

# Auroral breakup detection in all-sky images by unsupervised learning

Noora Partamies<sup>1</sup>, Bas Dol<sup>1,2</sup>, Vincent Teissier<sup>3</sup>, Liisa Juusola<sup>4</sup>, Mikko Syrjäsuo<sup>1</sup>, and Hjalmar Mulders<sup>2</sup>

<sup>1</sup>The University Centre in Svalbard, Longyearbyen, Norway

<sup>2</sup>Eindhoven University of Technology, The Netherlands

<sup>3</sup>ENSTA Bretagne, Brest, France

<sup>4</sup>Finnish Meteorological Institute, Helsinki, Finland

**Correspondence:** Noora Partamies (noora.partamies@unis.no)

**Abstract.** Due to a large number of automatic auroral camera systems on the ground, image data analysis requires more efficiency than what a human expert visual inspection can provide. Furthermore, there is no solid consensus on how many different types or shapes exist in auroral displays. We report the first attempt to classify auroral morphological forms by unsupervised learning method on an image set that contains both nightside and dayside aurora. We used six months of full-colour auroral all-sky images captured at a high-arctic observatory on Svalbard, Norway, in 2019–2020. The selection of images containing aurora was performed manually. These images were then input to a convolutional neural network called SimCLR for feature extraction. The clustered and fused features resulted in 37 auroral morphological clusters. In the clustering of auroral image data with two different time resolutions we found that the occurrence of eight clusters strongly increased when the image cadence was high (24 seconds), while the occurrence of 14 clusters experienced little or no change with changes in input image cadence. We therefore investigated the temporal evolution of a group of eight "active aurora" clusters. Time periods for which this active aurora persisted for longer than two consecutive images with maximum cadence of six minutes coincided with ground-magnetic deflections and their occurrence was found to maximise around the magnetic midnight. The active aurora onsets typically included vortical auroral structures and equivalent current patterns typical for substorms. Our findings therefore suggest that our unsupervised image clustering method can be used to detect auroral breakups in ground-based image datasets with a temporal accuracy determined by the image cadence.

## 1 Introduction

Auroral displays exhibit a vast variety of different morphology and dynamics. Despite decades of research and an early morphological "template" for auroral evolution during substorms (Akasofu, 1964), there are still many unexplained structures and periods of evolution, as pointed out by Knudsen et al. (2021) in a recent review. With the fast development of observational capabilities, recent observations have also revealed new auroral (or their like) forms (e.g. Lumikot – McKay et al. (2019), Fragments – Dreyer et al. (2021), STEVE – MacDonald et al. (2018)), which emphasises how we still lack knowledge and understanding of auroral structures and, in particular, their relation to each other.

One of the first automatic image classification attempts by Syrjäsuo and Donovan (2004) detected arcs, patches and omega  
25 bands. They stated that for less than 10% of all auroral structures the form is "known" and can be named. This obviously  
hampers our skills to perform morphological classification for aurora in statistical sense and by means of supervised learning.  
The (known) structures typically included in supervised learning as the ground truth are arcs, patchy/diffuse, discrete, moon  
and clouds (e.g. Clausen et al., 2018; Kvammen et al., 2020; Sado et al., 2022). These automatic classification results are good  
within about 90% success rate, but some of the commonly used auroral classes are very broad, with "Arcs" being the only spe-  
30 cific shape and the rest of the auroral morphology being grouped into "Discrete" and "Diffuse" aurora. Furthermore, as about  
50% of the image data do not contain aurora (but rather clear skies, clouds, or Moon), classifying a combination of aurora  
and non-aurora classes makes the morphological part of the classification inefficient. To overcome the problem of classifying  
largely unknown auroral features an auroral arciness index was introduced to include all images containing aurora (Partamies  
et al., 2014). This method recognises all auroral structures, and gives them an index-like number between 0.4 and 1 based  
35 on the distribution and clustering of the brightest pixels in the images. This method has been used to characterise temporal  
evolution of selected known structures (e.g. poleward moving auroral forms of the dayside aurora by Goertz et al., 2022).

An unsupervised learning attempt of the dayside auroral structures by Yang et al. (2021) clustered auroral forms into two  
categories based on 4000 randomly selected images over five auroral (northern winter) seasons. The number of clusters chosen  
40 by the authors was based on visualisation of the feature vectors. As daytime aurora has previously been divided into four cate-  
gories by human experts (e.g. Hu et al., 2009), the new unsupervised clustering results reopens the discussion on the unknown  
number of true clusters. In their study, the first cluster contained variable morphological features, such as arcs, patches and  
spots with high brightness and primarily afternoon occurrence, while the second cluster consisted of corona-type aurora of  
lower brightness and high occurrence rate around magnetic noon.

45

To the best of our knowledge, we report the first attempt on unsupervised learning on auroral image data that includes both  
daytime and nighttime aurora. Our practical application is to automatically identify auroral breakups in the image data. This is  
particularly important for locations like Svalbard archipelago. Surrounded by a highly conductive ocean, the ground magnetic  
measurements are typically contaminated by the magnetic contribution of ground-induced currents by about 50–70% (Juusola  
50 et al., 2020), making the traditional substorm onset detection methods on magnetic data less reliable.

## 2 Auroral image data

We use full-colour all-sky camera (ASC) data from Kjell Henriksen Observatory (KHO, 78.25°N, 16.04°E) on Svalbard in  
arctic Norway. Our ASC is a Sony  $\alpha 7s$  mirrorless DSLR, which has been in operation since late 2015, but has also had  
comparable predecessors since 2008. The ASC raw data has a high pixel resolution (2832×2832). However, our analysis  
55 uses quicklook data with reduced pixel and time resolution for faster processing. Nighttime images with 4-second exposure

time have been taken at a cadence of 12 seconds throughout winter seasons, which on Svalbard extend from the beginning of November until the end of February. Images are captured when the Sun is below the horizon.

Daily summary plots of image data are automatically published in the form of keograms<sup>1</sup>. These are north-south slices of individual images stacked together into a daily time vs. latitude (or zenith angle) plots. Keograms have been used later on in the study to validate the results of our automatic classification.

In addition to the auroral image data, we use geomagnetic index data and solar wind data from OMNIWeb<sup>2</sup> to provide an overview of the magnetic activity level, as well as a reference for comparisons between what we call "active" and "quiet" auroral displays (for more detailed explanations, see section 4.1). Dst-index data from the World Data Center in Kyoto<sup>3</sup> is used as a storm indicator. Hp30-index<sup>4</sup> (Yamazaki et al., 2022) gives a 30-minute resolution version of planetary Kp-index, and the SuperMAG electrojet index (SML<sup>5</sup>, Gjerloev (2012)) describes the auroral electrojet variability with a global coverage of magnetometer stations at 1-minute resolution.

### 3 Classification method

#### 3.1 Pre-processing of the auroral images

Manual labelling was performed for all quicklook images from the winter season 2019–2020 as well as for January and February 2019. Quicklook images have a reduced resolution of 480×480 pixels and about 6-minute cadence. The manual labelling aimed at providing a ground truth for developing an automatic classification routine to detect images which contain auroral emission. This dataset contained approximately 37000 labelled images. From this dataset, only those images that contained auroral emission and were not dominated by clouds were further used in unsupervised learning. That became approximately 12000 images.

To prepare the images for unsupervised learning, each image was first processed to remove features that could lead to biases that are unrelated to the auroral morphology, such as a caption indicating the camera type, observatory location, date and time. After removing the caption, images with very faint or barely detectable aurora were removed. In the quicklook images, the colour of each pixel is represented by individual intensities in red, green and blue colours. This is commonly known as the RGB colour space. However, for processing based on brightness, we transform the RGB colours into HSV and L\*a\*b\* colour spaces, where the brightness and actual colour content are more clearly separated.

In HSV-colour space, the colours are expressed by Hue (H) and Saturation (S) while the brightness is contained in Value (V) (Malacara, 2002). If V was less than 50 out of 255 in more than 90% of pixels in the image, the image was discarded as too faint. This left 10300 images containing sufficiently bright aurora.

---

<sup>1</sup><http://kho.unis.no/Keograms/keograms.php>

<sup>2</sup><https://omniweb.gsfc.nasa.gov>

<sup>3</sup><https://wdc.kugi.kyoto-u.ac.jp/dstdir/index.html>

<sup>4</sup><https://kp.gfz-potsdam.de/en/hp30-hp60>

<sup>5</sup><https://supermag.jhuapl.edu/indices/>

The  $L^*a^*b^*$ , or CIELAB colour space, aims to represent the colours as a human observer would perceive them (Malacara, 2002). Here,  $L^*$  denotes the lightness of the colour, while  $a^*$  and  $b^*$  provide the colour information. Unlike RGB and HSV,  $L^*a^*b^*$  is a device-independent colour space based on a standard human observer and a standard outdoor illumination. Similarly to earlier work (e.g. Sado et al., 2022; Clausen et al., 2018; Johnson et al., 2021), we clipped the  $L^*$  values to the range from 0.5 to 99.5 percentiles. To reduce the influence of the background sky conditions on the aurora classes, the median values of the  $a^*$  and  $b^*$  colour channels were used to provide a neutral white balance for all images. Next, the images were cropped to 400x400 pixels around the centre. This removes the biases due to dark corners outside the circular field-of-view of all-sky images. This step also removes most of the auroral emission at the lowest elevation angles, which is beneficial as the morphology of the auroral forms near the horizon is heavily distorted by the fish-eye optics and therefore difficult to examine.

To better take into account faint aurora a contrast enhancement was performed on the images by equalizing the histograms of the  $L^*$  channel for each image. Furthermore, a  $5 \times 5$  median filter was used to remove single bright pixels due to stars, similarly to the  $3 \times 3$  filter used by Kvammen et al. (2020). Finally, the images were resized to  $224 \times 224$  pixels and converted back to RGB, which is the expected format for most feature extractors.

As an example of the effect of the pre-processing steps outlined above, Figure 1 shows two original quicklook images (left column), and the corresponding pre-processed images (right column). The images demonstrate the impact of cropping, where aurora close to the horizon is being excluded, as well as the effect of the colour enhancement and brightness normalisation.

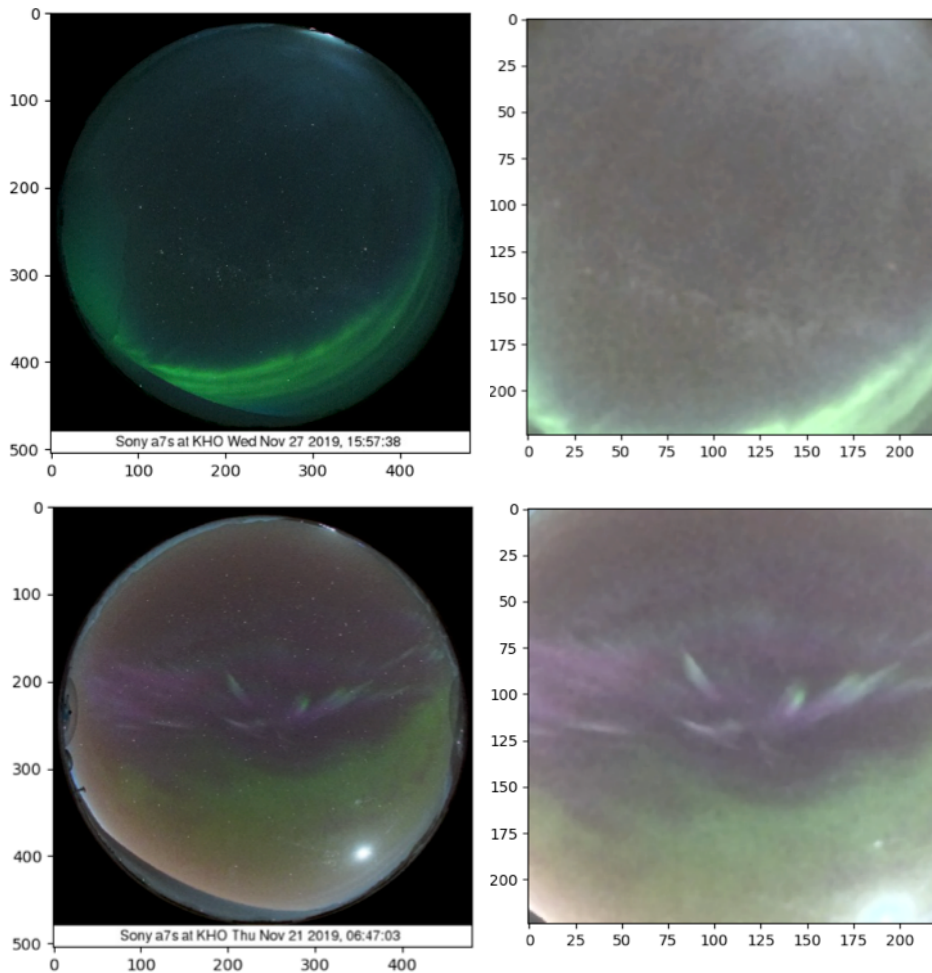
The cadence of 6 minutes of the quicklook data favours quiet aurora over active aurora. This happens because active aurora occurs in short highly dynamic bursts, which are poorly sampled by a cadence of 6 minutes, while quiet aurora experiences longer lifetimes. To study the influence of this bias and to better represent the active auroral forms, a second dataset was made. In this dataset, the cadence was reduced to 24 seconds during selected periods of active aurora. This additional dataset is also referred to as high resolution dataset in this work. These selected periods were visually identified as the 19 brightest auroral displays with large north-south extent as seen in the keograms (sample keogram in the top panel of Figure 5).

### 3.2 Classification of images

In contrast to *supervised learning*, where we know the correct answer to a classification question and can train a classifier accordingly, in *unsupervised learning* we do not know the answer. The manual labelling of auroral images provided us with a dataset of unknown auroral forms. We try to learn the types of the aurora in the data by using clustering algorithms. Intuitively, similar auroral shapes in the images should belong to the same cluster.

The first step is to define a numeric measure of the image content in form of a *feature vector*. In the second step, the images are clustered based on their feature vectors: here, the true number of clusters is, of course, unverifiable. As clustering is often based on similarity metrics, the results also depend on how well the feature vectors represent the image content. In his Master's thesis, Teissier (2022) evaluated a number of different feature vector extractors as well as clustering approaches. The following provides a brief description of the central concepts and the choices of the methodology.





**Figure 1.** Left: Two quicklook images in their original format. Right: Corresponding images after the pre-processing steps of colour enhancement, brightness normalisation, cropping and scaling.

Classifiers based on Convolutional Neural Networks (CNN) (LeCun et al., 2015) are becoming increasingly popular in image analysis. *Training* an artificial neural network refers to the process of optimising all parameters within the network to minimise the classification error.

120 The analysis of auroral images in our dataset uses a processing chain which includes a CNN architecture followed by a smaller neural network. We start with the inclusion of high-time resolution data as it provides a better balance between images of auroral displays during active and quiet times. We use a variation of the SimCLR feature extractor used by Johnson et al. (2021). This feature extractor builds on the Resnet-50 neural network (He, et al., 2016) architecture. Random rotations and other image transformations are often used in training image classifiers to both artificially increase the number of "different"

sample images and to obtain invariance in orientation. In this study, we limit ourselves to horizontal flipping (east-west in  
125 auroral images) and random cropping (random parts of the sky with aurora) in the training phase (Teissier, 2022).

We used the UMAP (Uniform Manifold Approximation and Projection for Dimension Reduction) method to reduce the  
dimensionality of the feature vectors (McInnes et al., 2020). This step was carried out to improve clustering (Steinbach et al.,  
2004). In the UMAP reducer, there are two critical parameters: one that impacts on how much the algorithm focuses on local  
versus global structures ( $N\_neighbours$ ), and another determining the minimum allowed distance between the features in the  
130 dimensionally reduced space ( $min\_dist$ ). Based on the experiments by Teissier (2022), we used the values  $N\_neighbours = 20$   
and  $min\_dist = 0$ .

Finally, a clustering algorithm was used to determine clusters of the dimensionally reduced feature vectors. Two different  
clustering algorithms were used: K-means (MacQueen, 1967) and hierarchical clustering (Nielsen, 2016). These algorithms  
were used to divide images into 30 or 100 clusters. Consequently, the four clustering results (two clustering algorithms and two  
135 numbers of clusters) were fused together to balance the weaknesses and biases of the individual approaches. This also helps to  
identify outlier images that are connected to different auroral features depending on the clustering algorithm that is used. The  
fusion was done by using a modified majority voting with co-association matrix algorithm (Fred, 2001). The original algorithm  
was modified to have two tuneable parameters. The first parameter is the majority threshold of the co-association matrix, above  
which two samples are merged in the same cluster. The second parameter is the minimal cluster size, under which a cluster is  
140 merged into the cluster of 'outliers', to indicate hard to classify images. The values of these parameters were determined by  
changing them to minimize the loss function

$$L = \frac{1}{n_c} \sum_{k=0}^N |n_k - n_0^k| + \frac{n_e}{n_c} \quad \text{with } n_0^k = \frac{N}{n_c} \text{ if } k < n_c, \text{ otherwise } n_0^k = 0 \quad (1)$$

where  $N$  is the total number of samples,  $n_k$  the number of samples in the cluster  $k$ , and  $n_e$  the number of outlier samples. The  
parameter  $n_c$  is used to influence the number of clusters resulting from the fusion, and was set to 25. The fusion resulted in 37  
145 clusters with numbers ranging from -1 to 35, where the -1 cluster is for the outlier images not belonging to any of the other  
clusters.

Using a basic desktop computer (in 2022), the pre-processing, training and clustering required roughly one day of computer  
time. Predicting clusters for additional images takes less than one second per image. Table 1 summarises the numbers of images  
150 at each stage of the data processing.

## 4 Results

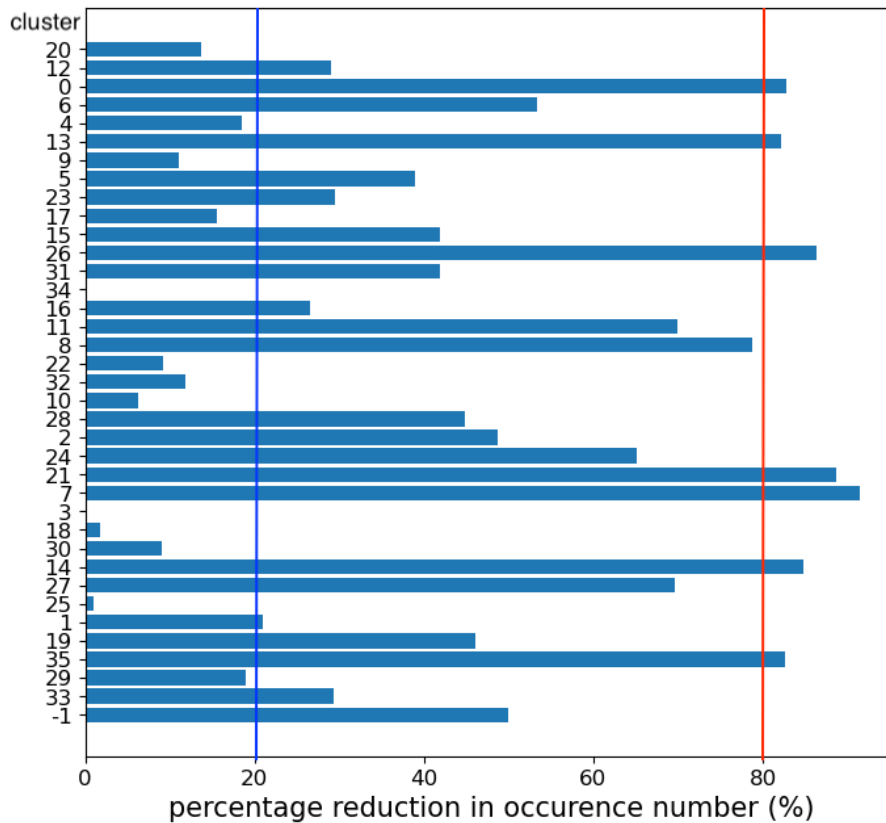
### 4.1 Differences between active and quiet type aurora

The CNN analysis was run on the quicklook images with 6-minute cadence alone as well as on the full dataset with the inclusion  
of higher resolution images with 24-second cadence. As a result we found that the occurrence of some morphological clusters

**Table 1.** Summary of numbers of images in our datasets throughout the process

Dataset	Number of images	Notes
Raw data	37000	All labelled images, 6-min cadence
Aurora only	12000	Images with no aurora and clouds removed
High-time resolution events	5500	Additional bright aurora events with 24-s cadence
Clustered aurora	9200	Auroral images grouped by their morphology

155 increased much with the increasing temporal resolution, while the occurrence rate of other clusters was nearly not affected. The high sensitivity to the increased temporal resolution in the image data (at least about 80% change, red vertical line in



**Figure 2.** Occurrence rate difference of all 37 clusters between quicklook and high-resolution data in percentage with respect to the total occurrence rate of each cluster. Clusters with a maximum change of about 20% are called quiet aurora, and clusters with at least about 80% change are taken as active aurora. Threshold occurrence changes for quiet and active aurora are marked by blue and red vertical lines respectively. Cluster number -1 is an outlier cluster. Figure according to Dol (2023).

Figure 2) suggests that these clusters primarily describe morphology of active auroral displays. These are the clusters number

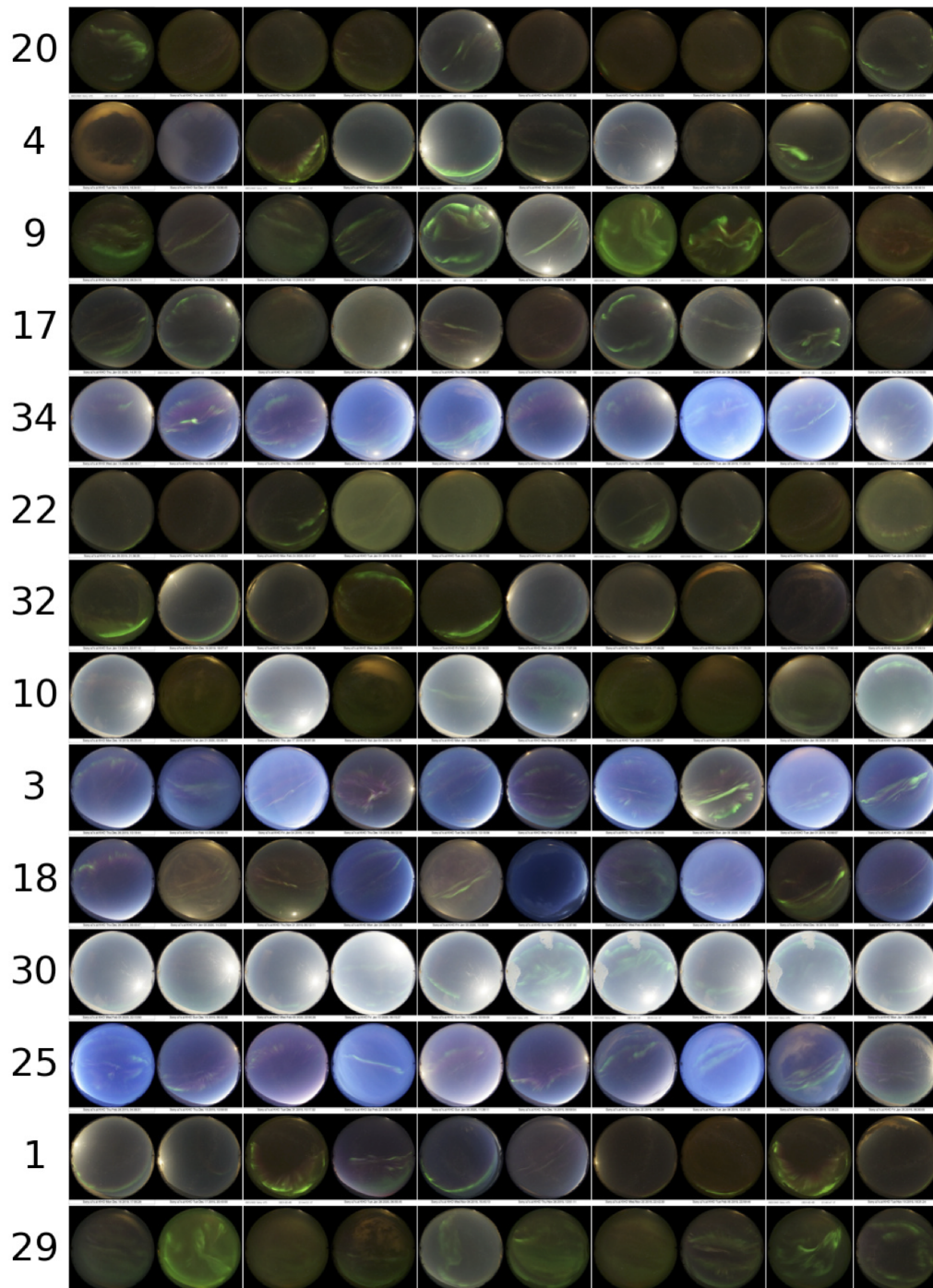
0, 13, 26, 8, 21, 7, 14 and 35. The occurrence change of individual clusters is illustrated by Figure 2. It shows the occurrence rate difference of all 37 clusters between quicklook and high-resolution data in percentage with respect to the total occurrence rate of each cluster. The clusters, for which the occurrence showed little or no change (maximum of about 20% change, blue vertical line in Figure 2) with the increasing temporal resolution (clusters number 20, 4, 9, 17, 34, 22, 32, 10, 3, 18, 25, 1 and 29), are likely to contain auroral structures mainly related to quiet auroral displays. By quiet auroral displays we refer to images of structures, which are relatively simple, dim and evolve slowly in time. A typical example of this is an auroral arc, or a multiple arc, which changes little between consecutive images with higher temporal resolution of 24 seconds. A set of ten randomly selected images from each of the individual clusters included in quiet aurora is shown in Figure 3. In addition to the simple green auroral structures, daytime and afternoon overhead aurora with a notable red emission contribution belong to this category. Active aurora displays, in turn, refer to images with one or multiple more complex auroral structures, which evolve significantly between consecutive images in our higher temporal resolution dataset, and have little resemblance between consecutive images in quicklook time resolution (6 minutes). A random selection of images in each individual cluster included in active aurora is displayed in Figure 4. These active aurora displays typically include bright emission in vortical, rayed and small-scale structures. The threshold values for the occurrence rate changes for quiet and active aurora ( $\sim 20\%$  &  $\sim 80\%$  respectively) are based on visual inspection of the cluster occurrence rate histogram in Figure 2, and are therefore somewhat arbitrary. Note that cluster number 1 is included in the quiet aurora, although its change rate is just over 20%. Similarly, cluster number 8 is included in the active aurora, although its change rate is just under 80%. These choices were made with the idea that large percentage difference is a conservative choice as long as it results in several cluster in each extreme.

From image samples in Figures 3 and 4 it is obvious that a detailed description of the type of aurora in each individual cluster is difficult to determine. Simple properties, such as brightness, contrast, colour, alignment, and location of the aurora in the image seem to play a role in the numerical clustering. For both quiet and active aurora categories, the images containing the Moon have been collected in the same clusters. Any more detailed interpretation of the individual clusters will require more analysis.

An example of time evolution of auroral all-sky image data with the detected active and quiet auroral displays is provided by Figure 5, where the upper panel is a full keogram of 25 January 2019 and the lower panel shows a time evolution of individual images of active (red dots) and quiet (blue dots) auroral displays. The images of active and quiet aurora are most frequent at the time periods of clear skies and aurora, because our pre-processing excludes clear skies with no aurora and images with clouds. Active aurora coincides with the brightest aurora in the keograms, as expected. The bottom panel in Figure 5 shows ground magnetic data (X component) from Svalbard magnetometer stations in Hornsund (HOR, 77.00°Glat), Longyearbyen (LYR, 78.20°Glat) and Ny-Ålesund (NAL, 78.92°Glat). These stations are part of the IMAGE magnetometer network<sup>6</sup> (Tanskanen, 2009). The magnetic variations are measured and plotted in 10-second time resolution. The three periods of active aurora correspond to small ( $\sim 100$  nT) to moderate ( $\sim 400$  nT) magnetic deflections in the north–south component. They could all be interpreted as substorms, the first of which expands towards Svalbard from further south, while the two latter events occur

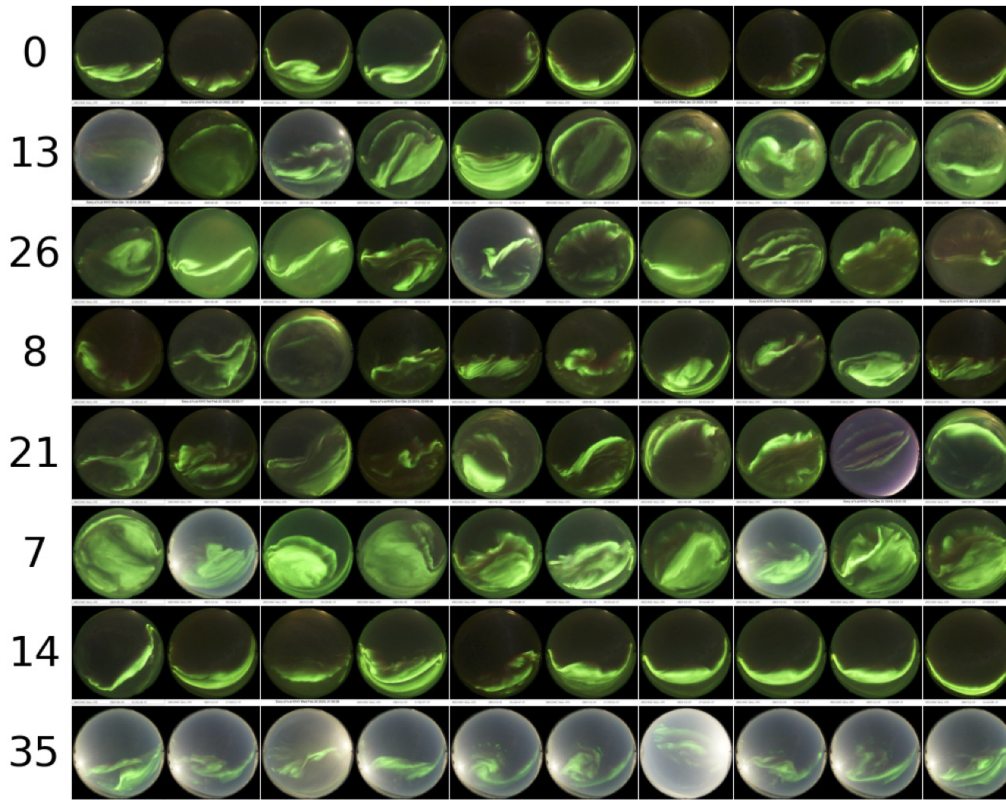
---

<sup>6</sup><https://space.fmi.fi/image/www/index.php>



**Figure 3.** Ten random images from each individual cluster included in the category of "quiet aurora" (DoI, 2023).



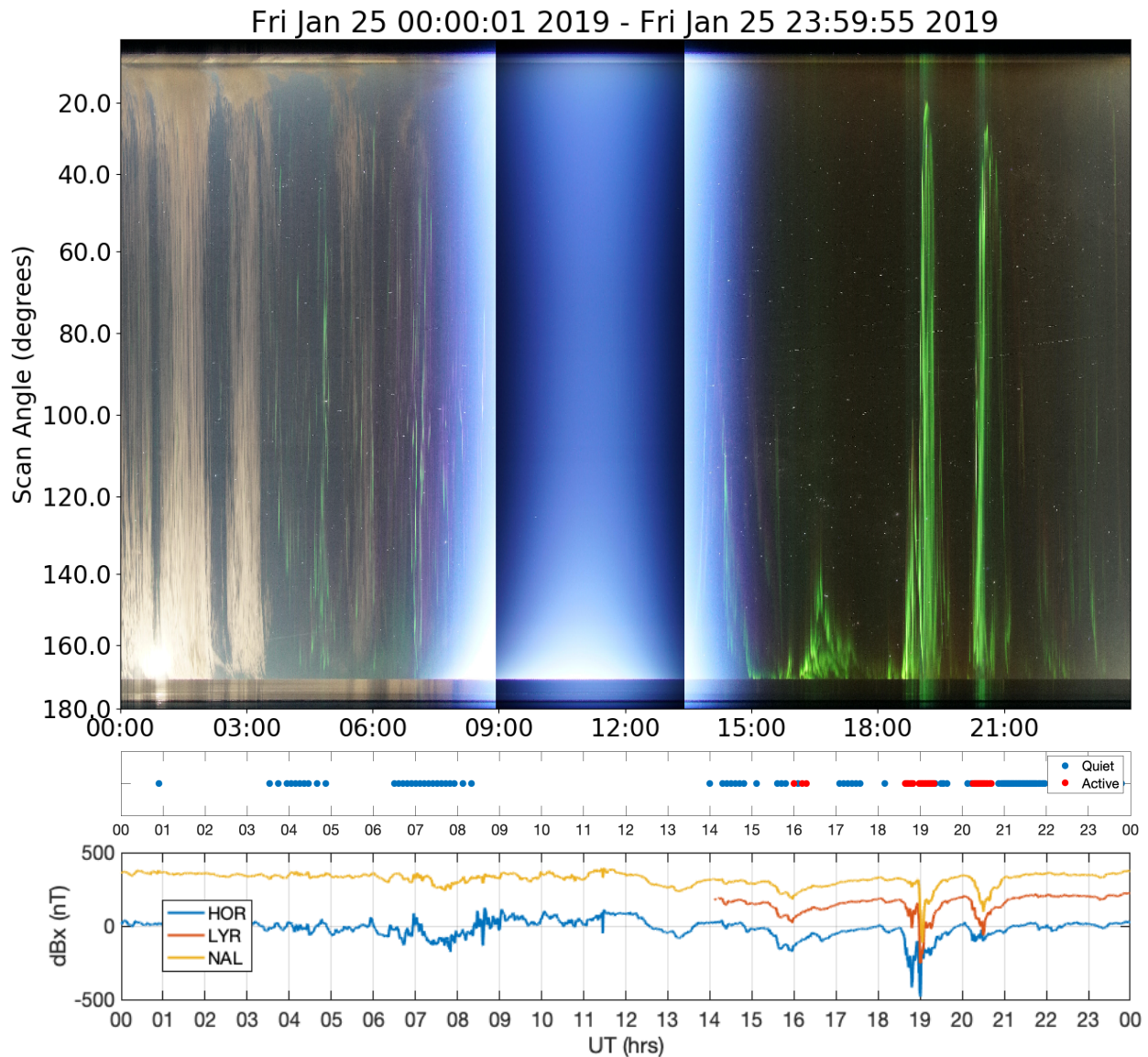


**Figure 4.** Ten random images from each individual cluster included in the category of "active aurora" (Dol, 2023).

more directly overhead. The visual correspondence between the periods of active aurora and the magnetic deflections during the two latter substorms appears particularly good.

To further investigate these difference morphological cluster groups of "active" and "quiet" aurora, we selected time periods of active or quiet aurora that included three or more consecutive images with a maximum cadence of 6 minutes. For a sequence  
 195 longer than 3 consecutive images, one single quiet class image would be allowed within an active auroral period, or the other way round. This procedure resulted in 28 active auroral events and 222 quiet auroral events in the time frame of all our labelled data in 2019–2020.

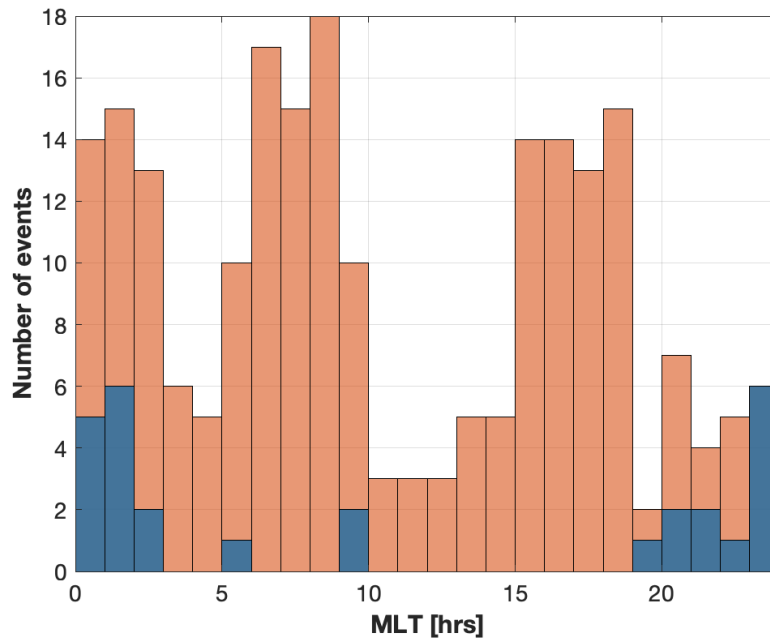
The table 2 gives an overview of the typical parameters for periods of active and quiet aurora. The duration of the active aurora events varied from 60 seconds up to 5 hours, while that of the quiet events ranged from 2 minutes up to 25 hours.  
 200 The median values (row 2 in the Table), however, do not differ much. The active aurora events typically started at magnetic midnight (row 3), while the quiet aurora events were spread more evenly over the Magnetic Local Time (MLT) hours, which is illustrated by Figure 6. The median start time is therefore not a good indicator for quiet aurora, which experiences three occurrence maxima in 24 hours: right after midnight, at about 6–9, and at about 15–19 MLT. The geomagnetic indices with coarser spatial resolution (a low number of stations, which provide the data) are not dramatically different between the periods



**Figure 5.** Top: Sample keogram of colour ASC data on 25 January 2019. At 00-01 UT on the southern sky (at scan angles 160–180) the moon is visible and illuminates the clouds in the field-of-view. At 03–08 UT faint morning sector aurora is seen, first as green and later also as red. At 08–15 UT the daylight increases the illumination of the sky although the sun is below the horizon. Due to the increased light level the exposure time changes, and that is seen as vertical colour changes at about 09 and 13:30 UT. From 15 UT onwards the sky is dark and green aurora appears in three northward expansions. Middle: Time series of active (red dots) and quiet (blue dots) aurora for the sample day. Bottom: Evolution of ground magnetic X-component deflections at the stations of NAL (yellow), LYR (red), and HOR (blue). LYR data are missing until 14 UT, but exist during the active aurora displays.

**Table 2.** Median values of event durations, geomagnetic indices and solar wind speed for periods of active and quiet aurora, respectively.

Parameter	Active aurora	Quiet aurora
1. Number of events	28	222
2. Duration (min)	37	42
3. Start time in MLT	0	10
4. Dst index (nT)	-7.0	-4.0
5. SML index (nT)	-180	-50
6. Hp30 index	2.0	1.33
7. Solar wind speed (km/s)	416	367



**Figure 6.** Distribution of start times of active (blue) and quiet auroral displays (orange) in MLT. Midnight in MLT is at about 21 UT on Svalbard.

205 of active and quiet aurora. These are the Dst index (row 4) and the Hp30 index (row 6). Neither of these indices with low spatial  
 resolution includes high-latitude magnetic field data, and therefore they do not reflect the high-latitude magnetic deflections,  
 which may have different timing compared to the corresponding deflections at lower latitudes. However, the SML electrojet  
 index (row 5), which has a good spatial coverage of magnetic data from a range of different latitudes, shows a difference of  
 more than 100 nT between active and quiet aurora. Similarly to the low resolution magnetic indices, the median solar wind  
 210 speed (row 7) is more enhanced during active than quiet aurora, but only some tens of km/s, which is not significant.



## 4.2 Are the active aurora periods auroral breakups?

We have performed a visual inspection on what the active aurora periods correspond to by using keograms (as in top panel in Figure 5). The main mission of the validation procedure was to find out what the detected events looked like, if they corresponded to magnetic substorm activity, could keogram inspection reveal missed auroral activations, and if yes, what kind of events would they be. Keograms were therefore viewed for each day from January 2019 until March 2020. We inspected all detected active aurora events, as well as each keogram for any additional auroral brightening, which was not detected.

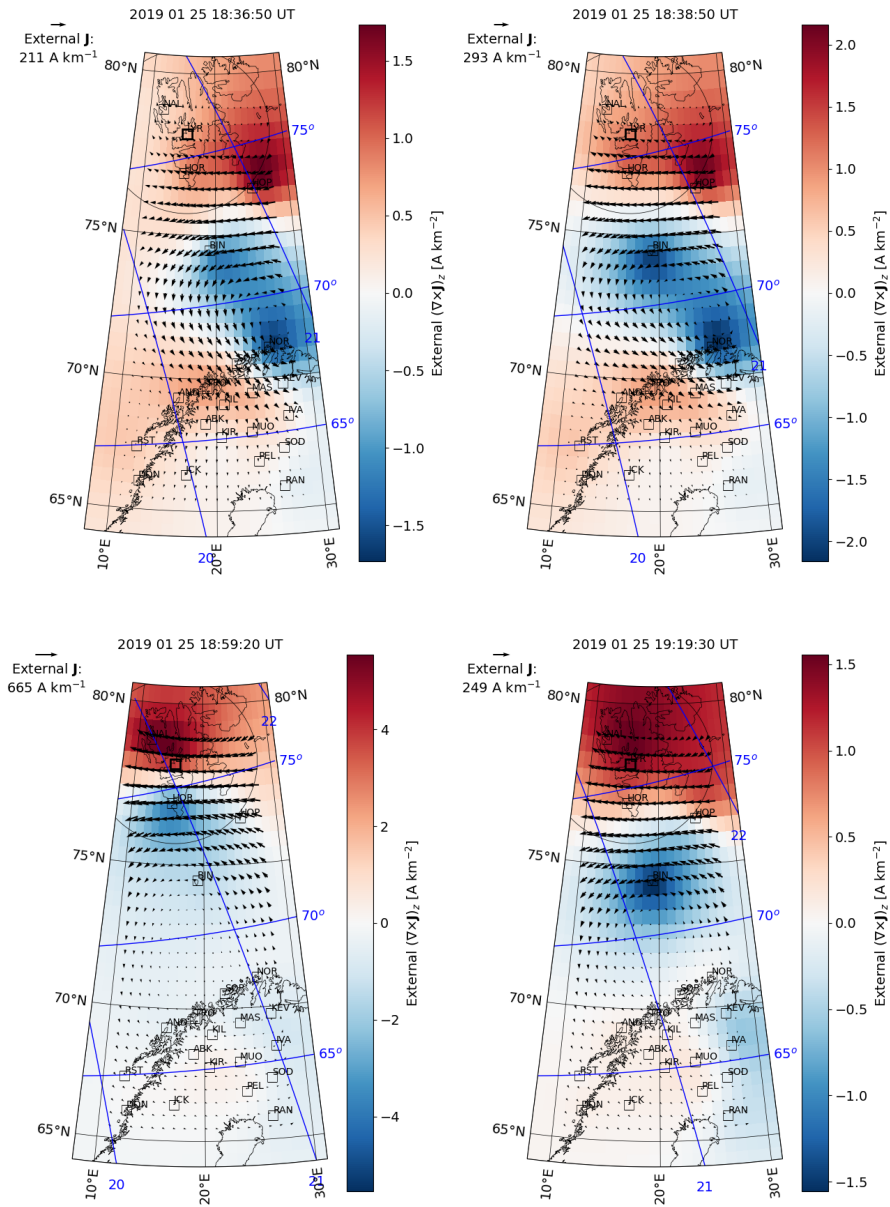
Most active aurora periods were auroral brightenings for which the bright emission extended over the full (or nearly full) field-of-view of the all-sky image as illustrated by the keogram in the top panel of Figure 5. Most of the active aurora periods also coincided with a small to moderate deflection of the local magnetic north–south (X) component, which indicates substorm activity. The maximum magnetic deflections for the active aurora events ranged from about 50 nT up to about 400 nT, with a median value of 100–200 nT. Cluster numbers of individual images were also investigated during the active aurora periods, but no consistent time evolution or preferential order was found among the individual active aurora clusters.

Taking the auroral breakup overhead as a benchmark, five false positive events were identified in the visual inspection. Three of our false positive cases were morning sector auroral events (see the lonely blue bars in Figure 6). These consisted of transient brightenings in the morning sector diffuse and pulsating aurora. Two of these events are from the shortest end of the duration spectrum containing only two consecutive images. This type of events could be filtered out simply by increasing the minimum duration of the active aurora events in order to produce a cleaner auroral breakup list. Two of the other events we call false positive cases were clearly substorm-like aurora, which extended about half way of the sky towards the local zenith, such as the first active aurora event in Figure 5. This type of events are not exactly wrongly detected but rather a milder category compared to the rest of the cases. They may include substorms, which are inherently not taking place at high latitudes but rather expand towards Svalbard from further south where the strongest magnetic disturbances take place.

As for false negatives, i.e. any additional auroral brightenings that the active aurora periods did not cover, no events were found. Based on keograms, we visually identified some auroral brightenings that extended nearly across the full sky but were not automatically identified as active aurora. These included 1) events where the sky was fully or partly cloudy so that the auroral structures were obscured, 2) events where the image was contaminated by moonlight so that the auroral brightness (and therefore the structure) was not well visible, or 3) events, which were substorm-like auroral activations that did not even reach half way toward the local zenith. Images in the two first categories would have been excluded from the data fed to the classifier due to the clouds or the moonlight. In the last category, the largest magnetic deflections occurred typically further south from Svalbard, which was confirmed by visual examination of the IMAGE magnetometer data.

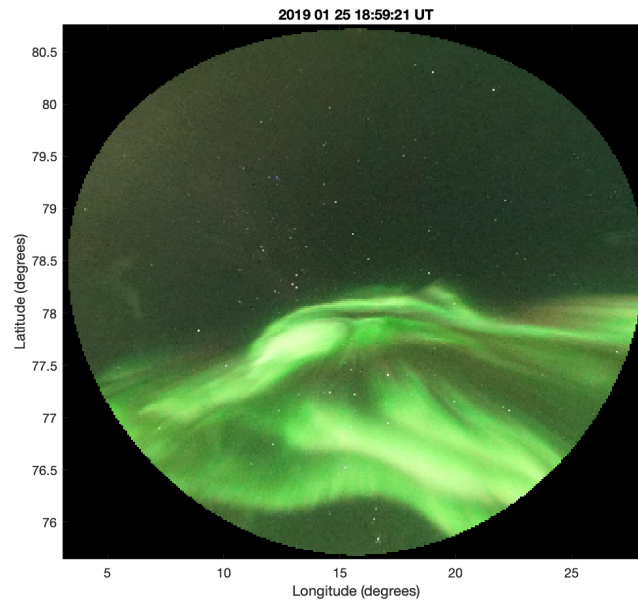
240

Figure 7 shows snapshots of the ionospheric equivalent currents, derived from 10-second IMAGE magnetometer data (Vanhamäki and Juusola, 2020), on 25 January 2019 around a period of active aurora in Figure 5. The plots show an equivalent current pattern typical for the Westward Traveling Surge (WTS) (e.g., Vanhamäki et al., 2005) sweeping past LYR from south-east to northwest. Two minutes before the period of active aurora (18:36:45 UT), the U-shaped head of the surge pattern was



**Figure 7.** Ionospheric equivalent currents (Vanhamäki and Juusola, 2020) (arrows) and the Z component of their curl (color) that can be interpreted as an estimate of field-aligned current  $j_z$  on 25 January 2019 two minutes before a period of active auroras started (18:36:50 UT), at the start of the period of active auroras (18:38:45 UT), during the period of active auroras (18:59:20 UT), and at the end of the period of active auroras (19:19:27 UT). The IMAGE magnetometer stations used to construct the equivalent currents are shown by black rectangles and LYR field-of-view by a circle. Magnetic Apex coordinates (Richmond, 1995; Emmert et al., 2010; Laundal et al., 2022) are indicated by the blue grid.

245 still located south and east of the LYR field-of-view (indicated by the black circle). The surge head appears to reach LYR at  
the time the active aurora started (18:38:45 UT) and to disappear around the time the active aurora ended (19:19:27 UT). A  
similar sequence of equivalent current dynamics (not shown) can be seen around the next interval of active aurora in Figure 5,  
between 20:18:14 and 20:41:04 UT. We have also examined several other active aurora events and found similar equivalent  
current development. This indicates that periods of active aurora may be associated with a WTS, which has originated earlier  
250 at a substorm onset location just east and south of LYR, and travels westward and northward past LYR.



**Figure 8.** An image of the surge head taken at 18:59:21 UT plotted into geographic coordinates for easier comparison with the corresponding distribution of equivalent currents in Figure 7. The assumed emission peak emission height for the mapping was 110 km.

Figure 8 shows the ASC image of the surge head aurora as it comes into the ASC field-of-view, which corresponds to the strongest ionospheric equivalent currents at 18:59:20 UT (Figure 7). Here the image is plotted onto geographic coordinates to make it more comparable to the coordinates of the equivalent current maps (grey grid). Characteristic to the WTS aurora is the intense auroral emission and vortical structures, located within the region of upward field-aligned current (blue colour, negative external  $j_z$ ). The auroral evolution leading to this included poleward expansion from the southern edge of the field-of-view, as well as more localised brightenings propagating from east to west along the poleward boundary of the surge aurora. This evolution is in agreement with that of the equivalent currents as described above.  
255

## 5 Discussion

Results from our newly developed method for morphological clustering of auroral images have been used to detect auroral  
260 activations over Svalbard. While the method produced 37 individual clusters, which we cannot describe in detail, our further  
analysis suggests that the occurrence of eight of those clusters are associated with active auroral displays. Similarly, 14 clusters  
are prominently present during quiet auroral displays. Particularly interesting finding is that longer periods of active auroral  
displays practically include all full-sky auroral events in our all-sky field-of-view. These events coincide with ground-magnetic  
deflections and enhanced westward ionospheric electrojet current, which are signatures of magnetospheric substorms. At high-  
265 latitudes and close to the polar cap boundary, such as Svalbard is ( $78^\circ$  Glat), auroral breakups overhead do not happen often. It  
is therefore practical to have a way to automatically identify them in the image data, in such a way that no events are missed,  
even when this means a detection of some additional false positive cases (10–15%).

The MLT distribution of quiet aurora in Figure 6 has three maxima: one at around midnight, one in the afternoon at 15–17,  
270 as well as one in the morning at 6–9 MLT. This is in a very good agreement with an MLT distribution of auroral structures for  
Svalbard during quiet geomagnetic conditions (Partamies et al., 2022). In their 13-year long data series the auroral morphology  
was investigated in terms of simple auroral structures called auroral arcs versus other more complicated structures. Both  
classes undergo similar MLT occurrence rate when geomagnetic conditions are quiet (auroral electrojet AL index is larger  
than -100 nT). These quiet conditions correspond to the magnetic disturbance level for our quiet aurora. Similarly, for their  
275 active conditions (AL smaller than -300 nT), the MLT occurrence of both arcs and more complex auroral structures maximise  
between 21 and 02 MLT. This agrees with the occurrence of our active aurora, even though our active aurora events generally  
take place in less disturbed conditions (SML median of -180 nT).

An earlier study by Singh et al. (2012) analysed magnetic signatures of high-latitude substorms poleward of the central  
auroral oval. They concluded that the substorms occur primarily close to the MLT midnight, at 21–02 MLT during low or  
280 moderate solar wind stream, which is in a very good agreement with the occurrence conditions of our events. In a more recent  
high-latitude substorm study Cresswell-Moorcock et al. (2013) identified 112 events of energetic electron precipitation (EEP)  
in 12 months of electron density profiles from EISCAT Svalbard radar (ESR) measurements. This is a much larger number  
than what we collected in our study, but since our optical approach requires both dark and clear skies (possible only for three  
months a year) the event numbers seem comparable. Our events were collected from a total of six months of data, and sta-  
285 tistically about half of the auroral images are cloudy. Our events of active aurora show a very similar occurrence around the  
magnetic midnight as do the EEP events detected in radar data (their Figure 3a). Our auroral breakups occurred during less  
active magnetic conditions as compared to the EEP events from the radar data ( $K_p/H_p$  index = 2 for ours and 3 for theirs), and  
during average solar wind speed, while the EEP events were reported to take place during fast solar wind. It is very likely that  
our auroral breakups would therefore not fulfill the EEP criterion of strong D region ionisation.

290

An automated method, which would closest compare to our approach is a new study on pixel level classification that has empirically implemented thresholds for detecting auroral intensifications by Yamauchi et al. (2023). This method includes auroral breakups among other brightenings. What the authors call a local-arc brightening is not validated strictly as substorm activity, because brightenings take place at all local times. The pixel-level classification of a full-resolution ASC image requires  
295 a lot more manual work than manual labelling of full images, but since the authors used data from the same camera model as ours, a cross-validation of our results can be performed in the future.

ASC image data have been used to detect the auroral breakups before. Murphy et al. (2014) developed a method which utilised the temporal evolution of the auroral image brightness as a proxy for auroral breakups. Three independently studied substorms were identified with good accuracy. Furthermore, 50% of independently listed 240 substorm onsets were detected  
300 within the uncertainty of their method.

Currently, the only operational image classification method that runs on real-time image data is described by Nanjo et al. (2022). They use unpruned auroral colour images from Tromsø and Skibotn in Northern Norway and Kiruna in Northern Sweden<sup>7</sup>. The closest to the auroral breakup detection of that approach is the beginning of an extended period of the class called discrete aurora. The class itself contains much more than just the auroral breakups, but with some further analysis those  
305 results may also become a helpful cross-validation dataset for our method in the future.

While the results presented here are very promising, further research is needed to assess how efficiently this method works on unseen image data from different winter seasons. This essentially depends on how well the originally manually labelled image data from 2019–2020 represents all different sky conditions and the variety of auroral morphology at and around the polar cap boundary. Also worth testing is if the current results are sensitive to the use of brightness normalisation in the pre-processing  
310 of the images. Specifically, it should be investigated if the brightness normalisation leads to an unnecessary bias towards faint auroral structures. Future studies will also include testing the method on other similar ASCs at different locations. This may require re-evaluation of the categories of active and quiet aurora, as individual instruments have slightly different colour balances, which may affect the clustering results. Furthermore, aurora at lower latitudes consists of different structures to some extent, and will be limited to the nightside aurora with different emission balance and different background sky conditions  
315 as compared to the dayside aurora. All these factors may affect the occurrence of the morphological clusters, and therefore must be investigated. The traditional way of detecting substorms is to use measurements of ground-magnetic field. Because the magnetic data are not sensitive to weather or daylight conditions, the magnetometer station density is high, and the data are available in long-time series in high temporal resolution, the magnetic approach has been widely used for statistical studies (e.g. Forsyth et al., 2015; Partamies et al., 2013; Juusola et al., 2011). However, the recently documented ground-induction  
320 contribution in the magnetic measurements suggests that the magnetic substorm detection may be biased (Juusola et al., 2020). Furthermore, for some studies it is essential to include information on the auroral morphology, which makes the availability of the image data a key element.

---

<sup>7</sup><https://tromsoe-ai.cei.uec.ac.jp/>

## 6 Conclusions

This study has explored a newly developed prototype method for automatic clustering of auroral all-sky images in an unsu-  
325 pervised way. We used manually labelled data that were known to contain aurora, which means that in order for this approach  
to work, a classification of raw images into classes of Aurora and No Aurora is needed. Our method produced 37 clusters.  
Our results showed that an occurrence of a group of clusters was strongly increased with an increasing temporal resolution of  
input images taken during bright auroral displays. This indicates that a time sequence of these morphological clusters mainly  
describes auroral activations. This result was further used to detect the start times of periods with continuous auroral activity  
330 in our labelled data. Examination of the detected auroral activations showed that these are indeed local auroral breakups that  
carry substorm-like properties to the extent high-latitude substorm events are expected to. An essential skill of our method is  
that no major events were missed by the detection. These are promising results that may help in identifying optical auroral  
breakups in the future, after being tested on unseen data and cross-validated with other methods.

*Code availability.* Auroral image clustering method by Vincent Teissier: <https://github.com/Tadlai/auroral-classification> ; Master's thesis on  
335 unsupervised image classification by Vincent Teissier: [http://kho.unis.no/doc/Vincent\\_master\\_thesis-final.pdf](http://kho.unis.no/doc/Vincent_master_thesis-final.pdf) . The software to calculate the  
equivalent currents is available as supplementary material of Vanhamäki and Juusola (2020).

*Data availability.* Labelled images and their morphological clusters are available at <http://doi.org/10.11582/2023.00132> . IMAGE magne-  
tometer data are available at  
<https://space.fmi.fi/image/www/index.php>, Sony keograms are available at <http://kho.unis.no/Keograms/keograms.php>

340 *Author contributions.* Noora Partamies supervised the projects by Vincent Teissier and Bas Dol. She further analysed the clustering results  
of the latter project and took the main responsibility for writing the manuscript. Vincent Teissier developed the unsupervised learning method  
for his M.Sc project, helped Bas Dol to reproduce the results and further develop the method, as well as helped in describing the method in  
this manuscript. Bas Dol produced the preliminary results on the morphological clustering, which were the starting point of this manuscript.  
Mikko Syrjäsoo co-supervised the method development by Vincent Teissier and participated in data processing, visualisation and analysis of  
345 the clustering results. Hjalmar Mulders supervised the project by Bas Dol and participated in the brainstorming of the analysis. Liisa Juusola  
analysed the equivalent currents for the periods of active aurora, plotted and interpreted the data. All authors helped in editing the manuscript.

*Competing interests.* The authors declare no competing interests.

*Acknowledgements.* We thank the institutes who maintain the IMAGE Magnetometer Array: Tromsø Geophysical Observatory of UiT the Arctic University of Norway (Norway), Finnish Meteorological Institute (Finland), Institute of Geophysics Polish Academy of Sciences (Poland), GFZ German Research Centre for Geosciences (Germany), Geological Survey of Sweden (Sweden), Swedish Institute of Space Physics (Sweden), Sodankylä Geophysical Observatory of the University of Oulu (Finland), DTU Technical University of Denmark (Denmark), and Science Institute of the University of Iceland (Iceland). The provisioning of data from AAL, GOT, HAS, NRA, VXJ, FKP, ROE, BFE, BOR, HOV, SCO, KUL, and NAQ is supported by the ESA contracts number 4000128139/19/D/CT as well as 4000138064/22/D/KS.

## References

- 355 Akasofu, S.-I.: The development of the auroral substorm, *Planetary and Space Science*, 4, 273–282, [https://doi.org/10.1016/0032-0633\(64\)90151-5](https://doi.org/10.1016/0032-0633(64)90151-5), 1964.
- Clausen, L. B. N., and Nickisch, H.: Automatic classification of auroral images from the Oslo Auroral THEMIS (OATH) data set using machine learning. *Journal of Geophysical Research: Space Physics*, 123, 5640–5647, <https://doi.org/10.1029/2018JA025274>, 2018.
- Cresswell-Moorcock, K., Rodger, C. J., Kero, A., Collier, A. B., Clilverd, M. A., Häggström, I., and Pitkänen, T.: A reexamina-  
360 tion of latitudinal limits of substorm-produced energetic electron precipitation, *J. Geophys. Res. Space Physics*, 118, 6694–6705, <https://doi.org/10.1002/jgra.50598>, 2013.
- Deng, J., Dong, W., Socher, R., Li, L.-J., Kai L., and Li F.-F.: ImageNet: A large-scale hierarchical image database, in *Proceedings of 2009 IEEE Conference on Computer Vision and Pattern Recognition*, 248–255, <https://doi.org/10.1109/CVPR.2009.5206848>, 2009.
- Dol, B.: Viability of using images classified by an unsupervised AI for determining patterns in the evo-  
365 lution of auroral morphology, Internship report at The University Centre in Svalbard, Norway, Eindhoven University of Technology, The Netherlands, [https://bibsyst-almaprmo.hosted.exlibrisgroup.com/primop-explre/fulldisplay?docid=BIBSYS\\_ILS71681826100002201&vid=UNIS&search\\_scope=default\\_scope&tab=default\\_tab&lang=en\\_US&context=L](https://bibsyst-almaprmo.hosted.exlibrisgroup.com/primop-explre/fulldisplay?docid=BIBSYS_ILS71681826100002201&vid=UNIS&search_scope=default_scope&tab=default_tab&lang=en_US&context=L), 2023.
- Dreyer, J., Partamies, N., Whiter, D., Ellingsen, P. G., Baddeley, L., and Buchert, S. C.: Characteristics of fragmented aurora-like emissions  
370 (FAEs) observed on Svalbard, *Ann. Geophys.*, 39, 277–288, <https://doi.org/10.5194/angeo-39-277-2021>, 2021.
- Emmert, J. T., Richmond, A. D., and Drob, D. P.: A computationally compact representation of Magnetic-Apex and Quasi-Dipole coordinates with smooth base vectors, *J. Geophys. Res.*, 115, A08322, <https://doi.org/10.1029/2010JA015326>, 2010.
- Forsyth, C., Rae, I. J., Coxon, J. C., Freeman, M. P., Jackman, C. M., Gjerloev, J., and Fazakerley, A. N.: A new technique for determining Substorm Onsets and Phases from Indices of the Electrojet (SOPHIE), *J. Geophys. Res. Space Physics*, 120, 10592–10606,  
375 <https://doi.org/10.1002/2015JA021343>, 2015.
- Fred, A.: Finding Consistent Clusters in Data Partitions, in *proceedings of Multiple Classifier Systems*, edited by Kittler J., and Roli, F., Springer Berlin Heidelberg, 309–318, ISBN 978-3-540-48219-2, 2001.
- Gjerloev, J. W.: The SuperMAG data processing technique, *J. Geophys. Res.*, 117, A09213, doi:10.1029/2012JA017683, 2012.
- Goertz, A. O., Partamies, N., Whiter, D., and Baddeley, L.: The Morphology of Poleward Moving Auroral Forms, *Ann. Geophys.*, 41,  
380 115–128, <https://doi.org/10.5194/angeo-41-115-2023>, 2023.
- Hu, Z. J., Yang, H., Huang, D. et al.: Synoptic distribution of dayside aurora: multiple-wavelength all-sky observation at Yellow River Station in Ny-Ålesund, Svalbard, *J. Atmos. Solar Terr. Phys.*, 71, 794–804, <https://doi.org/10.1016/j.jastp.2009.02.010>, 2009.
- Juusola, L., Østgaard, N., Tanskanen, E., Partamies, N., and Snekvik, K.: Earthward plasma sheet flows during substorm phases, *J. Geophys. Res.*, 116, A10228, <https://doi.org/10.1029/2011JA016852>, 2011.
- 385 Johnson, J. W., Hari, S., Hampton, D., Connor, Hyunju K., and Keesee, A.: A Contrastive Learning Approach to Auroral Identification and Classification, in *20th IEEE International Conference on Machine Learning and Applications (ICMLA)*, 772–777, <https://doi.org/10.1109/ICMLA52953.2021.00128>, 2021.
- Juusola, L., Vanhamäki, H., Viljanen, A., and Smirnov, M.: Induced currents due to 3D ground conductivity play a major role in the interpretation of geomagnetic variations, *Ann. Geophys.*, 38, 983–998, <https://doi.org/10.5194/angeo-38-983-2020>, 2020.



- 390 Juusola, L., Viljanen, A., Partamies, N., Vanhamäki, H., Kellinsalmi, M., and Walker, S.: Three principal components describe the spatiotemporal development of meso-scale ionospheric equivalent currents around substorm onsets, *Ann. Geophys.*, 41, 483–510, <https://doi.org/10.5194/angeo-41-483-2023>, 2023.
- He, K., Zhang, X., Ren, S., and Sun, J.: Deep Residual Learning for Image Recognition, in *Proceedings of 2016 IEEE Conference on Computer Vision and Pattern Recognition (CVPR)*, 770–778, <https://doi.org/10.1109/CVPR.2016.90>, 2016.
- 395 Knudsen, D.J., Borovsky, J.E., Karlsson, T. et al. Editorial: Topical Collection on Auroral Physics. *Space Sci Rev* 217, 19, <https://doi.org/10.1007/s11214-021-00798-8>, 2021.
- Kvammen, A., Wickstrøm, K., McKay, D., and Partamies, N.: Auroral image classification with deep neural networks. *Journal of Geophysical Research: Space Physics*, 125, e2020JA027808, <https://doi.org/10.1029/2020JA027808>, 2020.
- Laundal, K. M., van der Meeren, C., Burrell, A. G., Starr, G., Reimer, A., Morschhauser, A., and Lamarche, L. (2022): ApexPy [code], <https://apexpy.readthedocs.io/en/latest/>, last access: March 14, 2024.
- 400 LeCun, Y., Bengio, Y. & Hinton, G. Deep learning. *Nature* 521, 436–444, <https://doi.org/10.1038/nature14539>, 2015.
- MacDonald, E. A. et al.: New science in plain sight: Citizen scientists lead to the discovery of optical structure in the upper atmosphere, *Sci. Adv.* 4, <https://doi.org/10.1126/sciadv.aag0030>, 2018.
- MacQueen, J.: Some methods for classification and analysis of multivariate observations, edited by L. M. Le Cam, and J. Neyman, *Berkeley Symp. on Math. Statist. and Prob.*, 1, 281–297, 1967.
- 405 Malacara, D.: *Color Vision and Colorimetry, Theory and Applications*, SPIE PRESS, ISBN 0-8194-4228-3, 2002.
- McInnes, L., Healy, J., and Melville, J.: UMAP: Uniform Manifold Approximation and Projection for Dimension Reduction, <https://doi.org/10.48550/arXiv.1802.03426>, 2020.
- McKay, D., Paavilainen, T., Gustavsson, B., Kvammen, A., and Partamies, N.: Lumikot: Fast auroral transients during the growth phase of substorms, *Geophysical Research Letters*, 46, 7214–7221, <https://doi.org/10.1029/2019GL082985>, 2019.
- 410 Murphy, K. R., Miles, D. M., Watt, C. E. J., Rae, I. J., Mann, I. R., and Frey, H. U.: Automated determination of auroral breakup during the substorm expansion phase using all-sky imager data, *J. Geophys. Res. Space Physics*, 119, 1414–1427, <https://doi.org/10.1002/2013JA018773>, 2014.
- Nanjo, S., Nozawa, S., Yamamoto, M. et al.: An automated auroral detection system using deep learning: real-time operation in Tromsø, Norway. *Sci Rep* 12, 8038, <https://doi.org/10.1038/s41598-022-11686-8>, 2022.
- 415 Nielsen, F.: *Hierarchical Clustering*, in *Introduction to HPC with MPI for Data Science*, Springer International Publishing, 195–211, ISBN 978-3-319-21903-5, [https://doi.org/10.1007/978-3-319-21903-5\\_8](https://doi.org/10.1007/978-3-319-21903-5_8), 2016.
- Partamies, N., Juusola, L., Tanskanen, E., and Kauristie, K.: Statistical properties of substorms during different storm and solar cycle phases, *Ann. Geophys.*, 31, 349–358, <https://doi.org/10.5194/angeo-31-349-2013>, 2013.
- 420 Partamies, N., Whiter, D., Syrjäsoo, M., and Kauristie, K.: Solar cycle and diurnal dependence of auroral structures, *J. Geophys. Res. Space Physics*, 119, 8448–8461, <https://doi.org/10.1002/2013JA019631>, 2014.
- Partamies, N., Whiter, D., Kauristie, K., and Massetti, S.: Magnetic local time (MLT) dependence of auroral peak emission height and morphology, *Ann. Geophys.*, 40, 605–618, <https://doi.org/10.5194/angeo-40-605-2022>, 2022.
- Richmond, A. D.: Ionospheric electrodynamics using Magnetic Apex Coordinates, *Journal of geomagnetism and geoelectricity*, 47(2), 191–425 212, <https://doi.org/10.5636/jgg.47.191>, 1995.
- Sado, P., Clausen, L. B. N., Miloch, W. J., and Nickisch, H.: Transfer learning aurora image classification and magnetic disturbance evaluation, *Journal of Geophysical Research: Space Physics*, 127, e2021JA029683, <https://doi.org/10.1029/2021JA029683>, 2022.

- Singh, A. K., Sinha, A. K., Rawat, R., Jayashree, B., Pathan, B. M., Dhar, A.: A broad climatology of very high latitude substorms, *Advances in Space Research*, 50, 2012, 1512–1523, <https://doi.org/10.1016/j.asr.2012.07.034>, 2012.
- 430 Steinbach, M., Ertöz, L., and Kumar, V.: The Challenges of Clustering High Dimensional Data, in *New Directions in Statistical Physics: Econophysics, Bioinformatics, and Pattern Recognition*, edited by Wille, L. T., Springer Berlin Heidelberg, 273–309, ISBN 978-3-662-08968-2, [https://doi.org/10.1007/978-3-662-08968-2\\_16](https://doi.org/10.1007/978-3-662-08968-2_16), 2004.
- Syrjäsuu, M. T. and Donovan, E. F.: Diurnal auroral occurrence statistics obtained via machine vision, *Ann. Geophys.*, 22, 1103–1113, <https://doi.org/10.5194/angeo-22-1103-2004>, 2004.
- 435 Tanskanen, E.I.: A comprehensive high-throughput analysis of substorms observed by IMAGE magnetometer network: Years 1993–2003 examined, *J. Geophys. Res.*, 114, A05204, <https://doi.org/10.1029/2008JA013682>, 2009.
- Teissier, V., Automatic morphological classification of auroral structures, Master’s thesis, [https://github.com/Tadlai/auroral-classification/blob/main/master\\_thesis-final.pdf](https://github.com/Tadlai/auroral-classification/blob/main/master_thesis-final.pdf).
- Vanhamäki, H., Viljanen, A., and Amm, O.: Induction effects on ionospheric electric and magnetic fields, *Ann. Geophys.*, 23, 1735–1746, <https://doi.org/10.5194/angeo-23-1735-2005>, 2005.
- 440 Vanhamäki, H., and Juusola, L.: Introduction to Spherical Elementary Current Systems. In: Dunlop, M., Lühr, H. (eds) *Ionospheric Multi-Spacecraft Analysis Tools*, ISSI Scientific Report Series, vol 17, Springer, Cham., [https://doi.org/10.1007/978-3-030-26732-2\\_2](https://doi.org/10.1007/978-3-030-26732-2_2), 2020.
- Yamazaki, Y., Matzka, J., Stolle, C., Kervalishvili, G., Rauberg, J., Bronkalla, O., et al.: Geomagnetic activity index Hpo, *Geophysical Research Letters*, 49, e2022GL098860, <https://doi.org/10.1029/2022GL098860>, 2022.
- 445 Yamauchi, M., and Brändström, U.: Auroral alert version 1.0: two-step automatic detection of sudden aurora intensification from all-sky JPEG images, *Geosci. Instrum. Method. Data Syst.*, 12, 71–90, <https://doi.org/10.5194/gi-12-71-2023>, 2023.
- Yang, Q., Liu, C. and Liang, J.: Unsupervised automatic classification of all-sky auroral images using deep clustering technology, *Earth Sci Inform* 14, 1327–1337, <https://doi.org/10.1007/s12145-021-00634-1>, 2021.