

Observations of the macrophysical properties of cumulus cloud fields over the tropical western Pacific and their connection to meteorological variables

Michie Vianca De Vera¹, Larry Di Girolamo¹, Guangyu Zhao¹, Robert M. Rauber¹, Stephen W. Nesbitt¹,
5 Greg M. McFarquhar^{2,3}

¹Department of Atmospheric Sciences, University of Illinois Urbana-Champaign, Urbana, Illinois, 61801, USA

²Cooperative Institute for Severe and High-Impact Weather Research and Operations, The University of Oklahoma, Norman, Oklahoma, 73072, USA

³School of Meteorology, The University of Oklahoma, Norman, Oklahoma, 73072, USA

10 *Correspondence to:* Michie Vianca De Vera (mdevera2@illinois.edu)

Abstract. The poor representation of the macrophysical properties of shallow oceanic cumuli in climate models contributes to the large uncertainty in cloud feedback. These properties are also difficult to measure because it requires high-resolution satellite imagery that are seldomly collected over ocean. Here, we examine cumulus cloud macrophysical properties, their size, shape, and spatial distributions, over the tropical western Pacific using 170 15-m resolution scenes from Terra's Advanced
15 Spaceborne Thermal Emission and Reflection Radiometer (ASTER) collected during the 2019 Cloud, Aerosol and Monsoon Processes Philippines Experiment (CAMP²Ex) mission. The average cloud fraction (CF) was 0.12, half of which was contributed by clouds less than 1.6 km in area-equivalent diameter. This compared well to Terra's Multiangle Imaging Spectroradiometer (MISR) resolution-corrected CF of 0.14, but less than the 0.19 measured by Terra's Moderate Resolution Imaging Spectroradiometer (MODIS). The cloud size distribution exhibited a power law form with exponent of 2.93 and an
20 area-perimeter power law with dimension of 1.25. ASTER, MISR, and CAMP²Ex aircraft lidar showed excellent agreement in the cloud top height (CTH) distribution peak altitude of ~750 m. We examined cumulus properties in relation to meteorological variables and found that the variation in mean CTH is most controlled by the total column water vapor, lower-tropospheric stability (LTS), and estimated inversion strength (EIS). The variation in CF is most controlled by surface wind speed and near-cloud relative humidity instead of LTS/EIS, suggesting the need to improve low cloud parameterizations in
25 climate models that use LTS/EIS based on stratocumulus studies.

1 Introduction

Tropical oceanic low clouds, such as shallow cumulus, have been found to explain most of the inter-model spread in global mean cloud feedback (Bony and Dufresne, 2005; Zelinka et al., 2016). This is primarily due to challenges in realistically simulating these clouds at the subgrid scale of global climate models (Ceppi and Nowack, 2021; Myers et al., 2021).

Deleted: 3

Deleted: 4

Consequently, large-eddy simulations (LES) have been utilized to resolve low-cloud processes, such as their response to changes in lapse rate, in surface fluxes, and in surface temperatures, to predict the low-cloud feedback (Rieck et al., 2012; Zhang et al., 2012; Bretherton, 2015). These processes are tightly coupled to cloud macrophysical properties. For example, cloud fraction within a domain strongly modulates radiative effects (Chen et al., 2000; George and Wood, 2010; Bender et al., 2016). The cloud top height and spatial distribution also strongly impact the radiation field (e.g., Chen et al., 2000; Tobin et al., 2012). For example, Tobin et al. (2013) found that the outgoing longwave radiation increases, while the shortwave radiation decreases, as the cloud field becomes more aggregated, showing that the emerging radiation field can depend on the spatial organization and geometry of clouds. [Other studies \(Rampal and Davies, 2020; Goren et al., 2023, Lang et al., 2024\) have further shown how cloud morphology and cloud heterogeneity can impact the measured radiative field.](#) Their results imply that cloud macrophysical properties must be considered in the parameterization of the highly interactive processes of radiative heating, turbulent and convective mixing, and cloud microphysical processes that govern the variability of low clouds in LES models (Klein et al., 2017). To mitigate the uncertainties in model parameterizations, it is crucial to better constrain cloud models using observational data.

To help understand cloud macrophysical properties, long-term data from satellite observations are desirable. Jones et al. (2011) found that satellite imagers with a spatial resolution of 80 m or less are needed to accurately measure cloud fraction to an error of 0.01, instrument and algorithm cloud detection sensitivity aside, in the trade wind regions of the world. Most meteorological satellite imagers, however, have a spatial resolution of around 1 km, which is larger than the typical size of shallow cumulus clouds (e.g., McFarquhar et al., 2004; Zhao and Di Girolamo, 2007). This can result in substantial overestimates in cloud fraction (e.g., Shenk and Salamonson, 1972; Di Girolamo and Davies, 1997; Zhao and Di Girolamo, 2006). For example, Dey et al. (2008) found that when pixel resolution degrades from 15 m to 1 km, the mean cloud fraction can increase fourfold, while the total number of clouds can reduce 26-fold for trade wind clouds. Given the importance of having high-resolution data, observations of cumulus cloud fields should ideally come from land-based imagers. Such high-resolution (< 80 m) freely available satellite data are found in land-based satellite missions, such as Landsat (Crawford et al., 2023) and ASTER (Abrams, 2000). But, such land-based imagers normally collect very little data over ocean, have radiometric gain settings that may not be appropriate for cloud analyses, and have sampling and archiving strategies that are not conducive to forming statistically unbiased properties of clouds. Therefore, there remains the challenge of acquiring high-resolution data over the oceans for studies of cloud macrophysical properties.

Previous observational studies of the macrophysical properties of cumulus cloud fields have used images from aircraft, space shuttle, and land-imaging satellite instruments. These are summarized in Table 1. Most of these studies are based on small observational data sets, with resolutions of 30-60 m and at most 19 scenes. Only two of these studies (Zhao and Di Girolamo, 2007; Mieslinger et al., 2019) used high resolution satellite data at 15 m with a larger number of scenes. Moreover, among

65 these previous studies, the locations analyzed are very sparse. Thus, there remains a need to get more statistics on the
macrophysical properties of cumulus cloud fields using high-resolution satellite data in other regions, particularly with well-
characterized environments obtained, for example, with intensive field campaigns. Note that the characterization of the aerosol
environment is also of importance given its impact on cloud macro- and microphysical properties (e.g., McFarquhar et al.,
2004; Yuan et al., 2011; Li et al., 2010; Sheffield et al., 2015).

70

Caution must be taken when comparing cumulus cloud statistics using different scales, given that different instruments have
different domain sizes and spatial resolutions as shown in Table 1. A study by Dey et al. (2008) showed how the statistics of
the macrophysical properties of trade wind cumuli derived by Zhao and Di Girolamo (2007) changed with domain size and
pixel resolution. As the domain size decreases, the probability of separating clouds into smaller clouds increases and the
75 probability of having cloudier and clearer domains increases. As the pixel resolution degrades, smaller clouds amalgamate into
larger clouds and the number of partially filled cloudy pixels increases. Moreover, when comparing aircraft with satellite data,
differences between the one-dimensional and two-dimensional measurements of cloud size distributions must be considered.
Aircraft cloud size distributions are usually biased towards smaller cloud sizes, assuming random sampling (Rodts et al., 2003;
Roms and Vogelmann, 2017; Barron et al., 2020). As a result, differences in time, location, instrument resolution, and
80 sampling must be considered when comparing between different studies.

Table 1 also summarizes the properties of cumulus clouds based on LES models. Low-cloud feedback has been studied by
using simulations of clouds from LES models to find a relationship between cloud properties and large-scale meteorology that
can be used to predict how clouds will respond to changes in the meteorology within coarser scale models. Most of these
85 studies have focused on stratocumulus clouds. Some of these findings, for example, indicate that the lower-tropospheric
stability (LTS), estimated inversion strength (EIS; Wood and Bretherton, 2006; [McCoy et al., 2017](#)), reduced subsidence
(Myers and Norris, 2013; Blossey et al., 2013; [van der Dussen et al., 2016](#)), sea surface temperature (Qu et al., 2015; Stein et
al., 2017; [Geiss et al., 2020](#); [McCoy et al., 2017](#)), and surface wind speed (Bretherton et al., 2013) all can have an impact on
cloud cover and cloud top height. Fewer studies have been done on shallow cumulus clouds. In particular, Nuijens and Stevens
90 (2012) and Brueck et al. (2015) found that surface wind speed can influence cloud amount and cloud top height. Yamaguchi
et al. (2019) have also shown that vertical wind shear can influence cumulus deepening. Given the limited number of studies,
there is a need not only for more observations of cumulus clouds but also their relationships with large-scale meteorological
conditions (Klein et al., 2017).

95 Here, we provide a study of cloud macrophysical properties using data collected during the National Aeronautics and Space
Administration (NASA) Cloud, Aerosol and Monsoon Processes Philippines Experiment (CAMP²Ex; Reid et al., 2023). This
field campaign offered an opportunity to investigate shallow cumulus clouds in a different region from those studies listed in

Table 1. The CAMP²Ex mission took place in the Philippines from August to October 2019, with the goal of investigating cloud-aerosol interactions and their influence on the southwest monsoon precipitation in the region. During CAMP²Ex, the Advanced Spaceborne Thermal Emission and Reflection Radiometer (ASTER) was tasked to sample clouds over parts of the ocean near the Philippines region. ASTER provides high resolution data suitable for studying cloud macrophysical properties of cumulus cloud fields.

This study uses 170 ASTER scenes dominated with cumulus clouds and collected during CAMP²Ex to analyze the macrophysical properties of cumulus cloud fields and their relationships with larger-scale meteorological conditions in the tropical western Pacific. The ASTER data used in this study are discussed in Section 2. Section 3 discusses the cloud masking technique used. Section 4 presents the results of trade wind cumuli properties, which include cloud size, cloud fraction, cloud area-perimeter relationship, cloud top height, and spatial distribution. Cloud fraction and cloud top height are also compared to those derived from the Multiangle Imaging Spectroradiometer (MISR) and Moderate Resolution Imaging Spectroradiometer (MODIS). Section 5 examines the relationship of the macrophysical properties observed with the meteorological conditions, while Section 6 summarizes our results.

Table 1: Summary of cumulus macrophysical properties from past studies using observations (o) and models (m).

| Reference | Data Description | | | | | | | Size Distribution ^a | | | | Fractal Dimension ^b | | | Average Cloud Fraction |
|---------------------------|--------------------|------------------|------------------------|-----------|--|---------------|--------------------------|--------------------------------|-------------|-------------|---------------------|--------------------------------|----------------|---------------------|------------------------|
| | Instrument | Domain (km x km) | Spatial Resolution (m) | Data Type | Location | No. of Scenes | Sub-scenes? ^c | n(x) | λ_1 | λ_2 | D _c (km) | d ₁ | d ₂ | d _c (km) | |
| Plank (1969) | camera on aircraft | 16x32 | NR | o | Florida coast | 12 | yes | - | - | - | - | - | - | - | 0.25 |
| Wielicki and Welch (1986) | MMS ^d | 170x185 | 57 | o | United States, tropical western Atlantic, western Arkansas, Gulf of Mexico | 4 | yes | - | - | - | - | - | - | - | 0.15-0.19 |
| Cahalan and Joseph (1989) | MMS | 170x185 | 57 | o | Pacific, South America, | 16 | yes | - | - | - | - | 1.27 | 1.55 | 0.5 | 0.45 |
| | TM ^e | 65x65 | 28.5 | o | Florida coast | 19 | yes | logD | 0.89 | 2.76 | 0.5 | 1.34 | 1.47 | 0.5 | 0.55 |
| Sengupta et al. (1990) | MMS | 170x185 | 57 | o | tropical Atlantic, Gulf of Mexico, United States, France | 10 | yes | D | 1.39 | 2.35 | 1 | 1.20-1.27 | 1.50-1.73 | 0.5 | - |

| | | | | | | | | | | | | | | | |
|-----------------------------|----------------------|---------|-------|---|--|------|-----|------|-------------------|------|----------|------|-------|-----|----------|
| Benner and Curry (1998) | MAS ^f | 37x37 | 50 | o | tropical western and central Pacific, Maldives, Somali coast, Coral Sea, Caribbean Sea | 17 | yes | D | 1.98 | 3.06 | 0.9 | 1.23 | 1.374 | 0.5 | 0.0925 |
| | space shuttle | 110x145 | 30 | o | | 5 | yes | | 0.94 | 2.91 | 0.6 | 1.1 | 1.34 | 0.5 | 0.09 |
| Gotoh and Fujii (1998) | TM | 65x65 | 28.5 | o | Japan | 1 | yes | - | - | - | - | 1.36 | 1.677 | 0.7 | - |
| Zhao and Di Girolamo (2007) | ASTER | 60x60 | 15 | o | tropical western Atlantic | 152 | no | D | 2.85 ^g | - | - | 1.28 | - | - | 0.086 |
| | | | | | | | | | 1.88 ^h | 3.18 | 0.6 | - | - | | |
| | | | | | | | | | 2.19 ⁱ | - | - | - | - | | |
| Jiang et al. (2008) | aircraft | - | 50 | o | Houston | 5 | - | D | 2.3 | - | - | - | - | - | - |
| Koren et al. (2008) | ETM ^{+j} | 170x185 | 30 | o | Bahamas, Barbados, Polynesia, Hawaii, southeast of Ascension Island | 5 | no | logA | 1.3 | - | - | - | - | - | 0.1-0.25 |
| Mieslinger et al. (2019) | ASTER | 60x60 | 15 | o | tropical central and eastern Pacific, tropical western Atlantic | 1158 | no | logD | 2.55 | - | - | 1.19 | - | - | 0.087 |
| | | | | | | | | | 1.68 | 3.12 | 0.59 | - | - | | |
| Luebke et al. (2022) | GOES-16 ^k | - | 2000 | o | Barbados | 842 | yes | - | - | - | - | - | - | - | 0.204 |
| This study | ASTER | 60x60 | 15 | o | tropical western Pacific | 170 | no | D | 2.93 ^g | - | - | 1.25 | - | - | 0.115 |
| | | | | | | | | | 1.95 ^h | 3.27 | 0.6 | 1.20 | 1.55 | 0.5 | |
| | | | | | | | | | 2.16 ⁱ | - | - | - | - | | |
| Neggers et al. (2003) | LES | 6.4x6.4 | 50 | m | BOMEX ^l | - | - | D | 1.7 | - | 0.7 | - | - | - | 0.14 |
| | | | 50 | | SCMS ^m | - | - | | | - | 1.05 | - | - | - | |
| | | | 66.67 | | SGP-ARM ⁿ | - | - | | | - | 0.4-1.25 | - | - | - | |
| Heus and Selfert (2013) | LES | 25x25 | 25 | m | RICO ^o | - | - | D | - | 2.2 | 0.4 | - | - | - | 0.138 |
| Dawe and Austin (2012) | LES | 6.4x6.4 | 25 | m | BOMEX | - | - | D | 1.88 | - | 1 | - | - | - | - |

^fPower law defined by equation (1).

^gPower law defined by equation (5) for area perimeters.

^hManually selected subsets of larger scenes that were cut to show only the cumuli-dominated area

ⁱLandsat Multispectral Scanner (MSS).

^lLandsat Thematic Mapper (TM).

¹Moderate Resolution Imaging Spectrometer (MODIS) Airborne Simulator (MAS).

²Single-line least squares fit.

³Double-line least squares fit with a scale break.

⁴Direct power law fit.

⁵Enhanced Thematic Mapper Plus (ETM+)

⁶Geostationary Operational Environmental Satellite-16 (GOES-16)

⁷Barbados Oceanographic and Meteorological EXperiment (BOMEX)

⁸Small Cumulus and Microphysics Study (SCMS)

⁹Southern Great Plains (SGP) site of the Atmospheric Radiative Measurement (ARM)

¹⁰Rain in Cumulus over the Ocean (RICO)

2 ASTER Data

115 ASTER is an instrument onboard the NASA Earth Observing System Terra spacecraft, which is in a Sun-synchronous orbit
with equator crossing time around 10:30 local time. ASTER has two cameras, one that points at nadir and one that points
backward in the along-track direction. The nadir camera has three visible and one near-infrared spectral bands (0.50 to 1.0 μm)
at 15 m spatial resolution, six shortwave infrared spectral bands (1.0 to 2.5 μm) at 30 m spatial resolution, and five thermal
infrared spectral bands (8 to 12 μm) at 90 m spatial resolution. Note that the ASTER shortwave infrared data are no longer
120 available after April 2008 due to the detectors not functioning. ASTER takes around 600 scenes in a day, with each scene
covering a 60 km x 60 km area. More details about the ASTER instrument can be found in Abrams (2000).

Since ASTER was designed for land surface studies, it primarily collects data over land only. However, as part of the
CAMP²Ex mission, it was tasked to acquire data over the Philippines region (0°-25° N, 110°-135° E) from August to October
125 2019 with appropriate radiometric gain settings for acquiring cloud properties. The ASTER Level 1T (L1T) calibrated radiance
data (version V003) that were collected during the mission were used in this study. In total, there were 2022 scenes from 81
separate days. Scenes occurring over land were not included to facilitate the cloud masking described below, giving a total of
1217 oceanic scenes. There were a lot of cirrus present during the observing period (Reid et al., 2023). Scenes that had any
pixel with a brightness temperature less than 0 °C were also excluded to avoid potential cirrus contamination, leaving a total
130 of 378 scenes. These too may contain cirrus, as described in the next section.

3 Cloud Masking and Labelling

To generate cloud masks, a single threshold approach was applied to the ASTER 3N channel (760-860 nm, nadir view) over
each 60 km x 60 km scene, following earlier studies (Zhao and Di Girolamo, 2006, 2007; Dey et al., 2008; Jones et al., 2012;
Dutta et al., 2020). In brief, a threshold was manually selected for each scene by simultaneously viewing the radiance and
135 mask images to visually verify the chosen threshold. Any scene that was not easily masked with a single threshold was removed
from the data set. Some scenes that contained sun glint were used if a threshold could be accurately determined, while scenes

that were visually determined to be contaminated by cirrus were not used in the analysis. Thresholds were successfully obtained for 180 ASTER scenes that were visually determined to be dominated by cumulus clouds. Figure 1 shows an example of an ASTER scene on 12 August 2019 along with its cloud mask.

140

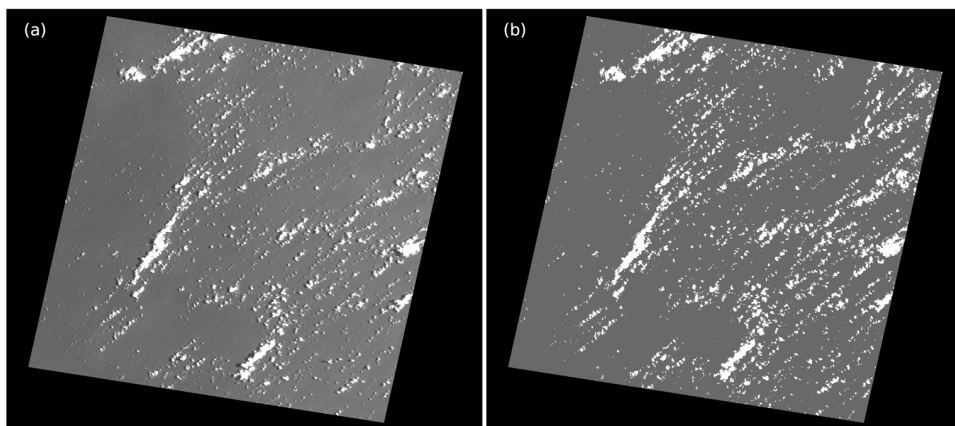


Figure 1: (a) ASTER Channel 3N image (60 km x 60 km) taken on 12 August 2019 and (b) its cloud mask, where white represents cloud, grey represents clear, and black represents no data.

145 Scenes that contained clouds with cloud area equivalent diameters, defined as the diameter of a circle with the same cloud area, greater than 30 km, or half the ASTER scene domain, were excluded from the analysis. This was done to reduce the uncertainty in cloud edges with the finite domain size being 60 km x 60 km. Moreover, clouds of this size are typically not classified as trade cumulus. This reduced the total number of scenes to 170 from 36 separate days. There were 46, 33, and 91 scenes for the months of August, September, and October, respectively. Figure 2 shows a map of the CAMP²Ex region, with the centers of each of the 170 ASTER scenes colored by the date each scene was collected. The final list of the ASTER scenes and the thresholds derived for each scene can be found in the supplementary material, thereby making our results reproducible.

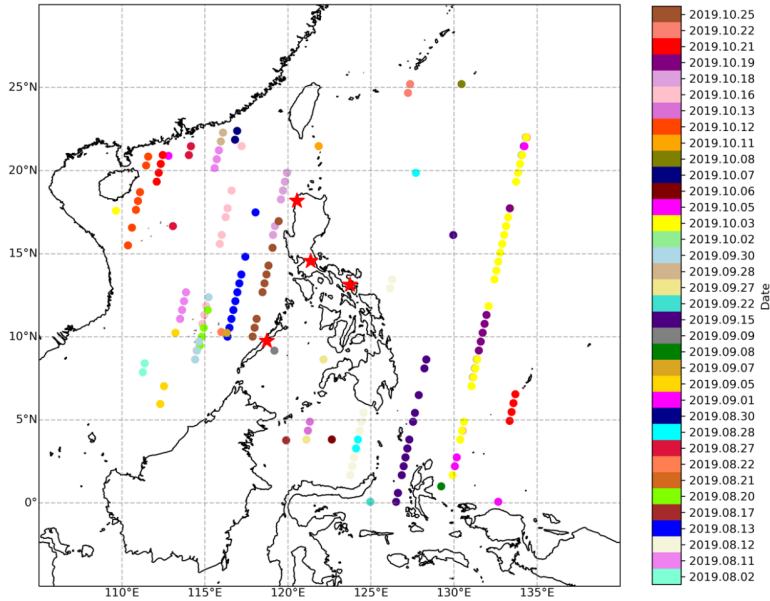
150

At the 15 m spatial resolution, each pixel was assigned as either completely cloudy or clear. After classification, pixels were grouped into individual clouds using the four-connectivity rule, where two cloudy pixels that share one edge but not one vertex belong to the same cloud. This was done using the cloud labelling algorithm available in Zhao (2006). In total, the number of clouds found within the 170 scenes is 2,181,059.

155

The uncertainties in our cloud masking approach and its impact on the cumuli statistics are discussed in Zhao and Di Girolamo (2007). The largest impact is on cloud fraction, where much of the uncertainty from our approach comes from cloud edge pixels. This uncertainty can be estimated using the formulation given by Di Girolamo and Davies (1997). Otherwise, cumulus cloud size distributions and spatial distributions have been shown to be insensitive to small perturbations on the choice of cloud detection thresholds as shown and discussed in other similar studies (e.g., Wielicki and Welch, 1986; Zhao and Di Girolamo, 2007).

160



165

Figure 2: The center of each ASTER 60 km x 60 km scene used in the CAMP²Ex region, colored by date (YYYY.MM.DD). Red stars indicate operational sounding stations published by the University of Wyoming (<https://weather.uwyo.edu/upperair/sounding.html>).

4 Observed Statistics of Cumulus Cloud Macrophysical Properties

The following sections present the trade wind cumuli macrophysical properties over the tropical western Pacific using the 170 cloud masked scenes from ASTER Channel 3N that were derived in Section 3. These include cloud size, cloud fraction, cloud area-perimeter relationship, cloud top height, and spatial distribution. These properties are compared to previous studies on

170

oceanic shallow cumulus cloud properties and, in the case of cloud fraction and cloud top height, to MISR and MODIS satellite retrievals.

4.1 Cloud Size Distribution

175 The cloud size distribution shows the fraction of clouds within a finite range of sizes. The cloud size distribution has been commonly observed to follow a power law distribution (Benner and Curry, 1998) and has been used to compare cloud models and observations (Neggers et al., 2003). The cloud size distribution $n(D)$ following the power law is given by

$$n(D) = aD^{-\lambda}, \quad (1)$$

180 where D is the cloud area-equivalent diameter, and a and λ are constants. The area of each cloud is defined as the product of the number of cloudy pixels and the area of each pixel. D is then calculated from the cloud area by assuming a perfectly circular cloud.

185 The scaling parameter, λ , can be determined by taking the natural logarithm of both sides of Eq. (1) giving

$$\ln n(D) = \ln(a) - \lambda \ln D, \quad (2)$$

190 where λ is the slope of the least squares linear regression between $\ln n(D)$ and $\ln D$. This method of fitting a least squares line, called the “line-fit” method, has been shown to give more weight to larger clouds, which tend to be poorly sampled, and is sensitive to the binning strategy. Thus, the “direct power law fit” method described by Zhao and Di Girolamo (2007) was also used in this study.

In the direct power law fit method, the mean of all cloud diameters D is first determined as

$$D = \frac{1}{n} \sum_i^n D_i, \quad (3)$$

200 where n is the total number of clouds in a scene and D_i is the area equivalent diameter of each cloud. From equation (1), the probability density function of D is given as $f(D) = (\lambda - 1)D^{-\lambda}$, so that the expected value of D , $E(D)$, is

$$E(D) = \frac{\int_{D_0}^{D_u} D f(D) dD}{\int_{D_0}^{D_u} f(D) dD} = \frac{\int_{D_0}^{D_u} D^{1-\lambda} dD}{\int_{D_0}^{D_u} D^{-\lambda} dD} = \frac{(1-\lambda)(D_u^{2-\lambda} - D_0^{2-\lambda})}{(2-\lambda)(D_u^{1-\lambda} - D_0^{1-\lambda})}, \quad (4)$$

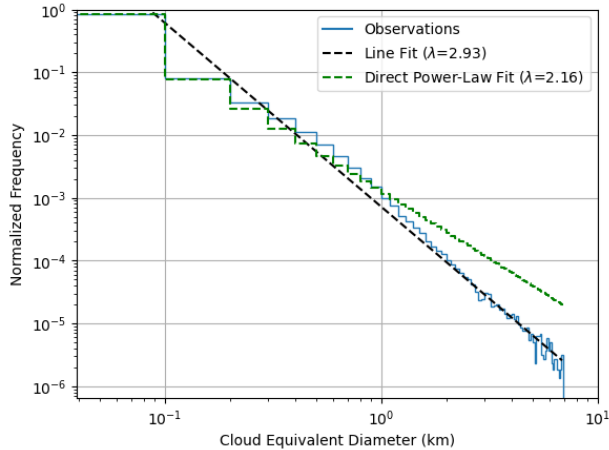
where D_0 and D_u are the smallest and largest cloud diameters among all the clouds, respectively. For a sufficiently large number of samples, $D \cong E(D)$, and λ can be solved by combining equations (3) and (4). This method has been shown to be statistically unbiased with equal weight assigned to each data point (Zhao, 2006). Note that the “direct power law” fit method does not make use of any binned data and is thus independent of binning strategy.

The solid line in Fig. 3 shows the normalized frequency of all clouds with area-equivalent diameters less than 7 km in 100 m bin widths on a logarithmic scale. Clouds with $D > 7$ km are poorly sampled and were excluded in the analysis of cloud size distribution. We note that 68 of the 170 ASTER scenes used contained clouds with $D > 7$ km. However, clouds with $D > 7$ km only make up less than 0.007 % of all clouds observed.

Figure 3 shows $\lambda = 2.93$ with correlation coefficient $R = 0.99$ using the line-fit method, while the double power law line-fit gives $\lambda_1 = 1.95$ and $\lambda_2 = 3.27$, with a scale break at $D_c = 0.6$ km that was computed as the point that leads to the least residual. These results are similar to those reported by Benner and Curry (1998) for the double power law from MODIS Airborne Simulator (MAS) images ($\lambda_1 = 1.98$ and $\lambda_2 = 3.06$) and Zhao and Di Girolamo (2007) for the single ($\lambda = 2.85$) and double power law ($\lambda_1 = 1.88$ and $\lambda_2 = 3.18$) as seen in Table 1. Mieslinger et al. (2019) reports a slightly smaller exponent with the single power law of $\lambda = 2.55$ and double power law of $\lambda_1 = 1.68$ and $\lambda_2 = 3.12$, but with a similar scale break at $D_c = 0.59$ km.

[Note again these results are insensitive to small changes in the cloud masking threshold used but can differ with other studies due to domain size and spatial resolution.](#)

Figure 3 also shows that the direct power law fit gives $\lambda = 2.16$ with $R = 0.99$, which is similar to Zhao and Di Girolamo (2007). This is shown as a dashed step line in Fig. 3 instead of a straight line since the direct power law fit was not calculated based on binned data. A double direct power law fit gives $\lambda_1 = 2.12$ and $\lambda_2 = 2.94$, with a scale break at $D_c = 0.4$ km, which is slightly smaller than the scale break computed from the double power law line-fit method. Note that the difference between the direct power-law fit and the observations for larger cloud diameters (> 1 km) is small, on the order of 10^{-4} , but fits well with the smallest cloud diameters. On the other hand, the difference between the line fit and the observations for the smallest cloud diameters is large, on the order of 10^{-1} , but fits well for the larger cloud diameters.



230 **Figure 3: Normalized distribution of cloud equivalent diameter of clouds smaller than 7 km in diameter using bin width of 100 m for the 170 ASTER scenes.**

4.2 Cloud Fraction Distribution

235 Figure 4 gives the cloud fraction and cumulative cloud fraction as a function of cloud area-equivalent diameter using bin intervals of 100 m. Cloud fraction was defined as the ratio of the number of cloudy pixels to the total number of pixels. The average cloud fraction from all 170 scenes is 0.115 ± 0.014 . This uncertainty comes from half the fraction of cloud edge pixels (Di Girolamo and Davies, 1997), which is 0.027. The cloud fraction over the CAMP²Ex region is only slightly larger (around a 0.03 difference) than those from previous studies done over other tropical regions, such as those by Benner and Curry (1998), McFarquhar et al. (2004), Zhao and Di Girolamo (2007), and Mieslinger et al. (2019). Very similar to Zhao and Di Girolamo (2007), half of this total cloud fraction is from clouds less than 1.6 km in diameter. A peak in cloud fraction is observed at cloud diameters between 400 and 500 m, showing how small most of the cumulus clouds sampled in this region are. Note that most of the bins between 10 km to 30 km only contained one cloud, so an increase is seen in cloud fraction as cloud area is proportional to cloud diameter.

Deleted: , while

Deleted:

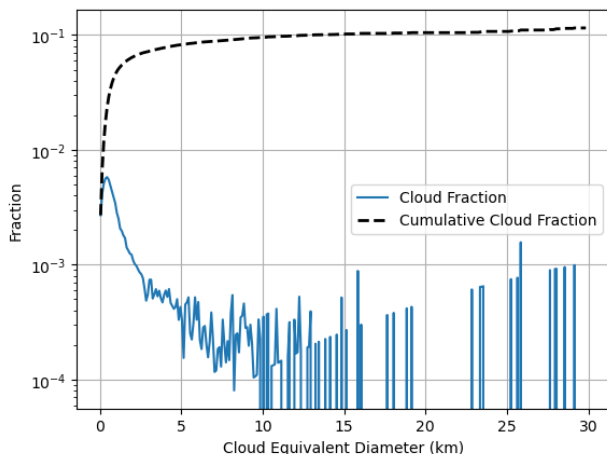


Figure 4: Cloud fraction and cumulative cloud fraction as a function of cloud equivalent diameter using bin width of 100 m for 170 ASTER scenes sampled over the western Pacific Ocean during CAMP²Ex.

250 The ASTER, MISR, and MODIS cloud fractions for the CAMP²Ex region provide an opportunity to compare with results of
 Zhao and Di Girolamo (2006) and Dutta et al. (2020) in other regions. They showed large overestimates of cloud fraction
 reported by MISR and MODIS as compared to ASTER. This was due to the presence of subpixel clouds, especially in trade
 wind cumuli-dominated regions where typical cumuli size can be smaller than the resolution of passive sensors like MISR and
 MODIS. Here, cloud fractions from the MISR Level 2 TOA/Cloud Classifiers Product (TC_Classifiers) version 3 (Moroney
 255 et al., 2014) and from the MODIS cloud mask (MOD35) Collection 6.1 (Ackerman and Frey, 2015) were compared to the
 total cloud fraction from the ASTER scenes. MISR provides two different cloud fraction products, the standard estimate cloud
 fraction (SECF) and resolution-corrected cloud fraction (RCCF), at 17.6-km resolution, both of which are derived from the
 Radiometric Camera-by-camera Cloud Mask over ocean (Zhao and Di Girolamo, 2004). To compare ASTER, MISR, and
 MODIS cloud fractions, ASTER (15 m) and MODIS (1 km) cloud mask pixels were collocated to the MISR 17.6-km cloud
 260 fraction pixels. Cloud fractions from ASTER and MODIS were then calculated for each 17.6 km x 17.6 km region to directly
 compare to MISR SECF and RCCF. Note that the MODIS pixels are labeled as cloudy, probably cloudy, probably clear, clear,
 or no retrieval. Cloudy and probably cloudy pixels were considered as cloudy, while clear and probably clear pixels were
 considered as clear in computing for the MODIS cloud fraction. This is consistent with how cloud fraction climatologies are
 derived from MODIS (Stubenrauch et al., 2012). Only regions that contained at least 99 % of the total possible number of
 265 ASTER pixels in a 17.6 km x 17.6 km region were used for the comparison. Taking an average over all 17.6 km x 17.6 km

regions, the mean ASTER cloud fraction was 0.12, the mean MISR SECF was 0.49, the mean MISR RCCF was 0.14, and the mean MODIS cloud fraction was 0.19. Thus, there is an overestimate of cloud fraction due to pixel resolution for MISR SECF and MODIS that is similar to what was reported by Zhao and Di Girolamo (2006) for scenes over the tropical western Atlantic. We see that the resolution-correction provided by the MISR RCCF algorithm (Jones et al. 2012) carries a small bias (+0.02), which is well within the uncertainties reported in this product by Dutta et al. (2020) and very close to the fraction of cloud edge pixels reported above.

4.3 Cloud Area-Perimeter Relationship

The scaling relationship between cloud perimeter and cloud area was given by Lovejoy (1982) as

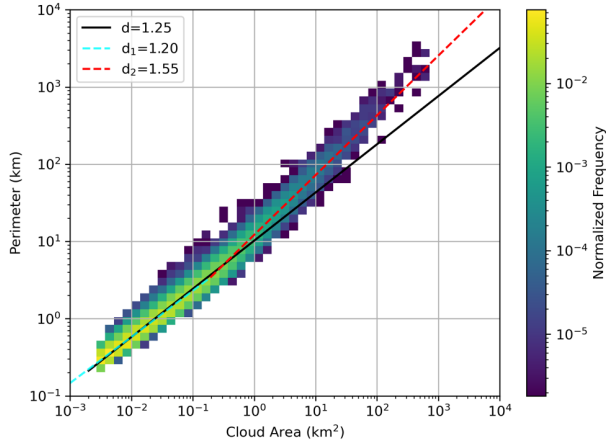
$$P \propto \sqrt{A^d}, \quad (5)$$

where A is the cloud area, P is the cloud perimeter, and d is the fractal dimension. The value of d describes the complexity of the cloud shape. For regular shapes, such as circles and squares, d is unity, while d approaches the value of two as the perimeter becomes more contorted. The perimeter of each cloud was defined as the total length of all the edges adjacent to noncloudy pixels, while the cloud area was computed in the same way as described in Section 4.1

Figure 5 shows the observed normalized frequency of cloud perimeter versus cloud area in log-log space. Using a least-squares fit, the slope of the line was $d = 1.25$ with a correlation coefficient of 0.98. This is slightly smaller than previous studies listed in Table 1, indicating cumulus clouds of smoother shapes were sampled during the CAMP²Ex period. When two lines of best fit were determined, the slopes were $d_1 = 1.20$ and $d_2 = 1.55$, with a scale break in cloud area of $d_c = 0.19 \text{ km}^2$ (or 0.50 km in area-equivalent diameter), which has the least residual. This shows that the larger clouds have more complex shapes than smaller clouds, consistent with previous studies (Cahalan and Joseph, 1989; Benner and Curry, 1998; Gotoh and Fujii, 1998).

Note that the fractal dimension d will also be insensitive to small perturbations in the cloud threshold as Cahalan (1991) showed only a 0.1 increase in dimension with around a 300% increase in threshold.

Formatted: Font color: Text 1



290

Figure 5: Density plot of cloud area against cloud perimeter using 50 logarithmic bins from 0.1 to 10000 km in the y-axis and 0.001 to 10000 km² in the x-axis for clouds larger than 12 pixels in the 170 ASTER scenes during the CAMP²Ex period with fractal dimension d without a scale break and d_1 and d_2 with a scale break.

295 4.4 Spatial Distribution

We characterize the spatial distribution using the statistics of the nearest neighbor distance (NND) in the observed cloud fields as done in Zhao and Di Girolamo (2007). The distance between two clouds was calculated as the Euclidean distance between their mass centers. Figure 6a shows the observed frequency distribution of NND with a peak around 0 to 50 m. However, because the size of a cloud limits the minimum possible value of its NND, Fig. 6b shows the frequency distribution of the ratio of NND to the cloud area-equivalent radius. This shows that around 30 % of clouds have a nearest neighbor within a distance of 3 times their radius. At a bin width of 10 (not shown here), more than 75 % of clouds have a nearest neighbor within a distance of 10 times their radius. This result is very similar to that reported by Zhao and Di Girolamo (2007).

305

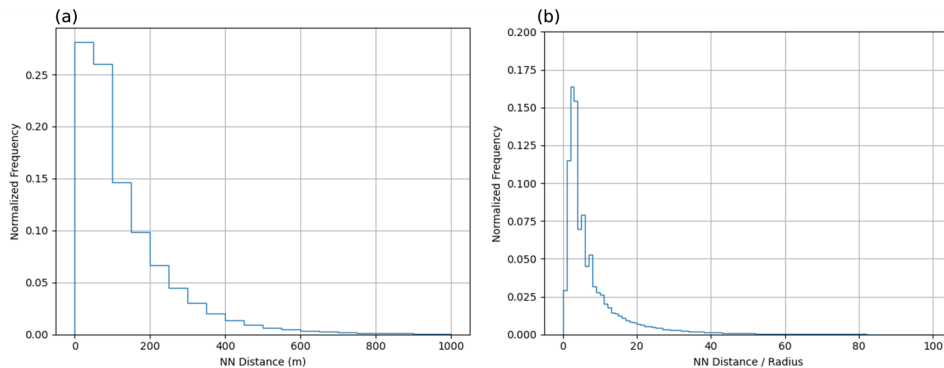


Figure 6: (a) Normalized distribution of the nearest neighbor distance using bin width of 50 m and (b) of the ratio of the nearest neighbor distance to the cloud area-equivalent diameter using bin width of 1 for the 170 CAMP²Ex ASTER scenes.

310

4.5 Cloud Top Height Distribution

ASTER channel 14 (12 μm) has the least amount of water vapor absorption among the thermal infrared channels of ASTER. Thus, channel 14 data was used to retrieve the cloud top height (CTH) for each 90-m resolution cloudy pixel using the same method as Zhao and Di Girolamo (2007). A 90-m resolution cloud mask was first constructed by flagging a 90-m resolution pixel in the channel 14 scene as cloudy only if all the 15 m subpixels within the corresponding channel 3N scene were cloudy based on the 15-m cloud mask (section 2.4). For these 90-m cloudy pixels, the brightness temperature (BT) was calculated from the radiance for each cloudy pixel using the procedure in the ASTER's Algorithm Theoretical Basis Document for Brightness Temperature Version 3.0 (Alley and Jentoft-Nilsen, 1999). The BT is converted to a CTH by equating it with the temperature profile from a sounding. Note that this approach assumes that cloud emissivity is equal to one and that atmospheric absorption of radiation within this channel does not happen above the cloud top.

320

The soundings used were obtained during the CAMP²Ex mission. These soundings included dropsondes from the NASA P-3 aircraft, as well as ship sondes (van Diedenhoven et al., 2022). However, they were limited in that there were only 11 out of 36 ASTER scene days when there was at least one sounding available. Thus, standard synoptic soundings acquired over the Philippines from four sites, namely stations 98223, 98433, 98444, and 98618 (shown as red stars in Fig. 1) for 00:00 UTC, were also used. As these soundings had lower vertical resolution compared to those from the CAMP²Ex mission, the temperature profile was interpolated to every 5 m. The sounding collected nearest in time and space to that of the ASTER center was used to convert the BT into CTH by equating it with the temperature profile of the sounding. [Note that small](#)

325

[perturbations to the choice of the cloud detection threshold will only impact the number of 90-m pixels used to retrieve CTH,](#)

330 [but not the values of CTH \(Zhao and Di Girolamo, 2007\).](#)

As an estimate of the uncertainty in retrieving CTH due to sounding choice, temperature profiles from each sounding from the aircraft dropsonde was compared to the temperature profile from an operational sounding nearest in time and space. Both temperature profiles were then re-gridded onto an evenly spaced grid from 500 m to 4000 m – the altitude range containing
335 most of the cloud tops in our data. From this, the root mean square difference (RMSD) between the temperature profiles from the dropsonde and the operational sounding was calculated. An overall mean RMSD of 0.9 K was calculated. The same was done for each sounding from the ship sondes, leading to an overall mean RMSD of around 1.0 K. With a ± 1.0 K uncertainty in the temperature profile due to sounding choice, there is around a ± 160 m uncertainty in height. Note that the dropsonde has an uncertainty of ± 0.2 K (UCAR, 2020) in temperature measurements, while the ship sonde has an uncertainty of ± 0.3 K
340 (Vaisala, 2017). The overall uncertainty in height is then mostly due to sounding choice.

We also want to compare the CTH obtained from the ASTER scenes to that retrieved by other satellite instruments, such as MISR and MODIS. MISR CTH data in the MISR Level 2 TOA/Cloud Height and Motion Parameters Product, namely TC_Cloud (Version F01_0001; Mueller et al., 2013), and MODIS CTH data in the MODIS Level 2 Cloud Product, namely
345 MOD06 (Version 6.1; Platnick et al., 2015), were retrieved for each ASTER scene by taking the valid MISR CTH retrievals at 1.1-km resolution and the valid MODIS CTH retrievals at 1-km resolution within the ASTER scene. CTH distributions for MISR and MODIS within the ASTER scenes were then compared to those obtained from the ASTER scenes using the BT technique.

350 Figure 8a shows the CTH frequency distribution with bin width of 100 m for different ranges of cloud area-equivalent diameter normalized by the total number of the cloudy pixels examined. The cloud diameters used in Fig. 6a were calculated from the 90-m cloud mask in the same way as calculated from the 15-m cloud masks. On average, cloudy pixels from larger clouds have higher cloud tops than those from small clouds as seen in the widening of curves as the range of cloud diameters increase. A peak in ASTER-retrieved CTH around 1.2 to 1.3 km was observed from all clouds.

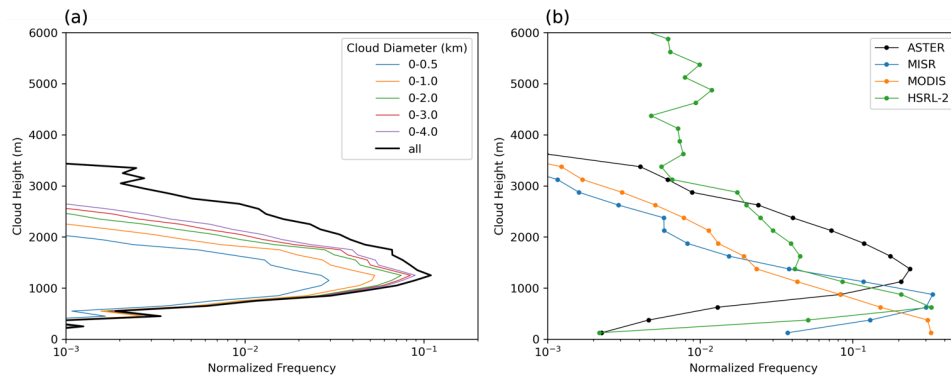


Figure 8: (a) Normalized distribution of cloud top heights with 100 m bin width from ASTER for different cloud equivalent diameters and (b) a comparison of the normalized distribution of cloud top heights with 250 m bin width obtained from ASTER, MISR, and MODIS corresponding to each ASTER scene and from the HSRL-2 onboard the P-3 aircraft.

As a comparison, Fig. 8b shows the CTH distribution with bin width of 250 m for all ASTER scenes versus the MISR and MODIS CTHs retrieved for each scene. Figure 8b also shows the CTH distribution derived from the High-Spectral-Resolution Lidar – Generation 2 (HSRL-2; Hair et al., 2008; Burton et al., 2018) instrument onboard the NASA P-3 aircraft during CAMP²Ex (Fu et al., 2022), which were not typically coincident with the ASTER scenes. The MISR CTH distribution peaks around 750 to 1000 m, the MODIS CTH distribution peaks around 0 to 250 m, and the HSRL-2 CTH distribution peaks around 500 m to 750 m. Thus, there is around a 1250 m spread in the location of the peak in the CTH distributions between the four instruments. Below we discuss this further to better understand the likely causes for the differences.

First, the CTH distribution from in-situ measurements using the HSRL-2 (data processed by Fu et al., 2022) is seen to have two modes, having CTHs larger than 4 km, as compared to the CTH distribution from ASTER. Recall that ASTER (and coincident MISR and MODIS) scenes do not include scenes that have any clouds colder than 0 °C anywhere in a 60 km x 60 km ASTER scene. No such filtering was placed on the HSRL-2 data, which includes all heights observed. The 0 °C isotherm is around 5 km, yet heights greater than 4 km are still observed from the HSRL-2 data, albeit very infrequently. This may be due to a sampling bias towards larger clouds in the aircraft data, as larger clouds, such as congestus, were targeted during research flights (Fu et al., 2022). Still, it is the lower clouds that dominate the frequency distribution. Since the HSRL-2 data is a sample from 19 separate days scattered over the ASTER collection period, the CTH mode in the 500-750 m bin is taken

as reference for comparison. We see that this lower peak is closer to the peak in MISR CTHs than it is to the peak in ASTER CTHs.

380 The MODIS CTH distribution peak is around 1000 m lower than the peak in the BT-derived ASTER CTHs, 750 m lower than
the peak in the MISR stereoscopically-retrieved CTHs, and 500 m lower than the peak in the HSRL-2. When collocated
ASTER and MODIS pixels were examined, 81 % of the 1-km MODIS pixels reporting CTH had CF <0.50 based on the
ASTER 15 m mask (See Fig. 9 of Reid et al. (2023) for an overlay of ASTER-MODIS example highlighting this effect). This
is consistent with the results of Section 4.2, where a peak in the cloud fraction distribution was seen at the 400 to 500 m cloud
385 equivalent diameter bin. Because of its coarse resolution, the CTH MODIS retrieval is affected more by the surface temperature
when there are subpixel clouds compared to ASTER, thus biasing the cloud height low.

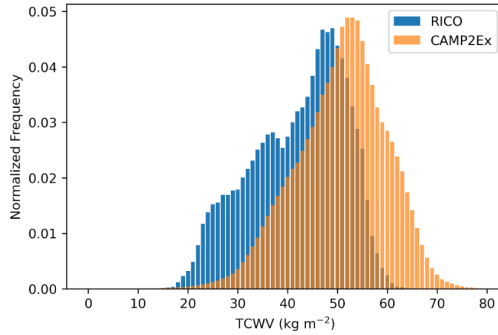
MODIS also uses a latitude-dependent BT lapse rate to infer low-level cloud heights over water. These lapse rates were
developed from collocated MODIS-observed 11 μm BTs, CALIPSO low-level cloud heights, and sea surface temperatures,
390 with a different set of lapse rates determined for each month, to create the monthly zonal mean “apparent 11- μm BT lapse
rates” (Baum et al., 2012). Thus, differences in the lapse rate used by MODIS and the “true” lapse rate from the sounding can
also cause differences in the retrieved CTH distributions between MODIS and ASTER. Using the coefficients given in Baum
et al. (2012), the lapse rate used by MODIS for each ASTER scene was computed and averaged to 3.34 K km^{-1} for all scenes.
Lapse rates were also computed from the surface to around 2 km in altitude for the sounding used for each ASTER scene in
395 retrieving CTHs. This averaged to 5.74 K km^{-1} for all scenes. Thus, there is a 2.40 K km^{-1} difference in lapse rates, with
MODIS having a lower lapse rate. This would then translate to MODIS reporting CTHs with a high bias of around 800 m on
average, which is opposite to what is observed in Fig. 8b. This strongly implies the dominating effect of subpixel clouds is
leading to an overall lower MODIS CTHs relative to ASTER, MISR, and HSRL-2.

400 For the MISR CTH distribution, the peak frequency occurs in the 750-1000 m bin at 0.33, although the frequency in the 500-
750 m bin is only slightly lower at 0.30 as in seen in Fig. 8b. This lines up well with the HSRL-2, having a peak CTH frequency
in the 500-750 m bin, but with a frequency in the 750-1000 m bin at 0.21, which is not much different from the MISR peak at
0.33. The slight difference may be an indication of sampling differences between MISR and HSRL-2 observations. Note that
MISR retrieves CTH using a stereoscopic technique (Mueller et al., 2013), which is not impacted by subpixel cloud biases. As
405 such, the difference between the ASTER and MISR CTHs is likely due to violations in the assumptions of the ASTER BT
retrieval technique. One of the assumptions is that the cloud emissivity is always equal to one, which may not always be true.
While CTH retrievals were from Channel 14 90-m pixels that were fully cloudy based on the 15 m cloud mask, some 15 m
cloudy pixels may not have been fully cloud covered. Since the ocean surface is warmer than clouds in this region and time
period, optically thin cloud or sub-pixel cloud would bias the cloud top heights low, opposite to what is observed relative to

410 the MISR or HSRL-2 CTHs. This leads to the possibility of either significant thin cirrus contamination or significant water
vapor absorption as the possible source for ASTER CTHs that are biased high relative to MISR and HSRL-2. Thin cirrus
contamination was ruled out because of the care taken in filtering scenes that contain cirrus, including the use of the 12 μm
channel. To examine the impact of water vapor absorption, soundings used for each scene, along with the spectral response
function of ASTER's Channel 14 (ASTER Instrument Characteristics, n.d.), were input into the radiative transfer model
415 libRadtran (Mayer et al., 2020) with a cloud layer of optical depth 9.6 at 700 to 900 m in altitude to simulate BTs retrieved.
Simulations without water vapor in the atmosphere were run to examine the impact of water vapor absorption. Results showed
that a 2 to 5 K cooling due to water vapor absorption can lower the ASTER-retrieved CTHs by \sim 200 to 900 m, thus bringing
it more in line with the MISR heights, which had a mode that was 500 m lower than ASTER.

420 In summary, Fig. 8b shows the different CTH distributions retrieved using different techniques. The HSRL-2 CTH distribution
has a peak close to that of MISR, with the small differences between the two likely due to sampling differences. The MODIS
CTH peak is the lowest among the distributions, where the presence of subpixel clouds leads to the overall lower MODIS
CTHs. The ASTER CTHs shown in both Fig. 8a and 8b do not include any correction for water vapor absorption, thus they
are biased high. Radiative transfer simulations indicate that bias expected from the neglect of water vapor absorption in this
425 region and time period is consistent with the difference we see between ASTER and MISR CTHs. Finally, the analysis above
were for coincident MISR and MODIS data that fell within the ASTER 60 km x 60 km scenes. Not all ASTER clouds had
retrieved MISR and MODIS CTHs. When restricting the analysis (not shown) to pixels with valid MISR and MODIS CTH
that had at least one ASTER CTH, none of the conclusions drawn above changed.

430 The CTHs reported here are also similar to the heights reported for the RICO region over the Atlantic east of Antigua (Zhao
and Di Girolamo, 2007). They too used ASTER for retrieving CTH and found a peak frequency around 900 m. They reported
that neglecting water vapor absorption could bias the cloud heights up to 200 m. This suggests that total column water vapor
(TCWV) observed during CAMP²Ex was much higher than observed during RICO. Indeed, Fig. 9 shows the TCWV for the
CAMP²Ex and RICO regions during their respective mission periods, as derived from the fifth generation of atmospheric
435 reanalysis data (ERA5) by the European Centre for Medium-Range Weather Forecasts (ECMWF; Hersbach et al., 2020).
Repeating the radiative transfer simulations above, results showed a \sim 2 K BT difference between the two regions. Thus,
accounting for water vapor absorption in estimating CTH from ASTER, both regions show a peak frequency in CTH of \sim 750
m.



440 **Figure 9: Normalized distribution of total column water vapor from ERA5 reanalysis data for the RICO (blue) and CAMP²Ex (orange) regions.**

5 Comparison of Meteorological Variables with Macrophysical Properties

In the previous sections, the macrophysical properties (size, areal fraction, area-perimeter relationship, CTH, and a metric for the spatial distribution) of boundary layer cumuli observed during CAMP²Ex using ASTER were presented and compared to
 445 in-situ measurements, prior studies, and retrievals from other satellites. In this section, the relationship of those cumulus cloud macrophysical properties to large-scale meteorological parameters are examined.

Previous studies have investigated the relationship between the large-scale meteorology and the shallow cumulus cloud macrophysical properties. Zhao and Di Girolamo (2007) did not find any relationship between the two during the RICO
 450 campaign, which they hypothesized was due to the inability of the forecast meteorological data that they used to capture the scales in which the cumulus clouds reside. Mieslinger et al. (2019), on the other hand, analyzed cumulus cloud fields over the western Atlantic and the central and eastern Pacific and found that the surface wind speed was the dominant controlling factor for their estimated cloud macrophysical properties. They found that with increasing surface wind speed, the cloud fraction and cloud top heights increased, leading to a shift in the cloud size distribution toward larger clouds with smoother shapes. They
 455 reached this conclusion by examining the average cloud field properties as a function of single-binned meteorological parameters using ERA5 Interim data. However, data binning can create artificial relationships between uncorrelated data depending on how the data is binned (Wainer et al., 2006; Rusakov, 2023). To avoid this issue, we use multiple linear regression to investigate the relationship between the large-scale meteorology and observed macrophysical properties.

460 The ERA5 reanalysis data was used to characterize the large-scale meteorological conditions instead of the available soundings due to the limited temporal and spatial coverage of the soundings and inconsistencies in the spatial and temporal resolution between the different sounding instruments. The ERA5 reanalysis data at hours of 01, 02, 03, and 04 UTC were used, the time period that the ASTER scenes were taken. Data included the u- (east) and v- (north) wind components at 10 m and pressure levels of 1000-850 hPa (every 25 hPa) and 600 hPa (the boundary layer top), vertical velocity and relative humidity at pressure
465 levels of 1000-850 hPa (every 25 hPa), sea surface temperature (SST), and total column water vapor (TCWV). These variables were compiled for the time period of August to October 2019 over the CAMP²Ex region with a horizontal resolution of $0.25^\circ \times 0.25^\circ$. From these, other variables such as wind speed, wind speed difference, wind direction, lower tropospheric stability (LTS), estimated inversion strength (EIS), equivalent potential temperature (θ_e), equivalent potential temperature difference, convective available potential energy (CAPE), and convective inhibition (CIN) were calculated [using MetPy version 1.4.1 on Python](#). This gave a total of 88 meteorological variables, which are shown in Table 2. [Note that the ERA5 boundary layer height \(BLH\) variable was also examined and was found to be insignificant based on p-value for all the observed macrophysical properties. Therefore, it was not included in the final list of variables shown in Table 2. The low ranking may be due to the decoupling of the PBL in the trade cumulus regime, leading to relatively shallow and small cumuli with CTHs well below the PBL top as found in other studies \(Karlsson et al., 2010; Kubar et al., 2020\).](#)

475

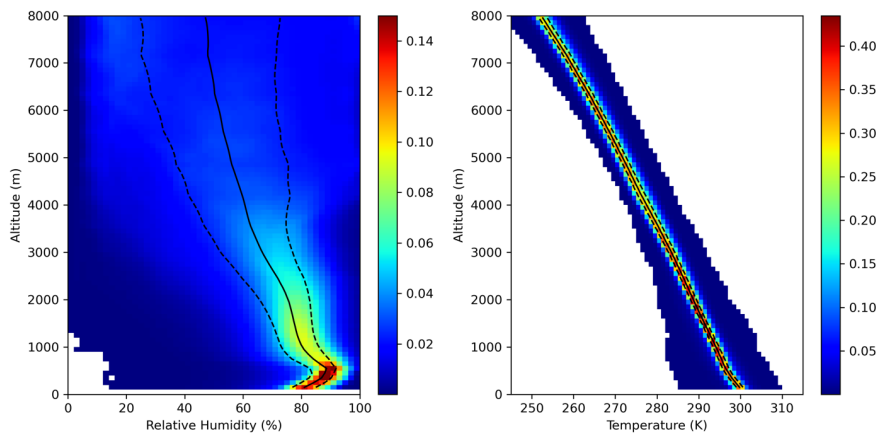
Table 2: Meteorological variables at the different levels used in this study. Fields extracted or calculated from the ERA5 reanalysis data.

| Meteorological Variable (units) | Levels |
|--|--|
| u- and v-wind components [m s^{-1}] | 1000-850 hPa (every 25 hPa), 600 hPa |
| Vertical velocity [Pa s^{-1}] | 1000-850 hPa (every 25 hPa), 600 hPa |
| Relative humidity | 1000-850 hPa (every 25 hPa) |
| Sea surface temperature (SST) [K] | - |
| Total column water vapor (TCWV) [kg m^{-2}] | - |
| Wind speed [m s^{-1}] | 10 m, 1000-850 hPa (every 25 hPa), 600 hPa |
| Wind speed difference [m s^{-1}] | 1000-975 (950, 925, 900, 875, 850) hPa, 950-925 (900, 875, 850) hPa, 850-600 hPa |
| Wind direction [deg] | 10 m, 1000-850 hPa (every 25 hPa), 600 hPa |
| Lower tropospheric stability (LTS) [K] | 1000-975 (950, 925, 900, 875, 850, 700) hPa |
| Estimated inversion strength (EIS) [K] | 1000-700 hPa |
| Equivalent potential temperature [K] | 1000-850 hPa (every 25 hPa) |

Deleted: ¶

| | |
|---|---|
| Equivalent potential temperature difference [K] | 1000-975 (950, 925, 900, 875, 850) hPa, 950-925 (900, 875, 850) hPa |
| Convective available potential energy (CAPE) [J kg^{-1}] | 850 hPa |
| Convective inhibition (CIN) [J kg^{-1}] | 850 hPa |

- 480 Figure 10 shows contour normalized frequency by altitude diagrams for relative humidity and temperature from the ERA5 reanalysis data. A wide spread in relative humidity is seen, while the temperature has a relatively narrow spread. The median vertical profile is shown as the solid black line. At the surface, there is a median relative humidity value of around 80 % and a temperature of around 300 K. These have around a 9 % and 2 K RMSD relative to the median relative humidity and temperature profile soundings, respectively, obtained from the dropsondes and ship sondes that were used in Section 4.5 for CTH retrieval.
- 485 Comparing the frequency by altitude diagram for relative humidity to a similar figure in Davison et al. (2013) for the RICO campaign, lower relative humidity was generally observed for the RICO field campaign at altitudes above 3 km. This is consistent with the lower TCWV values observed during RICO from the ERA5 reanalysis data as discussed in Section 4.5.



490 **Figure 10: Contour frequency by altitude diagrams for relative humidity (left) and temperature (right) from the ERA5 reanalysis data. Relative humidity bins are 2 %, temperature bins are 1 K, and altitude bins are 100 m. The median is shown in the solid black line, while the 25th percentile and 75th percentile are shown in dotted black lines.**

For each ASTER scene, the mean value of the meteorological variables (Table 2) contained within each scene was taken to represent the whole scene. The pooled standard deviation of the meteorological variables contained within each ASTER scene can be found in the supplementary material. Standard deviations are relatively small, as seen in the median coefficient of

495

variation values (around 0.1), showing the representativeness of taking the mean to represent the whole scene. The general statistics for the mean meteorological variables among all scenes are also given in the supplementary material. In general, there is a wide variability seen in the mean meteorological variables, apart from SST. All 88 meteorological variables were then standardized by subtracting the mean and dividing by the standard deviation.

500

The different statistics of cloud macrophysical properties were obtained from individual ASTER scenes, and the standardized meteorological variables were then fit into a multiple linear regression model for each cloud macrophysical property. The R^2 and adjusted R^2 values obtained when doing so are shown in Table 3. The adjusted R^2 value considers the number of variables in the model, and unlike the R^2 value, it only increases when the new variable improves the model more than would be expected by chance. As seen in the adjusted R^2 values, less than 30 % of the variation in the cloud size distribution parameters (line-fit λ and direct power-law fit λ) and fractal dimension are explained by all the variables. This may be due to the low variability seen in these properties among all the scenes (see the supplementary material). However, for the cloud fraction and mean cloud top height, 51 % and 72 % of their variation can be explained by the variables, respectively. With this, the discussion below only focuses on the results for cloud fraction and mean cloud top height.

510

Table 3: R^2 and adjusted R^2 values for the multiple linear regression model containing all 88 variables for each cloud macrophysical property.

| Cloud Macrophysical Property | R^2 | Adjusted R^2 |
|--------------------------------|-------|----------------|
| Line-Fit λ | 0.56 | 0.19 |
| Direct Power-Law Fit λ | 0.58 | 0.21 |
| Fractal Dimension | 0.52 | 0.10 |
| Mean Cloud Top Height | 0.85 | 0.72 |
| Cloud Fraction | 0.74 | 0.52 |

To rank the meteorological variables that affected the cloud properties, variable selection was first done from the full regression model using backward elimination (Faraway, 2014) by examining the p-values. Starting with the multiple regression model with 88 variables, the variable with the greatest p-value (the least significant) was removed. A model was then fit again and the variable with the greatest p-value was again removed. This was repeated until all p-values were significant at the 0.05 level. After this process, the remaining variables in the model were ranked by the change in R^2 when that variable is removed. By doing so, the variables are ranked according to which ones explain most of the variation in the observed macrophysical property. Note that the results do not differ when the remaining variables were instead ranked by the change in the adjusted R^2 values.

520

The final multiple linear regression model for mean cloud top height contains 26 variables, with $R^2 = 0.80$ and adjusted $R^2 = 0.77$. This model has a root mean squared error (RMSE) of 127 m using the leave-one-out cross-validation (LOOCV) technique. Table 4 shows the top six ranked variables by the change in R^2 from 0.80 when that variable is removed from the regression model. TCWV, EIS, LTS, wind speed difference, and vertical velocity are seen to rank highest. These results are consistent with other observational studies that have shown higher TCWV, or total precipitable water, can lead to higher cloud tops in boundary layer clouds (e.g., Forsythe et al., 2012). The stability terms of EIS and LTS are also important as higher values would reduce entrainment drying and warming, moistening the planetary boundary layer, allowing for deeper and more low stratiform clouds (Wood and Bretherton, 2006). Wind speed difference is also important as wind shear can tilt deeper cumulus clouds, [limit vertical cloud development](#), and enhance evaporation at cloud tops (Neggers et al., 2003; Yamaguchi et al., 2019; [Helfer et al., 2020](#)), while vertical velocity or subsidence near the cloud top can limit the deepening of marine boundary layer clouds, such as stratocumulus, stratus, and cumulus, due to the pushing down of the top of the marine boundary layer (Myers and Norris, 2013).

Table 4: Top 6 meteorological variables that explain most of the variation in the observed mean cloud top height.

| Meteorological Variable | Pressure Level | Change in R^2 |
|-------------------------|----------------|-----------------|
| TCWV | | -0.14 |
| EIS | 1000-700 hPa | -0.12 |
| LTS | 1000-700 hPa | -0.11 |
| Wind speed difference | 1000-975 hPa | -0.02 |
| Wind speed difference | 1000-950 hPa | -0.02 |
| Vertical velocity | 925 hPa | -0.02 |

The final multiple linear regression model for cloud fraction contains 24 variables, with $R^2 = 0.59$ and adjusted $R^2 = 0.53$. This model has RMSE of 0.068 using the LOOCV technique. Table 5 shows the top six ranked variables by the change in R^2 from 0.59 when that variable is removed from the regression model. From the table, wind near the surface is the variable that has the biggest impact on cloud fraction. This agrees with previous modelling and observational studies that have shown how surface wind speed can increase surface fluxes of moisture and heat and deepen the boundary layer, allowing for deeper and larger clouds (Nuijens and Stevens, 2012; Brueck et al., 2015). [Naud et al. \(2023\) also found that the 10-m winds are the dominant cloud controlling factor for shallow cumulus regions](#). Relative humidity above the cloud is also important for cloud entrainment and lifetime (Eastman and Wood, 2018). Notice also that the standard EIS and LTS terms calculated between the 1000 and 700 hPa levels are lower in the ranking. This is in agreement with Cutler et al. (2022) who recently showed using surface-based and satellite cloud data, along with reanalysis data, that the correlation between LTS and EIS on cumulus cloud cover is low compared to the correlation of LTS and EIS with stratocumulus cloud cover. [Lewis et al. \(2023\) also recently](#)

550 [showed how EIS is not the most important variable for low cloud cover in the trade-cumulus regions.](#) This is an important finding because climate models use these stability terms to parameterize low cloud cover (Neale et al., 2010) and in climate sensitivity studies to study low cloud feedback (Brient and Schneider, 2016; McCoy et al., 2017; Myers et al., 2021; Sherwood et al., 2020).

Table 5: Top 6 meteorological variables that explain most of the variation in the observed cloud fraction.

| Meteorological Variable | Pressure Level | Change in R ² |
|-------------------------|----------------|--------------------------|
| Wind speed | 975 hPa | -0.08 |
| Relative humidity | 900 hPa | -0.08 |
| LTS | 1000-900 hPa | -0.08 |
| Wind speed | 925 hPa | -0.06 |
| EIS | 1000-700 hPa | -0.05 |
| LTS | 1000-700 hPa | -0.05 |

555 Finally, McFarquhar et al. (2004) and Dey et al. (2011) have also investigated how cloud amount and cloud top height can vary with aerosol amount over the Indian Ocean. Given that the CAMP²Ex mission was held in the Philippines region due to its complex aerosol environment (Reid et al., 2023), the variability of the macrophysical properties with mean aerosol optical depth (AOD) retrieved by MISR for each ASTER scene during the mission was also investigated by examining each of the macrophysical properties as a function of AOD and by grouping scenes based on their AOD into “clean” and “polluted” (not shown here). There was not much variability seen in the cloud macrophysical properties (coefficient of variations ranging from 0.01 to 0.3 for the different properties) as there was not much variability in the AOD observed in the region (standard deviation of 0.10) for the observed ASTER scenes. Most of the ASTER scenes were collected under fairly pristine conditions, with only 7 % of the 550 nm AODs retrieved from MISR having values greater than 0.3. This is in contrast to other studies that have investigated the impact of aerosol loading on the cloud macrophysics. For example, in the study by Dey et al. (2011), which also used ASTER and MISR data, about half of the aerosol retrievals had 550 nm AODs > 0.3. They also had a much larger sample size. Thus, the generality of McFarquhar et al.’s (2004) finding that the cloud macrophysical properties depend on aerosol properties could not be well tested here, given the narrow range in observed AOD over the CAMP²Ex region.

6 Conclusions

570 Cloud macrophysical properties place strong controls on local to global scale radiative and latent heat budgets. The macrophysical properties of oceanic shallow cumulus clouds are challenging to model and observe owing to their small sizes and remote locations, despite being a commonly occurring cloud type over the oceans, particularly over the tropics. The

Deleted: ¶

representation of tropical shallow cumuli in climate models continues to be a major source of uncertainty in cloud feedback. This, in part, calls for improved observations of these clouds and their relationship to meteorological variables to help improve and evaluate their representation in models. This is possible with existing satellite instrument missions focused on land studies, such as ASTER, but such instruments are rarely tasked to collect data over oceans with sampling and settings that are appropriate for deriving the macrophysical properties of clouds. One such occurrence took place as part of the CAMP²Ex field campaign, where the ASTER instrument onboard Terra was tasked to collect high-resolution imagery over the ocean waters surrounding the Philippines.

In this study, the macrophysical properties of 2,181,059 cumulus clouds over the tropical western Pacific were examined using 170 ASTER scenes collected from August to October 2019 during the conduct of the CAMP²Ex field campaign. An average cloud fraction of 0.115 ± 0.14 was retrieved, with half of that fraction contributed by clouds less than 1.6 ± 0.1 km in area equivalent diameter. Around 80 % of the individual scenes had a cloud fraction less than 0.2. The cloud size distribution follows a power law form, with an exponent of 2.93 ($R = 0.99$) using the line-fit method and 2.16 ($R = 0.99$) using the direct power-law fit method. An area-perimeter power law was also observed with a dimension of 1.25 ($R = 0.98$), indicating cumulus clouds of smooth shapes. More than 75 % of the clouds were found to have a nearest neighbor within 10 times their area-equivalent radius. After correcting for water vapor absorption that led to ~ 200 to 900 m bias in cloud top height (CTH) per scene, the resulting peak frequency in ASTER-derived CTH occurred at 750 m – consistent with MISR and HSRL-2 CTHs. A remaining uncertainty in CTH due to sounding choice was found to be ± 160 m. With a mean lifting condensation level (LCL) of 466 ± 89 m for the CAMP²Ex period (Miller et al., 2023), a mode CTH of 750 ± 160 m, and a mode in the cloud fraction distribution occurring in the 400 to 500 m bin, the cloud aspect ratio (cloud depth to width) for this mode is 0.6 ± 0.4 . MODIS CTHs were also found to peak in the lowest altitude bin (0 to 250 m) due to the subpixel (1 km MODIS) nature of these clouds. MODIS and MISR standard cloud fraction estimates were also found to have large, positive biases (0.19 and 0.49, respectively) because of the sub-pixel nature of these clouds, with biases that are consistent with Zhao and Di Girolamo (2006). The newer “resolution-corrected” cloud fraction product offered by MISR had a small positive bias of 0.02, which is consistent with the expectation of the algorithm (Jones et al., 2012), slightly better than other validation exercises (Dutta et al., 2020), and very close to the 0.014 value of uncertainty in our estimate of the ASTER cloud fraction. Any remaining uncertainty in the macrophysical properties owing to sub-pixel clouds in 15-m ASTER imagery is expected to be exceedingly small (Dey et al., 2008) relative to the uncertainties reported above.

Similarities and differences were found when results were compared to the previous studies shown in Table 1. Differences between the studies in the table may be due to the different times, location, sampling issues, domain size, and spatial resolution. Given the effect of scale on the statistics, it may be best to compare amongst studies that have used ASTER data (Zhao and Di Girolamo, 2007; Mieslinger et al., 2019). When comparing to these studies, the macrophysical properties of cumulus clouds

- Deleted:
- Deleted: .
- Deleted: 4
- Deleted:
- Deleted: cloud top height (CTH)
- Deleted: ~
- Deleted: 70
- Deleted: mean
- Deleted: ~
- Deleted:
- Deleted: ~450
- Deleted: ~
- Deleted: -
- Deleted: consistent
- Deleted: with
- Deleted:
- Deleted: 0.027
- Deleted: cloud edge pixel fraction observe
- Deleted: d
- Deleted: dataset
- Deleted: (taken as the upper limit in the error in the observed 0.115 cloud fraction using our method).
- Deleted: ¶
- Deleted: also

635 from the CAMP²Ex region are very similar. A noticeable difference was the higher total cloud fraction in the CAMP²Ex region
by around 0.03. The similarities in cloud macrophysics amongst these ASTER studies is remarkable given that they were done
in very different parts of the world, although all tropical. We also looked at the 214 scenes of cumulus clouds over the tropical
Indian Ocean described in Jones et al. (2012) and again found very similar cloud macrophysical properties (not shown here).
We therefore conclude that the properties of tropical trade wind cumulus shown here appear to be indicative of the properties
640 of trade wind cumuli across large swaths of tropical oceanic regions. While aerosol conditions in the environment may impact
the macrophysics of shallow oceanic clouds as shown in McFarquhar et al. (2004) and Dey et al. (2011) over the Indian Ocean,
the narrow range observed in the AOD for the specific ASTER scenes led to no significant relationship between the AOD and
the macrophysical properties.

645 The relationship between the observed cloud macrophysical properties for each ASTER scene and the meteorological
conditions was also investigated. While this has been done using ASTER data in other regions containing oceanic cumuli by
Mieslinger et al. (2019) using the average cloud field parameters as a function of single-binned meteorological parameters, we
had concerns that artificial relationships can be created between uncorrelated data depending on how the data is binned (Wainer
et al., 2006; Rusakov, 2023). To avoid this issue, we used multiple linear regression for each macrophysical property, with the
650 full model having 88 variables. Less than 30 % of the variation in the cloud size distribution parameters (line-fit λ and direct
power-law fit λ) and fractal dimension was explained by all 88 variables. However, for the cloud fraction and mean cloud top
height, more than 50 % of their variation can be explained by all 88 variables. Variable selection was performed by backward
elimination, reducing the number of variables to 26 for mean cloud top height and to 24 for cloud fraction. It was found that
TCWV, LTS, and EIS are the variables that contributed the most to the variation in mean cloud top height, while wind speed
655 near the surface, relative humidity near the cloud, and LTS calculated between 1000 hPa and 900 hPa contribute most to the
variation in cloud fraction. Mieslinger et al. (2019) also found that surface wind speed is a huge controlling factor for cloud
fraction, along with the standard LTS term, calculated between 1000 hPa and 700 hPa. Interestingly, in our study, we find that
the standard LTS and EIS terms, calculated between 1000 hPa and 700 hPa, contribute relatively less to the variation in
cumulus cloud fraction, in agreement with Cutler et al. (2022) and Lewis et al. (2023). This is important given that these terms
660 are used in climate models to parameterize overall low cloud cover (Neale et al., 2010) and in climate sensitivity studies to
study low cloud feedback (Brient and Schneider, 2016; McCoy et al., 2017; Myers et al., 2021; Sherwood et al., 2020).
Although not discussed here due to the low adjusted R² values of the model, similar to cloud fraction, relative humidity (at
1000, 975, and 900 hPa) and wind speed (at 925 and 900 hPa) are the top variables that explain most of the variation in the
observed cloud size distribution parameter (line-fit λ) for each ASTER scene. Note again that there is not much confidence in
665 these relationships, however, because only around 30 % of the variation in the line-fit λ parameter can be explained by the
reduced model. We further note that given that the statistics of the macrophysical properties of cumulus clouds are influenced

Deleted: lambda

by the domain size, the observed relationships of the cloud macrophysical properties to the meteorological conditions may also change with domain size.

670

While this study does show some relationship of cloud macrophysical properties to the meteorology, we do not intend to predict or imply how cloud macrophysical properties change with varying meteorology. [We explicitly note that the results we presented do not imply any causality.](#) This study simply provides the statistics on the macrophysical properties and shows that meteorology can explain some of the observed variation in the CAMP²Ex region, which has important applications for model evaluation. It should also be noted that any smaller-scale meteorological variations, which are not captured due to the coarse resolution of the ERA5 reanalysis, might be able to explain more of the variation in the observed properties if such higher-resolution data were available. While the multiple linear regression model is used, this does not imply that the relationships between cloud macrophysical properties to the meteorology are linear. Still, as seen in our results, multiple linear regression is a useful tool to help explain the relationship between the observed properties and the meteorology, showing the relative importance of TCWV to the variations in mean cloud top height and surface wind speed to the variation in cloud fraction.

675

680

Data availability

The soundings obtained during the CAMP²Ex mission were obtained from <https://www-air.larc.nasa.gov/cgi-bin/ArcView/camp2ex>, while the standard synoptic soundings acquired over the Philippines were obtained from the University of Wyoming website at <https://weather.uwyo.edu/upperair/sounding.html>. The ASTER L1T data were obtained through the NASA Land Processes Distributed Active Archive Center (LP DAAC) data pool at https://lpdaac.usgs.gov/products/ast_11tv003/. The MISR Level 2 TOA/Cloud Classifiers product version 3 data were obtained from the NASA Langley Research Center at <https://opendap.larc.nasa.gov/opendap/MISR/MIL2TCCL.003/>. The MISR Level 2 Cloud Product for cloud top height were obtained from the NASA Langley Research Center at <https://opendap.larc.nasa.gov/opendap/MISR/MIL2TCSP.001/>. The MODIS Level 2 data, namely MOD35 and MOD06, were obtained from the Level 1 and Atmosphere Archive and Distribution System of NASA Goddard Space Flight Center at <https://ladsweb.modaps.eosdis.nasa.gov/archive/allData/61/>. The ERA5 reanalysis data were obtained through the Copernicus Climate Change Service Climate Data Store at <https://cds.climate.copernicus.eu/>.

685

690

Author contributions

MVDV, LDG, and GZ conceived the study design and analysis. MVDV analyzed data with inputs from LDG, GZ, RMR, SWN, and GMM. LDG acquired funding. MVDV wrote the paper with reviews from co-authors.

695

Competing interests

The authors declare that they have no conflict of interest.

Acknowledgements

The authors would like to acknowledge Dongwei Fu for providing the histogram data for the CTH distribution from the HSRL-
700 2 instrument used in Fu et al. (2022). We also thank Sonia Lasher-Trapp for her valuable comments and discussion on this
paper.

Financial support

This research has been supported by the National Aeronautics and Space Administration through grant numbers
80NCCS18K0144 and 80NNC21K1449. Partial support from the MISR project through the Jet Propulsion Laboratory of the
705 California Institute of Technology is also gratefully acknowledged. GMM acknowledges support from the Cooperative
Institute for Severe and High-Impact Weather Research and Operations (CIWRO) and the NASA AOS program through grant
number 80NSSC23M0083.

References

- Abrams, M.: The advanced spaceborne thermal emission and reflection radiometer (ASTER): Data products for the high spatial
710 resolution imager on NASA's Terra platform, *Int. J. Remote Sens.*, 21, 847–859, doi: 10.1080/014311600210326, 2000.
- Ackerman, S. A. and Frey, R.: MODIS atmosphere L2 cloud mask product, NASA MODIS Adaptive Processing System,
Goddard Space Flight Center, USA, doi: 10.5067/MODIS/MOD35_L2.006, 2015.
- Alley, R. and Jentoft-Nilsen, M.: Algorithm Theoretical Basis Document for: Brightness Temperature – Version 3.0, Jet
Propulsion Laboratory, 1999.
- 715 ASTER Instrument Characteristics, <https://asterweb.jpl.nasa.gov/characteristics.asp>, last access: 2 July 2023.
- Barron, N. R., Shawn, D. R., and Heus, T.: Reconciling chord length distributions and area distributions for fields of fractal
cumulus clouds, *Atmosphere*, 11, doi: 10.3390/atmos11080824, 2020.
- Baum, B. A., Menzel, W. P., Frey, R. A., Tobin, D. C., Holz, R. E., Ackerman, S. A., Heidinger, A. K., and Yang, P.: MODIS
cloud-top property refinements for collection 6, *J. Appl. Meteorol. Clim.*, 51, 1145-1163, doi: 10.1175/JAMC-D-11-
720 0203.1, 2012.
- Bender, F. A.-M., Engström, A., and Karlsson, J.: Factors controlling cloud albedo in marine subtropical stratocumulus regions
in climate models and satellite observations, *J. Climate*, 29, 3559-3587. doi: 10.1175/JCLI-D-15-0095.1, 2016.

- Benner, T. C. and Curry, J. A.: Characteristics of small tropical cumulus clouds and their impact on the environment, *J. Geophys. Res.*, 103, 28753–28767, doi: 10.1029/98JD02579, 1998.
- 725 Blossy, P. N., Bretherton, C. S., Zhang, M., Cheng, A., Endo, S., Heus, T., Liu, Y., Lock, A. P., de Roode, S. R., and Xu, K. M.: Marine low cloud sensitivity to an idealized climate change: The CGILS LES intercomparison, *J. Adv. Model Earth Sy.*, 5(2), 234-258. doi: 10.1002/jame.20025, 2013.
- Bony, S. and Dufresne, J.-L.: Marine boundary layer clouds at the heart of tropical cloud feedback uncertainties in climate models, *Geophys. Res. Lett.*, 32, L20806, doi: 10.1029/2005GL023851, 2005.
- 730 Bretherton, C. S.: Insights into low-latitude cloud feedbacks from high-resolution models. *Philos. T. Roy. Soc. A.*, 373, 20140415, doi: 10.1098/rsta.2014.0415, 2015.
- Brient, F. and Schneider, T.: Constraints on climate sensitivity from space-based measurements of low-cloud reflection, *J. Climate*, 29, 5821-5835, doi: 10.1175/JCLI-D-15-0897.1, 2016.
- Brueck, M., Nuijens, L., and Stevens, B.: On the seasonal and synoptic time-scale variability of the North Atlantic Trade Wind Region and its low-level clouds, *J. Atmos. Sci.*, 72, 1428–1446, doi: 10.1175/JAS-D-14-0054.1, 2015.
- 735 Burton, S. P., Hostetler, C. A., Cook, A. L., Hair, J. W., Seaman, S. T., Scola, S., Harper, D. B., Smith, J. A., Fenn, M. A., Ferrare, R. A., Saide, P. E., Chemyakin, E. V., and Müller, D.: Calibration of a high spectral resolution lidar using a Michelson interferometer, with data examples from ORACLES, *Appl. Optics*, 57, 6061-6075, doi: 10.1364/AO.57.006061, 2018.
- 740 Cahalan, R. F. and Joseph, J. H.: Fractal statistics of cloud fields, *Mon. Weather Rev.*, 117, 261–272, doi: 10.1175/1520-0493(1989)117<0261:FSOCF>2.0.CO;2, 1989.
- [Cahalan, R. F.: Landsat Observations of Fractal Cloud Structure. in: Non-Linear Variability in Geophysics, edited by: Schertzer, D., Lovejoy, S., Springer, Dordrecht, 281-295, doi:10.1007/978-94-009-2147-4_22, 1991.](#)
- Ceppi, P. and Nowack, P.: Observational evidence that cloud feedback amplifies global warming, *P. Natl. Acad. Sci. USA*, 745 118, e2026290118, doi: 10.1073/pnas.2026290118, 2021.
- Chen, T., Rossow, W. B., and Zhang, Y.: Radiative effects of cloud-type variations, *J. Climate*, 13, 264-286, doi: 10.1175/1520-0442(2000)013<0264:REOCTV>2.0.CO;2, 2000.
- Cutler, L., Brunke, M. A., and Zeng, X.: Re-evaluation of low cloud amount relationships with lower-tropospheric stability and estimated inversion strength, *Geophys. Res. Lett.*, 49, e2022GL098137, doi: 10.1029/2022GL098137, 2022.
- 750 Crawford, C. J., Roy, D. P., Arab, S., Barnes, C., Vermote, E., Hulley, G., Gerace, A., Choate, M. J., Engebreston, C., Micijevic, E., Schmidt, G. L., Anderson, C., Anderson, M., Bouchard, M., Cook, B. D., Dittmeier, R., Howard, D., Jenkerson, C., Kim, M., Kleyians, T., Maiersperger, T., Mueller, C., Neigh, C., Owen, L., Page, B., Pahelvan, N., Rengajaran, R., Roger, J.-C., Saylor, K., Scaramuzza, P. L., Skakun, S., Yan, L., Zhang, H. K., Zhu, Z., and Zahn, S. G.: The 50-year Landsat collection 2 archive, *Science of Remote Sensing*, 8, 100103, doi: 10.1016/j.srs.2023.100103, 2023.

Formatted: Font: (Default) Times New Roman, Font color: Text 1

Formatted: Font: (Default) Times New Roman, Font color: Text 1

Formatted: Font: (Default) Times New Roman, Font color: Text 1

Formatted: Default Paragraph Font, Font: (Default) Times New Roman, Font color: Text 1, Pattern: Clear

Formatted: Font: (Default) Times New Roman, Font color: Text 1

Formatted: Font color: Text 1

Formatted: Font color: Text 1

Formatted: Font: (Default) Times New Roman, 10 pt, Font color: Text 1

Formatted: Font color: Text 1

- 755 Davison, J. L., Rauber, R. M., Di Girolamo, L., and LeMone, M. A.: A revised conceptual model of the tropical marine boundary layer. Part I: Statistical characterization of the variability inherent in the wintertime trade wind regime over the western tropical Atlantic, *J. Atmos. Sci.*, 70, 3005-3024, doi: 10.1175/JAS-D-12-0321.1, 2013.
- Dawe, J. T. and Austin, P. H.: Statistical analysis of an LES shallow cumulus cloud ensemble using a cloud tracking algorithm, *Atmos. Chem. Phys.*, 12, 1101–1119, doi: 10.5194/acp-12-1101-2012, 2012.
- 760 Dey, S., Di Girolamo, L., and Zhao, G.: Scale effect on statistics of the macrophysical properties of trade wind cumuli over the tropical western Atlantic during RICO, *J. Geophys. Res.-Atmos.*, 113, doi: 10.1029/2008JD010295, 2008.
- Dey, S., Di Girolamo, L., Zhao, G., Jones, A. L., and McFarquhar, G. M.: Satellite-observed relationships between aerosol and trade-wind cumulus cloud properties over the Indian Ocean, *Geophys. Res. Lett.*, 38, doi: 10.1029/2010GL045588, 2011.
- 765 Dutta, S., Di Girolamo, L., Dey, S., Zhan, Y., Moroney, C. M., and Zhao, G.: The reduction in near-global cloud cover after correcting for biases caused by finite resolution measurements, *Geophys. Res. Lett.*, 47, e2020GL090313, doi: 10.1029/2020GL090313, 2020.
- Eastman, R. and Wood, R.: The competing effects of stability and humidity on subtropical stratocumulus entrainment and cloud evolution from a Lagrangian perspective. *J. Atmos. Sci.*, 75, 2563-2578, doi: 10.1175/JAS-D-18-0030.1, 2018.
- 770 Faraway, J. J.: Linear models with R, CRC Press, Boca Raton, Florida, ISBN 9780429211393, 2014.
- Forsythe, J. M., Dodson, J. B., Partain, P. T., Kidder, S. Q., and Vonder Haar, T. H.: How total precipitable water vapor anomalies relate to cloud vertical structure, *J. Hydrometeorol.*, 13, 709-721, doi: 10.1175/JHM-D-11-049.1, 2012.
- Fu, D., Di Girolamo, L., Rauber, R. M., McFarquhar, G. M., Nesbitt, S. W., Loveridge, J., Hong, Y., van Dienenhoven, B., Cairns, B., Alexandrov, M. D., Lawson, P., Woods, S., Tanelli, S., Schmidt, S., Hostetler, C., and Scarino, A. J.: An evaluation of the liquid cloud droplet effective radius derived from MODIS, airborne remote sensing, and in situ measurements from CAMP²Ex, *Atmos. Chem. Phys.*, 22, 8259-8285, doi: 10.5194/acp-22-8259-2022, 2022.
- 775 [Geiss, A., Marchand, R., and Thompson, L.: The Influence of Sea Surface Temperature Reemergence on Marine Stratiform Cloud. *Geophys. Res. Lett.*, 47, e2020GL086957, doi: 10.1029/2020GL086957, 2020.](#)
- George, R. C. and Wood, R.: Subseasonal variability of low cloud radiative properties over the southeast Pacific Ocean, *Atmos. Chem. Phys.*, 10, 4047-4063, doi: 10.5194/acp-10-4047-2010, 2010.
- 780 [Goren, T., Sourdeval, O., Kretzschmar, J., and Quaas, J.: Spatial aggregation of satellite observations leads to an overestimation of the radiative forcing due to aerosol-cloud interactions. *Geophys. Res. Lett.*, 50, e2023GL105282, doi: 10.1029/2023GL105282, 2023.](#)
- Gotoh, K. and Fujii, Y.: A fractal dimensional analysis on the cloud shape parameters of cumulus over land, *J. Appl. Meteorol.*, 37, 1283–1292, doi: 10.1175/1520-0450(1998)037<1283:AFDAOT>2.0.CO;2, 1998.

Formatted: Font: (Default) Times New Roman

Formatted: Font: (Default) Times New Roman

Formatted: Font: (Default) Times New Roman

Formatted: Font: (Default) Times New Roman, 10 pt, Not Bold

Formatted: Font: (Default) Times New Roman

Formatted: Font: (Default) Times New Roman

Formatted: Default Paragraph Font, Font: (Default) Times New Roman, 10 pt, Not Bold

Formatted: Font: (Default) Times New Roman

Hair, J. W., Hostetler, C. A., Cook, A. L., Harper, D. B., Ferrare, R. A., Mack, T. L., Welch, W., Izquierdo, L. R., and Hovis, F. E.: Airborne high spectral resolution lidar for profiling aerosol optical properties, *Appl. Optics*, 47, 6734-6752, doi: 10.1364/AO.47.006734, 2008.

[Helfer, K. C., Nuijens, L., De Roode, S. R., and Siebesma, A. P.: How wind shear affects trade-wind cumulus convection, *J. Adv. Model Earth Sy.*, 12, e2020MS002183, doi: 10.1029/2020MS002183, 2020.](#)

Hersbach, H., Bell, B., Berrisford, P., Hirahara, S., Horányi, A., Muñoz-Sabater, J., Nicolas, J., Peubey, C., Radu, R., Schepers, D., Simmons, A., Soci, C., Abdalla, S., Abellan, X., Balsamo, G., Bechtold, P., Dee, D., Diamantakis, M., Dragani, R., Flemming, J., Forbes, R., Fuentes, M., Geer, A., Haimberger, L., Healy, S., Hogan, R. J., Holm, E., Janiskova, M., Keeley, S., Laloyaux, P., Lopez, P., Lupu, C., radnoti, G., de Rosnay, P., Rozum, I., Vamborg, F., Villaume, S., and Thépaut, J. N.: The ERA5 global reanalysis, *Q. J. Roy. Meteor. Soc.*, 146, 1999-2049. Doi: 10.1002/qj.3803, 2020.

Heus, T. and Seifert, A.: Automated tracking of shallow cumulus clouds in large domain, long duration large eddy simulations, *Geosci. Model. Dev.*, 6, 1261-1273, doi: 10.5194/gmd-6-1261-2013, 2013.

Jiang, H., Feingold, G., Jonsson, H. H., Lu, M. L., Chuang, P. Y., Flagan, R. C., and Seinfeld, J. H.: Statistical comparison of properties of simulated and observed cumulus clouds in the vicinity of Houston during the Gulf of Mexico Atmospheric Composition and Climate Study (GoMACCS), *J. Geophys. Res.-Atmos.*, 113, doi: 10.1029/2007JD009304, 2008.

Jones, A. L., Di Girolamo, L., and Zhao, G.: Reducing the resolution bias in cloud fraction from satellite derived clear-conservative cloud masks, *J. Geophys. Res.-Atmos.*, 117, doi: 10.1029/2011JD017195, 2012.

[Karlsson, J., Svensson, G., Cardoso, S., Teixeira, J., and Paradise, S.: Subtropical cloud-regime transitions: Boundary layer depth and cloud-top height evolution in models and observations, *J. Appl. Meteorol. Clim.*, 49, 1845-1858, doi: 10.1175/2010JAMC2338.1, 2010.](#)

Klein, S. A., Hall, A., Norris, J. R., and Pincus, R.: Low-cloud feedbacks from cloud-controlling factors: A review, *Surv. Geophys.*, 38, 1307-1329, doi: 10.1007/s10712-017-9433-3, 2017.

Koren, I., Oreopoulos, L., Feingold, G., Remer, L. A., and Altaratz, O.: How small is a small cloud?, *Atmos. Chem. Phys.*, 8, 3855-3864, doi: 10.5194/acp-8-3855-2008, 2008.

[Kubar, T. L., Xie, F., Ao, C. O., and Adhikari, L.: An assessment of PBL heights and low cloud profiles in CAM5 and CAM5-CLUBB over the Southeast Pacific using satellite observations, *Geophys. Res. Lett.*, 47, e2019GL084498, doi: 10.1029/2019GL084498, 2020.](#)

[Lang, F., Siems, S. T., Huang, Y., Alinejadtabrizi, T., and Ackermann, L.: On the relationship between mesoscale cellular convection and meteorological forcing: comparing the Southern Ocean against the North Pacific, *Atmos. Chem. Phys.*, 24, 1451-1466, doi: 10.5194/acp-24-1451-2024, 2024.](#)

[Lewis, H., Bellon, G., and Dinh, T.: Upstream large-scale control of subtropical low-cloud climatology, *J. Climate*, 36, 3289-3303, doi: 10.1175/JCLI-D-22-0676.1, 2023.](#)

Formatted: Font: (Default) Times New Roman, Font color: Text 1

Formatted: Default Paragraph Font, Font: (Default) Times New Roman, 10 pt, Not Bold, Font color: Text 1

Formatted: Font: (Default) Times New Roman, Font color: Text 1

Formatted: Font: (Default) Times New Roman

Formatted: Default Paragraph Font, Font: Times New Roman, Font color: Auto

Formatted: Font: (Default) Times New Roman

Deleted: ¶

Formatted: Font: (Default) Times New Roman

Formatted: Default Paragraph Font, Font: (Default) Times New Roman, 10 pt, Not Bold

Formatted: Font: (Default) Times New Roman

Formatted: Font: (Default) Times New Roman

Formatted: Font: (Default) Times New Roman, 10 pt

Formatted: Font: (Default) Times New Roman

Formatted: Default Paragraph Font, Font: Times New Roman, Font color: Auto

Formatted: English (UK)

- Li, W., Luo, C., Wang, D., and Lei, T.: Diurnal variations of precipitation over the South China Sea, *Meteor. Atmos. Phys.*, 109, 33-46, doi: 10.1007/s00703-010-0094-8, 2010.
- 820 Lovejoy, S.: Area-perimeter relation for rain and cloud areas, *Science*, 216, 185-187, doi: 10.1126/science.216.4542.18, 1982.
- Luebke, A. E., Ehrlich, A., Schafer, M., Wolf, K., and Wendisch, M.: An assessment of macrophysical and microphysical cloud properties driving radiative forcing of shallow trade-wind clouds, *Atmos. Chem. Phys.*, 22, 2727-2744, doi: 10.5194/acp-22-2727-2022, 2022.
- 825 Mayer, B., Kylling, A., Emde, C., Buras, R., Hamann, U., Gasteiger, J., and Richter, B.: libRadtran user's guide, <http://www.libradtran.org/doc/libRadtran.pdf> (last access: 29 June, 2023), 2020.
- libRadtran user's guide. <http://www.libradtran.org/doc/libRadtran.pdf>
- McCoy, D. T., Eastman, R., Hartmann, D. L., and Wood, R.: The change in low cloud cover in a warmed climate inferred from AIRS, MODIS, and ERA-Interim, *J. Climate*, 30, 3609–3620, doi: 10.1175/JCLI-D-15-0734.1, 2017.
- 830 McFarquhar, G. M., Platnick, S., Di Girolamo, L., Wang, H., Wind, G., and Zhao, G.: Trade wind cumuli statistics in clean and polluted air over the Indian Ocean from in situ and remote sensing measurements, *Geophys. Res. Lett.*, 31, L21105, doi: 10.1029/2004GL020412, 2004.
- Mieslinger, T., Horvath, A., Buehler, S. A., and Sakradzija, M.: The dependence of shallow cumulus macrophysical properties on large-scale meteorology as observed in ASTER imagery, *J. Geophys. Res.-Atmos.*, 124, 11477-11505, doi: 10.1029/2019JD030768, 2019.
- 835 Miller, R. M., Rauber, R. M., Di Girolamo, L., Rilloraza, M., Fu, D., McFarquhar, G. M., Nesbitt, S. W., Ziemba, L. D., Woods, S., and Thornhill, K. L.: Influence of natural and anthropogenic aerosol on cloud base droplet size distributions in clouds over the South China Sea and Western Pacific, *Atmos. Chem. Phys.*, 23, 8959-8977, doi: 10.5194/acp-23-8959-2023, 2023.
- 840 Mitra, A., Di Girolamo, L., Hong, Y., Zhan, Y., and Mueller, K. J.: MODIS and MISR cloud-top heights through comparison with ISS-CATS lidar, *J. Geophys. Res.-Atmos.*, 126, e2020JD034281, doi: 10.1029/2020JD034281, 2021.
- Moroney, C., Di Girolamo, L. and Jones, A.L.: Data Products Specifications for the MISR Level 2 Classifiers Product, JPL D-81127, Revision A, https://asdc.larc.nasa.gov/documents/misr/DPS_Classifiers.pdf (last access: 25 July 2023), 2014.
- Mueller, K. J., Moroney, C. P., Jovanovic, V., Muller, J.-P., Di Girolamo, L., and Davies, R.: MISR Level 2 Cloud Product Algorithm Theoretical Basis, https://eosps.nasa.gov/sites/default/files/atbd/MISR_L2_CLOUD_ATBD-1.pdf (last access: 26 June 2023), 2013.
- 845 Myers, T. A. and Norris, J. R.: Observational evidence that enhanced subsidence reduces subtropical marine boundary layer cloudiness, *J. Climate*, 26, 7507-7524, doi: 10.1175/JCLI-D-12-00736.1, 2013.
- Myers, T. A., Scott, R. C., Zelinka, M. D., Klein, S. A., Norris, J. R., and Caldwell, P. M.: Observational constraints on low cloud feedback reduce uncertainty of climate sensitivity, *Nat. Clim. Change*, 11, 501–507, doi: 10.1038/s41558-021-01039-0, 2021.

Deleted: .

Formatted: Default Paragraph Font, Font color: Text 1

[Naud, C. M., Elsaesser, G. S., and Booth, J. F.: Dominant cloud controlling factors for low-level cloud fraction: Subtropical versus extratropical oceans, *Geophys. Res. Lett.*, 50, e2023GL104496, doi: 10.1029/2023GL104496, 2023.](#)

855 Neggers, R. A. J., Jonker, H. J. J., and Siebesma, A. P.: Size statistics of cumulus cloud populations in large-eddy simulations, *J. Atmos. Sci.*, 60, 1060–1074, doi: 10.1175/1520-0469(2003)60<1060:SSOCCP>2.0.CO;2, 2003.

Nuijens, L. and Stevens, B.: The influence of wind speed on shallow marine cumulus convection, *J. Atmos. Sci.*, 69, 168–184, doi: 10.1175/JAS-D-11-02.1, 2012.

860 Plank, V. G.: The size distribution of cumulus clouds in representative Florida populations, *J. Appl. Meteorol. Clim.*, 8, 46–67, doi: 10.1175/1520-0450(1969)008<0046:TSDOCC>2.0.CO;2, 1969.

Platnick, S., Ackerman, S., King, M., Wind, G., Amarasinghe, N., Marchant, B., Arnold, G. T., Zhang, Z., Hubanks, P. A., Holz, R. E., Yang, P., Ridgway, W. L., and Riedi, J.: MODIS Atmosphere L2 Cloud Product (06_L2), NASA MODIS Adaptive Processing System, Goddard Space Flight Center USA [data set], doi:10.5067/MODIS/MOD06_L2.061, 2015.

865 Qu, X., Hall, A., Klein, S. A., and DeAngelis, A. M.: Positive tropical marine low-cloud cover feedback inferred from cloud-controlling factors, *Geophys. Res. Lett.*, 42, 7767–7775, doi: 10.1002/2015GL065627, 2015.

[Rampal, N., and Davies, R.: On the factors that determine boundary layer albedo, *J. Geophys. Res.-Atmos.*, 125, e2019JD032244, doi: 10.1029/2019JD032244, 2020.](#)

870 Reid, J. S., Maring, H. B., Narisma, G. T., van den Heever, S., Di Girolamo, L., Ferrare, R., Lawson P., Mace, G. G., Simpas, J. B., Tanelli, S., Ziemba, L., van Diedenhoven, B., Brientjes, R., Bucholtz, A., Cairns, B., Cambaliza, M. O., Chen, G., Diskin, G. S., Flynn, J. H., Hostetler, C. A., Holz, R. E., Lang, T. J., Schmidt, K. S., Smith, G., Sorooshian, A., Thompson, E. J., Thornhill, K. L., Trepte, C., Wang, J., Woods, S., Yoon, S., Alexandrov, M., Alvarez, S., Amiot, C. G., Bennett, J. R., Brooks, M., Burton, S. P., Cayan, E., Chen, H., Collow, A., Crosbie, E., DaSilva, A., DiGangi, J. P., Flagg, D. D., Freeman, S. W., Fu, D., Fukada, E., Hilario, M. R. A., Hong, Y., Hristova-Veleva, S. M., Kuehn, R., Kowch, R. S., Leung, G. R., Loveridge, J., Meyer, K., Miller, R. M., Montes, M. J., Moum, J. N., Nenes, A., Nesbitt, S. W., Norgren, M.,
875 Nowotnick, E. P., Rauber, R. M., Reid, E. A., Rutledge, S., Schlosser, J. S., Sekiyama, T. T., Shook, M. A., Sokolowsky, G. A., Stamnes, S. A., Tanaka, T. Y., Wasilewski, A., Xian, P., Xiao, Q., Xu, Z., and Zavaleta, J.: The Coupling Between Tropical Meteorology, Aerosol Lifecycle, Convection, and Radiation during the Cloud, Aerosol and Monsoon Processes Philippines Experiment (CAMP²Ex), *B. Am. Meteorol. Soc.*, 104, E1179–E1205. Doi: 10.1175/BAMS-D-21-0285.1, 2023.

880 Rieck, M., Nuijens, L., and Stevens, B.: Marine boundary layer cloud feedbacks in a constant relative humidity atmosphere, *J. Atmos. Sci.*, 69, 2538–2550. Doi: 10.1175/JAS-D-11-0203.1, 2012.

Rodts, S. M., Duynkerke, P. G., and Jonker, H. J.: Size distributions and dynamical properties of shallow cumulus clouds from aircraft observations and satellite data, *J. Atmos. Sci.*, 60, 1895–1912, doi:10.1175/1520-0469(2003)060<1895:SDADPO>2.0.CO;2, 2003.

885 Roms, D. M. and Vogelmann, A. M.L Methods for estimating 2D cloud size distributions from 1D observations, *J. Atmos. Sci.*, 74, 3405–3417, doi: 10.1175/JAS-D-17-0105.1, 2017.

Formatted: Font: (Default) Times New Roman, Font color: Text 1

Formatted: Font: (Default) Times New Roman, Font color: Text 1

Formatted: Font: (Default) Times New Roman, Font color: Text 1

Formatted: Font: (Default) Times New Roman, Font color: Text 1

Formatted: Font: (Default) Times New Roman, Font color: Text 1

Formatted: Font: (Default) Times New Roman, Font color: Text 1

Formatted: Font: (Default) Times New Roman, Font color: Text 1

Formatted: Font: (Default) Times New Roman, Font color: Text 1

Formatted: Font: (Default) Times New Roman, Font color: Text 1

Formatted: Font: (Default) Times New Roman, Font color: Text 1

Formatted: Font: (Default) Times New Roman, Font color: Text 1

Formatted: Default Paragraph Font, Font: (Default) Times New Roman, 10 pt, Not Bold, Font color: Text 1

Formatted: Font: (Default) Times New Roman, Font color: Text 1

Formatted: Font color: Text 1

Formatted: Font: (Default) Times New Roman, Font color: Text 1

Formatted: Default Paragraph Font, Font: (Default) Times New Roman, 10 pt, Not Bold, Font color: Text 1

Formatted: Font: (Default) Times New Roman, Font color: Text 1

Formatted: Font color: Text 1

- Rusakov, D. A.: A misadventure of the correlation coefficient, *Trends Neurosci.*, 46, 94-96, doi: 10.1016/j.tins.2022.09.009, 2023.
- Sengupta, S. K., Welch, R. M., Navar, M. S., Berendes, T. A., and Chen, D. W.: Cumulus cloud field morphology and spatial patterns derived from high spatial resolution Landsat imagery, *J. Appl. Meteorol. Clim.*, 29, 1245–1267, doi: 10.1175/1520-0450(1990)029<1245:CCFMAS>2.0.CO;2, 1990.
- 890 Sheffield, A. M., Saleeby, S. M., and van den Heever, S. C.: Aerosol-induced mechanisms for cumulus congestus growth, *J. Geophys. Res. Atmos.*, 120, 8941–8952, doi:10.1002/2015JD023743, 2015.
- Sherwood, S. C., Webb, M. J., Annan, J. D., Armour, K. C., Forster, P. M., Hargreaves, J. C., Hegerl, G., Klein, S. A., Marvel, K. D., Rohling, E. J., Watanabe, M., Andrews, T., Braconnot, P., Bretherton, C. S., Foster, G. L., Hausfather, Z., von der Heydt, A. S., Knutti, R., Mauritsen, T., Norris, J. R., Proistosescu, C., Rugenstein, M., Schmidt, G. A., Tokarska, K. B., and Zelinka, M. D.: An assessment of Earth’s climate sensitivity using multiple lines of evidence, *Review of Geophysics*, 58, e2019RG000678, doi: 10.1029/2019RG000678, 2020.
- 895 Stein, T. H. M., Holloway, C. E., Tobin, I., and Bony, S.: Observed relationships between cloud vertical structure and convective aggregation over tropical ocean, *J. Climate*, 30, 2187–2207, doi: 10.1175/JCLI-D-16-0125.1, 2017.
- 900 Tobin, I., Bony, S., and Roca, R.: Observational evidence for relationships between the degree of aggregations of deep convection, water vapor, surface fluxes, and radiation, *J. Climate*, 25, 6885–6904, doi: 10.1175/JCLI-D-11-00258.1, 2012.
- Tobin, I., Bony, S., Holloway, C. E., Grandpeix, J. Y., Sèze, G., Coppin, D., Woolnough, S. J., and Roca, R.: Does convective aggregation need to be represented in cumulus parameterizations?, *J. Adv. Model Earth Sy.*, 5, 692–703, doi: 10.1002/jame.20047, 2013.
- 905 UCAR: AVAPS dropsondes, <http://www.eol.ucar.edu/content/avaps-dropsondes> (last access: 18 July 2023), 2020.
- Vaisala: Vaisala Radiosonde RS41-SGP, <https://www.vaisala.com/sites/default/files/documents/WEA-MET-RS41SGP-Datasheet-B211444EN.pdf> (last access: 18 July 2023), 2017.
- [van der Dussen, J. J., De Roode, S. R., and Siebesma, A. P.: How large-scale subsidence affects stratocumulus transitions, *Atmos. Chem. Phys.*, 16, 691-701, doi:10.5194/acp-16-691-2016, 2016.](#)
- 910 van Dierenhoven, B., Tanelli, S., Hostetler, C., Schmidt, S., Holz, R., and Lawson, P.: NASA-Langley: CAMP2EX_PISTON, CAMP2EX-PISTON archive [data set], <https://www-air.larc.nasa.gov/cgi-bin/ArcView/camp2ex> (last access: 13 June 2023), 2022.
- Wainer, H., Gessaroli, M., and Verdi, M.: Visual Revelations, *CHANCE*, 19, 49-52, doi: 10.1080/09332480.2006.10722771, 2006.
- 915 Wielicki, B. A., and Welch, R. M.: Cumulus cloud properties derived using Landsat satellite data, *J. Appl. Meteorol. Clim.*, 25, 261–276, doi: 10.1175/1520-0450(1986)025<0261:CCPDUL>2.0.CO;2, 1986.
- Wood, R. and Bretherton, C. S.: On the relationship between stratiform low cloud cover and lower-tropospheric stability, *J. Climate*, 19, 6425–6432, doi: 10.1175/JCLI3988.1, 2006.

Formatted: Font: (Default) Times New Roman

Formatted: Font: (Default) Times New Roman

Formatted: Font: (Default) Times New Roman, 10 pt

Formatted: Font: (Default) Times New Roman

- 920 Yamaguchi, T., Feingold, G., and Kazil, J.: Aerosol-cloud interactions in trade wind cumulus clouds and the role of vertical
wind shear, *J. Geophys. Res.-Atmos.*, 124, 12244-12261, doi: 10.1029/2019JD031073, 2019.
- Yuan, T., Remer, L. A., Pickering, K. E., and Yu H.: Observational evidence of aerosol enhancement of lightning activity and
convective invigoration, *Geophys. Res. Lett.*, 38, L04701, doi: 10.1029/2010GL046052, 2011.
- Zelinka, M. D., Chou, Z., and Klein, S. A.: Insights from a refined decomposition of cloud feedbacks, *Geophys. Res. Lett.*, 43,
9259–9269, doi: 10.1002/2016GL069917, 2016.
- 925 Zelinka, M. D., Randall, D. A., Webb, M. J., and Klein, S. A.: Clearing clouds of uncertainty, *Nat. Clim. Change*, 7, 674–678,
doi: 10.1038/nclimate3402, 2017.
- Zhao, G.: Cloud observation from EOS-Terra: From conception to interpretation of cloud climatologies with a focus on small
clouds [Doctoral thesis, University of Illinois at Urbana-Champaign], 2006.
- Zhao, G. and Di Girolamo, L.: A cloud fraction versus view angle technique for automatic in-scene evaluation of the MISR
930 cloud mask. *J. Applied. Meteorol.*, 43, 860-869, 2004.
- Zhao, G. and Di Girolamo, L.: Cloud fraction errors for trade wind cumuli from EOS-Terra instruments. *Geophys. Res.
Lett.*, 33, doi: 10.1029/2006GL027088, 2006.
- Zhao, G. and Di Girolamo, L.: Statistics on the macrophysical properties of trade wind cumuli over the tropical western
Atlantic, *J. Geophys. Res.*, 112, D10204, doi: 10.1029/2006JD007371, 2007.
- 935 Zhang, M., Bretherton, C. S., Blossey, P. N., Bony, S., Brient, F., and Golaz, J. C.: The CGILS experimental design to
investigate low cloud feedbacks in general circulation models by using single-column and large-eddy simulation models, *J.
Adv. Model Earth Sy.*, 4, doi: 10.1029/2012MS000182, 2012.