

Technical Note: TimeFRAME - A Bayesian Mixing Model to Unravel Isotopic Data and Quantify Trace Gas Production and Consumption Pathways for Timeseries Data

Eliza Harris^{1,*}, Philipp Fischer^{1,2,*}, Maciej P. Lewicki³, Dominika Lewicka-Szczebak⁴, Stephen J. Harris^{5,6}, and Fernando Perez-Cruz¹

¹Swiss Data Science Center, ETH Zürich and EPFL, Lausanne, Switzerland

²Now at: BSI Business Systems Integration AG, 5405 Baden

³Institute of Nuclear Physics, Polish Academy of Sciences, Kraków, Poland

⁴Institute of Geological Sciences, University of Wrocław, Wrocław, Poland

⁵Australian Nuclear Science and Technology Organisation, Lucas Heights, NSW, 2234, Australia

⁶School of Biological, Earth and Environmental Sciences, UNSW Sydney, NSW, 2052, Australia

*These authors contributed equally to this work.

Correspondence: Eliza Harris (eliza.harris@ethz.sdsc.ch)

Abstract. Isotopic measurements of trace gases such as N₂O, CO₂ and CH₄ contain valuable information about production and consumption pathways. Quantification of the underlying pathways contributing to variability in isotopic timeseries can provide answers to key scientific questions, such as the contribution of nitrification and denitrification to N₂O emissions under different environmental conditions, or the drivers of multiyear variability in atmospheric CH₄ growth rate. However, there is currently no data analysis package available to solve isotopic production, mixing and consumption problems for timeseries data in a unified manner while accounting for uncertainty in measurements and model parameters as well as temporal autocorrelation between data points and underlying mechanisms. Bayesian hierarchical models combine the use of expert information with measured data and a mathematical mixing model while considering and updating the uncertainties involved, and are an ideal basis to approach this problem.

Here we present the TimeFRAME data analysis package for ‘Time-resolved FRactionation And Mixing Evaluation’. We use four different classes of Bayesian hierarchical model to solve production, mixing and consumption contributions using multi-isotope timeseries measurements: i) independent time step models, ii) Gaussian process priors on measurements, iii) Dirichlet-Gaussian process priors, and iv) generalized linear models with spline bases. We show extensive testing of the four models for the case of N₂O production and consumption in different variations. Incorporation of temporal information in approaches i-iv) reduced uncertainty and noise compared to the independent model i). Dirichlet-Gaussian process prior models have been found to be most reliable, allowing for simultaneous estimation of hyperparameters via Bayesian hierarchical modeling. Generalized linear models with spline bases seem promising as well, especially for fractionation estimation, although the robustness to real datasets is difficult to assess given their high flexibility. Experiments with simulated data for $\delta^{15}\text{N}^{\text{bulk}}$ and $\delta^{15}\text{N}^{\text{SP}}$ of N₂O showed that model performance across all classes could be greatly improved by reducing uncertainty in model input data - particularly isotopic endmembers and fractionation factors. The addition of the $\delta^{18}\text{O}$ additional isotopic dimension yielded

a comparatively small benefit for N₂O production pathways but improved quantification of the fraction of N₂O consumed; however, the addition of isotopic dimensions orthogonal to existing information could strongly improve results, for example clumped isotopes.

The `TimeFRAME` package can be used to evaluate both static and timeseries datasets, with flexible choice of the number and type of isotopic endmembers and the model set up allowing simple implementation for different trace gases. The package is available in R, and is implemented using `Stan` for parameter estimation, in addition to supplementary functions re-implementing some of the surveyed isotope analysis techniques.

1 Introduction

Analysis of isotopic signatures is frequently used in environmental sciences to infer production and consumption pathways for trace gases. For example, N₂O isotopic composition reflects the production via different pathways (including microbial denitrification, nitrification, fungal denitrification), mixing within the soil airspace, and consumption via complete denitrification. The different production pathways have distinct isotopic ‘endmembers’, which describe the isotopic composition of emitted N₂O. Following emission, N₂O from different pathways mixes in the soil airspace, described using the approximated mixing equation (Ostrom et al., 2007; Fischer, 2023):

$$\delta_{\text{mix}} \approx \sum_{k=1}^K f_k \delta_k \quad (1)$$

where δ_{mix} is the isotopic composition of a mixture of two or more sources enumerated by $k = 1, \dots, K$ with isotopic compositions designated δ_k and fractional contributions to the mixture designated by f_k . This approximation assumes that the light isotope has a much greater concentration than the heavy isotope, which is valid for common trace gases such as CO₂, CH₄ and N₂O.

N₂O is consumed during complete denitrification to N₂, which favours the light isotope and thus leads to progressive enrichment of the remaining N₂O pool. The isotopic effect of consumption can be approximated using the Rayleigh equation (Mariotti et al., 1981; Ostrom et al., 2007; Fischer, 2023):

$$\delta_{\text{substr},r} \approx \delta_{\text{substr},r=1} + \epsilon \ln(r) \quad (2)$$

where $\delta_{\text{substr},r=1}$ and $\delta_{\text{substr},r}$ are the isotopic composition of the initial substrate prior to consumption ($r = 1$) and when a certain fraction $(1 - r)$ has been consumed, ϵ is the fractionation factor for the reaction in permil (‰) and r is the fraction of substrate remaining where $r = 0$ represents a complete reaction.

We can combine equations 1 and 2 for a full model of mixing and fractionation of the subsequent mixture; for example, mixing of N₂O from different sources within the soil airspace, followed by complete reduction of a certain fraction of N₂O, before measurement of N₂O isotopic composition (Fischer, 2023):

$$\delta = \sum_{k=1}^K f_k \delta_k + \epsilon \ln(r) \quad (3)$$

50 where δ is the measured isotopic composition. In this equation, we assume that mixing occurs before fractionation, when in reality mixing and fractionation are likely occurring simultaneously depending on the soil pore size distribution and connectivity, the availability of different substrates, and the microbial community present (Denk et al., 2017; Yu et al., 2020; Lewicka-Szczebak et al., 2020). A detailed discussion of the implications of this assumption is given in SI Section 1. Further uncertainty in the model equation relates to open vs. closed system fractionation, describing renewal of the N₂O pool relative to the
55 rate of N₂O consumption (Yu et al., 2020; Lewicka-Szczebak et al., 2020). However, the largest uncertainties in evaluation of this equation to interpret the measured isotopic composition δ relate to the endmembers for different sources δ_k and the fractionation factor ϵ .

A commonly used approach to interpret trace gas isotopic measurements is the application of dual-isotope mapping, which utilises the relationship between two isotopic parameters to infer pathways, for example $\delta^{15}\text{N}^{\text{bulk}}$ and $\delta^{15}\text{N}^{\text{SP}}$ in the case
60 of N₂O. The mapping approach can be used to roughly estimate the dominance of different pathways and the importance of fractionation during consumption (Wolf et al., 2015; Lewicka-Szczebak et al., 2017; Wu et al., 2019; Yu et al., 2020; Rohe et al., 2021). However, they fail to provide quantitative determination of different pathways or to estimate uncertainty for individual samples. Moreover, mapping approaches are limited to mixing scenarios involving only two sources, which - for example -
65 does not allow for the differentiation of contributions from the nitrification and fungal denitrification pathways which have similar $\delta^{15}\text{N}^{\text{SP}}$ signatures. In addition, there are no statistical packages available to implement these mapping approaches, calling into question the reproducibility among studies using this approach.

Bayesian approaches to solve isotopic mixing models have been successfully implemented in several well-known frameworks (R packages `MixSIAR`, `simmr`) (Parnell et al., 2013; Stock et al., 2018). These advanced models are used to resolve the contribution of multiple sources to a mixture using a range of Bayesian statistical techniques, and are widely used for applications
70 such as animal diet partitioning (Stock et al., 2018). However, these packages do not offer the capability to deal with pool consumption and Rayleigh fractionation, and thus are not suitable for the interpretation of trace gas isotopic measurements where consumption/destruction plays a key role (Fischer, 2023; Lewicka-Szczebak et al., 2020).

The FRAME (Fractionation And Mixing Evaluation) model provided the first Bayesian tool to include both mixing and fractionation for the interpretation of isotopic data (Lewicka-Szczebak et al., 2020; Lewicki et al., 2022). FRAME applies a
75 Markov-Chain Monte Carlo (MCMC) algorithm to estimate the contribution of individual sources and processes, as well as the probability distributions of the calculated results (Lewicki et al., 2022). However, the FRAME model can only be applied to timeseries data by solving separately for single or aggregated points. Although the contribution of different pathways may vary strongly on short timescales, model parameters - such as isotopic endmembers and fractionation factors - are expected to show minimal variability between subsequent points in a time series. Timeseries information can be added to isotopic models through
80 statistical approaches using smoothing and other techniques to account for temporal autocorrelation and measurement noise, or through the application of dynamic approaches incorporating differential equations (Bonnaffé et al., 2021). In TimeFRAME, we use the statistical approach as a natural extension to the implementation of FRAME; investigation of dynamical approaches may be challenging due to high uncertainties in all inputs and should be a focus of further research.

Here we present the TimeFRAME extension to the FRAME model to allow for efficient analysis of timeseries data. TimeFRAME uses one independent time step model in which points in a time series are treated independently, and three classes of model to fully incorporate time series information: i) independent time step models, ii) Gaussian process priors on measurements, iii) Dirichlet-Gaussian process priors, and iv) generalized linear models with spline bases. The models are solved for the contribution of different pathways, endmembers and fractionation factors within a MCMC framework, and the full posterior distributions of parameters are reported. The isotopes, endmembers, fractionation factors and model set up are defined by the user, allowing flexible application to many isotopic problems.

2 Methodology

2.1 Inference of source contributions

One objective of studying isotopic signatures is to determine the source contributions $f_1 \cdots f_K$ from measurements of the mixture. However, measuring one single isotopic species will only be efficient in distinguishing between a maximum of two sources. For additional sources, or if consumption of the mixture needs to be accounted for, multiple isotopic species are necessary. Analysis of N_2O sources and pathways, for instance, can include analysis of $\delta^{15}\text{N}^{\text{bulk}}$, $\delta^{15}\text{N}^{\text{SP}}$ and $\delta^{18}\text{O}$. The vector of d different isotopic species shall be denoted by $X \in \mathbb{R}_d$. Measurements of the isotopic endmember for each individual source enumerated by $k = 1, \dots, K$ are assumed to be known and denoted by $S_1, \dots, S_K \in \mathbb{R}_d$ together with the fractionation factor $\epsilon \in \mathbb{R}_d$. Using vector and matrix notation they can later be used to state the mixing equation in vector form:

$$\mathbf{f} := [f_1 \cdots f_K]^T \in \mathbb{R}^K \quad (4)$$

$$\mathbf{S} := [S_1 \cdots S_K]^T \in \mathbb{R}^{d \times K} \quad (5)$$

The case of Rayleigh fractionation as expressed in Eq. 3 can be similarly expressed in vectorised form:

$$X = \mu(\mathbf{f}, r) := \mathbf{S}\mathbf{f} + \epsilon \ln(r) \quad (6)$$

In a simple example with two sources and measurements of two isotopic species $K = d = 2$ the mixing equation can be solved (assuming convergence is possible) for the parameters of interest using linear algebra (see (Fischer, 2023) for details). More generally, mixing and fractionation according to Eq. 6 can be solved for an arbitrary number of sources as long as an equal number of isotopic species is available, ie. $K = d \geq 2$. In this case the linear system of equations can be written in matrix terms, and augmented with the sum constraint on \mathbf{f} :

$$\tilde{X} := \begin{bmatrix} X \\ 1 \end{bmatrix} = \begin{bmatrix} \mathbf{S} & -\epsilon \\ \mathbf{1}^T & 0 \end{bmatrix} \begin{bmatrix} \mathbf{f} \\ \ln(r) \end{bmatrix} =: \tilde{\mathbf{S}}\tilde{\mathbf{f}} \quad (7)$$

This $d + 1$ -dimensional linear system of equations can be addressed with decomposition techniques and its solution can be expressed as $\tilde{\mathbf{f}} = \tilde{\mathbf{S}}^{-1}\tilde{X}$. A unique solution exists if $\tilde{\mathbf{S}}$ is invertible, or equivalently, if none of the mixing lines as well as

the consumption line are co-linear. Only non-negative solutions $\tilde{\mathbf{f}} \geq 0$ are feasible to ensure that the source contributions f correspond to mixing weights and that $0 < r \leq 1$.

115 A flaw of the isotope mapping approach as presented above is that it does not take measurement uncertainty into account. However, this can easily be added by formulating the measurements X as random variables with expected value given by the mixing equation $\mathbb{E}[X] = \mu(\mathbf{f}, r)$. Most commonly, measurements are modeled using the Gaussian distribution with independent components and variance $\eta^2 \in \mathbb{R}$, thus allowing the mixing-fractionation equation to be stated as:

$$X \sim \mathcal{N}_d(\mu(\mathbf{f}, r), \eta^2 \mathbf{1}) = \mathcal{N}_d(\mathbf{S}\mathbf{f} + \epsilon \ln(r), \eta^2 \mathbf{1}) \quad (8)$$

120 A maximum likelihood solution to this mixing-fractionation equation can be pursued (see (Fischer, 2023) for details), however this limits the framework to parameters that can be approximated with a Gaussian distribution. Often, the epistemic uncertainty of source isotopic endmembers is modelled as a uniform distribution to best account for the combination of measurement uncertainty and true variability in endmember values (Lewicki et al., 2022). Bayesian statistics is useful to incorporate all assumptions and constraints into the model, as well as to employ numerical inference methods for source contribution estimation
125 and uncertainty estimation.

2.2 Stationary inference

Stationary inference involves inference for the source contributions $\mathbf{f} \in \mathcal{S}_K$, where \mathcal{S}_K is the K -simplex, and the fraction of the pool remaining $r \in [0, 1]$ for one single measurement independent of time. This can be accomplished with the original FRAME model (Lewicki et al., 2022). FRAME constructs a prior and likelihood structure where the isotopic species measurements
130 $X \in \mathbb{R}^d$ are independently normally distributed with variance vector $\eta^2 \in \mathbb{R}_+^d$ around a mean given by an arbitrary mixing equation $\mu(\mathbf{f}, r)$. The source contributions \mathbf{f} are then equipped with a flat Dirichlet prior and the fraction remaining r with a uniform prior:

$$\begin{aligned} \mathbf{f} &\sim \text{Dir}(1), \quad r \sim \text{Uni}(0, 1) \\ X|\mathbf{f}, r &\sim \mathcal{N}_d(\mu(\mathbf{f}, r), \eta^2) \end{aligned} \quad (9)$$

The auxiliary parameters for the mixing equation \mathbf{S} and ϵ are understood to be random variables as well, with predetermined
135 fixed priors that are omitted from the model description above. Choosing those priors is dependent on the origin of the data and thus not subject to the further engineering of inference models in the following sections. The likelihood of X is understood to be implicitly conditional on these auxiliary parameters. This means that a joint posterior $\pi(\mathbf{f}, r, \mathbf{S}, \epsilon|X)$ is fit by the model and the reported posterior $\pi(\mathbf{f}, r|X)$ is simply its marginalization.

The FRAME model can be extended by taking different choices of prior distributions for the parameters of interest (the
140 source contributions \mathbf{f} and the fraction remaining r). The Jeffreys prior for source contributions is constructed by computing the Fisher information matrix and choosing the probability distribution proportional to the square root of its determinant. For the source contributions $\mathbf{f} = \begin{pmatrix} 1-f \\ f \end{pmatrix} \in \mathcal{S}_2$ of two sources $S_1, S_2 \in \mathbb{R}$ the computation can be done by omitting the influence

of fractionation, leading to a uniform prior over the domain of \mathbf{f} . For multiple source contributions this is equivalent to the flat Dirichlet distribution used in the original FRAME model.

145 Taking now fraction remaining with regards to Rayleigh fractionation $r \in [0, 1]$ independently of the mixing weights \mathbf{f} into account, the Jeffreys prior can be computed relative to the pure mixing solution $M = X - S_1(1 - f) - S_2f \in \mathbb{R}$ with fractionation factor $\epsilon \in \mathbb{R}$ (Fischer, 2023):

$$\mathcal{I}_r(r) \propto -\mathbb{E} \left[\frac{d^2 r}{dr^2} \frac{(M - \epsilon \ln(r))^2}{\eta^2} \middle| r \right] = \frac{2\epsilon^2}{\eta^2 r^2} \propto \frac{1}{r^2} \quad (10)$$

Therefore the objective prior for the fraction remaining r is given by $\pi(r) \propto \frac{1}{r}$ for $r \in [0, 1]$, which is also known as the
 150 logarithmic prior; since it cannot be normalized it is an improper prior. Additionally, even though this prior can be considered uninformative for r individually according to the Jeffreys criterion, a joint prior could lead to different results, although priors are typically chosen as independent distributions.

In the case of Rayleigh fractionation, however, it might be more reasonable to use a different distribution that is somewhere in between the uniform and logarithmic prior and incorporates the bounds to the interval $[0, 1]$ as well, which is a similar idea
 155 to prior averaging (Berger et al., 2015). The beta distribution offers a functional form that is similar to the Jeffreys prior, but can be normalized. Parameterizing the distribution with a restricted concentration parameter $\alpha \in [0, 1]$, the form $\text{Beta}(\alpha, 1)$ is the uniform distribution for $\alpha = 1$ and converges to the Jeffreys prior for $\alpha \rightarrow 0$, thus expressing a generalized approach.

2.3 Time series inference

In order to incorporate time series information in the inference procedure, the model can be extended to work with multiple
 160 measurements at different points in time. The source contribution \mathbf{f} and fraction remaining r are assumed to be functions with respect to time \mathbf{f}_τ and r_τ and the measurements correspond to samples in time $X_t = X(\tau_t)$ at n discrete time points τ_1, \dots, τ_n .

Now the measurements can be grouped into a measurement matrix $\mathbf{X} := [X_1 \dots X_N] \in \mathbb{R}^{d \times N}$, where the time dimension is along the matrix rows. Inference of the parameters can be done at the identical time points $\mathbf{f}_t = \mathbf{f}(\tau_t)$ and $r_t = r(\tau_t)$, so that they can be grouped into similar matrices as well: $\mathbf{F} := [\mathbf{f}_1 \dots \mathbf{f}_N] \in \mathbb{R}^{K \times N}$ and $\mathbf{r} := [r_1 \dots r_N] \in \mathbb{R}^{1 \times N}$. This grouping has
 165 the advantage that the mixing equation can be expressed in vectorized form over all time points without changing its general layout (Fischer, 2023):

$$\mathbb{E}[\mathbf{X} | \mathbf{F}, \mathbf{r}] = \mu(\mathbf{F}, \mathbf{r}) = \mathbf{S}\mathbf{F} + \epsilon \ln(\mathbf{r}) \quad (11)$$

2.3.1 Independent time steps

The simplest method to extend the stationary model is to assume complete independence between all points in time. This
 170 reduces the time series problem to a set of N independent stationary problems with one single measurement point each, thus the same stationary FRAME model can be used for each point. The vector of measurement errors $\eta \in \mathbb{R}^d$ is now also allowed

to vary in time as η_1, \dots, η_N

$$\begin{aligned} \mathbf{f}_t &\sim \text{Dir}(1), r_t \sim \text{Uni}(0, 1) \quad \forall t \\ X_t | \mathbf{f}_t, r_t &\sim \mathcal{N}_d(\mu(\mathbf{f}_t, r_t), \eta_t^2) \quad \forall t \end{aligned} \tag{12}$$

The prior on the series of source contributions \mathbf{f}_t and pool fraction remaining r_t is now fully independent in time and the information that could be contained in the fact that some measurements are closer in time than others is ignored.

Prior information can be encoded into the prior distribution for \mathbf{f}_t by introducing a concentration parameter $\sigma \in \mathbb{R}_+^K$ as well as a parameter $\alpha \in (0, 1)$ that interpolates between the uniform prior for r_t and the Jeffreys prior using the beta distribution as described in Section 2.2. This allows for the inclusion of information that is universally true for all time points simultaneously. If no information is available the model can be extended by adding an additional hierarchical layer for these parameters with weakly informative hyperpriors being the gamma distribution $\Gamma(2, 2)$ on the positive real axis for concentrations σ and the uniform $\text{Uni}(0, 1)$ for α :

$$\begin{aligned} \sigma &\sim \Gamma(2, 2), \alpha \sim \text{Uni}(0, 1) \\ \mathbf{f}_t &\sim \text{Dir}(\sigma), r_t \sim \text{B}(\alpha, 1) \quad \forall t \\ X_t | \mathbf{f}_t, r_t &\sim \mathcal{N}_d(\mu(\mathbf{f}_t, r_t), \eta_t^2) \quad \forall t \end{aligned} \tag{13}$$

2.3.2 Gaussian Process priors

Time series information can be incorporated by various methods in the case of unconstrained random variables. An obvious method is to apply the FRAME model with independent time steps on a preprocessed measurement series. The timeseries preprocessing can be done before model application, without consideration of the Bayesian mixing model. Candidate preprocessing algorithms are kernel smoothing, spline smoothing, and local polynomial regression. While the latter can offer uncertainty estimates of the smoothed time series, a holistic treatment of estimation with uncertainty can be offered by Gaussian process regression.

Despite the possibility of running the simple time-independent model on preprocessed measurement time series, it is beneficial to combine both steps into an advanced model; for example, the problem specific geometry could influence the feasibility of a region in measurement space. A combined model will include a Gaussian process prior on the measurements X_t such that posterior means W_t can be estimated and used to drive the FRAME model with independent time steps (Section 12). The Gaussian process is shifted and scaled to align with the empirical mean $\hat{\mu}_X$ and standard deviation $\hat{\sigma}_X$ of the measurements

195 X_t and controlled by a kernel function \mathbf{G} (Fischer, 2023):

$$\begin{aligned}
\mathbf{f}_t &\sim \text{Dir}(1), r_t \sim \text{Uni}(0, 1) \quad \forall t \\
W_t | \mathbf{f}_t, r_t &\sim \mathcal{N}_d(\mu(\mathbf{f}_t, r_t), \frac{\eta_t^2}{2}) \quad \forall t \\
W &\sim \mathcal{GP}_d(\hat{\mu}_X, \hat{\sigma}_X, \mathbf{G}) \\
X_t | W_t, \mathbf{f}_t, r_t &\sim \mathcal{N}_d(W_t, \frac{\eta_t^2}{2}) \quad \forall t
\end{aligned} \tag{14}$$

The distribution on the latent estimates W_t is the product of the Gaussian process prior as well as the independent normal distribution around the mixing estimate. Ideally, this model does not need to include sampling of \mathbf{f}_t and r_t because if the mixing equation can be expressed as a linear system of equations (Eq. 7) then the smooth measurement series W_t is sufficient
200 to solve for the source contribution and fractionation parameters directly. In practice, this approach reduces to applying isotopic mapping techniques to the time series that is preprocessed using Gaussian process smoothing.

If the mixing equation is not explicitly inverted but evaluated by sampling the parameters \mathbf{f}_t and r_t , then the latent variables W can be marginalized over and eliminated from the model. The product density of W can also be expressed using known identities (Pedersen and Petersen, 2012) for each separate isotopic measurement dimension $j = 1, \dots, d$ in terms of its empirical
205 mean $\hat{\mu}_{X,j}$, empirical standard deviation $\hat{\sigma}_{X,j}$ and noise variance η_j^2 . Using the Cholesky decomposition these distribution parameters can efficiently be computed and used for sampling, thus the latent parameters W can be eliminated from the model and the likelihood of each row X_j . can be directly computed (Fischer, 2023):

$$\begin{aligned}
\mathbf{F} &\sim \text{Dir}(1), \mathbf{r} \sim \text{Uni}(0, 1) \\
\mu(\mathbf{F}, \mathbf{r}) &\sim \mathcal{GP}_d(\hat{\mu}_X, \hat{\sigma}_X, \mathbf{G}) \\
\mathbf{X}_{j:}^T | \mathbf{F}, \mathbf{r} &\sim \mathcal{N}_N(\tilde{\mu}_j, \tilde{\Sigma}_j + \frac{\eta_j^2}{2} \mathbf{1}) \quad \forall j = 1, \dots, d
\end{aligned} \tag{15}$$

Gaussian process priors on measurements use only one single hyperparameter which is the correlation length ρ used to compute
210 the kernel matrix $\mathbf{G}_{ij} = \kappa_\rho(\tau_i, \tau_j)$. The scale of the Gaussian process is always set to the empirical standard deviation of the data and is thus considered fixed. In order to compile a fully hierarchical Bayesian model an inverse gamma distribution $\frac{1}{\rho} \sim \Gamma(2, 2)$ can be used as hyperprior for the correlation length, assuming that the time scales are properly normalized.

2.3.3 Dirichlet-Gaussian Process priors

To make use of time series information in the source contributions \mathbf{f} and the fraction reacted r , direct priors are desired. These
215 priors can be constructed by sampling auxiliary variables from multiple independent Gaussian processes $\mathbf{Z} \sim \mathcal{GP}_K(\mathbf{G})$ and at each point in time inverting the log ratio transformations on the simplex in order to create a time series of simplex-valued variables \mathbf{f}_t . The fraction reacted r_t is constrained to the interval $[0, 1]$ and can thus be linked for instance by applying the logit transform $\text{logit}(r) = \ln \frac{r}{1-r}$ at each point in time, which maps it to the entire real axis. Hyperparameters for correlation length

220 $\rho \in \mathbb{R}_+$ and concentration $\sigma \in \mathbb{R}_+$ are used to compute the kernel matrix $\mathbf{G}_{ij} = \sigma^2 \kappa_\rho(\tau_i, \tau_j)$ for the Gaussian process. The general shape of these priors is visualized in Figure 1. Working with the matrix of source contributions $\mathbf{F} = [\mathbf{f}_1, \dots, \mathbf{f}_n] \in \mathbb{R}^{K \times N}$ and of the fraction reacted $\mathbf{r} = [r_1, \dots, r_n] \in \mathbb{R}^{1 \times N}$ the model can be stated in vectorized form, where the link functions are understood to be column-wise (Fischer, 2023):

$$\text{clr}(\mathbf{F}) \sim \mathcal{GP}_K(\mathbf{G})$$

$$\text{logit}(\mathbf{r}) \sim \mathcal{GP}(\mathbf{G})$$

$$X_t | \mathbf{f}_t, r_t \sim \mathcal{N}_d(\mu(\mathbf{f}_t, r_t), \eta_t^2) \quad \forall t$$

(16)

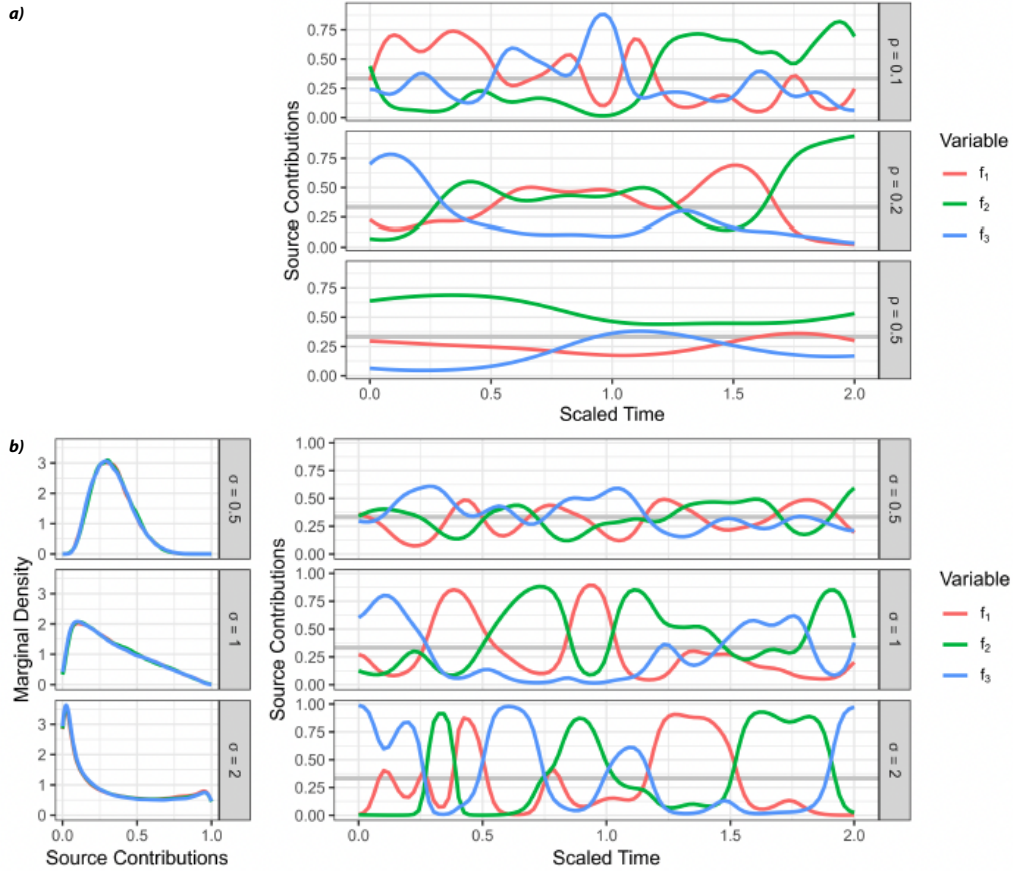


Figure 1. Examples of Generalized Gaussian Process prior with the radial basis function kernel using different values for correlation length (ρ) and concentration (σ). *a)* Prior observation for three sources (f_1, f_2, f_3) mapped to the simplex using the centred log ratio transform, shown over an arbitrary time axis using different values of ρ with $\sigma = 1$. *b)* Estimated marginal densities (LHS) of transformed Gaussian process priors for different values of the concentration parameters σ with $\rho = 0.1$, with a prior observation for three sources (f_1, f_2, f_3) shown over an arbitrary time axis on the RHS.

Both link functions used can easily be inverted once random variables $\mathbf{Z} \sim \mathcal{GP}_K(\mathbf{G})$ and $\mathbf{Y} \sim \mathcal{GP}(\mathbf{G})$ are sampled from
 225 Gaussian processes over time $t = 1, \dots, N$. The inverse of the CLR transform is given by the softmax function and the inverse of
 the logit link is given by the sigmoid function (see Fischer (2023)). The prior on the source contribution parameters \mathbf{G} is known
 as a generalized Gaussian process prior, and techniques such as Taylor expansion can be used to derive analytic approximations
 (Chan and Dong, 2011). Its marginal is a softmax transformed multivariate Gaussian, which is also known as a logistic normal
 distribution and serves as an approximation to the Dirichlet distribution (Aitchison and Shen, 1980; Devroye, 1986; Fischer,
 230 2023). Mapping using centered log ratio (CLR) transforms thus creates a time series of random variables with approximate
 Dirichlet marginals, which is referred to as a *Dirichlet-Gaussian process* (DGP) (Chan, 2013).

The marginals are controlled by the parameter σ of the Gaussian process, which now acts as the concentration parameter of
 the Dirichlet distribution. Since the covariance kernel \mathbf{G} is scaled to generate Gaussian random variables with unit variance
 if $\sigma = 1$, the marginal distribution in that case is approximately the uniform $\text{Dir}(1)$. This can be seen by sampling from the
 235 generalized Gaussian process priors and estimating the marginals, as shown in Figure 1b.

Using the isometric log ratio transform ILR instead of CLR reduces the number of Gaussian processes that need to be sampled
 to $K - 1$ for the source contributions. Inverting this link function is accomplished by applying an orthonormal base transform
 \mathbf{U} to the random variables, and then applying the softmax function. Since interpretability of the sampled Gaussian process
 variables is not required, any orthonormal basis is suitable and a simple construction using Gram-Schmidt orthogonalization is
 240 chosen (Nesrstová et al., 2022; Fischer, 2023):

$$\begin{aligned} \text{ILR}(\mathbf{F}) &\sim \mathcal{GP}_{K-1}(\mathbf{G}) \\ \text{logit}(\mathbf{r}) &\sim \mathcal{GP}(\mathbf{G}) \\ X_t | \mathbf{f}_t, r_t &\sim \mathcal{N}_d(\mu(\mathbf{f}_t, r_t), \eta_t^2) \quad \forall t \end{aligned} \tag{17}$$

Shorthand notation $\mathcal{GP}(\mathbf{G}) = \mathcal{GP}(0, 1, \mathbf{G})$ is used with correlation length ρ and scale σ included in the kernel computation
 $\mathbf{G}_{ij} = \sigma^2 \kappa_\rho(\tau_i, \tau_j)$. Both kernel parameters ρ and σ can be set in advance or given weak hyperpriors. The inverse gamma
 distribution $\frac{1}{\rho} \sim \Gamma(2, 2)$ and the regular gamma distribution $\sigma \sim \Gamma(2, 2)$ are chosen under the assumption that the time variables
 245 τ_1, \dots, τ_N are scaled appropriately. This hierarchical model benefits especially from the reduced number of Gaussian processes
 sampled when using the ILR transform, since the kernel covariance matrix must be reconstructed in every sampling step.
 The number of hyperparameters could be increased by using separate concentrations and correlation lengths for the source
 contributions \mathbf{F} and the fraction remaining \mathbf{r} .

2.3.4 Spline-based priors

250 An alternative to Gaussian process priors are spline basis functions, which can be used to construct a linear fitting operation
 that is then mapped to simplex space. This allows for the addition of exogenous variables as predictors of source contributions
 or fractionation. A cubic spline basis of M basis functions (Figure 2) is evaluated at the measurement points τ_1, \dots, τ_N to form
 the evaluation matrix $\mathbf{H} \in \mathbb{R}^{N \times M}$ with $\mathbf{H}_{ij} = s_j(\tau_i)$ for polynomial basis functions $s_1(\cdot), \dots, s_M(\cdot)$. The time series of source
 contributions in simplex space is reconstructed with the basis coefficients $\mathbf{b}_k \in \mathbb{R}^M$ for each source $k = 1, \dots, K$ arranged to

255 the matrix $[\mathbf{b}_1 \cdots \mathbf{b}_K]^T = \mathbf{B} \in \mathbb{R}^{L \times M}$ and coefficients for fractionation $\mathbf{c} \in \mathbb{R}^{1 \times M}$. This type of model is therefore part of the generalized linear model class (Nelder and Wedderburn, 1972) and allows for easy extension with fixed effects relating to measurement dimensions as well as random effects for experiment replication. It will thus further be referred to as generalized linear model with spline basis (spline GLM) (Fischer, 2023):

$$\mathbf{B}, \mathbf{c} \sim \mathcal{N}(0, 1)$$

$$\text{clr}(\mathbf{F}) = \mathbf{B}\mathbf{H}^T$$

$$\text{logit}(\mathbf{r}) = \mathbf{c}\mathbf{H}^T$$

$$X_t | \mathbf{f}_t, r_t \sim \mathcal{N}_d(\mu(\mathbf{f}_t, r_t), \eta_t^2) \quad \forall t$$

(18)

260 In consequence, the distribution of the basis coefficient vector $\mathbf{b}_k = \mathbf{B}_{k:}^T \in \mathbb{R}^M$ before transformation has distribution $\mathbf{b}_k \sim \mathcal{N}_M(0, \mathbf{1})$ for source $k = 1, \dots, K$. After application of the spline basis transform it is thus still Gaussian $\mathbf{H}\mathbf{b}_k \sim \mathcal{N}_N(0, \mathbf{H}\mathbf{H}^T)$, although with a modified covariance matrix $\mathbf{H}\mathbf{H}^T \in \mathbb{R}^{N \times N}$. Since the inverse centered log ratio transform maps Gaussian random variables with unit variance approximately to a uniform Dirichlet distribution, it makes sense to scale the basis transform such that $\frac{1}{N} \text{Tr}(\mathbf{H}\mathbf{H}^T) = 1$, as the spline basis vectors are not semi-orthogonal in general.

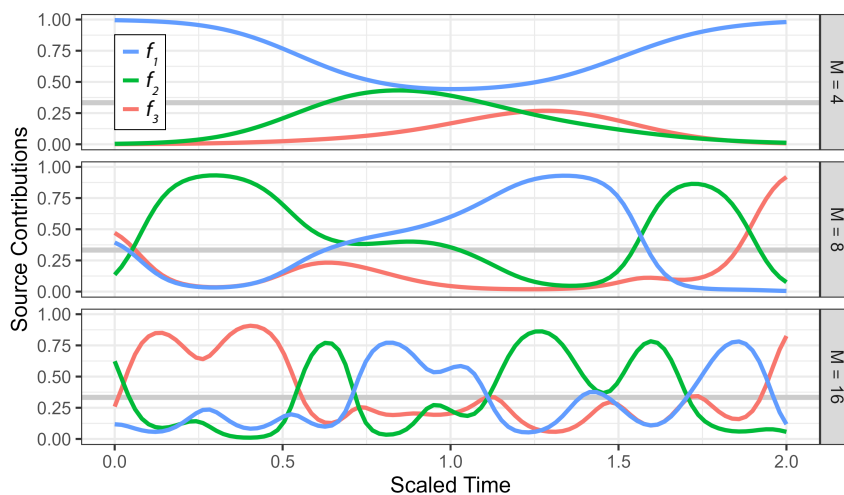


Figure 2. Examples of the spline prior for three source contributions (f_1, f_2, f_3 where $f_1 + f_2 + f_3 = 1$) transformed to the simplex with the CLR transformation using different degrees of freedom M that can be used to control the covariance of source contributions at separate points in time.

265 2.4 Prior distribution for the fraction remaining r

Sampling the prior distribution of the fractionation weight r for closed system Rayleigh fractionation is challenging, because it is connected through the non-linear logarithm to the effect on measurements. Although a uniform prior usually does not inform

the posterior about anything except the boundaries, the effect of the logarithm on the posterior is much more unclear. Different choices for prior distributions of r were thus tested for their effect on the generated posterior sample. The simulated dataset used 17 different values for the fractionation index d ranging from 0.05 to 0.95. Source contributions were fixed to $f_1^* = 0.7$ and $f_2^* = 0.3$. Each value of r is used to generate $Q = 64$ data points $X^{(1)}, \dots, X^{(Q)}$ with measurement error $\eta = 4$ for a total of 1088 data points (Figure 4a). The stationary inference model given in Eq. 9 was fitted to each point individually, which makes this setting analogous to the inference procedure used in the original FRAME model (Lewicki et al., 2022).

2.5 Model comparison

2.5.1 Data simulation

No timeseries datasets with known N_2O production and consumption pathway contributions are available, therefore simulated data must be used for thorough comparison of models. The four models were compared by simulating the data generating process multiple times, and then comparing the resulting posterior sample with fixed ‘truth’ input values. The time series of source contributions f and pool fractions reacted r used to simulate the data are denoted by $\mathbf{F}^* = [f_1^* \dots f_N^*]$ and $\mathbf{r}^* = [r_1^* \dots r_N^*]$ and the mixing equation with Rayleigh fractionation is used (Eq. 3). Measurement generation is then repeated Q times by sampling the source isotopic signature $S^{(q)} \in \mathbb{R}^{d \times K}$ and fractionation factor $\epsilon^{(q)} \in \mathbb{R}^d$ from their respective priors, and then adding independent Gaussian measurement errors $E_t^{(q)} \sim \mathcal{N}_d(0, \eta^2)$ with noise variance $\eta^2 \in \mathbb{R}^d$ for $q = 1, \dots, Q$ (Fischer, 2023):

$$X_t^{(q)} = \mathbf{S}^{(q)} \mathbf{f}_t^* + \epsilon^{(q)} \ln(r_t^*) + E_t^{(q)} \quad (19)$$

Auxiliary data for source isotopic signatures and fractionation factors are taken from Yu et al. (2020) (Table 1). These values correspond to the major N_2O sources, nitrification (S_1) and bacterial denitrification (S_2). Priors are uniform for the sources $S_j \sim \text{Uni}(b_j, \Delta_j), j = 1, 2$ and Gaussian for the fractionation factor with variance matched to the reported bounds $\epsilon \sim \mathcal{N}(c, \frac{\Delta_\epsilon^2}{2})$.

Table 1. Prior distribution parameters for N_2O source isotopic signatures and the fractionation factor for consumption used to simulate data sets for model testing (Yu et al., 2020). Ranges for sources indicate the full range of previous data used to construct the uniform distribution, whereas for reduction the range indicates the standard deviation of the Gaussian distribution.

	$b_1 \pm \Delta_1$	$b_2 \pm \Delta_2$	$b_3 \pm \Delta_3$	$c \pm \Delta_\epsilon$
Source	Nitrification	Denitrification	Fungal denitrification	Reduction
Abbreviation	Ni	bD	fD	Red
$\delta^{15}\text{N}^{\text{bulk}}$	-55.5 ± 17.0	-25.25 ± 55.1	-38.50 ± 15.0	-6.4 ± 2.7
$\delta^{15}\text{N}^{\text{SP}}$	35.35 ± 6.7	-1.9 ± 11.2	33.55 ± 12.7	-5.55 ± 1.5
$\delta^{18}\text{O}$	23.5 ± 6.0	20.0 ± 6.6	38.45 ± 7.3	-15.4 ± 5.8

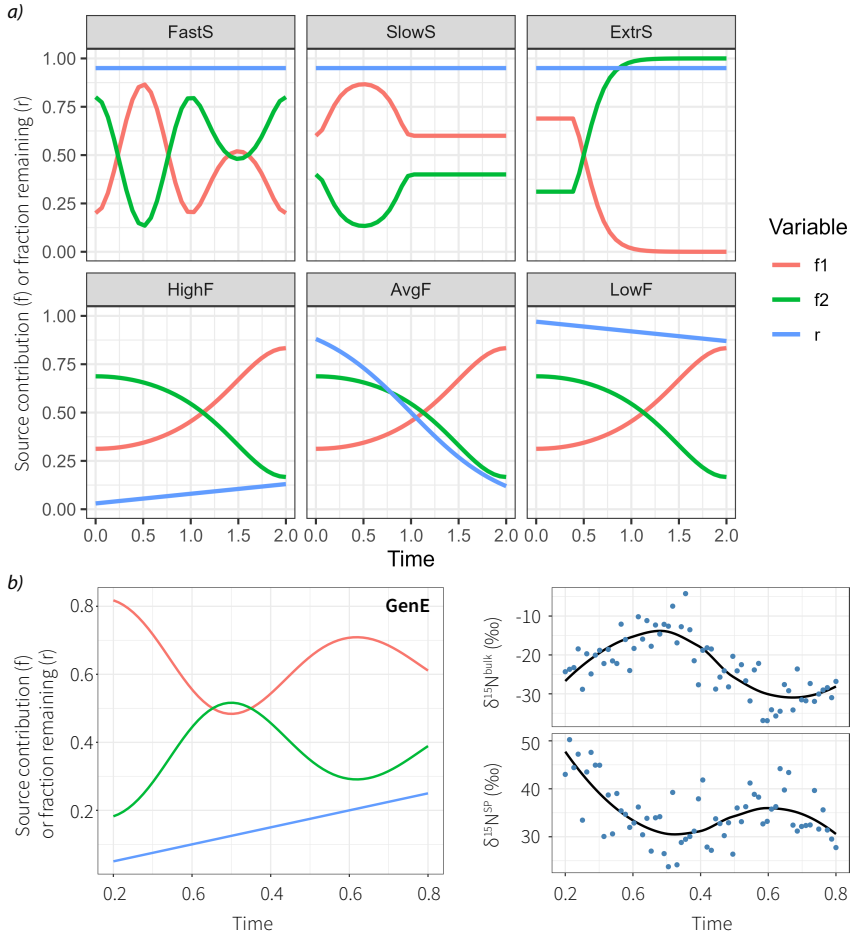


Figure 3. True parameter series used to simulate datasets with different properties. The production-consumption scenario corresponds to production by nitrification (S_1 , red) and denitrification (S_2 , green) following by mixing and subsequently reduction (r = fraction remaining following reduction, blue) in complete denitrification. *a)* Six parameter series to test time series modelling, which illustrate: fast changing source contributions (FastS), slow changing source contributions (SlowS), extremal source contributions (ExtrS), high fractionation (HighF), average and variable fractionation (AvgF) and low fractionation (LowF). *b)* The general example (GenE) and the resultant isotopic timeseries, show measurement values simulated accordingly together with LOESS estimates in the right panel

290 The simulations are done on fixed parameter sets that intend to be illustrative for six given cases that might occur in reality. The focus is on investigation of temporal patterns; other fractionation scenarios have been explored previously using a stationary model set up (Lewicka-Szczebak et al., 2020; Lewicki et al., 2022). The true parameter time series \mathbf{f}_t^* and r_t^* are shown in Figure 3 and are sampled at $N = 32$ equally spaced time steps. One additional general example (GenE) is used for simulation with properties being less extreme than for the other six, which may be more representative of average datasets that

would be encountered in practice. For GenE, a Gaussian error with magnitude $\eta = 5$ is used to sample $N = 64$ measurements X_1, \dots, X_N . The fixed parameter values and the simulated data is shown in Figure 3.

Bayesian parameter estimation is then tested on each generated data set $\mathbf{X}^{(q)} = [X_1^{(q)} \dots X_N^{(q)}] \in \mathbb{R}^{d \times N}$ for $q = 1, \dots, Q$ individually and a total of S posterior samples of all parameters is produced each time. The posterior samples shall be denoted by $\mathbf{F}^{(q,s)} = [\mathbf{f}_1^{(q,s)} \dots \mathbf{f}_N^{(q,s)}]$ and $\mathbf{r}^{(q,s)} = [r_1^{(q,s)} \dots r_N^{(q,s)}]$ respectively for $s = 1, \dots, S$.

2.5.2 Measuring quality of inference

Sampling from the posterior distribution does not give unique point estimates for the parameters involved, and multiple ways of computing final parameter estimates exist. Most commonly the posterior mean is used as point estimate, although using the median could, for example, be a useful strategy for posterior distributions that are highly dissimilar to a Gaussian distribution.

The accuracy of the estimation can be assessed by computing the distance between these pointwise estimates and the true value using root mean squared error (RMSE) and mean average error (MAE). Although it would be possible to compute the metrics at each point in time, they are averaged for simpler model comparison:

$$\text{RMSE}_k^{(q)} := \sqrt{\frac{1}{N} \sum_{t=1}^N (\hat{\mathbf{F}}_{kt}^{(q)} - \mathbf{F}_{kt}^*)^2} \quad (20)$$

$$\text{MAE}_k^{(q)} := \frac{1}{N} \sum_{t=1}^N |\hat{\mathbf{F}}_{kt}^{(q)} - \mathbf{F}_{kt}^*| \quad (21)$$

Computations for $\mathbf{r}^{(q,s)}$ are analogous.

Since the parameters to be estimated are interpreted as a time series, it makes sense to also compare specific time series information across the model estimates. The rate of change can be significantly confounded in the measurement time series, since the measurement errors follow a white noise distribution that introduces high frequency changes. The ability of models to filter this noise can be measured by comparing the rate of change which is approximated using first differences: $\Delta \mathbf{F}_{t,j}^* = \mathbf{F}_{t,j+1}^* - \mathbf{F}_{t,j}^*$ and $\Delta r_t^* = r_{t+1}^* - r_t^*$ for $t = 1, \dots, N - 1$. The magnitude of changes is not necessarily relevant, since poor estimates of the magnitude of changes would also lead to poor pointwise comparison metrics. Therefore, the ratio of variances of first differences shall serve as comparison metric for timeseries information, which can be understood as comparing a notion of curvature or acceleration in the timeseries (Fischer, 2023):

$$\text{VarFD}_k^{(q)} = \frac{\sum_{t=1}^{N-1} \left(\Delta \mathbf{F}_{kt}^{(q)} - \sum_{j=1}^{N-1} \mathbf{F}_{kj}^{(q)} \right)^2}{\sum_{t=1}^{N-1} \left(\Delta \mathbf{F}_{kt}^* - \sum_{j=1}^{N-1} \mathbf{F}_{kj}^* \right)^2} \quad (22)$$

2.5.3 Metrics for comparison of Bayesian posterior distributions

Bayesian models are mainly used to derive pointwise estimates, but their advantage is the creation of a sample from the posterior distribution. It is thus also important to take distribution properties into account. Posterior interval coverage is a

useful metric to evaluate simulated data from the full Bayesian model, meaning in particular that \mathbf{F}^* and \mathbf{r}^* are sampled from their priors as well. Since the data simulation for model comparison used here has fixed parameter values, interpreting interval coverage becomes less meaningful. It is still practical to use the size of the credible interval as measure of uncertainty, and thus the interval span can be compared, which is desired to be as small as possible given otherwise accurate estimates. The credible interval with level $\gamma \in [0, 1]$ is then the set excluding the tails with a proportion of $\frac{1-\gamma}{2}$ of the most extreme observations on either side (Fischer, 2023):

$$I(\gamma) = \left[q\left(\frac{1-\gamma}{2} | \mathbf{X}\right), q\left(\frac{1+\gamma}{2} | \mathbf{X}\right) \right] \quad (23)$$

Further metrics for the quality of the entire posterior distributions can be taken into consideration. Posterior predictive checks are typically used in cases where no true values for the parameter estimates are available, in order to assess the models capability of representing the input data well (Rubin, 1984). The posterior predictive distribution is the likelihood of hypothetical future measurements calculated using the posterior distribution over parameter values in presence of the actually available data:

$$p(\tilde{\mathbf{X}} | \mathbf{X}) = \int p(\tilde{\mathbf{X}} | \mathbf{F}, \mathbf{r}) \pi(\mathbf{F}, \mathbf{r} | \mathbf{X}) d\mathbf{F} d\mathbf{r} \quad (24)$$

This posterior predictive distribution is not unique due to the auxiliary parameters \mathbf{S} and ϵ . It is unclear whether the posterior predictive distribution should be proportional to the marginalized likelihood $p(\tilde{\mathbf{X}} | \mathbf{F}, \mathbf{r})$ or rather the likelihood conditioned on the auxiliary parameters $p(\tilde{\mathbf{X}} | \mathbf{F}, \mathbf{r}, \mathbf{S}, \epsilon)$. This discrepancy renders comparison of predictive density values across dataset simulations $\mathbf{X}^{(q)}$ ineffective, since the models fit a joint posterior and thus assume that future data must be sampled using identical auxiliary parameter values, whereas the simulation resamples their values $\mathbf{S}^{(q)}$ and $\epsilon^{(q)}$ every time.

The log pointwise predictive density (LPPD) is a metric for the quality of the posterior predictive density, and thus by proxy of the Bayesian model. It is computed by evaluating the predictive density at the original data points and can be approximated using the posterior samples (Gelman et al., 2014):

$$\text{LPPD}^{(q)} = \ln \int p(\mathbf{X} | \mathbf{F}, \mathbf{r}) \pi(\mathbf{F}, \mathbf{r} | \mathbf{X}) d\mathbf{F} d\mathbf{r} \approx \frac{1}{S} \sum_{s=1}^S p(\mathbf{X} | \mathbf{F}^{(s)}) \quad (25)$$

2.6 Model implementation

TimeFRAME is implemented in R R Core Team (2017). Bayesian modelling in TimeFRAME uses Stan for Hamiltonian Monte Carlo sampling (see SI Section 2). TimeFRAME can be installed using the links provided in the *Code and data availability* section. All experiments were run on an Intel Core i9-10900K CPU. The reported run times in SI Section 2 are for a single sampling chain, and in other sections the reported times are the maximum of four simultaneously run chains.

350

3 Results

In this Section, we will first discuss the influence of the prior distribution for r , and then present a detailed comparison of different aspects of model performance. The four classes of models were compared for performance on timeseries data across a wide range of scenarios representative of edge cases that might occur in reality. For these experiments, fixed parameter values for source contributions \mathbf{F}^* and fraction remaining \mathbf{r}^* were sampled as described in Section 2.5.1. The model configurations to be compared are summarised in Table 2.

Table 2. Model configurations used to compare performance on timeseries data across different edge cases, for the four model classes described in Section 2.3. ‘Abbreviation’ refer to the abbreviations for each configuration used in subsequent discussion.

Model class	Abbreviation	Description
Independent	Independent	Independent time step model described in Eq. 12
	Hierarchical	Hierarchical independent time step model with gamma hyperprior for concentration σ described in Eq. 13
Gaussian process prior	GP ($\rho = 1$)	Gaussian process prior on measurements with $\rho = 1$ described in Eq. 15
	GP (latent)	Gaussian process prior on measurements with $\rho = 1$ using latent variable formulation described in Eq. 14
	GP (hier.)	Gaussian process prior on measurements with inverse gamma hyperprior on ρ
	GP (latent, hier.)	Gaussian process prior on measurements with with inverse gamma hyperprior on ρ using latent variable formulation
Dirichlet-GP prior	DGP (CLR, $\rho = 1$)	DGP prior using CLR transform and $\rho = 1$, $\sigma = 1$ described in Eq. 16
	DGP (ILR, $\rho = 1$)	DGP prior using ILR transform and $\rho = 1$, $\sigma = 1$ described in Equation Eq. 17
	DGP (CLR, hier.)	DGP prior using CLR transform and $\sigma = 1$ with inverse gamma hyperprior on ρ
	DGP (ILR, hier.)	DGP prior using ILR transform and $\sigma = 1$ with inverse gamma hyperprior on ρ
Spline-based prior	Spline (CLR)	B-spline GLM using CLR link function having $M = 8$ for source contributions and $M = 4$ for fraction remaining described in Eq. 18
	Spline (ILR)	B-spline GLM using ILR link function and $M = 8$ for source contributions and $M = 4$ for fraction remaining
	Spline (Laplace)	B-spline GLM using ILR link function and $M = 8$ for source contributions and $M = 4$ for fraction remaining with Laplace prior on coefficients

3.1 Influence of the chosen prior distribution for the fraction remaining r

Using a uniform prior for the fraction reacted $\pi(r) \propto 1$ is the natural choice used as standard by all models. This was compared to the Jeffreys prior, which was derived to be $\pi(r) \propto \frac{1}{r}$ and thus is an improper prior (see Sections 2.2 and Fischer (2023) for details). A middle ground between these two choices was given by the beta prior $r \sim B(\frac{1}{2}, 1)$, which has $\pi(r) \sim \frac{1}{\sqrt{r}}$. The first

argument of the beta distribution can also be used as a free parameter $\alpha \in (0, 1]$ alongside a uniform hyperprior to construct the hierarchical model $r \sim B(\alpha, 1), \alpha \sim \text{Uni}(0, 1)$.

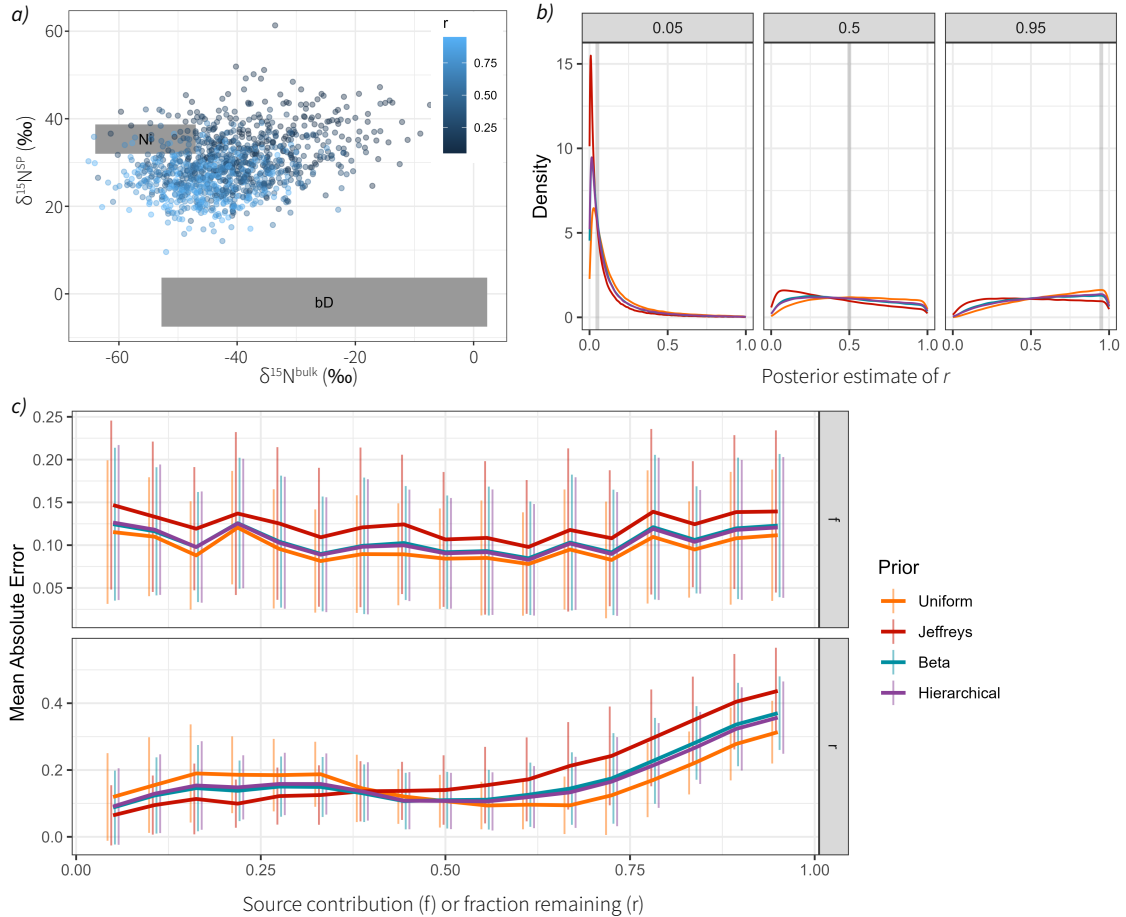


Figure 4. Comparison of different priors for the fraction remaining r . *a*) Dual isotope plot for the simulated data, constructed with two sources and different values of r . Data points are coloured by the ‘true’ value of r . *b*) Posterior densities of the fractionation weight r averaged across simulations for ‘true’ r values of 0.05, 0.5 and 0.95 using different prior distributions. *c*) Mean absolute error of Bayesian models using different prior distributions of r , shown for different ‘true’ values of r and f . Vertical lines indicate the standard deviation over $Q = 64$ repetitions. The performance on source contributions is identical for both sources (Ni and bD), since they are perfectly correlated, so only one panel is shown for f .

Each data point was supplied to the model individually and $S = 5000$ posterior samples were generated. The samples were combined for each value of r to marginalize over the distributions of the auxiliary parameters (Figure 4b). The source S_2 (bD) has a wide prior distribution (Table 1) which confounds with the effect of fractionation and introduces high uncertainty. Since this uncertainty is proportional to the logarithm of r , the effect on the posterior distribution is much more pronounced when r is high. The Jeffreys prior introduces a shift towards lower values compared to the uniform prior with the beta prior

being in between the two. Inference performance was compared by taking the posterior means $\hat{\mathbf{f}}^{(q)} = \frac{1}{S} \sum_{s=1}^S \mathbf{f}^{(q,s)}$ and $\hat{\mathbf{r}}^{(q)} = \frac{1}{S} \sum_{s=1}^S \mathbf{r}^{(q,s)}$ and comparing them against the true values (Figure 4c). Clearly, the Jeffreys prior performs worst for source contributions f , with the uniform prior performing best, closely followed from the beta and hierarchical prior. Regarding the fraction remaining r , the Jeffreys prior performs best for low values of r , with the uniform prior performing worst, however this relationship switches at about $r = 0.4$ to the opposite. Therefore, choosing any prior can be justified if one expects the fractionation index to be in a certain range. The standard deviation between different repetitions however clearly shows that the effect of prior choice is overwhelmed by the variation introduced through the distribution of the sources and consumption, due to the large uncertainty in the source and fractionation factor priors.

3.2 Comparison of overall model performance

The examples described in subsection 2.5.1 were sampled for $Q = 64$ repetitions. Measurements were simulated with Gaussian measurement error of magnitude $\eta = 5$. The posteriors were sampled for a total of $S = 10000$ steps using four parallel chains. Goodness of estimation was quantified with estimates computed as the posterior means $\hat{\mathbf{f}}^{(q)} = \frac{1}{S} \sum_{s=1}^S \mathbf{f}^{(q,s)}$ and $\hat{\mathbf{r}}^{(q)} = \frac{1}{S} \sum_{s=1}^S \mathbf{r}^{(q,s)}$ and taking the mean absolute error (Eq. 21) to the ground truth (Figure 5a). Conclusions using the root mean squared error or with posterior medians were similar. All models using fixed hyperparameters use default values that are not specifically tuned for the examples at hand. Therefore the reported performance is not indicative of best case performance and only shows the quality of the chosen values. Hierarchical models do not have this problem since they can estimate the hyperparameters for each example specifically.

Overall performance was best for hierarchical DGP models and spline GLMs (Figure 5a). Estimation of fraction reacted r is relatively poor in most cases (MAE > 0.4), however spline models perform well for all cases (MAE usually < 0.3), particularly for extremal fractionation amounts (all examples except AvgF). The default number of degrees of freedom that spline models use seems surprisingly robust in all examples, whereas the default correlation length of Gaussian processes does not. Gaussian process priors on measurements appear to be slightly worse than DGP priors and spline-based priors, especially for examples SlowS and ExtrS. Independent time step models have worse performance than the rest for all examples and the hierarchical extension to it only has good performance in examples SlowS and ExtrS, which represent cases where concentration to sources is either very low or very high. In other cases using flat priors as default values seems to work best.

Spline GLMs have very small errors on fraction consumed r whenever the value is slowly changing and close to 0 or 1. This could suggest that the chosen hyperparameters are suitable for all examples. Another plausible explanation is the fact that the spline bases used have an intercept term, which allows the center of estimation to freely move, whereas DGP models do not. For the source contributions this likely does not matter, but allowing the Gaussian process to have non-zero mean could be beneficial for estimating r . An additional spline model was added with Laplace priors on the coefficients, which seems to be beneficial in cases where parameters are close to their boundaries since the prior allows for values farther from zero. The model using Gaussian process priors on measurements was implemented using both formulations with latent variables and with analytically computed likelihood. Performance is identical in all cases, strongly indicating that the formulations are equivalent

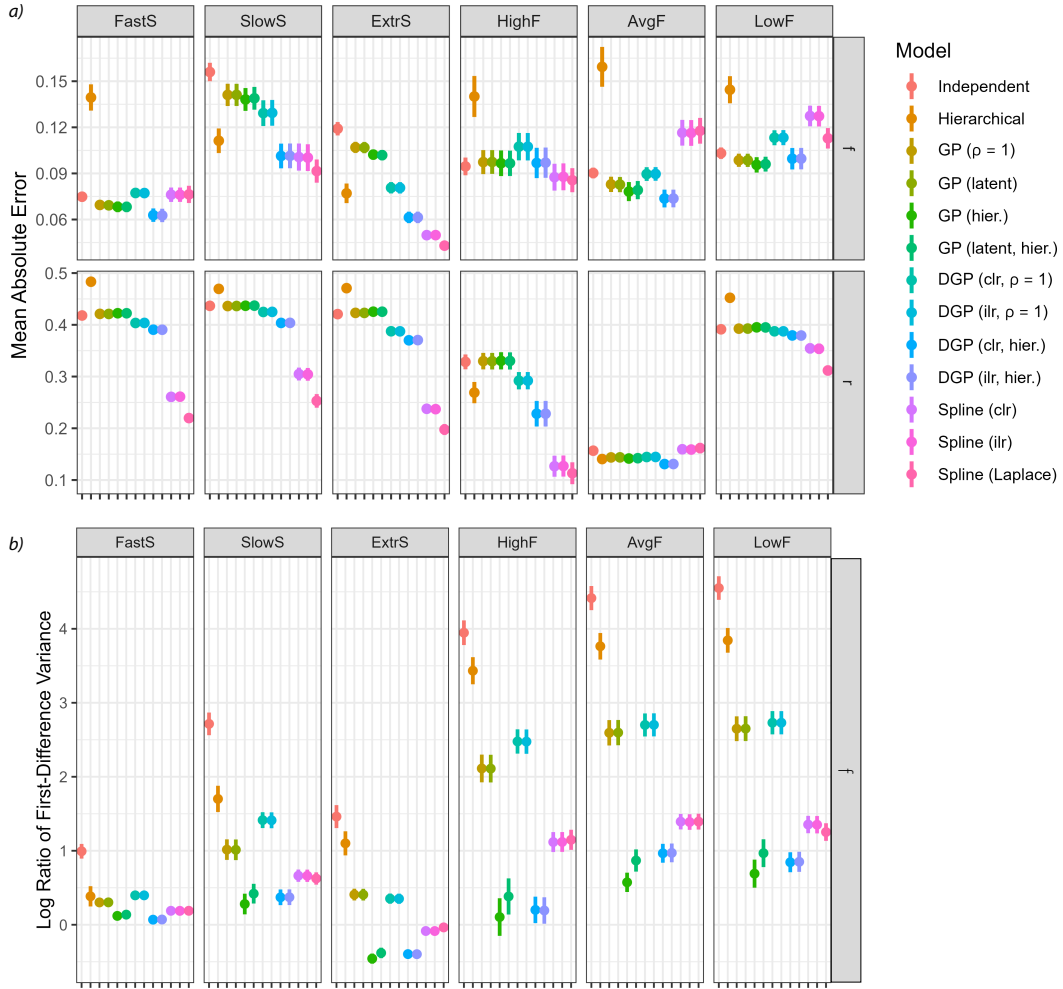


Figure 5. Model performance for different configurations (see Table 2 for details: fast changing source contributions (FastS), slow changing source contributions (SlowS), extremal source contributions (ExtrS), high fractionation (HighF), average and variable fractionation (AvgF) and low fractionation (LowF)). *a*) Mean absolute errors for all examples averaged over $Q = 64$ dataset simulations with standard deviations shown as vertical lines. The results for the two source contributions were identical since they are perfectly correlated, so the plots only show one result for f in addition to the fraction remaining r . *b*) Log variance ratio of first differences of the estimated time series against the true values for source contributions f . The time series for fraction remaining r are linear or constant in most examples and are thus not suitable to be used for model comparison with this metric.

for parameter estimation. Additionally, using CLR or ILR transformations for DGP models and Spline GLMs does not make a difference in estimation accuracy, as is to be expected from their derivations.

Time series models are not only expected to give accurate estimates of mean source contributions and fractionation, but the resulting time series should also have similar properties to the ground truth. The variance ratio of first differences (Eq. 25)

405 measures accuracy of the estimated curvature (Figure 5b). Clearly, the hierarchical Gaussian process and DGP models estimate the correlation length well, resulting in a time series with similar rates of change than the true values. Spline GLMs perform well, especially for the examples FastS, SlowS and ExtrS. Independent time step models result in high variation which is due to the fact that the measurement noise is not adequately filtered. The fixed correlation length Gaussian processes seem to have misspecified hyperparameters, since they also overestimate the rates of change in the time series.

410 Fitting times ranged from 20 seconds to 72 seconds on average for the $S = 10000$ posterior samples generated by each model, split into 2 500 over 4 chains (see Fischer (2023) for details). Hierarchical models tend to be slowest due to the additional parameters and repeated matrix decompositions that need to be computed, whereas fixed parameter models, especially independent time steps and spline GLMs, are sampled fastest. Spline models using the Laplace prior have long fitting times which could indicate that the high parameter values - which are allowed due to weaker regularization of parameter ranges far from zero
415 - are not sufficiently identifiable, resulting in slow sample generation.

3.3 Influence of fractionation extent on model performance

Models can have varying performance at different reaction extents and thus different levels of fractionation. For this reason, a timeseries of source contribution values f_t^* was taken and paired with different constant fractionation values $r_t^* = r^*$ to generate measurements and monitor performance. In total, 17 equally spaced fractionation values ranging from $r_* = 0.02$ to
420 0.98 were used and a total of $Q = 32$ datasets were generated per value. True values for source contributions were taken from the general example GenE (Section 2.5.1) and a measurement error magnitude of $\eta = 5$ was used. This experiment was done only with representative models of the four main model classes in order to reduce the number of comparisons. The model configurations used were the independent time step model, the Gaussian process prior on measurements with hierarchical estimation of correlation length, DGP prior with hierarchical estimation of correlation length, and spline-based GLM with
425 fixed hyperparameters for degrees of freedom.

Overall performance is best when r^* is close to 0.5 (Figure 6a). Estimation is also more accurate with very low values of r^* , because small r^* values have large impacts on isotopic measurements and thus estimation can become more accurate. Spline models are expected to perform well here because the time series of fraction remaining is constant, which can be reflected in the low degrees of freedom used. The different model classes seem to be equally affected by changes in r^* otherwise, showing
430 that the choice of hyperparameters to reflect the situation of interest is more important than selecting a particular model.

Spans of 95% credible intervals can give additional insight into the pattern observed for the estimation accuracy over different values of r^* (Figure 6b). If parameter estimation is good, then a smaller credible interval span shows a narrow posterior around the correct mean. DGP prior models have the smallest credible interval span for source contributions and fraction remaining. All other models have an interval width of over 0.75 for large values of fraction remaining, thus spanning over half of the
435 possible domain. Clearly, due to the Rayleigh fractionation equation being non-linear in r , it is difficult to estimate large values of r (resulting in low fractionation) with high accuracy. If the amount of remaining substrate is larger than 0.1, the data does not give sufficient information regarding r , so estimates of r group around the prior mean of 0.5 and show large credible interval spans.

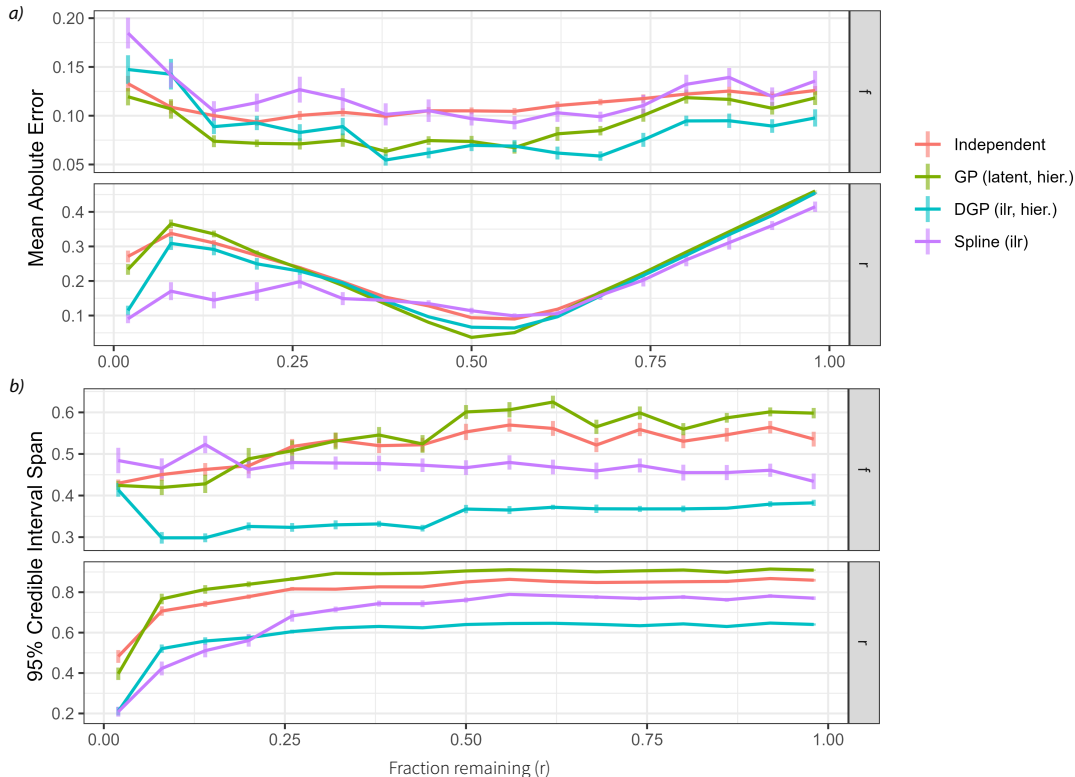


Figure 6. Impact of the fraction remaining r on model performance. Each reported value is the average over $Q = 32$ dataset simulations with vertical lines indicating standard deviations. *a)* Mean absolute error of the four main model classes over different values of the fraction remaining r . *b)* 95% credible interval spans of the four main model classes over different values of the fraction remaining r .

3.4 Influence of measurement noise on model performance

440 The main advantage that smooth models such as Gaussian processes and splines have over the independent time step assumption is that they promise to filter measurement noise and thus produce estimates that are more accurate and have a narrower posterior distribution. For this reason an experiment was conducted using values of source contributions \mathbf{f}_t^* and fraction remaining r_t^* from the general example GenE (Section 2.5.1) to simulate datasets with different levels of measurement noise. Noise values range from $\eta = 0.5$ to $\eta = 20$, and for each separate value of η , a total of $Q = 32$ data sets were generated.

445 Performance of all models generally decreases with increased measurement noise as expected (Figure 7a). However, below $\eta = 5$, reduction in noise does not lead to further improvement in performance: Most of the estimation error at this noise level comes from the source endmember uncertainty rather than the measurement noise. The variance ratio of first differences (Figure 7b) can be used to assess the quality of the estimated timeseries in the presence of high frequency changes due to measurement noise. Variance ratios of the independent time series model gradually increase with increasing measurement
 450 noise magnitude. All other models seem to filter the noise well, having much lower overestimations of the first difference

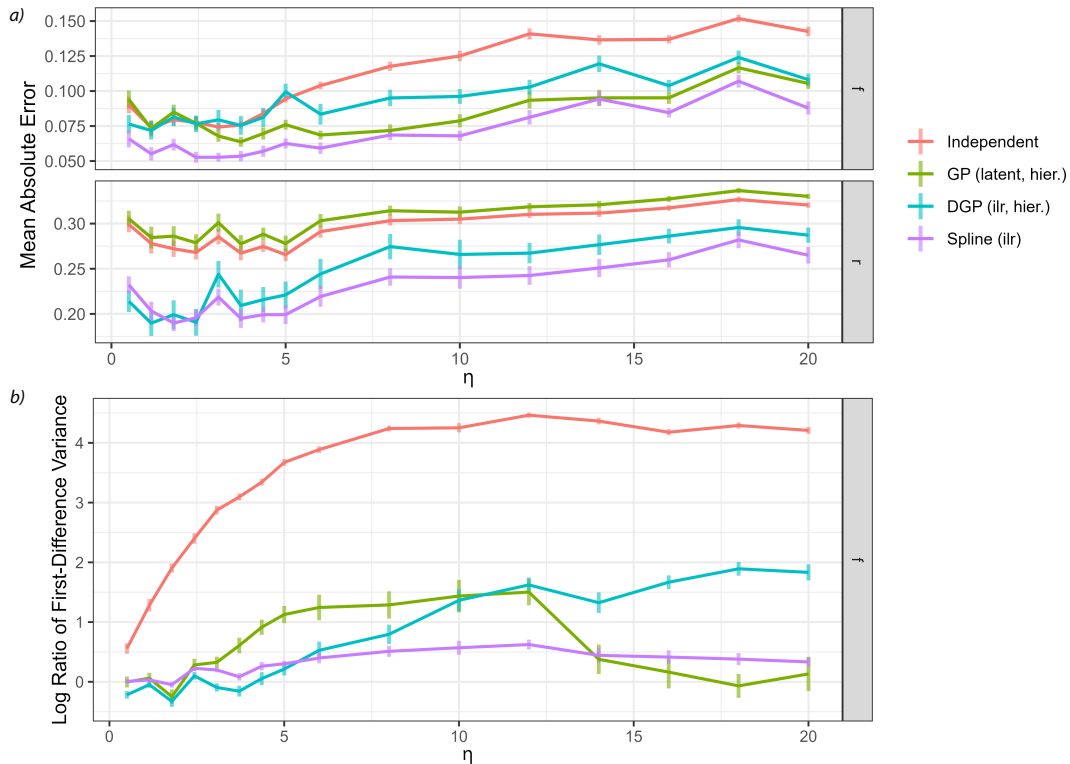


Figure 7. Impact of measurement noise on model performance. Each reported value is the average over $Q = 32$ dataset simulations with vertical lines indicating standard deviations. *a)* Mean absolute error of estimation of the four main model classes over different measurement noise levels η . *b)* Log variance ratio of first differences for the estimated time series against the true values for source contributions over different measurement noise levels η .

variance. The hierarchical DGP model seems to be less equipped to deal with very high noise, which could simply be due to the fact that the weakly informative hyperprior on the correlation length is not suitable here. The spline GLM appears to have constant low values for the ratio of first difference variance, due to the fact that the fixed degrees of freedom predetermines the smoothness of the estimates independent of measurement noise. Moreover, the model run time for the spline model was close to the run time for the independent model, and less than half the run time for the GP and DGP models across all noise levels. These results show that use of the spline model can be particularly advantageous for data featuring high statistical uncertainty.

3.5 Potential impact of improvements in data quality

Estimation accuracy can be improved not only by choosing the right model but also by improving the quality of the data available to the model. Several ways of adding more or higher quality data exist and the effects on model performance were studied in order to find what would be most beneficial. The above examples use two sources with two isotopic measurements, making the system well-determined. If additional isotopic measurements are available they can be added to make the system

overdetermined and thus eliminate some noise. To investigate this approach, the additional isotopic measurement $\delta^{18}\text{O}$ was added with source endmembers and uncertainty from Yu et al. (2020) (Table 1). The same dataset generation procedure as in Section 3.2 was used with a total of $Q = 64$ datasets generated. Resulting improvement in estimation accuracy for the same two
465 sources is shown in Figure 8a. It is worth noting that the additional measurement is not ideal in quality, with large uncertainty for the fractionation factor ϵ . An improvement can clearly be seen for estimation of the fraction reacted r , especially in the examples HighF and AvgF. Very little improvement is seen for estimation of f . Spline GLMs improved the most, especially in their already good ability to estimate the fraction reacted. The addition of $\delta^{18}\text{O}$ to this model did not strongly improve results, due to large uncertainty in source endmembers and fractionation factors. However, the addition of isotopic dimensions with
470 low uncertainty or strong differences to existing information could improve results, for example clumped isotopes, or $\delta^{18}\text{O}$ for determination of fungal denitrification.

Instead of adding additional measurements, efforts could be put into determining the endmembers of the sources and the fractionation factors more accurately, thus reducing uncertainty in the input data. To study this case an idealized set of sources and fractionation factors were selected to have the mixing and reduction line exactly perpendicular with an uncertainty of
475 10% in each dimension respective to the mean. This renders the mixing and fractionation components independent, since they cannot confound each other. We therefore set the endmembers for S_1 to -1 ± 0.2 and $1 \pm 0.2\text{‰}$ for $\delta^{15}\text{N}^{\text{bulk}}$ and $\delta^{15}\text{N}^{\text{SP}}$ respectively, and for S_2 to 1 ± 0.2 and $-1 \pm 0.2\text{‰}$ for $\delta^{15}\text{N}^{\text{bulk}}$ and $\delta^{15}\text{N}^{\text{SP}}$ respectively. The fractionation factor was set to $1 \pm 0.1\text{‰}$ for both isotopes. Measurements sampled in this setting follow exactly the same procedure as in Section 3.2, but only use a Gaussian measurement error with magnitude $\eta = 0.1$. For each example $Q = 64$ datasets were generated and the mean
480 absolute error of estimation is shown in Figure 8b.

Improving all uncertainties involved to a minimum has a great impact on model performance. Almost all mean absolute errors of estimation are below an error margin of 0.05 for source contributions and below 0.1 for fraction remaining. Furthermore, model choice becomes less relevant, and even the independent time step models perform similarly to the other more sophisticated ones. Interestingly, the DGP model with fixed hyperparameters as well as the spline GLM with fixed spline basis underperform
485 in source contribution estimation for example HighF. This could be evidence that the default parameters become less robust when noise is removed and they should be selected more carefully. This experiment is an extremely idealised case and natural variability likely precludes this level of precision in endmembers for microbial N_2O production in soil, however it shows the high potential for improvements in input data to enhance results, and moreover to make results more robust towards model configuration. Currently, the level of uncertainty in direct anthropogenic N_2O and CH_4 source endmembers (eg. industrial
490 production, energy and transport emissions) is very high due to the scarcity of measurements (Eyer et al., 2016; Röckmann et al., 2016; Harris et al., 2017) - further investigation of the isotopic range of these sources, as well as consideration of endmembers for novel isotopes such as clumped species, may lead to the level of uncertainty reduction required to achieve accurate source partitioning.

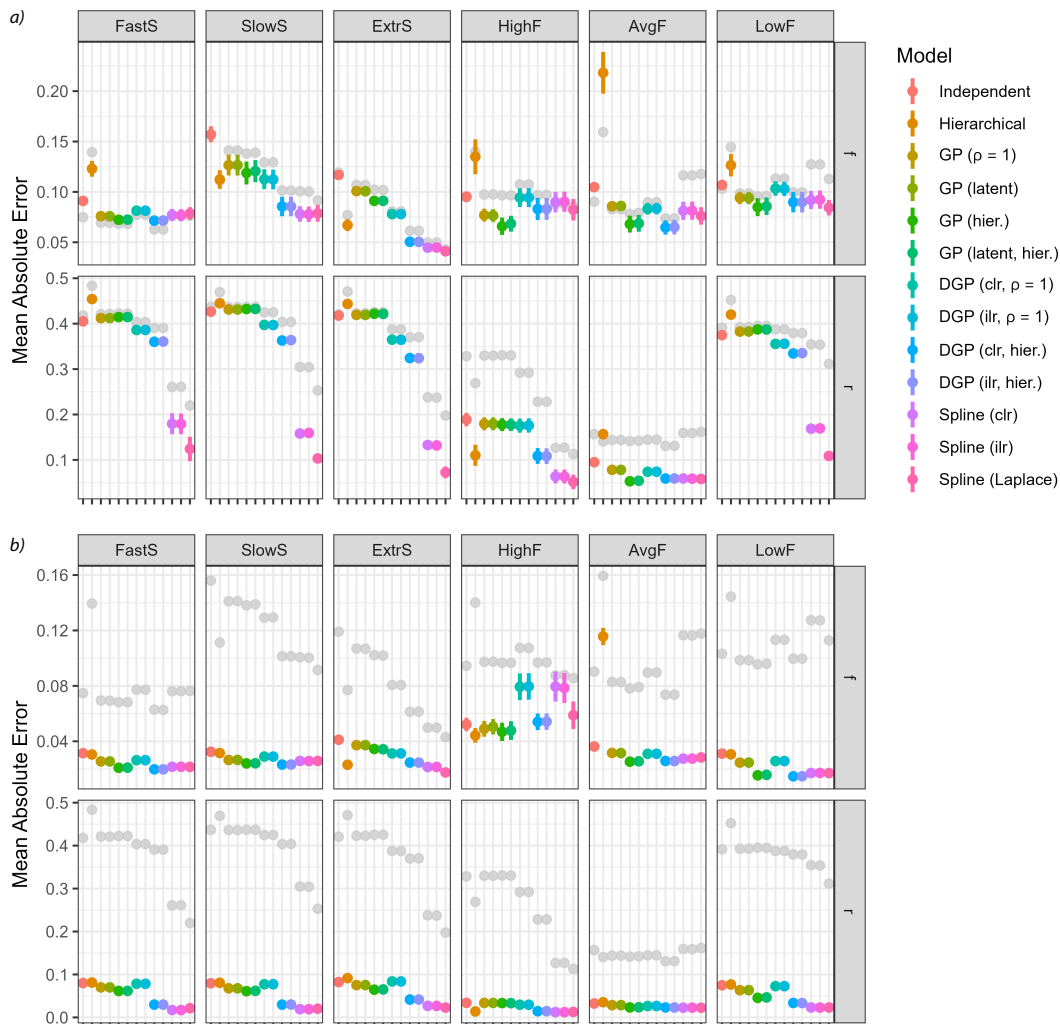


Figure 8. Model performance considering different improvements to the input data. The original model performance is shown in grey. *a)* Mean absolute error for all models on $Q = 64$ generated datasets using one additional isotopic measurement ($\delta^{18}\text{O}$). *b)* Mean absolute error for all models on $Q = 64$ generated datasets using the idealized sources and fractionation factor with 10% uncertainty in isotopic endmembers.

495 4 Application of TimeFRAME to real and simulated datasets

In this section, we will present use of the TimeFRAME package for the analysis of simulated and real datasets, to illustrate aspects of model configuration choice and output data under different scenarios.

4.1 Model selection and application

TimeFRAME allows different models to be applied with minimal effort, meaning that data can be analysed with several
500 different model set ups to investigate the robustness of results. The independent time step model does not incorporate timeseries
information, thus it is recommended only for datasets with independent measurements. The DGP and spline models both
perform well, reproducing the input data values and timeseries properties - the spline model was better able to estimate r . All
models estimate f of different sources across the full range with similar accuracy, however when the fraction remaining r is
very low or high the results show much larger error (Figure 8). This is compounded by the difference between MR and RM
505 models at low values of r (SI Section 1). We therefore recommend users test both DGP and spline models for timeseries data,
and take results with caution when these models differ strongly. Estimates of very low fraction remaining should also be treated
with caution. Despite these points, we find that TimeFRAME offers a strong improvement on previously available methods:
Accounting for information contained within timeseries significantly reduces the uncertainty in estimates of f and r , and the
package application is simple and fast, and easy to document and reproduce.

510 The testing here focuses on interpretation of N_2O isotope data to unravel production and consumption pathways. TimeFRAME
can also be applied to other scenarios, for example trace gases such as CO_2 or CH_4 , or datasets with many more isotopic
dimensions through clumped isotope measurements. The number of sources is indefinite as the model can be extended by
the user; however, when the number of sources is larger than the number of isotopic dimensions the model will be poorly
constrained. The model can currently only include one consumption pathway applied after mixing - future versions will include
515 more complex set ups, however, the uncertainty in input data currently precludes this level of complexity. The examples shown
here use time as the dimension of autocorrelation, as timeseries are the most common kind of data. However, other dimensions
could be used, such as temperature in the case of measurements across a gradient of temperature-dependent processes, or
soil moisture for a set of incubations across a moisture gradient. TimeFRAME's set up allows simple adaptation to different
user-defined mixing and fractionation models and fast and reproducible interpretation of these models.

520 4.2 Application to the general simulated timeseries

The main purpose of the time series models is to provide estimates of source contribution and fractionation weights with
uncertainty. In the sections above, only the performance metrics aggregated over many simulations have been shown. To
illustrate the modeling capabilities the representative general example (GenE) was simulated from fixed parameter values and
the inference results are shown in comparison to the true values.

525 In order to run the Bayesian models and estimate source contributions and fractionation over time, the auxiliary distributions
of the source isotopic signatures S and the fractionation factor ϵ as well as the noise magnitude η must be supplied in addition
to the dataset. Three different model classes were run to illustrate the computed output: i) the independent time step model
described in Eq. 12, ii) the spline GLM described in Eq. 18, and iii) the hierarchical DGP prior model described in Eq. 17.
From the output that the models produce, either summary statistics of the posterior (such as its mean and quantiles) can be
530 gathered, or the mean and credible intervals from all posterior time series sampled can be extracted as shown in Figure 9 .

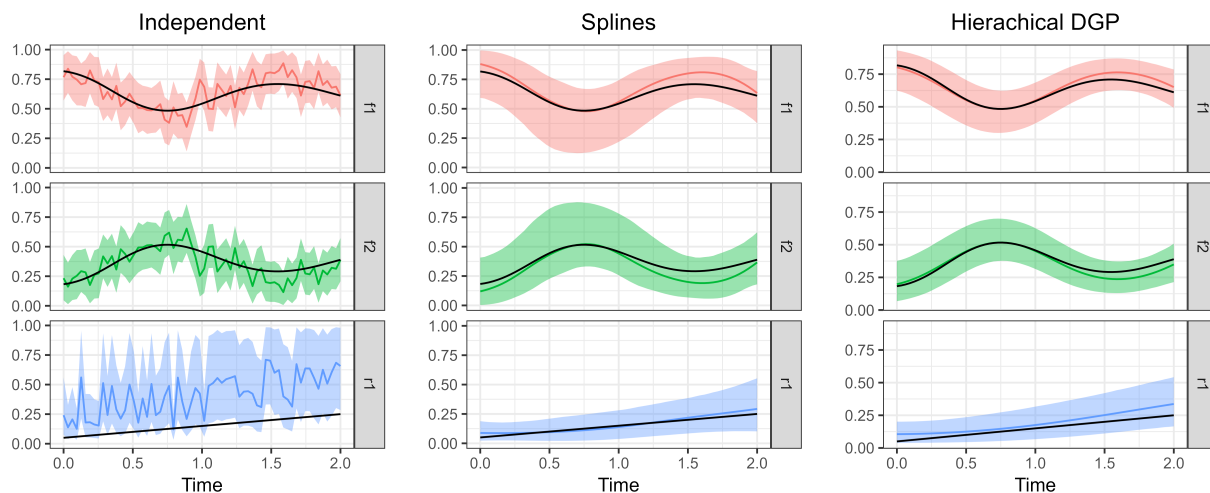


Figure 9. Posterior means of the three model types compared to the true parameter values. Shaded areas indicate 95% credible intervals and the true parameter values used to simulate the measurements are shown as black lines.

The independent time step model clearly shows poorer performance due to the large effect of measurement error on the estimated parameters. Nevertheless, the credible interval covers the true parameter values well and is reasonably narrow. Estimation of the fraction remaining r seems to be biased toward higher values, which could be due to overlap with the variation in source isotopic signatures. The B-spline basis for the GLM seems to have default values for degrees of freedom
535 that are fairly optimal in this case. The time series of parameter estimates is now similarly smooth to the actual parameter series. Estimation using the hierarchical DGP prior model gives the best results: The time series are adequately smooth and estimates are close to the true values with narrow credible intervals.

4.3 Comparison of TimeFRAME and a dual isotope mapping approach on a stationary dataset

The samples used to compare the TimeFRAME model with the traditional dual isotope mapping approach were taken from
540 Kenyan livestock enclosures (Kiswahili ‘bomas’) at Kapiti Research Station and Wildlife Conservancy of the International Livestock Research Institute (ILRI) located in the semi-arid savanna region (1°35.8’ W - 1°40.9’ W, 36°6.4’ E - 37°10.3’ E). The different samples represent the isotopic composition of N₂O taken from boma clusters of varying age classes (0-5 years after abandonment). At Kapiti, bomas are setup in clusters of 3-4, which are used for the duration of approximately one month before setting up a new cluster. The sampling campaign was conducted in October 2021 in order to understand the underlying
545 mechanisms of the huge N₂O emissions observed in these systems (Butterbach-Bahl et al., 2020), and the findings will be published in a separate paper (Fang et al., submitted). The dataset contains measurements of $\delta^{15}\text{N}^{\text{bulk}}$, $\delta^{15}\text{N}^{\text{SP}}$ and $\delta^{18}\text{O}$ of N₂O as well as $\delta^{15}\text{N}$ of soil. Stable isotope analysis of these samples had been done using a IRMS as described in (Verhoeven et al., 2019) and (Gallarotti et al., 2021). A dual isotope mapping approach was used to extract the production pathways and

reduction extent for this dataset based on $\delta^{15}\text{N}^{\text{SP}}$ and $\delta^{18}\text{O}$ using the scenarios of mixing following by reduction (MR) and
550 reduction followed by mixing (RM), described in detail in Fang et al., (submitted) and Ho et al. (2023) .

As the boma dataset is a set of independent measurements, TimeFRAME was applied to the data using the independent
time steps model. The time axis was replaced by numbering of points in the dataset. The standard deviation of all isotope
measurements was set to 1‰ as the measurement uncertainty was not quantified, however this may be a low estimate given
the many sources of uncertainty from measurement error to international scale calibration. TimeFRAME was applied in two
555 configurations:

1. Using only $\delta^{15}\text{N}^{\text{SP}}$ and $\delta^{18}\text{O}$ and Ni and bD pathways, to closely mimic the configuration of the dual isotope MR
approach, and
2. Using $\delta^{15}\text{N}^{\text{bulk}}$, $\delta^{15}\text{N}^{\text{SP}}$ and $\delta^{18}\text{O}$ with Ni, bD and fD (fungal denitrification) pathways, which is the most detailed
configuration available with this data.

560 The agreement between the dual isotope method and the analogous TimeFRAME 2-isotope implementation is very good
(mean absolute deviation of 8% and 15% for bD/Ni and reduction respectively for the MR method, Figure 10). The dual isotope
method results are not significantly different for the MR and RM implementations, supporting the assumptions made in Eq. 3 as
the basis for the TimeFRAME package: These models only deliver significantly different results in cases where N_2O reduction
is very high (see SI Section 1). TimeFRAME offers the major advantage that uncertainty bounds for the prior are incorporated
565 and thus calculated for the posterior. Moreover, using the TimeFRAME package functions, the calculations are reproducible,
can be performed in just two lines of code, and can be easily adapted to consider different endmembers and model set ups. The
TimeFRAME 3-isotope implementation shows very different results to the other estimates due to the inclusion of $\delta^{15}\text{N}^{\text{bulk}}$ and
the fungal denitrification pathway. This pathway has high $\delta^{15}\text{N}^{\text{SP}}$ (Table 1) and thus strongly impacts the model estimates of
nitrification and reduction, which are also evidenced by high $\delta^{15}\text{N}^{\text{SP}}$.

Table 3. RMSE (‰) for isotopic data estimated using pathway contributions from the two TimeFRAME and the two dual isotope model
configurations, compared to the measured isotopic data used as input for the models.

	$\delta^{15}\text{N}^{\text{bulk}}$	$\delta^{15}\text{N}^{\text{SP}}$	$\delta^{18}\text{O}$
TimeFRAME, 2-iso., 2 source	-	6	19
TimeFRAME, 3-iso., 3 source	36	22	17
Dual isotope, MR	-	7	23
Dual isotope, RM	-	7	23

570 The pathway estimates were used to reconstruct the isotope measurements, and the RMSE between true measurements and
reconstructed measurements was found as an estimate of model performance in the absence of true knowledge of pathways
(Table 3). The TimeFRAME 2-isotope implementation is able to reproduce the isotopic data more accurately than the dual
isotope plot due to the Bayesian optimization of the fit. The TimeFRAME 3-isotope implementation shows poorer RMSE due
to the additional challenge of fitting $\delta^{15}\text{N}^{\text{bulk}}$ as well as the fD pathway. The difference between MR and RM implementations

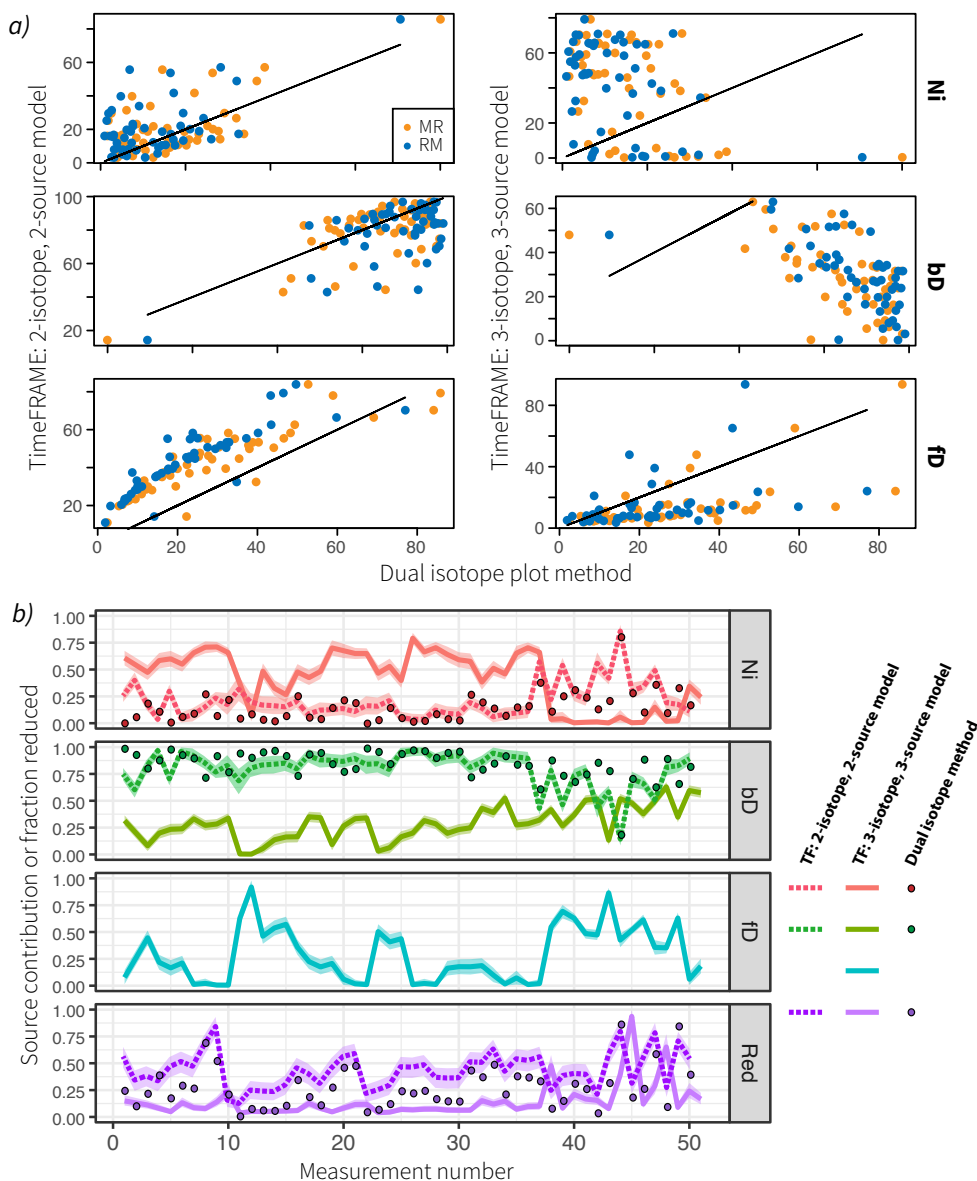


Figure 10. Comparison of TimeFRAME results with pathways estimates from a dual isotope plot approach. TimeFRAME was applied in two configurations, i) using only $\delta^{15}\text{N}^{\text{SP}}$ and $\delta^{18}\text{O}$ and Ni and bD pathways, and ii) using $\delta^{15}\text{N}^{\text{bulk}}$, $\delta^{15}\text{N}^{\text{SP}}$ and $\delta^{18}\text{O}$ with Ni, bD and fD pathways. The dual isotope approach used $\delta^{15}\text{N}^{\text{SP}}$ and $\delta^{18}\text{O}$ and Ni and bD pathways, in configurations MR (mixing then reduction) and RM (reduction then mixing). *a*) A 1:1 comparison of estimates from the two TimeFRAME configurations and the dual isotope plot MR and RM methods. *b*) A plot of the estimates for each pathway from the two TimeFRAME configurations and from the dual isotope MR method.

575 of the dual isotope approach is minimal, showing that model configuration and uncertainty in endmembers is far more important for results than the specific formulation of the fractionation and mixing equation.

These results show the importance of considering different pathways and model configurations. TimeFRAME users should aim to include as much isotopic data as possible, and to use other complementary approaches such as microbial ecology to constrain potential production and consumption pathways; for example, to decide whether it is appropriate to include fungal denitrification. Users should consider both the estimated uncertainty for a particular model set up, provided by the TimeFRAME package, as well as the variation between estimates for different plausible scenarios.

4.4 Comparison of timeseries analysis with existing approaches

TimeFRAME was applied to two irregularly time-spaced datasets from soil incubations at different soil moisture levels (L1 = drier = 55-66% WFPS; L2 = wetter = 69-82% WFPS). The L1 and L2 incubations were sampled on eight and eleven dates respectively with between one and seven duplicate measurements taken on each sampling date, and a total of 41 and 24 measurements made respectively. The incubations are described in detail in Lewicka-Szczebak et al. (2020). TimeFRAME was compared to results from the 3DIM/FAME model (Lewicka-Szczebak et al., 2020; Lewicki et al., 2022), with both models considering four pathways (bacterial denitrification, nitrifier denitrification, fungal denitrification, nitrification) as well as N₂O reduction using the endmembers and fractionation factors reported in Lewicka-Szczebak et al. (2020). FAME solves the isotopic equations independently for each sampling date, whereas TimeFRAME spline and DGP implementations are able to consider temporal correlations between sampling times. Additionally, dual isotope mapping and ¹⁵N labelling approaches were compared, as described in Lewicka-Szczebak et al. (2020).

The agreement was good between pathway estimates from TimeFRAME and FAME, although the spline implementation estimated lower reduction than other methods (Figure 11). Agreement with the mapping approach was very poor for bD and good for reduction, reflecting the low ability of the mapping approach to unravel pathway contributions with similar endmembers. Agreement with the ¹⁵N gas flux method was good for reduction and acceptable for bD, considering the denitrification contribution being quantified is not identical. The results clearly showed the influence of WFPS on bD and reduction, with both pathways increasing by 2% for every 1% increase in WFPS (Figure 11).

5 Conclusions

The TimeFRAME data analysis package uses Bayesian hierarchical modelling to estimate production, mixing and consumption pathways based on isotopic measurements. The package was particularly developed for the analysis of N₂O isotopic data and contains default isotopic endmembers and fractionation factors for N₂O, but the flexible implementation means it can also be applied to other trace gases such as CH₄ and CO₂. TimeFRAME provides a simple and standardised method for analysis of pathways based on isotopic datasets, which has previously been lacking. The package will contribute strongly to reproducibility and uncertainty quantification in the analysis of these datasets.

TimeFRAME has four main classes of model which have been extensively tested in a range of scenarios. For timeseries data, the Dirichlet-Gaussian process and spline GLM priors show very good results. These models are able to smooth timeseries to reduce the impact of noisy data, and deliver good pathway quantification compared to the ground truth for simulated datasets.

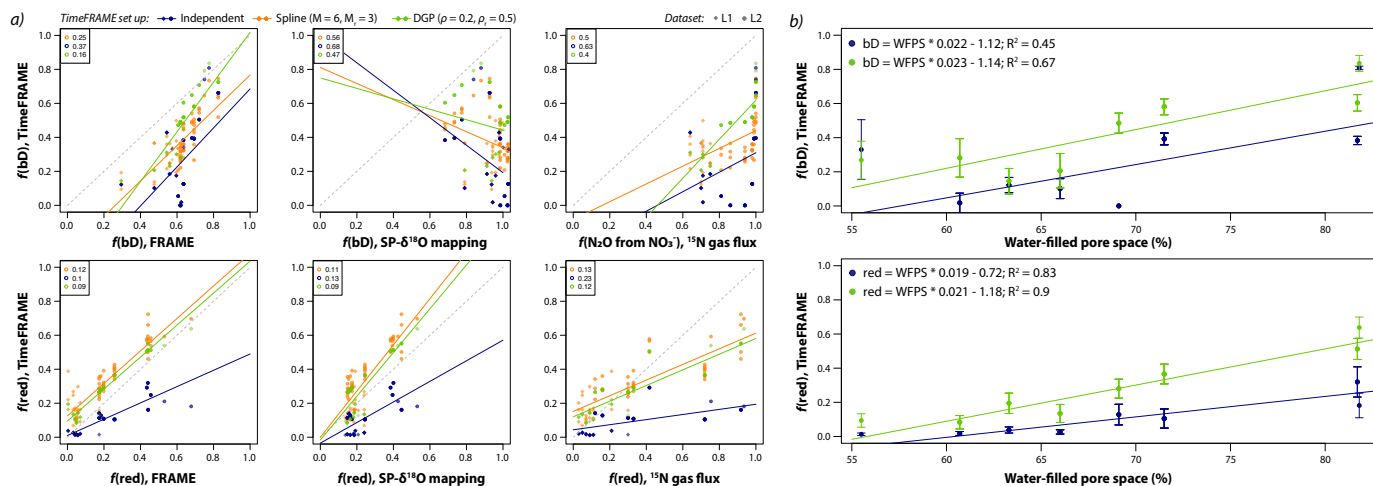


Figure 11. Using TimeFRAME to understand the impact of WFPS on N_2O production and consumption. *a)* Comparison of TimeFRAME pathway estimates (independent, spline ($M = 6$ and $M_r = 3$) and DGP ($\rho = 0.2$ and $\rho_r = 0.5$) implementations) with estimates from the FRAME model, from an SP- $\delta^{18}\text{O}$ mapping approach, and from a ^{15}N -labelled gas flux approach. Comparisons are only shown for bD (bacterial denitrification) and reduction as other pathways are not estimate by the mapping and gas flux approaches. The gas flux approach does not strictly estimate bD, but the proportion of N_2O arising from NO_3^- substrate. The lines show the linear regression and the legends show the mean absolute deviation for each comparison. *b)* Impact of WFPS on bD and reduction estimated using TimeFRAME spline and DGP results. The error bars show the estimated standard deviation at each point from the TimeFRAME fit. The legend shows details of the weighted linear regression ($R \text{ Im}(\cdot)$ function weighted by $\frac{1}{\sigma}$) for each dataset.

The independent timestep model is strongly impacted by measurement noise, but delivers good performance compared to the
 610 dual isotope mapping approach, with simpler and more reproducible implementation as well as uncertainty quantification.

Model application and testing showed that uncertainty in endmembers and fractionation factors was the major source of
 uncertainty in pathway quantification. Reduction of uncertainty in these parameters will strongly improve the insights that can
 be gained from isotopic data. Model set up is also critical: The sources/pathways chosen in the model strongly affect results,
 and should be informed based on any other relevant sources of information, for example profiling of the microbial community
 615 present at a measurement site. TimeFRAME provides a robust and powerful analysis tool but the accuracy of results gained
 from TimeFRAME depend on careful definition of the model set up and configuration by the user.

Code and data availability.

The TimeFRAME code and application data shown in the manuscript can be accessed at:

- <https://gitlab.renkulab.io/eliza.harris/timeframe>

620 The TimeFRAME package for direct installation with devtools is located at:

- <https://github.com/elizaharris/TimeFRAME>

The TimeFRAME user interface (Shiny app) is useful for first interactions with the mode. The TimeFRAME shiny app can be directly started:

- <https://renkulab.io/projects/fischphi/n2o-pathway-analysis/sessions/new?autostart=1>

Alternatively, session settings for the Renku platform deployment can be chosen before the app is initialised:

625 – <https://renkulab.io/projects/fischphi/n2o-pathway-analysis/sessions/new>

The development version of TimeFRAME, including the different edge scenarios explored in this manuscript as well as tools and examples to assist in the implementation of different fractionation equations, can be accessed at:

- <https://gitlab.renkulab.io/fischphi/n2o-pathway-analysis>

In particular, code used for the experiments can be found:

630 – <https://gitlab.renkulab.io/fischphi/n2o-pathway-analysis/-/tree/main/experiments>

Author contributions. EH and PF wrote the paper with comments and input from other coauthors. PF developed the TimeFRAME package and carried out extensive testing of the tool during his MSc thesis at ETH Zürich under the supervision of EH, FPC, ML and DLS. ML and DLS developed the FRAME package and provided guidance for the expansion to TimeFRAME.

Competing interests. We declare no competing interests.

635 *Acknowledgements.* We thank Matti Barthel (USYS, ETHZ) for contribution of boma data. We acknowledge the support of the Swiss National Science Foundation in funding the ‘N2O-SSA’ project (200021_207348). DLS was supported by the Program ‘Polish Returns’ of the Polish National Agency of Academic Exchange.

References

- Aitchison, J. and Shen, S. M.: Logistic-normal distributions: Some properties and uses, *Biometrika*, 67, <https://doi.org/10.2307/2335470>, 1980.
- Berger, J. O., Bernardo, J. M., and Sun, D.: Overall Objective Priors, *Bayesian Analysis*, 10, 189–221, <https://doi.org/10.1214/14-ba915>, 2015.
- Bonnaffé, W., Sheldon, B. C., and Coulson, T.: Neural ordinary differential equations for ecological and evolutionary time-series analysis, *Methods in Ecology and Evolution*, 12, 1301–1315, <https://doi.org/10.1111/2041-210X.13606>, 2021.
- Butterbach-Bahl, K., Gettel, G., Kiese, R., Fuchs, K., Werner, C., Rahimi, J., Barthel, M., and Merbold, L.: Livestock enclosures in drylands of Sub-Saharan Africa are overlooked hotspots of N₂O emissions, *Nature Communications*, 11, <https://doi.org/10.1038/s41467-020-18359-y>, 2020.
- Chan, A. B.: Multivariate generalized gaussian process models, <https://doi.org/10.48550/ARXIV.1311.0360>, 2013.
- Chan, A. B. and Dong, D.: Generalized gaussian process models, *CVPR 2011*, IEEE, <https://doi.org/10.1109/cvpr.2011.5995688>, 2011.
- Denk, T. R. A., Mohn, J., Decock, C., Lewicka-Szczebak, D., Harris, E., Butterbach-Bahl, K., Kiese, R., and Wolf, B.: The nitrogen cycle: A review of isotope effects and isotope modeling approaches, *Soil Biology and Biochemistry*, 105, 121–137, <https://doi.org/10.1016/j.soilbio.2016.11.015>, 2017.
- Devroye, L.: *Methods of Multivariate Analysis*, Wiley, 1986.
- Eyer, S., Tuzson, B., Popa, M., Van Der Veen, C., Röckmann, T., Rothe, M., Brand, W., Fisher, R., Lowry, D., Nisbet, E., Brennwald, M., Harris, E., Zellweger, C., Emmenegger, L., Fischer, H., and Mohn, J.: Real-time analysis of ¹³C- and ¹⁴D-CH₄ in ambient air with laser spectroscopy: Method development and first intercomparison results, *Atmospheric Measurement Techniques*, 9, <https://doi.org/10.5194/amt-9-263-2016>, 2016.
- Fischer, P.: Using Bayesian Mixing Models to Unravel Isotopic Data and Quantify N₂O Production and Consumption Pathways (MSc thesis, ETHZ), Msc thesis, ETH Zurich, <https://blogs.ethz.ch/eliza-harris-isotopes/timeframe/>, 2023.
- Gallarotti, N., Barthel, M., Verhoeven, E., Engil Isadora, P. P., Bauters, M., Baumgartner, S., Drake, T. W., Boeckx, P., Mohn, J., Longepierre, M., Kalume Mugula, J., Ahanamungu Makelele, I., Cizungu Ntaboba, L., and Six, J.: In-depth analysis of N₂O fluxes in tropical forest soils of the Congo Basin combining isotope and functional gene analysis, *The ISME Journal*, <https://doi.org/10.1038/s41396-021-01004-x>, 2021.
- Gelman, A., Hwang, J., and Vehtari, A.: Understanding predictive information criteria for Bayesian models, *Statistics and Computing*, 24, 997–1016, <https://doi.org/10.1007/s11222-013-9416-2>, 2014.
- Harris, E., Henne, S., Hüglin, C., Zellweger, C., Tuzson, B., Ibraim, E., Emmenegger, L., and Mohn, J.: Tracking nitrous oxide emission processes at a suburban site with semicontinuous, in situ measurements of isotopic composition, *Journal of Geophysical Research - Atmospheres*, 122, 1–21, <https://doi.org/10.1002/2016JD025906>, 2017.
- Lewicka-Szczebak, D., Augustin, J., Giesemann, A., and Well, R.: Quantifying N₂O reduction to N₂ based on N₂O isotopocules-validation with independent methods (helium incubation and ¹⁵N gas flux method), *Biogeosciences*, 14, 711–732, <https://doi.org/10.5194/bg-14-711-2017>, 2017.
- Lewicka-Szczebak, D., Piotr Lewicki, M., and Well, R.: N₂O isotope approaches for source partitioning of N₂O production and estimation of N₂O reduction-validation with the ¹⁵N gas-flux method in laboratory and field studies, *Biogeosciences*, 17, 5513–5537, <https://doi.org/10.5194/bg-17-5513-2020>, 2020.

- 675 Lewicki, M. P., Lewicka-Szczebak, D., and Skrzypek, G.: FRAME—Monte Carlo model for evaluation of the stable isotope mixing and fractionation, *PLoS ONE*, 17, 4–7, <https://doi.org/10.1371/journal.pone.0277204>, 2022.
- Mariotti, A., Germon, J. C., Hubert, P., Kaiser, P., Letolle, R., Tardieux, A., and Tardieux, P.: Experimental-determination of Nitrogen Kinetic Isotope Fractionation - Some Principles - Illustration For the Denitrification and Nitrification Processes, *Plant and Soil*, 62, 413–430, 1981.
- Nelder, J. and Wedderburn, R.: Generalized linear models, *Journal of the Royal Statistical Society, Series A*, 135, 370, 680 <https://doi.org/10.2307/2344614>, 1972.
- Nesrstová, V., Wilms, I., Palarea-Albaladejo, J., Filzmoser, P., Martín-Fernández, J. A., Friedecký, D., and Hron, K.: Principal Balances of Compositional Data for Regression and Classification using Partial Least Squares, *arxiv*, pp. 1–26, <http://arxiv.org/abs/2211.01686>, 2022.
- Ostrom, N. E., Pitt, A., Sutka, R., Ostrom, P. H., Grandy, A. S., Huizinga, K. M., and Robertson, G. P.: Isotopologue effects during N₂O reduction in soils and in pure cultures of denitrifiers, *Journal of Geophysical Research - Biogeosciences*, 112, G02005, 685 <https://doi.org/10.1029/2006JG000287>, 2007.
- Parnell, A. C., Phillips, D. L., Bearhop, S., Semmens, B. X., Ward, E. J., Moore, J. W., Jackson, A. L., Grey, J., Kelly, D. J., and Inger, R.: Bayesian stable isotope mixing models, *Environmetrics*, 24, 387–399, <https://doi.org/10.1002/env.2221>, 2013.
- Pedersen, K. B. and Petersen, M. S.: The Matrix Cookbook, Technical University of Denmark, <http://www2.compute.dtu.dk/pubdb/pubs/3274-full.html>, 2012.
- 690 R Core Team: R: A Language and Environment for Statistical Computing, R Foundation for Statistical Computing, Vienna, Austria, 2017.
- Röckmann, T., Eyer, S., Van Der Veen, C., Popa, M., Tuzson, B., Monteil, G., Houweling, S., Harris, E., Brunner, D., Fischer, H., Zazzeri, G., Lowry, D., Nisbet, E., Brand, W., Necki, J., Emmenegger, L., and Mohn, J.: In situ observations of the isotopic composition of methane at the Cabauw tall tower site, *Atmospheric Chemistry and Physics*, 16, 10469–10487, <https://doi.org/10.5194/acp-16-10469-2016>, 2016.
- Rohe, L., Anderson, T. H., Flessa, H., Goeske, A., Lewicka-Szczebak, D., Wrage-Mönnig, N., and Well, R.: Comparing modified substrate- 695 induced respiration with selective inhibition (SIRIN) and N₂O isotope approaches to estimate fungal contribution to denitrification in three arable soils under anoxic conditions, *Biogeosciences*, 18, 4629–4650, <https://doi.org/10.5194/bg-18-4629-2021>, 2021.
- Rubin, D.: Bayesianly justifiable and relevant frequency calculations for the applied statistician, *The Annals of Statistics*, 12, 1151–1172, 1984.
- Stock, B. C., Jackson, A. L., Ward, E. J., Parnell, A. C., Phillips, D. L., and Semmens, B. X.: Analyzing mixing systems using a new 700 generation of Bayesian tracer mixing models, *PeerJ*, 2018, 1–27, <https://doi.org/10.7717/peerj.5096>, 2018.
- Verhoeven, E., Barthel, M., Yu, L., Celi, L., Said-Pullicino, D., Sleutel, S., Lewicka-Szczebak, D., Six, J., and Decock, C.: Early season N₂O emissions under variable water management in rice systems: Source-partitioning emissions using isotope ratios along a depth profile, *Biogeosciences*, 16, 383–408, <https://doi.org/10.5194/bg-16-383-2019>, 2019.
- Wolf, B., Merbold, L., Decock, C., Tuzson, B., Harris, E., Six, J., Emmenegger, L., and Mohn, J.: First on-line isotopic characterization of 705 N₂O emitted from intensively managed grassland, *Biogeosciences*, 12, 2517–2531, <https://doi.org/10.5194/bg-12-2517-2015>, 2015.
- Wu, D., Well, R., Cárdenas, L. M., Fuß, R., Lewicka-Szczebak, D., Köster, J. R., Brüggemann, N., and Bol, R.: Quantifying N₂O reduction to N₂ during denitrification in soils via isotopic mapping approach: Model evaluation and uncertainty analysis, *Environmental Research*, 179, <https://doi.org/10.1016/j.envres.2019.108806>, 2019.
- Yu, L., Harris, E., Lewicka-Szczebak, D., and Mohn, J.: What can we learn from N₂O isotope data? Analytics, processes and modelling, 710 *Rapid Communications in Mass Spectrometry*, <https://doi.org/10.1002/rcm.8858>, 2020.