

Spatial patterns of Organic Matter content in the surface soil of the salt marshes of the Venice Lagoon (Italy)

Alice Puppini¹, Davide Tognin², Massimiliano Ghinassi¹, Erica Franceschinis³, Nicola Realdon³, Marco Marani², Andrea D'Alpaos¹

5 ¹Department of Geosciences, University of Padova, Padova, 35131, Italy

²Department of Civil, Environmental and Architectural Engineering, University of Padova, Padova, 35131, Italy

³Department of Pharmaceutical and Pharmacological Sciences, University of Padova, Padova, 35131, Italy

Correspondence to: Alice Puppini (alice.puppini@unipd.it)

Abstract

Salt marshes are crucial eco-geomorphic features of tidal environments as they provide ~~numerous~~ important ecological functions and deliver a wide range of ecosystem services ~~that contribute to human well-being~~. Being controlled by the interplay between hydrodynamics, geomorphology and vegetation, the ~~deposition-contribution~~ of both organic matter (OM) and inorganic sediments drives salt marsh vertical accretion. This allows marshes to keep pace with relative sea-level rise, and likewise capture and store carbon, making them valuable allies in climate mitigation strategies. Thus, Soil Organic Matter (SOM), i.e. the organic component of the soil, plays a key role within salt marsh environments, directly contributing to soil formation and supporting carbon storage. This study aims at inspecting spatial patterns of OM in surface salt marsh soils (top 20 cm), providing further insights into the physical and biological factors driving OM dynamics, affecting salt marsh survival and carbon sink potential. Our results reveal two scales of variations in ~~sedimentary~~ SOM content in ~~salt marsh soils~~ marsh environments. At the marsh scale OM variability is influenced by the interplay between surface elevation and changes in sediment supply linked with the distance from ~~tidal channels~~ the marsh edge. At the system scale, OM content distribution is dominated by the gradient generated by marine and fluvial influence. ~~Variations in inorganic and organic inputs, both autochthonous and allochthonous, sediment grain size, and preservation conditions may explain t~~ The observed variations in SOM are explained by the combination of inorganic and organic input, preservation conditions and sediment grain size. Our results highlight marsh importance as carbon sink environments, furthermore emphasizing that environmental conditions within a tidal system may generate strongly variable and site-specific carbon accumulation patterns, enhancing blue carbon assessment complexity.

30 1. Introduction

Salt marshes may be defined as halophytic grasslands or dwarf brushwoods encroaching sediment platforms bordering saline tidal water bodies (Beefink, 1977; Silvestri and Marani, 2004). Salt marshes lie at the upper margin of the intertidal environment and they are regularly flooded by the tides and occasionally by storm surges (Allen, 2000; Friedrichs and Perry, 2001; D'Alpaos and D'Alpaos, 2021; D'Alpaos et al., 2007; D'Alpaos, 2011). They occur worldwide, particularly in middle and high latitudes on low-energy coasts, ~~both infrom~~ microtidal and to macrotidal regimes (Allen and Pye, 1992). Coastal wetlands, situated at the interface between terrestrial and marine ecosystems, often lie in some of the World's most densely populated areas and deliver a wide range of ecosystem services that contribute to human well-being, being simultaneously some of the most economically relevant and vulnerable ecosystems on Earth (D'Alpaos and D'Alpaos, 2021; Costanza et al., 1997; de Groot et al., 2012). Salt marshes provide critical habitat for numerous species, protect coastal areas by buffering floods and wave action, improve water quality, support commercial fisheries, provide recreational opportunities and contribute

to climate regulation by acting as carbon (C) sinks (e.g. Barbier et al., 2011; Boesch and Turner, 1984; Costanza et al., 1997; Lefeuvre et al., 2003; Temmerman et al., 2013; Fairchild et al., 2021; Möller et al., 2014).

However, salt marsh ecosystems are exceptionally vulnerable to the effects of climate changes and increasing human pressure such as accelerating relative sea-level rise, declining sediment supply, and coastal land reclamation (D'Alpaos et al., 2011; Gedan et al., 2009; Kirwan et al., 2010; Marani et al., 2007; Morris et al., 2002; Mudd et al., 2004; Mudd, 2011; Temmerman et al., 2005; Silvestri et al., 2018; Breda et al., 2022), having lost between 25% and 50% of their global historical coverage (Mcowen et al., 2017).

Salt marshes are intrinsically dynamic environments and their evolution importantly depends on complex feedbacks between physical and biological components. The interplay between hydrodynamics, geomorphology and vegetation controls marsh vertical accretion, which has allowed marshes to keep pace with relative sea-level rise over thousands of years (D'Alpaos et al., 2007; Marani et al., 2007; Fagherazzi et al., 2012; Mudd et al., 2009; Allen, 2000; Mudd et al., 2004; Brückner et al., 2019). Vertical accretion in tidal marshes is driven by the deposition-contribution of both Organic Matter (OM) and inorganic sediments (Mudd et al., 2009; Fagherazzi et al., 2012; Nyman et al., 2006; Neubauer, 2008). Tides, wind waves, and storms are the main mechanisms for sediment transport, deposition or mobilisation on the marsh platform, shaping marsh morphology, which in turn influences water depth and flow velocity. Halophytic plants, spatially organized in characteristic patches related to soil elevation and hydroperiod (Bertness and Ellison, 1987; Pennings and Callaway, 1992; Silvestri et al., 2005; Silvestri and Marani, 2004), contribute considerably to marsh accretion, influencing the water flow, enhancing sediment settling, damping sediment resuspension and producing biomass, which results in OM accumulation (D'Alpaos et al., 2007; Marani et al., 2006; Mudd et al., 2009). In some cases, OM contribution to ~~tidal-marsh volume and~~ surface vertical accretion can be much greater than that of ~~mineral material- sediment deposition~~ (Ewers Lewis et al., 2020; Morris et al., 2016; Allen et al., 2021). The organic material that helps ~~to build~~ing marsh elevation is likely a combination of in situ production of belowground root tissue inserted into the sediments (Craft et al., 1993; Day et al., 1999) and autochthonous or allochthonous organic materials that are deposited over the surface ~~in association with mineral sediment particles~~ (Nyman et al., 2006; Mudd et al., 2009; Ewers Lewis et al., 2019; Mueller et al., 2019). Surface litter produced during the annual cycles of plant growth and decay settles on the ground and is trapped within the inorganic sediments deposited. A variable proportion of the salt-marsh SOM (Drexler et al., 2020; Middelburg et al., 1997; Mueller et al., 2019) has an allochthonous source, deriving from suspended particulate organic matter, often adsorbed on mineral matter, as well as estuarine and marine phytoplankton, microphytobenthos and non-local macrophytes litter carried to the marsh surface by waves and tides. Furthermore, tidal flooding inhibits microbial aerobic activity and slows down decomposition, fostering C accumulation in marsh soils (Keuskamp et al., 2013; Mueller et al., 2018; Kirwan et al., 2014; Morris et al., 2016). Thanks to these dynamics, the C captured through plant photosynthesis is buried and preserved as soil organic carbon (SOC) and may be locked away from the atmosphere over centennial to millennial time scales (Perillo et al., 2009; Duarte et al., 2005). This process allows salt marsh environments to act as carbon sinks, serving as natural or artificial reservoirs that accumulate and store carbon-containing compounds, thereby helping to offset the effects of greenhouse gas emissions on the Earth's climate (Watson et al., 2000). The C sink function of vegetated coastal ecosystems,

75 including salt marshes, mangrove forests and seagrass meadows, has been increasingly recognised in recent years and the term “blue carbon” was coined to indicate the C sequestered in these ecosystems, with a potential role in climate change mitigation (Chmura et al., 2003; Duarte et al., 2005; McLeod et al., 2011; Macreadie et al., 2019; Nellemann et al., 2009).

Recent models of intertidal system dynamics predict marsh evolution incorporating both physical and ecological processes (e.g. D’Alpaos et al., 2007; Kirwan & Murray, 2007; Marani et al., 2007, 2013; Morris et al., 2002; Mudd et al., 2004, 2009).

80 However, to refine current representations of OM accumulation, a deeper understanding is needed of crucial biogeomorphological factors driving OM dynamics in tidal environments.

Drivers of Soil Organic Matter (SOM) variability in salt marshes are innately difficult to identify as SOM content is the result of many complex processes acting simultaneously. The study of the interplay between these processes is complicated by the fact that they occur over a wide range of spatial scales (Marani et al., 2006; Ewers Lewis et al., 2020).

85 While at the global scale, climatic parameters appear to be important drivers for C sequestration and storage (Chmura et al., 2003), at the system scale, the position within the gradient generated by marine and fluvial influence was observed to be a key predictor of organic content, with the environmental conditions resulting from the interplay between physical and biological factors (Kelleway et al., 2016; Van de Broek et al., 2016). Geomorphological factors and vegetation characteristics appear to be important drivers of soil organic content variability when considering finer spatial scales (e.g. Chen et al., 2016; Leonard

90 et al., 2002; Roner et al., 2016). For instance, elevation, and hydroperiod ~~and sediment supply~~ importantly affect vegetation characteristics, organic-matter supply and sediment deposition ~~sediment deposition and organic-matter trapping capacity~~ (Chmura et al., 2003) other than microbial community and organic-matter preservation conditions (Kirwan et al., 2013; Marani et al., 2006; Mudd et al., 2009; Yousefi Lalimi et al., 2018). The latter are influenced also by sediment type and grain size, which are additionally associated with different concentration of suspended particulate organic matter (Kelleway et al., 2016;

95 Van de Broek et al., 2016; Saintilan et al., 2013). Therefore, sediment grain size was pointed as a key predictor of organic content by Ford et al. (2019) and Kelleway et al. (2016), whereas Van de Broek et al. (2016) reported variations in suspended sediment concentration and stable particulate OC as the main drivers of observed differences in organic storage. The vegetation type was also observed to significantly affect soil organic content at different scales ~~Considerable variability in sediment organic content has also been observed at different scales across vegetation types~~ (Ewers Lewis et al., 2020; Saintilan et al.,

100 2013). Above and belowground production greatly varies across and within plant species, both in terms of quantity and quality, the latter determining different degrees of decay resistance, ~~which determine above and belowground biomass production both quantitatively and qualitatively, in terms of decay resistance~~ (Scarton et al., 2002; Stagg et al., 2018). In addition, Van de Broek et al., 2018, show that SOC from allochthonous sources (e.g. particulate organic matter, phytoplankton, microphytobenthos and non-local macrophytes litter) may be a main component of SOC stock preserved in marsh sediments,

105 and this finding could significantly impact organic carbon sequestration assessments (Van de Broek et al., 2018).

Here we aim at inspecting spatial patterns of OM in salt marsh soils, providing further insights into the physical and biological factors driving OM dynamics, affecting salt marsh survival and C sink potential. Toward these goals, we analysed soil organic content and SOC stock for the surface soil layer (0–20 cm) in 10 salt marshes of the Venice Lagoon from 60 sediment cores,

110 together with different variables including soil, morphological and vegetation characteristics. The choice to analyse surface marsh soil for assessing spatial patterns of soil organic content is driven by the need to capture the layer most directly influenced by current environmental variables.

115 By contributing to a better understanding of OM distribution and its controls in tidal marshes, our study has the potential to improve spatially explicit biomorphological models of salt marsh evolution, allowing the evaluation of marsh resilience and associated C storage as an ecosystem service. Improved representation of SOM dynamics in biomorphodynamic models will provide critical information for management and conservation strategies, favouring the identification of optimal locations and actions where to direct protection and restoration efforts.

2. Material and methods

2.1. Study site

120 The Venice Lagoon, situated in the northwestern Adriatic Sea (Italy), is the largest brackish tidal waterbody within the Mediterranean Sea. It is a shallow, microtidal, back-barrier system, characterized by a semidiurnal tidal regime with an average range of 1.0 m and a mean water depth over tidal flats of about 1.5 m, and is connected to the Adriatic through three inlets known as Lido, Malamocco, and Chioggia (Figure 1).

125 The Venice Lagoon is also highly influenced by meteorological forcings, with the south-easterly Sirocco wind responsible for severe storm surges flooding the city of Venice, north-easterly Bora wind responsible for large wind waves (Tommasini et al., 2019). The present-day morphology of the Venice Lagoon is strongly affected by the intense human pressure occurred over the last centuries, going from the diversion of the main rivers, which are now debouching out of the Lagoon, to the more recent construction of jetties at the inlets and the excavation of large navigable channels, to the rash groundwater exploitation in the 20th century. The above interventions have seriously modified sediment supply and dynamics, local hydrodynamics and morphology, together with rates of relative sea level rise, favouring sediment starvation and the deepening of the lagoon (Zecchin 2009, Brambati 2003). The recent activation of storm-surge barriers, designed to prevent flooding of the city of Venice, was proved to further alter the lagoon hydrodynamics (Mel et al., 2021) contributing to the deepening of the tidal flats and reducing salt marsh sedimentation (Tognin et al., 2021, 2022). Salt marsh areas of the Venice Lagoon have dramatically shrunk in the last centuries, with a decrease in extension from about 180 km² in 1811 to about 43 km² in 2002 (Carniello et al., 2009; D'Alpaos, 2010; Tommasini et al., 2019; Finotello et al., 2023). In addition, historical river diversions have significantly reduced freshwater inputs into the lagoon, thereby impacting water salinity and vegetation characteristics. Freshwater inputs currently flow in the lagoon through twelve main tributaries distributed along the landward boundary of the lagoon, with a mean annual contribution of about 35 m³ s⁻¹ and a peak discharge of 344 m³ s⁻¹ (Zuliani et al., 2005). Spatial and temporal variability of salinity in the Venice Lagoon is additionally influenced by groundwater inputs (Gieskes et al., 2013). Estimates of the volume of underground freshwaters entering the lagoon floor vary widely, from 15% of total freshwater flow to more

135

140 than 100% (Zirino et al., 2014). Salinity levels in the Venice Lagoon today vary from approximately 20 ‰PSU at the northeastern mainland edge to about 34–35 PSU‰ at the three inlets (Zirino et al., 2014).

The study sites are located in 10 salt marshes of the Venice Lagoon, at variable distances from the inlets (Figure 1). In the northern lagoon, the Sant’Erasmo (SE), San Felice (SF) and Saline (SA) salt marshes border large tidal channels departing from the Lido inlet. These marshes host exclusively halophytic vegetation, mainly constituted by *Salicornia veneta*, *Limonium narbonense*, and *Sarcocornia fruticosa*, associated with *Spartina maritima*, *Juncus maritimus*, *Puccinellia palustris*, *Inula crithmoides*, *Suaeda maritima* and *Arthrocnemum macrostachyum* (Silvestri, 2000; Silvestri et al., 2005; Yang et al., 2020). In contrast, Pagliaga (PA) and Campalto (CA) sites are located at the lagoon-mainland boundary in the northern lagoon, with PA being close to the estuary of the springwater Dese River which debouches into the lagoon carrying an average 65 m³ s⁻¹ freshwater discharge and negligible sediment supply. Freshwater inputs at PA site maintain a near-freshwater plant community dominated by *Phragmites australis*, together with the halophytic species *Juncus maritimum*, *Salicornia veneta* and *Halimione portulacoides* (Silvestri, 2000). The CA marsh, whose main edge faces a shallow tidal flat exposed to Scirocco wind, hosts halophytic species dominated by *Limonium narbonense*, associated with *Sarcocornia fruticosa*, *Spartina maritima*, *Salicornia veneta*, and scarce *Suaeda maritima*, *Triglochin maritima* and *Juncus gerardii*. In the southern part of the Venice Lagoon, the Mira (MI) marsh is close to the landward boundary and it is characterized by the presence of *Phragmites australis* on the marsh edge, together with the halophytic species *Juncus maritimum*, *Puccinellia palustris*, *Limonium narbonense*, and *Sarcocornia fruticosa*. Canale Virgilio (CV) and Fosse (FO) are located within the marsh belt in front of Malamocco and Chioggia inlets and host halophytic vegetation consisting mainly of *Limonium narbonense*, *Sarcocornia fruticosa*, *Puccinellia palustris*, together with *Juncus maritimum*, *Spartina maritima*, *Salicornia veneta* and *Suaeda maritima*. The Conche (CO) salt marsh fringes the mainland and faces the wide subtidal flat that occupies the central-southern Venice Lagoon, being exposed to Bora wind. CO hosts halophytic species dominated by *Sarcocornia fruticosa*, *Suaeda maritima*, *Inula crithmoides*, and *Halimione portulacoides*. Finally, the Valle di Brenta (VB) salt marsh, at the southern end of the lagoon, is separated from the mainland by a channel and is characterized by the dominance of *Juncus maritimum*, *Sarcocornia fruticosa*, *Limonium narbonense* and *Puccinellia palustris*, with the presence of *Triglochin maritima*. The marsh areas under study were already mapped by Sebastiano Alberti in 1611, and considering an overall accretion rate of about 2.0-3.0 mm yr⁻¹, the study deposits were probably accumulated over the past century (Tommasini et al., 2019).



Figure 1. Location of the study areas within the Venice Lagoon (Italy). Insets show the position of the 30-m-long transects (orange lines) within each study area located perpendicularly to the main marsh edge: MI, CA, PA, SA, SF, SE, VB, CO, FO, CV (Map data: ©2022 Google-Landsat/Copernicus, Maxar Technologies).

170

2.2. Experimental design and sample analysis

Six sediment cores were collected along transects from the marsh edge to the inner part of the 10 salt marshes, for a total of 60 cores. The selected sites are distributed across the Venice Lagoon in order to represent the different environmental conditions typical of the system (Figure 1). ~~In most cases,~~ transects typically start on the marsh edge facing a channel and

175 therefore show a tide-dominated sedimentation. In contrast with the exception of CA and CO transects, that face tidal flats
and are exposed to energetic wind-waves. At each site, 6 cores were collected at increasing distance from the marsh edge (at
a distance of 0, 2.5, 5, 10, 20 and 30 m from the edge) so as to represent morphological and vegetation zonation. The position
of each core was surveyed using a GPS (Leica GS16) in RTK mode. At each site where a core was collected, elevation above
Mean Sea Level (MSL) and geographic location were measured using a GPS in RTK mode (Leica GS16) and vegetation
180 characteristics were surveyed recorded within a 1 x 1 m quadrat by the Braun-Blanquet method (Braun-Blanquet, 1964) and
registering species cover percentages (Table A1-S3 in Appendix A the Supplement). For each quadrat, we estimated the
aboveground biomass on the basis of species cover and live plant biomass as ash free dry weight (AFDW) for each species
from literature (Table A2 in Appendix A). Shannon diversity index was used to measure the diversity of species in each 1 x 1
m quadrat sample community.

185 Soil samples were taken every 5 cm up to the depth of 20 cm (0, 5, 10, 15, 20 cm) from each core, collected through a
Eijkelpkamp auger, 3 cm diameter corer) (Howard et al., 2014) and subsamples were oven dried at 60 °C for 48 h or to constant
weight and prepared for different analyses, including OM and C content, soil density, and grain size distribution. Percent OM
of each sample was determined through a loss-on-ignition (LOI) procedure by combusting 2 g of ground sediment in a muffle
furnace at 375 °C for 16 h of ground samples (Ball, 1964; Frangipane et al., 2009; Roner et al., 2016). The difference in weight
between pre- and post-treatment provided the OM content as a weight percentage. Percent organic C was calculated from LOI
190 using a the following local conversion equation built on a subsample analysed with an Elemental Analyser (Puppin, 2023;
Puppin et al., 2023b)

$$OC = (0.37 \pm 0.01) LOI + (0.0024 \pm 0.0004) LOI^2 \quad (1)$$

195 Sediment Dry Bulk Density (DBD) was calculated from the water content, as the difference in weight between wet and dry
samples, and organic and inorganic fractions, according to Kolker et al., (2009), by assuming water density = 1.02 g m⁻³, and
mineral and organic sediment density of $\rho_i = 2.6 \text{ g m}^{-3}$ and $\rho_o = 1.2 \text{ g m}^{-3}$, respectively, knowing the inorganic sediment and
OM percentage from LOI analysis (Kolker et al., 2009). The product of percent OC and DBD determined soil carbon density
(SCD). Soil carbon stocks in the top 20 cm soil were calculated based on Howard et al. (2014) summing the C content in each
200 soil interval along the core in order to better represent OM content variability within the depth interval. Inorganic particle size
distribution analyses were performed, after the removal of the OM through a treatment with 35% hydrogen peroxide (H₂O₂)
for 36 h, using laser granulometry (Mastersizer 2000 - Version 5.40, MALVERN INSTRUMENTS).

As to the analysis of OM content, we considered sediments up to the depth of 20 cm because we wanted to investigate the soil
layer directly impacted by current vegetation. Indeed, according to Trumbore (2009), in most vegetated ecosystems the
205 majority of underground plant biomass and microbial activity exists within the top 20 cm of soils. Conversely, in order to
analyse sediment characteristics with reference to current hydrodynamics and morphological dynamics, we limited the
reference depth for grain size analysis to 5 cm, considering the accreting behaviour of salt marshes.

210 Values of water salinity for each study area were calculated as the last-5-years mean of the quarterly measurements from the CTD multiparameter probes of the Veneto Region Environmental Protection Agency (ARPAV) (Table [A3-S5](#) in [the SupplementAppendix A](#)).

2.3. Statistical analysis

215 Statistical analyses were performed using MATLAB R2021a. Analyses included the use of the Kendall test, Kruskal-Wallis H test and post hoc median comparisons. The Kendall test is a non-parametric, rank-based method, aimed to determine whether there exists a monotonic relationship between two variables of interest. The value of the τ coefficient ranges from 1 to -1, indicating a positive or a negative association, respectively. The Kruskal-Wallis test is a nonparametric version of classical one-way ANOVA using ranks of the data to compute the chi-square statistic and compare the medians of the groups of data to determine if the samples come from the same population. When Kruskal-Wallis test showed a significant difference between groups, a multiple comparison test was used to determine which pairs of means were significantly different. For the statistical tests, we included all available data in the analysis without attempting and did not attempt to identify and eliminate possible outliers. We included all available data in the statistical analysis without conducting an outlier search.

220

3. Results

3.1. Distribution of surface sediment variables along the transects

Figure 2 and Figure 3 show ~~We analysed~~ examined the distribution of the surface sediment ~~variables analysed, namely~~ OM content, DBD, grain size distribution, and the vegetation cover along the surface elevation profile of study transects, in the northern (Figure 2) and southern (Figure 3) lagoon, ~~respectively~~.

225

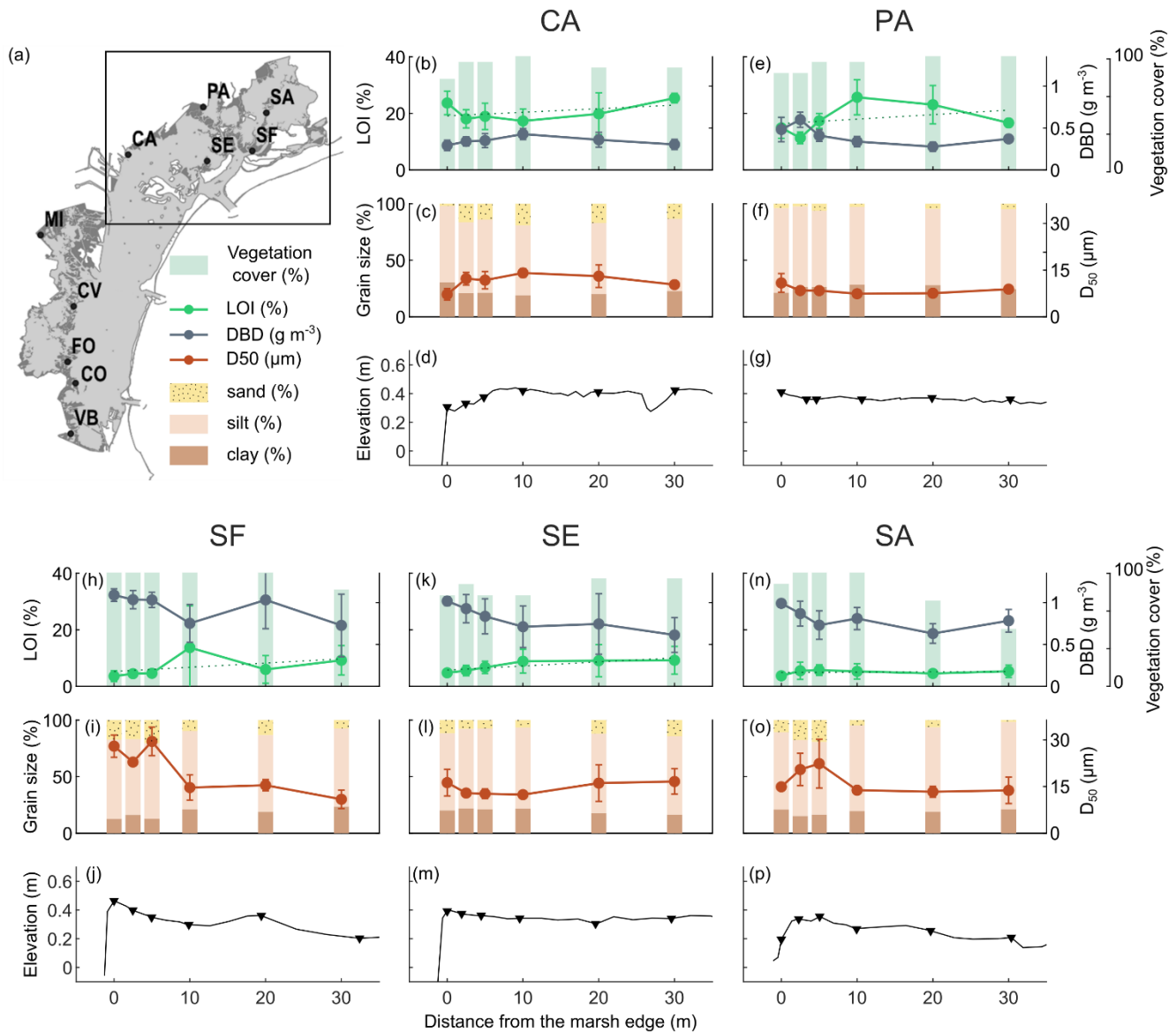


Figure 2. Distribution of surface sediment variables analysed and surface elevation profile along the transects in northern lagoon: organic matter content (LOI % - mean value and standard deviation in top 20 cm), Dry Bulk Density (g cm^{-3} - mean value and standard deviation in top 20 cm), vegetation cover (%), grain size distribution (D_{50} μm and sand-silt-clay percentage - mean value and standard deviation in top 5 cm) and surface elevation (m a.MSL). The dashed line represents the linear regression between the percent organic matter values.

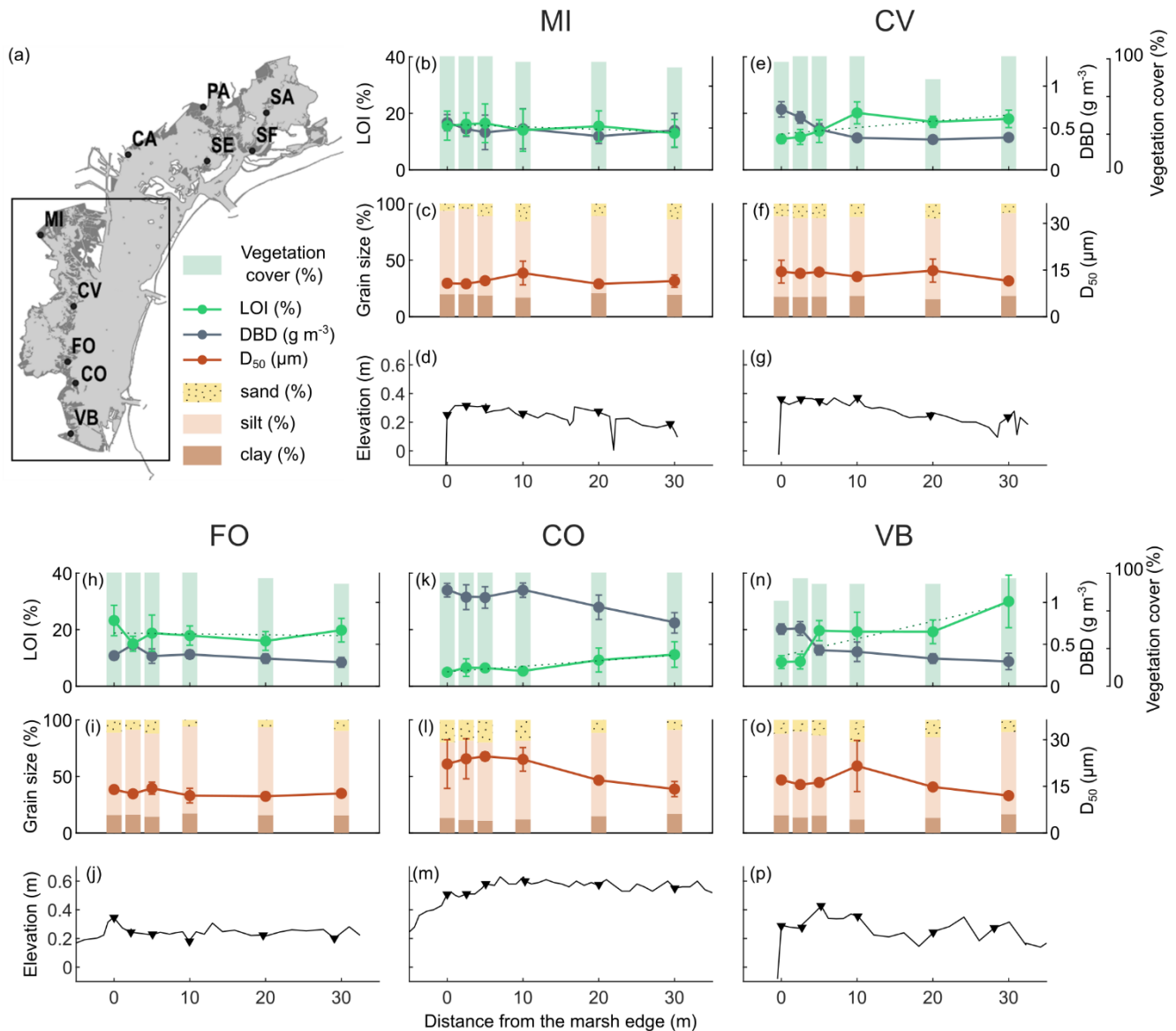


Figure 3. Distribution of surface sediment variables analysed and surface elevation profile along the transects in southern lagoon: organic matter content (LOI % - mean value and standard deviation in top 20 cm), Dry Bulk Density (g cm^{-3} - mean value and standard deviation in top 20 cm), vegetation cover (%), grain size distribution (D_{50} μm and sand-silt-clay percentage - mean value and standard deviation in top 5 cm) and surface elevation (m a.MSL). The dashed line represents the linear regression between the percent organic matter values.

The topographic GPS field surveys (Figure 2 and Figure 3, d, g, j, m, p) show that marsh surface elevations along the transects range between about 0.20 and 0.60 m above MSL. CO is the highest site, with an average elevation along the transect of 0.55 m above MSL, while FO is the lowest site, with an average elevation of 0.24 m above MSL. Surface elevations are generally

higher near the marsh edge, adjacent to the channel levees, and they decrease toward the inner marsh. Some sites show a pronounced levee morphology (i.e. SF, SA and FO), while in other sites the latter is less distinct due to irregular profiles (i.e. MI, CV, VB) or flattened profiles (i.e. PA, SE). CA and CO transects, which face a tidal flat and are exposed to wave energy, are characterized by higher surface elevations toward the inner marsh, with a convex shape profile (Tognin, 2022).

245 The vegetation cover is generally high (never below 50%), with no detectable trends along the transects. OM content in surface soils (mean value in top 20 cm) ranges between 4% and 30% (green lines in Figure 2 and Figure 3, b, e, h, k, n) and shows important differences both within and among study areas. CA, FO, PA, VB, CV and MI show generally higher organic content, with average OM content values along the transects ranging between 15 and 21%, than CO, SF, SE and SA, with average OM content values along the transects ranging between 5 and 7%. ~~Trends of OM content trend~~ along the transects ~~follows a more or less marked suggest an~~ increase toward the inner marsh in most of the study sites (e.g. CA, PA, SF, ~~SA~~~~SE~~, CV, CO, VB). DBD in surface soil (grey lines in Figure 2 and Figure 3, b, e, h, k, n) shows a distribution mirrored to that of OM content, with values ranging between 0.28 and 1.15 g cm⁻³, displaying a more or less marked decrease toward the inner marsh in most of the study sites. The highest values of DBD are found at CO, SE, SF and SA sites, with average values of 1.02, 0.81, 0.94 and 0.80 g cm⁻³, respectively.

250

255 Grain size of the surface inorganic sediment fraction (Figure 2 and Figure 3, c, f, i, l, o) ranges from clay to very fine sand, with a D₅₀ (mean value in top 5 cm) ranging between 7 μm and 28 μm, with a mean value of 14 μm. Finer median grain size values are found at the PA site (average D₅₀ value of 5 μm), which is characterized by higher percentages of clay. Whereas, coarser median grain size values are found in SF and CO sites (average D₅₀ value of 19 and 20 μm, respectively), with the latter being characterized by some shell layers on the marsh surface. As to the distribution of the median grain size, D₅₀, along the transects, we observe coarser grains along the marsh edges (i.e. along the tidal channel levees) at SF, SA and VB. CA and CO median grain sizes show a smooth trend with coarser particles in the central part of the transects. The SE transect shows slightly coarsening sediments toward the inner marsh, bordered by a tidal flat.

260

3.2. Dependence of sediment variables on the distance from the marsh edge

Considering the data from all our study areas, OM content in surface soils was significantly positively correlated with the distance from the marsh edge (Kendall's tau test, $\tau = 0.1551$ p-value = 0.0002) (Figure 4 a), whereas DBD was significantly negatively correlated with the distance from the marsh edge (Kendall's tau test, $\tau = -0.2302$ p-value < 0.0001) (Figure 4 b). A significant negative correlation was found also between the median sediment grain size (D₅₀) on the marsh surface and the distance from the marsh edge (Kendall's tau test, $\tau = -0.0924$ p-value = 0.0269) (Figure 4 c). Distance from the marsh edge resulted to be negatively correlated to surface elevation in our study case (Kendall's tau test, $\tau = -0.1204$ p-value = 0.0040), thus, as expected, DBD and D₅₀ were positively correlated to marsh surface elevations ($\tau = 0.1387$ and 0.1503 p-value = 0.0003 and 0.0001, respectively). Nevertheless, no significant relationship was found between the OM content and surface elevation.

265

270

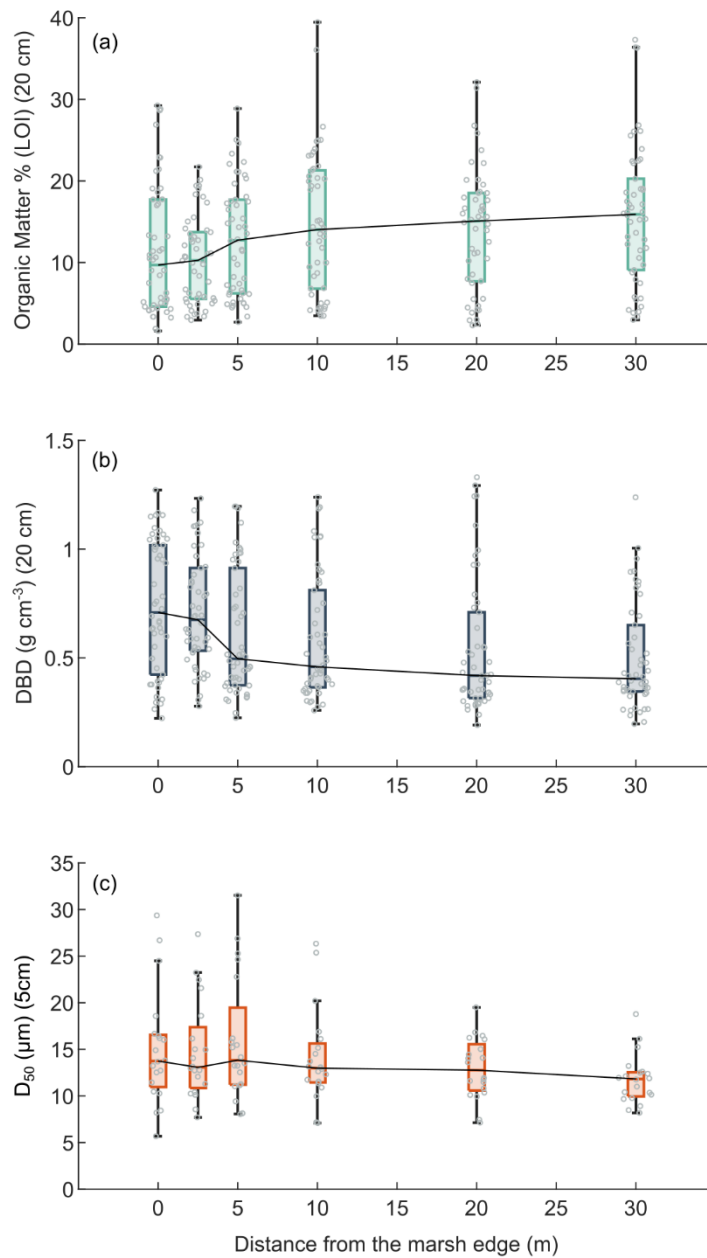


Figure 4. Effects of the distance from the marsh edge on OM, DBD and grain size: organic matter content (LOI % - mean value in top 20 cm) (a), Dry Bulk Density (g cm⁻³ - mean value in the top 20 cm) (b), sediment median grain size distribution (D₅₀ μm - mean value in the top 5 cm) (c). In the box plots the central mark indicates the median, the bottom and top edges of the box indicate the 25th and 75th percentiles, respectively, the whiskers extend to the most extreme data points not considered outliers, and the outliers are plotted individually using a thick circle. Swarm plots show single values (circles).

3.3. Vegetation distribution and influence on SOM

280 The vegetation surveys revealed that *Sarcocornia fruticosa*, *Limonium narbonense*, *Puccinellia palustris*, and *Juncus maritimus* are among the most abundant species in terms of percent cover along the analysed transects (Figure 5a). *Sarcocornia fruticosa* exhibits an increasing trend in cover with distance from the marsh edge, peaking at approximately 5 meters from the edge before declining. Conversely, the cover of *Limonium narbonense* and *Puccinellia palustris* increases towards the inner marsh. The cover of *Juncus maritimus* varies along the transect. At the lagoon scale, *Phragmites australis*, typically found in brackish water environments, was observed only at two sites, PA and MI (Figure S1 in the Supplement). Additionally, *Puccinellia palustris* was more abundant at sites located in the southern part of the lagoon (Figure S1 in the Supplement). We found no relationship between OM content and vegetation cover. Estimated aboveground biomass was highly variable in the analysed plots, ranging between about 200 and 1500 g cm⁻² (AFDW) and showed no significant relationship with OM content in surface soils (Figure 5-a). When considering the dominant species, OM content of marsh surface soil displayed a wide variability (Figure 5-c). Higher mean organic content was observed in the presence of *Limonium narbonense* (Figure 5-eb), *Juncus maritimus*, and *Phragmites australis* (Figure 5-de) and *Puccinellia palustris* as dominant species. Although highly variable, organic content showed a significant positive correlation with vegetation species diversity (Kendall's tau test for Shannon Diversity Index H and OC stock in top 20 cm: $\tau = 0.1931$ p-value = 0.0300; with mean SCD in top 20 cm $\tau = 0.1818$ p-value = 0.0412) (Figure 5-bd).

295

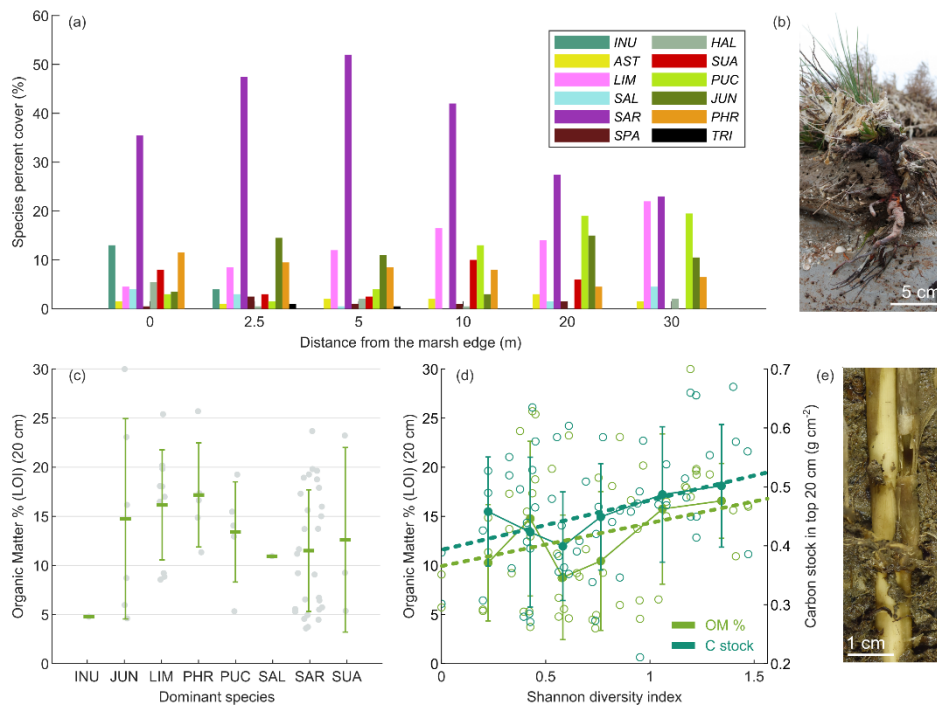


Figure 5. Vegetation distribution and influence on SOM. Species cumulative percent cover at each station along the transect (a) Organic matter content in marsh surface soils (LOI % - mean value in top 20 cm) as a function of biomass estimates (a) and dominant species (c). Organic matter content in marsh surface soils (LOI % - mean value in top 20 cm) and OC stock in top 20 cm as a function of Shannon Diversity Index H (db) in 1x1 m plot around core sites. *Limonium narbonense* roots exposed by marsh edge erosion at SE site (eb) and *Phragmites australis* roots and stems within PA site soil (de). Panels (a) and (b) show median and standard deviation of binned values. Panel (c) includes mean values (horizontal-line markers) and standard deviations. In the box plots the central mark indicates the median, the bottom and top edges of the box indicate the 25th and 75th percentiles, respectively, the whiskers extend to the most extreme data points not considered outliers, and the outliers are plotted individually using a thick circle. Swarm plots show single values (grey closed circles). Panel (d) includes median and standard deviation of binned values. Open circles represent single values and bold lines represent their linear regressions ($OM = 9.91 + H4.43$, $R^2 = 0.0679$, $p\text{-value} = 0.0444$; $C\ stock (20\ cm) = 0.39 + H0.08$, $R^2 = 0.0982$, $p\text{-value} = 0.0147$). (INU = *Inula crithmoides*, AST = *Aster tripolium*, LIM = *Limonium narbonense*, SAL = *Salicornia veneta*, SAR = *Sarcocornia fruticosa*, SPA = *Spartina* spp., HAL = *Halimione portulacoides*, SUA = *Suaeda maritima*, PUC = *Puccinellia palustris*, JUN = *Juncus maritimus*, PHR = *Phragmites australis*, TRI = *Triglochin maritima*).

3.4. Variability of sediment characteristics among study sites

As to the variability of marsh soil characteristics in different areas, the Kruskal-Wallis analysis indicated that there was a significant difference between OM content in the 10 sites ($p\text{-value} = < 0.00014.49285e-34$), and the post hoc test confirmed that CO, SA, SE and SF have significantly lower mean OM content in surface soil (Figure 6a). Study sites were characterized by different mean water salinity ranging between 24.3 and 32.4 ‰ PSU, which revealed a significant negative relationship with OM content (Kendall's tau test, $\tau = -0.3524$ $p\text{-value} = 0.0002$). CO, SA, SE and SF also show significantly higher values of DBD (Kruskal-Wallis, $p\text{-value} = < 0.00012.31627e-36$) (Figure 6b).

Mean SOC density in the top 20 cm (product of percent OC, which is function of OM, and DBD determined) ranged between 0.014 and 0.026 g cm⁻³ with lower values at SA, SF and SE (Figure 6b). Carbon stock in top 20 cm ranged between 0.21 and 0.66 g cm⁻² with lower values at SA, SF and SE (Figure 6c). CO, which showed mean organic matter percentage similar to SA, SF and SE, displays, in contrast, higher values of SCD and C stock compared to SA, SF and SE, due to particularly high DBD values at this site.

Median sediment grain size (D₅₀) on marsh surface was not equal in different study sites (Kruskal-Wallis, $p\text{-value} = < 0.00019.96865e-11$), although not showing clear distribution patterns- (Figure 6d).

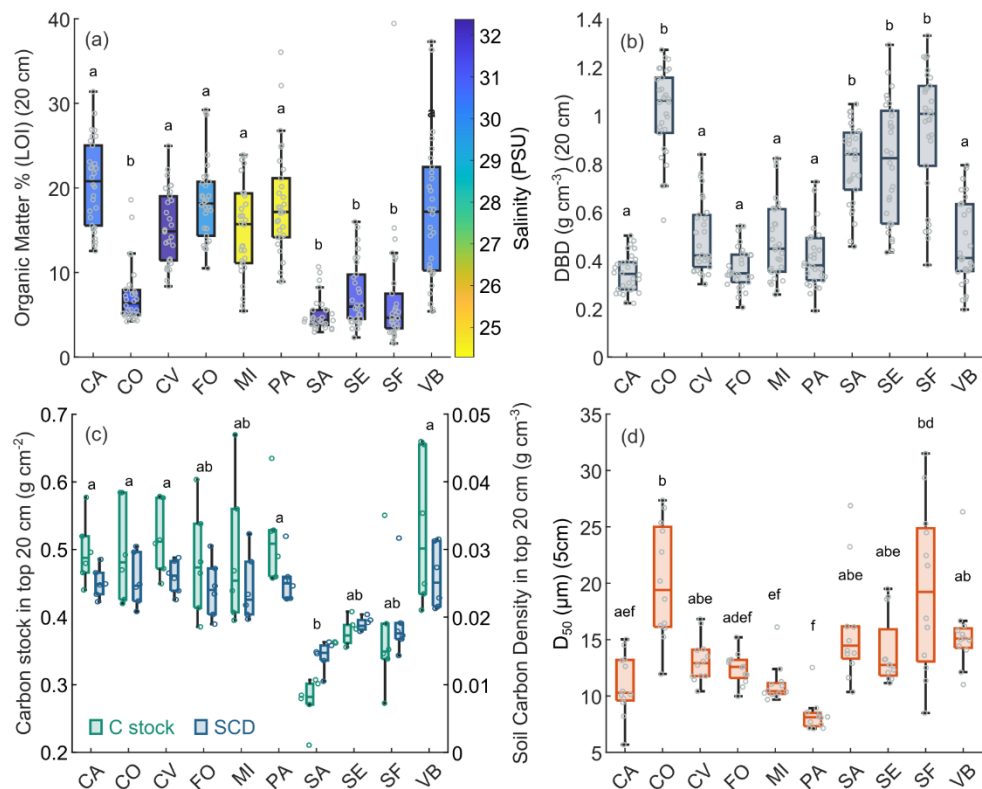


Figure 6. Surface sediment variables at different study sites: organic content (LOI % - mean value in top 20 cm) and water salinity at each study area (a), grain size distribution (D_{50} μm and sand-silt-clay percentage - mean value in top 5 cm) (b), Dry Bulk Density (g cm^{-3} - mean value in top 20 cm) (c), OC stock in top 20 cm (g cm^{-2}) and SOC Density (g cm^{-3} - mean value in top 20 cm) (d). In the box plots the central mark indicates the median, the bottom and top edges of the box indicate the 25th and 75th percentiles, respectively, the whiskers extend to the most extreme data points not considered outliers. Swarm plots show single values (circles). Different letters above the box plots indicate significant difference on the basis of Kruskal-Wallis test and post hoc multiple comparison test (when two groups do not show a significant difference, then they have at least one letter in common).

4. Discussion

4.1. Elevation profiles and grain size characteristics

Tidal currents deliver suspended sediments onto the marsh platform through inundation by apical flow at creek heads and by overbank flow along tidal channels (Torres and Styles, 2007). As soon as the flow reaches the vegetated marsh platform, current velocities and turbulent energy rapidly decrease (D'Alpaos et al., 2007; Mudd et al., 2010), thus promoting the deposition of coarser and more abundant sediments in proximity of the channel edges (Christiansen et al., 2000; Roner et al., 2016). Indeed, elevation profiles and grain size characteristics observed along the transects reflect sediment supply dynamics, with the formation of levees along the tidal channels and the presence of coarser sediments the on their top (Figure 2 and Figure 3), where tidal current flow is firstly slowed down favouring coarser particle settling. The increasing elevations and the

grain size coarsening observed at the inner end of SE transect are likely due to the presence of a tidal flat at the inner border of the salt marsh, representing another source of sediment supply.

345 The general pattern of sediment grain size is confirmed when considering all data together (Figure 4 b), as median sediment grain size (D_{50}) on the marsh surface was found to be significantly correlated to the distance from the marsh edge and to surface elevations.

350 Interestingly, CA and CO transect, which are located on marsh edges adjacent to tidal flats (Figure 1) and exposed to energetic wind waves, displayed slightly different surface morphology and sediment grain size patterns (Figure 2 and Figure 3). The elevation profiles exhibit a subtly convex shape, with the disappearance of the raised margin and a slight inward shift of the summit along with the locations of higher median grain size values, characterized by higher surface elevations toward the inner marsh, and sediment grain size patterns (Figure 2 and Figure 3) likely due to wave action pushing sediments and coarser particles further toward the inner marsh, as observed by (Duvall et al., 2019).

355 At the lagoon scale, higher values of median grain size were observed at sites closer to the inlet (i.e., SF, SE) or adjacent to first order channel connected to them (SA) (Figure 6 d), whereas higher fractions of fine sediments were observed at the lagoon mainland boundary, near to the Dese River mouth (PA) (Figure 2). This pattern is consistent with the general grain size gradient observed in the Venice Lagoon, reflecting the typical pattern of decreasing hydrodynamic energy conditions from the inlets to the landward shore (Zonta et al., 2018). Accordingly, marsh edge levees seem to be more pronounced along the main channels departing from the inlets and influenced by hydrodynamic conditions along those channels.

360 **4.2. Organic content variability**

The OM content in salt marsh soils is likely a combination of in-situ production of belowground biomass (root, rhizome and tuber tissue) inserted into the sediments (Craft et al., 1993; Rybezyk et al., 2002) and autochthonous or allochthonous organic materials that are deposited on the salt marsh (Nyman et al., 2006, Mudd et al., 2009, Ewer Lewis 2019, Mueller 2019). Spatial patterns in OM content are influenced by different conditions such as sediment supply, primary production and decomposition rates (Nyman et al., 2006; Morris et al., 2016; Kolker et al., 2009; Turner et al., 2002; Kirwan et al., 2013; Mudd et al., 2009). Overall, our data reveal two scales of variations in sedimentary OM content: one occurs on the order of meters to tens of meters along the transect, and another one is associated with the lagoon scale. The topographic and textural sedimentological features of the salt marsh can influence a range of biological and physical processes and consequently affect the distribution of OM content (Chen et al., 2016). These features reflect sediment supply dynamics from the marsh edge (i.e. sediment source) to the inner marsh, together with the dynamic feedbacks between surface elevation and primary productivity and vegetation characteristics (Perillo et al., 2009). Consistently with previous findings (e.g. Chen et al., 2016; Leonard et al., 2002; Roner et al., 2016) and despite a considerable variability, we found a significant correlation between OM content in surface soils and the distance from the marsh edge, with organic content generally increasing toward the inner marsh.

375 When focusing on the spatial patterns exhibited at each transect If we observe the pattern site by site, seven out of ten sites show an increasing trend of OM with the distance from the marsh edge (CA, PA, SF, S, CV, CO, VB sites). The inner marsh

380 areas, often displaying lower elevations, are suggested to be characterized by better preservation conditions, as anaerobic environments in frequently flooded sites reduce microbial respiration, slowing down organic matter decomposition (Halupa and Howes, 1995; Kirwan et al., 2013; Puppin et al., 2023a; Roner et al., 2016). In addition, finer sediment grain size in inner marsh areas may affect OM preservation conditions, through a reduced oxygen exchange due to lower porosity and drainage capacity and through their greater potential for protection of C by means of organic-mineral interaction and micro- or macro-aggregates (Kelleway et al., 2016). Furthermore, the enriched OM content of inner marsh areas may also be explained by the different sources of material available for salt marsh accretion across the platform (Miller et al., 2022). Due to the preferential deposition of the denser inorganic fraction of suspended sediments within tidal flow during the initial phase of inundation, inorganic sediment is mainly deposited near the marsh edge, whereas the inner marsh is supplied with more organic material due to, the transport and deposition of less dense organic particles, in addition to in situ decaying vegetation (Leonard et al., 2002; Miller et al., 2022). Organic supply inputs includes allochthonous particulate OM and organic debris and wrack deposited during storms (Miller et al., 2022), and autochthonous plant litter collected and moved above the marsh platform (Leonard et al., 2002).

385 As different species have different biomass productions and different resistance against decomposition, the type of vegetation populating the different marsh areas is another possible controlling factor for SOM content (e.g. Van de Broek et al., 2016; Ewers-Lewis et al., 2020; H Ford et al., 2019; Saintilan et al., 2013; Yuan et al., 2020). However, we observed no detectable trend of vegetation cover or plant biomass along the transect, nor a significant relationship between OM content and aboveground biomass estimates (Figure 5 a and c). Thus, our results suggest that aboveground species productivity is not a determinant in SOM at our study area. In fact, a major influence was expected by belowground biomass, which inserting into the sediments directly contributes to SOM content (Craft et al., 1993; Rybezyk et al., 2002), and, unfortunately, lacks sufficient available estimates. Thus, our results suggest that aboveground species productivity is not a determinant in SOM at our study area. Furthermore, our aboveground biomass estimates neglect intraspecific biomass variability at the catchment scale, which could be represented only through direct measurements.

390 While our data do not allow for a full statistical analysis of the relationship between OM content and vegetation type, we observed higher mean OM content in presence of *Limonium narbonense*, *Phragmites australis* and *Puccinellia palustris*. We also observed that *Phragmites australis* is characterized by a high belowground biomass, forming a dense and deep network of leathery stems, roots and rhizomes (Moore et al., 2012; Scarton et al., 2002) (Figure 5 e), *Limonium narbonense* produces massive woody roots (Figure 5 d) and *Puccinellia maritima* creates a dense root mat (Brooks et al., 2021), which can importantly contribute to SOM content quantitatively and qualitatively, as belowground litter decomposition was observed to decline with increasing lignin content (Stagg et al., 2018). In addition, OM content showed a significant positive correlation with vegetation species diversity (Figure 5 b), in agreement with Ford et al., 2019. Ford et al. (2016) found that plant species richness was one of the most important explanatory variables of root biomass and Xu et al. (2020) suggested that species richness may increase biomass productivity due to multiple mechanisms including competition reduction, niche complementarity, selection effects, and biotic and abiotic facilitation.

410 At the catchment scale, the position within the gradient generated by marine and fluvial influence was previously observed to
be a key predictor of organic content (e.g. . Our results show lower mean OM content in surface soil in areas which are directly
affected by marine influence, being closer to the inlets or along the main channels leading away from them (CO, SE, SF, SA)
(Figure 1 and Figure 6 a). Conversely, higher OM contents were observed at sites closer to the mainland. In agreement with
415 observations from other studies (e.g. Van de Broek et al., 2016; Gorham et al., 2021; Hansen et al., 2017; Omengo et al., 2016)
which attribute OM content increase toward the mainland to an increasing supply of already stabilized organic suspended
particles from terrestrial sources and increasing macrophyte biomass. However, in the Venice Lagoon, after historical river
diversions, fluvial supply of organic and inorganic material dramatically decreased. Freshwater inputs currently flow in the
lagoon through twelve main tributaries distributed along the landward boundary of the lagoon, with a mean annual contribution
420 of about $35 \text{ m}^3 \text{ s}^{-1}$ and a peak discharge of $344 \text{ m}^3 \text{ s}^{-1}$ (Zuliani et al., 2005). In addition, spatial and temporal variability of
salinity in the Venice Lagoon is influenced by groundwater inputs (Gieskes et al., 2013). Estimates of the volume of
underground freshwaters entering the lagoon floor vary widely, from 15% of total freshwater flow to more than 100% (Zirino
et al., 2014). Another hypothesis is that at sites where inorganic sediment inputs are greater, soil organic fraction is lower due
to a dilution effect, reproduction of organogenic and minerogenic behaviour of salt marshes at different scales (Allen, 2000).
425 Furthermore, considering the landward decreasing grain size gradient observed within the lagoon, enhanced C preservation
capacity of fine sediments (Kelleway et al., 2016) may have a role in the observed organic content pattern. However, as
previous observations suggest an inverse relationship between soil salinity and decomposition (Hemminga et al., 1991; Wang
et al., 2019), it is unlikely that salinity as such directly controls soil organic content, being this effect overcome by the co-
occurring effect of freshwater inputs.

430 As a consequence of organic content variability, C stock and SOC density show irregular values in different salt marshes,
enhancing the complexity of blue C assessment. Based on our estimates of mean SOC density in top 20 cm, and considering
for salt marshes in equilibrium with RSLR an expected accretion rate of about 0.3 cm yr^{-1} (Day et al., 1998), the average C
accumulation rate for the Venice Lagoon salt marshes is estimated to be approximately equal to $69 \text{ g C m}^{-2} \text{ yr}^{-1}$. Our result is
consistent with the mean C accumulation rate in the Australian tidal marshes of $54.52 \text{ m}^{-2} \text{ yr}^{-1}$ calculated by Macreadie et al.
435 (2017) from 323 soil cores to the depth of 30 cm all around Australia and using a mean accretion rate of 0.21 cm yr^{-1} . However,
we observed that, under the same accretion rate, estimated SOC from our study may result in C accumulation rates varying up
to 50% from one place to another.

4.3. Dry Bulk Density

Soil density is influenced both by OM content and grain size: various researchers found a strong and negative correlation
440 between SOM and bulk density (e.g. Holmquist et al., 2018; Morris et al., 2016) and sand content showed a positive correlation
with the soil bulk density (Tanveera et al., 2016). Our results further confirm this relationship showing higher soil densities
along marsh edges and at CO, SE, SF and SA sites, where organic content is generally lower and coarser sediments are found.

445 The sources of OM content in salt marsh soils are influenced both by local and non-local processes. Firstly, OM is the result of in-situ production of belowground (root, rhizome and tuber tissue) (Craft et al., 1993; Rybczyk et al., 2002) and aboveground biomass, thus directly depending on the local primary production. OM content is also affected by the accumulation of organic material produced in other sites (Nyman et al., 2006, Mudd et al., 2009, Ewer Lewis 2019, Mueller 2019), which are transported and eventually is deposited on the marsh surface by hydrodynamic processes (i.e. tides and waves) acting at larger spatial scales . Both autochthonous and allochthonous organic materials, once part of marsh soil, are also affected by decomposition resulting from local topographic, sedimentological and environmental conditions (Chen et al., 2016). Due to the intricate
450 interaction of these local and non-local dynamics, two main spatial scales in OM variations can be identified: the marsh scale (meters to tens of meters) and the system scale (ranging from kilometers, encompassing the entire lagoon or estuary). In the following discussion, we will first examine evidence of OM variations in our results at the marsh scale by considering trends along the transects. Subsequently, we will shift our focus to the system scale by comparing results among study sites.

455 At the marsh scale, our results show that OM content in surface soils displays a significant trend with the distance from the marsh edge, with OM content generally increasing towards the inner marsh (Figure 4a), consistently with previous findings (e.g. Chen et al., 2016; Leonard et al., 2002; Roner et al., 2016). This overall trend in OM with distance from the edge is influenced by various processes acting at the marsh scale, among which the interaction between sediment delivery and local topography plays a preeminent role. Suspended material is primarily delivered onto the marsh platform through inundation by
460 overbank flow along tidal channels (Bayliss-Smith et al., 1979) and by apical flow at creek heads (Torres and Styles, 2007). As soon as the flow reaches the vegetated marsh platform, current velocities and turbulent energy rapidly decrease (D'Alpaos et al., 2007; Mudd et al., 2010), thus promoting the deposition of more abundant sediments during the flooding initial phase in close proximity of the marsh edge (Christiansen et al., 2000; Roner et al., 2016). As a result of the larger deposition close to the edge, inner marsh generally present slightly lower elevation than that of the marsh margin (Figures 2 and 3). Lower elevations promote the persistence of an anaerobic environment, which slows down OM decomposition by reducing microbial respiration (Halupa and Howes, 1995; Kirwan et al., 2013; Puppin et al., 2023a; Roner et al., 2016).
465 Progressive energy dissipation over the vegetated marsh platform also promotes selective material settling. Coarser, denser inorganic sediment is mainly deposited near the marsh edge, while the inner marsh receives a higher proportion of finer sediments, as supported by the observed grain size distribution along the transect (Figure 4c), and less dense organic material

470 (Leonard et al., 2002; Miller et al., 2022). In addition to the already larger proportion of organic material settling in the inner marsh, the supply of finer inorganic sediment (Figure 4c) may also promote conditions favourable for OM preservation. This can occur due to the reduced oxygen exchange resulting from the lower porosity and drainage capacity of finer sediments, as well as their greater potential for protecting C from decay through organic-mineral interactions and the formation of micro- or macro-aggregates (Kelleway et al., 2016).

475 Considering all available data along transects allows us to capture global trends and average out variabilities related to local conditions. However, analysing site-specific trends can offer an interesting perspective on driver locally affecting OM

480 dynamics. Overall, seven out of ten analysed transects show an increasing trend of OM with the distance from the marsh edge (CA, PA, SF, SE, CV, CO, VB). At the SA, MI and FO study sites the trend in OM content deviates from the average behaviour and this can be attributed to the effects of local variability. At the SA site, observed OM content is very low (Figure 3n), and its distribution pattern may be masked by the intrinsic variability of the measurements. At the MI site, *Phragmites australis* grows on the marsh edge, providing a contribution of OM that outcompetes that provided by the halophytic vegetation of the inner marsh (Figure S1 in the Supplement). At the FO site, we observed abundant beach-cast seagrass wracks on the marsh edge, which are likely transported from the extensive seagrass meadows located on the tidal flats adjacent to the FO area (Figure 1f). These wracks may serve as an additional source of OM, locally influencing OM trend with the distance from the marsh margin.

485 Conversely, in some transects where the organic matter trend aligns with the average increasing trend with distance from the marsh margin, we observed particular cases in the behaviour of grain size and topographic variables, which occasionally deviate from the average trend. For example, at the inner end of the SE transect, we can observe an unexpected, slight increase both in sediment grain size (Figure 2l) and in topographic elevation (Figure 2m). This may be related to the presence of a tidal flat at the inner border of the SE marsh (Figure 1j), which can represent an additional source of sediment supply. Two notable exceptions in terms of marsh topography are also represented by the CA and CO marshes, which face a tidal flat (Figure 1b,h) and are exposed to energetic wind waves. As a consequence of the influence of wind waves, the elevation profiles exhibit a subtly convex shape, with the disappearance of the raised margin and a slight inward shift (i.e. between 5 and 10 m from the edge) of the maximum elevation along with the locations of higher median grain size values. However, these variations do not appear to affect the overall increasing trend of OM content towards the inner marsh at SE, CA and CO sites.

490 We observe variations and patterns of OM also at the system scale. The position within the gradient generated by marine and fluvial influence was previously observed to be a key predictor of OM content (e.g. Van de Broek et al., 2016; Ewers Lewis et al., 2020; Kelleway et al., 2016; Macreadie et al., 2017). At the lagoon scale, our results show lower mean OM content in surface soil in areas which are directly affected by marine influence, being closer to the inlets or along the main channels branching from them (CO, SE, SF, SA) (Figure 1 and Figure 6a). Conversely, higher OM contents were observed at sites closer to the mainland, e.g. CA, MI and PA. In agreement with this result, a significant negative relationship was observed between OM content and water salinity. However, it is unlikely that salinity as such directly controls soil organic content, as previous observations suggest an inverse relationship between soil salinity and decomposition (Hemminga et al., 1991; Wang et al., 2019), . The effect of salinity on decomposition may have been overcome by the co-occurring effects of other factors acting at different positions within the lagoon, such as vegetation characteristics, hydrodynamic conditions, sediment supply, freshwater inputs. OM increase at less saline sites is likely minimally related to the supply of already stabilized organic suspended particles from terrestrial sources as suggested for other study areas (e.g. Van de Broek et al., 2016; Gorham et al., 2021; Omengo et al., 2016; Van de Broek et al., 2018), because in the Venice Lagoon, after historical river diversions, fluvial supply of organic and inorganic material dramatically decreased. However, residual freshwater inputs, especially in terms of

groundwater, can still locally reduce salinity levels and, consequently, affect vegetation characteristics, with usually increasing macrophyte biomass at lower salinity values (Hansen et al., 2017; Van de Broek et al., 2016).

515 A relationship between OM and grain size can also be observed at the lagoon scale. Higher values of median grain size were observed at sites closer to the inlet (i.e., SF, SE) or adjacent to first order channel connected to them (SA) (Figure 6 d), whereas
higher fractions of fine sediments were observed at the lagoon-mainland boundary, near the Dese River mouth (PA) (Figure 2). This pattern is consistent with the general grain-size gradient observed in the Venice Lagoon, reflecting the typical pattern of decreasing hydrodynamic energy conditions from the inlets to the landward shore (Zonta et al., 2018). Considering the landward decreasing grain-size gradient observed within the lagoon, enhanced C preservation capacity of fine sediments (Kelleway et al., 2016) may have a role in the observed organic content pattern. Furthermore, we may hypothesize that at sites
520 where inorganic sediment inputs are greater, where hydrodynamic energy is higher, soil organic fraction is proportionally lower.

Another potentially important factor controlling OM content is vegetation type, as different species exhibit varying biomass production and decomposition resistance (e.g. Van de Broek et al., 2016; Ewers Lewis et al., 2020; H Ford et al., 2019; Saintilan et al., 2013; Yuan et al., 2020).

While our data do not allow for a full statistical analysis of the relationship between OM content and vegetation type, we can derive some interesting qualitative observations. We find no discernible trend in vegetation cover along the transects, nor a significant relationship between OM content and vegetation cover.

Considering the relationship between SOM and dominant species, we observed that higher OM percentages in surface soil are not necessarily associated with dominant species having greater aboveground biomass (as reported in the literature, see Table S4 in the Supplement). We speculate that the lack of a relationship between aboveground biomass and OM may be due to the continuous transport and mixing of locally-produced litter by marsh flooding, weakening the effect of local aboveground biomass production. Moreover, previous studies indicate a major impact from belowground biomass, which inserting into the sediments directly contributes to OM content (Craft et al., 1993; Rybczyk et al., 2002). The highest mean organic contents
535 were observed in the presence of *Limonium narbonense* and *Phragmites australis* as dominant species (Figure 5c). *Phragmites australis*, characterized by high aboveground biomass and even higher belowground biomass, forms a dense and deep network of leathery stems, roots, and rhizomes (Figure 5e) (Moore et al., 2012; Scarton et al., 2002). *Limonium narbonense*, despite low aboveground biomass (Table S4 in the Supplement), produces massive woody roots (Figure 5b) (Brooks et al., 2021). The belowground biomass of these plants may importantly contribute to SOM content quantitatively and qualitatively, as
540 belowground litter decomposition was observed to decline with increasing lignin content (Stagg et al., 2018; Puppini et al., 2023a). Interestingly, these species are more abundant in locations associated with higher values of SOM, such as the inner marsh for *Limonium narbonense*, and brackish areas for *Phragmites australis* (Figure 5a and Figure S1 in the Supplement). However, it was not feasible to directly measure or estimate the relationship between aboveground and belowground biomass and their effect on SOM content in this study.

545 In addition, soil organic content showed a significant positive correlation with vegetation species diversity (Figure 5d), in
agreement with Ford et al. (2019). Ford et al. (2016) found that plant species richness was one of the most important
explanatory variables of root biomass and Xu et al. (2020) suggested that species richness may increase biomass productivity
due to multiple mechanisms including competition reduction, niche complementarity, selection effects, and biotic and abiotic
facilitation.

550 Overall, the interplay of these dynamics at both marsh and system scales also impacts sediment bulk density. We observed
higher soil densities along marsh edges and at sites such as CO, SE, SF, and SA, where organic content is generally lower and
coarser sediments predominate (Figure 4b and Figure 6b). This observation aligns with previous research indicating that soil
density is influenced by both organic matter content and grain size. Indeed, several studies have reported a significant and
555 negative correlation between SOM and bulk density (e.g. Holmquist et al., 2018; Morris et al., 2016), while sand content has
been shown to correlate positively with soil bulk density (Tanveera et al., 2016).

As a consequence of the variability in soil organic content and density both at the marsh and at the system scale, SOC density
and C stock show significant variations across and within different salt marshes, enhancing the complexity of blue C
assessment. Based on our estimates of mean SOC density in top 20 cm, and considering an expected accretion rate of about
560 0.3 cm yr⁻¹ for salt marshes in equilibrium with Relative Sea Level Rise (RSLR) (Day et al., 1998), the average C accumulation
rate for the salt marshes in the Venice Lagoon is estimated to be approximately equal to 69 g C m⁻² yr⁻¹. Our results are
consistent with the mean C accumulation rate in the Australian tidal marshes of 54.52 g C m⁻² yr⁻¹ calculated by Macreadie
et al. (2017) from 323 soil cores to the depth of 30 cm all around Australia and using a mean accretion rate of 0.21 cm yr⁻¹.
However, we observed that, under the same accretion rate, estimated SOC from our study may result in C accumulation rates
565 varying up to 50% from one place to another because of the two-scale variability highlighted by our measurements. This
underscores the need for careful consideration of local variability when assessing blue carbon sequestration and storage
potential in wetland environments.

Conclusions

570 Overall, our data reveal two scales of variations in sedimentary OM content in salt marsh soils. One occurs at the marsh scale
and is influenced by the interplay between surface elevation and sediment supply dynamics along the distance from the marsh
edge. The other occurs at the basin scale, dominated by the gradient generated by marine and fluvial influence.

The observations on morphological, sedimentological and vegetational features emphasize the dynamic feedbacks between
hydrological dynamics, sediment supply, surface elevation and vegetation characteristics and allowed us to relate them to SOM
spatial patterns.

575 Our results show that OM content generally follows an inverse relationship with the distance from the marsh edge and, broadly,
is greatest in salt marshes subjected to freshwater inputs and characterized by the presence of fine-grained sediments. Although

the interplay between physical and biological factors makes it difficult to unravel the direct cause-effect relationship, variations in allochthonous inputs, sediment grain size and/or preservation condition may explain the observed variation in SOM. Our data on local vegetation do not allow us to detect plant community characteristics controlling overall variations in SOM. Hence, we highlight the need for further analyses of quantitative and qualitative characteristics of different tidal marsh vegetation types. However, species diversity was observed to be an important factor influencing SOM content.

~~The observations on marsh morphology and grain size distribution further emphasize the interplay between hydrological, morphological and biological dynamics.~~

Our data on the spatial distribution of SOM provide additional insights on organic matter dynamics in salt marshes and inform model representations of SOM accumulation, with the possibility to help improve the ability for biogeomorphological models ~~constrain model representations of SOM accumulation, improving biogeomorphological model ability~~ to describe marsh response to the effects of climate change and anthropogenic perturbation. Moreover, our analyses emphasize the potential complications introduced by local variability in assessing the blue carbon sequestration and storage potential in wetland environments. This underscores the importance of carefully considering both the local variability and the factors influencing it. ~~Furthermore, our analyses further elucidate marsh importance within the global C cycle.~~ Finally, our findings may inform conservation strategies and restoration interventions, ~~giving directions on salt marsh type prioritisation. They also provide valuable~~ providing information on conditions promoting OM storage and preservation, such as the maintenance or recovery of freshwater inputs, the supply of finer sediments, and the enhancement of vegetation diversity.

Appendix A

Site	<i>Inula-erithmoides</i>	<i>Aster-tripolium</i>	<i>Limonium-narbonense</i>	<i>Salicornia-veneta</i>	<i>Sarcocornia-fruticosa</i>	<i>Spartina-maritima</i>	<i>Halimione-portulacoides</i>	<i>Suaeda-maritima</i>	<i>Puccinellia-palustris</i>	<i>Juncus-maritimus</i>	<i>Phragmites-australis</i>	<i>Triglochin-maritima</i>	Soil (%)
SF1			+		3		3						0
SF2			+		4					3			0
SF3					2					4			0
SF4					1					1			0
SF5			1		3					3			0
SF6			3	2									15
CO1	3		+		3								0
CO2	3	+	+		3			1					0
CO3					4		2	2					0
CO4							1	1					0
CO5		+			3			4	+				0
CO6					1		2	+					0
SE1	4				2								20
SE2			2		4				+				10
SE3			2		4								20
SE4			3		2								20

<i>Site</i>	<i>Inula-erithmoides</i>	<i>Aster-tripolium</i>	<i>Limonium-narbonense</i>	<i>Salicornia-veneta</i>	<i>Sarcocornia-fruticosa</i>	<i>Spartina-maritima</i>	<i>Halimione-portulacoides</i>	<i>Suaeda-maritima</i>	<i>Puccinellia-palustris</i>	<i>Juncus-maritimus</i>	<i>Phragmites-australis</i>	<i>Triglochin-maritima</i>	<i>Soil (%)</i>
<i>SE5</i>					†								5
<i>SE6</i>			†		†								5
<i>PA1</i>		†									†		15
<i>PA2</i>		†									†		15
<i>PA3</i>		†									†		5
<i>PA4</i>		†									†		5
<i>PA5</i>		†								3	3		0
<i>PA6</i>		†					±			2	4		0
<i>SA1</i>			†		†	†							10
<i>SA2</i>					†				†				0
<i>SA3</i>					†								0
<i>SA4</i>			†		†				†				0
<i>SA5</i>			±	†	2				2				25
<i>SA6</i>			±	†					3				50
<i>CV1</i>	2		†	3				†	2				5
<i>CV2</i>			±		†	†			†				0
<i>CV3</i>			†		4	†			†				0

<i>Site</i>	<i>Inula-erithmoides</i>	<i>Aster-tripolium</i>	<i>Limonium-narbonense</i>	<i>Salicornia-veneta</i>	<i>Sarcocornia-fruticosa</i>	<i>Spartina-maritima</i>	<i>Halimione-portulacoides</i>	<i>Suaeda-maritima</i>	<i>Puccinellia-palustris</i>	<i>Juncus-maritimus</i>	<i>Phragmites-australis</i>	<i>Triglochin-maritima</i>	<i>Soil (%)</i>
<i>CV4</i>			4		2	1			1				0
<i>CV5</i>			3	1		1		1		2			25
<i>CV6</i>			3		1				1	2			0
<i>FO1</i>					2			4					0
<i>FO2</i>				2	3			2	1				0
<i>FO3</i>					1	1		1	1				0
<i>FO4</i>			1		4	1		1	1				0
<i>FO5</i>			1	1	3	1			2	1			5
<i>FO6</i>			1	1	2				2				10
<i>MI1</i>			1		2		1			1	2		0
<i>MI2</i>		1	1		2		1			2	1		0
<i>MI3</i>		1	4	1	1					1	1		0
<i>MI4</i>		1	1						1				5
<i>MI5</i>		1	1						1				5
<i>MI6</i>		1	1						1				10
<i>CA1</i>			1		4								20
<i>CA2</i>			4		1	1						1	5

Site	<i>Inula-erithmoides</i>	<i>Aster-tripolium</i>	<i>Limonium-narbonense</i>	<i>Salicornia-veneta</i>	<i>Sarcocornia-frutesca</i>	<i>Spartina-maritima</i>	<i>Halimione-portulacoides</i>	<i>Suaeda-maritima</i>	<i>Puccinellia-palustris</i>	<i>Juncus-maritimus</i>	<i>Phragmites-australis</i>	<i>Triglochin-maritima</i>	Soil (%)
CA3			+		4				+				5
CA4					+				+				0
CA5			4		2								10
CA6			4						+				10
VB1		+	2		+				+	2			25
VB2					2					4			5
VB3			+		2				+	2		+	10
VB4			2		2				+	2			10
VB5		2	+						3	+			10
VB6			+		2				+	3			5

595

Table A 1. Vegetation survey. Species composition at each studied site following Braun-Blanquet cover-abundance scale (5 = 75-100 %; 4 = 50-75 %; 3 = 25-50 %; 2 = 5-25 %; 1 < 5 % numerous individuals; + < 5 % few individuals).

Species	Live plant biomass (AFDW g m ⁻²)	Source
<i>Inula-erithmoides</i>	366	+
<i>Aster-tripolium</i>	545	2
<i>Limonium-narbonense</i>	276.3	3

<i>Salicornia veneta</i>	657.7	3
<i>Sarcocornia fruticosa</i>	1296.7	3
<i>Spartina maritima</i>	370.7	3
<i>Halimione portulacoides</i>	1540.7	3
<i>Suaeda maritima</i>	135.42	4
<i>Puccinellia palustris</i>	372.7	3
<i>Juncus maritimus</i>	601.3	3
<i>Phragmites australis</i>	1855	5
<i>Triglochin maritima</i>	500	6

600 **Table A 2.** Aboveground biomass. Live plant biomass as ash-free dry weight (AFDW) for the species found in our study area. 1 = Zurayk & Baalbaki (1996); 2 = Ingegnoli & Giglio (2004); 3 = Scarton (2006); 4 = Mitra et al. (2005); 5 = Windham (2001); 6 = Kibby et al. (1980).

Study site	ARPAV station	Mean salinity (ppt)	Standard deviation
CA	PNC1_7B	30.45	2.94
CV	ENC1_4	32.38	2.02
FO	ENC1_VS/PC2_16B	29.81	3.80
MI	PC4_10B	24.6	5.45
PA	PC1_1B/PNC2_2	24.29	1.03
SA SF	EC_Ve8	32.16	2.30
SE	PNC2_SG	31.21	2.40
VB	PC3_VDB	30.57	2.57

605 **Table A 3.** Water salinity. Values of water salinity for each study area as the last 6 years mean (2016-2022) of the quarterly measurements from the CTD multiparameter probes of the Veneto Region Environmental Protection Agency (ARPAV).

Data availability

The datasets needed to evaluate the conclusions in the paper are available at link <https://researchdata.cab.unipd.it/id/eprint/1240><https://researchdata.cab.unipd.it/id/eprint/709>. Salinity data for the Venice

610 Lagoon are also freely available at <https://www.arpa.veneto.it/dati-ambientali/open-data/file-e-allegati/soaml/laguna-di-veneziah/dati-sonda>

Author contribution A.P., D.T., A.D. and M.M. designed the study. A.P., D.T., A.D. and M.M. developed the methodology. A.P. and D.T. collected the data and performed laboratory analyses. E.F. and N.R. provided the instrumentation and tools for grain-size analysis. A.P. and D.T. were responsible for data analysis and interpretation with the supervision of A.D., M.M. and M.G. All the authors discussed the data and agreed on their interpretation. A.P. wrote the original draft. D.T., A.D., M.G. and M.M. provided comments and suggestions to improve the original draft. All the co-authors contributed to the final polishing of the manuscript.

Competing interests The authors declare that they have no conflict of interest.

620 **Acknowledgements** This scientific activity was performed in the Research Programme Venezia2021, coordinated by CORILA, with the contribution of the Provveditorato for the Public Works of Veneto, Trentino Alto Adige and Friuli Venezia Giulia, Research Line 3.2 (PI A.D.). The University of Padova SID2021 project, “Unraveling Carbon Sequestration Potential by Salt-Marsh Ecosystems” is also acknowledged (PI A. D.). This study was funded within the RETURN Extended Partnership and received funding from the European Union Next-GenerationEU (National Recovery and Resilience Plan – NRRP, Mission 4, Component 2, Investment 1.3 – D.D. 1243 2/8/2022, PE0000005). The authors thank the colleagues and technical staff of the Department of Biology, the Department of Pharmaceutical and Pharmacological Sciences and the Department of Geosciences, University of Padova, for fieldwork and laboratory analysis support.

References

- Allen, J. R., Cornwell, J. C., and Baldwin, A. H.: Contributions of organic and mineral matter to vertical accretion in tidal wetlands across a Chesapeake Bay subestuary, *J. Mar. Sci. Eng.*, 9, <https://doi.org/10.3390/jmse9070751>, 2021.
- Allen, J. R. L.: Morphodynamics of Holocene salt marshes: A review sketch from the Atlantic and Southern North Sea coasts of Europe, *Quat. Sci. Rev.*, 19, 1255–1331, [https://doi.org/10.1016/S0277-3791\(00\)00157-8](https://doi.org/10.1016/S0277-3791(00)00157-8), 2000.
- Ball, D. F.: Loss-on-ignition as an estimate of organic matter and organic carbon in non-calcareous soils, *J. Soil Sci.*, 15, 84–92, <https://doi.org/https://doi.org/10.1111/j.1365-2389.1964.tb00247.x>, 1964.
- 635 Barbier, E. B., Hacker, S. D., Kennedy, C., Koch, E. W., Stier, A. C., and Silliman, B. R.: The value of estuarine and coastal ecosystem services, *Ecol. Monogr.*, 81, 169–193, <https://doi.org/10.1890/10-1510.1>, 2011.
- Bayliss-Smith, T. P., Healey, R., Lailey, R., Spencer, T., and Stoddart, D. R.: Tidal flows in salt marsh creeks, *Estuar. Coast. Mar. Sci.*, 9, 235–255, [https://doi.org/https://doi.org/10.1016/0302-3524\(79\)90038-0](https://doi.org/https://doi.org/10.1016/0302-3524(79)90038-0), 1979.
- Beefink, W. G.: The coastal salt marshes of western and northern Europe: an ecological and phytosociological approach, in:

- 640 Ecosystems of the World 1: wet coastal ecosystems, edited by: Chapman, V. J., Elsevier, Amsterdam, 1977.
 Bertness, M. D. and Ellison, A. M.: Determinants of Pattern in a New England Salt Marsh Plant Community, *Ecol. Monogr.*,
 57, 129–147, <https://doi.org/10.2307/1942621>, 1987.
 Boesch, D. F. and Turner, R. E.: Dependence of Fishery Species on Salt Marshes: The Role of Food and Refuge, *Estuaries*, 7,
 460–468, <https://doi.org/doi.org/10.2307/1351627>, 1984.
- 645 Braun-Blanquet, J.: *Pflanzensoziologie. Grundzüge der Vegetationskunde*, 3rd ed., Springer Vienna, Wien, 866 pp.,
<https://doi.org/https://doi.org/10.1007/978-3-7091-8110-2>, 1964.
 Breda, A., Saco, P. M., Rodríguez, J. F., Sandi, S. G., and Riccardi, G.: Assessing the effects of sediment and tidal level
 variability on coastal wetland evolution, *J. Hydrol.*, 613, <https://doi.org/10.1016/j.jhydrol.2022.128387>, 2022.
 Van de Broek, M., Temmerman, S., Merckx, R., and Govers, G.: Controls on soil organic carbon stocks in tidal marshes along
 an estuarine salinity gradient, *Biogeosciences*, 13, 6611–6624, <https://doi.org/10.5194/bg-13-6611-2016>, 2016.
- 650 Van de Broek, M., Vandendriessche, C., Poppelmonde, D., Merckx, R., Temmerman, S., and Govers, G.: Long-term organic
 carbon sequestration in tidal marsh sediments is dominated by old-aged allochthonous inputs in a macrotidal estuary, *Glob.
 Chang. Biol.*, 24, 2498–2512, <https://doi.org/10.1111/gcb.14089>, 2018.
 Brooks, H., Möller, I., Carr, S., Chirol, C., Christie, E., Evans, B., Spencer, K. L., Spencer, T., and Royse, K.: Resistance of
 salt marsh substrates to near-instantaneous hydrodynamic forcing, *Earth Surf. Process. Landforms*, 46,
 655 <https://doi.org/https://doi.org/10.1002/esp.4912>, 2021.
 Brückner, M. Z. M., Schwarz, C., van Dijk, W. M., van Oorschot, M., Douma, H., and Kleinhans, M. G.: Salt Marsh
 Establishment and Eco-Engineering Effects in Dynamic Estuaries Determined by Species Growth and Mortality, *J. Geophys.
 Res. Earth Surf.*, 124, 2962–2986, <https://doi.org/https://doi.org/10.1029/2019JF005092>, 2019.
- 660 Carniello, L., Defina, A., and D’Alpaos, L.: Morphological evolution of the Venice lagoon: Evidence from the past and trend
 for the future, *J. Geophys. Res. Earth Surf.*, 114, <https://doi.org/https://doi.org/10.1029/2008JF001157>, 2009.
 Chen, S., Torres, R., and Goñi, M. A.: The Role of Salt Marsh Structure in the Distribution of Surface Sedimentary Organic
 Matter, *Estuaries and Coasts*, 39, 108–122, <https://doi.org/10.1007/s12237-015-9957-z>, 2016.
 Chmura, G. L., Anisfeld, S. C., Cahoon, D. R. D. R., and Lynch, J. C. J. C.: Global carbon sequestration in tidal, saline wetland
 665 soils, *Global Biogeochem. Cycles*, 17, 22–1, <https://doi.org/10.1029/2002GB001917>, 2003.
 Christiansen, T., Wiberg, P. L., and Milligan, T. G.: Flow and Sediment Transport on a Tidal Salt Marsh Surface, *Estuar.
 Coast. Shelf Sci.*, 50, 315–331, <https://doi.org/10.1006/ECSS.2000.0548>, 2000.
 Costanza, R., D’Arge, R., De Groot, R., Farber, S., Grasso, M., Hannon, B., Limburg, K., Naeem, S., O’Neill, R. V. V., Paruelo,
 J., Raskin, R. G., Sutton, P., and Van Den Belt, M.: The value of the world’s ecosystem services and natural capital, *Nature*,
 670 387, 253–260, <https://doi.org/10.1038/387253a0>, 1997.
 Craft, C. B., Seneca, E. D., and Broome, S. W.: Vertical Accretion in Microtidal Regularly and Irregularly Flooded Estuarine
 Marshes, *Estuar. Coast. Shelf Sci.*, 37, 371–386, <https://doi.org/https://doi.org/10.1006/ecss.1993.1062>, 1993.
 D’Alpaos, A.: The mutual influence of biotic and abiotic components on the long-term ecomorphodynamic evolution of salt-

- marsh ecosystems, *Geomorphology*, 126, 269–278, <https://doi.org/10.1016/J.GEOMORPH.2010.04.027>, 2011.
- 675 D’Alpaos, A., Lanzoni, S., Marani, M., and Rinaldo, A.: Landscape evolution in tidal embayments: Modeling the interplay of erosion, sedimentation, and vegetation dynamics, *J. Geophys. Res. Earth Surf.*, 112, <https://doi.org/10.1029/2006JF000537>, 2007.
- D’Alpaos, A., Mudd, S. M., and Carniello, L.: Dynamic response of marshes to perturbations in suspended sediment concentrations and rates of relative sea level rise, *J. Geophys. Res. Earth Surf.*, 116, <https://doi.org/10.1029/2011JF002093>,
680 2011.
- D’Alpaos, C. and D’Alpaos, A.: The valuation of ecosystem services in the Venice lagoon: A multicriteria approach, *Sustain.*, 13, <https://doi.org/10.3390/su13179485>, 2021.
- D’Alpaos, L.: *Fatti e misfatti di idraulica lagunare. La laguna di Venezia dalla diversione dei fiumi alle nuove opere delle bocche di porto*, edited by: Istituto Veneto di Scienze Lettere e Arti, 329 pp., 2010.
- 685 Day, J. W., Rismondo, A., Scarton, F., Are, D., and Cecconi, G.: Relative sea level rise and Venice lagoon wetlands, *J. Coast. Conserv.*, 4, 27–34, <https://doi.org/10.1007/BF02806486>, 1998.
- Day, J. W., Rybczyk, J., Scarton, F., Rismondo, A., Are, D., and Cecconi, G.: Soil accretionary dynamics, sea-level rise and the survival of wetlands in Venice Lagoon: A field and modelling approach, *Estuar. Coast. Shelf Sci.*, 49, 607–628, <https://doi.org/10.1006/ecss.1999.0522>, 1999.
- 690 Drexler, J. Z., Davis, M. J., Woo, I., and De La Cruz, S.: Carbon Sources in the Sediments of a Restoring vs. Historically Unaltered Salt Marsh, *Estuaries and Coasts*, 43, 1345–1360, <https://doi.org/10.1007/s12237-020-00748-7>, 2020.
- Duarte, C. M., Middelburg, J. J., and Caraco, N.: Major role of marine vegetation on the oceanic carbon cycle, *Biogeosciences*, 2, 1–8, <https://doi.org/10.5194/bg-2-1-2005>, 2005.
- Ewers Lewis, C. J., Baldock, J. A., Hawke, B., Gadd, P. S., Zawadzki, A., Heijnis, H., Jacobsen, G. E., Rogers, K., and
695 Macreadie, P. I.: Impacts of land reclamation on tidal marsh ‘blue carbon’ stocks, *Sci. Total Environ.*, 672, 427–437, <https://doi.org/10.1016/j.scitotenv.2019.03.345>, 2019.
- Ewers Lewis, C. J., Young, M. A., Ierodiaconou, D., Baldock, J. A., Hawke, B., Sanderman, J., Carnell, P. E., and Macreadie, P. I.: Drivers and modelling of blue carbon stock variability in sediments of southeastern Australia, *Biogeosciences*, 17, 2041–2059, <https://doi.org/10.5194/bg-17-2041-2020>, 2020.
- 700 Fagherazzi, S., Kirwan, M. L., Mudd, S. M., Guntenspergen, G. R. G. R., Temmerman, S., D’Alpaos, A., Van De Koppel, J., Rybczyk, J. M. J. M., Reyes, E., Craft, C., Craft, C., and Clough, J.: Numerical models of salt marsh evolution: Ecological, geomorphic, and climatic factors, *Rev. Geophys.*, 50, <https://doi.org/https://doi.org/10.1029/2011RG000359>, 2012.
- Fairchild, T. P., Bennett, W. G., Smith, G., Day, B., Skov, M. W., Möller, I., Beaumont, N., Karunarathna, H., and Griffin, J. N.: Coastal wetlands mitigate storm flooding and associated costs in estuaries, *Environ. Res. Lett.*, 16, 74034,
705 <https://doi.org/10.1088/1748-9326/ac0c45>, 2021.
- Finotello, A., Tognin, D., Carniello, L., Ghinassi, M., Bertuzzo, E., and D’Alpaos, A.: Hydrodynamic Feedbacks of Salt-Marsh Loss in the Shallow Microtidal Back-Barrier Lagoon of Venice (Italy), *Water Resour. Res.*, 59, e2022WR032881,

<https://doi.org/https://doi.org/10.1029/2022WR032881>, 2023.

- 710 Ford, H., Garbutt, A., Ladd, C., Malarkey, J., and Skov, M. W.: Soil stabilization linked to plant diversity and environmental context in coastal wetlands, *J. Veg. Sci.*, 27, 259–268, <https://doi.org/https://doi.org/10.1111/jvs.12367>, 2016.
- Ford, H., Garbutt, A., Duggan-Edwards, M., Pagès, J. F., Harvey, R., Ladd, C., and Skov, M. W.: Large-scale predictions of salt-marsh carbon stock based on simple observations of plant community and soil type, *Biogeosciences*, 16, 425–436, <https://doi.org/10.5194/bg-16-425-2019>, 2019.
- 715 Frangipane, G., Pistolato, M., Molinaroli, E., Guerzoni, S., and Tagliapietra, D.: Comparison of loss on ignition and thermal analysis stepwise methods for determination of sedimentary organic matter, *Aquat. Conserv. Mar. Freshw. Ecosyst.*, 19, 24–33, <https://doi.org/https://doi.org/10.1002/aqc.970>, 2009.
- Friedrichs, C. T. and Perry, J. E.: Tidal Salt Marsh Morphodynamics: A Synthesis, *J. Coast. Res.*, 27, 7–37, 2001.
- Gedan, K. B., Silliman, B. R., and Bertness, M. D.: Centuries of Human-Driven Change in Salt Marsh Ecosystems, *Ann. Rev. Mar. Sci.*, 1, <https://doi.org/10.1146/annurev.marine.010908.163930>, 2009.
- 720 Gieskes, J. M., Elwany, H., Rasmussen, L., Han, S., Rathburn, A., and Deheyn, D. D.: Salinity variations in the Venice Lagoon, Italy: Results from the SIOSED Project, May 2005–February 2007, *Mar. Chem.*, 154, 77–86, <https://doi.org/10.1016/J.MARCHEM.2013.05.011>, 2013.
- Gorham, C., Lavery, P., Kelleway, J. J., Salinas, C., and Serrano, O.: Soil Carbon Stocks Vary Across Geomorphic Settings in Australian Temperate Tidal Marsh Ecosystems, *Ecosystems*, 24, 319–334, <https://doi.org/10.1007/S10021-020-00520-9>,
725 2021.
- de Groot, R., Brander, L., van der Ploeg, S., Costanza, R., Bernard, F., Braat, L., Christie, M., Crossman, N., Ghermandi, A., Hein, L., Hussain, S., Kumar, P., McVittie, A., Portela, R., Rodriguez, L. C., ten Brink, P., and van Beukering, P.: Global estimates of the value of ecosystems and their services in monetary units, *Ecosyst. Serv.*, 1, 50–61, <https://doi.org/10.1016/J.ECOSER.2012.07.005>, 2012.
- 730 Hansen, K., Butzeck, C., Eschenbach, A., Gröngröft, A., Jensen, K., and Pfeiffer, E.-M.: Factors influencing the organic carbon pools in tidal marsh soils of the Elbe estuary (Germany), *J. Soils Sediments*, 17, 47–60, <https://doi.org/10.1007/s11368-016-1500-8>, 2017.
- Hemminga, M. A., De Leeuw, J., De Munck, W., and Koutstaal, B. P.: Decomposition in estuarine salt marshes: the effect of soil salinity and soil water content, *Veg.*, 94, 25–33, <https://doi.org/10.1007/BF00044913>, 1991.
- 735 Holmquist, J. R., Windham-Myers, L., Bliss, N., Crooks, S., Morris, J. T., Megonigal, J. P., Troxler, T., Weller, D., Callaway, J., Drexler, J., Ferner, M. C., Gonnecta, M. E., Kroeger, K. D., Schile-Beers, L., Woo, I., Buffington, K., Breithaupt, J., Boyd, B. M., Brown, L. N., Dix, N., Hice, L., Horton, B. P., Macdonald, G. M., Moyer, R. P., Reay, W., Shaw, T., Smith, E., Smoak, J. M., Sommerfield, C., Thorne, K., Velinsky, D., Watson, E., Grimes, K. W., and Woodrey, M.: Accuracy and precision of tidal wetland soil carbon mapping in the conterminous United States, *Sci. Rep.*, 8, <https://doi.org/10.1038/s41598-018-26948-7>,
740 7, 2018.
- Howard, J., Hoyt, S., Isensee, K., Telszewski, M., and Pidgeon, E.: Coastal blue carbon: methods for assessing carbon stocks

- and emissions factors in mangroves, tidal salt marshes, and seagrasses, edited by: Howard, J., Hoyt, S., Isensee, K., Telszewski, M., and Pidgeon, E., Conservation International, Intergovernmental Oceanographic Commission of UNESCO, International Union for Conservation of Nature, Arlington, Virginia, USA, 2014.
- 745 Kelleway, J. J., Saintilan, N., Macreadie, P. I., and Ralph, P. J.: Sedimentary Factors are Key Predictors of Carbon Storage in SE Australian Saltmarshes, *Ecosystems*, 19, 865–880, <https://doi.org/10.1007/s10021-016-9972-3>, 2016.
- Keuskamp, J. A., Dingemans, B. J. J., Lehtinen, T., Sarneel, J. M., and Hefting, M. M.: Tea Bag Index: A novel approach to collect uniform decomposition data across ecosystems, *Methods Ecol. Evol.*, 4, 1070–1075, <https://doi.org/10.1111/2041-210X.12097>, 2013.
- 750 Kirwan, M. L. and Murray, A. B.: A coupled geomorphic and ecological model of tidal marsh evolution, *Proc. Natl. Acad. Sci.*, 104, 6118–6122, <https://doi.org/10.1073/PNAS.0700958104>, 2007.
- Kirwan, M. L., Guntenspergen, G. R., D’Alpaos, A., Morris, J. T., Mudd, S. M., and Temmerman, S.: Limits on the adaptability of coastal marshes to rising sea level, *Geophys. Res. Lett.*, 37, <https://doi.org/10.1029/2010GL045489>, 2010.
- Kirwan, M. L., Langley, J. A., Guntenspergen, G. R., and Megonigal, J. P.: The impact of sea-level rise on organic matter decay rates in Chesapeake Bay brackish tidal marshes, *Biogeosciences*, 10, 1869–1876, <https://doi.org/10.5194/bg-10-1869-2013>, 2013.
- 755 Kirwan, M. L., Guntenspergen, G. R., and Langley, J. A.: Temperature sensitivity of organic-matter decay in tidal marshes, *Biogeosciences*, 11, 4801–4808, <https://doi.org/10.5194/bg-11-4801-2014>, 2014.
- Kolker, A. S., Goodbred, S. L., Hameed, S., and Cochran, J. K.: High-resolution records of the response of coastal wetland systems to long-term and short-term sea-level variability, *Estuar. Coast. Shelf Sci.*, 84, 493–508, <https://doi.org/10.1016/j.ecss.2009.06.030>, 2009.
- 760 Lefeuvre, J.-C., Laffaille, P., Feunteun, E., Bouchard, V., and Radureau, A.: Biodiversity in salt marshes: from patrimonial value to ecosystem functioning. The case study of the Mont-Saint-Michel bay, *C. R. Biol.*, 326, 125–131, [https://doi.org/https://doi.org/10.1016/S1631-0691\(03\)00049-0](https://doi.org/https://doi.org/10.1016/S1631-0691(03)00049-0), 2003.
- 765 Leonard, L. A., Wren, P. A., and Beavers, R. L.: Flow dynamics and sedimentation in *Spartina alterniflora* and *Phragmites australis* marshes of the Chesapeake Bay, *Wetlands*, 22, 415–424, [https://doi.org/10.1672/0277-5212\(2002\)022\[0415:FDASIS\]2.0.CO;2](https://doi.org/10.1672/0277-5212(2002)022[0415:FDASIS]2.0.CO;2), 2002.
- Macreadie, P. I., Ollivier, Q. R., Kelleway, J. J., Serrano, O., Carnell, P. E., Ewers Lewis, C. J., Atwood, T. B., Sanderman, J., Baldock, J., Connolly, R. M., Duarte, C. M., Lavery, P. S., Steven, A., and Lovelock, C. E.: Carbon sequestration by Australian tidal marshes, *Sci. Rep.*, 7, 44071, <https://doi.org/10.1038/srep44071>, 2017.
- 770 Macreadie, P. I., Anton, A., Raven, J. A., Beaumont, N., Connolly, R. M., Friess, D. A., Kelleway, J. J., Kennedy, H., Kuwae, T., Lavery, P. S., Lovelock, C. E., Smale, D. A., Apostolaki, E. T., Atwood, T. B., Baldock, J., Bianchi, T. S., Chmura, G. L., Eyre, B. D., Fourqurean, J. W., Hall-Spencer, J. M., Huxham, M., Hendriks, I. E., Krause-Jensen, D., Laffoley, D., Luisetti, T., Marbà, N., Masque, P., McGlathery, K. J., Megonigal, J. P., Murdiyarso, D., Russell, B. D., Santos, R., Serrano, O.,
- 775 Silliman, B. R., Watanabe, K., and Duarte, C. M.: The future of Blue Carbon science, *Nat. Commun.*, 10, 1–13,

<https://doi.org/10.1038/s41467-019-11693-w>, 2019.

Marani, M., Belluco, E., Ferrari, S., Silvestri, S., D'Alpaos, A., Lanzoni, S., Feola, A., and Rinaldo, A.: Analysis, synthesis and modelling of high-resolution observations of salt-marsh eco-geomorphological patterns in the Venice lagoon, *Estuar. Coast. Shelf Sci.*, 69, 414–426, <https://doi.org/10.1016/j.ecss.2006.05.021>, 2006.

780 Marani, M., D'Alpaos, A., Lanzoni, S., Carniello, L., and Rinaldo, A.: Biologically-controlled multiple equilibria of tidal landforms and the fate of the Venice lagoon, *Geophys. Res. Lett.*, 34, <https://doi.org/10.1029/2007GL030178>, 2007.

Marani, M., Da Lio, C., and D'Alpaos, A.: Vegetation engineers marsh morphology through multiple competing stable states, *Proc. Natl. Acad. Sci. U. S. A.*, 110, 3259–3263, <https://doi.org/10.1073/pnas.1218327110>, 2013.

785 McLeod, E., Chmura, G. L., Bouillon, S., Salm, R., Björk, M., Duarte, C. M., Lovelock, C. E., Schlesinger, W. H., and Silliman, B. R.: A blueprint for blue carbon: Toward an improved understanding of the role of vegetated coastal habitats in sequestering CO₂, *Front. Ecol. Environ.*, 9, 552–560, <https://doi.org/10.1890/110004>, 2011.

Mcowen, C. J., Weatherdon, L. V., Van Bochove, J.-W., Sullivan, E., Blyth, S., Zockler, C., Stanwell-Smith, D., Kingston, N., Martin, C. S., Spalding, M., Fletcher, S., Van Bochove, J.-W., Sullivan, E., Blyth, S., Zockler, C., Stanwell-Smith, D., Kingston, N., Martin, C. S., Spalding, M., Fletcher, S., Bochove, J.-W., Sullivan, E., Blyth, S., Zockler, C., Stanwell-Smith, D., Kingston, N., Martin, C. S., Spalding, M., and Fletcher, S.: A global map of saltmarshes, *Biodivers. Data J.*, 5, e11764, <https://doi.org/10.3897/BDJ.5.e11764>, 2017.

Mel, R. A., Viero, D. P., Carniello, L., Defina, A., and D'Alpaos, L.: The first operations of Mo.S.E. system to prevent the flooding of Venice: Insights on the hydrodynamics of a regulated lagoon, *Estuar. Coast. Shelf Sci.*, 261, 107547, <https://doi.org/https://doi.org/10.1016/j.ecss.2021.107547>, 2021.

795 Middelburg, J. J., Nieuwenhuize, J., Lubberts, R. K., and Van De Plassche, O.: Organic carbon isotope systematics of coastal marshes, *Estuar. Coast. Shelf Sci.*, 45, 681–687, <https://doi.org/10.1006/ecss.1997.0247>, 1997.

Miller, C. B., Rodriguez, A. B., Bost, M. C., Mckee, B. A., and Mctigue, N. D.: Carbon accumulation rates are highest at young and expanding salt marsh edges, *Commun. Earth Environ. Environ.*, 3, <https://doi.org/10.1038/s43247-022-00501-x>, 2022.

800 Möller, I., Kudella, M., Rupprecht, F., Spencer, T., Paul, M., Van Wesenbeeck, B. K., Wolters, G., Jensen, K., Bouma, T. J., Miranda-Lange, M., Miranda-Lange, M., and Schimmels, S.: Wave attenuation over coastal salt marshes under storm surge conditions, *Nat. Geosci.*, 7, 727–731, <https://doi.org/10.1038/NGEO2251>, 2014.

Moore, G. E., Burdick, D. M., Peter, C. R., and Keirstead, D. R.: Belowground Biomass of *Phragmites australis* in Coastal Marshes, *Northeast. Nat.*, 19, 611–626, <https://doi.org/10.1656/045.019.0406>, 2012.

805 Morris, J. T., Sundareshwar, P. V., Nietch, C. T., Kjerfve, B., and Cahoon, D. R.: Responses of coastal wetlands to rising sea level, *Ecology*, 83, 2869–2877, [https://doi.org/10.1890/0012-9658\(2002\)083\[2869:ROCWTR\]2.0.CO;2](https://doi.org/10.1890/0012-9658(2002)083[2869:ROCWTR]2.0.CO;2), 2002.

Morris, J. T., Barber, D. C., Callaway, J. C., Chambers, R., Hagen, S. C., Hopkinson, C. S., Johnson, B. J., Megonigal, P., Neubauer, S. C., Troxler, T., and Wigand, C.: Contributions of organic and inorganic matter to sediment volume and accretion in tidal wetlands at steady state, *Earth's Futur.*, 4, 110–121, <https://doi.org/10.1002/2015EF000334>, 2016.

- 810 Mudd, S. M.: The life and death of salt marshes in response to anthropogenic disturbance of sediment supply, *Geology*, 39, 511–512, <https://doi.org/10.1130/focus052011.1>, 2011.
- Mudd, S. M., Fagherazzi, S., Morris, J. T., and Furbish, D. J.: Flow, Sedimentation, and Biomass Production on a Vegetated Salt Marsh in South Carolina: Toward a Predictive Model of Marsh Morphologic and Ecologic Evolution, in: *The Ecogeomorphology of Tidal Marshes - Volume 59*, edited by: Fagherazzi, S., Marani, M., and Blum, L. K., American
- 815 Geophysical Union (AGU), 165–188, <https://doi.org/https://doi.org/10.1029/CE059p0165>, 2004.
- Mudd, S. M., Howell, S. M., and Morris, J. T.: Impact of dynamic feedbacks between sedimentation, sea-level rise, and biomass production on near-surface marsh stratigraphy and carbon accumulation, *Estuar. Coast. Shelf Sci.*, 82, 377–389, <https://doi.org/https://doi.org/10.1016/j.ecss.2009.01.028>, 2009.
- Mudd, S. M., D’Alpaos, A., and Morris, J. T.: How does vegetation affect sedimentation on tidal marshes? Investigating
- 820 particle capture and hydrodynamic controls on biologically mediated sedimentation, *J. Geophys. Res. Earth Surf.*, 115, <https://doi.org/https://doi.org/10.1029/2009JF001566>, 2010.
- Mueller, P., Schile-Beers, L. M., Mozdzer, T. J., Chmura, G. L., Dinter, T., Kuzyakov, Y., De Groot, A. V., Esselink, P., Smit, C., D’Alpaos, A., Ibáñez, C., Lazarus, M., Neumeier, U., Johnson, B. J., Baldwin, A. H., Yarwood, S. A., Montemayor, D. I., Yang, Z., Wu, J., Jensen, K., and Nolte, S.: Global-change effects on early-stage decomposition processes in tidal wetlands-
- 825 implications from a global survey using standardized litter, *Biogeosciences*, 15, 3189–3202, <https://doi.org/10.5194/bg-15-3189-2018>, 2018.
- Mueller, P., Ladiges, N., Jack, A., Schmieidl, G., Kutzbach, L., Jensen, K., and Nolte, S.: Assessing the long-term carbon-sequestration potential of the semi-natural salt marshes in the European Wadden Sea, *Ecosphere*, 10, <https://doi.org/10.1002/ecs2.2556>, 2019.
- 830 Nellemann, C., Corcoran, E., Duarte, C. M., Valdés, L., De Young, C., Fonseca, L., and Grimsditch, G.: *Blue carbon: A Rapid Response Assessment.*, edited by: Nellemann, C., Corcoran, E., Duarte, C. M., Valdés, L., De Young, C., Fonseca, L., and Grimsditch, G., UN Environment, GRID-Arendal, 2009.
- Neubauer, S. C.: Contributions of mineral and organic components to tidal freshwater marsh accretion, *Estuar. Coast. Shelf Sci.*, 78, 78–88, <https://doi.org/https://doi.org/10.1016/j.ecss.2007.11.011>, 2008.
- 835 Nyman, J. A., Walters, R. J., Delaune, R. D., and Patrick, W. H.: Marsh vertical accretion via vegetative growth, *Estuar. Coast. Shelf Sci.*, 69, 370–380, <https://doi.org/10.1016/j.ecss.2006.05.041>, 2006.
- Omengo, F. O., Geeraert, N., Bouillon, S., and Govers, G.: Deposition and fate of organic carbon in floodplains along a tropical semiarid lowland river (Tana River, Kenya), *J. Geophys. Res. Biogeosciences*, 121, 1131–1143, <https://doi.org/10.1002/2015JG003288>, 2016.
- 840 Pennings, S. C. and Callaway, R. M.: Salt Marsh Plant Zonation: The Relative Importance of Competition and Physical Factors, *Ecology*, 73, 681–690, <https://doi.org/https://doi.org/10.2307/1940774>, 1992.
- Perillo, G. M. E., Wolanski, E., Cahoon, D. R., and Hopkinson, C. S.: *Coastal wetlands: an integrated ecosystem approach*, II., edited by: Perillo, G. M. E. W. E., Cahoon, D. R., and Hopkinson, C. S., Elsevier, 2009.

- Puppini, A.: Soil organic matter and carbon dynamics in Venice Lagoon salt marshes under natural and anthropogenic forcing, University of Padova, <https://doi.org/https://hdl.handle.net/11577/3472562>, 2023.
- Puppini, A., Roner, M., Finotello, A., Ghinassi, M., Tommasini, L., Marani, M., and D'Alpaos, A.: Analysis of Organic Matter Decomposition in the Salt Marshes of the Venice Lagoon (Italy) Using Standard Litter Bags, *J. Geophys. Res. Biogeosciences*, 128, e2022JG007289, <https://doi.org/https://doi.org/10.1029/2022JG007289>, 2023a.
- Puppini, A., Tognin, D., Paccagnella, M., Zancato, M., Ghinassi, M., D'Alpaos, C., Marani, M., and D'Alpaos, A.: Blue Carbon assessment in the salt marshes of the Venice Lagoon: dimensions, variability and influence of storm-surge regulation, *Res. Sq.* [preprint], <https://doi.org/https://doi.org/10.21203/rs.3.rs-3639902/v1>, 2023b.
- Roner, M., D'Alpaos, A., Ghinassi, M., Marani, M., Silvestri, S., Franceschinis, E., and Realdon, N.: Spatial variation of salt-marsh organic and inorganic deposition and organic carbon accumulation: Inferences from the Venice lagoon, Italy, *Adv. Water Resour.*, 93, 276–287, <https://doi.org/10.1016/j.advwatres.2015.11.011>, 2016.
- Saintilan, N., Rogers, K., Mazumder, D., and Woodroffe, C.: Allochthonous and autochthonous contributions to carbon accumulation and carbon store in southeastern Australian coastal wetlands, *Estuar. Coast. Shelf Sci.*, 128, 84–92, <https://doi.org/https://doi.org/10.1016/j.ecss.2013.05.010>, 2013.
- Scarton, F., Day, J. W., and Rismondo, A.: Primary production and decomposition of *Sarcocornia fruticosa* (L.) Scott and *Phragmites australis* Trin. Ex Steudel in the Po Delta, Italy, *Estuaries*, 25, 325–336, <https://doi.org/10.1007/BF02695977>, 2002.
- Silvestri, S.: La vegetazione alofila quale indicatore morfologico negli ambienti a marea., University of Padova, 2000.
- Silvestri, S. and Marani, M.: Salt-Marsh Vegetation and Morphology: Basic Physiology, Modelling and Remote Sensing Observations, *Ecogeomorphology Tidal Marshes*, *Coast. Estuar. Stud.*, 59, 5–25, <https://doi.org/10.1029/ce059p0005>, 2004.
- Silvestri, S., Defina, A., and Marani, M.: Tidal regime, salinity and salt marsh plant zonation, *Estuar. Coast. Shelf Sci.*, 62, 119–130, <https://doi.org/10.1016/j.ecss.2004.08.010>, 2005.
- Silvestri, S., D'Alpaos, A., Nordio, G., and Carniello, L.: Anthropogenic Modifications Can Significantly Influence the Local Mean Sea Level and Affect the Survival of Salt Marshes in Shallow Tidal Systems, *J. Geophys. Res. Earth Surf.*, 123, 996–1012, <https://doi.org/https://doi.org/10.1029/2017JF004503>, 2018.
- Stagg, C. L., Baustian, M. M., Perry, C. L., Carruthers, T. J. B., and Hall, C. T.: Direct and indirect controls on organic matter decomposition in four coastal wetland communities along a landscape salinity gradient, *J. Ecol.*, 106, 655–670, <https://doi.org/10.1111/1365-2745.12901>, 2018.
- Tanveera, A., Kanth, T. A., Tali, P. A., and Naikoo, M.: Relation of soil bulk density with texture, total organic matter content and porosity in the soils of Kandi Area of Kashmir valley, India, *Int. J. Earth Sci.*, 4, 1–6, 2016.
- Temmerman, S., Bouma, T. J., Govers, G., Wang, Z. B., De Vries, M. B., and Herman, P. M. J.: Impact of vegetation on flow routing and sedimentation patterns: Three-dimensional modeling for a tidal marsh, *J. Geophys. Res. Earth Surf.*, 110, <https://doi.org/https://doi.org/10.1029/2005JF000301>, 2005.
- Temmerman, S., Meire, P., Bouma, T. J., Herman, P. M. J., Ysebaert, T., and De Vriend, H. J.: Ecosystem-based coastal

- defence in the face of global change, *Nature*, 504, 79–83, <https://doi.org/10.1038/nature12859>, 2013.
- 880 Tognin, D.: Natural and anthropogenic drivers of erosional and depositional dynamics in shallow tidal systems, University of Padova, <https://doi.org/https://hdl.handle.net/11577/3446285>, 2022.
- Tognin, D., D’Alpaos, A., Marani, M., and Carniello, L.: Marsh resilience to sea-level rise reduced by storm-surge barriers in the Venice Lagoon, *Nat. Geosci.*, 14, 906–911, <https://doi.org/10.1038/s41561-021-00853-7>, 2021.
- Tognin, D., Finotello, A., D’Alpaos, A., Viero, D. P., Pivato, M., Mel, R. A., Defina, A., Bertuzzo, E., Marani, M., and Carniello, L.: Loss of geomorphic diversity in shallow tidal embayments promoted by storm-surge barriers, *Sci. Adv.*, 8, 885 <https://doi.org/10.1126/sciadv.abm8446>, 2022.
- Tommasini, L., Carniello, L., Ghinassi, M., Roner, M., and D’Alpaos, A.: Changes in the wind-wave field and related salt-marsh lateral erosion: inferences from the evolution of the Venice Lagoon in the last four centuries, *Earth Surf. Process. Landforms*, 44, 1633–1646, <https://doi.org/10.1002/esp.4599>, 2019.
- Torres, R. and Styles, R.: Effects of topographic structure on salt marsh currents, *J. Geophys. Res. Earth Surf.*, 112, 890 <https://doi.org/https://doi.org/10.1029/2006JF000508>, 2007.
- Trumbore, S.: Radiocarbon and Soil Carbon Dynamics, *Annu. Rev. Earth Planet. Sci.*, 37, 47–66, <https://doi.org/10.1146/annurev.earth.36.031207.124300>, 2009.
- Wang, F., Kroeger, K. D., Gonneea, M. E., Pohlman, J. W., and Tang, J.: Water salinity and inundation control soil carbon decomposition during salt marsh restoration: An incubation experiment, *Ecol. Evol.*, 9, 1911–1921, 895 <https://doi.org/10.1002/ece3.4884>, 2019.
- Watson, R., Noble, I., Bolin, B., Ravindranath, N., Verardo, D., and Dokken, D.: Land Use, Land-Use Change, and Forestry, Intergovernmental Panel on Climate Change Special Report, 2000.
- Xu, S., Eisenhauer, N., Ferlian, O., Zhang, J., Zhou, G., Lu, X., Liu, C., and Zhang, D.: Evidence synthesis Species richness promotes ecosystem carbon storage: evidence from biodiversity-ecosystem functioning experiments, *Proc. R. Soc. B*, 287, 1–900 14, <https://doi.org/10.1098/rspb.2020.2063>, 2020.
- Yang, Z., D’Alpaos, A., Marani, M., and Silvestri, S.: Assessing the fractional abundance of highly mixed salt-marsh vegetation using random forest soft classification, *Remote Sens.*, 12, 1 – 25, <https://doi.org/10.3390/rs12193224>, 2020.
- Yousefi Lalimi, F., Silvestri, S., D’Alpaos, A., Roner, M., and Marani, M.: The Spatial Variability of Organic Matter and Decomposition Processes at the Marsh Scale, *J. Geophys. Res. Biogeosciences*, 123, 3713–3727, 905 <https://doi.org/10.1029/2017JG004211>, 2018.
- Yuan, Y., Li, X., Jiang, J., Xue, L., and Craft, C. B.: Distribution of organic carbon storage in different salt-marsh plant communities: A case study at the Yangtze Estuary, *Estuar. Coast. Shelf Sci.*, 243, <https://doi.org/10.1016/j.ecss.2020.106900>, 2020.
- Zirino, A., Elwany, H., Neira, C., Maicu, F., Mendoza, G., and Levin, L. A.: Salinity and its variability in the Lagoon of Venice, 2000–2009, *Adv. Oceanogr. Limnol.*, 5, 41–59, <https://doi.org/10.1080/19475721.2014.900113>, 2014.
- Zonta, R., Botter, M., Cassin, D., Bellucci, L. G., Pini, R., and Dominik, J.: Sediment texture and metal contamination in the

Venice Lagoon (Italy): A snapshot before the installation of the MOSE system, *Estuar. Coast. Shelf Sci.*, 205, 131–151, <https://doi.org/10.1016/j.ecss.2018.03.007>, 2018.

Zuliani, A., Zaggia, L., Collavini, F., and Zonta, R.: Freshwater discharge from the drainage basin to the Venice Lagoon (Italy), *Environ. Int.*, 31, 929–938, <https://doi.org/10.1016/J.ENVINT.2005.05.004>, 2005.