

A model study on investigating the sensitivity of aerosol forcing on the volatilities of semi-volatile organic compounds

Muhammed Irfan et al.

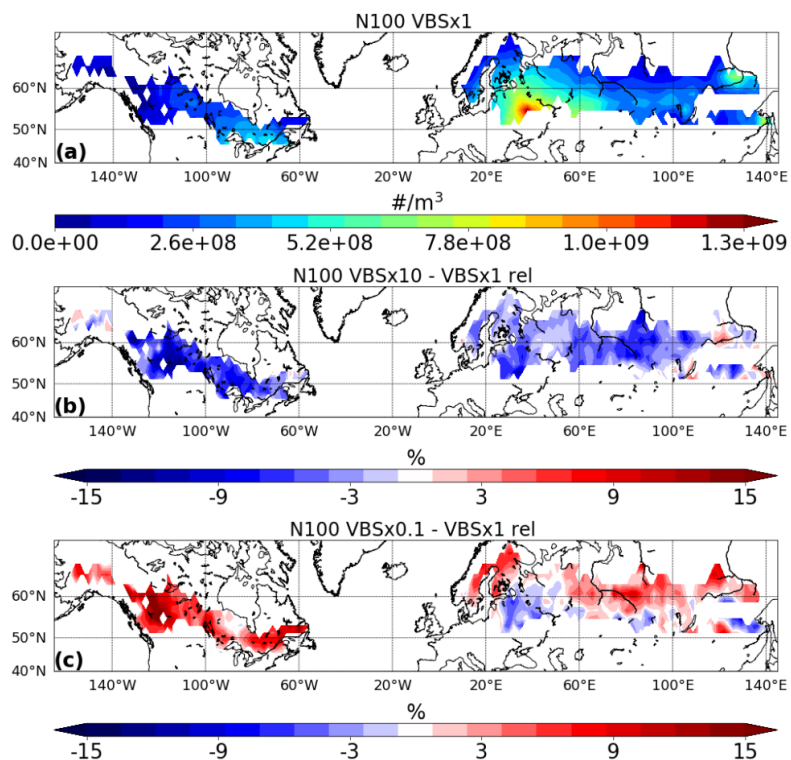


Figure S1. Simulated CCN concentration of (a) VBS \times 1 and the relative difference between (b) VBS \times 10 and (c) VBS \times 0.1 with respect VBS \times 1 at 900 hPa

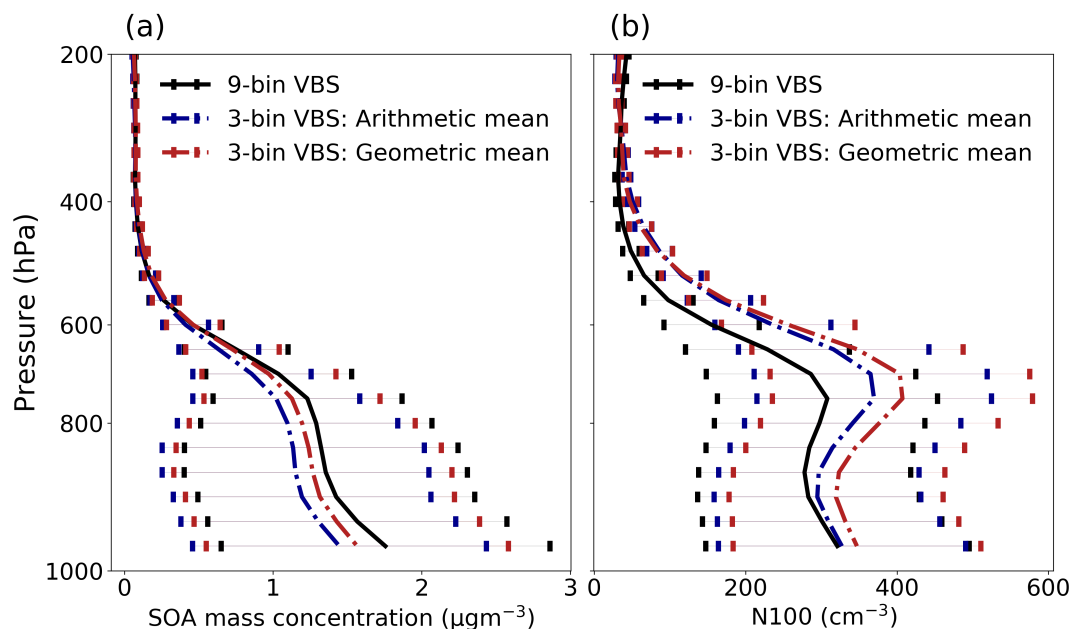


Figure S2. Mean vertical profile of (a) N100 and (b) SOA mass concentration for the 9-bin VBS setup, 3-bin VBS setup with volatility calculated using Arithmetic mean, and the 3-bin VBS setup with volatility calculated using Geometric mean. The error bar depicts the one-sigma standard deviation over each model levels.

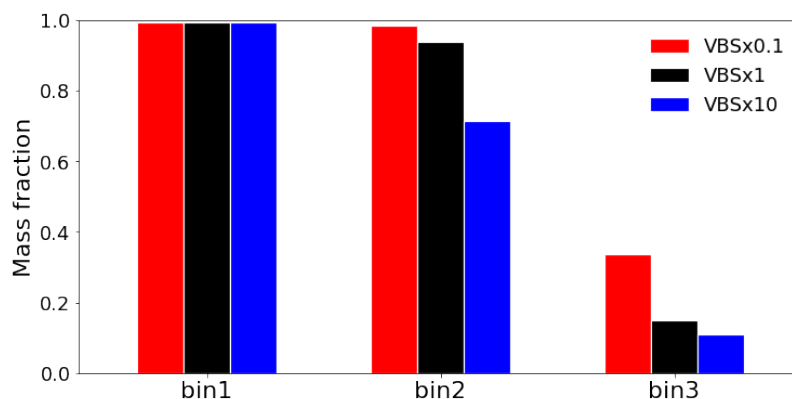


Figure S3. Fraction of particle phase mass concentration close to the ground level (particle/(particle+gas)) in each VBS bins with changes in volatility using the 3-bin VBS setup. The x-axis values show the C_{sat} of that bin in the VBS \times 1 simulation

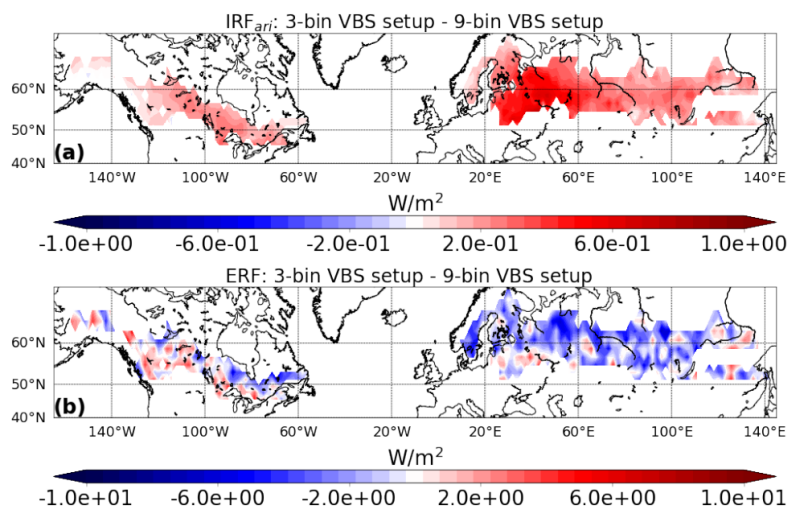


Figure S4. (a) TOA IRF_{ari}, (b) ERF for the 3-bin VBS setup with respect to 9-bin VBS setup analysed over the boreal region.