

Review 1 – marked changes in the revised document are in red

Major issues:

1. Figure 9 in page 22, please explain that why the “glacial outwash gravels” are unsaturated?

There is an error on the text in the figure which should say “variably saturated”. We’ve corrected this, and have also modified the figure to clarify the saturation status:

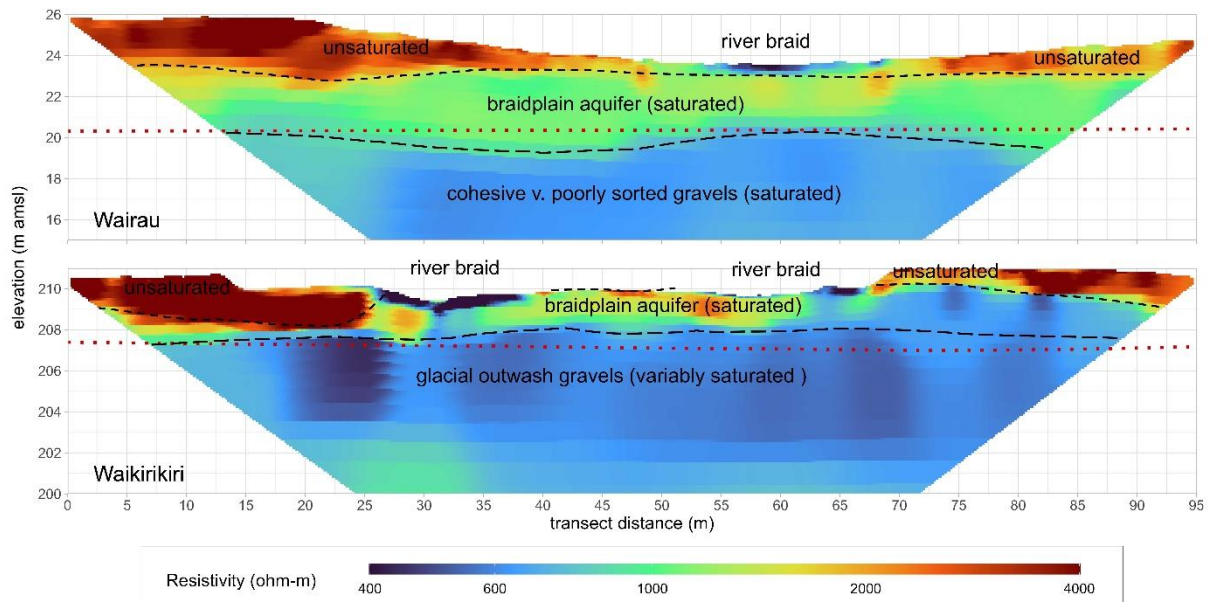


Figure 10. Subsurface resistivity collected by Electrical Resistivity Tomography (ERT) across Wairau and Waikirikiri river braids, looking downstream. Surfaces interpreted from the resistivity data are shown in black. An interpolated surface for the base of the BPA derived from drilling and bed data is shown in red.

The requirements for a variably saturated zone to form in the sediments underlying the BPA are described in the original document in the paragraph at line 172. For clarification, we have included the following explanation in the text at line 518 of the revised document:

Our explanation for the presence of this variably saturated zone is that the glacial outwash gravels are stratified, and vertical infiltration to the regional aquifer is limited by the lower permeability horizons of silt and clay. The presence of higher permeability horizons within the stratified postglacial sequence allows water to move laterally away from the recharge zone at a rate that exceeds vertical infiltration, enabling unsaturated or variably saturated conditions to form.

And how about the braidplain aquifer? Saturated or unsaturated?

We’ve added a sentence at line 225 to clarify the BPA saturation status:

For a perennially flowing river, the BPA will retain some degree of saturation, although unsaturated conditions may occur in the case of intermittent or ephemeral rivers if there are prolonged periods with no river flow.

Can you compare the ERT results with your borehole surveys in Fig. 4.

The contact at the base of the BPA shown on Fig 9 represents the unconformity revealed in drill core e.g. on Fig 4, and is described in section 5.1, including the grainsize distribution of the two units (Fig 5). While the locations of the ERT profiles don’t exactly match the coring locations (Fig 3), there is

structural and lateral consistency in both the coring and ERT data. We've added an interpolated surface to Figure 9 (see red line in the figure above), which has been derived by kriging intercepts of BPA base within the contemporary braidplain (in Fig 3). The sentence at **line 721** has been modified for clarity:

These profiles reveal the contact between the braidplain aquifer and underlying sediments (the unconformities shown in Fig. 4) at elevations consistent with drillhole coring. For comparison, the elevation of the same unconformity, derived by kriging intercepts of the BPA base within the contemporary braidplain (Figure 3.), is shown in red on Figure 9.

2. In Fig. 10 at page 23, can you explain that what is the "DTS" and "A-DTS"?

These acronyms are explained in 4.1 of the original document (lines 298-299), and are also evident in the section 5.5 title. If the editor prefers, we can change the caption to:

Figure 11. Vertical (a) distributed temperature sensing (DTS) and (b) active-distributed temperature sensing (A-DTS) surveys carried out on the south bank of the Wairau River on w27. The river temperature over the period of the surveys is shown in (c) along with temperatures measured by DTS at 4 and 9 m depth. SWL=static water level measurements over the survey period

Minor issues:

These issues are specific to correct use of language. We agree with some of these changes, although we do disagree with some of them:

1. Line 17:"including:" should be changed to "including". **Changed (line 22)**
2. Line 26:"hyporheic" should be changed to "the hyporheic". not changed
3. Line 27:"exchange" should be changed to "the exchange". not changed
4. Line 28:"Exchange" should be changed to "The exchange". not changed
5. Line 30:"aquifer" should be changed to "aquifers". not changed
6. Line 55:"scale" should be changed to "scales". not changed
7. Line 95:"net" should be changed to "a net". **Changed (line 131)**
8. Line 100:"reach" should be changed to "reaches". not changed
9. Line 147:"recognises" should be changed to "recognizes". not changed
10. Line 190:"result" should be changed to "results". not changed
11. Line 218:"enables" should be changed to "enable". **Changed (line 319)**
12. Line 282:"are" should be changed to "were". **Changed (line 418)**
13. Line 291:"underling" should be changed to "underlying". **Changed (line 432)**
14. Line 301:"on" should be changed to "in". **changed (line 440)**
15. Line 304:"insufficient" should be changed to "an insufficient". not changed
16. Line 331:"on Fig. 3" should be changed to "in Fig. 3". **Changed (line 502)**
17. Line 351:"on Fig. 4" should be changed to "in Fig. 4". **Changed (line 533)**
18. Line 351:"on Fig. 10" should be changed to "in Fig. 10". **Changed (line 533)**
19. Line 415:"are approximately" should be changed to "is approximately". not changed
20. Line 416:"condition" should be changed to "conditions". not changed

21. Line 441:“notable” should be changed to “a notable”. **Changed (line 685)**
22. Line 446:“in the near surface” should be changed to “at the near surface”. **Changed to " in the near-surface, which improved" (line718)**
23. Line 474:“in the 1960's” should be changed to “in the 1960s”. **Changed (line 747)**
24. Line 501:“on Fig. 1” should be changed to “in Fig. 1”. **Changed (line 786)**
25. Line 515:“losing water” should be changed to “lose water”. **changed to “be losing water” (line 806)**
26. Line 517:“therefore interpretation” should be changed to “ therefore an interpretation”. not changed
27. Line 550:“hyporheic exchange” should be changed to “the hyporheic exchange”. not changed

Review 2 – marked changes in the revised document are in blue

Major comments

Radon: Unfortunately, the entire radon aspect needs a thorough revision. The method is not sufficiently well described to allow an assessment of the validity/quality/uncertainty of the data (e.g., which water amount was analysed per sample?)

We have revised the radon section and improved the section on radon data collection. 250ml samples were analysed as per data collection section (refer to line 452).

How long were samples stored before being measured?

Samples were analysed 21-100 hours after sampling for Waikirikiri, and 20-24 hours for the Wairau.

How long were the samples measured for, i.e., how many counting cycles were employed? (?)

To reduce the uncertainty of the WAT250 method using the Rad7, we increased the aeration time to 10 minutes, and the analysis duration recommended in the Durrige manual to 5 cycles of 10 minutes.

We have modified the relevant paragraph, at the end of the methods section (4.2) from **line 452** as follows:

Samples for radon-222 analysis were collected in 250 ml bottles in the Waikirikiri (Songola 2022) and Wairau reaches from riffles, at different depths in pools, and from purged piezometers. Samples were analysed 21-100 hours after sampling for Waikirikiri, and 20-24 hours for the Wairau. Laboratory analysis for radon activity was conducted with a RAD7 (Durrige 2020a), RAD H2O (Durrige 2020b), and active DRYSTIK (Durrige 2021) in a closed loop system, with the results adjusted for decay since the time of sampling (WAT250 method). The radon activity and uncertainty values reported here follow the approach of Durejka et al. (2019), with the mean and standard deviation calculated from five counting cycles, with duplicate samples pooled (ten cycles total). Additional radon measurements were made in the field using the RAD AQUA method (Durrige 2020c) to verify the WAT250 method results, and these returned similar values. For this study we have reported the WAT250 data, which has a larger uncertainty associated with the measurements but enables more samples to be collected in a short time frame from remote field sites. To reduce the uncertainty of the WAT250 results, we increased the aeration time to 10 minutes, and the analysis duration recommended in the Durrige manual to 5 cycles of 10 minutes.

Durrige (2020c). Continuous Radon in Water Accessory for the RAD7 user manual.

Durejka, S., Gilfedder, B., Frei, S. (2019). A method for long-term high resolution 222Radon measurements using a new hydrophobic capillary membrane system. *Journal of Environmental Radioactivity* 208-209: 105980, doi:10.1016/j.jenvrad.2019.05.012.

Moreover, the (instrument reported) measurement uncertainties are not provided, nor is any assessment of the uncertainty of the radon measurements made.

We have reviewed the radon data and revised the values in Table 3, including uncertainties:

Table 3. Measured radon-222 activities and one standard deviation uncertainties (BQ.m-3) for the Wairau and Waikirikiri study reaches.

River	Wairau			Waikirikiri			
	River run	Braidplain aquifer	Regional aquifer	River run	Braidplain aquifer	Variably saturated glacial outwash sediments	Regional aquifer
Samples	14	11	21	10	38	7	6

Rn min	260 ± 85	368 ± 150	739 ± 272	384 ± 185	1791 ± 481	7017 ± 3607	16111 ± 3305
Rn max	604 ± 224	2849 ± 826	5700 ± 629	809 ± 443	9545 ± 1378	14654 ± 4338	22655 ± 2221
Rn mean	395 ± 180	1307 ± 361	3263 ± 666	568 ± 356	4569 ± 1002	11814 ± 2589	19184 ± 2763

The residence times that are calculated based on the measured radon activities are fantasies, as the precision of the employed method is not good enough (it is impossible to use the Rad H₂O method and get radon concentration measurements at a precision that would allow a residence time detection beyond around the 3-half-lives mark of radon (ie. about 12 days), and this without even considering the fact that most likely the samples were not measured directly but first stored for a day or two, leading to a further loss in precision).

Thank you for this comment which we agree with. We have accordingly included the measurement uncertainties and removed residence times from Table 3. To clarify, the WAT250 method results were adjusted for decay since the time of sampling. The decay correction factor (DCF) is given by the formula $DCF = \exp(T/132.4)$, where T is the decay time in hours (Durrige Rad H₂O manual).

Last but not least, the secular equilibrium for one of the two measured sites is in my opinion not chosen appropriately, as the regional aquifer shows much more elevated background activity concentrations. I don't see why the braidplain aquifer should be used to define the background values instead of the regional aquifer, unless the sediments are very very different, which is very unlikely. Even though this aspect of the study needs a major overhaul, looking at the data tells me that the main conceptual conclusions from the data will most likely remain valid.

We see no reason to assume that two different gravel deposits would have similar secular emanation values, or vice versa. We have chosen our equilibrium values on the best available information but agree that some caution needs to be advised in the text. We will address this in your specific comments.

Lidar-Bathymetry data: Although mentioned as the first two data types in the abstract, this data was not presented in the paper. It is only used to discuss the concept and derive conclusions. Since this data is important for the assessment of braided river-aquifer systems, and critical for the derivation of the updated conceptualization of braided river-aquifer systems in this manuscript, it must be provided somehow.

We agree, and not including any of our bathymetry or lidar is an oversight. Displaying the actual bathy/LiDAR data is perhaps not particularly informative, since it's the specific querying of the bathy-lidar that provides useful information, not the bathy-lidar surfaces per se. With this in mind, we have created an additional figure (Fig 6), which shows two maps for the Wairau at same position and scale to illustrate the relationship between the river surface, river bed, and kriged BPA water table: (a) the difference between the river surface and static water level with aerial imagery as backdrop (b) the difference between the static water level and river bed. An additional paragraph has been added to the field data section at **line 397**:

LiDAR data were captured in dry areas of riverbed using a LiDARUSA Snoopy LiDAR scanner deployed on either a UAV or backpack. Bathymetry and water surface elevation were mapped using a kayak or remote controlled jetboat equipped with a paired RTK GPS and echosounder, and wading with an RTK GPS. Interpolation, or (where necessary) optical-bathymetry techniques, were used generate high-resolution bathymetry maps from less-dense echosounder survey data. The dry topography from LiDAR was stitched together with the bathymetry data to provide a complete digital elevation model (DEM) for each reach at a spatial resolution of 1 m or less, and a vertical accuracy of ±0.1 m in dry areas and ±0.2 m in wet areas.

A new section (5.2) has been written to describe the data shown in the new **Figure 6** from **line 573**:

5.2 LiDAR and bathymetry

LiDAR and bathymetry surveys were carried out in each study area to understand the spatially varying relationship between the river surface, bed levels, and water levels in the braidplain and regional aquifers. Repeat surveys were carried out following significant flood events to capture changes in bed levels. An example of our LiDAR and bed elevation data for the Wairau River is shown in Figure 6. These data were captured on 19 Feb 2020 at relatively low flow conditions, measured at $13.4 \text{ m}^3 \cdot \text{s}^{-1}$ to $11.5 \text{ m}^3 \cdot \text{s}^{-1}$ ($\pm 3 \%$) at the upstream and downstream margins of the image, respectively. The river water surface and bed elevation data within the wetted channel are shown on Figure 6 in relation to a modelled surface of hydraulic head across the river system, represented by piezometric contours which are shown in Figure 6a. This surface was fitted (sum squared error of 5×10^{-6}) to 25 water level observations (yellow points in Fig 6a) located within and outside of the contemporary braidplain by universal kriging with an exponential variogram of anisotropy of 0.9 at 090° , partial sill 0.31 m, and range 670 m. With such a large variogram range, the surface should be considered as indicative of an averaged hydraulic head across the regional and braidplain aquifers. The kriged surface does reveal an inflection of the piezometric contours across the contemporary braidplain margins, indicating that flow within the BPA is largely controlled by river exchange and preferential flow within the BPA, with flow being approximately sub-parallel to the contemporary braidplain longitudinal orientation.

Fig. 6a reveals locations in the river system where the river water surface is higher than the braidplain water table (red and orange zones), indicating that the river is losing flow to the BPA in these areas. Areas of the river which are coloured blue in Fig. 6a represent the surface expression of the braidplain water table in pools. These are locations where the river can potentially gain flow. The black areas denoted as “riffles” are identified from a slope raster derived from the digital elevation model (DEM). Locations where maximum potential river water loss occurs can be identified in most cases as being situated at the upstream margins of high elevation riffles.

The bathymetry DEM (Fig. 6b) reveals the presence of scouring along the contemporary braidplain margins, which in the case of the Wairau River is promoted by excessive river narrowing and rock training banks. The corollary of this scouring is the relative mounding of gravel in the middle of the contemporary braidplain. The difference between the river bed level and hydraulic head reveals locations where the river bed is above the braidplain aquifer, and has the potential to be losing-disconnected at these locations. In most cases these areas also correspond to the upstream margins of high elevation riffles.

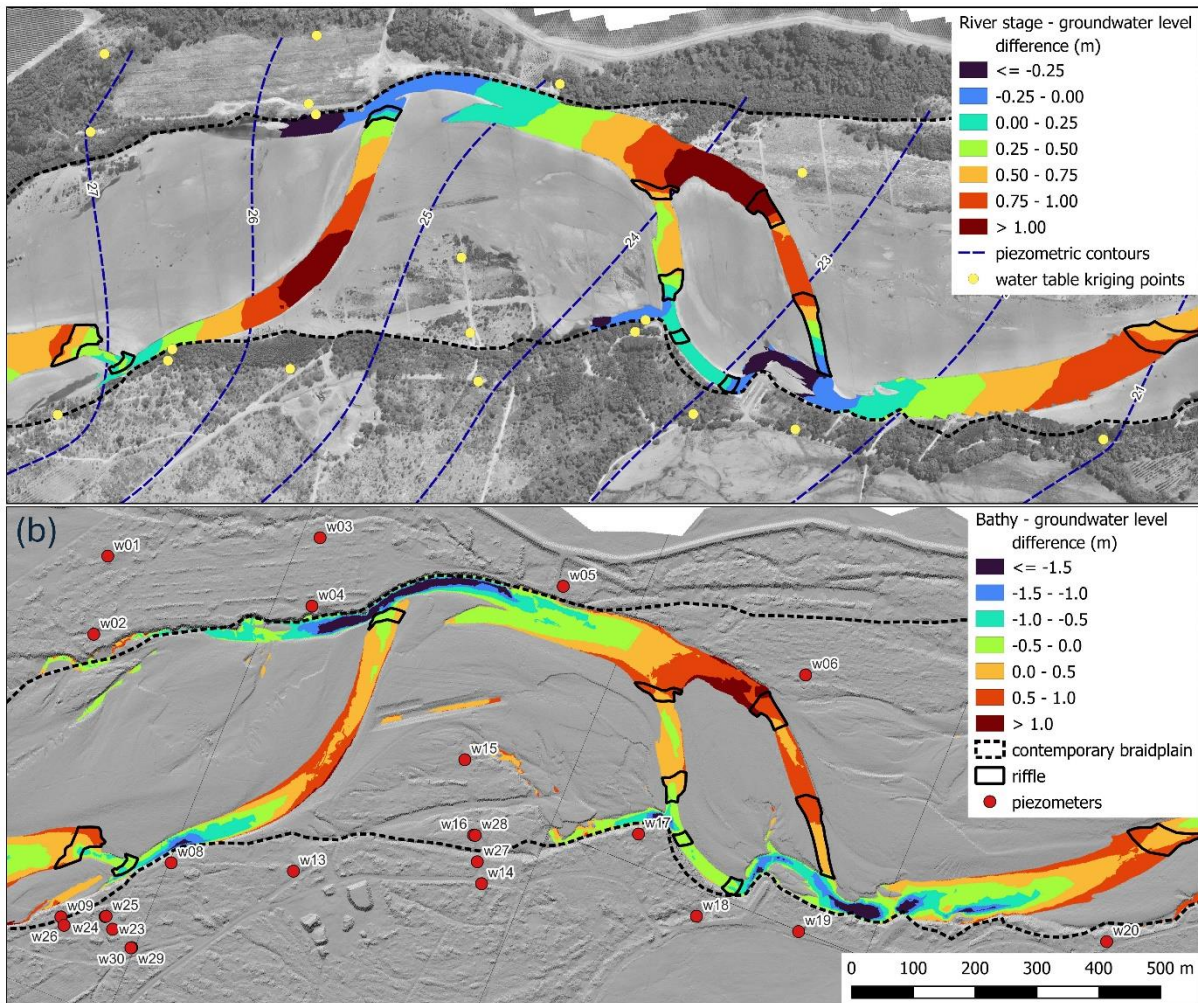


Figure 6. Images of the wetted Wairau River channel showing differences between (a) river water surface and a kriged hydraulic head (overlain on aerial imagery), and (b) bathymetry and kriged hydraulic head (overlain on the DEM). River flow is from left to right.

Specific comments:

L 103-106: a more recent modelling approach for braided river-aquifer systems with their buried paleochannels that should be referred to here is Schilling, O. S., Partington, D. J., Doherty, J., Kipfer, R., Hunkeler, D., & Brunner, P. (2022). Buried paleo-channel detection with a groundwater model, tracer-based observations, and spatially varying, preferred anisotropy pilot point calibration. *Geophys. Res. Lett.*, 49(14), e2022GL098944. <https://doi.org/10.1029/2022GL098944>

We have now included this reference in the references list and have cited it in the text at **line 143**:

A significant body of literature exists to describe braided river deposits via morphology (Huber and Huggenberger 2015), sedimentology (Huggenberger and Regli 2006, Theel et al. 2020), geophysics (Pirrot et al. 2019), and modelling approaches (Pirrot et al. 2014; 2015, Brunner et al. 2017, Schilling et al. 2022).

L 107-109: Indeed, changing bed morphologies create problems for the representation of braided river systems (and this problem isn't even restricted to braided river systems but occurs also in less complex river corridors). One way to deal with this problem when one simulates SW-GW interactions in braided river systems is using data assimilation, where whenever new information on the bathymetry of the river system becomes available, that information gets incorporated into the forward model. The concept was demonstrated by Tang, Q., Schilling, O. S., Kurtz, W., Brunner, P., Vereecken, H., & Hendricks Franssen, H.-J. (2018). Simulating flood induced riverbed transience using unmanned aerial vehicles, physically-based hydrological modelling and the ensemble Kalman filter. *Water Resour. Res.* <https://doi.org/10.1029/2018WR023067>. Although not necessarily feasible or required on the regional scale, this way forward should nevertheless be mentioned here. Another approach that can be useful relies not on assimilation of riverbed bathymetry information but on a moving pilot points approach, which can be used to "follow" changing structures simply via inversion of hydraulic- and tracer-based data: Khambhammettu, P., Renard, P., & Doherty, J. (2020). The traveling pilot point method. A novel approach to parameterize the inverse problem for categorical fields. *Adv. Water Resour.*, 138, 103556. <https://doi.org/10.1016/j.advwatres.2020.103556>. Also this study should be mentioned here.

This comment looks to be referring to lines 117-119 of the original document. Thank you for pointing these two papers out, they are superb developments. We have changed the last paragraph from **line 164** to:

In recent years, two approaches to simulate the transitions of dynamic bed morphology and sediments on river-groundwater exchanges have been tested. The first approach applied the ensemble Kalman filter and areal imagery to assimilate river bed topography and to update aquifer hydraulic conductivities in a HydroGeoSphere model for a 2-km section of the Emme River in Switzerland (Tang et al. 2018). The data assimilation scheme strongly improved predictions of post-flood hydraulic states of the system. The second approach proposed a pilot point parametrization scheme where both the aquifer properties (hydraulic conductivity) and the location of the pilot points are inferred, e.g. from river-bed training images (Khambhammettu et al. 2020). The corresponding Traveling Pilot points (TRIPS) scheme could potentially be used to describe the transition between discrete states of river morphology. To some extent these approaches enable the application of fully integrated 3D models in dynamic river environments of appropriate scale, although their application in a larger river system or at a larger scale is untested.

l192-211: It is worth mentioning here that this sedimentological and SW-GW interaction concept of braided, alluvial gravel rivers was already presented a rather long time ago, and moreover gave the different types of gravel-sand sediments a full nomenclature. The key reference to mention here is: Huggenberger, P., Hoehn, E., Beschta, R., & Woessner, W. (1998). Abiotic aspects of channels and floodplains in riparian ecology. *Freshwater Biol.*, 40, 407-425. <https://doi.org/10.1046/j.1365-2427.1998.00371.x>

We have included this reference, and an additional sentence to accommodate this at **line 301**:

The sedimentological features and groundwater-surface water interaction concepts associated within the contemporary braidplain have been identified and detailed by previous authors (e.g., Huggenberger et al. 1998). Regardless of the nature of the relationship between the braidplain and regional aquifers, the braidplain gravels have a higher transmissivity than both the adjacent and underlying sediments, because of repeated reworking of the braidplain gravels during high flow events.....

l226: don't superscript the "s" in the unit

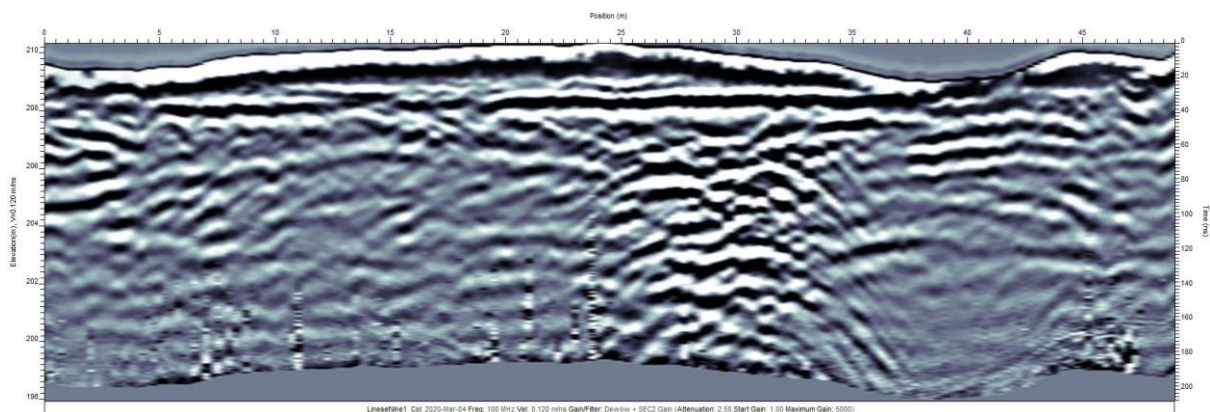
This seems to be an error generated by the pdf conversion. The "s" is not superscript in the original document.

l228-334: Unfortunately, the findings that the electromagnetic methods do not help in identifying the structure of braided river sediments is not surprising and only confirms what could be observed previously. I disagree however that the magnitude of the resistivity is the main cause for these methods to not work. The main reason is rather that the resistivity of the sediments are too similar, as they are in fact all more or less the same type of gravel and sand, simply differing in whether they are more washed or aligned in different ways. In order to be able to differentiate these types of sediment structures one has to resort to ground penetrating radar. The effectiveness of the method has, for example, been demonstrated in the publication I mentioned above: Huggenberger, P., Hoehn, E., Beschta, R., & Woessner, W. (1998). Abiotic aspects of channels and floodplains in riparian ecology. *Freshwater Biol.*, 40, 407-425. <https://doi.org/10.1046/j.1365-2427.1998.00371.x>

or in more detail in the following publication: Huggenberger, P., Meier, E., & Pugin, A. (1994). Ground-probing radar as a tool for heterogeneity estimation in gravel deposits: advances in data processing and facies analysis. *J. Appl. Geophys.*, 31(1-4), 171-184. [https://doi.org/10.1016/0926-9851\(94\)90056-6](https://doi.org/10.1016/0926-9851(94)90056-6)

I would prefer it if the author's revise the statement on why EM methods do/did not work in their case and highlight somewhere that ground penetrating radar could be a way forward in this respect.

Thank you for raising this point. When we began this investigation, we didn't know which geophysics methods would be best applied in our braided rivers, so were open minded. The first method we did test was GPR (50, 100, 200 and 500 MHz) on 5 transects in the active and contemporary Waikirikiri braidplain. We neglected to include GPR in the field methods section because the results were inconclusive. The GPR surveys revealed the water table surface but failed to reveal any clear underlying structure corresponding with our drill core at this site. Our interpretation of the poor performance of GPR is two-fold. Firstly, water has a high dielectric constant, so most of the GPR signal is reflected at the water table. Secondly, beneath the water table, the signal is rapidly attenuated with depth by reflection and dispersion due to the presence of cobbles and boulders, which are abundant at the Waikirikiri field site. As an explanation for this, a feature $\geq 1/10$ of the wavelength will increasingly scatter the signal, so a 100 MHz signal will be scattered by 0.3 m features (boulders) and a 200 MHz signal will be scattered by 0.15 m features (cobbles). It seems likely that GPR would be successful in detecting subsurface features in settings with less cobble and boulders, which is not the case in the three field sites we have studied. The best of the GPR profiles we captured is shown below:



The near-surface sediments at our study sites are extremely resistive > 2000 ohm-m (the scale on Fig 9 has been maximised at 4000 ohm-m, as have the values on the profile). It is worth noting that even the river water is resistive (fluid specific conductance ~ 5 mS/m). Our experience is that we could identify the base of the BPA in ERT surveys at an elevation consistent with drill core elevations, but only in surveys carried out across the wetted river channel. The most likely explanation for this is the increased conductivity caused by the saturated sediment and filled pore space, which has improved the conductivity response. It's well known that electric conductance is also enhanced in the presence of fine material, particularly clays, which are likely to be present within the river channel. However, we agree that in most cases we are trying to detect differences between high and very resistivity, so our ability to identify clear structural features will be compromised.

Based on our experience we think it's best to trial a few geophysical methods and see what works. For braided rivers in New Zealand, we would recommend using GPR for mapping the water table, and trial ERT within wetted channels to investigate subsurface structure. The use of NMR in braided rivers looks to be quite promising. We have written a paper which looks at the application of NMR at these field sites, however this paper is currently under review, hence this method is not covered here.

We have added the 5 GPR surveys to Table 2, and revised the paragraph at **line 436** to include on our experience with GPR, and revise the reason for poor resistivity response as follows:

Hydrogeophysical methods were also used to image the subsurface, including passive (DTS) and active (ADTS) distributed temperature sensing (Banks et al., 2022), ground penetrating radar (GPR), electrical resistivity tomography (ERT), transient electromagnetic (tTEM) and electromagnetic induction (DualEM421). The tracks prepared for tTEM and DualEM surveys are evident in the aerial photos shown in Figure 3. SkyTEM data were also available for the Ngaruroro area (Rawlinson et al. 2021). Of the hydrogeophysical methods employed, DTS/ADTS, and ERT were the most successful methods for delineating sediment structure and saturation associated with the river. The resistivity of New Zealand braided river water (fluid specific conductance ~5 mS/m) and associated gravel deposits is very high (400-10,000 Ω m). For this reason, we think there was insufficient resistivity contrast for electromagnetic and ERT methods to reveal distinct subsurface features in most of our surveys. SkyTEM data did provide good definition of the basement contact beneath the Ngaruroro River but did not reveal any clear structural features in the near surface (<10 m). GPR surveys that were trialled at the Waikirikiri site clearly revealed the shallow water table but did not reveal any clear structure beneath the water table due to reflection of the signal.

Table 2. Type and number of measurements undertaken in the three study reaches.

Measurement type	Ngaruroro	Wairau	Waikirikiri
Differential flow gauging	2	2	14
Local river stage/temperature		3	6
LiDAR and bathymetry surveys	1	2	2
Piezometers	19	31	43
Cored holes	10	8	21
Particle size distribution	36	38	60
Core porosity	6	12	5
Field porosity	3	10	4
Radon-222 samples	5	53	61
tTEM	Y	Y	Y
DualEM	Y	Y	Y
SkyTEM	Y		
ERT surveys		9	11
Ground penetrating radar (GPR)			5
DTS installations (vertical)		2	3
DTS installations (horizontal)			2

I 429, and following: unclear what 'BPA source' is supposed to be. Moreover, the following sentence is repeated twice.

We have now revised the radon section, and in doing so have removed 'BPA source' from the text, and the repeated sentence.

I435-437: Looking at table 3, the regional aquifer shows much larger Rn-222 activities than the BPA. Why do the authors believe that it is justified to use the largest measured BPA Rn-222 activity concentrations as the

secular equilibrium values? It makes much more sense to me to use the regional aquifer values, assuming that the regional aquifer also consists of sediments from the Waikirikiri river, albeit sediments that were deposited a longer time ago. Using the regional aquifer values as secular equilibrium indicators would result in much lower residence times for the BPA water in Waikirikiri. I believe that the RT of 15.5 days (essentially the upper detection limit of the RAD H₂O based Rn-222 method) is too old and in reality would lie closer to the values observed for the Wairau AQ.

This is a really good point. We think the Wairau BPA activities are small because the residence time is not sufficient for samples to reach equilibrium. Accordingly, we have to resort to using the Wairau aquifer secular equilibrium to represent an equilibrium value for the Wairau BPA (line 437). A possible reason for the large difference in the Wairau and Waikirikiri residence times is the differing relationship between the active and contemporary braidplains. In the Wairau system, the active and contemporary braidplains cover the same extent. By contrast the Waikirikiri system has a very narrow active braidplain and considerably wider contemporary braidplain (see area of clean gravels vs contemporary braidplain on Fig 3). From a hydrological perspective this creates comparatively longer parafluvial pathways in the Waikirikiri braidplain aquifer. This may explain the larger Waikirikiri travel time estimates, although we also acknowledge that the secular equilibrium of both braidplain gravel units is not well constrained. Further studies at the site are conducting a large volume of batch experiments on the sedimentary material from the drill cores in an attempt to better constrain the radon activity at secular equilibrium.

To get an indication of the Waikirikiri BPA equilibrium, we did a stochastic comparison of travel times derived from temperature time series and radon derived residence times. This comparison showed that the temperature-derived travel times could not be matched using an equilibrium >10,000 Bq/m³, while values based on hydrogeological knowledge (7,500-9,000) compared well. However, we think that a temperature-radon comparison is beyond the scope of this paper, and we intend to write a paper on that aspect alone.

l437-438: What is the basis for the assumption that the secular EQ for the Wairau AQ is 4800 Bq/m³ ? For the Waikirikiri site it is explained how the secular EQ was derived, but for the Wairau aquifer it is not. From table 3 I understand that the 4800 Bq/m³ was the highest value measured in the regional aquifer, which makes sense to me. But please explain.

The Wairau aquifer equilibrium was derived by plotting measured radon activity vs the piezometer distance from the river. A curve could then be fitted to the data using the ingrowth equation¹ to give an estimate of the equilibrium. We found that both the BPA and regional aquifer samples fitted to the same curve. Previous samples reported by ESR² from the regional aquifer at sites downgradient of our field site in the Wairau returned radon activities around 7000 Bq/m³. However, the ESR activities do not fall on the same ingrowth pathway as our samples, and we think those samples are sourced from sediments associated with an earlier depositional phase (early to mid-Holocene).

table 3: What are the measurement uncertainties of the Radon measurements? The RAD H₂O method is notoriously uncertain if one follows the standard protocol of the manufacturer. Which steps were taken to reduce the measurement uncertainty of the standard measurement protocol? If the default procedure to measure Rad7 in the 250ml Rad H₂O bottles was used, then it is highly likely that the instrument reported measurement uncertainties were an order of magnitude larger than the measured values shown for the river water samples.

We have updated Table 3 to include uncertainties. To reduce the uncertainty of the WAT250 method results, we increased the aeration time to 10 minutes, and the analysis duration recommended in the Durrig manual to 5 cycles of 10 minutes.

¹ Close, M. 2014. Analysis of Radon data from the Wairau River and adjoining Wairau Plains Aquifer February 2014. Institute of Environmental Science and Research Client Report CSC14001 for Marlborough District Council.

² Hoehn, E., von Gunten, H.R. 1989: Radon in Groundwater: A Tool to Assess Infiltration From Surface Waters to Aquifers. *Water Resources Research*, 25(8): 1795-1803.

In other words: In order for the reader to be able to assess the quality and validity of the presented radon-222 data with the specific method that the authors used, the authors must provide information on the measurement protocol that was employed and report the instrument-reported measurement uncertainties. This is especially important as the uncertainties in the activities have a huge effect on the uncertainty of the residence time estimates.

We have modified the radon data collection section from **line 452** to be more specific about the measurement protocol and uncertainties.

table 3: estimating a residence time of 25 days is not possible with the Rn-222 method, unless maybe one has an extremely precise radon-222 measurement system, for example a very well tuned liquid scintillation counter. With the Rad7 instrument, and particularly with the Rad H2O grab sampling technique, uncertainties are much too large to estimate Rn-222 based residence times beyond the 3 half-lives mark, i.e. beyond about 11.5 days.... The fact that the authors provide such values without a proper discussion of the employed method or the uncertainties and detection limits again tells me that a thorough re-thinking and revision of the radon-222 methodology is necessary.

Yes we agree with this statement, and accordingly have removed residence times from Table 3. We did compare RAD AQUA and WAT250 samples at both sites, more comparisons were made at the Waikirikiri site due to its closer proximity to our university. The two methods return very similar results for both sites with r^2 0.99 for Wairau ($n=7$) and 0.95 for Waikirikiri ($n=44$), although the RAD AQUA uncertainties are about a third of WAT250 values because of the different sampling setup and method of the Rad7. The Waikirikiri data are reported in (Songola 2022), and a paper based on that work has recently been submitted to Journal of Hydrology. So, while the WAT250 measurement uncertainties are large, we can have confidence that the residence times are good estimates. We have revised the radon section (**Section 5.3 from line 676**) as follows:

5.4 Radon-222 sampling

A summary of the radon-222 results and measurement uncertainties for surface water and groundwater sources in the Wairau and Waikirikiri reaches is shown in Table 3. In the Wairau system, samples from riverbed piezometers and riverbed seepages have similar radon activities with ranges 1724-2849 BQ.m⁻³ and 368-2585 BQ.m⁻³ respectively. Accordingly, samples from seepages and riverbed piezometers are both considered to represent the braidplain aquifer.

The radon data show distinct groupings, with radon-222 activities increasing from river channel to BPA to regional aquifer. At both sites, radon activities in river run samples were significantly lower than those in BPA samples. In the Wairau study reach, there is a notable overlap in radon activities between the braidplain and regional aquifers, indicating a likely hydraulic connection between these two systems. Conversely, in the Waikirikiri study reach, there is a downward increase in radon activities from the BPA to the variably saturated zone and further into the regional aquifer, with no overlapping values. This suggests a hydraulic disconnection between the BPA and the regional aquifer in the Waikirikiri reach.

Table 3. Measured radon-222 activities and one standard deviation uncertainties (BQ.m⁻³) for the Wairau and Waikirikiri study reaches.

The determination of residence times between the river and each aquifer depends on knowing the initial channel condition, representative secular equilibrium for the host gravel deposit, as well as a well-defined flow path length. Our estimate of the initial river channel condition is 260 BQ.m⁻³ for Wairau and 380 BQ.m⁻³ for Waikirikiri, reflecting the lowest measured river radon-222 activities. A secular equilibrium estimate of 5000 BQ.m⁻³ was derived for Wairau aquifer samples by plotting measured groundwater radon activity against distance of the piezometer from the river and fitting the ingrowth equation to the data to determine the 21 day equilibrium value. This exercise indicated that the Wairau BPA activities are too low for samples to reach equilibrium. In the absence of sediment specific data, the Wairau aquifer secular equilibrium was chosen to represent the Wairau BPA equilibrium. The secular equilibrium for the Waikirikiri BPA is estimated at approximately 8500 BQ.m⁻³ based on the lowest activity observed in porewater samples from piezometer

sumps in the variably saturated glacial outwash gravels beneath the braidplain aquifer (7017 BQ.m⁻³), and the highest activity observed in the BPA (9545 BQ.m⁻³). Based on the secular equilibrium values chosen, residence times for our study reach samples are estimated to be in the range of 0.1 to 4.4 days for the Wairau BPA in the study reach and 1 to >12 days for the Waikirikiri BPA. Due to the large uncertainties associated with the WAT250 method, these estimates should be considered for comparative purposes only.

L471: "The hydrogeologic structure..."

We've corrected the text at **line 743** to:

"The hydrogeologic structure in the Wairau study reach..."

L535-540: Lidar and bathymetric data were not presented and therefore can't be used here to discuss aspects/the functioning of the system... or the other way around: if such data are used to derive insights/conceptualisations of braided river-aquifer systems functioning, the respective data must also be presented and discussed properly.

This paragraph is based on field observations of differences in elevation that are apparent on the ground and reinforced by elevation data. We've addressed this comment by including a new section (5.2) and new Figure 6.

Discussion

We suggest a revision to the discussion at **line 871** as follows:

Braided river systems are spatially and temporally variable, which introduces heterogeneity both within a BPA, and the adjacent older sediments. This heterogeneity can manifest as preferential flowpaths, which can greatly influence exchange fluxes at a local scale, as evident in spatial variability of temperature and radon data. While the BPA consists of high transmissivity sediments, and can itself be considered a preferential flow path at the regional scale, the presence of preferential flow within the BPA at the local scale is not captured by the conceptualisation presented here. We therefore recommend application of the BPA concept at the regional scale, and to provide a hydrogeological context for local scale studies. An additional consideration for applying the BPA concept is the volume of reworked material associated with the river. In braided river environments, the volume of gravel associated with the BPA is large, and significantly greater than the wetted channel volume at average flow conditions. However, in some gravel bed rivers, the volume of sediment mobilised by flooding events could potentially be very thin, and the relevance of these mobile sediments on the exchange between the river and regional groundwater system will depend on the scale of the study.

At the regional scale, the BPA concept is best applied to braided rivers that have stable or actively degrading beds, or have had some form of bank stabilisation.....