

# Bathymetry-constrained impact of relative sea-level change on basal melting in Antarctica

Moritz Kreuzer<sup>1,2</sup>, Torsten Albrecht<sup>1</sup>, Lena Nicola<sup>1,2</sup>, Ronja Reese<sup>3,1</sup>, and Ricarda Winkelmann<sup>1,2</sup>

<sup>1</sup> Potsdam Institute for Climate Impact Research (PIK), Member of the Leibniz Association, P.O. Box 601203, D-14412 Potsdam, Germany

<sup>2</sup> University of Potsdam, Institute of Physics and Astronomy, Karl-Liebknecht-Str. 24-25, D-14476 Potsdam, Germany

<sup>3</sup> Department of Geography and Environmental Sciences, Northumbria University, Ellison Place, NE1 8ST, Newcastle Upon Tyne, UK

**Correspondence:** Moritz Kreuzer (kreuzer@pik-potsdam.de)

**Abstract.** Relative sea level (local water depth) on the Antarctic continent is changing by the complex interplay of processes associated with Glacial Isostatic Adjustment (GIA). This involves near-field visco-elastic bedrock displacement and gravitational effects in response to changes in Antarctic ice load, but also far-field interhemispheric effects on the sea-level pattern. On glacial time scales, these changes can be in the order of several hundred meters, potentially affecting the access of ocean water masses at different depths to Antarctic grounding lines and ice-sheet margins. Due to strong vertical gradients in ocean temperature and salinity at the continental shelf margin, basal melt rates of ice shelves have the potential to change just by variations in relative sea level alone. Based on simulated relative sea-level change from coupled ice sheet – GIA model experiments and the analysis of topographic features such as troughs and sills that regulate the access of open ocean water masses onto the continental shelf, we derive maximum estimates of Antarctic basal melt rate changes, solely driven by relative sea-level variations. Our results suggest that the effect of relative sea-level changes on basal melting is limited, especially compared to transient changes in the climate forcing.

## 1 Introduction

Global-mean sea level (GMSL) varies on glacial-interglacial time scales in the order of 100 m. The dominant component of GMSL changes since the Last Glacial Maximum (LGM, ca. 21 kyr BP; Gebbie, 2020) is determined by the mass redistribution between ocean and land (e.g. by ice sheet changes; Miller et al., 2020; Horwath et al., 2022), which is referred to as *barystatic sea-level change* (Gregory et al., 2019). Changes in ocean density (steric effects) play only a minor role on glacial time scales, but have a relevant contribution to anthropogenic sea-level rise (Gebbie, 2020; Marcos and Amores, 2014). The global distribution of sea level **aligns** according to an equipotential surface, also called the *geoid* (Gregory et al., 2019), which is determined by the gravity field of ice, water and the Earth’s mantle material, with a feedback on Earth’s rotation (Mitrovica et al., 2005). Variations of sea-level height through ocean currents and winds are not included in the geoid definition. The *relative sea level* (RSL) is the depth of the water column, hence the vertical distance between the geoid and the ocean bathymetry (or when negative, the land surface elevation above the geoid), and it can change through several processes:

1. *Changes in ice masses* affect the volume and area of the global ocean, leading to a globally distributed, barystatic shift of the geoid height.
- 25 2. The mass redistribution between ice and ocean also affects the Earth's *rotational* axis, such that the global sea-level fingerprint adjusts to the change in centrifugal acceleration.
3. The *gravitational* force exerted by ice masses on the surrounding ocean masses leads to variations in local geoid height near ice sheets following gains or losses of ice mass.
4. Changes in load have *deformational* (visco-elastic) effects on the solid Earth, leading to subsidence or uplift of the  
30 underlying bedrock topography. Due to the flexure of the lithospheric plate and the viscous flow of upper mantle material, an increase in ice load would therefore produce an uplift at some distance from the centre of the load, yielding a reversed (negative) signal in RSL; this is called a 'forebulge'. Depending on the local mantle viscosity and lithosphere thickness, these visco-elastic processes can induce vertical changes of hundreds of meters.

These mechanisms act on different spatial and temporal scales, i.e. almost instantaneous in case of rotational and gravitational  
35 effects, whereas bedrock deformation can take several millennia to unfold. All of the mentioned mechanisms are covered by the *Glacial Isostatic Adjustment* theory (GIA; Farrell and Clark, 1976; Whitehouse, 2018). Global mean sea level is also influenced by thermosteric effects through changes in ocean water temperature, but this effect is comparably small on glacial time scales.

40 During the Last Glacial Maximum, GMSL was about 125–134 m lower than today, mainly due to the **greater extent of northern hemisphere ice sheets** (Yokoyama et al., 2018; Lambeck et al., 2014). Grounded ice in Antarctica reached close to the continental-shelf break (CSB) in many locations during the LGM (Bentley et al., 2014) and ~~holding~~ up to 20 m sea-level equivalent more ice, according to the literature review in Albrecht et al. (2020b, Fig. 11b). Today's configuration of the Antarctic Ice Sheet (AIS) still holds enough ice to raise GMSL by approx. 58 m if melted completely (neglecting isostatic  
45 or thermal effects; Morlighem et al., 2020). Considering all land-based ice on Earth, including the Greenland Ice Sheet and mountain glaciers, this number increases to approx. 66 m (IPCC AR6 WG1 Ch. 2.3.3.3, Gulev et al., 2021).

While Antarctic ice mass changes have been small in the Late Holocene (approx. last 4000 years, Jones et al., 2022), the AIS is losing mass at an increasing rate in the last decades (Shepherd et al., 2012; Rignot et al., 2019; Otosaka et al., 2023). Due to ongoing atmospheric and oceanic warming, it is projected that Antarctica loses up to 3.1 m of sea-level equivalent ice  
50 volume by 2300 under a high-emission scenario (IPCC AR6 WG1 Ch. 9.6.3.5, Fox-Kemper et al., 2021). When considering the long-term stability of the ice sheet, Garbe et al. (2020) find that due to several feedback mechanisms, the AIS is bound to become ice-free at warming greater than 10 °C above pre-industrial levels.

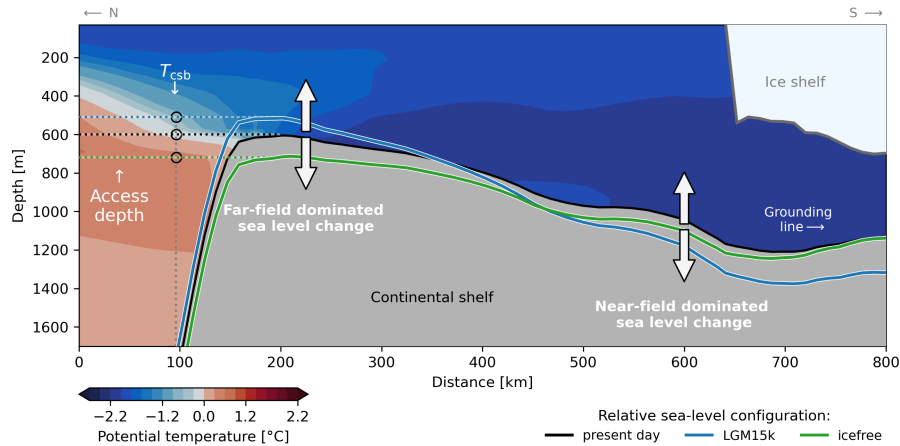
Melting of ice shelves, the floating extensions of the marine ice sheets, is highly sensitive to changes in ocean temperatures on the continental shelf, especially when warm water masses intrude into the ice-shelf cavities at depth (Hellmer et al.,  
55 2012; Pritchard et al., 2012; Rintoul et al., 2016). Sub-shelf melt rates are generally highest close to the grounding line, where

grounded ice becomes afloat (Rydt and Gudmundsson, 2016). For ice-sheet simulations over long time scales, such as glacial cycles, climatic boundary conditions as ocean and atmospheric temperature have to be parameterized in a robust manner. Albrecht et al. (2020a) use a temperature-index method and linear response functions to scale present-day ocean temperature observations on the continental shelf, which is the shallow ocean area surrounding the Antarctic Ice Sheet, with climatic variations derived from ice-core data. For shorter time scales, i.e. end-of-century projections, stand-alone ice sheet models are typically forced by the output of climate models (Seroussi et al., 2020).

In order to assess the stability and long-term behaviour of ice sheets, interactions with the solid Earth and sea level are relevant, as GIA responses can have major feedbacks with ice dynamics (Whitehouse et al., 2019). Albrecht et al. (2023, accepted), for instance, use a globally consistent coupled ice sheet–GIA model framework and find that ice retreat can be significantly slowed down when isostatic rebound is included, in particular when considering a weak Earth structure with low mantle viscosity and thin lithosphere, as reconstructions suggest for the West Antarctic plate (Barletta et al., 2018; Bagge et al., 2021). Coupled ice sheet–GIA models exist in different modes of complexity, e.g. with regional setups (Coulon et al., 2021; Zeitz et al., 2022), 1-dimensional Earth structure (Pollard et al., 2017; Gomez et al., 2020) or globally 3-dimensional, which are just becoming available as in Gomez et al. (2018), van Calcar et al. (2023) and Albrecht et al. (2023, accepted).

GIA processes also influence ocean dynamics in various ways: Rugenstein et al. (2014) demonstrate that the presence of a forebulge, which rises the Southern Ocean floor by approx. 50 m in response to additional ice loading, can significantly alter ocean velocities, frontal structures and zonal transport. Wilmes et al. (2017) show that tides are affected by changes in RSL patterns. Tinto et al. (2019) argue that sub-shelf bathymetry controls the oceanic flow beneath the Ross Ice Shelf, which is subject to change due to GIA processes. Motivated by these previous studies, the focus of our analysis is how RSL changes can influence basal melting in ice-shelf cavities.

Temperatures and salinities in the Southern Ocean show a strong dependence with depth: while surface waters are close to the freezing point of seawater (ca.  $-1.9^{\circ}\text{C}$ ), temperatures increase with an average rate of  $+0.5^{\circ}\text{C}$  per 100 meters in the *thermocline layer* (approx. upper 600 m) and decrease slowly below to reach about  $0^{\circ}\text{C}$  at 1800 m (see Fig. S1 in the supplementary material). Similarly, ocean salinities increase from about 34.0 psu (practical salinity unit) at the surface to ca. 34.7 psu at 600 m depth and stay rather constant below (see Fig. S2). The thermocline layer is characterised by the transition between cold and fresh surface waters and warmer, saltier Circumpolar Deep Water (CDW). As (positive values of) RSL indicate the local water column depth, changes of RSL can be interpreted as a negative displacement of bedrock topography relative to the geoid. From an ice-sheet perspective the local sea level thus remains at the same reference elevation ( $z = 0$ ), whereas bedrock elevation is modulated according to changes in relative sea level. In a related study, Nicola et al. (2023b, in discus.) show that bathymetry can play a crucial role in the interaction between the AIS and the surrounding ocean: topographic features such as troughs and sills can act as *oceanic gateways* through providing or blocking access of warm CDW into the ice-shelf cavities, from where it potentially reaches deep-lying grounding lines (Thoma et al., 2008; Nicholls et al., 2009; Hellmer et al., 2012; Pritchard et al., 2012; Tinto et al., 2019; Sun et al., 2022). At the same time the pattern of RSL changes is highly



**Figure 1. Schematic of a typical oceanic gateway, where topography shields a deep-lying grounding line from warm-water inflow.** A transect following the deepest topographic connection (along a trough) shows a common temperature distribution for the Antarctic continental shelf. Variations of the sill depth can occur in response to far-field and near-field variations of relative sea-level, which affects the access depth from where offshore water masses flow onto the continental shelf. The effect of RSL changes on basal melt rates can be assessed by evaluating the change in ocean properties resulting from variations in access depths at the continental-shelf break ( $T_{csb}$ ).

dependent on the local GIA response to ice dynamics. On glacial time scales, the near-field visco-elastic vertical displacement of bedrock as a consequence of changing ice load and gravitational attraction can outweigh the barystatic (‘far-field’) sea-level signal and lead to several hundreds of meter change in RSL.

The typical depth of the continental shelf around Antarctica (approx. 500 m) is in the range of the thermocline layer. **As-**  
 95 **suming** that changes in bathymetry do not influence the horizontal circulation patterns between open ocean water masses (at the CSB or further offshore) and shallow water masses on the continental shelf, a change in RSL could give water masses from different depths access to the continental shelf and potentially into the cavities, where it would affect melting underneath the ice shelves. Within the thermocline layer, water properties at the CSB ~~are getting~~ colder and fresher when RSL decreases, and warmer and saltier during an increase in RSL (cf. Fig. S1). Figure 1 shows a schematic of this concept and also highlights the  
 100 typical spatial pattern of RSL changes.

So far the effect of RSL changes on Antarctic basal melt rates has not been assessed. The importance and relevance of this effect is thus unclear and whether this mechanism should be considered for the ocean forcing in ice-sheet simulations. With this study we want to provide an approximate estimate on the potential impact of relative sea-level change on basal melt rates  
 105 in Antarctica.

We first define different RSL configurations, which represent end-member realisations for past and future change in sea level, as well as an upper-end estimate for possible changes in the year 2300. From these RSL patterns we compute the change in open-ocean **connectivity** to grounding lines of the Antarctic Ice Sheet and infer how this changes the ocean properties that

get access onto the continental shelf. By adding the derived changes in continent-shelf break temperature and salinities as anomalies to an ice-sheet model, we compute changes in basal melt rates based on the RSL signal.

The study consists of two different sets of experiments: In a first step, we test the sensitivity of a present-day ice-sheet configuration to end-member realisations of RSL change patterns to derive upper limit estimates of this effect on basal melt rate changes. Secondly, we apply **RSL driven ocean forcing** corrections for specific past and future time slices of the Antarctic ice-sheet evolution to assess the effect of RSL-induced basal melt rates changes also in more realistic scenarios.

## 115 2 Methods

This section describes the methods and workflow we use to derive ice-shelf basal melt rate estimates by applying different relative sea-level change configurations.

In order to assess the relevance and magnitude of relative sea-level on basal melt rates, we define different configurations of relative sea-level change. For an upper limit estimate of past RSL changes, we choose the maximum ice extent of the AIS during the Last Glacial Maximum, which is named *LGM15k* in the following. For an upper limit of expected future changes, we assume a configuration where all present-day solid ice is melted and the global mean sea-level as well as solid Earth rebound would thus be highest (*icefree*). For an intermediate and more realistic future setup, we also assess a configuration in the year 2300, with the Antarctic Ice Sheet being forced by an upper limit climate projection (*yr2300*). More information about these configurations is given below (Sect. 2.1.2).

To estimate sub-shelf melt rate changes for the different RSL configurations, we follow these steps:

1. Compute relative sea-level changes with coupled ice sheet – GIA simulations.
2. Identify access depths informed by relative sea-level changes to determine open ocean access to ice-sheet grounding lines.
3. Calculate ocean state changes at the continental-shelf break on the basis of vertical displacement of access depths.
4. Compute diagnostic changes in ice-shelf basal melt rates with an ice-sheet model.

In the following, we explain the methodology of each step in more detail.

### 2.1 Computation of relative sea-level changes

In this section we first present the used models to compute relative sea-level changes, and then provide more information about the different relative sea-level configurations that we use for our analysis.

### 2.1.1 Coupled ice-sheet – GIA model framework

We simulate RSL changes using the coupled ice sheet – GIA model framework PISM-VILMA as described in Albrecht et al. (2023, accepted). The Parallel Ice Sheet Model (PISM; <https://www.pism.io>; Bueler and Brown, 2009; Winkelmann et al., 2011), an open-source model which simulates ice sheets and ice shelves, is used to compute the transient evolution of the Antarctic Ice Sheet under external climatic forcing. It is interactively coupled to the VIscoelastic Lithosphere and MAntle model (VILMA; Klemann et al., 2008; Martinec et al., 2018), which calculates the solid Earth and sea-level response to changes in ice loading based on a 3D Earth structure (Bagge et al., 2021). VILMA solves the global sea-level equation self-consistently, which yields a sea-level fingerprint in response to the redistribution of water masses between ice sheets and ocean, as well as a result of rotational and gravitational feedbacks. While Antarctic Ice Sheet changes are interactively modeled with PISM, ice evolution in the northern hemisphere is prescribed (see more information about this below in Sect. 2.1.2). PISM uses a regular Cartesian grid, with either 16 km (*LGM15k*) or 8 km (*yr2300*) horizontal resolution. VILMA utilizes a Gauss-Legendre grid and our setup uses the n128 resolution ( $256 \times 512$  grid points) for viscoelastic deformation, while solving the sea level equation on higher resolution (n512,  $1024 \times 2048$  grid points). We use the '3D ref' Earth rheology from Albrecht et al. (2023, accepted), which is equivalent to the 'v\_0.4\_s16' configuration in Bagge et al. (2021). A visualisation of the vertical and lateral viscosity structure in Antarctica as well as the lithosphere thickness is provided in Fig. 5 in Albrecht et al. (2023, accepted). VILMA is initialized with the global present-day ETOPO1 bed topography (Amante and Eakins, 2009; NOAA National Geophysical Data Center, 2009), where the Antarctic region has been replaced with the Bedmap2 dataset (Fretwell et al., 2013). Further information about the PISM-VILMA coupling framework is provided in Albrecht et al. (2023, accepted).

In order to represent the GIA response in the ice sheet domain, we first calculate the change in relative sea level  $\Delta r(c)$  with respect to present-day RSL  $r_{pd} = r(\text{present-day})$ , where  $r(c)$  denotes the new RSL configuration  $c$  computed by PISM-VILMA (see Eq. 1). Subsequently, the present-day ice sheet bedrock topography  $t_{pd}$  is corrected with the shift of relative sea-level change to compute the updated bedrock  $t(c)$ , see Eq. 2.

$$\Delta r(c) = r(c) - r_{pd} \quad (1)$$

$$t(c) = t_{pd} - \Delta r(c) \quad (2)$$

We use the BedMachine Antarctica (v3) dataset (Morlighem, 2022; Morlighem et al., 2020) in original resolution (500 m) for present-day topography and regrid RSL changes  $\Delta r(c)$  from the VILMA to BedMachine grid bilinearly.

### 2.1.2 Relative Sea-Level Configurations

The *LGM15k* configuration represents the difference in relative sea level 15 thousand years before present (kyr BP). It is extracted as a single time slice from a transient coupled ice sheet – GIA simulation over the last 246 kyr BP (representing the last two glacial cycles) described in Albrecht et al. (2023, accepted). The Antarctic Ice Sheet is modeled interactively with PISM, while the ice load history of the northern hemisphere is prescribed by the ICE-6G\_C reconstruction (Stuhne and

Peltier, 2015). The Antarctic climate forcing is scaled with temperature anomalies from ice-core reconstructions (Albrecht et al., 2020a). The whole simulation period has been iterated six times to invert for the initial topography, by considering the offset of the present-day modeled topography at the end of the previous run. The coupling interval between ice and GIA models is 100 years and PISM uses a 16 km horizontal resolution. During the coupled simulation, the maximum AIS extent during the last glacial period is reached at around 15 kyr BP, which is approx. 11 thousand years later than in the northern hemisphere (26 kyr BP, see Fig. S3). This delay agrees well with Clark et al. (2009), suggesting a West Antarctic LGM delay of 4.5–12 kyr with respect to the global LGM sea-level lowstand and the ICE-6G\_C reconstruction. In our simulation, GMSL was approx. 93 m lower than today during that period.

The *icefree* RSL configuration is derived from the long-term solid Earth response to an instant removal of all present-day ice load. Continental ice masses are redistributed as liquid water and added to the ocean mass, which leads to a GMSL rise of approx. 70 m in our simulation. As no dynamic ice-sheet changes are computed, this RSL configuration is computed with a VILMA standalone configuration. The simulation period spans 86 kyr into the future. The long simulation time has been chosen such that the full solid Earth response can unfold (before a possible next ice age), also in regions featuring high mantle viscosities as well as a thick lithosphere and therefore rather long response time scales.

The *yr2300* RSL configuration is derived from a coupled PISM-VILMA simulation using an upper-limit climate forcing. The initial state for PISM is derived as in Reese et al. (2023), with a 400 kyr thermal spinup (using a 16 km horizontal resolution), followed by a 25 kyr full-physics spinup (8 km resolution). First, the historic period (1850–2015) is computed with pre-industrial climate forcing as described in Reese et al. (2023). The climate forcing for the subsequent model period (2015–2300) follows the ISMIP6 2300 extension protocol using a SSP5-8.5 realisation of CESM2 (AE04, The ISMIP6 2300 extension authors, 2022). We use the best scoring PISM ensemble member (AIS1) from Reese et al. (2023), which uses the following PISM parameters: till effective overburden fraction  $\delta = 1.75\%$  and till water content decay rate  $C_d = 10 \text{ mm a}^{-1}$ . The coupling time step between PISM and VILMA is set to 1 year and PISM uses a 8 km horizontal resolution. The historic period shows plausible RSL change rates (see Fig. S4), which are comparable to GNSS measurements (Buchta et al., 2022; Scheinert et al., 2023). While the climate forcing reflects an upper-end estimate, the dynamic ice-sheet response does not include structural uncertainties of ice-sheet behaviour such as the Marine Ice Cliff Instability (MICI), which can potentially increase Antarctic ice loss by a factor up to 4 but is poorly constrained (IPCC AR6 WG1 Ch. 9.6.3.5, Fox-Kemper et al., 2021). To also include non-Antarctic cryospheric changes and reflect redistributions in the global water budget, we add a uniform GMSL contribution of 3.68 m on the relative sea-level changes computed by PISM-VILMA in a post-processing step (after the coupled simulation has been finished), which is composed from upper end (83th percentile) IPCC estimates for the year 2300 under SSP5-8.5 forcing: the contributions are 1.75 m from the Greenland Ice Sheet, 0.32 m from glaciers, 0.10 m from land-water storage and 1.51 m from thermal expansion (IPCC AR6 WG1 Ch. 9.6.3.5, Fox-Kemper et al., 2021, Table 9.11). By adding a uniform, global mean sea-level offset to relative sea-level changes computed by PISM-VILMA we make the assumption, that regional variations from the global mean around Antarctica, e.g. induced by gravitational or rotational effects in response to these contributions (with origin mostly on the northern hemisphere), are small and not relevant on the scale of our assessment, which uses a vertical resolution of 1 meter to identify access depths from topography.

## 2.2 Identification of access depths

In order to evaluate how the altered bathymetry  $t(c)$  modifies the access of offshore water masses to the ice-sheet grounding lines, we make use of the approach developed in a related study by Nicola et al. (2023b, in discus.). Therein, *oceanic gateways* are defined as the deepest possible topographic connection of open ocean water to the grounding lines of the Antarctic Ice Sheet. This methodology is based on the assumption that inflowing water masses from beyond the continental-shelf break always follows these deepest bathymetric pathways onto the continental shelf and eventually into the ice-shelf cavities. Over-deepend regions on the continental shelf are thereby shielded by shallower topography that inhibits the inflow of water masses below the deepest connection to the open ocean. We systematically analyse the topographic connectedness by calculating an access depth map  $d_m(c)$ . This map contains for every grid point on the continental shelf the largest possible depth, for which there is a horizontal oceanic connection to the open ocean (which is defined as  $t > 3700$  m depth) that is not obstructed by bathymetry. We obtain the map of access depths  $d_m(c)$  via a 'Connected Component Analysis' (CCA), using the implementation by Khrulev (2024). The algorithm iterates the vertical water column from 0 m to 3700 m depth in vertical resolution of 1 m and finds isolated regions that can not be reached from locations classified as open ocean, as they are shielded by shallower topography. A pseudo-code version of the used algorithm is attached in Appendix A. Due to the efficient implementation, an access depth map on 500 m resolution can be computed **in less than 10 minutes**. We calculate access depth maps  $d_m(c)$  for each topography map  $t(c)$  including the present-day topography  $t_{pd}$ . Supplement Figure S5 shows the difference between bathymetry  $t(c)$  and the computed access depth maps  $d_m(c)$ , which visualises the location and magnitude by which deeper parts on the continental shelf are shielded by further offshore, more shallow, topography. The influence of RSL changes  $\Delta r(c)$  on access depth maps can be analysed by the anomaly to present-day access depth map (Eq. 3).

$$\Delta d_m(c) = d_m(c) - d_m(\text{present-day}) \quad (3)$$

From the inferred 2-dimensional access depth maps, we select only the grid cells coinciding with the grounding line mask for further analysis. The grounding line mask is defined as all floating ice grid cells, which have a direct neighbouring cell with grounded ice belonging to the main Antarctic continent, which means that islands and ice rises are not considered here.

We evaluate the sparse access depth map at the grounding line for different basins  $b$  and define the deepest access depth per basin as  $d_{GL,0}(b, c)$ . Furthermore, we calculate access depths with the constraint that at least a certain fraction of the grounding line needs to be reached by this depth:  $d_{GL,g}(b, c)$  is the deepest possible access depth for RSL configuration  $c$ , such that at least  $g\%$  of the grounding line cells in basin  $b$  have a deeper or similar access depth. Using a range of grounding line fractions for  $g \in \{10, 20, \dots, 90\}$ , we thereby obtain values of  $d_{GL,10}(b, c), d_{GL,20}(b, c), \dots, d_{GL,90}(b, c)$  for each basin  $b$  and RSL configuration  $c$ . We use a classification of the AIS and the surrounding ocean into 19 basins as presented in Nicola et al. (in discus., 2023b), which are originally based on AIS drainage basins defined in Zwally et al. (2012), extended and modified by Reese et al. (2018) and adapted by Nicola et al. (in discus. 2023b) to match oceanic gateway pathways for present-day (basin boundaries shown in Fig. 2c). Changes in grounding line access depths to the present-day baseline are computed as in Eq. 4 and 5:



$$\Delta d_{GL,0}(b, c) = d_{GL,0}(b, c) - d_{GL,0}(b, \text{present-day}), \quad (4)$$

$$\Delta d_{GL,g}(b, c) = d_{GL,g}(b, c) - d_{GL,g}(b, \text{present-day}). \quad (5)$$

### 2.3 Calculation of marginal ocean properties

The underlying assumption of our methodology is that changes in the grounding line access depth  $d_{GL,0}$  modifies the vertical entry point of water masses that flow onto the continental shelf from further offshore and thereby **affect the potential** melting inside the ice-shelf cavities. We calculate this change in ocean properties by evaluating the vertical column of present-day ocean observations at the continental-shelf break for different access depths:  $T_{CSB, \text{mean}}$  is defined as the mean of ocean temperature  $T$  at the continental-shelf break at the depth of the deepest grounding line access depth  $d_{GL,0}$  (see Eq. 6).

$$T_{CSB, \text{mean}}(b, c) = \text{mean} \{ T(x, y, z) | (x, y) \in \text{CSB}(b) \text{ and } z = d_{GL,0}(b, c) \} \quad (6)$$

We define the continental-shelf break mask as all grid cells that are in the range of 40 km distance of the 1800 m isobath of present-day bathymetry.  $\text{CSB}(b)$  denotes the subset of the continental-shelf break mask in basin  $b$ . From the computed continental-shelf break temperatures for different RSL configurations  $c$ , we calculate the temperature anomaly with respect to the present-day configuration (Eq. 7) and add them to baseline values used for calculating basal melt rates in ice-shelf cavities (see Sec. 2.4 and 2.5 below). Note that the anomaly method diverges from Nicola et al. (2023b, in discus.; revised manuscript), who calculate ocean anomalies between the continental-shelf break and the calving front location, in order to estimate the present-day basal melt increase due to extensive inflow of warmer offshore water masses into ice-shelf cavities.

$$\Delta T_{CSB, \text{mean}}(b, c) = T_{CSB, \text{mean}}(b, c) - T_{CSB, \text{mean}}(b, \text{present-day}) \quad (7)$$

Salinity values at the continental-shelf break  $S_{CSB, \text{mean}}$  and their anomalies to present-day  $\Delta S_{CSB, \text{mean}}$  are computed accordingly to Eq. 6 and 7. Similar to Nicola et al. (2023b, in discus.), we make use of the ISMIP6 climatology dataset (Jourdain et al., 2020), which contains potential temperature and practical salinity data points averaged over the period 1995–2017 at a  $8 \text{ km} \times 8 \text{ km}$  horizontal and 60 m vertical resolution. The dataset is a combination of different data sources like the World Ocean Atlas 2018 (Locarnini et al., 2018; Zweng et al., 2019), the Met Office EN4 subsurface ocean profiles (Good et al., 2013) and the Marine Mammals Exploring Oceans from Pole to Pole (MEOP) dataset (Roquet et al., 2013, 2014; Treasure et al., 2017). Jourdain et al. (2020) merged and extrapolated these data products using a similar method as our CCA approach, which makes their data very suitable for our analysis as missing data has been filled with appropriate values. To acquire ocean properties between discrete vertical data layers, we utilize linear interpolation along the vertical axis.

## 2.4 Computation of basal melt in ice-shelf cavities

For computing basal melt rates we use the Potsdam Ice shelf Cavity mOdule (PICO) as implemented in the ice-sheet model PISM (Reese et al., 2018). PICO parameterizes the vertical overturning circulation in ice-shelf cavities driven by melt-induced buoyancy fluxes, extending the box model by Olbers and Hellmer (2010) to two horizontal dimensions. The module takes ocean temperature and salinity from the floor of the continental shelf area as input, typically averaged horizontally per basin, representing the water masses that reach the grounding line. Due to mixing with more buoyant melt water these water masses rise along the ice-shelf base via the ice-pump mechanism (Lewis and Perkin, 1986).

We compute basal melt rate changes in a pure diagnostic manner without any transient ice sheet changes (except for one special case, explained in Sec. 2.5). Thus, the computed melt rates are solely dependent on the used PICO parameters, the ocean forcing and the ice-sheet geometry. We compare ‘baseline’ basal melt rates to ones that are obtained by adding RSL derived ocean anomalies ( $\Delta T_{\text{CSB,mean}}$ ,  $\Delta S_{\text{CSB,mean}}$ ) to the baseline ocean forcing. Depending on the set of experiments, we use different ice-sheet geometries and resolution (further information given below in Section 2.5).

PICO features two main (circum-Antarctic) parameters to adjust the amount of melting in the ice-shelf cavities: the vertical overturning circulation strength  $C$  (in  $\text{Sv m}^3 \text{kg}^{-1}$ ), and the heat-exchange coefficient  $\gamma_T^*$  (in  $10^{-5} \text{ m s}^{-1}$ ). Reese et al. (2023) tune these two parameters in order to represent realistic melt-rate sensitivities for given thermal forcing. Similar to the approach in Jourdain et al. (2020), they correct the input temperature values during this process, which are originally based on Schmidtko et al. (2014), in order to match present-day melt rate observations from Adusumilli et al. (2020). Which PICO parameters we use is explained in the following section.

## 2.5 Experiment Design

In order to estimate the impact of relative sea-level changes on basal melt rates, we conduct different sets of experiments. They can be classified into the set of *present-day sensitivity* experiments and the *applied scenario* set and are all listed in Table 1.

In the *present-day sensitivity* set we calculate the effect of different RSL configurations on basal melt rates using a present-day ice-sheet configuration. We thereby test the sensitivity of the present-day ice sheet to RSL configurations from different (past and future) time slices which include the maximum range of plausible RSL changes. These experiments have no real-world application, but are still useful to derive upper-limit estimates of the maximum possible impact of relative sea level on basal melt rates.

The set encompasses the experiments LGM15k\_PDsens\_RSLcorrect, icefree\_PDsens\_RSLcorrect and yr2300\_PDsens\_RSLcorrect, where basal melt rates are compared to the present-day baseline experiment PD\_baseline. We use an updated bedrock topography with the respective RSL configuration (see Eq. 2) to compute access depths  $d_{\text{GL},0}(b, c)$  using the present-day ice sheet mask and grounding line position. Similarly, we compute access depths for PD\_baseline, where no RSL changes are applied. We now add the derived changes in ocean forcing ( $\Delta T_{\text{CSB,mean}}$ ,  $\Delta S_{\text{CSB,mean}}$ , see Eq. 7) to the present-day baseline ocean forcing and compute basal melt rates with a present-day ice-sheet configuration. By comparing these melt rates to the baseline

**Table 1. Experiment overview.** A list of the experiments conducted for this study. *RSL config* refers to the used relative sea level configuration to update the bedrock topography ( $c$  in Eq. 1 and 2). *Basal melt resolution* indicates the horizontal resolution of the ice-sheet setup used for computing basal melt rates. *deglac* represents a time series from *LGM15k* to present-day with 500 year time slices (more explanation in Sec. 2.5).

Name	Experiment set	RSL config.	Ice mask	Ocean forcing	Basal melt resolution
PD_baseline	PD sensitivity	PD	PD	PD	4 km
LGM15k_PDsens_RSLcorrect	PD sensitivity	LGM15k	PD	PD + RSL correct.	4 km
icefree_PDsens_RSLcorrect	PD sensitivity	icefree	PD	PD + RSL correct.	4 km
yr2300_PDsens_RSLcorrect	PD sensitivity	yr2300	PD	PD + RSL correct.	4 km
LGM15k_apply_baseline	applied scenario	PD	LGM15k	LGM15k	16 km
LGM15k_apply_RSLcorrect	applied scenario	LGM15k	LGM15k	LGM15k + RSL correct.	16 km
yr2300_apply_baseline	applied scenario	PD	yr2300	yr2300	8 km
yr2300_apply_RSLcorrect	applied scenario	yr2300	yr2300	yr2300 + RSL correct.	8 km
deglac_apply_baseline	applied scenario	PD	deglac	deglac	16 km
deglac_apply_RSLcorrect	applied scenario	deglac	deglac	deglac + RSL correct.	16 km

PD = present-day, RSL config. = relative sea-level configuration, RSL correct. = relative sea-level correction

295 experiment, we acquire changes in ice-shelf basal melting driven by artificial RSL configurations for the present-day ice-sheet configuration.

To compute basal melt rates with PICO, we use bedrock topography and ice thickness from the BedMachine Antarctica (v3) dataset (Morlighem, 2022; Morlighem et al., 2020) regridded to a horizontal resolution of 4 km. We use the "best" parameter combination from Reese et al. (2023), which is  $\{C = 2.0 \text{ Sv m}^3 \text{ kg}^{-1}, \gamma_T^* = 5 \times 10^{-5} \text{ m s}^{-1}\}$ . The baseline ocean forcing for  
300 this set of experiments corresponds to the temperature corrected ocean input in Reese et al. (2023).

In the second, *applied scenario* set of experiments, we compute RSL derived basal melt rate changes for ice-sheet configurations that correspond to the used RSL configurations. This experiment set is of more realistic nature than the first one, as it considers the correct ice-sheet geometry and corresponding ocean forcing that matches the used RSL configurations. It can  
305 therefore be regarded as an estimate of the RSL influence on basal melt rates in realistic scenarios.

For the *LGM15k* and *yr2300* RSL configuration, we first compute access depths and melt rates for a baseline scenario (\*\_apply\_baseline), using the corresponding ice-sheet geometry and ocean forcing. Note that the bedrock topography is not updated in these baseline experiments, so no modifications to the ocean forcing due to RSL corrections apply. This is instead done in the subsequent experiments (\*\_apply\_RSLcorrect): computed access depths  $d_{GL,0}$  differ from the baseline experiments  
310 as the bedrock topography has been altered by the associated changes in RSL. Using Eq. 6 and 7, we derive corrections

in the ocean forcing. By comparing the computed basal melt rates from the \*\_apply\_RSLcorrect to the \*\_apply\_baseline experiments, we compute the RSL impact on basal melt rates in real-world applications.

For the *LGM15k* scenario, the PICO parameters  $\{C = 0.8 \text{ Sv m}^3 \text{ kg}^{-1}, \gamma_T^* = 1 \times 10^{-5} \text{ m s}^{-1}\}$  are used on a horizontal grid resolution of 16 km, similar to Albrecht et al. (2020a). In the *yr2300* case the "max" parameter set from Reese et al. (2023)   
315  $\{C = 3.0 \text{ Sv m}^3 \text{ kg}^{-1}, \gamma_T^* = 7 \times 10^{-5} \text{ m s}^{-1}\}$  is used on a horizontal resolution of 8 km.

The *applied scenario* set features an additional experiment named *deglac\_apply\_baseline* and *deglac\_apply\_RSLcorrect*. These are similar to the *LGM15k\_apply\_\** experiments, but encompass a time series for the whole deglaciation time span from 15 kyrBP to present-day in steps of 500 years. We compute the RSL-induced ocean forcing corrections for every time slice using the same methodology as for the *LGM15k* case. We then repeat the coupled PISM-VILMA simulation for the   
320 deglaciation period and apply the ocean forcing corrections as a time-dependent anomaly. These experiments are the only ones in this study, where we calculate basal melt rates with RSL-induced ocean corrections in a transient manner (compared to the pure diagnostic analysis for the other experiments).

### 3 Results

In this section we describe the results of our analysis investigating the impact of relative sea-level change on Antarctic ice-shelf   
325 basal melt rates. First, we describe RSL changes for the *LGM15k*, *icefree* and *yr2300* configurations as modeled by the coupled ice sheet – GIA simulations. The derived changes in grounding line access depths are described thereafter, before we assess the impact on continental-shelf break ocean temperatures, which drive the changes in basal melting. We present basal melt changes for the *present-day sensitivity*, as well as for the *applied scenario* experiment set.

#### 3.1 Changes in relative sea level

Variations in the RSL pattern can be ascribed to barystatic, rotational, gravitational, or deformational processes. Hereafter, we   
330 will refer to changes in the *far-field*, encompassing those arising from both barystatic effects and all GIA-induced alterations in the northern hemisphere that impact the southern hemisphere. This includes primarily the rotational component and alterations in ocean basin volume due to bedrock deformation linked to changes in ice load. In contrast, we categorize *near-field* effects as RSL changes resulting from GIA processes specific to the Antarctic Ice Sheet, primarily involving gravitational and   
335 deformational influences.

The *LGM15k* ice sheet features a well advanced grounding line compared to the present-day location and a thicker ice column in almost all regions (see Fig. S6a). The increased ice thickness (up to +3000 m) is especially prominent in the marine basins, where today's largest ice-shelves are located, the Filchner–Ronne (basin 1) and Ross (basin 12) as well as in large portions of the West Antarctic Ice Sheet (basins 13–16). To a lesser extent, thicker ice is also present in the Antarctic Peninsula (basins   
340 17–19) and at the edges of East Antarctica. The interior of the East Antarctic Ice Sheet, however, shows a slight decrease of thickness during *LGM15k* (up to -140 m locally) due to less snowfall with colder surface temperature forcing (Nicola et al.,

2023a). The additional continental ice mass in Antarctica contributed with around 15 m to the global mean (barystatic) sea-level fall of 93 m at 15 kyr BP (130 m during northern hemisphere LGM around 26 kyr BP).

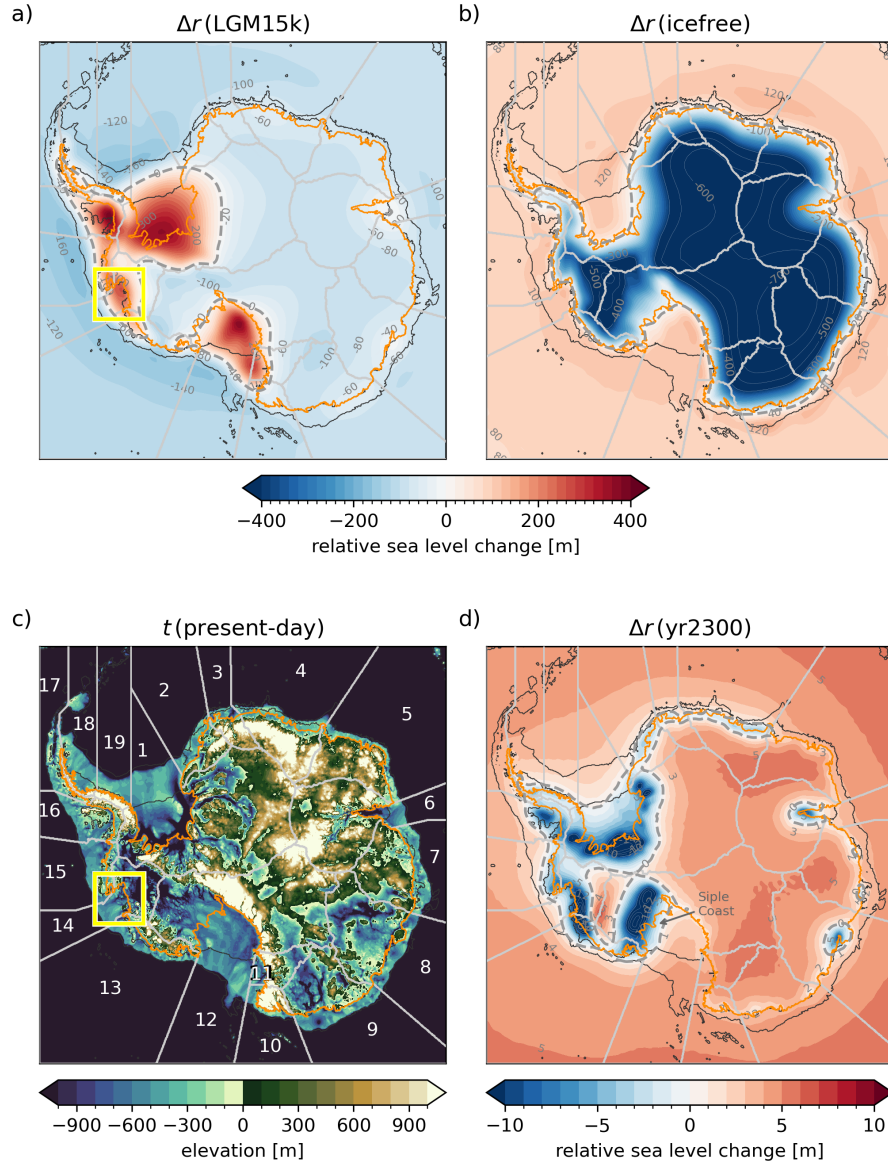
The changes in sea level relative to present-day  $\Delta r$  as inferred from our coupled ice sheet–GIA model is shown in Fig. 2 for different RSL configurations  $c$ . In the *LGM15k* case (Fig. 2a) the GIA response to greater ice extent overcompensates the far-field sea-level fall in many parts: most of West-Antarctica, the Filchner–Ronne and Ross basins and parts of the Peninsula show a total RSL increase, which can be more than 400 m locally. This is also a consequence of the regionally weak Earth structure due to very low mantle viscosities and a thin lithosphere, which is represented in the 3D Earth structure used by VILMA (Bagge et al., 2021). In contrast, the *LGM15k* far-field sea-level fall dominates the RSL pattern in all regions of East Antarctica. Locally this RSL pattern is dampened through visco-elastic GIA effects, for instance in the Amery (basin 6) or Totten region (basin 8), reflected by a reduction of the negative RSL signal in these regions (cf. Fig. 2a). The increased ice load leading to bedrock subsidence also causes a displacement of mantle material into the surrounding areas as part of the forebulge effect, which includes the elastic response of the lithosphere. This combined process further reduces the relative sea level in those areas and can be observed for example offshore the Filchner-Ronne region (basin 1 and 19), in the Bellingshausen Sea (basin 15) and in the Ross region (basin 12; cf. Fig 2a).

In the *icefree* experiment, the transformation of all present-day ice masses into liquid water causes a barystatic sea-level rise of ca. +70 m. The VILMA output shows a strong bedrock uplift in all previously glaciated regions in both hemispheres (cf. Fig. 2b). The solid Earth response causes uplift (RSL decrease) of up to 800 m in the interior of the AIS. The mantle material is drained from the surroundings, causing an inverse forebulge effect, such that the RSL increases approx. 20 m more than the far-field sea-level rise in many places of the present-day continental shelf area. Areas where the far-field increase in sea level and the near-field bedrock uplift compensate each other (dashed gray contour line in Fig. 2b) are found close to present-day grounding lines.

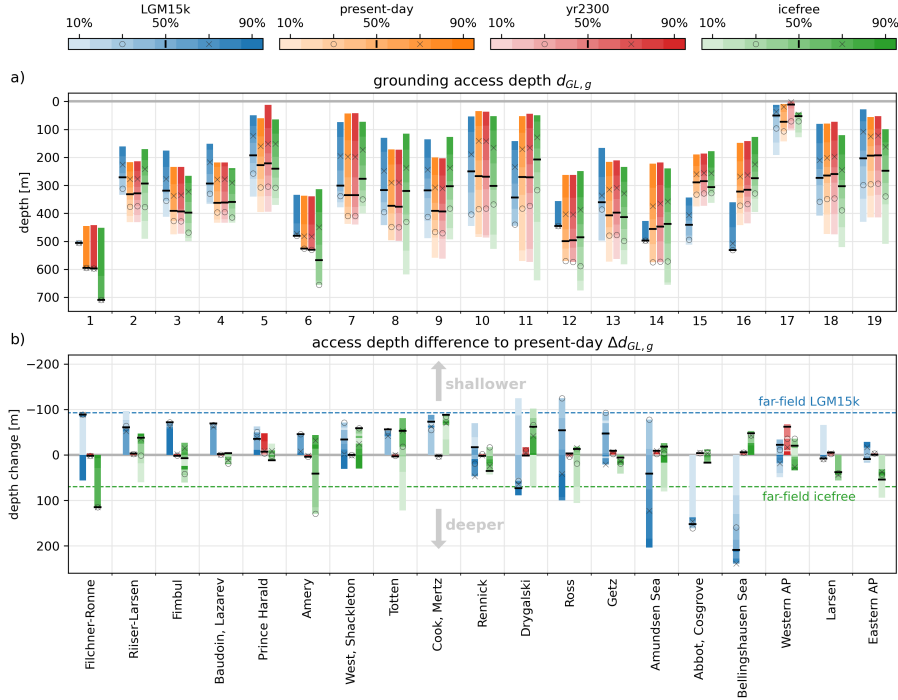
The simulated ice sheet in the *yr2300* case shows significant grounding line retreat from present-day location, especially in the Filchner-Ronne region (basin 1), the Siple Coast, which is part of the Ross Ice Shelf (basin 12), parts of the Antarctic Peninsula (basins 16, 18, 19) and the West Antarctic basins (no. 13–15). Also in Dronning Maud Land (basins 2–4), Amery (basin 6) and Totten region (basin 8), widespread grounding line retreat can be observed (cf. Fig. S6b). The land ice loss from both northern and southern hemisphere causes a far-field RSL increase in the Southern Ocean around the Antarctic continent mostly in the range of 4–5 m (cf. Fig. 2d). Bedrock uplift caused by grounding line retreat and ice-sheet thinning reduces the depth of the water column, in locally strongly differing magnitudes. In regions of strong uplift, like for instance in the West Antarctic basins, the Antarctic Peninsula, the Filchner–Ronne basin and the Siple Coast, relative sea level shows a net decrease (up to -19 m), overcompensating the far-field sea-level rise. The far-field signal is dominant in large parts of East Antarctica, with some exceptions, like in Dronning Maud Land, the Amery basin or the Totten region.

### 3.2 Changes in access depths

We compute the updated topography  $t(c)$  for each RSL configuration  $c$  (Eq. 2) using the changes in relative sea level  $\Delta r$  presented above. Based on this, we compute access depth maps  $d_m(c)$  and retrieve the grounding line access depths  $d_{GL,0}(b, c)$



**Figure 2. Relative sea-level changes for different configurations and present-day topography.** Changes in relative sea level  $\Delta r$  are shown for *LGM15k* (a), *icefree* (b) and *yr2300* (d) RSL configurations. The transition between positive and negative relative sea-level changes is indicated by thick dashed grey contour lines. The grounding line of the present-day ice sheet is shown in orange and the corresponding continental-shelf area (confined by continental-shelf break and present-day ice mask) is marked with black contour lines. Present-day reference topography  $t_{pd}$  (BedMachine v3) including basin numbers is shown in panel (c). The yellow rectangle indicates the Amundsen Sea (see Fig. 4).



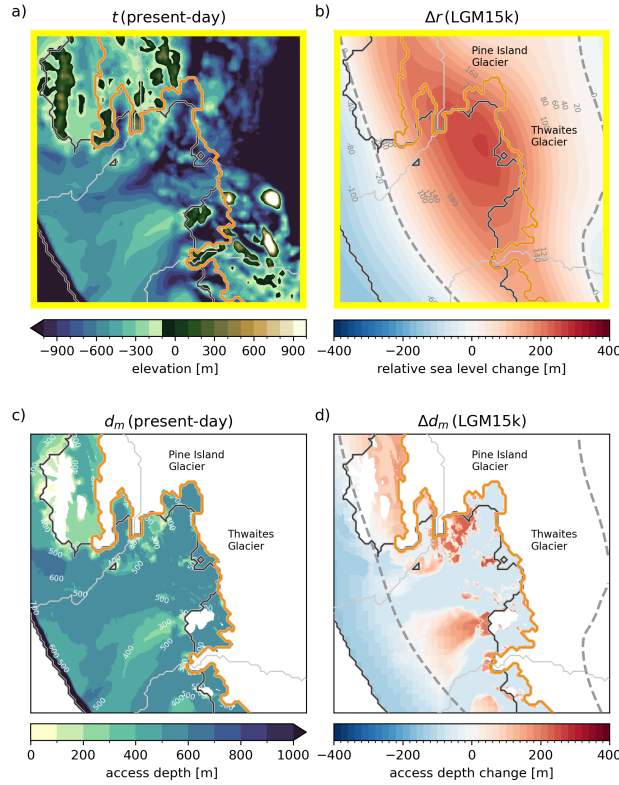
**Figure 3. Grounding line access depths  $d_{GL,g}$  (a) and their changes compared to present-day  $\Delta d_{GL,g}$  (b).** The colour shade indicates the percentage of grounding line reached by the specific access depth, with additional marks for  $d_{GL,30}$  (o),  $d_{GL,50}$  (—) and  $d_{GL,70}$  (x). Barystatic sea-level changes are indicated by dashed horizontal lines in panel b) for *LGM15k* and *icefree* RSL configuration. The plot shows results for the *present-day sensitivity* experiment set, which uses a present-day ice mask and grounding line position, but updated topography. Basins are labelled according to prominent ice shelves following Nicola et al. (2023b, in discus.; with AP = Antarctic Peninsula).

and  $d_{GL,g}(b,c)$  as explained in Sec. 2.2. In this section, we ~~the~~ explain the relation between  $d_m$  and  $d_{GL,g}$  exemplary for the *present-day sensitivity* experiment set. The *applied scenario* set of experiments uses the same relative sea-level changes  $\Delta r(c)$ , but features different ice masks and thereby grounding line positions. Results from this set are shown further below (Sec. 3.4). Results for  $d_{GL,0}$  are shown in Sec. 3.3 and 3.4.

380

**Present-day access depths  $d_{GL,g}(b, \text{present-day})$  reveal oceanic gateways** (Nicola et al., 2023b, in discus.), e.g. in the Filchner–Ronne basin (no. 1) and the Amery basin (no. 6). This can be inferred from Fig. 3a, where the additional colorbar markers (indicating  $g = 30\%$ ,  $50\%$  and  $70\%$  of grounding-line accessibility, respectively) are placed at same depths (orange bars represent present-day). Here, large parts of these basins are filled with offshore water of the same access depth level, due to the retrograde slope with over-deepened bathymetry within the ice-shelf cavity. In the Filchner–Ronne basin around 80 % of the grounding line is reached by water masses that overflow the topographic sill in 595 m depth. In Amery basin this threshold is at 526 m depth, reaching ca. 65 % of the basin grounding line. We identify oceanic gateways also for example in the Ross (basin

385



**Figure 4. Influence of relative sea-level change on access depths in the Amundsen Sea Embayment for the *LGM15k* RSL configuration.** Upper row shows present-day topography  $t_{pd}$  (a) and the change in relative sea level  $\Delta r$  in the *LGM15k* configuration (b). Lower panels show the derived access depth map  $d_m$  for present-day bathymetry (c) and the corresponding change  $\Delta d_m$  for *LGM15k* (d). Present-day grounding line is shown in orange and the continental shelf area (excluding floating ice) is marked with black contour lines. The zero contour line of RSL changes is marked as a grey dashed line in panels b) and d). Yellow borders refer to map extent highlighted in Fig. 2.

12) and the Amundsen Sea basin (no. 14), where at the deepest open-ocean connection (570 m and 575 m, respectively) 30 % of present-day grounding lines are directly reached.

390 Figure 3a also shows grounding line access depths  $d_{GL,g}$  for different RSL configurations of the *present-day sensitivity* experiments. How they differ from present-day depth ( $\Delta d_{GL,g}$ ) is presented in Fig. 3b. In the *LGM15k* configuration, barystatic sea level is about 93 m lower than today, which in first estimate would make grounding line access depths uniformly shallower in all basins, when only the far-field sea-level change with some distance to the AIS was to be considered. This is indicated by a dashed horizontal line in Fig. 3b. Deviations from this line are caused by regional visco-elastic deformations of the lithosphere and mantle and also by the resulting changes in the gravity potential due to mass redistribution and polar motion, all resulting  
395 from changes in ice loading.



The change of access depths at the grounding line  $\Delta d_{GL,g}$  is governed by the combination of different factors like the bedrock topography (retro- or prograde slope), the position and depth of the grounding line, and the horizontal fingerprint of relative sea-level changes. To decipher the response in grounding line access depth changes and understand the deviations to the barystatic far-field signal, it helps to examine the spatial pattern of access depth map changes: Figure 4 shows the present-day bedrock topography  $t_{pd}$ , the relative sea-level change  $\Delta r$ , the present-day access depth map  $d_m$  (present-day) and its associated change ( $\Delta d_m$ ) for the *LGM15k* RSL configuration in the same region, namely the Amundsen Sea Embayment (basin 14). There, a relatively shallow sill at the front of the continental shelf hinders water masses to reach deeper regions further inland including the present-day grounding line. Relative sea-level change at the outer regions of the continental shelf is dominated by the far-field sea-level fall, which reduces the sill depth (meaning the sill is getting shallower). In contrast, relative sea level increases by several hundred meters in the interior of the ice-shelf basin due to increased ice loading and subsidence of the bedrock, over-compensating the far-field sea-level fall. These two opposed signals of relative sea-level change are also represented in the introductory schematic (cyan line in Fig. 1). Despite the clear pattern of RSL changes in the Amundsen Sea region (Fig. 4b), the horizontal fingerprint of access-depth changes is very heterogeneous (Fig. 4d): it is generally dominated by the sea-level fall at the sill, meaning that bedrock subsidence has no additional effect in the over-deepened interior. A deepening of the access depth only occurs in regions, where present-day topography is higher than the overflow sill (compare Fig. 4a, c and d).

To derive grounding line access depths  $d_{GL,g}$ , we evaluate the spatial access depth map  $d_m$  at the position of the grounding line. Using a present-day ice-sheet geometry and the RSL configuration *LGM15k*, the deepest 40 % of the grounding line in the Amundsen Sea basin is accessed by shallower ocean water compared to present (up to 78 m) as a result of the far-field decrease in sea level. Note that the grounding line in basin 14 has many small patches with higher elevation than the sill at the outer continental shelf, which are not clearly recognisable in Fig. 4d. Shallower parts of the grounding line are instead reached by deeper waters compared to the reference (up to 204 m) as these regions are subject to bedrock subsidence (see Fig. 4b and 3d). This enhances the “oceanic gateway feature” drastically in the sense that a bigger share of the grounding line is reached at lowest possible access depth: in the *LGM15k* case, 75 % of the grounding line are reached via the deepest grounding line access depth (497 m), whereas the deepest connection at present-day reaches 30 % (575 m; compare blue and orange bars in Fig. 3a, basin 14).

As seen in the Amundsen Sea Embayment, the sign and strength in  $\Delta d_{GL,g}$  depends on the fraction of grounding line  $g$  that is considered. Also in other basins we observe a mixed signal in grounding line access depth change for the *LGM15k* RSL configuration, namely in basins 1,7 and 10–12, with the deepest grounding line access depths getting shallower, while the higher grounding line parts are getting deeper. In most of the East Antarctic basins (2–6, 8, 9)  $\Delta d_{GL,g}$  gets shallower for all values of  $g$ . The maximum shallowing is, however, less than the far-field sea level fall, when bedrock subsidence dampens the RSL signal locally. In the West Antarctic basins 15 and 16, the whole grounding line shows deeper access depths compared to present-day, as the bedrock subsidence over-compensates the far-field sea level fall and no prominent oceanic gateway features exist during present-day in these basins (Nicola et al., 2023b, in discus.). The presence of even shallower grounding line access depths compared to the far-field sea level fall in basin 12 is explained by the forebulge effect in the respective continental shelf

region (cf. Fig. 2a).

Figure 3 shows grounding line access depths and their changes also for the *icefree* and *yr2300* RSL configurations of the *present-day sensitivity* experiment set. In the *icefree* case  $\Delta d_{\text{GL},g}$  is in the range of  $\pm 115$  m, and thereby in the same order as  
435 the far-field barystatic sea-level rise of +70 m. The maximum deepening of grounding line access depths partly exceeds the far-field signal (basins 1, 6, 8 and 12) due to a reverse-forebulge effect, where uplift in the interior of the Antarctic continent leads to draining of mantle material in the vicinity, which causes an increase of the RSL rise.

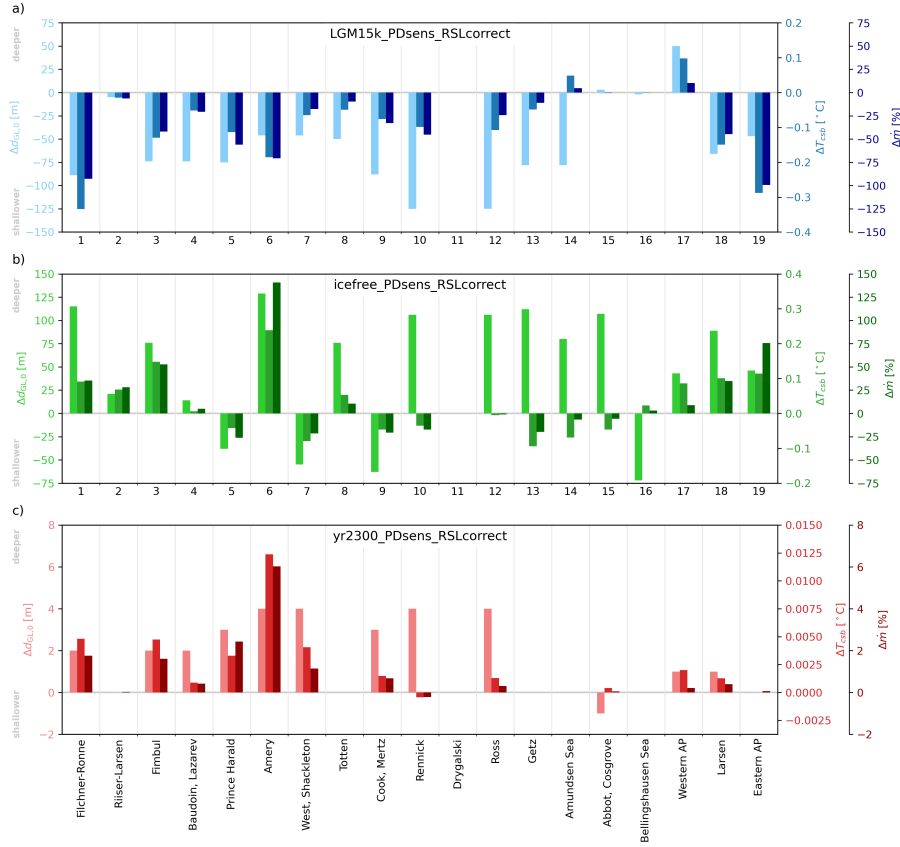
As stated above in Section 3.1,  $\Delta r$  is between +5 m and -19 m for the *yr2300* RSL configuration, which is an order of magnitude smaller than the other cases. Due to the scale, most of the changes to present-day are therefore not clearly recognisable  
440 in Fig. 3b, with two exceptions:  $\Delta d_{\text{GL},g}$  is up to -72 m in basin 17 and up to -54 m in basin 5. Deviations greater than 20 m are found only for high grounding line fractions ( $g \geq 70\%$ ) in the latter case. The validity of basin 17 results is generally questionable, as this basin features only very little grounding line grid cells for the present-day ice-sheet configuration. Note that grounding line access depths in basin 17 are much shallower compared to the other basins (Fig. 3a), which leads to a high gradient of grounding coverage  $g$  to  $d_{\text{GL},g}$ . Subsequently, small values in  $\Delta r$  can lead to comparable high  $\Delta d_{\text{GL},g}$ .

### 445 3.3 Present-day **sensitivity** experiments

The presented changes in relative sea level (Sec. 3.1) and access depth (Sec. 3.2) gave a general understanding on how GIA processes influence the connectivity of open-ocean water to ice-sheet grounding lines. In this Section, we carry out the next step of our analysis and analyse how the changes in grounding line access depth influence the water properties (ocean temperature and salinity) that reach the grounding lines, and what changes in basal melting thereby occur. As the functional principal of  
450 the PICO model is based on the ice-pump mechanism (Lewis and Perkin, 1986) and takes ocean temperature and salinity at the **grounding line as input**, which rise upwards along the ice shelf draft (see Sec. 2.4), we consider only the deepest grounding line access depth  $d_{\text{GL},0}$  and its changes in the following.

Figure 5 shows the changes in deepest grounding line access depth  $\Delta d_{\text{GL},0}$ , the derived modifications in continental-shelf break temperatures  $\Delta T_{\text{csb,mean}}$  and the resulting changes in basal melt rates for the *present-day sensitivity* experiment set  
455 (LGM15k\_PDsens\_RSLcorrect, icefree\_PDsens\_RSLcorrect and yr2300\_PDsens\_RSLcorrect). The experiments are compared to the present-day baseline experiment PD\_baseline (see Sec. 2.5 for details). Note that results for basin 11 are not shown as there is no continental shelf region associated with this basin. Absolute basal melt rates are shown in Fig. S7 (PD\_baseline) and Fig. S8 (\*\_PDsens\_RSLcorrect).

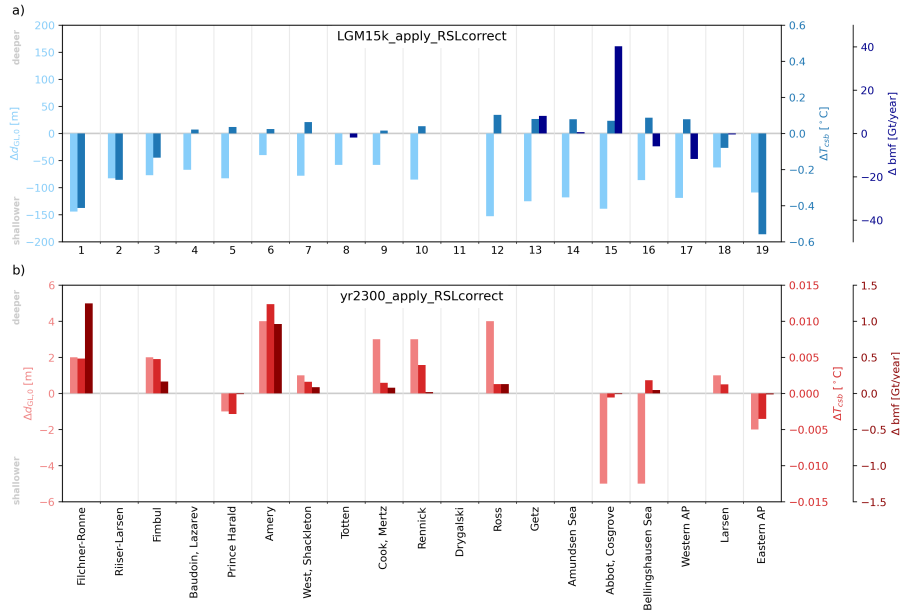
460 For LGM15k\_PDsens\_RSLcorrect access depth changes  $\Delta d_{\text{GL},0}$  are up to 125 m shallower due to the applied RSL change (Fig 5a). Only basin 15 (+3 m) and 17 (+50 m) have deeper access depths. The shallower grounding line access leads to negative continental-shelf break temperatures anomalies in different magnitudes (-0.02 °C in basin 2 to -0.33 °C in basin 3), which is due to the varying thermocline gradients per basin (cf. Fig. S1). **Only basin 14** has a positive temperature anomaly (+0.05 °C) despite a shallower access depth (-78 m), because the present-day access depth (575 m) is below the thermocline layer, so



**Figure 5. Changes for grounding line access depth, ocean temperatures and basal melt rates (present-day sensitivity experiments).** The plot shows for each basin (from left to right): change in grounding line access depth ( $\Delta d_{GL,0}$ ), change in continental-shelf break temperature ( $\Delta T_{csb,mean}$ ) and relative change of basal melt rates ( $\Delta \dot{m}$ ) compared to baseline experiment PD\_baseline. Bar colors correspond to the respective y-axis. Note that the y-axis orientation for  $\Delta d_{GL,0}$  is reversed compared to Fig. 3 to be aligned with the orientation of  $\Delta T_{csb}$  and  $\Delta \dot{m}$ .

temperatures increase when moving up the water column from there (cf. Fig. S1). The negative temperature anomalies lead to a reduction in basal melting, which is up to -99 % (basin 19) compared to present-day melt rates. Relevant positive changes in basal melt rates occur only in basin 14 (+5 %) and basin 17 (+10 %).

Sensitivity of the *icefree* RSL configuration to the present-day ice sheet (*icefree\_PDsens\_RSLcorrect*; Fig. 5b) is more heterogeneous across the basins, like indicated in previous results (cf.  $\Delta d_{GL,g}$  in Sec. 3.2). Access depth changes range from +129 m (deeper) in basin 6 to -72 m (shallower) in basin 16. The relationship between access depth change and temperature anomaly follows the same direction for all basins except 10–16, where it is inverse. The same reason as in the *LGM15k* experiment applies here. The maximum derived temperature change at the continental-shelf break due to the RSL corrections



**Figure 6. Changes for grounding line access depth, ocean temperatures and basal melt rates (applied scenario experiments).** Similar to Fig. 5, but anomalies are computed to LGM15k\_apply\_baseline and yr2300\_apply\_baseline experiments, respectively. Other than in Fig. 5, changes in basal melting are displayed as absolute basal mass flux differences, which is more adequate as basal melting is close to zero in many basins of LGM15k\_apply\_baseline.

ranges from  $+0.24^{\circ}\text{C}$  (basin 6) to  $-0.09^{\circ}\text{C}$  (basin 13). The derived basal melt rate changes range from more than doubling ( $+141\%$ ) in basin 6 to  $-26\%$  in basin 5.

475 Applying the yr2300 RSL configuration to the present-day ice sheet (yr2300\_PDsens\_RSLcorrect, Fig. 5c) results in mostly deeper access depths (up to 4 m) and temperature anomalies between  $-0.001^{\circ}\text{C}$  (basin 10) and  $+0.012^{\circ}\text{C}$  (basin 6), which would change present-day melt rates up to 6 % at maximum.

### 3.4 Applied scenario experiments

480 Testing the sensitivity of a present-day ice-sheet with end-member RSL configurations is useful for an upper-bound estimate of the relative sea-level change impact on basal melting, but changes possibly deviate for different ice-sheet configurations. This Section shows the results for RSL-induced basal melt rate changes using the respective ice-sheet configuration from where the RLS configurations *LGM15k* and *yr2300* have been derived from. The *icefree* RSL configuration is not included as in this scenario there is no ice sheet to compute basal melt rate changes for.

485

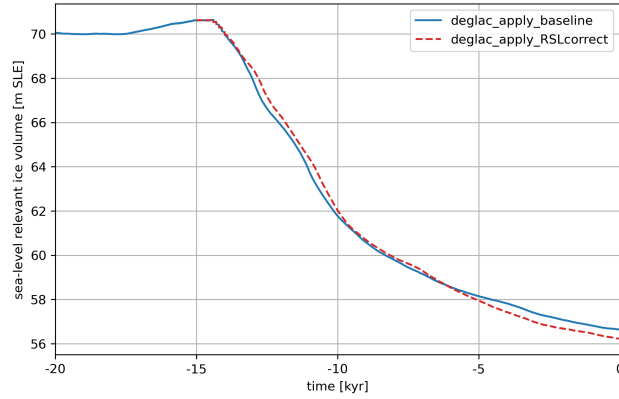
Grounding line access depths  $d_{GL,0}$  are 40–153 m **deeper** in the LGM15k\_apply\_RSLcorrect experiment compared to LGM15k\_apply\_baseline (Fig. 6a), resulting in continental-shelf break temperature changes between  $-0.55^{\circ}\text{C}$  and  $+0.10^{\circ}\text{C}$ . Note that Supplement Figures S1 and S2 show the dependence of temperature and salinity values to their respective grounding line access depths for the baseline and ‘RSLcorrect’ experiment. The ocean forcing temperatures in LGM15k\_apply\_baseline  
490 are generally cold enough to suppress any relevant basal melting during the LGM except in the West Antarctic basins including the Western Antarctic Peninsula (basins 13–17; cf. Fig S7b). Therefore, these are the only basins, where a change in basal mass flux can be observed when applying the RSL derived temperature correction  $\Delta T_{\text{csb,mean}}$  to the baseline forcing. The resulting basal mass flux changes range from  $-12$  to  $+40$  Gt/year, which relates to relative changes of  $-15\%$  (basin 17) and  $+41\%$  (basin 15) compared to the baseline.

495 In order to test whether the RSL correction changes the transient evolution of the Antarctic Ice Sheet during deglaciation, we calculate in the deglac\_apply\_RSLcorrect experiment the temperature correction  $T_{\text{csb,mean}}$  of **LGM15k\_apply\_RSLcorrect** for every 500 years since 15 kyr BP and apply it as temperature correction to the transient ice-sheet forcing in the coupled PISM-VILMA simulation. Figure 7 shows the transient sea-level equivalent AIS volume with and without our temperature correction applied. After ca. 2 kyr into the deglaciation run, the RSL temperature correction effect leads to a small delay of  
500 ice loss compared to the baseline run (deglac\_apply\_baseline). Within the last 5 kyr of the run, ice loss is slightly faster with the RSL correction applied. The difference at present-day is around 0.4 m Sea Level Equivalent (mSLE), which is relatively small compared to the modeled difference of 14 m SLE between LGM and present-day and the difference of different VILMA rheology parameters (cf. Fig. 7b in Albrecht et al., 2023, accepted). The RSL correction causes positive as well as negative temperature anomalies, depending on the basin and model time. Access depths and corresponding continental-shelf  
505 temperatures as well as PICO input temperatures are shown for different basins and the deglaciation time span in Fig S9. In general, the applied RSL correction is substantially smaller than the climate-induced variation in PICO forcing over time, which explains the little effect of relative sea level on the AIS evolution throughout the deglaciation simulation.

The applied yr2300 experiment (yr2300\_apply\_RSLcorrect) provides comparable results to yr2300\_PDsens\_RSLcorrect: changes in grounding line access depths are in the range of  $\pm 5$  m, which results in a comparable change in continental-shelf  
510 break temperature anomalies ( $\leq \pm 0.012^{\circ}\text{C}$ ). Absolute changes in basal mass flux that results from this RSL adjustment are less than 1.5 Gt/year. Compared to yr2300\_PDsens\_baseline, these changes are less than 0.4 %, which is smaller **as** in the present-day sensitivity experiment, as climate forcing and basal melting in the 2300 projection are substantially higher (cf. Fig. S7a and c).

## 4 Discussion

515 In this section we will critically review the methods we used to derive our results, discuss possible limitations and give context to the results. Some important points have already been addressed in Nicola et al. (2023b, in discus.), as the dependence of the results on the sub-shelf melt parameterisation (Burgard et al., 2022), the chosen melt parameters for the PICO model or the influence of basin boundaries.



**Figure 7. Influence of RSL correction on the deglaciation of the Antarctic Ice Sheet.** m SLE = meter Sea Level Equivalent.

We here have derived our results using a single set of PICO parameters for the *present-day sensitivity* experiment set, which is tuned to represent present-melt rate sensitivities best (see Sec. 2.5; and Reese et al., 2023). In order to test the influence of PICO parameters on our results, we repeat the analysis with an additional set of PICO parameters, representing the maximum sensitivity to present-day melt rate changes, which is  $\{C = 3.0 \text{ Sv m}^3 \text{ kg}^{-1}, \gamma_T^* = 7 \times 10^{-5} \text{ m s}^{-1}\}$  (cf. Reese et al., 2023). Additionally, we test the robustness of our results by deriving the ocean anomalies ( $\Delta T_{\text{csb,mean}}, \Delta S_{\text{csb,mean}}$ ; Eq. 6 and 7) not only as the mean along the continental-shelf break, but also as maximum values ( $\Delta T_{\text{csb,max}}, \Delta S_{\text{csb,max}}$ ). The influence of PICO parameters in the PD\_baseline experiment is generally little with exceptions in basins 15–17 (cf. Fig. S8). Thereby, the influence of the basin reduce method (mean vs. max) is larger than the influence of chosen PICO parameters, in all basins except 15–17 (cf. Fig S8).

**Not** that we have focused on temperature changes at the continental-shelf break throughout this manuscript, as they are far more important for the melting response than salinity anomalies: according to the melt rate estimate depending on the equation of state (Eq. 8; Reese et al., 2018), a temperature anomaly of  $0.5^\circ\text{C}$  outweighs the melting response of  $0.2 \text{ psu}$  by approximately the factor 40 (cf. Fig. S1 and S2;  $0.5^\circ\text{C} / (0.0572^\circ\text{C psu}^{-1} \cdot 0.2 \text{ psu}) \approx 43.7$ ).

The relative sea-level configurations used in this study were informed by coupled PISM-VILMA simulations, which account for the three-dimensional structure of the solid Earth, including laterally varying lithosphere thickness and mantle viscosity. Again, we have used only a single set of 3D Earth rheology parameters (named ‘3D ref’ in Albrecht et al. (2023, accepted) and ‘v\_0.4\_s16’ in Bagge et al. (2021)) for our analysis, which is showing the best fit to global relative sea level records (Bagge et al., 2021) and represents spatially varying parameters between West and East Antarctica (cf. Fig. 5, Albrecht et al., 2023, accepted). However, there is still considerable uncertainty in the parameters space (van Calcar et al., 2023), which has the potential to change the response in grounding line access depth. Albrecht et al. (2023, accepted), for example, show that a thinner lithosphere and low mantle viscosities, as likely dominant in West Antarctica, supports a larger ice-sheet extent (sea-level relevant Antarctic ice volume can be a few meters larger) and much stronger bedrock subsidence (of the order of 100s of meters), when considering large and long-term changes in climate forcing. By comparing three additional rheology parameter

sets ('3D ant', '3D trans' and '3D glob'; cf. supplementary material of Albrecht et al., 2023, accepted) we see diverging RSL changes of up to 200 m during LGM, especially in the Filchner-Ronne basin. It cannot be completely ruled out that the VILMA parameters have a non-negligible effect on our results. However, the '3D ref' parameter set we used for our results already represents the upper end of tested RSL changes. As systematic testing of the different VILMA parameter sets is out of scope for this study, this remains future work.

The *applied scenario* experiments rely on ice-sheet simulations with prescribed climate forcing. The corresponding *LGM15k* and *deglaciation* experiments make use of a climate-index method to scale external forcing temperatures (ocean and atmosphere) by ice-core reconstructions (Albrecht et al., 2020a). In the *yr2300* experiment, climate anomalies from the global climate model CESM2 are used according to the ISMIP6 2300 protocol (The ISMIP6 2300 extension authors, 2022). We compute continental-shelf break ocean anomalies based on the the present-day ISMIP6 dataset by Jourdain et al. (2020) for all experiments and add these to the respective baseline forcing, despite the discrepancy to present-day climate conditions. The underlying assumption, that any climatic changes in the ocean are uniform with depth is often inaccurate and warrants further scrutiny.

Our approach of applying access depth derived ocean anomalies from the continental-shelf region directly to the oceanic input at the grounding lines has a number of further limitations. First of all, we fully rely on the ISMIP6 dataset to represent the current ocean state at the continental-shelf break realistically. Despite the fact that this dataset merges different available data sources (argo floats, ship cruises, satellites and marine mammals), in-situ observations at the Antarctic continent margin still remain sparse in temporal and spatial resolution. Furthermore, our approach does solely rely on the vertical ocean profile and does not reflect other mechanisms: for example, if the grounding line access depth is below the thermocline layer, a change in access depth has little effect on the derived ocean anomaly. However, a thicker layer of intruding CDW, which is likely with RSL increase, has the potential to modify basal melting substantially.

A general downside of the anomaly approach is that we do not account for any changes of cross-shelf water transport including modification of water masses on the continental shelf. The processes that regulate the transport of warm offshore waters onto the continental shelf and towards grounding lines are inherently complex and governed by many factors: e.g. topographic features, strength and location of sea-ice formation, wind patterns, precipitation, ambient air temperature, freshwater input through basal melting or tides; see Thompson et al. (2018) and Colleoni et al. (2018) for detailed reviews. Moreover, as mentioned in the introduction, there is evidence that GIA processes themselves control ocean circulation on the continental shelf and offshore (Rugenstein et al., 2014; Wilmes et al., 2017; Tinto et al., 2019), which is not covered by our methodology. According to Thompson et al. (2018), the Antarctic continental shelf can be classified into three distinct types, namely fresh, dense and warm shelf regions, which differ in terms of ocean dynamics and water mass exchange across the continental-shelf break. Fresh shelves are characterised by a strong Antarctic Slope Current with little cross-shelf water mass exchange. Dense shelves feature moderate exchange with efficient pathways for both import of CDW and export of Dense Shelf Water. Warm shelves typically exhibit a weak frontal structure which allows for high water mass exchange across the continental shelf break and almost uninhibited access of CDW onto the continental shelf (cf. Thompson et al. (2018)). Our anomaly approach is best suited for warm shelf regions, as there is a direct relationship between the continental-shelf break temperatures and the water

masses on the continental shelf that enter the ice-shelf cavities. Despite the methodology is less suited for dense and fresh continental-shelf regions, it is still valuable for deriving upper-bound estimates of basal melt changes, as the actual changes represent an attenuation.

580 High-resolution ocean modeling can help to study the dependence of ocean processes to RSL changes, that are not captured by our methodology: a change in isopycnal slopes at the continental-shelf break, changes in thermocline gradients, transport of open ocean water masses onto the continental shelf or how ocean circulation inside the ice-shelf cavities is affected. This possibly requires cavity-resolving ocean model domains down to kilometer scale resolution. Additionally, it is required to represent also different time periods with significantly varied climate conditions and ice-sheet configurations, e.g. the Last Glacial Max-  
585 imum or climate projections for the year 2300. Considering the long simulation run times and extensive computational costs associated with high-resolution ocean modeling (e.g. Pelletier et al., 2022), as well as the challenges in simulating present-day conditions, e.g. deriving spinup states or initializing newly created water masses during topographic adaptation, this remains a substantial exercise. Nonetheless, we encourage the community to verify our findings with a more realistic representation of ocean dynamics.

590 In our study, we have also not considered any geomorphologic processes so far. We derive access depths through analysing the deepest possible topographic connections between the open ocean and Antarctic grounding line positions. The bedrock on the continental shelf is in many places strongly characterised by troughs and sills, which often determine the access to grounding lines. These topographic features have been formed by previous glacial ice streams and can be in the order of hundreds of meters deep. For example, large gateway-like bed structures were eroded during the last glacials, such as the Filchner  
595 Trough or Glomar Challenger Basin in the Ross region, see Nicola et al. (2023b, in discus.). For paleo ice-sheet simulations, the representation of erosion and sediment transport (Damsgaard et al., 2020) can have an additional control on sub-shelf melt estimates, as we have only considered present-day topography in our analysis. However, the horizontal resolution and precise location modeled by sedimentary models is key for correctly representing the effect of changing topographic features and the subsequent impact on ice-shelf basal melt rates.

600

## 5 Conclusions

Our study presents a simplified methodology to test the impact of relative sea-level changes on Antarctic basal melt rates. For a set of relative sea-level configurations, we derive maximum estimates of how ocean access to ice-sheet grounding lines is modified. Based on **relative-sea level induced vertical changes in the ocean column**, we use ocean anomalies from the  
605 continental-shelf break to compute changes in basal melting inside ice-shelf cavities. We use relative sea-level configurations representing the Last Glacial Maximum, the climate in the year 2300 and a hypothetically ice-free planet as another end-member configuration.

Our results indicate that the effect of relative sea-level changes on Antarctic melt rates is of secondary importance, when compared to corresponding climatic changes. This is confirmed by our transient simulation of deglaciation since the Last



610 Glacial Maximum, where we perform coupled ice sheet – GIA modeling with and without relative-sea level induced temperature corrections. Although our methodology has some simplifications, it still remains useful for an approximate estimation. Nevertheless, high-resolution ocean simulations would be valuable to verify our results, in particular to represent the complex continental-shelf processes and their influence on basal melt rates with changes in relative sea level.

*Code and data availability.* The data and relevant code will be made publicly available on a public data repository i.e. PANGAEA or Zenodo.  
615 DOI links to the repositories will be provided upon publication

**Appendix A: Algorithm: Connected Components Analysis**

---

**Algorithm A1** Connected Component Analysis as implemented in Khrulev (2024)

---

```
1: max_depth.py:main
2:     load bed topography (bed, mask)
3:     create depth array: invert bed (*-1) and set all grounded values to -1
4:     call max_depth.py:find_max_depth
5:         create max_depth field and initialize with -1
6:         create mask field and initialize with 0
7:         for D in (0,1,2,...,3700)
8:             set mask to 0
9:             call pism_label_components:label(depth, True, D, 3700, mask)
10:             finds all isolated regions (connected components) that have greater depth than D
11:             and can't be reached from deep ocean (>3700m)
12:             marks isolated regions with 1, rest with 0 in mask
13:             call pism_label_components:update_max_depth(depth, mask, D, mask_depth)
14:             sets max_depth = max(max_depth, D) in all areas where depth>D and reachable from deep
15:             ocean according to mask
16:     call max_depth.prepare_output
17:     write max_depth to file
```

---

*Author contributions.* RW and TA conceptualized the study, whereas MK, TA and LN developed the detailed study methodology. MK, TA and LN carried out the analysis and TA contributed the PISM-VILMA simulations. RR provided the PISM-PICO setup. RW, RR and LN co-developed the oceanic gateway methodology. MK wrote the manuscript and prepared the figures, with contributions from LN. All authors  
620 contributed to the final version with input and suggestions.

*Competing interests.* The authors declare that they have no competing interests.

*Acknowledgements.* This work was supported by the Deutsche Forschungsgemeinschaft (DFG) in the framework of the priority program SPP 1158 "Antarctic Research with comparative investigations in Arctic ice areas" by the following grant: WI 4556/4-1. MK was financially supported by the Potsdam Graduate School. The work of TA and RW has been conducted within the framework of the PalMod project (grant no. FKZ: 01LP1925D, 01LP2305B), supported by the German Federal Ministry of Education and Research (BMBF) as Research for Sustainability initiative (FONA). TA and RW acknowledge support by OCEAN:ICE, which is co-funded by the European Union, Horizon Europe Funding Programme for research and innovation under grant agreement Nr. 101060452 and by UK Research and Innovation. O:I Contribution number 2. LN was supported by the Studienstiftung des Deutschen Volkes (German National Academic Foundation). MK, LN, RR and RW gratefully acknowledge support by the European Union's Horizon 2020 research and innovation programme under Grant Agreement No. 820575 (TiPACCs). RW further acknowledges support by the European Union's Horizon 2020 under Grant Agreement No. 869304 (PROTECT). Development of PISM is supported by NASA grants 20-CRYO2020-0052 and 80NSSC22K0274 and NSF grant OAC-2118285. The authors gratefully acknowledge the European Regional Development Fund (ERDF), the German Federal Ministry of Education and Research and the Land Brandenburg for supporting this project by providing resources on the high performance computer system at the Potsdam Institute for Climate Impact Research.

- Adusumilli, S., Fricker, H. A., Medley, B., Padman, L., and Siegfried, M. R.: Interannual variations in meltwater input to the Southern Ocean from Antarctic ice shelves, *Nature Geoscience*, 13, 616–620, <https://doi.org/10.1038/s41561-020-0616-z>, 2020.
- Albrecht, T., Winkelmann, R., and Levermann, A.: Glacial-cycle simulations of the Antarctic Ice Sheet with the Parallel Ice Sheet Model (PISM) – Part 1: Boundary conditions and climatic forcing, *The Cryosphere*, 14, 599–632, <https://doi.org/10.5194/tc-14-599-2020>, 2020a.
- 640 Albrecht, T., Winkelmann, R., and Levermann, A.: Glacial-cycle simulations of the Antarctic Ice Sheet with the Parallel Ice Sheet Model (PISM) – Part 2: Parameter ensemble analysis, *The Cryosphere*, 14, 633–656, <https://doi.org/10.5194/tc-14-633-2020>, 2020b.
- Albrecht, T., Bagge, M., and Klemann, V.: Feedback mechanisms controlling Antarctic glacial cycle dynamics simulated with a coupled ice sheet–solid Earth model, <https://doi.org/10.5194/egusphere-2023-2990>, 2023.
- Amante, C. and Eakins, B. W.: ETOPO1 Arc-Minute Global Relief Model: Procedures, Data Sources and Analysis, NOAA Technical Memorandum NESDIS NGDC-24, National Geophysical Data Center, NOAA, Boulder, <https://doi.org/10.7289/V5C8276M>, 2009.
- 645 Bagge, M., Klemann, V., Steinberger, B., Latinović, M., and Thomas, M.: Glacial-Isostatic Adjustment Models Using Geodynamically Constrained 3D Earth Structures, *Geochemistry, Geophysics, Geosystems*, 22, <https://doi.org/10.1029/2021gc009853>, 2021.
- Barletta, V. R., Bevis, M., Smith, B. E., Wilson, T., Brown, A., Bordoni, A., Willis, M., Khan, S. A., Rovira-Navarro, M., Dalziel, I., Smalley, R., Kendrick, E., Konfal, S., Caccamise, D. J., Aster, R. C., Nyblade, A., and Wiens, D. A.: Observed rapid bedrock uplift in Amundsen Sea Embayment promotes ice-sheet stability, *Science*, 360, 1335–1339, <https://doi.org/10.1126/science.aao1447>, 2018.
- 650 Bentley, M. J., Cofaigh, C. Ó., Anderson, J. B., Conway, H., Davies, B., Graham, A. G., Hillenbrand, C.-D., Hodgson, D. A., Jamieson, S. S., Larter, R. D., Mackintosh, A., Smith, J. A., Verleyen, E., Ackert, R. P., Bart, P. J., Berg, S., Brunstein, D., Canals, M., Colhoun, E. A., Crosta, X., Dickens, W. A., Domack, E., Dowdeswell, J. A., Dunbar, R., Ehrmann, W., Evans, J., Favier, V., Fink, D., Fogwill, C. J., Glasser, N. F., Gohl, K., Golledge, N. R., Goodwin, I., Gore, D. B., Greenwood, S. L., Hall, B. L., Hall, K., Hedding, D. W., Hein, A. S., Hocking, E. P., Jakobsson, M., Johnson, J. S., Jomelli, V., Jones, R. S., Klages, J. P., Kristoffersen, Y., Kuhn, G., Leventer, A., Licht, K., Lilly, K., Lindow, J., Livingstone, S. J., Massé, G., McGlone, M. S., McKay, R. M., Melles, M., Miura, H., Mulvaney, R., Nel, W., Nitsche, F. O., O'Brien, P. E., Post, A. L., Roberts, S. J., Saunders, K. M., Selkirk, P. M., Simms, A. R., Spiegel, C., Stoll Dorf, T. D., Sugden, D. E., van der Putten, N., van Ommen, T., Verfaillie, D., Vyverman, W., Wagner, B., White, D. A., Witus, A. E., and Zwart, D.: A community-based geological reconstruction of Antarctic Ice Sheet deglaciation since the Last Glacial Maximum, *Quaternary Science Reviews*, 100, 1–9, <https://doi.org/10.1016/j.quascirev.2014.06.025>, 2014.
- 660 Buchta, E., Scheinert, M., King, M., Wilson, T., Kendrick, E., Koulali, A., Clarke, P., and Knöfel, C.: GIANT-REGAIN: A comprehensive analysis of geodetic GNSS recordings in Antarctica for geodetic and geodynamic applications, in: SCAR Open Science Conference 2022, p. 347, SCAR, <https://scar.org/~documents/conferences/scar-open-science-conferences/abstracts/scar-open-science-conference-2022-abstracts> (last access: 06 August, 2024), 2022.
- 665 Bueler, E. and Brown, J.: Shallow shelf approximation as a “sliding law” in a thermomechanically coupled ice sheet model, *Journal of Geophysical Research*, 114, <https://doi.org/10.1029/2008jf001179>, 2009.
- Burgard, C., Jourdain, N. C., Reese, R., Jenkins, A., and Mathiot, P.: An assessment of basal melt parameterisations for Antarctic ice shelves, *The Cryosphere*, 16, 4931–4975, <https://doi.org/10.5194/tc-16-4931-2022>, 2022.
- Clark, P. U., Dyke, A. S., Shakun, J. D., Carlson, A. E., Clark, J., Wohlfarth, B., Mitrovica, J. X., Hostetler, S. W., and McCabe, A. M.: The Last Glacial Maximum, *Science*, 325, 710–714, <https://doi.org/10.1126/science.1172873>, 2009.
- 670

- Colleoni, F., Santis, L. D., Siddoway, C. S., Bergamasco, A., Golledge, N. R., Lohmann, G., Passchier, S., and Siegert, M. J.: Spatio-temporal variability of processes across Antarctic ice-bed–ocean interfaces, *Nature Communications*, 9, <https://doi.org/10.1038/s41467-018-04583-0>, 2018.
- Coulon, V., Bulthuis, K., Whitehouse, P. L., Sun, S., Haubner, K., Zipf, L., and Pattyn, F.: Contrasting Response of West and East Antarctic Ice Sheets to Glacial Isostatic Adjustment, *Journal of Geophysical Research: Earth Surface*, 126, <https://doi.org/10.1029/2020jfr006003>, 2021.
- Damsgaard, A., Goren, L., and Suckale, J.: Water pressure fluctuations control variability in sediment flux and slip dynamics beneath glaciers and ice streams, *Communications Earth & Environment*, 1, <https://doi.org/10.1038/s43247-020-00074-7>, 2020.
- Farrell, W. E. and Clark, J. A.: On Postglacial Sea Level, *Geophysical Journal of the Royal Astronomical Society*, 46, 647–667, <https://doi.org/10.1111/j.1365-246x.1976.tb01252.x>, 1976.
- Fox-Kemper, B., Hewitt, H., Xiao, C., Aðalgeirsdóttir, G., Drijfhout, S., Edwards, T., Golledge, N., Hemer, M., Kopp, R., Krinner, G., Mix, A., Notz, D., Nowicki, S., Nurhati, I., Ruiz, L., Sallée, J.-B., Slangen, A., and Yu, Y.: Ocean, Cryosphere and Sea Level Change, in: *Climate Change 2021: The Physical Science Basis. Contribution of Working Group I to the Sixth Assessment Report of the Intergovernmental Panel on Climate Change*, edited by Masson-Delmotte, V., Zhai, P., Pirani, A., Connors, S., Péan, C., Berger, S., Caud, N., Chen, Y., Goldfarb, L., Gomis, M., Huang, M., Leitzell, K., Lonnoy, E., Matthews, J., Maycock, T., Waterfield, T., Yelekçi, O., Yu, R., and Zhou, B., book section 9, p. 1211–1362, Cambridge University Press, Cambridge, United Kingdom and New York, NY, USA, <https://doi.org/10.1017/9781009157896.011>, 2021.
- Fretwell, P., Pritchard, H. D., Vaughan, D. G., Bamber, J. L., Barrand, N. E., Bell, R., Bianchi, C., Bingham, R. G., Blankenship, D. D., Casassa, G., Catania, G., Callens, D., Conway, H., Cook, A. J., Corr, H. F. J., Damaske, D., Damm, V., Ferraccioli, F., Forsberg, R., Fujita, S., Gim, Y., Gogineni, P., Griggs, J. A., Hindmarsh, R. C. A., Holmlund, P., Holt, J. W., Jacobel, R. W., Jenkins, A., Jokat, W., Jordan, T., King, E. C., Kohler, J., Krabill, W., Riger-Kusk, M., Langley, K. A., Leitchenkov, G., Leuschen, C., Luyendyk, B. P., Matsuoka, K., Mouginot, J., Nitsche, F. O., Nogi, Y., Nost, O. A., Popov, S. V., Rignot, E., Rippin, D. M., Rivera, A., Roberts, J., Ross, N., Siegert, M. J., Smith, A. M., Steinhage, D., Studinger, M., Sun, B., Tinto, B. K., Welch, B. C., Wilson, D., Young, D. A., Xiangbin, C., and Zirizzotti, A.: Bedmap2: improved ice bed, surface and thickness datasets for Antarctica, *The Cryosphere*, 7, 375–393, <https://doi.org/10.5194/tc-7-375-2013>, 2013.
- Garbe, J., Albrecht, T., Levermann, A., Donges, J. F., and Winkelmann, R.: The hysteresis of the Antarctic ice sheet, *Nature*, 585, 538–544, <https://doi.org/10.1038/s41586-020-2727-5>, 2020.
- Gebbie, G.: Cancellation of Deglacial Thermosteric Sea Level Rise by a Barosteric Effect, *Journal of Physical Oceanography*, 50, 3623–3639, <https://doi.org/10.1175/jpo-d-20-0173.1>, 2020.
- Gomez, N., Latychev, K., and Pollard, D.: A Coupled Ice Sheet–Sea Level Model Incorporating 3D Earth Structure: Variations in Antarctica during the Last Deglacial Retreat, *Journal of Climate*, 31, 4041–4054, <https://doi.org/10.1175/jcli-d-17-0352.1>, 2018.
- Gomez, N., Weber, M. E., Clark, P. U., Mitrovica, J. X., and Han, H. K.: Antarctic ice dynamics amplified by Northern Hemisphere sea-level forcing, *Nature*, 587, 600–604, <https://doi.org/10.1038/s41586-020-2916-2>, 2020.
- Good, S. A., Martin, M. J., and Rayner, N. A.: EN4: Quality controlled ocean temperature and salinity profiles and monthly objective analyses with uncertainty estimates, *Journal of Geophysical Research: Oceans*, 118, 6704–6716, <https://doi.org/10.1002/2013jc009067>, 2013.
- Gregory, J. M., Griffies, S. M., Hughes, C. W., Lowe, J. A., Church, J. A., Fukimori, I., Gomez, N., Kopp, R. E., Landerer, F., Cozannet, G. L., Ponte, R. M., Stammer, D., Tamisiea, M. E., and van de Wal, R. S. W.: Concepts and Terminology for Sea Level: Mean, Variability and Change, Both Local and Global, *Surveys in Geophysics*, 40, 1251–1289, <https://doi.org/10.1007/s10712-019-09525-z>, 2019.

- Gulev, S., Thorne, P., Ahn, J., Dentener, F., Domingues, C., Gerland, S., Gong, D., Kaufman, D., Nnamchi, H., Quaas, J., Rivera, J., Sathyendranath, S., Smith, S., Trewin, B., von Schuckmann, K., and Vose, R.: Changing State of the Climate System, in: Climate Change 2021: The Physical Science Basis. Contribution of Working Group I to the Sixth Assessment Report of the Intergovernmental Panel on Climate Change, edited by Masson-Delmotte, V., Zhai, P., Pirani, A., Connors, S., Péan, C., Berger, S., Caud, N., Chen, Y., Goldfarb, L., Gomis, M., Huang, M., Leitzell, K., Lonnoy, E., Matthews, J., Maycock, T., Waterfield, T., Yelekçi, O., Yu, R., and Zhou, B., book section 2, p. 287–422, Cambridge University Press, Cambridge, United Kingdom and New York, NY, USA, <https://doi.org/10.1017/9781009157896.004>, 2021.
- Hellmer, H. H., Kauker, F., Timmermann, R., Determann, J., and Rae, J.: Twenty-first-century warming of a large Antarctic ice-shelf cavity by a redirected coastal current, *Nature*, 485, 225–228, <https://doi.org/10.1038/nature11064>, 2012.
- Horwath, M., Gutknecht, B. D., Cazenave, A., Palanisamy, H. K., Marti, F., Marzeion, B., Paul, F., Bris, R. L., Hogg, A. E., Otosaka, I., Shepherd, A., Döll, P., Cáceres, D., Schmied, H. M., Johannessen, J. A., Nilsen, J. E. Ø., Raj, R. P., Forsberg, R., Sørensen, L. S., Barletta, V. R., Simonsen, S. B., Knudsen, P., Andersen, O. B., Rannald, H., Rose, S. K., Merchant, C. J., Macintosh, C. R., von Schuckmann, K., Novotny, K., Groh, A., Restano, M., and Benveniste, J.: Global sea-level budget and ocean-mass budget, with a focus on advanced data products and uncertainty characterisation, *Earth System Science Data*, 14, 411–447, <https://doi.org/10.5194/essd-14-411-2022>, 2022.
- Jones, R. S., Johnson, J. S., Lin, Y., Mackintosh, A. N., Sefton, J. P., Smith, J. A., Thomas, E. R., and Whitehouse, P. L.: Stability of the Antarctic Ice Sheet during the pre-industrial Holocene, *Nature Reviews Earth & Environment*, 3, 500–515, <https://doi.org/10.1038/s43017-022-00309-5>, 2022.
- Jourdain, N. C., Asay-Davis, X., Hattermann, T., Straneo, F., Seroussi, H., Little, C. M., and Nowicki, S.: A protocol for calculating basal melt rates in the ISMIP6 Antarctic ice sheet projections, *The Cryosphere*, 14, 3111–3134, <https://doi.org/10.5194/tc-14-3111-2020>, 2020.
- Khrulev, C.: PISM’s connected component labeling implementation, <https://github.com/pism/label-components/>, 2024.
- Klemann, V., Martinec, Z., and Ivins, E. R.: Glacial isostasy and plate motion, *Journal of Geodynamics*, 46, 95–103, <https://doi.org/10.1016/j.jog.2008.04.005>, 2008.
- Lambeck, K., Rouby, H., Purcell, A., Sun, Y., and Sambridge, M.: Sea level and global ice volumes from the Last Glacial Maximum to the Holocene, *Proceedings of the National Academy of Sciences*, 111, 15 296–15 303, <https://doi.org/10.1073/pnas.1411762111>, 2014.
- Lewis, E. L. and Perkin, R. G.: Ice pumps and their rates, *Journal of Geophysical Research: Oceans*, 91, 11 756–11 762, <https://doi.org/10.1029/JC091iC10p11756>, 1986.
- Locarnini, M., Mishonov, A., Baranova, O., Boyer, T., Zweng, M., Garcia, H., Reagan, J., Seidov, D., Weathers, K., Paver, C., and Smolyar, I.: World Ocean Atlas 2018, Volume 1: Temperature, Report, [https://data.nodc.noaa.gov/woa/woa18/DOC/woa18\\_vol1.pdf](https://data.nodc.noaa.gov/woa/woa18/DOC/woa18_vol1.pdf), 2018.
- Marcos, M. and Amores, A.: Quantifying anthropogenic and natural contributions to thermosteric sea level rise: Marcos and Amores: Anthropogenic ocean warming, *Geophysical Research Letters*, 41, 2502–2507, <https://doi.org/10.1002/2014gl059766>, 2014.
- Martinec, Z., Klemann, V., van der Wal, W., Riva, R. E. M., Spada, G., Sun, Y., Melini, D., Kachuck, S. B., Barletta, V., Simon, K., A., G., and James, T. S.: A benchmark study of numerical implementations of the sea level equation in GIA modelling, *Geophysical Journal International*, 215, 389–414, <https://doi.org/10.1093/gji/ggy280>, 2018.
- Miller, K. G., Browning, J. V., Schmelz, W. J., Kopp, R. E., Mountain, G. S., and Wright, J. D.: Cenozoic sea-level and cryospheric evolution from deep-sea geochemical and continental margin records, *Science advances*, 6, eaaz1346, <https://doi.org/10.1126/sciadv.aaz1346>, 2020.
- Mitrovica, J. X., Wahr, J., Matsuyama, I., and Paulson, A.: The rotational stability of an ice-age earth, *Geophysical Journal International*, 161, 491–506, <https://doi.org/10.1111/j.1365-246X.2005.02609.x>, 2005.
- Morlighem, M.: MEaSURES BedMachine Antarctica, Version 3 [dataset], <https://doi.org/10.5067/FPSU0V1MWUB6>, 2022.

- Morlighem, M., Rignot, E., Binder, T., Blankenship, D., Drews, R., Eagles, G., Eisen, O., Ferraccioli, F., Forsberg, R., Fretwell, P., Goel, V., Greenbaum, J. S., Gudmundsson, H., Guo, J., Helm, V., Hofstede, C., Howat, I., Humbert, A., Jokat, W., Karlsson, N. B., Lee, W. S., Matsuoka, K., Millan, R., Mouginot, J., Paden, J., Pattyn, F., Roberts, J., Rosier, S., Ruppel, A., Seroussi, H., Smith, E. C., Steinhage, D., Sun, B., van den Broeke, M. R., van Ommen, T. D., van Wessem, M., and Young, D. A.: Deep glacial troughs and stabilizing ridges unveiled beneath the margins of the Antarctic ice sheet, *Nature Geoscience*, 13, 132–137, <https://doi.org/10.1038/s41561-019-0510-8>, 2020.
- Nicholls, K. W., Østerhus, S., Makinson, K., Gammelsrød, T., and Fahrbach, E.: Ice-ocean processes over the continental shelf of the southern Weddell Sea, Antarctica: A review, *Reviews of Geophysics*, 47, <https://doi.org/10.1029/2007rg000250>, 2009.
- 755 Nicola, L., Notz, D., and Winkelmann, R.: Revisiting temperature sensitivity: how does Antarctic precipitation change with temperature?, *The Cryosphere*, 17, 2563–2583, <https://doi.org/10.5194/tc-17-2563-2023>, 2023a.
- Nicola, L., Reese, R., Kreuzer, M., Albrecht, T., and Winkelmann, R.: Oceanic gateways to Antarctic grounding lines – Impact of critical access depths on sub-shelf melt, *EGU sphere*, 2023, 1–30, <https://doi.org/10.5194/egusphere-2023-2583>, 2023b.
- NOAA National Geophysical Data Center: ETOPO1 1 Arc-Minute Global Relief Model, <https://doi.org/10.7289/V5C8276M>, 2009.
- 760 Olbers, D. and Hellmer, H.: A box model of circulation and melting in ice shelf caverns, *Ocean Dynamics*, 60, 141–153, <https://doi.org/10.1007/s10236-009-0252-z>, 2010.
- Otosaka, I. N., Shepherd, A., Ivins, E. R., Schlegel, N.-J., Amory, C., van den Broeke, M. R., Horwath, M., Joughin, I., King, M. D., Krinner, G., Nowicki, S., Payne, A. J., Rignot, E., Scambos, T., Simon, K. M., Smith, B. E., Sørensen, L. S., Velicogna, I., Whitehouse, P. L., A., G., Agosta, C., Ahlstrøm, A. P., Blazquez, A., Colgan, W., Engdahl, M. E., Fettweis, X., Forsberg, R., Gallée, H., Gardner, A., Gilbert, L., 765 Gourmelen, N., Groh, A., Gunter, B. C., Harig, C., Helm, V., Khan, S. A., Kittel, C., Konrad, H., Langen, P. L., Lecavalier, B. S., Liang, C.-C., Loomis, B. D., McMillan, M., Melini, D., Mernild, S. H., Mottram, R., Mouginot, J., Nilsson, J., Noël, B., Pattie, M. E., Peltier, W. R., Pie, N., Roca, M., Sasgen, I., Save, H. V., Seo, K.-W., Scheuchl, B., Schrama, E. J. O., Schröder, L., Simonsen, S. B., Slater, T., Spada, G., Sutterley, T. C., Vishwakarma, B. D., van Wessem, J. M., Wiese, D., van der Wal, W., and Wouters, B.: Mass balance of the Greenland and Antarctic ice sheets from 1992 to 2020, *Earth System Science Data*, 15, 1597–1616, <https://doi.org/10.5194/essd-15-1597-2023>, 2023.
- 770 Pelletier, C., Fichet, T., Goosse, H., Haubner, K., Helsen, S., Huot, P.-V., Kittel, C., Klein, F., clec'h, S. L., van Lipzig, N. P. M., Marchi, S., Massonnet, F., Mathiot, P., Moravveji, E., Moreno-Chamarro, E., Ortega, P., Pattyn, F., Souverijns, N., Achter, G. V., Broucke, S. V., Vanhulle, A., Verfaillie, D., and Zipf, L.: PARASO, a circum-Antarctic fully coupled ice-sheet–ocean–sea-ice–atmosphere–land model involving f.ETISH1.7, NEMO3.6, LIM3.6, COSMO5.0 and CLM4.5, *Geoscientific Model Development*, 15, 553–594, <https://doi.org/10.5194/gmd-15-553-2022>, 2022.
- 775 Pollard, D., Gomez, N., and Deconto, R. M.: Variations of the Antarctic Ice Sheet in a Coupled Ice Sheet-Earth-Sea Level Model: Sensitivity to Viscoelastic Earth Properties, *Journal of Geophysical Research: Earth Surface*, 122, 2124–2138, <https://doi.org/10.1002/2017jfr004371>, 2017.
- Pritchard, H. D., Ligtenberg, S. R. M., Fricker, H. A., Vaughan, D. G., van den Broeke, M. R., and Padman, L.: Antarctic ice-sheet loss driven by basal melting of ice shelves, *Nature*, 484, 502–505, <https://doi.org/10.1038/nature10968>, 2012.
- 780 Reese, R., Albrecht, T., Mengel, M., Asay-Davis, X., and Winkelmann, R.: Antarctic sub-shelf melt rates via PICO, *The Cryosphere*, 12, 1969–1985, <https://doi.org/10.5194/tc-12-1969-2018>, 2018.
- Reese, R., Garbe, J., Hill, E. A., Urruty, B., Naughten, K. A., Gagliardini, O., Durand, G., Gillet-Chaulet, F., Gudmundsson, G. H., Chandler, D., Langebroek, P. M., and Winkelmann, R.: The stability of present-day Antarctic grounding lines – Part 2: Onset of irreversible

retreat of Amundsen Sea glaciers under current climate on centennial timescales cannot be excluded, *The Cryosphere*, 17, 3761–3783, <https://doi.org/10.5194/tc-17-3761-2023>, 2023.

Rignot, E., Mouginot, J., Scheuchl, B., van den Broeke, M., van Wessem, M. J., and Morlighem, M.: Four decades of Antarctic Ice Sheet mass balance from 1979–2017, *Proceedings of the National Academy of Sciences*, 116, 1095–1103, <https://doi.org/10.1073/pnas.1812883116>, 2019.

Rintoul, S. R., Silvano, A., Pena-Molino, B., van Wijk, E., Rosenberg, M., Greenbaum, J. S., and Blankenship, D. D.: Ocean heat drives rapid basal melt of the Totten Ice Shelf, *Science Advances*, 2, <https://doi.org/10.1126/sciadv.1601610>, 2016.

Roquet, F., Wunsch, C., Forget, G., Heimbach, P., Guinet, C., Reverdin, G., Charrassin, J., Bailleul, F., Costa, D. P., Huckstadt, L. A., Goetz, K. T., Kovacs, K. M., Lydersen, C., Biuw, M., Nøst, O. A., Bornemann, H., Ploetz, J., Bester, M. N., McIntyre, T., Muelbert, M. C., Hindell, M. A., McMahon, C. R., Williams, G., Harcourt, R., Field, I. C., Chafik, L., Nicholls, K. W., Boehme, L., and Fedak, M. A.: Estimates of the Southern Ocean general circulation improved by animal-borne instruments, *Geophysical Research Letters*, 40, 6176–6180, <https://doi.org/10.1002/2013gl058304>, 2013.

Roquet, F., Williams, G., Hindell, M. A., Harcourt, R., McMahon, C., Guinet, C., Charrassin, J.-B., Reverdin, G., Boehme, L., Lovell, P., and Fedak, M.: A Southern Indian Ocean database of hydrographic profiles obtained with instrumented elephant seals, *Scientific Data*, 1, <https://doi.org/10.1038/sdata.2014.28>, 2014.

Rugenstein, M., Stocchi, P., von der Heydt, A., Dijkstra, H., and Brinkhuis, H.: Emplacement of Antarctic ice sheet mass affects circumpolar ocean flow, *Global and Planetary Change*, 118, 16–24, <https://doi.org/10.1016/j.gloplacha.2014.03.011>, 2014.

Rydt, J. D. and Gudmundsson, G. H.: Coupled ice shelf-ocean modeling and complex grounding line retreat from a seabed ridge, *Journal of Geophysical Research: Earth Surface*, 121, 865–880, <https://doi.org/10.1002/2015jf003791>, 2016.

Scheinert, M., Buchta, E., King, M., Wilson, T., Gomez, D., Kendrick, E., Koulali, A., Clarke, P., and Knöfel, C.: Reprocessing of geodetic GNSS recordings in Antarctica for geodetic and geodynamic applications (GIANT-REGAIN), in: General Assembly of the International Union of Geodesy and Geophysics (IUGG), GFZ German Research Centre for Geosciences, <https://doi.org/10.57757/IUGG23-3431>, 2023.

Schmidtko, S., Heywood, K. J., Thompson, A. F., and Aoki, S.: Multidecadal warming of Antarctic waters, *Science*, 346, 1227–1231, <https://doi.org/10.1126/science.1256117>, 2014.

Seroussi, H., Nowicki, S., Payne, A. J., Goelzer, H., Lipscomb, W. H., Abe-Ouchi, A., Agosta, C., Albrecht, T., Asay-Davis, X., Barthel, A., Calov, R., Cullather, R., Dumas, C., Galton-Fenzi, B. K., Gladstone, R., Golledge, N. R., Gregory, J. M., Greve, R., Hattermann, T., Hoffman, M. J., Humbert, A., Huybrechts, P., Jourdain, N. C., Kleiner, T., Larour, E., Leguy, G. R., Lowry, D. P., Little, C. M., Morlighem, M., Pattyn, F., Pelle, T., Price, S. F., Quiquet, A., Reese, R., Schlegel, N.-J., Shepherd, A., Simon, E., Smith, R. S., Straneo, F., Sun, S., Trusel, L. D., Van Breedam, J., van de Wal, R. S. W., Winkelmann, R., Zhao, C., Zhang, T., and Zwinger, T.: ISMIP6 Antarctica: a multi-model ensemble of the Antarctic ice sheet evolution over the 21st century, *The Cryosphere*, 14, 3033–3070, <https://doi.org/10.5194/tc-14-3033-2020>, 2020.

Shepherd, A., Ivins, E. R., A. G., Barletta, V. R., Bentley, M. J., Bettadpur, S., Briggs, K. H., Bromwich, D. H., Forsberg, R., Galin, N., Horwath, M., Jacobs, S., Joughin, I., King, M. A., Lenaerts, J. T. M., Li, J., Ligtenberg, S. R. M., Luckman, A., Luthcke, S. B., McMillan, M., Meister, R., Milne, G., Mouginot, J., Muir, A., Nicolas, J. P., Paden, J., Payne, A. J., Pritchard, H., Rignot, E., Rott, H., Sørensen, L. S., Scambos, T. A., Scheuchl, B., Schrama, E. J. O., Smith, B., Sundal, A. V., van Angelen, J. H., van de Berg, W. J., van den Broeke, M. R., Vaughan, D. G., Velicogna, I., Wahr, J., Whitehouse, P. L., Wingham, D. J., Yi, D., Young, D., and Zwally, H. J.: A Reconciled Estimate of Ice-Sheet Mass Balance, *Science*, 338, 1183–1189, <https://doi.org/10.1126/science.1228102>, 2012.

- Stuhne, G. R. and Peltier, W. R.: Reconciling the ICE-6G\_C reconstruction of glacial chronology with ice sheet dynamics: The cases of Greenland and Antarctica, *Journal of Geophysical Research: Earth Surface*, 120, 1841–1865, <https://doi.org/10.1002/2015jf003580>, 2015.
- Sun, C., Liu, C., Wang, Z., Yan, L., Tao, Y., Qin, Q., and Qian, J.: On the influences of the continental shelf bathymetry correction in Prydz Bay, East Antarctica, *Frontiers in Marine Science*, 9, <https://doi.org/10.3389/fmars.2022.957414>, 2022.
- The ISMIP6 2300 extension authors: ISMIP6 Projections 2300 Antarctica, <https://thehub.org/groups/ismip6/wiki/ISMIP6-Projections2300-Antarctica>, Last accessed July 25, 2023, 2022.
- Thoma, M., Jenkins, A., Holland, D., and Jacobs, S.: Modelling Circumpolar Deep Water intrusions on the Amundsen Sea continental shelf, Antarctica, *Geophysical Research Letters*, 35, <https://doi.org/10.1029/2008gl034939>, 2008.
- Thompson, A. F., Stewart, A. L., Spence, P., and Heywood, K. J.: The Antarctic Slope Current in a Changing Climate, *Reviews of Geophysics*, 56, 741–770, <https://doi.org/10.1029/2018rg000624>, 2018.
- Tinto, K. J., Padman, L., Siddoway, C. S., Springer, S. R., Fricker, H. A., Das, I., Caratori Tontini, F., Porter, D. F., Frearson, N. P., Howard, S. L., Siegfried, M. R., Mosbeux, C., Becker, M. K., Bertinato, C., Boghosian, A., Brady, N., Burton, B. L., Chu, W., Cordero, S. I., Dhakal, T., Dong, L., Gustafson, C. D., Keeshin, S., Locke, C., Lockett, A., O'Brien, G., Spergel, J. J., Starke, S. E., Tankersley, M., Wearing, M. G., and Bell, R. E.: Ross Ice Shelf response to climate driven by the tectonic imprint on seafloor bathymetry, *Nature Geoscience*, 12, 441–449, <https://doi.org/10.1038/s41561-019-0370-2>, 2019.
- Treasure, A., Roquet, F., Ansorge, I., Bester, M., Boehme, L., Bornemann, H., Charrassin, J.-B., Chevallier, D., Costa, D., Fedak, M., Guinet, C., Hammill, M., Harcourt, R., Hindell, M., Kovacs, K., Lea, M.-A., Lovell, P., Lowther, A., Lydersen, C., McIntyre, T., McMahon, C., Muelbert, M., Nicholls, K., Picard, B., Reverdin, G., Trites, A., Williams, G., and de Bruyn, P. N.: Marine Mammals Exploring the Oceans Pole to Pole: A Review of the MEOP Consortium, *Oceanography*, 30, 132–138, <https://doi.org/10.5670/oceanog.2017.234>, 2017.
- van Calcar, C. J., van de Wal, R. S. W., Blank, B., de Boer, B., and van der Wal, W.: Simulation of a fully coupled 3D glacial isostatic adjustment – ice sheet model for the Antarctic ice sheet over a glacial cycle, *Geoscientific Model Development*, 16, 5473–5492, <https://doi.org/10.5194/gmd-16-5473-2023>, 2023.
- Whitehouse, P. L.: Glacial isostatic adjustment modelling: historical perspectives, recent advances, and future directions, *Earth Surface Dynamics*, 6, 401–429, <https://doi.org/10.5194/esurf-6-401-2018>, 2018.
- Whitehouse, P. L., Gomez, N., King, M. A., and Wiens, D. A.: Solid Earth change and the evolution of the Antarctic Ice Sheet, *Nature Communications*, 10, <https://doi.org/10.1038/s41467-018-08068-y>, 2019.
- Wilmes, S., Green, J. A. M., Gomez, N., Rippeth, T. P., and Lau, H.: Global Tidal Impacts of Large-Scale Ice Sheet Collapses, *Journal of Geophysical Research: Oceans*, 122, 8354–8370, <https://doi.org/10.1002/2017jc013109>, 2017.
- Winkelmann, R., Martin, M. A., Haseloff, M., Albrecht, T., Bueler, E., Khroulev, C., and Levermann, A.: The Potsdam Parallel Ice Sheet Model (PISM-PIK) – Part 1: Model description, *The Cryosphere*, 5, 715–726, <https://doi.org/10.5194/tc-5-715-2011>, 2011.
- Yokoyama, Y., Esat, T. M., Thompson, W. G., Thomas, A. L., Webster, J. M., Miyairi, Y., Sawada, C., Aze, T., Matsuzaki, H., Okuno, J., Fallon, S., Braga, J.-C., Humblet, M., Iryu, Y., Potts, D. C., Fujita, K., Suzuki, A., and Kan, H.: Rapid glaciation and a two-step sea level plunge into the Last Glacial Maximum, *Nature*, 559, 603–607, <https://doi.org/10.1038/s41586-018-0335-4>, 2018.
- Zeitz, M., Haacker, J. M., Donges, J. F., Albrecht, T., and Winkelmann, R.: Dynamic regimes of the Greenland Ice Sheet emerging from interacting melt–elevation and glacial isostatic adjustment feedbacks, *Earth System Dynamics*, 13, 1077–1096, <https://doi.org/10.5194/esd-13-1077-2022>, 2022.
- Zwally, H. J., Giovinetto, M. B., Beckley, M. A., and Saba, J. L.: Antarctic and Greenland Drainage Systems [Dataset], <http://imbie.org/imbie-3/drainage-basins/>, accessed 27 November 2018, 2012.



860 Zweng, M., Reagan, J., Seidov, D., Boyer, T., Locarnini, M., Garcia, H., Mishonov, A., Baranova, O., Weathers, K., Paver, C., and Smolyar, I.: World Ocean Atlas 2018, Volume 2: Salinity, Report, [https://data.nodc.noaa.gov/woa/WOA18/DOC/woa18\\_vol2.pdf](https://data.nodc.noaa.gov/woa/WOA18/DOC/woa18_vol2.pdf), 2019.