

Figures in the Responses to Reviewer 1's comments:

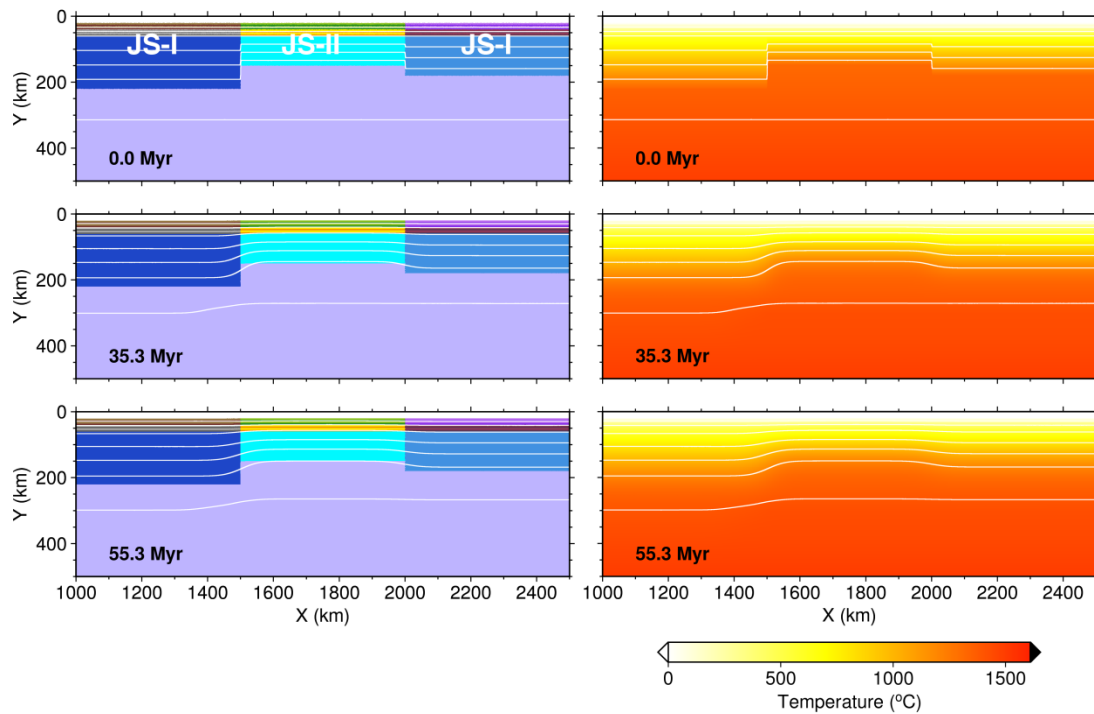


Figure R1. Evolution of the composition and temperature fields of model without convergence rate. In this model, rheology models of the Pro-, Mid- and Retro-terrane are JS-I, JS-II and JS-I which are same to the Case 1. White lines are isotherms with an interval of 200° C.

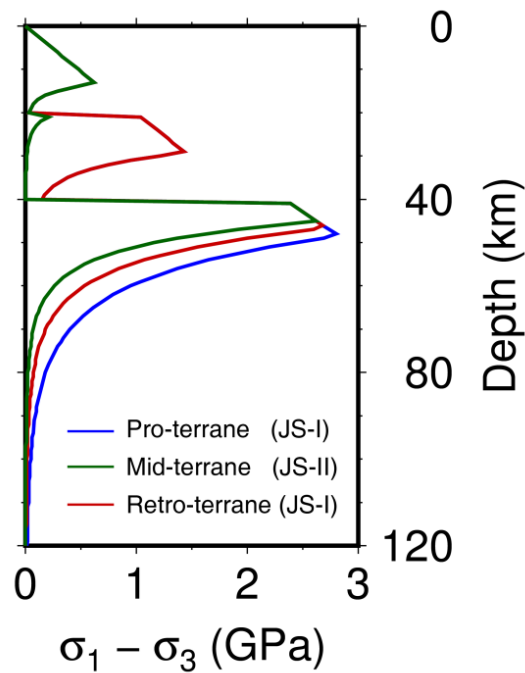


Figure R2. Strength of the Pro-, Mid- and Retro-terrane in model of JS-I/JS-II/JS-I (case 1).

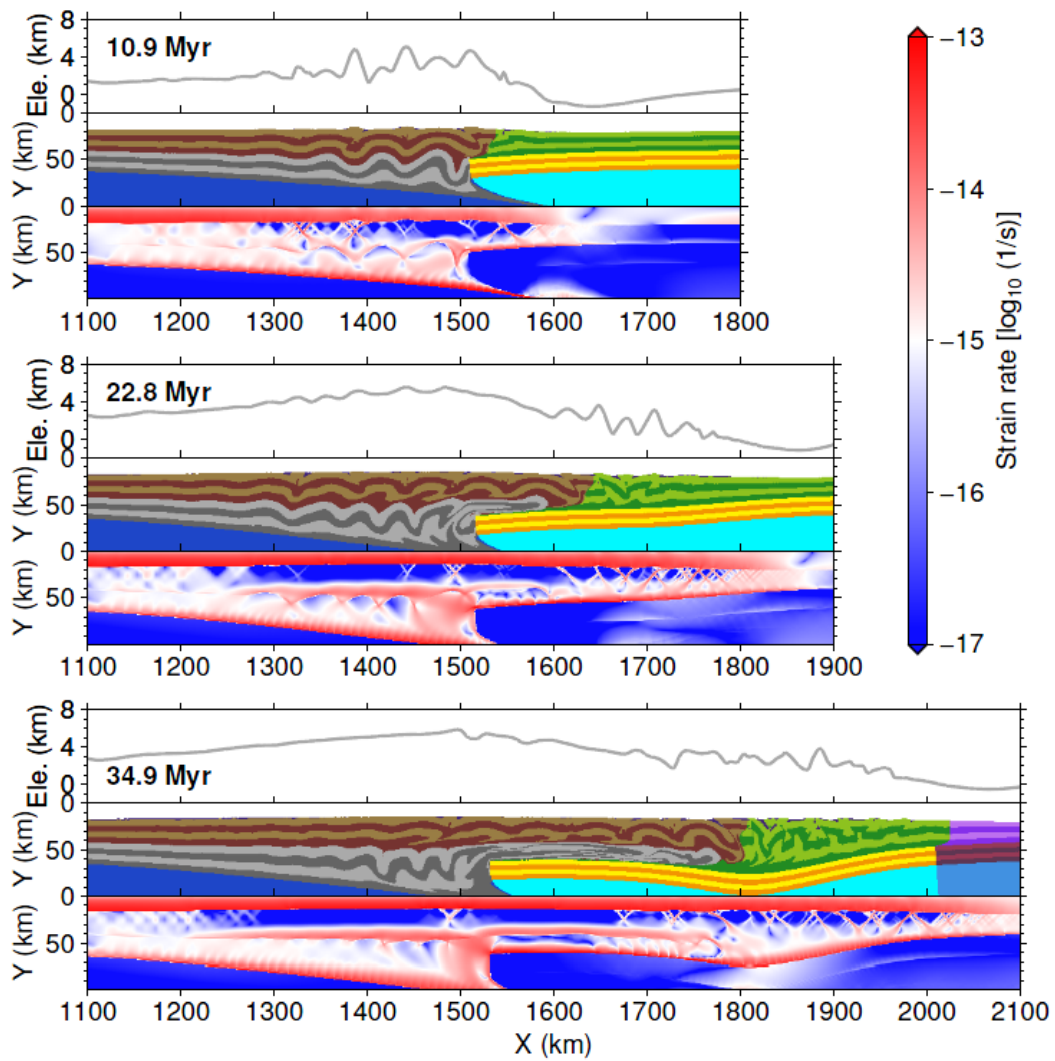


Figure R3. Crustal deformation and topography uplift of deformation mode of lithosphere subduction. The upper, middle and lower panels are topography, component and strain rate results, respectively.

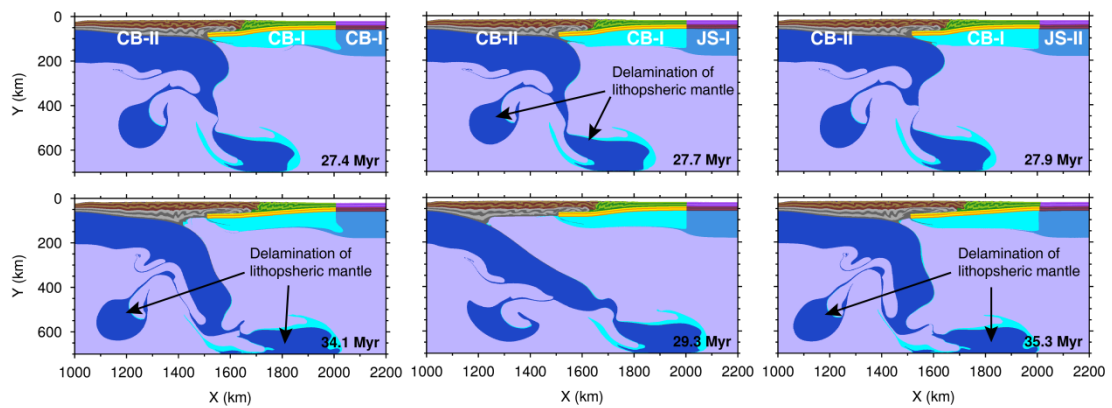


Figure R4. Delamination of the Pro-terrane's lithospheric mantle. The left, middle and right panels were the component results of models of CB-II/CB-I/CB-I, CB-II/CB-I/JS-I, and CB-II/CB-I/JS-II, respectively.