

Soil carbon-concentration and carbon-climate feedbacks in CMIP6 Earth system models

Rebecca M. Varney^{1,2}, Pierre Friedlingstein^{1,3}, Sarah E. Chadburn¹, Eleanor J. Burke⁴, and Peter M. Cox^{1,2}

¹Faculty of Environment, Science and Economy, University of Exeter, Laver Building, North Park Road, Exeter, EX4 4QE, UK

²Global Systems Institute, University of Exeter, Laver Building, North Park Road, Exeter, EX4 4QE, UK

³Laboratoire de Météorologie Dynamique/Institut Pierre-Simon Laplace, CNRS, Ecole Normale Supérieure/Université PSL, Sorbonne Université, Ecole Polytechnique, Paris, 75231, France

⁴Met Office Hadley Centre, FitzRoy Road, Exeter, EX1 3PB, UK

Correspondence: Rebecca M. Varney (r.varney@exeter.ac.uk)

Abstract. Achieving climate targets requires mitigation against climate change, but also understanding of the response of land and ocean carbon systems. In this context, global soil carbon stocks and its response to environmental changes is key. This paper quantifies the global soil carbon feedbacks due to changes in atmospheric CO₂, and associated climate changes, for Earth system models (ESMs) in CMIP6. A standard approach is used to calculate carbon cycle feedbacks, defined here as soil carbon-concentration (β_s) and carbon-climate (γ_s) feedback parameters, which are also broken down into processes which drive soil carbon change. The sensitivity to CO₂ is shown to dominate soil carbon changes at least up to a doubling of atmospheric CO₂. However, the sensitivity of soil carbon to climate change is found to become an increasingly important source of uncertainty under higher atmospheric CO₂ concentrations.

1 Introduction

Global soil carbon stocks contain at least twice as much carbon than is stored in the world's vegetation, making soils the largest active store of carbon on the land surface of Earth (Canadell et al., 2021). In the absence of human disturbance and land-use change (Jones et al., 2018), future changes in soil carbon depend on the sensitivity to increases in atmospheric CO₂ concentrations and the sensitivity to the associated impacts, such as increases to atmospheric temperatures and changes in precipitation patterns (Varney et al., 2023; Todd-Brown et al., 2014). The quantification of such carbon cycle feedbacks is required to determine the overall response of the climate system to given anthropogenic CO₂ emissions and to help achieve Paris Agreement targets (Friedlingstein et al., 2022; Gregory et al., 2009).

Previous studies have defined land carbon cycle feedbacks within Earth system models (ESMs) from both CMIP6 and CMIP5 ensembles (Arora et al., 2020, 2013). In general, the overall response of carbon stores is separated into those due to changes in atmospheric CO₂ (ΔCO_2) and those due to changes in global temperature (ΔT), with the latter assumed to represent the overall impacts of climate change on large spatial scales. These components of land carbon cycle feedbacks are called carbon-concentration feedbacks (β_L) and carbon-climate feedbacks (γ_L), respectively (Friedlingstein et al., 2003, 2006). An

advantage of using this formulation is that it allows for the quantification of the feedbacks for a given atmospheric CO₂ concentration, which can then be used as a simplified measure to compare amongst ESMs despite the increasing model complexities (Arora et al., 2020, 2013; Gregory et al., 2009). For example, it provides a consistent metric to measure land carbon feedbacks
25 despite the differing climate sensitivities amongst ESMs (Boer and Arora, 2013).

In this study, soil carbon driven feedbacks in ESMs are quantified using this $\beta\gamma$ formulation (Friedlingstein et al., 2006). Additionally, the $\beta\gamma$ formulation is combined with the Varney et al. (2023) framework, which breakdowns future changes in soil carbon (ΔC_s) into individual processes which drive this response. This paper makes use of the latest generation of the Coupled Model Intercomparison Project (CMIP6) used within the Intergovernmental Panel on Climate Change 6th Assessment Report
30 (IPCC AR6; IPCC (2021); Eyring et al. (2016)). To do this, soil carbon-concentration and carbon-climate feedback parameters are presented for CMIP6 ESMs, named β_s and γ_s respectively, together with components which make up β_s and γ_s due to associated processes. The aim of this paper is to: (1) quantify the sensitivity of soil carbon to increased atmospheric CO₂ concentrations and associated climate impacts by calculating β_s and γ_s for CMIP6 ESMs; (2) investigate the linearity of future soil carbon change at higher levels of atmospheric CO₂ increase; and (3) identify the fraction of the land carbon response to
35 climate change that is due to global soils.

2 Methods

2.1 C4MIP simulations

The Coupled Climate-Carbon Cycle Model Intercomparison Project (C4MIP) was set up to provide a common framework to allow for comparison and consistent evaluation of carbon cycle feedbacks within ESMs (Friedlingstein et al., 2006) and
40 has been used across CMIP generations (Arora et al., 2013, 2020). This framework includes a set of idealised experiments to simplify and quantify the impact of increasing atmospheric CO₂ on the climate system. In these experiments, additional effects such as land-use change, aerosols and non-CO₂ greenhouse gases are not included and nitrogen deposition is fixed at pre-industrial values (Jones et al., 2016).

The control simulation is known as the 1% CO₂ run (CMIP simulation *1pctCO2*), where a consistent 1% increase in at-
45 mospheric CO₂ per year is prescribed (referred to in this study as the full 1% CO₂ simulation), starting from pre-industrial concentrations and running for 150 years. Additional experiments were designed to enable the CO₂ and climate effects to be isolated, these are known as: biogeochemically coupled (referred to here as the ‘BGC’ simulation) and radiatively coupled (referred to here as the ‘RAD’ simulation) runs. In the BGC runs (CMIP6 simulation *1pctCO2-bgc* and CMIP5 simulation *esmFixClim1*), the 1% CO₂ increase per year only affects the carbon cycle component of the ESM while the radiation code
50 continues to see pre-industrial CO₂ values. Conversely, in the RAD runs (CMIP6 simulation *1pctCO2-rad* and CMIP5 simulation *esmFdbk1*), the 1% CO₂ increase per year affects only the radiation code, and the carbon cycle component of the ESM continues to see just the pre-industrial CO₂ value (285 ppm).

This study uses the full 1% CO₂, BGC, and RAD C4MIP experiments with 10 CMIP6 ESMs (Eyring et al., 2016): ACCESS-ESM1-5, BCC-CSM2-MR, CanESM5, CESM2, GFDL-ESM4, IPSL-CM6A-LR, MIROC-ES2L, MPI-ESM1-2-

55 LR, NorESM2-LM and UKESM1-0-LL (see Table 1). For comparison, the soil carbon feedback parameters were calculated using 6 CMIP5 ESMs (Taylor et al., 2012): CanESM2, GFDL-ESM2M, IPSL-CM5A-LR, MPI-ESM-LR, NorESM1-ME and HadGEM2-ES (see Table A2). The ESMs included were chosen due to the availability of the data required at the time of analysis (CMIP6: <https://esgf-node.llnl.gov/search/cmip6/>, last access: 4 February 2024, and CMIP5: <https://esgf-node.llnl.gov/search/cmip5/>, last access: 6 February 2024).

60 2.2 Defining soil carbon feedbacks

2.2.1 Friedlingstein et al. (2006) $\beta\gamma$ formulation

The standard formulation uses a linear approximation to estimate carbon cycle feedbacks under a changing climate (Friedlingstein et al., 2003, 2006). The change in land carbon storage (ΔC_L , PgC) is approximated linearly using feedback parameters which define separate sensitivities to changes in atmospheric CO₂ (ΔCO_2 , ppm) and changes in global temperatures (ΔT ,
65 °C), defined as the land carbon-concentration (β_L , PgC ppm⁻¹) and carbon-climate (γ_L , PgC °C⁻¹) (Equation 1).

$$\Delta C_L \approx \beta_L \Delta CO_2 + \gamma_L \Delta T \quad (1)$$

The Friedlingstein et al. (2006) methodology uses time-integrated fluxes (NEP , PgC yr⁻¹), which represent the total change in size of the land carbon pool (ΔC_L). This is presented for the full 1% CO₂ simulation (Equation 2), BGC simulation (Equation 3), and RAD simulation (Equation 4) below, where ΔC_L , ΔC_L^{BGC} , and ΔC_L^{RAD} are the changes in global land carbon pools
70 (PgC), and F_L , F_L^{BGC} , and F_L^{RAD} are the net carbon fluxes to the land (PgC yr⁻¹), for each simulation.

$$\Delta C_L = \int F_L dt \approx \beta_L \Delta CO_2 + \gamma_L \Delta T \quad (2)$$

$$\Delta C_L^{BGC} = \int F_L^{BGC} dt \approx \beta_L \Delta CO_2 + \gamma_L \Delta T^{BGC} \approx \beta_L \Delta CO_2 \quad (3)$$

$$\Delta C_L^{RAD} = \int F_L^{RAD} dt \approx \gamma_L \Delta T^{RAD} \quad (4)$$

In these equations, $\Delta CO_2(t)$ (ppm) is consistent between all scenarios. Within the RAD simulation however (Equation
75 4), the carbon cycle does not see an increased CO₂ so the ΔCO_2 is neglected and only found in the full 1% CO₂ and BGC simulations (Equations 2 and 3, respectively). ΔT , ΔT^{BGC} , and ΔT^{RAD} (°C) are the changes in global temperatures, in the full 1% CO₂, BGC, and RAD simulations, respectively. In Equation 3, ΔT^{BGC} is assumed to be negligible, following Friedlingstein et al. (2006). As the increased CO₂ within the BGC simulation does not affect the radiation code, there is no direct increase in atmospheric temperatures within the model. Arora et al. (2020) explain however, that local changes in the

80 carbon cycle arising from increases in CO₂ affect latent and sensible heat fluxes at the land surface, including: changes to evaporative fluxes from stomatal closure over land and changes in vegetation structure and coverage if dynamic vegetation is included within the ESM (see Table 1). This study assumes that the global temperature changes in the BGC simulation are negligible in the context of the $\beta\gamma$ formulation (Fig. A1).

2.2.2 Soil carbon-concentration and carbon-climate feedbacks

85 Global ΔC_L can be written as the sum of the changes in vegetation carbon (ΔC_v) and changes in soil carbon (ΔC_s). Following the $\beta\gamma$ formulation, a similar breakdown of the land carbon-concentration and carbon-climate feedback parameters can be derived, where $\beta_L = \beta_v + \beta_s$ and $\gamma_L = \gamma_v + \gamma_s$ (Equation 5).

$$\Delta C_L \approx (\beta_v + \beta_s)\Delta CO_2 + (\gamma_v + \gamma_s)\Delta T \quad (5)$$

$$\Delta C_v \approx \beta_v\Delta CO_2 + \gamma_v\Delta T \quad (6)$$

90 $\Delta C_s \approx \beta_s\Delta CO_2 + \gamma_s\Delta T \quad (7)$

Therefore, an equation for ΔC_s can be obtained, with soil specific carbon-concentration (β_s) and carbon-climate (γ_s) feedback parameters, which represent the sensitivity of ΔC_s to CO₂ and T, respectively (Equation 7).

2.3 Processes driving soil carbon change and relation to the $\beta\gamma$ formulation

To isolate the processes which make up each soil carbon feedback, we follow the framework presented in Varney et al. (2023).

95 An equation for soil carbon (Equation 8) is derived using the definition of soil carbon turnover time ($\tau_s = C_s/R_h$), which is defined as the ratio of soil carbon storage (C_s) to the carbon output flux from the soil (heterotrophic respiration, R_h ; Varney et al. (2020)). Future soil carbon can then be defined as initial soil carbon ($C_{s,0}$) plus a change in soil carbon (ΔC_s), as shown by Equation 9, where the subscript 0 denotes the initial state (decadal time-average at the start of C4MIP simulation). Equation 9 can be expanded to give Equation 10, which can be simplified to give Equation 11, as shown below.

100 $C_s = R_h\tau_s \quad (8)$

$$C_{s,0} + \Delta C_s = (R_{h,0} + \Delta R_h)(\tau_{s,0} + \Delta\tau_s) \quad (9)$$

$$C_{s,0} + \Delta C_s = R_{h,0}\tau_s + \tau_{s,0}\Delta R_h + R_{h,0}\Delta\tau_s + \Delta R_h\Delta\tau_s \quad (10)$$

$$\Delta C_s = \tau_{s,0}\Delta R_h + R_{h,0}\Delta\tau_s + \Delta R_h\Delta\tau_s \quad (11)$$

To consider the above and below ground effects on soil carbon separately, the effects due to changes vegetation productivity, represented by Net Primary Productivity (NPP), and effects due to changes in soil carbon turnover time due to increased heterotrophic respiration (τ_s), are considered (Todd-Brown et al., 2014). However, due to the difference between the global fluxes NPP and R_h in a transient climate, an additional term is included which is defined as Net Ecosystem Productivity ($NEP = NPP - R_h$). Using the definition of NEP, this can be substituted into Equation 11 to give Equation 12, and expanded to give an equation for ΔC_s in terms of NPP, NEP and τ_s (Equation 13).

$$\Delta C_s = \tau_{s,0}\Delta(NPP - NEP) + (NPP_0 - NEP_0)\Delta\tau_s + \Delta(NPP - NEP)\Delta\tau_s \quad (12)$$

$$\Delta C_s = \tau_{s,0}\Delta NPP + NPP_0\Delta\tau_s + \Delta NPP\Delta\tau_s - \tau_{s,0}\Delta NEP - NEP_0\Delta\tau_s - \Delta NEP\Delta\tau_s \quad (13)$$

The individual terms in Equation 13 are: the change in soil carbon due to NPP changes ($\Delta C_{s,NPP} \approx \tau_{s,0}\Delta NPP$), the change in soil carbon due to the NEP transient term ($\Delta C_{s,NEP} \approx -\tau_{s,0}\Delta NEP$), the change in soil carbon due to τ_s changes ($\Delta C_{s,\tau} \approx NPP_0\Delta\tau_s$), as well as the transient effect on τ_s ($\Delta C_{s,\tau NEP} \approx -NEP_0\Delta\tau_s$). The two additional terms are the non-linear term between NPP and τ_s ($\Delta NPP\Delta\tau_s$) and the non-linear term between NEP and τ_s ($\Delta NEP\Delta\tau_s$).

Following on from this Varney et al. (2023) framework, the equation for ΔC_s (Equation 13) can also be defined for the change in soil carbon in both the BGC simulations (ΔC_s^{BGC} , Equation 14) and RAD simulations (ΔC_s^{RAD} , Equation 15), where the superscripts denotes the BGC and RAD simulations, respectively.

$$\begin{aligned} \Delta C_s^{BGC} = & \tau_{s,0}^{BGC} \Delta NPP^{BGC} + NPP_0^{BGC} \Delta\tau_s^{BGC} + \Delta NPP^{BGC} \Delta\tau_s^{BGC} \\ & - \tau_{s,0}^{BGC} \Delta NEP^{BGC} - NEP_0^{BGC} \Delta\tau_s^{BGC} - \Delta NEP^{BGC} \Delta\tau_s^{BGC} \end{aligned} \quad (14)$$

$$\begin{aligned} \Delta C_s^{RAD} = & \tau_{s,0}^{RAD} \Delta NPP^{RAD} + NPP_0^{RAD} \Delta\tau_s^{RAD} + \Delta NPP^{RAD} \Delta\tau_s^{RAD} \\ & - \tau_{s,0}^{RAD} \Delta NEP^{RAD} - NEP_0^{RAD} \Delta\tau_s^{RAD} - \Delta NEP^{RAD} \Delta\tau_s^{RAD} \end{aligned} \quad (15)$$

These equations can be used to investigate the sensitivity of these isolated processes to changes in atmospheric CO₂ and global temperature (T), as shown by Equations 16 and 17. This is done by the explicit differentiation of Equations 14 and 15 with respect to CO₂ and T, respectively.

$$\Delta C_s^{BGC} = \frac{\partial}{\partial CO_2} \left[\Delta C_s^{BGC} \right] \Delta CO_2 \quad (16)$$

$$125 \quad \Delta C_s^{RAD} = \frac{\partial}{\partial T} \left[\Delta C_s^{RAD} \right] \Delta T \quad (17)$$

Equations 16 and 17 can be used to relate these CO₂ and T sensitivities to the $\beta\gamma$ formulation, where β is used to represent the sensitivity to CO₂ and γ is used to represent the sensitivity to T. Equation 7 which defines ΔC_s in terms of the soil carbon-concentration (β_s) and carbon-climate (γ_s) feedback parameters can be rewritten in terms of partial derivatives, as shown by Equation 18.

$$130 \quad \Delta C_s = \frac{\partial C_s}{\partial CO_2} \Delta CO_2 + \frac{\partial C_s}{\partial T} \Delta T, \quad \text{where, } \beta_s = \partial C_s / \partial CO_2 \text{ and } \gamma_s = \partial C_s / \partial T. \quad (18)$$

Then, Equations 16 and 17 can be used together with Equation 18 to combine the $\beta\gamma$ formulation with the (Varney et al., 2023) framework. In this case, therefore β_s and γ_s can be defined as the contributions to ΔC_s based on the individual sensitivities of the soil carbon controls to CO₂ and T (by substituting Equations 14 and 15 into Equations 16 and 17, respectively), as shown by Equations 20 and 21.

$$135 \quad \Delta C_s = \frac{\partial}{\partial CO_2} \left[\Delta C_s^{BGC} \right] \Delta CO_2 + \frac{\partial}{\partial T} \left[\Delta C_s^{RAD} \right] \Delta T \quad (19)$$

Where,

$$\begin{aligned} \beta_s = & \tau_{s,0}^{BGC} \frac{\partial NPP^{BGC}}{\partial CO_2} + NPP_0^{BGC} \frac{\partial \tau_s^{BGC}}{\partial CO_2} + \frac{\partial \Delta NPP^{BGC} \Delta \tau_s^{BGC}}{\partial CO_2} \\ & - \tau_{s,0}^{BGC} \frac{\partial NEP^{BGC}}{\partial CO_2} - NEP_0^{BGC} \frac{\partial \tau_s^{BGC}}{\partial CO_2} \\ & - \frac{\partial \Delta NEP^{BGC} \Delta \tau_s^{BGC}}{\partial CO_2} \end{aligned} \quad (20)$$

$$\begin{aligned} \gamma_s = & \tau_{s,0}^{RAD} \frac{\partial NPP^{RAD}}{\partial T} + NPP_0^{RAD} \frac{\partial \tau_s^{RAD}}{\partial T} + \frac{\partial \Delta NPP^{RAD} \Delta \tau_s^{RAD}}{\partial T} \\ & - \tau_{s,0}^{RAD} \frac{\partial NEP^{RAD}}{\partial T} - NEP_0^{RAD} \frac{\partial \tau_s^{RAD}}{\partial T} \\ & - \frac{\partial \Delta NEP^{RAD} \Delta \tau_s^{RAD}}{\partial T} \end{aligned} \quad (21)$$

Equations 20 and 21 can be rewritten by defining β_s and γ_s contribution terms, where each component of the equations
140 make up the total β_s and γ_s sensitivities. As shown below for β_s (Equation 22) and γ_s (Equation 23).

$$\beta_s = \beta_{NPP} + \beta_\tau + \beta_{\Delta NPP\Delta\tau} - \beta_{NEP} - \beta_{NEP_\tau} - \beta_{\Delta NEP\Delta\tau} \quad (22)$$

$$\gamma_s = \gamma_{NPP} + \gamma_\tau + \gamma_{\Delta NPP\Delta\tau} - \gamma_{NEP} - \gamma_{NEP_\tau} - \gamma_{\Delta NEP\Delta\tau} \quad (23)$$

Where, β_{NPP} and γ_{NPP} are the $\beta\gamma$ contributions due to ΔNPP , β_τ and γ_τ are the $\beta\gamma$ contributions due to $\Delta\tau_s$, β_{NEP} and γ_{NEP} are the $\beta\gamma$ contributions due to the transient NEP term, including β_{NEP_τ} and γ_{NEP_τ} representing the $\beta\gamma$ contributions due to the transient NEP term on $\Delta\tau_s$, and then $\beta_{\Delta NPP\Delta\tau}$, $\beta_{\Delta NEP\Delta\tau}$, $\gamma_{\Delta NPP\Delta\tau}$ and $\gamma_{\Delta NEP\Delta\tau}$ are the non-linear effects on $\beta\gamma$.

2.4 Calculation of feedback parameters

2.4.1 Defining climate variables

For each of the CMIP6 ESMs, the CMIP output variables: $cSoil$, $cLitter$, and $cVeg$ are considered in the land carbon storage analysis. Soil carbon (C_s) is defined as the sum of carbon stored in soils and the carbon stored in the litter (CMIP variable $cSoil$ + CMIP variable $cLitter$), allowing for a more consistent comparison between the models despite differences in how soil carbon and litter carbon are simulated (Varney et al., 2022; Todd-Brown et al., 2013). For models that do not report a separate litter carbon pool (CMIP variable $cLitter$), soil carbon is taken to be simply the CMIP variable $cSoil$ (UKESM1-0-LL). Land carbon (C_L) is defined as the sum of carbon stored in soil + litter (C_s), plus the carbon stored in vegetation (C_v , CMIP variable $cVeg$). Global total values for C_s and C_L (PgC) are calculated using an area weighted sum (using the model land surface fraction, CMIP variable $sftlf$).

In the breakdown analysis of the $\beta\gamma$ feedbacks, Net Primary Productivity (NPP, CMIP variable npp) is defined as the net carbon assimilated by plants via photosynthesis minus loss due to plant respiration and is used to represent the net carbon input flux to the system. Heterotrophic Respiration (R_h , CMIP variable rh) is defined as the microbial respiration within global soils and is used to define an effective global soil carbon turnover time (τ_s). τ_s (years) is defined as the ratio of mean soil carbon to annual mean heterotrophic respiration, given as $\tau_s = C_s/R_h$ (where the mean represents an area weighted global average). Carbon fluxes (NPP and R_h) in the calculation of feedback contributions are considered as area weighted global totals in units of PgC yr⁻¹ (using the model land surface fraction, CMIP variable $sftlf$).

Increases in global temperatures (ΔT) are considered using CMIP variable tas , which is defined as the change in near-surface air temperature (°C). To calculate changes in atmospheric CO₂ (ΔCO_2) in the C4MIP 1% CO₂ simulations, initial pre-industrial CO₂ concentrations are assumed to be 285 ppm, and then cumulatively increased by 1% each year, for 70 years (approximately 2xCO₂) or 140 years (approximately 4xCO₂).

2.4.2 Carbon-concentration feedback parameter (β)

To calculate the soil carbon-concentration feedback parameter (β_s), the BGC run was used. For each ESM, the change in soil carbon in the BGC run (ΔC_s^{BGC} , PgC) was divided by the change in CO₂ concentration (ppm) up to that point in time (expressed in units of carbon uptake or release per unit change in CO₂, PgC ppm⁻¹). For this study, β_s was calculated at the time of 2xCO₂ and 4xCO₂. To calculate the land carbon-concentration feedback parameter (β_L), the same method was used but replacing C_s^{BGC} with C_L^{BGC} .

2.4.3 Carbon-climate feedback parameter (γ)

To calculate the soil carbon-climate feedback parameter (γ_s), the RAD run was used. For each ESM, the change in soil carbon in the RAD run (ΔC_s^{RAD} , PgC) was divided by the change in temperature T (°C) up to that point in time (expressed in units of carbon uptake or release per unit change in temperature, PgC °C⁻¹). For this study, γ_s was calculated at 2xCO₂ and 4xCO₂. To calculate the land carbon-climate feedback parameter (γ_L), the same method was used but replacing C_s^{RAD} with C_L^{RAD} .

2.4.4 Feedback parameter contributions

To calculate the isolated contributions which make up β and γ , as shown in Equations 22 and 23, again the BGC and RAD simulations are used for each CMIP6 ESM. To calculate gradients with respect to CO₂ and T, the methodology presented above is used, but with the relevant component against CO₂ or T, such as NPP or τ_s . The β_s contributions are expressed in units of carbon uptake or release per unit change in CO₂ (PgC ppm⁻¹) and the γ_s contributions are expressed in units of carbon uptake or release per unit change in temperature (PgC °C⁻¹), using the definitions presented in Equations 22 and 23.

3 Results

3.1 Projections of soil carbon change

Projections of soil carbon change in CMIP6 ESMs for the full 1% CO₂ (ΔC_s), BGC (ΔC_s^{BGC}) and RAD (ΔC_s^{RAD}) simulations are presented in Fig. 1. Soil carbon is projected to increase in the full 1% CO₂ simulation amongst CMIP6 ESMs (ensemble mean 88.2 ± 40.4 PgC at 2xCO₂ and 177 ± 141 PgC at 4xCO₂). However, the magnitude of the increase varies amongst the ESMs, with a range of 38 PgC (NorESM2-LM) to 145 PgC (BCC-CSM2-MR) at 2xCO₂, and a range of 15 PgC (ACCESS-ESM1-5) to 502 PgC (CanESM5) at 4xCO₂. Six of the ESMs (CanESM5, CESM2, GFDL-ESM4, MIROC-ES2L, MPI-ESM1-2-LR, NorESM2-LM) see an increased ΔC_s value with increasing climate forcing, however the remaining four ESMs (ACCESS-ESM1-5, BCC-CSM2-MR, IPSL-CM6A-LR, UKESM1-0-LL) see a saturation to the rate of increase, or even a turning point where carbon starts to decrease again, from 70 years ($\approx 2xCO_2$) in the simulation (Fig. 1(a)).

The projected increase in soil carbon can be approximated by the increases projected in the BGC run (ΔC_s^{BGC} ; ensemble mean 132 ± 66.5 PgC at 2xCO₂ and 348 ± 203 PgC at 4xCO₂, Fig. 1(b)) and the decreases projected in the RAD run (ΔC_s^{RAD} ; ensemble mean -45.5 ± 22.9 PgC at 2xCO₂ and -170 ± 94.7 PgC at 4xCO₂, Fig. 1(c)). The response due to

increases in atmospheric CO₂ (BGC simulation) are found to dominate the overall response (full 1% CO₂ simulation) in the majority of models, where greater magnitudes of change are seen compared to the RAD simulation (exception ACCESS-
200 ESM1-5). The BGC simulation also sees a greater spread in projected ΔC_s , with a range of 218 PgC at 2xCO₂ and 603 PgC at 4xCO₂ (ΔC_s^{BGC}), compared to ranges of 68 PgC at 2xCO₂ and 312 PgC at 4xCO₂ in the RAD simulation (ΔC_s^{RAD}).

Fig. 2 shows patterns of soil carbon changes at 4xCO₂ for the full 1% CO₂ (ΔC_s), BGC (ΔC_s^{BGC}) and RAD (ΔC_s^{RAD}). In the BGC simulation, increases in ΔC_s^{BGC} are seen across the majority of regions within CMIP6 ESMs, though exceptions are found in the northern latitudes for two ESMs (CanESM5 and NorESM2-LM). Across the ensemble, the projected increases in
205 ΔC_s^{BGC} have spatially varying magnitudes, where generally the greatest increases are seen in the tropical regions. Conversely, the RAD simulation generally sees reductions in ΔC_s^{RAD} globally, with the greatest reductions seen in the tropical regions. However, disagreement is seen in the northern latitudes, where four models (ACCESS-ESM1-5, CanESM5, MIROC-ES2L, UKESM1-0-LL) see an increased ΔC_s^{RAD} and three models (BCC-CSM2-MR, CESM2, NorESM2-LM) see a decreased ΔC_s^{RAD} . The overall ΔC_s values seen in the full 1% CO₂ simulation are again found to be mostly dominated by the BGC
210 simulation (Fig. 2), though exceptions are seen where the RAD simulation is shown to dominate the response for certain regions. Specifically, the reduced ΔC_s within the RAD simulation dominates the net response in the northern latitudes of three ESMs (BCC-CSM2-MR, CESM2, and NorESM2-LM; the only models where decreases were seen), as well as in the tropical regions of a different three ESMs (ACCESS-ESM1-5, GFDL-ESM4, and UKESM1-0-LL).

3.2 Soil carbon-concentration and carbon-climate feedback parameters

215 The calculated β_s and γ_s values for CMIP6 ESMs are presented in Table 2. Values for β_s are found to be positive amongst the CMIP6 ESMs which is consistent with increased C_s with increasing CO₂, and values for γ_s are found to be negative which is consistent with decreased C_s with increasing temperature (Fig. 3). The magnitude of the feedback parameters (β_s and γ_s) are found to vary amongst the CMIP6 ensemble, suggesting uncertainty in the magnitude of the soil carbon response to climate change. Generally, models with higher sensitivities to CO₂ (β_s), also have higher sensitivities to temperature (γ_s), where a
220 r^2 values of 0.64 (2xCO₂) and 0.60 (4xCO₂) are found between the β_s and γ_s values (Table 2). The range in projected β_s parameters are found to be relatively consistent between 2xCO₂ and 4xCO₂ (where a small decrease is seen), with a range of 0.704 PgC ppm⁻¹ and range of 0.636 PgC ppm⁻¹ respectively. Conversely, the range of calculated γ_s parameters are found to be less consistent between 2xCO₂ and 4xCO₂ (increasing range with increased global warming), with ranges of 42.7 PgC °C⁻¹ and 68.0 PgC °C⁻¹ respectively (Table 2).

225 The linearity of future soil carbon changes can be investigated by comparing the 2xCO₂ and 4xCO₂ lines for β_s and γ_s in Fig. 3. A future linear response is shown to be a good approximation, however the figure suggests a slight non-linearity in the soil carbon response to both CO₂ (ΔC_s^{BGC}) and temperature (ΔC_s^{RAD}) in the majority of ESMs. The BGC simulation generally sees greater consistency between 2xCO₂ and 4xCO₂ β_s values, for example in the CESM2 and NorESM2-LM models. However, the majority of ESMs (ACCESS-ESM1-5, BCC-CSM2-MR, GFDL-ESM4, IPSL-CM6A-LR, MIROC-ES2L, MPI-
230 ESM1-2-LR, and UKESM1-0-LL) see a reduction in β_s and a saturation to the sensitivity with greater CO₂ levels (Fig. 3(a)). In the RAD simulation, generally inconsistencies are seen between 2xCO₂ and 4xCO₂ (exception MPI-ESM1-2-LR) and an

increased sensitivity of C_s^{RAD} to temperature (T) with increased climate forcing is suggested by the majority of CMIP6 ESMs (Fig. 3(b)). As an example, in CESM2 where one of the lowest sensitivities to T at $2xCO_2$ is seen, the ESM see an approximate 50% increase in γ_s by $4xCO_2$ (Table 2).

235 The β_s and γ_s values were also calculated for CMIP5 ESMs (Table A3), which can be compared with a subset of generationally related CMIP6 ESMs considered in this study (Fig. A3). The CMIP6 ensemble means for both β_s and γ_s parameters are found to be lower compared with the CMIP5 ensemble means (Table 2 and Table A3). The relationship of β_s and γ_s values between CMIP5 and CMIP6 however, is not found to be consistent amongst the ensembles. For β_s , reductions are seen in 4 ESMs (GFDL-ESM2M Vs GFDL-ESM4, IPSL-CM5A-LR Vs IPSL-CM6A-LR, MPI-ESM-LR Vs MPI-ESM1-2-LR, and
240 HadGEM2-ES Vs UKESM1-0-LL), compared to increases in the remaining 2 (CanESM2 Vs CanESM5 and NorESM1-ME Vs NorESM2-LM). For γ_s , a greater value (closer to 0) is seen in 4 ESMs (CanESM2 Vs CanESM5, GFDL-ESM2M Vs GFDL-ESM4, IPSL-CM5A-LR Vs IPSL-CM6A-LR, and MPI-ESM-LR Vs MPI-ESM1-2-LR), compared to a lower value (greater negative) is seen in the remaining 2 ESMs (NorESM1-ME Vs NorESM2-LM and HadGEM2-ES Vs UKESM1-0-LL).

3.3 Breakdown of the feedback parameters into soil carbon drivers

245 In this section, β_s and γ_s are broken down into the individual sensitivities of drivers of soil carbon change which make up the net response. As shown in Fig. 4, the total soil carbon sensitivities (β_s and γ_s , blue bars) can be considered as a sum of the sensitivity due to ΔNPP (β_{NPP} and γ_{NPP} , green bars), the sensitivity due to $\Delta\tau_s$ (β_τ and γ_τ , red bars), and additional terms due to the transient land carbon sink, such as NEP (β_{NEP} and γ_{NEP} , light green bars) and the NEP effect on τ_s ($\beta_{\tau_{NEP}}$ and $\gamma_{\tau_{NEP}}$, pink bars). Additionally, there are non-negligible contributions due to non-linear sensitivities between NPP and τ_s
250 ($\beta_{\Delta NPP\Delta\tau}$ and $\gamma_{\Delta NPP\Delta\tau}$, black bars) and a small contribution from non-linear sensitivities between NEP and τ_s ($\beta_{\Delta NEP\Delta\tau}$ and $\gamma_{\Delta NEP\Delta\tau}$, grey bars).

Investigating the sensitivity of soil carbon to ΔNPP , β_{NPP} is found to be positive amongst CMIP6 ESMs (Fig. 4). At $2xCO_2$, β_{NPP} ranges from $0.567 \text{ PgC ppm}^{-1}$ (ACCESS-ESM1-5) to $5.62 \text{ PgC ppm}^{-1}$ (BCC-CSM2-MR), with an ensemble mean of $2.37 \pm 1.37 \text{ PgC ppm}^{-1}$. There is some evidence of a saturation of global NPP at higher CO_2 , with the sensitivity
255 of NPP to CO_2 (β_{NPP}) decreasing at $4xCO_2$ to an ensemble mean of $1.44 \pm 0.933 \text{ PgC ppm}^{-1}$. The sensitivity of NPP to global temperature changes (γ_{NPP}) is found to be more variable amongst the ensemble. The majority of models find γ_{NPP} to be negative, however it is found to be positive in two ESMs (CanESM5 and MPI-ESM1-2-LR). The sensitivity of NPP to temperature (γ_{NPP}) is found to be more consistent with climate change than the sensitivity to CO_2 (β_{NPP}), where the γ_{NPP} ensemble mean changes from $-29.4 \pm 40.1 \text{ PgC } ^\circ\text{C}^{-1}$ at $2xCO_2$ to $-35.3 \pm 33.1 \text{ PgC } ^\circ\text{C}^{-1}$ at $4xCO_2$ (Fig. 4). At $4xCO_2$, the
260 lowest sensitivity of NPP to temperature is seen in CanESM5 ($3.95 \text{ PgC } ^\circ\text{C}^{-1}$), and the greatest sensitivity in BCC-CSM2-MR ($-90.8 \text{ PgC } ^\circ\text{C}^{-1}$).

Investigating the sensitivity of soil carbon to $\Delta\tau_s$, negative β_τ and γ_τ values are mostly found amongst the CMIP6 models (Fig. 4). An anomaly is found where τ_s is found to increase with temperature in the ACCESS-ESM1-5 model, where the reason for this is unclear (Fig. A2). The sensitivity of τ_s to T (γ_τ) is also found to be more consistent with increasing climate change
265 than the sensitivity to CO_2 , where an ensemble mean of $-25.2 \pm 27.9 \text{ PgC } ^\circ\text{C}^{-1}$ at $2xCO_2$ and $-20.5 \pm 29.5 \text{ PgC } ^\circ\text{C}^{-1}$ at

4xCO₂ is seen. At 4xCO₂, the greatest sensitivity of τ_s to temperature is seen in the MIROC-ES2L model (-54.6 PgC °C⁻¹) and the lowest sensitivity is seen in the NorESM2-LM model (-2.80 PgC °C⁻¹). τ_s is found to decrease non-linearly with increasing CO₂ (β_τ). At 2xCO₂, β_τ ranges from -0.329 PgC ppm⁻¹ (ACCESS-ESM1-5) to -1.90 PgC ppm⁻¹ (BCC-CSM2-MR), with an ensemble mean of -0.900 ± 0.574 PgC ppm⁻¹. Due to the non-linearity, a reduced ensemble mean of $-0.450 \pm$
270 0.359 PgC ppm⁻¹ is found at 4xCO₂ compared with 2xCO₂ (Fig. 4).

It is apparent from Fig. 4 that the sensitivities of NPP and τ_s to both CO₂ and T must be accounted for to understand and quantify the sensitivities of soil carbon. The magnitude of β_τ is found to be approximately a third of the magnitude of β_{NPP} at both 2xCO₂ and 4xCO₂, but with counteracting signs of change. Models with the lowest β_{NPP} sensitivities also see the lowest β_τ sensitivities (e.g. ACCESS-ESM1-5), and via versa. The magnitude of γ_{NPP} is generally found to be greater across the
275 ensemble compared with γ_τ , however with a greater range of sensitivities. Additionally, the apparent sensitivity of soil carbon to CO₂ is less than the individual sensitivities of NPP and τ_s , due to a cancellation effect from opposing signs, leading to a lower apparent β_s . The magnitudes of β_{NPP} and β_τ are lower at 4xCO₂ than 2xCO₂, which means a reduced sensitivity of NPP and τ_s to CO₂ at greater levels of climate change. However, due to this cancellation effect the same reduced sensitivity is not seen in β_s . Conversely, a reduced sensitivity of NPP and τ_s to temperature is not suggested under increasing climate
280 forcing. No clear relationship between γ_{NPP} and γ_τ is seen amongst the CMIP6 ESMs (Fig. 4).

The contribution of the non-linearity between NPP and τ_s to the net soil carbon sensitivity is also investigated ($\beta_{\Delta NPP\Delta\tau}$ and $\gamma_{\Delta NPP\Delta\tau}$). Fig. 4 suggests that the non-linearity between NPP and τ_s is more robustly projected to result from increasing CO₂ (β_s), however non-linearities in γ_s are also seen in the models which the greatest temperature sensitivities. The ensemble mean predicted $\beta_{\Delta NPP\Delta\tau}$ is found to be -0.462 ± 0.462 at 2xCO₂ and -0.463 ± 0.468 PgC ppm⁻¹ at 4xCO₂. As expected
285 from Fig. 4, predicted $\gamma_{\Delta NPP\Delta\tau}$ is found to have a low sensitivity, where the ensemble means of -0.374 ± 3.12 at 2xCO₂ and -0.0478 ± 7.42 PgC °C⁻¹ at 4xCO₂ are found. Additionally, the NEP terms (β_{NEP} and γ_{NEP}) are shown to contribute to both CO₂ and T sensitivities (Fig. 4), due to the disequilibrium of land carbon changes under 1% increasing CO₂.

3.4 Investigating robustness of the ΔC_s approximation

Projections of ΔC_s in ESMs in the full 1% CO₂ simulation was compared with the estimated ΔC_s derived using Equation
290 7, which uses the derived β_s and γ_s feedback parameters together with model specific ΔT and estimates for ΔCO_2 (Fig. 5). This investigates the approximation that changes in the full 1% CO₂ simulation is equal to the sum of changes in the BGC and RAD simulations. At 2xCO₂, the approximation is found to predict ΔC_s within 20% of the actual projected values in the 1% CO₂ simulation for 7 out of the 10 CMIP6 ESMs (BCC-CSM2-MR, CESM2, GFDL-ESM4, IPSL-CM6A-LR, MIROC-ES2L, MPI-ESM1-2-LR and UKESM1-0-LL). At 4xCO₂, the robustness of the assumption between the BGC and RAD simulations
295 reduces for future changes in soil carbon. However, $\beta_s\Delta CO_2 + \gamma_s\Delta T$ is within 20% of the projected ΔC_s for 5 out of the 10 ESMs (GFDL-ESM4, IPSL-CM6A-LR, MIROC-ES2L, MPI-ESM1-2-LR and UKESM1-0-LL). The models where the approximation is the least consistent with projected ΔC_s are ACCESS-ESM1-5 and BCC-CSM2-MR, where at 4xCO₂ the greatest non-linearities are present between BGC and RAD simulations (Fig. 5).

3.5 Comparisons between soil and land feedback parameters

300 The contribution of the sensitivity of soil carbon stocks (C_s) to the total sensitivity of land carbon stocks (C_L) was investigated by comparing the β and γ feedback parameters for land (Table A1) and soil (Table 2), for both $2xCO_2$ and $4xCO_2$ in CMIP6 ESMs (Fig. 6). Here, the assumption from Equation 5 is followed that the land sensitivity is made up of the sum of the soil and vegetation responses. For the carbon-concentration feedback (β), the portion of the land sensitivity to CO_2 (β_L) that is due to global soils (β_s) ranges from 19% (NorESM2-LM) to 53% (BCC-CSM2-MR), with a mean of 38 ± 11 % seen across
305 the CMIP6 ESMs at $2xCO_2$ (Fig. 6(a)). Similar proportions are found at $4xCO_2$, ranging from 22% (NorESM2-LM) to 58% (MIROC-ES2-L), with a mean of 42 ± 12 % seen across the CMIP6 ESMs (Fig. 6(b)). The portion of β_L due to β_s is estimated to be close to half the total land response. For the carbon-climate feedback (γ), the portion of the land sensitivity to climate (γ_L) that is due to global soils (γ_s) ranges from approximately 42% (CESM2) to 147% (MPI-ESM1-2-LM), with a mean of 75 ± 30 % seen across the CMIP6 ESMs at $2xCO_2$ (Fig. 6(a)), and at $4xCO_2$ the ranges is from 48% (ACCESS-ESM1-5) to 157%
310 (MPI-ESM1-2-LM), with a mean of 75 ± 31 % seen across the CMIP6 ESMs (Fig. 6(b)). Therefore, the portion of γ_L due to γ_s is estimated to be the majority of the sensitivity, suggesting that soil dominates the response of land carbon to climate. Note that the MPI-ESM1-2-LR model sees a greater γ_s value compared with γ_L , resulting in the percentage of the land response attributed to soil being greater than 100%. This suggests a positive γ_v response in this model, meaning a predicted increased vegetation carbon globally with global warming.

315 4 Discussion

Quantifying the future sensitivity of global soil carbon stocks to anthropogenic CO_2 emissions and their role within future land carbon storage is vital in order to understand future changes in the Earth's climate system (Canadell et al., 2021). Global changes in soil carbon (ΔC_s), in the absence of human disturbance and land-use change, will result from responses due to changes in atmospheric CO_2 and associated changes in global temperatures (T), which is used to represent climate effects on a
320 global scale. By separating the sensitivities due to increasing CO_2 and T, the idealised C4MIP ESM simulations allows for these effects on soil carbon to be examined individually and the use of the $\beta\gamma$ formulation allows these sensitivities to be quantified and compared for CMIP6 ESMs (Jones et al., 2016; Friedlingstein et al., 2006). Further, combining the $\beta\gamma$ formulation with the Varney et al. (2023) ΔC_s framework, allows us to isolate the sensitivities of soil carbon processes which influence β_s and γ_s within models.

325 Across CMIP6 ESMs, soil carbon is projected to increase in the BGC simulation (' CO_2 only') and decrease in the RAD simulation ('climate only'), consistent with projections of the overall land carbon response (Arora et al., 2020). The BGC simulation has been used to quantify the sensitivity of soil carbon to ΔCO_2 (β_s), where positive β_s values were defined due to the projected increase in soil carbon with increased atmospheric CO_2 (Fig. 1(b)). The positive β_s has been shown here to mostly be a result of a positive β_{NPP} term (Fig. 4), which represents the increased CO_2 fertilisation effect describing an
330 increased vegetation productivity under higher atmospheric CO_2 concentrations, which leads to an increased input of litter carbon into soil carbon pools (Schimel et al., 2015; Koven et al., 2015). A negative contribution of β_τ on β_s is also shown (Fig.

4). Previously, Varney et al. (2023) presented a transient reduction in τ_s in CMIP6 ESMs due to an increased rate of carbon input into the soil (i.e. negative β_τ due to positive β_{NPP}); a phenomenon known as false priming (Koven et al., 2015). However, it can be seen that the magnitude of this effect is small compared to the CO₂ fertilisation effect across the ESMs (β_τ Vs β_{NPP} ,
335 Fig. 4). Despite agreement on a net increase in soil carbon stocks globally (positive β_s), this study highlights uncertainty on the projected magnitude of this sensitivity amongst the CMIP6 models, which is seen to be driven by uncertainties in β_{NPP} (Fig. 4).

The RAD simulation has been used to quantify the sensitivity of soil carbon to changes in climate (ΔT ; γ_s), where negative γ_s values were defined due to the projected decrease in soil carbon with global warming (Fig. 1(c)). The negative γ_s term has
340 been shown here to be a result of negative γ_τ , and in many cases negative γ_{NPP} (Fig. 4). The negative sensitivity of τ_s to global warming (negative γ_τ) is known to be due to an increased rate of heterotrophic respiration (R_h) under warmer temperatures as a result of increased microbial activity (Varney et al., 2020; Crowther et al., 2016). The global sensitivity of NPP to climate changes (γ_{NPP}) is less certain where both negative and positive values are seen across the CMIP6 ESMs (Fig. 4). This is likely due to more spatially varying responses, where the resultant ΔC_s can be seen in Fig. 2. For example, increased temperatures
345 in northern latitudes could result in the northward expansion of boreal forests (Pugh et al., 2018), which would increase forest productivity and subsequently carbon storage in these regions. However, future changes in precipitation patterns could lead to regions with reduced soil moisture, which would conversely lead to reduced vegetation productivity and carbon uptake (Green et al., 2019). The uncertainties associated with projected spatial changes (γ_{NPP}), together with the uncertainties in the magnitude of carbon turnover times within the soil (γ_τ ; Varney et al. (2020); Koven et al. (2017)), results in uncertainties in
350 the sensitivity of soil carbon to climate changes (γ_s) amongst the CMIP6 models.

This paper highlights the importance of soils within the land carbon response to global warming (Fig. 6). Despite the ΔC_s sensitivity to CO₂ dominating net soil carbon changes (β_s), it could be argued that the significance of the ΔC_s climate sensitivity (γ_s) will increase under more extreme levels of climate change. This is suggested by both a projected saturation of β_s and an increase in γ_s between 2xCO₂ and 4xCO₂ shown in the CMIP6 ensemble means (Table 2). The saturation, or reduced
355 rate of increase, in β_s seen in CMIP6 is likely due to a limit of the CO₂ fertilisation effect, based on the reduced β_{NPP} values between 2xCO₂ and 4xCO₂ (Fig. 4). The rate of CO₂ fertilisation in the future is expected to be limited by nutrient availability (Wieder et al., 2015), which in CMIP6 is now more explicitly represented by the inclusion of an interactive nitrogen cycle in multiple models (see Table 1). This implementation is expected to limit the increased productivity from CO₂ fertilisation within ESMs (Davies-Barnard et al., 2020), and has previously been found to lower the magnitude of the land feedback parameters
360 (Arora et al., 2020). However, it is noted that warming within the soil could accelerate nutrient mineralisation, which could result in a liberation of nitrogen due to increased microbial breakdown of plant litter, alleviating the nutrient limitation in plants (Todd-Brown et al., 2014).

Unlike the β_s parameter, the sensitivity of soil carbon to climate changes (γ_s) has been shown to increase with global warming amongst CMIP6. The greater γ_s values at 4xCO₂ compared to 2xCO₂ found here implies an increased rate of soil
365 carbon loss under increased amounts of global warming (Table 2). Additionally, it could be hypothesised that limitations within CMIP6 ESMs in the representation of soil carbon and related processes could lead to a potential underestimation of γ_s . In Fig.

2, reductions in soil carbon stocks within the high northern latitudes are only seen in 3 models for the full 1% CO₂ simulation (BCC-CSM2-MR, CESM2, and NorESM2-LM). Varney et al. (2022) find that these CMIP6 models represent quantities of northern latitude carbon stocks the most consistently with observational estimates, which could imply an increased likelihood of soil carbon loss from the northern latitudes based on consistency with observations. It is noted however, that CESM2 and NorESM2-LM contain the same land surface model so are expected to show similar results (Lawrence et al., 2019). Furthermore, the majority of ESMs do not include explicit representation of permafrost carbon (Burke et al., 2020). Including permafrost within ESMs would result in increased quantities of carbon within the soil known to be especially sensitive to global warming (increased γ_s), which currently are not included in the calculation of these feedbacks (Schuur et al., 2015).

375 The $\beta\gamma$ formulation has many benefits in allowing the quantification and comparison of land and soil carbon feedbacks amongst ESMs. However, one limitation is due to ΔC_s not being consistently linear with increasing CO₂ and temperature (Fig. 3), so the parameter values depend on the point in time which they are calculated (for example, 2xCO₂ or 4xCO₂). This has been shown to be due to non-linearities in the processes driving soil carbon feedbacks (Fig. 4), such as the discussed saturation of the CO₂ fertilisation effect (β_{NPP} ; Wang et al. (2020)), and additionally a known Q₁₀ dependence of heterotrophic (soil) respiration to temperature (γ_T ; Zhou et al. (2009)).

380 Non-linearities between CO₂ and T responses are also known and have previously been shown within ESMs in the future land carbon responses (Schwinger et al., 2014; Zickfeld et al., 2011; Gregory et al., 2009). Zickfeld et al. (2011) suggest that the non-linearity in the land response are due to significantly differing vegetation responses which depend on whether or not climate effects are combined with the CO₂ fertilisation effect; for example, forest dieback (Cox et al., 2004). However, this is model dependent as not all models within CMIP6 simulate dynamic vegetation (Table 1). The spatial variations in the response of soil carbon to CO₂ and climate that are seen in Fig. 2 could also contribute to the non-linearity. For example, a different spatial pattern of soil carbon under elevated CO₂ could lead to a different overall temperature response, e.g. if more carbon is in the high latitudes where greater temperature changes are seen. Arora et al. (2020) find that climate responses in the BGC simulation account for a difference of 1% - 5% in the calculation of the feedbacks, suggesting a small but non-negligible effect of climate in the BGC runs. This response was shown to be dependent on the representation of vegetation within the model, as with the non-linearities found in Zickfeld et al. (2011). Despite this, isolating and quantifying the key sensitivities with the $\beta\gamma$ method provides a useful benchmark for feedbacks within CMIP.

5 Conclusions

395 The Friedlingstein et al. (2006) methodology adapted in this study suggests that β_s and γ_s linearity is a valid assumption for projected soil carbon changes in ESMs up until a doubling of CO₂. However, under more extreme levels of climate change, the results here suggest the need for the non-linearity in feedbacks to be further investigated. Soil carbon is found to have a greater impact on carbon-climate feedbacks than vegetation carbon responses, which means that the sensitivity of soil carbon to changes in global temperature is the dominant response of the land carbon cycle when considering climate effects. Therefore, further understanding and quantifying the sensitivity of global soils under global warming is necessary to quantify future

400 changes in the climate system. Moreover, the sensitivity of soil carbon to temperature increases with increasing climate forcing, suggesting that soil carbon is particularly important in the long-term land carbon response under extreme levels of global warming.

Code availability. Code is available on GitHub (<https://github.com/rebeccamayvarney/CMIP6-soil-beta-gamma>).

Data availability. The CMIP6 and CMIP5 data analysed during this study is available online (cmip6: <https://esgf-node.llnl.gov/search/cmip6/>,
405 cmip5: <https://esgf-node.llnl.gov/search/cmip5/>).

Author contributions. RMV and PMC outlined the study. RMV completed the analysis and produced the figures. All the co-authors provided useful guidance on the study at various times and suggested edits to the draft manuscript.

Competing interests. The authors have declared no competing interests.

Acknowledgements. This research has been supported by the European Research Council, Climate–Carbon Interactions in the Current Century project (4C; grant no. 821003) (RMV, PMC and PF) and Emergent Constraints on Climate–Land feedbacks in the Earth System project (ECCLES; grant no. 742472) (RMV and PMC). SEC was supported by a Natural Environment Research Council independent research fellowship (grant no. NE/R015791/1). EJB was supported by the Joint UK BEIS/Defra Met Office Hadley Centre Climate Programme (grant no. GA01101). We thank the World Climate Research Programme’s Working Group on Coupled Modelling and the climate modelling groups for producing and making their model output available.

415 References

- Anav, A., Friedlingstein, P., Kidston, M., Bopp, L., Ciais, P., Cox, P., Jones, C., Jung, M., Myneni, R., and Zhu, Z.: Evaluating the land and ocean components of the global carbon cycle in the CMIP5 Earth System Models, *Journal of Climate*, 26, 6801–6843, 2013.
- Arora, V. K., Boer, G. J., Friedlingstein, P., Eby, M., Jones, C. D., Christian, J. R., Bonan, G., Bopp, L., Brovkin, V., Cadule, P., et al.: Carbon–concentration and carbon–climate feedbacks in CMIP5 Earth system models, *Journal of Climate*, 26, 5289–5314, 2013.
- 420 Arora, V. K., Katavouta, A., Williams, R. G., Jones, C. D., Brovkin, V., Friedlingstein, P., Schwinger, J., Bopp, L., Boucher, O., Cadule, P., et al.: Carbon–concentration and carbon–climate feedbacks in CMIP6 models and their comparison to CMIP5 models, *Biogeosciences*, 17, 4173–4222, 2020.
- Boer, G. and Arora, V.: Feedbacks in emission-driven and concentration-driven global carbon budgets, *Journal of climate*, 26, 3326–3341, 2013.
- 425 Burke, E. J., Zhang, Y., and Krinner, G.: Evaluating permafrost physics in the Coupled Model Intercomparison Project 6 (CMIP6) models and their sensitivity to climate change, *The Cryosphere*, 14, 3155–3174, 2020.
- Canadell, J., Monteiro, P., Costa, M., Cotrim da Cunha, L., Cox, P., Eliseev, A., Henson, S., Ishii, M., Jaccard, S., Koven, C., Lohila, A., Patra, P., Piao, S., Rogelj, J., Syampungani, S., Zaehle, S., and Zickfeld, K.: *Global Carbon and other Biogeochemical Cycles and Feedbacks*, Cambridge University Press, Cambridge, United Kingdom and New York, NY, USA, <https://doi.org/10.1017/9781009157896.007>, 2021.
- 430 Cox, P. M., Betts, R., Collins, M., Harris, P. P., Huntingford, C., and Jones, C.: Amazonian forest dieback under climate-carbon cycle projections for the 21st century, *Theoretical and applied climatology*, 78, 137–156, 2004.
- Crowther, T. W., Todd-Brown, K. E., Rowe, C. W., Wieder, W. R., Carey, J. C., Machmuller, M. B., Snoek, B., Fang, S., Zhou, G., Allison, S. D., et al.: Quantifying global soil carbon losses in response to warming, *Nature*, 540, 104–108, 2016.
- Davies-Barnard, T., Meyerholt, J., Zaehle, S., Friedlingstein, P., Brovkin, V., Fan, Y., Fisher, R. A., Jones, C. D., Lee, H., Peano, D., et al.: 435 Nitrogen cycling in CMIP6 land surface models: progress and limitations, *Biogeosciences*, 17, 5129–5148, 2020.
- Eyring, V., Bony, S., Meehl, G. A., Senior, C. A., Stevens, B., Stouffer, R. J., and Taylor, K. E.: Overview of the Coupled Model Intercomparison Project Phase 6 (CMIP6) experimental design and organization, *Geoscientific Model Development (Online)*, 9, 2016.
- Friedlingstein, P., Dufresne, J.-L., Cox, P., and Rayner, P.: How positive is the feedback between climate change and the carbon cycle?, *Tellus B: Chemical and Physical Meteorology*, 55, 692–700, 2003.
- 440 Friedlingstein, P., Cox, P., Betts, R., Bopp, L., von Bloh, W., Brovkin, V., Cadule, P., Doney, S., Eby, M., Fung, I., et al.: Climate–carbon cycle feedback analysis: results from the C4MIP model intercomparison, *Journal of climate*, 19, 3337–3353, 2006.
- Friedlingstein, P., Meinshausen, M., Arora, V. K., Jones, C. D., Anav, A., Liddicoat, S. K., and Knutti, R.: Uncertainties in CMIP5 climate projections due to carbon cycle feedbacks, *Journal of Climate*, 27, 511–526, 2014.
- Friedlingstein, P., O’sullivan, M., Jones, M. W., Andrew, R. M., Gregor, L., Hauck, J., Le Quéré, C., Luijckx, I. T., Olsen, A., Peters, G. P., 445 et al.: Global carbon budget 2022, *Earth System Science Data*, 14, 4811–4900, 2022.
- Green, J. K., Seneviratne, S. I., Berg, A. M., Findell, K. L., Hagemann, S., Lawrence, D. M., and Gentine, P.: Large influence of soil moisture on long-term terrestrial carbon uptake, *Nature*, 565, 476–479, 2019.
- Gregory, J. M., Jones, C., Cadule, P., and Friedlingstein, P.: Quantifying carbon cycle feedbacks, *Journal of Climate*, 22, 5232–5250, 2009.
- IPCC: *Climate Change 2021: The Physical Science Basis. Contribution of Working Group I to the Sixth Assessment Report* 450 of the Intergovernmental Panel on Climate Change, Cambridge University Press, Cambridge, UK and New York, NY, USA, <https://doi.org/10.1017/9781009157896>, 2021.

- Jones, A. D., Calvin, K. V., Shi, X., Di Vittorio, A. V., Bond-Lamberty, B., Thornton, P. E., and Collins, W. D.: Quantifying human-mediated carbon cycle feedbacks, *Geophysical Research Letters*, 45, 11–370, 2018.
- Jones, C. D., Arora, V., Friedlingstein, P., Bopp, L., Brovkin, V., Dunne, J., Graven, H., Hoffman, F., Ilyina, T., John, J. G., et al.: C4MIP–The
455 coupled climate–carbon cycle model intercomparison project: Experimental protocol for CMIP6, *Geoscientific Model Development*, 9, 2853–2880, 2016.
- Koven, C. D., Chambers, J. Q., Georgiou, K., Knox, R., Negron-Juarez, R., Riley, W. J., Arora, V. K., Brovkin, V., Friedlingstein, P., and Jones, C. D.: Controls on terrestrial carbon feedbacks by productivity versus turnover in the CMIP5 Earth System Models, *Biogeosciences*, 12, 5211–5228, <https://doi.org/10.5194/bg-12-5211-2015>, 2015.
- 460 Koven, C. D., Hugelius, G., Lawrence, D. M., and Wieder, W. R.: Higher climatological temperature sensitivity of soil carbon in cold than warm climates, *Nature Climate Change*, 7, 817–822, 2017.
- Lawrence, D. M., Fisher, R. A., Koven, C. D., Oleson, K. W., Swenson, S. C., Bonan, G., Collier, N., Ghimire, B., van Kampenhout, L., Kennedy, D., et al.: The Community Land Model version 5: Description of new features, benchmarking, and impact of forcing uncertainty, *Journal of Advances in Modeling Earth Systems*, 11, 4245–4287, 2019.
- 465 Pugh, T., Jones, C., Huntingford, C., Burton, C., Arneth, A., Brovkin, V., Ciais, P., Lomas, M., Robertson, E., Piao, S., et al.: A large committed long-term sink of carbon due to vegetation dynamics, *Earth’s Future*, 6, 1413–1432, 2018.
- Schimel, D., Pavlick, R., Fisher, J. B., Asner, G. P., Saatchi, S., Townsend, P., Miller, C., Frankenberg, C., Hibbard, K., and Cox, P.: Observing terrestrial ecosystems and the carbon cycle from space, *Global Change Biology*, 21, 1762–1776, 2015.
- Schuur, E. A., McGuire, A. D., Schädel, C., Grosse, G., Harden, J. W., Hayes, D. J., Hugelius, G., Koven, C. D., Kuhry, P., Lawrence, D. M.,
470 et al.: Climate change and the permafrost carbon feedback, *Nature*, 520, 171–179, 2015.
- Schwinger, J., Tjiputra, J. F., Heinze, C., Bopp, L., Christian, J. R., Gehlen, M., Ilyina, T., Jones, C. D., Salas-Mélia, D., Segschneider, J., et al.: Nonlinearity of ocean carbon cycle feedbacks in CMIP5 earth system models, *Journal of Climate*, 27, 3869–3888, 2014.
- Taylor, K. E., Stouffer, R. J., and Meehl, G. A.: An overview of CMIP5 and the experiment design, *Bulletin of the American Meteorological Society*, 93, 485–498, 2012.
- 475 Todd-Brown, K., Randerson, J., Post, W., Hoffman, F., Tarnocai, C., Schuur, E., and Allison, S.: Causes of variation in soil carbon simulations from CMIP5 Earth system models and comparison with observations, *Biogeosciences*, 10, 1717–1736, 2013.
- Todd-Brown, K., Randerson, J., Hopkins, F., Arora, V., Hajima, T., Jones, C., Shevliakova, E., Tjiputra, J., Volodin, E., Wu, T., et al.: Changes in soil organic carbon storage predicted by Earth system models during the 21st century, *Biogeosciences*, 11, 2341–2356, 2014.
- Varney, R. M., Chadburn, S. E., Friedlingstein, P., Burke, E. J., Koven, C. D., Hugelius, G., and Cox, P. M.: A spatial emergent constraint on
480 the sensitivity of soil carbon turnover to global warming, *Nature communications*, 11, 5544, 2020.
- Varney, R. M., Chadburn, S. E., Burke, E. J., and Cox, P. M.: Evaluation of soil carbon simulation in CMIP6 Earth system models, *Biogeosciences*, 19, 4671–4704, <https://doi.org/10.5194/bg-19-4671-2022>, 2022.
- Varney, R. M., Chadburn, S. E., Burke, E. J., Jones, S., Wiltshire, A. J., and Cox, P. M.: Simulated responses of soil carbon to climate change in CMIP6 Earth System Models: the role of false priming, *Biogeosciences*, 20, 3767–3790, 2023.
- 485 Wang, S., Zhang, Y., Ju, W., Chen, J. M., Ciais, P., Cescatti, A., Sardans, J., Janssens, I. A., Wu, M., Berry, J. A., et al.: Recent global decline of CO₂ fertilization effects on vegetation photosynthesis, *Science*, 370, 1295–1300, 2020.
- Wieder, W. R., Cleveland, C. C., Lawrence, D. M., and Bonan, G. B.: Effects of model structural uncertainty on carbon cycle projections: biological nitrogen fixation as a case study, *Environmental Research Letters*, 10, 044 016, 2015.

- Zhou, T., Shi, P., Hui, D., and Luo, Y.: Global pattern of temperature sensitivity of soil heterotrophic respiration (Q10) and its implications for carbon-climate feedback, *Journal of Geophysical Research: Biogeosciences*, 114, 2009.
- Zickfeld, K., Eby, M., Matthews, H. D., Schmittner, A., and Weaver, A. J.: Nonlinearity of carbon cycle feedbacks, *Journal of Climate*, 24, 4255–4275, 2011.

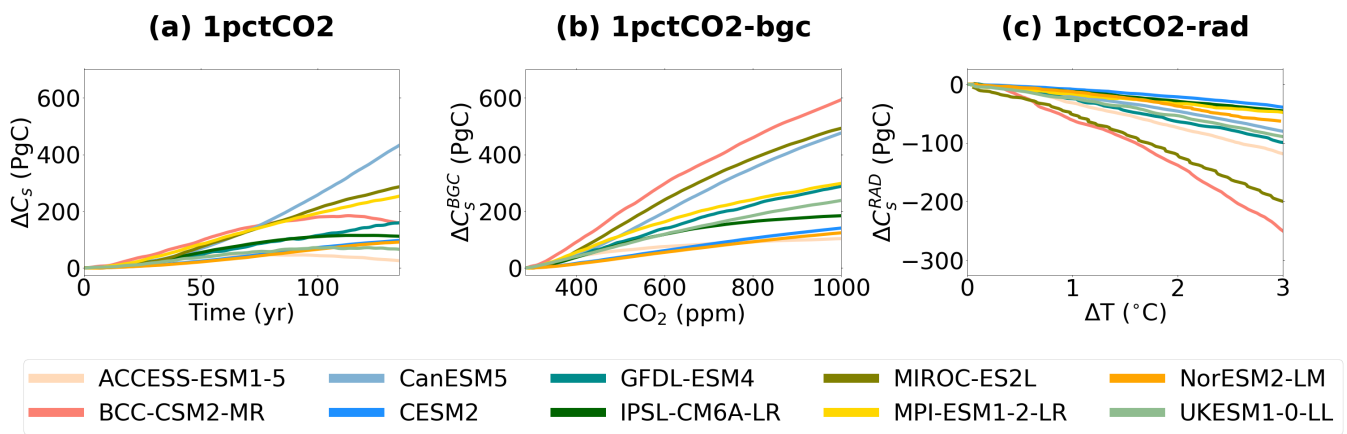


Figure 1. Timeseries of projected changes in soil carbon (ΔC_s) in CMIP6 ESMs, for the: (a) idealised 1% CO_2 (left column), (b) biogeochemically coupled 1% CO_2 (BGC, middle column), and (c) radiatively coupled 1% CO_2 (RAD, right column) simulations. This figure has been adapted from Fig. A2 in Varney et al. (2023).

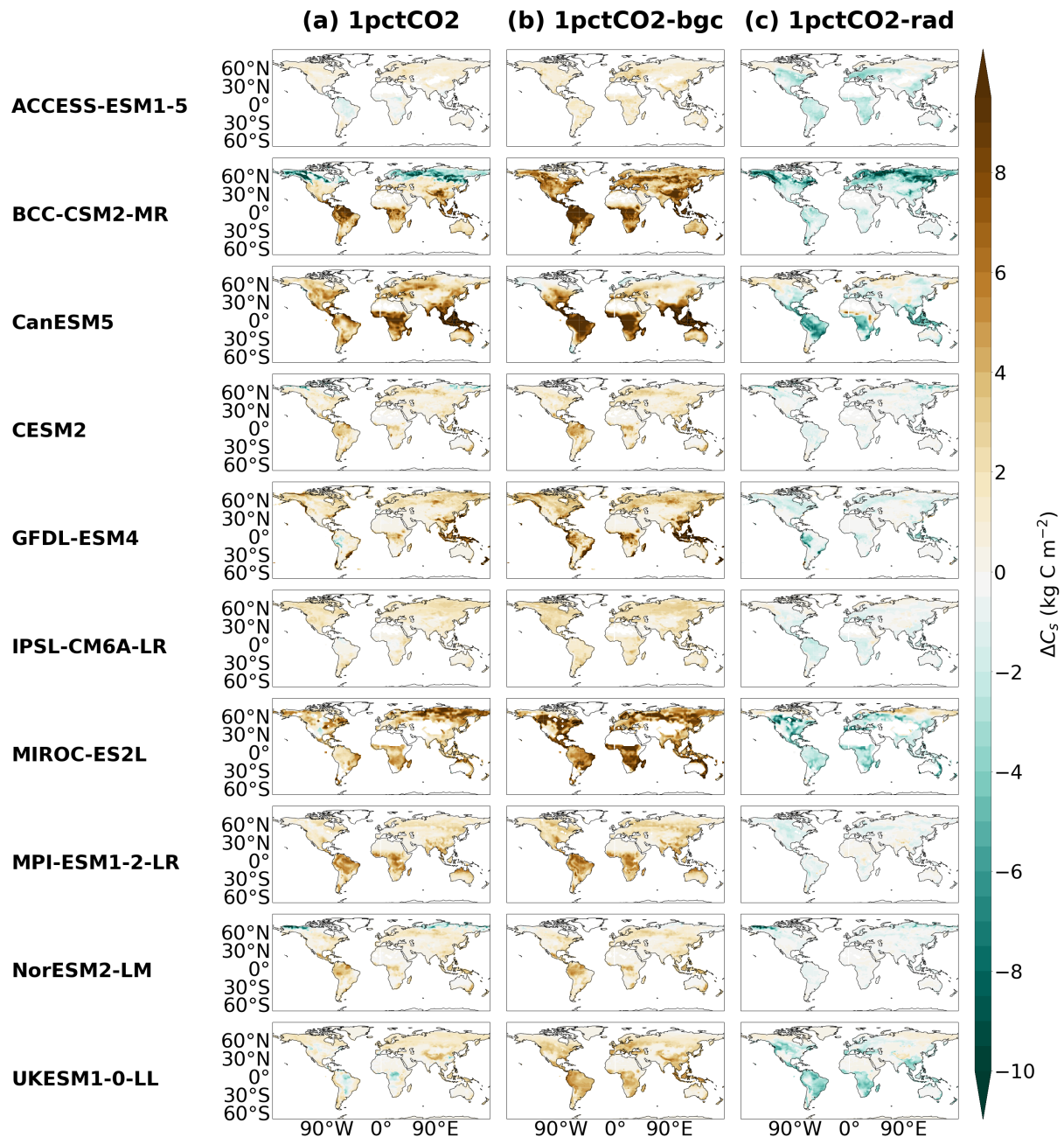


Figure 2. Maps showing the changes in soil carbon (ΔC_s) at $4\times\text{CO}_2$ in CMIP6 ESMs, for the: (a) idealised simulations 1% CO_2 (left column), (b) biogeochemically coupled 1% CO_2 (BGC, middle column), and (c) radiatively coupled 1% CO_2 (RAD, right column).

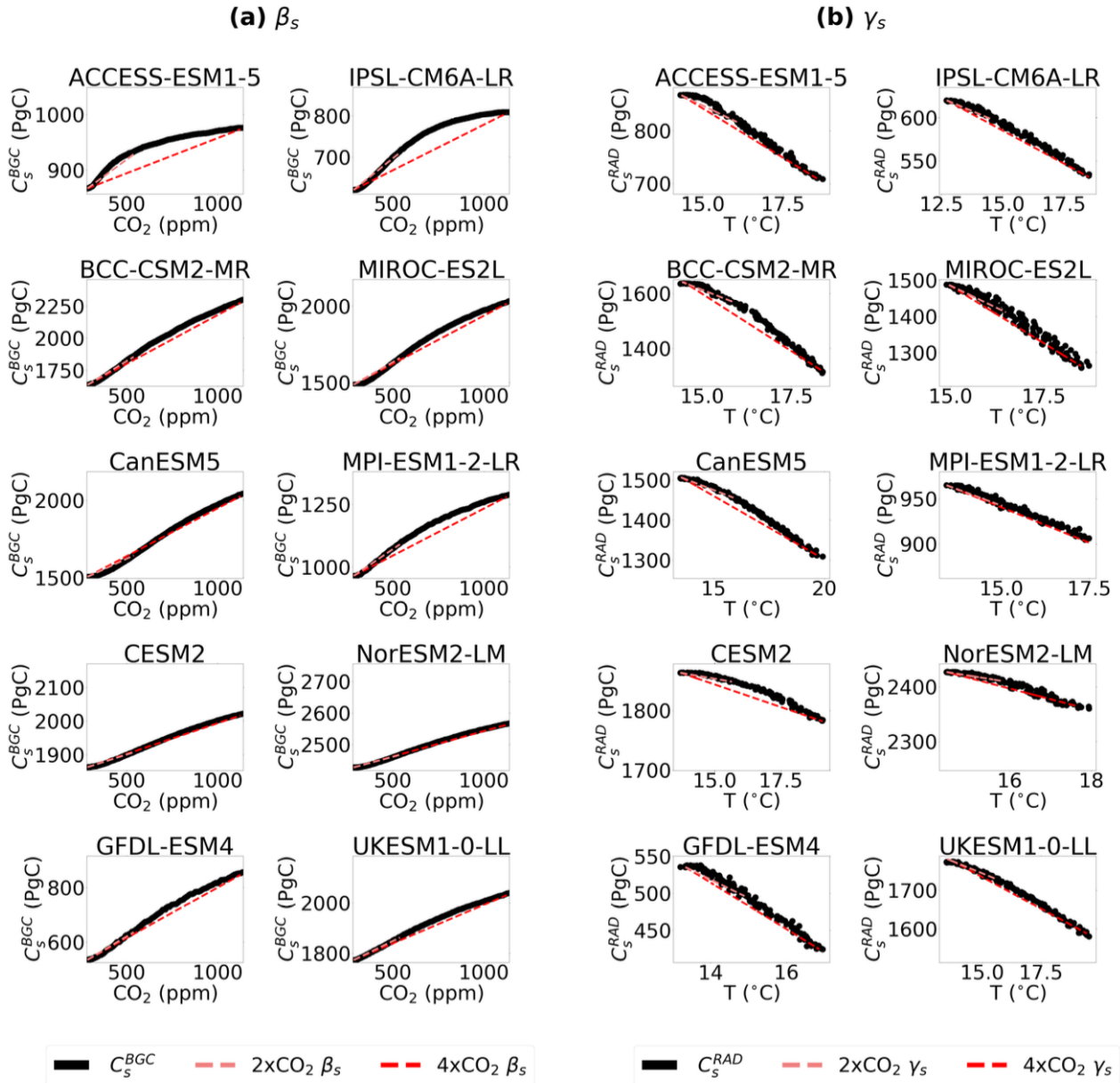


Figure 3. Timeseries plots used to calculate the soil feedback parameters. (a) Soil carbon in the BGC simulation (C_s^{BGC} , PgC) Vs CO_2 (ppm) for the carbon-concentration feedback parameters (β_s , PgC ppm $^{-1}$), and (b) Soil carbon in the RAD simulation (C_s^{RAD} , PgC) Vs temperature (T , °C) for the soil carbon-climate feedback parameters (γ_s , PgC °C $^{-1}$), for each CMIP6 ESM. The lines show the gradients at 2x CO_2 (lighter line) and 4x CO_2 (darker line), respectively.

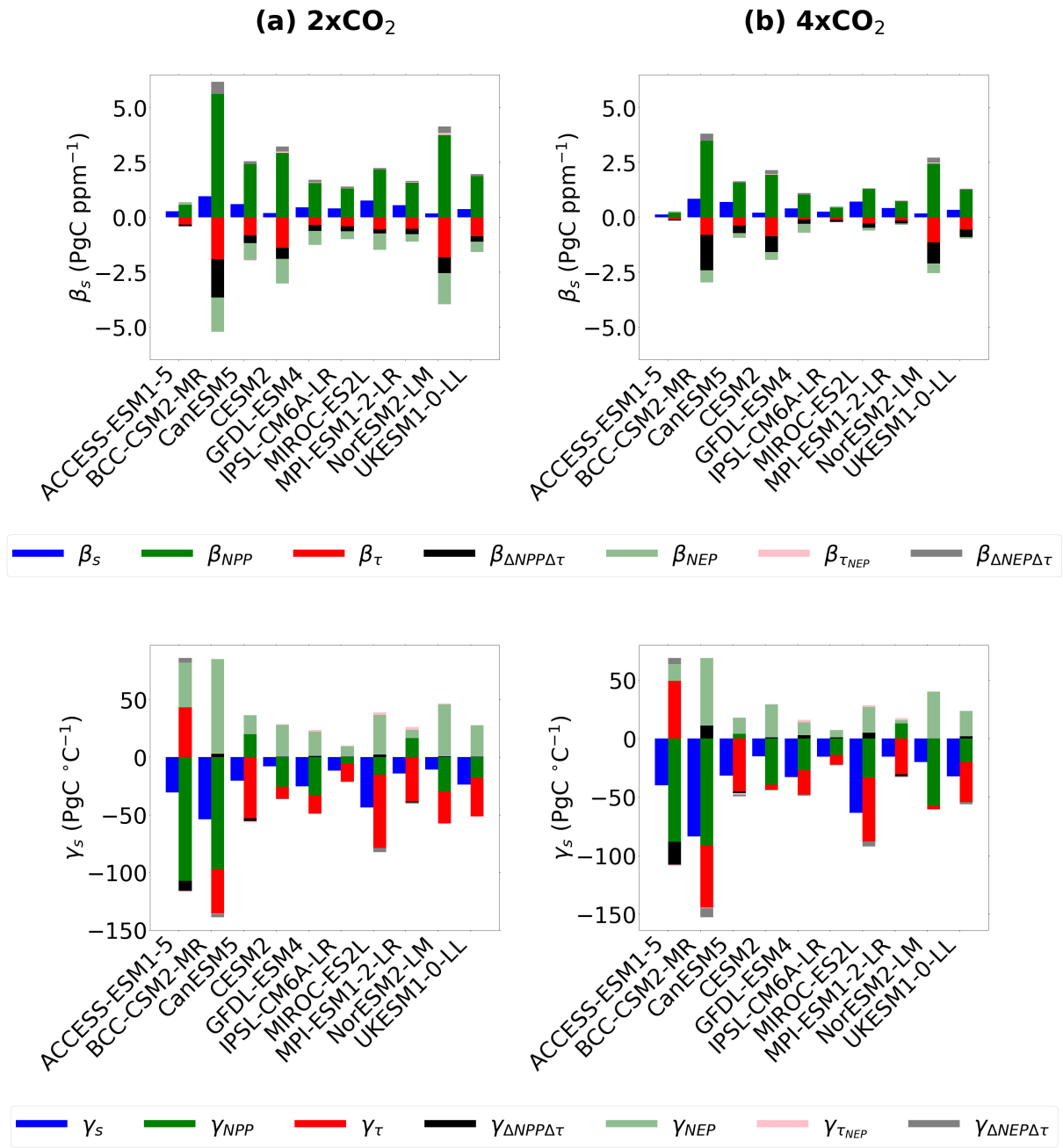


Figure 4. Investigating the contribution of individual soil carbon drivers to the soil carbon-concentration (β_s , top row) and carbon-climate (γ_s , bottom row) feedback parameters, for each CMIP6 ESM, for (a) 2xCO₂ and (b) 4xCO₂. The figure shows soil carbon feedback parameter contributions from NPP (β_{NPP} and γ_{NPP}), τ_s (β_τ and γ_τ), the non-linearity in NPP and τ_s ($\beta_{\Delta NPP\Delta\tau}$ and $\gamma_{\Delta NPP\Delta\tau}$), and the effect from the non-equilibrium term NEP (β_{NEP} , $\beta_{\tau_{NEP}}$, $\beta_{\Delta NEP\Delta\tau}$ and γ_{NEP} , $\gamma_{\tau_{NEP}}$, $\gamma_{\Delta NEP\Delta\tau}$).

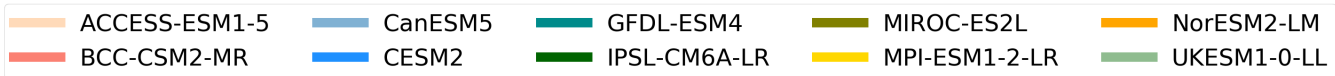
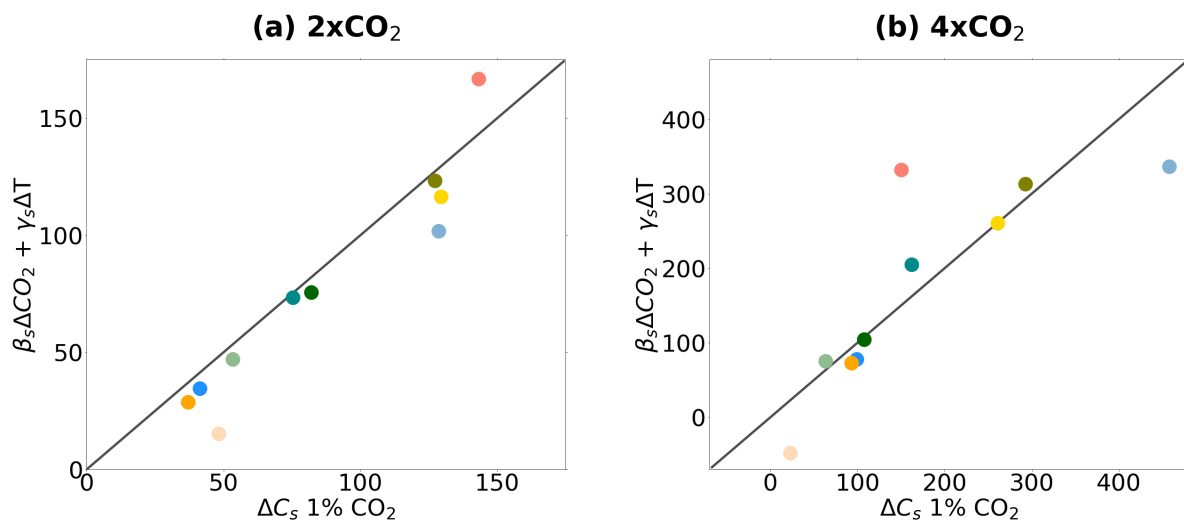


Figure 5. Comparison of ΔC_s (PgC) in the full 1% CO_2 simulation (x-axis) against the estimated ΔC_s using the calculated β_s and γ_s feedback parameters (y-axis), where estimated $\Delta C_s \approx \beta_s \Delta \text{CO}_2 + \gamma_s \Delta T$, for each CMIP6 ESM at (a) $2\times\text{CO}_2$ and (b) $4\times\text{CO}_2$.

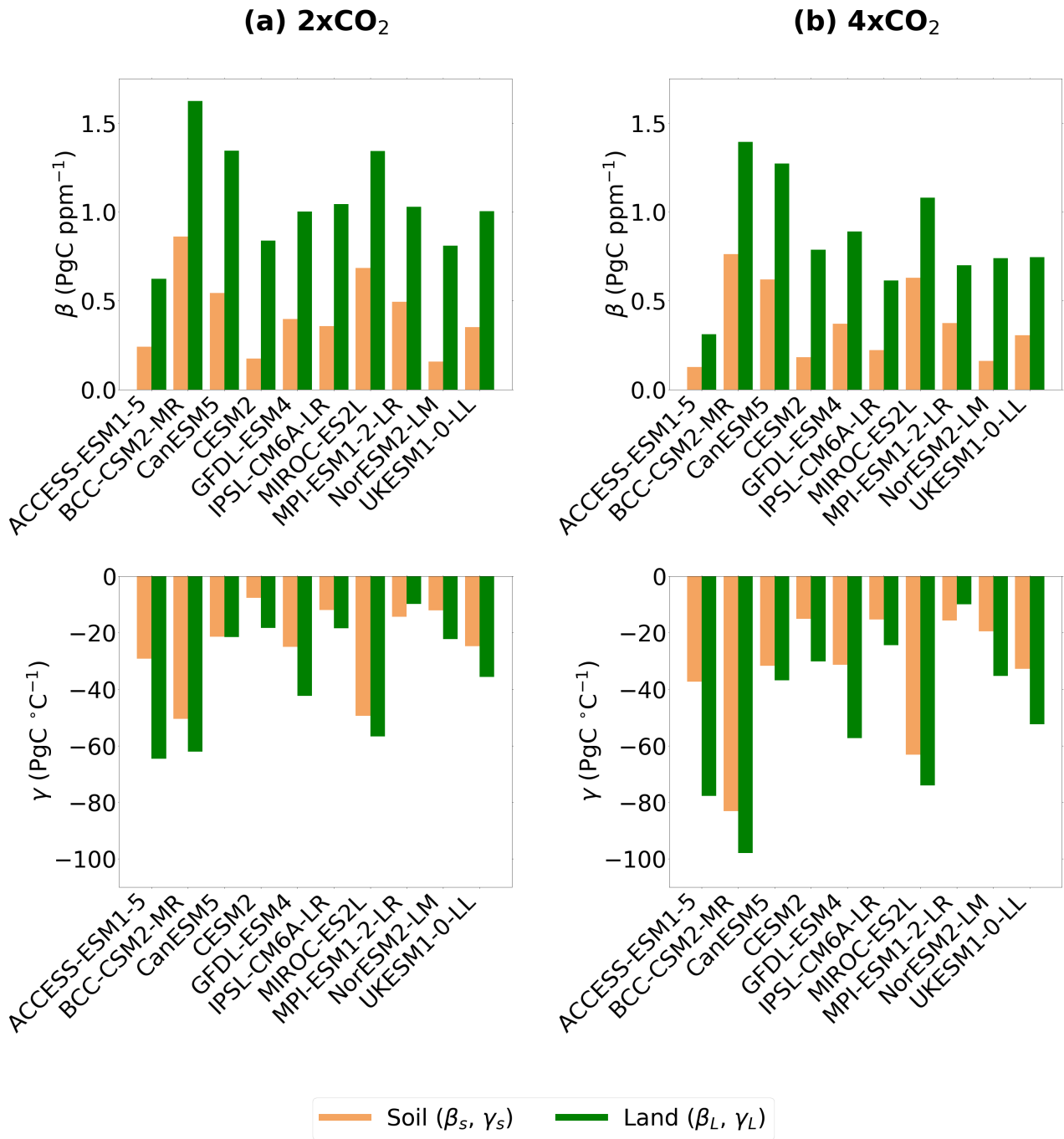


Figure 6. Comparison of the land carbon-concentration (β_L) feedback parameters with the soil carbon-concentration (β_s) feedback parameters (top row), and the land carbon-climate (γ_L) feedback parameters with the soil carbon-climate (γ_s) feedback parameters (bottom row), for (a) 2xCO₂ and (b) 4xCO₂.

Table 1. The CMIP6 Earth system models included in this study and the relevant features of associated land carbon cycle components: simulation of interactive nitrogen, the inclusion of dynamic vegetation, representation of fire, and the soil decomposition functions used (Varney et al., 2022; Arora et al., 2020). Explanations of the temperature and moisture functions used within ESMs are given in Varney et al. (2022) and Todd-Brown et al. (2013).

Earth System Model	Nitrogen Cycle	Dynamic Vegetation	Fire	Temperature & Moisture Functions
ACCESS-ESM1.5	Yes	No	No	Arrhenius & Hill
BCC-CSM2-MR	No	No	No	Hill & Hill
CanESM5	No	No	No	Q_{10} & Hill
CESM2	Yes	No	Yes	Arrhenius & Increasing
GFDL-ESM4	No	Yes	Yes	Hill & Increasing
IPSL-CM6A-LR	No	No	No	Q_{10} & Increasing
MIROC-ES2L	Yes	No	No	Arrhenius & Increasing
MPI-ESM1.2-LR	Yes	Yes	Yes	Q_{10} & Increasing
NorESM2-LM	Yes	No	Yes	Arrhenius & Increasing
UKESM1-0-LL	Yes	Yes	No	Q_{10} & Hill

Table 2. The soil carbon-concentration (β_s , PgC ppm⁻¹) and carbon-climate (γ_s , PgC °C⁻¹) feedback parameters for 2xCO₂ and 4xCO₂ for the CMIP6 ESMs.

Earth System Model	2xCO ₂		4xCO ₂	
	β_s	γ_s	β_s	γ_s
ACCESS-ESM1.5	0.242	-29.2	0.127	-37.3
BCC-CSM2-MR	0.861	-50.5	0.763	-83.1
CanESM5	0.544	-21.4	0.620	-31.8
CESM2	0.175	-7.67	0.183	-15.1
GFDL-ESM4	0.397	-25.0	0.371	-31.4
IPSL-CM6A-LR	0.357	-11.9	0.222	-15.3
MIROC-ES2L	0.684	-49.4	0.630	-63.1
MPI-ESM1-2-LR	0.494	-14.4	0.375	-15.6
NorESM2-LM	0.157	-12.0	0.161	-19.5
UKESM1-0-LL	0.351	-24.7	0.307	-32.7
Ensemble mean	0.426	-24.6	0.376	-34.5
Ensemble std	± 0.213	± 14.2	± 0.212	± 21.3

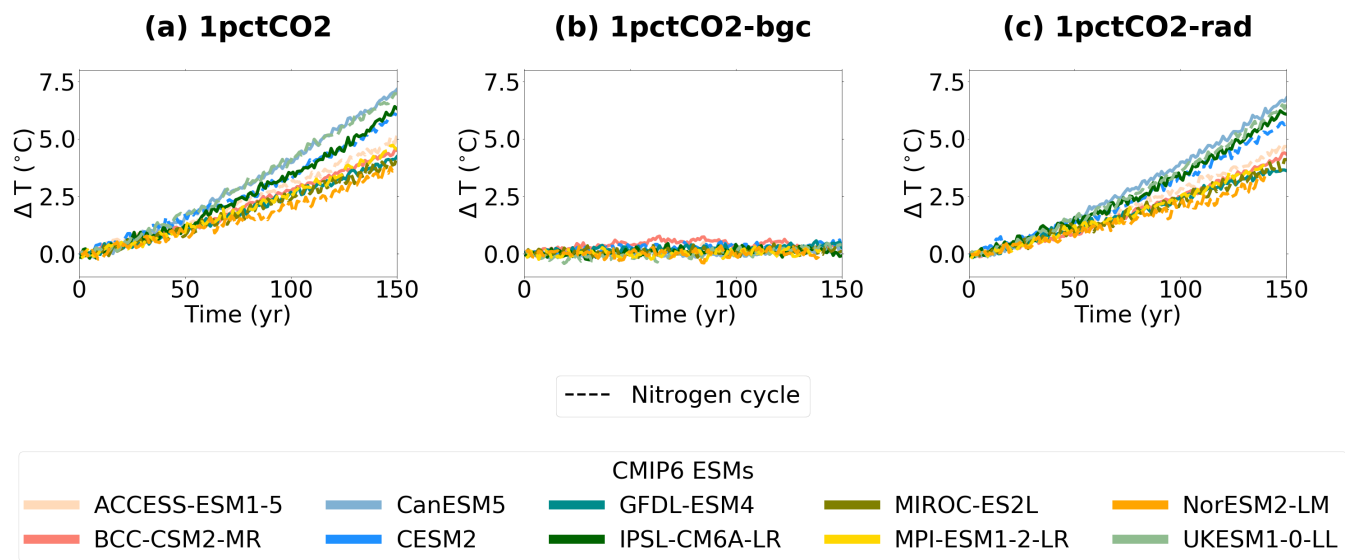


Figure A1. Timeseries of projected global mean temperature changes (ΔT) in CMIP6 ESMs for the idealised simulations 1% CO₂ (left column), biogeochemically coupled 1% CO₂ (BGC, middle column) and radiatively coupled 1% CO₂ (RAD, right column).

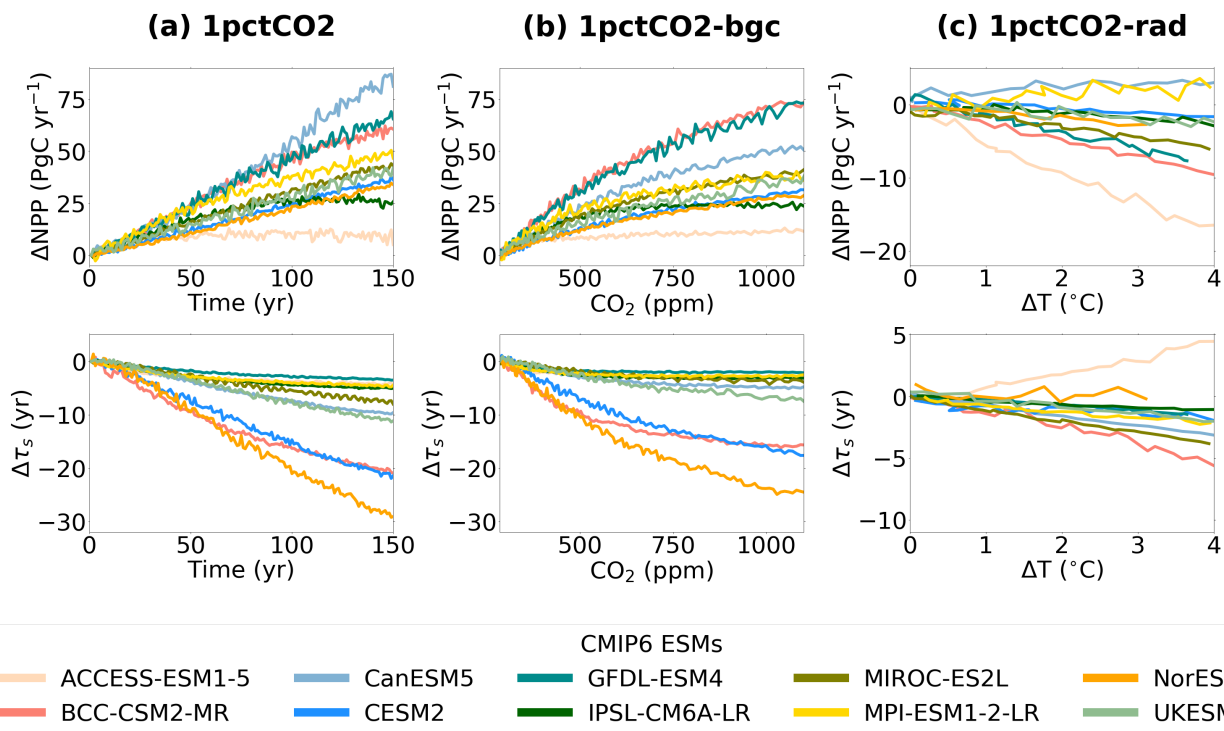


Figure A2. Timeseries of projected changes in Net Primary Productivity (ΔNPP , top row) and soil carbon turnover time ($\Delta\tau_s$, bottom row) in CMIP6 ESMs for the idealised simulations 1% CO₂ (left column), biogeochemically coupled 1% CO₂ (*BGC*, middle column) and radiatively coupled 1% CO₂ (*RAD*, right column). This figure has been adapted from Fig. A2 in Varney et al. (2023).

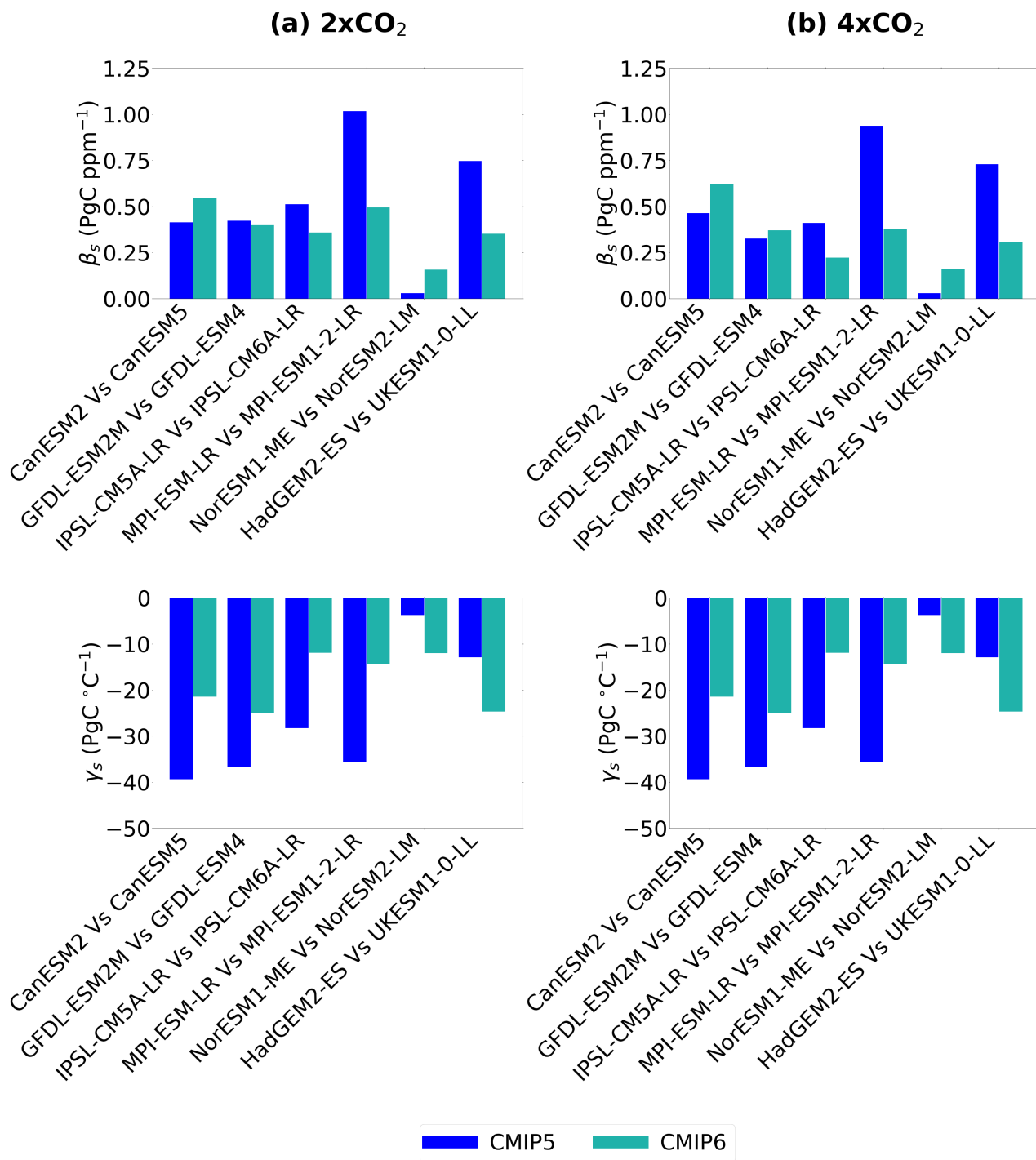


Figure A3. Comparison of the soil carbon-concentration (β_s) feedback parameters (top row) and the soil carbon-climate (γ_s) feedback parameters (bottom row) from generationally related ESMs from CMIP5 and CMIP6, for (a) 2xCO₂ and (b) 4xCO₂.

Table A1. The land carbon-concentration (β_L , PgC ppm⁻¹) and carbon-climate (γ_L , PgC °C⁻¹) feedback parameters for 2xCO₂ and 4xCO₂ for the CMIP6 ESMs.

Earth System Model	2xCO ₂		4xCO ₂	
	β_L	γ_L	β_L	γ_L
ACCESS-ESM1.5	0.624	-64.5	0.312	-77.7
BCC-CSM2-MR	1.63	-62.1	1.39	-98.0
CanESM5	1.34	-21.6	1.27	-36.9
CESM2	0.839	-18.3	0.787	-30.1
GFDL-ESM4	1.00	-42.3	0.891	-57.3
IPSL-CM6A-LR	1.05	-18.4	0.614	-24.5
MIROC-ES2L	1.34	-56.7	1.08	-74.0
MPI-ESM1-2-LR	1.03	-9.81	0.699	-9.98
NorESM2-LM	0.811	-22.2	0.740	-35.3
UKESM1-0-LL	1.00	-35.6	0.746	-52.4
Ensemble mean	1.07	-35.2	0.854	-49.6
Ensemble std	± 0.281	± 19.1	± 0.304	± 26.0

Table A2. The CMIP5 Earth system models included in this study and the relevant features of associated land carbon cycle components: simulation of interactive nitrogen, the inclusion of dynamic vegetation, and the soil decomposition functions used (Varney et al., 2022; Arora et al., 2013; Anav et al., 2013; Friedlingstein et al., 2014). Explanations of the temperature and moisture functions used within ESMs are given in Varney et al. (2022) and Todd-Brown et al. (2013).

Earth System Model	Nitrogen Cycle	Dynamic Vegetation	Temperature & Moisture Functions
CanESM2	No	No	Q_{10} & Hill
GFDL-ESM2M	No	Yes	Hill & Increasing
IPSL-CM5A-LR	No	No	Q_{10} & Increasing
MPI-ESM-LR	No	Yes	Q_{10} & Increasing
NorESM1-ME	Yes	No	Arrhenius % Increasing
HadGEM2-ES	No	Yes	Q_{10} & Hill

Table A3. The soil carbon-concentration (β_s , PgC ppm⁻¹) and carbon-climate (γ_s , PgC °C⁻¹) feedback parameters for 2xCO₂ and 4xCO₂ for the CMIP5 ESMs.

Earth System	2xCO ₂		4xCO ₂	
Model	β_s	γ_s	β_s	γ_s
CanESM2	0.413	-39.4	0.463	-54.2
GFDL-ESM2M	0.421	-36.7	0.326	-73.5
IPSL-CM5A-LR	0.511	-28.3	0.410	-39.5
MPI-ESM-LR	1.02	-35.7	0.937	-63.6
NorESM1-ME	0.0281	-3.76	0.0287	-7.80
HadGEM2-ES	0.745	-12.9	0.729	-18.0
Ensemble mean	0.522	-26.1	0.482	-42.8
Ensemble std	± 0.306	± 13.3	± 0.290	± 23.7