

# Magma-poor continent-ocean transition zones of the southern North Atlantic: a wide-angle seismic synthesis of a new frontier

J. Kim Welford<sup>1</sup>

<sup>1</sup>Department of Earth Sciences, Memorial University of Newfoundland, St. John's, NL, Canada

**Correspondence:** J. Kim Welford (kwelford@mun.ca)

## Abstract.

Magma-poor rifted margins, and their corresponding potential zones of exhumed serpentized mantle, represent a unique class of tectonic boundaries with enormous promise for advancing the energy transition, such as with hydrogen production, carbon sequestration, and in the search for critical minerals. In this study, a synthesis of the results from seismic refraction/wide-angle reflection profiling, and resulting velocity models, across the continent-ocean transitions of the southern North Atlantic Ocean is presented. The models are assessed and compared to understand characteristic basement types and upper mantle behaviour across the region and between conjugate margin pairs, and to calibrate how their continent-ocean transition zones (COTZ) are defined. Ultimately, this work highlights the variable nature of continent-ocean transition zones, even within the magma-poor rifted margin end-member case, and points to avenues for future research to fill the knowledge gaps that will accelerate the energy transition.

## 1 Introduction

The transition from continental to oceanic crust at rifted margins is far more complex than originally conceived during the early development of the theory of plate tectonics (Manatschal et al., 2010; Franke, 2013; Eagles et al., 2015; Péron-Pinvidic et al., 2019). What was once envisioned to simply comprise an abrupt abutting of continental crust against oceanic crust has been revealed to more often consist of variable amounts of magmatic contributions at magma-rich margins (Eldholm et al., 1989; White, 1992) and mantle serpentization and exhumation at magma-poor margins (Boillot et al., 1980; Whitmarsh et al., 2001; Lavier and Manatschal, 2006; Reston, 2009; Gillard et al., 2019), with the latter hosting promising targets for the energy transition, such as hydrogen production (Albers et al., 2021; Liu et al., 2023; Pérez-Gussinyé et al., 2023), carbon sequestration (Goldberg et al., 2010; Schwarzenbach et al., 2013; Coltat et al., 2021), and critical mineral exploration (Hannington et al., 2017; Patten et al., 2022).

A key component of the theory of plate tectonics was founded on the concept of the Wilson Cycle (Wilson, 1966), which involves the repeated opening and closing of successive ocean basins over geological time. This concept originated based on evidence collected around the modern Atlantic Ocean (Argand, 1922; Wilson, 1966; Williams, 1984), and the southern North Atlantic Ocean in particular, which revealed that the Paleozoic Iapetus Ocean existed before the Atlantic, with rifting

25 having been seeded within the deformation zones from earlier Rodinian rifting and breakup as well as subsequent Appalachian-Caledonian and Variscan orogenic episodes (Thomas, 2005).

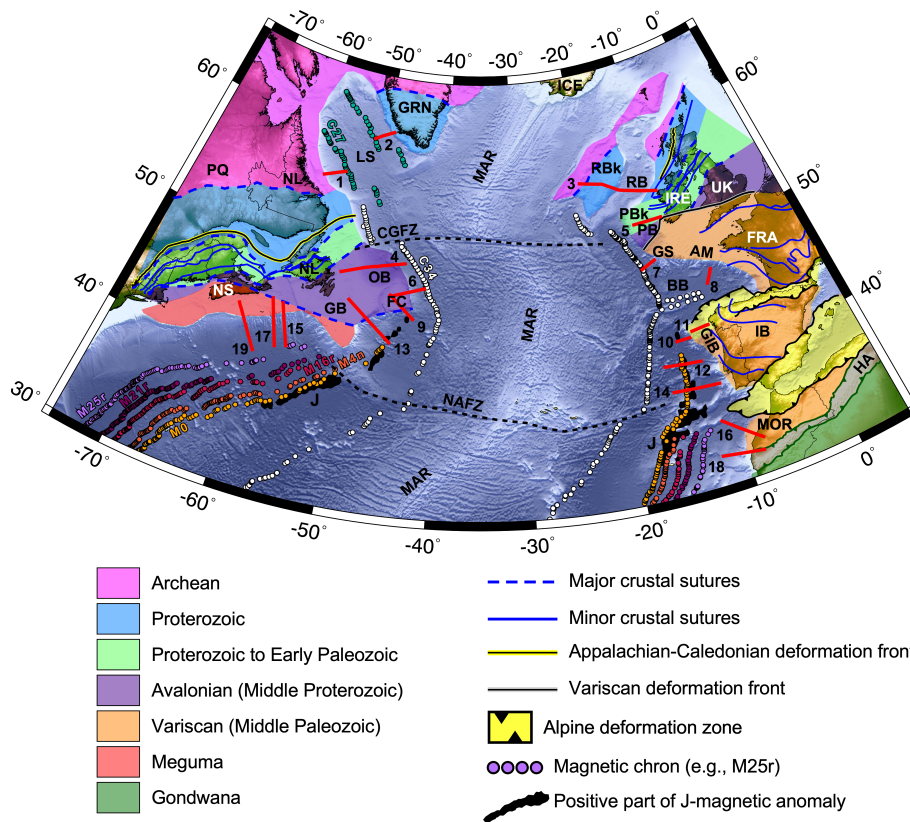
In the southern North Atlantic Ocean, seismic refraction/wide-angle reflection surveying has allowed for the construction of lithospheric-scale velocity structural models encompassing continent-ocean transition zones that enhance and expand our understanding of the Wilson Cycle and the broader theory of plate tectonics (Fig. 1). However, unlike for the northern reaches of the North Atlantic Ocean (Funck et al., 2017), no detailed synthesis of the southern North Atlantic Ocean, with velocity models plotted at comparable scales and with comparable colour palettes, has yet been produced, despite a few regional profiles appearing in a pan-Atlantic synthesis (Biari et al., 2021). In this contribution, I present a review of seismic refraction/wide-angle reflection velocity models across the continent-ocean transition zones of magma-poor margins of the southern North Atlantic Ocean, with a view to assessing basement and upper mantle type variations, to tracking regional trends, and to reconciling continent-ocean transition zone (COTZ) definitions to a regional standard.

## 2 Geological background

Opening of the modern Atlantic Ocean resulted from the breakup and dispersal of the supercontinent Pangea (Schettino and Turco, 2009; Buitter and Torsvik, 2014; Frizon de Lamotte et al., 2015; Whalen et al., 2015; Müller et al., 2016; Peace et al., 2020), which itself formed through multiple orogenies from the end of the Neoproterozoic to the Triassic (Cawood and Buchan, 2007; Stampfli et al., 2013; Chenin et al., 2015), with closure of the Palaeozoic Iapetus Ocean during the Appalachian-Caledonide Orogen (Haworth and Keen, 1979; Williams, 1984, 1995). This zone of orogenesis ultimately corresponded to the eventual locus of Mesozoic rifting of the southern North Atlantic. Palaeozoic closure of the adjacent Rheic Ocean due to collision of northern Africa with southern Europe resulted in the Variscan Orogen, which mostly affected the European margins south of Ireland (Nance et al., 2010; Kroner and Romer, 2013; Chenin et al., 2015).

45 For the northernmost portion of the central Atlantic (Fig. 1), which lies south of the Newfoundland-Azores Fracture Zone (NAFZ), NW-SE-oriented rifting began in the Late Triassic (~230 Ma; Schettino and Turco (2009)) and breakup between Nova Scotia and Morocco occurred as early as ~190 Ma (Labails et al., 2010). Northward rift migration into the southern North Atlantic Ocean between Newfoundland and Iberia, with a reoriented W-E extension direction, occurred from the Late Jurassic to Early Cretaceous, achieving breakup at ~115 Ma (Eddy et al., 2017). A final reorientation of the rifting to SW-NE in the Late Cretaceous (de Graciansky and Poag, 1985; Tucholke et al., 1989; Hopper et al., 2006; Tucholke et al., 2007) saw the migration of rifting to between Newfoundland and Ireland and then eventually the Labrador Sea between Labrador and Greenland from 130 Ma (Roest and Srivastava, 1989), with breakup and seafloor spreading inferred to coincide with creation of magnetic chron 27 (~62 Ma; Gradstein et al. (2012)) in the Labrador Sea (Fig. 1; Chalmers and Laursen (1995)).





**Figure 1.** Topographic/bathymetric map from ETOPO1 (Amante and Eakins, 2009) of the study area of the southern North Atlantic Ocean subdivided by inferred basement affinity of continental crust, adapted from Jolivet et al. (2021), Tyrrell et al. (2007), Waldron et al. (2022), and Ziegler and Dèzes (2006). The numbered solid red lines correspond to the seismic refraction/wide-angle reflection (RWAR) profiles for which velocity models are reproduced in this work. The corresponding survey names and citations are provided in Table 1. Select fracture zones are delimited by dashed black lines. Select magnetic chron anomalies from Seton et al. (2014) are plotted as coloured circles (M25r, M21r, M16r, M4n, M0, C34, C27). The positive portions of the J-magnetic anomaly from Nirrengarten et al. (2016) are plotted as black polygons. Abbreviations: AM, Armorican Margin; BB, Bay of Biscay; CGFZ, Charlie-Gibbs Fracture Zone; FC, Flemish Cap; GB, Grand Banks; GIB, Galicia Interior Basin; GRN, Greenland; GS, Goban Spur; HA, High Atlas; IB, Iberia; IRE, Ireland; LS, Labrador Sea; MAR, Mid-Atlantic Ridge; MOR, Morocco; NAFZ, Newfoundland-Azores Fracture Zone; NL, Newfoundland & Labrador; NS, Nova Scotia; OB, Orphan Basin; PB, Porcupine Basin; PBk, Porcupine Bank; RB, Rockall Basin; RBk, Rockall Bank; UK, United Kingdom.

### 3 Characterization of rifted margins

55 Rifted margins are commonly described in terms of rift domains, which typically progress oceanward from the landward-most proximal domain, to the necking domain, to the distal domain, to the enigmatic outer domain, and ultimately to the oceanic domain (Péron-Pinvidic et al., 2013). These domains correspond to specific evolutionary stages in the rift-to-drift transition and mapping their distributions allows for direct comparison of margin structures both along strike of rifted margins and across con-

jugate margin pairs. When considering the rifted margin end-members of magma-poor versus magma-rich margins, the main differences are typically manifested in the distal domain. Magma-poor margins in particular commonly have distal domains comprising hyperextended continental crust and potentially wide tracts of exhumed serpentized mantle (Whitmarsh et al., 2001; Reston, 2009), displaying variable amounts of magmatic products (Bronner et al., 2011; Epin et al., 2019), while magma-rich margins have distal domains dominated by magmatic products like seaward-dipping reflectors and intrusives in the lower crust (Eldholm et al., 2000; Planke et al., 2000). Continent-ocean transition zones (COTZ) typically correspond to these distal domains and can also include embryonic oceanic crust, accreted prior to the initiation of classic seafloor spreading (Minshall, 2009; Reston, 2009; Péron-Pinvidic et al., 2013; Sauter et al., 2018).

Magma-poor margins are the dominant margin type in the southern North Atlantic, from Nova Scotia to Labrador on the eastern Canadian margin, and from Morocco to the Irish Atlantic margin on the European side. These particular margins resulted from the propagation of rifting through ancient Appalachian-Caledonian orogenic terranes, with inheritance likely driving the development of continental ribbons (e.g. Flemish Cap, Porcupine Bank, Rockall Bank; Péron-Pinvidic and Manatschal (2010)) and possibly setting up the necessary conditions for exhumation of serpentized mantle within their distal domains. The development of COTZ for these margins, encompassing the final stages of rifting and the initiation of seafloor spreading, remains an area of active research, hampered by sparser data availability compared to more proximal domains, and challenged by the non-uniqueness inherent to geophysical methods in the absence of drilling. In this study, I focus on identifying the transitions from extended continental crust (encompassing proximal, necking, and portions of the distal domains) to exhumed serpentized mantle (a component of the distal domain), where present, to oceanic crust, whether anomalously thin, anomalously thick, or of normal thickness (5-8.5 km; White et al. (1992)). I also aim to define the lateral extents of these COTZ using a consistent classification rubric for the southern North Atlantic Ocean.

## 4 Synthesis methodology

Velocity models from twenty seismic refraction/wide-angle reflection (RWAR) surveys are included in this synthesis (see Fig. 1 and Table 1 for the profiles included in this study), from which crustal and upper mantle variations have been revealed and continent-ocean transition zones have previously been interpreted. The velocity models from the profiles highlighted in Fig. 1 are reproduced and compared in Figs. 2 to 6.

### 4.1 Geophysical methods

For studying continent-ocean transition zones, seismic RWAR techniques arguably represent the best geophysical method for determining their crustal and upper mantle velocity structures, as well as delineating fundamental lithospheric boundaries such as the Mohorovičić discontinuity (Moho), which separates the lower crust from the upper mantle. In the marine environment, these surveys involve the deployment of ocean bottom seismometers (OBS) that record arrivals from airgun sources deployed at the sea surface.

90 Data from RWAR surveys consist of seismic waveforms recorded as a function of time, from which traveltimes for both re-  
fracted and reflected seismic phases between the sources and the OBS can be identified and picked. The waveforms themselves  
contain information about the velocity variations both within layers and across subsurface interfaces. Traditionally, forward  
modelling using ray tracing, with localized inversion, has been used to derive velocity models from OBS traveltime data (Čer-  
vený et al., 1977; McMechan and Mooney, 1980; Červený and Pšenčík, 1981, 1984; Zelt and Smith, 1992), such as for the  
95 majority of the RWAR profiles included in this study (indicated by the FMRT label in the fourth column of Table 1). More  
recently, tomographic inversion methods have begun to replace and complement the forward modelling approaches (Van Aven-  
donk et al., 1998; Zelt and Barton, 1998; Korenaga et al., 2000, 2001; Van Avendonk et al., 2004; Meléndez et al., 2015;  
Begović, 2020). These are less time-consuming to develop and arguably less biased since the traveltimes are fit using model  
norms rather than subjective visual inspection. The simplest form of tomographic inversion, known as traveltime inversion  
100 (TTI), involves reproducing the picked seismic phase traveltimes (both refracted and possibly reflected), and the velocity mod-  
els that were developed using this technique in the study area are indicated by the TTI label in the fourth column of Table  
1. The most computationally expensive approach to modelling RWAR data involves Full-Waveform Inversion (FWI), which  
attempts to reproduce both the observed traveltimes as well as the seismic waveforms themselves (Pratt and Worthington,  
1990; Pratt et al., 1996, 1998; Pratt, 1999; Ravaut et al., 2004; Brenders and Pratt, 2007; Virieux and Operto, 2009). As FWI  
105 requires much more closely spaced OBS than used in conventional RWAR surveys, there has not yet been widespread use of  
this technique offshore (Sears et al., 2008; Kamei et al., 2013; Morgan et al., 2013; Górszczyk et al., 2021), particularly in the  
Atlantic Ocean (Minshull and Singh, 1993; Davy et al., 2017; Guo et al., 2020; Boddupalli et al., 2021, 2022), and only one  
FWI-generated partial profile is considered in this synthesis (Jian et al. (2021); line 15b in Table 1).

## 4.2 Model digitization

110 To allow for reproduction and direct comparison of velocity models from a range of modelling approaches and from di-  
verse vintages of published sources, digital versions are required. Several authors graciously provided their original mod-  
els as either RAYINR input files or as velocity grids, simplifying the incorporation of these models into the synthesis and  
ensuring accurate representations. Where original files are not available, the models are digitized directly from their pub-  
lished images. This is done by digitizing individual model boundaries and/or velocity contours and then manually construct-  
115 ing RAYINVR models from those boundaries/contours and through careful inspection of the original model images to ex-  
tract velocity values as a function of model distance and depth. This process naturally introduces some uncertainty into  
the accuracy of the digitized model representations but great care is put into ensuring that the digital models closely re-  
semble their analog counterparts. All of the RAYINVR files are converted to velocity grids using the VMED tool by Barry  
Zelt (<http://www.soest.hawaii.edu/users/bzelt/vmed/vmed.html>). The velocity models shown in Figs. 2 to 6 are plotted using  
120 Generic Mapping Tools (Wessel et al., 2019), the gridded velocity files, identical plot dimensions, and a common colour palette.  
Note that I do not have access to original OBS refraction datasets and/or the picks used to generate the presented models (other  
than for SIGNAL 1 (Welford et al., 2020)), so no error or uncertainty analyses can be performed. The reader is referred to the  
original papers (cited in Table 1) to assess the support for the individual velocity models.

### 4.3 Defining Moho

125 Reflections off of the Mohorovičić discontinuity (Moho) are observed as the PmP reflected phase in RWAR profiling and these  
are commonly used to constrain the Moho depths shown in published velocity models. For the PmP reflections to be clear  
during RWAR profiling, the velocity contrast between the lower crust and the upper mantle must be large enough to generate a  
detectable reflection. Typically, the velocity contrast across the Moho corresponds to 6.9 km/s for the lower crust and to 8 km/s  
for unaltered mantle, with mantle velocities decreasing with increasing degrees of serpentinization. Where mantle has been  
130 exhumed and the crust has been removed, no Moho exists and so PmP reflections are not expected (although it is possible to  
observe reflections off of serpentinization fronts in the exhumed mantle domain (Gillard et al., 2019)). When forward modelling  
is used with discrete model boundaries (FMRT label in the fourth column of Table 1), it is not uncommon for velocities within  
a modelled layer to vary over such a large range as to capture both crustal velocities as well as serpentinized mantle velocities,  
implying that the Moho boundary should transect a model layer. This modelling oddity just means that the Moho does not  
135 correspond to a prescribed boundary in those models. Where this phenomenon is observed in the synthesis, it is highlighted  
below. Where the Moho boundary in the velocity model does correspond with a clear model boundary, it is plotted with a  
continuous thickened black line, as is the top basement boundary where clearly defined.

### 4.4 Defining continent-ocean transition zones (COTZ)

One of the primary goals of this synthesis is to compare and contrast the COTZ along the select velocity models. The COTZ  
140 are typically defined in terms of interpreted variations in basement type along the velocity models (e.g., continental versus  
transitional versus oceanic), as it is well established that for most margins, an abrupt continent-ocean boundary is not  
observed (Eagles et al., 2015). Transitional crust can refer to hyperextended continental crust, exhumed mantle, embryonic  
oceanic crust, and any combination thereof, making the demarcation of the limits of transition zones challenging. To facilitate  
the defining of COTZ along passive margins, Heine et al. (2013) introduced the concept of the LaLOC, the landward limit  
145 of oceanic crust. The LaLOC marks the landward boundary between classic Penrose-type oceanic crust (Penrose Conference  
Participants, 1972), where normal oceanic spreading is inferred to have begun, and transition zones comprising either thinned  
continental crust or exhumed mantle. Sauter et al. (2023) simplify the LaLOC definition as corresponding to the landward  
point beyond which the top basement and Moho cease to be parallel. This latter definition does not preclude the inclusion of  
embryonic oceanic crust, provided it is of constant thickness. Meanwhile, another boundary often used to define COTZ is the  
150 edge of continental crust, ECC (Nirrengarten et al., 2018). Herein, the approximate locations of the ECC and the LaLOC are  
indicated for each of the velocity models under consideration, although they are not used to define the full extents of the COTZ.

For this synthesis, the domain extents for basement type are extracted directly from the published interpretations. To comple-  
ment the basement type comparisons herein, the lateral extents of unexhumed serpentinized mantle along each line, defined by  
the presence of upper mantle velocities less than 8 km/s, are also interpreted and tracked (fourth column in Table 2). This metric  
155 allows for assessment of the lateral extent of communication between seawater and the upper mantle when the mantle has not  
been exhumed. To allow for direct COTZ length comparisons across the considered velocity models (fifth column in Table

2), the COTZ herein is defined as corresponding to the oceanward progression from a) hyperextended continental crust underlain by serpentinitized mantle (whose landward limit would correspond to the coupling point as defined by Pérez-Gussinyé et al. (2003)), to b) exhumed serpentinitized mantle (where present, and whose landward limit would be the ECC as defined by Nirrengarten et al. (2018)), and finally to c) thinner than normal oceanic crust (whose landward limit would correspond to the LaLOC according to the definition from Sauter et al. (2023)) or normal oceanic crust underlain by serpentinitized mantle. The oceanward limits for the newly interpreted COTZ are marked as corresponding to the first occurrence of normal thickness oceanic crust (5-8.5 km; White et al. (1992)) underlain by unaltered mantle. Based on this standardized COTZ definition, the limits of the COTZ do not necessarily correspond to the ECC and the LaLOC. Where the newly defined COTZ for each model matches that from the original RWAR publication, it is mentioned explicitly below. Finally, no COTZ are defined for failed rifts.

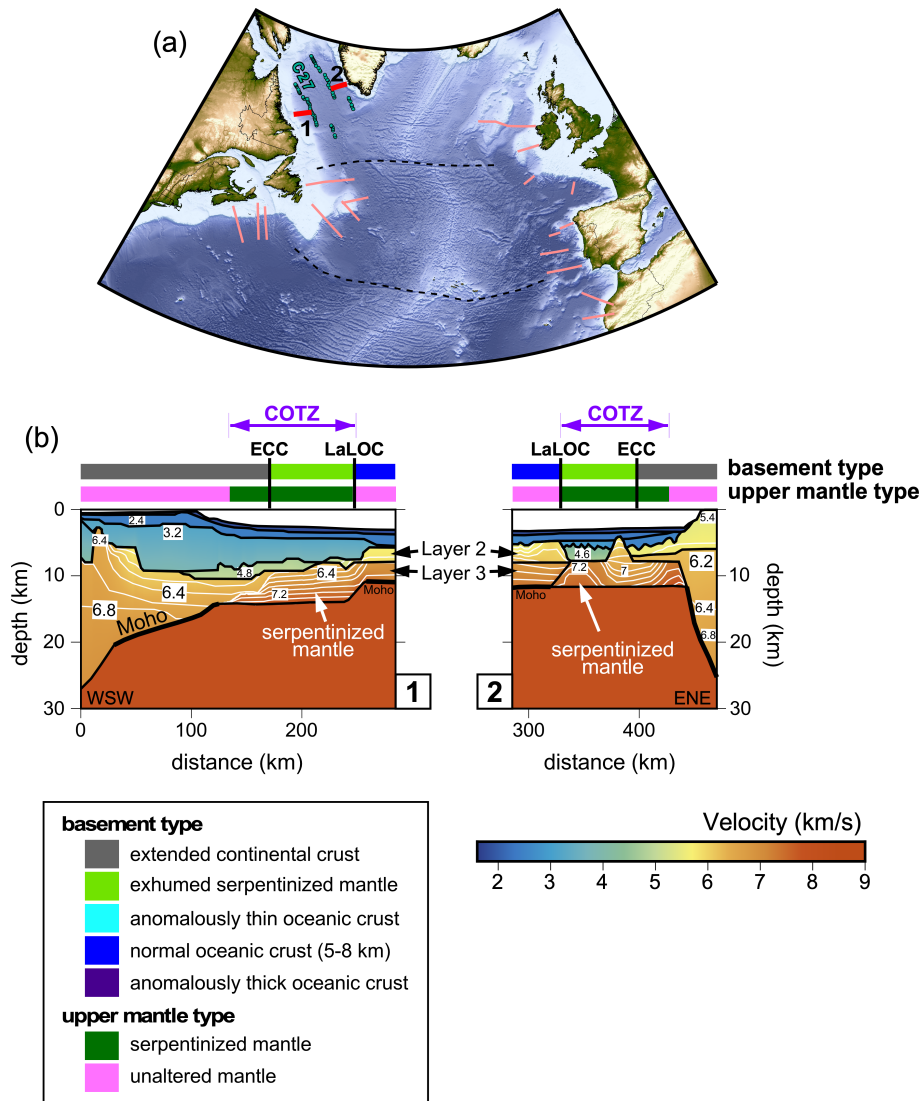
## 5 Geophysical constraints

### 5.1 Labrador - Greenland margins

The Labrador Sea is bordered by the rifted passive margins of Labrador in the WSW and Greenland in the ENE, with the densest concentration of RWAR surveys acquired on the Labrador margin (van der Linden, 1975; Chian et al., 1995; Reid, 1996; Funck and Loudon, 1998, 1999, 2000; Funck et al., 2001a, b; Hall et al., 2002; Funck et al., 2008), although these are focused primarily on the proximal domain. While the Greenland margin has received less attention, select studies do exist (Chian and Loudon, 1992; Gohl and Smithson, 1993; Chian and Loudon, 1994; Funck et al., 2007) to allow a conjugate margin comparison.

Figure 2 shows the comparison of RWAR derived velocity models from either side of the Labrador Sea, resulting from the work of Chian and Loudon (1994) and Chian et al. (1995) (profiles 1 and 2 in Fig. 1). These models were based on OBS data, with multi-channel (profile 1; Keen et al. (1994)) and single-channel (profile 2) seismic reflection data used to constrain the shallow sedimentary layer geometries and uppermost crust in the models. Both gravity and magnetic modelling were performed to confirm the correspondence between the derived velocity models and independent geophysical datasets (Chian et al., 1995; Chian and Loudon, 1994). For inclusion of these profiles in the synthesis, the interpreted basement types are adopted directly from the original works and the upper mantle types are newly estimated from the original velocity model plots.

Landward, these models demonstrate a fundamental asymmetry, with a wider zone of thinned continental crust for the Labrador margin relative to the Greenland margin. Moving oceanward, greater symmetry is observed. On both margins, extensive sub-crustal 100 km-wide zones of serpentinitized mantle are modelled, with 80 km and 70 km of those zones exhumed on the Labrador and Greenland margins, respectively. The seaward extents of both models show normal two-layered oceanic crust with a uniform boxy geometry abutting these zones of exhumation, which is consistent with their correspondence with magnetic chron 27 (Fig. 2a), interpreted as undisputed oceanic crust by Chalmers and Laursen (1995). While linear magnetic anomalies have been identified landward of chron 27 (not shown; Seton et al. (2014)), these are inferred to correspond to magnetite generated during the serpentinitization process (Nazarova, 1994; Oufi et al., 2002; Sibuet et al., 2007b).



**Figure 2.** (a) Topography/bathymetry map with location of velocity models in (b) highlighted in red, and all other considered velocity model locations in this study shown in pink. (b) Velocity models reproduced from 1: Chian et al. (1995) and 2: Chian and Loudon (1994). In (a), the dashed black lines are select fracture zones and magnetic chron anomaly C27 picks from Seton et al. (2014) are plotted as coloured circles. In (b), model boundaries are shown as solid black lines and velocity contours (with a contour interval of  $0.2 \text{ km s}^{-1}$ ) are shown as solid white lines within the crust. Interpreted basement types and upper mantle types are plotted above each velocity model with colours explained in the legend. Abbreviations: COTZ, continent-ocean transition zone; ECC, edge of continental crust; LaLOC, landward limit of oceanic crust.

190 Note that for profile 1, the model boundary labelled as Moho in the original work (Chian et al., 1995) extends below the zone of serpentinized mantle when it should rather follow the top of the serpentinized mantle, merging with the top basement where exhumed mantle is interpreted (light green basement type). For profile 2, an oblique model boundary does separate the oceanic

layer 3 block from the zone of interpreted serpentinized mantle, while an additional model boundary delimits its bottom. For clarity, the model boundaries most consistent with a Moho definition have been plotted with thickened black lines.

195 The COTZ for the two Labrador Sea margins were originally defined by Chian et al. (1995) as only corresponding to the exhumed serpentinized mantle domains. In this synthesis, the COTZ are extended landward to also encompass the hyperthinned continental crust underlain by serpentinized mantle. This definition results in COTZ with lateral extents of 115 km and 100 km for profiles 1 and 2, respectively (Table 2). Note that along-strike variations in COTZ characteristics are expected in the Labrador Sea due to rheological inheritance from prior orogenesis, as modelled numerically by Gouiza and Naliboff (2021).

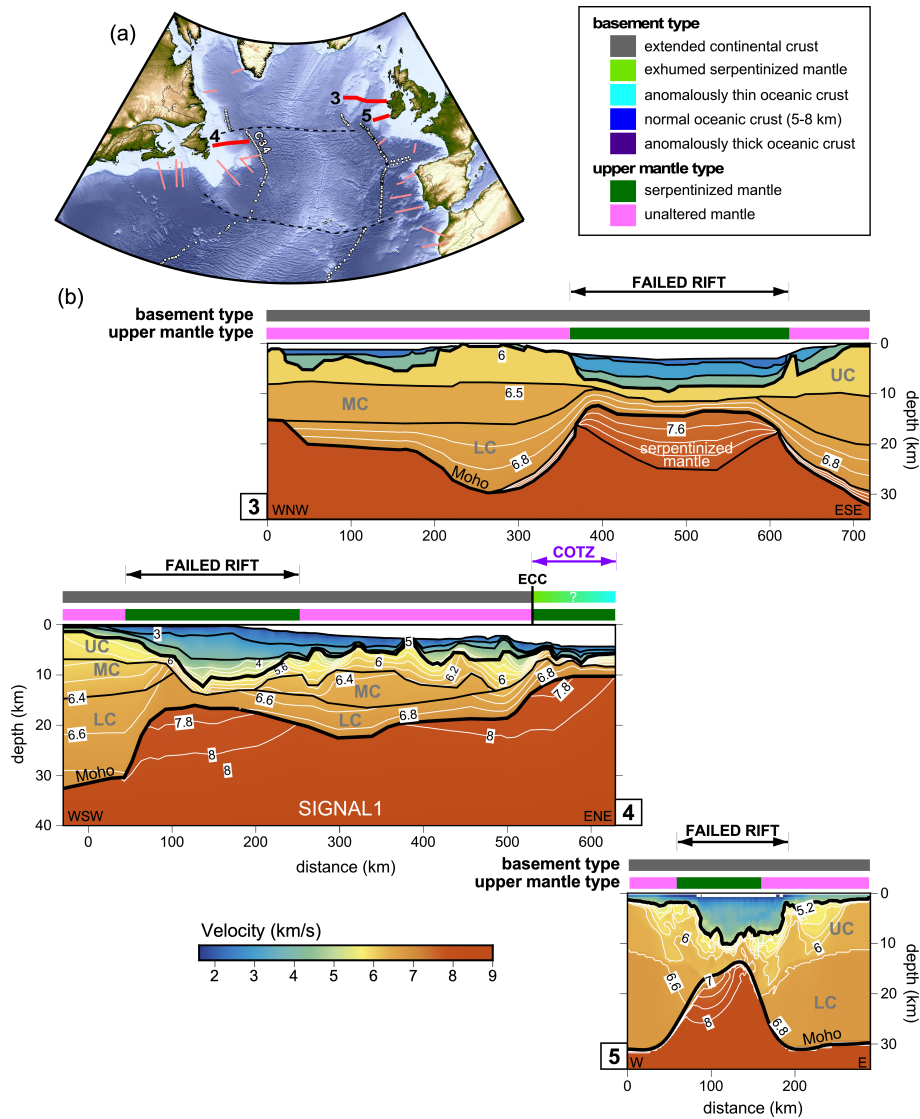
## 200 5.2 Orphan Basin - northern Irish Atlantic margins

The NE margin of Newfoundland, corresponding to the Orphan Basin, and the conjugate northern Irish Atlantic margin once lay within the thickened terranes of the Appalachian-Caledonide Orogen, with the resulting inherited structures strongly influencing subsequent rifting and the formation of multiple continental ribbons (e.g., Flemish Cap, Rockall Bank, Porcupine Bank; Fig. 1). While RWAR profiling has been undertaken in the Orphan Basin (Keen and Barrett, 1981; Chian et al., 2001; 205 Lau et al., 2015; Welford et al., 2020), only the studies by Chian et al. (2001) and Welford et al. (2020) allowed for characterization of a portion of the COTZ (profile 4 in Fig. 1). Meanwhile, on the conjugate northern Irish Atlantic margin, there is a lack of modern RWAR studies across the continent-ocean transition, with older surveys with sparse OBS revealing simplistic abrupt continent-ocean boundaries (COB; Makris et al. (1988); Hauser et al. (1995)). As such, only inboard surveys crossing the Rockall Basin, the Porcupine Basin, and their respective flanking banks are included in this study in order to capture the 210 velocity structures where rifting failed to achieve breakup and seafloor spreading (profiles 3 and 5 in Fig. 1).

Figure 3 shows the comparison between the velocity model from Welford et al. (2020) across the Orphan Basin (profile 4), and velocity models that lie inboard of the COTZ on the northern Irish Atlantic margin (Funck et al., 2017; Prada et al., 2017), namely profiles 3 and 5. On the NE Newfoundland margin, profile 4 was modelled from OBS data collected during the SIGNAL 2009 cruise (Funck et al., 2010) as well as the original OBS data used in Chian et al. (2001). In the resulting velocity 215 model from Welford et al. (2020), the shallow sedimentary layer geometries were constrained using a coincident multi-channel seismic reflection profile. Gravity modelling was performed to validate the plausibility of the velocity model.

Profile 3 was acquired as part of the RAPIDS1 experiment and was originally published in Makris et al. (1991) based on modelling of OBS data alone. The southeastwardmost part of the profile was reanalysed by O'Reilly et al. (1995) and O'Reilly et al. (1996), taking into account constraints from an intersecting velocity model (Hauser et al., 1995). The velocity model for 220 profile 3 presented herein was digitized and modified from the model in the compilation by Funck et al. (2017), which itself was based on the version of the model published by Shannon et al. (1999) for which gravity modelling was performed to support the interpreted lithospheric structures.

Profile 5 is one of three RWAR lines collected across the Porcupine Basin in 2004. This model was derived using travel-time inversion (TTI), which is performed using only the refracted and reflected phases identified on the OBS gathers (Prada et al., 225 2017). The velocity model was then supported through comparisons with coincident seismic reflection data, as well as gravity modelling.



**Figure 3.** (a) Topography/bathymetry map with location of velocity models in (b) highlighted in red, and all other considered velocity model locations in this study shown in pink. (b) Velocity models reproduced from 3: Funck et al. (2017), 4: Welford et al. (2020), and 5: Prada et al. (2017). In (a), the dashed black lines are select fracture zones and magnetic chron anomaly C34 picks from Seton et al. (2014) are plotted as white circles. In (b), model boundaries are shown as solid black lines and velocity contours (with a contour interval of  $0.2 \text{ km s}^{-1}$ ) are shown as solid white lines within the crust. Interpreted basement types and upper mantle types are plotted above each velocity model with colours explained in the legend. Abbreviations: COTZ, continent-ocean transition zone; ECC, edge of continental crust; LC, lower crust; MC, middle crust; UC, upper crust.

In terms of interpreted basement types, profiles 3, 4, and 5 are dominated by either thinned continental crust across multiple failed rifts, or by thicker continental crust in the form of continental ribbons. Across all of these failed rifts, low velocities



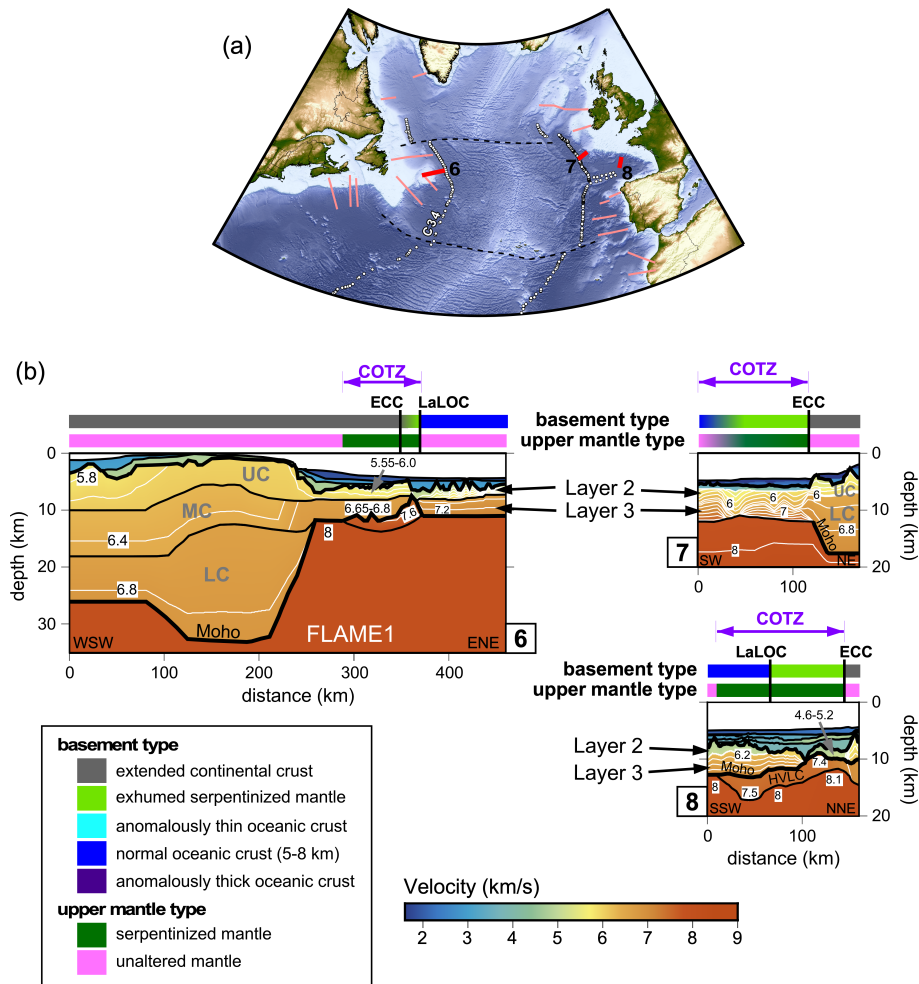
in the upper mantle are consistent with some degree of serpentinization (Hauser et al., 1995; O'Reilly et al., 1996; Reston  
230 et al., 2004; O'Reilly et al., 2006; Prada et al., 2017). At the COTZ, outboard of the Orphan Basin, the nature of the basement  
cannot be uniquely defined due to non-unique velocities but it may correspond to either exhumed mantle or anomalously thin  
oceanic crust, consistent with its location inboard of magnetic chron 34, the locus of undisputed oceanic crust in this part of the  
southern North Atlantic Ocean (Fig. 3a; Srivastava et al. (1990)). The basement types along the profiles are inherited from the  
published works while the mantle type lateral extents are newly interpreted herein, based on visual inspection of the original  
235 models. The extent of the COTZ (100 km; Table 2) is directly adopted from Welford et al. (2020).

### 5.3 Flemish Cap - southern Irish and Armorican margins

Southeast of the Orphan Basin on the Newfoundland margin lies the Flemish Cap, a continental ribbon that is interpreted to  
have been rotated and translated during Mesozoic rifting (Sibuet et al., 2007a), leading to the formation of the Orphan Basin  
itself. Ignoring this rotation, early studies proposed the Goban Spur, on the southern Irish margin, as the conjugate margin to  
240 the Flemish Cap (Keen and Dehler, 1993; Gerlings et al., 2012). More recent work however suggests a closer link between the  
Flemish Cap and the Porcupine Bank (Peace et al., 2019; Sandoval et al., 2019; Yang and Welford, 2022).

Two RWAR profiles cross the NE margin of the Flemish Cap, the 460 km-long FLAME 1 survey (profile 6 in Figs. 1  
and 4; Gerlings et al. (2011)) and a shorter coincident 80 km-long experiment involving four OBS (Reid and Keen, 1990),  
whose results are superceded by the FLAME results. The FLAME 1 velocity model was constructed using OBS data, with  
245 a coincident seismic reflection profile used to constrain the sedimentary layer geometries. Gravity modelling was performed  
to confirm that the velocity model is consistent with independent geophysical constraints. In terms of basement type, the  
FLAME 1 velocity model is interpreted by Gerlings et al. (2011) to comprise basement with a very narrow 20 km-wide zone of  
exhumed serpentinized mantle, with a more expansive 80 km-wide zone of serpentinized mantle underlying thinned continental  
crust. An abrupt transition from exhumed mantle to normal two-layer boxy oceanic crust in the model is consistent with the  
250 intersection of the seawardmost portion of the FLAME 1 model (profile 6) with the magnetic chron 34 anomaly (Fig. 4a), the  
locus of undisputed oceanic crust along this portion of the southern North Atlantic (Srivastava et al., 1990). The COTZ shown  
for profile 6 in Fig. 4 is modified from Gerlings et al. (2011) and disregards the thinned crust underlain by unaltered mantle,  
resulting in a lateral extent of 80 km for the COTZ (Table 2).

On the southern Irish margin, the Goban Spur and regions immediately to the south have seen the greatest number of RWAR  
255 experiments (Ginzburg et al., 1985; Whitmarsh et al., 1986; Horsefield et al., 1994; Bullock and Minshull, 2005), with the  
most recent model by Bullock and Minshull (2005) corresponding to profile 7 in Figs. 1 and 4. The Bullock and Minshull  
(2005) model was derived using a combination of OBS and sonobuoy data (using both P and S wave arrivals, where available),  
constraints from a coincident seismic reflection line (WAM; Klempner and Hobbs (1991)), velocity constraints from a nearby  
RWAR profile (Horsefield et al., 1994), and Deep Sea Drilling Project (DSDP) results (de Graciansky and Poag, 1985). The  
260 velocity model was ultimately used for gravity and magnetic modelling to confirm its plausibility. Based on the interpreted  
basement types from Bullock and Minshull (2005), the transitional crust in the model spans 120 km and is subdivided into  
an inboard 70 km wide zone of serpentinized mantle peridotites with subdued relief, and an oceanward 50 km wide zone



**Figure 4.** (a) Topography/bathymetry map with location of velocity models in (b) highlighted in red, and all other considered velocity model locations in this study shown in pink. (b) Velocity models reproduced from 6: Gerlings et al. (2011), 7: Bullock and Minshull (2005), and 8: Thion et al. (2003). In (a), the dashed black lines are select fracture zones and magnetic chron anomaly C34 picks from Seton et al. (2014) are plotted as white circles. In (b), model boundaries are shown as solid black lines and velocity contours (with a contour interval of  $0.2 \text{ km s}^{-1}$ ) are shown as solid white lines within the crust. Interpreted basement types and upper mantle types are plotted above each velocity model with colours explained in the legend. Abbreviations: COTZ, continent-ocean transition zone; ECC, edge of continental crust; HVLC, high-velocity lower crust; LaLOC, landward limit of oceanic crust; LC, lower crust; MC, middle crust; UC, upper crust.

of possibly exhumed serpentinized basement ridges, similar to ones identified on the Iberian margin to the south (Boillot et al., 1980; Beslier et al., 1993; Shipboard Scientific Party, 1998; Dean et al., 2000; Henning et al., 2004). The mantle types interpreted herein simply mirror the sections of the model with serpentinized basement. Note that this velocity model parameterization is one where the model boundary corresponding to the Moho in the NE continues southwestward, delimiting the bottom of the serpentinized mantle zone, while the Moho should actually rise steeply to meet the basement at the location

labelled ECC for edge of continental crust. For clarity, the portion of the model boundary that actually corresponds to proper Moho has been plotted with a thicker black line. Finally, the COTZ is defined according to Bullock and Minshull (2005), with a lateral extent of 120 km (Table 2).

South of the Goban Spur, along the northern margin of the Bay of Biscay lies the Armorican margin. The Norgasis 14 RWAR line (profile 8 in Fig. 1) was modelled by Thinon et al. (2003), using a coincident seismic reflection profile to help constrain the sedimentary layer geometries in the velocity model. Gravity modelling confirmed the main features of the velocity model. The basement type interpretation provided by Thinon et al. (2003) reveals an 80 km-wide zone of transitional exhumed mantle, bordered oceanward by an abrupt transition to normal thickness oceanic crust. A more extensive unexhumed sub-crustal zone of serpentinized mantle was shown by Thinon et al. (2003) to extend beneath that normal oceanic crust, although its lateral extent was not explicitly stated in their work. To maintain consistency with the COTZ definition adopted herein, the oceanward limit of the COTZ is placed at the oceanward limit of the zone of unexhumed serpentinized mantle, resulting in a lateral extent of 135 km for the COTZ (Table 2).

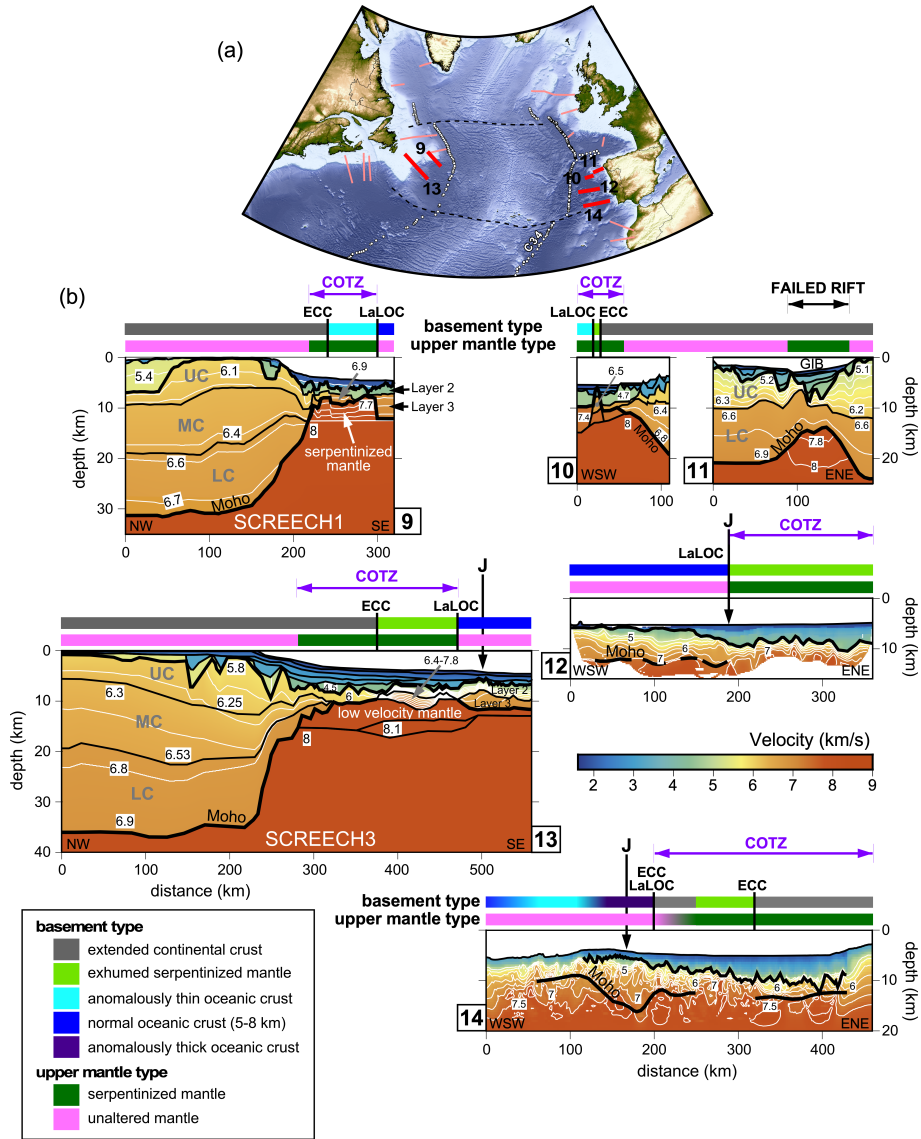
#### 5.4 Southeast Newfoundland-Iberia margins

The southeast Newfoundland and northwest Iberian margins arguably represent the best studied conjugate margin pair in the world (Louden and Chian, 1999; Srivastava et al., 2000; Manatschal et al., 2007; Péron-Pinvidic et al., 2007; Sibuet et al., 2007b; Tucholke et al., 2007; Crosby et al., 2008; Péron-Pinvidic and Manatschal, 2009; Manatschal et al., 2010; Soares et al., 2012; Péron-Pinvidic et al., 2013; Sutra et al., 2013; Mohn et al., 2015; Stanton et al., 2016; Brune et al., 2017; Eddy et al., 2017; Alves and Cunha, 2018; Causer et al., 2020; Liu et al., 2022). Herein, we focus on two RWAR surveys on the Newfoundland margin (profiles 9 and 13 in Fig. 1) and four profiles on the Iberian side (profiles 10, 11, 12, and 14 in Fig. 1). Profiles 10 and 11 combined provide almost continuous coverage from east to west across the Galicia Interior Basin, the outboard Galicia Bank continental ribbon, and the COTZ beyond (Fig. 5).

The two presented SCREECH profiles along the southeast Newfoundland margin (Fig. 5; Funck et al. (2003); Lau et al. (2006a)) were constructed based on refracted and reflected phases identified on OBS gathers, with coincident seismic reflection data used to constrain the shallow sedimentary layer geometries and basement morphologies (Hopper et al., 2004; Lau et al., 2006b). Gravity modelling was also performed by Funck et al. (2003) and Lau et al. (2006a) for both velocity models in order to assess their correspondence with independent geophysical data.

The SCREECH 1 and SCREECH 3 models (profiles 9 and 13) show abrupt oceanward crustal necking, with outboard thinned continental crust underlain by serpentinized mantle. Southeast of Flemish Cap, the thinned continental crust only extends for 20 km (profile 9) before being replaced by anomalously thin oceanic crust (60 km-wide zone) according to Funck et al. (2003). They also provide a classification of the upper mantle type with an 80 km-wide zone of unexhumed serpentinized mantle extending landward beneath the thinned continental crust (as reproduced in Fig. 5), which corresponds to the COTZ as defined in this synthesis (Funck et al. (2003) instead defined a discrete continent-ocean boundary (COB)). Conversely, the SCREECH 3 profile off the Grand Banks shows a 90 km-wide zone of thinned continental crust transitioning into a 95 km-wide zone of exhumed serpentinized mantle, with an abrupt transition into normal oceanic crust overlying unaltered mantle.

The 190 km-wide unexhumed serpentized mantle type highlighted in Fig. 5 was derived for this synthesis based on a visual inspection of the published model and is used to define the COTZ lateral extent of 190 km herein (Table 2). For profile 13, there is not a continuous model boundary that corresponds uniquely to the Moho, particularly one that delimits the upper boundary of the interpreted exhumed mantle. As such, only the unambiguous Moho boundaries in the parameterization are plotted with thickened black lines in Fig. 5.



**Figure 5.** (a) Topography/bathymetry map with location of velocity models in (b) highlighted in red, and all other considered velocity model locations in this study shown in pink. (b) Velocity models reproduced from 9: Funck et al. (2003), 10: Sibuet et al. (1995) and Druet et al. (2017), 11: Pérez-Gussinyé et al. (2003), 12: Grevemeyer et al. (2022), 13: Lau et al. (2006a), and 14: Merino et al. (2021). In (a), the dashed black lines are select fracture zones and magnetic chron anomaly C34 picks from Seton et al. (2014) are plotted as white circles. In (b), model boundaries are shown as solid black lines and velocity contours (with a contour interval of  $0.2 \text{ km s}^{-1}$ ) are shown as solid white lines within the crust. Interpreted basement types and upper mantle types are plotted above each velocity model with colours explained in the legend. The approximate location of the positive part of the J-magnetic anomaly from Nirrengarten et al. (2016) is shown for profiles 12, 13, and 14. Abbreviations: COTZ, continent-ocean transition zone; ECC, edge of continental crust; GIB, Galicia Interior Basin; LaLOC, landward limit of oceanic crust; LC, lower crust; MC, middle crust; UC, upper crust.

Across the Galicia margin, making up the northwestern Iberian margin, profile 10 (Sibuet et al., 1995; Druet et al., 2017) comprises the COTZ while profile 11 (Pérez-Gussinyé et al., 2003) is focused on the Galicia Bank continental ribbon and its in-board basin, the Galicia Interior Basin, which represents a failed rift. Profile 10 was acquired in 1987 as part of the Réframarge  
310 cruise (cruise line 6) using only three OBS, along the track of a coincident seismic reflection profile, GP 101, which was ultimately used to constrain the sedimentary layer geometries and the basement morphology in the derived velocity model (Sibuet et al., 1995). Modelling of deep-tow magnetic data that were acquired during the RWAR campaign was also performed to enhance the interpretation of the velocity model (Sibuet et al., 1995). The version of the model used for digitization and inclusion in the synthesis is obtained from Druet et al. (2017), which was modified from Sibuet et al. (1995).

315 For profile 10, oceanward abrupt crustal necking of the Galicia Bank transitions to an exhumed serpentized ridge, confirmed through drilling (Shipboard Scientific Party, 1987) and dredging (Boillot et al., 1980), and then anomalously thin oceanic crust (<5 km thick) over a further distance of approximately 20 km (Sibuet et al., 1995; Whitmarsh et al., 1996; Druet et al., 2017). The thin oceanic crust overlies a zone of serpentized mantle (Sibuet et al., 1995) that extends 55 km landward to the westward limit of the necking zone, which is used by Druet et al. (2017) to propose the extent of the COTZ shown in Fig. 5  
320 and adopted in this synthesis (Table 2).

Profile 11 from Pérez-Gussinyé et al. (2003) was acquired in 1997 as part of the Iberia Seismic Experiment (cruise line 17), along with a coincident seismic reflection profile, which was used to constrain sedimentary layer geometries and the top basement in the velocity model. Iterative refinement of the velocity model was achieved through its use in the prestack depth-migration of the seismic reflection profile. The basement type for all of profile 11 is interpreted as continental by Pérez-  
325 Gussinyé et al. (2003). For this synthesis, lower velocities in the upper mantle are interpreted as evidence for a mantle type of unexhumed serpentized mantle spanning 70 km based on the published velocity model.

Along the mid-Iberian margin, the velocity model for profile 12 (Figs. 1 and 5) was obtained from a joint wide-angle reflection and refraction tomographic inversion of traveltimes from densely spaced OBS (10 to 12 km spacing) along the FRAME-p3 line (Grevemeyer et al., 2022). The OBS data themselves were used for seismic mirror imaging (Grion et al.,  
330 2007) to produce a seismic reflection section from which the sedimentary layer geometries and the top basement morphology could be determined (Grevemeyer et al., 2022). Gravity modelling was subsequently performed to validate the features in the velocity model. The model reveals basement types with an even split between exhumed serpentized mantle landward, and normal oceanic crust oceanward. These two segments are split by the J anomaly, a prominent magnetic anomaly from the southern North Atlantic Ocean that is the subject of much controversy as to its significance (or not) as a seafloor spreading  
335 isochron (Russell and Whitmarsh, 2003; Srivastava et al., 2000; Bronner et al., 2011; Nirrengarten et al., 2016; Stanton et al., 2016). Grevemeyer et al. (2022) conclude that it is not an isochron and so should not be used to constrain plate reconstructions but that it does mark the onset of seafloor spreading at this location along the Iberian margin. The mantle type interpreted for this synthesis mirrors the basement type split, as does the COTZ extent adopted for this synthesis (160 km; Table 2).

The Tagus Abyssal Plain within the southwest Iberian margin has been sampled by the least amount of RWAR surveys, and  
340 until recently, only with widely spaced OBS (30 to 40 km spacing for Afilhado et al. (2008)). A recent velocity model (profile 14) from Merino et al. (2021), obtained using an iterative joint reflection and refraction travel-time tomography with multi-

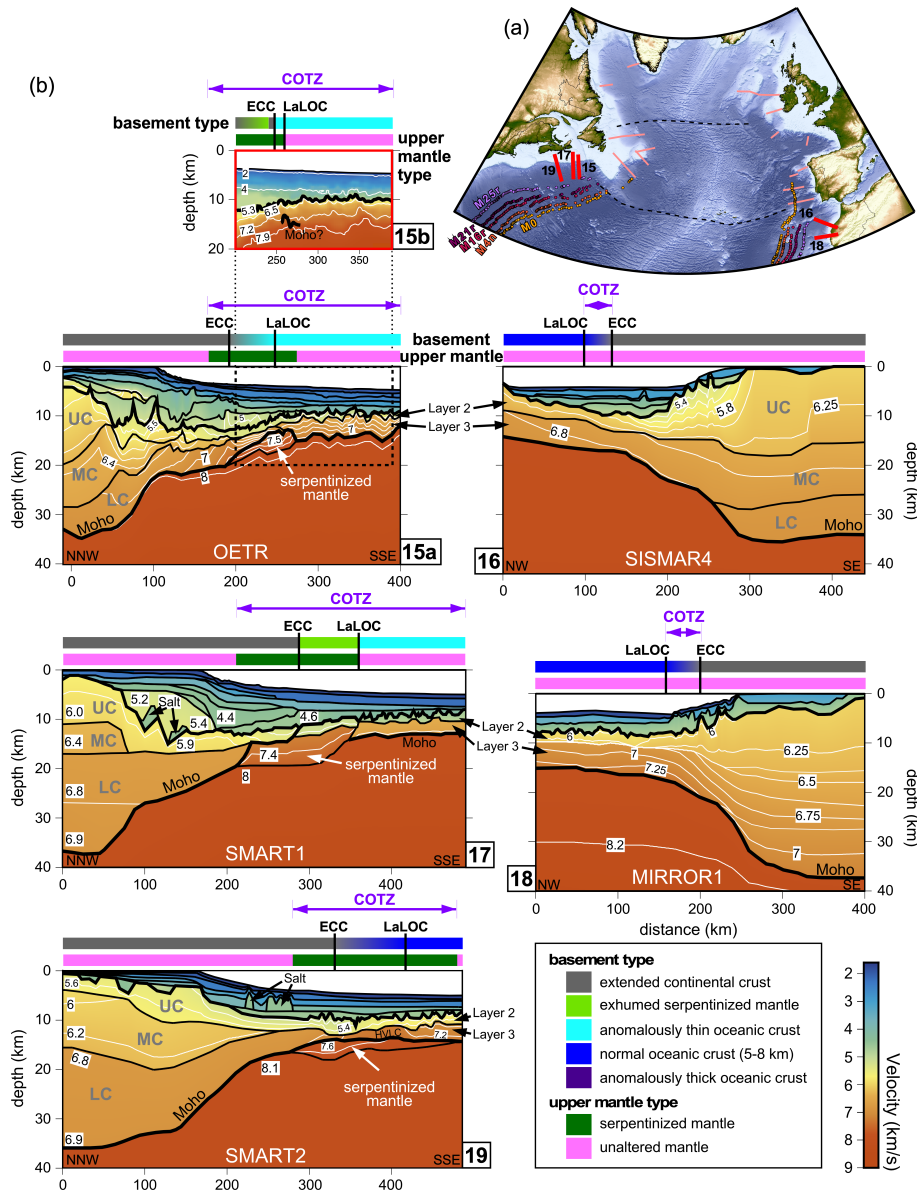
channel seismic (MCS) constraints from a coincident 300 km-long profile, shows the highest resolution and highest degree of complexity for a model in this region, achieved using a dense OBS spacing (approximately 14 km). Gravity modelling was performed to support the interpretation of the velocity model.

345 For profile 14 (Fig. 5), the basement types interpreted by Merino et al. (2021) show thinned continental crust in the east abutting a 60 km-wide zone of exhumed serpentized mantle oceanward, before a 50 km-wide rafted segment of thinned continental crust, possibly intruded by melts, is encountered. Merino et al. (2021) hypothesize that the rafted continental block was originally part of the Newfoundland margin and was orphaned on the Iberian margin due to an abrupt westward jump in the localization of extension. Immediately oceanward of the rafted continental block, a 60 km-wide zone of anomalously thick  
350 oceanic crust is revealed, transitioning to an 80 km-wide zone of anomalously thin oceanic crust, and finally normal oceanic crust. The J-magnetic anomaly lies within the zone of thickened oceanic crust and is interpreted to correspond to the onset of seafloor spreading, as was also interpreted to the north along profile 12 (Grevemeyer et al., 2022). At the eastern end of the profile, the upper mantle type beneath the COTZ is interpreted as serpentized mantle based on the low velocities (Merino et al., 2021). Beneath the rafted continental block, beyond the zone of exhumed mantle, the upper mantle is argued by Merino  
355 et al. (2021) to be faster and more homogeneous than at the eastern end of the profile, consistent with unaltered mantle. Oceanward, mantle velocities decrease gradually from the thicker, to thinner, to normal oceanic crust, although Merino et al. (2021) make no mention of possible serpentization so the unaltered mantle type is extended to the western limit of the profile in this synthesis. The COTZ, as defined for this synthesis, extends for 260 km, and includes the orphaned continental block (Table 2).

## 360 **5.5 Nova Scotia-Morocco margins**

The Nova Scotia and Moroccan conjugate margin pair were the first to experience rifting during the late Triassic and subsequent breakup during the Jurassic within the study region (Schettino and Turco, 2009; Sibuet et al., 2012), with Morocco acting as an independent small plate detached from mainland Africa (Beauchamp et al., 1996; Piqué et al., 1998; Labails et al., 2010). Three RWAR surveys on the Nova Scotia margin (profiles 15, 17, and 19) are presented here, with the oceanwardmost half of  
365 profile 15 covered by both a forward modelled ray traced velocity model (model 15a in Fig. 6; Lau et al. (2018)) as well as a Full-Waveform Inversion model (model 15b in Fig. 6; Jian et al. (2021)) derived using the same OBS data. On the Moroccan side, two RWAR surveys (profiles 16 and 18 in Fig. 1) are used for comparison, corresponding to the SISMAR 4 (Contrucci et al., 2004) and MIRROR 1 (Biari et al., 2015) surveys.

The OETR-2009 RWAR survey (profiles 15a and 15b in this synthesis) followed the track of a coincident seismic reflection  
370 profile, GXT-2000, with OBS spaced between less than 3 km (over the COTZ) and more than 10 km apart (Lau et al., 2018; Jian et al., 2021). For OBS velocity modelling along profile 15a, boundaries on the seismic reflection profile were used to define sedimentary layer geometries. Gravity modelling was performed following velocity modelling for validation (Lau et al., 2018). Meanwhile, the model for profile 15b was obtained using Full Waveform Inversion (Jian et al., 2021) on a subset of the OBS data and no other *a priori* information. Using the FWI-generated velocity model, pre-stack depth migration of the  
375 coincident MCS data was performed and used to constrain the interpretation (Fig. 6).



**Figure 6.** (a) Topography/bathymetry map with location of velocity models in (b) highlighted in red, and all other considered velocity model locations in this study shown in pink. (b) Velocity models reproduced from 15a: Lau et al. (2018), 15b: Jian et al. (2021), 16: Contrucci et al. (2004), 17: Funck et al. (2004), 18: Biari et al. (2015), and 19: Wu et al. (2006). In (a), the dashed black lines are select fracture zones and magnetic chron anomalies from Seton et al. (2014) are plotted as coloured circles (M25r, M21r, M16r, M4n, M0). In (b), model boundaries are shown as solid black lines and velocity contours are shown as solid white lines within the crust. Interpreted basement types and upper mantle types are plotted above each velocity model with colours explained in the legend. Abbreviations: COTZ, continent-ocean transition zone; ECC, edge of continental crust; LaLOC, landward limit of oceanic crust; LC, lower crust; MC, middle crust; UC, upper crust.



The SMART 1 (Funck et al., 2004) and SMART 2 (Wu et al., 2006) RWAR lines (profiles 17 and 19 in Fig. 1, respectively) were acquired in 2001 and coincident seismic reflection data (Keen et al., 1991; Keen and Potter, 1995) were used to define the shallow model layer geometries. Salt bodies were explicitly placed within the models based on their identification along the MCS profiles. Gravity modelling was performed for both velocity models to support the interpretations.

380 For all three long Nova Scotian profiles (15a, 17, and 19 in Fig. 6), gradual continental necking zones are observed, thinning from 30 km to less than 10 km over a lateral distance of approximately 200 km. The two southern profiles (SMART 1 and SMART 2; profiles 17 and 19 in Fig. 6) reveal thinned continental crust beyond the necking zone extending 60 to 80 km oceanward over serpentinized mantle. Meanwhile, the OETR profile (profile 15a in Fig. 6) has a more restricted extent of thinned continental crust beyond the necking zone, with most of it overlying unaltered mantle.

385 In terms of exhumation of serpentinized mantle, profiles 15b and 17 are interpreted by Jian et al. (2021) and by Funck et al. (2004) as comprising <30 and 80 km-wide zones of exhumed serpentinized mantle, respectively, while profile 15a does not show evidence of mantle exhumation at all. Instead, profile 15a shows a gradual transition from thinned continental to embryonic thin oceanic crust across the COTZ (Fig. 6). Meanwhile, the southernmost SMART 2 line (profile 19 in Fig. 6) shows thinned continental crust transitioning to normal oceanic crust.

390 North of profile 19 (SMART 2 line), which encompasses normal 5 km-thick oceanic crust, anomalously thin oceanic crust of less than 5 km thickness is modelled for profiles 15a (Lau et al., 2018), 15b (Jian et al., 2021), and 17 (Funck et al., 2004). These are all attributed to low melt supply during the initiation of seafloor spreading. By including anomalously thin oceanic crust in the COTZ definition herein, the resulting COTZ lateral extents are 235 km (profile 15a), 225 km (profile 15b, adopting the same landward limit as 15a), and 280 km (profile 17). The lateral extent of the COTZ for profile 19 is only slightly narrower  
395 at 200 km but that width is based on the observed extent of unexhumed serpentinized mantle in the velocity model from Wu et al. (2006).

Two Moroccan profiles (SISMAR 4 and MIRROR 1, profiles 16 and 18 in Fig. 6) are included in this synthesis. Both profiles involved the combined acquisition of both MCS and RWAR data, with the former being used to constrain the shallow layer geometries for the latter. The velocity model interpretations were supported by gravity modelling. The Moroccan velocity  
400 models show similar structures, with slightly more abrupt continental necking zones compared to the conjugate Nova Scotian profiles, with crustal thinning from 30 km to less than 10 km occurring over a lateral distance of approximately 160 km. Both Moroccan models comprise very narrow 30 to 40 km-wide COTZ with extended continental crust transitioning to normal oceanic crust. There is no evidence of serpentinized mantle or of exhumed mantle in the basement along the Moroccan margin based on the RWAR models generated to date (Biari et al., 2015; Klingelhoefer et al., 2016).

## 405 **6 Discussion**

The basement types and upper mantle types interpreted in the velocity models presented in Figs. 2 to 6 are summarized in the maps presented in Fig. 7 and in the diagram in Fig. 8. The map views allow for easier regional interpretations and correlations,

while the diagram allows for side by side and conjugate margin comparisons. The widths of the individual basement and upper mantle components, as well as the interpreted COTZ along each profile, are also listed in Table 2.

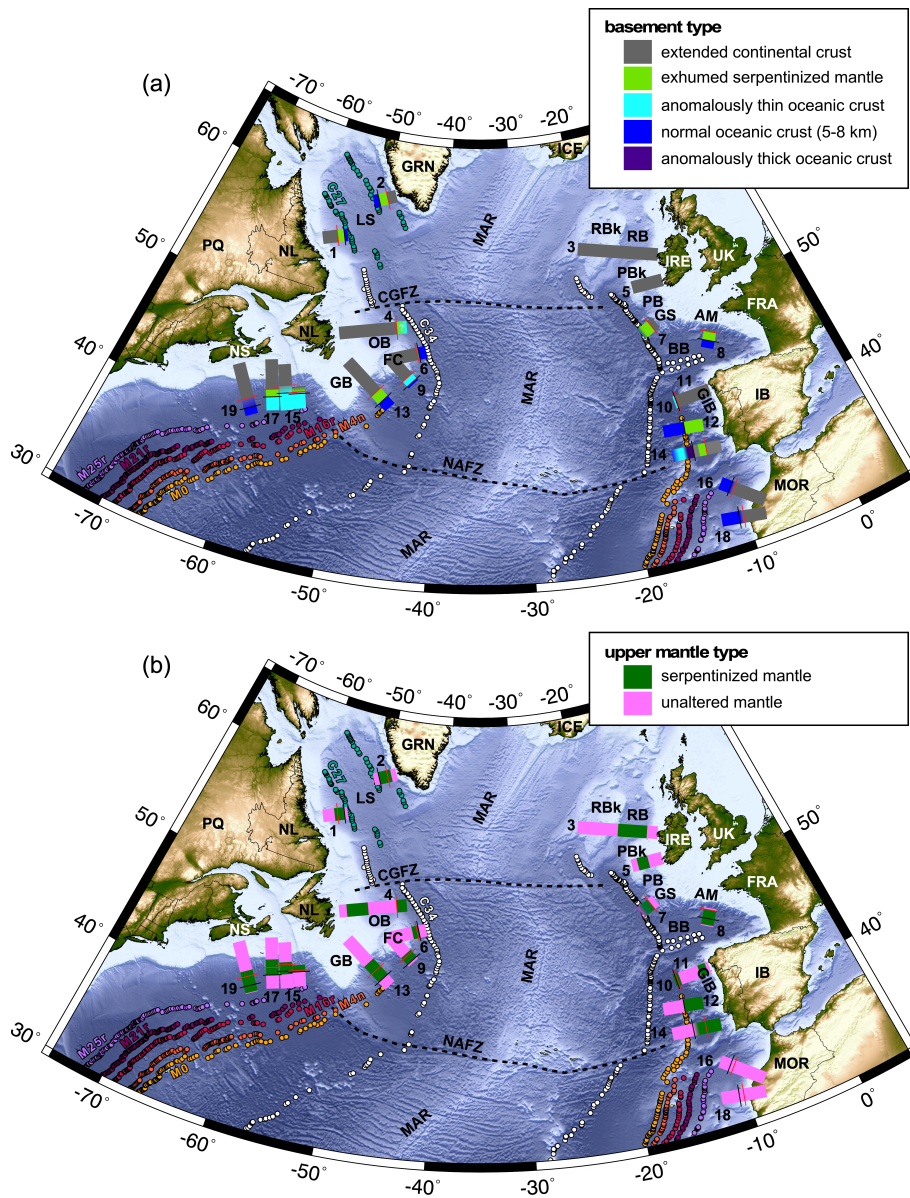
410 For the interpreted basement types (Fig. 7a, and Fig. 8), the greatest variations are observed with regards to the presence/absence, and extent if present, of exhumed serpentized mantle, and with regards to the nature of the oceanic crust (thin versus thick versus normal). The widths of these respective zones are listed in the first two columns of Table 2.

On the North American margins (Fig. 8, left side), exhumed serpentized mantle is modelled on all of the profiles other than profile 9 across Flemish Cap, profile 15a offshore northern Nova Scotia, and profile 19 along the southern Nova Scotian margin. The widths of the exhumed zones vary from 20 km (profile 6) to 95 km (profile 13). On the European margins (Fig. 8, right side), south of the northern Irish margin, which lacks RWAR constraints, exhumed serpentized mantle is ubiquitous down through Iberia, ranging in width from 10 km (profile 10) to 160 km (profile 12), with the narrowest zone outboard of the Galicia Bank continental ribbon. Offshore Morocco, no exhumed serpentized mantle has been observed on RWAR models published to date, revealing a fundamental asymmetry with its Nova Scotian conjugate margin pair (Fig. 8).

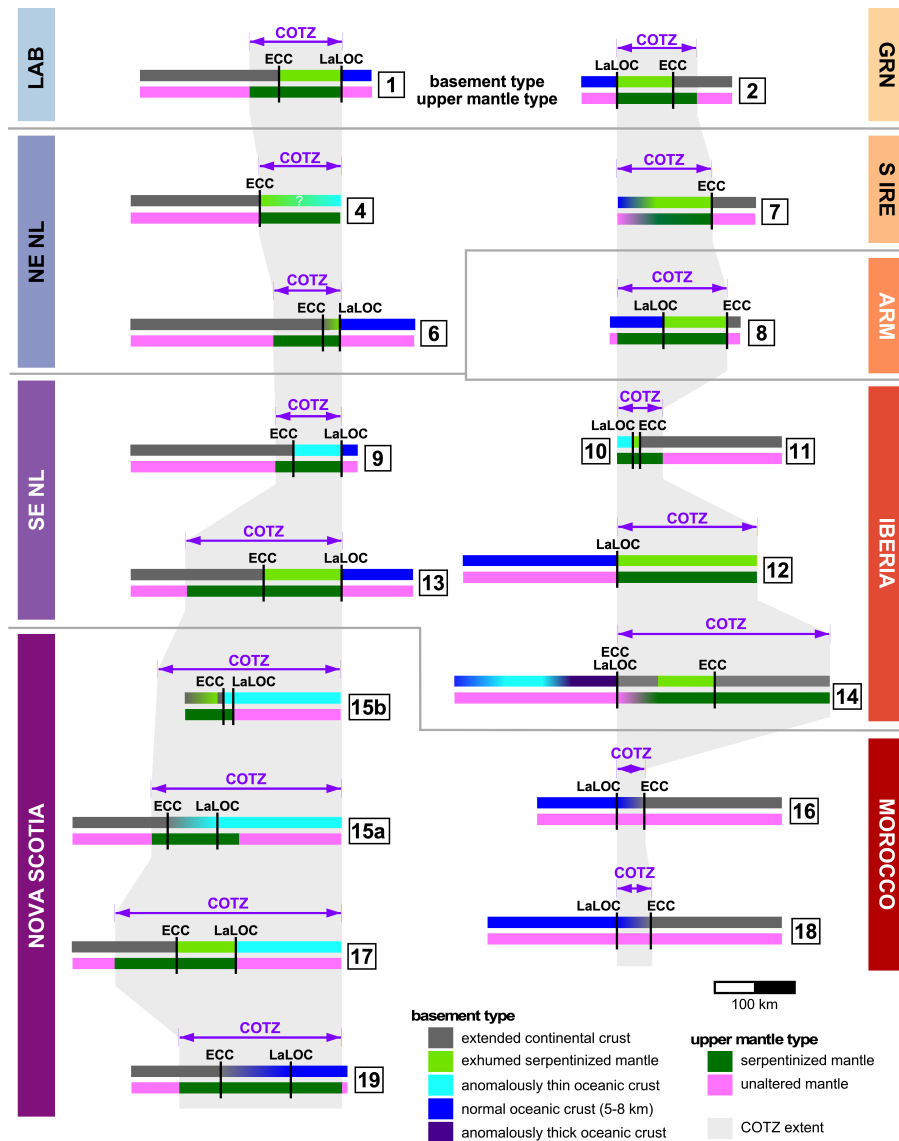
420 The nature of the oceanic crust outboard of the North American margins varies between anomalously thin oceanic crust (profiles 4, 9, 15a, 15b, and 17 in Fig. 7a) and normal oceanic crust (profiles 1, 6, 13, and 19 in Fig. 7a). The densest concentration of anomalously thin oceanic crust is outboard of northern Nova Scotia but elsewhere the variability seems random, perhaps reflecting variable seafloor spreading processes acting at the local scale or simply modelling variations (e.g., OBS spacing, modelling methodology). On the European margins, only two models (profiles 10 and 14) reveal zones of anomalously thin oceanic crust, with the latter model also exhibiting a 60 km-wide zone of anomalously thick oceanic crust immediately inboard of the thin oceanic crust. Merino et al. (2021) interpret this significant lateral variation as corresponding to the J anomaly.

For the interpreted upper mantle types (Fig. 7b and Fig. 8), sub-crustal serpentized mantle appears ubiquitous to all but the Moroccan profiles investigated in this synthesis, with significant variations in terms of the lateral extent of serpentized mantle within the COTZ of individual models, from 55 km (profile 10) to 230 km (profile 14). In addition, wherever failed rifts have been interpreted in the presented profiles (Orphan Basin, Rockall Basin, Porcupine Basin, Galicia Interior Basin; profiles 3, 4, 5, and 11 in Fig. 7b; see Table 2), serpentized mantle is always detected, varying in width from 70 km (profile 11) to 260 km (profile 3). It should be noted though that another RWAR profile across the Orphan Basin but away from the COTZ (not shown; Lau et al. (2015)), oblique to profile 4, did not show evidence for mantle serpentization despite revealing failed rifts.

435 Regardless of whether mantle exhumation is achieved or not, serpentization of mantle requires appropriate temperatures (Bonatti et al., 1984) and that any remaining crust is completely embrittled (Pérez-Gussinyé and Reston, 2001), such that throughgoing crustal faults transport fluids into the mantle. This process can involve an extended period of ultraslow rifting (<20mm/yr; Sauter et al. (2011, 2018); Grevemeyer et al. (2018)), in which sufficient cooling of the lithosphere leads to embrittlement and mantle decompression melting is suppressed. The widespread distribution of serpentized mantle throughout the study region (other than for the Moroccan margin) may be consistent with lengthy ultraslow rifting for the early stages of the southern North Atlantic opening.



**Figure 7.** Topographic/bathymetric maps from ETOPO1 (Amante and Eakins, 2009) of the study area of the central and north Atlantic Ocean, with (a) showing the interpreted basement types summarized in this work, and (b) showing the interpreted upper mantle types summarized in this work. The numbered interpretations in both plots correspond to the seismic refraction/wide-angle reflection (RWAR) profiles described in Table 1. The solid red and black lines intersecting the interpreted polygons correspond to the ECC (edge of continental crust) and LaLOC (landward limit of oceanic crust) boundaries, respectively, highlighted in Figs. 2 to 6. Select fracture zones are delimited by dashed black lines. Select magnetic chron anomalies from Seton et al. (2014) are plotted as coloured circles (M25r, M21r, M16r, M4n, M0, C34, C27) on both plots. Abbreviations: AM, Armorican Margin; BB, Bay of Biscay; CGFZ, Charlie-Gibbs Fracture Zone; FC, Flemish Cap; GB, Grand Banks; GIB, Galicia Interior Basin; GRN, Greenland; GS, Goban Spur; IB, Iberia; IRE, Ireland; LS, Labrador Sea; MAR, Mid-Atlantic Ridge; MOR, Morocco; NAFZ, Newfoundland-Azores Fracture Zone; NL, Newfoundland & Labrador; NS, Nova Scotia; OB, Orphan Basin; PB, Porcupine Basin; PBk, Porcupine Bank; RB, Rockall Basin; RBk, Rockall Bank; UK, United Kingdom.



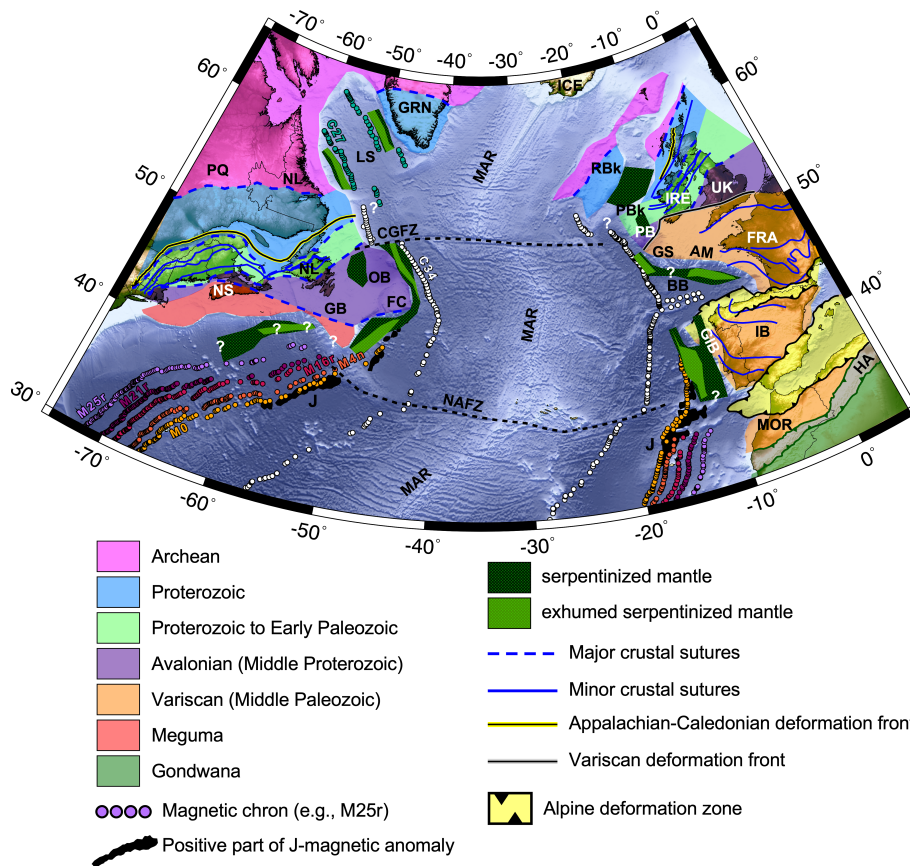
**Figure 8.** Summary diagram capturing the continent-ocean transition zone (COTZ) variations along the North American margins (left side; purple tone labels) and the European/Moroccan margins (right side; orange tone labels). For each side of the diagram, the models are aligned based on the oceanward limit of their interpreted COTZ. Landward portions of some of the sections have been truncated to conserve space. Conjugate margin pairs are roughly delimited by the gray horizontal lines. Basement types are plotted above and upper mantle types are plotted below for each profile (labelled by the numbered squares). The lateral extents of the COTZ synthesized in this contribution are plotted as grey polygons behind the simplified model interpretations. Abbreviations: ARM, Armorican Margin; ECC, edge of continental crust; GRN, Greenland; LaLOC, landward limit of oceanic crust; LAB, Labrador; NE NL, northeast Newfoundland; SE NL, southeast Newfoundland; S IRE, southern Ireland.

## 6.1 Basement, upper mantle, and COTZ regional trends: the role of inheritance

Figures 7 and 8 ultimately reveal the challenges associated with defining continent-ocean transition zones (COTZ) even within the magma-poor margin end member category. Basement types (Figs. 7a and 8) show a range of transition zone components (e.g., thinned continental crust, exhumed serpentinitized mantle, anomalously thin/thick oceanic crust) with variable widths, often with conflicting interpretations in close proximity to each other. Complicating matters further is the fact that these margins often comprise extensive zones of sub-crustal and unexhumed serpentinitized mantle, that extend laterally beyond the interpreted ECC and LaLOC, which are defined solely based on basement types (Fig. 7b). Furthermore, unexhumed serpentinitized mantle is often found far inboard of the present day COTZ due to the presence of failed rifts (Fig. 7a).

By extrapolating the regional extents of modelled zones of exhumed serpentinitized mantle, as well as the broader serpentinitized mantle zones that underlie thinned continental crust and occasionally oceanic crust according to RWAR surveys, the interplay between inheritance and serpentinitization can be investigated (Fig. 9), subject to the variable RWAR profile coverage. To first order, the resulting map highlights that, while inferred mantle serpentinitization is pervasive on all of the interrogated margins in this synthesis (other than the Moroccan margin; Klingelhoefer et al. (2016)), exhumation of that serpentinitized mantle only occurs in proximity to the locus of eventual seafloor spreading. There is also an indication, albeit biased by the available RWAR coverage, that exhumation is greatest in proximity to major fracture zones (NAFZ and CGFZ in Fig. 9), with diminished exhumation towards the Bay of Biscay extinct triple point, at least for Flemish Cap and the northwest Iberian margin.

In terms of a margin's propensity for mantle exhumation, there is no direct spatial correlation between the mapped exhumation patterns in this synthesis and particular basement terranes (Fig. 9). This signifies that while the proximal and necking rifting processes might vary according to inherited structures and crustal fabrics, as argued by Manatschal et al. (2015) and modelled by Jammes and Lavier (2019), hyperextension, mantle serpentinitization and exhumation, which occur at the later stages of rifting, seem to be less influenced by the nature of their continental basement but rather by weakening through mineral hydration (Manatschal et al., 2015), by formation of detachment faults (Jammes and Lavier, 2019), due to insufficient magma supply during continued extension, and/or according to fundamental rifting parameters such as rift velocity (Huisman and Beaumont, 2007; Tetreault and Buitert, 2018). According to Brune et al. (2016), rifting velocities tend to be slow for the first two thirds of the rift evolution and then speed up for the last third, with the fast phase starting approximately 10 Myr before breakup is achieved. This piece-wise acceleration, which is thought to result from a feedback loop where strain softening processes increase non-linearly over time as deformation continues, may be sufficient to explain why unexhumed mantle serpentinitization is so widespread, presumably occurring during slower rifting even within failed rifts, but that the exhumation requires the rift acceleration to breach the embrittled crust entirely, and so is only observed immediately prior to breakup (Huisman and Beaumont, 2007). For this hypothesis to extend to failed rifts like the Porcupine Basin, where mantle exhumation has been posited (Reston et al., 2001), breakup would have to have been aborted soon after exhumation, consistent with Chen et al. (2018) who interpret limited seafloor spreading in the basin. Such a scenario cannot be ruled out given the complex



**Figure 9.** Topographic/bathymetric map from ETOPO1 (Amante and Eakins, 2009) of the study area of the southern North Atlantic Ocean subdivided by inferred basement affinity of continental crust, adapted from Jolivet et al. (2021), Tyrrell et al. (2007), Waldron et al. (2022), and Ziegler and Dèzes (2006). Interpreted extents of serpentinized mantle (hashed green polygons) with zones of exhumed serpentinized mantle (hashed light green polygons), extrapolated from Fig. 7, are overlain (areas marked with white question marks lack RWAR coverage). Select fracture zones are delimited by dashed black lines. Select magnetic chron anomalies from Seton et al. (2014) are plotted as coloured circles (M25r, M21r, M16r, M4n, M0, C34, C27). The positive portions of the J-magnetic anomaly from Nirrengarten et al. (2016) are plotted as black polygons. Abbreviations: AM, Armorican Margin; BB, Bay of Biscay; CGFZ, Charlie-Gibbs Fracture Zone; FC, Flemish Cap; GB, Grand Banks; GIB, Galicia Interior Basin; GRN, Greenland; GS, Goban Spur; HA, High Atlas; IB, Iberia; IRE, Ireland; LS, Labrador Sea; MAR, Mid-Atlantic Ridge; MOR, Morocco; NAFZ, Newfoundland-Azores Fracture Zone; NL, Newfoundland & Labrador; NS, Nova Scotia; OB, Orphan Basin; PB, Porcupine Basin; PBk, Porcupine Bank; RB, Rockall Basin; RBk, Rockall Bank; UK, United Kingdom.

475 3-D nature of the tectonic forcings involved with oblique rifting of lithosphere (Brune et al., 2018) with a recent history of orogenesis (Yang et al., 2021; Péron-Pinvidic et al., 2022).

In this synthesis, an attempt has been made to standardize the definition of the COTZ for the southern North Atlantic Ocean so that the COTZ lateral extents along each margin can be quantified and compared using the RWAR velocity models

considered. These interpreted COTZ extents are listed in Table 2 (fifth column) and are also shown graphically in Fig. 8 as  
480 light grey envelopes underlying the simplified model interpretations. That plot generally reveals symmetric COTZ widths all the  
way from the Labrador Sea to the southern Newfoundland and Iberian margins, with the Armorican margin (profile 8) perhaps  
departing from that symmetry due to anomalous mantle fertility and lithospheric strength than its conjugate and along-strike  
counterparts (Mouthereau et al., 2021). North of the Newfoundland-Azores Fracture Zone (NAFZ), the symmetry of COTZ  
extents occurs regardless of the basement types comprising the COTZ. However, significant asymmetry in the COTZ arises  
485 abruptly south of the NAFZ where the Nova Scotian margin COTZ is up to 9 times wider than along the Moroccan margin  
(consider profile 17 versus profile 16). This implies a fundamental contrast in possibly rifting mechanisms, rift velocities,  
thermal conditions, and/or inherited mantle rheology and fertility (Chenin et al., 2015, 2017, 2019; Mouthereau et al., 2021)  
across the NAFZ.

The NAFZ is a fascinating fracture zone as it aligns with the southern boundary of the present-day Grand Banks of the  
490 Newfoundland continental shelf, as well as the southern limit of the earlier St. Lawrence Promontory, which formed during  
the breakup of Rodinia and the creation of the Iapetus Ocean (Williams, 1984; Thomas, 2019). The spatial correlation between  
the abrupt change in COTZ symmetry at the NAFZ and the NAFZ possibly representing a long-lived fundamental lithospheric  
boundary that endured through two consecutive Wilson cycles (Thomas, 2019) underlines the point that lithospheric mantle in-  
heritance can endure for a billion years and can supercede shallower crustal influences during subsequent tectonism (Stockmal  
495 et al., 1987; Hibbard and Waldron, 2009; Waldron et al., 2015; White and Waldron, 2022). Addressing this persistent litho-  
spheric memory requires greater consideration of deeper processes during rifting and a recognition of the limitations associated  
with the simple Wilson Cycle framework.

## 6.2 Avenues for future research and potential rewards

Based on the synthesis of available RWAR velocity models of the southern North Atlantic Ocean, mapped continent-ocean  
500 transition zones (COTZ) show symmetric lateral extents north of the NAFZ and asymmetric extents further south, while com-  
prising a range of different basement types (e.g., thinned continental crust, exhumed mantle, anomalously thin oceanic crust),  
ubiquitously underlain by serpentinized mantle (except for offshore Morocco). While patterns are beginning to emerge, it  
is abundantly clear that significant research is still needed in order to properly understand the rift-to-drift evolution along  
magma-poor margins. Several key avenues for future research are proposed.

505 Given the unmatched and crucial value of RWAR profiling for determining crustal and mantle velocities, as well as delimit-  
ing key horizontal boundaries like the Moho and lateral variations attributable to continent-ocean transitions, clearly more  
geophysical surveys are needed to fill coverage gaps (particularly across continent-ocean transition zones) and to ensure that  
margins are being compared using similar data acquisition parameters and modelling approaches. As clearly demonstrated  
by Grevenmeyer et al. (2022), a dense spacing of OBS (10-12 km) is pivotal for high resolution characterization of continent-  
510 ocean transition zones. The resulting models allow for improved correlations with independent and co-located geophysical  
constraints such as shipboard magnetic data, and increase confidence in posited interpretations. Furthermore, as demonstrated  
by the direct comparison of models generated by conventional FMRT modelling (Lau et al., 2018) and FWI (Jian et al., 2021)



using the exact same input data but yielding different models and interpretations (models 15a and 15b in Fig. 6), comparable modelling approaches need to be used in order to reliably identify velocity model features that can be attributed to real geological phenomena. To this end, synthetic modelling of RWAR acquisition parameters to determine optimal OBS spacings and their influence on modelling outputs are needed.

Where high resolution velocity structural models do now exist, such as for southwest Iberia (Merino et al., 2021; Grevemeyer et al., 2022), significant variations in mantle exhumation and the onset of oceanic crustal accretion are revealed over relatively short spatial scales. To explain these variations, an enhanced need for numerical modelling efforts now exists, to complement existing work (Bowling and Harry, 2001; Pérez-Gussinyé et al., 2001; Pérez-Gussinyé and Reston, 2001; Pérez-Gussinyé et al., 2006; Huisman and Beaumont, 2007; Theunissen and Huisman, 2022; Liu et al., 2023), with particular emphasis placed on which key parameters (e.g., rift velocity, thermal structure, magmatic contributions, hydrothermal circulation, mantle rheology and fertility (Chenin et al., 2015, 2017, 2019; Mouthereau et al., 2021)) control and/or influence localized rifting processes and seafloor spreading mechanisms. While these parameters can be more effectively isolated and their impacts quantified using 2-D numerical models, their incorporation into 3-D models is the ultimate goal if the complexities of the southern North Atlantic are to be properly explained.

Continent-ocean transition zones hold great potential for advancing the energy transition, with serpentized mantle representing an important global source of geologic hydrogen (Albers et al., 2021; Milkov, 2022; Liu et al., 2023), and ultramafic rocks serving the role of both effective carbon sequestration reservoirs (Goldberg et al., 2010; Schwarzenbach et al., 2013; Picazo et al., 2020; Coltat et al., 2021) as well as sources of critical minerals (Hannington et al., 2017; Patten et al., 2022). An improved understanding of the processes involved in their formation and the key controlling parameters is essential for characterizing these zones offshore and explaining their occurrences in subsequent orogenesis onshore.

## 7 Conclusions

In this study, the continent-ocean transition zones (COTZ) of the southern North Atlantic Ocean have been synthesized using seismic refraction/wide-angle reflection (RWAR) profiling in order to elucidate variations in both interpreted basement types and upper mantle types, as well as to extract regional trends in COTZ components and distributions. The main findings are:

- COTZ in the southern North Atlantic Ocean are generally associated with zones of exhumed serpentized mantle, of variable width, with most margins (other than Morocco) comprising extensive zones of unexhumed sub-crustal serpentized mantle.
- Variations in oceanic crustal thicknesses within COTZ may reflect localized seafloor spreading processes or may simply show that different OBS spacings and methodological approaches can generate conflicting results at the oceanward limits of the RWAR profiles.
- Regardless of their basement components (e.g., thin continental, exhumed mantle, anomalously thin oceanic), COTZ of the southern North Atlantic show symmetric lateral extents north of the Newfoundland-Azores Fracture Zone all the



545 way to the Labrador Sea but a stark asymmetry exists further south, possibly due to fundamental differences in rifting mechanisms, rifting velocities, the thermal regime, and/or rheological and petrological variations of the continental lithosphere.

– Significant RWAR data gaps exist, particularly for the northern Irish Atlantic margins, and a clearer understanding of optimal data acquisition and modelling approaches is needed to properly characterize continent-ocean transition zones using these methods.

550

– A more profound understanding of continent-ocean transition zones offshore is needed to identify the key parameters that drive their evolution. This groundwork is essential for evaluating the incorporation of these zones into later orogenesis revealed onshore.

*Author contributions.* JKW developed the concept for the contribution. JKW prepared the figures and the manuscript.

555 *Competing interests.* The author declares that they have no conflict of interest.

*Acknowledgements.* This work is supported by a Natural Sciences and Engineering Research Council of Canada Discovery Grant to JKW. Marta Pérez-Gussinyé is thanked for many constructive discussions that ultimately inspired this contribution. Thomas Funck, Ingo Greve-meyer, Helen Lau, Manel Prada, and Cesar Ranero are thanked for providing their original velocity model files (see Table 1). Thomas Funck is further thanked for providing the velocity model colour palette, originally developed by Frauke Klingelhoefer, for consistency with other nearby compilations (Funck et al., 2017; Keen et al., 2022). Frédéric Mouthereau, Georgios-Pavlos Farangitakis, and two anonymous reviewers are acknowledged for their insightful and constructive comments that helped improve the manuscript.

560

## References

- Afilhado, A., Matias, L., Shiobara, H., Hirn, A., Mendes-Victor, L., and Shimamura, H.: From unthinned continent to ocean: the deep structure of the West Iberia passive continental margin at 38<sup>circ</sup> N, *Tectonophysics*, 458, 9–50, 2008.
- 565 Albers, E., Bach, W., Pérez-Gussinyé, M., McCammon, C., and Frederichs, T.: Serpentinization-Driven H<sub>2</sub> Production From Continental Break-Up to Mid-Ocean Ridge Spreading: Unexpected High Rates at the West Iberia Margin, *Frontiers in Earth Science*, 9, <https://doi.org/10.3389/feart.2021.673063>, 2021.
- Alves, T. M. and Cunha, T. A.: A phase of transient subsidence, sediment bypass and deposition of regressive–transgressive cycles during the breakup of Iberia and Newfoundland, *Earth and Planetary Science Letters*, 484, 168–183, 2018.
- 570 Amante, C. and Eakins, B.: ETOPO1 1 Arc-Minute Global Relief Model: Procedures, Data Sources and Analysis, in: NOAA Technical Memorandum NESDIS NGDC-24, doi:10.7289/V5C8276M, National Geophysical Data Center, NOAA, 2009.
- Argand, E.: La tectonique de l'Asie. Conférence faite à Bruxelles, le 10 août 1922, in: Congrès géologique international (XIIIe session) - Belgique, pp. 171–372, 1922.
- Beauchamp, W., Barazangi, M., Demnati, A., and Alji, M. E.: Intracontinental rifting and inversion: Missouri basin and Atlas mountains, Morocco, *AAPG bulletin*, 80, 1459–1481, 1996.
- 575 Begović, S.: Structure and physical properties of the subduction plate boundary, Ph.D. thesis, Universitat de Barcelona, 2020.
- Beslier, M., Ask, M., and Boillot, G.: Ocean-continent boundary in the Iberia Abyssal Plain from multichannel seismic data, *Tectonophysics*, 218, 383–393, 1993.
- Biari, Y., Klingelhoefer, F., Sahabi, M., Aslanian, D., Schnurle, P., Berglar, K., Moulin, M., Mehdi, K., Graindorge, D., Evain, M., Benabdellouahed, M., and Reichert, C.: Deep crustal structure of the North-West African margin from combined wide-angle and reflection seismic data (MIRROR seismic survey), *Tectonophysics*, 656, 154 – 174, <https://doi.org/https://doi.org/10.1016/j.tecto.2015.06.019>, 2015.
- 580 Biari, Y., Klingelhoefer, F., Franke, D., Funck, T., Loncke, L., Sibuet, J.-C., Basile, C., Austin, J. A., Rigoti, C. A., Sahabi, M., Benabdellouahed, M., and Roest, W. R.: Structure and evolution of the Atlantic passive margins: A review of existing rifting models from wide-angle seismic data and kinematic reconstruction, *Marine and Petroleum Geology*, 126, 104898, <https://doi.org/https://doi.org/10.1016/j.marpetgeo.2021.104898>, 2021.
- 585 Boddupalli, B., Minshull, T. A., Morgan, J., Bayrakci, G., and Klaeschen, D.: Comparison of 2-D and 3-D full waveform inversion imaging using wide-angle seismic data from the Deep Galicia Margin, *Geophysical Journal International*, 227, 228–256, <https://doi.org/10.1093/gji/ggab164>, 2021.
- Boddupalli, B., Minshull, T. A., Bayrakci, G., Lymer, G., Klaeschen, D., and Reston, T. J.: Insights Into Exhumation and Mantle Hydration Processes at the Deep Galicia Margin From a 3D High-Resolution Seismic Velocity Model, *Journal of Geophysical Research: Solid Earth*, 127, e2021JB023220, <https://doi.org/https://doi.org/10.1029/2021JB023220>, e2021JB023220 2021JB023220, 2022.
- 590 Boillot, G., Grimaud, S., Mauffret, A., Mougénot, D., Mergoïl-Daniel, J., Kornprobst, J., and Torrent, G.: Ocean-continent boundary off the Iberian margin: a serpentinite diapir west of the Galicia Bank, *Earth and Planetary Science Letters*, 48, 23–34, 1980.
- Bonatti, E., Lawrence, J. R., and Morandi, N.: Serpentinization of oceanic peridotites: temperature dependence of mineralogy and boron content, *Earth and Planetary Science Letters*, 70, 88–94, [https://doi.org/https://doi.org/10.1016/0012-821X\(84\)90211-5](https://doi.org/https://doi.org/10.1016/0012-821X(84)90211-5), 1984.
- 595 Bowling, J. C. and Harry, D. L.: Geodynamic models of continental extension and the formation of non-volcanic rifted continental margins, *Geological Society, London, Special Publications*, 187, 511–536, <https://doi.org/10.1144/GSL.SP.2001.187.01.25>, 2001.

- Brenders, A. J. and Pratt, R. G.: Full waveform tomography for lithospheric imaging: results from a blind test in a realistic crustal model, *Geophysical Journal International*, 168, 133–151, <https://doi.org/10.1111/j.1365-246X.2006.03156.x>, 2007.
- 600 Bronner, A., Sauter, D., Manatschal, G., Péron-Pinvidic, G., and Munschy, M.: Magmatic breakup as an explanation for magnetic anomalies at magma-poor rifted margins, *Nature Geoscience*, 4, 549–553, <https://doi.org/10.1038/ngeo1201>, 2011.
- Brune, S., Williams, S. E., Butterworth, N. P., and Müller, R. D.: Abrupt plate accelerations shape rifted continental margins, *Nature*, 536, 201–204, <https://doi.org/10.1038/nature18319>, 2016.
- Brune, S., Heine, C., Clift, P. D., and Pérez-Gussinyé, M.: Rifted margin architecture and crustal rheology: reviewing Iberia-Newfoundland, 605 Central South Atlantic, and South China Sea, *Marine and Petroleum Geology*, 79, 257–281, 2017.
- Brune, S., Williams, S. E., and Müller, R.: Oblique rifting: the rule, not the exception, *Solid Earth*, 9, 1187–1206, 2018.
- Buiter, S. J. and Torsvik, T. H.: A review of Wilson Cycle plate margins: A role for mantle plumes in continental break-up along sutures?, *Gondwana Research*, 26, 627–653, <https://doi.org/https://doi.org/10.1016/j.gr.2014.02.007>, 2014.
- Bullock, A. D. and Minshull, T. A.: From continental extension to seafloor spreading: crustal structure of the Goban Spur rifted margin, 610 southwest of the UK, *Geophysical Journal International*, 163, 527–546, 2005.
- Causser, A., Pérez-Díaz, L., Adam, J., and Eagles, G.: Uncertainties in break-up markers along the Iberia–Newfoundland margins illustrated by new seismic data, *Solid Earth*, 11, 397–417, <https://doi.org/10.5194/se-11-397-2020>, 2020.
- Cawood, P. A. and Buchan, C.: Linking accretionary orogenesis with supercontinent assembly, *Earth-Science Reviews*, 82, 217–256, <https://doi.org/https://doi.org/10.1016/j.earscirev.2007.03.003>, 2007.
- 615 Červený, V. and Pšenčík, I.: 2-D seismic ray package, Tech. rep., Research Report, Institute of Geophysics, Charles University, Prague, 1981.
- Červený, V. and Pšenčík, I.: SEIS83 - Numerical modeling of seismic wave fields in 2-D laterally varying layered structures by the ray method, in: *Documentation of earthquake algorithms*, edited by Engdahl, E., vol. Report SE-35, pp. 36–40, World Data Center (A) for Solid Earth Geophysics, Boulder, CO, USA, 1984.
- Červený, V., Molotkov, I., and Pšenčík, I.: *Ray method in seismology*, 214 pp., University of Karlova, Prague, 1977.
- 620 Chalmers, J. A. and Laursen, K. H.: Labrador Sea: the extent of continental and oceanic crust and the timing of the onset of seafloor spreading, *Marine and Petroleum Geology*, 12, 205–217, 1995.
- Chen, C., Watremez, L., Prada, M., Minshull, T., Edwards, R., O'Reilly, B., Reston, T., Wagner, G., Gaw, V., Klaschen, D., and Shannon, P.: From continental hyperextension to seafloor spreading: new insights on the Porcupine Basin from wide-angle seismic data, *Journal of Geophysical Research*, 123, 8312–8330, doi:10.1029/2018JB016375, 2018.
- 625 Chenin, P., Manatschal, G., Lavier, L. L., and Erratt, D.: Assessing the impact of orogenic inheritance on the architecture, timing and magmatic budget of the North Atlantic rift system: a mapping approach, *Journal of the Geological Society, London*, 172, 711–720, doi:10.1144/jgs2014-139, 2015.
- Chenin, P., Manatschal, G., Picazo, S., Müntener, O., Karner, G., Johnson, C., and Ulrich, M.: Influence of the architecture of magma-poor hyperextended rifted margins on orogens produced by the closure of narrow versus wide oceans, *Geosphere*, 13, 559–576, 2017.
- 630 Chenin, P., Picazo, S., Jammes, S., Manatschal, G., Müntener, O., and Karner, G.: Potential role of lithospheric mantle composition in the Wilson cycle: a North Atlantic perspective, in: *Fifty Years of the Wilson Cycle Concept in Plate Tectonics*, edited by Wilson, R., Houseman, G., McCaffrey, K., Doré, A., and Buiter, S., vol. 470, pp. 157–172, doi:10.1144/SP470.10, Geological Society of London, Special Publications, <https://doi.org/10.1144/SP470.10>, 2019.
- Chian, D. and Loudon, K. E.: The structure of Archean-Ketilidian crust along the continental shelf of southwestern Greenland from a seismic 635 refraction profile, *Canadian Journal of Earth Sciences*, 29, 301–313, 1992.

- Chian, D. and Louden, K. E.: The continent-ocean crustal transition across the southwest Greenland margin, *Journal of Geophysical Research*, 99, 9117–9135, 1994.
- Chian, D., Louden, K. E., and Reid, I.: Crustal structure of the Labrador Sea conjugate margin and implications for the formation of nonvolcanic continental margins, *Journal of Geophysical Research*, 100, 24 239–24 253, 1995.
- 640 Chian, D., Reid, I., and Jackson, H.: Crustal structure beneath Orphan Basin and implications for nonvolcanic continental rifting, *Journal of Geophysical Research*, 106, 10,923–10,940, 2001.
- Coltat, R., Boulvais, P., Branquet, Y., Richard, A., Tarantola, A., and Manatschal, G.: Moho carbonation at an ocean-continent transition, *Geology*, 50, 278–283, <https://doi.org/10.1130/G49363.1>, 2021.
- Contrucci, I., ofer, F. K., Perrot, J., Bartolome, R., Gutscher, M.-A., Sahabi, M., Malod, J., and Rehault, J.-P.: The crustal structure of the  
645 NW Moroccan continental margin from wide-angle and reflection seismic data, *Geophysical Journal International*, 159, 117–128, 2004.
- Crosby, A., White, N., Edwards, G., and Shillington, D. J.: Evolution of the Newfoundland-Iberia conjugate rifted margins, *Earth and Planetary Science Letters*, 273, 214–226, 2008.
- Davy, R. G., Morgan, J. V., Minshull, T. A., Bayrakci, G., Bull, J. M., Klaeschen, D., Reston, T. J., Sawyer, D. S., Lymer, G., and Cresswell, D.: Resolving the fine-scale velocity structure of continental hyperextension at the Deep Galicia Margin using full-waveform inversion,  
650 *Geophysical Journal International*, 212, 244–263, <https://doi.org/10.1093/gji/ggx415>, 2017.
- de Graciansky, P. and Poag, C.: Geologic history of Goban Spur, northwest Europe continental margin, in: *Initial Reports of the DSDP*, edited by de Graciansky, P. and Poag, C., vol. 80, chap. 58, pp. 1187–1216, doi:10.2973/dsdp.proc.80.158.1985, US Government Printing Office, Washington, D.C., 1985.
- Dean, S., Minshull, T., Whitmarsh, R., and Louden, K.: Deep structure of the ocean-continent transition in the southern Iberia Abyssal Plain  
655 from seismic refraction profiles: the IAM-9 transect at 40°20'N, *Journal of Geophysical Research*, 105, 5859–5886, 2000.
- Druet, M., noz Martín, A. M., na, J. G.-B., Carbó-Gorosabel, A., Acosta, J., Llanes, P., and Ercilla, G.: Crustal structure and continent-ocean boundary along the Galicia continental margin (NW Iberia): insights from combined gravity and seismic interpretation, *Tectonics*, 2017.
- Eagles, G., Pérez-Díaz, L., and Scarselli, N.: Getting over continent ocean boundaries, *Earth-Science Reviews*, 151, 244–265, <https://doi.org/https://doi.org/10.1016/j.earscirev.2015.10.009>, 2015.
- 660 Eddy, M. P., Jagoutz, O., and Ibañez-Mejía, M.: Timing of initial seafloor spreading in the Newfoundland-Iberia rift, *Geology*, 45, 527–530, 2017.
- Eldholm, O., Thiede, J., and Taylor, E.: Evolution of the Vøring Volcanic Margin, Proc., scientific results, ODP, Leg 104, Norwegian Sea, 104, 1033–1065, <https://doi.org/10.2973/odp.proc.sr.104.191.1989>, 1989.
- Eldholm, O., Gladchenko, T. P., Skogseid, J., and Planke, S.: Atlantic volcanic margins: a comparative study, Geological Society, London,  
665 *Special Publications*, 167, 411–428, <https://doi.org/10.1144/GSL.SP.2000.167.01.16>, 2000.
- Epin, M. E., Manatschal, G., Amman, M., Ribes, C., Clause, A., Guffon, T., and Lescanne, M.: Polyphase tectono-magmatic evolution during mantle exhumation in an ultra-distal, magma-poor rift domain: example of the fossil Platta ophiolite, SE Switzerland, *International Journal of Earth Sciences*, 108, 2443–2467, <https://doi.org/10.1007/s00531-019-01772-0>, 2019.
- Franke, D.: Rifting, lithosphere breakup and volcanism: Comparison of magma-poor and volcanic rifted margins, *Marine and Petroleum  
670 Geology*, 43, 63–87, <https://doi.org/https://doi.org/10.1016/j.marpetgeo.2012.11.003>, 2013.
- Frizon de Lamotte, D., Fourdan, B., Leleu, S., Leparmentier, F., and de Clarens, P.: Style of rifting and the stages of Pangea breakup, *Tectonics*, 34, 1009–1029, doi:10.1002/2014TC003 760, <https://doi.org/https://doi.org/10.1002/2014TC003760>, 2015.

- Funck, T. and Louden, K. E.: Wide-angle seismic imaging of pristine Archean crust in the Nain Province, Labrador, *Canadian Journal of Earth Sciences*, 35, 672–685, 1998.
- 675 Funck, T. and Louden, K. E.: Wide-angle seismic transect across the Torngat Orogen, northern Labrador: evidence for a Proterozoic crustal root, *Journal of Geophysical Research*, 104, 7463–7480, 1999.
- Funck, T. and Louden, K. E.: Wide-angle seismic imaging of a Mesoproterozoic anorthosite complex: the Nain Plutonic Suite in Labrador, Canada, *Journal of Geophysical Research*, 105, 25 693–25 707, 2000.
- Funck, T., Louden, K. E., and Hall, J.: Wide-angle reflectivity across the Torngat Orogen, NE Canada, *Geophysical Research Letters*, 28, 680 3541–3544, 2001a.
- Funck, T., Louden, K. E., and Reid, I.: Crustal structure of the Grenville Province in southeastern Labrador from refraction seismic data: evidence for a high-velocity lower crustal wedge, *Canadian Journal of Earth Sciences*, 38, 1463–1478, 2001b.
- Funck, T., Hopper, J. R., Larsen, H. C., Louden, K. E., Tucholke, B. E., and Holbrook, W. S.: Crustal structure of the ocean-continent transition at Flemish Cap: seismic refraction results, *Journal of Geophysical Research*, 108, doi:10.1029/2003JB002434, 2003.
- 685 Funck, T., Jackson, H. R., Louden, K. E., Dehler, S. A., and Wu, Y.: Crustal structure of the northern Nova Scotia rifted continental margin (Eastern Canada), *Journal of Geophysical Research*, 109, 2004.
- Funck, T., Jackson, H., Louden, K. E., and ofer, F. K.: Seismic study of the transform-rifted margin in Davis Strait between Baffin Island (Canada) and Greenland: what happens when a plume meets a transform, *Journal of Geophysical Research*, 112, doi:10.1029/2006JB004308, 2007.
- 690 Funck, T., Hansen, A., Reid, I., and Louden, K. E.: The crustal structure of the southern Nain and Makkovik provinces of Labrador derived from refraction seismic data, *Canadian Journal of Earth Sciences*, 45, 465–481, 2008.
- Funck, T., Dehler, S., Chapman, C., Delescluse, M., Iulicucci, J., Iulicucci, R., Judge, W., Meslin, P., and Ruhnau, M.: Cruise Report of the SIGNAL 2009 Refraction Seismic Cruise (Hudson 2009-019), Open file # 6442, 110 p., Geological Survey of Canada, 2010.
- Funck, T., Erlendsson, Ö., Geissler, W. H., Gradmann, S., Kimbell, G. S., McDermott, K., and Petersen, U. K.: A review of the 695 NE Atlantic conjugate margins based on seismic refraction data, *Geological Society, London, Special Publications*, 447, 171–205, <https://doi.org/10.1144/SP447.9>, 2017.
- Gerlings, J., Louden, K., and Jackson, H.: Crustal structure of the Flemish Cap Continental Margin (eastern Canada): an analysis of a seismic refraction profile, *Geophysical Journal International*, 185, 30–48, 2011.
- Gerlings, J., Louden, K. E., Minshull, T. A., and Nedimovic, M. R.: Flemish Cap-Goban Spur conjugate margins: new evidence of asymmetry, 700 *Geology*, 40, 1107–1110, 2012.
- Gillard, M., Tugend, J., Müntener, O., Manatschal, G., Karner, G. D., Autin, J., Sauter, D., Figueredo, P. H., and Ulrich, M.: The role of serpentinization and magmatism in the formation of decoupling interfaces at magma-poor rifted margins, *Earth-Science Reviews*, 196, 102 882, <https://doi.org/https://doi.org/10.1016/j.earscirev.2019.102882>, 2019.
- Ginzburg, A., Whitmarsh, R., Roberts, D., Montadert, L., Camus, A., and Avedik, F.: The deep seismic structure of the northern continental 705 margin of the Bay of Biscay, *Annales Geophysicae*, 3, 499–510, 1985.
- Gohl, K. and Smithson, S.: Structure of Archean crust and passive margin of southwest Greenland from seismic wide-angle data, *Journal of Geophysical Research*, 98, 6623–6638, doi:10.1029/93JB00016, 1993.
- Goldberg, D. S., Kent, D. V., and Olsen, P. E.: Potential on-shore and off-shore reservoirs for CO<sub>2</sub> sequestration in Central Atlantic magmatic province basalts, *Proceedings of the National Academy of Sciences*, 107, 1327–1332, 710 <https://doi.org/10.1073/pnas.0913721107>, 2010.

- Górszczyk, A., Brossier, R., and Métivier, L.: Graph-Space Optimal Transport Concept for Time-Domain Full-Waveform Inversion of Ocean-Bottom Seismometer Data: Nankai Trough Velocity Structure Reconstructed From a 1D Model, *Journal of Geophysical Research: Solid Earth*, 126, e2020JB021504, <https://doi.org/https://doi.org/10.1029/2020JB021504>, e2020JB021504 2020JB021504, 2021.
- 715 Gouiza, M. and Naliboff, J.: Rheological inheritance controls the formation of segmented rifted margins in cratonic lithosphere, *Nature Communications*, 12, 4653, doi:10.1038/s41467-021-24945-5, <https://doi.org/10.1038/s41467-021-24945-5>, 2021.
- Gradstein, F., Ogg, J., Schmitz, M., and Ogg, G., eds.: *The Geologic Time Scale 2012*, Elsevier, 2012.
- Grevemeyer, I., Hayman, N. W., Peirce, C., Schwardt, M., van Avendonk, H. J., Dannowski, A., and Papenberg, C.: Episodic magmatism and serpentized mantle exhumation at an ultraslow-spreading centre, *Nature Geoscience*, 11, 444–448, 2018.
- Grevemeyer, I., Ranero, C. R., Papenberg, C., Sallares, V., Bartolomé, R., Prada, M., Batista, L., and Neres, M.: The continent-to-ocean transition in the Iberia Abyssal Plain, *Geology*, 50, 615–619, <https://doi.org/10.1130/G49753.1>, 2022.
- 720 Grion, S., Exley, R., Manin, M., Miao, X., Pica, A., Wang, Y., Granger, P., and Ronen, S.: Mirror imaging of OBS data, *First Break*, 25, <https://doi.org/https://doi.org/10.3997/1365-2397.2007028>, 2007.
- Guo, P., Singh, S. C., Vaddineni, V. A., Visser, G., Grevemeyer, I., and Saygin, E.: Nonlinear full waveform inversion of wide-aperture OBS data for Moho structure using a trans-dimensional Bayesian method, *Geophysical Journal International*, 224, 1056–1078, <https://doi.org/10.1093/gji/ggaa505>, 2020.
- 725 Hall, J., Loudon, K. E., Funck, T., and Deemer, S.: Geophysical characteristics of the continental crust along the Lithoprobe Eastern Canadian Shield Onshore-Offshore Transect (ECSOOT): a review, *Canadian Journal of Earth Sciences*, 39, 569–587, 2002.
- Hannington, M., Petersen, S., and Krätschell, A.: Subsea mining moves closer to shore, *Nature Geoscience*, 10, 158–159, <https://doi.org/10.1038/ngeo2897>, 2017.
- 730 Hauser, F., O'Reilly, B. M., Jacob, A. B., Shannon, P. M., Makris, J., and Vogt, U.: The crustal structure of the Rockall Trough: differential stretching without underplating, *Journal of Geophysical Research*, 100, 4097–4116, 1995.
- Haworth, R. and Keen, C. E.: The Canadian Atlantic margin: a passive continental margin encompassing an active past, *Tectonophysics*, 59, 83–126, 1979.
- Heine, C., Zoethout, J., and Müller, R. D.: Kinematics of the South Atlantic rift, *Solid Earth*, 4, 215–253, [https://doi.org/10.5194/se-4-215-](https://doi.org/10.5194/se-4-215-2013) 2013, 2013.
- 735 Henning, A. T., Sawyer, D. S., and Templeton, D. C.: Exhumed upper mantle within the ocean-continent transition on the northern West Iberia margin: evidence from prestack depth migration and total tectonic subsidence analyses, *Journal of Geophysical Research*, 109, doi:10.1029/2003JB002526, 2004.
- Hibbard, J. and Waldron, J. W.: Truncation and translation of Appalachian promontories: Mid-Paleozoic strike-slip tectonics and basin initiation, *Geology*, 37, 487–490, <https://doi.org/10.1130/G25614A.1>, 2009.
- 740 Hopper, J., Funck, T., Tucholke, B., Larsen, H. C., Holbrook, W. S., Loudon, K. E., Shillington, D. J., and Lau, H.: Continental breakup and the onset of ultraslow seafloor spreading off Flemish Cap on the Newfoundland rifted margin, *Geology*, 32, 93–96, 2004.
- Hopper, J., Funck, T., Tucholke, B., Loudon, K., Holbrook, W., and Larsen, H. C.: A deep seismic investigation of the Flemish Cap margin: implications for the origin of deep reflectivity and evidence for asymmetric break-up between Newfoundland and Iberia, *Geophysical Journal International*, 164, 501–515, doi:10.1111/j.1365-246X.2006.02800.x, 2006.
- 745 Horsefield, S. J., Whitmarsh, R. B., White, R. S., and Sibuet, J.-C.: Crustal structure of the Goban Spur rifted continental margin, NE Atlantic, *Geophysical Journal International*, 119, 1–19, 1994.

- Huismans, R. and Beaumont, C.: Roles of lithospheric strain softening and heterogeneity in determining the geometry of rifts and continental margins, in: *Imaging, mapping and modelling continental lithosphere extension and breakup*, edited by Karner, G., Manatschal, G., and Pinheiro, L., vol. 282, pp. 111–138, Geological Society of London, Special Publications, 2007.
- Jammes, S. and Lavier, L.: Effect of contrasting strength from inherited crustal fabrics on the development of rifting margins, *Geosphere*, 15, 407–422, <https://doi.org/10.1130/GES01686.1>, 2019.
- Jian, H., Nedimović, M. R., Canales, J. P., and Lau, K. W. H.: New insights Into the Rift to Drift Transition across the Northeastern Nova Scotian margin From wide-angle seismic waveform inversion and reflection imaging, *Journal of Geophysical Research: Solid Earth*, 126, e2021JB022201, <https://doi.org/https://doi.org/10.1029/2021JB022201>, 2021.
- Jolivet, L., Baudin, T., Calassou, S., Chevrot, S., Ford, M., Issautier, B., Lasseur, E., Masini, E., Manatschal, G., Mouthereau, F., Thinon, I., and Vidal, O.: Geodynamic evolution of a wide plate boundary in the Western Mediterranean, near-field versus far-field interactions, *Bulletin de la Société Géologique de France*, 192, 48, doi:10.1051/bsgf/2021043, <https://doi.org/10.1051/bsgf/2021043>, 2021.
- Kamei, R., Pratt, R. G., and Tsuji, T.: On acoustic waveform tomography of wide-angle OBS data—strategies for pre-conditioning and inversion, *Geophysical Journal International*, 194, 1250–1280, <https://doi.org/10.1093/gji/ggt165>, 2013.
- Keen, C. and Dehler, S. A.: Stretching and subsidence: rifting of conjugate margins in the North Atlantic region, *Tectonics*, 12, 1209–1229, 1993.
- Keen, C., Potter, P., and Srivastava, S.: Deep seismic reflection data across the conjugate margins of the Labrador Sea, *Canadian Journal of Earth Sciences*, 31, 192–205, 1994.
- Keen, C., Dickie, K., Dafoe, L., Funck, T., Welford, J., Dehler, S., Gregersen, U., and DesRoches, K.: Rifting and evolution of the Labrador-Baffin Seaway, in: *Geological synthesis of Baffin Island (Nunavut) and the Labrador-Baffin Seaway*, edited by Dafoe, L. and Bingham-Koslowski, N., pp. 341–377, doi:10.4095/321854, Geological Survey of Canada, Bulletin 608, 2022.
- Keen, C. E. and Barrett, D.: Thinned and subsided continental crust on the rifted margin of eastern Canada: crustal structure, thermal evolution and subsidence history, *Geophysical Journal of the Royal Astronomical Society*, 65, 443–465, 1981.
- Keen, C. E. and Potter, D.: Formation and evolution of the Nova Scotia rifted margin: evidence from deep seismic reflection data, *Tectonics*, 14, 918–932, 1995.
- Keen, C. E., MacLean, B., and Kay, W. A.: A deep seismic reflection profile across the Nova Scotia continental margin, offshore eastern Canada, *Canadian Journal of Earth Sciences*, 28, 1112–1120, 1991.
- Klemperer, S. L. and Hobbs, R. W.: *The BIRPS Atlas : Deep Seismic Reflection Profiles Around the British Isles*, Cambridge Univ. Press, Cambridge, <https://api.semanticscholar.org/CorpusID:128332911>, 1991.
- Klingelhoefer, F., Biari, Y., Sahabi, M., Aslanian, D., Schnabel, M., Matias, L., Benabdellouahed, M., Funck, T., Gutscher, M.-A., Reichert, C., and Austin, J. A.: Crustal structure variations along the NW-African continental margin: A comparison of new and existing models from wide-angle and reflection seismic data, *Tectonophysics*, 674, 227 – 252, <https://doi.org/https://doi.org/10.1016/j.tecto.2016.02.024>, 2016.
- Korenaga, J., Holbrook, W., Kent, G., Kelemen, P., Detrick, R., Larsen, H.-C., Hopper, J., and Dahl-Jensen, T.: Crustal structure of the southeast Greenland margin from joint refraction and reflection seismic tomography, *Journal of Geophysical Research*, 105, 21591–21614, 2000.
- Korenaga, J., Holbrook, W., Detrick, R., and Kelemen, P.: Gravity anomalies and crustal structure at the southeast Greenland margin, *Journal of Geophysical Research*, 106, 8853–8870, 2001.

- 785 Kroner, U. and Romer, R.: Two plates — Many subduction zones: The Variscan orogeny reconsidered, *Gondwana Research*, 24, 298–329, <https://doi.org/https://doi.org/10.1016/j.gr.2013.03.001>, 2013.
- Labails, C., Olivet, J.-L., Aslanian, D., and Roest, W. R.: An alternative early opening scenario for the Central Atlantic Ocean, *Earth and Planetary Science Letters*, 297, 355 – 368, <https://doi.org/https://doi.org/10.1016/j.epsl.2010.06.024>, 2010.
- Lau, K. H., Loudon, K. E., Funck, T., Tucholke, B. E., Holbrook, W. S., Hopper, J. R., and Larsen, H. C.: Crustal structure across the Grand Banks-Newfoundland Basin continental margin - I. Results from a seismic refraction profile, *Geophysical Journal International*, 167, 127–156, doi:10.1111/j.1365-246X.2006.02988.x, 2006a.
- 790 Lau, K. H., Loudon, K. E., Deemer, S., Hall, J., Hopper, J. R., Tucholke, B. E., Holbrook, W. S., and Larsen, H. C.: Crustal structure across the Grand Banks-Newfoundland Basin continental margin - II. Results from a seismic reflection profile, *Geophysical Journal International*, 167, 157–170, 2006b.
- 795 Lau, K. H., Watremez, L., Loudon, K. E., and Nedimovic, M. R.: Structure of thinned continental crust across the Orphan Basin from a dense wide-angle seismic profile and gravity data, *Geophysical Journal International*, 202, 1969–1992, doi:10.1093/gji/ggv261, 2015.
- Lau, K. W. H., Nedimović, M. R., and Loudon, K. E.: Continent-Ocean Transition across the northeastern Nova Scotian margin from a dense wide-angle seismic profile, *Journal of Geophysical Research: Solid Earth*, 123, 4331–4359, <https://doi.org/10.1029/2017JB015282>, 2018.
- Lavier, L. and Manatschal, G.: A mechanism to thin the continental lithosphere at magma-poor margins, *Nature*, 440, 324–328, 2006.
- 800 Liu, Z., Pérez-Gussinyé, M., Rüpke, L., Muldashev, I. A., Minshull, T. A., and Bayrakci, G.: Lateral coexistence of ductile and brittle deformation shapes magma-poor distal margins: An example from the West Iberia-Newfoundland margins, *Earth and Planetary Science Letters*, 578, 117–128, <https://doi.org/https://doi.org/10.1016/j.epsl.2021.117288>, 2022.
- Liu, Z., Perez-Gussinye, M., García-Pintado, J., Mezri, L., and Bach, W.: Mantle serpentinization and associated hydrogen flux at North Atlantic magma-poor rifted margins, *Geology*, 51, 284–289, <https://doi.org/10.1130/G50722.1>, 2023.
- 805 Loudon, K. E. and Chian, D.: The deep structure of non-volcanic rifted continental margins, *Philosophical transactions of the Royal Society of London*, 357, 767–804, 1999.
- Makris, J., Egloff, R., Jacob, A. B., Mohr, P., Murphy, T., and Ryan, P.: Continental crust under the southern Porcupine Seabight, West of Ireland, *Earth and Planetary Science Letters*, 89, 387–397, 1988.
- Makris, J., Ginzburg, A., Shannon, P., Jacob, A. B., Bean, C., and Vogt, U.: A new look at the Rockall region, offshore Ireland, *Marine and Petroleum Geology*, 8, 410–416, 1991.
- 810 Manatschal, G., Müntener, O., Lavier, L., Minshull, T., and Péron-Pinvidic, G.: Observations from the Alpine Tethys and Iberia–Newfoundland margins pertinent to the interpretation of continental breakup, *Geological Society, London, Special Publications*, 282, 291–324, 2007.
- Manatschal, G., Sutra, E., and Péron-Pinvidic, G.: The lesson from the Iberia–Newfoundland rifted margins: how applicable is it to other rifted margins?, in: *Proceedings of the II Central & North Atlantic Conjugate Margins Conference, Lisbon, vol. 2, pp. 27–37*, 2010.
- 815 Manatschal, G., Lavier, L. L., and Chenin, P.: The role of inheritance in structuring hyperextended rift systems: some considerations based on observations and numerical modeling, *Gondwana Research*, 27, 140–164, 2015.
- McMechan, G. A. and Mooney, W. D.: Asymptotic ray theory and synthetic seismograms for laterally varying structures: theory and application to the imperial valley, California, *Bulletin of the Seismological Society of America*, 70, 2021–2035, 820 <https://doi.org/10.1785/BSSA0700062021>, 1980.



- MeléndeZ, A., Korenaga, J., Sallarès, V., Miniussi, A., and Ranero, C.: TOMO3D: 3-D joint refraction and reflection travel-time tomography parallel code for active-source seismic data—synthetic test, *Geophysical Journal International*, 203, 158–174, <https://doi.org/10.1093/gji/ggv292>, 2015.
- Merino, I., Ranero, C. R., Prada, M., Sallarès, V., and Grevemeyer, I.: The rift and Continent-Ocean Transition structure under the Tagus Abyssal Plain west of the Iberia, *Journal of Geophysical Research: Solid Earth*, 126, e2021JB022629, <https://doi.org/https://doi.org/10.1029/2021JB022629>, e2021JB022629 2021JB022629, 2021.
- 825
- Milkov, A. V.: Molecular hydrogen in surface and subsurface natural gases: Abundance, origins and ideas for deliberate exploration, *Earth-Science Reviews*, 230, 104063, <https://doi.org/https://doi.org/10.1016/j.earscirev.2022.104063>, 2022.
- Minshull, T. A.: Geophysical characterisation of ocean-continent transition at magma-poor rifted margins, *Comptes Rendus Geosciences*, 341, 382–393, 2009.
- 830
- Minshull, T. A. and Singh, S. C.: Shallow structure of oceanic crust in the western North Atlantic from seismic waveform inversion and modeling, *Journal of Geophysical Research: Solid Earth*, 98, 1777–1792, <https://doi.org/https://doi.org/10.1029/92JB02136>, 1993.
- Mohn, G., Karner, G. D., Manatschal, G., and Johnson, C. A.: Structural and stratigraphic evolution of the Iberia–Newfoundland hyper-extended rifted margin: a quantitative modelling approach, *Special Publications*, 413, 53–89, 2015.
- 835
- Morgan, J., Warner, M., Bell, R., Ashley, J., Barnes, D., Little, R., Roele, K., and Jones, C.: Next-generation seismic experiments: wide-angle, multi-azimuth, three-dimensional, full-waveform inversion, *Geophysical Journal International*, 195, 1657–1678, <https://doi.org/10.1093/gji/ggt345>, 2013.
- Mouthereau, F., Angrand, P., Jourdon, A., Ternois, S., Fillon, C., Calassou, S., Chevrot, S., Ford, M., Jolivet, L., Manatschal, G., Masini, E., Thinon, I., Vidal, O., and Baudin, T.: Cenozoic mountain building and topographic evolution in Western Europe: impact of billions of years of lithosphere evolution and plate kinematics, *Bulletin de la Société Géologique de France*, 192, 56, <https://doi.org/10.1051/bsgf/2021040>, 2021.
- 840
- Müller, R., Seton, M., Zahirovic, S., Williams, S., Matthews, K., Wright, N., Shephard, G., Maloney, K., Barnett-Moore, N., Hosseinpour, M., Bower, D., and Cannon, J.: Ocean basin evolution and global-scale plate reorganization events since Pangea breakup, *Annual Reviews of Earth and Planetary Science*, 44, 107–138, 2016.
- 845
- Nance, R. D., Gutiérrez-Alonso, G., Keppie, J. D., Linnemann, U., Murphy, J. B., Quesada, C., Strachan, R. A., and Woodcock, N. H.: Evolution of the Rheic Ocean, *Gondwana Research*, 17, 194–222, doi:10.1016/j.gr.2009.08.001, <https://doi.org/https://doi.org/10.1016/j.gr.2009.08.001>, 2010.
- Nazarova, K.: Serpentinized peridotites as a possible source for oceanic magnetic anomalies, *Marine Geophysical Researches*, 16, 455–462, 1994.
- 850
- Nirrengarten, M., Manatschal, G., Tugend, J., Kuszniir, N. J., and Sauter, D.: Nature and origin of the J-magnetic anomaly offshore Iberia–Newfoundland: implications for plate reconstructions, *Terra Nova*, 2016.
- Nirrengarten, M., Manatschal, G., Tugend, J., Kuszniir, N., and Sauter, D.: Kinematic evolution of the southern North Atlantic: implications for the formation of hyperextended rift systems, *Tectonics*, 37, 89–118, doi:10.1002/2017TC004495, 2018.
- O’Reilly, B. M., Hauser, F., Jacob, A. B., Shannon, P. M., Makris, J., and Vogt, U.: The transition between the Erris and the Rockall basins: new evidence from wide-angle seismic data, *Tectonophysics*, 241, 143–163, 1995.
- 855
- O’Reilly, B. M., Hauser, F., Jacob, A. B., and Shannon, P. M.: The lithosphere below the Rockall Trough: wide-angle seismic evidence for extensive serpentinisation, *Tectonophysics*, 255, 1–23, 1996.

- O'Reilly, B. M., Hauser, F., Ravaut, C., Shannon, P. M., and Readman, P.: Crustal thinning, mantle exhumation and serpentinization in the Porcupine Basin, offshore Ireland: evidence from wide-angle seismic data, *Journal of the Geological Society, London*, 163, 775–787, doi:10.1144/0016-76492005-079, 2006.
- 860 Oufi, O., Cannat, M., and Horen, H.: Magnetic properties of variably serpentinized abyssal peridotites, *Journal of Geophysical Research*, 107, 1–17, 2002.
- Patten, C., Coltat, R., Junge, M., Peillod, A., Ulrich, M., Manatschal, G., and Kolb, J.: Ultramafic-hosted volcanogenic massive sulfide deposits: an overlooked sub-class of VMS deposit forming in complex tectonic environments, *Earth-Science Reviews*, 224, 103 891, 865 <https://doi.org/https://doi.org/10.1016/j.earscirev.2021.103891>, 2022.
- Peace, A. L., Welford, J. K., Ball, P. J., and Nirrengarten, M.: Deformable plate tectonic models of the southern North Atlantic, *Journal of Geodynamics*, 128, 11–37, 2019.
- Peace, A. L., Phethean, J., Franke, D., Foulger, G., Schiffer, C., Welford, J., McHone, G., Rocchi, S., Schnabel, M., and Doré, A.: A review of Pangaea dispersal and Large Igneous Provinces – In search of a causative mechanism, *Earth-Science Reviews*, 206, 102 902, 870 doi:10.1016/j.earscirev.2019.102902, <https://doi.org/https://doi.org/10.1016/j.earscirev.2019.102902>, 2020.
- Penrose Conference Participants: Penrose field conference on ophiolites, *Geotimes*, 17, 1972.
- Pérez-Gussinyé, M. and Reston, T.: Rheological evolution during extension at nonvolcanic rifted margins: onset of serpentinization and development of detachments leading to continental breakup, *Journal of Geophysical Research*, 106, 3961–3975, 2001.
- Pérez-Gussinyé, M., Reston, T., and Phipps Morgan, J.: Serpentinization and magmatism during extension at non-volcanic margins: the effect 875 of initial lithospheric structure, in: *Non-volcanic rifting of continental margins: a comparison of evidence from land and sea*, edited by Wilson, R., Whitmarsh, R., Taylor, B., and Froitzheim, N., vol. 187, pp. 551–576, Geological Society of London, Special Publications, 2001.
- Pérez-Gussinyé, M., Ranero, C., Reston, T., and Sawyer, D.: Mechanisms of extension at nonvolcanic margins: evidence from the Galicia interior basin, west of Iberia, *Journal of Geophysical Research*, 108, doi:10.1029/2001JB000901, 2003.
- 880 Pérez-Gussinyé, M., Morgan, J., Reston, T., and Ranero, C.: The rift to drift transition at non-volcanic margins: insights from numerical modelling, *Earth and Planetary Science Letters*, 244, 458–473, 2006.
- Pérez-Gussinyé, M., Collier, J. S., Armitage, J. J., Hopper, J. R., Sun, Z., and Ranero, C. R.: Towards a process-based understanding of rifted continental margins, *Nature Reviews Earth & Environment*, <https://doi.org/10.1038/s43017-022-00380-y>, 2023.
- Péron-Pinvidic, G. and Manatschal, G.: The final rifting evolution at deep magma-poor passive margins from Iberia-Newfoundland: a new 885 point of view, *International Journal of Earth Sciences*, 98, 2009.
- Péron-Pinvidic, G. and Manatschal, G.: From microcontinents to extensional allochthons: witnesses of how continents rift and break apart?, *Petroleum Geoscience*, 16, 1–10, doi:10.1144/1354-079309-903, 2010.
- Péron-Pinvidic, G., Manatschal, G., Minshull, T. A., and Sawyer, D.: Tectonosedimentary evolution of the deep Iberia-Newfoundland margins: evidence for a complex breakup history, *Tectonics*, 26, doi:10.1029/2006TC001970, 2007.
- 890 Péron-Pinvidic, G., Manatschal, G., and Osmundsen, P.: Structural comparison of archetypal Atlantic rifted margins: a review of observations and concepts, *Marine and Petroleum Geology*, 43, 21–47, 2013.
- Péron-Pinvidic, G., Manatschal, G., and the IMAGinING RIFTING Workshop Participants: Rifted margins: state of the art and future challenges, *Frontiers in Earth Science*, 7:218, 2019.

- Péron-Pinvidic, G., Fourel, L., and Buitter, S.: The influence of orogenic collision inheritance on rifted margin architecture: Insights from comparing numerical experiments to the mid-Norwegian margin, *Tectonophysics*, 828, 229–273, doi:10.1016/j.tecto.2022.229273, <https://doi.org/https://doi.org/10.1016/j.tecto.2022.229273>, 2022.
- Picazo, S., Malvoisin, B., Baumgartner, L., and Bouvier, A.-S.: Low Temperature Serpentinite Replacement by Carbonates during Seawater Influx in the Newfoundland Margin, *Minerals*, 10, <https://doi.org/10.3390/min10020184>, 2020.
- Piqué, A., Le Roy, P., and Amrhar, M.: Transtensive synsedimentary tectonics associated with ocean opening: the Essaouira–Agadir segment of the Moroccan Atlantic margin, *Journal of the Geological Society*, 155, 913–928, 1998.
- Planke, S., Symonds, P., Alvestad, E., and Skogseid, J.: Seismic volcanostratigraphy of large-volume basaltic extrusive complexes on rifted margins, *Journal of Geophysical Research*, 105, 19335–19351, 2000.
- Prada, M., Watremez, L., Chen, C., O'Reilly, B. M., Minshull, T. A., Reston, T., Shannon, P. M., Klaeschen, D., Wagner, G., and Gaw, V.: Crustal strain-dependent serpentinisation in the Porcupine Basin, offshore Ireland, *Earth and Planetary Science Letters*, 474, 148–159, 2017.
- Pratt, R. G.: Seismic waveform inversion in the frequency domain; Part 1, Theory and verification in a physical scale model, *Geophysics*, 64, 888–901, <https://doi.org/10.1190/1.1444597>, 1999.
- Pratt, R. G. and Worthington, M.: Inverse theory applied to multi-source cross-hole tomography, *Geophysical Prospecting*, 38, 287–310, <https://doi.org/https://doi.org/10.1111/j.1365-2478.1990.tb01846.x>, 1990.
- Pratt, R. G., Song, Z.-M., Williamson, P., and Warner, M.: Two-dimensional velocity models from wide-angle seismic data by wavefield inversion, *Geophysical Journal International*, 124, 323–340, <https://doi.org/10.1111/j.1365-246X.1996.tb07023.x>, 1996.
- Pratt, R. G., Shin, C., and Hick, G. J.: Gauss–Newton and full Newton methods in frequency–space seismic waveform inversion, *Geophysical Journal International*, 133, 341–362, <https://doi.org/10.1046/j.1365-246X.1998.00498.x>, 1998.
- Ravaut, C., Operto, S., Improta, L., Virieux, J., Herrero, A., and Dell’Aversana, P.: Multiscale imaging of complex structures from multifold wide-aperture seismic data by frequency-domain full-waveform tomography: application to a thrust belt, *Geophysical Journal International*, 159, 1032–1056, <https://doi.org/10.1111/j.1365-246X.2004.02442.x>, 2004.
- Reid, I.: Crustal structure across the Nain-Makkovik boundary on the continental shelf off Labrador from seismic refraction data, *Canadian Journal of Earth Sciences*, 33, 460–471, 1996.
- Reid, I. and Keen, C. E.: High seismic velocities associated with reflections from within the lower oceanic crust near the continental margin of eastern Canada, *Earth and Planetary Science Letters*, 99, 118–126, 1990.
- Reston, T.: The structure, evolution and symmetry of the magma-poor rifted margins of the North and Central Atlantic: a synthesis, *Tectonophysics*, 468, 6–27, 2009.
- Reston, T., Pennell, J., Stubenrauch, A., Walker, I., and Pérez-Gussinyé, M.: Detachment faulting, mantle serpentinization, and serpentinite-mud volcanism beneath the Porcupine Basin, southwest of Ireland, *Geology*, 29, 587–590, 2001.
- Reston, T., Gaw, V., Pennell, J., Klaeschen, D., Stubenrauch, A., and Walker, I.: Extreme crustal thinning in the south Porcupine Basin and the nature of the Porcupine Median High: implications for the formation of non-volcanic rifted margins, *Journal of the Geological Society, London*, 161, 783–798, 2004.
- Roest, W. and Srivastava, S.: Sea-floor spreading in the Labrador Sea: a new reconstruction, *Geology*, 17, 1000–1003, 1989.
- Russell, S. and Whitmarsh, R.: Magmatism at the west Iberia non-volcanic rifted continental margin: evidence from analyses of magnetic anomalies, *Geophysical Journal International*, 154, 706–730, 2003.

- Sandoval, L., Welford, J. K., MacMahon, H., and Peace, A. L.: Determining continuous basins across conjugate margins: The East Orphan, Porcupine, and Galicia Interior basins of the southern North Atlantic Ocean, *Marine and Petroleum Geology*, 110, 138–161, 2019.
- Sauter, D., Sloan, H., Cannat, M., Goff, J., Patriat, P., Schaming, M., and Roest, W. R.: From slow to ultra-slow: How does spreading rate affect seafloor roughness and crustal thickness?, *Geology*, 39, 911–914, <https://doi.org/10.1130/G32028.1>, 2011.
- 935 Sauter, D., Tugend, J., Gillard, M., Nirrengarten, M., Autin, J., Manatschal, G., Cannat, M., Leroy, S., and Schaming, M.: Oceanic basement roughness alongside magma-poor rifted margins: insight into initial seafloor spreading, *Geophysical Journal International*, 212, 900–915, <https://doi.org/10.1093/gji/ggx439>, 2018.
- Sauter, D., Manatschal, G., Kuszniir, N., Masquelet, C., Werner, P., Ulrich, M., Bellingham, P., Franke, D., and Autin, J.: Ignition of the southern Atlantic seafloor spreading machine without hot-mantle booster, *Scientific Reports*, 13, 1195, <https://doi.org/10.1038/s41598-023-28364-y>, 2023.
- 940 Schettino, A. and Turco, E.: Breakup of Pangaea and plate kinematics of the central Atlantic and Atlas regions, *Geophysical Journal International*, 178, 1078–1097, doi:10.1111/j.1365-246X.2009.04186.x, <https://doi.org/10.1111/j.1365-246X.2009.04186.x>, 2009.
- Schwarzenbach, E. M., Früh-Green, G. L., Bernasconi, S. M., Alt, J. C., and Plas, A.: Serpentinization and carbon sequestration: A study of two ancient peridotite-hosted hydrothermal systems, *Chemical Geology*, 351, 115–133, <https://doi.org/https://doi.org/10.1016/j.chemgeo.2013.05.016>, 2013.
- 945 Sears, T., Singh, S., and Barton, P.: Elastic full waveform inversion of multi-component OBC seismic data, *Geophysical Prospecting*, 56, 843–862, <https://doi.org/https://doi.org/10.1111/j.1365-2478.2008.00692.x>, 2008.
- Seton, M., Whittaker, J. M., Wessel, P., Müller, R. D., DeMets, C., Merkouriev, S., Cande, S., Gaina, C., Eagles, G., Granot, R., Stock, J., Wright, N., and Williams, S. E.: Community infrastructure and repository for marine magnetic identifications, *Geochemistry, Geophysics, Geosystems*, 15, 1629–1641, <https://doi.org/https://doi.org/10.1002/2013GC005176>, 2014.
- 950 Shannon, P., Jacob, A. B., O'Reilly, B., Hauser, F., Readman, P., and Makris, J.: Structural setting, geological development and basin modelling in the Rockall Trough, in: *Petroleum Geology of North West Europe: Proceedings of the Fifth Conference*, edited by Fleet, A. and Boldy, S., vol. 5, pp. 421–431, doi:10.1144/0050421, Geological Society, 1999.
- Shipboard Scientific Party: Introduction, objectives, and principal results: Ocean Drilling Program leg 103, west Galicia margin, *Proceedings of the Ocean Drilling Program, Initial Reports*, 103, 3–17, 1987.
- 955 Shipboard Scientific Party: Leg 173 introduction, *Proceedings of the Ocean Drilling Program, Initial Reports*, 173, 7–23, 1998.
- Sibuet, J.-C., Louvel, V., Whitmarsh, R. B., White, R. S., Horsefield, S. J., Sichler, B., Léon, P., and Recq, M.: Constraints on rifting processes from refraction and deep-tow magnetic data: the example of the Galicia continental margin (west Iberia), in: *Rifted ocean-continent boundaries*, edited by Banda, E., Torné, M., and Talwani, M., vol. 463 of *NATO ASI Series, Series C: Mathematical and Physical Sciences*, pp. 197–217, Kluwer Academic Publishers, 1995.
- 960 Sibuet, J.-C., Srivastava, S., Enachescu, M. E., and Karner, G.: Early Cretaceous motion of Flemish Cap with respect to North America: implications on the formation of Orphan Basin and SE Flemish Cap-Galicia Bank conjugate margins, in: *Imaging, mapping and modelling continental lithosphere extension and breakup*, edited by Karner, G., Manatschal, G., and Pinheiro, L., vol. 282, pp. 63–76, doi:10.1144/SP282.4, Geological Society of London, Special Publications, 2007a.
- 965 Sibuet, J.-C., Srivastava, S., and Manatschal, G.: Exhumed mantle-forming transitional crust in the Newfoundland-Iberia rift and associated magnetic anomalies, *Journal of Geophysical Research*, 112, doi:10.1029/2005JB003856, 2007b.
- Sibuet, J.-C., Rouzo, S., and Srivastava, S.: Plate tectonic reconstructions and paleogeographic maps of the central and North Atlantic oceans, *Canadian Journal of Earth Sciences*, 49, 1395–1415, <https://doi.org/10.1139/e2012-071>, 2012.

- Soares, D. M., Alves, T. M., and Terrinha, P.: The breakup sequence and associated lithospheric breakup surface: their significance in the context of rifted continental margins (West Iberia and Newfoundland margins, North Atlantic), *Earth and Planetary Science Letters*, 355–356, 311–326, 2012.
- Srivastava, S., Roest, W., Kovacs, L., Oakey, G., Lévesque, S., Verhoef, J., and Macnab, R.: Motion of Iberia since the Late Jurassic: Results from detailed aeromagnetic measurements in the Newfoundland Basin, *Tectonophysics*, 184, 229–260, 1990.
- Srivastava, S., Sibuet, J.-C., Cande, S., Roest, W., and Reid, I.: Magnetic evidence for slow seafloor spreading during the formation of the Newfoundland and Iberian margins, *Earth and Planetary Science Letters*, 182, 61–76, 2000.
- Stampfli, G., Hochard, C., Vérard, C., Wilhem, C., and vonRaumer, J.: The formation of Pangea, *Tectonophysics*, 593, 1–19, <https://doi.org/https://doi.org/10.1016/j.tecto.2013.02.037>, 2013.
- Stanton, N., Manatschal, G., Autin, J., Sauter, D., Maia, M., and Viana, A.: Geophysical fingerprints of hyper-extended, exhumed and embryonic oceanic domains: the example from the Iberia-Newfoundland rifted margins, *Marine Geophysical Researches*, 37, 185–205, 2016.
- Stockmal, G. S., Colman-Sadd, S. P., Keen, C. E., O'Brien, S. J., and Quinlan, G.: Collision along an irregular margin: a regional plate tectonic interpretation of the Canadian Appalachians, *Canadian Journal of Earth Sciences*, 24, 1098–1107, <https://doi.org/10.1139/e87-107>, 1987.
- Sutra, E., Manatschal, G., Mohn, G., and Unternehr, P.: Quantification and restoration of extensional deformation along the Western Iberia and Newfoundland rifted margins, *Geochemistry, Geophysics, Geosystems*, 14, 2575–2597, 2013.
- Tetreault, J. and Buitter, S.: The influence of extension rate and crustal rheology on the evolution of passive margins from rifting to breakup, *Tectonophysics*, 746, 155–172, <https://doi.org/https://doi.org/10.1016/j.tecto.2017.08.029>, understanding geological processes through modelling - A Memorial Volume honouring Evgenii Burov, 2018.
- Theunissen, T. and Huismans, R. S.: Mantle exhumation at magma-poor rifted margins controlled by frictional shear zones, *Nature Communications*, 13, 1634, <https://doi.org/10.1038/s41467-022-29058-1>, 2022.
- Thinon, I., Matias, L., Réhault, J., Hirn, A., Fidalgo-Gonzalez, L., and Avedik, F.: Deep structure of the Armorican Basin (Bay of Biscay): a review of Norgasis seismic reflection and refraction data, *Journal of the Geological Society, London*, 160, 99–116, 2003.
- Thomas, W.: Tectonic inheritance at a continental margin, *GSA Today*, 16, 4–11, 2005.
- Thomas, W. A.: Tectonic inheritance at multiple scales during more than two complete Wilson cycles recorded in eastern North America, *Geological Society, London, Special Publications*, 470, 337–352, doi:10.1144/SP470.4, <https://doi.org/10.1144/SP470.4>, 2019.
- Tucholke, B., Austin, J., and Uchupi, E.: Crustal structure and rift-drift evolution of the Newfoundland basin, in: *Extensional tectonics and stratigraphy of the North Atlantic margins*, edited by Tankard, A. and Balkwill, H., vol. 46, chap. 16, pp. 247–263, doi:10.1306/M46497C16, AAPG Memoir, 1989.
- Tucholke, B., Sawyer, D., and Sibuet, J.-C.: Breakup of the Newfoundland-Iberia rift, in: *Imaging, mapping and modelling continental lithosphere extension and breakup*, edited by Karner, G., Manatschal, G., and Pinheiro, L., vol. 282, pp. 9–46, doi:10.1144/SP282.2, Geological Society of London, Special Publications, 2007.
- Tyrrell, S., Haughton, P., and Daly, J.: Drainage reorganization during breakup of Pangea revealed by in-situ Pb isotopic analysis of detrital K-feldspar, *Geology*, 35, 971–974, doi:10.1130/G4123A.1, 2007.
- Van Avendonk, H. J. A., Harding, A. J., Orcutt, J. A., and McClain, J. S.: A two-dimensional tomographic study of the Clipperton transform fault, *Journal of Geophysical Research: Solid Earth*, 103, 17 885–17 899, <https://doi.org/https://doi.org/10.1029/98JB00904>, 1998.

- 1005 Van Avendonk, H. J. A., Shillington, D. J., Holbrook, W. S., and Hornbach, M. J.: Inferring crustal structure in the Aleutian island arc from a sparse wide-angle seismic data set, *Geochemistry, Geophysics, Geosystems*, 5, <https://doi.org/https://doi.org/10.1029/2003GC000664>, 2004.
- van der Linden, W.: Crustal attenuation and sea-floor spreading in the Labrador Sea, *Earth and Planetary Science Letters*, 27, 409–423, 1975.
- Virieux, J. and Operto, S.: An overview of full-waveform inversion in exploration geophysics, *Geophysics*, 74, WCC1–WCC26, <https://doi.org/10.1190/1.3238367>, 2009.
- 1010 Waldron, J. W., McCausland, P. J., Barr, S. M., Schofield, D. I., Reusch, D., and Wu, L.: Terrane history of the Iapetus Ocean as preserved in the northern Appalachians and western Caledonides, *Earth-Science Reviews*, 233, 104 163, doi:10.1016/j.earscirev.2022.104 163, <https://doi.org/https://doi.org/10.1016/j.earscirev.2022.104163>, 2022.
- Waldron, J. W. F., Barr, S. M., Park, A. F., White, C. E., and Hibbard, J.: Late Paleozoic strike-slip faults in Maritime Canada and their role in the reconfiguration of the northern Appalachian orogen, *Tectonics*, 34, 1661–1684, doi:10.1002/2015TC003 882, <https://doi.org/10.1002/2015TC003882>, 2015.
- 1015 Welford, J. K., Dehler, S. A., and Funck, T.: Crustal velocity structure across the Orphan Basin and Orphan Knoll to the continent–ocean transition, offshore Newfoundland, Canada, *Geophysical Journal International*, 221, 37–59, doi:10.1093/gji/ggz575, <https://doi.org/10.1093/gji/ggz575>, 2020.
- 1020 Wessel, P., Luis, J. F., Uieda, L., Scharroo, R., Wobbe, F., Smith, W. H. F., and Tian, D.: The Generic Mapping Tools Version 6, *Geochemistry, Geophysics, Geosystems*, 20, 5556–5564, <https://doi.org/https://doi.org/10.1029/2019GC008515>, 2019.
- Whalen, L., Gazel, E., Vidito, C., Puffer, J., Bizimis, M., Henika, W., and Caddick, M. J.: Supercontinental inheritance and its influence on supercontinental breakup: The Central Atlantic Magmatic Province and the breakup of Pangea, *Geochemistry, Geophysics, Geosystems*, 16, 3532–3554, <https://doi.org/https://doi.org/10.1002/2015GC005885>, 2015.
- 1025 White, R.: Crustal structure and magmatism of North Atlantic continental margins, *Journal of the Geological Society, London*, 149, 841–854, 1992.
- White, R., McKenzie, D., and O’Nions, R.: Oceanic crustal thickness from seismic measurements and rare earth element inversions, *Journal of Geophysical Research*, 97, 19 683–19 715, 1992.
- White, S. E. and Waldron, J. W.: Along-strike variations in the deformed Laurentian margin in the Northern Appalachians: Role of inherited margin geometry and colliding arcs, *Earth-Science Reviews*, 226, 103 931, doi:10.1016/j.earscirev.2022.103 931, <https://doi.org/https://doi.org/10.1016/j.earscirev.2022.103931>, 2022.
- 1030 Whitmarsh, R., Avedik, F., and Saunders, M.: The seismic structure of thinned continental crust in the northern Bay of Biscay, *Geophysical Journal of the Royal Astronomical Society*, 86, 589–602, 1986.
- Whitmarsh, R., White, R. S., Horsefield, S. J., Sibuet, J.-C., Recq, M., and Louvel, V.: The ocean-continent boundary off the western continental margin of Iberia: crustal structure west of Galicia Bank, *Journal of Geophysical Research*, 101, 28 291–28 314, 1996.
- 1035 Whitmarsh, R., Manatschal, G., and Minshull, T.: Evolution of magma-poor continental margins from rifting to seafloor spreading, *Nature*, 413, 150–154, 2001.
- Williams, H.: Miogeoclines and suspect terranes of the Caledonian-Appalachian orogen: tectonic patterns in the North Atlantic region, *Canadian Journal of Earth Sciences*, 21, 887–901, doi:10.1139/e84–095, 1984.
- 1040 Williams, H.: Geology of the Appalachian-Caledonian orogen in Canada and Greenland, *Geological Survey of Canada, Geology of Canada*, no.6, 1995.

- Wilson, J. T.: Did the Atlantic close and then re-open?, *Nature*, 211, 676–681, doi:10.1038/211676a0, <https://doi.org/10.1038/211676a0>, 1966.
- 1045 Wu, Y., Louden, K. E., Funck, T., Jackson, H. R., and Dehler, S. A.: Crustal structure of the central Nova Scotia margin off Eastern Canada, *Geophysical Journal International*, 166, 878–906, 2006.
- Yang, P. and Welford, J. K.: Kinematic plate modelling of the Goban Spur margin, offshore Ireland, with deforming zones constrained by seismic reflection data, *Marine and Petroleum Geology*, 139, 105595, <https://doi.org/https://doi.org/10.1016/j.marpetgeo.2022.105595>, 2022.
- 1050 Yang, P., Welford, J. K., and King, M. T.: Assessing the rotation and segmentation of the Porcupine Bank, Irish Atlantic margin, during oblique rifting using deformable plate reconstruction, *Tectonics*, 40, doi:10.1029/2020TC006665, <https://doi.org/https://doi.org/10.1029/2020TC006665>, 2021.
- Zelt, C. and Barton, P.: Three-dimensional seismic refraction tomography: A comparison of two methods applied to data from the Faeroe Basin, *Journal of Geophysical Research*, 103, 7187–7210, 1998.
- Zelt, C. and Smith, R.: Seismic travelt ime inversion for 2-D crustal velocity structure, *Geophysical Journal International*, 108, 16–34, 1992.
- 1055 Ziegler, P. and Dèzes, P.: Crustal evolution of Western and Central Europe, *Geological Society, London, Memoirs*, 32, 43–56, doi:10.1144/GSL.MEM.2006.032.01.03, 2006.

**Table 1.** Labelled refraction lines in Fig. 1, the source of the velocity models presented herein, and the type of modelling used to create the model (FMRT, forward model ray tracing; TTI, tomographic travelttime inversion; FWI, full waveform inversion). The final two columns capture additional data types used to help constrain the OBS data modelling, and the independent datasets used to confirm/validate the interpreted velocity model, respectively. Abbreviations in these two last columns: DSD, deep sea drilling; G, gravity data; M, magnetic data; MCS, multi-channel seismic reflection data; SCS, single-channel seismic reflection data; SMI, seismic mirror imaging (Grion et al., 2007).

No.	Survey line name	Citation	Source	Mod. Type	Orig. Mod. Const.	Interp. support
1	90R1	Chian et al. (1995)	Digitized	FMRT	MCS	G, M
2	88R2	Chian and Louden (1994)	Digitized	FMRT	SCS	G, M
3	RAPIDS 1	Funck et al. (2017)	Digitized	FMRT	-	G
4	SIGNAL 1	Welford et al. (2020)	Original file	FMRT	MCS	G
5	P03	Prada et al. (2017)	Original file	TTI	-	G, MCS
6	FLAME 1	Gerlings et al. (2011)	Digitized	FMRT	MCS	G
7	-	Bullock and Minshull (2005)	Digitized	FMRT	DSD, MCS	G, M
8	Norgasis 14	Thinon et al. (2003)	Digitized	FMRT	MCS	G
9	SCREECH 1	Funck et al. (2003)	Original file	FMRT	MCS	G
10	Réframarge Line 6	Druet et al. (2017)	Digitized	FMRT	MCS	G, M, MCS
11	Line 17	Pérez-Gussinyé et al. (2003)	Digitized	FMRT	MCS	MCS
12	FRAME-p3	Grevenmeyer et al. (2022)	Original file	TTI	SMI	G
13	SCREECH 3	Lau et al. (2006a)	Digitized	FMRT	MCS	G, MCS
14	FRAME-2	Merino et al. (2021)	Original file	TTI	MCS	G, MCS
15a	OETR-2009	Lau et al. (2018)	Original file	FMRT	MCS	G, MCS
15b	OETR-2009	Jian et al. (2021)	Digitized	FWI	-	MCS
16	SISMAR 4	Contrucci et al. (2004)	Digitized	FMRT	MCS	G, MCS
17	SMART 1	Funck et al. (2004)	Digitized	FMRT	MCS	G, MCS
18	MIRROR 1	Biari et al. (2015)	Digitized	FMRT	MCS	G, MCS
19	SMART 2	Wu et al. (2006)	Digitized	FMRT	MCS	G, MCS



**Table 2.** Labelled refraction lines in Fig. 1, width of exhumed serpentinized mantle zone, width of anomalous oceanic crust zone (thin or thick), width of sub-crustal serpentinized mantle zone, and width of full COTZ (as delimited in Figs. 2 to 6).

Label no.	Exhumed mantle	Anomalous oceanic crust	Sub-crustal serpentinized mantle	Interpreted COTZ
1	80 km	-	110 km (within COTZ)	115 km
2	70 km	-	100 km (within COTZ)	100 km
3	-	-	260 km (failed rift)	-
4	50 km ??	50 km ?? (thin)	210 km (failed rift) and 100 km (within COTZ)	100 km
5	-	-	100 km (failed rift)	-
6	20 km	-	80 km (within COTZ)	80 km
7	up to 120 km	-	up to 120 km (within COTZ)	120 km
8	80 km	-	135 km (within COTZ)	135 km
9	-	60 km (thin)	80 km (within COTZ)	80 km
10	10 km	20 km (thin)	55 km (within COTZ)	55 km
11	-	-	70 km (failed rift)	-
12	160 km	-	160 km (within COTZ)	160 km
13	95 km	-	190 km (within COTZ)	190 km
14	60 km	80 km (thin) and 60 km (thick)	230 km (within COTZ)	260 km
15a	-	200 km (thin)	85 km (within COTZ)	235 km
15b	<30 km ??	145 km (thin, within COTZ)	60 km (within COTZ)	225 km
16	-	-	-	30 km
17	70 km	130 km (thin)	150 km (within COTZ)	280 km
18	-	-	-	40 km
19	-	-	200 km (within COTZ)	200 km