

ClimaMeter: Contextualising Extreme Weather in a Changing Climate

Davide Faranda^{1,2,3}, Gabriele Messori^{4,5,6}, Erika Coppola⁷, Tommaso Alberti⁸, Mathieu Vrac¹, Flavio Pons¹, Pascal Yiou¹, Marion Saint Lu¹, Andreia N. S. Hisi^{1,11}, Patrick Brockmann¹, Stavros Dafis^{9,10}, Gianmarco Mengaldo^{12,13}, and Robert Vautard¹

¹Laboratoire des Sciences du Climat et de l'Environnement, UMR 8212 CEA-CNRS-UVSQ, Université Paris-Saclay, IPSL, 91191 Gif-sur-Yvette, France

²London Mathematical Laboratory, 8 Margravine Gardens London, W6 8RH, UK

³Laboratoire de Météorologie Dynamique/IPSL, École Normale Supérieure, PSL Research University, Sorbonne Université, École Polytechnique, IP Paris, CNRS, Paris, 75005, France

⁴Department of Earth Sciences, Uppsala University, Uppsala, Sweden

⁵Swedish Centre for Impacts of Climate Extremes (climes), Uppsala University, Uppsala, Sweden

⁶Department of Meteorology and Bolin Centre for Climate Research, Stockholm University, Stockholm, Sweden.

⁷The Abdus Salam International Center for Theoretical Physics, Trieste, Italy.

⁸Istituto Nazionale di Geofisica e Vulcanologia, Rome, Italy.

⁹National Observatory of Athens, Institute for Environmental Research and Sustainable Development, I. Metaxa & Vas. Pavlou, P. Penteli (Lofos Koufou), 15236 Athens, Greece.

¹⁰Data4Risk, Paris, France.

¹¹Sorbonne Université, Paris, France.

¹²College of Design and Engineering, National University of Singapore, Singapore

¹³Honorary Research Fellow, Imperial College London, UK

Correspondence: Davide Faranda (davide.faranda@cea.fr)

Abstract. Climate change is a global challenge with multiple far-reaching consequences, including the intensification and increased frequency of many extreme weather events. In response to this pressing issue, we present ClimaMeter: a platform designed to assess and contextualise extreme weather events relative to climate change. The platform offers near real-time insights into the dynamics of extreme events, serving as a resource for researchers and policymakers while also being a science dissemination tool for the general public. ClimaMeter currently analyses heatwaves, cold spells, heavy precipitation and windstorms. This paper elucidates the methodology, data sources, and analytical techniques on which ClimaMeter relies, providing a comprehensive overview of its scientific foundation. To demonstrate the capabilities and limitations of ClimaMeter, we present two case studies: the late 2023 French Heatwave and the July 2023 windstorm Poly. We use two distinct datasets for each case study, namely the MSWX data, which serves as the reference for our rapid attribution protocol, and the ERA5 data, widely regarded as the leading global climate reanalysis. These examples highlight both the strengths and limitations of ClimaMeter in expounding the link between climate change and the dynamics of extreme weather events.

1 Introduction

The consequences of climate change are becoming increasingly evident and widespread, making the need for a comprehensive and timely understanding of their current and future implications acute (Allan et al., 2021; Hartin et al., 2023). A number of recent high-impact extreme weather events, such as the 2021 North American heatwave (Philip et al., 2021; Lucarini et al., 2023; Pons et al., 2024), the 2019-2020 wildfires in Australia and the 2023 wildfires in Canada (Bowman and Sharples, 2023), the 2021 Ahr floods in Germany and Benelux (Cornwall, 2021), the summer and autumn drought of 2020 in the Southwest USA (Dannenberg et al., 2022) and the 2020 North Atlantic Hurricane season (Reed et al., 2022), have once again raised to the forefront the potential role of climate change in making extreme weather more frequent and severe. As climate records are repeatedly shattered, a crucial task to advance scientific understanding, climate policy-making and communication to the general public is to distinguish between those extreme events primarily issuing from natural variability and those which were modulated by climate change-related factors (Trenberth, 2011; Trenberth et al., 2015; Mahony and Cannon, 2018; Huggel et al., 2016). As a result, a number of rapid tools for linking extreme events to climate change have emerged (e.g., Stott et al., 2016; Angéilil et al., 2014; Otto, 2016; Otto et al., 2018; Vautard et al., 2018; Faranda et al., 2022). These tools bridge the gap between climate science, climate policy and public awareness, offering a means to decipher the complex web of interactions between human-induced climate change and extreme weather events.

Here, we present a new step in the assessment of extreme weather events in the context of climate change: the ClimaMeter platform. ClimaMeter provides a near real-time assessment of extreme weather, balancing the competing needs of rapidity, accuracy and accessibility for a broad public. Specifically, the platform offers a non-technical report with a summary figure, intended for the general public and media, and more detailed supplementary figures providing additional analysis, aimed at fellow researchers. A defining feature of ClimaMeter is its accessibility, allowing users to explore and visualize results through an intuitive and user-friendly interface. ClimaMeter currently analyses heatwaves, cold spells, heavy precipitation and windstorms.

ClimaMeter has been developed as a collaborative effort among climate scientists, meteorologists, and data analysts, and harnesses state-of-the art historical weather reconstructions and statistical algorithms based on dynamical system metrics to determine the influence of climate change on specific extreme weather events. This ClimaMeter core group is responsible for selecting and analyzing extreme events, producing reports, and addressing media inquiries. A rapid framework like ClimaMeter, which provides a dynamical view of extreme weather events as synoptic-scale weather features, has so far been missing. Indeed, probabilistic extreme event attribution techniques usually rely on a single variable, averaged on a spatial and temporal domain. They thus do not consider the extreme event as a dynamically evolving weather feature, which may influence several meteorological variables with potentially compounding effects. These aspects are instead taken into account in the so-called storyline attribution (see, e.g. (van Garderen et al., 2020; Leach et al., 2021; Wang et al., 2023)) or in the analogues based approaches introduced in Faranda et al. (2022), at the basis of the methodology of ClimaMeter. For instance, cyclones and storms can lead to impacts from strong winds, pluvial floods and storm surges (e.g., Alberti et al., 2023).

45 In its initial phase of expansion, ClimaMeter welcomes scientists interested in investigating the relationship between extreme events and climate change, inviting them to join this important endeavor. The aim is to fulfill the need for a near-real time understanding of the interactions between climate change, natural variability, and specific extreme weather events. The ClimaMeter website (www.climameter.org) includes: a home page providing real-time updates and summaries of recent extreme weather event reports, with links to full reports; an Event Dashboard offering visual overview of all analyzed extreme events based on
50 location and event type, with filtering options available; the Hazard Database listing all analyzed extreme events categorized by type; the Methodology page outlining the scientific methods employed by ClimaMeter; the About ClimaMeter page providing information on the project's origins, goals, and core team; the Media Coverage page compiling news articles, interviews, and reports featuring ClimaMeter; and lastly the Peer-Reviewer Research page listing peer-reviewed publications connected to ClimaMeter.

55 In the remainder of this study, we provide a detailed explanation of the methodological foundations of ClimaMeter, present report writing protocols for extreme events and user-oriented features of the ClimaMeter website. Finally, we show two examples of ClimaMeter extreme weather reports: the late French Heatwave on 2023/08/20-23 and the Storm Poly affecting Northern Europe on 2023/07/05.

2 Methodology

60 Our methodology is based on looking for weather conditions similar to those that caused the extreme event of interest (atmospheric circulation analogues, Yiou, 2014; Faranda et al., 2020) with statistical algorithms based on dynamical system metrics. The object studied (i.e., "the event") is a surface-pressure pattern over a certain region and averaged over a certain number of days, that has led to extreme weather conditions. The analysis of an event is decided upon within the ClimaMeter core group based on national and international media reports of societal, economic and/or environmental losses, or if the event in question
65 had unique features from a meteorological perspective. Although at present the selection of events is based on expert-informed judgement, we are open in the future to using automated event detection methods (e.g., Latent Dirichlet Allocation, Fery et al., 2022) to select the events to be analysed. The geographical area and time-period for analysing the event are determined based on the locations of the above-mentioned impacts and on a visual analysis of the meteorological drivers and surface footprint of the event. For example, in the case of a summer heatwave associated with an atmospheric block, we would select a region
70 including both the block and the land areas affected by the highest temperatures. The final choice is based on expert judgment, following an open discussion in the ClimaMeter core group.

We focus on the satellite era, namely the period since 1979, when continuous observations of climate variables from satellites have become available (e.g. Hersbach et al., 2018). We consider the early decades of the satellite era (1979–2000, "past") and the more recent decades (2001–2022, "present") separately. The "past" is meant to be representative of a world with a
75 weaker anthropogenic influence on climate than the "present", which refers to present-day conditions strongly affected by anthropogenic climate change. We use data from MSWX (Beck et al., 2022), freely available in real-time at <https://www.gloh2o.org/mswx/>, but in this article we also show results obtained analyzing ERA5 data (Hersbach et al., 2018). We then compare

weather conditions associated with analogues in the two periods, and test for significant changes. In other words, given the definition of the event, any change in the probability or intensity of meteorological hazards (e.g., extreme rain or heat) will be conditioned to the atmospheric circulation (e.g., Vautard et al., 2016; Shepherd, 2016; Yiou et al., 2017). Next, we evaluate whether the observed changes in the extreme event, if any, are likely due to natural variability or anthropogenic climate change.

Since we use publicly available historical climate reconstructions constrained by observations, instead of numerical model simulations, the framework is rapid, reproducible and minimises the influence of model biases. However, our approach also comes with disadvantages. In some cases, the extreme event can result from very unusual weather situations that may not have previously occurred in the analysis period. In this case, the identified atmospheric circulation analogues will be poor, and the confidence we place in our results is low. Moreover, the use of 1979–2000 as reference "past" period comes with the risk of underestimating the role of anthropogenic climate change, as this period cannot be viewed as a stationary, unforced climate. Finally, While at mid-latitudes surface pressure anomalies can track cyclones and anticyclones, their use in tracking tropical extremes is limited to tropical waves, tropical depression and tropical cyclones.

2.1 Data pre-processing and analysis

1. We use surface pressure as MSWX does not currently provide mid-tropospheric fields, and other reanalysis products which provide these, do so with a considerable time delay.
2. The latest available data from the MSWX-Past data product are downloaded. If necessary, these are completed with the MSWX-NRT (MSWX near real-time) product (Beck et al., 2022). Specifically, we download surface pressure, 2-m temperature, total precipitation and 10-m wind speed data at daily resolution and with a horizontal grid size resolution of $0.1^\circ \times 0.1^\circ$. As a gridded meteorological product, MSWX-NRT does not reflect extremes at spatial scales smaller than the grid's size. Moreover, the analysis data used for the near real-time extension might suffer from model errors. For these reasons, extreme values of temperature, precipitation and wind speed measured locally by meteorological stations and mentioned in our reports, may not be reflected in the MSWX-NRT data shown in our analysis.
3. The event is represented by a surface pressure pattern averaged over a certain number of days (≥ 1) and over a certain geographical region. These are determined through a consensus expert judgement (see Sect. 2 above).
4. Surface pressure and 2-m temperature data are pre-processed by removing, at each grid point and for each day, the average of their values for all the corresponding calendar days over the period 1979–2022. This accounts for the seasonal cycle and, only for surface pressure data, this also removes the effect of varying surface elevation in space. Total precipitation and wind speed data are not pre-processed. When more than one day is considered, a moving average across the event duration is performed.
5. Similar past events are searched by looking for *analogues* in terms of the event's surface pressure pattern only, over the selected spatio-temporal domain (see Sect. 2 above). Analogues are defined as those surface pressure maps displaying the smallest Euclidean distances with respect to the event itself within the analyzed domain. We consider a fixed geo-

110 graphical domain and do not look for similar pressure patterns at other geographical locations. The motivation is that
similar SLP patterns at different locations could have different impacts (in terms of temperature, wind and precipitation),
thus biasing our analysis. We focus on the surface pressure to identify atmospheric circulation analogues as it is spatially
smoother than hazard variables (temperature, precipitation and windspeed) and is thus the most suitable field for evaluat-
115 "past" and "present" periods, and look for analogues in each period separately. Once analogues are found, we compute
the corresponding temperature, precipitation or wind speed composite maps based on the best analogues in each period.
The specific number of analogues is determined by a quantile of the total dataset length. In the case studies presented
later in this study, we varied the number of selected analogues between 10 and 20 and observed no qualitative differences.
In Sect. 4 below we show results for 15 analogues. For the present period, the event itself is excluded from the present
120 composite maps. In addition, we exclude analogues within a window of 21 days centered on the date of the event (only
for events that last exactly one day). Ginesta et al. (2023) performed extensive robustness tests of the methodology with
respect to changes in the number of selected analogues, changes in the geographical domain's extension and changes
in the temporal duration analysed for an event. However, we recognise that domain sensitivity may be to some extent
region and event dependent.

125 6. We next compute differences between the composite surface pressure and temperature, precipitation or wind speed fields
for analogues in the two periods. We additionally compute differences in composite temperature, precipitation and wind
speed for analogues in the two periods in three selected major urban areas within the analysis region.

7. In order to evaluate the possible role of low-frequency modes of natural variability in explaining the differences between
the composite maps of analogues in the two periods, we also include in our analysis monthly indices of the El Niño-
130 Southern Oscillation (ENSO), the Atlantic Multidecadal Oscillation (AMO), and the Pacific Decadal Oscillation (PDO).
We compare the distributions of the ENSO, AMO and PDO values on the dates of the analogues in the past and present
periods, and we test the statistical significance of the observed differences. If a significant difference is found, we consider
that the mode of variability could possibly influence the observed changes in the analogues of the event between the two
periods. This step provides a zeroth-order assessment of the possible influence of natural variability, yet comes with
135 several limitations. First, we only use three amongst the many large-scale climate variability modes known from the
literature. Moreover, not finding a significant difference between the distributions of an index conditionally to an event's
analogues in the two periods does not guarantee the absence of an effect from that variability mode. For example, a
resurgent or transitioning La Nina is linked to significant shifts in patterns of convective outbreaks over the U.S.A. (Lee
et al., 2016), yet these ENSO phases are not reflected by the ENSO3.4 index used in our analysis. Finally, in our analysis
140 we always give equal weight to all three modes, even though depending on the geographical location of the event being
analysed some of the modes may be more relevant than others. The indices for all three modes of variability are based
on NOAA/ERSSTv5 data. The ENSO and AMO data are freely retrieved from the Royal Netherlands Meteorological
Institute (KNMI) Climate Explorer (<https://climexp.knmi.nl/start.cgi>), and the PDO time series from

the National Centers for Environmental Information (NCEI) of the National Ocean and Atmospheric Administration NOAA (<https://www.ncei.noaa.gov/>), where the most updated version is available.

2.2 Visual Representation

Figure 1 is a schematic explanation of the summary ClimaMeter figure, present in all extreme weather reports. The ClimaMeter figure represents a distinctive feature of the platform, meticulously crafted based on extensive feedback from journalists and colleagues specializing in climate change communication.

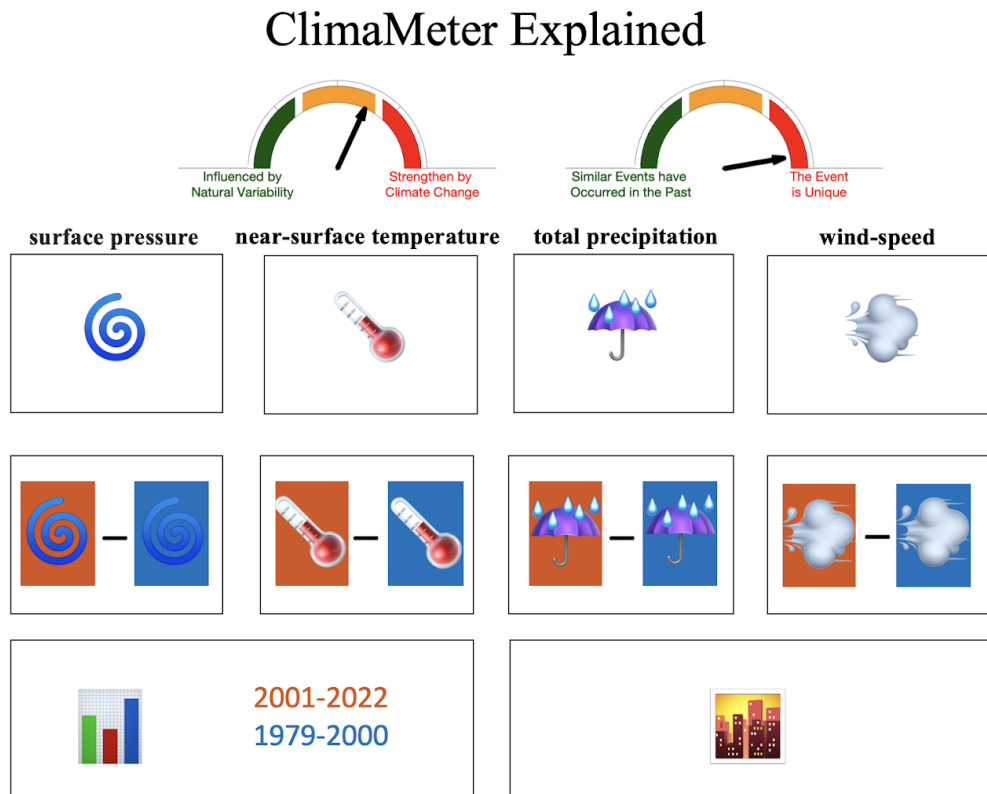


Figure 1. Schematic illustration of the ClimaMeter figure output. The top row of the figure consists of two gauge charts. The left-hand-side one indicates the respective roles of natural variability and climate change in explaining the changes detected. The right-hand-side gauge indicates the rarity of the surface-pressure pattern of the event. The second row provides a visual representations of the surface pressure anomalies of the event and those of the hazard variables, i.e., temperature, precipitation and wind-speed. The third row provides maps of the composite differences between analogues in the "present" and "past" periods. The last row reports the seasonality of the analogues in each period (left panel), and detected changes in temperature, precipitation and wind speed in three major urban areas within the analysis domain (right panel). See Section 2.2 for more details.

150 The top row of the figure consists of two gauge charts (Figure 1, upper panels). The left-hand-side one indicates the respective roles of natural variability and climate change in explaining the changes detected in the event (i.e., "strengthened (for cold spells: weakened) by climate change" or "influenced by natural variability"). The right-hand-side gauge indicates the rarity of the surface-pressure pattern of the event (i.e., "the event is unique" or "similar events have occurred in the past"). The gauge representation is a visually immediate way to communicate this complex information. The gauge needles can take four
155 positions: almost entirely to the left (5%), 2/3 to the left (35%), 2/3 to the right (65%), or almost entirely to the right (95%). These categories are determined based on the values of underlying quantitative metrics (see below).

Furthermore, we provide visual representations of the surface pressure anomalies of the event and of the hazard variables, i.e. temperature, precipitation, and wind speed (Figure 1, top middle panels). We also provide corresponding maps of the composite differences between analogues in the "present" and "past" periods (bottom middle panels). Finally, we report the
160 seasonality of the analogues in each period (Figure 1, lower left panel), and detected changes in temperature, precipitation and wind speed in three major urban areas within the analysis domain (lower right panel). More in detail:

1. To determine the influence of natural variability or climate change on the event (left-hand gauge), we look at whether the analogues in the two periods occurred during significantly different phases of the ENSO, and/or the AMO, and/or the PDO. To assess the significance of the differences in the indices of natural variability during analogues in the past and
165 present periods, we use a two-sided Cramer-von Mises test to compare pairs of distributions in a non parametric way, at the 0.05 significance level. If the p-value is smaller than 0.05, the null hypothesis that both samples are from the same distribution is rejected, namely we interpret the distributions as being significantly different. If none of the three modes shows significant differences, then the dial points 95% to the right. For each statistically significant difference in one of the variability modes, we shift the dial 30% to the left. Since we consider three modes, the dial can thus attain values of
170 95%, 65%, 35% or 5%. We do not use 0% or 100% to acknowledge data and analysis uncertainties.

2. Concerning the rarity of the event in the data record (right-hand gauge) we use analogue quality Q , previously introduced in Faranda et al. (2022). In our analysis, Q is computed based on the Euclidean distances between analogues of all days in the dataset.

(a) If for both the past and the present, Q is below the 75th percentile of the distribution of Q values computed for all
175 days in each period, the gauge points left (5%). This means that similar events have occurred in the past.

(b) If, instead, for both the past and the present periods, Q is between the 75th and the 95th percentiles, we assign 35%.

(c) If for the past or the present Q is between the 75th and the 95th percentiles, while for the other period it is above the 95th percentile, we assign 65%.

(d) If Q exceeds the 95th percentile for both the past and the present, we assign the maximum value to the gauge
180 (95%). This means that the event is unique in our dataset.

We choose relatively high percentiles of Q to determine the positioning of the dial since we analyse extreme events which, by their very nature, are not frequently observed. The dial should therefore be interpreted as referring to events

which in any case are comparatively unusual, but which may not be unique. As for the other dial, we do not use 0% or 100% to acknowledge data and analysis uncertainties.

- 185 3. We display the event's average surface pressure anomaly, defined as the difference between the average surface pressure at each gridbox in the selected region for the duration of the event and the average surface pressure at each gridbox for the same calendar day(s) over the whole period 1979–2022. The same is displayed for temperature, while absolute values are displayed for precipitation and wind speed.
- 190 4. We also display the difference between the average surface pressure for all analogues in the present period and the average surface pressure for all analogues in the past period. The same is done for the selected hazard variables. To determine significant changes between the two periods, we adopt a bootstrap procedure which consists of pooling the dates from the two periods together, randomly sampling 15 dates without replacement from this pool 100 times (higher values do not change significantly the results), creating the corresponding difference maps and marking as significant only grid point changes larger than two standard deviations above or below the mean of the bootstrap sample. This is
- 195 implemented in the summary figure and it highlighted in the report text. For the hazard changes, significance is only included in the extended analyses (see Appendix A) and is highlighted in the report text.

2.3 Statistics of events

Figure 2 presents a statistical analysis of the extreme events analysed by ClimaMeter up to 11th April 2024. We specifically highlight the average values of the two gauges representing the influence of climate change on the selected events and the uniqueness of the events, as well as a summary of the role modes of natural variability. These insights are provided for all events collectively, as well as separately for each hazard class including cold spells, heatwaves, heavy rainfall, and wind storms.

200

Overall, we observe that the median percentage value of the uniqueness gauge is approximately 80%, indicating that the majority of events that we analyse lack similar past analogues. This is not necessarily surprising given that extreme events are by definition rare. Conversely, the median percentage value of the Climate Change gauge (approximately 50%) suggests that the anthropogenic climate change signal is only evident in part of the analyzed events. In this respect, we however note that we take a restrictive approach to quantifying this, as discussed in Sect. 5. Upon closer examination of specific hazards, it is noteworthy that all cold spell events in our dataset are unique, and that the anthropogenic climate change signal is most visible in heatwaves.

205

Concerning the modes of large-scale climate variability, we find a dominant role of the Atlantic Multidecadal Oscillation (AMO), with the Pacific Decadal Oscillation (PDO) playing a secondary role, and the El Niño-Southern Oscillation (ENSO) contributing less. Interestingly, the PDO influences all cold spell events, while AMO dominates for all other hazard categories.

We conclude by noting that these statistics are provided to demonstrate the capabilities of ClimaMeter, but given the small sample size may not be indicative of the bulk statistics of natural hazards. As discussed, the selection of events analyzed is guided by expert opinion and by their relevance to the general public.

215

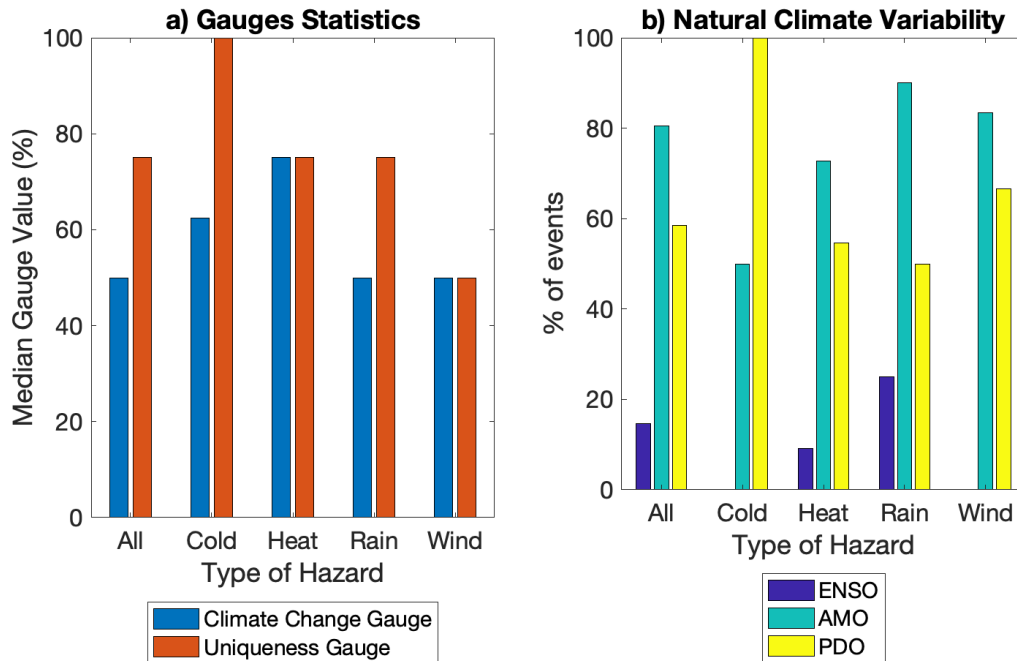


Figure 2. Percentage Median values of ClimaMeter’s climate change and uniqueness gauges (a) and percentage of events which we deem may have been affected by shifts in a given pattern of natural variability (b). The figure include both all events (41 in total) and individual hazard classes (cold spells (4 events), heatwaves (11 events), heavy rainfall (20 events), wind storms (6 events)).

Figure 3 further shows the geographical distribution of events analysed, the proportion of events for each hazard class and the counts of events yielding specific values of the gauges. There are evident biases in the geographical homogeneity of events and hazards analyzed. Therefore, while these findings offer an insight into the interplay between climate change, natural variability, and specific hazards, they should not be construed as universally representative.

220 3 Report Writing Protocol

ClimaMeter has a structured protocol for writing reports that assess and contextualise extreme weather events relative to climate change. This is a living document, that can be updated based on input from the ClimaMeter core team. The latest version of the template at the time of writing, which is detailed in Appendix A, encompasses all aspects of the report, including the formulation of the report title, homepage title (which appears on the www.climameter.org homepage when the report is released), press summary, event description, climate and data background, ClimaMeter analysis, and conclusion.

225

The homepage title categorizes extreme weather events into those "strengthened by human-driven climate change", "mostly strengthened by human-driven climate change", "likely influenced by both human-driven climate change and natural variability," or "mostly driven by natural variability". This dichotomy is chosen to provide a clear and immediate communication, even though we appreciate that there may be factors affecting the extremes which fall in neither category (for example human-driven
230 land-use changes). In the report itself, the template starts with a press summary that provides context for the event, assesses its uniqueness, and characterizes it in terms of the role of climate change versus natural variability, based on the ClimaMeter analysis. The event description section details the specifics of the extreme weather event, including dates, location, and key characteristics. Links to relevant media reports are provided. It also presents a simplified explanation of the atmospheric conditions leading to the event. The climate and data background section refers to IPCC reports and other relevant scientific
235 information to provide context and support for the analysis. It also assesses the confidence level in the analysis based on the uniqueness or not of the event (right-hand dial). A unique event is associated with low confidence, since analogues will be poor; an event similar to others observed in the past gives us a higher confidence in the analogues-based analysis. The ClimaMeter analysis section examines changes in surface pressure and hazard variables, comparing the present and past analogues to determine how the event has evolved between the two periods. It further evaluates the extent to which climate change may
240 have strengthened the event (left-hand dial). The conclusion provides a two-sentence summary of the analysis, summarising the two dials and the analogue composite difference maps. Overall, this protocol aims to offer an accessible yet comprehensive approach to assessing extreme weather events in the context of climate change, prioritising a clear communication of findings.

The report for a given extreme event is usually produced within 2-3 days after the event has occurred, if needed using the MSWX-NRT data (see Sect. 2.1). When updated MSWX-Past data become available, we aim to update the report. Similarly,
245 we update reports based on suggestions or criticisms that we receive e.g., from colleagues or journalists, including correcting errors in the figures or analysis, modifying the text in response to requests for clarification, updating estimates of the damage or of the meteorological measurements. In general, we strive to take into account any feedback that helps improve the reports. This means that we may update a given report several times. For every report, we indicate the first publication date, the date of the latest update, and the date when the report was finalised. Once the report is finalised, it cannot be changed further. We
250 will provide a PDF version of the report as well as a DOI to cite the report. The finalisation of the report may happen several months after the occurrence of the extreme event being analysed.

4 ClimaMeter Examples

Here, we present two examples to illustrate the ClimaMeter methodology in detail and its robustness with respect to changes in dataset (MSWX vs. ERA5) and observables (mean sea level pressure and geopotential height). The results and their present-
255 ation differ from the standard ClimaMeter reports and the protocol in Appendix A to provide a more thorough explanation of the methodology and also to better fit the requirements of a scientific paper. However, the content is consistent with that of the corresponding ClimaMeter reports.

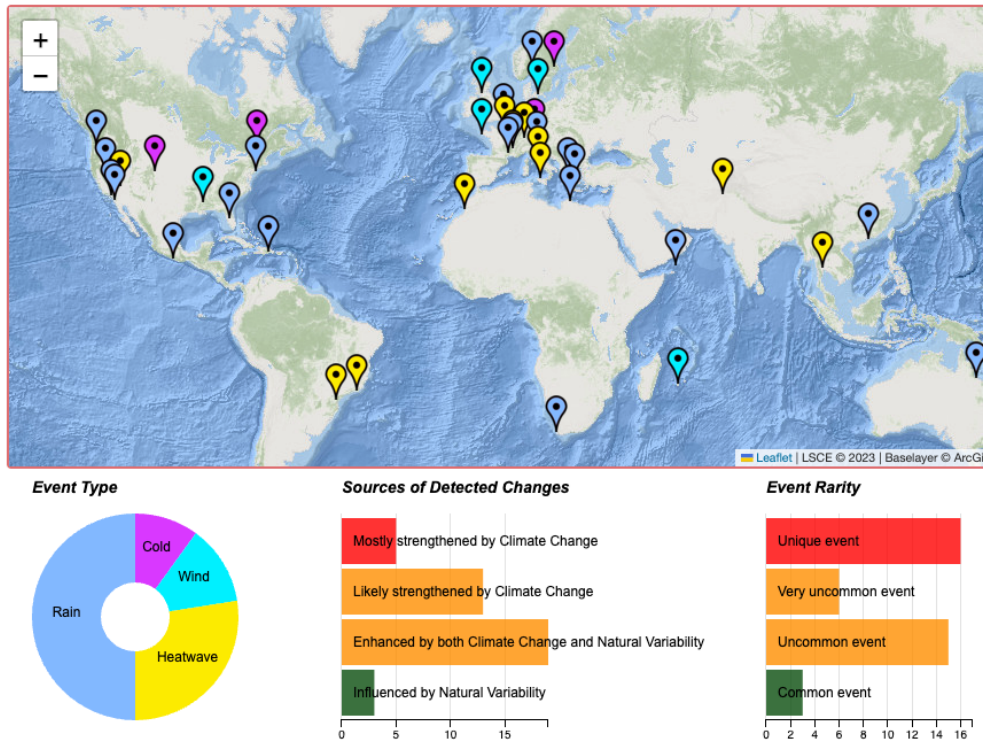


Figure 3. Screenshot of the Event Dashboard appearing in the ClimaMeter website, with extremes analyzed up to April 11th 2024. See <https://www.climameter.org/event-dashboard>.

4.1 2023/08/20-23 Late Summer French Heatwave [-10°E 20°E 30°N 52°N]

Event Description. Starting from August 20th, Western and Northern Europe experienced unusually high temperatures, peaking on the 22nd and 23rd August. With a national temperature indicator of 27.5°C, Wednesday August 23rd was the second-hottest day ever recorded in France (TF1 Info, 2023). A large number of daily maximum temperature records were broken in the country. In Toulouse the thermometer reached 42.4 °C (previous record 40.7 °C), in Auch 42.3 °C (previous record 40.9 °C), and in Narbonne 42.1 °C (previous record 39.8 °C). Additionally, the heatwave was extreme also in mountain areas with Aiguille du Midi (~3800 m.a.s.l. in the Mont-Blanc massif) recording a maximum temperature of over 10 °C. Finally, the minimum daily temperature of 30.4 °C in Menton, set a new record for minimum daily temperature in mainland France. The heatwave ended on August 24th, when fresher air from the Atlantic reached the country causing severe thunderstorms.

The heatwave was associated with a persistent area of high pressure (anticyclone) over Western and Central Europe, on the background of a warm Atlantic ocean and warm Mediterranean sea and of a positive phase of the El Niño–Southern Oscillation. The Surface Pressure Anomalies (Figure 4) pattern associated with the event consists of a high pressure area over the Alps and Central Europe and a low pressure area over the south-eastern North Atlantic. Temperature Anomalies show that temperatures

were 10°C or more warmer than usual over most of the domain considered (Figure 4).

Climate and Data Background for the Analysis. Chapter 11 of the IPCC AR6 report (Seneviratne et al., 2021) emphasizes that in Western Europe, there is strong evidence of an increase in maximum temperatures and in the frequency of heatwaves. Specifically, in Western Europe, climate warming has already reached 1.7°C compared to the pre-industrial era, with 1.5°C of this increase occurring since the 1960s, particularly during the summer months. The number of heatwave days in Western Europe has multiplied by five, transitioning from an annual average of 2 days between 1960 and 2020 to about 10 days.

Our analysis approach rests on looking for weather situations similar to those of the event of interest having been observed in the past. For this event, we have medium-high confidence in the robustness of our approach given the available climate data, as the event is similar to other past events in the data record.

ClimaMeter Analysis. Figure 4 reports ClimaMeter results on the late Summer French Heatwave based on the MSWX dataset and how events similar to this have changed in the present (2001–2022) compared to what they would have looked like if they had occurred in the past (1979–2000) in the region [-10°E 20°E 30°N 52°N]. Surface Pressure Changes show that the pressure over Brittany pressure has becoming higher while is lower over Italy. We underline that such changes are rather modest. Temperature Changes show that similar events produce temperatures which in the present climate are between 1 °C and 4 °C hotter than what they would have been in the past especially on the Mediterranean area. This coincided with temperatures in Lyon, Toulouse and Marseille being over 1.5 °C hotter than what they would have been in the past. We also note that Similar Past Events have become more common in the month of August, while they previously occurred largely in July. However, the differences in average maximum temperatures between these two months are limited in many French cities.

Finally, we find that sources of natural climate variability (see Figure A1), notably the Pacific Decadal Oscillation and Atlantic Multidecadal Oscillation, may have influenced the event. This suggests that the changes we see in the event compared to the past may be partly due to human driven climate change, with a contribution from natural variability.

Conclusions. Based on the above, we conclude that heatwaves similar to the late August 2023 French heatwave have become between 0 °C and 4 °C warmer in the present than in the past. We interpret this heatwave as a largely unique event whose characteristics can be mostly ascribed to human driven climate change.

Comparison with ERA5 data. In addition to the above report which mostly follows the ClimaMeter protocol, we also discuss, in the following, the results obtained with ERA5 data to assess the robustness of the method (cf. Fig. 4 with Fig. 5). Temperature changes among the datasets are largely consistent geographically but they are more intense in the ERA5 dataset and also extends over France and Germany. Precipitation Changes are consistent, apart small variations over Alps likely due to both the higher spatial resolution of MSWX ($0.1^\circ \times 0.1^\circ$) with respect to ERA5 ($0.25^\circ \times 0.25^\circ$) and to the inclusion of ground-based observations in MSWX, instead of only using satellite-based data. Windspeed Changes are also consistent, apart small differences in specific areas over Northern Italy. The fraction of Similar Past Events is also consistent, indicating increasing events in August rather than in July. Changes in Urban Areas are consistent in terms of temperature, while differences are

ClimaMeter for French Heatwave 21-Aug-2023 to 23-Aug-2023

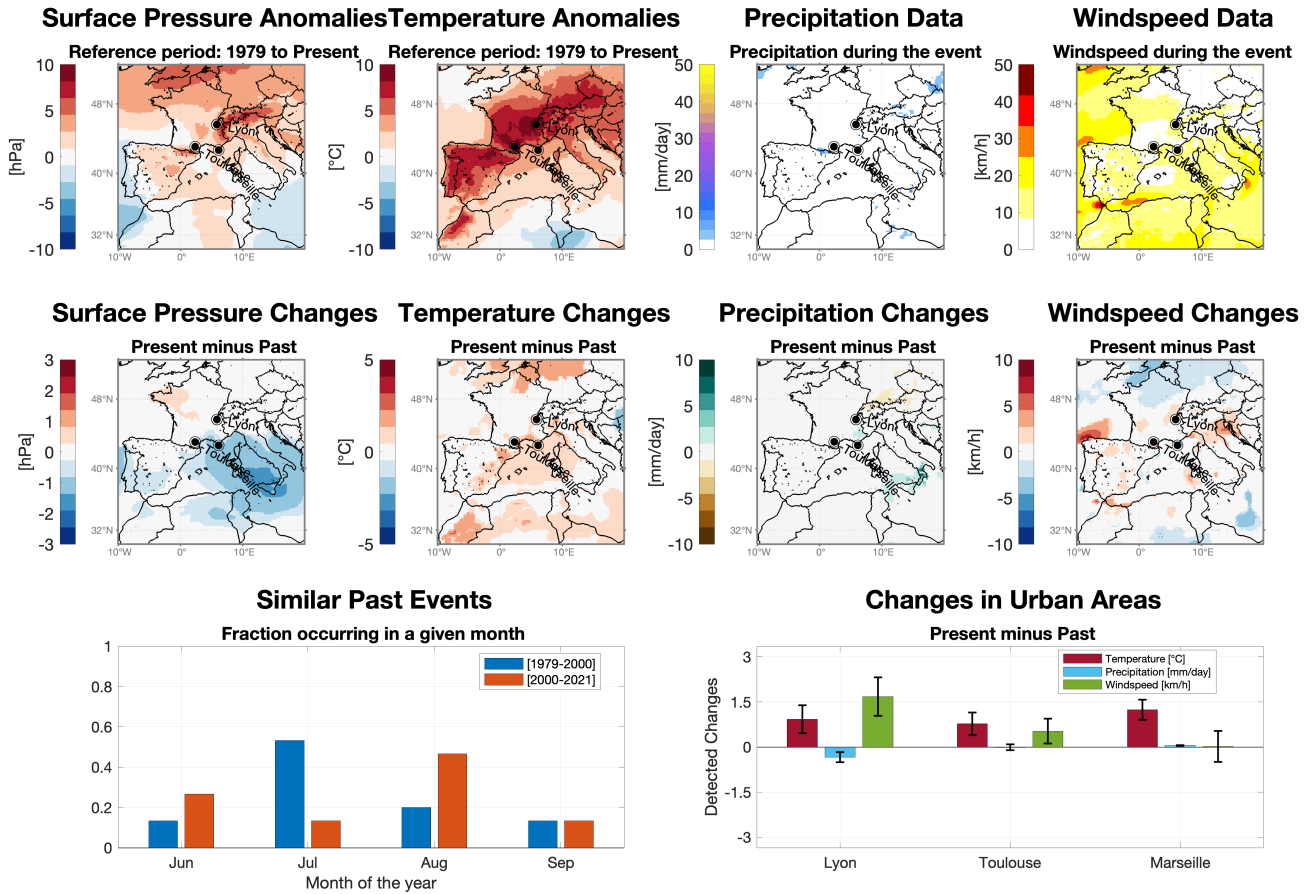
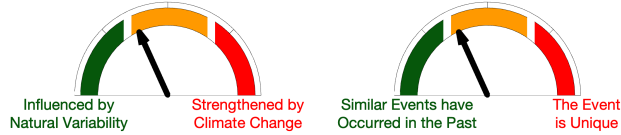


Figure 4. ClimaMeter output for 2023/08/20-23 Late Summer French Heatwave with MSWX data and the analogues selection operated on surface pressure anomalies. See Figure 1 for an explanation of the different panels.

observed in Windspeed. Finally, while there is a similar indication on the uniqueness of the event (right gauge plot in Fig. 5), there is a difference in the role of natural variability, pointing towards a larger role. A reasonable agreement is also confirmed when searching analogues by using the 500 hPa geopotential height (z500, Fig. 6), although in this case we see clear differences in the seasonality panel as well as in both the uniqueness and natural variability gauges.

310 4.2 2023/07/05 Storm Poly in Northern Europe [0°E 25°E 46°N 60°N]

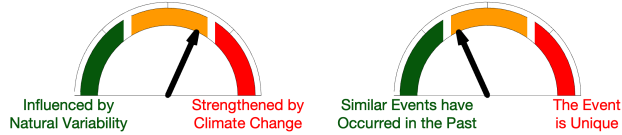
Event Description. On July 5th 2023, a summer extratropical storm named Poly hit Germany, the Netherlands and Denmark, causing significant damage and resulting in 2 casualties. It featured hurricane-force wind gusts locally up to 146 km/h, the strongest ever recorded for a summer storm in the Netherlands (EUMETSAT). The storm's rapid cyclogenesis began over the North Atlantic. Once it made landfall, severe winds were accompanied by heavy rainfall and led to uprooted trees and
315 transportation disruptions. The majority of severe weather reports associated with the storm concerned intense wind events. Storm Poly displayed clear negative Surface Pressure Anomalies over the Netherlands, Denmark and parts of North-Western Germany, while wind speed during the storm in the MSWX data we use for analysis, was around or above 30-40 km/h over a large swath of the Baltic and Northern Europe (Figure 7).

320 **Climate and Data Background for the Analysis.** In Chapter 11 of the IPCC AR6 report (Seneviratne et al., 2021), it is highlighted that there is low confidence in recent total extratropical storm changes globally, but medium confidence in a poleward storm track shift since the 1980s. Understanding past-century extratropical storm trends is hindered by interannual variability and variations in the assimilated data, particularly when moving from the pre-satellite era to the satellite era. Data for the Northern Hemisphere supports a decreased central pressure for cyclones (< 970 hPa) in summer and winter during 1979-
325 -2010, but with non-monotonic trends. The background mean sea level pressure's seasonal and regional variations complicate assessing extratropical storm intensity trends based on absolute central pressure.

For Poly, we have low confidence in the robustness of our approach given the available climate data, as the event is largely unique in the data record.

330 **ClimaMeter Analysis.** Figure 7 reports ClimaMeter results on the storm Poly and how events similar to this have changed in the present (2001--2022) compared to what they would have looked like if they had occurred in the past (1979--2000). The Surface Pressure Changes show that the pressure over the storm area has become lower, favouring more intense cyclones in the present period than in the past. Wind Speed Changes show that similar events produce winds which are between 2 and 6 km/h stronger than what they would have been in the past, consistent with the Surface Pressure Changes. Storms similar to Poly are
335 associated with stronger winds in Hamburg (Germany) and Copenhagen (Denmark) than they would have been in the past. We also note that Similar Past Events have become more common in the month of August, while they previously occurred more in other summer months (peaking in July) or even in September. Finally, we find that sources of natural climate variability, notably the Atlantic Multidecadal Oscillation and the Pacific Decadal Oscillation, may have partly influenced the event. This suggests that the changes we see in the event compared to the past may be partly due to human driven climate change, with a

ClimaMeter for French Heatwave 21-Aug-2023 to 23-Aug-2023



www.climameter.org
© davide.faranda@cea.fr

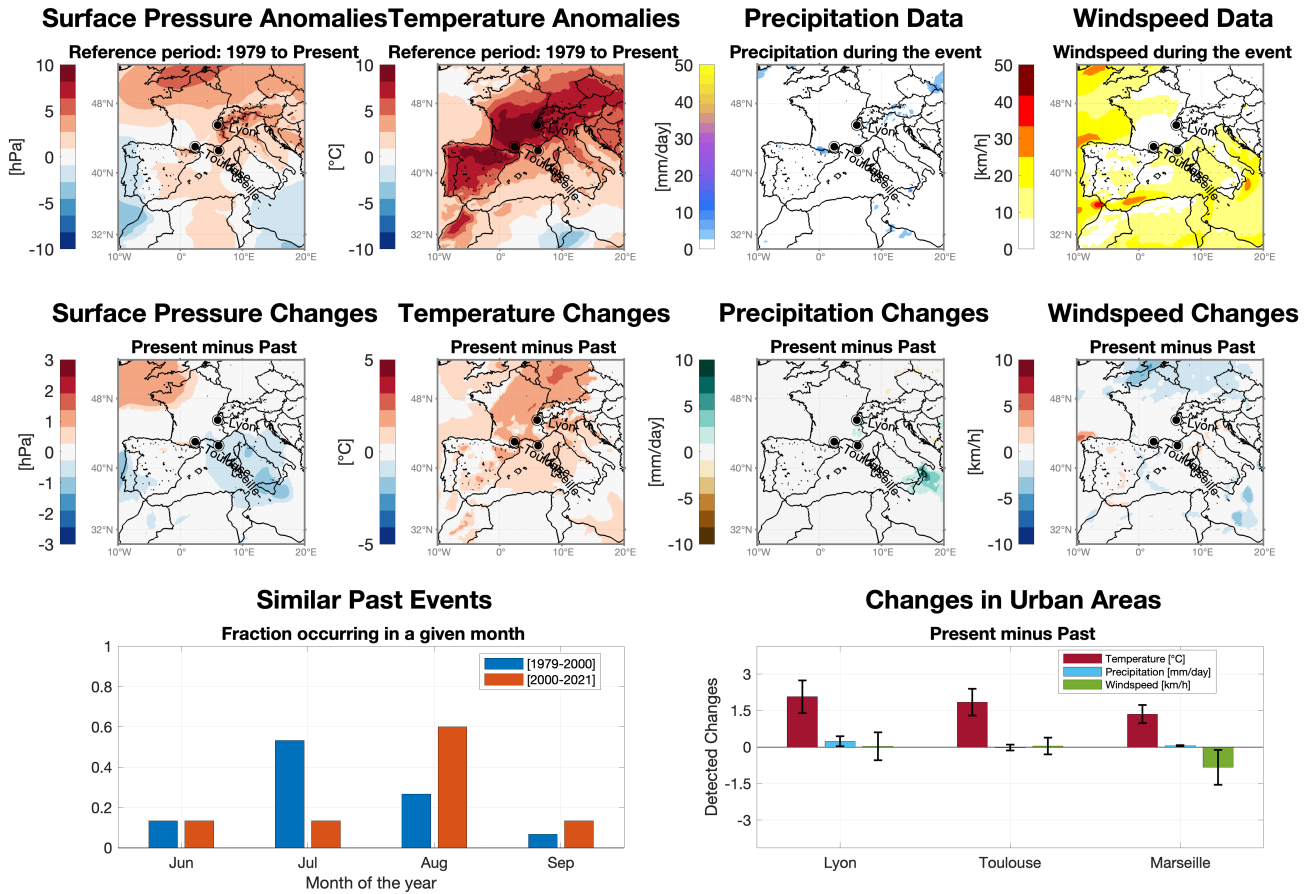
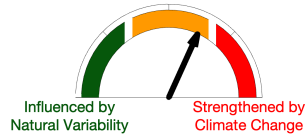


Figure 5. ClimaMeter output for 2023/08/20-23 Late Summer French Heatwave with the ERA5 data and with the analogues selection operated on sea-level pressure anomalies. See Figure 1 for an explanation of the different panels.

ClimaMeter for French Heatwave 21-Aug-2023 to 23-Aug-2023



LSCE-IPSL
www.ipsl.fr



www.climameter.org
© davide.faranda@cea.fr

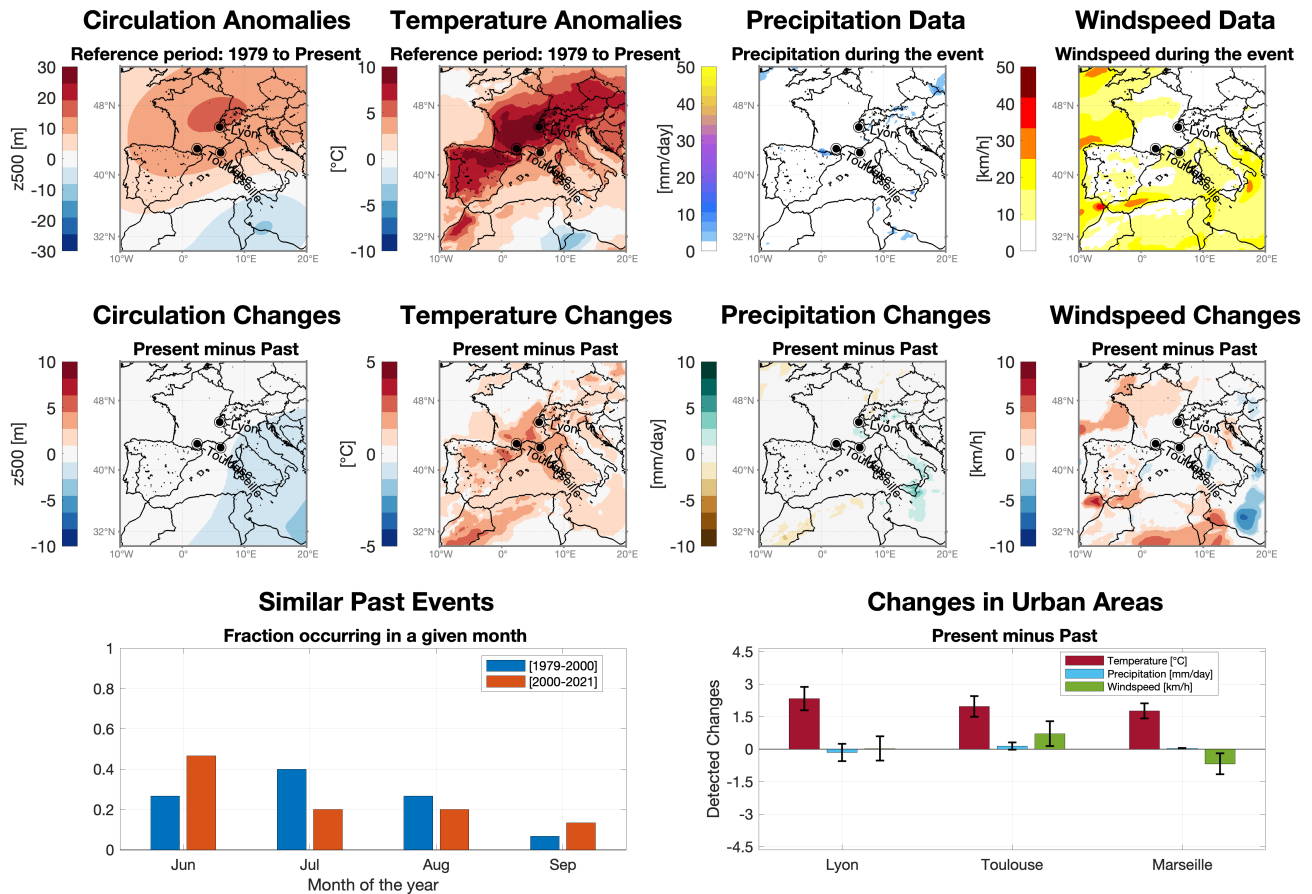


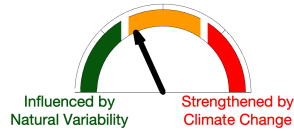
Figure 6. ClimaMeter output for 2023/08/20-23 Late Summer French Heatwave with the ERA5 data and with the analogues selection operated on 500 hPa geopotential data (z500). See Figure 1 for an explanation of the different panels.

ClimaMeter for Storm Poly

05-Jul-2023

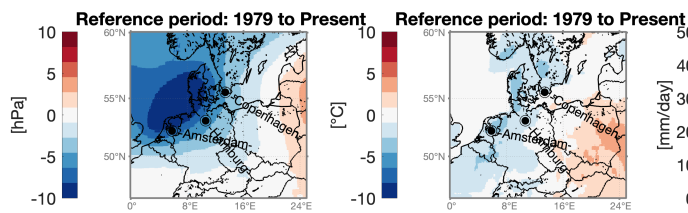


LSCE-IPSL
www.ipsl.fr

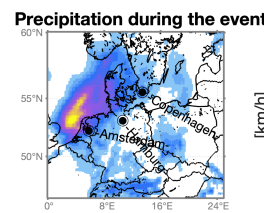


www.climameter.org
© daive.faranda@cea.fr

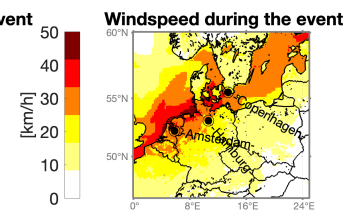
Surface Pressure Anomalies Temperature Anomalies



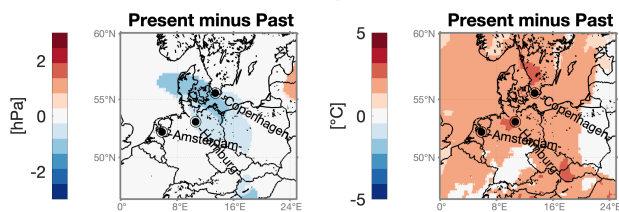
Precipitation Data



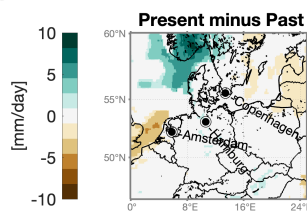
Windspeed Data



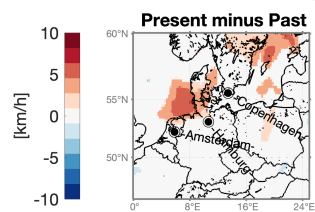
Surface Pressure Changes Temperature Changes



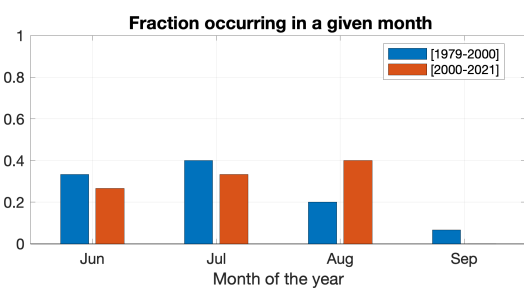
Precipitation Changes



Windspeed Changes



Similar Past Events



Changes in Urban Areas

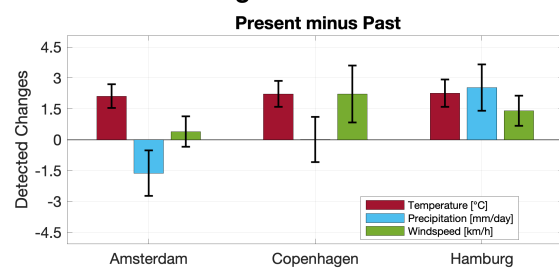


Figure 7. ClimaMeter output for 2023/07/05 Storm Poly in Northern Europe with the MSWX data and the analogues selection operated on surface pressure anomalies. See Figure 1 for an explanation of the different panels.

340 contribution from natural variability.

Conclusion. Based on the above, we conclude that storms similar to Poly display lower pressures and stronger winds in the present than in the past. We interpret this storm as a largely unique event for which natural climate variability played a role.

345 **Comparison with ERA5 data.** As for the previous example we provide, in addition to the ClimaMeter report, a detailed comparison with ERA5 data to assess the robustness of the method (cf Fig. 7 and Fig. 8. We again find an overall good correspondence, yet with some differences - for example in the observed windspeed changes between present and past events in the selected urban areas. However, both datasets present consistent spatial patterns for windspeed and surface pressure changes over the region affected by the storm, which are the key conclusions that we draw from our analysis. The main
350 difference emerges when comparing gauge plots. Indeed, we evidence that for the MSWX analogues the events in unique, while for ERA5 data it seems to be a more common event. This difference can be related to the cyclonic pattern which appears to be more spatially extended in ERA5 over the North Atlantic, leading to different analogues. The conclusions of an increase in windspeed and precipitation also hold when searching analogues by using the 500 hPa geopotential height (z500, Figure 9).

5 Conclusions

355 ClimaMeter is an effort to contextualise the ever-increasing occurrence of extreme and hazardous weather events across the globe relative to the ongoing human-driven climate change. Together with other international efforts of rapidly communicating climate change such as the World Weather Attribution, the Climate Shift index, the C3S Copernicus program, ClimaMeter responds to a pressing need to enhance the way we communicate on this critical issue to the general public and to provide a new tool for policymakers who face the implications of climate change. ClimaMeter's framework is flexible and is not restricted
360 to a specific region or event, as evidenced by the coverage displayed in Fig.3.

At the heart of ClimaMeter's approach lies an analysis of weather conditions similar to those that caused the extreme event of interest (so-called atmospheric circulation analogues), diagnosed using surface pressure. The analysis then leverages analogues to diagnose changes over time in four key meteorological hazard indicators: rainfall, wind speed, and high or low temperatures. These, combined with the analysis of the circulation analogues, serve as the cornerstone for understanding and contextualizing
365 the dynamics of the analysed extreme weather phenomena.

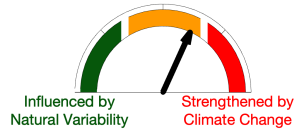
We see the rapidity and reproducibility of the ClimaMeter framework as two of its key strengths. Indeed, ClimaMeter reports typically become available only a few days after the occurrence of the extreme event of interest, and rely on publicly accessible datasets rather than on ad-hoc numerical simulations. Nonetheless, we also recognise some limitations of the framework. One is that the choice to limit our analysis to the satellite era (post 1979) risks underestimating the role of human-driven climate
370 change in affecting the analysed extreme events. Another important caveat is that we adopt a simplified approach to determine the role of natural climate variability, that does not account for the geographical location of the extreme event of interest. Another methodological limitation is that we indeed do not estimate quantitatively the relative sizes of the effects of climate

ClimaMeter for Storm Poly

05-Jul-2023

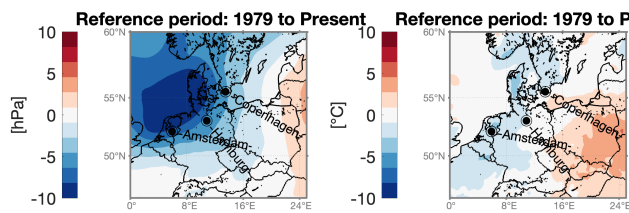


LSCE-IPSL
www.ipsl.fr

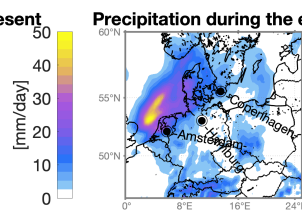


www.climameter.org
© daive.faranda@cea.fr

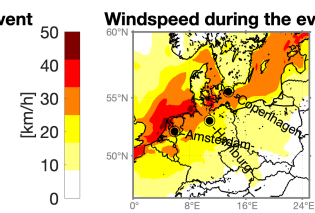
Surface Pressure Anomalies Temperature Anomalies



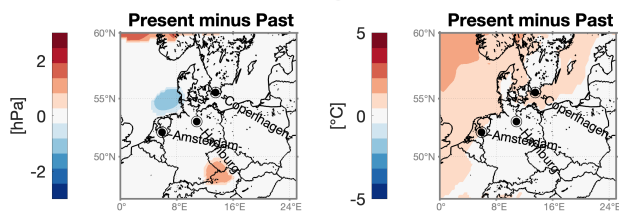
Precipitation Data



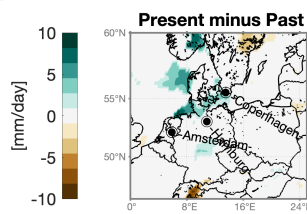
Windspeed Data



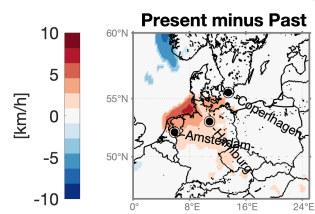
Surface Pressure Changes Temperature Changes



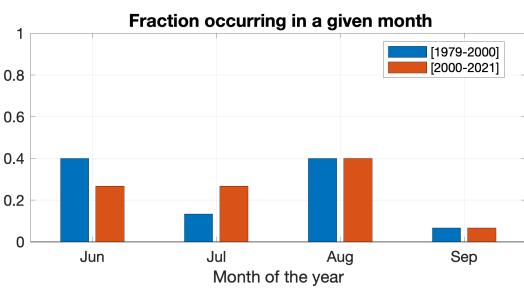
Precipitation Changes



Windspeed Changes



Similar Past Events



Changes in Urban Areas

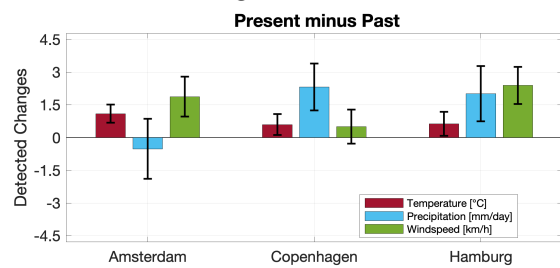


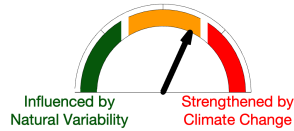
Figure 8. ClimaMeter output for 2023/07/05 Storm Poly in Northern Europe the ERA5 data and with the analogues selection operated on sea-level pressure anomalies. See Figure 1 for an explanation of the different panels.

ClimaMeter for Storm Poly

05-Jul-2023



LSCE-IPSL
www.ipsl.fr



www.climameter.org
© daive.faranda@cea.fr

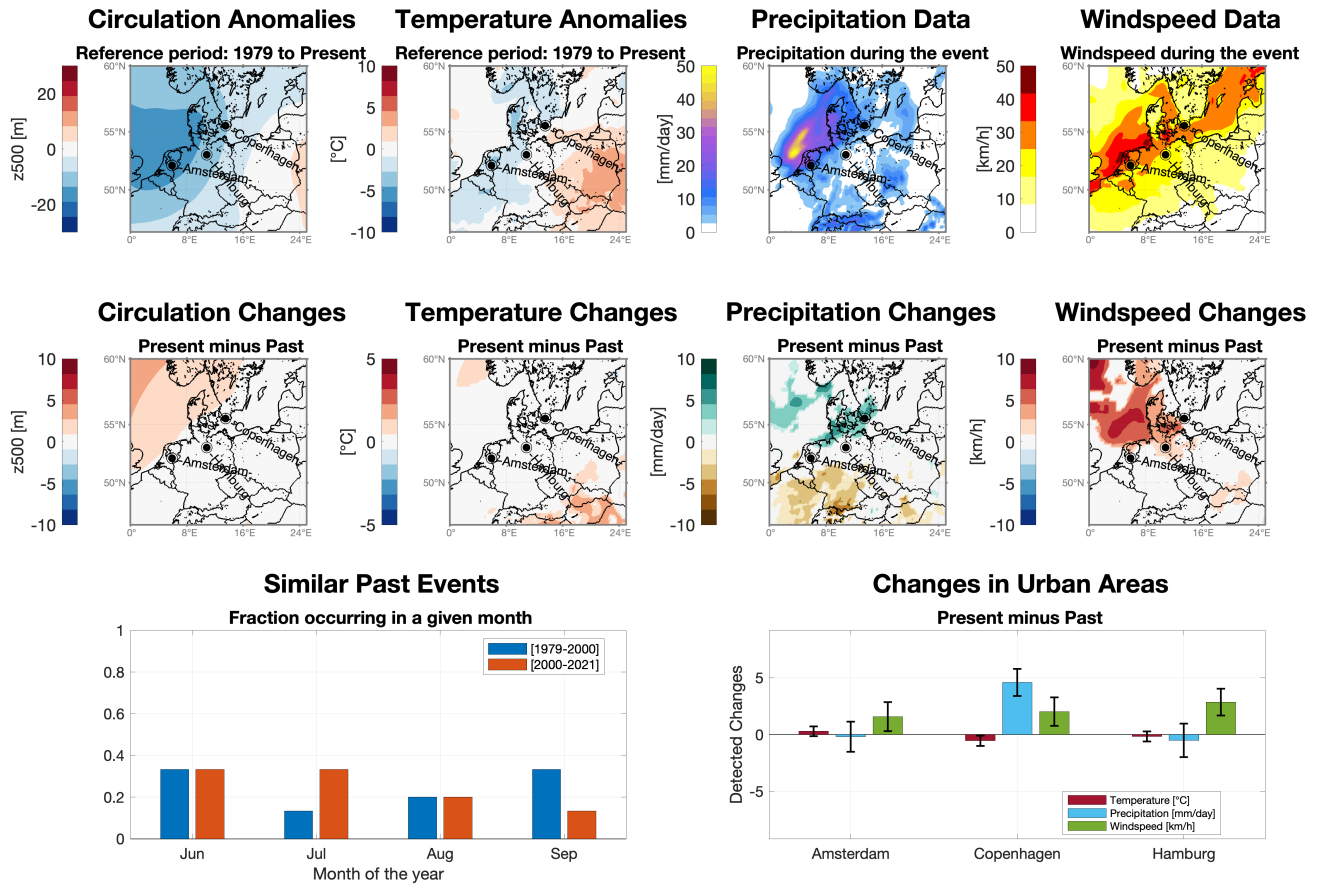


Figure 9. ClimaMeter output for 2023/07/05 Storm Poly in Northern Europe the ERA5 data and with the analogues selection operated 500 hPa geopotential data (z500). See Figure 1 for an explanation of the different panels.

change and natural variability, contrary to other probabilistic approaches. The comparison between ERA5 sea-level pressure and geopotential height analogues has revealed that changes in hazards exhibit geographical consistency. However, there may be variations in magnitude, and ClimaMeter gauges may differ between datasets. In our analysis, we have encountered instances where there is a discrepancy between the near real-time MSWX data and the definitive (termed "past" in the MSWX archive) data used for report updates. This underscores the importance of not regarding ClimaMeter's rapid assessments as replacements for peer-reviewed research, but rather as initial evaluations of extreme events following their occurrence.

Amidst the escalating challenges posed by climate change, ClimaMeter holds potential as a valuable tool for various stakeholders. Researchers can utilize ClimaMeter to delve into the relationship between climate change and specific extreme events, even those not typically addressed in scientific literature. For instance, building upon insights from figures 2 and 3, further investigation can deepen our understanding of how climate variability influences hazards. While the statistics presented offer a glimpse into this relationship, a more comprehensive approach could involve extending the analysis to encompass all events detected within a certain hazard category and geographic region. For instance, focusing on windstorms in Europe, leveraging datasets such as the one compiled by (Faranda et al., 2023) could provide a wealth of data to investigate the role of climate variability on this class of extreme events in a more nuanced manner. Policymakers can rely on ClimaMeter for evidence as to how and to what extent specific extreme event categories in a given geographical area are affected by climate change, thus providing a knowledge basis for addressing the growing risks and vulnerabilities associated with extreme events. Finally, the general public can benefit from ClimaMeter's accessible and informative approach, fostering greater awareness and understanding of the urgency and complexity of climate change and its consequences. This occurs both directly through ClimaMeter's website and social media and indirectly, through the media reports on ClimaMeter analyses.

Ultimately, we hope that frameworks like ClimaMeter may be a small but important piece in the puzzle to achieve a more resilient and sustainable climate future, by integrating scientific research, communication and operational implementation.

Appendix A: ClimaMeter template for reports

395 A1 Template for report titles

For the report titles we use the following formulations. We have removed here the case of cold spells to make the text easier to follow.

- «Heavy precipitation/high temperatures/strong winds» in «location name» strengthened by human-driven climate change [if both gauge indicators are on the red]
- 400 – «Heavy precipitation/high temperatures/strong winds» in «location name» mostly strengthened by human-driven climate change [if one of the gauge indicator is in red and the other is yellow]
- «Heavy precipitation/high temperatures/strong winds» in «location name» likely influenced by both human-driven climate change and natural variability [if both gauge indicators are in the yellow or one is in the green and one in the yellow]

- 405 – «Heavy precipitation/high temperatures/strong winds» in «location name» mostly driven by natural variability [if both gauge indicators are on the green]
- Low confidence prevents ascribing «Heavy precipitation/high temperatures/strong winds» in «location name» to human-driven climate change [if the left gauge indicator is green and the right gauge indicator is red or when detected changes are not aligned with the existing literature]

410 **A2 Press Summary**

For the first sentence about changes in the event intensity:

- «event type» similar to «event name» are «change here» in the present than they would have been in the past «geographical area here» [example: Cold spells similar to Borea are 2 °C warmer in the present than they would have been in the past across all of Northern Europe].

415 For the second sentence about the uniqueness of the event:

- «event name» was a largely unique event [if arrow of right-hand-side-dial points to the right]
- «event name» was a very uncommon event [if arrow of right-hand-side-dial points 3/4 to the right]
- «event name» was a somewhat uncommon event [if arrow of right-hand-side-dial points 3/4 to the left]
- «event name» was a similar to several events in the past [if arrow right-hand-side-dial points to the left]

420 For the third sentence about the role of climate change vs natural variability:

- We ascribe the «high/low/heavy/strengthened» «variable name here» of/associated with «event name» to human driven climate change and natural climate variability likely played a minor role [if arrow of left-hand-side-dial points to the right].
- We mostly ascribe the «high/low/heavy/strengthened» «variable name here» of «event name» to human driven climate change and natural climate variability likely played a modest role [if arrow of left-hand-side-dial points 3/4 to the right].
- 425 – Natural climate variability likely played a role in driving the pressure pattern and the associated «increase/decrease» in «variable name here» linked to «event name», but human-driven climate change have also contributed [if arrow of left-hand-side-dial points 3/4 to the left].
- Natural climate variability likely played an important role in driving the pressure pattern and the associated «increase/decrease»
- 430 in «variable name here» linked to «event name» [if arrow of left-hand-side-dial points to the left].

A3 Event Description

«On/Starting from/In the period» «date(s)», «location» experienced «brief description of event, ideally with some numbers» [example: unusually low temperatures for the season, with -20°C being recorded in Stockholm. These frigid temperatures were part of a broader area of below-average temperatures, peaking in the first week of December and stretching from Scandinavia
435 all the way to Southern France]. «The «event type»/ During «event name» or similar» «brief description of the atmospheric configuration for laymen» [example: During the Scandinavian cold spell of November 2022, the Surface Pressure Anomalies Pattern displayed a large high-pressure area over the North Atlantic, drawing cold Arctic and Siberian air over the continent. The presence of a low pressure over Central Europe further favored cold air advection. This resulted in Temperature Anomalies of up to 10° below average. The high-pressure area in the North Atlantic persisted until early December, after which warmer
440 air masses from the North Atlantic spread over large parts of Europe.] Important: make sure to refer to both panels in the first row of maps and use the panel titles to refer to them, i.e. Surface Pressure Anomalies Pattern or Temperature Anomalies or wind speed or Precipitation.

A4 Climate and Data Background for the Analysis

«According to the/In Chapter XX of the» IPCC AR6 report «brief summary of confidence level on change in frequency/intensity
445 of the selected extreme» [example: it is virtually certain that there has been a decrease in severity and/or frequency of cold spells in the last several decades, and the consensus is that at a global level this decrease will continue in the future.]. «Additional information about specific location/event type if relevant» [example: In Scandinavia, cold spells have become on average 4°C warmer since 1950]. Our analysis approach rests on looking for weather situations similar to those of the event of interest having been observed in the past. For «event name», we have:

- 450 – «high confidence in the robustness of our approach given the available climate data, as the event is very similar to other past events in the data record [if right-hand-side dial points to the left]
- medium-high confidence in the robustness of our approach given the available climate data, as the event is similar to other past events in the data record [if right-hand-side dial points $\frac{3}{4}$ to the left]
- medium-low confidence in the robustness of our approach given the available climate data, as the event is unusual in the
455 data record [if right-hand-side dial points $\frac{3}{4}$ to the right]
- low confidence in the robustness of our approach given the available climate data, as the event is largely unique in the data record [if right-hand-side dial points to the right]» .

A5 ClimaMeter Analysis

We analyse here (see methodology for more details) how events similar to «event name» have changed in the present (2001–
460 2022) compared to what they would have looked like if they had occurred in the past (1979–2000). Surface Pressure Changes

show «brief description of the changes here» [example: that the high pressure over the North Atlantic has become weaker than in the past, resulting in weaker cold-air advection over Europe]. «Temperature Changes/Precipitation Changes/Wind Changes» show that similar events produce «variable name here» which in the present climate are «brief description of the changes here» [example: temperatures which in the present climate are between 1 °C and 4 °C hotter than what they would have been in the past]. «This has resulted in/This coincided with/similar connective phrase» «description of variable changes over cities as shown in figure» than they would have been in the past [example: temperatures in Berlin and Stockholm having become 5 °C warmer than they would have been in the past]. We also note that Similar Past Events «description of seasonal changes in occurrence of the analogues» [example: have become more common in the spring than in the winter months, contributing to making the cold spells less severe.] «Finally, we find that sources of natural climate variability, notably the «Pacific Decadal Oscillation/El Nino—Southern Oscillation/Atlantic Multidecadal Oscillation», may have heavily influenced the event. This means that the changes we see in the event compared to the past may be primarily due to natural climate variability [If left-hand-side-dial points to the left]».

– «Finally, we find that sources of natural climate variability, notably the «Pacific Decadal Oscillation/El Nino—Southern Oscillation/Atlantic Multidecadal Oscillation», may have heavily influenced the event. This means that the changes we see in the event compared to the past may be primarily due to natural climate variability [If left-hand-side-dial points to the left]».

– «Finally, we find that sources of natural climate variability, notably the «Pacific Decadal Oscillation/El Nino—Southern Oscillation/Atlantic Multidecadal Oscillation», may have influenced the event. This suggests that the changes we see in the event compared to the past may be partly due to human driven climate change, with a contribution from natural variability. [If left-hand-side-dial points ¾ to the left]»

– «Finally, we find that sources of natural climate variability, notably the «Pacific Decadal Oscillation/El Nino—Southern Oscillation/Atlantic Multidecadal Oscillation», may have only partly influenced the event. This means that the changes we see in the event compared to the past may be mostly due to human driven climate change [If left-hand-side-dial points ¾ to the right]»

– «Finally, we find that sources of natural climate variability did not influence the event. This means that the changes we see in the event compared to the past may be primarily due to human driven climate change [If left-hand-side-dial points to the right]»

A6 Conclusion

Based on the above, we conclude that «event type» similar to «event name» have become «short description of how the circulation change likely affected the intensity of the event». [example: have become 3 °C warmer than in the present than in the past]. We interpret «event name» as:

- a largely unique event [if right-hand-dial points to the right]

- an unusual event [if right-hand-dial points $\frac{3}{4}$ to the right]
- an event [if right-hand-dial points $\frac{3}{4}$ to the left or to the left]
- 495 – whose characteristics can be ascribed to human driven climate change [if arrow of left-hand-side-dial all the way to the right]
- whose characteristics can mostly be ascribed to human driven climate change [if arrow of left-hand-side-dial points $\frac{3}{4}$ to the right]
- for which natural climate variability played a role [if arrow of left-hand-side-dial points $\frac{3}{4}$ to the left].
- 500 – for which natural climate variability likely played an important role [if arrow of left-hand-side-dial all the way to the left].

Author contributions. DF performed the analyses, created the ClimaMeter figures and the ClimaMeter Website. GM created the template for reports. DF, GM, EC, TA, MV, FP, PY, and RV devised the methodology underlying ClimaMeter. DF, EC, TA, MV, FP, PY, MSL, AH, and PB contributed to the visualization. All authors contributed to write the paper and discussed the results.

505 *Competing interests.* The authors declare no competing interests.

Disclaimer. MSWX (Beck et al., 2022) data are freely available at <https://www.gloh2o.org/mswx/>. ERA5 data are freely available at Climate Data Store upon registration (<https://cds.climate.copernicus.eu/>).

Acknowledgements. The authors thank Bérengère Dubrulle for useful suggestions. The authors acknowledge the support of the INSU-CNRS-LEFE-MANU grant (project CROIRE), the grant ANR-20-CE01-0008-01 (SAMPRACE) and support from the European Union’s Horizon
510 2020 research and innovation programme under grant agreement No. 101003469 (XAIDA), the Marie Skłodowska-Curie grant agreement No. 956396 (EDIPI) and the Swedish Research Council grant no. 2022-06599 (climes). Gianmarco Mengaldo acknowledges support from MOE Tier 2 grant No. 22-5191-A0001-0 “Prediction-to-Mitigation with Digital Twins of the Earth’s Weather”.

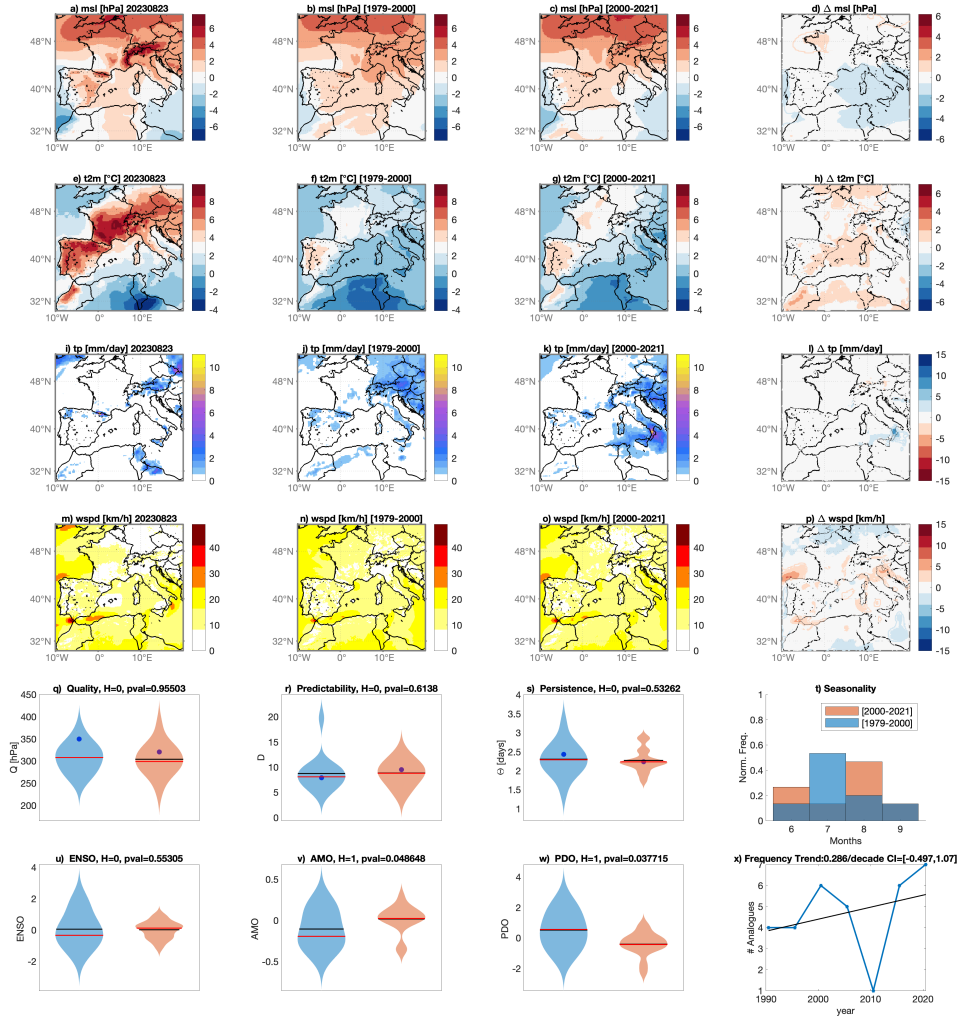


Figure A1. 2023/08/20-23 Late Summer French Heatwave. Average of surface pressure anomalies (msl) (a), average 2-meter temperatures anomalies (t2m) (e), cumulated total precipitation (tp) (i), and average wind speed (wspd) in the period of the event. Average of the surface pressure analogues found in the counterfactual [1979–2000] (b) and factual periods [2001–2022] (c), along with corresponding 2-meter temperatures (f, g), cumulated precipitation (j, k), and wind speed (n, o). Changes between present and past analogues are presented for surface pressure Δslp (d), 2 meter temperatures Δt2m (h), total precipitation Δtp (i), and wind speed Δwspd (p): color-filled areas indicate significant anomalies with respect to the bootstrap procedure. Violin plots for past (blue) and present (orange) periods for Quality of analogues Q (q), Predictability Index D (r), Persistence Index Θ (s), and distribution of analogues in each month (t). Violin plots for past (blue) and present (orange) periods for ENSO (u), AMO (v) and PDO (w). Number of the Analogues occurring in each subperiod (blue) and linear trend (black). Horizontal bars in panels (q,r,s,u,v,w) correspond to the mean (black) and median (red) of the distributions. Values for the peak day of the extreme event are marked by a blue dot.

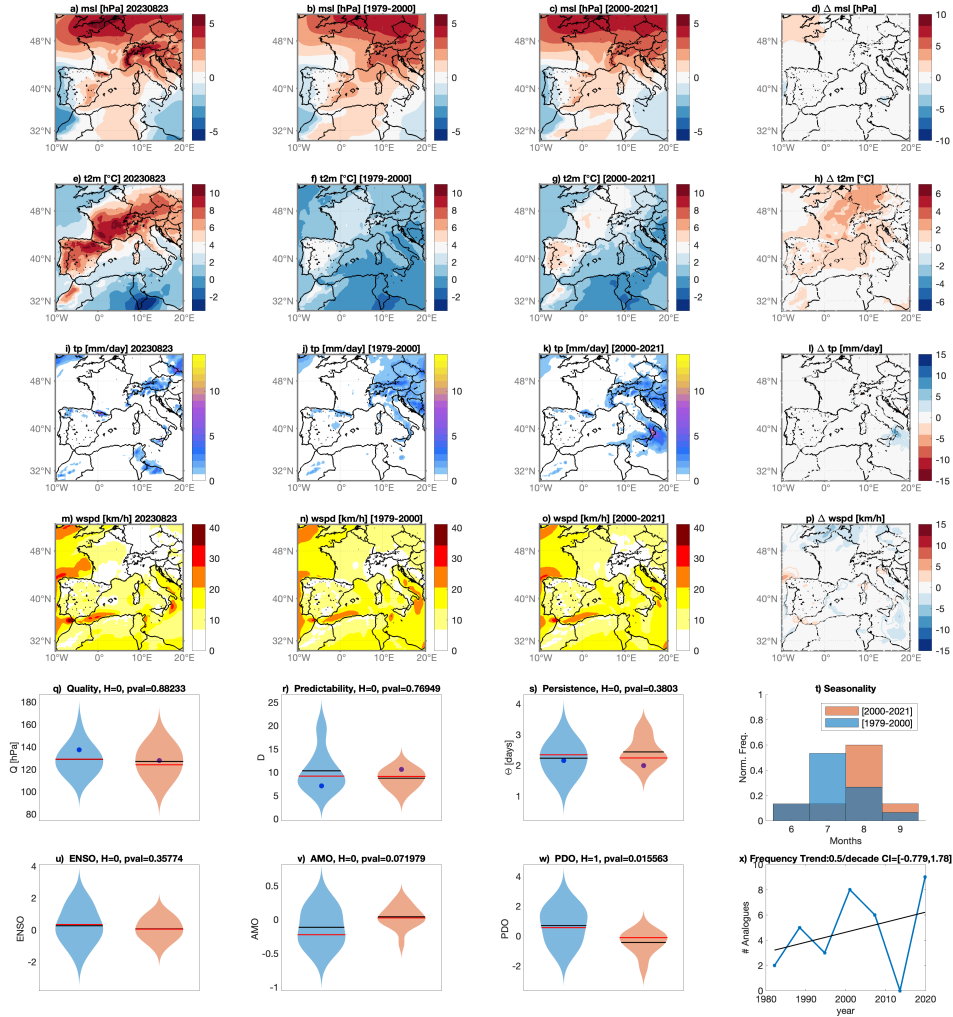


Figure A2. 2023/08/20-23 Late Summer French Heatwave. As in Figure A1 but for ERA5 data sea-level pressure data.

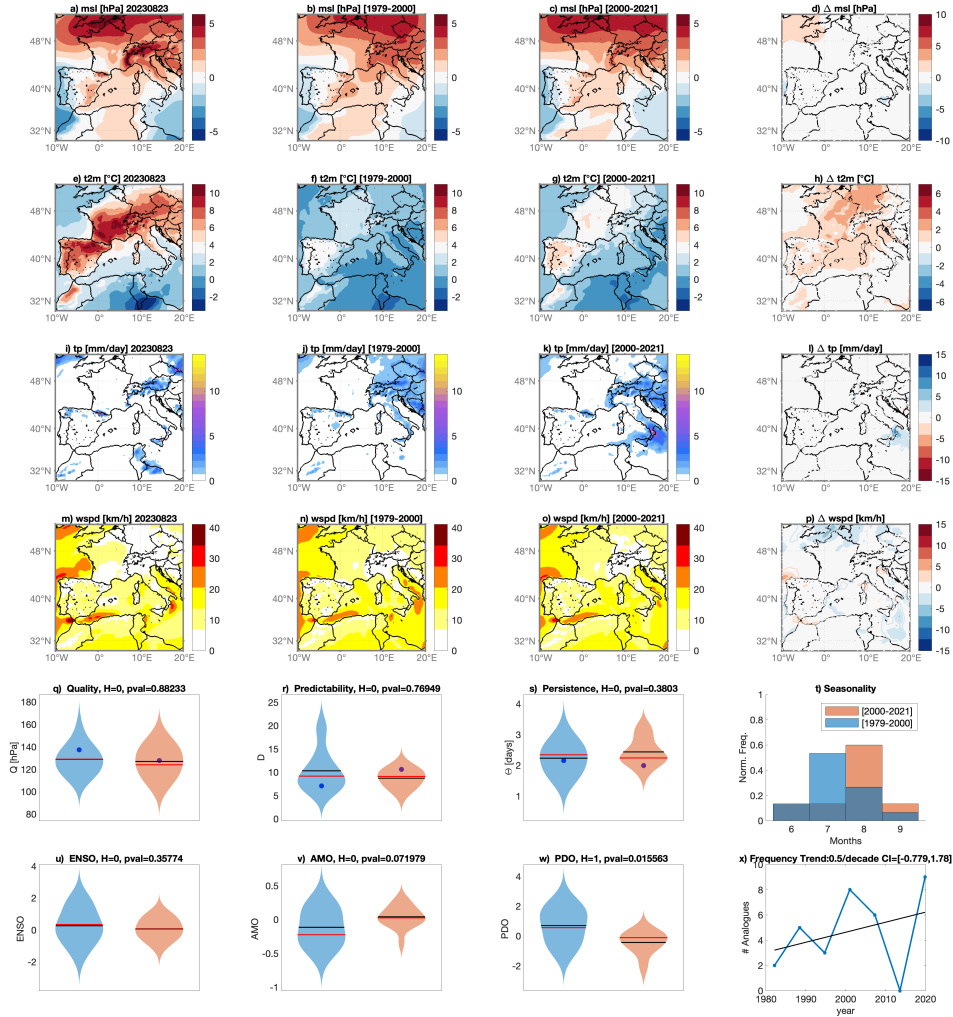


Figure A3. 2023/08/20-23 Late Summer French Heatwave. As in Figure A1 but for ERA5 500 hPa geopotential height (z500) data.

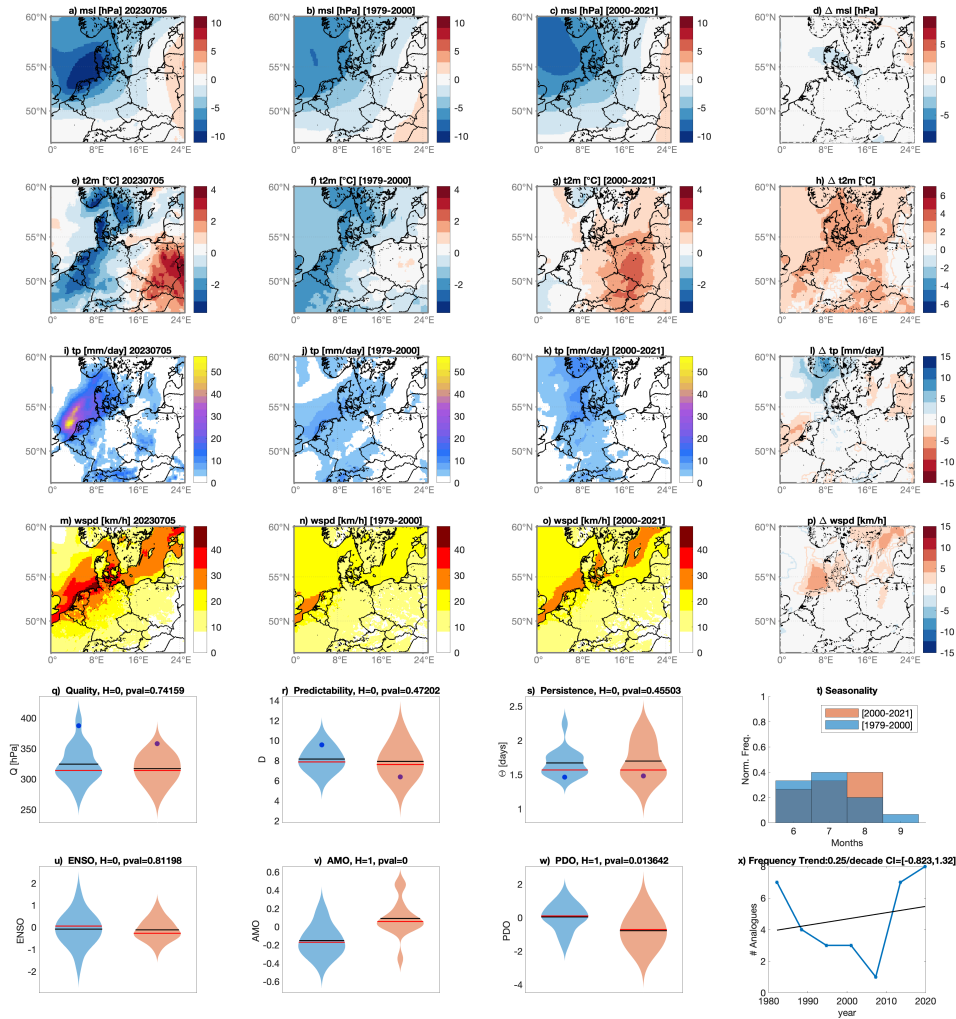


Figure A4. 2023/07/05 - Storm Poly in Northern Europe. Surface pressure anomalies (msl) (a), average 2-meter temperatures anomalies (t2m) (e), cumulated total precipitation (tp) (i), and average wind speed (wspd) in the period of the event. Average of the surface pressure analogues found in the counterfactual [1979–2000] (b) and factual periods [2001–2022] (c), along with corresponding 2-meter temperatures (f, g), cumulated precipitation (j, k), and wind speed (n, o). Changes between present and past analogues are presented for surface pressure Δ slp (d), 2 meter temperatures Δ t2m (h), total precipitation Δ tp (i), and wind speed Δ wspd (p): color-filled areas indicate significant anomalies with respect to the bootstrap procedure. Violin plots for past (blue) and present (orange) periods for Quality of analogues Q (q), Predictability Index D (r), Persistence Index Θ (s), and distribution of analogues in each month (t). Violin plots for past (blue) and present (orange) periods for ENSO (u), AMO (v) and PDO (w). Number of the Analogues occurring in each subperiod (blue) and linear trend (black). Horizontal bars in panels (q,r,s,u,v,w) correspond to the mean (black) and median (red) of the distributions. Values for the peak day of the extreme event are marked by a blue dot.

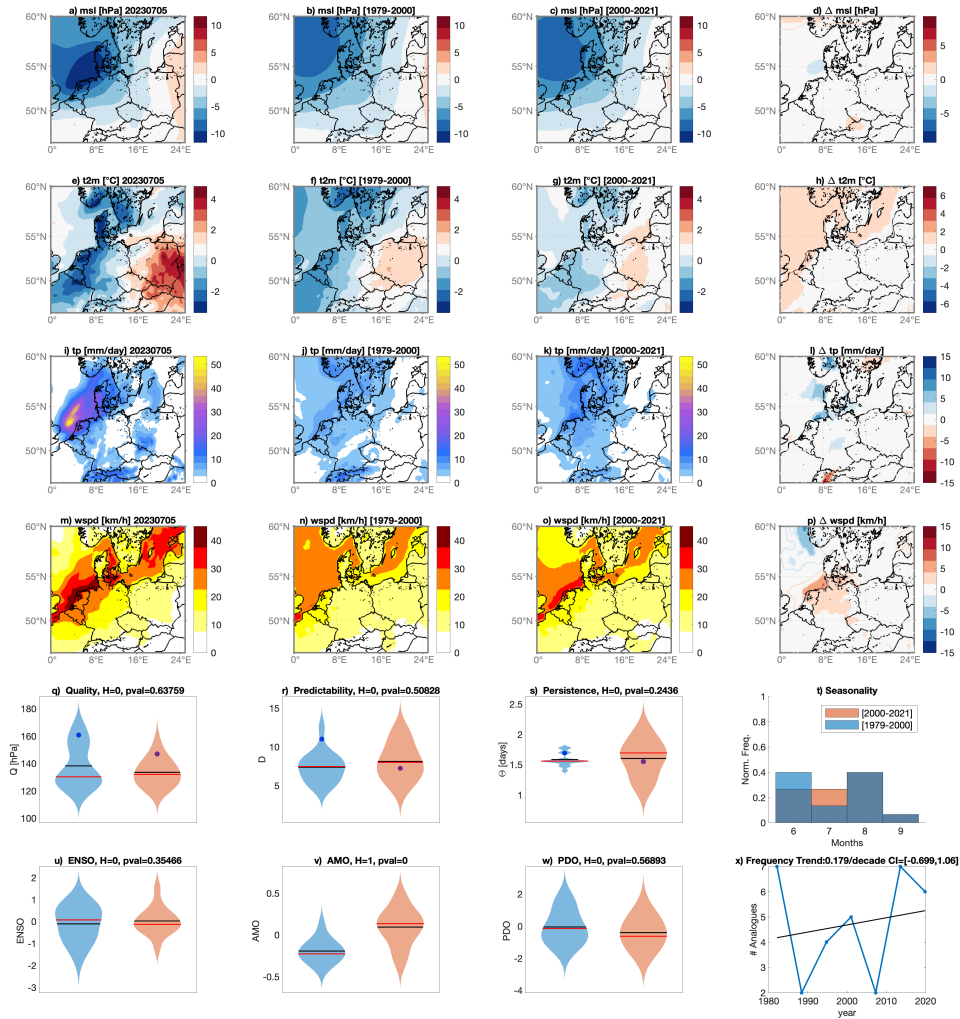


Figure A5. 2023/07/05 - Storm Poly in Northern Europe. As in Figure A4 but for ERA5 sea-level pressure data.

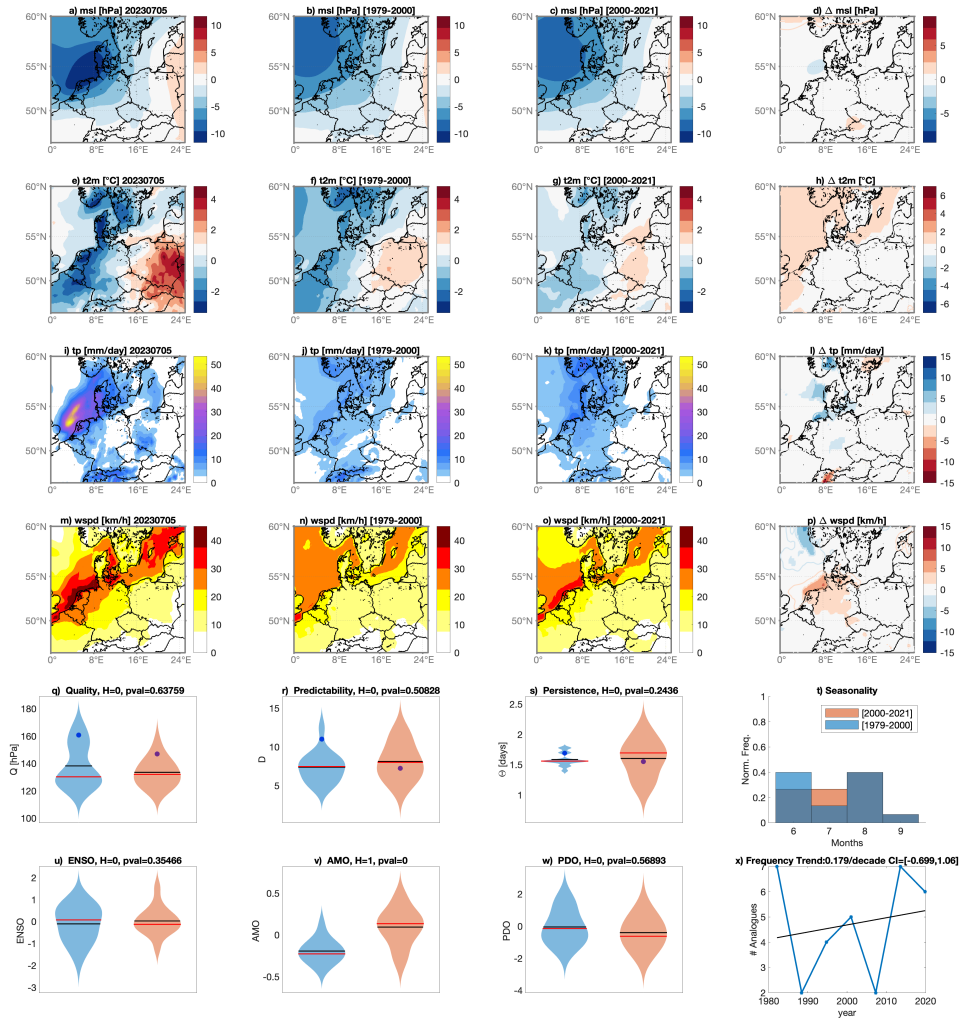


Figure A6. 2023/07/05 - Storm Poly in Northern Europe. As in Figure A4 but for ERA5 500 hPa geopotential height (z_{500}) data.

References

- Alberti, T., Anzidei, M., Faranda, D., Vecchio, A., Favaro, M., and Papa, A.: Dynamical diagnostic of extreme events in Venice lagoon and their mitigation with the MoSE, *Scientific Reports*, 13, 10475, <https://doi.org/10.1038/s41598-023-36816-8>, 2023.
- Allan, R. P., Hawkins, E., Bellouin, N., and Collins, B.: IPCC, 2021: summary for Policymakers, 2021.
- Angélil, O., Stone, D. A., and Pall, P.: Attributing the probability of South African weather extremes to anthropogenic greenhouse gas emissions: Spatial characteristics, *Geophysical Research Letters*, 41, 3238–3243, 2014.
- Beck, H. E., van Dijk, A. I. J. M., Larraondo, P. R., McVicar, T. R., Pan, M., Dutra, E., and Miralles, D. G.: MSWX: Global 3-Hourly 0.1° Bias-Corrected Meteorological Data Including Near-Real-Time Updates and Forecast Ensembles, *Bulletin of the American Meteorological Society*, 103, E710 – E732, <https://doi.org/https://doi.org/10.1175/BAMS-D-21-0145.1>, 2022.
- Bowman, D. M. and Sharples, J. J.: Taming the flame, from local to global extreme wildfires, *Science*, 381, 616–619, 2023.
- Cornwall, W.: Europe’s deadly floods leave scientists stunned, *Science*, 373, 372–373, 2021.
- Dannenberg, M. P., Yan, D., Barnes, M. L., Smith, W. K., Johnston, M. R., Scott, R. L., Biederman, J. A., Knowles, J. F., Wang, X., Duman, T., et al.: Exceptional heat and atmospheric dryness amplified losses of primary production during the 2020 US Southwest hot drought, *Global change biology*, 28, 4794–4806, 2022.
- EUMETSAT: Storm-Poly - Europe Storm Severity Information, <https://www.eumetsat.int/storm-poly>.
- Faranda, D., Messori, G., and Yiou, P.: Diagnosing concurrent drivers of weather extremes: application to warm and cold days in North America, *Climate Dynamics*, 54, 2187–2201, iSBN: 1432-0894 Publisher: Springer, 2020.
- Faranda, D., Bourdin, S., Ginesta, M., Krouma, M., Noyelle, R., Pons, F., Yiou, P., and Messori, G.: A climate-change attribution retrospective of some impactful weather extremes of 2021, *Weather and Climate Dynamics*, 3, 1311–1340, <https://doi.org/10.5194/wcd-3-1311-2022>, 2022.
- Faranda, D., Messori, G., Jezequel, A., Vrac, M., and Yiou, P.: Atmospheric circulation compounds anthropogenic warming and impacts of climate extremes in Europe, *Proceedings of the National Academy of Sciences*, 120, e2214525 120, 2023.
- Fery, L., Dubrulle, B., Podvin, B., Pons, F., and Faranda, D.: Learning a Weather Dictionary of Atmospheric Patterns Using Latent Dirichlet Allocation, *Geophys. Res. Lett.*, 49, e96184, <https://doi.org/10.1029/2021GL096184>, 2022.
- Ginesta, M., Yiou, P., Messori, G., and Faranda, D.: A methodology for attributing severe extratropical cyclones to climate change based on reanalysis data: the case study of storm Alex 2020, *Climate Dynamics*, 61, 229–253, 2023.
- Hartin, C., McDuffie, E. E., Noiva, K., Sarofim, M., Parthum, B., Martinich, J., Barr, S., Neumann, J., Willwerth, J., and Fawcett, A.: Advancing the estimation of future climate impacts within the United States, *Earth System Dynamics*, 14, 1015–1037, 2023.
- Hersbach, H., Bell, B., Berrisford, P., Biavati, G., Horányi, A., Muñoz Sabater, J., Nicolas, J., Peubey, C., Radu, R., Rozum, I., et al.: ERA5 hourly data on single levels from 1959 to present. Copernicus Climate Change Service (C3S) Climate Data Store (CDS), <https://doi.org/10.24381/cds.adbb2d47>, (Accessed on 09-11-2022), 2018.
- Huggel, C., Wallimann-Helmer, I., Stone, D., and Cramer, W.: Reconciling justice and attribution research to advance climate policy, *Nature Climate Change*, 6, 901, 2016.
- Leach, N. J., Weisheimer, A., Allen, M. R., and Palmer, T.: Forecast-based attribution of a winter heatwave within the limit of predictability, *Proceedings of the National Academy of Sciences*, 118, e2112087 118, 2021.
- Lee, S.-K., Wittenberg, A. T., Enfield, D. B., Weaver, S. J., Wang, C., and Atlas, R.: US regional tornado outbreaks and their links to spring ENSO phases and North Atlantic SST variability, *Environmental Research Letters*, 11, 044 008, 2016.

- 550 Lucarini, V., Melinda Galfi, V., Riboldi, J., and Messori, G.: Typicality of the 2021 Western North America summer heatwave, *Environmental Research Letters*, 18, 015 004, 2023.
- Mahony, C. R. and Cannon, A. J.: Wetter summers can intensify departures from natural variability in a warming climate, *Nature communications*, 9, 783, 2018.
- Otto, F. E.: Extreme events: the art of attribution, *Nature Climate Change*, 6, 342, 2016.
- 555 Otto, F. E., van der Wiel, K., van Oldenborgh, G. J., Philip, S., Kew, S. F., Uhe, P., and Cullen, H.: Climate change increases the probability of heavy rains in Northern England/Southern Scotland like those of storm Desmond—a real-time event attribution revisited, *Environmental Research Letters*, 13, 024 006, 2018.
- Philip, S. Y., Kew, S. F., Van Oldenborgh, G. J., Anslow, F. S., Seneviratne, S. I., Vautard, R., Coumou, D., Ebi, K. L., Arrighi, J., Singh, R., et al.: Rapid attribution analysis of the extraordinary heatwave on the Pacific Coast of the US and Canada June 2021, *Earth System*
- 560 *Dynamics Discussions*, 2021, 1–34, 2021.
- Pons, F. M. E., Yiou, P., Jézéquel, A., and Messori, G.: Simulating the Western North America heatwave of 2021 with analog importance sampling, *Weather and Climate Extremes*, p. 100651, 2024.
- Reed, K. A., Wehner, M. F., and Zarzycki, C. M.: Attribution of 2020 hurricane season extreme rainfall to human-induced climate change, *Nature communications*, 13, 1905, 2022.
- 565 Seneviratne, S., Zhang, X., Adnan, M., Badi, W., Dereczynski, C., Luca, A. D., Ghosh, S., Iskandar, I., Kossin, J., Lewis, S., Otto, F., Pinto, I., Satoh, M., Vicente-Serrano, S., Wehner, M., , and Zhou, B.: Weather and Climate Extreme Events in a Changing Climate. In *Climate Change 2021: The Physical Science Basis. Contribution of Working Group I to the Sixth Assessment Report of the Intergovernmental Panel on Climate Change*, 2021.
- Shepherd, T. G.: A Common Framework for Approaches to Extreme Event Attribution, *Current Climate Change Reports*, 2, 28–38,
- 570 <https://doi.org/10.1007/s40641-016-0033-y>, 2016.
- Stott, P. A., Christidis, N., Otto, F. E. L., Sun, Y., Vanderlinden, J.-P., van Oldenborgh, G. J., Vautard, R., von Storch, H., Walton, P., Yiou, P., and Zwiers, F. W.: Attribution of extreme weather and climate-related events, *Wiley Interdisciplinary Reviews: Climate Change*, 7, 23–41, <https://doi.org/10.1002/wcc.380>, 2016.
- TF1 Info: Canicule et record de chaleur : l'indicateur thermique national, c'est quoi exactement ?, <https://www.tf1info.fr/meteo/canicule-que-est-ce-que-l-indicateur-thermique-national-qui-a-battu-un-nouveau-record-mardi-2267458.html>, 2023.
- 575 Trenberth, K. E.: Attribution of climate variations and trends to human influences and natural variability, *Wiley Interdisciplinary Reviews: Climate Change*, 2, 925–930, 2011.
- Trenberth, K. E., Fasullo, J. T., and Shepherd, T. G.: Attribution of climate extreme events, *Nature Clim. Change*, 5, 725–730, <http://dx.doi.org/10.1038/nclimate2657>, 2015.
- 580 van Garderen, L., Feser, F., and Shepherd, T. G.: A methodology for attributing the role of climate change in extreme events: a global spectrally nudged storyline, *Natural Hazards and Earth System Sciences Discussions*, 2020, 1–24, 2020.
- Vautard, R., Yiou, P., Otto, F. E. L., Stott, P., Christidis, N., van Oldenborgh, G. J., and Schaller, N.: Attribution of human-induced dynamical and thermodynamical contributions in extreme weather events, *Environmental Research Letters*, 11, 114 009, <https://doi.org/10.1088/1748-9326/11/11/114009>, 2016.
- 585 Vautard, R., Colette, A., Van Meijgaard, E., Meleux, F., Jan van Oldenborgh, G., Otto, F., Tobin, I., and Yiou, P.: Attribution of Wintertime Anticyclonic Stagnation Contributing to Air Pollution in Western Europe, *Bulletin of the American Meteorological Society*, 99, S70–S75, 2018.

- Wang, J., Chen, Y., Tett, S. F., Stone, D., Nie, J., Feng, J., Yan, Z., Zhai, P., and Ge, Q.: Storyline attribution of human influence on a record-breaking spatially compounding flood-heat event, *Science Advances*, 9, eadi2714, 2023.
- 590 Yiou, P.: AnaWEGE: a weather generator based on analogues of atmospheric circulation, *Geoscientific Model Development*, 7, 531–543, <https://doi.org/10.5194/gmd-7-531-2014>, 2014.
- Yiou, P., Jézéquel, A., Naveau, P., Otto, F. E. L., Vautard, R., and Vrac, M.: A statistical framework for conditional extreme event attribution, *Advances in Statistical Climatology, Meteorology and Oceanography*, 3, 17–31, <https://doi.org/10.5194/ascmo-3-17-2017>, 2017.