

# Characterizing hail-prone environments using convection-permitting reanalysis and overshooting top detections over south-central Europe

Antonio Giordani <sup>1,2</sup>, Michael Kunz <sup>3</sup>, Kristopher M. Bedka <sup>4</sup>, Heinz Jürgen Punge <sup>3</sup>, Tiziana Paccagnella <sup>2</sup>, Valentina Pavan <sup>2</sup>, Ines M. L. Cerenzia <sup>2</sup>, and Silvana Di Sabatino <sup>1</sup>

<sup>1</sup>Department of Physics and Astronomy (DIFA) "Augusto Righi", University of Bologna, Bologna, Italy

<sup>2</sup>ARPAE-SIMC Emilia Romagna, Bologna, Italy

<sup>3</sup>Institute of Meteorology and Climate Research, Karlsruhe Institute of Technology (KIT), Karlsruhe, Germany

<sup>4</sup>NASA Langley Research Center, Science Directorate, Climate Science Branch, Hampton, VA, USA

**Correspondence:** Antonio Giordani (antonio.giordani3@unibo.it)

**Abstract.** The challenges associated with reliably observing and simulating hazardous hailstorms call for new approaches that combine information from different available sources, such as remote sensing instruments, observations, or numerical modeling, to improve understanding of where and when severe hail most often occurs. In this work, a proxy for hail frequency is developed by combining overshooting cloud top (OT) detections from the Meteosat Second Generation (MSG) weather satellite with convection-permitting SPHERA reanalysis predictors describing hail-favorable environmental conditions. Atmospheric properties associated with ground-based reports from the European Severe Weather Database (ESWD) are considered to define specific criteria for data filtering. Five convection-related parameters from reanalysis data quantifying key ingredients for hailstorm occurrence enter the filter, namely: most unstable convective available potential energy (CAPE), K index, surface lifted index, deep-layer shear, and freezing level height. A hail frequency estimate over the extended summer season (April-October) in south-central Europe is presented for a test period of 5 years (2016-2020). OT-derived hail frequency peaks at around 15 UTC in June-July over the pre-Alpine regions and the northern Adriatic sea. The hail proxy statistically matches with ~~~62~~~63% of confirmed ESWD reports, which is roughly ~~22~~23% more than the previous estimate over Europe coupling deterministic satellite detections with coarser global reanalysis ambient conditions. The separation of hail events according to their severity highlights enhanced appropriateness of the method for large-hail-producing hailstorms (with hailstones diameters  $\geq 3$  cm). Further, signatures for small-hail missed occurrences are identified, which are characterized by lower instability and organization, and warmer cloud-top temperatures.

## 1 Introduction

Hailstorms cause billions of Euros of damage every year by severely damaging buildings (Paterson and Sankaran, 1994), crops (Zhou et al., 2016), vehicles (Hohl et al., 2002), and infrastructure. Individual hail events can produce losses exceeding 1 billion EUR (Gunturi and Tippett, 2017), as reported for Europe (Kunz et al., 2018), the United States (Changnon and Burroughs, 2003), and Australia (Yeo et al., 1999). Hail ~~can form~~ forms in severe thunderstorms ~~with~~ within strong

updrafts that penetrate above their local cirrus anvil level, containing large amounts of supercooled liquid content, and having a sufficient lifetime for the accretion process that forms graupel and hail (Knight and Knight, 2001; Houze Jr, 2014). Anthropogenic global warming is expected to further increase air temperature and~~so its water holding capacity; as~~, thus,  
25 the amount of low-level atmospheric moisture. As a consequence, these changes may ~~result locally in increased low-level atmospheric moisture, leading to increased convective instability (Trapp et al., 2007; Brooks, 2013; Rasmussen et al., 2020); higher freezing level altitudes (Xie et al., 2008; Mahoney et al., 2012; Dessens et al., 2015), and possibly deviations in vertical wind shear typical values (Trapp et al., 2007; Brooks, 2013; Brimelow et al., 2017). These conditions will~~ generally increase the probability of hail formation and the development of larger hailstones (Dessens et al., 2015; Brimelow et al., 2017;  
30 Trapp et al., 2019). However, the response of hailstorms to climate change is highly heterogeneous (Raupach et al., 2021) and still uncertain (Allen et al., 2020; Seneviratne et al., 2021); ~~owing to the general lack of direct hail observations, the incomplete understanding of microphysical processes controlling hail formation and growth, and the insufficient level of details in operationally implemented microphysical schemes.~~

The low probability of hail occurrence at a certain location makes its observation ~~still~~ a major challenge (Prein and Holland,  
35 2018; Allen et al., 2020). A comprehensive, standardized, and operational surface hail observing system is ~~still missing. The existing networks are highly variable among the different countries. The atmospheric~~ missing across most of Europe. The current  
observative methods rely on weather station networks~~including dedicated,~~ that are usually lacking specific sensors for hail detection ~~usually do not cover extended regions for appropriately sampling hail (except for China - Li et al., 2018b). New generations of automatic hail recorders (HARE) are in operation in some regions, for example, in parts of Switzerland~~  
40 ~~(Löffler-Mang et al., 2011; Kopp et al., 2022), but unfortunately these systems are very expensive and can not be implemented over extended areas. Ground-based hailpad networks can provide homogeneous long-term records and have been deployed in several parts of the world, such as in parts of China, France, Italy, or Croatia (e.g., Changnon Jr, 1970; Giaiotti et al., 2003; Xie et al., 2008; . However, they~~ due to their high cost (e.g., the automatic sensors deployed in parts of Switzerland - Löffler-Mang et al., 2011; Kopp et al.,  
, or hailpad networks, which cover only smaller regions and require significant resources for their maintenance. ~~Event-based~~  
45 ~~(e.g., Changnon Jr, 1970; Giaiotti et al., 2003; Xie et al., 2008; Sánchez et al., 2009; Palencia et al., 2010; Manzato, 2012; Dessens et al., . Information about hail occurrence can be obtained from severe weather~~ reports, collected by storm spotters, voluntary observers ~~, or media, constitute a precious way of retrieving hail observations~~or media. This practice has been systematically adopted in the United States (Allen et al., 2015), Australia (Allen and Allen, 2016), and Europe (~~Dotzek et al., 2009). For the latter, Púčik et al. (2019) present the first European Severe Weather Database (ESWD) hail climatology for 1990-2018.~~  
50 ~~(Dotzek et al., 2009; Púčik et al., 2019).~~ Nevertheless, hail reports are potentially affected by spatio-temporal heterogeneity biases (e.g., higher number of reports in densely populated areas or during daytime compared to nighttime), undersampling bias of the largest hailstones, or under-reporting in case of non-damaging hailstorms (Allen et al., 2020).

To compensate for direct hail measurements limitations, proxies retrieved from remote sensing instruments have been employed to characterize hail incidence over a certain region with higher spatio-temporal homogeneity (e.g., Murillo and Homeyer, 2019; Gobbo et al., 2021; Mecikalski et al., 2021). Radar reflectivity~~has been used by several authors,~~ sometimes combined  
55 with other observational data (e.g., melting level or lightning detections), has been widely used for detecting hail and estimating

its size and probability of occurrence (~~Puskeiler et al., 2016; Nisi et al., 2020; Fluck et al., 2021~~)(e.g., Puskeiler et al., 2016; Nisi et al., 2020). However, radar coverage is often limited to the national scale, sensor networks are not always homogenized among themselves, and limitations exist in the correct inference of hailstone size (Ortega, 2018). To overcome these restrictions ~~in the radar~~  
60 ~~observations~~, satellite-based products have been used to characterize hail occurrence. Satellites can sample larger regions of the world with enhanced spatial homogeneity than radars (Cecil and Blankenship, 2012). Hailstorm detection methods are based on the microwave, infrared (IR) or visible spectrum measured with passive instruments (e.g., Cecil, 2009; Melcón et al., 2016; Bang and Cecil, 2019; Laviola et al., 2020; Khlopenkov et al., 2021). Particularly, severe convective thunderstorms are detectable in the IR as local cold spot anomalies, which are commonly referred to as Overshooting cloud Tops (OTs) (Adler  
65 et al., 1985). It is well known that thunderstorms presenting satellite OTs signatures have the potential to produce a variety of hazardous weather at the surface, such as tornadoes, heavy rainfall, downbursts, large hail, or wind gusts, all of which typically concentrated near OT regions (Reynolds, 1980; Brunner et al., 2007; Setvák et al., 2013; Mikuš and Mahović, 2013; Bedka and Khlopenkov, 2016; Mecikalski et al., 2021). Moreover, several studies reported ~~the linking a link~~ between large hail at the surface and OT intensity (Bedka, 2011; Punge et al., 2014; Proud, 2015; Jurković et al., 2015; Punge et al., 2017; Bedka et al.,  
70 2018; Punge et al., 2021; Wilhelm et al., 2021; Scarino et al., 2023). OTs can rapidly form and evolve within a thunderstorm; they usually exist for less than 15 minutes (even less than 5 minutes - Elliott et al., 2012) with a maximum diameter of roughly 15 km (Fujita, 1992; Brunner et al., 2007), and with ~~temperatures  $\leq$~~  typical temperatures ranging from 190 to 215 K (Allen et al., 2020). The detection of OTs from infrared satellite imagery has been automated by Bedka et al. (2010), and subsequently refined and optimized with probabilistic approaches by Bedka and Khlopenkov (2016) and Khlopenkov et al. (2021). However,  
75 ~~the OT proxy alone is insufficient to characterize hail occurrence because~~ not all severe OT-generating thunderstorms produce hail ~~on~~ with a potential to reach the ground (e.g., owing to non-supportive environmental conditions or to hailstone melt during fall in case of very high freezing level heights).

To reduce the uncertainty of single-source records, potential hail proxies are often combined with hail-favoring environmental conditions, either from proximity soundings or from numerical ~~weather forecast or climate~~ models, used to discriminate  
80 hail from non-hail events. These ~~are~~ specific conditions are described through atmospheric parameters statistically associated with hailstorm formation (e.g., Johns and Doswell III, 1992; Brooks et al., 2003). This approach improves the estimation of the potential for severe thunderstorms (Thompson et al., 2003; Hitchens and Brooks, 2014; Tippett et al., 2014) and enables to develop hail climatologies on the global (Riemann-Campe et al., 2009; Prein and Holland, 2018; Chen et al., 2020) or regional scale (Gascón et al., 2015; Púčik et al., 2017; Li et al., 2018a; Tang et al., 2019; Taszarek et al., 2021). Reanalysis datasets play  
85 a major role in this context, given the spatial homogeneity and long-term records they provide. Several studies have estimated hail hazard by coupling large-scale reanalysis/regional climate models with lightning data (Rädler et al., 2018; Battaglioli et al., 2023), surface-based reports (Prein and Holland, 2018; Torralba et al., 2023), or combinations of lightning, insurance loss data, severe weather reports (Mohr et al., 2015), and radar data (Taszarek et al., 2020). The combination of hail-favoring ambient conditions from reanalysis with OT detections has been applied to describe the hail hazard over Europe (Punge et al., 2017),  
90 Australia (Bedka et al., 2018), and South Africa (Punge et al., 2023). However, the ~~reanalysis-based OT filter developed in these studies~~ hail proxies obtained by blending reanalysis data with OT detections rely on global datasets such as ERA-Interim

(Dee et al., 2011) or ERA5 (Hersbach et al., 2020), characterized by coarse horizontal resolutions (i.e., about ~~80 and 25-79~~ and 31 km, respectively), which could produce significant inaccuracies. Indeed, a fine spatio-temporal resolution in the models constitutes a crucial necessity for improving the representation of deep moist convection ~~including hail~~ (Wilhelmson and Wicker, 2001; Bryan et al., 2003; Wu and Arakawa, 2014; Clark et al., 2016; Allen et al., 2020; Raupach et al., 2021).

Convection-permitting (CP) ~~simulations, numerical models produce simulations~~ with horizontal grid spacings of a few km ~~that allow~~. This allows to switch off physical parameterizations for convection in the ~~models, model, which~~ have been demonstrated to enhance ~~the model's its~~ skills to forecast convective phenomena thanks to the explicit representation of most convective motions (e.g., Prein et al., 2015; Trapp and Hoogewind, 2016; Hoogewind et al., 2017; Prein et al., 2017; Liu et al., 2017; Trapp et al., 2019; Lupo et al., 2020; Giovannini et al., 2021; Chen et al., 2021; Tiesi et al., 2022). Particularly, CP models have provided added value for the representation of tornadic or large-hail environments (Clark et al., 2013; Adams-Selin and Ziegler, 2016; Labriola et al., 2019; Gagne II et al., 2019; Manzato et al., 2020; Malečić et al., 2022). The need ~~for an enhanced description to enhance the characterization~~ , rapidly-evolving and sharply-localized atmospheric phenomena prompted the development of a new CP regional reanalysis over south-central Europe: SPHERA ~~(High rEsolution ReAnalysis over Italy – Cerenzia et al., 2022; Giordani et al., 2023). Based on dynamical downscaling of ERA5 and driven by a non-hydrostatic model COSMO (Schättler et al., 2018) at 0.02° grid spacing, SPHERA has shown (High rEsolution ReAnal~~ , which demonstrated to enhance the ~~description of weather extremes such as representation of~~ severe precipitation over Italy and ~~neighboring neighbouring~~ countries (Giordani et al., 2023). This region is particularly relevant as it represents one of the major hail hotspots over Europe (i.e., northern Italy, Taszarek et al., 2020).

This work aims at presenting a new method for hail hazard assessment ~~over south-central Europe obtained by coupling~~ obtained by combining satellite OT detections from Meteosat Second Generation (MSG) SEVIRI instrument with a set of environmental predictors from SPHERA and ESWD hail reports. The purpose is to ~~obtain a new proxy for hail by optimally tuning the combination among the different data sources, and to evaluate its reliability~~ characterize hail hazard exemplarily for south-central Europe by selecting the cloud-top storm signatures associated with favorable environmental conditions for hail development. These are described by the distributions of dynamic and thermodynamic reanalysis predictors in the presence of confirmed surface hail reports. The identification of hail-related OTs is performed by removing those detections presenting environments whose descriptors fall within the tails of the relative distributions that are unsupportive for hail development. For this reason, in the following the use of the reanalysis-based conditions to exclude non-hail events identified by OTs only is referred to as filter. An application and evaluation of the approach is proposed during the extended summer season (April-October) over a 5-year test period (2016-2020) during the extended summer season (April-October), which coincides with the last years available for SPHERA reanalysis, and during which numerous hail reports have been collected. Additionally, the high-resolution CP regional reanalysis allows for a detailed representation of the environmental conditions ~~occurring prevailing~~ during hailstorms. Hence, in order to investigate the atmospheric states potentially associated with hail, the distributions of the numerical convective indices considered are conditionally analyzed depending on hail severity, inferred from the reports, and on the ability of detection of the hail proxy.

~~Seet.~~ Section 2 presents the datasets used, while the ~~filtering procedure developed~~ OT-reanalysis filter procedure to retain potentially hail-related OTs is described in Sect. 3. The resulting hail frequency over the analyzed test period and the associated ambient conditions are reported in Sect. 4, ~~while discussions and~~ and are discussed in Sect. 5. Finally, conclusions are drawn in Sect. ~~5-6.~~

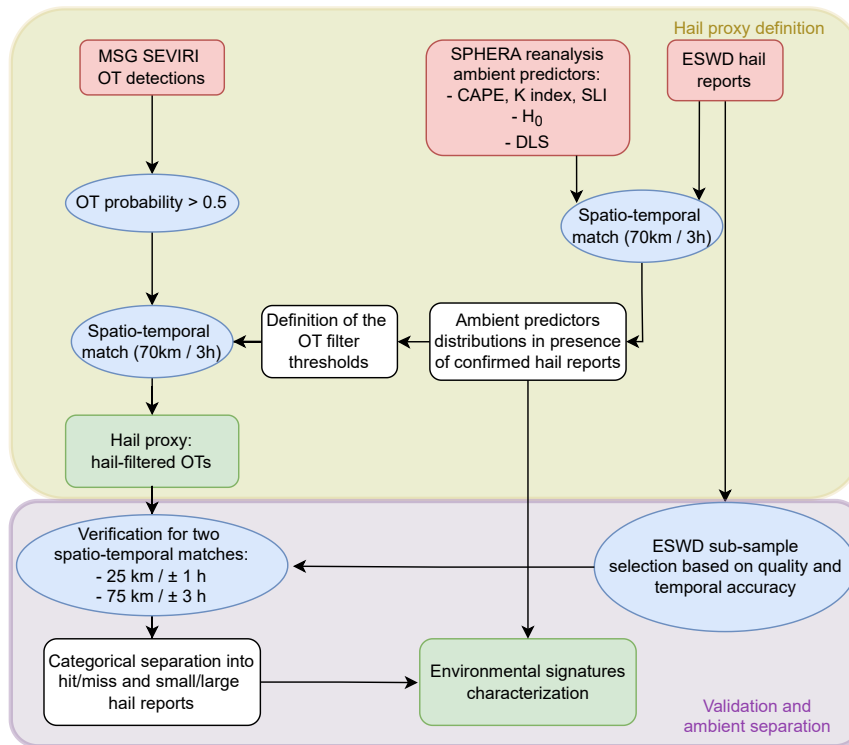
## 130 2 Data

This section describes the sets of hail reports, OT detections and reanalysis proxies considered. The diagram in Fig. 1 illustrates how the data are processed and combined to obtain the hail proxy and to characterize the associated environments. The investigation period pertains to the extended summer (April-October), representing the climatological season for hail at mid-latitudes, over the period 2016-2020. The reference area pertains to the entire SPHERA reanalysis domain (i.e., approximately 35-49°N; 135 6-19°E, Fig. 3a), including the countries of Italy, Switzerland, Austria, Slovenia, Croatia, parts of Bosnia-Herzegovina and Germany.

### 2.1 ESWD hail reports

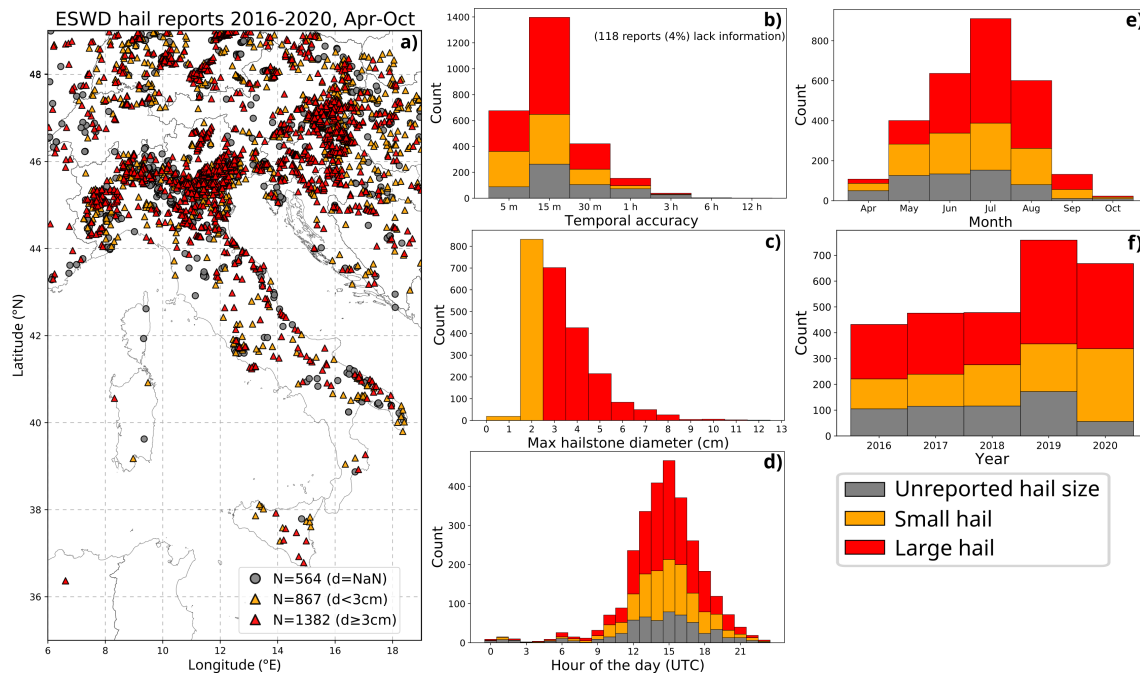
The ~~ESWD~~ (<https://www.eswd.eu/>; ~~Dotzek et al., 2009~~) European Severe Weather Database (ESWD - <https://www.eswd.eu/>; Dotzek et al. constitutes a primary source for severe convective storm data in Europe ~~and represents the largest and only multinational~~ European hail report archive, being the only European multinational archive of hail reports available. Maintained by the European Severe Storm Laboratory (ESSL), the ESWD provides quality-checked data collected by networks of voluntary observers, meteorological services, weather enthusiasts, and news and media reports. Thanks to technological innovations and increasing public awareness of extreme meteorological events, reports have rapidly increased in number in recent years (Groenemeijer et al., 2017). Despite recent advances, the ESWD still suffers from deficits in data representativity owing to 145 the spatial-inhomogeneity in the localization of a large part of reports, biased towards the most populated areas (i.e., the main urban centers) and the relatively short temporal series covering only the last few years. However, the ESWD forms the only reliable source of direct hail data for Europe, including information such as location, date, hour (with an estimate of the temporal accuracy), and maximum size of hailstones. Further, an operational quality control procedure categorizes each report with different quality levels: QC0 (“as received”), QC0+ (“plausibility checked”), QC1 (“confirmed by reliable source”), and QC2 150 (“scientific case study”).

A total of 2,813 hail reports with a minimum quality level of QC0+ were available for this study (Fig. 2), ~~of which~~, Among them, 2,249 reports (80%) contained hail size information (for a minimum hailstone diameter of 2 cm - Fig. 2c), used to quantify hail severity. Hereafter we refer to small hail reports for maximum hailstone diameters of <3 cm, large hail for reports with maximum hailstone diameters of  $\geq 3$  cm, and very large hail for reports with maximum hailstone diameters of  $\geq 5$  cm. ~~These different~~ Note that this nomenclature is slightly different from that adopted by ESSL (which refers to large hail reports for maximum hailstone diameters of  $\geq 2$  cm). The three different classes account for 39, 61, and 16%, respectively, of 155 ESWD reports with information about hail size. Their spatial distribution (Fig. 2a) shows a strong inhomogeneity with a larger



**Figure 1.** Flowchart summarizing the data processing. Red rectangles indicate the datasets included, blue ellipses the operations performed, white rectangles the intermediate steps, and green rectangles the final outcomes. The upper part of the chart (yellow outer rectangle) shows the steps applied to define the hail proxy, while the lower part (purple outer rectangle) illustrates the steps for the post-processing validation and environmental characterization.

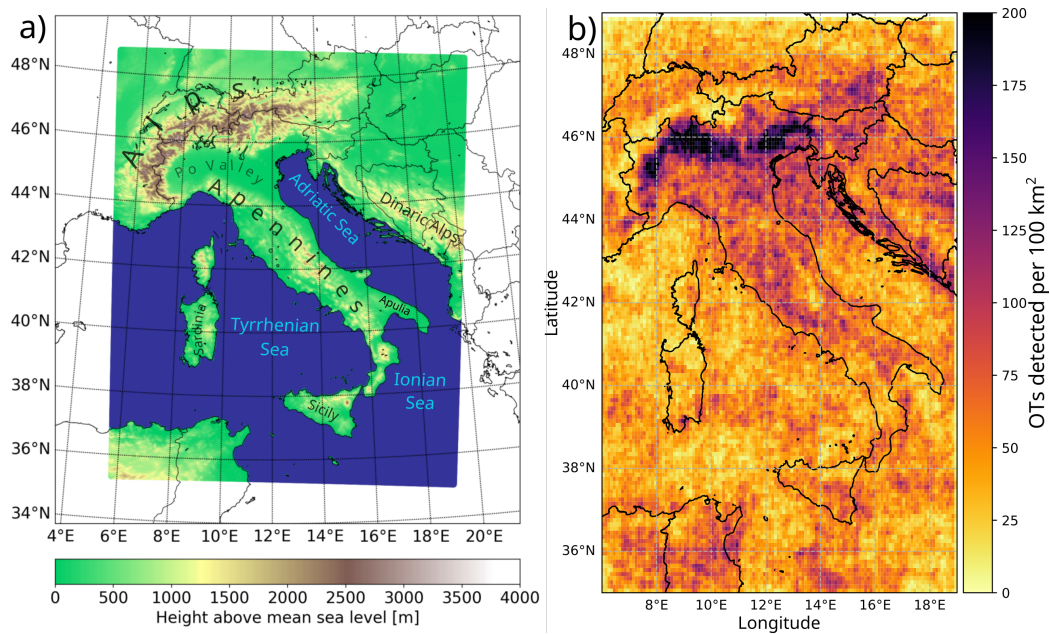
density of reports in northern Italy, south-eastern Austria, eastern Slovenia, and northern Croatia. The regions with the lowest hail reporting are central-southern Italy and all islands, the main Alpine crest (extending along the northern Italian border with France, Switzerland and Austria), and southern Balkans (southern Croatia and Bosnia and Herzegovina). The temporal accuracy is  $\leq 1$  h for 98% of the reports have a temporal accuracy of  $\leq 1$  h (Fig. 2b), and is considerably high ( $\leq 15$  min) for the 77% of the sample. Their temporal distribution indicates the maximum probability for hail at 15 UTC (Fig. 2d) and in July (Fig. 2e), with a similar number of reports (between 400 and 500) for the first three years considered (Fig. 2f). A substantial increase is noted for 2019 and, to a slightly lesser extent, for 2020-2020, most likely owing to the general increase in the public awareness, and hence reporters, in recent years (Púčík et al., 2019). Particularly, since 2019, the PRETEMP group has been collecting a large amount of storm reports over Italy which have been fed into ESWD (De Martin et al., 2023).



**Figure 2.** ESWD hail reports in April-October over 2016-2020. The reports are classified by distinguishing among three classes: reports with no information on hail size (in gray), small hail (maximum diameter  $<3$  cm, in orange), and large hail (maximum diameter  $\geq 3$  cm in red). a) spatial distribution, b) temporal accuracy distribution, c) maximum hailstone diameter distribution, d) number of reports per hour of the day (UTC), e) number of reports per month, and f) number of reports per year.

## 2.2 Overshooting top detections

The remote detection of OTs automated by Bedka et al. (2010) has been previously used to characterize OTs climatological distribution in North America (Bedka et al., 2010), Europe (Bedka, 2011), and Australia (Bedka et al., 2018). The OT detection algorithm relies on the comparison between clusters of cold pixels likely related to strong updrafts with a tropopause temperature, as well as with pixels consistent with the temperature of the anvil of the thunderstorm, as detected with IR satellite scans. A large temperature difference ( $> 6$  K) helps to separate ~~actually-occurred-true~~ OTs from other non-convective clouds (e.g., cirrus) as this difference is indicative of updraft penetration through the anvil of at least 1-2 km (Griffin et al., 2016). Recently, the automatic OT detection algorithm has been substantially improved by considering a probabilistic approach (Bedka and Khlopenkov, 2016; Khlopenkov et al., 2021) instead of the binary yes/no decisions based on predefined fixed temperature thresholds. The statistical combination of tropopause-relative IR brightness temperature, the prominence of a candidate OT relative to the surrounding anvil, and the spatial uniformity and size of the area covered by the anvil delivers a 3-km gridded probabilistic OT estimate across the domain. The validation of this methodology (Khlopenkov et al., 2021; Cooney et al., 2021) revealed important improvements compared to the original detection algorithm of Bedka et al. (2010).



**Figure 3.** a) The spatial domain and model orography of SPHERA reanalysis. b) Number of overshooting tops detected per grid cell (on a 10-km regular grid) during April-October in 2016-2020.

180 The present study considers IR imagery from geostationary MSG Spinning Enhanced Visible and InfraRed Imager (SEVIRI) (Schmetz et al., 2002) between 2016 to 2020 at a continuous temporal resolution of 15 minutes over south-central Europe. Only OTs detected with the Khlopenkov et al. (2021) algorithm having a probability >50% are considered, similar to Punge et al. (2023). This statistical constraint was derived by the comparison of OT detections with radar echo tops (Cooney et al., 2021) ~~that~~ and demonstrated enhanced reliability being indicative of colder and more prominent anvil-relative tops. The spatial

185 distribution of the 991,042 OTs detected over 872 days is shown on a 10-km regular grid in Fig. 3b. A generally higher number of OTs over land is observed, especially around the Alps, Apennines, and Dinaric Alps mountainous ranges. The main OT hotspot over the study domain extends throughout the northern Po valley region adjacent to the Alps, which is bounded to the north by the most prominent minimum located in proximity of the Alpine crest (i.e., along the northern Italian border with south-eastern France, southern Switzerland, and western Austria, Fig. 3a).

### 190 2.3 SPHERA reanalysis ambient predictors

The atmospheric conditions associated with convective environments that favor hail formation are ~~described with~~ inferred from the high-resolution regional reanalysis SPHERA (Cerenzia et al., 2022; Giordani et al., 2023). SPHERA is a dynamical down-scaling of the global reanalysis ERA5 driven by the non-hydrostatic limited-area model COSMO (Consortium for Small-scale Modelling -

195 (wind speed, pressure, air humidity and temperature), coming from various sources (surface weather stations, radiosound-



ings, radar and aircraft reports), with a continuous nudging scheme steers the simulations towards the observed state. Three-dimensional output is produced on a hourly basis for south-central Europe (Fig. 3a) during 1995-2020.

The meteorological parameters selected to describe ambient conditions favorable to hailstorm development and to identify potential hail-related OTs rely on statistical relationships between hail observations and proximal atmospheric soundings (e.g., Kunz, 2007; Prein and Holland, 2018; Kunz et al., 2020; Allen et al., 2020; Jelić et al., 2020). These parameters represent the key dynamical and thermodynamical ingredients necessary for hailstorm formation: atmospheric instability and low-level moisture, storm organization, and freezing level altitude.

Atmospheric instability and related updraft strength of a thunderstorm are particularly relevant as strong updrafts are necessary for hail growth. Numerous radiosounding-based instability indices have been proposed to predict the potential for thunderstorm development. As of today, the preference on which index is most suited to represent favorable conditions for hail occurrence is not univocal, ~~and could change depending as it could depend~~ on the different ambient conditions over ~~particular~~ specific regions (e.g., Europe compared to the United States, where the majority of the indices have been designed - Brooks, 2009; Taszarek et al., 2020, 2021). Hence, to better identify hail-favorable meteorological conditions and reduce possible misrepresentation by using a single quantity (that may potentially be unsuitable in some situations), three different thermodynamic parameters are considered. These are Most Unstable (MU) CAPE, K index, and Surface Lifted Index (SLI), which ~~reported~~ showed the highest skill for severe thunderstorms predictions in central Europe (Kunz, 2007). ~~Their different formulations~~ (, and which formulations are reported in Appendix A) ~~imply the contribution from distinct parts of the numerical model equations involved in their computation.~~ K index relies only on the environmental characteristics of the vertical temperature and moisture content of the atmospheric profile. Hence, the K index quantifies the thunderstorm potential conditional on the low-level moisture content and its vertical extent. On the other hand, both SLI and CAPE consider the temperature difference between the environment and the lifted parcel rising with the convective air mass, ~~but while~~. Particularly, SLI is a "two-level" index (based on the temperature difference between the ambient and the rising parcel at 500 hPa), while CAPE is an integrated measure of buoyancy over the entire vertical column.

Additionally, organized thunderstorms in the form of multicells, supercells, or mesoscale convective systems (MCS) are more likely to produce hail. ~~Hence, The degree of organization of a storm is usually quantified with~~ the 0-6 km wind vector difference (~~deep layer shear - DLS~~), (deep layer shear - DLS; Markowski and Richardson, 2011), which is frequently used for investigating hail-favoring conditions (e.g., Trapp et al., 2007; Wellmann et al., 2020), ~~is also~~. Hence, DLS is included in the filterOTs filtering procedure.

Finally, the amount of moisture available below the freezing level has an influence on the hydrometeor density in the updraft, and hence potentially on the growth rate of the hailstones (Johnson and Sugden, 2014; Allen et al., 2015). On the one hand, too low a freezing level may limit the amount of supercooled water in the updraft necessary for hail growth (Prein and Holland, 2018). On the other hand, thunderstorms with a high freezing level ( $H_0$ ) are less likely to produce hail on the ground owing to enhanced melting during hailfall (Dessens et al., 2015). This causes, for example, the lower hail probability observed near the tropics where the surface atmospheric layers are generally warmer and the tropopause higher (Prein and Holland, 2018).

230 Hence,  $H_0$ , defined as the altitude of the  $0^\circ\text{C}$  isotherm above mean sea level, is ~~included in the filter~~ [employed to filter out OTs associated to conditions that are unsupportive to hail development](#).

While CAPE, SLI, and  $H_0$  are direct outputs of SPHERA, DLS and K index are computed from temperature and wind profiles. Every parameter is available at hourly frequency at the native horizontal resolution of  $0.02^\circ$  (i.e.,  $\sim 2.2$  km). However, local rapidly evolving deep convective processes are characterized by a low ~~intrinsic~~ [intrinsic](#) predictability and this may affect  
235 the representativity of the local indices considered. Hence, SPHERA fields are remapped to a common grid of 10 km to avoid possibly “noisy” estimates and to reduce data representativity issues.

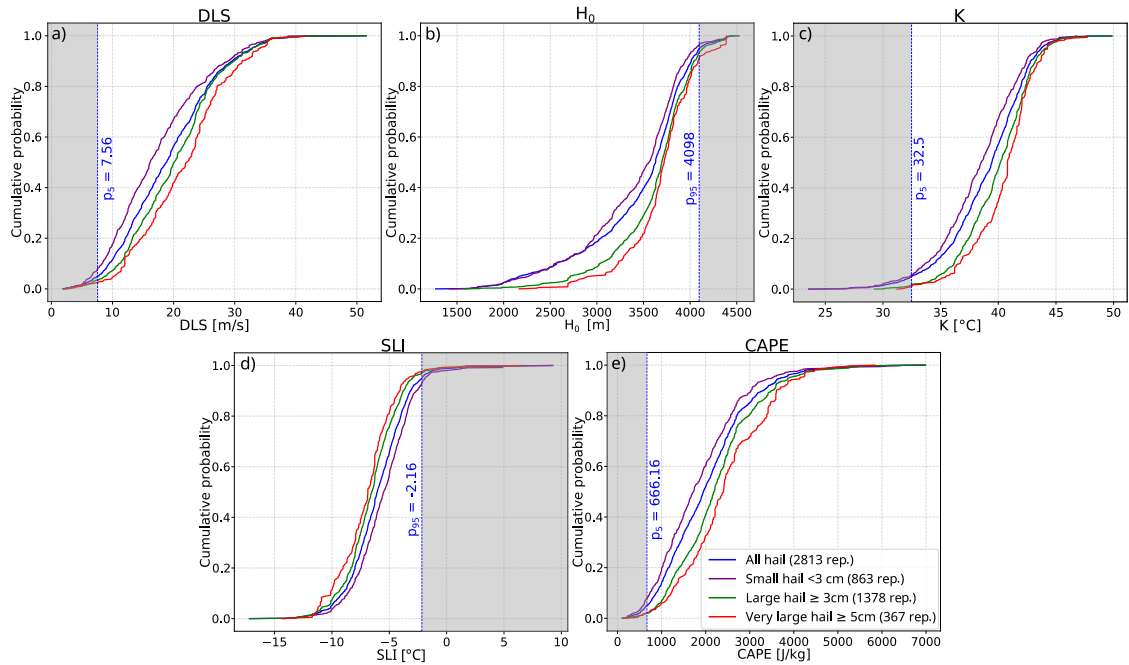
### 3 OT-reanalysis filter design

Recent findings suggest links between convective storm severity and specific characteristics of the OT detections, such as their spatial extension (Marion et al., 2019) or the temperature gradient between the OT and the tropopause (Khlopenkov  
240 et al., 2021). However, some OTs with intense updrafts reaching the tropopause and penetrating the lower stratosphere may be associated with convective environments not necessarily supportive of severe weather phenomena such as hail. The necessary discrimination between hail- and non-hail-producing OTs can be attained by additionally considering convection-related environmental conditions estimated with reanalysis (Punge et al., 2017; Bedka et al., 2018; Punge et al., 2023).

SPHERA predictors are extracted around each OT detection in a spatio-temporal neighborhood of  $0.63^\circ \times 0.63^\circ$  (approx-  
245 imately 70 km x 70 km) over the three hours preceding an OT and the hour at which the OT is issued. This relatively large spatial matching window is required owing to the extremely localized and rapidly-evolving nature of hailstorms in order to limit double-penalty issues due to the difficulties of the models to predict the exact localization of convective processes (Ebert, 2008; Marsigli et al., 2021). Additionally, to take into account pre-convective conditions from SPHERA, a temporal window before the OT event is considered. Within this spatio-temporal neighborhood, the maximum (for CAPE, K index, and DLS) or  
250 minimum (for SLI and  $H_0$ ) values of these parameters are extracted.

The filter to select potential hail-related OTs is then constructed by employing confirmed ESWD hail reports. The environmental parameters are selected in the vicinity of the reports by considering the same spatio-temporal neighborhood used for the OTs (i.e.,  $0.63^\circ \times 0.63^\circ$  spatial window, 0-3 hours temporal window), and the thresholds are defined as percentiles  $p_{th}$  of the distributions of the parameters (following the approach of Punge et al., 2017). Conversely to ~~the latter study~~ [Punge et al. \(2017\)](#)  
255 , where thresholds based on the 2nd or 98th percentiles were prescribed, here the slightly more stringent 5th percentile (for CAPE, K index, and DLS) or 95th percentile (for SLI and  $H_0$ ) is selected. This is justified by the higher spatio-temporal resolution of SPHERA reanalysis (2.2 km - 1 h), which, compared to ERA-Interim (~~80-79~~ km - 6 h) considered by Punge et al. (2017) is expected to significantly enhance the representation of the atmospheric conditions described by the indices (e.g., in the form of sharper peaks in the parameter distributions owing to clearer distinction of the modeled dynamical features).

260 The ESWD-based cumulative density functions (CDFs) of the predictors are reported in Fig. 4. To investigate the relationship between each parameter and hailstorm severity, the CDFs are shown for the distribution of the entire hail reports set, and separated between small, large, and very large hail. A general shift of the predictors towards severe-convective environments



**Figure 4.** Cumulative density functions of the five parameters selected from SPHERA in the presence of ESWD hail reports. Hail reports are divided into different classes: all reports (blue lines), small hail (<3 cm, purple lines), large hail ( $\geq 3$  cm, green lines), and very large hail ( $\geq 5$  cm, red lines). The blue dashed vertical lines indicate the thresholds selected for defining the OT hail filter reported in Table 1. The shadowed portion of the distributions indicates the range of values where the filter is effective. a) DLS, b)  $H_0$ , c) K index, d) SLI, and e) CAPE.

is detected for increasing hail sizes. Indeed, moving from the purple to the red lines in Fig. 4, increased instability (greater CAPE and K index and lower SLI), enhanced organization (greater DLS), and higher freezing levels are noted. This suggests the ability of the numerical proxies to identify hail-related ambient conditions. The shaded areas in Fig. 4 indicate the tail of the CDFs (corresponding to the 5th or 95th percentile portions) where the filter is active.

### 3.1 Reanalysis parameters contribution to OT filtering

The Table 1 reports the thresholds obtained, the numbers of OTs and the relative fractions filtered by the full filter (applying the five conditions together parameter conditions together (hereafter referred to as full filter) and for each parameter are listed in Table 1. Singular parameter contributions to the filter vary from 7.0 to 11.2%. Since the same OTs are sometimes filtered by more than one variable, the fraction of removed OTs with the full filter is lower than the sum of the singular filters and reaches 27.0%. The fraction of days when instability-index filters (SLI, CAPE, and K index) are active amount to  $\sim 70\%$  and beyond. This suggests their dominant contribution in the OT selection compared to DLS, which filters in roughly half of the days, or to  $H_0$ , being active in less than one third of the days. The resulting full filter is active in almost the totality (95%) of days with at least one detected OT.

**Table 1.** Variables and thresholds used in the OT filter, relative number and fraction of OTs filtered, and number of days with active OT filtering (with fractions expressed out of the 872 days when at least one OT is detected).

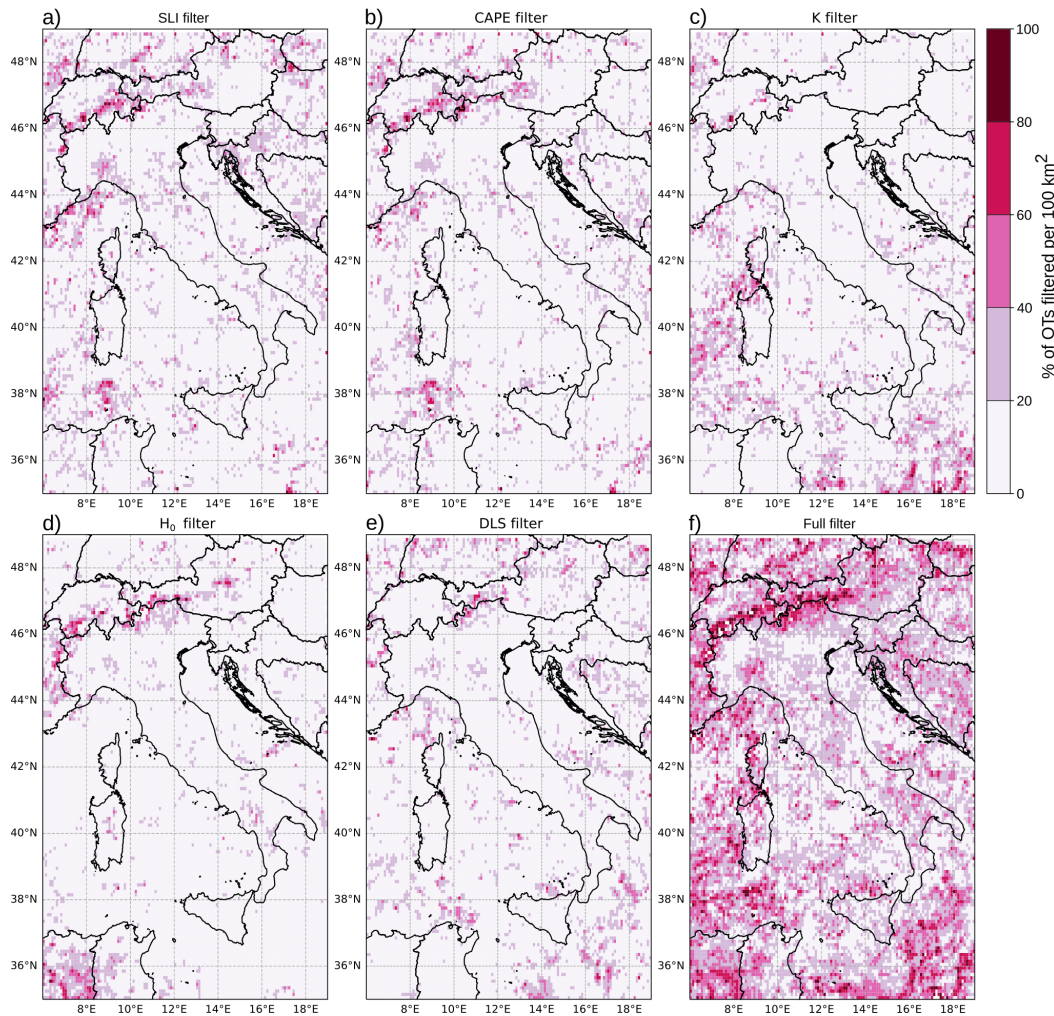
Variable	Threshold	OTs filtered	Fraction	Days w. active filter
SLI	$< p_{95} = -2.16 \text{ }^\circ\text{C}$	111,042	11.2%	679 (78%)
CAPE	$> p_5 = 666.16 \text{ J kg}^{-1}$	98,051	9.9%	669 (77%)
K index	$> p_5 = 32.5 \text{ }^\circ\text{C}$	91,794	9.3%	583 (67%)
DLS	$> p_5 = 7.56 \text{ m s}^{-1}$	88,796	8.6%	414 (48%)
$H_0$	$< p_{95} = 4098 \text{ m}$	69,347	7.0%	244 (28%)
Full filter	All those above	267,900	27.0%	824 (95%)

To understand the impacts of the different parameters in the OT filtering, their spatio-temporal contributions are investigated. Figure 5 shows the spatially-distributed filtered fractions of OTs for the single-parameters filters (Fig. 5a-e) and for the full filter (Fig. 5f). Instability parameters (Fig. 5a-c) filter mainly over certain areas of the sea (especially in the southern and western Mediterranean) and the Alpine crest, particularly along the Italian-Swiss border. The largest contribution over the sea is given by K index, while over land CAPE and SLI are more active. This is presumably owing to the explicit inclusion of the water vapor content in the atmospheric column in the K index, that weights more over the sea.  $H_0$  (Fig. 5d) filters most OTs over lower latitudes (~~>60% in~~ Tunisia and Algeria) and high-elevation terrains, especially over the whole Alpine crest, ~~where almost 100% of all OTs are filtered out~~. This enhanced removal is attributable to the generally colder atmospheric profiles found over the Alps (compared to lower-elevation regions) where the simulated topography reaches elevations as high as 3950 m in SPHERA reanalysis (Fig. 3a), and the freezing level usually exceeds the imposed threshold of 4098 m. However, as seen by the spatial distributions of ESWD reports (Fig. 2a) and OTs (Fig. 3b), the Alpine crest is the least populated region of the domain in terms of hail reports and prominent OTs. This is attributed to the difficulties for deep-organized convective systems to develop in extremely complex terrains, in agreement with a recent climatology of lightning flashes and associated conditions for convective initiation over the Alpine area (Manzato et al., 2022b). Hence, it is believed that the ~~limitation imposed by choice of the~~ chosen  $H_0$  threshold is not detrimental to the analysis presented here (a possible proposal for a more sophisticated  $H_0$ -filtering could be topography-dependent).

The DLS filter (Fig. 5e) shows less prominent spatial peaks than other parameters, but enhanced activity in the northern part of the domain (i.e., southern Germany and northern Austria) and in the south-eastern Mediterranean sea.

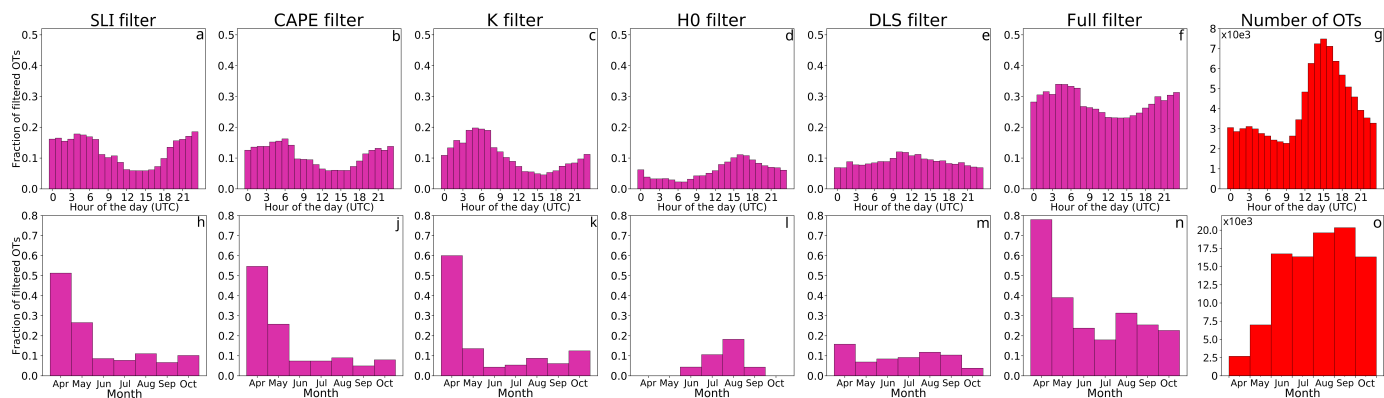
The combination of the five individual filters (Fig. 5f) delivers maximum filtering ( $\sim 100\%$ ) along the northern Italian border where the main mountain peaks of the Alps are located, and substantially high ( $\sim 60\%$ ) but locally variable filtering over the western and southern Mediterranean sea, southern Germany and eastern Austria. ~~In contrast, the regions with the lowest OT removal ( $< 20\%$ ) are the Po valley in northern Italy, the northern Adriatic and Tyrrhenian seas, and the associated Italian and Croatian coastlines.~~

Figure 6 shows the fractions of filtered OTs for the different parameters depending on the hour of the day (upper row) and the month of the year (lower row), aggregated over the whole spatial domain. Further, panels g) and o) shows the total



**Figure 5.** Percentage of filtered OTs per grid cell (on a 10-km regular grid). a) SLI, b) CAPE, c) K index, d)  $H_0$ , e) DLS, and f) full filter.

number of OTs detected per hour of the day and month, respectively. It should be kept in mind that the local time zone over the considered region, the Central European Summer Time (CEST), is two hours ahead of the UTC time zone. The OT activity shows a well-defined diurnal cycle (with the maximum number of detections at 15 UTC), and a decisive increase from spring to summer, which further rises in August and September. Instability parameters (SLI, CAPE, and K index) filter mainly during the night and early morning (reaching 20% around 4-7 UTC), and in April (exceeding 50%), May, and October. This reflects the lower likelihood of hail-favoring convective conditions at these times of the day and year. Conversely, their contribution to the filter is minimal when the increased heating of the boundary layer enhances the potential for convective activity and reduces convective inhibition, increasing the possibility for hail formation (e.g., Markowski and Richardson, 2011), i.e., in the central

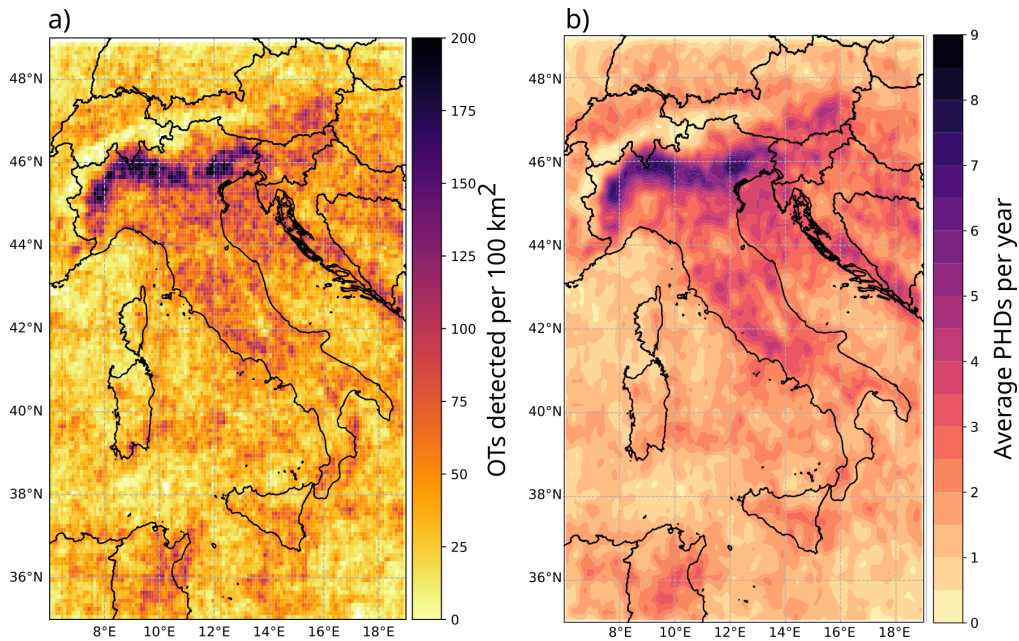


**Figure 6.** Percentage of filtered OTs aggregated over the spatial domain per hour of the day (top row) and per month (bottom row) considering singular parameters filters: a) & gh) SLI, b) & hj) CAPE, c) & ik) K index, d) & jl) H<sub>0</sub>, e) & km) DLS, and f) & hn) the full filter. The total number of OTs per hour of the day and per month are reported in panels g) and o) respectively.

hours of the day (with less than 10% removal around 14-16 UTC) and during JJA (June July August). No evident differences  
 310 among the three parameters are detected.

The H<sub>0</sub> contribution (Fig. 6d-jd-l) is roughly opposite to that of the instability. The largest removal is found in the afternoon (~12% at 16-18 UTC) and in late summer, especially in August (about 20%). This seasonal variation is likely linked to the warming of the lower troposphere peaking in August in this region, owing to the annual cycle of solar insolation, producing an upward shift of the freezing level. On the other hand, the daily cycle in H<sub>0</sub> filter cannot be generally related to the diurnal  
 315 cycle of boundary layer warming. In fact, at altitudes of ~4 km above sea level (a.s.l.), temperature changes are mainly driven by horizontal advective processes, rather than by vertical sensible heat fluxes, which are little affected by low-level daily variability. The largest fraction of H<sub>0</sub>-driven OT removal is found over the main Alpine crest (Fig. 5d), where the atmospheric boundary layer could extend over 4 km a.s.l., despite being very shallow, implying a possible diurnal impact on the H<sub>0</sub> variation. Anyhow, as previously mentioned, In any case, this does not constitute a critical issue for the purpose of the analysis here  
 320 presented, this does not constitute a critical issue as indicated by the almost complete lack of multiple hail proxy signals in this the Alpine region (i.e., hail reports, OT and lightning detections).

The DLS filter (Fig. 6e-ke-m) shows the least diurnal and seasonal variations, with slightly higher OT removal rates around 10 UTC (~12%) and in April (~15%). The reduced variability in DLS filtering compared to all the other parameters is most likely attributed to its kinetic (rather than thermodynamic) nature, and to its direct relationship with synoptic-scale forcings.  
 325 Indeed, during the considered warm season of the year, the typical synoptic conditions found in the study region are dominated by a persistent anticyclonic ridge. This large-scale forcing produces a general less variable and lower wind magnitude difference between the surface and at ~6 km altitude compared to its cold season counterpart, which is characterized by more dynamism (e.g., stronger jet streams), and associated with the DLS climatological maximum (Taszarek et al., 2018).



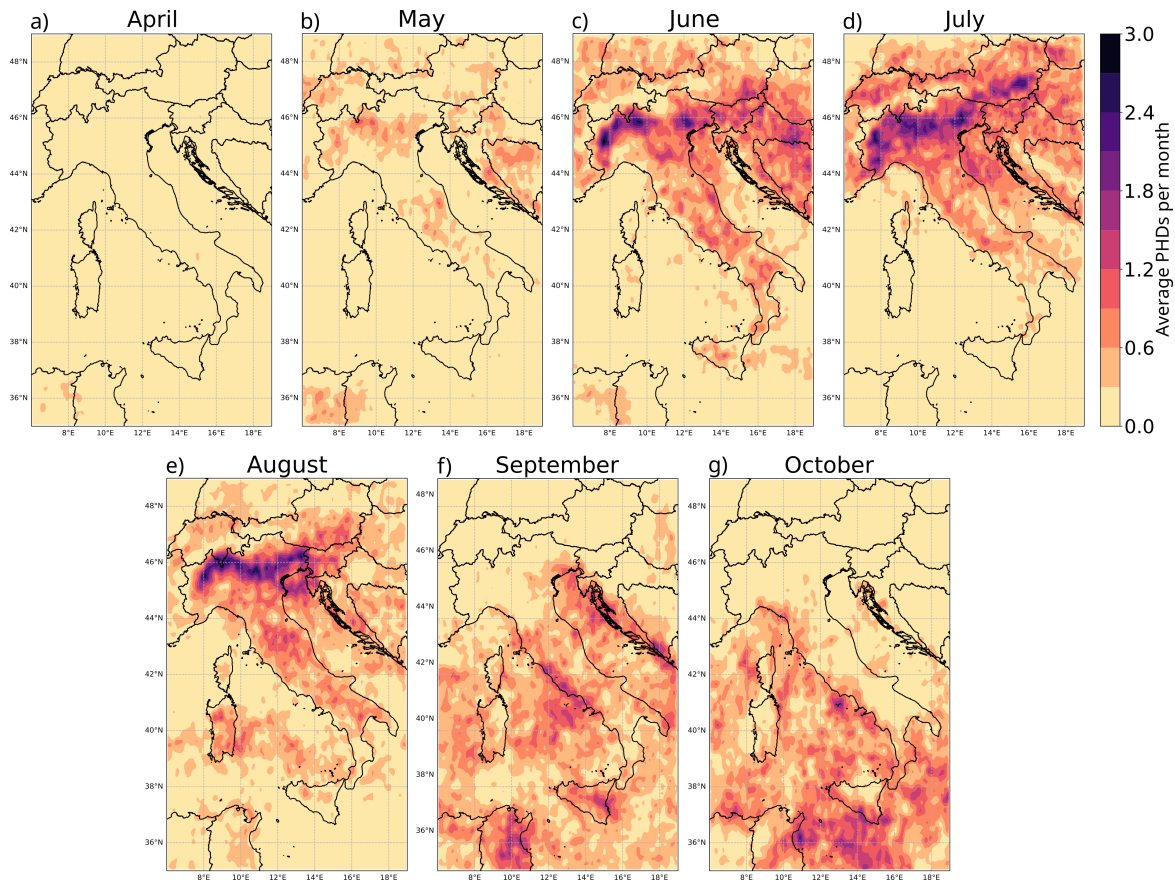
**Figure 7.** a) Same as Fig. 3b, but for OTs retained after the hail-specific filter. b) The resulting average number of potential hail days (PHDs) per year over 2016-2020 estimated from the hail-related OTs distribution in a) after spatial smoothing with a Gaussian filter.

The resulting full filter on the daily term (Fig. 6f) shows maximum removal of more than 30% in the morning and evening (4-7 and 20-23 UTC respectively) and to a minimum of  $\sim 23\%$  around 13-15 UTC. Considering the seasonal cycle (Fig. 6h), the parameters combination shows enhanced filtering in spring (April with almost 80% and May with almost 40%) followed by August with a removal above 30%. Hail-favoring conditions are most likely to be established in July and June, where minimum OTs removal of  $\sim 13\%$  and  $\sim 22\%$  are issued, respectively. This tendency is in good accordance with the observed hailstorms distribution over the years considered (Fig. 2e), and with more robust 28-year ESWD-based hail climatology (Půčik et al., 2019).

## 4 Hail frequency and ambient conditions

### 4.1 Spatio-temporal characterization

Figure 7a shows the spatial distribution of the 723,142 OTs retained after applying the filtering described in the previous section over the five extended warm seasons considered. Compared to the original distribution (Fig. 3b), a decrease in the number of OTs over the main Alpine crest is evident, associated with the maximum removal rate in that area (Fig. 5f). Fewer OTs are also detected over land at lower latitudes (Algeria and Tunisia), over the Mediterranean sea, throughout the Apennines, and in north-eastern continental areas (Austria, Slovenia, Croatia, and Bosnia). The main hotspot of OT frequency in the region along the southern pre-Alps and northern Po valley is well preserved after filtering. Further, the resulting contrast with the minimum

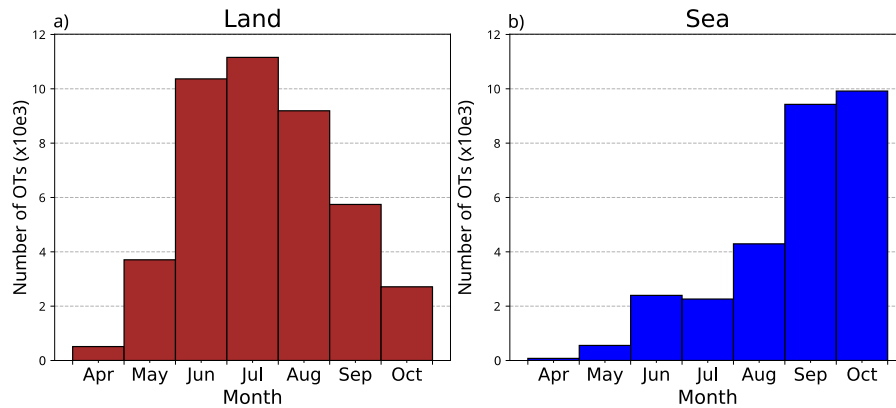


**Figure 8.** Same as Fig. 7b, but separating among a) April, b) May, c) June, d) July, e) August, f) September, and g) October.

OT frequency found over the main Alpine crest is more pronounced than before filtering. This suggests the identification of  
 345 preferential areas for hail formation, which show good agreement with findings from Punge et al. (2017) and recent radar-based  
 hail climatology (Nisi et al., 2020).

Hail frequency in a certain area is usually estimated as the number of hail days per year rather than counting every single  
 hailstorm (Punge and Kunz, 2016). In this case, a potential hail day (PHD) is defined as a day when at least one hail-related  
 OT is detected per reference area of  $10 \times 10 \text{ km}^2$ . The sensitivity tests performed by increasing the number of OTs defining  
 350 a PHD showed stable and mutually consistent spatial structures (only from  $> 10$  OTs per day the distributions started to lose  
 too much detail). The resulting average PHD distribution is reported in Fig. 7b after spatial smoothing with a Gaussian filter.  
 This is done to minimize potential uncertainties arising from spatio-temporal shifts between the OT proxy and the occurrence  
 of hail on the ground, and to homogenize the gridded distribution. The result suggests a maximum hailstorm frequency of  $\geq 7$   
 PHDs per year in proximity of the southern Alpine slopes and  $\sim 0$  PHDs over the Alpine crest.



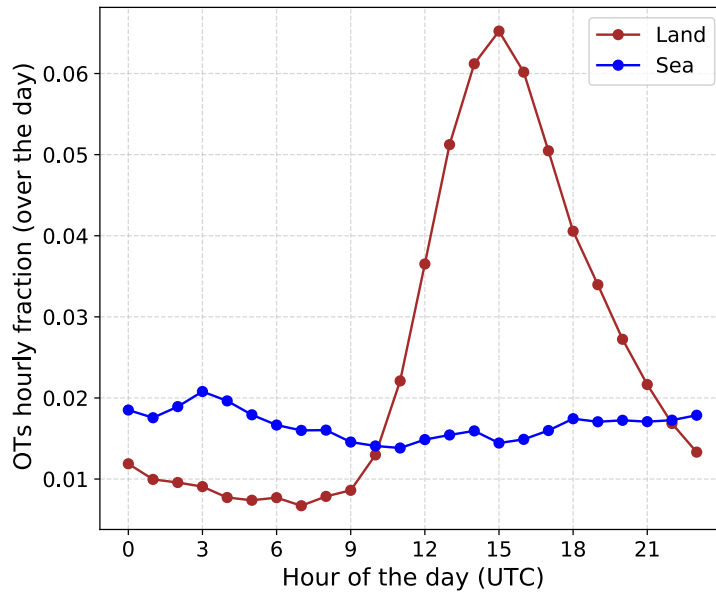


**Figure 9.** Distributions of hail-related OTs per month separately over land (panel a) and sea (panel b).

355 The intra-annual variations in hail frequency are estimated on a monthly basis in terms of the geographical distribution of PHDs per month (Fig. 8), and with histograms of hail-related OTs over the whole domain separately for land and sea areas (Fig. 9). Hail frequency is found to be almost zero in early spring, but increasing from April to May, when the cooler temperatures over land and sea surface lead to lower low-level moisture, which limits the development of deep moist convection. Hail likelihood rapidly increases in June and July over continental areas, with a well-defined peak around the Alpine region. 360 Particularly in July, besides the widespread maximum over the southern pre-Alps in northern Italy, circumscribed hotspots over central Switzerland and south-western Germany are detected, in accordance with Nisi et al. (2016). Starting from August and extending to September, a significant reduction in hail-filtered OT rate over land is evident (Fig. 8e-f and 9a), coupled with a gradual increase in thunderstorm development over the warm waters of the Tyrrhenian and Adriatic seas (Fig. 9b). Finally, in October (Fig. 8g) a further shift of hailstorm activity towards lower latitudes of the southern Mediterranean sea is detected, 365 while maintaining the hail hotspot over the Thyrrenian sea. This is linked to the increased cooling of the continental surface and the growing likelihood of mid-latitude cyclone formation in this region resulting from the maintenance of warm sea surface temperatures (e.g., Flaounas et al., 2022)(e.g., Flaounas et al., 2022).

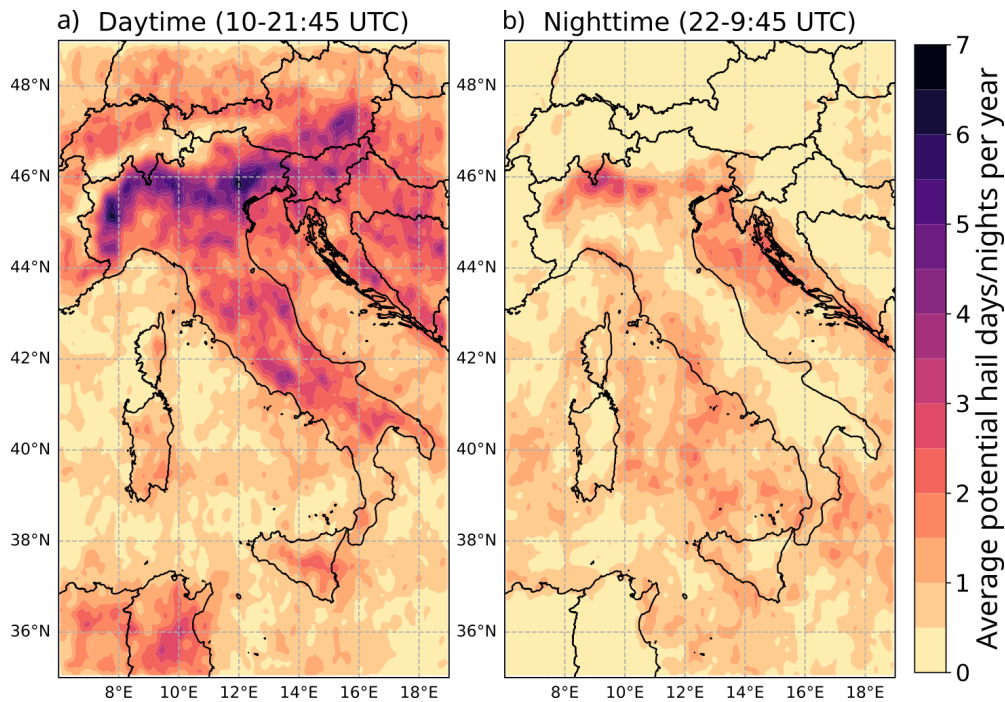
370 Figure 10 shows the diurnal cycle of hail-related OT activity separated between land and sea areas. Over land, very infrequent OT detections are revealed during the night and early morning, with a rapid increase starting from 10 UTC and peaking at 15 UTC (i.e., 17 CEST). This reflects the maximum diurnal heating of the near-surface troposphere, which reduces convective inhibition and increases the likelihood for atmospheric instability conditions. During the afternoon, a slightly more gradual decrease is detected. Over the sea, OTs are more likely to form during the night and early morning (from 23 to 9 UTC) compared to land, with a local maximum at 3 UTC. This is most likely linked to the north-eastern Adriatic hotspot of nocturnal hailstorm generation (discussed in the next paragraph - Fig. 11b). Afterwards, a gradual decrease in marine OT activity is detected after around 12 UTC, when OT frequency slightly fluctuates during the afternoon and increases during the evening. These findings are in good agreement with the spatio-temporal distribution of the European OT characterization (over 2004-2009) of Bedka (2011).

375



**Figure 10.** Hourly fraction of hail-related OTs separating land (in red) from sea surface (in blue) and aggregating over the whole spatial domain.

Following these results, a separation between daytime (10 to 21:45 UTC) and nighttime (22 to 9:45 UTC) is proposed in Fig. 11. Hail is found to be generally more frequent over land during daytime (from 8 to 19:45 UTC, Fig. 10 Fig. 11a) and over the sea during nighttime (from 20 to 7:45 UTC, Fig. 10 Fig. 11b). Hail likelihood during daytime is highest over southern pre-Alpine areas and significantly pronounced over high-elevation terrains, especially in the eastern continental part of the domain (Austria, Slovenia, and the Balkans) and over the central-southern Italian peninsula. During nighttime, the north Adriatic sea is an evident hail hotspot, with the maximum along the western Croatian coast. This may be linked to the combination of the north-eastern mountains, supporting convective development, with local near-surface wind convergence, causing the formation and organization of convective cells over coastal areas during the afternoon and early evening (Mikuš et al., 2012; Jelić et al., 2020). A further relevant nighttime hotspot is detected over north-western Italy along the border with Switzerland and all along the pre-Alpine southern flank area. This is presumably linked to late-evening thunderstorm formation over the foothills, most likely imputable to katabatic winds interacting with thermally-driven Alpine Pumping circulation (Bica et al., 2007). The interaction between these flows produces local convergences, enhances vertical wind shear and orographic lifting, and ultimately promotes convection initiation over the region (Nisi et al., 2020). Finally, the western Italian coast also shows prominent (to a lesser extent) nocturnal potential hail signals, which are mostly underestimated by ESWD-based estimates (Fig. 2d) likely owing to the reduced observational activity during nighttime (Fig. Same as Fig. 7b, but separating between a) Daytime (i.e., 8-19:45 UTC) and b) Nighttime (i.e., 20-7:45 UTC). Hourly fraction of hail-related OTs separating land (in red) from sea surface (in blue) and aggregating over the whole spatial domain.



**Figure 11.** Same as Fig. 7b, but separating between a) Daytime (i.e., 10-21:45 UTC) and b) Nighttime (i.e., 22-9:45 UTC).

395 ~~Figure 11 shows the diurnal cycle of hail-related OT activity separated between land and sea areas. Over land, very infrequent OT detections are revealed during the night and early morning, with a rapid increase starting from 10 UTC and peaking at 15 UTC (i.e., 17 CEST). This reflects the maximum diurnal heating of the near-surface troposphere, which reduces convective inhibition and increases the likelihood for atmospheric instability conditions. During the afternoon, a slightly more gradual decrease is detected. Over the sea, OTs are more likely to form during the night and early morning (from 23 to 9 UTC) compared to land, with a local maximum at 3 UTC. This is most likely linked to the north-eastern Adriatic hot spot of nocturnal hailstorm generation detected in Fig. 10b. Afterwards, a gradual decrease in marine OT activity is detected after around 12 UTC, when OT frequency slightly fluctuates during the afternoon and increases during the evening.~~

400

~~These findings are in good agreement with the spatio-temporal distribution of the European OT characterization (over 2004-2009) of Bedka (2011) [B1](#).~~

#### 405 4.2 Matching Hail proxy matching with ESWD hail reports

The appropriateness of the hail proxy is evaluated by comparing both filtered and unfiltered OT detections with ESWD hail reports. The aim objective is to quantify how often an OT is found in the spatio-temporal proximity of observed and confirmed hailstorms. ~~Despite the~~ The same ESWD sample ~~has been~~ used to define the environmental thresholds of the reanalysis parameters ~~used~~ to filter the OTs (Sect. 3) has been used to validate the final dataset. However, the comparison between reports and

**Table 2.** Comparison between OT detections and ESWD reports (with quality level QC1 or superior) considering the two spatio-temporal matching of 25 km /  $\pm 1$  h and 75 km /  $\pm 3$  h, both for the original “Orig OT” and the hail-filtered “Filt OT” datasets, only over land. The fractions of ESWD reports matching OT detections (Hit ESWD rep. row), and the fractions of OTs hitting at least one ESWD report (OTs hitting ESWD row) are reported. The comparison when considering only ESWD reports with high Temporal Accuracy (TA  $\leq 15$  min) is reported in blue.

Spatio-temporal matching	25 km / $\pm 1$ h (TA $\leq 15$ min)		75 km / $\pm 3$ h	
	Filt OT	Orig OT	Filt OT	Orig OT
Number of ESWD rep.	2,293 (1,720)		2,293	
Hit ESWD rep.	1,410 (1,077)	1,552 (1,186)	1,788	1,934
	61.5% (62.6%)	67.7% (68.9 %)	78.0%	84.3%
Number of OTs	433,862	597,547	433,862	597,547
OTs hitting ESWD rep.	12,501 (9,863)	14,158 (11,179)	45,868	52,643
	2.88% (2.27 %)	2.37% (1.87 %)	10.57%	8.81%

410 hail-related OT detections is believed not to be affected by any substantial overfitting issue ~~given the full independence of the~~  
~~two datasets.~~ This holds given that the main source of information used to build the proxy is that on OTs, while the SPHERA  
indices are only used to filter these data in a very conservative way, that is by removing the events when hail is unlikely to occur  
because the SPHERA parameter values fall in the tail of their respective distributions. Unfortunately, a complete assessment  
of the performance of the hail proxy is not possible ~~due to the partial description of the real hail occurrence available with~~  
415 ~~because of the incomplete information provided by~~ crowd-sourced reports, as discussed in Sect. 2.1. ~~While confirmed reports~~  
~~can give precious spatio-temporal information in case of actually occurred hailstorms, their lack does not necessarily imply~~  
~~the non-occurrence of events.~~ 2.1. Several events may be missed or under-reported in the crowd-sourced data (e.g., in sparsely  
populated areas such as mountainous regions, or during nighttime), which is recognized to be a dominant issue of the ESWD  
database (Púčík et al., 2019). Statistically, this implies that in the contingency table we can only assess the hit and the miss  
420 rates describing the joint distribution of the "forecast" (OT detections) and observations (hail reports), and not the false alarms  
or the correct negatives.

The matching condition between satellite detections and hail reports consists of a temporal window of  $\pm 1$  h around the OT  
detection time and 25 km from each OT location. This relatively sharp temporal window is considered given the **high** temporal  
accuracy  $\leq 1$  h characterizing more than 98% of ESWD reports (Fig. 2b). The 25-km distance criterion is retained from Bedka  
425 (2011) and Punge et al. (2017) and accounts for a maximum storm motion of  $60 \text{ km h}^{-1}$  and possible latitude/longitude  
uncertainty for ESWD reports. The matching with the set of hail reports having a quality level QC1 or superior (2,293 reports)  
is considered for both the original and the hail-filtered OT datasets (over land only), to highlight possible differences owing to  
the filter procedure. Further, the subset of 1,720 ESWD reports presenting high Temporal Accuracy (TA)  $\leq 15$  min is separately  
considered in the matching to investigate the impact of a lower temporal uncertainty in the surface reference state. Additionally,  
430 to investigate the sensitivity of the matching conditions between the hail proxy and observations, a less conservative spatio-  
temporal constraint of  $\pm 3$  h over 75 km is proposed. The results are ~~reported-listed~~ in Table 2.

With respect to the 25 km /  $\pm 1$  h matching, an OT of the unfiltered dataset is found in the vicinity of 67.7% of the ESWD hail reports, while for hail-filtered OTs, the hit rate reduces to 61.5%. When considering only reports with high temporal accuracy ( $\leq 15$  min), the fractions slightly increase to 68.9% and 62.6%, respectively. To give an objective evaluation of these results, a comparison with the similar analysis previously performed by Punge et al. (2017) is proposed. However, given several differences in the research design, it is necessary to focus only on the qualitative aspects. The main differences between the present study and that of Punge et al. (2017) are: a larger spatial domain covering all of Europe (extending from England to Russia and from Norway to Egypt) over ten years (2004-2014), the consequent different spatial coverage in the distribution of ESWD reports (which are only scarcely available in some regions such as France or Portugal during their analysis period), the employment of the former non-probabilistic version of the OT detection algorithm from satellite infrared imagery, and the substantially coarser description of hail-favoring convective environments owing to ERA-Interim reanalysis. Using a the same spatio-temporal window of 25 km and  $\pm 1$  h around each OT detection, here considered they found a hit rate decreasing from 40.3% to 39.7% for the unfiltered and filtered OT datasets, respectively, for a subset of 2,475 ESWD reports (with quality level  $\geq$  QC1 ~~or superior~~ and temporal accuracy  $\leq 15$  min). This indicates that the proxy obtained in the present analysis has improved by roughly 22.23% over that obtained by Punge et al. (2017) in terms of match with hail reports. The main reason for this improvement is likely the new probabilistic OT detection algorithm of Khlopenkov et al. (2021) allowing the identification of weaker looking satellite features that were previously harder to detect with fixed temperature thresholds. Further, this is also accompanied by a reduction of false OT detections. As a possible indication of this, the fraction of OTs found in the vicinity of hail reports by Punge et al. (2017) increased from 0.67% to 0.84% after the filter, conversely to the detected values of 2.37% and 2.881.87% and 2.27%, respectively (for TA  $\leq 15$  min - Table 2). Considering the more generous spatio-temporal window of 75 km /  $\pm 3$  h, a decisive increase for all hit rates is noted: the fractions of hail reports detected by the filtered and unfiltered OTs sets are 78.0% and 84.3%, and the respective OT rates matching ESWD are 10.57% and 8.81%.

The inter-monthly and inter-daily variability of the hit rates are analyzed in Fig. B1. The differences found between the filtered and unfiltered OTs matching the ESWD for the whole temporal aggregation tend to persist for every temporal sub-period. An increase in both hit rates is noted when moving from spring to summer, while a slight decrease is detected when moving from day- to nighttime.

Even if an increase in the fraction of OTs associated with hail reports is detected, its absolute value remains low. This may be related to under-reporting issues in the ESWD dataset, or the limits of the conservative design of the filter proposed. The relevance of the under-reporting problems of the hail database is highlighted by the strong year-to-year variability in the fractions of filtered OTs found in the vicinity of ESWD reports (not shown). Considering the 75 km /  $\pm 3$  h matching, in the year with the largest number of reports (2019, with 659 reports) the fraction of OTs in their vicinity exceeds the 18%. Conversely, when the lowest number of hail reports were issued (2016, with 298 reports) the amount of matching satellite detections is slightly less than 7%. With respect to the limits of the OT filtering procedure designed, the aim of the minimum conditions imposed is to remove all possible situations that are unsupportive to hail development in a thunderstorm. The retained environmental characteristics and the associated OTs are shared also by storms producing other severe weather than hail. A potential way forward to more sharply discriminate specifically hail environments within this superposition could be

to include additional hail-related observations to expand the sample of ambient conditions, such as hailpad records. However, hailpad networks cover only a smaller part of the selected region, which prevents a substantial enlargement of the validated OT data sample. Therefore, ESWD still represents the best available dataset for ground-truth hail occurrence.

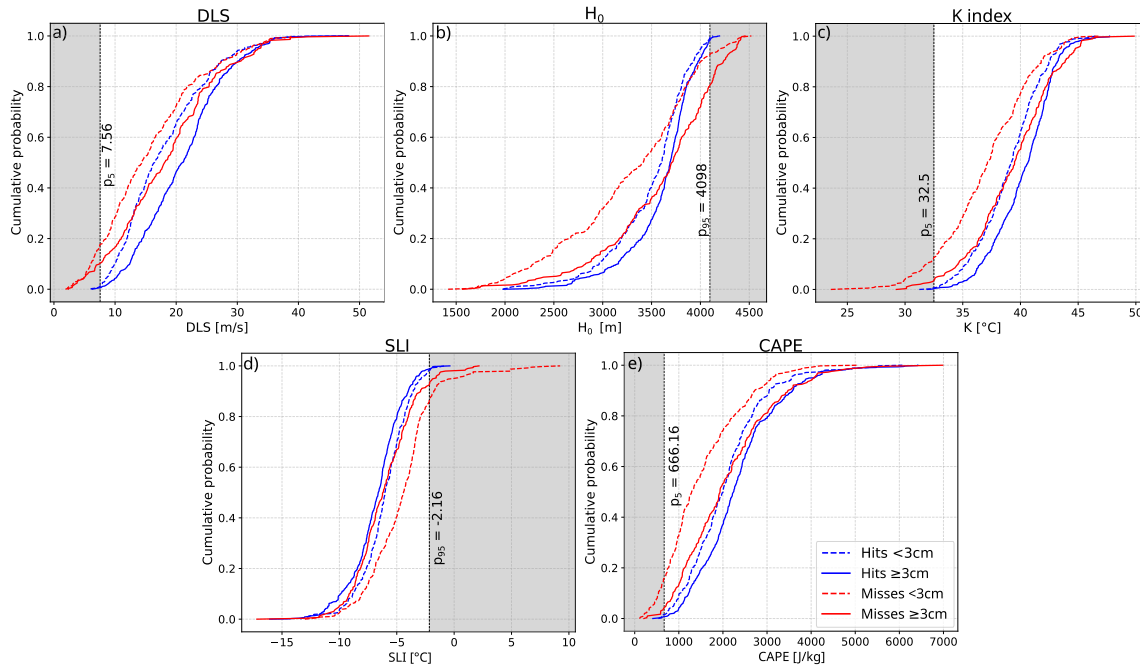
### 470 4.3 Hailstorm environmental signatures

To better understand under which conditions hail reports are correctly identified or missed by the OT-based approach, the associated environmental conditions described with the CP reanalysis predictors are investigated. Parameter distributions are analyzed separately for hit or missed reports. Further, to take into account the role of hail severity, only the subset of 2,249 ESWD reports with information on the maximum hailstone size is considered (in the following referred to as ESWD-S), and  
475 results are reported separating between small ( $< 3$  cm) and large hail ( $\geq 3$  cm). For some hailstorms more than one report is issued, which share the same ambient conditions at a specific temporal stage of the storm. For this reason, duplicate values of the parameter distributions that at the same hour present exactly the same values of all five SPHERA parameters are discarded, and only those associated with the report presenting the largest maximum hailstone size are kept. This is necessary to avoid artificial deviations owing to repetitions of the samples in the resulting distributions. Finally, the satellite-measured cloud-top  
480 thermal characteristics in presence of ESWD-S reports are analyzed to further detail hailstorm ambient features.

The cumulative density functions of SPHERA parameters in the presence of ESWD-S reports, separated into four categories based on matching and hail severity conditions, are presented in Fig. 12. 66% reports are successfully detected by the filter-based proxy, the majority of which (69%) pertains to large hail, while missed cases are similarly associated with small (46%) and large hail (54%). By increasing the hailstone size, the distributions tend to shift towards values with enhanced potential for  
485 severe convection (i.e., larger CAPE, K index, and DLS, and smaller SLI) and higher  $H_0$ . The most evident separation for all parameters (including DLS, but to a lesser extent) emerges for the missed–small hail class (Fig. 12 - dashed red lines), showing cumulative density curves systematically shifted towards less unstable, less sheared and warmer environments. Interestingly, only 4% of hit ESWD-S reports show at least one parameter falling in its filtered data range (i.e., shadowed areas in Fig. 12), while the fraction decisively increases to 42% for missed reports.

To investigate the inter-relationships between ambient descriptors, hailstorm severity and matching conditions, the parameter spaces for the four hail reports classes are considered in the form of bi-variate histograms. Figure 13 shows the joint distributions of  $H_0$  and K index for the four hailstorm classes. A joint increase of freezing level height with atmospheric instability and low-level moisture content is noted, suggesting a positive linear relationship between  $H_0$  and K index. The distributions for hits (13a-b) are compact and do not present relevant differences among hail sizes. On the other hand, misses counterparts  
495 (13c-d) extend over wider ranges and show evident shifts between small and large hail (with  $H_0$  and K index medians greater by roughly 300 m and 2.3°C, respectively). This suggests that missed-large hail events are characterized by generally warm vertical atmospheric profiles (with  $\sim 20\%$  freezing level heights above the imposed threshold), while missed-small hail tends to form in lower-instability and colder ambient conditions.

More dispersion characterizes the joint  $H_0$ -DLS distributions (Fig. 14). In all four classes, DLS covers a broad spectrum  
500 with interquartile ranges (IQRs) of  $\sim 10$  m s $^{-1}$ , confirming the difficulty in separating events by their hailstone sizes through

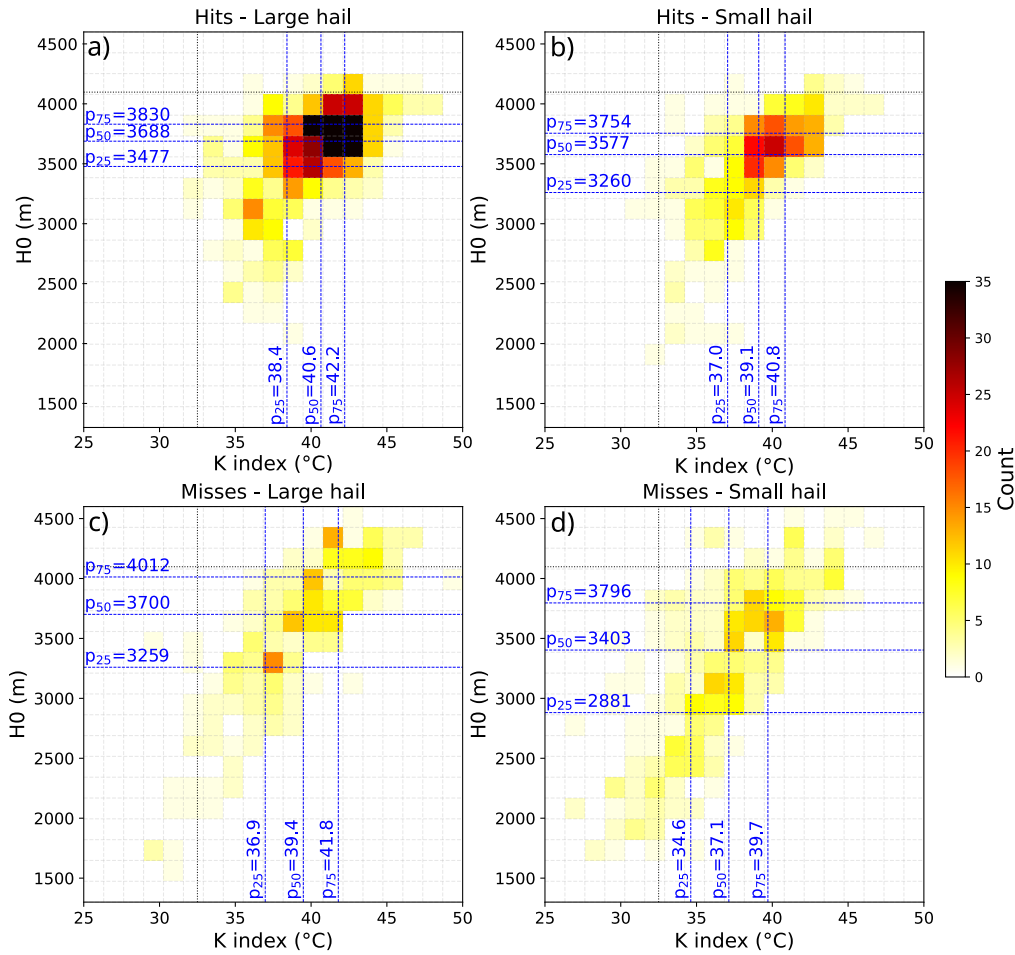


**Figure 12.** Cumulative density functions of the five parameters selected from SPHERA in the presence of ESWD-S hail reports. The same criteria described in Sect. 3 apply to spatio-temporally aggregate the parameters in the vicinity of hail reports. Reports are divided into small hail (< 3 cm, dashed lines) and large hail ( $\geq$  3 cm, solid lines) when hit (in blue) or missed (in red) by the hail-specific OT dataset. The black dashed vertical lines indicate the thresholds identified for filtering (Table 1). The shadowed portion of the distributions show when the filter is active. a) DLS, b)  $H_0$ , c) K index, d) SLI, and e) CAPE.

the vertical wind shear (Kunz et al., 2020). The difference of roughly  $7 \text{ m s}^{-1}$  in median DLS values from misses-small hail ( $14.39 \text{ m s}^{-1}$ ) to hits-large hail ( $21.24 \text{ m s}^{-1}$ ) suggests the increase in hail severity with storm organization.

505 Significant spread characterizes also the CAPE-DLS spaces describing the relationship between atmospheric instability and storm organization (Fig. 15). Also in this case, the most different conditions emerge for the missed–small hail class, characterized by generally pronounced low-CAPE (median  $1,286 \text{ J kg}^{-1}$ ) and low-DLS environments.

510 A factor playing a central role in the identification of an OT from satellite scans data is the thermal characteristic of the cloud top where the OT can be found. Previous research showed how OTs linked to deep convective clouds can be detected as cold pixels in infrared satellite imagery scans (e.g., Morel and Senesi, 2002; Mikuš and Mahović, 2013). These cold spots are associated with small and sharp infrared brightness temperature (IRBT) minima that are near to or colder than the tropopause temperature associated with the anvil cirrus cloud. Hence, a critical variable included in the Khlopenkov et al. (2021) algorithm for automatic OT detection is the temperature difference  $\Delta T$  between infrared brightness and tropopause temperatures. A large  $\Delta T$  ( $> 6 \text{ K}$ ) indicates a penetration of the updraft through the anvil of at least 1-2 km (Griffin et al., 2016). The investigation of the cloud-top thermal conditions in the presence of **actually-occurred-true** hailstorms could help understand why these have been correctly identified or not with the OT filter approach. For this reason, the minimum IRBT and  $\Delta T$  distributions in the

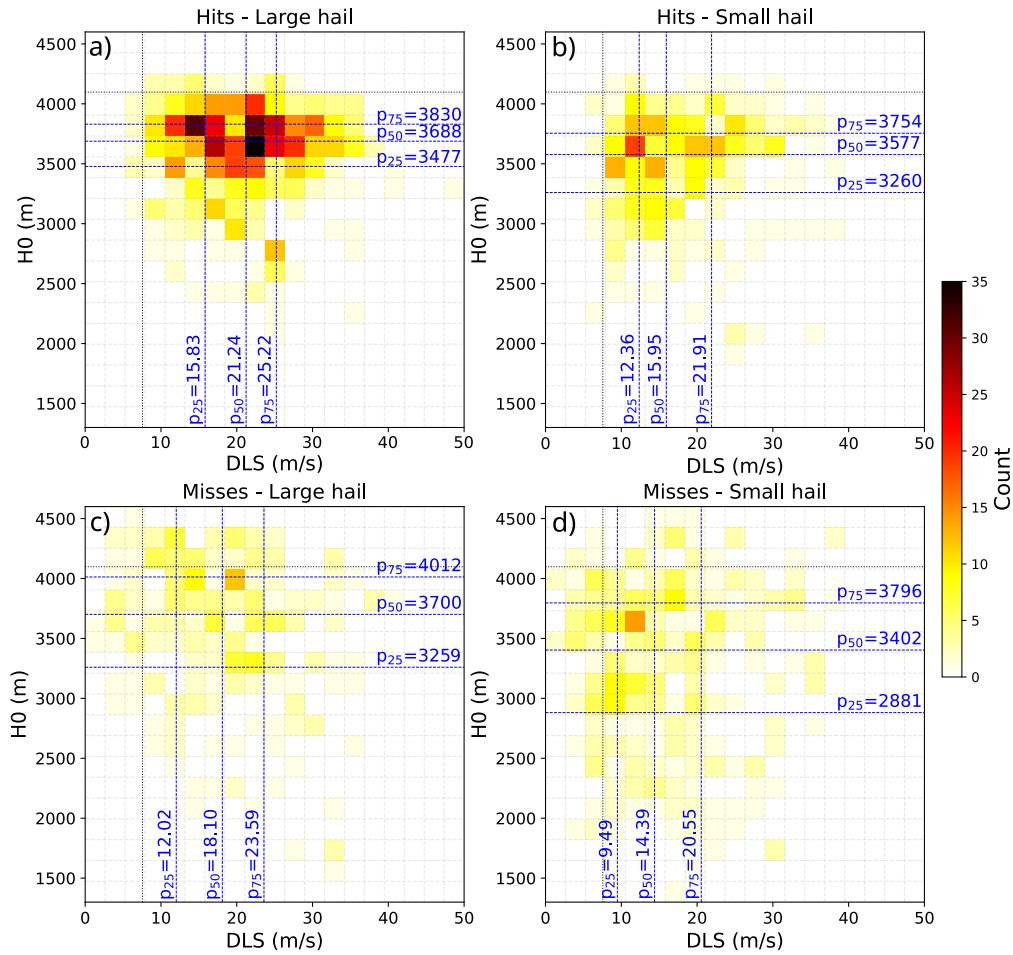


**Figure 13.** Bi-variate histogram distributions of  $H_0$  vs K index in presence of ESWD-S hail reports for the separation considered in Fig. 12: a) hits–large hail, b) hits–small hail, c) misses–large hail, and d) misses–small hail. The blue dashed vertical and horizontal lines represent the median ( $p_{50}$ ) and the interquartile (IQR) range values ( $p_{25}$  and  $p_{75}$ ) of the distributions. The black dotted lines report the thresholds used for the filter defined in Table 1.

515 presence of ESWD-S reports are considered (for any OT probability of occurrence and not only for >50% as imposed up to now). The distributions are separated among hit and missed reports for small, large, and very large hail occurrences (Fig. 16). Sharp IRBT minima distributions characterize hit reports of all hailstone size (Fig. 16a), with mean values of  $\sim 211$  K and rarely exceeding higher temperatures than 224 K. The relative  $\Delta T$  minima (Fig. 16c) show almost no positive values, meaning that IRBT is almost always warmer-colder than the tropopause temperature. Further, the central values of all  $\Delta T$  populations are below -4 K, as expected from severe thunderstorms producing prominent OTs (e.g., Scarino et al., 2023). Missed reports (Fig. 16b) present more blunted and higher IRBT minima distributions, extending to temperatures as high as 239 K. The associated mean values suggest a more pronounced separation among hail severity classes, especially in case of very large hail

520

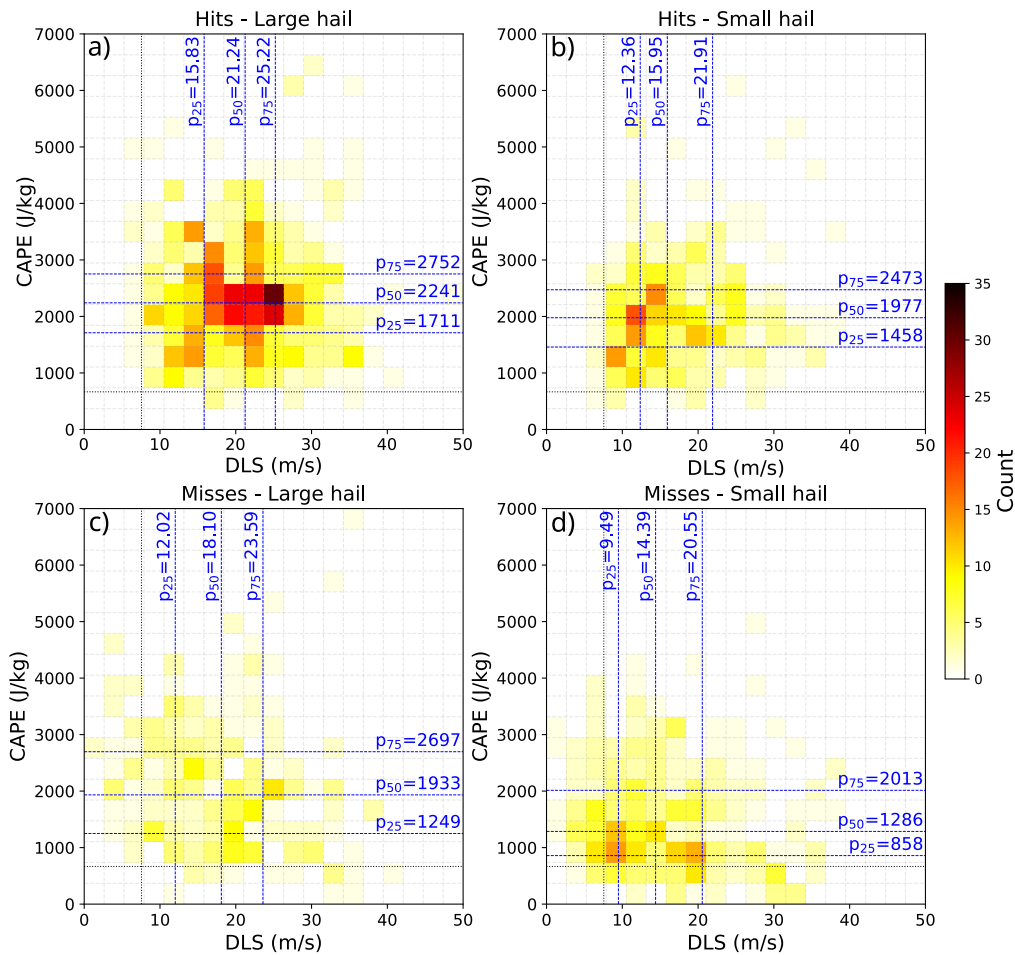




**Figure 14.** Same as Fig. 13, but for  $H_0$  and DLS.

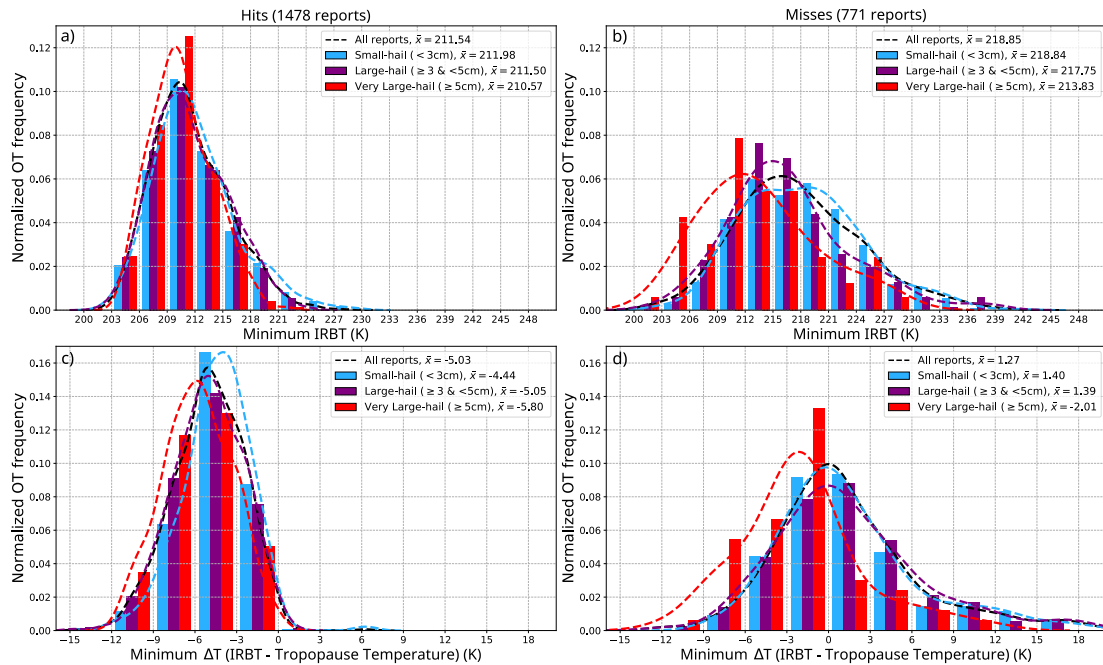
( $\sim 5$  K colder than for small hail).  $\Delta T$  minima (Fig. 16d) confirms and strengthens these results: the majority (i.e., 54%) of missed ESWD reports are associated with positive  $\Delta T$ , reaching values as large as +15 K. These conditions indicate tropopause temperatures substantially lower than those of the detected OT, suggesting not prominent IR signatures **that can be expected to be detected**. The enhanced separation in  $\Delta T$  distributions between small and very large hail, the latter being on average more than 3 K colder, indicates the difficulty for large hailstones to form in these environments.

~~A method for hailstorm identification obtained by combining convection-permitting SPHERA reanalysis environmental predictors, satellite MSG-OT detections, and crowdsourced ESWD hail reports has been presented. The analysis over 2016–2020 during the extended summer season (April–October) allows to assess the appropriateness of the hail proxy over south-central Europe, and to investigate the environmental conditions associated with hail. The proxy is based on a filter to identify convective updrafts potentially linked to the formation of hailstones in a thunderstorm by considering the surrounding environment. Five numerical predictors, quantifying key ingredients for hail development (i.e., most unstable CAPE, K index, SLI, DLS, and~~



**Figure 15.** Same as Fig. 13, but for CAPE and DLS.

freezing level height), are employed to separate OT detections. Single predictors give different spatio-temporal contributions in the identification of hail-related conditions, and their joint use enables to single out satellite-detected updrafts where hail is possible. Indeed, the resulting hail proxy shows a maximum hail potential over northern Italy pre-Alpine areas in June and July peaking at 15 UTC. A hail-related OT is found in the vicinity of 61.5% of ESWD reports, exceeding roughly 22% more than the previous OT-filter estimate over Europe (Punge et al., 2017), and suggesting an improved appropriateness of the new method. Enhanced suitability of the proxy is observed in case of severe hailstorms: the majority (69%) of correctly identified reports are linked to hailstones exceeding 3 cm diameters. Furthermore, the analysis of the ambient conditions for different hail severity classes suggests the tendency for large (small) hail to form in environments with higher (lower) instability and wind shear, and within warmer (colder) atmospheric vertical profiles, as expected. However, considerable spread in the associated parameters distributions is found, especially for the missed-small hail class, which also shows the most distinct environmental signature. Additionally, the analysis of the observed thunderstorm top temperature minima reveals systematically warmer conditions when



**Figure 16.** Normalized distributions of minimum IRBT (a b) and  $\Delta T$  (c d) in presence of hit (a c) and missed (b d) hail reports. The histogram bars quantify the normalized frequency of OTs in the presence of the ESWD-S subset for small (light blue), large (purple), and very large hail (red). Indicated are the mean values ( $\bar{x}$ ) for each distribution. The kernel-density estimated probability density functions are shown with dashed curves in respective colors, additionally, the density functions for the whole ESWD set (including also those reports without maximum hailstone size information) are displayed with black dashed curves.

545 ~~ground hail reports are failed to be identified. The greater challenge for the satellite-based algorithm to detect less prominent~~  
~~OTs characterizing these occasions explains, at least partly, why most of the missed ESWD reports went undetected.~~  
 Generally

## 5 Discussion

550 In this manuscript a new method for potential hail hazard assessment and for characterizing the associated environmental  
conditions have been presented and applied over a 5-year test period. The obtained results show good agreement with recent  
 hail climatologies over the study region ~~is found~~ (Punge and Kunz, 2016). The least hail-prone area over the whole spatial  
 domain is the main Alpine crest, owing to the difficulties for organized convective systems to develop in extremely complex  
 terrains, and is in agreement with radar- (Nisi et al., 2018, 2020) and lightning-based (Manzato et al., 2022b) climatologies  
 555 over the Alps. Pre-mountainous regions over the eastern Alps show enhanced likelihood for hail formation as described by  
 the OT-hail proxy, with local maxima over south-eastern Austria and Slovenia, in good accordance with Svabik et al. (2013).  
 Moderate hail frequency is detected in southern Germany, which is considered a main European hotspot for hail hazard (Punge

et al., 2014, 2017; Fluck et al., 2021); this may be caused by the limited temporal extent of the analysis. The northern Adriatic sea represents the primary marine hotspot for hailstorms, particularly enhanced along the Croatian coastline during nighttime in late summer (August-September), similar to Jelić et al. (2020). The most favorable conditions for hail are found along the Italian pre-Alps, but the potential for hailstorm formation is met throughout north-central Italy. This agrees with several hail climatologies on the national (Baldi et al., 2014), or regional level over north-western (Davini et al., 2012) and north-eastern Italy (Giaiotti et al., 2003; Sartori, 2012; Manzato et al., 2022a). On the seasonal scale, the detected intra-annual variability well agrees with the recent Italian ERA5-and-ESWD-based hail characterization of Torralba et al. (2023) over 1979-2020. Good temporal matching is also found with the ESWD reports statistics during 1990-2018 over Europe (Púčik et al., 2019).

The hail-related environmental conditions identified and the relative tendencies depending on hailstone dimensions are also in line with previous [findings works, highlighting a high degree of variability in the environmental conditions leading to hail, which confirms recent findings \(Nixon et al., 2023\)](#). Torralba et al. (2023) found CAPE > 900 J kg<sup>-1</sup> and a median K index of 30°C for hail occurrence, with increasing values with hail severity, indicating enhanced instability for severe hail development, as expected (e.g., Púčik et al., 2015; Marcos et al., 2021). Kunz et al. (2020), separating between <3 cm and ≥5 cm hailstones, identified scattered DLS distributions ranging ~0-30 m s<sup>-1</sup> for the former and ~5-30 m s<sup>-1</sup> for the latter, confirming a high degree of dispersion between hail severity and storm organization, and corroborated by proximity radiosounding data (Púčik et al., 2015). The CAPE-DLS space has been used in numerous studies as a proxy for hail. Wide ranges in the joint distribution have been found by Púčik et al. (2023) and Púčik et al. (2015), but with a clear lack of severe events in low-CAPE and low-DLS environments (which tend to concentrate on the opposite high-CAPE and high-DLS range), similarly to the tendency found in this analysis, as well as by Taszarek et al. (2020). The freezing level characterization is also in accordance with previous studies: Jelić et al. (2020) found an upper limit of ~4000 m above which no hail on the ground has been observed. Finally, the positive relationship between freezing level height and instability, for which large hail can form in stabler environments if H<sub>0</sub> is low while more instability is needed if H<sub>0</sub> is higher, has been detected also by Prein and Holland (2018).

The proposed method [for hail characterization](#) has demonstrated enhanced appropriateness for the identification of large hail-producing [hailstorms storms](#). This is revealed by the large fraction of hit ESWD reports having large maximum hail diameters and sharper distributions of their environmental characteristics. In case of smaller hailstones, a larger degree of uncertainty is revealed by less explicit OT signatures, related to higher cloud top temperatures, and by environments with lower freezing levels and instability (associated with weaker updrafts that are less evident from the OT perspective). Hence, the fixed thresholds of the high-resolution reanalysis parameters introduced to filter the OTs could mask these occasions. [Anyhow In any case](#), since the primary interest is to enhance the characterization of the most damaging hailstorms, the developed methodology has demonstrated to be appropriate for this scope.

## 6 Conclusion

[A method for hailstorm identification obtained by combining convection-permitting SPHERA reanalysis environmental predictors, satellite MSG OT detections, and crowd-sourced ESWD hail reports has been presented. The analysis over 2016-2020 during](#)

590 the extended summer season (April-October) allows to assess the appropriateness of the hail proxy over south-central Europe  
for a sample period, and to investigate the environmental conditions associated with hail. The proxy is based on a filter to  
identify convective updrafts potentially linked to the formation of hailstones in a thunderstorm by considering the surrounding  
environment. Five numerical predictors, quantifying key ingredients for hail development (i.e., most unstable CAPE, K index,  
SLI, DLS, and freezing level height), are employed to filter OT detections. Single predictors give different spatio-temporal  
595 contributions in the identification of hail-related conditions, and their joint use enables to single out satellite-detected updrafts  
where hail is possible. Indeed, the resulting hail proxy shows a maximum hail potential over northern Italy pre-Alpine areas  
in June and July peaking at 15 UTC. A hail-related OT is found in the vicinity of 62.6% of ESWD reports, exceeding roughly  
23% more than the previous OT-filter estimate over Europe (Punge et al., 2017), and suggesting an improved appropriateness  
of the new method. Enhanced suitability of the proxy is observed in case of severe hailstorms: the majority (69%) of correctly  
600 identified reports are linked to hailstones exceeding 3 cm diameters. Furthermore, the analysis of the ambient conditions  
for different hail severity classes suggests the tendency for large (small) hail to form in environments with higher (lower)  
instability and wind shear, and within warmer (colder) atmospheric vertical profiles, as expected. However, considerable  
spread in the associated parameters distributions is found, especially for the missed-small hail class, which also shows the  
most distinct environmental signature. Additionally, the analysis of the observed thunderstorm top temperature minima reveals  
605 systematically warmer conditions when ground hail reports are missed.

The five years considered in this study constitutes one of the main limitation ~~of the study~~ owing to the large year-to-year variability associated with hail. Indeed, a period of few years is insufficient for a robust assessment of hail frequency. However, it is appropriate for the purpose to present the novel methodology and to assess its potential. Possible future temporal extensions of the analysis could decisively enhance its robustness with the purpose to develop a sound climatology for  
610 hail. Further, the selection of other numerical parameters should also be tested in future works with the aim to improve the  
identification of hail-producing environments. Possible choices could include the CAPE above the -10°C-isotherm, which  
recently demonstrated enhanced skill for hail detection over Europe (Battaglioli et al., 2023), or the storm depth and the  
storm-relative flow below the hail-growth-layer, which may enhance the prediction of the maximum potential hailstone size  
(Kumjian and Lombardo, 2020; Nixon et al., 2023). Additionally, a promising direction for further research developments in  
615 the field is given by machine learning approaches which allow greater dimensionality within forecast parameters and consent to  
objectively select optimal predictors for hail in a certain region (Gagne et al., 2017; Gagne II et al., 2019; Gensini et al., 2021; Torralba et al.  
. Hence, in future extensions of this work these methods should be considered to potentially improve the environmental  
characterization associated with hail.

The imperfect OT observations with the MSG IR satellite instrument constitutes a further source for improvement. Indeed,  
620 the majority of missed ESWD reports are associated with detected cloud top temperatures that are higher than those at the tropopause, which are more challenging to be identified with the automatic algorithm of Khlopenkov et al. (2021) applied to the MSG SEVIRI. This difficulty, as noted by Cooney et al. (2021), may be linked to satellite scans performed when storm tops are not optically thick enough at the initial stages of the storm development, resulting in outgoing radiation being scanned in warmer and deeper regions of the cloud than the updraft top, likely owing to the insufficient density of the particles in this region

625 (Sherwood et al., 2004). This results in smaller temperature differences between tropopause and cloud top, ultimately reducing  
the probability of OT detection and, consequently, causing to miss the hail event. Hence, possible ways to overcome this issue  
and to improve the OT detection methodology are the inclusion of visible channel textures together with IR detections (Bedka  
and Khlopenkov, 2016), or the enhancement in the spatio-temporal resolution of the satellite scanning that in this study are  
limited respectively to 3 km and 15 minutes ~~respectively~~ (at the time of analysis the 5-minute rapid-scan data from MSG were  
630 not easily processable with the OT-detection algorithm). Particularly, a higher temporal frequency for detecting thunderstorm  
OTs, such as that possible with the Geostationary Operational Environmental Satellites (GOES) 16 or 17, or with the novel  
Meteosat Third Generation (MTG) satellite, is essential, given the rapidity of their formation and dissipation, which may be  
even below 15 minutes (Elliott et al., 2012).

In this study high-resolution numerical simulations are included to describe atmospheric ambient conditions, which is con-  
635 sidered a promising avenue of development in hail research (Allen et al., 2020). Indeed, coarser global datasets have been  
generally employed in similar studies, whose simulations include physical parameterizations to account for deep moist convec-  
tion, implying potential significant errors and inaccuracies (Prein et al., 2015). The present study benefits from the information  
obtained from the new regional reanalysis SPHERA ~~is considered in this work, whose horizontal grid spacing of~~ , whose 2.2  
km horizontal resolution allows to switch off parameterization schemes, as well as ~~a finer representation of the atmospheric~~  
640 ~~and topographic details~~ to use a finer surface topography. However, a quantification of the added value introduced by this inno-  
vation was not feasible, and, generally, no quantitative studies have been performed so far to assess the benefits of finer spatial  
grid spacings configurations over coarser datasets specifically for the reproduction of hailstorm environments. Hence, possible  
future studies could analyze in detail the sensitivity on the driver dataset describing hail environmental predictors to better  
understand the role of km-scale simulations in this context.

645 Ultimately, this work offers a way to retrieve information on local-scale hail frequency and characteristics over south-central  
Europe, a region of the world particularly affected by damaging hail hazard, which can be valuable and desirable for several  
reasons. Besides improving the scientific understanding of the atmospheric dynamical processes associated with hail, the  
correct assessment of the related risk is essential for insurance agencies in order to provide adequate estimates for specific  
portfolios. Further, other stakeholders may include several sectors that are highly vulnerable to hail hazard such as the building  
650 construction and maintenance market, energy supply systems (e.g., solar thermal systems), and farmers or wine growing  
enterprises that need to decide on crop protection measures (Punge and Kunz, 2016).

*Code availability.* The python scripts developed to process and visualize reanalysis parameters, OT detections and hail reports datasets are  
freely available at <https://github.com/agiord/hail-analysis>.

*Data availability.* SPHERA reanalysis data are stored at the ARPAE-SIMC repository and available from the corresponding author upon  
655 request ([antonio.giordani3@unibo.it](mailto:antonio.giordani3@unibo.it)). Overshooting top detections data have been made available by NASA (contact K. Bedka for any

inquiry: kristopher.m.bedka@nasa.gov). The access to ESWD hail reports was partly granted by ADA Life Project funding under contract LIFE19 CCA/IT/001257 under the LIFE programme of the European Commission, and partly by the Karlsruhe Institute of Technology (KIT) in collaboration with ESSL.

## Appendix A: Thermodynamic parameters

660 In the following are reported the formulations of the thermodynamic parameters selected from SPHERA reanalysis:

### – MU CAPE:

$$CAPE = g \int_{z_i}^{LZB} \frac{T_{v_{parcel}} - T_{v_{envir}}}{T_{v_{envir}}} dz \quad (A1)$$

665 where  $g$  is the gravitational acceleration,  $z_i$  is the altitude in the lowest 300 hPa where the equivalent potential temperature is at its maximum (i.e., most unstable conditions),  $LZB$  is the level of zero buoyancy (or equilibrium level) where the virtual temperature of the parcel  $T_{v_{parcel}}$  equals the virtual temperature of the surrounding environment  $T_{v_{envir}}$ . CAPE represents the integrated amount of work over the vertical air column exerted by the upward buoyancy force over the air parcel.

### – K index:

$$K = (T_{850hPa} - T_{500hPa}) + Td_{850hPa} - (T_{700hPa} - Td_{700hPa}) \quad (A2)$$

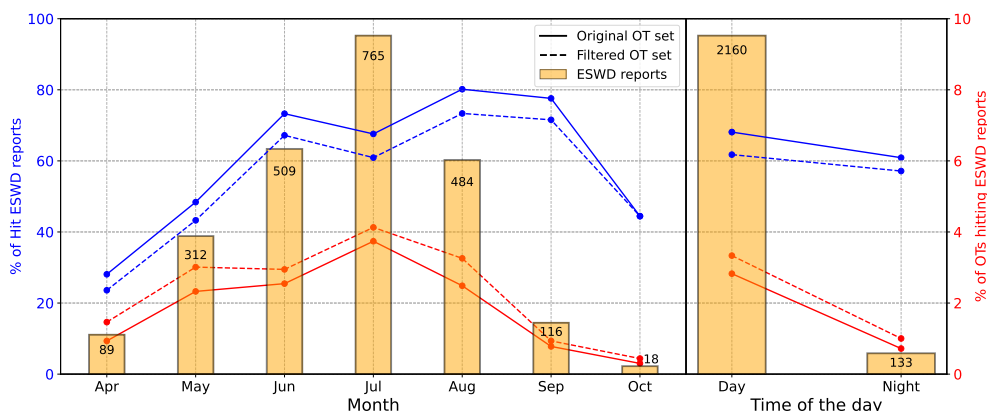
670 where  $T_{xxhPa}$  and  $Td_{xxhPa}$  are respectively the temperature and the dew-point temperature at the isobaric level  $xx$  hPa. The terms entering the K index represents respectively the lapse rate, the low-level moisture content, and the moist layer depth.

### – SLI

$$SLI = T_{500hPa_{envir}} - T_{500hPa_{parcel}} \quad (A3)$$

675 The SLI evaluates the temperature difference between the environment at 500 hPa and a parcel lifted dry adiabatically from the surface to the lifting condensation level and pseudo-adiabatically to 500 hPa.

## Appendix B: Matching with ESWD hail reports: inter-monthly and inter-daily variability



**Figure B1.** Inter-monthly (left panel) and inter-daily (right panel) variability of the performance described in Sect. 4.2 considering the 25 km /  $\pm$  1h spatio-temporal window for matching. Solid (dashed) blue lines report the fraction of ESWD reports hit by the original (filtered) OT set. Red lines counterparts report the fraction of OTs hitting ESWD reports. The bars indicate the number of ESWD reports detected per month or time of the day (daytime, 10:00-21:45 UTC, or nighttime, 22:00-9:45 UTC).

*Author contributions.* **Antonio Giordani:** data curation, formal analysis, investigation, methodology, software, visualization, writing - original draft, review and editing. **Michael Kunz:** conceptualization, supervision, critical review of all drafts. **Kristopher M. Bedka:** conceptualization, methodology, resources, supervision, writing - original draft, review and editing. **Heinz Jürgen Punge:** conceptualization, methodology, software, writing - original draft. **Tiziana Paccagnella:** funding acquisition, supervision. **Valentina Pavan:** conceptualization, funding acquisition, supervision, writing - review and editing. **Ines M. L. Cerenzia:** data curation, resources, writing - review and editing. **Silvana Di Sabatino:** funding acquisition, project administration, supervision.

*Competing interests.* The authors have no conflicts of interest to declare.

*Acknowledgements.* The work of some of the authors was supported by the projects OPERANDUM (OPEN-air laborATORies for Nature baseD solUTions to Manage hydro-meteo risks), which is funded by the European Union's Horizon 2020 research and innovation programme under the Grant Agreement No. 776848, ECOSISTER (ECOsystem for SustaInable Transition of Emilia-Romagna) funded by the European Union's Next Generation EU program - PNRR (Piano Nazionale Ripresa Resilienza), and ADA (ADaptation in Agriculture) under contract LIFE19 CCA/IT/001257 under the LIFE programme of the European Commission. Kunz's participation in this work has been supported by the Helmholtz Association (Research Program "Changing Earth – Sustaining our Future"). Bedka's participation in this project has been supported by the NASA Applied Sciences Disasters Program project award 18-DISASTER18-0008. The first author is thankful to the



colleagues of ARPAE-SIMC for the fruitful discussions, in particular to Davide Cesari for the substantial help in pre-processing SPHERA reanalysis data.

## References

- 695 Adams-Selin, R. D. and Ziegler, C. L.: Forecasting hail using a one-dimensional hail growth model within WRF, *Monthly Weather Review*, 144, 4919–4939, 2016.
- Adler, R. F., Markus, M. J., and Fenn, D. D.: Detection of severe Midwest thunderstorms using geosynchronous satellite data, *Monthly weather review*, 113, 769–781, 1985.
- Allen, J. T. and Allen, E. R.: A review of severe thunderstorms in Australia, *Atmospheric research*, 178, 347–366, 2016.
- 700 Allen, J. T., Tippet, M. K., and Sobel, A. H.: An empirical model relating US monthly hail occurrence to large-scale meteorological environment, *Journal of Advances in Modeling Earth Systems*, 7, 226–243, 2015.
- Allen, J. T., Giammanco, I. M., Kumjian, M. R., Jurgen Punge, H., Zhang, Q., Groenemeijer, P., Kunz, M., and Ortega, K.: Understanding hail in the Earth system, *Reviews of Geophysics*, 58, e2019RG000665, 2020.
- Baldi, M., Ciardini, V., Dalu, J. D., De Filippis, T., Maracchi, G., and Dalu, G.: Hail occurrence in Italy: Towards a national database and  
705 climatology, *Atmospheric research*, 138, 268–277, 2014.
- Bang, S. D. and Cecil, D. J.: Constructing a multifrequency passive microwave hail retrieval and climatology in the GPM domain, *Journal of Applied Meteorology and Climatology*, 58, 1889–1904, 2019.
- Battaglioli, F., Groenemeijer, P., Tsonevsky, I., and Púčík, T.: Forecasting Large Hail and Lightning using Additive Logistic Regression Models and the ECMWF Reforecasts, *Natural Hazards and Earth System Sciences Discussions*, 2023, 1–22, [https://doi.org/10.5194/nhess-  
710 2023-40](https://doi.org/10.5194/nhess-2023-40), 2023.
- Bedka, K., Brunner, J., Dworak, R., Feltz, W., Otkin, J., and Greenwald, T.: Objective satellite-based detection of overshooting tops using infrared window channel brightness temperature gradients, *Journal of applied meteorology and climatology*, 49, 181–202, 2010.
- Bedka, K. M.: Overshooting cloud top detections using MSG SEVIRI Infrared brightness temperatures and their relationship to severe weather over Europe, *Atmospheric Research*, 99, 175–189, 2011.
- 715 Bedka, K. M. and Khlopenkov, K.: A probabilistic multispectral pattern recognition method for detection of overshooting cloud tops using passive satellite imager observations, *Journal of Applied Meteorology and Climatology*, 55, 1983–2005, 2016.
- Bedka, K. M., Allen, J. T., Punge, H. J., Kunz, M., and Simanovic, D.: A long-term overshooting convective cloud-top detection database over Australia derived from MTSAT Japanese advanced meteorological imager observations, *Journal of Applied Meteorology and Climatology*, 57, 937–951, 2018.
- 720 Bica, B., Knabl, T., Steinacker, R., Ratheiser, M., Dorninger, M., Lotteraner, C., Schneider, S., Chimani, B., Gepp, W., and Tschannett, S.: Thermally and dynamically induced pressure features over complex terrain from high-resolution analyses, *Journal of applied meteorology and climatology*, 46, 50–65, 2007.
- Brimelow, J. C., Burrows, W. R., and Hanesiak, J. M.: The changing hail threat over North America in response to anthropogenic climate change, *Nature Climate Change*, 7, 516–522, 2017.
- 725 Brooks, H. E.: Proximity soundings for severe convection for Europe and the United States from reanalysis data, *Atmospheric Research*, 93, 546–553, 2009.
- Brooks, H. E.: Severe thunderstorms and climate change, *Atmospheric research*, 123, 129–138, 2013.
- Brooks, H. E., Lee, J. W., and Craven, J. P.: The spatial distribution of severe thunderstorm and tornado environments from global reanalysis data, *Atmospheric Research*, 67, 73–94, 2003.

- 730 Brunner, J. C., Ackerman, S. A., Bachmeier, A. S., and Rabin, R. M.: A quantitative analysis of the enhanced-V feature in relation to severe weather, *Weather and Forecasting*, 22, 853–872, 2007.
- Bryan, G. H., Wyngaard, J. C., and Fritsch, J. M.: Resolution requirements for the simulation of deep moist convection, *Monthly Weather Review*, 131, 2394–2416, 2003.
- Cecil, D. J.: Passive microwave brightness temperatures as proxies for hailstorms, *Journal of applied meteorology and climatology*, 48, 735 1281–1286, 2009.
- Cecil, D. J. and Blankenship, C. B.: Toward a global climatology of severe hailstorms as estimated by satellite passive microwave imagers, *Journal of Climate*, 25, 687–703, 2012.
- Cerenzia, I. M. L., Giordani, A., Paccagnella, T., and Montani, A.: Towards a convection-permitting regional reanalysis over the Italian domain, *Meteorological Applications*, 29, e2092, 2022.
- 740 Changnon, S. A. and Burroughs, J.: The tristate hailstorm: The most costly on record, *Monthly Weather Review*, 131, 1734–1739, 2003.
- Changnon Jr, S. A.: Hailstreaks, *Journal of Atmospheric Sciences*, 27, 109–125, 1970.
- Chen, J., Dai, A., Zhang, Y., and Rasmussen, K. L.: Changes in convective available potential energy and convective inhibition under global warming, *Journal of Climate*, 33, 2025–2050, 2020.
- Chen, Y., Paschalis, A., Kendon, E., Kim, D., and Onof, C.: Changing spatial structure of summer heavy rainfall, using convection-permitting 745 ensemble, *Geophysical Research Letters*, 48, e2020GL090903, 2021.
- Clark, A. J., Gao, J., Marsh, P. T., Smith, T., Kain, J. S., Correia Jr, J., Xue, M., and Kong, F.: Tornado pathlength forecasts from 2010 to 2011 using ensemble updraft helicity, *Weather and Forecasting*, 28, 387–407, 2013.
- Clark, P., Roberts, N., Lean, H., Ballard, S. P., and Charlton-Perez, C.: Convection-permitting models: a step-change in rainfall forecasting, *Meteorological Applications*, 23, 165–181, 2016.
- 750 Cooney, J. W., Bedka, K. M., Bowman, K. P., Khlopenkov, K. V., and Itterly, K.: Comparing Tropopause-Penetrating Convection Identifications Derived From NEXRAD and GOES Over the Contiguous United States, *Journal of Geophysical Research: Atmospheres*, 126, e2020JD034319, 2021.
- Davini, P., Bechini, R., Cremonini, R., and Cassardo, C.: Radar-based analysis of convective storms over northwestern Italy, *Atmosphere*, 3, 33–58, 2012.
- 755 De Martin, F., Carlon, N., Pavan, F., Carpentari, S., Giazzi, M., Peressutti, G., Miglietta, M. M., and Davolio, S.: Toward a dedicated warning system of severe storms in Italy: the PRETEMP project, Poster presented at the 11th European Conference on Severe Storms, Bucharest, Romania, 8–12 May 2023, ECSS2023-18, <https://doi.org/10.5194/ecss2023-18>, 2023.
- Dee, D. P., Uppala, S. M., Simmons, A. J., Berrisford, P., Poli, P., Kobayashi, S., Andrae, U., Balmaseda, M., Balsamo, G., Bauer, d. P., et al.: The ERA-Interim reanalysis: Configuration and performance of the data assimilation system, *Quarterly Journal of the royal meteorological 760 society*, 137, 553–597, 2011.
- Dessens, J., Berthet, C., and Sanchez, J.: Change in hailstone size distributions with an increase in the melting level height, *Atmospheric Research*, 158, 245–253, 2015.
- Dotzek, N., Groenemeijer, P., Feuerstein, B., and Holzer, A. M.: Overview of ESSL’s severe convective storms research using the European Severe Weather Database ESWD, *Atmospheric research*, 93, 575–586, 2009.
- 765 Ebert, E. E.: Fuzzy verification of high-resolution gridded forecasts: a review and proposed framework, *Meteorological Applications: A journal of forecasting, practical applications, training techniques and modelling*, 15, 51–64, 2008.

- Elliott, M. S., MacGorman, D. R., Schuur, T. J., and Heinselman, P. L.: An analysis of overshooting top lightning mapping array signatures in supercell thunderstorms, in: Proc. 22nd Int. Lightning Detection Conf, 2012.
- 770 Flaounas, E., Davolio, S., Raveh-Rubin, S., Pantillon, F., Miglietta, M. M., Gaertner, M. A., Hatzaki, M., Homar, V., Khodayar, S., Korres, G., et al.: Mediterranean cyclones: Current knowledge and open questions on dynamics, prediction, climatology and impacts, *Weather and Climate Dynamics*, 3, 173–208, 2022.
- Fluck, E., Kunz, M., Geissbuehler, P., and Ritz, S. P.: Radar-based assessment of hail frequency in Europe, *Natural Hazards and Earth System Sciences*, 21, 683–701, 2021.
- Fujita, T. T.: *Memoirs of an Effort to Unlock the Mystery of Severe Storms: During the 50 Years, 1942-1992*, University of Chicago, 1992.
- 775 Gagne, D. J., McGovern, A., Haupt, S. E., Sobash, R. A., Williams, J. K., and Xue, M.: Storm-based probabilistic hail forecasting with machine learning applied to convection-allowing ensembles, *Weather and forecasting*, 32, 1819–1840, 2017.
- Gagne II, D. J., Haupt, S. E., Nychka, D. W., and Thompson, G.: Interpretable deep learning for spatial analysis of severe hailstorms, *Monthly Weather Review*, 147, 2827–2845, 2019.
- 780 Gascón, E., Merino, A., Sánchez, J., Fernández-González, S., García-Ortega, E., López, L., and Hermida, L.: Spatial distribution of thermodynamic conditions of severe storms in southwestern Europe, *Atmospheric Research*, 164, 194–209, 2015.
- Gensini, V. A., Converse, C., Ashley, W. S., and Taszarek, M.: Machine learning classification of significant tornadoes and hail in the United States using ERA5 proximity soundings, *Weather and Forecasting*, 36, 2143–2160, 2021.
- Giaiotti, D., Nordio, S., and Stel, F.: The climatology of hail in the plain of Friuli Venezia Giulia, *Atmospheric Research*, 67, 247–259, 2003.
- 785 Giordani, A., Cerenzia, I. M. L., Paccagnella, T., and Di Sabatino, S.: SPHERA, a new convection-permitting regional reanalysis over Italy: Improving the description of heavy rainfall, *Quarterly Journal of the Royal Meteorological Society*, 149, 781–808, <https://doi.org/10.1002/qj.4428>, 2023.
- Giovannini, L., Davolio, S., Zaramella, M., Zardi, D., and Borga, M.: Multi-model convection-resolving simulations of the October 2018 Vaia storm over Northeastern Italy, *Atmospheric Research*, 253, 105 455, 2021.
- 790 Gobbo, S., Ghiraldini, A., Dramis, A., Dal Ferro, N., and Morari, F.: Estimation of hail damage using crop models and remote sensing, *Remote Sensing*, 13, 2655, 2021.
- Griffin, S. M., Bedka, K. M., and Velden, C. S.: A method for calculating the height of overshooting convective cloud tops using satellite-based IR imager and CloudSat cloud profiling radar observations, *Journal of Applied Meteorology and Climatology*, 55, 479–491, 2016.
- 795 Groenemeijer, P., Púčik, T., Holzer, A. M., Antonescu, B., Riemann-Campe, K., Schultz, D. M., Kühne, T., Feuerstein, B., Brooks, H. E., Doswell III, C. A., et al.: Severe convective storms in Europe: Ten years of research and education at the European Severe Storms Laboratory, *Bulletin of the American Meteorological Society*, 98, 2641–2651, 2017.
- Gunturi, P. and Tippett, M.: *Managing severe thunderstorm risk: Impact of ENSO on US tornado and hail frequencies*, Technical Rep. Minneapolis: WillisRe, 2017.
- Hersbach, H., Bell, B., Berrisford, P., Hirahara, S., Horányi, A., Muñoz-Sabater, J., Nicolas, J., Peubey, C., Radu, R., Schepers, D., et al.: The ERA5 global reanalysis, *Quarterly Journal of the Royal Meteorological Society*, 146, 1999–2049, 2020.
- 800 Hitchens, N. M. and Brooks, H. E.: Evaluation of the Storm Prediction Center’s convective outlooks from day 3 through day 1, *Weather and Forecasting*, 29, 1134–1142, 2014.
- Hohl, R., Schiesser, H.-H., and Knepper, I.: The use of weather radars to estimate hail damage to automobiles: an exploratory study in Switzerland, *Atmospheric research*, 61, 215–238, 2002.

- Hoogewind, K. A., Baldwin, M. E., and Trapp, R. J.: The impact of climate change on hazardous convective weather in the United States: Insight from high-resolution dynamical downscaling, *Journal of Climate*, 30, 10081–10100, 2017.
- Houze Jr, R. A.: *Cloud dynamics*, Academic press, 2014.
- Jelić, D., Megyeri, O. A., Malečić, B., Belušić Vozila, A., Strelec Mahović, N., and Telišman Prtenjak, M.: Hail climatology along the northeastern Adriatic, *Journal of Geophysical Research: Atmospheres*, 125, e2020JD032749, 2020.
- Johns, R. H. and Doswell III, C. A.: Severe local storms forecasting, *Wea. Forecasting*, 7, 588–612, 1992.
- 810 Johnson, A. W. and Sugden, K. E.: Evaluation of sounding-derived thermodynamic and wind-related parameters associated with large hail events, *E-Journal of Severe Storms Meteorology*, 9, 2014.
- Jurković, P. M., Mahović, N. S., and Počakal, D.: Lightning, overshooting top and hail characteristics for strong convective storms in Central Europe, *Atmospheric Research*, 161, 153–168, 2015.
- Khlopenkov, K. V., Bedka, K. M., Cooney, J. W., and Iterly, K.: Recent advances in detection of overshooting cloud tops from longwave 815 infrared satellite imagery, *Journal of Geophysical Research: Atmospheres*, 126, e2020JD034359, 2021.
- Knight, C. A. and Knight, N. C.: Hailstorms, in: *Severe convective storms*, pp. 223–254, Springer, 2001.
- Kopp, J., Schröer, K., Schwierz, C., Hering, A., Germann, U., and Martius, O.: The summer 2021 Switzerland hailstorms: weather situation, major impacts and unique observational data, *Weather*, 2022.
- Kumjian, M. R. and Lombardo, K.: A hail growth trajectory model for exploring the environmental controls on hail size: Model physics and 820 idealized tests, *Journal of the Atmospheric Sciences*, 77, 2765–2791, 2020.
- Kunz, M.: The skill of convective parameters and indices to predict isolated and severe thunderstorms, *Natural Hazards and Earth System Sciences*, 7, 327–342, 2007.
- Kunz, M., Blahak, U., Handwerker, J., Schmidberger, M., Punge, H. J., Mohr, S., Fluck, E., and Bedka, K. M.: The severe hailstorm in south-west Germany on 28 July 2013: Characteristics, impacts and meteorological conditions, *Quarterly Journal of the Royal Meteorological 825 Society*, 144, 231–250, 2018.
- Kunz, M., Wandel, J., Fluck, E., Baumstark, S., Mohr, S., and Schemm, S.: Ambient conditions prevailing during hail events in central Europe, *Natural Hazards and Earth System Sciences*, 20, 1867–1887, 2020.
- Labriola, J., Snook, N., Jung, Y., and Xue, M.: Explicit ensemble prediction of hail in 19 May 2013 Oklahoma City thunderstorms and analysis of hail growth processes with several multimoment microphysics schemes, *Monthly Weather Review*, 147, 1193–1213, 2019.
- 830 Laviola, S., Levizzani, V., Ferraro, R. R., and Beauchamp, J.: Hailstorm detection by satellite microwave radiometers, *Remote Sensing*, 12, 621, 2020.
- Li, M., Zhang, D.-L., Sun, J., and Zhang, Q.: A statistical analysis of hail events and their environmental conditions in China during 2008–15, *Journal of Applied Meteorology and Climatology*, 57, 2817–2833, 2018a.
- Li, X., Zhang, Q., Zou, T., Lin, J., Kong, H., and Ren, Z.: Climatology of hail frequency and size in China, 1980–2015, *Journal of Applied 835 Meteorology and Climatology*, 57, 875–887, 2018b.
- Liu, C., Ikeda, K., Rasmussen, R., Barlage, M., Newman, A. J., Prein, A. F., Chen, F., Chen, L., Clark, M., Dai, A., et al.: Continental-scale convection-permitting modeling of the current and future climate of North America, *Climate Dynamics*, 49, 71–95, 2017.
- Löffler-Mang, M., Schön, D., and Landry, M.: Characteristics of a new automatic hail recorder, *Atmospheric research*, 100, 439–446, 2011.
- Lupo, K. M., Torn, R. D., and Yang, S.-C.: Evaluation of stochastic perturbed parameterization tendencies on convective-permitting ensemble 840 forecasts of heavy rainfall events in New York and Taiwan, *Weather and Forecasting*, 35, 5–24, 2020.

- Mahoney, K., Alexander, M. A., Thompson, G., Barsugli, J. J., and Scott, J. D.: Changes in hail and flood risk in high-resolution simulations over Colorado's mountains, *Nature Climate Change*, 2, 125–131, 2012.
- Malečić, B., Cui, R., Demory, M.-E., Horvath, K., Jelic, D., Schär, C., Prtenjak, M. T., Velasquez, P., and Ban, N.: Simulating Hail and Lightning over the Alpine Adriatic Region-A model Intercomparison Study, *Authorea Preprints*, 2022.
- 845 Manzato, A.: Hail in northeast Italy: Climatology and bivariate analysis with the sounding-derived indices, *Journal of Applied Meteorology and Climatology*, 51, 449–467, 2012.
- Manzato, A., Riva, V., Tiesi, A., and Marcello Miglietta, M.: Observational analysis and simulations of a severe hailstorm in northeastern Italy, *Quarterly Journal of the Royal Meteorological Society*, 146, 3587–3611, 2020.
- Manzato, A., Cicogna, A., Centore, M., Battistutta, P., and Trevisan, M.: Hailstone Characteristics in Northeast Italy from 29 Years of Hailpad  
850 Data, *Journal of Applied Meteorology and Climatology*, 61, 1779–1795, 2022a.
- Manzato, A., Serafin, S., Miglietta, M. M., Kirshbaum, D., and Schulz, W.: A pan-Alpine climatology of lightning and convective initiation, *Monthly Weather Review*, 2022b.
- Marcos, J., Sánchez, J., Merino, A., Melcón, P., Mérida, G., and García-Ortega, E.: Spatial and temporal variability of hail falls and estimation of maximum diameter from meteorological variables, *Atmospheric Research*, 247, 105 142, 2021.
- 855 Marion, G., Trapp, R. J., and Nesbitt, S. W.: Using overshooting top area to discriminate potential for large, intense tornadoes, *Geophysical Research Letters*, 46, 12 520–12 526, 2019.
- Markowski, P. and Richardson, Y.: *Mesoscale meteorology in midlatitudes*, vol. 2, John Wiley & Sons, 2011.
- Marsigli, C., Ebert, E., Ashrit, R., Casati, B., Chen, J., Coelho, C. A., Dorninger, M., Gilleland, E., Haiden, T., Landman, S., et al.: Observations for high-impact weather and their use in verification, *Natural Hazards and Earth System Sciences*, 21, 1297–1312, 2021.
- 860 Mecikalski, J. R., Sandmæl, T. N., Murillo, E. M., Homeyer, C. R., Bedka, K. M., Apke, J. M., and Jewett, C. P.: A random-forest model to assess predictor importance and nowcast severe storms using high-resolution radar-GOES satellite-lightning observations, *Monthly Weather Review*, 149, 1725–1746, 2021.
- Melcón, P., Merino, A., Sánchez, J. L., López, L., and Hermida, L.: Satellite remote sensing of hailstorms in France, *Atmospheric Research*, 182, 221–231, 2016.
- 865 Mikuš, P. and Mahović, N. S.: Satellite-based overshooting top detection methods and an analysis of correlated weather conditions, *Atmospheric Research*, 123, 268–280, 2013.
- Mikuš, P., Prtenjak, M. T., and Mahović, N. S.: Analysis of the convective activity and its synoptic background over Croatia, *Atmospheric Research*, 104, 139–153, 2012.
- Mohr, S., Kunz, M., and Keuler, K.: Development and application of a logistic model to estimate the past and future hail potential in Germany,  
870 *Journal of Geophysical Research: Atmospheres*, 120, 3939–3956, 2015.
- Morel, C. and Senesi, S.: A climatology of mesoscale convective systems over Europe using satellite infrared imagery. I: Methodology, *Quarterly Journal of the Royal Meteorological Society: A journal of the atmospheric sciences, applied meteorology and physical oceanography*, 128, 1953–1971, 2002.
- Murillo, E. M. and Homeyer, C. R.: Severe hail fall and hailstorm detection using remote sensing observations, *Journal of applied meteorology and climatology*, 58, 947–970, 2019.
- 875 Nisi, L., Martius, O., Hering, A., Kunz, M., and Germann, U.: Spatial and temporal distribution of hailstorms in the Alpine region: a long-term, high resolution, radar-based analysis, *Quarterly Journal of the Royal Meteorological Society*, 142, 1590–1604, 2016.

- Nisi, L., Hering, A., Germann, U., and Martius, O.: A 15-year hail streak climatology for the Alpine region, *Quarterly Journal of the Royal Meteorological Society*, 144, 1429–1449, 2018.
- 880 Nisi, L., Hering, A., Germann, U., Schroeer, K., Barras, H., Kunz, M., and Martius, O.: Hailstorms in the Alpine region: Diurnal cycle, 4D-characteristics, and the nowcasting potential of lightning properties, *Quarterly Journal of the Royal Meteorological Society*, 146, 4170–4194, 2020.
- Nixon, C. J., Allen, J. T., and Taszarek, M.: Hodographs and skew T s of hail-producing storms, *Weather and Forecasting*, 38, 2217–2236, 2023.
- 885 Ortega, K. L.: Evaluating multi-radar, multi-sensor products for surface hailfall diagnosis, *E-Journal of Severe Storms Meteorology*, 13, 2018.
- Palencia, C., Giaiotti, D., Stel, F., Castro, A., and Fraile, R.: Maximum hailstone size: Relationship with meteorological variables, *Atmospheric Research*, 96, 256–265, 2010.
- Paterson, D. A. and Sankaran, R.: Hail impact on building envelopes, *Journal of wind engineering and industrial aerodynamics*, 53, 229–246, 890 1994.
- Prein, A. F. and Holland, G. J.: Global estimates of damaging hail hazard, *Weather and Climate Extremes*, 22, 10–23, 2018.
- Prein, A. F., Langhans, W., Fossier, G., Ferrone, A., Ban, N., Goergen, K., Keller, M., Tölle, M., Gutjahr, O., Feser, F., et al.: A review on regional convection-permitting climate modeling: Demonstrations, prospects, and challenges, *Reviews of geophysics*, 53, 323–361, 2015.
- Prein, A. F., Rasmussen, R. M., Ikeda, K., Liu, C., Clark, M. P., and Holland, G. J.: The future intensification of hourly precipitation extremes, 895 *Nature climate change*, 7, 48–52, 2017.
- Proud, S. R.: Analysis of overshooting top detections by Meteosat Second Generation: a 5-year dataset, *Quarterly Journal of the Royal Meteorological Society*, 141, 909–915, 2015.
- Půčík, T., Groenemeijer, P., Rýva, D., and Kolář, M.: Proximity soundings of severe and nonsevere thunderstorms in central Europe, *Monthly Weather Review*, 143, 4805–4821, 2015.
- 900 Půčík, T., Groenemeijer, P., Rädler, A. T., Tijssen, L., Nikulin, G., Prein, A. F., van Meijgaard, E., Fealy, R., Jacob, D., and Teichmann, C.: Future changes in European severe convection environments in a regional climate model ensemble, *Journal of Climate*, 30, 6771–6794, 2017.
- Půčík, T., Castellano, C., Groenemeijer, P., Kühne, T., Rädler, A. T., Antonescu, B., and Faust, E.: Large hail incidence and its economic and societal impacts across Europe, *Monthly Weather Review*, 147, 3901–3916, 2019.
- 905 Půčík, T., Groenemeijer, P., Taszarek, M., and Battaglioli, F.: Pre-storm environments and storm-scale properties of the major hailstorms of 2021 and 2022 in Europe, 11th European Conference on Severe Storms, Bucharest, Romania, 8–12 May 2023, ECSS2023-124, <https://doi.org/10.5194/ecss2023-124>, 2023.
- Punge, H., Bedka, K., Kunz, M., and Werner, A.: A new physically based stochastic event catalog for hail in Europe, *Natural Hazards*, 73, 1625–1645, 2014.
- 910 Punge, H., Bedka, K., Kunz, M., and Reinbold, A.: Hail frequency estimation across Europe based on a combination of overshooting top detections and the ERA-INTERIM reanalysis, *Atmospheric Research*, 198, 34–43, 2017.
- Punge, H. J. and Kunz, M.: Hail observations and hailstorm characteristics in Europe: A review, *Atmospheric Research*, 176, 159–184, 2016.
- Punge, H. J., Bedka, K. M., Kunz, M., Bang, S. D., and Itterly, K. F.: Characteristics of hail hazard in South Africa based on satellite detection of convective storms, *Natural Hazards and Earth System Sciences Discussions*, pp. 1–32, 2021.

- 915 Punge, H. J., Bedka, K. M., Kunz, M., Bang, S. D., and Itterly, K. F.: Characteristics of hail hazard in South Africa based on satellite detection of convective storms, *Natural Hazards and Earth System Sciences*, 23, 1549–1576, 2023.
- Puskeiler, M., Kunz, M., and Schmidberger, M.: Hail statistics for Germany derived from single-polarization radar data, *Atmospheric Research*, 178, 459–470, 2016.
- Rädler, A. T., Groenemeijer, P., Faust, E., and Sausen, R.: Detecting severe weather trends using an additive regressive convective hazard  
920 model (AR-CHaMo), *Journal of Applied Meteorology and Climatology*, 57, 569–587, 2018.
- Rasmussen, K. L., Prein, A. F., Rasmussen, R. M., Ikeda, K., and Liu, C.: Changes in the convective population and thermodynamic environments in convection-permitting regional climate simulations over the United States, *Climate Dynamics*, 55, 383–408, 2020.
- Raupach, T. H., Martius, O., Allen, J. T., Kunz, M., Lasher-Trapp, S., Mohr, S., Rasmussen, K. L., Trapp, R. J., and Zhang, Q.: The effects of climate change on hailstorms, *Nature reviews earth & environment*, 2, 213–226, 2021.
- 925 Reynolds, D. W.: Observations of damaging hailstorms from geosynchronous satellite digital data, *Monthly Weather Review*, 108, 337–348, 1980.
- Riemann-Campe, K., Fraedrich, K., and Lunkeit, F.: Global climatology of convective available potential energy (CAPE) and convective inhibition (CIN) in ERA-40 reanalysis, *Atmospheric Research*, 93, 534–545, 2009.
- Sánchez, J., Gil-Robles, B., Dessens, J., Martin, E., Lopez, L., Marcos, J., Berthet, C., Fernández, J., and García-Ortega, E.: Characterization  
930 of hailstone size spectra in hailpad networks in France, Spain, and Argentina, *Atmospheric Research*, 93, 641–654, 2009.
- Sartori, G.: Eventi meteorologici estremi, Dati e valutazioni sulla radicalizzazione del clima in Veneto. Rapporto Tecnico. Consiglio Regionale del Veneto, 2012.
- Scarino, B., Itterly, K., Bedka, K., Homeyer, C. R., Allen, J., Bang, S., and Cecil, D.: Deriving Severe Hail Likelihood from Satellite Observations and Model Reanalysis Parameters using a Deep Neural Network, *Artificial Intelligence for the Earth Systems*, pp. 1–55,  
935 2023.
- Schättler, U., Doms, G., and Schraff, C.: A description of the nonhydrostatic regional COSMO-model. Part VII: user’s guide, *Deutscher Wetterdienst Rep. COSMO-Model*, p. 195, 2018.
- Schmetz, J., Pili, P., Tjemkes, S., Just, D., Kerkmann, J., Rota, S., and Ratier, A.: An introduction to Meteosat Second Generation (MSG), *Bulletin of the American Meteorological Society*, 83, 977–992, 2002.
- 940 Seneviratne, S., Zhang, X., Adnan, M., Badi, W., Dereczynski, C., Di Luca, A., Ghosh, S., Iskandar, I., Kossin, J., Lewis, S., Otto, F., Pinto, I., Satoh, M., Vicente-Serrano, S., Wehner, M., and Zhou, B.: Chapter 11: Weather and Climate Extreme Events in a Changing Climate, Contribution of working group I to the sixth assessment report of the intergovernmental panel on climate change, in *Climate Change 2021: The Physical Science Basis*, pp. 1513–1766, 2021.
- Setvák, M., Bedka, K., Lindsey, D. T., Sokol, A., Charvát, Z., Št’ástka, J., and Wang, P. K.: A-Train observations of deep convective storm  
945 tops, *Atmospheric research*, 123, 229–248, 2013.
- Sherwood, S. C., Chae, J.-H., Minnis, P., and McGill, M.: Underestimation of deep convective cloud tops by thermal imagery, *Geophysical Research Letters*, 31, 2004.
- Svabik, O., Meyer, V., Tüchler, L., and Zenkl, G.: Hail risk areas in Austria, on the basis of reports 1971–2011 and weather radar images 2002–2011, in: *7th European Conference on Severe Storms*. Helsinki, Finland, p. 2, 2013.
- 950 Tang, B. H., Gensini, V. A., and Homeyer, C. R.: Trends in United States large hail environments and observations, *NPJ climate and atmospheric science*, 2, 1–7, 2019.



- Taszarek, M., Brooks, H. E., Czernecki, B., Szuster, P., and Fortuniak, K.: Climatological aspects of convective parameters over Europe: A comparison of ERA-Interim and sounding data, *Journal of Climate*, 31, 4281–4308, 2018.
- 955 Taszarek, M., Allen, J. T., Púčik, T., Hoogewind, K. A., and Brooks, H. E.: Severe convective storms across Europe and the United States. Part II: ERA5 environments associated with lightning, large hail, severe wind, and tornadoes, *Journal of Climate*, 33, 10 263–10 286, 2020.
- Taszarek, M., Allen, J. T., Brooks, H. E., Pilguy, N., and Czernecki, B.: Differing trends in United States and European severe thunderstorm environments in a warming climate, *Bulletin of the American Meteorological society*, 102, E296–E322, 2021.
- Thompson, R. L., Edwards, R., Hart, J. A., Elmore, K. L., and Markowski, P.: Close proximity soundings within supercell environments obtained from the Rapid Update Cycle, *Weather and Forecasting*, 18, 1243–1261, 2003.
- 960 Tiesi, A., Mazzà, S., Conte, D., Ricchi, A., Baldini, L., Montopoli, M., Picciotti, E., Vulpiani, G., Ferretti, R., and Miglietta, M. M.: Numerical simulation of a Giant-hail-bearing Mediterranean supercell in the Adriatic Sea, *Atmosphere*, 13, 1219, 2022.
- Tippett, M. K., Sobel, A. H., Camargo, S. J., and Allen, J. T.: An empirical relation between US tornado activity and monthly environmental parameters, *Journal of Climate*, 27, 2983–2999, 2014.
- Torralba, V., Hénin, R., Cantelli, A., Scoccimarro, E., Materia, S., Manzato, A., and Gualdi, S.: Modelling hail hazard over Italy with ERA5 large-scale variables, *Weather and Climate Extremes*, 39, 100 535, 2023.
- 965 Trapp, R. J. and Hoogewind, K. A.: The realization of extreme tornadic storm events under future anthropogenic climate change, *Journal of Climate*, 29, 5251–5265, 2016.
- Trapp, R. J., Diffenbaugh, N. S., Brooks, H. E., Baldwin, M. E., Robinson, E. D., and Pal, J. S.: Changes in severe thunderstorm environment frequency during the 21st century caused by anthropogenically enhanced global radiative forcing, *Proceedings of the National Academy of Sciences*, 104, 19 719–19 723, 2007.
- 970 Trapp, R. J., Hoogewind, K. A., and Lasher-Trapp, S.: Future changes in hail occurrence in the United States determined through convection-permitting dynamical downscaling, *Journal of Climate*, 32, 5493–5509, 2019.
- Wellmann, C., Barrett, A. I., Johnson, J. S., Kunz, M., Vogel, B., Carslaw, K. S., and Hoose, C.: Comparing the impact of environmental conditions and microphysics on the forecast uncertainty of deep convective clouds and hail, *Atmospheric Chemistry and Physics*, 20, 2201–2219, 2020.
- 975 Wilhelm, J., Mohr, S., Punge, H. J., Mühr, B., Schmidberger, M., Daniell, J. E., Bedka, K. M., and Kunz, M.: Severe thunderstorms with large hail across Germany in June 2019, *Weather*, 76, 228–237, 2021.
- Wilhelmson, R. B. and Wicker, L. J.: Numerical modeling of severe local storms, in: *Severe convective storms*, pp. 123–166, Springer, 2001.
- Wu, C.-M. and Arakawa, A.: A unified representation of deep moist convection in numerical modeling of the atmosphere. Part II, *Journal of the Atmospheric Sciences*, 71, 2089–2103, 2014.
- 980 Xie, B., Zhang, Q., and Wang, Y.: Trends in hail in China during 1960–2005, *Geophysical Research Letters*, 35, 2008.
- Yeo, S., Leigh, R., and Kuhne, I.: The April 1999 Sydney Hailstorm, *Australian Journal of Emergency Management*, The, 14, 23–25, 1999.
- Zhou, J., Pavek, M. J., Shelton, S. C., Holden, Z. J., and Sankaran, S.: Aerial multispectral imaging for crop hail damage assessment in potato, *Computers and Electronics in Agriculture*, 127, 406–412, 2016.