

Response to Reviewer #1

We appreciate your time and effort in thoroughly reviewing our manuscript. We are truly grateful for your constructive comments and insightful suggestions, which encourage and help us to improve the manuscript. We have revised the manuscript carefully based on your comments. In the response below, your comments are provided in black text and [our responses are provided in blue text](#).

Response:

GENERAL COMMENTS:

This study uses aircraft in-situ measurements from the ACE-ENA and SOCRATES field campaigns to illustrate vertical profiles of cloud microphysical and precipitation properties and their relationships with above- and below-cloud aerosols. The paper is well-written with appropriate references. There is tremendous detail in Section 2 (uncertainties in airborne observations, formulae used to calculate cloud properties, thresholds used to define in-cloud and above/below-cloud regions) to ensure the results can be reproduced. The discussion of the results is well structured, and the text is backed up with appropriate figures. The study draws proper conclusions and provides appropriate evidence. This is a comprehensive study that deals with numerous elements of aerosol-cloud-precipitation interactions – a single paper is used to show findings that could have spread across multiple studies if the individual elements were investigated further.

While the work is comprehensive, the novelty of this study comes from the fact that these in-situ observations come from regions that have not been sampled extensively by aircraft or the data examined in detail. Additionally, very distinct regions with unique cloud and aerosol characteristics are compared. In isolation, many findings might not strictly be new as they corroborate results from many previous studies that have used aircraft observations. Nevertheless, this study is an important addition to the literature because of the wide range of topics discussed and the fact that the authors contrast cloud and aerosol properties from multiple field campaigns from two different locations. The effort put into this work is commendable and the paper would be a valuable addition to the journal and the literature. Given the number of topics discussed and potential for deeper dives into each topic, I can see multiple studies coming out of further investigation into the results presented here.

Thanks for the thorough assessment of our manuscript, we have tried our best to carefully consider and address your comments and suggestions.

I have some considerations for the authors before the study is published:

1. The introduction felt a bit too broad and generic - the authors could better motivate and highlight the unique aspect of this work by guiding the reader through the distinct nature of these regions, by contrasting the existing knowledge of cloud properties from these regions - somewhat done for SOCRATES but not for ACE-ENA, highlighting the ‘climatic significance’ of clouds observed in these two regions – this was only done for MBL clouds in general, and the need for in situ observations from these locations.

Is there a reason behind comparing these two specific field campaigns? Are we comparing apples to apples? - describing the cloud regime, type, or morphology in these regions could help interpret the differences in the results presented in later sections.

We have reconstructed our discussion to review the previous works on ACE-ENA and SOCRATES in the introduction, and our results in comparison with the previous study in the summary and conclusion section. Please refer to the revised manuscript.

Furthermore, to demonstrate the feasibility and justification of combining these two campaigns, we calculated the composite of the selected case periods during the ACE-ENA and SOCRATES using the hourly ERA5 reanalysis, as shown in Figure S1 below. The composite 850 hPa geopotential height is denoted by black contours, and the height anomaly from the 20-year climatology (2000-2020) is portrayed by the shaded area.

The discussion in the introduction has been modified to better motivate our study, as follows:

‘The Eastern North Atlantic (ENA) stands as a desirable region for exploring MBL clouds in the mid-latitude, with Graciosa Island in the Azores (39.09°N, 28.03°W) representing a focal point for such studies. Located between the mid-latitude and subtropical climate zones, Graciosa is subject to the meteorological influence of both the Icelandic Low and the Azores High, and the influence of aerosols ranging from pristine marine air masses to those heavily influenced by continental

emissions from North America and Northern Europe (Logan et al., 2014; Wood et al., 2015; Wang et al., 2020). Addressing the need for sustained research into the MBL clouds, the recent Aerosol and Cloud Experiments in the Eastern North Atlantic (ACE-ENA) aircraft campaign (J. Wang et al., 2022) were conducted in the summer (June and July) 2017 (ACEENA Sum) and winter (January and February) 2018 (ACEENA Win). During these two intensive operation periods (IOPs) of ACE-ENA, the research aircraft accrued abundant in-situ measurements of aerosols, clouds, and drizzle properties, providing invaluable resources for studying the ACI and ACPI processes. During the summer, the Azores is located at the eastern part of the high-pressure system, while during the winter, the center of the Azores high shifts to the eastern Atlantic and is primarily located directly over the Azores (Mechem et al., 2018; J. Wang et al., 2022). Furthermore, both summer and winter IOPs of ACE-ENA are featured with anomalous stronger high-pressure systems, compared to the 20-year climatology as shown in Figure S1. This meteorological pattern is favorable to the prevailing and persistent stratocumulus clouds observed during the ACE-ENA, especially for the winter IOP, where the enhanced large-scale subsidence would lead to a deeper stratocumulus-topped MBL (Rémillard and Tselioudis, 2015; Jensen et al., 2021). The ACE-ENA summer IOP is characterized by anomalously low MBL heights and substantial MBL decoupling (Miller et al., 2021; J. Wang et al., 2022), while the winter IOP is featured with prevalent precipitation-generated cold pools, where evaporative cooling alters the thermodynamical structure of the MBL, sustains and enhances turbulence mixing, hence contributes to dynamical perturbations that can influence the behavior of the MBL (Terai and Wood, 2013; Zuidema et al., 2017; Jensen et al., 2021; J. Wang et al., 2022). Over the recent years, many observational studies, based on the ACE-ENA data, have focused on the seasonal contrasts of the aerosol distributions and sources (Y. Wang et al., 2021b; Zawadowicz et al., 2021), the cloud and drizzle microphysics vertical distributions (Wu et al., 2020a; Zheng et al., 2022b), as well as the impacts of MBL conditions on the cloud structure and morphology (Jensen et al., 2021). However, they seldom analyze the comprehensive interactions between aerosol, clouds and precipitation.

Over the Southern Ocean (SO), the Southern Ocean Clouds Radiation Aerosol Transport Experimental Study (SOCRATES) field campaign (McFarquhar et al., 2021) was conducted during the austral summer (January and February 2018), which marks another valuable piece of the MBL cloud research. The SO, being one of the cloudiest regions globally, is predominantly influenced by naturally produced aerosols originating from oceanic sources due to its remoteness,

where the anthropogenic and biomass burning aerosols exert minimal influence over the region (McCoy et al., 2021; Sanchez et al., 2021; Twohy et al., 2021; Zhang et al., 2023). The aerosol budget in this region is primarily shaped by biological aerosols, which nucleate from the oxidation products of dimethyl sulfide (DMS) emissions, as well as by sea spray aerosols. Hence, the SO provides an unparalleled natural laboratory for discerning the influence of these natural aerosol emissions on the MBL clouds under a pre-industrial natural environment. The summertime SO region, particularly near the SOCRATES focus area, is characterized by more frequently closed-cell mesoscale cellular convection structures (Danker et al., 2022; Lang et al., 2022). Furthermore, the MBL clouds over the SO predominantly consist of supercooled liquid water droplets, which coexist with mixed- and ice-phase processes (Y. Wang et al., 2021a; Xi et al., 2022), while the precipitation phases are examined to be primarily dominated by liquid hydrometeors (Tansey et al., 2022; Kang et al., 2024). The in-situ measurements collected from SOCRATES have cultivated numerous studies on aerosols, clouds, and precipitation over the SO using both in-situ measurements and model simulations (McCoy et al., 2020; Altas et al., 2021; D'Alessandro et al., 2021), and provides an opportunity to study the liquid cloud processes under a colder nature. As shown in Figure S1c, compositely speaking, the SOCRATES cloud cases used in this study are located ahead of the anomaly-stronger thermal ridge and behind the thermal trough, providing a set up favorable to the closed cellular MBL cloud structures (McCoy et al., 2017; Lang et al., 2022). While the region of selected SOCRATES cloud cases crosses a larger latitudinal zone and is under more consistent influence of mid-latitude cyclone systems than over the ACE-ENA region, the cloud sampling periods used in this study majority reside in the closed-cell MBL stratocumulus decks.

The cloud cases selected from the ACE-ENA and SOCRATES share similar cloud morphology (stratocumulus) while experiencing different aerosol sources and meteorological conditions. Using a synergistic approach to compare data from these different field campaigns can provide valuable insights to the community regarding the functioning physical processes of the interactions between aerosols, clouds, and precipitation under the influence of different MBL dynamic and thermodynamic conditions. This study targets the similarities and differences in the MBL aerosol, cloud, and drizzle properties, their distribution and evolution, and more appealingly, the ACIs and ACPIs between the two campaigns.'

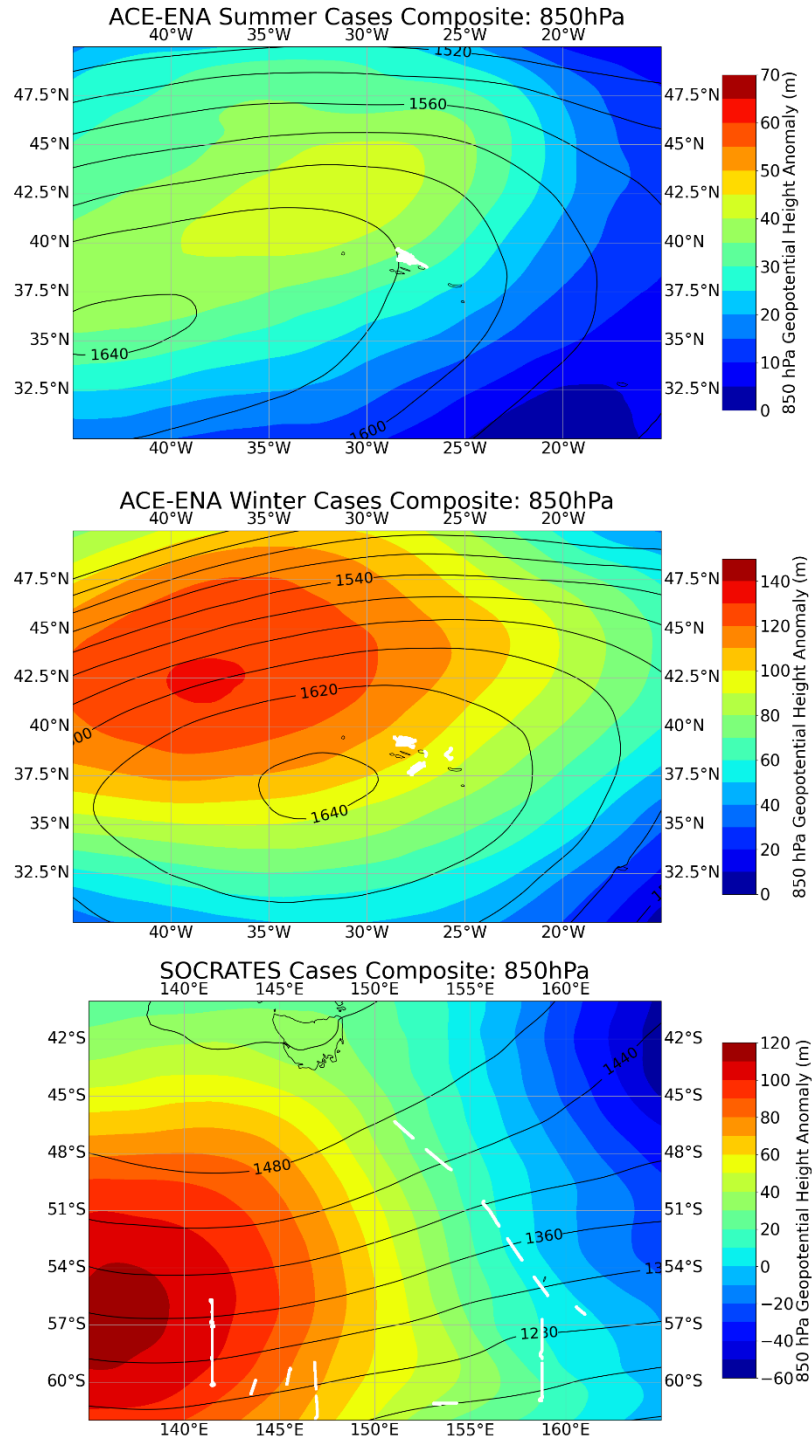


Figure S1. The selected-cases 850 hPa geopotential height composite (black contours), and the height anomaly from (shaded area) the 20-year climatology (2000-2020), for a) ACE-ENA summer, b) ACE-ENA winter, and c) SOCRATES. White dots denote the aircraft flight tracks for the selected cases.

2. The authors could better and use terminology to refer to cloud processes discussed throughout the text. Terms like “collision-coalescence”, “in-cloud coalescence”, “coalescence-scavenging” are used (often interchangeably it seems) - they can be merged or defined using more commonly used terminology.

Line 57: the authors could separate what they term the ‘coalescence-scavenging effect’ into two parts. While the drizzle drops are within the cloud layer, the process described in Line 58 can be described as the ‘collision-coalescence’ process. Once the drizzle drops are below cloud base, the process described in Line 59 can be described as the ‘precipitation scavenging’ process. Using such terminology would prevent confusion caused by using the same term for two separate processes that occur in-cloud and out-of-cloud, respectively. Please ensure consistency in using the terms as the paper currently uses “collision-coalescence process” in some spots and different terms at other spots while describing a similar process.

We have changed the term ‘in-cloud coalescence’ to ‘collision-coalescence’ throughout the paper. Additionally, we have added more explanation on ‘coalescence-scavenging’ in order to distinguish it from the precipitation of wet scavenging outside the cloud.

‘Conversely, precipitation has been shown to exert a substantial influence on the MBL aerosol and cloud condensation nuclei (CCN) budget through the coalescence-scavenging effect, as multiple aerosols combine into a single aerosol core inside the cloud droplet during collision-coalescence. As the drizzle drops descend, they are enlarged by collecting more cloud droplets within the cloud layer. However, the drizzle drops, once falling out of the cloud base, can result in net reductions in sub-cloud aerosols and CCN budgets also via the precipitation scavenging processes’.

SPECIFIC COMMENTS:

ABSTRACT:

Line 15: Could you provide quantitative estimates with the number and size used to state “larger number” and “smaller cloud droplets”?

We have added those quantities in this sentence:

‘SOCRATES clouds have a larger number (148.3 cm^{-3}) and smaller cloud droplets ($8.0 \text{ }\mu\text{m}$) compared to ACE-ENA summertime (89.4 cm^{-3} and $9.0 \text{ }\mu\text{m}$) and wintertime clouds (70.6 cm^{-3} and $9.8 \text{ }\mu\text{m}$).’

SECTION 1:

Line 34: The authors mention ‘cloud-top longwave radiative cooling’ here which is very important and should be mentioned but it is not discussed later. In contrast, there is an excellent discussion of cloud top entrainment mixing and droplet evaporation near cloud top later, but it is not introduced here. The authors could better motivate their results by introducing cloud processes in Section 1 if they are discussed later.

We have added the discussion on the cloud-top longwave radiative cooling and entrainment mixing in the introduction as follows:

‘Precipitation, particularly in the form of drizzle, is common in MBL clouds (Wood et al., 2015; Wu et al., 2020), and the turbulence forced by stratocumulus cloud-top radiative cooling can increase the cloud liquid water path, and contributing to drizzle production (Ghate et al., 2019, 2021). The drizzle formation and growth processes are deeply entwined with the MBL aerosols and dynamics. Aerosols have been found to suppress the precipitation frequency and strength by constantly buffering cloud droplet number concentrations via activation, hence increasing cloud precipitation susceptibility (Feingold and Seibert, 2009; Lu et al., 2009; Sorooshian et al., 2009; Duong et al., 2011). Furthermore, the assessments of precipitation susceptibility are examined to be under the influences of methodology (Terai et al., 2012), cloud morphology (Sorooshian et al., 2009; Jung et al., 2016), ambient aerosol concentrations (Duong et al., 2011; Jung et al., 2016; Gupta et al., 2022), and cloud thickness (Terai et al., 2012; Jung et al., 2016; Gupta et al., 2022). The in-cloud turbulence and wind shear can effectively enhance collision-coalescence efficiency, stimulating drizzle formation and growth, and consequently leading to enhanced precipitation (Chen et al., 2011; Wu et al., 2017). Cloud-top entrainment of dryer and warmer air can potentially deplete small cloud droplets and shrink large droplets via evaporation, thereby impacting cloud top microphysical processes depending on the homogeneous or inhomogeneous mixing regimes (Lehmann et al., 2009; Jia et al., 2019).’

Line 42: This statement is only true under conditions of comparable cloud water content. Please update accordingly and provide appropriate references.

We have changed this statement to:

‘...the aerosol-cloud interaction (ACI), can be typically viewed as decreased cloud droplet effective radii (r_c) and increased number concentrations (N_c) with more aerosol intrusion, under conditions of comparable cloud water content (Feingold and McComiskey, 2016).’

Line 44: Instead of listing references at the end of the sentence, a reader would benefit much more if references for specific elements followed the corresponding text. For example, “...investigated by different observational platforms, such as aircraft (Diamond et al., 2018; Painemal et al., 2020), model simulations (Hill et al. 2009)...”. Please directly state some of the “different maritime regions”. Something like “...over different maritime regions like the southeast Pacific (Painemal and Zuidema, 2011), northeast Pacific (Braun et al., 2018), southeast Atlantic (Diamond et al., 2018), and eastern North Atlantic (Zheng et al., 2022a).”

We have changed this discussion accordingly:

‘The ACIs have been extensively investigated by different observational platforms, such as aircraft (Hill et al., 2009; Diamond et al., 2018; Gupta et al., 2022), ground-based and satellite observations (Painemal et al., 2020; Zheng et al., 2022a), and model simulations (Wang et al., 2020) over different maritime regions like the southeast Pacific (Painemal and Zuidema, 2011), northeast Pacific (Braun et al., 2018), southeast Atlantic (Gupta et al., 2022), and eastern North Atlantic (Zheng et al., 2022a).’

Line 53: More recent studies of precipitation susceptibility (e.g., Gupta et al., 2022; Jung et al., 2016; Terai et al., 2012) have been built upon the studies cited here. To my knowledge, Feingold and Seibert (2009) introduced the term precipitation susceptibility and the study should be cited here. I see the authors briefly compared their results with some of these previous studies (good to see) - but the studies should be cited in the introductory text. Also suggest discussing the different issues with estimating/interpreting S_o based on results from previous studies.

The suggested references (Gupta et al., 2022; Jung et al., 2016; Terai et al., 2012) are added to the text.

‘The assessments of S_o are examined to be under the influences of methodology (Terai et al., 2012), cloud morphology (Sorooshian et al., 2009; Jung et al., 2016), ambient aerosol concentrations (Duong et al., 2011; Jung et al., 2016; Gupta et al., 2022), and cloud thickness (Terai et al., 2012; Jung et al., 2016; Gupta et al., 2022).’

Line 75: Please also provide the months for the ACE-ENA IOPs along with the years.

This information is added:

‘...the recent Aerosol and Cloud Experiments in the Eastern North Atlantic (ACE-ENA) aircraft campaign (J. Wang et al., 2022) were conducted in the summer (June and July) 2017 (ACEENA Sum) and winter (January and February) 2018 (ACEENA Win).’

Line 80: Please provide the duration for the SOCRATES austral summer IOP.

This information is added:

‘...the Southern Ocean Clouds Radiation Aerosol Transport Experimental Study (SOCRATES) field campaign (McFarquhar et al., 2021) was conducted during the austral summer (January and February 2018),’

SECTION 2:

I want to commend the authors for the discussion in this section. However, the section does lack some context about the cloud sampling locations. A map of the sampling locations/flights tracks or a list of the range of latitude-longitude coordinates where clouds were sampled during the IOPs would be very useful.

Thanks for your recognition.

We have added Figure S1 to illustrate the meteorological patterns of the study domains, and the sampling locations of the selected cases are indicated by the white dots in Figure S1.

Line 106: I believe by “resolutions” you actually mean - “the size bins of the probe were 1 to 3 μm wide”?

The description is changed as follows:

‘The Fast Cloud Droplet Probe (FCDP) onboard aircraft during ACE-ENA can detect droplets with diameter (D_p) ranging from 1.5 μm to 50 μm , with the size bins of the probe between 1 and 3 μm (Glienke and Mei, 2020). While the SOCRATES used a similar CDP to measure droplets from 2 μm to 50 μm at a 2 μm probe size bin width.’

Line 111: Can you provide a reference for the phase classification product? If not, a short description of the methodology for it would be useful.

This information is added:

‘...the University of Washington Ice–Liquid Discriminator product, which is a Machine-learning-based single-particle phase classification of the 2DS images (Atlas et al., 2021)’

Line 128: Can cite Hansen and Travis, 1974 where the term “effective radius” and the associated formula were introduced.

We have added this reference to the revised manuscript.

Line 160: Do your results depend on the selection of the value of 200 m to determine the distance for above-cloud aerosols that are important for the analysis? Gupta et al. (2021) conducted a sensitivity test to determine if their analysis of cloud microphysical properties was affected by this number for distance from above-cloud aerosols. A comment on the sensitivity of the results on this value would be useful.

We have added the discussion as follows:

‘The above-cloud aerosols and CCN are selected between the cloud top and 200 m above. Note that the selection criteria of 200 m above the cloud top would inevitably induce uncertainty in the cloud top ACI assessment, depending on the vertical trend of the individual aerosol profile. Over the Southeast Atlantic, Gupta et al. (2021) conducted an analysis focusing particularly on the differing impacts when biomass burning aerosols are in contact with marine stratocumulus cloud tops, using 100 m above as the demarcation, versus when they are separated by various distances, and found that significant differences were observed in cloud microphysics, owing to different droplet evaporation and nucleation, compared to separated profiles. That result is in agreement with the modeling sensitivity study over the Eastern North Atlantic by Wang et al. (2020), who found that aerosol plumes can exert impacts on the cloud-top microphysics only when they are in close contact with the cloud layer. In most cases, the ACE-ENA feature is a rather stable or slightly decreasing profile within a couple hundred meters above the cloud top, while the long-range transports, particularly during summertime, will induce an elevated aerosol layer in higher altitudes that is not in contact with the cloud layer. While the frequent new particle formation events during SOCRATES will significantly alter the free-troposphere Aitken mode aerosol budget, they would need to further subside down to impact the cloud (McCoy et al., 2021; Zhang et al., 2023). Therefore, the 200 m criteria used in this study are in the reconciliation of getting the close-to-cloud aerosol plumes and enough sample size for statistical analysis.’

SECTION 3:

Line 192: These aerosol concentrations for SOCRATES seem high for the Southern Ocean, which was typically viewed to be a pristine environment. The authors refer to previous studies from SOCRATES to explain the aerosol size distribution or composition, do these studies have similar aerosol concentrations?

We have added the discussion as follows:

‘Previously, McCoy et al. (2021) reported average values of 680.69 cm^{-3} , 546.28 cm^{-3} and 465.05 cm^{-3} for mid-troposphere, above and below cloud for the multiple SOCRATES cases, respectively. While for the individual cases the above cloud aerosols vary from a couple hundred to over a

thousand (McCoy et al., 2021; Zhang et al., 2023). These aerosols are predominantly produced from the oxidation of biogenic gases, notably the dimethyl sulfide (DMS) emitted by marine biological productivity (Sanchez et al., 2018; McCoy et al., 2020). The rising air currents in MBL transport these particles into the free troposphere (FT) with dominant aerosol population over the SO (McCoy et al., 2021; Sanchez et al., 2021). And hence, it reinforces the notion that the SO represents a pre-industrial marine environment where the influence of anthropogenic and biomass-burning aerosols is mostly negligible (McCoy et al., 2020, 2021).'

Line 213: Do you mean that the 'sub-cloud N_{acc} values' are more than double the 'above-cloud N_{acc} values'? Suggest rewording this sentence.

We have reworded this sentence as:

'Notice that the sub-cloud N_{Acc} values from three IOPs are more than double of the above-cloud N_{Acc} values, and most of the sub-cloud accumulation mode aerosol can be activated to become CCN at SS of 0.35%.'

Line 268: "These results have further improved the understanding of the aerosol first indirect effect". This statement is a bit overreaching. There are many studies that have shown similar results. I suggest rewording to "These results are consistent with the understanding of the aerosol first indirect effect"

We totally agree. We have reworded this statement to 'These results have further confirmed and reassured our understanding of the aerosol first indirect effect'

Line 271: It is interesting that the average N_c for ACE-ENA winter is greater than both the sub-cloud N_{acc} and N_{ccn} . Do you have any comments on why this is the case? Has this been observed elsewhere? Are the values of N_c influenced by above-cloud aerosols or sub-cloud N_a ?

We have added a brief discussion on this:

‘Note that the $N_{CCN0.35\%}$ and N_c values are lower than N_c values during the ACE-ENA winter IOP, which is also confirmed in previous studies (J. Wang et al., 2022; Wang et al., 2023), which is also confirmed in previous studies (J. Wang et al., 2022; Wang et al., 2023). This interesting phenomenon can potentially be attributed to a combination of factors including lower MBL aerosol sources, stronger in-cloud coalescence-scavenging depletion of sub-cloud aerosols, and the aircraft snapshots capturing the equilibrium states of aerosols and cloud due to enhanced aerosol activations induced by stronger updrafts during the ACE-ENA winter (J. Wang et al., 2022). This thereby compels further investigation into the potential impacts of precipitation on the MBL CCN budget.’

Line 310: This is an excellent discussion of entrainment mixing and its competing influence on droplet size/liquid water content and likely highlights two different modes of cloud top mixing – homogeneous and inhomogeneous mixing that depend on the entrainment rate (Lehmann et al., 2009; Lu et al., 2011) – do the authors have any comments based on their calculated entrainment rates? The authors could cite examples of previous studies that show similar vertical profiles of cloud properties where the effects of entrainment mixing on cloud microphysical properties were evident.

We have added the discussion as follows:

‘For the three IOPs, the N_c and LWC_c exhibited a stable trend from the cloud base, followed by a noticeable decrease near the cloud top mixing zone, while the changes in τ_c trend were not as dramatic as the others. Such characteristics of the cloud microphysics vertical profiles indicate the signal of inhomogeneous mixing, which occurs when dry and warm air mixes unevenly and not rapidly with the cloud air, hence partially evaporating the cloud droplets (Lehmann et al., 2009; Lu et al., 2011). The results are consistent with findings in stratocumulus clouds over multiple field campaigns (Brenquier et al., 2011; Jia et al., 2019) and with the findings in Sanchez et al. (2020) for five stratocumulus cases during the SOCRATES. However, further quantification of the entrainment-mixing mechanisms requires high-frequency eddy dissipation and accurate examination of the mixing time scale (Lehmann et al., 2009; Lu et al., 2011), which is of interest for future study.’

Line 370: The skewness of a distribution can actually be calculated as a statistical parameter rather than having a visual comparison. I leave it to the authors to decide if they would like to add this parameter to the study.

We have calculated the skewness values for the cloud DSDs and include them in the discussion: ‘For the four cloud portions from cloud base to cloud top, the skewness of summertime (wintertime) cloud DSDs are 0.627 (0.271), 0.358 (0.175), 0.098 (-0.063), and -0.362 (-0.554), respectively.’

SECTION 4:

Line 434: This statement would be more accurate if the Liquid Water Path (LWP; vertical integral of the LWC) values were compared across campaigns rather than the mean LWC. Suggest adding LWP values or rewording the sentence.

We have changed this statement to:

‘Furthermore, the similarity in the vertical integral of LWC_c (as shown in Fig. 3c) provides comparable liquid water between three IOPs’

Line 468: Do you want to mention some of these aircraft campaigns - VOCALS, ORACLES, ACTIVATE, etc.?

We have expanded the discussion here:

‘However, a more comprehensive investigation into the cloud microphysical responses to CCN intrusions under a larger range of various water supply conditions, and further untangling the ACI from the meteorological influences, will require additional aircraft cases from more field campaigns, for instance the VAMOS Ocean-Cloud-Atmosphere-Land Study (VOCALS), the Cloud System Evolution over the Trades (CSET), the ObseRvations of CLouds above Aerosols and their intEractionS (ORACLES), and the Aerosol Cloud meTeorology Interactions oVer the western ATlantic Experiment (ACTIVATE).’

Line 475: These are some very interesting results. While the $ACI_{r,CT}$ values are close to what one might expect (droplets are too large near cloud top for above-cloud aerosols to exert a significant influence on r near cloud top), it is interesting to note the $ACI_{N,CT}$ values reported here. Do the authors have any explanation or hypotheses for what causes these values to not be closer to 0 like $ACI_{r,CT}$?

We have added a brief explanation to this:

‘Compared to the $ACI_{N,CB}$ and $ACI_{r,CB}$, the $ACI_{N,CT}$ and $ACI_{r,CT}$ are much weaker, especially for $ACI_{r,CT}$, as the near cloud top droplets are too large for above-cloud aerosols to exert a significant influence on r_c (Diamond et al., 2018; Gupta et al., 2022). While the weaker cloud top N_c dependence on the $N_{CCN,0.35\%}$ could be due to the legacy of the sub-cloud CCN impacts on N_c being conveyed to the cloud top. This occurs because FT aerosols and CCN can be entrained down to the MBL before and during the cloud process, as observed in the assessment of inter-cloud cases. These weaker relationships support the notion that though the aerosols entrained into the upper-cloud region can affect the cloud microphysics to a certain degree, the effects are less pronounced than those from the sub-cloud aerosols (Diamond et al., 2018, Wang et al., 2020) because the MBL cloud N_c and r_c variations are dominated by the condensational growth process, collision-coalescence process, and cloud top entrainment mixing near the cloud top.’

Line 480: I think the authors should also mention cloud top entrainment mixing over here.

We have changed this statement to:

‘...the MBL cloud N_c and r_c variations are dominated by the condensational growth process, collision-coalescence process, and cloud top entrainment mixing near the cloud top.’

Line 484: As mentioned earlier, would be good to also cite Feingold and Seibert, 2009 when defining S_o , which to my knowledge was the first study to define the term.

This reference is added.

Line 491: The authors should provide the correlation coefficient values for the S_o calculations and contrast these with previous studies. At least two recent studies did this – Jung et al. 2016 and Gupta et al. 2022.

Line 501: “...due to decreasing S_o within the thicker cloud (Terai et al., 2012)”. This is oversimplifying the problem. The value of S_o depends not only on cloud thickness but also on the calculation methodology as shown by Terai et al, the cloud type – cumulus versus stratocumulus (Sorooshian et al., 2009; Jung et al., 2016) and the above- and below-cloud aerosol concentration (Duong et al., 2011; Jung et al., 2016; Gupta et al., 2022). Having more information on cloud type/morphology in the introduction would give context to these S_o values and other results in the study.

Response to comments on L491 & L501:

We have added the suggested reference in the introduction, and the following discussion in the Section 4.2 (precipitation susceptibility):

‘The S_o values are 0.979, 1.229, and 1.638, with the absolute values of correlation coefficients being 0.33, 0.29, and 0.45 for SOCRATES, ACE-ENA summer and winter, respectively. These correlation coefficient values fall within the reasonable range found in previous studies on precipitation susceptibility in MBL stratus and stratocumulus clouds (Jung et al., 2016; Gupta et al., 2022), and indicate statistically significant dependences of R_{CB} on N_c . Previous study by Terai et al. (2012) found that the S_o values decrease with the increasing cloud thickness over the southeast Pacific, and Jung et al. (2016) found that the S_o is more pronounced within the medium-deep clouds with thickness ~300-400 m in the MBL stratocumulus over the eastern Pacific. While Gupta et al. (2022) found that the S_o values are generally higher under low ambient N_a condition in the southeastern Atlantic MBL. In this study, R_{CB} for the ACE-ENA winter is more susceptible to the layer-mean N_c than the ACE-ENA summer and SOCRATES, which can be partially attributed to the existence of more large drizzle drops (as shown in Fig. 4d) near the cloud base. As previously discussed, the ACE-ENA winter feature with enhanced collision-coalescence and the drizzle-recirculating processes, especially under low N_c conditions with more larger drizzle drops, leading to the increase of S_o values. In comparison, the higher ambient aerosol and CCN concentrations during SOCRATES lead to relatively narrower drizzle DSDs and may induce

effective aerosol buffering effects, where the warm-rain processes in cloud are already fairly suppressed, hence diminishing the sensitivity of R_{CB} to N_c (Stevens and Feingold, 2009; Fan et al., 2020; Gupta et al., 2022).’

Line 531: What are the units of the CCN loss rate? Here, the values are reported with units of “ cm^{-3} ” which does not include a unit of time, this is likely an error?

We have corrected the unit to $\text{cm}^{-3}\text{h}^{-1}$, thanks for catching this.

SECTION 5:

Line 568: The differences can also be attributed to the different size distributions which are then due to the sources discussed in the following sentences. That would then nicely lead to the discussion of aerosol modes toward the end of the paragraph.

Line 569: I don’t think using the words ‘pristine natural environment’ is appropriate when the previous sentence claimed the aerosol concentrations are highest for SOCRATES.

Response to comments on L568 & L569:

We have reworded the following discussion as:

‘The differences can be attributed to the differences in aerosol size distributions between ACE-ENA and SOCRATES, which are largely due to the aerosol sources in those regions. The SOCRATES features the pre-industrial natural environment enriched by aerosols from marine biological productivity and without the contamination of anthropogenic aerosols...’

Line 580: Can you also list the percentage increase in r from cloud base to top since these campaigns had different cloud thickness values?

We have changed this statement to:

‘...the r_c growths (and percentage increases), from cloud base to top, being $4.03 \mu\text{m}$ (0.66%), $4.78 \mu\text{m}$ (0.68%), and $5.85 \mu\text{m}$ (0.79%) for SOCRATES, ACE-ENA summer, and winter, respectively.’

Lines 255 and 576: How does in-cloud coalescence cause an increase in the size of sub-cloud aerosols? In-cloud coalescence would increase the size of a cloud drop as it accumulates water by colliding and coalescing with other droplets. Once this drop evaporates in the sub-cloud to expose the residual aerosol, the aerosol/CCN core size should be the same unless the CCN is modified during droplet growth. Is this related to the condensation of sulfuric acid onto aerosol cores as described in Line 245? If so, is there a way to verify this based on these observations? If not, this should be stated as a hypothesis rather than a conclusion?

We have added the discussion as follows:

‘Coalescence scavenging refers to the process in which cloud or drizzle droplets, containing aerosol particles, merge with each other. Upon the collision-coalescence of cloud droplets, the dissolved aerosol masses within the cloud droplets also collide and merge into a larger aerosol core, leading to larger aerosol particles upon droplet evaporation. The sub-cloud aerosols are then replenished into the cloud layer, experiencing growth within the cloud through cloud and drizzle droplet collision-coalescence, and subsequently falling and evaporating outside the cloud again. Eventually, the residual aerosols undergoing this cloud-processing cycle will gradually decrease in number concentration and increase in size (Flossmann et al., 1985; Feingold et al., 1996; Hudson and Noble, 2020; Hoffmann and Feingold, 2023).’

Lines 591-597: I don't fully understand or agree with the conclusion drawn here. The studies that the authors cited here/earlier (among many others) have calculated f_{ad} using in-situ aircraft data from other locations and shown that assuming $f_{ad} = 0.8$ could lead to errors in satellite estimates of droplet concentration. While the calculation of f_{ad} and stating the regional values is important, these f_{ad} values do not “shed light on the further understanding of the satellite retrievals, particularly the satellite-based aerosol-cloud interaction assessment”. The authors can state the f_{ad} values and perhaps add a comment on the need to use these values when calculating droplet concentration for these regions using satellite retrievals, but I suggest removing lines 594-597.

We have eased our tone and modified our discussion to:

‘While satellite retrievals of droplet number concentration heavily rely on the adiabatic cloud assumption and are usually given as a constant of $f_{ad} = 0.8$, the in-situ observational evidence found in this study further confirms the unrealistic nature of this assumption. It will be of interest to utilize multiple aircraft measurements (campaigns) to explore the variability of MBL cloud and drizzle microphysical properties over different marine regions. This can help examine potential predictors for f_{ad} , which will aid in satellite-based retrievals and aerosol-cloud interaction assessments (Painemal and Zuidema, 2011; Grosvenor et al., 2018; Painemal et al., 2021).’

Line 614: I don’t understand what is meant by “the aircraft assessment provides more connected circumstances between the aerosols and cloud layer.”

We have changed this statement to:

‘...the aircraft assessment of ACI is based on measurements where the aerosols are in direct contact with the cloud layer.’

TECHNICAL CORRECTIONS/CLARIFICATIONS:

Line 12: Could use the term “aerosol-cloud-precipitation” given the terminology in the title? Also, change to “interactions” given the verb “are” in the next sentence?

We have changed this sentence as suggested.

Line 94: “aerosol, cloud, and drizzle”?

We have changed this statement to:

‘This study targets the similarities and differences in the MBL aerosol, cloud, drizzle properties, their distribution and evolution, and more appealingly, the ACIs and ACPIs between the two campaigns.’

Line 105: “onboard the aircraft”?

We have changed this sentence as suggested.

Line 110: “large, ice particles”? Large ice particles would be a lot larger than 200 μm .

We have changed this statement to:

‘The 2DS in-situ measurements will be used as additional screening to eliminate the ice particles with diameters larger than 200 μm .’

Line 286: “To ensure the representativeness of the vertical profiles”?

We have changed this sentence as suggested.

Line 443: The sentence should probably end with “during the winter”.

We have changed this sentence as suggested:

‘...indicating that N_c is more sensitive to the sub-cloud $N_{CCN,0.35\%}$ during the winter.’

Line 582: Do you mean “The mean cloud-top entrainment rates (w_e) are a function of cloud top virtual potential temperature and vertical velocity and their values are....”

We have changed this sentence to:

‘Given the valid cloud top virtual potential temperature and vertical velocity measurements for the selected cloud cases, the averaged w_e values are 0.570 ± 0.834 cm s^{-1} , 0.581 ± 0.560 cm s^{-1} , and 0.960 ± 1.127 cm s^{-1} for SOCRATES, ACE-ENA summer and winter, respectively.’

Figure 1: Please mention which statistical metrics are provided in the legends. Suggest adding that to the figure caption.

We have added the following to the caption:

‘The statistical metrics in the legends denote the mean and standard deviation values for all samples in three IOPs.’

Figure 2: The caption lists the incorrect size range for the inner plots. Should be “Aitken mode size distribution ($D_p = 0.01$ to 0.06 μm)”

The caption is corrected, thanks for catching.

REFERENCES:

- Brenguier, J. L., Burnet, F., and Geoffroy, O.: Cloud optical thickness and liquid water path – does the k coefficient vary with droplet concentration?, *Atmos. Chem. Phys.*, 11, 9771-9786, 10.5194/acp-11-9771-2011, 2011.
- Flossmann, A. I., Hall, W. D., and Pruppacher, H. R.: A Theoretical Study of the Wet Removal of Atmospheric Pollutants. Part I: The Redistribution of Aerosol Particles Captured through Nucleation and Impaction Scavenging by Growing Cloud Drops, *J. Atmos. Sci.*, 42, 583-606, [https://doi.org/10.1175/1520-0469\(1985\)042<0583:ATSOTW>2.0.CO;2](https://doi.org/10.1175/1520-0469(1985)042<0583:ATSOTW>2.0.CO;2), 1985.
- Feingold, G., Kreidenweis, S. M., Stevens, B., and Cotton, W. R.: Numerical simulations of stratocumulus processing of cloud condensation nuclei through collision-coalescence, *J. Geophys. Res.-Atmos.*, 101, 21391-21402, <https://doi.org/10.1029/96JD01552>, 1996.
- Feingold, G. and Siebert, H.: Cloud – Aerosol Interactions from the Micro to the Cloud Scale, from the Strungmann Forum Report, *Clouds in the Perturbed Climate System: Their Relationship to Energy Balance, Atmospheric Dynamics, and Precipitation*, 2, edited by: Heintzenberg, J. and Charlson, R. J., MIT Press, ISBN 978-0-262-01287-4, 2009.
- Gupta, S., McFarquhar, G. M., O'Brien, J. R., Delene, D. J., Poellot, M. R., Dobracki, A., Podolske, J. R., Redemann, J., LeBlanc, S. E., Segal-Rozenhaimer, M., and Pistone, K.: Impact of the variability in vertical separation between biomass burning aerosols and marine stratocumulus on cloud microphysical properties over the Southeast Atlantic, *Atmos. Chem. Phys.*, 21, 4615– 4635, <https://doi.org/10.5194/acp-21-4615-2021>, 2021.
- Gupta, S., McFarquhar, G. M., O'Brien, J. R., Poellot, M. R., Delene, D. J., Miller, R. M., and Small Griswold, J. D.: Factors affecting precipitation formation and precipitation susceptibility of marine stratocumulus with variable above- and below-cloud aerosol concentrations over the Southeast Atlantic, *Atmos. Chem. Phys.*, 22, 2769–2793, <https://doi.org/10.5194/acp-22-2769-2022>, 2022.
- Hansen, J. and Travis, L. D.: Light scattering in planetary atmospheres, *Space Sci. Rev.*, 16, 527–610, 1974.
- Hudson, J. G. and Noble, S.: CCN Spectral Shape and Cumulus Cloud and Drizzle Microphysics, *J. Geophys. Res.-Atmos.*, 125, e2019JD031141, <https://doi.org/10.1029/2019JD031141>, 2020.

- Hoffmann, F. and Feingold, G.: A Note on Aerosol Processing by Droplet Collision-Coalescence, *Geophys. Res. Lett.*, 50, e2023GL103716, <https://doi.org/10.1029/2023GL103716>, 2023.
- Jia, H., Ma, X., and Liu, Y.: Exploring aerosol–cloud interaction using VOCALS-REx aircraft measurements, *Atmos. Chem. Phys.*, 19, 7955-7971, 10.5194/acp-19-7955-2019, 2019.
- Jensen, M. P., Ghate, V. P., Wang, D., Apoznanski, D. K., Bartholomew, M. J., Giangrande, S. E., Johnson, K. L., and Thieman, M. M.: Contrasting characteristics of open- and closed-cellular stratocumulus cloud in the eastern North Atlantic, *Atmos. Chem. Phys.*, 21, 14557-14571, 10.5194/acp-21-14557-2021, 2021.
- Jung, E., Albrecht, B. A., Sorooshian, A., Zuidema, P., and Jonsson, H. H.: Precipitation susceptibility in marine stratocumulus and shallow cumulus from airborne measurements, *Atmos. Chem. Phys.*, 16, 11395-11413, 10.5194/acp-16-11395-2016, 2016.
- Lang, F., Ackermann, L., Huang, Y., Truong, S. C. H., Siems, S. T., and Manton, M. J.: A climatology of open and closed mesoscale cellular convection over the Southern Ocean derived from Himawari-8 observations, *Atmos. Chem. Phys.*, 22, 2135-2152, 10.5194/acp-22-2135-2022, 2022.
- Lehmann, K., Siebert, H., and Shaw, R. A.: Homogeneous and inhomogeneous mixing in cumulus clouds: dependence on local turbulence structure, *J. Atmos. Sci.*, 66, 3641–3659, <https://doi.org/10.1175/2009JAS3012.1>, 2009.
- Lu, C., Liu, Y., and Niu, S.: Examination of turbulent entrainment-mixing mechanisms using a combined approach, *J. Geophys. Res.*, 116, D20207, <https://doi.org/10.1029/2011JD015944>, 2011
- Mechem, D. B., Wittman, C. S., Miller, M. A., Yuter, S. E., and de Szoeke, S. P.: Joint Synoptic and Cloud Variability over the Northeast Atlantic near the Azores, *J. Appl. Meteorol. Clim.*, 57, 1273-1290, <https://doi.org/10.1175/JAMC-D-17-0211.1>, 2018.
- McCoy, I. L., Wood, R., and Fletcher, J. K.: Identifying Meteorological Controls on Open and Closed Mesoscale Cellular Convection Associated with Marine Cold Air Outbreaks, *J. Geophys. Res.-Atmos.*, 122, 11,678-611,702, <https://doi.org/10.1002/2017JD027031>, 2017.
- Rémillard, J. and Tselioudis, G.: Cloud Regime Variability over the Azores and Its Application to Climate Model Evaluation, *J. Climate*, 28, 9707-9720, <https://doi.org/10.1175/JCLI-D-15-0066.1>, 2015.

- Sanchez, K. J., Roberts, G. C., Diao, M., and Russell, L. M.: Measured Constraints on Cloud Top Entrainment to Reduce Uncertainty of Nonprecipitating Stratocumulus Shortwave Radiative Forcing in the Southern Ocean, *Geophys. Res. Lett.*, 47, e2020GL090513, <https://doi.org/10.1029/2020GL090513>, 2020.
- Terai, C. R. and Wood, R.: Aircraft observations of cold pools under marine stratocumulus, *Atmos. Chem. Phys.*, 13, 9899-9914, 10.5194/acp-13-9899-2013, 2013.
- Terai, C. R., Wood, R., Leon, D. C., and Zuidema, P.: Does precipitation susceptibility vary with increasing cloud thickness in marine stratocumulus?, *Atmos. Chem. Phys.*, 12, 4567-4583, 10.5194/acp-12-4567-2012, 2012.
- Wang, J., Wood, R., Jensen, M. P., Chiu, J. C., Liu, Y., Lamer, K., Desai, N., Giangrande, S. E., Knopf, D. A., Kollias, P., Laskin, A., Liu, X., Lu, C., Mechem, D., Mei, F., Starzec, M., Tomlinson, J., Wang, Y., Yum, S. S., Zheng, G., Aiken, A. C., Azevedo, E. B., Blanchard, Y., China, S., Dong, X., Gallo, F., Gao, S., Ghate, V. P., Glienke, S., Goldberger, L., Hardin, J. C., Kuang, C., Luke, E. P., Matthews, A. A., Miller, M. A., Moffet, R., Pekour, M., Schmid, B., Sedlacek, A. J., Shaw, R. A., Shilling, J. E., Sullivan, A., Suski, K., Veghte, D. P., Weber, R., Wyant, M., Yeom, J., Zawadowicz, M., and Zhang, Z.: Aerosol and Cloud Experiments in the Eastern North Atlantic (ACE-ENA), *B. Am. Meteorol. Soc.*, 103, E619-E641, 10.1175/BAMS-D-19-0220.1, 2022.
- Zuidema, P., Torri, G., Muller, C., and Chandra, A.: A Survey of Precipitation-Induced Atmospheric Cold Pools over Oceans and Their Interactions with the Larger-Scale Environment, *Surveys in Geophysics*, 38, 1283-1305, 10.1007/s10712-017-9447-x, 2017.

Response to Reviewer #2

We appreciate your time and effort in thoroughly reviewing our manuscript. We are truly grateful for your constructive comments and insightful suggestions, which encourage and help us to improve the manuscript. We have revised the manuscript carefully based on your comments. In the response below, your comments are provided in black text and [our responses are provided in blue text](#).

Response:

SUMMARY

The authors present a comparative study of aircraft in situ aerosol and cloud microphysical measurements of liquid phase boundary layer (BL) clouds from two different regions: over the Eastern North Atlantic (ENA) region near the Azores and the Southern Ocean (SO) in an area spanning south of Tasmania. The ENA measurements are from the summer and winter seasons, while the SO measurements are from summertime only. The overall conclusions are that:

1. Clouds across different regions and seasons have differing collections of microphysical properties
2. These differing microphysical regimes exhibit different susceptibilities to aerosol perturbations
3. Drizzle has a big impact on the BL CCN budget
4. Turbulence plays a leading role in enhanced precipitation seen in the ENA winter regime

The primary data analyzed in the study are aerosol and cloud microphysical properties averaged over all full cloud soundings of warm BL clouds during each campaign. These properties include number concentration (total, modal, fully size-resolved, etc.), measures of drop size distribution (DSD) width, effective radius/mean diameter, liquid water content, sedimentation rate, etc.

Many (if not most) of these observations have been analyzed in other recent studies, and indeed many of the conclusions reached by the authors are “consistent with” (or similar language) the results of these other papers. The frequency with which conclusions are followed by such qualifiers gives the impression that there is not much new added by the manuscript. It would be more effective to give a condensed overview of in situ work on the ACE-ENA and SOCRATES campaigns in which you lay out what has already been done. Then in the results section, devote a subsection (or a couple paragraphs, whatever) to explain how your work fits with what’s already been published. This would be easier to digest than the piecemeal and repetitive referencing in the

manuscript's current state. I do see novelty in the specific focus on interactions among aerosol, clouds and precipitation (abbreviated ACI or ACPI, depending on the context), which to my knowledge have not been addressed in the literature for either field campaign (ACE-ENA and SOCRATES) analyzed.

I have serious concerns about the lack of justification for combining analysis of the field campaigns used here as well as the scientific reasoning leading to the point that turbulence- enhanced collision-coalescence explains more intense drizzle during one campaign (ACE-ENA winter) versus the other two. In fact, I think the differences in precipitation attributed to turbulence can be explained much more simply without appealing to turbulence-microphysics interactions *at all* (see 3rd major comment below). While there is clearly a body of legitimate analysis presented in the study, I recommend the manuscript either undergo VERY major revisions or that it be rejected so the authors have sufficient time to rewrite the manuscript before resubmitting it.

Thanks for the thorough assessment of our manuscript, we have tried our best to carefully consider and address your comments and suggestions.

We have reconstructed our discussion to review the previous works on ACE-ENA and SOCRATES in the introduction, and our results in comparison with the previous study in the summary and conclusion section. Please refer to the response to general comment 1 and the revised manuscript.

GENERAL COMMENTS

- 1. The unifying thread tying together measurements from the two regions is not clear to me, and I ask that the authors further emphasize/clarify the scientific motivation for combining the campaigns.** This would give a stronger basis for communicating the significance of your results. As it stands, there are no previously unexplored commonalities across the 3 campaigns. Yes, cloud effective radius increases with height for all the campaigns; yes, drizzle mean diameter increases from cloud top to base – these results (among others) are expected, and simply demonstrate that atmospheric physics as we know it isn't completely "broken." But beyond that, what purpose does this comparison serve? The aerosol and meteorology driving the clouds in each

regime are quite different, so it's somewhat of a trivial conclusion that the microphysical properties differ as well. The argument that "SOCRATES and ACE-ENA both took place in the midlatitudes, so they're directly comparable" is insufficient. The SO region sampled by SOCRATES is more consistently impacted by midlatitude cyclone systems than ENA during summer, which is more often dominated by the nearby Azores high (i.e., ENA is borderline subtropical during summer). In addition, I do not buy that these aircraft campaigns can be taken as "representative" samples of their respective latitude bands/ocean basins; Mechem et al. (2018) show significant interannual variability in the synoptic conditions experienced at the ENA site, and the summer ACE-ENA IOP was characterized by anomalously low BL heights *and* substantial BL decoupling.

To demonstrate the feasibility and justification of combining these two campaigns, we calculated the composite of the selected case periods during the ACE-ENA and SOCRATES using the hourly ERA5 reanalysis, as shown in Figure S1 below. The composite 850 hPa geopotential height is denoted by black contours, and the height anomaly from the 20-year climatology (2000-2020) is portrayed by the shaded area.

The discussion in the introduction has been modified to better motivate our study, as follows:

'The Eastern North Atlantic (ENA) stands as a desirable region for exploring MBL clouds in the mid-latitude, with Graciosa Island in the Azores (39.09°N, 28.03°W) representing a focal point for such studies. Located between the mid-latitude and subtropical climate zones, Graciosa is subject to the meteorological influence of both the Icelandic Low and the Azores High, and the influence of aerosols ranging from pristine marine air masses to those heavily influenced by continental emissions from North America and Northern Europe (Logan et al., 2014; Wood et al., 2015; Wang et al., 2020). Addressing the need for sustained research into the MBL clouds, the recent Aerosol and Cloud Experiments in the Eastern North Atlantic (ACE-ENA) aircraft campaign (J. Wang et al., 2022) were conducted in the summer (June and July) 2017 (ACEENA Sum) and winter (January and February) 2018 (ACEENA Win). During these two intensive operation periods (IOPs) of ACE-ENA, the research aircraft accrued abundant in-situ measurements of aerosols, clouds, and drizzle properties, providing invaluable resources for studying the ACI and ACPI processes. During the summer, the Azores is located at the eastern part of the high-pressure system, while

during the winter, the center of the Azores high shifts to the eastern Atlantic and is primarily located directly over the Azores (Mechem et al., 2018; J. Wang et al., 2022). Furthermore, both summer and winter IOPs of ACE-ENA are featured with anomalous stronger high-pressure systems, compared to the 20-year climatology as shown in Figure S1. This meteorological pattern is favorable to the prevailing and persistent stratocumulus clouds observed during the ACE-ENA, especially for the winter IOP, where the enhanced large-scale subsidence would lead to a deeper stratocumulus-topped MBL (Rémillard and Tselioudis, 2015; Jensen et al., 2021). The ACE-ENA summer IOP is characterized by anomalously low MBL heights and substantial MBL decoupling (Miller et al., 2021; J. Wang et al., 2022), while the winter IOP is featured with prevalent precipitation-generated cold pools, where evaporative cooling alters the thermodynamical structure of the MBL, sustains and enhances turbulence mixing, hence contributes to dynamical perturbations that can influence the behavior of the MBL (Terai and Wood, 2013; Zuidema et al., 2017; Jensen et al., 2021; J. Wang et al., 2022). Over the recent years, many observational studies, based on the ACE-ENA data, have focused on the seasonal contrasts of the aerosol distributions and sources (Y. Wang et al., 2021b; Zawadowicz et al., 2021), the cloud and drizzle microphysics vertical distributions (Wu et al., 2020a; Zheng et al., 2022b), as well as the impacts of MBL conditions on the cloud structure and morphology (Jensen et al., 2021). However, they seldom analyze the comprehensive interactions between aerosol, clouds and precipitation.

Over the Southern Ocean (SO), the Southern Ocean Clouds Radiation Aerosol Transport Experimental Study (SOCRATES) field campaign (McFarquhar et al., 2021) was conducted during the austral summer (January and February 2018), which marks another valuable piece of the MBL cloud research. The SO, being one of the cloudiest regions globally, is predominantly influenced by naturally produced aerosols originating from oceanic sources due to its remoteness, where the anthropogenic and biomass burning aerosols exert minimal influence over the region (McCoy et al., 2021; Sanchez et al., 2021; Twohy et al., 2021; Zhang et al., 2023). The aerosol budget in this region is primarily shaped by biological aerosols, which nucleate from the oxidation products of dimethyl sulfide (DMS) emissions, as well as by sea spray aerosols. Hence, the SO provides an unparalleled natural laboratory for discerning the influence of these natural aerosol emissions on the MBL clouds under a pre-industrial natural environment. The summertime SO region, particularly near the SOCRATES focus area, is characterized by more frequently closed-cell mesoscale cellular convection structures (Danker et al., 2022; Lang et al., 2022). Furthermore, the

MBL clouds over the SO predominantly consist of supercooled liquid water droplets, which coexist with mixed- and ice-phase processes (Y. Wang et al., 2021a; Xi et al., 2022), while the precipitation phases are examined to be primarily dominated by liquid hydrometeors (Tansey et al., 2022; Kang et al., 2024). The in-situ measurements collected from SOCRATES have cultivated numerous studies on aerosols, clouds, and precipitation over the SO using both in-situ measurements and model simulations (McCoy et al., 2020; Altas et al., 2021; D'Alessandro et al., 2021), and provides an opportunity to study the liquid cloud processes under a colder nature. As shown in Figure S1c, compositely speaking, the SOCRATES cloud cases used in this study are located ahead of the anomaly-stronger thermal ridge and behind the thermal trough, providing a set up favorable to the closed cellular MBL cloud structures (McCoy et al., 2017; Lang et al., 2022). While the region of selected SOCRATES cloud cases crosses a larger latitudinal zone and is under more consistent influence of mid-latitude cyclone systems than over the ACE-ENA region, the cloud sampling periods used in this study majority reside in the closed-cell MBL stratocumulus decks.

The cloud cases selected from the ACE-ENA and SOCRATES share similar cloud morphology (stratocumulus) while experiencing different aerosol sources and meteorological conditions. Using a synergistic approach to compare data from these different field campaigns can provide valuable insights to the community regarding the functioning physical processes of the interactions between aerosols, clouds, and precipitation under the influence of different MBL dynamic and thermodynamic conditions. This study targets the similarities and differences in the MBL aerosol, cloud, and drizzle properties, their distribution and evolution, and more appealingly, the ACIs and ACPIs between the two campaigns.'

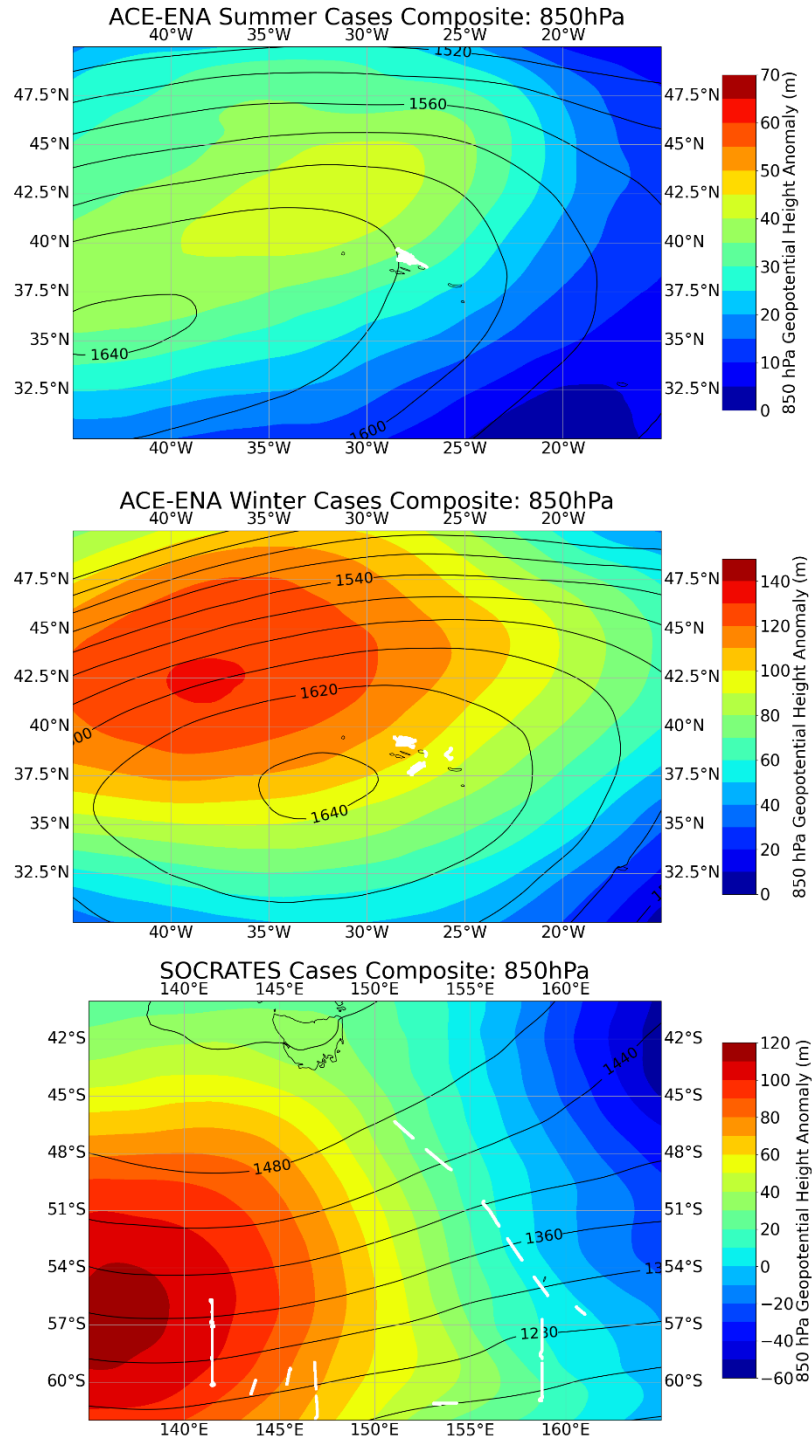


Figure S1. The selected-cases 850 hPa geopotential height composite (black contours), and the height anomaly from (shaded area) the 20-year climatology (2000-2020), for a) ACE-ENA summer, b) ACE-ENA winter, and c) SOCRATES. White dots denote the aircraft flight tracks for the selected cases.

2. The authors go to some length to justify their assertion that turbulence-enhanced collision-coalescence is the reason for stronger precipitation during winter at ENA, but the evidence given does not prove their hypothesis. **The discussion of TKE is illustrative but quantitatively insufficient.** For one, very few details are given on how the velocity perturbations are calculated; for example, what is the integral length scale obtained with a 10 s moving window (i.e., are you capturing the inertial subrange)? Is it the same for ACE-ENA and SOCRATES? (no) Is any window function applied or is this a simple “boxcar” moving average? Is 1 Hz data used or did you analyze high-rate data? Is “high-rate” the same for ACE-ENA and SOCRATES? (no) In addition, TKE is not the relevant quantity for evaluating turbulent enhancement of collisional growth; rather, it is the TKE dissipation rate ϵ that is used in parameterizations (e.g., Grabowski and Wang 2013 as referenced in the manuscript). For another, $\epsilon \sim 0(10^{-4} m^2/s^2)$ in stratiform BL clouds while in shallow cumulus it is about an order of magnitude higher. Based on the sampling goals of both ACE-ENA and SOCRATES, mostly stratiform clouds were sampled, suggesting generally low turbulence intensities. A past modeling study on the feasibility of turbulence to overcome the “warm rain bottleneck” and accelerate drizzle formation via collision-coalescence enhancement in subtropical marine stratocumulus (Sc) showed a minor impact (Witte et al. 2019, doi: doi: 10.1175/MWR-D-18-0242.1) – why is a different answer expected in the same cloud dynamical regime? Finally, cold pools are a dynamical forcing mechanism more prevalent during ACE-ENA winter than either of the other 2 campaigns; this is not mentioned at all.

For you to continue pushing the line of reasoning that turbulence directly *causes* stronger precipitation, at very minimum you need to demonstrate that ϵ is substantially stronger for the ACE-ENA winter campaign than both typical marine Sc *and* SOCRATES/ACE-ENA summer (i.e., much greater than the 30-40% difference in mean cloud-top TKE shown). If you are unable to demonstrate this, I cannot support the heavy reliance on turbulence-enhanced collision-coalescence peppered throughout the manuscript. If you move forward with quantifying, please explicitly detail your approach in the methodology section – I recommend Siebert et al. (2010, 10.1175/2009JAS3200.1) or Waclawczyk et al. (2017, doi: 10.5194/amt-10-4573-2017) as starting points for developing your own analysis.

Thanks for the great suggestions. After carefully considering and examining this aspect, we found that the 1Hz used in this study is not sufficient to capture the small-scale turbulent structures. Thus,

we have added the method description, and the following discussion of limitations:

‘The turbulent perturbations of vertical ($\overline{w'^2}$) and horizontal ($\overline{u'^2}$ and $\overline{v'^2}$) components are calculated as the simple moving variance in a 10s window centered at the measurement time, without window weighting function, using 1Hz data for all three IOPs. The w data is confined to an absolute aircraft roll angle of less than 5° (Cooper et al., 2016). Given the average aircraft ground speed of ~ 140 m/s and vertical speed of ~ 5 m/s (Altas et al., 2020), the smallest resolved wavelength is 140 m. Hence, within the 10s moving window, the ~ 50 m in the integral vertical range is able to resolve the eddies smaller than 140 m, and preserve the potential of capturing the inertial subrange.

The use of TKE provides an illustration that in-cloud turbulence during ACE-ENA might be slightly stronger than that observed during SOCRATES. That being said, the quantitative evaluation of the turbulent enhancement of collision-coalescence requires access to the eddy dissipation rate, as typically used in model parameterizations (Grabowski and Wang, 2013; Wittle et al., 2019). The smallest scales resolvable with the 1Hz measurement used in this study are on the order of 140 meters, thus capturing only the larger-scale end of the inertial subrange and larger turbulent motions. Consequently, the ability to resolve smaller eddies and turbulent structures, crucial for understanding the energy cascade within the inertial subrange, is limited by the too-coarse spatial and temporal resolutions and aliasing issues (Siebert et al., 2010; Muñoz-Esparza et al., 2018; Kim et al., 2022). Therefore, to fully resolve the spectrum of turbulence and quantitatively examine energy dissipation and mixing processes, access to higher-frequency measurements is required to capture smaller eddies within the inertial subrange (Siebert et al., 2010; Lu et al., 2011; Waclawczyk et al., 2017). Additionally, the further quantification of the entrainment-mixing mechanisms also requires high-frequency eddy dissipation and accurate examination of the mixing time scale (Lehmann et al., 2009; Lu et al., 2011) for individual profile. Though currently beyond the scope of this study, those mechanisms will be of interest for future investigations.’

I will note that your point that the activation fraction of available CCN to cloud droplets is highly correlated with turbulence intensity (as stated in the abstract, albeit differently worded) is valid, but

this is not quantitatively demonstrated either; you could adopt a framework as in Hu et al. (2021, doi: 10.1029/2021JD035180) to explore this point further.

Following the notion in Hu et al. (2021), we have calculated the correlation coefficients between the CCN activation ratio and the TKE, as an inter-cloud assessment. The following discussions are added to Section 4.1:

‘Previous studies have shown that the enhanced vertical turbulence (updraft velocity) can effectively facilitate CCN replenishment into the cloud layer (Hu et al., 2021; Zheng et al., 2022a&b) and increase the actual in-cloud supersaturation (Brunke et al., 2022), thus leading to a more efficient cloud droplet formation, enhancing the $ACI_{N,CB}$. By correlating the mean TKE values with the CCN activation ratio ($N_c/N_{CCN,0.35\%}$) for all individual cloud cases, the three IOPs show moderate but statistically significant correlation coefficients of 0.36, 0.55, and 0.51 for ACE-ENA summer, winter, and SOCRATES, respectively. This result reinforces the notion that the CCN activation fractions, particularly during the wintertime ACE-ENA, are significantly correlated with in-cloud turbulence intensities.’

And in the summary section:

‘The moderate but statistically significant correlation coefficients between the CCN activation fractions and the TKE agree with a previous study that found the local activation fraction of CCN to be strongly associated with increased updrafts (Hu et al., 2021).’

3. Beyond the lack of quantitative evidence supporting the hypothesis that turbulence is the cause of increased drizzle production during ACE-ENA winter, **there is a simpler, more parsimonious explanation that I believe is given short shrift in the manuscript: that a combination of a deep cloud layer along with relatively clean aerosol conditions during ACE-ENA winter results in robust drizzle generation.** You do discuss the relationship between cloud depth and precipitation susceptibility very briefly in section 4.2, but it essentially reads as a footnote versus a primary point. Given the strong dependence of cloud base rain rate on cloud depth in the empirical relation discussed in this same section (4.2), it was a major oversight that you didn’t explore this aspect further.

We agree with your argument and have revised and included the following discussion on the end of Section 3.3:

‘Drizzle formation and evolution in the ACE-ENA winter clouds are noticeably stronger than in the other two IOPs, which could be attributed to multiple factors. First, the ambient aerosols and CCN during winter are substantially fewer, featuring clean environments that promote the formation of generally larger cloud droplets due to the availability of more water content per droplet. Larger cloud droplets are more likely to collide and coalesce into drizzle drops, leading to relatively heavier precipitation (Chen et al., 2011; Duong et al., 2011; Mann et al., 2014). Furthermore, the wintertime clouds feature deeper cloud layers with mean thickness of (392.4 m) compared to the summertime clouds (336.3). In a thicker cloud layer with sufficient turbulence, the residence times of large cloud droplets and drizzle drops are elongated, and the chance of collision-coalescence growth can be effectively increased by recirculating the drizzle drops (Brost et al., 1982; Feingold et al., 1996; Magaritz et al., 2009; Ghate et al., 2021). Additionally, the prevalence of precipitation-evaporation-induced MBL cold pools, which disturb the MBL thermodynamics and contribute to turbulent mixing (Zuidema et al., 2017), during the wintertime might provide strong dynamical forcing to the warm-rain process (Jenson et al., 2021; J. Wang et al., 2022). As a result, the ACE-ENA wintertime drizzle DSD is sufficiently broadened, and the D_{mmd} is enlarged toward the cloud base. In comparison, although the SOCRATES exhibits even thicker clouds (487.4 m), the drizzle processes are seemingly suppressed by the much higher ambient aerosol and CCN concentrations.’

4. The discussion of the role of thermodynamic decoupling is incomplete, but decoupling ostensibly plays a significant role in the low values of τ encountered during all three campaigns. It would be well worth taking the next step and directly quantifying at least one decoupling metric from the observed profiles as defined by Jones et al. (2011).

We adapted the notion of Jones et al. (2011) and calculate the coupled layer and the degree of decoupling for every individual profile, as described in the following discussion in last paragraph of Section 2.1:

‘Jones et al. (2011) suggested that the MBL would be in a well-mixed and coupled condition when the difference in liquid water potential temperature (θ_L) and total water mixing ratio (q_t) between the bottom of MBL and the inversion layer are less than 0.5 K and 0.5 g/kg, respectively. In this regard, since the coupled and decoupled MBL conditions coexist in the selected cloud cases in this study, particularly in ACE-ENA summer, which is characterized by anomalously low BL heights and substantial BL decoupling. Previous studies found that, under the decoupling condition, the aerosols, CCN, and moisture sources near the surface are disconnected from the cloud layer aloft, hence exerting much less effective impact on the cloud microphysics (Zheng et al., 2022a; Christensen et al., 2023). Therefore, we adapt and modify the metric in Jones et al. (2011) to calculate the sub-cloud coupled layer, in order to ensure the aerosols and CCN measured sub-cloud are in a well-mixed state and can represent the actual interaction (or contact) with the cloud layer. In this study, the q_t and θ_L at the cloud base are calculated, and then their vertical variations are examined starting from the altitude of cloud base (z_b) and looking downward. As such, the coupled point altitude (z_{cp}) is defined as the altitude where the vertical changes in q_t and θ_L exceed 0.5 K and 0.5 g/kg, respectively. Hence, the coupled layer ($H_{cp} = z_t - z_{cp}$) is defined as the layer between the cloud top altitude (z_t) and coupled point altitude (z_{cp}), hence the selection of the aerosols and CCN within the below-cloud part of the coupled layer can be viewed as in contact with the cloud. An example of the coupled layer identification is shown in Figure S2. Therefore, the degree of MBL decoupling (D_{cp}) can be quantified as the ratio of the coupled sub-cloud MBL thickness to the sub-cloud MBL thickness, where $D_{cp} = 1 - (H_{cp} - H_c)/z_b$. As shown in Table S1, the ACE-ENA summer feature with highest degree of decoupling (averaged $D_{cp}=0.504$), compared to the ACE-ENA winter ($D_{cp}=0.370$) and SOCRATES ($D_{cp}=0.277$).’

5. I am not familiar with “retrospecting” as discussed in section 4.3 and shown in Fig. 8. What is the procedure for performing this analysis? Please explain in the manuscript, as this appears to be simultaneously one of the most tentative aspects of the paper as well as something the authors are rather excited about.

We have added the following discussion on the methodology:

‘In order to examine the potential impact of the aforementioned processes on the ACI assessment, a sensitivity analysis is conducted by simply retrospectively adjusting the sub-cloud $N_{CCN0.35\%}$ according to their L_{CCN} . For each retrospective time step ΔT , the r_c values are held unchanged, and the retrospective $N_{CCN0.35\%}$ values for individual cloud cases are given by $N_{CCN0.35\%} - L_{CCN} * \Delta T$, and then the $ACI_{r, CB}$ can be recalculated. Note that assuming a constant r_c value over time inevitably induces uncertainty and biases, as it does not consider the microphysical processes affecting the cloud droplet mean size. However, previous numerical experiments show that the noticeable impact on the cloud mean radius through collision-coalescence necessitates a high degree of CCN depletion, and the quantified percentage changes in droplet mean sizes are several times less than the changes in CCN depletion (Feingold et al., 1996). Hence, the retrospective method, from an observational snapshot point of view, provides a direction that enables the assessment of $ACI_{r, CB}$ as if before the sub-cloud aerosols and CCN are scavenged by in-cloud coalescence-scavenging and precipitation scavenging processes.’

SPECIFIC COMMENTS

Each comment refers to a specific line/passage, figure, table or caption. Specific line(s) are denoted by LXX (or LXX-YY for longer passages).

L24-26: the lack of sensitivity of precipitation to aerosol during SOCRATES suggests that it inhabits a different microphysical regime than ACE-ENA. In other words, there are sufficient CCN during SOCRATES that the ACPI are effectively “saturated” with respect to increasing aerosol loading. There are numerous references discussing such buffering effects (a good starting point is Stevens and Feingold 2009, doi: 10.1038/nature08281) that I recommend the authors consult to reframe this discussion.

We have added the following discussion in Section 4.2 when discussing the precipitation susceptibility:

‘...the ACE-ENA winter feature with enhanced collision-coalescence and the drizzle-recirculating processes, especially under low N_c conditions with more larger drizzle drops, leading to the increasing the S_o values. In comparison, the higher ambient aerosol and CCN concentrations during SOCRATES lead to relatively narrower drizzle DSDs and may induce effective aerosol

buffering effects, where the warm-rain processes in cloud are already fairly suppressed, hence diminishing the sensitivity of R_{CB} to N_c (Stevens and Feingold, 2009; Fan et al., 2020; Gupta et al., 2022).’

L154-157: with respect to what are the “changes” in θ_L and q_t evaluated? The mean of the cloud layer or surface layer? Based on Fig. S1, I assume cloud layer. I am confused by this definition because “mixed layer” typically implies surface mixed layer, while you are using it to describe an elevated mixed layer. In general, I found your analysis of decoupling to be incomplete.

We have refined our discussion, please refer to our previous response on the MBL decoupling discussion.

L191-195: When you discuss “airmass origin,” at what vertical level(s) are back trajectories taken? I believe you in terms of PBL airmass, but is this also true above the PBL?

We have expanded the statements on the airmass origin as follows:

‘In the SOCRATES region, according to the previous studies involving back-trajectory analyses, dominant air masses within the MBL primarily originate from the south or from the west, skirting the Antarctic coast (Zhang et al., 2023), while the air masses above the MBL follow a similar transport pathway, they can also originate from the tip of southern Africa and transport southeast along the warm conveyor belt (McCoy et al., 2021).

Conversely, the ENA region experiences aerosols of varied origins, spanning maritime air masses to those heavily influenced by continental emissions from North America or Northern Europe, especially during the summertime (Logan et al., 2014; Wang et al., 2020). The summertime air mass back-trajectories within the MBL strongly feature recirculating flow around the Azores high. During the wintertime, however, the air masses predominantly originate in the FT, are transported above the MBL, and are then further entrained down to the MBL by large-scale subsidence, indicating less influence from continental pollution (Y. Wang et al., 2021b).’

L192 and elsewhere: Zhang et al. (2023) reference is missing in bibliography – I assume the correct reference is from (most of) the same authors in Atmosphere (doi: 10.3390/atmos14081246)?

Yes, we have added the correct reference to the reference list. Thanks for catching.

L216-217: please add a location for the further discussion, i.e., “and will be further discussed in Section X.X” or “further discussed later in this section”

We have added the location for further discussion as: ‘...and will be further discussed in Section 3.1.’

L259: are there any measurements that support your assertion that it’s both coalescence-enlargement and sea salt contributing to heightened concentration at $D_p > 1 \mu\text{m}$?

We have added the reference on previous case analysis during the summer ACE-ENA (Zheng et al., 2022b), and the long-term statistics on the coarse-mode aerosol seasonal variation over the ARM-ENA site (Zheng et al., 2018) to back up this statement.

‘The elevation in sub-cloud coarse mode aerosols observed for both ACE-ENA IOPs (as seen in Fig. 2) can be attributed both to the coalescence-enlargement process and the intrusion of sea spray aerosols (e.g., sea salt). As illustrated and analyzed based on a case study during summertime that exhibits the signal of cloud-processing aerosols (Zheng et al., 2022b), as well as the long-term aerosol physicochemical properties over the ARM-ENA ground-based observatory (Zheng et al., 2018), particularly during the winter season where the production of sea spray aerosol is prevalent.’

L268-269: I don’t think you’ve improved understanding of the first indirect effect. Rather, you’re adding another data point that supports what we already understand about it. So it’s more of a “confirmation” than anything novel.

We have eased the tone and changed this statement to: ‘These results have further confirmed and

reassured our understanding of the aerosol first indirect effect.’

L296: Verb tense disagreement. Recommend you make everything present tense: “...air **is** entrained into the boundary layer...”

We have changed this statement to present tense as ‘The warmer and drier air near the cloud top entrains into the cloud layer and further mixes downward, often resulting in the evaporation of small cloud droplets and the shrinking of droplet sizes, which oppose condensational growth (Desai et al., 2021).’

L300-302: Does this difference in r_c profiles tell you anything about mixing regime (i.e. homogeneous vs. inhomogeneous)?

We have added the following discussion on the entrainment mixing regime:

‘For the three IOPs, the N_c and LWC_c exhibited a stable trend from the cloud base, followed by a noticeable decrease near the cloud top mixing zone, while the changes in r_c trend were not as dramatic as the others. Such characteristics of the cloud microphysics vertical profiles indicate the signal of inhomogeneous mixing, which occurs when dry and warm air mixes unevenly and not rapidly with the cloud air, hence partially evaporating the cloud droplets (Lehmann et al., 2009; Lu et al., 2011). The results are consistent with findings in stratocumulus clouds over multiple field campaigns (Brenguier et al., 2011; Jia et al., 2019) and with the findings for selected cases during the ACE-ENA (Yeom et al., 2021), and the SOCRATES (Sanchez et al., 2020). While the near-cloud r_c profiles for the ACE-ENA cases exhibit more constant variation, which could be possibly attributed to more effective mixing due to the stronger entrainment rate, particularly during the ACE-ENA winter, eventually reaching a smaller equilibrium in terms of mean sizes.’

L304: I can’t imagine the water vapor source from entrainment evaporation is a leading order term in the BL q_t budget, and I’m having some difficulty understanding the relevance of raising this point. As you state, the net impact of entrainment on BL q_t should be negative (i.e., entrainment mixes in drier air, so BL-mean q_t should decrease), which would imply this evaporative source is

a relatively minor offset to the entrainment drying sink. Eyeballing it from Fig. 3c, it looks like there's maybe 0.2 g/m³ of vapor that is liberated from the clouds (extrapolating the midcloud ql lapse rate to $z_i=1$) – but I can't assess this any further since you don't show any mean q_t or q_v profiles. Both the G1 and the GV have open path hygrometers from which q_v can be accurately measured in cloud – if you want to get into a discussion of the vapor budget, it would be helpful to explicitly show some of these measurements.

We are not intended to suggest that the evaporation will cause a difference in an order of magnitude. We appreciate your consideration on this argument, however, we have considered to delete this statement to avoid further confusion, and changed it to:

'As cloud-top entrainment mixing can shrink large cloud droplets via evaporation, depending on the entrainment mixing rate, the nearly constant r_c values (at $z_i > 0.8$) might represent the equilibrium balance between two competing processes: cloud droplet condensational and collision-coalescence growths, and the entrainment mixing evaporation effects.'

L305-310: What evidence do you have for re-condensation beyond the inferences made from bulk profiles? And shouldn't there be *more rapid* growth on smaller drops since condensation rate is inversely proportional to surface area? You have the full DSDs to demonstrate the validity of the generalizations you're drawing. Please provide evidence for these assertions.

L313: What is gained by quantifying Δr_c ? Is this not just a different way of expressing the subadiabatic ql lapse rate via the relation $r_e = kr_v$ where $r_v \propto (q_i/N)^{1/3}$?

Response to L305-310 & L313:

We are trying to provide a bulk descriptive discussion to introduce the discussion on the cloud microphysical responses on aerosols later, we have removed the argument on re-condensation and changed the discussion here as:

'When dry air entrainment occurs at the cloud top, some of the upper-level smaller cloud droplets will evaporate, which leads to decreases in N_c (Fig. 3a). As cloud-top entrainment mixing can

shrink large cloud droplets via evaporation, depending on the entrainment mixing rate, the nearly constant r_c values (at $z_i > 0.8$) might represent the equilibrium balance between two competing processes: cloud droplet condensational and collision-coalescence growths, and the entrainment mixing evaporation effects.

The increases of r_c (Δr_c) from cloud base to cloud top are 4.03 μm , 4.78 μm and 5.85 μm , with percentage increases of 66%, 68% and 79%, for SOCRATES, ACE-ENA summer and winter, respectively. Even though, theoretically, the condensational growth effect would be more pronounced on smaller cloud droplets due to their smaller surface area (Wallace and Hobbs, 2006), SOCRATES exhibits the thickest mean cloud thickness but experienced the least r_c increases among the three IOPs. This suggests that high aerosol loadings are limiting the overall growth of the cloud DSD in SOCRATES clouds, while the ACE-ENA winter clouds show the strongest r_c increase, in contrast. This comparison suggests different cloud microphysical responses to aerosol perturbations in the three IOPs, which will be further discussed in Section 4.1.'

L337-340: Please define what terms are being used to calculate the “reduction of LWC_c ” – it’s not clear to me what you’re doing here.

We are comparing the LWC_c deficit between the three IOPs, from where it starts to decrease according to the mean profiles. We have added more description to the discussion:

‘Considering the near cloud-top proportion of cloud where the LWC_c experienced decrease, the difference in LWC_c (between the cloud top value the upper-middle cloud maximum for the mean profiles) for the ACE-ENA summer (-0.032 g m^{-3}) is higher than the reductions in winter (-0.018 g m^{-3}) and SOCRATES (-0.009 g m^{-3}).’

L368-369: Water vapor competition matters in a water-vapor limited regime (which seems quite obvious when stated that way...), but it seems to me that ACE-ENA winter is more of an aerosol limited regime. Appealing to water vapor competition is not a “one size fits all” conclusion that can be universally applied.

We have added the following discussion in this regard:

‘In addition, the discrepancies in ϵ between the three IOPs may be attributed to the sub-cloud aerosol differences, which essentially resided in different microphysical regimes. Y. Wang et al. (2021a) stated that higher aerosol loading would lead to increased ϵ due to the water vapor competition effect, supporting the discrepancy between SOCRATES and ACE-ENA summer IOPs, which can be categorized as a water-vapor-limited regime. Meanwhile, the ACE-ENA wintertime IOP exhibits characteristics of an aerosol-limited regime, in which the cloud DSDs tend to be narrower than in the water-limited regime, due to enhanced droplet growth, and the ϵ values further decrease with height via the condensational narrowing effect (J. Chen et al., 2018).’

L370: do you quantify skewness or is this a qualitative description?

We have calculated the skewness values for the cloud DSDs and include them in the discussion: ‘For the four cloud portions from cloud base to cloud top, the skewness of summertime (wintertime) cloud DSDs are 0.627 (0.271), 0.358 (0.175), 0.098 (-0.063), and -0.362 (-0.554), respectively.’

L371-372: can you say with certainty whether coarse mode aerosols are drizzle residuals vs. “primary production” of sea salt from the surface? Seems like a difficult “chicken and egg” problem to assess from in situ data without either aerosol composition information or some modeling work to back up the statement.

Since both campaigns lack continuous coarse mode chemical compositions and the offline analyzed samples are inadequate for the select cases. We have added the following discussion regarding this issue:

‘These coarse mode aerosols, whether from primary production of sea spray or from the residuals of evaporated drizzle drops, are more easily activated (or re-activated) into larger cloud droplets when they intrude (or recirculate) into the cloud layer (Hudson and Noble, 2020; Hoffmann and Feingold, 2023). Nevertheless, it is challenging to pinpoint the actual origins of coarse mode aerosols from the perspective of aircraft observational snapshots, thus requiring further numerical modeling work.’

L436: I assume you mean liquid water *content*, but this is not stated

We have changed this statement to:

‘Furthermore, the similarity in the vertical integral of LWC_c (as shown in Fig. 3c) provides comparable liquid water between three IOPs’

L490-491: What are the uncertainties in S_0 ? The correlations do not look very strong in Fig. 7a.

The S_0 values are 0.979, 1.229 and 1.638, with the absolute values of correlation coefficients are 0.33, 0.29 and 0.45, for SOCRATES, ACE-ENA summer and winter, respectively. These correlation coefficient values fall within the reasonable range found in previous studies on precipitation susceptibility in MBL stratus and stratocumulus clouds (Jung et al., 2016; Gupta et al., 2022), and indicate statistically significant (but not strong) dependences of R_{CB} on N_c , since the R_{CB} is not solely dependent on the N_c .

L514: Double check the equation, it looks like something is not formatted correctly or there are some extra characters.

We have corrected the equation:

$$R_{CB} = 1.73e^{-10} H_c^{3.6} N_a^{-1}$$

L536: Should there be a minus sign in the 2nd parenthetical?

Yes, we have corrected it.

L538-539: This sentence needs to be restructured, it is currently a fragment.

We have changed it to ‘As the results indicate, the ACE-ENA clouds experience more substantial sub-cloud CCN loss than SOCRATES, especially in wintertime precipitating clouds.’

L542-543: you could expand upon this point more, it’s a bit too concisely expressed to be easily understood.

We have further expanded on this discussion as:

‘Recall that the assessment of $ACI_{r,CB}$ relies on the relative changes of r_c and N_{CCN} , while the different L_{CCN} for individual cases can result in the shrinking of the N_{CCN} variation ranges (imagine the abundant CCN are depleted by the coalescence-scavenging). In other words, the given change in r_c corresponds to a narrowed change in N_{CCN} . Mathematically speaking, the assessment of $ACI_{r,CB}$ depends on the ratio of the numerator (change in r_c) and the denominator (change in N_{CCN}). Under the circumstances of substantial cloud-processing to the aerosols, the altered sub-cloud CCN budgets are reflected as a smaller denominator, versus the less altered numerator, hence mathematically presented as an enlarged $ACI_{r,CB}$.’

L569: it is rather counterintuitive that the “pristine” environment has the strongest aerosol loading. This is paradoxical because we often use the terms “pristine” vs “polluted” to imply low vs. high aerosol loading, respectively. You clearly mean it in the sense that the SO region is minimally impacted by anthropogenic emissions. So a little word-smithing is needed to resolve this incongruity.

We have changed the term ‘pristine’ to ‘pre-industrial’ in order to describe the SOCRATES nature, as well as in the relevant discussion throughout the revised manuscript.

E.g., ‘The SOCRATES features the pre-industrial natural environment enriched by aerosols from marine biological productivity and without the contamination of anthropogenic aerosols.’

L594: fully agreed that the assumption of constant f_{ad} used in satellite N retrievals is problematic, but how do the campaign-average profiles presented here improve this situation? On a profile-by-profile (or, from the satellite perspective, pixel-by-pixel) basis, is there anything from the measurements that suggest potential predictors of f_{ad} ? Or do you view your contribution as simply another data point showing that an assumed value of 0.8 is unrealistic?

We have eased our tone and modified our discussion to:

‘While satellite retrievals of droplet number concentration heavily rely on the adiabatic cloud assumption and are usually given as a constant of $f_{ad} = 0.8$, the in-situ observational evidence found in this study further confirms the unrealistic nature of this assumption. It will be of interest

to utilize multiple aircraft measurements (campaigns) to explore the variability of MBL cloud and drizzle microphysical properties over different marine regions. This can help examine potential predictors for f_{ad} , which will aid in satellite-based retrievals and aerosol-cloud interaction assessments (Painemal and Zuidema, 2011; Grosvenor et al., 2018; Painemal et al., 2021).’

Figure 2: This figure could be compressed in the horizontal, which would accentuate the shape of the distribution in a manner pleasing to the eye. As it currently stands, this looks “stretched out” and there aren’t many interesting detail/wiggles in any of the curves that merit such a long aspect ratio.

Figure 2 is replotted with smaller aspect ratio.

Figure 3: What do the shaded regions denote? Interquartile range? Standard deviation? 5th-95th percentiles? No info in caption.

The shaded region denotes the inter-cloud-case standard deviation. We have added this information to the captions.

Figure S2: put the two panels on the same plot so they can be directly compared.

Figure S2 is updated accordingly.

Figure S3: why does this size range needs to be separated from Fig. 2 in the main manuscript?

The coarse-mode range is added to the new Fig. 2, and the original Fig. S3 is removed.

Figure S4: please add uncertainty shading as you did in Fig. 3 of the manuscript, it would be helpful to see the variability of subadiabaticity within campaigns

The standard deviations are added as shading areas in Fig. S4.

Table S1: Please include f_{ad} in this table.

The f_{ad} values are included.

Table S2: it looks like this table is cutoff. Are there more variables not shown?

We have fixed the table appearance.

REFERENCE

- Atlas, R. L., Bretherton, C. S., Blossey, P. N., Gettelman, A., Bardeen, C., Lin, P., and Ming, Y.: How Well Do Large-Eddy Simulations and Global Climate Models Represent Observed Boundary Layer Structures and Low Clouds Over the Summertime Southern Ocean?, *Journal of Advances in Modeling Earth Systems*, 12, e2020MS002205, <https://doi.org/10.1029/2020MS002205>, 2020.
- Brenguier, J. L., Burnet, F., and Geoffroy, O.: Cloud optical thickness and liquid water path – does the k coefficient vary with droplet concentration?, *Atmos. Chem. Phys.*, 11, 9771-9786, 10.5194/acp-11-9771-2011, 2011.
- Brost, R. A., Wyngaard, J. C., and Lenschow, D. H.: Marine Stratocumulus Layers. Part II: Turbulence Budgets, *J. Atmos. Sci.*, 39, 818-836, 10.1175/1520-0469(1982)039<0818:MSLPIT>2.0.CO;2, 1982.
- Chen, J., Liu, Y., Zhang, M., and Peng, Y.: Height Dependency of Aerosol-Cloud Interaction Regimes, *J. Geophys. Res.-Atmos.*, 123, 491-506, <https://doi.org/10.1002/2017JD027431>, 2018.
- Grabowski, W. W. and Wang, L.-P.: Growth of Cloud Droplets in a Turbulent Environment, *Annual Review of Fluid Mechanics*, 45, 293-324, 10.1146/annurev-fluid-011212-140750, 2013.
- Fan, C., Wang, M., Rosenfeld, D., Zhu, Y., Liu, J., and Chen, B.: Strong Precipitation Suppression by Aerosols in Marine Low Clouds, *Geophys. Res. Lett.*, 47, e2019GL086207, <https://doi.org/10.1029/2019GL086207>, 2020.
- Feingold, G., Kreidenweis, S. M., Stevens, B., and Cotton, W. R.: Numerical simulations of stratocumulus processing of cloud condensation nuclei through collision-coalescence, *J. Geophys. Res.-Atmos.*, 101, 21391-21402, <https://doi.org/10.1029/96JD01552>, 1996.
- Hu, A. Z., Igel, A. L., Chuang, P. Y., and Witte, M. K.: Recognition of Inter-Cloud Versus Intra-Cloud Controls on Droplet Dispersion With Applications to Microphysics Parameterization, *J. Geophys. Res.-Atmos.*, 126, e2021JD035180, <https://doi.org/10.1029/2021JD035180>, 2021.
- Ghate, V. P., Cadeddu, M. P., Zheng, X., and O'Connor, E.: Turbulence in the Marine Boundary Layer and Air Motions below Stratocumulus Clouds at the ARM Eastern North Atlantic Site, *J. Appl. Meteorol. Clim.*, 60, 1495-1510, 10.1175/JAMC-D-21-0087.1, 2021.

- Gupta, S., McFarquhar, G. M., O'Brien, J. R., Poellot, M. R., Delene, D. J., Miller, R. M., and Small Griswold, J. D.: Factors affecting precipitation formation and precipitation susceptibility of marine stratocumulus with variable above- and below-cloud aerosol concentrations over the Southeast Atlantic, *Atmos. Chem. Phys.*, 22, 2769–2793, <https://doi.org/10.5194/acp-22-2769-2022>, 2022.
- Jia, H., Ma, X., and Liu, Y.: Exploring aerosol–cloud interaction using VOCALS-REx aircraft measurements, *Atmos. Chem. Phys.*, 19, 7955–7971, [10.5194/acp-19-7955-2019](https://doi.org/10.5194/acp-19-7955-2019), 2019.
- Jensen, M. P., Ghate, V. P., Wang, D., Apoznanski, D. K., Bartholomew, M. J., Giangrande, S. E., Johnson, K. L., and Thieman, M. M.: Contrasting characteristics of open- and closed-cellular stratocumulus cloud in the eastern North Atlantic, *Atmos. Chem. Phys.*, 21, 14557–14571, [10.5194/acp-21-14557-2021](https://doi.org/10.5194/acp-21-14557-2021), 2021.
- Jones, C. R., Bretherton, C. S., and Leon, D.: Coupled vs. decoupled boundary layers in VOCALS-REx, *Atmos. Chem. Phys.*, 11, 7143–7153, [10.5194/acp-11-7143-2011](https://doi.org/10.5194/acp-11-7143-2011), 2011.
- Jung, E., Albrecht, B. A., Sorooshian, A., Zuidema, P., and Jonsson, H. H.: Precipitation susceptibility in marine stratocumulus and shallow cumulus from airborne measurements, *Atmos. Chem. Phys.*, 16, 11395–11413, [10.5194/acp-16-11395-2016](https://doi.org/10.5194/acp-16-11395-2016), 2016.
- Kim, S. H., Kim, J., Kim, J. H., and Chun, H. Y.: Characteristics of the derived energy dissipation rate using the 1 Hz commercial aircraft quick access recorder (QAR) data, *Atmos. Meas. Tech.*, 15, 2277–2298, [10.5194/amt-15-2277-2022](https://doi.org/10.5194/amt-15-2277-2022), 2022.
- Lang, F., Ackermann, L., Huang, Y., Truong, S. C. H., Siems, S. T., and Manton, M. J.: A climatology of open and closed mesoscale cellular convection over the Southern Ocean derived from Himawari-8 observations, *Atmos. Chem. Phys.*, 22, 2135–2152, [10.5194/acp-22-2135-2022](https://doi.org/10.5194/acp-22-2135-2022), 2022.
- Lehmann, K., Siebert, H., and Shaw, R. A.: Homogeneous and inhomogeneous mixing in cumulus clouds: dependence on local turbulence structure, *J. Atmos. Sci.*, 66, 3641–3659, <https://doi.org/10.1175/2009JAS3012.1>, 2009.
- Lu, C., Liu, Y., and Niu, S.: Examination of turbulent entrainment-mixing mechanisms using a combined approach, *J. Geophys. Res.*, 116, D20207, <https://doi.org/10.1029/2011JD015944>, 2011

- Mechem, D. B., Wittman, C. S., Miller, M. A., Yuter, S. E., and de Szoeke, S. P.: Joint Synoptic and Cloud Variability over the Northeast Atlantic near the Azores, *J. Appl. Meteorol. Clim.*, 57, 1273-1290, <https://doi.org/10.1175/JAMC-D-17-0211.1>, 2018.
- McCoy, I. L., Wood, R., and Fletcher, J. K.: Identifying Meteorological Controls on Open and Closed Mesoscale Cellular Convection Associated with Marine Cold Air Outbreaks, *J. Geophys. Res.-Atmos.*, 122, 11,678-611,702, <https://doi.org/10.1002/2017JD027031>, 2017.
- Muñoz-Esparza, D., Sharman, R. D., and Lundquist, J. K.: Turbulence Dissipation Rate in the Atmospheric Boundary Layer: Observations and WRF Mesoscale Modeling during the XPIA Field Campaign, *Mon. Weather Rev.*, 146, 351-371, <https://doi.org/10.1175/MWR-D-17-0186.1>, 2018.
- Sanchez, K. J., Roberts, G. C., Diao, M., and Russell, L. M.: Measured Constraints on Cloud Top Entrainment to Reduce Uncertainty of Nonprecipitating Stratocumulus Shortwave Radiative Forcing in the Southern Ocean, *Geophys. Res. Lett.*, 47, e2020GL090513, <https://doi.org/10.1029/2020GL090513>, 2020.
- Siebert, H., Shaw, R. A., and Warhaft, Z.: Statistics of Small-Scale Velocity Fluctuations and Internal Intermittency in Marine Stratocumulus Clouds, *J. Atmos. Sci.*, 67, 262-273, <https://doi.org/10.1175/2009JAS3200.1>, 2010.
- Stevens, B. and Feingold, G.: Untangling aerosol effects on clouds and precipitation in a buffered system, *Nature*, 461, 607-613, 10.1038/nature08281, 2009.
- Rémillard, J. and Tselioudis, G.: Cloud Regime Variability over the Azores and Its Application to Climate Model Evaluation, *J. Climate*, 28, 9707-9720, <https://doi.org/10.1175/JCLI-D-15-0066.1>, 2015.
- Terai, C. R. and Wood, R.: Aircraft observations of cold pools under marine stratocumulus, *Atmos. Chem. Phys.*, 13, 9899-9914, 10.5194/acp-13-9899-2013, 2013.
- Wacławczyk, M., Ma, Y. F., Kopeć, J. M., and Malinowski, S. P.: Novel approaches to estimating the turbulent kinetic energy dissipation rate from low- and moderate-resolution velocity fluctuation time series, *Atmos. Meas. Tech.*, 10, 4573-4585, 10.5194/amt-10-4573-2017, 2017.
- Wang, J., Wood, R., Jensen, M. P., Chiu, J. C., Liu, Y., Lamer, K., Desai, N., Giangrande, S. E., Knopf, D. A., Kollias, P., Laskin, A., Liu, X., Lu, C., Mechem, D., Mei, F., Starzec, M.,

- Tomlinson, J., Wang, Y., Yum, S. S., Zheng, G., Aiken, A. C., Azevedo, E. B., Blanchard, Y., China, S., Dong, X., Gallo, F., Gao, S., Ghate, V. P., Glienke, S., Goldberger, L., Hardin, J. C., Kuang, C., Luke, E. P., Matthews, A. A., Miller, M. A., Moffet, R., Pekour, M., Schmid, B., Sedlacek, A. J., Shaw, R. A., Shilling, J. E., Sullivan, A., Suski, K., Veghte, D. P., Weber, R., Wyant, M., Yeom, J., Zawadowicz, M., and Zhang, Z.: Aerosol and Cloud Experiments in the Eastern North Atlantic (ACE-ENA), *B. Am. Meteorol. Soc.*, 103, E619-E641, 10.1175/BAMS-D-19-0220.1, 2022.
- Witte, M. K., Chuang, P. Y., Ayala, O., Wang, L.-P., and Feingold, G.: Comparison of Observed and Simulated Drop Size Distributions from Large-Eddy Simulations with Bin Microphysics, *Mon. Weather Rev.*, 147, 477-493, <https://doi.org/10.1175/MWR-D-18-0242.1>, 2019.
- Zhang, X., Dong, X., Xi, B., and Zheng, X.: Aerosol Properties and Their Influences on Marine Boundary Layer Cloud Condensation Nuclei over the Southern Ocean, *Atmosphere-Basel*, 14, 10.3390/atmos14081246, 2023.
- Zheng, G., Wang, Y., Aiken, A. C., Gallo, F., Jensen, M. P., Kollias, P., Kuang, C., Luke, E., Springston, S., Uin, J., Wood, R., and Wang, J.: Marine boundary layer aerosol in the eastern North Atlantic: seasonal variations and key controlling processes, *Atmos. Chem. Phys.*, 18, 17615-17635, 10.5194/acp-18-17615-2018, 2018.
- Zuidema, P., Torri, G., Muller, C., and Chandra, A.: A Survey of Precipitation-Induced Atmospheric Cold Pools over Oceans and Their Interactions with the Larger-Scale Environment, *Surveys in Geophysics*, 38, 1283-1305, 10.1007/s10712-017-9447-x, 2017.