

MESSAGEix-GLOBIOM Nexus Module: Integrating water sector and climate impacts

Muhammad Awais^{1,2}, Adriano Vinca¹, Edward Byers¹, Stefan Frank³, Oliver Fricko¹, Esther Boere³, Peter Burek³, Miguel Poblete Cazenave¹, Paul Natsuo Kishimoto¹, Alessio Mastrucci¹, Yusuke Satoh^{3,5}, Amanda Palazzo³, Madeleine McPherson², Keywan Riahi^{1,2,4}, Volker Krey¹

¹ Energy, Climate & Environment Program, International Institute of Applied Systems Analysis, Laxenburg, Austria

² Institute for Integrated Energy Systems, University of Victoria, Canada

³ Biodiversity and Natural Resources Program, International Institute of Applied Systems Analysis, Laxenburg, Austria

⁴ Technical University Graz, Austria

⁵ Moon Soul Graduate School of Future Strategy, Korea Advanced Institute of Science and Technology, Daejeon, Korea

Correspondence to: Muhammad Awais (awais@iiasa.ac.at)

Abstract. The Integrated Assessment Model (IAM) MESSAGEix-GLOBIOM developed by IIASA is widely used to analyse global change and socioeconomic development scenarios within the energy and land systems across different scales. However, until now, the representation of impacts from climate impacts and water systems within the IAM has been limited. We present a new nexus module for MESSAGEix-GLOBIOM that improves the representation of climate impacts and enables the analysis of interactions between population, economic growth, energy, land, and water resources in a dynamic system. The module uses a spatially resolved representation of water systems to retain hydrological information without compromising computational feasibility. It maps simplified water availability and key infrastructure assumptions with the energy and land systems. The results of this study inform on the transformation pathways required under climate change impacts and mitigation scenarios. The pathways include multi-sectoral indicators highlighting the importance of water as a constraint in energy and land-use decisions and the implications of global responses to limited water availability from different sources, suggesting possible shifts in the energy and land sectors.

1 Introduction

Multiple inter-sectoral objectives, including economic, environmental, and social goals, are integrated into formulating effective, sustainable policies over the long term. Nexus approaches have been increasingly used and considered in policy analysis, including the Sustainable Development Goals (SDGs), to exploit synergies and avoid negative trade-offs and unintended consequences considering the increased awareness of the interdependencies between the energy-water-land (EWL) sectors. Climate policy assessment helps identify pathways that can help achieve the 'well below 2°C' global warming target and other SDGs, such as access to clean

40 energy, water and sanitation, and food security (Parkinson et al., 2018; Khan et al., 2017, 2018;
Parkinson et al., 2019b). In addition to climate change risks, limited resources compounded by
population and GDP growth pose an additional challenge (Byers et al., 2018). Integrated
Assessment Models (IAMs) help researchers and policymakers understand the long-term
45 consequences of varying socioeconomic development and climate change scenarios. These
scenarios assess the costs and benefits of climate change impacts and mitigation strategies. These
models integrate sectors (global economy, energy, water, agriculture, and forestry) to provide
policy insights relevant to climate change scenarios (Weyant, 2017). IAMs provide long-term
transformation pathways to answer critical questions on climate change transition to ambitious
climate policy goals (Riahi et al., 2017).

50 Substantial efforts have been made to develop scenarios that inform a range of futures
with varying societal and socioeconomic assumptions. (Riahi et al., 2017) The most used set of
scenarios in IAMs includes the Shared-Socio-economic Pathways (SSPs), a group of five
quantified narratives for the evolution of socioeconomic development globally for the 21st
century (O'Neill et al., 2017), and Representation Concentration Pathways (RCPs), a set of four
55 scenarios spanning a range of radiative forcing values (van Vuuren et al., 2011). These narratives
have been translated into assumptions for economic growth, population change, and urbanization
to analyse baseline and climate mitigation scenarios (Riahi et al., 2017).

Although SSPs were designed to analyze the challenges for mitigation and climate
adaptation, integration of climate impacts and adaptation of energy and land sectors to water
60 sector constraints has, until recently, been limited in the IAM scenarios due to substantial
challenges in technical implementation and representation of climate impacts. Long-term
assessment of climate mitigation scenarios often neglects the climate impacts on system
performance, resulting in avoiding adaptation costs in the analysis (Calvin et al., 2013; Piontek et
al., 2021). IAMs typically operate at a regional or continental scale to inform future pathways,
65 whereas adaptation strategies require a more nuanced, localized focus emphasizing national and
sub-national levels (Andrijevic et al., 2023). More detailed information on the spatial distribution
of costs and benefits of impacts and adaptation is required to inform adaptation actions and
policies (Patt et al., 2010).

Impact modelling activities across diverse modelling groups, such as the
70 Intercomparison Model project (ISIMIP) (Frieler et al., 2017), have been carried out to understand
the impacts of climate change better individually. These sectoral assessments evaluate biophysical
impacts such as changing yields, runoff changes, food production, and groundwater. Economic
impacts are subsequently estimated using various methodologies, chosen based on the specific
type of impact considered, such as the correlation between climate damages and temperature
75 variations. Some studies have empirically linked climate conditions with socioeconomic systems
and incorporated distributional factors into cost-benefit models, resulting in increased social costs
of carbon and more stringent mitigation pathways (Parry and Carter, 2019; Howard and Sterner,
2017). Incorporating the representation of biophysical climate impacts into integrated assessment
models is crucial to understand how various sectors influence techno-economic scenarios and to

80 identify appropriate mitigation and adaptation strategies (van Maanen et al., 2023; Andrijevic et al., 2023). (Piontek et al., 2021) analyzed the economic impacts of climate change using the REMIND IAM model, but biophysical climate impacts were not represented. (Soergel et al., 2021a) emphasized the significance of considering the consequences of climate impacts and evaluating how integrated scenarios respond to these impacts, especially regarding sustainable development pathways. (Schultes et al., 2021) highlights the economic impact of climate change, advocating for immediate mitigation to reduce long-term damages and align with cost-effective Paris Agreement targets. This study proposes a framework incorporating high-resolution model outputs of biophysical climate impacts into IAMs, strengthening the water sector's resilience, and crafts scenarios with sustainable development objectives to evaluate climate change effects across various pathways, including mitigation, adaptation, and sustainability.

90 New analytical approaches and solutions are required to address the challenges of impact and adaptation in long-term policy analysis (Wang et al., 2016; Patt et al., 2010; Riahi et al., 2017). There is a need for a balanced synthesis of Shared Socio-economic Pathways (SSP) narratives with climate impacts, adaptation, and resilience pathways to assess water, food, and energy security to assess sectoral adaptation costs and impacts (Rasul, 2016; Schleussner et al., 2021). Regions highly exposed to climate impacts, highly vulnerable populations (Byers et al., 2018), and developing regions face the biggest challenge in adapting to climate change impacts and simultaneously meeting growing population-driven demands in the EWL sectors (Rasul and Sharma, 2016). Integrating cross-sectoral EWL nexus analysis in IAMs can help identify trade-offs and synergies, integrate policy implementations, and address equity dimensions, such as the population exposed to hunger or lacking access to sanitation and electricity. This holistic approach is designed to elicit a model endogenous response to climate impacts and SDGs constraints, thereby enhancing systemic resilience and advancing sustainable development. However, it does not delineate specific adaptation policies at the community level. Due to the spatial and temporal complexity of hydrological data, it is challenging to translate hydrological information into the IAMs. Usually, the spatial extent of IAMs is macro-regions, and the aggregated hydrological information loses adequate information at a macro-level. There is always a need to find a middle ground between showing the hydrological process more accurately and lowering the cost of computing (Fricko et al., 2016; Parkinson et al., 2019b). There have been efforts to link a higher spatial resolution water sector to account for hydrological balance and constraints in IAMs, such as (Yates, 1997) and (Kim et al., 2016). Addressing the identified gaps, this study proposes a framework that integrates climate impacts with an emphasis on the water sector's role in climate change and develops scenarios in sync with sustainable development assumptions to evaluate the effects of climate change within the contexts of mitigation, adaptation, and sustainable development pathways.

115 This paper introduces a new module of the global MESSAGEix-GLOBIOM framework (Riahi et al., 2021; Krey et al., 2016). The Nexus module attempts to fill the gap in integrated assessments by improving the representation of biophysical climate impacts across the EWL sectors and enhancing the water sector representation. We develop scenarios that can effectively

120 capture climate impacts across multiple sectors using this module. Then, these scenarios are
combined with SDG targets in EWL sectors to capture the synergies and trade-offs of climate
impacts and sustainable development pathways.

125 The manuscript is structured as follows: Section 2 comprehensively explains the
module's structure, improvements, and modular procedures, with detail on specific components
of the module, such as the water sector, biophysical climate impacts, Sustainable Development
Goals, and flexibility at different scales (with Zambia as an example), described in section 3.
Section 4 presents the results of the module's ability to answer different research questions, and
Section 5 concludes with a summary of the study's significant findings and contributions.

2. Model structure & workflows

130 Least-cost optimization using engineering-economic modelling is a common approach
for long-term energy, water, and land planning (Barbier, 2012; Khan et al., 2017). However, it is
not typically performed in a holistic manner that jointly considers system solutions across sectors
in a single algorithm. These approaches have been a vital component of the MESSAGEix
135 framework in analysing sustainable transition in climate change mitigation and sustainable
socioeconomic development (Khan et al., 2018; Huppmann et al., 2019). Engineering-economic
modelling methods to quantify impacts, resource potential, and costs across different spatial and
temporal scales are employed within the nexus module. The approach is both engineering and
economical in scope because it combines physically based models of infrastructure systems with
140 cost functions and decision rules for operation, expansion, and retirement at the process level
through time. The theoretical underpinning of decision modelling is that system design choices
are made at least cost over the planning horizon in a perfectly foresight, integrated way. The end-
user prices for consumers are minimized, and flexibilities across sectors to absorb sectoral trade-
offs are fully utilized and planned for in advance.

145 The "nexus" module of the MESSAGEix-GLOBIOM framework, MESSAGEix-
GLOBIOM Nexus v1 presented in this paper, contains endogenous spatially- and temporally
explicit climate impact constraints and water allocation algorithms. This module extends the
foundational work carried out by (Parkinson et al., 2019b). It addresses the gaps in the previous
study by improving the water sector resolution, water constraints, and climate impacts. The
150 module here refers to expanding the core global framework of MESSAGEix-GLOBIOM to
represent specific dimensions straightforwardly at the cost of increased computational complexity
and cost. The MESSAGEix-GLOBIOM Integrated Assessment framework is a global energy-
economic-agricultural-land use model that evaluates the interconnected global energy systems,
agriculture, land use, climate, and the economy. The MESSAGEix framework optimizes the total
155 discounted system costs across all energy, land-use, and water sector representations using Linear
Programming. It provides options for both perfect foresight and recursive-dynamic modes. Its
adaptability and flexibility make it a powerful instrument for optimizing transformation pathways
at various scales, emphasizing minimizing system costs. It comprises five complementary
modules: the energy model MESSAGEix (Huppmann et al., 2019), the land use model

160 GLOBIOM (Havlík et al., 2014), the air pollution and greenhouse gas (GHG) model GAINS, the
aggregated macro-economic model MACRO, and the simple climate model MAGICC
(Meinshausen et al., 2011). The framework combines the MESSAGEix and GLOBIOM models
to assess and model policy scenarios' economic, social, and environmental implications. The
framework comprehensively examines the trade-offs and synergies between numerous policy
165 objectives, such as reducing greenhouse gas emissions, boosting food security, and safeguarding
natural resources. To assess sustainable development targets, the framework is utilized to evaluate
the feasibility and implications of alternative policy choices and to guide decision-making.

The nexus module simultaneously determines energy portfolio, land use, associated
water requirements, and feedback from constrained resources, such as limited water availability
for energy and land use resource usage. It includes a framework for connecting information from
170 hydrological models. It is designed to adapt any Global Hydrological Model (GHM) output and
be flexible across different spatial scales (regional definitions, global and country scales). A
higher-resolution spatial layer at the basin scale is embedded within the module to retain valuable
hydrological data. The information from the water sector is then mapped to the global
MESSAGEix energy system at the MESSAGEix native region level. This connects valuable water
175 resource data to the energy sectors and vice versa. The framework balances basin-level water
availability and demand while mapping water necessary for energy and land usage at the
MESSAGE native region level. The nexus module tracks annual municipal and industrial water
demand, water required for power plant cooling technologies, energy extraction, and irrigation
water use, balancing through water supply from several sources, such as surface water,
180 groundwater, and desalinated water.

Furthermore, a wastewater treatment infrastructure representation tracks the water
during collection, treatment, and reuse. Water demands are tracked across urban and rural
components to enable a more comprehensive understanding of future development and adaptation
needs. Additionally, biophysical climate impacts are integrated across EWL sectors, including
185 water availability, desalination potential, hydropower potential, air-conditioning cooling demand,
power plant cooling potential, and land-use variables (bioenergy, irrigation water) to account for
the feedback associated with climate change within the module. GLOBIOM was also adjusted to
capture water supply, availability, scarcity, and demand from other sectors based on GHM's
hydrological data under different climate-forcing scenarios. In this case, GLOBIOM and the
190 MESSAGEix nexus module are configured to use outputs from gridded GHMs from the Inter-
Sectoral Impact Model Intercomparison Project (ISIMIP) (Frieler et al., 2017). This information
is specified for 210 river basins based on the Hydro SHEDS basin delineation (Lehner et al., 2006)
(Figure 3).

One of the critical features of the Nexus module is its ability to simulate global
195 interactions across multiple sectors and systems. It allows the module to represent the complex
feedback and spillover effects from policy interventions, such as the potential implications of land
use changes on the global food system and the energy sector or the water footprints of the energy
system. The framework facilitates a comprehensive assessment of policy options by integrating

200 scenario-based projections, including population and economic growth, technological
advancements, and resource limitations.

The integrated approach thoroughly considers the trade-offs and synergies between
diverse policy objectives, such as reducing greenhouse gas emissions, enhancing food security,
and protecting natural resources. Considering biophysical climate impacts across different sectors
helps to access different adaptation needs and responses in different sectoral outputs across
205 different pathways. In the context of sustainable development, it can analyse the viability and
implications of various policy alternatives and inform decision-making.

The MESSAGEix-GLOBIOM framework allows flexible integration with different
modules, such as those on water, transport, materials, and buildings. The development process of
the nexus module is divided into four phases: (i) identifying databases and literature studies for
210 key assumptions; (ii) data processing to make the data model compatible; (iii) setting the core
module, which compiles the data and populates it into the core model; and (iv) post-processing of
the model outputs to provide ready-to-use results in a database and for visualization tools such as
IIASA scenario explorer (Huppmann et al., 2018).

The module uses SSP-RCP (Shared Socioeconomic Pathways – Representative
215 Concentration Pathway) combinations as narratives for creating a baseline scenario. Each scenario
is developed using SSP-RCP combinations, national policies, and Sustainable Development Goal
(SDG) assumptions aggregated at the R11 region, a spatial delineation of 11 global regions used
in the MESSAGEix-GLOBIOM. National policies, including energy use and emission
trajectories, are formulated based on the existing MESSAGEix-GLOBIOM at 0.5° x 0.5° spatial
220 resolution, distributed monthly over the growing season based on local cropping calendars for a
10-year time step. These requirements are used as input to the GLOBIOM model. We used the
Global Hydrological Models (GHMs) outputs from the ISIMIP database (Frieler et al., 2017) for
water availability and hydropower potentials for biophysical impact indicators. The GLOBIOM
model upscales these water requirements and provides irrigation requirements at an aggregated
225 37 regions based on land-use allocation decisions.

A typical scenario from the MESSAGEix-GLOBIOM is used to develop and extend the
nexus module and consists of several crucial components (Riahi et al., 2021). Socioeconomic
assumptions on population and GDP are used to form energy demand projections. Nationally
Determined Contributions (NDCs) are applied to various sectors and configurations as policy
230 implications, including but not limited to emission targets, energy shares, capacity or generation
targets, and macro-economic targets. The reference energy system in this scenario features a
comprehensive set of energy resources and conversion technologies from extraction to
transmission and distribution. This scenario's outcome estimates technology-specific multi-sector
responses and pathways for various sectoral targets. The analysis is based on the Shared
235 Socioeconomic Pathway (SSP) 2, which builds on historical trends as the starting point. The time
horizon for the optimization framework of MESSAGEix-GLOBIOM extends from 2020 to 2100,
with a non-regular distribution of time steps.

Further information on the typical scenarios of MESSAGEix-GLOBIOM can be found in (Krey et al., 2016). The scenario is further extended from the typical scenario in the nexus module using certain policy and technological assumptions. The configuration can handle any SSP-RCP combinations to allow access to a diverse range of pathways compared to each other and the Reference scenario.

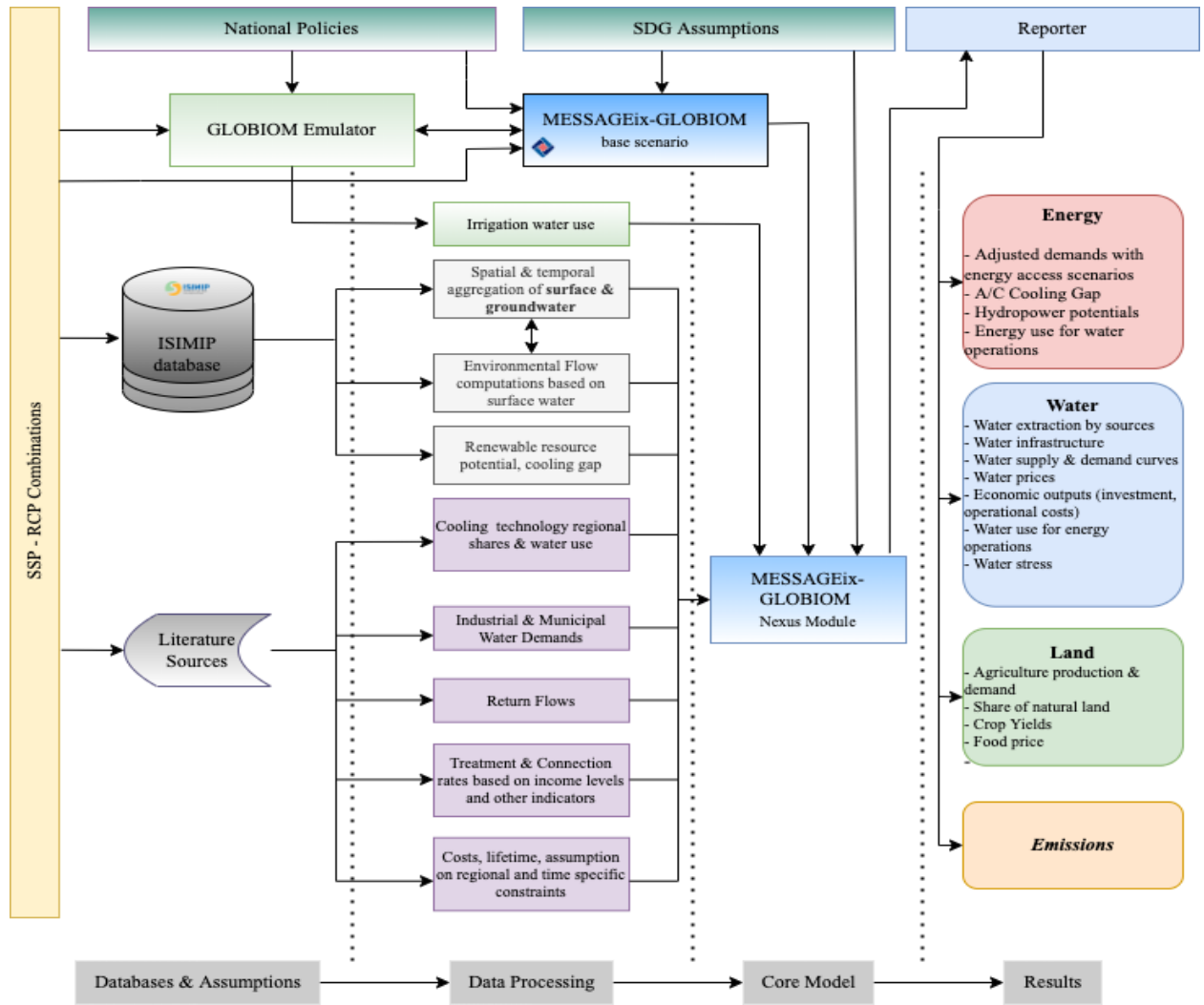


Figure 1 Structure & data flows of MESSAGEix-GLOBIOM Nexus Module. SSP-RCP combinations of scenarios are used as basis for development of nexus module. The module is built on the typical MESSAGEix-GLOBIOM scenario. The typical scenario has updated biophysical climate impacts in the energy and land sectors and then the water system is added. The database assumptions, structure and processing are the main components of this study besides the core model. Using the computational tools and post-processing methods, multi-dimensional sectoral results inform the pathways for different scenarios.

3 Water, Climate, and SDG implementation and results

The subsequent sections explain the modelling framework's water resource structure (supply, demand, and infrastructure) (Section 3.1), and Sections 3.2 and 3.3 discuss integrating biophysical climate impacts and SDG-related assumptions within the module.

3.1 Water resources and the water sector

250 The reference system for the water sector in the nexus module of MESSAGEix-
GLOBIOM is shown in Figure 3. This study applies the MESSAGEix-GLOBIOM (energy system
model) in native R11 global macro-regions via its energy and land systems. The data sources used
across the water sector are detailed in Table 1. The water sector loses important spatial information
if aggregated on a macro scale. As a first step toward balancing water demand and supply, we
255 have selected the HydroShed River Basin Level 3 (Lehner et al., 2006), intersected with the R11
region and annual timestep, as the ideal standard scale. This spatial layer results in 210 basins
(B210, see Figure 2), providing a more powerful depiction of the supply-demand system (Figure
2). The energy demand for water uses and water withdrawals for irrigation and thermal power
plant cooling are mapped from B210 to R11. This allows for balancing water supply and demand
estimates at a suitable scale where the economic decision incorporates information on all
260 processes, including water availability. We acknowledge that aggregating water needs across vast
regions may underestimate the cascading effect of binding water limitations at the local level and
the local level adaptation components.

Using further high-resolution basin definitions adds additional complexity to the model
due to upstream and downstream interdependence. Our initial 255 effort identifies the primary
265 long-term regional and global drivers of gross imbalances in the supply and demand for water
resources. Our ongoing research focuses on determining the most appropriate geographical (grid,
sub-basin, or basin) and temporal (daily, monthly, or annual) scales for reconciling water demands
and supplies in the global IAM for more robust climate extremes and adaptation needs. To better
understand the spatial distribution and water balance of 260 regions, we can look at the Nile River
270 basin, which extends across South Africa and the Middle East (R11 native regions). Due to the
overlapping of these two R11 regions, we come up with two distinct spatial units: Nile-Middle
East and Nile-South Africa. Now for Nile-South Africa, using proxy indicators such as basin area
and the proportion of available water in each basin, we calculate the proportion of renewable
water resources available from the Nile and the total water 265 availability in the South African
275 region. This 'downscaled' value plays a crucial role in the model, allowing us to reconcile the
available water supply options with the region's varying water demands.

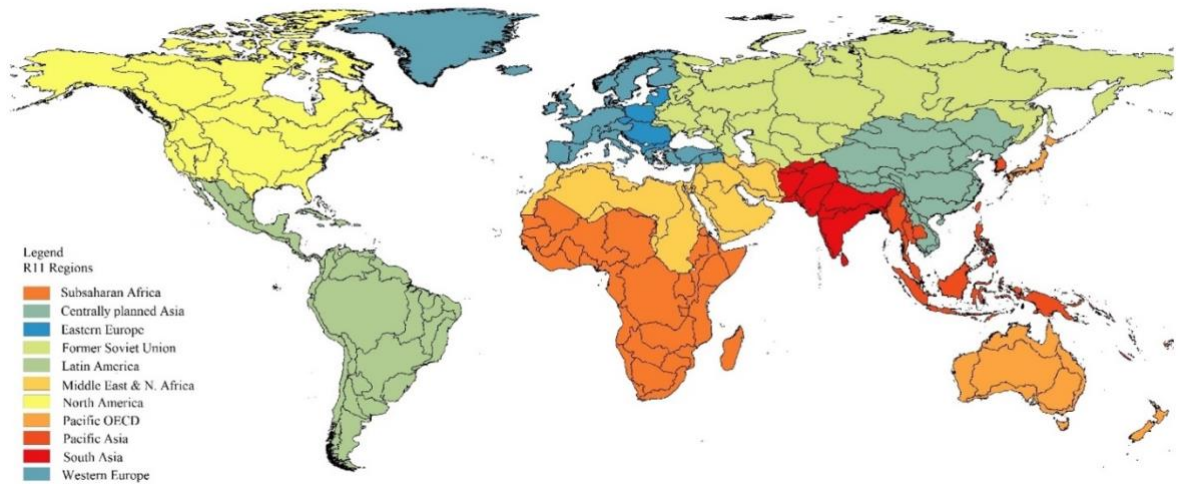


Figure 2 Delineation of basins within the MESSAGE R11 regions. The HydroSHEDs basin level 3 is intersected with MESSAGE R11 regional delineation, and the new polygon are used as decision units in the water sector. The distinct colors in the maps represent R11 regions however polygons inside each distinct colored R11 regions are the B210 basins intersected by R11 region. The complete list of basin names along with the area in km² can be looked in the GitHub repository (data/node/B210_R11.yaml)

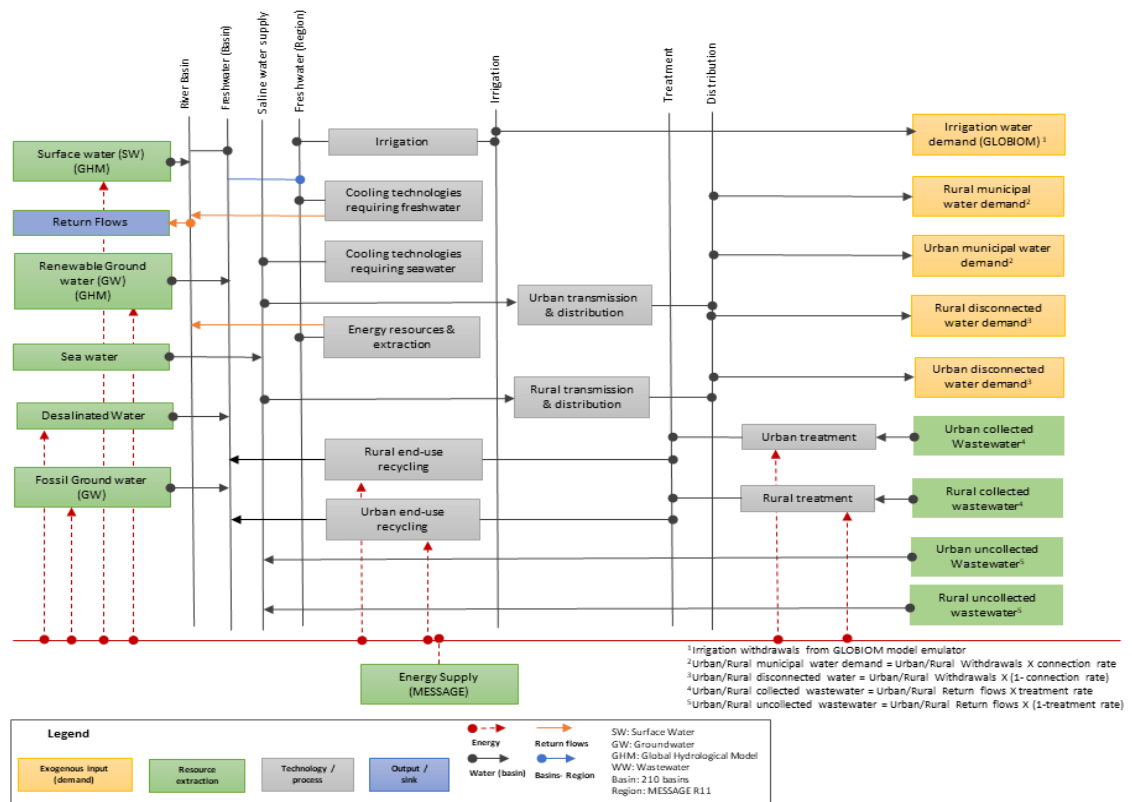


Figure 3: Reference System of the water system representation in the nexus module. The arrows show the direction of input/output of different technologies within the framework. Energy footprint of water system is tracked at different supply steps and infrastructure technologies.

The water balance in the water sector of the IAM is

$$Fr_{B,t} + Gw_{B,t} + FGw_{B,t} + Ww_{B,t} + D_{B,t} \geq Mc_{B,t} + (Irr_{B,t} + Ew_{B,t}) + Ef_{n,t} \quad (1)$$

$$(Irr_{B,t} + Ew_{B,t}) \leq \sum (Irr_{R,t} + Ew_{R,t}) \times share_B \quad (2)$$

Where Fr is the surface freshwater supplied from the river basin, Gw is freshwater supplied from groundwater aquifers, FGw is the non-renewable groundwater extractions, Ww is treated water provided from wastewater recycling facilities, D is desalinated water, Mc represents municipal and industrial sectoral demands, Irr defines the irrigation water withdrawals from the GLOBIOM emulator, Ew is the water demand for the energy system. Irrigation and energy water demands are balanced at the regional level, and Ef is Environmental flows calculated using the Variable Monthly Flow (VMF) method (Supplementary Figure S2.1.3) (Pastor et al., 2014). R represents MESSAGE energy regions. In contrast, B represents river basins within the given MESSAGE regions, and t is time periods at a 5-year annual time interval. $share$ is the share of freshwater in basins (B) per region (R) used as a proxy to balance irrigation and energy demands at the basin (B). All the values are in km³/yr. In GLOBIOM, irrigation water withdrawals are treated as residual claimants, with the water demands for municipal and energy taking priority (Palazzo et al., 2019; Frank et al., 2021). The water withdrawals are balanced with the supply of each model decision-making period and region.

Within the module, the choice between the supply system is motivated by the associated investments and operational costs. Renewable surface and groundwater freshwater are prioritized based on the cost. The other priority choice of supply between wastewater reuse, desalination, and fossil groundwater varies across regions, and the available potential in each region varies. On the supply side, we use global gridded runoff and groundwater recharge data from the Community Water Model (CWatM) (Burek et al., 2019) and GHM outputs from ISIMIP (Frieler et al., 2017). Three bias-corrected meteorological forcing data from different climate models (GFDL-ESM2M, HadGEM2-ES, IPSL-CM5A-LR) are used to estimate surface runoff and groundwater recharge. We use multi-model ensemble mean runoff and groundwater recharge as an available renewable freshwater resource. We aggregate the gridded data (0.5° X 0.5° spatial, daily timestep) onto the B210 basins and 5-year annual average. For spatial aggregation, the spatial sum is used to sum the grid hydrological outputs (runoff and groundwater recharge) to the B210 basins. The detailed process has been summarized in Supplementary Table S2.

We apply a quantile approach with monthly freshwater (surface and groundwater) resources for temporal aggregation to incorporate hydro-climate variability and prolonged dry periods. For example, for the 10th percentile, the monthly mean is first calculated from daily data. Then, we use the 10th percentile (Q90) of monthly freshwater runoff for a 20-year rolling window to determine a reliable flow for 90% of the time. This type of percentile methodology applied to multi-decadal periods is frequently used in water resource and environmental flow assessments (Prudhomme et al., 2014; Satoh et al., 2022; Gleeson and Richter, 2018) to account for the seasonal low flows experienced in typical wet and average years, although not the driest 10% of months (over 20 years). Figure S2.1.2 shows the Q90 flows overlaid on the monthly flow data

for the significant basins to show their reliable flows. We have run the scenarios for testing the model's sensitivity based on the flow quantiles.

320 We followed the methodology by (Graham et al., 2020) to estimate the municipal water demands, where urban and rural components are derived from gridded population and income-level projections based on the SSPs, as detailed in(Wang and Sun, 2022). Manufacturing demands are generated following a similar approach used by (Hejazi et al., 2014). Historical country-level data for 2015 is estimated by subtracting energy sector withdrawals from total industrial sector withdrawals. Future changes in manufacturing demands are projected, assuming convergence
325 towards a log-linear model between GDP and manufacturing withdrawals. Demands are distributed across countries based on growth in GDP and then downscaled to 7.5 arcminutes and re-aggregated at the B210 basins. Supplementary Figure S shows urban and rural components of municipal demands and industrial demands for 2050, whereas the data is provided in the GitHub repository (See Data Availability). Supplementary Figures S3.1 & S3.2 show average municipal
330 and industrial demands across the basins. The wastewater treatment system is adapted and improved from the previous implementation by (Parkinson et al., 2019b). Figure 3 shows the framework's conversion steps from wastewater collection to wastewater reuse. The module includes two generalized urban wastewater treatment technologies to simplify the number of decision variables. The first represents a standard secondary-level treatment facility commonly
335 found in a mid-sized city.

In contrast, the second includes recycling capabilities and is parameterized to represent a standard facility suitable for upgrading municipal or manufacturing wastewater to potable standards, such as a membrane bioreactor. In addition, the module includes a rural wastewater treatment technology that meets the United Nations guidelines for clean water and sanitation in
340 rural areas and is equivalent to a standard septic system. It ensures enough wastewater treatment capacity, including recycling and conventional treatment, to support the projected return flow connected to treatment. The desalination potentials have been estimated following the approach in (Parkinson et al., 2019b), where desalination capacity data are inferred against GDP trends using a logistic function. Here, data on water stress from (Byers et al., 2018) have been added to
345 the function to include the climate dimension in the projections (see Figure S 4.1.4).

We use the approach detailed by (Fricko et al., 2016) to calculate water withdrawal and return flows from energy technologies. Each energy technology requiring water is provided with a withdrawal and consumption intensity (e.g., cubic kilometres per GWh). This allows the module to translate technology outputs into water requirements and return flows, which balance with the
350 available supply. For power plant cooling technologies, where the water requirements are calculated as a function of heat rate, the efficiency change in the energy technologies (e.g., lower heat rates) impacts the cooling requirements per unit of electricity produced. The withdrawal and consumption intensities for power plant cooling technologies align with the range reported by (Meldrum et al., 2013a). In contrast, the electricity balance computation includes additional
355 electricity demands from recirculating and dry cooling technologies. Other technologies adhere to the data (Fricko et al., 2016)

360

The energy footprints of various components of the water sector, including supply (surface water and groundwater extraction), distribution (urban and rural), and wastewater treatment (treatment, recycling, and re-use), are interconnected with the electricity needs of the energy sector. This connection is established through basin-region mapping, which enables the spatial aggregation of appropriate fractions of electricity requirements to the region (R11) where the water sector's electricity consumption is managed. Table 1 indicates different references used for electricity requirements per unit of water infrastructure activity at different stages.

365

Table 1: Data sources used for various parameters and input variables

Parameter	Description	Data
Basin boundaries	Basin boundaries used from the HydroSheds database (Lehner et al., 2006) to create new spatial units in the water sector	All the processed files are available in the GitHub repository in CSV format (~data/water/delineation)
Power plant water use	All power plants' water use and investments (Meldrum et al., 2013b) are updated based on the latest powerplant database from Platts (Platts Market Data – Electric Power S&P Global Commodity Insights, 2022) Hydropower use and investments (Grubert, 2016) Parasitic electricity requirements (Dai et al., 2016) Regional shares of cooling (Raptis et al., 2016)	All the processed files are available in the GitHub repository in CSV format (~data/water/ppl_cooling_tech)
Water Availability	Runoff & groundwater recharge from the GHM CWatM model (Burek et al., 2019) outputs of the ISIMIP project (Frieler et al., 2017). The outputs are spatially and temporally processed for further use. We use groundwater abstraction data from (Wada et al., 2014) and historical water withdrawals from (Wada et al., 2016) to parameterize the historical groundwater extraction. The fraction of groundwater abstraction to the overall withdrawals determined the 'groundwater fraction.' This value is then used on the actual historical water demands included in the model to set the amount of pumping capacity for the future horizon. For the cost of groundwater pumping, depending on the aquifer depth, we use groundwater aquifer depth data (Fan et al., 2013) and energy consumption values from (Vinca et al., 2020) and (Liu et al., 2016).	All the processed files are available in the GitHub repository in CSV format (~data/water/water_availability)
	Freshwater Energy consumption per unit of water (Liu et al., 2016)	The energy consumption values vary regionally based on the groundwater table depths. Thus, the processed file is available in the GitHub repository in CSV format (~data/water/water_availability) 0.01883 (0.0011 - 0.03653) kwh/km3
	Techno-economic values from (Vinca et al., 2020) and (Burek et al., 2018)	Investment costs are assumed for the whole world. groundwater infrastructure: 155.57 million USD/km3, surface water extraction: 54.52 million USD/km3
Water demands	Municipal water demands are spatially and temporally processed using the approach followed by (Wada et al., 2016) and using recent and updated data. Irrigation water demands are used from the GLOBIOM model for a set of scenarios aimed at	All the processed files are available in the GitHub repository in CSV format (~data/water/water_demands) GLOBIOM Emulator

	achieving multiple, different SDG goals (Frank et al., 2021) Treatment & access rates are re-calculated using the approach described in (Parkinson et al., 2019b) and using additional dependent variables in the regression analysis. These treatment and access rates are then used with the return flows from (Wada et al., 2016).	All the processed files are available in the GitHub repository in CSV format (~data/water/water_demands)
Water Infrastructure	Water distribution & wastewater treatment energy footprints are used by (Liu et al., 2016) An upper constraint on desalination potential is implied in the model using multiple regression parameters (GDP, Water Stress Index (Byers et al., 2018), Governance (Andrijevic et al., 2020), and distance to the coast. We use the Desal Data dataset (Global Water Intelligence, 2016) to evaluate the existing (or historical) capacity of desalination units worldwide, gathered at the BCU level.	All the processed files are available in the GitHub repository in CSV format (~data/water/water_infrastructure)

3.2 Climate Impacts

370 The following climatic impacts are covered in the nexus module and this study: Changes
in crop yield, variations in precipitation patterns and drought severity, renewable energy
potentials, cooling and heating energy demand, desalination potential, and cooling water
discharge for energy use. Impacts on biodiversity are partially included in the evaluation whereby
375 natural land serves as a high-level proxy indicator for the level of biodiversity. This method covers
land-use change-induced consequences, which are the primary cause of biodiversity loss in the
short term, but excludes direct climatic impacts. Thus, it primarily reflects the consequences of
climate and SDG policies. All impact data is derived from the Intersectoral Model
Intercomparison Project (ISIMIP) (Frieler et al., 2017) to maintain internal consistency across all
380 indicators and models. The remainder of this section describes the model-specific representation
of biophysical climate impacts across the energy, water, and land sectors and the methodological
steps required to implement or update new climate impacts. We use the data for RCP2.6 and
RCP6.0 to consider the climate impacts, i.e., emission pathways reaching 2.6 W/m² and 6.0 W/m²
forcing levels in 2100. We have not included GDP and labour productivity implications to focus
solely on biophysical impacts.

Table 2 Summary of biophysical impacts

Biophysical climate impacts	Approach
Renewable supply (hydro)	Different costs supply curves based on 0.5x0.5 grid calculations (Gernaat et al., 2021)
Heating/cooling demand	Impact via population-weighted heating and cooling demands based on the work of (Mastrucci et al., 2021; Byers et al., 2018) 0.5 x 0.5 grid
Water availability	Runoff and groundwater recharge from CWatM calculated at 0.5 x 0.5 grid (Burek et al., 2020)

Crop yields Climate impacts on crop productivity, nitrogen, and irrigation from the CMIP6 projections of the crop-model EPIC-IIASA are used in GLOBIOM. EPIC-IIASA estimates the impact of climate on rice, maize, wheat, and soy, which are accordingly mapped to the crops in GLOBIOM following (Müller and Robertson, 2014)

Cooling technology capacity factor Climate impacts on cooling water discharges for cooling technologies of fossil power plants are used (Yalew et al., 2020)

Desalination potential Desalination potential climate impacts are based on water stress outputs from the combinations of GHMs & GCMs (Byers et al., 2018)

385

The climate impacts on hydropower energy supply have been based on (Gernaat et al., 2021). The difference between current and projected spatially explicit climate parameters is translated into spatially explicit energy supply estimates, translated to regional cost-supply curves. The climate data were used as input to calculate hydropower potential. It includes the theoretical potential of the upper limit of resource availability based on physical and hydrological conditions. The climate impacts were calculated for the historical and future periods using the ISIMIP database. The maps of technical potential, combined with economic information, have been used to generate cost-supply curves. These curves show the cumulative technical potential against the production cost, showing that each location's production cost depends on its productivity. Cost-supply curves are widely used in IAMs to model the long-term cost development of renewable energy technologies. These curves indicate resource depletion, as the most productive sites are slowly being depleted, and thus, higher cost-incurring sites need to be used. On the other hand, note that climate impact on non-hydro renewables is not included in this study because excluding non-hydro renewables in the IAM is not expected to lead to significant discrepancies between the scenario results. (Gernaat et al., 2021) Have presented relatively small impacts on renewable energy supply.

390

395

400

405

410

Regional cooling and heating demand days are based on the dataset and study by (Byers et al., 2018)(Byers et al., 2018), who derived their climate data from an ensemble of downscaled and bias-corrected global climate models (ISIMIP2). The data represents gridded global surface air temperature data at the daily resolution, summarised to decadal timesteps and a monthly mean and subsequently aggregated to countries, weighted by SSP population. In this study, to estimate the corresponding energy demand in socioeconomic, technology, climate, and policy scenarios, we used two modules within the MESSAGEix-Buildings framework: CHILLED (Cooling and Heating gLobaL Energy Demand model), a bottom-up engineering model to estimate residential space heating and cooling energy demand; and STURM (Stock TURnover Model of global buildings), a stock turnover model based on dynamic material flow analysis (MFA) to assess the future evolution of the building stock (Mastrucci et al., 2021)(Mastrucci et al., 2021). The resulting estimates of the country's energy demand for cooling for SSP2 under RCP2.6 and RCP6.0 and the assumption of fixed historical temperature are aggregated from the country to the

415 MESSAGE region. They are added to the module as a subcategory of the residential demand
(Figure S5).

Climate impacts on agriculture and assessment of future hotspots are assessed in
GLOBIOM by systematically integrating crop yield information from EPIC (Balkovič et al.,
2014)(Balkovič et al., 2014) (run for the different GCMs) for 4 crops (corn, wheat, maize, and
420 rice) and applying it using some assumption to our other crops (Jägermeyr et al., 2021)(Jägermeyr
et al., 2021). IIASA's Global Forest Model (G4M) is used to model forest growth as a response to
climate (Kindermann et al., 2008)(Kindermann et al., 2008). The G4M uses a dynamic net primary
productivity model to consider how growth rates are affected by changes in temperature,
425 precipitation, radiation, and soil properties. G4M works with a monthly step, and the highest
spatial resolution is 1 km². The model estimates the impact on net primary productivity, mean
annual increment, standing biomass, and harvestable biomass. Factor changes of mean annual
increment and biomass accumulation under a certain degree of climate change compared to a no
climate change scenario are multiplied by the default rates in GLOBIOM GLOBIOM's
430 biophysical model incorporates agricultural yield, input requirements, and water availability for
irrigation from the CWatM. This integration allows us to evaluate the relative effects of climate
change on production, consumption, and market conditions and the autonomous adaptation to the
impacts resulting from the GLOBIOM. Irrigation water withdrawals from the GLOBIOM are then
linked to the nexus module, which balances the water system across other uncertainties.

3.3 SDGs

435 This section describes the energy, water, and land SDG measures in the module, which
align with SDG2 (Zero hunger/food access), SDG6 (Clean water and sanitation/water access),
SDG7 (Affordable and clean energy/energy access), SDG15 (Life on land/biodiversity). SDG13
(Climate action) is also implicitly included in the framework when emissions constraints are
included in the scenario design. In this study, SDG13 is represented by achieving a 2.6 W/m² (or
440 a well below 2 degrees) target in 2100. This is essentially the goal of the SDG, limiting climate
change following the Paris Agreement. Table 3 provides an overview of all the (non-climate)
nexus SDG measures, their representation in the modules, and the indicators to measure progress.
The main criteria for including measures have been: 1) They should maximally benefit the overall
goal, 2) They should be unambiguous and quantifiable, and 3) They should allow for consistent
445 implementation across modules. The interaction between these measures and the other SDG
categories is relatively limited.

The MESSAGE-Access-E-USE (end-use services of energy) model (Poblete-Cazenave
and Pachauri, 2018; Poblete-Cazenave et al., 2021) is used for the analysis of households' energy
access to modern energy services for heating and cooking and has already been used on a global
450 level to study demand in different socioeconomic pathways (Poblete-Cazenave and Pachauri,
2021; Pachauri et al., 2021). An estimation model takes as input micro-level data from nationally
representative household surveys covering different regions of the world to estimate behavioural
preference parameters that explain the choices of appliances and energy demands for different

455 end uses based on household socioeconomic and demographic characteristics. Then, a simulation
module uses the preference parameters estimated in the first module and additional external
drivers that present potential pathways of socioeconomic growth and energy prices to simulate
future appliance uptake and household energy demand under each scenario. This process is not
internalized in MESSAGEix-GLOBIOM, but instead, a first iteration is performed to estimate the
460 share of the population with access to modern energy sources for cooking (as opposed to
traditional biomass or kerosene) given a fixed GDP pathway (SSP2) and energy prices related to
each policy scenario. The model also assesses the implication of additional SDG policies
regarding costs and transformations in the demand for energy. This is, however, separated from
the solution of MESSAGE because an iterative procedure would alter the GDP pathways in the
macroeconomic component of the model (MACRO).

465 The SDG6 narrative is incorporated by applying supply and demand-side development across the
water system. The supply-side measure includes constraints on available surface water as
environmental flows. Maintaining environmental flows in rivers is instrumental in achieving SDG
target 6.6, which aims to protect and restore water-related ecosystems, encompassing a range of
natural landscapes from mountains and forests to wetlands, rivers, aquifers, and lakes. We use the
470 Variable Monthly Flow (VFM) method (Pastor et al., 2014) to constrain the monthly surface water
available for human use based on environmental flow requirements (EFRs) for wet and dry
seasons (Pastor et al., 2014). This method implies that w(ater withdrawals cannot exceed the
available residual supply after considering the EFRs. Some regions may be unable to adapt
environmental flow targets in 2030 based on historical trajectories due to high withdrawals or
475 fewer governance capabilities. We categorized these basins based on the development status of
countries specified by the World Bank, implemented a lower environmental flow target in the
respective regions from 2030 onwards and increased the target till 2050, thus following the
trajectory of basins with high adaptive capacity. These environmental flow targets also vary across
climate impact scenarios. It enables assessing the response to mitigating future demand growth.
480 The demand-side measures for SDG6 in the water system include targets for reaching sustainable
water consumption across all sectors. We constrain the capacity of the water infrastructure system
for integrating water access and quality targets. The connection and treatment rates are
endogenized in the withdrawals and wastewater collection. These rates are changed to allow shifts
in water withdrawals for universal piped access. Wastewater treatment capacity is increased to
485 treat half of all the wastewater collection in the infrastructure system. The connection and
treatment rates are adjusted for the basins that can readily adapt; the targets for 2030 are assigned
to the basins with more adaptive capacity than those with less adaptive capacity. Increasing the
fraction of wastewater treatment also helps to protect ecosystems related to water, thus
contributing to achieving SDG6 target 6.6. The rates are projected in the baseline (non-SDG)
490 scenario using a logistic model by combining income projections fitting to national historical data
using the approach described in (Parkinson et al., 2019b).

The irrigation conservation approach is implemented to reduce the irrigation withdrawals and
reallocate water to other sectors, thus contributing to target 6.4 (Frank et al., 2021). (Pastor et al.,

2019) mentions how the reduced water approach in the irrigation sector in the GLOBIOM model
 495 accounts for environmental flows, and the water is reallocated to the environment and domestic
 uses by saving from the irrigation sector. The module chooses the irrigation water withdrawals
 based on the land-use emissions and associated costs to keep the land-related trade-offs with water
 and energy intact through the GLOBIOM emulator. The module enhancements do not cover all
 500 SDG6 targets, such as flood management and transboundary cooperation across basins.
 Concerning biodiversity protection, the GLOBIOM model assumes increased efforts and a
 doubling of the AICHI Biodiversity Target 11 (e.g., increase the total surface of protected areas
 to 17% by 2030 (Bacon et al., 2019). In addition, we use the UNEP- WCMC Carbon and
 Biodiversity Report (Kapos Ravilious C. et al., 2008) to identify highly biodiverse areas and
 prevent their conversion to agriculture or forest management from 2030 onwards. We consider
 505 the area highly biodiverse where three or more biodiversity priority schemes overlap
 (Conservation International's Hotspots, WWF Global 200 terrestrial and freshwater ecoregions,
 Birdlife International Endemic Bird Areas, WWF/IUCN Centre of Plant Diversity and Amphibian
 Diversity Areas).

We estimate residential cooling gaps as the extent of the population needing space
 510 cooling without access and the additional energy demand required to close this gap and provide
 essential cooling comfort to all (Mastrucci et al., 2019). Minimum cooling requirements are
 calculated under the assumption of durable housing construction and conservative per-capita floor
 space and cooling operation to provide decent living standards (Kikstra et al., 2021), assuming
 the gap is covered with current cooling technologies, including fans and AC.

515 **Table 3:** SDG measures and indicators. Where possible and relevant, measures are fully implemented in
 2030 and maintained until 2100 (see this [link](#) for SDG description)

SDG	Measure	Indicators
SDG 2 FOOD	- < 1% undernourishment goal by 2030	- Food production - Food prices - Population at risk of hunger
	- Decrease animal calorie intake to 430 kcal/capita/day by 2030 from current levels in overconsuming countries (USDA recommendations for healthy diets)	
	- 50% reduction in food waste compared to SSP2 assumptions	- Food production - Food prices - Population at risk of hunger
SDG6 Water	- Limited irrigation water withdrawals to sustainable removal rates that do not jeopardize ecosystem services and environmental flows (Frank et al., 2021)	- Water withdrawal (irrigation)
	- Based on the variable monthly flow (VMF) method developed by (Pastor et al., 2014), 60% and 30% of the mean monthly natural flow are reserved for ecosystems in low and high flow periods, respectively.	- Water and environmental flows
	- A minimum of half of all return flows will be treated by 2030 for	- Population with access to clean drinking water

		developed regions and 2040 for developing regions.	
SDG7 Energy	-	Results from the MESSAGEix-GLOBIOM are iterated through the MESSAGE-Access-E-USE (end-use services of energy) model by the provision of access targets based on income levels and GDP pathways and population with access to modern energy access and the energy demand adjustments are calculated.	- Energy prices - Population with access to modern energy services
	-	90 % access target to modern cooking energy for cooking by 2030	- Energy prices -Population cooking with traditional biomass
SDG15: Life on land	-	Based on (Frank et al., 2021), the expansion of protected lands to 34% in 2030 was assumed, and highly biodiverse areas were identified based on the UNEP-WCMC Carbon and Biodiversity Report (Kapos Ravilious C. et al., 2008) their conversion to agriculture or forest management from 2030 onwards was prohibited.	- Natural land area

3.4 Flexibility across scales

As mentioned in section 2, the module is flexible to adapt to a different spatial dimension with a higher resolution. In this case, we tested downscaling the global module for a particular country, Zambia. The energy sector is downscaled using the country model generator, which is used for various country-scale energy sector analyses, e.g., (Orthofer et al., 2019). However, the nexus module also allows the water system to be prototyped rapidly for a country/basin level. The water reference system described in previous sections is pre-processed onto the higher-resolution spatial units from the gridded datasets, and a base scenario is produced. The workflow diagram to produce the country scale module is shown in supplementary Figure S6. The Zambian scale module is being used to develop an integrated platform combining different high-resolution sectoral models (Water Crop Evapotranspiration model to estimate crop water demand for different crops (Tuninetti et al., 2015), an electricity demand assessment platform, M-LED for communities without electricity supply (Falchetta et al., 2021), OnSSET tool to assess least-cost electrification technologies and investment requirements based on electricity demand and energy potentials (Korkovelos et al., 2019). (Falchetta et al., 2022) discusses the application of such linkages and further details.

4 Results

In our analysis, we have currently applied the SSP2 framework in conjunction with both RCP2.6 and RCP6.0 to establish the current module setup. Future work will incorporate a broader array of SSPs paired with various RCPs to ensure a more comprehensive and coherent set of assumptions across different scenarios. Our examination of the biophysical effects of climate change on energy, water, and land use sectors involved contrasting scenarios that integrate climate

540 impacts—specifically designated as Impacts, Impacts-EN (focusing on the energy sector),
 Impacts-WAT (water sector), and Impacts-LU (land use)—alongside SDGs. We measured these
 against a Reference scenario, which is predicated on historical climatic patterns and excludes any
 projections of climate impacts or SDG considerations. The scenario assumptions are detailed in
 Table 4.

545 Our study presents detailed results of water balance flows, providing a critical
 examination of global water management and the interdependencies within the water, energy, and
 land nexus. By comparing our module's outputs with benchmark values from the literature, we
 establish a validation baseline for EWL indicators, ensuring our findings resonate with recognized
 global estimates. Our study allows the monitoring of water balance flows at varying stages,
 offering an in-depth understanding of global water management and the intricate nexus between
 550 water, energy, and land. These interactions are depicted in Figure 5a in form of a Sankey diagram,
 along with input details and assumptions expounded in Section 3.1. The module provides a
 nuanced perspective, capturing the complexities of water resources and their utilization at both
 global and basin scales. Compared to the literature, global water resources (total runoff) are in the
 range of approximately 47,220 km³/yr., aligning with those reported by (Burek et al., 2020) and
 555 (Sutanudjaja et al., 2018). Across our module's scenarios, water withdrawals or water extractions
 fell within the 3365–3656 km³/yr., echoing figures found in established literature (Table 5). In
 our module, global wastewater collection is considered an exogenous input, quantified at
 approximately 310 km³/yr for 2020, a figure that is broadly in line with the estimates from (Jones
 et al., 2021). Global wastewater treatment volumes range from 156 to 172 km³/yr, in close
 560 agreement with the 187 km³/yr reported by (Jones et al., 2021). For agricultural withdrawals, an
 essential water use sector, Our module's estimate for agricultural water withdrawals is 2670
 km³/yr, which surpasses the 1250–2000 km³/yr range reported by (Burek et al., 2020), yet it is
 quite consistent with the 2735 km³/yr figure suggested by (Sutanudjaja et al., 2018). Figure 5b
 shows a range of water supply portfolios with varying water demands. Even though renewable
 565 energy sources are crucial overall, the makeup of these portfolios shows significant regional
 variation (supplementary sections S3 and S4). Characterizing supply portfolios across various
 river basins will be the focus of future research projects under varying scenarios and water supply
 reliability levels. However, this structure allows us to see the water management portfolios linked
 with the energy and land sectors under varying climate and sustainable development scenarios.

570 **Table 4** Summary of Scenario assumption

<i>Scenario</i>	Climate Scenario	SDGs
<i>Reference</i>	Historical climate assumptions for RCP 6.0 across EWL sectors.	Not included
<i>Reference (Mitigation)</i>	Historical climate assumptions for RCP 6.0 across EWL sectors.	

	<i>This scenario, although is practically not feasible it is used to compare the responses of the new features</i>	
<i>Mitigation</i>	RCP 2.6 (biophysical impacts of EWL sectors as outlined in Table 2 and section 3.2)	
<i>Impacts</i>	RCP 6.0 (biophysical impacts of EWL sectors as outlined in Table 2 and section 3.2)	
<i>Impacts_LU</i>	RCP 6.0 (biophysical impacts of land sector, e.g. crop yields)	
<i>Impacts_WAT</i>	RCP 6.0 (biophysical impacts of hydrology)	
<i>Impacts_EN</i>	RCP 6.0 (biophysical impacts of energy, e.g., cooling demand and renewable potential)	
<i>SDGs</i>	RCP 6.0 (biophysical impacts of EWL sectors as outlined in Table 2 and section 3.2)	SDG 2, 6, 7, 13, 15 – as outlined in Table 3 and section 3.3

575 Sectoral withdrawals primarily drive water extraction by source, with irrigation withdrawals from the GLOBIOM model making up a sizable portion. Figure S4.1.3 depicts the outlook for water extraction under the reference scenario. The effects of climate on crop yields show variability, with sugar crops experiencing a significant impact at 16%, while cereals exhibit a comparatively modest change of approximately 1%. The net yield effect is directly influenced by the intensity of nitrogen and phosphorus fertilization, which enhances water use efficiency and consequently reduces the demand for irrigation water. Furthermore, in our climate impact scenarios, increased CO2 levels also increase crop yields and contribute to improved water use efficiency, which is factored into our results. However, these results require cautious interpretation because our study did not account for cultivar optimization. The results affect water withdrawals and consequently influence the portfolio of water supplies. It is essential to highlight the role of enhanced irrigation efficiency assumptions in the SDG scenario, which results in a 29% average reduction in total water withdrawals compared to climate impacts concurrent to the study by (Frank et al., 2021). In addition, these effects contribute to a 28% decrease in the marginal price of potable water due to adaptive responses to climate change impacts in electricity and irrigation withdrawals. In contrast, pursuing the SDGs can result in a significant price increase due to increased allocation to environmental flows.

580

585

590 The results demonstrate that renewable surface water and groundwater are limited and vary across different climate scenarios. These effects decrease renewable water consumption, which is more evident in the land than in the water sector. In addition, our module indicates an increase in the use of alternative water sources such as brackish water, effluent, and desalination in certain regions, indicating that renewable water resources are limited in these areas. These observations

595 highlight the significance of the SDGs further. For instance, when aligned with SDG 6 targets, the module estimates a 24% reduction in water consumption, resulting in a more sustainable water allocation to environmental flows (Figure 4).

600 Figure 5 presents a comparative analysis of key Energy-Water-Land (EWL) indicators across a spectrum of modeled scenarios. The boxplot distributions visually depict selected model output indicators for the period from 2030 to 2080, covering scenarios such as Reference, Impacts, Impacts_LU (land use), Impacts_EN (energy), Impacts_WAT (water), and SDGs. The graph's constant trend in energy-related metrics across scenarios stands in stark contrast to the pronounced unpredictability of non-renewable water usage, suggesting that energy indicators are less vulnerable compared to water and land.

605 Figure 5 also shows that, despite the biophysical impacts, agricultural production doesn't vary much. The SDG scenario, however, results in a considerable 20% decrease in agricultural output, with the biophysical implications of land usage having a particular influence on sugar crop yields. This noteworthy effect emphasizes how susceptible some crops are to changes in land use and how crucial it is to take these effects into account when developing agricultural plans and policies. 610 Furthermore, the primary cause of the decrease in water withdrawals is the consequences of land use, wherein CO2 fertilization effects are a major factor. These effects on land usage decrease the overall need for irrigation and increase the efficiency with which agricultural operations use water. Additionally, the figure also indicates that the cost of potable water has increased by 80%, primarily due to the adoption of environmental flow allocations aimed at protecting freshwater ecosystems and the increased expenses linked to sophisticated wastewater treatment procedures. 615 These elements highlight the intricate relationship that exists between water resource management and economic results as well as environmental care. The geophysical features and land use influences of various regions mostly determine the global consequences of climate change on the water sector, with certain areas experiencing gains while others may have negative effects. 620 Adaptive responses to climatic impacts reduce the number of people exposed to hunger by an average of 11% according to the study. This is not as significant as the 30% reduction in the SDG scenario, which is based on specific actions to reduce the risk of hunger.

625 It is imperative to exercise caution when interpreting the outcomes of the different scenarios, considering their reliance on several assumptions and their suitability for particular geographical and temporal circumstances. However, these results offer insightful information about the possible financial effects of various water management techniques. Different modeling methodologies may produce different results because assumptions, data inputs, and other elements are inherently variable. It is feasible to determine the most effective and successful tactics and to obtain a more thorough understanding of the probable consequences of different water management systems by comparing the outcomes from many models. 630

635 **Table 5** Comparison of EWL indicator results for the year 2020 with published literature sources for module validation.

<i>Variable/Indicator</i>	<i>Module Value</i> 2020	<i>Comparison with other studies</i>
<i>Primary Energy (EJ)</i>	595-599	613 (GCAM5.3_NAVIGATE); 591 (IMAGE 3.2); 570 (REMIND-MAgPIE 2.1-4.2) ;575 (MESSAGEix-GLOBIOM_1.1) (Harmsen et al., 2021)
<i>Energy Supply Investments</i>	1325-1401	1148.13 (IMAGE3.2); 1036/41 (MESSAGEix-GLOBIOM_1.1); 1208 (REMIND-MAgPIE 2.1-4.2) (Harmsen et al., 2021)
<i>Agricultural Production</i>	3350	4400.6 (IMAGE3.2); 4045 (MESSAGEix-GLOBIOM_1.1); 1519 (REMIND-MAgPIE 2.1-4.2) (Harmsen et al., 2021)
<i>Cereal Yield (t DM/ha/yr.)</i>	3.7	3.7 (IMAGE3.2); 3.8 (MESSAGEix-GLOBIOM_1.1); 3.5 (REMIND-MAgPIE 2.1-4.2) (Harmsen et al., 2021)
<i>Yield Sugarcane (t DM/ha/yr.)</i>	18.7	8.6 (IMAGE3.2); 19.8 (MESSAGEix-GLOBIOM_1.1); 30.6 (REMIND-MAgPIE 2.1-4.2) (Harmsen et al., 2021)
<i>Water Withdrawals (km³/yr.)</i>	3656-33659	2200 – 4200 (Burek et al., 2020) , 3912 (Sutanudjaja et al., 2018)
<i>Water Resource (km³/yr.)</i>	47220	51800±1800 (Burek et al., 2020); 42393 (Sutanudjaja et al., 2018) ; 42000 – 66000 (Haddeland et al., 2014)
<i>Groundwater Recharge (km³/yr.)</i>	15000	19000 920 (Burek et al., 2020); 27756; 12666 – 29 900 (Mohan et al. 2018)
<i>Agriculture Withdrawal (km³/yr.)</i>	2666	2000 [1250-2400] (Burek et al., 2020) ;2735 (Sutanudjaja et al., 2018)
<i>Wastewater Collection (km³/yr.)</i>	310	224.4–226.9 km ³ /yr (Jones et al., 2021)380 km ³ /yr. (Qadir et al., 2020)
<i>Wastewater Treatment (km³/yr.)</i>	155 - 180 km ² /yr.	186.6 km ³ /yr. – 189 km ³ /yr (Jones et al., 2021)

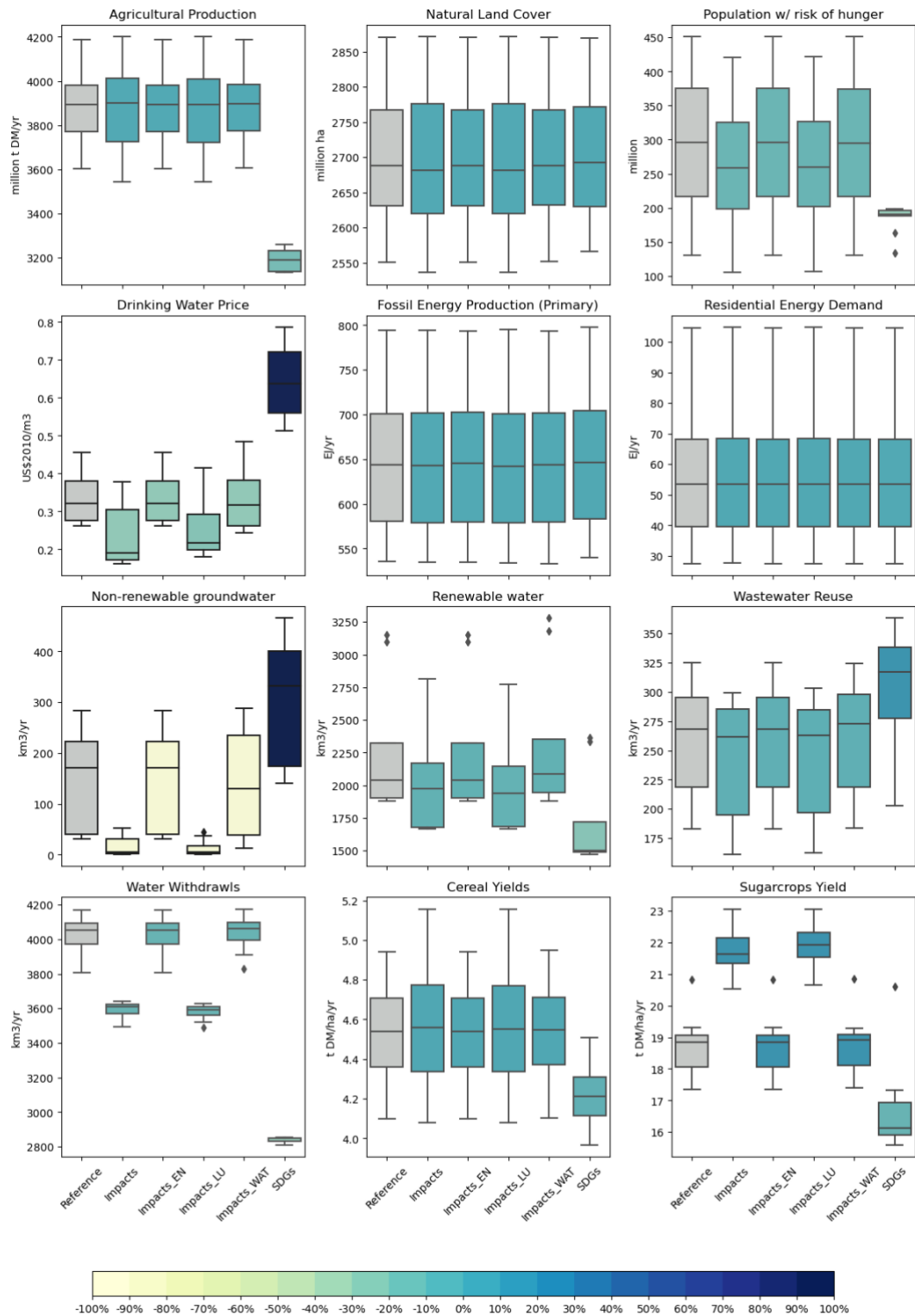
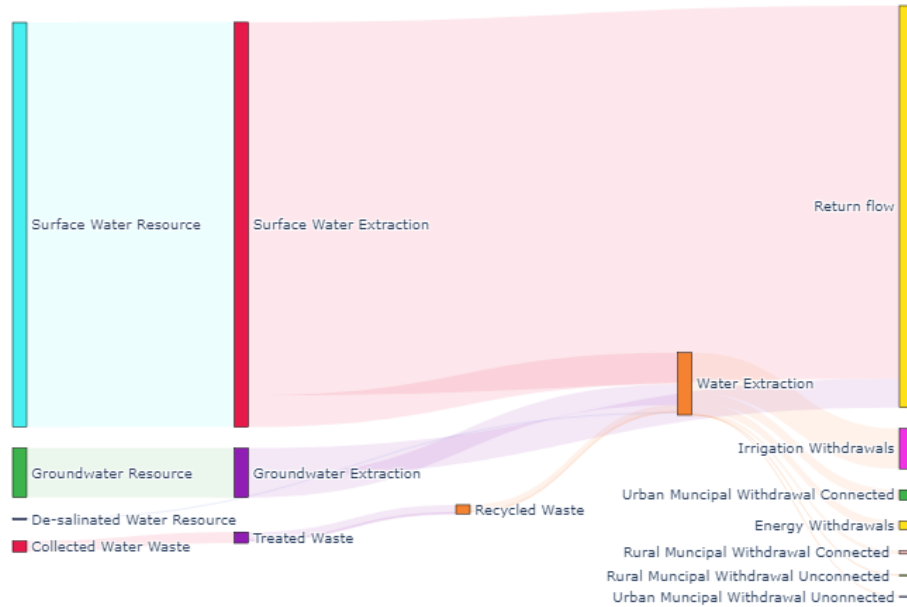


Figure 4 A Comparison of Key EWL Indicators across Multiple Scenarios It shows the boxplot distributions for selected indicators from the module output. From 2030 to 2080, these are displayed against five distinct scenarios: reference, impacts, impacts_LU, impacts_EN, impacts_WAT, and SDGs. The reference scenario, which stands out visually by having a grey hue, serves as a benchmark for other scenarios. The variance in colour between the remaining boxplots represents the percentage change from the reference scenario.

Water Balance 2050



Water supply and withdrawals (-) w/o climate feedback

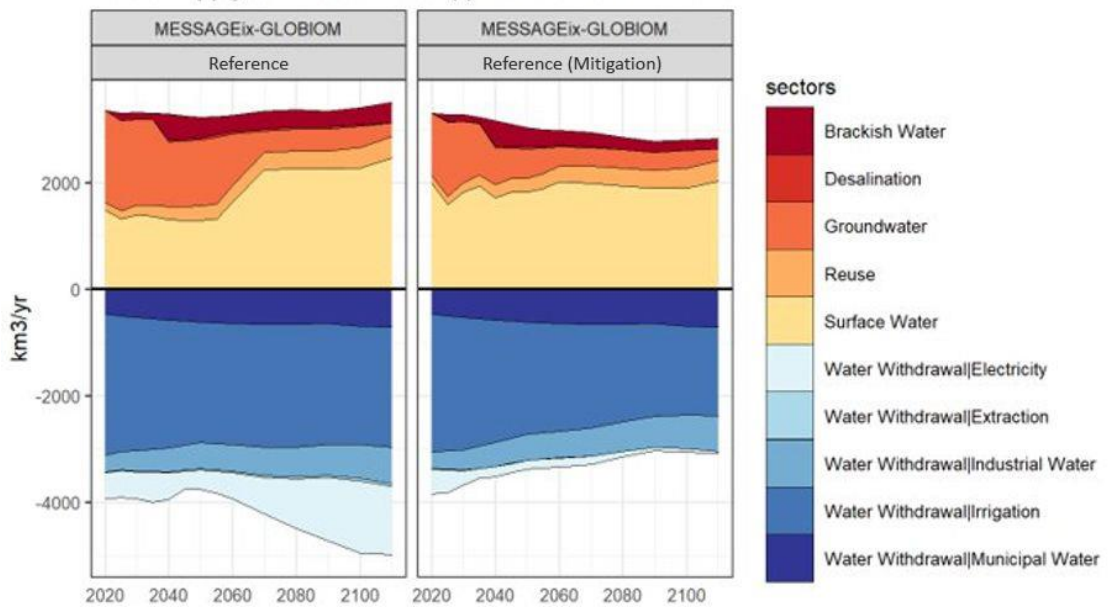


Figure 5 a) Water flows from supply to source in the water sector of the MESSAGEix-GLOBIOM nexus module. The flows and associated techno-economic parameters can be tracked as module outputs across the time horizon and scenarios. **b)** illustrates the supply and withdrawal components of the global water balance, which are reported from the module outputs for the Reference and Impact scenarios. A range of blue hues are used to represent the supply sources, and a range of red hues are used to represent the withdrawals.

5 Discussion

The MESSAGEix-GLOBIOM nexus module generates outputs that enhance our understanding of the complex interconnections of water, energy, and land, spanning from specific basins to the global scale. The outputs include assessments of water availability, indicators for Sustainable Development Goals, and climate impacts unique to different sectors. These outputs serve as the foundation for conducting integrated route analysis. Figure 6 provides a concise representation of the various outputs that can be generated by the module, emphasizing its ability to provide a wide range of scenario combinations. These combinations reveal the fundamental sensitivities and assumptions of various approaches, enabling us to identify effective methods that are adaptable to change and meet the needs of stakeholders.

In order to determine the effectiveness of the module in different climate and SDG scenarios, we developed a set of scenarios based on different assumptions. While theoretically impractical, the Reference scenario acts as a benchmark for determining the outcomes of biophysical impacts by extrapolating previous climatic data into the future. The module also provides crucial investment and capacity projections at five-year intervals, offering insights into the future of water management. In addition, we have compared these indicators to the available literature in Table 5, confirming the dependability of our findings. This research provides a thorough understanding of global water, energy, and land interconnections. It has the potential to influence policy and investment choices, guiding us towards the sustainable use of resources.

Our module effectively addresses the ever-changing climate system by utilizing a combination of internal and external outputs. As an example, we utilize EPIC to gain valuable information about how irrigation affects crop yields. These findings contribute to GLOBIOM, a system that adjusts land use allocations based on the impacts of climate change. The reallocations, namely in the utilization of land for irrigation, contribute to the balancing of water supplies in MESSAGEix-GLOBIOM. This balancing takes into consideration the requirements of different sectors in the face of changing climate conditions.

The reactions in the water sector are determined by the availability of resources. Climate change-induced changes in the water cycle determine how resources are distributed and require finding alternative sources. The energy industry is subject to similar levels of dynamism, as climate changes have an impact on the efficiency of thermal power plants and the feasibility of hydropower projects while also increasing the demand for cooling. Our module provides a comprehensive multi-sectoral assessment by taking into account these biophysical consequences.

Understanding the interconnectedness of climate impacts across all sectors is essential; the ripple effects they cause require a comprehensive perspective. The results of our study emphasize the need for additional research to fully understand the range of potential effects that climate change could have on many industries and how their inclusion could greatly influence scenarios for managing and reducing these effects. The adoption of sustainable energy sources in certain areas demonstrates the wider significance of our research, which reveals the

interaction between climate effects and strategies for reducing them, along with their additional benefits, such as improved agricultural output and a transition from fossil fuels in the power industry.

700 Our forthcoming research will expand on these preliminary findings, offering insights that are pertinent to policy-making. The next articles will explore the integration of Sustainable Development Goals (SDGs) with climate policies, providing a fresh outlook on how to tackle climate adaptation problems effectively. While previous research has included SDG components in IAMs, our approach stands out by simultaneously analyzing SDG policies, climate targets, and impacts. This provides a new perspective on the climate adaptation narrative. We utilize this novel methodology to analyze the regional discrepancies in development objectives, facilitating our comprehension of how diverse regions might effectively manage the consequences of climate change while attaining their development targets. The study's regional insights will enhance our understanding of the adaptive strategies that regions may employ to achieve their developmental goals.

710 To summarize, the outputs of our module connected to the Sustainable Development Goals (SDGs) have the potential to greatly transform our understanding of human development indicators on a global and regional scale. Through the examination of metrics and the comparison of scenarios with and without SDGs, as illustrated in Figure 7, we emphasize the novelty of integrating SDG scenarios with climate effect evaluations. This comprehensive scenario will support future studies, allowing us to assess the combined effects of actions to reduce and adapt to climate change to achieve sustainable development goals.

715

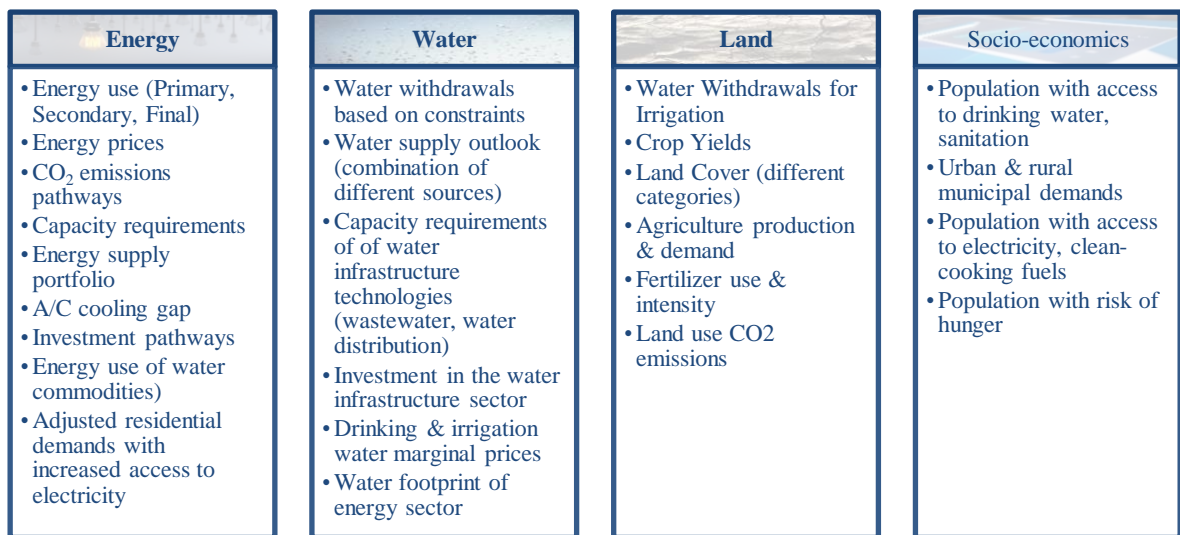


Figure 6 Summary of output indicators that are possible from the MESSAGEix-GLOBIOM nexus module. These outputs are long term pathways and much of these outputs can be further disaggregated onto the technology level.

5.1 Further development

720

While the module includes detailed implementation of the water sector and representation of biophysical climate impacts, we identify areas where our module lacks certain aspects and uncertainties. Since we look at the integrated systems, we do not include inter-basin or spatial unit transfers, which can be crucial for answering transboundary challenges in the river basins. Moreover, we currently do not account for water storage, a potentially important aspect of water resource management where we can see the water storage during a high flow season and its use during a low flow season. We use the flow percentiles approach to partially address this concern.

725

730

While the Nexus module employs the robust outputs of the ISIMIP for depicting climate impacts, there are certain challenges from the current set of outputs that are not fully consistent with the input climate scenario assumptions. As soon as updated and aligned ISIMIP outputs become available, we will conduct a new model run to enhance consistency and reduce uncertainty in our analysis. In addition, the sensitivity of indicators to these impacts and the uncertainty of the Global Hydrological Model (GHM) are more significant than those of climate models. The module's representation of alternative water constraints, such as the economic consequences of fossil groundwater extraction to reduce water consumption, will be explored in future research by focusing on more realistic groundwater assumptions. The current module structure, which assumes an endogenous adaptation response, may not fully capture the complex dynamics, such as the feedback mechanisms between water availability and energy production, socioeconomic impacts of water scarcity on land use, and long-term societal adaptations to water stress within the EWL sectors. Future research will focus on integrating these inter-sectoral feedback and dynamic responses to enhance the module's accuracy in depicting the intricacies of the EWL nexus.

735

740

745

In future research, we plan to expand our exploration of climate impact dimensions to include a more robust handling of statistical climate extremes, aiming for greater resilience in our module's performance at sub-annual temporal resolutions. Future versions of the module will integrate up-to-date climate impact data and strive for more consistent data sources across sectors.

750

In addition, we aim to distinguish the roles of impacts and adaptation responses within the EWL sectors, which will allow for a better understanding of the role of climate and the responses triggered by these impacts in the models. This future work will contribute to the module's refinement and expansion, resulting in a more comprehensive and accurate representation of the intricate interplay between climate impacts, water policy, and reliability.

6 Conclusion

755

This study addresses the research gap of improved EWL nexus, including biophysical climate impact representation within IAMs, by developing a nexus module for the global

760 MESSAGEix-GLOBIOM integrated assessment model. It enhances the MESSAGEix framework to study the responses to biophysical climate impacts and water constraints across different scales. Representation of interactions with the water sector has been enhanced by implementing endogenous water sector spatial resolution and water constraints by balancing supply and demand at basin scales globally. It can address nexus synergies and trade-offs across EWL sectors on a global scale, showing regional results.

765 Moreover, the study shows that regional differences influence the cost of alternate water sources and infrastructure. Furthermore, the research on climate impacts highlights the biophysical consequences of climate change on many sectors and the necessity for additional research to comprehend their prospective outcomes. The study also investigates the effects of climate change on the power generation mix, highlighting the transition from fossil to renewable technologies. The results suggest that integrating biophysical repercussions can considerably impact the outcomes of climatic scenarios, and these findings should be regarded in the context of the entire model.

770 The module is improved to implement river ecosystem constraints, increasing socioeconomic demands, and ecological uncertainties. The module is developed consistent with state-of-the-art software development practices. The whole framework is transparent and flexible to be downscaled to any basin or country worldwide. A first order module can be rapidly prototyped and further used to answer cutting-edge policy questions on the impacts and adaptation potentials across different basins, utilizing a set of socioeconomic and climate ensemble scenarios. The research will address the EWL nexus dynamics and interactions in terms of costs and structural changes concerning future resilient pathways.

780 **Author's Contributions**

MA, AV, EB, VK, KR conceived the modelling framework. MA & AV led the model development with support of EB, OF, PNK, KR, and VK. SF, EB, AM helped with the GLOBIOM scenarios. AM provided data on cooling gaps, MPC ran energy access scenarios, PB and YS provided the hydrological data. MM, KR, VK did overall supervision. MA led the manuscript, and preparation of results. AV & EB coordinated the overall research. All authors reviewed and contributed to the manuscript writing.

785

Data Availability

The code, processed data, and documentation are available at <https://doi.org/10.5281/zenodo.7687578>

Acknowledgments

790 We thank Michelle van Vliet for providing the data for climate impacts on cooling technology and Michaela Werning for helping with spatial processing for the desalination data.

We also acknowledge funding provided by the NAVIGATE project (H2020/2019-2023, grant agreement number 821124) of the European Commission.

Competing Interests

795 The authors declare that they have no conflict of interest.

References

- Andrijevic, M., Crespo Cuaresma, J., Muttarak, R., and Schleussner, C. F.: Governance in socioeconomic pathways and its role for future adaptive capacity, *Nat. Sustain.*, 3, 35–41, <https://doi.org/10.1038/s41893-019-0405-0>, 2020.
- 800 Andrijevic, M., Schleussner, C. F., Crespo Cuaresma, J., Lissner, T., Muttarak, R., Riahi, K., Theokritoff, E., Thomas, A., van Maanen, N., and Byers, E.: Towards scenario representation of adaptive capacity for global climate change assessments, *Nature Climate Change* 2023, 1–10, <https://doi.org/10.1038/s41558-023-01725-1>, 2023.
- Platts Market Data – Electric Power | S&P Global Commodity Insights:
805 <https://www.spglobal.com/commodityinsights/en/products-services/electric-power/market-data-power>, last access: 18 July 2022.
- Bacon, E., Gannon, P., Stephen, S., Seyoum-Edjigu, E., Schmidt, M., Lang, B., Sandwith, T., Xin, J., Arora, S., Adham, K. N., Espinoza, A. J. R., Qwathekana, M., Prates, A. P. L., Shestakov, A., Cooper, D., Ervin, J., Dias, B. F. de S., Leles, B., Attallah, M., Mulongoy, J.,
810 and Gidda, S. B.: Aichi Biodiversity Target 11 in the like-minded megadiverse countries, *J Nat Conserv*, 51, 125723, <https://doi.org/10.1016/J.JNC.2019.125723>, 2019.
- Balkovič, J., van der Velde, M., Skalský, R., Xiong, W., Folberth, C., Khabarov, N., Smirnov, A., Mueller, N. D., and Obersteiner, M.: Global wheat production potentials and management flexibility under the representative concentration pathways, *Glob Planet*
815 *Change*, 122, 107–121, <https://doi.org/10.1016/j.gloplacha.2014.08.010>, 2014.
- Barbier, E. B.: The green economy post Rio+ 20, *Science* (1979), 338, 887–888, 2012.
- Baumstark, L., Bauer, N., Benke, F., Bertram, C., Bi, S., Gong, C. C., Dietrich, J. P., Dirnauchner, A., Giannousakis, A., Hilaire, J., Klein, D., Koch, J., Leimbach, M., Levesque, A., Madeddu, S., Malik, A., Merfort, A., Merfort, L., Odenweller, A., Pehl, M., Pietzcker, R.,
820 Piontek, F., Rauner, S., Rodrigues, R., Rottoli, M., Schreyer, F., Schultes, A., Soergel, B., Soergel, D., Strefler, J., Ueckerdt, F., Kriegler, E., and Luderer, G.: REMIND2.1: Transformation and innovation dynamics of the energy-economic system within climate and sustainability limits, *Geoscientific Model Development Discussions*, 1–50, <https://doi.org/10.5194/GMD-2021-85>, 2021.
- 825 Binsted, M., Iyer, G., Patel, P., Graham, N., Ou, Y., Khan, Z., Kholod, N., Narayan, K., Hejazi, M., Kim, S., Calvin, K., and Wise, M.: GCAM-USA v5.3_water_dispatch: Integrated modeling of subnational U.S. energy, water, and land systems within a global framework, *Geoscientific Model Development Discussions*, 1–39, <https://doi.org/10.5194/GMD-2021-197>, 2021.
- 830 Burek, P., Greve, P., Wada, Y., Krey, V., Fischer, G., Parkinson, S., Tramberend, S., Byers, E., Satoh, Y., Riahi, K., Veldkamp, T. I. E., Burtscher, R., Djilali, N., Langan, S., and Kahil, T.: A Continental-Scale Hydroeconomic Model for Integrating Water-Energy-Land Nexus Solutions, *Water Resour Res*, 54, 7511–7533, <https://doi.org/10.1029/2017wr022478>, 2018.
- 835 Burek, P., Satoh, Y., Kahil, T., Tang, T., Greve, P., Smilovic, M., Guillaumot, L., and Wada, Y.: Development of the Community Water Model (CWatM v1.04) A high-resolution hydrological model for global and regional assessment of integrated water resources

- management, *Geoscientific Model Development Discussions*, 1–49, <https://doi.org/10.5194/gmd-2019-214>, 2019.
- 840 Burek, P., Satoh, Y., Kahil, T., Tang, T., Greve, P., Smilovic, M., Guillaumot, L., Zhao, F., and Wada, Y.: Development of the Community Water Model (CWatM v1.04) - A high-resolution hydrological model for global and regional assessment of integrated water resources management, *Geosci Model Dev*, 13, 3267–3298, <https://doi.org/10.5194/GMD-13-3267-2020>, 2020.
- 845 Byers, E., Gidden, M., Leclere, D., Balkovic, J., Burek, P., Ebi, K., Greve, P., Grey, D., Havlik, P., Hillers, A., Johnson, N., Kahil, T., Krey, V., Langan, S., Nakicenovic, N., Novak, R., Obersteiner, M., Pachauri, S., Palazzo, A., Parkinson, S., Rao, N. D., Rogelj, J., Satoh, Y., Wada, Y., Willaarts, B., and Riahi, K.: Global exposure and vulnerability to multi-sector development and climate change hotspots, *Environ. Res. Lett.*, 13, 055012, <https://doi.org/10.1088/1748-9326/aabf45>, 2018.
- 850 Calvin, K., Wise, M., Clarke, L., Edmonds, J., Kyle, P., Luckow, P., and Thomson, A.: Implications of simultaneously mitigating and adapting to climate change: initial experiments using GCAM, *Clim Change*, 117, 545–560, 2013.
- Dai, Z., Wu, Z., Loew, A., Jaramillo, P., and Zhai, H.: Marginal costs of water savings from cooling system retrofits: a case study for Texas power plants, *Environ. Res. Lett.*, 11, 104004, <https://doi.org/10.1088/1748-9326/11/10/104004>, 2016.
- 855 Falchetta, G., Stevanato, N., Moner-Girona, M., Mazzoni, D., Colombo, E., and Hafner, M.: The M-LED platform: advancing electricity demand assessment for communities living in energy poverty, *Environmental Research Letters*, 16, 074038, <https://doi.org/10.1088/1748-9326/AC0CAB>, 2021.
- 860 Falchetta, G., Adeleke, A., Awais, M., Byers, E., Copinschi, P., Duby, S., Hughes, A., Ireland, G., Riahi, K., Rukera-Tabaro, S., Semeria, F., Shendrikova, D., Stevanato, N., Troost, A., Tuninetti, M., Vinca, A., Zulu, A., and Hafner, M.: A renewable energy-centred research agenda for planning and financing Nexus development objectives in rural sub-Saharan Africa, *Energy Strategy Reviews*, 43, 100922, <https://doi.org/10.1016/J.ESR.2022.100922>, 2022.
- 865 Fan, Y., Li, H., and Miguez-Macho, G.: Global patterns of groundwater table depth, *Science* (1979), 339, 940–943, https://doi.org/10.1126/SCIENCE.1229881/SUPPL_FILE/FAN.SM.PDF, 2013.
- 870 Frank, S., Gusti, M., Havlík, P., Lauri, P., Di Fulvio, F., Forsell, N., Hasegawa, T., Krisztin, T., Palazzo, A., and Valin, H.: Land-based climate change mitigation potentials within the agenda for sustainable development, *Environmental Research Letters*, 16, 024006, <https://doi.org/10.1088/1748-9326/ABC58A>, 2021.
- Fricko, O., Parkinson, S. C., Johnson, N., Strubegger, M., Vliet, M. T. Van, and Riahi, K.: Energy sector water use implications of a 2°C climate policy, *Environmental Research Letters*, 11, <https://doi.org/10.1088/1748-9326/11/3/034011>, 2016.
- 875 Frieler, K., Lange, S., Piontek, F., Reyer, C. P. O., Schewe, J., Warszawski, L., Zhao, F., Chini, L., Denvil, S., Emanuel, K., Geiger, T., Halladay, K., Hurtt, G., Mengel, M., Murakami, D., Ostberg, S., Popp, A., Riva, R., Stevanovic, M., SuzGBRi, T., Volkholz, J., Burke, E., Ciais, P., Ebi, K., Eddy, T. D., Elliott, J., Galbraith, E., Gosling, S. N.,
- 880 Hattermann, F., Hickler, T., Hinkel, J., Hof, C., Huber, V., Jägermeyr, J., Krysanova, V., Marcé, R., Müller Schmied, H., Mouratiadou, I., Pierson, D., Tittensor, D. P., Vautard, R., Van Vliet, M., Biber, M. F., Betts, R. A., Leon Bodirsky, B., Deryng, D., Frohling, S., Jones, C. D., Lotze, H. K., Lotze-Campen, H., Sahajpal, R., Thonicke, K., Tian, H., and Yamagata, Y.: Assessing the impacts of 1.5°C global warming - Simulation protocol of the Inter-Sectoral Impact Model Intercomparison Project (ISIMIP2b), *Geosci Model Dev*, 10, 4321–4345, <https://doi.org/10.5194/GMD-10-4321-2017>, 2017.

- Gernaat, D. E. H. J., de Boer, H. S., Daioglou, V., Yalew, S. G., Müller, C., and van Vuuren, D. P.: Climate change impacts on renewable energy supply, *Nature Climate Change* 2021 11:2, 11, 119–125, <https://doi.org/10.1038/s41558-020-00949-9>, 2021.
- 890 Gleeson, T. and Richter, B.: How much groundwater can we pump and protect environmental flows through time? Presumptive standards for conjunctive management of aquifers and rivers, *River Res Appl*, 34, 83–92, <https://doi.org/10.1002/rra.3185>, 2018.
- Global Water Intelligence: DesalData, 2016.
- Graham, N. T., Hejazi, M. I., Chen, M., Davies, E. G. R., Edmonds, J. A., Kim, S. H., Turner, S. W. D., Li, X., Vernon, C. R., Calvin, K., Miralles-Wilhelm, F., Clarke, L., Kyle, P., Link, R., Patel, P., Snyder, A. C., and Wise, M. A.: Humans drive future water scarcity changes across all Shared Socioeconomic Pathways, *Environmental Research Letters*, 15, 014007, <https://doi.org/10.1088/1748-9326/AB639B>, 2020.
- 895 Grubert, E. A.: Water consumption from hydroelectricity in the United States, *Adv Water Resour*, 96, 88–94, <https://doi.org/10.1016/J.ADVWATRES.2016.07.004>, 2016.
- 900 Haddeland, I., Heinke, J., Biemans, H., Eisner, S., Flörke, M., Hanasaki, N., Konzmann, M., Ludwig, F., Masaki, Y., Schewe, J., Stacke, T., Tessler, Z. D., Wada, Y., and Wisser, D.: Global water resources affected by human interventions and climate change, *Proc Natl Acad Sci U S A*, 111, 3251–3256, https://doi.org/10.1073/PNAS.1222475110/SUPPL_FILE/PNAS.201222475SI.PDF, 2014.
- 905 Harmsen, M., Krieglner, E., Van Vuuren, D. P., Van Der Wijst, K. I., Luderer, G., Cui, R., Dessens, O., Drouet, L., Emmerling, J., Morris, J. F., Fosse, F., Fragkiadakis, D., Fragkiadakis, K., Fragkos, P., Fricko, O., Fujimori, S., Gernaat, D., Guivarch, C., Iyer, G., Karkatsoulis, P., Keppo, I., Keramidas, K., Köberle, A., Kolp, P., Krey, V., Krüger, C., Leblanc, F., Mittal, S., Paltsev, S., Rochedo, P., Van Ruijven, B. J., Sands, R. D., Sano, F., Streffler, J., Arroyo, E. V., Wada, K., and Zakeri, B.: Integrated assessment model diagnostics: key indicators and model evolution, *Environmental Research Letters*, 16, 054046, <https://doi.org/10.1088/1748-9326/ABF964>, 2021.
- 910 Havlík, P., Valin, H., Herrero, M., Obersteiner, M., Schmid, E., Rufino, M. C., Mosnier, A., Thornton, P. K., Böttcher, H., Conant, R. T., Frank, S., Fritz, S., Fuss, S., Kraxner, F., and Notenbaert, A.: Climate change mitigation through livestock system transitions, *Proc Natl Acad Sci U S A*, 111, 3709–3714, https://doi.org/10.1073/PNAS.1308044111/SUPPL_FILE/SAPP.PDF, 2014.
- 915 Hejazi, M. I., Edmonds, J., Clarke, L., Kyle, P., Davies, E., Chaturvedi, V., Wise, M., Patel, P., Eom, J., and Calvin, K.: Integrated assessment of global water scarcity over the 21st century under multiple climate change mitigation policies, *Hydrol Earth Syst Sci*, 18, 2859–2883, <https://doi.org/10.5194/HESS-18-2859-2014>, 2014.
- 920 Howard, P. H. and Sterner, T.: Few and Not So Far Between: A Meta-analysis of Climate Damage Estimates, *Environ Resour Econ (Dordr)*, 68, 197–225, <https://doi.org/10.1007/S10640-017-0166-Z/FIGURES/3>, 2017.
- 925 Huppmann, D., Rogelj, J., Krieglner, E., Krey, V., and Riahi, K.: A new scenario resource for integrated 1.5 C research, *Nat Clim Chang*, 8, 1027–1030, 2018.
- Huppmann, D., Gidden, M., Fricko, O., Kolp, P., Orthofer, C., Pimmer, M., Kushin, N., Vinca, A., Mastrucci, A., Riahi, K., and Krey, V.: The MESSAGEix Integrated Assessment Model and the ix modeling platform (ixmp): An open framework for integrated and cross-cutting analysis of energy, climate, the environment, and sustainable development, *Environmental Modelling and Software*, 143–156, <https://doi.org/10.1016/j.envsoft.2018.11.012>, 2019.
- 930 Jägermeyr, J., Müller, C., Ruane, A. C., Elliott, J., Balkovic, J., Castillo, O., Faye, B., Foster, I., Folberth, C., Franke, J. A., Fuchs, K., Guarin, J. R., Heinke, J., Hoogenboom, G., Iizumi, T., Jain, A. K., Kelly, D., Khabarov, N., Lange, S., Lin, T. S., Liu, W., Mialyk, O., Minoli, S.,

- Moyer, E. J., Okada, M., Phillips, M., Porter, C., Rabin, S. S., Scheer, C., Schneider, J. M., Schyns, J. F., Skalsky, R., Smerald, A., Stella, T., Stephens, H., Webber, H., Zabel, F., and Rosenzweig, C.: Climate impacts on global agriculture emerge earlier in new generation of climate and crop models, *Nat Food*, 2, 873–885, <https://doi.org/10.1038/s43016-021-00400-y>, 2021.
- 940 Jones, E. R., Van Vliet, M. T. H., Qadir, M., and Bierkens, M. F. P.: Country-level and gridded estimates of wastewater production, collection, treatment and reuse, *Earth Syst Sci Data*, 13, 237–254, <https://doi.org/10.5194/ESSD-13-237-2021>, 2021.
- 945 Kahil, T., Parkinson, S., Satoh, Y., Greve, P., Burek, P., Veldkamp, T. I. E., Burtscher, R., Byers, E., Djilali, N., Fischer, G., Krey, V., Langan, S., Riahi, K., Tramberend, S., and Wada, Y.: A Continental-Scale Hydroeconomic Model for Integrating Water-Energy-Land Nexus Solutions, *Water Resour Res*, 54, 7511–7533, <https://doi.org/10.1029/2017WR022478>, 2018.
- Kapos Ravilious C., Campbell A., Dickson B., Gibbs H., Hansen M., Lysenko I., Miles L., Price J., Scharlemann J.P.W., and Trumper K.: Carbon and biodiversity. A demonstration atlas, UNEP-WCMC, 2008.
- 950 Khan, Z., Linares, P., and García-González, J.: Integrating water and energy models for policy driven applications. A review of contemporary work and recommendations for future developments, *Renewable and Sustainable Energy Reviews*, 67, 1123–1138, <https://doi.org/10.1016/j.rser.2016.08.043>, 2017.
- 955 Khan, Z., Linares, P., Rutten, M., Parkinson, S., Johnson, N., and García-González, J.: Spatial and temporal synchronization of water and energy systems: Towards a single integrated optimization model for long-term resource planning, *Appl Energy*, 210, 499–517, <https://doi.org/10.1016/j.apenergy.2017.05.003>, 2018.
- 960 Kikstra, J. S., Mastrucci, A., Min, J., Riahi, K., and Rao, N. D.: Decent living gaps and energy needs around the world, *Environmental Research Letters*, 16, 095006, <https://doi.org/10.1088/1748-9326/AC1C27>, 2021.
- Kim, S. H., Hejazi, M., Liu, L., Calvin, K., Clarke, L., Edmonds, J., Kyle, P., Patel, P., Wise, M., and Davies, E.: Balancing global water availability and use at basin scale in an integrated assessment model, *Clim Change*, 217–231, <https://doi.org/10.1007/s10584-016-1604-6>, 2016.
- 965 Kindermann, G. E., McCallum, I., Fritz, S., and Obersteiner, M.: A global forest growing stock, biomass and carbon map based on FAO statistics, *Silva Fennica*, 42, 387–396, <https://doi.org/10.14214/SF.244>, 2008.
- Korkovelos, A., Khavari, B., Sahlberg, A., Howells, M., and Arderne, C.: The Role of Open Access Data in Geospatial Electrification Planning and the Achievement of SDG7. An OnSSET-Based Case Study for Malawi, *Energies* 2019, Vol. 12, Page 1395, 12, 1395, <https://doi.org/10.3390/EN12071395>, 2019.
- 970 Krey, V., Havlik, P., Fricko, O., J, Z., Forsell N, G. G. M. S. M. K. G. E. T., Obersteiner M, R. M. J. N. K. G. K. P. M. D. P. S. R. S. R. J. V. H., and (2016), K.: MESSAGE-GLOBIOM 1.0 Documentation, <https://docs.messageix.org/projects/global/en/latest/overview/index.html>, 2016.
- 975 Lehner, B., Verdin, K., and Jarvis, A.: HydroSHEDS v1.1, 1–27, 2006.
- Liu, Y., Hejazi, M., Kyle, P., Kim, S. H., Davies, E., Miralles, D. G., Teuling, A. J., He, Y., and Niyogi, D.: Global and regional evaluation of energy for water, *Environ Sci Technol*, 50, 9736–9745, https://doi.org/10.1021/ACS.EST.6B01065/SUPPL_FILE/ES6B01065_SI_002.XLSX, 2016.
- 980 van Maanen, N., Lissner, T., Harmsen, M., Piontek, F., Andrijevic, M., and van Vuuren, D. P.: Representation of adaptation in quantitative climate assessments, *Nature Climate Change* 2023 13:4, 13, 309–311, <https://doi.org/10.1038/s41558-023-01644-1>, 2023.

- 985 Mastrucci, A., Byers, E., Pachauri, S., and Rao, N. D.: Improving the SDG energy poverty targets: Residential cooling needs in the Global South, *Energy Build*, 186, 405–415, <https://doi.org/10.1016/J.ENBUILD.2019.01.015>, 2019.
- Mastrucci, A., van Ruijven, B., Byers, E., Poblete-Cazenave, M., and Pachauri, S.: Global scenarios of residential heating and cooling energy demand and CO₂ emissions, *Clim Change*, 168, 1–26, <https://doi.org/10.1007/S10584-021-03229-3/FIGURES/7>, 2021.
- 990 Meinshausen, M., Raper, S. C. B., and Wigley, T. M. L.: Emulating coupled atmosphere-ocean and carbon cycle models with a simpler model, *MAGICC6 - Part 1: Model description and calibration*, *Atmos Chem Phys*, 11, 1417–1456, <https://doi.org/10.5194/ACP-11-1417-2011>, 2011.
- 995 Meldrum, J., Nettles-Anderson, S., Heath, G., and Macknick, J.: Life cycle water use for electricity generation: a review and harmonization of literature estimates, *Environmental Research Letters*, 8, 015031, <https://doi.org/10.1088/1748-9326/8/1/015031>, 2013a.
- Meldrum, J., Nettles-Anderson, S., Heath, G., and Macknick, J.: Life cycle water use for electricity generation: a review and harmonization of literature estimates, *Environmental Research Letters*, 8, 015031, <https://doi.org/10.1088/1748-9326/8/1/015031>, 2013b.
- 1000 Müller, C. and Robertson, R. D.: Projecting future crop productivity for global economic modeling, *Agricultural Economics*, 45, 37–50, <https://doi.org/10.1111/AGEC.12088>, 2014.
- O’Neill, B. C., Kriegler, E., Ebi, K. L., Kemp-Benedict, E., Riahi, K., Rothman, D. S., van Ruijven, B. J., van Vuuren, D. P., Birkmann, J., Kok, K., Levy, M., and Solecki, W.: The roads ahead: Narratives for shared socioeconomic pathways describing world futures in the 21st century, *Global Environmental Change*, 42, 169–180, <https://doi.org/10.1016/j.gloenvcha.2015.01.004>, 2017.
- Orthofer, C. L., Huppmann, D., and Krey, V.: South Africa after Paris-fracking its way to the NDCs?, *Front Energy Res*, 7, 1–15, <https://doi.org/10.3389/fenrg.2019.00020>, 2019.
- 1010 Pachauri, S., Poblete-Cazenave, M., Aktas, A., and Gidden, M. J.: Access to clean cooking services in energy and emission scenarios after COVID-19, *Nature Energy* 2021 6:11, 6, 1067–1076, <https://doi.org/10.1038/s41560-021-00911-9>, 2021.
- Palazzo, A., Valin, H., Batka, M., and Havlík, P.: Investment Needs for Irrigation Infrastructure along Different Socioeconomic Pathways, *Investment Needs for Irrigation Infrastructure along Different Socioeconomic Pathways*, <https://doi.org/10.1596/1813-9450-8744>, 2019.
- 1015 Parkinson, S., Krey, V., Huppmann, D., Kahil, T., McCollum, D., Fricko, O., Byers, E., Gidden, M. J., Mayor, B., Khan, Z., Raptis, C., Rao, N. D., Johnson, N., Wada, Y., Djilali, N., and Riahi, K.: Balancing clean water-climate change mitigation trade-offs, *Environmental Research Letters*, 14, <https://doi.org/10.1088/1748-9326/aaf2a3>, 2019a.
- Parkinson, S., Krey, V., Huppmann, D., Kahil, T., McCollum, D., Fricko, O., Byers, E., Gidden, M. J., Mayor, B., Khan, Z., Raptis, C., Rao, N. D., Johnson, N., Wada, Y., Djilali, N., and Riahi, K.: Balancing clean water-climate change mitigation trade-offs, *Environmental Research Letters*, 14, <https://doi.org/10.1088/1748-9326/aaf2a3>, 2019b.
- 1025 Parkinson, S. C., Makowski, M., Krey, V., Sedraoui, K., Almasoud, A. H., and Djilali, N.: A multi-criteria model analysis framework for assessing integrated water-energy system transformation pathways, *Appl Energy*, 210, 477–486, <https://doi.org/10.1016/j.apenergy.2016.12.142>, 2018.
- Parry, M. L. and Carter, T. R.: Climate impact assessment: A review of some approaches, *Planning for Drought: Toward A Reduction of Societal Vulnerability*, 165–187, <https://doi.org/10.4324/9780429301735-13/CLIMATE-IMPACT-ASSESSMENT-REVIEW-APPROACHES-MARTIN-PARRY-TIMOTHY-CARTER>, 2019.

- Pastor, A. V., Ludwig, F., Biemans, H., Hoff, H., and Kabat, P.: Accounting for environmental flow requirements in global water assessments, *Hydrol Earth Syst Sci*, 18, 5041–5059, <https://doi.org/10.5194/HESS-18-5041-2014>, 2014.
- Pastor, A. V., Palazzo, A., Havlik, P., Biemans, H., Wada, Y., Obersteiner, M., Kabat, P., and Ludwig, F.: The global nexus of food–trade–water sustaining environmental flows by 2050, *Nat Sustain*, <https://doi.org/10.1038/s41893-019-0287-1>, 2019.
- Patt, A. G., van Vuuren, D. P., Berkhout, F., Aaheim, A., Hof, A. F., Isaac, M., and Mechler, R.: Adaptation in integrated assessment modeling: Where do we stand?, *Clim Change*, 99, 383–402, <https://doi.org/10.1007/s10584-009-9687-y>, 2010.
- Piontek, F., Drouet, L., Emmerling, J., Kompas, T., Méjean, A., Otto, C., Rising, J., Soergel, B., Taconet, N., and Tavoni, M.: Integrated perspective on translating biophysical to economic impacts of climate change, *Nature Climate Change* 2021 11:7, 11, 563–572, <https://doi.org/10.1038/s41558-021-01065-y>, 2021.
- Poblete-Cazenave, M. and Pachauri, S.: A structural model of cooking fuel choices in developing countries, *Energy Econ*, 75, 449–463, <https://doi.org/10.1016/J.ENERCO.2018.09.003>, 2018.
- Poblete-Cazenave, M. and Pachauri, S.: A model of energy poverty and access: Estimating household electricity demand and appliance ownership, *Energy Econ*, 98, 105266, <https://doi.org/10.1016/J.ENERCO.2021.105266>, 2021.
- Poblete-Cazenave, M., Pachauri, S., Byers, E., Mastrucci, A., and van Ruijven, B.: Global scenarios of household access to modern energy services under climate mitigation policy, *Nature Energy* 2021 6:8, 6, 824–833, <https://doi.org/10.1038/s41560-021-00871-0>, 2021.
- Prudhomme, C., Giuntoli, I., Robinson, E. L., Clark, D. B., Arnell, N. W., Dankers, R., Fekete, B. M., Franssen, W., Gerten, D., Gosling, S. N., Hagemann, S., Hannah, D. M., Kim, H., Masaki, Y., Satoh, Y., Stacke, T., Wada, Y., and Wisser, D.: Hydrological droughts in the 21st century, hotspots and uncertainties from a global multimodel ensemble experiment, *Proc Natl Acad Sci U S A*, 111, 3262–3267, https://doi.org/10.1073/PNAS.1222473110/SUPPL_FILE/PNAS.201222473SI.PDF, 2014.
- Qadir, M., Drechsel, P., Jiménez Cisneros, B., Kim, Y., Pramanik, A., Mehta, P., and Olaniyan, O.: Global and regional potential of wastewater as a water, nutrient and energy source, *Nat Resour Forum*, 44, 40–51, <https://doi.org/10.1111/1477-8947.12187>, 2020.
- Raptis, C. E., Van Vliet, M. T. H., and Pfister, S.: Global thermal pollution of rivers from thermoelectric power plants, *Environmental Research Letters*, 11, 104011, <https://doi.org/10.1088/1748-9326/11/10/104011>, 2016.
- Rasul, G.: Managing the food, water, and energy nexus for achieving the Sustainable Development Goals in South Asia, *Environ Dev*, 18, 14–25, <https://doi.org/10.1016/j.envdev.2015.12.001>, 2016.
- Rasul, G. and Sharma, B.: The nexus approach to water – energy – food security : an option for adaptation to climate change an option for adaptation to climate change, *Climate Policy*, 16, 682–702, <https://doi.org/10.1080/14693062.2015.1029865>, 2016.
- Riahi, K., van Vuuren, D. P., Kriegler, E., Edmonds, J., O’Neill, B. C., Fujimori, S., Bauer, N., Calvin, K., Dellink, R., Fricko, O., Lutz, W., Popp, A., Cuaresma, J. C., KC, S., Leimbach, M., Jiang, L., Kram, T., Rao, S., Emmerling, J., Ebi, K., Hasegawa, T., Havlik, P., Humpenöder, F., Da Silva, L. A., Smith, S., Stehfest, E., Bosetti, V., Eom, J., Gernaat, D., Masui, T., Rogelj, J., Strefler, J., Drouet, L., Krey, V., Luderer, G., Harmsen, M., Takahashi, K., Baumstark, L., Doelman, J. C., Kainuma, M., Klimont, Z., Marangoni, G., Lotze-Campen, H., Obersteiner, M., Tabeau, A., and Tavoni, M.: The Shared Socioeconomic Pathways and their energy, land use, and greenhouse gas emissions implications: An overview, *Global Environmental Change*, 42, <https://doi.org/10.1016/j.gloenvcha.2016.05.009>, 2017.

- Riahi, K., Bertram, C., Huppmann, D., Rogelj, J., Bosetti, V., Cabardos, A. M., Deppermann, A., Drouet, L., Frank, S., Fricko, O., Fujimori, S., Harmsen, M., Hasegawa, T., Krey, V.,
1085 Luderer, G., Paroussos, L., Schaeffer, R., Weitzel, M., van der Zwaan, B., Vrontisi, Z.,
Longa, F. D., Després, J., Fosse, F., Fragkiadakis, K., Gusti, M., Humpenöder, F., Keramidas,
K., Kishimoto, P., Kriegler, E., Meinshausen, M., Nogueira, L. P., Oshiro, K., Popp, A.,
Rochedo, P. R. R., Ünlü, G., van Ruijven, B., Takakura, J., Tavoni, M., van Vuuren, D., and
1090 Zakeri, B.: Cost and attainability of meeting stringent climate targets without overshoot,
Nature Climate Change 2021 11:12, 11, 1063–1069, <https://doi.org/10.1038/s41558-021-01215-2>, 2021.
- Satoh, Y., Yoshimura, K., Pokhrel, Y., Kim, H., Shiogama, H., Yokohata, T., Hanasaki, N.,
Wada, Y., Burek, P., Byers, E., Schmied, H. M., Gerten, D., Ostberg, S., Gosling, S. N.,
Boulangé, J. E. S., and Oki, T.: The timing of unprecedented hydrological drought under
1095 climate change, *Nature Communications* 2022 13:1, 13, 1–11,
<https://doi.org/10.1038/s41467-022-30729-2>, 2022.
- Schleussner, C.-F., Pflleiderer, P., Andrijevic, M., Vogel, M. M., Otto, F. E. L., and
Seneviratne, S. I.: Pathways of climate resilience over the 21st century, *Environmental
Research Letters*, 2, 0–31, 2021.
- 1100 Schultes, A., Piontek, F., Soergel, B., Rogelj, J., Baumstark, L., Kriegler, E., Edenhofer, O.,
and Luderer, G.: Economic damages from on-going climate change imply deeper near-term
emission cuts, *Environmental Research Letters*, 16, 104053, <https://doi.org/10.1088/1748-9326/AC27CE>, 2021.
- Soergel, B., Kriegler, E., Weindl, I., Rauner, S., Dirnaichner, A., Ruhe, C., Hofmann, M.,
1105 Bauer, N., Bertram, C., Bodirsky, B. L., Leimbach, M., Leininger, J., Levesque, A., Luderer,
G., Pehl, M., Wogens, C., Baumstark, L., Beier, F., Dietrich, J. P., Humpenöder, F., von
Jeetze, P., Klein, D., Koch, J., Pietzcker, R., Strefler, J., Lotze-Campen, H., and Popp, A.: A
sustainable development pathway for climate action within the UN 2030 Agenda, *Nature
Climate Change* 2021 11:8, 11, 656–664, <https://doi.org/10.1038/s41558-021-01098-3>,
1110 2021a.
- Soergel, B., Kriegler, E., Weindl, I., Rauner, S., Dirnaichner, A., Ruhe, C., Hofmann, M.,
Bauer, N., Bertram, C., Bodirsky, B. L., Leimbach, M., Leininger, J., Levesque, A., Luderer,
G., Pehl, M., Wogens, C., Baumstark, L., Beier, F., Dietrich, J. P., Humpenöder, F., von
Jeetze, P., Klein, D., Koch, J., Pietzcker, R., Strefler, J., Lotze-Campen, H., and Popp, A.: A
1115 sustainable development pathway for climate action within the UN 2030 Agenda, *Nat. Clim.
Change*, 11, 656–664, <https://doi.org/10.1038/s41558-021-01098-3>, 2021b.
- van Soest, H. L., van Vuuren, D. P., Hilaire, J., Minx, J. C., Harmsen, M. J. H. M., Krey, V.,
Popp, A., Riahi, K., and Luderer, G.: Analysing interactions among Sustainable Development
Goals with Integrated Assessment Models, *Glob Transit*, 1, 210–225,
1120 <https://doi.org/10.1016/J.GLT.2019.10.004>, 2019.
- Sutanudjaja, E. H., Van Beek, R., Wanders, N., Wada, Y., Bosmans, J. H. C., Drost, N., Van
Der Ent, R. J., De Graaf, I. E. M., Hoch, J. M., De Jong, K., Karssenber, D., López López,
P., Peßenteiner, S., Schmitz, O., Straatsma, M. W., Vannamete, E., Wissler, D., and
Bierkens, M. F. P.: PCR-GLOBWB 2: A 5 arcmin global hydrological and water resources
1125 model, *Geosci Model Dev*, 11, 2429–2453, <https://doi.org/10.5194/GMD-11-2429-2018>,
2018.
- Taconet, N., Méjean, A., and Guivarch, C.: Influence of climate change impacts and
mitigation costs on inequality between countries, *Clim Change*, 160, 15–34, 2020.
- Tuninetti, M., Tamea, S., D’Odorico, P., Laio, F., and Ridolfi, L.: Global sensitivity of high-
1130 resolution estimates of crop water footprint, *Water Resour Res*, 51, 8257–8272,
<https://doi.org/10.1002/2015WR017148>, 2015.

- Vinca, A., Parkinson, S., Byers, E., Burek, P., Khan, Z., Krey, V., Diuana, F. A., Wang, Y., Ilyas, A., Köberle, A. C., Staffell, I., Pfenninger, S., Muhammad, A., Rowe, A., Schaeffer, R., Rao, N. D., Wada, Y., Djilali, N., and Riahi, K.: The NEXus Solutions Tool (NEST) v1.0: An open platform for optimizing multi-scale energy-water-land system transformations, *Geosci Model Dev*, 13, 1095–1121, <https://doi.org/10.5194/GMD-13-1095-2020>, 2020.
- 1135 van Vuuren, D. P., Edmonds, J., Kainuma, M., Riahi, K., Thomson, A., Hibbard, K., Hurtt, G. C., Kram, T., Krey, V., Lamarque, J. F., Masui, T., Meinshausen, M., Nakicenovic, N., Smith, S. J., and Rose, S. K.: The representative concentration pathways: An overview, *Clim Change*, 109, 5–31, <https://doi.org/10.1007/s10584-011-0148-z>, 2011.
- 1140 Vuuren, D. P. van, Zimm, C., Busch, S., Kriegler, E., Leininger, J., Messner, D., Nakicenovic, N., Rockstrom, J., Riahi, K., Sperling, F., Bosetti, V., Cornell, S., Gaffney, O., Lucas, P. L., Popp, A., Ruhe, C., Schiller, A. von, Schmidt, J. O., and Soergel, B.: Defining a sustainable development target space for 2030 and 2050, *One Earth*, 0, <https://doi.org/10.1016/J.ONEEAR.2022.01.003>, 2022.
- 1145 Wada, Y., Wisser, D., and Bierkens, M. F. P.: Global modeling of withdrawal, allocation and consumptive use of surface water and groundwater resources, *Earth System Dynamics*, 5, 15–40, <https://doi.org/10.5194/ESD-5-15-2014>, 2014.
- 1150 Wada, Y., Flörke, M., Hanasaki, N., Eisner, S., Fischer, G., Tramberend, S., Satoh, Y., Van Vliet, M. T. H., Yillia, P., Ringler, C., Burek, P., and Wiberg, D.: Modeling global water use for the 21st century: The Water Futures and Solutions (WFaS) initiative and its approaches, *Geosci Model Dev*, 9, 175–222, <https://doi.org/10.5194/GMD-9-175-2016>, 2016.
- Wang, T. and Sun, F.: Global gridded GDP data set consistent with the shared socioeconomic pathways, *Scientific Data* 2022 9:1, 9, 1–10, <https://doi.org/10.1038/s41597-022-01300-x>, 2022.
- 1155 Wang, X., Zhang, J., Shahid, S., Guan, E., Wu, Y., Gao, J., and He, R.: Adaptation to climate change impacts on water demand, *Mitig Adapt Strateg Glob Chang*, 21, 81–99, 2016.
- Weyant, J.: Some contributions of integrated assessment models of global climate change, *Rev Environ Econ Policy*, 11, 115–137, 2017.
- 1160 Yalew, S. G., van Vliet, M. T. H., Gernaat, D. E. H. J., Ludwig, F., Miara, A., Park, C., Byers, E., De Cian, E., Piontek, F., Iyer, G., Mouratiadou, I., Glynn, J., Hejazi, M., Dessens, O., Rochedo, P., Pietzcker, R., Schaeffer, R., Fujimori, S., Dasgupta, S., Mima, S., da Silva, S. R. S., Chaturvedi, V., Vautard, R., and van Vuuren, D. P.: Impacts of climate change on energy systems in global and regional scenarios, *Nature Energy* 2020 5:10, 5, 794–802, <https://doi.org/10.1038/s41560-020-0664-z>, 2020.
- 1165