

# Subglacial valleys preserved in the highlands of south and east Greenland record restricted ice extent during past warmer climates

Guy J. G. Paxman<sup>1</sup>, Stewart S. R. Jamieson<sup>1</sup>, Aisling M. Dolan<sup>2</sup>, Michael J. Bentley<sup>1</sup>

<sup>1</sup>Department of Geography, Durham University, Durham, DH1 3LE, United Kingdom

5 <sup>2</sup>School of Earth and Environment, University of Leeds, Leeds, LS2 9JT, United Kingdom

*Correspondence to:* Guy J. G. Paxman (guy.j.paxman@durham.ac.uk)

**Abstract.** The Greenland Ice Sheet is a key contributor to contemporary global sea level rise, but its long-term history and response to episodes of warming in Earth's geological past remain uncertain. The terrain covered by the ice sheet comprises ~79% of Greenland and ~1.1% of the Earth's land surface and contains geomorphological records that may provide valuable insights into past ice-sheet behaviour. Here we use ice surface morphology and radio-echo sounding data to identify ice-covered valleys within the highlands of southern and eastern Greenland and use numerical ice-sheet modelling to constrain the climatological and glaciological conditions responsible for valley incision. Our mapping reveals intricate subglacial valley networks with morphologies that are indicative of substantial glacial modification of an inherited fluvial landscape, yet many of these valleys are presently situated beneath cold-based, slow-moving (i.e., non-erosive) ice. We use the morphology of the valleys and our simple ice-sheet model experiments to infer that incision likely occurred beneath erosive mountain valley glaciers during one or more phases of Greenland's glacial history when ice was restricted to the southern and eastern highlands, and Greenland's contribution to barystatic sea level was up to +7 metres relative to today. We infer that this valley incision primarily occurred prior to the growth of a continental-scale ice sheet, most likely during the late Miocene (ca. 7–5 Ma) and/or late Pliocene (ca. 3.6–2.6 Ma). Our findings therefore provide new data-based constraints on early Greenland Ice Sheet extent and dynamics that can serve as valuable boundary conditions in models of regional and global palaeoclimate during past warm periods that are important analogues for climate change in the 21<sup>st</sup> Century and beyond.

10  
15  
20

## 1 Introduction

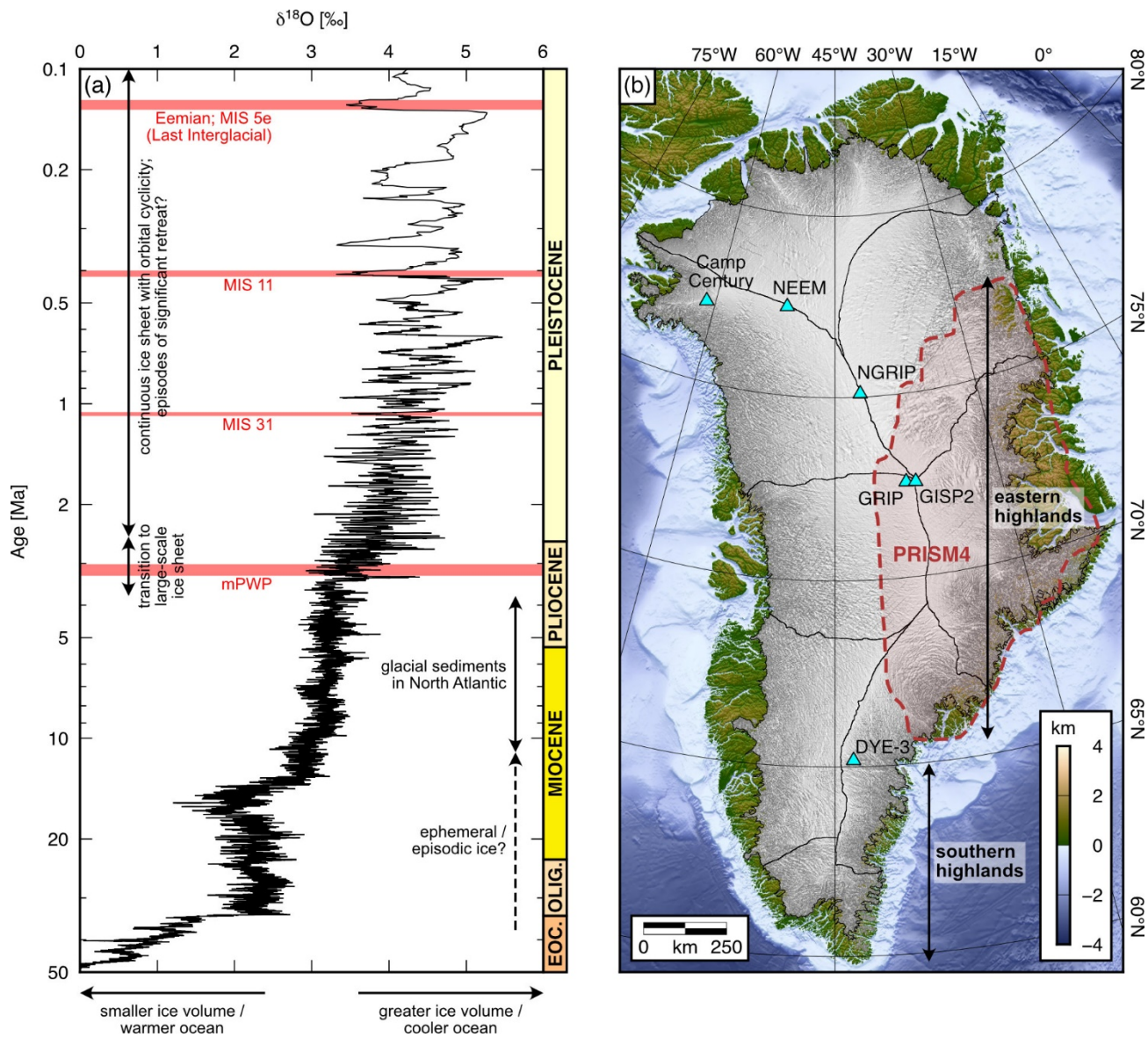
Loss of ice from the Greenland Ice Sheet (GrIS) is one of the largest contributors to contemporary sea level rise (Cazenave et al., 2018). Between 2005 and 2018, the GrIS contributed an average of 0.76 mm yr<sup>-1</sup> to global mean sea level rise (Cazenave et al., 2018) due to mass loss driven by increased surface melting and enhanced discharge from outlet glaciers (The Imbie Team, 2020). Climate-ice sheet model ensemble experiments indicate that rates of ice mass loss in Greenland are likely to accelerate over the course of the current century, with the GrIS contributing several centimetres of additional global mean sea level rise by 2100 (Aschwanden & Brinkerhoff, 2022; Edwards et al., 2021; Goelzer et al., 2020). However, predicting future GrIS behaviour remains challenging due to incomplete understanding of ice dynamics, including the complex interactions

25

30 between the ice sheet and the atmosphere, solid Earth, and ocean (Alley et al., 2019; Goelzer et al., 2013; Straneo & Heimbach, 2013). A key means of improving our understanding of current and future GrIS behaviour is to examine records of past change. However, significant uncertainties persist regarding the long-term history of the GrIS, particularly its extent and behaviour during past warm periods of the Quaternary and Neogene (Fig. 1a).

35 Given that ice covers approximately 79% of the land surface of Greenland (Fig. 1b), many of the records used to infer long-term past ice-sheet behaviour have been acquired via coring or seismic imaging of offshore sedimentary material. For example, the presence of ice-rafted debris in North Atlantic and Arctic shelf and deep ocean sediments suggests that near-coastal ice existed in eastern Greenland from the late Miocene (ca. 11–7 Ma) (Helland & Holmes, 1997; Larsen et al., 1994; St. John & Krissek, 2002) and potentially as early as the late Eocene (ca. 38 Ma) in ephemeral form (Eldrett et al., 2007; Tripathi & Darby, 2018) (Fig. 1a).

40 Records of ice-rafted debris in the North Atlantic (Bailey et al., 2013; Blake-Mizen et al., 2019; Flesche Kleiven et al., 2002; Jansen et al., 2000) and global ice volume signals extracted from marine oxygen isotope records (Mudelsee & Raymo, 2005) have been used to infer that the gradual transition towards large-scale glaciation in Greenland — referred to as the ‘onset of Northern Hemisphere Glaciation’ (McClymont et al., 2023) — occurred during the late Pliocene to earliest Pleistocene (ca. 3.6–2.4 Ma; Fig. 1a). Glaciation is thought to have been primarily controlled by a drop in atmospheric CO<sub>2</sub> levels below a key 45 threshold (DeConto et al., 2008; Lunt et al., 2008), although other global factors such as uplift of the Himalayas and Rocky Mountains (Ruddiman & Kutzbach, 1989), closure of the Panama seaway (Haug & Tiedemann, 1998), and/or shifts in atmosphere and ocean circulation (Wara et al., 2005) may have also been partially responsible (Lunt et al., 2008). The initial phase of ice growth was likely interrupted by the mid-Piacenzian warm period (mPWP; ca. 3.26–3.02 Ma) (Haywood et al., 2016a); the global sea level highstand of up to +25 m during this interval (Dumitru et al., 2019; Dutton et al., 2015; Grant et 50 al., 2019) implies that the GrIS was likely significantly smaller than at the present-day.



**Figure 1: Greenlandic glacial history.** (a) Cenozoic global benthic oxygen isotope curve (5-point running mean) (Westerhold et al., 2020) (Eoc. = Eocene; Olig. = Oligocene). Note the logarithmic age scale. Red bars mark notable Plio-Pleistocene warm intervals (MIS = Marine Isotope Stage). (b) Present-day Greenland Ice Sheet. Hillshade image of the ice surface (Howat et al., 2014, 2022) is shaded in grey; land surface topography and seafloor bathymetry are displayed according to the colour scale (relative to mean sea level) (Morlighem et al., 2017). Black lines demarcate major ice-sheet drainage basins (Zwally et al., 2012); blue triangles mark deep ice core sites. Red dashed line marks the GrIS extent used as a PRISM4 (Pliocene Research Interpretation and Synoptic Mapping) palaeogeography boundary condition representing the mPWP interval in the Pliocene Model Intercomparison Project Phase 2 (Dowsett et al., 2016; Haywood et al., 2016b).

55 The intensification of large-scale glaciation on Greenland is believed to have commenced following the mPWP, culminating in a continental-scale ice sheet by the latest Pliocene / earliest Pleistocene (ca. 2.7–2.4 Ma) (Christ et al., 2020; Flesche Kleiven et al., 2002; Lisiecki & Raymo, 2005; McClymont et al., 2023). Interglacial marine sediments and terrestrial material exposed

along the northern Greenland coast indicate that periods characterised by boreal forest-tundra conditions and less extensive ice cover persisted (at least intermittently) into the early Pleistocene (Bennike et al., 2010; Feyling-Hanssen et al., 1983; Funder et al., 2001). Dynamic behaviour of the GrIS in the early Pleistocene is also evidenced by offshore seismic reflection data, which reveal major cross-shelf glacial troughs and progradational trough-mouth fans and sedimentary wedges that are indicative of multiple phases of ice sheet shelf-edge advance and retreat (Knutz et al., 2019; Nielsen & Kuijpers, 2013).

Cosmogenic radionuclide (e.g.,  $^{10}\text{Be}$  and  $^{26}\text{Al}$ ) concentrations in sediment and bedrock obtained via sub-ice drilling at GISP2 and Camp Century (Fig. 1b) indicate that these sites have not been continuously covered by ice for more than approx. 1.1 Myr, suggesting that at least one episode of major ice loss occurred in northwest and central Greenland at or since 1.1 Ma (Christ et al., 2021; Schaefer et al., 2016). However, cosmogenic radionuclides in North Atlantic sediments indicate that ice cover persisted at least in eastern Greenland throughout this time (Bierman et al., 2016). Candidate time intervals for partial late Pleistocene deglaciation include particularly warm or long-lasting interglacial periods, such as Marine Isotope Stage (MIS) 31 (ca. 1.09–1.06 Ma) (Melles et al., 2012) or 11 (ca. 430–400 ka) (Christ et al., 2023; Reyes et al., 2014; Robinson et al., 2017) (Fig. 1a). Most recently, the GrIS underwent a period of more muted retreat during the Last Interglacial Period (the Eemian; MIS 5e; ca. 125 ka) (Plach et al., 2018), before expanding onto the continental shelf at the Last Glacial Maximum (LGM; ca. 21 ka) (Lecavalier et al., 2014) and subsequently retreating to its modern configuration through the Holocene (Lesnek et al., 2020).

Building an improved understanding of GrIS behaviour during its early development and through subsequent warmer climate intervals will provide valuable analogues for predicting its response to current and projected future atmosphere and ocean warming. Model intercomparison projects such as PLISMIP (Pliocene Ice Sheet Model Intercomparison Project) demonstrate that there is significant model spread in the predicted GrIS configuration during past warm periods such as the mPWP, which largely relates to uncertainties in the climate forcing (Dolan et al., 2015; Koenig et al., 2015). This highlights the need for more data-based constraints of past ice extent and behaviour. Unfortunately, evidence for long-term GrIS behaviour is limited in quantity and irregularly distributed, reflecting the logistical challenges associated with acquiring geological data, the masking of 79% of the land surface by the GrIS, and the fact that as the ice sheet waxes and wanes it erases the onshore debris that would otherwise provide a record of previous glacial cycles.

In areas elsewhere on Earth formerly covered by large ice sheets, investigations of large-scale glacial geomorphology have provided important insights into past ice-sheet extent and behaviour, given that the landscape typically records the long-term average glacial conditions to which it has been subjected (Porter, 1989). This paradigm has recently begun to be applied to the bed topography of Greenland and Antarctica, which has been measured/inferred using the large quantities of radio-echo sounding (RES) survey data and ice surface morphology imagery acquired in recent years (Haran et al., 2018; MacGregor et al., 2021). Previous studies have shown that the subglacial landscape records processes including glacial erosion, fluvial incision in the absence of ice, tectonic deformation, and isostatic adjustment (Cooper et al., 2016; Livingstone et al., 2017;

95 Paxman et al., 2021; Pedersen et al., 2019). The topography of the 79% of Greenland that is covered by the GrIS can therefore provide a valuable, and hitherto relatively little exploited, opportunity for understanding past ice-sheet behaviour, particularly during intervals associated with smaller-than-present ice configurations. Significantly, ice sheets can preserve large areas of topography beneath cold-based, non-erosive ice, meaning that geomorphological records pertaining to the early development of the ice sheet can survive for millions of years (Bierman et al., 2014; Rose et al., 2013).

100 The aim of this study is to use ice surface morphology and RES survey data to map and interpret the subglacial landscape of the highlands of south and east Greenland (Fig. 1b). We focus on this area because these highlands are believed to have been the site of initial GrIS inception (Solgaard et al., 2013) and to have retained ice during subsequent warm periods (Bierman et al., 2016; Schaefer et al., 2016), and are therefore the area most likely to contain geomorphological records of ice behaviour during intervals when the GrIS was significantly more restricted in extent. We combine our geomorphological mapping with  
105 numerical ice-sheet modelling to understand the processes responsible for the evolution of the subglacial landscape of these highlands and the implications for long-term ice behaviour.

## 2 Methods

### 2.1 Subglacial valley mapping

We used a combination of satellite imagery and airborne RES survey data to map subglacial valleys present in the eastern and  
110 southern highlands of Greenland (Fig. 1b). The distribution and morphology of valleys and their networks (i.e., how they are spatially organised and connected) are particularly useful in establishing the patterns and scales of past erosion, and in turn the dynamics of past ice sheets (Livingstone et al., 2017; Rose et al., 2013).

#### 2.1.1 Ice surface morphology

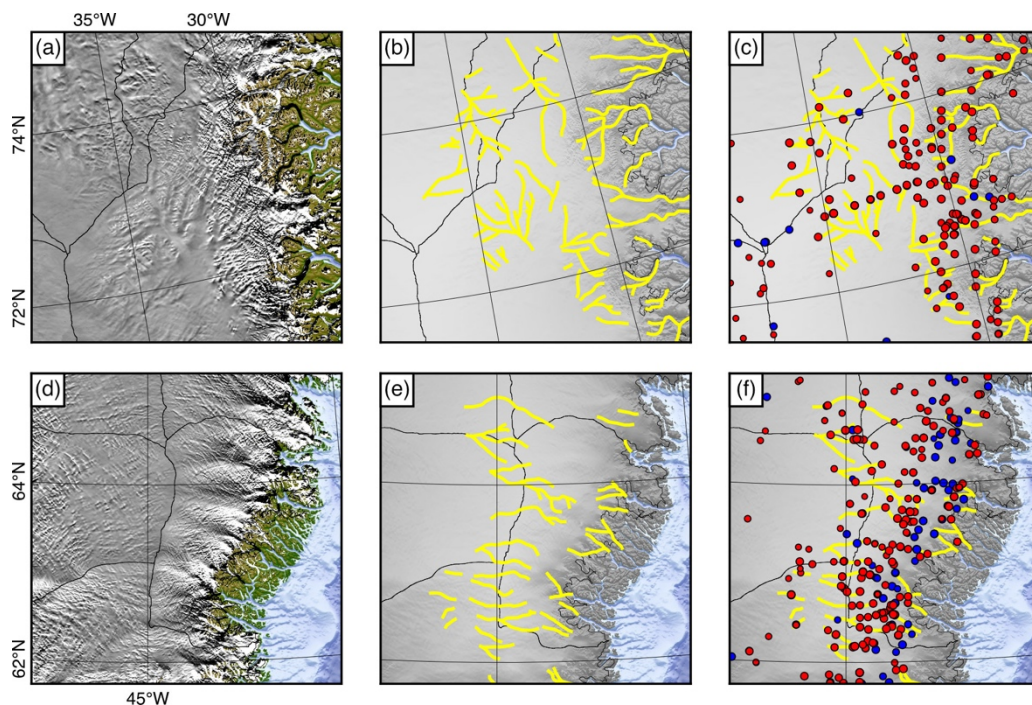
We followed the approach of previous studies (Jamieson et al., 2023; Lea et al., 2023; Ross et al., 2014) that have used ice  
115 surface morphology, as recorded by satellite imagery, to infer the locations of subglacial valleys and ridges. For this task, we used the 100 m-resolution MODIS (Moderate Resolution Imaging Spectroradiometer) Mosaic of Greenland (MoG) surface morphology image map version 2 (Haran et al., 2018). MODIS is a passive sensor that records the intensity of (near-)visible solar radiation reflections; the MoG surface morphology map is derived by high-pass filtering of red-light MODIS images (Haran et al., 2018). MoG surface morphology imagery therefore provides a semi-quantitative approximation of the reflectivity  
120 of the ice surface, records the intensity of the reflection of a satellite emitted radar signal, which depends on the ice surface slope / curvature. Depending on the local glaciological conditions, subtle changes in surface slope can be predictably correlated with undulations in bed topography (Le Brocq et al., 2008; Rémy & Minster, 1997); typically, subglacial valleys are positioned below darker areas (lower reflection intensity) and subglacial ridges below lighter areas (higher reflection intensity) in the MoG image (Fig. 2). Surface morphology mapping is often ineffective close to ice divides, where ice is thickest and horizontal

125 velocities are near-zero, meaning surface expressions of basal features are heavily attenuated. ~~Conversely~~Furthermore, isolating the signal from the basal topography is challenging in areas characterised by high basal sliding rates and active supra- and en-glacial dynamics (such as ice streams), which also influence ice surface morphology (Cooper et al., 2019a). Surface imagery is therefore best suited to inferring qualitative variations in bed topography in areas of relatively slow (but non-zero) ice surface velocity, minimal basal sliding, high bed relief, and thin ice. The southern and eastern highlands of Greenland fulfil  
130 all of these criteria (Joughin et al., 2018; MacGregor et al., 2022; Morlighem et al., 2017) and are therefore an ideal target for this analysis.

### 2.1.2 Radio-echo sounding

The amplitude transfer of bed undulations to the ice surface is complex and dependent on basal sliding velocity, ice rheology, and ice thickness (Gudmundsson, 2003; Ng et al., 2018). Therefore, while useful for inferring the qualitative ‘form’ of a  
135 subglacial landscape, ice surface morphology alone cannot be used to establish the absolute elevation of the bed. RES surveys directly measure the ice thickness (and thus bed elevation) along flight lines; these data can be used to ground-truth the locations of subglacial valleys and quantify their cross-profile morphology. For this task, we used a recently assembled database of the locations of subglacial valleys visible in Operation IceBridge RES data (MacGregor et al., 2021; Paden et al., 2019) (Fig. S1a) across the GrIS. This dataset (Paxman, 2023) also contains quantitative metrics of valley cross-profile  
140 morphology, including depth, width, V-shapedness, and curvature, as well as classifications of valleys as either ‘glacial’ or ‘fluvial’ based on their morphological similarity to glacial or fluvial valleys observed elsewhere in the Northern Hemisphere. ~~This valley classification was accomplished using the random forest supervised machine learning algorithm (Breiman, 2001), which is a statistical method associated with uncertainty that is encapsulated in the classification ‘score’.~~ For the purposes of this ~~analysis~~study, we only examined ~~the morphometrics of valley profiles with a score of at least 0.75, indicating that the~~whose  
145 classification is associated with ~~relatively~~high confidence ~~or probability~~ (for more information the reader is referred to Paxman, 2023).

MODIS ice surface imagery and RES bed elevation data are therefore complementary, providing (i) an indication of the morphology of valley cross-profiles where they are intersected by flight lines and (ii) a view of valley planform geometry (i.e.,  
150 orientation and connectivity) between flight lines (Fig. 2). Using the MODIS MoG image and the RES-derived subglacial valley database (Paxman, 2023), we digitised valley planform patterns within the highlands of southern and eastern Greenland visible in ice surface imagery, ground-truthed their locations using RES data, and extracted their cross-profile morphometrics.



155 **Figure 2: Illustration of subglacial valley mapping from ice surface morphology imagery and RES survey data.** (a, d) MODIS MoG ice surface morphology image (Haran et al., 2018). (b, e) Locations of interpreted subglacial valleys (yellow) overlain on shaded ice surface elevation (Howat et al., 2022) over the same areas as shown in the panels on the left. (c, f) Valleys identified in RES survey data (Paxman, 2023) overlain on valley planforms mapped from MODIS MoG morphology imagery (yellow). Red circles = ‘glacial’ classification; blue = ‘fluvial’ classification. Panels a–c cover the area shown in Fig. 4c; panels d–f cover the area shown in Fig. 4e.

## 2.2 Ice-sheet modelling

160 The valleys in the southern and eastern highlands may have been formed, exploited, and/or modified during past mountain-scale glaciation in Greenland (Patton et al., 2016). They may therefore provide important constraints on the extent and behaviour of past ice sheets. We performed simple numerical ice-sheet modelling experiments to test whether it was possible to simulate ice masses with configurations consistent with the mapped valley extents and configurations, and if so to quantify the associated climatology. For this task we used the Parallel Ice Sheet Model (PISM), an open-source, finite-difference, 165 shallow ice-sheet model (Winkelmann et al., 2011).

### 2.2.1 Model set-up

We used PISM in its ‘hybrid’ mode, which simulates internal deformation and basal sliding by employing the shallow-ice and shallow-shelf approximations (SIA and SSA), respectively. Our model set-up included constitutive ‘laws’ for temperature-dependent and water-content-dependent creep, which govern internal ice deformation (Aschwenden et al., 2012; Lliboutry & Duval, 1985; Paterson & Budd, 1982), and a pseudo-plastic sliding ‘law’ that governs basal sliding (Bueler & Brown, 2009; 170 Winkelmann et al., 2011); we used a constant till friction angle of  $30^\circ$  based on analogy with the European Alps (Seguinot et

al., 2018). Unless otherwise stated, we used the PISM default values for the model parameters relating to ice rheology and basal sliding (a full list of the parameters used in our simulations is provided in Table 1).

175 Since the focus of our modelling was on upland ice growth as opposed to (e.g.) grounding line dynamics at marine-terminating glaciers, we assumed a simple calving model where ice is removed when it reaches the coastline; sea level was assumed to be 20 metres higher than today (Dutton et al., 2015). The model domain includes the entirety of Greenland with a horizontal grid resolution of 10 km, which represents a compromise between computational efficiency and the ability to capture the larger valley networks present in the subglacial topography (cf. Paxman, 2023). Selected experiments were also performed at a higher resolution of 5 km, which reflects the average valley width in the eastern and southern highlands (Paxman, 2023), allowing us  
180 to examine the influence of valley topography on the simulated patterns of ice flow in greater detail. Each simulation started from an ice-free state, using the boundary conditions and climate forcing described below. In each case, the model was spun-up for 10 kyr, after which ice extent and volume reached quasi-equilibrium in all experiments. Through the model run, the bed topography was continually adjusted for isostatic deformation under the simulated ice load using an elastic lithosphere relaxing asthenosphere model.

185 **Table 1: Parameters used in PISM simulations.**

Name	Value	Unit
<b>Ice rheology</b>		
Ice density	910	kg m <sup>-3</sup>
Acceleration due to gravity	9.81	m s <sup>-2</sup>
Glen exponent	3	-
Ice hardness coefficient (cold)	3.61 x 10 <sup>-13</sup>	Pa <sup>3</sup> s <sup>-1</sup>
Ice hardness coefficient (warm)	1.73 x 10 <sup>3</sup>	Pa <sup>3</sup> s <sup>-1</sup>
Flow law activation energy (cold)	6.0 x 10 <sup>4</sup>	J mol <sup>-1</sup>
Flow law activation energy (warm)	13.9 x 10 <sup>4</sup>	J mol <sup>-1</sup>
SIA enhancement factor	3	-
SSA enhancement factor	1	-
Flow law critical temperature	263.15	K
Flow law water fraction coefficient	181.25	-
Ideal gas constant	8.31441	J mol <sup>-1</sup> K <sup>-1</sup>
Clausius-Clapeyron constant	7.9 x 10 <sup>-8</sup>	K Pa <sup>-1</sup>
Ice specific heat capacity	2009	J kg <sup>-1</sup> K <sup>-1</sup>
Water specific heat capacity	4170	J kg <sup>-1</sup> K <sup>-1</sup>
Ice thermal conductivity	2.1	J m <sup>-1</sup> K <sup>-1</sup> s <sup>-1</sup>



Water latent heat of fusion	$3.34 \times 10^5$	$\text{J kg}^{-1} \text{K}^{-1}$
<b>Basal sliding</b>		
Pseudo-plastic sliding exponent	0.25	-
Pseudo-plastic threshold velocity	100	$\text{m yr}^{-1}$
Till cohesion	0	Pa
Till reference void ratio	0.69	-
Till compressibility coefficient	0.12	-
Till effective fraction overburden	0.02	-
Till friction angle	30	$^{\circ}$
Maximum till water thickness	2	m
<b>Bedrock and lithosphere</b>		
Bedrock density	2700	$\text{kg m}^{-3}$
Bedrock specific heat capacity	1000	$\text{J kg}^{-1} \text{K}^{-1}$
Bedrock thermal conductivity	3	$\text{J m}^{-1} \text{K}^{-1} \text{s}^{-1}$
Lithosphere flexural rigidity	$5 \times 10^{24}$	N m
Mantle density	3300	$\text{kg m}^{-3}$
Mantle viscosity	$1 \times 10^{21}$	Pa s
<b>Climate</b>		
Temperature of rain precipitation	275.15	K
Temperature of snow precipitation	273.15	K
PDD factor for ice	$8.791 \times 10^3$	$\text{m K}^{-1} \text{day}^{-1}$
PDD factor for snow	$3.297 \times 10^3$	$\text{m K}^{-1} \text{day}^{-1}$
Snow refreezing fraction	0.6	-
Ice refreezing fraction	0	-
Standard deviation of daily temperature variation in the PDD model	5	K
Air temperature lapse rate	-6.5	$\text{K km}^{-1}$
Precipitation exponential scaling factor	0.0704	$\text{K}^{-1}$
Ice-free thickness limit	10	m
Sea level (relative to modern)	20	m

## 2.2.2 Boundary conditions

The main subglacial boundary conditions required by the ice-sheet model are the geothermal heat flux and bed topography. We used a present-day geothermal heat flux model derived from magnetic anomaly data (Martos et al., 2018), and, in the  
190 absence of a robust reconstruction of palaeo-geothermal heat flux, assumed that the heat flux has remained constant since early ice growth. For the bed topography, we adjusted the modern BedMachine v.5 digital elevation model (Morlighem et al., 2017) for the isostatic response to (a) the complete removal of the modern GrIS (Paxman et al., 2022) and (b) erosional unloading driven by ~~Pleistocene glacial valley and~~ fjord incision (Medvedev et al., 2013; Pedersen et al., 2019).

~~For the erosional unloading correction, we used followed the approach described by Medvedev et al. (2013) and Pedersen et al. (2019), whereby the thickness of glacially eroded material was estimated by subtracting the ice-free topography from an accordant surface interpolated between the plateaux and peaks that separate the fjords and valleys (Fig. S2a), are filled to the level of the adjacent plateaux. Erosion of the glacial troughs on the adjacent continental shelf was also accounted for., and We computed the isostatic response is computed to this incision using an elastic plate model with a laterally variable effective elastic thickness (Paxman et al., 2021; Steffen et al., 2018), and subtracted this correction from the rebounded BedMachine v.5 digital elevation model. This means that the mountain peaks and plateaux (which are assumed to have not been eroded since widespread glaciation) were lowered to their estimated pre-glacial elevations, correction was necessary given that we were attempting to which was necessary for examining elevation-climate controls in our simulation~~ of early mountain ice growth prior to fjord incision. The magnitude of the flexural response to fjord and valley incision is 200–400 m along the highlands (Fig. S2b) (Paxman et al., 2021). However, as soon as glaciation commences in our model experiments, it is necessary for while we adjusted regional elevations for the regional flexural response to valley/fjord incision, we left the valleys themselves to be left open (i.e., unfilled instantaneously incised) in the reconstructed digital elevation model, enabling us to simulate realistic spatial patterns of ice flow through the valleys. Indeed, it is reasonable to assume that the modern-day valleys would have at least been partially incised by rivers prior to glaciation. While this means the bed topography boundary condition used in our models will not have existed at a single point in time, it acts as a representative state for the period of early mountain glaciation and allows a trade-off between ensuring that the elevation-climate controls on ice nucleation are correct while also allowing the influence of valleys on ice flow to be simulated.

~~Because there is uncertainty surrounding both the past geothermal heat flux and the bed topography (and given that we are not modelling a specific past time interval), we used sensitivity testing to examine the influence of these boundary conditions on the ice-sheet model results. To do so, we ran sensitivity experiments using the heat flux and topography described above and an alternative scenario for each boundary condition. The alternative heat flux map was derived by quantifying statistical relationships between global geological data and geothermal heat flux measurements to predict heat flux across Greenland from geophysical observations (Rezvanbehbahani et al., 2017). We are agnostic with regards to the relative merits of the two models, but importantly for our purposes they were determined using independent datasets and methodologies and contain~~

contrasting estimates of heat flux for eastern and southern Greenland (30–50 mW m<sup>-2</sup> in Rezvanbehbahani et al. (2017) versus  
220 60–70 mW m<sup>-2</sup> in Martos et al. (2018)), allowing us to fully assess the sensitivity of our results to this parameter. The alternative  
topography was generated using the same isostatic correction for modern ice-sheet unloading, but the flexural response to  
valley incision was reduced by a factor of two (i.e., equivalent to conservatively filling the fjords to only 50% of their total  
relief). This allows for likelihood that a certain (but unknown) fraction of the observed valley relief likely pre-dated (and was  
exploited by) glaciation. Aside from glacial fjord, trough, and valley incision and the associated isostatic response, the first-  
225 order topographic configuration of Greenland is unlikely to have been significantly altered since glacial inception (Alley et al.,  
2019). Although eastern Greenland may have experienced significant Neogene tectonic uplift (Japsen et al., 2013; Pedersen et  
al., 2012), any such uplift likely predated (and was potentially a key enabler of) ice-sheet nucleation (Japsen et al., 2014;  
Solgaard et al., 2013).

### 2.2.3 Climate forcing

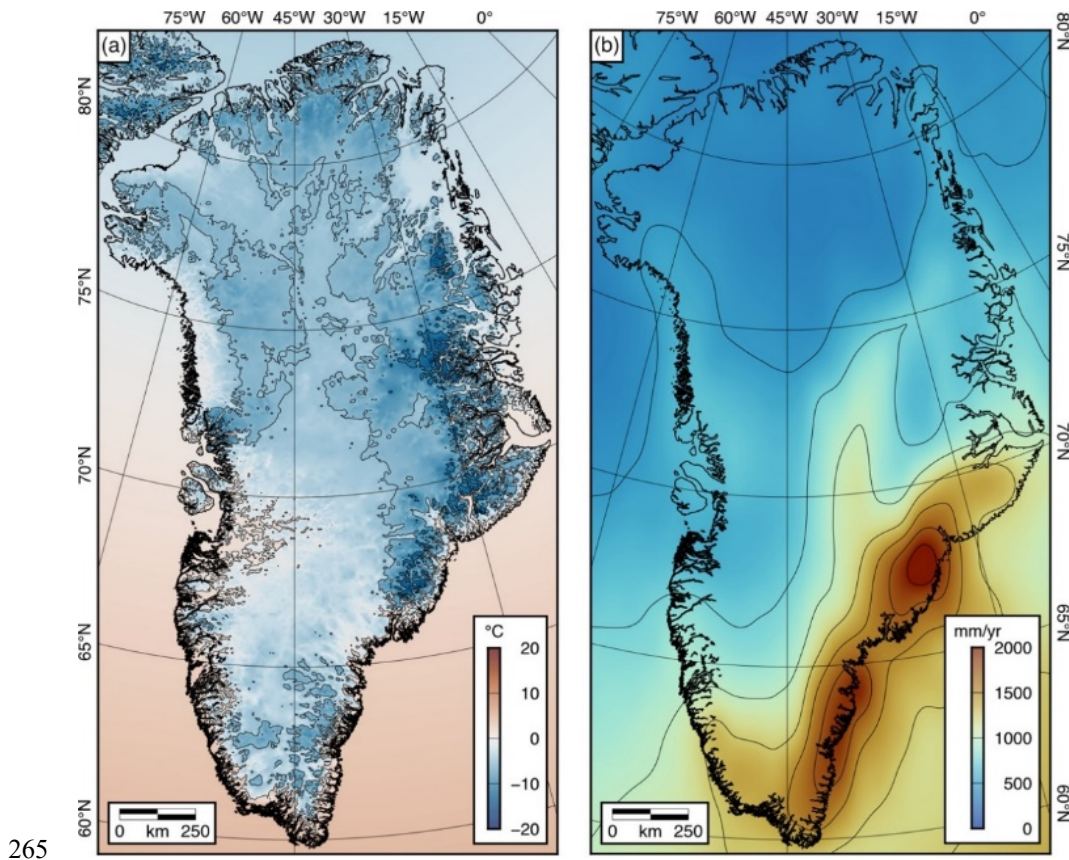
230 Climatologically, ice-sheet extent and dynamics are highly sensitive to temperature and precipitation (e.g., Dolan et al., 2015;  
Golledge et al., 2008). Accurately reconstructing and modelling past temperature and precipitation patterns in Greenland is  
therefore a key community challenge (Haywood et al., 2016b). Given the high degree of uncertainty surrounding Greenland's  
palaeoclimate beyond the most recent glacial-interglacial cycles, we did not attempt a complex coupled general circulation  
atmosphere / ice-sheet model approach. Instead, we adopted a deliberately simplistic ice-sheet modelling strategy, whereby  
235 we performed experiments to identify broad-scale temperature and precipitation conditions that are (in)capable of producing  
ice masses with extent and dynamics consistent with the mapped valley geomorphology along the southern and eastern  
highlands. We then assessed the implications of our findings for the chronology and timing of valley incision.

In our core experiments, we prescribed a range of simple temperature distributions defined by two parameters: the mean annual  
air temperature (MAAT) at sea level at 60°N (i.e., the southern tip of Greenland), and the latitudinal gradient (i.e., the rate at  
240 which temperature decreases moving northwards; Fig. 3a). For sea level MAAT at 60°N, we used 1°C increments from 2 to 6  
°C, representing a range of values higher than the modern-day average for this latitude (~1°C) (Noël et al., 2019). The modern  
latitudinal temperature gradient over Greenland is ~-0.8 °C/°N (Noël et al., 2019); reduced polar amplification prior to the  
growth of a continental-scale ice sheet would most likely result in a weaker latitudinal gradient (Burls et al., 2021). We  
therefore used a range of gradients from -0.5 to -0.2 °C/°N in 0.1 °C/°N increments. We also assumed that temperature varies  
245 with altitude according to a constant moist atmospheric lapse rate of -6.5 °C km<sup>-1</sup> (Kerr & Sugden, 1994) and tested the  
sensitivity of the model output to this choice using a stronger lapse rate of -8 °C km<sup>-1</sup>. The temperature field and surface mass  
balance were updated after every time step to account for changes in ice surface elevation (i.e., the ice-elevation feedback).

On top of the MAAT values, we imposed a periodic annual cycle with an amplitude of  $\pm 10$  °C, comparable to modern-day and inferred Pliocene annual variability (Ballantyne et al., 2010; Noël et al., 2019).

250 For precipitation, we used absolute values derived from the multi-model mean of the Pliocene Model Intercomparison Project phase 2 (PlioMIP2) general circulation model output (Haywood et al., 2020). The multi-model mean precipitation is diminished over eastern Greenland due to the presence of a prescribed ice cap in the PRISM4 (Pliocene Research Interpretation and Synoptic Mapping) boundary conditions used in PlioMIP2 (Dowsett et al., 2016). To avoid circularity, this effect was removed by identifying the amplitude of the air temperature anomaly associated with the prescribed east Greenland ice cap  
255 and using a scaling of 5.5 % precipitation change per °C to adjust the multi-model mean precipitation (Nicola et al., 2023). The adjusted precipitation field is characterised by high rates in coastal areas of southeast Greenland (up to 2000 mm yr<sup>-1</sup>), decreasing to low rates (<400 mm yr<sup>-1</sup>) in northern areas (Fig. 3b). For simplicity we assumed constant precipitation throughout the year. We did not use an ensemble of precipitation fields as for MAAT, but instead tested the sensitivity of our results to precipitation by performing additional experiments with annual precipitation values one standard deviation below and above  
260 the multi-model mean (Haywood et al., 2020). Temperature and precipitation were used to calculate the surface mass balance (difference between accumulation and ablation). Accumulation is equal to precipitation when air temperatures are below 0°C and decreases linearly to zero at temperatures above 2°C. Ablation was computed using a positive degree-day (PDD) model,

which integrates the time where temperatures are above 0°C. We used the PISM default PDD factors, which are based on EISMINT-Greenland values (Huybrechts, 1998).



**Figure 3: Baseline temperature and precipitation for ice-sheet model experiments.** (a) Example of a mean annual air temperature (MAAT) field. The MAAT field shown is one of an ensemble of 20 and was constructed assuming a MAAT of +4°C at 60°N, a latitudinal gradient of -0.3 °C/°N, and a vertical lapse rate of -6.5 °C/km. Contour interval is 5°C. (b) Annual precipitation, derived from the PlioMIP2 multi-model mean and adjusted for the removal of the influence of ice on Greenland. Contour interval is 250 mm/yr.

## 270 3 Results

### 3.1 Subglacial valley networks

Using MODIS MoG imagery, we mapped over 300 subglacial valley segments along the length of the ice-covered highlands of southern Greenland (60–65°N) and eastern Greenland (66–78°N) (Fig. 4a). The valleys can be divided into two first-order categories: (i) those with a predominantly eastward orientation, which terminate at the modern-day ice margin or enter the fjord systems exposed along the North Atlantic coast and (ii) those with a predominantly westward (inland-facing) orientation

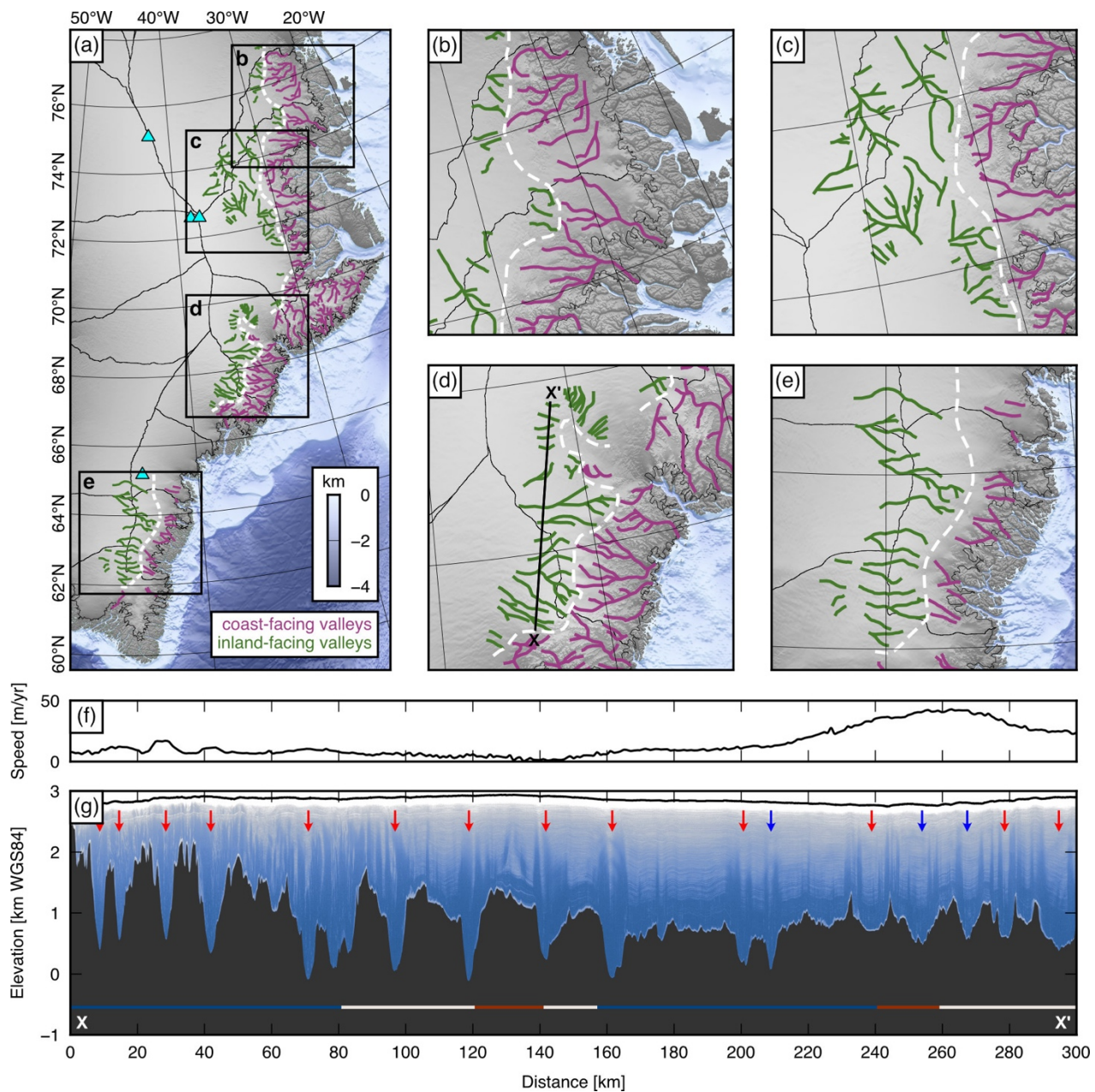
275

(Fig. 4). We traced a central divide separating these two groups of valleys that trends north-south along the spine of the highlands (Fig. 4).

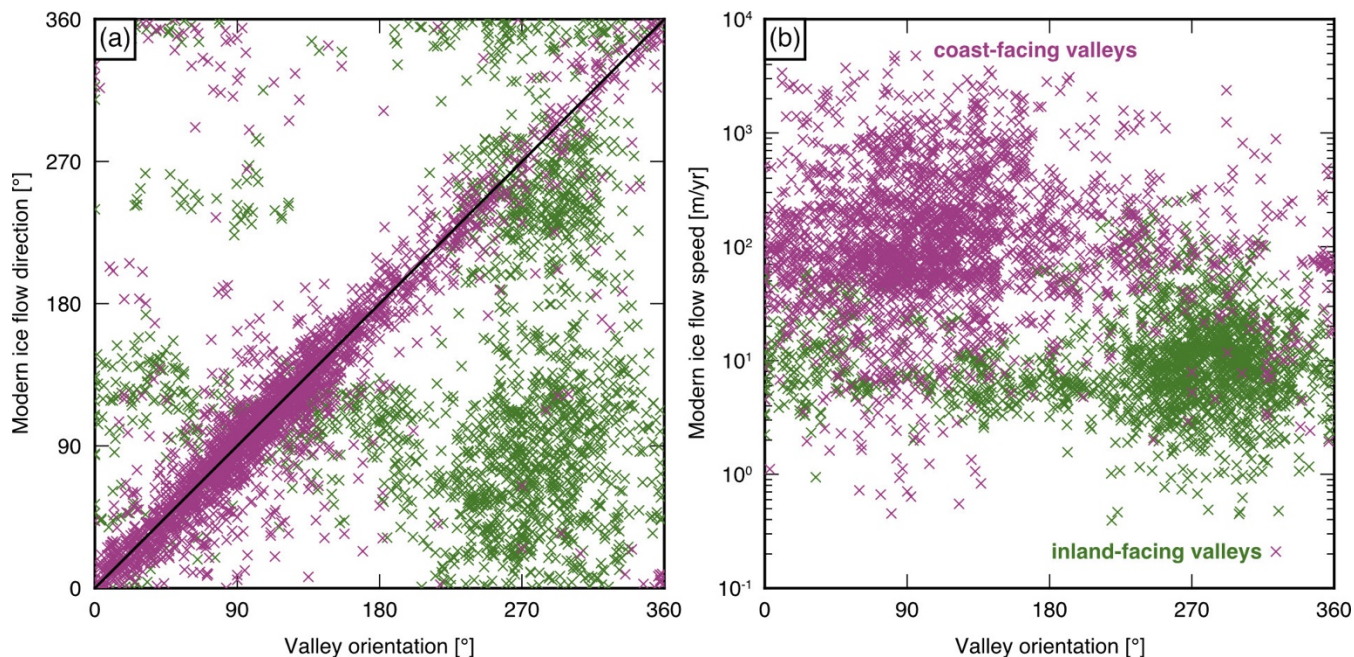
280 MODIS MoG imagery also reveals that the valleys exhibit complex planform arrangements and often form interconnected networks with sinuous (Fig. 4b), branching/dendritic (Fig. 4c), and radial (Fig. 4d) structures. Some networks contain multiple distinct tributaries, whereas others exhibit a simpler structure with relatively few discernible tributaries (Fig. 4). We note that the ice surface morphology imagery will likely not capture basal topographic features on a scale smaller than the local ice thickness, so is unlikely to resolve the narrower (sub-kilometre), lower-order tributaries within a valley network. In multiple locations, valleys are crosscut by present-day ice divides and convergent tributaries join in a direction that is oblique to, or  
285 opposes, the modern ice flow direction (Fig. 4e).

The presence of these inferred subglacial valleys is confirmed by RES data (Fig. 4g), which show that the textural lineaments observed in the MODIS MoG imagery often correlate with subglacial valleys. Previous comparison of valley cross-profile morphology with glacial and fluvial valleys elsewhere in the Northern Hemisphere (Paxman, 2023) indicates that 85% of  
290 valleys within the highlands are classified as ‘glacial’ in morphology (i.e., deep, wide, U-shaped, high curvature) and the remainder as ‘fluvial’ (i.e., shallow, narrow, V-shaped, low curvature). Notably, however, the majority (~72%) of the ‘glacial’ valleys are presently situated beneath ice that is either (a)-likely frozen at the bed (i.e., cold-based) or (b) slow-flowing (<50 m/yr) with an uncertain basal thermal state; (Fig. 4g, S2b) (Joughin et al., 2018; MacGregor et al., 2022) and therefore likely non-erosive.

295 -The orientations of the coast-facing valleys tend to be strongly aligned with the flow direction of the modern ice sheet (Fig. 5a) and the mean surface speed of the ice flowing through these valleys is 250 m/yr (Joughin et al., 2018) (Fig. 5b). By contrast, the inland-terminating valleys have a significantly lower mean ice surface flow speed of 20 m/yr (Joughin et al., 2018) (Fig. 4f, 5b) and are typically not aligned with contemporary ice flow; indeed there is a slight preferential misalignment of ~180°  
300 (Fig. 5a), implying that ice commonly flows (slowly) up (rather than down) these valleys.



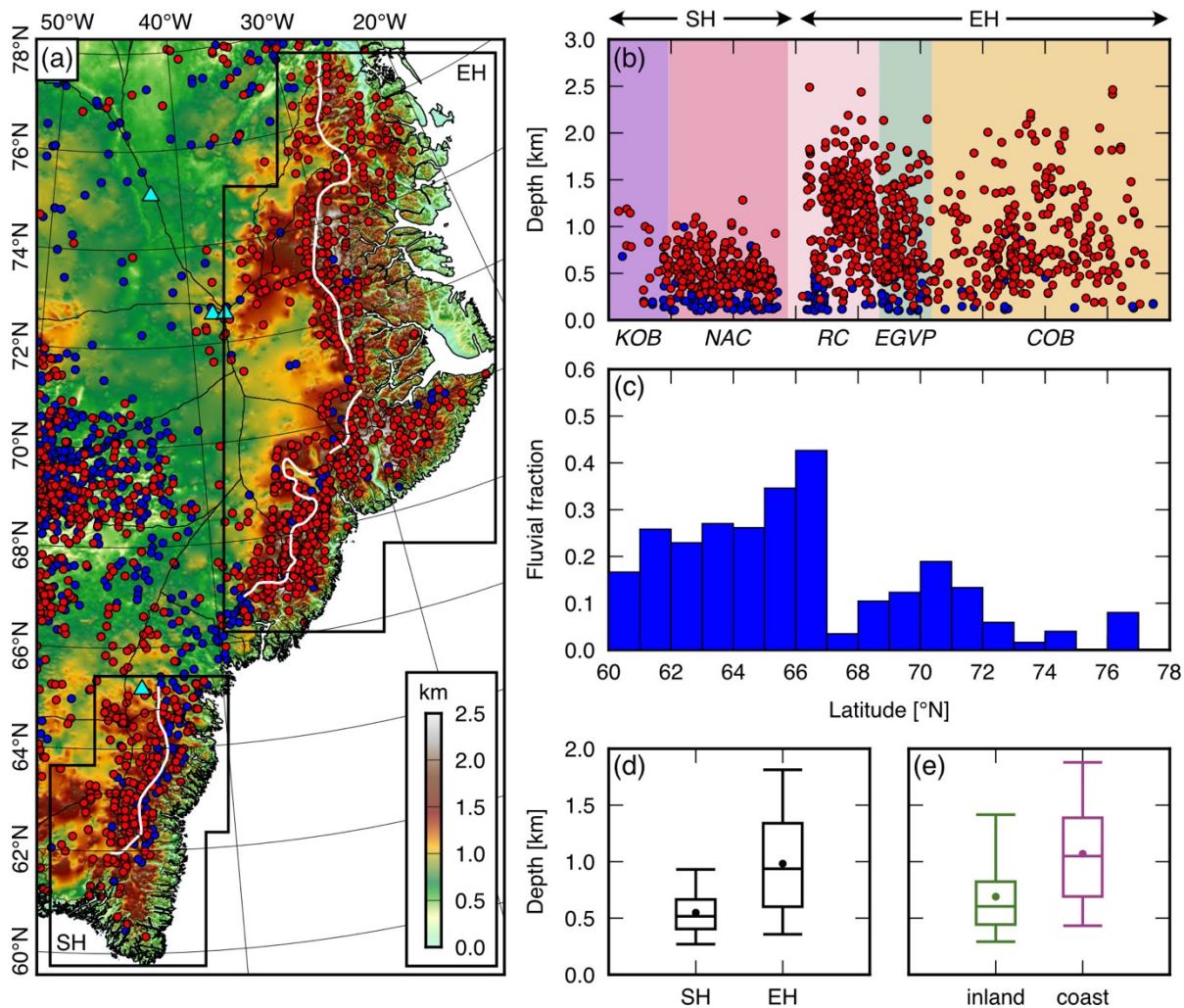
**Figure 4: Subglacial valleys in the eastern and southern highlands.** (a) Valleys identified in MODIS MoG ice surface morphology imagery. Green lines denote inland-facing valleys; purple lines denote coast-facing valleys; dashed white lines delineate the divides between these valleys. Black lines show modern ice divides; blue triangles mark deep ice core sites. Greenland surface elevation is displayed in greyscale (Howat et al., 2022); offshore bathymetry according to the colour scale (Morlighem et al., 2017). (b–e) Valley networks within the four 400 km x 400 km areas indicated in panel a. (f) Ice surface speed (Joughin et al., 2018) (sampled from Fig. S3a) along profile X–X' over inland-facing valleys (location shown in panel d). (g) Ice-penetrating radargram along profile X–X' (OIB flight segment 20170422\_01). Arrows denote valleys identified in RES survey data (red = 'glacial' classification; blue = 'fluvial' classification) (Paxman, 2023) that are correlated with lineations in MODIS MoG ice surface morphology imagery. Coloured bars denote the likely basal thermal state of the ice sheet (red = likely thawed; white = uncertain; blue = likely frozen) (MacGregor et al., 2022) (sampled from Fig. S3b).



**Figure 5: Relationship between subglacial valleys and modern ice flow.** (a) Valley orientation vs. modern ice surface flow direction (Joughin et al., 2018) for all inland-facing (green) and coast-facing (purple) valleys. Each symbol represents a point within the valley network; the horizontal spacing between adjacent points within all traced valleys is 2 km. Points where both orientations align will plot along the solid line. (b) Valley orientation vs. modern ice surface speed (Joughin et al., 2018).

RES data indicate that ‘glacial’ valleys are densely clustered in the southern and eastern highlands, whereas ‘fluvial’ valleys become more common further into the continental interior and in lower-lying gaps between the highlands (Fig. 6a). There is also a small, but non-negligible, fraction of ‘fluvial’ valleys within the highlands, which varies between 20% and 30% in the southern highlands but is typically below 15% in the eastern highlands (Fig. 6c). Another notable pattern in valley morphology is that the mean depth of ‘glacial’ valleys in the southern highlands is ~550 m, compared to ~980 m in the eastern highlands (Fig. 6b,d). This contrast is also apparent if only the ~72% of valleys that are not experiencing significant erosion beneath the modern GrIS are considered; the mean depths of this subset of valleys are ~570 m in the southern highlands and ~1040 m in the eastern highlands. Very few valleys in the southern highlands exceed 1 km depth, whereas many valleys in the eastern highlands exhibit depths of 1–2 km (Fig. 6b). A dichotomy is also observed between the depths of the ‘glacial’ valleys on the inland and coastal sides of the highlands, with coast-facing valleys exhibiting a higher mean depth than inland-facing valleys (~1070 m vs. 690 m), as well as a larger interquartile range (Fig. 6e).





330 **Figure 6: Subglacial valley characteristics in the eastern and southern highlands.** (a) Valleys identified from RES survey data (red =  
 'glacial'; blue = 'fluvial'). Valleys are overlain on the BedMachine v.5 onshore bed topography, which has been isostatically adjusted for  
 the removal of the modern ice sheet load (Morlighem et al., 2017; Paxman et al., 2022). White lines are divides between coast- and inland-  
 facing valleys; blue triangles mark deep ice core sites. (b) Variations in valley depth (i.e., ridge-to-floor relief) along the southern highlands  
 (SH) and eastern highlands (EH). Geographic extents are shown by boxes in panel a and horizontal arrows in panel b. Background colours  
 335 denote first-order geological provinces, whose extents are shown in Fig. S1b; KOB = Ketilidian Orogenic Belt; NAC = North Atlantic  
 Craton; RC = Rae Craton; EGVP = East Greenland Volcanic Province; COB = Caledonian Orogenic Belt (Henriksen et al., 2009). (c)  
 Fraction of valleys classified as 'fluvial' within 1° latitudinal bins. (d) Boxplot of the depths of 'glacial' valleys in the SH and EH. (e)  
 Boxplot of the depths of inland- (green) and coast-facing (purple) 'glacial' valleys within both the SH and EH.

340 The northern and southern limits of the valleys within the southern and eastern highlands are well-defined, with a distinct gap  
 between 65 and 66 °N. The western (inland) limit of the glacial valleys is also relatively well-defined in the MODIS MoG  
 imagery, in which the inland-facing valleys often transition from clearly distinguishable to absent over a relatively short

horizontal distance (Fig. 2). Surface features that are likely diagnostic of subglacial valleys are visible further inland, but these are more linear in planform and have previously been interpreted to reflect the upper reaches of palaeo-fluvial drainage pathways that extend from the inland foothills of the eastern highlands to the west coast (Cooper et al., 2016; Cooper et al., 2019a; Paxman et al., 2021). Similarly, RES data show a strong clustering of ‘glacial’ valleys within the highlands, with a well-defined western margin, beyond which valleys are rarer and those that are observed are more commonly classified as ‘fluvial’ (Paxman, 2023) (Fig. 6). Good RES flight line coverage (Fig. S1a) and MODIS MoG imagery lacking in features in areas far from ice divides means we are confident that the observed valley limit is not an artefact of data coverage. For the purposes of comparison with our ice-sheet model results, we constructed polygons demarcating the areas covered by the mapped mountain glacial valley networks, assuming that these valleys can be used to infer the approximate long-term average glacial limit at the time(s) of valley incision (Fig. 7). This exercise was most challenging along the eastern margin of the eastern highlands, where the limit of the mountain glacial valley networks is ambiguous due to the superimposition of the coastal fjord systems. For simplicity, we traced the eastern limit along the heads of the fjord systems, close to the modern ice margin (Fig. 7).

355

### 3.2 Simulations of mountain ice growth

Our ice-sheet modelling experiments show that the temperature field that yields an ice configuration that best matches the glacial valley limit in the eastern highlands is defined by a sea level MAAT of +4 °C at 60°N and a latitudinal MAAT gradient of -0.3 °C/°N (Fig. 7m). These parameters yield a simulated ice sheet that covers a latitudinal range in strong agreement with the mapped valley limits and an inland margin positioned close to the inferred limit (Fig. 7m). The strength of the agreement was quantified by converting both the simulated ice extent and mapped glacial limit into binary fields (where 1 denotes the presence of ice and 0 the absence of ice). We computed the mean absolute deviation (MAD) between the two binary fields within a constant domain (Fig. 7e) as a measure of the spatial misfit (i.e., a lower ~~mean absolute deviation~~ MAD signifies a greater number of grid cells in which the model and geomorphological observations agree regarding whether ice is present or absent).

365

$$MAD = \frac{1}{n} \sum_{i=1}^n |X_i - Y_i| \quad (1)$$

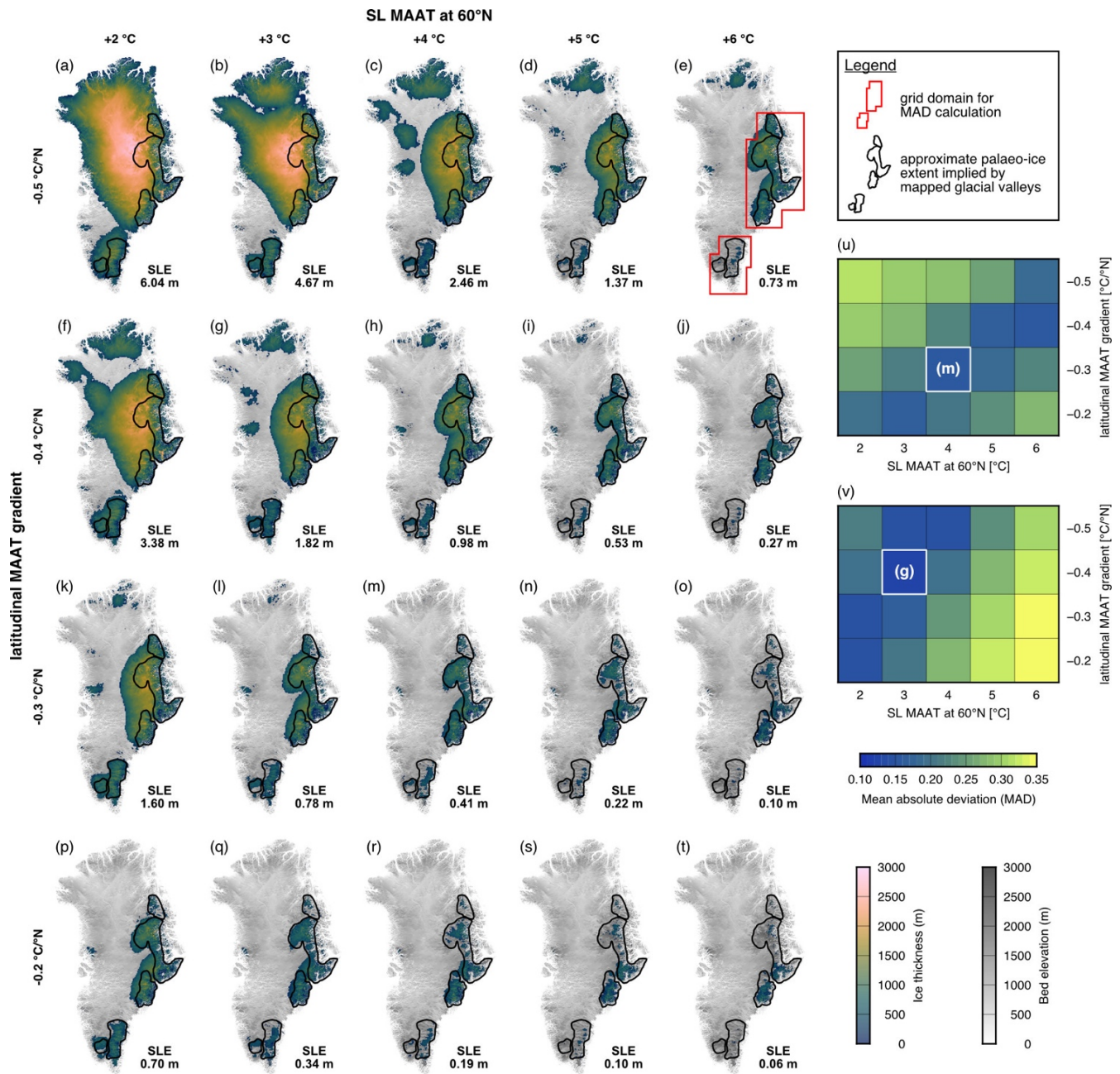
Where  $X_i$  is 1 in grid cells where ice was present and 0 where ice was absent according to the mapped mountain glacial limit (Fig. 7),  $Y_i$  is 1 in grid cells where ice is present and 0 where ice is absent in the given ice-sheet model experiment, and  $n$  is the number of grid cells in the domain.

370 -The ~~mean absolute deviation~~ MAD confirms this combination of temperature parameters as producing the best-fitting modelled ice sheet in eastern Greenland (Fig. 7u), and also reveals that there is a trade-off between the sea level MAAT at

60°N and the latitudinal MAAT gradient, such that similarly good fits to the mapped glacial valley limit can be achieved via a combined increase in SL MAAT at 60°N and a strengthening of the latitudinal MAAT gradient, or vice versa (Fig. 7u).

375 However, under the temperature scenario that yields the best match with the mapped glacial valley limit in the eastern highlands, the simulated ice extent in the southern highlands is more restricted than is implied by the valley limit (Fig. 7m). An ice mass that best matches the glacial valley limit in southern Greenland is obtained by decreasing the sea level MAAT at 60°N to +3°C and steepening the latitudinal MAAT gradient to -0.4 °C/°N (Fig. 7g). As for the eastern highlands, there is a trade-off between the two temperature parameters (Fig. 7v). Although high topography is also present in northern Greenland, ice here is absent or ~~highly~~ restricted to local-scale masses in most of our simulations owing to the low precipitation rates in  
380 this region (Fig. 3b, 7). Only under the lowest tested temperatures and steepest latitudinal gradients does the development of a large-scale ice sheet occur in northern Greenland (e.g., Fig. 7a).

Sensitivity testing indicates that increasing/decreasing the annual precipitation by one standard deviation from the multi-model mean increases/decreases the size of the modelled ice sheet by an amount approximately equivalent to that achieved by decreasing/increasing the MAAT by 1°C (Fig. S4a-c). Increasing the atmospheric lapse rate to -8 °C km<sup>-1</sup> predictably causes  
385 an increase in simulated ~~highland~~ ice extent, again by an amount comparable to that achieved by decreasing the MAAT by 1°C (Fig. S4d). By contrast, bed topography and geothermal heat flux exert a relatively minor influence on the modelled ice-sheet geometry (Fig. S4e,f). The higher of the two bed topographies intuitively results in a slight increase in modelled ice volume due to the dependence of air temperature upon elevation (Fig. S4e). These sensitivity testing results, combined with the observed trade-off between sea level MAAT at 60°N and the latitudinal MAAT gradient (Fig. 7), suggest that reasonable  
390 uncertainty bounds are ±1 °C for the best-fitting sea level MAAT at 60°N and ±0.1 °C/°N for the latitudinal MAAT gradient.



**Figure 7: Ice-sheet model ensemble results.** Panels a–t show simulated steady-state ice thicknesses for a range of combinations of sea level MAAT at 60°N (columns) and the latitudinal MAAT gradient (rows). In each experiment, ice was grown from scratch on an ice-free palaeotopography (displayed in greyscale). Solid black outlines show the approximate palaeo-ice extent implied by the mapped valleys (Fig. 4, 6). The sea level equivalent (SLE) of each modelled ice sheet is labelled (modern GrIS SLE = 7.42 m). Panels u and v show the mean absolute deviation (i.e., misfitMAD) matrices between each simulated ice extent and the mapped mountain glacial valley limit for the eastern (u) and southern (v) highlands within the constant domains marked by the red boxes shown in panel e. (A lower misfitMAD signifies greater domain-wide agreement between the model and geomorphological observations regarding whether ice is present and or absent). The parameter combination that yields an ice configuration most consistent with the mapped glacial limit in the eastern highlands is a 60°N SL

400 MAAT of +4°C and a latitudinal temperature gradient of -0.3°C / °N (panel m). For the southern highlands, a lower 60°N SL MAAT of  
| +3°C and a steeper latitudinal gradient of -0.4°C / °N yields the smallest ~~misfit~~ MAD (panel g).

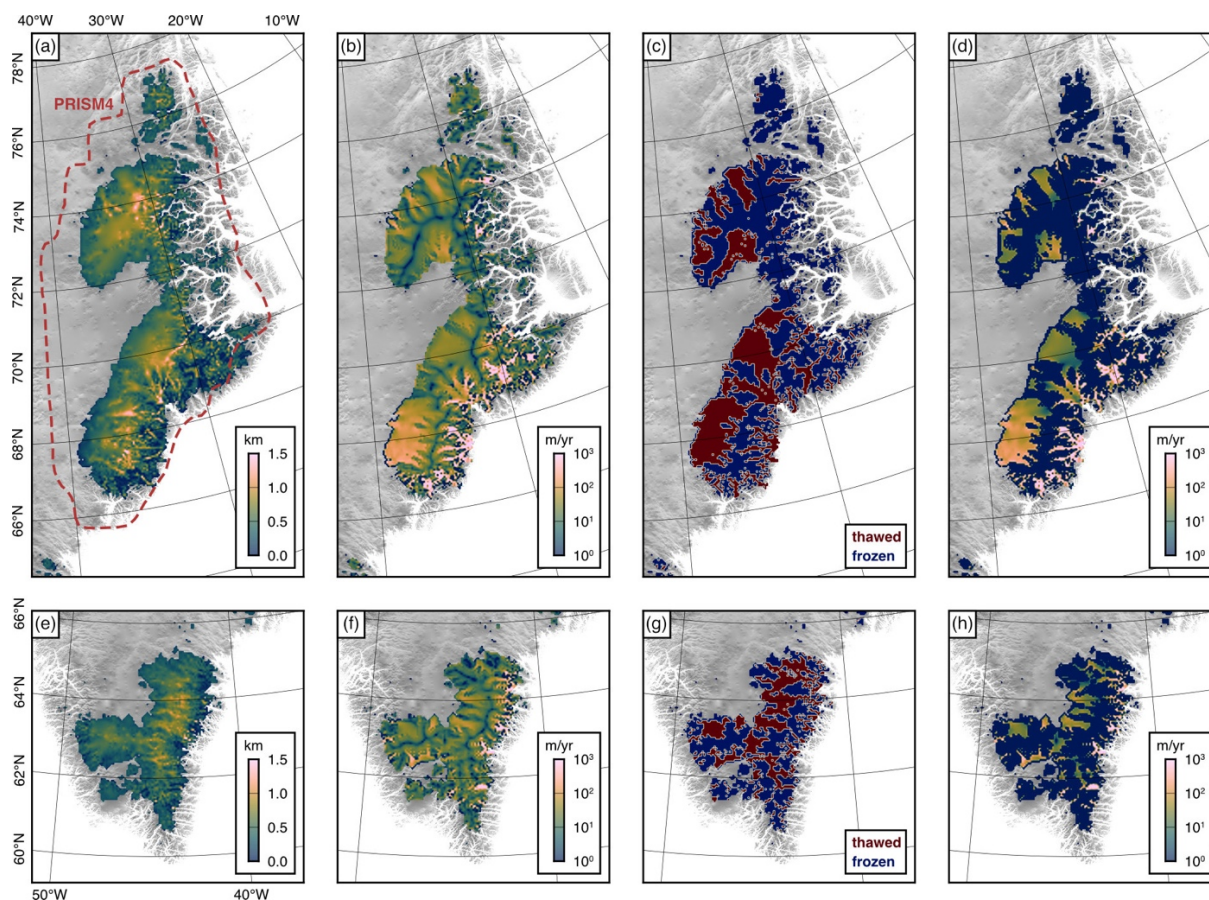
Irrespective of the uncertainties associated with the assumed temperature and precipitation fields, our results demonstrate that  
ice masses with extents consistent with those implied by the mapped glacial valley networks can be simulated using a relatively  
405 simple numerical ice-sheet model set-up. A single latitudinal temperature gradient yields simulated ice masses that closely  
match the glacial valley limit along much of the eastern highlands, and a second, cooler, temperature field yields a similarly  
good fit in the southern highlands. The ice masses that best fit the glacial valley limit in the eastern highlands contain a total  
volume of  $1.7 \times 10^5 \text{ km}^3$  and a sea level equivalent of 0.41 m (Fig. 7m), which is ~6% of that of the modern GrIS (7.42 m)  
(Morlighem et al., 2017). Given the trade-off between the two temperature parameters (Fig. 7u), a similarly good fit can be  
410 achieved for ice masses with sea level equivalents in the range 0.34 to 0.53 m (Fig. 7i,q). The modelled ice masses that yield  
the best-fit in the southern highlands contain a larger volume of  $7.3 \times 10^5 \text{ km}^3$  and a sea level equivalent 1.82 m, which is  
~25% of that of the modern GrIS (with a range of 1.60–2.46 m; Fig. 7c,g,k,v). The implication is that at the time of valley  
incision in the eastern and southern highlands, barystatic sea level was significantly higher than today, with a Greenlandic  
contribution of between 5 and 7 metres.

415 We stress that these values represent total Greenland ice volume under the best-fitting climate forcing scenarios. The scenario  
shown in Fig. 7g contains a greater ice volume than Fig. 7m not because the best-fitting southern highlands ice mass is larger  
than that of the eastern highlands, but because under the climate that best fits the glacial valley limit in the southern highlands  
there is a substantial ice cap present in eastern Greenland and smaller bodies are also present in northern Greenland. Indeed,  
420 the SLE of just the best-fitting ice mass in southern Greenland is 0.11 m. The combined SLE of the two best-fitting highland  
ice masses in isolation is therefore 0.52 m (~7% of that of the modern GrIS). We also note that because of the assumed  
palaeotopographic configuration, where we adjusted the topography for the flexural response to glacial valley and fjord  
incision but did not fill in the valleys themselves (section 2.2.2), these modelled ice volumes are likely to be upper estimates,  
given that there is more accommodation space available within the valleys than may have been the case at the time of mountain  
425 ice growth. Conversely, given the limits in RES data coverage and model resolution, small-scale (<10 km) basal roughness  
(which would increase the amount of accommodation space) will be poorly represented in our models.

For the best-fitting ice configurations (Fig. 7g,m), we performed additional high-resolution (5 km) simulations to examine the  
dynamics of the modelled ice masses in greater detail. These simulations produced ice masses of a ~~very~~ similar configuration  
430 and thickness to (and with total volumes within  $\pm 5\%$  of) the lower-resolution (10 km) simulations (Fig. 8a,e), confirming that  
our first-order findings are not strongly dependent on model resolution. These high-resolution simulations show that ice flow  
is steered through the subglacial valleys, with flow directions consistent with the mapped valley networks and elevated ice  
surface velocities through many of the coast- and inland-facing valleys (Fig. 8b,f). Ice divides are established over subglacial  
ridges (Fig. 8b,f), with major drainage divides running north-south as is implied by the mapped valley network geometry (Fig.

435 4). Similarly, warm-based ice (which we defined as having a basal melt rate exceeding  $10^{-4}$  m/yr) is primarily located within  
valleys, whereas cold-based ice predominates within the interior of the ice masses that are situated over higher terrain (Fig.  
8c,g).

Although a quantitative relationship between glacial dynamics and erosion rates remains difficult to establish, it is widely held  
440 that erosion predominantly occurs beneath warm-based ice and scales with the basal sliding velocity (Cook et al., 2020;  
Herman et al., 2015; Koppes et al., 2015). Thus, it is notable that basal sliding velocities are elevated within valleys but  
negligible over high terrain, indicating that erosion by these ice masses would have been strongly selective (Fig. 8d,h). These  
ice masses would therefore have been capable of preserving high topography (peaks and ridges) while contemporaneously  
incising the intervening valleys. We also note that modelled basal sliding velocity magnitudes are comparable in both the  
445 southern and eastern highlands, with the highest sliding velocities typically found on the coast-facing side of the highlands  
(Fig. 8d,h). The distributions of basal thermal state and sliding velocity are also more diffuse on the inland side of the highlands  
compared to the coastal side; this in part likely reflects the fact that many of the inland-facing valleys are not well resolved in  
the BedMachine digital elevation model due to poorer RES data coverage and the unsuitability of mass conservation techniques  
in (modern-day) slower-flowing areas, meaning simulated ice flow is not as strongly topographically focussed here as on the  
450 coastal side of the highlands.



455 **Figure 8: Dynamics of the modelled ice masses in eastern and southern Greenland.** The simulations shown were performed at 5 km resolution with an otherwise identical model set-up to the best-fitting ice configurations shown in Fig. 7m (eastern highlands; top row) and Fig. 7g (southern highlands; bottom row). (a, e) Ice thickness. (b, f) Ice surface velocity. (c, g) Basal thermal state (thawed = warm-based, frozen = cold-based). (d, h) Basal sliding velocity, which is a proxy for erosive potential. For comparison, the red dashed line in panel a marks the PRISM4 GrIS extent used in PlioMIP2 (note that PRISM4 assumed an absence of ice in the southern highlands) (Dowsett et al., 2016; Haywood et al., 2016b).

## 4 Discussion

### 460 4.1 Origin and development of valley networks in the eastern and southern highlands

Despite predominantly resembling glacial valleys in their cross-profile morphology (Paxman, 2023), the valley networks we have mapped in the highlands of eastern and southern Greenland show several characteristics that are inconsistent with formation beneath the modern continental-scale ice sheet. Many valleys are situated beneath modern slow-moving, cold-based ice, particularly the inland-facing valleys on the western side of the highlands (Fig. 4f,g, 5b). Additionally, valley planforms  
 465 commonly exhibit intricate structures including sinuous, dendritic, and radial drainage patterns (Fig. 4) that are indicative of

convergent/divergent flow through valleys with orientations that are often inconsistent with the modern ice surface velocity field (Fig. 5a), which overrides the landscape. The observation that numerous valleys are crosscut by modern ice divides (Fig. 4) also indicates that these valleys were not incised by the modern GrIS or by subglacial meltwater at its base. These valley patterns are more consistent with formation by fluvial and/or local-scale glacial erosion. ~~There is a non-negligible overall~~ 470 fraction of ‘fluvial’ valleys within the highlands is 15%, with higher fractions of 20–30% in the southern highlands (Fig. 6c), indicating that elements of a fluvial landscape have been preserved since glacial inception, most likely facilitated by the long-term presence of cold-based, slow-flowing ice, as is present in the centre of our simulated ice masses (Fig. 8). We therefore surmise that the mapped valleys most likely represent inherited pre-glacial fluvial networks that were exploited and erosively modified by topographically steered valley glaciers, as part of a smaller ice field earlier in Greenland’s glacial history. Modern- 475 day analogues for the inferred palaeoenvironment include locations characterised by topographically steered valley glaciers emanating from central ice fields, such as south Patagonia and British Columbia, Yukon, and Alaska.

The mapped extent and geometry of the palaeo-glacial valleys may therefore reflect the approximate long-term average configuration and dynamics of the former ice mass(es) responsible for their incision (Porter, 1989). However, rather than reflecting a former limit of erosion, an alternative hypothesis is that the distribution of the palaeo-glacial valleys is governed 480 by the modern distribution of non-erosive (i.e., cold-based) ice, and instead reflects a limit of long-term preservation. Comparison of the observed valley network limits with the estimated likely basal thermal state of the modern GrIS (MacGregor et al., 2022) indicates that, other than at the northern end of the eastern highlands and in the gap between the eastern and southern highlands, the mapped valley limit does not coincide with an abrupt transition from cold- to warm-based ice (Fig. S3b), as would be expected if this limit reflected the extent of landscape preservation by current and former comparable 485 continental-scale ice sheets. Indeed, cold-based, slow-flowing ice extends hundreds of kilometres inland of the limit of the palaeo-glacial network along much of the eastern highlands (MacGregor et al., 2022) (Fig. S3), suggesting it is unlikely that the observed valley network is the remainder of what was once a much wider signal that was partially removed by subsequent ice-sheet-scale erosion. This conclusion is also supported by the observation that the landscape further into the Greenlandic interior often appears to more closely resemble those of fluvial systems (Bamber et al., 2013; Cooper et al., 2016; Paxman, 490 2023; Paxman et al., 2021), hinting at long-term landscape preservation.

A notable observation is that ‘glacial’ valleys in the eastern highlands are on average almost twice as deeply incised as those in the southern highlands (Fig. 6b,d). This implies that southern Greenland has experienced a lesser amount of glacial incision integrated over its history than eastern Greenland. Two potential hypotheses to account for this observation are: (i) a lithologically-controlled difference in bedrock erodibility and (ii) a differing glacial history, for example a shorter overall



495 duration of erosive mountain-scale glaciation or a lower average mass turnover (i.e., slower glacier velocities and lower incision rates) in southern Greenland than eastern Greenland.

Geologically, southern Greenland comprises (moving from south to north) the Ketilidian Orogenic Belt (Palaeoproterozoic metasediments and granitoid intrusions deformed during the Palaeoproterozoic Ketilidian Orogeny) and the North Atlantic Craton (Archaean granitic gneiss) (Fig. S1b) (Henriksen et al., 2009). The highlands of eastern Greenland span (from south to north), the Rae Craton (Palaeoproterozoic with reworked Archaean granitic gneiss), the East Greenland Volcanic Province (Palaeogene basalt and mafic intrusions), and the Caledonian Orogenic Belt (Mesoproterozoic metasediments deformed during the Silurian Caledonian Orogeny) (Fig. S1b) (Henriksen et al., 2009). Notably, the North Atlantic Craton (south Greenland) and Rae Craton (east Greenland) are geologically similar, and would therefore be expected to be characterised by a similar hardness / erodibility (Campforts et al., 2020), but show a strong contrast in valley incision depth (Fig. 6b). Moreover, despite the significant geological variation along the eastern highlands, average and maximum valley depths remain comparable along the full length of the mountain chain, and consistently deeper than those in the southern highlands (Fig. 6b). These observations indicate that lithology is not a significant control on the spatial variations in valley depth, which may instead be attributable to a contrasting glacial history between the southern and eastern highlands. We suggest that the apparent upper limit of ~2 km on valley depths in the eastern highlands (Fig. 6b) may reflect negative feedbacks related to sediment evacuation that act to slow and stabilise the depth of glacial overdeepenings (Patton et al., 2016).

-Our ice-sheet model ensemble results show that in all simulations which exhibit ice growth in the southern highlands there is always ice present in the eastern highlands, but the same is not true in reverse (Fig. 7). Glaciation of the southern highlands requires a cooler island-wide temperature field than the eastern highlands despite the higher modelled precipitation rates (Fig. 3b), owing to the higher temperatures at lower latitudes (Fig. 3a) and the lower maximum altitude of the southern highlands compared to the eastern highlands (Morlighem et al., 2017). Given that the southern highlands are less likely to be glaciated than the eastern highlands (Fig. 7), it follows that they have likely experienced a shorter duration of glacial incision integrated over Greenland's history, accounting for the lower average valley depths. This would also account for the greater incidence of preserved palaeo-fluvial valleys in the southern highlands (Fig. 6c).

An alternative scenario is that the eastern and southern highlands were occupied by erosive mountain ice for similar durations of time but the ice in eastern Greenland was associated with a higher rates of mass turnover (and therefore greater basal sliding velocities and erosion rates). However, this possibility, can likely be discounted because the elevated palaeo-precipitation rates in southern Greenland that are consistently indicated by general circulation models (Fig. 3b) would likely result in higher rates of mass accumulation and turnover here than in eastern Greenland (all other things being equal). Moreover, our ice-sheet simulations do not show a clear difference in modelled ice surface or basal sliding velocities between the southern and eastern highlands (Fig. 8). Therefore, while ice growth and mountain glacial valley incision may have occurred near-simultaneously along the full length of the eastern highlands (66–78°N) under a single latitudinal temperature gradient (Fig. 8a), we suggest

that this pre-dated glaciation in southern Greenland and/or that mountain glaciation in southern Greenland was shorter-lived or more intermittent due to a warmer climate and lower average topography.

530 The observation that coast-facing valleys are deeper on average than inland-facing valleys (Fig. 6e) is also indicative of a contrasting incision history between these two groups of valleys. Having discounted a major role for geological variability along the highlands, this second dichotomy may reflect (a) contrasting inherited (pre-glacial) valley depths, and/or (b) a contrasting glacial incision history. Given the origin of the eastern and southern highlands via passive margin uplift following North Atlantic breakup (Bonow et al., 2014; Japsen et al., 2014), fluvial valleys on either side of the central drainage divide would have responded to continental separation and uplift by incising down to base level. Given their proximity to the coast, 535 antecedent rivers on the east side of the highlands would be expected to have cut deep valleys through the uplifting margin to depths close to sea level, whereas antecedent rivers on the western side of the highlands would have been located several hundred kilometres up-catchment of their own base level (i.e., the west coast) and thus would not have been driven to incise such deep valleys (Beaumont et al., 2000; Cockburn et al., 2000). Although these valleys will have been subsequently excavated and overdeepened by valley glaciers, an inherited disparity in their depths either side of the drainage divide may 540 have survived to the present day.

This scenario does not preclude the possibility that the coast-facing valleys have also experienced a greater amount of incision beneath fast-flowing, warm-based ice integrated over Greenland's glacial history. For example, both coast- and inland-facing valleys may have been incised ~~by similar amounts~~ during early mountain-scale glaciation, and subsequent continental-scale ice sheets may have contemporaneously preserved the inland-facing valleys beneath cold-based ice (Bierman et al., 2014; 545 MacGregor et al., 2022), while continuing to incise and deepen the coast-facing valleys that were ideally oriented for exploitation by the warm-based, fast-flowing outlet glaciers that drain outwards from the modern ice-sheet interior (Fig. 5, S2a) (Joughin et al., 2018). A similar hypothesis has also been proposed to explain the asymmetric incision depths observed on the coast- and inland-facing sides of the conjugate Norwegian glaciated passive margin (Hall et al., 2013; Kleman et al., 2008). Faster basal sliding velocities on the coastal side of the highlands during mountain-scale glaciation (Fig. 8), which 550 likely resulted from an increased maritime influence on the climate on the eastern side of the highlands (i.e., elevated precipitation and mass turnover rates; Fig. 3b) could have also contributed to a disparity in palaeo-incision rates (Cook et al., 2020; Seguinot & Delaney, 2021). A caveat attached to this explanation is that our models may underestimate the basal sliding velocities (and therefore erosion potential) of the inland-facing valleys because many of these features are not well resolved in BedMachine. Some or all of these mechanisms may have worked in concert to leave the coast-facing valleys generally 555 deeper on average than those on the inland side of the highlands.

#### 4.2 Timing of ~~landscape modification~~mountain glacial valley incision

While we have ascertained that the landscape of the eastern and southern highlands was significantly modified during one or more earlier phases of restricted, mountain-scale glaciation, the age of these event(s) cannot be easily determined from the

onshore geomorphology alone. In this section, we explore whether our geomorphological mapping and ice-sheet modelling  
560 results can be combined with the findings of previous studies to constrain the timing and chronology of mountain valley  
glaciation in eastern and southern Greenland.

A challenge in addressing this question is that ice sheets and their underlying landscapes are continually evolving; subglacial  
topography does not reflect a single ‘definitive past configuration’ of the ice sheet but is instead better thought of as a  
palimpsest produced during several glacial stages (Kleman, 1994). Such a landscape may therefore broadly relate to average  
565 glacial conditions over multiple glacial cycles (Porter, 1989), although this does not necessarily mean that the topography can  
be used to directly infer the historical mean or modal glacial conditions (Spagnolo et al., 2022). However, the presence of well-  
developed and morphologically consistent palaeo-glacial valley networks along the southern and eastern highlands of  
Greenland does suggest that ice likely occupied these regions in a configuration conducive to the incision of these valley  
networks for a protracted timespan. This configuration may not have existed for a single continuous episode, but instead during  
570 repeated intervals within a longer window of time, given the sensitivity of mountain glaciers to (e.g., orbital) climate variability.  
Here we focus on a series of time intervals pertinent to Greenland’s glacial history and assess the relative likelihood of the  
valleys having experienced significant and repeated phases of incision during these times.

#### 4.2.1 The Last Interglacial

The most recent time interval when the GrIS was potentially significantly diminished in extent relative to today is the Last  
575 Interglacial (Eemian; MIS 5e; ca. 125 ka), when global mean surface temperatures were 1.5–2°C higher than during the current  
interglacial period (Clark & Huybers, 2009). Although ice loss at this time was likely non-negligible, numerical ice-sheet  
models consistently predict that the Eemian GrIS still covered much of central Greenland (Fig. 9a), and global sea level records  
do not require an extensive loss of ice from Greenland at this time (Dutton et al., 2015). The identification of Eemian ice in  
northern Greenland via glacial radiostratigraphy (MacGregor et al., 2015) and in the NEEM, GRIP/GISP2, and DYE-3 deep  
580 ice cores (Dahl-Jensen et al., 2013; Suwa et al., 2006; Yau et al., 2016) supports this view, and argues in favour of the  
persistence of a significantly more extensive ice sheet at this time than the restricted ice masses that are likely to have incised  
the palaeo-glacial valleys in eastern and southern Greenland (Fig. 8).

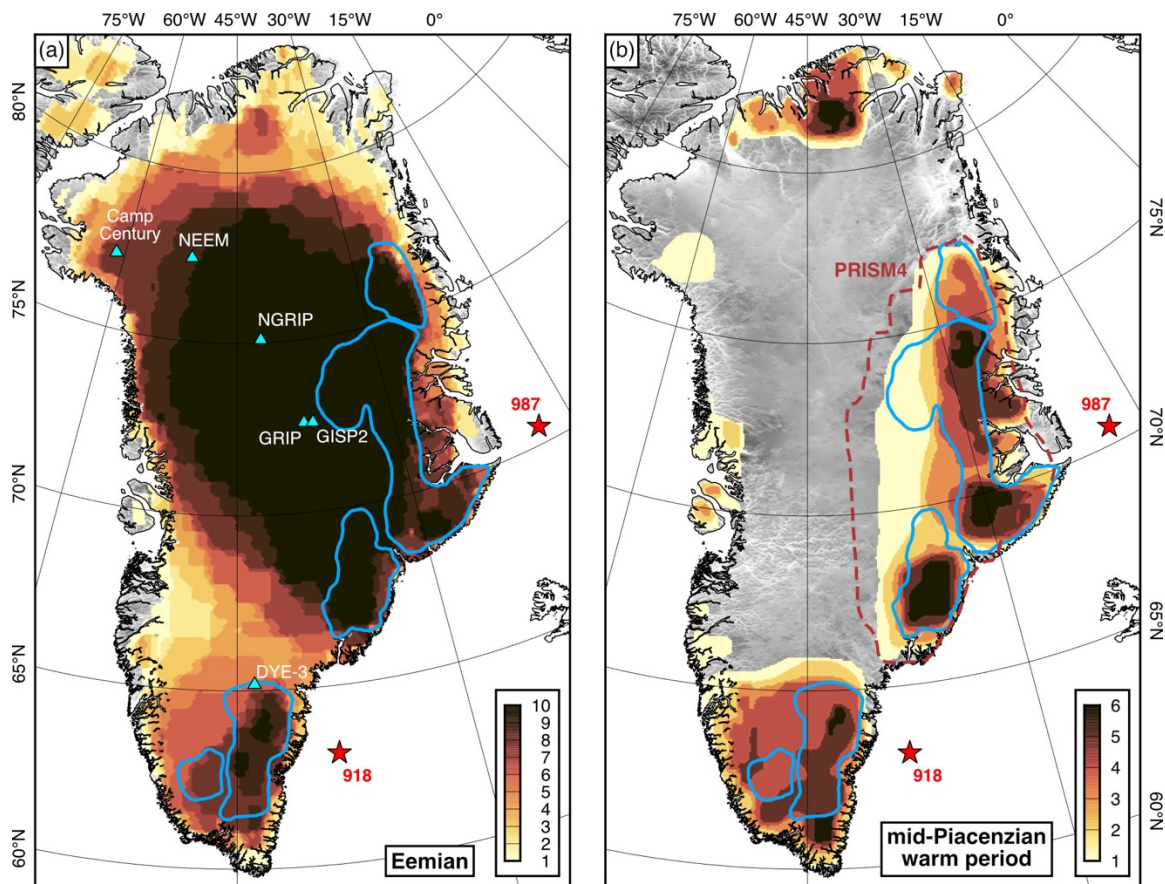
#### 4.2.2 Pleistocene ‘super-interglacials’

Cosmogenic nuclide analysis from sediment and bedrock obtained via sub-ice drilling at GISP2 and Camp Century (Fig. 1b)  
585 indicates that at least one episode of major ice loss occurred in Greenland at or since ca. 1.1 Ma (Christ et al., 2021; Schaefer  
et al., 2016), perhaps corresponding to one or more particularly warm and/or long-lasting interglacial periods such as MIS 11  
(ca. 430–400 ka) or 31 (ca. 1.09–1.06 Ma). Ice retreat simulations indicate that deglaciation of the Camp Century site  
(northwest Greenland; Fig. 1b) during MIS 11 would require loss of at least ~20% of the GrIS (Christ et al., 2023), while an  
ice-free GISP2 site would necessitate reduction of the GrIS to <10% of its current volume, restricted to isolated ice caps in the

590 eastern and/or southern highlands (Fyke et al., 2014; Schaefer et al., 2016). These ice core sites are both ice-free in our best-fitting ice-sheet simulations (Fig. 9). Although the exact chronology remains uncertain, it is therefore plausible that during the most prominent Pleistocene interglacials (e.g., MIS 11 and 31) the GrIS could have been restricted to a configuration capable of the incision of the mapped palaeo-glacial valley networks (Fig. 4, 8).

595 However, an important question is whether the ice sheet existed in this restricted state for a sufficiently long period(s) of time to account for observed valley depths of 1–2 km. Even allowing for an upper estimate for the combined duration of the MIS 11 and 31 interglacial peaks of ~50 kyr (de Wet et al., 2016) and an assumption that half of the observed valley relief pre-dated glaciation, this would necessitate average erosion rates of ~10–20 mm/yr to account for the incision of the valleys during these intervals alone. While estimating long-term glacial erosion rates from ice-sheet model output remains highly uncertain, using modelled basal sliding velocities of ~100 m/yr (Fig. 8d,h) in a variety of empirical glacial erosion ‘laws’ (Cook et al., 2020; Herman et al., 2015; Koppes et al., 2015) gives expected erosion rates on the order of ~2 mm/yr within the valleys. The latter value is also more consistent with the typical range associated with alpine/polar glaciers (Koppes & Montgomery, 2009; Patton et al., 2022). Moreover, MIS 11 simulations suggest that while the GrIS was much-diminished, basal ice remained below the pressure melting point across much of the remaining ice cap (Robinson et al., 2017), helping to preserve the landscape at GISP2 beneath cold-based, non-erosive ice (Bierman et al., 2014). The restricted ice caps present during Pleistocene ‘super-605 interglacials’ may therefore have contributed to the incision of the valley networks in eastern and southern Greenland but were likely insufficiently long-lived or erosive to fully account for the observed relief of these features.

Moreover, isostatic calculations indicate that glacial valley and fjord incision in the near-coastal regions of eastern Greenland must have primarily occurred prior to ca. 2.5 Ma (Pedersen et al., 2019). This is because incision of these deep valley and fjord systems would be expected to have driven hundreds of metres of flexural uplift of the adjacent coastal areas via erosional unloading, but late Pliocene-early Pleistocene (ca. 2.5 Ma) shallow marine sediments are are exposed along the shoreline north of Scoresby Sund at elevations much lower than would be expected if they had been deposited prior to fjord incision and consequently flexurally uplifted by hundreds of metres and have not experienced significant uplift (Pedersen et al., 2019). This indicates that fjord incision and concomitant isostatic adjustment must have largely pre-dated the deposition of these sediments deposition, pointing towards significant-selective glacial valley and fjord incision having largely commenced-occurred prior 615 to the Quaternary in eastern Greenland prior to the Quaternary.



**Figure 9: Heat maps representing simulated GrIS extent during past warmer intervals.** (a) Simulated GrIS minimum extent during the Last Interglacial (Eemian; ca. 125 ka), based on ~~a recent compilation of 10~~ previously published ice-sheet model outputs compiled in Fig. 2 of Plach et al. (2018). These simulations examine the retreat of the GrIS during the Last Interglacial. Colours indicate the number of model simulations that predict the presence of ice at a given location. Light blue triangles mark deep ice cores; red stars mark ODP core sites; blue polygons denote the highland palaeo-glacial valley limits mapped in this study. (b) Simulated GrIS extent during the mid-Piacenzian warm period (ca. 3.26–3.02 Ma), based on the results of 6 different ice-sheet models (Koenig et al., 2015). These simulations examine the growth of the GrIS on an ice-free Greenland using a late Pliocene climatology from the HadAM3 general circulation model. Red dashed line marks the PRISM4 GrIS extent used in PlioMIP2 (Dowsett et al., 2016; Haywood et al., 2016b).

620

### 625 4.2.3 Neogene ice growth

630

If mountain glacial valley incision did not primarily occur during Quaternary interglacial ice-sheet retreat episodes, the implication is that these valley networks primarily reflect early ice-sheet development during the Neogene. A number of modelling studies indicate that in the late Pliocene (ca. 3.6–2.6 Ma) the GrIS nucleated on, and expanded from, the mountains of eastern and southern Greenland (Berends et al., 2019; Contoux et al., 2015; Koenig et al., 2015; Lunt et al., 2009; Solgaard et al., 2011; Tan et al., 2018), although these results do not preclude the presence of upland ice masses prior to the late Pliocene (Bierman et al., 2016). Across multiple ice-sheet models that adopt a mPWP climate forcing from an atmospheric general circulation model in which no GrIS exists *a priori*, the simulated ice sheet is confined to the eastern and southern highlands

(Koenig et al., 2015), with an extent that is broadly consistent with the mapped palaeo-glacial valley limit and our simple ice-sheet modelling results (Fig. 9b).

635 Data-based constraints for Greenland's climate during the late Pliocene are rare and derive from a small number of sites. On  
Ellesmere Island (78°N), multiproxy analysis including tree-ring width and oxygen isotopes, palaeo-vegetation composition,  
and tetraether lipids have been used to infer MAATs of  $-1^{\circ}\text{C}$  ( $\pm 4^{\circ}\text{C}$ ) during the late Pliocene (Ballantyne et al., 2010; Csank  
et al., 2011). Similarly, earlier analysis of floral and faunal fossil assemblages from the Kap København Formation in northern  
Greenland (82°N) provided an indicative estimate for local late Pliocene MAATs of  $-4^{\circ}\text{C}$  (Funder et al., 2001). In our ice-  
640 sheet modelling experiments, we obtained an ice sheet with a geometry in closest agreement with the observed glacial valley  
limit in eastern Greenland for a sea level MAAT of  $+4^{\circ}\text{C}$  at 60°N and a latitudinal gradient of  $-0.3^{\circ}\text{C}/^{\circ}\text{N}$  (Fig. 7). This implies  
a sea level MAAT of  $-2^{\circ}\text{C}$  at 80°N, which is broadly consistent with these data-based constraints for late Pliocene temperatures  
in northern Greenland. The best-fitting latitudinal gradient is also broadly consistent with estimated global palaeolatitudinal  
temperature gradients for the late Miocene and Pliocene, which, while highly uncertain, are typically less than half as steep  
645 between 60°N and 90°N as at the present-day ( $\sim -0.8^{\circ}\text{C}/^{\circ}\text{N}$ ) (Bradshaw et al., 2012; Burls et al., 2021; Zhang et al., 2019). The  
temperature conditions necessary to develop mountain ice masses capable of incising the mapped palaeo-glacial valleys  
therefore appear to be broadly consistent with those that characterised the late Miocene and/or Pliocene epochs. The inferred  
global sea level highstand of up to +25 m above modern global mean sea level during the mPWP (Dumitru et al., 2019; Grant  
et al., 2019) is also consistent with a significantly diminished GrIS at this time (Dutton et al., 2015). The ice masses that best  
650 match the extent of the palaeo-glacial valleys contain  $\sim 0.4$  m SLE in the eastern highlands and  $\sim 0.1$  m SLE in the southern  
highlands (Fig. 7), implying that at the time these valleys were incised, the GrIS contribution to barostatic sea level was as  
much as  $\sim 7$  metres.

Offshore records of early Greenlandic glacial development prior to continental-scale ice-sheet formation indicate that glacial  
material began to appear in North Atlantic sediments during the late Miocene. At ODP Site 918 (southeast Greenland; Fig. 9),  
655 episodes of coarse sand, till, diamicton, and periodic ice-rafted debris (IRD) deposition commenced at ca. 7 Ma (Larsen et al.,  
1994; St. John & Krissek, 2002). Despite the southerly location of Site 918, sediments here were likely advected southwards  
by the East Greenland Current, which has been circulating anti-clockwise along the continental shelf since the late Miocene,  
and were likely sourced from rocks in the highlands of eastern Greenland rather than southern Greenland (Blake-Mizen et al.,  
2019). Similarly, at ODP Site 987 (east Greenland; Fig. 9), dropstones suggest that ice rafting commenced at ca. 7.5 Ma (Butt  
660 et al., 2001). Offshore seismic stratigraphy close to Site 987 also reveals that pre-late Miocene Atlantic sediments lack evidence  
of progradation or coarse-grained material, implying an absence of ice at the coast (Pérez et al., 2018). The first progradational  
glacial unit, indicative of outlet glaciers reaching the coast, is dated at ca. 7 Ma, followed by a broader major glacial advance  
in the early Pliocene (ca. 5 Ma) (Nielsen & Kuijpers, 2013; Pérez et al., 2018). Glaciers then appear to have retreated during  
the mPWP, followed by a second major advance at the Pliocene-Pleistocene transition (Pérez et al., 2018).

665 In our best-fitting ice-sheet model scenario for the eastern highlands (Fig. 7m), the ice sheet reaches the east coast in places  
along the southern half of the eastern highlands (Fig. 8a). The extent of the marine-terminating margins of the modelled ice  
sheets with extents more restricted than the best-fitting scenario appears to be reduced, although this is difficult to assess  
robustly given the uncertainties in the palaeotopography. This suggests that, while relatively restricted compared to the modern  
GrIS, these simulated ice masses were likely sufficiently extensive to reach the coast, at least in certain areas, and could have  
670 been responsible for the delivery of glaciogenic sedimentary material and IRD to the continental shelf during the late Miocene  
and Pliocene via tidewater glaciers. We note however that mountain glacial valley incision will have commenced prior to the  
establishment of a marine-terminating margin (Bierman et al., 2016). Thermochronological data from eastern Greenland  
suggests that kilometre-scale uplift of the highlands commenced at ca. 10 Ma (Japsen et al., 2014) and geomorphological  
evidence suggests that incision into peneplanation surfaces uplifted at this time was initially driven by rivers (Japsen et al.,  
675 2024). If rivers dominated this landscape at ca. 10 Ma and the uplift was necessary to trigger mountain glaciation (Solgaard et  
al., 2013), the mapped palaeo-glacial valley network is unlikely to have developed until after ca. 10 Ma.

Geological records therefore indicate that two plausible intervals for mountain glacial valley incision are (i) the late Miocene  
(after ca. 10 Ma) prior to the large-scale early Pliocene (ca. 5 Ma) margin advance, and/or (ii) subsequent warm periods of the  
late Pliocene (e.g., the mPWP). It is difficult to determine from the evidence presented here whether glacial incision primarily  
680 occurred during both or only one of these two possible windows. The simplest scenario is that the mapped palaeo-glacial  
landscape primarily reflects the presence of restricted mountain-scale ice masses during the late Pliocene immediately prior to  
the onset of continental-scale glaciation (Funder et al., 2001) and consequent establishment of widespread cold-based, non-  
erosive ice. However, if a marine-terminating ice margin existed (at least intermittently) during the late Miocene / early  
Pliocene, mountain glacial valley incision likely commenced prior to the late Pliocene. Therefore, on the available evidence,  
685 we simply suggest that glacial valley incision in the eastern and southern highlands primarily occurred early in Greenland's  
glacial history, most likely in the late Miocene and/or subsequent warm intervals of the late Pliocene. To further resolve which  
of these two candidate intervals was characterised by the most incision, we recommend future analysis of offshore seismic  
data and/or acquisition of sediment cores on the east Greenland continental shelf to compare the provenance of Miocene and  
Pliocene sediments and the timing of pulses of erosion from the eastern and southern highlands.

690 Following the development of the alpine-style glacial landscape in southern and eastern Greenland over an extended interval  
(on the order of 100s of kyr to a few Myr), we suggest that the GrIS likely expanded to continental scale comparatively quickly.  
This inference is made on the basis of (i) ice-sheet modelling that suggests rapid GrIS expansion could have occurred via a  
surface elevation-mass balance feedback once a key temperature threshold was reached (DeConto et al., 2008), which is also  
borne out by our own ice-sheet model results (Fig. 7 shows that for every 1°C of cooling, the modelled ice volume  
695 approximately doubles), and (ii) the subglacial geomorphology, which suggests that large parts of the interior landscape have  
not been strongly modified by glacial erosion (Bamber et al., 2013; Bierman et al., 2014; Cooper et al., 2016), implying that  
the ice margin (which would be expected to generally be characterised by the fastest ice flow and thus the highest erosion

rates) was not situated in these locations (cf. Figs 7c and 7k) for an extended period of time. Much of the landscape in the Greenlandic interior, including the inland-facing valleys in the eastern and southern highlands, would thus have been preserved  
700 beneath a cold-based core of the expanded continental-scale ice sheet. We therefore suggest that the inland-facing side of the eastern highlands in particular may be a promising region in which to find ancient ice in Greenland, on the basis that (a) the topography is generally high, with deep valleys last incised during early mountain glaciation, (b) the ice is cold-based and slow-moving (Joughin et al., 2018; MacGregor et al., 2022), and (c) ice has likely been persistent for millions of years (Bierman et al., 2016), with potentially the longest continual glacial history in Greenland.

705 Although the absolute timing remains to be fully resolved, the combined results of our geomorphological mapping and ice-sheet modelling provide an important constraint on the geometry of the GrIS (Fig. 8) during warm intervals of the late Miocene and/or late Pliocene, and possibly during the strongest Pleistocene interglacial periods. We suggest that these constraints could be retro-actively applied to existing climate/ice-sheet modelling studies to rule in/out certain simulated past ice sheet scenarios. They can also act as an improved, data-constrained, boundary condition for subsequent iterations of global palaeogeography  
710 boundary conditions such as PRISM (Dowsett et al., 2016) and palaeoclimate model intercomparison projects such as PlioMIP (Haywood et al., 2016b); we highlight that the best-fitting ice configuration in the eastern highlands is significantly less extensive than the ice cap assumed in PRISM4 (Fig. 8a). We also highlight the need for a better understanding of the chronology of landscape development. This could be facilitated by improved mapping and quantification of offshore sediment volumes and chronologies (e.g., Pedersen et al., 2018), as well as geochemical analysis of the provenance of eroded material  
715 entering the North Atlantic (e.g., Blake-Mizen et al., 2019; Cook et al., 2013), which would help better quantify the times at which the ice margin reached the coast or retreated inland along the eastern margin of Greenland.

## 5 Conclusions

In this study we have used a combination of geomorphological mapping and ice-sheet modelling to constrain the behaviour of the Greenland Ice Sheet during past warmer climates. We draw the following conclusions:

720

1. The highlands of eastern and southern Greenland are incised by a complex network of subglacial valleys that retain signatures of pre-glacial fluvial incision in their observed planform geometry and cross-sectional profile morphology. The distribution of the subglacial valleys is inconsistent with incision beneath the modern continental-scale GrIS.
2. Instead, the inherited palaeo-fluvial valleys likely steered, and were modified by, the flow of (warm-based, erosive)  
725 mountain valley glaciers that drained central high-elevation (cold-based, non-erosive) ice fields during past warmer climates. Our ice-sheet modelling indicates that the mapped palaeo-glacial valley limit in the eastern highlands is consistent with a palaeoclimate characterised by simulated late Pliocene precipitation rates and a simple air temperature field (defined by a sea level MAAT at 60°N of  $+4 \pm 1$  °C, a latitudinal gradient of  $-0.3 \pm 0.1$  °C/°N, and a vertical lapse rate of  $-6.5$  °C km<sup>-1</sup>) that is broadly consistent with terrestrial records for the late Pliocene.



- 730 3. A further cooling of 1 °C and steepening of the latitudinal gradient by -0.1 °C/°N is required to match the mapped  
palaeo-glacial valley limit in the southern highlands. Geomorphological mapping also indicates that the landscape of  
the southern highlands has been less extensively modified by mountain-scale glaciation. We suggest that glaciation  
in the eastern highlands likely pre-dated the southern highlands, reflecting the higher latitudes and higher elevations  
of this region. The SLE of the simulated ice masses that best match the mapped palaeo-glacial valley limit is ~0.4 m  
735 in the eastern highlands and ~0.1 m in the southern highlands, indicating that at the time of valley incision, the GrIS  
was significantly more restricted in extent than today, with a contribution to barostatic sea level of up to ~7 metres.
4. We suggest that the late Miocene (ca. 7–5 Ma) and late Pliocene (ca. 3.6–2.6 Ma) are the most likely time intervals  
for the incision of the mapped palaeo-glacial valley network, although we cannot exclude the possibility that the  
valleys were also incised during particularly warm and/or long-lived ‘super-interglacial’ intervals of the Pleistocene.  
740 The mapped limit of the palaeo-glacial valley network and associated simulations of ice extent and flow can act as  
valuable constraints for the next generation of palaeoclimate model intercomparison projects focussed on these past  
warm periods, which provide valuable analogues for projected future climate warming.
5. Subsequent transition(s) between a mountain- and continental-scale GrIS did not substantially erode the landscape of  
the Greenlandic interior, indicating that ice margin advance/retreat occurred relatively quickly and/or non-erosively.  
745 As a result, the inland-facing side of the eastern highlands may contain some of the oldest ice preserved in Greenland.

#### Data/Code availability

The BedMachine version 5 (<https://doi.org/10.5067/GMEVBWFLWA7X>) and MEaSURES MODIS MoG version 2  
(<https://doi.org/10.5067/9ZO79PHOTYE5>) datasets were accessed via the National Snow and Ice Data Center. The isostatic  
750 response to the unloading of the modern Greenland Ice Sheet (Paxman et al., 2022) is available via the Arctic Data Center  
(<https://doi.org/10.18739/A2280509Z>). The dataset of Greenland subglacial valleys (Paxman, 2023) is available via  
<https://doi.org/10.5281/zenodo.7794565>. Data produced in this study, including ESRI shapefiles of the mountain valley  
network and inferred palaeo-glacial limit and NetCDF files of selected ice-sheet model output, is available via  
<https://doi.org/10.5281/zenodo.10013441>.

755

#### Acknowledgements

GJGP was funded by a Leverhulme Trust Early Career Fellowship, award number ECF-2021-549. MJB was supported by  
funding received from the European Research Council (ERC) under the European Union’s Horizon 2020 research and  
innovation programme, grant agreement 885205. The authors would like to thank Lauren Burton, Tamara Fletcher, Alan  
760 Haywood, Daniel Hill, Erin McClymont, and Julia Tindall for helpful discussions on late Pliocene Greenland, along with the  
broader PlioMIP climate modelling community for their ongoing efforts. We also extend thanks to Andreas Plach and Andreas  
Born for providing the modelled MIS 5e Greenland Ice Sheet extents used to construct the heat map in Fig. 9a. GJGP would  
like to thank the attendees of the ‘Greenland Ice Sheet: lessons from the past’ workshop in Bergen, Norway (April 2023),

especially Jason Briner, Petra Langebroek, Vivi Pedersen, and Julien Seguinot, for fruitful discussions that helped shape this manuscript. We thank Henry Patton and a second, anonymous, reviewer for their thoughtful and constructive comments, which greatly improved the final manuscript. Figures were prepared using the Generic Mapping Tools (GMT) version 6 software package (Wessel et al., 2019) and colour palettes from Scientific Colour Maps version 7 (Crameri et al., 2020).

### Author contributions

GJGP conceived the project, performed the analysis, constructed the figures, and drafted the manuscript. SSRJ and MJB provided input on the study scope, methods, and interpretation. AMD provided general circulation model output for the ice-sheet modelling and input on the interpretation of the model results. All authors contributed comments and revisions to the final manuscript.

### Competing interests

The authors declare that they have no conflict of interest.

### References

- Alley, R. B., Pollard, D., Parizek, B. R., Anandkrishnan, S., Pourpoint, M., Stevens, N. T., MacGregor, J. A., Christianson, K., Muto, A., & Holschuh, N. (2019). Possible Role for Tectonics in the Evolving Stability of the Greenland Ice Sheet. *Journal of Geophysical Research: Earth Surface*, *124*(1), 97–115. <https://doi.org/10.1029/2018JF004714>
- Aschwanden, A., & Brinkerhoff, D. J. (2022). Calibrated mass loss projections from the Greenland Ice Sheet. *Geophysical Research Letters*, 1–15. <https://doi.org/10.18739/A2G73752>
- Aschwanden, A., Bueller, E., Khroulev, C., & Blatter, H. (2012). An enthalpy formulation for glaciers and ice sheets. *Journal of Glaciology*, *58*(209), 441–457. <https://doi.org/10.3189/2012JoG11J088>
- Bailey, I., Hole, G. M., Foster, G. L., Wilson, P. A., Storey, C. D., Trueman, C. N., & Raymo, M. E. (2013). An alternative suggestion for the Pliocene onset of major northern hemisphere glaciation based on the geochemical provenance of North Atlantic Ocean ice-rafted debris. *Quaternary Science Reviews*, *75*, 181–194. <https://doi.org/10.1016/j.quascirev.2013.06.004>
- Ballantyne, A. P., Greenwood, D. R., Sinninghe Damsté, J. S., Csank, A. Z., Eberle, J. J., & Rybczynski, N. (2010). Significantly warmer Arctic surface temperatures during the Pliocene indicated by multiple independent proxies. *Geology*, *38*(7), 603–606. <https://doi.org/10.1130/G30815.1>
- Bamber, J. L., Siegert, M. J., Griggs, J. A., Marshall, S. J., & Spada, G. (2013). Paleofluvial mega-canyon beneath the central Greenland ice sheet. *Science*, *341*(6149), 997–999. <https://doi.org/10.1126/science.1239794>
- Beaumont, C., Kooi, H., & Willett, S. (2000). Coupled tectonic-surface process models with applications to rifted margins and collisional orogens. In M. A. Summerfield (Ed.), *Geomorphology and Global Tectonics* (pp. 29–55). Wiley.

- Bennike, O., Knudsen, K. L., Abrahamsen, N., Böcher, J., Cremer, H., & Wagner, B. (2010). Early Pleistocene sediments on Store Koldewey, northeast Greenland. *Boreas*, 39(3), 603–619. <https://doi.org/10.1111/j.1502-3885.2010.00147.x>
- Berends, C. J., de Boer, B., Dolan, A. M., Hill, D. J., & van de Wal, R. S. W. (2019). Modelling ice sheet evolution and atmospheric CO<sub>2</sub> during the Late Pliocene. *Climate of the Past*, 15(4), 1603–1619. <https://doi.org/10.5194/cp-15-1603-2019>
- 800 Bierman, P. R., Corbett, L. B., Graly, J. A., Neumann, T. A., Lini, A., Crosby, B. T., & Rood, D. H. (2014). Preservation of a Preglacial Landscape Under the Center of the Greenland Ice Sheet. *Science*, 344(6182), 402–405. <https://doi.org/10.1126/science.1249047>
- Bierman, P. R., Shakun, J. D., Corbett, L. B., Zimmerman, S. R., & Rood, D. H. (2016). A persistent and dynamic East  
805 Greenland Ice Sheet over the past 7.5 million years. *Nature*, 540(7632), 256–260. <https://doi.org/10.1038/nature20147>
- Blake-Mizen, K., Hatfield, R. G., Stoner, J. S., Carlson, A. E., Xuan, C., Walczak, M., Lawrence, K. T., Channell, J. E. T., & Bailey, I. (2019). Southern Greenland glaciation and Western Boundary Undercurrent evolution recorded on Eirik Drift during the late Pliocene intensification of Northern Hemisphere glaciation. *Quaternary Science Reviews*, 209, 40–51. <https://doi.org/10.1016/j.quascirev.2019.01.015>
- 810 Bonow, J. M., Japsen, P., & Nielsen, T. F. D. (2014). High-level landscapes along the margin of southern East Greenland—A record of tectonic uplift and incision after breakup in the NE Atlantic. *Global and Planetary Change*, 116, 10–29. <https://doi.org/10.1016/j.gloplacha.2014.01.010>
- Bradshaw, C. D., Lunt, D. J., Flecker, R., Salzmann, U., Pound, M. J., Haywood, A. M., & Eronen, J. T. (2012). The relative roles of CO<sub>2</sub> and palaeogeography in determining late Miocene climate: Results from a terrestrial model-data  
815 comparison. *Climate of the Past*, 8(4), 1257–1285. <https://doi.org/10.5194/cp-8-1257-2012>
- Bueler, E., & Brown, J. (2009). Shallow shelf approximation as a “sliding law” in a thermomechanically coupled ice sheet model. *Journal of Geophysical Research: Solid Earth*, 114(3), 1–21. <https://doi.org/10.1029/2008JF001179>
- Burls, N. J., Bradshaw, C. D., De Boer, A. M., Herold, N., Huber, M., Pound, M., Donnadieu, Y., Farnsworth, A., Frigola, A., Gasson, E., von der Heydt, A. S., Hutchinson, D. K., Knorr, G., Lawrence, K. T., Lear, C. H., Li, X., Lohmann, G., Lunt,  
820 D. J., Marzocchi, A., ... Zhang, Z. (2021). Simulating Miocene Warmth: Insights From an Opportunistic Multi-Model Ensemble (MioMIP1). *Paleoceanography and Paleoclimatology*, 36(5), 1–40. <https://doi.org/10.1029/2020PA004054>
- Butt, F. A., Elverhøi, A., Forsberg, C. F., & Solheim, A. (2001). Evolution of the Scoresby Sund Fan, central East Greenland - Evidence from ODP Site 987. *Norsk Geologisk Tidsskrift*, 81(1), 3–15.
- Campforts, B., Vanacker, V., Herman, F., Vanmaercke, M., Schwanghart, W., Tenorio, G. E., Willems, P., & Govers, G.  
825 (2020). Parameterization of river incision models requires accounting for environmental heterogeneity: Insights from the tropical Andes. *Earth Surface Dynamics*, 8(2), 447–470. <https://doi.org/10.5194/esurf-8-447-2020>
- Cazenave, A., Meyssignac, B., Ablain, M., Balmaseda, M., Bamber, J., Barletta, V., Beckley, B., Benveniste, J., Berthier, E., Blazquez, A., Boyer, T., Caceres, D., Chambers, D., Champollion, N., Chao, B., Chen, J., Cheng, L., Church, J. A., Chuter, S., ... Wouters, B. (2018). Global sea-level budget 1993–present. *Earth System Science Data*, 10(3), 1551–1590.

- 830 <https://doi.org/10.5194/essd-10-1551-2018>
- Christ, A. J., Bierman, P. R., Knutz, P. C., Corbett, L. B., Fosdick, J. C., Thomas, E. K., Cowling, O. C., Hidy, A. J., & Caffee, M. W. (2020). The Northwestern Greenland Ice Sheet During The Early Pleistocene Was Similar To Today. *Geophysical Research Letters*, *47*(1), 1–9. <https://doi.org/10.1029/2019GL085176>
- 835 Christ, A. J., Bierman, P. R., Schaefer, J. M., Dahl-Jensen, D., Steffensen, J. P., Corbett, L. B., Peteet, D. M., Thomas, E. K., Steig, E. J., Rittenour, T. M., Tison, J.-L., Blard, P.-H., Perdrial, N., Dethier, D. P., Lini, A., Hidy, A. J., Caffee, M. W., & Southon, J. (2021). A multimillion-year-old record of Greenland vegetation and glacial history preserved in sediment beneath 1.4 km of ice at Camp Century. *Proceedings of the National Academy of Sciences*, *118*(13). <https://doi.org/10.1073/pnas.2021442118>
- 840 Christ, A. J., Rittenour, T. M., Bierman, P. R., Keisling, B. A., Knutz, P. C., Thomsen, T. B., Keulen, N., Fosdick, J. C., Hemming, S. R., Tison, J., Blard, P., Steffensen, J. P., Caffee, M. W., Corbett, L. B., Dahl-Jensen, D., Dethier, D. P., Hidy, A. J., Perdrial, N., Peteet, D. M., ... Thomas, E. K. (2023). Deglaciation of northwestern Greenland during Marine Isotope Stage 11. *Science*, *381*(6655), 330–335. <https://doi.org/10.1126/science.ade4248>
- Clark, P. U., & Huybers, P. (2009). Interglacial and future sea level. *Nature*, *462*(7275), 856–857. <https://doi.org/10.1038/462856a>
- 845 Cockburn, H. A. P., Brown, R. W., Summerfield, M. A., & Seidl, M. A. (2000). Quantifying passive margin denudation and landscape development using a combined fission-track thermochronology and cosmogenic isotope analysis approach. *Earth and Planetary Science Letters*, *179*(3–4), 429–435. [https://doi.org/10.1016/S0012-821X\(00\)00144-8](https://doi.org/10.1016/S0012-821X(00)00144-8)
- Contoux, C., Dumas, C., Ramstein, G., Jost, A., & Dolan, A. M. (2015). Modelling Greenland ice sheet inception and sustainability during the Late Pliocene. *Earth and Planetary Science Letters*, *424*, 295–305. <https://doi.org/10.1016/j.epsl.2015.05.018>
- 850 Cook, C. P., Van De Flierdt, T., Williams, T., Hemming, S. R., Iwai, M., Kobayashi, M., Jimenez-Espejo, F. J., Escutia, C., González, J. J., Khim, B. K., McKay, R. M., Passchier, S., Bohaty, S. M., Riesselman, C. R., Tauxe, L., Sugisaki, S., Galindo, A. L., Patterson, M. O., Sangiorgi, F., ... Yamane, M. (2013). Dynamic behaviour of the East Antarctic ice sheet during Pliocene warmth. *Nature Geoscience*, *6*(9), 765–769. <https://doi.org/10.1038/ngeo1889>
- 855 Cook, S. J., Swift, D. A., Kirkbride, M. P., Knight, P. G., & Waller, R. I. (2020). The empirical basis for modelling glacial erosion rates. *Nature Communications*, *11*(1), 759. <https://doi.org/10.1038/s41467-020-14583-8>
- Cooper, M. A., Jordan, T. M., Siegert, M. J., & Bamber, J. L. (2019). Surface Expression of Basal and Englacial Features, Properties, and Processes of the Greenland Ice Sheet. *Geophysical Research Letters*, *46*(2), 783–793. <https://doi.org/10.1029/2018GL080620>
- 860 Cooper, M. A., Michaelides, K., Siegert, M. J., & Bamber, J. L. (2016). Paleofluvial landscape inheritance for Jakobshavn Isbræ catchment, Greenland. *Geophysical Research Letters*, *43*(12), 6350–6357. <https://doi.org/10.1002/2016GL069458>
- Cramer, F., Shephard, G. E., & Heron, P. J. (2020). The misuse of colour in science communication. *Nature Communications*, *11*(1), 1–10. <https://doi.org/10.1038/s41467-020-19160-7>

- Csank, A. Z., Patterson, W. P., Eglington, B. M., Rybczynski, N., & Basinger, J. F. (2011). Climate variability in the Early  
865 Pliocene Arctic: Annually resolved evidence from stable isotope values of sub-fossil wood, Ellesmere Island, Canada.  
*Palaeogeography, Palaeoclimatology, Palaeoecology*, 308(3–4), 339–349.  
<https://doi.org/10.1016/j.palaeo.2011.05.038>
- Dahl-Jensen, D., Albert, M. R., Aldahan, A., Azuma, N., Balslev-Clausen, D., Baumgartner, M., Berggren, A. M., Bigler, M.,  
Binder, T., Blunier, T., Bourgeois, J. C., Brook, E. J., Buchardt, S. L., Buizert, C., Capron, E., Chappellaz, J., Chung, J.,  
870 Clausen, H. B., Cvijanovic, I., ... Zheng, J. (2013). Eemian interglacial reconstructed from a Greenland folded ice core.  
*Nature*, 493(7433), 489–494. <https://doi.org/10.1038/nature11789>
- de Wet, G. A., Castañeda, I. S., DeConto, R. M., & Brigham-Grette, J. (2016). A high-resolution mid-Pleistocene temperature  
record from Arctic Lake El'gygytgyn: A 50 kyr super interglacial from MIS 33 to MIS 31? *Earth and Planetary Science  
Letters*, 436, 56–63. <https://doi.org/10.1016/j.epsl.2015.12.021>
- 875 DeConto, R. M., Pollard, D., Wilson, P. A., Pälike, H., Lear, C. H., & Pagani, M. (2008). Thresholds for Cenozoic bipolar  
glaciation. *Nature*, 455(7213), 652–656. <https://doi.org/10.1038/nature07337>
- Dolan, A. M., Hunter, S. J., Hill, D. J., Haywood, A. M., Koenig, S. J., Otto-Bliesner, B. L., Abe-Ouchi, A., Bragg, F., Chan,  
W. L., Chandler, M. A., Contoux, C., Jost, A., Kamae, Y., Lohmann, G., Lunt, D. J., Ramstein, G., Rosenbloom, N. A.,  
Sohl, L., Stepanek, C., ... Zhang, Z. (2015). Using results from the PlioMIP ensemble to investigate the Greenland Ice  
880 Sheet during the mid-Pliocene Warm Period. *Climate of the Past*, 11(3), 403–424. <https://doi.org/10.5194/cp-11-403-2015>
- Dowsett, H., Dolan, A., Rowley, D., Moucha, R., Forte, A. M., Mitrovica, J. X., Pound, M., Salzmann, U., Robinson, M.,  
Chandler, M., Foley, K., & Haywood, A. (2016). The PRISM4 (mid-Piacenzian) paleoenvironmental reconstruction.  
*Climate of the Past*, 12(7), 1519–1538. <https://doi.org/10.5194/cp-12-1519-2016>
- 885 Dumitru, O. A., Austermann, J., Polyak, V. J., Fornós, J. J., Asmerom, Y., Ginés, J., Ginés, A., & Onac, B. P. (2019).  
Constraints on global mean sea level during Pliocene warmth. *Nature*, 574(7777), 233–236.  
<https://doi.org/10.1038/s41586-019-1543-2>
- Dutton, A., Carlson, A. E., Long, A. J., Milne, G. A., Clark, P. U., DeConto, R., Horton, B. P., Rahmstorf, S., & Raymo, M.  
E. (2015). Sea-level rise due to polar ice-sheet mass loss during past warm periods. *Science*, 349(6244).  
890 <https://doi.org/10.1126/science.aaa4019>
- Edwards, T. L., Nowicki, S., Marzeion, B., Hock, R., Goelzer, H., Seroussi, H., Jourdain, N. C., Slater, D. A., Turner, F. E.,  
Smith, C. J., McKenna, C. M., Simon, E., Abe-Ouchi, A., Gregory, J. M., Larour, E., Lipscomb, W. H., Payne, A. J.,  
Shepherd, A., Agosta, C., ... Zwinger, T. (2021). Projected land ice contributions to twenty-first-century sea level rise.  
*Nature*, 593(7857), 74–82. <https://doi.org/10.1038/s41586-021-03302-y>
- 895 Eldrett, J. S., Harding, I. C., Wilson, P. A., Butler, E., & Roberts, A. P. (2007). Continental ice in Greenland during the Eocene  
and Oligocene. *Nature*, 446(7132), 176–179. <https://doi.org/10.1038/nature05591>
- Feyling-Hanssen, R. W., Funder, S., & Petersen, K. S. (1983). The Lodin Elv Formation; a Plio-Pleistocene occurrence in

Greenland. *Bulletin Geological Society Denmark*, 31, 81–106.

- 900 Flesche Kleiven, H., Jansen, E., Fronval, T., & Smith, T. M. (2002). Intensification of Northern Hemisphere glaciations in the circum Atlantic region (3.5-2.4 Ma) - Ice-rafted detritus evidence. *Palaeogeography, Palaeoclimatology, Palaeoecology*, 184(3–4), 213–223. [https://doi.org/10.1016/S0031-0182\(01\)00407-2](https://doi.org/10.1016/S0031-0182(01)00407-2)
- Funder, S., Bennike, O., Böcher, J., Israelson, C., Petersen, K. S., & Simonson, L. A. (2001). Late Pliocene Greenland — The Kap København Formation in North Greenland. *Bulletin of the Geological Society of Denmark*, 48, 117–134. <http://www.mendeley.com/research/late-pliocene-greenland-the-kap-kobenhavn-formation-in-north-greenland/>
- 905 Fyke, J., Eby, M., Mackintosh, A., & Weaver, A. (2014). Impact of climate sensitivity and polar amplification on projections of Greenland Ice Sheet loss. *Climate Dynamics*, 43(7–8), 2249–2260. <https://doi.org/10.1007/s00382-014-2050-7>
- Goelzer, H., Huybrechts, P., Fürst, J. J., Nick, F. M., Andersen, M. L., Edwards, T. L., Fettweis, X., Payne, A. J., & Shannon, S. (2013). Sensitivity of Greenland Ice Sheet projections to model formulations. *Journal of Glaciology*, 59(216), 733–749. <https://doi.org/10.3189/2013JoG12J182>
- 910 Goelzer, H., Nowicki, S., Payne, A., Larour, E., Seroussi, H., Lipscomb, W. H., Gregory, J., Abe-Ouchi, A., Shepherd, A., Simon, E., Agosta, C., Alexander, P., Aschwanden, A., Barthel, A., Calov, R., Chambers, C., Choi, Y., Cuzzone, J., Dumas, C., ... Van Den Broeke, M. (2020). The future sea-level contribution of the Greenland ice sheet: A multi-model ensemble study of ISMIP6. *The Cryosphere*, 14(9), 3071–3096. <https://doi.org/10.5194/tc-14-3071-2020>
- Golledge, N. R., Hubbard, A., & Sugden, D. E. (2008). High-resolution numerical simulation of Younger Dryas glaciation in 915 Scotland. *Quaternary Science Reviews*, 27(9–10), 888–904. <https://doi.org/10.1016/j.quascirev.2008.01.019>
- Grant, G. R., Naish, T. R., Dunbar, G. B., Stocchi, P., Kominz, M. A., Kamp, P. J. J., Tapia, C. A., McKay, R. M., Levy, R. H., & Patterson, M. O. (2019). The amplitude and origin of sea-level variability during the Pliocene epoch. *Nature*, 574(7777), 237–241. <https://doi.org/10.1038/s41586-019-1619-z>
- Gudmundsson, G. H. (2003). Transmission of basal variability to a glacier surface. *Journal of Geophysical Research: Solid Earth*, 108(B5), 1–19. <https://doi.org/10.1029/2002jb002107>
- 920 Hall, A. M., Ebert, K., Kleman, J., Nesje, A., & Ottesen, D. (2013). Selective glacial erosion on the Norwegian passive margin. *Geology*, 41(12), 1203–1206. <https://doi.org/10.1130/G34806.1>
- Haran, T., Bohlander, J. A., Scambos, T. A., Painter, T., & Fahnestock, M. A. (2018). *MEASUREs MODIS Mosaic of Greenland (MOG) 2005, 2010, and 2015 Image Maps, Version 2*. Boulder, Colorado USA. NSIDC: National Snow and 925 Ice Data Center. <https://doi.org/10.5067/9ZO79PHOTYE5>
- Haug, G. H., & Tiedemann, R. (1998). Effect of the formation of the Isthmus of Panama on Atlantic Ocean thermohaline circulation. *Nature*, 393(6686), 673–676. <https://doi.org/10.1038/31447>
- Haywood, A. M., Dowsett, H. J., & Dolan, A. M. (2016). Integrating geological archives and climate models for the mid-Pliocene warm period. *Nature Communications*, 7(1), 10646. <https://doi.org/10.1038/ncomms10646>
- 930 Haywood, A. M., Dowsett, H. J., Dolan, A. M., Rowley, D., Abe-Ouchi, A., Otto-Bliesner, B., Chandler, M. A., Hunter, S. J., Lunt, D. J., Pound, M., & Salzmann, U. (2016). The Pliocene Model Intercomparison Project (PlioMIP) Phase 2:

- Scientific objectives and experimental design. *Climate of the Past*, 12(3), 663–675. <https://doi.org/10.5194/cp-12-663-2016>
- 935 Haywood, A. M., Tindall, J. C., Dowsett, H. J., Dolan, A. M., Foley, K. M., Hunter, S. J., Hill, D. J., Chan, W. Le, Abe-Ouchi, A., Stepanek, C., Lohmann, G., Chandan, D., Richard Peltier, W., Tan, N., Contoux, C., Ramstein, G., Li, X., Zhang, Z., Guo, C., ... Lunt, D. J. (2020). The Pliocene Model Intercomparison Project Phase 2: Large-scale climate features and climate sensitivity. *Climate of the Past*, 16(6), 2095–2123. <https://doi.org/10.5194/cp-16-2095-2020>
- 940 Helland, P. E., & Holmes, M. A. (1997). Surface textural analysis of quartz sand grains from ODP site 918 off the southeast coast of Greenland suggests glaciation of southern Greenland at 11 Ma. *Palaeogeography, Palaeoclimatology, Palaeoecology*, 135(1–4), 109–121. [https://doi.org/10.1016/S0031-0182\(97\)00025-4](https://doi.org/10.1016/S0031-0182(97)00025-4)
- Henriksen, N., Higgins, A. K., Kalsbeek, F., & Pulvertaft, T. C. R. (2009). Greenland from Archaean to Quaternary: Descriptive text to the 1995 Geological map of Greenland, 1:2500000. 2nd edition. *Geological Survey of Denmark and Greenland Bulletin*, 18, 126.
- 945 Herman, F., Beyssac, O., Brughelli, M., Lane, S. N., Leprince, S., Adatte, T., Lin, J. Y. Y., Avouac, J. P., & Cox, S. C. (2015). Erosion by an Alpine glacier. *Science*, 350(6257), 193–195. <https://doi.org/10.1126/science.aab2386>
- Howat, I. M., Negrete, A., & Smith, B. E. (2014). The Greenland Ice Mapping Project (GIMP) land classification and surface elevation data sets. *The Cryosphere*, 8(4), 1509–1518. <https://doi.org/10.5194/tc-8-1509-2014>
- 950 Howat, I. M., Negrete, A., & Smith, B. E. (2022). *MEaSURES Greenland Ice Mapping Project (GrIMP) Digital Elevation Model from GeoEye and WorldView Imagery, Version 2*. NASA National Snow and Ice Data Center Distributed Active Archive Center. <https://doi.org/10.5067/BHS4S5GAMFVY>
- Huybrechts, P. (1998). *Report of the third EISMINT workshop on model intercomparison*.
- Jamieson, S. S. R., Ross, N., Paxman, G. J. G., Clubb, F. J., Young, D. A., Yan, S., Greenbaum, J., Blankenship, D. D., & Siegert, M. J. (2023). An ancient river landscape preserved beneath the East Antarctic Ice Sheet. *Nature Communications*, 14(1), 6507. <https://doi.org/10.1038/s41467-023-42152-2>
- 955 Jansen, E., Fronval, T., Rack, F., & Channell, J. E. T. (2000). Pliocene-Pleistocene ice rafting history and cyclicity in the Nordic Seas during the last 3.5 Myr. *Paleoceanography*, 15(6), 709–721. <https://doi.org/10.1029/1999PA000435>
- Japsen, P., Green, P. F., Bonow, J. M., Nielsen, T. F. D., & Chalmers, J. A. (2014). From volcanic plains to glaciated peaks: Burial, uplift and exhumation history of southern East Greenland after opening of the NE Atlantic. *Global and Planetary Change*, 116, 91–114. <https://doi.org/10.1016/j.gloplacha.2014.01.012>
- 960 Japsen, P., Green, P. F., & Chalmers, J. A. (2013). The mountains of North-East Greenland are not remnants of the Caledonian topography. A comment on Pedersen et al. (2012): Tectonophysics vol. 530-531, p. 318-330. *Tectonophysics*, 589, 234–238. <https://doi.org/10.1016/j.tecto.2012.07.026>
- Japsen, P., Green, P. F., Chalmers, J. A., & Bonow, J. M. (2024). Episodes of post-Caledonian burial and exhumation in Greenland and Fennoscandia. *Earth-Science Reviews*, 248, 104626. <https://doi.org/10.1016/j.earscirev.2023.104626>
- 965 Joughin, I., Smith, B. E., & Howat, I. M. (2018). A complete map of Greenland ice velocity derived from satellite data collected

- over 20 years. *Journal of Glaciology*, 64(243), 1–11. <https://doi.org/10.1017/jog.2017.73>
- Kerr, A., & Sugden, D. (1994). The sensitivity of the south Chilean snowline to climatic change. *Climatic Change*, 28(3), 255–272. <https://doi.org/10.1007/BF01104136>
- 970 Kleman, J. (1994). Preservation of landforms under ice sheets and ice caps. *Geomorphology*, 9(1), 19–32. [https://doi.org/10.1016/0169-555X\(94\)90028-0](https://doi.org/10.1016/0169-555X(94)90028-0)
- Kleman, J., Stroeven, A. P., & Lundqvist, J. (2008). Patterns of Quaternary ice sheet erosion and deposition in Fennoscandia and a theoretical framework for explanation. *Geomorphology*, 97(1–2), 73–90. <https://doi.org/10.1016/j.geomorph.2007.02.049>
- 975 Knutz, P. C., Newton, A. M. W., Hopper, J. R., Huuse, M., Gregersen, U., Sheldon, E., & Dybkjær, K. (2019). Eleven phases of Greenland Ice Sheet shelf-edge advance over the past 2.7 million years. *Nature Geoscience*, 12(5), 361–368. <https://doi.org/10.1038/s41561-019-0340-8>
- Koenig, S. J., Dolan, A. M., De Boer, B., Stone, E. J., Hill, D. J., Deconto, R. M., Abe-Ouchi, A., Lunt, D. J., Pollard, D., Quiquet, A., Saito, F., Savage, J., & Van De Wal, R. (2015). Ice sheet model dependency of the simulated Greenland Ice Sheet in the mid-Pliocene. *Climate of the Past*, 11(3), 369–381. <https://doi.org/10.5194/cp-11-369-2015>
- 980 Koppes, M. N., Hallet, B., Rignot, E., Mouginot, J., Wellner, J. S., & Boldt, K. (2015). Observed latitudinal variations in erosion as a function of glacier dynamics. *Nature*, 526(7571), 100–103. <https://doi.org/10.1038/nature15385>
- Koppes, M. N., & Montgomery, D. R. (2009). The relative efficacy of fluvial and glacial erosion over modern to orogenic timescales. *Nature Geoscience*, 2(9), 644–647. <https://doi.org/10.1038/ngeo616>
- 985 Larsen, H. C., Saunders, A. D., Clift, P. D., Beget, J., Wei, W., Spezzaferri, S., & Party, O. D. P. L. 152 S. (1994). Seven million years of glaciation in Greenland. *Science*, 264(May), 952–955. <https://doi.org/10.1126/science.264.5161.952>
- Le Brocq, A. M., Hubbard, A., Bentley, M. J., & Bamber, J. L. (2008). Subglacial topography inferred from ice surface terrain analysis reveals a large un-surveyed basin below sea level in East Antarctica. *Geophysical Research Letters*, 35(16), L16503. <https://doi.org/10.1029/2008GL034728>
- 990 Lea, E. J., Jamieson, S. S. R., & Bentley, M. J. (2023). Alpine topography of the Gamburtsev Subglacial Mountains, Antarctica, mapped from ice sheet surface morphology. *The Cryosphere Discussions*. <https://doi.org/10.5194/tc-2023-94>
- Lecavalier, B. S., Milne, G. A., Simpson, M. J. R., Wake, L., Huybrechts, P., Tarasov, L., Kjeldsen, K. K., Funder, S., Long, A. J., Woodroffe, S., Dyke, A. S., & Larsen, N. K. (2014). A model of Greenland ice sheet deglaciation constrained by observations of relative sea level and ice extent. *Quaternary Science Reviews*, 102, 54–84. <https://doi.org/10.1016/j.quascirev.2014.07.018>
- 995 Lesnek, A. J., Briner, J. P., Young, N. E., & Cuzzone, J. K. (2020). Maximum Southwest Greenland Ice Sheet Recession in the Early Holocene. *Geophysical Research Letters*, 47(1), 1–11. <https://doi.org/10.1029/2019GL083164>
- Lisiecki, L. E., & Raymo, M. E. (2005). A Pliocene-Pleistocene stack of 57 globally distributed benthic  $\delta^{18}\text{O}$  records. *Paleoceanography*, 20(1), 1–17. <https://doi.org/10.1029/2004PA001071>
- Livingstone, S. J., Chu, W., Ely, J. C., & Kingslake, J. (2017). Paleofluvial and subglacial channel networks beneath Humboldt



- 1000 Glacier, Greenland. *Geology*, 45(6), 551–554. <https://doi.org/10.1130/G38860.1>
- Lliboutry, L., & Duval, P. (1985). Various isotropic and anisotropic ices found in glaciers and polar ice caps and their corresponding rheologies. *International Journal of Rock Mechanics and Mining Sciences & Geomechanics Abstracts*, 22(6), 198. [https://doi.org/10.1016/0148-9062\(85\)90267-0](https://doi.org/10.1016/0148-9062(85)90267-0)
- Lunt, D. J., Foster, G. L., Haywood, A. M., & Stone, E. J. (2008). Late Pliocene Greenland glaciation controlled by a decline  
1005 in atmospheric CO<sub>2</sub> levels. *Nature*, 454(7208), 1102–1105. <https://doi.org/10.1038/nature07223>
- Lunt, D. J., Haywood, A. M., Foster, G. L., & Stone, E. J. (2009). The Arctic cryosphere in the Mid-Pliocene and the future. *Philosophical Transactions of the Royal Society A: Mathematical, Physical and Engineering Sciences*, 367(1886), 49–67. <https://doi.org/10.1098/rsta.2008.0218>
- MacGregor, J. A., Boisvert, L. N., Medley, B., Petty, A. A., Harbeck, J. P., Bell, R. E., Blair, J. B., Blanchard-Wrigglesworth,  
1010 E., Buckley, E. M., Christoffersen, M. S., Cochran, J. R., Csathó, B. M., De Marco, E. L., Dominguez, R. T., Fahnestock, M. A., Farrell, S. L., Gogineni, S. P., Greenbaum, J. S., Hansen, C. M., ... Yungel, J. K. (2021). The Scientific Legacy of NASA's Operation IceBridge. *Reviews of Geophysics*, 59(2), 1–65. <https://doi.org/10.1029/2020RG000712>
- MacGregor, J. A., Chu, W., Colgan, W. T., Fahnestock, M. A., Felikson, D., Karlsson, N. B., Nowicki, S. M. J., & Studinger, M. (2022). GBaTSv2: a revised synthesis of the likely basal thermal state of the Greenland Ice Sheet. *The Cryosphere*,  
1015 16(8), 3033–3049. <https://doi.org/10.5194/tc-16-3033-2022>
- MacGregor, J. A., Fahnestock, M. A., Catania, G. A., Paden, J. D., Prasad Gogineni, S., Young, S. K., Rybarski, S. C., Mabrey, A. N., Wagman, B. M., & Morlighem, M. (2015). Radiostratigraphy and age structure of the Greenland Ice Sheet. *Journal of Geophysical Research: Earth Surface*, 120(2), 212–241. <https://doi.org/10.1002/2014JF003215>
- Martos, Y. M., Jordan, T. A., Catalán, M., Jordan, T. M., Bamber, J. L., & Vaughan, D. G. (2018). Geothermal Heat Flux  
1020 Reveals the Iceland Hotspot Track Underneath Greenland. *Geophysical Research Letters*, 45, 8214–8222. <https://doi.org/10.1029/2018GL078289>
- McClymont, E. L., Ho, S. L., Ford, H. L., Bailey, I., Berke, M. A., Bolton, C. T., De Schepper, S., Grant, G. R., Groeneveld, J., Inglis, G. N., Karas, C., Patterson, M. O., Swann, G. E. A., Thirumalai, K., White, S. M., Alonso-Garcia, M., Anand, P., Hoogakker, B. A. A., Littler, K., ... Tanguan, D. (2023). Climate Evolution Through the Onset and Intensification  
1025 of Northern Hemisphere Glaciation. *Reviews of Geophysics*, 61(3). <https://doi.org/10.1029/2022RG000793>
- Medvedev, S., Souche, A., & Hartz, E. H. (2013). Influence of ice sheet and glacial erosion on passive margins of Greenland. *Geomorphology*, 193, 36–46. <https://doi.org/10.1016/j.geomorph.2013.03.029>
- Melles, M., Brigham-Grette, J., Minyuk, P. S., Nowaczyk, N. R., Wennrich, V., DeConto, R. M., Anderson, P. M., Andreev, A. A., Coletti, A., Cook, T. L., Haltia-Hovi, E., Kukkonen, M., Lozhkin, A. V., Rosen, P., Tarasov, P., Vogel, H., &  
1030 Wagner, B. (2012). 2.8 Million Years of Arctic Climate Change from Lake El'gygytgyn, NE Russia. *Science*, 337(6092), 315–320. <https://doi.org/10.1126/science.1222135>
- Morlighem, M., Williams, C. N., Rignot, E., An, L., Arndt, J. E., Bamber, J. L., Catania, G., Chauché, N., Dowdeswell, J. A., Dorschel, B., Fenty, I., Hogan, K., Howat, I., Hubbard, A., Jakobsson, M., Jordan, T. M., Kjeldsen, K. K., Millan, R.,

- 1035 Mayer, L., ... Zinglensen, K. B. (2017). BedMachine v3: Complete Bed Topography and Ocean Bathymetry Mapping  
of Greenland From Multibeam Echo Sounding Combined With Mass Conservation. *Geophysical Research Letters*,  
44(21), 11,051–11,061. <https://doi.org/10.1002/2017GL074954>
- Mudelsee, M., & Raymo, M. E. (2005). Slow dynamics of the Northern Hemisphere glaciation. *Paleoceanography*, 20(4).  
<https://doi.org/10.1029/2005PA001153>
- 1040 Ng, F. S. L., Ignéczi, Á., Sole, A. J., & Livingstone, S. J. (2018). Response of Surface Topography to Basal Variability Along  
Glacial Flowlines. *Journal of Geophysical Research: Earth Surface*, 123(10), 2319–2340.  
<https://doi.org/10.1029/2017JF004555>
- Nicola, L., Notz, D., & Winkelmann, R. (2023). Revisiting temperature sensitivity: how does Antarctic precipitation change  
with temperature? *The Cryosphere*, 17(7), 2563–2583. <https://doi.org/10.5194/tc-17-2563-2023>
- 1045 Nielsen, T., & Kuijpers, A. (2013). Only 5 southern Greenland shelf edge glaciations since the early Pliocene. *Scientific  
Reports*, 3, 1–5. <https://doi.org/10.1038/srep01875>
- Noël, B., van de Berg, W. J., Lhermitte, S., & van den Broeke, M. R. (2019). Rapid ablation zone expansion amplifies north  
Greenland mass loss. *Science Advances*, 5(9), 2–11. <https://doi.org/10.1126/sciadv.aaw0123>
- 1050 Paden, J., Li, J., Leuschen, C., Rodriguez-Morales, F., & Hale, R. (2019). *IceBridge MCoRDS L2 Ice Thickness, Version 1*.  
Boulder, Colorado USA. NASA National Snow and Ice Data Center Distributed Active Archive Center.  
<https://doi.org/10.5067/GDQ0CUCVTE2Q>
- Paterson, W. S. B., & Budd, W. F. (1982). Flow parameters for ice sheet modeling. *Cold Regions Science and Technology*,  
6(2), 175–177. [https://doi.org/10.1016/0165-232X\(82\)90010-6](https://doi.org/10.1016/0165-232X(82)90010-6)
- 1055 Patton, H., Hubbard, A., Heyman, J., Alexandropoulou, N., Lasabuda, A. P. E., Stroeven, A. P., Hall, A. M., Winsborrow, M.,  
Sugden, D. E., Kleman, J., & Andreassen, K. (2022). The extreme yet transient nature of glacial erosion. *Nature  
Communications*, 13(1), 7377. <https://doi.org/10.1038/s41467-022-35072-0>
- Patton, H., Swift, D. A., Clark, C. D., Livingstone, S. J., & Cook, S. J. (2016). Distribution and characteristics of  
overdeepenings beneath the Greenland and Antarctic ice sheets: Implications for overdeepening origin and evolution.  
*Quaternary Science Reviews*, 148, 128–145. <https://doi.org/10.1016/j.quascirev.2016.07.012>
- 1060 Paxman, G. J. G. (2023). Patterns of valley incision beneath the Greenland Ice Sheet revealed using automated mapping and  
classification. *Geomorphology*, 436, 108778. <https://doi.org/10.1016/j.geomorph.2023.108778>
- Paxman, G. J. G., Austermann, J., & Hollyday, A. (2022). Total isostatic response to the complete unloading of the Greenland  
and Antarctic Ice Sheets. *Scientific Reports*, 12(1), 11399. <https://doi.org/10.1038/s41598-022-15440-y>
- 1065 Paxman, G. J. G., Tinto, K. J., & Austermann, J. (2021). Neogene–Quaternary uplift and landscape evolution in northern  
Greenland recorded by subglacial valley morphology. *Journal of Geophysical Research: Earth Surface*, 126(12), 1–24.  
<https://doi.org/10.1029/2021JF006395>
- Pedersen, V. K., Braun, J., & Huismans, R. S. (2018). Eocene to mid-Pliocene landscape evolution in Scandinavia inferred  
from offshore sediment volumes and pre-glacial topography using inverse modelling. *Geomorphology*, 303, 467–485.

<https://doi.org/10.1016/j.geomorph.2017.11.025>

- 1070 Pedersen, V. K., Larsen, N. K., & Egholm, D. L. (2019). The timing of fjord formation and early glaciations in North and Northeast Greenland. *Geology*, 47(7), 682–686. <https://doi.org/10.1130/G46064.1>
- Pedersen, V. K., Nielsen, S. B., & Gallagher, K. (2012). The post-orogenic evolution of the Northeast Greenland Caledonides constrained from apatite fission track analysis and inverse geodynamic modelling. *Tectonophysics*, 530–531, 318–330. <https://doi.org/10.1016/j.tecto.2012.01.018>
- 1075 Pérez, L. F., Nielsen, T., Knutz, P. C., Kuijpers, A., & Damm, V. (2018). Large-scale evolution of the central-east Greenland margin: New insights to the North Atlantic glaciation history. *Global and Planetary Change*, 163(December 2017), 141–157. <https://doi.org/10.1016/j.gloplacha.2017.12.010>
- Plach, A., Nisancioglu, K. H., Le Clec'h, S., Born, A., Langebroek, P. M., Guo, C., Imhof, M., & Stocker, T. F. (2018). Eemian Greenland SMB strongly sensitive to model choice. *Climate of the Past*, 14(10), 1463–1485. <https://doi.org/10.5194/cp-14-1463-2018>
- 1080 Porter, S. C. (1989). Some geological implications of average Quaternary glacial conditions. *Quaternary Research*, 32(3), 245–261. [https://doi.org/10.1016/0033-5894\(89\)90092-6](https://doi.org/10.1016/0033-5894(89)90092-6)
- Rémy, F., & Minster, J.-F. (1997). Antarctica Ice Sheet Curvature and its relation with ice flow and boundary conditions. *Geophysical Research Letters*, 24(9), 1039–1042. <https://doi.org/10.1029/97GL00959>
- 1085 Reyes, A. V., Carlson, A. E., Beard, B. L., Hatfield, R. G., Stoner, J. S., Winsor, K., Welke, B., & Ullman, D. J. (2014). South Greenland ice-sheet collapse during Marine Isotope Stage 11. *Nature*, 510(7506), 525–528. <https://doi.org/10.1038/nature13456>
- Rezvanbehbahani, S., Stearns, L. A., Kadivar, A., Walker, J. D., & van der Veen, C. J. (2017). Predicting the Geothermal Heat Flux in Greenland: A Machine Learning Approach. *Geophysical Research Letters*, 44(24), 12,271–12,279. <https://doi.org/10.1002/2017GL075661>
- 1090 Robinson, A., Alvarez-Solas, J., Calov, R., Ganopolski, A., & Montoya, M. (2017). MIS-11 duration key to disappearance of the Greenland ice sheet. *Nature Communications*, 8(May), 1–7. <https://doi.org/10.1038/ncomms16008>
- Rose, K. C., Ferraccioli, F., Jamieson, S. S. R., Bell, R. E., Corr, H., Creyts, T. T., Braaten, D., Jordan, T. A., Fretwell, P. T., & Damaske, D. (2013). Early East Antarctic Ice Sheet growth recorded in the landscape of the Gamburtsev Subglacial Mountains. *Earth and Planetary Science Letters*, 375, 1–12. <https://doi.org/10.1016/j.epsl.2013.03.053>
- 1095 Ross, N., Jordan, T. A., Bingham, R. G., Corr, H. F. J., Ferraccioli, F., Le Brocq, A. M., Rippin, D. M., Wright, A. P., & Siegert, M. J. (2014). The Ellsworth Subglacial Highlands: Inception and retreat of the West Antarctic Ice Sheet. *Geological Society of America Bulletin*, 126(1–2), 3–15. <https://doi.org/10.1130/B30794.1>
- Ruddiman, W. F., & Kutzbach, J. E. (1989). Forcing of late Cenozoic Northern Hemisphere climate by plateau uplift in southern Asia and the American west. *Journal of Geophysical Research*, 94(D15). <https://doi.org/10.1029/jd094id15p18409>
- 1100 Schaefer, J. M., Finkel, R. C., Balco, G., Alley, R. B., Caffee, M. W., Briner, J. P., Young, N. E., Gow, A. J., & Schwartz, R.

- (2016). Greenland was nearly ice-free for extended periods during the Pleistocene. *Nature*, 540(7632), 252–255. <https://doi.org/10.1038/nature20146>
- 1105 Seguinot, J., & Delaney, I. (2021). Last-glacial-cycle glacier erosion potential in the Alps. *Earth Surface Dynamics*, 9(4), 923–935. <https://doi.org/10.5194/esurf-9-923-2021>
- Seguinot, J., Ivy-Ochs, S., Juvet, G., Huss, M., Funk, M., & Preusser, F. (2018). Modelling last glacial cycle ice dynamics in the Alps. *The Cryosphere*, 12(10), 3265–3285. <https://doi.org/10.5194/tc-12-3265-2018>
- 1110 Solgaard, A. M., Bonow, J. M., Langen, P. L., Japsen, P., & Hvidberg, C. S. (2013). Mountain building and the initiation of the Greenland Ice Sheet. *Palaeogeography, Palaeoclimatology, Palaeoecology*, 392, 161–176. <https://doi.org/10.1016/j.palaeo.2013.09.019>
- Solgaard, A. M., Reeh, N., Japsen, P., & Nielsen, T. (2011). Snapshots of the Greenland ice sheet configuration in the Pliocene to early Pleistocene. *Journal of Glaciology*, 57(205), 871–880. <https://doi.org/10.3189/002214311798043816>
- Spagnolo, M., Rea, B. R., & Barr, I. (2022). The (mis)conception of average Quaternary conditions. *Quaternary Research*, 105, 235–240. <https://doi.org/10.1017/qua.2021.48>
- 1115 St. John, K. E. K., & Krissek, L. A. (2002). The late Miocene to Pleistocene ice-rafting history of Southeast Greenland. *Boreas*, 31(1), 28–35. <https://doi.org/10.1111/j.1502-3885.2002.tb01053.x>
- Steffen, R., Audet, P., & Lund, B. (2018). Weakened Lithosphere Beneath Greenland Inferred From Effective Elastic Thickness: A Hot Spot Effect? *Geophysical Research Letters*, 45(10), 4733–4742. <https://doi.org/10.1029/2017GL076885>
- 1120 Straneo, F., & Heimbach, P. (2013). North Atlantic warming and the retreat of Greenland’s outlet glaciers. *Nature*, 504(7478), 36–43. <https://doi.org/10.1038/nature12854>
- Suwa, M., von Fischer, J. C., Bender, M. L., Landais, A., & Brook, E. J. (2006). Chronology reconstruction for the disturbed bottom section of the GISP2 and the GRIP ice cores: Implications for Termination II in Greenland. *Journal of Geophysical Research Atmospheres*, 111(2), 1–12. <https://doi.org/10.1029/2005JD006032>
- 1125 Tan, N., Ladant, J. B., Ramstein, G., Dumas, C., Bachem, P., & Jansen, E. (2018). Dynamic Greenland ice sheet driven by pCO<sub>2</sub> variations across the Pliocene Pleistocene transition. *Nature Communications*, 9(1), 1–9. <https://doi.org/10.1038/s41467-018-07206-w>
- The Imbie Team. (2020). Mass balance of the Greenland Ice Sheet from 1992 to 2018. *Nature*, 579(7798), 233–239. <https://doi.org/10.1038/s41586-019-1855-2>
- 1130 Tripathi, A., & Darby, D. (2018). Evidence for ephemeral middle Eocene to early Oligocene Greenland glacial ice and pan-Arctic sea ice. *Nature Communications*, 9(1), 1–11. <https://doi.org/10.1038/s41467-018-03180-5>
- Wara, M. W., Ravelo, A. C., & Delaney, M. L. (2005). Climate change: Permanent El Niño-like conditions during the Pliocene warm period. *Science*, 309(5735), 758–761. <https://doi.org/10.1126/science.1112596>
- 1135 Wessel, P., Luis, J. F., Uieda, L., Scharroo, R., Wobbe, F., Smith, W. H. F., & Tian, D. (2019). The Generic Mapping Tools Version 6. *Geochemistry, Geophysics, Geosystems*, 20(11), 5556–5564. <https://doi.org/10.1029/2019GC008515>

- Westerhold, T., Marwan, N., Drury, A. J., Liebrand, D., Agnini, C., Anagnostou, E., Barnet, J. S. K., Bohaty, S. M., De Vleeschouwer, D., Florindo, F., Frederichs, T., Hodell, D. A., Holbourn, A. E., Kroon, D., Laurentano, V., Littler, K., Lourens, L. J., Lyle, M., Pälike, H., ... Zachos, J. C. (2020). An astronomically dated record of Earth's climate and its predictability over the last 66 million years. *Science*, 369(6509), 1383–1388.  
|140 <https://doi.org/10.1126/SCIENCE.ABA6853>
- Winkelmann, R., Martin, M. A., Haseloff, M., Albrecht, T., Bueller, E., Khroulev, C., & Levermann, A. (2011). The Potsdam Parallel Ice Sheet Model (PISM-PIK) – Part 1: Model description. *The Cryosphere*, 5(3), 715–726.  
<https://doi.org/10.5194/tc-5-715-2011>
- Yau, A. M., Bender, M. L., Blunier, T., & Jouzel, J. (2016). Setting a chronology for the basal ice at Dye-3 and GRIP: Implications for the long-term stability of the Greenland Ice Sheet. *Earth and Planetary Science Letters*, 451, 1–9.  
|145 <https://doi.org/10.1016/j.epsl.2016.06.053>
- Zhang, L., Hay, W. W., Wang, C., & Gu, X. (2019). The evolution of latitudinal temperature gradients from the latest Cretaceous through the Present. *Earth-Science Reviews*, 189(January), 147–158.  
<https://doi.org/10.1016/j.earscirev.2019.01.025>
- |150 Zwally, H. J., Giovinetto, M. B., Beckley, M. A., & Saba, J. L. (2012). *Antarctic and Greenland Drainage Systems*. GSFC Cryospheric Sciences Laboratory. [http://icesat4.gsfc.nasa.gov/cryo\\_data/ant\\_grn\\_drainage\\_systems.php](http://icesat4.gsfc.nasa.gov/cryo_data/ant_grn_drainage_systems.php)