

Supplemental Informations

Here, we would like to add two supplemental figures for the submitted manuscript, Koseki et al.

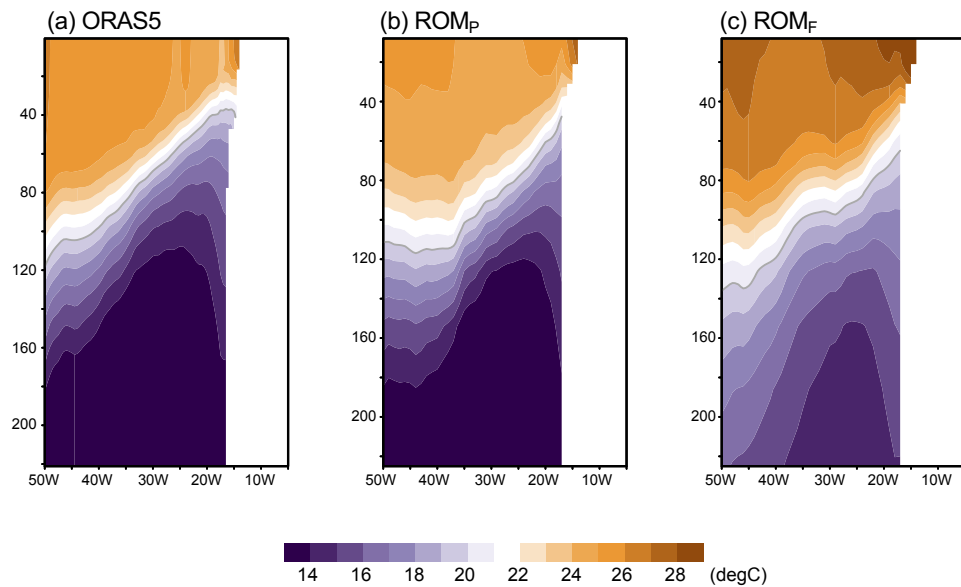


Figure S1.

Depth-longitude section of climatological ocean temperature in March averaged between 9°N and 12°N for (a) ORAS5 reanalysis and (b) ROM_P, and (c) ROM_F, respectively.

The gray contour denotes the ocean temperature of 20°C, a proxy for the thermocline depth.

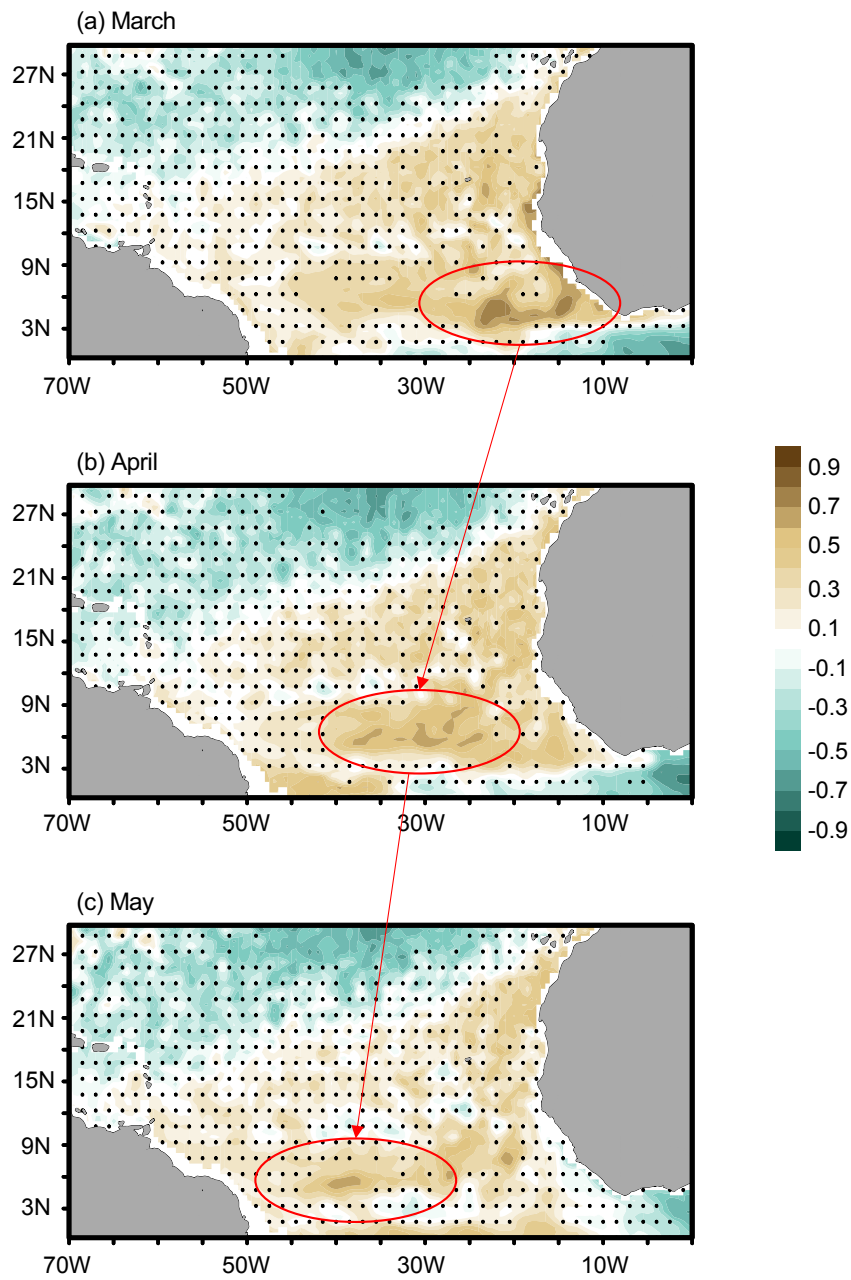


Figure S2.

Lag-correlation plots between March Dakar Index (SST over 9°N-14°N and 21°W-17°W) and ocean temperature at 41m depth in ROM_p from March to May. Dots denote no significance of correlation. The red circle and arrow are the highest correlation and indication of westward propagation by eye.