

Mesoscale permeability variations estimated from natural airflows in the decorated Cosquer Cave (SE France)

Hugo Pellet ^{1,2}, Bruno Arfib ¹, Pierre Henry ¹, Stéphanie Tournon ², Ghislain Gassier ¹

¹ Aix Marseille Univ, CNRS, IRD, INRAE, CEREGE, Aix-en-Provence, France

5 ² UAR3224-CRC-Laboratoire de Recherche des Monuments Historiques, France

Correspondence to: Hugo Pellet (pellet@cerège.fr)

Abstract. ~~Conservation~~The conservation of decorated caves is highly dependent on airflows in the karst network and through the surrounding host rock. Airflows are driven by the pressure gradient and influenced by the shape of the karst conduits and the permeability of the carbonate rock massif. The Cosquer cave is an Upper Paleolithic decorated cave, half drowned in a coastal karst, where conservation is also dependent on the cave's pools connected to the sea. Hydroclimatic data, such as air pressure and temperature and water level inside and outside the cave have been measured for several years to identify the main processes governing the water level variations, the airflows and the air renewal. Data show an unusual behavior for a karst: the karst air pressure is nearly always higher than the atmospheric pressure. As a result, the water level in the cave is below the sea level. The daily variations of the sea tide provide an assessment of the cave volume above the ~~pools~~-water level in the pools. Although the cave air is confined by the rock and the seawater, there are also external air inflows during short pressurization events. Moreover, the ~~carbonate rocks~~ effective permeability of the carbonate rocks to air at the massif scale is inferred from the cave air pressure decrease over the summer season, by applying Darcy's law in a partially-saturated medium. Six years of data show that permeability varies from year to year, and according to the cumulative~~d~~ rainfalls during the spring and summer. The driest years are correlated with a higher permeability, a faster air pressure decrease in the cave and a faster rise of the pools' water level. In the future, in the context of climate change, a perturbation of the rock permeability is then expected in the near surface caves, which will impact airflows in decorated caves and may alter their fragile hydroclimatic stability.

1 Introduction

Upper Paleolithic decorated caves constitute an exceptional cultural heritage. The climatic stability of the subterranean karstic environment has ensured the ~~well-good~~ preservation of paintings and engravings for millennia, despite their vulnerability (Andrieux, 1977; Mangin and Andrieux, 1984; Baffier, 2005; Bourges et al., 2006b). The equilibrium of the cave's climate is delicate and is maintained through intricate interactions with the environment (Quindos et al., 1987; Bourges et al., 2006a, 2014; Peyraube et al., 2018; Leplat et al., 2019). Disruptions in the climatic equilibrium ~~werehave~~ notably been linked to cave

equipment and tourism (Cigna, 1993; Baker and Genty, 1998; Touron et al., 2019) ~~yet it does~~but do not entirely spare caves
30 closed to the public, especially in a context of climate change (Domínguez-Villar et al., 2015; Bourges and Enjalbert, 2020a).
A shift in the climatic equilibrium could lead to fluctuations of different parameters such as CO₂ concentrations, humidity,
temperature or air exchanges and flows (Badino, 2010; Matthey et al., 2013; Kukuljan et al., 2021). This, in turn, could
contribute to the deterioration of the artwork due to outbreaks of microorganisms (Lefèvre, 1974; Martin-Sanchez et al., 2012;
Borderie et al., 2015), the emergence of efflorescence (Lepinay et al., 2018; Germinario and Oguchi, 2021) or ~~the~~-processes
35 of calcite precipitation or dissolution (Ford and Williams, 2007; Touron and Frouin, 2022).

In karst, two main types of airflows occur: airflows between the outside and inside of caves (and conversely) and airflows
within the caves (Lismonde, 2002; Sainz et al., 2018; Gázquez et al., 2022). In caves with ~~2~~two openings, the airflow is mainly
driven by the temperature difference between the outside and inside of the cave or between the upper and lower openings
(Lismonde, 2002; Gabrovšek, 2023). The flow is continuous and its direction depends on the season. Within caves with a
40 ~~single-~~aperture, airflows result from ~~the~~ air density gradient due to differences in temperature or humidity either within the
cave or between the cave and the outside environment (Lismonde, 2002; Luetscher and Jeannin, 2004; Malaurent et al., 2006;
Liñán et al., 2018; Huang, 2018). These flows are subject to seasonality, with generally stronger flows in winter and
stratification of air masses in summer for descending conduits and conversely for ascending conduits (Perrier et al., 2007;
Matthey et al., 2013; Lacanette et al., 2023). These air movements also occur in ~~eaves~~-artificially closed caves but are
45 comparatively milder in intensity.

Exchanges with the outside environment resulting in the air renewal of the caves, as well as exchanges between the different
rooms, are conventionally assessed through measurements of radon and/or CO₂ concentrations (Richon et al., 2005; Kowalczk
and Froelich, 2010; Sainz et al., 2018). Air renewal can be calculated when the cave volumes are known, but ~~these~~ latter are
not systematically measured, as this can be time-consuming and costly. Cave volumes can be obtained using different
50 techniques such as lasergrammetry, photogrammetry (Mohammed Oludare and Pradhan, 2016) or estimated from ~~the~~-3D
speleological hand-surveys, but they ~~stay~~remain limited by accessibility for human investigation. The permeability of the host
rock also influences exchanges with the outside environment and can be locally measured, at the scale of a few centimeters on
plugs (Borgomano et al., 2013), or at the scale of a well using pumping tests in the saturated zone or in the unsaturated zone
(Kuang et al. 2013). Permeability to air or to water of the unsaturated zone is also dependent on the water content. Thus, when
55 dealing with the conservation of decorated caves, permeability of the carbonate massif in the unsaturated zone is a key
parameter since it can control the air or water flows through the rock, by limiting or enhancing the flux of exchanges ~~flux~~. This
paper aimed to estimate the volume of a coastal cave, determine the net airflow exchanged with the outside environment and
discuss the variation of the effective air permeability of the massif. The methodology relies on the monitoring of in situ pressure
and temperature data.

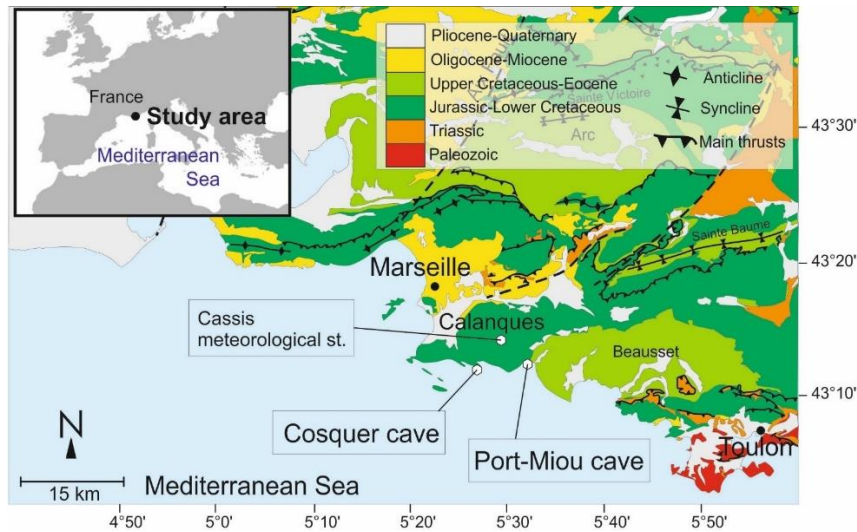
60 The topic ~~is~~was explored by studying the Cosquer cave, (southeastern France), which is a singular case of a decorated cave
located within a partially submerged coastal karst. Although other partially submerged caves have been found in the
Mediterranean region (Arfib and Charlier, 2016; Castagnino Berlinghieri et al., 2020; Arfib and Mocochain, 2022), the

Cosquer cave is of special interest since it is isolated by siphons on one side and by a low-permeability limestone massif on the other side. ~~First~~^{Initial} data (Vouvé et al., 1996; Arfib et al., 2018) ~~have shown~~^{showed} that the air pressure in the cave can remain higher than the outside atmospheric pressure for weeks. ~~They also highlighted that~~ Cave air pressure increases by the inflow of outside air rapidly flows into the cave, during ~~brief events, resulting in an increase of cave air pressure periods with high waves breaking on the cliff of the coastal limestone massif. Waves can produce and force air bubbles to flow along submarine open fissures or karst conduits inside the massif during short periods of time.~~ Since the ~~massif~~^{rock} is not airtight, air slowly flows out through the limestone massif. ~~By taking over several months. We took~~ advantage of this ~~particular~~ behavior, ~~we can thus to~~ investigate the permeability variations of ~~a karst~~^{the limestone} massif at the mesoscale.

Firstly, we present two full years of data including cave air pressure, atmospheric pressure, cave water level variations and sea level variations. These data ~~are~~^{were} used to investigate cave pressure fluctuations across annual to daily temporal scales. The daily pressure variations related to tides provide an assessment of the cave volume filled by pressurized air above the water level of the pools, applying the ideal gas law. This outcome ~~is~~^{was} used to compute the net airflows entering and leaving the cave. Finally, the limestone effective air permeability at the massif scale ~~is~~^{was} estimated from the cave air pressure decrease during the summer season, applying ~~the~~ Darcy's law. Permeability ~~is~~^{was} then compared to rainfalls and its evolution is discussed in the context of climate change. This study ~~gives~~^{proposes} for the first time a conceptual model and a quantitative assessment of flows within both the saturated and unsaturated zones of the Cosquer cave. It also highlights that airflows may change in ~~the~~ karst unsaturated zone with changes in the water cycle.

80 2 Study site and data

The Cosquer cave, located in the South-East of France ~~in~~^{on} the Mediterranean seashore, is a partly submerged cave. It is located in the Calanques National Park, ~~near~~^{by} Marseille city in Provence. Part of the cave develops below the current sea level and is filled by seawater, and part of the cave ~~still~~ remains filled with air above the sea level. It hosts a large range of paintings and engravings from the Upper Paleolithic with 553 graphic entities recorded to date, dating back ~~32-500~~³²⁵⁰⁰ to ~~19-000~~¹⁹⁰⁰⁰ years B.P. (Clottes et al., 1992a, 1992b, 1997; Valladas et al., 2001, 2017). Among ~~the~~ representations, some animals rarely represented in prehistorical artwork ~~(are painted (penguins and jellyfish) are painted (~~ Clottes et al., 1992a; Delporte et al., 1994). All the preserved artworks are located in the aerial part of the cave. The only way to currently access the cave in the limestone massif is by cave diving in submerged karstic conduits. However, during the Upper Paleolithic period, prehistoric humans accessed the cave by an entrance that is now 37 meters below ~~the~~ sea level. The sea level was ~~lower~~^{lower} back then ~~lower~~, e.g. during the Last Glacial Maximum about ~~20-000~~²⁰⁰⁰⁰ years ago and about 120 meters lower than today (Benjamin et al., 2017). The entrance ~~has been~~^{was} flooded between ~~10-000~~¹⁰⁰⁰⁰ and ~~8-000~~⁸⁰⁰⁰ years BP (Sartoretto et al., 1995; Lambeck and Bard, 2000) by ~~the~~ rising sea level.



95 **Figure 1: Structural map of the Provence region (south-east of southeast France), with location of the Cosquer cave, the Port-Miou observatory and the Cassis meteorological station. Modified from Lamarche et al., 2012.**

100 The cave is embedded in the Morgiou massif, a peninsula made of early ~~cretaceous urgonian~~Cretaceous Urgonian limestones (Masse et al., 2020). These limestones are tight carbonates, rudist-rich oolitic grainstones. According to thin-section ~~observations~~, these carbonates ~~do not~~ display neither macro nor micro porosity (Lamarche et al., 2012; Matonti et al., 2015). The cave consists of two rooms whose walls host ~~p~~Paleolithic paintings and engravings and pools hydraulically connected to the sea. Karstic voids used bedding planes and fractures to develop, forming a karst network made of four areas: (1) a main conduit from 37 meters deep to ~~the~~ Room 1, below ~~the~~ sea level; (2) Rooms 1 and 2, partly flooded, containing ~~p~~Paleolithic decorations above the ~~pools~~ water level; of the pools; (3) a vertical shaft (named “Grand Puits”, or “high shaft” crossing ~~the~~ Room 2) that is 35 meters high above the pool water level; (4) an upper karst conduit located in a higher bedding plane, running above the decorated rooms and connected on one side to Room 2 by the Grand Puits and to a small pool of seawater on the other side. This pool is connected to the sea outside by karstic conduits that have not been fully surveyed for accessibility and safety reasons. However, the water level in the pool on the cave side varies with waves outside, which indicates that communication with the sea occurs at a shallow depth (Figure 2), and it is suspected that large waves can push air bubbles through the conduits. Expeditions in the cave are never scheduled during rough weather, which makes direct observation of this phenomenon nearly impossible. However, we will show that instrumental records display a strong correlation between

105 episodes of high waves and air input into the cave.

110

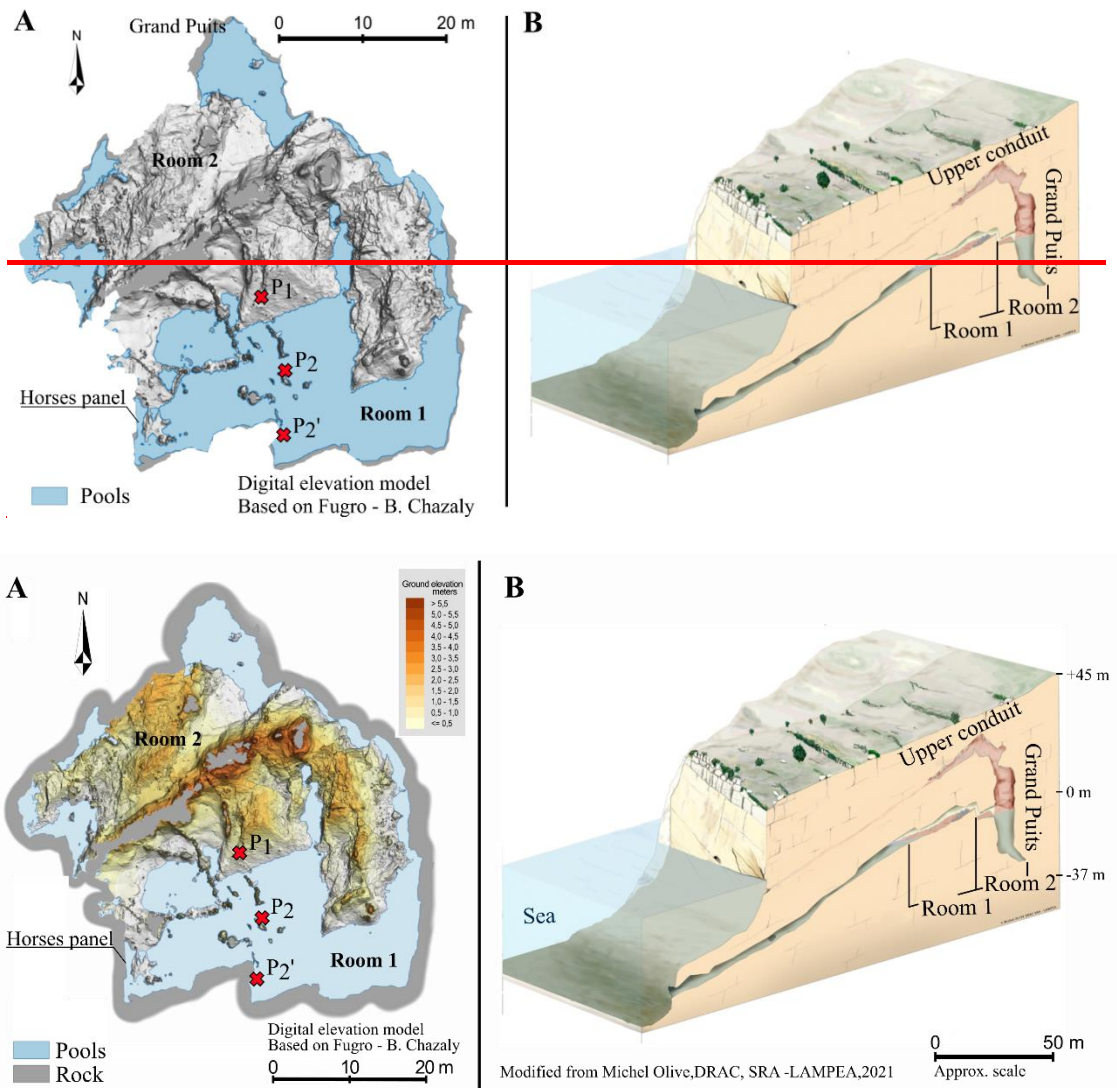
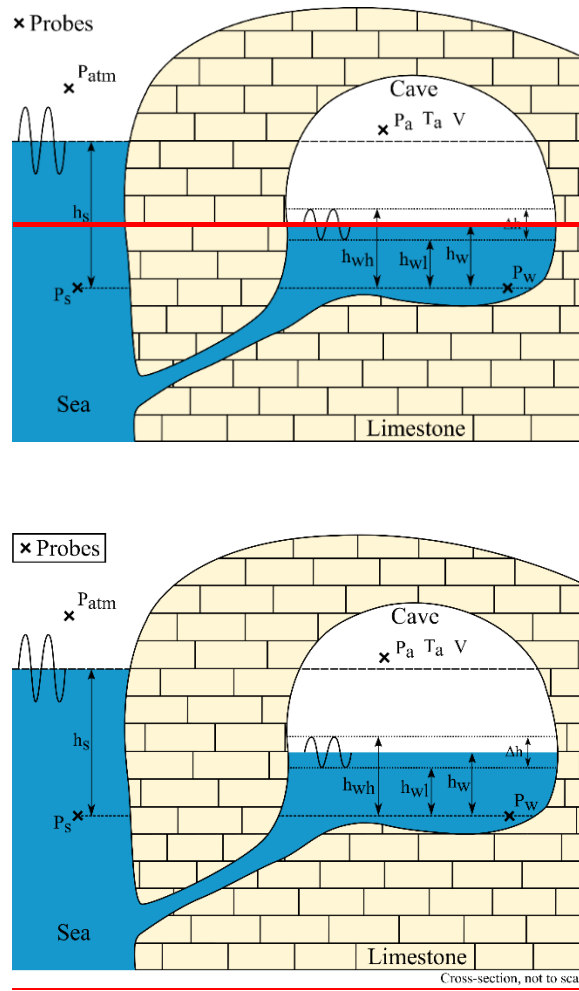


Figure 2: (A) Topographic map of the Cosquer cave. Blue areas are the pools. Probes in air are located in P₁, hooked to a stalagmite 5 m away from the water and 1 m above the ground. The probes in water are located in P₂ and P₂' (map designed by C. Font, 2023, *Équipe grotte Cosquer*). (B) Schematic cross-section of the Cosquer cave. The entrance of the conduit is 37 m below the sea level. Modified from Olive and Vanrell, 2021.

Temperature and pressure in air are measured in the Cosquer cave using respectively a Cera-Diver probe (resolution of 0.01 °C and an accuracy of ± 0.2 °C) and a STS DLN probe (resolution of 10 Pa and an accuracy of +/- 0.1 % of full-scale (+/- 130 Pa)). Both probes are located in Room 1, hooked to a stalagmite about 5 m away from the pool, 1 m above the ground and 10 cm away from the stalagmite (location P₁ on Fig. 2A). CTD-Diver probes measure absolute pressure, temperature and specific electric conductivity of water in Room 1 (locations P₂ and P₂' on Fig. 2A). CTD pressure resolution is 10 Pa and accuracy 50 Pa. Atmospheric air pressure outside the Cosquer cave (SNO KARST, 2021) and sea level are measured 5 km away from the cave using Cera-Diver or TD-Diver probes, in the Port-Miou observatory of the French Karst National Observatory Service

(Fig. 1). Port-Miou sea probes are moored in a large karst conduit connected to the sea (Arfib and Charlier, 2016; Jourde et al., 2018). This location protects measurements from marine storms and waves. Data ~~are~~have been continuously recorded since 2014 at a 5-minute time-step. ~~Height~~The height of the water column ~~are~~is calculated from absolute pressure by subtracting the air pressure above the water table and converted to meters of sea water (m_{sw}) using density of the Mediterranean Sea ($\rho_{sea} = 1027 \text{ kg m}^{-3}$). Probes are factory calibrated and their clocks synchronized. Measurement and clock drifts are checked with a control probe during data collection (every 4 to 5 months) ~~and pressure sensors of air inside and outside the cave are~~
130 intercalibrated. When the same pressure is recorded inside and outside the cave, the water level in the cave is thus equal to the sea level. Available data run from 2014 to 2020 for this study. Precipitation data ~~is~~are provided by Météo-France records at Cassis city (Météo-France, 2023) located 5 km to the North-East of the Cosquer cave in the Calanques massif. The significant height of waves in front of the cave is the result of simulations provided by the French Naval Hydrographic and Oceanographic Service (SHOM, 2024).
135 All the parameters used in this paper are summarized in Table 1 and illustrated on Fig. 3.



140

Figure 3: Main parameters measured with pressure probes, viewed on a conceptual cross section of the coastal cave. [Referred to See Table 1 for parameters an explanation of the parameters.](#)

Symbol	Parameters	Unit
P_{am}	Atmospheric pressure (outside the cave)	Pa or m_{sw}
P_s	Absolute pressure above the probe moored in the sea	Pa or m_{sw}
h_s	Sea level above the probe	m_{sw}
P_a	Cave air pressure	Pa or m_{sw}
P_w	Cave absolute pressure above the probe moored in water	Pa or m_{sw}
h_w	Cave water level above the probe	m_{sw}
h_{wl}	Cave water level at low tide	m_{sw}
h_{wh}	Cave water level at high tide	m_{sw}
Δh_w	Tide range in cave	m_{sw}
T_a	Cave air temperature	$^{\circ}C$ or K
T_w	<u>Cave water temperature</u>	<u>$^{\circ}C$ or K</u>
V_l	Cave volume at low tide	m^3
V_h	Cave volume at high tide	m^3
V	Cave volume	m^3
h_0	Reference water level above the probe	m_{sw}
V_0	Reference cave volume	m^3
S_w	Surface of water bodies in the cave	m^2
n	Cave air quantity	mol
Q	Volumetric airflow rate	$m^3 s^{-1}$
Q_n	Molar flow rate	$mol s^{-1}$
q_n	Molar flux	$mol m^{-2} s^{-1}$
L	Fracture length or limestone thickness	m
W	Fracture width	m
A	Cave cross-sectional area	m^2
λ_a	Air intrinsic transmissivity	m^3
k_a	Air effective permeability	m^2
b	Hydraulic aperture of a fracture	m
r	Radius of a pipe (equivalent to a karst conduit)	m
μ	Air dynamic viscosity	$Pa \cdot s$
R	Ideal gas constant	$J \cdot K^{-1} \cdot mol^{-1}$
ρ_{sea}	Sea water density	$kg \cdot m^{-3}$
g	Gravitational acceleration	$m^2 \cdot m s^{-2}$
γ	Adiabatic index	-
P_0	Standard pressure	Pa

T_0	Standard temperature	K
-------	----------------------	---

Table 1: Presentation of the physical parameters, their notation and units used in this paper.

3 Cosquer cave hydroclimate

145 Figure 4 shows the pressure, temperature and water level time series recorded in 2017 and 2018. These two years ~~awere~~ used to illustrate the hydroclimatic behavior of the cave. Three types of variations ~~awere~~ identified and are described below: (1) seasonal variations, (2) events lasting several hours to several days, (3) daily variations.

~~3.1 Seasonal pressure variations~~

3.1 Overpressure in the Cosquer cave

150 Data show that air pressure in the Cosquer cave is nearly always higher than the outside atmospheric pressure (Fig. 44B). This very peculiar feature had already been shown by previous ~~worksstudies~~ (Vouvé et al., 1996; Arfib et al., 2018) and has now been confirmed on the timescale of several years of continuous surveymonitoring (2014-2020). Air pressure in the cave and water level of the pools are anti-correlated.~~Between~~ (Fig. 4A and Fig. 4B). ~~When the air pressure increases, the air is confined by the walls of the cave and pushes down the water table to balance the overpressure. Conversely, between~~ late spring and
155 early autumn, there is a slow decrease in cave air pressure and the water level simultaneously increases.

~~Summer depressurization rate was in average $-0.21 \text{ cm}_{\text{sw}} \text{ day}^{-1}$ in 2017 and $-0.32 \text{ cm}_{\text{sw}} \text{ day}^{-1}$ in 2018 (mean over July and August). Air slowly flows out of the cave.~~ At the end of summer, cave air pressure is minimal and close to atmospheric pressure outside the cave. The water level in the cave is then close to the seawater level.

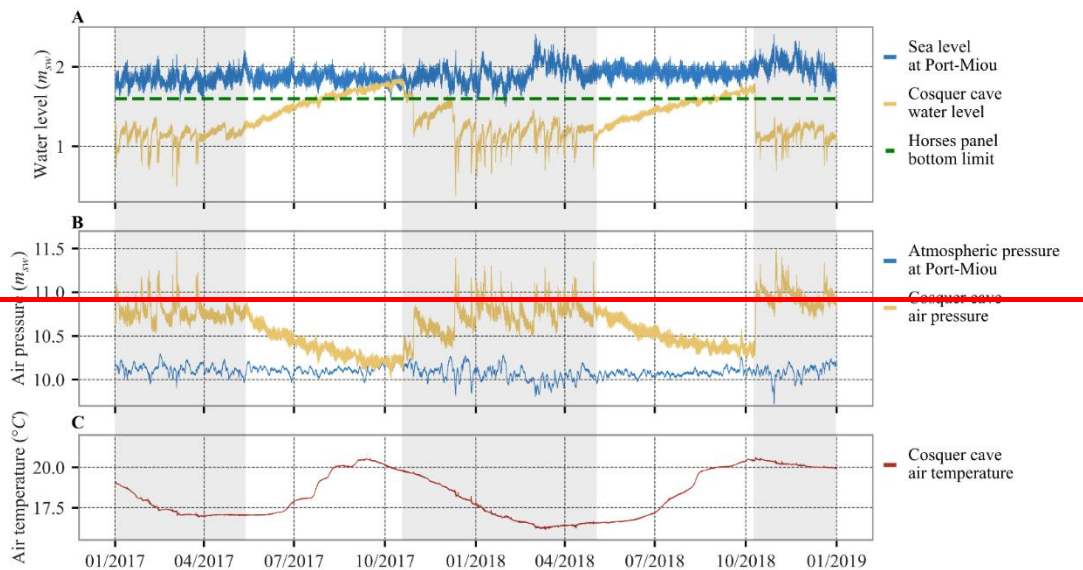
A succession of pressure peaks occurs between October and May (highlighted in grey in Fig. 4) and these are generally absent
160 in summer. These sharp rises in air pressure over tens of minutes to a few hours followed by a rapid pressure decay (over a day or so) are referred to in this paper as pressurization events and the shape of these events will be described in more detail in the ~~nextfollowing~~ section. Between 20/10/2017 and 30/04/2018, about 30 of these pressurization events occurred. ~~Net~~These events generate the cave overpressure by the inflow of outside air. They occur systematically during periods with high waves in front of the coastal limestone massif (Fig. 4E). While storms are often associated with rainfall, periods with high rainfall but no high waves occasionally occur (e.g. August 2018, Fig. 4D) and they do not cause pressure variations in the cave (Fig. 4B). On the other hand, some pressurization events are not associated with heavy rainfall, but they are systematically associated with waves (Fig. 4E). Furthermore, the absence of significant wave activity during summer months supports the observation of rising water levels during this period. The current hypothesis is that breaking waves and waves crashing against the cliff can generate bubbles and then force seawater and air to flow through the limestone massif by shallow fissures and karst
165 conduits (however, the detailed mechanism of how bubbles of air can flow inside submerged karst is outside the scope of this
170 paper). Given the existence of karst pathways at several levels connecting the sea and the cave, air flows through shallow

sumps and reaches the cave by upper conduits away from the decorated rooms, and not the lower conduit (human entrance) which is too deep to be the air intake point (-37 m).

3.2 Seasonal variations

175 As previously described, air overpressure in the cave decreases during summer. The summer depressurization rate was in average $-0.21 \text{ cm}_{\text{sw}} \text{ day}^{-1}$ in 2017 and $-0.32 \text{ cm}_{\text{sw}} \text{ day}^{-1}$ in 2018 (mean over July and August). Conversely, during pressurization events, net
air pressure usually increases in the cave ~~during these events~~, i.e. the air pressure is usually higher after the event than before. Two thresholds are graphically identified in Fig. 44B: (i) maximum air pressure never exceeds $11.5 \text{ m}_{\text{sw}}$ (1.16 hPa); (ii) immediately after pressurization peaks, the air pressure drops down to an overpressure level between $10.8 \text{ m}_{\text{sw}}$ (1.09 hPa) and $10.7 \text{ m}_{\text{sw}}$ (1.08 hPa).
180 Below this level, the pressure decrease rate slows down considerably. The lowest water level is about $1.5 \text{ m}_{\text{sw}}$ below the seawater level ($0.40 \text{ m}_{\text{sw}}$ above the probe, Fig. 4A) during winter. Thus, at a seasonal time scale, the pressure variation range (Fig. 4A) is around $1.5 \text{ m}_{\text{sw}}$ (0.15 hPa).

Air temperature varies in the range 16°C to 21°C , in a seasonal pattern. The maximum is observed at the end of ~~the summer and the minimum at the beginning of the spring~~, summer and the minimum at the beginning of spring (Fig. 4C). The air
185 temperature variations are mainly driven by the water temperature variations. Water temperature variations are related to exchange with seawater outside the cave through conduits. Air temperature variations are smoother than water temperature variations, and delayed because of heat exchange with the cave walls, which have thermal inertia.



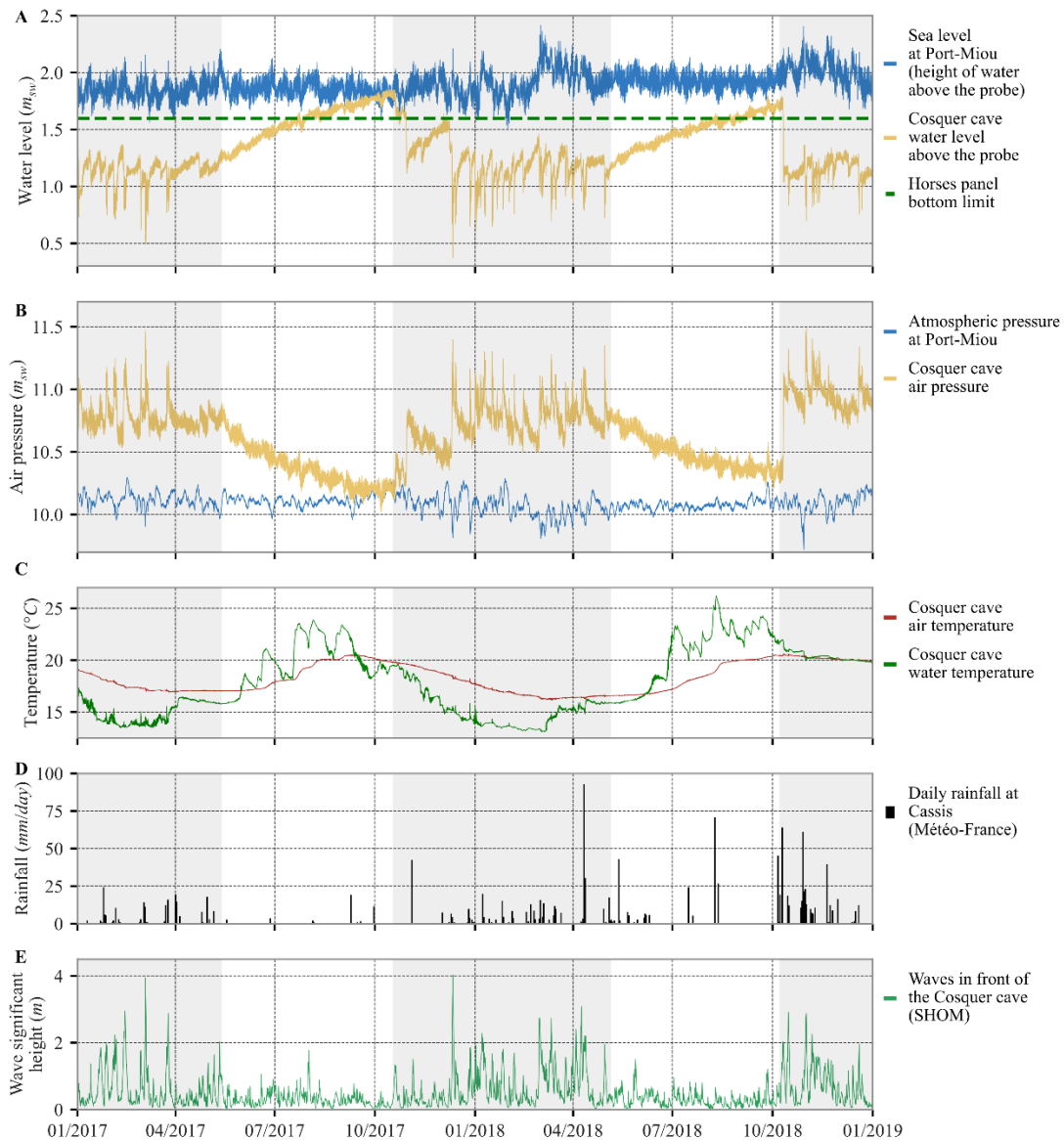


Figure 4:4: Pressure, water level and temperature time series recorded in the Cosquer cave and at the Port-Miou observatory for years 2017 and 2018: (A) Sea level at Port-Miou (h_s) and Cosquer cave water level (h_w), expressed in column of seawater (m_{sw}) above the probe with the same reference level. The green dashed line shows the bottom of the horses panel (paleolithic decorated wall). (B) Atmospheric pressure (P_{atm}) outside the cave and cave air pressure ($P_{a,c}$). (C) Cave air temperature ($T_{a,c}$) and cave water temperature in Room 1 ($T_{w,c}$). (D) Daily rainfall (Météo-France, 2023). (E) Waves significant height in front of the Cosquer cave (SHOM, 2024). Pressurization events periods are highlighted shaded in grey.

3.3.3 Pressurization events

Pressurization events can be separated into different stages with analogy with the flood hydrograph (Chow et al., 2013). One example is detailed in this paper to illustrate the phenomenon. This example, lasting 38.3 hours, occurred from April 29 to May 1, 2018. This is a representative pressurization event, with three main stages (Fig. 5) identified by the slope variations of the cave air pressure. The first stage is the pressurization stage corresponding to the rising limb of the curve (from A to D); it lasted 7.8 hours and induced an increase of 73.7 cm_{sw} of air pressure in the cave (mean pressurization rate around 9.4 cm_{sw} h⁻¹). The maximum slope of the rising limb reached a maximum pressurization rate close to 15.8 cm_{sw} h⁻¹ (Fig. 5, from B to C). After the pressure peak at point D, the second stage started until an inflection point in the recession curve; the pressure dropped rapidly by 57.4 cm_{sw} from D to E (Fig. 5), at an average rate of -1.9 cm_{sw} h⁻¹, which is more than 100 times higher than the slow pressure decrease rate described in the previous section (summer time). The third stage started from point E, around 10.8 m_{sw} with a lower pressure decrease rate of -0.2 cm_{sw} h⁻¹ and was interrupted by the next pressurization event.

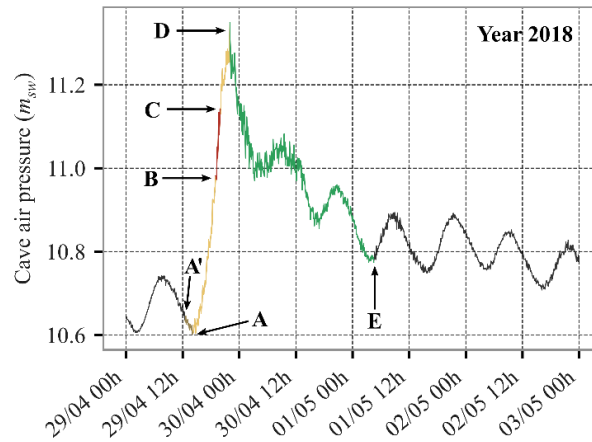


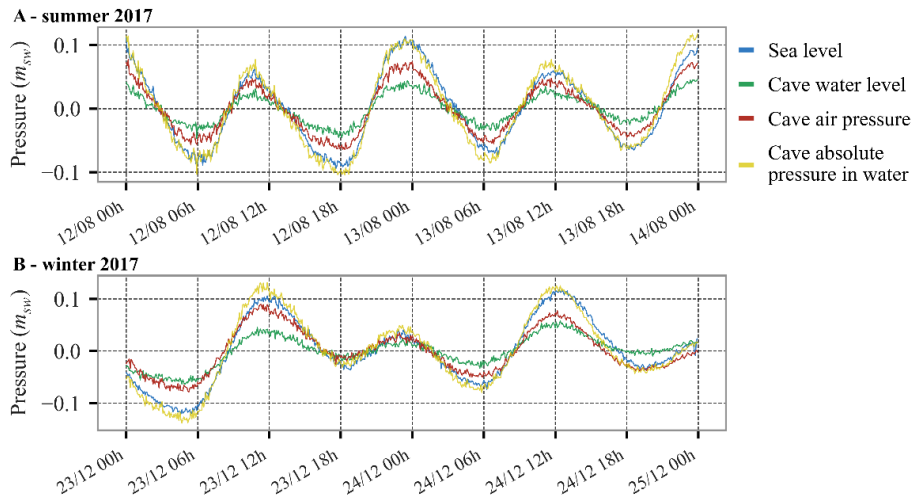
Figure 4: Example of the pressurization event occurring between from 29 April 2018 to 1 May 2018. (A) start of the pressurization event based on cave air pressure variations; (B to C) maximum slope of the rising limb; (D) pressure peak, end of the pressurization stage (A to C) and start of the rapid pressure drop stage (or rapid falling limb), (E) end of the rapid pressure drop stage and start of the slow pressure decrease stage. (A') start of the pressurization event based on cave air quantity computation.

3.3.4 Variations at tidal scale

Tide-induced pressure variations are recorded in the cave. Figure 6 shows in situ pressures expressed in meters of seawater (m_{sw}) and mean-centered at a two-day scale in order to focus on the relationships between sea level (h_s , measured at Port-Miou), cave air pressure (P_a), cave absolute pressure in water (P_w) and cave water level (h_w , computed from P_a and P_w). The different parameters are considered in summer when the cave air pressure is low and the cave water level is high (from 12/08/2017 to 14/08/2017, Fig. 6A) and in winter when the cave air pressure is high and the cave water level is low (from 23/12/2017 to 25/12/2017, Fig. 6B). The sea tide is transmitted through the submarine karst conduits or open fractures and

bedding planes so the absolute pressure in water inside the Cosquer cave equilibrates with the sea level variations, without any noticeable lag (data time-step is 5 minutes).

225 The water level in the cave varies less than the tide outside because a part of the pressure variation is transmitted to the confined air above the pools' surface. Focusing on the examples in Fig. 6, during summer the mean tide amplitude is 14.1 cm_{sw} outside and 5.6 cm_{sw} inside the cave. During winter the mean tide amplitude is 12.5 cm_{sw} outside the cave and 5.2 cm_{sw} inside. ~~On~~In both seasons, the tide amplitude in the cave is thus about 40 % of the sea tide and variations ~~of~~in the cave air pressure account for the remaining 60%. The magnitude of the damping of the tide ~~in cave~~ depends on the volume of air trapped in the cave. Tide-related temperature variations in the cave air are observed. These variations are small, less than 0.05 °C crest to crest (not shown in Fig. 4 or Fig. 6) and display a $\pi/2$ phase advance (3 hours) with respect to tide pressure variations. The amplitude of
230 these variations is much smaller (about twenty times) than the adiabatic temperature variation (Eq. (7)) that would result from the tide air pressure changes. Moreover, simultaneous measurements obtained with two probes set 5 cm and 21 cm from the surface of the nearest wall (a stalagmite) recorded the same small temperature variations within <0.01 °C. These observations indicate that thermal convection is very active at least in the decorated rooms of the cave and that at the tide time scale, the air in the cave and the walls remains close to thermal equilibrium ~~with the walls~~.



235 **Figure 5: Time series of the sea level (h_s), the cave air pressure (P_a), the cave water level (h_w) and the absolute pressure in water in the cave (P_w) centered by their mean values during (A) a summer period when P_a is low (12/08/2017 to 14/08/2017) and (B) a winter period when P_a is high (23/12/2017 to 25/12/2017).**

3.43.5 A threatened treasure: focus on the Horses panel

240 We showed that the cave water level in the Cosquer cave is lower than the sea level. This behavior limits the submersion of art nearbyclose to water such as the horses panel (Fig. 2A). Figure 7 shows, for years 2017 and 2018, the cumulative time (in % of the year) of the water level above the probe (in m_{sw}). The highest level recorded in 2017 (water level close to 1.8 meters above the probe in Fig. 7) was an exceptionally high water level in the cave, equivalent to the sea level for a few days. A scaled

photo of the Horses panel is added to the figure. It illustrates how high the water level can rise and flood the artwork. The
245 green dashed line marks the bottom of the painting. Usually, water level in coastal karsts is equal to the sea level; thus in this
theoretical case, the lower part of the horses panel would be continuously flooded. But in the case of the Cosquer cave, air
overpressure maintained the horses panel totally out of water 75 % of the time in 2017 and 88 % of the time in 2018 (Fig. 7).
The Horses panel is partially flooded from mid-summer, when the cave water level slowly rises ~~up~~, to the first pressurization
event at the end of summer or beginning of autumn (water level above the green dashed line on Fig. 4).
250 The Horses panel was flooded during 92 days in 2017 and 64 days in 2018. During these periods, the panel undergoes (1)
washout due to the infiltration of water into the rock porosity and (2) mechanical erosion under the effect of alternating wet/dry
periods caused by the tide. Currently, air overpressure and tide ~~d~~amping inside the cave reduce the duration of flooding. The
Horses panel is not the only art threatened by water: the Negative Hands panel and archaeological artefacts on the floor are
also endangered. The behavior of the karst limits the water level rising on the paintings and engravings, which are still under
255 threat. Global sea level rise is a direct threat to the integrity of the cave.

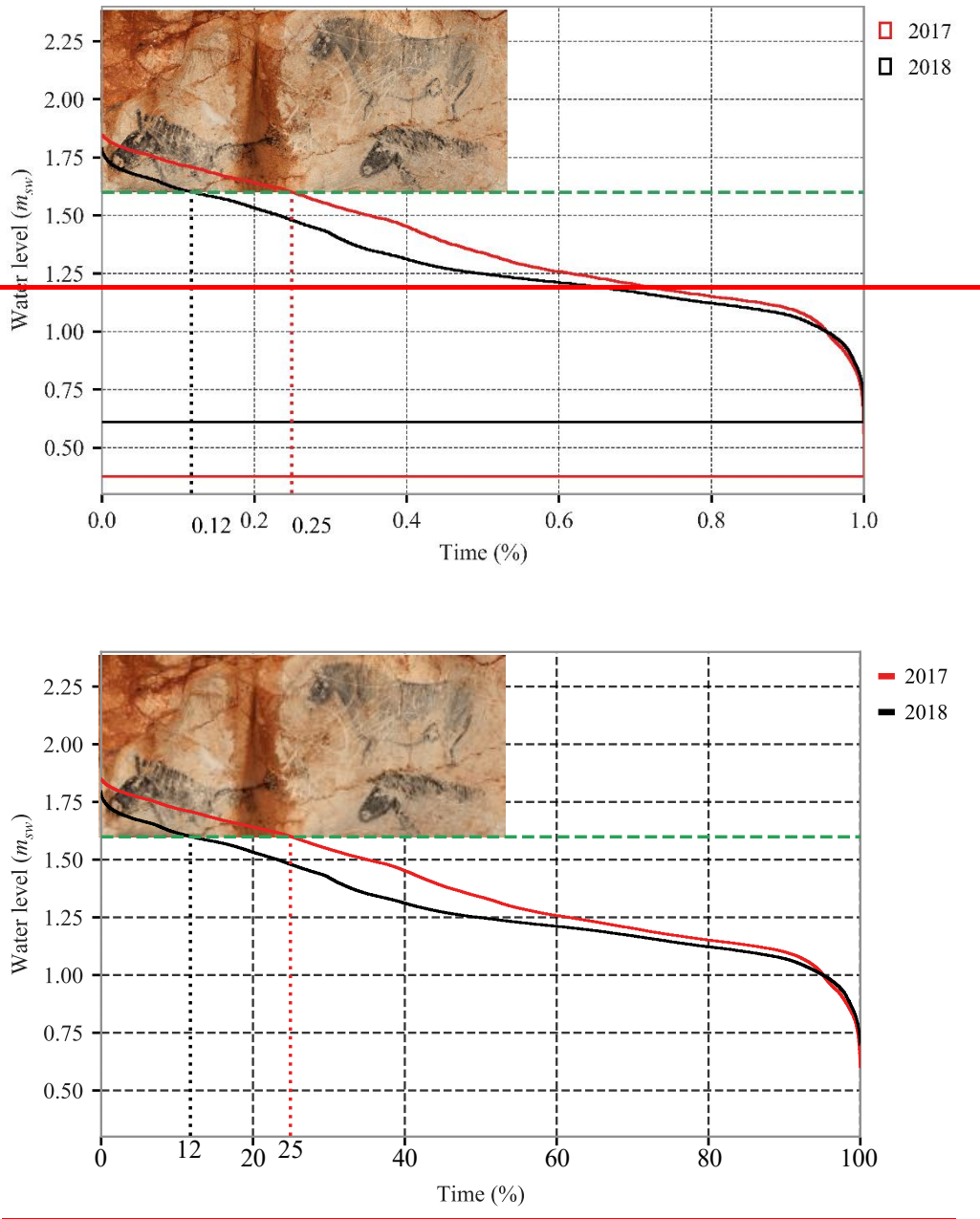


Figure 6: Cumulative time (in % of the year) of the water level above the probe (in m_{sw}) for years 2017 (red) and 2018 (black). The green dashed line marks the bottom of the Horses panel represented on the figure.

Recorded data show that air pressure variations in the Cosquer cave are related to the cave volume and the inflow and outflow of air into the confined cave. We ~~aim at calculating~~sought to calculate the cave volume using the tide variations and the rock permeability using the slow air depressurization stage. This section ~~gives~~details the methods and equations used.

4.1 Equations for air pressure and air quantity in the cave

265 Pressure variations of air in the Cosquer cave are related to variations of air quantity in the cave, temperatures and tides
variations-. Approximating air as an ideal gas:

$$P_a V = n R T_a \quad (1)$$

where P_a is cave air pressure and T_a is cave air temperature, n is the number of gas moles in the cave, V the air-filled volume of the cave, defined as the volume of all the connected voids above the water level, and R is the ideal gas constant. P_a and T_a
270 here represent the average pressure and temperature in the volume of the cave. There is here no requirement with this formulation to assume that P and T are uniform, but the question arises as to whether the measurements do represent the average temperature ~~may be asked~~. This point is dealt with in §4.2. Variations in n correspond to variations of gas content in the cave regardless of the processes considered. These include air inflows and outflows but potentially also exchanges with the liquid phase by diffusion of dissolved ~~gases~~ and water liquid/vapor phase change. The effect of water evaporation and
275 condensation may be approximated considering that the air in the cave is generally close to dew point. Using the Tetens equation (Monteith and Unsworth, 2013) to calculate water vapor pressure, a maximum range of vapor pressure variations of 18.2 hPa to 24.9 hPa is obtained for a temperature varying from 16 °C to 21 °C, representing the range of seasonal variations (Fig. 4). This pressure variation corresponds to a 6.7 cm water level change. Conversely, the effect of the thermal expansion of dry air from 16 °C to 21 °C leads to a pressure increase of 17.3 hPa, with ideal gas approximation. At the tidal scale, cave
280 air temperature variations do not exceed 0.05°C and thus changes ~~of~~in water vapor pressure may be neglected. Mean cave air pressure variation because of tides is about 9.5 cm_{sw} (Fig. 6) whereas during slow depressurization (with a depressurization rate of -0.32 cm_{sw}/day) cave air pressure decreases by 0.08 cm_{sw} between two tides (~6 h), i.e. 1.4 % of the mean tide range. This variation ~~are~~is therefore neglected.

The total volume of the cave and the number of moles are both unknown. Nevertheless, the variation of the air-filled volume
285 of the cave due to tidal variations may be estimated from the variations of water height in the cave, which are measured. Knowing P_a and T_a variations, it is thus possible to estimate n assuming it remains constant during a tidal cycle, and hence the total volume of the cave. On the longer time scale, once this volume is known, the variation of n during the slow depressurization may be calculated from the long-term variations of P_a and T_a .

4.2 Volume calculation

290 The variation of the cave volume (filled with air) between high and low tide can be expressed as:

$$V_h = V_l - \int_{h_{wl}}^{h_{wh}} S_w(h) dh_w \quad (2)$$

295 ~~W~~where V_h and V_l are respectively the cave volume at high and low tide. h_{wh} and h_{wl} are the cave water level at high and low tide. $S_w(h)$ (m^2) is the total surface of water bodies (pools) connected to the sea and thus affected by tides. The surface of the pools for a middle stand water level was calculated using QGIS tools from a georeferenced map of the cave and ~~equals~~
~~was~~ found to be 847 m^2 . For a first order approximation, the variations ~~of pools in pool~~ surface between high and low tide may be neglected because the roof and shore in Room 1, which hosts the largest pool area, are almost parallel (both follow the dip of sedimentary layers), and the walls of the Grand Puits are subvertical. $S_w(h)$ is thus taken constant:

$$S_w(h) \approx S_w = 847 \text{ m}^2$$

and

$$300 \quad V_h = V_l - S_w \cdot (h_{wh} - h_{wl}) = V_l - S_w \cdot \Delta h_w \quad (3)$$

Also, n is assumed constant on the time scale of a tide. The validity of this assumption was assessed in section 4.1. ~~Perfect~~The
perfect gas law is applied at high and low tide:

$$\frac{P_{ah}V_h}{T_{ah}} = \frac{P_{al}V_l}{T_{al}} \quad (4)$$

Combining Eq. (3) and Eq. (4), the volume of the cave at low tide V_l is:

$$305 \quad V_l = S_w \Delta h_w \frac{\frac{P_{ah}T_{al}}{P_{al}T_{ah}}}{1 - \frac{P_{al}T_{ah}}{P_{ah}T_{al}}} \quad (5)$$

Except during the transient pressurization events, air pressure within the connected rooms of the cave is at equilibrium. However, air temperature may not be uniform as it depends on thermal convection for homogenization. To bound volumetric estimations, we will also consider two end-member cases corresponding to isothermal and adiabatic assumptions.

310 In the isothermal case, Eq. (5) simplifies as:

$$V_l = S_w \Delta h_w \frac{1}{1 - \frac{P_{al}}{P_{ah}}} \quad (6)$$

In the case of an adiabatic process, there is no heat transfer between the air and the cave walls or water pools and the ~~variation~~
~~of~~ temperature variation of an ideal gas is related to the pressure variation by:

$$\frac{T_{al}}{T_{ah}} = \left(\frac{P_{al}}{P_{ah}} \right)^{1-1/\gamma} \quad (7)$$

315 The adiabatic coefficient for air at 20 °C is $\gamma = 1.4$ (Lange and Forker, 1967). Combining Eq. (3) and Eq. (7) yields ~~to~~:

$$V_l = S_w \Delta h_w \frac{1}{1 - \left(\frac{P_{al}}{P_{ah}} \right)^{1/\gamma}} \quad (8)$$

As air pressure at low tide is lower than at high tide, the P_{al}/P_{ah} ratio is less than 1 and the volume estimated with the adiabatic assumption is larger than for the isothermal one.

4.3 Airflow rate

320 Once the volume of the cave has been estimated from the tidal variations, the quantity of air in the cave is computed over time as:

$$n(t) = \frac{P(t)}{RT(t)} [V_0 + S_w \cdot (h_0 - h_w(t))] \quad (9)$$

Where V_0 is a reference volume of the cave for a reference water level above the probe h_0 . The net volumetric flow rate Q ($\text{m}^3 \text{ s}^{-1}$) into the Cosquer cave (inflow positive) is calculated as:

$$325 \quad Q = v_m Q_n = \frac{RT}{P} Q_n \quad (10)$$

where v_m is the air molar volume ($\text{m}^3 \text{ mol}^{-1}$), $Q_n Q_n = \frac{dn(t)}{dt}$ is the molar flow rate (mol s^{-1}) and $R = 8.314 \text{ J K}^{-1} \text{ mol}^{-1}$ the ideal gas constant. The net volumetric flow rate can be expressed for standard pressure $P = P_0 = 101325 \text{ Pa}$ and temperature $T = T_0 = 288.15 \text{ K}$.

4.4 Rock mass permeability

330 The seasonal slow depressurization of the confined Cosquer cave during spring and summer implies air outflows through the host-rock. The effect of gas compressibility on flow is taken into account, approximating air as a perfect gas. Assuming that airflow follows Darcy's law, and neglecting the hydrostatic gradient in the atmosphere (about 11 Pa m^{-1}), the molar flux may then be written as (e.g.: Massman, 1989); Lang, 1999; Charbeneau, 2006):

$$\mathbf{q}_n = \left(\frac{P}{RT} \frac{k_a}{\mu(T)} \right) \mathbf{grad}(P) = \left(\frac{k_a}{\mu(T)RT} \right) \mathbf{grad} \left(\frac{P^2}{2} \right) \quad (11)$$

335 Where \mathbf{q}_n is the molar flux ($\text{mol m}^{-2} \text{ s}^{-1}$), μ is the dynamic viscosity of air (Pa s), k_a is the medium effective permeability to air (m^2), T the gas temperature (K) and P the air pressure (Pa). According to the kinetic theory of gasses, the viscosity of a perfect gas is a function of temperature only and does not depend on pressure (Chapman and Cowling, 1970).

Airflows through a porous medium follow Darcy's law if the pores have a sufficiently low water saturation to host a continuous gas phase, defining the percolation threshold. The generalization of Darcy's law for air flow in an unsaturated porous medium uses the effective permeability to air (k_a):

$$k_a = k_{ra} k_w \quad (12)$$

k_{ra} is the relative permeability to air (-), describing the influence of air and water content on permeability. It ranges between 0 (at the percolation threshold) to 1 (dry state). k_w is the intrinsic permeability of the host-rock (m^2), which is independent of the fluid properties and saturation. Our data can constrain k_a but not k_{ra} . The maximum value of effective permeability to air from our calculations is thus a lower bound for the intrinsic permeability.

Now considering a steady-state, or slowly varying, flow between a cavity at pressure P_a and the surface at atmospheric pressure P_{atm} , other parameters being held constant (T , μ), it follows from Eq. (11) that the total molar flux depends linearly on the difference of the squared pressure between the boundary conditions ~~of the squared pressure.~~(Charbeneau, 2006). Hence, the effective air transmissivity λ_a between the cave and the ground surface may be defined as:

$$350 \quad \lambda_a = \frac{2\mu RT}{(P_a^2 - P_{atm}^2)} Q_n \quad ; \quad (13)$$

The variations of temperature in the host-rock are unknown, but are much lower in amplitude than temperature variations in the cave and at the ground surface (Bourges et al., 2006a). T is thus taken constant equal to the yearly mean air temperature in the cave, about 18 °C. In this case $\mu(T) = \mu = 1.81 \cdot 10^{-5}$ Pa s. ~~This~~The interpretation of the air effective transmissivity coefficient λ_a , which has m²a dimension ~~and is presented for three flow~~of m³, can vary based on the geometrical configuration. Three

355 geometries ~~in this paper are considered: a porous rock volume (Fig. 8A), a single fracture (Fig. 8B) and a pipe (Fig. 8C).~~

If a pressure gradient is applied over length L (m) on a cross-sectional area A (m²), the air effective permeability (m²) may be defined as:

$$k_a = \lambda_a \frac{L}{A} \quad ; \quad (14)$$

In the case of the Cosquer cave, L and A reflect the dimensions of the boundary conditions and are illustrated in Fig. 8A. One possibility is to consider the air effective permeability of the rock volume between the main cave and the ground surface, hence $A = 2000$ m² and $L = 40$ m. However, it is possible that most of the flow occurs through the upper part of the cave, closer to the ground and likely less water saturated, namely the top part of the Grand Puits (*high shaft*), that is about 100 m² and 10 m below the surface according to available 3D models of the cave. The geometric factor A/L may thus be considered to range from 10 to 50 m.

365 If a leakage occurring through a fracture of length L and width W as shown in Fig. 8B is considered, the hydraulic aperture of the fracture is (Zimmerman and Bodvarsson, 1996):

$$b = \left(12\lambda_a \frac{L}{W}\right)^{\frac{1}{3}} \quad ; \quad (15)$$

If a population of N fractures is considered, b^3 represents the sum of the cubed apertures of individual fractures. It follows that the larger fractures generally dominate the flow. For instance, if eight identical fractures of hydraulic opening b are present, they are equivalent to a single fracture of opening $2b$. ~~Consequently, equation will, in~~In most cases, eq. (15) yields a correct order of magnitude for the hydraulic opening of the largest active fractures. For pipe conduits of length L (Fig. 8C), the air effective transmissivity is a function of the fourth power of the radius and, similarly, the larger conduit will dominate the flow.

According to Poiseuille's law the hydraulic radius r of a pipe conduit may be defined as:

$$r = \left(\frac{8}{\pi}\lambda_a L\right)^{\frac{1}{4}} \quad ; \quad (16)$$

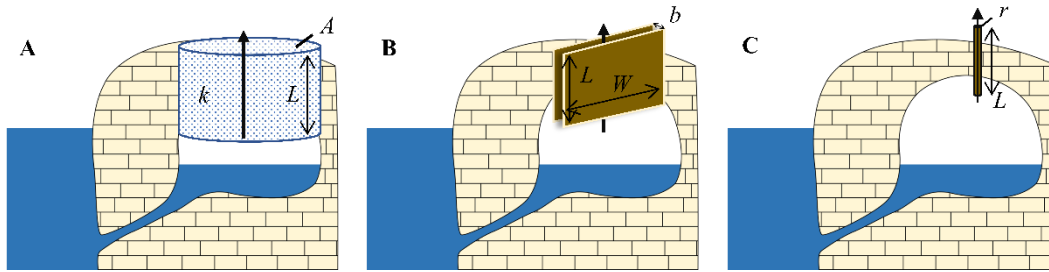


Figure 7: Schematic cross-sections to illustrate the three theoretical models tested for flow: (A) porous rock volume of cross-sectional area A and length L (B) fracture of length L , width W and hydraulic aperture b and (C) pipe of length L and radius r .

5 Results

5.1 Cosquer cave volume

380 Volume calculations ~~awere~~ done over July and August for years 2015 to 2020, using pressure and temperature variations between successive tidal extrema. These two months were chosen during the summer season, when the cave water level is mainly driven by the tide, without significant pressurization events. This yields ~~4four~~ volume calculations per day and 240 values for ~~boththe two~~ months.

385 Figure 9A shows ~~all the values calculated~~ for ~~the~~ years 2017 and 2018, ~~all calculated values~~ taking into account the measured air temperature variation during the tide (referred to as temperature corrected volume, Eq. (5)), with measurement uncertainties. The volume of the cave and its uncertainty ~~awere~~ computed using the weighted mean (Eq. (B5)) and weighted mean standard deviation (Eq. (B6)) over ~~the~~ July to August period. This method gives more weight to values with smaller uncertainties. Using data recorded in summer 2017, ~~the~~ mean cave volume is $4973 \pm 83 \text{ m}^3$, for a mean cave water level $\bar{h}_w = 1.60 \text{ m}_{\text{sw}}$ (~~the~~ water level reference is the absolute location of the sensor as shown in Figure 3A). Using data recorded in summer 2018, ~~the~~ mean volume is $4967 \pm 78 \text{ m}^3$ for a mean cave water level ~~observed~~ $\bar{h}_w = 1.53 \text{ m}_{\text{sw}}$, which ~~gives would be equivalent to~~ 4915 m^3 for ~~an equivalent waterthe reference~~ level of $h_w = 1.60 \text{ m}_{\text{sw}}$. ~~Using this latter value, the calculated air-filled volume of the cave was the same in order to be compared with results of 2017. The difference of 58 m^3 between 2017 and 2018 is, within the range of uncertainties, as expected. It shows that using data of the two summer months, volume can be calculated by the method proposed.~~

395 Table 2 summarizes mean cave water level measurement and volume calculated ~~over the two summer months~~ for ~~summers between~~ years 2015 ~~andto~~ 2020. Mean ~~summer~~ cave volume over the 6 years ~~iswas~~ 5000 m^3 for an average water level of $1.54 \text{ m}_{\text{sw}}$. ~~MaximalThis~~ mean ~~eave~~-volume is ~~5164 m³was maximal~~ in 2020 when ~~the~~ mean water level ~~iswas~~ minimal ($1.40 \text{ m}_{\text{sw}}$), and ~~iswas~~ minimal in 2016 with 4957 m^3 when ~~the~~ mean water level ~~iswas~~ maximal ($1.64 \text{ m}_{\text{sw}}$). ~~Considering. Using the entire time seriescomplete dataset available from years 2015 to 2020, the annual-cave6-year average water level for years~~

400 ~~2015 to 2020 is was~~ 1.33 m_{sw} and ~~the annual mean yields an average air-filled~~ volume of the cave ~~on this 6 years period is of~~ 5184 m³.

	2015	2016	2017	2018	2019	2020
\bar{h}_w (m _{sw})	1.55	1.64	1.60	1.53	1.55	1.40
\bar{V} (m ³)	4974	4957	4973	4967	4965	5164

Table 2: Mean cave water level and volume over July and August for years 2015 to 2020

In order to show the impact of the heat exchanges between the air and the cave walls or water pools on the cave volume calculation, we performed calculation~~s~~ for three assumptions on year 2017 data, plotted in Fig. 9B. Case I is the temperature corrected curve (red line on Fig. 9B), using air temperature variation during the tide (Eq. (5)); this is the curve connecting the data point given in Fig. 9A. Case II (green dashed line on Fig. 9B) is the volume calculation with an isothermal assumption (Eq. (6)), and case III (blue line on Fig. 9B) is the volume calculation with an adiabatic assumption (Eq. (8)). Comparison of cases I, II and III over July and August 2017 shows that the three cases give similar relative variations but different means. Temperature (I) and isothermal (II) plots are almost superimposed, suggesting that the isothermal assumption is a much better approximation than the adiabatic one. The small tide-related temperature variations in the cave (< 0.05 °C) show~~s~~ a quasi-isothermal process, which leads to a mean relative difference ~~of~~ less than 1 % with isothermal computation. Mean volume for ~~the~~ adiabatic case is 6993 m³. There is a factor of 1.4 between case III and case II because of the adiabatic index γ (Eq. (8)). This gives the possible maximum cave volume in the case when the available temperature record ~~wouldis~~ not ~~be~~ representative of average air temperature variations in the cave during the tidal cycle.

405

410

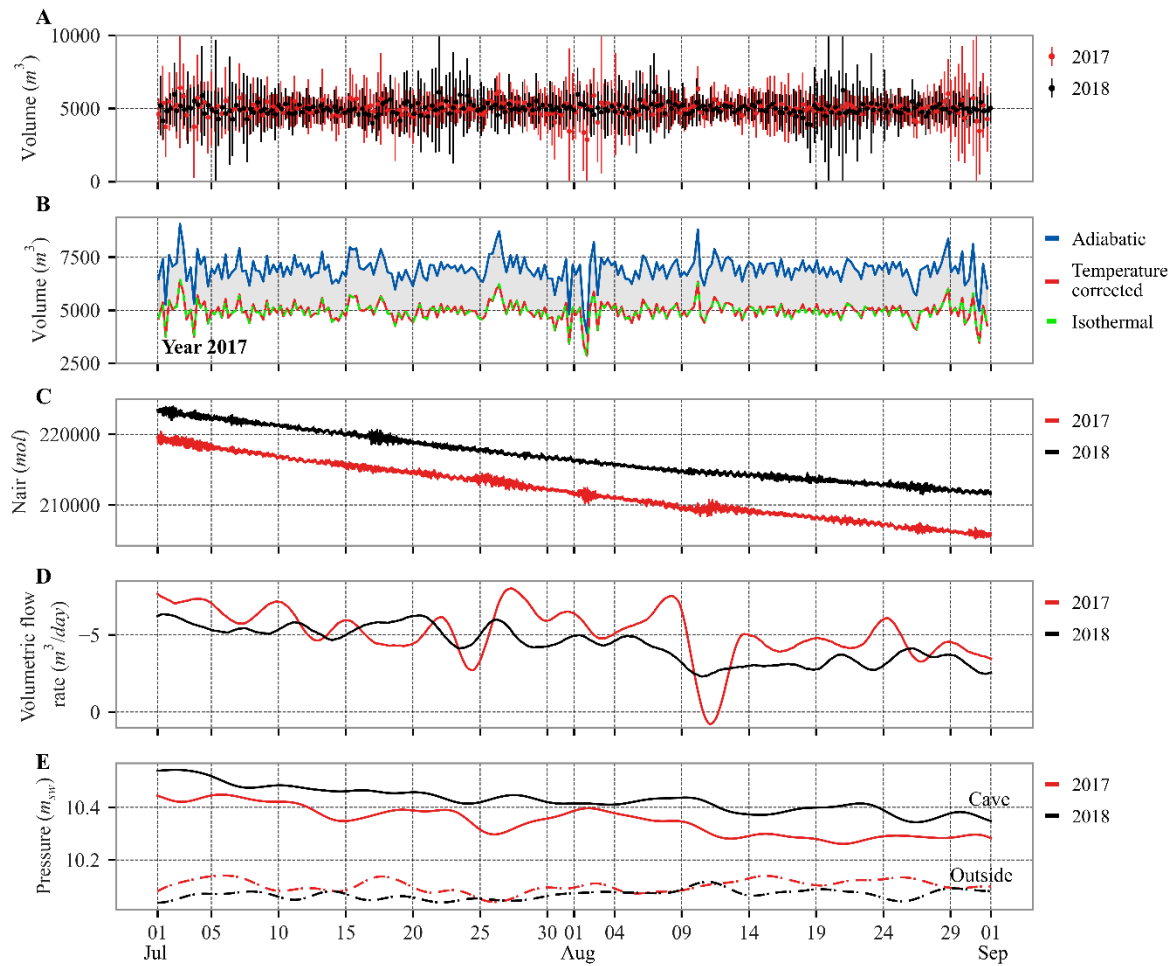


Figure 8: Calculated and recorded time series from July, 1 to August, 31 for years 2017 and 2018. (A) Results of the cave volume computation using air temperature variations, with uncertainties (B) Results of the cave volume computation (only year 2017) for the three assumptions: adiabatic, isothermal, and temperature corrected (using air temperature variations); (C) Results of cave air quantity; (D) Results of volumetric flow rate (negative value for outflow) filtered with a 5-days Hann window; (E) Recorded data of cave air pressure and atmospheric pressure (outside the cave) filtered with a 5-days Hann window.

5.2 Cave airflow rates

5.2.1 Outflow during slow pressure decrease

The cave volume previously calculated makes it possible to evaluate at any time the cave air quantity (Eq. (9)) and therefore the airflow rates (Eq. (10)) for standard pressure/temperature conditions ($P_0 = 101325$ Pa, $T_0 = 288.15$ K). The air quantity given in Fig. 9C shows a slow decrease over the two months, correlated with the slow air pressure decrease (Fig. 4).

The quantity of air is was lower in 2017 than in 2018 because the air pressure was lower in summer 2017 in the cave.

Table 3 summarizes mean airflow rates over July and August for years 2015 to 2020. Values are negative when air flows out

of the karst. ~~Mean~~The mean summer flow rate over the ~~6~~six years ~~is~~was $-5.9 \text{ m}^3 \text{ d}^{-1}$ ($-0.24 \text{ m}^3 \text{ h}^{-1}$), ranging from a minimum $-4.5 \text{ m}^3 \text{ d}^{-1}$ (in 2018) to a maximum $-7.7 \text{ m}^3 \text{ d}^{-1}$ (in 2020). Years 2017 and 2018 are detailed in Fig. 9D, filtered with a 5-day Hann window. Airflow rates changed from -1.2 to $-8.4 \text{ m}^3 \text{ d}^{-1}$ in 2017. These extrema values appear mainly when the air quantity curve (Fig. 9C) shows a noisy shape, corresponding to periods with higher sea level variations (waves outside the karst). In 2018, airflow rates ~~were~~varied less ~~varying~~, corresponding to a smoother decrease ~~of~~in air quantity over the summer.

	2015	2016	2017	2018	2019	2020
Q ($\text{m}^3 \text{ d}^{-1}$)	-5.2	-5.7	-5.3	-4.5	-6.8	-7.7

Table 3: Mean cave airflow rates over July and August for years 2015 to 2020 (air flows out of the cave for negative values)

Nevertheless, in 2017 and 2018, the airflow rates tended to decrease (from the highest negative value to the lowest negative value) over the summer as the air overpressure inside the cave decreases (Fig. 9E) and therefore the pressure difference between the cave and the outside atmosphere decreases.

5.2.2 Inflow and outflow during pressurization events

The method to calculate the airflow rate, based on cave air quantity variation, can also be applied to net airflows during pressurization events, which occur during wintertime (Fig. 4). The pressurization event presented in Fig. 5 (from 29/04 to 01/05/2018) has been separated into several stages using pressure variations. To enhance precision, the onset of the pressurization event ~~is~~was identified by analyzing changes in air quantity, thus avoiding tidal variations passing point A to A' (Fig. 5). For this event, considered as a typical example, the rising limb, from the beginning of the increase of the air quantity to the peak, lasted 9.5 hours for a total inflow of 869 m^3 (from A' to D). Then the rapid falling limb, from the peak to the first inflection point, lasted 30.5 hours for a total outflow of 656 m^3 (from D to E). The maximum pressure increase during the injection stage was related to a maximum inflow rate of $222 \text{ m}^3 \text{ h}^{-1}$ (from B to C). All the results are summarized in Table 4. During this pressurization event 26 % of the total air volume ~~is~~was injected in about 10 % of the total pressurization stage duration (from A' to D). The mean outflow rate during the rapid pressure drop (from D to E) ~~is~~was 82 times higher than the mean airflow rate during the slow pressure decrease in summer season (July and August, mean from 2015 to 2020). 75 % of the air injected during the pressurization stage (from A' to D) leaked out of the cave in the next following 30.5 h (from D to E).

	Stage	Duration (h)	Airflow rate ($\text{m}^3 \text{ h}^{-1}$)	Total volume (m^3)
A' → D	Rising limb	9.5	91.7	869
B → C	Maximum slope	1	222.6	222
D → E	Rapid falling limb	30.5	-21.5	-656

Table 4: Airflow rates during the pressurization event from 29/04 to 01/05/2018

This method ~~is~~was applied to quantify the total net volume of air flowing in and out of the cave during all the pressurization events spanning from 2015 to 2020. The cumulative annual net air inflow ranged from 10240 m^3 (year 2015) to 22460 m^3 (year 2020) with an annual average of 17590 m^3 . Similarly, the cumulative net annual air outflow during rapid pressure decays

455 varied from 7720 m³ (year 2015) to 18260 m³ (year 2020) with an annual average of 13270 m³. This yields an annual budget gives a remaining outflowing air volume (6-year average sum of 4300, 4320 m³ for) corresponding to the volume of cumulative net annual air flowing out of the cave outflow during slow depressurization periods. These results of net air volume flowing in and out of the cave will be used to discuss the air renewal in section 6.2.

5.3 Permeability of the limestone massif

460 During the periods of slow pressure decrease in July and August, the air effective transmissivity coefficient ~~is~~ was calculated according to Eq. (13). It ~~is~~ was then converted to effective permeability, effective hydraulic aperture and effective radius, corresponding to different ideal flow geometries, as defined in section 4.4.

1 – It is firstly assumed that air flows out through a porous rock volume of cross-sectional area A and length L to compute its air effective permeability k_a (Eq. (14), Fig. 8A). We consider two end-member cases consistent with the Cosquer cave geometry: i) flow through the rock volume above the "Grand Puits", hence $A = 100 \text{ m}^2$ and $L = 10 \text{ m}$ ($A/L = 10 \text{ m}$), and ii) flow
465 through the whole rock volume above the main cave, hence $A = 2000 \text{ m}^2$ and $L = 40 \text{ m}$ ($A/L = 50 \text{ m}$). All the averaged results between 01/07 and 31/08 for the years 2015 to 2020 for the different models are summarized in Table 5, varying ~~between~~ from 4.6 10^{-15} to 50.0 10^{-15} m^2 .

2 – It is assumed that air leakage occurs through a fracture of length L and width W to determine its hydraulic aperture b (Eq.
470 (15), Fig. 8B). ~~Ratio~~ The L/W ~~is~~ ratio was set at 1. Results varied between 0.14 mm and 0.18 mm (Table 5).

3 – It is assumed that air flows out through a small karst conduit equivalent to a pipe of length L and radius r (Eq. (16), Fig. 8C). Two cases are set up: i) the pipe goes from the main cave to the surface, hence $L = 40 \text{ m}$, and ii) the pipe goes from the top of the "Grand Puits" to the surface, hence $L = 10 \text{ m}$. The computed radius of this hypothetical pipe is then around 1.5 to 2.7 mm (Table 5).

		2015	2016	2017	2018	2019	2020
k_a (10^{-15} m^2)	$A/L = 10 \text{ m}$	29.9	50.0	40.3	23.3	32.3	29.5
	$A/L = 50 \text{ m}$	6.0	10.0	8.1	4.6	6.4	5.9
b (mm)	$L/W = 1$	0.15	0.18	0.17	0.14	0.16	0.15
r (mm)	$L = 10 \text{ m}$	1.66	1.88	1.77	1.55	1.69	1.65
	$L = 40 \text{ m}$	2.33	2.66	2.50	2.20	2.39	2.34

475 **Table 5: Averaged results over July and August for years 2015 to 2020 of the air effective permeability k_a considering 2 different geometries, the equivalent permeability of a fracture with a hydraulic aperture b and the equivalent permeability of a pipe of radius r considering 2 different pipe lengths.**

6 Discussion

6.1 Exploring caves with sea tide: accessing the inaccessible volumes

480 Cave volume is a challenging parameter to ~~get~~quantify and is important as it is involved in the study of the cave air renewal or internal air flow impacting ~~the~~ conservation of ~~work-art~~artwork or archaeological remains. It can also be a parameter of interest for archaeological studies, to understand the spaces that ~~paleolithic-human~~Paleolithic humans used for decoration. Indeed, the large number of Upper Paleolithic caves decorated in ~~the~~ south of France shows that ~~the~~ volumes of decorated caves vary ~~in-a-wide-range~~widely, from small rooms to large caves. For instance, ~~the volume of~~ Lascaux cave ~~volume-is~~ 485 ~~lower~~less than 3000 m³ (Malaurent et al., 2006), the polychrome room in Altamira cave is 342 m³ (Sainz et al., 2018), the Chauvet cave is 60000 ± 20 000 m³ (Bourges et al., 2020b), Cussac cave is 50000 m³ (Peyraube et al., 2016) and l'Aven d'Ornac is 237000 m³ (Bourges et al., 2006a). ~~Volume~~The volumes of accessible parts of caves ~~had-been~~have usually ~~been~~ obtained by 3D speleological surveys (Jouves et al., 2017), using handheld topographic instruments or by laser scanning (Giordan et al., 2021; Mohammed Oludare and Pradhan, 2016). These methods are efficient but are mainly limited by the 490 accessibility of cave passages to speleological investigation because they ~~required-to-scan~~require scanning point clouds. Small passages or connected rooms yet undiscovered are ~~then~~us not surveyed. In the case of the Cosquer cave, tidal pressure variation makes it possible to assess the entire cave volume independently ~~of~~ the geometry or the accessibility of these volumes. The method uses classical equations but is a ~~kind-of~~rather exceptional application since partly drowned confined coastal caves are not widespread. Nevertheless, calculating the whole volume of the cave ~~gives~~provides the opportunity to compute other crucial 495 data in this study: air quantity and then air flow rates and rock permeability. One strength of the method is that it uses the natural variation ~~of~~in the pools' water level induced by the sea tides ~~2-time~~twice per day, giving four slopes per day. ~~Results~~ uncertaintiesUncertainties in the results vary with ~~the~~ tide range. Uncertainties are maximum when the tide variation is minimum. Computing the mean volume over a ~~large-time~~long period (2 months) is a way to minimize the impact of local disturbances (Fig. 9C), generating a few outliers in volume results, although the sources of the disturbances have not been 500 identified and separated. One should remember that the cave volume is almost constant from day to day, and volume changes in Fig. 9A from one result to the next are commonly explained by bias in the measurement (sensor dependent), or due to water level variations with a very high frequency when the seawater is moving with waves.

~~On-a~~Over the two ~~summer~~ months ~~scale~~, there is a slow decrease ~~of~~in the cave air pressure and the ~~pools~~-water level ~~of the~~ pools rises slowly in the cave. The cave volume should then change, decreasing with the rising of the water level. As shown 505 in Fig. 4, between July and August, water level ~~ri~~ses by 23 cm_{sw} in 2017 and 13 cm_{sw} in 2018. Using the ~~pools'~~reference ~~pools~~ surface (847 m²), the cave volume decrease is equivalent to 192 m³ in 2017 and 112 m³ in 2018 during these two months. No significant~~ive~~ decreasing trend appears on the cave volume measurement time series (Fig. 9A). However, a significant difference in average volumes (197 m³) ~~is~~was found between year 2020 when the water level remained exceptionally low (1.4 m) ~~th~~and during years 2015-2019 (average water level 1.57±0.05 m) (Table 2). We also compared this computed volume,

510 with the volume calculated from the 3D survey of the cave. We approximated roughly the volume of the cave from the 3D speleological hand-survey maps and cross-sections (Fig. 2): 3100 m³ for the decorated rooms (#1 in Fig. 10), 1500 m³ for the "Grand Puits" (#2 in Fig. 10) and 1200 m³ for the upper conduit connected to the top of the Grand Puits (#3 in Fig. 10). The total estimated volume is 5800 m³, which is significantly higher than our best estimation (5184 m³ for a water level of 1.33 m). Assuming that the geometrical determination is accurate, which still needs to be confirmed by full 3D modeling of the whole cave, this difference may be explained by the actual surface of the pools which will need to be refined and by the temperature variations of the air during a tidal cycle. Regarding air temperature, convective movements control temperature homogenization in the cave (Lismonde, 2002) and although the air temperature time series were obtained outside the convective boundary layer, they were only acquired at one location in the main room, and may not be representative of the volume-averaged temperature in the cave. We pointed out that the recorded tide-related temperature variations were much smaller than the adiabatic tide-related temperature variations and showed that calculations in fully adiabatic conditions could result in 40% larger volume estimates. Therefore, other parts of the cave may have larger tide-related temperature variations, which could result in underestimating the total volume. Nevertheless, our results suggest there are no other connected large rooms ~~to discover~~ that remain to be discovered inside the Cosquer cave.

6.2 Air renewal

525 Cave airflows typically take place through the entrance of the cave along karst conduits or through fractures or porosity in the formation. If the cave is connected to several entrances, even entrances that are too small for human investigation, ventilation occurs through the karstic network between the entrances (Gabrovšek, 2023; Lismonde, 2002). Here, in the Cosquer cave, the cave is confined, and all the passages are closed by submarine karst sumps. The air pressure inside the cave is almost always higher than the pressure outside and we showed in the results section that airflows are conditioned by the following: (1) there are rapid air exchanges driven by waves during short pressurization events occurring a few dozen times a year, with a rapid inflow and outflow through the saturated karst conduits; these events generally have a positive airflow budget which results in a net inflow of air to the cave; (2) excess air slowly leaks through the limestone walls in the unsaturated zone, re-equilibrating air pressure on a seasonal time scale. The processes allowing air renewal are thus very different from other caves, which do not have long-term overpressurization.

535 During the summer period, we showed that there is no significant air inflow and that the air flows out continuously (Fig. 10A). So, the air quantity inside the cave varies, decreasing over the summer, but the air is not renewed. The annual mean pressure difference between inside and outside the Cosquer cave is 56 cm_{sw} (years 2015 to 2020). This is significantly higher than the natural pressure gradients usually found in caves: pressure gradients due to variations in atmospheric pressure or temperature variations in the range of 2 cm_{sw} are observed at the Lascaux and Altamira caves (Houillon et al., 2017; Sainz et al., 2018) and up to 5 cm_{sw} in the case of a coastal karst under the influence of tides (Jiao and Li, 2004). In the case of the Cosquer cave, this air supply and consequently air renewal, only happens during pressurization events. These events require an additional

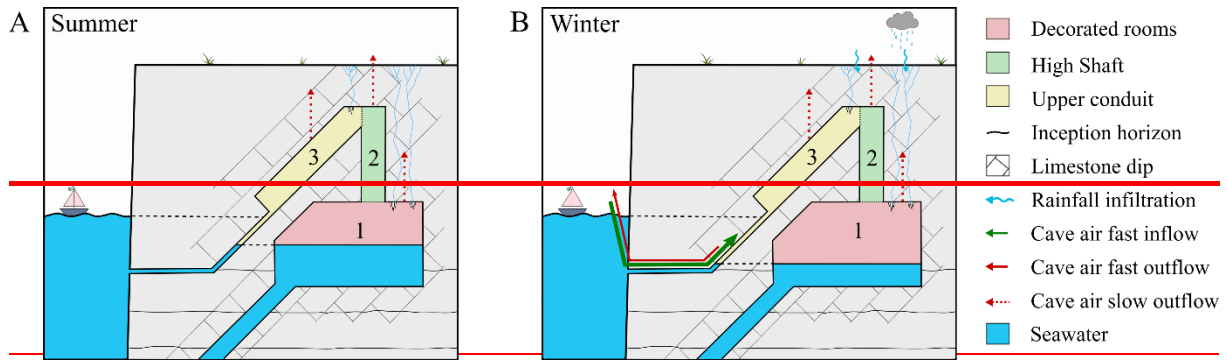
mechanism to force the air to flow from outside to inside the cave. Field observations and data suggest a close link between sea conditions (waves height ~~and direction~~) and the pressurization events. Waves breaking along the cliff at the shallow submarine karst inception ~~horizon seems~~ horizons and fractures seem to be the main driver. Understanding this mechanism is beyond the scope of this paper but our air content calculations can be used to ~~evaluated~~ assess net fluxes occurring during pressurization events.

Pressurization events generally have an initial pressure increase stage indicating inflow, followed by a rapid decay indicating a net outflow through the karst, probably occurring through the same shallow conduit network. Part of the injected air is thus expelled ~~right~~ immediately after the pressurization stage. For instance, during the 29/04/2018 event (Fig. 5), 869 m³, corresponding to 17 % of the cave's air volume, ~~is was~~ injected in a few hours but nearly 75 % of this air ~~exit~~ sed during the following day (Table 4). As no air quality measurements were carried out, it is unclear whether the air exiting ~~is was~~ newly entered air or mixed with pre-event air. Moreover, the input air may at first stay near the entrance area and not mix with air in the other rooms. This situation has been reported in many caves. Its occurrence depends on the air density differences inside the cave (Lismonde, 2002; Peyraube et al., 2016) and on the shape of the cave passages (Gabrovšek, 2023; Luetscher and Jeannin, 2004). In the Cosquer cave, in situ observations suggested that air inflow occurs mainly through ~~the small pool~~ shallow conduits and fractures connected to the upper conduit (Malaurent and Vouvé, 2003) and not directly in the decorated rooms.

We propose a conceptual model in Fig. 10, taking into account the volumes of the three main parts of the cave. The air pushed by the waves below the sea level flows up to pools connected to the lower end of the upper conduit (Fig. 10B). The ascending geometry of the upper conduit may prevent air from flowing down to the decorated rooms. The volume of air flowing in during the event must therefore be greater than the volume of the upper conduit (around 1 200 m³) to reach the top of the Grand Puits and flows into the decorated rooms.

Summing all the air volume entering the cave during events, the mean annual air inflow volume is approximately 17590 m³ (years 2015 to 2020), corresponding to a total annual air renewal of 3.4 times the volume of the cave (considering the mean cave volume of 5184 m³ and under standard pressure/temperature conditions) per year. However, this value represents a maximum renewal rate as 75 % (13270 m³) of the entering air exits during the rapid pressure decays immediately after the pressure peaks (e.g. Fig. 5, from D to E), possibly without mixing, and 25 % (4300 m³) exits during slow pressure decreases.

The minimal air renewal rate in the cave is calculated by excluding the fraction of air outflowing during pressurization events, in other words, only taking into account the volume of air leaving by slow depressurization. This minimum rate is 0.8 times the air volume in the cave per year (mean from year 2015 to 2020). In either case, air renewal in the Cosquer cave is significantly lower than that measured at Hollow Ridge Cave (~175-8760 y⁻¹, Kowalczk and Froelich, 2010), in the Altamira polychrome hall (~270 y⁻¹, Sainz et al., 2018) or at the Chauvet cave (~40 y⁻¹ Bourges et al., 2020b). For preservation reasons, the Altamira and Chauvet decorated caves are artificially closed by gates to limit natural air ventilation, which nevertheless remains 11 to 300 times higher than in the Cosquer cave.



575

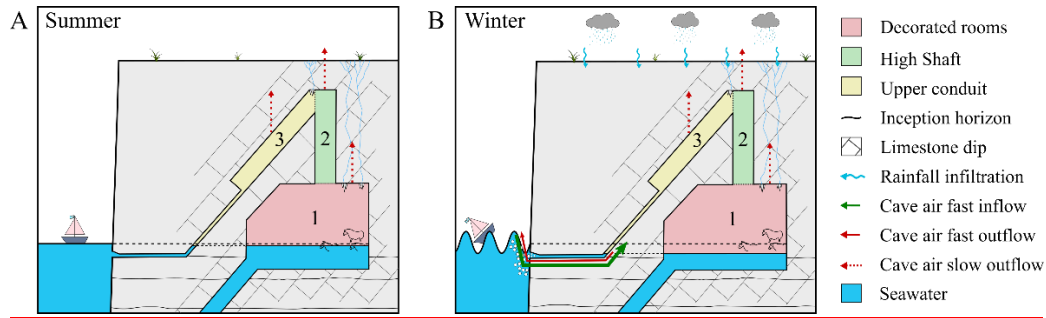


Figure 9: Conceptual model of airflows in the saturated and unsaturated zones of the limestone massif surrounding the Cosquer cave (cross-section, not to scale).

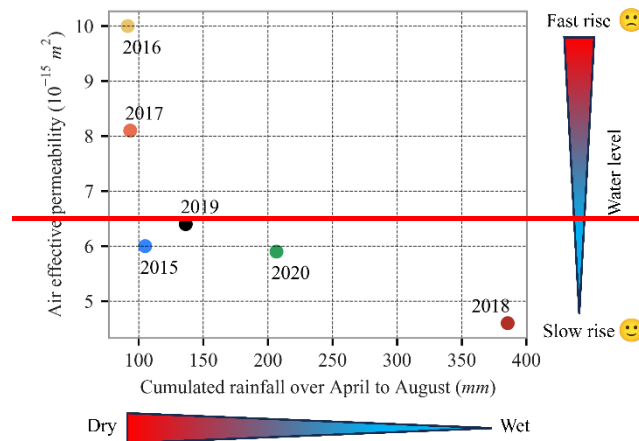
6.3 Permeability of the unsaturated zone at the cave scale

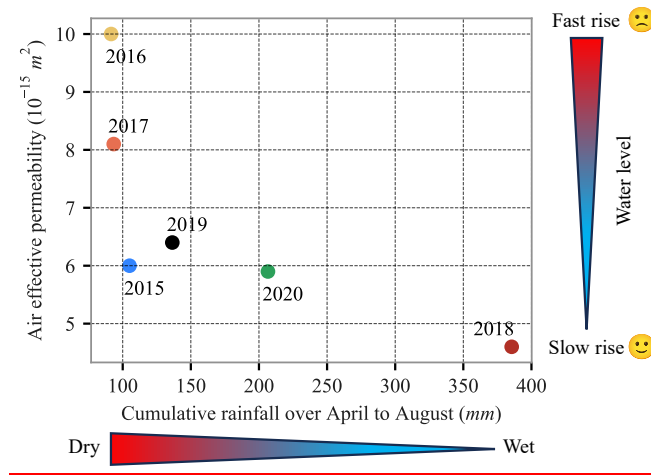
580 The case of the Cosquer cave shows that permeability can be highly variable between the saturated zone and the unsaturated zone surrounding the cave above the sea level. Both saturated and unsaturated zones are in the same rock age and facies, i.e. early Cretaceous limestones with Urgonian facies. At the rock massif scale, permeability differs mainly if karst conduits are connected, or if karst fractures or porosity are filled and clogged by low-permeability materials. Study of Studying water level variations in coastal wells is a classic way of calculating the aquifer's transmissivity and storage coefficient in the saturated zone, using the amplitude, frequency and phase shift of the tide (Trefry and Johnston, 1998; Zhang, 2021). This method does not apply to coastal karsts that do not filter the tide pressure wave, when karst conduits are large. As the groundwater table fluctuates with sea tides in coastal aquifers, it also causes air pressure fluctuations in some coastal unsaturated zones. Tide--induced airflow has been extensively studied (Kuang et al., 2013). CoastaIn coastal aquifers with a layered unsaturated zone have, airflow is induced by sea tides. Jiao and Li (2004) orand Xia and collaborators (2011) used this feature to validate air permeability estimation with numerical simulations. In the case of the Cosquer cave, air effective permeability calculations have not been done using the tide variation because it requires pressure measurements at several altitudes in the unsaturated zone. However, we showed that air effective permeability calculations can be done on a seasonal

585

590

time scale using the cave slow depressurization. It gives air effective permeabilities varying from $4.6 \cdot 10^{-15}$ to $50.0 \cdot 10^{-15} \text{ m}^2$ (12 values). These values are relatively high compared to the permeability given in the literature for samples taken in similar carbonate formations. Several authors reported permeability measured on plugs (local scale, a few centimeters) in Urgonian limestones in the south of France, ranging from $<1 \cdot 10^{-17} \text{ m}^2$ to $4 \cdot 10^{-15} \text{ m}^2$ for porosities ranging from 0.75 to 18.3 % (Cochard et al., 2020; Danquigny et al., 2023; Jeanne et al., 2013). These measurements were done on plugs and do not include karstic vugs, ~~neither~~ fractures or inception horizons on bedding planes (Filipponi et al., 2009) that locally increase ~~locally~~ the rock permeability. For instance, larger scale measurements performed with packers in a fault zone with open fractures in the same formation found much higher permeabilities, of the order of $6.9 \cdot 10^{-12} \text{ m}^2$ (Guglielmi et al., 2015). Air effective permeabilities determined by air depressurization of the Cosquer cave give permeability of the unsaturated zone at the massif scale, i.e. at a mesoscale around 100 m length scale and include fractures and karst conduits. These potentially permeable geological features have been recognized in-situ on the cliff and the plateau around the cave. However, we calculated that the permeability of the massif surrounding the cave is equivalent to a fracture of small hydraulic aperture (1 equivalent fracture around $150 \mu\text{m}$), or an equivalent pipe of very small radius (between 1.5 and 2.7 mm). These relatively small values show that most voids or fractures may be clogged or not connected in the unsaturated zone. This is consistent with in situ geomorphological observations at the outcrop, where karst voids are generally filled up by calcite and clay minerals.





610 **Figure 10: Mean air effective permeability (m^2) between July and August as a function of cumulated versus cumulative rainfall at Cassis from April to August (mm) for years 2015 to 2020 (for model $A/L = 50$ m)**

Fig. 11 shows the mean air effective permeability calculated for each year over July and August compared to the cumulative rainfall over April to August (5 months). We computed cumulative rainfall for several periods lasting over the slow cave air pressure decrease period, beginning on 1st of May, April or March and ending on 31st August (end of the period used for permeability calculation). The trends were similar and the best graphical view is given in Fig. 11. This figure shows a relationship between the air effective permeability of the unsaturated zone and the cumulative rainfall. There are no data available on the moisture content in the unsaturated zone but it may be assumed that the higher the cumulative rainfall is, the higher the moisture in the unsaturated zone should be. A lower water saturation in the limestone massif is then expected during drier years, i.e. years with longer spring and summer droughts. Consequently, drier years should have a higher relative permeability to air because there is less groundwater in contact with grains and more air connection between the pores (Kuang et al., 2013; Weeks, 1978). It may also increase the number of flow paths or open a preferential airflow path through the karstic unsaturated zone. On the other hand, the rainfall infiltrates, fills the porosity and limits the air effective permeability of the unsaturated zone.

625 ~~Cumulated rainfalls from Cumulative rainfall over~~ April to August vary ranged from 90 to 390 mm ~~fover~~ the six years studied. Mean interannual cumulated rainfalls, while the 30-year average was observed equal to 170 mm (1991 to 2020, Météo-France 2023) ~~have been observed equal to 170 mm.~~ Four out of six years ~~over six~~ (2015, 2016, 2017, 2019) ~~have a cumulated amount lower than the mean, including 3 years had below-average cumulative rainfall,~~ with drought, ~~and 1 periods.~~ In contrast, one year (2018) was highly very rainy. The expected trend ~~can be~~ clearly ~~happens~~ observed in Fig. 11: air effective permeability of the unsaturated zone increases systematically when rainfall amount decreases. This trend is not linear along the whole range of ~~cumulated rainfalls~~ cumulative rainfall variations. Years 2019, 2020 and 2018 show a large increase in rainfall amount but a small decrease in air effective permeability, whereas drier years show a larger increase in permeability. As a result, the cave

air pressure decreases faster in dryier years and so the water level inside the Cosquer cave rises faster. Dryier years could lead to a total loss of overpressure in the cave.

7 Summary and conclusion

635 Airflows in decorated caves impact wall art conservation. In karst systems, air can flow through either the karst network or open and connected fractures or through the porous carbonates rocks. This paper givesproposes the first conceptual model and quantification of airflows through the rock massif surrounding the Cosquer cave, including flows through the saturated zone and the unsaturated zone. Data show that the Cosquer cave air pressure is higher than atmospheric pressure. In response, the water level in the cave is lower than the sea level. Three types of cave air pressure variations at 3three different time scales
640 awere identified:

– (1) seasonal variations consisting inof a succession of pressurization events from early autumn to late spring. Pressurization events consist inof massive air inflows resulting in a remarkable increase ofin the cave air pressure that is immediately followed by a rapid pressure drop but with a positive budget showing an increase in air quantity in the cave;

– (2) a slow air pressure decrease from late spring to early autumn;

645 – (3)-a daily cave air pressure and water level variations forced by sea tides.

We showed that tidal variations in cave air pressure can be used to calculate the geometrieair-filled volume of air-of the cave (for a given water surface area) by applying the perfect gases law at low and high tides. The mean cave volume calculated in summer is around 5000 m³, which is consistent with a rough estimation made from the 3D speleological hand-survey maps and cross-sections. It seems that archaeologists have explored all the main rooms of this decorated cave.

650 Using the cave volume results, we calculated the air flowing into and out of the cave. The Cosquer cave is closed off by sumps in the saturated part of the karst below the sea level and by the low permeability of the rock in the unsaturated zone surrounding the cave. The high airflow rates during pressurization events (e.g. up to 222 m³/h for the case studied in April-May 2018) revealed that air flows through large voids in the saturated zone of the karst. These results are a first step to-studytowards
studying the mechanism that generates the overpressure inside the cave. Further studies will focus on the relationship between

655 the pressurization events and the assumed link with the sea waves breaking on the cliff outside the cave. Following the first observations by Malaurent and Vouvé (2003), we confirm that air may use karst or inception horizons on bedding planes s to flow a few meters below the sea level across the limestone massif. Consequently, air renewal occurs during pressurization events but at a low rate (3.4 to 0.8 y⁻¹). However, this air renewal may differ from one area to another: the volume of outside air injected into the cave during pressurization events is of the same order of magnitude order as the volume of the upper
660 conduit (about 1200 m³) and may therefore not reach the decorated rooms located in the lower part of the cave. The 3D scan of the cave will give insight ofinto the volumes of the different areas of the cave. Moreover, part of the air flowing in is
flowingflows out of the cave immediately after the pressurization peak. Further air quality measurements, such as radon concentration, will help to show whether the air exiting is newly entered air or mixed with pre-event air (Fernández et al.,

1986; Cigna, 2005; Kowalczk and Froelich, 2010). In addition, excluding the periods with pressurization events, the gradual
665 decrease of the air pressure over the summer is explained by the slow air outflow through the unsaturated zone, which does
not necessarily involve air renewal.

Using the low rates of air outflowing during the slow pressure decreases (around $6 \text{ m}^3/\text{d}$), we estimated the air effective
permeability of the rock massif with ~~the~~ Darcy's law for several assumptions of flows through the unsaturated zone. Rock
effective permeability was found to be in the range $4.6 \cdot 10^{-15}$ to $50.0 \cdot 10^{-15} \text{ m}^2$ depending on the assumed geometry. Although
670 karstified fractures are visible on the surface of the limestone massif, these are sealed by calcite or clay minerals, which limits
permeability. This is in line with the observation of a permanently over-pressurized cave. We showed that the massif mean air
effective permeability over the months of July and August varies from year to year as a function of the water saturation of the
unsaturated zone by comparing effective permeability with the cumulative rainfalls over spring and summer. A decrease in
rainfall leads to an increase in the air permeability of the massif, and therefore to an increase in the air outflow rate through
675 the unsaturated zone of the massif.

~~By this~~ Through these first six years of measurements in this decorated cave, we show that droughts periods and dryier spring
and summer years impact the conservation of the ~~paleolithic painting~~ Paleolithic paintings and engravings on the walls close
to the ~~pools~~ water level ~~of the pools~~. This result is of utmost importance in the ~~frame of the~~ current context of climate change.
In the future, an increasing evapotranspiration rate and longer dry periods are expected in the Mediterranean basin (Cramer et
680 al., 2020). Within these conditions, ~~pools~~ water level of the pools in Cosquer cave should then rise faster during spring and
summer, and hence the decorated walls and archaeological artefacts on the floor would face longer flooding periods. The effect
may be even worse if clay infillings in karst voids start drying and cracks open across the unsaturated zone, transforming the
current slow air pressure decrease ~~into a~~ rapid decrease. Nevertheless, predicting water level in the future in the Cosquer
cave remains hard because other parameters drive the variations, such as the process of air inflow through the saturated zone.
685 The striking example of the Cosquer cave also shows that inland (not coastal) decorated caves s could be affected by changes
in air circulation through the unsaturated zone in the future in a climate change context, which will affect the water content in
the unsaturated zone governing the air permeability. ~~Its~~ This supports the need to observe our changing world by dedicated
data acquisition (Gaillardet et al., 2018).

Appendix A-: tide filter

690 As seen above, cave air pressure and water level vary with tides. We used this behavior to calculate the variation of the volume
of air in the cave. This calculation ~~is was~~ done at high and low tide to maximize the amplitudes of these variations and minimize
measurement uncertainties. To determine the times of the tidal peaks, the tidal signal h_t is isolated from the sea level h_s using
the TTide python package (Pawlowicz et al., 2002). The synthetic tide signal $h_t(t)$ is then derived:

Tide is low when:-

$$695 \quad \frac{dh_t(t_{lt})}{dt} = 0 \quad \text{and} \quad \frac{dh_t(t_{lt-1})}{dt} < 0, \quad (\text{A1})$$

And tide is high when:-

$$\frac{dh_t(t_{ht})}{dt} = 0 \quad \text{and} \quad \frac{dh_t(t_{ht-1})}{dt} > 0, \quad (\text{A2})$$

Where t_{lt} and t_{ht} are times of low tide and high tide.

Appendix B: uncertainties calculation

700 Propagation of uncertainty provides the standard deviation for a sum or difference of measured parameters:

$$\sigma_f = \sqrt{\sum_{i=1}^n \sigma(x_i)}, \quad (\text{B1})$$

And for product and division:

$$\sigma_f = |f| \sqrt{\sum_{i=1}^n \left(\frac{\sigma(x_i)}{x_i}\right)^2}, \quad (\text{B2})$$

705 Where f is the resulting value, x_i is the measured parameter and $\sigma(x_i)$ its standard deviation. Standard deviation of parameters x_i is given by:

$$\sigma(x_i) = \frac{\delta_i}{\sqrt{3}}, \quad (\text{B3})$$

With δ_i the typical uncertainty of the sensor i . Using Eq. (C1) and Eq. (C2) the typical uncertainty for the cave volume V_l (Eq. (5)) is:

$$710 \quad \sigma_{V_l} = V_l \sqrt{\left(\frac{\sigma(\Delta h_w)}{\Delta h_w}\right)^2 + \left(\frac{\sigma(P_{ah})}{P_{ah}}\right)^2 + \left(\frac{\sigma(T_{al})}{T_{al}}\right)^2 + \left(\frac{u(K)}{K}\right)^2}, \quad (\text{B4})$$

Where:

$$\left(\frac{u(K)}{K}\right)^2 = \left(\frac{P_{ah}T_{al} \sqrt{\left(\frac{\sigma(P_{ah})}{P_{ah}}\right)^2 + \left(\frac{\sigma(T_{al})}{T_{al}}\right)^2} + P_{al}T_{ah} \sqrt{\left(\frac{\sigma(P_{al})}{P_{al}}\right)^2 + \left(\frac{\sigma(T_{ah})}{T_{ah}}\right)^2}}{P_{ah}T_{al} - P_{al}T_{ah}} \right)^2$$

and

$$\sigma(\Delta h_w) = \frac{\sqrt{2(\sigma(P_a)^2 + \sigma(P_w)^2)}}{\rho_{sea} g}$$

715 The use of the weighted mean reduces the contribution of results with high uncertainties:

$$\bar{V} = \frac{\sum_{j=1}^n \frac{V_{lj}}{\sigma^2 + \sigma_{V_{lj}}^2}}{\sum_{j=1}^n \frac{1}{\sigma^2 + \sigma_{V_{lj}}^2}}, \quad (\text{B5})$$

Where σ is the standard deviation of V_l . The weighted variance of \bar{V} is given by:

$$\sigma_{\bar{V}}^2 = \frac{\sum_{j=1}^n \frac{1}{\sigma^2 + \sigma_{V_l j}^2}}{\left(\sum_{j=1}^n \frac{1}{\sigma^2 + \sigma_{V_l j}^2} \right)^2}, \quad (\text{B6})$$

Volume result is within the range:

$$720 \quad [\bar{V} - \sigma_{\bar{V}}; \bar{V} + \sigma_{\bar{V}}], \quad (\text{B7})$$

725 *Code and data availability*:- The codes developed for this research and code to reproduce the figures are available via gitlab at <https://gitlab.osupytheas.fr/hpellet/chapitre-3-mesoscale-permeability-variations>. [The](#) Port-Miou observatory dataset can be accessed via https://data.oreme.org/snokarst/snokarst_map. Meteorological data can be ~~requested via~~ <https://donneespubliques.meteofrance.fr/> ~~with fees~~ [accessed via https://meteo.data.gouv.fr/](https://meteo.data.gouv.fr/). Data from the Cosquer cave are confidential.

730 ~~Authors contribution~~ *Author contributions*: HP, BA and PH conceptualized the research goals and developed the methodology. BA and ST found the funding for the project. HP developed the code and prepared vizualisation and GG provide programming support and analysis tools. HP prepared the original draft with contribution~~s~~ from BA, PH and ST.

Competing interest~~s~~: The authors declare that they have no conflict of interest.

Acknowledgements

735 We would like to thank the DRAC PACA (Service Régional de l'Archéologie, Conservation Régionale des Monuments Historiques), which supported this study by authorizing access to the cave and funded the fieldwork and some of the measurement devices. This study was also supported by ~~the~~ Aix-Marseille University (AMU) and the Laboratoire de Recherche des Monuments Historiques (LRMH, Ministère de la Culture). This work received support from the French government under the France 2030 investment plan, as part of the Initiative d'Excellence d'Aix-Marseille Université - A*MIDEX - Institute for Mediterranean Archaeology ARKAIA (AMX-19-IET-003). Hugo Pellet ~~has been~~ was awarded a PhD grant from AMU and LRMH. This work was performed within the framework of the Port-Miou observation site, part of the KARST observatory network (www.sokarst.org) initiative from the INSU/CNRS, which aims to strengthen knowledge-sharing and promote cross-disciplinary research on karst systems. This study was also performed in the frame of the interdisciplinary research team Equipe Grotte Cosquer supervised by C. Montoya (PCR 2022-2023). We thank the Conservatoire du Littoral, the Calanques National Park, ~~the~~ Cassis city and Météo-France. This paper benefited from the work of Bertrand Chazaly on 745 the 3D scan of the cave, Caroline Font on QGIS and Sylvain Rassat on the 3D model. We thank the Immadras diving team, ~~directed by Luc Vanrell~~ and ~~Orsane Vanrell,~~ the DRASSM for their help in field studies. We also thank~~s~~ Sophie Viseur, François Fournier, Philippe Léonide, Baptiste Suchéras-Marx, Lamarche Juliette, Paul Namongo Soro (AMU), and Luc Vanrell and Michel Olive (~~DRAC,~~ Immadras, DRAC), for ~~the enriching conversations~~ helpful discussions.

References

- 750 Andrieux, C.: Étude du climat des cavités naturelles dans les roches calcaires (Grotte de Niaux, Ariège). *Gallia préhistoire* 20, 301–322. <https://doi.org/10.3406/galip.1977.1564>, 1977.
- Arfib, B., Charlier, J.-B.: Insights into saline intrusion and freshwater resources in coastal karstic aquifers using a lumped Rainfall–Discharge–Salinity model (the Port-Miou brackish spring, SE France). *Journal of Hydrology* 540, 148–161. <https://doi.org/10.1016/j.jhydrol.2016.06.010>, 2016.
- 755 Arfib, B., Mocochain, L.: Deep flooded karst of south-eastern France – Genesis and hydrodynamic functioning. *Karstologia* 79, 35–44. <https://hal.science/hal-03779651v2>, 2022.
- Arfib, B., Vanrell, L., Olive, M.: New insights into the Cosquer art cave hydrogeological functioning (France), in: Eurokarst. Besançon, France, p. 4. <https://hal.archives-ouvertes.fr/hal-01919939>, 2018.
- Badino, G.: Underground Meteorology-“What’s the weather underground?” *Acta Carsologica* 39, 427–448. <https://doi.org/10.3986/ac.v39i3.74>, 2010.
- 760 Baffier, D.: La grotte Chauvet : conservation d’un patrimoine. *Bulletin de la Société préhistorique française* 102, 11–16. <https://doi.org/10.3406/bspf.2005.13332>, 2005.
- Baker, A., Genty, D.: Environmental pressures on conserving cave speleothems: effects of changing surface land use and increased cave tourism. *Journal of Environmental Management* 53, 165–175. <https://doi.org/10.1006/jema.1998.0208>, 1998.
- 765 Benjamin, J., Rovere, A., Fontana, A., Furlani, S., Vacchi, M., Inglis, R.H., Galili, E., Antonioli, F., Sivan, D., Miko, S., Mourtzas, N., Felja, I., Meredith-Williams, M., Goodman-Tchernov, B., Kolaiti, E., Anzidei, M., Gehrels, R.: Late Quaternary sea-level changes and early human societies in the central and eastern Mediterranean Basin: An interdisciplinary review. *Quaternary International* 449, 29–57. <https://doi.org/10.1016/j.quaint.2017.06.025>, 2017.
- 770 Borderie, F., Alaoui-Sossé, B., Aleya, L.: Heritage materials and biofouling mitigation through UV-C irradiation in show caves: state-of-the-art practices and future challenges. *Environmental Science and Pollution Research* 22, 4144–4172. <https://doi.org/10.1007/s11356-014-4001-6>, 2015.
- Borgomano, J., Masse, J.-P., Fenerci-Masse, M., Fournier, F.: Petrophysics of lower cretaceous platform carbonate outcrops in provence (se france): implications for carbonate reservoir characterisation. *Journal of Petroleum Geology* 36, 5–41. <https://doi.org/10.1111/jpg.12540>, 2013.
- 775 Bourges, F., Enjalbert, J.: Suivi environnemental des grottes ornées paléolithiques d’Occitanie en 2020a. *Drac Occitanie* , p. 162, 2020.
- Bourges, F., Genthon, P., Genty, D., Lorblanchet, M., Mauduit, E., D’Hulst, D.: Conservation of prehistoric caves and stability of their inner climate: Lessons from Chauvet and other French caves. *Science of The Total Environment* 493, 79–91. <https://doi.org/10.1016/j.scitotenv.2014.05.137>, 2014.
- 780

- Bourges, F., Genthon, P., Mangin, A., D'Hulst, D.: Microclimates of l'Aven d'Orgnac and other French limestone caves (Chauvet, Esparros, Marsoulas). *International Journal of Climatology* 26, 1651–1670. <https://doi.org/10.1002/joc.1327>, 2006a.
- 785 Bourges, F., Genty, D., Perrier, F., Lartiges, B., Régnier, É., François, A., Leplat, J., Tournon, S., Boust, F., Massault, M., Delmotte, M., Dumoulin, J.-P., Girault, F., Ramonet, M., Chauveau, C., Rodrigues, P.: Hydrogeological control on carbon dioxide input into the atmosphere of the Chauvet-Pont d'Arc cave. *Science of The Total Environment* 716, 136844. <https://doi.org/10.1016/j.scitotenv.2020.136844>, 2020b.
- Bourges, F., Mangin, A., D'Hulst, D., Genthon, P.: La conservation de l'art pariétal préhistorique des grottes, les raisons d'un miracle. *Bulletin de la Société préhistorique Ariège-Pyrénées, Préhistoire, Art et Sociétés* 61, 43–50, 2006b.
- 790 Castagnino Berlinghieri, E.F., Antonioli, F., Bailey, G.: Italy: The Archaeology of Palaeoshorelines, Coastal Caves and Seafaring Connections, in: Bailey, G., Galanidou, N., Peeters, H., Jöns, H., Mennenga, M. (Eds.), *The Archaeology of Europe's Drowned Landscapes*, Coastal Research Library. Springer International Publishing, Cham, pp. 321–340. https://doi.org/10.1007/978-3-030-37367-2_16, 2020.
- Chapman, S., Cowling, T.G.: *The Mathematical Theory of Non-uniform Gases: An Account of the Kinetic Theory of Viscosity, Thermal Conduction and Diffusion in Gases*. Cambridge University Press, 1990.
- 795 [Charbeneau, R.J.: Groundwater Hydraulics and Pollutant Transport. Waveland Press, 2006.](#)
- Chow, V., Maidment, D., Mays, L.: *Applied Hydrology*, 2nd Edition. McGraw-Hill Companies, Incorporated.
- Cigna, A.A., 1993. Environmental management of tourist caves: The examples of Grotta di Castellana and Grotta Grande del Vento, Italy. *Environmental Geology* 21, 173–180. <https://doi.org/10.1007/BF00775302>, 2013.
- 800 Cigna, A.A.: Radon in Caves. *International Journal of Speleology* 34, 1–18, 2005.
- Clottes, J., Beltrán, A., Courtin, J., Cosquer, H.: La Grotte Cosquer (Cap Morgiou, Marseille). *Bulletin de la Société Préhistorique Française* 89, 98–128. <https://doi.org/10.3406/bspf.1992.10536>, 1992a.
- Clottes, J., Courtin, J., Collina-Girard, J., Valladas, H.: News from Cosquer Cave: climatic studies, recording, sampling, dates. *Antiquity* 71, 321–326, 1997.
- 805 Clottes, J., Courtin, J., Valladas, H., Cachier, H., Mercier, N., Arnold, M.: La grotte Cosquer datée. *Bulletin de la Société Préhistorique Française* 89, 230–234. <https://doi.org/10.3406/bspf.1992.9527>, 1992b.
- Cochard, J., Léonide, P., Borgomano, J., Guglielmi, Y., Massonnat, G., Rolando, J., Marié, L., Pasquier, A.: Reservoir properties of barremian – aptian urgonian limestones, SE France, part 1: influence of structural history on porosity-permeability variations. *Journal of Petroleum Geology* 43, 75–94. <https://doi.org/10.1111/jpg.12750>, 2020.
- 810 Cramer, W., Guiot, J., Marini, K., Azzopardi, B., Balzan, M.V., Semia Cherif, Doblaz-Miranda, E., Santos, M.D., Dobrinski, P., Falder, M., Hassoun, A.E.R., Giupponi, C., Koubi, V., Lange, M., Lionello, P., Llasat, M.C., Moncada, S., Mrabet, R., Schlomit Paz, Savé, R., Snoussi, M., Toreti, A., Vafeidis, A.T., Xoplaki, E.: Summary for Policymakers of the First Mediterranean Assessment Report (MAR1) of the Mediterranean Experts on Climate and environmental Change

- (MedECC). Climate and Environmental Change in the Mediterranean Basin – Current Situation and Risks for the Future. First Mediterranean Assessment Report 11–40. <https://doi.org/10.5281/ZENODO.5113087>, 2020.
- 815 Danquigny, C., Coqueret, J., Massonnat, G., Léonide, P., Barbier, M., Dal Soglio, L., Lesueur, J.L.: A Smart Analytical and Numerical Interpretation of Injection Tests in Unsaturated, Fractured and Karstified Carbonate Reservoirs, in: Andreo, B., Barberá, J.A., Durán-Valseo, J.J., Gil-Márquez, J.M., Mudarra, M. (Eds.), *Advances in Karst Science*. Presented at the EuroKarst 2022, Málaga, Springer International Publishing, Cham, pp. 115–122.
- 820 https://doi.org/10.1007/978-3-031-16879-6_17, 2023.
- Delporte, H., Clottes, J., Courtin, J.: La grotte Cosquer, peintures et gravures de la caverne engloutie. *Bulletin de la Société Préhistorique Française* 91, 173–174, 1994.
- Domínguez-Villar, D., Lojen, S., Krklec, K., Baker, A., Boyce, A.J., Fairchild, I.J.: Is global warming affecting cave temperatures? Experimental and model data from a paradigmatic case study. *Climate Dynamics* 45, 569–581.
- 825 <https://doi.org/10.1007/s00382-014-2226-1>, 2015.
- Fernández, P.L., Gutierrez, I., Quindós, L.S., Soto, J., Villar, E.: Natural ventilation of the Paintings Room in the Altamira cave. *Nature* 321, 586–588. <https://doi.org/10.1038/321586a0>, 1986.
- Filipponi, M., Jeannin, P.-Y., Tacher, L.: Evidence of inception horizons in karst conduit networks. *Geomorphology* 106, 86–99. <https://doi.org/10.1016/j.geomorph.2008.09.010>, 2009.
- 830 Ford, D., Williams, P.: *Karst Hydrogeology and Geomorphology*, John Wiley&Sons, Ltd. ed. England.
- Gabrovšek, F., 2023. How do caves breathe: The airflow patterns in karst underground. *PLoS ONE* 18, 1–22. <https://doi.org/10.1371/journal.pone.0283767>, 2007.
- Gaillardet, J., Braud, I., Hankard, F., Anquetin, S., Bour, O., Dorfliger, N., De Dreuz, J.R., Galle, S., Galy, C., Gogo, S., Gourcy, L., Habets, F., Laggoun, F., Longuevergne, L., Le Borgne, T., Naaim-Bouvet, F., Nord, G., Simonneaux, V.,
- 835 Six, D., Tallec, T., Valentin, C., Abril, G., Allemand, P., Arènes, A., Arfib, B., Arnaud, L., Arnaud, N., Arnaud, P., Audry, S., Comte, V.B., Batiot, C., Battais, A., Bellot, H., Bernard, E., Bertrand, C., Bessière, H., Binet, S., Bodin, J., Bodin, X., Boithias, L., Bouchez, J., Boudevillain, B., Moussa, I.B., Branger, F., Braun, J.J., Brunet, P., Caceres, B., Calmels, D., Cappelaere, B., Celle-Jeanton, H., Chabaux, F., Chalikakis, K., Champollion, C., Copard, Y., Cotel, C., Davy, P., Deline, P., Delrieu, G., Demarty, J., Dessert, C., Dumont, M., Emblanch, C., Ezzahar, J., Estèves, M.,
- 840 Favier, V., Fauchoux, M., Filizola, N., Flammarion, P., Floury, P., Fovet, O., Fournier, M., Francez, A.J., Gandois, L., Gascuel, C., Gayer, E., Genthon, C., Gérard, M.F., Gilbert, D., Gouttevin, I., Grippa, M., Gruau, G., Jardani, A., Jeanneau, L., Join, J.L., Jourde, H., Karbou, F., Labat, D., Lagadeuc, Y., Lajeunesse, E., Lastennet, R., Lavado, W., Lawin, E., Lebel, T., Le Bouteiller, C., Legout, C., Lejeune, Y., Le Meur, E., Le Moigne, N., Lions, J., Lucas, A., Malet, J.P., Marais-Sicre, C., Maréchal, J.C., Marlin, C., Martin, P., Martins, J., Martinez, J.M., Massei, N., Mauclerc, A., Mazzilli, N., Molénat, J., Moreira-Turcq, P., Mougou, E., Morin, S., Ngoupayou, J.N., Panthou, G., Peugeot, C.,
- 845 Picard, G., Pierret, M.C., Porel, G., Probst, A., Probst, J.L., Rabatel, A., Raclot, D., Ravanel, L., Rejiba, F., René, P., Ribolzi, O., Riotte, J., Rivière, A., Robain, H., Ruiz, L., Sanchez-Perez, J.M., Santini, W., Sauvage, S., Schoeneich,

- P., Seidel, J.L., Sekhar, M., Sengtaheuanghoung, O., Silvera, N., Steinmann, M., Soruco, A., Tallec, G., Thibert, E., Lao, D.V., Vincent, C., Viville, D., Wagnon, P., Zitouna, R.: OZCAR: The French Network of Critical Zone
850 Observatories. *Vadose Zone Journal* 17, 1–24. <https://doi.org/10.2136/vzj2018.04.0067>, 2018.
- Gázquez, F., Quindós, L., Rábago, D., Fuente, I., Celaya, S., Sainz, C.: The role of cave ventilation in the triple oxygen and hydrogen isotope composition of condensation waters in Altamira Cave, northern Spain. *Journal of Hydrology* 606, 127416. <https://doi.org/10.1016/j.jhydrol.2021.127416>, 2022.
- Germinario, L., Oguchi, C.T.: Underground salt weathering of heritage stone: lithological and environmental constraints on
855 the formation of sulfate efflorescences and crusts. *Journal of Cultural Heritage* 49, 85–93. <https://doi.org/10.1016/j.culher.2021.02.011>, 2021.
- Giordan, D., Godone, D., Baldo, M., Piras, M., Grasso, N., Zerbetto, R.: Survey Solutions for 3D Acquisition and Representation of Artificial and Natural Caves. *Applied Sciences* 11, 6482. <https://doi.org/10.3390/app11146482>, 2021.
- 860 Godin, G. *The Analysis of Tides*. University of Toronto Press, 1972.
- Guglielmi, Y., Cappa, F., Avouac, J.-P., Henry, P., Elsworth, D. Seismicity triggered by fluid injection–induced aseismic slip. *Science* 348, 1224–1226. <https://doi.org/10.1126/science.aab0476>, 2015.
- Houillon, N., Lastennet, R., Denis, A., Malaurent, P., Minvielle, S., Peyraube, N. Assessing cave internal aerology in understanding carbon dioxide (CO₂) dynamics: implications on calcite mass variation on the wall of Lascaux Cave
865 (France). *Environmental Earth Sciences* 76, 170. <https://doi.org/10.1007/s12665-017-6498-8>, 2017.
- Huang, J.: A Simple Accurate Formula for Calculating Saturation Vapor Pressure of Water and Ice. *Journal of Applied Meteorology and Climatology* 57, 1265–1272. <https://doi.org/10.1175/JAMC-D-17-0334.1>, 2018.
- Jeanne, P., Guglielmi, Y., Cappa, F. Dissimilar properties within a carbonate-reservoir’s small fault zone, and their impact on the pressurization and leakage associated with CO₂ injection. *Journal of Structural Geology* 47, 25–35.
870 <https://doi.org/10.1016/j.jsg.2012.10.010>, 2013.
- Jiao, J.J., Li, H.: Breathing of coastal vadose zone induced by sea level fluctuations. *Geophysical Research Letters* 31, 1–4. <https://doi.org/10.1029/2004GL019572>, 2004.
- Jourde, H., Massei, N., Mazzilli, N., Binet, S., Batiot-Guilhe, C., Labat, D., Steinmann, M., Bailly-Comte, V., Seidel, J.L., Arfib, B., Charlier, J.B., Guinot, V., Jardani, A., Fournier, M., Aliouache, M., Babic, M., Bertrand, C., Brunet, P.,
875 Boyer, J.F., Bricquet, J.P., Camboulive, T., Carrière, S.D., Celle-Jeanton, H., Chalikakis, K., Chen, N., Cholet, C., Clauzon, V., Soglio, L.D., Danquigny, C., Défargue, C., Denimal, S., Emblanch, C., Hernandez, F., Gillon, M., Gutierrez, A., Sanchez, L.H., Hery, M., Houillon, N., Johannet, A., Jouves, J., Jozja, N., Ladouche, B., Leonardi, V., Lorette, G., Loup, C., Marchand, P., de Montety, V., Muller, R., Ollivier, C., Sivelles, V., Lastennet, R., Lecoq, N., Maréchal, J.C., Perotin, L., Perrin, J., Petre, M.A., Peyraube, N., Pistre, S., Plagnes, V., Probst, A., Probst, J.L.,
880 Simler, R., Stefani, V., Valdes-Lao, D., Viseur, S., Wang, X.: SNO KARST: A French Network of Observatories for

- the Multidisciplinary Study of Critical Zone Processes in Karst Watersheds and Aquifers. *Vadose Zone Journal* 17, 1–18. <https://doi.org/10.2136/vzj2018.04.0094>, 2018.
- Jouves, J., Viseur, S., Arfib, B., Baudement, C., Camus, H., Collon, P., Guglielmi, Y.: Speleogenesis, geometry, and topology of caves: A quantitative study of 3D karst conduits. *Geomorphology* 298, 86–106. <https://doi.org/10.1016/j.geomorph.2017.09.019>, 2017.
- 885 Kowalczyk, A.J., Froelich, P.N.: Cave air ventilation and CO₂ outgassing by radon-222 modeling: How fast do caves breathe? *Earth and Planetary Science Letters* 289, 209–219. <https://doi.org/10.1016/j.epsl.2009.11.010>, 2010.
- Kuang, X., Jiao, J.J., Li, H.: Review on airflow in unsaturated zones induced by natural forcings. *Water Resources Research* 49, 6137–6165. <https://doi.org/10.1002/wrcr.20416>, 2013.
- 890 Kukuljan, L., Gabrovšek, F., Covington, M.D., Johnston, V.E.: CO₂ dynamics and heterogeneity in a cave atmosphere: role of ventilation patterns and airflow pathways. *Theoretical and Applied Climatology* 146, 91–109. <https://doi.org/10.1007/s00704-021-03722-w>, 2021.
- Lacanette, D., Bassel, L., Salmon, F., Portais, J.-C., Bousquet, B., Chapoulie, R., Ammari, F., Malaurent, P., Ferrier, C.: Climate of a cave laboratory representative for rock art caves in the Vézère area (south-west France). *International Journal of Speleology* 52, 85–100. <https://doi.org/10.5038/1827-806X.52.2.2442>, 2023.
- 895 Lamarche, J., Lavenu, A.P.C., Gauthier, B.D.M., Guglielmi, Y., Jayet, O.: Relationships between fracture patterns, geodynamics and mechanical stratigraphy in Carbonates (South-East Basin, France). *Tectonophysics* 581, 231–245. <https://doi.org/10.1016/j.tecto.2012.06.042>, 2012.
- Lambeck, K., Bard, E.: Sea-level change along the French Mediterranean coast for the past 30 000 years. *Earth and Planetary Science Letters* 175, 203–222. [https://doi.org/10.1016/S0012-821X\(99\)00289-7](https://doi.org/10.1016/S0012-821X(99)00289-7), 2000.
- 900 [Lang, S.: Fundamentals of differential geometry, Graduate texts in mathematics. Springer, New York Berlin Heidelberg, 1999](#)
- Lange, N.A., Forker, G.M.: *Handbook of Chemistry*, 10th ed. McGraw-Hill Book Company, Inc, New York, Toronto, London, 1967.
- Lefèvre, M.: La “maladie verte” de Lascaux. *Studies in Conservation* 19, 126–156, 1974.
- 905 Lepinay, C., Mihajlovski, A., Touron, S., Seyer, D., Bousta, F., Di Martino, P. Bacterial diversity associated with saline efflorescences damaging the walls of a French decorated prehistoric cave registered as a World Cultural Heritage Site. *International Biodeterioration & Biodegradation* 130, 55–64. <https://doi.org/10.1016/j.ibiod.2018.03.016>, 2018.
- Leplat, J., François, A., Touron, S., Galant, P., Bousta, F.: Aerobiological behavior of Paleolithic decorated caves: a comparative study of five caves in the Gard department (France). *Aerobiologia* 35, 105–124. <https://doi.org/10.1007/s10453-018-9546-2>, 2019.
- 910 Liñán, C., del Rosal, Y., Carrasco, F., Vadillo, I., Benavente, J., Ojeda, L.: Highlighting the importance of transitional ventilation regimes in the management of Mediterranean show caves (Nerja-Pintada system, southern Spain). *Science of The Total Environment* 631–632, 1268–1278. <https://doi.org/10.1016/j.scitotenv.2018.02.304>, 2018.
- Lismonde, B.: *Climatologie du monde souterrain.*, 1st ed. Comité Départemental de Spéléologie de l’Isère, Grenoble, 2002.

- 915 Luetscher, M., Jeannin, P.-Y.: The role of winter air circulations for the presence of subsurface ice accumulations: an example from Monlési ice cave (Switzerland). *Theoretical and Applied Karstology* 17, 19–25, 2004.
- Malaurent, P., Brunet, J., Lacanette, D., Caltagirone, J.-P.: Contribution of numerical modelling of environmental parameters to the conservation of prehistoric cave paintings: the example of Lascaux Cave. *Conservation and Management of Archaeological Sites* 8, 59–76. <https://doi.org/10.1179/175355206x202976>, 2006.
- 920 Malaurent, P., Vouvé, J.: Caractérisation de la dynamique des transferts dans les galeries de la grotte H. Cosquer. Conséquences pour la conservation (No. G345). Ministère de la culture et de la communication - Laboratoire LRMH and Université Bordeaux I, Talence, France, p. 17, 2003.
- Mangin, A., Andrieux, C.: Les Conditions hydrogéologiques et climatiques d'environnement des œuvres pariétales préhistoriques, in: *L'Art des cavernes: Atlas des grottes ornées paléolithiques françaises*. Imprimerie nationale, Paris, pp. 53–56, 1984.
- 925
- Martin-Sanchez, P.M., Nováková, A., Bastian, F., Alabouvette, C., Saiz-Jimenez, C.: Use of Biocides for the Control of Fungal Outbreaks in Subterranean Environments: The Case of the Lascaux Cave in France. *Environmental Science & Technology* 46, 3762–3770. <https://doi.org/10.1021/es2040625>, 2012.
- Masse, J.-P., Frau, C., Tendil, A.J.-B., Fenerci-Masse, M.: Evidence for three successive upper Barremian–lower Aptian rudist faunas in the Urgonian-type deposits of southeastern France and their stratigraphic value. *Cretaceous Research* 115, 104561. <https://doi.org/10.1016/j.cretres.2020.104561>, 2020.
- 930
- Massmann, J. W.: Applying Groundwater Flow Models in Vapor Extraction System Design. *Journal of Environmental Engineering* 115, 129–149. 10.1061/(ASCE)0733-9372(1989)115:1(129), 1989.
- Matonti, C., Guglielmi, Y., Viseur, S., Bruna, P.O., Borgomano, J., Dahl, C., Marié, L.: Heterogeneities and diagenetic control on the spatial distribution of carbonate rocks acoustic properties at the outcrop scale. *Tectonophysics* 638, 94–111. <https://doi.org/10.1016/j.tecto.2014.10.020>, 2015.
- 935
- Mattey, D.P., Fisher, R., Atkinson, T.C., Latin, J.-P., Durrell, R., Ainsworth, M., Lowry, D., Fairchild, I.J.: Methane in underground air in Gibraltar karst. *Earth and Planetary Science Letters* 374, 71–80. <https://doi.org/10.1016/j.epsl.2013.05.011>, 2013.
- 940
- Météo-France: Meteorological station 13022003, La Gardiole, Cassis - (Dataset). https://donneespubliques.meteofrance.fr/FichesClim/FICHECLIM_13022003.pdf, 2023.
- Mohammed Oludare, I., Pradhan, B.: A decade of modern cave surveying with terrestrial laser scanning: A review of sensors, method and application development. *International Journal of Speleology* 45, 71–88. <https://doi.org/10.5038/1827-806X.45.1.1923>, 2016.
- 945
- Monteith, J.L., Unsworth, M.H. (Eds.): Principles of Environmental Physics, in: *Principles of Environmental Physics (Fourth Edition)*. Academic Press, Boston. <https://doi.org/10.1016/B978-0-12-386910-4.00019-6>, 2013.
- Olive, M., Vanrell, L.: La caverne et ses différents espaces. *Dossiers d'Archéologie, Faton* 408, 26–29, 2021.

- Pawlowicz, R., Beardsley, B., Lentz, S.: Classical tidal harmonic analysis including error estimates in MATLAB using T_TIDE. *Computers & Geosciences* 28, 929-937. [10.1016/S0098-3004\(02\)00013-4](https://doi.org/10.1016/S0098-3004(02)00013-4), 2002.
- 950 Perrier, F., Richon, P., Gautam, U., Tiwari, D.R., Shrestha, P., Sapkota, S.N.: Seasonal variations of natural ventilation and radon-222 exhalation in a slightly rising dead-end tunnel. *Journal of Environmental Radioactivity* 97, 220–235. <https://doi.org/10.1016/j.jenvrad.2007.06.003>, 2007.
- Peyraube, N., Lastennet, R., Villanueva, J.D., Houillon, N., Malaurent, P., Denis, A.: Effect of diurnal and seasonal temperature variation on Cussac cave ventilation using CO2 assessment. *Theoretical and Applied Climatology* 129, 1045–1058. <https://doi.org/10.1007/s00704-016-1824-8>, 2016.
- 955 Peyraube, N., Lastennet, R., Denis, A., Malaurent, P., Houillon, N., Villanueva, J.D. Determination and quantification of major climatic parameters influencing the CO2 of Lascaux Cave. *Theoretical and Applied Climatology* 133, 1291–1301. <https://doi.org/10.1007/s00704-017-2255-x>, 2018.
- Quindós, L.S., Bonet, A., Diaz-Caneja, N., Fernandez, P.L., Gutierrez, I., Solana, J.R., Soto, J., Villar, E.: Study of the environmental variables affecting the natural preservation of the Altamira Cave paintings located at Santillana del Mar, Spain. *Atmospheric Environment* (1967) 21, 551–560. [https://doi.org/10.1016/0004-6981\(87\)90037-0](https://doi.org/10.1016/0004-6981(87)90037-0), 1987.
- 960 Richon, P., Perrier, F., Sabroux, J.-C., Trique, M., Ferry, C., Voisin, V., Pili, E.: Spatial and time variations of radon-222 concentration in the atmosphere of a dead-end horizontal tunnel. *Journal of Environmental Radioactivity* 78, 179–198. <https://doi.org/10.1016/j.jenvrad.2004.05.001>, 2005.
- 965 Sainz, C., Rábago, D., Celaya, S., Fernández, E., Quindós, J., Quindós, L., Fernández, A., Fuente, I., Arceche, J.L., Quindós, L.S.: Continuous monitoring of radon gas as a tool to understand air dynamics in the cave of Altamira (Cantabria, Spain). *Science of The Total Environment* 624, 416–423. <https://doi.org/10.1016/j.scitotenv.2017.12.146>, 2018.
- Sartoretto, S., Collina-Girard, J., Laborel, J., Morhange, C.: Quand la Grotte Cosquer a-t-elle été fermée par la montée des eaux ? *Méditerranée* 82, 21–24. <https://doi.org/10.3406/medit.1995.2897>, 1995.
- 970 [SHOM: Total sea forecast from daily simulations of the Wavewatch III @ wave model. SHOM. data.shom.fr, 2024.](#)
- SNO KARST: Time series of type climatology-meteorology-atmosphere in Port-Miou basin - PORT-MIOU observatory - KARST observatory network - OZCAR Critical Zone network Research Infrastructure. OSU OREME. (Dataset). <https://doi.org/10.15148/4140d06c-fa31-4b4c-8c0f-38e6d0c62fbc>, 2021.
- Touron, S., Frouin, M., Bousta, F., François, A., Leplat, J.: Grotte du Pech-Merle - Bilan sanitaire (No. GO-19-13). LRMH, Champs-sur-Marne, p. 15, 2019.
- 975 Touron, S., Frouin, M.: Grotte d'Oulen ou Baume d'Oullins, date de protection 19/01/1911. Travaux en vue de l'isolation de la Salle 2 (Note scientifique No. GO-22-10). LRMH, Champs-sur-Marne, p. 4, 2022.
- Trefry, M.G., Johnston, C.D.: Pumping Test Analysis for a Tidally Forced Aquifer. *Ground Water* 36, 427–433. <https://doi.org/10.1111/j.1745-6584.1998.tb02813.x>, 1998.

- 980 Valladas, H., Quiles, A., Delque-Kolic, M., Kaltnecker, E., Moreau, C., Pons-Branchu, E., Vanrell, L., Olive, M., Delestre, X.: Radiocarbon Dating of the Decorated Cosquer Cave (France). *Radiocarbon* 59, 621–633. <https://doi.org/10.1017/RDC.2016.87>, 2017.
- Valladas, H., Tisnérat-Laborde, N., Cachier, H., Arnold, M., de Quirós, F.B., Cabrera-Valdés, V., Clottes, J., Courtin, J., Fortea-Pérez, J.J., Gonzáles-Sainz, C., Moure-Romanillo, A.: Radiocarbon AMS Dates for Paleolithic Cave Paintings. *Radiocarbon* 43, 977–986. <https://doi.org/10.1017/S0033822200041643>, 2001.
- 985 Vouvé, J., Malaurent, P., Brunet, J.: Caractérisation physique et environnementale d'un sanctuaire préhistorique sous-marin, semi-noyé et orné préalablement à l'élaboration d'une démarche conservatoire. Cas de la grotte Cosquer, France. *Comptes rendus de l'Académie des sciences, Sciences de la Terre et des planètes* 322, 935–942, 1996.
- Weeks, E.P.: Field Determination of Vertical Permeability to Air in the Unsaturated Zone (Geological survey professional paper No. 1051). U.S. department of the interior, U.S., 1978.
- 990 Xia, Y., Li, H., Wang, L.: Tide-Induced Air Pressure Fluctuations in a Coastal Unsaturated Zone: Effects of Thin Low-Permeability Pavements. *Ground Water Monitoring & Remediation* 31, 40–47. <https://doi.org/10.1111/j.1745-6592.2011.01322.x>, 2011.
- Zhang, H.: Characterization of a multi-layer karst aquifer through analysis of tidal fluctuation. *Journal of Hydrology* 601, 126677. <https://doi.org/10.1016/j.jhydrol.2021.126677>, 2021.
- 995 Zimmerman, R.W., Bodvarsson, G.S.: Hydraulic conductivity of rock fractures. *Transport in Porous Media* 23, 1–30. <https://doi.org/10.1007/bf00145263>, 1996.