

Measurement report: Shipborne observations of black carbon aerosols in the western Arctic Ocean during summer and autumn 2016–2020: impact of boreal fires

Style Definition: Comment Text

Deleted: fire impacts

5 Yange Deng¹, Hiroshi Tanimoto¹, Kohei Ikeda¹, Sohiko Kameyama², Sachiko Okamoto^{1,a}, Jinyoung Jung³,
Young Jun Yoon³, Eun Jin Yang³ and Sung-Ho Kang³

1 National Institute for Environmental Studies, Tsukuba, Japan

2 Hokkaido University, Sapporo, Japan

3 Korea Polar Research Institute, Incheon, Korea

10 a now at: University Paris Est Creteil and Université de Paris Cité, CNRS, LISA, 94010 Créteil, France

Correspondence to: Hiroshi Tanimoto (tanimoto@nies.go.jp)

Black carbon (BC) aerosol is considered one of the important contributors to the fast climate warming and snow and sea ice melting in the Arctic. Yet the observations of BC aerosols in the Arctic Ocean have been
15 limited due to infrastructural and logistical difficulties. We observed BC mass concentrations (m_{BC}) using light absorption methods on board the icebreaker R/V *Araon* in the Arctic Ocean (166° E–156° W and <80° N) as well as the North Pacific Ocean in summer and early Autumn of 2016 to 2020. The levels, interannual variations and pollution episodes of m_{BC} in the Arctic were examined, and the emission sources responsible for the high BC episodes were analyzed with global chemistry-transport model simulations. The average
20 m_{BC} in the surface air over the Arctic Ocean (72–80° N) observed by the 2019 cruise exceeded 70 ng m⁻³, which was substantially higher than cruises in other years (approximately 10 ng m⁻³). The much higher m_{BC} observed in 2019 was perhaps due to more frequent wildfires occurring in the Arctic region than in other years. The model suggested that biomass burning contributed most to the observed BC by mass in the western Arctic Ocean and the marginal seas. For these five years, we identified 10 high BC episodes north
25 of 65° N, including one in 2018 that was associated with co-enhancements of CO and CH₄ but not CO₂ and O₃. The model analysis indicated that certain episodes were attributed to BC containing airmasses transported from boreal fire regions to the Arctic Ocean, with some transport occurring near-surface and others in the mid-troposphere. This study provides crucial datasets on BC mass concentrations and the mixing ratios of O₃, CH₄, CO, and CO₂ in the western Arctic Ocean regions and highlights the significant
30 impact of boreal fires on the observed Arctic BC during the summer and early autumn months.

Deleted: -

Deleted: in

Deleted: was over

Deleted: occurred

Deleted: composed the largest contribution

Deleted: elevated-

Deleted: most

Deleted: the

Deleted: fires

1 Introduction

The annual average surface temperature increase in the Arctic is more than three times the global average increase, resulting in a rapid decline of Arctic sea ice extent in all months, a decrease in extreme cold events, and other ecosystem changes (AMAP, 2021a; IPCC, 2021). While global anthropogenic carbon dioxide (CO₂) emissions play the dominant role in driving Arctic climate change, short-lived climate forcers (SLCFs) – such as methane (CH₄), ozone (O₃), nitrogen oxides, and aerosols – have considerable potential to mitigate climate warming in the Arctic (AMAP, 2015, 2021b). Arctic aerosol chemical composition may include black carbon (BC), sulfate (SO₄), nitrate (NO₃), organics, sea-salt, and mineral dust. Particularly, BC aerosols in the Arctic atmosphere can absorb solar radiation directly which causes direct and/or semi-direct climate forcing (AMAP, 2011). Besides, BC aerosols can also act as cloud condensation nuclei (CCN) which causes indirect climate forcing (AMAP, 2011; McFarquhar et al., 2011). When deposited onto snow/ice surface, BC can also affect the radiation budget due to reduction of the surface albedo, leading to an acceleration in the melting of snow and ice (AMAP, 2011). According to Oshima et al. (2020), BC in the Arctic provides the second largest contribution to the positive effective radiative forcings after CO₂. Therefore, BC plays an important role in Arctic climate forcing.

Systematic monitoring of BC in the Arctic is critical to provide a better scientific basis for making mitigation policies. Long-term BC observations have been carried out at ground-based Arctic observatories on continental Arctic, such as Utqiagvik, Alert, Zeppelin, Summit, Pallas and Tiksi, and Gruevbadet (e.g., Stohl et al., 2013; Schmale et al., 2022). Whereas these long-term datasets provided essential information on the seasonal and interannual variations of BC in the Arctic (e.g., Schmale et al., 2022), they are limited in representing the spatial variation of BC in the Arctic Ocean. Such limitations can be partially compensated for by shipborne and airborne observations. Airborne observations have illustrated the vertical distributions of BC above the Arctic Ocean surface (e.g., Schulz et al., 2019; Ohata et al., 2021a; Jurányi et al., 2023). Meanwhile, shipborne observations have facilitated in situ measurements in the remote Arctic Ocean, especially in summer and autumn when the Arctic sea ice is at the minimum, making access to the Arctic Ocean easier (Xie et al., 2007; Sierau et al., 2014; Kim et al., 2015; Sakerin et al., 2015, 2021; Taketani et al., 2016, 2022; Popovicheva et al., 2017; Ding et al., 2018; Terpugova et al., 2018; Shevchenko et al., 2019; Pankratova et al., 2020; Park et al., 2020; Nagovitsyna et al., 2023). In addition, Boyer et al. (2023) measured the BC mass concentration in the central Arctic (>80° N) for a whole year from September 2019 to October 2020. These shipborne studies have provided BC mass concentration results used for model evaluation in the Arctic Ocean (e.g., Whaley et al., 2022). They also revealed important characteristics of the spatial distribution of BC in the Arctic Ocean, demonstrating that BC concentration diminishes in the northern direction and decreases as distance from the continent increases (Xie et al., 2007; Sakerin et al.,

Deleted: climate warming rate
Deleted: of
Deleted: and
Deleted: 2021b

Deleted: has
Deleted:). Aerosol
Deleted: can
Deleted: sulphate
Deleted: /
Deleted: and work

Deleted: ; besides, it can accelerate
Deleted: snow/ice
Deleted: due to its light absorption ability.

Deleted: warranted
Deleted: in
Deleted: Barrow/
Deleted: those data

Deleted: , especially aircraft-based ones, are less constrained from earth-surface conditions and allow
Deleted: profiles
Deleted: in different seasons to be evaluated
Deleted: Shipborne
Deleted: allow for

Deleted: over
Deleted: preliminary
Deleted: of BC mass concentrations
Deleted: Seas
Deleted: and its marginal seas such as the
Deleted: with the growing
Deleted: source region

2015, 2021). The year-round observation in the central Arctic by Boyer et al. (2023) indicated that seasonal changes in BC are similar to those of the Arctic continent, but **the changes are larger**, with high values in winter and **spring – the Arctic Haze season (Barrie, 1986), and** low values in summer, **and early autumn**. However, most of **these studies were** limited to the North Atlantic and Eurasian Arctic Seas (Sierau et al., 2014; Sakerin et al., 2015, 2021; Popovicheva et al., 2017; Terpugova et al., 2018; Shevchenko et al., 2019; Pankratova et al., 2020; Nagovitsyna et al., 2023; Boyer et al., 2023) and the **Bering, Chukchi, and Beaufort** Seas (Xie et al., 2007; Kim et al., 2015; Sakerin et al., 2015; Taketani et al., 2016, 2022; Ding et al., 2018; Nagovitsyna et al., 2023). To our knowledge, Xie et al. (2007) and Ding et al. (2018) are the only two studies that reported BC observations in the western Arctic Ocean north of 74° N, and Shevchenko et al. (2019) is the only study related to BC observation in the East Siberian Sea. Furthermore, BC in Xie et al. (2007) was only qualitatively quantified. Therefore, for a better understanding of the spatial-temporal variations of BC in the Arctic Ocean and better model constraint, continuous shipborne observations of BC in the Arctic marine boundary layer especially in the western central Arctic Ocean and East Siberian Sea, **where data coverage is sparse**, are highly necessary under the rapidly changing Arctic environments (AMAP, **2021a**; Whaley et al., 2022; Jurányi et al., 2023).

The accurate location of BC sources is another important step toward mitigation measures. Atmospheric modelling is indispensable in understanding the distributions and sources of BC in the Arctic quantitatively. **Current** atmospheric models still have difficulties in accurately reproducing the BC abundance in the Arctic (e.g., Whaley et al., 2022; Jurányi et al., 2023). The main obstacles include poor understanding **of long-range** transport, vertical mixing, deposition, and emissions (e.g., Ikeda et al., 2017; Whaley et al., 2022). Preexisting modeling studies combined with field observations indicate that biomass burning from Siberia as well as Alaska and Canada contributed the most to surface BC mass concentration during summer and early autumn (e.g., Zhu et al., 2020; Popovicheva et al., 2022). In addition, according to McCarty et al. (2021), wildfire emissions of BC above 60° N have increased from 2010 to 2020 and open biomass burning contributed 56 % of BC emissions above 65° N in 2020. In the context of climate change, the likelihood of extreme **fire weather in the Arctic will increase**, (McCarty et al., 2021). Consequently, the impact of BC emissions from boreal vegetation fires on the Arctic atmospheric BC may increase (AMAP, 2021a, b). Therefore, continual studies combining field observations and modelling simulations on the impact and transport of biomass burning BC in boreal areas to the Arctic Ocean **are** urgently needed.

In this study, **to enhance comprehension of the distribution and sources of BC in the Arctic, the mass concentration of BC (m_{BC}) was monitored across five round-trip expeditions, conducted between the North Pacific Ocean and the Arctic Ocean, during the summer and early autumn of 2016–2020**. Based on the observations, the spatial-temporal variations of m_{BC} were characterized and the background m_{BC} in the

Deleted: relatively large

Deleted: .

Deleted: those

Deleted: close to land

Deleted: 2021b

Deleted: Whereas models have been improving in the past two decades, current

Deleted: in

Formatted: Font: Times New Roman

Formatted: Font: Times New Roman

Deleted: Arctic

Deleted: .

Deleted: is

Deleted: monitors based on light absorption theory were operated during the 2016–2020 summer and autumn

Deleted: from

Deleted: to

Deleted: , encompassing

Deleted: western Arctic Ocean and part of the east Siberian Sea,...

Deleted: back to the North Pacific Ocean to measure the BC mass concentration (m_{BC}).

western Arctic Ocean was estimated. The observations were compared with BC tagged-tracer simulations using GEOS-Chem (Ikeda et al., 2017). The sources of observed BC and air masses containing high BC mass concentrations were interpreted based on GEOS-Chem model and back trajectory analysis. The results from this study demonstrate the significant impacts of boreal fires on the observed BC in the western Arctic Ocean and its marginal seas.

Deleted: derived

2 Shipborne observations

The shipborne observations were conducted in summer and autumn in the years of 2016 to 2020 (Fig. S1a) on board the icebreaker R/V *Araon* operated by the Korea Polar Research Institute (KOPRI), South Korea. The air intake was set at the handrail of the front upper deck to prevent contamination from ship exhaust pollution. Furthermore, detailed information regarding data filtering techniques to mitigate the impact of ship exhaust will be provided later. A cyclone was attached at the intake to selectively sample PM_{2.5} aerosols. The total air flow rate was 10 L/min.

Deleted: avoid ship exhaust pollution.

A continuous soot monitoring system (COSMOS, model 3130, KANOMAX, Japan) and an Aethalometer (model AE22, serial number 1057:1010, Magee Scientific Co., USA) were used during the cruises to measure the mass concentrations of BC aerosols. Whereas both instruments use light absorption methods, COSMOS was equipped with a 400 °C heated inlet line. This feature effectively eliminated interference from volatile non-refractory aerosol chemical species internally mixed with BC, ensuring a high accuracy of m_{BC} measurement. This aspect has been critically assessed in previous studies (Ohata et al., 2019; Sinha et al., 2017). Consequently, COSMOS measurements differ from traditional light absorption methods, where the mass concentration of BC is referred to as equivalent BC (eBC, Petzold et al., 2013). Therefore, instead of using eBC, the term BC can be used for COSMOS data in a general sense (Ohata et al., 2019). Henceforth, when comparing data from the two different instruments, we will use m_{cBC} to represent the BC mass concentration measured with the Aethalometer during the 2017, 2018, and 2020 cruises, and m_{BC} (COSMOS) to represent the BC mass concentration measured with COSMOS during the 2016–2019 cruises. Otherwise, BC mass concentration is denoted as m_{BC} for simplicity.

Deleted: AE33

Deleted: in

Deleted: in 2016–2019 and in 2020, respectively,

Deleted: Both

Deleted: . Therefore,

Deleted: obtained

Deleted: black carbon

Deleted: Nonetheless, BC will

Deleted: throughout the manuscript if not specifically mentioned. ...

COSMOS monitors changes in transmittance of 565 nm wavelength LED light across an automatically advancing quartz fiber filter tape. To achieve measurements with high sensitivity and a lower detectable light absorption coefficient, COSMOS uses a double-convex lens and optical bundle pipes to maintain high light intensity and signal data are obtained at 1000 Hz. In addition, its sampling flow rate (0.9 L min⁻¹) and optical unit temperature were actively controlled. The measurement interval was set to 1 min, which was then averaged to 1 h for further analysis. The default mass absorption cross section (MAC) of 10 m² g⁻¹ was applied for the derivation of m_{BC} . The lowest detection limit of COSMOS at 1 min time resolution is

Deleted: The data integration time was set to 1 min, which was then averaged to 1 h for further analysis.

Deleted: inlet line for COSMOS

Deleted: heated

Deleted: 400 °C

Deleted: effectively volatilize non-refractory aerosol components that were internally mixed with BC.

50 ng m^{-3} . On an hourly basis, COSMOS can measure m_{BC} in the range of 1–3000 ng m^{-3} with an average accuracy of ~10 %, as compared with measurements by a single particle soot photometer (SP2) (Moteki and Kondo, 2010); and its sensitivity to the changes in the BC size distributions was less than 10 %, within the typical BC sizes in ambient atmosphere (Ohata et al., 2019). The SP2 is used as a reference instrument in previous studies (e.g., Ohata et al., 2019; Sinha et al., 2017). Further details about the measurement principles of COSMOS can be found in previous studies (Ohata et al., 2019; Kondo et al., 2009).

Deleted: and at 1 h time resolution is 1

The Aethalometer uses the absorption of light at a wavelength of 880 nm by ambient aerosols collected on a quartz filter tape to determine the BC concentration. The flow rate was set to 5 L min^{-1} and the accumulation area of the filter is 1.67 cm^2 . The filter was set to change every 24 hours to minimize the loading effects. The data integration time was set to 5 min, which was then averaged to 1 h for further analysis. The default manufacturer-provided MAC value of $16.6 \text{ m}^2 \text{ g}^{-1}$ was applied. The lower detection limit of the Aethalometer at 1 h time resolution is 20 ng m^{-3} , with the error limit of $\pm 30 \text{ ng m}^{-3}$. Comparison between m_{eBC} and m_{BC} (COSMOS) for cruises in 2017 and 2018, when both data are available, shows that the two data are in high consistency (Pearson correlation coefficient $R > 0.96$) and that m_{eBC} was 1.3–2.5 times m_{BC} (COSMOS) (Fig. S2). Previous studies also show that the default parameter settings of the Aethalometer, as mentioned above, may cause the obtained BC mass concentrations to be 1–3 times the mass measured by SP2, depending on the sources and mixing states of the BC aerosols (Wang et al., 2014; Sharma et al., 2017; Laing et al., 2020). Due to the above reasons, the AE22 data in this study are mainly used as a reference. Hereinafter, for cruises conducted from 2016 to 2019, the analysis primarily relied on COSMOS data. In the case of the 2020 cruise, when only AE22 data was available, AE22 data was utilized for the analysis.

Deleted: the

Deleted: Pallflex Teflon-coated glass fiber (TFE)

Deleted: mass absorption cross section

Deleted: 7.77

Deleted: and internal multiple scattering correction factor of 1.57 were

Deleted: (Drinovec et al., 2015).

Deleted: 5

Deleted: . It is noted

Deleted: aethalometer

Deleted: twice the actual values (

Deleted: ; Asmi et al., 2021).

In addition, the atmospheric mixing ratios of CH_4 , carbon monoxide (CO), and CO_2 were monitored using a cavity ring-down spectrometer (CRDS) - the Picarro G2401 gas concentration analyzer (Picarro, Inc., USA) when the icebreaker R/V *Araon* was in the Arctic Ocean (North of 72° N) during the cruise in 2018.

Formatted: Font: Times New Roman

The Picarro G2401 analyzer was calibrated by running the standard CH_4 gas (RIGAS, Korea) for 8 min every day. The CH_4 , CO, and CO_2 data during the instrument calibration period were omitted. The CH_4 , CO, and CO_2 data were averaged to 1 min before being further analyzed. The mixing ratios of O_3 were determined using ultraviolet absorption spectroscopy during the cruises in 2017 and 2018 with a time resolution of 1 min. The O_3 monitor (Model 1100, Dylec Inc., Japan) utilized absorption at 253.7 nm emitted by a low-pressure mercury lamp and was calibrated through intercomparison with a reference photometer, which was referenced to the Standard Reference Photometer (SRP) #2 at the National Institute of Standards and Technology (NIST). Those gaseous data were used to assist the analysis on BC sources during high BC episodes in 2018 (Sect. 4.4.2). The O_3 data were also used to scrutinize the possible contamination from

Deleted: lump

ship emissions as explained in the next paragraph. Statistics of those gaseous data are shown in Appendix Table A1; times series and concentration distributions of those data along the cruise tracks are presented in Figs. 6-8 and [S18](#).

To avoid the influence of ship exhausts, we only used 1- or 5-min data records that occurred when the 1-min wind direction and speed relative to the ship's course were within $\pm 60^\circ$ of the bow and $> 3 \text{ m s}^{-1}$, respectively, for continuous 10 min centered around the current 1- or 5-min data record. Furthermore, for the 2017 and 2018 cruise, when the atmospheric mixing ratio of O_3 was recorded (Fig. [S18](#)), the 1-min COSMOS BC and O_3 data were further scrutinized for the possible contamination of ship exhausts considering the O_3 titration effect by NO from ship emissions (Pfannerstill et al., 2019). When O_3 decreased and BC increased at the same time, both 1-min BC and O_3 data were considered invalid. Accordingly, 41–57 % of the observed 1- or 5-min BC data, 56 % of 1-min O_3 data, and 63 % of 1-min CH_4 , CO, and CO_2 data were removed from the analysis. It is noteworthy that the additional scrutiny based on the O_3 criteria had minimal impact on the overall characteristics of the observed BC by COSMOS. This screening process resulted in the exclusion of less than 0.3 % and 0.4 % of the total valid data in 2017 and 2018, respectively. Furthermore, hourly values are only calculated when there are more than 40 minutes of valid data records in an hour, by averaging the 1-min or 5-min values within that hour. Within the hourly BC mass concentration data, 5–13 % of COSMOS data and 63–71 % of Aethalometer data fall below their respective detection limits.

3 Model simulations

Tagged tracer simulations of BC using the global chemistry transport model GEOS-Chem (v13.1.2; Bey et al., 2001; Ikeda et al., 2017) were performed to assist in the interpretation of the sources and transport paths of observed BC in the Arctic Ocean. The horizontal resolution of GEOS-chem was $2^\circ \times 2.5^\circ$ with 47 vertical layers from the surface to 0.01 hPa. The meteorological data was supplied by Modern-Era Retrospective analysis for Research and Applications, Version 2 (MERRA-2). Two BC tracers, namely anthropogenic BC (BCan) and biomass burning BC (BCbb), were defined for the simulations. The Evaluating of the Climate and Air Quality Impacts of Short-Lived Pollutants version 6b (ECLIPSEv6b) was adopted as anthropogenic emission source (Klimont et al., 2017). The Global Fire Emissions Database with small fires (GFED v4.1s) with $0.25^\circ \times 0.25^\circ$ of spatial resolution and daily temporal resolution was applied as biomass burning emission source (van der Werf et al., 2017). In the following section, the simulated total BC mass concentration is noted as $m_{\text{BC,S}}$, and the simulated BC mass concentrations contributed by anthropogenic and biomass burning sources were noted as $m_{\text{BC,SAN}}$ and $m_{\text{BC,SBB}}$, respectively.

Deleted: S14

Formatted: Font: Times New Roman

Deleted: were

Deleted: S14,

Deleted: 1

Furthermore, backward trajectories were generated using the NOAA Air Resources Laboratory Hybrid Single-Particle Lagrangian Integrated Trajectory model (HYSPLIT; Stein et al., 2015) to aid in interpreting the sources of the observed BC and identifying background periods in the Western Arctic Ocean. These trajectories were calculated with a 1-hour time step, initiated at the ship positions with starting heights of 10, 500, and 1000 m above model ground level, and extended for 5 days. The selection of a 5-day duration allows for identifying potential source regions of high BC episodes (Sect. 4.4) while ensuring trajectory accuracy (Backman et al., 2021). The meteorological data used for HYSPLIT was the NCEP's GDAS data, featuring a horizontal resolution of $1^\circ \times 1^\circ$ and 24 pressure levels extending from the ground to 20 hPa in the vertical direction.

Deleted: 2015) was also applied to assist the interpretation of BC sources

4 Results and discussion

4.1 Spatial and temporal variations of BC mass concentrations

Figure 1 shows the shipborne observation cruise tracks North of 64° N during 2016–2020. Spatial distributions of the observed BC mass concentrations along the cruise tracks of respective years are indicated by filled color circles in Figs. 1b-f. For all the years, the cruises in the Arctic Ocean took place during August and early September, covering the region of 166° E – 156° W and $\leq 80^\circ$ N (Fig. 1a; Table 1). The cruise region in the Arctic in this study either fully or partially covered the shipborne research regions in previous studies by Taketani et al. (2016, 2022), Xie et al. (2007), Dall'Osto et al. (2020), Park et al. (2020), and Ding et al. (2018).

The temporal-spatial distribution of BC mass concentrations along the whole cruise tracks in respective years can be found in Fig. S1. To further investigate the spatial and temporal variations of observed BC, the m_{BC} in each cruise were categorized into three groups according to the latitude of the observations, i.e., South of 52° N (in the North Pacific Ocean), North of 72° N (mainly in the Canada Basin and the east part of the East Siberian Sea, which are noted as western central Arctic Ocean in the following sections of this study), and between 52 and 72° N (mainly in the Bering, Chukchi, and Beaufort Seas). They were statistically analyzed and the results are presented in Fig. 2. Note that the grouping mentioned here does not comply with the latitudinal constraints (i.e., north of 65° N) used to select high BC episodes in Sect. 4.4. Time series of the m_{BC} and ship latitudes in each cruise are presented in Fig. 3. In general, m_{BC} in high latitude regions were relatively low, consistent with previous studies (Sakerin et al., 2021) demonstrating a decrease in m_{BC} with increasing latitude. Additionally, high latitude regions showed fewer temporal-spatial variations compared to low latitude regions. However, frequent high m_{BC} spikes were also observed at high latitudes in 2019. The high m_{BC} observed in lower latitude regions from the North Pacific Ocean to the southern Chukchi Sea near the Bering Strait can be explained by the fact that East Asia is the largest BC

Deleted: and

Deleted: less

source region in the world (Ikeda et al., 2022) and that biomass burning in boreal regions including Siberia, Alaska, and Canada is also a large BC source in summer (Zhu et al., 2020).

Significant but not regular interannual variation of m_{BC} was observed in regions South of 52° N. The highest mean and median m_{BC} values were observed in 2018 and 2017, followed by 2019, 2020, and 2016 (Fig. 2a).

5 At regions between 52 and 72° N and North of 72° N, except the year 2019, m_{BC} variations among other years were not evident (Fig. 2a). The median values of m_{BC} at the former region were 10–12 ng m⁻³ except for the cruise in 2019, when it was around 17 ng m⁻³; at the latter region, the median values were 3–4 ng m⁻³ except for 2019, when it was around 15 ng m⁻³. The higher BC concentration and more frequent high BC spikes in 2019 than other years at the Arctic Ocean and marginal sea regions were likely affected by
10 more frequent outflows of smoke from boreal vegetation fires during the cruise observation period (Sakerin et al., 2020). This is supported by a few studies. For example, Antokhina et al. (2023) reported intensive fire activities during 3 July to 12 August 2019 in Eastern Siberia (95–120° E); Bhatt et al. (2021) reported extreme fire activity started in mid-August in Southcentral Alaska due to the extreme conditions of hot summer temperature and prolonged drought; Voronova et al. (2020) reported that the total burned-out areas and the amounts of emissions of fine aerosols in Siberia were abnormally high in 2019 especially in August; Chen et al. (2023) reported that unprecedented vegetation fires were observed in the eastern Siberia and Alaska in 2019; and Hayasaka (2022) reported that the number of hotspots in summer season in the Arctic region in 2019 was much greater than those in 2016–2018 and 2020. In addition, at Utqiagvik observatory (Fig. 1a), the nearest surface station to the cruise regions in the Arctic Ocean of this study, the interannual variation of BC mass concentrations measured by a similar COSMOS instrument and absorption coefficient at 550 nm measured by two other filter-based absorption photometers in August and September also presented higher values in 2019 than in other years (Figs. S4-5; Ohata et al., 2021b; <https://ads.nipr.ac.jp/dataset/A20201120-001>; last access: 8 September 2022.), which is consistent with the interannual variations of BC mass concentrations observed in this study.

25 The BC mass concentration measured in the western central Arctic Ocean is comparable to some of those in previous shipborne observation studies, (Table 2), most of which adopted aethalometer methods, except for those conducted by Taketani et al. (2016, 2021). In this study, the median and mean (± 1 standard deviation) m_{BC} measured with the AE22 in August 2020 were 3.4 and 14 (± 35) ng m⁻³, respectively; the values are close to those measured in the central Arctic Ocean during the same period using a AE33
30 Aethalometer, where the median and mean (± 1 standard deviation) values were 6.5 and 10 (± 22) ng m⁻³, respectively (Boyer et al., 2023). In addition, the mean (± 1 standard deviation) m_{BC} (COSMOS) in August and early September 2016 was 10 (± 11) ng m⁻³, aligning with the m_{BC} value of 23 (± 55) ng m⁻³ obtained in late July and August 2016 by Ding et al. (2018), considering the relative uncertainty factor of 1–3 for the

Deleted: pre-existing

Formatted: Font: Times New Roman

Deleted: Barrow

Deleted: Fig. S2

Deleted: .

Deleted: m_{BC}

Deleted: similar

Deleted: aethalometer

Deleted: on 8–9 September 2016, when the *Araon* was cruising in the Arctic region similar to the observation region of Taketani et al. (2022) (i.e., approximately 70–74° N and 170–153° W), the

Deleted: values of

Deleted: was 8.2 (± 6.0)

Deleted: which is consistent

Deleted: that presented in Taketani et al. (2022, Fig. 2a) during the same period using a single particle soot photometer (SP2) (Moteki and Kondo, 2010).

Aethalometer as discussed in Sect. 2. However, this m_{BC} (COSMOS) value is 10 times higher than that reported by Taketani et al. (2022). The large difference was likely caused by the spatial and temporal difference between the measurements in the two studies. The cruise routes in this study covered part of the East Siberian Sea region, whereas that in Taketani et al. (2022) was within the Chukchi and Beaufort Sea regions; and the cruise in this study occurred mainly in August whereas that in Taketani et al. (2022) mainly in September. Resultingly, different airmasses containing different BC concentrations could have been observed by this study and Taketani et al. (2022). Therefore, caution on the temporal and spatial ranges should be taken when comparing the mass concentrations of BC observed in the Arctic Ocean. It is noted that the COSMOS can measure the BC mass concentration in the Arctic with ~10 % accuracy compared with SP2 in 1 h time resolution (Ohata et al., 2019), as mentioned in Sect. 2, therefore the instrument difference should not have influenced the comparison between this study and Taketani et al. (2022) largely. Furthermore, the m_{BC} (COSMOS) measured in this study is lower than most of the m_{eBC} observed in the Eurasian Arctic Seas, except for that observed in the Laptev Sea in 2018 (Pankratova et al., 2020). This is also likely caused by differences in air mass resources.

Deleted: the overall mean m_{BC} observed in the Arctic Ocean of ...

Deleted: study (10 ng m⁻³, Table 1)

Deleted: This also indicates the necessity to further study the spatial-temporal variations of BC in the Arctic Ocean.

Deleted: as

Deleted: shouldn't

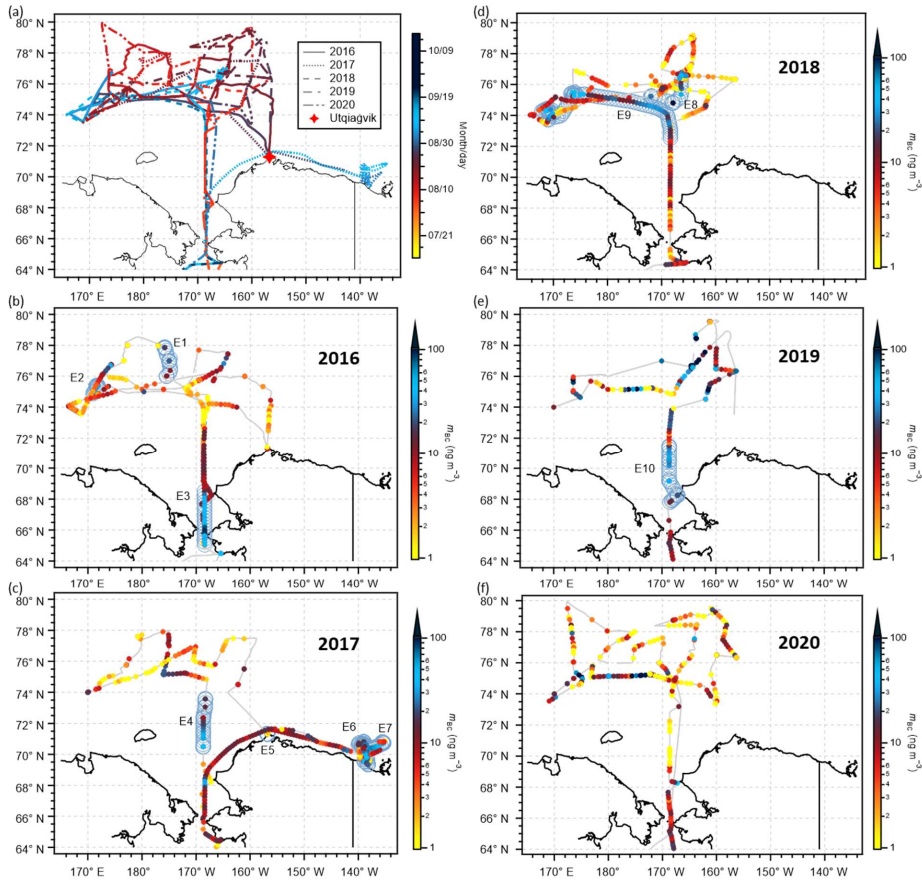
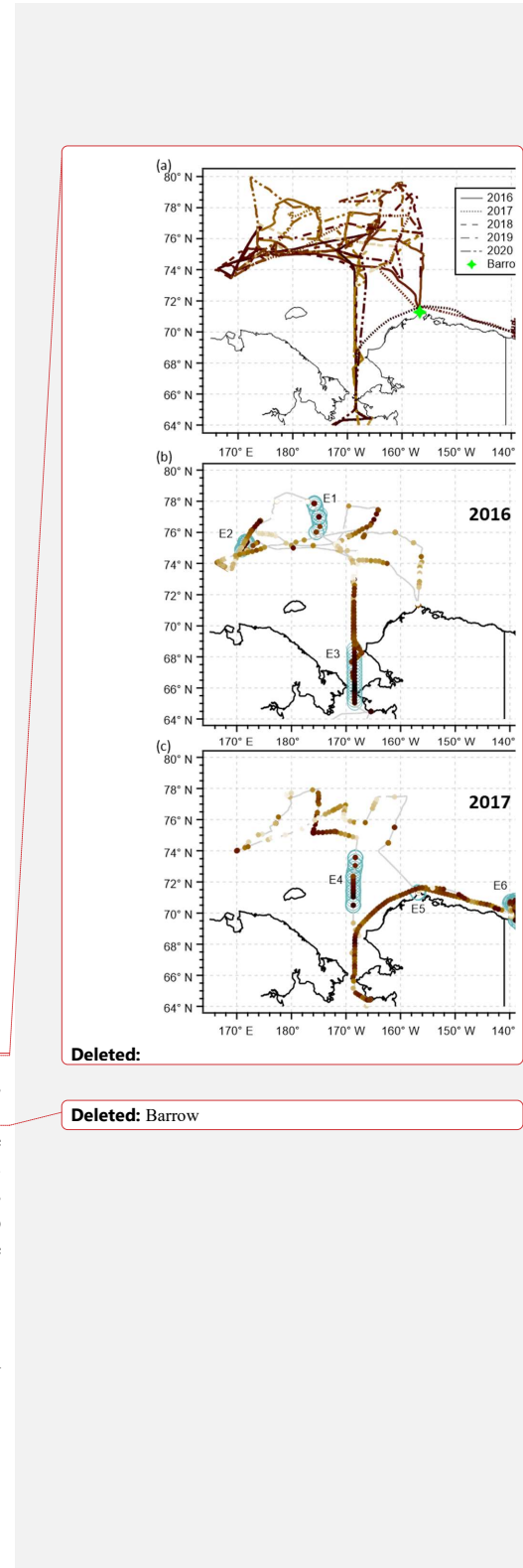


Figure 1 Shipborne observation cruise tracks North of 64° N during 2016–2020. (a) Color indicates month/day. Star marker indicates the location of the Utqiagvik observatory (71.29° N, 156.75° W). (b-f) Spatial distribution of BC mass concentrations along the cruise tracks in respective years. The grey line represents the cruise track, and the filled color circle superimposed on the track indicates the BC mass concentration. The m_{BC} presented here is at 1 h time resolution and the data influenced by ship exhaust has been removed. In panels (b-c), ship positions during the 10 episodes (E1-E10) were marked along the ship tracks as open circles. The temporal and spatial distribution of BC mass concentrations along the whole cruise tracks in respective years can be found in Fig. S1.

5

10

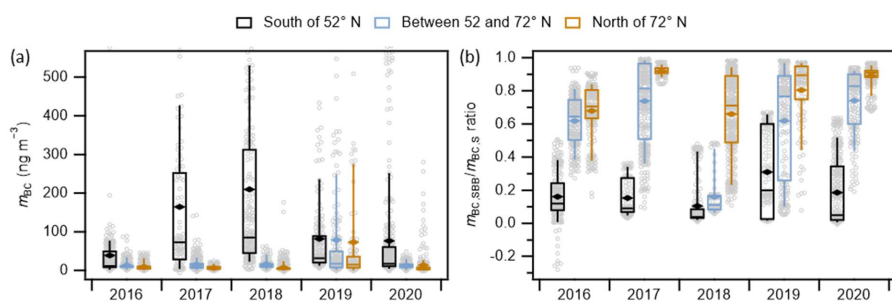
Table 1 Time and space coverage of R/V *Araon* and overall and background BC mass concentrations in the Arctic Ocean ($\geq 72^\circ$ N).



Year	2016	2017	2018	2019	2020
Period (month/day)	08/08–09/09	08/09–08/25	08/06–09/18	08/08–08/27	08/06–08/31
Latitude (°)	+72–+79	+72–+78	+72–+79	+72–+80	+72–+80
Longitude (°)	+166–+156	+170–+159	+166–+156	+170–+156	+169–+156
m_{BC} (ng m ⁻³) ^a	Overall 10(±11)	6.6(±6.7)	7.8(±15)	73(±210)	14(±35) ^b
Background	2.8(±2.6)	9.8(±6.3)	2.1(±2.5)	14(±11)	5.5(±7.0) ^b

^a mean(± 1 standard deviation)

^b m_{eBC} .



5 **Figure 2** Box plots of (a) the observed BC mass concentration and (b) the model simulated ratio of biomass burning BC to total BC ($m_{BC,SBB}/m_{BC,S}$) along the ship tracks at latitudes south of 52° N, north of 72° N, and between 52 and 72° N for respective cruises in 2016–2020. Lower whisker – 9th percentile; upper whisker – 91st percentile; box bottom – first quartile; box top – third quartile; line in the box – median value; solid diamond marker – arithmetic mean; open circles – individual data. All data presented here is at 1 h time resolution and the data influenced by ship exhaust has been removed. The full-scale panel (a) and a zoomed-in view of panel (a) with the y-axis maximum set to 80 ng m⁻³ are shown in Fig. S3.

10

Formatted: Font: Times New Roman

Formatted: Font: Times New Roman

Formatted: Font: Times New Roman

Formatted: Font: Times New Roman

Formatted: Font: Times New Roman

Deleted: 3.1(±1.1)

Deleted: .6 (±2.2)

Deleted: 3.8 (±

Deleted: 4

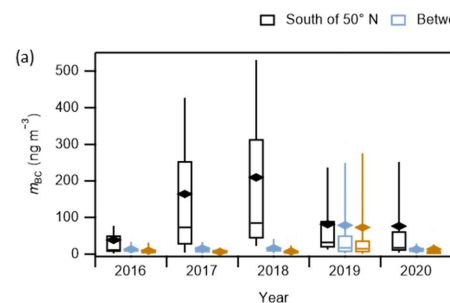
Deleted: -^b

Deleted: -^c

Deleted: ^b No background period was identified.¶

^c Criteria for background periods were not applicable because the data was obtained from an aethalometer.¶

¶



Deleted: . In panel (b), individual data are presented as grey open circles.

Deleted: ¶

... [1]

Table 2 BC mass concentrations based on shipborne observations from previous studies.

<u>Concentration</u> (<u>ng m⁻³</u>) ^a	<u>Period</u>	<u>Area</u>	<u>Method</u>	<u>R/V</u>	<u>Data Source</u>
<u>20±9</u>	<u>7-29 Sep, 2013</u>	<u>Western Arctic Ocean (Utqiagvik, Beaufort Sea, Nome, and Chukchi Sea)</u>	<u>Aethalometer (AE22: 880 nm)</u>	<u>Araon</u>	<u>Kim et al., 2015</u>
<u>23±55</u>	<u>25 Jul-31 Aug, 2016</u>	<u>Western Arctic Ocean (<82.88° N; 180-136° W)</u>	<u>Aethalometer (AE-31: 880 nm)</u>	<u>Xuelong</u>	<u>Ding et al., 2018</u>
<u>1.0±1.2</u>	<u>6-25 Sep, 2014</u>	<u>Western Arctic Ocean (70-75° N; ~170~156° W)</u>	<u>laser-induced incandescence method (SP2)</u>	<u>Mirai</u>	<u>Taketani et al., 2016, 2022</u>
<u>0.9±1.4</u>	<u>6-30 Sep, 2015</u>	<u>Western Arctic Ocean (70~75° N; ~170~153° W)</u>	<u>laser-induced incandescence method (SP2)</u>	<u>Mirai</u>	<u>Taketani et al., 2022</u>
<u>0.7±1.8</u>	<u>3-20 Sep, 2016</u>	<u>Western Arctic Ocean (70~74° N; ~170~152° W)</u>	<u>laser-induced incandescence method (SP2)</u>	<u>Mirai</u>	<u>Taketani et al., 2022</u>
<u>50±20</u>	<u>9-24 Aug, 2013</u>	<u>Chukchi and East Siberian seas (69–71° N)</u>	<u>Aethalometer (MDA-02: 460, 530, 590, and 630 nm)</u>	<u>Professor Khljustin</u>	<u>Sakerin et al., 2015</u>
<u>140±100</u>	<u>18–21 Aug, 2013</u>	<u>Barents Sea near Kola Peninsula coasts (68–71° N)</u>	<u>Aethalometer (MDA-02: 460, 530, 590, and 630 nm)</u>	<u>Akademik Fedorov</u>	<u>Sakerin et al., 2015</u>
<u><30</u>	<u>9-25 Oct, 2015</u>	<u>Southeastern Barents Sea</u>	<u>Aethalometer (MSU-CAO: 450, 550, and 650 nm)</u>	<u>Akademik Treshnikov</u>	<u>Popovicheva et al., 2017; Shevchenko et al., 2019</u>
<u>36±9.2</u>	<u>24 Aug, and 29 Sep, 2017</u>	<u>Southeastern Barents Sea</u>	<u>Quartz fiber filter samples subjected to Aethalometer analysis</u>	<u>Akademik Mstislav Keldysh</u>	<u>Shevchenko et al., 2019</u>
<u>54</u>	<u>19 Aug, 2018</u>	<u>Southeastern Barents Sea</u>	<u>Quartz fiber filter samples subjected to Aethalometer analysis</u>	<u>Akademik Mstislav Keldysh</u>	<u>Pankratova et al., 2020</u>
<u>14</u>	<u>17-18 Sep, 2018</u>	<u>Southeastern Barents Sea</u>	<u>Quartz fiber filter samples subjected to Aethalometer analysis</u>	<u>Akademik Mstislav Keldysh</u>	<u>Pankratova et al., 2020</u>
<u>60±20</u>	<u>21–23 Aug and 19–21 Sep, 2013</u>	<u>Barents Sea (71–81° N)</u>	<u>Aethalometer (MDA-02: 460, 530, 590, and 630 nm)</u>	<u>Akademik Fedorov</u>	<u>Sakerin et al., 2015</u>
<u>46±13</u>	<u>Jul 29-Aug 9, 2017</u>	<u>Barents Sea</u>	<u>Quartz fiber filter samples subjected to Aethalometer analysis</u>	<u>Akademik Mstislav Keldysh</u>	<u>Shevchenko et al., 2019</u>
<u>37±68</u>	<u>Summer and Autumn of 2007-2020</u>	<u>Barents Sea</u>	<u>MDA Aethalometer or quartz fiber filter samples analyzed by absorption photometers</u>	<u>Akademik Mstislav Keldysh, Akademik Fedorov, Akademik Tryoshnikov, Professor Molchanov, or Professor Multanovsky</u>	<u>Sakerin et al., 2021</u>
<u>20±10</u>	<u>24 Aug–18 Sep, 2013</u>	<u>Arctic Ocean (77–84° N, 80–160° E)</u>	<u>Aethalometer (MDA-02: 460, 530, 590, and 630 nm)</u>	<u>Akademik Fedorov</u>	<u>Sakerin et al., 2015</u>

<u>50–360</u>	<u>12-14 Oct, 2015</u>	<u>Kara Strait and Kara Sea</u>	<u>Aethalometer (MSU-CAO: 450, 550, and 650 nm)</u>	<u>Akademik Treshnikov</u>	<u>Popovicheva et al., 2017</u>
<u>46, 11</u>	<u>21 Aug, 2018</u>	<u>Kara Sea</u>	<u>Quartz fiber filter samples subjected to Aethalometer analysis</u>	<u>Akademik Mstislav Keldysh</u>	<u>Pankratova et al., 2020</u>
<u>77±17</u>	<u>Second half of July, 2017</u>	<u>Norwegian Sea</u>	<u>Quartz fiber filter samples subjected to Aethalometer analysis</u>	<u>Akademik Mstislav Keldysh</u>	<u>Shevchenko et al., 2019</u>
<u>44±37</u>	<u>Summer and Autumn of 2007-2020</u>	<u>Norwegian Sea</u>	<u>MDA Aethalometer or quartz fiber filter samples analyzed by absorption photometers</u>	<u>Akademik Mstislav Keldysh,</u> <u>Akademik Fedorov,</u> <u>Akademik Tryoshnikov,</u> <u>Professor Molchanov, or</u> <u>Professor Multanovsky</u>	<u>Sakerin et al., 2021</u>
<u>23±11</u>	<u>31 Aug-4 Sep, and 13-21 Sep, 2017</u>	<u>Laptev Sea</u>	<u>Quartz fiber filter samples subjected to Aethalometer analysis</u>	<u>Akademik Mstislav Keldysh</u>	<u>Shevchenko et al., 2019</u>
<u>6</u>	<u>24-25 Aug, 2018</u>	<u>Laptev Sea</u>	<u>Quartz fiber filter samples subjected to Aethalometer analysis</u>	<u>Akademik Mstislav Keldysh</u>	<u>Pankratova et al., 2020</u>
<u>2</u>	<u>31 Aug-5 Sep, 2018</u>	<u>Laptev Sea</u>	<u>Quartz fiber filter samples subjected to Aethalometer analysis</u>	<u>Akademik Mstislav Keldysh</u>	<u>Pankratova et al., 2020</u>
<u>8.3±6.0</u>	<u>Jun-Oct, 2020</u>	<u>Central Arctic (>80° N)</u>	<u>Aethalometer (AE33: 880nm)</u>	<u>Polarstern</u>	<u>Boyer et al., 2023</u>
<u>71±34</u>	<u>Jan-May, 2020</u>	<u>Central Arctic (>80° N)</u>	<u>Aethalometer (AE33: 880nm)</u>	<u>Polarstern</u>	<u>Boyer et al., 2023</u>

^a xx±xx indicates mean±standard deviation.

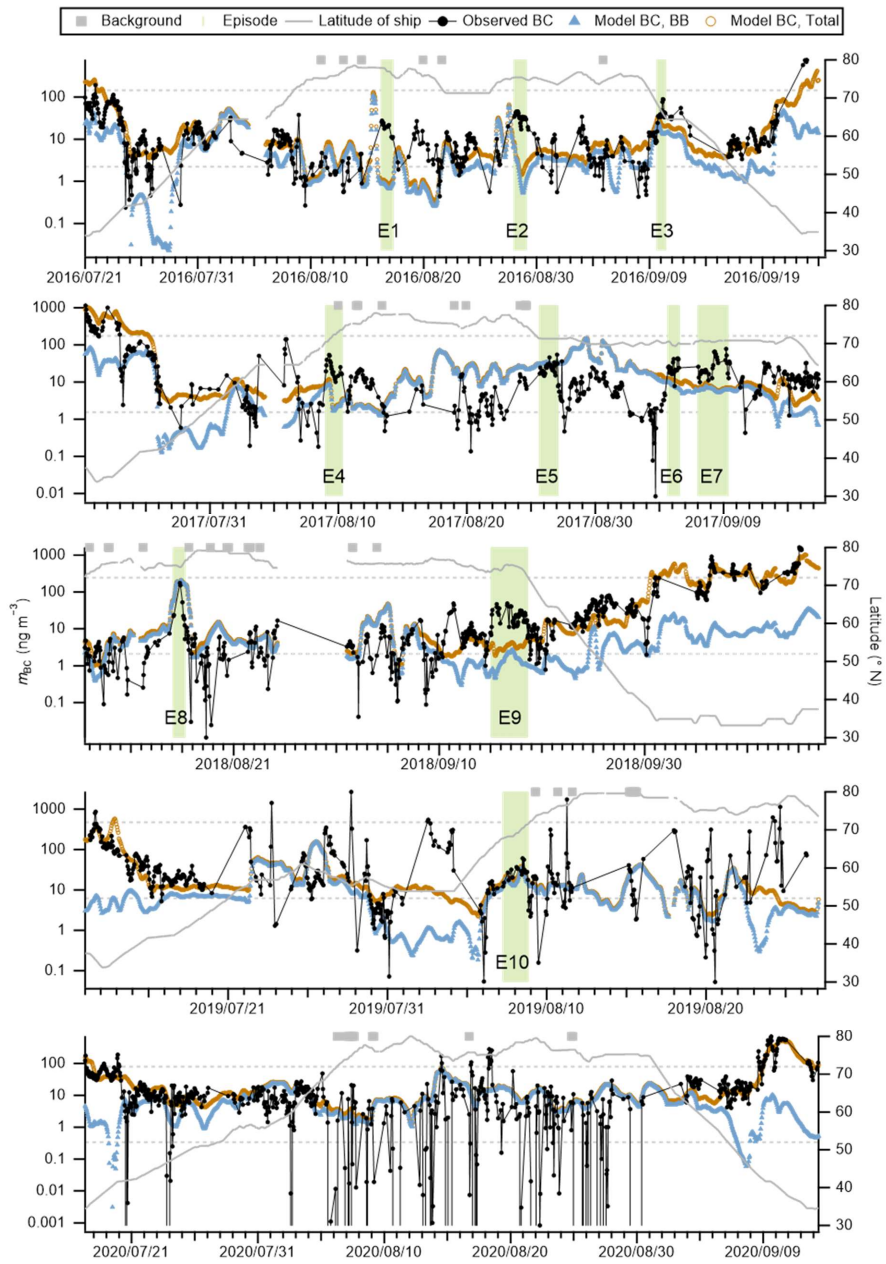


Figure 3 Time series of mass concentrations of observed BC, model simulated total BC and biomass burning BC, and latitude of ship positions. The Arctic Ocean background periods defined in Sect. 4.2 and 10 high BC episodes (E1 to E10) are also shown. The dashed light gray lines represent latitudes 52° N and 72° N. The time series of raw 1-h m_{BC} before removing the influence of ship exhausts are presented in Fig. S6.

4.2 Background BC concentration in the western central Arctic Ocean

To evaluate the air quality and climate changes in the Arctic Ocean correctly, it is important to estimate the background BC mass concentration. While finding a situation entirely identical to the preindustrial atmosphere is challenging due to the pervasive influence of anthropogenic activities on even natural events like wildfires (McCarty et al., 2021), examining periods in the Arctic Ocean unaffected by regional transport could offer insights into the preindustrial atmospheric situations. This assumes that the impact of natural terrestrial activities, such as wildfires, on BC in the preindustrial Arctic Ocean atmosphere was likely negligible, recognizing the inherent uncertainties in making such historical assessments.

Many anthropogenic and natural activities can bring BC aerosols to the Arctic Ocean atmosphere. Those activities include industry activities producing large amounts of air pollutants in lower latitude regions that may be transported to the Arctic through long-range transport (Ikeda et al., 2017; Zhu et al., 2020), gas flaring and wildfire frequently occurring in the Arctic regions (Stohl et al., 2013), as well as expanding local activities such as cruise tourism along the Arctic coastal region driven by the warming Arctic climate (AMAP, 2021a). In winter and early spring, the buildup of terrestrial anthropogenic and natural pollutants occurs due to the expansion of the polar dome, which allows for the transport of pollutants from continental regions further south. This buildup, combined with stable atmospheric conditions, can result in monthly mean m_{BC} levels exceeding 100 ng m⁻³ (e.g., Boyer et al., 2023). In summer and early autumn, intense wildfires in the boreal regions can also result in remarkably high m_{BC} levels, as discussed in Sect. 4.1. However, during this period, the m_{BC} in the Arctic Ocean surface layer atmosphere can be extremely low. This is due to changes in transport patterns and wet deposition processes, which efficiently prevent the transport of terrestrial aerosols to the Arctic Ocean (e.g., Bozem et al., 2019; Sierau et al., 2014). Therefore, the summer and early autumn months are considered the most suitable for evaluating the background level of m_{BC} in the Arctic Ocean, with the assumption mentioned previously.

The background periods in the western central Arctic Ocean (>72° N) were determined according to the following criteria: first, for each hour with effective BC data, all three 5-day HYSPLIT back trajectories initiated at starting heights of 10, 500, and 1000 m originated from the Arctic Ocean. Additionally, all 1-min m_{BC} or 5-min m_{eBC} data within that hour were not removed due to ship exhaust according to data screening criteria described in Sect. 2. The second criterion is to ensure the accuracy of the selected data.

Deleted: short

Deleted: S3

Deleted: in the Arctic. Ideally, the Arctic Ocean is one of the pristine regions in the world and background concentrations of primary air pollutants such as black carbon there should be close

Deleted: zero. However, zero background black carbon may not be true to the Arctic marine boundary layer

Deleted: many

Deleted: and natural

Deleted: anthropogenic productive

Deleted: amount

Deleted: low

Deleted: export

Deleted: commercial fisheries and

Deleted: along

Deleted: warming

Deleted: 2021b

Deleted: pollutions,

Deleted: anthropogenic

Deleted: , and the

Deleted: lead to

Deleted: of as high as more than

Deleted: while

Deleted: 4.1

Deleted: that

Deleted: remove transported anthropogenic

Deleted: months to evaluate

Deleted: defined

Deleted: m_{BC} measured by COSMOS and the 5

Deleted: as follows: the 1-min m_{BC} was below the lowest detection limit of 50 ng m⁻³ for continually 2 hours or longer, the 1-h m_{BC} was above the lowest detection limit of 1 ng m⁻³, and the air masses were

As shown in Fig. 3, background periods of 8, 12, 17, 15, and 13 hours were identified for the 2016, 2017, 2018, 2019, and 2020 cruises, respectively. The mean background m_{BC} (m_{eBC}) values during the cruises in respective years are presented in Table 1, spanning a broad range from 2 to 14 ng m^{-3} . Except for the 2017 cruise, the mean background m_{BC} (m_{eBC}) values were lower than their respective overall means and exhibited a positive correlation ($R = 0.98$) with the overall means. The former indicates that the Arctic Ocean could be frequently affected by local or regional BC pollutants. The positive correlation might indicate the accumulation of atmospheric pollutants within the Arctic Ocean planetary boundary layer even in the summer and early autumn months. In the 2017 cruise, the estimated background m_{BC} was higher than the overall mean, possibly due to residual ship exhaust contamination, despite rigorous data screening procedures (Sect. 2). The overall mean of background m_{BC} , calculated from COSMOS m_{BC} at 1 h time resolution over 52 hours, was $7.5 (\pm 8.5) \text{ ng m}^{-3}$. Despite the significantly higher lower detection limit of AE22 used in the 2020 cruise compared to that of COSMOS (Sect. 2), the combined data from both COSMOS m_{BC} and AE22 m_{eBC} for 65 hours resulted in a similar mean background m_{BC} of $7.1 (\pm 8.2) \text{ ng m}^{-3}$.

To our knowledge, this is the first study that calculated the background concentration of BC in the Arctic marine boundary layer during summer periods. The strong correlation between the estimated mean background m_{BC} values and their respective overall mean values might indicate that the Arctic Ocean atmosphere is readily influenced by long-range transported air pollutants, whose dispersion may be inhibited by the polar dome. This adds difficulty to the estimation. Nevertheless, the data used for the estimation are mostly limited to within the western Arctic Ocean, and the number of data used for the estimation is small. Future studies based on a larger data size over broader areas in the Arctic Ocean are promising to provide a better estimation of the Arctic Ocean background BC concentration.

4.3 Comparisons between observations and model simulations

The time series of GEOS-Chem model simulated total BC mass concentration ($m_{BC,S}$) and that were ascribed to biomass burning sources ($m_{BC,SBB}$) are also presented in Fig. 3, which shows that GEOS-Chem overestimated some low m_{BC} (e.g., during 28 August – 5 September 2017) and underestimated some high m_{BC} (e.g., 18 August 2020). Scatter plots between $m_{BC,S}$ and m_{BC} are presented in Fig. S7. Except for the 2019 cruise, the R_v values in other years were greater than 0.5. The R for the overall model versus observed m_{BC} is 0.66. Therefore, GEOS-Chem model can reproduce ($0.66 \times 0.66 =$) 44 % of the temporal and spatial variations of the shipborne m_{BC} . The normalized mean biases (NMB) of model simulated from observed m_{BC} in 2017 and 2019 were high and were 102.9 % and -37.4 %, respectively. They were lower in other years, with 16.6, -8.5, and -3.1 % in 2016, 2018, and 2020, respectively. The overall normalized mean bias was estimated to be 4.6 %. Statistical analysis in NMB showed no distinct spatiotemporal variation

- Deleted:** cruises in
- Deleted:** 2018.
- Deleted:** overall
- Deleted:** of
- Deleted:** calculated
- Deleted:** m_{BC} at 1 h time resolution for 53 hours was $3.3 (\pm 1.5)$
- Deleted:** (Table 1). This value is lower than
- Deleted:** BC mass concentrations in regions North of 72° N (Table 1), which
- Deleted:** In addition, this value is lower than the overall mean BC mass concentration of $10 (\pm 22) \text{ ng m}^{-3}$ in the central
- Deleted:** in August 2020 measured by an aethalometer (Boyer et al., 2023), which suggests that
- Deleted:** the central Arctic Ocean could be affected by imported BC pollutants (Boyer et al., 2023; Sierau et al., 2014). Note that
- Deleted:** BC mass concentration in Boyer et al. (2023) might be twice
- Deleted:** actual values because the default parameter settings of AE33 were
- Deleted:** (Sect. 2).
- Deleted:** result should be representative as
- Deleted:** data covered
- Deleted:** summer seasons of three years.
- Deleted:** minimum limit
- Deleted:** 1 ng m^{-3}
- Deleted:** 1-h m_{BC} in
- Deleted:** definition of background conditions may have elevated the overall
- Deleted:** of background m_{BC} . Therefore, more
- Deleted:** using instruments with lower detection limits such as SP2 (e.g., Taketani et al., 2022)
- Deleted:** warranted
- Deleted:** make
- Deleted:** conclusion on
- Deleted:** of contemporary Arctic atmosphere
- Deleted:** S4
- Deleted:** Pearson correlation coefficient (
- Deleted:**)
- Deleted:** The overall normalized mean bias was estimated to be 4.6 %. In addition, Fig. S4

characteristics (Fig. S8). Furthermore, the ratio of mean absolute error to the mean of m_{BC} (MAE/Mean) ranged from 0.5 to 1.4 for individual cruises, with an overall estimate of 0.8 for all cruises (Fig. S7). This suggests that the model can reproduce observed data with an average relative uncertainty of less than 1.4.

GEOS-Chem failed to reproduce almost all the high BC spikes observed in the Arctic Ocean in 2019. As discussed in Sect. 4.1, the high spikes in 2019 were likely caused by intensive wildfires in the Arctic especially Eastern Siberia (Antokhina et al., 2023) and Alaska (Bhatt et al., 2021). Therefore, we can infer that the less accounting of wildfires in the boreal regions by the GFED4s biomass burning inventory used in this study might be the main reason for the poor reproduction of observed BC during the 2019 cruise by GEOS-Chem (Pan et al., 2020) considering that the transport path of BC from the boreal regions to the Arctic Ocean is mainly through the lower to middle atmosphere as indicated by the analyses in Sect. 4.4 and previous studies (e.g., Ikeda et al., 2017; AMAP, 2021b). Thus, it is necessary to improve the estimation of biomass burning emissions in the boreal regions. However, the influence of possible uncertainties in the transport regime of the GEOS-Chem model (e.g., overestimation of wet deposition) in reproducing the peaks observed during the 2019 Arctic cruise cannot be ruled out. In addition, Fig. S7 shows systematical overestimation of model m_{BC} in the region of lower than 1 ng m^{-3} . Similar overestimation was also found in Whaley et al. (2022), which was possibly caused by the coarse resolution of the GEOS-Chem model, making it unable to accurately simulate such low BC mass concentrations.

4.4 Sources of High BC episodes

Statistical analyses of the GEOS-Chem simulated biomass burning BC to total BC ratio ($m_{BC,SBB}/m_{BC,S}$) are presented in Fig. 2b, which indicate that BC_{bb} accounted for more of the observed BC mass concentration in higher than in lower latitude regions. In the Arctic Ocean (i.e., north of 72° N), BC_{bb} contributed on average 67–92 % of total BC observed along the cruise tracks. In the marginal Arctic Sea regions (i.e., between 52 and 72° N), $m_{BC,SBB}/m_{BC,S}$ was estimated to be 62–74 % except in the 2018 cruise, where it was estimated to be 16 % (Fig. 2b). These results indicate that most of the observed BC in the Arctic during summer and Autumn were from biomass burning sources. This aligns with previous model studies indicating that during summer, the transport efficiency of low latitude anthropogenic BC to the Arctic was low, and biomass burning BC contributed more than 63 % to the surface BC in the Arctic (Ikeda et al., 2017; Zhu et al., 2020).

Elevated BC mass concentration periods were observed in almost every Arctic cruise (Fig. 3). To characterize the sources of the high concentrations of BC in the Arctic Ocean and the marginal seas (north of 65° N), we identified periods when the 1-h m_{BC} exceeded 10 ng m^{-3} . From these periods, we further selected those lasting 18 h or longer and the mean of valid 1-h m_{BC} during the selected period was not less than 20 ng m^{-3} . This process allowed us to identify and refine 10 high BC episodes (Figs. 1, 3, S1, and S6,

Moved down [1]: shows systematical overestimation of model m_{BC} in the region of lower than 1 ng m^{-3} . Similar overestimation was also found in Whaley et al. (2022), which was possibly caused by the coarse resolution of the GEOS-Chem model, making it unable to accurately simulate such low BC mass concentrations.

Deleted: GFED4

Deleted: 2021a

Moved (insertion) [1]

Formatted: Font: Times New Roman

Formatted: Font: Times New Roman

Deleted: cruises

Deleted: , high BC episodes were defined as

Deleted: was continually greater than

Deleted: for

Deleted: defined periods

Deleted: greater

Deleted: In total,

Deleted: mass concentration

Deleted: were identified

Deleted: S3

Table 3). Episode 1 (abbreviated as E1, same for other episodes) and E8 were observed in the Arctic Ocean; E2 was observed in the East Siberian Sea; E3 was observed on the way from the Chukchi Sea to the Bering Strait; E4 and E10 were observed in the Chukchi Sea; E5, E6, and E7 were observed in the Beaufort Sea near the Alaska coast; and E9 was observed on the way from the East Siberian Sea to the Chukchi Sea.

5 Table 3 presents the time and space range details and observed and model simulated mean BC mass concentrations during the 10 episodes. According to GEOS-Chem model simulation results, except for E9 which occurred in 2018, biomass burning contributed more than 69 % of the observed BC during all the other episodes (Table 3). Note that despite substantial normalized mean biases in model simulations compared to observed m_{BC} for these episodes, ranging from -95 % to 178 %, we consider it reasonable to

10 estimate the contribution of biomass burning to the total BC based on the model results. This is attributed to the pervasive dominance of biomass burning BC north of 65° N, where all episodes were identified (Fig. 3). The estimate is further supported by the uncertainty analysis, involving shifting the episode period back or forward by 18 hours while maintaining its length, which revealed changes of no more than 10 % in the modeled biomass burning to total BC ratio for most episodes. Additionally, the temporal and spatial

15 variations of E3, E8, and E10 were well reproduced by GEOS-Chem model, showing nearly simultaneous peaks in observed and model data during these episodes (Fig. 3). Therefore, in the following sections, the sources and transports of BC during E3, E8, and E10 are elaborated based on GEOS-Chem model, with findings further corroborated by the HYSPLIT back trajectory model.

Table 3 Time and space ranges and observed and simulated BC mass concentrations for the 10 episodes.

Episodes	Start time	Duration (h)		Latitude (°)	Longitude (°)	Mean m_{BC} ($ng\ m^{-3}$)		$m_{BC,SBG}/m_{BC,S}^c$ (%)
		Total ^a	Valid ^b			Observed	Model, total	
E1	16 Aug 2016, 06:00	25	14	+76.00–	-175.89–	20	1.0	82
				+77.88	-174.78			
E2	28 Aug 2016, 00:00	26	25	+74.89–	+170.93–	34	2.9	72
				+75.40	+171.86			
E3	9 Sep 2016, 16:00	18	18	+65.05–	-168.48–	44	25	69
				+68.48	-168.41			
E4	9 Aug 2017, 00:00	31	19	+70.49–	-168.71–	25	5.6	82
				+73.58	-168.28			
E5	25 Aug 2017, 16:00	34	32	+71.32–	-156.88–	25	33	97
				+71.33	-156.79			
E6	4 Sep 2017, 16:00	21	17	+69.34–	-139.02–	26	11	73
				+70.57	-138.21			
E7	7 Sep 2017, 00:00	56	30	+70.38–	-140.02–	32	7.3	87
				+70.81	-135.31			
E8	15 Aug 2018, 03:00	27	9	+74.80–	-171.97–	55	154	98
				+76.26	-166.32			
E9	15 Sep 2018, 02:00	84	50	+72.52–	+167.84–	25	3.5	41
				+75.50	-168.36			
E10	7 Aug 2019, 06:00	38	21	+67.80–	-168.67–	29	23	86
				+71.50	-167.12			

Deleted: 2...). Episode 1 (abbreviated as E1, same for other episodes) and E8 were observed in the Arctic Ocean; E2 was observed in the East Siberian Sea; E3 was observed on the way from the Chukchi Sea to the Bering Strait; E4 and E10 were observed in the Chukchi Sea; E5, E6, and E7 were observed in the Beaufort Sea near the Alaska coast; and E9 was observed on the way from the East Siberian Sea to the Chukchi Sea. Table 2... presents the time and space range details and observed and model simulated mean BC mass concentrations during the 10 episodes. Note that in addition to these 10 episodes, high BC was also observed in the Arctic at other times, such as on 14–18 August 2020. ¶ According to GEOS-Chem model simulation results, except for E9 which occurred in 2018, biomass burning contrit[... [2]

- Deleted: 2
- Deleted: .
- Formatted ... [3]
- Deleted: 19.7
- Deleted: .991
- Deleted: .4
- Deleted: 94
- Formatted ... [4]
- Deleted: .1
- Deleted: .4
- Formatted ... [5]
- Deleted: .1
- Deleted: 56
- Formatted ... [6]
- Deleted: .3
- Deleted: 32.8
- Formatted ... [7]
- Deleted: .0
- Deleted: .4
- Formatted ... [8]
- Deleted: 31.5
- Deleted: 31
- Formatted ... [9]
- Deleted: .4
- Deleted: 24.7
- Deleted: 54
- Formatted: Font: Times New Roman
- Formatted ... [10]
- Deleted: 28.9
- Deleted: .4

^a The total duration of each episode.

^b The number of hours with valid 1-h BC mass concentration data in each episode.

^c GEOS-Chem simulated biomass burning to total BC mass concentration ratio.

5 4.4.1 Episode 3

Episode 3 was measured during 9 September 2016, 16:00 – 10 September 2016, 10:00 UTC. The mean m_{BC} is 44 ng m⁻³ and BC from biomass burning was estimated to contribute 69 % of the total BC (Table 3).

Figure 4 presents the surface distribution of BC_{bb} and the surface winds before this episode. It suggests that the biomass burning occurred on boarder of Chukotka Autonomous Okrug (CAO) and Kamchatka Krai

10 (KamK) was likely the main source of this episode. Southwest winds have brought the biomass burning BC

containing air mass from the source region to the ship positions. Figure 4 indicates that biomass burning contributed 80 % of the BC mass concentration at this source region. GFED4s data and back trajectories

(Fig. S9) also indicate that biomass burning occurred on boarder of CAO and KamK was likely the main source of the observed high BC mass concentration during E3. The longitude-height cross sections of BC_{bb}

15 also presented in Fig. 4 suggests that the height of the transport path of BC_{bb} was constrained to >700 hPa

(i.e., <~3 km) and little contribution of subsidence BC from upper atmosphere had contributed to E3. This is also supported by the height distributions of back trajectories (Fig. S9), which indicate that the observed

air masses were transported to the ship position within 2.5 km above the ground level. Compared with BC_{bb}, the contribution of anthropogenic BC to the observed high BC mass concentrations in E3 was relatively

20 small through either surface level or above-ground transports (Fig. S10).

Deleted: occurred

Deleted: 2

Deleted: Contour plots in Fig.

Deleted: indicate

Deleted: GFED4

Deleted: S5

Deleted: S5

Deleted: S6

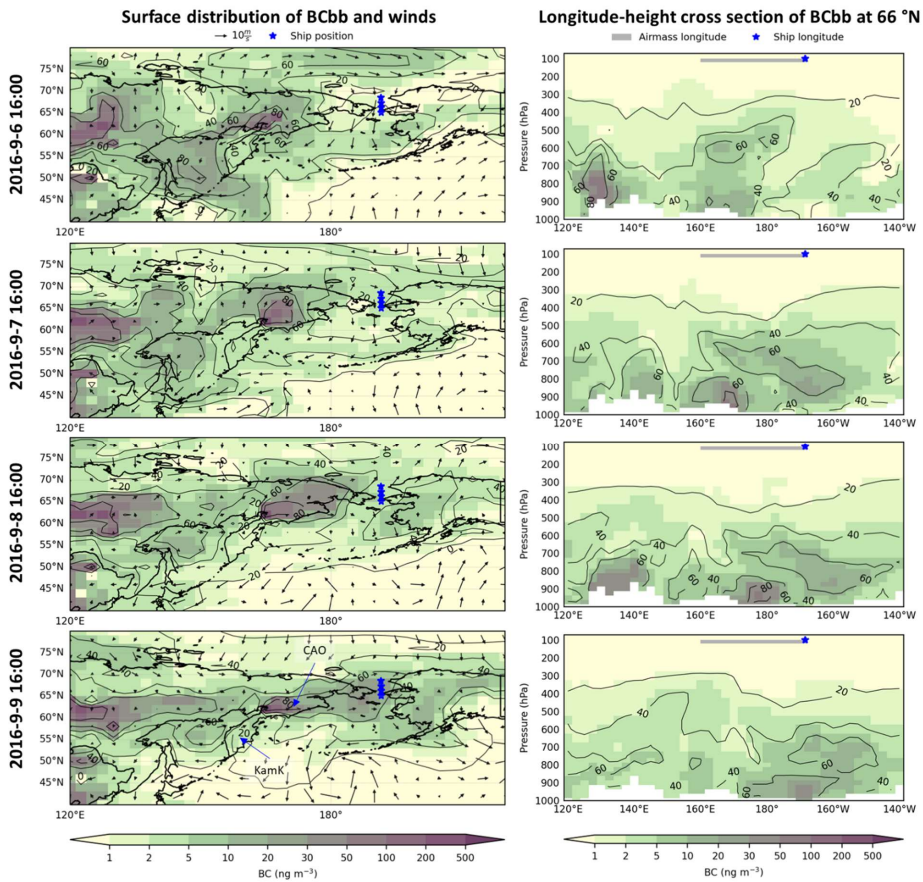
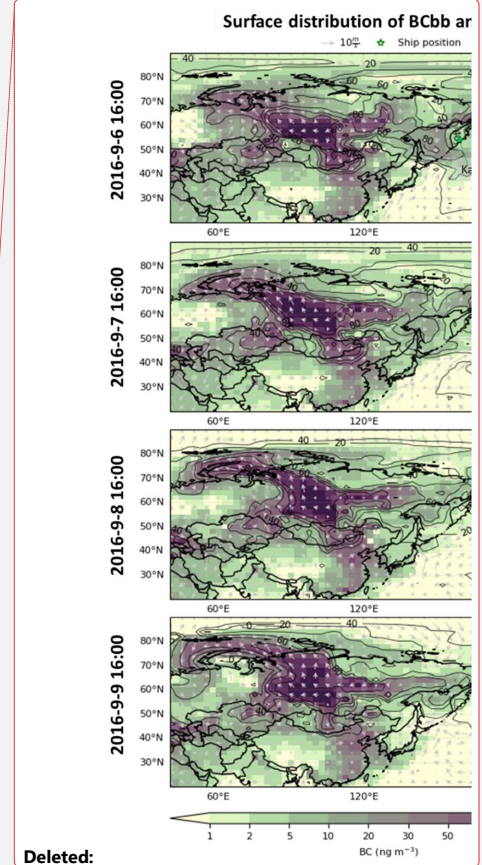


Figure 4 Simulated biomass burning BC (BCbb, color image) surface distributions (left) and longitude-pressure cross sections at 66° N (right) before Episode 3. Superimposed on the left panels are surface winds and the ship positions. Superimposed on the right panels are the ship longitude positions and the possible transport region of BC-containing air masses related with Episode 3. The latter was inferred from GEOSChem model (left) and back trajectories (Fig. S9). On both panels, the contour plot represents the simulated biomass burning BC to total BC ratio (%). In the **bottom** left panel, CAO-Chukotka Autonomous Okrug and KamK-Kamchatka Krai.

5

10 4.4.2 Episode 8

Episode 8 **was measured** during 15 August 2018, 3:00 – 16 August 2018, 6:00 (Fig. 3). The mean m_{BC} is 55 ng m^{-3} and BC from biomass burning was estimated to contribute 98 % of the total BC (Table 3). Note



Deleted:

Deleted: S5

Deleted: upper

Deleted: occurred

Deleted: 2

that although there are only nine valid 1-h m_{BC} during E8, following analyses on gaseous species and GEOS-Chem and back trajectory model simulations indicate that E8 is part of a prominent transport event of Siberia biomass burning airmasses to the Arctic Ocean. Figure 5 presents the surface distribution of biomass burning BC and winds before, during, and after Episode 8. Biomass burning airmasses from Krasnoyarsk Krai (KraK) and the Republic of Sakha (Sakha) were transported northwards and northeastwards to the Siberia Arctic and then spread eastwards by the westerly from 13 to 14 August. Further, northwest winds blew the biomass burning BC containing airmasses to the ship positions on 15 August. Figure 5 indicates that biomass burning contributed more than 80 % of BC mass concentration in the transported airmasses. These transport paths are also supported by GFED4s data and back trajectory analyses (Fig. S11). Figure 5 also shows that the biomass burning BC containing airmass was blown away from the ship later by northerly winds. Although the height distribution of back trajectories presented in Fig. S11 showed that the observed air masses during E8 were transported to the ship position mainly under 2 km above the ground, longitude-height distributions of BCbb presented in Fig. 5 indicate that the transport of biomass burning BC containing airmasses from the source regions to above the ship position was mainly through lower to middle atmosphere. Although the contribution of anthropogenic BC to the observed BC in Episode 8 was very small, surface level concentration distribution and longitude-height cross sections (Fig. S12) show that they followed similar transport paths to the ship positions as the biomass burning BC.

Figure 6 presents the time series of the atmospheric mixing ratios of CO, CH₄, CO₂, and O₃, as well as observed and model simulated BC mass concentrations during the 2018 shipborne observation when CO, CH₄, and CO₂ data were obtained. During Episode 8, the mixing ratios of CO and CH₄ increased whereas those of CO₂ and O₃ were not or even slightly decreased. Similar phenomena have been reported in previous studies in the lower atmosphere over Siberia (Paris et al., 2010). The increased CO and CH₄ is consistent with the observation of biomass burning plumes possibly related with smoldering combustion conditions (Andreae et al., 1994). The slight decrease in CO₂ is possibly due to uptake by intact high latitude vegetation during the polar daylight period before transporting to the Arctic Ocean (Paris et al., 2010) as well as smoldering combustion conditions, producing much more CO than CO₂. The former is consistent with the fact that in Siberia planetary boundary layer and free troposphere CO₂ concentrations are at the minimum in July to August (Sasakawa et al., 2013). The no increase or slight decrease of O₃ was possibly caused by less active photochemistry in the fire plumes, in particular, at the northern high-latitude (Tanimoto et al., 2000) and/or surface deposition (Text S1). Over Siberia, the O₃ formed in biomass burning plumes probably was lost greatly due to deposition to the forest canopy before being transported out of the Siberia terrestrial to the Arctic Ocean (Chin et al., 1994; Paris et al., 2010) so that the observed O₃ concentration in the plumes were lower than that of the Arctic Ocean background. Scatter plots between m_{BC} versus CO, O₃ versus CO, CO versus CO₂, and CH₄ versus CO₂ are presented in Fig. 7, where most of the data points during E8 are

Deleted: surface

Deleted: to

Deleted: Contour plots in Fig. 5 indicate

Deleted: GFED4

Deleted: S7

Deleted: S7

Deleted: S8

significantly different from the others. The reduced major axis regression between O_3 and CO during period having not been influenced by Episode 8 airmasses resulted in a slope of 0.39, which is similar to that derived from the MOSAiC observation in the central Arctic during the same season of 2020 (Fig. S13; Angot et al., 2022 and references therein). The spatial distribution of the atmospheric mixing ratios of O_3 , CO, CO_2 , and CH_4 , and the $m_{BC}/\Delta CO$ (i.e., the enhancement ratio of BC to CO; here, ΔCO is the increase in CO relative to baseline, see the caption of Fig. 8 for more details; note that in order to ensure that there were sufficient data to characterize the spatiotemporal changes in $m_{BC}/\Delta CO$, the background of m_{BC} was not subtracted) and CO/ CO_2 ratios are presented in Fig. 8. Distinctive features such as increases of CO, CH_4 , $m_{BC}/\Delta CO$ and CO/ CO_2 ratios and decreases of CO_2 and O_3 during E8 can be clearly observed. In addition, the median $m_{BC}/\Delta CO$ of less than $1 \text{ ng m}^{-3} \text{ ppb}^{-1}$ is near to those reported in Taketani et al. (2022), which might have been affected by wet removal of BC during transport processes or smoldering combustion conditions.

Deleted: S9

Deleted: obtain more $m_{BC}/\Delta CO$ data points

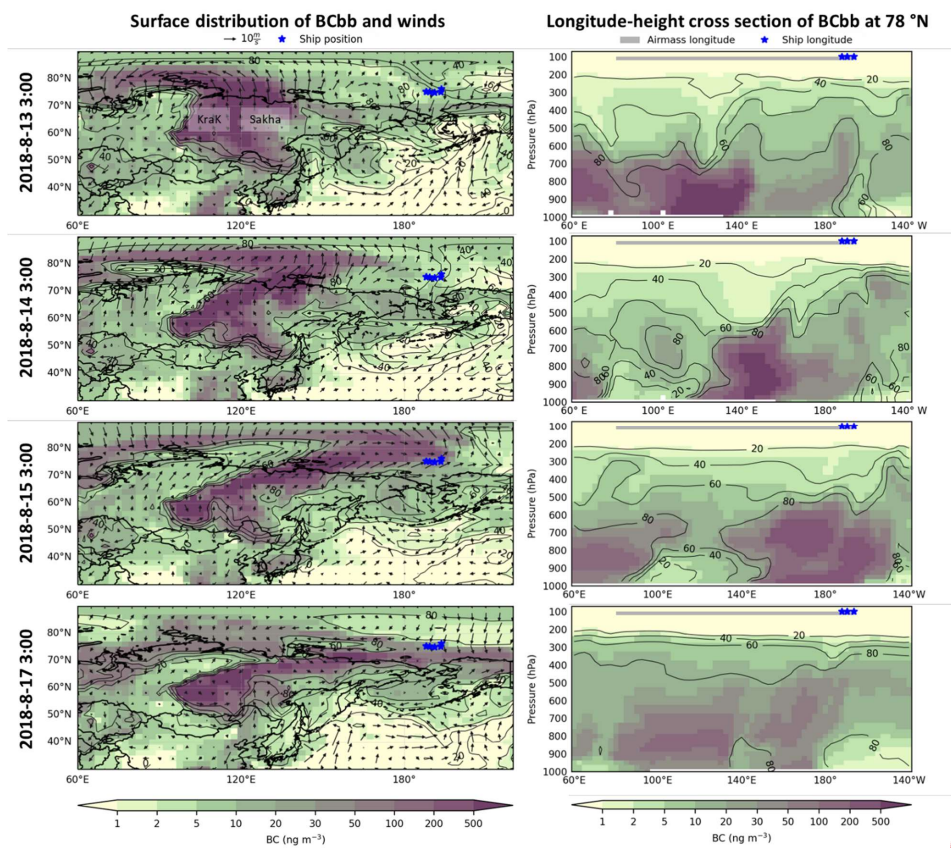
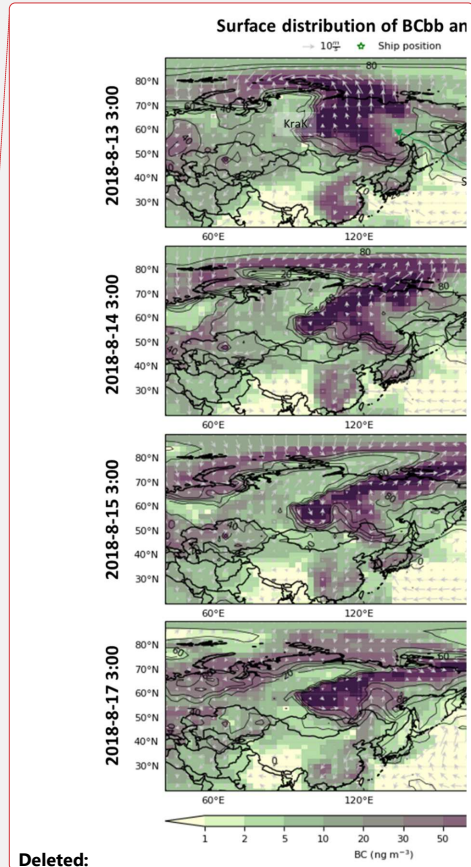


Figure 5 Simulated biomass burning BC (BCbb, color image) surface distributions (left) and longitude-pressure cross sections at 78° N (right) before to right after Episode 8. Superimposed on the left panels are surface winds and the ship positions. Superimposed on the right panels are the possible transport region of BC-containing air masses related with Episode 8. The latter was inferred from GEOSchem model (left) and back trajectories (Fig. S11). On both panels, the contour plot represents the simulated biomass burning BC to total BC ratio (%). In the upper left panel, KraK- Krasnoyarsk Krai and Sakha- the Republic of Sakha.



Deleted:

Deleted: S7

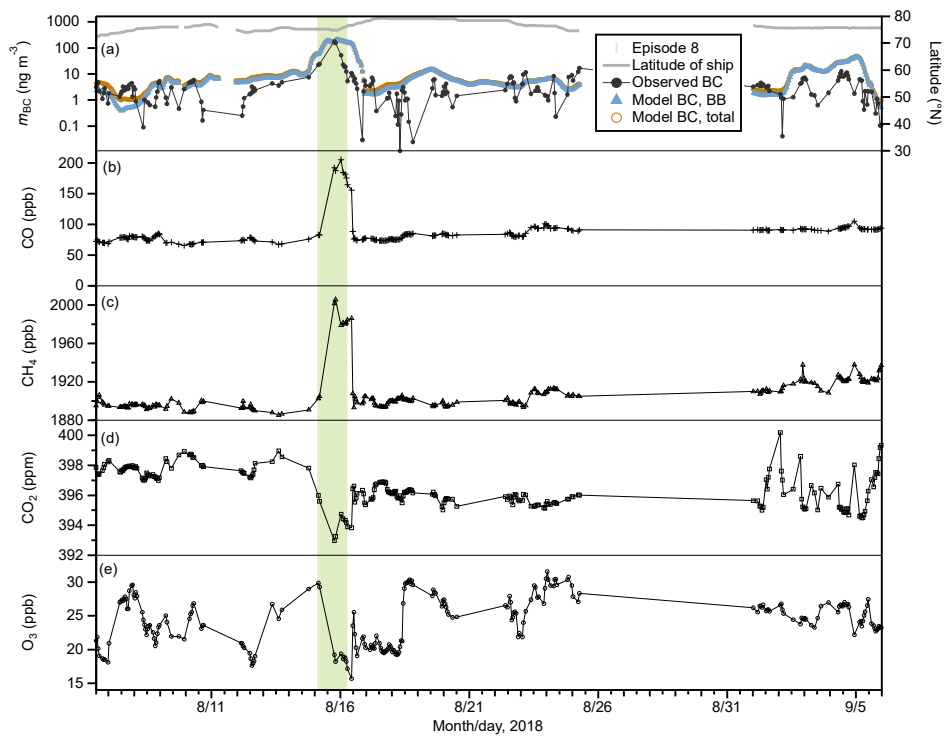
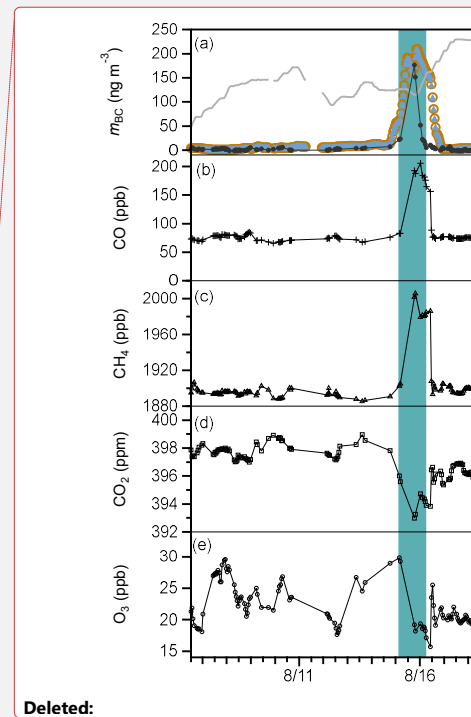


Figure 6 Time series of (a) observed BC, model simulated total BC and biomass burning BC, and latitude of ship positions, (b) CO, (c) CH₄, (d) CO₂, and (e) O₃ during the 2018 shipborne observation. Bar shade indicates the Episode 8 period.

5



Deleted:

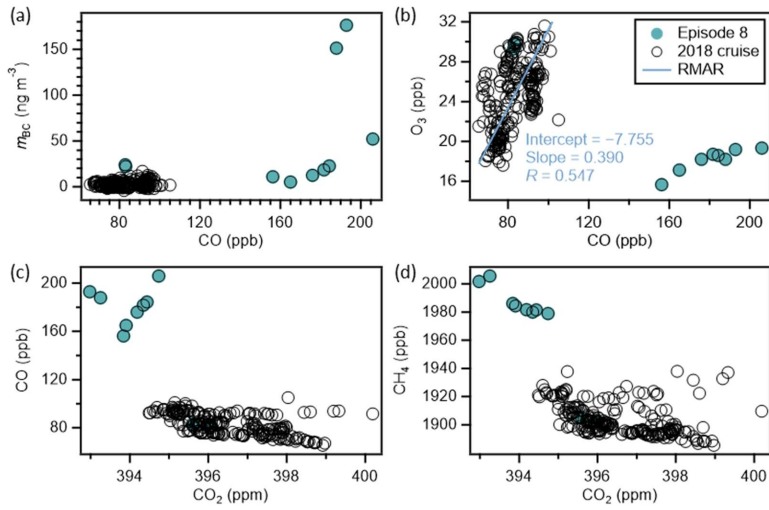


Figure 7 Scatter plots of (a) m_{BC} versus CO, (b) O₃ versus CO, (c) CO versus CO₂, and (d) CH₄ versus CO₂ during the cruise in the Arctic Ocean in 2018 and Episode 8. In panel (b), the line represents the reduced major axis regression (RMAR) for data having not been influenced by Episode 8 airmasses: the intercept, slope, and correlation coefficient are also presented.

5

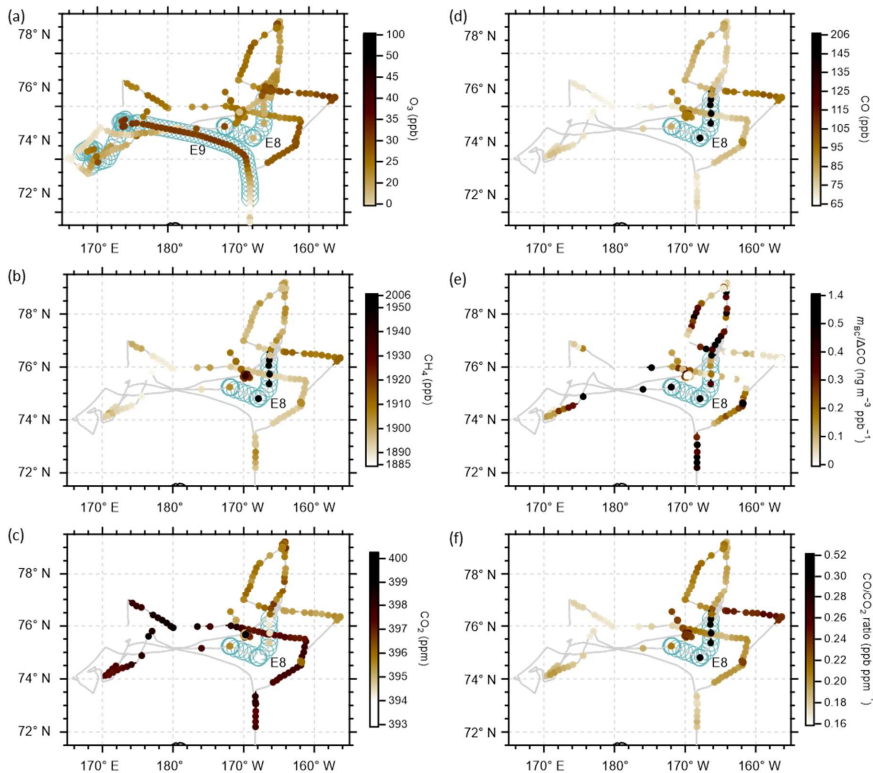


Figure 8 Surface distributions of O₃ (a), CO (b), CO₂ (c), and CH₄ (d) mixing ratios, and $m_{BC}/\Delta CO$ (e) and CO/CO₂ (f) ratios along the ship track during part of the 2018 cruise in the Arctic Ocean. In each panel, the grey line represents the cruise track; the filled color markers superimposed on the track indicates the respective observed (a, b, c, and d) or derived (e and f) parameters, which are at 1 h time resolution and screened to remove the influence of ship exhausts; and the open circles represent the ship positions during Episodes 8 (a-f) and 9 (a). Note that valid CH₄, CO, and CO₂ data are only available for a limited time (Fig. 6). For the derivation of ΔCO , the baseline of CO is defined as the minimum 1-h CO data; and $m_{BC}/\Delta CO$ ratio was calculated only when ΔCO was higher than 4 ppb.

10

4.4.3 Episode 10

Episode 10 was measured during 7 August 2019, 6:00 – 8 August 2019, 20:00 UTC (Fig. 3). The mean m_{BC} is 29 ng m⁻³ and BC from biomass burning was estimated to contribute 86 % of the total BC (Table 3). Figure 9 presents the surface distribution of biomass burning BC and surface winds before and during Episode 10. Although no obvious fire spot was observed on boarders among Magadan Oblast and Chukotka

15

Deleted: occurred

Deleted: 2

Autonomous Okrug and Kamchatka Krai (abbreviated as MCK boarders, Figs. 9 and S10), GEOS-Chem simulations showed high concentration of biomass burning BC at MCK boarders on 6 August 2019 (Fig. 9), which was then transported to the ship position by weak northeastward winds. Longitude-pressure cross sections of BCbb presented in the right panels of Fig. 9 suggest that the high BCbb occurred at MCK boarders (150–170° E) was likely subsidence from upper atmosphere. Surface BCbb distributions (Fig. 9) and GFED4s map (Fig. S14) show that intensive biomass burning occurred in Krasnoyarsk Krai (KraK), Irkutsk Oblast (IrO), and the Republic of Sakha (Sakha) areas (90–150° E) before and during Episode 10. This is consistent with Antokhina et al. (2023), which reported intensive fire activities during 3 July to 12 August 2019 in Siberia (95–120° E). The highly BCbb containing airmasses from these intensive fires advected up to 4 km (i.e., ~600 hPa) and transported to the ship position mainly through the lower to middle atmospheres (Fig. 9right). Figures S15 and S16 show the horizontal BCbb distribution and wind fields at about 800 and 600 hPa, respectively. Both figures indicate that subsidence of BCbb containing airmasses occurred at MCK boarders, and the rest of BCbb containing airmasses were transported to the Arctic above the ship positions through much stronger than surface southwest winds, which are consistent with the longitude-pressure cross section of BCbb (Fig. 9). In addition, the height distribution of back trajectories also showed that more than a third airmasses originated from an altitude higher than 2 km (Fig. S14). Contour plots superimposed on each figure (Figs. 9 and S15-16) indicate that biomass burning BC contributed to more than 80 % of the BC transported to the ship position. Surface distributions and longitude-height distributions (Fig. S17) of anthropogenic BC show that it contributed little to the observed BC in Episode 10.

Formatted: Font: Times New Roman

Deleted: GFED4

Deleted: S10

Formatted: Font: Times New Roman

Formatted: Font: Times New Roman

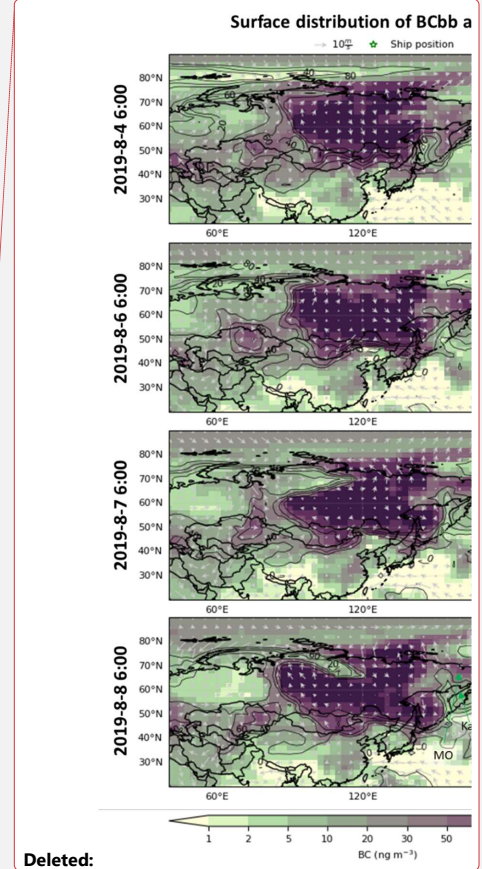
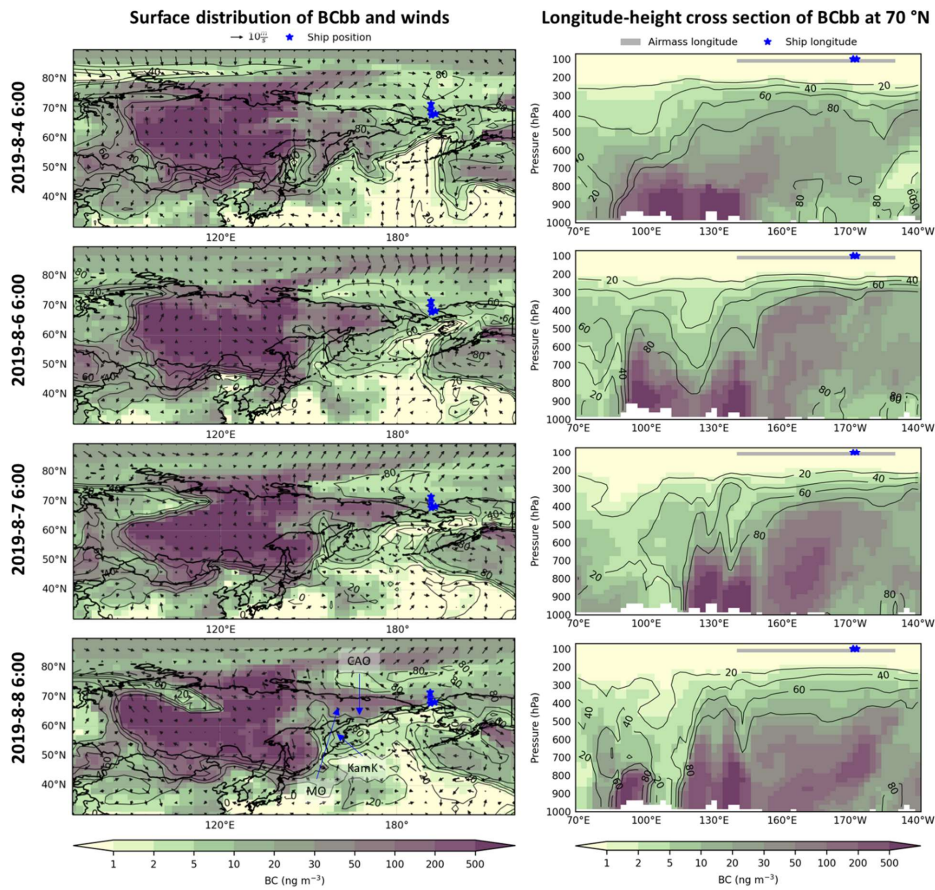
Deleted: S11

Deleted: S12

Deleted: S9

Deleted: S11-12

Deleted: S13



Deleted:

Deleted: S10

Figure 9 Simulated biomass burning BC (BCbb, color image) surface distributions (left panel) and longitude-pressure cross sections at 70° N (right panel) before and during Episode 10. Superimposed on the left panels are surface winds and the ship positions. Superimposed on the right panels are the ship longitude positions and the possible surface transport region of BC-containing air masses related with Episode 10. The latter was inferred from GEOSChem model (left) and back trajectories (Fig. S14). On both panels, contour plots represent the simulated biomass burning BC to total BC ratio (%). In the lower left panel, MO- Magadan Oblast, CAO- Chukotka Autonomous Okrug, and KamK- Kamchatka Krai.

5

5 Summary and conclusions

The mass concentration of black carbon aerosols was measured in the Arctic Ocean, encompassing the western Arctic Ocean and part of the East Siberian Sea, as well as the North Pacific Ocean. The measurements were conducted using COSMOS and an AE-22 Aethalometer on board icebreaker R/V *Araon* during summer and autumn 2016–2020. Relatively low levels of m_{BC} were observed at higher latitude regions. In the western Arctic Ocean ($>72^\circ$ N), the overall mean (± 1 standard deviation) of 1-h m_{BC} during the cruises in 2016, 2017, 2018, 2019, and 2020 were 10 (± 11), 6.6 (± 6.7), 7.8 (± 15), 73 (± 210), and 14 (± 35) ng m^{-3} , respectively. The estimated background m_{BC} concentrations in respective years show a strong positive correlation with those mean values, indicating potential accumulation of atmospheric pollutants within the Arctic Ocean planetary boundary layer even in the summer and early autumn months. The overall mean of the background m_{BC} across all five cruises was estimated to be 7.1 (± 8.2) ng m^{-3} . In the western Arctic Ocean and the Bering Sea ($>52^\circ$ N), the year-to-year variation of m_{BC} was not significant, except for the 2019 cruise, which observed much higher and more frequent elevated m_{BC} compared to other years. This increase was likely attributed to more frequent biomass burning in the Arctic region in 2019. We identified 10 high BC episodes north of 65° N based on the observational data. Significant but irregular interannual variability in m_{BC} was observed in the North Pacific Ocean (south of 52° N).

Tagged tracer simulations of BC using a global chemistry transport model (GEOS-Chem) were applied for the interpretation of the sources and transport paths of the observed BC. The model's relative uncertainty, estimated based on the observed m_{BC} , was less than 1.4. Additionally, the model was estimated to reproduce 44 % of the temporal and spatial variations of m_{BC} . GEOS-Chem analyses indicate that biomass burning composed the largest contribution to the observed BC along the ship tracks in the Arctic Ocean (67–92 %) and most high BC episodes (41–98 %). GEOS-Chem also revealed that transport paths of biomass burning BC from Siberian area to the Arctic could occur near-surface and/or through the lower to middle atmosphere. However, GEOS-Chem failed to accurately replicate the frequently observed high BC spikes in the Arctic during the 2019 cruise, which were attributed to the influx of biomass burning airmasses. This suggests the need for improvements in biomass burning emission inventories, especially considering the ongoing increase in wildfires during the boreal summer in a warming climate. Nevertheless, it cannot be ruled out that uncertainties in the BC transport regimes used in GEOS-Chem also contributed to the simulation discrepancies.

This study provides crucial datasets on BC mass concentrations and the mixing ratios of O_3 , CH_4 , CO , and CO_2 in the western Arctic Ocean regions during summer and autumn. Our results also highlight the significant impact of boreal fires on the observed Arctic BC mass during summer and early autumn months,

Deleted: along with

Deleted: light absorption methods

Deleted: than low

Formatted: Font: Times New Roman

Deleted: ; the background m_{BC} concentration was estimated to be 3.3 (± 1.5) ng m^{-3} . In the

Formatted: Font: Times New Roman

Deleted: in

Deleted: based on specific criteria: 1-h

Deleted: greater than 10 ng m^{-3} for a continuous duration of more than 18 h, with an overall mean of valid m_{BC} during

Deleted: episodes exceeding 20 ng m^{-3} .

Deleted: the elevated

Deleted: mass concentration

consistent with previous modelling and observational studies (e.g., Zhu et al., 2020; Popovicheva et al., 2022). These results are valuable for model validation, predicting Arctic climate change, and guiding air quality research in the Arctic Ocean. In addition, due to rapid changes in temperature, precipitation, snow cover, sea and land ice, permafrost, and extreme events occurring in the Arctic (AMAP, 2021a), the sources, transport pathways, and climate forcing effects of BC are thought to be changing in the Arctic. Therefore, further studies on the spatial-temporal distributions, background concentrations of BC in the Arctic marine boundary layer, and the impact of boreal fires as well as other natural and anthropogenic sources on Arctic Ocean atmospheric BC are required to clearly understand the feedback of atmospheric BC in the rapidly changing Arctic Ocean.

Deleted: 2021b

10 Appendix A: Statistics of gaseous species

Table A1: Statistics of the observed concentrations of gaseous species during shipborne measurements in 2017 and 2018.

Year		2017	2018					
Species		O ₃ (ppb)	O ₃ (ppb)	CH ₄ (ppb)	CO (ppb)	CO ₂ (ppm)	CO/CO ₂ ratio (ppb ppm ⁻¹)	m _{BC} /ΔCO ratio (ng m ⁻³ ppb ⁻¹)
North of 72° N	Median	23.2	24.2	1900.7	82.2	396.21	0.208	0.119
	Mean	24.3	23.6	1906.8	86.4	396.46	0.218	0.172
	STD	3.6	5.0	19.1	20.3	1.23	0.052	0.238
Between 52 and 72° N	Median	25.8	24.8	-	-	-	-	-
	Mean	25.1	24.1	-	-	-	-	-
	STD	6.1	6.0	-	-	-	-	-
South of 52° N	Median	38.9	38.8	-	-	-	-	-
	Mean	38.0	43.2	-	-	-	-	-
	STD	12.9	14.3	-	-	-	-	-
Whole cruise	Median	25.1	26.8	-	-	-	-	-
	Mean	27.2	29.3	-	-	-	-	-
	STD	8.9	12.5	-	-	-	-	-

Note: STD, standard deviation; -, no available data.

Data availability

15 The dataset containing m_{BC} (ng m⁻³), ship latitude and longitude, relative wind direction (RWD), relative wind speed (RWS, m s⁻¹), CH₄ (ppb), CO (ppb), and CO₂ (ppm) used in this publication is available online (Deng et al., 2023; <https://db.cger.nies.go.jp/MD/10.17595/202307XX.001.html>; last access: 25 September 2023).

Formatted: Font: Times New Roman

Formatted: Font: Times New Roman

Author contributions

20 HT, SK, and JJ designed the experiment and did the shipborne observations with contributions from SO, YJY, EJY, and SHK; KI did the model simulations; YD analyzed the observation and model data with

contributions from HT and KI; YD made the manuscript with contributions from HT and KI; and all authors contributed to the revisions of the manuscript.

Competing interests

The authors declare no competing interests.

5 Acknowledgements

We thank Ms. Kimiko Suto for her support in gaseous species data analysis. [We also thank Dr. Sho Ohata for his valuable suggestions on COSMOS data analysis.](#) We acknowledge the NOAA Air Resources Laboratory (ARL) for providing the HYSPLIT transport and dispersion model. [The Aethalometer measurements were supported by a National Research Foundation of Korea Grant from the Korean](#)

10 [Government \(MSIT; the Ministry of Science and ICT\) NRF-2021M1A5A1065425 \(KOPRI-PN24011\).](#)

This research was supported by the Korea Institute of Marine Science & Technology (KIMST) funded by the Ministry of Oceans and Fisheries, Korea (grant no. 20210605, Korea-Arctic Ocean Warming and Response of Ecosystem, KOPRI). Financial support to NIES was given by the Environmental Research and Technology Development Fund (ERTDF) from the Ministry of the Environment, Japan (grant no. 2-2201:

15 JPMEERF20222001), and by JSPS KAKENHI grant number JP21K12216 and JP17KK0016.

References

[AMAP: AMAP Arctic Climate Change Update 2021: Key Trends and Impacts, Tromsø, Norway, 2021a.](#)

20 AMAP: AMAP Assessment 2015: Black carbon and ozone as Arctic climate forcers, Oslo, Norway, 2015.

AMAP: AMAP Assessment 2021: Impacts of Short-lived Climate Forcers on Arctic Climate, Air Quality, and Human Health, Tromsø, Norway, [2021b.](#)

AMAP: [The Impact of Black Carbon on Arctic Climate, Oslo, Norway, 2011.](#)

25 Andreae, M. O., Anderson, B. E., Blake, D. R., Bradshaw, J. D., Collins, J. E., Gregory, G. L., Sachse, G. W., and Shipham, M. C.: Influence of plumes from biomass burning on atmospheric chemistry over the equatorial and tropical South Atlantic during CITE 3, *Journal of Geophysical Research: Atmospheres*, 99, 12793–12808, <https://doi.org/10.1029/94JD00263>, 1994.

30 Angot, H., Blomquist, B., Howard, D., Archer, S., Bariteau, L., Beck, I., Boyer, M., Crotwell, M., Helmig, D., Hueber, J., Jacobi, H.-W., Jokinen, T., Kulmala, M., Lan, X., Laurila, T., Madronich, M., Neff, D., Petäjä, T., Posman, K., Quéléver, L., Shupe, M. D., Vimont, I., and Schmale, J.: Year-round trace gas measurements in the central Arctic during the MOSAiC expedition, *Sci Data*, 9, 723, <https://doi.org/10.1038/s41597-022-01769-6>, 2022.

Deleted: 2021a

Deleted: Change Update 2021: Key Trends and Impacts. Summary for Policy-makers, Tromsø

Deleted: 2021b

Antokhina, O. Y., Antokhin, P. N., Belan, B. D., Gochakov, A. V., Martynova, Y. V., Pustovalov, K. N., Tarabukina, L. D., and Devyatova, E. V.: Effects of Rossby Waves Breaking and Atmospheric Blocking Formation on the Extreme Forest Fire and Floods in Eastern Siberia 2019, *Fire*, 6, 122, <https://doi.org/10.3390/fire6030122>, 2023.

- 5 [Backman, J., Schmeisser, L., and Asmi, E.: Asian Emissions Explain Much of the Arctic Black Carbon Events, *Geophysical Research Letters*, 48, e2020GL091913, <https://doi.org/10.1029/2020GL091913>, 2021.](#)

[Barrie, L. A.: Arctic air pollution: An overview of current knowledge, *Atmospheric Environment* \(1967\), 20, 643–663, \[https://doi.org/10.1016/0004-6981\\(86\\)90180-0\]\(https://doi.org/10.1016/0004-6981\(86\)90180-0\), 1986.](#)

- 10 Bey, I., Jacob, D. J., Yantosca, R. M., Logan, J. A., Field, B. D., Fiore, A. M., Li, Q., Liu, H. Y., Mickley, L. J., and Schultz, M. G.: Global modeling of tropospheric chemistry with assimilated meteorology: Model description and evaluation, *Journal of Geophysical Research: Atmospheres*, 106, 23073–23095, <https://doi.org/10.1029/2001JD000807>, 2001.

Bhatt, U. S., Lader, R. T., Walsh, J. E., Bieniek, P. A., Thoman, R., Berman, M., Borries-Strigle, C.,

- 15 Bullock, K., Christ, J., Hahn, M., Hendricks, A. S., Jandt, R., Little, J., McEvoy, D., Moore, C., Rupp, T. S., Schmidt, J., Stevens, E., Strader, H., Waigl, C., White, J., York, A., and Ziel, R.: Emerging Anthropogenic Influences on the Southcentral Alaska Temperature and Precipitation Extremes and Related Fires in 2019, *Land*, 10, 82, <https://doi.org/10.3390/land10010082>, 2021.

Boyer, M., Aliaga, D., Pernov, J. B., Angot, H., Quelever, L. L. J., Dada, L., Heutte, B., Dall'Osto, M., Beddows, D. C. S., Brasseur, Z., Beck, I., Bucci, S., Duetsch, M., Stohl, A., Laurila, T., Asmi, E., Massling, A., Thomas, D. C., Nojgaard, J. K., Chan, T., Sharma, S., Tunved, P., Krejci, R., Hansson, H. C., Bianchi, F., Lehtipalo, K., Wiedensohler, A., Weinhold, K., Kulmala, M., Petaja, T., Sipila, M., Schmale, J., and Jokinen, T.: A full year of aerosol size distribution data from the central Arctic under an extreme positive Arctic Oscillation: insights from the Multidisciplinarydrifting Observatory for the Study of Arctic Climate (MOSAIC) expedition, *Atmospheric Chemistry and Physics*, 23, 389–415, <https://doi.org/10.5194/acp-23-389-2023>, 2023.

- 20 [Bozem, H., Hoor, P., Kunkel, D., Köllner, F., Schneider, J., Herber, A., Schulz, H., Leitch, W. R., Aliabadi, A. A., Willis, M. D., Burkart, J., and Abbatt, J. P. D.: Characterization of transport regimes and the polar dome during Arctic spring and summer using in situ aircraft measurements, *Atmospheric Chemistry and Physics*, 19, 15049–15071, <https://doi.org/10.5194/acp-19-15049-2019>, 2019.](#)

Chen, X., Kang, S., Hu, Y., and Yang, J.: Temporal and spatial analysis of vegetation fire activity in the circum-Arctic during 2001–2020, *Research in Cold and Arid Regions*, 15, 48–56, <https://doi.org/10.1016/j.rcar.2023.03.002>, 2023.

- 35 Chin, M., Jacob, D. J., Munger, J. W., Parrish, D. D., and Doddridge, B. G.: Relationship of ozone and carbon monoxide over North America, *Journal of Geophysical Research: Atmospheres*, 99, 14565–14573, <https://doi.org/10.1029/94JD00907>, 1994.

Dall'Osto, M., Park, J., Kim, J. H., Kang, S. H., Park, K., Beddows, D. C. S., Harrison, R. M., and Yoon, Y. J.: Arctic ship-based evidence of new particle formation events in the Chukchi and East Siberian Seas, *Atmospheric Environment*, 223, <https://doi.org/10.1016/j.atmosenv.2019.117232>, 2020.

- 40 Ding, M. H., Tian, B., Zhang, T., Tang, J., Peng, H., Bian, L. G., and Sun, W. J.: Shipborne observations of atmospheric black carbon aerosol from Shanghai to the Arctic Ocean during the 7th Chinese Arctic

Moved down [2]: K.,

Deleted: Asmi, E.,

Deleted: Servomaa, H., Virkkula, A., Gini, M. I., Eleftheriadis,

Deleted: Müller, T., Ohata, S., Kondo, Y

Deleted: Hyvärinen, A.: Absorption instruments inter-comparison campaign at

Deleted: Pallas station, Atmospheric Measurement Techniques, 14, 5397–5413

Deleted: 5194/amt-14-5397-

Deleted: , 2021

Formatted: Font: Times New Roman

Formatted: Font: Times New Roman

Research Expedition, Atmospheric Research, 210, 34–40, <https://doi.org/10.1016/j.atmosres.2018.04.016>, 2018.

Formatted: Font: Times New Roman

Drinovec, L., Močnik, G., Zotter, P., Prévôt, A. S. H., Ruckstuhl, C., Coz, E., Rupakheti, M., Sciare, J., Müller, T., Wiedensohler, A., and Hansen, A. D. A.: The “dual-spot” Aethalometer: an improved measurement of aerosol black carbon with real-time loading compensation, Atmospheric Measurement Techniques, 8, 1965–1979, <https://doi.org/10.5194/amt-8-1965-2015>, 2015.

Hayasaka, H.: Fire Weather Conditions in Boreal and Polar Regions in 2002–2021, Atmosphere, 13, <https://doi.org/10.3390/atmos13071117>, 2022.

Formatted: Font: Times New Roman

Ikeda, K., Tanimoto, H., Sugita, T., Akiyoshi, H., Kanaya, Y., Zhu, C. M., and Taketani, F.: Tagged tracer simulations of black carbon in the Arctic: transport, source contributions, and budget, Atmospheric Chemistry and Physics, 17, 10515–10533, <https://doi.org/10.5194/acp-17-10515-2017>, 2017.

Formatted: Font: Times New Roman

Ikeda, K., Tanimoto, H., Kanaya, Y., and Taketani, F.: Evaluation of anthropogenic emissions of black carbon from East Asia in six inventories: constraints from model simulations and surface observations on Fukue Island, Japan, Environmental Science-Atmospheres, 2, 416–427, <https://doi.org/10.1039/d1ea00051a>, 2022.

Formatted: Font: Times New Roman

IPCC: Climate Change 2021: The Physical Science Basis. Contribution of Working Group I to the Sixth Assessment Report of the Intergovernmental Panel on Climate Change, Cambridge, United Kingdom and New York, NY, USA, <https://doi.org/10.1017/9781009157896>, 2021.

Formatted: Font: Times New Roman

Jurányi, Z., Zanatta, M., Lund, M. T., Samset, B. H., Skeie, R. B., Sharma, S., Wendisch, M., and Herber, A.: Atmospheric concentrations of black carbon are substantially higher in spring than summer in the Arctic, Commun Earth Environ, 4, 1–12, <https://doi.org/10.1038/s43247-023-00749-x>, 2023.

Formatted: Font: Times New Roman

Kim, G., Cho, H. J., Seo, A., Kim, D., Gim, Y., Lee, B. Y., Yoon, Y. J., and Park, K.: Comparison of Hygroscopicity, Volatility, and Mixing State of Submicrometer Particles between Cruises over the Arctic Ocean and the Pacific Ocean, Environmental Science & Technology, 49, 12024–12035, <https://doi.org/10.1021/acs.est.5b01505>, 2015.

Formatted: Font: Times New Roman

Klimont, Z., Kupiainen, K., Heyes, C., Purohit, P., Cofala, J., Rafaj, P., Borken-Kleefeld, J., and Schöpp, W.: Global anthropogenic emissions of particulate matter including black carbon, Atmospheric Chemistry and Physics, 17, 8681–8723, <https://doi.org/10.5194/acp-17-8681-2017>, 2017.

[Kondo, Y., Sahu, L., Kuwata, M., Miyazaki, Y., Takegawa, N., Moteki, N., Imaru, J., Han, S., Nakayama, T., Oanh, N. T., K., Hu, M., Kim, Y. J., and Kita, K.: Stabilization of the Mass Absorption Cross Section of Black Carbon for Filter-Based Absorption Photometry by the use of a Heated Inlet, Aerosol Science and Technology, 43, 741–756, <https://doi.org/10.1080/02786820902889879>, 2009.](https://doi.org/10.1080/02786820902889879)

Moved (insertion) [2]

Laing, J. R., Jaffe, D. A., and Arthur J. Sedlacek, I. I. I.: Comparison of Filter-based Absorption Measurements of Biomass Burning Aerosol and Background Aerosol at the Mt. Bachelor Observatory, Aerosol Air Qual. Res., 20, 663–678, <https://doi.org/10.4209/aaqr.2019.06.0298>, 2020.

McCarty, J. L., Aalto, J., Paunu, V.-V., Arnold, S. R., Eckhardt, S., Klimont, Z., Fain, J. J., Evangeliou, N., Venäläinen, A., Tchepakova, N. M., Parfenova, E. I., Kupiainen, K., Soja, A. J., Huang, L., and Wilson, S.: Reviews and syntheses: Arctic fire regimes and emissions in the 21st century, Biogeosciences, 18, 5053–5083, <https://doi.org/10.5194/bg-18-5053-2021>, 2021.

McFarquhar, G. M., Ghan, S., Verlinde, J., Korolev, A., Strapp, J. W., Schmid, B., Tomlinson, J. M., Wolde, M., Brooks, S. D., Cziczo, D., Dubey, M. K., Fan, J. W., Flynn, C., Gultepe, I., Hubbe, J., Gilles, M. K., Laskin, A., Lawson, P., Leaitch, W. R., Liu, P., Liu, X. H., Lubin, D., Mazzoleni, C., Macdonald, A. M., Moffet, R. C., Morrison, H., Ovchinnikov, M., Shupe, M. D., Turner, D. D., Xie, S. C., Zelenyuk, A., Bae, K., Freer, M., and Glen, A.: INDIRECT AND SEMI-DIRECT AEROSOL CAMPAIGN The Impact of Arctic Aerosols on Clouds, *Bulletin of the American Meteorological Society*, 92, 183–201, <https://doi.org/10.1175/2010bams2935.1>, 2011.

Formatted: Font: Times New Roman

Moteki, N.: *Climate-relevant properties of black carbon aerosols revealed by in situ measurements: a review*, *Progress in Earth and Planetary Science*, 10, 12, <https://doi.org/10.1186/s40645-023-00544-4>, 2023.

Moteki, N. and Kondo, Y.: Dependence of Laser-Induced Incandescence on Physical Properties of Black Carbon Aerosols: Measurements and Theoretical Interpretation, *Aerosol Science and Technology*, 44, 663–675, <https://doi.org/10.1080/02786826.2010.484450>, 2010.

Formatted: Font: Times New Roman

Nagovitsyna, E. S., Poddubny, V. A., Karasev, A. A., Kabanov, D. M., Sidorova, O. R., and Maslovsky, A. S.: Assessment of the Spatial Structure of Black Carbon Concentrations in the Near-Surface Arctic Atmosphere, *Atmosphere*, 14, <https://doi.org/10.3390/atmos14010139>, 2023.

Formatted: Font: Times New Roman

Ohata, S., Kondo, Y., Moteki, N., Mori, T., Yoshida, A., Sinha, P. R., and Koike, M.: Accuracy of black carbon measurements by a filter-based absorption photometer with a heated inlet, *Aerosol Science and Technology*, 53, 1079–1091, <https://doi.org/10.1080/02786826.2019.1627283>, 2019.

Formatted: Font: Times New Roman

Ohata, S., Koike, M., Yoshida, A., Moteki, N., Adachi, K., Oshima, N., Matsui, H., Eppers, O., Bozem, H., Zanatta, M., and Herber, A. B.: Arctic black carbon during PAMARCMiP 2018 and previous aircraft experiments in spring, *Atmospheric Chemistry and Physics*, 21, 15861–15881, <https://doi.org/10.5194/acp-21-15861-2021>, 2021a.

Formatted: Font: Times New Roman

Ohata, Sho, Mori, Tatsuhiro, Kondo, Yutaka, Sharma, Sangeeta, Hyvarinen, Antti, Andrews, Elisabeth, Tunved, Peter, Asmi, Eija, Backman, John, Servomaa, Henri, Veber, Daniel, Eleftheriadis, Konstantinos, Vratolis, Stergios, Krejci, Radovan, Zieger, Paul, Koike, Makoto, Kanaya, Yugo, Yoshida, Atsuh, Moteki, Nobuhiro, Zhao, Yongjing, Tobo, Yutaka, Matsushita, Junji, and Oshima, Naga: Black carbon mass concentrations and aerosol light absorption coefficients measured at Arctic sites (1.01), <https://doi.org/10.17592/001.2020112001>, 2021b.

Formatted: Font: Times New Roman

Oshima, N., Yukimoto, S., Deushi, M., Koshiro, T., Kawai, H., Tanaka, T. Y., and Yoshida, K.: Global and Arctic effective radiative forcing of anthropogenic gases and aerosols in MRI-ESM2.0, *Progress in Earth and Planetary Science*, 7, <https://doi.org/10.1186/s40645-020-00348-w>, 2020.

Formatted: Font: Times New Roman

Pan, X., Ichoku, C., Chin, M., Bian, H., Darmenov, A., Colarco, P., Ellison, L., Kucsera, T., da Silva, A., Wang, J., Oda, T., and Cui, G.: Six global biomass burning emission datasets: intercomparison and application in one global aerosol model, *Atmospheric Chemistry and Physics*, 20, 969–994, <https://doi.org/10.5194/acp-20-969-2020>, 2020.

Formatted: Font: Times New Roman

Pankratova, N. V., Belikov, I. B., Belousov, V. A., Kopeikin, V. M., Skorokhod, A. I., Shtabkin, Y. A., Malafeev, G. V., and Flint, M. V.: Concentration and Isotopic Composition of Methane, Associated Gases, and Black Carbon over Russian Arctic Seas (Shipborne Measurements), *Oceanology*, 60, 593–602, <https://doi.org/10.1134/s0001437020050197>, 2020.

Formatted: Font: Times New Roman

Paris, J.-D., Stohl, A., Ciais, P., Nédélec, P., Belan, B. D., Arshinov, M. Y., and Ramonet, M.: Source-receptor relationships for airborne measurements of CO₂, CO and O₃ above Siberia: a cluster-based approach, *Atmospheric Chemistry and Physics*, 10, 1671–1687, <https://doi.org/10.5194/acp-10-1671-2010>, 2010.

5 Park, J., Dall’Osto, M., Park, K., Gim, Y., Kang, H. J., Jang, E., Park, K.-T., Park, M., Yum, S. S., Jung, J., Lee, B. Y., and Yoon, Y. J.: Shipborne observations reveal contrasting Arctic marine, Arctic terrestrial and Pacific marine aerosol properties, *Atmospheric Chemistry and Physics*, 20, 5573–5590, <https://doi.org/10.5194/acp-20-5573-2020>, 2020.

10 Petzold, A., Ogren, J. A., Fiebig, M., Laj, P., Li, S. M., Baltensperger, U., Holzer-Popp, T., Kinne, S., Pappalardo, G., Sugimoto, N., Wehrli, C., Wiedensohler, A., and Zhang, X. Y.: Recommendations for reporting “black carbon” measurements, *Atmospheric Chemistry and Physics*, 13, 8365–8379, <https://doi.org/10.5194/acp-13-8365-2013>, 2013.

15 Pfannerstill, E. Y., Wang, N., Edtbauer, A., Bourtsoukidis, E., Crowley, J. N., Dienhart, D., Eger, P. G., Ernle, L., Fischer, H., Hottmann, B., Paris, J.-D., Stöner, C., Tadic, I., Walter, D., Lelieveld, J., and Williams, J.: Shipborne measurements of total OH reactivity around the Arabian Peninsula and its role in ozone chemistry, *Atmospheric Chemistry and Physics*, 19, 11501–11523, <https://doi.org/10.5194/acp-19-11501-2019>, 2019.

20 Popovicheva, O. B., Evangeliou, N., Eleftheriadis, K., Kalogridis, A. C., Sitnikov, N., Eckhardt, S., and Stohl, A.: Black Carbon Sources Constrained by Observations in the Russian High Arctic, *Environmental Science & Technology*, 51, 3871–3879, <https://doi.org/10.1021/acs.est.6b05832>, 2017.

Popovicheva, O. B., Evangeliou, N., Kobleev, V. O., Chichaeva, M. A., Eleftheriadis, K., Gregorič, A., and Kasimov, N. S.: Siberian Arctic black carbon: gas flaring and wildfire impact, *Atmospheric Chemistry and Physics*, 22, 5983–6000, <https://doi.org/10.5194/acp-22-5983-2022>, 2022.

25 Sakerin, S. M., Bobrikov, A. A., Bukin, O. A., Golobokova, L. P., Pol’kin, V. V., Shmirko, K. A., Kabanov, D. M., Khodzher, T. V., Onischuk, N. A., Pavlov, A. N., Potemkin, V. L., and Radionov, V. F.: On measurements of aerosol-gas composition of the atmosphere during two expeditions in 2013 along the Northern Sea Route, *Atmospheric Chemistry and Physics*, 15, 12413–12443, <https://doi.org/10.5194/acp-15-12413-2015>, 2015.

30 Sakerin, S. M., Kabanov, D. M., Makarov, V. I., Pol’kin, V. V., Popova, S. A., Chankina, O. V., Pochufarov, A. O., Radionov, V. E., and Rize, D. D.: Spatial Distribution of Atmospheric Aerosol Physicochemical Characteristics in the Russian Sector of the Arctic Ocean, *Atmosphere*, 11, <https://doi.org/10.3390/atmos11111170>, 2020.

35 Sakerin, S. M., Kabanov, D. M., Kopeikin, V. M., Kruglinsky, I. A., Novigatsky, A. N., Pol’kin, V. V., Shevchenko, V. P., and Turchinovich, Y. S.: Spatial Distribution of Black Carbon Concentrations in the Atmosphere of the North Atlantic and the European Sector of the Arctic Ocean, *Atmosphere*, 12, <https://doi.org/10.3390/atmos12080949>, 2021.

40 Sasakawa, M., Machida, T., Tsuda, N., Arshinov, M., Davydov, D., Fofonov, A., and Krasnov, O.: Aircraft and tower measurements of CO₂ concentration in the planetary boundary layer and the lower free troposphere over southern taiga in West Siberia: Long-term records from 2002 to 2011, *Journal of Geophysical Research: Atmospheres*, 118, 9489–9498, <https://doi.org/10.1002/jgrd.50755>, 2013.

Formatted: Font: Times New Roman

Formatted: Font: Times New Roman

Formatted: Font: Times New Roman

Formatted: Font: Times New Roman

Formatted: Font: Times New Roman

Schmale, J., Sharma, S., Decesari, S., Pernov, J., Massling, A., Hansson, H. C., von Salzen, K., Skov, H., Andrews, E., Quinn, P. K., Upchurch, L. M., Eleftheriadis, K., Traversi, R., Gilardoni, S., Mazzola, M., Laing, J., and Hopke, P.: Pan-Arctic seasonal cycles and long-term trends of aerosol properties from 10 observatories, *Atmospheric Chemistry and Physics*, 22, 3067–3096, <https://doi.org/10.5194/acp-22-3067-2022>, 2022.

Formatted: Font: Times New Roman

Schulz, H., Zanatta, M., Bozem, H., Leaitch, W. R., Herber, A. B., Burkart, J., Willis, M. D., Kunkel, D., Hoor, P. M., Abbatt, J. P. D., and Gerdes, R.: High Arctic aircraft measurements characterising black carbon vertical variability in spring and summer, *Atmospheric Chemistry and Physics*, 19, 2361–2384, <https://doi.org/10.5194/acp-19-2361-2019>, 2019.

Formatted: Font: Times New Roman

Sharma, S., Leaitch, W. R., Huang, L., Veber, D., Kolonjari, F., Zhang, W., Hanna, S. J., Bertram, A. K., and Ogren, J. A.: An evaluation of three methods for measuring black carbon in Alert, Canada, *Atmospheric Chemistry and Physics*, 17, 15225–15243, <https://doi.org/10.5194/acp-17-15225-2017>, 2017.

Shevchenko, V. P., Kopeikin, V. M., Novigatsky, A. N., and Malafeev, G. V.: Black Carbon in the Atmospheric Boundary Layer Over the North Atlantic and the Russian Arctic Seas in June–September 2017, *Oceanology*, 59, 692–696, <https://doi.org/10.1134/s0001437019050199>, 2019.

Formatted: Font: Times New Roman

Sierau, B., Chang, R. Y. W., Leck, C., Paatero, J., and Lohmann, U.: Single-particle characterization of the high-Arctic summertime aerosol, *Atmospheric Chemistry and Physics*, 14, 7409–7430, <https://doi.org/10.5194/acp-14-7409-2014>, 2014.

Formatted: Font: Times New Roman

Sinha, P. R., Kondo, Y., Koike, M., Ogren, J. A., Jefferson, A., Barrett, T. E., Sheesley, R. J., Ohata, S., Moteki, N., Coe, H., Liu, D., Irwin, M., Tunved, P., Quinn, P. K., and Zhao, Y.: Evaluation of ground-based black carbon measurements by filter-based photometers at two Arctic sites, *Journal of Geophysical Research: Atmospheres*, 122, 3544–3572, <https://doi.org/10.1002/2016JD025843>, 2017.

Stein, A. F., Draxler, R. R., Rolph, G. D., Stunder, B. J. B., Cohen, M. D., and Ngan, F.: NOAA's HYSPLIT Atmospheric Transport and Dispersion Modeling System, *Bulletin of the American Meteorological Society*, 96, 2059–2077, <https://doi.org/10.1175/BAMS-D-14-00110.1>, 2015.

Formatted: Font: Times New Roman

Stohl, A., Klimont, Z., Eckhardt, S., Kupiainen, K., Shevchenko, V. P., Kopeikin, V. M., and Novigatsky, A. N.: Black carbon in the Arctic: the underestimated role of gas flaring and residential combustion emissions, *Atmospheric Chemistry and Physics*, 13, 8833–8855, <https://doi.org/10.5194/acp-13-8833-2013>, 2013.

Formatted: Font: Times New Roman

Taketani, F., Miyakawa, T., Takashima, H., Komazaki, Y., Pan, X., Kanaya, Y., and Inoue, J.: Shipborne observations of atmospheric black carbon aerosol particles over the Arctic Ocean, Bering Sea, and North Pacific Ocean during September 2014, *Journal of Geophysical Research-Atmospheres*, 121, 1914–1921, <https://doi.org/10.1002/2015jd023648>, 2016.

Formatted: Font: Times New Roman

Taketani, F., Miyakawa, T., Takigawa, M., Yamaguchi, M., Komazaki, Y., Mordovskoi, P., Takashima, H., Zhu, C. M., Nishino, S., Tohjima, Y., and Kanaya, Y.: Characteristics of atmospheric black carbon and other aerosol particles over the Arctic Ocean in early autumn 2016: Influence from biomass burning as assessed with observed microphysical properties and model simulations, *Science of the Total Environment*, 848, <https://doi.org/10.1016/j.scitotenv.2022.157671>, 2022.

Formatted: Font: Times New Roman

Tanimoto, H., Kajii, Y., Hirokawa, J., Akimoto, H., and Minko, N. P.: The atmospheric impact of boreal forest fires in far eastern Siberia on the seasonal variation of carbon monoxide: Observations at Rishiri, A

northern remote island in Japan, *Geophysical Research Letters*, 27, 4073–4076, <https://doi.org/10.1029/2000GL011914>, 2000.

5 Terpugova, S. A., Zenkova, P. N., Kabanov, D. M., Pol'kin, V. V., Golobokova, L. P., Panchenko, M. V., Sakerin, S. M., Lisitzin, A. P., Shevchenko, V. P., Politova, N. V., Kozlov, V. S., Khodzher, T. V., Shmargunov, V. P., and Chernov, D. G.: Results of the Study of Aerosol Characteristics in the Atmosphere of the Kara and Barents Seas in Summer and Autumn 2016, *Atmospheric and Oceanic Optics*, 31, 507–518, <https://doi.org/10.1134/s1024856018050172>, 2018.

Formatted: Font: Times New Roman

10 van der Werf, G. R., Randerson, J. T., Giglio, L., van Leeuwen, T. T., Chen, Y., Rogers, B. M., Mu, M., van Marle, M. J. E., Morton, D. C., Collatz, G. J., Yokelson, R. J., and Kasibhatla, P. S.: Global fire emissions estimates during 1997–2016, *Earth System Science Data*, 9, 697–720, <https://doi.org/10.5194/essd-9-697-2017>, 2017.

Voronova, O. S., Zima, A. L., Kladov, V. L., and Cherepanova, E. V.: Anomalous Wildfires in Siberia in Summer 2019, *Izvestiya Atmospheric and Oceanic Physics*, 56, 1042–1052, <https://doi.org/10.1134/s000143382009025x>, 2020.

Formatted: Font: Times New Roman

15 [Wang, Q., Schwarz, J. P., Cao, J., Gao, R., Fahey, D. W., Hu, T., Huang, R.-J., Han, Y., and Shen, Z.: Black carbon aerosol characterization in a remote area of Qinghai–Tibetan Plateau, western China, *Science of The Total Environment*, 479–480, 151–158, <https://doi.org/10.1016/j.scitotenv.2014.01.098>, 2014.](#)

20 Whaley, C. H., Mahmood, R., von Salzen, K., Winter, B., Eckhardt, S., Arnold, S., Beagley, S., Becagli, S., Chien, R. Y., Christensen, J., Damani, S. M., Dong, X. Y., Eleftheriadis, K., Evangeliou, N., Faluvegi, G., Flanner, M., Fu, J. S., Gauss, M., Giardi, F., Gong, W. M., Hjorth, J. L., Huang, L., Im, U., Kanaya, Y., Krishnan, S., Klimont, Z., Kuhn, T., Langner, J., Law, K. S., Marelle, L., Massling, A., Olivie, D., Onishi, T., Oshima, N., Peng, Y. R., Plummer, D. A., Popovicheva, O., Pozzoli, L., Raut, J. C., Sand, M., Saunders, L. N., Schmale, J., Sharma, S., Skeie, R. B., Skov, H., Taketani, F., Thomas, M. A., Traversi, R., Tsigaridis, K., Tsyro, S., Turnock, S., Vitale, V., Walker, K. A., Wang, M. Q., Watson-Parris, D., and Weiss-Gibbons, T.: Model evaluation of short-lived climate forcers for the Arctic Monitoring and Assessment Programme: a multi-species, multi-model study, *Atmospheric Chemistry and Physics*, 22, 5775–5828, <https://doi.org/10.5194/acp-22-5775-2022>, 2022.

Formatted: Font: Times New Roman

30 Xie, Z. Q., Blum, J. D., Utsunomiya, S., Ewing, R. C., Wang, X. M., and Sun, L. G.: Summertime carbonaceous aerosols collected in the marine boundary layer of the Arctic Ocean, *Journal of Geophysical Research-Atmospheres*, 112, <https://doi.org/10.1029/2006jd007247>, 2007.

Formatted: Font: Times New Roman

Zhu, C. M., Kanaya, Y., Takigawa, M., Ikeda, K., Tanimoto, H., Taketani, F., Miyakawa, T., Kobayashi, H., and Pizzo, I.: FLEXPART v10.1 simulation of source contributions to Arctic black carbon, *Atmospheric Chemistry and Physics*, 20, 1641–1656, <https://doi.org/10.5194/acp-20-1641-2020>, 2020.

Formatted: Font: Times New Roman

Page 11: [1] Deleted **DENG Yange** **2/14/2024 4:45:00 PM**



Page 18: [2] Deleted **DENG Yange** **2/14/2024 4:45:00 PM**



Page 18: [2] Deleted **DENG Yange** **2/14/2024 4:45:00 PM**



Page 18: [2] Deleted **DENG Yange** **2/14/2024 4:45:00 PM**



Page 18: [2] Deleted **DENG Yange** **2/14/2024 4:45:00 PM**



Page 18: [2] Deleted **DENG Yange** **2/14/2024 4:45:00 PM**



Page 18: [2] Deleted **DENG Yange** **2/14/2024 4:45:00 PM**



Page 18: [3] Formatted **DENG Yange** **2/14/2024 4:45:00 PM**

Font: Times New Roman

Page 18: [3] Formatted **DENG Yange** **2/14/2024 4:45:00 PM**

Font: Times New Roman

Page 18: [4] Formatted **DENG Yange** **2/14/2024 4:45:00 PM**

Font: Times New Roman

Page 18: [4] Formatted **DENG Yange** **2/14/2024 4:45:00 PM**

Font: Times New Roman

Page 18: [5] Formatted **DENG Yange** **2/14/2024 4:45:00 PM**

Font: Times New Roman

Page 18: [5] Formatted DENG Yange 2/14/2024 4:45:00 PM

Font: Times New Roman

Page 18: [6] Formatted DENG Yange 2/14/2024 4:45:00 PM

Font: Times New Roman

Page 18: [6] Formatted DENG Yange 2/14/2024 4:45:00 PM

Font: Times New Roman

Page 18: [7] Formatted DENG Yange 2/14/2024 4:45:00 PM

Font: Times New Roman

Page 18: [7] Formatted DENG Yange 2/14/2024 4:45:00 PM

Font: Times New Roman

Page 18: [8] Formatted DENG Yange 2/14/2024 4:45:00 PM

Font: Times New Roman

Page 18: [8] Formatted DENG Yange 2/14/2024 4:45:00 PM

Font: Times New Roman

Page 18: [9] Formatted DENG Yange 2/14/2024 4:45:00 PM

Font: Times New Roman

Page 18: [9] Formatted DENG Yange 2/14/2024 4:45:00 PM

Font: Times New Roman

Page 18: [10] Formatted DENG Yange 2/14/2024 4:45:00 PM

Font: Times New Roman

Page 18: [10] Formatted DENG Yange 2/14/2024 4:45:00 PM

Font: Times New Roman

Measurement report: Shipborne observations of black carbon aerosols in the western Arctic Ocean during summer and autumn 2016–2020: impact of boreal fires

Deleted: fire impacts

Yange Deng¹, Hiroshi Tanimoto¹, Kohei Ikeda¹, Sohiko Kameyama², Sachiko Okamoto^{1,a}, Jinyoung Jung³, Young Jun Yoon³, Eun Jin Yang³ and Sung-Ho Kang³

1 National Institute for Environmental Studies, Tsukuba, Japan

2 Hokkaido University, Sapporo, Japan

3 Korea Polar Research Institute, Incheon, Korea

a now at: University Paris Est Creteil and Université de Paris Cité, CNRS, LISA, 94010 Créteil, France

Correspondence to: Hiroshi Tanimoto (tanimoto@nies.go.jp)

Text S1: Calculation of ΔO_3 during high BC episodes

Ozone is a major secondary pollutant existing in aged biomass burning plumes (Andreae et al., 1994). The change of ozone concentration from the background level could be a good indicator of the aging of biomass burning plumes. The O_3 concentration in fresh plumes could be lower than that in background. And elevated O_3 from background levels could occur in aged biomass burning plumes. However, this simple approach can be complicated by surface deposition of O_3 during long-range transport (Chin et al., 1994) or less active photochemistry in the fire plumes due to cloudy or rainy weather at the northern high latitude (Tanimoto et al., 2000).

According to GEOS-Chem model simulation, biomass burning dominated all high BC episodes except Episode 9. Therefore, for the high BC episodes identified in the 2017 and 2018 cruises, when O_3 mixing ratios were observed, ΔO_3 was derived to illustrate the aging status of the observed biomass burning airmasses. Here, ΔO_3 was the difference between the observed 1-h O_3 mixing ratios to the Arctic Ocean background, which was calculated as the average 1-h O_3 mixing ratios during the defined BC background periods in 2017 and 2018 cruises (Sect. 4.2) and was estimated to be 26.9 ppb (Fig. S14). The mean and standard deviation of ΔO_3 during E4 to E9 are presented in Table S1. Except Episodes 5 and 9, ΔO_3 during other episodes were on average negative. For E6 and E7, which occurred near the coast of Alaska and back trajectories (Fig. S15) indicate fresh Alaska airmasses could have been captured, it's possible that the monitored biomass burning plumes were fresh that the O_3 production potential have not yet realized. However, lower photochemical activity cannot be excluded as a reason for the lower observed O_3 levels. Back trajectories for E6 (Fig. S15) and E8 (Fig. S7) indicate that the observed airmasses probably have transported more than two days before being monitored. Therefore, O_3 production probably have occurred before the biomass burning plumes were transported to the ship positions if not cloudy or rainy weather and surface deposition may be the main reason for the negative ΔO_3 . For Episodes 5 and 9, although the positive ΔO_3 may indicate aged biomass burning plumes were observed, other factors may have dominated the ΔO_3 , especially for E9, anthropogenic sources possibly contributed more than biomass burning sources to the observed BC and O_3 as well (Table 2).

Table S1 The mean and standard deviation of ΔO_3 (ppb) during the high BC episodes in 2017 and 2018.

Episodes	E4	E5	E6	E7	E8	E9
Mean	-4.6	1.1	-9.9	-7.7	-5.8	0.8
Standard deviation	2.2	1.5	2.3	4.2	4.8	4.9

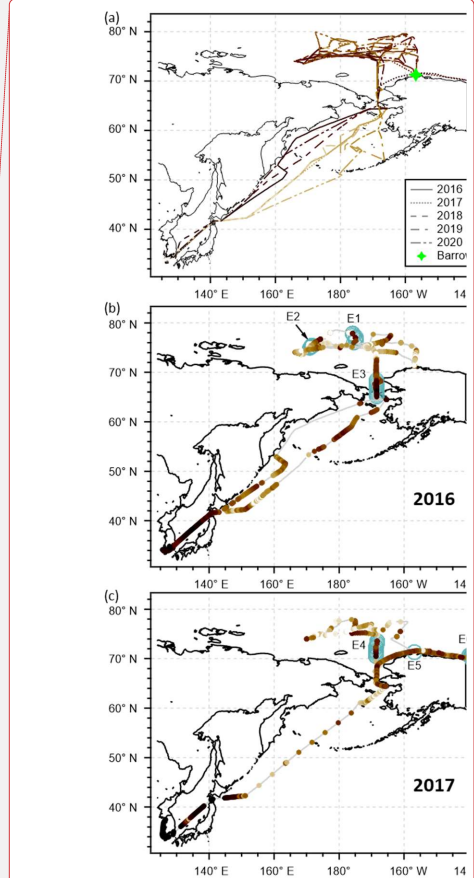
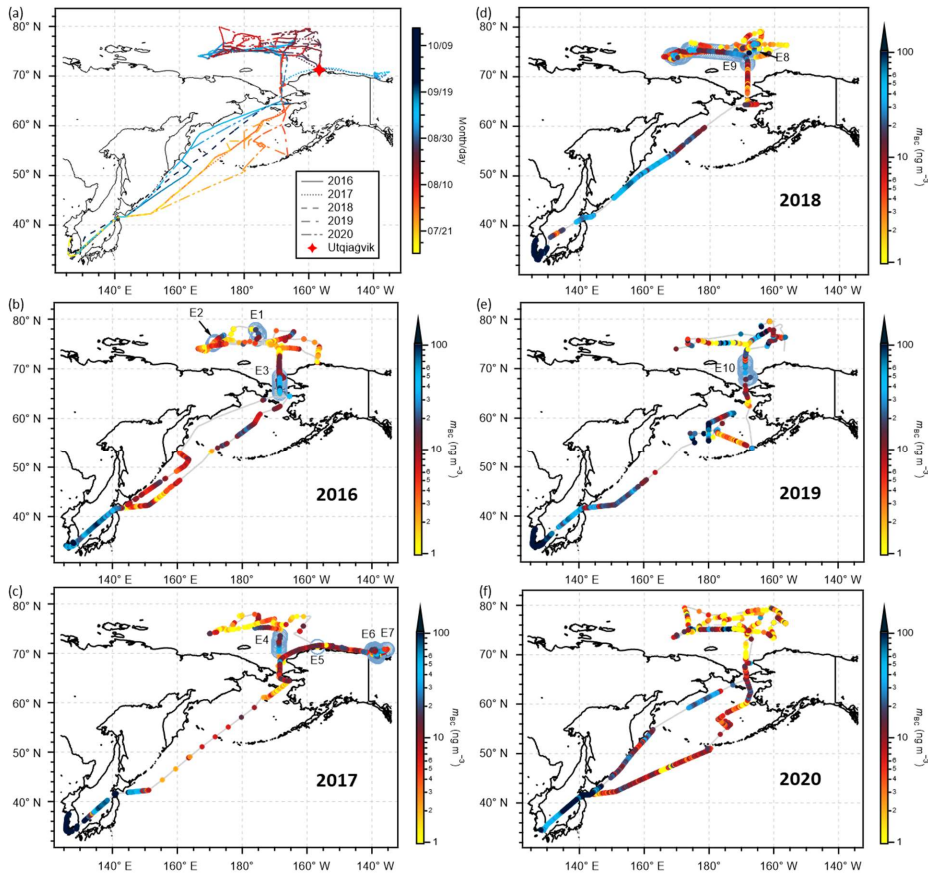


Figure S1 Same as Fig. 1, but for the temporal and spatial distribution of BC mass concentrations along the whole cruise tracks in respective years.

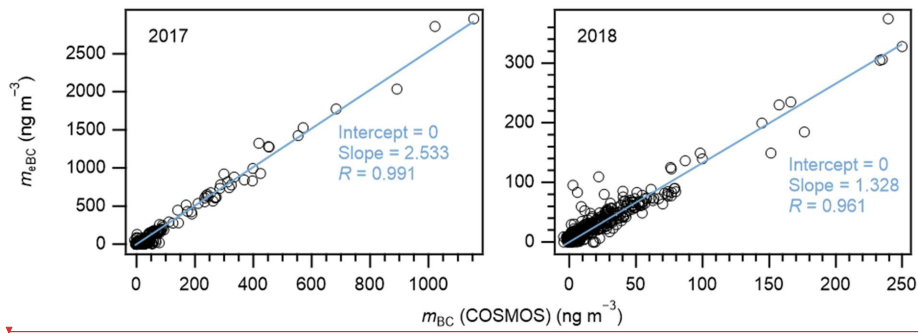


Figure S2 Scatter plot of m_{eBC} versus m_{BC} (COSMOS) for the cruises in 2017 (left) and 2018 (right). In each panel, a linear regression line forced through zero is included. The intercept, slope, and Pearson correlation coefficient (R) are also presented. All data are at a 1-h time resolution.

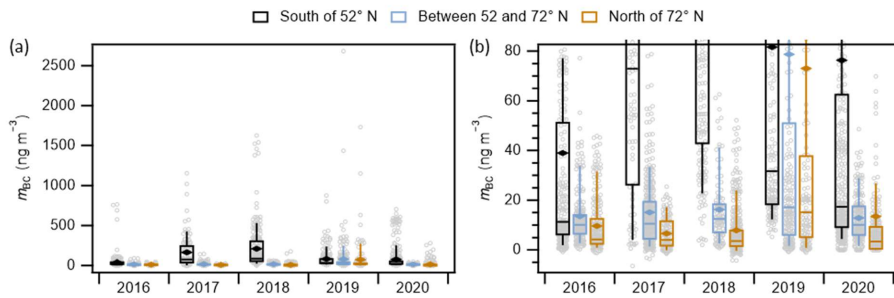
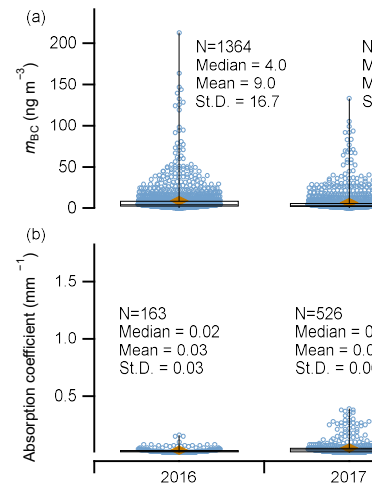


Figure S3 The full-scale view (a) and a zoomed-in view (b) of Fig. 2a.



Deleted:
Figure S2

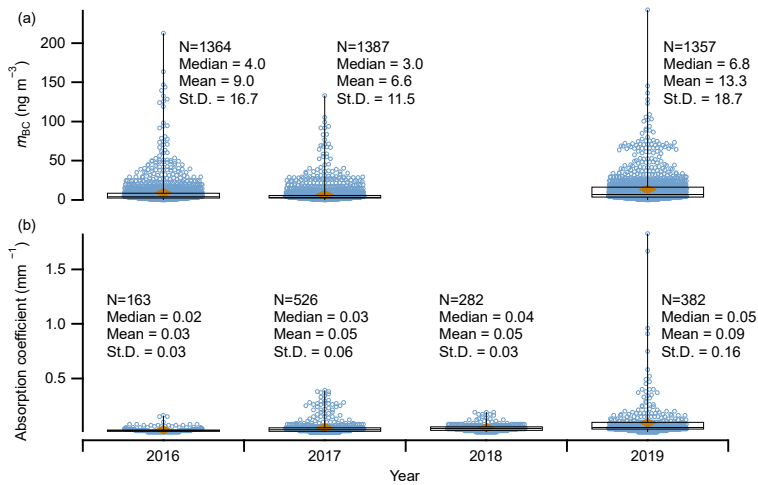


Figure S4 Interannual variations of (a) BC mass concentrations measured by a COSMOS and (b) aerosol absorption coefficients measured by filter-based absorption photometers at Barrow observatory in August and September. For each box plot, lower whisker – minimum, upper whisker – maximum, box bottom – first quartile, box top – third quartile, line in the box – median, solid diamond marker – arithmetic mean, and circle markers – measured data; N, Median, Mean, and St.D. are the number, median, arithmetic mean, and standard deviation of the data used for the individual box plot, respectively. (Data source: Ohata et al., 2021; <https://ads.nipr.ac.jp/dataset/A20201120-001>; last access: 8 September 2022.)

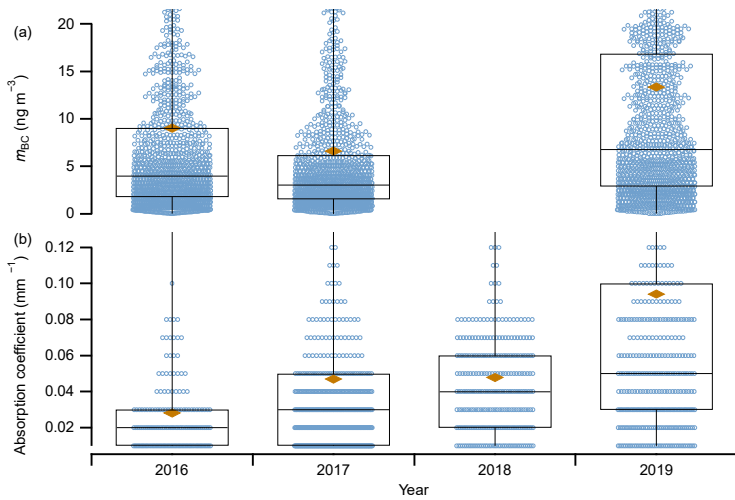
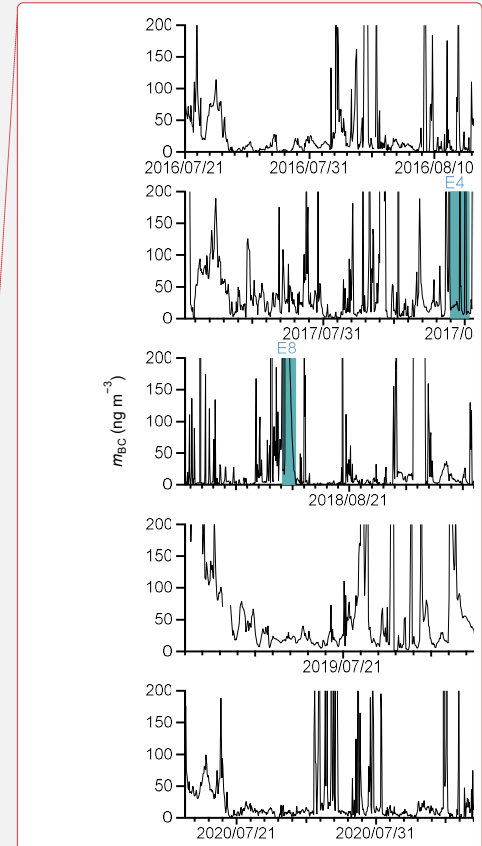


Figure S5 A zoomed-in view of Fig. S4.



Deleted:
Deleted: S3

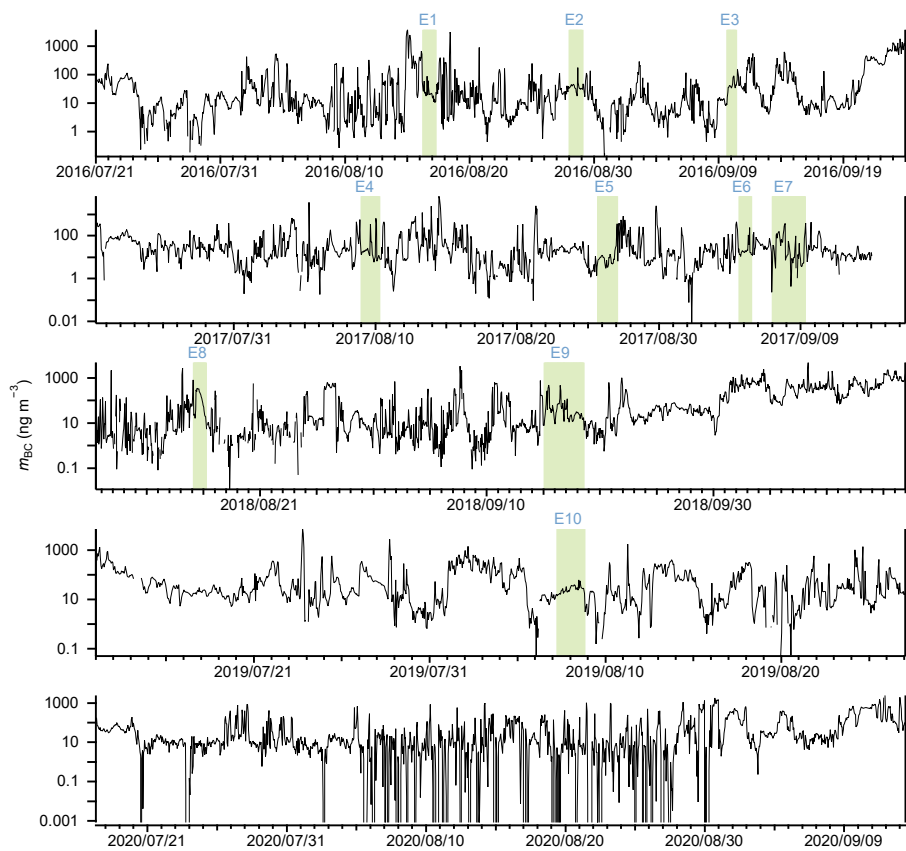


Figure S6 Time series of 1-h BC mass concentrations before removing data influenced by ship exhausts. The shaded areas indicate the 10 episodes selected in this study.

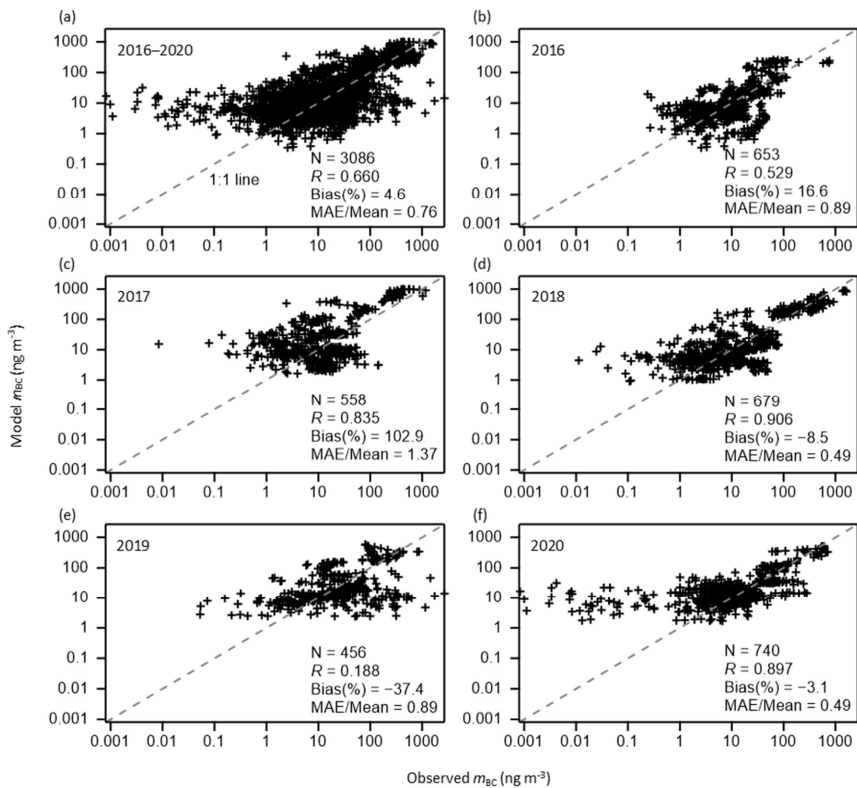
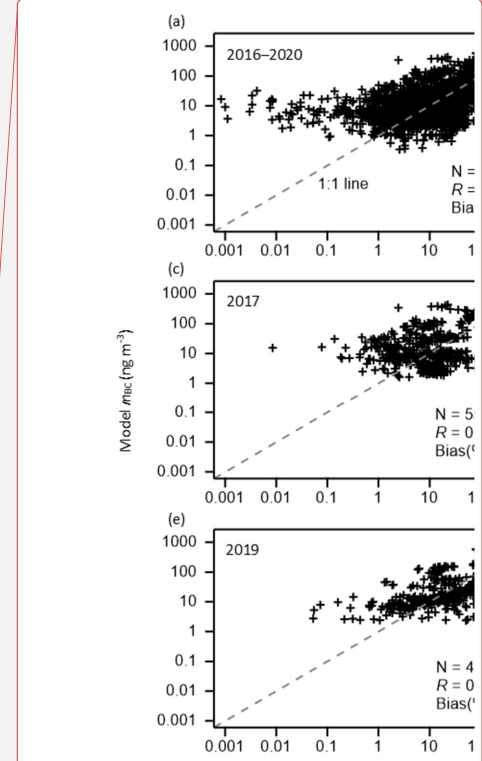


Figure S7 Comparison between model simulated and observed BC mass concentration for all cruises (a) and individual cruises (b-f). Also presented in each panel are the 1:1 line, the number of samples (N), the Pearson correlation coefficient (R), the normalized mean bias (%) between the model and observed data, and the ratio of mean absolute error to the mean of m_{BC} (MAE/Mean) for all cruises (a) and individual cruises (b-f).



Deleted:

Deleted: S4

Deleted: and

Deleted: .

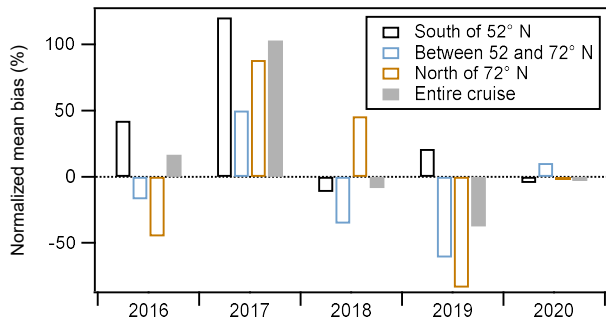


Figure S8 The normalized mean biases (NMB) of the model simulations, based on observed m_{BC} along ship tracks, are presented for latitudes south of 52° N, north of 72° N, and between 52° and 72° N for respective cruises conducted between 2016 and 2020. Additionally, the NMB for the entire duration of each cruise is provided.

Deleted: ¶ ... [1]

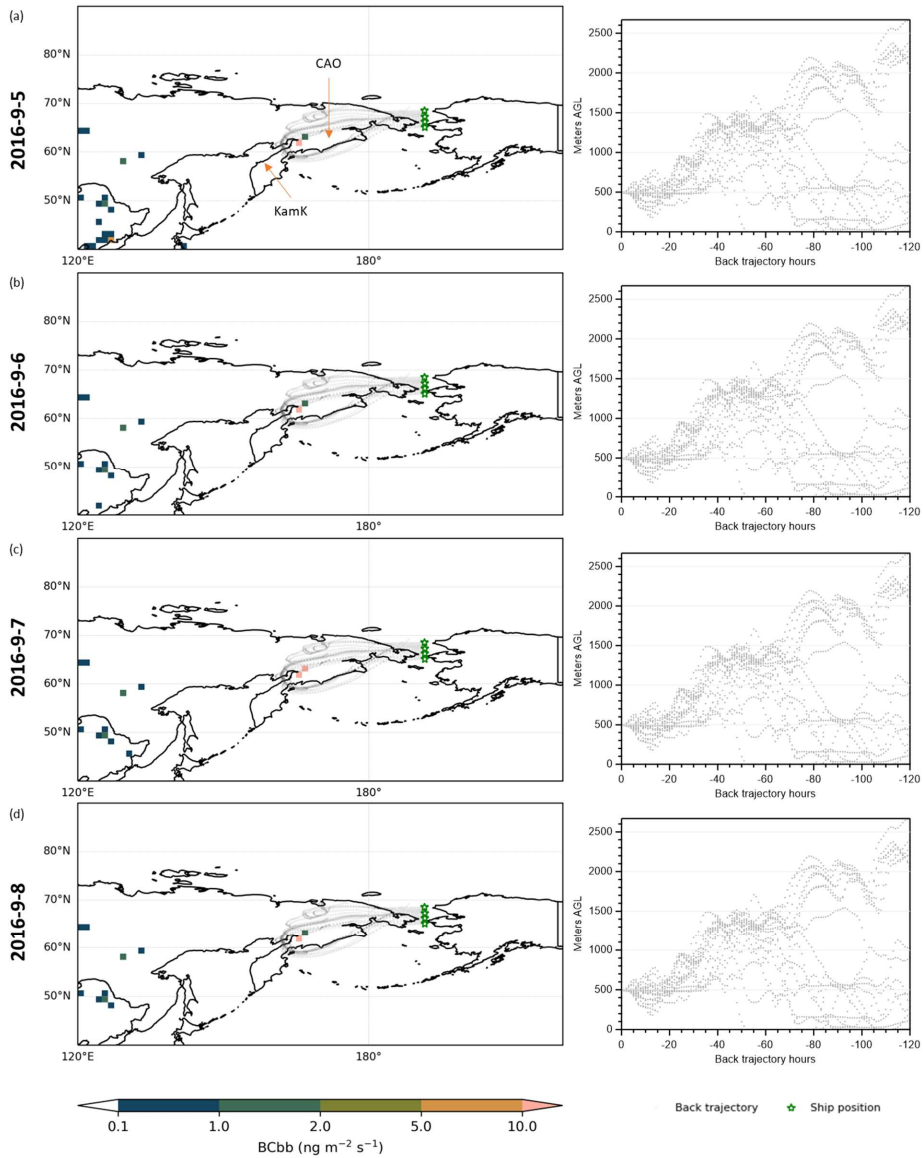


Figure S9 Biomass burning sources of BC (BCbb) during 5–8 September 2016 based on GFED4 data. In each panel, the 5-day air mass back trajectories (dotted lines) started from the ship positions (star markers) during Episode 3 are superimposed on the map, and the height distribution of the back trajectories during

Deleted:

Episode 3 are shown on the right. In panel (a), CAO-Chukotka Autonomous Okrug and KamK-Kamchatka Krai.

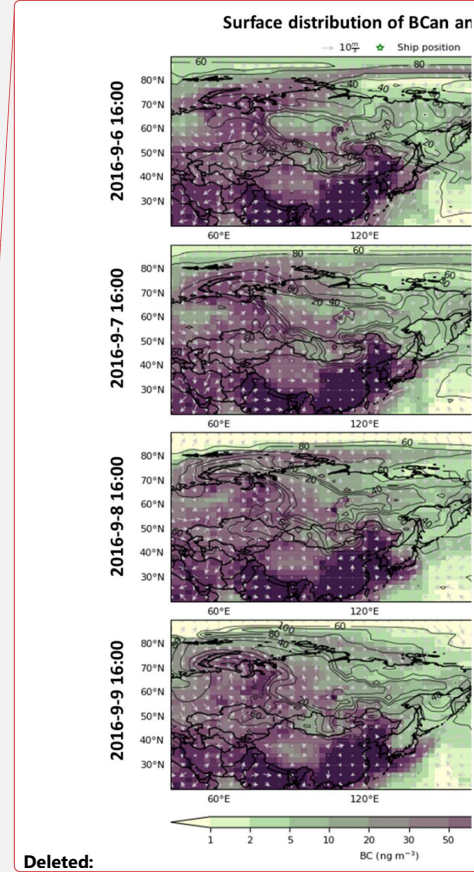
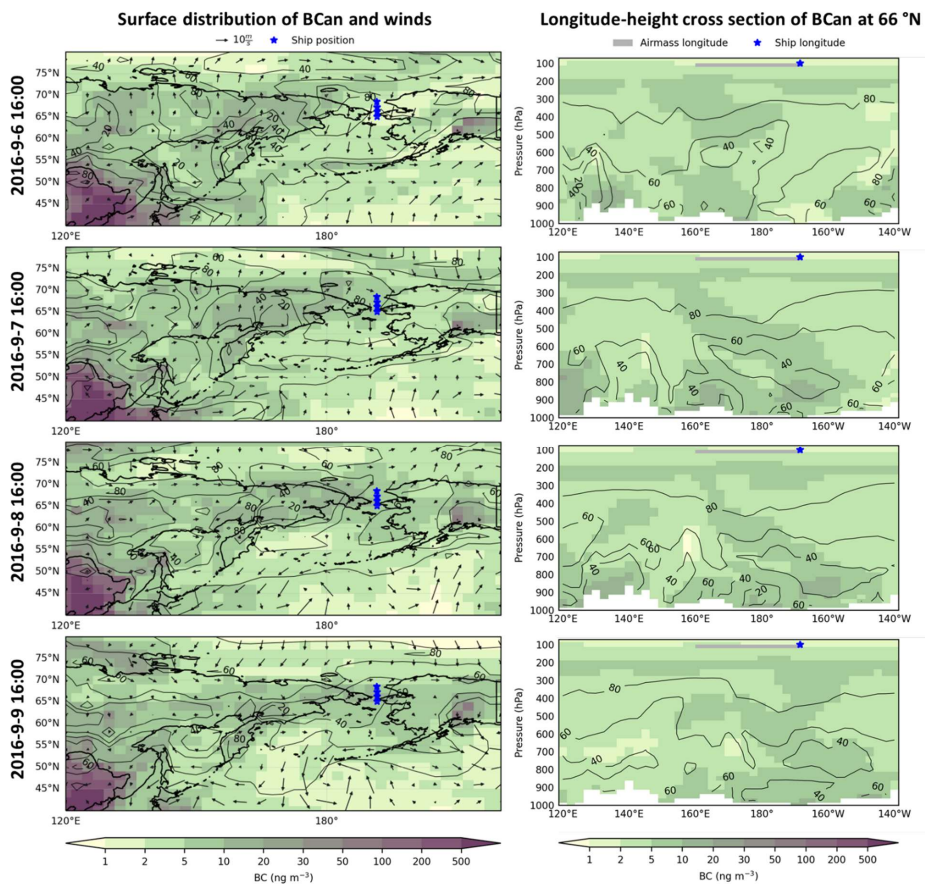


Figure S10 Model simulated anthropogenic BC (BCan, color image) surface distributions (left) and longitude-pressure cross sections at 66° N (right) before Episode 3. Superimposed on the left panels are surface winds and the ship positions. Superimposed on the right panels are the ship longitude positions and the possible transport region of BC-containing air masses related with Episode 3. The latter was inferred from GEOSChem model (Fig. 4) and back trajectories (Fig. S9). On both panels, the contour plot represents the simulated anthropogenic BC to total BC ratio (%).

Deleted: S6

Deleted: S5

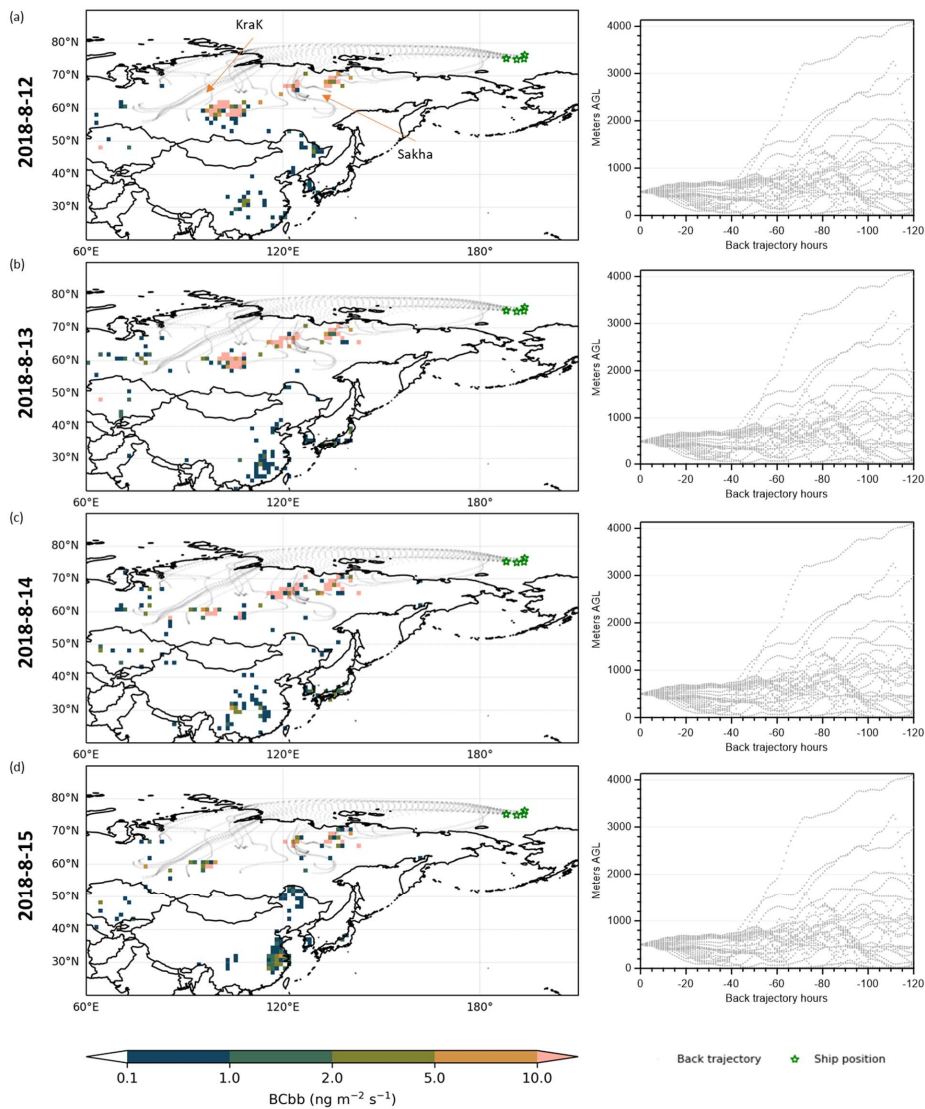
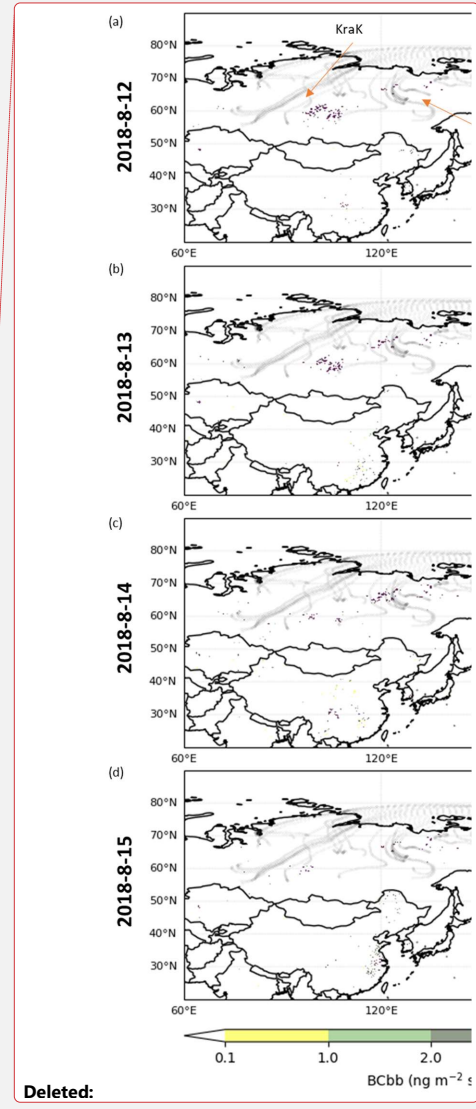


Figure S11 Biomass burning sources of BC (BCbb) during August 12–15, 2018 based on GFED4 data. In each panel, the 5 day air mass back trajectories (dotted lines) started from the ship positions (star markers) during Episode 8 are superimposed on the map, and the height distribution of the back trajectories (dotted lines) during Episode 8 are shown on the right. In panel (a), KraK- Krasnoyarsk Krai and Sakha- the Republic of Sakha.



Deleted:

Deleted: S7

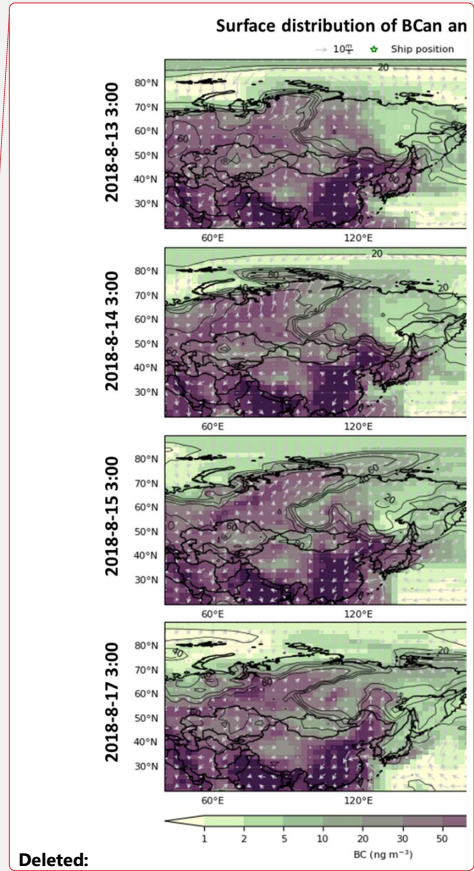
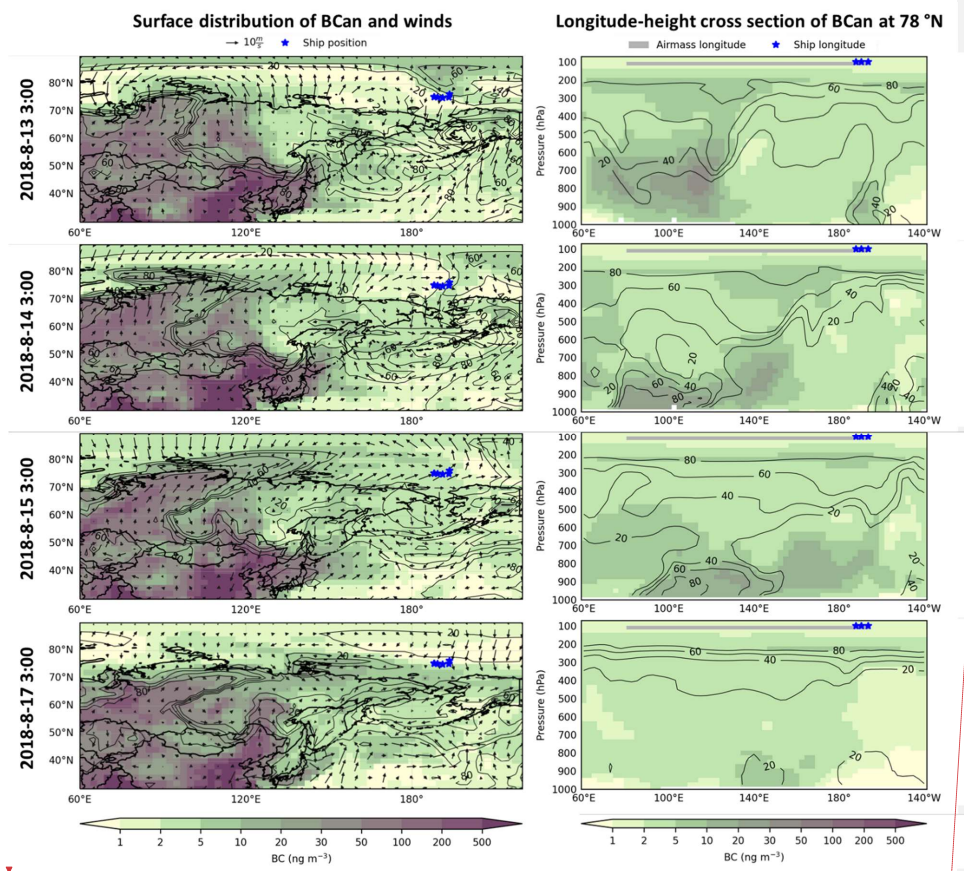


Figure S12 Model simulated anthropogenic BC (BCan, color image) surface distributions (left) and longitude-pressure cross sections at 78° N (right) before to right after Episode 8. Superimposed on the left panels are surface winds and the ship positions. Superimposed on the right panels are the ship longitude positions and the possible transport region of BC-containing air masses related with Episode 8. The latter was inferred from GEOSChem model (Fig. 5) and back trajectories (Fig. S11). On both panels, the contour plot represents the simulated anthropogenic BC to total BC ratio (%).

Deleted: S8

Deleted: S7

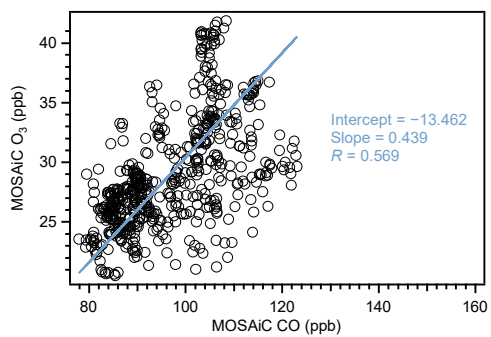


Figure S13 Scatter plot of O₃ versus CO for the period from 6 August 2020 0:00 to 6 September 2020 0:00 of the MOSAiC observation in the central Arctic (Boyer et al., 2023). The line represents the reduced major axis regression: the intercept, slope, and correlation coefficient are also presented. The merged CO and O₃ datasets (Angot et al., 2022) were used for the analysis.

Deleted: S9

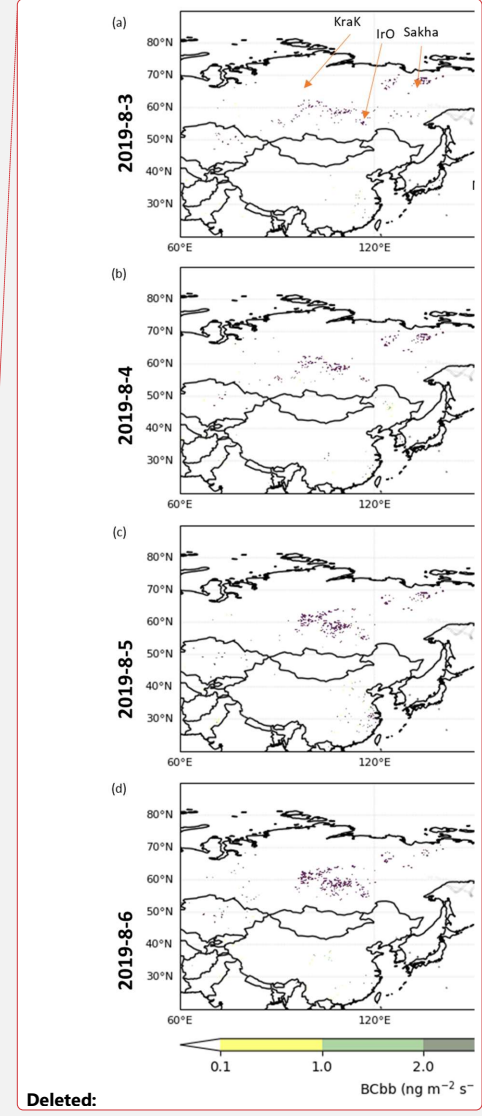
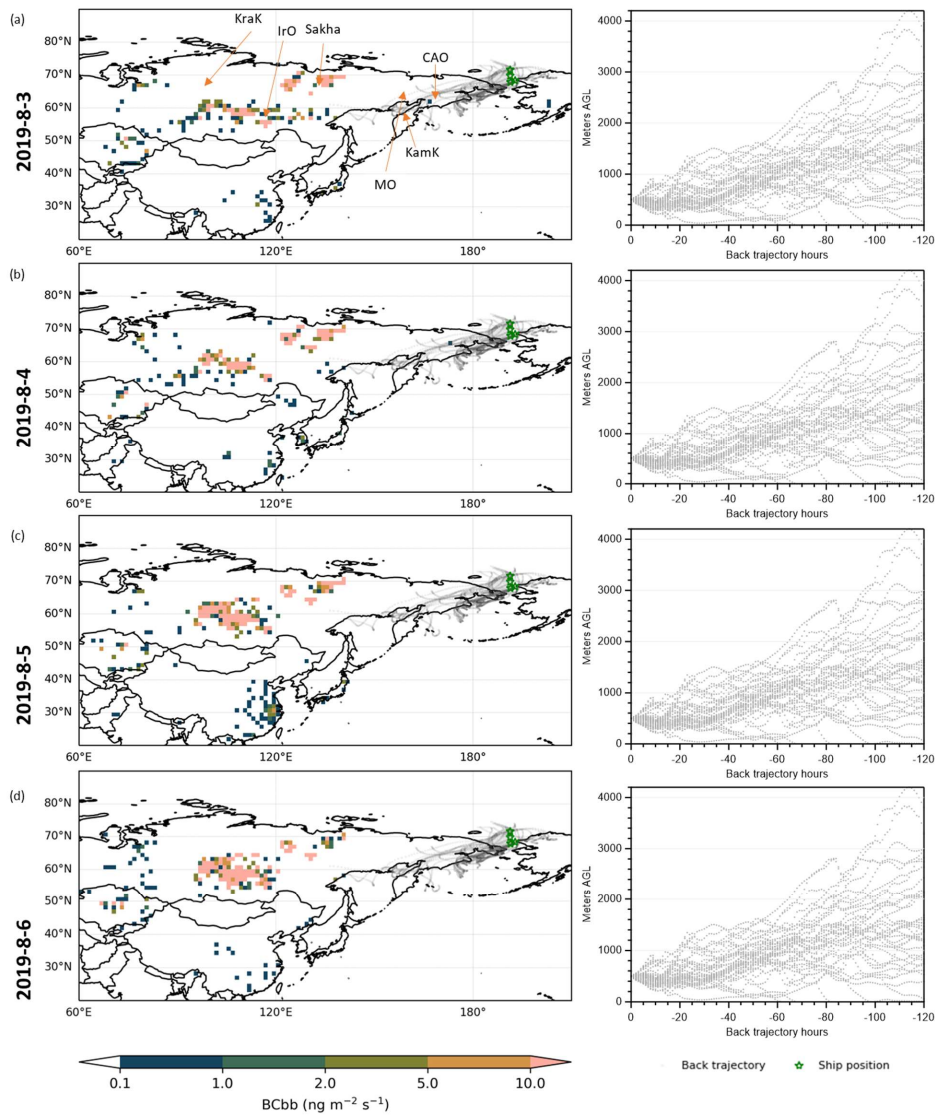


Figure S14 Biomass burning sources of BC (BCbb) during August 3–6, 2019 based on GFED4 data. In each panel, the 5 day airmass back trajectories (dotted lines) started from the ship positions (star markers) during Episode 10 are superimposed on the map, and the height distribution of the back trajectories (dotted lines) during Episode 10 are shown on the right. In panel (a), KraK- Krasnoyarsk Krai, IrO-

Deleted: S10

Irkutsk Oblast, Sakha- the Republic of Sakha, MO- Magadan Oblast, CAO- Chukotka Autonomous Okrug, and KamK- Kamchatka Krai.

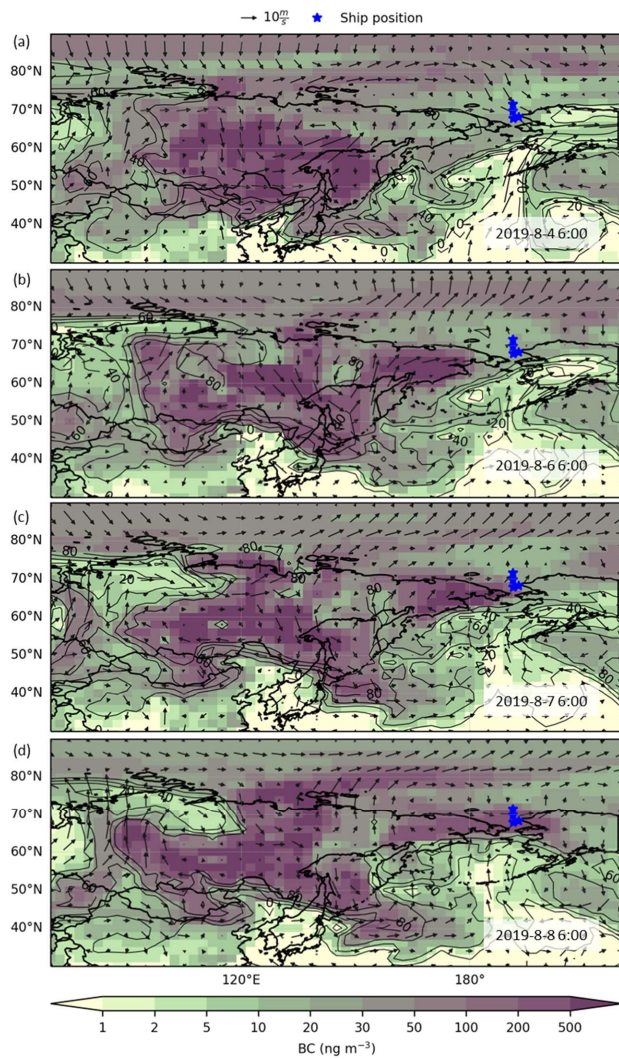
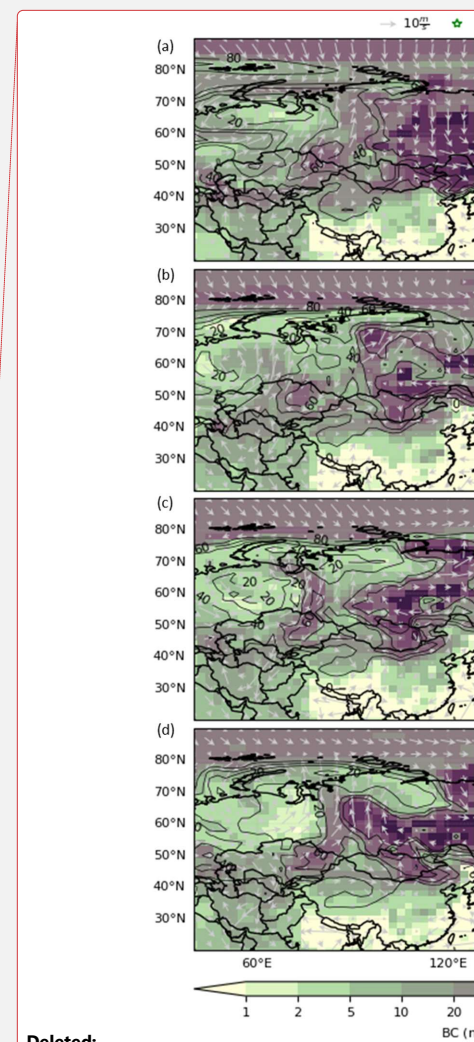


Figure S15 Simulated biomass burning BC (color image) surface distributions and horizontal winds (arrow) at 800 hPa before and during Episode 10. The contour plot superimposed on each panel represents the simulated biomass burning BC to total BC ratio (%). Star markers indicate the ship position during episode 10.



Deleted:

Deleted: S11

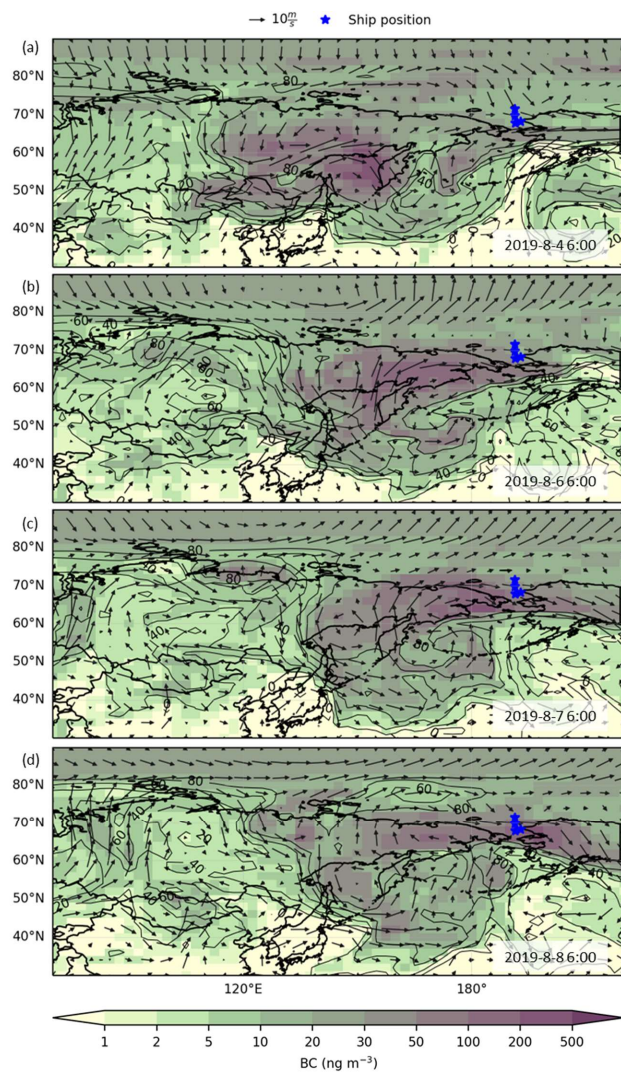
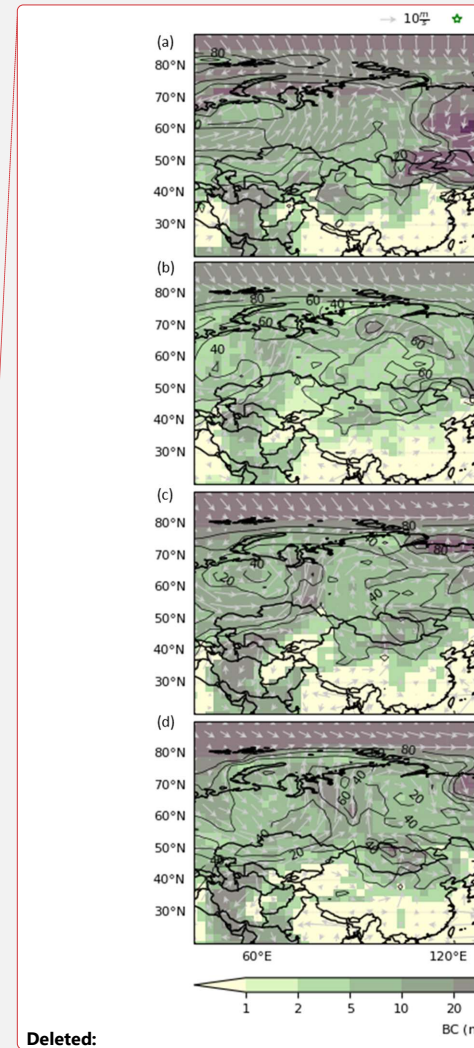


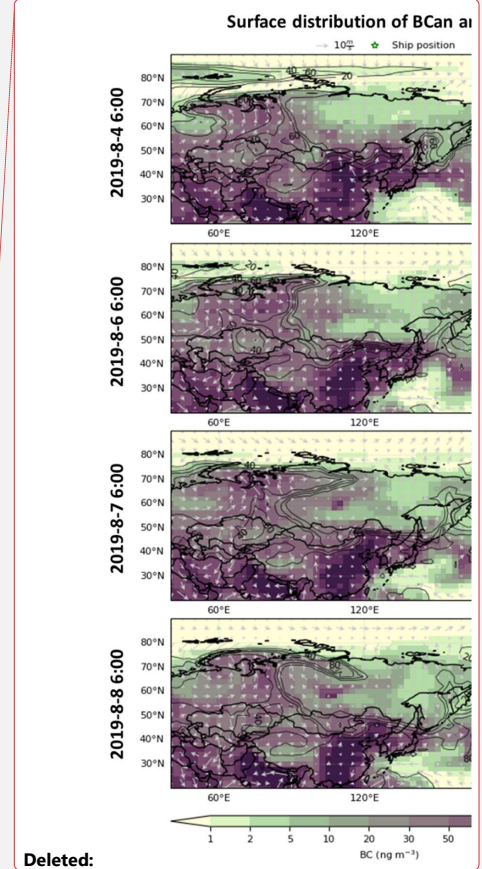
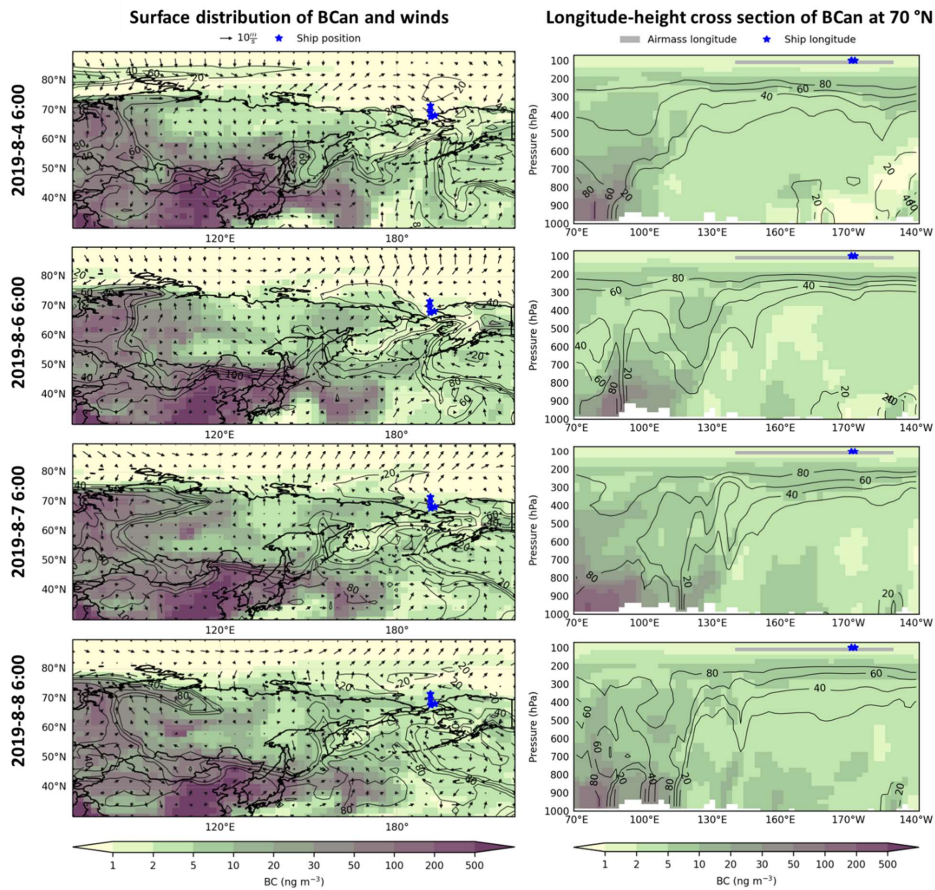
Figure S16 Same as Fig. S15, but for simulations at 600 hPa.



Deleted:

Deleted: S12

Deleted: S11



Deleted:

Figure S17 Model simulated anthropogenic BC (BCan, color image) surface distributions (left) and longitude-pressure cross sections at 70° N (right) before and during Episode 10. Superimposed on the left panels are surface winds and the ship positions. Superimposed on the right panels are the ship longitude positions and the possible transport region of BC-containing air masses related with Episode 10. The latter was inferred from GEOSChem model (Fig. 9) and back trajectories (Fig. S14). On both panels, the contour plot represents the simulated anthropogenic BC to total BC ratio (%).

Deleted: S13

Deleted: S10

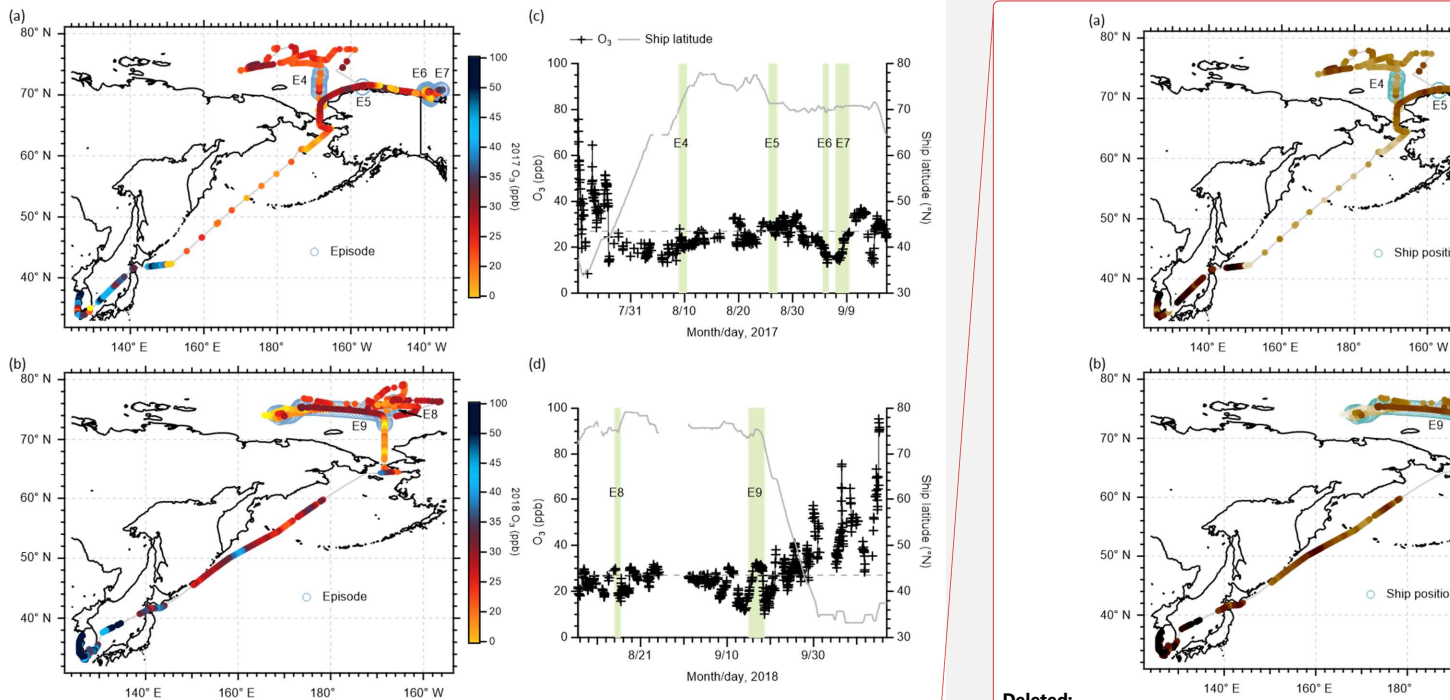
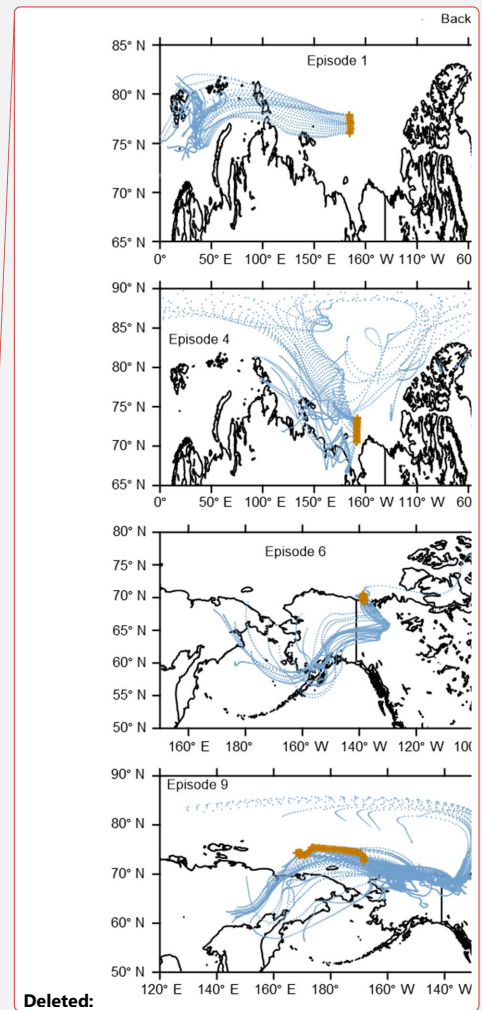
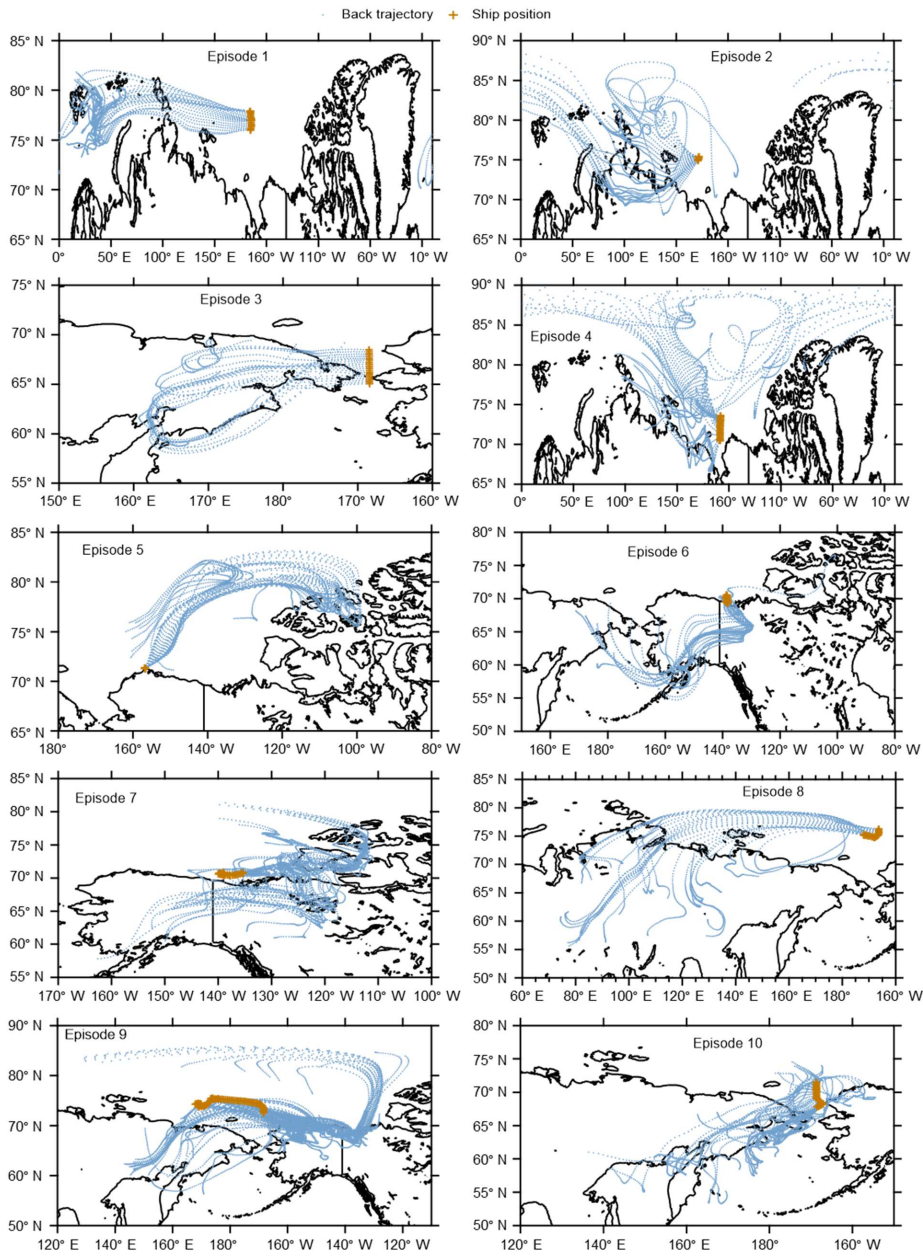


Figure S18 Surface distributions of O₃ mixing ratios along the ship tracks (a and b) and time series of O₃ mixing ratios and ship latitude positions (c and d) during the 2017 (a and c) and 2018 (b and d) cruises. In panels (a) and (b), the grey line represents the cruise track, and the filled color circles superimposed on the track indicate the O₃ mixing ratios. Ship positions during Episodes 4-9 are marked along the ship tracks as open circles. In panels (c) and (d), bar shades indicate Episodes 4-9, and the horizontal dashed lines indicate the background O₃ mixing ratio in the Arctic Ocean (Text S1). The O₃ mixing ratios presented here are at 1 h time resolution and the data influenced by ship exhaust has been removed.

Deleted:

Deleted: S14



Deleted:

Figure S19 Hourly 5 day backward airmass trajectories (dotted lines) started from 500 m above the ship positions (plus markers) for the ten episodes.

Deleted: S15

Deleted: Episodes 1, 2, 4, 5, 6, 7, and 9

References:

Andreae, M. O., Anderson, B. E., Blake, D. R., Bradshaw, J. D., Collins, J. E., Gregory, G. L., Sachse, G. W., and Shipham, M. C.: Influence of plumes from biomass burning on atmospheric chemistry over the equatorial and tropical South Atlantic during CITE 3, *Journal of Geophysical Research: Atmospheres*, 99, 12793–12808, <https://doi.org/10.1029/94JD00263>, 1994.

Angot, H., Blomquist, B., Howard, D., Archer, S., Bariteau, L., Beck, I., Boyer, M., Crotwell, M., Helmig, D., Hueber, J., Jacobi, H.-W., Jokinen, T., Kulmala, M., Lan, X., Laurila, T., Madronich, M., Neff, D., Petäjä, T., Posman, K., Quéléver, L., Shupe, M. D., Vimont, I., and Schmale, J.: Year-round trace gas measurements in the central Arctic during the MOSAiC expedition, *Sci Data*, 9, 723, <https://doi.org/10.1038/s41597-022-01769-6>, 2022.

Chin, M., Jacob, D. J., Munger, J. W., Parrish, D. D., and Doddridge, B. G.: Relationship of ozone and carbon monoxide over North America, *Journal of Geophysical Research: Atmospheres*, 99, 14565–14573, <https://doi.org/10.1029/94JD00907>, 1994.

Ohata, Sho, Mori, Tatsuhiro, Kondo, Yutaka, Sharma, Sangeeta, Hyvarinen, Antti, Andrews, Elisabeth, Tunved, Peter, Asmi, Eija, Backman, John, Servomaa, Henri, Veber, Daniel, Eleftheriadis, Konstantinos, Vratolis, Stergios, Krejci, Radovan, Zieger, Paul, Koike, Makoto, Kanaya, Yugo, Yoshida, Atsuhiko, Moteki, Nobuhiro, Zhao, Yongjing, Tobo, Yutaka, Matsushita, Junji, and Oshima, Naga: Black carbon mass concentrations and aerosol light absorption coefficients measured at Arctic sites (1.01), <https://doi.org/10.17592/001.2020112001>, 2021.

Tanimoto, H., Kajii, Y., Hirokawa, J., Akimoto, H., and Minko, N. P.: The atmospheric impact of boreal forest fires in far eastern Siberia on the seasonal variation of carbon monoxide: Observations at Rishiri, A northern remote island in Japan, *Geophysical Research Letters*, 27, 4073–4076, <https://doi.org/10.1029/2000GL011914>, 2000.

