

Tropospheric sulfate from Cumbre Vieja (La Palma) observed over Cabo Verde contrasted to background conditions - lidar case study of aerosol extinction, backscatter, depolarization and lidar ratio profiles at 355, 532 and 1064 nm

~~Tropospheric sulfate from Cumbre Vieja volcano at Las Palmas, transported towards Cabo Verde - lidar measurements of aerosol extinction, backscatter and depolarization at 355, 532 and 1064 nm~~

Henriette Gebauer^{1,2}, Athena Augusta Floutsi¹, Moritz Haarig¹, Martin Radenz¹, Ronny Engelmann¹, Dietrich Althausen¹, Annett Skupin¹, Albert Ansmann¹, Cordula Zenk^{3,4}, and Holger Baars¹

¹Leibniz Institute for Tropospheric Research, Leipzig, Germany

²Institute for Meteorology, Leipzig University, Leipzig, Germany

³Ocean Science Center Mindelo, Mindelo, Cabo Verde

⁴GEOMAR Helmholtz Centre for Ocean Research, Kiel, Germany

Correspondence: Henriette Gebauer (gebauer@tropos.de)

Abstract. In September 2021, volcanic aerosol (mainly freshly formed sulfate plumes) originating from the eruption of Cumbre Vieja on La Palma, Canary Islands, Spain, crossed Cabo Verde at altitudes below 2 km. On 24 September 2021, an extraordinarily large aerosol optical depth (AOD) close to 1.0 (daily mean at 500 nm) was observed at Mindelo, Cabo Verde. This event provided favorable conditions to obtain lidar-derived profiles of extinction and backscatter coefficients, lidar ratio and depolarization ratio at 355, 532 and 1064 nm in the sulfate aerosol plume. A novel feature of the lidar system operated at Mindelo is the availability of extinction, lidar ratio and depolarization measurements at 1064 nm in addition to the standard wavelengths of 355 and 532 nm. Having measurements of these parameters at all three wavelengths is a major advantage for the aerosol characterization and in aerosol typing efforts as the lidar ratio and the particle linear depolarization ratio are key parameters for this purpose. In this article, we present the key results of the lidar observations obtained on one specific day, namely on 24 September 2021, 04:38–05:57 UTC, including the first ever measurements of the particle extinction coefficient, the lidar ratio and the depolarization ratio at 1064 nm for volcanic sulfate, and discuss the findings in terms of aerosol optical properties and mass concentrations by comparison to a reference observation (16 September 2021) representing the typical background conditions before the start of the eruptions. We found an unusual high particle extinction coefficient of 721 ± 51 , 549 ± 38 and $178 \pm 13 \text{ Mm}^{-1}$ and an enhanced lidar ratio of 66.9 ± 10.1 , 60.2 ± 9.2 and $30.8 \pm 8.7 \text{ sr}$ at 355, 532 and 1064 nm, respectively, in the sulfate-dominated planetary boundary layer (PBL). The particle linear depolarization ratio was $\leq 0.9\%$ at all respective wavelengths. It is the first time that lidar-derived intensive aerosol optical properties could be derived for volcanic sulfate at all three wavelengths and, thus, it is a highly valuable data set for global aerosol characterization. The lidar analysis also revealed

a sulfate-related AOD of about 0.35 ± 0.03 at 532 nm of the total PBL-related AOD of 0.43. The rest of the AOD contribution was caused by a lofted Saharan dust layer extending from 1.4 to 5 km and leading to a total AOD of 0.79 at 532 nm. Volcanic ash contribution to the observed aerosol plumes could be mostly excluded based on trajectory analysis and the observed optical properties. Peak mass concentration was $178.5 \pm 44.6 \mu\text{g m}^{-3}$ in the volcanic influenced – sulfate dominated polluted PBL showing the hazardous potential of such sulfate plumes to significantly worsen local air quality at even remote locations. From 19 September to 13 December 2021, volcanic eruptions took place at the Cumbre Vieja ridge, Las Palmas, Canary Islands. Thereby, fine ash and volatiles, like sulfur dioxide (SO_2), were emitted and transported over hundreds to thousands of kilometers away from the island. Continuous lidar observations with the multiwavelength-Raman-polarization-lidar Polly^{XT} were performed at the Ocean Science Center at Mindelo, Cabo Verde, in the framework of the Joint Aeolus-Tropical Atlantic Campaign (JATAC) 2021/2022 enabling the characterization of the atmospheric state above Mindelo during the eruption period. A special feature of the system operated at Mindelo is, that measurements of the particle extinction coefficient, the particle extinction-to-backscatter ratio (lidar ratio) and the particle linear depolarization ratio are available at all three wavelengths (355, 532 and 1064 nm). The typical aerosol conditions over Mindelo are a clean marine planetary boundary layer (PBL) up to approx. 1 km and above a Saharan dust layer (SAL, up to 6 km) during northern hemispheric summer and fall. A particle extinction coefficient smaller than 200 Mm^{-1} , a lidar ratio smaller than 30 sr and a particle linear depolarization ratio close to 0% have been typically observed within the planetary boundary layer, while a lidar ratio between 40 and 60 sr and a linear depolarization ratio between 20 and 30% are characteristic for the SAL above. In contrast, during the time of the volcanic eruptions, a strongly polluted PBL was observed on specific days beginning on the 23 September 2021, whereby the particle extinction coefficient and the lidar ratio increased up to 800 Mm^{-1} and 80 sr (at 355 nm), respectively. On 24 September, the aerosol optical depth, determined by an AERONET (Aerosol Robotic Network) sun-photometer, was as high as 0.9 and 1.1 (daily averages at 500 and 340 nm). HYSPLIT (Hybrid Single-Particle Lagrangian Integrated Trajectory) trajectories indicate air mass transport from Canary Islands to Mindelo at heights below 2 km. The observed pollution in the PBL over Mindelo is attributed to sulfate aerosol from the volcanic eruption at Las Palmas as the particle linear depolarization ratio was low ($\leq 3\%$) and, thus, does not indicate non-spherical particles, such as Saharan dust or volcanic ash. We thus conclude that sulfate aerosol formed from gaseous precursors during the transport (2–3 days for a distance of 1500 km) from Las Palmas towards Cabo Verde. No indications of volcanic ash over Mindelo were found in the SAL. This finding is supported by the HYSPLIT trajectories, which show that air masses in higher altitudes originate from the African continent and not from the Canary Islands.

1 Introduction

Volcanic eruptions are of large importance for the Earth's climate (Hansen et al., 1997; Robock, 2000) because the emitted particles and gases can be transported several hundreds of kilometers away from the source and influence the global radiation budget (Solomon et al., 2011; Groß et al., 2012; Martin et al., 2014). Typically emitted products of volcanic activity are ash particles with a diameter smaller than 2 mm during explosive phases, as well as volatiles such as sulfur dioxide (SO_2);

McGonigle et al., 2004; Aiuppa et al., 2008; Carracedo et al., 2022). SO₂ is the most abundant gas emitted by volcanoes (Kampouri et al., 2021) of which 10–20Mt are released into the troposphere each year (Martin et al., 2014). While in the stratosphere this gas has a lifetime of multiple weeks, it persists in the troposphere for around 1–3 days (Navas-Guzmán et al., 2013; Pattantyus et al., 2018). In a chemical reaction with water and further atmospheric components (hydroxyl radical (OH) in clear air conditions or hydrogen peroxide (H₂O₂) in cloudy air), it is quickly converted to sulfate aerosol (SO₄²⁻ bearing substances and sulfuric acid droplets; Ansmann et al., 2011b; Martin et al., 2014; Pattantyus et al., 2018). The efficiency of the conversion of SO₂ to sulfate aerosol is influenced by multiple factors and increases with temperature and relative humidity (Eatough et al., 1994; Yang et al., 2018). The lifetime of sulfate aerosol in the troposphere of 1 to 3 weeks is much longer than the one of SO₂ or volcanic ash so that it can be transported over long distances (Pappalardo et al., 2004; Filonchyk et al., 2022). If it reaches the higher troposphere/lower stratosphere it can remain even for several years (Jäger, 2005; Deshler, 2008; Martin et al., 2014).

Sulfate aerosol particles ~~are impacting the climate in several ways~~~~have several climate impacts~~ since they reflect solar radiation (Pappalardo et al., 2004) and scatter light even more efficiently with increasing relative humidity due to hygroscopic growth (Miffre et al., 2012). Furthermore, they act as cloud condensation nuclei (CCN) and ice nucleation particles (INPs) and, thus, influence the precipitation cycle (Pappalardo et al., 2004). Especially in cities, sulfate aerosol is of large importance with regard to air quality. It is one of the major components of urban PM_{2.5} (Zhang et al., 2004; Yang et al., 2018). Although anthropogenic SO₂ emissions are with 110Mt per year 5–10 times higher than volcanic emissions, volcanic eruptions are one of the greatest natural sources for sulfur emissions (Martin et al., 2014). Furthermore, their emissions have a larger ~~impact on the climate~~~~climate impact~~ due to the release of SO₂ in higher altitudes, which provides a longer lifetime of the formed aerosol particles (Kampouri et al., 2021). In addition, sulfate particles can be emitted directly as well (Martin et al., 2014). Moreover, volcanic eruptions have not only climatological but also economical ~~consequences~~~~impact~~ with regard to aviation. For example, volcanic ash can cause engine damage at aircraft or ~~the~~ air traffic is even suspended, as happened during the eruption of the Iceland volcano Eyjafjallajökull in spring 2010 (Groß et al., 2012). To reduce the risks, ash-dispersion simulations are used in early warning systems. Assimilation of satellite products like Aeolus wind measurements improve the ash plume forecast, as shown in a recent study of Amiridis et al. (2023). Besides the climatological and economical consequences, volcanic gases and particles regionally lead to strong pollution events, too, ~~so that in fact~~ during volcanic eruptions villages in the proximity even have to be evacuated. Often, the visibility is reduced and extremely unfavorable air quality is caused (Pattantyus et al., 2018). As a dominant component of PM_{2.5}, sulfate aerosol has a negative impact on human health as it infiltrates deeply into the lung and can cause asthma, sinusitis or further respiratory disease (Businger et al., 2015).

Lidar observations have expanded our knowledge on volcanic aerosol in the troposphere. In the case of the eruption of Eyjafjallajökull in Iceland in 2010 (Ansmann et al., 2010, 2011b; Groß et al., 2012; Pappalardo et al., 2013) and Etna in Italy in 2002 (Pappalardo et al., 2004) and 2019 (Kampouri et al., 2021), pure volcanic ash was observed. Lidar ratios in the range of 30–60sr and a particle linear depolarization ratio of 35–37% were measured at 355 and 532nm. In general, it is challenging to distinguish volcanic ash from other depolarizing aerosol types, especially from desert dust, because of the very similar lidar ratios of both types. The main quantity for the distinction between volcanic ash and desert dust is the particle linear

depolarization ratio, which is in the range of $30 \pm 5\%$ (at 355, 532, 710 and 1064 nm) for pure dust (Ansmann et al., 2010) and, thus, smaller than the aforementioned values for ash. Sulfate aerosol instead can be distinguished more easily from volcanic ash due to a much lower particle linear depolarization ratio, which is close to zero, and the different size ranges of the aerosol particles. While volcanic ash is in the coarse mode (diameter $> 2 \mu\text{m}$), sulfate aerosol is in the fine mode (diameter $\leq 2 \mu\text{m}$) (John et al., 2011). ~~(fine mode (diameter $\leq 2 \mu\text{m}$) for sulfate aerosol and coarse mode (diameter $> 2 \mu\text{m}$) for volcanic ash; John et al., 2011)~~ A separation of volcanic sulfate and ash based on the particle linear depolarization ratio was successfully introduced by Ansmann et al. (2011b). Sulfate particles produce a larger lidar ratio (55 up to 80 sr) and a particle linear depolarization ratio close to zero (4–5%) as multiwavelength-Raman lidar observations at 355 and 532 nm during the eruptions of Eyjafjallajökull and Etna have shown (Pappalardo et al., 2004; Mona et al., 2012; Navas-Guzmán et al., 2013). In the case of Eyjafjallajökull, Navas-Guzmán et al. (2013) observed two distinct aerosol layers over Granada, Spain, consisting of ~~to~~ 82% of sulfate aerosol. Sulfate aerosol from Eyjafjallajökull mixed with continental aerosol was furthermore observed in the planetary boundary layer (PBL) ~~PBL~~ over Potenza, Italy, (Mona et al., 2012). One of the first multiwavelength-Raman lidar ~~measurements~~ observations of tropospheric volcanic aerosol, and especially sulfate particles (mixed with a low amount of soot), was also performed at Potenza by Pappalardo et al. (2004), capturing the eruption of Etna in 2002.

One of the most recent volcanic eruptions, which was highly present in the European media, took place at the Cumbre Vieja volcanic ridge (28.62°N , 17.88°W ~~28.34°N , 17.50°E~~ , 1949 m a.s.l. (Filonchik et al., 2022)) at La Palma ~~Las Palmas~~, Canary Islands. The event is described in detail by Carracedo et al. (2022). Further studies concerning its impact on air quality were performed by Filonchik et al. (2022) and Milford et al. (2023). ~~A ceilometer-based study of the mass concentration of volcanic ash at La Palma and its distribution to the south of France was performed by Bedoya-Velázquez et al. (2022).~~ Volcanic activity started on 19 September 2021. The last eruption was recorded on 13 December 2021. ~~The volcanic activity during this period was classified as a basaltic fissure eruption dominated by strombolian activity and with episodic phreatomagmatic pulses.~~ The eruptive column usually reached to an altitude of 3500 m a.s.l. and peaked at 8500 m a.s.l. on 13 December. During the whole time of volcanic activity, fine lapilli (diameter 2–64 mm) were constantly produced. In addition, ash ($< 2 \text{ mm}$) and more than 10 kt SO_2 per day were emitted (Filonchik et al., 2022) so that at different measurement sites at La Palma ~~locally~~ the European air quality hourly threshold of $350 \mu\text{g m}^{-3}$ was exceeded on multiple days (Milford et al., 2023). The SO_2 emissions were largest at the beginning of the period with a maximum of 125 kt on 23 September 2021 (Milford et al., 2023). According to SO_2 -dispersion forecasts (Carracedo et al., 2022), the emission products were transported over long distances reaching Central Europe and the Caribbean. ~~A mixture of fine and coarse mode aerosol originating from La Palma was detected at Toulouse, France, on 24–25 September 2021 (Bedoya-Velázquez et al., 2022).~~

Volcanic aerosol of this eruption was also transported towards Mindelo on the Cabo Verdean Islands, which are located 1500 km southwest of the Canary Islands. Since June 2021, the multiwavelength-Raman-polarization lidar Polly^{XT} (Engelmann et al., 2016; Baars et al., 2016) has been operated there and was able to ~~capture~~ observe the volcanic aerosol plume. On 24 September 2021 ~~On specific days~~, the volcanic particles caused a high aerosol optical depth (AOD) of around 1.0, as measured with the co-located sun photometer, and a strong pollution in the PBL with extinction coefficient values more than twice as much as the typical background conditions ~~leading to~~ and a highly reduced visibility. ~~Since Cabo Verde is located in the trade~~

~~wind zone with preferred direction of inflow from north-east, i.e., from the Canary Islands, w~~We will show that the volcanic aerosol reached the measurement site at a low altitude and, thus, had a significant relevance with regard to air quality and human health~~impacts~~. In this paper, we present a case study of lidar observations conducted on ~~the~~ 24 September 2021 (period of volcanic activity) at Mindelo, Cabo Verde ~~contrasted to a reference measurement from 16 September 2021, before the start~~ of the eruptions. ~~The lidar observations indicate a strong pollution by volcanic sulfate aerosol.~~ In the following section, the methodology is described, including information about the instruments and models, the measurement site and the ~~methodway~~ of data processing. In Sect. 3, the results for the case study are presented and discussed in Sect. 4, before a conclusion is drawn in Sect. 5.

2 Methodology

130 2.1 Measurement site and instrumentation

In the frame of the ground-based part (ASKOS) of the Joint Aeolus-Tropical Atlantic Campaign (JATAC) (Amiridis et al., 2022; Fehr et al., 2023; Marinou et al., 2023), a temporary ACTRIS (Aerosol, Clouds and Trace Gases Research Infrastructure) ~~remote sensing~~ station was set up at the Ocean Science Center Mindelo (OSCM) at Mindelo, Cabo Verde, (16.878°N, 24.995°W ~~E~~) in June 2021. The OSCM is located on the west coast of the island of São Vicente, ~~with lowso-that-the~~ anthropogenic influence ~~is low~~. The island itself is located 1500 km southwest of the Canary Islands and ~~La PalmaLas Palmas~~ and in the trade wind zone with usual advection of air masses from north-easterly direction. Typically, cumulus convection occurs at Mindelo during nighttime.

Amongst others, this station is equipped with a Polly^{XT} multiwavelength-Raman-polarization lidar. The lidar deployed at Mindelo has a few improvements, compared to previous instruments (Althausen et al., 2009; Engelmann et al., 2016). For instance, it uses a diode pumped Nd:YAG laser, which has a higher repetition rate (100Hz) than the typical ~~flashlamp pumped~~ Nd:YAG laser (20–30Hz) of Polly^{XT}. This feature offers the possibility to retrieve profiles of the optical properties with a lower temporal averaging down to 10 min. It is an important capability with regard to this study, since at Mindelo ~~often~~ small clouds ~~often~~ occur ~~atduring~~ night and cloud-free periods are quite short. Furthermore, the receiver consists of 15 channels and enables measurements of the elastic backscatter coefficient at 355, 532 and 1064 nm, the inelastic backscatter at 387, 607 and 1058 nm, the cross-polar signal at 355, 532 and 1064 nm and the inelastic signal from water vapour at 407 nm. Additionally ~~to the far-field (ff) measurements~~, near-field (nf) measurements are available for the 355 and 532 nm elastic channels and the 387 and 607 nm Raman channels. The instrument has also a dual-field-of-view depolarization channel (Jimenez et al., 2020a) ~~(Jimenez et al., 2020b)~~, which is a powerful technique, allowing the determination of microphysical liquid-water properties (Jimenez et al., 2020b). Thus, in combination with the lidar-derived aerosol optical properties, it can be used to study aerosol-cloud interactions, which is, however, not the scope of the study we are presenting here. With the described~~is~~ setup, several aerosol optical ~~propertiesquantities~~ can be determined. These are the particle backscatter coefficient, the particle extinction coefficient, the lidar ratio (ratio of particle extinction-to-backscatter coefficient) and the particle linear depolarization ratio, all at 355, 532 and 1064 nm, as well as the backscatter-related Ångström exponent between the different wavelengths and

the extinction-related Ångström exponent. The availability of the extinction coefficient, the lidar ratio and the particle linear depolarization ratio at 1064 nm as well as the backscatter coefficient at this wavelength determined via the rotational Raman (RR) channel is a new feature of this device. The calculation of the extinction coefficient at 1064 nm via the rotational Raman method follows the methodology described in Haarig et al. (2016). The spectral cross-talk calibration using a liquid cloud with a constant cloud base height was introduced in Haarig et al. (2022). Here, a liquid cloud base on 4 October 2021 was used for calibration, which led to a spectral cross-talk correction factor of $6.7e-4 \pm 0.3e-4$. There was no change in neutral density filters between 24 September and 4 October 2021 and therefore the spectral cross-talk correction factor remained stable. The calibration of the depolarization ratio at 1064 nm and the estimation of its uncertainties followed the same approach as the calibration at 355 and 532 nm (Engelmann et al., 2016). The $\Delta 90^\circ$ calibration (Freudenthaler et al., 2009) with a linear polarizer after the pinhole was applied. ~~A liquid cloud base on 4 October 2021 was used to estimate the cross talk of the elastic signal in the rotational Raman signal at 1058 nm (Haarig et al., 2016, 2022).~~ Like every Polly^{XT} lidar system, the Polly^{XT} lidar that operates at Mindelo is part of Polly^{NET} (Baars et al., 2016) and vertical profiles of the lidar optical properties are automatically derived by the Polly^{NET} processing chain (Yin and Baars, 2021). However, for this study, the profiles were analyzed manually. Due to the frequent occurrence of boundary layer clouds, a more tailored data analysis was needed. ~~Otherwise, optical profiles were not derived by the automatic processing chain having a strict cloud screening and other quality control measures.~~ Furthermore, to reduce noise, the profiles were smoothed vertically by using a moving average filter. The result is again a continuous profile with the distance of 7.5 m between the single data points but starting at an altitude, which is half of the smoothing length (s). Thus, each data point contains information of the height range from $0.5s$ below to $0.5s$ above this point.

Concerning the uncertainties of the lidar-derived aerosol optical properties, it is worth to mention that systematic errors (e.g., polarization effects in the receiver unit, dead time effects, overlap effects) are generally corrected as the lidar system is calibrated according to ACTRIS/EARLINET standards (e.g., ACTRIS guidelines, 2024). To account for remaining unknown systematic errors (e.g. reference height and value) and the statistical uncertainties, a relative error of 15 % is considered for the particle backscatter coefficient determined with the Raman method (Althausen et al., 2009; Baars et al., 2012; Engelmann et al., 2016; Baars et al., 2016). For the particle extinction coefficient, the statistical error is calculated from the error of the linear fit of the derivative without considering systematic uncertainties. For the particle depolarization ratio, we consider a remaining constant absolute error of 0.02 at 355 nm and of 0.01 at 532 and 1064 nm retrieved after intense calibration approaches (ACTRIS guidelines, 2024). The uncertainties of the lidar ratio and the Ångström exponents were then calculated using the Gaussian error propagation.

In addition, a CIMEL Sun Sky Lunar photometer of type CE318-T was used for this study, which is operating in the Aerosol Robotic Network (AERONET; Holben et al., 1998). It measures solar irradiances at 8 different wavelengths (340, 380, 440, 500, 675, 870, 1020 and 1640 nm) from which the AOD (at the same wavelengths), the columnar Ångström exponent (for 6 wavelength pairs), the volume size distribution, the refractive index, the single scattering albedo, the absorption AOD, the extinction AOD, the asymmetry factor, and the phase function are derived. A new capability of the latest type CE318-T is that it measures during night as well using the moonlight to determine nighttime AODs.

2.2 Air mass source attribution

To describe the origin of the observed air masses, Hybrid Single-Particle Lagrangian Integrated Trajectories (Stein et al., 2015; Rolph et al., 2017; HYSPLIT, 2024) were used. Ensemble trajectories with 27 members were calculated for 5 days back in time, i.e., towards the day when volcanic activity at [La PalmaLas Palmas](#) started. The meteorological input data was taken from the Global Data and Assimilation Service (GDAS1, 2024). Furthermore, simulations with [the air mass source attribution tool TRACE](#) (Radenz et al., 2021; Radenz, 2021) were performed, which is a combination of the FLEXible PARTicle dispersion model FLEXPART (Pisso et al., 2019) and a simplified version of the MODIS land cover classification (Broxton et al., 2014) or custom defined geographical areas. For FLEXPART, the meteorological input data was taken from the Global Forecast System (GFS; National Centers for Environmental Prediction, National Weather Service, NOAA, U.S. Department of Commerce (2000)).~~the Lagrangian dispersion model FLEXPART (Radenz et al., 2021) were performed using meteorological data fields from the Global Forecast System (GFS; National Centers for Environmental Prediction, National Weather Service, NOAA, U.S. Department of Commerce~~

In this case, 5-day backward simulations were calculated for 500 air parcels, which arrive at Mindelo at different altitudes from 0 to 10km in steps of 500m with a temporal resolution of 3h. Evaluating both backward simulation models allows us to ensure more certainty with respect to the origin of the air masses.

In addition, the [horizontal](#) distribution of the volcanic plume was monitored. Therefore, the transport of SO₂ and its advection towards Mindelo was tracked. For this purpose, the TROPOspheric Monitoring Instrument (Veefkind et al., 2012; TROPOMI, 2024) on board the polar orbiting Sentinel-5 Precursor satellite [was used](#), which offers daily global measurements of the amount of SO₂ molecules in a column per surface area. Its horizontal resolution is $3.5 \times 5.5 \text{ km}^2$.

3 Results

A time series of the [AERONET](#) AOD at different wavelengths and the columnar Ångström exponent between 440 and 870nm is shown in Fig. 1. Before the start of the eruption, the hourly mean AOD was [around about 0.4 at the shown wavelengths](#). Hourly mean Ångström exponent values of 0.2 were usually observed until 22 September. During the time of volcanic activity, a change in the behaviour of the Ångström exponent and the AOD could be seen since 22 September and, thus, 3 days after the eruption started. A strong increase of the Ångström exponent to values higher than 0.8 was measured. In that time, high AODs, ~~with~~ values close to 1.0 [at wavelengths \$\leq 500 \text{ nm}\$](#) were recorded, e.g., on 24 and 29 September 2021. On 24 September, the daily mean AOD was 1.1 at 340nm and 0.9 at 500nm. The vertically-resolved lidar optical properties are presented in a case study for 24 September (Sect. 3.2) contrasted to background conditions before the volcanic eruption (16 September, Sect. 3.1), representing a clean [PBLplanetary boundary layer](#) (marine influenced).

3.1 Reference case (16 September 2021)

To contrast the differences between the volcanic influenced aerosol conditions over Mindelo and the typical situation before the start of the eruption at [La PalmaLas Palmas](#), the 16th September 2021 was selected as reference observation. The corresponding

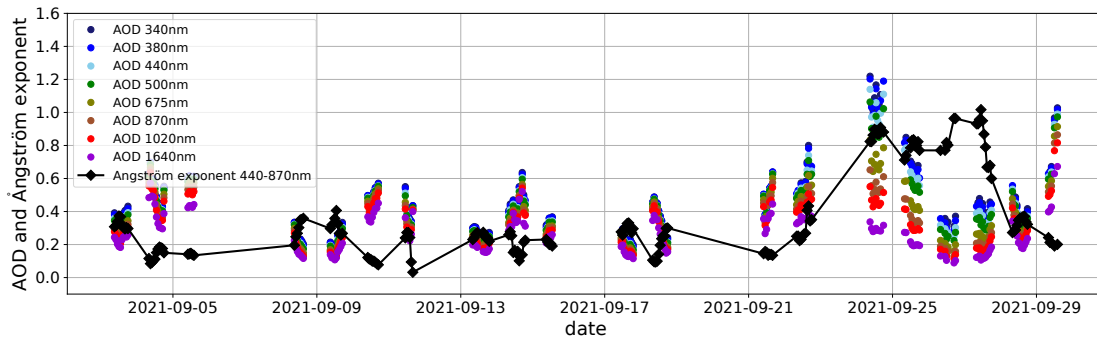


Figure 1. Time series of Level 2.0 hourly averages of the aerosol optical depth (AOD) at different wavelengths and the columnar Ångström exponent between 440 and 870nm measured with an AERONET sun photometer at Mindelo in September 2021. Data points for the 16 September were cut out, since on that day, a cirrus was present, which was not correctly screened out by the AERONET retrieval. The original data, including the cirrus, is shown in the Appendix (Fig. A1). ~~The data was taken from AERONET (2024)~~

height-resolved temporal development of the calibrated attenuated backscatter coefficient at 1064 nm and the volume depolarization ratio at 532 nm is shown in Fig. 2 (left side). The figure is provided to illustrate the vertical structure of the aerosol layers for the days of interest. As it is not corrected for the atmospheric attenuation, it does not allow a quantitative comparison of the backscatter intensity at a given altitude. For this purpose, vertical profiles of the backscatter coefficient are presented later on. The vertical structure on the 16 September showed two different aerosol layers. During that day, two different aerosol layers were present. The PBL planetary boundary layer reached up to 0.8 km height. In that layer, no depolarization occurred (Fig. 2b). Above, a lofted layer, which was strongly depolarizing, was located between 1.2 and 6 km height. Small clouds were frequently present in the PBL as indicated by a very strong backscatter signal and complete attenuation (no signal) some few hundreds of meters above the cloud base. They can be identified in Fig. 2a as red spots above which stripes of missing signal are visible. Such a vertical structure This layering has been typically observed over Mindelo from June to October 2021 and is in agreement with previous studies on this archipelago (Ansmann et al., 2011a; Groß et al., 2011; Rittmeister et al., 2017). Additionally, on the reference day, a cirrus occurred, which was not correctly screened out by the AERONET algorithm (cf. Fig. A1 and Fig. A2). Thus, there are no usable sun photometer data for the 16 September.

Vertical profiles of the lidar optical properties (Fig. 3) were derived with the Raman method (Ansmann et al., 1992) for a 48-min interval in the evening (22:24–23:12 UTC, red rectangle in Fig. 2, left side), since this was the longest cloud-free period during nighttime. The corresponding mean values are summarized in Table 1. The uncertainties given in the text are always the standard deviation (parameter variability within the layer) or the layer mean error as described in the caption of Table 1. In the lofted layer, between 1.3 and 5.3 km height, the mean lidar ratio of 58.4 ± 8.8 and 47.3 ± 7.2 sr (at 355 and 532 nm) and the particle linear depolarization ratio of 24.5 ± 2.0 , 28.1 ± 1.0 and $24.1 \pm 1.0\%$ (at 355, 532 and 1064 nm) are in a typical range for desert dust (Haarig et al., 2017; Floutsi et al., 2023). In the PBL (up to 0.6 km height), relatively clean marine conditions (Bohmann et al., 2018) were observed, which were characterized by a mean lidar ratio of 17.3 ± 2.8 and 23.8 ± 4.2 sr.

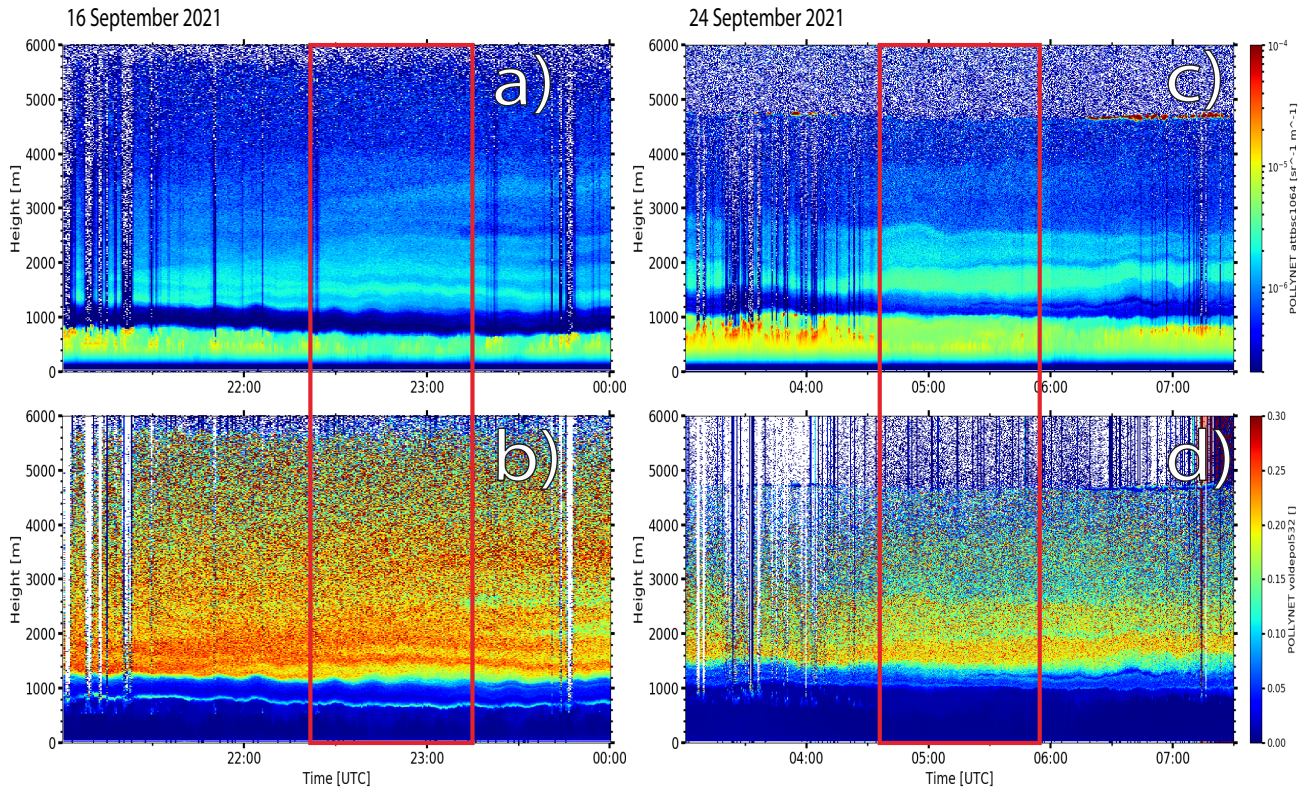


Figure 2. Temporal evolution of the height-resolved **calibrated** attenuated backscatter coefficient at 1064 nm (top) and the volume depolarization ratio at 532 nm (bottom) measured by Polly^{XT} at Mindelo, Cabo Verde, during 16 September 2021, 21:00–24:00 UTC, (left) and 24 September 2021, 03:00–07:30, (right).

240 (at 355 and 532 nm) **between 0.25 and 0.6 km height** and a mean particle linear depolarization ratio of $\leq 1.1\%$ **0.7, 1.1 and 1.0%** (at 355, 532 and 1064 nm) **between 0.06 and 0.6 km height**. The mean particle extinction coefficient was about 114 ± 20 and $130 \pm 24 \text{ Mm}^{-1}$ (at 355 and 532 nm) **between 0.25 and 0.6 km height**. Unfortunately, for that day the rotational Raman profiles at 1064 nm were not available since the analyzed time period of 48 min is too short to obtain reasonable results. However, the measurement from **the** 16 September represents the typical values, which we usually observed over Mindelo during that time
 245 of the year, as **the** lidar studies in the framework of ASKOS and L2A+ confirm (L2A+, 2024; EVDC, 2024). This statement is valid especially for the PBL.

3.2 Volcanic influence (24 September 2021)

For **the-the** 24 September 2021, the height-resolved temporal development of the attenuated backscatter coefficient at 1064 nm is shown in Fig. 2c and the volume depolarization ratio at 532 nm in Fig. 2d. Again, two distinct aerosol layers are visible – a

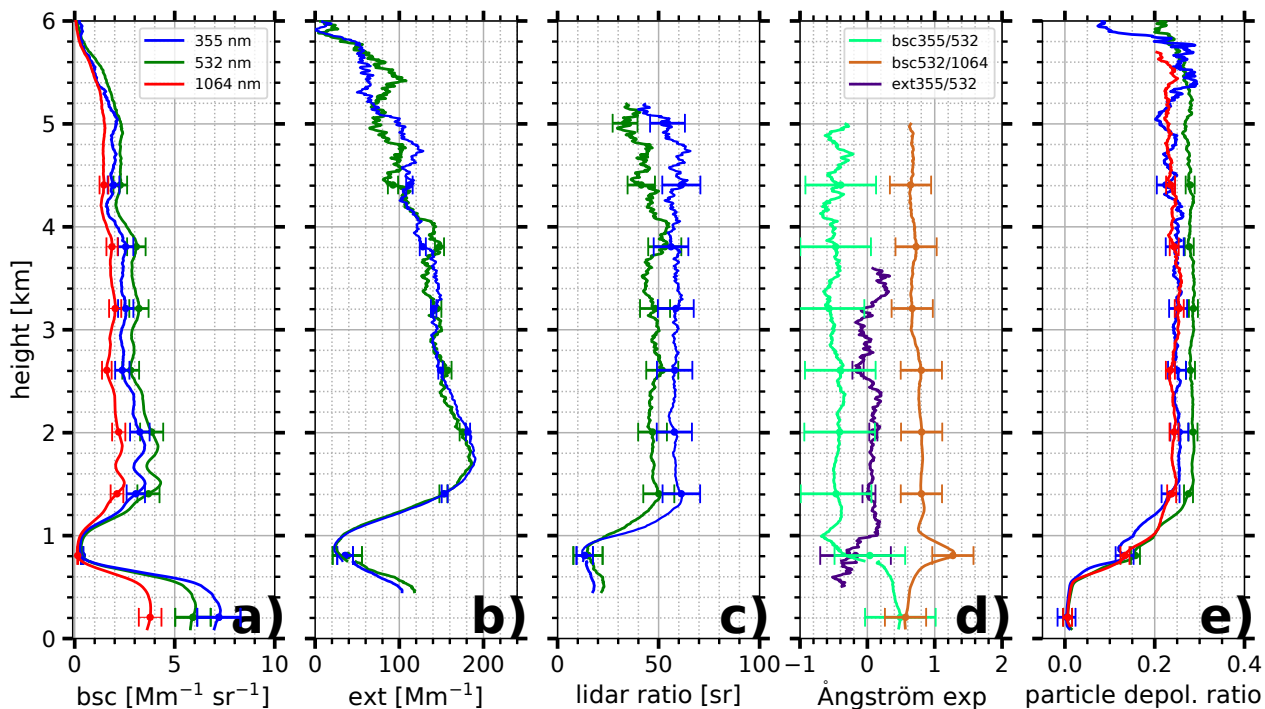


Figure 3. Measured with Polly^{XT} at Mindelo, Cabo Verde, on 16 September 2021, between 22:24 and 23:12 UTC: vertical profiles of (a) the particle backscatter coefficient, (b) the particle extinction coefficient, (c) the lidar ratio, (d) the Ångström exponent and (e) the particle linear depolarization ratio. Vertical smoothing: 187.5 m for (a), (e) and the backscatter-related Ångström exponent and 742.5 m for (b), (c) and the extinction-related Ångström. Near- and far-field measurements are merged at 750 m. The error bars show the uncertainties described in Sect. 2.1. Backscatter and depolarization profiles as well as the backscatter-related Ångström exponent are plotted with a vertical smoothing of 187.5 m. The vertical smoothing for the remaining quantities is 742.5 m. Near- and far-field measurements are merged at 750 m.

250 very low depolarizing PBL (Fig. 2d) up to about 1 km height and a strongly depolarizing lofted layer from 1.4 to 5 km height. As on 16 September, often small clouds occurred frequently in the PBL. Before first daylight appeared at 07:30 UTC, a longer cloud free period evolved. Thus, optical properties were retrieved with the Raman method for an 1:19 h interval (04:38–05:57 UTC, indicated by a red rectangle in Fig. 2, right side).

The corresponding vertical profiles are shown in Fig. 4. On that day, all lidar-derived optical quantities are available at all 255 three wavelengths. For the lofted layer, mean values, as depicted in Table 1, were retrieved based on the far-field measurements considering a vertical extent of 1.4–4.4 km and a vertical smoothing as in Fig. 4. The particle backscatter coefficient varied from $0.8 \text{ Mm}^{-1} \text{ sr}^{-1}$ (minimum at 355 nm) to $5.0 \text{ Mm}^{-1} \text{ sr}^{-1}$ (maximum at 532 nm) and the particle extinction coefficient was in the range of $114\text{--}168 \text{ Mm}^{-1}$ at 355, 532 and 1064 nm. from 16 Mm^{-1} (minimum at 532 nm) to 246 Mm^{-1}

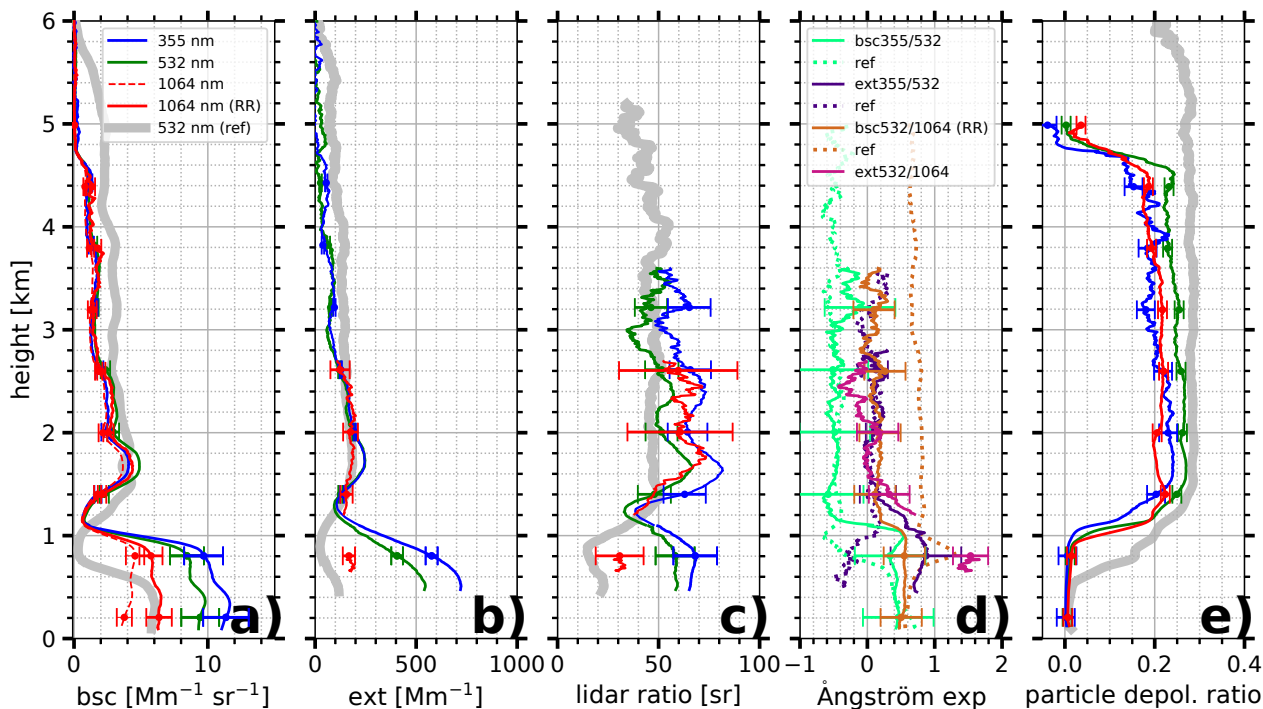


Figure 4. Same as in Fig. 3 but for the 24 September 2021, between 04:38 and 05:57 UTC (note the changed x-scale for (a) and (b)), including the particle extinction coefficient and lidar ratio at 1064 nm and the extinction-related Ångström exponent between 532 and 1064 nm (vertical smoothing: 397.5 m below 1.2 km and 1492.5 m above 1.2 km). Near- and far-field measurements are merged at 1100 m. Reference profiles at 532 nm from 16 September 2021 are shown as thick grey line and in (d) as dotted lines and labelled as "ref". For that day, profiles of the particle extinction coefficient and the lidar ratio are available at 1064 nm, too, as well as the extinction-related Ångström exponent between 532 and 1064 nm. For them, the vertical smoothing is 397.5 m (below 1.2 km) and 1492.5 m (above 1.2 km). Near- and far-field measurements are merged at 1100 m. Additionally, the reference profiles from 16 September 2021 at 532 nm (thick grey line and dotted lines for the Ångström exponent and labelled as "ref") are shown, representing the typical aerosol conditions over Mindelo with a clean marine PBL.

(maximum at 532 nm). Measurements of the lidar ratio led to layer mean values of 64.8 ± 10.2 , 50.9 ± 8.3 and 61.8 ± 8.6 sr
 260 65.3 , 50.7 and 68.7 sr (355, 532, and 1064 nm, respectively). These values are slightly larger than the ones measured
 on 16 September, which were similar compared to previous observations of pure Saharan dust (50–60 sr at 355 and 532 nm)
 (Ansmann et al., 2011a; Ansmann et al., 2011; Ansmann et al., 2023). The increase of the lidar ratio from 532 nm to 1064 nm
 by 21%–36% is in line with dust observations at Leipzig, Germany (increase by 24–38%; Haerig et al., 2022), because of similar
 source regions of the dust in the Western Sahara of both observations. The enhanced lidar ratio at 355 nm compared to 532 nm
 265 indicates specific source regions in the Sahara as reported from lidar observations in Senegal (Veselovskii et al., 2020). The

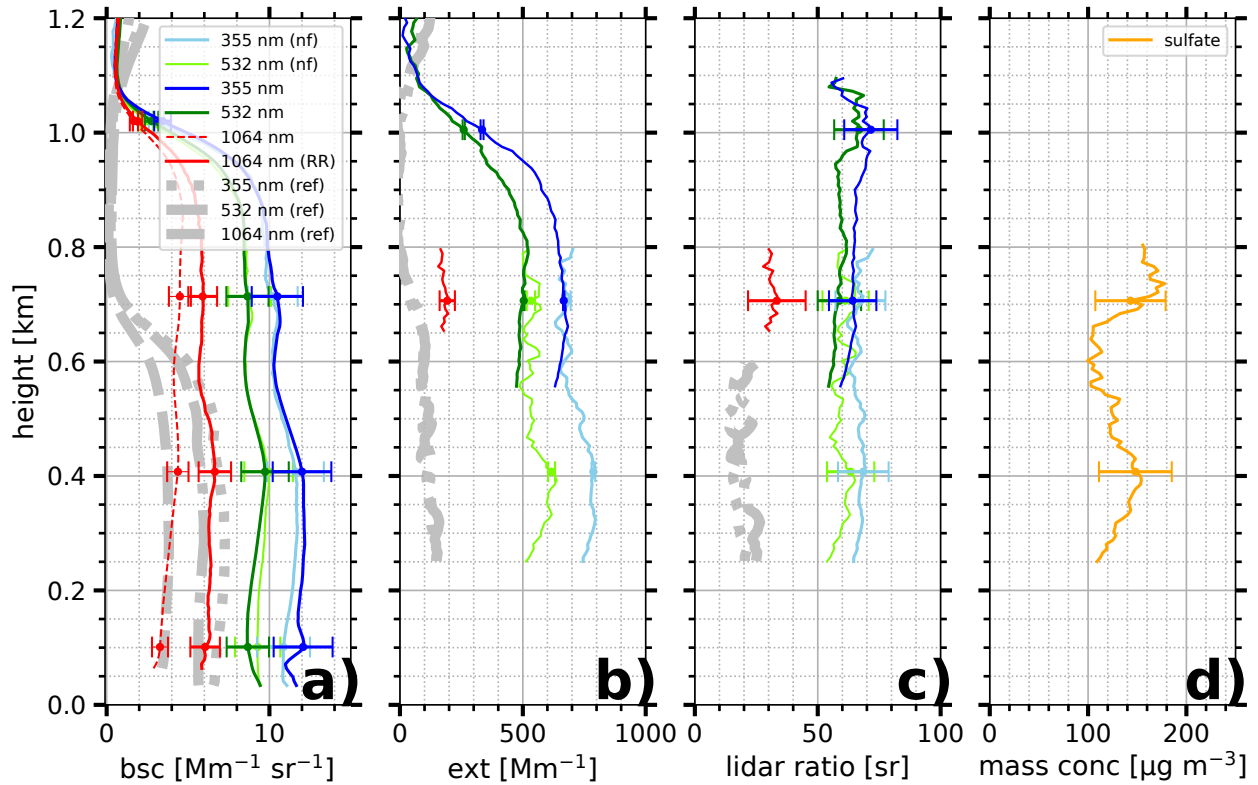


Figure 5. (a)–(c): same profiles as in Fig. 4 (a)–(c), but only up to a height of 1.2 km. Vertical smoothing: (a) 67.5 m, (b) and (c) 187.5 m at 355 and 532 nm and 742.5 m at 1064 nm. Near- and far-field measurements are shown separately. (d): sulfate mass concentration with height constant relative error of 25%. The same profiles as in Fig. 4 are shown here, but only for the PBL up to a height of 1.2 km. Furthermore, vertical smoothing was reduced to 67.5 m for the particle backscatter coefficient and to 187.5 m for the particle extinction coefficient and the lidar ratio at 355 and 532 nm and increased to 742.5 m for the particle extinction coefficient and the lidar ratio at 1064 nm. Near-field (nf) and far-field measurements are shown separately.

lidar ratio at 1064 nm is in line with dust observations at Leipzig, Germany (Haarig et al., 2022). From 532 nm to 1064 nm, the lidar ratio increased by 36%, which is in agreement with the previous observations at Leipzig (increase by 24–38%; Haarig et al. (2022)). The measured particle linear depolarization ratio of 20.6–25.0% for the three different wavelengths indicates the presence of non-spherical particles, i.e., desert dust, but is somewhat smaller than what was typically observed for pure dust (Freudenthaler et al., 2009; Floutsi et al., 2023), indicating the presence of some spherical non-dust particles. Consider-
 270 ing the wavelength dependence of the particle linear depolarization ratio, a decrease of 18% from 532 towards 1064 nm was observed. Similar findings were made at Leipzig, Germany, and Morocco during SAMUM (decrease by 13–31%; Freuden-

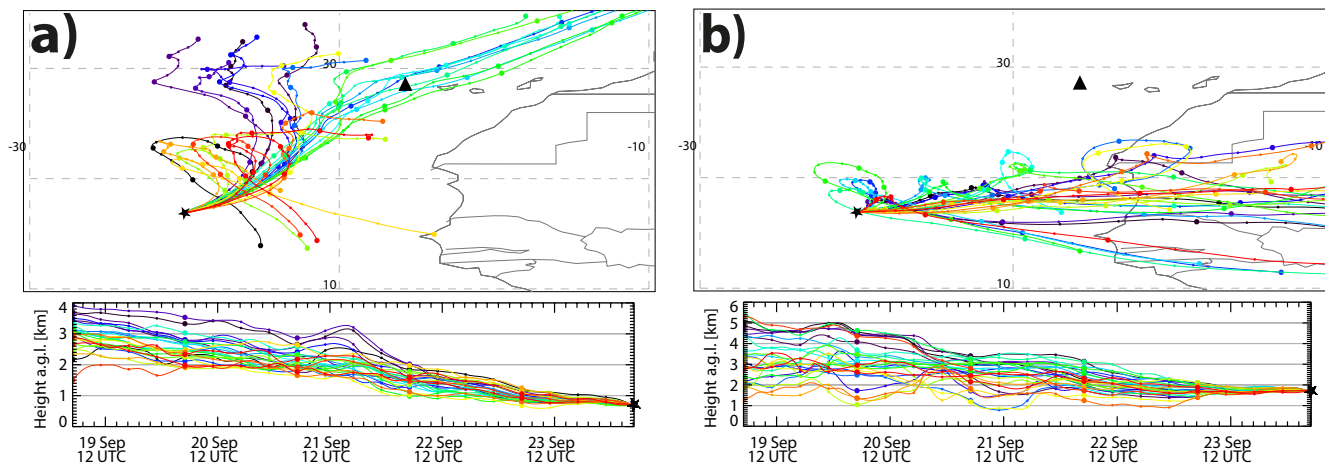


Figure 6. HYSPLIT ensemble trajectories for 120 hours back in time are shown. Backward trajectories of air masses arriving at Mindelo (black star) on 24 September 2021, 5 UTC at (a) 0.7 km and (b) 1.7 km were computed. In the lower altitude, they mainly originate from Las Palmas (black triangle), whereas in the higher altitude, they were advected from the Sahara.

thaler et al., 2009; Haarig et al., 2022). The backscatter-related Ångström exponent in the lofted layer is on average around 0.4 ± 0.31 for the wavelength pair 532/1064 nm, indicating large particles (i.e., desert dust). Considering the higher lidar ratio (especially at 355 nm) and the lower particle linear depolarization ratio on 24 September compared to the typical values of pure desert dust, we conclude that the dust on 24 September was slightly polluted.

In contrast to the almost typical aerosol conditions in the lofted layer, an unusual strong pollution was observed in the PBL. The findings are highlighted in Fig. 5 showing zoomed profiles. In addition, vertical smoothing was reduced, which improves the resolution, reduces the overlap effect especially for the near-field profiles and, thus, allows to include information from lower altitudes above the lidar accuracy of the near-field profiles. All mean values for the PBL are listed in Table 1 as well. On this day, extremely high values of the particle extinction coefficient were observed with layer mean values of 721 ± 51 , 549 ± 38 and $178 \pm 13 \text{ Mm}^{-1}$ (at 355, 532 and 1064 nm) in the PBL between 0.25 and 1 km. The maximum values were even higher with 794 ± 7 , 640 ± 13 and $198 \pm 26 \text{ Mm}^{-1}$ (at 355, 532 and 1064 nm, mentioned here with statistical errors). These values are 3–4 times higher than what was observed under clean marine conditions as shown for 16 September and indicated as grey lines in Fig. 5. Additionally, the particle extinction coefficient was strongly decreasing with increasing wavelength. A similar behavior was observed for the lidar ratio. Mean values of 66.9 ± 10.1 , 60.2 ± 9.2 and $30.8 \pm 8.7 \text{ sr}$ (at 355, 532 and 1064 nm) were found, showing a decrease by 48% from 532 towards 1064 nm. The mean values of the lidar ratio are notably quite high compared to the clean marine conditions and are typical for pollution or even smoke (Floutsi et al., 2023). However, the decrease of the lidar ratio at 1064 nm compared to the value at 532 nm points rather to pollution than to smoke. In the case of wildfire smoke an increase of the lidar ratio at 1064 nm was observed (Haarig et al., 2018). The high lidar ratio values point out the presence of particles, which are strongly attenuating the incoming solar radiation

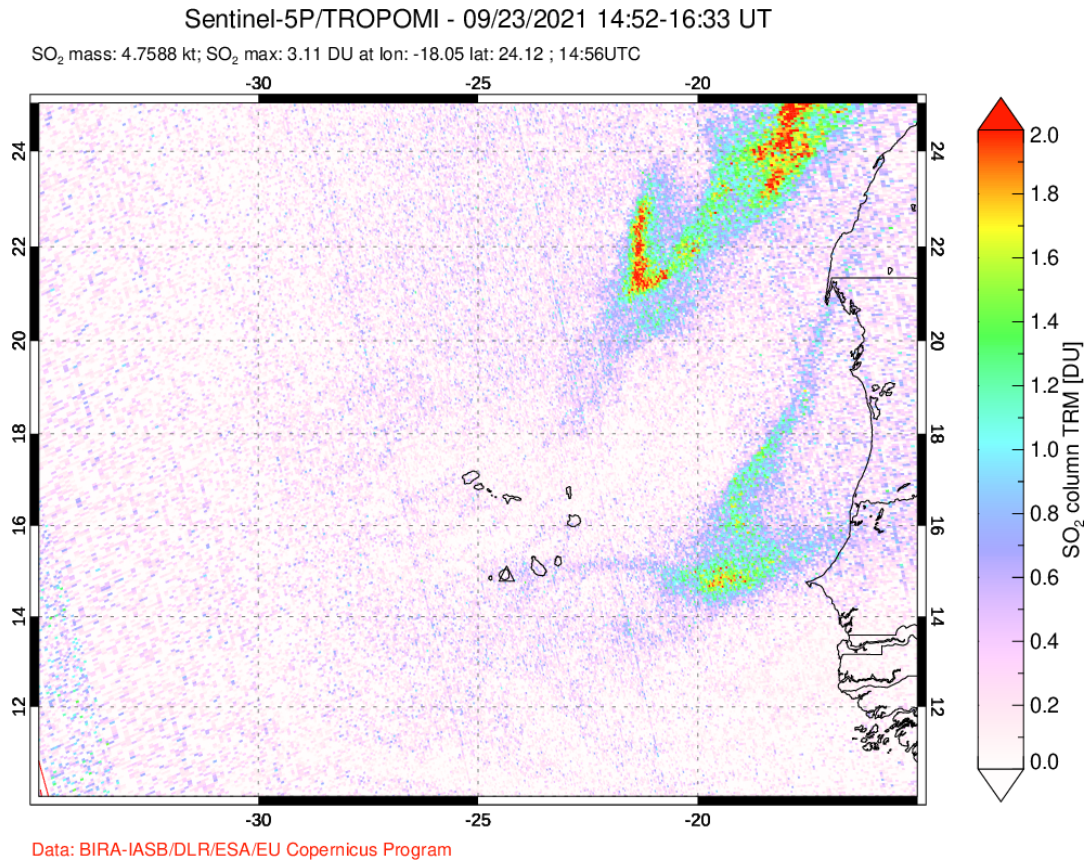


Figure 7. Satellite observations of TROPOMI on Sentinel-5P, which show the column integrated of SO₂ mass for the Cabo Verdean region on 23 September 2021 (TROPOMI, 2024).

by scattering and absorption (Wandinger et al., 2023). The large extinction close to the ground indicates a strong pollution and explains the unusual high daily mean AOD of 1.1, 0.9 and 0.51 at 340, 500 and 1020 nm, which was measured with the sun photometer at 340, 500 and 1020 nm on this day. The lidar-derived total AOD between 04:38 and 05:57 UTC was 0.96 ± 0.28 , 0.79 ± 0.26 and 0.57 ± 0.17 at 355, 532 and 1064 nm, respectively, and, thus, in agreement with the values of the sun photometer measured during daytime. The AOD for the boundary layer only (including the sulfate and marine contribution), as derived from the lidar measurements, was 0.58 ± 0.03 , 0.43 ± 0.02 and 0.18 ± 0.01 at 355, 532 and 1064 nm, and, thus, covered 54–60% of the total lidar-derived AOD in case of 355 and 532 nm and 32% in case of 1064 nm. Furthermore, visibility was strongly reduced on that day. Based on the maximum particle extinction coefficient at 532 nm and using the Koschmieder equation (Koschmieder, 1924), we calculated the visibility to be around 6 km. The presence of relatively small particles is further supported by the moderate wavelength dependence indicated by the backscatter-related Ångström exponent between 532 and 1064 nm (RR), which was

0.54 ± 0.31 and the mean extinction-related Ångström exponent of only 0.68 ± 0.07 . The low values of the particle linear depolarization ratio $\rho_{\parallel} \leq 0.9\%$ indicate that the observed particles are spherical.

305 4 Discussion

To summarize, both days – the 16th September 2021 (before the start of the eruption at [La Palma](#)) and the 24th September 2021 (during the volcanic episode) – had a similar aerosol layering structure with a PBL ≤ 1 km and a lofted layer of Saharan dust up to 6 km, typical for this time of the year at Cabo Verde. Both measurements were taken under similar meteorological conditions and, thus, well suitable to assess the influence of the volcanic activity.

310 Although for the lofted layer, the lidar-derived aerosol optical properties slightly vary concerning the extent and intensity of the lofted layer between the 16 and 24 September 2021 with a lower layer top height, a lower particle linear depolarization ratio and a higher lidar ratio on the 24 September, we can conclude that on both days the predominant aerosol type in the lofted layer was Saharan dust. Obviously, no volcanic ash was included in this layer on 24 September, because in that case we would have observed much higher values of the particle linear depolarization ratio (Groß et al., 2012). The higher lidar ratio
315 observed on 24 September, however, indicate the presence of stronger absorbing particles slightly contaminating the Saharan Air Layer (SAL) on that day. Considering the particle linear depolarization ratio and the lidar ratio together, a contamination with continental pollution or smoke is feasible. To corroborate the origin of the lofted aerosol layer on this day, 120 h HYSPLIT ensemble backward trajectories are shown in Fig. 6. Simulations of air mass arrival at Mindelo on 24 September, 5 UTC, at 0.7 km (Fig. 6a) and at 1.7 km (Fig. 6b) have been calculated. The trajectories for the higher altitude (Fig. 6b) show that the
320 lofted layer was influenced by an easterly flow so that air masses were advected directly from the Saharan desert, which makes the occurrence and predominance of Saharan dust evident. However, partial mixing with sulfate during the transport over the Atlantic Ocean cannot be ruled out as well as smoke and pollution contamination over the African continent. Fire spot analysis with the Fire Information for Resource Management System (FIRMS, 2024, Fig. B1) ([FIRMS, firms.modaps.eosdis.nasa.gov](#), not shown) revealed only little fire activity along the transport path within the 120 h. Fires were detected at the eastern border
325 of Algeria and close to the Mediterranean. Thus, smoke contamination may have led to the slight contamination of the SAL. However, we consider the presence of volcanic ash based on this analysis and the eruption mechanisms at Cumbre Vieja to be unlikely.

In contrast, the aerosol conditions in the PBL strongly differed between both analyzed measurement periods. While on 16 September, a clean marine PBL was present, a strong pollution was observed on 24 September with layer mean values of
330 the particle extinction coefficient up to almost 800 Mm^{-1} , compared to $\leq 130 \text{ Mm}^{-1}$ during the clean marine conditions. The lidar ratio on that day was strongly enhanced as well with values around 60 sr compared to values for pure marine conditions of around 20 sr. The aerosol load in the PBL was furthermore responsible for 54–60% of the total AOD at 355 and 532 nm and for 32% at 1064 nm in the analyzed time period. In contrast, for the 16 September, the contribution of the AOD in the PBL to the total AOD was only 12% (at 355 and 532 nm), i.e., more than 80% of the total AOD was caused by the SAL.
335 The observed pollution is associated to air masses coming from [La Palma](#) containing volcanic aerosol, which is

supported by the HYSPLIT backward trajectories depicted in Fig. 6a. They illustrate a distinct advection of air masses from Canary Islands and, thus, from the volcano on [La PalmaLas Palmas](#). Additionally, [TRACE backwardFLEXPART](#) simulations (Fig. C1) confirm these findings as they show air masses accumulating over the Atlantic Ocean on 18 September before they pass from northwest over [La PalmaLas Palmas](#) on 21 September and move further to Mindelo on 23 September. [TRACE backward simulation](#) were also performed for air parcels arriving at Mindelo at 500m altitude on 16 September 2021, 0 UTC, shown in Fig. C2. The pathway of the air parcels was similar to the one from 24 September. While on 16 September, they also partly crossed the African continent, they passed only over the Atlantic Ocean and the Canary Islands on 24 September. This finding emphasizes even more the impact of the volcanic eruption on the pollution observed in the PBL at Mindelo. As the corresponding measured particle linear depolarization ratio is low ~~in the PBL~~, the presence of ash particles can be excluded.

345 Instead, volcanic sulfate seemed to be the dominating aerosol type in the PBL. It becomes more evident if the large amount of sulfur dioxide released by the volcano is taken into account. The SO₂ emissions were greatest at the beginning of the active period, reaching a maximum of 125kt on 23 September 2021 (Milford et al., 2023). SO₂ was advected towards Mindelo as can be seen in the satellite measurements of TROPOMI onboard Sentinel-5P (Fig. 7), showing the amount of SO₂ around the Cabo Verdean region during afternoon of 23 September 2021. The presence of SO₂ offered the possibility for secondary aerosol formation to sulfate particles, which is assumed to be the source of the observed particles. SO₂ quickly oxidates to sulfate aerosol with a high efficiency at warm temperatures and high relative humidity (Eatough et al., 1994; Yang et al., 2018). Favorable Favored conditions seemed to be prevalent provided since the air masses were are transported only over the Atlantic Ocean in a tropic region. According to Pattanyus et al. (2018), conversion rates are large (3–50% s^{-1}) especially in cloudy air, which is given as well due to the frequently occurring small clouds in the PBL as observed over the Cabo Verdean region.

355 In addition, not only SO₂ could have been advected from [La PalmaLas Palmas](#) but also sulfate particles themselves. Filonchik et al. (2022) identified, based on the single scattering albedo and the dissection of the AOD into a coarse and fine mode component, that on 24 September 2021 coarse-mode particles were almost absent at [La PalmaLas Palmas](#). Instead the presence of non-absorbing but scattering fine-mode particles attributed to sulfate aerosol was shown, which could have been formed locally or were emitted directly by the volcano. As these observations are valid for a time period in which our case study was included, it strengthens our hypothesis that we measured volcanic sulfate at Mindelo originating from Cumbre Vieja.

The presence of sulfate aerosol from the eruption at [La PalmaLas Palmas](#) also becomes evident since the measured aerosol optical properties quantities are in agreement with previous lidar observations of volcanic sulfate (e.g., Pappalardo et al., 2004; Mona et al., 2012; Navas-Guzmán et al., 2013). Furthermore, in this study, it was the first time ever that tropospheric volcanic sulfate was measured with a lidar at 1064nm. During the eruption of Eyjafjallajökull in 2010, Navas-Guzmán et al. (2013) observed lofted aerosol layers between 1.5 and 3.5km consisting to 82% of fine-mode aerosol particles, i.e., sulfate particles, over Granada, Spain. The corresponding values of the lidar ratio were 55 and 75sr (355, 532nm). Mona et al. (2012) recorded values of the lidar ratio up to 80sr for volcanic sulfate from Eyjafjallajökull mixed with continental aerosol in the PBL over Potenza, Italy, while during the eruption of Mt. Etna in 2002 a lidar ratio of 55 ± 4 sr (355nm) was measured by Pappalardo et al. (2004) in a lofted aerosol layer of young sulfate particles mixed with a low amount of soot between 4 and 4.5km over

Potenza. With 66.9 ± 10.1 and 60.2 ± 9.2 sr (355, 532 nm), the observations over Mindelo on 24 September fit well into the range of values of the lidar ratio observed during the previous eruptions. Also, the observed wavelength dependence with decreasing lidar ratio by 48% from 532 towards 1064 nm confirms the assumptions in the CALIPSO aerosol typing which uses a lidar ratio of 50 sr at 532 nm and of 30 sr at 1064 nm for sulfate (Kim et al., 2018; Tackett et al., 2023). The particle linear depolarization ratio measured on 24 September 2021 was with $\leq 0.9\%$ even smaller than the values observed for sulfate from Eyjafjallajökull, which was 4–5% (Navas-Guzmán et al., 2013), indicating more clearly the presence of spherical (sulfate) particles. For the volcanic sulfate from Eyjafjallajökull, the backscatter-related Ångström exponent measured over Granada was 1.1 ± 0.2 for the wavelength pair 355/532 and 2.1 ± 0.1 for 532/1064. During the measurement period, the values decreased to 0.7 ± 0.1 and 1.7 ± 0.3 , respectively. Navas-Guzmán et al. (2013) stated that the temporal evolution in the Ångström exponent arose from an increasing particle size in the accumulation mode driven by hygroscopic growth and a potential change in the chemical composition rather than an increasing contribution of coarse-mode particles., due to hygroscopic growth of the sulfate particles. In a second layer of volcanic sulfate, values of 1.7 ± 0.1 (355/532) and 1.4 ± 0.2 (532/1064) were observed by Navas-Guzmán et al. (2013), also decreasing significantly during the measurement period. Compared to these studies, the backscatter-related Ångström exponent measured over Mindelo on 24 September 2021 was smaller having values of only 0.42 ± 0.52 and 0.54 ± 0.31 (355/532, 532/1064 (RR)). These low values can be explained by hygroscopic growth of the sulfate particles since they were exposed to high humidity during their transport over the Atlantic Ocean before they reached Mindelo. Furthermore, we expect that some marine particles were present in the PBL above Mindelo, which are also spherical at high relative humidity (accounting to the low depolarization ratio). As marine particles are larger than the sulfate particles, they reduced the backscatter-related Ångström exponent in contrast to the aforementioned observations where air masses were influenced by the European continent. The extinction-related Ångström exponent between 355 and 532 nm observed over Mindelo was 0.68 ± 0.07 and, thus, closer to the previous observations at Granada where values of 0.7 ± 0.1 and 0.8 ± 0.1 were observed.

As a further step, an attempt to estimate the mass concentration of the observed sulfate aerosol was done according to the method used in Ansmann et al. (2011b). A sulfate conversion factor of $0.2 \cdot 10^{-6}$ was obtained leading to the vertical profile of the mass concentration, which is shown in Fig. 5d, and a layer mean value for the PBL of about $133.1 \pm 20.3 \mu\text{g m}^{-3}$. Such a high sulfate concentration indicates extremely polluted conditions. For comparison, the aerosol pollution level should not exceed $50 \mu\text{g m}^{-3}$ in European cities to avoid unhealthy situations. For our estimation, the error of the sulfate mass concentration was assumed to be similar to the one of the dust mass concentration, which is about 20–30% (Ansmann et al., 2019). Thus, for our estimation, we used a height constant relative error of 25%.

In this paper, it is the first time ever that we can report the optical properties for the volcanic plume mixed in the marine PBL for all three (aerosol lidar) wavelengths by extending the observational capabilities towards 1064 nm. While the lidar ratios at 355 and 532 nm are in agreement with previous observations, the lidar ratio at 1064 nm of 30.8 ± 8.7 sr and the extinction-related Ångström exponent of 1.53 ± 0.26 between 532 and 1064 nm have never been reported so far. Thus, it is a milestone for the characterization of volcanic sulfates with remote sensing techniques.

405 5 Summary and conclusions

In the frame of ESA's JATAC campaign to validate the Aeolus satellite, the multiwavelength-Raman-polarization lidar Polly^{XT} was installed at Mindelo, Cabo Verde, in June 2021 together with further instruments, e.g., an AERONET sun photometer. During the [intensive observation period](#) of the campaign [in September 2021](#), a volcanic eruption at the Cumbre Vieja ridge at [La PalmaLas Palmas](#), Canary Islands, took place, starting on 19 September 2021. Volcanic activity was recorded until 13
410 December 2021. Due to the location of Mindelo in the trade wind zone, the preferred wind direction is northeast, i.e., from [the](#) Canary Islands. Thus, advected air masses contaminated with volcanic aerosol were observed within the local PBL while the SAL above seemed little affected. The occurrence of volcanic aerosol at Mindelo was indicated by an increase of the columnar Ångström exponent and the AOD as measured by the sun photometer after 22 September 2021. Volcanic aerosol was furthermore observed with the Polly^{XT} lidar, [which is shown in a case study of 24 September 2021. on multiple days during the](#)
415 [whole time of volcanic activity. Exemplarily, a case study was shown for the 24 September 2021.](#) On that day, a pronounced pollution was seen over Cabo Verde, strongly contrasting the conditions observed before the start of the eruption. The intense pollution caused an unusually high AOD of [around more than](#) 1.0 at [wavelengths \$\leq 500\$ nm \(AERONET daily mean\), different spectral bands.](#) For a more detailed view, the vertically-resolved optical properties derived from the lidar were analyzed. They were compared to the lidar measurements from 16 September, which was before the start of the eruption and represents the
420 typical aerosol conditions over Cabo Verde at this time of the year.

The lidar measurements for both days showed the presence of two distinct aerosol layers – the [PBLplanetary boundary layer](#) and a lofted layer of Saharan dust. For the 24 September, HYSPLIT trajectory calculations and [TRACEFLEXPART](#) simulations indicated a distinct advection of air masses from [La PalmaLas Palmas](#) in the PBL. Air masses of the lofted layer originated from the Saharan desert. With the lidar, a strong pollution in the PBL was revealed. It led to an unusual high particle extinction
425 coefficient of [721 \$\pm\$ 51, 549 \$\pm\$ 38 and 178 \$\pm\$ 13 Mm⁻¹718, 547 and 126 Mm⁻¹](#) and an enhanced lidar ratio of [66.9 \$\pm\$ 10.1, 60.2 \$\pm\$ 9.2 and 30.8 \$\pm\$ 8.7 sr66.7, 60.1 and 33.7 sr](#) (mean values at 355, 532 and 1064 nm) in contrast to ≤ 130 Mm⁻¹ and ≤ 23.8 sr ≤ 23.7 sr within the clean marine PBL on the 16 September. Thus, on 24 September, the attenuation in the [PBLplanetary boundary layer](#) was increased by a factor of 3–4 compared to the background conditions. The visibility significantly decreased during these days down to 6 km. According to the measured particle extinction coefficient, the AOD for the [PBLplanetary boundary](#)
430 [layer](#) was [0.58 \$\pm\$ 0.03, 0.43 \$\pm\$ 0.02 and 0.18 \$\pm\$ 0.01 at 355, 532 and 1064 nm, respectively.0.69 at 355 nm and 0.5 at 532 nm.](#) It accounts for [54-60%58-64%](#) of the total AOD [in the case of 355 and 532 nm and for 32% at 1064 nm.](#) Compared to the AOD in the PBL of 0.08 (355 and 532 nm) during the clean marine PBL on 16 September 2021, we can conclude that the pollution on 24 September accounted for [81-86%84-88%](#) of the AOD in the PBL [on that day](#) (AOD caused by pollution: [0.5 \$\pm\$ 0.04 0.64 and 0.35 \$\pm\$ 0.030.42](#) at 355 and 532 nm, respectively), i.e., only [14-19%12-16%](#) of the AOD in the PBL were caused
435 by marine aerosol. Since the particle linear depolarization ratio in the PBL was close to 0%, the presence of volcanic ash could be excluded. Instead, sulfate aerosol due to the volcanic eruption at [La PalmaLas Palmas](#) seemed to be the dominating particle type in the low altitudes. This finding was furthermore supported by satellite measurements of Sentinel-5P, showing an advection of SO₂ towards Mindelo on 23 September, which was transformed to sulfate aerosol reaching Mindelo the day after.

In contrast, no indication for pure volcanic aerosol in the lofted layer could be found. The lidar ratio of 64.8 ± 10.2 , 50.9 ± 8.3 and 61.8 ± 8.6 sr (mean values at 355, 532 and 1064 nm) were slightly higher compared to 58.4 ± 8.8 and 47.3 ± 7.2 sr (355, 532 nm) on 16 September 2021. Instead, the particle linear depolarization ratio of 20.8 ± 2.0 , 25.0 ± 1.0 and 20.6 ± 1.0 % were lower than 24.5 ± 2.0 , 28.1 ± 1.0 and 24.11 ± 1.0 % (355, 532, 1064 nm), which were observed on 16 September. However, Saharan dust as the major contributor can still be identified within this layer (SAL) but probably slightly contaminated with smoke, pollution and/or sulfate.

While observations of Saharan dust have already been captured during several campaigns (e.g., SAMUM; Ansmann et al., 2011a; Tesche et al., 2011), it was the first time that the optical properties of volcanic aerosol were observed at Cabo Verde with a multiwavelength-Raman-polarization lidar. Lidar observations of volcanic ash exist for distinct eruptions like Eyjafjallajökull (Ansmann et al., 2010; Groß et al., 2012) but lidar measurements of tropospheric volcanic sulfate aerosol are very rare, yet. Thus, it is important to enlarge the knowledge about the aerosol optical properties of volcanic sulfate, which is aimed by our study. As the observations were made in a usually clean marine PBL, the influence of mixing with other aerosol types is low. Besides this point, we show in our study that far-range transported volcanic aerosol can also effect air quality, indicated by sulfate mass concentrations of more than $100 \mu\text{g m}^{-3}$, and, thus, may have an impact on human health, even more than 1000 km away from the emission source. One additional benefit of this study is the first ever availability of measurements of the particle extinction coefficient and the lidar ratio at 1064 nm for volcanic sulfate aerosol. Having measurements at all three wavelengths is a major advantage with regard to lidar-based aerosol typing and enlarges our data sets. The findings of this study allows us to get new insights in lidar-based aerosol typing and to enlarge our data sets. The findings of this study provide useful insights on the lidar-derived optical properties of volcanic aerosol. They can in turn be used to further improve the aerosol typing by multiwavelength-Raman-polarization lidars, as well as space-borne lidar missions as NASA's CALIPSO CALIOP or ESA's Aeolus and EarthCARE, or assist in the development of new aerosol typing schemes. Besides this point, our findings will be helpful for studying the radiative effects of tropospheric volcanic aerosol, which are still not properly quantified and modeled. As the focus of the campaign at Cabo Verde was on the Aeolus validation activities, there is also the possibility for further research on the potential of Aeolus to capture the volcanic plume on its way to Cabo Verde, which is planned for future studies. Furthermore, a long-term study of the influence of the eruption of Cumbre Vieja on the atmosphere over Cabo Verde based on the ground-based lidar measurements at Mindelo is foreseen but first needs a more robust cloud screening in the automatically derived lidar products. Finally, the observation of this event highlights the necessity for ground-based lidar stations in remote areas. With respect to that, a permanent aerosol and cloud remote sensing station within the framework of ACTRIS has been set up in Mindelo.

Data availability. The Polly^{XT} lidar data will be made available via ACTRIS services, but for now it is available at <https://doi.org/10.5281/zenodo.10650879> (Gebauer et al., 2024). Near-real-time measurement quicklooks can be found at <https://polly.tropos.de/>. AERONET data (station name "Mindelo_OSCM") was downloaded from https://aeronet.gsfc.nasa.gov/cgi-bin/draw_map_display_aod_v3?long1=-180&long2=180&lat1=-89&lat2=90&multiplier=2&what_map=4&nachal=1&formatter=0&level=2&place_code=10 https://aeronet.gsfc.nasa.gov/cgi-bin/data_displa

(AERONET, 2024), last access: ~~14 February 2024~~~~9 March 2023~~. HYSPLIT trajectories were calculated using the online tool on <https://www.ready.noaa.gov/hypub-bin/trajtype.pl?runtype=archive> with meteorological input data from GDAS1 (<https://www.ready.noaa.gov/gdas1.php>), last access: ~~23 January 2024~~~~20 January 2023~~. The data for the FLEXPART analysis was taken from <https://doi.org/10.5065/D6M043C6>, last access: ~~29 January 2024~~~~24 September 2021~~. The TROPOMI SO₂ plot [wasis](https://so2.gsfc.nasa.gov/pix/daily/ixxxza/troploop5pca.php?yr=21&mo=09&dy=23&bn=cverde) taken from <https://so2.gsfc.nasa.gov/pix/daily/ixxxza/troploop5pca.php?yr=21&mo=09&dy=23&bn=cverde>. The underlying data was downloaded from the S5P-PAL data portal (<https://data-portal.s5p-pal.com/>) from July 2022 onward, and from BIRA-IASB distributions website (<https://distributions.aeronomie.be/>) for older data, last access: ~~6 February 2024~~~~13 March 2023~~.

Table 1. Layer-mean values of the lidar-derived aerosol optical and microphysical properties for the PBL and the lofted layer on 24 September 2021, 04:38–05:57 UTC, and on 16 September 2021, 22:24–23:12 UTC. The values are given along with the standard deviation (parameter variability within the layer) for the extensive aerosol properties and the sulfate mass concentration and with the layer-mean errors (errors as described in Sec. 2.1) for the intensive aerosol properties. Geometric information of the aerosol layers is also provided (note that for the calculation of the extinction-related properties in the PBL the layer bottom height is 0.25 km due to the overlap configurations). Layer mean values and standard deviation of the lidar-derived aerosol optical properties for the planetary boundary layer and the lofted layer on 24 September averaged from 04:38 to 05:57 UTC and on 16 September 2021 from 22:24 to 23:12 UTC. To avoid edge and overlap effects, the mean values were calculated for the following height ranges: lofted layer (ff measurements): 1.3–5.3 km (16 September with vertical smoothing as in Fig. 3) and 1.4–4.4 km (24 September with vertical smoothing as in Fig. 4); PBL (nf measurements): 0.06–0.6 km for backscatter-related properties and 0.25–0.6 km for extinction-related properties (16 September) and 0.06–1 km and 0.25–1 km, respectively (24 September), both with vertical smoothing as in Fig. 5.

Layer mean optical and microphysical properties					
		PBL (nf, smoothing as in Fig. 5)		lofted layer (ff, smoothing as in Figs. 3 and 4)	
		24 Sep	16 Sep	24 Sep	16 Sep
		0.06–0.8 km	0.06–0.6 km	1.3–5.3 km	1.4–4.4 km
		sulfate	marine	Saharan dust	
Extensive aerosol optical properties and microphysical properties					
Particle backscatter coefficient	355 nm	10.9 ± 0.6	6.8 ± 0.5	$2.01_9 \pm 0.9$	2.4 ± 0.5
	532 nm	9.2 ± 0.58	$5.65_7 \pm 0.4$	$2.32_4 \pm 1.1$	2.9 ± 0.6
	1064 nm	4.1 ± 0.44	3.6 ± 0.3	1.8 ± 0.8	1.8 ± 0.3
	1064 nm (RR)	6.1 ± 0.34	-	2.2 ± 0.92	-
Particle extinction coefficient	355 nm	721 ± 51	114 ± 20	120 ± 64	138 ± 31
	532 nm	549 ± 38	130 ± 24	$114_{113} \pm 65$	134 ± 32
	1064 nm	178 ± 13	-	168 ± 21	-
Aerosol optical depth	355 nm	0.58 ± 0.03	0.08 ± 0.01	0.38 ± 0.25	0.57 ± 0.21
	532 nm	0.43 ± 0.02	0.08 ± 0.01	0.36 ± 0.24	0.57 ± 0.20
	1064 nm	0.18 ± 0.01	-	0.39 ± 0.16	-
sulfate mass concentration ($\mu\text{g m}^{-3}$)		133.1 ± 20.3	-	-	-
Intensive aerosol optical properties					
Lidar ratio (sr)	355 nm	66.9 ± 10.1	17.3 ± 2.8	64.8 ± 10.2	58.4 ± 8.8
	532 nm	60.2 ± 9.2	23.8 ± 4.2	50.9 ± 8.3	47.3 ± 7.2
	1064 nm	30.8 ± 8.7	-	61.8 ± 8.6	-
Particle linear depolarization ratio (%)	355 nm	0.3 ± 2.0	0.7 ± 2.0	20.8 ± 2.0	24.5 ± 2.0
	532 nm	0.7 ± 1.0	1.1 ± 1.0	25.0 ± 1.0	28.1 ± 1.0
	1064 nm	0.9 ± 1.0	1.0 ± 1.0	20.6 ± 1.0	24.1 ± 1.0
Ångström exponent	ext 355/532 nm	0.68 ± 0.07	-0.32 ± 0.29	0.10 ± 0.14	0.06 ± 0.08
	ext 532/1064 nm	1.53 ± 0.26	-	-0.06 ± 0.53	-

Appendix A: AOD and lidar quicklooksprofiles

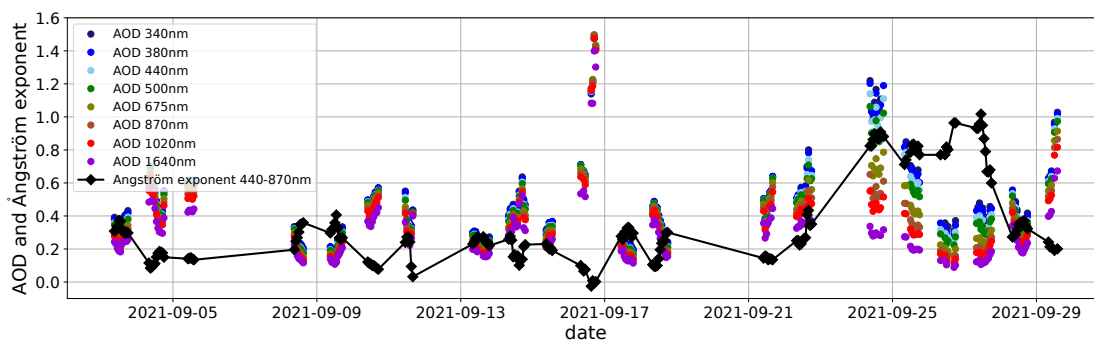


Figure A1. Same as Figure 1 but including the measurement of 16 September 2021, which was contaminated by a cirrus cloud.

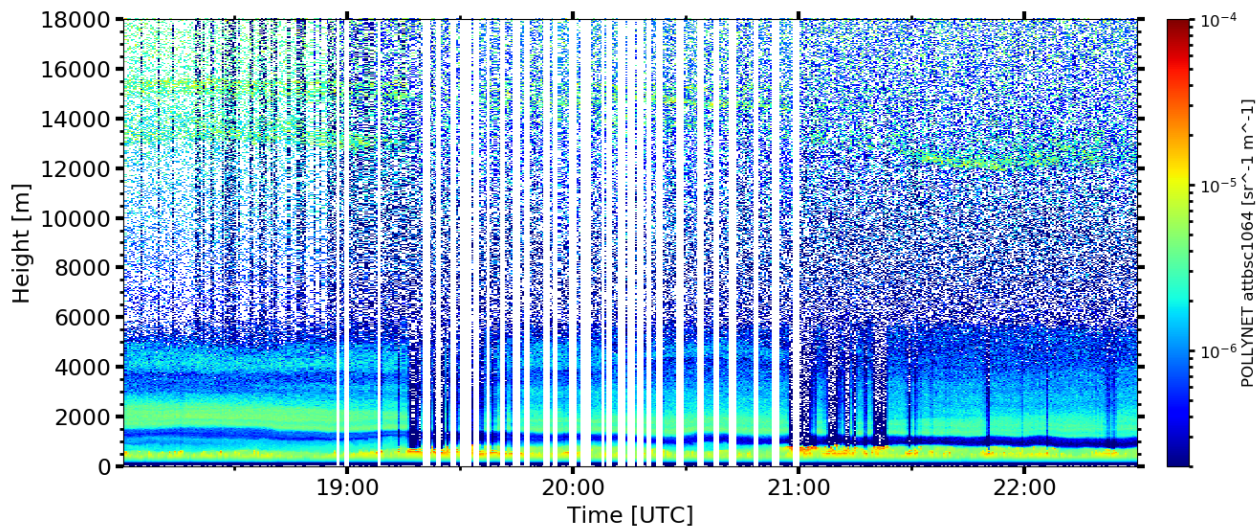


Figure A2. Temporal evolution of the calibrated attenuated backscatter coefficient at 1064 nm measured by Polly^{XT} at Mindelo, Cabo Verde, during 16 September 2021, 18–22:30 UTC. In an altitude between 12 and 16 km the Cirrus cloud was located, which was not correctly screened out by the AERONET algorithm.

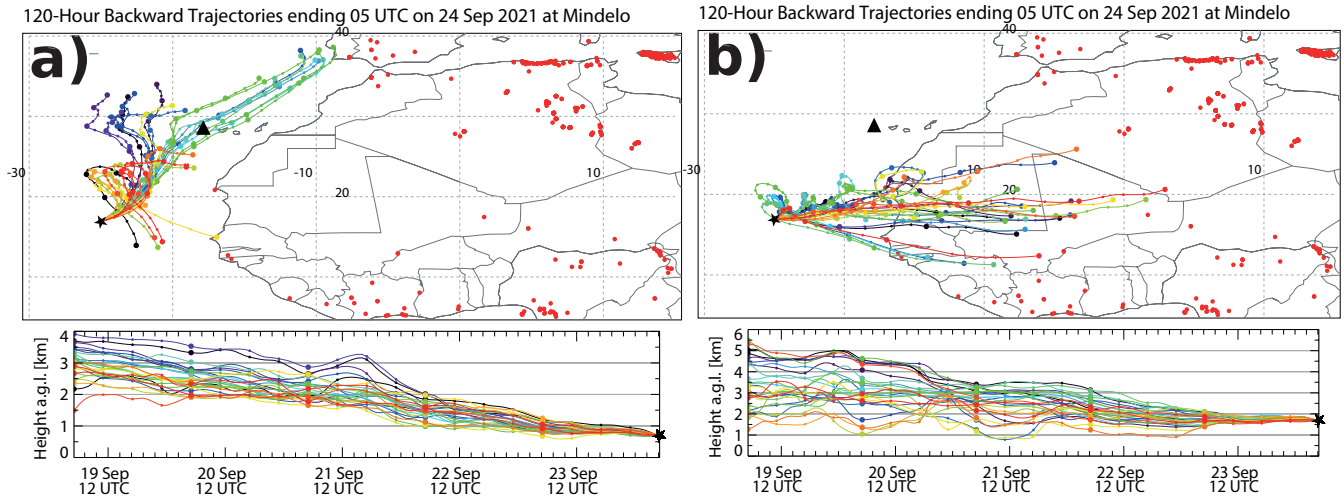


Figure B1. Same as Fig. 6 but with fire spot analysis from MODIS (FIRMS, firms.modaps.eosdis.nasa.gov) between 14 and 24 September 2021.

Appendix C: TRACEFLEXPART simulations

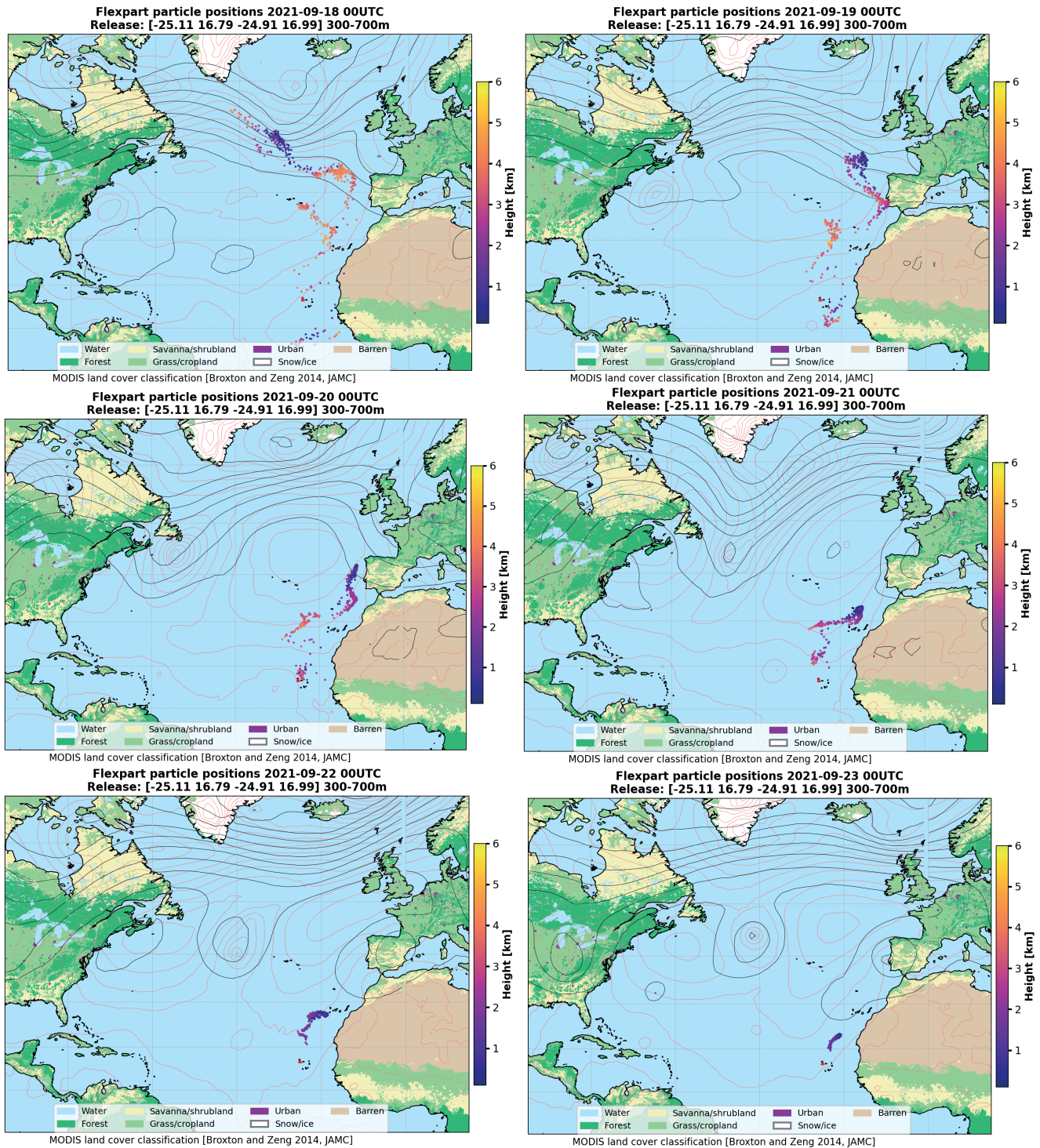


Figure C1. Selected **TRACEFlexpart** simulations show the location of single air parcels (labelled as "particle positions") between 18 and 23 September 2021, each at 0 UTC, before they arrive at Mindelo (red triangle) at 500m on 24 September 2021, 6 UTC. The colour of the dots indicates their height above ground. MODIS land cover classification according to Broxton et al. (2014).

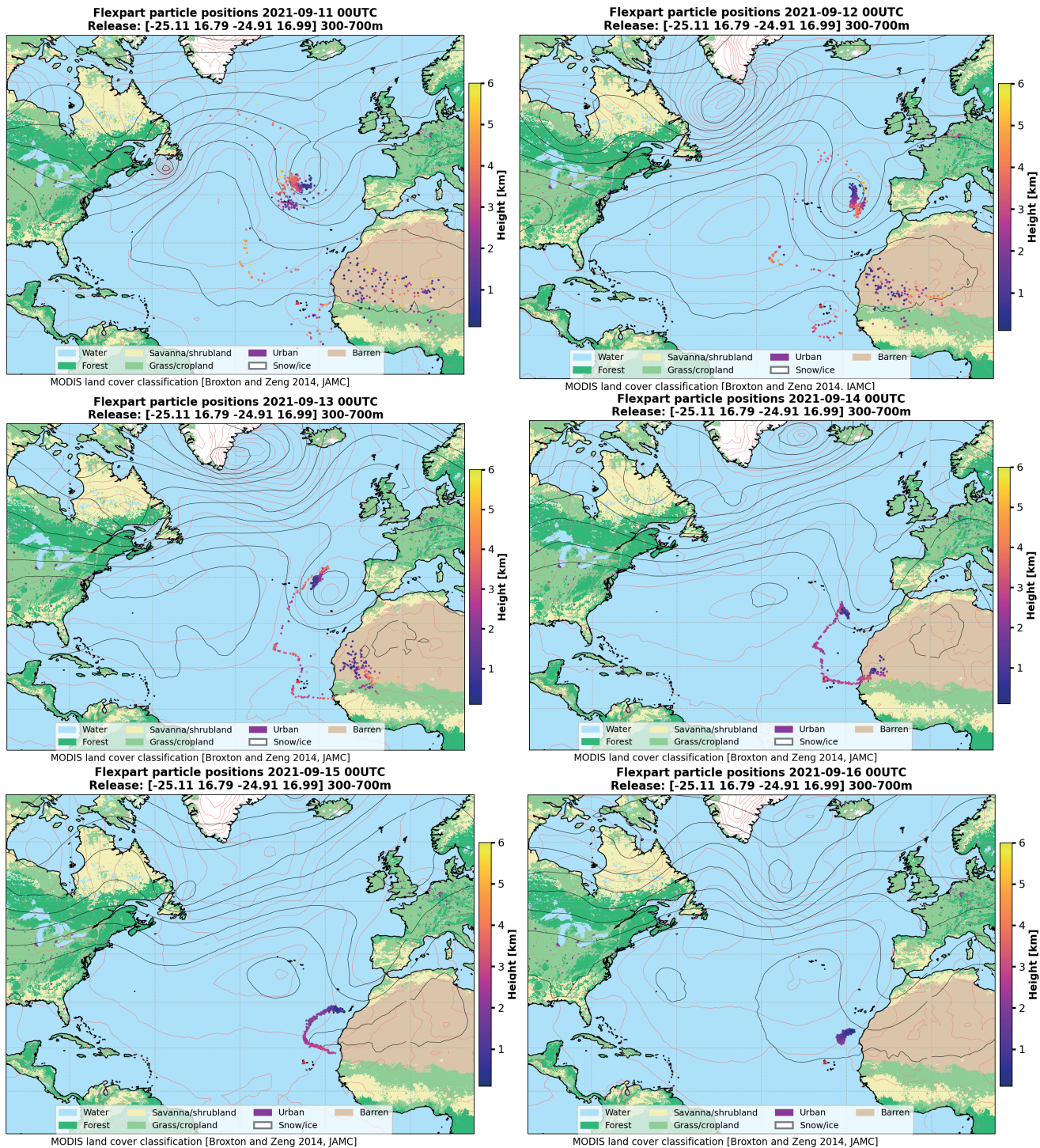


Figure C2. Same as Fig. C1 but for air parcels arriving on 16 September 2021, 0 UTC.

Author contributions. HG conceptualized the manuscript together with HB and AAF. MH provided the data of the lidar extinction measurements at 1064 nm. MR performed the [TRACEFLEXPART](#) simulations. AA contributed his expertise on lidar data analysis and volcanic aerosol. RE, DA, HB, and AS have been responsible for the deployment and operation of the ground-based instruments at Mindelo. CZ coordinates the scientific activities at OSCM, Cabo Verde. All coauthors were actively involved in the extended discussions and the elaboration of the final design of the manuscript.

Competing interests. The authors declare that they have no conflict of interest.

Acknowledgements. This research has been supported by the German Federal Ministry for Economic Affairs and Energy (BMWi) (grant no. 50EE1721C) and Horizon 2020 (grant nos. 654109 and 7395302). We furthermore acknowledge gratefully the team of OSCM for their support without which it would not have been possible to perform the observations. We also would like to thank ESA and the ASKOS/JATAC teams for the organization of the campaign and the support during the whole time!

References

- ACTRIS guidelines(2024): ACTRIS guidelines for quality assurance procedures, available at <https://www.actris.eu/topical-centre/cars/announcements-resources/documents>, last access: 31 January, 2024.
- 495 AERONET(2024): Aerosol Robotic Network, available at https://aeronet.gsfc.nasa.gov/cgi-bin/draw_map_display_aod_v3?long1=-180&long2=180&lat1=-89&lat2=90&multiplier=2&what_map=4&nachal=1&formatter=0&level=2&place_code=10, last access: 14 February, 2024.
- Aiuppa, A., Giudice, G., Gurrieri, S., Liuzzo, M., Burton, M., Caltabiano, T., McGonigle, A. J. S., Salerno, G., Shinohara, H., and Valenza, M.: Total volatile flux from Mount Etna, *Geophysical Research Letters*, 35, <https://doi.org/10.1029/2008GL035871>, 2008.
- 500 Althausen, D., Engelmann, R., Baars, H., Heese, B., Ansmann, A., Müller, D., and Komppula, M.: Portable Raman Lidar PollyXT for Automated Profiling of Aerosol Backscatter, Extinction, and Depolarization, *Journal of Atmospheric and Oceanic Technology*, 26, 2366–2378, <https://doi.org/10.1175/2009JTECHA1304.1>, 2009.
- Amiridis, V., Kampouri, A., Gkikas, A., Misios, S., Gialitaki, A., Marinou, E., Rennie, M., Benedetti, A., Solomos, S., Zanis, P., et al.: Aeolus winds impact on volcanic ash early warning systems for aviation, *Scientific Reports*, 13, 1–14, <https://doi.org/10.1038/s41598-023-34715-6>, 2023.
- 505 Amiridis, V. et al.: The ASKOS experiment for desert dust science applications, EGU General Assembly 2022, Vienna, Austria, 23–27 May 2022, EGU22-3633, Tech. rep., Copernicus Meetings, <https://doi.org/10.5194/egusphere-egu22-3633>, 2022.
- Ansmann, A., Wandinger, U., Riebesell, M., Weitkamp, C., and Michaelis, W.: Independent measurement of extinction and backscatter profiles in cirrus clouds by using a combined Raman elastic-backscatter lidar, *Appl. Opt.*, 31, 7113–7131, <https://doi.org/10.1364/AO.31.007113>, 1992.
- 510 Ansmann, A., Tesche, M., Groß, S., Freudenthaler, V., Seifert, P., Hiebsch, A., Schmidt, J., Wandinger, U., Mattis, I., Müller, D., and Wiegner, M.: The 16 April 2010 major volcanic ash plume over central Europe: EARLINET lidar and AERONET photometer observations at Leipzig and Munich, Germany, *Geophysical Research Letters*, 37, <https://doi.org/10.1029/2010GL043809>, 2010.
- Ansmann, A., Petzold, A., Kandler, K., Tegen, I., Wendisch, M., Mueller, D., Weinzierl, B., Mueller, T., and Heintzenberg, J.: Saharan Mineral Dust Experiments SAMUM–1 and SAMUM–2: what have we learned?, *Tellus B: Chemical and Physical Meteorology*, 63, 403–429, <https://doi.org/10.1111/j.1600-0889.2011.00555.x>, 2011a.
- 515 Ansmann, A., Tesche, M., Seifert, P., Groß, S., Freudenthaler, V., Apituley, A., Wilson, K. M., Serikov, I., Linné, H., Heinold, B., Hiebsch, A., Schnell, F., Schmidt, J., Mattis, I., Wandinger, U., and Wiegner, M.: Ash and fine-mode particle mass profiles from EARLINET-AERONET observations over central Europe after the eruptions of the Eyjafjallajökull volcano in 2010, *Journal of Geophysical Research: Atmospheres*, 116, <https://doi.org/10.1029/2010JD015567>, 2011b.
- 520 Ansmann, A., Mamouri, R.-E., Hofer, J., Baars, H., Althausen, D., and Abdullaev, S. F.: Dust mass, cloud condensation nuclei, and ice-nucleating particle profiling with polarization lidar: updated POLIPHON conversion factors from global AERONET analysis, *Atmospheric Measurement Techniques*, 12, 4849–4865, <https://doi.org/10.5194/amt-12-4849-2019>, 2019.
- Baars, H., Ansmann, A., Althausen, D., Engelmann, R., Heese, B., Müller, D., Artaxo, P., Paixao, M., Pauliquevis, T., and Souza, R.: Aerosol profiling with lidar in the Amazon Basin during the wet and dry season, *Journal of Geophysical Research: Atmospheres*, 117, <https://doi.org/10.1029/2012JD018338>, 2012.

- Baars, H., Kanitz, T., Engelmann, R., Althausen, D., Heese, B., Komppula, M., Preißler, J., Tesche, M., Ansmann, A., Wandinger, U., et al.: An overview of the first decade of PollyNET: an emerging network of automated Raman-polarization lidars for continuous aerosol profiling, <https://doi.org/10.5194/acp-16-5111-2016>, 2016.
- 530 Bedoya-Velásquez, A. E., Hoyos-Restrepo, M., Barreto, A., García, R. D., Romero-Campos, P. M., García, O., Ramos, R., Roininen, R., Toledano, C., Sicard, M., and Ceolato, R.: Estimation of the Mass Concentration of Volcanic Ash Using Ceilometers: Study of Fresh and Transported Plumes from La Palma Volcano, *Remote Sensing*, 14, <https://doi.org/10.3390/rs14225680>, 2022.
- Bohlmann, S., Baars, H., Radenz, M., Engelmann, R., and Macke, A.: Ship-borne aerosol profiling with lidar over the Atlantic Ocean: from pure marine conditions to complex dust–smoke mixtures, *Atmospheric Chemistry and Physics*, 18, 9661–9679, <https://doi.org/10.5194/acp-18-9661-2018>, 2018.
- 535 Broxton, P. D., Zeng, X., Sulla-Menashe, D., and Troch, P. A.: A Global Land Cover Climatology Using MODIS Data, *Journal of Applied Meteorology and Climatology*, 53, 1593 – 1605, <https://doi.org/10.1175/JAMC-D-13-0270.1>, 2014.
- Businger, S., Huff, R., Pattantyus, A., Horton, K., Sutton, A. J., Elias, T., and Cherubini, T.: Observing and Forecasting Vog Dispersion from Kīlauea Volcano, Hawaii, *Bulletin of the American Meteorological Society*, 96, 1667 – 1686, <https://doi.org/10.1175/BAMS-D-14-00150.1>, 2015.
- 540 Carracedo, J. C., Troll, V. R., Day, J. M. D., Geiger, H., Aulinas, M., Soler, V., Deegan, F. M., Perez-Torrado, F. J., Gisbert, G., Gazel, E., Rodriguez-Gonzalez, A., and Albert, H.: The 2021 eruption of the Cumbre Vieja volcanic ridge on La Palma, Canary Islands, *Geology Today*, 38, 94–107, <https://doi.org/10.1111/gto.12388>, 2022.
- Deshler, T.: A review of global stratospheric aerosol: Measurements, importance, life cycle, and local stratospheric aerosol, *Atmospheric Research*, 90, 223–232, <https://doi.org/10.1016/j.atmosres.2008.03.016>, 17th International Conference on Nucleation and Atmospheric Aerosols, 2008.
- 545 Eatough, D., Caka, F., and Farber, R.: The Conversion of SO₂ to Sulfate in the Atmosphere, *Israel Journal of Chemistry*, 34, 301–314, <https://doi.org/10.1002/ijch.199400034>, 1994.
- Engelmann, R., Kanitz, T., Baars, H., Heese, B., Althausen, D., Skupin, A., Wandinger, U., Komppula, M., Stachlewska, I. S., Amiridis, V., Marinou, E., Mattis, I., Linné, H., and Ansmann, A.: The automated multiwavelength Raman polarization and water-vapor lidar Polly^{XT}: the neXT generation, *Atmospheric Measurement Techniques*, 9, 1767–1784, <https://doi.org/10.5194/amt-9-1767-2016>, 2016.
- EVDC(2024): <https://doi.org/10.60621/jatac.campaign.2021.2022.caboverde>, data of the JATAC campaign available via the ESA Validation Data Center (EVDC), 2024.
- 555 Fehr, T., McCarthy, W., Amiridis, V., Baars, H., von Bismarck, J., Borne, M., Chen, S., Flamant, C., Marengo, F., Knipperz, P., et al.: The Joint Aeolus Tropical Atlantic Campaign 2021/2022 Overview–Atmospheric Science and Satellite Validation in the Tropics, EGU General Assembly 2023, Vienna, Austria, 24–28 Apr 2023, EGU23-7249, Tech. rep., <https://doi.org/10.5194/egusphere-egu23-7249>, 2023.
- Filonchik, M., Peterson, M. P., Gusev, A., Hu, F., Yan, H., and Zhou, L.: Measuring air pollution from the 2021 Canary Islands volcanic eruption, *Science of The Total Environment*, 849, 157 827, <https://doi.org/10.1016/j.scitotenv.2022.157827>, 2022.
- FIRMS(2024): Fire Information for Resource Management System, available at: firms.modaps.eosdis.nasa.gov, last access: 15 January, 2024.
- 560 Floutsis, A. A., Baars, H., Engelmann, R., Althausen, D., Ansmann, A., Bohlmann, S., Heese, B., Hofer, J., Kanitz, T., Haarig, M., Ohneiser, K., Radenz, M., Seifert, P., Skupin, A., Yin, Z., Abdullaev, S. F., Komppula, M., Filioglou, M., Giannakaki, E., Stachlewska, I. S., Janicka, L., Bortoli, D., Marinou, E., Amiridis, V., Gialitaki, A., Mamouri, R.-E., Barja, B., and Wandinger, U.: DeLiAn – a growing collection of depolarization ratio, lidar ratio and Ångström exponent for different aerosol types and mixtures from ground-based lidar observations, *Atmospheric Measurement Techniques*, 16, 2353–2379, <https://doi.org/10.5194/amt-16-2353-2023>, 2023.

- 565 Freudenthaler, V., Esselborn, M., Wiegner, M., Heese, B., Tesche, M., Ansmann, A., Müller, D., Althausen, D., Wirth, M., Fix, A., Ehret, G., Knippertz, P., Toledano, C., Gasteiger, J., Garhammer, M., and Seefeldner, M.: Depolarization ratio profiling at several wavelengths in pure Saharan dust during SAMUM 2006, *Tellus B: Chemical and Physical Meteorology*, <https://doi.org/10.1111/j.1600-0889.2008.00396.x>, 2009.
- GDAS1(2024): Global Data and Assimilation Service, meteorological data, information available at: <https://www.ready.noaa.gov/gdas1.php>,
570 last access: 14 February, 2024.
- Gebauer, H., Floutsi, A. A., Haarig, M., Radenz, M., Engelmann, R., Althausen, D., Skupin, A., Ansmann, A., Zenk, C., and Baars, H.: Lidar-derived aerosol optical properties from Mindelo, Cabo Verde, September 2021, <https://doi.org/10.5281/zenodo.10650879>, 2024.
- Groß, S., Tesche, M., Freudenthaler, V., Toledano, C., Wiegner, M., Ansmann, A., Althausen, D., and Seefeldner, M.: Characterization of Saharan dust, marine aerosols and mixtures of biomass-burning aerosols and dust by means of multi-wavelength depolarization and Raman lidar measurements during SAMUM 2, *Tellus B: Chemical and Physical Meteorology*, 63, 706–724, <https://doi.org/10.1111/j.1600-0889.2011.00556.x>, 2011.
- 575 Groß, S., Freudenthaler, V., Wiegner, M., Gasteiger, J., Geiß, A., and Schnell, F.: Dual-wavelength linear depolarization ratio of volcanic aerosols: Lidar measurements of the Eyjafjallajökull plume over Maisach, Germany, *Atmospheric Environment*, 48, 85–96, <https://doi.org/10.1016/j.atmosenv.2011.06.017>, volcanic ash over Europe during the eruption of Eyjafjallajökull on Iceland, April-May
580 2010, 2012.
- Haarig, M., Engelmann, R., Ansmann, A., Veselovskii, I., Whiteman, D. N., and Althausen, D.: 1064 nm rotational Raman lidar for particle extinction and lidar-ratio profiling: cirrus case study, *Atmospheric Measurement Techniques*, 9, 4269–4278, <https://doi.org/10.5194/amt-9-4269-2016>, 2016.
- Haarig, M., Ansmann, A., Althausen, D., Klepel, A., Groß, S., Freudenthaler, V., Toledano, C., Mamouri, R.-E., Farrell, D. A., Prescod, D. A., Marinou, E., Burton, S. P., Gasteiger, J., Engelmann, R., and Baars, H.: Triple-wavelength depolarization-ratio profiling of Saharan dust over Barbados during SALTRACE in 2013 and 2014, *Atmospheric Chemistry and Physics*, 17, 10 767–10 794, <https://doi.org/10.5194/acp-17-10767-2017>, 2017.
- 585 Haarig, M., Ansmann, A., Baars, H., Jimenez, C., Veselovskii, I., Engelmann, R., and Althausen, D.: Depolarization and lidar ratios at 355, 532, and 1064 nm and microphysical properties of aged tropospheric and stratospheric Canadian wildfire smoke, *Atmospheric Chemistry and Physics*, 18, 11 847–11 861, <https://doi.org/10.5194/acp-18-11847-2018>, 2018.
- 590 Haarig, M., Ansmann, A., Engelmann, R., Baars, H., Toledano, C., Torres, B., Althausen, D., Radenz, M., and Wandinger, U.: First triple-wavelength lidar observations of depolarization and extinction-to-backscatter ratios of Saharan dust, *Atmospheric Chemistry and Physics*, 22, 355–369, <https://doi.org/10.5194/acp-22-355-2022>, 2022.
- Hansen, J., Sato, M., Lacis, A., and Ruedy, R.: The missing climate forcing, *Philosophical Transactions of the Royal Society of London. Series B: Biological Sciences*, 352, 231–240, <https://doi.org/10.1098/rstb.1997.0018>, 1997.
- 595 Holben, B., Eck, T., Slutsker, I., Tanré, D., Buis, J., Setzer, A., Vermote, E., Reagan, J., Kaufman, Y., Nakajima, T., Lavenu, F., Jankowiak, I., and Smirnov, A.: AERONET—A Federated Instrument Network and Data Archive for Aerosol Characterization, *Remote Sensing of Environment*, 66, 1–16, [https://doi.org/10.1016/S0034-4257\(98\)00031-5](https://doi.org/10.1016/S0034-4257(98)00031-5), 1998.
- HYSPLIT(2024): HYbrid Single-Particle Lagrangian Integrated Trajectory model, backward trajectory calculation tool, available at: <https://www.ready.noaa.gov/index.php>, last access: 14 February, 2024.
- 600

- Jimenez, C., Ansmann, A., Engelmann, R., Donovan, D., Malinka, A., Schmidt, J., Seifert, P., and Wandinger, U.: The dual-field-of-view polarization lidar technique: a new concept in monitoring aerosol effects in liquid-water clouds – theoretical framework, *Atmospheric Chemistry and Physics*, 20, 15 247–15 263, <https://doi.org/10.5194/acp-20-15247-2020>, 2020a.
- 605 Jimenez, C., Ansmann, A., Engelmann, R., Donovan, D., Malinka, A., Seifert, P., Wiesen, R., Radenz, M., Yin, Z., Bühl, J., Schmidt, J., Barja, B., and Wandinger, U.: The dual-field-of-view polarization lidar technique: a new concept in monitoring aerosol effects in liquid-water clouds – case studies, *Atmospheric Chemistry and Physics*, 20, 15 265–15 284, <https://doi.org/10.5194/acp-20-15265-2020>, 2020b.
- John, W. et al.: Size distribution characteristics of aerosols, vol. 3, pp. 41–54, John Wiley & Sons, Inc., Hoboken, NJ, USA, 2011.
- Jäger, H.: Long-term record of lidar observations of the stratospheric aerosol layer at Garmisch-Partenkirchen, *Journal of Geophysical Research: Atmospheres*, 110, <https://doi.org/10.1029/2004JD005506>, 2005.
- 610 Kampouri, A., Amiridis, V., Solomos, S., Gialitaki, A., Marinou, E., Spyrou, C., Georgoulas, A. K., Akritidis, D., Papagiannopoulos, N., Mona, L., Scollo, S., Tschla, M., Tsikoudi, I., Pytharoulis, I., Karacostas, T., and Zanis, P.: Investigation of Volcanic Emissions in the Mediterranean: “The Etna–Antikythera Connection”, *Atmosphere*, 12, <https://doi.org/10.3390/atmos12010040>, 2021.
- Kim, M.-H., Omar, A. H., Tackett, J. L., Vaughan, M. A., Winker, D. M., Trepte, C. R., Hu, Y., Liu, Z., Poole, L. R., Pitts, M. C., Kar, J., and Magill, B. E.: The CALIPSO version 4 automated aerosol classification and lidar ratio selection algorithm, *Atmospheric Measurement*
615 *Techniques*, 11, 6107–6135, <https://doi.org/10.5194/amt-11-6107-2018>, 2018.
- Koschmieder, H.: Theorie der horizontalen Sichtweite, *Beiträge zur Physik der freien Atmosphäre*, 12, 33–53, 1924.
- L2A+(2024): L2A+ project deliverable: "Enhanced Aeolus L2A for depolarizing targets and impact on aerosol research and NWP", available at: <https://l2a.space.noa.gr/backend/assets/e7a1b125-e2b2-4489-a205-720bd4f8077a?download>, last access: 11 January, 2024.
- Marinou, E., Paschou, P., Tsikoudi, I., Tsekeri, A., Daskalopoulou, V., Kouklaki, D., Siomos, N., Spanakis-Misirlis, V., Voudouri, K. A.,
620 Georgiou, T., Drakaki, E., Kampouri, A., Papachristopoulou, K., Mavropoulou, I., Mallios, S., Proestakis, E., Gkikas, A., Koutsoupi, I., Raptis, I. P., Kazadzis, S., Baars, H., Floutsi, A., Pirloaga, R., Nemuc, A., Marengo, F., Kezoudi, M., Papetta, A., Močnik, G., Díez, J. Y., Ryder, C. L., Ratcliffe, N., Kandler, K., Sudharaj, A., and Amiridis, V.: An Overview of the ASKOS Campaign in Cabo Verde, *Environmental Sciences Proceedings*, 26, <https://doi.org/10.3390/envirosciproc2023026200>, 2023.
- Martin, E., Bekki, S., Ninin, C., and Bindeman, I.: Volcanic sulfate aerosol formation in the troposphere, *Journal of Geophysical Research: Atmospheres*, 119, 12,660–12,673, <https://doi.org/10.1002/2014JD021915>, 2014.
625
- McGonigle, A. J. S., Delmelle, P., Oppenheimer, C., Tsanev, V. I., Delfosse, T., Williams-Jones, G., Horton, K., and Mather, T. A.: SO₂ depletion in tropospheric volcanic plumes, *Geophysical Research Letters*, 31, <https://doi.org/10.1029/2004GL019990>, 2004.
- Miffre, A., David, G., Thomas, B., Rairoux, P., Fjaeraa, A., Kristiansen, N., and Stohl, A.: Volcanic aerosol optical properties and phase partitioning behavior after long-range advection characterized by UV-Lidar measurements, *Atmospheric Environment*, 48, 76–84,
630 <https://doi.org/10.1016/j.atmosenv.2011.03.057>, volcanic ash over Europe during the eruption of Eyjafjallajökull on Iceland, April-May 2010, 2012.
- Milford, C., Torres, C., Vilches, J., Gossman, A.-K., Weis, F., Suárez-Molina, D., García, O. E., Prats, N., Barreto, Á., García, R. D., et al.: Impact of the 2021 La Palma volcanic eruption on air quality: Insights from a multidisciplinary approach, *Science of the Total Environment*, 869, 161 652, <https://doi.org/10.1016/j.scitotenv.2023.161652>, 2023.
- 635 Mona, L., Amodeo, A., D’Amico, G., Giunta, A., Madonna, F., and Pappalardo, G.: Multi-wavelength Raman lidar observations of the Eyjafjallajökull volcanic cloud over Potenza, southern Italy, *Atmospheric Chemistry and Physics*, 12, 2229–2244, <https://doi.org/10.5194/acp-12-2229-2012>, 2012.

- National Centers for Environmental Prediction, National Weather Service, NOAA, U.S. Department of Commerce: NCEP FNL Operational Model Global Tropospheric Analyses, continuing from July 1999, <https://doi.org/10.5065/D6M043C6>, 2000.
- 640 Navas-Guzmán, F., Müller, D., Bravo-Aranda, J. A., Guerrero-Rascado, J. L., Granados-Muñoz, M. J., Pérez-Ramírez, D., Olmo, F. J., and Alados-Arboledas, L.: Eruption of the Eyjafjallajökull Volcano in spring 2010: Multiwavelength Raman lidar measurements of sulphate particles in the lower troposphere, *Journal of Geophysical Research: Atmospheres*, 118, 1804–1813, <https://doi.org/10.1002/jgrd.50116>, 2013.
- Pappalardo, G., Amodeo, A., Mona, L., Pandolfi, M., Pergola, N., and Cuomo, V.: Raman lidar observations of aerosol emitted during the 645 2002 Etna eruption, *Geophysical Research Letters*, 31, <https://doi.org/10.1029/2003GL019073>, 2004.
- Pappalardo, G., Mona, L., D’Amico, G., Wandinger, U., Adam, M., Amodeo, A., Ansmann, A., Apituley, A., Alados Arboledas, L., Balis, D., Boselli, A., Bravo-Aranda, J. A., Chaikovskiy, A., Comeron, A., Cuesta, J., De Tomasi, F., Freudenthaler, V., Gausa, M., Giannakaki, E., Giehl, H., Giunta, A., Grigorov, I., Groß, S., Haefelin, M., Hiebsch, A., Iarlori, M., Lange, D., Linné, H., Madonna, F., Mattis, I., Mamouri, R.-E., McAuliffe, M. A. P., Mitev, V., Molero, F., Navas-Guzman, F., Nicolae, D., Papayannis, A., Perrone, M. R., Pietras, 650 C., Pietruczuk, A., Pisani, G., Preißler, J., Pujadas, M., Rizi, V., Ruth, A. A., Schmidt, J., Schnell, F., Seifert, P., Serikov, I., Sicard, M., Simeonov, V., Spinelli, N., Stebel, K., Tesche, M., Trickl, T., Wang, X., Wagner, F., Wiegner, M., and Wilson, K. M.: Four-dimensional distribution of the 2010 Eyjafjallajökull volcanic cloud over Europe observed by EARLINET, *Atmospheric Chemistry and Physics*, 13, 4429–4450, <https://doi.org/10.5194/acp-13-4429-2013>, 2013.
- Pattanyus, A. K., Businger, S., and Howell, S. G.: Review of sulfur dioxide to sulfate aerosol chemistry at Kīlauea Volcano, Hawai‘i, 655 *Atmospheric Environment*, 185, 262–271, <https://doi.org/10.1016/j.atmosenv.2018.04.055>, 2018.
- Pisso, I., Sollum, E., Grythe, H., Kristiansen, N. I., Cassiani, M., Eckhardt, S., Arnold, D., Morton, D., Thompson, R. L., Groot Zwaafink, C. D., Evangeliou, N., Sodemann, H., Haimberger, L., Henne, S., Brunner, D., Burkhardt, J. F., Fouilloux, A., Brioude, J., Philipp, A., Seibert, P., and Stohl, A.: The Lagrangian particle dispersion model FLEXPART version 10.4, *Geoscientific Model Development*, 12, 4955–4997, <https://doi.org/10.5194/gmd-12-4955-2019>, 2019.
- 660 Radenz, M.: martin-rdz/trace_airmass_source: trace_airmass_source jan2021, <https://doi.org/10.5281/zenodo.4438051>, 2021.
- Radenz, M., Seifert, P., Baars, H., Floutsis, A. A., Yin, Z., and Bühl, J.: Automated time–height-resolved air mass source attribution for profiling remote sensing applications, *Atmospheric Chemistry and Physics*, 21, 3015–3033, <https://doi.org/10.5194/acp-21-3015-2021>, 2021.
- Rittmeister, F., Ansmann, A., Engelmann, R., Skupin, A., Baars, H., Kanitz, T., and Kinne, S.: Profiling of Saharan dust from the Caribbean 665 to western Africa – Part 1: Layering structures and optical properties from shipborne polarization/Raman lidar observations, *Atmospheric Chemistry and Physics*, 17, 12 963–12 983, <https://doi.org/10.5194/acp-17-12963-2017>, 2017.
- Robock, A.: Volcanic eruptions and climate, *Reviews of Geophysics*, 38, 191–219, <https://doi.org/10.1029/1998RG000054>, 2000.
- Rolph, G., Stein, A., and Stunder, B.: Real-time Environmental Applications and Display sYstem: READY, *Environmental Modelling & Software*, 95, 210–228, <https://doi.org/10.1016/j.envsoft.2017.06.025>, 2017.
- 670 Solomon, S., Daniel, J. S., Neely, R. R., Vernier, J.-P., Dutton, E. G., and Thomason, L. W.: The Persistently Variable “Background” Stratospheric Aerosol Layer and Global Climate Change, *Science*, 333, 866–870, <https://doi.org/10.1126/science.1206027>, 2011.
- Stein, A. F., Draxler, R. R., Rolph, G. D., Stunder, B. J. B., Cohen, M. D., and Ngan, F.: NOAA’s HYSPLIT Atmospheric Transport and Dispersion Modeling System, *Bulletin of the American Meteorological Society*, 96, 2059–2077, <https://doi.org/10.1175/BAMS-D-14-00110.1>, 2015.

- 675 Tackett, J. L., Kar, J., Vaughan, M. A., Getzewich, B. J., Kim, M.-H., Vernier, J.-P., Omar, A. H., Magill, B. E., Pitts, M. C., and Winker, D. M.: The CALIPSO version 4.5 stratospheric aerosol subtyping algorithm, *Atmospheric Measurement Techniques*, 16, 745–768, <https://doi.org/10.5194/amt-16-745-2023>, 2023.
- Tesche, M., Gross, S., Ansmann, A., Mueller, D., Althausen, D., Freudenthaler, V., and Esselborn, M.: Profiling of Saharan dust and biomass-burning smoke with multiwavelength polarization Raman lidar at Cape Verde, *Tellus B: Chemical and Physical Meteorology*, 63, 649–676, <https://doi.org/10.1111/j.1600-0889.2011.00548.x>, 2011.
- 680 TROPOMI(2024): TROPospheric Monitoring Instrument, quicklooks available at <https://so2.gsfc.nasa.gov/pix/daily/ixxxza/troploop5pca.php?yr=21&mo=09&dy=23&bn=cverde>, unerlaying data available at <https://data-portal.s5p-pal.com/>) from July 2022 onward and at <https://distributions.aeronomie.be/for> older data, last access: 14 February, 2024.
- Veefkind, J., Aben, I., McMullan, K., Förster, H., de Vries, J., Otter, G., Claas, J., Eskes, H., de Haan, J., Kleipool, Q., van Weele, M., Hasekamp, O., Hoogeveen, R., Landgraf, J., Snel, R., Tol, P., Ingmann, P., Voors, R., Kruizinga, B., Vink, R., Visser, H., and Levelt, P.: TROPOMI on the ESA Sentinel-5 Precursor: A GMES mission for global observations of the atmospheric composition for climate, air quality and ozone layer applications, *Remote Sensing of Environment*, 120, 70–83, <https://doi.org/10.1016/j.rse.2011.09.027>, the Sentinel Missions - New Opportunities for Science, 2012.
- 685 Veselovskii, I., Hu, Q., Goloub, P., Podvin, T., Korenskiy, M., Derimian, Y., Legrand, M., and Castellanos, P.: Variability in lidar-derived particle properties over West Africa due to changes in absorption: towards an understanding, *Atmospheric Chemistry and Physics*, 20, 6563–6581, <https://doi.org/10.5194/acp-20-6563-2020>, 2020.
- Wandinger, U., Floutsi, A. A., Baars, H., Haarig, M., Ansmann, A., Hünerbein, A., Docter, N., Donovan, D., van Zadelhoff, G.-J., Mason, S., and Cole, J.: HETEAC – the Hybrid End-To-End Aerosol Classification model for EarthCARE, *Atmospheric Measurement Techniques*, 16, 2485–2510, <https://doi.org/10.5194/amt-16-2485-2023>, 2023.
- 690 Yang, S., Ma, Y., Duan, F., He, K., Wang, L., Wei, Z., Zhu, L., Ma, T., Li, H., and Ye, S.: Characteristics and formation of typical winter haze in Handan, one of the most polluted cities in China, *Science of The Total Environment*, 613-614, 1367–1375, <https://doi.org/10.1016/j.scitotenv.2017.08.033>, 2018.
- Yin, Z. and Baars, H.: PollyNET/Pollynet_Processing_Chain: Version 3.0, <https://doi.org/10.5281/zenodo.5571289>, 2021.
- Zhang, Y., Zhu, X., Slanina, S., Shao, M., Zeng, L., Hu, M., Bergin, M., and Salmon, L.: Aerosol pollution in some Chinese cities (IUPAC Technical Report), *Pure and Applied Chemistry*, 76, 1227–1239, <https://doi.org/10.1351/pac200476061227>, 2004.
- 700