

Supplement to response to **RC1: 'Comment on egusphere-2023-2295'**, Martha K. Reynolds, 18 Dec 2023 (<https://doi.org/10.5194/egusphere-2023-2295-RC1>)

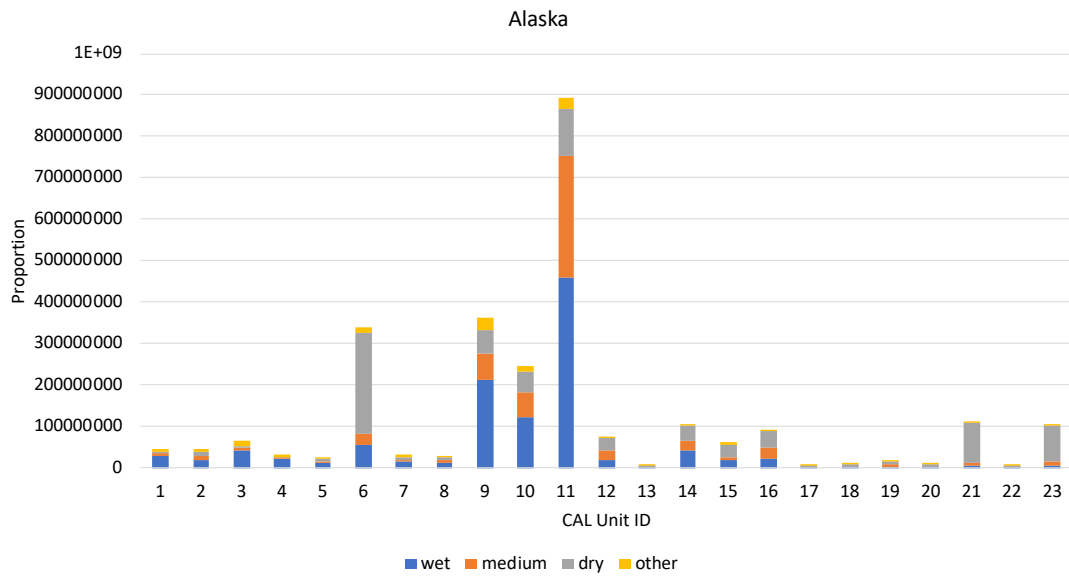


Figure 1: Comparison of CALU (10m, for legend of unit IDs see Bartsch et al. 2023) with CAWASAR wetness levels (500m, Widhalm et al. 2015) over the extent of the Alaskan North Slope as defined in Muller et al. (2018) (see also Figure 3).

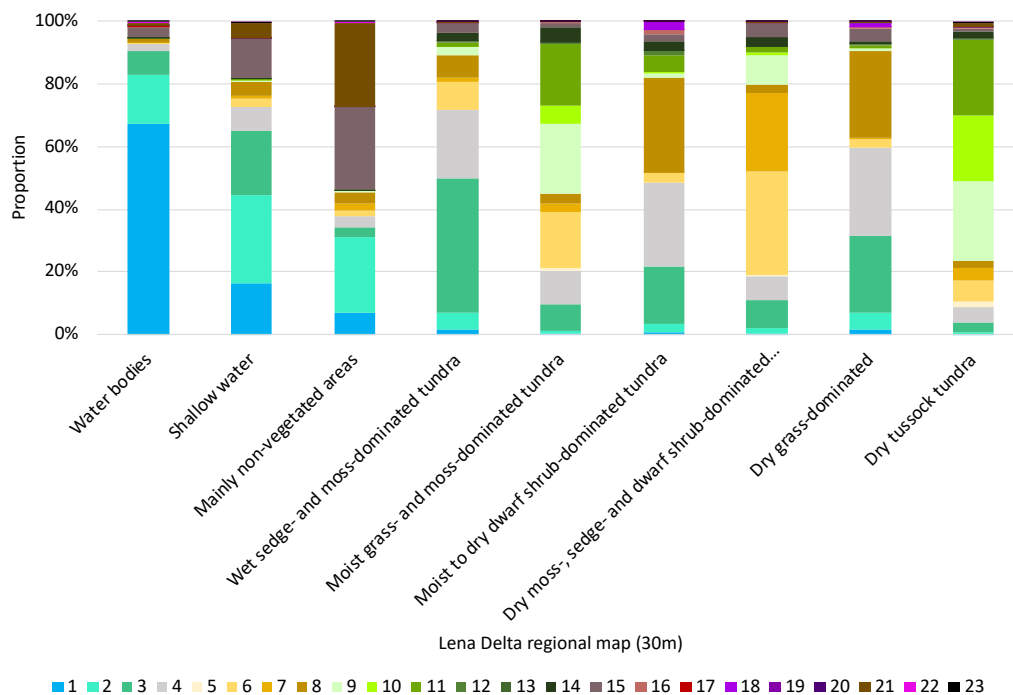


Figure 2: Cross-comparison of CALU (10m) with the Lena Delta Landcover classification by Schneider et al. (2009), 30m (proportion of CAL Unit within class; for legend of unit IDs see Bartsch et al. 2023).

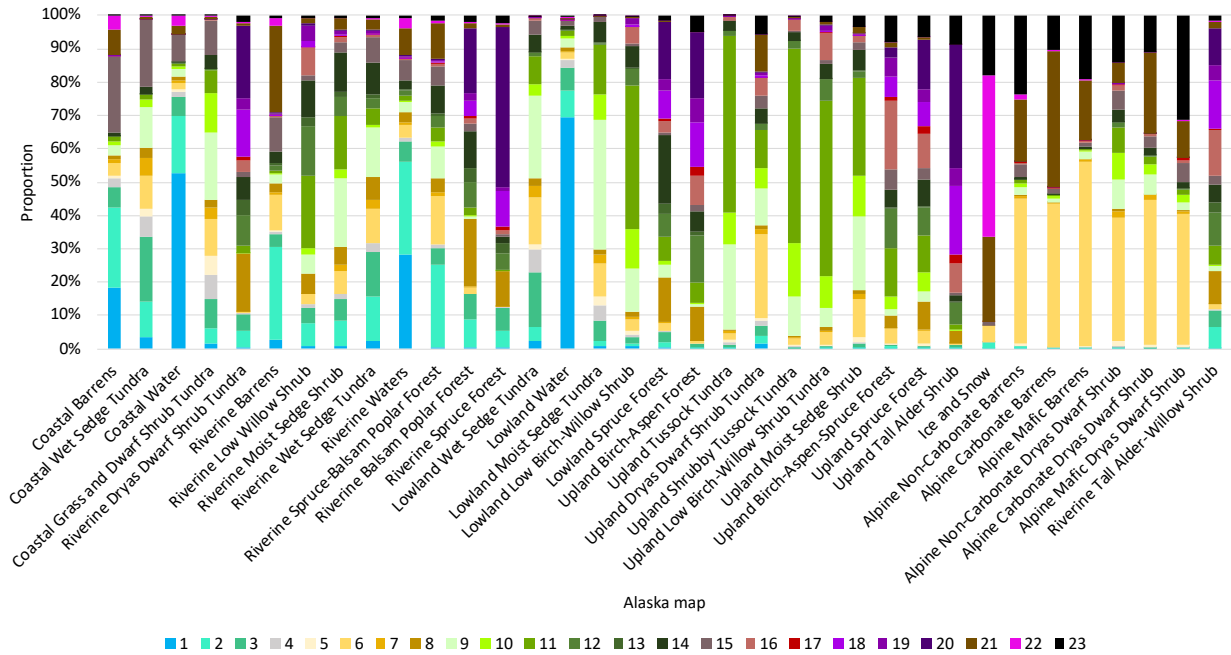


Figure 3: Cross-comparison of CALU (10m) with the Alaska landcover/ecosystems 2010 classification (30m) published in Muller et al. (2018) (proportion of CAL Unit within class; for legend of unit IDs see Bartsch et al. 2023).

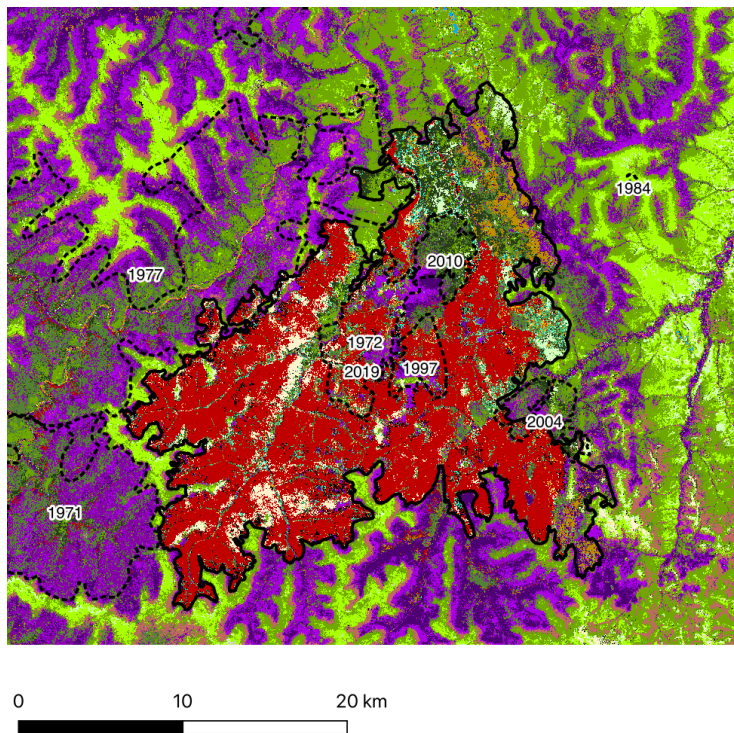


Figure 4: Example for class 17 'recently burned or flooded' (shown in red). Burned areas in southwestern Alaska (outlines and years from Alaska Fire Database, <https://www.frames.gov/catalog/10465>). Dashed lines – boundaries of fires before 2019, bold line - fire extent 2019. (for legend see Bartsch et al. 2023)

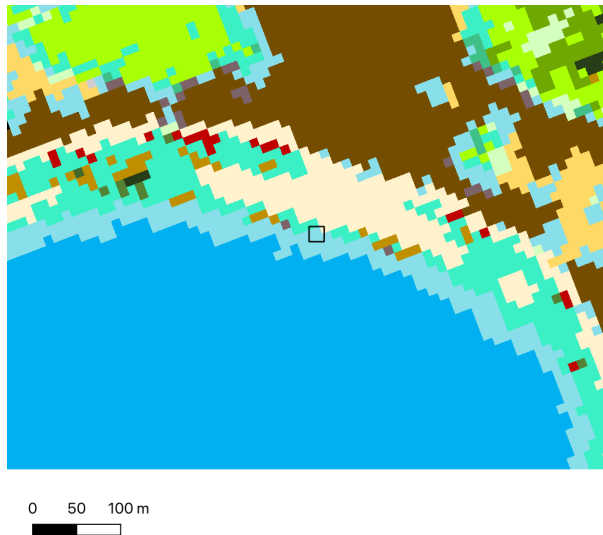


Figure 5: Example for an AVA vegetation plot (Zemlianskii et al. 2023) located along a lake margin (square), falling into unit #2 (light blue, abundant macrophytes, shallow lake margin) instead of land area due to geolocation uncertainties. (for legend see Bartsch et al. 2023)

References

Bartsch, A., Efimova, A., Widhalm, B., Muri, X., von Baeckmann, C., Bergstedt, H., Ermokhina, K., Hugelius, G., Heim, B., and Leibmann, M.: Circumarctic landcover diversity considering wetness gradients, *EGUsphere* [preprint], <https://doi.org/10.5194/egusphere-2023-2295>, 2023.

Muller, S., D.A. Walker, and M.T. Jorgenson. 2018. Land Cover and Ecosystem Map Collection for Northern Alaska. ORNL DAAC, Oak Ridge, Tennessee, USA. <https://doi.org/10.3334/ORNLDAAC/1359>

Schneider, J., G. Grosse, and D. Wagner. 2009. “The Lena River Delta - Land Cover Classification of Tundra Environments Based on Landsat 7 ETM+ Data and Its Application for Upscaling of Methane Emissions.” doi:10.1594/PANGAEA.759631. In Supplement to: “Land Cover Classification of Tundra Environments in the Arctic Lena Delta Based on Landsat 7 ETM+ Data and its Application for Upscaling of Methane Emissions.” *Remote Sensing of Environment* 113 (2): 380–391. doi:10.1016/j.rse.2008.10.013.

Widhalm, B., Bartsch, A., and Heim, B.: A novel approach for the characterization of tundra wetland regions with C-band SAR satellite data, *International Journal of Remote Sensing*, 36, 5537–5556, 2015.

Zemlianskii, V., Ermokhina, K., Schaepman-Strub, G., Matveyeva, N., Troeva, E., Lavrinenko, I., Telyatnikov, M., Pospelov, I., Koroleva, N., Leonova, N., Khitun, O., Walker, D., Breen, A., Kadetov, N., Lavrinenko, O., Ivleva, T., Kholod, S., Petrzhhik, N., Gunin, Y., Kurysheva, M., Lapina, A., Korolev, D., Kudr, E., and Plekhanova, E.: Russian Arctic Vegetation Archive—A new database of plant community composition and environmental conditions, *Global Ecology and Biogeography*, <https://doi.org/10.1111/geb.13724>, 2023.