

The characteristics of tides and their effects on the general circulation of the Mediterranean Sea

Bethany McDonagh^{1,2}, Emanuela Clementi¹, Anna Chiara Goglio¹, and Nadia Pinaridi²

¹Centro Euro-Mediterraneo sui Cambiamenti Climatici – CMCC, Italy

²Department of Physics and Astronomy, University of Bologna, Italy

Correspondence: Bethany McDonagh (bethany.mcdonagh@cmcc.it), Emanuela Clementi (emanuela.clementi@cmcc.it)

Abstract. The effects of tides on the Mediterranean Sea’s general circulation, with a particular focus on the horizontal and vertical currents, are investigated using twin simulations with and without tides. Amplitudes of tides in the region are typically low, but an analysis of the [potential and kinetic energy](#) demonstrates that tides have effects across many spatial and temporal scales in the basin, including nonlinear effects at short periods (less than one day) with high kinetic energy peaks at near-inertial, basin modes and tidal frequencies. Internal tidal waves are also revealed below 100m. Tides are found to amplify several basin modes of the Mediterranean Sea, broaden several tidal frequency energy spectra bands, as well as interact energetically with near-inertial waves. Tides ~~are found to~~ increase the mixed layer depth in the Mediterranean Sea, particularly in the deep and intermediate water formation areas of the Western and Eastern basins. ~~It is confirmed that the net mass transport through the Gibraltar Strait is unchanged by tides, but both inflow and outflow increase, and the addition of tides also enhances Western~~ [Mediterranean Deep Water formation.](#)

1 Introduction

Tidal forcing is a rather recent addition to ~~large scale circulation models that start to have~~ [large scale circulation models of the ocean, since](#) horizontal and vertical resolutions ~~that have recently become fine enough to~~ allow for an ~~analysis of tidal motion on the~~ [explicit and more accurate representation of tides. This has given rise to novel opportunities to analyse tides and their impacts on the ocean](#) circulation. For an overall review of the topic, see Arbic (2022). Tides are now considered to be essential components of the large scale circulation ([St. Laurent et al., 2002; Müller et al., 2010; Melet et al., 2016](#)), their global average input energy is 3.5 ~~TW~~-TW (Simmons et al., 2004), the second largest after winds (Ferrari and Wunsch, 2010), and they generate internal tides that then drive internal mixing (de Lavergne et al., 2020). [Tides are also an important phenomenon in coupled numerical models, which represents a new opportunity in high-resolution modelling of the ocean and atmosphere](#) ([Arbic, 2022](#)), and long-term simulations.

~~For the Mediterranean Sea, several authors have depicted the importance of tidal motion for the Gibraltar Strait (Armi and Farmer, 1985; Recently, Gonzalez (2023) has revisited the tidal dynamics in the Gibraltar Strait, concluding that there are several tidal-induced hydraulic control points and the authors developed a specific mixing parametrization for the Strait. Harzallah et al. (2014) and Naranjo et al. (2014) found that tides at the Strait of Gibraltar: (1) increase the baroclinic volume transport, (2) increase the~~

25 ~~salinity of Atlantic inflowing waters through the enhancement of mixing, affecting the water mass formation processes further downstream from the Strait and (3) change the Mediterranean deep water outflow.~~

Internal tides are characterised by relatively large vertical velocities with respect to the Ekman suction and pumping, while their horizontal wavelength is similar to the general circulation scales (Oddo et al., 2023). Recently, observational and modelling studies have ~~also started begun~~ to advance our understanding of internal tides in several regions of the Mediterranean Sea.

30 The presence of internal tides generated in the Gibraltar Strait is discussed in Morozov et al. (2002) and Vlasenko et al. (2009). Diurnal internal tide oscillations are generated around the Adriatic Sea islands in observational studies (Mihanović et al., 2009), leading to baroclinic trapped waves. In a recent paper, Oddo et al. (2023) found observational and modelling evidence of internal tides at the Sicily-Malta escarpment due to the diurnal tidal components, connected to the bathymetric gradients.

~~Internal tides are characterised by relatively large vertical velocities with respect to the Ekman suction and pumping, while their horizontal wavelength is similar to the general circulation scales (Oddo et al., 2023). In the North Atlantic, the addition of tides was found to improve the representation of the mixed layer depth and deep water formation in the Labrador Sea (Müller et al., 2010). Lee et al. (2006) found that in the same region, sea surface density was increased by the addition of tides to their model and found that this could enhance ventilation and overturning. Internal wave frequencies around 8 hours were also found by van Haren et al. (2014) in the northwestern Mediterranean Sea.~~For the Mediterranean Sea, several authors have
40 depicted the importance of tidal motion in the Gibraltar Strait (Armi and Farmer, 1985; Candela et al., 1990; Harzallah et al., 2014). Armi and Farmer (1985) and Farmer et al. (1988) first observed the hydraulic control points that are induced by tides, and the importance of tidal dynamics and their variability in the region have been more recently discussed by Vázquez et al. (2006), Sánchez-Román et al. (2012), García-Lafuente et al. (2013), and Hilt et al. (2020). Naranjo et al. (2014) and Harzallah et al. (2014)
45 found that tides at the Strait of Gibraltar: (1) intensify the high frequency dynamics in the Gibraltar Strait, and (2) increase the salinity and, to a lesser extent, decrease the temperature of Atlantic inflowing waters through the enhancement of mixing, affecting the water mass formation processes further downstream from the Strait. Tides also change the Mediterranean water outflow, as demonstrated by Izquierdo and Mikolajewicz (2019), where outflowing water is modified with tides, demonstrating the role of tides in the spreading of outflowing water. Moreover, Ambar and Howe (1979) found that tides increase the variability of outflowing salinity.

50 Other features of the Mediterranean Sea that bear importance when discussing tides are the free barotropic oscillations induced by atmospheric pressure and wind forcing. The Mediterranean Sea's first barotropic basin mode is at 38.5 hours (Schwab and Rao, 1983), beyond that of ~~semidiurnal diurnal~~ tides, but higher modes also exist at 11.4, 8.4, and 7.4 hours (Schwab and Rao, 1983), and 8 hours (Lamy et al., 1981; Lozano and Candela, 1995). Many of these free oscillations could be affected or enhanced by tides, especially considering their proximity to tidal frequencies. The Adriatic Sea is characterised
55 by seiches or free barotropic oscillations close to tidal frequencies: at 10.7 hours and 21.9 hours (Medvedev et al., 2020; Leder and Orlić, 2004; Schwab and Rao, 1983), and at 12.0 hours (Lozano and Candela, 1995). Medvedev et al. (2020) used tide gauge data to explicitly find that tides resonate with the Adriatic Sea modes, while Lozano and Candela (1995) discussed the interaction of the M2 tide with modes in the Gulf of Gabes, Adriatic Sea, Aegean Sea, and the Mediterranean Sea. Palma et al. (2020) found additionally that spectra of kinetic energy in the Sicily Channel are enhanced at 8 hours and

60 6 hours due to the nonlinear effects of tides. These works demonstrate the potential importance of interactions between tides and higher frequency features of the Mediterranean Sea, but the interaction between tides and barotropic oscillations in the Mediterranean Sea have not been investigated using a state-of-the-art numerical model.

In ~~this~~ the North Atlantic, the addition of tides was found to improve the representation of the mixed layer depth and deep water formation in the Labrador Sea (Müller et al., 2010). Lee et al. (2006) found that in the same region, sea surface density
65 was increased by the addition of tides to their model and found that this could enhance ventilation and overturning. Internal wave frequencies around 8 hours were also found by van Haren et al. (2014) in the northwestern Mediterranean Sea. These relationships have, to our knowledge, not been investigated in detail in the Mediterranean Sea.

In this work, we further characterise the tidal large scale circulation effects in the overall Mediterranean Sea. Analysis of the effects of tides on circulation has been carried out in the Western Mediterranean basin by Naranjo et al. (2014), in the Gibraltar Strait by Sannino et al. (2014) and Gonzalez (2023), in the Sicily Strait by Oddo et al. (2023) and Gasparini et al. (2004) and in the whole Mediterranean basin, the general circulation without tides was analysed by Pinardi et al. (2019). To our knowledge, the effects of tides on the circulation of the entire Mediterranean Sea has not been extensively investigated.
70

To do this, we analyse the differences between a general circulation ocean model with and without tides, focusing on changes in the spectra, in the horizontal and vertical dynamics both across the basin on average and in several water mass formation
75 regions. Furthermore, we show the impact of tides in the Eastern Mediterranean Sea and the amplification of different basin modes by a tidal resonant mechanism.

In the Mediterranean Sea there are four key regions of deep and intermediate water formation (see Figure 1): the Gulf of Lion (Western Mediterranean Deep Water, WMDW) and South Adriatic (Eastern Mediterranean Deep Water, EMDW) for deep water formation, and the Cretan Sea (Cretan Deep Water, CDW, and Cretan Intermediate Water, CIW) and Rhodes Gyre
80 (Levantine Deep Water, LDW, and Levantine Intermediate Water, LIW) for intermediate water formation (Pinardi et al., 2015). In these regions the vertical velocities are enhanced, and this paper will analyse ~~in detail~~ the differences of water mass formation rates with and without tides in detail.

Section 2 describes the model and observational data used and the analysis methods, while Sections ~~3-8-3-7~~ contain the model results and conclusions as follows:

- 85 – Section 3: Sea level energy spectra
- Section 4: Kinetic energy spectra
- Section 5: Mixed layer depth and water mass formation
- Section 6: Temperature and salinity
- Section 7: ~~The Gibraltar Strait~~
- 90 – ~~Section 8:~~ Conclusions

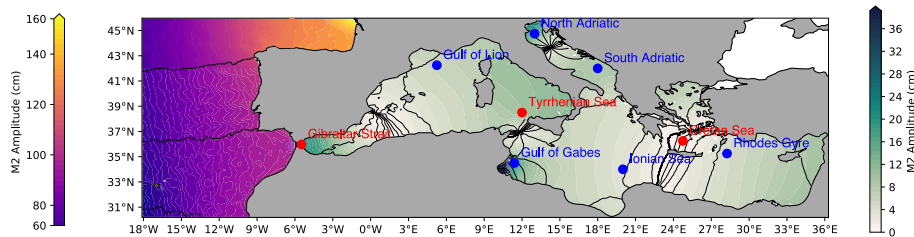


Figure 1. Map of the M2 tidal component amplitude in the Atlantic Ocean (contours) in colourbar on the left and Mediterranean Sea (contours, colourbar on the right) and M2 phase in black contour lines, with highlighted points in regions of open ocean dense water formation in red (Gulf of Lion, South Adriatic, Cretan Sea, and Rhodes Gyre) and regions with of high tidal amplitude in blue and lateral open boundary conditions from the model configuration (see Section 2 Gibraltar Strait, Gulf of Gabes, North Adriatic Sea). Additional points that are studied further in green Section 4 are also shown (Tyrrhenian Sea, Ionian Sea).

2 Data and methods

The general circulation model used is NEMO v3.6, following the implementation of the Mediterranean Sea forecasting system operational in the framework of the Copernicus Marine Service (Coppini et al., 2023; Clementi et al., 2021). The area covered by the model is shown in Fig. 1. The model without tidal forcing is validated in Coppini et al. (2023) and as part of the model information in Clementi et al. (2019), while the experiment with tides is validated in the Quality Information Document in Clementi et al. (2021).

The model has $\frac{1}{24}^\circ$ uniform horizontal resolution with 141 uneven vertical levels, using z^* vertical coordinates and partial steps. This model is eddy-resolving, since the Rossby radius of deformation is of the order of 10km in the Mediterranean Sea and the horizontal resolution of the model is approximately 4km. Atmospheric forcing fields are given by the six-hour European Centre for Medium-Range Weather Forecasts (ECMWF) analyses, at a horizontal resolution of $\frac{1}{8}^\circ$ (2015-2018) and $\frac{1}{10}^\circ$ (2019-2021) and they are used to compute momentum, water and heat fluxes using specifically designed bulk formulae (Pettenuzzo et al., 2010). Lateral open boundary conditions are used in the Atlantic Ocean and Dardanelles Strait (see Fig. 1), which are provided by the Copernicus Marine global analysis and forecast system (Galloudec et al., 2022) for the Atlantic Ocean, and a mixture of the aforementioned global model and daily climatology derived from a Marmara Sea box model (Maderich et al., 2015) at the Dardanelles Strait boundary. Further details of the boundary conditions are in Clementi et al. (2021).

Additionally, monthly mean climatological freshwater inputs from 39 rivers are added to the surface layer. Several datasets are used for this: the Global Runoff Data Centre dataset (Fakete et al., 1999) for the Po, Ebro, Nile, and Rhône rivers, the dataset from Raicich (1996) for the Vjosë and Seman rivers, the UNEP-MAP dataset (Demiraj et al., 1996) for the Buna and Bojana rivers, and the PERSEUS dataset (Deliverable of Perseus, 2012) for the remaining 32 Mediterranean rivers which have a mean run-off larger than $50 \text{ m}^3\text{s}^{-1}$. The bathymetry used is the GEBCO 30-sec bathymetry (GEBCO Bathymetric Compilation Group 2014, 2014), interpolated onto the model grid.

In the chosen configuration, vertical diffusivity depends on the Richardson number, calculated according to Pacanowski and Philander (1981). The Richardson number is a ratio of buoyancy to horizontal shear:

$$115 \quad Ri = \frac{N^2}{\frac{\partial \bar{v}}{\partial z}^2} \quad (1)$$

where N^2 is the Brunt-Väisälä frequency, and $\frac{\partial \bar{v}}{\partial z}$ is the horizontal shear - vertical shear of horizontal flow. Enhanced vertical viscosity and diffusivity are used where layers are unstable ($N^2 \leq -1 \times 10^{-12} \text{ s}^{-2}$) imposing a vertical diffusivity coefficient of $10 \text{ m}^2 \text{ s}^{-1}$. Vertical viscosity and diffusivity are then calculated according to:

$$A^{vT} = \frac{A_{ric}^{vT}}{(1 + aRi)^n} + A_b^{vT} \quad (2)$$

120

$$A^{vm} = \frac{A^{vT}}{(1 + aRi)} + A_b^{vm} \quad (3)$$

where A^{vT} and A^{vm} are the vertical eddy viscosity and diffusivity respectively, and A_{ric}^{vT} (the maximum viscosity value, $100 \times 10^{-4} \text{ m}^2 \text{ s}^{-1}$), a , and n are adjustable parameters. In the model runs used, these values are 100×10^{-4} , a and n are 5 ; and 2 respectively, following Tonani et al. (2008). Background vertical eddy diffusivity - viscosity and vertical eddy viscosity - diffusivity values are $A_b^{vT} = 10^{-7} \text{ m}^2 \text{ s}^{-1}$ and $A_b^{vm} = 1.2 \times 10^{-6} \text{ m}^2 \text{ s}^{-1}$ respectively, which are typical values in the case of constant viscosity and diffusivity, representing diapycnal mixing from the breaking of internal waves.

Twin experiments are presented in this work with and without the representation of tides. In the experiments - experiment including tides, the 8 major tidal components for the Mediterranean Sea (M2, S2, K1, O1, N2, Q1, K2, P1) are represented, which are detailed further in Table 1. The M2 amplitude is displayed in Fig. 1 showing the well-known high amplitude areas at the Gibraltar Strait, the Gulf of Gabes and the Northern Adriatic Sea. Moreover, the Atlantic Ocean lateral open boundary fields include tidal forcing from TPXO9 (Egbert and Erofeeva, 2002).

Other than the addition of the tidal forcing itself, there are some other - further differences between the tidal and non-tidal modelling set-ups (see Table 2), with the primary difference being the time integration method. Both experiments use a split-explicit free surface formulation proposed in Shchepetkin and McWilliams (2005), solving the free surface equation and the associated barotropic velocity equations with a smaller timestep than the one used for the three-dimensional prognostic variables. The non-tidal experiment uses forward time integration, in which the external mode (barotropic timestep) is integrated between the current and the subsequent baroclinic time steps. This was not stable in the experiment including tides, so this instead uses a centred integration scheme, as recommended by the NEMO manual (Madec et al., 2019), where the baroclinic to barotropic forcing term given at the actual time step becomes centred in the middle of the integration window. The tidal experiment uses a shorter baroclinic timestep, 120s, rather than 240s in the experiment without tides, which was changed for stability purposes. The effects of these changes are negligible compared to the effects of adding tidal forcing to the model (see

Tidal component	Period (hours)	Description
M2	12.421	Principal lunar semidiurnal tidal constituent
S2	12.000	Principal solar semidiurnal tidal constituent
K1	23.934	Lunisolar diurnal tidal constituent
O1	25.819	Lunar diurnal tidal constituent
N2	12.658	Larger lunar elliptic semidiurnal tidal constituent
P1	24.066	Solar diurnal tidal constituent
Q1	26.868	Larger lunar elliptic diurnal tidal constituent
K2	11.967	Lunisolar semidiurnal tidal constituent

Table 1. Tidal constituent components used in the model for this work, with their respective periods and astronomical descriptions.

	Experiment without tides	Experiment with tides
Timestep <u>Baroclinic timestep</u>	240s	120s
Time integration scheme	Forward	Centred
Tides	No tidal forcing	8 tidal components: M2, S2, K1, O1, N2, P1, Q1, K2
Boundary conditions	No tidal signal at the boundary	Additional tidal signal at the Atlantic boundary: horizontal currents and sea surface height
Bathymetry	GEBCO 2014 interpolated onto model grid	Topography changed in 3 grid points at the boundary in the Bay of Biscay and 4 grid points in the Adriatic Sea

Table 2. Summary of the key differences between the tidal experiment and the experiment without tides.

supplementary materials). The bathymetry was adjusted at several points in the tidal experiment for stability reasons: in the Bay of Biscay, at the northernmost part of the model domain, and several points were modified along the Croatian coastline to avoid generation of spurious tidal signals due to islands and complex bathymetry. All of the above changes in the tidal ~~model~~ experiment compared to the experiment without tides are implemented as in Agresti (2018).

The model was integrated for seven years (2015-2021), starting from climatological temperature and salinity initial conditions ~~for seven years (2015-2021)~~, with the derived from the winter climatology (2005-2012) of the World Ocean Atlas (Boyer et al., 2013). The first two years are removed from the following analysis ~~and as they are~~ considered as a spin-up period.

150 3 Sea level energy spectra

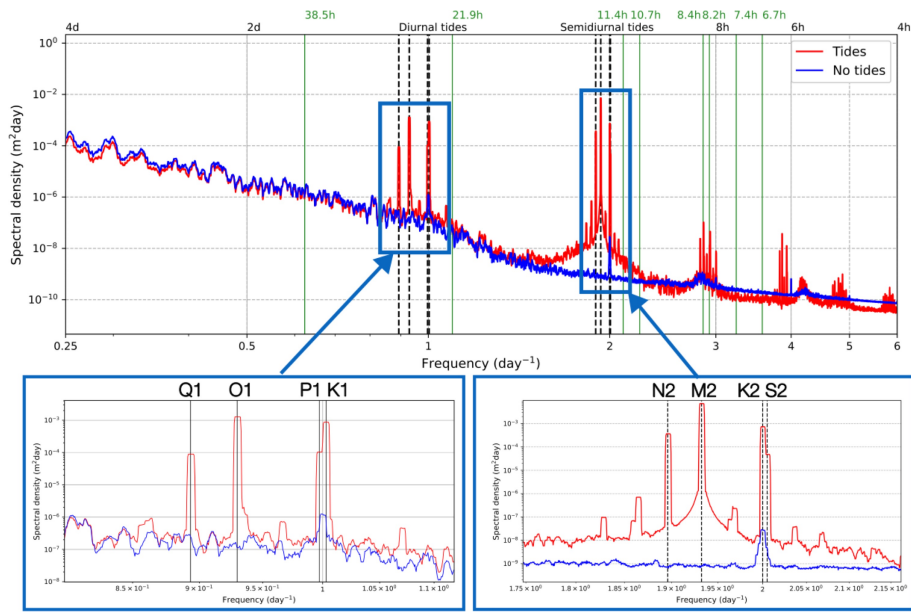


Figure 2. Energy density spectrum of hourly mean sea surface height in the Mediterranean Sea for the period 2017-2021, for the experiment without tides (blue) and with tides (red). Boxes below the figure show the key diurnal and semidiurnal ranges to highlight the representation of each individual tidal component. [Green lines on the figure indicate frequencies of known barotropic oscillations in the Mediterranean Sea.](#)

[A Figure 2 shows a](#) spectrum of hourly sea surface height (SSH) in the Mediterranean Sea for five years ~~is shown in Fig-2,~~ for both tidal and non-tidal experiments. The diurnal and semidiurnal tidal components represent the major differences between the two solutions, as expected. Further differences between the two models away from these tidal frequencies are also visible. Tides appear to modulate the spectrum at the mesoscales: energy is reduced in the tidal model at frequencies ~~lower than 0.5~~ [\(longer than a period of two days\)](#) [with a period longer than two days.](#)

Peaks at both 24 hours and 12 hours are apparent, both with and without tides. In the case without tides, the energy peaks can be attributed to basin modes excited by atmospheric pressure forcing, as found by Oddo et al. (2014) using a similar NEMO configuration. In the semidiurnal range, the tidal model introduces a broad peak around 12 hours, as well as peaks at the individual tidal component frequencies. This is due to the amplification by tides of the basin modes near and at these frequencies. We argue that the broad 12h energy peak in Figure 2 in the tidal run is composed of the amplified 11.4h Mediterranean Sea basin mode energy (Schwab and Rao, 1983), the first Adriatic mode at 10.7h, known to be enhanced by tides (Medvedev et al., 2020; Schwab and Rao, 1983), and the 12h Adriatic/Aegean seas mode (Lozano and Candela, 1995). Peaks are also seen at 8h and 6h, which correspond to the kinetic energy frequencies ~~noted~~ in the Sicily Strait, [noted](#) by Palma et al. (2020), and in their work, these peaks were considered to come from non-linear effects of tides. The peak at 8h also aligns with the Western Mediterranean basin mode of 8.4h discussed in Schwab and Rao (1983), [and the Gulf of Gabes mode at 8.2h](#) (Lozano and Candela, 1995). Schwab and Rao (1983) also noted a fourth Mediterranean mode at 7.4h and the third Adriatic

mode at 6.7h, ~~which align with some of the higher frequency peaks in Fig. 2. Lozano and Candela (1995) discussed an 8.2h mode in the Gulf of Gabes, which also could contribute to this peak.~~

170 Considering the amplification of basin modes, Fig. 3 shows sea level spectra in the Adriatic Sea and Gulf of Gabes ~~are shown~~
in Fig. 3, to understand whether the peaks in Fig. 2 ~~2~~ correspond to modes in these regions. In the Adriatic Sea (Fig. 3a), the
sea level energy peaks at the frequencies of the barotropic modes of the Adriatic Sea at 11.4 hours, 6.7 hours (Schwab and Rao,
1983) and 12 hours (Lozano and Candela, 1995) ~~,~~ are all enhanced by tides. The peaks are also visible in the model without
tides, but with lower energy, thus confirming that these peaks are due to amplification of existing modes forced by winds and
atmospheric pressure. In the Gulf of Gabes (Fig. 3b), tides also enhance the mode at 8.2 hours (Lozano and Candela, 1995) ~~is~~
175 ~~also enhanced by tides.~~

Maps of the sea surface height power spectrum at 8.2h and 6h are shown for both experiments in Fig. 4. These frequencies are
presented here as they show the largest differences between the two experiments, other than the tidal frequencies directly. Most
of the Mediterranean Sea has enhanced power at 8.2h in the tidal experiment (Fig. 4a, c), with particularly large changes in the
central Mediterranean: the Tyrrhenian Sea, the Gulf of Gabes, and the Adriatic Sea. The barotropic oscillation at 8.2h is in the
180 Gulf of Gabes, according to Lozano and Candela (1995), but the third mode of the Mediterranean Sea (Schwab and Rao, 1983)
, and the nonlinear effects of tides in the central Mediterranean Sea according to Palma et al. (2020) are at frequencies close
to this (8.4h and 8.0h respectively), and may also have an impact on Figure 4c. Since many of the calculations of barotropic
oscillations in the Mediterranean Sea were made several decades ago, there is a need for an updated confirmation of the
frequencies of barotropic oscillations using state-of-the-art methods. In Fig. 4b and 4d, we see that the Sicily escarpment
185 region of Palma et al. (2020) again has particularly enhanced power in the experiment with tides, but other regions such as the
Alboran Sea, and the western Mediterranean Sea see an interaction between tides and potential energy at the 6h frequency.

To summarise the analysis of sea surface height, we find that (1) tides affect the sea surface height on spatial and temporal
scales away from those of the tides directly, (2) existing Mediterranean basin and regional barotropic oscillations at frequencies
with a shorter time period than 12h are excited by tides, particularly at 6h and at several frequencies close to 8h, and (3) maps
190 of the energy density at these frequencies reveal the distribution of these interactions in the Mediterranean Sea.

4 Kinetic energy spectra

For this analysis, several points ~~were~~ are selected across the Mediterranean Sea, to understand the effects of tides on local
phenomena such as the generation of internal tides and interactions with near-inertial waves. ~~A map of these points is shown~~
~~in Figure ??~~ The map in Fig. 1 shows these points. From this, three contrasting points were selected to be shown in this work:
195 the Gibraltar Strait, the Tyrrhenian Sea, and the Cretan Sea. Results for the other points are available in the supplementary
material.

~~Map of selected points in the Mediterranean Sea. Points in red are discussed in this manuscript, while points in black are~~
~~presented in the supplementary material.~~

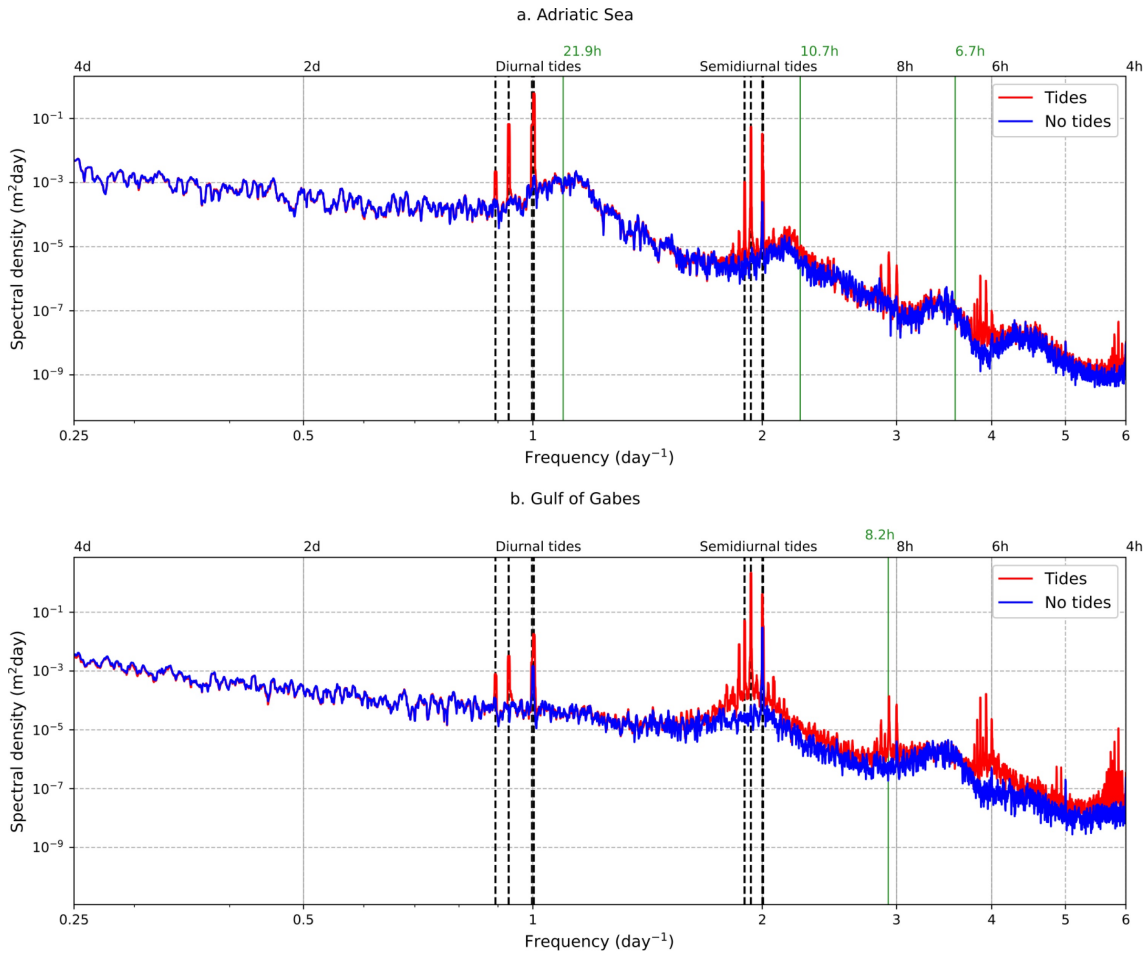


Figure 3. [Energy density spectra of hourly mean sea surface height in the Mediterranean Sea for the period 2017-2021, for the model without tides \(blue\) and with tides \(red\), in a. Adriatic Sea \(40.5°N-northern boundary\), and b. Gulf of Gabes \(32.5-35.5°N, 9.8-13.0°E\). An area-weighted mean was taken for each of the sub-basins. Green lines on the figure indicate frequencies of known barotropic oscillations in each region.](#)

We first calculate the rotary spectra for depth-averaged (barotropic) horizontal velocities (Fig. 5), for both clockwise and counter-clockwise components and then combine these to create the rotary kinetic energy density spectra. [These rotary spectra visualise the time scales at which there is high kinetic energy at each selected point, over the entire water column.](#) In the Gibraltar Strait (Fig. 5a), tides enhance kinetic energy at all frequencies, particularly at frequencies close to and higher than 12 hours. The basin mode frequency of 8.4 hours is enhanced by tides, and a peak at around 6h is also visible, which is due to nonlinear tidal effects (Palma et al., 2020). The Tyrrhenian Sea and Cretan Sea, unlike Gibraltar, have broad peaks at the near-inertial frequencies. Peaks at diurnal tidal frequencies are more apparent in the Tyrrhenian [Sea](#) than in the Cretan Sea.

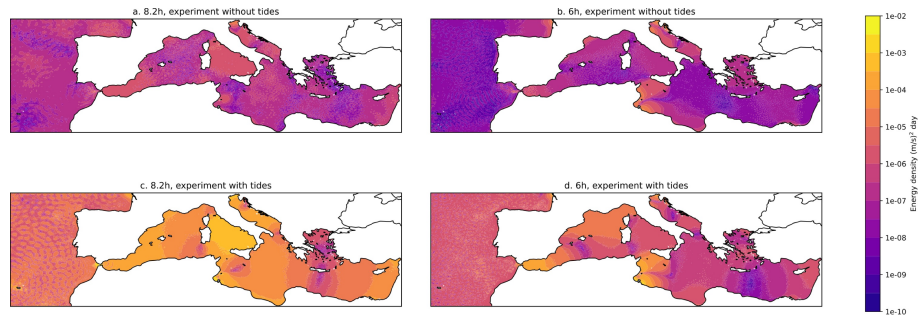


Figure 4. ~~Energy Maps of energy density spectra of hourly-mean sea surface height in the Mediterranean Sea for the period 2017-2021 at a. 8.2h without tides, for the model b. 6h without tides (blue) and-, c. 8.2h with tides (red), in a. Adriatic Sea, and bd. Gulf of Gabes. An area-weighted mean was taken 6h with tides, for each of the sub-basins Mediterranean Sea in 2017-2021.~~

~~The spectra of kinetic energy density were~~ We also analysed the kinetic energy spectra split into vertical levels, to consider baroclinic currents and internal wave modes, as shown in Fig. 6. We note that upper layer currents (0-150m) are characterised by the entering Atlantic Water layer dynamics, while the intermediate layer (150-500m) currents are on average in the opposite direction to the surface, characterising the Intermediate Water circulation in the basin. We now analyse the effects of tides on this anti-estuarine zonally oriented conveyor belt described in Pinardi et al. (2019). Figure 6 shows spectra for the three selected points throughout the water column.

In the Gibraltar Strait, it is clear that the entire structure of the kinetic energy is dominated by tides: tides enhance kinetic energy at almost all frequencies and depths. ~~Internal tides are also seen (Fig. 6c).~~ There are also internal tides visible in this region: Figure 6b shows peaks in kinetic energy at around 100m at the M2 and K1 tidal frequencies, implying the existence of internal tides ~~as already shown by Gonzalez (2023) in the Gibraltar Strait, as shown by Morozov et al. (2002), and more recently discussed in Gonzalez et al. (2023).~~ Some diurnal internal tidal energy is visible in the Tyrrhenian Sea (Fig. 6de), as well as a shift in the near-inertial peak when compared to the experiment without tides (Fig. 6ed). The interaction of tides with near-inertial waves is clearer in the Cretan Sea (Fig. 6fi), as the peak is shifted to a higher frequency compared to Fig. 6e.

~~To visualise the internal tidal motion in the basin, we use Hovmöller diagrams for one month (May 2019) hourly zonal currents for each of the selected points (Figs. ?? ??). These provide a representation of the zonal conveyor cell of the Mediterranean Sea, composed, on average, of eastward currents in the first 150m and westward currents in the lower water column (Pinardi et al., 2019).~~

~~Hovmöller plots of depth against time of hourly mean zonal currents at a point in the Gibraltar Strait (35.99°N, 5.48°W, see Figure ??) in May 2019, for a. Model without tides, 0-150m, b. Tidal model, 0-150m, c. Tidal model — model without tides, 0-150m, d. Model without tides, 150-500m, e. Tidal model, 150-500m, f. Tidal model — model without tides. Note that the depth scale is logarithmic~~

~~Hovmöller plots of depth against time of hourly mean zonal currents at a point in the Tyrrhenian Sea (38.53°N, 12.01°E, see Figure ??) in May 2019, for a. Model without tides, 0-150m, b. Tidal model, 0-150m, c. Tidal model — model without tides,~~

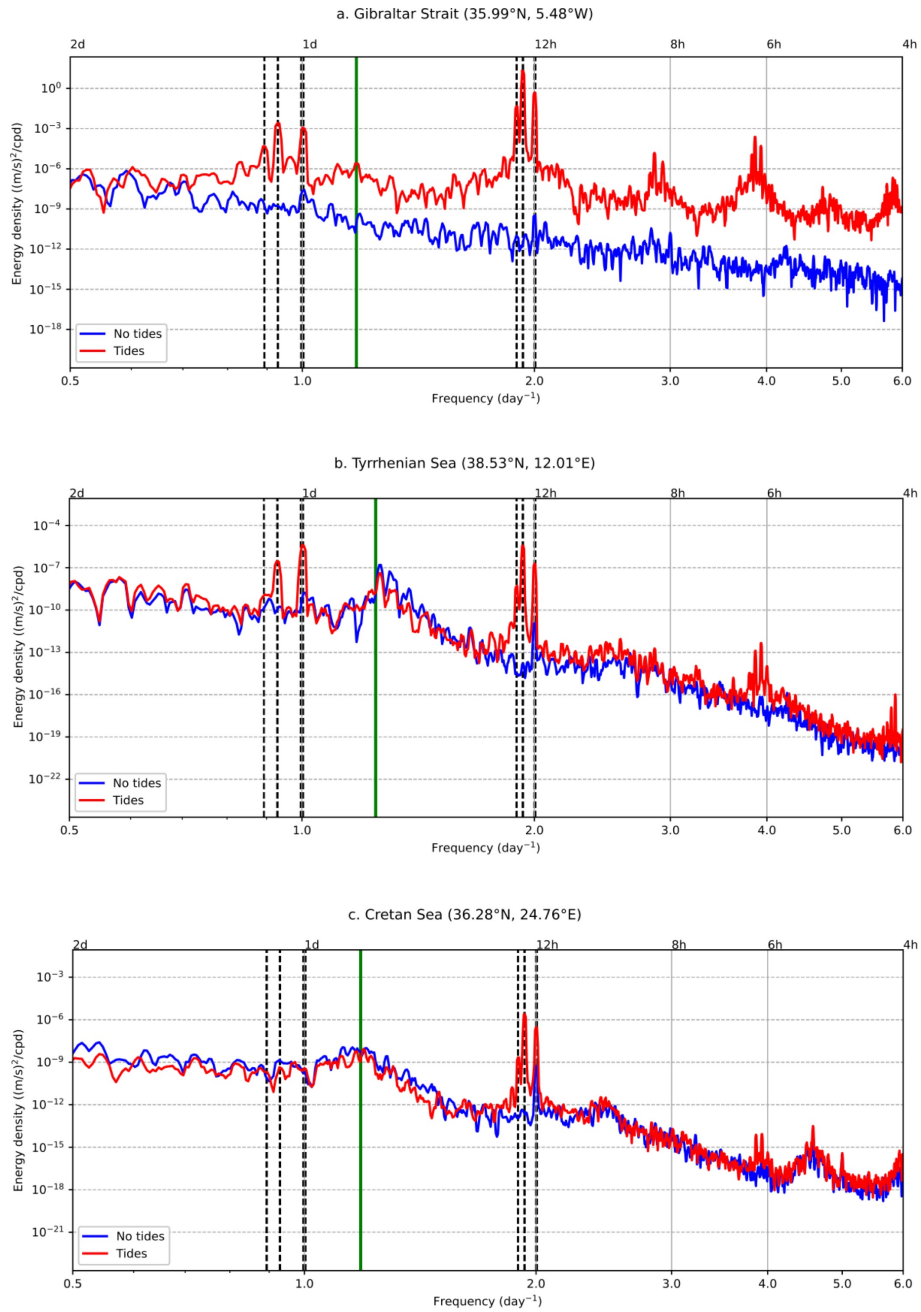


Figure 5. Barotropic (depth-mean) rotary kinetic energy density spectra for points in a. Gibraltar Strait (35.99°N, 5.48°W), b. Tyrrhenian Sea (38.53°N, 12.01°E), and c. Cretan Sea (36.28°N, 24.76°E), with the tidal experiment in red and the experiment without tides in blue, using hourly outputs over six months, January-June 2019. Dashed lines represent the eight tidal components used in the model, and the green line is the inertial frequency. The locations of these points are shown in Figure 221.

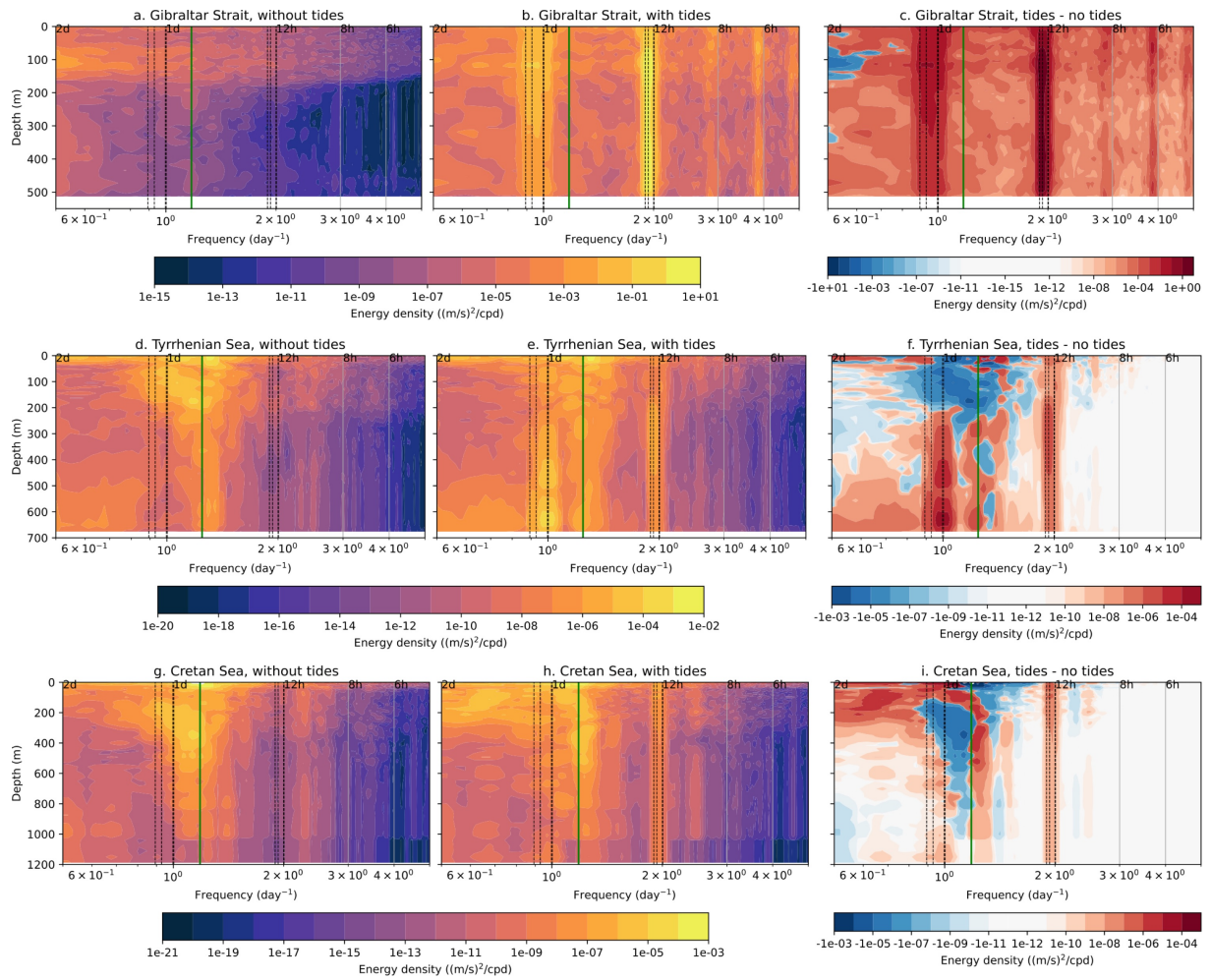


Figure 6. Rotary spectra of kinetic energy density over the full water column without tides at a. Gibraltar Strait (35.99°N, 5.48°W), [ed](#). Tyrrhenian Sea (38.53°N, 12.01°E), and [eg](#). Cretan Sea (36.28°N, 24.76°E), [and](#) with tides at b. Gibraltar Strait, [de](#). Tyrrhenian Sea, and [h](#). Cretan Sea, and the difference between the two spectra at c. Gibraltar Strait (35.99°N, 5.48°W), [f](#). Tyrrhenian Sea (38.53°N, 12.01°E), and [i](#). Cretan Sea (36.28°N, 24.76°E). All data are for May 2019. The locations of these points are shown in Figure [??](#)1.

0-150m, d. Model without tides, 150-500m, e. Tidal model, 150-500m, f. Tidal model—model without tides, g. Model without tides, below 500m, h. Tidal model, below 500m, i. Tidal model—model without tides, below 500m. Note that the depth scale is logarithmic.

Hovmöller plots of depth against time of hourly mean zonal currents at a point in the Cretan Sea (36.28°N, 24.76°E, see Figure [??](#)) in May 2019, for a. Model without tides, 0-150m, b. Tidal model, 0-150m, c. Tidal model—model without tides, 0-150m, d. Model without tides, 150-500m, e. Tidal model, 150-500m, f. Tidal model—model without tides, g. Model without

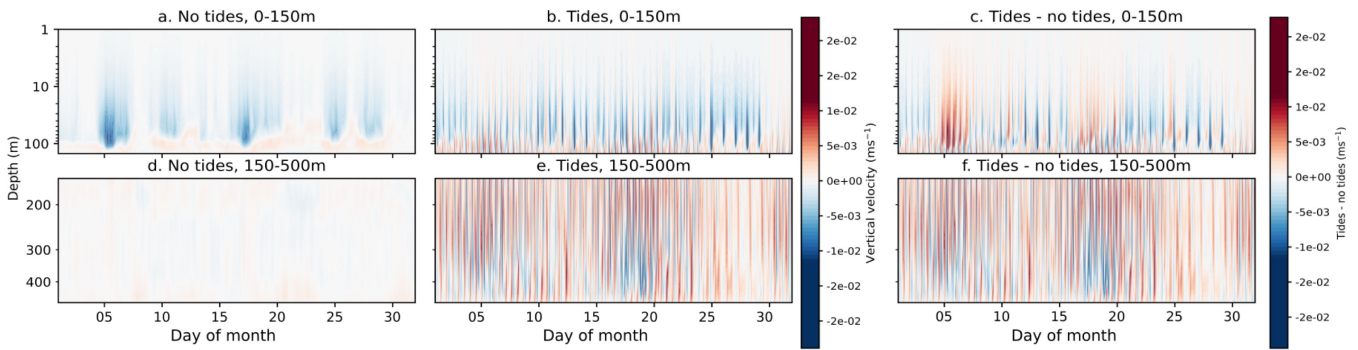


Figure 7. Hovmöller plots of depth against time of hourly mean vertical velocity at a point in the Gibraltar Strait (35.99°N , 5.48°W , see Figure ??) in May 2019, for a. Model without tides, 0-150m, b. Tidal model, 0-150m, c. Tidal model – model without tides, 0-150m, d. Model without tides, 150-500m, e. Tidal model, 150-500m, f. Tidal model – model without tides. Note that the depth scale is logarithmic.

235 tides, below 500m, h. Tidal model, below 500m, i. Tidal model – model without tides, below 500m. Note that the depth scale is logarithmic.

The three contrasting regions of the Mediterranean basin highlight the varying importance of tides, internal tides, and their interactions with near-inertial internal waves in different regions. While the Gibraltar Strait (Fig. ??) is dominated by semidiurnal tides, the other two regions (Figs. ??-?) show propagating near-inertial waves (Cozzani, 2023) interacting with internal tides, particularly in the Cretan Sea.

240 Internal tides are known to have large ageostrophic vertical velocities (Niwa and Hibiya, 2001; Li and von Storch, 2020) and thus an analysis of the vertical motion is mandatory. Figures ??-?? show the same To visualise the internal tidal motion in the basin, we use Hovmöller diagrams for one month (May 2019) as Figs. ??-??, but this time looking at hourly vertical velocity of hourly zonal currents for each of the three selected points from Fig. 6. In Fig. ??-7 the Gibraltar Strait location shows has a dominant vertical velocity oscillation at 12h. Contrastingly, inertial waves have greater importance in the Cretan Sea (Fig. ??-9) and they propagate downwards through the water column, notably around day 10-15 of the month and at 150-500m (Fig. ??-9d). The effect of tides on this is shown in Fig. ??-9e, where interactions between the internal tidal and near-inertial waves create wave-wave patterns during the same period. The Tyrrhenian Sea (Fig. ??-8) also has both near-inertial waves and internal tides at these depths, but the interaction here is weaker.

250 An interesting feature, shown in Figs. ?? of Figs. 7-??-9, is the baroclinic structure of the vertical velocity in the experiment with and without tides. Two zero crossings appear, one approximately at 150m, the lower limit of the inflowing branch of the zonal conveyor belt already described above (Pinaridi et al., 2019), and the second at 300m. This is particularly apparent in the Gibraltar Strait (Fig. ??-7), where internal tide generation leads to increased tidal velocity in both directions. The continuation of this zero-crossing at 150m in other regions (Figs. 8-9) demonstrates the importance of internal tide generation at the Gibraltar Strait and how it affects the entire Mediterranean Sea general circulation, including in remote regions.

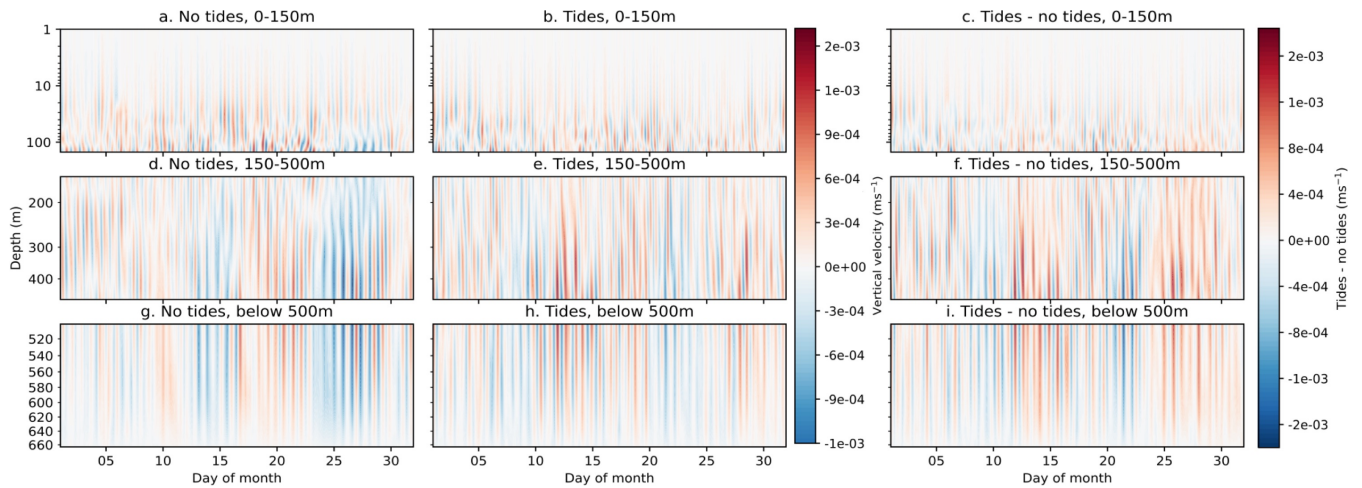


Figure 8. Hovmoller plots of depth against time of hourly mean vertical velocity at a point in the Tyrrhenian Sea (38.53°N , 12.01°E , see Figure ??1) in May 2019, for a. Model without tides, 0-150m, b. Tidal model, 0-150m, c. Tidal model – model without tides, 0-150m, d. Model without tides, 150-500m, e. Tidal model, 150-500m, f. Tidal model – model without tides, g. Model without tides, below 500m, h. Tidal model, below 500m, i. Tidal model – model without tides, below 500m. Note that the depth scale is logarithmic.

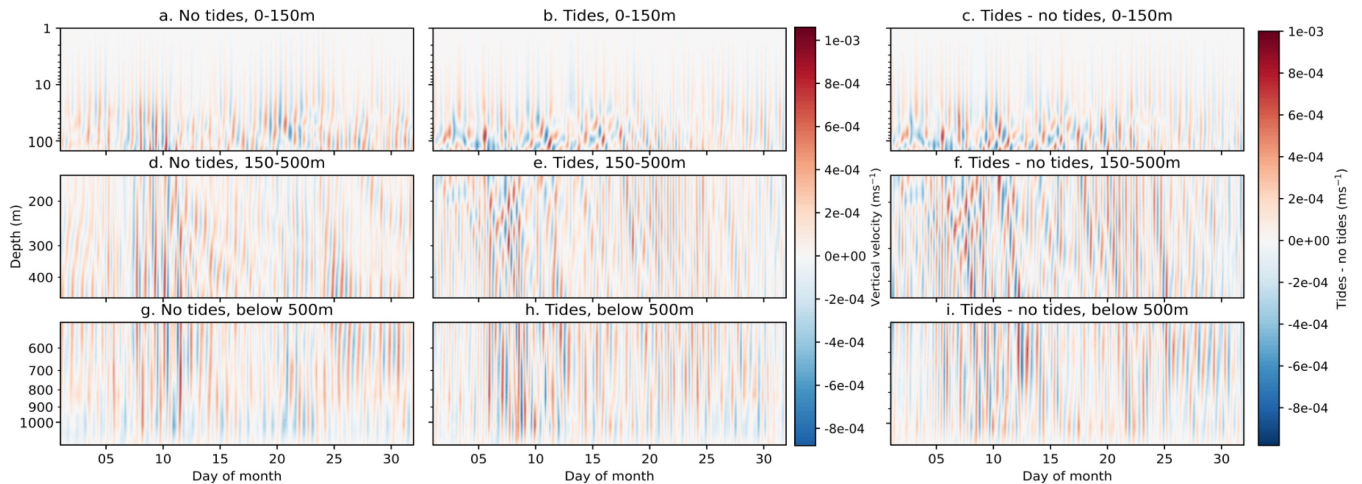


Figure 9. Hovmoller plots of depth against time of hourly mean vertical velocity at a point in the Cretan Sea (36.28°N , 24.76°E , see Figure ??1) in May 2019, for a. Model without tides, 0-150m, b. Tidal model, 0-150m, c. Tidal model – model without tides, 0-150m, d. Model without tides, 150-500m, e. Tidal model, 150-500m, f. Tidal model – model without tides, g. Model without tides, below 500m, h. Tidal model, below 500m, i. Tidal model – model without tides, below 500m. Note that the depth scale is logarithmic.

The three contrasting regions of the Mediterranean basin highlight the varying importance of tides, internal tides, and their interactions with near-inertial internal waves in different regions. While the Gibraltar Strait (Fig. 7) is dominated by semidiurnal

tides, the other two regions (Figs. 8-9) show propagating near-inertial waves, as in (Cozzani, 2023), interacting with internal tides, particularly in the Cretan Sea.

260 5 Mixed layer depth and water mass formation

Assessing the impact of tides on the mixed layer depth is indirect evidence of the importance of internal tides on the vertical mixing and vertical velocities. The mixed layer depth is calculated via a density criterion based on a density change of 0.01 kgm^{-3} (de Boyer Montégut et al., 2004). Figure ??-10 shows the change in winter (December-March) mixed layer depth in the two experiments, and timeseries of the Mediterranean Sea mean mixed layer depth for the entire five-year period. There is an increase in winter mixed layer depth with tides throughout most of the basin, with notable exceptions in the Gibraltar Strait/Alboran Sea region, and in parts of the Aegean Sea. In the Gibraltar Strait, this is explained by a thicker interface layer (García-Lafuente et al., 2013), which shrinks the upper layer compared to the experiment without tides, reducing the depth at which the threshold density change for the mixed layer is reached. These effects extend into the upper-layer Alboran Sea water which originates in the Gibraltar Strait. In the Aegean Sea, despite having low amplitude barotropic tides, internal tides are present (Alford et al., 2012), and affect mixing at the bottom (Gregg et al., 2012), which likely in turn affects the water column structure in this shallow region.

However, the biggest change occurs in the Gulf of Lion region, a key area for the formation of deep water (Western Mediterranean Deep Water, WMDW, Fig. 1). ~~A secondary large change occurs in the southern Adriatic Sea formation area (the Eastern Mediterranean Deep Water, EMDW, Fig. 1).~~

275 ~~Winter (December-March) mean mixed layer depth in the Mediterranean Sea, for a. experiment without tides, b. experiment with tides, and c. the percentage difference between the tidal and non-tidal experiments.~~

~~Increased mixed layer depth can be an indicator~~ Regarding the seasonality of mixed layer depth, both the absolute and percentage change due to tides is positive throughout the year, but is greatest in winter. We also note that the largest increase in the mean mixed layer depth in the tidal experiment is evident during winter 2019, which is also the year characterised by the largest WMDW formation (see Fig. 11). The deepening of the mixed layer can be a precursor for increased dense water formation, but a direct analysis of this is would be needed to confirm whether tides are enhancing water mass formation as well as mixed layer depth, and we note that the analysis in this work does not directly establish a connection between the two processes. Other important processes such as weak stratification and localised currents are key precursors to deep water formation in the Western Mediterranean.

285 Pinardi et al. (2015) defined that intermediate water has densities of $29.1\text{-}29.2 \text{ kgm}^{-3}$ and deep water has densities greater than 29.2 kgm^{-3} . Figure ??-11 shows the water mass formation rate in the deep and intermediate formation areas of Fig. 1 for each winter of the analysed period, with and without tides. The most notable change is in WMDW, ~~which had a significant event in particularly during the event of 2019, where the water mass formation rate was greatly increased in the tidal experiment~~ tidal experiment forms several times more deep water at its peak compared to the experiment without tides. This is in agreement 290 with Naranjo et al. (2014) showing that enhanced WMDW formation occurred with tides in four out of the five years analysed.

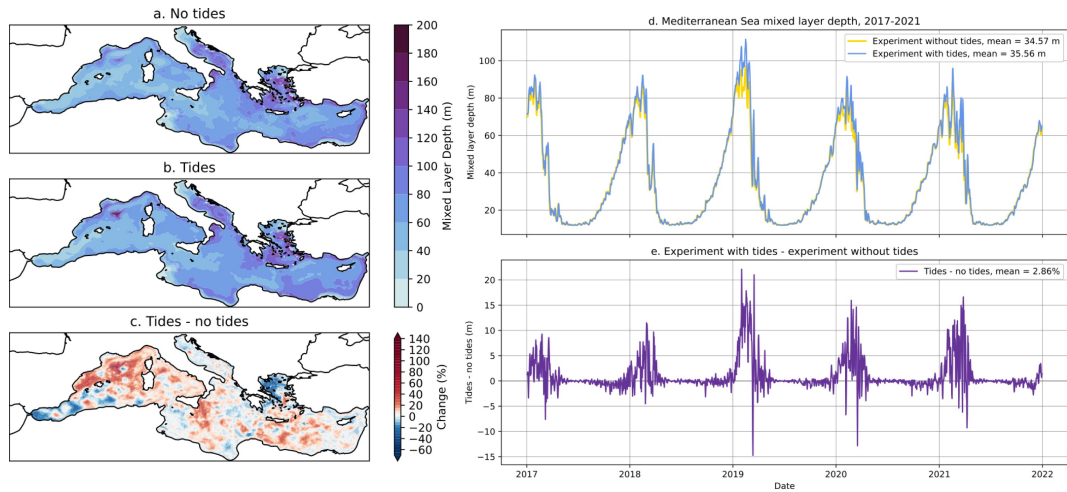


Figure 10. Winter (December-March) mean mixed layer depth in the Mediterranean Sea, for a. experiment without tides, b. experiment with tides, and c. the percentage difference between the tidal and non-tidal experiments. Timeseries of daily Mediterranean Sea mean mixed layer depth for 2017-2021 (d), and difference between tidal and non-tidal experiment timeseries (e).

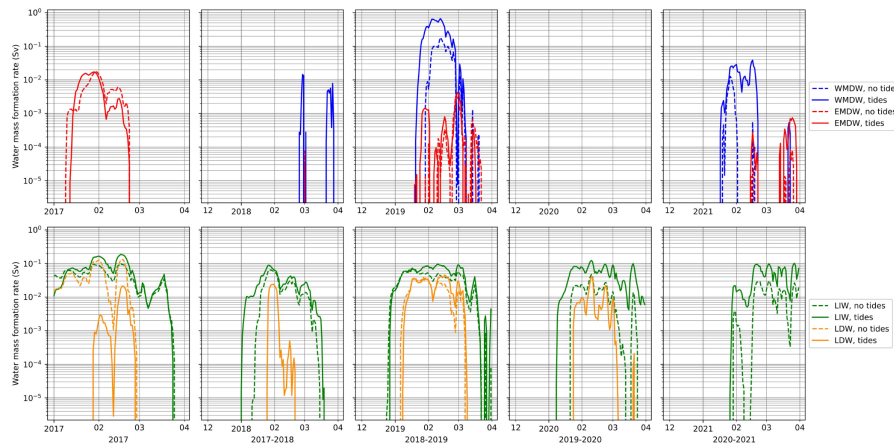


Figure 11. Daily water mass formation rate in winter 2017-2021, for the tidal experiment (solid lines) and the non-tidal experiment (dashed lines). Four types of water mass are included: Western Mediterranean Deep Water (blue), Eastern Mediterranean Deep Water (red), Levantine Intermediate Water (green), and Levantine Deep Water (orange).

Modest increases are also seen in LIW formation. EMDW and LDW have increased water mass formation rate when including tides in some years, and decreased in other years. We argue that this irregular behaviour is connected to the impact of tides on the strength of the pre-conditioning factors and the air-sea interaction heat fluxes that are affected by tides (Oddo et al., 2023).

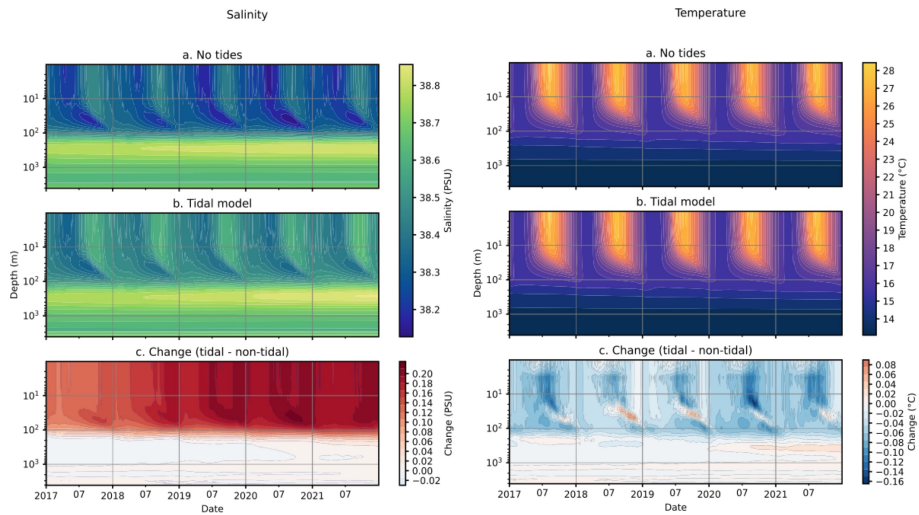


Figure 12. Hovmöller plot of depth against time of daily salinity (left) and temperature (right) in the Mediterranean Sea in 2017–2021, for the model without tides (a), with tides (b), and change (c): tidal model – model without tides. Note that the depth scale is logarithmic.

6 Temperature and salinity

295 The salinity and temperature of the Mediterranean Sea are affected by tides, primarily in the upper layers-layer above 150m, as can be seen in Figure [??12](#). This is the layer affected by the ~~Atlantic water and generally connected to the~~ entering low salinity Atlantic water. As indicated in work by Naranjo et al. (2014) ~~and Harzallah et al. (2014),~~ [Harzallah et al. \(2014\)](#), [Sanchez-Roman et al. \(2018\)](#), and [Gonzalez et al. \(2023\)](#), inflowing salinity at Gibraltar increases when tides are introduced and upper layer temperature decreases, albeit by a smaller amount. This ~~increase has a trend that~~ salinity increase has an upward
 300 trend that in time does not stabilise in the few years of our experiment. This was also found by Harzallah et al. (2014), where the salinity difference between the experiments with and without tides increased for several decades before stabilising, since this stabilisation depends on the overturning time scales of the basin that could require several decades to spin up in full.

The additional increased salinity in the Mediterranean Sea due to tides and its trend over time can be compared to observations from profiling floats to understand whether the salinity increase follows the observational trend or it is overestimated.
 305 This was calculated for the Mediterranean Sea and integrated along vertical layers for each year in the experiment. Figure [??13](#) shows the mean salinity bias and Root Mean Square Error (RMSE) of the experiments with respect to observations averaged in the whole basin and provided along nine vertical layers. ~~It is shown that for~~ For the tidal experiment, the bias is generally negative in the surface layers and becomes positive below 60m, and does not present a clear linear trend ~~and it varies,~~ instead varying by individual year. The lack of linear trend is also apparent in the non-tidal experiment, but there the salinity bias is positive throughout the upper layer. Overall the RMSE of the two experiments is similar in some years, but in 2019 and
 310 2020, the tidal experiment has a much lower salinity bias in the upper layers. Figures [??13c](#) and [d](#) demonstrate that in both experiments the model error is larger at the surface up to 150m and is reduced to less than 0.15 PSU below this layer, where

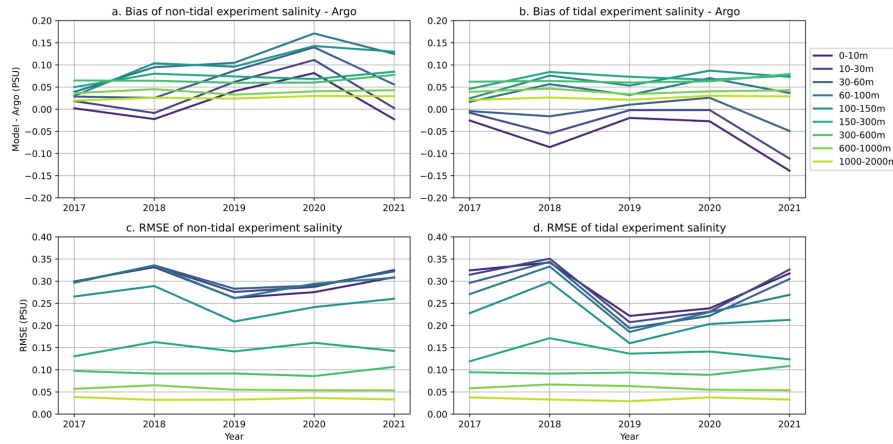


Figure 13. Salinity difference between the experiments and data from profiling floats for each analysed year (2017-2021), across nine layers for the Mediterranean Sea, presented as a. non-tidal experiment bias, b. tidal experiment bias, c. non-tidal experiment root mean square error, and d. tidal experiment root mean square error.

it also shows a lower temporal variability. Lower layers remain stable with small errors, whereas the surface varies more and produces larger errors when compared to observations.

315 7 The Gibraltar Strait

Mass transport at the Gibraltar Strait is affected by tides, as was shown by Gonzalez (2023), Harzallah et al. (2014), and Naranjo et al. (2014). The effects of tides on the Gibraltar Strait mass transport are detailed in Table ???. Although the net transport in the Gibraltar Strait is not largely affected by tides, both the inflow and outflowing transport are increased by tides. Within observational errors we cannot fully distinguish between the tide and no-tide experiments, but we can estimate a 5-10% larger inflow/outflow transport with respect to literature. We argue that this is due to the relatively coarse resolution of the model in the Gibraltar Strait, where Gonzalez (2023) recently demonstrated that the required resolution for an accurate representation of the Gibraltar Strait would be about five times the one used in our model.

Experiment Inflow Outflow Net Transport Model without tides 0.85-0.80-0.045 Tidal model 0.88-0.84-0.043 Observations (Soto-Navarro et al., 2010) 0.81 ± 0.06 - 0.78 ± 0.05 0.038 ± 0.007 Mass transport at the 5.48°W section of the Gibraltar Strait in the experiment without tides, tidal experiment, and observations from Soto-Navarro et al. (2010). Values for model outputs are calculated as mean inflow and outflow transport in the Gibraltar Strait for the period 2017-2021.

7 Conclusions

The effects of tides on the Mediterranean Sea circulation were studied through a twin numerical experiment approach based on a high-resolution (around 4km) model of the region, with and without the explicit representation of tides. Spectra of sea surface height and kinetic energy in the basin, as well as in key regions characterised by basin modes, revealed that the effects of tides on the energetics of the Mediterranean Sea extend far beyond the spatial and temporal scales of the tides themselves.

Tides enhance the power at 8h and 6h frequencies due to their nonlinear effects across the Mediterranean basin, amplifying the basin modes, as shown in the Sicily Strait by Palma et al. (2020). Tides also interact and amplify the other basin modes at 11.4h, 8.4h, and 7.4h, as well as the Adriatic modes at 10.7h and 6.7h, and the mode in the Gulf of Gabes at 8.2h. The Adriatic modes at 12h and 21.9h are visible in both the tidal and non-tidal experiments, but the 12h frequency is enhanced by tides. Results such as these demonstrate the complexity and non-linearity of tidal effects in the Mediterranean Sea.

The study then discussed the rotary spectra of the barotropic and full kinetic energy in several selected points in the Mediterranean Sea. This analysis showed the ubiquitous field of internal waves below around 150 meters, both at diurnal and semi-diurnal time frequencies. The Hovmoller ~~diagram of zonal and~~ diagrams of vertical velocity components revealed the internal tide field structure in the basin, as well as the interaction of internal tides with near-inertial waves in some regions, such as the Cretan Sea. In addition to ~~near inertial~~ near-inertial waves, both the semidiurnal and diurnal internal tides have high energy, potentially at an overall Mediterranean scale not previously highlighted.

Tides affect the mixed layer depth of the basin, with different signs in different regions. The Mediterranean deep and intermediate water formation is enhanced by tides in the ~~Gulf of Lion, the~~ WMDW region, and in the Levantine Sea where intermediate water masses are formed. This aligns with increases in the winter mixed layer depth across most of the Mediterranean Sea.

It is important to note that the resolution of this model configuration, although higher than many global ocean models and regional ocean models from past studies, has limitations in its representation of waves with shorter wavelengths, including internal tides. According to Li et al. (2015, 2017), the first two modes of the M2 internal tide and first three modes of the K1 internal tide all have wavelengths greater than 45 km, but higher modes are likely unresolved at the $\frac{1}{24}^\circ$ resolution. Furthermore, high vertical resolution is important for simulating internal tides. Our model lacks high vertical resolution at deeper levels, and this could contribute to a lack of internal tides in the deeper ocean.

Further work in this area should include process-oriented studies of some features in the Mediterranean Sea that were discovered by this work, but that are subregional structures. The current literature lacks an up-to-date study calculating the barotropic oscillations of the Mediterranean Sea using a state-of-the-art numerical model. A more detailed study focusing on the ~~region~~ regions of formation and propagation of internal tides throughout the entire Mediterranean is lacking. In addition, a deeper focus on the impacts of tides, both barotropic and baroclinic, on vertical motion in the most vertically dynamic regions of the Mediterranean Sea would further help in understanding the overturning circulation in the basin. This could include considering the impact of tides on vertical mixing in deep and intermediate water formation regions, and how ~~parametrization~~ parameterization choices in numerical models may affect this. However, a longer simulation of several decades would be required to directly reveal the impact of tides on the overturning circulation of the Mediterranean Sea.

Author contributions. BM ran the numerical models, analysed the results, and wrote the manuscript. EC and AG provided support in the set-up and running of the numerical models and analysis. NP planned the study and supported the analysis of model results. All authors reviewed and edited the manuscript.

Competing interests. The authors declare that they have no conflicts of interest.

365 *Acknowledgements.* This study has been conducted including support from the University of Bologna Ph.D. programme in Future Earth, Climate Change, and Societal Challenge, and the EU Copernicus Marine Service for the Mediterranean Monitoring and Forecasting Center.

References

- Agresti, V.: Effects of tidal motion on the Mediterranean Sea General Circulation, Ph.D. thesis, Alma Mater Studiorum University of Bologna, <https://doi.org/10.6092/unibo/amsdottorato/8516>, 2018.
- 370 Alford, M. H., Gregg, M. C., Zervakis, V., and Kontoyiannis, H.: Internal wave measurements on the Cycladic Plateau of the Aegean Sea, *J. Geophys. Res.*, 117, <https://doi.org/10.1029/2011JC007488>, 2012.
- Ambar, I. and Howe, M.: Observations of the Mediterranean outflow - I mixing in the Mediterranean outflow, *Deep Sea Res., Part I*, 26, 535–554, [https://doi.org/10.1016/0198-0149\(79\)90095-5](https://doi.org/10.1016/0198-0149(79)90095-5), 1979.
- Arbic, B. K.: Incorporating tides and internal gravity waves within global ocean general circulation models: A review, *Progr. Oceanogr.*, 206, <https://doi.org/10.1016/j.pocean.2022.102824>, 2022.
- 375 Armi, L. and Farmer, D.: The internal hydraulics of the Strait of Gibraltar and associated sills and narrows, *Oceanol. Acta*, 8, 37–46, 1985.
- Boyer, T., Antonov, J. I., Baranova, O. K., Coleman, C., Garcia, H. E., Grodsky, A., Johnson, D. R., Locarnini, R. A., Mishonov, A. V., O'Brien, T., Paver, C., Reagan, J., Seidov, D., Smolyar, I. V., , and Zweng, M. M.: World Ocean Database 2013, NOAA Atlas NESDIS 72, Silver Spring, MD, <https://doi.org/10.7289/V5NZ85MT>, 2013.
- 380 Candela, J., Winant, C., and Ruiz, A.: Tides in the Strait of Gibraltar, *J. Geophys. Res. Oceans*, 95, 7313–7335, <https://doi.org/10.1029/JC095iC05p07313>, 1990.
- Clementi, E., Pistoia, J., Escudier, R., Delrosso, D., Drudi, M., Grandi, A., Lecci, R., Cretí, S., Ciliberti, S., Coppini, G., Masina, S., and Pinardi, N.: Mediterranean Sea Analysis and Forecast (CMEMS MED-Currents, EAS5 system) (Version 1) [Data set], Copernicus Monitoring Environment Marine Service (CMEMS), https://doi.org/10.25423/CMCC/MEDSEA_ANALYSIS_FORECAST_PHY_006_013_EAS5, 2019.
- 385 Clementi, E., Aydogdu, A., Goglio, A. C., Pistoia, J., Escudier, R., Drudi, M., Grandi, A., Mariani, A., Lyubartsev, V., Lecci, R., Cretí, S., Coppini, G., Masina, S., and Pinardi, N.: Mediterranean Sea Physical Analysis and Forecast (CMEMS MED-Currents, EAS6 system), Copernicus Monitoring Environment Marine Service (CMEMS), https://doi.org/10.25423/CMCC/MEDSEA_ANALYSISFORECAST_PHY_006_013_EAS6, 2021.
- 390 Coppini, G., Clementi, E., Cossarini, G., Salon, S., Korres, G., Ravdas, M., Lecci, R., Pistoia, J., Goglio, A. C., Drudi, M., Grandi, A., Aydogdu, A., Escudier, R., Cipollone, A., Lyubartsev, V., Mariani, A., Cretí, S., Palermo, F., Scuro, M., Masina, S., Pinardi, N., Navarra, A., Delrosso, D., Teruzzi, A., Di Biagio, V., Bolzon, G., Feudale, L., Coidessa, G., Amadio, C., Brosich, A., Miró, A., Alvarez, E., Lazzari, P., Solidoro, C., Oikonomou, C., and Zacharioudaki, A.: The Mediterranean forecasting system. Part I: evolution and performance, *EGUsphere*, pp. 1–50, <https://doi.org/10.5194/egusphere-2022-1337>, 2023.
- 395 Cozzani, E.: Oceanic near-inertial internal waves generation, propagation, and interaction with mesoscale eddies, Ph.D. thesis, Alma Mater Studiorum University of Bologna, 2023.
- de Boyer Montégut, C., Madec, G., Fischer, A. S., Lazar, A., and Iudicone, D.: Mixed layer depth over the global ocean: An examination of profile data and a profile-based climatology, *J. Geophys. Res.*, 109, <https://doi.org/10.1029/2004JC002378>, 2004.
- de Lavergne, C., Vic, C., Madec, G., Roquet, F., Waterhouse, A. F., Whalen, C. B., Cuyper, Y., Bouruet-Aubertot, P., Ferron, B., and Hibiya, T.: A Parameterization of Local and Remote Tidal Mixing, *J. Adv. Modell. Earth Sys.*, 12, e2020MS002065, <https://doi.org/10.1029/2020MS002065>, 2020.
- 400

- Deliverable of Perseus: Deliverable D4.6, SES land-based runoff and nutrient load data (1980–2000), edited by: Bouwman, L. and van Apeldoorn, D., 2012 PERSEUS H2020 grant agreement n. 287600, European Commission, http://www.perseus-net.eu/assets/media/PDF/deliverables/33216_Final.pdf, 2012.
- 405 Demiraj, E., Bicja, M., Gjika, E., Gjikhuri, L., Muçaj, L. G., Hoxha, F., Hoxha, P., Karadumi, S., Kongoli, S., Mullaj, A., Mustaqi, V., Palluqi, A., Ruli, E., Selfo, M., Shehi, A., and Sino, Q.: Implications of climate change for the Albanian Coast, Mediterranean Action Plan, MAP Technical Reports Series, 98, UNEP, 1996.
- Egbert, G. D. and Erofeeva, S. Y.: Efficient inverse modeling of barotropic ocean tides, *J. Atmosph. Oceanic Tech.*, 19.2, 183–204, 2002.
- Fakete, B., Vörösmarty, C., and Grabs, W.: Global composite runoff fields based on observed river discharge and simulated water balances, 410 Technical Report 22, Global Runoff Data Centre, Koblenz, Germany, 1999.
- Farmer, D. M., Armi, L., Armi, L., and Farmer, D. M.: The flow of Atlantic water through the Strait of Gibraltar, *Progr. Oceanogr.*, 21, 1–103, [https://doi.org/https://doi.org/10.1016/0079-6611\(88\)90055-9](https://doi.org/https://doi.org/10.1016/0079-6611(88)90055-9), 1988.
- Ferrari, R. and Wunsch, C.: The distribution of eddy kinetic and potential energies in the global ocean, *Tellus*, 62A, 92–108, <https://doi.org/10.1111/j.1600-0870.2009.00432.x>, 2010.
- 415 Galloudec, O. L., Chune, S. L., Nouel, L., Fernandez, E., Derval, C., Tressol, M., Dussurget, R., Biardeau, A., and Tonani, M.: Global Ocean Physical Analysis and Forecasting Product, Copernicus Monitoring Environment Marine Service (CMEMS), <https://doi.org/10.48670/moi-00016>, 2022.
- García-Lafuente, J., Bruque Pozas, E., Sánchez Garrido, J. C., Sannino, G., and Sammartino, S.: The interface mixing layer and the tidal dynamics at the eastern part of the Strait of Gibraltar, *J. Mar. Syst.*, 117-118, 31–42, <https://doi.org/10.1016/j.jmarsys.2013.02.014>, 2013.
- 420 Gasparini, G. P., Smeed, D. A., Alderson, S., Sparnocchia, S., Vetrano, A., and Mazzola, S.: Tidal and subtidal currents in the Strait of Sicily, *J. Geophys. Res. Oceans*, 109, <https://doi.org/10.1029/2003JC002011>, 2004.
- GEBCO Bathymetric Compilation Group 2014: The GEBCO_2014 Grid, version 20150318, NERC EDS British Oceanographic Data Centre NOC, www.gebco.net, 2014.
- Gonzalez, N. M.: Modélisation multi-échelle du détroit de Gibraltar et de son rôle de régulateur du climat méditerranéen, Ph.D. thesis, 425 Sciences de l'Univers, de l'Environnement et de l'Espace, University of Toulouse, 2023.
- Gonzalez, N. M., Waldman, R., Sannino, G., Giordani, H., and Somot, S.: Understanding tidal mixing at the Strait of Gibraltar: A high-resolution model approach, *Progr. Oceanogr.*, 212, 102 980, <https://doi.org/10.1016/j.pocean.2023.102980>, 2023.
- Gregg, M., Alford, M., Kontoyiannis, H., Zervakis, V., and Winkel, D.: Mixing over the steep side of the Cycladic Plateau in the Aegean Sea, *J. Marine Sys.*, 89, 30–47, <https://doi.org/10.1016/j.jmarsys.2011.07.009>, 2012.
- 430 Harzallah, A., Alioua, M., and Li, L.: Mass exchange at the Strait of Gibraltar in response to tidal and lower frequency forcing as simulated by a Mediterranean Sea model, *Tellus A: Dyn. Meteorol. Oceanogr.*, 66, 23 871, <https://doi.org/10.3402/tellusa.v66.23871>, 2014.
- Hilt, M., Auclair, F., Benshila, R., Bordois, L., Capet, X., Debreu, L., Dumas, F., Jullien, S., Lemarié, F., Marchesiello, P., Nguyen, C., and Roblou, L.: Numerical modelling of hydraulic control, solitary waves and primary instabilities in the Strait of Gibraltar, *Ocean Modell.*, 151, 101 642, <https://doi.org/10.1016/j.ocemod.2020.101642>, 2020.
- 435 Izquierdo, A. and Mikolajewicz, U.: The role of tides in the spreading of Mediterranean Outflow waters along the southwestern Iberian margin, *Ocean Modell.*, 133, 27–43, <https://doi.org/10.1016/j.ocemod.2018.08.003>, 2019.
- Lamy, A., Millot, C., and Molines, J. M.: Bottom Pressure and Sea Level Measurements in the Gulf of Lions, *J. Phys. Oceanogr.*, 11, 394–409, [https://doi.org/10.1175/1520-0485\(1981\)011<0394:BPASLM>2.0.CO;2](https://doi.org/10.1175/1520-0485(1981)011<0394:BPASLM>2.0.CO;2), 1981.
- Leder, N. and Orlić, M.: Fundamental Adriatic seiche recorded by current meters, *Annales Geophysicae*, 22, 1449–1464, 2004.

- 440 Lee, H.-C., Rosatib, A., and Spelman, M. J.: Barotropic tidal mixing effects in a coupled climate model: Oceanic conditions in the Northern Atlantic, *Ocean Modell.*, 11, 464–477, <https://doi.org/10.1016/j.ocemod.2005.03.003>, 2006.
- Li, Z. and von Storch, J.-S.: M2 internal-tide generation in STORMTIDE2, *J. Geophys. Res. Oceans*, 125, <https://doi.org/10.1029/2019JC015453>, 2020.
- Li, Z., von Storch, J.-S., and Müller, M.: The M2 Internal Tide Simulated by a $1/10^\circ$ OGCM, *J. Phys. Oceanogr.*, 45, 3119 – 3135, <https://doi.org/10.1175/JPO-D-14-0228.1>, 2015.
- 445 Li, Z., von Storch, J.-S., and Müller, M.: The K1 internal tide simulated by a $1/10^\circ$ OGCM, *Ocean Modell.*, 113, 145–156, <https://doi.org/10.1016/j.ocemod.2017.04.002>, 2017.
- Lozano, C. J. and Candela, J.: The M2 tide in the Mediterranean Sea: Dynamic analysis and data assimilation, *Oceanol. Acta*, 18, 419–441, 1995.
- 450 Madec, G., Bourdallé-Badie, R., Bell, M., Chanut, J., Clementi, E., Coward, A., Drudi, M., Éthé, C., Iovino, D., Lea, D., Lévy, C., Martin, N., Masson, S., Mathiot, P., Mocavero, S., Müller, S., Nurser, G., Samson, G., and Storkey, D.: NEMO ocean engine, <https://doi.org/10.5281/zenodo.1464816>, 2019.
- Maderich, V., Ilyin, Y., and Lemeschko, E.: Seasonal and interannual variability of the water exchange in the Turkish Straits System estimated by modelling, *Mediterr. Mar. Sci.*, 16, 444–459, <https://doi.org/10.12681/mms.1103>, 2015.
- 455 Medvedev, I. P., Vilibić, I., and Rabinovich, A. B.: Tidal Resonance in the Adriatic Sea: Observational Evidence, *J. Geophys. Res. Oceans*, 125, e2020JC016168, <https://doi.org/10.1029/2020JC016168>, 2020.
- Melet, A., Legg, S., and Hallberg, R.: Climatic Impacts of Parameterized Local and Remote Tidal Mixing, *J. Clim.*, 29, 3473 – 3500, <https://doi.org/10.1175/JCLI-D-15-0153.1>, 2016.
- Mihanović, H., Orlić, M., and Pasarić, Z.: Diurnal thermocline oscillations driven by tidal flow around an island in the Middle Adriatic, *J. Marine Sys.*, 78, S157–S168, <https://doi.org/10.1016/j.jmarsys.2009.01.021>, 2009.
- 460 Morozov, E. G., Trulsen, K., Velarde, M. G., and Vlasenko, V. I.: Internal Tides in the Strait of Gibraltar, *J. Phys. Oceanogr.*, 32, 3193 – 3206, [https://doi.org/10.1175/1520-0485\(2002\)032<3193:ITITSO>2.0.CO;2](https://doi.org/10.1175/1520-0485(2002)032<3193:ITITSO>2.0.CO;2), 2002.
- Müller, M., Haak, H., Jungclaus, J., Sündermann, J., and Thomas, M.: The effect of ocean tides on a climate model simulation, *Ocean Modell.*, 35, 304–313, <https://doi.org/10.1016/j.ocemod.2010.09.001>, 2010.
- 465 Naranjo, C., Lafuente, J., Sannino, G., and Sanchez-Garrido, J.: How much do tides affect the circulation of the Mediterranean Sea? From local processes in the Strait of Gibraltar to basin-scale effects, *Progress Oceanogr.*, 127, 108–116, <https://doi.org/j.pocean.2014.06.005>, 2014.
- Niwa, Y. and Hibiya, T.: Numerical study of the spatial distribution of the M2 internal tide in the Pacific Ocean, *J. Geophys. Res. Oceans*, 106, 22 441–22 449, <https://doi.org/10.1029/2000JC000770>, 2001.
- 470 Oddo, P., Bonaduce, A., Pinardi, N., and Guarneri, A.: Sensitivity of the Mediterranean Sea level to atmospheric pressure and free surface elevation numerical formulation in NEMO, *Geosci. Model Dev.*, 7, 3001–3015, <https://doi.org/10.5194/gmd-7-3001-2014>, 2014.
- Oddo, P., Poulain, P., Falchetti, S., Storto, A., and Zappa, G.: Internal tides in the central Mediterranean Sea: observational evidence and numerical studies, *Ocean Dyn.*, 73, 145–163, <https://doi.org/10.1007/s10236-023-01545-z>, 2023.
- Pacanowski, R. C. and Philander, S. G. H.: Parameterization of Vertical Mixing in Numerical Models of Tropical Oceans, *J. Phys. Oceanogr.*, 11, 1443–1451, [https://doi.org/10.1175/1520-0485\(1981\)011<1443:POVMIN>2.0.CO;2](https://doi.org/10.1175/1520-0485(1981)011<1443:POVMIN>2.0.CO;2), 1981.
- 475

- Palma, M., Iacono, R., Sannino, G., Bargagli, A., Carillo, A., Fekete, B. M., Lombardi, E., Napolitano, E., Pisacane, G., and Struglia, M. V.: Short-term, linear, and non-linear local effects of the tides on the surface dynamics in a new, high-resolution model of the Mediterranean Sea circulation, *Ocean Dyn.*, 70, 935–963, <https://doi.org/10.1007/s10236-020-01364-6>, 2020.
- 480 Pettenuzzo, D., Large, W., and Pinardi, N.: On the corrections of ERA-40 surface flux products consistent with the Mediterranean heat and water budgets and the connection between basin surface total heat flux and NAO, *J. Geophys. Res.*, 115, <https://doi.org/10.1029/2009JC005631>, 2010.
- Pinardi, N., Zavatarelli, M., Adani, M., Coppini, G., Fratianni, C., Oddo, P., Simoncelli, S., Tonani, M., Lyubartsev, V., Dobricic, S., and Bonaduce, A.: Mediterranean Sea large-scale low-frequency ocean variability and water mass formation rates from 1987 to 2007: A retrospective analysis, *Prog. Oceanogr.*, 132, 318–332, <https://doi.org/10.1016/j.pocean.2013.11.003>, 2015.
- 485 Pinardi, N., Cessi, P., Borile, F., and Wolfe, C. L.: The Mediterranean sea overturning circulation, *J. Phys. Oceanogr.*, 49, 1699–1721, <https://doi.org/10.1175/JPO-D-18-0254.1>, 2019.
- Raicich, F.: On the fresh balance of the Adriatic Sea, *J. Mar. Sys.*, 9, 305–319, [https://doi.org/10.1016/S0924-7963\(96\)00042-5](https://doi.org/10.1016/S0924-7963(96)00042-5), 1996.
- Sanchez-Roman, A., Jorda, G., Sannino, G., and Gomis, D.: Modelling study of transformations of the exchange flows along the Strait of Gibraltar, *Ocean Sci.*, 14, 1547–1566, <https://doi.org/10.5194/os-14-1547-2018>, 2018.
- 490 Sannino, G., Sánchez Garrido, J. C., Liberti, L., and Pratt, L.: Exchange Flow through the Strait of Gibraltar as Simulated by a σ -Coordinate Hydrostatic Model and a z-Coordinate Nonhydrostatic Model, chap. 3, pp. 25–50, American Geophysical Union (AGU), <https://doi.org/10.1002/9781118847572.ch3>, 2014.
- Schwab, D. J. and Rao, D. B.: Barotropic oscillations of the Mediterranean and Adriatic Seas, *Tellus A*, 35A, 417–427, <https://doi.org/10.1111/j.1600-0870.1983.tb00216.x>, 1983.
- 495 Shchepetkin, A. F. and McWilliams, J. C.: The regional oceanic modeling system (ROMS): a split-explicit, free-surface, topography-following-coordinate oceanic model, *Ocean Modell.*, 9, 347–404, <https://doi.org/10.1016/j.ocemod.2004.08.002>, 2005.
- Simmons, H. L., Jayne, S. R., St. Laurent, L. C., and Weaver, A. J.: Tidally driven mixing in a numerical model of the ocean general circulation, *Ocean Modell.*, 6, 245–263, [https://doi.org/10.1016/S1463-5003\(03\)00011-8](https://doi.org/10.1016/S1463-5003(03)00011-8), 2004.
- Soto-Navarro, J., Criado-Aldeanueva, F., García-Lafuente, J., and Sánchez-Román, A.: Estimation of the Atlantic inflow through the Strait of Gibraltar from climatological and in situ data, *J. Geophys. Res. Oceans*, 115, <https://doi.org/10.1029/2010JC006302>, 2010.
- 500 St. Laurent, L. C., Simmons, H. L., and Jayne, S. R.: Estimating tidally driven mixing in the deep ocean, *Geophys. Res. Lett.*, 29, 21–1–21–4, <https://doi.org/10.1029/2002GL015633>, 2002.
- Sánchez-Román, A., García-Lafuente, J., Delgado, J., Sánchez-Garrido, J., and Naranjo, C.: Spatial and temporal variability of tidal flow in the Strait of Gibraltar, *J. Mar. Syst.*, 98–99, 9–17, <https://doi.org/10.1016/j.jmarsys.2012.02.011>, 2012.
- 505 Tonani, M., Pinardi, N., Dobricic, S., Pujol, I., and Fratianni, C.: A high-resolution free-surface model of the Mediterranean Sea, *Ocean Sci.*, 4, 1–14, <https://doi.org/10.5194/os-4-1-2008>, 2008.
- van Haren, H., and The ANTARES Collaboration: High-frequency internal wave motions at the ANTARES site in the deep Western Mediterranean, *Ocean Dyn.*, 64, <https://doi.org/10.1007/s10236-014-0702-0>, 2014.
- Vlasenko, V., Garrido, J. C. S., Stashchuk, N., Garcia-Lafuente, J., and Losada, M.: Three-Dimensional Evolution of Large-Amplitude Internal Waves in the Strait of Gibraltar, *J. Phys. Oceanogr.*, 39, 2230 – 2246, <https://doi.org/10.1175/2009JPO4007.1>, 2009.
- 510 Vázquez, A., Stashchuk, N., Vlasenko, V., Bruno, M., Izquierdo, A., and Gallacher, P. C.: Evidence of multimodal structure of the baroclinic tide in the Strait of Gibraltar, *Geophys. Res. Lett.*, 33, <https://doi.org/10.1029/2006GL026806>, 2006.