

# First validation of high-resolution satellite-derived methane emissions from an active gas leak in the UK

Emily Dowd<sup>1,2</sup>, Alistair J. Manning<sup>3</sup>, Bryn Orth-Lashley<sup>4</sup>, Marianne Girard<sup>4</sup>, James France<sup>5,6</sup>, Rebecca E. Fisher<sup>5</sup>, Dave Lowry<sup>5</sup>, Mathias Lanoisellé<sup>5</sup>, Joseph R Pitt<sup>7</sup>, Kieran M. Stanley<sup>7</sup>, Simon O'Doherty<sup>7</sup>,  
5 Dickon Young<sup>7</sup>, Glen Thistlethwaite<sup>8</sup>, Martyn P. Chipperfield<sup>1,2</sup>, Emanuel Gloor<sup>9</sup>, Chris Wilson<sup>1,2</sup>

<sup>1</sup>School of Earth and Environment, University of Leeds, Leeds, UK

<sup>2</sup>National Centre for Earth Observation, University of Leeds, Leeds, UK

<sup>3</sup>Hadley Centre, Met Office, Exeter, UK

10 <sup>4</sup>GHGSat Inc., Montreal, Canada

<sup>5</sup>Department of Earth Sciences, Royal Holloway, University of London, Egham, UK

<sup>6</sup>Environmental Defense Fund, 41 Eastcheap, London, UK

<sup>7</sup>School of Chemistry, University of Bristol, Bristol, UK

<sup>8</sup>UK National Atmospheric Emissions Inventory, Ricardo Energy & Environment, Harwell, Oxon, UK

15 <sup>9</sup>School of Geography, University of Leeds, Leeds, UK

*Correspondence to:* Emily Dowd (eed@leeds.ac.uk)

**Abstract.** Atmospheric methane (CH<sub>4</sub>) is the second most important anthropogenic greenhouse gas and has a 20-year global warming potential 82 times greater than carbon dioxide (CO<sub>2</sub>). Anthropogenic sources account for ~60% of global CH<sub>4</sub> emissions, of which 20% come from oil ~~&~~and gas exploration, production and distribution. High-resolution satellite-based imaging spectrometers are becoming important tools for detecting and monitoring CH<sub>4</sub> point source emissions, aiding mitigation. However, validation of these satellite measurements, such as those from the commercial GHGSat satellite constellation, has so far not been documented for active leaks. Here we present the monitoring and quantification, by GHGSat's satellites, of the CH<sub>4</sub> emissions from an active gas leak from a downstream natural gas distribution pipeline near Cheltenham, UK in Spring/Summer 2023, and provide the first validation of the satellite-derived emission estimates using surface-based mobile greenhouse gas surveys. We also use a Lagrangian transport model, NAME, to estimate the flux from both satellite and ground-based observation methods and assess the leak's contribution to observed concentrations at a local tall tower site (30 km away). We find GHGSat's emission estimates to be in broad agreement with those made from the in-situ measurements. During the study period (March-June 2023) GHGSat's emission estimates are 236—1357 kg CH<sub>4</sub> hr<sup>-1</sup> whereas the mobile surface measurements are ~~886~~—~~998~~634-846 kg CH<sub>4</sub> hr<sup>-1</sup>. The large ~~variation~~variability is likely down to variations in flow through the pipe and engineering works across the 11-week period. Modelled flux estimates in NAME are 181-1243 kg CH<sub>4</sub> hr<sup>-1</sup>, which are lower than the satellite- and mobile survey-derived fluxes but are within the uncertainty. After detecting the leak in March 2023, the local utility company was contacted, and the leak was fixed by mid-June 2023. Our results demonstrate that GHGSat's observations can produce flux estimates that broadly agree with surface-based mobile measurements. Validating the accuracy of the information provided by targeted, high-resolution satellite monitoring shows how it can play an important role in identifying emission sources, including ~~for~~ unplanned fugitive releases that are inherently challenging to

identify, track and estimate their impact and duration. Rapid, widespread access to such evidencedata to inform local action to address fugitive emission sources across the oil and gas supply chain could play a significant role in reducing ~~the~~ anthropogenic ~~contribution~~contributions to climate change.

## 40 **1 Introduction**

~~The increase in atmospheric~~ Atmospheric methane (CH<sub>4</sub>) has ~~contributed an extra 23% to the radiative forcing in the troposphere since 1750 and has~~ a 20-year global warming potential 82 times greater than carbon dioxide (CO<sub>2</sub>) and the increase in atmospheric CH<sub>4</sub> concentrations since 1750 has contributed an extra 23% to the radiative forcing in the troposphere (Forster et al., 2021; Saunio et al., 2020). CH<sub>4</sub> has a mixture of natural and anthropogenic sources. Anthropogenic sources account for 45 ~60% of global CH<sub>4</sub> emissions, of which 20% come from oil & gas exploitation and transportation (Saunio et al., 2020). The United Kingdom (UK) contributes 0.48% (European Commission, 2022) to global anthropogenic CH<sub>4</sub> emissions and 9% of UK anthropogenic emissions are from fugitive emissions from fuels (~~National Atmospheric Emissions Inventory (NAEI) Pollutant Information, Methane, 2023~~).(NAEI Pollutant Information, Methane, 2023). Fugitive emissions of CH<sub>4</sub> from oil and gas distribution in the UK were estimated to be 187.3 kilotonnes of CH<sub>4</sub> in 2020 (NAEI Pollutant Information, Methane, 2023). 50 Natural gas is mostly composed of CH<sub>4</sub> (Bains et al., 2016) and fugitive emissions are unintentional releases of substances, such as natural gas, making them difficult to estimate.

In the UK, fugitive emissions of natural gas from low-pressure distribution, medium pressure gas mains and above-ground installations are currently estimated by individual utility companies using an industry wide Shrinkage and Leakage model (SLM). The model combines parameters including: pipeline length, ~~an~~ annual leakage rate and ~~an~~ average system pressure 55 correction to estimate fugitive emissions, which are then aggregated to give a UK estimate (Marshall, 2023). The leakage rates are determined by sampling pipes during National Leakage Tests commissioned by the UK Gas Distribution Networks (GDN, Gas Governance, 2020). However, regular monitoring of pipes and detection of leaks through other methods such as emission identification and source rate quantification from high-resolution satellite observations and in-situ monitoring could be incorporated into leakage estimates to improve frequency of quantification and validate estimates.

60 ~~At the 27<sup>th</sup> United Nations Convention on Climate Change Conference~~The UK currently does not have a system to regularly monitor fugitive emissions of ~~Parties (COP27), CH<sub>4</sub> but~~ the United Nations Environment Programme (UNEP) International Methane Emissions Observatory (IMEO) ~~announced it~~has a Methane Alert and Response System (MARS) (United Nations Environment Programmes, 2023). ~~to inform governments and organisations of large emissions.~~ MARS uses TROPOMI on 65 board Sentinel-5P to identify very large methane plumes (> 25,000 kg h<sup>-1</sup>, Lauvaux et al., 2022) and other very large methane hot spots, and combines other satellite instruments such as ASI PRISMA to attribute the plume to a specific source. ~~The IMEO then informs relevant governments and organisations of the large methane emissions. MARS is an example of how high-resolution satellite based imaging spectrometers, such as TROPOMI and ASI PRISMA, are becoming important tools for~~

~~detecting and monitoring CH<sub>4</sub> point source emissions, aiding mitigation.~~ TROPOMI has a pixel size of 5.5 km × 7 km with a  
70 detection threshold of 25,000 kg h<sup>-1</sup> (Lauvaux et al., 2022) and ASI PRISMA 30 m × 30 m with a detection threshold of 500-  
2,000 kg h<sup>-1</sup> (Guanter et al., 2021). MARS is an example of how high-resolution satellite-based imaging spectrometers, such  
as TROPOMI and ASI PRISMA, are becoming important tools for detecting and monitoring CH<sub>4</sub> point source emissions,  
aiding mitigation globally.

GHGSat was the first satellite constellation launched specifically for CH<sub>4</sub> point-source emission identification, quantification,  
75 and attribution, and was the first system to provide high-resolution data to IMEO, although these data are not incorporated into  
MARS. GHGSat's constellation provides global monitoring of sites that are ~~potentially~~ emitting above 100 kg h<sup>-1</sup> and also  
targets locations based on detected emissions using Sentinel-5P or Sentinel-2 (Schuit et al., 2023). Not all leaks can be detected  
by global monitoring satellites, such as Sentinel-5P or Sentinel-2, due to their high detection threshold and lower resolution  
and so GHGSat's ability to detect smaller sources is important for observing leaks that might otherwise go undetected and  
80 unreported. However, there is a trade-off between global monitoring satellites and GHGSat because GHGSat requires a target  
to observe. GHGSat has previously detected and quantified CH<sub>4</sub> emissions from a variety of sources including landfill sites,  
coal mining and natural gas pipelines (GHGSat, 2022; ESA, 2023; GHGSat, 2023). Validation of GHGSat's technology has  
been performed on controlled releases and blind validation tests (McKeever and Jervis, 2022; Sherwin et al., 2023). ~~However,  
validation~~ There are a number of different methods that can be used to estimate emissions from point sources using  
85 measurements from satellite data, e.g. Gaussian Plume Model, Local Mass Balance for near-source pixels, Gauss Theorem,  
Cross-Sectional Flux (CSF) and Integrated Mass Enhancement (IME) (Jacob et al., 2016).

Validation of the emission estimates from the GHGSat satellite constellation, using the IME method, has so far not been  
documented for active leaks. Here we present the detection, monitoring and quantification, by GHGSat's satellites, of CH<sub>4</sub>  
emissions from an active gas leak near Cheltenham, UK in Spring/Summer 2023, and provide the first study using surface-  
90 based mobile greenhouse gas surveys to validate GHGSat's estimates. ~~We~~ There are two main methods for estimating the  
emission flux from surface-based mobile surveys; the Gaussian Plume Model and the Other Test Method 33A (OTM 33A).  
In this study we provide estimates of the Cheltenham gas leak ~~by using~~ three different methods: i) GHGSat-derived fluxes  
using the Integrated Mass Enhancement Method (IME); ii) Fluxes derived from ground-based observations using a Gaussian  
Plume model; and iii) Estimates from plumes simulated by the UK Met Office's Numerical Atmospheric-dispersion Modelling  
95 Environment (NAME, Jones et al., 2007) ~~and~~ scaled to match the satellite and mobile survey observations. We also estimate  
mole fractions from the leak at a local tall tower monitoring site using NAME. We compare the modelled mole fractions from  
the gas leak with the observed above-background concentrations and discuss the implications of the leak in terms of the UK  
National Atmospheric Emissions Inventory (NAEI) and the success in monitoring and mitigating it. Note that, throughout this  
text, we refer to kg CH<sub>4</sub> h<sup>-1</sup> as kg h<sup>-1</sup>.

**2.1 Gas Leak Location**

~~As part of a research study, the~~The University of Leeds requested, through the Third Party Missions Programme with the European Space Agency (ESA), that GHGSat monitor a landfill site near the town of Cheltenham, UK- and provide Level 4 emission estimate data. By chance, the monitored area included the location of a large ( $> 100 \text{ kg h}^{-1}$ ) gas leak (within 1 km of the landfill) allowing it to be detected by the satellite constellation. The landfill site was found to be below the satellite's detection threshold. The gas leak was first detected by GHGSat during its first cloud-free overpass on 27<sup>th</sup> March 2023 and the location of the leak from the satellite was estimated to be 51.95088°N, 2.09962°W at approximately 33 m above sea level (m.a.s.l.) ~~95097°N, 2.09956°W at approximately 33 m above sea level (m.a.s.l).~~ A GHGSat operator determines the source location by the shape of the observed plume (plume tail direction) and the area most concentrated at the beginning of the plume tail. When the plume shape and concentration gradient in the plume does not show a traditional directional plume-shape, the wind direction from Goddard Earth Observing System Forward Processing (GEOS-FP, NASA GMAO, 2023) is used to determine which side of the emission will most likely correspond to the source location. When GHGSat detect an emission from a site which is not in their database, other datasets such as visible satellite imagery and infrastructure maps are used to determine the source. In this case, GHGSat confirmed the source by contacting the utility company. The leak was from a low-pressure gas distribution pipeline situated in a field next to a railway line, approximately 5 km north of Cheltenham. The UK gas pipeline network is currently being upgraded from old metal pipes to new plastic ones and it is likely that the gas leak came from an older pipe (Wales & West Utilities, 2023). The GHGSat satellite constellation monitored the site over approximately 11 weeks (6 successful observations, one with no emissions detected) until the leaking pipe was repaired. The area surrounding the leak is a mixture of pastoral and arable agricultural land with one farm ~70 m to the east of the site, two waste management sites less than half a kilometre to the south and a small residential area less than 200 m to the east and southeast of the leak location. The farm closest to the site rears cattle so they are also a likely source of CH<sub>4</sub> to the atmosphere along with manure produced by other animals, although these sources are much more diffuse. There is one single carriageway road to the south of the leak location, which passes within ~30 m of the estimated location of the gas leak. The leak location estimated here is an approximate location for the surface emission and is not necessarily the precise location of the pipeline break. In our analysis, we use a mean location for the leak, 51.95088°N, 2.09962°W, estimated by the satellite. The individual estimated locations for each satellite observation can be found in the Supplement. The estimated locations were in close agreement with each other, within ±25 m, apart from one outlier.

**2.2 Atmospheric Methane Measurements****2.2.1 GHGSat Satellite Measurements**

130 GHGSat is a constellation of 9 SmallSats (~15 kg) orbiting in low Earth orbit at altitudes ranging from 500 – 550 km which retrieve vertical column density of CH<sub>4</sub> and detect concentration enhancements above background from targeted industrial

facilities globally. The satellite retrievals are collected using a Wide-Angle Fabry-Perot (WAF-P) imaging spectrometer, which is a hyperspectral spectrometer operating in the short-wave infrared (SWIR) at 1630 – 1675 nm, where methane absorption lines can be resolved for each pixel in the 12 km × 12 km sensor field-of-view (Jervis et al., 2021). This sensor system achieves both high spatial and spectral resolution, enabling precise geolocation and low noise measurements. For the 8 commercially operating satellites (GHGSAT-C1 to C8), the system achieves a spatial resolution of 25 m and spectral resolution of 0.3 nm (Jacob et al., 2022), having the capability of a 1-2 day revisit time. This allows for precise attribution of CH<sub>4</sub> emission enhancements to sources with emission rates above 100 kg h<sup>-1</sup> (50% probability of detection at wind speeds of 3 m s<sup>-1</sup>). The performance of the system has been independently verified through controlled releases of CH<sub>4</sub> at known rates that were measured using the GHGSat system (Sherwin et al., 2023).

The raw images collected by the satellites are processed through GHGSat's proprietary toolchain- and reviewed by experts at GHGSat. The surface reflectance and column-averaged concentration of CH<sub>4</sub> in parts per billion (ppb) are retrieved for each pixel by fitting a model of the instrument and atmosphere. These data are georeferenced using satellite's GPS outputs and Landsat-8 imagery with sub-pixel accuracy, achieving a geolocation accuracy of ~25 m for the source location.

### 2.2.2 Mobile Greenhouse Gas Observations

Royal Holloway, University of London's (RHUL) mobile greenhouse gas laboratory was used for ground-based verification of the leak location, source type and emission rate. The mobile laboratory includes a suite of cavity enhanced laser absorption spectrometers for the measurement of CH<sub>4</sub>, CO<sub>2</sub> and ethane (C<sub>2</sub>H<sub>6</sub>) mole fractions and methane isotopes (δ<sup>13</sup>C-CH<sub>4</sub>): Picarro G2311-f (10 Hz CH<sub>4</sub> and CO<sub>2</sub>), Licor-7810 (1 Hz CH<sub>4</sub> and CO<sub>2</sub>), LGR UMEA - ultraportable methane ethane analyser (1 Hz CH<sub>4</sub> and C<sub>2</sub>H<sub>6</sub>) and Picarro G2210-i (1 Hz CH<sub>4</sub>, CO<sub>2</sub>, C<sub>2</sub>H<sub>6</sub> and δ<sup>13</sup>C-CH<sub>4</sub>). The instruments are powered using a 6 kW portable lithium power station (Goal Zero Yeti 6000). Air is pumped to the instruments from inlets on the roof of a hybrid car, 1.8 m above ground level. A sonic anemometer (Campbell CSAT3B 3-D) and GPS receiver are also installed on the roof of the vehicle. Another air inlet is connected to a diaphragm pump for filling 3 litre multilayer foil bags with air, for subsequent high precision methane δ<sup>13</sup>C analysis by isotope ratio mass spectrometry (Fisher et al., 2006) and methane mole fraction analysis using the Licor-7810. The air bags were filled when the car was parked both in and outside of the emissions plume. Instruments are harmonised to international scales for CH<sub>4</sub> and CO<sub>2</sub> at RHUL using cylinders of ambient air calibrated by NOAA (National Oceanic and Atmospheric Administration).

Mobile surveys were carried out during daytime on 26<sup>th</sup> May, 12<sup>th</sup> June and 22<sup>nd</sup> June 2023. These dates were chosen because the wind direction was from between NW and ENE, allowing the emissions plume to be measured on the nearest road, which was to the south of where GHGSat had identified the source. During each survey, the car was driven at 20-30 mph (32-48 km h<sup>-1</sup>) on a public road downwind of the emissions site with at least 12 passes. The public road included a road bridge over a railway, close to satellite-derived leak location.

## 225 2.2.3 Greenhouse Gas Tall Tower Measurements

The UK Deriving Emissions linked to Climate Change (UK DECC) network currently consists of four tall tower sites within the UK (in addition to the baseline station at Mace Head, Ireland). The UK DECC network has been collecting measurements since 2012 and measures various atmospheric constituents including  $\text{CH}_4$  (Stanley et al., 2018).  $\text{CH}_4$  is measured by a cavity ring-down spectrometer (CRDS) at multiple inlet heights. The CRDS is calibrated using both a standard of approximately ambient mole fraction and a set of calibration standards which range above and below ambient mole fractions (Stanley et al., 2018). Calibrant and standard gases are used in the CRDS at all sites and are of natural composition. The standard gas is measured once a day to assess linear instrumental drift and the calibration gases are measured once a month to assess for instrument nonlinearity. The repeatability of the daily standard measurements is  $< 0.3 \text{ nmol mol}^{-1}$  (Stanley et al., 2018). The two key stations from the UK DECC network in this study are Mace Head (MHD) on the west coast of Ireland and Ridge Hill (RGL) in central western England. MHD is at  $53.32667^\circ\text{N}$ ,  $9.90456^\circ\text{W}$  and close to the shoreline. The surrounding area is sparsely populated, resulting in low local anthropogenic emissions at the site. Prevailing winds from the west and south-west bring well-mixed Atlantic air to MHD. As a result, the majority of measurements obtained at MHD at 10 m above ground level (a.g.l.) are representative of northern hemisphere, mid-latitude background concentrations (Stanley et al., 2018). RGL is a rural site situated at  $51.99747^\circ\text{N}$ ,  $2.53992^\circ\text{W}$  which is approximately 30 km east of the border between England and Wales. RGL is surrounded by land primarily used for agriculture. It is also 16 km south-east from Hereford and 30 km south west of Worcester, both large towns, and there are a number of wastewater treatment plants within a 40 km radius of the site (Stanley et al., 2018). RGL measures  $\text{CH}_4$  at 45 and 90 m a.g.l. and in this study, we use measurements from the 90 m a.g.l. inlet because it has a larger footprint of influence. The different source sectors surrounding RGL have an impact on the observed concentrations, but the main waste sites in the area are not upwind of the leak, which is 30 km east of RGL.

We use the concentrations representative of well-mixed mid-latitude northern hemisphere air measured at MHD to produce a time-varying background concentration at RGL, as described in Manning et al. (2021). The background concentrations are subtracted from the observed concentrations to obtain an above-background concentration at RGL.

## 2.3 Flux Estimation Methods

### 2.3.1 GHGSat Flux Estimation

~~The satellite-derived fluxes are estimated using the Integrated Mass Enhancement (IME) method (Varon et al., 2018). First, the emission signal is identified and masked by isolating methane enhancements that are not instrument artefacts or signal from albedo features. The source location is determined based on wind direction derived from Goddard Earth Observing System Forward Processing (GEOS-FP, NASA-GMAO, 2023), the methane enhancement gradient and morphology caused by the emission. The IME method relates the emission source rate to the emission mass downwind of the source (defined by the masked methane concentration and the source location) based on the expected transport of methane in the wind (defined~~

by the GEOS-FP wind data). The uncertainty on the source rate includes the uncertainties on the wind speed, the methane enhancement and the IME model parameters.

The satellite-derived fluxes are estimated using the Integrated Mass Enhancement (IME) method (Varon et al., 2018). First, the emission signal is identified and masked by isolating methane enhancements that are not instrument artefacts or signal from albedo features. The IME method relates the emission source rate to the emission mass downwind of the source (defined by the masked methane concentration and the source location) based on the expected transport of methane in the wind (defined by the GEOS-FP model wind data). The IME of the observed plume is:

$$IME = \sum_{j=1}^N \Delta\Omega_j A_j \quad (j=1 \dots N) \quad (1)$$

where  $N$  is the number of pixels,  $\Delta\Omega_j$  is the mean source pixel enhancement and  $A_j$  is area of each pixel. The IME of the observed plume and the source rate  $Q$  is related by the residence time of methane in the plume,  $\tau$ , where  $\tau$  can be expressed in terms of the effective wind speed  $U_{eff}$  ( $m\ s^{-1}$ ) and plume size  $L$  (m):

$$Q = \frac{IME}{\tau} = \frac{U_{eff}}{L} IME = \frac{U_{eff}}{L} \sum_{j=1}^N \Delta\Omega_j A_j \quad (2)$$

where  $U_{eff}$  is a function of the 10m wind speed from GEOS-FP, see Varon et al. (2018) for full description of IME method. The uncertainty on the source rate is the  $1\sigma$  standard deviation based on the uncertainties on the wind speed, measurement uncertainties, and the IME model parameters, where the wind speed is the dominant source of uncertainty. Details of how the wind speed uncertainty is calculated can be found in the Supplement of Varon et al. (2019).

There are a number of different methods to estimate the flux using satellite data, as listed in Section 1. The Gaussian Plume Model is the simplest way to simulate a  $CH_4$  plume and is described in Section 2.3.2. Due to atmospheric conditions,  $CH_4$  plumes can be turbulent and sometimes discontinuous which means that it can be unrealistic to model satellite-observed plumes as Gaussian (Jongaramrungruang et al., 2019). The Local Mass Balance method for near-source pixels estimates the flux by only considering the column enhancement over the point source pixel, neglecting information of the plume downwind (Varon et al., 2018). This method can be effective when the pixel size is coarse and contains most of the information of the plume. However, it is not suitable for high-resolution retrievals, such as those from GHGSat, because it does not use information of the plume downwind, where there may be strong variability in the wind from small-scale turbulence and the source pixel transport may be by turbulent horizontal diffusion rather than advection by the mean wind (Varon et al., 2018). The Gauss Theorem method is the outward flux summed along a contour surrounding the point source and does not account for the contribution of turbulent diffusion to the outward flux (Jacob et al., 2022). This method is often used for in situ aircraft observations which circle the source and measures wind and methane at the same time (Jacob et al., 2022).

The Cross-sectional Flux (CSF) and IME methods are both used to estimate fluxes of point sources from satellite retrievals because they provide consistent results (Varon et al., 2019). The CSF method estimates the flux from the product of the methane enhancement and the wind speed integrated across the plume width. Varon et al. (2018) found that the IME method performs best for GHGSat data and is the selected method for our analysis.

### 320 2.3.2 Gaussian Plume Inversion Method

The flux estimates from the mobile greenhouse gas measurements were calculated using a Gaussian plume model to determine the mole fraction of a gas as a function of distance downwind of a point source (Seinfeld and Pandis, 2006). We use this model, developed by Pasquill and Smith (1983), (Seinfeld and Pandis, 2006). We use this model, developed by Pasquill and Smith (1983), to estimate the emission rate of the source using the concentrations observed downwind of the plume to scale an idealised Gaussian plume model. In the idealised model, the mole fraction at a point in the plume is a function of flux of the source ( $Q$ , kg h<sup>-1</sup>), advective horizontal wind speed ( $u$ , m s<sup>-1</sup>), the rate of dispersion and the distance from the source, see Eq. 4.3. The plume measured during each transect during the mobile survey was manually identified in the dataset and distance and angle to the emission source calculated. We used a mean of the source locations provided by the satellite retrievals as the source location in the model. We then used the observed concentration data and wind speed data to create the initial model plume using Eq. 3. On 26<sup>th</sup> May we used a mean wind speed observed by the vehicle's 10Hz sonic anemometer for each transect, whereas on the 12<sup>th</sup> June we used wind speed data, averaged to the nearest hour, from the Met Office's UKV model due to instrument availability to create the initial model plume using Eq. 4 the unavailability of the anemometer.

$$C(x, y, z) = \frac{Q}{\pi\sigma_y\sigma_z u} \exp\left(-\frac{y^2}{2\sigma_y^2}\right) \left[ \exp\left(-\frac{(z-h)^2}{2\sigma_z^2}\right) + \exp\left(-\frac{(z+h)^2}{2\sigma_z^2}\right) \right] \quad (4.3)$$

Where  $C$  ( $\mu\text{g m}^{-3}$ ) is the atmospheric concentration of methane at  $(x, y, z)$ ,  $x$  is the distance downwind from the source (m),  $y$  is the distance crosswind (m),  $z$  is the height above ground level (m),  $Q$  is the source strength (kg h<sup>-1</sup>),  $\sigma_y$  and  $\sigma_z$  are the diffusion coefficients in the crosswind and vertical directions respectively,  $u$  represents the horizontal time-averaged wind speed (m s<sup>-1</sup>) and  $h$  is the height of the release (m). The dispersion coefficients of the plume ( $\sigma_y$  and  $\sigma_z$ ) are approximated using Briggs's assumptions in the Pasquill-Gifford atmospheric stability classification.  $\sigma_y$  and  $\sigma_z$  are given as functions of downwind distance  $x$  (m) and stability class. Equation 4 shows the general form of parameterisation of plume width parameters according to Briggs, (1973).

$$\sigma_y = \frac{\alpha x}{\sqrt{1+\beta x}} \text{ and } \sigma_z = \alpha x(1 + \beta x)^{\gamma} \quad (4)$$

The observations are measured in parts per billion (ppb) and are scaled to  $\mu\text{g m}^{-3}$  at standard temperature and pressure (STP) conditions. To scale from the idealised plume to the measurements, the flux through a control surface of 1m height and the width of the plume is determined using the measurement data (Eq. 2.5).

$$\sum (c_i [CH_4] \cdot \Delta x_i \cdot \Delta z) \quad (2)$$

$$\sum (c_i [CH_4] \cdot \Delta x_i \cdot \Delta z) \quad (5)$$

where  $c_i$  is the concentration of  $CH_4$  at point  $i$ ,  $\Delta x_i$  is the distance driven by the car at this point, and  $\Delta z=1$  m is the vertical extent of the control surface. The height of the control surface is allowed to vary between 2 and 7 m a.g.l to best match the height of the vehicle inlet above ground level when accounting for the effect of the bridge structure. The corresponding control surface flux



is then calculated for the modelled plume and the ratio between the measured control surface flux and modelled control surface flux used to scale the model to the measured plume.

355 There are several assumptions made when using the Gaussian plume model. We assume that the source is emitting at a constant rate, the CH<sub>4</sub> mass is conserved and there are no additional sources or sinks during transport. We also assume that the wind speed and vertical eddy diffusivity are constant, the diffusion in the *x* direction and horizontal wind shear is negligible and the molecular diffusion is negligible compared to turbulent diffusion. Local baseline CH<sub>4</sub> is taken as the 2<sup>nd</sup> percentile measurement over a 5-minute moving average window as per other mobile campaign. However, only measurements more than 1 ppm above baseline concentrations were used in the calculation of gas leak flux to conservatively ensure that the total is not  
360 enhanced by any small emissions from surrounding sources such as the farm or waste sites. The baseline was calculated using the methods described in Fernandez et al. (2022). ~~The uncertainty ranges provided are due to the variability in each plume transect and do not reflect the added uncertainty from the limitations of the Pasquill stability classifications or from the imperfect knowledge of the exact leak location.~~

We performed a Monte-Carlo simulation to determine the CH<sub>4</sub> emission estimates and the associated uncertainty for each surface-based mobile survey. The leak location is randomly assigned to any point within an approximate 10 m × 10 m box around the mean location of the leak (derived by the satellite observations). The box is bounded by the coordinates: 51.9506799°N, 2.099682°W; 51.9506635°N, 2.0997039°W; 51.9506682°N, 2.0997021°W; 51.9506718°N, 2.0997023°W. The wind speed for each individual plume is determined using the mean wind speed during the traverse. The wind speed for each plume also has a random uncertainty assigned with a mean of 1 ms<sup>-1</sup> and was allowed to vary according to a Gaussian distribution. The vehicle height varied during the traverse of the plume due to the presence of a road bridge over a railway line. To account for the difference between the ground height and inlet height, we allowed the simulation to vary randomly between 2.5 m – 6.5 m, with 1 m intervals. We also selected the most appropriate atmospheric stability classification based on the averaged wind speed per each Monte-Carlo run. The sky conditions did not vary significantly during the period of measurement on each day, resulting in the selection being based on wind speed only (see Supplement, Table S2 for the stability classes and meteorological conditions). The Monte-Carlo simulation was run 1,000 times for each suite of transects.

365  
370  
375

There are two main methods for estimating the flux using a ground-based mobile survey, as described in Section 1. The OTM 33A requires measurements to be taken downwind of the source, perpendicular to the wind direction in order to detect the plume centre line. Once the centre line has been found, the CH<sub>4</sub> concentrations and meteorological conditions are measured continuously for 20 minutes. The emissions are then quantified using a Gaussian Plume model with three assumptions; the measurement inlet is at the height of release, measurements are taken directly downwind of the source and reflection from the ground is negligible from the source (Ražnjević et al., 2022). However in this study it was not feasible to carry out the OTM 33A because we took observations on a public road and could not be static in the plume for the required time.

380

## 2.4 NAME Dispersion Modelling

We simulated the dispersion of the gas leak through a suite of experiments using the UK Met Office's Numerical Atmospheric-dispersion Modelling Environment (NAME, Jones et al., 2007). We use NAME to estimate the flux of the leak using the observed concentrations from both GHGSat and the mobile survey to provide some continuity between the two observation and flux estimation techniques. We also modelled the leak's mole fractions of CH<sub>4</sub> at Ridge Hill (RGL) tall tower site (30 km away) and compared them to the observed above-background concentrations at RGL.

NAME is a Lagrangian dispersion model which simulates the transport and dispersion of chemical species through the atmosphere (Jones et al., 2007). The model is offline and for this study is driven by the Met Office's Numerical Weather Prediction (NWP) meteorology from the high-resolution UKV model- [\(Davies et al., 2005; Bush et al., 2023\)](#). The UKV meteorology has a horizontal resolution of 1.5 km × 1.5 km and 70 vertical levels over the UK with hourly temporal resolution. NAME follows individual theoretical particles during the simulation and the number of particles within the user-defined grid determines the total mass output per grid cell for each time step. Model particles are advected by three-dimensional wind fields provided by the NWP model and are dispersed using random walk techniques which account for turbulent velocity structures in the atmosphere (Jones et al., 2007). NAME includes additional parametrizations for atmospheric processes which are unresolved in the NWP, ~~but~~ [model](#), which influence the transport of pollutants, including deep convection, horizontal mesoscale motions, and turbulence (Meneguz and Thomson, 2014; Webster et al., 2018). The output resolution of NAME is user-defined, allowing a suite of experiments to be performed at various resolutions. In our simulations we assume the chemical sinks of CH<sub>4</sub> to be negligible due to the short transport time to both the road near the leak site (~minutes, depending on wind direction) and to RGL (~7-10 hours, depending on wind direction) compared to the long atmospheric lifetime of CH<sub>4</sub> (~9 years, [Prather et al., 2012](#)).

In the first experiment, we set up a high-resolution grid in NAME to estimate the magnitude of the flux from the concentrations observed by the satellite and mobile survey. [We did this to provide a flux estimation for both observation methods, using the same model and meteorology to provide some continuity between the satellite and mobile survey-derived estimates.](#) To estimate the flux using the satellite retrievals we simulated the gas leak with a unit release (1  $\text{gsg s}^{-1}$ ), starting 1 hour before the time of observation and simulated the release for three hours. The simulation was output with a horizontal resolution of 25 m × 25 m with a 500 m vertical resolution up to 1000 m a.g.l. and a 1-hourly time step. We selected the model time step closest to the observation time to do our analysis. We produced a pressure-weighted mean total column value from the two layers, where concentrations in the layer above 500 m were approximately 0 ppb. The modelled and observed plumes did not overlap well so we defined certain criteria in the modelled plume to capture the modelled dispersion of CH<sub>4</sub> in a way that is comparable with the GHGSat plume. We defined the plume by removing concentrations less than 1% of the maximum value and limited the length of the modelled plume to match the observed length of GHGSat's plume. This method assumes that the CH<sub>4</sub> emitted in NAME has travelled at the same distance and speed as detected by GHGSat. We integrated the CH<sub>4</sub> over the total column concentrations in both the GHGSat plume and the defined area of the NAME plume to obtain a scaling factor for the NAME

flux. We then used this scaling factor to estimate the flux of the gas leak using NAME. To test the robustness of our modelled  
450 flux estimate we also calculated fluxes using two other plume definitions: (1) We removed values less than 1% of the maximum  
value; and (2) less than 5% of the maximum value, ignoring the plume length criteria in both cases. We then scaled the model  
using the integrated mass from these defined plumes to test the robustness of the flux estimation method. Apart from the release  
location and length of the plume, no other constraints from the observed satellite plume are applied to the modelled plume.  
The three different plume definitions are analogous to the threshold value used by GHGSat filter noise around the detected  
455 plume.

We applied a similar mass integration method to estimate the flux in NAME using the observations from the mobile survey.  
We simulated the gas leak with a unit release ( $1 \text{ gsg s}^{-1}$ ), starting 1 hour before the peak observation time and simulated the  
release for three hours. The model was output at a horizontal resolution of  $10 \text{ m} \times 10 \text{ m}$  with a single 24 m layer to capture the  
volume observed by the mobile survey. We selected three values centred on the maximum concentration in the model and  
460 mobile survey concentrations along the road that the survey was completed. In the model the selected values include the  
maximum value of the plume along the road and the two grid boxes either side of the maximum value. From the observations  
we used the median concentrations calculated from the different observed transects during the mobile survey; (see Supplement  
Section S3), then selected the maximum value and the ~~observation~~ observations taken immediately before and after the  
maximum value. These values are approximately 10 m apart. We integrated across the three peak values for the model and  
465 mobile survey in order to scale the model and derived a modelled flux. We then calculated flux estimation uncertainties by  
taking the three grid boxes to the left and three grid boxes to the right of the peak value on the road and use the mass of these  
grid boxes to scale the model to the observed peak concentrations. Flow-charts showing the calculation processes of the three  
different flux estimation methods can be found in the Supplement, Section S3.

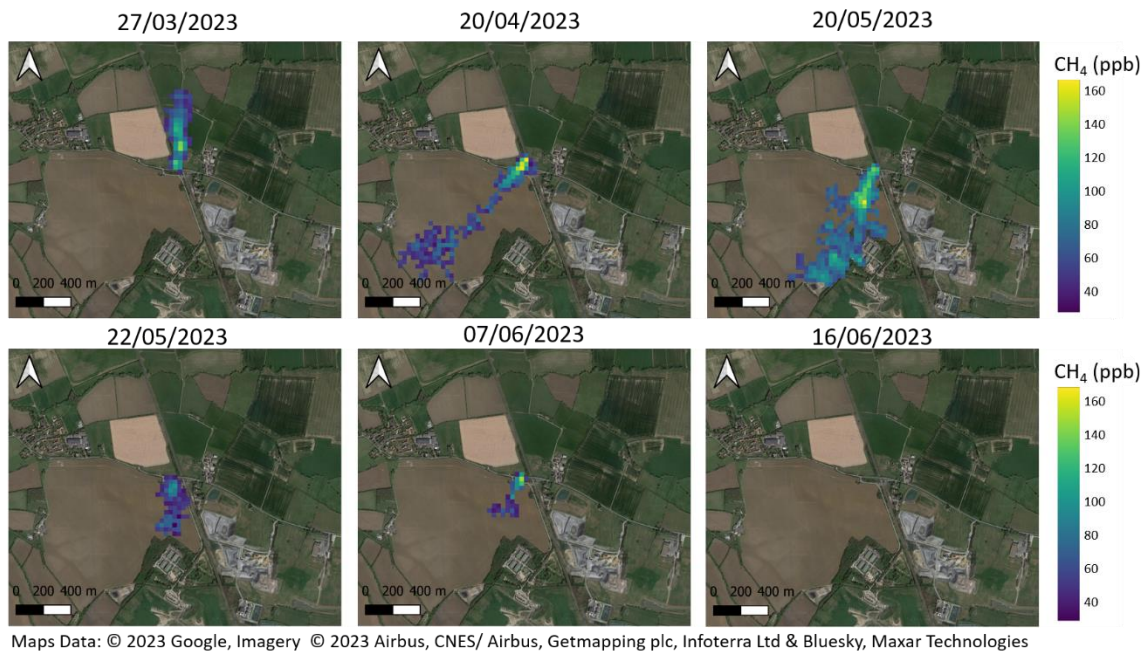
The second experiment involved estimating the leak's contribution to the observed above-background concentrations at the  
470 nearby tall tower (RGL) and assessing the likelihood of the leak contributing to most of the observed above-background  
concentration. We ran NAME with an output resolution of  $2.5 \text{ km} \times 2.5 \text{ km}$  with 40 m vertical resolution up to 120 m a.g.l.  
to capture the height of the observations at RGL. We used the five observed emission rates provided by GHGSat. We simulated  
the leak as a point source in NAME at  $51.95088^\circ\text{N}$ ,  $2.09962^\circ\text{W}$  from 27<sup>th</sup> March to 13<sup>th</sup> June, with the emission rate being held  
constant at each derived emission rate from the date that the observation was made until the date of the next available  
475 observation (see Fig 3a). We also simulated the upper and lower uncertainty emission ~~rate~~ rates from the satellite-derived fluxes  
(see Fig 3a). The model produced a one-hourly time series output at the RGL tall tower location at 80-120 m a.g.l. which we  
compared to the above-background observations. This simulation is called 'NAME\_spring'. Note, the prevailing wind at the  
leak site is from the west/southwest but a north easterly wind is needed for the emissions from the leak to be transported to  
RGL.

480 In the third experiment, we simulated the leak with the same model set up as NAME\_spring but with two alternative constant  
flux rates and simulated an extra year before the date that the leak was discovered, giving a simulation time of approximately  
1 year and 5 months (1<sup>st</sup> March 2022 to 13<sup>th</sup> June 2023). We simulated both the maximum flux derived by GHGSat and the

maximum flux derived from the mobile survey separately. This simulation is called 'NAME\_long'. We selected this time period to cover a full year previous to the leak discovery, to assess the frequency of large contributions at RGL from a theoretical leak over a longer time period, including different seasons. It should be noted that the UK DECC network was set up to monitor long-term greenhouse gas concentrations across the UK and is not specifically designed to detect fugitive emissions, like this gas leak. However, due to the location of the tall tower site relative to the gas leak in this case (within 30 km), it is reasonable to consider whether it might have been possible to use statistical analysis and inverse modelling techniques to recognise that the leak was ongoing without the use of GHGSat.

## 3 Results

### 3.1 Observations and Flux Comparisons

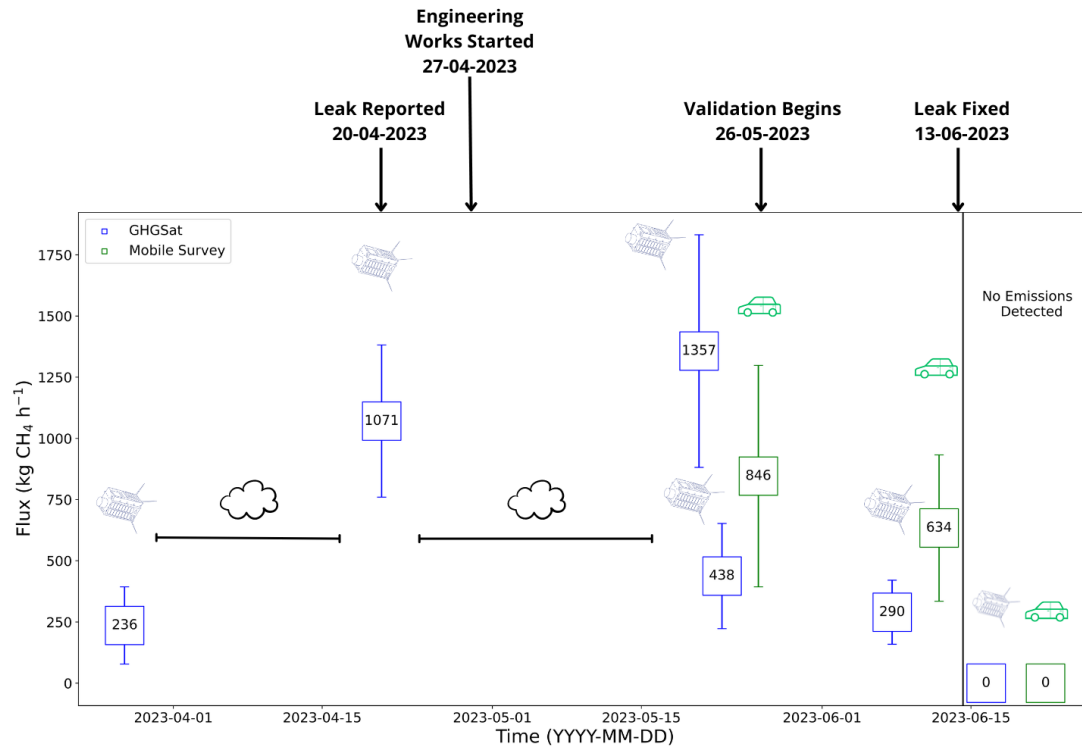
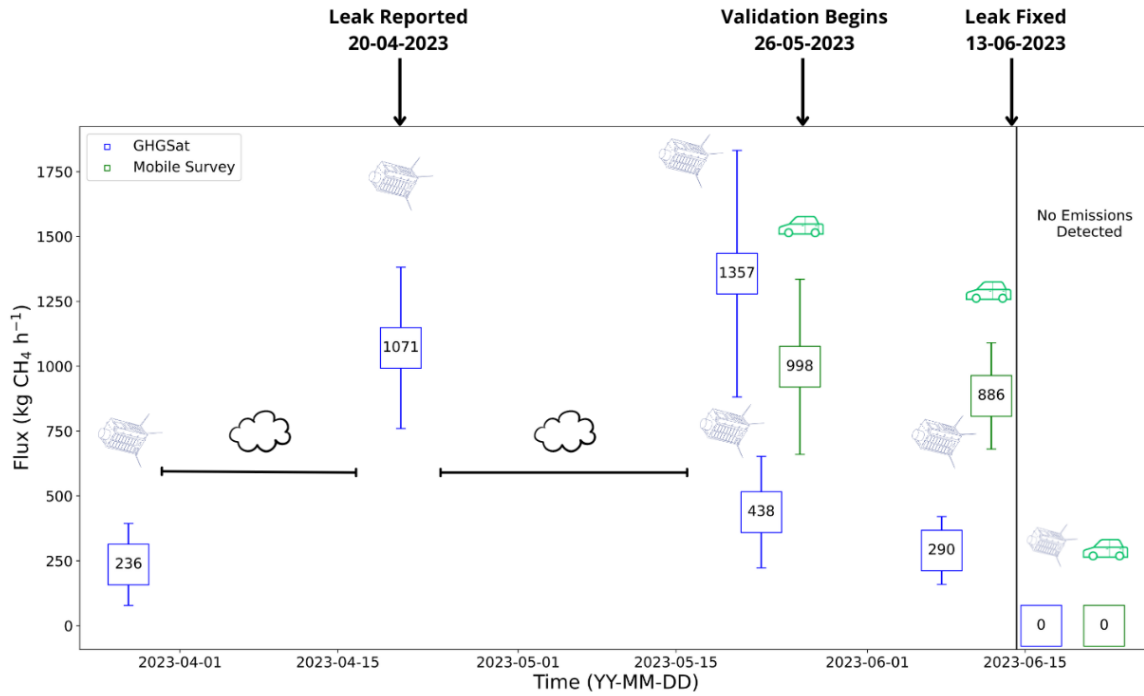


**Figure 1. Total column CH<sub>4</sub> (ppb) observations from the GHGSat satellite showing the variation in strength and size of the plume from the gas leak on six dates between March and June 2023. The geographical area shown is not the full field-of-view of the satellite and contains only the area where enhanced CH<sub>4</sub> concentrations were identified.**

We first observed an enhancement over a field, which was later confirmed to be a gas leak, on 27<sup>th</sup> March 2023 via satellite when targeting athe nearby landfill site. The satellite was centred on 51.9402°N, 2.0998°W with a 12 km × 12 km field-of-view. After detecting the leak, GHGSat continued to monitor the site with same field-of-view to quantify how much CH<sub>4</sub> was being released. Figure 1 shows the methaneCH<sub>4</sub> plumes measured by the satellite between 27<sup>th</sup> March and 16<sup>th</sup> June 2023. The initial observation on 27<sup>th</sup> March produced a flux estimate from the leak of  $236 \pm 157 \text{ kg h}^{-1}$  and the peak observed leak rate

occurred on 20<sup>th</sup> May with an estimated flux rate of  $1375 \pm 481 \text{ kg h}^{-1}$ . The observations taken after 20<sup>th</sup> May show that the size and strength of the plume was decreasing, with the last observed emission on 7<sup>th</sup> June with an estimated flux rate of  $290 \pm 130 \text{ kg h}^{-1}$ . The satellite-derived fluxes were estimated using the IME method. The next successful observation on 16<sup>th</sup> June shows no emissions above the  $100 \text{ kg h}^{-1}$  detection threshold.

505 During the satellite observation period, we conducted mobile greenhouse gas surveys of the leak to validate the satellite measurements. On 26<sup>th</sup> May and 12<sup>th</sup> June, observed CH<sub>4</sub> mole fractions were large enough to be above the dynamic range (20 ppm but capable up to 60 ppm) of the Picarro G2311-f when driving through the plume. The ~~L~~LLicor-7810 data were therefore used for the Gaussian plume modelling. The maximum CH<sub>4</sub> mole fractions recorded in each pass were 77 - 588 ppm (77,000 - 588,000 ppb) on 26<sup>th</sup> May and 120 - 839 ppm (120,000 - 839,000 ppb) on 12<sup>th</sup> June. Gaussian plume estimates of the flux  
510 were estimated to be  $998 \pm 377846 \pm 453 \text{ kg h}^{-1}$  on 26<sup>th</sup> May and  $886 \pm 205634 \pm 299 \text{ kg h}^{-1}$  on 12<sup>th</sup> June. The ethane/methane ratio in the plume was 0.05 and the  $\delta^{13}\text{C}$  isotopic signature was  $-36.7 \pm 2.1 \text{ ‰}$ . These values are characteristic of the thermogenic gas in the UK gas network (Zazzeri et al., 2015; Lowry et al., 2020), and confirm that the leak was from a gas pipeline. On 22<sup>nd</sup> June there were no significant enhanced concentrations recorded downwind of the leak site.



**Figure 2. Timeline of events during the observation period of the gas leak and the flux estimates (kg CH<sub>4</sub> h<sup>-1</sup>) from the different instruments. The satellite-derived fluxes are in blue and the mobile survey-derived fluxes are in green. The error bars represent the uncertainty on the flux estimates, as described in Section 2.3.1 and Section 2.3.2.**

Figure 2 shows the timeline of events, including estimated fluxes (with their uncertainty), from both estimation methods. Also shown are the dates that the leak was reported to the utility company by GHGSat, when work started on the leak, when the leak was resolved according to the utility company and when there were no further emissions detected by satellite or mobile survey. Once the persistence of the leak was confirmed on 20<sup>th</sup> April, GHGSat contacted the utility company. ~~Then work~~ A member of public had also reported the smell of gas to the utility company prior to the notification from GHGSat and the utility company started work on assessing and repairing the leak ~~by the utility company~~ on 27<sup>th</sup> April. GHGSat continued to monitor the leak and validation of the satellite retrievals by mobile survey began on 22<sup>nd</sup> May. We directly compare the flux estimates derived from the satellite and mobile surveys. Cloud obstructed the view of the satellite on the mobile survey days, so we compare the mobile survey-derived fluxes with the most recent satellite-derived flux to validate the satellite fluxes. We compare the mobile survey-derived flux on 26<sup>th</sup> May (~~998 ± 377846 ± 452~~ kg h<sup>-1</sup>) and 12<sup>th</sup> June (~~886 ± 205634 ± 299~~ kg h<sup>-1</sup>) with the satellite-derived flux on 22<sup>nd</sup> May (438 ± 215 kg h<sup>-1</sup>) and 7<sup>th</sup> June (290 ± 131 kg h<sup>-1</sup>), respectively, finding that the mobile survey-derived fluxes are ~~higher~~ larger than the satellite derived fluxes on these dates. ~~However, both~~ Both sets of fluxes have relatively large uncertainties, predominantly due to wind speed estimates used in the flux estimation, and the uncertainties overlap for the fluxes derived from the two observation methods ~~on 22<sup>nd</sup> and 26<sup>th</sup> May, see Fig. 1. The uncertainties for the fluxes in June do not overlap and this could be due to various factors such as variation in the flow of gas through the pipe or disruption due to the utility company working on the pipe. The mobile survey derived fluxes compare well with the satellite fluxes derived in April and May, see Fig. 2.~~ Differences between the satellite and ground survey fluxes will be discussed in detail in Sect. 4.

### 3.2 Flux Estimations from NAME Plume Modelling

We also use NAME to obtain a modelled estimate of the gas leak on each observation date for GHGSat and mobile survey observations to allow continuity between different observation and flux estimation methods. We simulated the gas leak with a unit release (1 ~~gsg~~ s<sup>-1</sup>) and then used the observed concentrations to scale NAME to estimate the flux as ~~discussed~~ described in Sect. 2.4. Table 1 shows the flux estimations from GHGSat and the mobile survey and their corresponding NAME-derived flux estimation, with the bounds of the estimation quoted in brackets from NAME. The NAME-derived flux estimations are smaller than the GHGSat-derived fluxes, but are always within the GHGSat uncertainty (Table 1). The smallest flux observed by GHGSat on 27<sup>th</sup> March was estimated to be 236 ± 157 kg h<sup>-1</sup> and we estimate a flux of 181 [~~133, 322~~ 135, 329] kg h<sup>-1</sup>, with a difference of 23% (55 kg h<sup>-1</sup>) compared with the central estimate of the GHGSat-derived flux. The bounds of the NAME-derived flux estimations described in Sect. 2.4 are shown in brackets. The largest flux observed by GHGSat on 20<sup>th</sup> May was estimated to be 1375 ± 481 kg h<sup>-1</sup> and we estimate a flux of 1243 [931, 2322] kg h<sup>-1</sup>, with a difference of 10% (132 kg h<sup>-1</sup>) compared with the central estimate of the GHGSat-derived flux. The estimation uncertainties for the NAME-derived fluxes

are much larger than the GHGSat-derived fluxes on 20<sup>th</sup> April and 20<sup>th</sup> May and this is likely due to higher wind speeds used in the model compared with the wind speeds used in GHGSat's IME method (see Supplement, Table S2).

575 We also simulated the gas leak in NAME to derive a flux from the mobile survey observations. The NAME-derived fluxes are lower than the mobile survey-derived fluxes but they lie within the mobile survey estimation uncertainty (Table 1). The peak concentrations measured during the mobile survey were larger on 12<sup>th</sup> June than the concentrations measured on 26<sup>th</sup> May. However, the Gaussian ~~plume model~~Plume Model estimates a large flux on 26<sup>th</sup> May (846 ± 453 kg h<sup>-1</sup>) due to differences in wind speeds on the observation days. The NAME-derived flux is larger on 12<sup>th</sup> June (512 [498,681] kg h<sup>-1</sup>) than the NAME-  
580 derived flux on 26<sup>th</sup> May- (406 [366,680] kg h<sup>-1</sup>). The NAME-derived fluxes use the same wind speeds as the Gaussian ~~plume model~~Plume Model on 12<sup>th</sup> June so differences between the model and the mobile survey fluxes are likely due to differences in the peak location along the road and the model resolution.

585

590

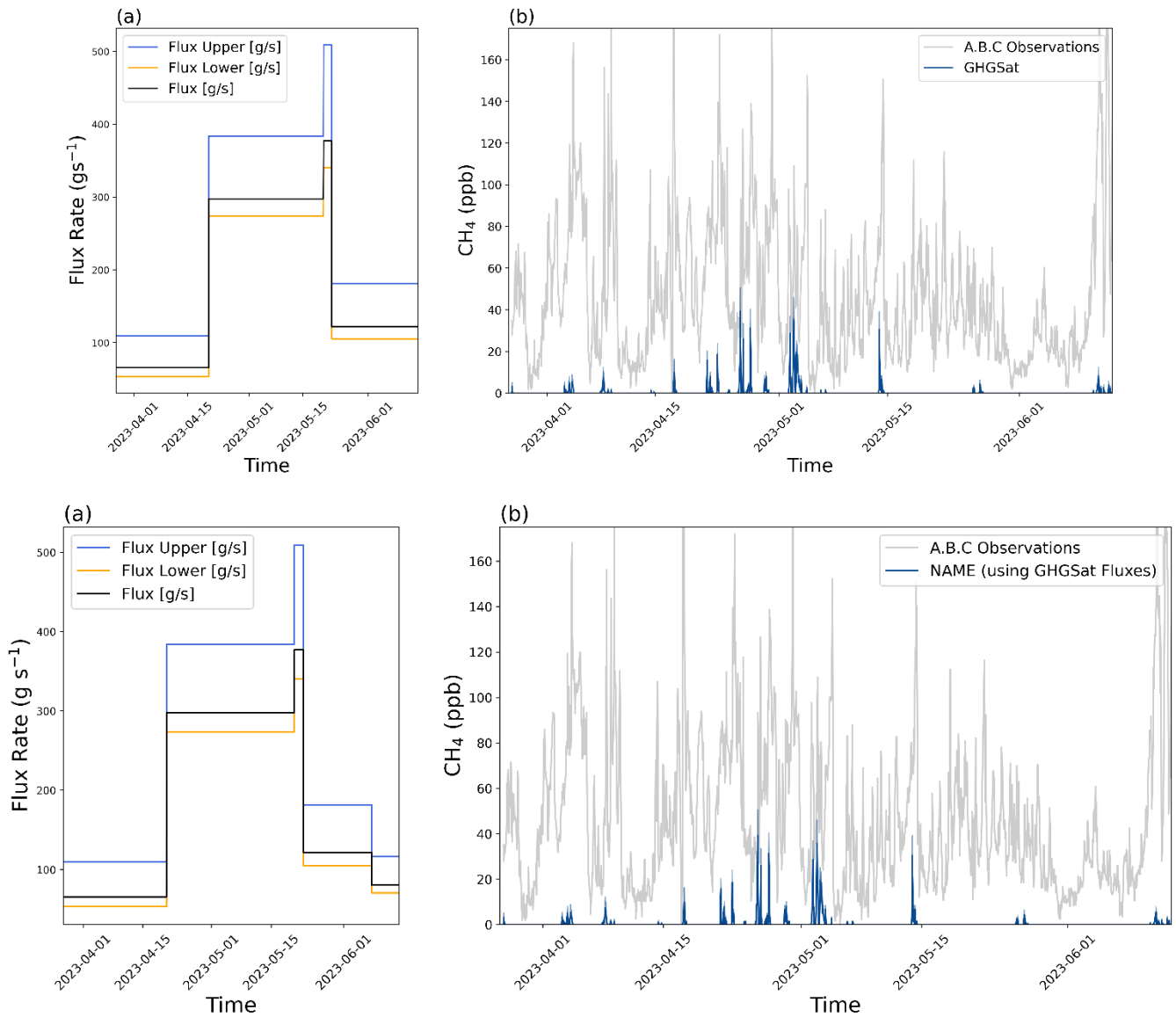
595 **Table 1. The comparison between the mobile survey and GHGSat-derived fluxes (kg h<sup>-1</sup>) and the equivalent fluxes derived in NAME (kg h<sup>-1</sup>). The bounds of NAME-derived fluxes are shown in brackets.**

Date	Mobile Survey Flux (kg h <sup>-1</sup> )	NAME-Derived Flux from MS Concentrations (kg h <sup>-1</sup> )	GHGSat Flux (kg h <sup>-1</sup> )	NAME-Derived Flux from GHGSat Concentrations (kg h <sup>-1</sup> )
27/03/2023	-	-	236 ± 157	181 [ <del>133, 322</del> 135, 329]
20/04/2023	-	-	1071 ± 310	745 [539, 1376]
20/05/2023	-	-	1375 ± 481	1243 [931, 2322]
22/05/2023	-	-	438 ± 215	<del>384 [173, 292]</del> 408 [169, 286]
26/05/2023	<del>998 ± 377</del> 846 ± 453	406 [366, 680]	-	-
07/06/2023	-	-	290 ± 131	204 [77, <del>244</del> 241]
12/06/2023	<del>886 ± 205</del> 634 ± 299	512 [498, 681]	-	-



### 3.3 Modelled Concentrations at Tall Tower Site

We carried out two simulations in NAME to assess the likelihood of the leak contributing to most of the observed above-background concentrations at RGL, described in Section 2.4. The occasions when the gas leak concentrations contribute to most of the above-background concentrations at RGL are defined as simulated concentrations that are at least two standard deviations ( $2\sigma$ , 14 ppb) larger than the observed background concentrations and contributing a significant percentage ( $\geq 90\%$ ) of the above-background concentrations - we call this a 'leak pollution event'- (LPE). We investigated the number of ~~pollution events~~LPEs at RGL over the period of the leak to assess whether statistical analysis and inverse modelling techniques ~~can~~ might have been used to recognise the gas leak.- Figure 3b shows that the observed above-background concentrations at RGL are almost always much larger than the contributions from the gas leak during the NAME\_spring simulation. ~~We~~We ~~calculated the number of times the gas leak concentrations at RGL met two different criteria. We first~~ calculated the number of times the gas leak concentration was at least  $2\sigma$  larger than the background concentration at RGL, i.e. when the leak's contribution was above the noise of the background concentrations, ~~and when it~~. ~~We also calculated number of times the gas leak~~ contributed to a '~~leak pollution event~~'LPE ( $> 2\sigma$  and  $> 90\%$  above-background) at RGL. Table 2 shows the results of these criteria during the NAME\_spring simulation with hourly output. In the NAME\_spring simulation, concentrations were above  $2\sigma$  of the background concentrations 21 times and a '~~leak pollution event~~'LPE only occurred once. The enhancements due to the gas leak were larger than the noise of the background for at least one hour on 8 of the 79 simulated days. The single pollution event from the NAME\_spring simulation shows that although  $\text{CH}_4$  from the gas leak can make up a large portion of the above-background concentrations at RGL, this does not happen frequently and therefore it is not sufficient for statistical analysis or inverse modelling to identify the leak due to the significant contributions from other local sources.



620 **Figure 3. (a) Varying flux rates ( $\text{g s}^{-1}$ ) used in the NAME model simulation 'NAME-spring'. (b) Modelled mole fractions  $\text{CH}_4$  concentrations (ppb) at the Ridge Hill (RGL) tall tower site from GHGSat-derived flux rates in the NAME-spring simulation (blue) and observed above-background mole fractions (A.B.C) at RGL (grey).**

The results from the NAME\_spring simulation show that the frequency of 'leak pollution events' (LPEs) at RGL was low during Spring 2023, therefore we investigated the gas leak contribution at RGL over a longer period (NAME\_long). The NAME\_long simulation is a hypothetical situation in which the gas leak is emitting at its highest estimated rate (from both observation methods) for much longer than we actually observed the leak. Similar to the NAME\_spring, the above-background concentrations at RGL during the NAME\_long simulation period were much larger than the concentrations modelled from the

625

gas leak at RGL, making it difficult to determine ~~pollution events~~LPEs (see Supplement, Fig. S5). We applied the same criteria as the NAME\_spring and found that during the NAME\_long simulation the leak concentrations at RGL were  $2\sigma$  above the background concentrations 226 times when using the GHGSat flux, and 140 times when using the mobile survey flux. The gas leak was above the noise of the background concentrations for at least one hour on 80 of 470 simulated days when using the satellite-derived flux. When we simulate the gas leak using the mobile survey-derived flux we find the gas leak to be above the noise of background concentrations on 63 days for at least one hour. The gas leak also meets the ~~'leak pollution event'~~LPE criteria 18 times for the GHGSat flux and 13 times for the mobile survey flux. ~~'Leak pollution events'~~LPEs from the gas leak occurred on 12 of 470 simulation days for at least one hour when simulating the satellite-derived flux and on 7 days when simulating the mobile survey-derived flux. The majority of the ~~'leak pollution events'~~LPEs occurred during April 2023. Based on these figures, the frequency of ~~'leak pollution events'~~LPEs from the gas leak during the NAME\_long simulation is very low even when we assume that the gas leak is constantly emitted at the highest estimated flux rates. This means that it is difficult to recognise the gas leak above the noise of the background concentrations and to determine the flux of the gas leak using inverse modelling techniques and observations at RGL. Both the NAME\_spring and NAME\_long simulations show there is a low number of ~~'leak pollution events'~~LPEs from the gas leak at RGL, which makes it difficult to recognise whether the above-background concentrations are from the leak or from other local sources.

**Table 2. Number of one-hour periods simulated concentrations at Ridge Hill from the gas leak were at least  $2\sigma$  larger than the background concentrations (B.C.) and number of times a pollution event occurs ( $> 2\sigma$  B.C. and  $> 90\%$  of the above background concentrations (A.B.C.)). The columns denoted with “upper” and “lower” represent the upper and lower uncertainty flux from the satellite and mobile survey (MS) derived fluxes.**

Criteria	NAME Simulation	GHGSat Lower	GHGSat Central	GHGSat Upper	MS Lower	MS Central	MS Upper
<b>Flux (<math>\text{kg h}^{-1}</math>)</b>	<b>NAME_spring</b>	<b>Variable</b>	<b>Variable</b>	<b>Variable</b>	-	-	-
# of times $> 2\sigma$ B.C.	NAME_spring	20	21	25	-	-	-
# of times $> 2\sigma$ B.C. and $> 90\%$ of A.B.C.	NAME_spring	1	1	2	-	-	-
<b>Flux (<math>\text{kg h}^{-1}</math>)</b>	<b>NAME_long</b>	<b>893</b>	<b>1367</b>	<b>1841</b>	<b>621</b>	<b>998</b>	<b>1375</b>
# of times $> 2\sigma$ B.C.	NAME_long	115	226	285	47	140	229
# of times $> 2\sigma$ B.C. and $> 90\%$ of A.B.C.	NAME_long	10	18	39	3	13	19

## 4 Discussion

670 In this study we detected, monitored and validated fluxes of a large gas leak from a low-pressure gas distribution pipe near Cheltenham, UK. The global monitoring satellite Sentinel-5P was not able to detect this leak during its overpass times because it was obstructed by clouds and the emission rate was lower than its theoretical detection threshold (25,000 kg h<sup>-1</sup>, Lauvaux et al., 2022). ~~The GHGSat satellite constellation~~The GHGSat detection threshold has a linear relationship with wind speed and is 100 kg h<sup>-1</sup> at 3 m s<sup>-1</sup> and 200 kg h<sup>-1</sup> at 6 m s<sup>-1</sup> (see McKeever and Jervis, 2022). GHGSat has demonstrated it can detect down to 42 kg h<sup>-1</sup> (McKeever and Jervis, 2022) and up to 79,000 kg h<sup>-1</sup> (GHGSat, 2022). ~~As a result, the Cheltenham gas leak is well within the detection threshold of GHGSat.~~

675 ~~The GHGSat retrievals are predominantly during a north (N) or north easterly (NE) wind which means that the enhancement detected by the satellite will mostly~~As a result, the Cheltenham gas leak is well within the detection threshold of GHGSat. The high spectral resolution of GHGSat means that it is not affected by surface type as strongly as other satellites such as Sentinel 2 or Landsat. GHGSat has been tested across a mixture of surface types and found to have a column precision of ~2% (MacLean et al., 2023; Jacob et al., 2022).~~The GHGSat retrievals are predominantly during a northerly (N) or north easterly (NE) wind,~~  
680 which means that the enhancement detected by the satellite will almost entirely be from the leak due to few CH<sub>4</sub> sources upwind of the leak. The N/NE wind is useful for comparisons with the mobile survey and our tall tower model simulations because RGL is situated to the west of the gas leak. However, the first satellite retrieval on 27<sup>th</sup> March is during southerly wind. No emissions from the landfill were detected by GHGSat which implies that emissions from the landfill are below 100 kg h<sup>-1</sup>, possibly lower than 42 kg h<sup>-1</sup>. Also, by the time the landfill emissions reach the gas leak location, the CH<sub>4</sub> concentrations  
685 would be more diffuse resulting in very small percentage of the mole fraction in the retrieved pixel of the plume, so the effect of the landfill upwind of the gas leak on this day is considered negligible.

We also confirmed and assessed the leak by completing a mobile survey on 26<sup>th</sup> May and 22<sup>nd</sup> June. ~~The measured concentrations along the roads closest to the satellite-derived leak location. The mobile survey also sampled CH<sub>4</sub> concentrations on the roads closest to the nearby landfill sites but did not detect any CH<sub>4</sub> enhancements. The measured~~  
690 concentrations of the gas leak on 22<sup>nd</sup> June were higher and the associated flux was lower than the equivalent concentrations and fluxes on 26<sup>th</sup> May, likely due to higher estimated wind speeds on 26<sup>th</sup> May. The Gaussian ~~plume model~~Plume Model has large uncertainties due to a number of factors: e.g. the variability in the measured plume from changes in wind speed and direction, the lack of granularity in the Pasquill classification (Fredenslund et al., 2019) and the lack of certainty over the exact position of the leak itself.

695 The satellite-derived flux estimates and flux estimates based on the ground-based measurements display some differences. These could be due to actual differences in the leak rate on different days from changes in pipeline pressure or biases between the two measurement and flux estimation methods. There are significant uncertainties associated with both flux estimation methods which overlap for the satellite and mobile survey estimates on 22<sup>nd</sup> and 26<sup>th</sup> May, respectively. The second mobile survey resulted in similar fluxes to the first survey and both were much larger than those estimated by GHGSat during the

700 same week. Unfortunately, we were unable to obtain satellite retrievals on the same days as the mobile measurements due to obstruction by clouds. Since we were monitoring a live leak, it is likely that changes in flow through the pipe and engineering works will have caused variations in the flux, contributing to the differences between the satellite and mobile survey estimates. During the second mobile survey, on 12<sup>th</sup> June, repairs on the pipe were being carried out, so it is likely ~~that emissions this estimate~~ included more diffuse emissions from a wider area of excavated soil (see Supplement, Fig. ~~S1-S1~~). More diffuse emissions could result in a wider CH<sub>4</sub> plume with lower concentrations which may not be above the threshold for enhanced CH<sub>4</sub> in the satellite retrievals. In addition to the effects of actual leak rate variations at the site, the satellite and mobile survey used different methods to estimate the fluxes, based on different meteorology. However, despite the mobile measurement fluxes being measured on different days, they agree well with the April and May satellite estimations. Based on the available observations, it is difficult to be certain whether the leak rate did drop in late May, as suggested by the GHGSat data, or continued at high rates as suggested by the mobile survey.

705 The mobile survey allowed us to validate the gas leak by confirming the CH<sub>4</sub> detected by the satellite was present and through isotope measurements also confirmed that the source was natural gas. ~~There~~ While there are differences ~~in~~ between the satellite-derived fluxes and the mobile survey-derived fluxes ~~but even though we were monitoring a live leak~~, they are still of the same magnitude, and differences could be due to the active nature of the leak.

715 The GHGSat Level 4 data, provided through the ESA TPM programme, give flux estimates for a source using GEOS-FP wind data as standard. GHGSat would not normally have access to the higher resolution UKV wind data. In order to provide some continuity between the different observation and flux estimation types we ~~estimated~~ calculated the flux of the gas leak ~~using~~ NAME using based on the observed concentrations from the satellite retrievals and the mobile survey. We find that the NAME-derived fluxes follow the same temporal flux pattern but are slightly lower than the GHGSat flux estimations. The difference between the GHGSat-derived fluxes and the NAME-derived fluxes could be due to a number of reasons. The modelled and satellite-plume-observed plumes did not overlap well ~~with the modelled plumes~~, making it difficult to define a plume shape that fully captured the dispersion of the modelled plume ~~well~~. We ~~used~~ employed a 25 m × 25 m horizontal resolution with 1.5 km resolution meteorology in NAME, which means the model might not capture local wind effects on the plume, leading to differences in the plume direction. The model simulations ~~were run using~~ used a unit release making it difficult to define the plume shape using the threshold value GHGSat applies to their retrievals (Jervis et al., 2021) or to apply any concentration thresholds based on the GHGSat retrievals because the modelled concentrations are ~~were not yet representative of~~ on the gas leak. Therefore, we same scale. As a result, the criteria applied ~~three different criteria~~ to the modelled plume, described in Section 2.4, ~~is mostly independent from~~ the ~~modelled~~ satellite-derived plume ~~to get flux estimations~~ apart from the length limit. The NAME-derived fluxes using the GHGSat concentrations are dependent on the plume selection criteria (see Table 725 1), particularly for larger fluxes, during 20<sup>th</sup> April and 20<sup>th</sup> May, where the bounds of the estimation are much larger. This could be due to different wind speeds used in the model and the IME method used by GHGSat when deriving the fluxes; the wind speed in NAME is generally higher than GEOS-FP (see Supplement. Table S2) and wind speeds are the largest uncertainty in the GHGSat IME flux estimation method (Jervis et al., 2021).

735 On 22<sup>nd</sup> May the main flux estimate is larger than the estimation bounds (408 [169, 286] kg h<sup>-1</sup>) and this is due to the plume selection criteria on this day. When we remove values less than 5% of the maximum value, the modelled plume length remains larger than the observed plume and as a result the scaling factor is smaller and the estimated flux is smaller than the main estimate. This is not the case for the other NAME-derived fluxes which use satellite observations. This further emphasises that the NAME-derived flux estimate is dependent on the plume selection criteria. We also applied a similar method to estimate the fluxes in NAME using the observations from the mobile survey. We ~~also~~ find that the peak mixing ratios of the simulated

740 plume ~~does do~~ not align well with the peak mixing ratios from the mobile survey. This is likely due to the model meteorology not capturing local wind effects in this area. The road where the survey was conducted was approximately 30 m away from the estimated source location at its closest point, but at this point/location the car is either ascending or descending the railway bridge which is not fully accounted for in the model. We find that the NAME-derived ~~flux/fluxes~~ using the mobile survey observations is/are smaller than the Gaussian ~~plume model/Plume Model~~ estimates, despite using the same wind speeds on 12<sup>th</sup> June. Differences between flux estimates could be due to different parameterisations in the NAME model compared with the Gaussian plume, for example the Gaussian ~~plume model/Plume Model~~ assumes a neutral boundary layer and uses different dispersion assumptions. We are also sampling a very small section of the plume in the model, which might not fully represent the main peak of the plume but was chosen to be similar in distance between the estimated source location and mobile survey observations. Also, during the mobile survey, instantaneously-measured concentrations from the gas leak fluctuated

745 significantly whilst driving through the plume, showing predominately perturbations in atmospheric mixing. These effects are averaged out slightly when the emission is calculated because it incorporates multiple transects over a 30-minute period, but some of these perturbations will still remain and the NAME model averages them out in the 1-hourly model time step. The NAME-derived fluxes do provide some continuity between the different flux estimation methods because they show a similar temporal pattern. The NAME-derived fluxes still peak on 20<sup>th</sup> April and fluctuate in a similar pattern to the other

750 estimation methods in May and June. This implies that there were fluctuations in the leaking gas, likely due to repairs on the pipe were being carried out in May and June. ~~Also the/The~~ variation between the NAME-derived fluxes from both observation methods is smaller than the differences between the satellite-derived fluxes using the IME method and the mobile-survey derived fluxes using the Gaussian Plume method. This implies that the flux estimation methodologies are responsible for some differences between the satellite and mobile survey-derived fluxes.

755 In all three flux estimation methods the resolution of the wind data is much coarser than the size of the observed plume. Atmospheric transport at the surface through small-scale turbulence and influence of the local terrain may not be well represented, contributing to the uncertainty in the flux estimate. Also any systematic biases in the measurements or flux estimation methods are likely to be negligible in comparison to the uncertainties from wind speed and model uncertainties described in Section 2. Another uncertainty in modelling the flux in NAME from both the satellite and the mobile survey

760 observations is the location of the leak. Four out of five locations were clustered together and these were used to calculate the mean location for the NAME modelling and for the Gaussian plume modelling. One estimated location was positioned on the other side of the road to the actual leak and was considered ~~as an outlier. We perturbed the leak location in the model by 10 m~~

north (N), south (S), east (E) and west (W) to investigate the impact of the source location on the NAME flux estimates. an outlier. The mean location derived from the satellite data is approximately 30 – 40 m away from the engineering works (see Supplement, Figure S1). The location of the gas leaking into the atmosphere is not necessarily the location of the pipeline break. WWU confirmed they replaced the whole pipe at once so could not confirm the precise location of the leak. We cannot give an independent location due to lack of access to the area and no noticeable infrastructure to provide an estimate, resulting in the Gaussian Plume Model and NAME estimates being guided by the satellite-derived location. During the second ground-based mobile surveys we discovered an area of dead vegetation close to the satellite-derived location which could be due to plants being suffocated by the amount of CH<sub>4</sub> (see Supplement Figure S2), however this is circumstantial.

To assess the impact of the source location on the NAME flux estimates we perturbed the leak location in the model by 10 m north (N), south (S), east (E) and west (W). We selected 10 m location perturbation to match the resolution of the NAME simulations using the surface-based observations. We kept the perturbations the same for the NAME simulations which use the satellite observations. Perturbing the source location shows that the mean location for the previous NAME simulations give the lowest flux values. We also find that the flux estimations are lower than the satellite-derived fluxes, apart from on 20<sup>th</sup> May (see Supplement, Table S1). The NAME fluxes, including the bounds of the estimation, derived on 20<sup>th</sup> May in the N/S/E/W directions are all higher than the satellite-derived flux and the NAME-derived flux at the mean location. The wind speed remains the same as the original simulation for each perturbed location and as a result, the maximum value of the plume was influenced most by the particles being advected by unresolved motions, such as turbulence, which are simulated by a random-walk technique. This contributes to the uncertainty in the NAME-derived fluxes and shows that the flux estimation is also highly dependent on the precise location of the leak when comparing with the GHGSat-IME and Gaussian Plume Model-derived fluxes, particularly. Large uncertainties occur when the fluxes are large (e.g. 20<sup>th</sup> April and 20<sup>th</sup> May) or when estimated over a very small area (e.g. scaling the model using grid boxes along the road where the mobile-survey measurements were taken).

We also In the NAME experiments, the maximum number of particles in the simulation can be adjusted so that the model does not stop producing particles during the simulation. We conducted all NAME runs with a maximum of  $9 \times 10^7$  particles. This value was selected in consultation with Met Office NAME scientists and was determined to be the optimal number for our high-resolution simulations. The final flux value is not sensitive to the number of particles because the total mass released (determined by the release rate) is distributed across the number of particles released.

Although the ground-based mobile survey-derived fluxes and NAME-derived fluxes used independent observations and/or methodologies for the flux estimation, the assumed leak location was taken from the mean of GHGSat-derived location estimates. Despite using independent observations and models from the satellite data, it is noted that the flux estimates are not fully independent because we were unable to determine an independent estimate for the leak location.

We ran simulations in NAME to assess the frequency of the gas leak's contribution to the observed CH<sub>4</sub> at the nearby tall tower site, RGL. This method assumes that the meteorology and transport of CH<sub>4</sub> from the gas leak in the model is correct, however it is likely that local meteorological effects and the surrounding terrain (e.g. the nearby railway bridge) will have had

some influence the on transport of CH<sub>4</sub> from the gas leak to RGL. We assessed the frequency of pollution events during ~~our~~ both our NAME\_spring and NAME\_long simulations and found a low number of ~~'leak pollution events'~~LPEs. The results show that it is possible for the gas leak to contribute to a pollutionLPE at RGL. However, the low number of events means  
805 that it is difficult to estimate the location and magnitude of the flux using inverse modelling techniques. There are a number of different sources surrounding RGL which contribute to above-background concentrations such as agriculture, waste and fossil fuels from nearby towns and cities. When the wind is coming from the gas leak to RGL, the main sources near to the gas leak site are from pastoral and arable agriculture, household waste landfills and food waste recycling. The addition of these other methane sources being transported to RGL also adds further complexity to the above-background signal at RGL.

810 The coverage of the tall tower network in the UK is sparse and not specifically designed for monitoring time-limited fugitive emissions like this gas leak and these simulations show that it is unlikely that the RGL observations can be used to investigate alert us to a gas leak of this size, location and duration. ~~In fact, in-~~This highlights the importance of validating other observations methods, such as the GHGSat satellite constellation. In this case, it was fortuitous that the gas leak was close to a tall tower site at all – due to the sparse coverage of the UK DECC network most gas leaks would likely not be near an  
815 observation site. Regular high-resolution satellite monitoring will allow us to detect emission locations, before monitoring them further through ground-based and drone-based surveys. ~~However,~~ GHGSat needs to be directed to observe the correct area in order to observe an emission. ~~An~~ and they carry out daily 'intelligence-led' targeting using information such as weather forecasts, past plume detection and locations of facilities likely to emit. However, a more robust 'early-warning' system to tell  
820 a machine learning model to detect emission plumes in Sentinel-5P measurements ~~and then~~which allows GHGSat ~~can be used~~ to identify and quantify emissions at a higher resolution. However, in this case the gas leak would not have been detected by Sentinel-5P, so other methods should be developed to detect smaller emissions. A disadvantage of monitoring methane emissions via satellite in the UK is that the country is often covered in cloud. However, GHGSat has a frequent revisit time of 1-2 days and with more satellites coming online there is an increased chance of a successful observation. A hybrid monitoring  
825 system combining satellite retrievals and mobile surveys could enable the operational detection of fugitive emissions and enhance countries capabilities to reduce CH<sub>4</sub> emissions.

We investigated whether emission estimates from this gas leak would be reported in the UK's National Atmospheric Emissions Inventory (NAEI), which is funded by the UK Government's Department for Sustainability and Net Zero (DESNZ) and the Department for Environment, Food and Rural Affairs (Defra). The NAEI estimates emissions to the atmosphere from all  
830 anthropogenic sources, including CH<sub>4</sub>, from gas leakage across the UK's National Transmission Network (operated by National Grid) and the downstream gas networks that are operated by Wales and West Utilities (WWU) and other GDN operators (such as Cadent, Northern Gas Networks, and SGN). The NAEI receives annual submissions from each of the GDNs to provide annual estimates of gas leakage from their distribution networks, using an industry-wide SLM. The SLM enables GDNs to apply consistent methods to generate emission estimates from several different source types across the gas network,  
835 with specific methods developed and agreed across the sector for: ~~Above-Ground Installations~~above ground installations



(leakage, venting), ~~Low~~ low pressure pipe leakage, medium pressure pipe leakage, own gas use, theft and ~~Third Party~~ ~~Damage~~ ~~third party damage~~. The annual gas leakage estimates are also reported by each of the GDNs to Ofgem (UK's independent energy regulator) as part of the network price control and performance mechanisms (Ofgem, 2023). For the gas leak detected by GHGSat, WWU would estimate the leakage of gas due as described in Marshall ~~et al.~~ (2023), which would be included in the annual estimate reported to NAEI. The annual submissions to the NAEI do not provide incident-specific estimates because the annual leakage estimates are aggregated prior to reporting to the NAEI. Therefore, the transparency and completeness of those reported emission estimates, including from ~~Third Party~~ ~~third party~~ damage incidents, such as this gas leak, is uncertain.

In addition to detecting and monitoring the leak, GHGSat contacted the relevant utility company who took steps to fix the leak. The utility company confirmed that the leak was fixed on 13<sup>th</sup> June. This is a good example of how satellite data can be used to detect fugitive emissions and inform facility operators of their emissions, encouraging them to take action to fix leaks. We estimate over 11 weeks with a mean emission rate of 754 kg h<sup>-1</sup>, the gas pipeline would have leaked a total of 1,393,392 kg of CH<sub>4</sub>. Using the United States Environmental Protection Agency's Greenhouse Gas Equivalencies calculator (Greenhouse Gas Equivalencies Calculator, 2023), we estimate the mass of CH<sub>4</sub> lost to be 39,015 tonnes of CO<sub>2</sub> equivalent, which is equivalent to the emissions from the average annual electricity consumption of 7,500 homes.

## 5 Conclusion

In this study, we detected and monitored a gas leak from a low-pressure distribution pipeline near Cheltenham, UK using GHGSat's high-resolution satellite constellation. We also validated the leak satellite-derived fluxes by completing two ground based mobile greenhouse gas surveys and found differences with the satellite-derived fluxes, likely due to observations taking place on different days. During the observation period, the satellite-derived fluxes varied from 236-1357 kg h<sup>-1</sup> and the mobile measurement derived fluxes were between ~~886-996~~ 634-846 kg h<sup>-1</sup>. The mobile survey measurements agree better with earlier satellite estimates on 20th April and 20th May than the retrievals taken in late May and June covering the same weeks as the mobile survey, although they were not made concurrently with the satellite observations. We also estimated the gas leak flux using the NAME model to provide some continuity between the different flux estimation methods. We find that the fluxes in NAME are smaller than both the satellite- and mobile survey-derived fluxes but are within the uncertainty of both and more consistent with each other. We also assessed the gas leak's contribution at the nearby tall tower site, RGL. ~~The,~~ although the UK DECC network is sparse and was not specifically designed to detect fugitive emissions. Our simulations show that for a gas leak 30 km from RGL we cannot provide a confident estimate of the flux rate using the RGL observations and inverse modelling techniques and it was not likely that any significantly large above-background concentrations would have stood out in the observations.

Steps taken by GHGSat to inform the utility company also led to mitigation, which is a good example of how satellites can be used to aid companies and government bodies in reducing their emissions. This study shows that GHGSat has the capability

to detect and monitor fugitive emissions over 100 kg h<sup>-1</sup> within the UK. The UK has access to mobile measurement laboratories, which can aid in monitoring ~~CH<sub>4</sub>Tall~~-CH<sub>4</sub> whilst the views from satellites are obscured by cloud. This gas leak was coincidentally discovered whilst trying to measure emissions from a nearby landfill. The discovery of this very large fugitive emission (by UK standards) raises the question of how many other large gas leaks are happening in the UK that are going undetected or unresolved. Although there are no current plans to carry this out operationally, combining satellite observations and mobile surveys means that the UK can access the technology to regularly monitor for fugitive emissions and take steps to significantly reduce their CH<sub>4</sub> emissions. It would seem prudent for the UK to explore how multiscale measurement methods currently used, primarily for academic research, can be moved into operational modes to assist with leak detection and repair programmes for the GDN. Currently, the focus on methane intensity and emissions reduction is on the upstream sector, but events such as these suggest that significant challenges face the distribution networks too.

This study highlights the capability of GHGSat and ground-based mobile surveys in monitoring fugitive emissions. Despite some differences in the emission estimates likely due to issues inherent in monitoring an active and variable leak, it is an excellent case study in validating satellite technology and collaborating with industry to reduce the human impact on climate change.

### **Code and Data Availability**

The UK Met Office NAME model and UM output to drive NAME are available via a research licence from the UK Met Office. UK DECC network data from Ridge Hill covering this period have been submitted to the Centre for Environmental Data Analysis archive (<https://catalogue.ceda.ac.uk/uuid/f5b38d1654d84b03ba79060746541e4f>). The mobile survey data and GHGSat plume rasters will become available once the paper has been published. The GHGSat code is proprietary information and will not be made publically available.

### **Author Contributions**

ED, AJM, CW, EG and MPC designed the study. BO and MG processed and applied IME method for the GHGSat retrievals. JF, REF and DL carried out the ground-based surveys, ML analysed the isotope measurements and JF applied the Gaussian Plume method. Tall tower data was collected by JRP, KMS, SO and DY. GT provided expertise on the national emissions inventory and reporting requirements. ED carried out analysis of emissions estimates and NAME simulations with guidance from AJM and CW. All co-authors contributed to the writing and analysis of the results.

### **Competing Interests**

The authors declare they have no conflict of interest.

## Acknowledgements

The GHGSat data provided for this project was through the European Space Agency Third Party Missions Programme. We would like to thank Alison Redington at the Met Office for her support in setting up daily forecasts to help identify suitable satellite tasking dates. We also like to thank Susan Leadbetter, Nicola Stebbing and Frances Beckett at the Met Office for their expertise in setting up high-resolution NAME simulations.

## Financial Support

This work was supported by the Natural Environment Research Council (NERC) SENSE CDT studentship (NE/T00939X/1). This work was also supported by NERC grants NE/V006924/1 and NE/V011863/1. CW and MPC were funded by the Natural Environment Research Council through its grants to the UK National Centre for Earth Observation (NCEO; NERC grants NE/R016518/1 and NE/N018079/1). Royal Holloway's mobile laboratory (MIGGAS) was funded by a NERC capital grant (NE/T009268/1). The Royal Holloway greenhouse gas group is supported by NERC research grants on UK greenhouse gas and global methane studies (NE/S003657/1 and NE/V000780/1). The UK DECC network is funded by the UK Government DESNZ under contracts TRN1028/06/2015, TRN1537/06/2018 and TRN5488/11/2021 to the University of Bristol and through the National Measurement System at the National Physical Laboratory. The collection of atmospheric composition data at Ridge Hill is also supported by the Integrated Carbon Observation System (ICOS). TRN 1537/06/2018 also provides support to AJM.

## References

- Bains, M., Hill, L., and Rossington, P.: Material comparators for end-of-waste decisions. Fuels: Natural Gas, Environment Agency, 2016.
- 915 Briggs, G. A.: Diffusion estimation for small emissions. Atmospheric turbulence and diffusion laboratory, 965, 83–145, 1973.
- Bush, M., Boutle, I., Edwards, J., Finnenkoetter, A., Franklin, C., Hanley, K., Jayakumar, A., Lewis, H., Lock, A., Mittermaier, M., Mohandas, S., North, R., Porson, A., Roux, B., Webster, S., and Weeks, M.: The second Met Office Unified Model–JULES Regional Atmosphere and Land configuration, RAL2. Geoscientific Model Development, 16, 1713–1734, <https://doi.org/10.5194/gmd-16-1713-2023>, 2023.
- 920 Davies, T., Cullen, M. J. P., Malcolm, A. J., Mawson, M. H., Staniforth, A., White, A. A., and Wood, N.: A new dynamical core for the Met Office's global and regional modelling of the atmosphere, Quarterly Journal of the Royal Meteorological Society, 131, 1759–1782, <https://doi.org/10.1256/qj.04.101>, 2005.
- Satellites detect large methane emissions from Madrid landfills:  
[https://www.esa.int/Applications/Observing\\_the\\_Earth/Satellites\\_detect\\_large\\_methane\\_emissions\\_from\\_Madrid\\_landfills](https://www.esa.int/Applications/Observing_the_Earth/Satellites_detect_large_methane_emissions_from_Madrid_landfills),  
925 last access: 31 August 2023.

- European Commission: EDGAR (Emissions Database for Global Atmospheric Research) Community GHG Database (a collaboration between the European Commission, Joint Research Centre (JRC), the International Energy Agency (IEA), and comprising IEA-EDGAR CO<sub>2</sub>, EDGAR CH<sub>4</sub>, EDGAR N<sub>2</sub>O, EDGAR F-GASES version 7.0, 2022.
- 930 Fernandez, J. M., Maazallahi, H., France, J. L., Menoud, M., Corbu, M., Ardelean, M., Calcan, A., Townsend-Small, A., van der Veen, C., Fisher, R. E., Lowry, D., Nisbet, E. G., and Röckmann, T.: Street-level methane emissions of Bucharest, Romania and the dominance of urban wastewater., *Atmospheric Environment: X*, 13, 100153, <https://doi.org/10.1016/j.aeaoa.2022.100153>, 2022.
- 935 Fisher, R., Lowry, D., Wilkin, O., Sriskantharajah, S., and Nisbet, E. G.: High-precision, automated stable isotope analysis of atmospheric methane and carbon dioxide using continuous-flow isotope-ratio mass spectrometry, *Rapid Commun Mass Spectrom*, 20, 200–208, <https://doi.org/10.1002/rcm.2300>, 2006.
- Forster, P., Storelvmo, K., Armour, W., and Collins, W. J.: 2021: The Earth’s Energy Budget, Climate Feedbacks, and Climate Sensitivity. In *Climate Change 2021: The Physical Science Basis. Contribution of Working Group I to the Sixth Assessment Report of the Intergovernmental Panel on Climate Change*, n.d.
- 940 Fredenslund, A. M., Mønster, J., Kjeldsen, P., and Scheutz, C.: Development and implementation of a screening method to categorise the greenhouse gas mitigation potential of 91 landfills, *Waste Management*, 87, 915–923, <https://doi.org/10.1016/j.wasman.2018.03.005>, 2019.
- Gas Governance: Shrinkage and Leakage Model Review 2020, Joint Distribution Network Publication, 2020.
- GHGSat: GHGSat measures its largest emission from a single source ever from Nord Stream 2 leak, 2022.
- 945 Coal Mining Methane Emissions | Case Study - GHGSat: <https://www.ghgsat.com/en/case-studies/coal-mining-methane/>, last access: 31 August 2023.
- Guanter, L., Irakulis-Loitxate, I., Gorroño, J., Sánchez-García, E., Cusworth, D. H., Varon, D. J., Cogliati, S., and Colombo, R.: Mapping methane point emissions with the PRISMA spaceborne imaging spectrometer, *Remote Sensing of Environment*, 265, 112671, <https://doi.org/10.1016/j.rse.2021.112671>, 2021.
- 950 Jacob, D. J., [Turner, A. J.](#), [Maasakkers, J. D.](#), [Sheng, J.](#), [Sun, K.](#), [Liu, X.](#), [Chance, K.](#), [Aben, I.](#), [McKeever, J.](#), and [Frankenberg, C.](#): [Satellite observations of atmospheric methane and their value for quantifying methane emissions, \*Atmos. Chem. Phys.\*, 16, 14371–14396, <https://doi.org/10.5194/acp-16-14371-2016>, 2016.](#)
- 955 [Jacob, D. J.](#), Varon, D. J., Cusworth, D. H., Dennison, P. E., Frankenberg, C., Gautam, R., Guanter, L., Kelley, J., McKeever, J., Ott, L. E., Poulter, B., Qu, Z., Thorpe, A. K., Worden, J. R., and Duren, R. M.: Quantifying methane emissions from the global scale down to point sources using satellite observations of atmospheric methane, *Atmospheric Chemistry and Physics Discussions*, 1–44, <https://doi.org/10.5194/acp-2022-246>, 2022.
- Jervis, D., McKeever, J., Durak, B. O. A., Sloan, J. J., Gains, D., Varon, D. J., Ramier, A., Strupler, M., and Tarrant, E.: The GHGSat-D imaging spectrometer, *Atmospheric Measurement Techniques*, 14, 2127–2140, <https://doi.org/10.5194/amt-14-2127-2021>, 2021.
- 960 Jones, A., Thomson, D., Hort, M., and Devenish, B.: The U.K. Met Office’s Next-Generation Atmospheric Dispersion Model, NAME III, Borrego C. and Norman A.-L. (Eds) *Air Pollution Modeling and its Application XVII, Proceedings of the 27th NATO/CCMS International Technical Meeting on Air Pollution Modelling and its Application.*, 580–589, 2007.

- Jongaramrungruang, S., Frankenberg, C., Matheou, G., Thorpe, A. K., Thompson, D. R., Kuai, L., and Duren, R. M.: Towards accurate methane point-source quantification from high-resolution 2-D plume imagery, Atmospheric Measurement Techniques, 12, 6667–6681, <https://doi.org/10.5194/amt-12-6667-2019>, 2019.
- 965 Lauvaux, T., Giron, C., Mazzolini, M., d’Aspremont, A., Duren, R., Cusworth, D., Shindell, D., and Ciais, P.: Global assessment of oil and gas methane ultra-emitters, *Science*, 375, 557–561, <https://doi.org/10.1126/science.abj4351>, 2022.
- Lowry, D., Fisher, R. E., France, J. L., Coleman, M., Lanoisellé, M., Zazzeri, G., Nisbet, E. G., Shaw, J. T., Allen, G., Pitt, J., and Ward, R. S.: Environmental baseline monitoring for shale gas development in the UK: Identification and geochemical characterisation of local source emissions of methane to atmosphere, *Science of The Total Environment*, 708, 134600, 970 <https://doi.org/10.1016/j.scitotenv.2019.134600>, 2020.
- MacLean, J.-P. W., Girard, M., Jervis, D., Marshall, D., McKeever, J., Strupler, M., Ramier, A., Tarrant, E., and Young, D.: Offshore methane detection and quantification from space using sun glint measurements with the GHGSat constellation, EGUsphere, 1–18, <https://doi.org/10.5194/egusphere-2023-1772>, 2023.
- 975 Manning, A. J., Redington, A. L., Say, D., O’Doherty, S., Young, D., Simmonds, P. G., Vollmer, M. K., Mühle, J., Arduini, J., Spain, G., Wisher, A., Maione, M., Schuck, T. J., Stanley, K., Reimann, S., Engel, A., Krummel, P. B., Fraser, P. J., Harth, C. M., Salameh, P. K., Weiss, R. F., Gluckman, R., Brown, P. N., Watterson, J. D., and Arnold, T.: Evidence of a recent decline in UK emissions of HFCs determined by the InTEM inverse model and atmospheric measurements, Gases/Atmospheric Modelling/Troposphere/Physics (physical properties and processes), <https://doi.org/10.5194/acp-2021-261>, 2021.
- 980 Marshall, M.: Gas Governance: Shrinkage and Leakage Model Review, Joint Distribution Network Publication, February 2023, 2023.
- McKeever, J. and Jervis, D.: Validation and Metrics for Emissions Detection by Satellite, 2022.
- Meneguz, E. and Thomson, D. J.: Towards a new scheme for parametrisation of deep convection in NAME III, *International Journal of Environment and Pollution*, 54, 128–136, <https://doi.org/10.1504/IJEP.2014.065113>, 2014.
- 985 NAEI Pollutant Information, Methane: [https://naei.beis.gov.uk/overview/pollutants?pollutant\\_id=3](https://naei.beis.gov.uk/overview/pollutants?pollutant_id=3), last access: 1 August 2023.
- GMAO - Global Modelling and Assimilation Office Research Site: [https://gmao.gsfc.nasa.gov/GMAO\\_products/NRT\\_products.php](https://gmao.gsfc.nasa.gov/GMAO_products/NRT_products.php), last access: 30 August 2023.
- Network price controls 2021-2028 (RIIO-2): <https://www.ofgem.gov.uk/energy-policy-and-regulation/policy-and-regulatory-programmes/network-price-controls-2021-2028-riio-2>, last access: 19 September 2023.
- 990 Pasquill, F. and Smith, F. B.: Atmospheric Diffusion (3rd Edition), Quarterly Journal of the Royal Meteorological Society, 110, 565–565, <https://doi.org/10.1002/qj.49711046416>, 1983.
- Prather, M. J., Holmes, C. D., and Hsu, J.: Reactive greenhouse gas scenarios: Systematic exploration of uncertainties and the role of atmospheric chemistry, *Geophysical Research Letters*, 39, <https://doi.org/10.1029/2012GL051440>, 2012.
- 995 Ražnjević, A., van Heerwaarden, C., and Krol, M.: Evaluation of two common source estimation measurement strategies using large-eddy simulation of plume dispersion under neutral atmospheric conditions, Atmospheric Measurement Techniques, 15, 3611–3628, <https://doi.org/10.5194/amt-15-3611-2022>, 2022.

1000 Saunio, M., Stavert, A. R., Poulter, B., Bousquet, P., Canadell, J. G., Jackson, R. B., Raymond, P. A., Dlugokencky, E. J., Houweling, S., Patra, P. K., Ciais, P., Arora, V. K., Bastviken, D., Bergamaschi, P., Blake, D. R., Brailsford, G., Bruhwiler, L., Carlson, K. M., Carrol, M., Castaldi, S., Chandra, N., Crevoisier, C., Crill, P. M., Covey, K., Curry, C. L., Etiope, G., Frankenberg, C., Gedney, N., Hegglin, M. I., Höglund-Isaksson, L., Hugelius, G., Ishizawa, M., Ito, A., Janssens-Maenhout, G., Jensen, K. M., Joos, F., Kleinen, T., Krummel, P. B., Langenfelds, R. L., Laruelle, G. G., Liu, L., Machida, T., Maksyutov, S., McDonald, K. C., McNorton, J., Miller, P. A., Melton, J. R., Morino, I., Müller, J., Murguia-Flores, F., Naik, V., Niwa, Y., Noce, S., O'Doherty, S., Parker, R. J., Peng, C., Peng, S., Peters, G. P., Prigent, C., Prinn, R., Ramonet, M., Regnier, P., Riley, W. J., Rosentreter, J. A., Segers, A., Simpson, I. J., Shi, H., Smith, S. J., Steele, L. P., Thornton, B. F., Tian, H., Tohjima, Y., 1005 Tubiello, F. N., Tsuruta, A., Viovy, N., Voulgarakis, A., Weber, T. S., van Weele, M., van der Werf, G. R., Weiss, R. F., Worthy, D., Wunch, D., Yin, Y., Yoshida, Y., Zhang, W., Zhang, Z., Zhao, Y., Zheng, B., Zhu, Q., Zhu, Q., and Zhuang, Q.: The Global Methane Budget 2000–2017, *Earth System Science Data*, 12, 1561–1623, <https://doi.org/10.5194/essd-12-1561-2020>, 2020.

1010 Schuit, B. J., Maasackers, J. D., Bijl, P., Mahapatra, G., Van den Berg, A.-W., Pandey, S., Lorente, A., Borsdorff, T., Houweling, S., Varon, D. J., McKeever, J., Jervis, D., Girard, M., Irakulis-Loitxate, I., Gorroño, J., Guanter, L., Cusworth, D. H., and Aben, I.: Automated detection and monitoring of methane super-emitters using satellite data, *Gases/Machine Learning/Troposphere/Chemistry (chemical composition and reactions)*, <https://doi.org/10.5194/acp-2022-862>, 2023.

[Seinfeld, J. H. and Pandis, S. N.: Atmospheric chemistry and physics: from air pollution to climate change, John Wiley & Sons, 2006.](#)

1015 Sherwin, E. D., Rutherford, J. S., Chen, Y., Aminfar, S., Kort, E. A., Jackson, R. B., and Brandt, A. R.: Single-blind validation of space-based point-source detection and quantification of onshore methane emissions, *Sci Rep*, 13, 3836, <https://doi.org/10.1038/s41598-023-30761-2>, 2023.

1020 [Stanley, K. M., Grant, A., O'Doherty, S., Young, D., Manning, A. J., Stavert, A. R., Spain, T. G., Salameh, P. K., Harth, C. M., Simmonds, P. G., Sturges, W. T., Oram, D. E., and Derwent, R. G.: Greenhouse gas measurements from a UK network of tall towers: technical description and first results, \*Atmospheric Measurement Techniques\*, 11, 1437–1458, <https://doi.org/10.5194/amt-11-1437-2018>, 2018.](#)

What is the Methane Alert and Response System (MARS)? <https://unenvironment.widen.net/s/7pmjgcdgkz/mars-infographic-1>, last access: 1 August 2023.

1025 Greenhouse Gas Equivalencies Calculator: <https://www.epa.gov/energy/greenhouse-gas-equivalencies-calculator#results>, last access: 22 September 2023.

Varon, D. J., Jacob, D. J., McKeever, J., Jervis, D., Durak, B. O. A., Xia, Y., and Huang, Y.: Quantifying methane point sources from fine-scale satellite observations of atmospheric methane plumes, *Atmospheric Measurement Techniques*, 11, 5673–5686, <https://doi.org/10.5194/amt-11-5673-2018>, 2018.

1030 [Varon, D. J., McKeever, J., Jervis, D., Maasackers, J. D., Pandey, S., Houweling, S., Aben, I., Scarpelli, T., and Jacob, D. J.: Satellite Discovery of Anomalously Large Methane Point Sources From Oil/Gas Production, \*Geophysical Research Letters\*, 46, 13507–13516, <https://doi.org/10.1029/2019GL083798>, 2019.](#)

Gas Pipe Upgrades | Wales & West Utilities: <https://www.wwutilities.co.uk/services/gas-pipe-upgrades/>, last access: 30 August 2023.

1035 Webster, H. N., Whitehead, T., and Thomson, D. J.: Parameterizing Unresolved Mesoscale Motions in Atmospheric Dispersion Models, *Journal of Applied Meteorology and Climatology*, 57, 645–657, <https://doi.org/10.1175/JAMC-D-17-0075.1>, 2018.

Zazzeri, G., Lowry, D., Fisher, R. E., France, J. L., Lanoisellé, M., and Nisbet, E. G.: Plume mapping and isotopic characterisation of anthropogenic methane sources, *Atmospheric Environment*, 110, 151–162, <https://doi.org/10.1016/j.atmosenv.2015.03.029>, 2015.