

# Extreme springs in Switzerland since 1763 in climate and phenological indices

Noemi Imfeld<sup>1,2</sup>, Koen Hufkens<sup>1,2</sup>, and Stefan Brönnimann<sup>1,2</sup>

<sup>1</sup>Oeschger Center for Climate Change Research, University of Bern, Switzerland

<sup>2</sup>Institute of Geography, University of Bern, Switzerland

**Correspondence:** Noemi Imfeld (noemi.imfeld@unibe.ch)

**Abstract.** Historical sources report manifold on hazardous past climate and weather events that had considerable impacts on society. Studying changes in the occurrence or mechanisms behind such events is, however, hampered by a lack of spatially and temporally complete weather data. Especially, the spring season has received less attention in comparison to summer and winter, but is nevertheless relevant since weather conditions in spring can delay vegetation and create substantial damage due to ~~for example~~ late frost events. For Switzerland, we created a daily high-resolution (1x1 km<sup>2</sup>) reconstruction of temperature and precipitation fields from 1763 to 1960, that forms together with present-day meteorological fields a 258-year-long gridded data set. With this data set, we study changes in ~~longer-term~~ long-term climate and historical weather events based on climate and phenological indices focusing on the spring season.

Climate and phenological indices show few changes in the mean during the first 200 years, ~~but compared to the most recent period from 1991 to 2020, where~~ climate change signals clearly ~~emerge in all indices in the most recent period~~ emerged in many indices. We evaluate the climate and phenological indices for three cases of extreme spring weather conditions, an unusually warm spring, two late frost events, and three cold springs. Warm springs are much more frequent in the 21st century, but also in 1862 a very warm and early spring occurred. Spring temperatures, however, do not agree on how anomalously warm the spring was when comparing the Swiss temperature reconstruction with reanalyses that extend back to 1868. The three springs of 1785, 1837, and 1853, were particularly cold with historical sources reporting for example prolonged lake freezing and abundant snowfall. Whereas the springs of 1837 and 1853 were characterized by cold and wet conditions, in the spring of 1785 ~~wet days~~ wet days were below average and frost days reached an all-time maximum, in particular, ~~in the Swiss Plateau, frost days reached an all-time maximum. Such inversion conditions are confirmed by mostly indicating inversion conditions. Such conditions are in line with a high occurrence of~~ north-easterly and high pressure weather types and historical sources describing ~~prolonged Bise conditions~~ Bise conditions, a regional wind in the Alpine area related to inversions. Studying such historical events is valuable since similar atmospheric conditions can ~~also nowadays~~ lead to cold springs affecting vegetation growth and agricultural production.

## 1 Introduction

Studies of long-term climate variability often focus on the summer or winter season. However, climate in spring is equally important, for example, for plant growth, and may have far reaching impacts. Cold spells in spring can delay crop growth considerably, late frost events can destroy ~~harvests~~subsequent harvests (Vitasse and Rebetez, 2018), and spring snowfall may put trees at risk due to snowfall (e.g. Tavankar et al., 2019; Schelhaas et al., 2003). Moreover, late beech leaf unfolding may prolong the spring wildfire season as sunlight penetrates to the ground and dries the litter layer ~~Studying such~~ (Valese et al., 2011). Studying adverse weather conditions in spring requires daily data, from which targeted climate indices can be calculated. Studies have evaluated changes in climate indices over the last few decades (e.g. Brown et al., 2010; Domínguez-Castro et al., 2020; Zhang et al., 2011), also focusing specifically on spring conditions, such as changes in late frost occurrence ~~and~~, safety margins of plants (e.g. Wypych et al., 2017; Vitasse et al., 2018). ~~Only~~, and false springs (e.g. Wypych et al., 2017; Vitasse et al., 2018; Zahradníček et al., 2018). ~~However, only~~ very few studies ~~however, have~~ extended analyses of daily-based climate indices ~~across over~~ several centuries because the necessary temporally complete daily data ~~that is needed is scarcely available~~ (Brugnara et al., 2022; Parker et al., 1992; Diodato et al., 2020). are rarely available (Brugnara et al., 2022; Diodato et al., 2020; Parker et al., 1992). In particular from a historical perspective evaluating daily-based indices, such as the occurrence of frost days or the occurrence of the last frost day in spring can be relevant as they are often reported in historical documents (Zhang et al., 2011; Pfister et al., 2017). Studying historical weather conditions in spring may also contribute to our understanding of today's adverse spring weather since it extends the sample of extreme events.

For Switzerland, we created a daily high-resolution (1x1 km<sup>2</sup>) reconstruction of temperature and precipitation fields from 1763 to 1960 (Imfeld et al., 2023), that forms together with present-day meteorological fields a 258-year-long gridded data (MeteoSwiss, 2021a, b). This data set allows us to calculate impact-relevant climate and phenological indices for the 258-year-long period and to study ~~longer-term~~ long-term spring climate and past extreme springs since 1763. A dense network of phenological observations exists in Switzerland starting in 1951 (Auchmann et al., 2018; Brugnara et al., 2020a), but for earlier periods, historical phenological observations are sparse. Thus, we used numerical approaches to model phenology from the gridded daily meteorological data.

This article is organized as follows. In Sect. 2, we describe the meteorological data used to calculate climate and phenological indices. In Sect. 3, we describe the calculation of the climate indices and the phenological application. In Sect. 4, we describe the long-term changes in the climate and phenological indices ~~and~~ analyze these indices for three different extreme spring cases, a warm spring, two frost events, and three cold springs. These results are discussed in Sect. 5. In Sect. 6, we conclude our article.

## 2 Data

### 2.1 Meteorological data

For the calculation of climate and phenological indices, we used a reconstruction of 258 years of daily mean temperature and daily precipitation sums for Switzerland covering a period from 2 January 1763 to 31 December 2020 with a resolution of 1 km (Imfeld et al., 2023). For precipitation, the gridded ~~dataset~~ data set also covers catchment areas outside Switzerland. These meteorological fields were reconstructed with the analog resampling method, quantile mapping, and data assimilation. The analog resampling and data assimilation are performed using a large number of instrumental measurement series from Switzerland and neighbouring regions. The data sets consist of two main sub-periods with different reconstruction skills due to the availability and quality of the input data. From 1763 to 1864, the reconstruction shows good skills for daily temperature with correlations on average between 0.80 and 0.96 (calculated from the anomalies of a climatological annual cycle) and root mean squared errors on average between 1 and 2.6 °C depending on the input station network and season. For precipitation, the reconstruction skill for the period from 1763 to 1864 is ~~considerably~~ lower with correlations on average between 0.6 and 0.8 and root mean squared errors between 6 and 10 mm depending on station network and season. However, the number of monthly wet days ~~compares well to independent observations~~ (daily precipitation > 1 mm) compares well with an independent series of wet days from Bern as shown in Imfeld et al. (2023). After 1864, reconstruction skills are much improved across Switzerland for both temperature and precipitation data. Despite the drawbacks in the early period, we used this novel data set, since it is the first one offering daily data at a high spatial resolution ~~for Switzerland~~.

To represent the uncertainty in the phenological indices, for temperature we used additionally an ensemble of the ten best analogue days with subsequent by data assimilation (see Imfeld et al., 2023). As the first analogue day is a better representation of a historical day than the second analogue day, this ensemble is not equivalent to a commonly used ensemble where all members are equally likely. A detailed description of the ~~reconstruction~~ entire reconstruction and reconstruction method is found in Imfeld et al. (2023).

### 2.2 Reanalyses and weather types

In addition, we used the station-based daily temperature time series for the Swiss ~~plateau~~ Plateau derived from the series of Bern and Zurich (Brugnara et al., 2022), further denoted as the "Swiss series" ~~and~~ the reanalysis 20CRv3 starting in 1807 (Slivinski et al., 2019) and to calculate the same indices. For monthly mean values, we used the Modern Era Reanalysis ModE-RA ~~(?) to calculate the same indices~~ (Valler et al., 2024). Note that these data sets are not fully independent of the Swiss reconstruction since they all rely partly on the same input data. From the reanalysis 20CRv3, we selected out of the four closest grid cells, the cell that correlates well and had a low bias ~~compare~~ compared to the Swiss Plateau area mean value. For ModE-RA, we used the grid cell in the northwest of Switzerland because it had ~~a~~ low biases in comparison to the Swiss Plateau area mean. 20CRv3 assimilates pressure observations from Hohenpeissenberg, Torino, and Geneva, which are also used in the Swiss reconstruction (Imfeld et al., 2023), ~~whereas~~ ModE-RA assimilates pressure, temperature, and wet-days ~~wet days~~, but on a monthly resolution. 20CRv3 and ModE-RA were further used to analyze ~~similar~~ atmospheric conditions during the

85 extreme spring examples. To evaluate the occurrence of weather types, we considered the reconstruction of Schwander et al.  
(2017) starting in 1763.

### 3 Methods

#### 3.1 Climate indices

We selected ~~eight-nine~~ different climate indices for daily mean temperature and precipitation (~~Tab. Table~~ 1, upper ~~rowpart~~)  
90 which have been suggested by the Expert Team on Climate Change Detection and Indices (ETCCDI) (e.g. Zhang et al., 2011).  
They are not exclusively based on spring weather, i.e. some are influenced already by winter temperatures, but they generally  
relate to conditions in spring. Because only daily mean temperature is available for the period since 1763, we adjusted the  
indices to daily mean temperature. A frost day was defined as a day with a daily mean temperature equal to or below 0 °C.  
Such a day is thus colder than what is normally considered a frost day, but it is warmer than an ice day, for which maximum  
95 temperature needs to be below 0 °C. The warm and cold spell indices were calculated for the 10th and 90th percentile thresholds  
in the reference period of 1871 to 1900 for daily mean temperature and not minimum and maximum temperature. ~~Snowfall~~  
~~days were calculated according to Zubler et al. (2014) using a threshold of at least 1 mm for precipitation and less than 2 °C~~  
~~for daily mean temperature~~. Further, we calculated the growing season start based on the first six days of the year with daily  
mean temperature above 5 °C in a year. The growing season length index, which is based on the growing season start, has been  
100 criticized for a high inter-annual variability related to the fact that the index operates on synoptic time scales (Cornes et al.,  
2019), rather than representing the conditions within a whole season. Thus, we also used the growing degree days index (GDD)  
that can be seen as a starting point for spring vegetation based on different thresholds (Wypych et al., 2017). Here, we used a  
threshold of 200 growing degree days.

For precipitation, we only focused on wet days related indices since these are better represented in the reconstruction. Thus,  
105 we calculated the seasonal wet days, consecutive wet days, i.e. the maximum number of consecutive wet days in a season, and  
an estimate of snowfall days. Snowfall days were estimated according to Zubler et al. (2014) using a threshold of at least 1  
mm for precipitation and less than 2 °C for daily mean temperature. We evaluated these thresholds by comparing the closest  
grid cells of snowfall days with observations of snowfall days at 27 different stations across Switzerland for the spring season.  
The results showed a mean Spearman correlation of 0.8 and a mean bias of -0.3 d. Especially for stations above 1000 m, the  
110 gridded data set showed a tendency to underestimate the number of snowfall days. It is therefore important to remember that  
our snowfall days only represent potential snowfall days. Nevertheless, these estimates provide a good basis for evaluating  
spring snowfall over the historical period.

All indices were calculated for the entire available period from 1763 to 2020 and for the ~~months of spring months from~~  
March to May for aggregated indices. Long-term changes in the indices were discussed based on 30-year mean values for eight  
115 climatological periods from 1781 to 1810, 1811 to 1840, 1841 to 1870, 1871 to 1900, 1901 to 1930, 1931 to 1960, 1961 to  
1990, and 1991 to 2020. Anomalies are shown as a deviation from the ~~pre-industrial reference period of period from~~ 1871  
to ~~1900 as it is defined in Begert et al. (2019)~~ 1900. This period is defined as the pre-industrial reference period by the Swiss



**Table 1.** Climate and phenological indices. The phenological model ~~descriptions are found further described in appendix ??~~[Sect. 3.2.](#)

<b>Climate index(Abbr.)</b>	<b>Definition</b>	<b>U</b>
Growing season start ( <del>GSS</del> )	First day of at least 6 days with daily mean temperature > 5 °C	da
Growing degree days ( <del>GDD</del> )	Accumulated temperature > 5 °C reaching 200 GDD	da
Frost days ( <del>FD</del> )	Number of frost days with daily mean temperature ≤ 0 °C	da
Last frost day ( <del>LFD</del> )	Last day of the first half of the year with daily mean temperature ≤ 0 °C	da
Cold spell index ( <del>CSDI</del> )	Number of 5 consecutive days with daily mean temperature > <del>20th-10th</del> percentile	da
Warm spell index ( <del>WSDI</del> )	Number of 5 consecutive days with daily mean temperature < <del>80th-90th</del> percentile	da
Wet days ( <del>WD</del> )	Number of days with daily precipitation ≥ 1 mm	da
<del>Snowfall-Consecutive dry day</del> <a href="#">Snowfall days estimate</a>	<del>Maximum number of consecutive days with daily precipitation ≥ 1 mm</del> Number of days with daily mean temperature < 2 °C and daily precipitation sum ≥ 1 mm	da
<b>Phenological index</b>	<b>Description and scientific name</b>	<b>M</b>
Cherry full flowering	Prunus avium - flowering (50 %)	PT
Beech leaf unfolding	Fagus sylvatica - leaf unfolding (50 %)	TT
Frost index	Accumulated <del>temperature below</del> <a href="#">daily mean temperature</a> ≤ 0 °C after <del>phenological phase</del> <a href="#">cherry full flowering</a>	-

[weather service based on comparison with other periods \(Begert et al., 2019\). Therefore, we used this period as a reference period in the herein presented results.](#) For the calculation of indices based on the Swiss ~~Plateau~~-series (Brugnara et al., 2022),  
 120 the entire year/season was set to missing for [the indices](#) growing season start and growing degree days if a missing value occurred. For aggregated indices (e.g. frost days, wet days), a value was set to missing if more than 10 % of the values in an aggregation period were missing. ~~Further~~ [All indices and their](#) definitions can be found in Table 1.

All calculated indices for a monthly, seasonal, and annual time aggregation for the period 1763 to 2020 are published at the open-access repository PANGAEA (Imfeld et al.).

### 125 3.2 Phenological application

To study the impacts of past weather on the spring vegetation, we calculated the cherry full flowering and beech leaf unfolding day-of-year from daily mean temperature data. Cherry flowering occurs around ~~mid-April~~ [mid-April](#) in the Swiss ~~plateau and~~ [can thus serve as a good indication for Plateau and is therefore a good indicator of](#) the state of the spring vegetation. Beech leaf unfolding occurs around the beginning of May in the Swiss ~~plateau~~ [Plateau](#) and is thus representative of later spring vegetation.  
 130 The phenological phases refer to the day of the year when 50 % of the cherry tree is blooming, resp. 50 % of the beech ~~leaves are unfolding.~~ [We leaves are unfolded.](#)

[For calibrating and reconstructing the phenological phases during the 258-year long period we](#) used the phenological observations of the Swiss phenological network (SPN) between 1951 and ~~2020 for calibrating and reconstructing the phenological~~

135 ~~phases during the 258-year-long period-2020.~~ Only series with a quality class of at least 3 were used leading to a total of 68  
 140 (56) time series for cherry flowering (beech leaf unfolding) with record lengths between 35 and 71 years distributed across  
 Switzerland (Auchmann et al., 2018; Brugnara et al., 2020a). ~~For~~ These quality classes were defined based on the length of  
 records, completeness (missing values and number of gaps >5 years), reliability (number of quality flagged values), and number  
 of inhomogeneities in the record. For further details on the quality classes see Auchmann et al. (2018). For the cherry full flow-  
 140 ering only grid cells below 1600 m a.s.l. where were considered because the observational network only includes observations  
 below this altitude.

The cherry full flowering ~~time was~~ dates were estimated using a photo thermal time model (PTT) as implemented in the phe-  
 nor R package (Hufkens et al., 2018) ~~for which 3 parameters needed to be calibrated (Appendix ??, by~~ Hufkens et al. (2018).  
It is based on the growing degree days temperature response ( $R_g$ ) and a term accounting for the photoperiod estimated based on  
the daylength  $L_i$  of day  $i$  (Eq. 1 and Eq. 2). ~~Beech leaf unfolding was estimated using a~~ Temperatures are accumulated starting  
 145 at day  $t_0$  until day  $n$ , if the daily mean temperature is above the threshold  $T_{base}$ .  $T_i$  represents the daily mean temperature of day  
 $i$ . When the state of forcing,  $S_{frc}$ , reaches a specific threshold  $F_{crit}$ , the phenological phase happens. The parameters  $F_{crit}$ ,  $T_{base}$ ,  
and  $t_0$  are calibrated based on the phenological observations from 1951 to 2020.

$$R_g(T_i) = \begin{cases} 0 & \text{if } T_i \leq T_{base} \\ T_i - T_{base} & \text{if } T_i > T_{base} \end{cases} \quad (1)$$

$$S_{frc} = \sum_{i=t_0}^n \frac{L_i}{24} R_g \geq F_{crit} \quad (2)$$

150 The beech leaf unfolding dates were estimated based on the thermal time model ~~(TT) which also.~~ This model is based on ~~3~~  
~~parameters but no term accounting for daylength, i.e. photoperiod (Appendix ??, Eq. 1 and Eq. 3).~~ the growing degree days  
temperature response  $R_g$  (1), but the daylength is not considered (3).

$$S_{frc} = \sum_{i=t_0}^n R_g \geq F_{crit} \quad (3)$$

155 Both models are solely based on a forcing response of temperature and do not include chilling accumulation, i.e. the  
accumulation of daily mean temperature below a certain threshold. The evaluation of all models based on daily mean temperature  
and included in the phenor R package (Hufkens et al., 2018) showed rather similar evaluation results with the two models  
selected here performing slightly better. The lack of winter chilling in our models can, however, influence the estimated  
phenological phases. The two evaluated species both have a negative correlation between the chilling accumulation and the heat  
requirement for their spring phenology (Wang et al., 2020). Calibrating a model on observations already affected by climate  
 160 change (especially the years between 1990 and 2020) without considering winter chilling might, thus, lead to a higher heat

requirement as shown in Wang et al. (2020). Transferring these calibrated models then to the past could lead to phenological dates being too late in spring. A comprehensive study of these effects would be needed but was beyond the scope of this article.

The model parameters were calibrated with a Markov Chain Monte Carlo differential evolution sampler with snooker update  
165 ~~(Ter Braak and Vrugt, 2008; Hartig et al., 2023)~~ (Hartig et al., 2023; Ter Braak and Vrugt, 2008) and run with ~~18000 iteration~~  
18,000 iterations across 3 chains. Bayesian model calibration has been shown to perform well for the calibration of phenologi-  
cal models ~~(e.g. Meier and Bigler, 2023; Fu et al., 2012)~~ (e.g. Fu et al., 2012; Meier and Bigler, 2023) and it further allows for  
assessing the uncertainty and convergence of model parameters. For the prior distributions of the parameters, a uniform distri-  
bution with pre-set bounds as defined in Hufkens et al. (2018) ~~were was~~ used. The model calibration converged with a potential  
170 scale reduction ~~factors~~ factor of 1.02 or below (Gelman and Rubin, 1992). Figure A1 in ~~Appendix A~~ the Appendix shows  
the trace of the calibrated parameters for the 6000 iterations and the marginal densities thereof. Figure A2b shows the root  
mean square error from a cross-validation based on station data. We added both phenological phases to the provided indices  
on PANGAEA (Imfeld et al.), but in the following only discuss cherry full flowering.

For comparing the phenological reconstructions to independent historical observations, we used the time series for full flow-  
175 ering of cherry in Liestal (Canton of Baselland) starting in 1894 (Defila and Clot, 2001) and a composite time series of cherry  
flowering from different historical sources representative of the Swiss ~~plateau-by~~ (Rutishauser et al., 2003; Burgdorf et al., 2023)  
Plateau (Burgdorf et al., 2023; Rutishauser et al., 2003).

The cherry full flowering was further used to study the frost occurrence after flowering that could potentially cause damage to  
trees. A frost index was calculated following Lhotka and Brönnimann (2020) by accumulating daily mean temperature below 0  
180 °C from the onset of cherry flowering (minus 3 d) until ~~the~~ the 30 June. This yielded an estimate of the area affected by late frost and  
of the intensity of the frost occurring. Most current studies of spring frost events (Vitasse and Rebetez, 2018; Vitasse et al., 2018, e.g.)  
relied on daily minimum temperature which has shown different rates of changing compared to the daily maximum or daily  
mean temperature (Scherrer and Begert, 2019). Since minimum temperature is not available in the past, we did not look at  
changes over time but focused on the representation of specific historical frost events.

## 185 4 Results

### 4.1 Longterm changes in climate and phenological indices

Most climate indices showed few differences in their climatological mean in the first five periods from 1781 to 1900 (Fig. 1  
and 2). The Swiss climatological reference period from 1871 to 1900 showed slightly colder conditions in some of the indices  
compared to the earlier periods. Growing degree days were up to five days earlier in the Swiss ~~plateau~~ Plateau in the periods  
190 between 1781 to 1870 compared to the 1871 to 1900 period, up to four frost days less were registered in these periods, and up  
to eight warm spell days more. Figure A1 ~~in Appendix B and A1 in the Appendix~~ shows the anomalies of the seven periods  
with respect to the ~~pre-industrial mean reference~~ pre-industrial mean reference period from 1871 to ~~1900~~ 1900. (Begert et al., 2019).

Warmer conditions emerged in all indices for the three periods from 1931 onward. The 1931 to 1960 period showed earlier growing season start and earlier growing degree days compared to the period from 1961 to ~~1990~~1990, but few differences in frost days, last frost days, and warm and cold spells. Very clear differences emerged in the last period of 1991 to 2020 (Fig. 1, ~~last column~~ and 2, last row). Across Switzerland, the growing season started up to 24 d earlier than in the ~~pre-industrial~~ reference period 1871 to 1900. The 200 GDD was reached up to 25 d earlier, and the last frost days occurred up to 25 d earlier compared to the ~~pre-industrial-reference~~ reference period 1871 to 1900. Warm spell days increased by up to 20 d, whereas cold spell days decreased by up to 10 d. P values from the comparison of the climatological mean and the ~~pre-industrial-mean~~ mean of the reference period with a Student's t test show that for most indices the last period significantly differs at a 0.05 confidence level (not shown).

Based on our reconstruction, cherry flowering occurred on average between mid and end of April in the Swiss Plateau during the reference period from 1871 to 1900 (Fig. 1 i). The flowering phase did not show considerable changes in the mean in the first five periods until 1930. Changes become apparent in the period of 1931 to 1960 at higher locations, and much more pronounced again in 1991 to 2020 with between 5 and 15 d earlier than in the reference period (see also in Appendix Fig. A1). The Student's t test showed significant differences at a level of 0.05 in parts of Switzerland already in the 1931 to 1960 period (not shown).

For the precipitation-related indices ~~snowfall days and wet days, differences only ranged between -5 to +5 d throughout all periods~~, differences between the periods were small (Fig. 1 and A1g and h2 and A1 c to e). The first two periods showed a north-south ~~precipitation difference~~ difference in the number of wet days compared to the ~~pre-industrial-mean~~, which mean of the reference period from 1871 to 1900. This is likely an artifact of the ~~dataset~~ data set due to the lack of precipitation data before 1864 in southern Switzerland. The 1931 to 1960 period showed ~~fewer~~ a lower estimate of snowfall days and wet days than ~~the pre-industrial in the~~ reference period. This period also included a prolonged episode of warm and dry years between 1945 to 1952 in Switzerland and Western Europe (Imfeld et al., 2022). The period from 1961 to 1990 showed no differences in ~~snow days~~ the snowfall days estimate compared to the ~~pre-industrial-reference~~ reference period, whereas the 1991 to 2020 period showed up to five days fewer snowfall days. Similarly, wet days did not show any difference in the 1961 to 1990 period, whereas they decreased in the last period. For ~~snowfall days~~ the snowfall days estimate, the differences in the mean value became significant at a 0.05 level for the last period compared to the ~~pre-industrial-reference~~ reference period (not shown).

~~Based on our reconstruction, cherry flowering occurred on average between mid and end of April in the Swiss plateau during the pre-industrial period from 1871 to 1900 (Fig. 1 i). The flowering phase did not show considerable changes in the mean in the first five periods until 1930. Changes become apparent in the period of 1931 to 1960 at higher locations, and much more pronounced again in 1991 to 2020 with between 5 and 15 d earlier than in the pre-industrial-reference period (see also Appendix Fig. A1). The Student's t test showed significant differences at a level of 0.05 in parts of Switzerland already in the 1931 to 1960 period (not shown).~~

Time series for the area-mean of the Swiss ~~plateau~~ Plateau region (Swiss recon), for the 20CRv3 reanalysis, the merged time series from Zurich and Bern (Swiss series), and the ensemble mean of ModE-RA depict a steep trend of the indices in the late 1980s for daily mean temperature and GDD (Fig. 3a and b). 20CRv3 shows lower temperatures, e.g. leading to later

GDD, in the period from 1806 to around 1835, which is also a period where few observations were assimilated into 20CRv3 (Slivinski et al., 2021, 2019) and considered the experimental extension (Slivinski et al., 2019, 2021). ModE-RA agrees well with the Swiss reconstruction and the Swiss series in the 18th and 19th centurycenturies, whereas it is on average colder than the other data sets in the 20th century. Notably cold springs in the time series are 1785, which also showed a much higher number of frost days in the Swiss plateau-Plateau than any other year, and 1837, which is together with 1785 the coldest spring in the 258-year-long time series. On the other hand, several springs showed quite high temperatures, comparable to the beginning-warm springs of the 21st century. The most prominent among these is the spring of 1862. Less visible in the 30-year climatologies, but evident from the time series are also the periods in the late 1940s and around the 1860s which show overall higher spring temperatures and earlier GDD.

The trend towards earlier flowering is also seen in the cherry flowering time series, with much-considerable earlier dates after 1989-1989 (Fig. 3d and e). For the cherry tree in Liestal, the Pearson correlation between the reconstruction and the observation was 0.85, but the reconstruction showed a mean bias of 7.36 d (Fig. 3d). The ten ensemble members of the temperature reconstruction are barely distinguishable from each other since differences between the individual members only range between -5 and +4 d. Overall, 94% of the estimated phenological dates differ only between -1 and +1 d between the members. The reconstruction uncertainty stemming from the temperature data is, therefore, small, and it is below the mean root mean squared error when calibrating the phenological model (see Fig. A2 for comparison). However, all members are based on the same temperature observations. Errors in these observations are not considered and could increase the uncertainty.

For the composite cherry flowering from Rutishauser et al. (2003), Pearson correlation was the Pearson correlation is 0.67, and the mean bias is 2.97 d considering the best reconstruction (Fig. 3e). Despite the biases between the reconstruction and the historical observations, the phenological reconstruction reproduced the overall variability throughout the years. Thus, the reconstruction offers an estimate to study cherry flowering in the past across Switzerland. As for Liestal, the ten ensemble members show very similar flowering dates. For the Swiss Plateau, on average the earliest flowering occurred in 2017 (4 April), which was related to a damaging frost event in Switzerland (Vitasse and Rebetez, 2018). The latest flowering happened in 1785 (15 May), followed by 1853 (12 May), and other. Other late years with cherry flowering between 9 and 10 of May were for example 1770 (a prolonged cold and wet period; see Collet 2018 and Imfeld et al. 2023), 1817 (after the year without a summer; see Flückiger et al. 2017), 1808, 1932, and 1837.

Despite the biases between the reconstruction and the historical observations, the phenological reconstruction reproduced the overall variability throughout the years. Thus, the reconstruction offers an estimate to study cherry flowering in the past across Switzerland.

## 4.2 Examples of extreme springs

Based on these climate and phenological indices, we studied three examples of extreme spring conditions, that may affect for example-vegetation growth in spring. Namely, we considered the early warm spring in 1862, the occurrence of late frost events in 1873 and 1957, and the three years 1785, 1837, and 1853 with especially cold springs and late cherry flowering. In addition

to the presented indices, we analyzed atmospheric variables for illustration of the weather conditions during the extreme spring cases, and we qualitatively evaluated historical sources reporting the weather conditions and weather-related impacts.

#### 4.2.1 The warm spring in 1862

Very warm springs considerably increased after the 1980s (Fig. 3a). However, also in the late 18th and early 19th century, several warm springs with high daily mean temperature and for example, early reach of 200 GDD occurred (Fig. 3a and b). The spring of 1862 in particular, stands out with a mean temperature of 10.4 °C between March and May in the Swiss plateau and Plateau based on the gridded reconstruction. It ranks as the third warmest spring since 1763 after the two warmest springs 2011 (11 °C) and 2007 (10.9 °C). With respect to the climatological period from 1841 to 1870, 1862 was exceptionally warm with an anomaly of 2.9 °C for the Swiss plateau-Plateau area mean. In contrast, the second (1841) and third (1846) warmest springs in the 1841 to 1870 period showed less pronounced anomalies of 1.8 and 1.1 °C. The warmest spring in 2011 had an anomaly of only 1.8 °C with respect to its mean climate from 1991 to 2020. We also considered the Swiss series of Bern and Zurich (Brugnara et al., 2022) and 2 m temperature from 20CRv3 (Slivinski et al., 2019). In the Swiss series, the spring of 1862 ranks seventh with a mean temperature of 10.09-10.1 °C between March and May. It had an anomaly of 2.8 °C considering the mean of the period from 1841 to 1870, whereas 2011 it had an anomaly of 1.8 °C considering its mean climate from 1991 to 2020. Thus, the anomalies were very similar and the spring of 1862 seemed to be have been unusually warm for this its period. In 20CRv3, the anomaly of the spring 1862 was lower with 1.9 °C with respect to the 1841 to 1870 period. Across all years, the spring of 1862 only ranks 17th in 20CRv3. In contrast, in ModE-RA, which ends in 2008, the spring of 1862 showed the highest temperature across the period from 1763 to 2008 and had an anomaly of 2.6 °C concerning the 1841 to 1870 mean. The spring of 2007 was the second warmest, but 2011 is missing for comparison. The number of assimilated observations in ModE-RA, however, gradually reduces towards the 21st century affecting the temperature analysis (Valler et al., 2024).

For both, the warmest spring of 2011 and the warm pre-industrial-spring of 1862, climate indices showed above-average temperatures and an above-average number of warm spell days across the entire Switzerland, though much more pronounced in 2011 (Fig. 4). Both springs showed mostly fewer wet days and fewer snowfall days than on average between 1871 and 1900. Cherry flowering was in certain areas up to 24 d advanced, in particular at higher altitudes.

Over eastern Europe, The reanalysis 20CRv3 showed only a very weak positive geopotential height anomaly at the 500hPa level over eastern Europe for the mean of the spring months March to May 1862 (Fig. 5a). For the spring of 2011, a more pronounced positive geopotential height anomaly at the 500hPa level was present over western Europe indicating that Switzerland was affected by the warmer and drier conditions (Fig. 5b). In the spring of 1862, a cold anomaly in mid-April interrupted the warm weather (Fig. 5c) leading to frost and snowfall over Switzerland, but, for example, for Aarau as mentioned above no reports on vegetation damage were found (Zschokke, 1865). After the cold spell, a pronounced ridge established again over Western Europe leading western Europe continuing to the warm spring weather (Fig. 5d). In ModE-RA, for which 1862 is the warmest spring in the 1763 to 2008 period, the geopotential height field of March to May at the 500 hPa level in spring was comparable to 20CRv3. Still with no pronounced ridge. But, the respective temperature anomalies were more pronounced than in 20CRv3 (see e.g. Fig. 3 and anomalies in the text above) (Appendix, Fig. A2).

295 Historical sources indeed reported an unusual early snow-free period in spring 1862 in Ursern, a valley in the Canton of Uri  
(Ambühl, 1961). (see Table 2 and Fig. A3). Already very early in the year the Gotthard was passed by carriage and not sled  
(Zschokke, 1865) which could point points to warm weather leading to early snow-melting, but also to less snowfall in the  
months before. For Aarau, Theodor Zschokke reported unusual advances in the vegetation, for example, a start of the cherry  
flowering as early as the 6th of April. In our reconstruction the cherry flowering happened on the 8 April in Aarau and on  
300 average on the 11 April in the Swiss plateauPlateau. The snowfall and frost that occurred in mid-April did not lead to damage  
in lower-lying areas (Zschokke, 1865). An official weather report from the weather service for the year 1862, however, did not  
mention an unusually warm spring (MeteoSwiss, 2016), but more qualitative sources describing the spring weather might be  
available.

#### 4.2.2 The late frost events in 1873 and 1957

305 Combining the cherry flowering reconstruction with climate indices allows us to look at climate events that affected vegetation  
directly, such as the occurrence of late frost in spring that can lead to considerable damage to vegetation. Two events stand  
out when considering the affected area and the intensity of the frost events (Fig. 6). In 1873, frost conditions after the cherry  
flowering affected large parts of Switzerland, however, the daily mean temperature did not fall much below 0 °C (daily mean  
temperature). The frost index based on the accumulated negative temperature reached at most -6 °C in the Swiss Plateau (Fig.  
310 6a). The last frost day occurred between the 26th and 28th of April across northern Switzerland, which is more than half a  
month later than it occurred on average between 1871 and 1900. In contrast, cherry trees reached their full bloom up to 10 d  
early (Fig. 6b). In the spring of 1957, a frost event occurred with very low temperatures, but the affected area was smaller  
(Fig. 6ba). The frost index showed much higher values, but affecting but affected only areas above 800 m a.s.l. For these areas,  
the last frost days, which occurred between the 6th and 8th of May, were also more than half almost a month later than between  
315 1871 and 1900 (Fig. 6c), and the cherry tree flowering was considerably earlier.

For both springs, March was characterized by average or above-average temperature conditions across Central Europe,  
though more pronounced for March 1957 (Fig. 6ad). These high temperatures in March might have likely led to an early start  
of the cherry flowering. In March 1873, temperature anomalies were positive, but the geopotential field shows a more zonal  
configuration (Fig. 7). On the 26th of April 1873, a large trough extended over Switzerland from the Northeast leading to the  
320 temperature drop. In 1957, temperatures reached their lowest values on the 8th May when a large trough was located above  
Switzerland.

For both events, damage caused by the late frost events was reported. In 1873, frost damage was reported for Sursee,  
Marschlins, Bad-Ragaz, and Appenzell-Innerrhoden, whereas many locations registered snowfall during the 26th to 28th April  
leading to further damage to the vegetation (Tab. 2 Table 2 and Fig. A3). For the frost event of 1957, the Swiss farmer  
325 association calculated a reduction of yield in pear and apple trees of 75 % and for cherries of 44 % compared to the six  
preceding years indicating considerable loss in harvests (Tab. Table 2).



### 4.2.3 The cold springs of 1785, 1837, and 1853

The three springs, 1785, 1837, and 1853 registered the lowest temperatures of the entire time series of 258 years and lie below the 1% quantile of all springs temperatures. Their mean [spring](#) temperature in the Swiss ~~plateau from March to May~~ [Plateau](#) reached only between 4.1 to 5.1 °C (Fig. 3) which is up to 3 °C degrees colder than the 1871 to 1900 average (Fig. 8a). In the Swiss series, the coldest spring was in 1837 with a mean temperature of only 3.8 °C and an anomaly of -3.4 °C followed by 1785 with a mean temperature of 4.1 °C and 1853 with a mean temperature of 5.1 °C. In 20CRv3, the spring of 1837 ranks the coldest with an anomaly of -4.0 °C with respect to 1871 to 1900, but 1785 is not available. In ModE-RA, the coldest spring was registered in 1837, followed by 1785, 1970, and 1853 with anomalies between ~~-2.24 and -1.84~~ [-2.2 and -1.8](#) °C with respect to 1871 to 1900.

Indices show, that during the three springs, the cherry flowering was up to 20 d later than the average of 1871 to 1900, and up to 30 more frost days were registered (Fig. [8b and c](#)). Snowfall day anomalies were positive in the spring of 1837 and 1853 [mostly especially](#) in the Alps, but they were negative in the Alps in the spring of 1785. The spring of 1785 also registered fewer wet days than in the 1871 to 1900 period and thus did not concur with the two other springs, that showed wet and cold conditions. In 1785, the frost days indeed showed a different spatial pattern with much larger frost day anomalies in the Swiss ~~plateau~~ [Plateau](#) region compared to the Alps, which would correspond to an inversion situation. This suggests that synoptic conditions were different over Europe during 1785 compared to the two other cold springs.

Weather types allow a look at the synoptic conditions throughout the three cold springs. The late springs of 1837 and 1853 show a higher occurrence of northerly cyclonic situations (N) and cyclonic situations with westerly flow over Southern Europe (WC) compared to usual spring weather types in the entire period from 1763 to 2020 (~~see Schwander et al. (2017) for the description of weather types~~) ([for the description of weather types see Schwander et al., 2017](#)) (Fig. 9a). More cyclonic weather types are found also on average for all springs with temperatures below the 10th quantile (q10). The spring of 1785, however, showed an increase in weather types describing easterly, indifferent flow (E), and high-pressure situations over Europe (HP). To further evaluate this difference in weather types, we used the variance of bandpass-filtered daily pressure observations which give an insight into the "storminess", i.e. the frequency of passing of extra-tropical cyclones. We followed the approach of Brugnara et al. (2015), but only considered station data for calculating anomalies of the standard deviation. The pressure observations show that storminess ~~was~~ decreased for northern stations in 1785, and it ~~was increased for~~ [increased in](#) 1837 and 1853 over Switzerland (Fig. 9b). Also, the average of the springs below q10 ~~show~~ [shows](#) increased storminess except for two stations.

This is ~~further~~ confirmed by the monthly fields of geopotential height (anomalies) at the 500hPa level during the three spring months March to May (Fig. 10). In February and March 1785, a trough was present over Central Europe leading to advection of cold air from the north. This situation weakens through April and May, but the trough ~~still~~ remains throughout spring. Stations from several locations in Germany, Poland, and ~~Czech Republic, indeed, show all~~ [the Czech Republic all registered](#) the same extended negative temperature anomalies throughout March until mid April (~~not shown~~). In 1837 and 1853, more zonal flow patterns seemed to prevail between March and May and the average of springs below q10 similarly shows more zonal flow.

Historical sources confirm these cold spring weather conditions. In spring 1785, for six lakes reports about continued (partial) lake freezing were found until March (see ~~Tab. Table~~ 2). In March and April, several locations reported abundant snowfall. Due to feed shortage livestock starvation was reported from the Canton of Valais. In St Blaise in the Canton of Neuenburg, strong *Bise* was reported for March and April (Kopp, 1873) ~~and~~. The *Bise* is a wind in the Alpine area channeled between the Jura mountains and the Alps and is related to high pressure and anticyclonic weather conditions (Wanner and Furger, 1990). It is further associated with the advection of cold and dry continental air, and the co-occurrence of stratus formation. Also, for St Blaise Kopp (1873) reported that the first rain (not snow) fell after 4 months ~~feh~~ at the end of May. Both, the *Bise* conditions and late rain indicate specific synoptic conditions for this cold spring. For the springs of 1837 and 1853, fewer sources are available, but they reported abundant ~~rain~~ and rain, snowfall, and frost impacts for various locations in Switzerland. These sources, thus, confirm that all three ~~spring were especially cold and also agree with the classification of Pfister and Wanner (2021) which report cold conditions for all three springs with a category -3 for the Pfister temperature index~~ springs were very cold.

## 5 Discussion

Climate and phenological indices provide a useful way to study historical extreme spring events, such as cold springs or late frost events, and relate them to impacts, for example, the state of vegetation. All indices showed steep changes towards warmer conditions in the last climatological period from ~~1990-1991~~ to 2020. These changes in temperature indices correspond to the widely reported trends for temperature development in Switzerland such as in e.g. Isotta et al. (2019) for monthly means, to changes in snowfall vs. rain (Serquet et al., 2011), and to the changes in spring phenology (Studer et al., 2005; Vitasse et al., 2018). The steep changes towards warmer conditions in the late 1980s have been found in a variety of time series across the world, including vegetation, temperature time series, and snow time series (Reid et al., 2016; Marty, 2008), however, mainly series linked to spring and winter conditions. Sippel et al. (2020) suggested that the changes, which are linked to the cold season temperature, stem from internal variability superimposed on a long-term warming trend.

For Switzerland, phenological models have been used to study for example past frost events (Vitasse et al., 2018) for different tree species and changes in future frost events for grapevines (Meier et al., 2018), but no attempts have been made to extend phenological predictions in space and time. The transferability of the phenological models may be limited in space (e.g. Basler, 2016), and also in time because the sensitivities of the calibrated parameters may not be constant over time, especially when going back until the 18th century (Rutishauser et al., 2007). The comparison of historical phenological observations with our reconstruction shows systematic biases of several days for the series of Liestal, but ~~high correlations, thus the reconstruction is able to a high correlation. Thus, the reconstruction can~~ depict the inter-annual variability of cherry flowering for Liestal despite the bias. For the composite cherry flowering series, the bias is small with below 3 d, but the correlation is also lower.

The indices allow us gaining to gain insights into historical springs with unusual weather conditions. The warm spring of 1862 exhibited warm temperatures across the entire Switzerland, which was exceptional for this period, however, it is less exceptional in comparison to the recent warm springs such as 2011 or 2007. Temperature anomalies were high in spring 1862 in the gridded reconstruction, the Swiss series (Brugnara et al., 2022), and ModE-RA, but ~~temperatures~~ temperature anomalies

were lower in 20CRv3. The three former data sets are all based on the same temperature series of Bern and Zurich. The  
395 geopotential height field in 20CRv3 does not point towards ~~a~~an exceptionally warm spring of 1862, which shows for the year  
2011 quite pronounced positive 500 hPa geopotential height anomalies ~~over Europe~~ and a ridge ~~in 2011~~over Europe, but not for  
the year 1862. Similarly, ModE-RA does not show very pronounced ridge conditions either ~~from March to May in the spring~~  
months, but it does have high temperature anomalies. For Germany and Central Europe, Glaser and Riemann (2009) developed  
a documentary-based monthly index which reported for all three spring months above average, but not exceptionally warm  
400 conditions. Pfister and Wanner (2021), however, classified the spring of 1862 as category 3, which is the warmest category of  
this index representative of the Swiss Plateau. An evaluation of biases in the spring temperature might be needed to put the  
spring temperatures in further context.

Late frost events after a warm period in spring can be particularly damaging for example to fruit harvest. For Switzerland,  
studies have evaluated how the frost risk has changed over the last decades, and how it may be affected by climate change in the  
405 future (~~Vitasse and Rebetez, 2018; Vitasse et al., 2018; Meier et al., 2018; Lhotka and Brönnimann, 2020~~)(Lhotka and Brönnimann, 2020),  
however historical events and their extent have not been studied. ~~These studies rely, though, on daily minimum temperature~~  
~~which has shown different rates of changing compared to daily maximum or daily mean temperature (Scherrer and Begert, 2019)~~  
~~Since minimum temperature is not available in the past, we did not look at changes over time but focus on the representation~~  
~~of specific historical frost events in detail.~~ Two notable frost events occurred in the spring of 1873 and 1957. Harvest data  
410 for 1957 showed a considerable loss for apple, pear, and cherry trees (SBV, 1958), which also agrees with the frost index  
showing strong negative values. Vitasse et al. (2019) identified the spring frost of 1957, as one of the most severe springs in  
terms of frost risk between 1930 and 2016 based on tree-ring data from different forest species across Switzerland. Also for the  
Apennines in Italy, Tonelli et al. (2023) noted considerable effects on the tree ring growth in 1957 due to the late frost event.  
This is in agreement with the extension of the cold surge to southern Europe, as it is seen in the temperature anomalies and  
415 geopotential height field from 20CRv3 (Fig. 7b). For the year 1873, only qualitative descriptions of frost damage ~~was~~were  
available. Since the frost index is based on daily mean temperature and not minimum temperature, it may not ~~capture~~have  
captured the extent of the frost event entirely. But, the data set allowed us to track past frost events based on phenology and  
frost days and relate them to historical descriptions of the events. This could be done as well for earlier events, ~~such as one~~  
example is the late frost event in 1802.

420 Lastly, we considered the three springs of 1785, 1837, and 1853, that registered the lowest ~~temperatures from March to May~~  
spring temperatures in the Swiss reconstruction. Climate indices showed differences between 1785 and the two springs of 1837  
and 1853 with respect to the occurrence of frost days, snowfall days, and wet days. Weather types, the storminess calculation,  
and the ModE-RA confirmed these differences. The spring of 1785 was under the influence of a pronounced cold trough with  
a higher occurrence of easterly, high-pressure, and northerly weather types. This led to particular cold, but also dry conditions.  
425 The frost day anomalies in the Swiss Plateau indicated likely prolonged inversion, and historical sources describe extended  
periods of *Bise* which can also lead to inversions and fog in the Swiss ~~plateau~~Plateau. Daily surface pressure fields over Europe  
would be needed to study the cold conditions in late winter and early spring of 1785 in more detail. In 1837 and 1853, ~~a~~higher  
storminess was found in accordance with a more zonal flow and low-pressure systems passing leading to ~~the~~above-average

wet conditions. For the very cold winter of 1785, six of the large lakes of Switzerland reported that the lakes were frozen until  
430 March, which would also be indicative of cold winters. As suggested by Franssen and Scherrer (2008) lake freezing could be reproduced based on negative growing degree days for further phenological comparison.

The spring of 1785 followed the cold years after the Laki eruption which occurred in Iceland in 1783 (Yiou et al., 2014; Zambri et al., 2019), but the very cold period end of winter and beginning of spring of 1785 has not been studied in detail. Also, the spring of 1837 followed a volcanic eruption, namely the Cosiguna in Nicaragua in January 1835. After this eruption,  
435 several cold years were evident in tree and frost rings from Europe (Longpré et al., 2014). However, Longpré et al. (2014), also stated that a cooling trend was already noted ~~prior to before~~ the eruption. The spring of 1853 has not been related to cold conditions in previous literature, and for this spring the three data sets do not agree ~~with respect to concerning~~ the magnitude of the negative temperature anomalies.

The monthly index for Germany and Central Europe based on documentary sources (Glaser and Riemann, 2009), however,  
440 assigned cold values to all three springs. In March 1785, the lowest index of -3 was reached, while April and May were classified as -2 and 0. In 1837, all spring months were classified as -2, and in 1853, the spring months were classified as -3/-2/-1 (March/April/May). Also, the Pfister temperature index (Pfister and Wanner, 2021, see e.g.) classified the three springs as very cold, with all three springs in the category -3. For the Czech Republic, Brázdil et al. (2024) found that the spring temperatures of 1785 together with 1740 were the coldest in the reconstructed temperature series of Dobrovolný et al. (2010).  
445 Also, Pappert et al. (2021) noted the particularly cold March of 1785 in the temperature observations of the Societas Meteorologica Palatina, with persistent below-zero temperatures for many locations across Europe. The cold temperatures across Europe fit well with the pronounced trough found in ModE-RA in March 1785 (see Fig. 10a). These cold spring conditions, in particular the unusually cold and dry conditions in 1785, thus provide a rather unique case of cold spring conditions. ~~Studying such weather in detail could still give relevant insights into mechanisms related to cold spring weather.~~

## 450 6 Conclusions

Climate and phenological indices allow us to depict changes in spring weather and to study extreme springs since the ~~mid-18th~~  
mid 18th century. The 258-year-long time series for the different indices all showed few changes for the first 200 years ~~and a~~  
compared to the steep increase toward warmer conditions in the most recent decades, ~~which has been shown by many studies.~~  
Notable are a warm period in the late 1940s and a warm period around the 1860s. Some extreme spring events were, however,  
455 evident from the time series. Based on the different indices, we evaluated three cases of such extreme spring weather conditions since the ~~mid-18th~~  
mid 18th century. The spring of 1862 was exceptionally warm ~~with respect compared~~ to its climatological mean and it still ranks among today's warmest springs, ~~though although~~ this ranking is highly dependent on the ~~dataset~~  
data set. Upper-level atmospheric fields ~~indicate the warm weather do not indicate similarly pronounced~~ conditions in spring 1862, ~~but~~  
~~they are not comparable to the exceptionally warm conditions in spring such as they do for the very warm spring of 2011.~~ The  
460 combination of phenology and frost days allows us to evaluate past frost events that caused damage to vegetation. Whereas

for the warm ~~summer-spring~~ of 1862, no frost damage was reported despite a cold air outbreak, for the two cases of 1873 and 1957, the frost index shows the affected areas and historical reports confirm the significance of these events.

In the period from 1763 to 2020, three springs showed very cold mean ~~temperature from March to May~~ temperatures of at most 5.1 °C. Whereas the springs of 1837 and 1853 showed cold and wet conditions, during spring 1785 fewer wet days  
465 than on average from 1871 to 1900, and, thus, dry conditions were registered. An evaluation of weather types, of a storminess index based on bandpass-filtered pressure data, and ModE-RA showed that the 1785 spring was related to more high-pressure conditions and northeasterly flow over Europe, which brought cold air towards Switzerland. The high frost day amounts in the Swiss ~~plateau~~ Plateau and reports about *Bise* further suggest a synoptic situation favorable for prolonged inversion and fog in the Swiss ~~plateau in March extending~~ Plateau from March to April. In 1837 and 1853, the zonal flow and mainly  
470 cyclonic conditions led to cold but also wet springs. Both, the spring of 1785 and 1837 occurred after volcanic eruptions in the extratropics and the subtropics.

The climate and phenological indices ~~, thus,~~ allowed us to get insights into different historical extreme spring events. It was possible to relate these springs to impacts through historical sources and to evaluate the atmospheric conditions behind them by considering further data sets. Studying such past springs might also nowadays be interesting to better understand the causes  
475 of cold and warm springs. ~~Modelling the phenology allowed~~ In addition, modelling phenological phases allowed us to relate the historical weather conditions in a straightforward manner to impacts ~~, such as on vegetation due to~~ late frost events ~~causing damage to harvests. But, phenological phases can also be relevant for agricultural modelling, and thus, may contribute to agricultural modelling of historical events in more detail.~~

## Appendix A: Phenological models

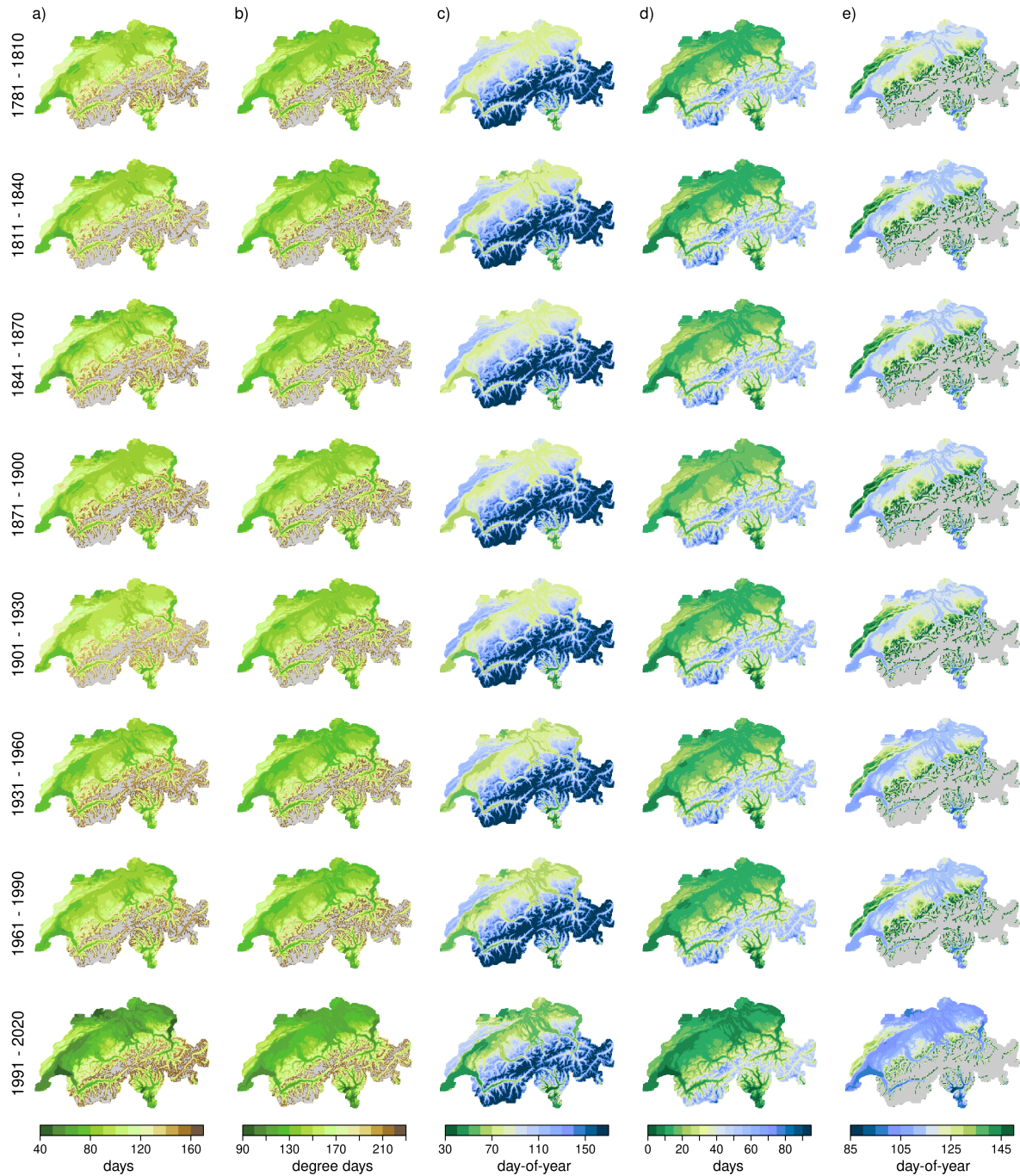
- 480 The cherry full flowering dates are estimated based on the photo thermal time model that has been proposed by various studies to model phenological phases (Basler, 2016; Meier et al., 2018; Hänninen, 1990). It is based on the growing degree days temperature response and a term that accounts for the photoperiod estimated based on the daylength  $L_T$  (Eq. 1 and 2). Temperatures are accumulated starting at day  $t_0$ . When  $S_{frc}$  reaches a specific threshold  $F_{crit}$ , the phenological phase happens. The parameters  $F_{crit}$ ,  $T_{base}$ , and  $t_0$  are calibrated based on the phenological observations from 1951 to 2020. The beech leaf
- 485 unfolding dates are estimated based on the thermal time model. As for the photo thermal time model, it is based on the growing degree days temperature response, but daylength is not considered (Eq. 1 and 3).

$$R_g(T_i) = \begin{cases} 0 & \text{if } T_i \leq T_{base} \\ T_i - T_{base} & \text{if } T_i > T_{base} \end{cases}$$

$$S_{frc} = \sum_{n=t_0}^n \frac{L_i}{24} R_g$$

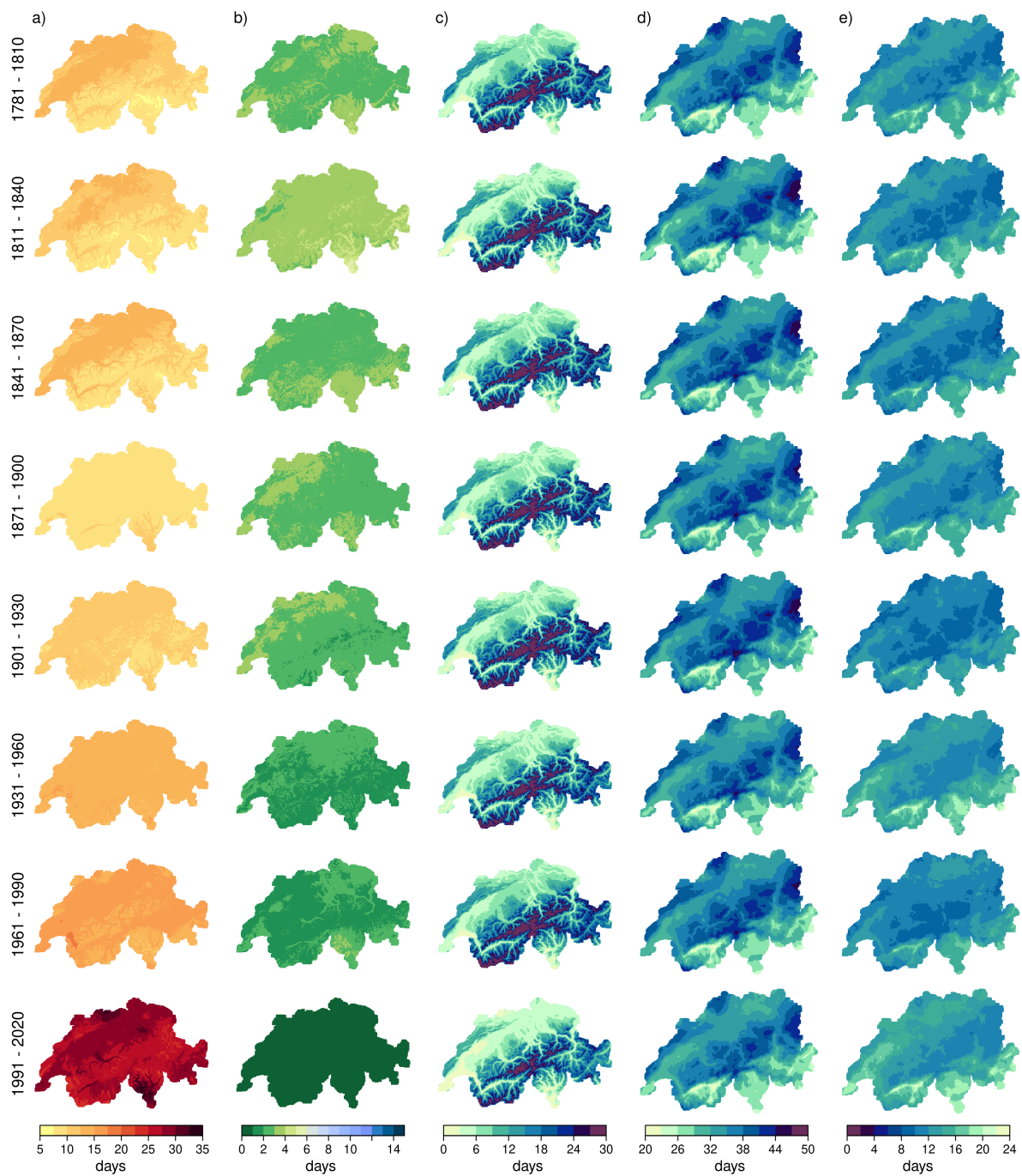
$$S_{frc} = \sum_{n=t_0}^n R_g$$



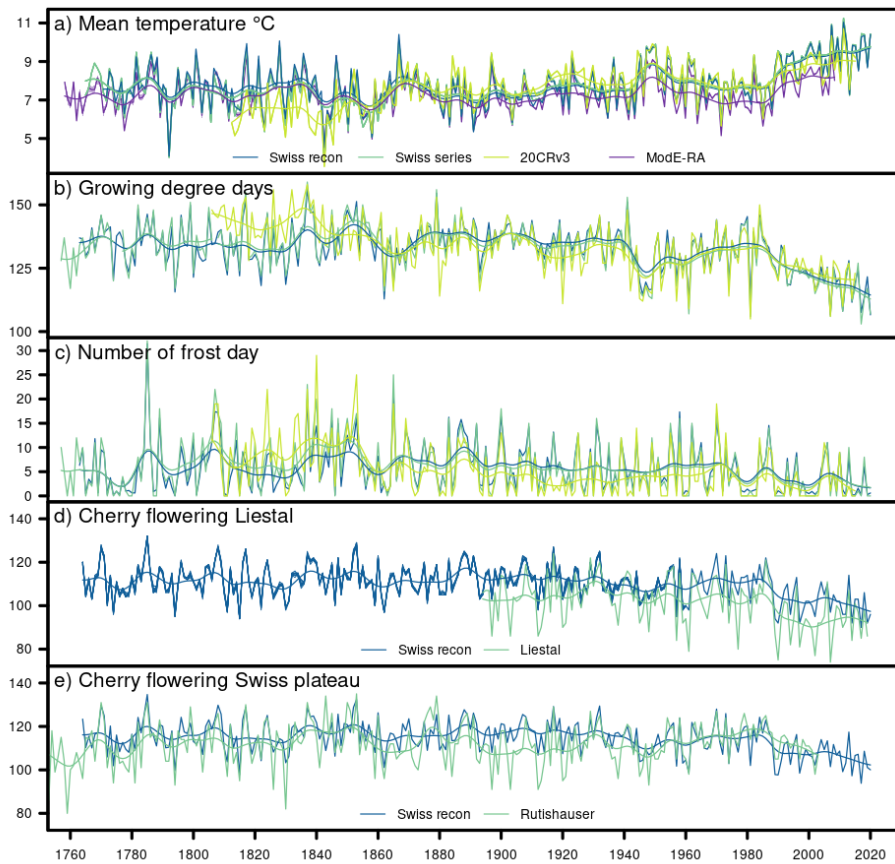


**Figure 1.** 30-year climatological mean for climate indices for the eight periods between 1781 to 2020. a) Growing season start, b) growing degree days, c) last frost day, d) frost days, and e) warm spell duration index, cold spell duration index, snowfall days, wet days, and cherry full flowering day-of-year. Light grey areas depict areas, where the indices was were not reached in more than 75 % of the years in a period or we did not calculate the index because the grid cells are above 1600 m a.s.l. (last rowcolumn).

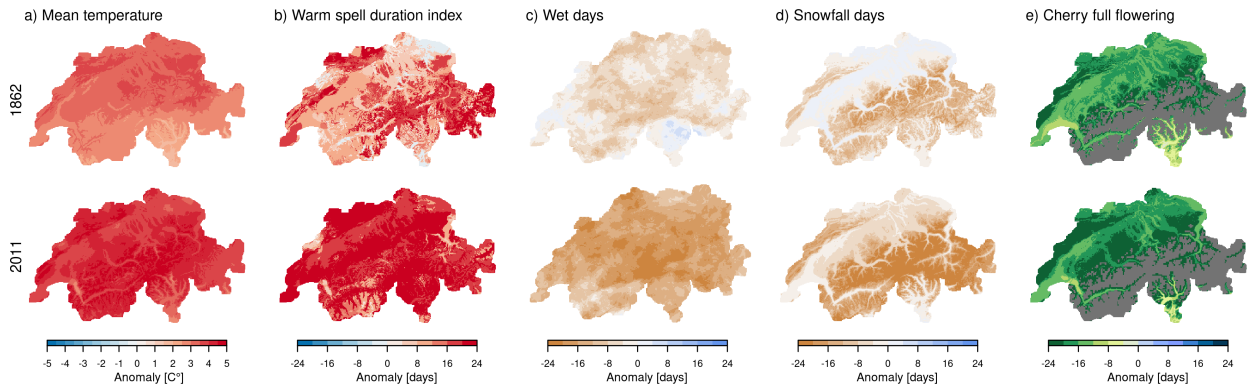




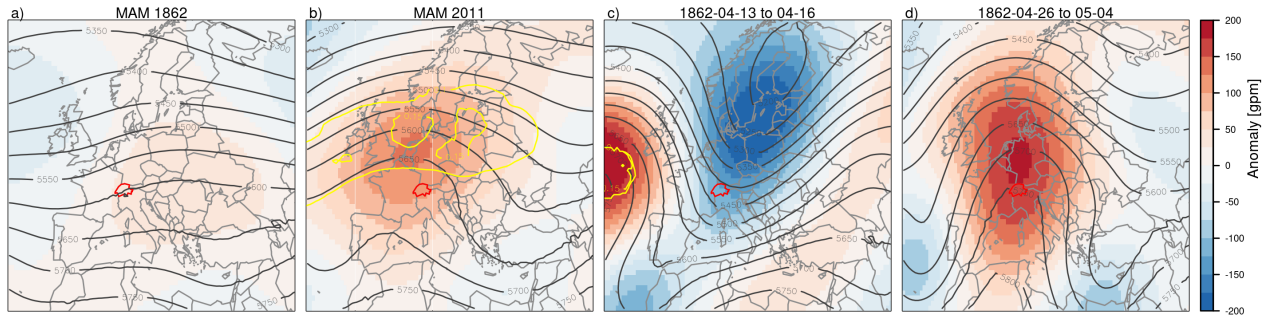
**Figure 2.** As in Figure 1, but for a) warm spell duration index, b) cold spell duration index, c) snowfall days, d) wet days, and e) consecutive dry days.



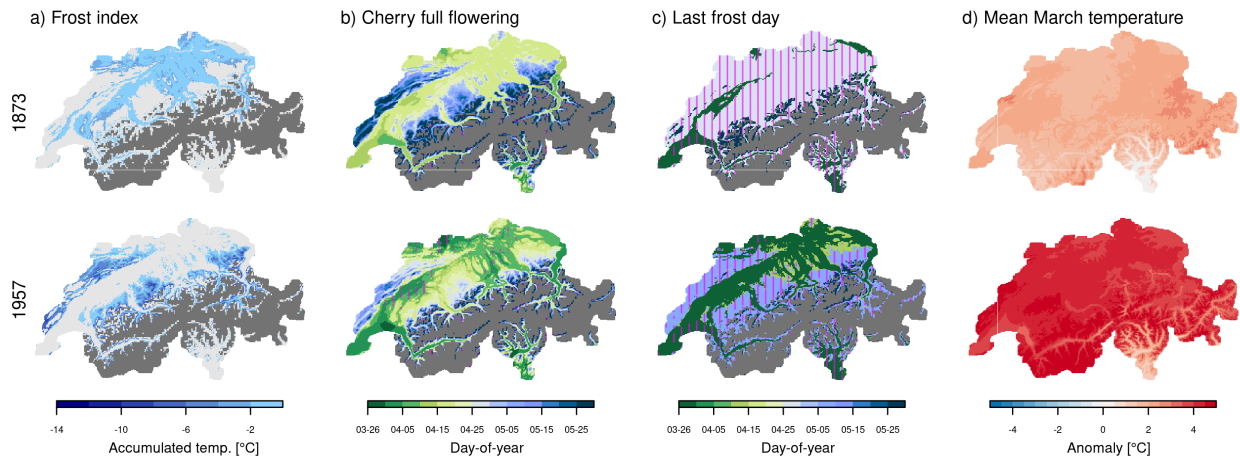
**Figure 3.** Evolution of indices in the spring season for different data sets. a) Mean spring temperature, b) growing degree days, c) number of frost days, d) cherry full flowering in Liestal for the reconstruction and the observations of Liestal (Defila and Clot, 2001), and fe) mean cherry flowering in the Swiss plateau-Plateau for the reconstruction and the composite series of Rutishauser et al. (2003). Note that for the Swiss series, NA values are removed. The smoothed lines are produced with a Gaussian filter using  $\sigma=3$  years. The time series of the Swiss gridded reconstruction set cover covers the area of the Swiss plateauPlateau. ModE-RA shows the ensemble mean, and the minimum and maximum member. 20CRv3 shows the ensemble mean and the spread. For the cherry full flowering reconstructions (d and e), we also show an ensemble of ten reconstructions from the analogue reconstruction.



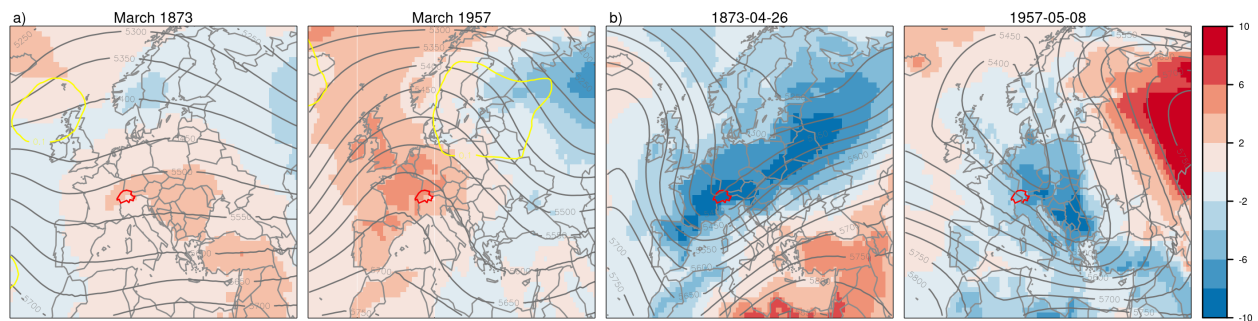
**Figure 4.** Anomalies of five indices for the warm springs of 1862 and 2011 with respect to the climatological mean seasonal values in the period from 1871 to 1900. a) mean spring temperature, b) warm spell duration index, c) number of wet days, d) number of estimated snowfall days, and e) cherry full flowering date for the two warm springs of a) 1862 and b) 2011. All anomalies are calculated with respect to March to May for the period 1871 to 1900.



**Figure 5.** a) Geopotential height field (gpm) at the 500hPa level (contours) and its anomalies (shading) for the March-to-May-spring mean in 1862 and 2011. b) The period during and after a cold air outbreak in April 1862. Anomalies are calculated with respect to 1871 to 1900. Yellow lines show the blocking frequencies (0.05 and 0.1) across all time steps and all members. The data is from 20CRv3 (Slivinski et al., 2019).



**Figure 6.** Two frost events in 1873 and 1957 causing damage to fruit-trees in Switzerland. Temperature-anomaly in March with respect to 1871 to 1900, a) frost index, b) day-of-year of cherry full flowering, c) last frost day, and day-of-cherry-flowering for the two events of ad) 1873 and b) 1957, temperature anomaly in March with respect to 1871 to 1900. The vertical purple lines in b and c) indicate areas where the last frost (cherry flowering) occurred 15 d later (earlier) than the 1871 to 1900 average. The dark grey area denotes grid cells above 1600 m a.s.l.

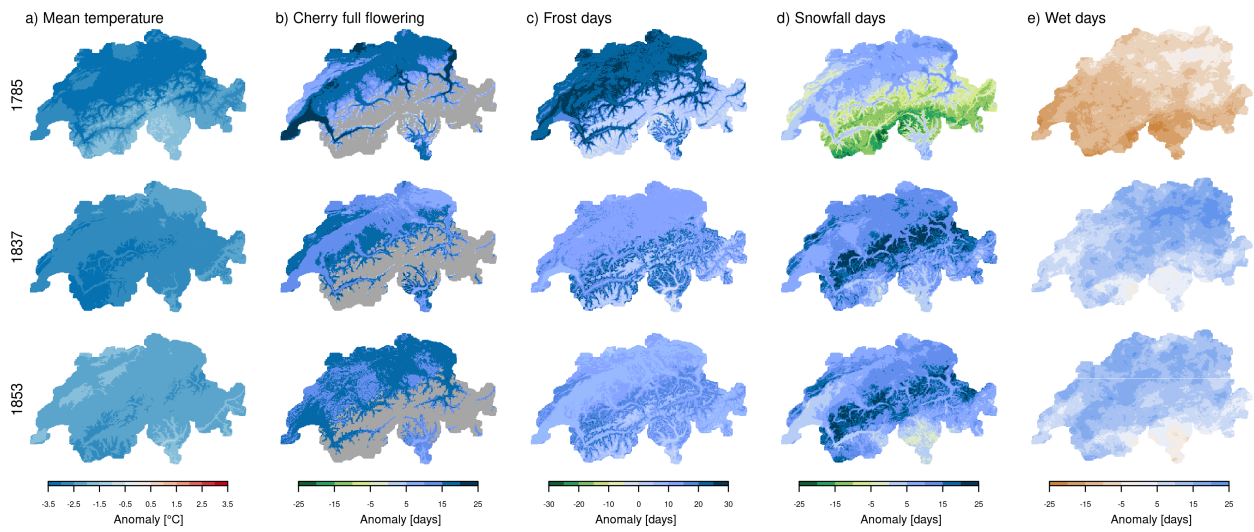


**Figure 7.** a) 2 m temperature anomalies and geopotential height fields at the 500 hPa level for March of 1873 and 1957. b) Daily 2 m temperature anomalies and daily geopotential height field of the coldest day during the late frost in Bern. Anomalies are calculated with respect to 1871 to 1900. The boundaries of Switzerland are marked in red. The data is from 20CRv3 (Slivinski et al., 2019).

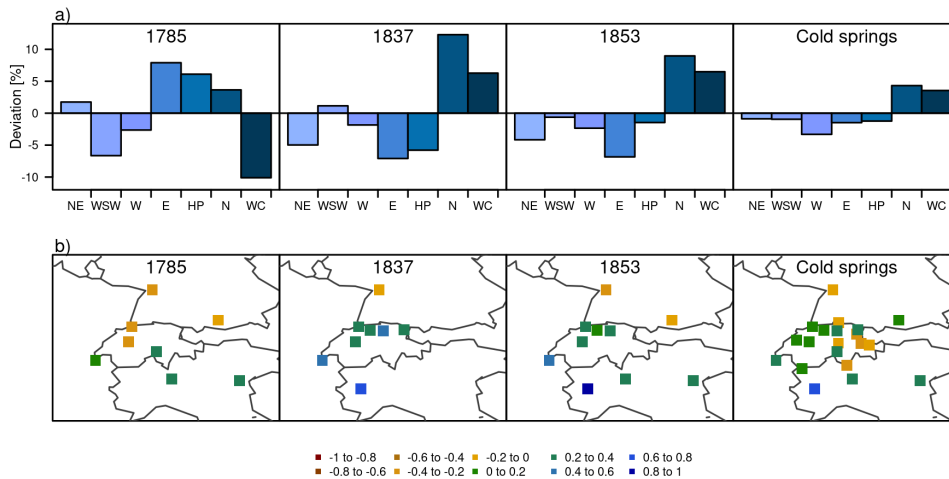
**Table 2.** Selection of ~~registered~~ weather impacts for the ~~frost events and cold springs in Switzerland~~ extreme spring examples based on the Euro-Climhist database (Pfister et al., 2017) and further sources. The original sources are listed where possible ~~and otherwise secondary sources~~. Ct. refers to the cantons (member states) of Switzerland. Numbers are marked on the map of Switzerland in the Appendix Figure A3.

Time	Location	Impacts	Sources
<b><u>Warm springs</u></b>			
1862 Spring	Ursern and Gotthard (Ct. of Uri) <sup>1</sup>	unusual early snow-free period	<u>Ambühl (1961); Zschokke (1865)</u>
1862 April	Aarau (Ct. of Aargau) <sup>2</sup>	unusual advances in vegetation	<u>Zschokke (1865)</u>
<b>Frost events</b>			
1873 April	Sursee <sup>3</sup>	complete damage of cherry harvest	MZA (1873)
1873 April	Marschlins <sup>4</sup>	damage of walnut trees and grapes	MZA (1873)
1873 April	Switzerland	snow/frost damage on fruit trees and grapes	Appenzeller-Kalender (1874)
1957 April/May	Switzerland	considerable losses in fruit harvest	SBV (1958)
<b>Late springs</b>			
1785 Jan-Apr	Lake Constance <sup>5</sup>	water bodies frozen	Paffrath (1915)
1785 March	Lucerne <sup>6</sup>	water bodies frozen	Staatsarchiv-Lucerne (1755-1829)
1785 March	Geneva <sup>7</sup>	water bodies frozen, ice partially walkable	Forel (1892)
1785 March	Lake Constance <sup>5</sup>	snowfall	Paffrath (1915)
1785 March	Thur river (Ct. of St Gall) <sup>8</sup>	water bodies frozen	Braecker (1998)
1785 March	Lake Alpnach <sup>9</sup>	water bodies frozen	Schaller-Donauer (1937)
1785 March	Lake Zurich <sup>10</sup>	water bodies frozen	Müller (1878)
1785 March	Wattwil (Canton Ct. of St Gall) <sup>11</sup>	several reports on abundant snow	Braecker (1998)
1785 March	Chur (Canton Ct. of Grisons) <sup>12</sup>	reports on abundant snow, 9 d snowfall	Grimmer (2019)
1785 March	Lake Constance <sup>5</sup>	reports on abundant snowfall	Paffrath (1915)
1785 March	Binn (Canton Ct. of Valais) <sup>13</sup>	reports on birds frozen to death	Zennhäuser (2008)
1785 April	Lake Constance <sup>5</sup>	snow impact, abundant snow, livestock starved	Paffrath (1915)
1785 April	Chur (Canton Ct. of Grisons) <sup>12</sup>	reports on abundant snow, 6d snowfall	Grimmer (2019)
1785 April	Binn (Canton Ct. of Valais) <sup>13</sup>	vegetation delayed, livestock starved	Zennhäuser (2008)
1785 March	St Blaise (Ct. of Neuenburg) <sup>14</sup>	rigorous cold, abundant snow, and strong <i>Bise</i>	Kopp (1873)
1785 April	St Blaise (Ct. of Neuenburg) <sup>14</sup>	abundant snow, cold, and strong <i>Bise</i>	Kopp (1873)
1785 May	Lake Constance <sup>5</sup>	delayed vegetation and frost impact on vegetation	Paffrath (1915)
1785 May	Wattwil (Canton Ct. of St Gall) <sup>11</sup>	fresh snow at higher elevations	Braecker (1998)
1837 March	Canton of Zurich <sup>15</sup>	snow and rain quantities 'as expected for a January'	Vogel (1841)
1837 March	Simplon (Canton Ct. of Valais) <sup>16</sup>	13 death due to avalanche	Joller (1888)
1837 April	Canton of Zurich <sup>15</sup>	large snow and rain quantities	Vogel (1841)
1837 May	Canton of Zurich <sup>15</sup>	large snow and rain quantities	Vogel (1841)
1837 May	Grindelwald (Ct. of Bern) <sup>17</sup>	permanent snow cover	Strasser (1890)
1853 May	Canton of Zurich <sup>17</sup>	large snow and rain quantities	Vogel (1841)
1853 May	Grindelwald (Ct. of Bern) <sup>17</sup>	permanent snow cover	Strasser (1890)



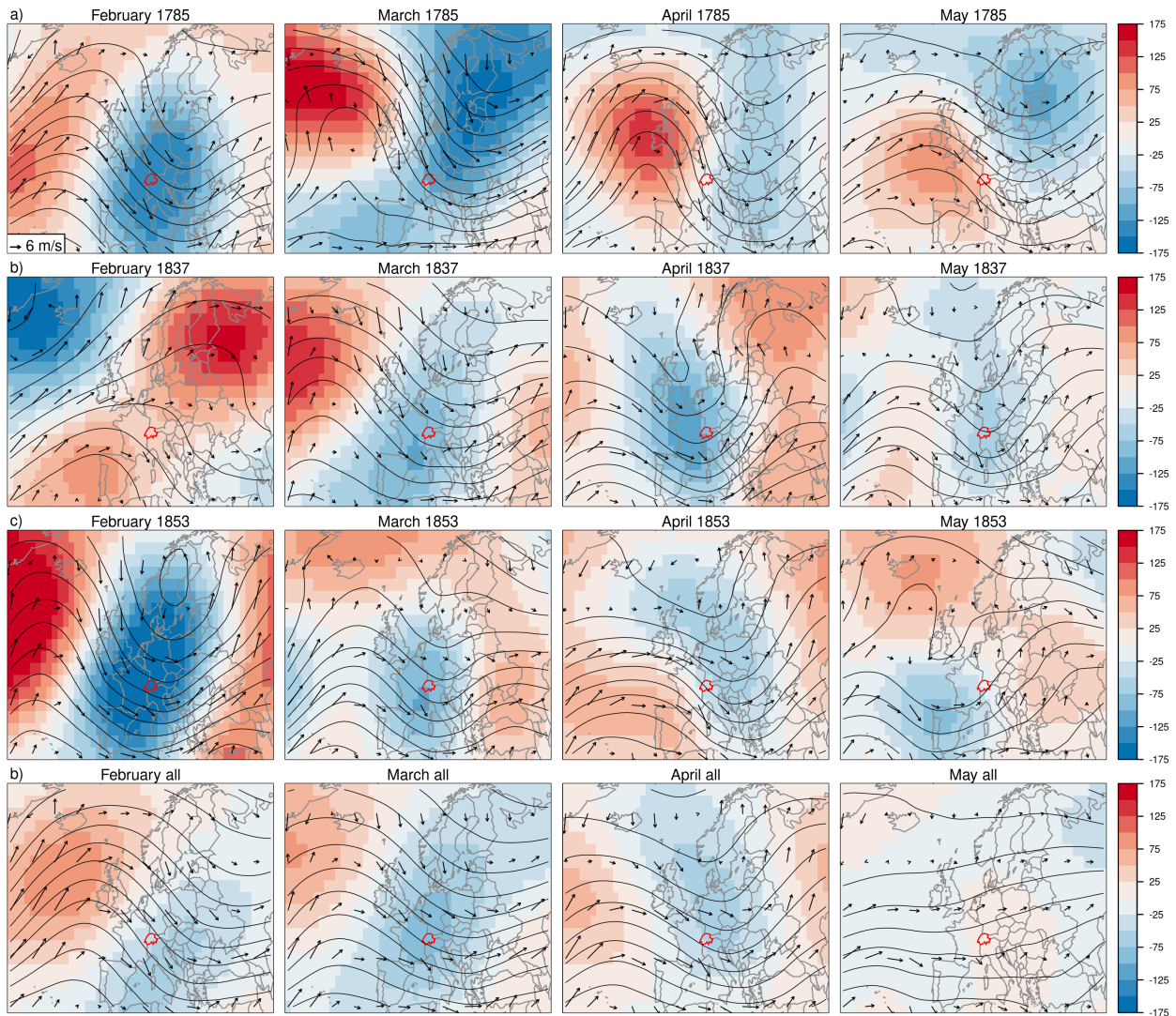


**Figure 8.** a) ~~Temperature~~ Spring temperature anomaly, b) anomaly in cherry flowering phenology, c) anomaly of the number of frost days, d) anomaly of the number of snow days, e) anomaly of the number of wet days for the cold springs (March to May) of 1785, 1837, 1853. All anomalies are calculated with respect to the 1871 to 1900 climatological mean. Grey areas for cherry flowering denote areas above 1600 m a.s.l.

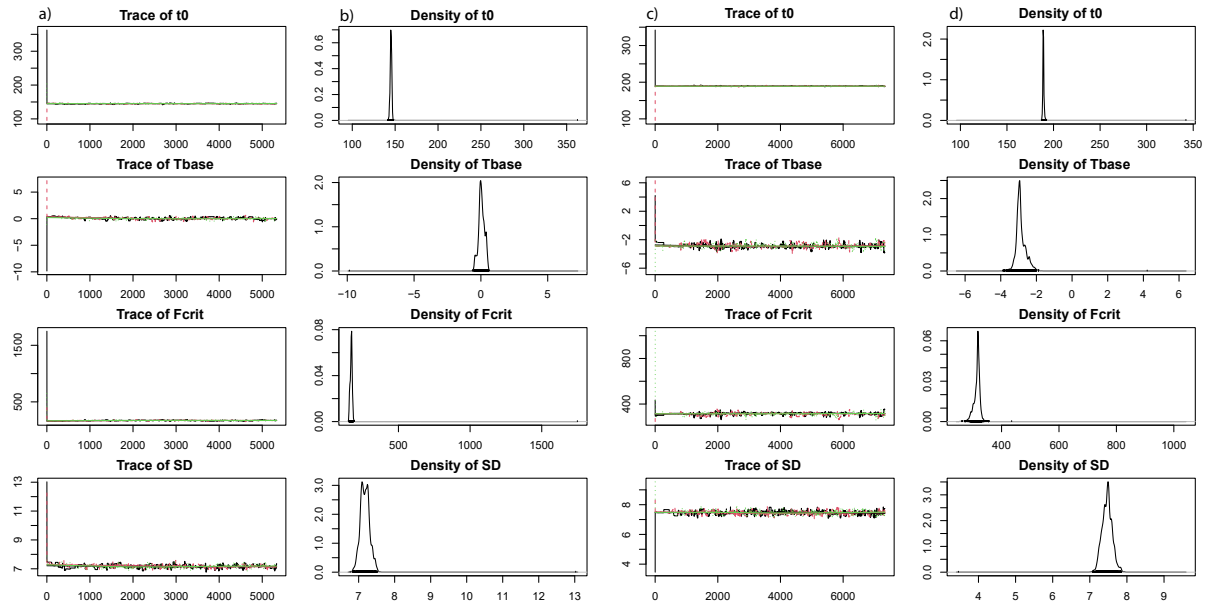


**Figure 9.** a) Anomalies of weather type frequencies for the three coldest springs and the mean of all springs below q10. The anomalies were calculated with respect to the mean frequency of weather types in March to ~~April~~ ~~May~~ from 1763 to 2020 considering all weather types with a cumulative probability ~~of~~ ~~above~~ 0.9. NE = Northeast, indifferent; WSW = West-southwest, cyclonic, flat pressure; W = Westerly flow over Northern Europe; E = East, indifferent; HP = High pressure over Europe; N = North, cyclonic; WC = Westerly flow over Southern Europe cyclonic (Schwander et al., 2017). b) Storminess based on pressure observations for the three coldest springs and the mean of ~~the~~ all springs below q10. The anomaly of the standard deviation was calculated with respect to 1961 to 1990 because some series exhibit large gaps between 1871 and 1900.

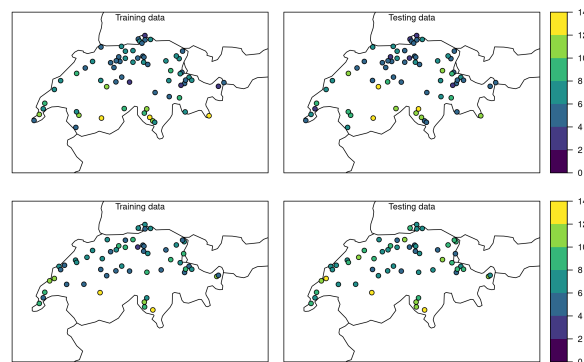




**Figure 10.** 500 hPa ~~Geopotential~~-geopotential height field and wind direction for the months February to May of the three cold springs. Colors show anomalies with respect to the mean of 1871 to 1900, contours show absolute geopotential height field. Arrows show the wind field at 850 hPa. Switzerland is marked in darkred. a) 1785, b) 1837, c) 1853, and d) the composite of all springs below q10. The data is from ModE-RA (?)([Valler et al., 2024](#)).

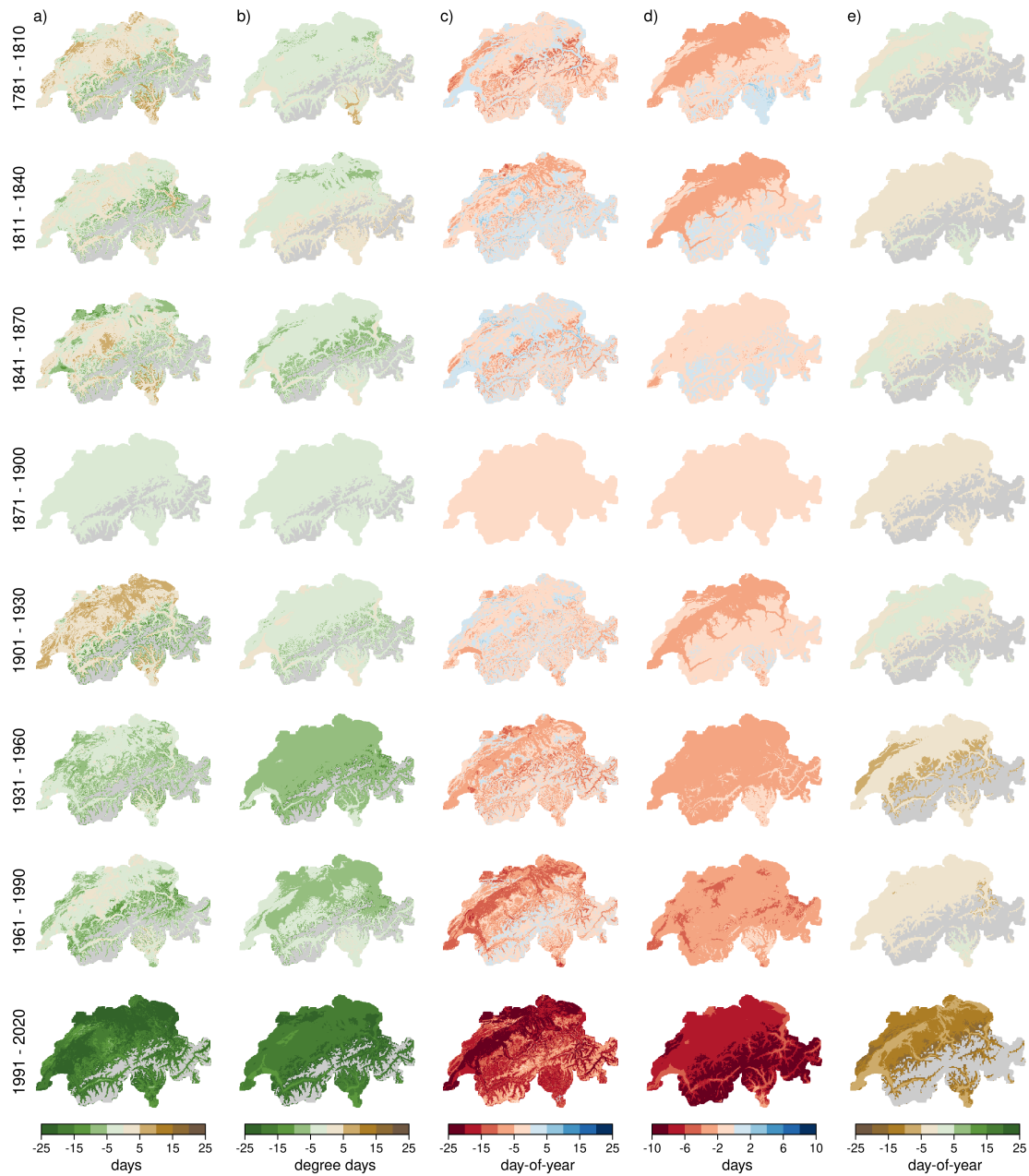


**Figure A1.** Convergence of the Markov Chain Monte Carlo DEzs algorithm for the calibration of the photo thermal time model (PTT) and the thermal time model (TT). a) Trace of the iterations after burn-in for the three chains and the four parameters. b) Marginal distribution of the four parameters based on the three chains. The first three parameters stem from the model, whereas the standard deviation is estimated during model calibration. See [the](#) formula in Eq. 2 and 1 for the parameters. Note that  $t_0$  does not start on ~~1st~~ January, but on ~~21st~~ 21 September. c) and d) are the same as a) and b) but for the thermal time model and beech leaf unfolding. Note that we used 8000 iterations of the thermal time model to reach convergence.



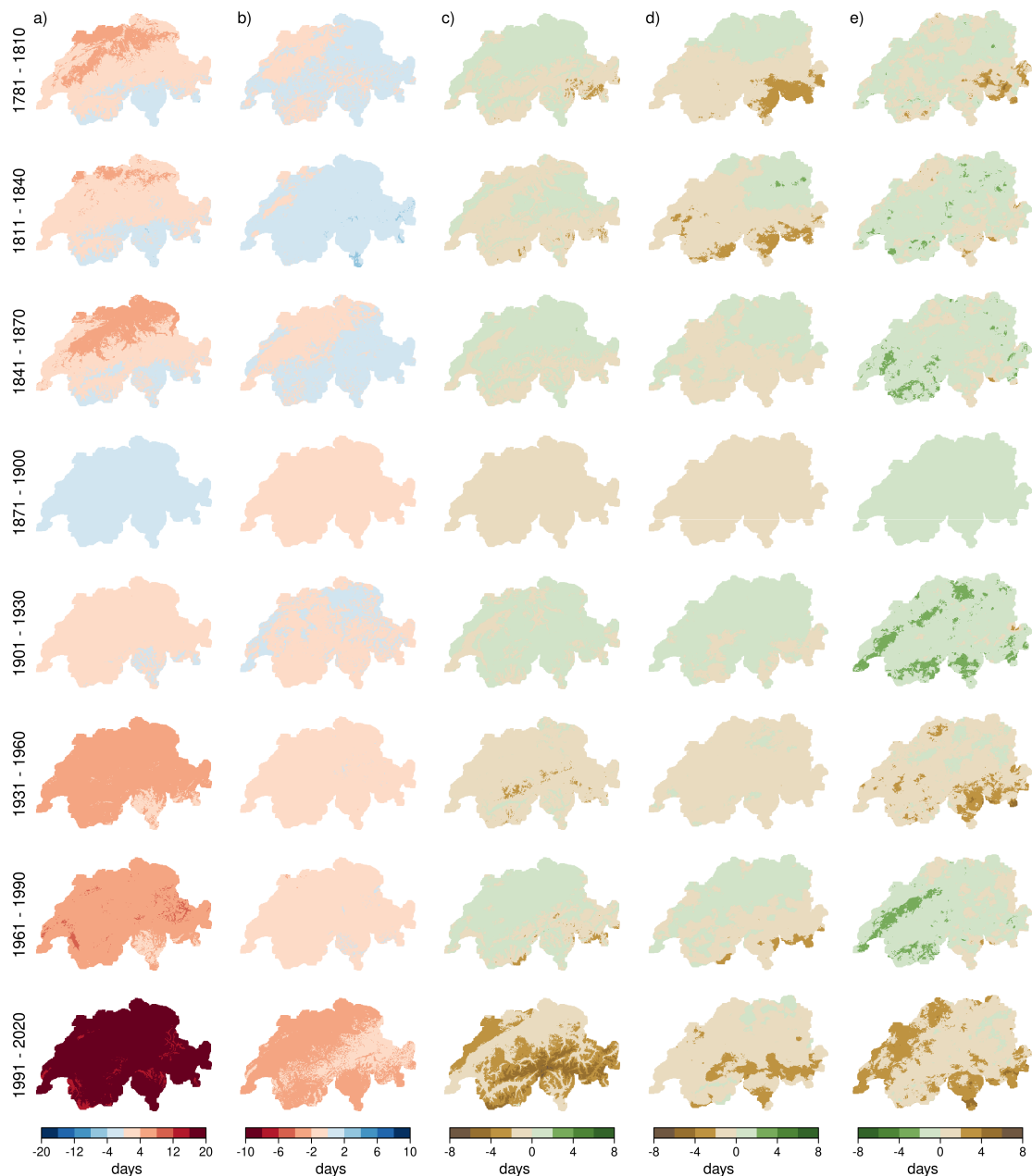
**Figure A2.** Root mean square error in days of the cross-validation for cherry flowering (upper row) and beech leaf unfolding (lower row) observations from the Swiss Phenology Network for training data (even years/left column) and testing data (odd years/right column).



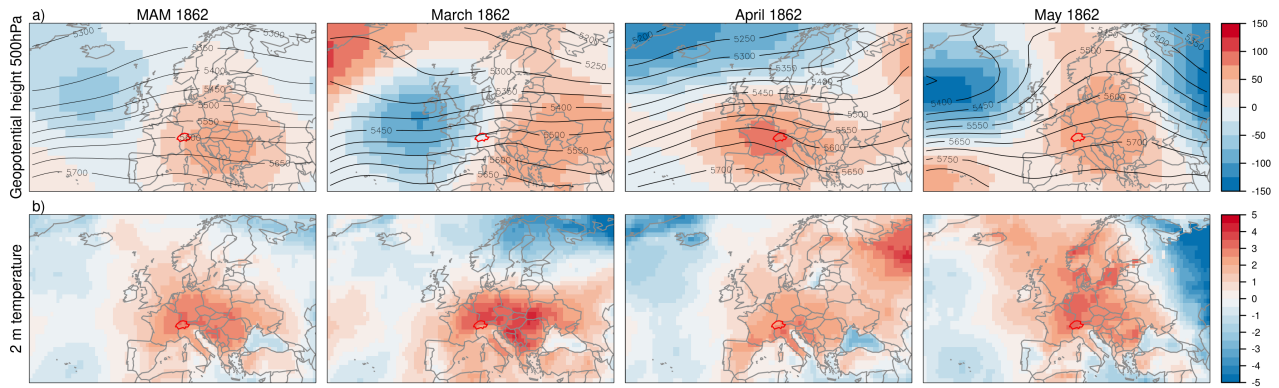


**Figure A1.** Anomalies of 30-year climatology for climate indices for all six periods with respect to the **pre-industrial** reference period from 1871 to 1900. a) Growing season start, b) growing degree days, c) last frost day, d) the number of frost days, **and e) warm spell days, f) cold spell days, g) snowfall days, h) wet days, and i) cherry full flowering.** Light grey areas depict areas, where the indices **is** are 0 in more than 75 % of the years in a period or we do not consider it because the grid cells are above 1600 m a.s.l. (last row).

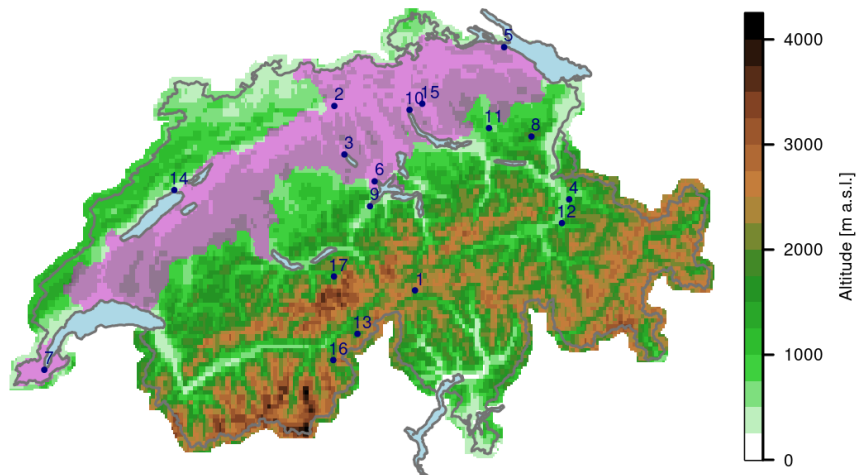
## Appendix B: The warm spring of 1862 in ModE-RA



**Figure A1.** Anomalies of 30-year climatology for climate indices for all six periods with respect to the reference period from 1871 to 1900.  
a) Warm spell duration index, b) cold spell duration index, c) snow days, d) wet days, and e) consecutive dry days.



**Figure A2.** a) Geopotential height anomalies (shading) and absolute values (contour) for the 500hPa level. b) 2 m temperature anomalies. Anomalies are calculated with respect to 1871 to 1900. The borders of Switzerland are marked in darkred. Data is from ModE-RA (↔) (Valler et al., 2024).



**Figure A3.** Topography and main water bodies of Switzerland. The numbers indicate weather impacts found in historical sources as listed in Table 2. The magenta shaded area indicates the area of the Swiss Plateau for which the area mean values are shown in Figure 3.

*Code availability.* The code for the calculation of indices is available on github: [https://github.com/imfeldn/swiss\\_indices](https://github.com/imfeldn/swiss_indices)

*Data availability.* Reconstructed daily precipitation and temperature data sets over the period 1763-01-02 to 2020-12-31 are published at the open-access repository PANGAEA under <https://doi.org/10.1594/PANGAEA.950236>. The climate and phenological indices for the period  
495 1763 to 2020 described in this article are published at the open-access repository PANGAEA under <https://doi.org/10.1594/PANGAEA.950236>.

*Author contributions.* NI performed the analyses and wrote the manuscript. KH helped with setting up the calibration of the phenological model and contributed to the manuscript. SB supervised the process and contributed to the manuscript.

*Competing interests.* The authors declare that they have no conflict of interest.

500 *Acknowledgements.* This work was funded by the Swiss National Science Foundation (project "WeaR", grant no. 188701) and by the European Commission through H2020 (ERC Grant PALAEO-RA 787574). The authors acknowledge the data provided by the projects "CHIMES" (SNF grant no. 169676) (Brugnara et al., 2020b), "Long Swiss Meteorological series" funded by MeteoSwiss through GCOS Switzerland (Brugnara et al., 2022), and "DigiHom" (Füllemann et al., 2011).



## References

- 505 Ambühl, E.: 100 Jahre Einschneien und Ausapern in Andermatt (1860/1960), *Die Alpen*, <https://www.sac-cas.ch/index.php?eID=dumpFile&t=f&f=133729&token=e932334ef1e45fb867c0f664f81416f77eea1429>, (last accessed 20 June 2023), 1961.
- Appenzeller-Kalender: Appenzeller Kalender: Von der Witterung und Fruchtbarkeit vom Herbst 1872-1873, <https://doi.org/10.5169/seals-373580>, 1874.
- Auchmann, R., Brugnara, Y., Rutishauser, T., Brönnimann, S., Gehrig, R., Pietragalla, B., Begert, M., Sigg, C., Knechtel, V., Calpini, B., and  
510 Konzelmann, T.: Quality Analysis and Classification of Data Series from the Swiss Phenology Network, Technical Report Meteoswiss, 271, 77 pp, <https://www.meteoschweiz.admin.ch/dam/jcr:5220f36c-435d-4d46-b766-ba91b0dffe37/fachbericht-271.pdf>, (last accessed 20 June 2023), 2018.
- Basler, D.: Evaluating phenological models for the prediction of leaf-out dates in six temperate tree species across central Europe, *Agricultural and Forest Meteorology*, 217, 10–21, <https://doi.org/10.1016/j.agrformet.2015.11.007>, 2016.
- 515 Begert, M., Stöckli, R., and Croci-Maspoli, M.: Klimaentwicklung in der Schweiz - vorindustrielle Referenzperiode und Veränderung seit 1864 auf Basis der Temperaturmessung, Technical Report Meteoswiss, 274, 23 pp, [https://www.meteoswiss.admin.ch/dam/jcr:4c89a839-d577-47f1-aeb9-a30749ddaf2b/AB\\_Vorind\\_Refp\\_v1.1\\_de.pdf](https://www.meteoswiss.admin.ch/dam/jcr:4c89a839-d577-47f1-aeb9-a30749ddaf2b/AB_Vorind_Refp_v1.1_de.pdf), (last accessed 30 June 2023), 2019.
- Braecker, U.: *Tagebücher 1779-1788 (Sämtliche Schriften 2)*, C.H.Beck/Haupt, Muenchen, 1998.
- Brázdil, R., Lhoták, J., Chromá, K., and Dobrovolný, P.: Effects of weather and climate on fluctuations of grain prices in southwestern  
520 Bohemia, 1725–1824 CE, *Climate of the Past Discussions*, 2024, 1–33, <https://doi.org/10.5194/cp-2024-2>, 2024.
- Brown, P. J., Bradley, R. S., and Keimig, F. T.: Changes in Extreme Climate Indices for the Northeastern United States, 1870–2005, *Journal of Climate*, 23, 6555 – 6572, <https://doi.org/10.1175/2010JCLI3363.1>, 2010.
- Brugnara, Y., Auchmann, R., Brönnimann, S., Allan, R. J., Auer, I., Barriendos, M., Bergström, H., Bhend, J., Brázdil, R., Compo, G. P., Cornes, R. C., Dominguez-Castro, F., van Engelen, A. F. V., Filipiak, J., Holopainen, J., Jourdain, S., Kunz, M., Luterbacher, J., Maugeri,  
525 M., Mercalli, L., Moberg, A., Mock, C. J., Pichard, G., Řezníčková, L., van der Schrier, G., Slonosky, V., Ustrnul, Z., Valente, M. A., Wypych, A., and Yin, X.: A collection of sub-daily pressure and temperature observations for the early instrumental period with a focus on the " year without a summer" 1816, *Climate of the Past*, 11, 1027–1047, <https://doi.org/10.5194/cp-11-1027-2015>, 2015.
- Brugnara, Y., Auchmann, R., Rutishauser, T., Gehrig, R., Pietragalla, B., Begert, M., Sigg, C., Knechtel, V., Konzelmann, T., Calpini, B., and Brönnimann, S.: Homogeneity assessment of phenological records from the Swiss Phenology Network, *International journal of*  
530 *biometeorology*, 64, 71–81, <https://doi.org/10.1007/s00484-019-01794-y>, 2020a.
- Brugnara, Y., Pfister, L., Villiger, L., Rohr, C., Isotta, F. A., and Brönnimann, S.: Early instrumental meteorological observations in Switzerland: 1708–1873, *Earth System Science Data*, 12, 1179–1190, <https://doi.org/10.5194/essd-12-1179-2020>, 2020b.
- Brugnara, Y., Hari, C., Pfister, L., Valler, V., and Brönnimann, S.: Pre-industrial temperature variability on the Swiss Plateau derived from the instrumental daily series of Bern and Zurich, *Climate of the Past*, 18, 2357–2379, <https://doi.org/10.5194/cp-18-2357-2022>, 2022.
- 535 Burgdorf, A.-M., Brönnimann, S., Adamson, G., Amano, T., Aono, Y., Barriopedro, D., Bullón, T., Camenisch, C., Camuffo, D., Daux, V., del Rosario Prieto, M., Dobrovolný, P., Gallego, D., García-Herrera, R., Gergis, Joelle Grab, S., Hannaford, M. J., Holopainen, J., Kelso, C., Kern, Z., Kiss, Andrea Kuan-Hui Lin, E., Loader, N. J., Možný, M., Nash, D., Nicholson, S. E., Pfister, C., Rodrigo, F. S., Rutishauser, T., Sharma, S., Takács, K., Vargas, E. T., and Vega, I.: DOCU-CLIM: A global documentary climate dataset for climate reconstructions, *Scientific data*, 10, 402, <https://doi.org/10.1038/s41597-023-02303-y>, 2023.

- 540 Collet, D.: Die doppelte Katastrophe: Klima und Kultur in der europäischen Hungerkrise 1770–1772., vol. 18 of *Umwelt und Gesellschaft*, Vandenhoeck & Ruprecht, <https://doi.org/10.13109/9783666355929>, 2018.
- Cornes, R. C., van der Schrier, G., and Squintu, A. A.: A reappraisal of the thermal growing season length across Europe, *International Journal of Climatology*, 39, 1787–1795, <https://doi.org/10.1002/joc.5913>, 2019.
- Defila, C. and Clot, B.: Phytophenological trends in Switzerland, *International journal of biometeorology*, 45, 203–207, <https://doi.org/10.1007/s004840100101>, 2001.
- 545 Diodato, N., Fratianni, S., and Bellocchi, G.: Reconstruction of snow days based on monthly climate indicators in the Swiss pre-alpine region, *Regional Environmental Change*, 20, 1–9, <https://doi.org/10.1007/s10113-020-01639-0>, 2020.
- Dobrovolný, P., Moberg, A., Brázdil, R., Pfister, C., Glaser, R., Wilson, R., van Engelen, A., Limanówka, D., Kiss, A., Haličková, M., et al.: Monthly, seasonal and annual temperature reconstructions for Central Europe derived from documentary evidence and instrumental records since AD 1500, *Climatic change*, 101, 69–107, <https://doi.org/10.1007/s10584-009-9724-x>, 2010.
- 550 Domínguez-Castro, F., Reig, F., Vicente-Serrano, S. M., Aguilar, E., Peña-Angulo, D., Noguera, I., Revuelto, J., van der Schrier, G., and El Kenawy, A. M.: A multidecadal assessment of climate indices over Europe, *Scientific data*, 7, 125, <https://doi.org/10.1038/s41597-020-0464-0>, 2020.
- Flückiger, S., Brönnimann, S., Holzkämper, A., Fuhrer, J., Krämer, D., Pfister, C., and Rohr, C.: Simulating crop yield losses in Switzerland for historical and present Tambora climate scenarios, *Environmental Research Letters*, 12, 074 026, <https://doi.org/10.1088/1748-9326/aa7246>, 2017.
- 555 Forel, F.-A.: *Le Léman : monographie limnologique*, F. Rouge, Lausanne, <https://doi.org/10.5962/bhl.title.124608>, 1892.
- Franssen, H. J. H. and Scherrer, S. C.: Freezing of lakes on the Swiss plateau in the period 1901–2006, *International Journal of Climatology*, 28, 421–433, <https://doi.org/https://doi.org/10.1002/joc.1553>, 2008.
- 560 Fu, Y. H., Campioli, M., Demarée, G., Deckmyn, A., Hamdi, R., Janssens, I. A., and Deckmyn, G.: Bayesian calibration of the Unified budburst model in six temperate tree species, *International journal of biometeorology*, 56, 153–164, <https://doi.org/10.1007/s00484-011-0408-7>, 2012.
- Füllemann, C., Begert, M., Croci-Maspoli, M., and Bönnimann, S.: Digitalisieren und Homogenisieren von historischen Klimadaten des Swiss NBCN: Resultate aus DigiHom, *Arbeitsberichte der MeteoSchweiz*, 236, <https://www.meteoswiss.admin.ch/dam/jcr:c0d90a48-a05d-4ac9-9cf3-10769270d75e/ab236.pdf>, (last accessed 21 June 2023), 2011.
- 565 Gelman, A. and Rubin, D. B.: Inference from iterative simulation using multiple sequences, *Statistical science*, 7, 457–472, <https://doi.org/10.1214/ss/1177011136>, 1992.
- Glaser, R. and Riemann, D.: A thousand-year record of temperature variations for Germany and Central Europe based on documentary data, *Journal of Quaternary Science: Published for the Quaternary Research Association*, 24, 437–449, <https://doi.org/10.1002/jqs.1302>, 2009.
- 570 Grimmer, M.: *The Meteorological Diaries of Johann Rudolf von Salis-Marschlins 1781-1800*, Master’s Thesis, University of Bern, <https://occrdata.unibe.ch/students/theses/msc/283.pdf>, 2019.
- Hänninen, H.: Modelling bud dormancy release in trees from cool and temperate regions, *Acta Forestalia Fennica*, pp. 1–47, <https://doi.org/10.14214/aff.7660>, 1990.
- Hartig, F., Minunno, F., Paul, S., Cameron, D., Ott, T., and Pichler, M.: BayesianTools: General-purpose MCMC and SMC samplers and tools for Bayesian statistics, R package version 0.1.8, [https://github.com/florianhartig/bayesian\\_tools](https://github.com/florianhartig/bayesian_tools), 2023.
- 575 Hufkens, K., Basler, D., Milliman, T., Melaas, E. K., and Richardson, A. D.: An integrated phenology modelling framework in r, *Methods in Ecology and Evolution*, 9, 1276–1285, <https://doi.org/10.1111/2041-210X.12970>, 2018.

- Imfeld, N., Hufkens, K., and Brönnimann, S.: Daily gridded temperature, precipitation, and phenology indices for Switzerland from 1763 to 2020, PANGAEA [data set], (in review).
- 580 Imfeld, N., Stucki, P., Brönnimann, S., Bader, S., Bürgi, M., Calanca, P., Gubler, S., Holzkämper, A., Hövel, L., Isotta, F. A., Kestenholz, C., Kotlarski, S., Mastai, A., Nussbaumer, S. U., Raible, C. C., Röthlisberger, M., Scherrer, S. C., Staub, K., Vicedo-Cabrera, A. M., Vogel, M.-M., Wehrli, K., Thomas, W., and Zumbühl, H. J.: Hot and dry summers in Switzerland. Causes and impacts of the record summers 1947, 2003, and 2018, Bern: Geographica Bernensia, Reihe G Grundlagenforschung G96, <https://doi.org/10.4480/GB2022.G98.02>, 2022.
- Imfeld, N., Pfister, L., Brugnara, Y., and Brönnimann, S.: A 258-year-long data set of temperature and precipitation fields for Switzerland  
585 since 1763, *Climate of the Past*, 19, 703–729, <https://doi.org/10.5194/cp-19-703-2023>, 2023.
- Isotta, F. A., Begert, M., and Frei, C.: Long-term consistent monthly temperature and precipitation grid data sets for Switzerland over the past 150 years, *Journal of Geophysical Research: Atmospheres*, 124, 3783–3799, <https://doi.org/10.1029/2018JD029910>, 2019.
- Joller, F. J.: Collectaneen von Pfarrer Joller, *Archiv des Geschichtsforschenden Vereins von Oberwallis*, 5, 1888.
- Kopp, C.: Résumé des observations météorologiques faites à Neuchâtel dans le 18<sup>ème</sup> siècle de 1760 à 1800, *Bulletin de la Société*  
590 *Neuchâteloise de Sciences Naturelles*, 9, 56–67, <https://doi.org/10.5169/seals-88065>, 1873.
- Lhotka, O. and Brönnimann, S.: Possible Increase of Vegetation Exposure to Spring Frost under Climate Change in Switzerland, *Atmosphere*, 11, <https://doi.org/10.3390/atmos11040391>, 2020.
- Longpré, M.-A., Stix, J., Burkert, C., Hansteen, T., and Kutterolf, S.: Sulfur budget and global climate impact of the A.D. 1835 eruption of Cosigüina volcano, Nicaragua, *Geophysical Research Letters*, 41, 6667–6675, <https://doi.org/10.1002/2014GL061205>, 2014.
- 595 Marty, C.: Regime shift of snow days in Switzerland, *Geophysical Research Letters*, 35, <https://doi.org/10.1029/2008GL033998>, 2008.
- Meier, M. and Bigler, C.: Process-oriented models of autumn leaf phenology: ways to sound calibration and implications of uncertain projections, *EGU sphere*, 2023, 1–43, <https://doi.org/10.5194/egusphere-2022-1423>, 2023.
- Meier, M., Fuhrer, J., and Holzkämper, A.: Changing risk of spring frost damage in grapevines due to climate change? A case study in the Swiss Rhone Valley, *International journal of biometeorology*, 62, 991–1002, <https://doi.org/10.1007/s00484-018-1501-y>, 2018.
- 600 MeteoSwiss: Witterungsberichte Schweiz 1861 – 1869, [https://www.meteoswiss.admin.ch/dam/jcr:a4f1eb74-3a40-4476-bc56-64a27382bb5f/Witterungsberichte\\_1861-1869.pdf](https://www.meteoswiss.admin.ch/dam/jcr:a4f1eb74-3a40-4476-bc56-64a27382bb5f/Witterungsberichte_1861-1869.pdf), (last accessed 25 July 2023), 2016.
- MeteoSwiss: Documentation of MeteoSwiss Grid-Data Products. Daily Precipitation (final analysis): RhiresD, [https://www.meteoswiss.admin.ch/dam/jcr:4f51f0f1-0fe3-48b5-9de0-15666327e63c/ProdDoc\\_RhiresD.pdf](https://www.meteoswiss.admin.ch/dam/jcr:4f51f0f1-0fe3-48b5-9de0-15666327e63c/ProdDoc_RhiresD.pdf), (last accessed 30 June 2022), 2021a.
- MeteoSwiss: Documentation of MeteoSwiss Grid-Data Products. Daily Mean, Minimum and Maximum Temperature: TabsD, TminD,  
605 TmaxD, [://www.meteoswiss.admin.ch/dam/jcr:818a4d17-cb0c-4e8b-92c6-1a1bdf5348b7/ProdDoc\\_TabsD.pdf](https://www.meteoswiss.admin.ch/dam/jcr:818a4d17-cb0c-4e8b-92c6-1a1bdf5348b7/ProdDoc_TabsD.pdf), (last accessed 30 June 2022), 2021b.
- MZA: Schweizerische Meteorologische Beobachtungen, *Annalen der Schweizerisch Meteorologischen Zentralanstalt*, <https://www.meteoschweiz.admin.ch/assets/weather-archive/annalen-1873.pdf>, (last accessed 25 July 2025), 1873.
- Müller, C.: Joh. Heinrich Waser, der zürcherische Volkswirtschaftler des 18. Jahrhunderts, seine Bestrebungen und Schicksale und sein  
610 statistischer Nachlass, fortgeführt bis zur Gegenwart, J. Herzog, Zurich, 1878.
- Paffrath, J.: *Schriften des Vereins für die Geschichte des Bodensees und seiner Umgebung*, chap. Zum Wetterverlauf am Bodensee, Kommissionsverlag von Joh. Thom. Stettner, Lindau, 1915.
- Pappert, D., Brugnara, Y., Jourdain, S., Pospieszynska, A., Przybylak, R., Rohr, C., and Brönnimann, S.: Unlocking weather observations from the Societas Meteorologica Palatina (1781–1792), *Climate of the Past*, 17, 2361–2379, <https://doi.org/10.5194/cp-17-2361-2021>,  
615 2021.

- Parker, D. E., Legg, T. P., and Folland, C. K.: A new daily central England temperature series, 1772–1991, *International Journal of Climatology*, 12, 317–342, <https://doi.org/10.1002/joc.3370120402>, 1992.
- Pfister, C. and Wanner, H.: *Climate and Society in Europe: The Last Thousand Years*, Haupt Verlag Bern, 2021.
- Pfister, C., Rohr, C., and Jover, A. C. C.: Euro-Climhist: eine Datenplattform der Universität Bern zur Witterungs-, Klima- und Katastrophengeschichte, *Wasser Energie Luft*, 109, <https://doi.org/10.7892/boris.97013>, 2017.
- 620 Reid, P. C., Hari, R. E., Beaugrand, G., Livingstone, D. M., Marty, C., Straile, D., Barichivich, J., Goberville, E., Adrian, R., Aono, Y., Brown, R., Foster, J., Groisman, P., H  laou  t, P., Hsu, H.-H., Kirby, R., Knight, J., Kraberg, A., Li, J., Lo, T.-T., Myneni, R. B., North, R. P., Pounds, J. A., Sparks, T., St  bi, R., Tian, Y., Wiltshire, K. H., Xiao, D., and Zhu, Z.: Global impacts of the 1980s regime shift, *Global Change Biology*, 22, 682–703, <https://doi.org/10.1111/gcb.13106>, 2016.
- 625 Rutishauser, T., Luterbacher, J., and Wanner, H.: A 280-Year Long Series of Phenological Observations of Cherry Tree Blossoming Dates for Switzerland, in: Diploma thesis, University of Bern, pp. 1–122, 2003.
- Rutishauser, T., Luterbacher, J., Jeanneret, F., Pfister, C., and Wanner, H.: A phenology-based reconstruction of interannual changes in past spring seasons, *Journal of Geophysical Research: Biogeosciences*, 112, <https://doi.org/10.1029/2006JG000382>, 2007.
- SBV: Statistische Erhebungen und Sch  tzungen auf dem Gebiete der Landwirtschaft, 35. Jahresheft, p. 41 pp, [https://www.sbv-usp.ch/fileadmin/sbvuspch/04\\_Medien/Publikationen/SES/Archiv/SES\\_1958-35.pdf](https://www.sbv-usp.ch/fileadmin/sbvuspch/04_Medien/Publikationen/SES/Archiv/SES_1958-35.pdf), (last accessed, 10 April 2023), 1958.
- 630 Schaller-Donauer, A.: *Chronik der Naturereignisse im Urnerland 1000-1800*, Gotthardpost, 1937.
- Schelhaas, M.-J., Nabuurs, G.-J., and Schuck, A.: Natural disturbances in the European forests in the 19th and 20th centuries, *Global Change Biology*, 9, 1620–1633, <https://doi.org/10.1046/j.1365-2486.2003.00684.x>, 2003.
- Scherrer, S. C. and Begert, M.: Effects of large-scale atmospheric flow and sunshine duration on the evolution of minimum and maximum temperature in Switzerland, *Theoretical and Applied Climatology*, 138, 227–235, <https://doi.org/10.1007/s00704-019-02823-x>, 2019.
- 635 Schwander, M., Br  nnimann, S., Delaygue, G., Rohrer, M., Auchmann, R., and Brugnara, Y.: Reconstruction of Central European daily weather types back to 1763, *International Journal of Climatology*, 37, 30–44, <https://doi.org/10.1002/joc.4974>, 2017.
- Serquet, G., Marty, C., Dulex, J.-P., and Rebetez, M.: Seasonal trends and temperature dependence of the snowfall/precipitation-day ratio in Switzerland, *Geophysical Research Letters*, 38, L07703, <https://doi.org/10.1029/2011GL046976>, 2011.
- 640 Sippel, S., Fischer, E. M., Scherrer, S. C., Meinshausen, N., and Knutti, R.: Late 1980s abrupt cold season temperature change in Europe consistent with circulation variability and long-term warming, *Environmental Research Letters*, 15, 094056, <https://doi.org/10.1088/1748-9326/ab86f2>, 2020.
- Slivinski, L. C., Compo, G. P., Whitaker, J. S., Sardeshmukh, P. D., Giese, B. S., McColl, C., Allan, R., Yin, X., Vose, R., Titchner, H., Kennedy, J., Spencer, L. J., Ashcroft, L., Br  nnimann, S., Brunet, M., Camuffo, D., Cornes, R., Cram, T. A., Crouthamel, R., Dom  nguez-Castro, F., Freeman, J. E., Gergis, J., Hawkins, E., Jones, P. D., Jourdain, S., Kaplan, A., Kubota, H., Le Blancq, F., Lee, T.-C., Lorrey, A., Luterbacher, J., Maugeri, M., Mock, C. J., Kent Moore, G., Przybylak, R., Pudmenzky, C., Reason, C., Slonosky, V. C., Smith, C. A., Tinz, B., Trewin, B., Valente, M. A., Wang, X. L., Wilkinson, C., Wood, K., and Wyszy  nski, P.: Towards a more reliable historical reanalysis: Improvements for version 3 of the Twentieth Century Reanalysis system, *Quarterly Journal of the Royal Meteorological Society*, 145, 2876–2908, <https://doi.org/10.1002/qj.3598>, 2019.
- 650 Slivinski, L. C., Compo, G. P., Sardeshmukh, P. D., Whitaker, J., McColl, C., Allan, R., Brohan, P., Yin, X., Smith, C., Spencer, L., Vose, R. S., Rohrer, M., Conroy, R. P., Schuster, D. C., Kennedy, J. J., Ashcroft, L., Br  nnimann, S., Brunet, M., Camuffo, D., Cornes, R., Cram, T. A., Dom  nguez-Castro, F., Freeman, J. E., Gergis, J., Hawkins, E., Jones, P. D., Kubota, H., Lee, T. C., Lorrey, A. M., Luterbacher, J., Mock, C. J., Przybylak, R. K., Pudmenzky, C., Slonosky, V. C., Tinz, B., Trewin, B., Wang, X. L., Wilkinson, C., Wood,

- K., and Wyszyński, P.: An evaluation of the performance of the twentieth century reanalysis version 3, *Journal of Climate*, 34, 1417–1438, <https://doi.org/10.1175/JCLI-D-20-0505.1>, 2021.
- Staatsarchiv-Lucerne: Unterschiedliche Begebenheiten und Ereignisse des Wetters, teils in Regen- teils in Schneewetter, wie auch in Kälte und Erdstößen (1755-1829), 1755-1829.
- Strasser, G.: Grindelwaldner Chroniken, Gletschermann. Familienblatt für Grindelwald, <https://doi.org/10.3931/e-rara-78062>, 1890.
- Studer, S., Appenzeller, C., and Defila, C.: Inter-annual variability and decadal trends in alpine spring phenology: a multivariate analysis approach, *Climatic Change*, 73, 395–414, <https://doi.org/10.1007/s10584-005-6886-z>, 2005.
- Tavankar, F., Lo Monaco, A., Nikooy, M., Venanzi, R., Bonyad, A., and Picchio, R.: Snow damages on trees of an uneven age in mixed broadleaf forests: Effects of topographical conditions and tree characteristics, *Journal of Forestry Research*, 30, 1383–1394, <https://doi.org/10.1007/s11676-018-0710-x>, 2019.
- Ter Braak, C. J. and Vrugt, J. A.: Differential evolution Markov chain with snooker updater and fewer chains, *Statistics and Computing*, 18, 435–446, <https://doi.org/10.1007/s11222-008-9104-9>, 2008.
- Tonelli, E., Vitali, A., Malandra, F., Camarero, J. J., Colangelo, M., Nolè, A., Ripullone, F., Carrer, M., and Urbinati, C.: Tree-ring and remote sensing analyses uncover the role played by elevation on European beech sensitivity to late spring frost, *Science of The Total Environment*, 857, 159 239, 2023.
- Valese, E., Conedera, M., Vacik, H., Japelj, A., Beck, A., Cocca, G., Cvenkel, H., Di Narda, N., Ghiringhelli, A., Lemessi, A., Mangiavillano, A., Pelfini, F., Pelosini, R., Ryser, D., and Wastl, C.: Wildfires in the Alpine region: first results from the ALP FFIRS project, in: *Proceedings of the 5th International Wildland Fire Conference*, South Africa, 9-13 May, 2011.
- Valler, V., Franke, J., Brugnara, Y., Samakinwa, E., Hand, R., Lundstad, E., Burgdorf, A.-M., Lipfert, L., Friedman, A. R., and Brönnimann, S.: ModE-RA: a global monthly paleo-reanalysis of the modern era 1421 to 2008, *Scientific data*, 11, 36, <https://doi.org/10.1038/s41597-023-02733-8>, 2024.
- Vitasse, Y. and Rebetez, M.: Unprecedented risk of spring frost damage in Switzerland and Germany in 2017, *Climatic Change*, 149, 233–246, <https://doi.org/10.1007/s10584-018-2234-y>, 2018.
- Vitasse, Y., Schneider, L., Rixen, C., Christen, D., and Rebetez, M.: Increase in the risk of exposure of forest and fruit trees to spring frosts at higher elevations in Switzerland over the last four decades, *Agricultural and Forest Meteorology*, 248, 60–69, <https://doi.org/10.1016/j.agrformet.2017.09.005>, 2018.
- Vitasse, Y., Bottero, A., Cailleret, M., Bigler, C., Fonti, P., Gessler, A., Lévesque, M., Rohner, B., Weber, P., Rigling, A., and Wohlgemuth, T.: Contrasting resistance and resilience to extreme drought and late spring frost in five major European tree species, *Global Change Biology*, 25, 3781–3792, <https://doi.org/https://doi.org/10.1111/gcb.14803>, 2019.
- Vogel, F.: *Memorabilia Tigurina oder Chronik der Denkwürdigkeiten der Stadt und Landschaft Zürich*, im Verlag des Verfassers und in Commission bey S. Höhr, <https://doi.org/10.3931/e-rara-26390>, 1841.
- Wang, H., Wu, C., Ciais, P., Peñuelas, J., Dai, J., Fu, Y., and Ge, Q.: Overestimation of the effect of climatic warming on spring phenology due to misrepresentation of chilling, *Nature Communications*, 11, 4945, 2020.
- Wanner, H. and Furger, M.: The bise—climatology of a regional wind north of the Alps, *Meteorology and Atmospheric Physics*, 43, 105–115, <https://doi.org/10.1007/BF01028113>, 1990.
- Wypych, A., Sulikowska, A., Ustrnul, Z., and Czekierda, D.: Variability of growing degree days in Poland in response to ongoing climate changes in Europe, *International Journal of Biometeorology*, 61, 49–59, <https://doi.org/10.1007/s00484-016-1190-3>, 2017.

- Yiou, P., Boichu, M., Vautard, R., Vrac, M., Jourdain, S., Garnier, E., Fluteau, F., and Menut, L.: Ensemble meteorological reconstruction using circulation analogues of 1781–1785, *Climate of the Past*, 10, 797–809, <https://doi.org/10.5194/cp-10-797-2014>, 2014.
- Zahradníček, P., Brázdil, R., Řehoř, J., Trnka, M., Bartošová, L., and Rožnovský, J.: Past and present risk of spring frosts for fruit trees in the Czech Republic, *Theoretical and Applied Climatology*, pp. 1–20, <https://doi.org/10.1007/s00704-023-04671-2>, 2023.
- 695 Zambri, B., Robock, A., Mills, M. J., and Schmidt, A.: Modeling the 1783–1784 Laki Eruption in Iceland: 2. Climate Impacts, *Journal of Geophysical Research: Atmospheres*, 124, 6770–6790, <https://doi.org/10.1029/2018JD029554>, 2019.
- Zennhäuser, G.: Witterung und Klima eines Walliser Alpentals nach Aufzeichnungen (1770-1812) des Weibels Johann Ignaz Inderschmitt von Binn, *Blätter aus der Walliser Geschichte* 40, 40, <https://doc.rero.ch/record/200964>, (last accessed 12 September 2023), 2008.
- Zhang, X., Alexander, L., Hegerl, G. C., Jones, P., Tank, A. K., Peterson, T. C., Trewin, B., and Zwiers, F. W.: Indices for monitoring changes  
700 in extremes based on daily temperature and precipitation data, *WIREs Climate Change*, 2, 851–870, <https://doi.org/10.1002/wcc.147>, 2011.
- Zschokke, T.: Witterungsbeobachtungen in Aarau in den Jahren 1861-1865, vol. 1, Aarau, Sauerländer, [https://abn-primio.hosted.exlibrisgroup.com/permalink/f/17uelnu/41ABN\\_ALEPH\\_DS000261569](https://abn-primio.hosted.exlibrisgroup.com/permalink/f/17uelnu/41ABN_ALEPH_DS000261569), 1865.
- Zubler, E. M., Scherrer, S. C., Croci-Maspoli, M., Liniger, M. A., and Appenzeller, C.: Key climate indices in Switzerland; expected changes  
705 in a future climate, *Climatic change*, 123, 255–271, <https://doi.org/10.1007/s10584-013-1041-8>, 2014.