

# Comparison of the LEO and CPMA-SP2 techniques for black-carbon mixing-state measurements

Arash Naseri <sup>1</sup>, Joel .C Corbin <sup>2</sup>, and Jason .S Olfert <sup>1</sup>

<sup>1</sup>Department of Mechanical Engineering, University of Alberta, Edmonton, Alberta, Canada

<sup>2</sup>Metrology Research Centre, National Research Council Canada, Ottawa, Ontario, Canada

**Correspondence:** Jason Olfert (jolfert@ualberta.ca, Office Tel: 780-492-2341)

**Abstract.** It is necessary to measure the mixing states of light-absorbing carbon (LAC) particles to reduce uncertainties in climate forcing due to particulate from wildfires and biomass combustion. For refractory LAC (normally called refractory black carbon; rBC), such measurements can be made using the single particle soot photometer (SP2). The SP2 measures the incandescent mass of individual particles due to heating by a 1064 nm laser. The SP2 also monitors single-particle light scattering from rBC plus internally mixed material (*e.g.*, *coatings* of volatile particulate matter). rBC mixing states can be estimated from SP2 measurements by combining the scattering and incandescence signals. This is the basis of the published methods known as the (i) scattering–incandescence lag-time, (ii) leading-edge only (LEO), and (iii) normalized derivative methods. More recently, the tandem centrifugal particle mass analyzer (CPMA)–SP2 method has been developed. The CPMA–SP2 method does not rely on the SP2 scattering signals and, therefore truly measures the rBC mass fraction, with no assumptions regarding particle composition or morphology. In this study, we provide the first quantitative comparison of the light-scattering and CPMA–SP2 methods for measuring mixing state. We discuss the upper and lower limits of detection (in terms of both rBC and coatings), temporal resolution, role of counting statistics, and errors associated with the measurements. We use a data set of atmospheric particles sampled at a regional background site (Kamloops, Canada; about 350 km northeast of Vancouver, British Columbia, Canada), where the majority of rBC was emitted by seasonal wildfires. In the overall comparison among measurement methods, the CPMA–SP2 method is found to have significantly better systematic uncertainties than the light-scattering methods for wildfire smoke. For example, the light-scattering methods could not quantify coatings on half of the rBC particles, because their light-scattering signals were below the SP2 detection limit. Consequently, the bias in SP2-only estimates of rBC mixing states depends on the size distribution of the rBC particles. Although more accurate, CPMA–SP2 measurements require significantly more time to acquire, whereas SP2-only light-scattering analyses (both LEO and lag-time) can provide near real-time qualitative information representing large rBC particles.

## 1 Introduction

Atmospheric light-absorbing carbon (LAC) plays an important role in the Earth’s radiative balance, affecting the amount of terrestrial and solar radiation absorbed by the atmosphere. This affects the Earth’s surface temperatures as well as precipitation patterns (Samset, 2022). The short lifetime of LAC, as well as its toxicity in the human lung, makes it an attractive target for

25 short-term climate mitigation (Grieshop et al., 2009; Shindell et al., 2012). A large fraction of atmospheric LAC is emitted  
by wildfires and biomass burning (Bond et al., 2013). These sources release LAC in the form of black carbon (BC, or soot;  
insoluble aggregates of partially graphitized carbon), brown carbon (BrC; soluble light-absorbing organic molecules including  
humic-like substances and polycyclic aromatic hydrocarbons), and tarballs (TBs; insoluble, amorphous-carbon spheres) (see  
30 the most abundant of these LAC types, BrC has received increasing attention (Laskin et al., 2015) and recent work suggests  
that TBs may be the dominant LAC species in some wildfire (Adachi et al., 2019; Chakrabarty et al., 2023) and marine-engine  
smoke (Corbin et al., 2018).

Major gaps remain in our understanding and prediction of atmospheric light by LAC. The relative abundance of BC, BrC,  
and TBs is one major question, which must be addressed using measurement techniques capable of quantifying these species  
35 separately (e.g. Laskin et al., 2015; Adler et al., 2019; Corbin and Gysel-Beer, 2019). Another major question is the degree  
to which light absorption by these species is enhanced by their internal mixing with non-absorbing species such as organic  
and inorganic matter or water. In some cases, such internal mixing can double the resulting light absorption of the mixed LAC  
particle (Cappa et al., 2019). Detailed modelling has showed that a size-resolved understanding of internal mixing is essential  
to explain the existing variety of observations (Fierce et al., 2017, 2020). A quantitative answer to the mixing-state question,  
40 therefore, requires quantitative measurements of the size-resolved mixing state of atmospheric BC.

One technique capable of providing such size-resolved mixing state measurements is the single-particle soot photometer  
(SP2, Schwarz et al., 2006; Stephens et al., 2003). The SP2 measures the incandescence and scattering of individual particles  
during exposure to a high-intensity, continuous-wave, 1064nm laser. The vast majority of incandescence in atmospheric parti-  
cles is due to BC (Schwarz et al., 2006), although it should be noted that both anthropogenic iron particles (Moteki et al., 2017)  
45 and marine-engine TBs (Corbin and Gysel-Beer, 2019), as well as laboratory TB surrogates (Sedlacek III et al., 2018) have  
been shown to generate detectable rBC signals in the SP2. On the other hand, scattering signals are produced by all materials  
present in sufficient quantity within a particle. Therefore, a comparison of the SP2 scattering and incandescence signals allows  
for an estimate of mixing states. This has been done via the complex *leading-edge only* (LEO) technique (Gao et al., 2007)  
(which extrapolates from the initial light-scattering signals of a particle, to avoid issues of coating evaporation) as well as the  
50 conceptually similar normalized derivative method (Moteki and Kondo, 2008). Below, we refer only to the SP2–LEO method,  
although similar results are expected from the normalized derivative method. A distinct method of SP2 light-scattering anal-  
ysis, the simplistic lag-time analysis (which simply compares the time at which scattering and incandescence peak) has often  
been used. Lag-time analysis is much simpler, categorizing particles as *thickly-coated* if their scattering signal peaks before the  
incandescence signal, and *moderately-to-thinly coated* otherwise. These methods are discussed in more detail below.

55 The SP2–LEO estimation of coating thickness is limited for two reasons. First, the accuracy of the implicit physical model is  
significantly limited (Liu et al., 2017): coated rBC particles are not core-shell spheres. Second, the range of response of the SP2  
detectors does not span all relevant scenarios. For example, very small (but significant in mass concentration) rBC particles do  
not scatter enough light to be detected, so the otherwise broad range of response of the SP2 incandescence detector cannot be  
fully exploited (Taylor et al., 2015; Zhao et al., 2020).

60 A significant improvement to the accuracy of SP2-based mixing state measurements is achieved by combining the SP2 in tandem with the centrifugal particle mass analyzer (CPMA, Olfert and Collings, 2005). CPMA–SP2 data provide quantitative, two-dimensional distributions of the mass fraction of rBC once multiple charging effects are removed (Section 3.2). The CPMA–SP2 technique avoids the two SP2–LEO limitations above, since it utilizes only the incandescence channel of the SP2 and requires no physical model for interpretation. These advantages were acknowledged in prior CPMA–SP2 work (Liu et al., 65 2017; Broda et al., 2018), but prior work has not performed a quantitative comparison of SP2–LEO and CPMA–SP2 results. This gap exists in part because the appropriate inversion algorithms for CPMA–SP2 analysis have only recently been developed (Naseri et al., 2021a, b).

In this work, we discuss and quantify differences in the SP2–LEO and CPMA–SP2 methods in detail. Specifically, we compare the LEO method, incandescence lag-time, and CPMA–SP2 methods in terms of detection size range, temporal resolution, 70 counting statistics, and associated uncertainties. We evaluate these methods using atmospheric measurements taken in Kamloops, British Columbia, Canada, during episodes dominated by predominately urban and highway soot particles (low coating content) or moderate to heavy wildfire smoke particulate (moderate to high coating content). Our results provide clear insights into the limitations of the SP2–LEO method. Our data also suggest that not only coated BC, but also TBs are detectable by CPMA–SP2, a result that we discuss briefly here and will return to in future work.

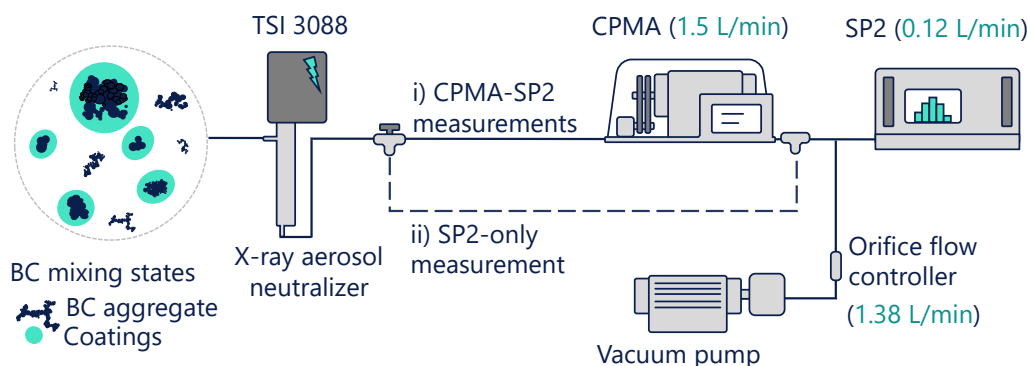
## 75 2 Experimental methods

### 2.1 Measurement location

The measurements were carried out in an urban setting in the city of Kamloops, British Columbia, Canada ( $50^{\circ}39'58.4''$  N,  $120^{\circ}21'45.5''$  W). The site was located 2.2 km from an air quality station operated by the British Columbia Ministry of Environment and Climate Change and  $\sim 0.7$  km from the Trans-Canada highway, which is a major corridor for heavy-duty 80 diesel vehicles carrying freight. Experiments took place on July 21 and July 22, 2021; however, three periods of time are used in this work as examples to compare the measurement methods. The examples include periods where ambient particulate levels were at: *i*) Case I; low concentrations and mostly thinly coated rBC particles, presumably composed of mostly urban and highway emissions and may also contain some wildfire smoke (July 21, 11:54 am to 1:44; PM<sub>2.5</sub> concentrations of 1.7 to 4  $\mu\text{g}/\text{m}^3$  as measured at the nearby air quality station), *ii*) Case II; moderate concentrations and mixture of thinly and 85 thickly coated rBC particles due to urban and highway emissions and smoke from nearby forest fires having bimodal particle size/mass distribution (July 22, 11:31 am to 12:41 pm; PM<sub>2.5</sub> concentrations of  $\sim 104$  to 81  $\mu\text{g}/\text{m}^3$ ), and *iii*) Case III; high concentrations and mostly thickly coated rBC due to wildfire smoke (July 22, 10:23 to 11:29 am; PM<sub>2.5</sub> concentrations of 122 to 104  $\mu\text{g}/\text{m}^3$ ).

## 2.2 Measurement system

90 Figure 1 shows the method used to measure ambient particles. Ambient particles are drawn through  $\sim 2.5$  m of silicone conductive tubing and an X-ray bipolar aerosol charger (Model 3088, TSI Inc). The particles were then directly sampled by the SP2 or classified by mass-to-charge ratio by the CPMA (Cambustion Ltd.) before being measured by SP2. The SP2 flow rate was maintained at 0.12 L/min during the experiments. However, to lessen particle diffusional losses (in the sampling line and the CPMA), a additional pump and critical orifice was used to maintain a flow of 1.5 L/min from the ambient inlet to the SP2 inlet.



**Figure 1.** Schematic of the measurement system. Numbers in parentheses illustrate flow rates in L/min.

95

For CPMA–SP2 measurements, the CPMA was stepped through mass set points over the range of  $m^* = 0.2$ –100 fg, with 5 CPMA set points per decade, and a CPMA resolution of 9. In general, 3 to 5 minutes were spent at each CPMA set point so that the total measurement time was limited to about an hour. This procedure led to about 1000 or more BC-containing particles being counted by the SP2 at each CPMA set point (the exception being CPMA set points near the limits of the distribution where particle counts were very low). These experimental settings (resolution, number of CPMA set points, SP2 counts) were chosen based on the optimized settings suggested by Naseri et al. (2021b) for the particle concentrations and measurement time frames in this work. The SP2-only measurements were taken at the beginning, end, and occasionally between CPMA–SP2 scans.

100

## 2.3 SP2 calibration

105 The SP2 incandescence signal was calibrated using soot from a miniature inverted soot generator (Argonaut Scientific Corp.; Kazemimanesh et al. (2019); Moallemi et al. (2019)) denuded with a catalytic stripper (Model CS08, Catalytic Instruments; Swanson and Kittelson (2010)). The denuded soot was classified with a CPMA over a wide range of set points and measured by the SP2, similar to the procedure used by Irwin et al. (2013). Since volatile material is removed from the rBC particles, the

calibration particles have no coating by definition and the CPMA mass is equal to the rBC mass ( $m_p = m_{\text{rBC}}$ ).<sup>1</sup> The scattering  
110 signal was calibrated using polystyrene latex (PSL) sphere standards (Thermo Scientific 3000 Series) with a diameter of 300  
nm. The PSI SP2 toolkit, version 4.114, was used to obtain the calibration curves for each signal.

### 3 Data analysis methods

#### 3.1 SP2-only measurements

##### 3.1.1 Leading-edge only

115 In the SP2 literature, the amount of coating material in the rBC-containing particle is typically represented as a coating thickness  
( $t_{\text{coating}}$ ), which is calculated as

$$t_{\text{coating}} = \frac{d_{\text{opt}}(\text{RI}) - d_{\text{rBC}}}{2}, \quad (1)$$

where,  $d_{\text{opt}}(\text{RI})$  is the optical diameter of the particle (a function of particle volume, refractive index, and morphology),  
and  $d_{\text{rBC}}$  is the mass-equivalent diameter of the rBC portion of the particle. The mass-equivalent diameter  $d_{\text{rBC}}$  is simply the  
120 volume-equivalent diameter calculated from the SP2-measured rBC mass and a literature value of rBC material density (*i.e.*,  
 $\rho_{\text{rBC}} = 1800 \text{ kg/m}^3$ , Ouf et al. 2019):

$$d_{\text{rBC}} = \left( \frac{6m_{\text{rBC}}}{\pi\rho_{\text{rBC}}} \right)^{1/3}. \quad (2)$$

To estimate  $d_{\text{opt}}$ , the scattering cross-section is needed to be determined as an input to the Mie theory. The scattering  
cross-section of the particles, can be estimated from the peak intensity of the Gaussian scattering signal, which was calibrated  
125 with measurements of PSL of known size. There is, however, a confounding effect for scattering size measurements of rBC-  
containing particles, such that as coated rBC particles are heated by the laser beam, the radiatively heated rBC heats the  
coating by conduction, causing evaporation and resulting in a lower particle volume. A lower volume means a lower peak  
intensity of the scattering signal. Accordingly, the peak intensity of the scattering signal cannot be directly derived from the  
originally detected signal and requires the reconstruction of the undistorted scattering signal. Developed by Gao et al. (2007),  
130 the leading-edge-only (LEO) approach reconstructs the expected scattering signals of rBC-containing particles by fitting a  
Gaussian function to the part of the scattering signal that precedes the evaporation of the coating material, *i.e.*, the leading edge  
of the scattering signal. We defined the leading edge of the scattering signal as 3% of the maximum laser intensity based on  
scatter plots of LEO and standard analysis for non-absorbing particles, similar to previous studies (Gao et al., 2007; Taylor  
et al., 2015).

---

<sup>1</sup>In this context, the masses measured for incandescing particles using this calibration data are to be interpreted as rBC equivalent mass.

135 The LEO approach requires precise knowledge of the particle position within the SP2 laser beam. This knowledge is obtained using the so-called *split detector*. The split detector is a two- or four-part (depending on the SP2 model) avalanche photodiode, where the polarity on one half of the detector is inverted relative to the other half. The split detector is then oriented such that when rBC-containing particles cross through the laser beam, the light scattered by them shifts from one element of the detector to the other. As particles move through the center of the detector, the scattering signal is split evenly, so that the measured  
140 scattering signal is zero. This process creates a clear notch that is used to infer the position of rBC-containing particles inside the laser beam, as the distance between the notch and the peak intensity of the laser changes only when the instrument optics are realigned during servicing (*i.e.*, it remains constant during the measurements).

Apart from the reconstructed scattering signal, several assumptions, like the refractive indices of the coating and rBC core, are required as inputs to Mie theory to obtain the optical diameter (scattering-equivalent size) of rBC-containing particles  
145 (Taylor et al., 2015). In reality, the exact value of rBC's refractive index is unknown and may vary from one rBC material to another; nonetheless, it has been empirically shown that  $\kappa \approx n - 1$ , (Bond and Bergstrom, 2006; Moteki et al., 2010). Taking this constraint into account, the SP2 Toolkit uses a range of lookup tables containing scattering cross-sections at the corresponding SP2 laser wavelength ( $\lambda = 1064$  nm) for diverse core and coating refractive indices. The user then selects the most appropriate rBC refractive index by ensuring that the rBC volume predicted from scattering by uncoated rBC particles is similar to the rBC  
150 volume predicted from the incandescence signal. Uncoated rBC particles are defined from the light-scattering signal just prior to incandescence onset, when coatings are assumed to have evaporated. In our study, this resulted in  $n_{\text{rBC}} = 2.26 + i 1.26$ . It should be noted that this approach must not be mistakenly interpreted as quantifying the rBC refractive index, which requires more supplementary measurements, but as a mechanism to ensure internal consistency in the LEO results.

The LEO approach is commonly employed to derive the size or mixing state of rBC-containing aerosols (Raatikainen et al.,  
155 2017; Sedlacek III et al., 2012; Zhang et al., 2018c, a). However, the scattering detection range for pure scattering particles (with no rBC portion) is narrow (*i.e.*,  $\sim 200$ – $500$  nm). The size range for LEO measurements of rBC-containing aerosols depends not only on the size of the particle, but also on the amount of rBC in the particle which affects the refractive index and the evaporation rate of the coating portion.

To measure coating thickness/mass of rBC-containing particles using the LEO method, a spherical core-shell morphology  
160 with several core/shell property assumptions are required, namely, (i) a spherical void-free rBC core and values for: (ii) rBC material density ( $\rho_{\text{rBC}}$ ), (iii) coating material density ( $\rho_{\text{coating}}$ ), (iv) core refractive index ( $n_{\text{rBC}}$ ), and (v) coating refractive index ( $n_{\text{coating}}$ ). The following values are often used in the literature and are used in this work unless otherwise stated:  $\rho_{\text{rBC}} = 1800$  kg/m<sup>3</sup> (Park et al., 2004; Bond and Bergstrom, 2006; Moteki et al., 2010; Corbin et al., 2018; Liu et al., 2020; Ouf et al., 2019),  $\rho_{\text{coating}} = 1000$  kg/m<sup>3</sup> (Ditas et al., 2018; Liu et al., 2019),  $n_{\text{rBC}} = 2.26 + i 1.26$  (Taylor et al., 2015; Moteki  
165 et al., 2010; Laborde et al., 2013; Zanatta et al., 2018; Dahlkötter et al., 2014), and  $n_{\text{coating}} = 1.5 + i 0$  (Laborde et al., 2013; Nakayama et al., 2010; Liu et al., 2015; Yuan et al., 2021). It is well established that the core-shell assumption does not adequately capture the characteristics of all rBC-containing particles (Liu et al., 2017; Cappa et al., 2019), and the accuracy of LEO in determining coating thickness relies on the four property values. The core/shell parameters utilized in LEO calculations

are notably influenced by density and refractive index (Taylor et al., 2015), which play a crucial role in the accuracy of the  
170 results.

### 3.1.2 Normalized Derivative

The *Normalized Derivative* (ND) approach, as introduced by Moteki and Kondo (2008), offers a methodology for assessing the  
time-dependent solid angle scattering cross-section ( $\Delta C_{\text{sca}}(t)$ ) to identify individual particles traversing through a Gaussian  
SP2 laser beam. This technique hinges on the concept that the normalized derivative of the scattering signal ( $S'/S$ ), as detected  
175 by the SP2, can be broken down into the normalized derivatives of the incident irradiance ( $I'/I$ ) and the scattering cross-  
section ( $\Delta C'_{\text{sca}}/\Delta C_{\text{sca}}$ ). In the realm of evaporative particles, the equality  $S'/S = I'/I$  holds true until evaporation initiates at  
a specific point within the laser beam. The incident irradiance  $I(t)$  for individual particles is deduced from  $I'/I$ , extracted from  
 $S'/S$ . Consequently,  $\Delta C_{\text{sca}}(t)$  is derived from  $I(t)$  and  $S(t)$ . The ND approach to evaluating rBC mixing states is similar to  
the LEO approach in that it extrapolates the initial particle size from the first portion of the scattering signal, except a different  
180 methodology is used to estimate the undisturbed particle diameter. While a split-detector signal is used in the LEO to derive the  
particle positional information, which is essential to recovering the undisturbed scattering signals, the *normalized derivative* of  
the scattering signal is used in the ND approach to obtain analogous information. Thus, the ND approach is similar to the LEO  
approach except that the detection limits and noise in the optical sizing of the coated particle may be slightly different. Due to  
the high degree of similarity between ND and LEO models, the ND approach is not considered in the present study.

### 185 3.1.3 Lag-time analysis

Lag-time analysis is a categorical approach for determining a general picture of the mixing state of BC. SP2 scattering signals  
can have two peaks, with the second one occurring almost at the peak of the incandescence. While the second peak of the  
scattering signal is typically higher than the first peak in thinly to moderately coated rBC particles, the opposite is true for  
thickly coated rBC particles. For the latter, the global maximum of scattering signals typically occurs well before the peak  
190 intensity of the incandescence signals, because of the much lower vapourization temperatures of typical coating material.  
Thus, the time difference between the peak intensity of the time-resolved SP2 scattering and incandescence signals ( $\Delta\tau =$   
 $t_{\text{max,scat}} - t_{\text{max,incand}}$ ) is used to categorize rBC-containing particles into two groups: (i) rBC particles with *thick* coatings,  
or (ii) *thin-to-moderate* coating (Schwarz et al., 2006; Moteki and Kondo, 2007; Subramanian et al., 2010; Corbin et al.,  
2018). Generally, particles are categorized as thickly coated rBC if the time lag between the peak intensities of the scattering  
195 and incandescence signals is more than  $\sim 2 \mu\text{s}$ , indicating considerable loss of coating material due to the heat absorbed  
by the particles as they transverse the laser beam. For rBC particles with thin-to-moderate coating, the peak scattering and  
incandescence signals occur nearly coincidentally (*e.g.*, time lag  $< 2 \mu\text{s}$ ). The lag-time method cannot distinguish between  
uncoated and thinly-to-moderately coated rBC particles.

One limitation of this method is that it cannot categorize rBC-containing particles whose rBC core and coating material are  
200 fragmented by laser light (Moteki and Kondo, 2007; Sedlacek III et al., 2012; Moteki et al., 2014; Dahlkötter et al., 2014;  
Sedlacek III et al., 2015). In such a case, the rBC portion reaches its boiling point and evaporates, while the unevaporated

coating portion is fragmented into smaller particles. A key to recognizing such a phenomenon is that the scattering signal does not entirely vanish as the incandescence signal goes to zero. Secondly, the lag-time method may be confounded by scenarios in which rBC forms within the SP2 laser (Sedlacek III et al., 2018; Corbin and Gysel-Beer, 2019). For more complex categorizations, advanced methods should be implemented, *e.g.*, supervised machine learning method (Lamb, 2019) or more complex analysis methods (Corbin and Gysel-Beer, 2019).

Depending on the rBC-containing particles measured and the SP2 used, the time lag threshold varies slightly. For instance, Liu et al. (2022) and Zhang et al. (2018b) used the threshold of  $\Delta\tau = 1.8 \mu\text{s}$  and  $1.6 \mu\text{s}$ , respectively, while  $\Delta\tau = 2.0 \mu\text{s}$  was used by Wang et al. (2014) and Wu et al. (2016). This variability may be caused by differences in coating composition, SP2 flow rates, or laser powers. Nevertheless, this variation is almost negligible, *i.e.*, less than  $\sim 0.4 \mu\text{s}$  (Moteki and Kondo, 2007), regardless of the atmospheric conditions and pollution level (Wu et al., 2016, 2017; Laborde et al., 2012). In the present study, we found that the low-gain channel yielded fewer invalid lagtime measurements, and therefore used this channel for our lag-time analysis. We used a time-lag threshold of  $\Delta\tau = 2 \mu\text{s}$  based on the observed bimodal distribution of lag times in our data. [The detailed information pertaining to lag time can be found in Section 4.4, illustrated in Figure 8.](#)

### 215 3.2 CPMA–SP2

The CPMA–SP2 system is used to measure the two-variable distribution of total particle mass  $m_p$  and rBC mass  $m_{\text{rBC}}$ ,  $\partial^2 N / \partial \log m_p \partial \log m_{\text{rBC}}$ , from which the distributions of coating mass or coating mass ratio on each rBC particle can also be calculated ( $\partial^2 N / \partial \log m_{\text{coating}} \partial \log m_{\text{rBC}}$ ). Details on the inversion scheme used to calculate the distribution from the measurements are given in detail in Naseri et al. (2021a). In brief, the  $m_p$ – $m_{\text{rBC}}$  distribution is found by inverting a double convolution where the input data is the number concentration of rBC particles detected within each SP2 bin ( $N_i$ ) at each CPMA set point  $i$ ,

$$N_i = \int_0^\infty \int_0^\infty K(\mathbf{r}_i^*, m_p, m_{\text{rBC}}, d_m) \frac{\partial^2 n}{\partial \log m_p \partial \log m_{\text{rBC}}} d \log m_{\text{rBC}} d \log m_p + \varepsilon_i, \quad (3)$$

where

$$K(\mathbf{r}_i^*, m_p, m_{\text{rBC}}, d_m) = \sum_{\phi=1}^{\infty} f(\phi, d_m) \Omega(m_{p,i^*}, m_p, d_m, \phi) \Lambda(m_{\text{rBC},i^*}, m_{\text{rBC}}) \quad (4)$$

225 is the kernel function,  $\Omega$  is the CPMA transfer function,  $\Lambda$  is the effective SP2 transfer function,  $f(\phi, d_m)$  is electric charge fraction for charge state  $\phi$ ,  $d_m$  is the equivalent mobility diameter of the particles,  $\mathbf{r}_i^* = [m_{p,i^*}^*, m_{\text{rBC},i^*}^*]^\top$  is a vector holding the set points of the CPMA and the discretized basis set of the SP2 data, respectively; and  $\varepsilon_i$  is the error in the measurement.

In this study, the model of Sipkens et al. (2020) (Case 1C) was used to calculate the CPMA transfer function and the model of Wiedensohler (1988) was used for the charge fraction. The inversion used a solution resolution of 64 bins per decade, a Bayesian model for regularization parameter selection, and the exponential distance method for imposing distribution smoothness on the solution. Details on how other inversion methods affect the solution are found in Naseri et al. (2021a).



### 3.3 Comparison of CPMA–SP2 and SP2-only data

We analyzed the CPMA–SP2 and SP2-only results according to their traditional methods of presentation below. We also converted between the two methods, to allow a direct comparison of differences in the two sets of results. To this end, a conversion from either rBC mass ( $m_{\text{rBC}}$ ) and coating mass ( $m_{\text{coating}}$ ) to rBC mass-equivalent diameter ( $d_{\text{rBC}}$ ) and coating thickness ( $t_{\text{coating}}$ ) or vice versa is required for comparison. The core-shell type morphology with core and shell material densities assumptions are required to convert CPMA–SP2 measurements (*i.e.*,  $m_{\text{p}}$  and  $m_{\text{rBC}}$ ) to coating thickness ( $t_{\text{coating}}$ ) and rBC mass equivalent diameter ( $d_{\text{rBC}}$ ). The  $d_{\text{rBC}}$  is calculated by Equation 2, and  $t_{\text{coating}}$  can be derived from

$$t_{\text{coating}} = \frac{1}{2} \left( \left( \frac{6(m_{\text{p}} - m_{\text{rBC}})}{\pi \rho_{\text{coating}}} \right)^{\frac{1}{3}} - d_{\text{rBC}} \right), \quad (5)$$

where  $\rho_{\text{coating}}$  is coating density and is assumed to be  $1000 \text{ kg/m}^3$ , to match the assumptions made in the LEO analysis (*c.f.*, Section 3.1.1). This assumption is evaluated later in Section 4.3. Note that, unlike the SP2–LEO method, the CPMA–SP2 method needs no optical model or assumed refractive indices to derive the coating thickness.

## 4 Results and Discussion

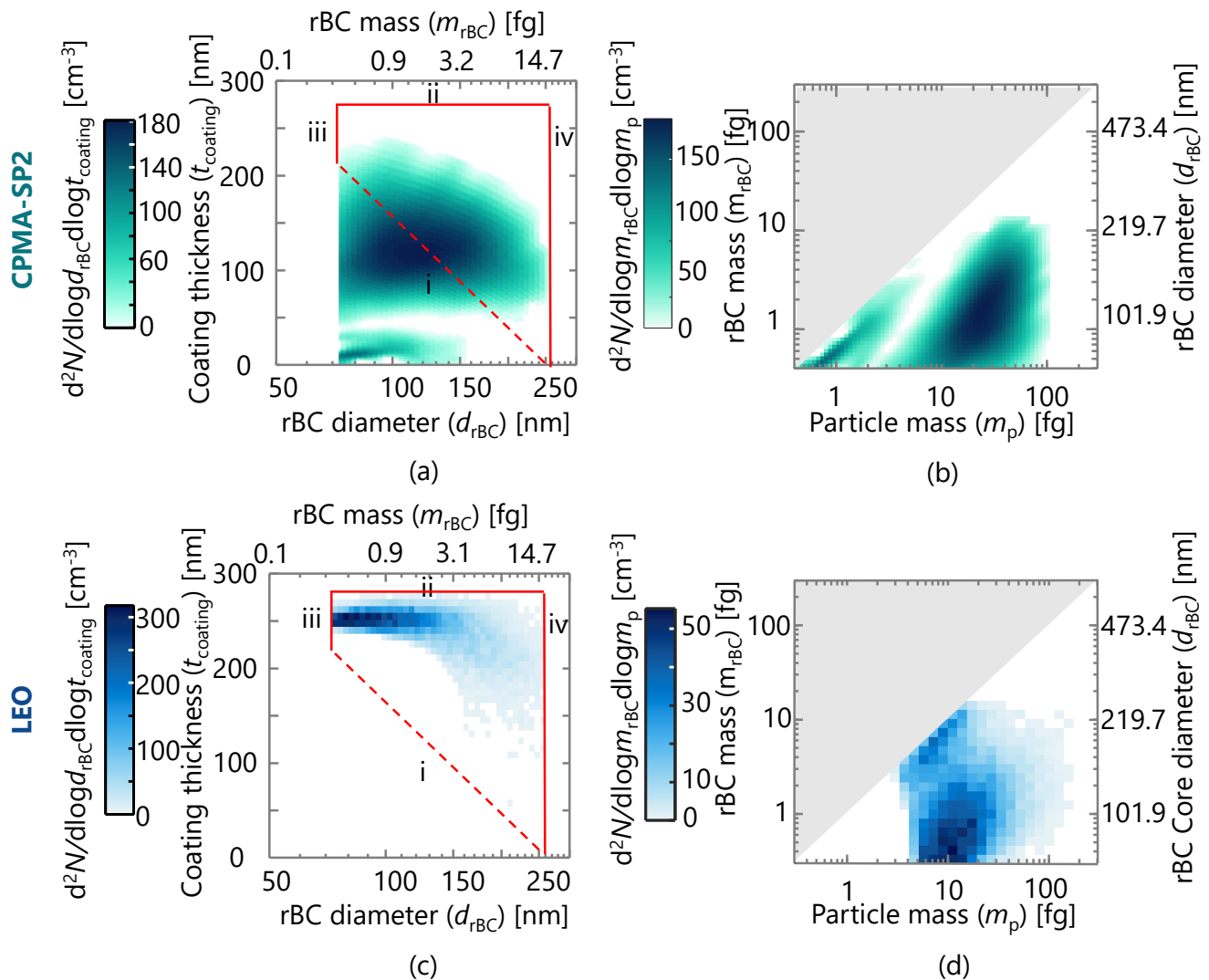
### 4.1 LEO detection limits

Figure 2 shows two-dimensional distributions of Case II measured by the CPMA–SP2 (green images; panels a and b) and LEO (blue images; panels c and d) methods. The distributions are presented both in terms of coating thickness versus rBC mass-equivalent diameter (Figure 2a and c) and in rBC mass versus total particle mass (Figure 2b and d). The rBC mass and total mass are both measured directly by the CPMA–SP2 method, while the coating thickness and mass equivalent diameter are typically shown in the LEO literature. As such, we have included both types of plots for comparison.

Figure 2a and 2c demonstrate the relationships between rBC diameter and coating thickness derived from the CPMA–SP2 and the LEO analysis, respectively. The detection limits of the LEO method, [inspired by the concept introduced in \(Dahlkötter et al., 2014\)](#), are indicated by red lines in Figure 2, and are defined as follows:

- Line iv (Upper BID limit of rBC core diameter):  $d_{\text{rBC}, \text{max}} = 254 \text{ nm}$ .
- Line iii (Lower BID limit of rBC core diameter):  $d_{\text{rBC}, \text{min}} = 74 \text{ nm}$ .
- Line ii (Upper limit for coating thickness due to detector saturation):  $t_{\text{coat}, \text{max}} = 285 \text{ nm}$ .
- Line i (Lower coating thickness limit, variable with  $d_{\text{rBC}}$ ):  $t_{\text{coat}}(d_{\text{rBC}})$  increases linearly from 0 at  $d_{\text{rBC}, \text{max}}$  to the minimum detectable thickness at  $d_{\text{rBC}, \text{min}}$ , represented as a dashed line.

The light scattering detection (LSD) and broadband incandescence detection (BID) limits are defined as the lowest and highest amount of light that the optics and detectors can collect and will vary between SP2 units and models. For the SP2 used



**Figure 2.** Distributions of rBC diameter and coating thickness (a, c), and total particle and rBC mass (b, d) for Case II (moderate PM concentrations, mixed urban and wildfire emissions). The CPMA–SP2 measurements are shown in their natural units of mass (b) and after conversion to coating thickness and diameter (a). The LEO analysis results are shown in (c) in conventional terms of coating thickness, and in (d) after conversion to equivalent mass units. The red lines in panels (a) and (c) indicate various detection limits. Lines *iii* and *iv* show the range of rBC mass that the SP2 can quantify (during both LEO and CPMA–SP2). Lines *i* and *ii* show the range of particle sizes the SP2 can quantify via LEO analysis. Grey shading in (b) and (d) indicates the physically impossible region where  $m_p > m_{\text{rBC}}$ .

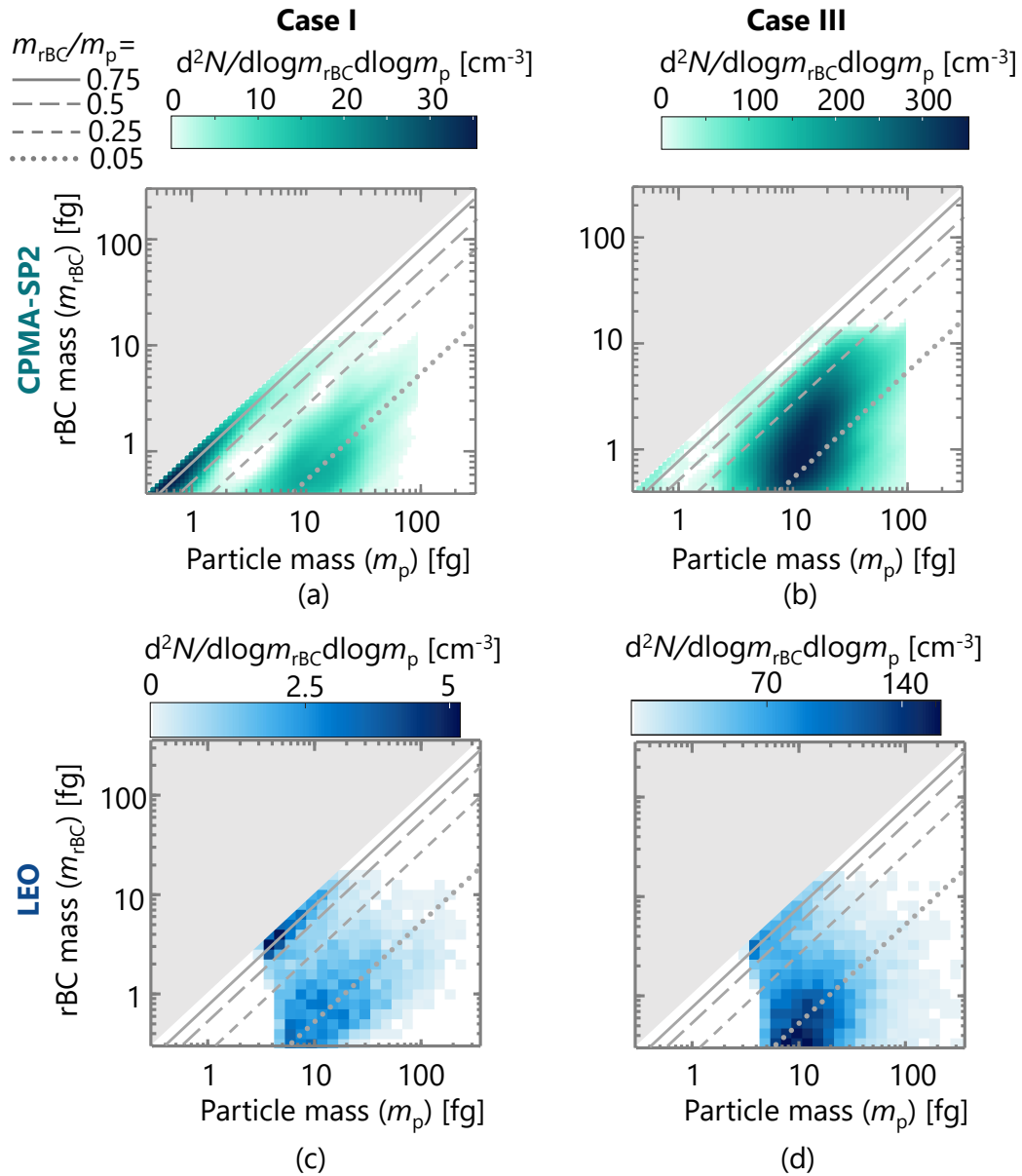
260 here (the original SP2 model), the limits are equivalent to about 150 nm to 430 nm in optical diameter, and 74 nm to 254 nm  
in rBC mass-equivalent diameter (0.38 to 15.36 fg), respectively. For comparison, the SP2 manufacturer currently reports  
detection ranges of 200 nm to 430 nm in optical diameter and 70 nm to 500 nm in rBC mass-equivalent diameter; *i.e.*, a much  
larger upper limit in rBC diameter (Droplet Measurement Technologies, 2023). Therefore, lines *iii* and *iv* in Figure 2 are simply  
the low and high BID limits of the SP2. Line *ii* is the upper coating detection limit of the LEO method and it is limited by the  
265 saturation of the scattering detector.

Since LEO is performed at a small fraction of the total scattering signal for a given particle, it increases the detection limit  
(*ii*) for the optical sizing of non-absorbing particles. The upper coating thickness limit of LEO (line *ii*), was  $\sim 285$  nm in our  
study, due to saturation of the LSD, which prevented the determination of the 3% threshold of the maximum laser intensity.  
The lower coating-thickness limit of LEO (Line *i*) is due to a combination of both lower LSD and BID limits. Because coating  
270 thickness is defined from the sum of rBC diameter and optical diameter (Equation 1), the limit *i* means that the lowest coating  
thickness detectable increases with decreasing rBC diameter. This increase occurs because the additional light scattered by  
the rBC core raises the scattering signal above its detection limit. The exact boundary of the lower coating thickness limit  
of LEO is difficult to determine, especially because not only the LSD but also the split detector must be above the LOD.  
However, the endpoints of the limit are simply the lower coating thickness limit of LEO at the BID limits (Line *i*) (*i.e.*, lowest  
275 detectable coating thickness at low BID limit, and zero coating thickness at high BID limit) and is shown as a linear dashed  
line in the figure. The data clearly show that the true lower limit of coating-thickness quantification is much higher, since no  
measurements come near to Line *i* in Figure 2c. The importance of this lower limit has been demonstrated previously, using  
different metrics to those discussed here (Taylor et al., 2015; Zhao et al., 2020).

To make a general comparison between the LEO results and those derived directly by the CPMA–SP2 measurements without  
280 making any assumptions regarding and density and morphology (Figure 2b), the distribution of Figure 2c was mapped onto  
 $m_p$ — $m_{\text{rBC}}$  mass space (Figure 2d) by rearranging Equation 5 to find  $m_p$ . It is not physically possible to have a particle in  
which the rBC mass exceeds the total mass of the particle; thus the reconstruction elements for which  $m_p$  is greater than  $m_{\text{rBC}}$   
are prohibited during the formal inversion and are greyed out in the figure.

A comparison of the particle mass range ( $m_p$ ) of distributions represented in Figure 2b and d measured by the CPMA–SP2  
285 and the LEO measurements, respectively, demonstrates that the LEO reconstruction range is far more limited than that of the  
CPMA–SP2 method. This deficiency is rooted in LEO’s structural dependence on the scattering signal, which results in a high  
LOD for  $m_p$ , which can make using the LEO model inefficient when dealing with particles with low rBC mass and thin- to  
moderate-coatings.

This point can be made clearer by a closer look at the mixing states of uncoated to heavily coated rBC particles from LEO  
290 and CPMA–SP2 measurements. Figure 3 shows three examples of  $m_p$ — $m_{\text{rBC}}$  distributions, representing rBC-containing  
particles with mostly thin to no coatings (Case I, Figure 3a and d), as compared to a mixture of rBC particles with no coating  
to moderate and heavy coatings (Case II, Figure 3b and e), and rBC-containing particles mostly with heavy coatings (Case III,  
Figure 3c and f). In these plots, the main diagonal corresponds to the mass fraction of rBC of one, *i.e.*,  $m_{\text{rBC}}/m_p = 1$ , with  
any line parallel to it corresponding to lines of constant rBC mass fraction of less than one, representing coated particles (lines



**Figure 3.** Distributions of number concentration for Cases I (clear visibility, thinnest rBC coatings, urban influence) and III (poorest visibility, thickest rBC coatings, wildfire influence), similar to Figure 2b and Figure 2d (Cases II). Case I represents the smallest influence of wildfires observed in our study; Case III represents the maximum. Solid diagonal lines indicate pure rBC particles with an rBC mass fraction of unity ( $m_{\text{rBC}}/m_{\text{p}} = 1$ ), while parallel lines represent decreasing mass fractions of 0.75, 0.5, and 0.25, respectively.

295 of rBC mass fractions of  $m_{\text{rBC}}/m_{\text{p}} = 0.75, 0.5, 0.25$  and 0.05 are shown in Figure 3). Consequently, a part of distributions

that are clustered along the diagonal line represents rBC-containing particles with thinly to no coatings. Overall, Figure 3a-c shows bimodal-bivariate distributions in which the distribution with a smaller particle mass mode corresponds to rBC particles with thin coatings (small rBC to coating mass ratio;  $m_{\text{coating}}/m_{\text{rBC}} \ll 1$ ), and the second mode represents rBC particles with moderate to heavy coatings ( $m_{\text{coating}}/m_{\text{rBC}} \gg 1$ ). As the relative concentration of rBC particles with thin and moderate-to-  
300 heavy coatings varies mostly due to changes in wildfire conditions, moving from the left distributions to the right ones in Figure 3, the second mode becomes wider and dominates the first mode.

It can be seen from Figure 3 that considerably more information on the mixing states of rBC-containing particles can be measured from CPMA–SP2 measurements than from the LEO analyses, as LEO is biased towards the rBC with heavy coatings. The reason for this disparity is that rBC particles with thin-to-moderate coatings may not be measured by the LEO method  
305 because of the lower LEO detection limit (line *i*). Thus, LEO analysis may only describe a fraction of rBC-containing particle population.

Apart from a more limited detection range of LEO, a comparison of distributions represented in Figure 2a and c, show that LEO data is concentrated near the higher LSD limits (*ii*) in Figure 2c; however, the CPMA–SP2 results suggest there are no particles there. This indicates that the LEO method over-predicts the coating thickness of rBC-containing particles, which  
310 stems from the assumptions made in LEO analysis, *e.g.*, the core-shell morphology. Besides, there are also some rBC particles with a total particle mass of  $\sim 4\text{--}20$  fg that is clustered near the 1:1 line in each case, which is an artifact discussed in detail in Section 4.3. Additionally, a closer look at Figures 2 and 3 shows that the number concentration of the LEO analysis is much lower than the CPMA–SP2. These two issues are discussed in the following sections.

## 4.2 LEO counting statistics limitation

315 There are three common types of rBC-containing particles with reliable incandescence signals whose scattering signals escape quantification by LEO analysis:

1. Very small rBC-containing particles, with negligible scattering signals (below Line *i* in Figure 2). These result in noisy fits and unreliable sizing.
2. Very large rBC-containing particles, with very large scattering signals (above Line *ii* in Figure 2), saturate the LSD, **even**  
320 **before the 3% threshold of maximum laser intensity is reached.**
3. rBC particles that evaporate before their position in the laser beam can be detected by the split detector.

The effect of excluding these rBC-containing particles from the LEO analysis can be seen in Figure 4, where the size distribution of rBC-containing particles having valid scattering data and are measurable by the LEO is compared with the one directly measured by the incandescence signal of the SP2. Specifically, Figure 4 shows the number concentration distributions  
325 of particle mass ( $dN/d\log m_p$ ) and rBC mass ( $dN/d\log m_{\text{rBC}}$ ), respectively, for the LEO and CPMA–SP2 methods which are found by integrating the two-dimensional distributions of Figure 2b and d over  $m_p$ ,

$$\frac{dN}{d\log m_{\text{rBC}}} = \int_0^{\infty} \frac{\partial^2 N}{\partial \log m_{\text{p}} \partial \log m_{\text{rBC}}} d\log m_{\text{p}}, \quad (6)$$

and by integrating over  $m_{\text{rBC}}$ ,

$$\frac{dN}{d\log m_{\text{p}}} = \int_0^{\infty} \frac{\partial^2 N}{\partial \log m_{\text{p}} \partial \log m_{\text{rBC}}} d\log m_{\text{rBC}}. \quad (7)$$

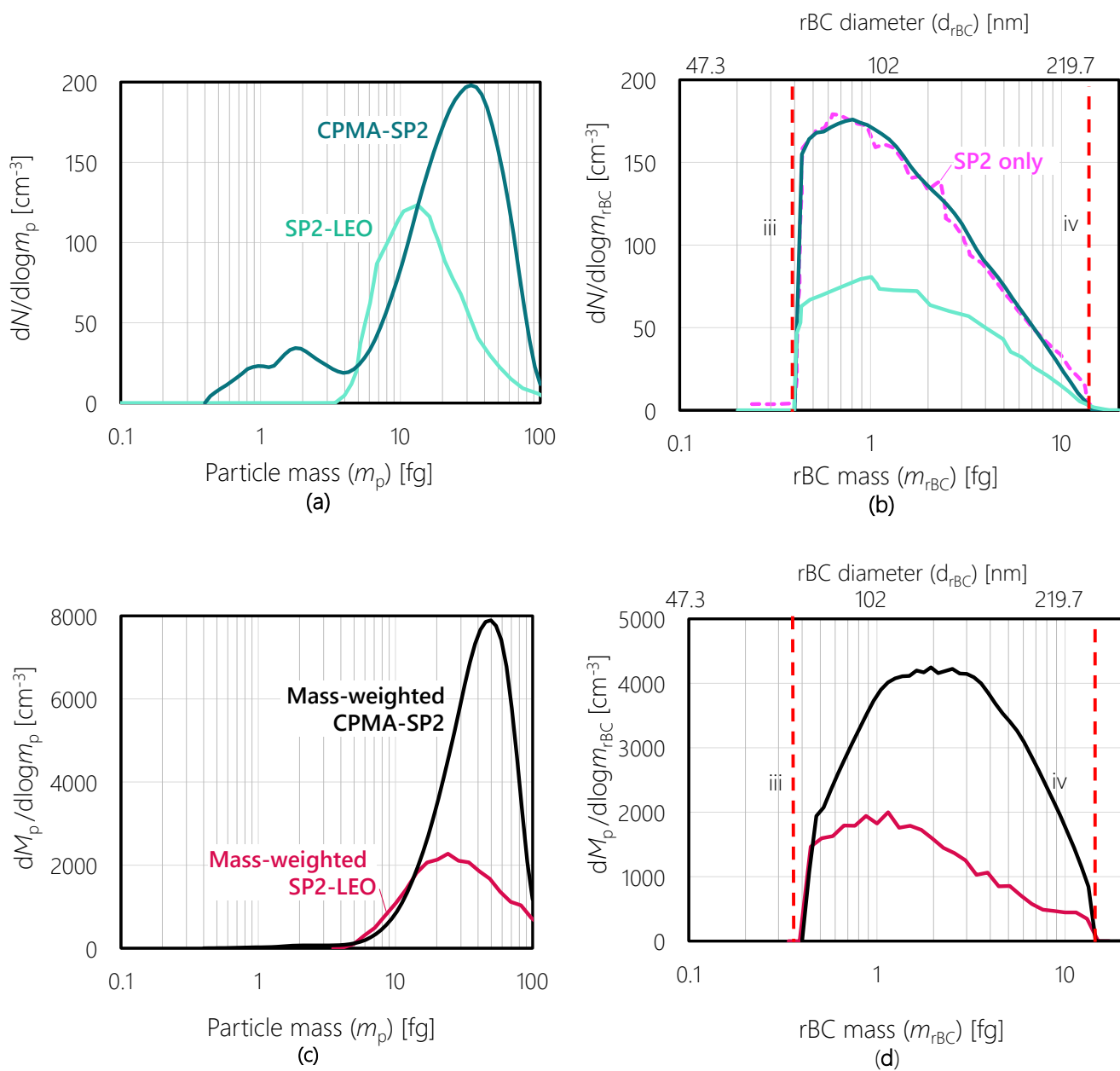
330 Figure 4 therefore shows the overall rBC-containing particle size distribution in two different ways, first as a function of total particle mass (Figure 4a) and second as a function of the rBC mass within the particle (Figure 4b). Both Figure 4a and Figure 4b show that the overall number concentration (area under the curves) of rBC-containing particles detected by LEO analysis is only  $\sim 50\%$  of that directly measured from the incandescence signal of the SP2, because of the higher LOD of the scattering signal.

335 Figures 4c and 4d show the particle mass and rBC mass distributions (*i.e.*,  $dM_{\text{p}}/d\log m_{\text{p}}$ , and  $dM_{\text{rBC}}/d\log m_{\text{rBC}}$ ) of the same data. These figures show that LEO only measures  $35\%$  of the total particle mass concentration ( $M_{\text{p}}$ ). The data presented also reveals that the median values of total particle mass ( $m_{\text{p}}$ ) and refractory black carbon mass ( $m_{\text{rBC}}$ ) obtained through the SP2-LEO method are approximately half those obtained through the CPMA-SP2 method. This observation suggests a pronounced bias in the distribution of particle masses towards lower values when utilizing the SP2-LEO method. We note that  
 340 even for the CPMA-SP2 method, a fraction of the smallest and largest rBC particles is not quantified; this has been discussed in detail by (Pileci et al., 2021).

In Figure 4a, the size distribution of LEO-analyzed particles drops to zero at a smaller total particle mass than does the size distribution of all particles, because of detector saturation. In contrast, Figure 4b shows the LEO-analyzed particle size distribution with a near-constant offset in amplitude from the size distribution of all particles, because SP2-LEO excluded  
 345 very large and very thin coatings from the data set. We note that the CPMA-SP2 data inversion matches the SP2-total size distribution almost perfectly because of constraints placed on the inversion of the CPMA-SP2 measurements. Overall, we conclude that LEO method only provides mixing state information on a small and biased subset of the entire rBC population.

### 4.3 Evaluation of the accuracy of LEO coating thickness measurement

A comparison of the particle mass ( $m_{\text{p}}$ ) distributions illustrated in Figure 2 to 4 shows that the LEO particle mass modes are  
 350 noticeably larger than the corresponding CPMA-SP2 ones. One way to evaluate the accuracy of LEO coating-thickness calculations is to measure coated rBC particles of known mass. We did this by using the CPMA to select particles (known particle mass) and conducting LEO analysis on the CPMA-classified particles. In such an experiment, the particle mass determined by LEO analysis should fall within the mass range given by the CPMA set-point ( $m^*$ ) (*i.e.*,  $m_{\text{p}} \in qm^* \times (1 \pm 1/R_{\text{m}})$ ; where  $R_{\text{m}}$  is the CPMA resolution).



**Figure 4.** Comparison of rBC-containing particle number and mass concentrations in Case II as functions of total particle mass (a and c) as functions of rBC-core mass (b and d). The figures shows data from both the LEO analysis and the CPMA-SP2 method. The detection-limit lines (iii) and (iv) from Figure 2 are reproduced in (b) and (d) here, to emphasize why the LEO results differ from the CPMA-SP2 results. The detection-limit line (i) from Figure 2 is the reason that the LEO data here drop to zero for small particles, relative to the CPMA-SP2 data. The pink dashed line in (b) illustrates the consistency between rBC distributions measured by CPMA-SP2 and SP2-only (standard measurement).

355 We, therefore, performed LEO analysis on CPMA-classified particles at a mass set point of  $m^* = 14.38$  fg with  $R_m=9$   
(we chose this set point because it corresponded to a large number of classified particles downstream) for Case I and Case  
III. The results are shown in Figure 5. Figure 5a and 5b shows the normalized  $m_p - m_{rBC}$  distributions of CPMA-classified  
particles, along with their corresponding marginal distributions (*i.e.*,  $dN/d\log m_p$ , Equation 7), that were determined by LEO  
360 moderate-to-heavy coatings) using a coating refractive index of  $n_{\text{coating}} = 1.5$  and  $\rho_{\text{coating}}=1000$  kg/m<sup>3</sup>.

If the rBC-containing particles were homogeneous in shape and physico-chemical composition, the distribution of CPMA-  
classified particles in Figure 5 would exhibit two modes, representing singly- and doubly-charged particles<sup>2</sup>. These two modes  
would appear as vertical lines, and their predicted location is shown using red dashed (singly-charged) and dotted (doubly-  
charged) lines in the figure. These modes were predicted using reasonable assumptions of density and refractive index, which  
365 are discussed further below.

Figure 5 clearly shows that only a subset of particles, at low rBC mass ( $m_{rBC} < 2$  fg), falls close to the predicted vertical  
modes. At moderate masses ( $m_{rBC}$  between 2 and 10 fg), the LEO-calculated particle mass consistently falls below the predicted  
mass. At higher masses ( $m_{rBC} > 10$  fg), the LEO-calculated mass returns to the predicted mass. This trend is evident for  
singly-charged particles in all panels of Figure 5, and is also evident for the doubly-charged particles in Figure 5b, due to its  
370 higher signal-to-noise ratio, resulting from higher number concentrations. This trend can be described as an "S" shape in the  
normalized  $m_p - m_{rBC}$  distributions, and is illustrated with a black outline.

The "S" shape in Figure 5 indicates significant and systematic variations in particle masses determined by LEO analysis.  
The potential sources of these variations may be attributed to different factors:

- 375 *i.* Assumptions embedded within the theoretical model: The LEO analysis assumes that the optical properties of coated  
rBC can be accurately described using a core-shell Mie-theory model. Therefore, the accuracy of the LEO results are  
limited by the accuracy of the core-shell Mie model.
- ii.* Assumptions about the physical properties of coatings: The accuracy of LEO analysis relies on assumptions made re-  
garding the physical properties of coatings, such as their density and refractive index. Any discrepancies between the  
assumed properties and the actual properties of the coatings present on the particles could lead to inaccurate mass deter-  
380 minations. These models rely on certain assumptions about particle structure and composition, and deviations from the  
actual particle configurations can introduce errors in mass determination.

In the following, we discuss these two factors in detail using additional calculations.

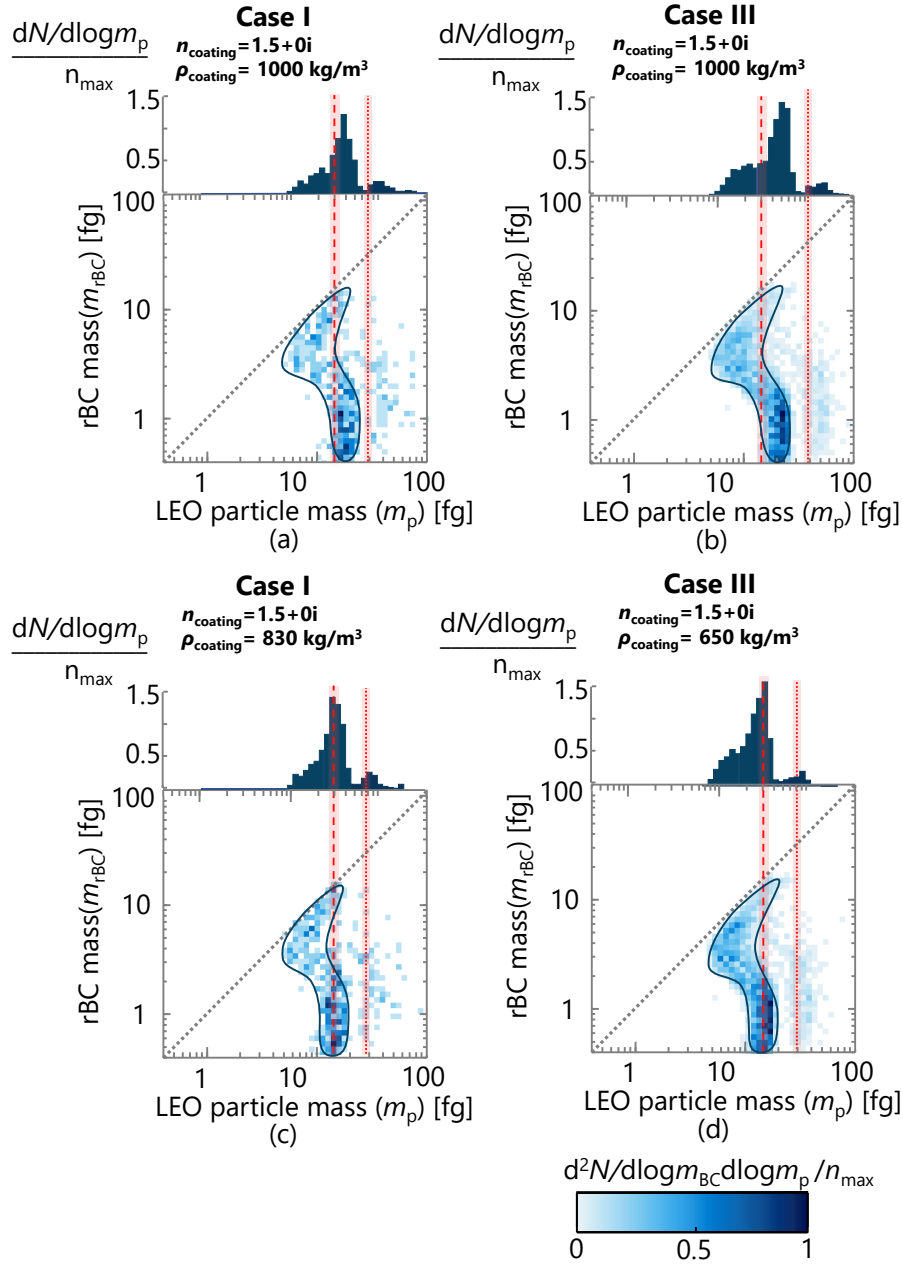
#### 4.3.1 Accuracy variations due to the core-shell model

Accuracy variations due to the core-shell model, which might lead to the "S" shaped variation in the LEO-calculations shown  
385 in Figure 5a and b, may be further visualized by plotting the ratio of  $m_{LEO}$  and  $m_p$  (which would be 1.0 for perfect LEO

---

<sup>2</sup>Triply-charged particles are also possible, but are omitted from this discussion for simplicity.



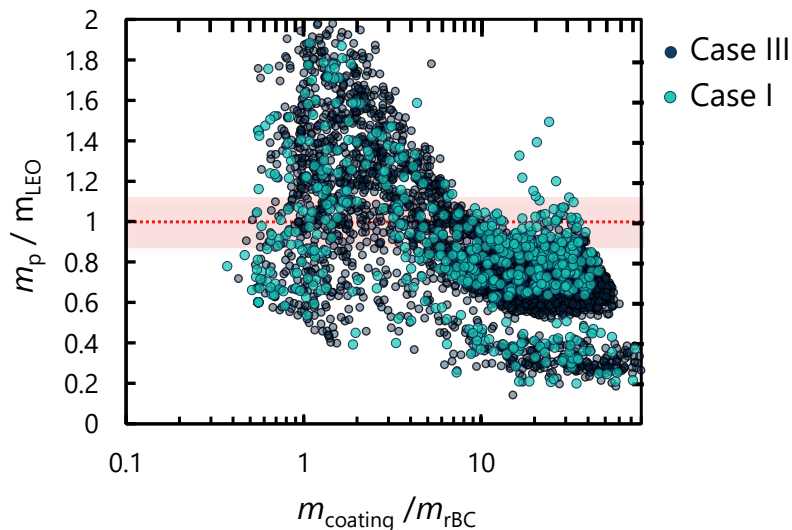


**Figure 5.** The normalized  $m_p$ — $m_{rBC}$  distributions of mass-classified particles at  $m^* = 14.38$  fg that were analyzed by LEO for rBC-containing particles with (a,c) thin or no coatings (Case I) and (b,d) moderate-to-heavy coatings (Case III) using the coating refractive index of  $n_{coating} = 1.5$  and (a,b)  $\rho_{coating} = 1000 \text{ kg/m}^3$  or the coating effective densities of  $\rho_{eff,c} = 830$  and  $650 \text{ kg/m}^3$  derived for (c) Case I and (d) Case III at the given coating refractive index, respectively.

calculations) as a function of the coating mass to rBC mass ratio, as shown in Figure 6.  $m_{\text{LEO}}$  is the total particle mass implied by the SP2-LEO analysis:

$$\begin{aligned} m_{\text{LEO}} &= \frac{\rho_{\text{coating}}\pi}{6} \left( (d_{\text{rBC}} + 2t_{\text{coating}}(\text{RI}))^3 - d_{\text{rBC}}^3 \right) \\ &= \frac{\rho_{\text{coating}}\pi}{6} (d_{\text{opt}}^3(\text{RI}) - d_{\text{rBC}}^3) \end{aligned} \quad (8)$$

We chose to plot  $m_{\text{LEO}}$  against  $m_{\text{p}}$  because they are directly analogous to the calculations of Liu et al. (2017), who also used a CPMA to measure  $m_{\text{p}}$  directly. Those authors reported their results in terms of the ratio of calculated-to-measured scattering cross sections, rather than the ratio of calculated-to-measured particle mass, and reported on a slightly different range of particle sizes. Here, we chose to retain mass units as this is the focus of our work.



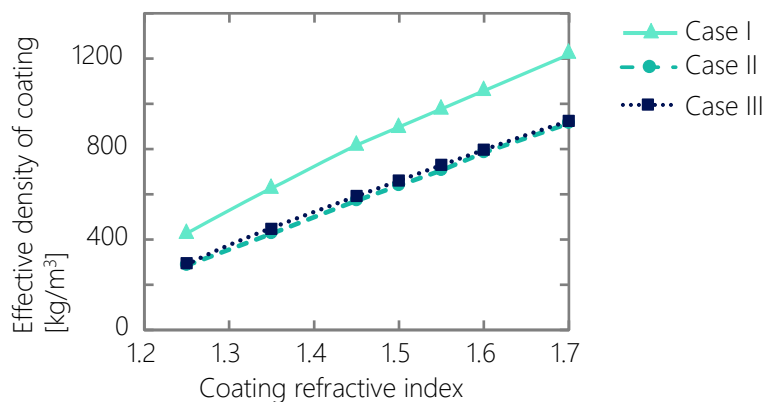
**Figure 6.** Particle mass ( $m_{\text{p}} \approx 14.38 \pm 0.11$ ) expected downstream of the CPMA relative to the particle mass calculated by the SP2-LEO method ( $m_{\text{LEO}}$ ) for various coating mass ratios ( $m_{\text{coating}} = m_{\text{p}} - m_{\text{rBC}}$ ). The increase in  $m_{\text{p}}/m_{\text{LEO}}$  for small coatings indicates undersizing by SP2-LEO.

Liu et al. (2017) found that the core-shell model had the highest accuracy (*i.e.*, the best match to the measured scattering cross-sections) for uncoated BC particles with mass ratio below 0.1 or greater than 3.0, for particles of total mass 2 fg. Liu et al. (2017) also pre-selected particles with the CPMA at 1–10 fg and obtained similar results. In our study, as we pre-selected particles with a total mass of  $m_{\text{p}} = 14.38$  fg, and these mass ratio values correspond to mass ratios of  $m_{\text{rBC}}/m_{\text{p}} > 0.91$  and  $m_{\text{rBC}}/m_{\text{p}} < 0.25$ , respectively, and to  $m_{\text{rBC}} > 13.1$  fg and  $m_{\text{rBC}} < 3.6$  fg, respectively. In between this range, their accuracy followed an “S” shape similar to our Figure 5; the core-shell model first overpredicted and then underpredicted scattering. Liu et al. (2017) showed that no simple optical model could capture this trend, and noted that the assumed material density of the coating affected the results. Our conclusions here are also consistent with work relating soot-core morphology to coating

thickness based on mobility-diameter based effective densities, which exploit particle mobility diameters to estimate particle volume in relation to SP2 scattering measurements Zhang et al. (2016, 2018b).

We note that the trends observed in Figure 6 and similarly by Liu et al. (2017) are consistent with soot-particle compaction due to thin coatings. If scattering by the coatings are minor, a decrease in light scattering cross-section upon compaction is expected (Liu and Mishchenko, 2018) at the  $45^\circ$  and  $135^\circ$  scattering angles measured by the SP2 (Gao et al., 2007). This would lead to an undersizing by SP2-LEO and an increase in the  $m_p/m_{LEO}$  ratio, as observed. Later, as coating mass ratios increase to 5 or higher, for which spherical particles have been observed (*i.e.*, at which rBC is fully encapsulated) (Corbin et al., 2023, and citations therein), the undersizing by SP2-LEO is reduced. Some spread in the data is expected according to this phenomenon, as the size change of soot with compaction is larger for larger soot particles.

#### 410 4.3.2 Accuracy variations due to varying particle properties



**Figure 7.** Pairs of effective coating densities and refractive index of coating materials used in Mie calculations that match the particle mass modes of various rBC-containing particles retrieved by the LEO method at a CPMA mass set point of 14.38 fg.

It is possible that the inaccuracy of the LEO-calculated particle mass in Figure 5 corresponds to a variation in particle physical properties. To explore this possibility, we solved Equation 5 for the coating density that would be required for the LEO-calculated mode of particle mass to match the CPMA mass set point. For simplicity, we focus here on particles with rBC mass  $m_{rBC} < 1$  fg.

415 Figure 5c and d show one example of this calculation. The figures show the adjusted  $m_p - m_{rBC}$  LEO distributions of CPMA-classified particles using effective coating densities at a fixed coating refractive index of  $n_{\text{coating}} = 1.5$ . As shown in Figure 5c and d, an effective coating density of  $830 \text{ kg/m}^3$  was needed to adjust the peak of small singly-charged particles with  $m_{rBC} < 1$  fg to the correct particle mass for Case I. In contrast, an effective coating density of  $650 \text{ kg/m}^3$  was needed for Case III.

420 For large particles with  $m_{\text{rBC}} > 1$  fg, these effective coating densities clearly overcompensate for the LEO inaccuracy. The mass of these particles was underpredicted at  $1000 \text{ kg/m}^3$ , and is even further underpredicted at the effective densities obtained for small particles (*i.e.*,  $650 \text{ kg/m}^3$  and  $830 \text{ kg/m}^3$  for Case I and III).

In Figure 7, the refractive-index–effective-density pairs which would align the LEO-calculated mass (at  $m_{\text{rBC}} < 1$  fg) with the CPMA-classified mass are shown. Since this calculation allowed for two free parameters, any value along the plotted curves  
425 would be a valid result. However, no single pair of values could be used for the three cases, implying a significant difference in physical or morphological properties between them.

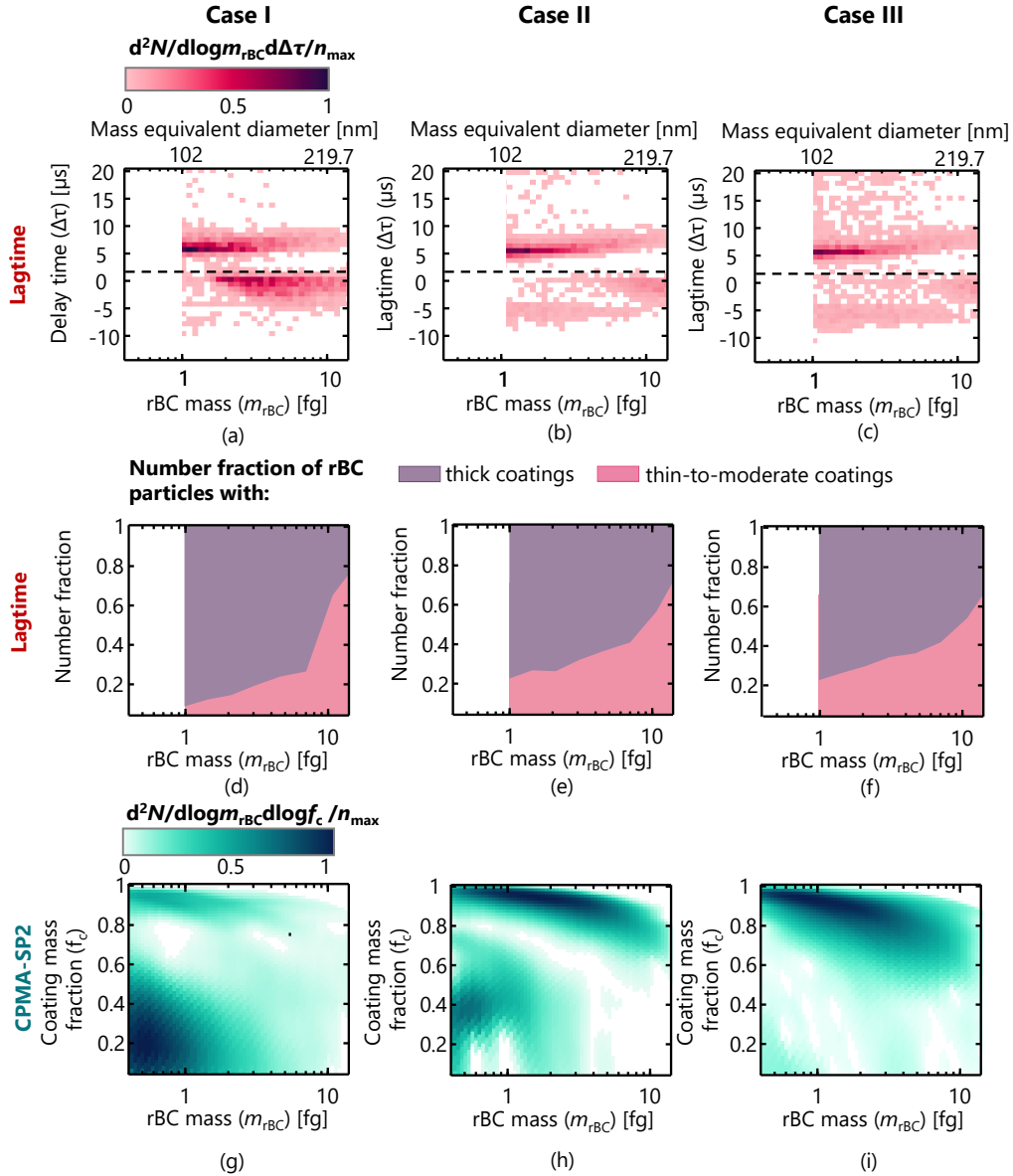
The physical cause behind the difference in physical or morphological properties in Case I compared to Cases II and III is beyond the scope of this work, but we will briefly mention some possibilities. Many factors, like the type of biomass and its moisture content, and any influence on the pre-ignition pyrolysis phase would change the physical and chemical composition of  
430 the particles, and, consequently, the material density of organics emitted from the combustion (which may vary by *e.g.*,  $\sim 30\%$ , Hu et al., 2021). Also, the particle concentrations in Case I are substantially lower than the other cases, which likely results in a higher fraction of rBC particles originating from Diesel engines rather than wildfire smoke, which likely have different physical and optical properties. It is also seen that for Case II and III, which are primarily composed of thickly coated rBC particles presumably emitted from wildfire smoke, the coating densities are quite low, ranging from  $350$  to  $900 \text{ kg/m}^3$  over a  
435 range of coating refractive index of  $1.25$  to  $1.7$ . However, studies have shown that the material density of organics in wildfire smoke ranges from  $800$  to  $1600 \text{ kg/m}^3$  (Turpin and Lim, 2001; Nakao et al., 2013; Li et al., 2016; Hu et al., 2021). These densities are as low as the effective densities measured for soot agglomerates with highly open structures, which are extremely unlikely values for coatings.

Our analysis implies that the range of effective densities shown here are not the material density of the coating, but rather an  
440 effective density that reconciles the errors in the SP2–LEO analysis. Specifically, low effective densities would be required to balance an overprediction of particle volume (diameter) by SP2–LEO. This overprediction may be due to the core-shell sphere assumption inherent in LEO, which is known to lead to overpredicted scattering relative to models of core-shell coated aggregates (Wu et al., 2014). On the other hand, attached or partially-embedded morphologies lead to slightly less light scattering and do not explain our observed trends (Liu and Mishchenko, 2018).

Another possibility is that these particles are the  $1064\text{-nm}$ -absorbing tarballs discussed in previous SP2 literature (Corbin et al., 2019a; Corbin and Gysel-Beer, 2019). However, the effective density of such tarballs is not expected to be unusually low. So the apparent oversizing by SP2–LEO would require that tarballs swell substantially in the SP2 laser. Although swelling has been proposed to occur for soot during laser heating (Michelsen et al., 2015), Corbin and Gysel-Beer (2019) reported optical diameters of about  $250 \text{ nm}$  for tarballs measured with an SP2, which rules out the hypothesis that tarball swelling led to the  
450 SP2–LEO oversizing discussed here.

#### 4.4 Lag-time limitations in coating estimation

Lag-time analysis of SP2 data is used qualitatively to classify rBC particles as thickly- or thinly-coated. The range and accuracy of the lag-time classification can be assessed by comparing it to CPMA–SP2 data. Figure 8a-c shows the normalized number



**Figure 8.** Normalized number concentration distributions of lag-times as a function of rBC mass for (a) Case I, (b) Case II and (c) Case III. The time-lag threshold of  $\Delta\tau = 2 \mu\text{s}$  is shown as a dashed line in panels (a) to (c). (d-f) The average proportions of rBC particles that have thick coatings and those with thin-to-moderate coatings. These proportions were determined using SP2 lag-time analysis. (g-i) The distribution of coating mass fraction ( $f_c = m_{\text{coating}}/m_p$ ) as a function of rBC mass of particle populations measured by the CPMA–SP2 measurement system.

concentration distributions of lag-times as a function of rBC mass for the three sample cases. The red shading represents  
455 the number fraction of particles falling within a histogram bin of rBC mass range and lag-time ( $d\log m_{\text{rBC}}$  and  $d\Delta\tau$ ). As  
shown in Figure 8a-c the measured particles exhibit a distribution of lag-times, spanning negative and positive values, and  
with multiple modes (most clearly seen in Case I). Figure 8d-f illustrates the average number fraction of particles with *thick*  
coatings (lag-time  $>2 \mu\text{s}$ ) versus *thin-to-moderate* coatings (lag-time  $<2 \mu\text{s}$ ) for an rBC mass range  $m_{\text{rBC}} \sim 1 \text{ fg}$  to  $15.4 \text{ fg}$   
(rBC mass-equivalent diameter  $d_{\text{rBC}} \sim 102 \text{ nm}$ — $254 \text{ nm}$ ). The results shown in Figure 8d-f indicate a higher number fraction  
460 of particles exhibiting *thick coatings* for smaller rBC masses, and this fraction decreases as the rBC masses increase. The  
number fraction of particles in each category remains relatively consistent across all three cases.

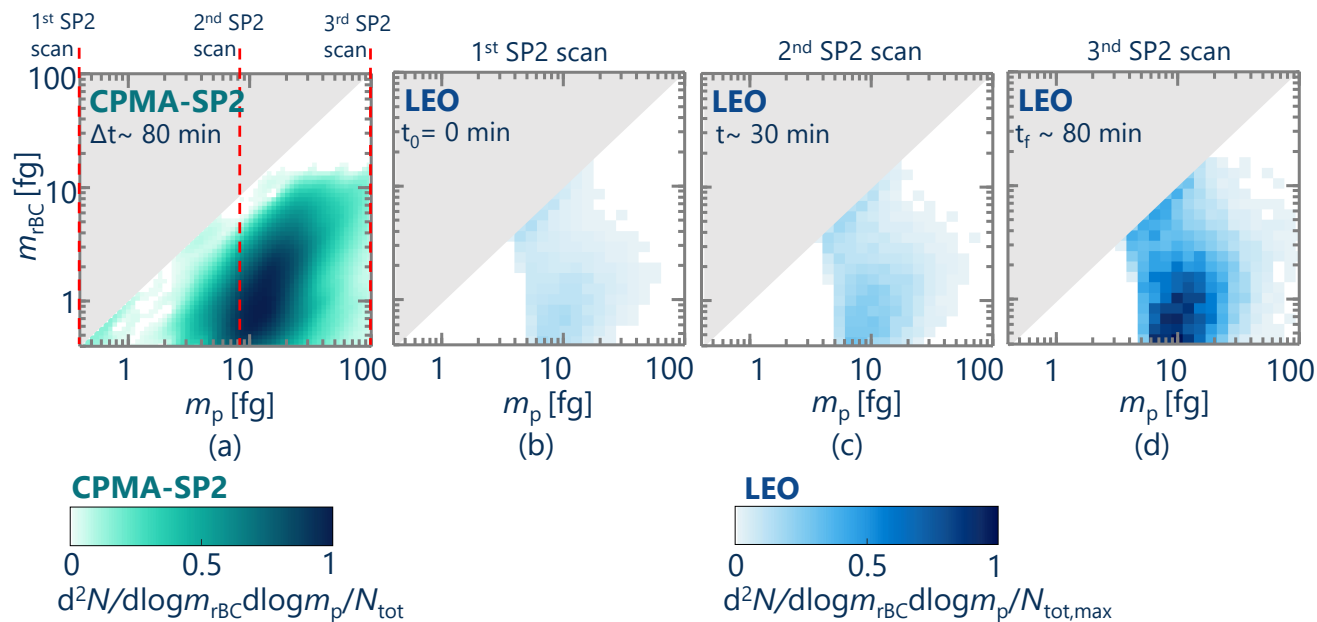
Figure 8g-i, on the other hand, shows the normalized number distributions of coating mass fraction ( $f_c = m_{\text{coating}}/m_p$ ) as a  
function of rBC mass for all three cases measured by the CPMA-SP2 system. These distributions are derived by transforming  
the  $m_p$ — $m_{\text{rBC}}$  distributions of Figure 3 into coating mass fraction — rBC mass space.

465 Comparing the CPMA-SP2 results in panel Figure 8g-i with the corresponding lag-time results presented in Figure 8d-f, it  
becomes clear that the lag-time analysis provides only an extremely rough estimate of coating thicknesses. For example, while  
lag-time analysis indicated that thick coatings prevailed in Case I, the CPMA-SP2 data make it clear that most of the small  
particles were thinly coated. Since lag-time analysis is limited to the largest particles, there is a severe bias in the estimated  
mean coating-thickness number fraction. This leads to the conclusion that the lag-time analysis should be used with great care,  
470 as it does not have the capability to quantitatively estimate coating thicknesses for the vast majority of rBC particles.

#### 4.5 Temporal resolution of SP2 measurement methods

Figure 9 shows the differences between the  $m_p$ — $m_{\text{rBC}}$  distribution of smoke particulates of Case III derived from a  $\sim 80$ -  
minute CPMA-SP2 measurement (Figure 9a) and that obtained by  $\sim 1$ -minute SP2 LEO measurements performed (Figure 9b)  
before ( $t=0 \text{ min}$ ), (Figure 9c) during ( $t=30 \text{ min}$ ; between the CPMA set points of  $5.2 \text{ fg}$  and  $8.6 \text{ fg}$ ), and (Figure 9d) after  
475 the CPMA-SP2 scan ( $t=80 \text{ min}$ ). The CPMA-SP2 measurement was performed in such a way that the CPMA mass set  
point was scanned in an ascending order (*i.e.*, CPMA was stepped from the low CPMA mass set point of  $0.4 \text{ fg}$  to the high  
mass set point of  $100 \text{ fg}$  over  $\sim 80$  minutes). The  $m_p$ — $m_{\text{rBC}}$  distribution in Figure 9a is normalized by the total number  
concentration of rBC-containing particles derived from the CPMA-SP2 measurement, whereas the  $m_p$ — $m_{\text{rBC}}$  distributions  
in Figure 9b-d are normalized by the maximum total number concentration of particles found in the LEO measurements. The  
480 number concentration of rBC-containing particles increased by  $\sim 3.7$  times over the first 30 min and  $\sim 5.6$  times over the entire  
time of the CPMA-SP2 scan. The CPMA-SP2 inversion assumes that the number concentration of particles is constant with  
respect to time over the course of the CPMA-SP2 scan. As is the case here, this assumption is not always true. Since the CPMA  
set points were stepped upward in mass, the number concentration of low-mass particles is underestimated, while the number  
concentration of high-mass particles is overestimated relative to time-averaged LEO measurements.

485 The compromise of the CPMA-SP2 approach is that it is slower, typically requiring over 30 minutes per scan, compared to  
a few minutes for SP2-only measurements (both durations depend on the number concentration of particles and guidelines for



**Figure 9.** Comparison of the average  $m_p$ — $m_{rBC}$  distribution of smoke particulates of Case III derived from (a) CPMA–SP2 measurement and the average distribution obtained by instantaneous LEO measurements performed (b) before, (c) during, and (d) after the CPMA–SP2 scan.

optimal scan times for CPMA–SP2 are given by Naseri et al. (2021b)). Therefore, for measurements of samples that are highly transient, as in the case of high-altitude research aircraft the CPMA–SP2 method would require a sample reservoir.

## 5 Conclusions

490 The present study investigated the performance of various SP2 measurement methods in measuring rBC mixing states that are primarily caused by wildfire smoke. This was accomplished using example data with a broad range of rBC mixing states. The rBC mixing states were characterized with a particular focus on the tandem CPMA–SP2 measurements and SP2-only measurements using LEO analysis that map out the rBC-containing particle characteristics in two-dimensional mass space. Comparison of the results of the LEO analysis and the CPMA–SP2 indicates that the LEO measurement range is very limited,  
 495 because it relies on the less-sensitive light-scattering signal as well as the position-sensitive light-scattering detector. These limitations, along with the assumptions on which LEO is based (*e.g.*, core-shell morphology and assumed density and refractive index for coating materials), bring about biased results and make the LEO method a qualitative measure, for a narrow range of the rBC population. Additionally, the accuracy of the LEO and CPMA–SP2 methods in characterizing particles was analyzed. The evaluation of the accuracy of LEO coating thickness measurement reveals notable variations in particle masses determined  
 500 by LEO analysis compared to CPMA-based measurements.

These discrepancies can be attributed to assumptions made about the physical properties of coatings and the theoretical models used in the LEO analysis for presenting the scattering behavior of BC particles. It is demonstrated that the core-shell model used in LEO analysis may not accurately represent the mixing arrangements of BC-containing particles, leading to errors in mass determinations. Efforts to adjust the LEO results by incorporating effective coating densities and refractive indices partially correct the measurements but still leave certain particles at physically-impossible masses. The possibility of different particle types and physico-optical properties further contributes to the challenges in accurately determining coating thickness using LEO analysis. As with other BC mixing states, wildfire smoke may exhibit non-uniform characteristics, it is not possible to identify a single physical and optical property for the LEO that can effectively address these limitations.

On the other hand, the CPMA-SP2 approach provides precise measurements of total particle mass. Therefore, it can be inferred that the CPMA-SP2 method demonstrates superior accuracy compared to the SP2-only method as it addresses and eliminates one of the limitations of the LEO technique, resulting in improved particle categorization. The compromise of the CPMA-SP2 method is that it is not a real-time measurement, typically requiring more than 30 minutes per scan for atmospheric measurements. Rapidly changing aerosol samples should therefore be captured in a reservoir prior to CPMA-SP2 measurement, to ensure valid results.

Finally, as a result of the high level of uncertainty in classifying rBC particles with invalid scattering signals, the lag-time analysis could not distinguish between the relative number fraction of rBC particles with thick and thin-to-moderate coating in the example data presented.



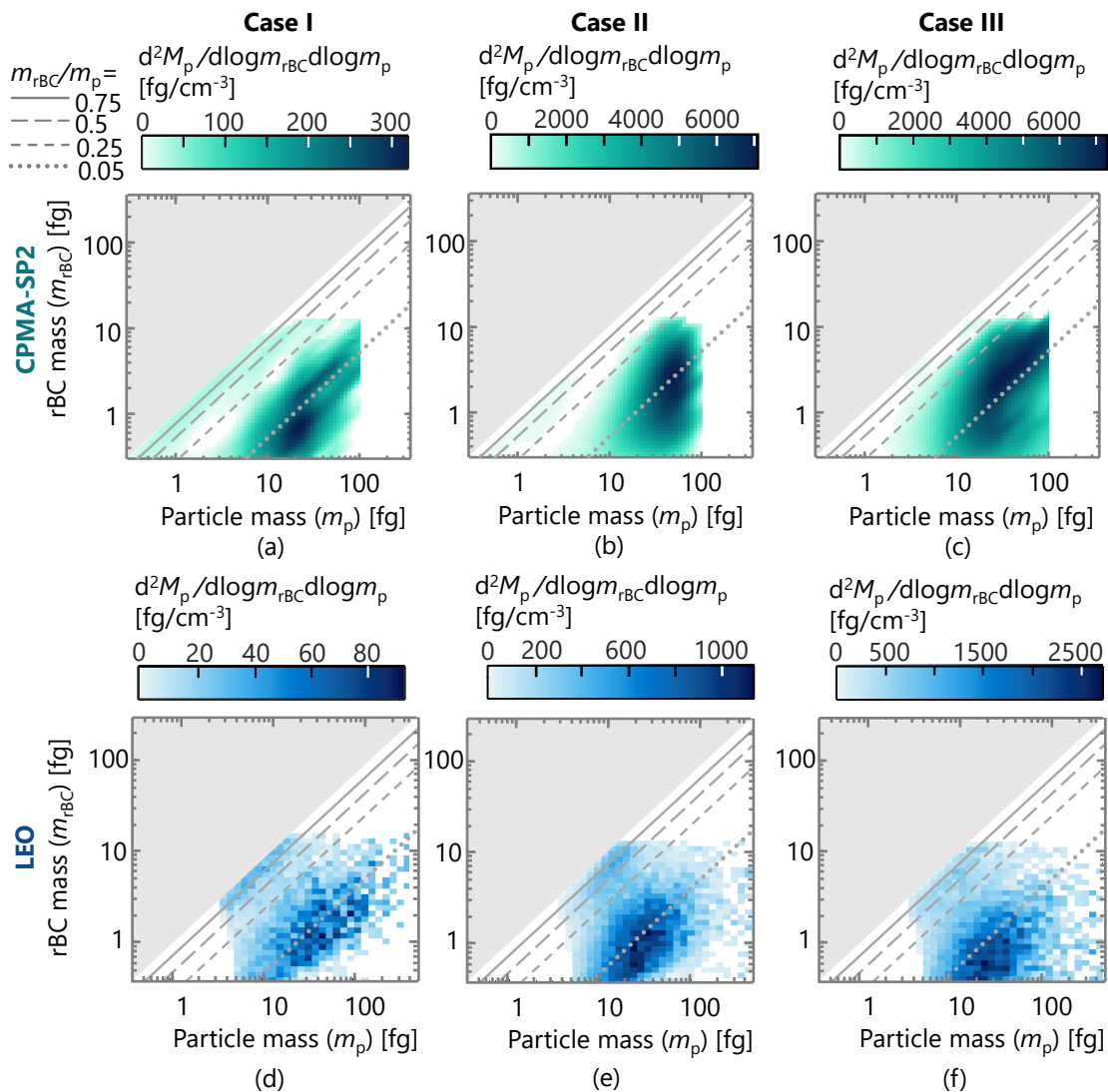
## Appendix A: Appendix

520 Figure A1 offers an alternative perspective on the number distributions found in Figure 3. It illustrates mass concentration distributions for cases I, II, and III, with a focus on their relationship to total particle-rBC mass ( $m_p - m_{rBC}$ ). These distributions were determined through two distinct measurement techniques: the CPMA-SP2 method (panels a-c) and the LEO analysis (panels d-f).

*Author contributions.* A.N. formulated the study, conducted the experiments, performed comprehensive data analysis, and composed the initial draft of the paper. J.S.O and J.C.C. played an active role in result discussions, significantly contributed to data interpretation, and  
525 engaged in collaborative writing.

*Competing interests.* The authors declare no conflicts of interest relevant to this research or paper.

*Acknowledgements.* The authors gratefully acknowledge funding from Alberta Innovates and NSERC (FlareNet Research Network), and support from the British Columbia Ministry of Environment and Climate Change as well as Transport Canada. More specifically, we would like to thank Steve Josefowich, without whose kind support and cooperation, this study would have been impossible.



**Figure A1.** The distributions of mass concentration for cases I, II, and III are depicted as functions of the total particle-rBC mass. These distributions have been assessed through two distinct measurement techniques: (a-c) the CPMA–SP2 method and (d-f) the LEO analysis. Main diagonal lines indicate pure rBC particles with a rBC mass fraction of one ( $m_{rBC}/m_p = 1$ ), while parallel lines represent constant rBC mass fractions less than one, signifying coated particles ( $m_{rBC}/m_p < 1$ ).

## 530 References

Adachi, K., Sedlacek III, A. J., Kleinman, L., Springston, S. R., Wang, J., Chand, D., Hubbe, J. M., Shilling, J. E., Onasch, T. B., Kinase, T., et al.: Spherical tarball particles form through rapid chemical and physical changes of organic matter in biomass-burning smoke, *Proceedings of the National Academy of Sciences*, 116, 19336–19341, 2019.

- Adler, G., Wagner, N. L., Lamb, K. D., Manfred, K. M., Schwarz, J. P., Franchin, A., Middlebrook, A. M., Washenfelder, R. A., Womack, C. C., Yokelson, R. J., et al.: Evidence in biomass burning smoke for a light-absorbing aerosol with properties intermediate between brown and black carbon, *Aerosol Science and Technology*, 53, 976–989, 2019.
- Bond, T. C. and Bergstrom, R. W.: Light absorption by carbonaceous particles: An investigative review, *Aerosol Science and Technology*, 40, 27–67, 2006.
- Bond, T. C., Doherty, S. J., Fahey, D. W., Forster, P. M., Berntsen, T., DeAngelo, B. J., Flanner, M. G., Ghan, S., Kärcher, B., Koch, D., Kinne, S., Kondo, Y., Quinn, P. K., Sarofim, M. C., Schultz, M. G., Schulz, M., Venkataraman, C., Zhang, H., Zhang, S., Bellouin, N., Guttikunda, S. K., Hopke, P. K., Jacobson, M. Z., Kaiser, J. W., Klimont, Z., Lohmann, U., Schwarz, J. P., Shindell, D., Storelvmo, T., Warren, S. G., and Zender, C. S.: Bounding the role of black carbon in the climate system: A scientific assessment, *J. Geophys. Res. Atmos.*, 118, 5380–5552, <https://doi.org/10.1002/jgrd.50171>, 2013.
- Broda, K., Olfert, J., Irwin, M., Schill, G., McMeeking, G., Schnitzler, E., and Jäger, W.: A novel inversion method to determine the mass distribution of non-refractory coatings on refractory black carbon using a centrifugal particle mass analyzer and single particle soot photometer, *Aerosol Science and Technology*, 52, 567–578, 2018.
- Cappa, C. D., Zhang, X., Russell, L. M., Collier, S., Lee, A. K., Chen, C.-L., Betha, R., Chen, S., Liu, J., Price, D. J., et al.: Light absorption by ambient black and brown carbon and its dependence on black carbon coating state for two California, USA, cities in winter and summer, *Journal of Geophysical Research: Atmospheres*, 124, 1550–1577, 2019.
- Chakrabarty, R. K., Shetty, N. J., Thind, A. S., Beeler, P., Sumlin, B. J., Zhang, C., Liu, P., Idrobo, J. C., Adachi, K., Wagner, N. L., Schwarz, J. P., Ahern, A., Sedlacek, A. J., Lambe, A., Daube, C., Lyu, M., Liu, C., Herndon, S., Onasch, T. B., and Mishra, R.: Shortwave absorption by wildfire smoke dominated by dark brown carbon, *Nat. Geosci.*, 16, 683–688, <https://doi.org/10.1038/s41561-023-01237-9>, 2023.
- Corbin, J. C. and Gysel-Beer, M.: Detection of tar brown carbon with a single particle soot photometer (SP2), *Atmospheric Chemistry and Physics*, 19, 15 673–15 690, 2019.
- Corbin, J. C., Pieber, S. M., Czech, H., Zanatta, M., Jakobi, G., Massabò, D., Orasche, J., El Haddad, I., Mensah, A. A., Stengel, B., et al.: Brown and black carbon emitted by a marine engine operated on heavy fuel oil and distillate fuels: optical properties, size distributions, and emission factors, *Journal of Geophysical Research: Atmospheres*, 123, 6175–6195, 2018.
- Corbin, J. C., Czech, H., Massabò, D., de Mongeot, F. B., Jakobi, G., Liu, F., Lobo, P., Mennucci, C., Mensah, A. A., Orasche, J., et al.: Infrared-absorbing carbonaceous tar can dominate light absorption by marine-engine exhaust, *Npj Climate and Atmospheric Science*, 2, 12, 2019a.
- Corbin, J. C., Czech, H., Massabò, D., de Mongeot, F. B., Jakobi, G., Liu, F., Lobo, P., Mennucci, C., Mensah, A. A., Orasche, J., Pieber, S. M., Prévôt, A. S. H., Stengel, B., Tay, L.-L., Zanatta, M., Zimmermann, R., El Haddad, I., and Gysel, M.: Infrared-absorbing carbonaceous tar can dominate light absorption by marine-engine exhaust, *npj Clim. Atmos. Sci.*, 2, 1–10, <https://doi.org/10.1038/s41612-019-0069-5>, 2019b.
- Corbin, J. C., Modini, R. L., and Gysel-Beer, M.: Mechanisms of soot-aggregate restructuring and compaction, *Aerosol Sci. Technol.*, 57, 89–111, <https://doi.org/10.1080/02786826.2022.2137385>, 2023.
- Dahlkötter, F., Gysel, M., Sauer, D., Minikin, A., Baumann, R., Seifert, P., Ansmann, A., Fromm, M., Voigt, C., and Weinzierl, B.: The Pagami Creek smoke plume after long-range transport to the upper troposphere over Europe—aerosol properties and black carbon mixing state, *Atmospheric Chemistry and Physics*, 14, 6111–6137, 2014.

- 570 Ditas, J., Ma, N., Zhang, Y., Assmann, D., Neumaier, M., Riede, H., Karu, E., Williams, J., Scharffe, D., Wang, Q., et al.: Strong impact of wildfires on the abundance and aging of black carbon in the lowermost stratosphere, *Proceedings of the National Academy of Sciences*, 115, E11 595–E11 603, 2018.
- Droplet Measurement Technologies: Single Particle Soot Photometer, <https://www.dropletmeasurement.com/product/single-particle-soot-photometer>, 2023.
- 575 Fierce, L., Riemer, N., and Bond, T. C.: Toward reduced representation of mixing state for simulating aerosol effects on climate, *Bulletin of the American Meteorological Society*, 98, 971–980, 2017.
- Fierce, L., Onasch, T. B., Cappa, C. D., Mazzoleni, C., China, S., Bhandari, J., Davidovits, P., Fischer, D. A., Helgestad, T., Lambe, A. T., et al.: Radiative absorption enhancements by black carbon controlled by particle-to-particle heterogeneity in composition, *Proceedings of the National Academy of Sciences*, 117, 5196–5203, 2020.
- 580 Gao, R., Schwarz, J., Kelly, K., Fahey, D., Watts, L., Thompson, T., Spackman, J., Slowik, J., Cross, E., Han, J.-H., et al.: A novel method for estimating light-scattering properties of soot aerosols using a modified single-particle soot photometer, *Aerosol Science and Technology*, 41, 125–135, 2007.
- Grieshop, A. P., Reynolds, C. C., Kandlikar, M., and Dowlatabadi, H.: A black-carbon mitigation wedge, *Nature Geoscience*, 2, 533–534, 2009.
- 585 Hu, D., Alfarra, M. R., Szpek, K., Langridge, J., Cotterell, M., Belcher, C., Rule, I., Liu, Z., Yu, C., Shao, Y., et al.: Physical and chemical properties of black carbon and organic matter from different sources using aerodynamic aerosol classification, *Atmos. Chem. Phys*, 21, 1–50, 2021.
- Irwin, M., Kondo, Y., Moteki, N., and Miyakawa, T.: Evaluation of a Heated-Inlet for Calibration of the SP2, *Aerosol Science and Technology*, 47, 895–905, 2013.
- 590 Kazemimanesh, M., Moallemi, A., Thomson, K., Smallwood, G., Lobo, P., and Olfert, J. S.: A novel miniature inverted-flame burner for the generation of soot nanoparticles, *Aerosol Science and Technology*, 53, 184–195, 2019.
- Laborde, M., Mertes, P., Zieger, P., Dommen, J., Baltensperger, U., and Gysel, M.: Sensitivity of the Single Particle Soot Photometer to different black carbon types, *Atmospheric Measurement Techniques*, 5, 1031–1043, 2012.
- Laborde, M., Crippa, M., Tritscher, T., Jurányi, Z., Decarlo, P., Temime-Roussel, B., Marchand, N., Eckhardt, S., Stohl, A., Baltensperger, U., et al.: Black carbon physical properties and mixing state in the European megacity Paris, *Atmospheric chemistry and physics*, 13, 5831–5856, 2013.
- Lamb, K. D.: Classification of iron oxide aerosols by a single particle soot photometer using supervised machine learning, *Atmospheric Measurement Techniques*, 12, 3885–3906, 2019.
- Laskin, A., Laskin, J., and Nizkorodov, S. A.: Chemistry of atmospheric brown carbon, *Chemical reviews*, 115, 4335–4382, 2015.
- 600 Li, C., Hu, Y., Chen, J., Ma, Z., Ye, X., Yang, X., Wang, L., Wang, X., and Mellouki, A.: Physiochemical properties of carbonaceous aerosol from agricultural residue burning: Density, volatility, and hygroscopicity, *Atmospheric Environment*, 140, 94–105, 2016.
- Liu, D., Taylor, J. W., Young, D. E., Flynn, M. J., Coe, H., and Allan, J. D.: The effect of complex black carbon microphysics on the determination of the optical properties of brown carbon, *Geophysical Research Letters*, 42, 613–619, 2015.
- Liu, D., Whitehead, J., Alfarra, M. R., Reyes-Villegas, E., Spracklen, D. V., Reddington, C. L., Kong, S., Williams, P. I., Ting, Y.-C., Haslett, S., et al.: Black-carbon absorption enhancement in the atmosphere determined by particle mixing state, *Nature Geoscience*, 10, 184–188, 2017.

- Liu, H., Pan, X., Wu, Y., Wang, D., Tian, Y., Liu, X., Lei, L., Sun, Y., Fu, P., and Wang, Z.: Effective densities of soot particles and their relationships with the mixing state at an urban site in the Beijing megacity in the winter of 2018, *Atmospheric Chemistry and Physics*, 19, 14 791–14 804, 2019.
- 610 Liu, H., Pan, X., Liu, D., Liu, X., Chen, X., Tian, Y., Sun, Y., Fu, P., and Wang, Z.: Mixing characteristics of refractory black carbon aerosols at an urban site in Beijing, *Atmospheric Chemistry and Physics*, 20, 5771–5785, 2020.
- Liu, H., Pan, X., Wang, D., Liu, X., Tian, Y., Yao, W., Lei, S., Zhang, Y., Li, J., Lei, L., et al.: Mixing characteristics of black carbon aerosols in a coastal city using the CPMA-SP2 system, *Atmospheric Research*, 265, 105 867, 2022.
- Liu, L. and Mishchenko, M. I.: Scattering and Radiative Properties of Morphologically Complex Carbonaceous Aerosols: A Systematic  
615 Modeling Study, *Remote Sens.*, 10, 1634, <https://doi.org/10.3390/rs10101634>, 2018.
- Michelsen, H. A., Schulz, C., Smallwood, G. J., and Will, S.: Laser-induced incandescence: Particulate diagnostics for combustion, atmospheric, and industrial applications, *Prog. Energy Combust. Sci.*, 51, 2–48, <https://doi.org/10.1016/j.pecs.2015.07.001>, 2015.
- Michelsen, H. A., Colket, M. B., Bengtsson, P.-E., D’Anna, A., Desgroux, P., Haynes, B. S., Miller, J. H., Nathan, G. J., Pitsch, H., and Wang, H.: A Review of Terminology Used to Describe Soot Formation and Evolution under Combustion and Pyrolytic Conditions, *ACS  
620 Nano*, 14, 12 470–12 490, <https://doi.org/10.1021/acsnano.0c06226>, 2020.
- Moallemi, A., Kazemimanesh, M., Corbin, J. C., Thomson, K., Smallwood, G., Olfert, J. S., and Lobo, P.: Characterization of black carbon particles generated by a propane-fueled miniature inverted soot generator, *Journal of Aerosol Science*, 135, 46–57, 2019.
- Moteki, N. and Kondo, Y.: Effects of mixing state on black carbon measurements by laser-induced incandescence, *Aerosol Science and Technology*, 41, 398–417, 2007.
- 625 Moteki, N. and Kondo, Y.: Method to measure time-dependent scattering cross sections of particles evaporating in a laser beam, *Journal of Aerosol Science*, 39, 348–364, 2008.
- Moteki, N., Kondo, Y., and Nakamura, S.-i.: Method to measure refractive indices of small nonspherical particles: Application to black carbon particles, *Journal of Aerosol Science*, 41, 513–521, 2010.
- Moteki, N., Kondo, Y., and Adachi, K.: Identification by single-particle soot photometer of black carbon particles attached to other particles:  
630 Laboratory experiments and ground observations in Tokyo, *Journal of Geophysical Research: Atmospheres*, 119, 1031–1043, 2014.
- Moteki, N., Adachi, K., Ohata, S., Yoshida, A., Harigaya, T., Koike, M., and Kondo, Y.: Anthropogenic iron oxide aerosols enhance atmospheric heating, *Nature communications*, 8, 15 329, 2017.
- Nakao, S., Tang, P., Tang, X., Clark, C. H., Qi, L., Seo, E., Asa-Awuku, A., and Cocker III, D.: Density and elemental ratios of secondary organic aerosol: Application of a density prediction method, *Atmospheric Environment*, 68, 273–277, 2013.
- 635 Nakayama, T., Matsumi, Y., Sato, K., Imamura, T., Yamazaki, A., and Uchiyama, A.: Laboratory studies on optical properties of secondary organic aerosols generated during the photooxidation of toluene and the ozonolysis of  $\alpha$ -pinene, *Journal of Geophysical Research: Atmospheres*, 115, 2010.
- Naseri, A., Sipkens, T., Rogak, S., and Olfert, J.: An improved inversion method for determining two-dimensional mass distributions of non-refractory materials on refractory black carbon, *Aerosol Science and Technology*, 55, 104–118, 2021a.
- 640 Naseri, A., Sipkens, T., Rogak, S., and Olfert, J.: Optimized instrument configurations for tandem particle mass analyzer and single particle-soot photometer experiments, *Journal of Aerosol Science*, p. 105897, 2021b.
- Olfert, J. and Collings, N.: New method for particle mass classification—the Couette centrifugal particle mass analyzer, *Journal of Aerosol Science*, 36, 1338–1352, 2005.

- Ouf, F.-X., Bourrous, S., Fauvel, S., Kort, A., Lintis, L., Nuvoli, J., and Yon, J.: True density of combustion emitted particles: A comparison of results highlighting the influence of the organic contents, *Journal of Aerosol Science*, 134, 1–13, 2019.
- 645 Park, K., Kittelson, D. B., Zachariah, M. R., and McMurry, P. H.: Measurement of inherent material density of nanoparticle agglomerates, *Journal of Nanoparticle Research*, 6, 267–272, 2004.
- Pileci, R. E., Modini, R. L., Bertò, M., Yuan, J., Corbin, J. C., Marinoni, A., Henzing, B., Moerman, M. M., Putaud, J. P., Spindler, G., Wehner, B., Müller, T., Tuch, T., Trentini, A., Zanatta, M., Baltensperger, U., and Gysel-Beer, M.: Comparison of co-located refractory black carbon (rBC) and elemental carbon (EC) mass concentration measurements during field campaigns at several European sites, *Atmos. Meas. Tech.*, 14, 1379–1403, <https://doi.org/10.5194/amt-14-1379-2021>, 2021.
- 650 Raatikainen, T., Brus, D., Hooda, R. K., Hyvärinen, A.-P., Asmi, E., Sharma, V. P., Arola, A., and Lihavainen, H.: Size-selected black carbon mass distributions and mixing state in polluted and clean environments of northern India, *Atmospheric Chemistry and Physics*, 17, 371–383, 2017.
- 655 Samset, B. H.: Aerosol absorption has an underappreciated role in historical precipitation change, *Communications Earth & Environment*, 3, 1–8, 2022.
- Schwarz, J. P., Gao, R., Fahey, D., Thomson, D., Watts, L., Wilson, J., Reeves, J., Darbeheshti, M., Baumgardner, D., Kok, G., et al.: Single-particle measurements of midlatitude black carbon and light-scattering aerosols from the boundary layer to the lower stratosphere, *Journal of Geophysical Research: Atmospheres*, 111, 2006.
- 660 Sedlacek III, A. J., Lewis, E. R., Kleinman, L., Xu, J., and Zhang, Q.: Determination of and evidence for non-core-shell structure of particles containing black carbon using the Single-Particle Soot Photometer (SP2), *Geophysical Research Letters*, 39, 2012.
- Sedlacek III, A. J., Lewis, E. R., Onasch, T. B., Lambe, A. T., and Davidovits, P.: Investigation of refractory black carbon-containing particle morphologies using the single-particle soot photometer (SP2), *Aerosol Science and Technology*, 49, 872–885, 2015.
- Sedlacek III, A. J., Onasch, T. B., Nichman, L., Lewis, E. R., Davidovits, P., Freedman, A., and Williams, L.: Formation of refractory black carbon by SP2-induced charring of organic aerosol, *Aerosol Science and Technology*, 52, 1345–1350, 2018.
- 665 Shindell, D., Kuylenstierna, J. C., Vignati, E., van Dingenen, R., Amann, M., Klimont, Z., Anenberg, S. C., Müller, N., Janssens-Maenhout, G., Raes, F., et al.: Simultaneously mitigating near-term climate change and improving human health and food security, *Science*, 335, 183–189, 2012.
- Sipkens, T. A., Olfert, J. S., and Rogak, S. N.: New approaches to calculate the transfer function of particle mass analyzers, *Aerosol Science and Technology*, 54, 111–127, 2020.
- 670 Stephens, M., Turner, N., and Sandberg, J.: Particle identification by laser-induced incandescence in a solid-state laser cavity, *Applied Optics*, 42, 3726–3736, 2003.
- Subramanian, R., Kok, G., Baumgardner, D., Clarke, A., Shinozuka, Y., Campos, T., Heizer, C., Stephens, B., De Foy, B., Voss, P. B., et al.: Black carbon over Mexico: the effect of atmospheric transport on mixing state, mass absorption cross-section, and BC/CO ratios, *Atmospheric Chemistry and Physics*, 10, 219–237, 2010.
- 675 Swanson, J. and Kittelson, D.: Evaluation of thermal denuder and catalytic stripper methods for solid particle measurements, *Journal of Aerosol Science*, 41, 1113–1122, 2010.
- Taylor, J., Allan, J., Liu, D., Flynn, M., Weber, R., Zhang, X., Lefer, B., Grossberg, N., Flynn, J., and Coe, H.: Assessment of the sensitivity of core/shell parameters derived using the single-particle soot photometer to density and refractive index, *Atmospheric Measurement Techniques*, 8, 1701–1718, 2015.
- 680

- Turpin, B. and Lim, H.: Contributions to PM<sub>2.5</sub> mass concentrations: Revisiting common assumptions for estimating organic mass, *Aerosol Sci. Technol.*, 35, 602–610, 2001.
- 685 Wang, Q., Huang, R.-J., Cao, J., Han, Y., Wang, G., Li, G., Wang, Y., Dai, W., Zhang, R., and Zhou, Y.: Mixing state of black carbon aerosol in a heavily polluted urban area of China: implications for light absorption enhancement, *Aerosol Science and Technology*, 48, 689–697, 2014.
- Wiedensohler, A.: An approximation of the bipolar charge distribution for particles in the submicron size range, *Journal of Aerosol Science*, 19, 387–389, 1988.
- Wu, Y., Cheng, T., Gu, X., Zheng, L., Chen, H., and Xu, H.: The single scattering properties of soot aggregates with concentric core–shell spherical monomers, *J. Quant. Spectrosc. Radiat. Transfer*, 135, 9–19, <https://doi.org/10.1016/j.jqsrt.2013.11.009>, 2014.
- 690 Wu, Y., Zhang, R., Tian, P., Tao, J., Hsu, S.-C., Yan, P., Wang, Q., Cao, J., Zhang, X., and Xia, X.: Effect of ambient humidity on the light absorption amplification of black carbon in Beijing during January 2013, *Atmospheric Environment*, 124, 217–223, 2016.
- Wu, Y., Wang, X., Tao, J., Huang, R., Tian, P., Cao, J., Zhang, L., Ho, K.-F., Han, Z., and Zhang, R.: Size distribution and source of black carbon aerosol in urban Beijing during winter haze episodes, *Atmospheric Chemistry and Physics*, 17, 7965–7975, 2017.
- Yuan, J., Modini, R. L., Zanatta, M., Herber, A. B., Müller, T., Wehner, B., Poulain, L., Tuch, T., Baltensperger, U., and Gysel-Beer, M.: 695 Variability in the mass absorption cross section of black carbon (BC) aerosols is driven by BC internal mixing state at a central European background site (Melpitz, Germany) in winter, *Atmospheric Chemistry and Physics*, 21, 635–655, 2021.
- Zanatta, M., Laj, P., Gysel, M., Baltensperger, U., Vratolis, S., Eleftheriadis, K., Kondo, Y., Dubuisson, P., Winiarek, V., Kazadzis, S., et al.: Effects of mixing state on optical and radiative properties of black carbon in the European Arctic, *Atmospheric Chemistry and Physics*, 18, 14 037–14 057, 2018.
- 700 Zhang, Y., Zhang, Q., Cheng, Y., Su, H., Kecorius, S., Wang, Z., Wu, Z., Hu, M., Zhu, T., Wiedensohler, A., et al.: Measuring the morphology and density of internally mixed black carbon with SP2 and VTDMA: new insight into the absorption enhancement of black carbon in the atmosphere, *Atmospheric Measurement Techniques*, 9, 1833–1843, 2016.
- Zhang, Y., Li, X., Li, M., Zheng, Y., Geng, G., Hong, C., Li, H., Tong, D., Zhang, X., Cheng, Y., et al.: Reduction in black carbon light absorption due to multi-pollutant emission control during APEC China 2014, *Atmospheric Chemistry and Physics*, 18, 10 275–10 287, 705 2018a.
- Zhang, Y., Su, H., Ma, N., Li, G., Kecorius, S., Wang, Z., Hu, M., Zhu, T., He, K., Wiedensohler, A., et al.: Sizing of Ambient Particles From a Single-Particle Soot Photometer Measurement to Retrieve Mixing State of Black Carbon at a Regional Site of the North China Plain, *Journal of Geophysical Research: Atmospheres*, 123, 12–778, 2018b.
- Zhang, Y., Zhang, Q., Cheng, Y., Su, H., Li, H., Li, M., Zhang, X., Ding, A., and He, K.: Amplification of light absorption of black carbon 710 associated with air pollution, *Atmospheric Chemistry and Physics*, 18, 9879–9896, 2018c.
- Zhao, G., Shen, C., and Zhao, C.: Mismeasurement of the core-shell structure of black carbon-containing ambient aerosols by SP2 measurements, *Atmospheric Environment*, 243, 117 885, 2020.