

# Can $\Delta^{14}\text{CO}_2$ observations help atmospheric inversions constrain the fossil $\text{CO}_2$ emission budget of Europe?

Carlos Gómez-Ortiz<sup>1</sup>, Guillaume Monteil<sup>1</sup>, Sourish Basu<sup>2,3</sup>, and Marko Scholze<sup>1</sup>

<sup>1</sup>Department of Physical Geography and Ecosystem Science, Lund University, Lund, Sweden

<sup>2</sup>Global Modeling and Assimilation Office, NASA Goddard Space Flight Center, Greenbelt, MD, USA

<sup>3</sup>Earth System Science Interdisciplinary Center, University of Maryland, College Park, MD, USA

**Correspondence:** Carlos Gómez-Ortiz (carlos.gomez@nateko.lu.se)

**Abstract.** Independent estimation and verification of fossil  $\text{CO}_2$  emissions on a regional and national scale are crucial for evaluating the fossil  $\text{CO}_2$  emissions and reductions reported by countries as part of their Nationally Determined Contributions (NDCs). Top-down methods, such as the assimilation of *in situ* and satellite observations of different tracers (e.g.,  $\text{CO}_2$ ,  $\text{CO}$ ,  $\Delta^{14}\text{CO}_2$ ,  $\text{XCO}_2$ ), have been increasingly used for this purpose. In this paper, we use the Lund University Modular Inversion Algorithm (LUMIA) to estimate fossil  $\text{CO}_2$  emissions and natural fluxes by simultaneously inverting *in situ* observations of  $\text{CO}_2$  and  $\Delta^{14}\text{CO}_2$  over Europe. We evaluate the inversion system by conducting a series of Observing System Simulation Experiments (OSSEs). We find that in regions with a dense sampling network, such as Western/Central Europe, adding  $\Delta^{14}\text{CO}_2$  observations in an experiment where the prior fossil  $\text{CO}_2$  and biosphere fluxes are set to zero allows LUMIA to recover the time series of both categories. This reduces the prior-to-truth root mean square error (RMSE) from 1.26  $\text{TgC day}^{-1}$  to 0.12  $\text{TgC day}^{-1}$  in fossil  $\text{CO}_2$  and from 0.97  $\text{TgC day}^{-1}$  to 0.17  $\text{TgC day}^{-1}$  in biosphere fluxes, reflecting the true total  $\text{CO}_2$  budget by 91%. In a second set of experiments using realistic prior fluxes, we find that in addition to retrieving the time series of the optimized fluxes, we are able to recover the true regional fossil  $\text{CO}_2$  budget in Western/Central Europe by 95% and in Germany by 97%. In regions with low sampling coverage, such as Southern Europe and the British Isles, the posterior fossil  $\text{CO}_2$  emissions are not well-resolved in any scenario. Moreover, the biosphere fluxes can follow the seasonality with a significant bias, making it impossible to close the total  $\text{CO}_2$  budget. We find that the prior uncertainty of fossil  $\text{CO}_2$  emissions does not significantly impact the posterior estimates, showing similar results in regions with good sampling coverage like Western/Central and Northern Europe. Finally, having a good prior estimate of the terrestrial isotopic disequilibrium is important to avoid introducing additional noise into the posterior fossil  $\text{CO}_2$  fluxes.

## 1 Introduction

Carbon dioxide ( $\text{CO}_2$ ) from fossil fuels and cement production has become the dominant source of anthropogenic emissions to the atmosphere from around 1950, leading to a concentration of  $\text{CO}_2$  in the atmosphere of 419.70 ppm on September 16<sup>th</sup>, 2023, 49% above pre-industrial levels ([https://gml.noaa.gov/ccgg/trends/gl\\_trend.html](https://gml.noaa.gov/ccgg/trends/gl_trend.html), accessed September 18<sup>th</sup>, 2023). Although land and ocean sinks of  $\text{CO}_2$  have increased over the past six decades, the fraction of emissions removed from the atmosphere is expected to decline as the  $\text{CO}_2$  concentration increases; therefore, a higher proportion of emitted  $\text{CO}_2$  will

25 remain in the atmosphere (Eyring et al., 2021). Monitoring CO<sub>2</sub> emissions and removals is important to follow compliance  
with international treaties such as the Paris Agreement (UNFCCC, 2016). In the Agreement, the Parties have committed to  
report their emissions and removals of CO<sub>2</sub> and other greenhouse gases (GHGs) to the United Nations Framework Convention  
on Climate Change (UNFCCC) through the annual GHG inventory. In the case of fossil CO<sub>2</sub> emissions, these inventories  
30 national-level data are used to spatially and temporally distribute CO<sub>2</sub> emissions at sub-national and sub-annual scales. These  
spatially distributed products help us to better understand the sources of CO<sub>2</sub> emissions and to implement more effective  
policies toward emission reduction (Han et al., 2020). Commonly available emission products, such as the Carbon Dioxide  
Information and Analysis Center (CDIAC) FFCO<sub>2</sub> emission maps (Andres et al., 2011), the Open-source Data Inventory  
for Anthropogenic CO<sub>2</sub> (ODIAC) emission data product (Oda and Maksyutov, 2011; Oda et al., 2018), and the Emissions  
35 Database for Global Atmospheric Research (EDGAR) (Janssens-Maenhout et al., 2019), use national energy statistics, power  
plant emission data, and spatial proxies such as nighttime light observations, population data, and road transport networks to  
spatially and temporally distribute the emissions. This additional information introduces new uncertainties that, in EDGAR,  
for instance, can reach a global uncertainty of approximately 11% (Solazzo et al., 2021), or can be as high as 120% in the case  
of CDIAC (Andres et al., 2016). These uncertainties can be more significant and challenging to characterize at sub-annual and  
40 sub-national scales, even in developed countries (Basu et al., 2016; Miller et al., 2012).

These emission products can be used alongside atmospheric observations of CO<sub>2</sub> and other tracers in inverse modeling  
systems to reduce their uncertainty, enhance our understanding of fossil CO<sub>2</sub> emissions and natural fluxes, and improve the  
accuracy of national carbon budgets. So far, atmospheric CO<sub>2</sub> inversion frameworks have predominantly been used to constrain  
terrestrial sources and sinks of CO<sub>2</sub> (Basu et al., 2013; Chevallier et al., 2007; Monteil et al., 2020; Monteil and Scholze, 2021).  
45 To constrain the terrestrial carbon cycle, inverse modelers typically prescribe fossil CO<sub>2</sub> fluxes from emission data products,  
like those mentioned previously, assuming them to be perfectly well-known. This is to avoid any bias the fossil CO<sub>2</sub> flux  
might introduce to the estimates of terrestrial fluxes (Turnbull et al., 2009). The atmospheric concentrations of CO<sub>2</sub> represent a  
mixture of all sources, with the natural signal being predominant during most of the year (the growing season covers spring to  
fall), masking the contribution of fossil CO<sub>2</sub> emissions (Shiga et al., 2014). Consequently, additional information is necessary  
50 to segregate the fossil contribution from the natural signal in atmospheric CO<sub>2</sub> observations to constrain the fossil CO<sub>2</sub> fluxes.  
Some strategies have included sampling approaches where observations are taken close to major fossil CO<sub>2</sub> sources (e.g., cities  
and power plants) (Bréon et al., 2015), or satellite observations of large point sources such as column-integrated atmospheric  
CO<sub>2</sub> concentration (XCO<sub>2</sub>) (Kaminski et al., 2022; Wang et al., 2020). A more commonly employed method is to combine  
these CO<sub>2</sub>-only observations (either CO<sub>2</sub> or XCO<sub>2</sub>) with additional tracers such as NO<sub>2</sub> and the NO<sub>x</sub>:CO<sub>2</sub> ratio (Kuhlmann  
55 et al., 2021), or ground observations of CO (Newman et al., 2013; Brioude et al., 2013), APO (Atmospheric Potential Oxygen)  
(Pickers et al., 2022), and, more widely, the radiocarbon ( $\Delta^{14}\text{CO}_2$ ) content of carbon dioxide (Turnbull et al., 2009; Basu et al.,  
2016; Wang et al., 2018), which we use in this study.

Radiocarbon is the radioactive isotope of carbon with a half-life of approximately 5730 years and is produced naturally  
in the upper atmosphere by cosmic-ray-induced reactions with nitrogen (Turnbull et al., 2009). Fossil CO<sub>2</sub> does not contain

60 radiocarbon (it has already decayed), and adding its  $^{14}\text{C}$ -free emissions to the atmosphere causes a depletion of  $\Delta^{14}\text{CO}_2$  (Suess, 1955). Meanwhile, radiocarbon is being absorbed and released by the ocean and the biosphere, making it an effective tracer of the natural carbon cycle and, therefore, a tool to distinguish fossil emissions from the natural cycle signal in atmospheric  $\text{CO}_2$  observations (Turnbull et al., 2009, 2022; Zazzeri et al., 2023). Radiocarbon is also produced as a by-product of nuclear facilities (e.g., nuclear power plants) and atmospheric nuclear weapon tests, the latter occurring mostly between 1945 and  
65 1980, with the highest intensity in 1961-1962 (Naegler and Levin, 2006). These bomb tests caused a significant disturbance in the radiocarbon cycle, resulting in an isotopic disequilibrium in the biosphere and ocean (Hesshaimer et al., 1994). Isotopic disequilibrium is the difference between the isotopic signatures or radiocarbon content of carbon entering and leaving a pool. Despite its similar meaning, this occurs differently in the ocean and the biosphere. In the ocean, the disequilibrium results from  $\Delta^{14}\text{C}$ -depleted  $\text{CO}_2$  from water that has returned to the surface and was out of contact with the atmosphere, allowing  
70 the radiocarbon to decay significantly. In the biosphere, the disequilibrium is a result of the heterotrophic respiration of  $\Delta^{14}\text{C}$ -enriched  $\text{CO}_2$  assimilated a couple of decades ago when the atmospheric  $\Delta^{14}\text{C}$  was higher due to the bomb spike (Lehman et al., 2013). Therefore, the ocean disequilibrium flux tends to dilute the atmospheric  $\Delta^{14}\text{C}$  content, whereas the biosphere disequilibrium flux tends to enrich it.

The usefulness of atmospheric  $\Delta^{14}\text{CO}_2$  observations in estimating the fossil  $\text{CO}_2$  content in the atmosphere as a fraction of  
75 the total atmospheric  $\text{CO}_2$  concentration has been demonstrated in various modeling studies. For instance, Levin and Karstens (2007) present an observational approach to estimate hourly regional fossil fuel  $\text{CO}_2$  offsets at a continental site (Heidelberg, Germany), using weekly mean  $^{14}\text{CO}_2$ -based fossil fuel  $\text{CO}_2$  mixing ratios and  $\text{CO}$  observations. On a larger scale, Levin et al. (2008) examine monthly mean  $^{14}\text{CO}_2$  observations from two German stations (Schauinsland and Heidelberg), compared against background measurements from Jungfraujoch, to assess the regional fossil fuel  $\text{CO}_2$  surplus and emphasize the impor-  
80 tance of high-precision radiocarbon measurements for quantifying fossil fuel  $\text{CO}_2$  contributions at a regional scale in Europe. The study by Miller et al. (2012) explores the relationship between fossil fuel  $\text{CO}_2$  emissions and enhancements in atmospheric concentrations of  $^{14}\text{CO}_2$  and other anthropogenic trace gases. Utilizing a six-year dataset from vertical profiles in the northeast U.S., they separate the fossil and natural components of atmospheric  $\text{CO}_2$  using apparent emission ratios of various gases to fossil fuel  $\text{CO}_2$ , offering observation-based estimates of national emissions and comparing these with inventory-based  
85 estimates. Turnbull et al. (2015) use measurements of  $\text{CO}_2$ ,  $^{14}\text{CO}_2$ , and  $\text{CO}$  from multiple sampling towers around Indianapolis, U.S., to differentiate fossil fuel  $\text{CO}_2$  from background levels in an urban environment and evaluate the consistency of a bottom-up emission product. More recently, by using radiocarbon observations in  $\text{CH}_4$  ( $\Delta^{14}\text{CH}_4$ ) and  $\text{CO}_2$  ( $\Delta^{14}\text{CO}_2$ ) over London, Zazzeri et al. (2023) reveal that fossil fractions of  $\text{CH}_4$  and atmospheric concentrations of fossil  $\text{CO}_2$  are consistently higher than those predicted by simulations using emission products such as EDGAR. This discrepancy highlights the poten-  
90 tial of  $^{14}\text{CO}_2$  measurements to refine our understanding of fossil and biospheric  $\text{CO}_2$  and  $\text{CH}_4$  partitioning in urban settings, especially when the influence of nuclear power plants is minimal.

Nevertheless, large-scale four-dimensional inversion systems have only recently begun to include  $\Delta^{14}\text{CO}_2$  as an additional tracer to constrain fossil  $\text{CO}_2$  emissions. Basu et al. (2016) introduced a novel dual-tracer atmospheric inversion technique that differentiates between biospheric and fossil fuel  $\text{CO}_2$  fluxes using atmospheric  $\text{CO}_2$  and  $\Delta^{14}\text{CO}_2$  measurements over

95 the U.S. This method not only allows for the estimation of monthly regional fossil fuel CO<sub>2</sub> fluxes but also addresses biases in biospheric flux estimates that occur when using traditional CO<sub>2</sub>-only inversion methods with fixed fossil fuel flux assumptions. Their approach represents a significant advancement in quantifying regional and national fossil fuel emissions from atmospheric observations. Building upon this study, Basu et al. (2020) presented a more focused analysis in providing national and sub-national-scale estimates of fossil fuel CO<sub>2</sub> emissions, using an extensive observation database of both  
100 CO<sub>2</sub> and  $\Delta^{14}\text{CO}_2$ . Graven et al. (2018) conducted an in-depth analysis of fossil fuel CO<sub>2</sub> emissions in California, utilizing atmospheric observations from nine sites and employing the Weather Research and Forecasting model along with the Stochastic Time-Inverted Lagrangian Transport model (WRF-STILT). The research integrates measurements of CO<sub>2</sub> concentration and  $\Delta^{14}\text{CO}_2$ , uniquely combining these observations with high-resolution emission data from Vulcan v2.2 and EDGARv4.2, aiming to refine estimates of regional fossil fuel CO<sub>2</sub> emissions and explore the impact of various factors such as nuclear  
105 industry emissions and air-sea exchanges on atmospheric CO<sub>2</sub> levels. In Europe, Wang et al. (2018) evaluated the potential of a  $\Delta^{14}\text{CO}_2$  observation network for estimating regional fossil fuel CO<sub>2</sub> emissions through atmospheric inversions. They examined the effectiveness of different network configurations, from minimal to very dense setups, in reducing uncertainties in fossil CO<sub>2</sub> emissions estimation. The study used synthetic observations and the LMDZv4 global transport model, paying special attention to representation and aggregation errors. Establishing a network of both CO<sub>2</sub> and  $\Delta^{14}\text{CO}_2$  measurement stations  
110 requires significant investments to ensure long monitoring periods that allow the identification of sub-annual and sub-national scale variations in fossil CO<sub>2</sub> emissions. The Integrated Carbon Observation System (ICOS) atmospheric network includes 39 stations in 14 European countries and overseas territories. Hourly CO<sub>2</sub> atmospheric observations are available for 26 stations, with the earliest data from 2015 when the network was established. However, some of these stations already existed by then, and there is information from previous years. Fourteen stations measure  $\Delta^{14}\text{CO}_2$  in 2-week integrated samples analyzed by the  
115 ICOS Central Radiocarbon Laboratory. The ICOS network is expanding to include more stations, and new sampling strategies are being developed to increase the number of  $\Delta^{14}\text{CO}_2$  measurements.

In this work, we present the new capabilities of the Lund University Modular Inversion Algorithm (LUMIA) system (Monteil and Scholze, 2021) to perform simultaneous inversions of atmospheric CO<sub>2</sub> and  $\Delta^{14}\text{CO}_2$  observations as a first attempt to develop a model capable of supporting the monitoring and verification of fossil CO<sub>2</sub> emissions across Europe. Such emissions  
120 monitoring and verification support capacities are essential for assessing compliance with international agreements, such as the Paris Agreement (UNFCCC, 2016), and for guiding policy decisions aimed at reducing carbon emissions ~~as outlined~~, as described by Janssens-Maenhout et al. (2020). We perform Observing System Simulation Experiments (OSSEs), recreating the current state of the ICOS network and its sampling strategy, and using different flux products (as priors and true values) to demonstrate the performance of the inversion scheme and show its capabilities. We begin by assessing the impact of oceanic  
125 fluxes on the total concentrations of CO<sub>2</sub> and  $\Delta^{14}\text{CO}_2$  ~~concentrations~~. Then, we evaluate the impact of adding  $\Delta^{14}\text{CO}_2$  observations on the estimation of fossil CO<sub>2</sub> emissions by comparing the model's ability to recover true fluxes starting from a prior flux set to zero. Finally, with a more realistic setup, i.e., prior, we evaluate the impact of the prescribed fossil CO<sub>2</sub> flux uncertainty and the impact of the terrestrial isotopic disequilibrium product.

## 2 Theoretical background

130 The depletion of radiocarbon in the atmosphere due to fossil CO<sub>2</sub> emissions has been demonstrated in various studies since the 1950s, primarily through the  $\Delta^{14}\text{C}$  content ~~in-of~~ tree rings (Suess, 1955; Tans et al., 1979). Anthropogenic disturbances in atmospheric radiocarbon content, such as those from nuclear bomb tests and nuclear power facilities (Hesshaimer and Levin, 2000), have led to a deeper understanding of the radiocarbon exchange processes between the atmosphere, the biosphere (Hahn et al., 2006), and the ocean (Hesshaimer et al., 1994).

135 With subsequent ~~advancements~~ advances in measurement and modeling techniques,  $\Delta^{14}\text{CO}_2$  observations have been used to estimate the fossil CO<sub>2</sub> offset within atmospheric CO<sub>2</sub> concentrations (Levin and Hesshaimer, 2000; Kuc et al., 2003; Naegler and Levin, 2006; Levin and Karstens, 2007; Levin et al., 2008). This is achieved by comparing observations from free troposphere background stations ~~against~~ with those from regionally polluted stations, establishing an essential foundation for estimating fossil CO<sub>2</sub> emissions using inverse modeling, as will be discussed in the following sections.

### 140 2.1 Regional transport model

We are using the LUMIA (Lund University Modular Inversion Algorithm) system as described by Monteil and Scholze (2021), modifying the way background concentrations ( $y^b$  in Equation 1) are calculated by computing a smoothed and detrended average of real observations from the ICOS network for each sampling site. Originally, the LUMIA system was developed to optimize regional Net Ecosystem Exchange (NEE) fluxes over Europe using in situ CO<sub>2</sub> observations from the ICOS (Inte-  
 145 grated Carbon Observation System) Atmosphere network. In this study, we have extended LUMIA to additionally assimilate  $\Delta^{14}\text{CO}_2$  observations from the same network and optimize multiple flux categories. This extension introduces a new step in the mass balance of ~~the atmospheric transport,~~ atmospheric transport as follows:

$$y_{\text{CO}_2} = y_{\text{CO}_2}^b + \sum_c \underline{HK}(F_c) \quad (1a)$$

$$y_{\text{C}\Delta^{14}\text{C}} = y_{\text{C}\Delta^{14}\text{C}}^b + \sum_c \underline{HK}(\Delta_c F_c) \quad (1b)$$

150 where  $y$  is the modeled concentration,  $y^b$  is the modeled background concentration (i.e., the boundary condition) (see Section 3.3). The operator HK represents the regional transport model (pre-computed footprints, see Section 3.2), which is used to calculate the contribution of surface fluxes  $F$  (in each category  $c$ ) to the change of CO<sub>2</sub> and  $\Delta^{14}\text{CO}_2$  in the atmosphere.  $F_c$  in this study corresponds to gridded fluxes ~~in-with~~ a resolution of  $0.5^\circ \times 0.5^\circ$  and ~~1-hourly~~ 1 hour. In Eq. 1b, the term  $\Delta_c$  refers to the  $\Delta^{14}\text{CO}_2$  signature of the accompanying flux category (Tans et al., 1979; Turnbull et al., 2016). Since the values of  
 155  $\Delta^{14}\text{CO}_2$  ‰ ~~values~~ are not additive ~~,~~ and following Basu et al. (2016), we convert all values to CO<sub>2</sub> $\Delta^{14}\text{CO}_2$  values values of CO<sub>2</sub> $\Delta^{14}\text{CO}_2$  (or  $\text{C}\Delta^{14}\text{C}$  for simplification), meaning that we do not model  $\Delta^{14}\text{CO}_2$  in units of ‰ (permil) ~~units~~, as reported in observations ( $\Delta^{14}\text{CO}_2$ ), but in units of amount of  $\text{CO}_2 \times \text{‰}$  (e.g., CO<sub>2</sub> ppm for concentrations,  $\text{PgC}\text{‰ yr}^{-1}$  for fluxes). The

capital delta notation ( $\Delta^{14}\text{CO}_2$  or just  $\Delta$ ), usually expressed in units of permil (‰), represents the enrichment or depletion of the atmosphere relative to a standard (Stuiver and Polach, 1977), in this case, the amount of radiocarbon relative to an absolute standard of  $^{14}\text{C}$  from 1950 (Trumbore et al., 2016), meaning which means that positive values indicate that the  $^{14}\text{C}$  content in the sample is higher than the pre-industrial-preindustrial atmosphere.

Expanding the foreground (regional) part of Equation 1 to include the flux categories explicitly yields:

$$\sum_c \underline{HK}(F_c) = \underline{HK}(F_{\text{ff}}) + \underline{HK}(F_{\text{bio}}) + \underline{HK}(F_{\text{oce}}) \quad (2a)$$

where  $F_{\text{ff}}$  is the fossil  $\text{CO}_2$  emissions,  $F_{\text{bio}} - F_{\text{bio}}$  is the net  $\text{CO}_2$  flux between the atmosphere and terrestrial ecosystems (Net Ecosystem Exchange, NEE, hereafter also called biosphere flux), and  $F_{\text{oce}}$  is the atmosphere-ocean  $\text{CO}_2$  exchanges. Calculating each  $\underline{H}(F_c) - \underline{K}(F_c)$  separately tracks the influence of each category, not just the total. For radiocarbon, the equation looks similar but includes an additional term for the radiocarbon from nuclear facilities:

$$\sum_c \underline{HK}(\Delta_c F_c) = \underline{HK}(\Delta_{\text{ff}} F_{\text{ff}}) + \underline{HK}(\Delta_{\text{atm}}(F_{\text{bio}} + F_{\text{oce}})) + \underline{HK}((\Delta_{\text{bio}} - \Delta_{\text{atm}})F_{\text{bio2atm}}) \quad (2b)$$

$$\begin{aligned} &+ \underline{HK}((\Delta_{\text{oce}} - \Delta_{\text{atm}})F_{\text{oce2atm}}) + \underline{HK}(\Delta_{\text{nuc}} F_{\text{nuc}}) \\ 170 \quad &= \underline{HK}(\Delta_{\text{ff}} F_{\text{ff}}) + \underline{HK}(\Delta_{\text{atm}}(F_{\text{bio}} + F_{\text{oce}})) + \underline{HK}(F_{\text{biodis}}) + \underline{HK}(F_{\text{ocedis}}) + \underline{HK}(\Delta_{\text{nuc}} F_{\text{nuc}}) \end{aligned} \quad (2c)$$

where  $\Delta_{\text{ff}}$  is set equal to  $-1000\text{‰}$ , indicating that the fossil  $\text{CO}_2$  does not contain any  $\Delta^{14}\text{CO}_2$  and, therefore, therefore dilutes the atmospheric  $\Delta^{14}\text{CO}_2$  content.  $\Delta_{\text{atm}} F_{\text{bio}}$  and  $\Delta_{\text{atm}} F_{\text{oce}}$  refer to the exchange of "modern"  $\text{C}\Delta^{14}\text{C}$  between terrestrial ecosystems and the ocean, respectively, with the atmosphere, since  $\Delta^{14}\text{C}$  in new biomass and the top ocean-layer-would nearly-layer of the ocean would almost match atmospheric  $\Delta^{14}\text{C}$  ( $\Delta_{\text{atm}}$ ) (Graven et al., 2020).  $F_{\text{biodis}}$  and  $F_{\text{ocedis}}$  represent the isotopic disequilibrium, or the isotopic difference between the source (ocean or biosphere) and the atmosphere.  $F_{\text{biodis}}$  is "old-captured" and  $\Delta^{14}\text{C}$ -enriched  $\text{C}\Delta^{14}\text{C}$  released through-by heterotrophic respiration ( $F_{\text{bio2atm}}$ ).  $F_{\text{ocedis}}$  is "old-captured" and  $\Delta^{14}\text{C}$ -depleted  $\text{C}\Delta^{14}\text{C}$  released through vertical transport of water masses ( $F_{\text{oce2atm}}$ ) (Lehman et al., 2013; Basu et al., 2016).  $F_{\text{nuc}}$  is the radiocarbon production due to nuclear activities, mainly from nuclear facilities, since radiocarbon production from nuclear bomb tests has largely-ceased-stopped largely (Hesshaimer and Levin, 2000). Converting  $\Delta_{\text{nuc}} F_{\text{nuc}}$  to  $\text{C}\Delta^{14}\text{C}$  notation, for modeling purposes, as mentioned above, is achieved through:

$$\Delta_{\text{nuc}} F_{\text{nuc}} = \frac{N}{r_{\text{std}}} F_{\text{nuc}} \quad (3)$$

where  $r_{\text{std}}$  is the standard  $^{14}\text{C} : \text{C}$  ratio ( $1.176 \times 10^{-12}$ ), and  $N = (975/(\delta^{13}\text{C} + 1000))^2$  is the isotope fractionation correction (Stuiver and Polach, 1977). As the  $\delta^{13}\text{C}$  value, we use the global atmospheric yearly average of  $-8\text{‰}$  (Basu et al., 2016). Combining Equations-equations 1 through 3 for the modeled  $\text{CO}_2$  and  $\Delta^{14}\text{CO}_2$  concentrations yields, yields the following:

$$185 \quad y_{\text{CO}_2} = y_{\text{CO}_2}^b + \underline{HK}(F_{\text{ff}}) + \underline{HK}(F_{\text{bio}}) + \underline{HK}(F_{\text{oce}}) \quad (4a)$$

$$\mathbf{y}_{C\Delta^{14}C} = \mathbf{y}_{C\Delta^{14}C}^b + \underline{HK}(\Delta_{ff}\mathbf{F}_{ff}) + \underline{HK}(\mathbf{F}_{biodis}) + \underline{HK}(\mathbf{F}_{ocedis}) + \underline{HK}(\Delta_{atm}(\mathbf{F}_{bio} + \mathbf{F}_{oce})) + \underline{HK}\left(\frac{N}{r_{std}}\mathbf{F}_{nuc}\right) \quad (4b)$$

An additional source of radiocarbon, the cosmogenic production, occurs naturally in the upper atmosphere ~~due to~~ as a result of cosmic-ray-induced reactions with nitrogen. This term is implicitly included in the background  $\mathbf{y}_{C\Delta^{14}C}^b$ .

## 190 2.2 Observations

We perform ~~the~~ inversions for a regional domain ranging from 15°W, 33°N to 35°E, 73°N, as shown in Figure 1. This domain is consistent with those used in previous studies, such as Monteil et al. (2020) and Thompson et al. (2020). The sampling stations depicted in Figure 1 represent the ICOS Atmosphere network for the years 2018-2020, noting that new sampling stations have been added since that period. The ICOS Atmosphere network is a component of ICOS, a European research  
 195 infrastructure designed to provide long-term, high-quality, and harmonized observations of carbon dynamics. The network includes 33 stations across Europe, all measuring CO<sub>2</sub>, with 15 of these stations also measuring  $\Delta^{14}\text{CO}_2$ .

There are two sampling strategies ~~employed~~ used at the ICOS stations: continuous ~~and periodical~~ sampling and periodic sampling. Continuous sampling is performed at nearly-almost every available sampling height at the station, utilizing-using commercially available automatic samplers for hourly measurements of, for example, CO<sub>2</sub>. Periodical sampling, on the other  
 200 hand, is conducted only at the highest sampling height using flask samplers. These flasks are later analyzed in various ICOS laboratories. Hourly integrated flask samples, collected every three days, serve both as quality control for ~~the~~ continuous sampling and for measuring other gases not continuously monitored (e.g.  $\gamma\text{-SF}_6$ , H<sub>2</sub>, stable isotopes of CO<sub>2</sub>), in addition to  $\Delta^{14}\text{CO}_2$  for the determination of the atmospheric fossil CO<sub>2</sub> component through inverse modeling (Levin et al., 2020). Furthermore, a 2-week integrated flask sample is designed to pass air over a NaOH solution, specifically for  $\Delta^{14}\text{CO}_2$  sampling.

In this paper, we use the continuous 1-hour CO<sub>2</sub> ~~continuous and the 2-week integrated and integrated 2-week~~  $\Delta^{14}\text{CO}_2$  periodical-periodic sampling strategies for the evaluation of LUMIA. A summary of the stations, including their location, sampling height, number and average of measurements, and integration days, is presented in Table 1.

## 2.3 Inverse modeling problem

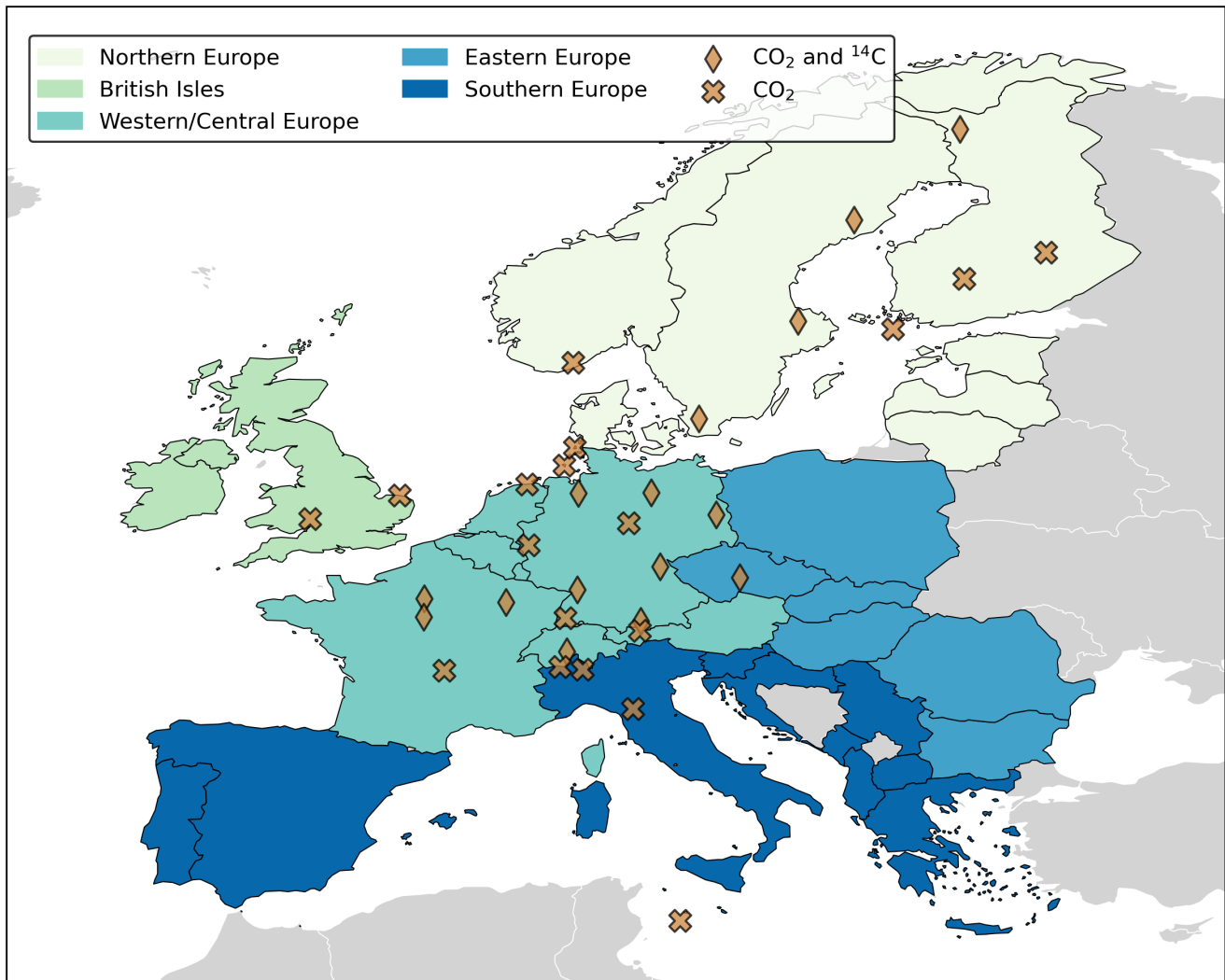
Atmospheric inverse modeling can be used for a variety of purposes, including the establishment of the initial conditions of a  
 210 model, the identification of sources and sinks, and the evaluation and improvement of prior emissions (Bocquet et al., 2015). The goal is to estimate the best set of variables (fluxes) consistent with atmospheric measurements of a tracer (e.g. CO<sub>2</sub> and  $\Delta^{14}\text{CO}_2$ ) in the study domain (observations), given the atmospheric transport that relates the two. In its most basic form, this can be formulated as

$$\mathbf{y} = H(\mathbf{x}, \mathbf{b}) + \boldsymbol{\epsilon} \quad (5a)$$

**Table 1.** Observation stations used in this study. Included is a summary of the number of observations ( $N_{\text{obs}}$ ), the average observations  $\pm$  one standard deviation, and the integration time of  $\Delta^{14}\text{CO}_2$  samples for the year 2018, based on data accessible through the ICOS Python API (<https://pypi.org/project/icoscp/>, accessed February 2023). Stations with zero  $N_{\text{obs}}$  did not measure or report observations of the corresponding tracer in 2018 to ICOS, but they are incorporated into this study for comprehensive analysis.

Code	Name	Country	Lat (°E)	Lon (°N)	Altitude (m.a.s.l.)	Max. samp. height (m.a.g.l)	$N_{\text{obs}}$ $\text{CO}_2$	$N_{\text{obs}}$ $\Delta^{14}\text{C}$	Avg. $\text{CO}_2$ (ppm)	Avg. $\Delta^{14}\text{C}$ (‰)	Integration time (days)
BIR	Birkenes	NO	58.39	8.25	219	75	2616	–	$421.9 \pm 8.0$	–	–
CMN	Monte Cimone	IT	44.19	10.70	2165	8	5832	–	$406.3 \pm 6.0$	–	–
GAT	Gartow	DE	53.07	11.44	70	341	8784	0	$419.5 \pm 10.0$	–	–
HEL	Helgoland	DE	54.18	7.88	43	110	1080	–	$430.4 \pm 10.1$	–	–
HPB	Hohenpeissenberg	DE	47.8	11.02	934	131	8784	17	$415.6 \pm 6.8$	$-4.1 \pm 2.8$	$13.4 \pm 0.5$
HTM	Hyltemossa	SE	56.1	13.42	115	150	8784	21	$417.1 \pm 8.4$	$-3.2 \pm 3.2$	$14.0 \pm 1.6$
IPR	Ispra	IT	45.81	8.64	210	100	8784	–	$430.0 \pm 15.9$	–	–
JFJ	Jungfraujoch	CH	46.55	7.99	3580	5	8784	15	$413.1 \pm 3.6$	$-1.0 \pm 3.5$	$14.0 \pm 0.0$
JUE	Jülich	DE	50.91	6.41	98	120	8784	–	$423.0 \pm 11.2$	–	–
KIT	Karlsruhe	DE	49.09	8.42	110	200	8784	21	$428.7 \pm 17.5$	$-14.1 \pm 10.4$	$6.2 \pm 0.7$
KRE	Křešín u Pacova	CZ	49.57	15.08	534	250	8784	13	$422.0 \pm 11.5$	$-4.1 \pm 3.0$	$13.2 \pm 0.6$
LIN	Lindenberg	DE	52.17	14.12	73	98	8784	5	$426.0 \pm 13.1$	$-8.6 \pm 6.3$	$14.0 \pm 0.0$
LMP	Lampedusa	IT	35.52	12.63	45	8	8088	–	$414.7 \pm 4.2$	–	–
LUT	Lutjewad	NL	53.4	6.35	1	60	8784	–	$422.3 \pm 12.2$	–	–
NOR	Norunda	SE	60.09	17.48	46	100	8784	19	$417.8 \pm 8.2$	$-0.7 \pm 4.2$	$13.3 \pm 0.5$
OPE	Observatoire pérenne de l'environnement	FR	48.56	5.5	390	120	8784	17	$420.2 \pm 9.5$	$-3.3 \pm 3.5$	$13.5 \pm 0.5$
OXK	Ochsenkopf	DE	50.03	11.81	1022	163	8784	0	$416.8 \pm 6.4$	–	–
PAL	Pallas	FI	67.97	24.12	565	12	8784	17	$416.2 \pm 7.7$	$-1.5 \pm 3.5$	$12.9 \pm 1.9$
PRS	Plateau Rosa	IT	45.93	7.70	3480	10	0	–	–	–	–
PUI	Puijo	FI	62.91	27.65	232	84	1248	–	$426.6 \pm 4.5$	–	–
PUY	Puy de Dôme	FR	45.77	2.97	1465	10	8784	–	$414.0 \pm 5.4$	–	–
RGL	Ridge Hill	GB	52.0	-2.54	199	90	8784	–	$413.4 \pm 6.1$	–	–
SAC	Saclay	FR	48.72	2.14	160	100	8784	12	$420.5 \pm 10.5$	$-2.7 \pm 6.4$	$16.5 \pm 4.3$
SMR	Hyytiälä	FI	61.85	24.29	181	125	8784	–	$416.8 \pm 8.5$	–	–
SSL	Schauinsland	DE	47.92	7.92	1205	35	0	–	–	–	–
STE	Steinkimmen	DE	53.04	8.46	29	252	8784	13	$421.9 \pm 11.5$	$-6.7 \pm 4.2$	$13.5 \pm 1.6$
SVB	Svartberget	SE	64.26	19.77	269	150	8784	13	$416.1 \pm 8.0$	$-0.9 \pm 3.1$	$15.6 \pm 1.9$
TOH	Torfhaus	DE	51.81	10.54	801	147	8784	–	$417.6 \pm 7.8$	–	–
TRN	Trainou	FR	47.96	2.11	131	180	8784	11	$419.4 \pm 8.6$	$-4.7 \pm 4.8$	$14.7 \pm 3.3$
UTO	Utö - Baltic sea	FI	59.78	21.37	8	57	8784	–	$416.2 \pm 8.0$	–	–
WAO	Weybourne	GB	52.95	1.12	31	10	8784	–	$413.4 \pm 6.1$	–	–
WES	Westerland	DE	54.92	8.31	12	14	8784	–	$416.2 \pm 2.7$	–	–
ZSF	Zugspitze	DE	47.42	10.98	2666	3	0	–	–	–	–





**Figure 1.** Study domain and location of the ICOS Atmosphere network sampling stations used in this paper. The regions will be used for the analysis and discussion of the results.

215 where the control vector  $x$  contains the variables (carbon fluxes,  $F_c$ ) to be estimated, and the observation vector  $y$  contains  
the observations (atmospheric concentrations).  $H$  is the observation operator, which includes the transport model and any  
additional ~~observations processing~~ processing of observations, such as accounting for the boundary conditions and variables  
 ~~$b$ , that which~~ we will not optimize.  $\epsilon$  is the error vector that includes the errors in the observations, the transport model,  
and the control vector. By pre-subtracting the prior model estimate for the observations,  $y^{\text{apri}}$ , Equation 5a can be rewritten as  
220  $y = y^{\text{apri}} + H(x) + \epsilon$ , with  $y^{\text{apri}}$  the *a priori* model estimate for the observations, computed following Equation 4. In this case,  
Equation 5a can be simplified as:

$$\delta_{\mathbf{y}} = \mathbf{H}\mathbf{x} + \boldsymbol{\varepsilon} \quad (5b)$$

where  $\delta_{\mathbf{y}} = \mathbf{y} - \mathbf{y}^{\text{pri}}$  is the vector storing the prior model-data mismatches.

There are multiple approaches to solving the inverse modeling problem. In this paper, and in general in LUMIA, we use the variational approach, in which the control vector  $\mathbf{x}$  that minimizes the cost function in Eq. 6 is sought iteratively by minimizing the misfit mismatch between the model outputs and the observations that are available over a range of times, also known assimilation window (Chatterjee and Michalak, 2013; Rayner et al., 2019; Scholze et al., 2017):

$$J(\mathbf{x}) = \frac{1}{2} (\mathbf{x} - \mathbf{x}^b)^T \mathbf{B}^{-1} (\mathbf{x} - \mathbf{x}^b) + \frac{1}{2} (\mathbf{H}\mathbf{x} - \delta_{\mathbf{y}})^T \mathbf{R}^{-1} (\mathbf{H}\mathbf{x} - \delta_{\mathbf{y}}) \quad (6)$$

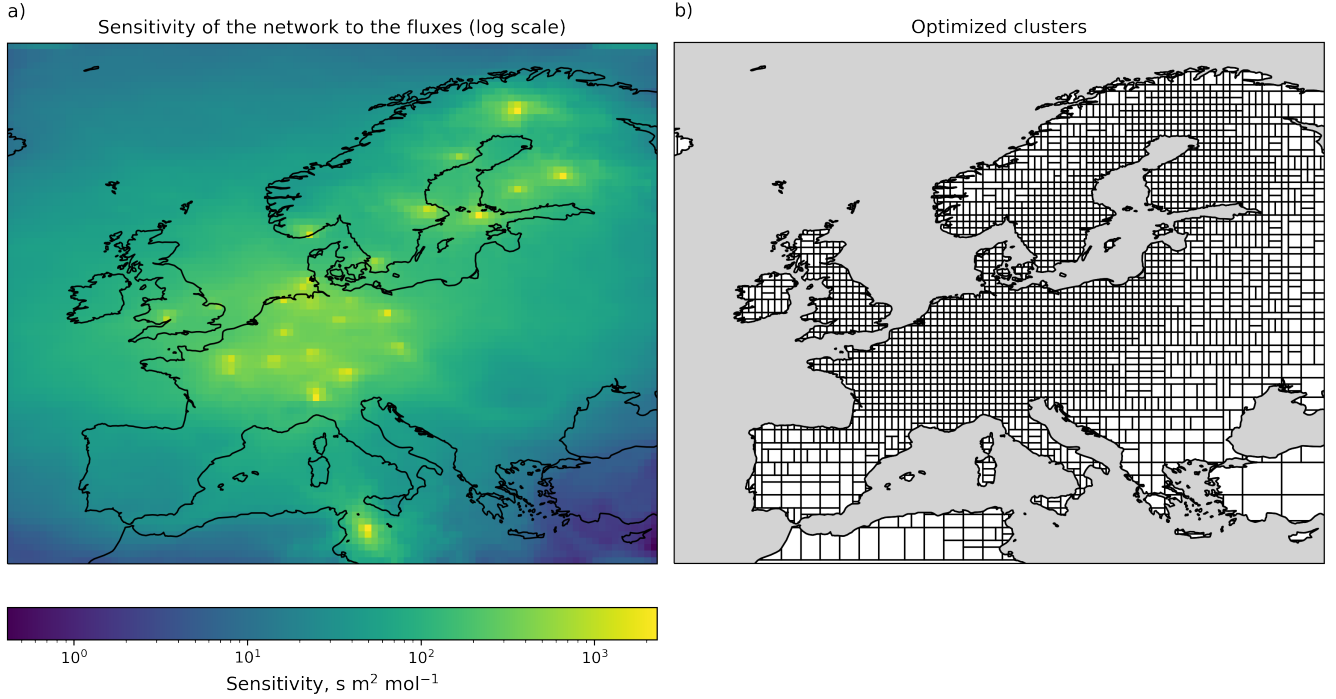
where  $\mathbf{B}$  is the prior uncertainty covariance matrix, and  $\mathbf{R}$  is the observational uncertainty covariance matrix (defined as a diagonal matrix) controlling the weight of each observation ( $\mathbf{y}^o$ ) and in the model-data mismatch  $\delta_{\mathbf{y}}$  and the target variable ( $\mathbf{x}^b$ , containing the prior fluxes) in the optimization. The iterative procedure searches for the value of  $\mathbf{x}$  that minimize  $J(\mathbf{x})$ , i.e. that is, the value of  $\mathbf{x}$  for which the gradient ( $\nabla_{\mathbf{x}} J$ ) is equal to zero. The observation operator  $H(\mathbf{x})$  can be expressed as the Jacobian matrix  $\mathbf{H}\mathbf{x}$  that stores the sensitivity of each observation to each control vector element (Monteil and Scholze, 2021). To reduce the number of iterations and large matrix multiplications, the optimization is performed on a preconditioned control vector  $\boldsymbol{\omega} = \mathbf{B}^{-1/2}(\mathbf{x} - \mathbf{x}^b)$ . More information on preconditioning can be found in Monteil and Scholze (2021).

### 2.3.1 Construction of the control vector ( $\mathbf{x}$ )

The control vector  $\mathbf{x}$  contains the set of parameters adjustable by the inversion, which are offsets to the different sources and sinks of  $\text{CO}_2$  and  $\Delta^{14}\text{CO}_2$  that we want to estimate. From Equation 4, our main interest is to optimize the fossil  $\text{CO}_2$  flux  $F_{\text{ff}}$ . But However, since through the radiocarbon cycle, we can separate the fossil and the natural fossil and biogenic  $\text{CO}_2$ , we also need to optimize the fluxes from the biosphere ( $F_{\text{bio}}$ ), as well as the isotopic disequilibrium  $F_{\text{biadis}}$ , to reduce the uncertainty from of these two terms that, which can have an important impact on the inversion result. The remaining fluxes ( $F_{\text{nuc}}$ ,  $F_{\text{oce}}$ , and  $F_{\text{ocedis}}$ ) are prescribed and not included in the control vector.

To limit the computational requirements, we do not solve directly for the high-resolution fluxes (e.g.  $0.5^\circ \times 0.5^\circ$  and 1-hourly) used in the transport model, but for weekly offsets for 2500 clusters of grid points. Appendix B describes the clustering algorithm in further more detail and the script can be found at `lumia/Tools/optimization_tools.py` of the LUMIA source code provided as an asset. In short, it groups contiguous grid cells, depending on how sensitive the observation network is to their emissions: grid cells directly upwind of the sampling stations are optimized at the native resolution of  $0.5^\circ$ , but in parts of the domain not well sampled by the observations (e.g., North Africa, Turkey), the resolution drops down to  $5^\circ \times 3.5^\circ$  (see Figure 2).

The relation between the control vector and the gridded emissions is given by Equation 5b can be rewritten as:



**Figure 2.** Visual representation of a) the sensitivity of the observation network to each grid-cell (in logarithmic scale) and b) the optimized clusters and their variable spatial resolution.

$$\mathbf{F}_c \delta \mathbf{y} = \mathbf{F}_c^0 + \sum_c \mathbf{H}(\mathbf{T}_T \mathbf{X}_x^c \mathbf{T}_H \otimes \mathbf{T}_T) \mathbf{x}_c \quad (7)$$

where  $\mathbf{F}_c$  is the matrix containing gridded emissions for the category  $c$ , with prior value  $\mathbf{F}_c^0$ . The matrix  $\mathbf{X}_x^c$  is the portion of the control vector  $\mathbf{x}$  that contains offsets for the category  $c$ , reshaped as a  $(n_{opt}^t, n_{opt}^p)$  matrix, with  $n_{opt}^t$  and  $n_{opt}^p$  the number of optimized (weekly) intervals and grid-cell clusters, respectively. The matrices  $\mathbf{T}_t$  and  $\mathbf{T}_T$  ( $n_{mod}^t, n_{opt}^t$ ) and  $\mathbf{T}_H$  ( $n_{opt}^p, n_{mod}^p, n_{opt}^p$ ) contain the relative contribution of each model time step  $t_{mod}$  (1 hour) and of each grid-cell grid cell  $p_{mod}$  ( $0.5^\circ \times 0.5^\circ$ ) to each optimized time-step time step  $t_{opt}$  and cluster  $p_{mod}$ . To reduce the number of iterations and large matrix multiplications, the optimization is performed on a preconditioned control vector  $\boldsymbol{\omega} = \mathbf{B}^{-1/2}(\mathbf{x} - \mathbf{x}^b)$ . More information about the preconditioning can be found in Monteil and Scholze (2021).

optimized intervals (weekly) and grid cell clusters, respectively.

### 2.3.2 Construction of the prior error covariance matrix (B)

Our matrix  $\mathbf{B}$  is constructed such that we first determine the spatio-temporal structure of the uncertainties, which is then scaled to match the reported uncertainties. Since we are optimizing for offsets, the prior control vector  $\mathbf{x}^b$  contains only

zeros (so  $\mathbf{F}_c = \mathbf{F}_c^0$ ). The uncertainties ~~on~~ in  $\mathbf{x}^b$  are given by the error covariance matrix  $\mathbf{B}$ . We assume no correlation between  
 265 different categories and different tracers. Therefore, ~~the~~ sections of  $\mathbf{B}$  specific to each tracer/category can be constructed independently. We do this in three steps:

1. Construct a vector of variances (diagonals of  $\mathbf{B}$ ), which contain the spatio-temporal pattern of the uncertainties.
2. Construct the covariances based on spatial and temporal correlation functions. Specifically, the covariances are set following  ~~$cov(\mathbf{x}_1, \mathbf{x}_2) = \sigma_{\mathbf{x}_1} \sigma_{\mathbf{x}_2} e^{-(d(p_1, p_2)/L_h)^2} e^{-|t_2 - t_1|/L_t}$ , with  $d(p_1, p_2)$~~   $cov(\mathbf{x}_i, \mathbf{x}_j) = \sigma_{\mathbf{x}_i} \sigma_{\mathbf{x}_j} e^{-(d(p_i, p_j)/L_h)^2} e^{-|t_i - t_j|/L_t}$   
 270 with  $d(p_i, p_j)$  the great circle distance between the center of the clusters (area-weighted average of the center-coordinates of the grid-cells in the cluster), and  $|t_2 - t_1|$  the temporal distance between  $\mathbf{x}_1$  and  $\mathbf{x}_2$ .  $i$  and  $j$  refer to the position in the control vector with assigned space/time coordinates, i.e.  $\mathbf{x}_i$  has coordinates  $(p_i, t_i)$ , and  $\mathbf{x}_j$  has coordinates  $(p_j, t_j)$ .
3. Scale the entire (section of the)  $\mathbf{B}$  matrix by a uniform scaling factor to match a prescribed category-specific annual  
 275 uncertainty value  $\delta \mathbf{F}_c$ .

The values of the correlation lengths  $L_h$  and  $L_t$ , as well as the scaling factors  $\delta \mathbf{F}_c$  are provided in Section 3.3.1. For constructing the vector of variances ( $\sigma_x^2$ ), two approaches were used:

- For fossil CO<sub>2</sub> emissions  $\mathbf{F}_{ff}$ , the variance is set to  $\sigma_{p,t,c}^2 = |\sum_{i,j,t_{mod}} \mathbf{F}_{i,j,t_{mod}}^c|^2$ , where  $\sigma_{p,t,c}^2$  is the variance corresponding to the control vector elements for the interval  $t$  and spatial cluster  $p$  of category  $c$ . The spatial coordinates  $i$   
 280 and  $j$  are the ensemble of grid cells that are within the cluster  $p$ , and the temporal coordinate  $t_{mod}$  is the ensemble of 1-hourly model time steps that are within the (weekly) optimization interval  $t$ . For instance, if the cluster  $p$  groups four model grid cells, the variance  $\sigma_{p,t,c}^2$  will be calculated over 672 flux components (4 grid cells, seven days with 24 hourly time steps).
- For the other fluxes, the procedure is similar, but the formula is  $\sigma_{p,t,c}^2 = \sqrt{|\sum_{i,j,t_{mod}} \mathbf{F}_{i,j,t_{mod}}^c|}$ .

285 The rationale behind these formulas is to scale the uncertainties to the prior estimate of the fluxes (assuming that very low prior fluxes should imply low prior uncertainties) but avoid artificially low errors in instances where negative and positive fluxes compensate each other (i.e., NEE, in the spring and autumn times). Furthermore, the location of fossil CO<sub>2</sub> emissions is relatively better known. Therefore, the formula used for fossil CO<sub>2</sub> emissions concentrates the uncertainties more at the location of prior emissions than that used for the other categories. Regardless of the formula used for determining the variance,  
 290 it is scaled afterward to match the target uncertainty reported in Table 2.

### 3 Observing System Simulation Experiments (OSSEs)

To assess the performance of the inversion system, we designed and performed a series of perfect transport Observing System Simulation Experiments (hereafter called OSSEs). In ~~so-called~~ OSSEs, the impact of new observing systems, ~~configurations of~~

existing systems existing system configurations, observing strategies, and ~~the optimization of new data are new data optimization~~  
295 on the quantification of the target variables is evaluated (Hoffman and Atlas, 2016). This is done by generating a set of simulated observations, called synthetic observations, from a set of reasonable but arbitrary fluxes,  $F_c^t$ , considered 'true' fluxes in the OSSE. Then, by using fluxes from different models or products as prior fluxes ( $F_c$ ), we investigate the ability of an inverse modeling system to reconstruct the true fluxes consistent with the model setup (e.g., prescribed uncertainties, error structure), making assumptions such as a perfect transport and a perfect boundary condition. Since they totally neglect the systematic  
300 model and representation errors, which should be accounted for in a real inversion, perfect transport OSSEs lead to overly optimistic results and should be interpreted with care. They are, however, well suited to our objective here, which is to test the robustness of our implementation of the dual-tracer inversion. In the following sections, we describe the different data sets, model setups, assumptions, and experiments used in this study.

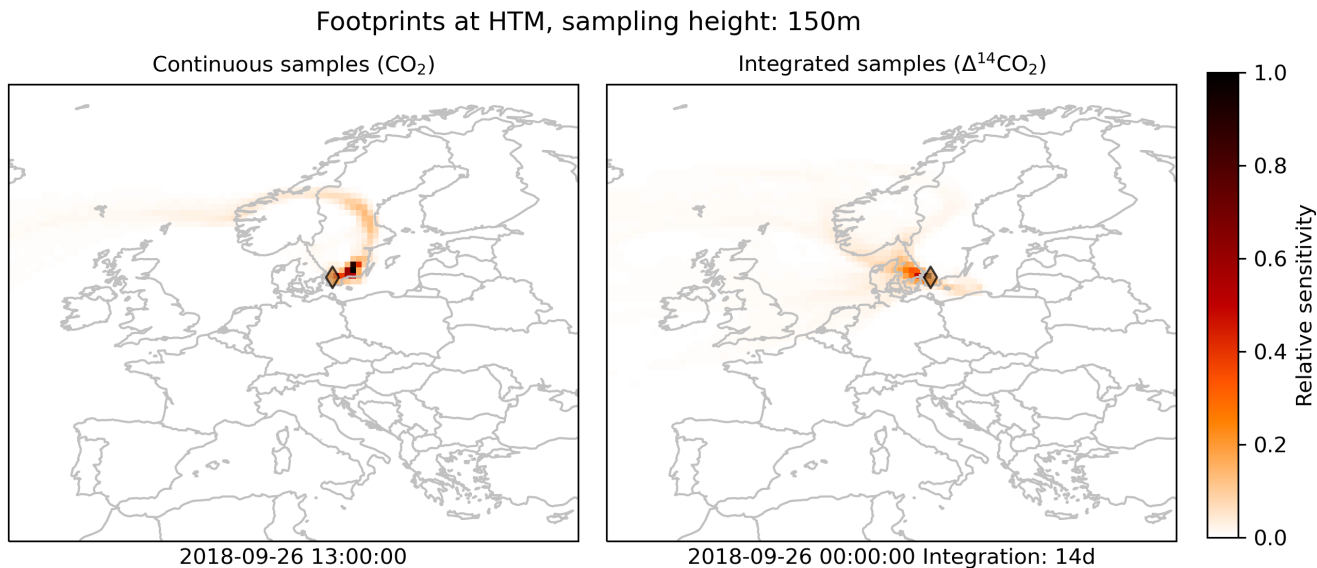
### 3.1 True and prior fluxes

305 We use a set of fluxes commonly used in this kind of inverse problem with a high horizontal and temporal resolution ( $0.5^\circ \times 0.5^\circ$  and 1 hour, respectively) to generate our synthetic observations. For the  $\text{CO}_2$  fluxes, we use EDGARv4.3 emission database (Janssens-Maenhout et al., 2019) distributed spatially and temporally based on fuel type, category, and country-specific emissions, using the COFFEE approach (Steinbach et al., 2011) (EDGAR in Table 3, see (Gerbig and Koch, 2021b)) as  $F_{\text{ff}}^t$  for the base year 2018. For  $F_{\text{bio}}^t$ , we use a simulation of the LPJ-GUESS vegetation model (Smith et al., 2014) (LPJ-  
310 GUESS in Table 3, see (Wu, 2023)), and for  $F_{\text{oce}}^t$ , we use the Jena Carbo-Scope v1.5 product (Rödenbeck et al., 2013). We use the terrestrial and ocean disequilibrium and nuclear fluxes from Basu et al. (2020) as our  $F_{\text{biadis}}^t$  (BASU in Table 3),  $F_{\text{ocedis}}^t$  and  $F_{\text{nuc}}^t$ , respectively.

As prior fluxes, we use products that followed different methodologies and schemes, with different spatial and temporal structures than the true fluxes, to make the implementation more realistic. For  $F_{\text{ff}}^t$ , we use a version of ODIAC (Open-source  
315 Data Inventory for Anthropogenic  $\text{CO}_2$ ) (ODIAC in Table 3, see (Oda and Maksyutov, 2020)) with a  $1\text{km} \times 1\text{km}$  spatial and monthly temporal resolution. Thus, our prior fossil  $\text{CO}_2$  fluxes include monthly variability but do not resolve the daily cycle (Oda et al., 2018). We also prepare a flat-year average version of this product (FlatODIAC in Table 3). For  $F_{\text{bio}}^t$ , we use a product from simulations of the VPRM vegetation model (Mahadevan et al., 2008; Thompson et al., 2020) (VPRM in Table 3, see (Gerbig and Koch, 2021a)). Due to the lack of an alternative product for the  $F_{\text{biadis}}^t$ , we generate our own prior by  
320 calculating a series of randomly perturbed versions of the true flux following their prescribed uncertainties and their horizontal and temporal correlations (RndBASU in Table 3). This perturbation is done by adding a random perturbation to the control vector and transforming such vector to the flux space. All fluxes are gridded to  $0.5^\circ \times 0.5^\circ$  and 1-hour resolution by the nearest neighbor interpolation.

### 3.2 Observation footprints (FLEXPART)

325 Similar to Monteil and Scholze (2021), we compute the regional transport (e.g. operator  $H$  in Equation 4) using the FLEXPART 10.4 Lagrangian transport model (Pisso et al., 2019). For each observation, FLEXPART computes a "footprint", i.e. a



**Figure 3.** Examples of so-called (pre-calculated) footprints for CO<sub>2</sub> (left) and Δ<sup>14</sup>CO<sub>2</sub> (right) at the Hyltemossa ICOS station. The maps show the sensitivity of the respective atmospheric tracer at the sampling site to the surface fluxes over the regional domain up to two weeks before the observation. The left panel displays the sensitivity of CO<sub>2</sub> at the indicated sampling time and shows influences by surface fluxes from the North Atlantic through Scandinavia, while the right panel demonstrates the dispersed sensitivity of a 14-day integrated Δ<sup>14</sup>CO<sub>2</sub> sample across Northwestern Europe and the Baltic region. The two maps illustrate the distinct spatial integration of the two tracers over time.

vector containing the sensitivity of the observation to changes in the surface fluxes. The footprints are pre-computed and then used throughout the subsequent steps of the inversion (see Monteil and Scholze (2021) for further details). The FLEXPART simulations were driven by ERA5 reanalysis data at a horizontal resolution of  $0.5^\circ \times 0.5^\circ$  and 1-hourly temporal resolution.

330 The footprints were computed differently for the CO<sub>2</sub> and Δ<sup>14</sup>CO<sub>2</sub> observations. For CO<sub>2</sub>, we computed a set of footprints for each observation up to 14 days backward in time, following the approach from Monteil and Scholze (2021). Integrated Δ<sup>14</sup>CO<sub>2</sub> observations (Section 2.2) quantify the Δ<sup>14</sup>C value of atmospheric CO<sub>2</sub> throughout 1 to 3 weeks (see Table 1). We account for this in FLEXPART by distributing the FLEXPART particles released over the whole integration period of the observations. The simulations are then carried on for (up to) 14 days backward in time from the start of the integration period. A Python code was

335 developed to run FLEXPART and post-process the footprints for being used in LUMIA (<https://github.com/lumia-dev/runflex>). In Figure 3, we show an example of an observation footprint for CO<sub>2</sub> and Δ<sup>14</sup>CO<sub>2</sub> at the Hyltemossa ICOS station in southern Sweden. The CO<sub>2</sub> footprint (left panel of Fig. 3) shows how the observation of June 26<sup>th</sup>, 2018 at 13:00 LT is sensitive to fluxes from the North Atlantic, passing through Norway, Sweden, and finally from Sweden's East and South coasts close to the Baltic Sea. The Δ<sup>14</sup>CO<sub>2</sub> aggregated footprint, on the other hand, shows a more spread sensitivity due to the long integration time,

340 collecting fluxes from Southern Norway, Northwestern Europe, and the Baltic.

### 3.3 Synthetic observations and background concentrations

We generate concentration time series for one year for each of the stations according to the current setup of the ICOS Atmosphere network as described in Section 2.2. For replicating the most realistic conditions of the sampling frequency, we use real sampling and integration times (in the case of radiocarbon) from the stations, taking for each one the sampling times for 2018.

345 In this way, we account for the sampling gaps and the differences in integration times commonly produced due to maintenance, and general operational eventualities. For stations with the number of observations,  $N_{obs}$ , equal to zero in Table 1, we set fixed sampling and integration times (14 days). Most of these stations were already in operation in 2018, but some were not yet labeled as ICOS stations (e.g. Schauinsland) or had not implemented and or started the tracer measurement (e.g.  $\Delta^{14}\text{CO}_2$  at Ochsenkopf).

350 Following Monteil and Scholze (2021), we select the  $\text{CO}_2$  observation times according to the sampling station's elevation to guarantee the model's best representation. For sampling stations located under 1000 m.a.s.l, we select the times when the boundary layer is most likely well developed, from 11:00 to 15:00 LT. For the contrary case, we take the times around midnight, from 22:00 to 2:00 LT, where the boundary layer is most likely below the sampling intake, or in other words, is sampling the free troposphere. For our OSSEs, we use the same transport model (i.e. the pre-computed observation footprints from FLEXPART)

355 to generate the synthetic observations and perform the inversions. Therefore, this data selection is not strictly necessary for this study, but we want to replicate the conditions of a real inversion. Since we are using the same background concentration for the synthetic observations and the simulated prior and posterior observations (i.e. we are assuming a perfect boundary condition), we simplify the calculation of it by computing a smoothed and detrended weekly (for  $\text{CO}_2$ ) and monthly (for  $\Delta^{14}\text{CO}_2$ ) average of the real observations (ICOS et al., 2023) for each sampling site. For sampling sites, for which there are for some reason no

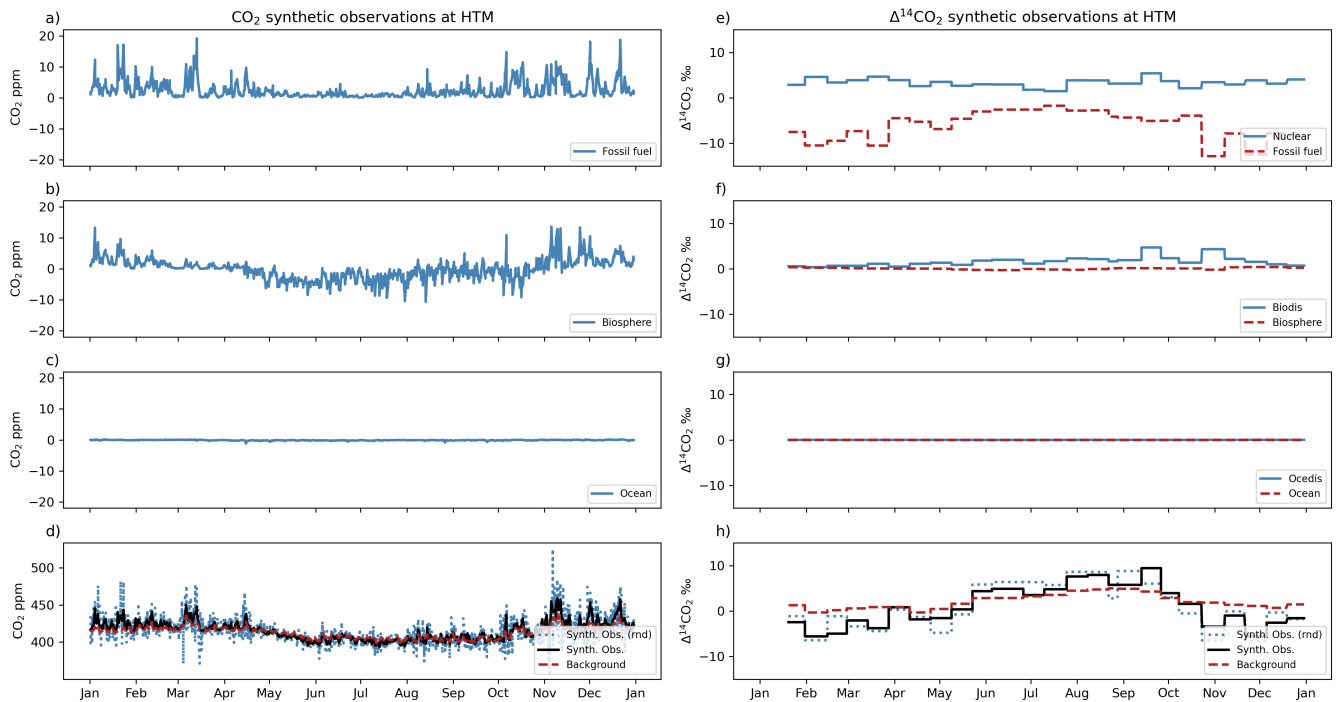
360 real observations for the year 2018 in the ICOS database (e.g.  $\Delta^{14}\text{CO}_2$  measurements were not yet implemented or were not yet part of ICOS), we took the observations from the nearest year available to calculate the background.

We then perform a forward run of the model using the true fluxes mentioned in Section 3.1 to calculate the corresponding "true"  $\text{CO}_2$  and  $\Delta^{14}\text{CO}_2$  concentration time series and add the background value corresponding to each site, observation time and tracer. To weaken the assumption of a perfect transport and boundary condition, we add a random perturbation to the

365 synthetic observations. This random perturbation is equal to  $\mathbf{y}^{so*} = \mathbf{y}^{so} + \varepsilon \times \xi$ , where  $\mathbf{y}$  is the synthetic observation,  $\varepsilon$  is the observation error (both the instrumental and representativity errors, see Section 3.3.1 below), and  $\xi$  is a standard normal random vector. In this way, the added perturbation is based on the observation error. Figure 4 shows the synthetic  $\text{CO}_2$  and  $\Delta^{14}\text{CO}_2$  observation time-series and the components of each flux at Hyltemossa station. As mentioned in Section 2.1, we convert all radiocarbon values to  $\text{C}\Delta^{14}\text{C}$  values. On the side of the observation, we do this by applying the following equation:

370 
$$[\text{C}\Delta^{14}\text{C}] = \frac{[\Delta^{14}\text{CO}_2] \times [\text{CO}_2]}{1000} \quad (8)$$

In a real setup, this would imply having paired  $\text{CO}_2$  and  $\Delta^{14}\text{CO}_2$  observations, and in the case of the integrated samples, this would mean having an average of  $\text{CO}_2$  observations along the integration period of the  $\Delta^{14}\text{CO}_2$  sample. However, since we



**Figure 4.** Synthetic observations of  $\text{CO}_2$  and  $\Delta^{14}\text{CO}_2$  at the HTM station over a one-year period. Panels a) to d) display  $\text{CO}_2$  concentration variations due to different sources: a) fossil fuel, b) biosphere, c) ocean, and d) combined synthetic observations with random perturbation (blue dotted line) against the background concentrations (red dashed line). Panels e) to h) illustrate  $\Delta^{14}\text{CO}_2$  variations: e) nuclear and fossil fuel, f) biospheric disequilibrium and biosphere, g) ocean disequilibrium and ocean, and h) total synthetic observations with random perturbation (blue dotted line) compared to the background (red dashed line). The blue solid and dashed lines represent the synthetic observations without and with random noise added, respectively.

are using synthetic observations, we transported the  $\text{CO}_2$  fluxes using the  $\Delta^{14}\text{CO}_2$  footprints and stored the values to convert back and forth between  $\Delta^{14}\text{CO}_2$  and  $\text{C}\Delta^{14}\text{C}$  units, ‰ and ppm, respectively.

375 As can be seen from Figure 4, both  $F_{\text{oce}}^{\text{I}}$  and  $F_{\text{ocedis}}^{\text{I}}$  have virtually no impact on the concentrations at the Hyltemossa station (and all other stations used in our setup, not shown), hence we decided not to include these components in the control vector, i.e. we transport them but do not optimize them further.

### 3.3.1 Experiments and inversion setup

To make the inversions comparable, we keep the same inversion setup for all the experiments. Table 2 summarizes the main  
 380 model parameter values. We choose a Gaussian horizontal correlation and an exponential temporal correlation for the prior flux uncertainties (See Section 2.3.1). Since our main purpose in this study is to demonstrate that our multi-tracer inversion system is capable of estimating both the fossil  $\text{CO}_2$  emissions and natural  $\text{CO}_2$  fluxes, we choose prior uncertainty values that



**Table 2.** Parameter setup used in all the inversions performed in this study.

Fluxes						
Flux category	Horizontal correlation	Temporal correlation	Prior uncertainty (PgC yr <sup>-1</sup> )	Error structure	Optimization interval (days)	Grid points
$F_{ff}$	200-g	1-e-monthly	0.30	log	7	2500
$F_{bio}$	500-g	1-e-monthly	0.37	sqrt	7	2500
$F_{biodis}$	1000-g	2-e-monthly	0.22	sqrt	7	500
Observations						
	Tracer	Type of sampling	Prior uncertainty			
	CO <sub>2</sub>	Continuous 1-hour	Weekly moving standard deviation			
	$\Delta^{14}\text{CO}_2$	Integrated 2-weekly	Constant 0.8 ppm ‰			

are reasonable and consistent with other studies. The prior uncertainties are assigned as follows: for  $F_{ff}$ , we use the difference between the annual budgets for the whole study domain from ODIAC (1.26 PgC yr<sup>-1</sup>) (Oda and Maksyutov, 2020) and from an emissions product based on EDGARv4.3 (1.47 PgC yr<sup>-1</sup>) (Gerbig and Koch, 2021b) as a reference to define its uncertainty (Basu et al., 2016). We use 150% (0.3 PgC yr<sup>-1</sup>) of the difference as the base uncertainty for all the experiments, and we select two extra values to evaluate the impact of the prescribed uncertainty on the inversion: 50% of the difference (0.1 PgC yr<sup>-1</sup>) and the exact difference of 0.21 PgC yr<sup>-1</sup> (100%). For  $F_{bio}$  we choose the 25% (0.37 PgC yr<sup>-1</sup>) of the monthly prior (Monteil and Scholze, 2021), and 30% (0.22 PgC yr<sup>-1</sup>) of the annual budget for  $F_{biodis}$  (Basu et al., 2020). We optimize all the categories at the same temporal resolution but at a higher horizontal resolution for  $F_{ff}$  and  $F_{bio}$  (2500 points) than for  $F_{biodis}$  (500 points). To set up the observation error, which includes the instrumental and the representativity errors, we use different methods for the CO<sub>2</sub> and the  $\Delta^{14}\text{CO}_2$ . For CO<sub>2</sub>, where the error of representativity is usually larger than the instrumental error, we apply a weekly moving standard deviation to each observation i.e. the prior error of each observation is equal to the standard deviation of the observations in a time window of  $\pm 3.5$  days around that observation. In this way, we account for the changes in the CO<sub>2</sub> concentrations according to the local site conditions. For instance, at a background station such as Jungfraujoch (JFJ) on the top of the Swiss Alps, the observation error ranges from 0.9 to 29.2ppm (mean value of  $9.3 \pm 4.0$ ppm), while at polluted sites such as Saclay (SAC) just outside Paris the CO<sub>2</sub> concentrations change rapidly and the error ranges from 5.9 to 215.5ppm (mean value of  $55.8 \pm 40.7$ ppm). For  $\Delta^{14}\text{CO}_2$  on the other hand, the instrumental error is larger than the representativity error, we use a constant value of 0.8ppm in C $\Delta^{14}\text{C}$  units or  $1.91 \pm 0.05$ ‰ in  $\Delta^{14}\text{CO}_2$  units, calculated using Equation 8.

We perform one forward run and six inversions, summarized in Table 3. We generate the synthetic observations and evaluate the impact of  $F_{oce}^t$  and  $F_{ocedis}^t$  on the total synthetic observations as described in Section 3.3 with the forward run (SYNTH).

**Table 3.** Inversions performed in this work.

Simulation	$F_{\text{ff}}$	$F_{\text{bio}}$	$F_{\text{biodis}}$	Optimized fluxes	Tracers	Run
SYNTH	EDGAR	LPJ-GUESS	BASU	None	$\text{CO}_2, \Delta^{14}\text{CO}_2$	Forward
ZBASE	ZEROFossil	ZEROBio	BASU	$F_{\text{ff}}, F_{\text{bio}}$	$\text{CO}_2, \Delta^{14}\text{CO}_2$	Inversion
ZCO2Only	ZEROFossil	ZEROBio	BASU	$F_{\text{ff}}, F_{\text{bio}}$	$\text{CO}_2$	Inversion
BASE0.1	ODIAC	VPRM	RndBASU	$F_{\text{ff}}, F_{\text{bio}}, F_{\text{biodis}}$	$\text{CO}_2, \Delta^{14}\text{CO}_2$	Inversion
BASE0.21	ODIAC	VPRM	RndBASU	$F_{\text{ff}}, F_{\text{bio}}, F_{\text{biodis}}$	$\text{CO}_2, \Delta^{14}\text{CO}_2$	Inversion
BASE(0.3)	ODIAC	VPRM	RndBASU	$F_{\text{ff}}, F_{\text{bio}}, F_{\text{biodis}}$	$\text{CO}_2, \Delta^{14}\text{CO}_2$	Inversion
BASENoBD	ODIAC	VPRM	BASU	$F_{\text{ff}}, F_{\text{bio}}$	$\text{CO}_2, \Delta^{14}\text{CO}_2$	Inversion

Starting with the inversions, we perform two experiments to test the impact of having  $\Delta^{14}\text{C}$  observations (ZBASE and ZCO2Only). We use the prior  $F_{\text{ff}}$  and  $F_{\text{bio}}$  set to zero (both in the spatial and temporal domain) with a prior uncertainty setup based on ODIAC and VPRM, respectively. The reason to use prior fluxes set to zero is that products of both categories can have similar spatial and temporal distributions and values, making it easy for the model to retrieve the true values. Instead, we set the values to zero but give the model some information through the prior uncertainty setup. The remaining fluxes are prescribed and set to their true values. We assimilate both  $\text{CO}_2$  and  $\Delta^{14}\text{C}$  observations for ZBASE and only  $\text{CO}_2$  observations for ZCO2Only. In the second set of inversions, we use a more realistic setup. In the first, BASE, we simulate a complete and realistic inversion setup, assimilating  $\text{CO}_2$  and  $\Delta^{14}\text{C}$  observations and optimizing  $F_{\text{ff}}$ ,  $F_{\text{bio}}$ , and  $F_{\text{biodis}}$ . In the BASE experiments, we change the prescribed prior uncertainty of  $F_{\text{ff}}$  (0.1, 0.21 and 0.3  $\text{PgC yr}^{-1}$ ) to evaluate its impact on the optimization. With the last inversion, BASENoBD, we evaluate the impact of the prior  $F_{\text{biodis}}$  product in the posterior  $F_{\text{ff}}$ . The terrestrial disequilibrium term ( $F_{\text{biodis}}$ ) is difficult to estimate since there is a large uncertainty on the heterotrophic respiration flux and the age of respired carbon (Basu et al., 2016), and it may be widely different if estimated using a different vegetation model or methodology. We account for this by optimizing only the  $\text{CO}_2$  fluxes,  $F_{\text{ff}}$  and  $F_{\text{bio}}$ , using both  $\text{CO}_2$  and  $\Delta^{14}\text{C}$  observations and keeping  $F_{\text{biodis}}^t$  prescribed.

## 4 Results

### 4.1 Impact of $F_{\text{oce}}$ and $F_{\text{oce}d\text{is}}$

We start by testing the impact of ocean-related fluxes ( $F_{\text{oce}}^t$  and  $F_{\text{oce}d\text{is}}^t$ ) in the total synthetic observations by performing a forward simulation (SYNTH in Table 3). Figure 4, shows the results from this forward simulation and the contribution of each flux category to the concentrations of both tracers for the Hyltemossa (HTM) station. The results show that the contribution of the ocean and ocean disequilibrium fluxes to the total concentration is below the error assigned to the synthetic observations. For  $\text{CO}_2$ , the average contribution is  $-0.07 \pm 0.12$  ppm (for an average observation error of  $10.0 \pm 5.7$  ppm) at HTM,  $-0.07 \pm 0.15$  ppm (average obs. error  $9.8 \pm 9.0$   $\text{CO}_2$  ppm) at all stations. For  $\Delta^{14}\text{CO}_2$ , the average contribution due to  $F_{\text{oce}}$  is  $-0.009$

$\pm 0.009\%$  (average obs. error  $1.9 \pm 0.04\%$ ) at HTM and  $-0.007 \pm 0.007\%$  (average obs. error  $1.9 \pm 0.05\%$ ) at all stations. Similarly, the contribution due to  $F_{\text{oceadis}}$  is  $0.016 \pm 0.009\%$  at HTM and  $0.02 \pm 0.017\%$  at all stations. Due to the low impact of ocean-related fluxes, we prescribe them in the inversions along with  $F_{\text{nuc}}$  and optimize only  $F_{\text{ff}}$ ,  $F_{\text{bio}}$ , and  $F_{\text{biadis}}$ . A summary for each station can be found in Appendix A.

## 4.2 Impact of adding $\Delta^{14}\text{CO}_2$ observations

In this section, we present the results from the ZBASE and ZCO2Only experiments. We start by analyzing the retrieval of truth fossil  $\text{CO}_2$  ( $F_{\text{ff}}^t$ ) and biosphere ( $F_{\text{bio}}^t$ ) time series. We divide the results into the regions shown in Figure 1, where Northern Europe represents Scandinavia, Finland, and the Baltic States, Western/Central Europe represents Benelux, France, Germany, Switzerland, Liechtenstein, and Austria, Southern Europe represents the Iberian Peninsula, Italy, and the Balkans (except for Romania and Bulgaria), Eastern Europe represents Poland, Slovakia, Hungary Romania, and Bulgaria, and the British Isles represents Ireland and the United Kingdom. The study domain includes all the land shown in Figure 1, even the countries not mentioned in the definition of the regions (countries in gray in Figure 1).

### 4.2.1 Retrieval of the monthly and regional time series

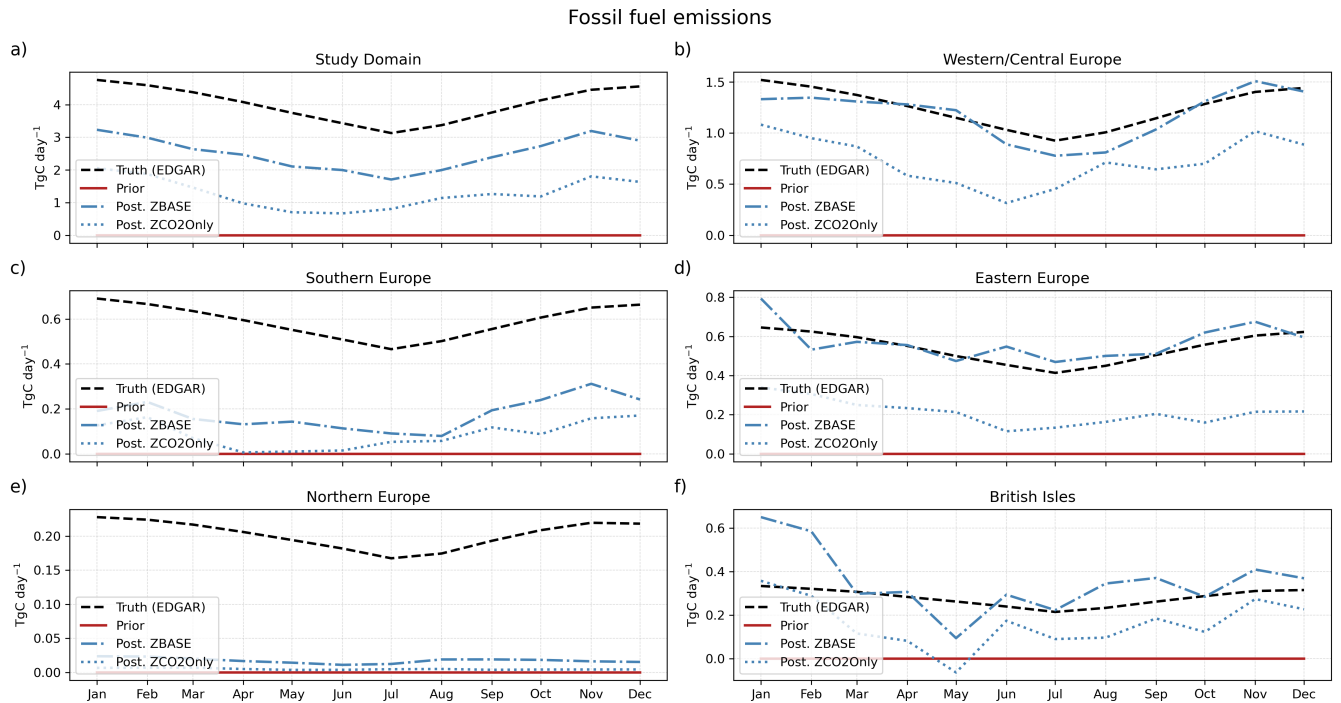
In general, there is a closer agreement between the truth and the posterior time series for the ZBASE and ZCO2Only experiments across all regions for the biosphere fluxes ( $F_{\text{bio}}$ ) (Figure 6) in contrast to the fossil  $\text{CO}_2$  emissions ( $F_{\text{ff}}$ ) (Figure 5). In the study domain, the inclusion of  $\Delta^{14}\text{CO}_2$  observations in the ZBASE experiment yields better performance than ZCO2Only for both flux categories. Specifically, ZBASE exhibits closer alignment to the posterior with a lower RMSE (see Table 4), indicating a better fit of the seasonality for  $F_{\text{ff}}$ . Similarly, the posterior biosphere fluxes more closely follow the true time series than the fossil  $\text{CO}_2$  emissions in both experiments, with ZBASE outperforming ZCO2Only in terms of RMSE and BIAS values.

The regional analysis reflects the influence of the coverage by sampling stations on the inversion outcomes. Western/Central Europe, benefiting from the highest number of stations (18 out of 33 stations considered in this study, 10 of them measuring both tracers), shows the best alignment between the posterior and true time series for  $F_{\text{ff}}$ , especially in the ZBASE experiment (Figure 5b), while ZCO2Only shows pronounced RMSE and BIAS values (Table 4). Conversely, regions like Eastern Europe (one station measuring both tracers) and the British Isles (two stations measuring only  $\text{CO}_2$ ), despite their lower station coverage, exhibit posterior ZBASE  $F_{\text{ff}}$  time series that closely approximate the truth, with Eastern Europe showing consistent performance throughout the year (panels d and f in Figure 5). However, the posterior ZBASE biosphere fluxes in these regions do not align as closely with the true values as observed in e.g. Western/Central Europe (panels d and f in Figure 6). In Eastern Europe, the posterior ZBASE shows big differences with the truth during May, June (maximum difference of  $0.42 \text{ TgC day}^{-1}$ ), and later in September, while ZCO2Only shows a better fit during these months but a positive bias the rest of the year (Figure 6d). In contrast, the posterior biosphere flux from the ZCO2Only experiment shows a better fit to the truth than the ZBASE one in the British Isles (Table 4).

Lastly, Southern and Northern Europe show similar results despite their differences: Northern Europe has better coverage of sampling stations, and its annual truth fossil  $\text{CO}_2$  emissions are lower (an average of  $0.20 \text{ TgC day}^{-1}$  against  $0.59 \text{ TgC day}^{-1}$ ).

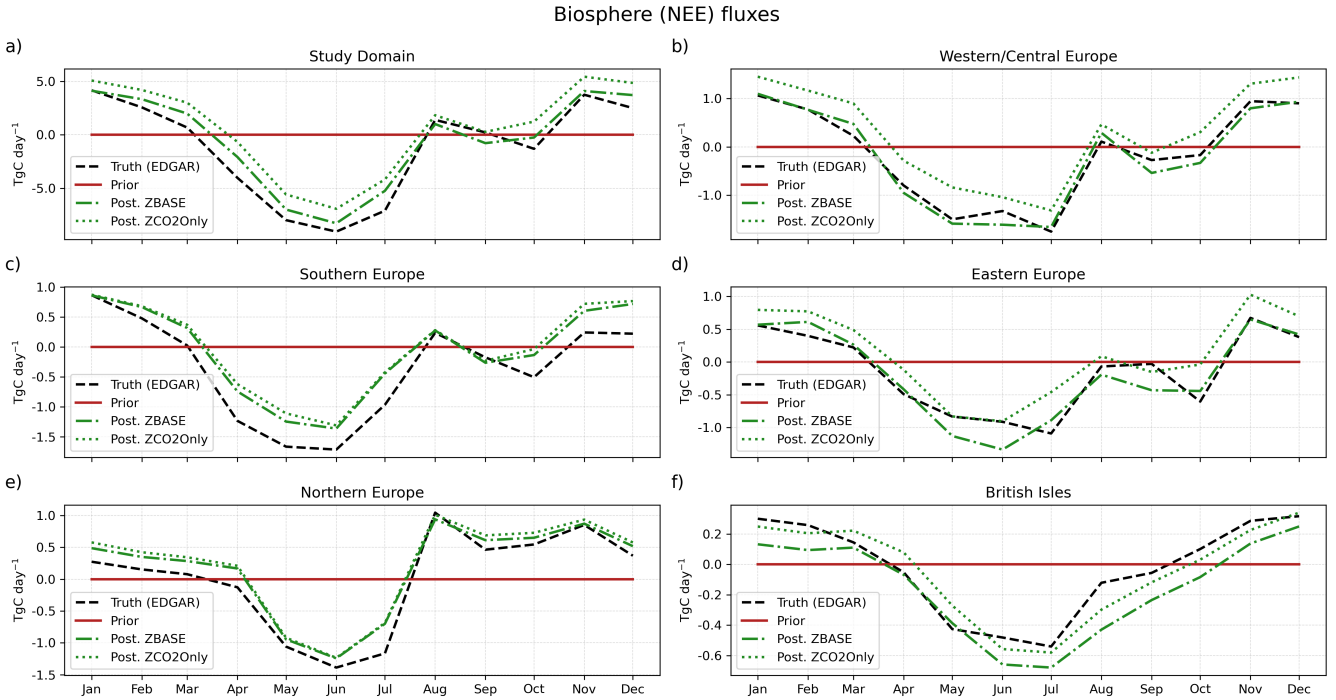
**Table 4.** RMSE and BIAS values for  $F_{ff}$  and  $F_{bio}$  from the ZBASE and ZCO2Only experiments in all the regions.

Region	Fossil fuel ( $F_{ff}$ )						Biosphere ( $F_{bio}$ )					
	RMSE (TgC day <sup>-1</sup> )			BIAS			RMSE (TgC day <sup>-1</sup> )			BIAS		
	Prior	ZBASE	ZCO2Only	Prior	ZBASE	ZCO2Only	Prior	ZBASE	ZCO2Only	Prior	ZBASE	ZCO2Only
Study Domain	4.07	1.51	2.75	-4.03	-1.51	-2.74	4.66	1.12	2.12	1.18	0.74	1.90
Western/Central Europe	1.26	0.12	0.53	-1.25	-0.06	-0.52	0.97	0.17	0.46	0.15	-0.04	0.43
Southern Europe	0.60	0.42	0.51	-0.59	-0.41	-0.50	0.89	0.35	0.41	0.35	0.29	0.35
Eastern Europe	0.55	0.07	0.33	-0.54	-0.02	-0.33	0.61	0.22	0.34	0.15	-0.04	0.26
Northern Europe	0.20	0.19	0.20	-0.20	-0.19	-0.20	0.76	0.21	0.25	0.00	0.16	0.22
British Isles	0.28	0.14	0.15	-0.28	0.07	-0.21	0.30	0.16	0.09	0.02	-0.13	-0.02



**Figure 5.** Monthly fossil CO<sub>2</sub> truth (dashed lines), prior (solid lines), and posterior fluxes from the ZBASE (dashed-dotted lines) and ZCO2Only (dotted lines) experiments for a) the study domain and the 5 sub-regions defined: b) Western/Central Europe, c) Southern Europe, d) Eastern Europe, e) Northern Europe, and f) British Isles.

In both regions, the posterior  $F_{ff}$  of the two experiments is far from the truth (Figures 5c and 5e), while the posterior  $F_{bio}$  of both regions and experiments is close to each other, with Northern Europe showing a better fit to the truth than Southern Europe, in which the posterior shows a more pronounced positive bias along the year (Figures 6c and 6e).



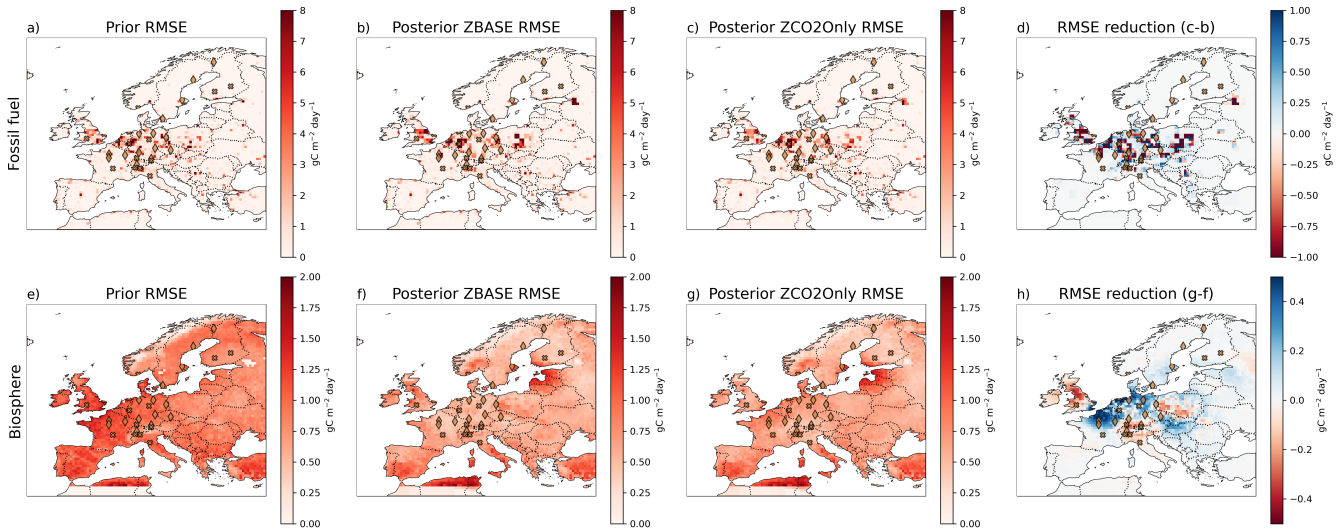
**Figure 6.** Monthly biosphere (NEE) truth (dashed lines), prior (solid lines), and posterior fluxes from the ZBASE (dashed-dotted lines) and ZCO2Only (dotted lines) experiments for a) the study domain and the 5 sub-regions defined: b) Western/Central Europe, c) Southern Europe, d) Eastern Europe, e) Northern Europe, and f) British Isles.

#### 460 4.2.2 Analysis of the spatial error reduction

We set up the ZBASE and ZCO2Only experiments with prior uncertainties and error structures as in Table 2 based on the values of ODIAC for  $F_{ff}$  and VPRM for  $F_{bio}$ . Therefore, the model had some information about the spatial and temporal error structure of the prior fluxes. To evaluate the spatial performance of LUMIA, we first aggregate the hourly values (both truth and posterior) to the optimization interval of one week. After this, we calculate the posterior RMSE of each experiment and  
 465 flux category at the grid cell level, and finally, we calculate the RMSE reduction by subtracting the posterior RMSE of ZBASE from the posterior RMSE of ZCO2Only as follows:

$$RMSE_{reduction} = RMSE_{ZCO2Only}^{apos} - RMSE_{ZBASE}^{apos} \quad (9)$$

Here, positive values of  $RMSE_{reduction}$  indicate posterior  $RMSE_{ZBASE}^{apos}$  values that are lower than  $RMSE_{ZCO2Only}^{apos}$ , i.e. grid cells where when adding  $\Delta^{14}C$  observations (ZBASE) shows values closer to the truth (better performance, lower RMSE)  
 470 than when only having  $CO_2$  observations (ZCO2Only). For fossil fuel, we find larger prior RMSE values in Western/Central



**Figure 7.** Spatial error of fossil  $\text{CO}_2$  (a to d) and biosphere (e to h) for the ZBASE and ZCO2Only experiments. a) and e) show the prior RMSE for  $F_{\text{ff}}$  and  $F_{\text{bio}}$ , respectively, b) and f) show the posterior RMSE for ZBASE, c) and g) show the posterior RMSE for ZCO2Only, and d) and h) show the RMSE reduction (see Equation 9) for fossil and biosphere. In Figures d) and h), positive values (in blue) show the pixels where ZBASE performs better than ZCO2Only (i.e. adding  $\Delta^{14}\text{C}$  observations improves the posterior estimates), and negative values (in red) where ZCO2Only performs better than ZBASE. Crosses and diamonds represent stations that only measure  $\text{CO}_2$  and those that additionally measure  $\Delta^{14}\text{C}$ , respectively.

Europe, but as well some grid cells show the location of larger cities like in southern England, Poland, and Spain (Figure 7a). For the biosphere fluxes, we find the larger prior RMSE values in Western/Central Europe and the British Isles (Figures 7e).

The largest positive RMSE reductions (where ZBASE performs better than ZCO2Only) (Figures 7d and 7h) occur around the sampling stations in Western/Central Europe and the British Isles for both flux categories. For fossil  $\text{CO}_2$ , most of the study domain has positive values (92%), although a large part of these values (around 75%) is close to zero, representing the values in Southern and Northern Europe where there is a low adjustment of the fluxes when adding  $\Delta^{14}\text{C}$  observations (Figure 7d). For the biosphere fluxes, the posterior RMSE maps (Figures 7f and 7g) show the regions that are poorly constrained due to the absence of observations such as the southern part of the domain and the Baltic States. Despite a lower portion of the study domain (40%) (Figure 7h) is showing an improvement in the posterior estimation when adding  $\Delta^{14}\text{C}$  observations compared with fossil fuel, this presents a clearer pattern in areas such as southeast England, the northern part of Western/Central Europe, Denmark, and southern Sweden, as well as some areas in Eastern Europe.

### 4.2.3 Recovery of the annual budget

Next, we assess how accurately the model can estimate the annual budget for fossil fuel, biosphere (NEE), and the total  $\text{CO}_2$ . Figure 8 shows the annual budget of the study domain, the sub-regions (right), and some of the largest European countries by

485 area (left). We include the ODIAC emission data product and the VPRM product for the biosphere in Figure 8 as references since we base the prior uncertainty and error structure on the spatial and temporal distribution of these two products. As we find in the temporal distribution (Figure 5), in the study domain, the posterior fossil CO<sub>2</sub> from both experiments does not fit the truth, but ZBASE shows a lower bias from the truth than ZCO2Only. This result is reflected in the annual budget, where ZBASE recovers 63% from  $F_{ff}^t$  while ZCO2Only recovers only 32% (Figure 8a). Likewise, the posterior  $F_{bio}$  of ZBASE that  
 490 closely fits  $F_{bio}^t$ , recovers 38% of the biosphere budget (Figure 8b), while ZCO2Only, which shows a larger positive bias in the temporal distribution, returns a positive annual budget, contrary to the negative annual budget of the true biosphere fluxes. This behavior is repeated in most of the regions and countries shown in Figure 8, where ZCO2Only strongly underestimates the annual fossil CO<sub>2</sub> emissions, with the lowest estimates in Southern (15%) and Northern Europe (2%), the latter with a strong underestimation from ZBASE as well (9%), France (33%), and Spain (~ 0%), which has a similar situation as Northern  
 495 Europe (5% recovery for ZBASE), and returns an annual biosphere budget that compensates for the total CO<sub>2</sub> budget which is close to ZBASE in most of the cases.

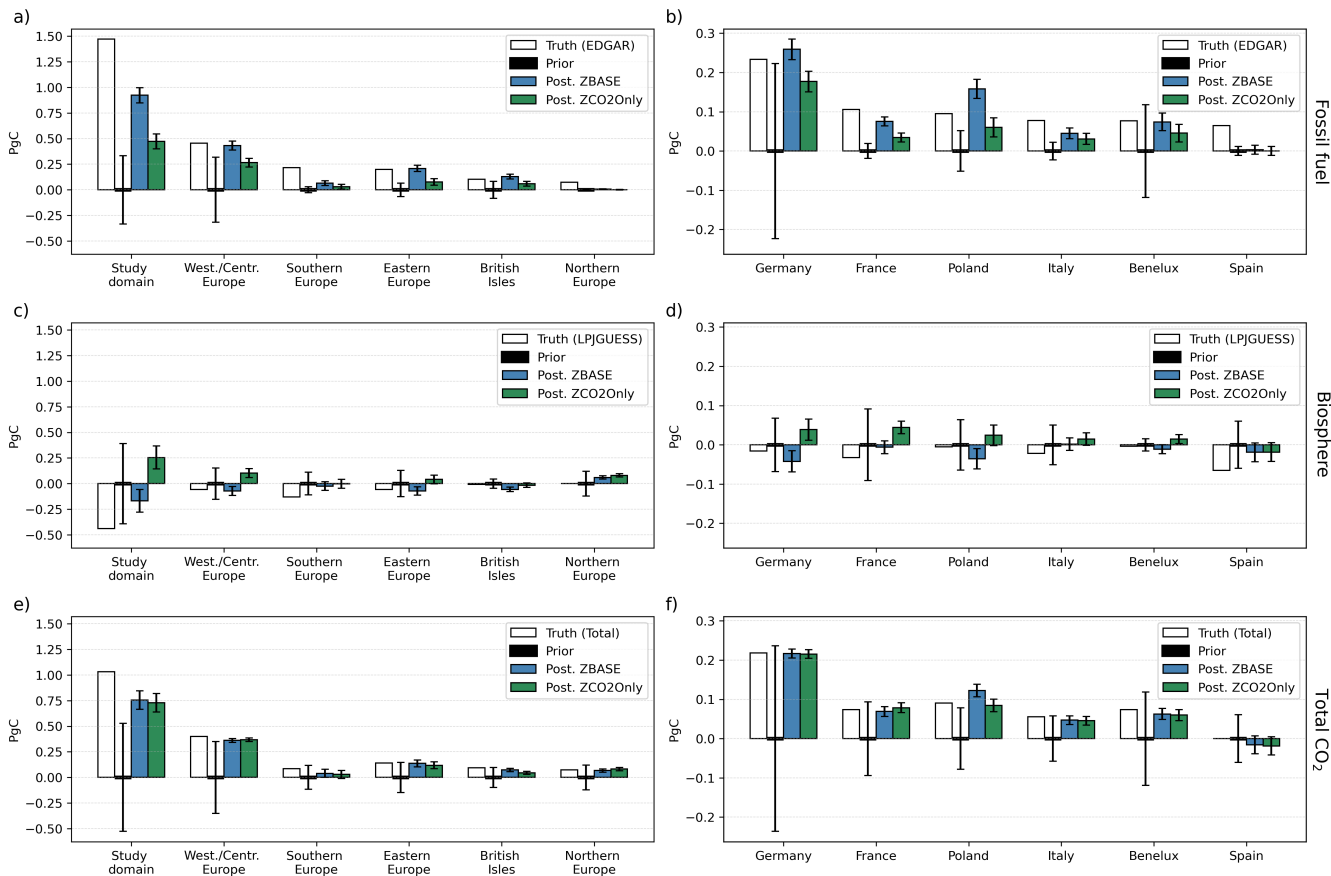
Western and Eastern Europe show the best posterior  $F_{ff}$  ZBASE values, 95%, and 105% of the truth, respectively. However, while some countries in these regions with good sampling coverage, such as the Benelux Union, show good recovery of  $F_{ff}^t$  (96%), some others with fewer neighboring sampling stations, such as France and Poland, show results far from the annual  
 500 fossil CO<sub>2</sub> emissions: 71% and 166%, respectively. Germany, which has the best coverage in the study domain, shows some overestimation (111%). On the other hand, the biosphere annual budget compensates in most cases for the total CO<sub>2</sub> budget, returning values that over and underestimate the truth, where the only regions with closer values are Western/Central Europe (126%) and Eastern Europe (128%) for the ZBASE experiment (Figure 8c). Finally, we find better estimates of the total CO<sub>2</sub> budget in most cases for the ZBASE experiment, with the largest recovery in Western/Central Europe (91%), Eastern Europe  
 505 (96%), and Northern Europe (89%) (Figure 8e), and in the country level in Germany (99%) and France (94%) (Figure 8f).

### 4.3 A realistic setup

The most realistic approach we can take to perform OSSEs is to use a realistic set of prior fluxes that differ substantially from the true fluxes used to generate the synthetic observations. In this section, we perform a series of experiments using the prior  
 510  $F_{ff}$ ,  $F_{bio}$ , and  $F_{biodis}$  fluxes described in Section 3.1 to evaluate the impact of prescribing different prior fossil CO<sub>2</sub> uncertainty values as well as the impact of the prior  $F_{biodis}$  flux product (RndBASU) in the optimization of  $F_{ff}$ .

#### 4.3.1 Impact of the prior fossil CO<sub>2</sub> uncertainty

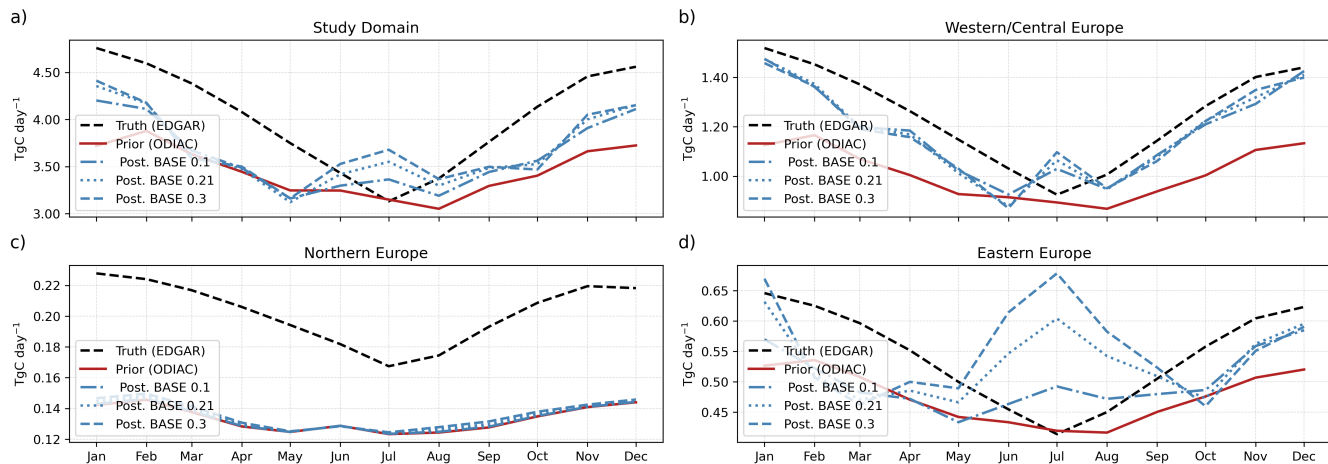
Figure 9 shows the weekly  $F_{ff}$  time series for the three experiments using different prior uncertainties (BASE0.1, BASE0.21, and BASE0.3). The EDGAR ( $F_{ff}^t$ ) and ODIAC (prior) products have different temporal distributions along the year, with ODIAC being flatter than EDGAR, but both with a minimum during summer, for EDGAR in July (3.13 TgC day<sup>-1</sup>), and  
 515 for ODIAC in August (3.05 TgC day<sup>-1</sup>). In the study domain (Figure 9a), the posterior  $F_{ff}$  for the three experiments is very close to each other and approaches the truth from January to February and later from August to December. From May to August, there is an increment in the posterior fluxes that depart from  $F_{ff}^t$  with the maximum difference in July that we find in



**Figure 8.** True, prior and posterior annual budgets of fossil (a-b), biosphere (c-d) and total CO<sub>2</sub> (e-f) for the study domain, the sub-regions (right), and some of the largest European countries by area (left). The white bars show the true annual budgets based on EDGAR and LPJ-GUESS flux products. The black bars represent the prior value, 0 PgC. The blue and green bars show the posterior budgets of ZBASE and ZCO2Only, respectively. The error bars represent the prior and posterior uncertainty calculated with a Monte Carlo ensemble of 100 members.

Western/Central Europe (ranging from 0.10 for BASE0.1 to 0.17 TgC day<sup>-1</sup> for BASE0.3) and in Eastern Europe (0.08 to 0.26 TgC day<sup>-1</sup>) (Figure 9). The posterior time series from the three experiments have the same RMSE with respect to the truth, 0.48 TgC day<sup>-1</sup>, which is lower than the prior RMSE of 0.65 TgC day<sup>-1</sup>. The posterior  $F_{ff}$  time series in Western/Central Europe shows the best results, with the estimates being close to truth, except for June and July. The three experiments show the same performance, reducing the RMSE by 50% (RMSE<sub>prior</sub> = 0.26 TgC day<sup>-1</sup>, RMSE<sub>BASE0.1</sub> = 0.13 TgC day<sup>-1</sup>), but BASE0.21 and BASE0.3 show the values farther from the truth in June and July. Northern Europe (Figure 9c), on the other hand, shows priors that are already very close to the truth, with a posterior RMSE equal to the truth of 0.07 TgC day<sup>-1</sup>. Finally, in Eastern Europe, with the lowest sampling coverage, the three posterior time series degrade the prior estimate.



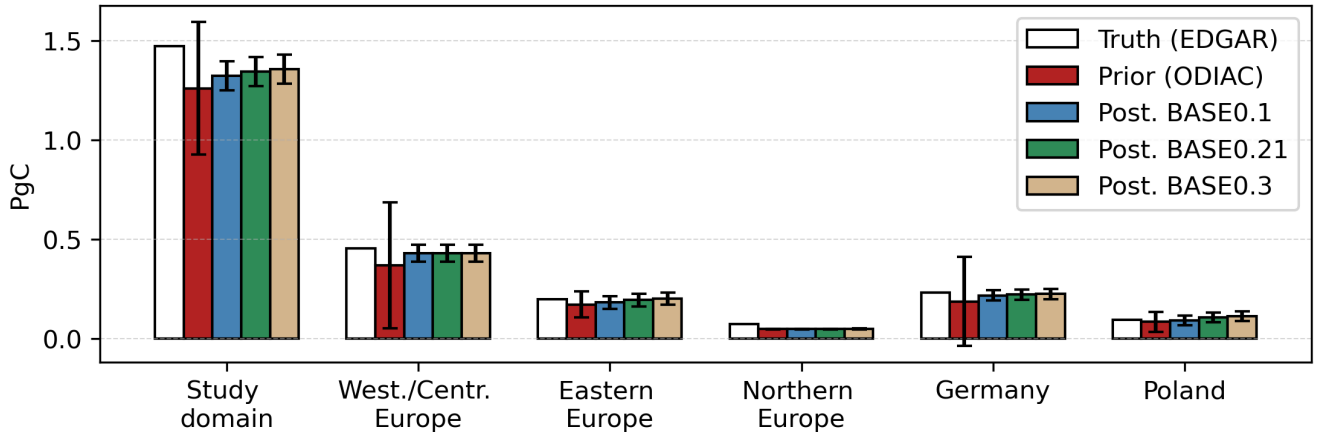


**Figure 9.** Monthly fossil CO<sub>2</sub> truth (black dashed lines), prior (red solid lines), and posterior fluxes from the BASE0.1 (blue dashed-dotted lines), BASE0.21 (blue dotted lines), and BASE0.3 (blue dashed lines) experiments for a) the study domain and the 3 sub-regions: b) Western/Central Europe, c) Northern Europe, and d) Eastern Europe (note the different scales on the y-axis).

The difference in the annual budget of EDGAR and ODIAC for the study domain is 0.21 PgC for the year 2018, which is as large as the emission of the country with the largest emission in the study domain for the same year, Germany, with 0.23 PgC according to EDGAR, and 0.19 PgC according to ODIAC (Figure 10). This difference in the study domain is nearly recovered by all three experiments, with a recovery ranging from 30% for BASE0.1 to 45% for BASE0.3. In Western/Central Europe, the three experiments recover 96% of the truth (around 71% of the difference between true and prior), similar to Germany, where the recovery ranges from 94% for BASE0.1 to 97% for BASE0.3 (68% to 82% of the difference). As we find in the time series (Figure 9d), the prior annual budget is very close to the truth both in Eastern Europe, where the difference is 0.02 PgC, and in Poland, 0.01 PgC. In both cases, the posterior recovers the annual budget, with overestimation from BASE0.3 for the whole sub-region and from BASE0.21 and BASE0.3 in Poland, which are as big as 120%. Finally, and as expected from Figure 9c and the prior uncertainty for the sub-region, there is no recovery of the annual budget in Northern Europe further than the prior estimate.

### 4.3.2 Impact of the terrestrial isotopic disequilibrium product

The prior  $F_{\text{bio}}$  and  $F_{\text{biadis}}$  are very different in magnitude from the true values, with differences as large as 13.4 TgC day<sup>-1</sup> and 7.6 TgC day<sup>-1</sup>, respectively, during summer for the whole study domain (Figures 11d and 11g). This gap is well resolved for  $F_{\text{bio}}$  in the study domain and Western/Central Europe (Figures 11d and 11f), and with some underestimation in Eastern Europe between June and September (Figure 11e). However, for the posterior  $F_{\text{biadis}}$  we find some larger differences from the truth during June and September in the study domain and the two sub-regions. When we prescribe  $F_{\text{biadis}}$  (BASENoBD), the posterior  $F_{\text{ff}}$  values from June to August in the study domain and Western/Central Europe (Figures 11a and 11b) get closer



**Figure 10.** Total annual fossil CO<sub>2</sub> emissions for the study domain, Western/Central Europe, Eastern Europe, Northern Europe, Germany, and Poland. The white bars show the true emissions based on the EDGAR emission database. The red bars show the prior fluxes based on the ODIAC emission data product. The blue, green and tan bars show the posterior fossil CO<sub>2</sub> emissions for the BASE0.1, BASE0.21, and BASE0.3 experiments, respectively. The error bars represent the prior and posterior uncertainty calculated with a Monte Carlo ensemble of 100 members.

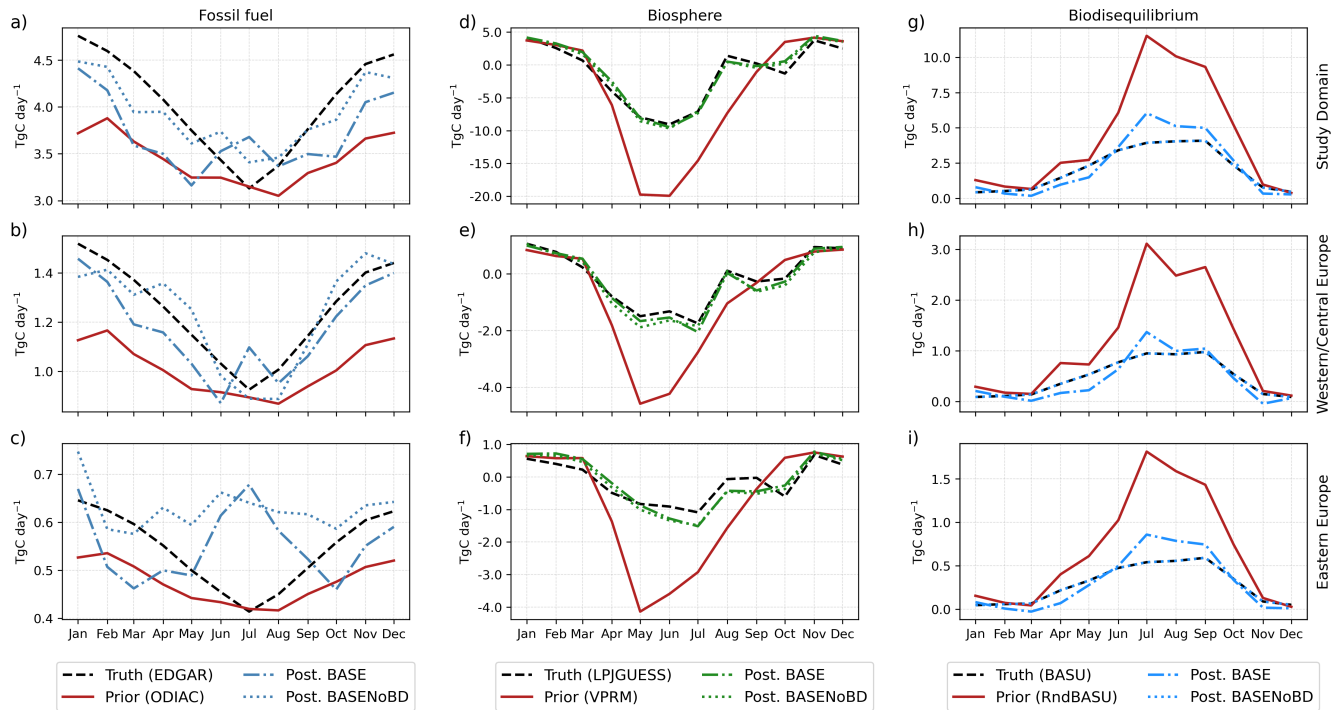
to  $F_{\text{ff}}^t$ , and after the summer in the study domain. This can also be seen in an improvement in the RMSE values with 0.32  
 545 TgC day<sup>-1</sup> for the study domain and 0.10 TgC day<sup>-1</sup> for Western/Central Europe. In Eastern Europe, the posterior  $F_{\text{ff}}$  for  
 BASENoBD experiments does not show a significant improvement and, on the contrary, further degrades the prior estimate  
 during the summer and the autumn.

### 4.3.3 The observational space

Finally, we analyze the model's performance in the observational space at all sampling stations aggregated together, one  
 550 polluted station (Saclay, SAC) (Figure 12) and one background station (Jungfraujoch, JFJ) (Figures 12 and 13) for the BASE  
 experiment. We calculate two performance metrics: the correlation coefficient (R) between the synthetic observations and the  
 prior and posterior simulated concentrations for all the sites and individually for the two sites selected, and the reduced chi-  
 square  $\chi_\nu^2$  for the overall simulation as measure to of the improvement upon the initial state and to guarantee that we are not  
 under or over-fitting the model (Table 5). We calculate the reduced chi-square as:

$$555 \quad \chi_\nu^2 = \frac{1}{\nu} \sum_{i=1}^N \left( \frac{\mathbf{y}_i^{\text{so}} - \mathbf{y}_i^{\text{b,a}}}{\epsilon_i} \right)^2 \quad (10)$$

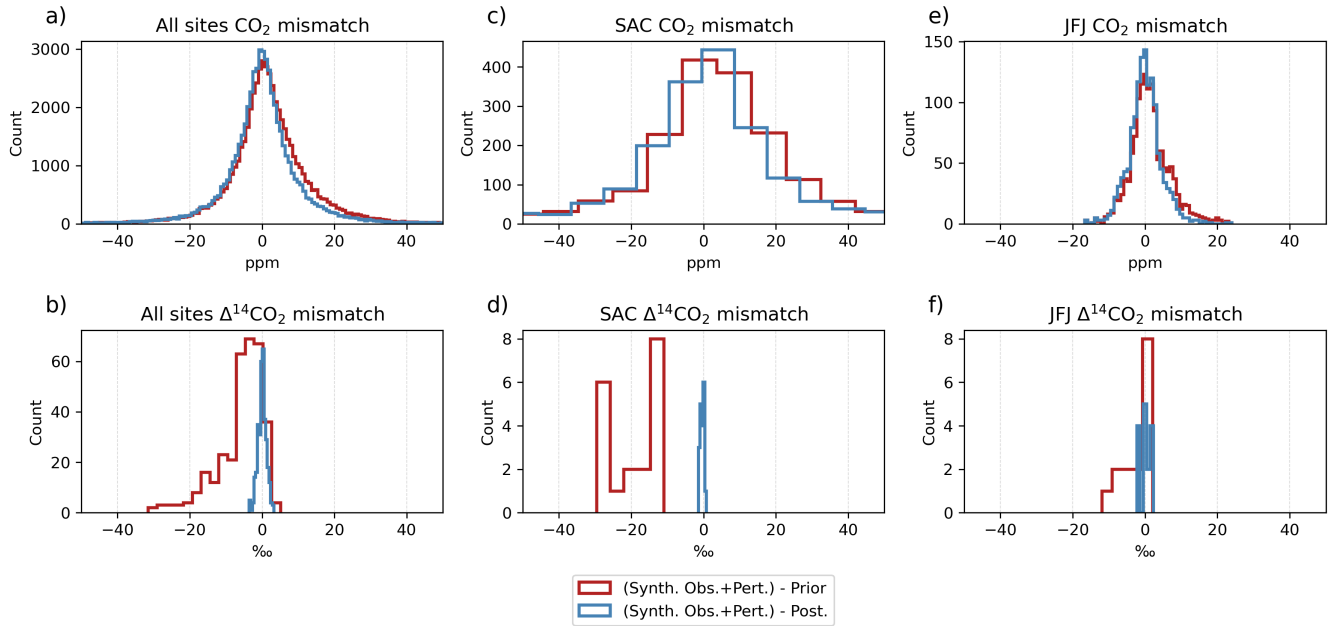
Where  $\mathbf{y}_i^{\text{so}}$  is the synthetic observation  $i$ ,  $\mathbf{y}_i^{\text{b,a}}$  is either the prior (b) or the posterior (a) concentration  $i$ ,  $\epsilon_i$  is the error of the  
 synthetic observation  $i$ ,  $N$  is the number of observations, and  $\nu$  are the degrees of freedom calculated as  $\nu = N - p$ , being  $p$



**Figure 11.** Monthly time series of  $F_{ff}$  (a) to c)),  $F_{bio}$  (d) to f)), and  $F_{biodis}$  (g) to i)), for the study domain (top panel), Western/Central Europe (center panel), and Eastern Europe (bottom panel). The truth is represented in black dashed lines, prior in red solid lines, posterior fluxes from the BASE0.1 in blue dashed-dotted lines, and BASNoBD in blue dotted lines.

**Table 5.** Performance metrics (correlation coefficient  $R$ , standard deviation and the reduced chi-square  $\chi^2_{\nu}$ ) for all sites, Saclay (SAC), and Jungfraujoch (JFJ).

		Prior		Posterior	
		R	$\sigma$	R	$\sigma$
All sites	CO <sub>2</sub>	0.64	14.2	0.68	13.4
	$\Delta^{14}\text{CO}_2$	0.72	6.4	0.99	1.2
SAC	CO <sub>2</sub>	0.56	31.9	0.59	31.1
	$\Delta^{14}\text{CO}_2$	0.63	6.8	0.99	0.5
JFJ	CO <sub>2</sub>	0.65	5.5	0.74	4.5
	$\Delta^{14}\text{CO}_2$	0.75	4.2	0.84	1.5
$\chi^2_{\nu}$		1.77		1.06	

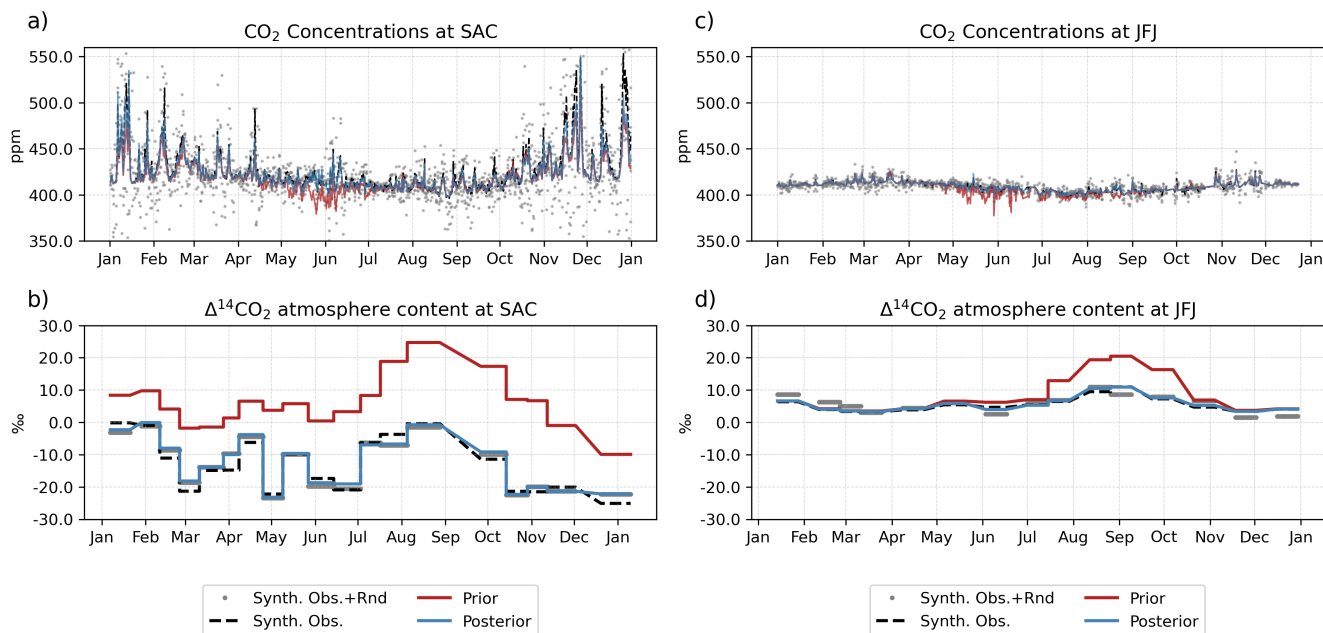


**Figure 12.** Mismatches between the synthetic observations and the prior (red) and posterior (blue) concentrations for all the sampling stations, Saclay (SAC) and Jungfraujoch (JFJ) for CO<sub>2</sub> (a, c and e) and for Δ<sup>14</sup>CO<sub>2</sub> (b, d and f). All prior and posterior concentrations correspond to the BASE experiment.

the number of fitted parameters in the model. Since  $p$  is difficult to calculate due to the different time and space clusters, we keep the number of observations as the degrees of freedom ( $\nu = N$ ).

560 The histograms in Figure 12 show the mismatches between the synthetic observations and the prior and posterior concentrations. For the CO<sub>2</sub> concentrations at all sites (Figure 12a), the histogram shows a distribution centered around zero for both prior and posterior mismatches with a standard deviation of 14.2 and 13.4, respectively (see Table 5), indicating systematic deviations from the observed values. The posterior mismatch has a slightly tighter distribution, suggesting a small improvement in the model after adjustments as reflected in the correlation coefficient (Table 5). At Saclay (Figure 12c), the mismatch  
 565 distribution is wider than the aggregate of all sites, which could suggest greater variability or larger errors at this particular site. The posterior adjustment has not significantly tightened the distribution, indicating that the model adjustments did not perform as well at this site as they did on average across all sites. On the other hand, the distribution in Jungfraujoch (Figure 12e) is much tighter than in all sites and SAC, with the posterior mismatch displaying a slight improvement in precision as evidenced by the narrower spread. However, when comparing the posterior time series with the synthetic observations before adding the  
 570 random perturbation (Figures 13a and 13c), there is a better agreement between them than with the prior values, especially during periods of higher variability (April to July at SAC, and April to September at JFJ).

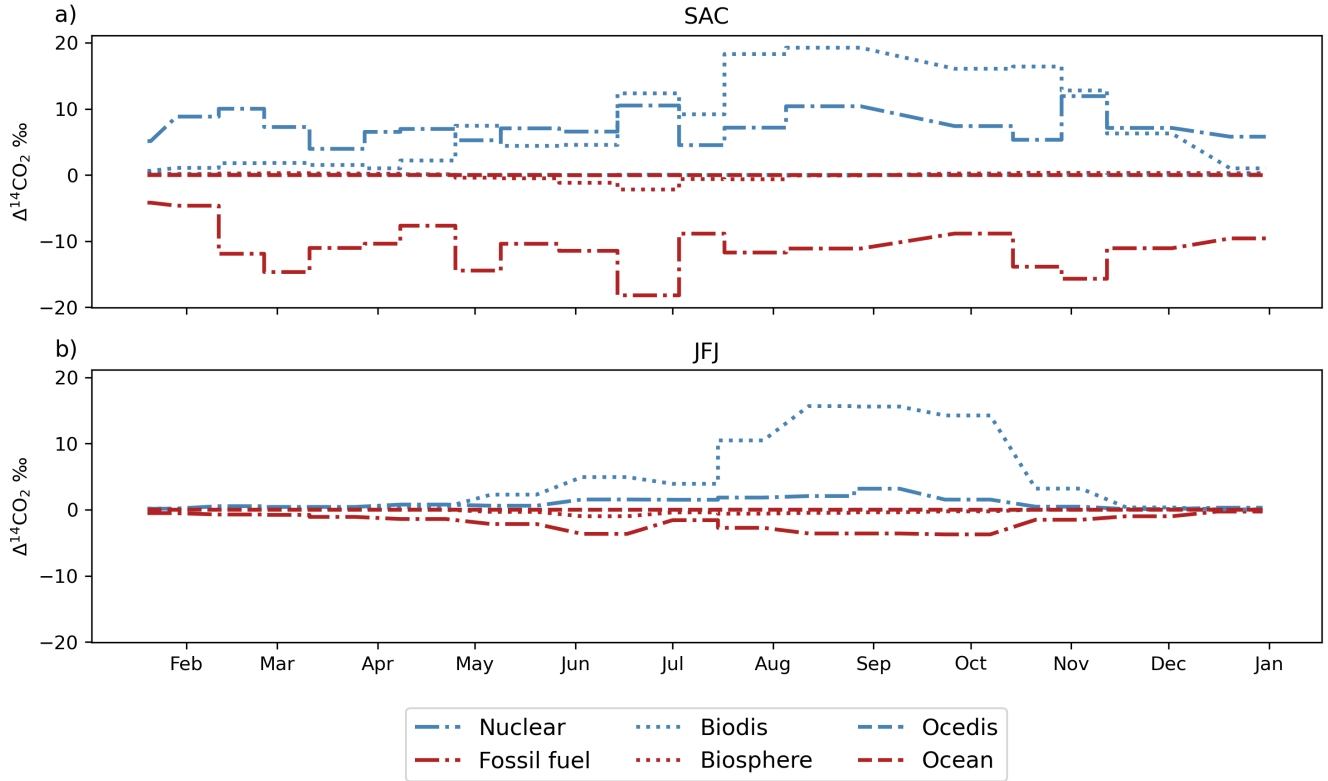
The Δ<sup>14</sup>CO<sub>2</sub> synthetic observations are in general better fitted by the posterior than CO<sub>2</sub> at all sites, SAC and JFJ (Table 5). In all cases, the prior distribution is displaced to the negative values, indicating that the prior simulated values are in general



**Figure 13.** Concentration time series of CO<sub>2</sub> (a and c) and Δ<sup>14</sup>CO<sub>2</sub> (b and d) at Saclay (SAC) and Jungfraujoch (JFJ), respectively. All prior and posterior concentrations correspond to the BASE experiment.

higher than the synthetic observations as shown for the whole period at SAC (Figure 12d) and from July to November at JFJ (Figure 12f). These larger prior concentrations are mainly caused by the prior terrestrial disequilibrium flux from July to November, and by the nuclear production fluxes throughout the year, which is significantly larger at Saclay (Figure 14). However, the posterior mismatches showed a much narrower spread around zero at all sites (Figure 12b), Saclay (Figure 12d), and Jungfraujoch (Figure 12f) that is evident in the time series at both sites where the posterior closely follows the synthetic observations, and supported by the correlation coefficients (Table 5).

The reported  $\chi^2_\nu$  values of 1.77 for the prior and 1.06 for the posterior across all sites and samples suggest a substantial improvement in the model's performance in adjusting the prior concentrations to the synthetic observations. A  $\chi^2_\nu$  of 1.77 for the prior indicates that there were significant discrepancies between the prior and the synthetic observations. This is consistent with the broader spread of mismatches in the histograms for both SAC and JFJ sites, as well as the apparent overestimation of Δ<sup>14</sup>CO<sub>2</sub> content in the time series. The improvement to a  $\chi^2_\nu$  of 1.06 for the posterior indicates a better fit to the synthetic observations that are likely to be reflective of the underlying data patterns while still maintaining some degree of generalizability without overfitting the data.



**Figure 14.** Contribution of each category to the prior  $\Delta^{14}\text{CO}_2$  simulated concentrations at Saclay (a) and Jungfraujoch (b).

## 5 Discussion

Under the current sampling strategy and observation network, we demonstrate through OSSEs that adding  $\Delta^{14}\text{CO}_2$  observations can help us constrain fossil  $\text{CO}_2$  emissions over Europe using the LUMIA system. We start with two simulation  
 590 experiments in which we set the prior fossil  $\text{CO}_2$  and biosphere (Net Ecosystem Exchange, NEE) fluxes to zero: ZBASE and ZCO2Only. Under an OSSE setup, even when using completely different truth and prior flux products (e.g. different spatio-temporal distributions and annual budgets), due to assumptions such as a perfect transport model and background concentrations, it is easy for the model to retrieve the true values even without adding  $\Delta^{14}\text{CO}_2$  observations. For this reason, we set up these two more challenging experiments to assess the capabilities of the inversion system to constrain the fossil  $\text{CO}_2$   
 595 emissions and biosphere fluxes using  $\text{CO}_2$  and  $\Delta^{14}\text{CO}_2$ . The ZBASE and ZCO2Only experiments show us that in regions with a dense sampling network, such as Western/Central Europe, when adding  $\Delta^{14}\text{CO}_2$  observations, LUMIA is capable of recovering the seasonality of  $F_{\text{ff}}$  and  $F_{\text{bio}}$ , as well as the total annual  $\text{CO}_2$  budget of the whole region and some of the larger countries (also in terms of fossil  $\text{CO}_2$  emissions) such as Germany and France. On the other hand, the results in Northern Europe, which has a relatively good network coverage, are not as good as in Western/Central Europe regarding fossil  $\text{CO}_2$ .

600 Comparing the ranges of the true fossil CO<sub>2</sub> and biosphere fluxes in Northern and Western/Central Europe, we find that, while  $F_{\text{bio}}^t$  has a similar range in both regions,  $F_{\text{ff}}^t$  differs by one order of magnitude. Using the concept of signal-to-noise ratio, if we consider the fossil CO<sub>2</sub> as the signal (the variable in which we are more interested) and the biosphere as the noise, this difference of one order of magnitude between them in Northern Europe makes it easier for the model to recover the biosphere fluxes than the fossil CO<sub>2</sub> emissions, even with additional information about  $\Delta^{14}\text{CO}_2$ . In addition, the prior uncertainty which  
605 is proportional to the fluxes, is close to zero for the fossil fluxes, while it is two orders of magnitude larger for the biosphere, making it for the inversion more costly to constrain the fossil CO<sub>2</sub> emissions.

The inversions are able to resolve the NEE both at the continental level and in the sub-regions but struggle more with fossil emissions in some regions with few observations (e.g. Southern Europe and the British Isles). This is similar to what was found by Wang et al. (2018) despite the differences between their inversion implementation and our LUMIA system. The  
610 main differences lie in the transport model and the inversion approach. They use a global transport model at a resolution of  $3.75^\circ \times 2.5^\circ$  (Laboratoire de Météorologie Dynamique's LMDZv4) and a pre-calculated fossil CO<sub>2</sub> tracer (product of the mass balance), while we use a Lagrangian regional transport model at a higher horizontal resolution ( $0.5^\circ \times 0.5^\circ$ ) and optimize both the fossil and the natural fluxes using as tracers CO<sub>2</sub> and  $\Delta^{14}\text{CO}_2$ . Wang et al. (2018) found the largest error reductions around Germany, Benelux, and eastern France, where most sampling stations are located. Northern Europe was also poorly  
615 constrained in its inversions, similar to what we find. Wang et al. (2018) attributed the results in Northern Europe to the coarse spatial resolution of the transport model. But even with a higher resolution transport model as employed in LUMIA, we still can not resolve the true fossil CO<sub>2</sub> emissions in an OSSE setup given the current CO<sub>2</sub> and  $\Delta^{14}\text{CO}_2$  observation networks. We think that a more likely explanation is the difference in the magnitude of the fossil CO<sub>2</sub> emissions in this region against the natural fluxes. This can be seen by the differences in the seasonal amplitude of the fluxes. In Western/Central Europe  $F_{\text{bio}}$  and  
620  $F_{\text{ff}}$  are of a similar order of magnitude (2.81 TgC day<sup>-1</sup> for  $F_{\text{bio}}$  and 0.6 TgC day<sup>-1</sup> for  $F_{\text{ff}}$ ) (see Figures 5 and 6). In contrast, in Northern Europe, there is a tenfold difference in the seasonal amplitude of the two fluxes: 2.44 TgC day<sup>-1</sup> for  $F_{\text{bio}}$  and 0.06 TgC day<sup>-1</sup> for  $F_{\text{ff}}$ . In addition, the prior uncertainty for  $F_{\text{ff}}$  (0.002 PgC year<sup>-1</sup>) in this region is much lower compared to  $F_{\text{bio}}$  (0.12 PgC year<sup>-1</sup>) in Northern Europe.

The BASE experiments, in which we use realistic prior fluxes, show that the posterior fossil CO<sub>2</sub> emissions are not very sen-  
625 sitive to the prescribed prior uncertainty in regions with a dense sampling network, even when using a low prior  $F_{\text{ff}}$  uncertainty in which case it is more difficult for the inversion algorithm to recover the true fluxes. As we have observed in previous studies using LUMIA (Monteil et al., 2020; Monteil and Scholze, 2021), the cost of fitting the observations dominates the total cost function value. In this sense, the relative value of the prior uncertainty of  $F_{\text{bio}}$  against  $F_{\text{ff}}$  is going to significantly impact the spatio-temporal distribution of flux adjustments, but the total uncertainty of the fluxes is of lesser importance since the model  
630 has enough freedom to adjust the data. In other words, the error structure and how is it set up for the different flux categories, is going to have more impact than the total prior uncertainty. Both Basu et al. (2016) and Wang et al. (2018) highlight the importance of a regional horizontal correlation and error structure for fossil CO<sub>2</sub> emissions. In our study, we use the same horizontal correlation and error structures developed by Monteil et al. (2020) originally for NEE. We are aware of the necessity of defining specific structures for fossil CO<sub>2</sub> within LUMIA due to the low improvement in spatial terms that we find in Figure

635 7 when adding  $\Delta^{14}\text{CO}_2$  observations. However, it is important to mention that given the sparse observation network, we can expect spatial misattributions (flux corrections that should happen in one place but are instead made elsewhere), and therefore, we should interpret the results aggregated at the scale that is relevant given the model setup, as we demonstrate through the time series and annual budget results. Such spatial misattribution is illustrated in the spatial RMSE reduction results for the biosphere fluxes. We can clearly identify the formation of dipoles (clusters of larger RMSE values) in regions with no observations  
640 such as the southern part of the study domain and the Baltic States indicating that these areas are underconstrained.

We also find the prior terrestrial disequilibrium product to have an important impact on the posterior fossil  $\text{CO}_2$  emissions (Figure 11). The prior terrestrial isotopic disequilibrium flux in our experiments is on purpose incorrect with the aim of showing the impact that it can have in the estimation of fossil  $\text{CO}_2$  emissions. As shown in Figure 11, the maximum difference between the prior and the true  $F_{\text{biadis}}$  is of the same order of magnitude for Western/Central Europe ( $2.1 \text{ TgC day}^{-1}$ ) and Eastern Europe  
645 ( $1.3 \text{ TgC day}^{-1}$ ) in July. For  $F_{\text{ff}}$ , however, the difference between the prior and truth is about one order of magnitude larger for Western/Central Europe compared to Eastern Europe ( $0.03$  vs  $0.005 \text{ TgC day}^{-1}$ ). This larger difference causes a stronger dilution of the fossil emissions in Eastern Europe, and therefore essentially lowers the signal-to-noise ratio of the  $\Delta^{14}\text{CO}_2$  measurements, and added to the lower network coverage compared to Western/Central Europe, a poorer constrain of the fossil  $\text{CO}_2$  emissions. According to Turnbull et al. (2009), one of the main contributors to atmospheric  $\Delta^{14}\text{CO}_2$  is heterotrophic  
650 respiration in natural environments. Therefore, having a good prior  $F_{\text{biadis}}$  estimate is crucial in estimating posterior  $F_{\text{ff}}$ . The impact of  $F_{\text{biadis}}$  and the other  $\Delta^{14}\text{CO}_2$  flux terms is not negligible, particularly, the emissions from nuclear facilities that can have a larger impact than the terrestrial disequilibrium (Graven and Gruber, 2011) as was evident when analyzing the individual impacts of the flux categories, showing that at sampling sites heavily influenced by emissions from nuclear facilities such as Saclay, these emissions can be as large as the terrestrial isotopic disequilibrium fluxes. In this study, we fixed the  $F_{\text{nuc}}$   
655 term (i.e. we use the same fluxes for calculating the synthetic observations and in the inversions), and hence, its impact is not considered here. In previous studies (Wang et al., 2018; Basu et al., 2016, 2020) the  $F_{\text{nuc}}$  is usually prescribed and assumed as an annual value at each nuclear facility location (Graven and Gruber, 2011; Zazzeri et al., 2018) due to a lack of knowledge on the temporal distribution of these emissions. This variability in nuclear emissions has been only studied by measuring the atmospheric content of  $\Delta^{14}\text{CO}_2$  in the surrounding areas of single nuclear facilities (Turnbull et al., 2014; Vogel et al., 2013;  
660 Lehmuskoski et al., 2021), but not yet in a large regional setup, and therefore it needs further investigation.

The Observing System Simulation Experiment (OSSE) framework used in this study assumes a perfect realization of atmospheric transport and mixing processes by employing the same transport model across the simulations. This assumption simplifies the complex nature of atmospheric dynamics and is a common approach to limit the scope of variability in such studies. However, it is crucial to acknowledge that this simplification overlooks one of the largest sources of uncertainty in atmospheric  
665 inverse modeling: the accurate representation of atmospheric transport and mixing processes. The variability and uncertainty in atmospheric transport can significantly impact the estimation of greenhouse gas sources and sinks. As demonstrated by Schuh et al. (2019), inconsistencies in transport simulations can introduce systematic biases in surface flux estimations, which can be as substantial as  $1.7 \text{ PgC year}^{-1}$  for large zonal bands. In a study by Munassar et al. (2023), in which multiple combinations of global and regional models were tested using two different inversion frameworks (LUMIA and CarboScope-Regional



670 (CSR)), they found that using a different regional transport (FLEXPART and STILT (Stochastic Time-Inverted Lagrangian Transport)) model can cause differences in the posterior NEE annual budget of  $0.51 \text{ PgC year}^{-1}$ . This highlights the sensitivity of inversion-derived emission estimates to the accuracy of the transport model used and emphasizes the critical role that transport uncertainty plays across global flux inversion systems.

675 Furthermore, the assumption of perfect boundary conditions in the model presents another significant simplification. Boundary conditions in atmospheric modeling can greatly influence the concentration gradients and flux estimates, and their mischaracterization can propagate errors throughout the model domain. Coming back to the study by Munassar et al. (2023), the use of a different global transport model (TM3 and TM5) for the estimation of the boundary condition can cause discrepancies in the posterior annual budget as large as  $0.23 \text{ PgC year}^{-1}$ . Errors in these aspects of the transport model could lead to skewed emission estimates. Given these considerations, the presented results should be interpreted with caution, understanding that  
680 the true uncertainty in atmospheric inverse modeling is likely understated in these OSSEs. It underscores the need for more comprehensive approaches that account for transport model uncertainties, such as employing ensemble modeling techniques that incorporate multiple transport models and boundary conditions to better capture the inherent uncertainties in atmospheric dynamics (Locatelli et al., 2015; Aleksankina et al., 2018).

## 6 Conclusions and future perspectives

685 We have expanded the LUMIA system to be capable of simultaneously inverting atmospheric observations of  $\text{CO}_2$  and  $\Delta^{14}\text{CO}_2$  to estimate fossil  $\text{CO}_2$  emissions and net terrestrial biosphere  $\text{CO}_2$  fluxes over Europe. We performed the first observing system simulation experiments to test the performance of the  $\Delta^{14}\text{C}$ -enhanced LUMIA version. In the first set of experiments, we show the impact of adding  $\Delta^{14}\text{C}$  observations in a scenario with prior estimates of  $F_{\text{ff}}$  and  $F_{\text{bio}}$  set to zero. In regions with good sampling network coverage, assimilating both  $\text{CO}_2$  and  $\Delta^{14}\text{C}$  observations allows recovering the seasonality of  $F_{\text{ff}}$  and  $F_{\text{bio}}$   
690 and the annual  $F_{\text{ff}}$  budget, while when assimilating only  $\text{CO}_2$  observations, the posterior  $F_{\text{ff}}$  is degraded. In the second set of experiments, we performed OSSEs using more realistic priors to test the impact of the prescribed  $F_{\text{ff}}$  uncertainty and the impact of the prior  $F_{\text{biodis}}$  product. The prescribed prior uncertainty has no significant impact on the posterior  $F_{\text{ff}}$ . On the other hand, the prior  $F_{\text{biodis}}$  product can significantly impact the posterior  $F_{\text{ff}}$ .

The purpose of this study is to describe the multi-tracer, more specifically  $\text{CO}_2$  and  $\Delta^{14}\text{CO}_2$ , version of LUMIA and  
695 illustrate its application to estimate both fossil  $\text{CO}_2$  emissions natural  $\text{CO}_2$  fluxes simultaneously. Future work should analyze in more detail the impact of various aspects of our inversion set-up here, such as the assumption of a perfect transport model, the specification of the boundary conditions as well as different spatiotemporal error structures, on the posterior fossil  $\text{CO}_2$  emissions and natural  $\text{CO}_2$  fluxes. Particular emphasis should be placed on the analysis of the impact of the prior  $F_{\text{biodis}}$  product using simulated terrestrial biosphere disequilibrium estimates by, e.g. the LPJ model following the methodology by Scholze  
700 et al. (2003) because our study here illustrated the importance of this flux term in the  $\text{CO}_2$  and  $\Delta^{14}\text{CO}_2$  inversion. In addition, the impact of the prior  $F_{\text{nuc}}$ , the sampling strategy, and the network density of the  $\Delta^{14}\text{C}$  observations on the capability to estimate fossil  $\text{CO}_2$  emissions needs to be evaluated. The current 2-weekly integrated sampling strategy allows us to get a

reasonable estimate of the annual budget over the whole domain. But the inversion can neither recover the correct temporal behavior nor the spatial distribution of the fossil CO<sub>2</sub> emissions when using CΔ<sup>14</sup>C observations provided by the current 2-  
705 weekly integrated sampling strategy. Additionally, converting Δ<sup>14</sup>CO<sub>2</sub> values to CΔ<sup>14</sup>C implies calculating the average of the CO<sub>2</sub> observations during the 2-week integration period that can introduce additional errors that we did not account for in this study. We will evaluate the use of hourly flask samples under different strategies as described by Levin et al. (2020), such as a "smart" sampling based on pollution episodes of CO<sub>2</sub> and CO. This will be in preparation for the intensive Δ<sup>14</sup>CO<sub>2</sub> sampling campaign (hourly samples taken every third day) planned within the EC's Horizon Europe CORSO (CO2MVS Research on  
710 Supplementary Observations) project (<https://corso-project.eu/>) during 2024 at 10 ICOS stations located in Western Europe.

*Code availability.* The LUMIA source code used in this paper has been published on Zenodo and can be accessed at <https://doi.org/10.5281/zenodo.8426217>.

*Data availability.* The revised EDGARv4.3 <https://doi.org/10.18160/GFNT-5Y47>, LPJ-GUESS <https://doi.org/10.18160/p52c-1qjm>, and VPRM <https://doi.org/10.18160/VX78-HVA1> datasets are available from the ICOS-Carbon Portal. ODIAC data is available at <https://doi.org/10.17595/20170411.001>. The input data has been uploaded on Figshare and is available at <https://doi.org/10.6084/m9.figshare.24307162>.  
715

## Appendix A: Summary of ocean and ocean disequilibrium-derived synthetic observations

Table A1.

Station	Ocean	Ocean	Ocedis	Synth. Obs.	Synth. Obs. (rnd)	Obs. Error	Synth. Obs.	Synth. Obs. (rnd)	Obs. Error
	CO <sub>2</sub> ppm	Δ <sup>14</sup> C ‰	Δ <sup>14</sup> C ‰	CO <sub>2</sub> ppm	CO <sub>2</sub> ppm	CO <sub>2</sub> ppm	Δ <sup>14</sup> C ‰	Δ <sup>14</sup> C ‰	Δ <sup>14</sup> C ‰
All sites	-0.07 ± 0.15	-0.007 ± 0.007	0.02 ± 0.017	414.6 ± 12.7	414.6 ± 18.3	9.8 ± 9.0	0.3 ± 8.0	0.2 ± 8.4	1.9 ± 0.05
GAT	-0.07 ± 0.1	-0.008 ± 0.007	0.021 ± 0.014	415.7 ± 12.7	416.2 ± 19.2	11.1 ± 7.2	2.1 ± 4.2	2.6 ± 4.8	1.9 ± 0.05
HPB	-0.04 ± 0.05	-0.005 ± 0.003	0.016 ± 0.008	414.0 ± 11.2	414.5 ± 16.7	10.4 ± 6.3	1.0 ± 6.3	1.5 ± 6.8	1.9 ± 0.04
HTM	-0.07 ± 0.12	-0.009 ± 0.009	0.016 ± 0.009	415.4 ± 12.3	415.5 ± 16.8	10.0 ± 5.7	1.0 ± 4.5	0.5 ± 4.8	1.9 ± 0.04
JFJ	-0.03 ± 0.04	-0.002 ± 0.002	0.01 ± 0.005	409.1 ± 5.0	409.0 ± 6.9	4.2 ± 2.1	5.5 ± 2.3	5.5 ± 2.9	2.0 ± 0.02
KIT	-0.06 ± 0.06	-0.005 ± 0.004	0.024 ± 0.012	427.1 ± 16.9	427.4 ± 26.9	17.7 ± 10.0	-5.2 ± 10.5	-4.7 ± 11.0	1.9 ± 0.05
KRE	-0.05 ± 0.06	-0.005 ± 0.004	0.014 ± 0.009	415.3 ± 12.6	415.0 ± 16.9	10.3 ± 6.0	-4.0 ± 4.6	-4.2 ± 4.9	1.9 ± 0.05
LIN	-0.06 ± 0.09	-0.007 ± 0.006	0.017 ± 0.011	420.9 ± 16.9	420.2 ± 25.2	15.2 ± 11.6	-7.7 ± 9.4	-8.2 ± 9.5	1.9 ± 0.05
NOR	-0.07 ± 0.14	-0.009 ± 0.009	0.011 ± 0.01	415.8 ± 10.7	415.5 ± 14.4	8.5 ± 4.8	4.9 ± 4.3	4.5 ± 5.1	1.9 ± 0.03
OPE	-0.07 ± 0.08	-0.006 ± 0.004	0.034 ± 0.021	416.7 ± 14.3	416.5 ± 21.5	13.3 ± 9.3	-1.6 ± 6.8	-1.2 ± 6.3	1.9 ± 0.04
OXK	-0.06 ± 0.08	-0.006 ± 0.004	0.02 ± 0.013	411.0 ± 7.3	410.8 ± 10.5	7.1 ± 3.0	1.8 ± 4.8	1.5 ± 5.8	1.9 ± 0.03
PAL	-0.1 ± 0.13	-0.011 ± 0.007	0.005 ± 0.004	412.3 ± 8.6	412.3 ± 10.8	6.0 ± 3.7	8.7 ± 4.2	8.9 ± 5.0	1.9 ± 0.03
SAC	-0.08 ± 0.1	-0.009 ± 0.007	0.04 ± 0.02	425.2 ± 23.0	425.6 ± 37.9	23.1 ± 20.0	-13.1 ± 8.3	-13.7 ± 8.8	1.9 ± 0.03
STE	-0.08 ± 0.12	-0.01 ± 0.007	0.021 ± 0.01	413.4 ± 10.0	413.7 ± 15.6	9.4 ± 7.2	0.4 ± 4.9	-0.4 ± 6.2	1.9 ± 0.03
SVB	-0.1 ± 0.16	-0.011 ± 0.009	0.007 ± 0.006	412.5 ± 9.5	412.0 ± 12.4	7.1 ± 4.5	5.8 ± 3.0	5.5 ± 3.7	1.9 ± 0.03
TRN	-0.08 ± 0.09	-0.009 ± 0.007	0.041 ± 0.026	415.9 ± 13.7	415.7 ± 21.0	12.2 ± 10.7	2.8 ± 5.4	3.1 ± 6.1	1.9 ± 0.04
BIR	-0.09 ± 0.1	-	-	410.7 ± 7.6	410.6 ± 10.3	6.1 ± 4.1	-	-	-
CMN	-0.03 ± 0.05	-	-	408.4 ± 6.7	408.2 ± 8.8	5.1 ± 2.6	-	-	-
HEL	-0.15 ± 0.25	-	-	414.1 ± 9.3	414.2 ± 16.7	11.1 ± 6.9	-	-	-
IPR	-0.04 ± 0.05	-	-	428.8 ± 17.6	428.8 ± 26.0	16.8 ± 10.3	-	-	-
JUE	-0.07 ± 0.08	-	-	417.6 ± 15.3	416.9 ± 24.8	15.2 ± 15.5	-	-	-
LMP	-0.01 ± 0.27	-	-	410.5 ± 4.6	410.3 ± 6.5	4.5 ± 1.8	-	-	-
LUT	-0.1 ± 0.14	-	-	416.8 ± 15.7	416.8 ± 24.9	14.4 ± 12.7	-	-	-
PRS	-0.02 ± 0.04	-	-	408.9 ± 5.0	409.0 ± 6.7	4.0 ± 2.0	-	-	-
PUI	-0.07 ± 0.12	-	-	410.9 ± 6.1	411.0 ± 8.1	5.1 ± 2.2	-	-	-
PUY	-0.06 ± 0.08	-	-	409.4 ± 8.3	409.3 ± 11.5	6.5 ± 4.2	-	-	-
RGL	-0.11 ± 0.13	-	-	409.6 ± 8.3	409.6 ± 11.1	6.9 ± 3.9	-	-	-
SMR	-0.07 ± 0.13	-	-	414.2 ± 10.6	414.2 ± 13.9	7.9 ± 4.6	-	-	-
SSL	-0.06 ± 0.06	-	-	410.2 ± 6.6	410.4 ± 9.7	6.4 ± 3.1	-	-	-
TOH	-0.06 ± 0.09	-	-	414.7 ± 11.7	414.9 ± 16.4	9.8 ± 5.6	-	-	-
UTO	-0.24 ± 0.45	-	-	414.2 ± 9.2	414.3 ± 14.5	9.4 ± 5.0	-	-	-
WAO	-0.06 ± 0.07	-	-	419.5 ± 9.6	420.2 ± 19.5	14.0 ± 7.5	-	-	-
WES	-0.08 ± 0.12	-	-	414.1 ± 10.3	414.2 ± 18.6	13.0 ± 6.9	-	-	-
ZSF	-0.03 ± 0.04	-	-	409.1 ± 5.3	409.2 ± 7.4	4.7 ± 2.3	-	-	-

## Appendix B: Spatial clustering algorithm

The inversion solves for offsets to the prior fluxes at a variable spatial resolution: high (up to  $0.25^\circ$ ) in the direct vicinity of observation sites, but lower in parts of the domain that are not well sampled by the observation network. To achieve this, the spatial domain of the inversion is divided into a set of clusters of grid cells, each defined by the following properties:

- cells: the list of grid cells included in the cluster.
- weight: the sum of a property carried by each grid cell. In our case, this property is the average sensitivity of the observation network to that grid cell.
- size: the number of grid cells in the cluster.
- 725 – mean\_lat, mean\_lon: the average (area-weighted) lat and lon of the grid cells in the cluster
- area: the total of all the grid cells included in the cluster.
- type: ocean, land, or mixed.
- continuity: whether it is possible to "walk" from any grid cell of the cluster to any other one or whether there are discontinuities (e.g. a "land" cluster separated in two parts by ocean grid cells).

730 The objective of the clustering algorithm is to divide the domain into a user-defined number of continuous clusters with roughly equal "weight". The "weight" of a single grid cell is, in our case, defined as the average value of the adjoint field in that grid cell for an adjoint simulation driven by model-data mismatches set proportional to the uncertainty of each observation. The clustering is performed iteratively as follows:

1. Initially, one single cluster is formed, comprising all grid cells of the domain. It is added to a pool of "dividable" clusters.
- 735 2. The "weight" of all clusters in that pool is calculated (i.e. the weight of the single initial cluster at the first iteration);
3. The cluster with the largest weight is then split into two even parts across its longest axis (i.e., in an eastern and western part, at the first iteration);
4. The resulting two new clusters are checked for continuity. If needed, they are further split into several continuous clusters;
5. If a cluster reaches the minimum size (1 grid cell), it is moved to a pool of "defined" clusters.
- 740 6. If the total number of clusters ("dividable" plus "defined") is lower than the target number of clusters, then repeat steps 2 to 6. Otherwise, exit.

Because of how the cluster weights are defined, clusters away from observation points end up being considerably larger, but they are in regions where the inversions would have applied very smooth flux adjustments, so there is no real drawback to this clustering.

745 *Author contributions.* All authors designed the experiments, CG and GM developed the code, SB provided the  $\Delta^{14}\text{CO}_2$  data, and CG performed the simulations. CG prepared the paper, and GM, SB, and MS provided corrections and suggestions for improvements.

*Competing interests.* The authors declare that they have no conflict of interest.

*Acknowledgements.* We thank the Swedish Research Council for Sustainable Development FORMAS for funding the 14C-FFDAS project (Dnr 2018-01771). MS, GM, and CG acknowledge support from the EU projects AVENGERS (Grant Agreement (GA): 101081322) and CORSO (GA: 101082194) as well as from the three Swedish strategic research areas Modelling the Regional and Global Earth system (MERGE), the e-science collaboration (eSENCE), and Biodiversity and Ecosystems in a Changing Climate (BECC). SB acknowledges the National Aeronautics and Space Administration NASA grant 80NSSC21K1708 and NASA/ESSIC cooperative agreement 80NSSC23M0011. The computations were enabled by resources provided by the National Academic Infrastructure for Supercomputing in Sweden (NAISS), the Swedish National Infrastructure for Computing (SNIC) at LUNARC, and NSC partially funded by the Swedish Research Council through grant agreements no. 2022-06725 and no. 2018-05973, and the Royal Physiographic Society of Lund through Endowments for the Natural Sciences, Medicine and Technology - Geoscience.

750  
755

## References

- Aleksankina, K., Heal, M. R., Dore, A. J., Van Oijen, M., and Reis, S.: Global sensitivity and uncertainty analysis of an atmospheric chemistry transport model: The FRAME model (version 9.15.0) as a case study, *Geoscientific Model Development*, 11, 1653–1664, <https://doi.org/10.5194/GMD-11-1653-2018>, 2018.
- 760 Andres, R. J., Gregg, J. S., Losey, L., Marland, G., and Boden, T. A.: Monthly, global emissions of carbon dioxide from fossil fuel consumption, *Tellus, Series B: Chemical and Physical Meteorology*, 63, 309–327, <https://doi.org/10.1111/J.1600-0889.2011.00530.X>, 2011.
- Andres, R. J., Boden, T. A., and Higdon, D. M.: Gridded uncertainty in fossil fuel carbon dioxide emission maps, a CDIAC }example, *Atmospheric Chemistry and Physics*, 16, 14 979–14 995, <https://doi.org/10.5194/acp-16-14979-2016>, 2016.
- 765 Basu, S., Guerlet, S., Butz, A., Houweling, S., Hasekamp, O., Aben, I., Krummel, P., Steele, P., Langenfelds, R., Torn, M., Biraud, S., Stephens, B., Andrews, A., and Worthy, D.: Global CO<sub>2</sub> fluxes estimated from GOSAT retrievals of total column CO<sub>2</sub>, *Atmos. Chem. Phys.*, 13, 8695–8717, <https://doi.org/10.5194/acp-13-8695-2013>, 2013.
- Basu, S., Miller, J. B., and Lehman, S.: Separation of biospheric and fossil fuel fluxes of CO<sub>2</sub> by }atmospheric inversion of CO<sub>2</sub> and 14CO<sub>2</sub> measurements: Observation System Simulations, *Atmos. Chem. Phys.*, 16, 5665–5683, <https://doi.org/10.5194/acp-16-5665-2016>, 2016.
- 770 Basu, S., Lehman, S. J., Miller, J. B., Andrews, A. E., Sweeney, C., Gurney, K. R., Xu, X., Southon, J., and Tans, P. P.: Estimating US fossil fuel CO<sub>2</sub> emissions from measurements of 14C in atmospheric CO<sub>2</sub>, *Proceedings of the National Academy of Sciences*, 117, 13 300–13 307, <https://doi.org/10.1073/pnas.1919032117>, 2020.
- Bocquet, M., Elbern, H., Eskes, H., Hirtl, M., Žabkar, R., Carmichael, G. R., Flemming, J., Inness, A., Pagowski, M., Pérez Camaño, J. L., Saide, P. E., San Jose, R., Sofiev, M., Vira, J., Baklanov, A., Carnevale, C., Grell, G., and Seigneur, C.: Data assimilation in atmospheric chemistry models: current status and future prospects for coupled chemistry meteorology models, *Atmos. Chem. Phys.*, 15, 5325–5358, <https://doi.org/10.5194/acp-15-5325-2015>, 2015.
- 775 Bréon, F. M., Broquet, G., Puygrenier, V., Chevallier, F., Xueref-Remy, I., Ramonet, M., Dieudonné, E., Lopez, M., Schmidt, M., Perrussel, O., and Ciais, P.: An attempt at estimating Paris area CO<sub>2</sub> emissions from atmospheric concentration measurements, *Atmos. Chem. Phys.*, 15, 1707–1724, <https://doi.org/10.5194/acp-15-1707-2015>, 2015.
- 780 Brioude, J., Angevine, W. M., Ahmadov, R., Kim, S.-W., Evan, S., McKeen, S. A., Hsie, E.-Y., Frost, G. J., Neuman, J. A., Pollack, I. B., Peischl, J., Ryerson, T. B., Holloway, J., Brown, S. S., Nowak, J. B., Roberts, J. M., Wofsy, S. C., Santoni, G. W., Oda, T., and Trainer, M.: Top-down estimate of surface flux in the Los Angeles Basin using a mesoscale inverse modeling technique: assessing anthropogenic emissions of CO, NO<sub>x</sub> and CO<sub>2</sub> and their impacts, *Atmos. Chem. Phys.*, 13, 3661–3677, <https://doi.org/10.5194/acp-13-3661-2013>, 2013.
- 785 Chatterjee, A. and Michalak, A. M.: Technical Note: Comparison of ensemble Kalman filter and variational approaches for CO<sub>2</sub> data assimilation, *Atmos. Chem. Phys.*, 13, 11 643–11 660, <https://doi.org/10.5194/acp-13-11643-2013>, 2013.
- Chevallier, F., Bréon, F.-M., and Rayner, P. J.: Contribution of the Orbiting Carbon Observatory to the estimation of CO<sub>2</sub> sources and sinks: Theoretical study in a variational data assimilation framework, *Journal of Geophysical Research: Atmospheres*, 112, <https://doi.org/https://doi.org/10.1029/2006JD007375>, 2007.
- 790 Eyring, V., Gillett, N. P., Achuta Rao, K. M., Barimalala, R., Barreiro Parrillo, M., Bellouin, N., Cassou, C., Durack, P. J., Kosaka, Y., McGregor, S., Min, S., Morgenstern, O., and Sun, Y.: Human Influence on the Climate System, in: *Climate Change 2021: The Physical Science Basis. Contribution of Working Group I to the Sixth Assessment Report of the Intergovernmental Panel on Climate Change*, edited

- by Masson-Delmotte, V., Zhai, P., Pirani, A., Connors, S. L., Péan, C., Berger, S., Caud, N., Chen, Y., Goldfarb, L., Gomis, M. I., Huang, M., Leitzell, K., Lonnoy, E., Matthews, J. B. R., Maycock, T. K., Waterfield, T., Yelekçi, O., Yu, R., and Zhou, B., p. 423–552, Cambridge University Press, Cambridge, United Kingdom and New York, NY, USA, <https://doi.org/10.1017/9781009157896.005>, 2021.
- 795 Gerbig, C. and Koch, F.-T.: Biosphere-atmosphere exchange fluxes for CO<sub>2</sub> from the Vegetation Photosynthesis and Respiration Model VPRM for 2006–2022, <https://doi.org/10.18160/VX78-HVA1>, 2021a.
- Gerbig, C. and Koch, F.-T.: European anthropogenic CO<sub>2</sub> emissions based on EDGARv4.3, BP statistics 2021 and CarbonMonitor for 2019–2020 (Version 1.0). ICOS ERIC – Carbon Portal, <https://doi.org/https://doi.org/10.18160/GFNT-5Y47>, 2021b.
- 800 Graven, H., Fischer, M. L., Lueker, T., Jeong, S., Guilderson, T. P., Keeling, R. F., Bambha, R., Brophy, K., Callahan, W., Cui, X., Frankenberg, C., Gurney, K. R., Lafranchi, B. W., Lehman, S. J., Michelsen, H., Miller, J. B., Newman, S., Paplawsky, W., Parazoo, N. C., Sloop, C., and Walker, S. J.: Assessing fossil fuel CO<sub>2</sub> emissions in California using atmospheric observations and models, *Environmental Research Letters*, 13, 065 007, <https://doi.org/10.1088/1748-9326/AABD43>, 2018.
- 805 Graven, H., Keeling, R. F., and Rogelj, J.: Changes to Carbon Isotopes in Atmospheric CO<sub>2</sub> Over the Industrial Era and Into the Future, *Global Biogeochemical Cycles*, 34, e2019GB006 170, <https://doi.org/https://doi.org/10.1029/2019GB006170>, 2020.
- Graven, H. D. and Gruber, N.: Continental-scale enrichment of atmospheric <sup>14</sup>CO<sub>2</sub> from the nuclear power industry: potential impact on the estimation of fossil fuel-derived CO<sub>2</sub>, *Atmos. Chem. Phys.*, 11, 12 339–12 349, <https://doi.org/10.5194/acp-11-12339-2011>, 2011.
- Hahn, V., Höglberg, P., and Buchmann, N.: <sup>14</sup>C – a tool for separation of autotrophic and heterotrophic soil respiration, *Global Change Biology*, 12, 972–982, <https://doi.org/https://doi.org/10.1111/j.1365-2486.2006.001143.x>, 2006.
- 810 Han, P., Zeng, N., Oda, T., Lin, X., Crippa, M., Guan, D., Janssens-Maenhout, G., Ma, X., Liu, Z., Shan, Y., Tao, S., Wang, H., Wang, R., Wu, L., Yun, X., Zhang, Q., Zhao, F., and Zheng, B.: Evaluating China’s fossil-fuel CO<sub>2</sub> emissions from a comprehensive dataset of nine inventories, *Atmos. Chem. Phys.*, 20, 11 371–11 385, <https://doi.org/10.5194/acp-20-11371-2020>, 2020.
- Hesshaimer, V. and Levin, I.: Revision of the stratospheric bomb <sup>14</sup>CO<sub>2</sub> inventory, *Journal of Geophysical Research: Atmospheres*, 105, 11 641–11 658, <https://doi.org/https://doi.org/10.1029/1999JD901134>, 2000.
- 815 Hesshaimer, V., Heimann, M., and Levin, I.: Radiocarbon evidence for a smaller oceanic carbon dioxide sink than previously believed, *Nature*, 370, 201–203, <https://doi.org/10.1038/370201a0>, 1994.
- Hoffman, R. N. and Atlas, R.: Future Observing System Simulation Experiments, *Bulletin of the American Meteorological Society*, 97, 1601–1616, <https://doi.org/10.1175/BAMS-D-15-00200.1>, 2016.
- 820 ICOS, R. I., Apadula, F., Arnold, S., Bergamaschi, P., Biermann, T., Chen, H., Colomb, A., Conil, S., Couret, C., Cristofanelli, P., De Mazière, M., Delmotte, M., Emmenegger, L., Forster, G., Frumau, A., Hatakka, J., Heliasz, M., Heltai, D., Hensen, A., Hermansen, O., Hoheisel, A., Kneuer, T., Komínková, K., Kubistin, D., Laurent, O., Laurila, T., Lehner, I., Lehtinen, K., Leskinen, A., Leuenberger, M., Levula, J., Lindauer, M., Lopez, M., Lund Myhre, C., Lunder, C., Mammarella, I., Manca, G., Manning, A., Marek, M., Marklund, P., Meinhardt, F., Mölder, M., Müller-Williams, J., O’Doherty, S., Ottosson-Löfvenius, M., Piacentino, S., Pichon, J.-M., Pitt, J., Platt, S. M., Plaß-Dülmer, C., Ramonet, M., Rivas-Soriano, P., Roulet, Y.-A., Scheeren, B., Schmidt, M., Schumacher, M., Sha, M. K., Smith, P., Stanley, K., Steinbacher, M., Sørensen, L. L., Trisolino, P., Vítková, G., Yver-Kwok, C., and di Sarra, A.: ICOS Atmosphere Release 2023-1 of Level 2 Greenhouse Gas Mole Fractions of CO<sub>2</sub>, CH<sub>4</sub>, N<sub>2</sub>O, CO, meteorology and <sup>14</sup>CO<sub>2</sub>, and flask samples analysed for CO<sub>2</sub>, CH<sub>4</sub>, N<sub>2</sub>O, CO, H<sub>2</sub> and SF<sub>6</sub>, <https://doi.org/10.18160/VXCS-95EV>, 2023.
- 825 Janssens-Maenhout, G., Crippa, M., Guizzardi, D., Muntean, M., Schaaf, E., Dentener, F., Bergamaschi, P., Pagliari, V., Olivier, J. G. J., Peters, J. A. H. W., van Aardenne, J. A., Monni, S., Doering, U., Petrescu, A. M. R., Solazzo, E., and Oreggioni, G. D.: EDGAR
- 830

- v4.3.2 Global Atlas of the three major greenhouse gas emissions for the period 1970–2012, *Earth Syst. Sci. Data*, 11, 959–1002, <https://doi.org/10.5194/essd-11-959-2019>, 2019.
- Janssens-Maenhout, G., Pinty, B., Dowell, M., Zunker, H., Andersson, E., Balsamo, G., Bézy, J. L., Brunhes, T., Bösch, H., Bojkov, B., Brunner, D., Buchwitz, M., Crisp, D., Ciais, P., Counet, P., Dee, D., Denier van der Gon, H., Dolman, H., Drinkwater, M. R., Dubovik, O., Engelen, R., Fehr, T., Fernandez, V., Heimann, M., Holmlund, K., Houweling, S., Husband, R., Juvyns, O., Kentarchos, A., Landgraf, J., Lang, R., Löscher, A., Marshall, J., Meijer, Y., Nakajima, M., Palmer, P. I., Peylin, P., Rayner, P., Scholze, M., Sierk, B., Tamminen, J., and Veefkind, P.: Toward an Operational Anthropogenic CO<sub>2</sub> Emissions Monitoring and Verification Support Capacity, *Bulletin of the American Meteorological Society*, 101, E1439–E1451, <https://doi.org/10.1175/BAMS-D-19-0017.1>, 2020.
- Kaminski, T., Scholze, M., Rayner, P., Voßbeck, M., Buchwitz, M., Reuter, M., Knorr, W., Chen, H., Agustí-Panareda, A., Löscher, A., and Meijer, Y.: Assimilation of atmospheric CO<sub>2</sub> observations from space can support national CO<sub>2</sub> emission inventories, *Environmental Research Letters*, 17, 014015, <https://doi.org/10.1088/1748-9326/ac3cea>, 2022.
- Kuc, T., Rozanski, K., Zimnoch, M., Necki, J. M., and Korus, A.: Anthropogenic emissions of CO<sub>2</sub> and CH<sub>4</sub> in an urban environment, *Applied Energy*, 75, 193–203, [https://doi.org/https://doi.org/10.1016/S0306-2619\(03\)00032-1](https://doi.org/https://doi.org/10.1016/S0306-2619(03)00032-1), 2003.
- Kuhlmann, G., Henne, S., Meijer, Y., and Brunner, D.: Quantifying CO<sub>2</sub> Emissions of Power Plants With CO<sub>2</sub> and NO<sub>2</sub> Imaging Satellites, *Frontiers in Remote Sensing*, 2, <https://www.frontiersin.org/articles/10.3389/frsen.2021.689838>, 2021.
- Lehman, S. J., Miller, J. B., Wolak, C., Southon, J., Tans, P. P., Montzka, S. A., Sweeney, C., Andrews, A., LaFranchi, B., Guilderson, T. P., and Turnbull, J. C.: Allocation of Terrestrial Carbon Sources Using <sup>14</sup>CO<sub>2</sub>: Methods, Measurement, and Modeling, *Radiocarbon*, 55, 1484–1495, <https://doi.org/DOI:10.1017/S0033822200048414>, 2013.
- Lehmuskoski, J., Vasama, H., Hämäläinen, J., Hokkinen, J., Kärkelä, T., Heiskanen, K., Reinikainen, M., Rautio, S., Hirvelä, M., and Genoud, G.: On-Line Monitoring of Radiocarbon Emissions in a Nuclear Facility with Cavity Ring-Down Spectroscopy, *Analytical Chemistry*, 93, 16096–16104, <https://doi.org/10.1021/acs.analchem.1c03814>, 2021.
- Levin, I. and Hesshaimer, V.: Radiocarbon – A Unique Tracer of Global Carbon Cycle Dynamics, *Radiocarbon*, 42, 69–80, <https://doi.org/DOI:10.1017/S0033822200053066>, 2000.
- Levin, I. and Karstens, U.: Inferring high-resolution fossil fuel CO<sub>2</sub> records at continental sites from combined <sup>14</sup>CO<sub>2</sub> and CO observations, *Tellus B*, 59, 245–250, <https://doi.org/https://doi.org/10.1111/j.1600-0889.2006.00244.x>, 2007.
- Levin, I., Hammer, S., Kromer, B., and Meinhardt, F.: Radiocarbon observations in atmospheric CO<sub>2</sub>: Determining fossil fuel CO<sub>2</sub> over Europe using Jungfraujoch observations as background, *Science of The Total Environment*, 391, 211–216, <https://doi.org/https://doi.org/10.1016/j.scitotenv.2007.10.019>, 2008.
- Levin, I., Karstens, U., Eritt, M., Maier, F., Arnold, S., Rzesanke, D., Hammer, S., Ramonet, M., Vítková, G., Conil, S., Heliasz, M., Kubistin, D., and Lindauer, M.: A dedicated flask sampling strategy developed for Integrated Carbon Observation System (ICOS) stations based on CO<sub>2</sub> and CO measurements and Stochastic Time-Inverted Lagrangian Transport (STILT) footprint modelling, *Atmos. Chem. Phys.*, 20, 11161–11180, <https://doi.org/10.5194/acp-20-11161-2020>, 2020.
- Locatelli, R., Bousquet, P., Hourdin, F., Saunois, M., Cozic, A., Couvreur, F., Grandpeix, J. Y., Lefebvre, M. P., Rio, C., Bergamaschi, P., Chambers, S. D., Karstens, U., Kazan, V., Van Der Laan, S., Meijer, H. A., Moncrieff, J., Ramonet, M., Scheeren, H. A., Schlosser, C., Schmidt, M., Vermeulen, A., and Williams, A. G.: Atmospheric transport and chemistry of trace gases in LMDz5B: Evaluation and implications for inverse modelling, *Geoscientific Model Development*, 8, 129–150, <https://doi.org/10.5194/GMD-8-129-2015>, 2015.



- Mahadevan, P., Wofsy, S. C., Matross, D. M., Xiao, X., Dunn, A. L., Lin, J. C., Gerbig, C., Munger, J. W., Chow, V. Y., and Gottlieb, E. W.: A satellite-based biosphere parameterization for net ecosystem CO<sub>2</sub> exchange: Vegetation Photosynthesis and Respiration Model (VPRM), *Global Biogeochemical Cycles*, 22, <https://doi.org/https://doi.org/10.1029/2006GB002735>, 2008.
- 870 Miller, J. B., Lehman, S. J., Montzka, S. A., Sweeney, C., Miller, B. R., Karion, A., Wolak, C., Dlugokencky, E. J., Southon, J., Turnbull, J. C., and Tans, P. P.: Linking emissions of fossil fuel CO<sub>2</sub> and other anthropogenic trace gases using atmospheric <sup>14</sup>CO<sub>2</sub>, *Journal of Geophysical Research: Atmospheres*, 117, <https://doi.org/https://doi.org/10.1029/2011JD017048>, 2012.
- Monteil, G. and Scholze, M.: Regional CO<sub>2</sub> inversions with LUMIA, the Lund University Modular Inversion Algorithm, v1.0, *Geosci. Model Dev.*, 14, 3383–3406, <https://doi.org/10.5194/gmd-14-3383-2021>, 2021.
- 875 Monteil, G., Broquet, G., Scholze, M., Lang, M., Karstens, U., Gerbig, C., Koch, F.-T., Smith, N. E., Thompson, R. L., Luijkx, I. T., White, E., Meesters, A., Ciais, P., Ganesan, A. L., Manning, A., Mischurow, M., Peters, W., Peylin, P., Tarniewicz, J., Rigby, M., Rödenbeck, C., Vermeulen, A., and Walton, E. M.: The regional European atmospheric transport inversion comparison, EUROCOM: first results on European-wide terrestrial carbon fluxes for the period 2006–2015, *Atmos. Chem. Phys.*, 20, 12 063–12 091, <https://doi.org/10.5194/acp-20-12063-2020>, 2020.
- 880 Munassar, S., Monteil, G., Scholze, M., Karstens, U., Rödenbeck, C., Koch, F. T., Totsche, K. U., and Gerbig, C.: Why do inverse models disagree? A case study with two European CO<sub>2</sub> inversions, *Atmospheric Chemistry and Physics*, 23, 2813–2828, <https://doi.org/10.5194/ACP-23-2813-2023>, 2023.
- Naegler, T. and Levin, I.: Closing the global radiocarbon budget 1945–2005, *Journal of Geophysical Research: Atmospheres*, 111, <https://doi.org/https://doi.org/10.1029/2005JD006758>, 2006.
- 885 Newman, S., Jeong, S., Fischer, M. L., Xu, X., Haman, C. L., Lefer, B., Alvarez, S., Rappenglueck, B., Kort, E. A., Andrews, A. E., Peischl, J., Gurney, K. R., Miller, C. E., and Yung, Y. L.: Diurnal tracking of anthropogenic CO<sub>2</sub> emissions in the Los Angeles basin megacity during spring 2010, *Atmos. Chem. Phys.*, 13, 4359–4372, <https://doi.org/10.5194/acp-13-4359-2013>, 2013.
- Oda, T. and Maksyutov, S.: A very high-resolution (1km×1 km) global fossil fuel CO<sub>2</sub> emission inventory derived using a point source database and satellite observations of nighttime lights, *Atmospheric Chemistry and Physics*, 11, 543–556, [https://doi.org/10.5194/ACP-](https://doi.org/10.5194/ACP-11-543-2011)
- 890 11-543-2011, 2011.
- Oda, T. and Maksyutov, S.: ODIAC Fossil Fuel CO<sub>2</sub> Emissions Dataset (Version name: ODIAC2020b), <https://doi.org/10.17595/20170411.001>, 2020.
- Oda, T., Maksyutov, S., and Andres, R. J.: The Open-source Data Inventory for Anthropogenic CO<sub>2</sub>, version 2016 (ODIAC2016): a global monthly fossil fuel CO<sub>2</sub> gridded emissions data product for tracer transport simulations and surface flux inversions, *Earth Syst. Sci. Data*,
- 895 10, 87–107, <https://doi.org/10.5194/essd-10-87-2018>, 2018.
- Pickers, P. A., Manning, A. C., Le Quéré, C., Forster, G. L., Luijkx, I. T., Gerbig, C., Fleming, L. S., and Sturges, W. T.: Novel quantification of regional fossil fuel CO<sub>2</sub> reductions during COVID-19 lockdowns using atmospheric oxygen measurements, *Science Advances*, 8, eab19250, <https://doi.org/10.1126/sciadv.ab19250>, 2022.
- Pisso, I., Sollum, E., Grythe, H., Kristiansen, N. I., Cassiani, M., Eckhardt, S., Arnold, D., Morton, D., Thompson, R. L., Groot Zwaafink,
- 900 C. D., Evangeliou, N., Sodemann, H., Haimberger, L., Henne, S., Brunner, D., Burkhardt, J. F., Fouilloux, A., Brioude, J., Philipp, A., Seibert, P., and Stohl, A.: The Lagrangian particle dispersion model FLEXPART version 10.4, *Geosci. Model Dev.*, 12, 4955–4997, <https://doi.org/10.5194/gmd-12-4955-2019>, 2019.
- Rayner, P. J., Michalak, A. M., and Chevallier, F.: Fundamentals of data assimilation applied to biogeochemistry, *Atmos. Chem. Phys.*, 19, 13 911–13 932, <https://doi.org/10.5194/acp-19-13911-2019>, 2019.

- 905 Rödenbeck, C., Keeling, R. F., Bakker, D. C. E., Metzl, N., Olsen, A., Sabine, C., and Heimann, M.: Global surface-ocean pCO<sub>2</sub> and sea-air CO<sub>2</sub> flux variability from an observation-driven ocean mixed-layer scheme, *Ocean Sci.*, 9, 193–216, <https://doi.org/10.5194/os-9-193-2013>, 2013.
- Scholze, M., Kaplan, J. O., Knorr, W., and Heimann, M.: Climate and interannual variability of the atmosphere-biosphere 13CO<sub>2</sub> flux, *Geophysical Research Letters*, 30, <https://doi.org/https://doi.org/10.1029/2002GL015631>, 2003.
- 910 Scholze, M., Buchwitz, M., Dorigo, W., Guanter, L., and Quegan, S.: Reviews and syntheses: Systematic Earth observations for use in terrestrial carbon cycle data assimilation systems, *Biogeosciences*, 14, 3401–3429, <https://doi.org/10.5194/bg-14-3401-2017>, 2017.
- Schuh, A. E., Jacobson, A. R., Basu, S., Weir, B., Baker, D., Bowman, K., Chevallier, F., Crowell, S., Davis, K. J., Deng, F., Denning, S., Feng, L., Jones, D., Liu, J., and Palmer, P. I.: Quantifying the Impact of Atmospheric Transport Uncertainty on CO<sub>2</sub> Surface Flux Estimates, *Global Biogeochemical Cycles*, 33, 484–500, <https://doi.org/10.1029/2018GB006086>, 2019.
- 915 Shiga, Y. P., Michalak, A. M., Gourdj, S. M., Mueller, K. L., and Yadav, V.: Detecting fossil fuel emissions patterns from subcontinental regions using North American in situ CO<sub>2</sub> measurements, *Geophysical Research Letters*, 41, 4381–4388, <https://doi.org/https://doi.org/10.1002/2014GL059684>, 2014.
- Smith, B., Wårlind, D., Arneth, A., Hickler, T., Leadley, P., Siltberg, J., and Zaehle, S.: Implications of incorporating N cycling and N limitations on primary production in an individual-based dynamic vegetation model, *Biogeosciences*, 11, 2027–2054, <https://doi.org/10.5194/bg-920-11-2027-2014>, 2014.
- Solazzo, E., Crippa, M., Guizzardi, D., Muntean, M., Choulga, M., and Janssens-Maenhout, G.: Uncertainties in the Emissions Database for Global Atmospheric Research (EDGAR) emission inventory of greenhouse gases, *Atmos. Chem. Phys.*, 21, 5655–5683, <https://doi.org/10.5194/acp-21-5655-2021>, 2021.
- Steinbach, J., Gerbig, C., Rödenbeck, C., Karstens, U., Minejima, C., and Mukai, H.: The CO<sub>2</sub> release and Oxygen uptake  
925 from Fossil Fuel Emission Estimate (COFFEE) dataset: effects from varying oxidative ratios, *Atmos. Chem. Phys.*, 11, 6855–6870, <https://doi.org/10.5194/acp-11-6855-2011>, 2011.
- Stuiver, M. and Polach, H. A.: Discussion Reporting of 14C Data, *Radiocarbon*, 19, 355–363, <https://doi.org/DOI:10.1017/S0033822200003672>, 1977.
- Suess, H. E.: Radiocarbon Concentration in Modern Wood, *Science*, 122, 415–417, <https://doi.org/10.1126/science.122.3166.415.b>, 1955.
- 930 Tans, P. P., De Jong, A. F. M., and Mook, W. G.: Natural atmospheric 14C variation and the Suess effect, *Nature*, 280, 826–828, <https://doi.org/10.1038/280826a0>, 1979.
- Thompson, R. L., Broquet, G., Gerbig, C., Koch, T., Lang, M., Monteil, G., Munassar, S., Nickless, A., Scholze, M., Ramonet, M., Karstens, U., van Schaik, E., Wu, Z., and Rödenbeck, C.: Changes in net ecosystem exchange over Europe during the 2018 drought based on atmospheric observations, *Philosophical Transactions of the Royal Society B: Biological Sciences*, 375, 20190512,  
935 <https://doi.org/10.1098/rstb.2019.0512>, 2020.
- Trumbore, S. E., Sierra, C. A., and Hicks Pries, C. E.: Radiocarbon Nomenclature, Theory, Models, and Interpretation: Measuring Age, Determining Cycling Rates, and Tracing Source Pools, in: *Radiocarbon and Climate Change: Mechanisms, Applications and Laboratory Techniques*, edited by Schuur, E. A. G., Druffel, E., and Trumbore, S. E., pp. 45–82, Springer International Publishing, Cham, [https://doi.org/10.1007/978-3-319-25643-6\\_3](https://doi.org/10.1007/978-3-319-25643-6_3), 2016.
- 940 Turnbull, J., Rayner, P., Miller, J., Naegler, T., Ciais, P., and Cozic, A.: On the use of 14CO<sub>2</sub> as a tracer for fossil fuel CO<sub>2</sub>: Quantifying uncertainties using an atmospheric transport model, *Journal of Geophysical Research: Atmospheres*, 114, <https://doi.org/https://doi.org/10.1029/2009JD012308>, 2009.

- Turnbull, J. C., Keller, E. D., Baisden, T., Brailsford, G., Bromley, T., Norris, M., and Zondervan, A.: Atmospheric measurement of point source fossil CO<sub>2</sub> emissions, *Atmos. Chem. Phys.*, 14, 5001–5014, <https://doi.org/10.5194/acp-14-5001-2014>, 2014.
- 945 Turnbull, J. C., Sweeney, C., Karion, A., Newberger, T., Lehman, S. J., Tans, P. P., Davis, K. J., Lauvaux, T., Miles, N. L., Richardson, S. J., Cambaliza, M. O., Shepson, P. B., Gurney, K., Patarasuk, R., and Razlivanov, I.: Toward quantification and source sector identification of fossil fuel CO<sub>2</sub> emissions from an urban area: Results from the INFLUX experiment, *Journal of Geophysical Research: Atmospheres*, 120, 292–312, <https://doi.org/10.1002/2014JD022555>, 2015.
- Turnbull, J. C., Graven, H., and Krakauer, N. Y.: Radiocarbon in the Atmosphere, in: *Radiocarbon and Climate Change: Mechanisms, Applications and Laboratory Techniques*, edited by Schuur, E. A. G., Druffel, E., and Trumbore, S. E., pp. 83–137, Springer International Publishing, Cham, [https://doi.org/10.1007/978-3-319-25643-6\\_4](https://doi.org/10.1007/978-3-319-25643-6_4), 2016.
- 950 Turnbull, J. C., Domingues, L. G., and Turton, N.: Dramatic Lockdown Fossil Fuel CO<sub>2</sub> Decrease Detected by Citizen Science-Supported Atmospheric Radiocarbon Observations, *Environmental Science & Technology*, 56, 9882–9890, <https://doi.org/10.1021/acs.est.1c07994>, 2022.
- 955 UNFCCC: THE PARIS AGREEMENT, Tech. rep., [https://treaties.un.org/Pages/ViewDetails.aspx?src=TREATY&mtdsg\\_no=XXVII-7-](https://treaties.un.org/Pages/ViewDetails.aspx?src=TREATY&mtdsg_no=XXVII-7-), 2016.
- Vogel, F. R., Levin, I., and Worthy, D. E. J.: Implications for Deriving Regional Fossil Fuel CO<sub>2</sub> Estimates from Atmospheric Observations in a Hot Spot of Nuclear Power Plant <sup>14</sup>CO<sub>2</sub> Emissions, *Radiocarbon*, 55, 1556–1572, <https://doi.org/DOI: 10.1017/S0033822200048487>, 2013.
- 960 Wang, Y., Broquet, G., Ciais, P., Chevallier, F., Vogel, F., Wu, L., Yin, Y., Wang, R., and Tao, S.: Potential of European <sup>14</sup>CO<sub>2</sub> observation network to estimate the fossil fuel CO<sub>2</sub> emissions via atmospheric inversions, *Atmos. Chem. Phys.*, 18, 4229–4250, <https://doi.org/10.5194/acp-18-4229-2018>, 2018.
- Wang, Y., Broquet, G., Bréon, F.-M., Lespinas, F., Buchwitz, M., Reuter, M., Meijer, Y., Loescher, A., Janssens-Maenhout, G., Zheng, B., and Ciais, P.: PMIF v1.0: assessing the potential of satellite observations to constrain CO<sub>2</sub> emissions from large cities and point sources  
965 over the globe using synthetic data, *Geosci. Model Dev.*, 13, 5813–5831, <https://doi.org/10.5194/gmd-13-5813-2020>, 2020.
- Wu, Z.: European hourly NEE, GPP and total respiration for 2010–2022 based on LPJ-GUESS (generated in 2023), <https://doi.org/10.18160/p52c-1qjm>, 2023.
- Zazzeri, G., Acuña Yeomans, E., and Graven, H. D.: Global and Regional Emissions of Radiocarbon from Nuclear Power Plants from 1972 to 2016, *Radiocarbon*, 60, 1067–1081, <https://doi.org/DOI: 10.1017/RDC.2018.42>, 2018.
- 970 Zazzeri, G., Graven, H., Xu, X., Saboya, E., Blyth, L., Manning, A. J., Chawner, H., Wu, D., and Hammer, S.: Radiocarbon Measurements Reveal Underestimated Fossil CH<sub>4</sub> and CO<sub>2</sub> Emissions in London, *Geophysical Research Letters*, 50, e2023GL103834, <https://doi.org/https://doi.org/10.1029/2023GL103834>, 2023.