

A global behavioural model of human fire use and management: WHAM! v1.0

Oliver Perkins^{1,2}, Matt Kasoar,^{1,3} Apostolos Voulgarakis^{1,3,4}, Cathy Smith^{1,5}, Jay Mistry^{1,5}, James D.A. Millington^{1,2}

5 ¹ The Leverhulme Centre for Wildfires, Environment, and Society, Imperial College London, SB7 2BX, UK

² Department of Geography, King's College London, WC2B 4BG, UK

³ Department of Physics, Imperial College London

⁴ Atmospheric Environment and Climate Change Laboratory, Technical University of Crete, Kounoupidiana, 73100, Greece

⁵ Department of Geography, Royal Holloway, University of London, TW20 0EX, UK

10

Correspondence to: OI Perkins (oliver.perkins@kcl.ac.uk)

Abstract. Fire is an integral ecosystem process and a major natural source of vegetation disturbance globally. Yet at the same time, humans use and manage fire in diverse ways and for a huge range of purposes. Therefore, it is perhaps unsurprising that a central finding of the first Fire Model Intercomparison Project was simplistic representation of humans is a substantial shortcoming in the fire modules of dynamic global vegetation models (DGVMs). In response to this challenge, we present a novel, global geospatial model that seeks to capture the diversity of human-fire interactions. Empirically-grounded with a global database of anthropogenic fire impacts, WHAM! (the **W**ildfire **H**uman **A**gency **M**odel) represents the underlying behavioural and land system drivers of human approaches to fire management and their impact on fire regimes. WHAM! is designed to be coupled with DGVMs (JULES-INFERN0 in the current instance), such that human and biophysical drivers of fire on Earth, and their interactions, can be captured in process-based models for the first time. Initial outputs from WHAM! presented here are in line with previous evidence suggesting managed anthropogenic fire use is decreasing globally, and point to land use intensification as the underlying reason for this phenomenon.

15

20

25 **1. Introduction**

Fire is a fundamental earth-system process and a key driver of global vegetation dynamics (Pausas et al., 2017). Yet at the same time humans use fire for a large range of purposes (Smith et al., 2022), from disposal of agricultural residues (Lin and Begho, 2022), to social ceremonies (Beaulaton, 2010). Anthropogenic fire management strategies are similarly diverse, spanning preventative strategies such as indigenous patch burning (Laris, 2002) to fire exclusion through industrial fire extinguishing (Eloy et al., 2019). Furthermore, humans not only influence fire regimes directly, through starting and managing fires, but also indirectly, by altering and fragmenting fuel-loads (Harrison et al., 2021; Rosan et al., 2022), for example through road-building (Haas et al., 2022), livestock grazing (Archibald, 2016) and logging (Cochrane and Barber, 2009).

35 As such, present-day wildfire regimes are best understood as a coupled socio-ecological system (Kelley et al., 2019; Ford et al., 2021), in which people are the largest driver of changes to the frequency, intensity and extent of fire (Kelly et al., 2020; Andela et al., 2017). Given the extent and diversity of human-fire interactions, it is perhaps not surprising that the recently completed Fire Model Intercomparison project (FIREMIP; Hantson et al., 2016) found representation of humans is a substantial shortcoming in current fire-enabled dynamic global vegetation models (DGVMs). Representation of humans was the biggest cause of disparity between model outputs (Teckentrup et al., 2019) and a major contributor to divergence between models and remotely sensed observations (Forkel et al., 2019). Models did not agree on the magnitude nor the direction of the anthropogenic influence on burned area over the last century (Teckentrup et al., 2019).

Underlying this issue are DGVMs' simplistic representations of human activity. To this point, inclusion of anthropogenic influences on fire regimes have been limited to globally homogenous functions based on population density and / or GDP (Rabin et al., 2018; Ford et al., 2021). These approaches treat all anthropogenic fires as similar events, and therefore do not account for the diverse ways in which humans use and manage fire in contrasting land use systems and underlying socio-ecological contexts. This makes separating the role of biophysical drivers of fire regimes from human fire use and management, and from anthropogenic changes to fuel load, a substantial research challenge (Jones et al., 2022). Indeed, integration of managed anthropogenic fire into models at all scales has been identified as a major step required to 'reimagine fire science for the Anthropocene' (Shuman et al., 2022). Lack of adequate representation of humans in DGVMs limits their ability to predict the future of fire on Earth, which, consequently, affects the quality of forecasts of future emissions of carbon and air pollutants (~~Lasslop et al., 2019~~) used in Earth system models (ESMs; ~~Lasslop et al., 2019~~) used to predict climate change.

55

Here, we present a new model that seeks to address this challenge. Drawing on agent-based approaches, the model – *WHAM!* (**W**ildfire **H**uman **A**gency **M**odel) – captures the drivers and distribution of human fire use and management globally.

Importantly, it represents the influence of *categorical* differences in land use systems – arable farming, livestock farming, forestry, and non-extractive land uses such as conservation and recreation – on human fire management strategies.

60

One reason for currently limited approaches to representing anthropogenic impacts on fire regimes has been a lack of systematic data from which to derive alternative parameterisations (Forkel et al., 2019; Jones et al., 2022). WHAM!’s empirical foundation is the Database of Anthropogenic Fire Impacts (DAFI), which was developed to address this issue (Millington et al., 2022). DAFI contains data from 1809 case studies of human-fire interactions, sourced primarily from the academic literature, but also the ‘grey’ literature of government and NGO reports. DAFI, which is freely available online (Perkins and Millington, 2021), enables WHAM! to represent the processes that drive human impacts on fire regimes from the bottom up.

65

A concurrent data issue has been that the majority of anthropogenic fires have not been captured in global-scale Earth observation products (Zhang et al., 2018). Anthropogenic fires are typically small: >50% are smaller than the 21ha size at which MODIS can reliably detect them (Millington et al., 2022). This has made the evaluation of representations of anthropogenic fire challenging, often leading to circular calibration of modelled fire counts and/or burned area to a structurally biased observational record (Teckentrup et al., 2019). However, with recent advances in fine-scale remote sensing of burned area (e.g. Gaveau et al., 2021; Chen et al., 2023), it is now possible to capture much more of the anthropogenic signal. As such, with the combination of DAFI and fine-scale Earth observation products, an independent evaluation of process-based model representation of anthropogenic influences on fire regimes is now possible.

75

Anthropogenic fire can be broadly categorised into three components: managed fire, unmanaged fires and escaped fires (UNEP, 2022). For managed fire, Millington et al., (2022) identify seven central modes of anthropogenic fire use, which include ranges from field preparation in shifting cultivation systems to prescribed fire for biodiversity conservation. Unmanaged anthropogenic fire comprises accidental fires from cigarette butts or machinery failure, as well as arson (Scott, 1985). Escaped fire is when a managed fire grows beyond its original purpose to become an unmanaged wildfire (e.g. Cano-Crespo et al., 2015). Of these three categories, calculating burned area from managed anthropogenic fire can be done within WHAM! itself, as a function of the land system and land user objectives. However, the burned area from unmanaged and escaped anthropogenic fires can only be calculated through coupling with a biophysical fire model.

80

85

Therefore, as fire regimes emerge from a combination of anthropogenic and biophysical influences, WHAM! has been developed to be coupled with DGVMs, in the first instance JULES-INFERNO, the fire-enabled dynamic global vegetation model in the UK Earth System Model (Mangeon et al., 2016; Burton et al., 2019). This model coupling will allow process-based representations of anthropogenic and biophysical drivers to be integrated to form a cohesive socio-ecological simulation of global fire regimes. In this paper we present WHAM! as a standalone or ‘isolated’ model (*sensu* Robinson et

90

~~al., 2018) form~~, and so the model evaluation focuses on managed fire, and particularly a comparison of cropland fires from WHAM! with the GFED5 crop fires product (Hall et al., 2023). As WHAM! is an empirical model, the performance metrics of statistical parameterisations against DAFI data are also provided (Supplement C). However, outside of croplands global
95 burned area products do not differentiate between managed and unmanaged fires (Chen et al., 2023), so full evaluation of WHAM! will only be possible after ~~coupling~~integration with JULES-INFERN0, when a complete picture of global burned area can be calculated.

To facilitate ~~the planned coupling of WHAM! with JULES-INFERN0 model integration~~, the parameterisation of WHAM! presented in the main text takes relevant biophysical input variables from JULES model outputs. However, as our intention is ultimately that WHAM! can be coupled with multiple fire-enabled DGVMs, we have also parameterised WHAM! using Earth observation products for its biophysical inputs. The differences between the EO-driven version, named ‘WHAM-EO’ (for WHAM! Earth Observation), and the default version of WHAM! are described in Supplement A. Some guidance for developers of other DGVMs on how to integrate WHAM! inputs is offered in Supplement F.
105

2. Methods

The typical timesteps adopted by DGVMs (e.g hourly or daily) are not relevant for large-scale modelling of human decision-making (Arneeth et al., 2014). As such, WHAM! runs at an annual timestep, inline with other geospatial land use models run at large spatial extents (e.g. Murray-Rust et al., 2014). WHAM! can be parameterised at different spatial resolutions, but is
110 here set up to run at the spatial resolution of JULES adopted in CMIP6 (1.875° x 1.25°; Wiltshire et al., 2020).

From a model structure perspective, WHAM! replaces globally-uniform functions generating numbers of anthropogenic ‘ignitions’ with a process-based representation of anthropogenic fire use and management. An overview of these changes is given in Figure 1. WHAM! outputs, therefore, are burned area from managed anthropogenic fire as a fraction of each model
115 grid cell, unmanaged anthropogenic fires as number of fires km⁻² yr⁻¹, and fire suppression intensity on a dimensionless scale (0-1; Table 1).

WHAM! is presented in the following stages. Firstly, we present the procedure to allocate categorical types of land user spatially (building on Perkins et al, (2022), Section 2.1). Secondly, we describe calculation of anthropogenic managed fire
120 (Section 2.2), and thirdly, unmanaged fires (Section 2.3). Fire suppression is described in Section 2.4. Setup of historical runs ~~and, including~~ model evaluation ~~are~~is described in Sections 2.5 & 2.6. WHAM! is written in Python 3.8 using the Agentpy library (Foramitti, 2021). Model code, including forcing data, is made freely available online (Perkins et al., 2023a).

Table 1: Overview of WHAM! outputs and respective units; burned area from unmanaged anthropogenic fires – including the impact of fire suppression – will be calculated by a DGVM (initially JULES-INFERNO) as a part of a coupled model ensemble.

Variable	Section	Output units
Managed fire	2.2	Burned area (fraction of grid cell)
Unmanaged fire	2.3	Fire counts (km ⁻² year ⁻¹)
Fire suppression	2.4	Suppression intensity (0-1; dimensionless)

125

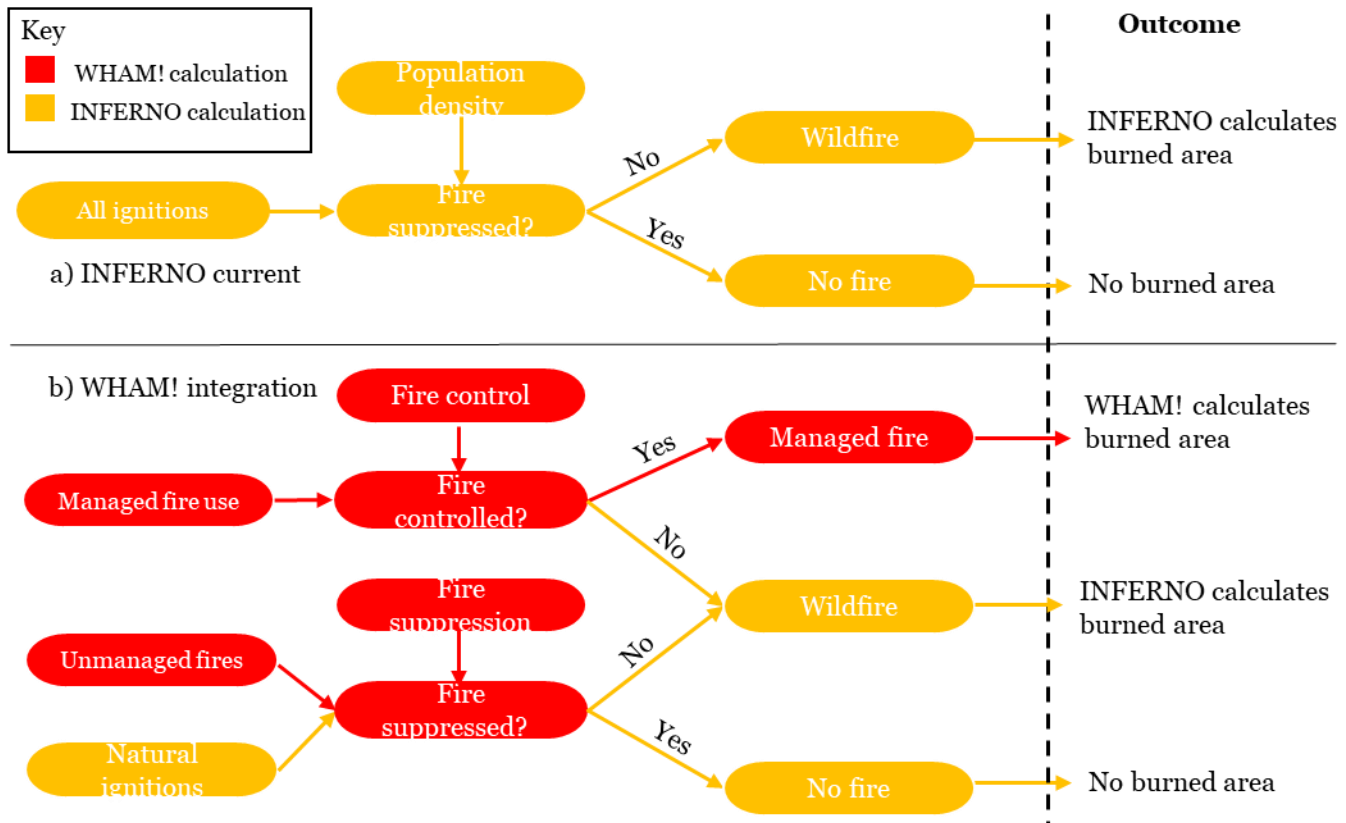


Figure 1: Schematic representation of the structural changes to INFERNO enabled by WHAM! integration. Rather than treating all fires as similar events, the WHAM! integration can differentiate between managed fires – that spread primarily according to anthropogenic land management objectives – and unmanaged fires, that spread principally according to biophysical drivers.

130 **2.1 Land use in WHAM!**

2.1.1 Defining agent functional types

WHAM! is driven by the spatiotemporal distribution and decisions of agent functional types (AFTs; Rounsevell et al., 2012). AFTs are analogous to plant functional types (PFTs) in DGVMs, providing broad categories of function or roles that allow global heterogeneity to be represented in a manageable way (Arneeth et al., 2014). The AFTs used are derived from a combination of land use system (LUS) types – cropland, livestock farming, forestry and non-extractive uses – and from what we term anthropogenic fire regimes (AFRs). The AFRs [draw on Pyne’s \(2019\) framing of human-fire interactions](#), and as such are categorical – ‘pre-industrial’, ‘transitional’, ‘industrial’ and ‘post-industrial’ - reflecting available resources and management strategies at a given time and place. The underlying theoretical justification and quantitative signatures of these AFRs, [as well as the relationship of the LUS to LUH2 land cover types](#) are described in Millington et al., (2022) and Perkins et al., (2022). The combination of four land use systems and four anthropogenic fire regimes provides 16 combined land-fire systems (LFS) which in turn can be split into distinct AFTs. In 12 of 16 cases, LFS and AFT are synonymous (Table 2). In the remaining four cases, multiple AFTs compete for space within a single LFS.

145 **Table 2: Agent-Functional Types (AFTs, *italicised*) and Land Fire Systems (LFS) resulting from the cross-referencing of Land Use Systems and Anthropogenic Fire Regimes (AFRs). In 12/16 cases, AFTs are synonymous with –LFS, while in the remaining cases the relationship is multi-faceted (and therefore multiple AFTs exist within a LFS as shown by *italics*)**

<i>AFR</i>	<i>Land Use System</i>			
	Non-extractive	Forestry	Livestock	Cropland
Pre-Industrial	Unoccupied	Hunter-Gatherer	Pastoralist	Swidden
Transition	<i>Recreationalist,</i>	<i>Logging,</i>	Extensive	<i>Small-holder (Subsistence),</i>
	<i>Conservationist</i>	<i>Agroforestry</i>	Livestock Farmer	<i>Small-holder (Market)</i>
Industrial	State land manager	Managed Forestry	Intensive	Intensive Farmer
			Livestock Farmer	
Post-Industrial	<i>Conservationist,</i>	Abandoned	Abandoned pasture	Abandoned cropland
	<i>Recreationalist</i>	forest plantation		

2.1.2 Land system distribution

To ensure compatibility under model intercomparison project protocols, WHAM! takes landcover inputs from the LUH2 forcing data sets of Hurtt et al., (2020). Cropland, pasture, rangeland, and urban land cover fractions were taken directly as forcing data. However, to calculate the proportion of tree cover used for forestry versus non-extractive land use, as well as the unoccupied fraction of cell, a process of competition was simulated. This used the same methods as those for the distribution of AFTs, which is described below in section 2.1.3.

2.1.3 Agent functional type distribution

The global spatiotemporal distribution of AFTs is based on a simulation of their competition for land. After Arneth et al., (2014), we first define the socio-ecological niche of each AFT, before comparing their relative competitiveness in a pixel to allocate space. A detailed presentation and evaluation of the representation of competition for land in WHAM! is given in Perkins et al., (2022). Here, we therefore provide a brief summary; a schematic representation is given in Figure 2.

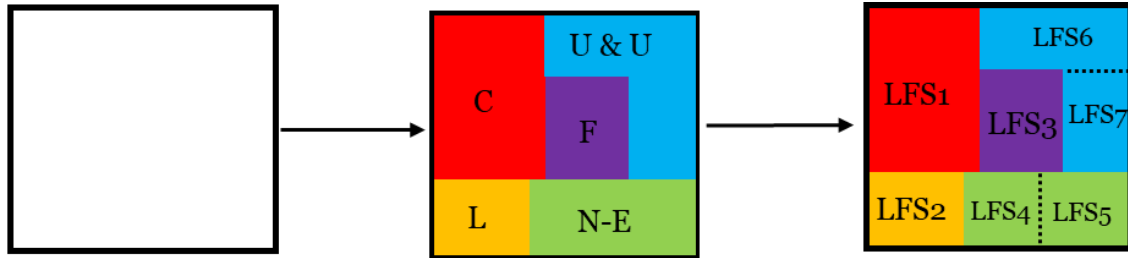
Firstly, to capture the socio-ecological niche of AFTs a simple classification tree was constructed quantitatively for each. This was done using data in DAFI as the target variable and explanatory variables from the secondary data sets given in Table 3. Bootstrapping was used to identify the most robust single-tree structure across data sub-samples. The bootstrapping approach also led to multiple possible split threshold values and output probabilities for the selected structure. These were retained to express data uncertainty, and to create transitions between output probability spaces ('niches') in the resulting maps. To prioritise representation of process and to avoid overfitting, the median and modal number of nodes or splits in AFTs' trees is two, and tree structures were accepted only if they had strong land system process rationale (Perkins et al., 2022). The complete set of tree models used for AFT distribution is provided along with model code (Perkins et al., 2023b).

Secondly, having defined a single tree per AFT, a process of competition was simulated by normalising the output probabilities of tree models across relevant AFTs:

$$AFT_{ij} = \frac{p(AFT_{ij})}{\sum p(AFT_j [p(AFT_j) > \theta])} \quad (1)$$

where AFT_{ij} is the fractional coverage of the i^{th} AFT in the j^{th} cell, and $p(AFT_{ij})$ and $\sum p(AFT_j)$ are the probability of the classification tree for the i^{th} AFT and for all AFTs respectively. Because of the choice of simple tree structures, to avoid very small land fractions continuing to be allocated to inappropriate AFTs – for example shifting cultivation in the USA Corn belt – output probabilities beneath a threshold parameter θ were set to 0. In this way, the output probabilities of the tree models of the AFTs' niche were in effect interpreted as a 'competitiveness score' in a given pixel. A complete set of AFT distributions is provided as supplement E.

A)



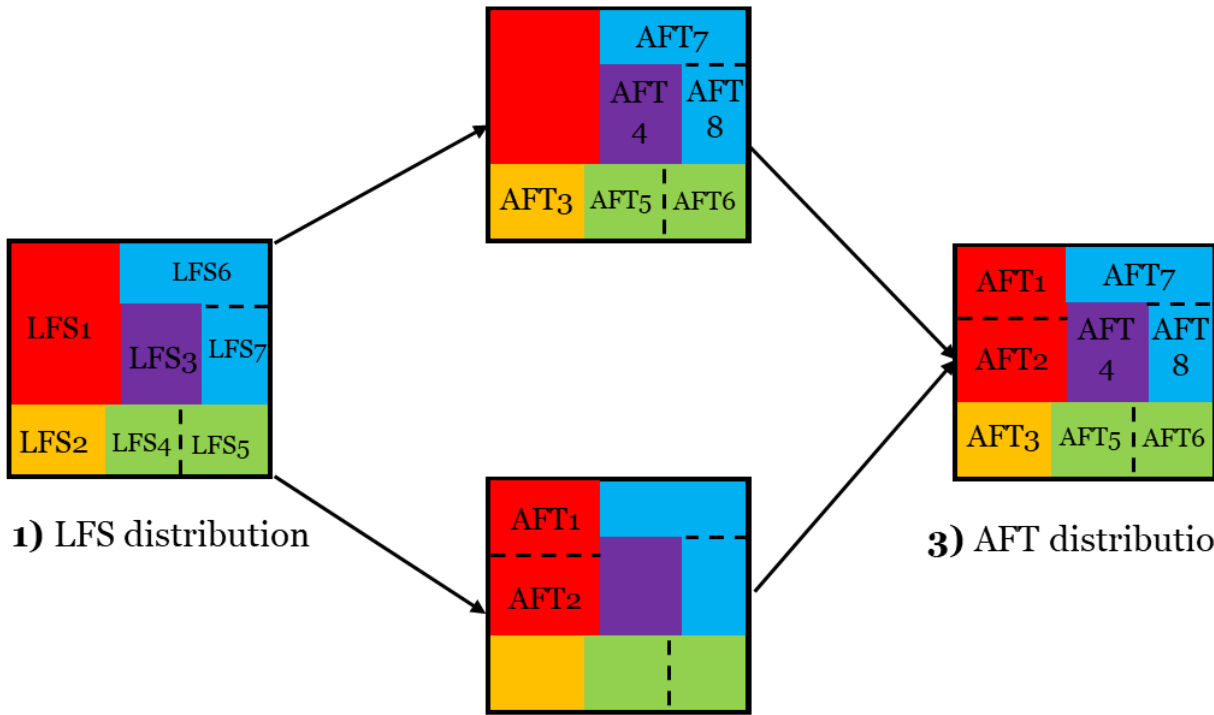
1) 1.875° x 1.25° cells in a global grid

2) Each cells divided fractionally by LUS

3) LUS sub-divided by AFR to produce LFS distribution

B)

2.1) LFS with 1:1 relationship to AFT allocated directly



1) LFS distribution

3) AFT distribution

2.2) LFS with multiple AFTs allocated after simulated competition

Figure 2: Overview of agent functional type (AFT) distribution in WHAM!; A) describes how cells are divided first into Land use systems (LUS) and then into land-fire systems (LFS). B) then describes the relationship of land fire systems to AFTs. Key: C = cropland, L = livestock, N-E = non-extractive, F = forestry, U&U = Urban and unoccupied.

Table 3: Data sets used to parameterise ~~WHAM!~~ submodels for land use competition and agent functional type allocation, managed fire use, unmanaged fires and fire suppression. All data were resampled to the resolution of JULES-INFENRO (1.875° x 1.25°). All data sets have an annual temporal resolution. ~~Whilst here, JULES-INFENRO data were used here to parameterise WHAM!, but WHAM! has also been parameterised using Earth Observation data to enable integration with other DGVMs (see Supplement A).~~

Variable type	Variable name	Spatial resolution	Temporal range	Source
Socio economic	Population density	0.04°	2000-2020	CIESIN, 2017
	Gross Domestic Product	0.08°	1990-2015	Kummu et al., 2018
	Human Development Index	0.08°	1990-2015	Kummu et al., 2018
	Market access ⁺	0.08°	2000 (1990-2015)	Verburg et al., 2011)
Land use & Land cover	Fractional land cover (anthropogenic)	0.25°	1990-2020	Hurt et al., 2020
	Land cover composition (natural)*	1.875° x 1.25°	1990-2020	Clark et al., 2011
Biophysical	Potential evapotranspiration*	1.875° x 1.25°	1990-2014	Best et al., 2011
	Ecosystem net primary production*	1.875° x 1.25°	1990-2014	Clark et al., 2011
	Topography	30m	N/A	Van Zyl et al., 2001

190 **Key:** + single year of data extrapolated to other years from other secondary data (see Perkins et al., 2022 Supplementary material A). *replaced with Earth observation data in WHAM_EO (Supplement A).

2.2 Managed anthropogenic fire

Analysis of DAFI revealed seven central modes of global anthropogenic fire use (Millington et al., 2022): crop field preparation; crop residue burning; pasture management; hunting and gathering; pyrome management; vegetation clearance; and arson. For the first five of these fire uses, a common method of parameterisation was adopted (Section 2.2.1); however, 195 vegetation clearance (Section 2.2.2) and arson (Section 2.3.2) required bespoke approaches. We define arson as fire use as a weapon or to cause deliberate property damage (Scott, 1985); therefore it is classed as unmanaged – though intentional – fire use.

2.2.1 Default fire use parameterisation

200 Fire use for crop field preparation, crop residue burning, pasture management, hunting and gathering and pyrome management were parameterised similarly. We parameterise each AFT's decisions to use these forms of managed fire in two stages. Firstly, AFTs decide whether to use a given type of fire; this was parameterised using Boolean fire presence or absence data from DAFI. Secondly, we represent the spatial extent of an AFT's use of a given fire type, in locations where they choose to use it; this was parameterised using burned area data from DAFI. Separating a decision to use fire for a given
205 purpose (hereafter 'fire use tendency') from the burned area generated where it is used (hereafter 'fire use extent') enables WHAM! to capture important nuances in human fire use decision-making. For example, DAFI data show that state land managers such as the US forestry service are typically fire averse and so have a low fire use tendency; but where they do use fire, for example in protected areas or other sparsely populated regions, they may burn large areas (Millington et al., 2022).

210 Fire use tendency and fire use extent maps were calculated with a combination of statistical tools: classification and regression trees, generalised linear models (GLMs), and their combination. These tools were chosen for their simplicity, interpretability, and complementarity. As with the distribution of AFTs, they were constructed using data from DAFI. Owing to data sparsity and sampling biases, corrections were needed for some combinations of AFTs and fire use mode. For example, parameterisation of hunter-gatherer fire did not capture the categorical difference between such fire uses in open
215 savannas versus forest ecosystems. Data in DAFI suggest hunter-gatherer fire in grasslands and savannas burns 18.0% of the land cover on average compared to 6.7% in forests (Perkins and Millington 2021). Hence a correction was applied to capture this effect. Similarly, a correction was applied to account for differences between human fire use in the context of livestock farming on the 'pasture' and 'rangeland' land cover classes in LUH2 –(Supplementary B 1.3). These fire purpose specific amendments are detailed in Supplement B. A complete set of AFT parameterisations is provided along with model code, and
220 their evaluation is described in Supplement C.

In addition to extra parameters required for specific fire use modes and AFTs, two global biases in DAFI data were corrected using top-down constraints on managed fire use. These were a vegetation constraint, and a dominant anthropogenic fire regime (AFR) effect. The impact of both constraints on model outputs is described in Supplement D. The vegetation constraint corrected for the lack of DAFI case studies in deserts and other very arid environments (Perkins et al., 2022). The goal of the constraint was therefore to remove fire from areas where it could not plausibly exist. Hence, rather than use a measure of vegetation density such as FAPAR (as in Knorr et al., 2014), we use bare soil fraction from JULES to capture only the presence or absence of any vegetation. The vegetation constraint was calculated as:

$$230 \quad VC_t = \begin{cases} 1 & \text{if } soil_t \leq T_{soil} \\ 1 - soil_t & \text{otherwise} \end{cases} \quad (2)$$

$$BA_t = \widehat{BA}_t * VC_t \quad (3)$$

where $soil_t$ is the bare soil fraction from JULES outputs at time = t; T_{soil} is a free parameter determining at what fractional coverage of bare soil in a cell the vegetation constraint should apply; VC_t is the vegetation constraint, and \widehat{BA}_t and BA_t are raw burned area from bottom-up AFT calculations, and burned area adjusted for the vegetation constraint. The initial parameter value of T_{soil} was the global mean. Given the highly skewed distribution of bare soil fraction in JULES, this removed fire from biophysically implausible locations whilst having limited impact on WHAM! outputs in other regions.

Similarly, the dominant-AFR constraint was needed as DAFI under-sampled places where fire use was absent in more developed contexts (Perkins et al., 2022). From a process perspective, it aimed to capture the impact of imitation in fire management amongst land users (Lopes et al., 2020; Cammelli et al., 2020), and also the impact of legal and other social barriers that prevent or restrict managed fire use where fire suppression has become the dominant management paradigm (Kreuter et al., 2008; Harr et al., 2014; Bendel et al., 2020). As such, it aimed to capture the social tipping point at which a fire exclusionary attitude (the industrial AFR) became the dominant management approach. Similarly, ~~T~~the dominant AFR constraint was therefore applied in model cells where the intensive AFR ~~had the largest coverage of the four AFRs in that~~ occupied more than half of a cell. It was calculated as:

$$245 \quad AFRC_t = \begin{cases} 1 & \text{if } Industrial_t \leq T_{AFR} \\ 1 - Industrial_t & \text{otherwise} \end{cases} \quad (4)$$

$$BA_t = \widehat{BA}_t * AFRC_t \quad (5)$$

250 where $Industrial_t$ is the fractional coverage of the Industrial AFR at time = t; T_{AFR} is a free parameter determining at what fractional coverage the constraint should apply; and $AFRC_t$ is the industrial AFR constraint. As a result of this process, the model gained two free parameters: the two critical thresholds at which the bare soil and dominant AFR constraints take effect. The sensitivity of model outputs to WHAM!'s free parameters is explored in Supplement D.

255 **2.2.2 Vegetation clearance**

Parameterisation of fire for clearance of primary vegetation (e.g. ‘deforestation fire’) was complicated by the fact that WHAM! takes land cover inputs from LUH2 (Hurtt et al., 2020). Therefore, rather than seeking to model change in land cover directly, WHAM! instead uses the vegetation transitions specified LUH2 data (Ma et al., 2020). Using these pre-defined land cover changes between simulated time steps, WHAM! calculates the portion of newly cleared primary
 260 vegetation occupied by each anthropogenic fire regime, and on this basis calculates the fraction of the cleared land area that would have involved fire use. WHAM! uses AFRs rather than AFTs for this calculation to ensure robust data samples.

Further, given that it is frequently a clandestine process, vegetation clearance fire proved highly difficult to quantify in DAFI. Remote sensing data are widely available for the size of cleared patches due to deforestation (e.g. Morton et al.,
 265 2006), but not for the specific amount of deforestation driven by differing actors and its relationship to fire. Consequently, DAFI contains 136 measurements of vegetation clearance fire size, but only 20 of burned area (Perkins and Millington, 2021). We therefore parameterise the ratio of area of vegetation cleared to burned area for each AFR as free parameters; given the inherent resulting uncertainty, their impact on burned area is explored in model sensitivity analysis (Supplement D). Initial values for these fire to deforestation ratios are given in Table 4. The ratio between fire and deforestation was
 270 assumed to be 1 for the pre-industrial AFR, as by definition this AFR does not use machinery for land management (Millington et al., 2022). Furthermore, none of the AFTs for the post-industrial AFR would clear primary vegetation for extractive land use systems so there is no ratio for these AFTs.

275 **Table 4: Ratio of burned area to total area of vegetation cleared used to parameterise vegetation clearance fire use. A ratio of 1.00 means 100% of vegetation was cleared by fire use.**

Anthropogenic fire regime	Ratio	Source
Pre-industrial	1.00	Ontological: the pre-industrial AFR does not make use of machinery
Transitional	0.84	Aragão et al., 2008
Industrial	0.31	van Marle et al., 2017
Post-industrial	N/A	No post-industrial AFTs cleared vegetation for extractive purposes

2.3 Unmanaged anthropogenic fire

2.3.1 Escaped fires

Escaped fires are those managed anthropogenic fires that escape control measures and grow to become unmanaged wildfires. As with managed fire use, escaped fire parameterisations were derived from data in DAFI. The starting point was the calculation of a baseline escape rate for the six managed fire types described in Section 2.2 (Millington et al., 2022; Table 5). This was then adjusted for the degree of fire control measures applied by an AFT. DAFI represents the degree of control measures applied during managed fire use on a 0-3 ordinal scale. There was a clear divide in outcome between no or little control (i.e. 0 or 1) and moderate or intensive fire control (ie.2 or 3; Table 5) So, the 0-3 ordinal scale for fire control was reduced down to a Boolean scale: 0-1 were grouped as no substantive attempt to control, 2-3 grouped as a substantive attempt to control.

The result is, in effect, a variable reflecting a meaningful attempt to control a given fire, which was used to calculate the ratio of escaped fires with control measures to those without. The rate of escaped fire for each fire use type and fire control present/absent was calculated as:

$$escape_{rate_i} | control_i = \rho_i * \frac{(\sum fire_{escape_i} | control_i)}{(\sum fire_{escape_i})} \quad (6)$$

$$escape_{rate_i} | !control_i = \rho_i * \frac{(\sum fire_{escape_i} | !control_i)}{(\sum fire_{escape_i})} \quad (7)$$

where ρ is the global mean rate of escape for each fire type, $fire_{escape_i}$ is the number of DAFI records for fire use i which describe escaped fire, and $control_i$ is a Bernoulli random variable representing the probability of the presence or absence of fire control measures.

The next step was to develop a distribution model of the *control* variable (eq. 6&7). This was done with simple classification trees. Regimes of fire governance, management philosophy and their associated degree of fire control measures emerge through complex interactions of land users with their local socio-ecological circumstances, and policy at multiple spatial scales (Gil-Romera et al., 2011; Seijo et al., 2015; Mistry et al., 2016). Therefore, rather than parameterising for individual AFTs, the modelled distributions of anthropogenic fire regimes (AFRs) in WHAM! were used as predictor variables, representing the complex landscape-level meta-effects of interactions of multiple actors. Pyrome management was overwhelmingly used with control measures (548/565 cases in DAFI), and so data on uncontrolled pyrome management fire were too sparse to detect the impact of control measures on escape rate. Therefore, as a simplifying assumption, all pyrome management fires were assumed to be controlled.

Table 5: Parameterisation of escaped fire from Eq. 6&7. Baseline rates of fire escape were calculated from data in DAFI (Millington et al., 2022). The spatiotemporal distribution of the presence of fire control measures was modelled using simple classification tree models (Supplement B). Pyrome management was assumed to be controlled in all cases. Aside from pyrome management, managed pasture fires are larger (mean = 33.9ha) than other uses (mean \leq 9.2ha); hence, pasture fires' more frequent escape rate is offset by a lower density per unit area burned.

Fire use	Fire Controlled	Baseline escape rate (%)	Impact of control	Adjusted escape rate (%)
Crop field preparation	FALSE	0.06	2.87	0.17
	TRUE	0.06	0.35	0.02
Crop residue burning	FALSE	0.01	6.43	0.06
	TRUE	0.01	0.16	0.00
Hunting and gathering	FALSE	1.10	1.04	1.15
	TRUE	1.10	0.96	1.05
Pasture management	FALSE	5.10	1.61	8.19
	TRUE	5.10	0.62	3.17
Pyrome management	FALSE	0.06	NA	0.06
	TRUE	0.06	NA	0.06
Vegetation clearance	FALSE	0.95	3.42	3.25
	TRUE	0.95	0.29	0.28

2.3.2 Arson

Arson was defined as fire used deliberately to harm persons or damage property. Fires caused through carelessness such as untended campfires or cigarettes dropped from car windows were categorised as background or accidental fires (Section 2.3.3). As arson fires are lit to cause damage, they are typically not managed and cannot be considered to have an intended burned area in the same way as a pasture or crop residue fire. Therefore, rather than using burned fraction as the dependent variable in the burned area calculation, fires $\text{km}^{-2} \text{year}^{-1}$ was used.

Furthermore, similar to escaped fire, arson is frequently associated with landscape-level effects, particularly conflict between land users over tenure (e.g. Suyanto, 2007). Therefore, the modelled distribution of AFRs, rather than secondary data were used as predictor variables. As unoccupied areas were not included in the calculation of AFRs, the impact of very inaccessible terrain such as deserts, the arctic tundras and rainforests with associated very low populations (i.e. where there are very few humans to use fire as a weapon) was not fully accounted for in initial model outputs. This effect was calculated, in addition to constraints described in Section 2.2.1, as:through a simple linear correction:

$$Arson_{adjusted} = \widehat{Arson} * (1 - Unoccupied) \quad (8)$$

where \widehat{Arson} is the output of the arson distribution model, $Unoccupied$ is the fraction of the cell unoccupied by humans and $Arson_{adjusted}$ the final calculation of the number of arson fires – adjusted for areas without human occupation.

2.3.3 Background fires

Background fires comprise accidental or incidental fires not captured in managed, escaped or arson fires. These include unintentional fires caused by, for example, sparks from cigarettes, forestry machinery, and from faulty powerlines and other anthropogenic infrastructure (Brennan and Keeley, 2017; Sizov et al., 2021; Bandara et al., 2023; Jenkins et al., 2023). It also includes mis-managed domestic fires and escaped waste disposal fires in urban areas (e.g. Langer et al., 2017), as WHAM! does not explicitly parameterise the behaviour of urban residents (who are assumed to occupy land but not manage it in a way that influences landscape fire). Fire density data (fires km⁻² yr⁻¹) were selected from DAFI where the recorded fire purpose was accidental or unknown. Using these data as a dependent variable, a simple regression tree was then developed.

2.4 Fire suppression

Fire suppression here refers to the extinguishing of active, unmanaged fires. Similar to fire control measures, which are applied by AFTs to constrain the spread of active managed fires, fire suppression emerges from interactions of local land users with policy at multiple spatial scales (Fernandes et al., 2016; Steen-Adams et al., 2017; Bilbao et al., 2019; Eloy et al., 2019). As such, the degree of suppression was also treated as a meta-effect, calculated as a function of distribution of the four Anthropogenic Fire Regimes (AFRs) rather than individual AFTs. The AFR distribution calculated by WHAM! became the independent variables in an ordinary least squares regression, the dependent variable of which was the fire suppression indicator in DAFI. Fire suppression was recorded in DAFI on a 0-3 ordinal scale: 0 = None, 1 = Limited, 2 = Moderate or Traditional, and 3 = Intensive. To convert this to a numeric value, these ordinal values were given values (Table 6-1), creating a dimensionless suppression intensity (0-1). The simplest interpretation of this index, and the current impact of suppression intensity in JULES-INFERNO, is that it represents a linear reduction in numbers of unmanaged fires due to active fire extinguishing. However, the exact functional form of the relationship between suppression intensity and reduction in numbers of fires will ultimately depend on the structure of a DGVM during model coupling, reflecting the proportion of fires extinguished (Table 6); ultimately these values and associated uncertainties will be defined during calibration of the coupled model (Figure 1).

360

Table 6: Overview of DAFI data used in fire suppression model; unmanaged fires extinguished became the dependent variable in a linear model of the distribution of anthropogenic fire regimes. These initial values will be updated during calibration of the planned coupled model with JULES-INFERN0.

Ordinal fire suppression intensity (0-3)	Count (DAFI records)	Numeric fire suppression intensity (0-1)
0 (None)	150	0
1 (Limited)	327	0.05
2 (Moderate or community-led)	218	0.25
3 Intensive	289	0.9

365

2.5 Model setup for historical runs

370

To assess and understand the model's outputs and behaviour, WHAM! was run for a historical period from 1990-2014. The rationale of this timeframe was driven by data availability. DAFI focused on 1990-2020, whilst 2014 represented the end of the CMIP6 historical run period. As noted in section 2.1, parameters of sub-models for LFS and AFT competition for land have numerical distributions derived from bootstrapping. Therefore, in model runs, 100 samples were drawn from these distributions and the mean value taken. As these distributions form a core part of the model ontology (capturing the transition zones between the niches of different land use systems), they are not a full representation of model uncertainty per se. As such, results presented below focus on the mean values of outputs of these 100 runs.

375

A baseline run used model inputs that took their historical values. To understand the rationale behind WHAM! outputs for managed fire, two counterfactual experiments were run and compared with the baseline run:

- LC90 (land cover 90) - in which land cover was held constant at 1990 levels; and
- SE90 (socio-economic 90) – in which socio-economic forcing data (GDP, HDI, market access & population) were held constant at 1990 values.

380

As primarily an empirical model, WHAM! has only 6 free parameters; a model sensitivity analysis was conducted to fit these parameters, as described in Supplement D.

2.5.1 Model evaluation

385 Calculating burned area from unmanaged fires projected by WHAM! requires coupling with a biophysical model. As such,
390 whilst all WHAM! outputs are presented (as per Table 1), ~~p~~Prior to ~~the~~ at planned coupling (~~e.g.~~ with JULES-INFERNO, ~~as~~
~~planned~~), ~~evaluation of model outputs here~~ focuses on managed fire only. Crop residue burning outputs are the easiest to
evaluate, as these can be compared directly with the GFED5 crop fires product (Hall et al., 2023). Similar to the first
FireMIP (which used the GFED4 & 4.1s products), this comparison was done using data for the overlapping period of
WHAM! historical runs and the MODIS-era of GFED5 (2001-2014; Rabin et al., 2017). As in Teckentrup et al, (2018)
405 Pearson's correlation coefficient between WHAM! outputs and GFED5 was calculated using a square-root transformation
to account for the skewed distribution of burned area. To account for differences in underlying cropland distributions that are
inputs to GFED5 (the MODIS-derived MCD12Q1; Hall et al., 2023) and WHAM! (LUH2; Hurtt et al., 2020), correlations
were also calculated for the proportion of cropland burned per pixel.

395
In addition, a broad assessment of plausibility of WHAM! managed fire outputs was made. The great majority of managed
anthropogenic fires are small, and smaller than the 21ha threshold at which MODIS can reliably detect burned area (Andela
et al., 2019; Millington et al., 2022). However, in GFED5, MODIS is cross-referenced against fine-scale remote sensing data
from Landsat (30m²) and Sentinel-2 (20m²), and hence small fires are beginning to be incorporated in global-scale Earth
400 observation. As such, between 2001-2014, GFED5 has mean burned area 457.7 Mha greater than GFED4 (800.3 Mha vs
342.6 Mha respectively, Giglio et al., 2013; Chen et al., 2023). Of course, not all of this difference is necessarily due to
anthropogenic fires (van Wees et al., 2022), but comparison of the GFED4 to GFED5 increase and WHAM! managed fire
outputs offers a high-level assessment of their plausibility.

405 Furthermore, evaluation of the sub-models for managed and unmanaged fire and fire suppression was conducted in three
ways. Firstly, within-sample performance of managed and unmanaged fire parameterisations is assessed using r^2 for
regression and AUC (area under the received operated curve) for classification. Secondly, these parameterisations are
compared against out-of-sample (unseen) DAFI data. These are available due to the fragmented nature of data on human-fire
interactions. For example, if the dependent variable of a fire use parameterisation was the percentage of a landcover burned,
410 then data from DAFI case studies reporting fire return interval (but not % burned area) could be used as unseen evaluation
data. Thirdly, the temporal trend in WHAM! outputs was evaluated by comparison with the qualitative evaluation of
temporal trend in the livelihood fire database (LIFE; Smith et al., 2022). LIFE provides assessments of whether 'subsistence-
oriented' and 'market-oriented' fire use were declining, stable or increasing in the human-fire use literature. The details and
outcomes of these evaluation steps using DAFI and LIFE case study data are reported in Supplement C.

3. Results

3.1 Model evaluation

Burned area from WHAM! managed fire has a coherent relationship with the difference between GFED5 and GFED4 outputs. From 2001-2014 (the overlapping period of WHAM! and the MODIS-era of GFED), the mean difference between GFED5 and GFED4 is 459.4 Mha, compared to burned area in WHAM! of 428.9 Mha (Figure 3). Pearson's correlation coefficient between WHAM! and GFED4-GFED5 difference ($r = 0.70$) is greater than the mean of the model ensemble in the first FireMIP ($r = 0.65$; Teckentrup et al., 2019) indicative of good performance for a first-in-class model. As noted above, comparison of WHAM! to the GFED5 to GFED4 difference is not a direct comparison of managed fire but is provided as an initial assessment of WHAM! output plausibility.

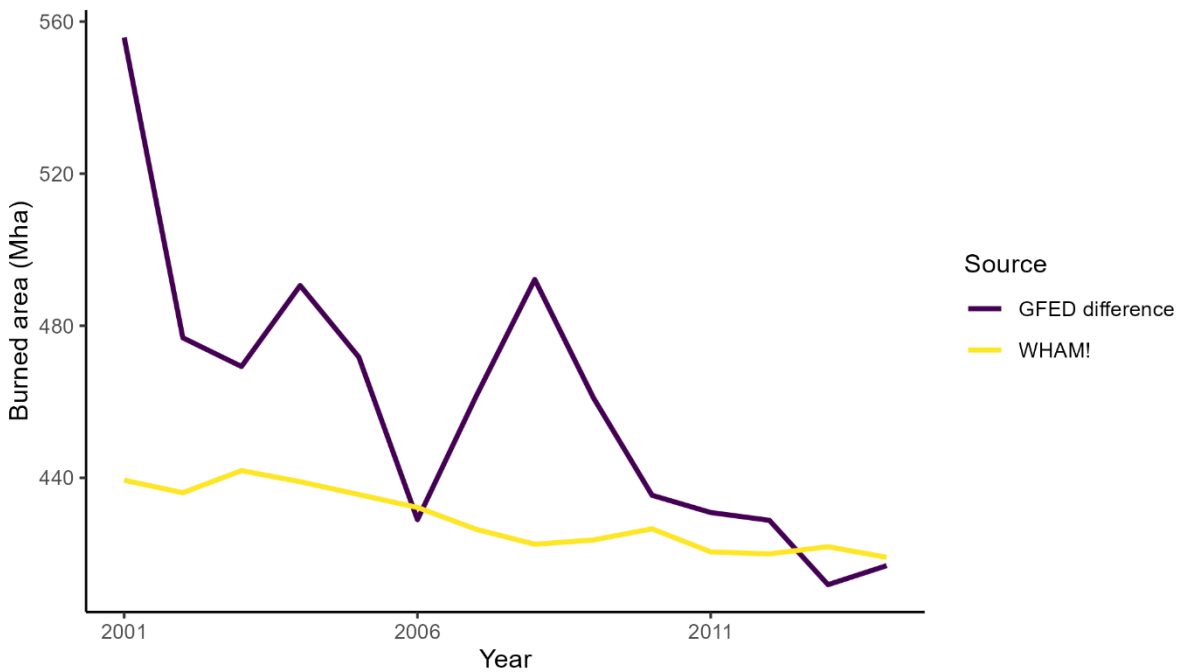


Figure 3. Total WHAM! managed fire compared against the difference in burned area in GFED5 & GFED4. Whilst the increase in burned area detected by GFED5 over that detected in GFED4 is primarily due improved detection of small-fires, not all of these will be managed anthropogenic fires. As such, this comparison is offered not as a like-for-like evaluation, but to establish the broad plausibility of WHAM! outputs.

WHAM! outputs for crop residue burning are in broad agreement with GFED5 crop fires (Figure 4). Correlation (Pearson's r) is 0.673 for burned area per pixel, and 0.665 for rate of cropland burned per pixel. WHAM! crop residue outputs project more burning than GFED5, with an annual mean of 129.2Mha over the overlapping period (2001-2014) compared to 87.6Mha for GFED5. The main continent driving disagreement is Asia: 67.8Mha in WHAM! compared to 31.2Mha in GFED5 (Figure 5).

WHAM! and GFED5 disagree on the trend of global crop fires, with WHAM! projecting a global increase and GFED5 suggesting a decrease (Figure 5). At the continental-scale, WHAM! and GFED5 agree on the trends in Europe and North America (decreasing). However, WHAM! projects gains in Asia (GFED decreasing), as well as increases in Africa (GFED decreasing). It is notable that WHAM! exhibits contrasting trends between crop residue fires and other managed fires. For example, in South America and Asia, WHAM! residue fires and other managed fires are negatively correlated ($r = -0.91, -0.74$ respectively), whilst GFED5 outputs for crop fires and the overall regime are positively correlated in all cases.

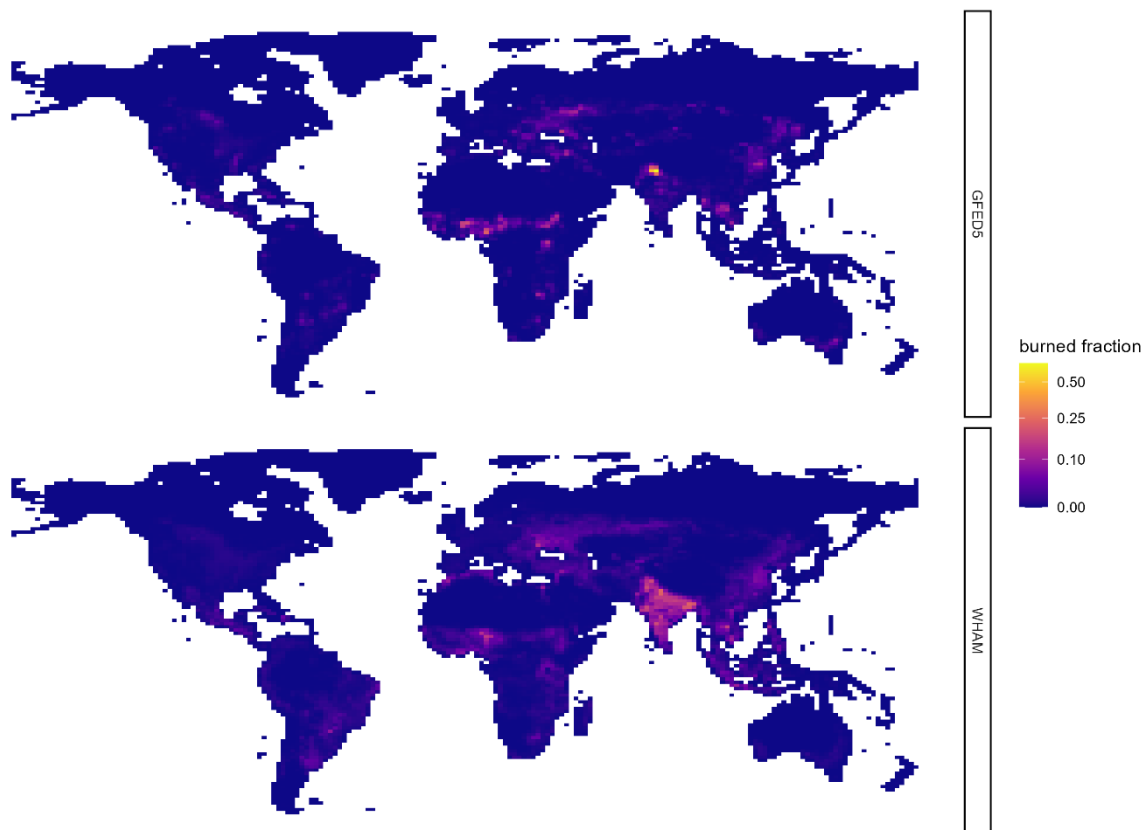


Figure 4: Comparison of WHAM! crop residue burning outputs and GFED5 crop fire outputs in 2014. Whilst overall coherence is good, disagreements are most evident in Northern India.

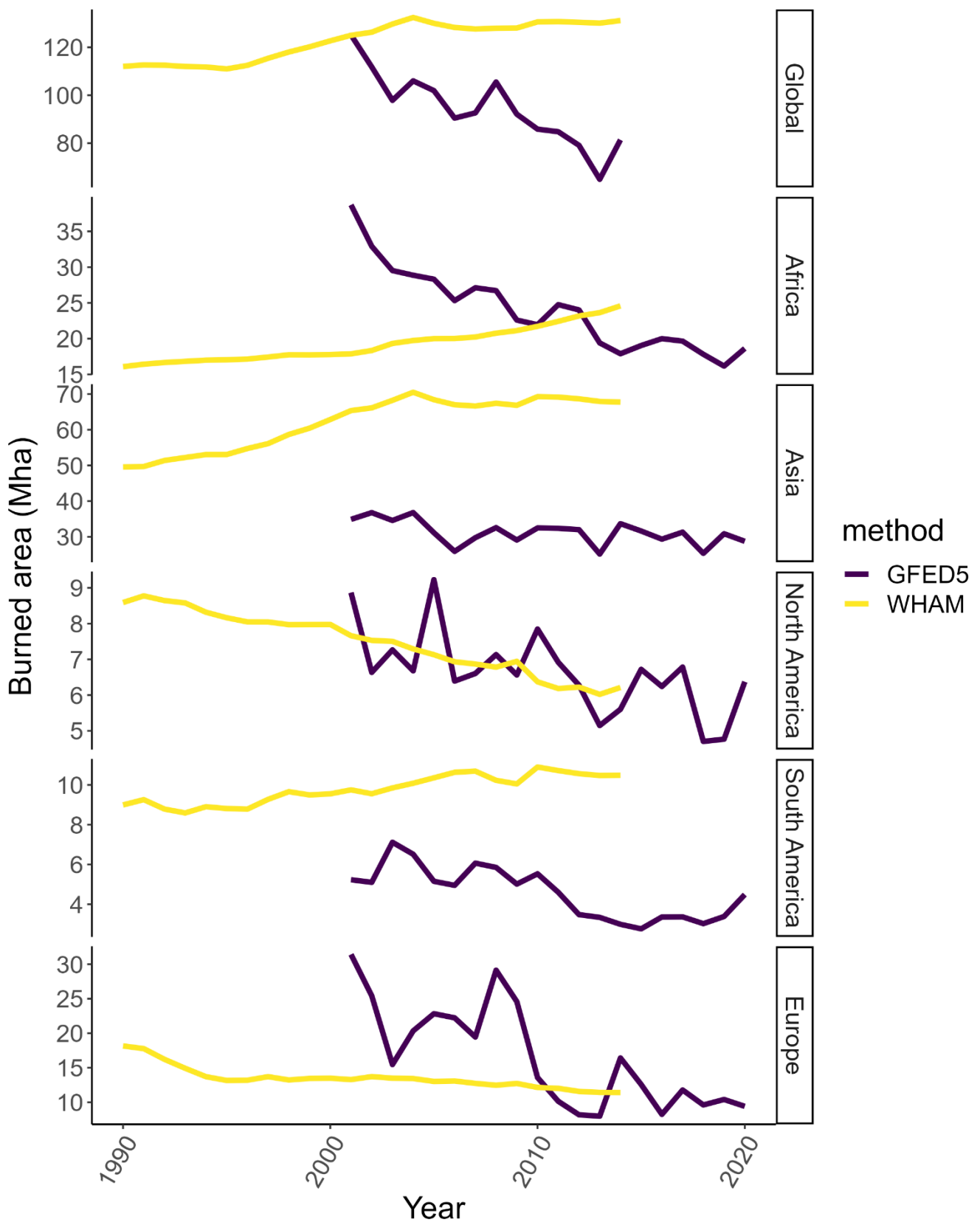


Figure 5: Continent-scale trends in burned area for WHAM! crop residue fires and GFED5 crop fires. The biggest area of disagreement in burned area is in Asia. Conversely, whilst in Africa burned area is similar, WHAM! & GFED5 show opposite temporal trends. Note the differing y-axis values.

3.2 Analysis of model outputs

3.2.1 Managed fire

Over the study period of 1990-2014, modelled burned area from managed anthropogenic fires decreases from 431.9 to 419.1 Mha. In percentage terms, this equates to a 3% decline. There is substantial heterogeneity in the trend amongst fire use types. The overall modelled decline in burned area is primarily due to a decrease in fire for pasture management, which declines 20.1% from 192.04 Mha to 153.7 Mha over 1990-2014 (Figure 6). This is complemented by declines in shifting cultivation (crop field preparation) fire (31.5 Mha to 26.9 Mha) and hunter gatherer fire (23.2 Mha to 19.4 Mha). By contrast, crop residue burning increases by 17.0% from 112.0 Mha to 131.1 Mha and pyrome management fire use increases by 15.7% from 69.5 Mha to 80.4 Mha. In absolute terms, vegetation clearance fires burn the smallest area (3.4-9.1 Mha), but in relative terms, their increase is much the largest (217%), highlighting this growing environmental challenge.

Beneath the global trends in managed fire, there is also substantial spatial heterogeneity (Figure 7). At the continental scale, the decline in pasture management fire dominates in South America, declining from 55.31 Mha in 1990 to 25.15 Mha in 2014, leading to a decline in overall managed fire from 102.14 Mha to 71.12 Mha (Figure 8). By contrast, in Africa pasture fire *increases* by 6.51 Mha, whilst in Asia a decrease in pasture fire of 9.83 Mha is more than offset by a steep increase in crop residue burning of 18.17 Mha.

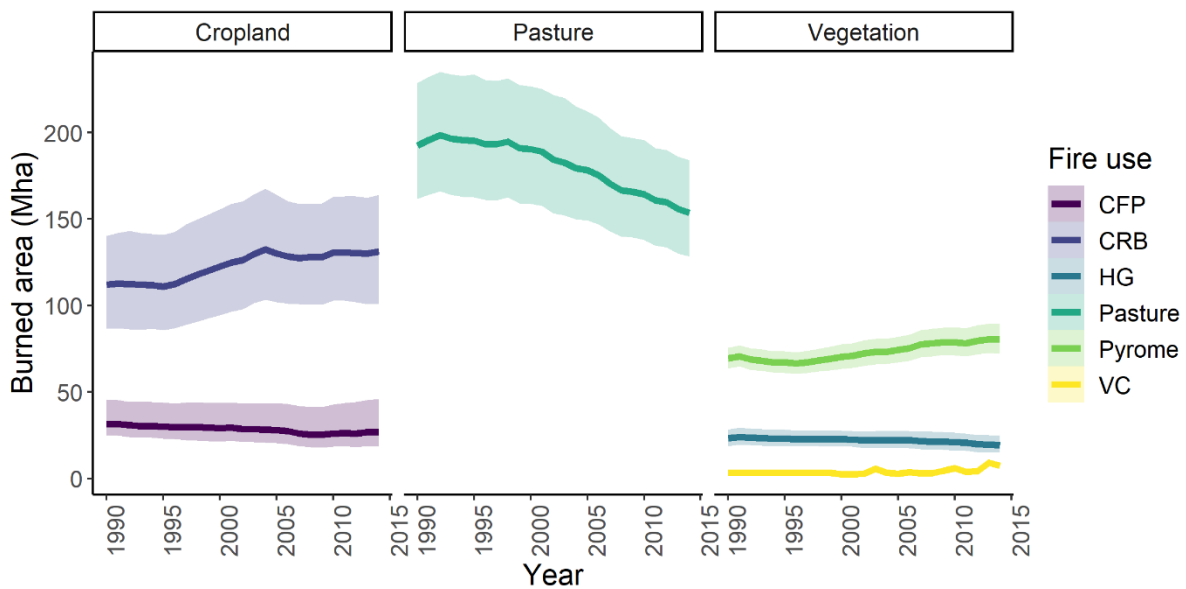
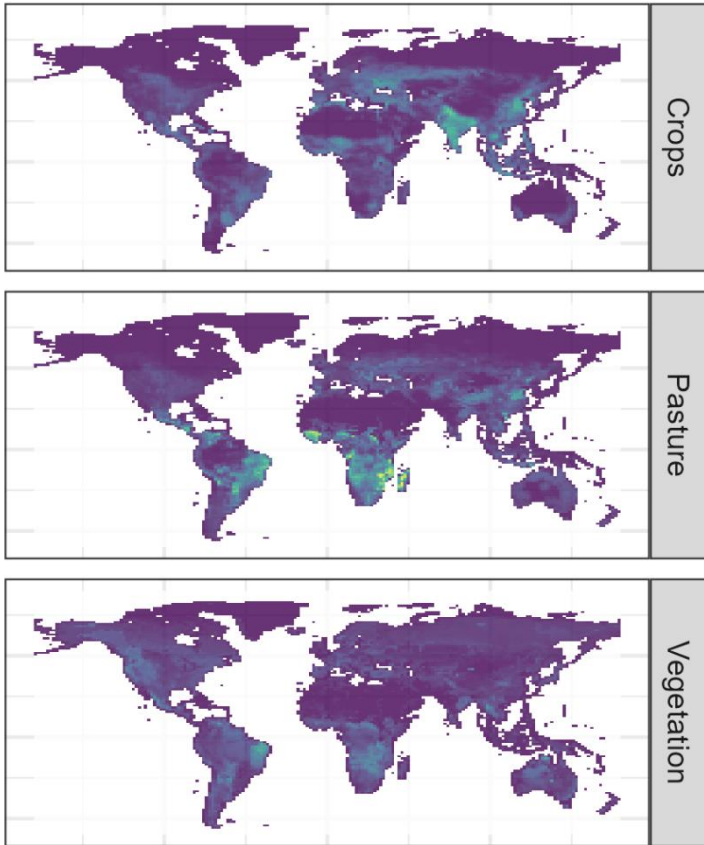


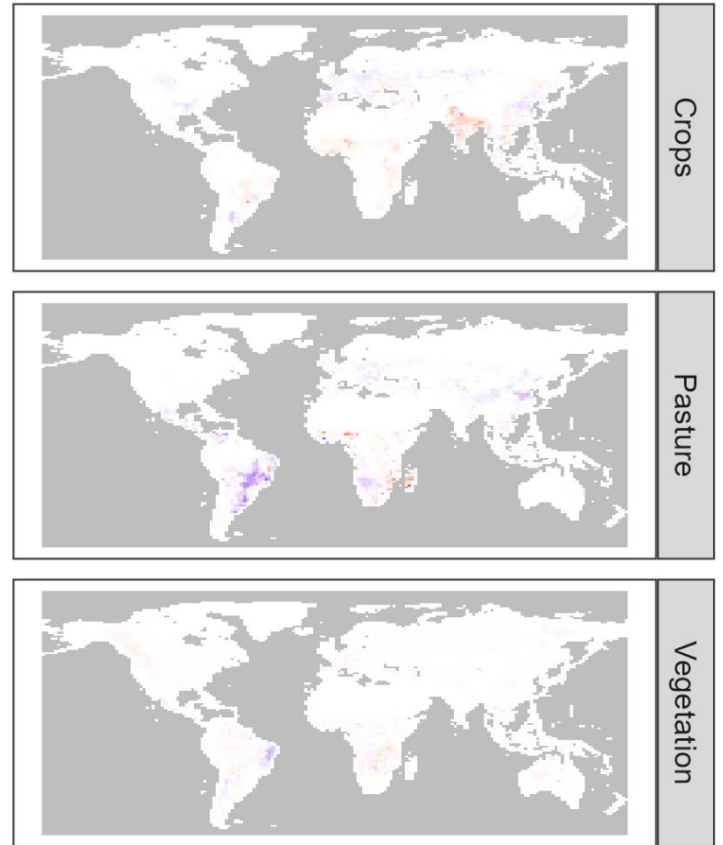
Figure 6: Temporal trends in managed fire. Lines show the global mean, shading the 5th and 95th percentiles of the outputs from WHAM! parameters' numerical distributions. Overall, pasture fire accounts for both the largest amount of fire and the largest absolute decline. In cropland systems, shifting cultivation fire and residue burning exhibit opposite trends. Whilst vegetation clearance fire is small in absolute terms, it shows the largest relative increase over the model period. Key: CFP = Crop field preparation, CRB = Crop residue burning, HG = Hunter gatherer, Pasture = Pasture management, Pyrome = Pyrome management, VC = Vegetation clearance.

480


A)



B)



Mean burned fraction 
0.0 0.1 0.2 0.3

Change in BA frac 
-0.2 -0.1 0.0 0.1 0.2

485

Figure 7: Global model outputs for managed fire grouped by land cover. A) Mean values across 1990-2014 & B) change in burned area fraction between 1990 & 2014. Forestry and non-extractive fire use types are grouped together as this will be how they are interpreted by JULES-INFERNNO. Maps highlight the decline in pasture fires in South America. Conversely, pasture fire increases in Sub-Saharan Africa. Crop fires increase in Northern India, South Asia and modestly in South America, but decline elsewhere. Vegetation fires cover those for hunting and gathering, pyrome management and vegetation clearance.

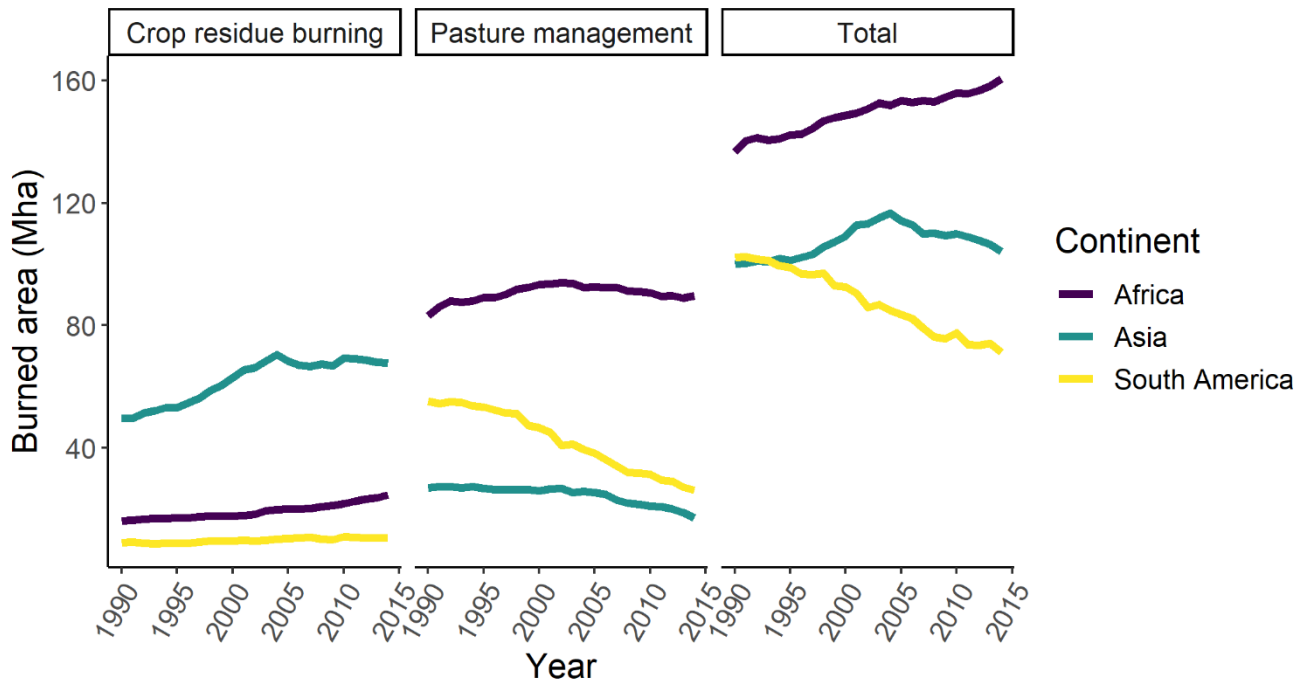


Figure 8: Managed fire burned area for the two dominant modes of managed fire & total managed fire for the three continents with largest burned area from managed fire. Whilst the global declining trend in pasture management fire is dominant in South America, in Africa pasture and crop residue fires contribute to an overall slight increase. Similarly, in Asia a decline in pasture fire is offset by a marked increase in crop residue fires.

3.2.2 Unmanaged fire

Whilst burned area from managed fire modestly decreases by 3% globally, the picture from unmanaged fire is mixed. Arson and accidental anthropogenic fires both increase (Figure 9): the background rate of accidental fires increases 24.8% whilst the rate of arson increases 17.7%. By contrast, the number of escaped fires decreases (-8.6%), mirroring the decrease in burned area from managed fire. However, until WHAM! is coupled with a DGVM, it will not be possible to deduce if this has led to increase in burned area from unmanaged anthropogenic fire. This consideration is particularly important given the distribution of unmanaged fires is clustered in urbanised areas (Figure 9b), meaning that many of these ignitions will likely be extinguished through industrialised fire-fighting (Millington et al., 2022).

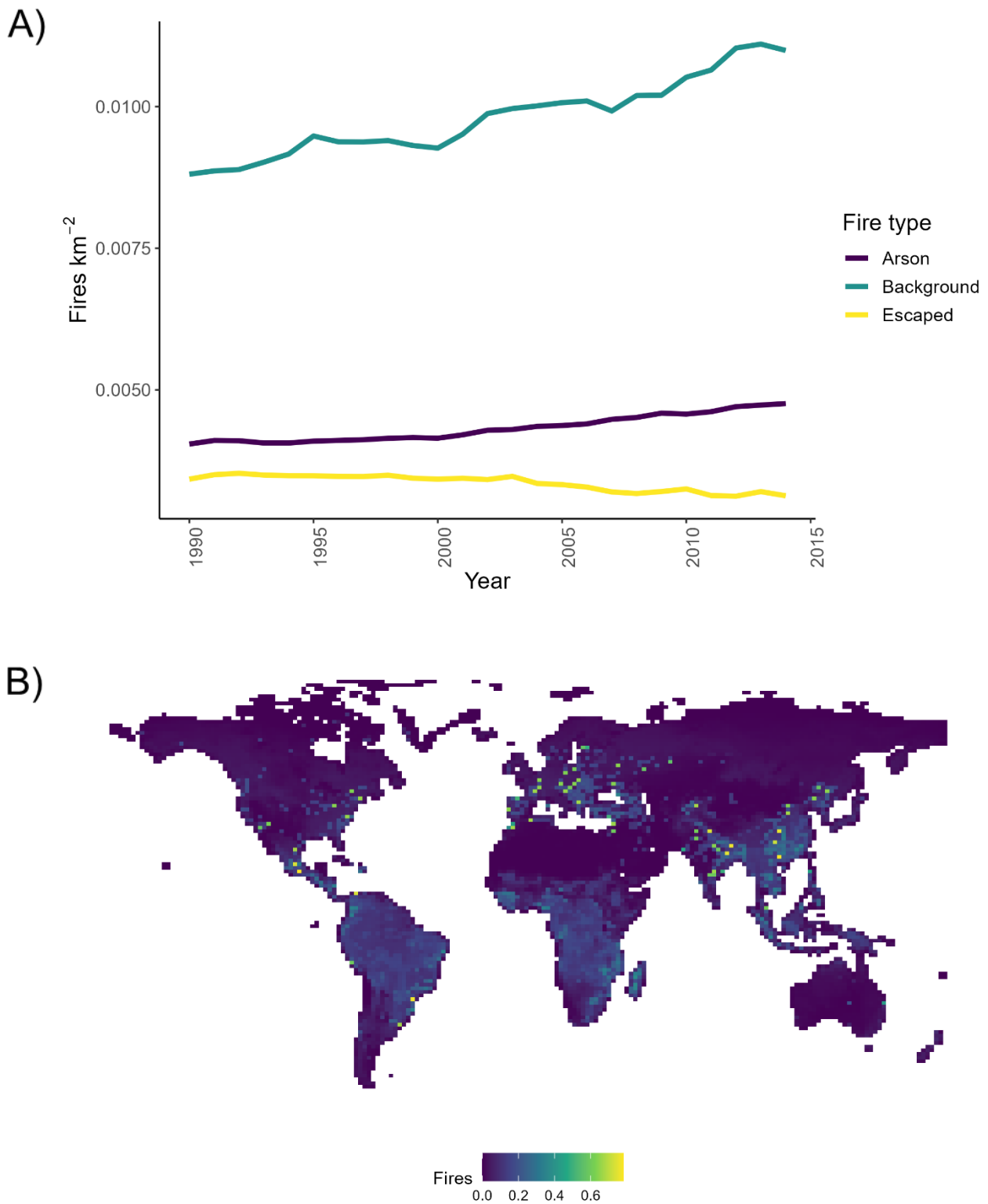
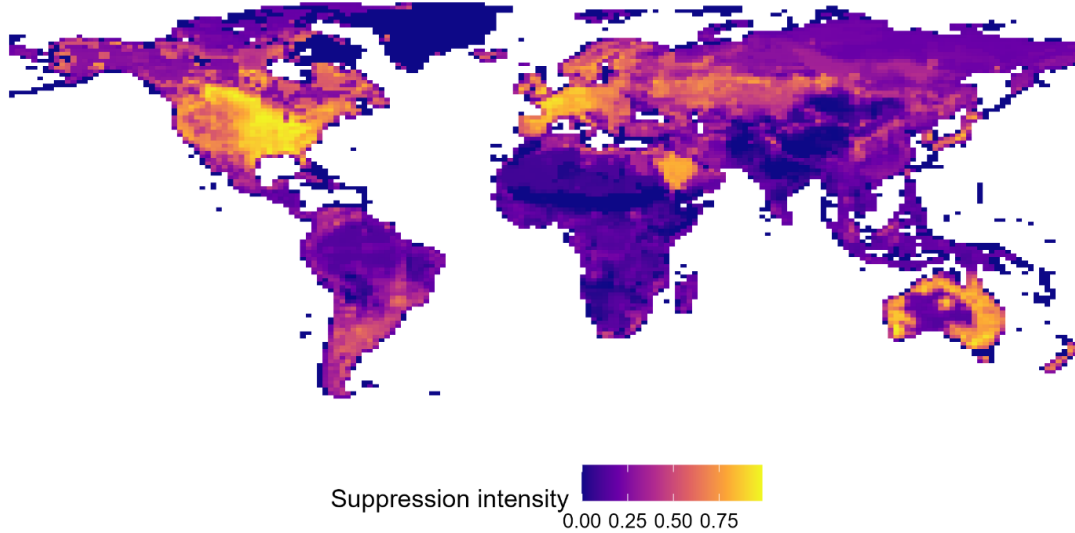


Figure 9: Unmanaged fire outputs as fires $\text{yr}^{-1} \text{km}^{-2}$: A) temporal change and B) spatial distribution in 2014. The rate of unmanaged fires increases over the modelled period. However, this increase is clustered towards Wildland-Urban Interface areas at the periphery of cities, as measured by market access (visible as spatial anomalies in B), T and the impact of this pattern of numbers of unmanaged fires on burned area will only be clear after coupling with JULES-INFERN0.

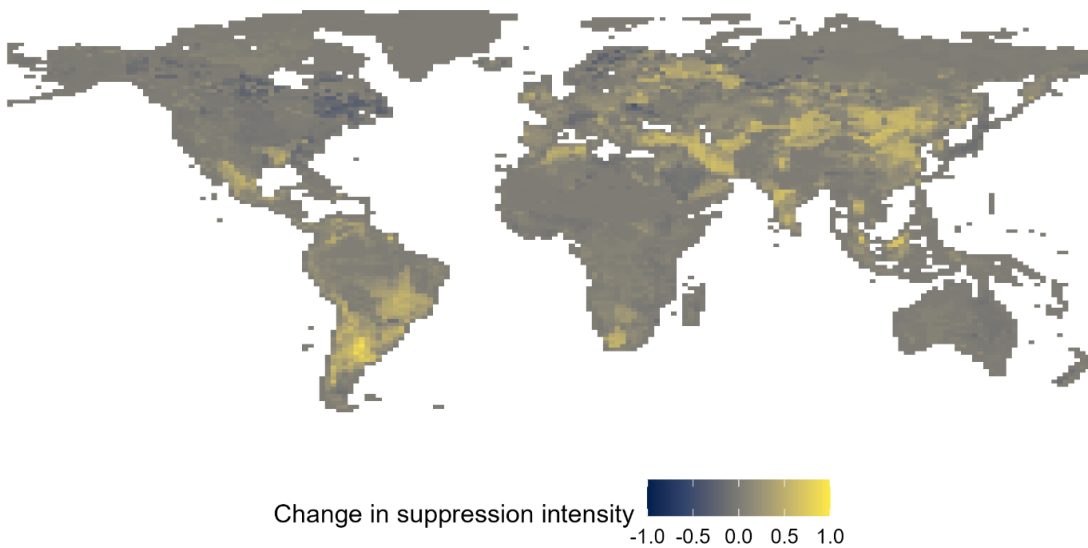
505

3.2.3 Fire suppression

510 Overall, modelled fire suppression increases from 1990-2014, particularly in South America, South and South-East Asia (Figure 10). As noted above, outputs here are a dimensionless suppression intensity (0-1). The form of the relationship of suppression intensity to reduction in the numbers of unmanaged fires will be determined through the planned coupling with JULES-INFERNO.



B)



515

Figure 10: Fire suppression intensity. A) Mean suppression intensity across 1990-2014, B) Change in suppression intensity between 1990-2014. Reductions in suppression intensity in Canada, Scandinavia and elsewhere, reflect land abandonment and rural depopulation.

520 3.3 Understanding model behaviour

Counterfactual experiments reveal divergent impacts between land cover change and changes in [socio-economic forcings](#). In the LC90 experiment, where land cover was held constant at 1990 levels, managed fire declines more starkly than in the baseline model run (431.94 to 388.74 Mha; Figure 11). By contrast, [LUSE90](#) (socio-economics held constant at 1990 levels) leads to an *increase* in overall managed fire from 431.94 to 472.10 Mha.

525

The effects of land cover and [socioeconomic forcings](#) ~~land use intensity~~ on human fire use have clear spatial patterns (Figure 11b). In [LUSE90](#), the increase in fire over the baseline scenario is most evident in South America, highlighting the importance of [socioeconomic development, and consequent](#) land use intensification in this continent as a driver of changing fire regimes ([Ribiero et al., 2024](#)). Similar increases over the baseline are present in North-eastern China and Mexico. By contrast, in Northern India, the ~~SELU90~~ counterfactual leads to decreased fire against the baseline, indicating land use intensification has led to increased fire use. This finding fits previous analyses of crop residue burning in the Indo-Gangetic Plain (Liu et al., 2019; Sembhi et al., 2020). The LC90 (constant land cover) counterfactual has more consistent global effects, with decreases in fire over the baseline observed in regions with large amounts of extensive livestock farming - particularly Madagascar, the Guinean Savana, and Southern Brazil.

530

535

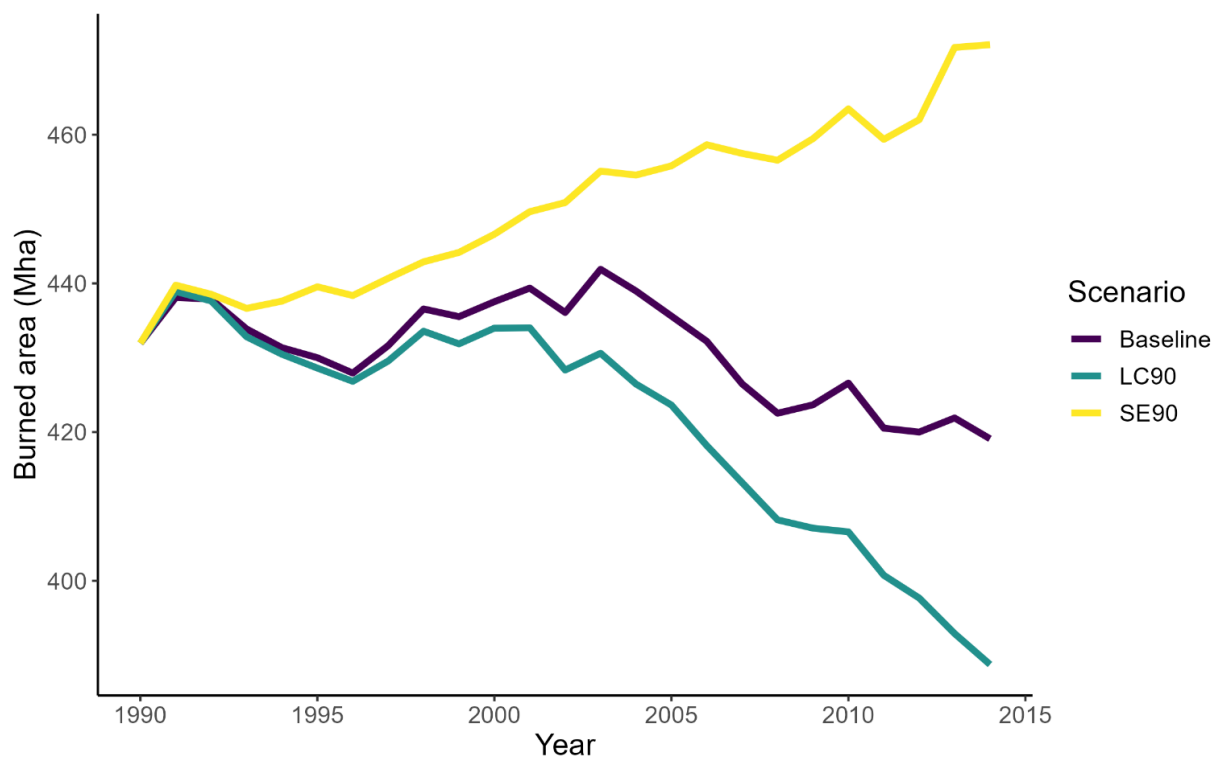
Divergent trends between land use and land cover change on human fire use point to similarly divergent socio-economic drivers across differing modes of fire use (Figure 12). For example, at global scale, population density seems to be associated with increased crop residue burning ($r = 0.420.31$). By contrast, population density has a more ambiguous effect on pasture management fires ($r = -0.050.07$), the distribution of which ~~has an overall negatively correlationed~~ with socio-economic development (as measured by the HDI; $r = -0.3147$). [However, in lower HDI regions \(<0.65; Figure 12b\), increasing HDI seems to be associated with increased pasture management fire.](#)

540

Similarly, across the three continents with the highest rates of agricultural fire – Africa, Asia, and South America – increased HDI consistently leads to decreased fire use for pasture management (Figure 12b). However, in these three continents, increased HDI can lead to either increased *or* decreased fire use for crop residue burning: at a mean HDI of ~ 0.76 such fire use increases substantially in Asia but decreases in South America. Possible process-based explanations of this trend are offered in the discussion (Section 4.1).

545

A)



B)

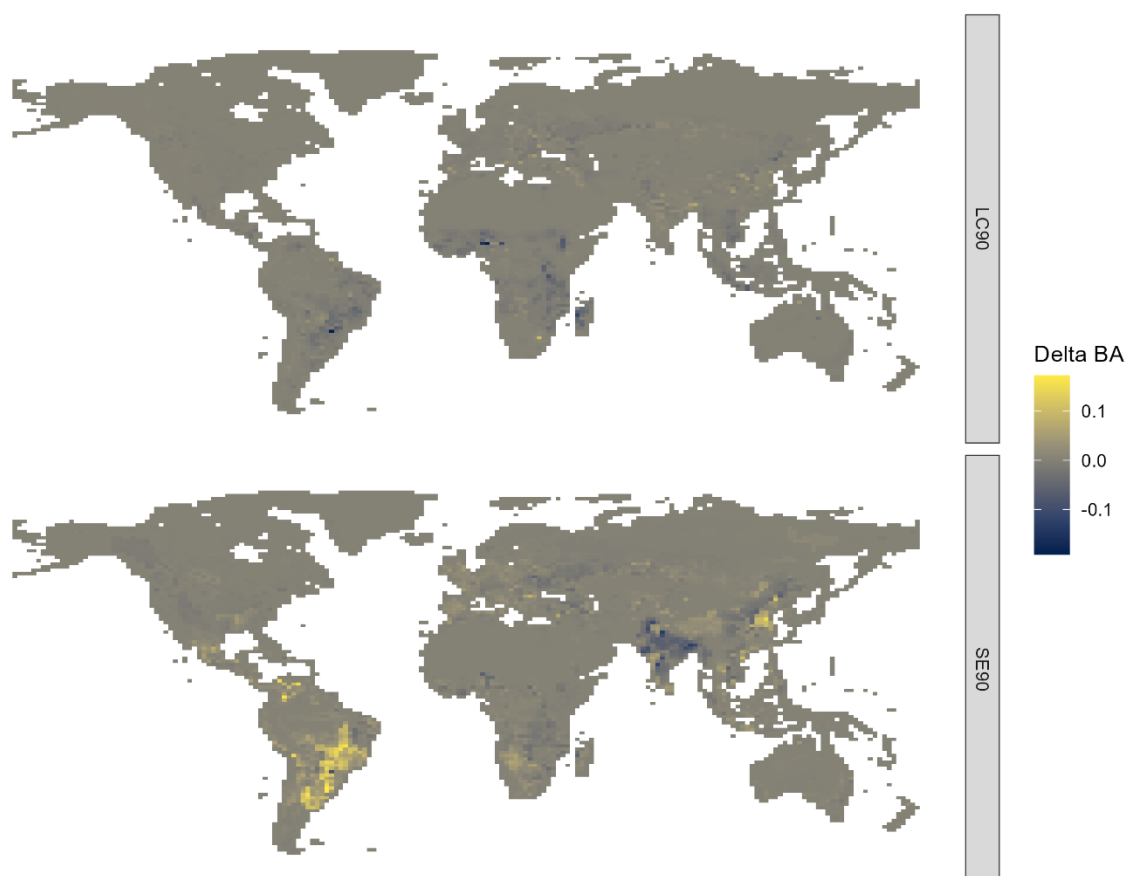
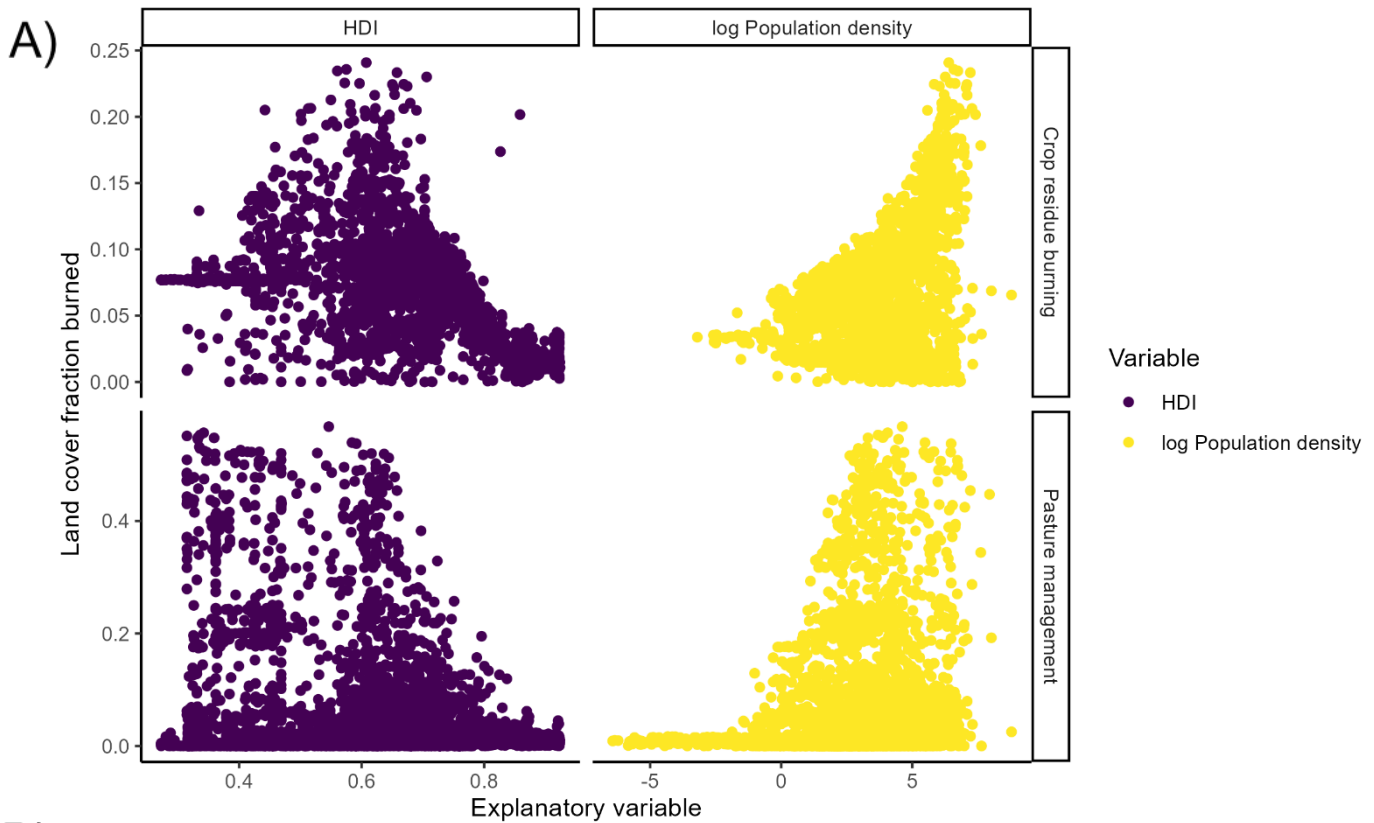


Figure 11: Global burned area from managed fire under counterfactual scenarios. A) global trends 1990-2014; B) Difference in burned area between counterfactual and baseline scenario in 2014. Key: LC90 – land cover held constant at 1990 levels; SE90 – socio-economic forcing held constant at 1990 levels.



555 B)

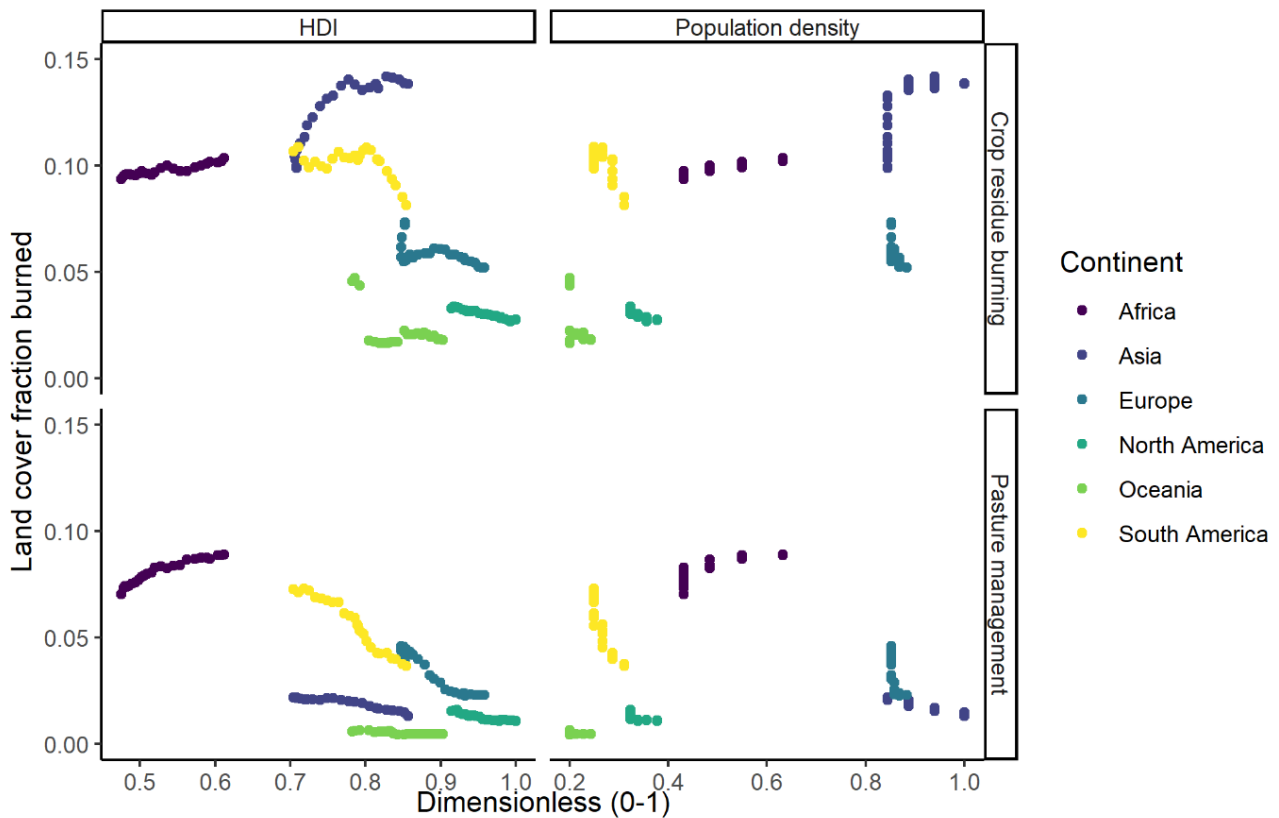


Figure 12: Drivers of managed burned area for the two modes of anthropogenic fire use with largest global burned area: A) mean values across 1990-2014 by pixel, and B) by-continental mean for each model year. Population density marginally increases the rate of crop residue burning but has an unclear impact on pasture management. Similarly, the human development index (HDI) has a complex relationship with fire use: increasing HDI seems to have is associated with increased pasture management fire in Africa, but increasing HDI elsewhere is associated with leads to declining pasture fire. The relationship between HDI and crop residue burning is also complex, with associations in both directions. seemingly able to increase or decrease burning.

560

4. Discussion

We have presented WHAM!, the first global behavioural land system model of human fire. The ultimate intention is to couple WHAM! with the JULES-INFERNO DGVM. Here, WHAM! has been presented in standalone form. Therefore, the discussion focuses on managed fire, which can be independently evaluated without input from JULES-INFERNO.

4.1 WHAM! outputs

WHAM! outputs suggest burned area from managed anthropogenic fire declined by 12.8Mha from 1990 to 2014. This is driven by decreased fire use for pasture management particularly in South America (Figure 8), and complemented by declines in crop field preparation (shifting cultivation) and hunting and gathering fire. By contrast, fires for crop residue disposal increased by 19.1Mha. These divergent trends broadly align with Smith et al., (2022), whose global meta-analysis found that ‘subsistence-oriented’ fire uses are declining, whilst ‘market-oriented’ fire uses are increasing (Supplement C). Globally, empirical data shows cropland fire uses produce the smallest anthropogenic fires (mean = 3.9ha; Millington et al., 2022). Therefore, outputs from WHAM! are also consistent with initial results from the Global Fire Emissions Database version 5 (GFED5), which suggest smaller fires – which are principally anthropogenic – have declined less than larger ones (Chen et al., 2023). Taken together, these recent advances spanning literature meta-analysis, remote sensing - and now modelling - suggest changes in anthropogenic fire use are contributing to the observed global decline in burned area, but perhaps at a lesser rate than changes in burned area from unmanaged wildfires (Andela et al., 2017).

Counterfactual experiments and analysis of the drivers of pasture management fire in WHAM! demonstrate that the modelled decline in pasture fire is primarily due to economic development and associated land use intensification (Figure 11). This finding matches real-world observations. For example, the rapid pace of land use intensification in South America was documented by Silva et al., (2017), who attribute changes to the ‘telecoupled’ system of soybean production in response to increased demand for meat. Furthermore, this process of declining fire under increased land use intensity was explored in the field experiments of Cammelli et al., (2020), who find that increased capital investment discourages fire use as a management strategy because fire increasingly becomes a risk to machinery, irrigation, and other capital investments.

By contrast, the relationship between increasing societal development (represented by the Human Development Index) and crop residue burning is more ambiguous (Figure 12). In Africa (HDI: 0.45-0.65), increased HDI seems to increase crop residue burning, consistent with land use intensification driving this practice. However, at intermediate (0.6-0.85) levels of HDI, increased development can have divergent impacts on residue burning, notably between Asia and South America. It is possible that farm size, and therefore the production system, plays a role here: large soybean farmers in South America engaged in formal, legalised supply chains are somewhat likely to comply with anti-burning as well as general fire management legislation (Soares-Filho et al., 2014; Villoria et al., 2022). By contrast, in Asia, and the Indo-Gangetic Plain in particular, high rural population density and small average farm size entails that production is dominated by small-holder farms with associated informal supply chains (Birthal et al., 2017), making environmental enforcement more challenging (Bhuvaneshwari et al., 2019; Liverpool-Tasie et al., 2020). In WHAM!, this difference is seemingly captured through the impact of population density, which features in the classification tree for the small-holder land fire system (Perkins et al., 2022).

600

WHAM! suggests human fire use can either increase or decrease with increasing population, in ways that are highly heterogeneous and specific to the rationale of the underlying land system and associated modes of fire use (Figure 12). At global scale, crop residue burning slightly increases with population density, but there is a weak negative relationship with pasture fire. Taken together, these complexities illustrate the shortcomings of relying on a single function of population density to capture the full spectrum of human-fire interactions globally (Teckentrup et al., 2019) and the benefit of taking a categorical approach to developing functions for representing human activity.

Therefore, whilst WHAM! is, at root, a relatively simple empirical model, it captures complex dynamics amongst the drivers and spatiotemporal distribution of human-fire interactions. This is further highlighted by the use of anthropogenic fire regimes (AFRs) to capture emergent or landscape-level effects. For example, arson fires become 17.7% more frequent over the period 1990-2014, driven by WHAM!'s representation of land tenure conflict through the transitional AFR. By contrast, the number of escaped managed fires declines (-8.6%). Using the AFRs as predictor variables in parameterisations of arson and fire control behaviours (which have an important influence on escaped fire) results in high predictive accuracy (AUC \geq 0.8; Supplement C). As such, we can conclude that use of the AFRs allows differing trends in sources of unmanaged fires to be identified (Figure 9), further highlighting the shortcoming of relating to anthropogenic fire directly to population density without considering the global diversity of human-fire interactions.

615

4.2 WHAM! evaluation and limitations

Comparison with GFED5 cropland fires suggests WHAM! credibly reproduces global patterns of crop burning. However, there are some disagreements between WHAM! and GFED5 crop fires, notably in terms of the spatial distribution of such fires in India, and the temporal trend in sub-Saharan Africa. Evaluating the distribution of the land-fire systems in WHAM!, Perkins et al., (2022) find that the crop fire hotspots in Northern India and in North Eastern China were also spots of disagreement between WHAM!'s distribution of land fire systems and the human appropriation of net primary production – an independent measure of land use intensity (Haberl et al., 2007). As such, this difference may point to underlying difficulties in representing land use transitions through a single transitional fire regime type per land system, when in reality multiple trajectories of intensification (and de-intensification) can occur, even within apparently similar land system types (Lambin and Meyfroidt, 2010; van der Sluis et al., 2016).

However, it is important to note that the GFED5 cropland product is the first of its kind - and *is itself a model* relying on empirical scaling factors to infer burned area per active fire detection in cropland areas (Hall et al., 2023). These scaling factors for rice burning were developed from fieldwork in Ukraine (Hall et al., 2021), where the mean field size of 40ha is much larger than the smallholder fields in Northern India (~1ha). Hence, a single active fire detection in Northern India could very possibly equate to more real world burned area than in Ukraine, indeed as is suggested by the work of Deshpande et al., (2022). Increased spatial coverage of ground-truthed, landscape-level remote sensing work of cropland burning is needed to advance understanding further.

As with any empirical model, WHAM! is inherently limited by the strengths and weaknesses of its underlying data. There were three central ways in which such uncertainties in the Database of Anthropogenic Fire Impacts (DAFI, against which WHAM! was parameterised) came through in model outputs, which are discussed in turn below. The first of these was in the parameterisation of fire use in nomadic land use systems, particularly shifting cultivation and pastoralism. The mediocre performance of the underlying models is indicative of the difficulty of quantifying fire regimes produced by such land use systems (AUC = 0.623, $r^2 = 0.07$). For example, shifting cultivation is challenging to study with remote sensing, not only as it is semi-nomadic, but also due to the complex spectral signals produced (Jiang et al., 2022), which make differentiating between fields and early-successional regrowth a substantial challenge (Heinimann et al., 2017). As a result, the fallow period was typically used from field studies as a proxy for fire return period. This involved assumptions about the duration of cultivation after fallow; here assumed to be two years – yet this can vary from 1-5 years (e.g. Maharani et al., 2019). Pastoralism is also challenging to study with remote sensing, due to the difficulty of tracking pastoralists' location across the large areas over which they may migrate seasonally (Nelson et al., 2020). However, it should be noted that these fire uses represent a small amount of global burned area: burned area from shifting cultivation was 26.9Mha, whilst migratory pastoralist fire accounted for just 18.4Mha of burned area in 2014.

655 Secondly, more structural sampling biases within DAFI led to the need for top-down constraints being applied to the bottom-up parameterisation of fire uses. These arose firstly as DAFI did not sample very arid environments (the vegetation constraint); and secondly, because DAFI under-sampled more developed contexts (Perkins et al., 2022). However, sensitivity analysis demonstrated that WHAM! is not overly sensitive to the resulting free parameters – with burned area outputs
660 varying by a maximum of $\pm 4.4\%$ (Supplement D). Furthermore, the most sensitive parameter was not for a top-down constraint, but the ‘theta’ parameter, which sets the threshold at which a given AFR’s competitiveness score was set to 0 (Supplement D). This is somewhat analogous to the ‘giving-in’ parameter in the CRAFTY land system model, which determines when a land use type becomes uncompetitive (Murray-Rust et al., 2014). CRAFTY is highly sensitive to this parameter (Seo et al., 2018), which is an uncertain function of agent behaviour. This seems a strength of the empirical approach taken here, as it appears less reliant on uncertain abstraction.

A third fundamental issue arises from the coarse spatial resolution of WHAM! and how that relates to the data available for parameterisation. Specifically, due to the intended coupling with JULES-INFERNNO, the spatial resolution of WHAM! and DAFI case study data are substantially different: the median WHAM! cell is seven times larger than the median DAFI case
665 study (24,684 vs 3,508 km²). However, this is likely a large underestimate of the true discrepancy. Only 30% of case studies in DAFI reporting pre-industrial AFRs quantified their study area, compared with 82% of industrial AFR case studies (Perkins and Millington 2021). The mean reported study area for industrial AFR case studies is 53 times larger than for the pre-industrial AFR. This trend is likely even more acute for LIFE (Smith et al. 2022), as it focuses on ‘livelihood fire’ –
670 which broadly corresponds to the pre-industrial and early transitional AFRs in WHAM!. However, case study area is not recorded in LIFE (Smith et al., 2022). The consequence of this disparity in spatial resolution is seen in the evaluation of model outputs against unseen case study data in DAFI and LIFE: WHAM! captures macro-scale trends, but in its first iteration does not fully capture more detailed trends at the case-study level (Supplement C).

In addition to data limitations, this first version of WHAM! has two main structural limitations. The first of these is a lack of
675 seasonality in human fire use. DAFI contains data on the months in which a given fire use practice was present. In principle this information could be extrapolated to create global seasonality maps for each of the managed fire use types. However, such an approach would require an account of how contrasting forms of seasonality (e.g. temperature-based, precipitation-based, or their combination) influence timing of fire use; complexity which is compounded by bimodal patterns of crop residue burning in double-cropping systems (Liu et al., 2019). Future work could explore how to account for such
680 complexities. The second structural limitation in WHAM! is a lack of explicit representation of policy. Representation of policy could, for example, replace the top down AFR constraint by explicitly capturing the impact of fire-averse and fire-exclusionary policies. DAFI also contains data on policy, which could in principle be used to parameterise representation of government ‘observer’ agents in each country. However, development of such functionality is an ongoing challenge within land system modelling (see discussion in Perkins et al., 2023), so will need to be addressed in future versions of WHAM!

This paper has presented WHAM!, the first global behavioural land system model of present-day human-fire interactions. WHAM! is designed to be coupled with dynamic global vegetation models – JULES-INFERNO in the first instance. As such, full evaluation of WHAM! will only be possible once this coupling is complete. However, here we demonstrate that independently, WHAM! is effective at capturing both spatial and temporal trends in Earth observation data of burned area.

690 Evaluation of WHAM! with GFED5 crop fires reveals strong spatial coherence, whilst WHAM! managed fire outputs project a decline in burned area between 1990-2014, driven by land use intensification and declining fire use for extensive livestock farming. Burned area from managed fire outputs in WHAM! is close to the difference in global Earth observation data with (GFED5) and without (GFED4) small fires, establishing the broad plausibility of model outputs.

695 Drivers of human fire use in WHAM! are divergent across differing fire use types and spatially heterogenous, pointing to the fundamental limitation of globally-uniform population-based approaches, which are widely used in existing global fire models. Additionally, use of landscape-level anthropogenic fire regimes proves an effective way to capture influences that emerge from interactions between land users: this includes fire suppression, the extent of control applied to managed fires, and arson. Overall, the diversity of human-fire interactions and their divergent spatiotemporal trends highlight a fundamental

700 need for consideration of the socio-ecological drivers of fire regimes in dynamic global vegetation models.

Code and data availability

All code and data to run WHAM! version 1.0 are made freely available online via Zenodo (Perkins et al., 2023a, 2023b). This includes an installation and user guide. For convenience, Github installation is also available at:

705 https://github.com/OliPerkins1987/Wildfire_Human_Agency_Model.

Author contribution

All authors contributed to model conceptualisation and methodological design from their contrasting disciplinary perspectives; OP wrote the software, whilst MK ensured model structure supported integration with JULES-INFERNO; OP

710 & CS were responsible for data curation. AV secured funding. JDAM provided project oversight and leadership. OP wrote the original draft, whilst all authors contributed to editing and revisions.

Competing interests

The authors declare that they have no conflict of interest.

715

Acknowledgements

The authors wish to thank Davide Lomeo and Toby Wainwright for their kind help with cross-platform compatibility testing, and wish to thank Calum Brown, Tamsin Edwards and Colin Prentice for their helpful comments and suggestions.

References

- 720 Andela, N., Morton, D. C., Giglio, L., Chen, Y., van der Werf, G. R., Kasibhatla, P. S., DeFries, R. S., Collatz, G. J., Hantson, S., Kloster, S., Bachelet, D., Forrest, M., Lasslop, G., Li, F., Mangeon, S., Melton, J. R., Yue, C., and Randerson, J. T.: A human-driven decline in global burned area, *Science*, 356, 1356–1362, <https://doi.org/10.1126/science.aal4108>, 2017.
- Andela, N., Morton, D. C., Giglio, L., Paugam, R., Chen, Y., Hantson, S., van der Werf, G. R., and Randerson, J. T.: The Global Fire Atlas of individual fire size, duration, speed and direction, *Earth System Science Data*, 11, 529–552, 725 <https://doi.org/10.5194/essd-11-529-2019>, 2019.
- Aragão, L. E. O. C., Malhi, Y., Barbier, N., Lima, A., Shimabukuro, Y., Anderson, L., and Saatchi, S.: Interactions between rainfall, deforestation and fires during recent years in the Brazilian Amazonia, *Philosophical Transactions of the Royal Society B: Biological Sciences*, 363, 1779–1785, <https://doi.org/10.1098/rstb.2007.0026>, 2008.
- Archibald, S.: Managing the human component of fire regimes: lessons from Africa, *Philosophical Transactions of the Royal Society B: Biological Sciences*, 371, 20150346, <https://doi.org/10.1098/rstb.2015.0346>, 2016. 730
- Arnell, A., Brown, C., and Rounsevell, M. D. A.: Global models of human decision-making for land-based mitigation and adaptation assessment, *Nature Clim Change*, 4, 550–557, <https://doi.org/10.1038/nclimate2250>, 2014.
- Bandara, S., Rajeev, P., and Gad, E.: Power Distribution System Faults and Wildfires: Mechanisms and Prevention, *Forests*, 14, 1146, <https://doi.org/10.3390/f14061146>, 2023.
- 735 Beaulaton, D.: Forêts sacrées et sanctuaires boisés. Des créations culturelles et biologiques (Burkina Faso, Togo, Bénin), 2010.
- Bendel, C., Toledo, D., Hovick, T., and McGranahan, D.: Using Behavioral Change Models to Understand Private Landowner Perceptions of Prescribed Fire in North Dakota, *rama*, 73, 194–200, <https://doi.org/10.1016/j.rama.2019.08.014>, 2020.
- 740 [Best, M., Pryor, M., Clark, D., Rooney, G., Essery, R., Menard, C., Edwards, J., Hendry, M., Porson, A., Gedney, N., Mercado, L., Sitch, S., Blyth, E., Boucher, O., Cox, P., Grimmond, C., & Harding, R.: The Joint UK Land Environment Simulator \(JULES\), model description – Part 1: Energy and water fluxes. *Geoscientific Model Development*, 4, 677-699, <https://doi.org/10.5194/gmd-4-677-2011>, 2011.](#)
- Bhuvaneshwari, S., Hettiarachchi, H., and Meegoda, J. N.: Crop Residue Burning in India: Policy Challenges and Potential Solutions, *International Journal of Environmental Research and Public Health*, 16, 832, 745 <https://doi.org/10.3390/ijerph16050832>, 2019.
- Bilbao, B., Mistry, J., Millán, A., and Berardi, A.: Sharing Multiple Perspectives on Burning: Towards a Participatory and Intercultural Fire Management Policy in Venezuela, Brazil, and Guyana, *Fire*, 2, 39, <https://doi.org/10.3390/fire2030039>, 2019.

- 750 BIRTHAL, P. S., CHAND, R., JOSHI, P. K., SAXENA, R., RAJKHOWA, P., KHAN, MD. T., KHAN, MOHD. A., and CHAUDHARY, K. R.: Formal versus informal: Efficiency, inclusiveness and financing of dairy value chains in Indian Punjab, *Journal of Rural Studies*, 54, 288–303, <https://doi.org/10.1016/j.jrurstud.2017.06.009>, 2017.
- Brennan, T. J. and Keeley, J. E.: Impacts of Mastication Fuel Treatments on California, USA, Chaparral Vegetation Structure and Composition, *fire ecol*, 13, 120–138, <https://doi.org/10.4996/fireecology.130312013>, 2017.
- 755 BURTON, C., BETTS, R., CARDOSO, M., FELDPAUSCH, T. R., HARPER, A., JONES, C. D., KELLEY, D. I., ROBERTSON, E., and WILTSHIRE, A.: Representation of fire, land-use change and vegetation dynamics in the Joint UK Land Environment Simulator vn4.9 (JULES), *Geoscientific Model Development*, 12, 179–193, <https://doi.org/10.5194/gmd-12-179-2019>, 2019.
- Cammelli, F., Garrett, R. D., Barlow, J., and Parry, L.: Fire risk perpetuates poverty and fire use among Amazonian smallholders, *Global Environmental Change*, 63, 102096, <https://doi.org/10.1016/j.gloenvcha.2020.102096>, 2020.
- 760 CANO-CRESPO, A., OLIVEIRA, P. J. C., BOIT, A., CARDOSO, M., and THONICKE, K.: Forest edge burning in the Brazilian Amazon promoted by escaping fires from managed pastures, *Journal of Geophysical Research: Biogeosciences*, 120, 2095–2107, <https://doi.org/10.1002/2015JG002914>, 2015.
- Chen, Y., Hall, J., van Wees, D., Andela, N., Hantson, S., Giglio, L., van der Werf, G. R., Morton, D. C., and Randerson, J. T.: Multi-decadal trends and variability in burned area from the 5th version of the Global Fire Emissions Database (GFED5),
- 765 *Earth System Science Data Discussions*, 1–52, <https://doi.org/10.5194/essd-2023-182>, 2023.
- [CIESIN \(Center for International Earth Science Information Network\): Gridded Population of the World, Version 4.11 \(GPWv4\), NASA Socioeconomic Data and Applications Center \(SEDAC\), https://sedac.ciesin.columbia.edu/data/collection/gpw-v4, 2018.](https://sedac.ciesin.columbia.edu/data/collection/gpw-v4)
- [Clark, D.B., Mercado, L.M., Sitch, S., Jones, C.D., Gedney, N., Best, M.J., Pryor, M., Rooney, G.G., Essery, R.L.H., Blyth, E., Boucher, O., Harding, R.J., Huntingford, C., & Cox, P.M.: The Joint UK Land Environment Simulator \(JULES\), model description – Part 2: Carbon fluxes and vegetation dynamics, Geoscientific Model Development, 4, 701–722, https://doi.org/10.5194/gmd-4-701-2011, 2011.](https://doi.org/10.5194/gmd-4-701-2011)
- 770
- Cochrane, M. A. and Barber, C. P.: Climate change, human land use and future fires in the Amazon, *Global Change Biology*, 15, 601–612, <https://doi.org/10.1111/j.1365-2486.2008.01786.x>, 2009.
- 775 DESHPANDE, M. V., PILLAI, D., and JAIN, M.: Detecting and quantifying residue burning in smallholder systems: An integrated approach using Sentinel-2 data, *International Journal of Applied Earth Observation and Geoinformation*, 108, 102761, <https://doi.org/10.1016/j.jag.2022.102761>, 2022.
- Eloy, L., Hecht, S., Steward, A., and Mistry, J.: Firing up: Policy, politics and polemics under new and old burning regimes, *The Geographical Journal*, 185, 2–9, <https://doi.org/10.1111/geoj.12293>, 2019a.

- 780 Eloy, L., A. Bilbao, B., Mistry, J., and Schmidt, I. B.: From fire suppression to fire management: Advances and resistances to changes in fire policy in the savannas of Brazil and Venezuela, *The Geographical Journal*, 185, 10–22, <https://doi.org/10.1111/geoj.12245>, 2019b.
- Fernandes, P. M., Pacheco, A. P., Almeida, R., and Claro, J.: The role of fire-suppression force in limiting the spread of extremely large forest fires in Portugal, *Eur J Forest Res*, 135, 253–262, <https://doi.org/10.1007/s10342-015-0933-8>, 2016.
- 785 Foramitti, J.: AgentPy: A package for agent-based modeling in Python, *Journal of Open Source Software*, 6, 3065, <https://doi.org/10.21105/joss.03065>, 2021.
- Ford, A. E., Harrison, S. P., Kountouris, Y., Millington, J. D., Mistry, J., Perkins, O., Rabin, S. S., Rein, G., Schreckenber, K., and Smith, C.: Modelling human-fire interactions: combining alternative perspectives and approaches, *Frontiers in Environmental Science*, 9, 649835, 2021.
- 790 Forkel, M., Andela, N., Harrison, S. P., Lasslop, G., van Marle, M., Chuvieco, E., Dorigo, W., Forrest, M., Hantson, S., Heil, A., Li, F., Melton, J., Sitch, S., Yue, C., and Arneeth, A.: Emergent relationships with respect to burned area in global satellite observations and fire-enabled vegetation models, *Biogeosciences*, 16, 57–76, <https://doi.org/10.5194/bg-16-57-2019>, 2019.
- Gaveau, D. L. A., Descals, A., Salim, M. A., Sheil, D., and Sloan, S.: Refined burned-area mapping protocol using Sentinel-2 data increases estimate of 2019 Indonesian burning, *Earth System Science Data*, 13, 5353–5368, 795 <https://doi.org/10.5194/essd-13-5353-2021>, 2021.
- Giglio, L., Randerson, J. T., and van der Werf, G. R.: Analysis of daily, monthly, and annual burned area using the fourth-generation global fire emissions database (GFED4), *Journal of Geophysical Research: Biogeosciences*, 118, 317–328, <https://doi.org/10.1002/jgrg.20042>, 2013.
- Gil-Romera, G., Turton, D., and Sevilla-Callejo, M.: Landscape change in the lower Omo valley, southwestern Ethiopia: 800 burning patterns and woody encroachment in the savanna, *Journal of Eastern African Studies*, 5, 108–128, <https://doi.org/10.1080/17531055.2011.544550>, 2011.
- Haas, O., Prentice, I. C., and Harrison, S. P.: Global environmental controls on wildfire burnt area, size, and intensity, *Environ. Res. Lett.*, 17, 065004, <https://doi.org/10.1088/1748-9326/ac6a69>, 2022.
- Haberl, H., Erb, K. H., Krausmann, F., Gaube, V., Bondeau, A., Plutzer, C., Gingrich, S., Lucht, W., and Fischer-Kowalski, 805 M.: Quantifying and mapping the human appropriation of net primary production in earth's terrestrial ecosystems, *Proceedings of the National Academy of Sciences*, 104, 12942–12947, <https://doi.org/10.1073/pnas.0704243104>, 2007.
- Hall, J., Argueta, F., Zubkova, M., Chen, Y., Randerson, J., and Giglio, L.: GloCAB: Global Cropland Burned Area from Mid-2002 to 2020, *Earth System Science Data Discussions*, 1–27, <https://doi.org/10.5194/essd-2023-191>, 2023.

- Hall, J. V., Zibtsev, S. V., Giglio, L., Skakun, S., Myroniuk, V., Zhuravel, O., Goldammer, J. G., and Kussul, N.:
810 Environmental and political implications of underestimated cropland burning in Ukraine, *Environ. Res. Lett.*, 16, 064019,
<https://doi.org/10.1088/1748-9326/abfc04>, 2021.
- Hantson, S., Arneth, A., Harrison, S. P., Kelley, D. I., Prentice, I. C., Rabin, S. S., Archibald, S., Mouillot, F., Arnold, S. R.,
and Artaxo, P.: The status and challenge of global fire modelling, *Biogeosciences*, 13, 3359–3375, 2016.
- Harr, R. N., Morton, L. W., Rusk, S. R., Engle, D. M., Miller, J. R., and Debinski, D.: Landowners' perceptions of risk in
815 grassland management: woody plant encroachment and prescribed fire, *Ecology and Society*, 19, 2014.
- Harrison, S. P., Prentice, I. C., Bloomfield, K. J., Dong, N., Forkel, M., Forrest, M., Ningthoujam, R. K., Pellegrini, A.,
Shen, Y., Baudena, M., Cardoso, A. W., Huss, J. C., Joshi, J., Oliveras, I., Pausas, J. G., and Simpson, K. J.: Understanding
and modelling wildfire regimes: an ecological perspective, *Environ. Res. Lett.*, 16, 125008, <https://doi.org/10.1088/1748-9326/ac39be>, 2021.
- 820 Heinemann, A., Mertz, O., Frohling, S., Christensen, A. E., Hurni, K., Sedano, F., Chini, L. P., Sahajpal, R., Hansen, M., and
Hurtt, G.: A global view of shifting cultivation: Recent, current, and future extent, *PLOS ONE*, 12, e0184479,
<https://doi.org/10.1371/journal.pone.0184479>, 2017.
- Hurtt, G. C., Chini, L., Sahajpal, R., Frohling, S., Bodirsky, B. L., Calvin, K., Doelman, J. C., Fisk, J., Fujimori, S., Klein
Goldewijk, K., Hasegawa, T., Havlik, P., Heinemann, A., Humpenöder, F., Jungclaus, J., Kaplan, J. O., Kennedy, J.,
825 Krisztin, T., Lawrence, D., Lawrence, P., Ma, L., Mertz, O., Pongratz, J., Popp, A., Poulter, B., Riahi, K., Shevliakova, E.,
Stehfest, E., Thornton, P., Tubiello, F. N., van Vuuren, D. P., and Zhang, X.: Harmonization of global land use change and
management for the period 850–2100 (LUH2) for CMIP6, *Geoscientific Model Development*, 13, 5425–5464,
<https://doi.org/10.5194/gmd-13-5425-2020>, 2020.
- Jenkins, J. S., Abatzoglou, J. T., Rupp, D. E., and Fleishman, E.: Human and climatic influences on wildfires ignited by
830 recreational activities in national forests in Washington, Oregon, and California*, *Environ. Res. Commun.*, 5, 095002,
<https://doi.org/10.1088/2515-7620/acf4e2>, 2023.
- Jiang, N., Li, P., and Feng, Z.: Remote sensing of swidden agriculture in the tropics: A review, *International Journal of
Applied Earth Observation and Geoinformation*, 112, 102876, <https://doi.org/10.1016/j.jag.2022.102876>, 2022.
- Jones, M. W., Abatzoglou, J. T., Veraverbeke, S., Andela, N., Lasslop, G., Forkel, M., Smith, A. J. P., Burton, C., Betts, R.
835 A., van der Werf, G. R., Sitch, S., Canadell, J. G., Santín, C., Kolden, C., Doerr, S. H., and Le Quéré, C.: Global and
Regional Trends and Drivers of Fire Under Climate Change, *Reviews of Geophysics*, 60, e2020RG000726,
<https://doi.org/10.1029/2020RG000726>, 2022.
- Kelley, D. I., Bistinas, I., Whitley, R., Burton, C., Marthews, T. R., and Dong, N.: How contemporary bioclimatic and
human controls change global fire regimes, *Nature Climate Change*, 9, 690–696, <https://doi.org/10.1038/s41558-019-0540-7>,
840 2019.

- Kelly, L. T., Giljohann, K. M., Duane, A., Aquilué, N., Archibald, S., Batllori, E., Bennett, A. F., Buckland, S. T., Canelles, Q., Clarke, M. F., Fortin, M.-J., Hermoso, V., Herrando, S., Keane, R. E., Lake, F. K., McCarthy, M. A., Morán-Ordóñez, A., Parr, C. L., Pausas, J. G., Penman, T. D., Regos, A., Rumpff, L., Santos, J. L., Smith, A. L., Syphard, A. D., Tingley, M. W., and Brotons, L.: Fire and biodiversity in the Anthropocene, *Science*, 370, eabb0355, 2020.
845 <https://doi.org/10.1126/science.abb0355>, 2020.
- Knorr, W., Kaminski, T., Arneith, A., and Weber, U.: Impact of human population density on fire frequency at the global scale, *Biogeosciences*, 11, 1085–1102, <https://doi.org/10.5194/bg-11-1085-2014>, 2014.
- [Kummu, M., Taka, M., Guillaume, J.H.A.: Gridded global datasets for Gross Domestic Product and Human Development Index over 1990–2015, Scientific Data, 5, 180004, https://doi.org/10.1038/sdata.2018.4, 2018.](#)
- 850 Kreuter, U. P., Woodard, J. B., Taylor, C. A., and Teague, W. R.: Perceptions of Texas Landowners Regarding Fire and Its Use, 61, <https://doi.org/10.2111/07-144.1>, 2008.
- Lambin, E. F. and Meyfroidt, P.: Land use transitions: Socio-ecological feedback versus socio-economic change, *Land Use Policy*, 27, 108–118, <https://doi.org/10.1016/j.landusepol.2009.09.003>, 2010.
- Langer, E. R. (Lisa), McGee, T. K., Langer, E. R. (Lisa), and McGee, T. K.: Wildfire risk awareness and prevention by 855 predominantly Māori rural residents, Karikari Peninsula, Aotearoa New Zealand, *Int. J. Wildland Fire*, 26, 820–828, <https://doi.org/10.1071/WF16133>, 2017.
- Laris, P.: Burning the Seasonal Mosaic: Preventative Burning Strategies in the Wooded Savanna of Southern Mali, *Human Ecology*, 30, 155–186, <https://doi.org/10.1023/A:1015685529180>, 2002.
- Lasslop, G., Coppola, A. I., Voulgarakis, A., Yue, C., and Veraverbeke, S.: Influence of Fire on the Carbon Cycle and 860 Climate, *Curr Clim Change Rep*, 5, 112–123, <https://doi.org/10.1007/s40641-019-00128-9>, 2019.
- Lin, M. and Begho, T.: Crop residue burning in South Asia: A review of the scale, effect, and solutions with a focus on reducing reactive nitrogen losses, *Journal of Environmental Management*, 314, 115104, <https://doi.org/10.1016/j.jenvman.2022.115104>, 2022.
- Liu, T., Marlier, M. E., Karambelas, A., Jain, M., Singh, S., Singh, M. K., Gautam, R., and DeFries, R. S.: Missing 865 emissions from post-monsoon agricultural fires in northwestern India: regional limitations of MODIS burned area and active fire products, *Environ. Res. Commun.*, 1, 011007, <https://doi.org/10.1088/2515-7620/ab056c>, 2019.
- Liverpool-Tasie, L. S. O., Wineman, A., Young, S., Tambo, J., Vargas, C., Reardon, T., Adjognon, G. S., Porciello, J., Gathoni, N., Bizikova, L., Galiè, A., and Celestin, A.: A scoping review of market links between value chain actors and small-scale producers in developing regions, *Nat Sustain*, 3, 799–808, <https://doi.org/10.1038/s41893-020-00621-2>, 2020.
- 870 Lopes, A. A., Viriyavipart, A., and Tasneem, D.: The role of social influence in crop residue management: Evidence from Northern India, *Ecological Economics*, 169, 106563, <https://doi.org/10.1016/j.ecolecon.2019.106563>, 2020.

- Ma, L., Hurtt, G. C., Chini, L. P., Sahajpal, R., Pongratz, J., Frohking, S., Stehfest, E., Klein Goldewijk, K., O'Leary, D., and Doelman, J. C.: Global rules for translating land-use change (LUH2) to land-cover change for CMIP6 using GLM2, *Geoscientific Model Development*, 13, 3203–3220, <https://doi.org/10.5194/gmd-13-3203-2020>, 2020.
- 875 Maharani, C. D., Moeliono, M., Wong, G. Y., Brockhaus, M., Carmenta, R., and Kallio, M.: Development and equity: A gendered inquiry in a swidden landscape, *Forest Policy and Economics*, 101, 120–128, <https://doi.org/10.1016/j.forpol.2018.11.002>, 2019.
- Mangeon, S., Voulgarakis, A., Gilham, R., Harper, A., Sitch, S., and Folberth, G.: INFERNO: a fire and emissions scheme for the UK Met Office's Unified Model, *Geoscientific Model Development*, 9, 2685–2700, [https://doi.org/10.5194/gmd-9-](https://doi.org/10.5194/gmd-9-2685-2016)
880 2685-2016, 2016.
- van Marle, M. J. E., Field, R. D., van der Werf, G. R., Estrada de Wagt, I. A., Houghton, R. A., Rizzo, L. V., Artaxo, P., and Tsigaridis, K.: Fire and deforestation dynamics in Amazonia (1973–2014), *Global Biogeochemical Cycles*, 31, 24–38, <https://doi.org/10.1002/2016GB005445>, 2017.
- Millington, J. D. A., Perkins, O., and Smith, C.: Human Fire Use and Management: A Global Database of Anthropogenic
885 Fire Impacts for Modelling, *Fire*, 5, 87, <https://doi.org/10.3390/fire5040087>, 2022.
- Mistry, J., Bilbao, B. A., and Berardi, A.: Community owned solutions for fire management in tropical ecosystems: case studies from Indigenous communities of South America, *Philosophical Transactions of the Royal Society B: Biological Sciences*, 371, 20150174, <https://doi.org/10.1098/rstb.2015.0174>, 2016.
- Morton, D. C., DeFries, R. S., Shimabukuro, Y. E., Anderson, L. O., Arai, E., del Bon Espirito-Santo, F., Freitas, R., and
890 Morisette, J.: Cropland expansion changes deforestation dynamics in the southern Brazilian Amazon, *Proceedings of the National Academy of Sciences*, 103, 14637–14641, <https://doi.org/10.1073/pnas.0606377103>, 2006.
- Murray-Rust, D., Brown, C., van Vliet, J., Alam, S. J., Robinson, D. T., Verburg, P. H., and Rounsevell, M.: Combining agent functional types, capitals and services to model land use dynamics, *Environmental Modelling & Software*, 59, 187–201, <https://doi.org/10.1016/j.envsoft.2014.05.019>, 2014.
- 895 Nelson, E. L., Khan, S. A., Thorve, S., and Greenough, P. G.: Modeling pastoralist movement in response to environmental variables and conflict in Somaliland: Combining agent-based modeling and geospatial data, *PLOS ONE*, 15, e0244185, <https://doi.org/10.1371/journal.pone.0244185>, 2020.
- Pausas, J. G., Keeley, J. E., and Schwilk, D. W.: Flammability as an ecological and evolutionary driver, *Journal of Ecology*, 105, 289–297, <https://doi.org/10.1111/1365-2745.12691>, 2017.
- 900 Perkins, O. and Millington, J. D. A.: DAFI: A global database of Anthropogenic Fire, Figshare <https://doi.org/10.6084/m9.figshare.c.5290792>, 2021.

- Perkins, O., Matej, S., Erb, K., and Millington, J.: Towards a global behavioural model of anthropogenic fire: The spatiotemporal distribution of land-fire systems, *Socio-Environmental Systems Modelling*, 4, 18130–18130, <https://doi.org/10.18174/sesmo.18130>, 2022.
- 905 Perkins, O., Millington, J., Kasoar, M., Voulgarakis, A., Smith, C., and Mistry, J.: OliPerkins1987/Wildfire_Human_Agency_Model: v1.0, <https://zenodo.org/doi/10.5281/zenodo.8319310>, 2023a.
- Perkins, O., Millington, J., Kasoar, M., Voulgarakis, A., Smith, C., and Mistry, J.: Data for running WHAM! v1.0 (1.0), <https://zenodo.org/doi/10.5281/zenodo.8319375>, 2023b.
- 910 [Perkins, O., Alexander, P., Arneth, A., Brown, C., Millington, J., Rounsevell, M.: Towards quantification of the feasible potential of land-based carbon dioxide removal. 6\(12\), 1638-1651, https://doi.org/10.1016/j.oneear.2023.11.011, 2023.](https://doi.org/10.1016/j.oneear.2023.11.011)
- Pyne, S.J.: *Fire: A Brief History*, University of Washington Press, Seattle, WA, USA, 2019.
- Rabin, S. S., Melton, J. R., Lasslop, G., Bachelet, D., Forrest, M., Hantson, S., Kaplan, J. O., Li, F., Mangeon, S., Ward, D. S., Yue, C., Arora, V. K., Hickler, T., Kloster, S., Knorr, W., Nieradzick, L., Spessa, A., Folberth, G. A., Sheehan, T., Voulgarakis, A., Kelley, D. I., Prentice, I. C., Sitch, S., Harrison, S., and Arneth, A.: The Fire Modeling Intercomparison
- 915 Project (FireMIP), phase 1: experimental and analytical protocols with detailed model descriptions, *Geoscientific Model Development*, 10, 1175–1197, <https://doi.org/10.5194/gmd-10-1175-2017>, 2017.
- Rabin, S. S., Ward, D. S., Malyshev, S. L., Magi, B. I., Shevliakova, E., and Pacala, S. W.: A fire model with distinct crop, pasture, and non-agricultural burning: use of new data and a model-fitting algorithm for FINAL.1, *Geoscientific Model Development*, 11, 815–842, <https://doi.org/10.5194/gmd-11-815-2018>, 2018.
- 920 Ribiero, A., Santos, L. Randerson, J., Uribe, M., Alencar, A., Macedo, M., Morton, D., Zscheischler, J., Silvestrini, R., Rattis, L., Seneviratne, S., & Brando, P.: The time since land-use transition drives changes in fire activity in the Amazon-Cerrado region, *Nature Communications Earth & Environment*, 5, 96, <https://doi.org/10.1038/s43247-024-01248-3>, 2024.
- Robinson, D., Di Vittorio, A., Alexander, P., Arneth, A., Barton, M., Brown, D., Kettner, A., Lemmen, C., O'Neill, B., Janssen, M., Pugh, T., Rabin, S., Rounsevell, M., Syvitski, J., Ullah, I., Verburg, P.: Modelling feedbacks between human
- 925 and natural processes in the land system, *Earth System Dynamics*, 9, 895-914, <https://doi.org/10.5194/esd-9-895-2018>, 2018.
- Rosan, T. M., Sitch, S., Mercado, L. M., Heinrich, V., Friedlingstein, P., and Aragão, L. E. O. C.: Fragmentation-Driven Divergent Trends in Burned Area in Amazonia and Cerrado, *Frontiers in Forests and Global Change*, 5, 2022.
- Rounsevell, M. D. A., Robinson, D. T., and Murray-Rust, D.: From actors to agents in socio-ecological systems models, *Philosophical Transactions of the Royal Society B: Biological Sciences*, 367, 259–269,
- 930 <https://doi.org/10.1098/rstb.2011.0187>, 2012.
- Scott, J. C.: *Weapons of the Weak: Everyday Forms of Peasant Resistance*, Yale University Press, 1985.

- Seijo, F., Millington, J. D. A., Gray, R., Sanz, V., Lozano, J., García-Serrano, F., Sangüesa-Barreda, G., and Julio Camarero, J.: Forgetting fire: Traditional fire knowledge in two chestnut forest ecosystems of the Iberian Peninsula and its implications for European fire management policy, *Land Use Policy*, 47, 130–144, <https://doi.org/10.1016/j.landusepol.2015.03.006>, 935 2015.
- Sembhi, H., Wooster, M., Zhang, T., Sharma, S., Singh, N., Agarwal, S., Boesch, H., Gupta, S., Misra, A., Tripathi, S. N., Mor, S., and Khaiwal, R.: Post-monsoon air quality degradation across Northern India: assessing the impact of policy-related shifts in timing and amount of crop residue burnt, *Environ. Res. Lett.*, 15, 104067, <https://doi.org/10.1088/1748-9326/aba714>, 2020.
- 940 Seo, B., Brown, C., and Rounsevell, M.: Evaluation and Calibration of an Agent Based Land use Model Using Remotely Sensed Land Cover and Primary Productivity Data, in: *IGARSS 2018 - 2018 IEEE International Geoscience and Remote Sensing Symposium*, *IGARSS 2018 - 2018 IEEE International Geoscience and Remote Sensing Symposium*, 7472–7475, <https://doi.org/10.1109/IGARSS.2018.8518023>, 2018.
- Shuman, J. K., Balch, J. K., Barnes, R. T., Higuera, P. E., Roos, C. I., Schwilk, D. W., Stavros, E. N., Banerjee, T., Bela, M. M., Bendix, J., Bertolino, S., Bililign, S., Bladon, K. D., Brando, P., Breidenthal, R. E., Buma, B., Calhoun, D., Carvalho, L. M. V., Cattau, M. E., Cawley, K. M., Chandra, S., Chipman, M. L., Cobian-Iñiguez, J., Conlisk, E., Coop, J. D., Cullen, A., Davis, K. T., Dayalu, A., De Sales, F., Dolman, M., Ellsworth, L. M., Franklin, S., Guiterman, C. H., Hamilton, M., Hanan, E. J., Hansen, W. D., Hantson, S., Harvey, B. J., Holz, A., Huang, T., Hurteau, M. D., Ilangakoon, N. T., Jennings, M., Jones, C., Klimaszewski-Patterson, A., Kobziar, L. N., Kominoski, J., Kosovic, B., Krawchuk, M. A., Laris, P., Leonard, J., 950 Loria-Salazar, S. M., Lucash, M., Mahmoud, H., Margolis, E., Maxwell, T., McCarty, J. L., McWethy, D. B., Meyer, R. S., Miesel, J. R., Moser, W. K., Nagy, R. C., Niyogi, D., Palmer, H. M., Pellegrini, A., Poulter, B., Robertson, K., Rocha, A. V., Sadegh, M., Santos, F., Scordo, F., Sexton, J. O., Sharma, A. S., Smith, A. M. S., Soja, A. J., Still, C., Swetnam, T., Syphard, A. D., Tingley, M. W., Tohidi, A., Trugman, A. T., Turetsky, M., Varner, J. M., Wang, Y., Whitman, T., Yelenik, S., and Zhang, X.: Reimagine fire science for the anthropocene, *PNAS Nexus*, 1, pgac115, 955 <https://doi.org/10.1093/pnasnexus/pgac115>, 2022.
- Silva, R. F. B. da, Batistella, M., Dou, Y., Moran, E., Torres, S. M., and Liu, J.: The Sino-Brazilian Telecoupled Soybean System and Cascading Effects for the Exporting Country, *Land*, 6, 53, <https://doi.org/10.3390/land6030053>, 2017.
- Sizov, O., Ezhova, E., Tsymbarovich, P., Soromotin, A., Prihod'ko, N., Petäjä, T., Zilitinkevich, S., Kulmala, M., Bäck, J., and Köster, K.: Fire and vegetation dynamics in northwest Siberia during the last 60 years based on high-resolution remote 960 sensing, *Biogeosciences*, 18, 207–228, <https://doi.org/10.5194/bg-18-207-2021>, 2021.
- van der Sluis, T., Pedroli, B., Kristensen, S. B. P., Lavinia Cosor, G., and Pavlis, E.: Changing land use intensity in Europe – Recent processes in selected case studies, *Land Use Policy*, 57, 777–785, <https://doi.org/10.1016/j.landusepol.2014.12.005>, 2016.

- Smith, C., Perkins, O., and Mistry, J.: Global decline in subsistence-oriented and smallholder fire use, *Nat Sustain*, 5, 542–551, <https://doi.org/10.1038/s41893-022-00867-y>, 2022.
- Soares-Filho, B., Rajão, R., Macedo, M., Carneiro, A., Costa, W., Coe, M., Rodrigues, H., and Alencar, A.: Cracking Brazil's Forest Code, *Science*, 344, 363–364, <https://doi.org/10.1126/science.1246663>, 2014.
- Steen-Adams, M. M., Charnley, S., and Adams, M. D.: Historical perspective on the influence of wildfire policy, law, and informal institutions on management and forest resilience in a multiownership, frequent-fire, coupled human and natural system in Oregon, USA, *Ecology and Society*, 22, 2017.
- Suyanto, S.: Underlying cause of fire: Different form of land tenure conflicts in Sumatra, *Mitig Adapt Strat Glob Change*, 12, 67–74, <https://doi.org/10.1007/s11027-006-9039-4>, 2007.
- Teckentrup, L., Harrison, S. P., Hantson, S., Heil, A., Melton, J. R., Forrest, M., Li, F., Yue, C., Arneith, A., Hickler, T., Sitch, S., and Lasslop, G.: Response of simulated burned area to historical changes in environmental and anthropogenic factors: a comparison of seven fire models, *Biogeosciences*, 16, 3883–3910, <https://doi.org/10.5194/bg-16-3883-2019>, 2019.
- UNEP.: Spreading like Wildfire: The Rising Threat of Extraordinary Landscape Fires: <http://www.unep.org/resources/report/spreading-wildfire-rising-threat-extraordinary-landscape-fires>, 2022.
- [van Zyl, J.: The Shuttle Radar Topography Mission \(SRTM\): a breakthrough in remote sensing of topography, *Acta Astronautica*, 48 \(5-12\), 559-565. \[https://doi.org/10.1016/S0094-5765\\(01\\)00020-0\]\(https://doi.org/10.1016/S0094-5765\(01\)00020-0\), 2001.](#)
- 980 [Verburg, P.H., Ellis, E.C., Letourneau, A.: A global assessment of market accessibility and market influence for global environmental change studies, *Environmental Research Letters*, 6, 034019, <https://doi.org/10.1088/1748-9326/6/3/034019>, 2011.](#)
- Villoria, N., Garrett, R., Gollnow, F., and Carlson, K.: Leakage does not fully offset soy supply-chain efforts to reduce deforestation in Brazil, *Nat Commun*, 13, 5476, <https://doi.org/10.1038/s41467-022-33213-z>, 2022.
- 985 van Wees, D., van der Werf, G. R., Randerson, J. T., Rogers, B. M., Chen, Y., Veraverbeke, S., Giglio, L., and Morton, D. C.: Global biomass burning fuel consumption and emissions at 500m spatial resolution based on the Global Fire Emissions Database (GFED), *Geoscientific Model Development*, 15, 8411–8437, <https://doi.org/10.5194/gmd-15-8411-2022>, 2022.
- Wiltshire, A. J., Duran Rojas, M. C., Edwards, J. M., Gedney, N., Harper, A. B., Hartley, A. J., Hendry, M. A., Robertson, E., and Smout-Day, K.: JULES-GL7: the Global Land configuration of the Joint UK Land Environment Simulator version 7.0 and 7.2, *Geoscientific Model Development*, 13, 483–505, <https://doi.org/10.5194/gmd-13-483-2020>, 2020.
- Zhang, T., Wooster, M. J., De Jong, M. C., and Xu, W.: How Well Does the ‘Small Fire Boost’ Methodology Used within the GFED4.1s Fire Emissions Database Represent the Timing, Location and Magnitude of Agricultural Burning?, *Remote Sensing*, 10, 823, <https://doi.org/10.3390/rs10060823>, 2018.