

# Solar cycle signatures in lightning activity

Jaroslav Chum<sup>1</sup>, Ronald Langer<sup>2</sup>, Ivana Kolmašová<sup>1,3</sup>, Ondřej Lhotka<sup>1</sup>, Jan Ruzsz<sup>1</sup>, Igor Strhářský<sup>2</sup>

<sup>1</sup>Institute of Atmospheric Physics of the Czech Academy of Sciences, Prague, 156 00, Czech Republic

<sup>2</sup>Institute of Experimental Physics, Slovak Academy of Sciences, Košice, 040 01, Slovakia

<sup>3</sup>Faculty of mathematics and Physics, Charles University, Prague, 180 00, Czech Republic

Correspondence to: Jaroslav Chum (jachu@ufa.cas.cz)

## Abstract

~~—The cross-correlation between annual lightning frequency occurrence and cosmic ray intensity, solar activity and the heliospheric magnetic field (HMF) solar wind is examined on a global scale using corrected data from the World Wide Lightning Location Network (WWLLN) for the period 2009 to 2022. Relatively large regions with The cross correlation coefficients vary depending on the position on the globe. Positive cross correlation significant cross-correlation coefficients ( $p < 0.05$ ) between the yearly lightning rates occurrence and Sun spot number (SSN) are found in east most of Africa, part of South and Central America overlapping with the South Atlantic Anomaly, Indian Ocean and west coast of Australia while in parts of Europe and Southeast Asia the cross correlation is negative. Regions with significant anti-correlation also appear if inter-annual smoothing is applied on lightning data. The main region that shows a significant correlation between lightning activity and the  $B_y$  component of the HMF and the magnetopause reconnection Kan-Lee electric field matches the South Atlantic anomaly quite well.~~

~~Similar areas of significant cross-correlation are obtained if simulated thunder days are used instead of lightning counts. Possible mechanisms leading to the observed correlations and limitations of the current study are discussed. Positive cross correlation between lightning occurrence and  $B_y$  component of heliospheric magnetic field is found for Southern part of South America, part of Europe, and northwestern Asia. Possible mechanisms are discussed. Although local weather and climate play a dominant role in lightning occurrence, observations suggest that changes in solar UV radiation during the solar cycle, together with global circulation and atmospheric waves, may modulate lightning occurrence in tropical and subtropical regions, while the polarity of the heliospheric magnetic field, atmospheric circulation and waves affect lightning occurrence more in mid and high latitude regions. The findings of the present study do not support previous works observed change indicating that  $s$  in cosmic ray intensity play an insignificant role is in phase with in the global occurrence of lightning, but they do not rule out the role of cosmic rays on lightning ignition in developed thunderclouds and the role of energetic particles precipitating from the magnetosphere on the significant correlation between lightning and  $B_y$  component of the HMF (SSN) in the South Atlantic Anomaly.~~

Naformátováno: Mezera Za: 0 b.

Naformátováno: Písmo: Kurzíva

Naformátováno: Písmo: Kurzíva, dolní index

Naformátováno: Mezera Za: 0 b., Přístupy klávesou tabulátor: 0,5 cm, (Zarovnání vlevo)

## 1 Introduction

35 Possible relationship between solar activity and lightning/thunderstorm occurrence frequency has been investigated for many years. Fritz (1878) correlated thunderstorm frequencies with Sun spot number (SSN) for the period 1755-1875 and several European and North-American stations without obtaining a conclusive result. A pioneering ~~and thorough~~ study on a global scale was made by Brooks (1934), who used data from 22 areas in different parts of the world and found that the cross-correlation coefficients between annual  
40 thunderstorm frequency and SSN were mostly positive. The best cross-correlation (0.88) was obtained for Siberia. ~~However, this result was not confirmed by Kleymenova (1967). However, Brooks (1934) also showed that~~ some cross-correlation coefficients ~~also~~ varied considerably over relatively short distances ~~or were relatively low around zero, for example in Europe.~~ Other authors studied the cross-correlation between thunderstorms and solar cycle for specific regions. For example, Aniol (1952) investigated the solar  
45 influence on thunderstorm frequency in southern Germany over the interval 1881-1950 and found that the cross-correlation coefficients varied significantly for different subintervals. Stringfellow (1974) obtained the cross-correlation coefficient of 0.8 between thunderstorms in Britain and solar cycle over the interval 1930-1973. Pinto Neto et al. (2013a) identified the solar cycle in thunder ~~daystorm~~ data obtained from selected Brazilian cities for the period 1951-2009 ~~and found mostly an anti-phase relation between SSN and thunder day data.~~

The above mentioned past studies used daily records of audible thunder and did not deal with thunderstorm intensities or actual number of lightning strokes. This limitation can be overcome by using lightning detection networks. Schlegel et al. (2001) calculated the cross-correlation coefficients between various parameters of solar activity and lightning detected in Germany and Austria using lightning detection  
55 systems for the period 1992-2000. In Germany, they found a ~~positivesignificant~~ cross-correlation coefficients (around 0.8) between lightning and solar activity, but in Austria the results were inconclusive (cross-correlation coefficients close to zero). In addition, Schlegel et al. (2001) showed that cross-correlation coefficients might differ considerably when using lightning counts from those using only number of thunder days as has been done in the past. Number of studies have also documented that lightning  
60 activity can be partially modulated on shorter time scale by the solar rotation, the solar wind and the polarity of the heliospheric magnetic field, HMF (Chronis 2009; Owens et al., 2014; Scott et al., 2014; Owens et al., 2015; Miyahara et al., 2018; Chum et al., 2021). Statistical studies by Voiculescu and Usoskin (2012) and Voiculescu et al. (2013) showed that solar activity might impact cloud cover in specific regions rather than globally.

65 The exact mechanism ~~leading to the link between~~ ~~of the dependence of~~ lightning ~~and activity on~~ solar activity is unknown. Some authors believe that clouds, ~~ionospheric potential~~ and lightning activity might be modulated by the intensity of the cosmic ray (CR) flux entering the atmosphere. ~~E.g., Markson (1981)~~

showed positive correlation between the ionospheric potential (atmospheric electric field) and CR, which in turn is controlled by solar activity and HMF; the CR flux is anti-correlated with solar activity (Usoskin et al., 1998). Cosmic rays may influence lightning activity directly by providing ~~secondary~~ energetic particles (electrons) acting as source of ionization necessary to ignite lightning, a process that is not yet understood in full detail (Dwyer and Uman, 2014; Shao et al., 2020) ~~or indirectly~~. The indirect influence is based on the potential role of CR in the modulation of cloud electrification, cloud condensation nuclei and clouds (Markson 1981; Kristjánsson et al., 2008; Kirkby 2008; Svensmark et al., 2009). It is reminded that a number of past studies (e.g., Brooks, 1934; Stringfellow, 1974; Schlegel et al., 2001) found mostly positive correlation between solar activity and lightning, implying a negative correlation with CR, which would reduce the importance of the direct mechanism/ionization. Solar activity and weather/climate can also be linked through ultraviolet (UV) solar radiation, which is absorbed in the middle and upper atmosphere and strongly depends on solar activity. Changes in stratospheric temperatures can then affect radiative balance, global circulation and ~~thus potentially the~~ tropospheric weather (Gray et al., 2010). The exact mechanisms need to be investigated. For example, ~~The~~ potential role of planetary waves in this top-down mechanism was discussed, ~~for example,~~ by Arnold and Robinson (1998, 2000) and Balachandran et al. (1999). Changes in in the global electric circuit (GEC) associated with the solar activity were discussed by Markson (1978), who put forward an idea that the atmospheric electricity is affected by changes in column resistance above thunderstorm due to the ionizing radiation modulated by solar activity. This idea was further followed by Markson and Muir (1980) and Markson (1981) by investigating the relation between solar wind, cosmic rays and ionospheric potential and finding negative (positive) correlation between solar wind (cosmic rays), respectively, and questioned by some authors (e.g., Hale; 1979). On the other hand, ~~other studies~~ (Burns et al., 2008; Lam and Tinsley, 2016) have investigated the atmospheric electric field and associated pressure changes in polar regions and discussed the possible relationship between solar wind, namely the polarity of the  $B_y$  component of the HMF, and tropospheric weather. They hypothesized that ~~through~~ changes in the global electric circuit (~~in the~~ GEC), specifically through the downward current ~~that~~ could affect cloud microphysics, ~~latent heat~~ and ~~thus~~ cloud formation. ~~However, further research and verification of this hypothesis is necessary.~~ Voiculescu et al. (2013) showed that HMF partially affects cloud cover, specifically low cloud cover at mid- and high-latitudes, which could be consistent with HMF – driven changes in GEC, while it is possible that UV changes (a top-down mechanism) may play a more important role at low latitudes. Considerable attention is paid to the chemical dynamical coupling caused by energetic particle precipitation (EPP) that includes both energetic electron precipitation from radiation belt and solar proton events during enhanced geomagnetic and solar activity as a potential link between solar activity and climate. EPPs cause changes in the chemical composition of the mesosphere and stratosphere, leading to changes in radiative balance and atmospheric temperature (Seppälä

et al., 2009; Anderson et al., 2014; Mironova et al., 2015; Sinhuber et al., 2018). The role of planetary waves, polar vortex and phase of quasi-biennial oscillation on the effects of EPP on the atmosphere is often discussed, with inconsistent results so far (Seppälä et al., 2013; Maliniemi et al., 2013, 2016; Salminen et al., 2019). Another hypothesis involving atmospheric waves was put forward by Prikryl et al. (2018), who based on previous statistical studies, suggested that high-speed solar wind streams are together with associated magneto-hydrodynamic waves responsible for enhanced Joule heating in high-latitude thermosphere and ionosphere that in turn generate atmospheric gravity waves that propagate equatorward. ~~Some of the energy transported by these waves~~ may reach the troposphere, lift the air and initiate convection and cloud formation.

The above review of possible coupling mechanisms indicates that further experimental and theoretical studies are needed to evaluate the relative role and validity of different mechanisms that may link solar activity to climate and lightning frequency. The present study investigates the relation between the solar activity (SSN), the  $B_y$ ,  $B_z$  components of the HMF, CR and lightning activity in various regions around the globe using World Wide Lightning Location Network.

## 2 Measurement setup and methods

The near Earth solar wind data and data of solar activity were retrieved from NASA/GSFC's Space Physics Data Facility OMNIWeb service (<https://omniweb.gsfc.nasa.gov/form/>). The solar data are also compared with the CR flux measured by neutron monitor (NM) with the cut-off rigidity of 3.84 GV located on the summit of Lomnický štít (49.195°N, 20.213°E) at an altitude of 2634 m. The NM is filled with  $\text{BF}_3$  and is of NM-64 type. More information about the NM can be found in Kudela and Langer (2009) and Chum et al. (2020).

Global lightning data ~~are~~ obtained using the World Wide Lightning Location Network (WWLLN), which consists of approximately 70 sensors operating in the frequency range 3-30 kHz that receive electromagnetic signals generated by lightning strokes and propagating in the waveguide between the Earth's surface and the lower ionosphere (Rodger et al., 2004). The WWLLN was selected because of its global coverage and availability for the authors. It should be noted that optical satellite LIS detector observes mainly low latitudes and that the OTD detector with global coverage worked only from 1995 to 2000. The WWLLN-lightning counts in  $1^\circ \times 1^\circ$  bins,  $3^\circ$  latitude  $\times$   $6^\circ$  longitude bins are used in this study. It is also shown that the results are consistent if larger bins ( $3^\circ$  latitude  $\times$   $6^\circ$  longitude) are used. The data available to the authors start in 2009. It should also be noted that the number of WWLLN sensors was substantially lower before 2009, and therefore the detection efficiency was also significantly lower than today. In addition, corrections of detection efficiency (used in this study and described later) are not

135 [available before 2009](#). It is estimated that the current detection efficiency for strokes with peak current at least 30 kA is approximately 30% globally (wwlln.net).

To investigate the possible dependence of lightning activity on the solar cycle, we applied a cross-correlation analysis using one-year lightning counts and one-year averages of Sun spot number, NM counts, and  $B_y$ ,  $B_z$  components of HMF [in the GSE coordinate system](#). The one-year values were used to remove the seasonal dependence of lightning occurrence. The lightning ~~and, to some extent, the NM data frequency~~ show trends over the 2009-2022 interval. The trend in lightning data is likely caused by increasing network efficiency due to the increasing number of WWLLN sensors. [The dependence of the number of detected lightning on the number of WWLLN sensor was shown by Holzworth et al. \(2021\)](#). ~~Their Figure 2 shows a clear decrease in the number of lightning detections before ~2013 due to the lower number of sensors.~~ [Hutchins et al. \(2012\)](#) introduced a model that account for the uneven global coverage of the WWLLN sensors and variations in the propagation of VLF signals by using correction coefficients for detection efficiency, currently provided for each hour and  $1^\circ \times 1^\circ$  bin. As will be shown in the "Results" section, [this model \(correction\) gives relatively high lightning frequency in Africa during the period ~2009-2013](#). ~~The slight trend in NM data may be caused by changes in the geomagnetic field.~~ Therefore, ~~the results are also presented for trends are first removed from the time series before cross-correlation analysis~~ [the uncorrected data](#). ~~The trends were estimated using quadratic polynomial fits, resulting in larger cross-correlation coefficients than if only linear trends were removed.~~

To compare time series with different units, ~~and scales~~ [and relative fluctuations it is useful to standardize](#) ~~the data (normalize by standard deviation after subtracting the mean) are first normalized~~ using equation (1).

$$a_{norm} = \frac{a - \text{mean}(a)}{\sigma_a}, \quad (1)$$

where  $a$  is the analyzed quantity (for example lightning counts, SSN, components of HMF, NM counts etc.) and  $\sigma_a$  is the standard deviation of its distribution. The cross-correlation coefficients  ~~$c$  are calculated for the normalized variables~~

$$c = \frac{1}{N-1} \cdot \sum_{i=1}^N \frac{a - \text{mean}(a)}{\sigma_a} \cdot \frac{b - \text{mean}(b)}{\sigma_b} = \frac{1}{N-1} \cdot \sum_{i=1}^N a_{norm} \cdot b_{norm} \quad (2)$$

160 To reduce potential influence of quasi-biennial and El Niño–Southern Oscillation (ENSO) on [global weather and](#) thunderstorm occurrence, the cross-correlation coefficient are also computed for smoothed normalized lightning counts  $a_{s,i}$

$$a_{s,i} = \frac{1}{2} \left( \frac{1}{2} a_{Lnorm,i-1} + a_{Lnorm,i} + \frac{1}{2} a_{Lnorm,i+1} \right), \quad (32)$$

where  $a_{Lnorm,i-1}$ ,  $a_{Lnorm,i}$  and  $a_{Lnorm,i+1}$  are the normalized lightning counts in the given region for the successive years  $i-1$ ,  $i$ , and  $i+1$ . Equation (32) represents a weighted 3-year running mean with effective width of 2-years. [It should be noted that the 3-year running mean reduces potential impact of ENSO on global climate and lightning occurrence](#), but may not eliminate it completely due to the relatively strong El Niño phase in

2014-2015 that coincides with solar maximum. On the other hand, two El Niño phases occurred during solar minima in 2009-2010 and 2018-2019.

To compare the cross-correlation coefficients obtained for lightning frequency with those for thunder days (a parameter used in many previous studies), we estimate the thunder days for each bin. The thunder days are estimated as follows. First we calculate the ratio ( $r_{LAT}$ ) of the area of the  $1^\circ \times 1^\circ$  bin ( $A_{LAT}$ ) to the thunder detection area ( $A_T$ ), considering the dependence of the bin area on latitude. The thunder detection area is computed as  $\pi \rho^2$ , where  $\rho=20$  km, which is the middle value of the thunder audibility range (15 – 25 km) given by Pinto et al. (2013b). The value of ratio  $r_{LAT}$  is largest at the equator (9.86) and decreases with increasing latitude (e.g. it is 5 at the latitude of  $50^\circ$ ). Then, to allow some uncertainty in the thunder days (TD), the TD are simulated using logistic function and summed over the year to get annual values.

$$TD = \sum_{i=1}^M \frac{1}{1+e^{-(N_i-r_{LAT})}} \quad (4)$$

where  $N_i$  is the number of lightning detected in the specific bin on the  $i$ -th day and  $M$  is the number of days in a year. The logistic function is very close to zero for  $N_i \ll r_{LAT}$  and approaches 1 if  $N_i \gg r_{LAT}$ . A relatively narrow range of intermediate values of logistic function around  $N_i \approx r_{LAT}$  admits some uncertainties.

It should be noted that the solar wind electric field components  $E_{zSW} \sim -v_x B_y$  and  $E_{ySW} \sim v_x B_z$  are believed to penetrate and add to the internal Earth's electric field between the ionosphere and ground (Rycroft et al., 2000; Lam and Tinsley, 2016), but since the relative changes in  $B_y$ ,  $B_z$  are much larger than the relative changes in the Earthward solar wind speed  $v_x$ , the dependencies on  $B_y$  or  $B_z$  have been studied primarily for simplicity. We verified that differences between the results obtained for  $|v_x|B_y$ , ( $|v_x|B_z$ ) and  $B_y$ , ( $B_z$ ) are negligible.

In addition, the cross-correlation is also computed between ~~normalized~~ lightning counts and magnetopause reconnection electric field (Kan and Lee, 1979). This electric field, namely its perpendicular component, can serve as a proxy for ionospheric electric currents at high latitudes (namely Region 1) during geomagnetic storms, potential across a polar cap (Kan and Lee, 1979; Mannucci et al., 2014) or large scale traveling ionospheric disturbances (LSTID) - waves in the upper atmosphere and ionosphere (Borries et al., 2023). The perpendicular component (related to the magnetic field lines at the magnetopause) of the Kan-Lee electric field (Kan and Lee, 1979) is

$$E_{perp} = v_x B_T \sin^2(\varphi/2), \quad (5)$$

where  $B_T$  is  $\sqrt{B_y^2 + B_z^2}$  and  $\varphi$  is a clock angle of the transverse HMF (relative to the  $z$ -axis, between  $B_y$  and  $B_z$ ,  $\varphi = \text{atan}(B_y/B_z)$ ).

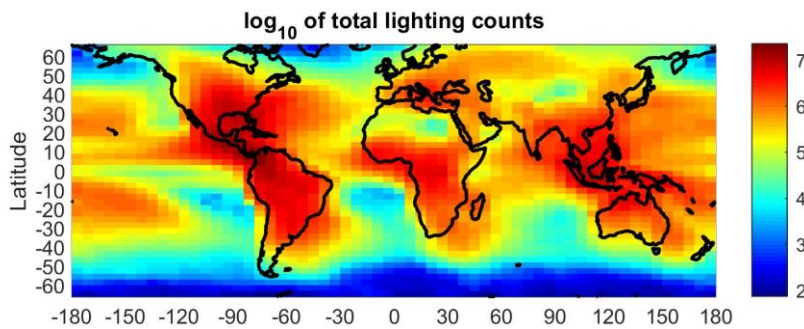
The parallel component of electric field is often neglected in plasma physics because it is believed that it is usually small because of high conductivity along the field line, but Kan and Lee (1979) also pointed out that the parallel component of the reconnection electric field ( $E_{par}$ ) exists and should not be automatically

neglected. The parallel field might accelerate/decelerate particles along the field line and affect their trajectories and precipitation into the atmosphere.

$$E_{par} = v_x B_T \sin(\varphi/2) \cos(\varphi/2). \quad (64)$$

### 3 Results

Figure 1 shows on a world map the global distribution of the total corrected number of lightning strikes recorded by the WWLLN during the analyzed period 2009-2022. The color scale indicates the common logarithm of lightning strikes in each  $13^\circ \times 16^\circ$  (latitude  $\times$  longitude) bin for the latitude range from  $-66^\circ$  to  $66^\circ$ . Thunderstorm centers are readily verified in tropical and subtropical regions over the continents, namely Central Africa, South and Central America, East Asia and Indonesia. The continental lightning dominates the oceanic lightning by more than an order of magnitude. Significant numbers of lightning have also been recorded in the Mediterranean. It should be noted that the actual number of lightning is larger because of the limited detection efficiency of the WWLLN, especially for intracloud discharges. Compared to the LIS OTD climatology data set ([https://ghrc.nsstc.nasa.gov/lightning/data/data\\_lis\\_otd-climatology.html](https://ghrc.nsstc.nasa.gov/lightning/data/data_lis_otd-climatology.html)), the WWLLN underestimates the lightning frequency especially in central Africa, where the number of uncorrected detected lightning by WWLLN was about 10 times lower. Therefore, the applied corrections (mentioned in previous section) are largest in Africa as will also be shown later.

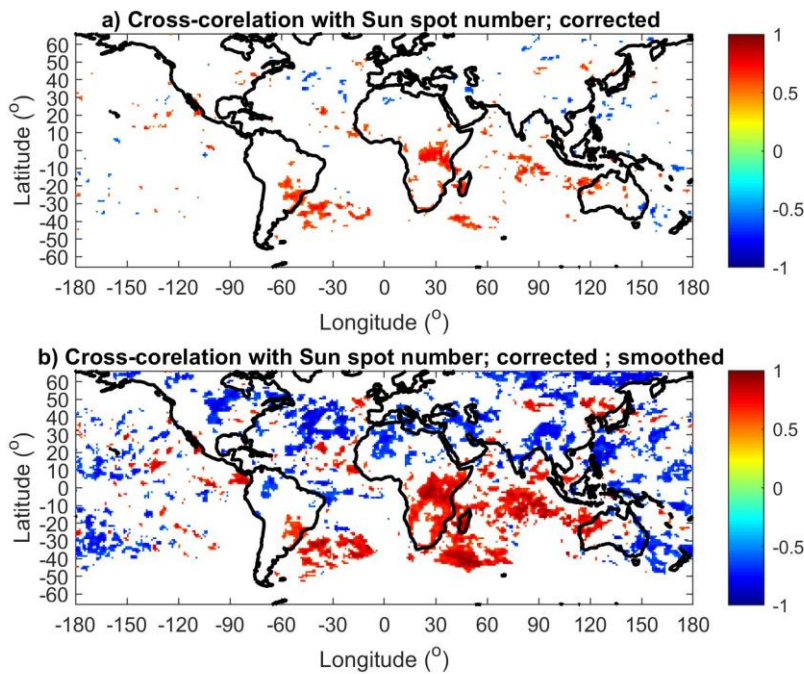


**Fig. 1** Common logarithm of total corrected numbers of all lightning strikes during the analyzed period, 2009-2022.

The cross-correlation coefficients between the normalized yearly SSN and corrected the smoothed normalized yearly lightning counts are shown in Figure 2a. The cross-correlation coefficients are displayed only for those bins, for which in which the correlation (anti-correlation) is statistically significant (probability of null hypothesis,  $p < 0.05$ ) and the total number of detected lightning strikes was larger than



230  $2 \cdot 10^{34}$  for the entire period 2009-2022, which corresponds to an average yearly number of detected lightning  
 larger than ~1400 in each bin. The same threshold for the required number of detected lightning strikes  
 per bin is used in the following analogous figures. Red color indicates cross-correlation coefficients close  
 to 1, whereas dark blue stands for large negative values of cross-correlation coefficients. It is obvious that  
 lightning activity is in phase – correlates well with solar activity represented by the SSN in central and  
eastmost of Africa, part of South and Central America and South Atlantic region and west coast of  
Australia. Larger areas of significant correlation are obtained if the lightning data are smoothed over time  
 using Eq. (3), which is shown in Figure 2b. In addition, areas of significant anti-correlation appear for the  
 lightning data smoothed over time, especially in the northern hemisphere. For example, there is a large area  
 235 in the North Atlantic that shows significant anti-correlation. Interestingly, there is a region of insignificant  
 correlation around Azores. Anti-correlation also shows a part of the United States and north-east Asia.

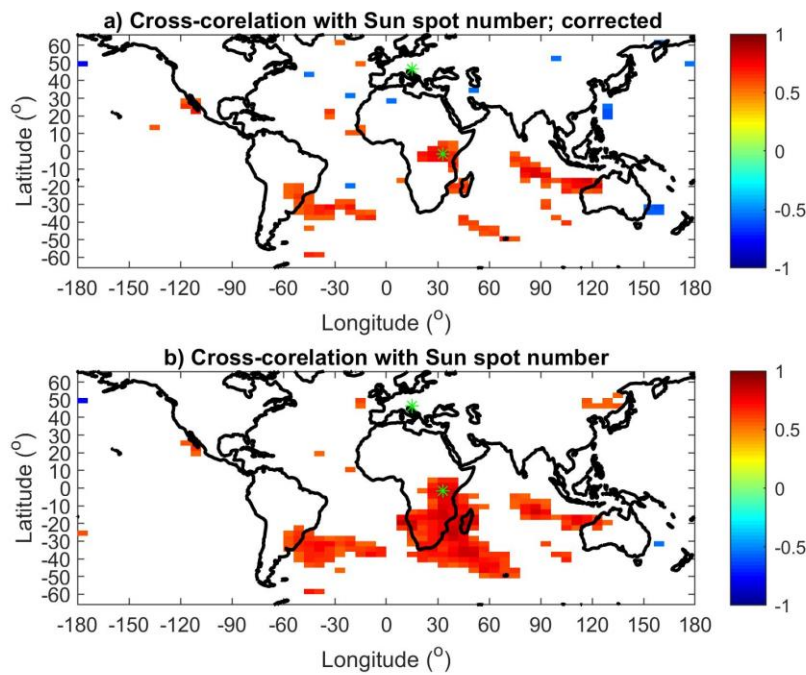


**Fig. 2** a) Cross-correlation coefficients between yearly SSN and corrected number of lightning strokes in  $1^\circ \times 1^\circ$  bins. b) Cross-correlation coefficients between yearly SSN and corrected number of smoothed (Eq. 3) lightning strokes in  $1^\circ \times 1^\circ$  bins. Only statistically significant cross-correlation coefficients are displayed ( $p < 0.05$ ).



Figure 3a shows that the cross-correlation coefficients between the yearly SSN and corrected yearly lightning counts in  $3^\circ$  latitude  $\times$   $6^\circ$  longitude bins to demonstrate that the main centers of significant correlation do not change if a different bin size is used (compare Figures 2a and 3a). Figure 3b displays the cross-correlation coefficients between the yearly SSN and uncorrected yearly lightning counts in  $3^\circ$  latitude  $\times$   $6^\circ$  longitude bins to show the effect of correction on WLLN data. The largest difference is in Africa, where the area with significant correlation is much larger for the uncorrected data. The reason for that is clear from the time series that are presented in Figures 4 and 5. On the other hand, some parts of South East Asia or South East Europe exhibit anti-correlation.

Figure 3b shows that the cross-correlation coefficients between the yearly SSN and uncorrected yearly lightning counts in  $3^\circ$  latitude  $\times$   $6^\circ$  longitude bins to show the effect of correction on WLLN data. The largest difference is in Africa, where the area with significant correlation is much larger for the uncorrected data. The reason for that is clear from the time series that are presented in Figures 4 and 5. On the other hand, some parts of South East Asia or South East Europe exhibit anti-correlation.



**Fig. 3** a) Cross-correlation coefficients between yearly SSN and corrected number of lightning in  $3^\circ \times 6^\circ$  (latitude  $\times$  longitude) bins. b) Cross-correlation coefficients between yearly SSN and uncorrected number of lightning in  $3^\circ \times 6^\circ$  (latitude  $\times$  longitude) bins. Only statistically significant cross-correlation coefficients are displayed ( $p < 0.05$ ). The green asterisks indicate the locations of the selected bins for which time series are shown in Figure 4.

Figure 4 displays the time series of annual SSN (Figure 4a) and annual NM counts measured at Lomnický Štít (Figure 4b). The relative deviations of the NM data from their means are much smaller than for SSN. The mean value and standard deviation for SSN is 47.6 and 38.4, respectively, and for NM counts 27691 and 842. Obviously, the time series of the SSN and NM data are in anti-phase (anti-correlated). This is expected since it is known that the CR flux characterized by NM data is anti-correlated with solar activity (e.g., Usoskin, 1998). An example of the time series of the annual number of lightning strikes for the selected bin in east Africa (latitude from  $-3^{\circ}$  to  $0^{\circ}$  and longitude from  $30^{\circ}$  to  $36^{\circ}$ ), in which relatively high and significant cross-correlation coefficient (0.77 for corrected data and 0.90 for corrected smoothed data) was obtained, is shown in Figure 4c. By blue are the uncorrected numbers of lightning and by red are the corrected numbers using the provided correction coefficients of detection efficiency. The uncorrected and corrected lightning counts significantly differ before 2014. The corrected data are relatively high before 2014, when the solar activity was lower. This is even more remarkable in the surrounding bins and leads to a smaller region of significant correlation, compared to the results obtained for uncorrected data (compare Figures 3a and 3b). On the other hand, in most of the other regions, such as in the selected bin shown in Figure 3d (latitude from  $45^{\circ}$  to  $48^{\circ}$  and longitude from  $12^{\circ}$  to  $18^{\circ}$ ), in which the cross-correlation is statistically insignificant, the differences are small. The selected bins are marked by green asterisks in Figure 3. The corresponding normalized annual time series of SSN, NM counts and lightning counts are presented in Figure 4. The bottom plots (Figure 4c and d) also show the smoothed normalized lightning data (solid line with asterisks) using Equation (3). This is expected since it is known that the CR flux characterized by NM data is anti-correlated with solar activity (e.g., Usoskin, 1998). This is also demonstrated for the analyzed time period in Figure 3 which displays the time series of normalized annual SSN (Figure 3a) and normalized annual NM counts measured at Lomnický Štít (Figure 3b). An example of the time series of the normalized annual number of lightning strikes for the selected bin (latitude from  $-12^{\circ}$  to  $9^{\circ}$  and longitude from  $30^{\circ}$  to  $36^{\circ}$ ), in which one of the highest cross correlation coefficients was obtained in Figure 2a, is shown by the dashed line with square symbols in Figure 3c, whereas the smoothed data using Equation (2) are drawn by solid line with asterisks. The similarity of the annual normalized lightning counts with normalized SSN and the cross correlation coefficient for them obtained by Equation (2) is 0.98 and 0.94 for them, respectively.

For comparison with previous works, it is also useful to investigate which regions would exhibit significant cross-correlation coefficients, if thunder day data were used. We use simulated thunder day data obtained from the corrected WWLLN lightning counts by method described in Section 2. The required threshold of  $2 \cdot 10^3$  lightning for each bin was modified to  $2 \cdot 10^2$  thunder days and the  $1^{\circ} \times 1^{\circ}$  bins are used. Figure 6a displays the cross-correlation coefficients between yearly Sun spot number and simulated yearly thunder days. Although the exact shape of the main regions that show a significant correlation is partly different from those in Figure 2a, which shows the same but using the number of lightning strokes, their

Naformátováno: není zvýrazněné

Naformátováno: zvýrazněné

approximate locations remain the same: East Africa, part of South America and the west coast of Australia. In addition, there is a relatively large region in East Asia that exhibits significant correlation if thunder days are used. Figure 6b shows the cross-correlation coefficients between Sun spot number and smoothed thunder days. Application of Equation (3) again leads to an increase in the area of significant cross-correlation and appearance of regions with significant anti-correlation.

As discussed in the Introduction, some of the previous studies showed a relation between the polarity (sign) of the HMF components (especially of  $B_y$ ) and atmospheric electric field at high latitudes and lightning or cloud cover at specific altitudes (Burns et al., 2008; Voiculescu et al., 2013; Owens et al. 2014). First, it is useful to investigate how the individual components of the HMF correlate with the SSN. The cross-correlation coefficients between the used yearly NM data, HMF components and Kan-Lee reconnection electric field are shown in Table 1.

**Table 1.** Cross-correlation coefficients  $C_{SSN,i}$  between yearly SSN and NM,  $B_y$ ,  $B_z$  components of HMF and reconnection electric field and the corresponding  $p$  values.

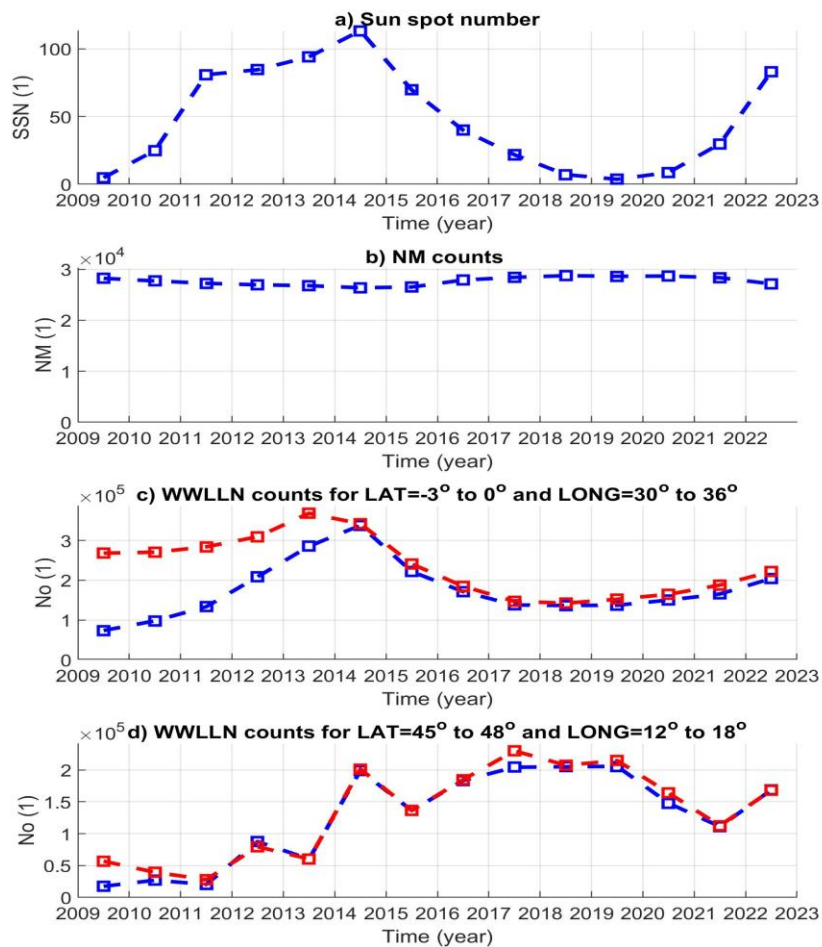
	NM	$B_y$	$B_z$	$E_{perp}$	$E_{par}$
$C_{SSN,i}$	-0.94	0.34	0.17	0.68	0.28
$p$ -value	$<10^{-6}$	0.24	0.55	0.007	0.33

for regions in which total number of lightning exceeded  $2 \cdot 10^4$ .

As discussed in the Introduction, some of the previous studies (Burns et al., 2008; Voiculescu et al., 2013; Owens et al. 2014 among others) showed a relation between the HMF polarity and atmospheric electric (Burns et al., 2008; Voiculescu et al., 2013; Owens et al. 2014 among others) ity or cloud cover. Therefore, in addition to the cross correlation of lightning with SSN and NM, the cross correlation with HMF components is also investigated. Figure 4 shows the cross correlation coefficients between yearly normalized values of  $B_y$ ,  $B_z$  components of HMF and lightning counts. It is obvious that lightning activity correlates with  $B_y$  over much of South America (except tropical regions), Europe and northwestern Asia (Fig. 4a), while only smaller parts of the Earth show higher values of the cross correlation between lightning and  $B_z$  (Fig. 4b). A comparison of Figure 2a and Figure 4a reveals that the regions that exhibit high values of cross correlation between the lightning strikes and both the SSN and the  $B_y$  component overlap only to

Naformátováno: Zarovnat do bloku, Mezera Za: 0 b.

Naformátováno: Mezera Za: 8 b.



**Fig. 4** a) Yearly Sun spot number. b) Yearly NM counts measured at Lomnický Štít. c) Number of detected lightning in the selected bin in which high cross-correlation with SSN was found, latitude from -3° to -0° and longitude from 30° to 36°. d) Number of detected lightning in the selected bin in which significant

correlation with SSN was not found, latitude from  $45^{\circ}$  to  $48^{\circ}$  and longitude from  $12^{\circ}$  to  $18^{\circ}$ . The corrected lightning counts are by red (see text for more details) —

320

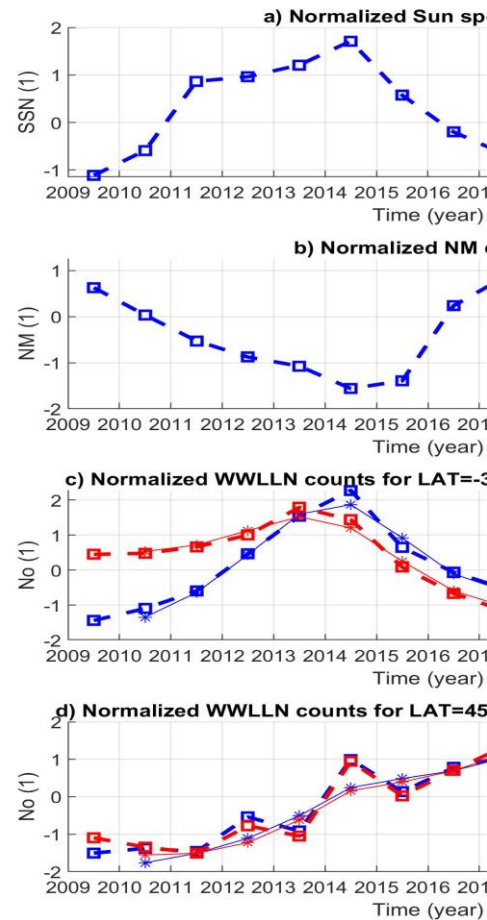
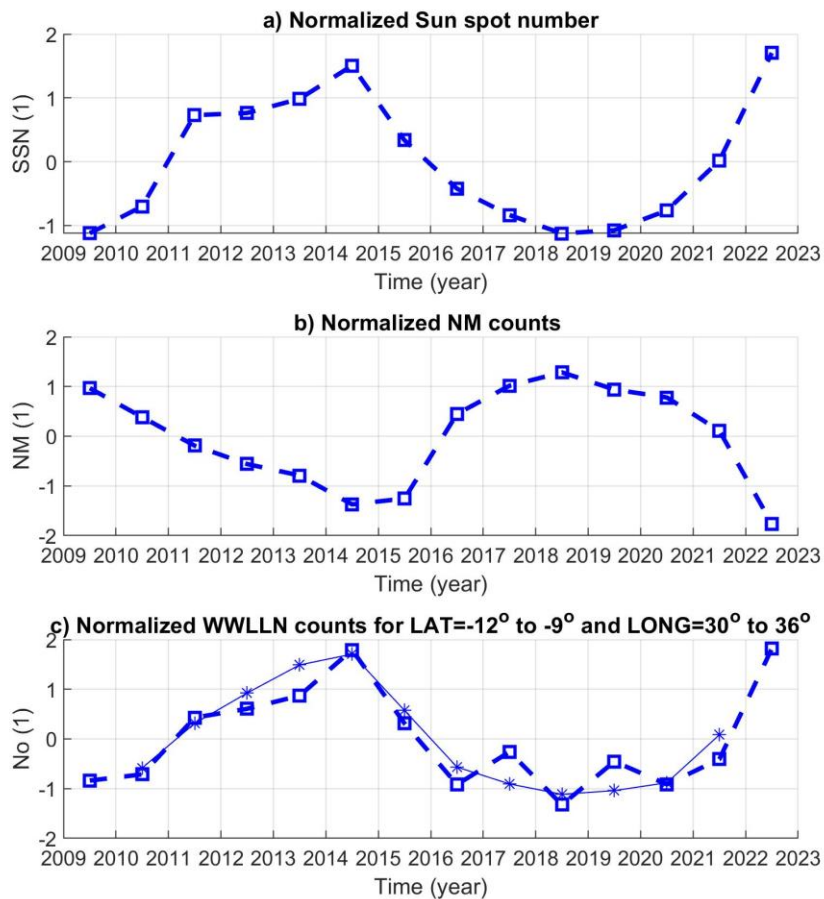


Fig. 53 a) Detrended-normalized yearly Sun-spot-number SSN. b) Detrended-normalized yearly Neutron monitor counts measured at Lomnický Štít. c) Detrended-normalized number of lightning in the selected bin in which significant cross-correlation with SSN was found, latitude from  $-34^{\circ}$  to  $-30^{\circ}$  and longitude from  $30^{\circ}$  to  $36^{\circ}$ . d) Normalized number of lightning in the selected bin in which significant

325

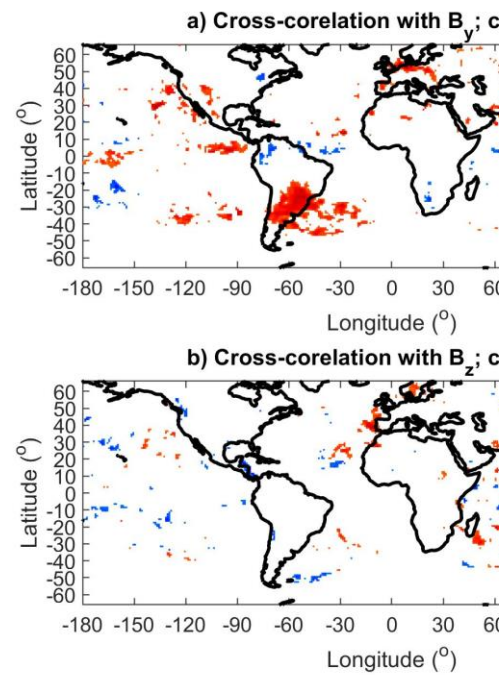
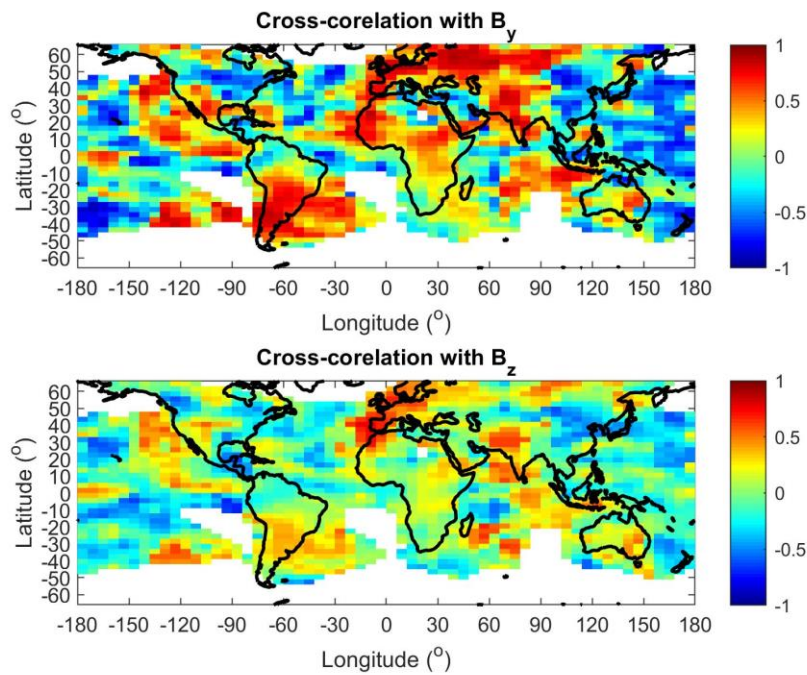
correlation with SSN was not found, latitude from  $45^\circ$  to  $48^\circ$  and longitude from  $12^\circ$  to  $18^\circ$ . Dashed line with square symbols represents annual data and solid line with asterisks show the smoothed data using Eq. equation (23). Corrected normalized counts are by red, uncorrected by blue.

330 **Fig. 6** a) Cross-correlation coefficients between yearly Sun spot number and simulated thunder days in  $1^\circ \times 1^\circ$  bins. b) Cross-correlation coefficients between yearly Sun spot number and smoothed (Eq. 3) simulated thunder days in  $1^\circ \times 1^\circ$  bins. Only statistically significant cross-correlation coefficients are displayed ( $p < 0.05$ ).

335 The NM data are very well anti-correlated ( $-0.94$ ,  $p < 10^{-6}$ ) with the SSN, so maps of cross-correlation coefficients between NM and lightning is just an opposite (negative) image to the maps shown, e.g., in Figure 2. More interesting is a map of cross-correlation coefficients between the  $B_y$ ,  $B_z$  components of the HMF and lightning counts, shown in Figure 7. It is obvious that lightning activity correlates with  $B_y$  over south-east part of South America (including South Atlantic) and over smaller regions in Europe, Asia and North America (Fig. 7a). On the other hand, only few relatively small regions show significant cross-correlation between lightning and  $B_z$  (Fig. 7b). A comparison of Figure 2a and Figure 7a reveals that main difference between maps for the cross-correlation with the SSN and the  $B_y$  component is that significant cross-correlation with  $B_y$  is not found in Africa. Figure 8 shows that similar results are obtained if thunder days, instead of lightning counts, are used. In addition, regions that show anti-correlation (e.g., in Colombia and Venezuela) are identified in Figure 8b. Figure 9 shows that slightly larger and stronger (darker red) regions of significant cross-correlation with the  $B_y$  component are obtained for the smoothed lightning counts (Eq. 3). Regions that exhibit significant anti-correlation (e.g. equatorial America) also appear, while again practically no significant cross-correlation is found with the  $B_z$  component.

345 Burns et al (2008) and Lam and Tinsley (2016) observed distinct changes of atmospheric electricity at high latitudes for  $|B_y| > 3$  nT. Figure 5a and 5b shows the cross correlation coefficients between yearly normalized values of  $B_y > 3$  nT and  $B_y < -3$  nT, respectively, and normalized lightning counts. While no significant cross correlation with lightning activity is observed when only values  $B_y > 3$  nT are used (Figure 5a), regions which show large negative cross correlation coefficients can be identified when only values  $B_y < -3$  nT are used (Figure 5b). These regions are nearly identical to the regions that were characterized by large positive cross correlation coefficients between normalized lightning counts and  $B_y$  (compare Figure 4a and 5b).

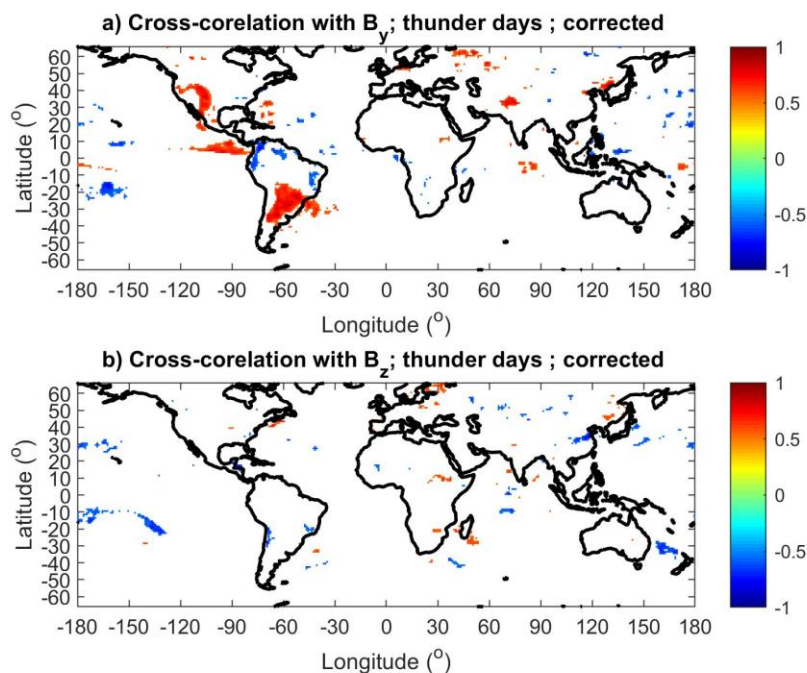




**Fig. 74** a) Cross-correlation coefficient between normalized-yearly  $B_y$  component of HMF and corrected lightning counts in  $1^\circ \times 1^\circ$  bins. for regions in which total number of lightning exceeded  $2 \cdot 10^4$ . b) Cross-correlation coefficient between normalized-yearly  $B_z$  component of HMF and corrected lightning counts in  $1^\circ \times 1^\circ$  bins for regions in which total number of lightning exceeded  $2 \cdot 10^4$ . Only statistically significant cross-correlation coefficients are displayed ( $p < 0.05$ ).

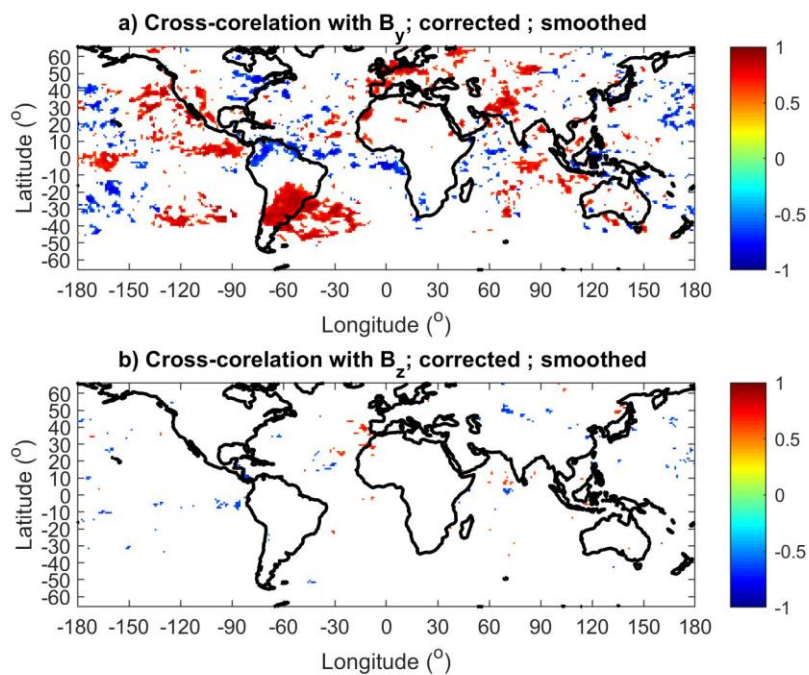
360





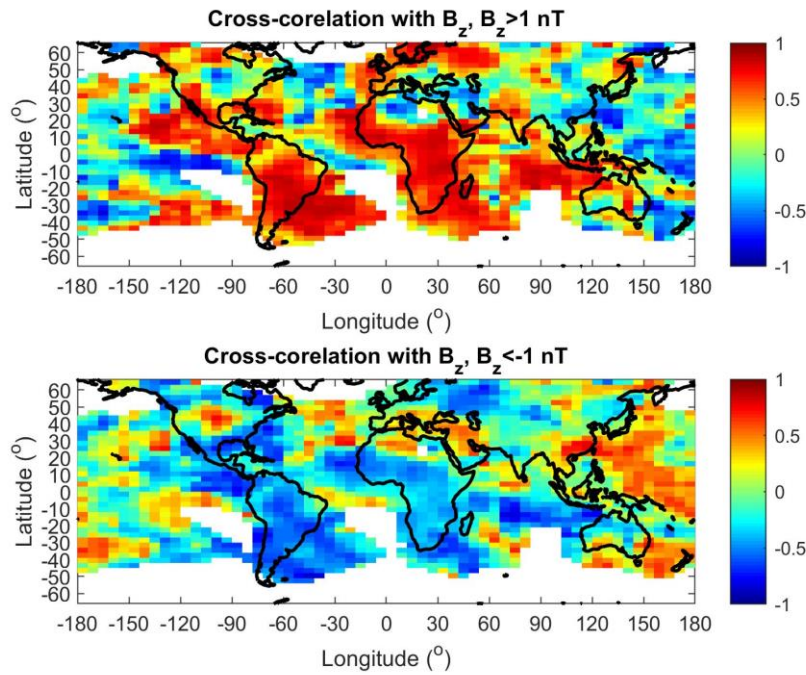
**Fig. 8** a) Cross-correlation coefficient between yearly  $B_y$  component of HMF and corrected lightning counts in  $1^\circ \times 1^\circ$  bins. b) Cross-correlation coefficient between yearly  $B_z$  component of HMF and corrected lightning counts in  $1^\circ \times 1^\circ$  bins. Only statistically significant cross-correlation coefficients are displayed ( $p < 0.05$ ).

As mentioned in Section 2, the threshold  $|B_y| = 3$  nT represents about  $\sqrt{2}$  times the average of  $|B_y|$ . An analogous threshold for  $|B_z|$  is approximately 1 nT. Figure 6a and 6b shows the cross-correlation coefficients between yearly normalized values of  $B_z > 1$  nT and  $B_z < -1$  nT, respectively, and normalized lightning counts. The cross-correlation analysis for  $B_z > 1$  nT (Figure 6a) gives similar results (although not identical, the cross-correlation coefficients are bit smaller in this case) to the cross-correlation analysis for SSN (compare Figures 2a and 6a). The cross-correlation analysis for  $B_z < -1$  nT (Figure 6b) does not yield large values for the cross-correlation coefficients.

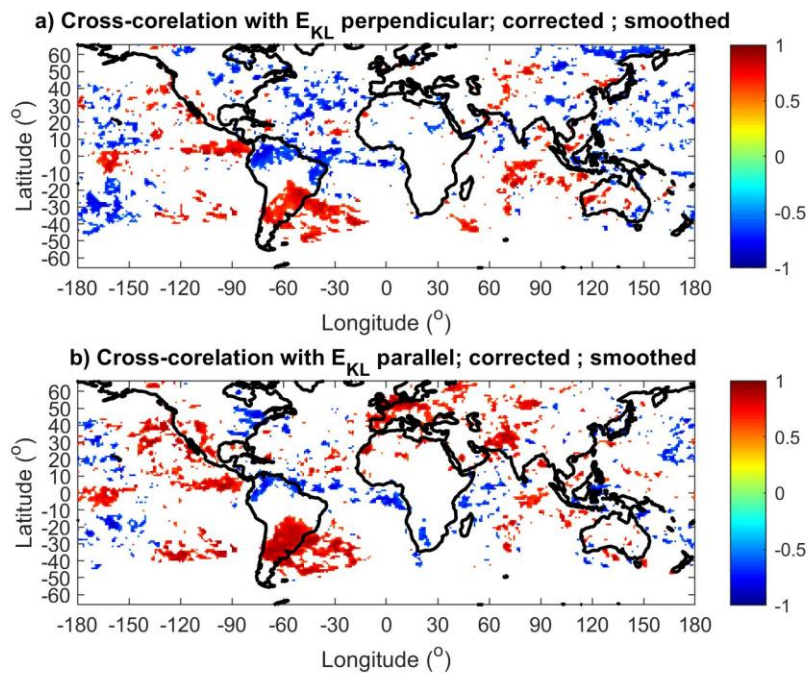


**Fig. 9** a) Cross-correlation coefficient between yearly  $B_y$  component of HMF and smoothed (Eq. 3) corrected lightning counts in  $1^\circ \times 1^\circ$  bins. b) Cross-correlation coefficient between yearly  $B_z$  component of HMF and smoothed (Eq. 3) corrected lightning counts in  $1^\circ \times 1^\circ$  bins. Only statistically significant cross-correlation coefficients are displayed ( $p < 0.05$ ).

significant correlation or anti-correlation as shows Figure 11. The main center of significant cross-correlation is again in south-east America and part of South Atlantic.



395 **Fig. 10.7a)** Cross-correlation coefficient between ~~normalized~~-reconnection Kan-Lee electric field (perpendicular component) and corrected lightning counts in  $1^\circ \times 1^\circ$  bins, for regions in which total number of lightning exceeded  $2 \cdot 10^4$ . b) Cross-correlation coefficient between ~~normalized~~-reconnection Kan-Lee electric field (parallel component) and corrected lightning counts in  $1^\circ \times 1^\circ$  bins. Only statistically significant cross-correlation coefficients are displayed ( $p < 0.05$ ).



**Fig. 11** a) Cross-correlation coefficient between reconnection Kan-Lee electric field (perpendicular component) and smoothed (Eq. 3) corrected lightning counts in  $1^\circ \times 1^\circ$  bins. b) Cross-correlation coefficient between reconnection Kan-Lee electric field (parallel component) and smoothed (Eq. 3) corrected lightning counts in  $1^\circ \times 1^\circ$  bins. Only statistically significant cross-correlation coefficients are displayed ( $p < 0.05$ ), for regions in which total number of lightning exceeded  $2 \cdot 10^4$ .

#### 4. Discussion and Conclusions

The presented maps results show that significant-high cross-correlation coefficients ( $p < 0.05$ ) between solar activity represented by the  $\{SSN\}$  and lightning are observed in tropical regions of central and east Africa, south-east part of and South America, including part of South Atlantic, and west coast of Australia and part of Indian Ocean for the period 2009-2022, which may indicate the importance of the top-down mechanism associated with greater UV flux and stratospheric heating during increased solar activity (Arnold and Robinson, 1998, 2000; Balachandran et al., 1999). Longitudinal differences and some asymmetry between the northern and southern hemispheres, particularly in the African and American

sectors, may be due to the climatic differences in various regions such as typical atmospheric circulation and planetary waves characteristics. It should be noted that the regions of significant correlation do not include most of the typical wet rain forest areas, the Amazon basin in America, west part of Congo basin in Africa and south-east Asia and Indonesia. Mutai and Ward (2000) found that rain events in east Africa are associated with the Madden Julian oscillation (MJO) in the Indian ocean. Both east Africa and the Indian ocean show significant correlation with SSN. Kozlov et al. (2023) found positive variation between the MJO and ionospheric potential. It was also shown that the intensity of rain events in east Africa depends on the phase of ENSO (Ogallo, 1988; Nicholson and Kim, 1997). Pinto et al., (2013b) found that an increase of thunderstorm activity around Rio de Janeiro occur simultaneously with a positive anomaly of the South Atlantic sea surface temperature and La Niña. Williams et al. (2021), based on Shuman resonance measurements, found that the global lightning activity increased in the transition phase to El Niño. It should be noted that strong El Niño occurred in 2014-2015, which coincides with solar maximum of the solar cycle 24. On the other hand, two El Niño phases occurred during solar minima in 2009-2010 and 2018-2019, so it is reasonable to expect that the effect of ENSO on the presented results is not dominant. In addition, the application of equation (3), which partially suppresses the inter-annual atmospheric oscillations such as ENSO, leads to an increase in the area of regions that show significant correlation (Figures 2b and 6b). On the other hand, it also leads to an emergence of areas that show significant anti-correlation with the SSN. It is probable that regional climatic differences are responsible for the observed patterns in the maps of significant correlation (anti-correlation) with the SSN, but the exact mechanism is not clear and needs further investigation. Barriopedro et al. (2008) found that the 11-year solar cycle (represented by SSN) modulates atmospheric blocking in mid-latitudes of the northern hemisphere. Proposed underlying physical mechanisms are related to heating in the stratosphere by UV radiation (Gray et al. 2016). Changes in blocking frequency, persistence and locations affect atmospheric circulation, which is a main factor modulating surface weather and climate patterns at mid-latitudes (Masato et al. 2012). However, the observed relationships between SSN and atmospheric circulation in the troposphere were significant only in boreal winter, when the lightning activity is relatively low compared to summer, and cannot explain the dipole mode over the Atlantic region in Africa and the Atlantic ocean (Zhang et al. 2014).

Pinto et al. (2013a), using audible thunder data from 1951 to 2009, found solar cycle signature in thunderstorm activity in several Brazilian cities, with significant anti-phase relation with the SSN for three out of seven cities. This is not confirmed in the current study that covers period from 2009 to 2022. In contrary, significant in-phase relation was found in the south part of Brazil. Anti-phase relation was found only in a minor part of east Brazil, if smoothed thunder day data were used (Figure 6b). On the other hand, significant anti-correlation with the SSN for smoothed lightning data was found over non-negligible part of the United States (Figure 2b, 6b). It should be noted that the anti-correlation is consistent with the idea

450 of Markson (1981), who suggested that thunderstorm activity is in-phase with cosmic rays and in anti-phase  
with solar activity. ~~Cosmic rays do not contribute to the global occurrence of lightning because they are not  
positively correlated in most regions.~~ According to our study, however, cosmic rays are out of phase or not  
uncorrelated with cosmic rays over most of the globe. More important are probably ~~suitable weather~~  
455 ~~conditions leading to thunderstorm formation.~~ This does not rule out the possibility that cosmic rays play a  
role in igniting individual lightning strikes in already developed thunderclouds (Shao et al., 2020).

~~Comparison of the maps obtained using lightning counts (Fig. 2) and simulated thunder days (Fig. 6)~~  
~~shows that although the patterns of areas with significant cross-correlation with SNN are not exactly~~  
~~identical, they are not very different and the approximate location of the major centers remains the same.~~  
~~Unlike Schlegel et al. (2001), we have not found significant correlation between the lightning frequency in~~  
460 ~~Germany and SSN. On the other hand, a significant correlation was found between lightning frequency in~~  
~~Germany and  $B_y$  component of the HMF and the reconnection Kan-Lee electric field (Figure 7a, 9a, 10b,~~  
~~11b).~~

~~An important and interesting result of the present study is that the region of significant correlation~~  
~~between lightning activity and the  $B_y$  component of the HMF and the reconnection Kan-Lee electric field~~  
465 ~~coincides with the region of South Atlantic Anomaly (SAA). It is known that a relatively large number of~~  
~~energetic particles precipitate from the magnetosphere in to the atmosphere due to the decreased strength~~  
~~of the magnetic field in the SAA region, especially during interaction of solar wind with the Earth's~~  
~~magnetosphere. For example, Sauvaud et al. (2008) showed, using measurements onboard DEMETER~~  
~~satellite, large flux of 200 keV precipitating (loss-cone) electrons when the satellite was inside the SAA.~~  
470 ~~On the other hand, east Africa does not exhibit correlation with the  $B_y$  component of the HMF and the~~  
~~reconnection Kan-Lee electric field. Therefore, it cannot be excluded that different mechanisms are~~  
~~responsible for the significant correlation between the SSN and lightning activity in the SAA region and in~~  
~~east Africa, where the precipitation of energetic particles from the magnetosphere is unlikely. Further~~  
~~studies are needed to verify, if energetic particles precipitating from the magnetosphere are indeed~~  
475 ~~responsible for the significant correlation between lightning activity and Kan-Lee electric field ( $B_y$~~   
~~component of the HMF) in the SAA region. Energy spectrum of precipitating particles, their effect on the~~  
~~ionization, electric conductivity, chemical compositions at different heights, radiative balance, cloud cover~~  
~~and cloud charging need to be analyzed.~~

~~An unusually large number of winter lightning in northwestern Europe during the peak of solar cycle 24~~  
480 ~~(2014/2015) was studied by Kolmašová et al. (2022), who hypothesized that the increase of lightning~~  
~~activity was due to the positive phase of North Atlantic Oscillation and cold-to-warm transition of El Niño.~~  
~~The effect of El Niño on lightning activity was also pointed out by Williams et al. (2021). On the other~~



hand, Holzworth et al. (2019) found a similarity between SSN and number of superbolts, particularly in northwestern Europe and Mediterranean in winter. solar maximum, enhance the ionization in the bottom ionosphere and upper mesosphere, lowering the reflection height from which the very low frequency and extra low frequency electromagnetic waves are reflected (Sátori et al., 2005; Bozóki et al., 2021). Changes in properties in the upper part of the Earth-Ionosphere waveguide can thus bias/affect the detection efficiency of the WWLLN.

Another limitation of the current study is a relatively short. The  $B_z$ -component of the heliospheric magnetic field and the reconnection Kan-Lee electric field is well correlated with lightning occurrence over significant portions of the globe from mid to high altitudes, including the northwestern Europe. This may suggest that solar wind, reconnection and particle precipitation can be responsible for changes in the upper and middle atmosphere in the polar and auroral regions. These changes may then modulate the usual tropospheric weather indirectly, through changes in the general circulation, radiation and atmospheric waves, leading to the observed influence of the solar wind on the occurrence of lightning at middle and high latitudes and to the observed longitudinal differences, whether the obtained patterns of significant cross-correlation coefficients between lightning and solar activity or HMF solar wind data applies to are also valid for other time periods and solar cycles. Some local previous studies based on thunder days, such as that of Aniol (1952) in Germany, suggest that the cross-correlation coefficients between thunder days in Germany and solar activity vary with time this may not be the case. Similarly, Chum et al. (2021) identified a period of solar rotation in lightning occurrence data in Central Europe at the period 2016-2019 (lightning was more probable if the HMF was oriented toward the Sun) for Central Europe and the period 2016-2019. However, extending their study to a longer time interval revealed that the periods observed in for lightning data occurrence and period of solar rotation (period of HMF polarity) solar wind are generally asynchronous, although they may be close together. Further studies, based on longer time intervals, are needed to verify

Naformátováno: Čeština

## Abbreviations

CC: Creative Commons; CR: Correlation; ENSO: El Niño Southern Oscillation; GCM: General Circulation Model; HMF: Heliospheric Magnetic Field; ICS: Ionospheric Critical Frequency of the Ordinary Wave; LOM: Lightning Occurrence Monitor; MJO: Madden-Julian oscillation; NM: Neutron monitor; PSD: Power spectral density; SW: Solar wind; WWLLN: World-wide lightning location network; SAA: South Atlantic anomaly; SSN: Sun spot number

## Data Availability

WWLLN archival data are copyrighted by the University of Washington and are available to the public at nominal cost. The Solar activity and HMF data can be found at NASA/GSFC's Space Physics Data Facility's OMNIWeb (<https://omniweb.gsfc.nasa.gov/>).

The NM data can be downloaded from <http://data.space.saske.sk/status/> (access is provided by R. Langer, [langner@saske.sk](mailto:langner@saske.sk), on request).



### Author Contributions

JC designed and wrote the paper and performed most of the analysis. RL and IS are responsible for and provided the SCR data. IK provided the lightning data and contributed to the discussion. OL and JR contributed to the discussion. All authors read and approved the submitted version.

### Competing Interest

The authors declare that they have no conflict of interest.

### Acknowledgments

We are grateful to Samuel Štefánik for maintaining the measurements on Lomnický Štít. [The authors thank E. Williams and an anonymous reviewer for valuable comments.](#)

### Funding

Support under the grant SAV-23-02 by the Czech Academy Sciences is acknowledged. The work of IK was supported by the Czech Science Foundation grant 23-06430S.

### References

- Andersson, M. E., Verronen, P. T., Rodger, C. J., Clilverd, M. A., and Seppälä, A. (2014), Missing driver in the Sun-Earth connection from energetic electron precipitation impacts mesospheric ozone, *Nat. Commun.*, 5, 5197, <https://doi.org/10.1038/ncomms6197>
- Aniol, R. (1952). Schwankungen der Gewitterhäufigkeit in Süddeutschland. *Meteorologische Rundschau* 3 (4), 55–56.
- Arnold, N.F., Robinson, T.R. (1998). Solar cycle changes to planetary wave propagation and their influence on the middle atmosphere circulation. *Annales de Geophysique* 16, 69–76.
- Arnold, N.F., Robinson, T.R. (2000). Amplification of the influence of solar flux variations on the middle atmosphere by planetary waves. *Space Science Reviews* 94 (1–2), 279–286.
- Balachandran, N.K., Rind, D., Lonergan, P., Shindell, D.T. (1999). Effects of solar cycle variability on the lower stratosphere and the troposphere. *Journal of Geophysical Research* 104, 27,321–27,339.
- Barriopedro, D., García-Herrera, R., Huth, R. (2008). Solar modulation of Northern Hemisphere winter blocking. *J. Geophys. Res.* 113, D14118. doi: 10.1029/2008JD009789
- Borries, C., Ferreira, A.A., Nykiel, G. et al. (2023), A new index for statistical analyses and prediction of traveling ionospheric disturbances. *J. Atmos. Solar-Terrestrial Phys.*, 247, doi: <https://doi.org/10.1016/j.jastp.2023.106069>.

**Naformátováno:** Standardní písmo odstavce, Písmo: (výchozí) +Základní text (Calibri)

- 550 [Bozóki T, Sători G, Williams E, Mironova I, Steinbach P, Bland EC, Koloskov A, Yampolski YM, Budanov OV, Neska M, Sinha AK, Rawat R, Sato M, Beggan CD, Toledo-Redondo S, Liu Y and Boldi R \(2021\) Solar Cycle-Modulated Deformation of the Earth–Ionosphere Cavity. \*Front. Earth Sci.\* 9:689127, doi: 10.3389/feart.2021.689127](#)
- Brooks, C.E.P., 1934. The variation of the annual frequency of thunderstorms in relation to sunspots. *Quarterly Journal of the Royal Meteorological Society* 60, 153–165.
- Burns, G. B., Tinsley, B. A., French, W. J. R., Troshichev, O. A., and Frank-Kamenetsky, A. V. (2008). Atmospheric Circuit Influences on Ground-Level Pressure in the Antarctic and Arctic. *J. Geophys. Res.* 113, D15112. doi:10.1029/2007JD009618
- 555 Chronis, T. G. (2009), Investigating possible links between incoming cosmic ray fluxes and lightning activity over the United States, *J. Clim.*, 22, 5748–5754, doi:10.1175/2009JCLI2912.1.
- Chum, J., Langer, R., Baše, J., Kollárik, M., Strhářský, I., Diendorfer, G., and Ruzs, J. (2020), Significant enhancements of secondary cosmic rays and electric field at the high mountain peak of Lomnický Štít in High Tatras during thunderstorms, *Earth, Planets and Space*, 72:28, <https://doi.org/10.1186/s40623-020-01155-9>
- 560 Chum, J., Kollárik, M., Kolmašová, I., Langer, R., Ruzs, J., Saxonbergová, D. and Strhářský, I. (2021), Influence of Solar Wind on Secondary Cosmic Rays and Atmospheric Electricity. *Front. Earth Sci.* 9:671801. <https://doi.org/10.3389/feart.2021.671801>
- 565 Dwyer, J. R., and Uman, M. A. (2014). The Physics of Lightning. *Phys. Rep.* 534 (4), 147–241. doi:10.1016/j.physrep.2013.09.004
- Fritz, H., 1878. Die wichtigsten periodischen Erscheinungen der Meteorologie und Kosmologie. In: *Naturkundige Verhandelingen van de Hollandsche Maatschappij der Wetenschappen te Haarlem*, Deel III, Haarlem
- 570 Gosling, J. T., and Pizzo, V. J. (1999). Formation and Evolution of Corotating Interaction Regions and Their Three Dimensional Structure. *Space Sci. Rev.* 89, 21–52. doi:10.1023/A:100529171190010.1007/978-94-017-1179-1\_3
- Gray, L. J., Beer, J., Geller, M., Haigh, D. J., Lockwood, M., Matthes, K., et al. (2010). Solar Influences on Climate. *Rev. Geophys.* 48, RG4001. doi:10.1029/2009RG000282
- 575 [Gray, L.J., Woollings, T.J., Andrews, M. and Knight, J. \(2016\), Eleven-year solar cycle signal in the NAO and Atlantic/European blocking. \*O.J.R. Meteorol. Soc.\*, 142, 1890-1903. doi: 10.1002/qj.2782](#)
- [Hale, L. Solar modulation of atmospheric electrification and the Sun–weather relationship. \*Nature\* 278, 373 \(1979\). <https://doi.org/10.1038/278373a0>](#)
- 580 [Holzworth, R. H., McCarthy, M. P., Brundell, J. B., Jacobson, A. R., and Rodger, C. J. \(2019\). Global Distribution of Superbolts, \*J. Geophys. Res. Atmos.\*, 124, 9996–10005, <https://doi.org/10.1029/2019JD030975>](#) [Holzworth, R. H., Brundell, J. B., McCarthy, M. P., Jacobson,](#)

**Naformátováno:** Písmo: (výchozí) Times New Roman, 11 b.

**Naformátováno:** Písmo: (výchozí) Times New Roman, 11 b.

- 585 [A. R., Rodger, C. J., & Anderson, T. S. \(2021\). Lightning in the Arctic. \*Geophysical Research Letters\*, 48, e2020GL091366. <https://doi.org/10.1029/2020GL091366>](#)
- [Hutchins, M. L., R. H. Holzworth, J. B. Brundell, and C. J. Rodger \(2012\), Relative detection efficiency of the World Wide Lightning Location Network, \*Radio Sci.\*, 47, RS6005, doi:10.1029/2012RS005049.](#)
- Kan, J.R., Lee, L.C. (1979). Energy coupling function and solar wind magnetosphere dynamo. *Geophys. Res. Lett.* 6(7), 577–580, <http://dx.doi.org/10.1029/GL006i007p00577>.
- 590 Kirkby, J. (2008). Cosmic Rays and Climate. *Surv. Geophys.* 28, 333–375. doi:10.1007/s10712-008-9030-610.1007/s10712-008-9030-6
- [Kleymenova, E. P. \(1967\), On the variation of the thunderstorm activity in the solar cycle, \*Glav. Uprav. Gidromet. Scuzb., Met. Gidr.\* 8, 64–68 \(in Russian\).](#)
- [Kolmašová, I., Santolík, O., Rosická, K., 2022: Lightning activity in northern Europe during a stormy winter: disruptions of weather patterns originating in global climate phenomena, \*Atmos. Chem. Phys.\*, 22, 5, 3379–3389, <https://doi.org/10.5194/acp-22-3379-2022>](#)
- 595 [Kozlov, A. V., Slyunyaev, N. N., Ilin, N. V., Sarafanov, F. G., Frank-Kamenetsky, A. V. \(2023\), The effect of the Madden–Julian Oscillation on the global electric circuit. \*Atmospheric Research\*, 284, 106585, <https://doi.org/10.1016/j.atmosres.2022.106585>.](#)
- 600 Kristjánsson, J. E., Stjern, C.W., Stordal, F., Fjæraa, A. M., Myhre, G., and Jónasson, K. (2008). Cosmic Rays, Cloud Condensation Nuclei and Clouds – a Reassessment Using MODIS Data. *Atmos. Chem. Phys.* 8 (24), 7373–7387. doi:10.5194/acp-8-7373-2008
- Kudela, K., Langer, R. (2009). Cosmic ray measurements in high Tatra mountains: 1957–2007. *Advances in Space Research*, 44(10), 1166–1172, <https://doi.org/10.1016/j.asr.2008.11.028>
- 605 Lam, M. M., and Tinsley, B. A. (2016). Solar Wind-Atmospheric Electricity-Cloud Microphysics Connections to Weather and Climate. *J. Atmos. Solar-Terrestrial Phys.* 149, 277–290. doi:10.1016/j.jastp.2015.10.019
- Maliniemi, V., Asikainen, T., Mursula, K. & Seppälä, A. (2013). QBO dependent relation between electron precipitation and wintertime surface temperature, *J. Geophys. Res. Atmos.*, 118, 6302-6310
- 610 Maliniemi, V., Asikainen, T. & Mursula, K. (2016), Effect of geomagnetic activity on the northern annular mode: QBO dependence and the Holton-Tan relationship, *J. Geophys. Res. Atmos.*, 121
- Mannucci, A.J., Crowley, G., Tsurutani, B.T., Verkhoglyadova, O.P., Komjathy, A., Stephens, P., 2014. Interplanetary magnetic field By control of prompt total electron content increases during superstorms. *J. Atmos. Sol. Terr. Phys.* 115–116, 7–16. <http://dx.doi.org/10.1016/j.jastp.2014.01.001>.
- 615 [Markson, R. \(1978\), Solar modulation of atmospheric electrification and possible implications for the Sun–weather relationship. \*Nature\* 273, 103–109. <https://doi.org/10.1038/273103a0>](#)

Markson, R. (1981), Modulation of the Earth's electric field by cosmic radiation. *Nature* **291**, 304–308.  
<https://doi.org/10.1038/291304a0>

Markson and Muir (1980), Solar wind control of the Earth's electric field, *Science* **208**, 979-990, DOI:  
[10.1126/science.208.4447.979](https://doi.org/10.1126/science.208.4447.979)

Naformátováno: Písmo: (výchozí) Times New Roman

Masato, G., Hoskins, B.J. and Woollings, T.J. (2012). Wave-breaking characteristics of midlatitude blocking. *Q.J.R. Meteorol. Soc.*, 138: 1285-1296. doi: 10.1002/qj.990

Mironova, I.A., Aplin, K.L., Arnold, F. *et al.* (2015). Energetic Particle Influence on the Earth's Atmosphere. *Space Sci Rev*, **194**, 1–96, <https://doi.org/10.1007/s11214-015-0185-4>

Miyahara, H. and Kataoka, R. and Mikami, T. and Zaiki, M. and Hirano, J. and Yoshimura, M. and Aono, Y. and Iwahashi, K. (2018), Solar rotational cycle in lightning activity in Japan during the 18-19th centuries, *Ann. Geophys.*, **36**, 633–640, <https://doi.org/10.5194/angeo-36-633-2018>

Mutai, C. and Ward, M. (2000), East African Rain fall and the Tropical Circulation/Convection on Intraseasonal to Interannual Timescales, *Journal of Climate*, **13**, (22), 3915–3939.

Nicholson and J. Kim (1997), The relationship of the El Niño–Southern Oscillation to African rainfall, *Int. J. Climatol.*, **17**, 117–135.

Ogallo, L. J. (1988), Relationship between seasonal rainfall in East Africa and Southern Oscillation, *J. Climatol.*, **8**, 34–43.

Owens, M., Scott, C., Lockwood, M., Barnard, L., Harrison, R., Nicoll, K., Watt, C., and Bennett, A. (2014), Modulation of UK lightning by heliospheric magnetic field polarity, *Environ. Res. Lett.*, **9**(11), 115009, <https://doi.org/10.1088/1748-9326/9/11/115009>.

Owens, M. J., Scott, C. J., Bennett, A. J., Thomas, S. R., Lockwood, M., Harrison, R. G., and Lam, M. M. (2015), Lightning as a space-weather hazard: UK thunderstorm activity modulated by the passage of the heliospheric current sheet, *Geophys. Res. Lett.*, **42**, 9624–9632, <https://doi.org/10.1002/2015GL066802>.

Pinto Neto, O., Pinto, I. R. C. A., and Pinto, O. (2013a), The relationship between thunderstorm and solar activity for Brazil from 1951 to 2009, *J. Atmos. Sol. Terr. Phys.*, **98**, 12–21, doi:10.1016/j.jastp.2013.03.010.

Pinto, O., I. R. C. A. Pinto, and M. A. S. Ferro (2013b), A study of the long-term variability of thunderstorm days in southeast Brazil, *J. Geophys. Res. Atmos.*, **118**, 5231–5246, <https://doi.org/10.1002/jgrd.50282>.

Prikryl, P., Bruntz, R., Tsukijihara, T., Iwao, K., Muldrew, D. B., Rušin, V., Rybanský, M., Turňa, M., and Šťastný, P. (2018), Tropospheric weather influenced by solar wind through atmospheric vertical coupling downward control, *J. Atmos. Sol. Terr. Phys.*, **171**, 94–110, <https://doi.org/10.1016/j.jastp.2017.07.023>.

Rodger, C. J., Brundell, J. B., Dowden, R. L., & Thomson, N. R. (2004). Location accuracy of long distance VLF lightning location network. *Annales Geophysicae*, **22**(3), 747–758.

<https://doi.org/10.5194/angeo-22-747-2004>.

- 655 Rycroft, M. J., Israelsson, S., and Price, C. (2000), The global atmospheric electric circuit, Solar activity and climate change, *J. Atmos. Sol. Terr. Phys.*, **62**, 1563–1576, [https://doi.org/10.1016/S1364-6826\(00\)00112-7](https://doi.org/10.1016/S1364-6826(00)00112-7)
- Salminen, A., Asikainen, T., Maliniemi, V. & Mursula, K. (2019). Effect of energetic electron precipitation on the northern polar vortex: Explaining the QBO modulation via control of meridional circulation, *Journal of Geophysical Research: Atmospheres*, *124*, 5807-5821
- 660 [Sátori, G., Williams, E., and Mushtak, V. \(2005\). Response of the Earth-Ionosphere Cavity Resonator to the 11-year Solar Cycle in X-Radiation, \*J. Atmos. Sol. Terr. Phys.\*, \*67\* \(6\), 553–562. doi:10.1016/j.jastp.2004.12.006](https://doi.org/10.1016/j.jastp.2004.12.006)
- [Sauvaud, J. A., R. Maggiolo, C. Jacquey, M. Parrot, J. J. Berthelier, R. J. Gamble, and C. J. Rodger \(2008\). Radiation belt electron precipitation due to VLF transmitters: Satellite observations, \*Geophys. Res. Lett.\*, \*35\*, L09101, doi:10.1029/2008GL033194](https://doi.org/10.1029/2008GL033194)
- 665 [Schlegel, K., Diendorfer, G., Thern, S., and Schmidt, M. \(2001\), Thunderstorms, lightning and solar activity—Middle Europe, \*J. Atmos. Sol. Terr. Phys.\*, \*63\*, 1705–1713, doi:10.1016/S1364-6826\(01\)00053-0.](https://doi.org/10.1016/S1364-6826(01)00053-0)
- Scott, C. J., Harrison, R. G., Owens, M. J., Lockwood, M., and Barnard, L. (2014), Evidence for solar wind modulation of lightning, *Environ. Res. Lett.*, *9*(5), 055004, doi:10.1088/1748-9326/9/5/055004.
- 670 Seppälä, A., Randall, C. E., Clilverd, M. A., Rozanov, E., and Rodger, C. J. (2009). Geomagnetic activity and polar surface air temperature variability, *J. Geophys. Res.-Space*, *114*, A10312, <https://doi.org/10.1029/2008JA014029>
- Seppälä, A., Lu, H., Clilverd, M.A. & Rodger, C.J. (2013). Geomagnetic activity signatures in wintertime stratosphere wind, temperature, and wave response, *J. Geophys. Res. Atmos.*, *118*, 2169-2183
- 675 Shao, X. M., Ho, C., Bowers, G., Blaine, W., and Dingus, B. (2020). Lightning Interferometry Uncertainty, Beam Steering Interferometry, and Evidence of Lightning Being Ignited by a Cosmic ray Shower. *J. Geophys. Res. Atmos.* *125*, e2019JD032273. doi:10.1029/2019JD032273
- Svensmark, H., Bondo, T., and Svensmark, J. (2009). Cosmic ray Decreases Affect Atmospheric Aerosols and Clouds. *Geophys. Res. Lett.* *36*, L15101. doi:10.1029/2009GL038429
- 680 Stringfellow, M. F. (1974), Lightning incidence in Britain and the solar cycle, *Nature*, *249*, 332–333, doi:10.1038/249332a0.
- Sinnhuber, M., Berger, U., Funke, B., Nieder, H., Reddmann, T., Stiller, G., Versick, S., von Clarmann, T., and Wissing, J. M. (2018). NO<sub>y</sub> production, ozone loss and changes in net radiative heating due to energetic particle precipitation in 2002–2010, *Atmos.Chem. Phys.*, *18*, 1115–1147, <https://doi.org/10.5194/acp-18-1115-2018>, 2018.
- 685

- Usoskin, I.G., Kananen, H., Mursula, K., Tanskanen, P., Kovaltsov, G.A. (1998), Correlative study of solar activity and cosmic ray intensity. *J. Geophys. Res.* 103(A5), 9567, <https://doi.org/10.1029/97JA03782>
- 690 Voiculescu, M., Usoskin, I., and Condurache-Bota, S. (2013). Clouds Blown by the Solar Wind. *Environ. Res. Lett.* 8, 045032. doi:10.1088/1748-9326/8/4/045032
- Voiculescu, M., and Usoskin, I. (2012). Persistent Solar Signatures in Cloud Cover: Spatial and Temporal Analysis. *Environ. Res. Lett.* 7, 044004. doi:10.1088/17489326/7/4/044004
- Williams, E., Bozóki, T., Sători, G., Price, C., Steinbach, P., Guha, A., Liu, Y., Beggan, C. D., Neska, M.,  
695 Boldi, R., and Atkinson, M. (2021), Evolution of global lightning in the transition from cold to warm phase preceding two super El Niño events, *J. Geophys. Res.-Atmos.*, 126, e2020JD033526, <https://doi.org/10.1029/2020JD033526>
- ~~Zafirah, N., Nurin, N.A., Samsurijan, M.S., Zuknik, M.H., Rafatullah, M., Syakir, M.I. (2017). Sustainable Ecosystem Services Framework for Tropical Catchment Management: A Review. *Sustainability* 9(4), 546. doi: 10.3390/su9040546~~
- 700