

The influence of dune lee side shape on time-averaged velocities and turbulence

Alice Lefebvre ¹, Julia Cisneros ²

¹MARUM – Center for Marine Environmental Sciences, University of Bremen, Bremen, Germany

²Department of Geological Sciences, Jackson School of Geosciences, UT Austin, Austin, TX 78712, USA

Correspondence to: Alice Lefebvre (alefebvre@marum.de)

Abstract. Underwater dunes are found in various environments with strong hydrodynamics and ~~sandy~~ movable sediment such as rivers, estuaries and continental shelves. They have a diversity of morphology, ranging from low to high-angle lee sides, and sharp or rounded crests. Here, we investigate the influence of lee side morphology on flow properties (time-averaged velocities and turbulence). To do so, we carried out a large number of numerical simulations of flows over dunes with a variety of morphologies using Delft3D. Our results show that the value of the mean lee side angle, as well as the value and position of the maximum lee side angle, have an influence on the flow properties investigated. We propose a classification with 3 types of dunes: (1) low-angle dunes (mean lee side $< 10^\circ$), over which there is generally no permanent flow separation, except if the maximum slope is steeper than 20° and situated close to the trough, and over which only little turbulence is created; (2) intermediate-angle dunes (mean lee side 10 – 20 – 17°) over which an intermittent flow separation is there is generally no permanent but likely an intermittent flow separation, situated over the trough; and (3) high-angle dunes (mean lee side > 17 – 20°) over which the flow separates at the brink point and reattaches shortly after the trough, and over which turbulence is high. The maximum lee side slope position has an influence on flow characteristics which depends on dune type. We discuss the implications of this the proposed dune classification on the interaction between dune morphology and flow.

1 Introduction

Underwater dunes are observed in many shallow and deep-water environments, such as rivers, estuaries, tidal inlets, continental shelves and slopes. They form in systems with beds composed of sediment ranging from coarse silt to fine gravel where the hydrodynamics are strong enough to produce sufficient bedload transport. Until recently, most studies focussed on so-called “high-angle dunes” which possess a steep lee side with slopes of around 30° over which sediment is avalanching when the slope is at the angle-of-repose (Kleinhans, 2004). These dunes commonly form in small rivers and in flumes (Naqshband et al., 2014a; Van Der Mark et al., 2008). Over such dunes, flow separation and recirculation over the lee side produces a turbulent wake and induces bedform roughness. However, many dunes have recently been observed to be “low-angle dunes” with lee side angles much lower than the angle-of-repose. Over low-angle dunes, flow separation is absent or intermittent, and turbulence and roughness are lower than over high-angle dunes (Kwoll et al., 2016; Lefebvre and Winter, 2016). In large rivers, mean lee side angles are commonly between 5 and 20° (Cisneros et al., 2020). This is illustrated in Figure 1 by data

Commented [AL1]: R2. dunes also occur in a wider range of sediments: silty sediments, sands and gravels (this is also mentioned later in the introduction)

Commented [AL2]: R2. no. (1) defines lee-side shape (with the max. angle close to the trough), but no.s (2) and (3) only mention mean lee-side angle (not shape).

Commented [AL3R2]: In order to keep the abstract short, we have removed the mention of the maximum angle in (1) but added a sentence that the details of the influence of maximum slope position are discussed in the manuscript.

Commented [AL4]: R2. Kleinhans has published many highly relevant papers on high-angle dunes; consider adding one of those.

Commented [AL5R4]: Kleinhans 2004 cited

from the Mississippi and Waal Rivers which had the steepest and gentlest mean lee side slopes of the six rivers investigated by Cisneros et al. (2020). Bedform lee sides in tidal environments are also often low, with typical values of ~~5-2~~ to 20° (e.g. Lefebvre et al., 2021, Figure 1c; Dalrymple and Rhodes, 1995; Franzetti et al., 2013; Damen et al., 2018). In addition, contrary to previous simplifications of lee side shape, the lee side is rarely a straight line but rather made of several steeply and gently sloping portions (Lefebvre et al., 2016). Typically, a comparatively steep slope is observed somewhere along the lee side with gentler slopes towards the crest and/or the trough. The steep slope is often referred to as the “slip face” as sediment is thought to avalanche or slip over this part of the lee side. Here, we refer to this slope as the “steep portion” in an effort to not make any assumption on the type of sediment transport along the dune lee side (see also Lefebvre et al., 2021). The maximum lee side angle value and position can be used to characterise the steep portion characteristics. In large rivers, the maximum lee side angle is generally less than the angle-of-repose (e.g. Figure 1a and b), with an average maximum lee side angle calculated by Cisneros et al. (2020) of 20.5°. In constrained tidal environments (e.g. estuaries and tidal inlets), maximum lee side angles are usually less than 20° (Lefebvre et al., 2021; Prokocki et al., 2022; Dalrymple and Rhodes, 1995) (Figure 1c). In marine environments, there has not yet been a systematic report of mean or maximum angles, in part due to the lack of consistent high-resolution data which may be used to precisely calculate the maximum slope. Nevertheless, it is likely that marine dunes have a variety of mean and maximum lee side angles. Their value is going to vary depending on dune asymmetry, the absolute and relative strength of ebb and flood currents, the influence of other currents (e.g. river flows, wave-related currents), sediment size and tidal phase. In any case, it should be noted that in tidal environments, flow reverses from one tidal phase to the next. ~~however~~ However, large dunes usually stay oriented in one direction during the whole tidal cycle. Therefore, in case of asymmetric bedforms, lee side may be steep during one tidal phase and gentle during the following tidal phase. As a result, a wide range of mean and maximum lee side angles are likely to be found in marine environments. Interestingly, the shapes of river (Figure 1d) and estuarine dunes (Figure 1e) differ (Figure 1). River dunes have their steepest slope close to the trough and a rounded crest (Cisneros et al., 2020), whereas estuarine dunes have their steepest slope close to the crest and a sharp crest (Dalrymple and Rhodes, 1995; Lefebvre et al., 2021; Prokocki et al., 2022). Lefebvre et al. (2021) suggested that this is created by the difference in sediment transport direction (Figure 1): in rivers, sediment is systematically eroded from the crest and deposited over the lee side by the unidirectional currents, creating a rounded crest; in estuaries and other tidal environments, sediment at the crest is being mobilised at each tidal phase but only for a short time in each direction resulting in the sharp crest morphology. In open marine environments, various morphologies are found, from sharp to round crests (Van Landeghem et al., 2009; Zhang et al., 2019). Therefore, the difference in dune shape is not strictly reflecting the difference between river and tidal environments, but rather the complex interaction between dune morphology, sediment properties and hydrodynamics. It is therefore likely that a range of shapes are found depending on these specific morphodynamic conditions. The influence of lee side morphology and how it fits within the coupling of feedbacks in the morphodynamic triad has not yet been systematically studied. The aim of this work is therefore to characterise flow properties (velocities and turbulence) in unidirectional flow over low and high-angle dunes with their steepest slope close to the crest and close to the trough using

Commented [AL6]: R2. And on continental shelves even lower: av. 2 degrees for Netherlands CS (e.g., Damen et al., 2018; Replication data for: Spatially varying environmental properties controlling observed sand wave morphology. 4TU. <https://doi.org/10.4121/uuid:0d7e016d-2182-46ea-bc19-cdfda5c20308>)

By heart, I think Franzetti et al. 2013 report on giant sand waves (not standard) at a specific site off the coast of Brittany (and generalise into an empirical equation). The dataset of Damen et al. comprises all sand waves on the NCS.

Commented [AL7R6]: The angles are not reported in Damen et al (2018) but they are given in the data (which I hadn't looked at for a long time, assuming it would be the same data as presented in the paper). I have now added the reference to the dataset.

Commented [AL8]: R2. “steep portion”

Commented [AL9]: R2. , whereas (or start new sentence with However.)

Commented [AL10]: R2. I agree and interesting point for future research. Small superimposed dunes were observed to change asymmetry direction with the turning of the tide.

Commented [AL11]: R2. please refer here to Figure 1 d and e, respectively, for the max angle position on the slope. This would improve the link between text and figure.

Commented [AL12]: Reviewer 2. Please add to the aim (lines 59-60): “for unidirectional flow”.

Commented [AL13R12]: Added in the next sentence

numerical experiments. We hypothesise that the presence, size and length of the flow separation and turbulent wake vary depending on the value and position of the maximum angle along the lee side.

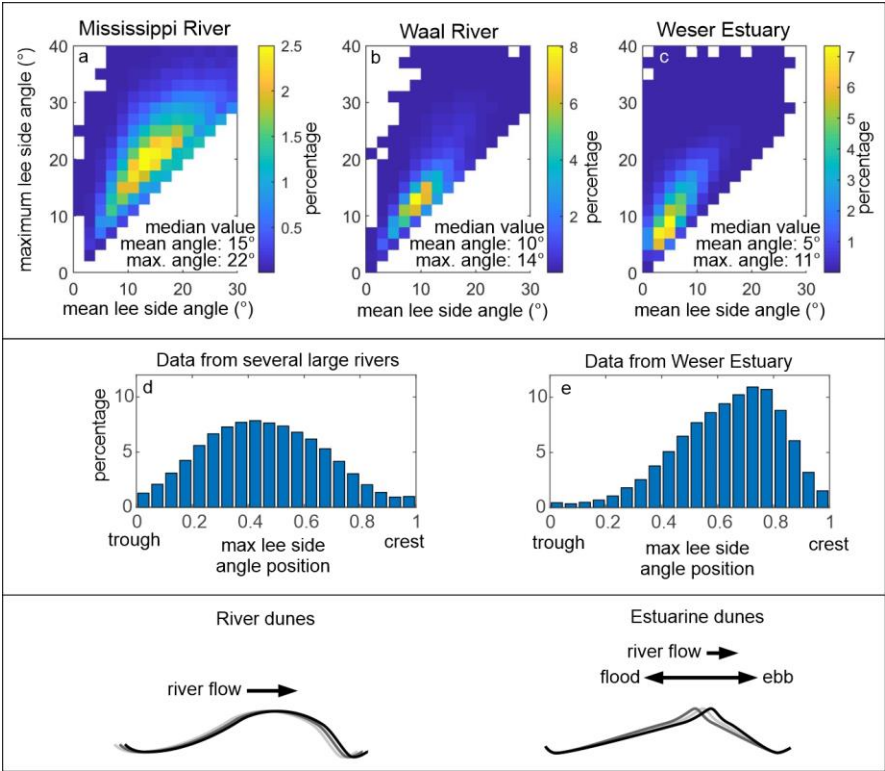


Figure 1. Upper panel: mean and maximum lee side angles from dunes found in the Mississippi and Waal Rivers (data from Cisneros et al., 2020) and the Weser Estuary (data from Lefebvre et al., 2021). Middle panel: histogram of the position of the maximum lee side angle in ~~several~~^{six} large rivers (data from Cisneros et al., 2020) and in the Weser Estuary (data from Lefebvre et al., 2021). Lower panel: schematic representation of the shape of dunes in large rivers and estuaries (after Lefebvre et al., 2021)

Commented [AL14]: R2. "several" (here and in the figure caption) is slightly vague. Are these the six rivers of Cisneros et al 2020, as mentioned in line 28?
Your point is clearly made with this figure: max angle at 0.4 for rivers and 0.7 for the Weser. Still, the question arose: would you not loose useful information by presenting all rivers in one histogram? E.g., any variation in the position of max lee-slope angle among those rivers.

75 2 Methods

2.1 Model description

Delft3D (Deltares, 2014) is a process-based open-source integrated flow and transport modelling system. In Delft3D-FLOW the 3D non-linear shallow water equations, derived from the three-dimensional Navier-Stokes equations for incompressible free surface flow, are solved. In order to capture non-hydrostatic flow phenomena such as flow separation and recirculation on the lee of dunes, the non-hydrostatic pressure can be computed by using a pressure correction technique: for every time step, a hydrostatic step is first performed to obtain an estimate of the velocities and water levels; a second step, taking into account the effect of the non-hydrostatic pressure, is carried out to correct the velocities and water levels such that continuity is fulfilled (Deltares, 2014).

The Delft3D modelling system has been used to set up a two-dimensional vertical (2DV) numerical model using the non-hydrostatic pressure correction technique to simulate horizontal and vertical velocities, turbulent kinetic energy (TKE) and bed shear stresses above fixed bedforms. The model has been calibrated and validated against laboratory flume experiments over idealised high-angle dunes (Lefebvre et al., 2014a) and verified against field data over natural tidal dunes (Lefebvre et al., 2014b). The same numerical model was used here to simulate flow over dunes with varying morphologies. The simulations were performed on a 2DV plane Cartesian model grid over a fixed bed (i.e. no sediment transport) composed of 10 similar bedforms. The following conditions were prescribed constant in time at the lateral open boundaries of the model domain: a logarithmic velocity profile at the upstream boundary, and a water surface elevation of 0 m at the downstream boundary. The bed roughness was set as a uniform roughness length $z_0 = 0.0001$ m. The dune height and length, the water depth and the vertical and horizontal grid size were kept similar for all simulations. The horizontal grid size was set as $dx = 0.09$ m (271 grid points per dune). A non-uniform vertical grid size, stretched in the vertical direction with fine spacing near the bed (dz_1) and coarser spacing in the water column (dz_2), was used; $dz_1 = 0.044$ m between the trough position and the height of the crest + $5 dz_1$, which gradually increased to $dz_2 = 0.48$ m within the remaining water column, resulting in 42 layers being used in each simulation. The time step dt was set to $8.33 \cdot 10^{-6}$ s (0.0005 min) following a Courant Friedrich Lewy criterion $CFL = dt \sqrt{(g h) / dx} < 10$, where dt is the time step (seconds), g is the acceleration due to gravity ($m s^{-2}$) and h is the water depth (m). Since the z-model was used, the following condition also applies: $dt \leq dx / |u|$ where $|u|$ is a characteristic value of horizontal velocities ($m s^{-1}$) (Deltares, 2014). A uniform background horizontal viscosity of $10^{-3} m^2 s^{-1}$ and background vertical eddy viscosity of $0 m^2 s^{-1}$ were set. A k- ϵ turbulence closure model (Uittenbogaard et al., 1992) was used.

2.2. Model experiments

A total of 88 simulations (Table 12) were carried out to test the influence of lee side morphology on unidirectional flow velocities, separation zone, turbulent kinetic energy and bed shear stress. Specifically, the influence of the maximum lee side slope position (closer to the dune crest or trough) is tested but not the shape of the stoss side or the overall shape of the crest.

Formatted: Superscript

Commented [AL15]: R2. Since there is no nomenclature section, these last sentences of section 2.1 benefit from adding units in brackets [certainly because $dt = 0.0005$ minutes is not SI] and symbols with the entities in words. E.g., dt is the time step (minutes? seconds?), g is $..(m s^{-2})$ and h is the water depth (m). $|u|$ is a $... (m s^{-1})$ [see also Main point #1 in Reviewer's comments.]

Commented [AL16]: Reviewer 2. The runs are all for unidirectional flow. That is okay, but the introduction suggested that crest sharpness in tidal flow conditions was also relevant to investigate. See comment above, to add to aim. P.S. Having read the paper: sharp and rounded crests are created by the position of 'the steep portion' (max lee slope segment); this became more clear when reading the results and discussion, but not so much in section 2.

Commented [AL17R16]: the fact that only the position of the maximum lee side is investigated is explicitly said, for example with the sentence at the beginning of section 2:

Commented [AL18]: R2. Should be Table 1? Also in the rest of the text.

For all simulations, bedform height ($H_b = 0.89$ m) and length ($L_b = 24.4$ m), water depth ($h = 8$ m) and mean flow velocity (0.8 m/s) were kept similar. The values were chosen based on typical dune dimensions in large rivers (Cisneros et al., 2020). The stoss side followed a cosine shape and the lee side was made of either a line (straight lee side) or three lines (complex lee side) (Figure 2). The straight lee side experiments were made with lee side angles varying from 5° to 30° , in increments of 5° . For each mean lee side angle (α_{mean}), simulations were done with the lee side composed of three segments: a steep portion where the maximum angle (α_{max}) was fixed (Table 21) and upper and lower lee sides which had angles adjusted so that the mean angle would be between 5 and 30° , in increments of 5° . The steep portion height was one third of the bedform height ($H_{st} = H_b / 3 = 0.3$ m). For each maximum lee side angle, 4 configurations were tested, with the position of the steep portion varying from close to the crest to close to the trough (Figure 2).

A distinction was made between sharp profiles and smooth profiles. For some experiments (sharp profiles), the bed profiles were left as created with a cosine stoss side and 1 or 3 straight lines for the lee side, with sharp variations between each section. However, most experiments were made with smooth profiles in order to mimic natural slopes: the profiles were first created from straight lines, and then smoothed using a 5-point smoothing averaged window. The smoothing produced mean angles that were lower than what was set up (Table 21). However, the maximum angle was not smoothed and stayed at the given value (Figure 2).

2.3. Model output analysis

From the simulation results, the horizontal and vertical velocities and the TKE are investigated above the 7th bedform (from a total of 10 bedforms) are investigated in order to characterize equilibrium conditions that are not perturbed by entrance and exit conditions. The position and size of the flow separation zone, when present, is calculated following the method detailed in Lefebvre et al. (2014a): the flow separation line delimitates the region in which the flow going upstream (i.e. negative horizontal velocity) is compensated by flow going downstream. The length of the flow separation zone (L_{FSZ}) is the horizontal distance between the separation point and the reattachment point. The relative flow separation length (rL_{FSZ}) is the flow separation length divided by the dune height (H_b). Because Delft3D uses the Reynolds-averaged Navier–Stokes equations, it is not possible to model intermittent flow separation zone; only permanent flow separation can be simulated and is considered here. The shear layer is visualised as a high vertical gradient of streamwise velocity (du/dz) reflecting a rapid change in velocity between two flow regions (Kwoll et al., 2016; Venditti, 2007).

The mean and maximum TKE (TKE_{mean} and TKE_{max}) over the 7th bedform are computed as indicators of the overall turbulence produced and dissipated over each dune shape. In the literature, the wake over bedforms has been defined in different ways: following definitions of wake behind cylinders, as a momentum deficit (i.e. reduced velocity) downstream of the bedform crest (Wiberg and Nelson, 1992; Nelson et al., 1993; Maddux et al., 2003) or by its position, i.e. a specific height or water depth (e.g. 0.1 to 0.5 depth), often in cases when velocity profiles are not available at high resolution above the bedforms (McLean

Commented [AL19]: R2. is there a reason why the 7th? not the 5th, 6th or 8th?

Commented [AL20]: R2. The introduction and previous studies (Lefebvre, Cisneros) have suggested that intermittent flow separation is a specific flow for many dunes (=intermediate lee angles and shapes; e.g. green crosses in Fig. 37). Is this not a short coming in this investigation? Please discuss in discussion what the consequences are for the findings of this study. [see also Main point #2 in Reviewer's report]

Commented [AL21R20]: Addressed in the discussion

et al., 1994; Bennett and Best, 1995; Mclean et al., 1999). More recently, the wake has been defined as a region of high turbulence, using turbulence intensity and TKE above a constant threshold value (Venditti, 2007), TKE more than 70% of the maximum TKE (Lefebvre et al., 2014a; Lefebvre et al., 2014b), high Reynolds shear stress (Kwoll et al., 2016), or percentage of quadrants 2 and 4 events (Unsworth et al., 2018). In the present work, we define the wake also based on turbulence and therefore will refer to it as “turbulent wake”. The turbulent wake is the region where TKE is more than twice the average TKE above a flat bed with similar hydrodynamic conditions. For this, a simulation was carried out with a flat bed (depth 8 m) but all other parameters (e.g. domain length, boundary conditions, roughness length etc.) kept similar to the simulations with dunes. The average TKE for this flat bed simulation is $0.0019 \text{ m}^2/\text{s}^2$ and therefore, a threshold value of $0.0038 \text{ m}^2/\text{s}^2$ was used to outline the contour of the wake in the dune simulations. As in previous work, this definition lacks a physical basis as the threshold value is defined quite arbitrarily. However, the turbulent wake contour above straight angle-of-repose dunes corresponds well to what is expected from the literature and it allows us to highlight changes in TKE intensity and spatial distribution between the different configurations. The length of the wake is calculated as the horizontal length between the beginning and the end of the wake.

The bed shear stress is calculated by Delft3D using the law of the wall (Deltares, 2014). In the z-layer, strong variations of the vertical cell size affect the calculation of the bed shear stress. In order to improve accuracy and smoothness of the computed bed shear stress, the local remapping of near-bed layer is used (Platzek et al., 2014). However, due to the high resolution of the grid used here, some distortions are still seen. Therefore, we use a 10-point smoothing average to produce a smooth bed shear stress profile.

Table 1. Summary of bedform dimensions used for the numerical experiments. For all simulations: water depth $h = 8 \text{ m}$; mean velocity $u = 0.8 \text{ m s}^{-1}$; bedform height $H_b = 0.89 \text{ m}$ and bedform length $L_b = 24.4 \text{ m}$. Note that the mean lee side angle values were fixed at 5, 10, 15, 20, 25 or 30°. However, due to horizontal resolution for the sharp profile (see also [Annexe Appendix A1](#)) and the smoothing for the smooth profiles, the mean lee side angles are lower than initially set. The maximum angle stayed as fixed (Figure2). See Figure 2 for a representation of the configurations

Sharp profiles	Straight lee side					
	Mean lee side angle (°)	5.0	9.9	14.6	19.5	24.2
	Complex lee side					
	Mean lee side angle (°)	4.9	10.0		20.2	
Smooth profiles	Maximum lee side angle (°)	10, 25	20		30	
	Configurations for each maximum angle	1-4	1-4		1-4	
	Straight lee side					
	Mean lee side angle (°)	4.9	9.3	13.5	17.5	21.2
Smooth profiles	Complex lee side					
	Mean lee side angle (°)	4.9	9.4	13.7	17.5	21.2
	Maximum lee side angle (°)	10, 15, 20, 25, 30	15, 20, 25, 30	20, 25, 30	25, 30	30

Commented [AL22]: R2. earlier, notation m2 s-2 was used

Formatted: Superscript

Formatted: Superscript

Commented [AL23]: R2. and maximum?

Commented [AL24R23]: “The maximum angle stayed as fixed (Figure 2)” added

Configurations for each maximum angle	1-4	1-4	1-4	1-4	1-4	
--	-----	-----	-----	-----	-----	--

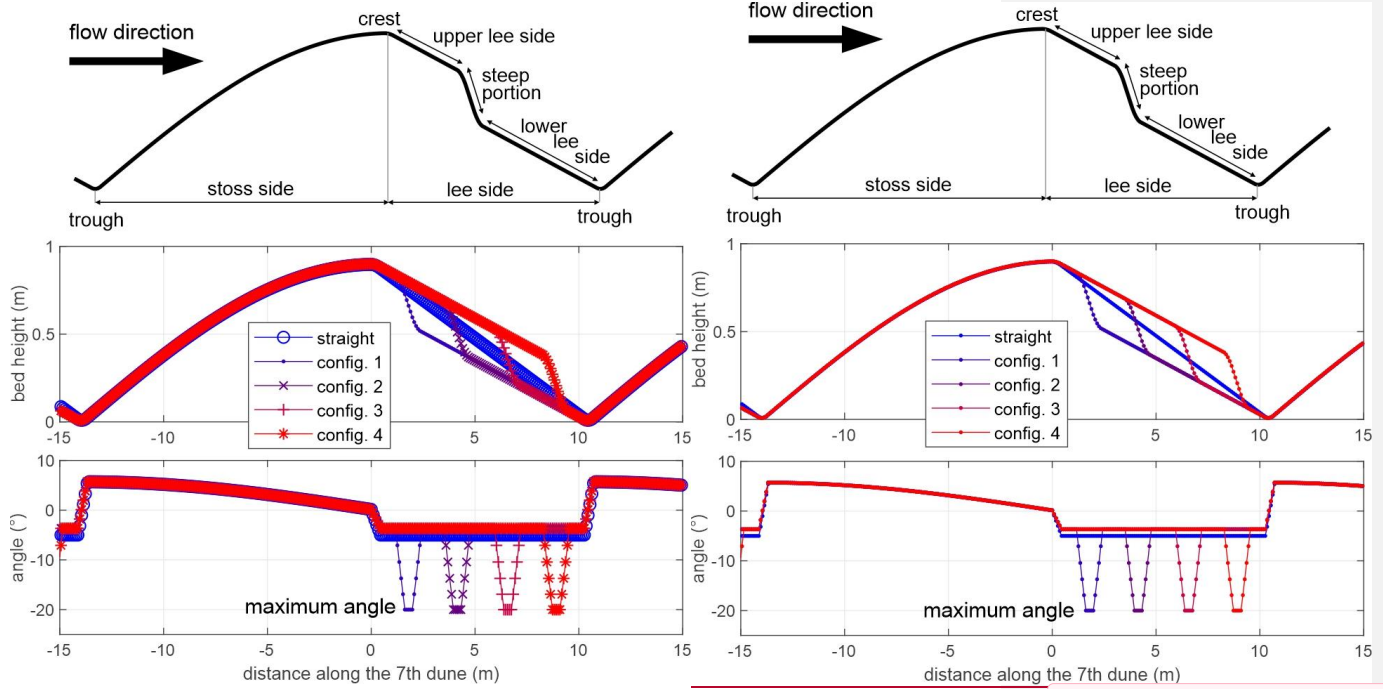


Figure 2. Example of the different configuration tested, here for a mean lee side angle of 5°, a maximum angle of 20° and a smooth profile

3 Results

The results from all the simulations (Figure 3) show that the relative flow separation length (rL_{fsz}) and the mean TKE (TKE_{mean}) generally increase with increasing mean lee side angle (α_{mean}). Both are linearly related to mean lee side angle: $relative\ flow\ separation\ length\ rL_{fsz} = 0.17 \alpha_{mean} - 0.67$ ($R^2=0.70$) and $mean\ TKE\ TKE_{mean} = 0.0004 \alpha_{mean} - 0.0009$ ($R^2=0.87$). They also generally increase as a function of the maximum lee side angle, but with a wide spread in the data (Figure 3b and 3e). There does not seem to be any clear pattern which relates the flow separation length or the mean TKE to the relative position of the maximum lee side angle (Figure 3c and 3f). The relative length of the turbulent wake shows strong variations and does not seem to be linearly related to mean or maximum lee side angle or its position. A distinct overall trend of relative flow separation length, TKE and relative turbulent wake length as a function of a combination of mean lee side angle and maximum lee side angle value and position could not be identified. There is therefore no influence of the combined mean angle and maximum angle value and location on flow

Commented [AL25]: Review 1 Figure 2: This diagram is confusing. It is difficult to distinguish between the symbols (., * etc) for each configuration. It might be better to use thinner lines for all the profiles.

Formatted: Subscript

Commented [AL26]: R2. The presentation of these equations looks a bit strange. Perhaps you could present these in a more traditional way. e.g., by introducing a symbol for relative flow separation length and mean lee slope angle; line 159, or already in line 121; which can also be used in the figures), and so that the equations here can be, e.g. $L_r = 0.17 \alpha_{mean} - 0.67$. Etc. [See Main point #1 in Review report]

Commented [AL27R26]: Corrected here and in many other places

Commented [AL28]: R2. i.e. Figure A2 in appendix? If yes, please refer here in the text to the figure.

Commented [AL29R28]: Actually, we are not showing all the combination which we tried and do not show any trend. On the other hand, we noticed that Appendix A2 and A3 were not correctly referenced and we corrected this.

properties. The maximum TKE above the 7th dune is linearly related to the mean TKE above the 7th dune ($R^2 = 0.95$, Appendix A3A2). Therefore, the trends described for mean TKE are also seen for the maximum TKE. Although some differences are seen between the smooth and sharp profiles, there is no systematic difference (Appendix A4A3).

Based on our results the presence and size of a flow separation zone, the shear layer and the relative length of the wake, and how they vary depending on mean and maximum angles, we find it is useful to make a distinction between low-angle dunes with mean lee side less than 10° (low-angle dunes), intermediate-angle dunes with mean lee side between ca. 10° to 17° (intermediate-angle dunes), and more high-angle dunes with mean lee side more than ca. 17° (high-angle dunes). Therefore, we describe flow properties and how they are affected by the value and position of the maximum angle based on these three categories in the next sections.

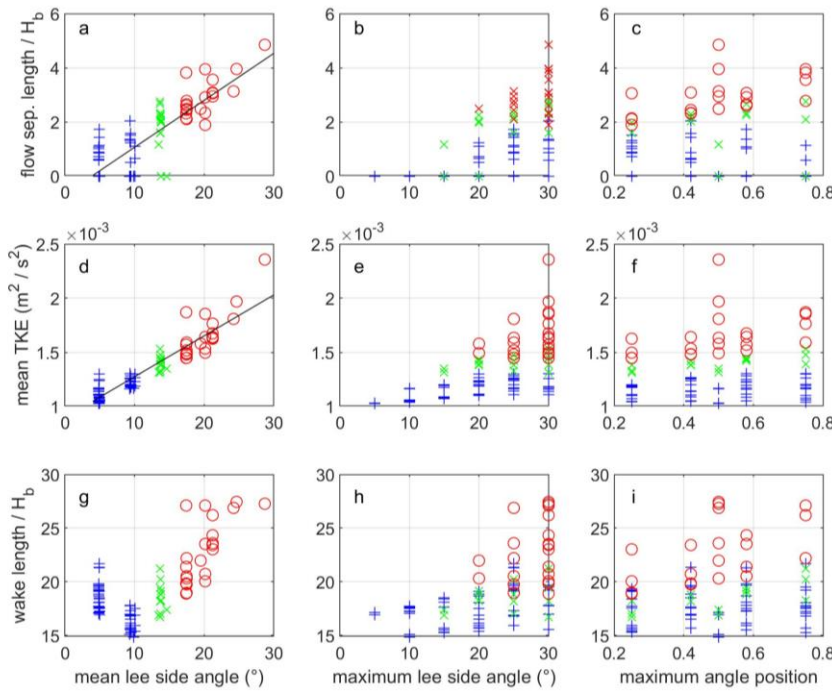


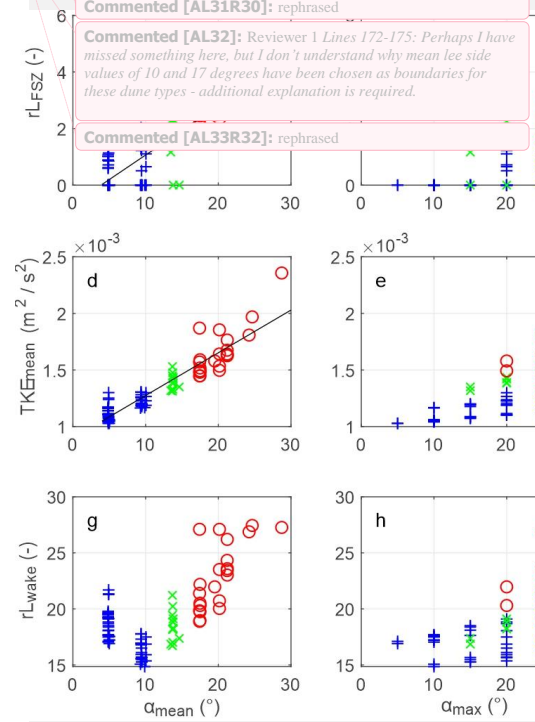
Figure 3. Relative flow separation length (flow separation length / bedform height H_b , rL_{FSZ}), mean Turbulent Kinetic Energy (TKE_{mean}) and relative length of the turbulent wake (rL_{wake} length / H_b) as a function of mean lee side angle (α_{mean}) (a, d, g), maximum lee side angle (α_{max}) (b, e, h) and the position of the maximum lee side angle (a position of 0.5 indicates a straight lee side) (c, f, i). The blue pluses show results from dunes with mean lee side lower than 10°, green crosses for mean lee sides between 10 and 17° and red circles for mean lee side > 17°

Commented [AL30]: R2 This is not really explained why. You could say "Based on the flow-bedform correlation results in Figure 3, we identify three categories" (or something like this). P.S.: coming back to this after the results and discussion sections: classification is different after all. This is confusing (when writing this sentence, you already know the outcome/discussion).

Commented [AL31R30]: rephrased

Commented [AL32]: Reviewer 1 Lines 172-175: Perhaps I have missed something here, but I don't understand why mean lee side values of 10 and 17 degrees have been chosen as boundaries for these dune types - additional explanation is required.

Commented [AL33R32]: rephrased



3.1 Low-angle dunes

Low-angle dunes (mean lee side angle $< 10^\circ$) represent 89% of the dunes measured in the Weser by Lefebvre et al. (2021) and 41% of dunes measured in large rivers by Cisneros et al. (2020). Flow and turbulence patterns over low-angle dunes are illustrated by Figure 4, which shows dunes with a mean lee side of around 5° and a maximum angle of 10° , the most common configuration in the Weser Estuary. As typically observed over dunes, the horizontal velocity is highest above the crest and lowest above the trough. Vertical velocity shows downward flow above the lee side, with the strongest downward flow observed above the steep portion, and upward flow above the stoss side. There is generally no flow separation over dunes with a mean lee side angle of 10° or less. However, if the maximum angle is at least 20° and situated close to the trough, a small flow separation may develop over the steep portion (Figure 5). For example, dunes with a mean lee side of 10° and a maximum lee side of 20° will not have a flow separation for config1 and config2 (where the maximum angle is positioned in the upper part of the lee side) but will have a small flow separation for config3 and config4 (where the maximum angle is positioned in the lower part of the lee side). It should be noted that dunes with a lee side angle of less than 10° but a maximum lee side angle of 20° or more represents only 2.75% of all dunes measured by Cisneros et al. (2020) in large rivers and 1.70% of dunes measured in the Weser Estuary by Lefebvre et al. (2021). Therefore, they are not commonly observed.

Over low-angle dunes, the shear layer stays close to the bed and is the thickest above the upper lee side and the steep portion. The maximum TKE is situated close to the trough independently of the steep portion position. The turbulent wake generally starts over the steep portion and extends downstream down to a distance of ca. $5 H_b$ after the trough. Therefore, although the mean and maximum TKE are strongest for steep portions closest to the trough, the turbulent wake is longest for steep portions close to the crest (Figure 4).

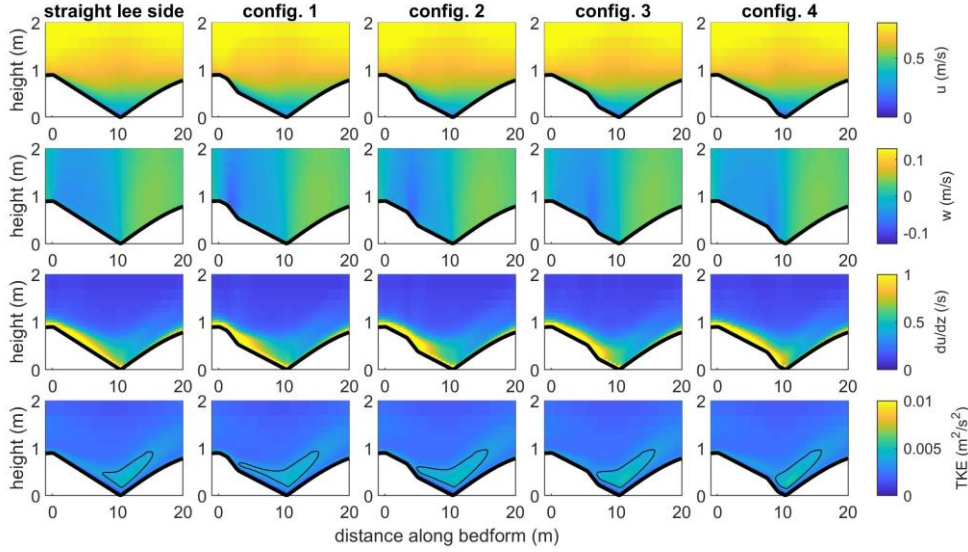


Figure 4. Horizontal and vertical velocities (u and w), vertical gradient of streamwise velocity (du/dz) from which the shear layer can be seen and TKE above bedforms with a mean lee side of 4.9° to 5° and maximum angle of 10° for the straight lee slope and the four lee shape configurations tested. The black lines on the bottom figures show the contour of $TKE > 0.0038 \text{ m}^2/\text{s}^2$ to highlight the position of the turbulent wake

Commented [AL34]: R2. or shear layer (i.e., as used in-text)

Commented [AL35]: R2. for the straight lee slope and 4 lee shape configurations.

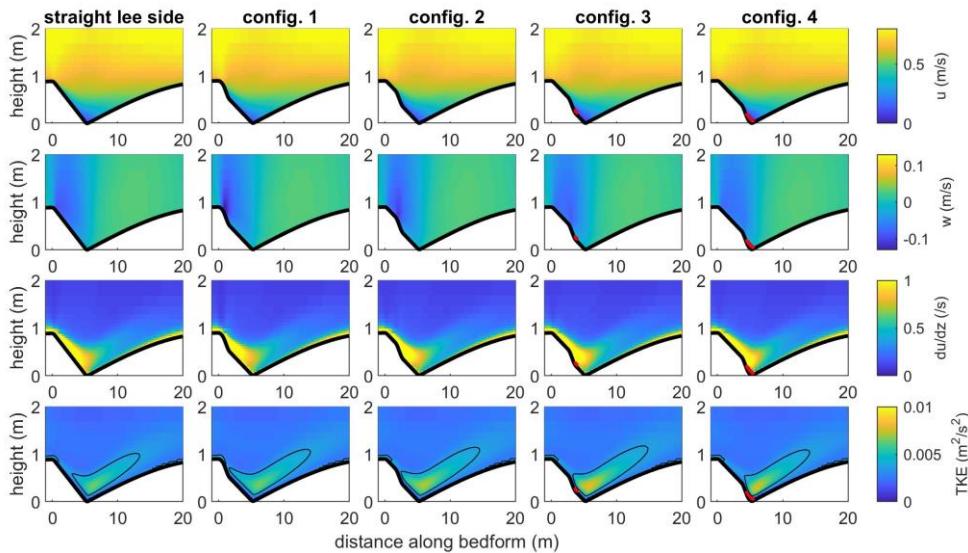


Figure 5. Horizontal and vertical velocities (u and w), vertical gradient of streamwise velocity (du/dz) from which the shear layer can be seen and TKE above bedforms with a mean lee side of 9.4ea , 10° and maximum angle of 20° for the straight lee slope and the four lee shape configurations tested. The thick red lines show the upper limit of the flow separation zone. The black lines on the bottom figures show the contour of $TKE > 0.0038 \text{ m}^2/\text{s}^2$ to highlight the position of the turbulent wake

3.2 Intermediate-angle dunes

Intermediate-angle dunes (defined here as mean lee side angles between 10° and 17°) represents 11% of the dunes measured in the Weser by Lefebvre et al. (2021) and 43% of dunes measured in large rivers by Cisneros et al. (2020). From results of simulations over intermediate-angle dunes, it is difficult to find distinctive trends in terms of the presence and size of flow separation and TKE patterns with relation to the maximum angle value and its position. This is likely due to the fact that the model can only simulate permanent flow separation whereas intermittent flow separation is most likely to occur over intermediate-angle dunes. In general, a small permanent flow separation is generally found simulated, although not systematically. For example, a flow separation is often absent over dunes where the maximum angle is close to the crest (e.g. config1 in Figure 6 but also config2 in some other cases) and / or for sharp profiles. Interestingly, flow separation does not always start at the brink point but is centered over the trough. As a result, when a flow separation is present, the flow separation is usually longer for maximum angles close to the crest than for maximum angles close to the trough. Moreover, Over-over intermediate-angle dunes, the shear layer extends from the dune crest and down the lee side reaching just above the dune trough regardless of maximum angle location. It becomes thicker moving down the lee side until detaching near the

Commented [AL36]: R2. see earlier comment on not being able to model intermittent flow separation, which is expected to be the most occurring for intermediate-angle dunes.

Commented [AL37R36]: A sentence is already added here to point this out and further is said in the discussion

Commented [AL38]: R2. This seems to be expected to me, whereas the next sentence "As a result" strikes me as a more interesting finding.

Commented [AL39]: R2. However, Figure 6 shows no flow separation for Config1 (steepest lee slope closest to the crest).

Commented [AL40R39]: Yes, as it is stated a couple of lines before ("For example, a flow separation is often absent over dunes where the maximum angle is close to the crest (Figure 6) and / or for sharp profiles"). I added a few words in this sentence as a reminder "As a result, when a flow separation is present, it is longer for maximum angles close to the crest than for maximum angles close to the trough."

Commented [AL41]: R2. Indeed, is also a very interesting finding.

Commented [AL42R41]: To make stand out, we added "moreover" at the beginning of the sentence.

location of flow separation. The maximum TKE is found close to the trough. The turbulent wake is situated over the trough, independently of the maximum angle position. It is longer than over low-angle dunes and extends into water column above the dune height, but its size does not vary significantly depending on the position of the maximum angle for a given mean angle.

Commented [AL43]: R2. and extends into the flow (water column), above the dune height.

Commented [AL44R43]: Added

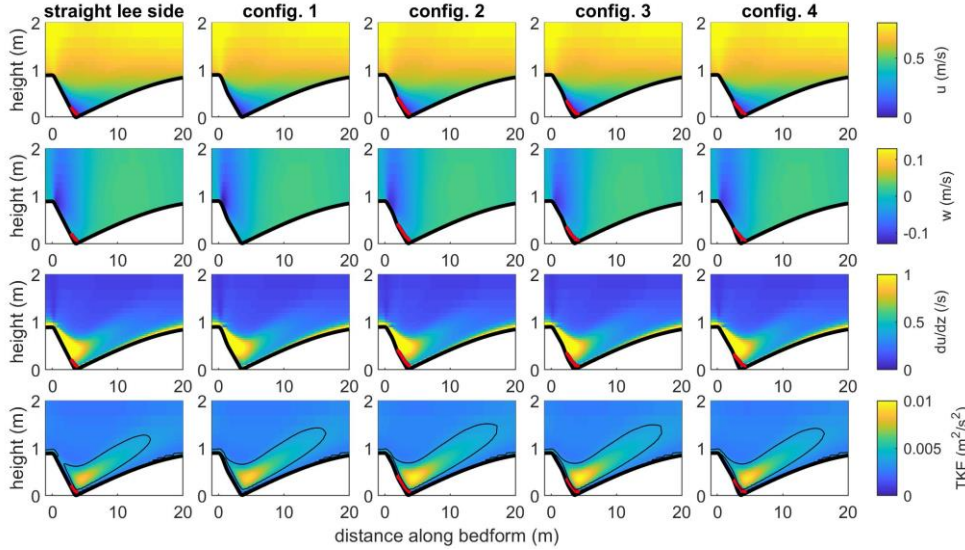


Figure 6. Horizontal and vertical velocities (u and w), vertical gradient of streamwise velocity (du/dz) from which the shear layer can be seen and TKE above bedforms with a mean lee side of 13.7° and maximum angle of 20° for the straight lee slope and the four lee shape configurations tested. The thick red lines show the upper limit of the flow separation zone. The black lines on the bottom figures show the contour of $TKE > 0.0038 \text{ m}^2/\text{s}^2$ to highlight the position of the turbulent wake

3.3 High-angle dunes

High-angle dunes (defined here as mean lee side angles over 17°) represents only 0.03% of the dunes measured in the Weser by Lefebvre et al. (2021) and 16% of dunes measured in large rivers by Cisneros et al. (2020). A flow separation is always observed above high-angle dunes. The flow generally separates over the steep portion and reattaches shortly after the trough (Figure 7). Therefore, flow separation is longer for maximum angles situated close to the crest than for those situated close to the trough. The highest downward velocity is always situated just after the crest, independently of the maximum angle position.

The shear layer detaches from the lee side shortly before flow separation. Significant differences are observed for the turbulent wake depending on the maximum angle position: it is especially strong (i.e. high TKE intensity) and spatially developed for steep portions close to the crest, so much so that a stacked wake (i.e. a turbulent wake which extends over the crest onto the next dune, as commonly observed over angle-of-repose dunes (Unsworth et al., 2018)) is seen (Figure 7). As the position of the steep portion is getting closer to the trough, the turbulent wake decreases in size and intensity.

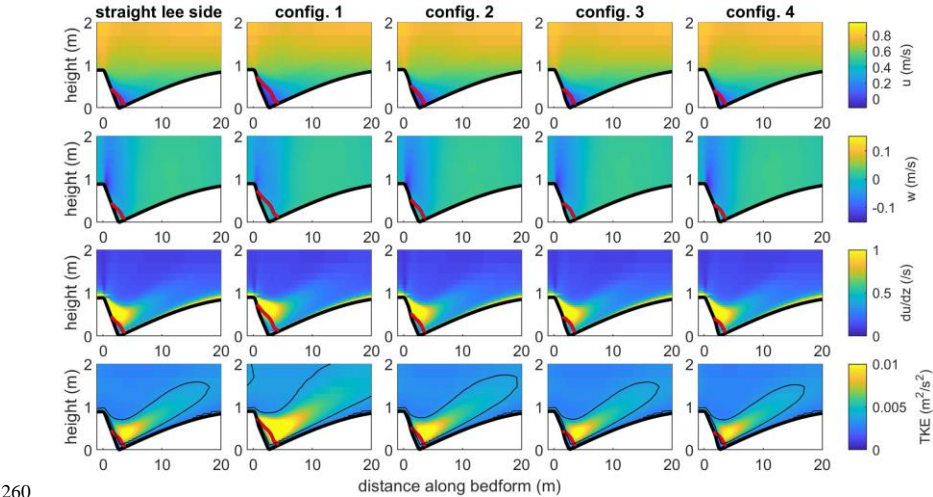


Figure 7. Horizontal and vertical velocities (u and w), vertical gradient of streamwise velocity (du/dz) from which the shear layer can be seen and TKE above bedforms with a mean lee side of 17.5° and maximum angle of 30° for the straight lee slope and the four lee shape configurations tested. The thick red lines show the upper limit of the flow separation zone. The black lines on the bottom figures show the contour of $TKE > 0.0038 \text{ m}^2/\text{s}^2$ to highlight the position of the turbulent wake

3.4 Bed shear stress

The bed shear stress variations above the dunes are influenced by the dune shape (Figure 8). Bed shear stress generally increases along the stoss side and reaches a maximum at the crest. It then decreases along the lee side and reaches a minimum above the trough. However, this decrease is not linear even when the lee side is straight. Instead, there is a strong decrease over the first half of the lee side, and a slower decrease or stabilisation in the lower half. It should be noted that the bed shear stress over a 30° lee side angle reaches slightly negative values (minimum value of -0.01 N m^{-2} over a straight lee side) due to flow separation, but stays relatively high for a 10° lee side angle (minimum value of 0.21 N m^{-2} over a straight lee side). The

maximum lee side angle position has an effect which is observed mainly over low-angle lee sides. If the maximum angle is close to the crest, the bed shear stress decreases strongly over the steep portion, increases gently over the lower lee side, with a little dip over the trough and a strong increase over the stoss side. If the maximum angle is situated towards the trough, bed shear stress decreases slowly over the upper lee side before a sudden decrease over the steep portion reaching a minimum over the trough. The value of the minimum bed shear stress also varies depending on the maximum angle position. For a mean angle of around 5° and a maximum angle of 30°, minimum bed shear stress is 0.03 N m⁻² if the maximum angle is close to the crest and -0.01 N m⁻² if the maximum angle is close to the trough (presence of a small flow separation). Therefore, the position and value of the minimum bed shear stress is impacted by the position of the maximum angle.

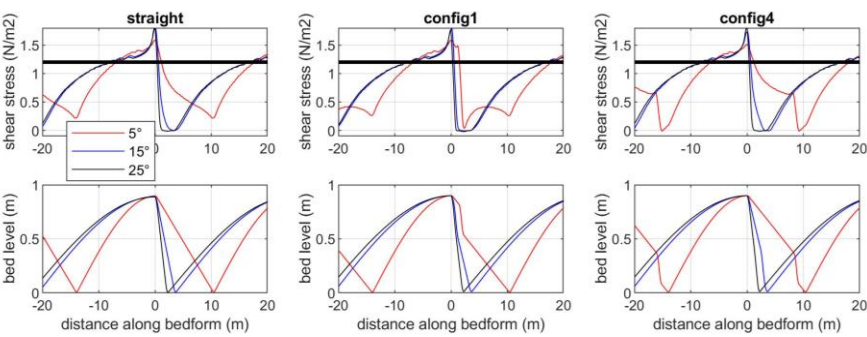


Figure 8. Bed shear stress and bed level for bedforms with a mean lee side of 5°, 15° and 25° and with a straight lee side (left panel), or a maximum angle of 30° close to the crest (config1, middle panel) or close to the trough (config4, right panel). The thick black line on the upper plots shows the critical shear stress for bed load transport

4 Discussion

4.1 Low, intermediate and high-angle dunes

Our results show that the mean lee side angle has the strongest control over flow separation and turbulence over dunes, with a secondary influence of the position and value of the maximum lee side angle depending on mean lee side angle values. Following these results, we propose a distinction among between three types of dunes: (1) low-angle dunes with mean lee side of less than 10°, (2) intermediate-angle dunes with mean lee side between ca. 10 and 20°, and (3) high-angle dunes with mean lee side of more than 20°. The results of the 88 simulations carried out indicate that the boundaries between these dune types are at 10° and 17°. Additional simulations were done in order to verify these angles. A detail analysis of these results can be seen in Appendix A4. The simulation results confirmed that dunes with a mean lee side of 12°, 15° and 16° belong to

Commented [AL45]: R2, the straight line indicates a constant value over a dune. The slope effect should play a role? (down-slope transport vs. up-slope (gravity))

Commented [AL46R45]: See long replied in the response to reviewer

Commented [AL47]: R2, among?

Commented [AL48]: R2, see main comment #2 in review report

Commented [AL49R48]: Rephrased here and addressed in the next paragraph

intermediate-angle dunes, with an “irregular” pattern of flow separation and turbulence. They also showed that an increase in relative dune height (varied within the limits given by Bradley and Venditti (2017)) did not have a strong influence on flow properties. Finally, flow over a mean lee side of 18° showed properties similar to high-angle dunes. Therefore, these additional simulations confirmed that with the settings used in the present study (fixed bedform height and length, only a small variation in bedform relative height, fixed bed roughness and flow velocity), the boundary between low and intermediate-angle dunes is at 10° and between intermediate and high-angle dunes is at 17°.

~~This~~The proposed classification scheme ~~differs~~ adds precision ~~from~~ to previous research~~many classifications in which recognise~~ only high and low-angle dunes ~~were described~~, sometimes without a clear definition, and ~~did~~ not (explicitly) recognise intermediate-angle dunes. For example, Best (2005) refers ~~to high-angle -angle-of-repose dunes and low-angle dunes but did not specifying~~ the slopes at which they are differentiated. Roden (1998) defined dunes with lee side angle > 20° as steep and lee side angle < 10° as low angle dune. Kostaschuk and Villard (1996) differentiates symmetric dunes with mean lee side slopes < 8° and asymmetric dunes with slopes > 19° and Kostaschuk and Venditti (2019) ~~describes~~ classify high-angle dunes with maximum lee side angles > 24° and low-angle dunes with maximum lee side angles < 24° ~~but often 10°~~. These three publications therefore recognised the existence of intermediate-angle dunes but only ~~im~~explicitly. Best and Kostaschuk (2002) defines low angle lee sides with slopes < 10° but mentions the “transition region for the onset of flow separation (e.g., 10° – 15°)”.

It can be noted that the boundaries between dune types in the literature varies compared to those from the present study. That is likely due to the variety of dune and flow characteristics found in a natural environment compared to our simplified numerical experiments. Other numerical experiments have already showed that some characteristics (especially bed roughness, relative bedform height or aspect ratio) can influence flow separation properties (Lefebvre et al., 2014a). Therefore, it is likely that the limits between low, intermediate and high-angle dunes are not at specific fixed values but vary around these values depending on hydrodynamic and morphodynamic conditions. Bradley and Venditti (2017); Lefebvre and Winter (2016) Based on our results and previous research (e.g. Best and Kostaschuk, 2002; Bradley et al., 2013; Kwoil et al., 2016; Naqshband et al., 2018; Kostaschuk and Villard, 1996), properties of each dune category can be identified (Figure 9). Over low-angle dunes, there is no flow separation, except if a very steep portion (slope > 20°) is found. Low-angle dunes generate little turbulence and are likely to induce little bedform roughness. The shear layer follows the bed and is more extended when the steepest slope is close to the trough than close to the crest. Over intermediate dunes, flow separation is intermittent. Turbulence and roughness are intermediate between low and high-angle dunes. No patterns were found between the position of the maximum angle and flow properties. Over high-angle dunes, a developing to fully developed flow separation is present, a strong turbulent flow is observed and a high bedform roughness is created. If the maximum angle is close to the crest, flow separation is longer and the turbulent wake is stronger than if the maximum angle is close to the trough.

A limitation of this study is that Delft3D uses the Reynolds-averaged Navier Stokes equations and therefore can only model permanent flow separation. This is especially important in the case of the intermediate-angle dunes, which are characterised by intermittent flow separation (Best and Kostaschuk, 2002). Furthermore, it is likely that the turbulent wake and the shear

Commented [AL50]: Reviewer 1 lines 277-278: the sentence beginning “For example, Best (2005)....” is confusing - please clarify.

Commented [AL51R50]: rephrased

Commented [AL52]: add ‘not?’ (not specifying?)

Commented [AL53]: R2. This is the same as you suggest. Perhaps not explicitly naming intermediate, but that is definitely implied (between low and high angle).

Commented [AL54R53]: That’s true. Therefore I have changed the word “differs” in the previous sentence into “adds precision”.

Commented [AL55]: R2. implicitly? that should be enough, see previous comment.

Commented [AL56]: Reviewer 1 move lines 302-308 to the beginning of section 4.1 so it is clear why the earlier use of 17 degrees has been changed to 20 degrees

Commented [AL57R56]: Following comments from Reviewer 2 and additional simulations, the classification is left with 17° now, and this part was largely rewritten.

Commented [AL58]: R2. Line 216: difficult to find distinctive trends for intermediate-angle dunes. Is this a consequence of not being able to model intermittent flow separation? (lines 122-123) I.e. in the literature the specific flow for intermediate-angle dunes. Please discuss in the discussion what the exact (or expected) consequences are for not being able to model intermittent flow separation. For example, would the independency of max lee slope position for most flow parameters for the 15° dunes be a direct consequence, and if so why? Lines 306-307 say: needs more research, but that is not sufficient here, for proposing a classification.

Commented [AL59R58]: New paragraph added

330 layer size and extent will be largely dynamic, switching between the behaviour presented for the intermediate case and
behaviour mimicking that seen in the high angle dunes when flow separation is present. The independency of max lee slope
position for most flow parameters for the 15° dunes be a direct consequence, and if so why? A question that arose from Figure
6 for the 15° dune results: flow separation is absent in Config1 (whereas it is present in all other configs): why? Our results
show the limitations of studying intermediate dunes with Reynolds-averaged models such as Delft3D. We suggest that these
335 dunes should be investigated with laboratory experiments, field measurements and Reynolds-resolving models in order to
precisely characterise the case of intermittent flow separation where little information is known. Precisely, the distinction
between low, intermediate and high-angle dunes is important for a range of processes, for example the evaluation of bed
roughness, understanding the relation between hydrodynamics, sediment transport, and dune morphology, how dunes are
identified in the depositional record, and unravelling the controlling processes leading to different lee side angle slopes and
340 shapes.

We base our classification between low, intermediate and high angle dunes on flow properties investigated in the present
study, but also on flow properties and sediment dynamics from previous research (e.g. Best and Kostaschuk, 2002; Bradley et
al., 2013; Kwoil et al., 2016; Naqshband et al., 2018; Kostaschuk and Villard, 1996). From this, some properties of each dune
category can be identified (Figure 9). Over low-angle dunes (mean lee side $< 10^\circ$), there is no flow separation, except if a very
345 steep portion (slope $> 20^\circ$) is found. Low angle dunes generate little turbulence and are likely to induce little bedform
roughness (Lefebvre and Winter, 2016; Kwoil et al., 2016). Over intermediate dunes (mean lee side angles between 10° and
 20°), flow separation is intermittent (Kwoil et al., 2016). Turbulence and roughness are intermediate between low and high-
angle dunes. No patterns were found between the position of the maximum angle and flow properties. Our results show the
limitations of studying intermediate dunes with Reynolds-averaged models such as Delft3D. We suggest that these dunes
350 should be investigated with laboratory experiments, field measurements and Reynolds-resolving models in order to precisely
characterise the case of intermittent flow separation where little information is known. Over high angle dunes (mean lee side
 $> 20^\circ$), a developing to fully developed flow separation is present, a strong turbulent flow is observed and a high bedform
roughness is created. If the maximum angle is close to the crest, flow separation is longer and the turbulent wake is stronger
than if the maximum angle is close to the trough.

Commented [AL60]: R2. I do not entirely agree. See main
comment #2 in review report

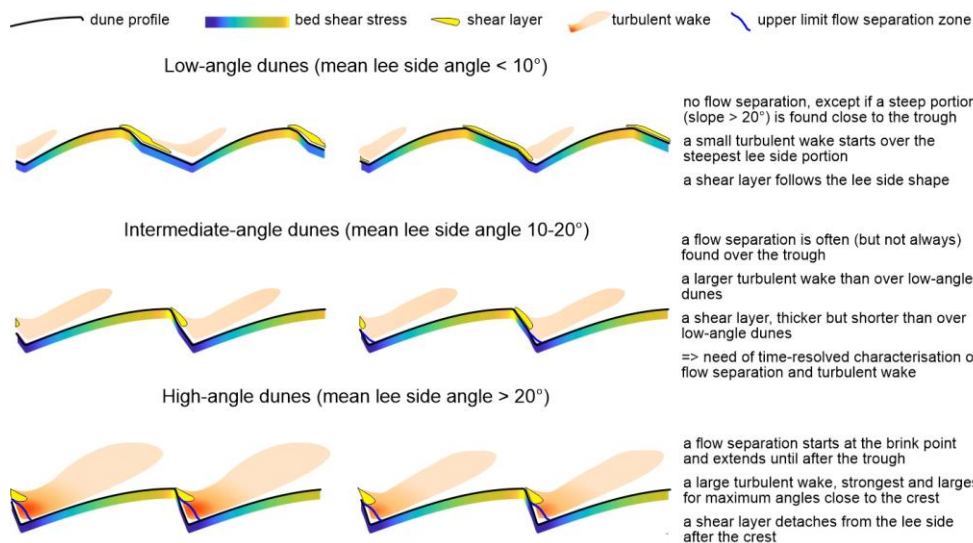


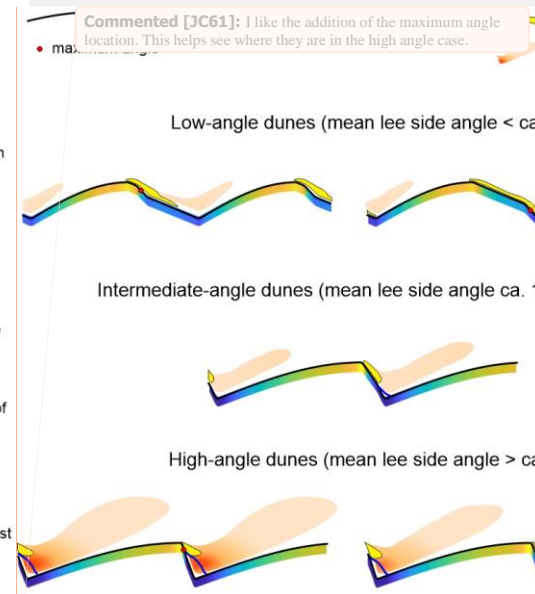
Figure 9. Summary of the results showing the main characteristics of flow over low-angle, intermediate-angle and high-angle dunes

4.2 Lee side morphology

We investigated the influence of “complex” dune morphologies, still simplified as three portions, but with a maximum angle placed towards the crest (creating a sharp crest) or placed towards the trough (creating a rounded crest). Dunes in rivers are predominantly low to intermediate-angle dunes with a rounded crest (Cisneros et al., 2020) and are similar to the config3 and config4 morphologies, which means that flow over river dunes will likely follow the results observed over those configurations.

Following this assumption, most river dunes, in general, are likely to have no or intermittent flow separation and a relatively strong wake contained over the trough. The bed shear stress will be slowly decreasing over the upper lee side and strongly decreasing over the steep portion.

Dunes in estuaries are predominantly low-angle dunes with a sharp crest (Lefebvre et al., 2021; Dalrymple and Rhodes, 1995) so they will mainly follow the results from config1 and config2. Following the modelled results over these lee side morphologies, it is unlikely that there is a permanent flow separation for low-angle sharp crested dunes. The turbulence will



Commented [JC61]: I like the addition of the maximum angle location. This helps see where they are in the high angle case.

Commented [AL62]: R2. "Figure 9: in this summarising figure (where text is used to further explain): do you really need the two configurations? (hard to see the differences anyway). The conceptual value of Figure 9 would increase if it would schematise (not trying to mimic figs 4-7) the main, most discriminating points. For example, low angle dunes: long shear layer; wakes within the height of dunes; lengths of shear and wakes dependent on lee shape.

Fig 9: For the (variation in) lengths of wakes, e.g. use a red (or yellow) dot to indicate the position of steepest slope. For longest wake high-angle dunes, indicate with a red dot: largest when steep slope at top of lee side close to the crest. "

Commented [AL63R62]: I played around a bit with the figure. I left the two configurations for low and high-angle dunes because the position of the maximum slope has an influence (and I indicated the position of the maximum slope with a red dot as suggested) but I removed it for the intermediate-angle dune

Commented [AL67]: Reviewer 1 lines 319-320: this sentence needs clarification. "Following this assumption, river dunes, in general, are likely to have no or intermittent flow separation and a relatively strong (missing text here?) contained over the trough.

Commented [AL68R67]: rephrased

be low and diffused along a large, long turbulent wake with low TKE. The bed shear stress will have a strong decrease over the upper part of the lee side and then be stable or increase slightly over the lower lee side.

Dunes on the continental shelf may have any type of morphology going from sharp to round crested (Van Landeghem et al., 2009; Zhang et al., 2019). The shape of marine dunes is likely to reflect the local conditions of hydrodynamics and sediment transport. For example, a strongly asymmetric dune with a flat crest may form in an environment where the tidal currents are strongly asymmetrical. Large symmetrical dunes with sharp crests will develop in environments with symmetrical or weakly asymmetrical currents and ample sand supply (Ma et al., 2019). Our results show that the dune shape will affect how they interact with the flow. However, so far, the precise mean and maximum angles and the detailed shape (e.g. position of maximum angle) has been systematically quantified only for six large rivers and the Weser Estuary. Therefore, it is essential that the lee side shape is characterised with a precise determination of mean and maximum angles, and the position of the maximum angle, also possibly if possible the size and location of the steep portion (i.e. not just the position of the maximum angle but the size of the steepest slope) and a quantification of the crest shape (between rounded and sharp) in order to precisely understand and predict the complex interaction between hydrodynamics, sediment transport and bed morphology. Since high-resolution multibeam data are now routinely collected during surveys, it can and should be routinely done. This would greatly help in better understand the complex interaction between bedform morphology and hydrodynamics.

In this study, we have assumed that there was only one scale of dunes. However, compound bedforms are often observed, with smaller bedforms superimposed on larger ones, usually over the stoss side. When the lee side of large dunes is low, secondary bedforms may also be found over the lee side (Zomer et al., 2021; Galeazzi et al., 2018). These secondary bedforms can have a strong influence on flow above dunes, as even if the primary dune mean lee side angle is low, the lee side of the secondary bedforms may be steep and therefore, flow separation and roughness will be created over such compound dunes. The simulations with mean lee side 5° and maximum lee side >20° certainly show the possibility for permanent flow separation over such low-angle primary dunes if there are some steep secondary bedforms. This has the potential to create high roughness as the wakes are mixing with one another when they are advecting downstream in the case that several steep secondary bedforms are found on the lee side of low-angle primary dunes. Further studies could therefore investigate the interaction between the turbulence and flow separation of the secondary bedforms found over low-angle dunes. However, this does require high-spatial resolution for the secondary bedforms to be properly resolved and, if the experiments are carried out with moving sediment, the temporal scales required to observe this interaction would be related to the rate of superimposed bedform migration.

4.3 Potential impact on bedform roughness

Bedform roughness varies depending on lee side angle (Kwoll et al., 2016; Lefebvre and Winter, 2016). In the present study, we could not quantify directly the variations in roughness. However, bedform roughness is related to turbulence intensity over dunes (Lefebvre et al., 2016). Here, we observe that mean and maximum turbulence generally increases with increasing mean

Commented [AL69]: R2. The paragraph on continental shelves (lines 327-337) is pure speculation (more or less a repetition of the introduction). This could be worked out adequately, but requires a fuller study of the literature. Here, therefore, I would suggest to not discuss this in the discussion, but formulate the application to continental shelves as wider implication of this work. That would turn this paragraph (weakness of the paper) into a strong point.

Commented [AL70R69]: Paragraph rephrased

Commented [AL71]: R2. Galeazzi et al 2018 as well

Commented [AL72]: R2. With section 4.3: bed roughness: in this paper, relative lengths of wakes were used. To what extent the wakes extend into the flow (water column; exceeding dune height) is not mentioned. Would this not add to the discussion on bedform roughness?

Commented [AL73R72]: From what I know of bedform roughness and turbulent wake, the relation is mainly that the turbulence intensity (mean or maximum TKE) is the main parameter related to bedform roughness. This is similar to the approach of calculating the bed shear stress as $\tau = 0.19 TKE$. I calculated the wake height above the crests for all the simulations and it is very much related to the wake length. For now, I haven't added anything about the wake height. I am happy to do so if you feel very strongly about it.

lee side angle. However, for the same mean lee side angle, there are still variations in turbulence created by the value and position of the maximum slope (Figure 3). This means that bedform roughness is likely to be affected not only by the mean lee side angle, but also by the value and position of the maximum angle. However, no practical way has been found to characterise the roughness of low-angle dunes, and a definite relation between lee side angle of natural dune field and roughness has not yet been established. For example, no relation was found between dune lee properties and roughness variations in the river Waal in the Netherlands (De Lange et al., 2021). Therefore, it currently seems unlikely that the effect of the value and position of the maximum lee side angle can easily be considered when estimating bedform roughness of a natural bedform field. Instead, research should focus on relating bedform statistical properties, ~~for example such as~~ the integrated slope area, ~~to~~ roughness measurements in the field, and developing practical ways to incorporate these in model simulations. Indeed, bedform roughness variations due to bedform asymmetry has a strong impact on velocities and bedload transport calculation in tidal environments (Herrling et al., 2021)

4.4 Potential impact on sediment transport

The variation of bed shear stress across different dune morphologies will impact the potential for sediment transport. Here, it should be noted that the critical shear was calculated using a single sediment size and without bed slope effect (following the procedure described by Soulsby (1997)), and of course, it does not take into account the complex feedback between sediment transport and morphology variation (i.e. no sediment is being moved). Furthermore, the dune shape investigated are still simple compared to natural dunes, especially the stoss side which is here represented by a sinusoidal. The critical shear stress is therefore a simple indication for the potential to put sediment in motion along the dune but cannot be used for a full analysis of sediment transport along the dunes. This point is especially salient considering the differences in near-bed sediment transport processes between migrating and fixed bed dunes, specifically the presence of a dense sediment layer near the bed in migrating dunes (Naqshband et al., 2014b)). For low-angle (mean lee side <10°) dunes, the extended area of critical bed shear stresses near the crest of the dune in case the config1 (maximum angle is near the crest (config1) implies that there is higher ability of sediment to be transported from the dune crest in these configurations compared to the configuration where the maximum angle is near the trough rounded crest (config4) eases for low angle (5°) dunes. (Kostaschuk and Villard, 1996) attribute crestal rounding (possibly through crestal erosion) to high near-bed velocities when bedload transport is dominating and this process would likely also occur in the config 1 case. Alternatively On the other hand, there is very little difference in the bed shear stress curves for the high-angle lee-side easedunes, which implies that the sediment transport potential for the different dune morphologies will be less impacted by the location of a steep slope in these high-angle cases. The difference between the shear stress curves from the low to the high-angle eases dunes requires that we account for the spatial variations in bed shear stress across the dune to better understand the sediment transport potential in these systems and the likely bedform evolution that will which can occur from these different bed shear stress patterns.

Commented [AL74]: R2. better to place this earlier in the sentence.

Commented [AL75]: R2. low-angle dunes

Commented [AL76]: R2. better to place this earlier in the sentence.

The differences in bed shear stress curves for the low-angle dunes are related to variations in velocity magnitude above the lee side, which can also be recognised in the shapes of the shear layer and turbulent wake. ~~Additionally, the magnitude of Kelvin-Helmholtz instabilities and macroturbulence above dunes have been linked to the velocity differential across the shear layer (Bennett and Best, 1995; Shugar et al., 2010) where accelerations and decelerations are attributed to locations and modes of sediment entrainment. The present simulations show the differences in velocity deceleration across the crestal and lee side region depending on the maximum angle position seen herein, particularly a rapid decrease versus a gradual decrease when the steep portion is close to the crest or trough, respectively. These differences are likely to result in varying magnitudes and types of sediment transport (i.e. bedload vs. suspended load), where more rapid flow deceleration may be related to higher suspended sediment flux (Shugar et al., 2010). In the case when the steep portion is close to the crest, there is a rapid decrease in velocity above the steep face, a thick shear layer, and the start of the turbulent wake. This results in a sudden drop in bed shear stress above the upper lee side, with the minimum shear stress found over the steep portion and a higher bed shear stress found over the lower lee side with a second minimum over the trough. In the case when the steep portion is close to the trough, there is a gradual decrease in velocity along the long and gently sloping upper lee side, a thin shear layer, and the turbulent wake is situated over the trough. This results in a gradual lowering of the bed shear stress until it reaches its minimum over the steep face close to the trough.~~ This shows the ways the differing flow dynamics and wake regions over complex lee side shapes may influence the along stream bed shear stress and resultant sediment transport across low-angle dunes.

~~The present analysis was carried out in a two-dimensional (2D) setting, whereas dunes usually have some degree of three-dimensionality. The complex interaction between bedform three-dimensional (3D) shape, flow and sediment transport has been recognised since the early work of Allen (1968) and described based mostly on idealised bedforms in physical and numerical experiments (Unsworth et al., 2020; Maddux et al., 2003; Venditti, 2007; Lefebvre, 2019; Hardy et al., 2021). For example, three-dimensionality will deflect flow over the lee side (Hardy et al., 2021) and thereby affect flow separation and turbulence properties (Lefebvre, 2019; Venditti, 2007). Furthermore, if a dune is recognised from 3D bathymetry as a 3D entity between 2 troughlines (Cassol et al., 2022; Lebrec et al., 2022), lee side angles may vary laterally along a dune. In this case, the classification may be complicated by the fact that parts of a dune may be considered for example low-angle but other parts intermediate-angle dunes.~~

Numerical simulations were carried out in order to estimate the influence of the value and position of the maximum lee side angle on flow above dunes with varied mean lee side slopes. Based on our results and previous literature, we propose a distinction between three types of dunes:

Low-angle dunes, with mean lee side slopes lower than ca. 10°. Over such dunes, there is no permanent flow separation, except if the maximum angle is more than 20° and close to the ~~through~~trough. The turbulent wake is generally weak, but strongest and most ~~contained~~ compact (limited spatial extent) for steep maximum angles situated close to the trough. The variations in

Commented [AL77]: R2. L379-384. This is a repetition of the results. Why not relate to the critical shear stress for incipient motion, as indicated in Fig. 8 (see earlier comment that slope effect should be taken into account for critical shear stress?). Also, interesting in discussing the consequences for sediment transport in this section (4.4) would be:
- does the detachment of the shear layer in higher angle cases lead to more suspended sediment i.e. bedload?
- the line of critical shear stress (Fig 8) implies that sediment will only be mobilised at the crests of dunes. However, empirical studies show that large parts of stoss sides are being eroded. Is this a consequence of the choice of initial dune shape in the simulation runs?

Commented [AL78R77]: It was a point that Julia and I discussed when writing the paper. I have to say, I am not so keen on doing this because I feel that this would require a much deeper analysis that we are doing for this paper. It shouldn't be just the slope considered, but also the sediment grain size, the bed roughness, the mean velocity, the dune shape as a whole... Our simulations are still very simplified compared to natural conditions.

Commented [AL79]: Reviewer 1. end of section 4.4. The paper and the proposed classification scheme focuses on 2-dimensional dune profiles - dune morphology however is usually three dimensional so I think an additional brief paragraph should be added that considers the role of 3-morphology on dune profiles.

Commented [AL80R79]: New paragraph added

velocity magnitude and turbulence intensity along the dune influence the bed shear stress and potential for sediment transport across different lee side shapes.

Intermediate-angle dunes, with mean lee sides of ca. 10 to 20°. Over such dunes, there is rarely a permanent flow separation but it is likely that an intermittent flow separation forms. When present, flow separation is observed over the trough, independently of the maximum lee side angle position. These dunes should be studied systemically and in detail with laboratory experiments and eddy-resolving numerical modelling.

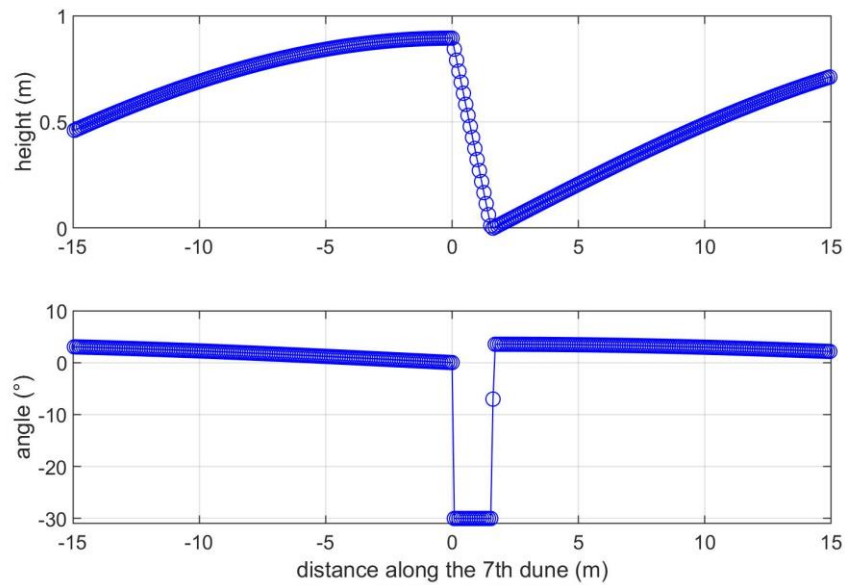
High-angle dunes, with mean lee sides of more than ca. 20°. Over such dunes, the flow separates at, or just downstream of, the brink point and therefore, flow separation is longest if the maximum angle is close to the crest. The turbulent wake is strong and, strongest and most extended-extensive for steep maximum slopes situated close to the crest.

This-The scheme introduced hereinclassification is more specific than previous classificationschemes, which only introduceed considered low and high-angle dunes, and describes the specifies-detailedof flow properties depending-onthat are controlled by lee side morphology. Importantly, this new classification scheme for dune lee sidedest allows for a precise consideration of the interaction between dune morphology and flow. To correctly take this interaction and its consequences into account, detailed reports of dune morphology from varied environments are needed.

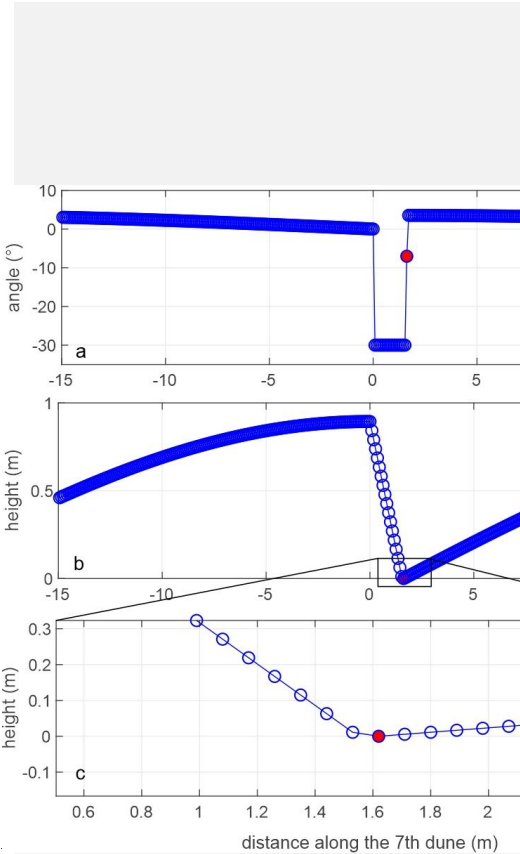
Appendix

Appendix A – extra figures

485 **Appendix A1: comparison of flow and turbulence over flat bed and straight angle-of-repose dunes**



490 **Figure A1. Example of the angles (a) and the bed (b a close up on the trough area in c) a straight lee-side configuration, on a straight lee side configuration with a set mean lee side angle of 30°. Because of the need to define the bedform profile on the grid, the last lee side point before the trough (marked with a red dot) is not at an angle is not of 30° compared to the previous point, but ca. 8°. As a result, and therefore, the mean lee side angle of this dune is 28.7° instead of the prescribed 30°.**



Commented [AL81]: Reviewer 1 I don't understand the explanation in the caption of Figure A1 – please clarify.

Commented [AL82R81]: Figure redone and caption expanded

A2. Comparison of mean and maximum TKE over the 7th bedform for all the experiments

The maximum and mean TKE above the 7th bedform are linearly related:

500 ~~Max.~~ $\text{TKE}_{\text{max}} = 12.4581 \times \text{mean-TKE}_{\text{mean}} - 0.0079$, $R^2 = 0.95$, number of points = 88.

Commented [AL83]: R2. see main comment #1. Better to write as equation
 $\text{TKE}_{\text{max}} = 12.4581 * \text{TKE}_{\text{mean}} - 0.0079$

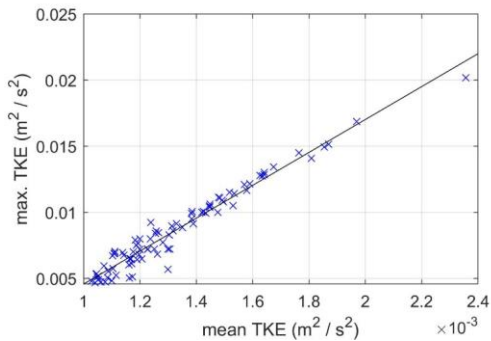


Figure A2. Mean and maximum TKE above the 7th bedform for all the simulations

505

510

515

520

A3. Comparison of properties over smooth and sharp lee sides

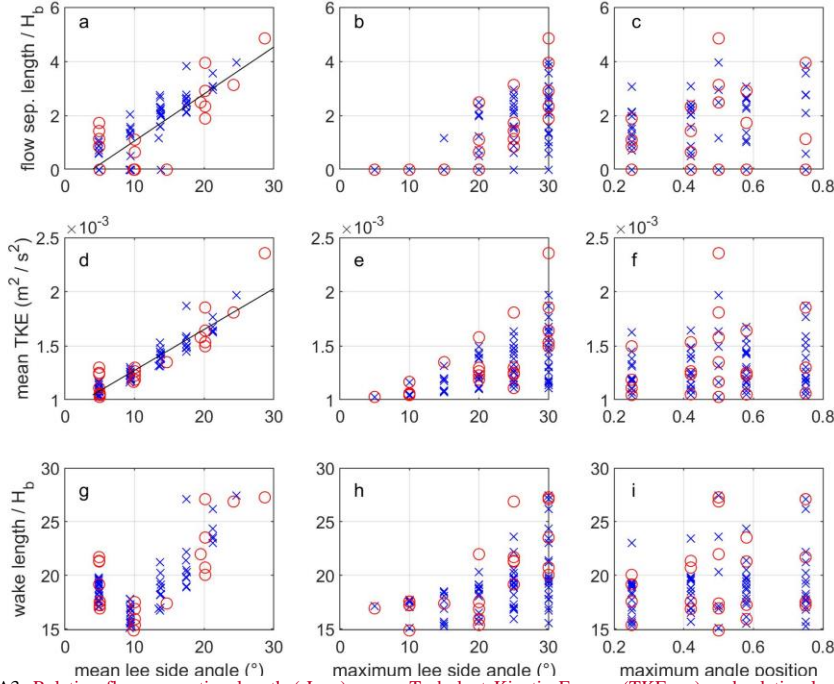


Figure A3. Relative flow separation length (rL_{FSZ}), mean Turbulent Kinetic Energy (TKE_{mean}) and relative length of the

turbulent wake (rL_{wake}) as a function of mean lee side angle (α_{mean}) (a, d, g), maximum lee side angle (α_{max}) (b, e, h) and the position of the maximum lee side angle (a position of 0.5 indicates a straight lee side) (c, f, i). Relative flow separation-length (flow-separation-length / bedform height H_b), mean Turbulent Kinetic Energy (TKE) and relative length of the turbulent wake (wake length / H_b) as a function of mean lee side angle (a, d, g), maximum lee side angle (b, e, h) and the position of the maximum lee side angle (a position of 0.5 indicates a straight lee side) (c, f, i). This figure is similar to Figure 3 from the main

manuscript but the properties calculated from the sharp dunes are plotted in red circles and those from the smooth dunes in blue crosses in order to highlight the lack of systematic differences.

A4. Additional simulations

Five new sets of simulations (20 simulations in total) were carried out in order to verify the limits of low, intermediate and high-angle dunes (Table 2). The results are briefly described here.

First set of simulations: dunes with a mean lee side of 13° , smoothed to 11.2° , and maximum lee side of 20° . A very small flow separation is observed over config1 and none over config2, larger one over config3 than config4. The fact that there is no direct relation between maximum angle position and flow separation size or presence, and that there is not systematically a flow separation confirms that these are intermediate-angle dunes.

Second set of simulations: dunes with a mean lee side of 17° , smoothed to 15.2° , and maximum lee side of 25° . A flow separation is found over all four configurations. However, the flow separation is in all cases concentrated over the trough and the shear layer does not detach over the crest. Furthermore, the simulation with a straight lee side of 15° does not have a flow separation. These dunes can therefore be classified as intermediate-angle dunes.

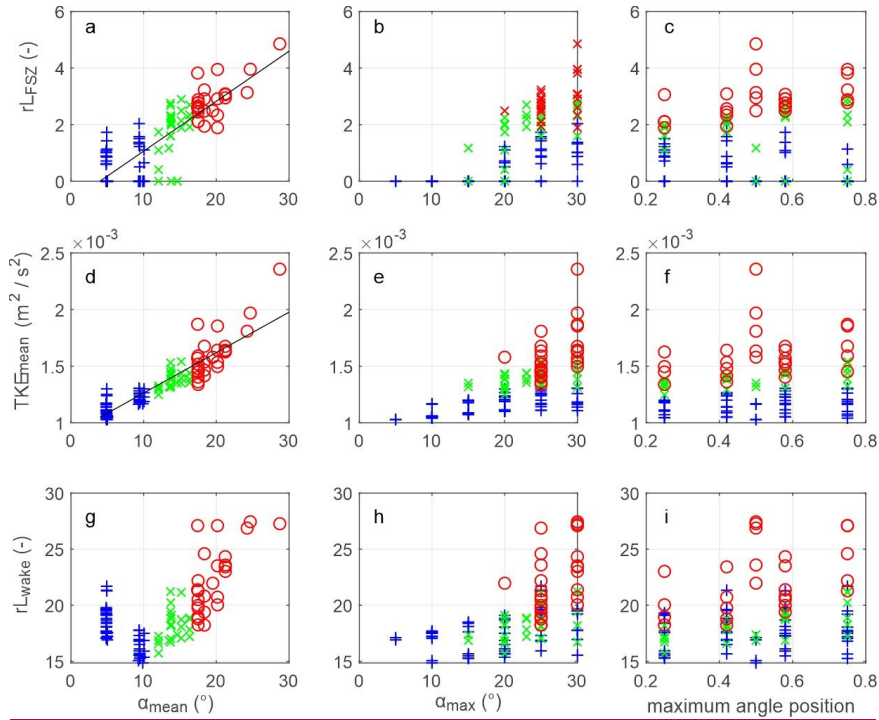
Third set of simulations: dunes with a mean lee side of 20° , smoothed to 17.5° , and maximum lee side of 25° but in 10 m water depth (instead of 8 m). The results are very similar to the similar simulation in 8 m water depth. This shows that there is not a large influence of water depth between these two values. In particular, it shows that the limit between intermediate and high-angle dunes is not shifted to higher values for smaller relative water depth.

Fourth set of simulations: a mean lee side of 18° (not smoothed) and maximum lee side of 25° . There is a flow separation in all cases, the flow separates at the brink point and reattaches shortly after the trough. The turbulent wake is strongest and largest for steep slopes close to the crest. These dunes can be classified as high-angle dunes.

Fifth set of simulations: a mean lee side of 16° (not smoothed) and maximum lee side of 23° . A flow separation is present for all four configurations. However, the size of the flow separation and the wake does not vary depending on steep slope position-. Therefore, these dunes can be classified as intermediate-angle dunes.

Table A1. Summary of bedform dimensions used for the numerical experiments. For all simulations: mean velocity $u = 0.8 \text{ m s}^{-1}$; bedform height $H_b = 0.89 \text{ m}$ and bedform length $L_b = 24.4 \text{ m}$. For all simulations, water depth $h = 8 \text{ m}$ except for the one in *italics* for which the water depth was $h = 10 \text{ m}$.

Sharp profiles	<u>Complex lee side</u>			
	<u>Mean lee side angle (°)</u>	-	<u>16.3</u>	<u>18.3</u>
	<u>Maximum lee side angle (°)</u>	-	<u>23</u>	<u>25</u>
	<u>Configurations for each maximum angle</u>	-	<u>config1-4</u>	<u>config1-4</u>
Smooth profiles	<u>Complex lee side</u>			
	<u>Mean lee side angle (°)</u>	<u>12.0</u>	<u>15.2</u>	<u>17.5</u>
	<u>Maximum lee side angle (°)</u>	<u>20</u>	<u>25</u>	<u>25</u>
	<u>Configurations for each maximum angle</u>	<u>config1-4</u>	<u>config1-4</u>	<u>config1-4</u>



Formatted: Font: Not Bold

Formatted: Centered

570 Figure A4. Relative flow separation length (rL_{FSZ}), mean Turbulent Kinetic Energy (TKE_{mean}) and relative length of the
turbulent wake (rL_{wake}) as a function of mean lee side angle (α_{mean}) (a, d, g), maximum lee side angle (α_{max}) (b, e, h) and the
position of the maximum lee side angle (a position of 0.5 indicates a straight lee side) (c, f, i). The blue plusses show results
from dunes with mean lee side lower than 10° , green crosses for mean lee sides between 10 and 17° and red circles for mean
lee side $> 17^\circ$. This figure is similar to Figure 3 from the main manuscript but the properties calculated from the sharp dunes
575 are plotted in red circles and those from the smooth dunes in blue crosses in order to highlight the lack of systematic differences.

Code availability

Data availability

The main results will be made available through <https://www.pangaea.de/>~~as soon as the manuscript is accepted with minor~~
580 ~~revisions~~. Pangaea is a Data Publisher for Earth & Environmental Science where data can be archived, published, and re-used
following FAIR principles.~~For now, the data are uploaded as an excel document as the data may still change during the review~~
~~process.~~

Author contribution

AL and JC conceptualised the study and planned the experiments; AL performed and analysed the numerical simulations;
585 Experimental results were discussed by AL and JC; the original draft was prepared by AL and commented by JC; further
writing, review and editing were done by AL and JC.

Competing interests:

The authors declare that they have no conflict of interest.

Acknowledgements

590 Alice Lefebvre is funded through the Cluster of Excellence ›The Ocean Floor – Earth’s Uncharted Interface‹. Julia Cisneros
is supported by the National Science Foundation under Award No. 1952844. Any opinions, findings, and conclusions or
recommendations expressed in this material are those of the author(s) and do not necessarily reflect the views of the National
Science Foundation. We are very grateful to the comments from two reviewers and the editor Andreas Baas. We appreciate
the open review style of Earth Surface Dynamics.

595

References

- Bennett, S. J. and Best, J. L.: Mean flow and turbulence structure over fixed, two-dimensional dunes: implications for sediment transport and bedform stability, *Sedimentology*, 42, 491-513, <https://doi.org/10.1111/j.1365-3091.1995.tb00386.x>, 1995.
- 600 Best, J.: The fluid dynamics of river dunes: A review and some future research directions, *J. Geophys. Res.*, 110, 21, <https://doi.org/10.1029/2004JF000218>, 2005.
- Best, J. and Kostaschuk, R.: An experimental study of turbulent flow over a low-angle dune, *J. Geophys. Res.*, 107, 3135, <https://doi.org/10.1029/2000JC000294>, 2002.
- Bradley, R. W. and Venditti, J. G.: Reevaluating dune scaling relations, *Earth-Science Reviews*, 165, 356-376, <https://doi.org/10.1016/j.earscirev.2016.11.004>, 2017.
- 605 Bradley, R. W., Venditti, J. G., Kostaschuk, R., Church, M. A., Hendershot, M., and Allison, M. A.: Flow and sediment suspension events over low-angle dunes: Fraser Estuary, Canada, *J. Geophys. Res.*, 118, 1693-1709, <https://doi.org/10.1002/jgrf.20118>, 2013.
- Cassol, W. N., Daniel, S., and Guilbert, É.: An Approach for the Automatic Characterization of Underwater Dunes in Fluvio-marine Context, *Geosciences*, 12, 89, <https://doi.org/10.3390/geosciences12020089>, 2022.
- 610 Cisneros, J., Best, J., van Dijk, T., de Almeida, R. P., Amsler, M., Boldt, J., Freitas, B., Galeazzi, C., Huizinga, R., Ianniruberto, M., Ma, H. B., Nittroer, J. A., Oberg, K., Orfeo, O., Parsons, D., Szupiany, R., Wang, P., and Zhang, Y. F.: Dunes in the world's big rivers are characterized by low-angle lee-side slopes and a complex shape, *Nat. Geosci.*, 13, 156-+, <https://doi.org/10.1038/s41561-019-0511-7>, 2020.
- 615 Dalrymple, R. W. and Rhodes, R. N.: Chapter 13 Estuarine Dunes and Bars, in: *Dev. Sedimentol.*, edited by: Perillo, G. M. E., Elsevier, 359-422, 1995.
- Damen, J. M., van Dijk, A. G. P., and Hulscher, S. J. M. H.: Replication Data for: Spatially varying environmental properties controlling observed sand wave morphology, Part 1. Version 1 [dataset], 10.4121/uuid:0d7e016d-2182-46ea-bc19-cdfa5c20308, 2018.
- 620 de Lange, S. I., Naqshband, S., and Hoitink, A. J. F.: Quantifying Hydraulic Roughness From Field Data: Can Dune Morphology Tell the Whole Story?, *Water Resour. Res.*, 57, e2021WR030329, <https://doi.org/10.1029/2021WR030329>, 2021.
- Deltares: User Manual Delft3D-FLOW, Deltares, Delft, The Netherlands 2014.
- Franzetti, M., Le Roy, P., Delacourt, C., Garlan, T., Cancouët, R., Sukhovich, A., and Deschamps, A.: Giant dune morphologies and dynamics in a deep continental shelf environment: Example of the banc du four (Western Brittany, France), *Mar. Geol.*, 346, 17-30, <https://doi.org/10.1016/j.margeo.2013.07.014>, 2013.
- 625 Galeazzi, C. P., Almeida, R. P., Mazoca, C. E. M., Best, J. L., Freitas, B. T., Ianniruberto, M., Cisneros, J., and Tamura, L. N.: The significance of superimposed dunes in the Amazon River: Implications for how large rivers are identified in the rock record, *Sedimentology*, <https://doi.org/10.1111/sed.12471>, 2018.
- 630 Hardy, R. J., Best, J. L., Marjoribanks, T. I., Parsons, D. R., and Ashworth, P. J.: The influence of three-dimensional topography on turbulent flow structures over dunes in unidirectional flows, *Journal of Geophysical Research: Earth Surface*, <https://doi.org/10.1029/2021jf006121>, 2021.
- Herrling, G., Becker, M., Lefebvre, A., Zorndt, A., Kramer, K., and Winter, C.: The effect of asymmetric dune roughness on tidal asymmetry in the Weser estuary, *Earth Surf. Processes Landforms*, 18, <https://doi.org/10.1002/esp.5170>, 2021.
- 635 Kleinhans, M. G.: Sorting in grain flows at the lee side of dunes, *Earth-Science Reviews*, 65(75-102), [https://doi.org/10.1016/S0012-8252\(03\)00081-3](https://doi.org/10.1016/S0012-8252(03)00081-3), 2004.
- Kostaschuk, R. and Villard, P.: Flow and sediment transport over large subaqueous dunes: Fraser River, Canada, *Sedimentology*, 43, 849-863, <https://doi.org/10.1111/j.1365-3091.1996.tb01506.x>, 1996.
- Kostaschuk, R. A. and Venditti, J. G.: Why do large, deep rivers have low-angle dune beds?, *Geology*, 47, 919-922, <https://doi.org/10.1130/g46460.1>, 2019.
- 640 Kwohl, E., Venditti, J. G., Bradley, R. W., and Winter, C.: Flow structure and resistance over subaqueous high- and low-angle dunes, *Journal of Geophysical Research: Earth Surface*, 121, 545-564, <https://doi.org/10.1002/2015JF003637>, 2016.

Lebrec, U., Riera, R., Paumard, V., O'Leary, M. J., and Lang, S. C.: Automatic Mapping and Characterisation of Linear Depositional Bedforms: Theory and Application Using Bathymetry from the North West Shelf of Australia, Remote Sensing, 14, 280, <https://doi.org/10.3390/rs14020280>, 2022.

Lefebvre, A.: Three-Dimensional Flow Above River Bedforms: Insights From Numerical Modeling of a Natural Dune Field (Río Paraná, Argentina), Journal of Geophysical Research: Earth Surface, 124, 2241–2264, <https://doi.org/10.1029/2018jfo04928>, 2019.

Lefebvre, A. and Winter, C.: Predicting bed form roughness: the influence of lee side angle, Geo-Mar. Lett., 36, 121–133, <https://doi.org/10.1007/s00367-016-0436-8>, 2016.

Lefebvre, A., Paarlberg, A. J., and Winter, C.: Flow separation and shear stress over angle of repose bedforms: a numerical investigation, Water Resour. Res., 50, 986–1005, <https://doi.org/10.1002/2013WR014587>, 2014a.

Lefebvre, A., Paarlberg, A. J., and Winter, C.: Characterising natural bedform morphology and its influence on flow, Geo-Mar. Lett., 36, 379–393, <https://doi.org/10.1007/s00367-016-0455-5>, 2016.

Lefebvre, A., Paarlberg, A. J., Ernsten, V. B., and Winter, C.: Flow separation and roughness lengths over large bedforms in a tidal environment: a numerical investigation, Cont. Shelf Res., 91, 57–69, <https://doi.org/10.1016/j.csr.2014.09.001>, 2014b.

Lefebvre, A., Herrling, G., Becker, M., Zorndt, A., Krämer, K., and Winter, C.: Morphology of estuarine bedforms, Weser Estuary, Germany, Earth Surf. Processes Landforms, <https://doi.org/10.1002/esp.5243>, 2021.

Maddux, T. B., Nelson, J. M., and McLean, S. R.: Turbulent flow over three-dimensional dunes: 1. Free surface and flow response, Journal of Geophysical Research: Earth Surface, 108, <https://doi.org/10.1029/2003JF000017>, 2003.

McLean, S. R., Nelson, J. M., and Wolfe, S. R.: Turbulence structure over two-dimensional bed forms: Implications for sediment transport, J. Geophys. Res., 99, 12729–12747, <https://doi.org/10.1029/94JC00571>, 1994.

McLean, S. R., Wolfe, S. R., and Nelson, J. M.: Spatially averaged flow over a wavy boundary revisited, J. Geophys. Res., 104, 15743–15753, <https://doi.org/10.1029/1999JC900116>, 1999.

Naqshband, S., Ribberink, J., and Hulscher, S.: Using both free surface effect and sediment transport mode parameters in defining the morphology of river dunes and their evolution to upper stage plane beds, J. Hydraul. Eng., 140, 06014010, [https://doi.org/10.1061/\(ASCE\)HY.1943-7900.0000873](https://doi.org/10.1061/(ASCE)HY.1943-7900.0000873), 2014a.

Naqshband, S., Ribberink, J. S., Hurther, D., and Hulscher, S. J. M. H.: Bed load and suspended load contributions to migrating sand dunes in equilibrium, J. Geophys. Res., 119, 1043–1063, <https://doi.org/10.1002/2013JF003043>, 2014b.

Naqshband, S., Wullems, B., de Ruijscher, T., and Houtink, T.: Experimental investigation of low-angle dune morphodynamics, E3S Web Conf., 40, <https://doi.org/10.1051/e3sconf/20184002056>, 2018.

Nelson, J. M., McLean, S. R., and Wolfe, S. R.: Mean flow and turbulence fields over two-dimensional bed forms, Water Resour. Res., 29, 3935–3953, <https://doi.org/10.1029/93WR01932>, 1993.

Platzek, F. W., Stelling, G. S., Jankowski, J. A., and Pietrzak, J. D.: Accurate vertical profiles of turbulent flow in z-layer models, Water Resour. Res., 50, 2191–2211, <https://doi.org/10.1002/2013WR014411>, 2014.

Prokocki, E. W., Best, J. L., Perillo, M. M., Ashworth, P. J., Parsons, D. R., Sambrook Smith, G. H., Nicholas, A. P., and Simpson, C. J.: The morphology of fluvial-tidal dunes: Lower Columbia River, Oregon/Washington, USA, Earth Surf. Processes Landforms, 47, 2079–2106, <https://doi.org/10.1002/esp.5364>, 2022.

Roden, J. E.: The sedimentology and dynamics of mega-dunes, Jamuna River, Bangladesh, Ph.D., Department of Earth Sciences, University of Leeds, Leeds, UK, 310 pp., 1998.

Shugar, D. H., Kostaschuk, R., Best, J. L., Parsons, D. R., Lane, S. N., Orfeo, O., and Hardy, R. J.: On the relationship between flow and suspended sediment transport over the crest of a sand dune, Río Paraná, Argentina, Sedimentol. Rev., 57, 252–272, <https://doi.org/10.1111/j.1365-3091.2009.01110.x>, 2010.

Soulsby, R. L.: Dynamics of marine sands: a manual for practical applications, Thomas Telford, London, 249 pp.1997.

Uittenbogaard, R., van Kester, J., and Stelling, G.: Implementation of three turbulence models in 3D-TRISULA for rectangular grids, Tech. Rep. Z81, WL | Delft Hydraulics, Delft, The Netherlands., 1992.

Unsworth, C. A., Parsons, D. R., Hardy, R. J., Reesink, A. J. H., Best, J. L., Ashworth, P. J., and Keevil, G. M.: The Impact of Nonequilibrium Flow on the Structure of Turbulence Over River Dunes, Water Resour. Res., 54, 6566–6584, <https://doi.org/10.1029/2017WR021377>, 2018.

Unsworth, C. A., Nicholas, A. P., Ashworth, P. J., Best, J. L., Lane, S. N., Parsons, D. R., Sambrook Smith, G. H., Simpson, C. J., and Strick, R. J. P.: Influence of Dunes on Channel-Scale Flow and Sediment Transport in a Sand Bed Braided River, Journal of Geophysical Research: Earth Surface, 125, e2020JF005571, <https://doi.org/10.1029/2020JF005571>, 2020.

- Van der Mark, C. F., Blom, A., and Hulshar, S. J. M. H.: Quantification of variability in bedform geometry, *J. Geophys. Res.*, 113, F03020, <https://doi.org/10.1029/2007JF000940>, 2008.
- 695 Van Landeghem, K. J. J., Wheeler, A. J., Mitchell, N. C., and Sutton, G.: Variations in sediment wave dimensions across the tidally dominated Irish Sea, NW Europe, *Mar. Geol.*, 263, 108-119, <https://doi.org/10.1016/j.margeo.2009.04.003>, 2009.
- Venditti, J. G.: Turbulent flow and drag over fixed two- and three-dimensional dunes, *J. Geophys. Res.*, 112, F04008, <https://doi.org/10.1029/2006JF000650>, 2007.
- 700 Wiberg, P. L. and Nelson, J. M.: Unidirectional flow over asymmetric and symmetric ripples, *Journal of Geophysical Research: Oceans*, 97, 12745-12761, <https://doi.org/10.1029/92JC01228>, 1992.
- Zhang, H., Ma, X., Zhuang, L., and Yan, J.: Sand waves near the shelf break of the northern South China Sea: morphology and recent mobility, *Geo-Mar. Lett.*, 39, 19-36, <https://doi.org/10.1007/s00367-018-0557-3>, 2019.
- 705 Zomer, J. Y., Naqshband, S., Vermeulen, B., and Hoitink, A. J. F.: Rapidly Migrating Secondary Bedforms Can Persist on the Lee of Slowly Migrating Primary River Dunes, *Journal of Geophysical Research: Earth Surface*, 126, e2020JF005918, <https://doi.org/doi.org/10.1029/2020JF005918>, 2021.