

Comparing the simulated influence of biomass burning plumes on low-level clouds over the southeastern Atlantic under varying smoke conditions.

Alejandro Baró Pérez^{1,2,a}, Michael S. Diamond³, Frida A.-M. Bender^{1,2}, Abhay Devasthale⁴, Matthias Schwarz⁵, Julien Savre⁶, Juha Tonttila⁷, Harri Kokkola⁷, Hyunho Lee⁸, David Painemal⁹, and Annica M. L. Ekman^{1,2}

¹Department of Meteorology, Stockholm University, Stockholm, Sweden

²Bolin Centre for Climate Research, Stockholm, Sweden

³Department of Earth, Ocean, & Atmospheric Science, Florida State University, Tallahassee, FL, USA

⁴Meteorological Research Unit, Research and development, Swedish Meteorological and Hydrological Institute, Norrköping Sweden

⁵GeoSphere Austria, Hohe Warte 38, 1190 Vienna, Austria

⁶Meteorological Institute, Fakultät für Physik, Ludwig-Maximilians-Universität Munich, Munich 80333, Germany

⁷Finnish Meteorological Institute, Kuopio, Finland

⁸Department of Atmospheric Science, Kongju National University, Gongju 32588, South Korea

⁹NASA Langley Research Center, Hampton, Virginia, USA

^anow at: Department of Space, Earth and Environment, Chalmers University, Gothenburg 41296, Sweden

Correspondence: Alejandro Baró Pérez (baralej@chalmers.se)

Abstract. Biomass burning plumes are frequently transported over the Southeast Atlantic stratocumulus deck during the southern African fire season (June-October). The plumes bring large amounts of absorbing aerosols as well as enhanced moisture, which can trigger a rich set of aerosol-cloud-radiation interactions with climatic consequences that are still poorly understood. We use large-eddy simulation (LES) to explore and disentangle the individual impacts of aerosols and moisture on the underlying stratocumulus clouds, the marine boundary layer (MBL) evolution and the stratocumulus to cumulus transition (SCT) for three different meteorological situations over the Southeast Atlantic during August 2017. For all three cases, our LES shows that the SCT is driven by increased sea surface temperatures and cloud-top entrainment as the air is advected towards the equator. In the LES model, aerosol indirect effects, including impacts on drizzle production, have a small influence on the modeled cloud evolution and SCT, even when aerosol concentrations are lowered to background concentrations. In contrast, local semi-direct effects, i.e aerosol absorption of solar radiation in the MBL, causes a reduction in cloud cover that can lead to a speed-up of the SCT, in particular during daytime and during broken cloud conditions, especially in highly polluted situations. The largest impact on the radiative budget comes from aerosol impacts on cloud albedo; the plume with absorbing aerosols produces a total average net radiative cooling effect between -4 and -9 W m^{-2} over the three days of simulations. We find that the moisture accompanying the aerosol plume produces an additional cooling effect that is about as large as the total aerosol radiative effect. Overall, there is still a large uncertainty associated with the radiative and cloud evolution effects of biomass burning aerosols. A comparison between different models in a common framework, combined with constraints from in-situ observations, could help to reduce the uncertainty.

1 Introduction

Biomass burning aerosols (BBA) influence the Earth's weather and climate (Liu et al., 2020), but their net impact is difficult to quantify because of the complex interactions between aerosols, radiation and clouds. The two main chemical components of BBA are pure black carbon (BC) and organic carbon (OC); the former predominantly absorbs and the latter mostly scatters solar radiation (Bond and Bergstrom, 2006). The combined absorption and scattering properties of BBA (direct aerosol effect) modify the radiative fluxes in the atmosphere, leading to temperature changes, and in general, to an energy redistribution, that affects atmospheric stability and alters cloud evolution and precipitation (semi-direct aerosol effect). Moreover, BBA can also serve as cloud condensation nuclei (CCN) and ice nuclei (INP) and alter the radiative properties of clouds and their lifetime (indirect effects, ~~(Twomey, 1977; Albrecht, 1989)~~Twomey, 1977; Albrecht, 1989).

Several tropical regions on the planet experience biomass fires every year that release considerable amounts of BBA to the atmosphere, affecting not only local but also remote areas (Herbert et al., 2021). The Southeast Atlantic (SEA) stands out as one region receiving substantial quantities of BBA from June to October (De Graaf et al., 2020; Deaconu et al., 2019; Ichoku et al., 2003). These aerosols originate from fires over the Southwestern African savanna that are transported westwards by the predominant trade winds. In addition, the SEA hosts one of the largest semi-permanent stratocumulus (Sc) cloud decks on the planet, providing an ideal environment for frequent interactions between BBA, Sc clouds, and radiation to occur. Another notable characteristic of the SEA is the typical occurrence of stratocumulus to cumulus transitions (SCTs) when air masses flow towards the equator on the eastern side of the semi-permanent South Atlantic subtropical anticyclone (Wood, 2012). The so-called deepening-warming mechanism (Bretherton and Wyant, 1997) suggests that SCTs are primarily driven by increasing sea surface temperatures (SSTs) as the air moves from the subtropics to the tropics. Warmer SSTs lead to increased surface latent heat fluxes that ~~are positively buoyant and intensify~~ increase the turbulent kinetic energy (TKE) and enhance turbulence in the boundary layer. The TKE increase strengthens the cloud-top entrainment which deepens the boundary layer. ~~However, the entrained air~~ If the mixture between the warm entrained air and the cloudy air is positively buoyant ~~and therefore reduces~~ the mixing between the cloud and the sub-cloud layers is reduced. The latter eventually leads to a decoupled boundary layer, where the flux of surface moisture to the Sc cloud is diminished, and the formation of cumulus clouds below the Sc is favored. According to this theory, the speed of the SCT is mostly modulated by the strength of the MBL-capping inversion whereas precipitation formation is less important (Sandu and Stevens, 2011). However, several recent studies have found that drizzle formation may indeed be highly relevant for SCTs, especially when aerosol concentrations are low, and when feedbacks between aerosols, cloud droplet number, and precipitation are considered (Yamaguchi et al., 2015, 2017; Erfani et al., 2022; Diamond et al., 2022).

The BBA are frequently transported in the free troposphere (FT) over the SEA, above the Sc-topped MBL. The combined direct and semi-direct effects in the FT can impact the Sc and MBL, mostly when the distance between the aerosol plume and the clouds is small (Herbert et al., 2020; Baró Pérez et al., 2021; Diamond et al., 2022). For instance, the absorption of SW radiation by the aerosols can warm the FT and strengthen the inversion at the top of the MBL, slowing down its deepening. Diamond et al. (2022) found that the SW absorption in the FT also can reduce the subsidence rate, which can modulate the

timing for a potential contact between the aerosol plume and the underlying Sc clouds. Studies based on satellite data have also shown an increase in cloud cover and cloud thickness in the presence of BBA in the FT (Wilcox, 2010; Costantino and Bréon, 2013). The BBA plumes over the SEA are typically accompanied by enhanced moisture originating from the continental boundary layer (Haywood et al., 2004; Adebisi et al., 2015; Zhou et al., 2017; Deaconu et al., 2019). The enhanced moisture transport is not directly caused by the biomass burning itself but happens to coincide with the transport of BBA (Pistone et al., 2021). Water vapor absorbs mainly at near-infrared and infrared wavelengths longer than $0.7 \mu\text{m}$ (Ramaswamy and Freidenreich, 1991; Collins et al., 2006). Thus, by increasing the downward longwave (LW) fluxes, moisture associated with BBA in the free troposphere can suppress MBL deepening (Eastman and Wood, 2018) by reducing the net Sc top LW cooling, as has been shown by large-eddy simulations (e.g. [Yamaguchi et al. \(2015\)](#), [Zhou et al. \(2017\)](#), [Yamaguchi et al., 2015](#); [Zhou et al., 2017](#)).

The BBA can also entrain and mix into the MBL, affecting clouds, precipitation, and the MBL evolution through aerosol indirect and semi-direct effects. The indirect effects resulting from a BBA plume can be manifested as a chain of processes. Following Twomey (1977) and Albrecht (1989), an increase of the cloud droplet number concentration (N_c) can result in a reduction of cloud droplet size, leading to a higher cloud albedo and eventually precipitation suppression. This can potentially extend the cloud's lifetime and increase the cloud depth and liquid water path (LWP). However, precipitation suppression can also increase cloud-top radiative cooling, leading to an increase in the entrainment rate and a reduction of the LWP (Wood, 2012; Gryspeerdt et al., 2019). The semi-direct effect of BBA within the MBL can manifest itself as a temperature increase that leads to a reduction of the relative humidity (RH) and, consequently, a decrease in cloudiness (Hansen et al., 1997; Ackerman et al., 2000; Diamond et al., 2022). In addition to the above, the moisture associated with BBA plumes can result in that relatively humid air is entrained into the MBL, which can lead to an increase in cloud cover with increasing entrainment, instead of the opposite that typically would occur for a clean, dry free troposphere (Eastman and Wood, 2018).

The aerosol amount and humidity tend to co-vary within BBA-moist plumes, and their individual effects on MBL evolution and Sc clouds are therefore difficult to disentangle using observational data, e.g. from satellites (Baró Pérez et al., 2021). Their relative impacts might also vary depending on the meteorological situation and the magnitude of the perturbations (Pistone et al., 2016). Therefore, a modeling perspective may be useful for examining the issue. Yamaguchi et al. (2015) used Lagrangian large-eddy simulations and an idealized SCT case (Sandu and Stevens, 2011) to explore how SCTs can be influenced by a plume of enhanced moisture and smoke. They found that cloud-top entrainment and MBL deepening were reduced when the smoke layer was located above the Sc deck, due to smoke absorption and a strengthening of the inversion. When the plume entrained into the MBL, drizzle was suppressed, which together with the enhanced moisture associated with the aerosol plume contributed to Sc cloud sustenance and a delay in the SCT. With some modifications, Zhou et al. (2017) also used the Sandu and Stevens (2011) SCT case study. However, they obtained an acceleration of the SCT when the aerosol plume made contact with the Sc deck, due to an increased N_c , smaller droplets, more evaporative cooling, and enhanced cloud-top entrainment. Note that the simulations by Zhou et al. (2017) did not include prognostic aerosol concentrations, i.e. their model setup would not be able to produce any drizzle-driven acceleration of the SCT, which could explain some of the differences compared to Yamaguchi et al. (2015).

One disadvantage of the studies by Yamaguchi et al. (2015) and Zhou et al. (2017) is that they both used idealized meteorological conditions, representative of the Northeastern Pacific. In contrast, Diamond et al. (2022) used data from the joint Observations of Aerosols above CLouds and their intERacionS (ORACLES)-CLouds and Aerosol Radiative Impacts and Forcing: Year 2017 (CLARIFY) campaigns to simulate an SCT case over the SEA. In their simulations, they also incorporated the effect of smoke on the large-scale circulation by forcing their LES model with output from a regional climate model. Diamond et al. (2022) found that the large-scale thermodynamic and dynamic adjustments, which cannot be explicitly simulated by an LES model, had the largest impact on the SCT except when aerosol concentrations were very low. This delay was to some extent counteracted by local (within the MBL) semi-direct effects that decreased cloud cover. However, similar to Yamaguchi et al. (2015) and Zhou et al. (2017), Diamond et al. (2022) found that local semi-direct effects did not dominate the impact of BBA on cloud evolution.

To summarize, BBA plumes and associated moisture (either overlying or mixed into the MBL) can influence the MBL, Sc clouds, and in consequence SCTs over the SEA in multiple and sometimes counteracting ways. The complexity of the interactions has caused disagreement between previous modeling studies using large-eddy simulation. Most of these studies were based on idealized meteorology. Only one study has examined conditions representative of the SEA and they focused on only one specific case (Diamond et al., 2022). Since the location, timing, and levels of pollution of the BBA plumes influence the clouds and MBL evolution, the analysis of different situations can give a wider perspective of the possible ways in which the humid BBA plumes can affect low-level clouds over the SEA.

In this work, we use the MISU-MIT Cloud and Aerosol (MIMICA) LES model (Savre et al., 2014) to simulate stratocumulus-topped boundary layers and SCTs for three different meteorological situations over the SEA, during August 2017, characterized by the presence of moist absorbing aerosol plumes interacting with the MBL. The three situations are chosen to study cases that are clearly different in the levels of pollution and moisture in the FT and also with respect to when the BBA plume appears in the FT, and when it mixes into the MBL. We explore the individual influence of aerosols and moisture on the diel (24 hours) cycle of the MBL, the Sc clouds, and on the SCT. Furthermore, we compare the impacts observed in the three situations and investigate the overall radiative effects of the absorbing aerosols as well as the enhanced moisture within the BBA plume. In Section 2, we describe the model setup and define some variables and parameters used in the analysis. Section 3 describes the results followed by a discussion and conclusions in Section 4.

2 Methods

2.1 Model setup and simulations

The MIMICA LES code (Savre et al., 2014) solves a set of anelastic, non-hydrostatic governing equations. The model uses a two-moment bulk microphysics scheme (Seifert and Beheng, 2001, 2006) where the mass mixing ratios and the number densities of five hydrometeor types (i.e. cloud droplets, raindrops, ice crystals, snow and graupel) are defined as prognostic variables. In this work, we only use the microphysics associated with warm (no-ice) clouds and precipitation and use a radius of 25 μm to separate cloud droplets from raindrops. Hydrometeor size distributions are defined by gamma functions. The

120 model is coupled to a version of the four-stream Fu-Liou-Gu radiative transfer model (Fu and Liou, 1993; Fu et al., 1997; Gu et al., 2003) which ~~includes~~ uses 6 bands for shortwave ~~and~~ (solar spectrum between 0.2 and 5 μm) and 12 for longwave radiation (infrared spectrum between 2200 and 10 cm^{-1}). A two-moment aerosol module is used to characterise the aerosol population (Ekman et al., 2006), with the possibility to define several log-normally distributed aerosol modes with different
125 carbon, sulfate, and sea salt). Aerosols can act as CCN following the (κ)-Köhler theory (Petters and Kreidenweis, 2007) and are lost through cloud processing and precipitation. However, the model tracks the mass of activated aerosols and generates one aerosol from each evaporated droplet. When collision-coalescence processes occur, the model does a simple assumption that the aerosols from the involved droplets merge into one upon evaporation.

To perform the simulations, we have added explicit aerosol-radiation interactions to MIMICA. The implementation is an
130 adaptation of the aerosol-radiation interactions used by Slater et al. (2020) in UCLA-LES-SALSA (Tonttila et al., 2017). MIMICA and UCLA-LES-SALSA share the same radiative transfer model (Fu and Liou, 1993; Fu et al., 1997; Gu et al., 2003), but in MIMICA the optical properties (optical thickness, single scattering albedo and phase function) are estimated for aerosol modes whereas in UCLA-LES-SALSA they are estimated for aerosol bins. The real and imaginary refractive indices for each aerosol component are obtained from Hess et al. (1998). The mean refractive index of the aerosol mode will be
135 proportional to the volume fraction of each aerosol type.

For our simulations, we use a 9.6 by 9.6 km horizontal domain with a resolution of 50 m. The vertical grid consists of 288 grid points from the surface to 6.5 km with a resolution of 10 meters below 2.5 km and a vertical stretching above (vertical distance between grid points increases by 10% each level). Aerosol properties described above are based on ORACLES-2017 measurements and follow Diamond et al. (2022). The BBA is represented by using a combination of black carbon (6.8%) and
140 organic carbon (93.2%) in a single mode; the single scattering albedo (SSA) of this internal mixture is approximately equal to 0.85. The initial geometrical mean diameter of the aerosol distribution is 185 nm with a fixed geometric standard deviation of 1.5. The hygroscopicity parameter (κ) is set to 0.2, consistent with Fanourgakis et al. (2019); Howell et al. (2021); Diamond et al. (2022). We use a constant surface aerosol source of ~~$70 \text{ cm}^{-2} \text{ s}^{-1}$~~ $70 \text{ cm}^{-2} \text{ s}^{-1}$ to maintain the background aerosol number concentration (N_a) within reasonable values (Wang et al., 2010; Yamaguchi et al., 2015). For simplicity, the aerosol source is
145 assumed to consist only of BBA, as in Yamaguchi et al. (2015) and Diamond et al. (2022). The horizontal wind divergence rate is set to a constant value of $2.16 \cdot 10^{-6} \text{ s}^{-1}$ in all cases.

The simulations are initialized (in the entire model domain) and later forced (only in the free troposphere) with meteorological fields and aerosol conditions given by trajectories calculated with the Goddard Earth Observing System Model Version 5 (GEOS-5) (Molod et al., 2012), that are a subset of those computed in Painemal et al. (2018). In the trajectories, the parcels’
150 initial longitudes span from 0 to 12°E, while their initial latitude is set at 25°S. A fixed vertical level of 250 m for the parcels is assumed, disregarding any vertical movement. At a specific point, the horizontal wind velocities are calculated by linearly interpolating values from 16 neighboring spatiotemporal (x, y, z, and time) points. To calculate the incremental changes in the parcels’ locations after each integration on the latitude/longitude coordinate, equatorial and polar radii of 6378.137 km and

6356.752 km, respectively are used. The model time step is 10 minutes in GEOS-5, and the simple forward Euler method is used for time integration. When the parcels approach land too closely to obtain the 250-m winds the integration stops.

During MIMICA's simulations, the free troposphere is continuously nudged to the forcing (from GEOS-5 trajectories) temperature, N_a , and mass fraction of water in air (water vapor mixing ratio) on a timescale of 30 minutes, and on a timescale of 3 hours to the horizontal winds. Note that this setup means that the meteorological fields from the GEOS-5 forcing data will always include FT semi-direct aerosol effects, as there are no GEOS-5 simulations where aerosol radiative effects are turned off (Diamond et al., 2022). We define the nudging base as the maximum inversion height in the model domain plus 100 m, and calculate the inversion height (or FT base) as the maximum vertical gradient of the potential temperature in each model column. The model is also forced with sea surface temperature (SST) values from GEOS-5 (Figure 1a).

We use three individual trajectories (cases) to force the LES, corresponding to periods starting on three different days (3rd, 16th and 31st) of August 2017 (see Table 1 and Figure 1 b). The motivation to select these days are explained in sections 1 and 3.1. For each case, four simulations are carried out: the control (CTRL) with the original values for each variable in the trajectory, an experiment called N100 with a fixed $N_a = 100 \text{ mg}^{-1}$ in the FT (this N_a value is among the lowest in the FT for AUG03, which is the cleanest among the three cases, see Section 3.1), an experiment with no aerosol-radiation-interactions (Aer-rad-off), an experiment where the water vapor mixing ratio (Q_v) in the FT was reduced to values between $0.1 \text{ and } 0.4 \text{ g} \cdot \text{kg}^{-1}$ (DRY simulation). These range of Q_v values occur in AUG03 CTRL at the beginning of the simulation when the FT is relatively dry. In total, we have 12 different simulations. In the experiments corresponding to the same day, the FT is always nudged (above the nudging base) towards the same forcing values of temperature and horizontal winds. Thus, changes in N_a (N100 experiment) or moisture (DRY experiment) or turning off the aerosol scattering and absorption (Aer-rad-off) are not going to affect the temperature and winds in the FT above the nudging base. This type of model setup also means that aerosol-radiation interactions, and associated cloud adjustments, will only be fully effective below the nudging base (the MBL and the lower 100 m of the FT).

The differences between the Aer-rad-off and the CTRL experiments are used to evaluate the direct and associated semi-direct aerosol effects in the MBL. Contrasts between the DRY and CTRL experiments are a consequence of the radiative impact of moisture in the FT on the MBL and the moisture entrainment into the MBL. ~~The comparison between the N100 and CTRL experiments shows differences due to a combination of the indirect aerosol effect (due to changes in N_a) and the semi-direct aerosol effect (because lower N_a produces less heating).~~ By comparing Aer-rad-off and N100, we can also obtain an estimate of the indirect aerosol effect. Finally, the differences between N100 and CTRL are due to a combination of all aerosol effects combined.

2.2 Parameters and variables used in the analysis

Here we briefly define some parameters and variables that we use in the analysis:

- **Cloud cover** is defined as the fraction of model columns with $LWP > 0.01 \text{ kg} \cdot \text{m}^{-2}$ (Sandu and Stevens, 2011; Zhou et al., 2017).

Table 1. Trajectories used for the model simulations.

Trajectory ID	Start date	Start time	Latitude
AUG03	2017-08-03	21:00	11.11 S
AUG16	2017-08-16	21:00	11.60 S
AUG31	2017-08-31	21:00	11.10 S

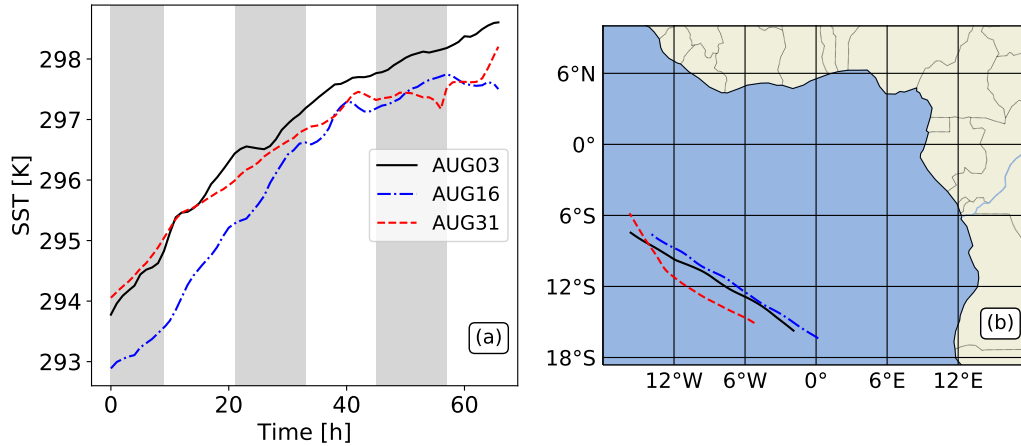


Figure 1. (a) Time series of sea surface temperature (SST) along the Lagrangian trajectories from GEOS-5, (b) Geographical location of the Lagrangian trajectories from GEOS-5

- **Vertically resolved cloud cover** is the fraction of total columns at each model level with cloud droplet mixing ratio $Q_c > 0.001g \cdot kg^{-1}$ (following Zhou et al. (2017), who call this variable cloud fraction).
- **Marine boundary layer turbulent kinetic energy (MBL TKE)** is the domain-averaged TKE between the surface and the height of the inversion capping the MBL.
- **The stratocumulus to cumulus transition (SCT)** is defined as the time at which the cloud cover first decreases to half of its initial value (Sandu and Stevens, 2011).
- **The decoupling parameter (δQ_t)** is calculated as the difference between the total water mixing ratio (Q_t) from the bottom and the top 25% of the MBL, according to Jones et al. (2011) and Diamond et al. (2022).
- **Aerosol radiative effect at the top of the model domain** is calculated as:
 - $F_{CTRL} - F_{Aer-rad-off}$ due to direct and semi-direct aerosol effects
 - $F_{Aer-rad-off} - F_{N100}$ due to **aerosol indirect effects** (indirect aerosol effects (we assume a negligible semi-direct aerosol effect because the aerosol absorption in N100 is small.))

– $F_{CTRL} - F_{N100}$ due to all aerosol effects combined.

200 where F is the net incoming SW or LW radiation.

– **Aerosol clear sky radiative effect at the top of the model domain (TOA)** is derived from $FCS_{Aer-rad-off} - FCS_{CTRL}$, where FCS is the net outgoing SW or LW radiation with clear sky (no clouds).

– **The radiative effect due to the enhanced moisture in the aerosol plume** is calculated as the difference between the outgoing radiative fluxes in the DRY and the CTRL experiments: $F_{CTRL} - F_{DRY}$.

205 – **The cloud radiative effect (CRE)** at the top of the model domain is calculated as the difference between the upwelling clear sky SW (or LW) fluxes and the upwelling all sky SW (or LW) fluxes.

– **The entrainment rate** is calculated, following Lock (2001) and Bulatovic et al. (2021), as the difference between the subsidence (large-scale divergence rate) at the top of the inversion and the change in the inversion height with time.

210 – **Entrainment fluxes of aerosol and moisture** at the top of the MBL are calculated by multiplying N_a and the mixing ratio of specific moisture (Q_v) with the entrainment rate, respectively.

2.3 Observations

We evaluated the simulated time evolution and diel cycle of cloud cover and liquid water path using ~~geostational~~geostationalry satellite sensor data. More specifically, we used cloud cover and LWP from SEVIRI retrieved by the NASA Langley Research Center using the Satellite Cloud and Radiation Property retrieval System algorithms (Painemal et al., 2015, 2012; Minnis
215 et al., 2008). Both variables are averaged in boxes of 0.185° diameter around each data point in the GEOS-5 trajectories. LWP retrievals are screened to only include data with solar zenith angles below 70° and cloud fractions above 90%. We complement this information with retrievals from the latest (third) edition of CM SAF CLOUD property dAtAset using SEVIRI (CLAAS-3, ~~Meirink et al. (2022)~~Meirink et al., 2022). CLAAS-3 provides high-resolution (0.05 degrees in space and 15 minutes in time)
220 cloud property retrievals, which is useful when evaluating the model performance in terms of simulating the time evolution of clouds.

3 Results

3.1 Control simulations

As highlighted in section 1, the three cases analysed (AUG03, AUG16, AUG31) differ in the levels of pollution and moisture in the FT, and in terms of when the BBA plume appears in the FT and when it mixes into the MBL (see Figures 2, 3, 4).
225 Nevertheless, there are some characteristics that are common for all simulated CTRL cases. First, there is a visible covariance between N_a (Figure 2) and specific humidity (Figure 3) within the FT BBA plumes, as typically happens over the SEA (see section 1). Second, some well-known features of the MBL diel cycle can be observed in all three cases: during nighttime,

there is an increase in the cloud cover (Figure 5), vertically resolved cloud cover (Figure 4, LW cooling at the top of the MBL (Figure 6 a-c), and MBL TKE (Figure 6 d-f). There is also a fast increase in the height of the MBL inversion with time (Figure 6 j-l). During daytime, the cloud cover and liquid water path (Figure 5) decrease at the same time as there is a reduction of the MBL TKE and a slower deepening of the MBL compared to nighttime conditions. Cumulus start to develop under the Sc after some time in the simulations: around sunrise of the second day in AUG03, near the beginning of the simulation in AUG16, and after sunset of the first day in AUG31 (Figure 4). There is a general increase of the MBL decoupling during or after the second night (Figure 6 m-o). The second day is characterized by a sharp decrease of the cloud cover and the vertically resolved cloud cover in all CTRL cases. The SCT, according to the criteria defined in Section 2.2, happens on the second day in all CTRL simulations; around midday in AUG03 and AUG16, and in the afternoon in AUG31. Precipitation is small in all CTRL cases (Figure 7g-i), which suggests that, for these cases, drizzle formation does not have a substantial impact on the SCT in MIMICA. The aforementioned description of the MBL evolution in the three situations is consistent with a deepening-warming type of SCT, primarily driven by the SST increase (Figure 1a). The diurnal CRE is dominated by the SW fluxes (Figures ??a-e and Table Figure 8). The domain-average CRE (Table Figure 8) becomes less negative with each day of simulation as a result of the reduction of cloudiness.

Despite the similarities, there are also clear differences between the three cases. AUG03 is initially characterized by a relatively clean FT (Figure 2). Around midday of the second day and until the end of the simulation, the BBA plume becomes apparent in the FT, approximately between an altitude of 4000 m and the top of the MBL. The maximum values of the domain average N_a in the plume are around 600mg^{-1} 600mg^{-1} , and are reached towards the end of the simulation near the MBL top. The entrainment of aerosol in the MBL remains relatively low during all the simulation compared to AUG16 and AUG31 (Figure 9a-c).

AUG16 starts with a strong and humid aerosol plume in the FT with average $N_a > 3000\text{mg}^{-1}$ near the MBL top. The BBA plume is in contact with the MBL top already at the beginning of the simulation and eventually entrains into the MBL, resulting in a relatively clean FT and a very polluted MBL (with $N_a > 1000\text{mg}^{-1}$) during the second half of the simulation. This situation differs from the cases analyzed by Yamaguchi et al. (2015), Zhou et al. (2017), and Diamond et al. (2022) in which the absorbing aerosol layer in the FT is initially clearly separated from the cloud layer, and only after a certain time makes contact with the Sc and entrains into the MBL.

In AUG31, the FT just above the MBL top remains relatively polluted and humid all the time, with N_a values above 1000mg^{-1} 1000mg^{-1} . There is a gradual increase of N_a with time in the MBL as a consequence of the entrainment of the aerosol plume (Figure 9 c). This entrainment is, however, not as strong as the one in AUG16 (Figure 9 b), and at the end of the simulation most of the pollution remains above the MBL.

3.2 Comparison between the control simulations and the observations

Figure 5 compares cloud cover and liquid water path along the trajectories between SEVIRI (NASA) and the MIMICA simulations. In the case of SEVIRI (NASA), for each of the days (AUG03, AUG16 and AUG31), we averaged three contiguous trajectories (four in AUG16) that are expected to have identical thermodynamic profiles (e.g. the trajectory matching the sim-

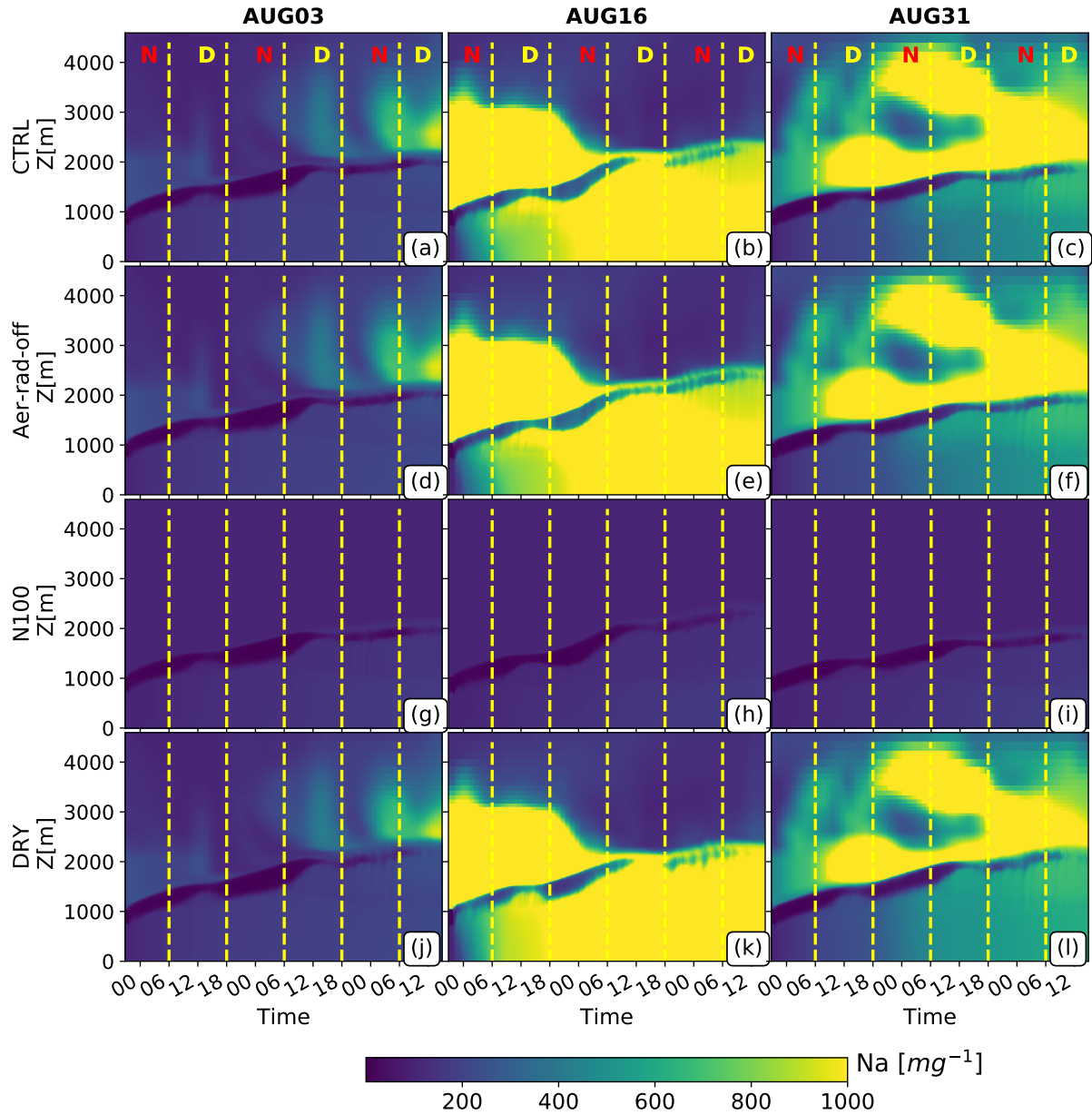


Figure 2. Temporal evolution of simulated profiles of the horizontally-averaged aerosol number concentration (N_a) from MIMICA. Results are shown for all experiments (CTRL, Aer-rad-off, N100 and DRY) and all cases: AUG03(a-d), AUG16(e-h), and AUG31(i-l). Dashed lines separate nighttime (N in the upper subplots) from daytime (D). Z is the altitude.

ulation AUG03 and two other trajectories from SEVIRI (NASA) [that are relatively close located at a distance less than 285 km](#)

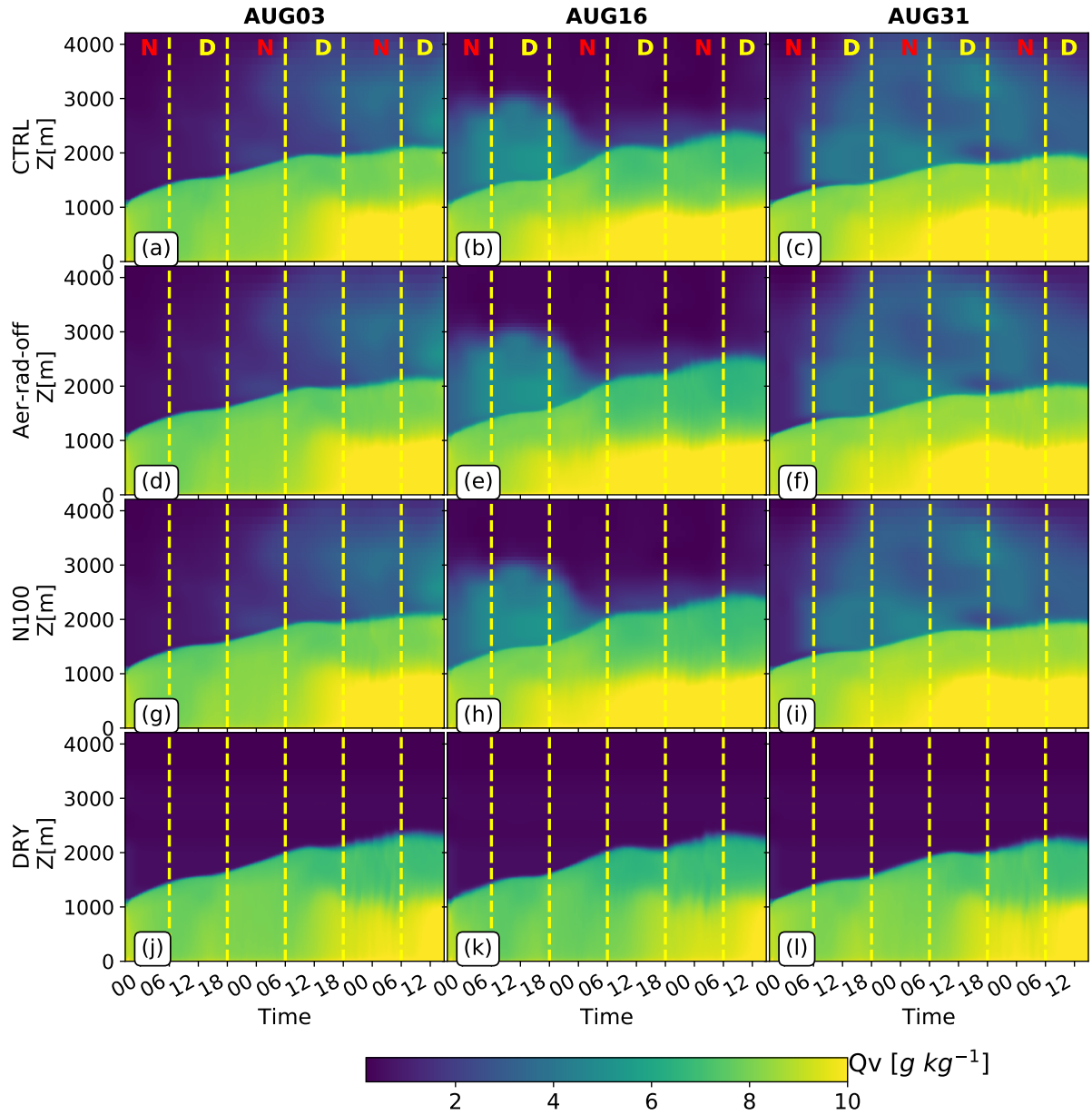


Figure 3. As in Figure 3 but for the water vapor mixing ratio (Q_v). Simulations are shown for: AUG03(a-d), AUG16(e-h), and AUG31(i-l).

from the trajectory simulated in AUG03). We did this in order to reduce the lack of satellite observations due to the filtering applied to the dataset.

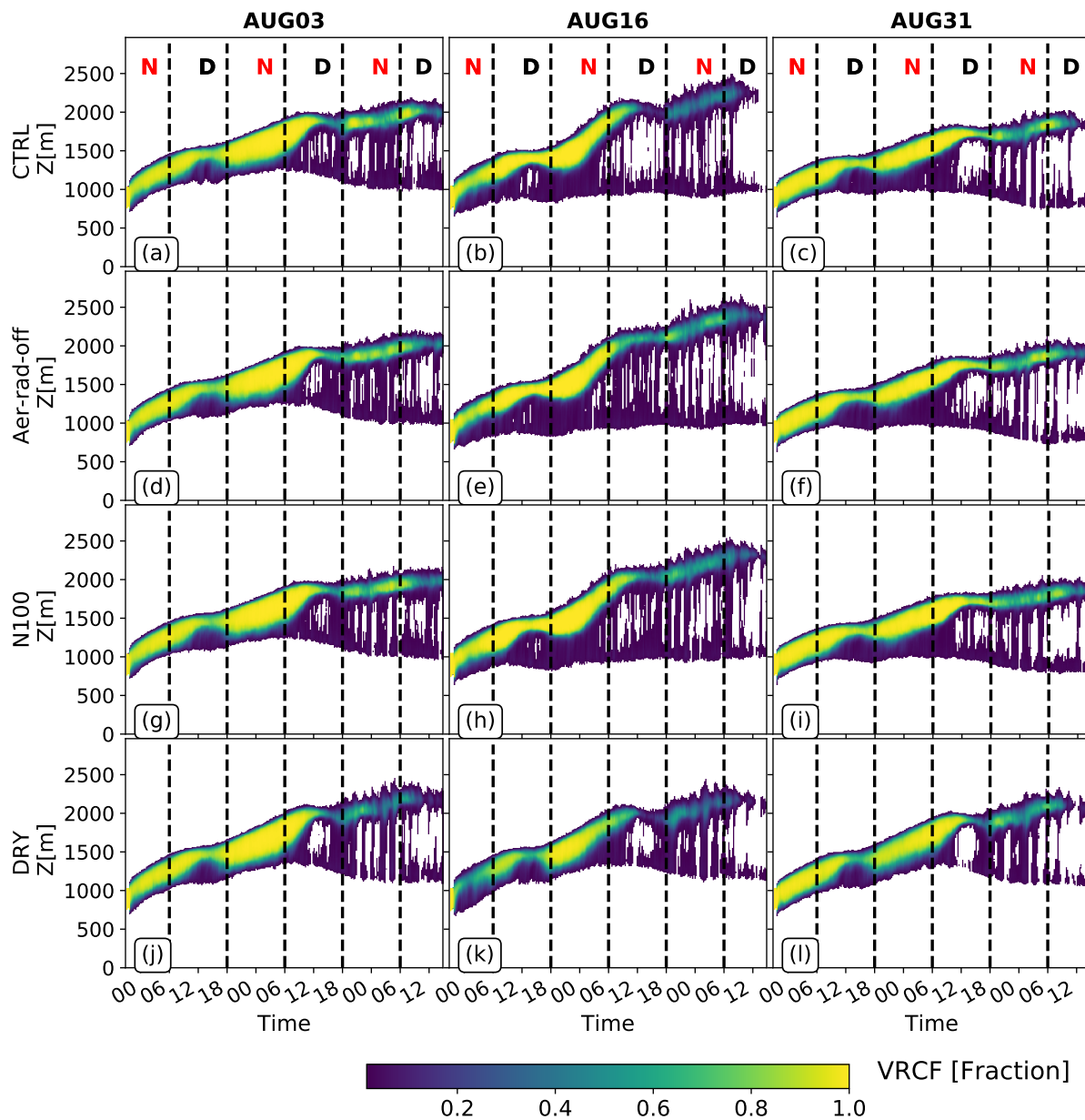


Figure 4. As in Figure 2 but for the vertically resolved cloud cover (VRCC). Simulations are shown for: AUG03(a-d), AUG16(e-h), and AUG31(i-l).

265 The SEVIRI (NASA) retrievals of cloud cover suggest a predominance of overcast conditions at the beginning of the three trajectories that later alternate with more broken clouds conditions (Figure 5 a-c). MIMICA also simulates cloud conditions along the trajectories that initially are overcast and later evolve into more broken cloud scenes. The sparse LWP data retrieved

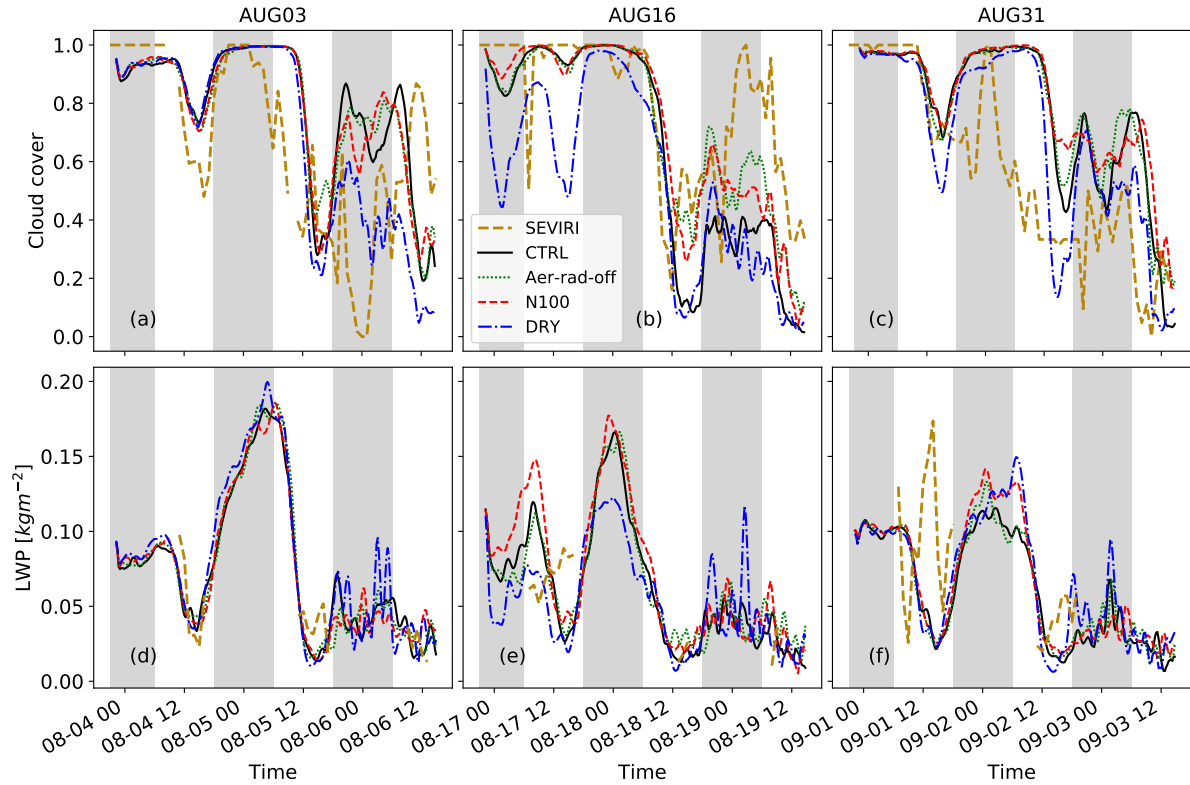


Figure 5. (a,b,c) Cloud cover and (d,e,f) liquid water path along the three trajectories as a function of time from SEVIRI (NASA) and the MIMICA simulations (liquid water path is in-cloud in MIMICA). The cloud cover and liquid water path output from MIMICA have a time resolution of 15 minutes and values are smoothed using a 1-hour moving average.

from SEVIRI (NASA) has the best agreement with the LWP simulated by MIMICA in AUG03, while the biggest differences are observed during the first day of AUG31. The comparison may be affected by the fact that our retrieval samples (SEVIRI) have a few 3 (or 4) values per time, which corresponds to the number of contiguous trajectories selected to calculate the average in each situation (AUG03, AUG16, AUG31).

In order to obtain a more robust statistical evaluation, we compare diel cycles averaged during August over 10 years of data of cloud cover and LWP from CLAAS-3 with the equivalent variables for each of the trajectories in the MIMICA simulations (Figure 10). There is a clear diel cycle of cloudiness and LWP in both the CLAAS-3 dataset and the MIMICA simulations. As expected, the cloudiness and the LWP are at minimum in the early afternoon. The cloud cover peaks early in the morning and in late evening in both the observations and the simulations. However, the cloud cover reaches its minimum a few hours earlier in the simulations compared to the observations and the amplitude of the diel cycle is stronger. The values of LWP are higher in the CLAAS-3 dataset than in MIMICA. Given the inherent differences in resolution between the CLAAS-3 retrievals and the MIMICA simulations, we find the model produces reasonable results.

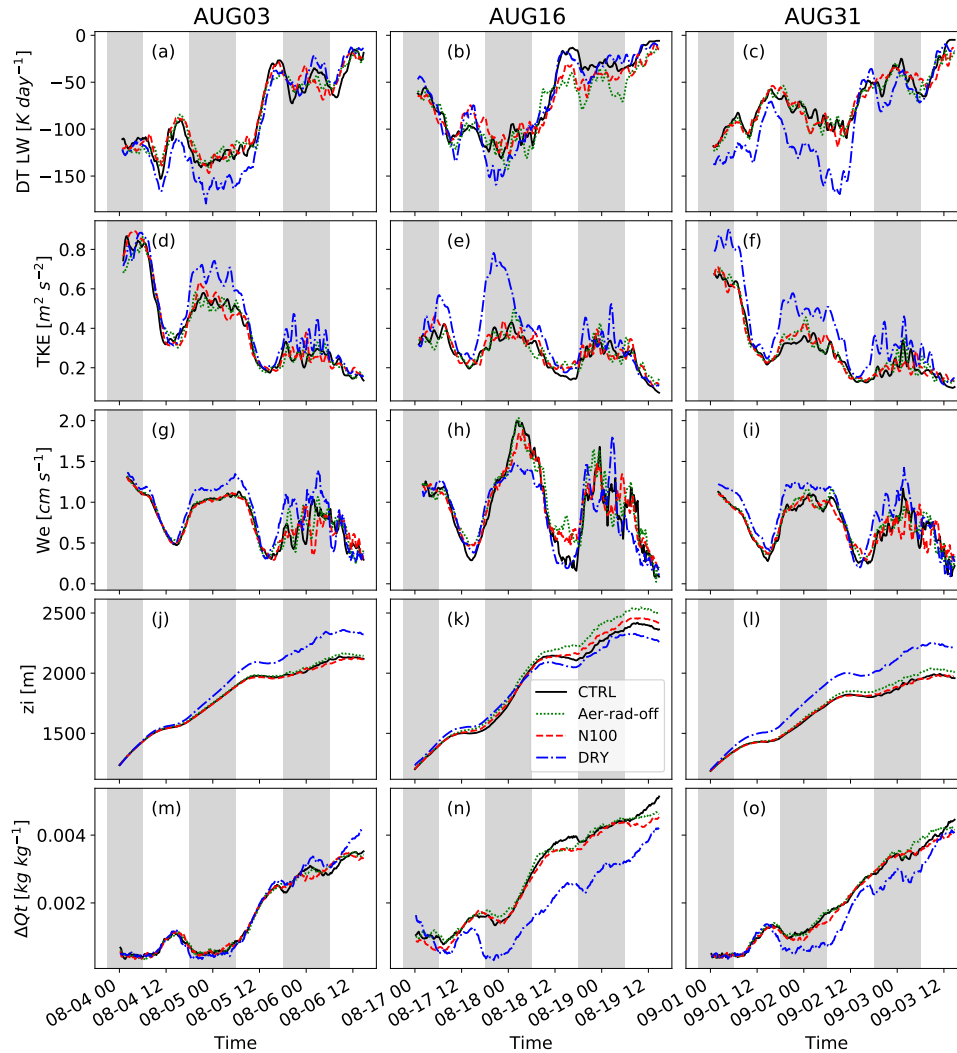


Figure 6. Temporal evolution of the simulated (MIMICA) domain-averaged: (a-c) LW cooling rate (DT LW) at the MBL top (corresponds to the maximum horizontal domain-averaged LW cooling rate), (d-f) MBL TKE, (g-i) Cloud-top entrainment rate (We), (j-l) Inversion height (z_i), (m-o) Decoupling parameter (δQ_t). All output variables have 15 minutes temporal resolution. DT LW and TKE values are smoothed using a 1 hour moving average. The entrainment rate is smoothed with 2 hours moving average.

280

Simulated (MIMICA) domain-averaged diurnal SW and LW cloud radiative effects (in Wm^{-2}): **DAYS AUG03 SW+LW SW+LW SW+LW SW+LW 1 -193.0 -212.0 -184.0 -197.0 2 -141.0 -172.0 -146.0 -130.0 3 -80.0 -100.0 -90.0 -36.0 AUG16 1 -170.0 -291.0 -213.0 -126.0 2 -84.0 147.0 -103.0 -74.0 3 -30.0 -83.0 -50.5 -22.0 AUG31 1 -161.0 -219.0 -189.0 -154.0 2 -140.0 -220.0 -168.0 -116.0 3 -52.0 -100.0 -91.0 -34.0**

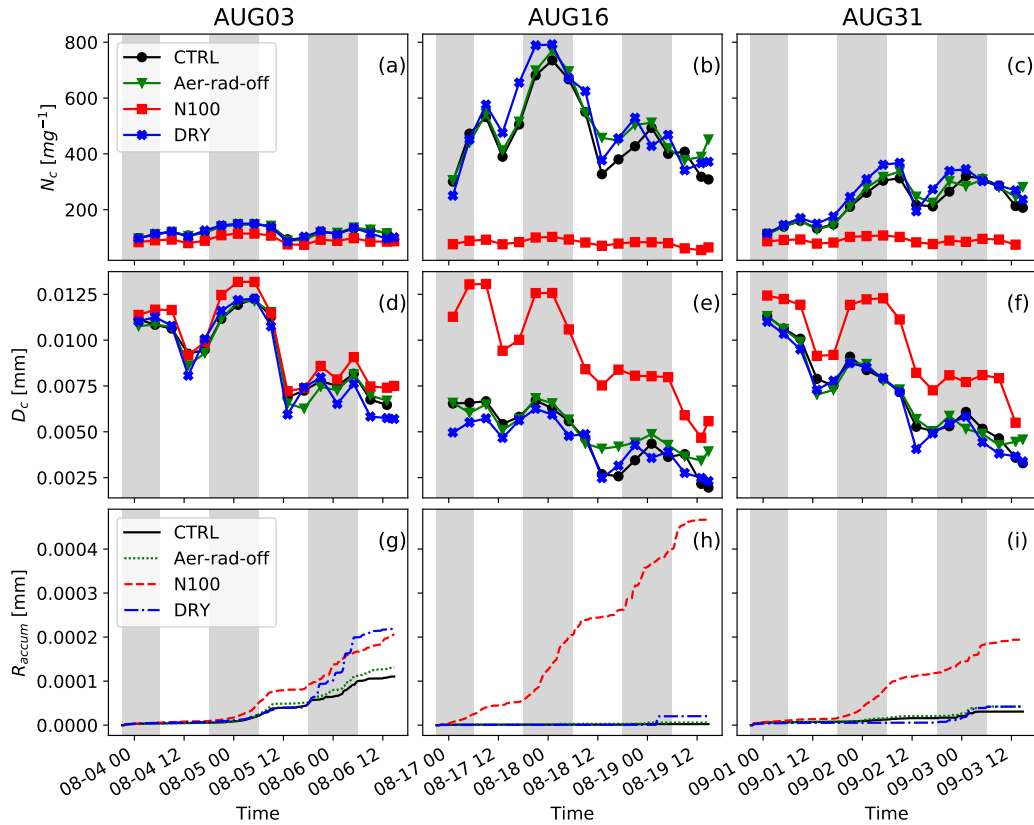


Figure 7. Temporal evolution of the simulated (MIMICA) domain-averaged (a-c) cloud droplet number concentration (N_c), (d-f) cloud droplet mean size (D_c), (g-i) accumulated precipitation (R_{accum}). The output of N_c and D_c have a 4 hours time resolution while the temporal resolution for the R_{accum} output is 15 minutes.

3.3 Influence of direct and semi-direct aerosol effects (Aer-rad-off vs CTRL)

285 In this subsection, we compare the Aer-rad-off simulations with the corresponding CTRL cases to study the influence of aerosol direct and semi-direct effects on the simulated cloud properties. Above-cloud semi-direct effects are excluded from the comparison because the forcing conditions in the FT are the same in both cases. For AUG03, the pollution levels are relatively low and mainly present during the second half of the simulation. In addition, most of the BBA plume remains above the Sc deck and the MBL (Figure 2). Thus, any impacts associated with the semi-direct effect are relatively weak and mainly noticeable

290 during or after the second day. The main feature when comparing CTRL (including aerosol-radiation interactions) with Aer-rad-off (without aerosol-radiation interactions) is a reduction in cloud cover during the second day when aerosol-radiation interactions are turned on (Figure 5 (d-f)). The daytime average difference in SW heating between CTRL and Aer-rad-off is generally small during the second day (Figure 11 (bd)). However, a closer inspection (not shown) suggests that the aerosol SW

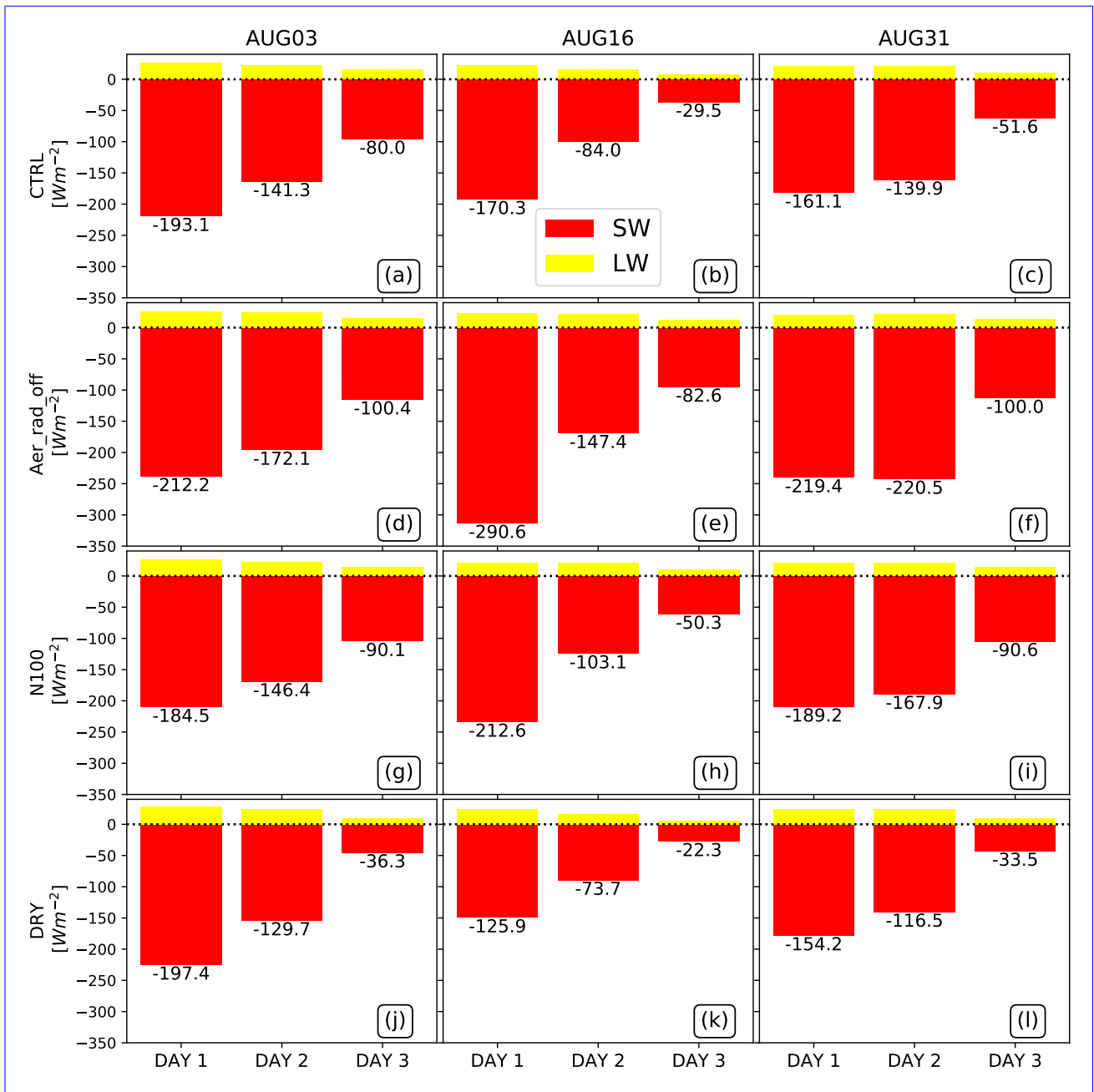


Figure 8. Simulated (MIMICA) time evolution of domain-averaged shortwave (a-e) diurnal SW and longwave (d-f) LW cloud radiative effects (SWCRE and LWCRE respectively in Wm^{-2}) for AUG01, in AUG03 (first column), AUG16 (second column) and AUG31 (third column). The total radiative effect (SW+LW) is the number above (if positive) or below (if negative) the stacked bars. Note that this number (total radiative effect) does not match the values on the Y axis since it is the sum or difference of the SW and LW bars.

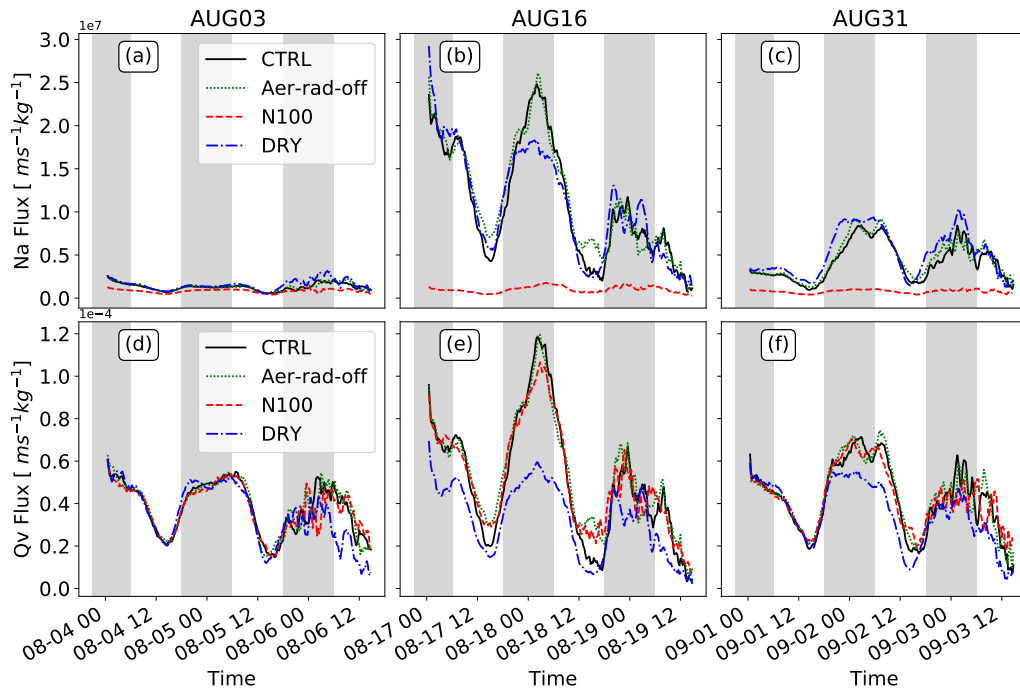


Figure 9. Temporal evolution of the simulated (MIMICA) domain-averaged aerosol (Na) and water vapor mixing ratio (Q_v) fluxes at the top of the MBL for AUG03, AUG16 and AUG31

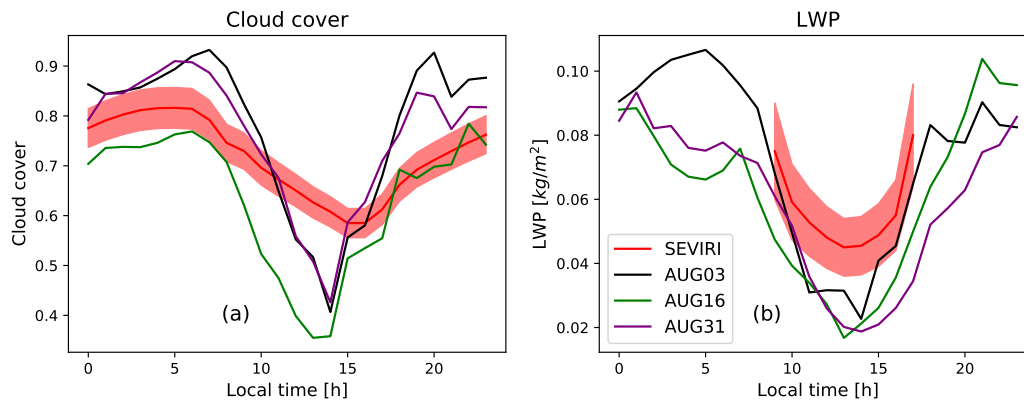


Figure 10. Average diel cycle of (a) cloud cover and (b) liquid water path from SEVIRI (CLAAS-3) and MIMICA [CTRL simulations](#). Values from SEVIRI (CLAAS-3) correspond to 10 years of data during August over the geographical area covered by the trajectories. The retrievals of LWP are based on the shortwave channels, hence they are available only during the sunlit hours. [the shading shows the standard deviation over an area about 500 km wide containing the three trajectories](#). For MIMICA, time-average values along each trajectory are shown.

heating in CTRL causes a temperature increase and a relative humidity decrease that most likely explains the reduction of
295 cloudiness (initially the temperature increase only occurs above the MBL top, but later increases within the MBL as the clouds
break up). The diurnal average CRE (driven mostly by the SW fluxes) is reduced in absolute values in CTRL compared to Aer-
rad-off during all three days ~~-, but more clearly during the last two days (Table (Figure 8)~~. This reduction can be explained by
a combination of two factors: the ~~decrease in cloud cover in CTRL~~ smaller cloud fraction in CTRL during daytime compared
to Aer-rad-off (especially during the second day in the three cases), which reduces the albedo, and the reduction of contrast in
300 albedo between clear and cloudy skies (which makes the clear sky scenes brighter in CTRL compared to Aer-rad-off because
the aerosols have a higher albedo than the sea surface). Differences in precipitation are small between CTRL and Aer-rad-off
(Figure 7).

AUG16 shows the clearest impacts among all cases of aerosol-radiation interactions on simulated cloud properties and MBL
evolution due to the high levels of pollution (Figure 2). During the first day, the BBA plume is in contact with the Sc deck and
305 there is also a substantial amount of pollution present within the MBL. However, the average daytime SW heating within the
MBL does not differ substantially between CTRL and Aer-rad-off (Figure 11**db**) due to the overcast conditions. Consequently,
the differences in cloud parameters between CTRL and Aer-rad-off (e.g. cloud cover and LWP, Figure 5) are small during the
first day of simulation. The differences between CTRL and Aer-rad-off become more pronounced after the second night, when
the aerosol plume is mainly located within the MBL (Figure 2). The general reduction in cloud cover during the second day (see
310 Section 2.1) allows more solar radiation to penetrate the MBL, causing a strengthening of the direct and semi-direct effects of
the absorbing aerosol that amplifies the reduction in cloud cover in CTRL (including aerosol-radiation interactions) compared
to Aer-rad-off. Figure 6b shows that the LW cooling at the top of the MBL is lower in CTRL compared to Aer-rad-off during
the second day, which contributes to a decrease in the MBL TKE (Figure 6 e). Furthermore, the absorption of solar radiation
produces a stronger SW heating just below the cloud (around $2 K \cdot day^{-1}$ difference between CTRL and Aer-rad-off, Figure
315 11e) compared to close to the surface (around $1 K \cdot day^{-1}$ difference between CTRL and Aer-rad-off). This heating profile
stabilizes the MBL in CTRL which also favors reduced buoyancy production. The net result is a clear reduction in cloud cover
in CTRL compared to Aer-rad-off (Figure 5 e). The entrainment rate is also substantially lower in CTRL compared to Aer-rad-
off (Figure 6 h) and actually reaches negative values during the second day of simulation, in agreement with a reduction of the
inversion height with time (Figure 6 k). The above processes cause the MBL to be around 200 meters shallower in CTRL than
320 in Aer-rad-off during the last day of simulation. There is a negligible difference in drizzle production between Aer-rad-off and
CTRL, since the large number of aerosols in the MBL effectively suppresses precipitation (Figure 7 h). As in AUG03, the CRE
in AUG16 is less negative in CTRL than in Aer-rad-off (Table 8), but the difference between the simulations is larger due to
the larger amounts of BBA in the AUG16 case.

For AUG31, the impact of the direct and semi-direct aerosol effects within the MBL are weaker than in AUG16, which is
325 expected since the MBL is less polluted and the BBA plume remains mainly above the cloud (Figure 2). The mean SW heating
difference between CTRL and Aer-rad-off is largest during the third day, reaching a maximum value of around $1 K \cdot day^{-1}$
just below the cloud (Figure 11 i). Therefore, the differences between CTRL and Aer-rad-off regarding the cloud variables are

smaller than in AUG16 (Figure 5). Similar to AUG03 and AUG16, the CRE is less negative in CTRL than in Aer-rad-off (Table Figure 8).

330 To summarize, all three cases show clear differences in cloud cover due to direct and semi-direct effects. These differences occur regardless of the level of pollution, although they are more pronounced when pollution is high, and during broken cloud conditions (during the second and third day of simulation) compared to overcast conditions (first day of simulation). In other words, the efficiency of the direct and semi-direct aerosol effects appears to increase with broken cloud conditions. For the AUG16 case, the SW heating during daytime is clearly larger within and below cloud in CTRL compared to Aer-rad-off

335 (Figure 11). For the other two cases, the differences in mean daytime SW heating within and below clouds are less pronounced.

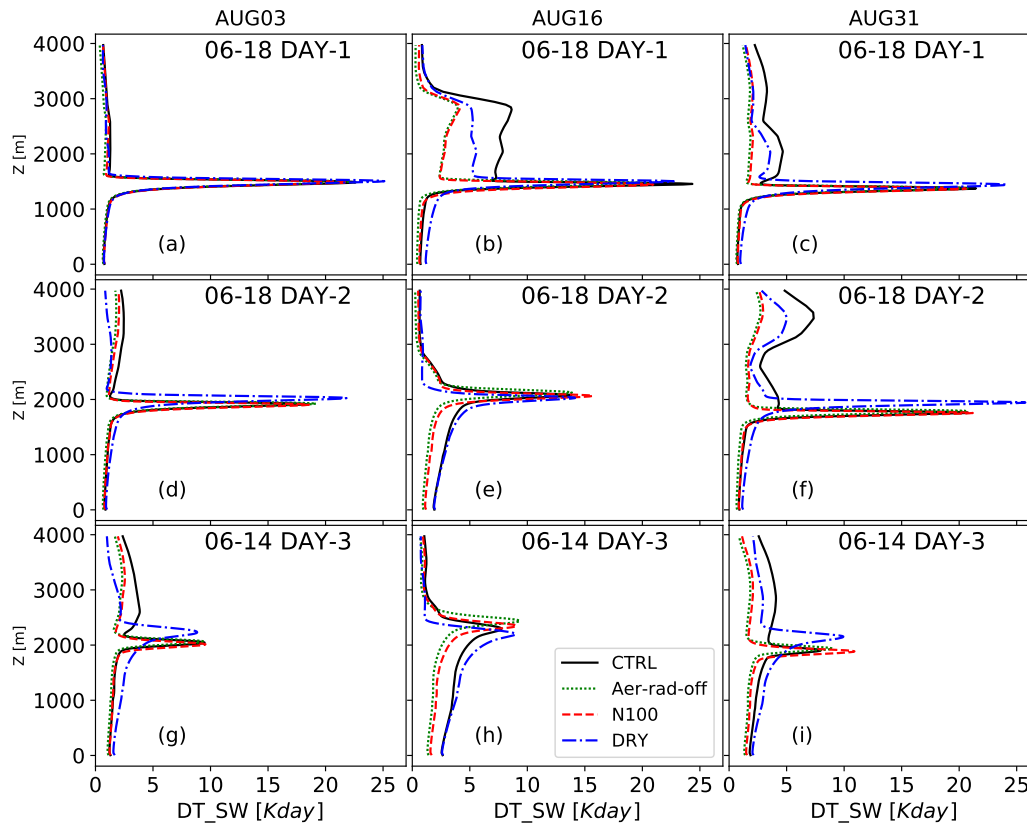


Figure 11. Simulated (MIMICA) mean daytime (between 6 and 18 h) profiles of SW heating for the three days for each case and each sensitivity experiment.

3.4 Influence of aerosol indirect effects (N100 vs Aer-rad-off)

In order to obtain an individual estimate of the aerosol indirect effect, we compare the N100 and Aer-rad-off simulations. Note that we cannot compare N100 with CTRL as this would show the combined direct, semi-direct, and indirect aerosol effects.

The low N_a in N100 produces mean daytime SW heating profiles in the FT similar to those in Aer-rad-off (Figure 11), showing
340 that the impact of aerosols on radiation is small in N100, and that it is reasonable to compare Aer-rad-off and N100 to derive
an estimate of the aerosol indirect effect.

In general, the indirect aerosol effect should primarily be visible in the cloud microphysical parameters. In all Aer-rad-
off simulations, the N_c is also higher than in N100 (Figure 7 a-c). This increase leads to a reduction in the average cloud
droplet radius (Figure 7 d-f) and an inhibition of drizzle (Figure 7 g-i). The largest impact on the drizzle production occurs for
345 AUG16, most likely as a consequence of the relatively high humidity content of the BBA plume for this case. The precipitation
sensitivity to N_a is most pronounced during nighttime, when most of the drizzle is produced.

Somewhat surprising, the AUG03 DRY simulation displays an increase in accumulated precipitation during the last night
with slightly higher values than in N100. In DRY, the convection is slightly more organized than in N100 and thus more
efficient in generating precipitation. Since there is a moisture perturbation in DRY, differences between DRY and N100 are
350 also not solely attributable to the indirect effect. Furthermore, AUG03 has the smallest differences (compared to AUG16 and
AUG31) in the forcing conditions between the experiments (CTRL, Aer-rad-off, N100 and DRY) which also leads to the
smallest differences in precipitation between N100 and the rest of the simulations.

The difference in cloud cover between N100 and Aer-rad-off (Figure 5) varies with time and is not consistent for all cases,
in particular during daytime. During nighttime, and especially towards the end of the simulation, there is a tendency for N100
355 to show lower cloud cover values than Aer-rad-off, i.e. that higher aerosol concentrations lead to more clouds - consistent with
the lower precipitation values and the aerosol indirect effect. However, ~~due to the small~~ the impact of the indirect effect on
cloud cover evolution is generally only seen if there is a substantial drizzle, and this is not the case for our simulations, where
the drizzle is small even in the N100 case (thus, the ability of MIMICA to simulate drizzle should be evaluated further). In
consequence, there are small and inconsistent differences between N100 and Aer-rad-off ~~it is difficult to make that prevent us
360 from making~~ a robust assessment of the indirect effect of BBA plumes on cloud evolution. Furthermore, for AUG16, the cloud
cover differences between Aer-rad-off and N100 during and after the second day of simulation are smaller than between each
of those experiments and CTRL. This suggests that, for this situation, the aerosol heating effect (semi-direct effect) is more
important than the indirect aerosol effect in terms of affecting the Sc cloud properties and the transition into cumulus.

~~The increase in~~ The highest N_a ~~between N100 and values in~~ Aer-rad-off ~~produces a higher~~ compared to N100 produce the
365 highest (in absolute terms) SW CRE ~~for all cases (Table in all Aer-rad-off cases (Figure 8)).~~ There are two reasons: first, the
higher N_c and smaller droplet radii increase the cloud albedo; second, aerosols are transparent to radiation in Aer-rad-off,
producing darker clear skies and brighter cloudy skies. In contrast, the SW CRE ~~generally decreases when comparing CTRL
with is in general smaller in CTRL than in~~ N100, i.e. when both direct and indirect effects are considered. The main reasons
370 for this difference are the clear-sky albedo which is higher in CTRL than in N100 due to more aerosols as well as that the cloud
cover tends to be smaller in CTRL than in N100 during daytime.

3.5 Influence of moisture in the BBA plume (DRY vs CTRL)

The impact of moisture within the BBA plume on cloud evolution is examined by comparing CTRL with DRY. Figure 5 shows that there is a clear difference in cloud cover between all CTRL and DRY cases, but the impact differs between AUG16 and the other two cases.

375 In AUG03 and AUG31, there are enhanced levels of moisture above and in contact with the MBL, in particular during the second half of the simulation (AUG03) or after the first day of simulation (AUG31, Figure 3). This additional moisture could favor the high values of cloud cover observed in CTRL compared to DRY (Figure 5). However, differences in moisture entrainment between CTRL and DRY are generally small, in particular for AUG03 (Figure 9 d). The most likely reason for the higher cloud cover in CTRL compared to DRY is instead that the MBL is shallower in the former (Figure 6j-l). Enhanced
380 levels of moisture above the MBL can reduce the net LW cooling at cloud top (see Section 1). Figure 6a and 6c also show that before midday of the second day, the LW cooling at the MBL top is generally lower in CTRL compared to DRY in AUG03 and AUG31. In CTRL, the reduced LW cooling leads to a reduction of the MBL TKE and cloud-top entrainment, which reduces the MBL growth compared to DRY (Figure 6). More clouds in CTRL than in DRY results in a more negative daytime CRE, in particular during the last two days of simulation.

385 The effect of moisture on cloud evolution is more complex for the AUG16 case. During the first 1.5 days of simulation, moisture is clearly enhanced in the FT in CTRL compared to DRY (Figure 3) meaning that moister air is also progressively entrained into the MBL (Figure 9d-f). Similar to the AUG03 and AUG31 cases, the additional moisture contributes to higher cloud cover and LWP values in CTRL compared to DRY for AUG16 (Figure 5). Since the cloud cover and LWP in DRY are substantially lower than in CTRL during the first night and day, the domain average LW cooling at the top of the MBL
390 is reduced (Figure 6 b). Therefore, unlike in AUG03 and AUG31, the domain averaged LW cooling at the MBL top is not consistently higher in DRY than in CTRL for the AUG16 case during the first 1.5 days of simulation (Figure 6b). Between the second midnight and the following morning of AUG16, most of the humid BBA plume has entrained into the MBL in the CTRL simulation. In CTRL, moist entrainment maintains the Sc cloud deck during this period, while the progressive reduction in humidity above the MBL facilitates MBL deepening. In contrast, DRY experiences an early (before sunrise) cloud break
395 up with an associated reduction in the domain averaged MBL top LW cooling, MBL TKE, and entrainment rates with respect to CTRL, which leads to a slowing of the MBL growth (Figure 6 k). During and after day 2 of AUG16, The MBL in CTRL remains moister than DRY, particularly in the lower half of the MBL (Figure 3). During this period, the differences in cloud cover between CTRL and DRY are not consistent, especially between midday of day 2 and the third midnight. The stronger MBL decoupling in CTRL compared to DRY prevents moisture fluxes from the lower MBL to reach the cloud base in CTRL,
400 which to some extent limits cloud growth in CTRL with respect to DRY.

3.6 Quantification of the radiative effects of aerosols and moisture

We compare the overall radiative impact of aerosols due to the direct and semi-direct effects, due to the indirect effect, and due to all aerosol effects. [Table ??](#) [Figure 12](#) shows that the time-mean domain-averaged radiative effect at the top of the

model domain is dominated by SW radiative effects. In general, positive values in the SW (i.e. a warming) can be caused
405 by absorption of aerosols above clouds (which reduces the upwelling SW radiation at the top of the model domain) or by
a reduction in cloudiness or cloud albedo. In contrast, the SW effect is negative if the cloud albedo or cloudiness increases
or if aerosols are present under clear-sky conditions. In the LW, a positive effect (warming) can be caused by an increase in
cloudiness or moisture.

The mean direct and semi-direct aerosol effect is positive for AUG16 and AUG31 but negative for AUG03. ~~Table ?? show~~
410 [Figure 13 shows](#) that the SW radiative effect is positive during the first two days ([DAY 1 and DAY 2](#)) in the three cases, with
higher values in AUG16 and AUG31 as a result of the presence of absorbing aerosols over the Sc cloud deck and the reduction
in cloudiness in CTRL compared to Aer-rad-off. However, during the third day, the radiative effect becomes negative as the
increase in clear-sky albedo (in CTRL compared to Aer-rad-off) becomes larger than the decrease in albedo due to fewer clouds.
The mean indirect aerosol effect is negative for all three cases (AUG03, AUG16, and AUG31). This result is expected as there
415 was no substantial impact on cloud cover and because the smaller cloud droplets in CTRL compared to N100 increased the
cloud albedo. The total radiative effect from the combination of direct, semi-direct and indirect aerosol effects is also negative
for all cases. This shows that for these three cases, and averaged over the whole simulations time, the net effect of the biomass
burning aerosols is to cool the system, with the indirect effect dominating over the direct and semi-direct aerosol effects.

The enhanced moisture associated with the BBA plume also leads to a negative mean radiative effect (cooling) for all three
420 cases (~~Table ??~~[Figure 12](#)). The main reason is that the enhanced moisture helps to sustain the Sc cloud deck which increases
the albedo of the system. Note that for all three cases, the cooling caused by the enhanced moisture is about as large as the sum
of all the aerosol effects (direct + semi-direct + indirect).

~~AUG16 DAYS SW+LW SW+LW SW+LW SW+LW 1 50.5 -63.6 -13.2 -42.2 2 11.1 -28.1 -17.0 -9.0 3 -6.5 -13.3 -19.7 -5.3~~
425 ~~AUG31 DAYS SW+LW SW+LW SW+LW SW+LW 1 9.5 -15.4 -5.9 -2.6 2 18.2 -36.8 -18.6 -18.2 3 -16.6 9.4 -7.2 -12.5~~

4 Discussion and conclusions

In this study, we have used large-eddy simulation in a Lagrangian setup to explore how the stratocumulus cloud cover, boundary
layer evolution, and stratocumulus-to-cumulus transitions over the Southeast Atlantic are affected by the individual impacts
of absorbing aerosols and moisture within biomass burning plumes. We initialized and forced our model with meteorological
430 conditions corresponding to three different periods during August 2017 (AUG03, AUG16 and AUG31). These situations were
clearly different with respect to the levels of pollution and water vapor in the plume, and also regarding when the plume
appeared in the free troposphere and when it mixed into the cloud layer and MBL. The selection of three cases can be useful
to generalize some of the impacts of the BBA layers on the Sc clouds and SCTs. The analysis and comparison of multiple
situations also helps giving a wider perspective on the topic, since there is only one previous study that investigates the effects
435 of biomass burning aerosols on SCTs using large-eddy simulation with meteorological conditions specific for the Southeast
Atlantic (Diamond et al., 2022).

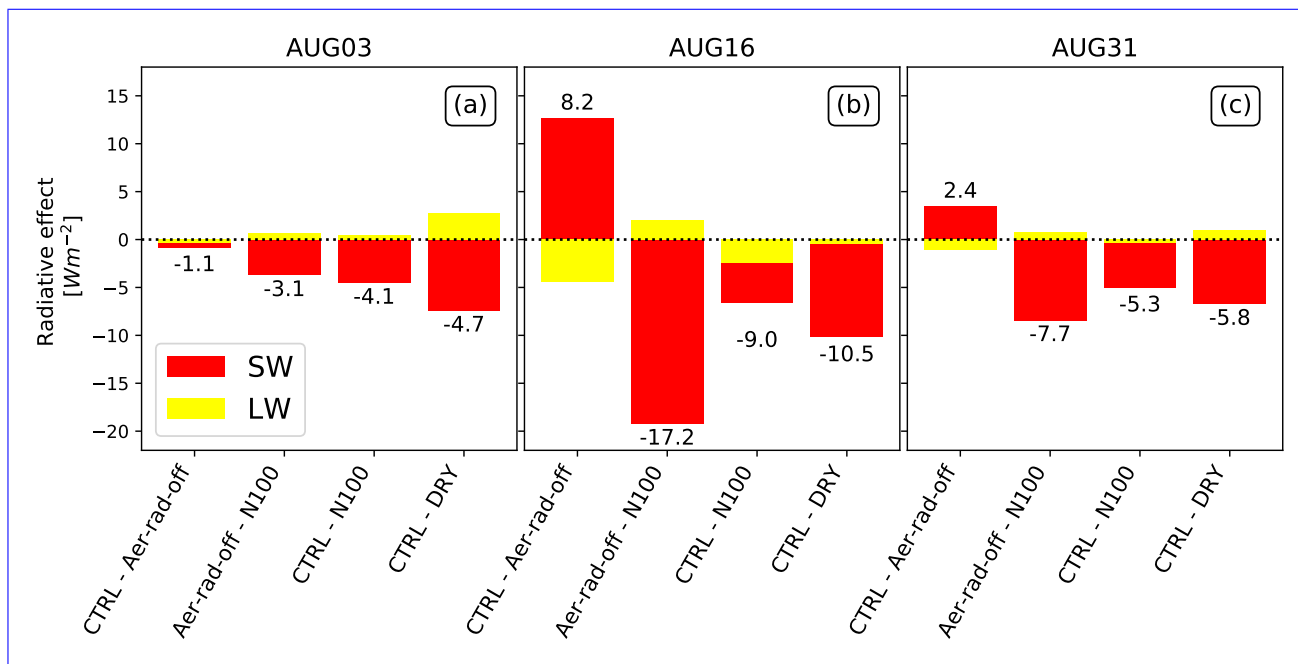


Figure 12. Domain-averaged and time-averaged radiative effect (in Wm^{-2}) in AUG03 (a), AUG16 (b), and AUG31 (c) due to aerosol direct and semi-direct effects (CTRL - Aer-rad-off), indirect aerosol effects (Aer-rad-off - N100), all aerosol effects combined (CTRL - N100), and enhanced moisture (CTRL - DRY). The mean values are calculated over 64 hours of MIMICA simulations. The total radiative effect (SW+LW) is the number above (if positive) or below (if negative) the stacked bars. Note that this number (total radiative effect) does not match the values on the Y axis since it is the sum or difference of the SW and LW bars.

Case SW+LW SW+LW SW+LW SW+LW AUG03 -1.1 -3.1 -4.1 -4.7 AUG16 8.2 -17.2 -9.0 -10.5 AUG31 2.4 -7.7 -5.3 -5.8

An evaluation of the model results against satellite retrievals showed that the model reproduced the diel cycle of cloud cover and liquid water path reasonably well from a climatological perspective. For all three periods examined, the simulations showed SCTs that were broadly consistent with the theory of a "deepening-warming" transition (Bretherton and Wyant, 1997), which is in agreement with results from previous studies under relatively high aerosol concentration conditions e.g. Yamaguchi et al. (2015); Zhou et al. (2017); Diamond et al. (2022) (e.g. Yamaguchi et al., 2015; Zhou et al., 2017; and Diamond et al., 2022). The drizzle increased slightly when aerosol concentrations were reduced and there was a clear decrease in the cloud droplet number concentration. However, none of the experiments showed signs of a relevant impact of drizzle on the SCT, not even when the aerosol concentrations were lowered to background levels. The reason is likely that there was little drizzle formation in all cases and that experiments with an even lower aerosol concentration are needed to explore a potential "drizzle-driven" transition in MIMICA e.g. Yamaguchi et al. (2015, 2017); Erfani et al. (2022); Diamond et al. (2022) (e.g. Yamaguchi et al., 2015; Yamaguchi et al., 2017; Erfani et al., 2022; and Diamond et al., 2022). These findings further amplify the existing interest in exploring the SCT in different LES models within a common framework. In this context, the South-eastern Atlantic Stratocumulus Transitions with Aerosol-Rain-Radiation interactions (SEA STARR) large eddy simulation

450 intercomparison project is currently being conducted in order to investigate the SCT in several LES models (including MIM-ICA) under same meteorological conditions and aerosol forcings, and improve our comprehension of the factors responsible for the differences in the SCT between models.

The semi-direct effect of absorbing aerosols that were in contact with, or mixed within, the MBL was found to be substantial, especially in highly polluted situations, and in particular during daytime and during broken cloud conditions. Our simulation
455 results imply that biomass burning aerosols have the potential to speed up SCTs through local semi-direct effects. However, the influence will be dependent on the state of the SCT as well as the time of the day when the absorbing aerosol makes contact with the cloud deck. In our simulations, the forcing conditions were the same in all experiments, with impacts of the biomass plume on temperature and winds always included in the free troposphere. Therefore, we were not able to explore any free tropospheric semi-direct aerosol effects on cloud cover (as in e.g. ~~Yamaguchi et al. (2015), Zhou et al. (2017) and Diamond et al. (2022)~~
460 [Yamaguchi et al., 2015](#); [Zhou et al., 2017](#) and [Diamond et al., 2022](#)), or the impacts of large-scale subsidence changes caused by aerosol heating (as in ~~Diamond et al. (2022)~~ [Diamond et al., 2022](#)). Thus, we cannot say if semi-direct effects of aerosols in the free troposphere can reduce the relative importance of local semi-direct effects in the MBL as shown in Yamaguchi et al. (2015), Zhou et al. (2017) and Diamond et al. (2022).

The moisture associated with the aerosol plume had a clear impact on the MBL and SCT for the three periods analyzed.
465 When located mostly above the Sc deck, the LW radiative effect of the humidity slowed down the MBL deepening, in particular during the night. These results are consistent with those obtained by Yamaguchi et al. (2015) and Zhou et al. (2017). However, in contrast with Yamaguchi et al. (2015) and Zhou et al. (2017), we did not find that the LW radiative effect of the water vapor above the MBL ~~cause~~ [caused](#) cloud breakup. The reason for this difference is that the enhanced moisture in the FT was never clearly separated from the cloud in our simulations. Thus, the moisture from the plume could always entrain the cloud and the
470 MBL, which led to an increase in cloud cover and a delay of the SCT, in agreement with Yamaguchi et al. (2015).

We note that the conclusions drawn regarding the plume impact on the SCT may depend on the definition of the SCT, and that there are different ways to define the SCT in the literature. Here we have used the definition employed by Sandu and Stevens (2011) and Zhou et al. (2017) (see section 2.2) based on a cloud cover threshold of 50%. Recently, Erfani et al. (2022) used a similar approach, ~~but they also considered that the cloud cover should remain~~. [However, they only considered the SCT
475 to happen when the cloud cover remained](#) below 50%, either during the following 24 hours of simulation or until the simulation end. If we use the same approach as Erfani et al. (2022), the SCT happens one day later in several of our simulations (including two of the control simulations: AUG03 and AUG31). Yamaguchi et al. (2015) investigated the decrease in the domain mean albedo at the beginning and end of their simulations to obtain a measure of the amplitude of the SCT, and thereby also an estimate of the pace of the SCT, following Sandu and Stevens (2011). This criterion is not directly comparable with the ones
480 based on cloud cover. A common metric among different studies would be useful to make comparisons more robust. Since all the mentioned criteria regarding the SCT have their flaws and do not fully capture the complexity of the phenomena, we have avoided to rigorously use the 50% threshold in cloud cover to conclude that the semi-direct effect favours while the moisture delays the SCT. Instead, we have looked at the differences in the evolution of the cloud cover between the experiments and used the 50% threshold as a "soft" reference of the SCT.

485 In our simulations, the indirect aerosol radiative effect always dominated over the direct and semi-direct radiative effects,
and the absorbing aerosol plume produced an average net radiative cooling effect over the three days of simulation of about -4
to -9 W m^{-2} . These results are consistent with Lu et al. (2018), who used a regional model to investigate the effects of biomass
burning aerosols during two months over the SEA. However, our estimate can be influenced by the fact that our experiments
did not include any aerosol effects in the FT and that our BBA plumes were not clearly separated from the cloud deck. For
490 instance, the semi-direct effect of absorbing aerosols located above and separated from the cloud deck might contribute to
additional cooling as in Che et al. (2020). Our simulations also showed that the moisture accompanying the absorbing aerosol
in the biomass burning plume produced an additional cooling effect that was as about as large as the total aerosol radiative
effect itself.

Data availability. Modelling data sets used in this study are available at <https://bolin.su.se/data/baro-perez-2023-biomass-burning-1> (last
495 access: 12 September 2023)

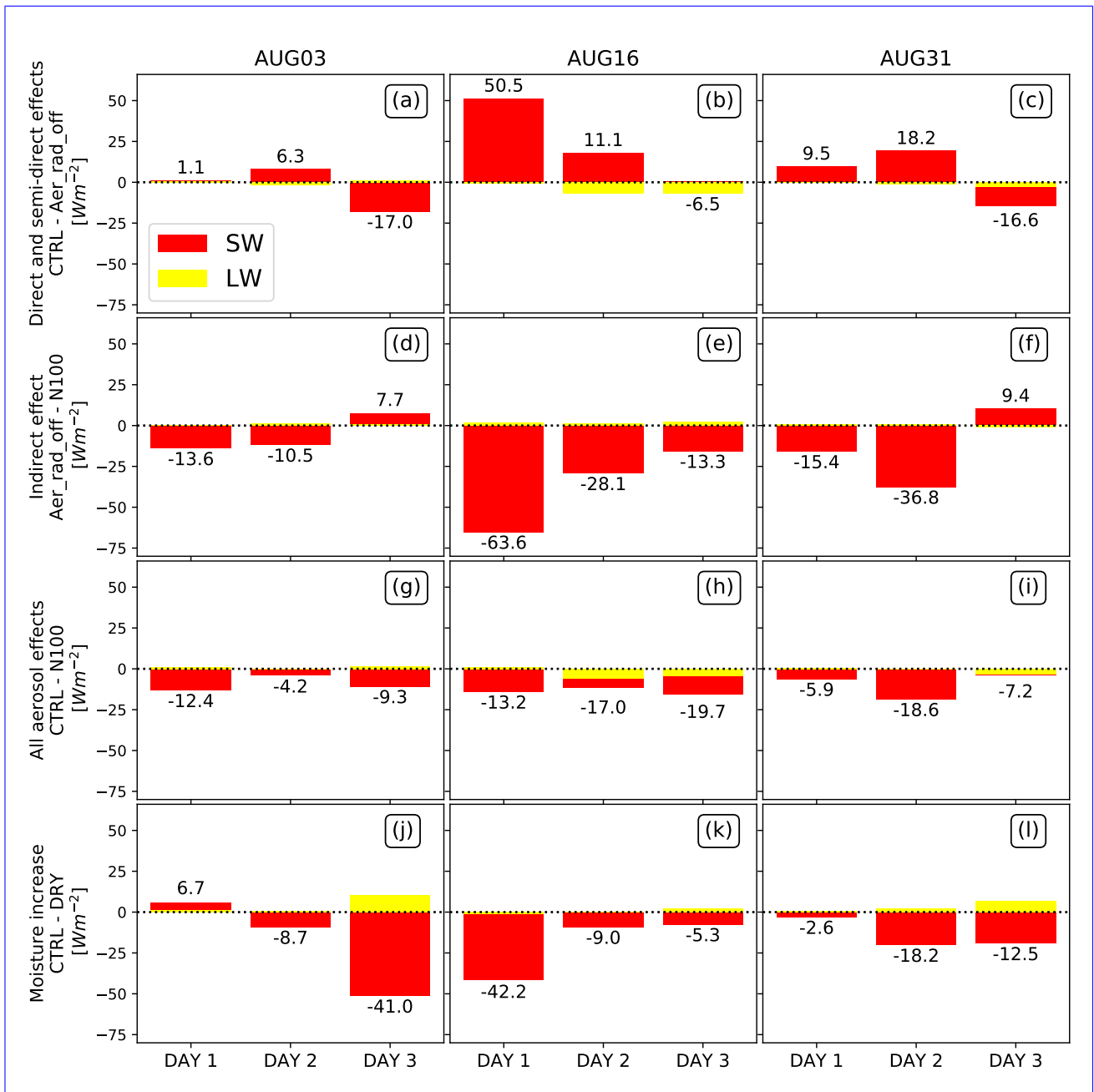


Figure 13. Mean daytime radiative effect effects (in Wm^{-2}) at the top of the model domain in AUG03, AUG16 and AUG31 due to aerosol direct an and semi-direct effects (a-c), indirect aerosol effects (d-f), all aerosol effects combined (g-i), and enhanced moisture (j-l) in AUG03 (first column), AUG16 (second column) and AUG31 (third column). The total radiative effect (SW+LW) is the number above (if positive) or below (if negative) the stacked bars. Note that this number (total radiative effect) does not match the values on the Y axis since it is the sum or difference of the SW and LW bars.

AUG03 DAYS SW+LW SW+LW SW+LW SW+LW 1 1.1 -13.6 -12.4 6.7 2 6.3 -10.5 -4.2 -8.7 3 -17.0 7.7 -9.3 -41.0

Author contributions. ABP and MSD designed the experiments. MSD provided the methodology to force MIMICA. ABP implemented the aerosol-radiation interactions in the model with inputs from JT and HK, and under the supervision of AMLE, JS and MS. ABP performed the simulations, provided all visualisations and wrote the manuscript with inputs and revisions from all the coauthors. AMLE, FAMB and AD revised the manuscript and participated in the analysis of results. AD provided the SEVIRI (CLAAS-3) dataset. DP and HL provided, 500 respectively, the SEVIRI (NASA) dataset and the Lagrangian trajectories used to force the model.

Competing interests. The authors declare that they have no conflict of interest.

Acknowledgements. This study was funded by the Swedish National Space Agency grant 16317. Additional funding was provided by the European Commission, H2020 Research Infrastructures (FORCeS, grant no. 821205) and the Swedish Research Council (2020-04158). The computations and data handling were enabled by resources provided by the Swedish National Infrastructure for Computing (SNIC) at the 505 National Supercomputer Centre (NSC) partially funded by the Swedish Research Council through grant agreement no. 2018-05973. We are grateful for the technical assistance provided by Matthias Brakebush (SU) and Hamish Struthers (NSC) in running the MIMICA LES model on the NSC resources. Many thanks to Jens Redemann for his valuable comments on the manuscript.

References

- Ackerman, A. S., Toon, O. B., Stevens, D. E., Heymsfield, A. J., Ramanathan, V., and Welton, E. J.: Reduction of Tropical Cloudiness by Soot, *Science*, 288, 1042–1047, <https://doi.org/10.1126/science.288.5468.1042>, 2000.
- Adebisi, A. A., Zuidema, P., and Abel, S. J.: The convolution of dynamics and moisture with the presence of shortwave absorbing aerosols over the southeast Atlantic, *Journal of Climate*, 28, 1997–2024, <https://doi.org/10.1175/JCLI-D-14-00352.1>, 2015.
- Albrecht, B. a.: Aerosols, Cloud Microphysics and Fractional Cloudiness, *Science*, 245, 1227–1230, <https://doi.org/10.1126/science.245.4923.1227>, 1989.
- 515 Baró Pérez, A., Devasthale, A., Bender, F. A.-M., and Ekman, A. M. L.: Impact of smoke and non-smoke aerosols on radiation and low-level clouds over the southeast Atlantic from co-located satellite observations, *Atmospheric Chemistry and Physics*, 21, 6053–6077, <https://doi.org/10.5194/acp-21-6053-2021>, 2021.
- Bond, T. C. and Bergstrom, R. W.: Light absorption by carbonaceous particles: An investigative review, *Aerosol Science and Technology*, 40, 27–67, <https://doi.org/10.1080/02786820500421521>, 2006.
- 520 Bretherton, C. S. and Wyant, M. C.: Moisture transport, lower-tropospheric stability, and decoupling of cloud-topped boundary layers, *Journal of the Atmospheric Sciences*, 54, 148–167, [https://doi.org/10.1175/1520-0469\(1997\)054<0148:MTL TSA>2.0.CO;2](https://doi.org/10.1175/1520-0469(1997)054<0148:MTL TSA>2.0.CO;2), 1997.
- Bulatovic, I., Igel, A. L., Leck, C., Heintzenberg, J., Riipinen, I., and Ekman, A. M. L.: The importance of Aitken mode aerosol particles for cloud sustenance in the summertime high Arctic – a simulation study supported by observational data, *Atmospheric Chemistry and Physics*, 21, 3871–3897, <https://doi.org/10.5194/acp-21-3871-2021>, 2021.
- 525 Che, H., Stier, P., Gordon, H., Watson-parris, D., and Deaconu, L.: The significant role of biomass burning aerosols in clouds and radiation in the South-eastern Atlantic Ocean, *Atmospheric Chemistry and Physics Discussions*, pp. 1–27, <https://doi.org/10.5194/acp-2020-532>, 2020.
- Collins, W. D., Lee-Taylor, J. M., Edwards, D. P., and Francis, G. L.: Effects of increased near-infrared absorption by water vapor on the climate system, *Journal of Geophysical Research Atmospheres*, 111, 1–13, <https://doi.org/10.1029/2005JD006796>, 2006.
- 530 Costantino, L. and Bréon, F. M.: Aerosol indirect effect on warm clouds over South-East Atlantic, from co-located MODIS and CALIPSO observations, *Atmospheric Chemistry and Physics*, 13, 69–88, <https://doi.org/10.5194/acp-13-69-2013>, 2013.
- De Graaf, M., Schulte, R., Peers, F., Waquet, F., Gijbert Tilstra, L., and Stammes, P.: Comparison of south-east Atlantic aerosol direct radiative effect over clouds from SCIAMACHY, POLDER and OMI-MODIS, *Atmospheric Chemistry and Physics*, 20, 6707–6723, <https://doi.org/10.5194/acp-20-6707-2020>, 2020.
- 535 Deaconu, L. T., Ferlay, N., Waquet, F., Peers, F., Thieuleux, F., and Goloub, P.: Satellite inference of water vapour and above-cloud aerosol combined effect on radiative budget and cloud-Top processes in the southeastern Atlantic Ocean, *Atmospheric Chemistry and Physics*, 19, 11 613–11 634, <https://doi.org/10.5194/acp-19-11613-2019>, 2019.
- Diamond, M. S., Saide, P. E., Zuidema, P., Ackerman, A. S., Doherty, S. J., Fridlind, A. M., Gordon, H., Howes, C., Kazil, J., Yamaguchi, T., Zhang, J., Feingold, G., and Wood, R.: Cloud adjustments from large-scale smoke–circulation interactions strongly modulate the southeast-
540 ern Atlantic stratocumulus-to-cumulus transition, *Atmospheric Chemistry and Physics*, 22, 12 113–12 151, <https://doi.org/10.5194/acp-22-12113-2022>, 2022.
- Eastman, R. and Wood, R.: The competing effects of stability and humidity on subtropical stratocumulus entrainment and cloud evolution from a Lagrangian perspective, *Journal of the Atmospheric Sciences*, 75, 2563–2578, <https://doi.org/10.1175/JAS-D-18-0030.1>, 2018.

- Ekman, A. M. L., Wang, C., Ström, J., and Krejci, R.: Explicit Simulation of Aerosol Physics in a Cloud-Resolving Model: Aerosol Transport and Processing in the Free Troposphere, *Journal of the Atmospheric Sciences*, 63, 682–696, <https://doi.org/10.1175/JAS3645.1>, 2006.
- 545 Erfani, E., Blossey, P., Wood, R., Mohrmann, J., Doherty, S. J., Wyant, M., and Kuan-Ting, O.: Simulating Aerosol Lifecycle Impacts on the Subtropical Stratocumulus-to-Cumulus Transition Using Large-Eddy Simulations, *Journal of Geophysical Research: Atmospheres*, 127, <https://doi.org/10.1029/2022JD037258>, 2022.
- Fanourgakis, G. S., Kanakidou, M., Nenes, A., Bauer, S. E., Bergman, T., Carslaw, K. S., Grini, A., Hamilton, D. S., Johnson, J. S., Karydis, V. A., Kirkevåg, A., Kodros, J. K., Lohmann, U., Luo, G., Makkonen, R., Matsui, H., Neubauer, D., Pierce, J. R., Schmale, J., Stier, P., Tsigaridis, K., van Noije, T., Wang, H., Watson-Parris, D., Westervelt, D. M., Yang, Y., Yoshioka, M., Daskalakis, N., Decesari, S., Gysel-Beer, M., Kalivitis, N., Liu, X., Mahowald, N. M., Myriokefalitakis, S., Schrödner, R., Sfakianaki, M., Tsimpidi, A. P., Wu, M., and Yu, F.: Evaluation of global simulations of aerosol particle and cloud condensation nuclei number, with implications for cloud droplet formation, *Atmospheric Chemistry and Physics*, 19, 8591–8617, <https://doi.org/10.5194/acp-19-8591-2019>, 2019.
- 550 Fu, Q. and Liou, K. N.: Parameterization of the Radiative Properties of Cirrus Clouds, *Journal of Atmospheric Sciences*, 50, 2008–2025, [https://doi.org/10.1175/1520-0469\(1993\)050<2008:POTRPO>2.0.CO;2](https://doi.org/10.1175/1520-0469(1993)050<2008:POTRPO>2.0.CO;2), 1993.
- Fu, Q., Liou, K. N., Cribb, M. C., Charlock, T. P., and Grossman, A.: Multiple Scattering Parameterization in Thermal Infrared Radiative Transfer, *Journal of the Atmospheric Sciences*, 54, 2799–2812, [https://doi.org/10.1175/1520-0469\(1997\)054<2799:MSPITI>2.0.CO;2](https://doi.org/10.1175/1520-0469(1997)054<2799:MSPITI>2.0.CO;2), 1997.
- 560 Gryspeerdt, E., Goren, T., Sourdeval, O., Quaas, J., Mülmenstädt, J., Dipu, S., Unglaub, C., Gettelman, A., and Christensen, M.: Constraining the aerosol influence on cloud liquid water path, *Atmospheric Chemistry and Physics*, 19, 5331–5347, <https://doi.org/10.5194/acp-19-5331-2019>, 2019.
- Gu, Y., Farrara, J., Liou, K. N., and Mechoso, C. R.: Parameterization of Cloud–Radiation Processes in the UCLA General Circulation Model, *Journal of Climate*, 16, 3357–3370, [https://doi.org/10.1175/1520-0442\(2003\)016<3357:POCPIT>2.0.CO;2](https://doi.org/10.1175/1520-0442(2003)016<3357:POCPIT>2.0.CO;2), 2003.
- 565 Hansen, J., Sato, M., and Ruedy, R.: Radiative forcing and climate response, *Journal of Geophysical Research: Atmospheres*, 102, 6831–6864, <https://doi.org/10.1029/96JD03436>, 1997.
- Haywood, J. M., Osborne, S. R., and Abel, S. J.: The effect of overlying absorbing aerosol layers on remote sensing retrievals of cloud effective radius and cloud optical depth, *Quarterly Journal of the Royal Meteorological Society*, 130, 779–800, <https://doi.org/10.1256/qj.03.100>, 2004.
- 570 Herbert, R., Stier, P., and Dagan, G.: Isolating Large-Scale Smoke Impacts on Cloud and Precipitation Processes Over the Amazon With Convection Permitting Resolution, *Journal of Geophysical Research: Atmospheres*, 126, <https://doi.org/10.1029/2021JD034615>, 2021.
- Herbert, R. J., Bellouin, N., Highwood, E. J., and Hill, A. A.: Diurnal cycle of the semi-direct effect from a persistent absorbing aerosol layer over marine stratocumulus in large-eddy simulations, *Atmospheric Chemistry and Physics*, 20, 1317–1340, <https://doi.org/10.5194/acp-20-1317-2020>, 2020.
- 575 Hess, M., Koepke, P., and Schult, I.: Optical Properties of Aerosols and Clouds: The Software Package OPAC, *Bulletin of the American Meteorological Society*, 79, 831–844, [https://doi.org/10.1175/1520-0477\(1998\)079<0831:OPOAAC>2.0.CO;2](https://doi.org/10.1175/1520-0477(1998)079<0831:OPOAAC>2.0.CO;2), 1998.
- Howell, S. G., Freitag, S., Dobracki, A., Smirnow, N., and Sedlacek III, A. J.: Undersizing of aged African biomass burning aerosol by an ultra-high-sensitivity aerosol spectrometer, *Atmospheric Measurement Techniques*, 14, 7381–7404, <https://doi.org/10.5194/amt-14-7381-2021>, 2021.

- 580 Ichoku, C., Remer, L. A., Kaufman, Y. J., Levy, R., Chu, D. A., Tanré, D., and Holben, B. N.: MODIS observation of aerosols and estimation of aerosol radiative forcing over southern Africa during SAFARI 2000, *Journal of Geophysical Research D: Atmospheres*, 108, 1–13, <https://doi.org/10.1029/2002jd002366>, 2003.
- Jones, C. R., Bretherton, C. S., and Leon, D.: Coupled vs. decoupled boundary layers in VOCALS-REx, *Atmospheric Chemistry and Physics*, 11, 7143–7153, <https://doi.org/10.5194/acp-11-7143-2011>, 2011.
- 585 Liu, L., Cheng, Y., Wang, S., Wei, C., Pöhlker, M. L., Pöhlker, C., Artaxo, P., Shrivastava, M., Andreae, M. O., Pöschl, U., and Su, H.: Impact of biomass burning aerosols on radiation, clouds, and precipitation over the Amazon: Relative importance of aerosol-cloud and aerosol-radiation interactions, *Atmospheric Chemistry and Physics*, 20, 13 283–13 301, <https://doi.org/10.5194/acp-20-13283-2020>, 2020.
- Lock, A. P.: The numerical representation of entrainment in parameterizations of boundary layer turbulent mixing, *Monthly Weather Review*, 129, 1148–1163, [https://doi.org/10.1175/1520-0493\(2001\)129<1148:TNROEI>2.0.CO;2](https://doi.org/10.1175/1520-0493(2001)129<1148:TNROEI>2.0.CO;2), 2001.
- 590 Lu, Z., Liu, X., Zhang, Z., Zhao, C., Meyer, K., Rajapakse, C., Wu, C., Yang, Z., and Penner, J. E.: Biomass smoke from southern Africa can significantly enhance the brightness of stratocumulus over the southeastern Atlantic Ocean, *Proceedings of the National Academy of Sciences of the United States of America*, 115, 2924–2929, <https://doi.org/10.1073/pnas.1713703115>, 2018.
- Meirink, J. F., Karlsson, K.-G., Solodovnik, I., Hüser, I., Benas, N., Johansson, E., Håkansson, N., Stengel, M., Selbach, N., Schröder, M., and Hollmann, R.: CLAAS-3: CM SAF CLOUD property dAtAset using SEVIRI - Edition 3, https://doi.org/10.5676/EUM_SAF_CM/CLAAS/V003, 2022.
- 595 Minnis, P., Nguyen, L., Palikonda, R., Heck, P. W., Spangenberg, D. A., Doelling, D. R., Ayers, J. K., Smith, Jr., W. L., Khaiyer, M. M., Trepte, Q. Z., Avey, L. A., Chang, F.-L., Yost, C. R., Chee, T. L., and Szedung, S.-M.: Near-real time cloud retrievals from operational and research meteorological satellites, *Remote Sensing of Clouds and the Atmosphere XIII*, 7107, 710 703, <https://doi.org/10.1117/12.800344>, 2008.
- 600 Molod, A., Takacs, L., Suarez, M., Bacmeister, J., Song, I.-S., and Eichmann, A.: NASA / TM – 2012-104606 / Vol 28 Technical Report Series on Global Modeling and Data Assimilation , Volume 28 The GEOS-5 Atmospheric General Circulation Model : Mean Climate and Development from MERRA to Fortuna April 2012, vol. 28, 2012.
- Painemal, D., Minnis, P., Ayers, J. K., and O’Neill, L.: GOES-10 microphysical retrievals in marine warm clouds: Multi-instrument validation and daytime cycle over the southeast Pacific, *Journal of Geophysical Research Atmospheres*, 117, 1–13, <https://doi.org/10.1029/2012JD017822>, 2012.
- 605 Painemal, D., Xu, K. M., Cheng, A., Minnis, P., and Palikonda, R.: Mean structure and diurnal cycle of southeast Atlantic boundary layer clouds: Insights from satellite observations and multiscale modeling framework simulations, *Journal of Climate*, 28, 324–341, <https://doi.org/10.1175/JCLI-D-14-00368.1>, 2015.
- Painemal, D., Firdlind, A., Lee, H., Palikonda, R., Smith Jr, W., Ferrare, R., Dasilva, A., and Griswold, J.: The Evolution of the Southeast Atlantic Boundary Layer Determined from Meteosat-10 Cloud Retrievals, GEOS-5 Model Outputs, and Observations during ORACLES 2016, 2018.
- Petters, M. D. and Kreidenweis, S. M.: A single parameter representation of hygroscopic growth and cloud condensation nucleus activity, *Atmospheric Chemistry and Physics*, 7, 1961–1971, <https://doi.org/10.5194/acp-7-1961-2007>, 2007.
- 615 Pistone, K., Praveen, P. S., Thomas, R. M., Ramanathan, V., Wilcox, E. M., and Bender, F. A.: Observed correlations between aerosol and cloud properties in an Indian Ocean trade cumulus regime, *Atmospheric Chemistry and Physics*, 16, 5203–5227, <https://doi.org/10.5194/acp-16-5203-2016>, 2016.

- Pistone, K., Zuidema, P., Wood, R., Diamond, M., Da Silva, A. M., Ferrada, G., Saide, P. E., Ueyama, R., Ryoo, J. M., Pfister, L., Podolske, J., Noone, D., Bennett, R., Stith, E., Carmichael, G., Redemann, J., Flynn, C., Leblanc, S., Segal-Rozenhaimer, M., and Shinozuka, Y.: Exploring the elevated water vapor signal associated with the free tropospheric biomass burning plume over the southeast Atlantic Ocean, *Atmospheric Chemistry and Physics*, 21, 9643–9668, <https://doi.org/10.5194/acp-21-9643-2021>, 2021.
- 620 Ramaswamy, V. and Freidenreich, S. M.: Solar radiative line-by-line determination of water vapor absorption and water cloud extinction in inhomogeneous atmospheres, *Journal of Geophysical Research*, 96, 9133–9157, <https://doi.org/10.1029/90JD00083>, 1991.
- Sandu, I. and Stevens, B.: On the factors modulating the stratocumulus to cumulus transitions, *Journal of the Atmospheric Sciences*, 68, 1865–1881, <https://doi.org/10.1175/2011JAS3614.1>, 2011.
- 625 Savre, J., Ekman, A. M., and Svensson, G.: Technical note: Introduction to MIMICA, a large-eddy simulation solver for cloudy planetary boundary layers, *Journal of Advances in Modeling Earth Systems*, 6, 630–649, <https://doi.org/10.1002/2013MS000292>, 2014.
- Seifert, A. and Beheng, K. D.: A double-moment parameterization for simulating autoconversion, accretion and selfcollection, *Atmospheric Research*, 59–60, 265–281, [https://doi.org/10.1016/S0169-8095\(01\)00126-0](https://doi.org/10.1016/S0169-8095(01)00126-0), 2001.
- Seifert, A. and Beheng, K. D.: A two-moment cloud microphysics parameterization for mixed-phase clouds. Part 1: Model description, *Meteorology and Atmospheric Physics*, 92, 45–66, <https://doi.org/10.1007/s00703-005-0112-4>, 2006.
- 630 Slater, J., Tonttila, J., Mcfiggans, G., Connolly, P., Romakkaniemi, S., Kühn, T., and Coe, H.: Using a coupled large-eddy simulation-aerosol radiation model to investigate urban haze: Sensitivity to aerosol loading and meteorological conditions, *Atmospheric Chemistry and Physics*, 20, 11 893–11 906, <https://doi.org/10.5194/acp-20-11893-2020>, 2020.
- Tonttila, J., Maallick, Z., Raatikainen, T., Kokkola, H., Kühn, T., and Romakkaniemi, S.: UCLALES-SALSA v1.0: A large-eddy *635* model with interactive sectional microphysics for aerosol, clouds and precipitation, *Geoscientific Model Development*, 10, 169–188, <https://doi.org/10.5194/gmd-10-169-2017>, 2017.
- Twomey, S.: The influence of pollution on the shortwave albedo of clouds., *J. Atmos. Sci.*, 34, 1149–1152, 1977.
- Wang, H., Feingold, G., Wood, R., and Kazil, J.: Modelling microphysical and meteorological controls on precipitation and cloud cellular structures in Southeast Pacific stratocumulus, *Atmospheric Chemistry and Physics*, 10, 6347–6362, <https://doi.org/10.5194/acp-10-6347-2010>, 2010.
- 640 Wilcox, E. M.: Stratocumulus cloud thickening beneath layers of absorbing smoke aerosol, *Atmospheric Chemistry and Physics*, 10, 11 769–11 777, <https://doi.org/10.5194/acp-10-11769-2010>, 2010.
- Wood, R.: Stratocumulus clouds, <https://doi.org/10.1175/MWR-D-11-00121.1>, 2012.
- Yamaguchi, T., Feingold, G., Kazil, J., and McComiskey, A.: Stratocumulus to cumulus transition in the presence of elevated smoke layers, *645* *Geophysical Research Letters*, 42, 10 478–10 485, <https://doi.org/10.1002/2015GL066544>, 2015.
- Yamaguchi, T., Feingold, G., and Kazil, J.: Stratocumulus to Cumulus Transition by Drizzle, *Journal of Advances in Modeling Earth Systems*, 9, 2333–2349, <https://doi.org/10.1002/2017MS001104>, 2017.
- Zhou, X., Ackerman, A. S., Fridlind, A. M., Wood, R., and Kollias, P.: Impacts of solar-absorbing aerosol layers on the transition of stratocumulus to trade cumulus clouds, *Atmospheric Chemistry and Physics*, 17, 12 725–12 742, <https://doi.org/10.5194/acp-17-12725-2017>, *650* 2017.