

Supplementary information for "Impact of a strong volcanic eruption on the summer middle atmosphere in UA-ICON simulations"

Sandra Wallis¹, Hauke Schmidt², and Christian von Savigny¹

¹Institute of Physics, University of Greifswald, Felix-Hausdorff-Str. 6, 17489 Greifswald, Germany

²Max Planck Institute for Meteorology, Bundesstrasse 53, 20146, Hamburg, Germany

Correspondence: Sandra Wallis (sandra.wallis@uni-greifswald.de)

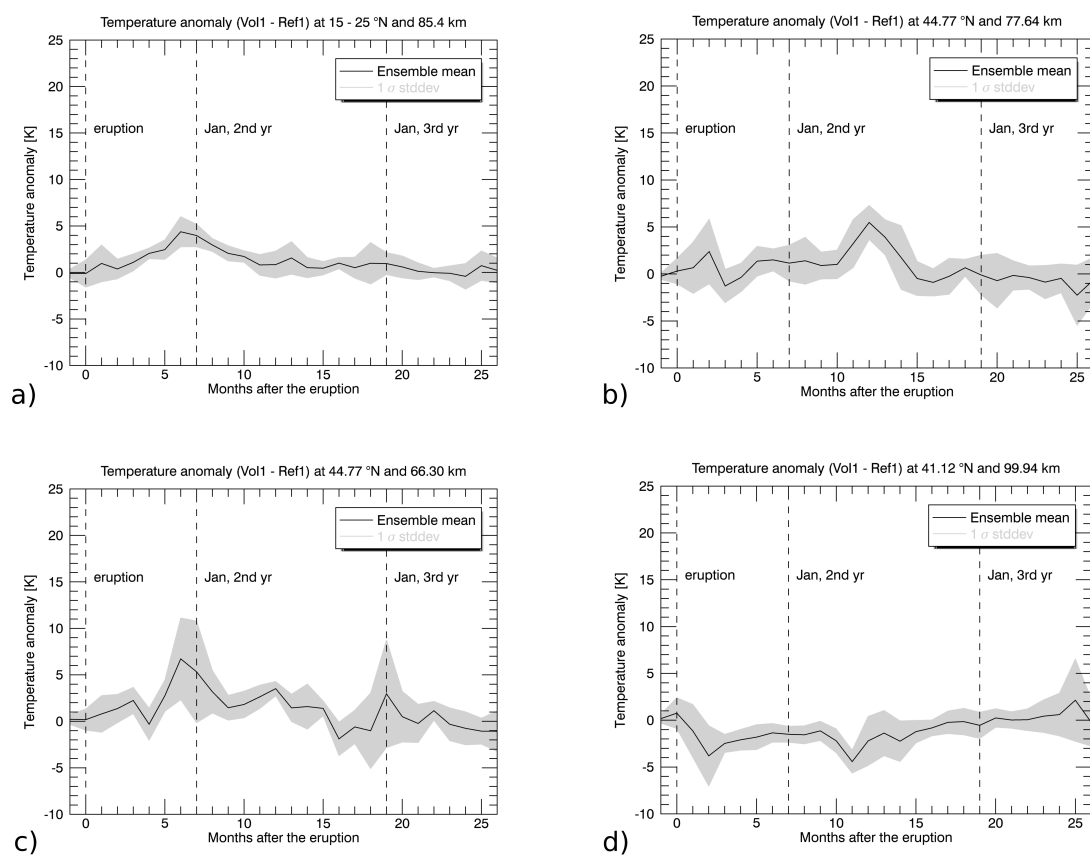


Figure S1. Time series of temperature anomaly (Vol1 - Ref1) for a) 15-25°N and 85.4 km altitude, b) 44.77°N and 77.64 km altitude, c) 44.77°N and 66.30 km altitude and d) 41.12°N and 99.94 km altitude. The gray areas in b)-d) indicate the 1- σ standard deviation. The gray areas in a) show the mean of the ensemble mean temperature anomaly standard deviations for all latitudes averaged between 15-25°N.