

Deepening mechanisms of cut-off lows in the Southern Hemisphere and the role of jet streams: insights from eddy kinetic energy analysis

5 Henri R. Pinheiro¹, Kevin I. Hodges², Manoel A. Gan³

¹Department of Atmospheric Sciences, University of Sao Paulo, 05508-090, Brazil.

²Department of Meteorology, University of Reading, Reading, RG6 6UR, United Kingdom.

³Center for Weather Forecast and Climate Studies (CPTEC), National Institute for Space Research (INPE), Sao Jose dos Campos, 12227-010, Brazil.

10 *Correspondence to:* Kevin I. Hodges (k.i.hodges@reading.ac.uk)

Abstract. Cut-off lows (COLs) exhibit diverse structures and lifecycles, ranging from confined upper tropospheric systems to deep, multi-level vortex structures. While COL climatologies are well-documented, the mechanisms driving their deepening remain unclear. To bridge this gap, a novel track matching algorithm applied to ERA-Interim reanalysis
15 investigates the vertical extent of Southern Hemisphere COLs. Composite analysis based on structure and eddy kinetic energy budget differentiates four COL categories: shallow, deep, weak, and strong, revealing similarities and disparities. Deep, strong COLs concentrate around Australia and the southwestern Pacific, peaking in autumn and spring, while shallow, weak COLs are more common in summer and closer to the equator. Despite differences, both contrasting types evolve energetically via anticyclonic Rossby wave breaking. The distinct roles of jet streams in affecting COL types are addressed:
20 intense polar front jet correlates with more deep COLs, whereas stronger subtropical jet relates to fewer shallow COLs. ~~Deepening mechanisms involve eddy feedback between upper and lower tropospheric systems, induced by an intense upstream poleward jet. The COL deepening typically occurs in the presence of a robust upstream polar front jet which enhances enhancing~~ ageostrophic flux convergence ~~behind the COLs, accompanied by and~~ baroclinic processes ~~flanking the COLs. The subtropical jet emerges as an important mechanism for system intensification, highlighting the differing impacts~~
25 of jets on both depth and intensity. Additionally, we highlight the significance of diabatic processes in COL deepening, addressing their misrepresentation in reanalysis and emphasizing the need for more observational and modelling studies to refine the energetic framework.

Keywords: Cut-off Lows, Vertical Depth, Deepening, Jet Streams, Energetics, Eddy Kinetic Energy.

30 **1 Introduction**

Cut-off low (COL) pressure systems are closed low-pressure systems that detach or "cut-off" from the main westerly flow (Palmén 1949). These systems manifest as isolated cyclonic potential vorticity anomalies and form both equatorward and poleward of the polar front or mid-latitude jet (Portmann et al. 2021). COLs are known for their slow movement, varying in duration from short-lived to persisting for several days. Their prolonged periods of precipitation often result in significant accumulations and eventually floods (Singleton and Reason 2007, Llasat et al. 2007, McInnes and Hubbert 2011)

One critical aspect of COLs is their vertical extent, which directly influences their precipitation intensity and duration. Deep COLs, reaching lower atmospheric levels, are usually linked to heavier rainfall compared to shallow systems (Porcù et al. 2007, Pinheiro et al. 2021). Early studies (Palmén 1979) established a groundwork for understanding their vertical structure, revealing their key features such as a quasi-barotropic structure, tropopause folding and thermal dipole patterns. Subsequent studies, including those of Frank (1970) and Porcù et al. (2007), observed a clear relationship between COL vertical extent and the associated cloud and precipitation patterns. More recently, Portmann et al. (2021) highlighted the influence of jet streams on the precipitation intensity of COLs based on their relative position.

Significant progress has been made in understanding the mechanisms driving the development of COLs. Studies have shed light on the crucial role of jet streams in supplying energy to these systems (Pinto and Rocha 2011; Gan and Piva 2013; Ndarana et al. 2021). Their formation often results from a split flow associated with Rossby wave breaking, leading to convergence of ageostrophic geopotential fluxes (hereafter, ageostrophic fluxes) and baroclinic processes. (Ndarana et al. 2021, Pinheiro et al. 2022). Diabatic processes, such as radiative cooling and latent heating, also play a role in COL development (Sakamoto and Takahashi 2005; Garreaud and Fuenzalida 2007, Cavallo and Hakim 2010, Portmann et al. 2018).

Despite these advancements, a comprehensive understanding of COL deepening mechanisms remains unclear. The role of jet streams in deepening COLs and the complex influence of diabatic processes require further investigation. Elucidating these key aspects is crucial for both accurate predictions and improved understanding of COL dynamics. This study aims to address these critical gaps by addressing the following scientific questions:

1. How sensitive are methods for estimating the vertical depth of COLs?
2. Can COLs be affectively classified based on their intensity and vertical depth? Do these classifications differ in terms of their spatial distribution and temporal variability?
3. How do jet streams influence COLs? Does the influence on deepening mechanisms differ between different COL types? Can specific jet stream characteristics be identified as particularly conducive to the deepening of COLs?

By addressing these key questions, we hope to significantly improve our understanding of COLs and their role in atmospheric dynamics. The remainder of the paper is organized as follows. Section 2 outlines the data and methods employed for tracking, estimating vertical depth, and producing composites of structure and energetics of COLs. Section 3 presents the results, and finally, Section 4 provides a summary of the main findings and conclusions.

2 Data and methods

2.1 Reanalysis dataset and tracking methodology

This study uses the ERA-Interim reanalysis data (Dee et al. 2011) obtained from the European Centre for Medium-Range Weather Forecasts (ECMWF) for the period from 1979 to 2014. ERA-Interim reanalysis employs a spectral model with a N128 reduced Gaussian grid (~80km) and 60 vertical hybrid levels, produced with a four-dimensional variational data assimilation (4D-Var) system.

Before the tracking, the data are spectrally truncated at 42 wavenumbers (T42), and coefficients corresponding to total wavenumbers less than five are set to zero. This is done to reduce noise and eliminate large-scale background influences, similarly to previous work (Pinheiro et al. 2017; 2021; 2022). The established TRACK algorithm (Hodges 1995, 1996, 1999) is employed to track T42 vorticity minima at various pressure levels (1000, 900, 800, 700, 600, 500, 400 and 300 hPa), using a consistent threshold ($-1.0 \times 10^{-5} \text{ s}^{-1}$) intentionally set relatively low to capture diverse cyclonic systems. The tracking is performed by minimizing a cost-function for track smoothness subject to adaptive constraints on track smoothness and displacement distance. The tracking is the same algorithm as used for extratropical and tropical cyclones (e.g., Hodges et al. 2011, 2017), but with some adjustments to the slower movement of COLs, as discussed in Pinheiro et al. (2019). The resulting tracks are filtered based on horizontal wind components (u , v) at four 5° geodesic offset points from the vorticity center: 0° ($u > 0$), 90° ($v < 0$), 180° ($u < 0$) and 270° ($v > 0$) relative to north. This retains only closed cyclonic centers, as discussed in Pinheiro et al. (2019). The retained tracks are those that either move equatorward and reach latitudes north of 40°S or originate north of 40°S and persist for at least 24 hours.

Spatial statistics of the COLs are computed using the track information and spherical kernel estimators for track density and mean intensity (Hodges 1996). Track density represents COLs per season per unit area (5° spherical cap $\cong 10^6 \text{ km}^2$), while mean intensity derives from T42 relative vorticity, scaled by -1 for the Southern Hemisphere.

2.2 Approach to estimate the vertical depth of COLs

To analyze and quantify COLs, numerous algorithms have emerged, though only a few of them address multi-level cyclone detection and their connections. Existing algorithms establish cyclone position correspondence between levels based on feature point distances, utilizing geopotential or vorticity centers. These methods span from basic search tasks (Lim and Simmonds 2007, Porcù et al. 2007) to more advanced techniques based on optimal solution (Lakkis et al. 2019).

In this study, the track matching algorithm introduced by Hodges et al. (2003) and used to match tracks in different datasets (Bengtsson et al. 2009, Hodges et al. 2011, 2017, Pinheiro et al. 2020) is employed to match tracks between different pressure levels. The algorithm is used to compare tracks across different pressure levels by defining a mean separation distance (d_m), chosen here to be 5 degrees geodesic, and considering overlaps in time (χ) between corresponding points in the tracks. Temporal overlaps between tracks will be determined following a sensitivity analysis, as discussed in Section 3.1. The percentage of points overlapping in time is calculated using the approach described in Hodges et al. (2003), defined as follows:

$$\chi = 100[2n_m/(n_1 + n_2)]$$

where n_m is the number of points that match in time, and n_1 and n_2 are the number of points in the track corresponding to different pressure levels.

Since our focus is on the upper-level forcing driving surface cyclone development and the mechanisms governing this interaction, our method works top-down, starting with two levels at a time and progressively extending the matches to adjacent pressure levels. Vorticity tracks (ξ_{300}) are matched against ξ_{400} if the mean separation distance is $\leq 5^\circ$ and temporal overlap exists. Successful matches indicate extending COLs; unmatched ξ_{300} tracks imply the COL is confined to 300 hPa. An iterative process continues to lower levels (e.g., 500 hPa, 600 hPa, and so on), stopping at the last match at 1000 hPa. The deepest successful match determines the COL vertical extent.

Complex interactions between COLs and lower-level cyclonic features makes capturing the full range of coupling processes challenging. Our algorithm, while simpler than the optimal solution-based approach in Lakkis et al. (2019), consistently establishes vertical associations and a sequential stacking process. However, diverse matching procedures might result in distinct COL evolution outcomes, although prior research has shown similar results between bottom-to-top and top-to-bottom approaches (Lakkis et al. 2019).

2.3 Compositing analysis of the structure and energetics of COLs

Employing a system-centered compositing method similar to that of Pinheiro et al. (2022), we investigate the composite structure of COLs and their eddy kinetic energy (EKE) budget. Initially, COLs are identified and categorized into shallow, medium and deep types based on their vertical extent, however, due to space constraints only the findings concerning deep and shallow COLs are presented in the paper. Shallow COLs are limited to the upper troposphere, extending no lower than 400 hPa, while deep COLs originate at high levels and extend down to 800 hPa or lower. The depth levels are chosen to capture the contrasting vertical extents of COLs, which are typically found either in the upper or lower troposphere. These depth categories, each accounting around 30% of the total COLs, are chosen to ensure a balanced representation across different types in our analysis. Additionally, we classify COLs as strong (above the 50th percentile) or weak (below the 50th percentile) according to their maximum intensity observed along each track, based on the 300-hPa vorticity.

120 Atmospheric fields and energetic quantities are sampled on a 25° latitude-longitude rectangular grid, initially defined centered on the equator then rotated to the COL 300hPa vorticity center, with a horizontal resolution of 0.5°. The sampling is performed at each vertical level from 1000 hPa to 100 hPa, taking the 300-hPa track point as the reference. We present vertical composites for west-east cross-sections centered on the vorticity center. These composites are produced for various time intervals relative to the peak intensity of COLs, but only for times within ± 48 hours of the peak intensity are shown.

125 Extending the compositing window beyond this timeframe often introduces noise due to variations in COL lifetimes.

Using the Orlanski and Katzfey (1991) method, we investigate the energy dynamics associated with the COL deepening through the EKE budget. This approach considers essential mechanisms such as baroclinic and barotropic conversions and ageostrophic flux convergence (downstream development). In this study, the focus is on baroclinic conversion and ageostrophic flux convergence, the two primary EKE budget mechanisms in COLs (Gan and Piva 2016, Ndarana et al. 2021, Pinheiro et al. 2022).

130 Pinheiro et al. 2022).

The budget residual accounts for processes not fully captured by the EKE budget calculation, including friction and discretization errors such as interpolation and finite differences. Errors could also arise from how diabatic processes are represented in reanalysis products (Pinheiro et al. 2022). Time-mean quantities are calculated for each month averaged over 28–31 days for the 6-hourly data, separately for each individual month and year.

135 **2.4 Link with jet streams**

The connection between COL extent and jet streams is also explored using Pearson correlation coefficients and scatter plots. Following Bals-Elshol et al. (2001), the characteristics of the polar front and subtropical jets are defined by averaging the 300-hPa zonal mean zonal wind at 50°S-65°S and 25°S-35°S, respectively. Despite their high variability in wind speed, jet streams exhibit relatively small seasonal variations in their position in the Southern Hemisphere (Simmons and Jones 1998), allowing a reasonable estimation using upper-tropospheric zonal mean winds within a fixed latitudinal band. ~~Pearson~~ Correlation coefficients are employed to verify the relationship between jet strengths and COLs, with significance exceeding 95% and 99%.

140

3 Results and discussion

3.1 Sensitivity of track matching algorithm for the estimation of COL depth

145 To assess the sensitivity of the track matching algorithm in determining COL depth, we investigate the influence of the mean separation distance (d_m) and temporal overlap (χ) between tracks at different pressure levels. We systematically varied χ from 1% to 100% while keeping d_m fixed at 5° geodesic. This choice is based on observations that the depth estimation is more sensitive to χ than d_m . Setting d_m to a large value leads to significant rise in the number of matches; however, this can introduce false matches involving unrelated cyclonic systems. Therefore, we set d_m to 5 degrees geodesic which is suitable

150 considering the typical small vertical tilt of COLs (refer to Fig. 9 in Pinheiro et al. 2021).

A sensitivity analysis varied χ across a range of values. Setting χ to 1% requires a minimum 1% time overlap between tracks at different pressure levels. Table A.1 in the Appendix shows that 20.3% of ξ_{300} COLs extend to the surface in at least one time step, indicating interconnected cyclonic features across all levels from 300 hPa to 1000 hPa. The number of systems reaching the surface remains relatively consistent for χ values ranging from 1% to 25% at 20.3% to 19.5% of all COLs. However, matches significantly decrease when χ exceeds 50%, likely due to COLs only associating briefly with lower-level features. With χ set to 75%, less than 10% of systems are identified as deep COLs, suggesting an underestimation due to association with short-lived lower-level features. Relaxing the χ threshold increases the chance of capturing stacked cyclonic system, guaranteeing vertically aligned or tilted COLs across adjacent levels using $\chi=1\%$ and $d_m=5^\circ$.

Using geopotential data instead of relative vorticity to estimate COL depth is an alternative approach. However, some care is required in selecting an appropriate threshold as geopotential magnitude generally increases with height in baroclinic systems. Previous studies (Porcù et al. 2007, Barnes et al. 2021) used varying geopotential thresholds for each pressure level, requiring different subjective thresholds at each level. In contrast, vorticity-based identification does not require vertical adjustments, as vorticity measures atmospheric flow rotation. Moreover, weaker COLs are less likely to be identified in a geopotential field-based tracking method (Pinheiro et al. 2019).

3.2 Relationship between intensity and vertical depth of COLs

Classifying COLs by grouping similar systems is crucial for uncovering the key factors influencing their diverse types, allowing a deeper understanding of their dynamics and providing a framework for evaluating climate impacts. This section explores the contrasting characteristics among four COL categories: shallow, deep, weak, and strong COLs (Figure 1). These categories are defined based on intensity and vertical extent, as detailed in Section 2.3.2. While intermediate-level COLs exist, this study focuses on the contrasting features of their vertical extent. This analysis does not focus on vertical tilt, which is comprehensively addressed in Pinheiro et al. (2021).

Figure 1 shows the annual track density of COLs in the four categories described above. Deep and strong systems exhibit similar distribution patterns, both primarily concentrated in Australia and the southwestern Pacific, with a secondary maximum in the southeast Pacific off the west coast of South America. These two groups exhibit similar intensity patterns, with maxima (blue dots) located in Australia and upstream of the main continents, as previously demonstrated (Barnes et al. 2021, Pinheiro et al. 2021, 2022). Shallow and weak COLs also share similarities; they are less intense and more dispersed than the deep and strong systems. These systems are predominantly found in the South Atlantic, southeast Africa (Madagascar), and the South Indian Ocean, and they are more frequently found equatorward than their deep and strong counterparts, a notable feature over the central-eastern Pacific Ocean.

By contrasting the tracks within each category, we found that 81% of deep COLs correspond with the 50th percentile of strongest systems, suggesting a significant correlation between the two categories. However, it is noteworthy that 19% of deep COLs fall into the category of weak COLs, indicating a level of variance within this classification. Similarly, 71% of

weak COLs correspond to shallow COLs. Despite the similarities shared between strong and deep COLs, as well as weak and shallow COLs, it is important to recognize that they are not entirely comparable. These distinctions arise from differences in classification and the dynamics inherent in these systems and their development processes.

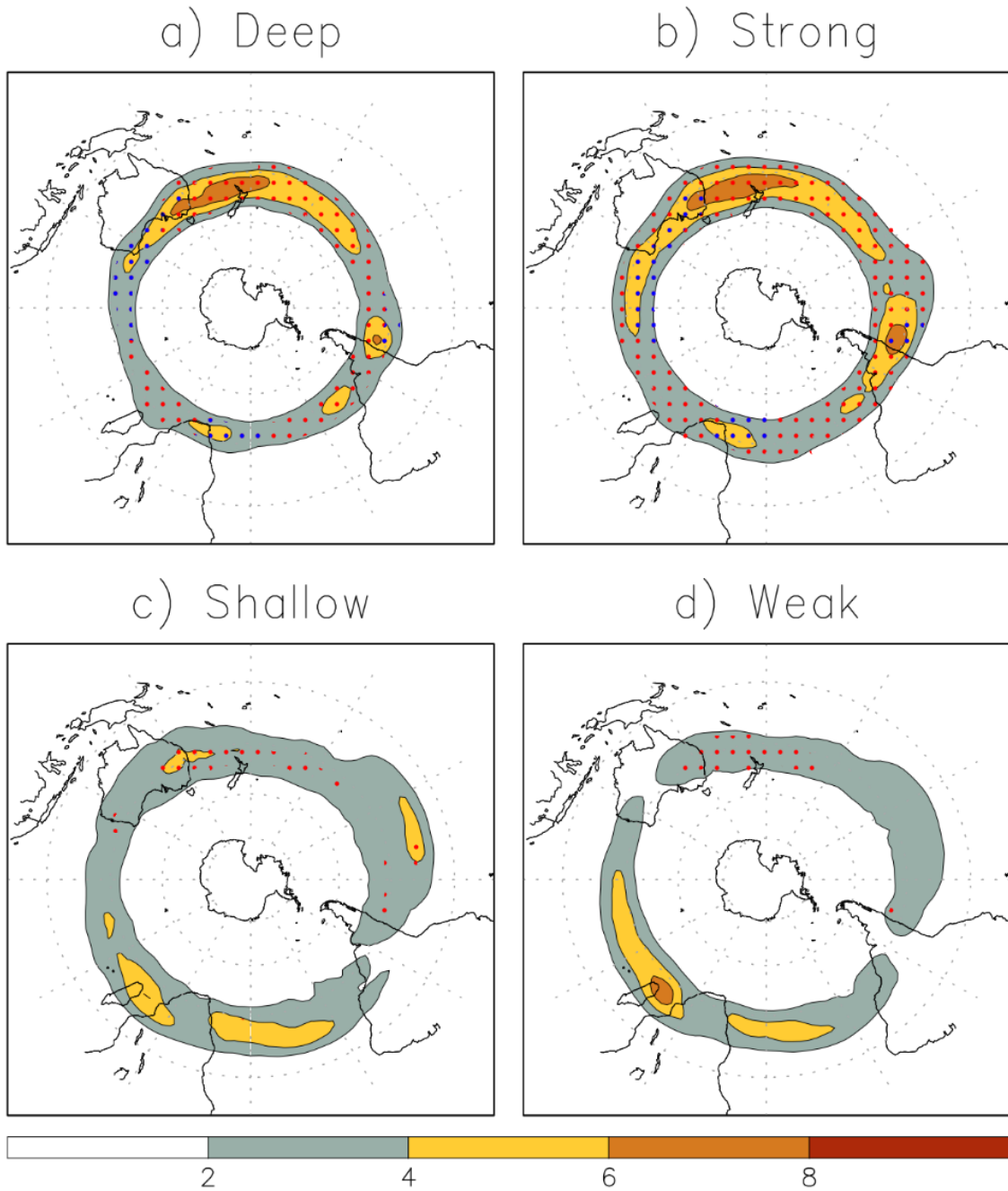
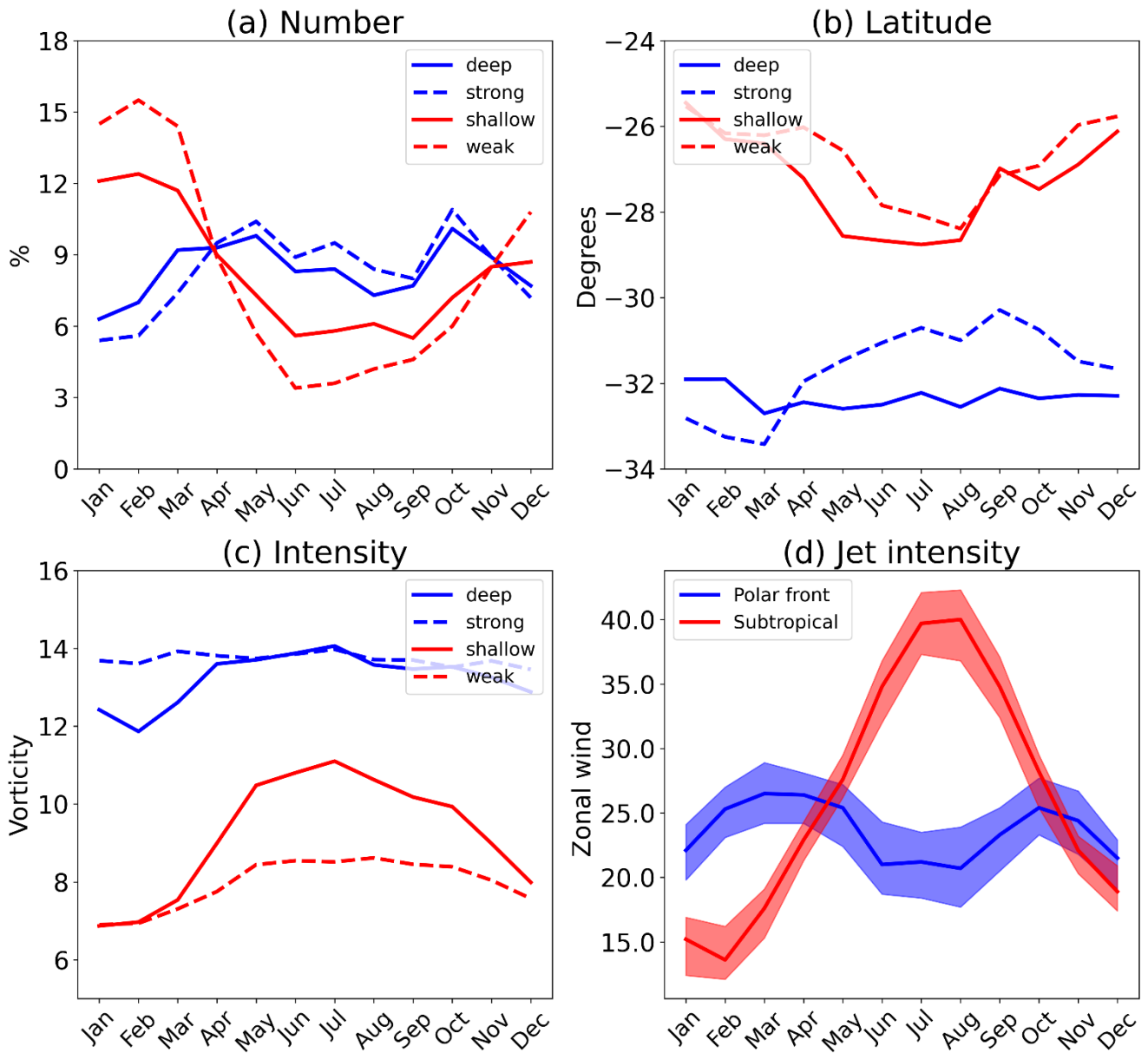


Figure 1: Track density (shaded) and mean intensity (dots) for (a) deep, (b) strong, (c) shallow, and (d) weak COLs in the Southern Hemisphere. Track density is measured in number per season per unit area, where the unit area is equivalent to a 5° spherical cap ($\cong 10^6 \text{ km}^2$). Mean intensities less than $-8 \times 10^{-5} \text{ s}^{-1}$ ($-12 \times 10^{-5} \text{ s}^{-1}$) are represented in red (blue) dots.

190 Figure 2 shows the seasonal variations in the average monthly number, intensity and latitude of COLs for each of the four distinct categories. A clear correspondence in seasonality is evident between deep and strong COLs, as well as between shallow and weak types. Deep and strong COLs exhibit similar intensities (Fig. 2c), though the deepest systems display a more pronounced seasonal cycle in intensity compared to the strongest ones. Deep and strong COLs are more prevalent at 31-33°S (Fig. 2b) from autumn to spring, with two peaks in May and October (Fig. 2a). These peaks appear to be associated
195 with a semiannual oscillation in the polar front jet, albeit with two-month delay from the first peak (Fig. 2d). The half-yearly cycle in the eddy-driven jet is attributed to a response of meridional temperature and pressure gradients between middle and high latitudes which peaks during equinoctial seasons (Van Loon 1967). Our findings align with previous studies and demonstrate a similar cycle to that observed for mid-latitude COLs and Rossby wave breaking events on the 330 K isentropic surface (Ndarana and Waugh 2010, Favre et al. 2012).

200 In summer, shallow and weak COLs exhibit notably higher frequencies compared to the fewer occurrences observed in winter months. This seasonal pattern appears to be closely linked to the fluctuations in subtropical jet intensity, which experiences a decline (increase) in summer (winter). The increased (reduced) frequency of COLs appears to correspond with the weakened (intensified) subtropical jet strength in summer (winter). This association likely arises because shallow and weak COLs tend to occur more equatorward, roughly coinciding with the subtropical jet position (see Fig. 3). This aligns
205 with the idea that COLs are primarily found over regions of weakened westerly winds (Nieto et al. 1998), and this hypothesis is supported by a robust negative correlation of -0.95 (-0.97) significant at 95% between shallow (weak) COLs and subtropical jet intensity.

Overall, there exists a discernible relationship between upper-tropospheric intensity of COLs and their vertical depth, establishing both classifications as pertinent parameters for assessing the vertical structure of these phenomena. The
210 association of deeper COLs with stronger cyclonic vorticity can be attributed to geostrophic balance and the vertical coupling of atmospheric motions. Enhanced upper-tropospheric circulations induce increased vertical motions and static stability anomalies, resulting in the formation of deeper vertical structures. To maintain consistency and simplicity in our analysis, our subsequent investigations will solely concentrate on the classification based on COL depth.



215 **Figure 2:** Zonal monthly mean characteristics of COLs categorized by deep, strong, shallow and weak for: a) number, b) latitude reached at the time of maximum intensity, and c) maximum intensity at 300-hPa vorticity (scaled by $-1 \times 10^{-5} \text{ s}^{-1}$). d) Intensity of subtropical and polar front jets as represented by the climatological 300-hPa zonal mean zonal wind at 25°S-35°S and 50°S-65°S, respectively.

3.3 Seasonal variations in Jet-COL interactions

220 The interplay between COLs, jet streams, and Rossby wave breaking has been documented in previous studies (Ndarana and
Waugh 2010, Barnes et al. 2021). To unravel this relationship further and elucidate how jets influence COL deepening, we
present seasonal mean maps of upper-level zonal winds and track density for deep and shallow COLs, as illustrated in Figure
3. A distinct polar front jet, often referenced as the mid-latitude jet in literature, is apparent from the South Atlantic to the
South Pacific oceans throughout the year, exhibiting a poleward spiraling pattern. In the Australia-New Zealand sector, the
225 well-known split jet flow becomes more pronounced during the cool season due to a stronger subtropical jet (Fig. 3c). This
pattern results in weak westerlies between the jets, inducing anticyclonic vorticity on the equatorward side of the subtropical
jet and cyclonic vorticity poleward (refer to Fig. S2 in Suppl. Material).

~~As previously discussed, deep-Deep COLs tend to be situated occur~~ at more poleward latitudes ~~–~~and typically near the
equatorward exit region of the polar front jet. This is particularly noticeable around Australia ~~throughout the year~~, albeit with
230 some seasonal and spatial variations. During winter, COLs are less frequent but more intense than other seasons (see Fig. 2),
~~likely due to an which may be due to an~~ intense subtropical jet, which generates cyclonic vorticity anomalies over its
poleward side. Conversely, the subtropical jet is weak or absent in summer, ~~leading to when~~ a higher occurrence of shallow,
weak COLs ~~is observed, particularly closer to the equator and~~ over the oceans ~~and closer to the equator compared to deep~~
~~systems~~. Interestingly, deep COLs peak in autumn and spring, coinciding with a strengthened polar front jet ~~which reaches~~
235 ~~reaching~~ a comparable magnitude to the subtropical jet. Additionally, during ~~the~~ transitional seasons, a secondary maximum
in deep COLs is observed near the west coast of South America, particularly in spring when the maximum density occurs
with reduced zonal flow at the end of the polar front jet on the poleward side of the subtropical jet.

Our findings suggest that ~~the position and strength of the jet streams influence the vertical structure of COL, the subtropical~~
~~and polar front jets affect COLs differently~~. ~~While the polar front jet seems to favor the COL deepening, the subtropical jet~~
240 ~~emerges as a key mechanism for their intensification~~. It is notable that while Rossby wave breaking and COLs manifest over
~~reduced zonal flow which generally occur in regions of weak climatological zonal winds, the mechanisms conducive for~~
~~COL deepening/intensification are more likely in the proximity of jets~~. This is supported by earlier observations ~~indicating~~
~~that of~~ a stronger polar front jet ~~leading-leads~~ to a more pronounced dipole pattern with enhanced cyclonic and anticyclonic
vorticity anomalies (Bals-Elshol et al. 2001). ~~A more detailed discussion on the influence of jet streams in COLs will be~~
245 ~~provided in the following sections~~.

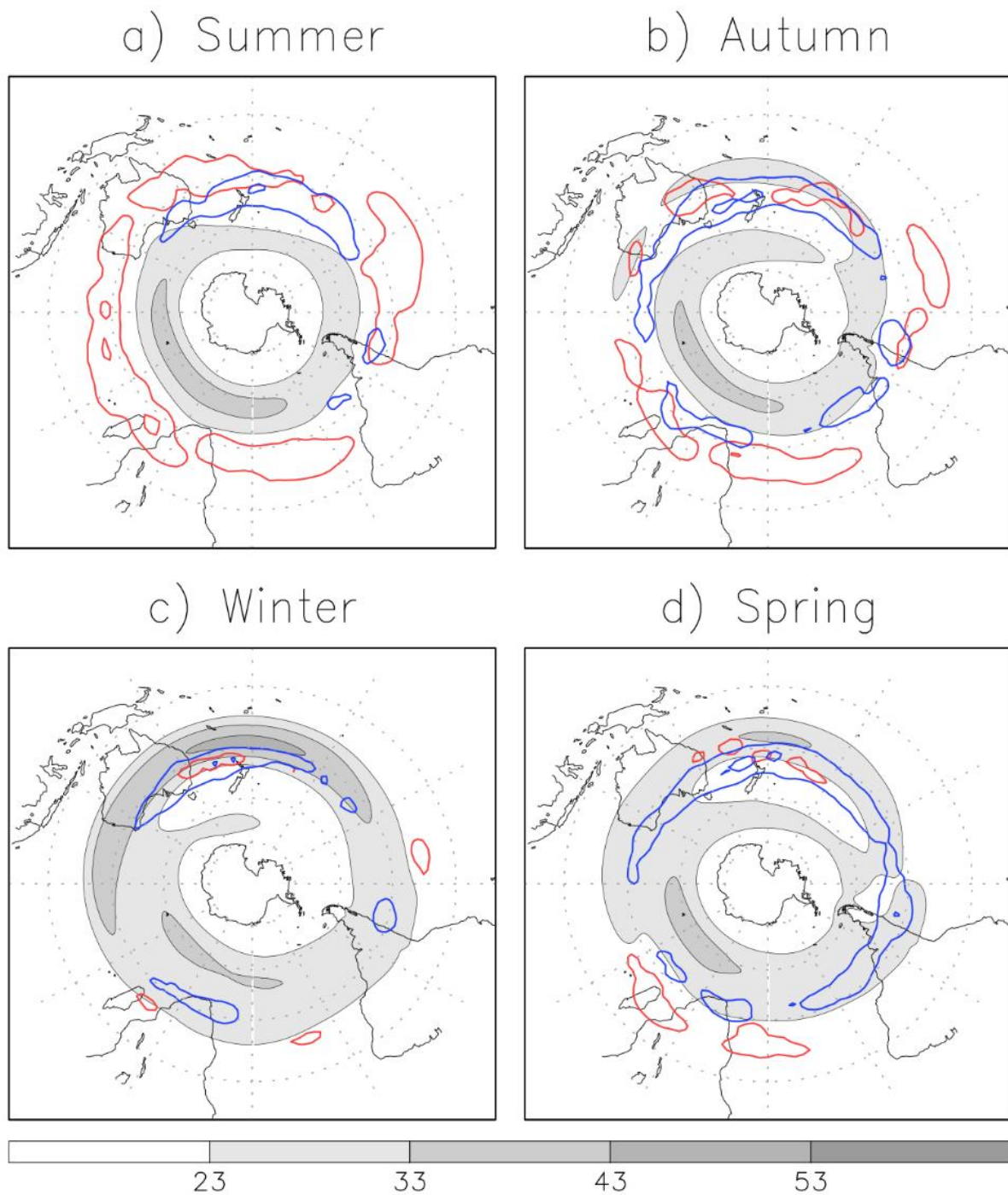


Figure 3: Zonal mean wind (shaded) and track density for deep COLs (blue contour) and shallow COLs (red contour) in the Southern Hemisphere for a) Summer (DJF), b) Autumn (MAM), c) Winter (JJA) and d) Spring (SON). Unit is as in Fig. 1

for track density, and $\text{m}\cdot\text{s}^{-1}$ for zonal wind. Track densities are plotted for interval contours of 4 units. All fields are represented at the 300-hPa level.

3.4 Distinct effects of polar front and subtropical jets on COL depths

To further investigate the influence of jets on COLs, scatter plots are employed to visualize the relationship ~~between COLs and across~~ different jet intensities, as given in Figure 4. ~~Following the approach detailed in Section 2.4, we found Deep COLs exhibit~~ a moderate positive correlation ~~between COL number with the and~~ polar front jet intensity ($r = 0.47$ at 99% confidence level), ~~indicating implying~~ that ~~an~~-intensifying polar front jet ~~promotes tends to result in an~~ increased occurrence ~~in of~~ deep COLs. This correlation accounts for approximately 22% of the variability in deep COLs. Shallow COLs also show a positive correlation with the polar front jet intensity, but ~~it is~~ weaker than that for deep COLs ($r = 0.25$, $p < 0.01$), explaining only 6% of their variability. Considering the subtropical jet (Fig. 4b), ~~there seems to be almost~~ no significant relationship ~~to with~~ the occurrence of deep COLs ~~is observed, with an insignificant correlation coefficient and a trend line that suggests no meaningful association~~. However, ~~for shallow COLs, there exists~~ a significant negative correlation of 0.75 (99% confidence level), ~~indicating indicates~~ that intensified subtropical jet is related to ~~reduced reduction in~~ shallow COLs. Approximately 56% of the variability in shallow COLs can be attributed to changes in subtropical jet intensity, aligning with their seasonal variations, ~~(as referred as illustrated in to~~ Fig. 2).

While ~~a negative correlation is observed between the subtropical jet intensity and the number of shallow COLs, our analysis reveals a notable positive correlation between the intensity of both shallow and deep COLs and the subtropical jet. This suggests that the subtropical jet likely plays a role in influencing the system intensity, as depicted in Figure 4d. However, our findings indicate no significant relationship between the intensity of COLs and the polar front jet (Figure 4c), implying that the polar front jet the relationship between COL intensity and jet intensity has been examined in this study, no significant correlations were found. This suggests that jets primarily influences~~ the frequency rather than the intensity of COLs.

These differential effects ~~are likely due to arise from~~ the distinct ~~positions and~~ roles ~~that of both~~ polar front and subtropical jets ~~play in within~~ the large-scale atmospheric circulation. The polar front jet, primarily occurring at mid- and high-latitudes, is an eddy-driven jet associated with ~~strong enhanced~~ temperature gradients and baroclinicity. In contrast, the subtropical jet, situated around 25° – 30° S, arises from the momentum flux of the meridional circulation at the Hadley cell edge. ~~The results of this study corroborate previous findings regarding the formation of COLs under reduced zonal wind. However, it is important to emphasize that the presence of a nearby jet is crucial for providing energy necessary for the intensification and/or deepening of the system. A more detailed discussion on the jet-COL interaction will be provided in the next section. While the subtropical jet clearly influences shallow COLs that occur more often equatorward, the polar front jet appears to act as a precondition for deepening COLs at more poleward latitudes.~~

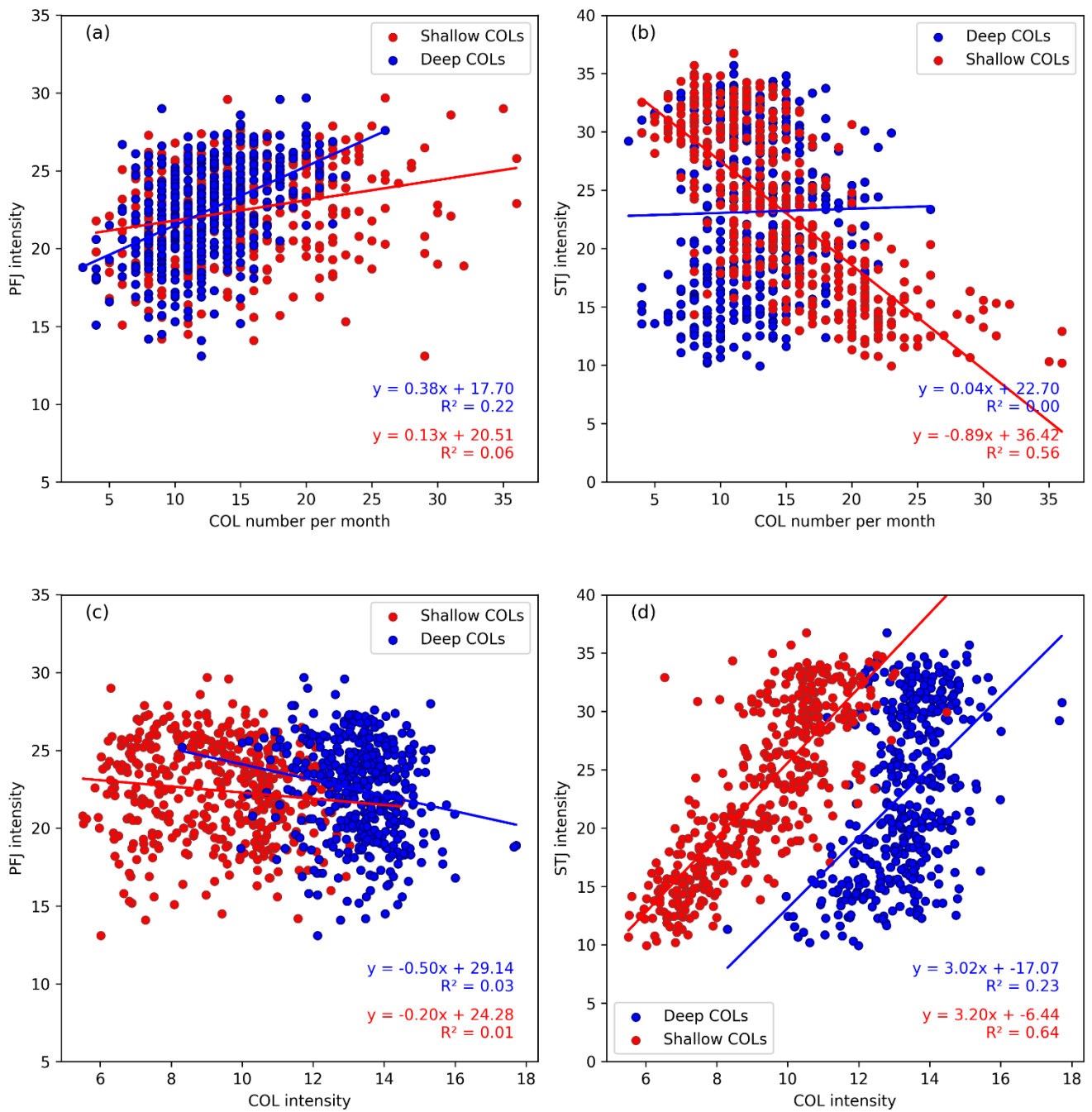


Figure 4: Scatter plots indicating the relationships between monthly mean COL number and jet intensity for (a) polar front jet and (b) subtropical jet, and COL intensity and jet intensity for (c) polar front jet and (d) subtropical jet. Deep and shallow

COLs are depicted by blue and red colors, respectively. Unit is in m.s^{-1} ~~m/s~~ for jet intensity and 10^{-5} s^{-1} for COL intensity
285 (scaled by -1).

3.5 Shallow COLs vs deep COLs: contrasting from the energetics point of view

When it comes to unraveling the intricate mechanisms behind the deepening of COLs, understanding the role of specific mechanisms in determining their vertical extent can be aided by examining their energetics. Early studies have investigated the dynamical mechanisms of COLs by examining their vertically integrated energy budgets (Gan and Piva 2013, 2016,
290 Ndarana et al. 2020, Pinheiro et al. 2022). In this study, we adopt a similar approach but direct our attention towards the two primary contributing mechanisms of the EKE budget: baroclinic conversion and ageostrophic flux convergence. We compare deep and shallow COLs and investigate the possible implications of energetics for their deepening.

Figures 5 and 6 show the temporal evolution of composite shallow and deep COLs, respectively, for horizontal and vertical fields. The four stages described in the conceptual model of Nieto et al. (2005) and shown in Pinheiro et al. (2021) are seen
295 to be reproduced for shallow and deep COLs, involving the following stages: upper-level trough (-48h), tear-off (-24h), cut-off (0), and decay or dissipation (+24 and +48h). Time is referenced to the time of maximum intensity in the 300 hPa vorticity.

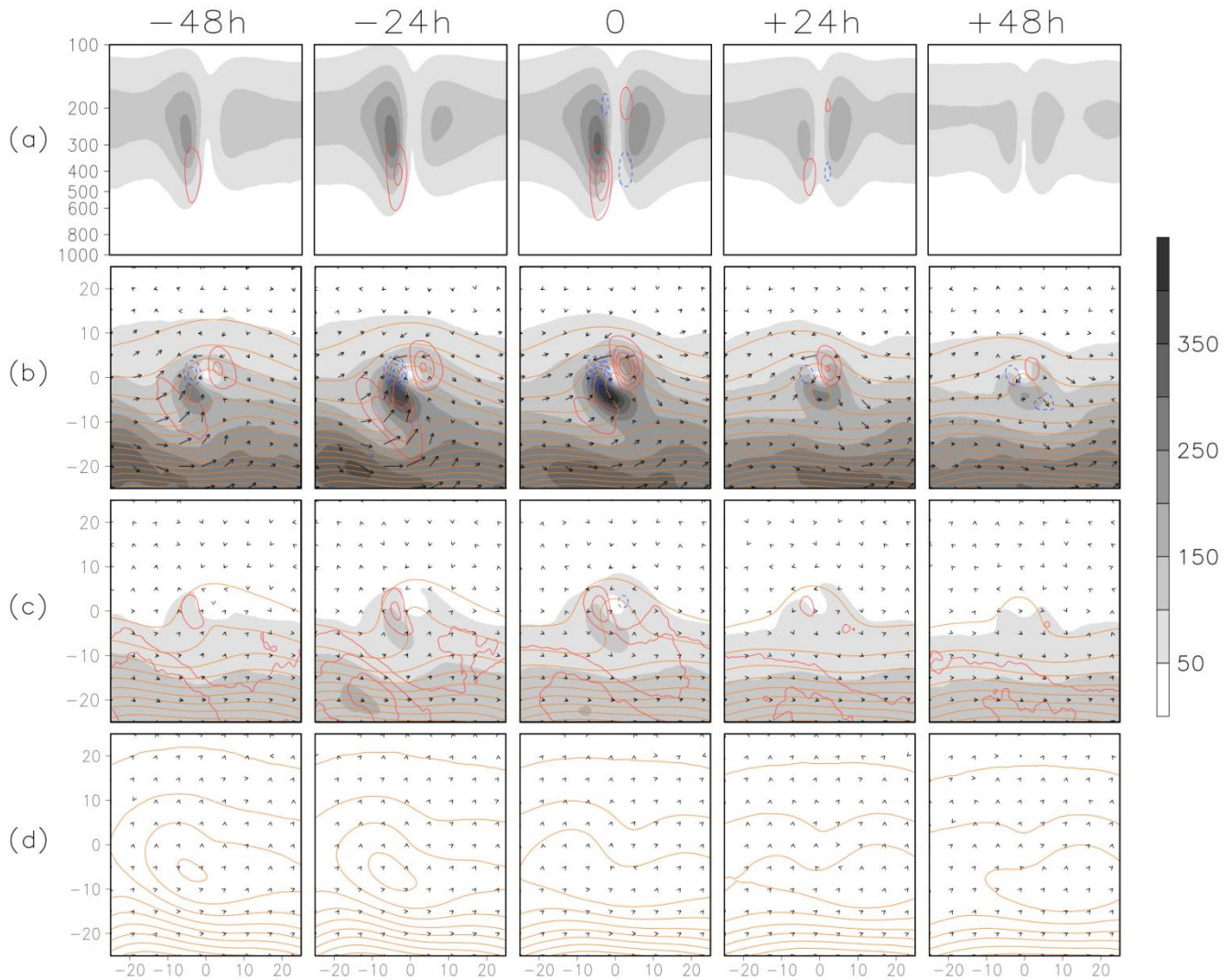


Figure 5 Temporal evolution of shallow COLs in the Southern Hemisphere relative to the time and space of maximum intensity in ξ_{300} . The panels depict: (a) vertical cross-sections of total EKE (shaded) with baroclinic conversion (contour); (b) vertically integrated ageostrophic flux convergence (contour) with EKE (shaded), geopotential height (orange line) and ageostrophic fluxes (vectors) at 300 hPa; (c) vertically integrated baroclinic conversion (red contour) with EKE (shaded), geopotential height (orange line) and ageostrophic fluxes (vectors) at 500 hPa; and (d) EKE, geopotential height (orange line) and ageostrophic fluxes (vectors) at 1000 hPa. Contours represent 0.003×10^{10} Joule. s^{-1} for integrated quantities, 50 gpm for geopotential height at 300 and 500 hPa, and 20 gpm for geopotential height at 1000 hPa, while total EKE is indicated by 10^9 Joule.

In the upper-level trough and tear-off stages of shallow COLs ($T = -48h$ and $T = -24h$ in Fig. 5), a poleward jet located upstream of the ridge axis, i.e., west of the COL, acts as the primary energy source for the COLs. Concurrently, ageostrophic fluxes transport EKE northeastward from the poleward jet to the rear side of the COLs, forming an energy center downstream of the ridge axis, referred to as the western energy center. As the trough-ridge system deepens in an anticyclonic orientation, the western energy center expands due to the convergence of ageostrophic fluxes and positive baroclinic conversion that arises downstream of the ridge axis, driven by descending cold air (not shown). The eastward propagation of the poleward jet and its increasing zonal flow give rises to anticyclonic barotropic shear flow and subsequent potential vorticity overturning, as documented in prior studies (Ndarana et al. 2021, Pinheiro et al. 2022). The COL decay occurs when the poleward jet shifts to the east, ceasing to provide energy to the system, as shown in Fig. S3 of Suppl. Material. Differences in the structure and lifecycle of shallow and deep COLs are observed. While shallow systems exhibit a gradual weakening and anticyclonic circulation at the surface, deep COLs display a multi-level interconnected vortex structure, as illustrated in Figure 6. During their development phase, deep COLs systems exhibit stronger ageostrophic fluxes along the ridge axis, and larger baroclinic conversion on the upstream poleward jet compared to shallow systems. ~~This enhanced activity is accompanied by momentum transfer from the upstream poleward jet into the COL. The positioning of deep COLs near the equatorward exit region of a strong polar front jet (as depicted in Fig. 3) intensifies the convergence of ageostrophic fluxes, thereby increasing baroclinic conversion. Consequently, this amplification leads to heightened vertical motions and deeper circulation. This distinct feature is prominently observed within deep COLs, distinguishing them from their shallow counterparts. This robust characteristic, linked to the stationary nature of Rossby waves, distinguishes deep COLs from typical mid-latitude disturbances (Chang 2000, Danielson et al. 2006).~~ Another distinct aspect of deep COLs arises during the cut-off stage ($T = 0$ onward), when enhanced vertical motions drive increased baroclinic conversion towards the east and near the surface. The interaction between upper- and lower-tropospheric eddies, as in mid-latitude baroclinic waves (Hoskins and Karoly 1981, Trenberth 1991, Nakamura 1992), suggests an eddy feedback mechanism between the eddy-driven jet and lower-level thermal forcing (Kushner et al. 2001, Deser et al. 2004, Lu et al. 2014). This feedback likely arises due to thermal wind adjustment (Ring and Plumb 2007, Nie et al. 2016). Additionally, downward eddy momentum activity fluxes also likely contribute to vertical energy propagation, as observed in earlier studies (Trenberth 1991, Rivière et al. 2015). During the decay stage of deep COLs, ageostrophic fluxes and eddy feedback mechanisms facilitate the downstream export of EKE, maintaining and shifting the jet eastward (refer to Fig. 6 at $T = +48$). The stronger baroclinic processes and ageostrophic fluxes observed in deep systems explain their longer lifetimes (4.7 days) compared to shallow COLs (3.3 days), due to a greater interaction between mechanisms operating at various levels within these systems.

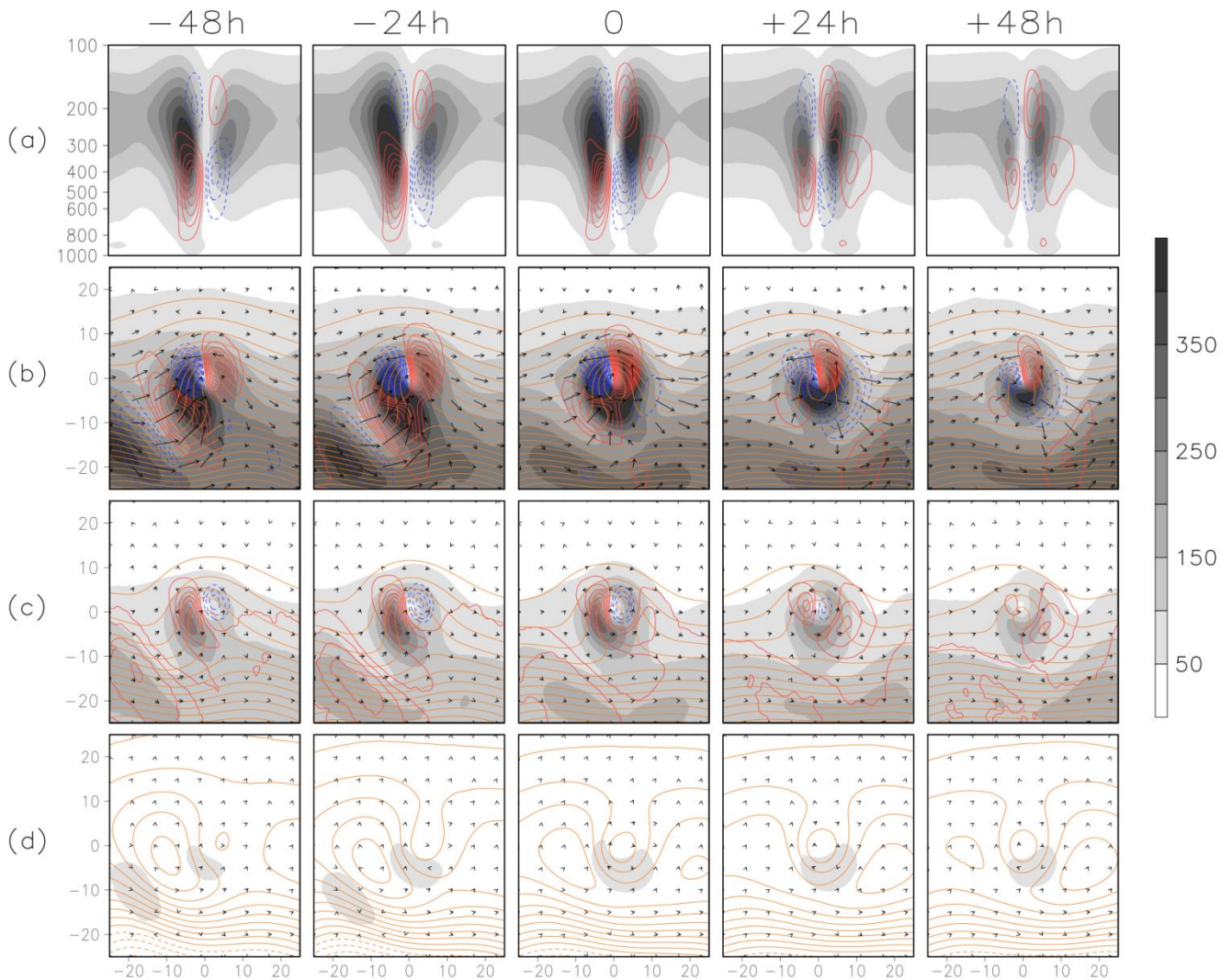


Figure 6: Same as Figure 5 but for deep COLs in the Southern Hemisphere. Dashed lines at the bottom indicate negative geopotential height at 1000 hPa.

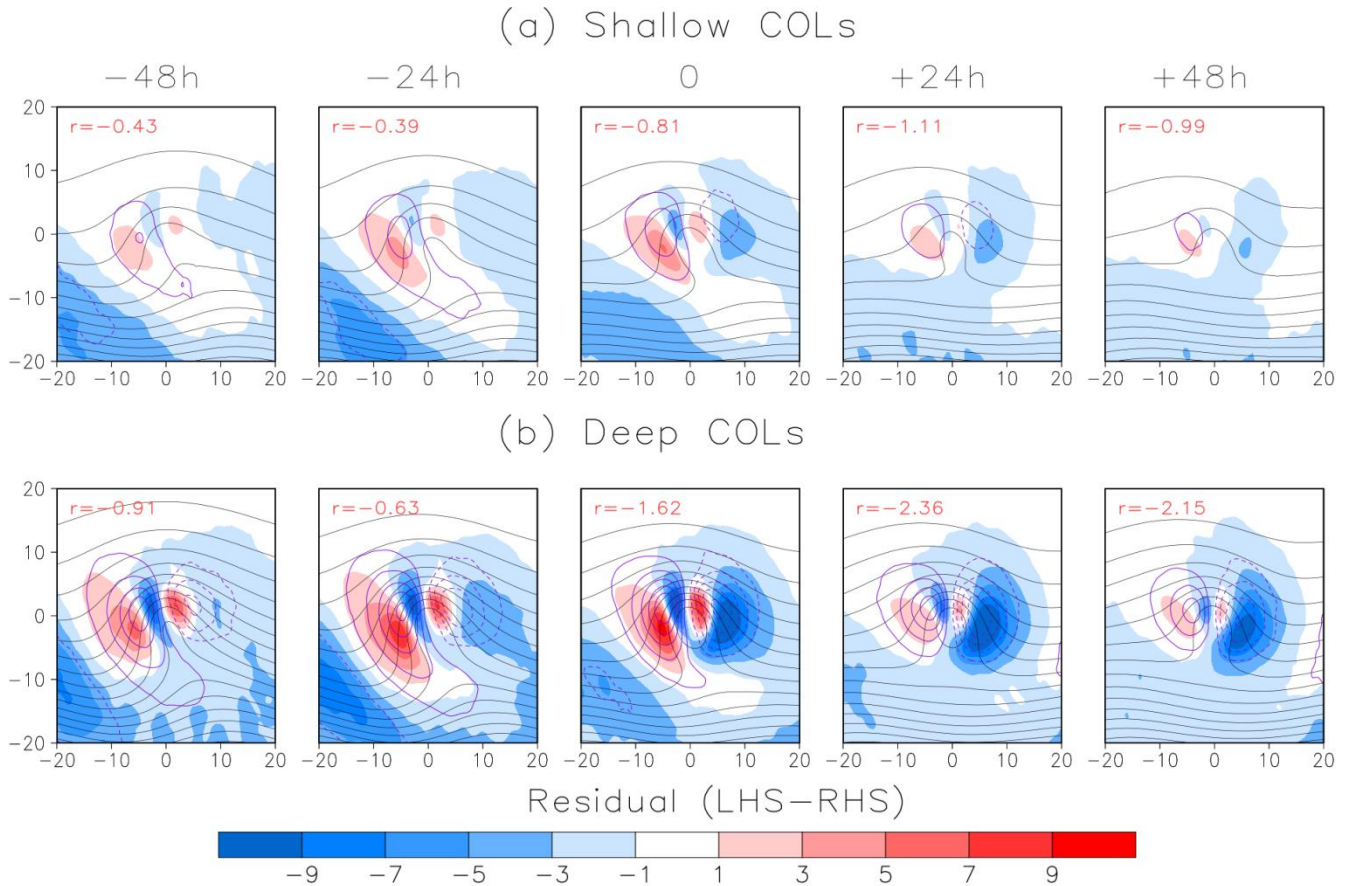
340 A key feature of our approach lies in its consideration of pre-existing low-level cyclones linked to COLs. This is achieved by using a relatively short temporal threshold for matching, which significantly expands our ability to detect a wide range of multi-level stacked lifecycles. While the results exhibit some sensitivity to the chosen method, they remain remarkably consistent with previous observations of rapid vertical evolution of potential vorticity cut-offs, which typically reach their maximum extent roughly one day after genesis (Portmann et al. 2021). Furthermore, the observed characteristics of deep COLs closely align with patterns identified in Catto (2018) for Cluster 3 and Sinclair and Revell (2000) for Class T in the Australia and New Zealand region, with a cyclone originating directly beneath a deep upper-level trough or a cut-off potential vorticity streamer.

345

3.5 Impacts of diabatic processes on residual energy and its influence in the deepening of COLs

Numerous studies have demonstrated the influential role of diabatic processes, such as radiation, latent heating and planetary boundary layer processes, in the development of synoptic-scale systems (Davis and Emanuel 1991, Stoelinga, 1996). As pointed out above and discussed in some detail by Pinheiro et al. (2022), inaccuracies arising from the misrepresentation of diabatic heating in reanalyses can introduce uncertainties into the energetic framework. Therefore, investigating the influences of diabatic processes on residual energy can enhance our understanding of their impact on the deepening mechanisms of COLs.

Figure 7 shows the spatial and temporal distribution of residual energy in composites of shallow and deep COLs. The patterns of residual energy exhibit similarities in shallow and deep COLs, with significantly higher magnitudes observed in deep systems. Negative residual energy dominates throughout the lifecycle of both shallow and deep COLs, as indicated by the red values in Figure 7, representing the residual integrated volume within a 15-degree radial distance centered on the vortex center.



360

Figure 7: Temporal evolution of the residual energy in Joule (shaded) scale by 10^9 , geopotential height (black contour) at 300 hPa for contour intervals 50 gpm, and vertical velocity (purple contour) for contour intervals $0.05 \text{ Pa}\cdot\text{s}^{-1}$, where solid (dashed) contours indicate positive (negative) values. Red values represent the residual energy vertically averaged within a 15-degree spherical cap region centered on the COL location.

365 While negative residual energy prevails, it is worth noting that positive values emerge west of the COLs during the upper-level trough and tear-off stages. Conversely, negative residual energy is observed to the east of the COLs during the cut-off and decay stages. This contrasting pattern is particularly pronounced in deep COLs, consistent with previous findings on strong COLs (see Figure 4 of Pinheiro et al. 2022).

The residual energy suggests the existence of development mechanisms that are either not considered in our approach or
370 inadequately represented in the reanalysis data. A common issue lies in accurately representing diabatic processes, such as radiative cooling and latent heating, which pose challenges for reanalysis. A significant negative residual, particularly pronounced in deep COLs, is observed east of COLs where enhanced ascent and convection can introduce additional energy sources and unresolved phenomena contributing to the residual. In contrast, positive residual prevails along the western COL edge, possibly influenced by sinking air that promotes radiative cooling.

375 Uncertainties in measurement techniques, including inhomogeneous observations, analysis increment, and model parameterizations, are especially important in regions of intense convection. Although diabatic heating does not directly influence the EKE budget as it is not included in the energetic framework, errors in the reanalysis due to the misrepresentation of these processes (see <https://confluence.ecmwf.int/display/FUG/Section+4.2+Analysis+Increments>) can lead to inconsistencies in the energetic analysis, as discussed by Pinheiro et al. (2022). Our results suggest that COLs that are
380 more strongly dependent on diabatic processes are less well represented by reanalysis data. Additionally, the contribution of friction remains an unknown factor, challenging to quantify directly. It is possible that stronger systems have a heightened residual contribution from frictional effects, although this remains an area of ongoing investigation.

4 Discussion and conclusions

This study has introduced a track matching algorithm applied to ERA-Interim reanalysis for accurate estimation of COL
385 depth. Our findings highlight that the accuracy of COL depth estimation is primarily influenced by the temporal overlap (χ) between tracks at different pressure levels. We found that employing $\chi = 1\%$ with a mean separation distance of 5° geodesic provides a feasible approach for capturing COLs during specific lifecycle stages. Notably, our method reveals a lower proportion of deep COLs compared to previous studies (Porcù et al. 2007, Barnes et al. 2021). This discrepancy arises from differences in methods, where our vorticity-based approach detected a larger number of systems, leading to a relatively
390 smaller frequency of deep COLs. However, vorticity-based identification offers advantages over geopotential data as it avoids subjective threshold adjustments across pressure levels and is more sensitive to weaker COLs, providing a more consistent method for analyzing their vertical structure.

Further, we investigated the contrasting characteristics of COLs based on their vertical depth and intensity, categorizing them into four main types: shallow, deep, weak, and strong. Deep and strong COLs exhibit similar distribution patterns, predominantly concentrated in Australia and the southwestern Pacific. They are more intense and frequently found poleward of the subtropical jet, displaying a semi-annual oscillation peaking in autumn and spring. In contrast, shallow and weak COLs are less intense, situated more equatorward and with increased frequencies in summer. ~~Our findings show the~~
395 ~~However, despite these similarities, existence of a direct link between upper tropospheric intensity and vertical depth of~~
~~COLs, underscoring the significance of these classifications in understanding these atmospheric phenomena approximately~~
400 ~~20-30% of deep and shallow COLs align with the 50th percentile of weakest and strongest systems, respectively. The~~
~~variability within these classifications underscores the complexity inherent in COL dynamics, highlighting the need for~~
~~future research to explore the interdependencies among these categories.~~

A particular novel aspect of our study is the differential impact of both subtropical and polar front jets on COLs ~~the distinct~~
~~role of the polar front and subtropical jets on different COL types.~~ While COLs typically originate in regions characterized
405 ~~by weak zonal flow, the proximity of a jet streak becomes crucial for the system intensification and/or deepening. Our~~
~~findings reveal that the COL deepening is more probable in the presence of a robust upstream polar front jet. This~~
~~phenomenon is driven by the strengthening of the polar front jet, which enhances convergence of ageostrophic fluxes and~~
~~baroclinic conversion, resulting in intensified vertical motions and a deeper cyclonic circulation. Deep COLs are~~
~~significantly affected by the polar front jet, with a positive correlation observed between their occurrence and the jet~~
410 ~~intensity. This means~~ Despite a stronger polar front jet ~~tends to lead to~~ contributing to more frequent deep COLs, although
~~our analysis does not show a no significant correlation was found regarding with~~ COL intensity. Conversely, the subtropical
jet emerges as an important mechanism for system intensification possibly due to the presence of cyclonic vorticity on the
poleward side of the jet. This is supported by the observed small-scale jet stream equatorward of COLs, as noted by Ndarana
et al. (2021). Other factors such as wind shear along the subtropical jet edge may contribute to the intensity of COLs.
415 ~~Nevertheless, further investigations are need to fully understand these relationships. shallow COLs show a significant~~
~~negative correlation with the subtropical jet, indicating that their occurrences decrease with the jet intensification.~~
~~Understanding these differential jet COL interactions is crucial for comprehension of atmospheric dynamics, improving~~
~~weather forecasting accuracy.~~

~~Unlike shallow systems, which weaken gradually towards the surface, deep COLs exhibit a multi-level vortex structure~~
420 ~~interconnected across different levels. Our findings suggest that the deep structure arises from an eddy feedback mechanism~~
~~in some COLs due to the interaction between upper and lower tropospheric eddies. This feedback mechanism is initiated by~~
~~a stronger upstream poleward jet, which induces more significant ageostrophic fluxes into the rear side of the COL system.~~
~~Moreover, this process is accompanied by enhanced baroclinic conversion occurring west and east of the COLs. These~~
~~stronger baroclinic processes and ageostrophic fluxes contribute to longer lifetimes and greater interaction between~~
425 ~~mechanisms operating at different levels within deep COL systems.~~

Our findings suggest that the deepening process is also influenced by diabatic processes which enhance vertical motions and lead to increased baroclinic conversion around the COLs. These processes contribute to longer lifetimes and greater interaction between mechanisms operating at different levels within deep COL systems. However, ~~A particular issue in our study is~~ the misrepresentation of diabatic processes in reanalysis ~~is a particular issue that, as they~~ affect the residual energy, ~~leading to uncertainties and possibly influence the deepening of COLs.~~ Negative residual energy dominated throughout the ~~shallow and deep~~ COL lifecycles, notably higher in deep systems. The presence of negative (positive) residual energy east (west) of the COLs points to the existence of dissipation (intensification) mechanisms not adequately represented in the reanalysis data, possibly related to latent heating (radiative cooling), as observed in Cavallo and Hakim (2010). Accurately representing diabatic processes in reanalyses is essential to maintain consistency in the energetic analysis and understand their role in deepening COLs. Therefore, it is crucial to re-evaluate COLs and the EKE budget whenever new reanalysis products such as ERA5 become available in future work.

~~In summary, our~~ research emphasizes the importance in classifying COL for understanding their key features and reveals their intricate relationships with jet streams. However, further development of the energetic framework, incorporating vertical ageostrophic fluxes as in Rivière et al. (2015), remains essential for comprehensively elucidating the eddy feedback mechanisms.

Acknowledgements

We would like to thank CNPq (Conselho Nacional de Desenvolvimento Científico e Tecnológico, Grant: 151225/2023-0) and FAPESP (Fundação de Amparo à Pesquisa do Estado de São Paulo, Grant: 2023/10882-2) for their support and funding throughout this research. The authors have employed artificial intelligence (AI) to enhance the quality of the paper's writing.

References

Bals-Elsholz, T. M., Atallah, E. H., Bosart, L. F., Wasula, T. A., Cempa, M. J., and Lupo, A. R.: The wintertime Southern Hemisphere split jet: Structure, variability, and evolution. *Journal of climate*, 14, 4191–4215, 2001.

Barnes, M. A., Ndarana T., and Landman, W. A.: Cut-off lows in the Southern Hemisphere and their extension to the surface, *Climate Dynamics*, 56, 3709–3732, doi:10.1007/s00382-021-05662-7, 2021.

Bengtsson, L., Hodges, K. I., and Keenlyside, N.: Will extratropical storms intensify in a warmer climate?, *Journal of Climate*, 22, 2276–2301, doi:10.1175/2008JCLI2678.1, 2009.

Catto, J. L.: A new method to objectively classify extratropical cyclones for climate studies: Testing in the southwest Pacific region. *Journal of Climate*, 31, 4683–4704, doi:10.1175/JCLI-D-17-0746.1, 2018.

Cavallo, S. M. and Hakim, G. J.: Composite structure of tropopause polar cyclones, *Monthly Weather Review*, 138, 3840–3857, doi:10.1175/2010MWR3371.1, 2010.

- ~~Chang, E. K.: Wave packets and life cycles of troughs in the upper troposphere: Examples from the Southern Hemisphere summer season of 1984/85. *Monthly Weather Review*, 128, 25–50, doi: 10.1175/1520-0493(2000)128<0025:WPALCO>2.0.CO;2, 2000~~
- 460 Davis, C. A. and Emanuel, K. A.: Potential vorticity diagnostics of cyclogenesis, *Monthly Weather Review*, 119, 1929–1953, doi:10.1175/1520-0493(1991)119<1929:PVDOC>2.0.CO;2, 1991.
- ~~Danielson, R. E., Gyakum, J. R., Straub, D. N.: A case study of downstream baroclinic development over the North Pacific Ocean. Part II: Diagnoses of eddy energy and wave activity. *Monthly weather review*, 134, 1549–1567, doi:10.1175/MWR3173.1, 2006~~
- 465 Dee, D. P., et al.: The ERA-Interim reanalysis: configuration and performance of the data assimilation system, *Quarterly Journal of the Royal Meteorological Society*, 137, 553–597, doi:10.1002/qj.828, 2011.
- Favre, A., Hewitson, B., Tadross, M., Lennard, C., Cerezo-Mota, R.: Relationships between cut-off lows and the semiannual and southern oscillations. *Climate dynamics*, 38, 1473–1487, doi:10.1007/s00382-011-1030-4, 2012
- Frank, N. L.: On the energetics of cold lows. In: Symposium on tropical meteorology. Proceedings... American Meteorological Society EIV1-EIV6, 1970.
- 470 Deser, C. et al.: The effects of North Atlantic SST and sea ice anomalies on the winter circulation in CCM3. Part II: Direct and indirect components of the response. *Journal of Climate*, 17, 5, 877–889, doi:10.1175/1520-0442(2004)017<0877:TEONAS>2.0.CO;2, 2004.
- Gan, M. A. and Dal Piva, E.: Energetics of a southeastern Pacific cut-off low, *Atmospheric Science Letters*, 14, 272–280, doi:10.1002/asl2.451, 2013.
- 475 Gan, M. A. and Dal Piva, E.: Energetics of southeastern Pacific cut-off lows, *Climate Dynamics*, 46, 3453–3462, doi:10.1007/s00382-015-2779-7, 2016.
- Garreaud, R. D. and Fuenzalida, H. A.: The influence of the Andes on cutoff lows: a modeling study, *Monthly Weather Review*, 135, 1596–1613, doi:10.1175/MWR3350.1, 2007.
- 480 Hodges, K. I. Feature tracking on the unit sphere. *Monthly Weather Review*, 123, 3458–3465, doi:10.1175/1520-0493(1995)123<3458:FTOTUS>2.0.CO;2, 1995.
- Hodges, K. I.: Spherical nonparametric estimators applied to the UGAMP model integration for AMIP, *Monthly Weather Review*, 124, 2914–2932, doi:10.1175/1520-0493(1996)124<2914:SNEATT>2.0.CO;2, 1996.
- Hodges, K. I.: Adaptive constraints for feature tracking, *Monthly Weather Review*, 127, 1362–1373, doi:10.1175/1520-0493(1999)127<1362:ACFFT>2.0.CO;2, 1999.

- 485 Hodges, K. I., Boyle, J., Hoskins, B. J., and Thorncroft, C.: A comparison of recent reanalysis datasets using objective feature tracking: storm tracks and tropical easterly waves, *Monthly Weather Review*, 131, 2012–2037, doi:10.1175/1520-0493(2003)131<2012:ACORRD>2.0.CO;2, 2003.
- Hodges, K. I., Lee, R. W., and Bengtsson, L.: A comparison of extratropical cyclones in recent reanalyses ERAI, NASA MERRA, NCEP CFSR, and JRA-25, *Journal of Climate*, 24, 4888–4906, doi:10.1175/2011JCLI4097.1, 2011.
- 490 Hodges, K., Cobb, A., Vidale, P. L., Hodges, K., Cobb, A., and Vidale, P. L.: How well are tropical cyclones represented in reanalysis datasets?, *Journal of Climate*, 30, 5243–5264, doi:10.1175/JCLI-D-16-0557.1, 2017.
- Hoskins, B. J., Karoly, D. J.: The steady linear response of a spherical atmosphere to thermal and orographic forcing. *Journal of the atmospheric sciences*, 38, 1179–1196, doi:10.1175/1520-0469(1981)038<1179:TSLROA>2.0.CO;2, 1981
- Kushner, P. J., Held, I. M., Delworth, T. L.: Southern Hemisphere atmospheric circulation response to global warming. 495 *Journal of Climate*, 14, 2238–2249, doi:10.1175/1520-0442(2001)014<0001:SHACRT>2.0.CO;2, 2001
- Lakkis, S. G., Canziani, P., Yuchechen, A., Rocamora, L., Caferri, A., Hodges, K., O'Neill, A. A 4D feature-tracking algorithm: a multidimensional view of cyclone systems. *Quarterly Journal of the Royal Meteorological Society*, 145, 395–417, doi:10.1002/qj.3436, 2019.
- Lim, E. P., Simmonds, I.: Southern Hemisphere winter extratropical cyclone characteristics and vertical organization 500 observed with the ERA-40 data in 1979–2001. *Journal of Climate*, 20, 2675–2690, doi:10.1175/JCLI4135.1, 2007.
- Llasat, M. C., Martín, F., and Barrera, A.: From the concept of “Kaltlufttropfen”(cold air pool) to the cut-off low. The case of September 1971 in Spain as an example of their role in heavy rainfalls, *Meteorology and Atmospheric physics*, 96, 43–60, doi:10.1175/JCLI-D-16-0557.1, 2007.
- Lu, J., Sun, L., Wu, Y., Chen, G.: The role of subtropical irreversible PV mixing in the zonal mean circulation response to 505 global warming–like thermal forcing. *Journal of Climate*, 27, 2297–2316, doi:10.1175/JCLI-D-13-00372.1, 2014
- Marshall G. J.: Trends in the Southern Annular Mode from observations and reanalyses. *Journal of Climate*, 16: 4134–4143.
- McInnes, K. L. and Hubbert, G. D.: The impact of eastern Australian cut-off lows on coastal sea levels, *Meteorol. Appl.*, 8, 229–244, doi:10.1017/S1350482701002110, 2001.
- Nakamura, H.: Midwinter suppression of baroclinic wave activity in the Pacific. *Journal of Atmospheric Sciences*, 49, 1629–510 1642, doi.org/10.1175/1520-0469(1992)049<1629:MSOBWA>2.0.CO;2, 1992.
- Ndarana, T. and Waugh, D. W.: The link between cut-off lows and Rossby wave breaking in the Southern Hemisphere. *Quarterly Journal of the Royal Meteorological Society*, 136, 869–885, 2010.

- Ndarana, T., Rammopo, T. S., Chikoore, H., Barnes, M. A., and Bopape, M. J.: A quasi-geostrophic diagnosis of the zonal flow associated with cut-off lows over South Africa and surrounding oceans, *Climate Dynamics*, 55, 2631–2644, doi:10.1007/s00382-020-05401-4, 2020.
- 515
- Ndarana, T., Rammopo, T. S., Bopape, M. J., Reason, C. J., and Chikoore, H.: Downstream development during South African cut-off low pressure systems, *Atmospheric Research*, 249, 105315, doi:10.1016/j.atmosres.2020.105315, 2021.
- Nieto, R., et al.: Climatological features of cutoff low systems in the Northern Hemisphere, *Journal of Climate*, 18, 3085–3103, doi:10.1175/JCLI3386.1, 2005.
- 520
- Orlanski, I., Katzfey, J.: The life cycle of a cyclone wave in the Southern Hemisphere: eddy energy budget, *Journal of the Atmospheric Sciences*, 48, 1972–1998, doi:10.1175/1520-0469(1991)048<1972:TLCOAC>2.0.CO;2, 1991.
- Palmén, E.: Origin and structure of high-level cyclones south of the maximum westerlies, *Tellus*, 1, 22–31, doi:10.1111/j.2153-3490.1949.tb01925.x, 1949.
- 525
- Pinheiro, H. R., Hodges, K. I., Gan, M. A., and Ferreira, N. J.: A new perspective of the climatological features of upper-level cut-off lows in the Southern Hemisphere, *Climate Dynamics*, 48, 541–559, doi:10.1007/s00382-016-3093-8, 2017.
- Pinheiro, H. R., Hodges, K. I., and Gan, M. A.: Sensitivity of identifying Cut-off Lows in the Southern Hemisphere using multiple criteria: implications for numbers, seasonality and intensity, *Climate Dynamics*, 53, 6699–6713, doi:10.1007/s00382-019-04984-x, 2019.
- 530
- Pinheiro, H. R., Hodges, K. I., and Gan, M. A.: An intercomparison of Cut-off Lows in the subtropical Southern Hemisphere using recent reanalyses: ERA-Interim, NCEP-CFSR, MERRA-2, JRA-55, and JRA-25, *Climate Dynamics*, 54, 777–792, doi:10.1007/s00382-019-05089-1, 2020.
- Pinheiro, H. R., Gan, M. A., and Hodges, K. I.: Structure and evolution of intense austral Cut-off Lows, *Quarterly Journal of the Royal Meteorological Society*, 147, 1–20, doi:10.1002/qj.3900, 2021.
- 535
- Pinheiro, H. R., Hodges, K. I., Gan, M. A., Ferreira, S. H., and Andrade, K. M.: Contributions of downstream baroclinic development to strong Southern Hemisphere cut-off lows, *Quarterly Journal of the Royal Meteorological Society*, 148, 214–232, doi:10.1002/qj.4201, 2022.
- Pinto, J. R. D. and da Rocha, R. P.: The energy cycle and structural evolution of cyclones over southeastern South America in three case studies, *Journal of Geophysical Research*, 116, 1–17, doi:10.1029/2011JD016217, 2011.
- 540
- Porcù, F., Carrassi, A., Medaglia, C. M., Prodi, E., and Mugnai, A.: A study on cut-off low vertical structure and precipitation in the Mediterranean region, *Meteorology and Atmospheric Physics*, 96, 121–140, doi:10.1007/s00703-006-0224-5, 2007.

- Portmann, R., Crezee, B., Quinting, J., and Wernli, H.: The complex life cycles of two long-lived potential vorticity cut-offs over Europe, *Quarterly Journal of the Royal Meteorological Society*, 144, 701–719, doi:10.1002/qj.3239, 2018.
- 545 Portmann, R., Sprenger, M., & Wernli, H.: The three-dimensional life cycle of potential vorticity cutoffs: a global and selected regional climatologies in ERA-interim (1979–2018). *Weather and Climate Dynamics*, 2, 1–52, doi:10.5194/wcd-2-507-2021, 2021.
- Rivière, G., Arbogast, P., Joly, A. Eddy kinetic energy redistribution within windstorms Klaus and Friedhelm. *Quarterly Journal of the Royal Meteorological Society*, 141, 925–938, doi:10.1002/qj.2412, 2015.
- 550 Sakamoto, K. and Takahashi, M.: Cut off and weakening processes of an upper cold low, *Journal of the Meteorological Society of Japan*, 83, 817–834, doi:10.2151/jmsj.83.817, 2005.
- Simmonds, I. and Jones, D. A.: The mean structure and temporal variability of the semiannual oscillation in the southern extratropics. *International Journal of Climatology: A Journal of the Royal Meteorological Society*, 18, 473–504, 1998.
- Sinclair, M. R., Revell, M. J: Classification and composite diagnosis of extratropical cyclogenesis events in the southwest Pacific. *Monthly Weather Review*, 128, 1089–1105, doi:10.1175/1520-0493(2000)128<1089:CACDOE>2.0.CO;2, 2000.
- 555 Singleton, A. T. and Reason, C. J. C.: A numerical model study of an intense cutoff low pressure system over South Africa, *Monthly weather review*, 135, 1128–1150, doi:10.1175/MWR3311.1, 2007.
- Stoelinga, M. T.: A potential vorticity-based study of the role of diabatic heating and friction in a numerically simulated baroclinic cyclone, *Monthly Weather Review*, 124, 849–874, doi:10.1175/1520-0493(1996)124<0849:APVBSO>2.0.CO;2, 1996.
- 560 Trenberth, K. E.: Storm tracks in the Southern Hemisphere. *Journal of Atmospheric Sciences*, 48, 2159–2178, doi:10.1175/1520-0469(1991)048<2159:STITSH>2.0.CO;2, 1991.
- Van Loon, H.: The half-yearly oscillations in middle and high southern latitudes and the coreless winter. *Journal of Atmospheric Sciences*, 24, 472–486, 1967.

570 Appendix

See Table A.1.

Table A.1 Sensitivity of the number of ξ_{300} COLs to time overlap for each pressure level (hPa), expressed as a percentage of the total number. The overlap thresholds are 1%, 5%, 10%, 25%, 50%, 75%, and 100%.

	1%	5%	10%	25%	50%	75%	100%
300	100.0	100.0	100.0	100.0	100.0	100.0	100.0
400	80.9	80.9	80.9	80.8	79.2	66.0	11.2
500	65.5	65.5	65.5	65.1	61.9	42.9	2.2
600	51.1	51.0	50.9	50.3	45.7	25.8	0.5
700	37.7	37.7	37.5	36.9	31.6	14.9	0.2
800	28.8	28.8	28.6	28.0	23.0	9.7	0.1
900	23.1	23.0	22.9	22.3	18.1	6.9	0.0
1000	20.3	20.2	20.1	19.5	15.4	5.6	0.0

575

Code/data availability

The code used in this study is available upon request from the corresponding author for researchers interested in reproducing or extending the findings presented in the paper. The ERA-Interim reanalysis data was sourced from the ECMWF server. Please contact corresponding author's email for access to the code.

580 Author Contributions

Henri Pinheiro: Conceptualization, investigation, data curation, methodology, writing – original draft, visualization.

Kevin Hodges: Software development, writing - review and editing.

Manoel Gan: Writing - review and editing.

Competing interests

585 The authors declare no competing interests in relation to the research, authorship, or publication of this paper.