

Failure strength of glacier ice inferred from Greenland crevasses

Aslak Grinsted¹, Nicholas Mossor Rathmann¹, Ruth Mottram², Anne Munck Solgaard³, Joachim Mathiesen⁴, and Christine Schøtt Hvidberg¹

¹Physics of Ice, Climate, and Earth, Niels Bohr Institute. University of Copenhagen, Tagensvej 16, DK-2200 Copenhagen N, Denmark

²National Center for Climate Research, Danish Meteorological Institute, Lyngbyvej 100, Copenhagen, 2200, Denmark

³Geological Survey of Denmark and Greenland (GEUS), Øster Volgade 10, 1350 Copenhagen K

⁴Biocomplexity, Niels Bohr Institute, University of Copenhagen, Blegdamsvej 17. 2100 København Ø.

Correspondence: Aslak Grinsted (aslak@nbi.ku.dk)

Abstract. Ice fractures when subject to stress that exceeds the material failure strength. Previous studies have found that a von Mises failure criterion, which places a bound on the second invariant of the deviatoric stress tensor, is consistent with empirical data. Other studies have suggested that a scaling effect exists, such that larger sample specimens have a substantially lower failure strength, implying that estimating material strength from laboratory-scale experiments may be insufficient for glacier-scale modelling. In this paper, we analyze the stress conditions in crevasse onset regions to better understand the failure criterion and strength relevant for large-scale modelling. The local deviatoric stress is inferred using surface velocities and reanalysis temperatures, and crevasse onset regions are extracted from a remotely sensed crevasse density map. We project the stress state onto the failure plane spanned by Haigh–Westergaard coordinates, showing how failure depends on mode of stress. We find that existing crevasse data is consistent with a Schmidt–Ishlinsky failure criterion that places a bound on the absolute value of the maximal principal deviatoric stress, estimated to be (158 ± 44) kPa. Although the traditional von Mises failure criterion also provides an adequate fit to the data with a von Mises strength of (265 ± 73) kPa, it depends only on stress magnitude and is indifferent to the specific stress state, unlike Schmidt–Ishlinsky failure which has a larger shear failure strength compared to tensile strength. Implications for large-scale ice-flow and fracture modelling are discussed.

1 Introduction

Understanding the mechanics of ice fracture is important for predicting the stability of ice sheets and glaciers, since fractures lead to crevassing, calving, and moulins (Colgan et al., 2016): calving is a major component of the mass budget of ice sheets and a potential source of rapid unstable retreat; crevassed and damaged ice is expected to flow more readily (Borstad et al., 2013; MacAyeal et al., 1986; Albrecht and Levermann, 2014; Sun et al., 2017); moulins couple basal conditions to surface conditions (Das et al., 2008) by channeling warmer surface melt water through the englacial system and potentially accelerating rates of ice loss (cryohydrologic warming; e.g. Phillips et al. (2010); Solgaard et al. (2022)). Yet in spite of the broad literature on glacier ice, important material properties that constrain ice fracturing remain under-studied.

In classical failure theory, fractures form when an appropriate measure of the internal stress magnitude exceeds a critical value (material failure strength). Fracturing leads to a rapid elastic response with a redistribution of the internal stress, tending

to concentrate near material defects and crack tips. Fracture propagation, and, therefore, ultimately the size of crevasses, is controlled by how the local stress field evolves in the presence of a crack. This kind of propagation has previously been modelled using linear elastic fracture mechanics that relies on material parameters such as the fracture toughness (van der Veen, 1998; Petrovic, 2003; Albrecht and Levermann, 2014).

There is, however, considerable discrepancy between failure strength estimates derived from lab experiments (Hawkes and Mellor, 1972; Haynes, 1978; Petrovic, 2003) and field data (Kehle, 1964; Ambach, 1968; Vaughan, 1993; Petrovic, 2003). Lab experiments found the tensile strength of ice to be 1.7 MPa to 3.2 MPa for temperatures above -37°C , whereas estimates inferred from field measurements are an order of magnitude smaller, 90 kPa to 320 kPa (Vaughan, 1993). While such difference could be partly due to material differences like crystal fabric, grain size distribution, or impurity content, it is more likely the result of sample size affecting failure strength: larger samples have substantially reduced tensile strength compared to smaller samples (Dempsey, 1996; Dempsey et al., 1999) which has been attributed to how the probability of weakest-links scale with volume (Petrovic, 2003). Specifically, a factor 10 increase in the characteristic length scale has been found to reduce the apparent tensile strength by a factor three (Dempsey et al., 1999).

Several failure criteria have been proposed in the literature. Vaughan (1993) used failure maps to justify that both Coulomb and von Mises failure criteria conform well with empirical crevasse data. Lab experiments have meanwhile found that the compressive strength is an order of magnitude greater than the tensile strength (Haynes, 1978; Petrovic, 2003), which is in apparent contradiction to von Mises failure theory. Furthermore, ~~both von Mises and Coulomb failure criteria are the von Mises criterion is~~ independent of pressure, but Nadreau and Michel (1986) found that failure stresses increase with hydrostatic pressure.

In summary, there is a discrepancy between the failure strength inferred from laboratory and field observations, and multiple distinct failure criteria have been proposed. In this paper, we use a large data set of Greenland crevasses to estimate a macro-scale failure criterion for naturally occurring glacier ice, relevant for large-scale modelling.

Figure 1. The spatial distribution of crevasses in Greenland from Chudley et al. (2021) is shown in semitransparent lavender blue. The crevasse onset regions along the upstream edge of crevasse fields are shown in magenta. The hatched region in the interior of the ice sheet has been excluded from the analysis.

2 Data

Chudley et al. (2021) derived a Greenland Ice Sheet wide crevasse map by processing high resolution elevation data from the ArcticDEM v3 mosaic (Porter et al., 2022), which in turn is based on remote sensing data collected over the period from 2007-2015. In this paper, we use the 200m resolution crevasse density data set (fig. 1) which contains the area fraction of 2x2m pixels that has been classified as crevassed (Chudley, 2022). This optically-derived data set is insensitive to snow-filled crevasses and it therefore likely underestimates the crevasse extent at higher elevations (Chudley et al., 2021).

Strain rates are derived from ice velocity measurements from the Greenland Ice Sheet Velocity Mosaic (Joughin et al., 2016, 2018) which is a multi-mission velocity average spanning the years from 1995 to 2015 (fig. 2). Surface air temperatures at 2.5km resolution are taken from the CARRA reanalysis data (Schyberg et al., 2021) averaged over the period from 1991-2020 (fig. 2).

We compare [our results](#) [the calculated von Mises stress](#) to BedMachine v5 ice thickness (H) (Morlighem, 2022), ArcticDEM ice sheet elevation (z) (Porter et al., 2022), along flow acceleration since 1985 (\dot{v}) (Grinsted et al., 2022; Grinsted, 2022), and the seasonal amplitude in ice velocities ($V_{\text{peak}}/V_{\text{winter}}$) derived from PROMICE Sentinel-1 ice velocities (Solgaard and Kusk, 2021; Solgaard et al., 2021).

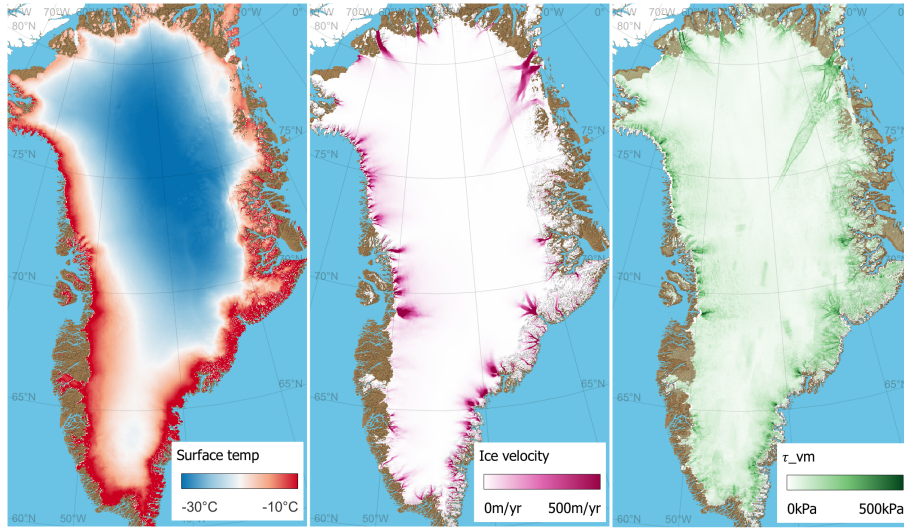


Figure 2. Average surface air temperatures from CARRA (left), Ice velocities from MEASUREs (middle), and near surface von Mises stress calculated assuming solid ice rheology (right).

60 3 Methods

Our aim is to relate crevassing to the local stress environment where crevasses initiate. Evidence suggests that most crevasses initiate at a depth of 15-30m (Colgan et al., 2016), which in a Greenland context can be considered near surface. We will therefore assume that the horizontal velocities at initiation depth are equal to surface velocities. We furthermore assume that vertical shear components are negligible and write the strain rate tensor as

$$65 \quad \dot{\epsilon} = \begin{pmatrix} \dot{\epsilon}_{xx} & \dot{\epsilon}_{xy} & 0 \\ \dot{\epsilon}_{xy} & \dot{\epsilon}_{yy} & 0 \\ 0 & 0 & \dot{\epsilon}_{zz} \end{pmatrix}, \quad (1)$$

where the horizontal components ($\dot{\epsilon}_{xx}$, $\dot{\epsilon}_{xy}$, $\dot{\epsilon}_{yy}$) are calculated from the observed surface velocities (Joughin et al., 2016). Crevasses tend to form at lower elevations where temperatures are warmer and firn densities increase more quickly with depth. Theoretical arguments suggest that crevasses initiate below the firn as greater stresses are possible in ice (van der Veen, 1998). Indeed, this is supported by observations of crevasses initiating from refrozen melt layers (Scott et al., 2010; 70 Christoffersen et al., 2018). We therefore assume that fractures initiate in the solid ice and hence that incompressibility applies, $\dot{\epsilon}_{zz} = -\dot{\epsilon}_{xx} - \dot{\epsilon}_{yy}$. Finally, we disregard the effect of pressure on the failure envelope (Nadreau and Michel, 1986) following Vaughan (1993) since only surface crevasses are considered here; that is, ~~crevasses~~ crevasse formation subject to relatively small ice pressure.

Glen's flow law for solid ice relates the strain-rate tensor to the deviatoric stress tensor (τ_{ij}) as

$$75 \quad \dot{\epsilon}_{ij} = A(T)\tau_e^{n-1}\tau_{ij}, \quad (2)$$

where A is a temperature-dependent rate factor, n is the flow exponent, $\tau_e = \sqrt{I_2} = \sqrt{\tau_{ij}\tau_{ij}/2}$ is the effective deviatoric stress, and I_2 is the second invariant of the deviatoric stress tensor. We calculate τ_e from the effective shear strain rate $\dot{\epsilon}_e$ using ~~$\tau_e = A(T)\dot{\epsilon}_e^n$~~ $\tau_e = [\dot{\epsilon}_e/A(T)]^{1/n}$. Here, we take the canonical value for the flow exponent, $n = 3$, and set the rate factor following Cuffey and Paterson (2010). For simplicity we assume that the temperature at the crevasse initiation depth can be 80 approximated by the CARRA annual average surface air temperature. With these assumptions, we can calculate the deviatoric stress tensor and the corresponding von Mises stress

$$\tau_{vM} = \sqrt{3I_2} = \sqrt{\frac{(\tau_1 - \tau_2)^2 + (\tau_2 - \tau_3)^2 + (\tau_3 - \tau_1)^2}{2}}, \quad (3)$$

where τ_1 , τ_2 and τ_3 are the principal deviatoric stresses.

3.1 π plane

85 The stress conditions where failure occurs can be represented by a three-dimensional threshold surface, spanned by the three principal stress components. For pressure-insensitive materials, the threshold surface must be reflection symmetric along the hydrostatic axis ($\sigma_1 = \sigma_2 = \sigma_3$). This symmetry implies that the threshold surface can, without ambiguity, conveniently be represented on a two-dimensional subspace (plane) by a threshold curve (or 'failure envelope'). A popular choice is the so-called π -plane view which corresponds to a plane perpendicular to the hydrostatic axis.

90 In the following, we will determine the failure criteria of ice by plotting principal deviatoric stresses in the π -plane and search for a match with hypothesized polygon profiles representing different failure criteria (Kolupaev, 2018). The π -plane is the plane spanned by the Haigh–Westergaard coordinates ξ_2 and ξ_3 , related to the ~~principle~~ principal deviatoric stresses through the transformation

$$\xi_2 = \frac{1}{\sqrt{2}}(\tau_1 - \tau_3) \quad (4)$$

$$95 \quad \xi_3 = \frac{1}{\sqrt{6}}(-\tau_1 + 2\tau_2 - \tau_3). \quad (5)$$

In this plane, the von Mises failure criterion appears as a circle with radius $r = \sqrt{2/3}\tau_{vM}$ since

$$\xi_2^2 + \xi_3^2 = \frac{(\tau_1 - \tau_2)^2 + (\tau_2 - \tau_3)^2 + (\tau_3 - \tau_1)^2}{3} = \frac{2}{3}\tau_{vM}^2, \quad (6)$$

where τ_{vM} is the material failure strength (critical stress).

100 An alternative visualization (Kolupaev, 2018, ch3.4), common in the glaciological literature, is to focus on the plane where $\sigma_3 = 0$ (i.e. plot σ_1 vs σ_2) (Vaughan, 1993, e.g.). In this plane, the von Mises envelope appears as an ellipse tilted 45 degrees. However, Glen's flow law is concerned with τ_{ij} , not σ_{ij} , so it is common to plot τ_1 versus τ_2 instead, calculated from horizontal velocities (Chudley et al., 2021, e.g.). In this case, results must be considered carefully to avoid misinterpretations: the approach implicitly assumes that $\tau_3 = 0$, which is not valid for horizontally diverging flows. If $\tau_3 = 0$ is not fulfilled, it is not justified to expect that e.g. points to fall on a von Mises ellipse even if generated by a von Mises failure process. We
 105 therefore advocate for the π -plane visualization as it is independent of pressure (i.e. plots for σ or τ gives the same result) and, importantly, takes all principal stress components into consideration.

3.2 Regions of interest

Crevasse are transported with the flow, and so not all crevasse are a product of the local stress conditions. As we are interested in the failure strength, we create a mask to select locations where crevasse have recently opened. These are defined as being
 110 located on the uphill edge of large-scale crevasse patches. We therefore apply a smoothed Sobel edge detection filter to a binary representation of the crevasse density map, and select the upstream edge by requiring that the along-flow crevasse density gradient to increase. We further require the crevasse density to be smaller than 5%. We label these as *crevasse onset* regions.

The high-elevation ice sheet interior has been excluded from the analysis, using a manually traced polygon (Grinsted, 2024)
 115 as we gauge that the false positive rate in the crevasse product is greatest there - (see fig. 1). Regions where the ice thickness is below 200m are also excluded due to concerns of whether the velocity product has sufficient spatial resolution to resolve the local strain rate.

Strain rates and stresses are calculated from long-term long-term average ice velocities. This may not accurately reflect the conditions under which crevasse were formed since trends or seasonal variability in ice flow are unaccounted for (Grinsted
 120 et al., 2022; Solgaard et al., 2022) (elaborated on below). We therefore separately examine onset regions with *steady flow*, defined as fulfilling $V_{peak}/V_{winter} < 2$ $V_{peak}/V_{winter} \leq 2$ and $\dot{v} < 2 \text{ m a}^{-2}$.

4 Results

The spatial distribution of crevasse and the automatic detection of *crevasse onset* regions are shown in fig. 1. Maps over the calculated von Mises stress, the ice velocity, and the surface temperature are shown in fig. 2. Calculated von Mises stresses are
 125 found to be greater in onset regions compared to crevasse regions in general, and over the ice sheet as a whole (fig. 3). Onset regions with steady flow are characterized by even greater von Mises stresses, $\tau_{vM} = (265 \pm 73) \text{ kPa}$ (fig. 3). The regional

differences in the von Mises stress distribution is shown in the appendix (fig. A1). The distribution of principal stresses in onset regions with steady flow are shown in figure 4. [A similar plot for the distribution of strain rates is shown in fig. B1.](#) In fig. A2, we show how the von Mises stress in onset regions relates to other field variables.

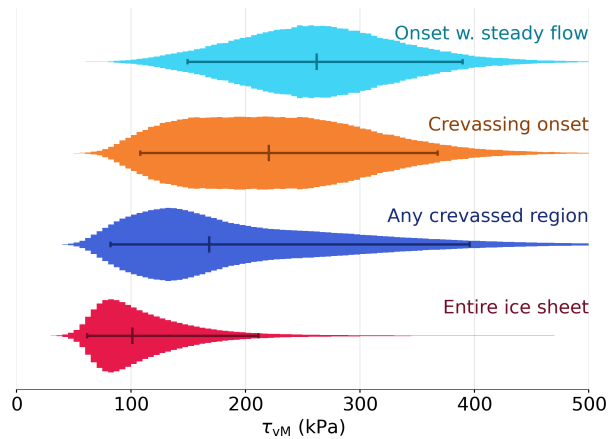


Figure 3. The von Mises stress distribution over different subsets of the ice sheet. [Bars-The counts per bin are all normalized to have the same peak height. Horizontal bars](#) show the 5%, 50% and 95% percentiles of the distribution.

130 5 Discussion

5.1 Uncertainties

Stresses are calculated assuming that ice temperatures, at the depth of crevasse initiation, can be approximated by surface air temperature as simulated by the CARRA regional reanalysis (fig. 2). It is, however, not clear whether this model is accurate, and there will likely be regional biases in the modelled temperature. Further, ice temperatures at depth may deviate from surface temperatures due to advection and redistribution of energy via melt and refreezing ([Løkkegaard et al., 2022](#)) [\(Løkkegaard et al., 2022; Harrington et al., 2015\)](#). We gauge the sensitivity of our stress estimates to temperature by calculating $(A(T_1)/A(T_2))^{1/n}$ (see eqn. [??2](#)), suggesting that a 1 °C change in temperature may result in inferred deviatoric stresses changing by 4 % to 8 %. Note that canonical parameters for Glen’s flow law were here assumed that disregard the effect of impurities or crystal fabric on ice rheology.

140 We find that crevasse onset regions are characterized by larger stresses than in crevasse fields in general (fig. 3). This is not surprising as many crevasses have been transported with the flow after being formed upstream. It is therefore clear that the von Mises stress distribution in crevasse fields does not, in general, accurately reflect the failure stress. We moreover find substantial regional differences in the onset von Mises stress distributions (fig. A1). Ideally, the estimated failure stress should be independent of region, ~~and~~ so this suggests that we are not accurately estimating the in-situ stress everywhere. We look for

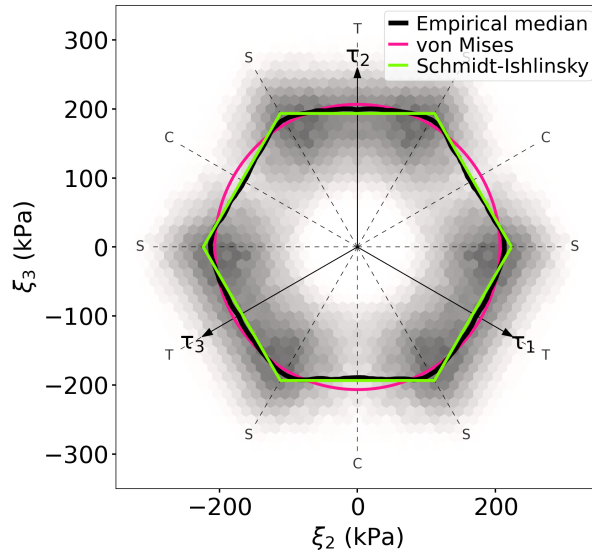


Figure 4. Empirical failure map showing a π -plane density map of stresses in crevasse onset regions with steady flow. The [grey color scale is linear in the counts per bin](#). The empirical median in 5° windows is shown in black; The median von Mises stress is shown as a pink circle; And the Schmidt–Ishlinsky median maximum absolute deviatoric stress is shown as a green hexagon. Tensile, Compressive and Shear directions have been labelled with T, C, and S.

145 clues that might explain regional discrepancies by examining the how the onset region stress co-varies with a range of local conditions (fig. A2), finding a strong anti-correlation between the von Mises stress and the seasonal amplitude in ice velocities (Rank correlation of -0.59). We interpret this as our method systematically underestimating the failure stress in regions with strong seasonal variations in near surface strain rates, and therefore argue that onset regions with steady flow more accurately represent the failure stress, ~~estimated to be $\tau_{vM} = (265 \pm 73)$ kPa~~. [Excluding regions with non-steady flow result in a narrower](#)
 150 [stress distribution that has an improved separation from the stress distribution over ice sheet as a whole](#) (fig. 3). [We therefore estimate the failure stress to be \$\tau_{vM} = \(265 \pm 73\)\$ kPa from onset regions with steady flow. This separation is not as clear in Chudley et al. \(2021\) which is based on a regional analysis of the same crevasse dataset but does not exclude areas with non-steady flow.](#)

We note that not every location where estimated stresses exceed the failure stress appear to be crevassed (fig. 2). ~~Exceeding~~
 155 ~~the~~ [This may be due to limitations in the crevasse dataset which is insensitive to snow-filled crevasses, or because exceeding the failure criterion is a necessary but not sufficient condition for crevasse formation](#), ~~conditions~~ [conditions must also favour crack propagation](#). ~~And Furthermore,~~ [in some interior locations, cracks may initiate in the firm pack, thus requiring a failure criterion for firm and a compressible rheology \(e.g. Gagliardini and Meyssonier, 1997; Petrovic, 2003\).](#)

5.2 Failure criterion

160 The empirical failure map in fig. 4 shows that in steady onset regions, crevasses predominantly open when subject to large shear or tension, and much less so compression. ~~The data~~ This does not necessarily reflect the relative failure strength of the different modes, but may simply reflect that the greatest surface stresses occur in shear zones. We therefore estimate the empirical failure envelope as the median of the data in 5° windows in the π -plane (Solid black line in fig. 4). The empirical envelope show that ice in tensile and compressive deformation is nearly equally strong, with the tensile failure strength only being 4% greater than
165 the compressive strength (see fig. 4). The empirical envelope compares reasonably well with the von Mises failure criterion which appears as a circle in the π -plane. However, the data clearly has a hexagonal pattern ~~, suggesting which we compared against a library of common failure criteria (Kolupaev, 2018, ch.3). The hexagonal shape, with corners in the shear directions, strongly suggests that glacier ice follows~~ a Schmidt–Ishlinsky failure criterion (Burzynski, 1928; Schmidt, 1932; Yu, 1983; Kolupaev, 2018).

170 In the Schmidt–Ishlinsky hypothesis, it is the largest principal deviatoric stress, rather than the magnitude of the second invariant, that defines the failure criterion:

$$\tau_{\text{SI}} = \max(|\tau_1|, |\tau_2|, |\tau_3|), \quad (7)$$

where the material failure strength (critical stress) is derived from the inscribed radius r of the hexagon profile in the π -plane using $\tau_{\text{SI}} = \sqrt{2/3}r = (158 \pm 44)$ kPa. The exscribed radius, corresponding to the shear failure strength is given by $R = \sqrt{4/3}r$,
175 i.e. the Schmidt–Ishlinsky criterion implies that ice is 15% stronger in shear relative to tensile stresses. Other polycrystalline materials—such as mild steel, copper, nickel alloy, titanium, stainless steel—have been found to have Schmidt-Ishlinsky like behaviour (see Kolupaev, 2018, table 2.1).

~~The estimated threshold values for the von Mises and the Schmidt–Ishlinsky criteria have nearly identical log-standard deviations (0.3) and thus both are good fits to the data. However, Alternative criteria have also been proposed in the literature,~~
180 such as the Coulomb criterion and the maximum strain-energy dissipation criterion (MacAyeal et al., 1986; Vaughan, 1993), but are inconsistent with our data as they imply that ice is weakest for shear. We quantify the misfit between previously-proposed theoretical failure criteria and the empirical envelope by calculating the root mean square log deviation (logRMS). Glen’s flow law allows for only deviatoric stress to be estimated, so we are prevented from considering (calculating misfits of) pressure-dependent criteria. The pressure invariant version of the Coulomb criterion is known as the Tresca criterion. We
185 find that the Schmidt–Ishlinsky fits the data best with a logRMS error of 0.02. For comparison, the von Mises and Tresca criteria have logRMS errors of 0.04, and 0.08 respectively. Further, measurement noise acts as to blur the octahedral failure profile, thus softening the corners of the hexagonal profile. We therefore argue that the Schmidt–Ishlinsky criterion is ~~a~~ an even better failure model for glacier ice than it appears from the ~~profile~~ empirical envelope.

~~Alternative criteria have also been proposed in the literature, such as~~ In the maximum strain energy dissipation criterion
190 (Vaughan, 1993), it is the rate of deformational work ($P = \dot{\epsilon}_{ij}\tau_{ji}/2$) which is hypothesized to be limited, rather than the stress state that can be withstood by the material. Vaughan (1993) uses Glens flow law (eqn. 2) to calculate τ corresponding to a $\dot{\epsilon}$. Unfortunately, estimating the τ failure envelope corresponding to a given threshold value for P becomes ambiguous as

195 [there will be a separate failure curve for every temperature. We can therefore not evaluate the fit using the same logRMS metric we used for the other criteria. However, we calculate the standard deviation of \$\log\(P\)\$ to be 1.2 in crevasse onset regions with steady flow. This large spread indicates that there is not a single threshold value for \$P\$, and we therefore have little confidence in relevance of the maximum strain energy dissipation criterion. For comparison, the ~~Coulomb criterion and the maximum strain energy dissipation criterion~~\(MacAyeal et al., 1986; Vaughan, 1993\), but are inconsistent with our data\(not shown\)log-standard deviations of the estimated threshold values for the von Mises and the Schmidt–Ishlinsky criteria, both have log-standard deviations of 0.3, and thus are much better fits to the data.](#)

200 We find that ice thickness correlates [positively](#) with the von Mises stress (fig. A2), contrary to expectations based on the established volume scaling effect. We speculate that the failure strength might approach a limiting value for large ice sample sizes as predicted by e.g. the multi-fractal scaling law (Carpinteri et al., 1995; Dempsey et al., 1999). This would imply that our reported critical stress values can be used in large-scale ice sheet models without adjustment for the scale effect.

5.3 Modelling crevasse fields

205 The von Mises and Schmidt–Ishlinsky failure envelopes do not deviate strongly from each other, but, for a given stress magnitude, the failure criterion might be fulfilled in one case and not the other depending on the stress state: the von Mises criterion is indifferent to the stress state, whereas the Schmidt–Ishlinsky criterion favors failure by tension or compression for a given stress magnitude; that is, glacier ice appears stronger when subject to shear as opposed to tensile stresses (see fig. 4).

The choice of failure criterion may therefore impact where crevasses are formed in large-scale models. A popular approach
 210 is to model the evolution of the crevasse density field (or damage phase field) as a function of local conditions and couple it back into ice viscosity (e.g. ~~Albrecht and Levermann, 2012, 2014; ?; ?; ?~~)(e.g. [Albrecht and Levermann, 2012, 2014; Borstad et al., 2016; Sun et al., 2016](#)). In such models, crevasse density evolution is represented as a production–healing process, where production depends on a scalar measure of the local stress state, which, if exceeding some critical value, is taken to grow proportionally to the local principal spreading rate (strain rate). Our results are therefore directly applicable to such modelling efforts: we provide both
 215 the failure criterion (7) and critical value $\tau_{SI} = (158 \pm 44)$ kPa. We leave it for future work to test whether modelled crevasse density fields using the Schmidt–Ishlinsky criterion in fact provide the best fit with observations.

5.4 Third stress-tensor invariant

The Schmidt–Ishlinsky criterion implies that the failure of ice depends not only on the second, but also the third invariant of the deviatoric stress, $I_3 = \tau_{ij}\tau_{jk}\tau_{ki}/3$, since eqn. (7) can equivalently be written as (Yu, 1983)

$$220 \quad (I_3 + I_2\tau_{SI} - \tau_{SI}^2)(I_3 - I_2\tau_{SI} + \tau_{SI}^2) = 0. \quad (8)$$

The plastic behaviour and failure of materials are often linked, which suggests that the third invariant should be included in the flow law for ice; a dependency that has previously been proposed (Glen, 1958; Veen and Whillans, 1990; Morland and Staroszczyk, 2019; Baker, 1987). Indeed, Steinemann (1954) found that ice deforms slower in shear than expected from uniaxial deformation tests (Glen, 1958), and suggested that deformation data are not consistent with Glen’s canonical co-axial

225 flow law with a dependence on only I_2 , but should depend on I_3 , too. Although this seems to be consistent with the Schmidt–
Ishlinsky failure pattern found here (fig. 4), constraining the stress response functions in a flow law depending on both I_2
and I_3 has proven difficult from available data (Morland and Staroszczyk, 2019; Staroszczyk and Morland, 2022). On that
note, Staroszczyk and Morland (2022) recently showed that a quadratic (non-coaxial) flow law depending only on I_2 can also
230 failure criterion might, too, inform on the form of the flow law in addition to correlating with deformation data.

6 Conclusions

We automatically identified crevasse onset regions from a dataset of Greenland crevasses (fig. 1), where we argue local stress
conditions must have exceeded the failure stress. We inferred the local stress conditions using Glen’s flow law combined with
observed ice velocities and average surface air temperatures (fig. 2), disregarding regions with seasonally variable ice flow. We
235 estimated the [tensile-failure](#) strength of glacier ice to be $\tau_{\text{VM}} = (265 \pm 73)$ kPa in crevasse onset regions with steady flow (fig.
3). This is compatible with the 90 kPa to 320 kPa [tensile strength](#) estimated by Vaughan (1993). The corresponding π -plane
failure map (fig. 4) suggests, however, that the mechanical failure of glacier ice is best modelled using the Schmidt–Ishlinsky
failure criterion, where failure occurs once the maximum absolute deviatoric stress exceeds (158 ± 44) kPa. While we argue that
the a Schmidt–Ishlinsky criterion is the better model for ice failure, we note that the deviations to the von Mises criterion are
240 quite small (fig. 4). It may therefore still be a good approximation to model ice failure with a von Mises criterion on average.
This, however, disregards the effect that the mode of deformation has on the failure strength, where the Schmidt–Ishlinsky
criterion implies that ice is 15% stronger in shear relative to tensile stresses.

This study is, to our knowledge, the first to propose a Schmidt–Ishlinsky failure criterion for glacier ice. More work is needed
to validate this hypothesis using e.g. forward modelling.

245 Appendix A: Regional von Mises stress

The failure strength of ice should largely be independent of location. We therefore plot the onset von Mises stress distribution
by region (Zwally et al., 2012). We find that there is substantial variability between regions (fig. A1). To illuminate the source
of the scatter we examine how the onset von Mises stress varies with other fields in a pair plot (fig. A2). We transform variables
which have a long tailed distributions with either a logarithm or hyperbolic tangent function prior to visualization. We find that
250 the von Mises stress anti-correlates with seasonal velocity amplitudes. This suggests that the von Mises stress, calculated from
long-term average velocities, are biased low in some regions as it does not capture the seasonal peak stress which may drive
crevasse formation.

Appendix B: [Critical strain rates](#)

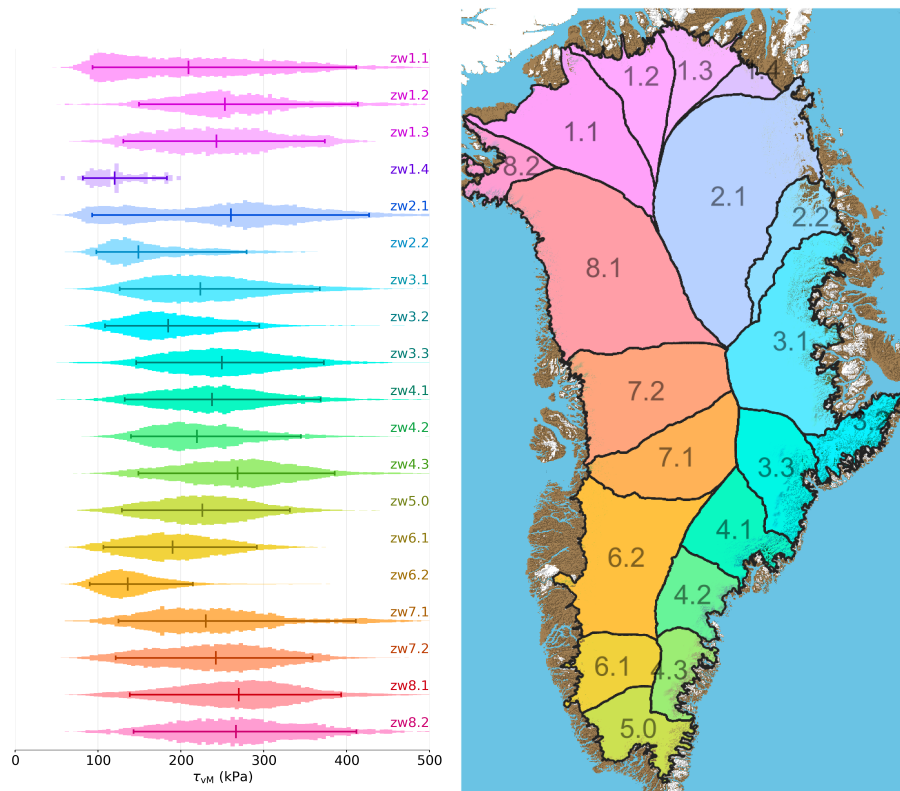


Figure A1. The calculated von Mises stress for opening crevasses varies substantially between different basins of the ice sheet. Bars—The counts per bin are all normalized to have the same peak height. Horizontal bars show the 5%-50%-95% percentiles of the distribution.

255 In this paper, we focus on the stress conditions that result in failure of glacier ice. We do not observe the stress state, but infer it from observed strain rates and our understanding of the mechanical properties of ice. In this section, we present the raw strain rate data. To investigate the how the critical strain rate depends on the mode of deformation we define strain rate π -plane coordinates in an equivalent way to eqn. 4, but using the three invariants of $\dot{\epsilon}_{ij}$ rather than τ_{ij} . Figure B1 shows the observed strain rates in crevasse onset regions with steady flow. Vaughan (1993) found that there is a strong impact on temperature on the critical strain rate, which can largely be accounted for by the rate factor in Glen's flow law (eqn. 2). We therefore calculate

260 empirical failures envelopes in three different temperature intervals (fig. B1), and find that the critical strain rate varies by an order of magnitude between them. This is reflected in a long-tailed strain rate distribution. All three empirical failure envelopes show a similar flower-like pattern where the critical strain rate is greater for shear than for tensile and compressive deformation.

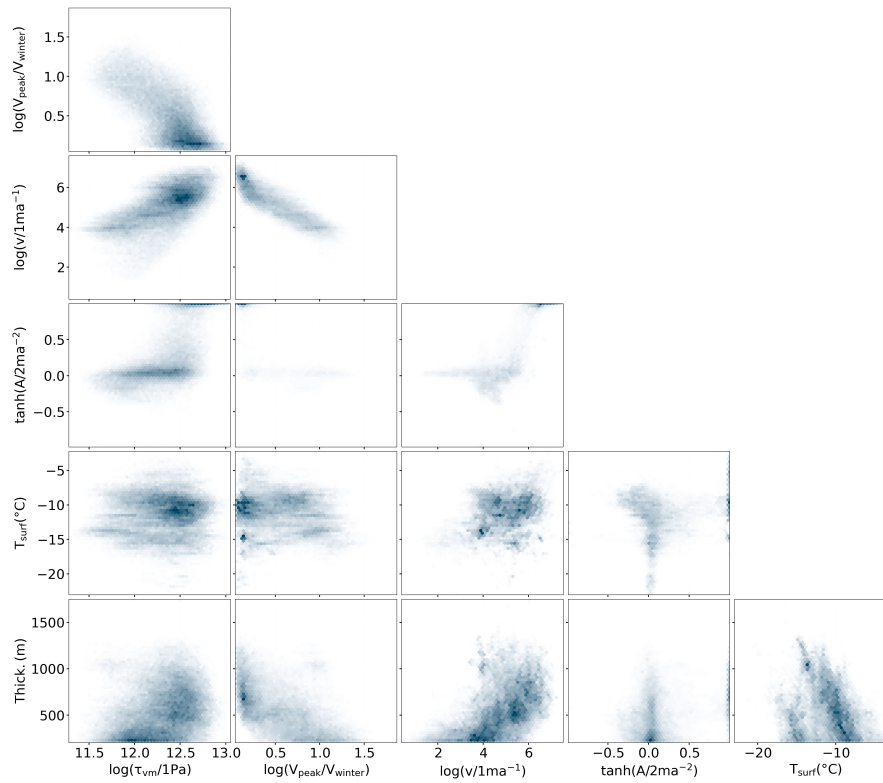


Figure A2. Pair plot showing the relationships between various quantities extracted over regions where crevasses are opening.

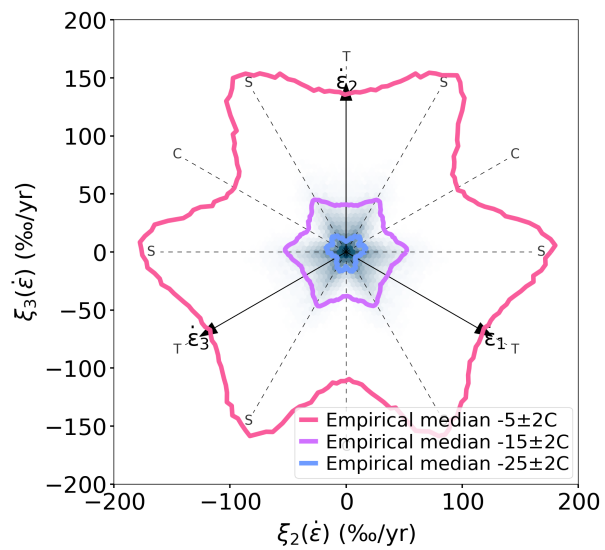


Figure B1. Empirical failure map showing a π -plane density map of strain rates in crevasse onset regions with steady flow. π -plane coordinates are calculated from strain rates rather than deviatoric stresses. The color scale is linear in the counts per bin. The empirical median in 10° windows for different temperature intervals is shown in thick lines; Tensile, Compressive and Shear directions have been labelled with T, C, and S.

Data availability. Crevasse density data are available from Chudley (2022). PROMICE ice velocity data from Sentinel-1 is available from
265 Solgaard and Kusk (2021). MEaSURES Multi-year Greenland Ice Sheet Velocity are available from Joughin et al. (2016). flow acceleration
data are available from Grinsted (2022). CARRA temperatures are available from Schyberg et al. (2021). BedMachine v5 ice sheet geometry
are available from Morlighem (2022). Supplemental data to this study containing masks and derived data are available from Grinsted (2024).

Author contributions. A.G. conceived the study, performed computations, and wrote the first draft. A.S. provided seasonal velocity ampli-
tudes. All authors discussed the results and contributed to the final manuscript.

270 *Competing interests.* Some authors are members of the editorial board of The Cryosphere.

Acknowledgements. The research leading to these results has received funding from the Villum Foundation, investigator grant nos. 16572
and 23261, the Independent Research Fund Denmark (DRF), grant no. 2032-00364B, and it is supported by the Novo Nordisk Foundation
Challenge grant no. NNF23OC0081251 .

275 Ice velocity maps were produced as part of the Programme for Monitoring of the Greenland Ice Sheet (PROMICE) using Coperni-
cus Sentinel-1 SAR images distributed by ESA, and were provided by the Geological Survey of Denmark and Greenland (GEUS) at
<http://www.promice.dk>.

References

- Albrecht, T. and Levermann, A.: Fracture Field for Large-Scale Ice Dynamics, *Journal of Glaciology*, 58, 165–176, <https://doi.org/10.3189/2012JoG11J191>, 2012.
- 280 Albrecht, T. and Levermann, A.: Fracture-Induced Softening for Large-Scale Ice Dynamics, *The Cryosphere*, 8, 587–605, <https://doi.org/10.5194/tc-8-587-2014>, 2014.
- Ambach, W.: The Formation of Crevasses in Relation to the Measured Distribution of Strain-Rates and Stresses, *Archiv für Meteorologie, Geophysik und Bioklimatologie, Serie A*, 17, 78–87, <https://doi.org/10.1007/BF02250793>, 1968.
- Baker: Is the Creep of Ice Really Independent of the Third Deviatoric Stress Invariant, in: *The Physical Basis of Ice Sheet Modelling*, edited by Waddington, E. D. and Walder, J. S., no. 170 in IAHS Publication, pp. 7–16, International Association of Hydrological Sciences, 1987.
- 285 Borstad, C., Khazendar, A., Scheuchl, B., Morlighem, M., Larour, E., and Rignot, E.: A Constitutive Framework for Predicting Weakening and Reduced Buttressing of Ice Shelves Based on Observations of the Progressive Deterioration of the Remnant Larsen B Ice Shelf, *Geophysical Research Letters*, 43, 2027–2035, <https://doi.org/10.1002/2015GL067365>, 2016.
- Borstad, C. P., Rignot, E., Mouginot, J., and Schodlok, M. P.: Creep Deformation and Buttressing Capacity of Damaged Ice Shelves: Theory and Application to Larsen C Ice Shelf, *The Cryosphere*, 7, 1931–1947, <https://doi.org/10.5194/tc-7-1931-2013>, 2013.
- 290 Burzynski, W.: *Studjum Nad Hipotezami Wyteżenia*, Nakladem Akademii nauk Technicznych, 1928.
- Carpinteri, A., Chiaia, B., and Ferro, G.: Size Effects on Nominal Tensile Strength of Concrete Structures: Multifractality of Material Ligaments and Dimensional Transition from Order to Disorder, *Materials and Structures*, 28, 311–317, <https://doi.org/10.1007/BF02473145>, 1995.
- 295 Christoffersen, P., Bougamont, M., Hubbard, A., Doyle, S. H., Grigsby, S., and Pettersson, R.: Cascading Lake Drainage on the Greenland Ice Sheet Triggered by Tensile Shock and Fracture, *Nature Communications*, 9, 1064, <https://doi.org/10.1038/s41467-018-03420-8>, 2018.
- Chudley, T. R.: Greenland Ice Sheet Crevasse Map from ArcticDEM, <https://doi.org/10.5281/zenodo.6779088>, 2022.
- Chudley, T. R., Christoffersen, P., Doyle, S. H., Dowling, T. P. F., Law, R., Schoonman, C. M., Bougamont, M., and Hubbard, B.: Controls on Water Storage and Drainage in Crevasses on the Greenland Ice Sheet, *Journal of Geophysical Research: Earth Surface*, 126, e2021JF006287, <https://doi.org/10.1029/2021JF006287>, 2021.
- 300 Colgan, W., Rajaram, H., Abdalati, W., McCutchan, C., Mottram, R., Moussavi, M. S., and Grigsby, S.: Glacier Crevasses: Observations, Models, and Mass Balance Implications, *Reviews of Geophysics*, 54, 119–161, <https://doi.org/10.1002/2015RG000504>, 2016.
- Cuffey, K. and Paterson, W. S. B.: *The Physics of Glaciers*, Butterworth-Heinemann/Elsevier, Burlington, MA, 4th edn., 2010.
- Das, S. B., Joughin, I., Behn, M. D., Howat, I. M., King, M. A., Lizarralde, D., and Bhatia, M. P.: Fracture Propagation to the Base of the Greenland Ice Sheet during Supraglacial Lake Drainage, *Science (New York, N.Y.)*, 320, 778–781, <https://doi.org/10.1126/science.1153360>, 2008.
- Dempsey, J.: Scale Effects on the Fracture of Ice, pp. 351–361, 1996.
- Dempsey, J., Adamson, R., and Mulmule, S.: Scale Effects on the In-Situ Tensile Strength and Fracture of Ice. Part II: First-year Sea Ice at Resolute, N.W.T., *International Journal of Fracture*, 95, 347–366, <https://doi.org/10.1023/A:1018650303385>, 1999.
- 310 Gagliardini, O. and Meyssonier, J.: Flow Simulation of a Firn-Covered Cold Glacier, *Annals of Glaciology*, 24, 242–248, <https://doi.org/10.3189/S0260305500012246>, 1997.
- Glen, J. W.: The Flow Law of Ice. A Discussion of the Assumptions Made in Glacier Theory, Their Experimental Foundations and Consequences, *International Association of Hydrological Sciences*, 47, 171–183, 1958.

- Grinsted, A.: Along Flow Acceleration of the Greenland Ice Sheet, <https://doi.org/10.5281/zenodo.6806677>, 2022.
- 315 Grinsted, A.: Supplemental Data for Failure Strength of Glacier Ice Inferred from Greenland Crevasses, <https://doi.org/10.5281/zenodo.10567694>, 2024.
- Grinsted, A., Hvidberg, C. S., Lilien, D. A., Rathmann, N. M., Karlsson, N. B., Gerber, T., Kjær, H. A., Vallelonga, P., and Dahl-Jensen, D.: Accelerating Ice Flow at the Onset of the Northeast Greenland Ice Stream, *Nature Communications*, 13, 5589, <https://doi.org/10.1038/s41467-022-32999-2>, 2022.
- 320 Harrington, J. A., Humphrey, N. F., and Harper, J. T.: Temperature Distribution and Thermal Anomalies along a Flowline of the Greenland Ice Sheet, *Annals of Glaciology*, 56, 98–104, <https://doi.org/10.3189/2015AoG70A945>, 2015.
- Hawkes, I. and Mellor, M.: Deformation and Fracture of Ice Under Uniaxial Stress, *Journal of Glaciology*, 11, 103–131, <https://doi.org/10.3189/S002214300002253X>, 1972.
- Haynes, F. D.: Effect of Temperature on the Strength of Polycrystalline Ice, *Cold Regions Research and Engineering Lab Report*, 78, 25, 325 1978.
- Joughin, I., Smith, B., Howat, I., and Scambos, T.: MEaSURES Multi-year Greenland Ice Sheet Velocity Mosaic, Version 1, <https://doi.org/10.5067/QUA5Q9SVMSJG>, 2016.
- Joughin, I., Smith, B. E., and Howat, I. M.: A Complete Map of Greenland Ice Velocity Derived from Satellite Data Collected over 20 Years, *Journal of Glaciology*, 64, 1–11, <https://doi.org/10.1017/jog.2017.73>, 2018.
- 330 Kachuck, S. B., Whitcomb, M., Bassis, J. N., Martin, D. F., and Price, S. F.: Simulating Ice-Shelf Extent Using Damage Mechanics, *Journal of Glaciology*, 68, 987–998, <https://doi.org/10.1017/jog.2022.12>, 2022.
- Kehle, R. O.: Deformation of the Ross Ice Shelf, *Antarctica*, *GSA Bulletin*, 75, 259–286, [https://doi.org/10.1130/0016-7606\(1964\)75\[259:DOTRIS\]2.0.CO;2](https://doi.org/10.1130/0016-7606(1964)75[259:DOTRIS]2.0.CO;2), 1964.
- Kolupaev, V. A.: Equivalent Stress Concept for Limit State Analysis, vol. 86 of *Advanced Structured Materials*, Springer International Publishing, Cham, <https://doi.org/10.1007/978-3-319-73049-3>, 2018.
- 335 Løkkegaard, A., Mankoff, K., Zdanowicz, C., Clow, G. D., Lüthi, M. P., Doyle, S., Thomsen, H., Fisher, D., Harper, J., Aschwanden, A., Vinther, B. M., Dahl-Jensen, D., Zekollari, H., Meierbachtol, T., McDowell, I., Humphrey, N., Solgaard, A., Karlsson, N. B., Khan, S. A., Hills, B., Law, R., Hubbard, B., Christoffersen, P., Jacquemart, M., Fausto, R. S., and Colgan, W. T.: Greenland and Canadian Arctic Ice Temperature Profiles, *The Cryosphere Discussions*, pp. 1–24, <https://doi.org/10.5194/tc-2022-138>, 2022.
- 340 MacAyeal, D. R., Shabtaie, S., Bentley, C. R., and King, S. D.: Formulation of Ice Shelf Dynamic Boundary Conditions in Terms of a Coulomb Rheology, *Journal of Geophysical Research: Solid Earth*, 91, 8177–8191, <https://doi.org/10.1029/JB091iB08p08177>, 1986.
- Morland, L. W. and Staroszczyk, R.: The Viscous Relation for the Initial Isotropic Response of Ice, *Cold Regions Science and Technology*, 162, 11–18, <https://doi.org/10.1016/j.coldregions.2019.03.014>, 2019.
- Morlighem, M.: IceBridge BedMachine Greenland, Version 5, <https://doi.org/10.5067/GMEVBWFLWA7X>, 2022.
- 345 Nadreau, J.-P. and Michel, B.: Yield and Failure Envelope for Ice under Multiaxial Compressive Stresses, *Cold Regions Science and Technology*, 13, 75–82, [https://doi.org/10.1016/0165-232X\(86\)90009-1](https://doi.org/10.1016/0165-232X(86)90009-1), 1986.
- Petrovic, J. J.: Review Mechanical Properties of Ice and Snow, *Journal of Materials Science*, 38, 1–6, <https://doi.org/10.1023/A:1021134128038>, 2003.
- Phillips, T., Rajaram, H., and Steffen, K.: Cryo-Hydrologic Warming: A Potential Mechanism for Rapid Thermal Response of Ice Sheets: 350 RAPID THERMAL RESPONSE OF ICE SHEETS, *Geophysical Research Letters*, 37, n/a–n/a, <https://doi.org/10.1029/2010GL044397>, 2010.

- Porter, C., Morin, P., Howat, I., Noh, M.-J., Bates, B., Peterman, K., Keeseey, S., Schlenk, M., Gardiner, J., Tomko, K., Willis, M., Kelleher, C., Cloutier, M., Husby, E., Foga, S., Nakamura, H., Platson, M., Wethington, M., Williamson, C., Bauer, G., Enos, J., Arnold, G., Kramer, W., Becker, P., Doshi, A., D'Souza, C., Cummins, P., Laurier, F., and Bojesen, M.: ArcticDEM, Version 3, <https://doi.org/10.7910/DVN/OHHUKH>, 2022.
- Schmidt, R.: Über den Zusammenhang von Spannungen und Formänderungen im Verfestigungsgebiet, *Ingenieur-Archiv*, 3, 215–235, <https://doi.org/10.1007/BF02079970>, 1932.
- Schyberg, H., Yang, X., Køltzow, M., Amstrup, B., Bakketun, Å., Bazile, E., Bojarova, J., Box, J., Dahlgren, P., Hagelin, S., Homleid, M., Horányi, A., Høyer, J., Johansson, Å., Killie, M., Körmich, H., Le Moigne, P., Lindskog, M., Manninen, T., Nielsen Englyst, P., Nielsen, K., Olsson, E., Palmason, B., Peralta Aros, C., Randriamampianina, R., Samuelsson, P., Stappers, R., Støylen, E., Thorsteinsson, S., Valkonnen, T., and Wang, Z.: Arctic Regional Reanalysis on Single Levels from 1991 to Present, <https://doi.org/10.24381/CDS.713858F6>, 2021.
- Scott, J. B. T., Smith, A. M., Bingham, R. G., and Vaughan, D. G.: Crevasses Triggered on Pine Island Glacier, West Antarctica, by Drilling through an Exceptional Melt Layer, *Annals of Glaciology*, 51, 65–70, <https://doi.org/10.3189/172756410791392763>, 2010.
- Solgaard, A. and Kusk, A.: Greenland Ice Velocity from Sentinel-1 Edition 2, <https://doi.org/10.22008/FK2/ZEGVXU>, 2021.
- Solgaard, A., Kusk, A., Merryman Boncori, J. P., Dall, J., Mankoff, K. D., Ahlstrøm, A. P., Andersen, S. B., Citterio, M., Karlsson, N. B., Kjeldsen, K. K., Korsgaard, N. J., Larsen, S. H., and Fausto, R. S.: Greenland Ice Velocity Maps from the PROMICE Project, *Earth System Science Data*, 13, 3491–3512, <https://doi.org/10.5194/essd-13-3491-2021>, 2021.
- Solgaard, A. M., Rapp, D., Noël, B. P. Y., and Hvidberg, C. S.: Seasonal Patterns of Greenland Ice Velocity From Sentinel-1 SAR Data Linked to Runoff, *Geophysical Research Letters*, 49, e2022GL100343, <https://doi.org/10.1029/2022GL100343>, 2022.
- Staroszczyk, R. and Morland, L. W.: A Quadratic Viscous Fluid Law for Ice Deduced from Steinemann's Uni-Axial Compression and Torsion Experiments, *Journal of Glaciology*, 68, 625–635, <https://doi.org/10.1017/jog.2021.113>, 2022.
- Steinemann, S.: Flow and Recrystallization of Ice, *IASH Publ*, 39, 449–462, 1954.
- Sun, S., Cornford, S. L., Moore, J. C., Gladstone, R., and Zhao, L.: Ice Shelf Fracture Parameterization in an Ice Sheet Model, *The Cryosphere*, 11, 2543–2554, <https://doi.org/10.5194/tc-11-2543-2017>, 2017.
- van der Veen, C. J.: Fracture Mechanics Approach to Penetration of Surface Crevasses on Glaciers, *Cold Regions Science and Technology*, 27, 31–47, [https://doi.org/10.1016/S0165-232X\(97\)00022-0](https://doi.org/10.1016/S0165-232X(97)00022-0), 1998.
- Vaughan, D. G.: Relating the Occurrence of Crevasses to Surface Strain Rates, *Journal of Glaciology*, 39, 255–266, <https://doi.org/10.3189/S0022143000015926>, 1993.
- Veen, C. J. V. D. and Whillans, I. M.: Flow Laws For Glacier Ice: Comparison Of Numerical Predictions And Field Measurements, *Journal of Glaciology*, 36, 324–339, <https://doi.org/10.3189/002214390793701372>, 1990.
- Yu, M.-h.: Twin Shear Stress Yield Criterion, *International Journal of Mechanical Sciences*, 25, 71–74, [https://doi.org/10.1016/0020-7403\(83\)90088-7](https://doi.org/10.1016/0020-7403(83)90088-7), 1983.
- Zwally, J. H., Giovinetto, M. B., Beckley, M. A., and Saba, J. L.: *Antarctic and Greenland Drainage Systems*, 2012.