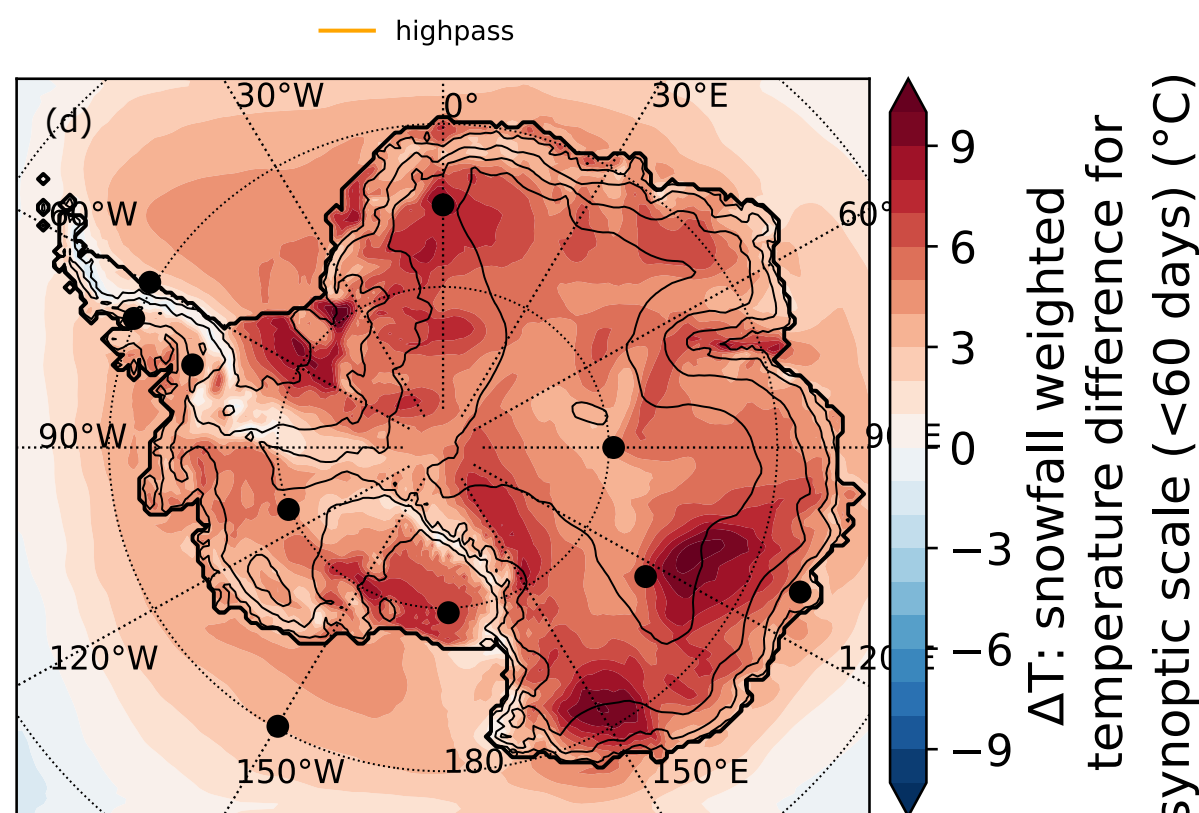
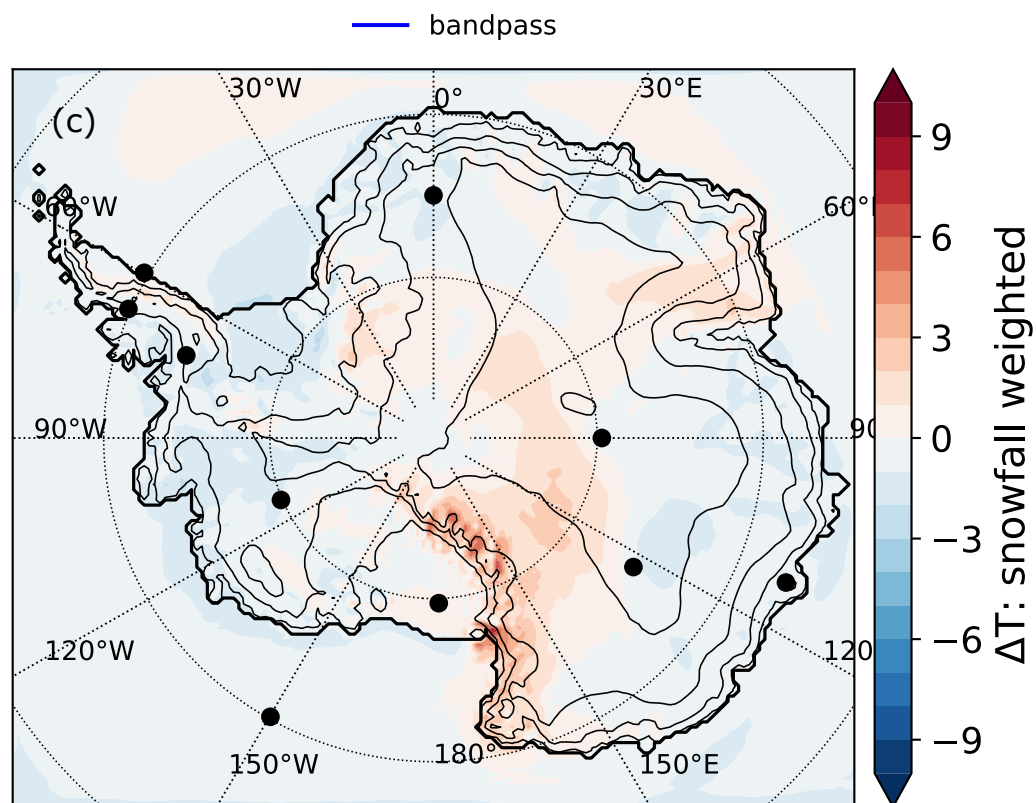
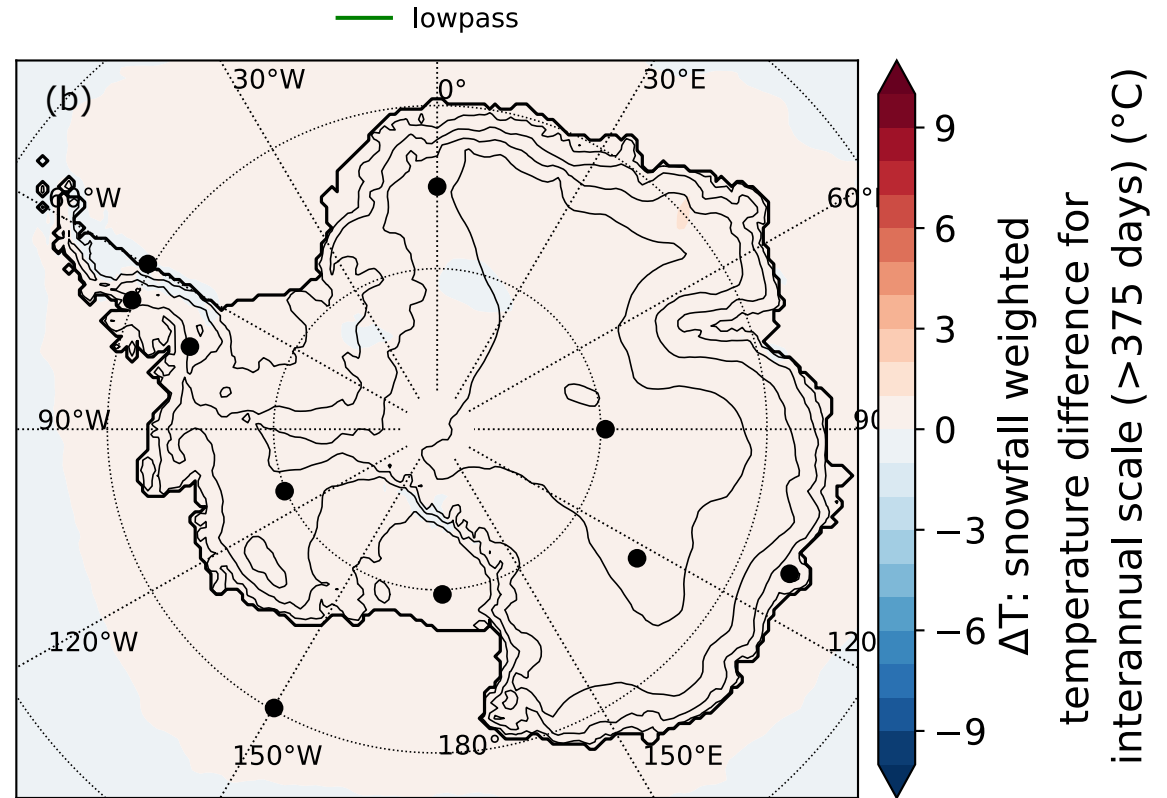
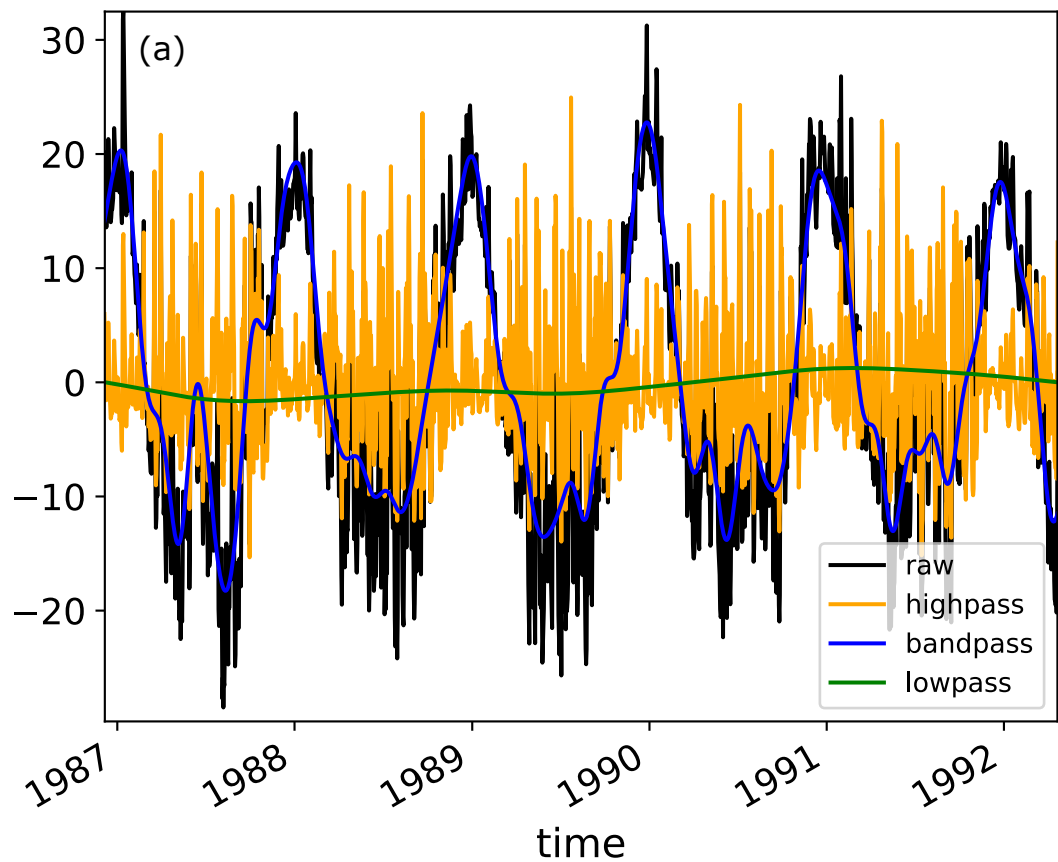


Figure 3. Scatter heatmap of annual snowfall -weighted temperature (T_w) as a function of annual temperature (T) for every model point on the surface of the Antarctic ice sheet (including ice shelves). The red continuous line represents the average snowfall-weighted temperature given the annual temperature, dashed line highlights 1:1 line

Dome C decomposition detail



Reply to Review #3, Supporting Figure.

Decomposition of ΔT using frequency filters: highpass (cut-off 60 days), bandpass (cut-offs 60 to 375 days) and lowpass (cut-off 375 days) to respectively represent the synoptic, seasonal and interannual effects of snowfall-weighting, as in Sime et al. (2008)

(a) example of the time-series filtered signals for Dome C.

(b) map of low-passed ΔT

(c) map of band-passed ΔT

(d) map of high-passed ΔT