



Hydro-pedotransfer functions: A roadmap for future development

Tobias Karl David Weber¹, Lutz Weihermüller², Attila Nemes^{3,4}, Michel Bechtold⁵, Aurore Degré⁶, Efstathios Diamantopoulos⁷, Simone Fatichi⁸, Vilim Filipovic^{9,10}, Surya Gupta¹¹, Tobias L Hohenbrink¹², Daniel R. Hirmas¹³, Conrad Jackisch¹⁴, Quirijn de Jong van Lier¹⁵, John Koestel^{16,17}, Peter Lehmann¹⁸,
5 Toby R. Marthews¹⁹, Budiman Minasny²⁰, Holger Pagel²¹, Martine van der Ploeg²², Simon Fiil Svane²³,
Brigitta Szabó²⁴, Harry Vereecken², Anne Verhoef²⁵, Michael Young²⁶, Yijian Zeng²⁷, Yonggen Zhang²⁸,
Sara Bonetti²⁹

Correspondence to: Tobias K. D. Weber (tobias.weber@uni-kassel.de)

10 **Abstract.** Hydro-pedotransfer functions (PTFs) relate easy-to-measure and readily available soil information to soil hydraulic properties for applications in a wide range of process-based and empirical models, thereby enabling the assessment of soil hydraulic effects on hydrological, biogeochemical, and ecological processes. At least more than four decades of research have been invested to derive such relationships. However, while models, methods, data storage capacity, and computational efficiency have advanced, there are fundamental concerns related to the scope and adequacy of current PTFs, particularly when
15 applied to parameterize models used at the field scale and beyond. Most of the PTF development process has focused on refining and advancing the regression methods, while fundamental aspects have remained largely unconsidered. Most system

¹ Soil Science Section, Faculty of Organic Agricultural Sciences, University of Kassel, D-37213 Witzenhausen, Germany, 0000-0002-3448-5208

² Institute Agrosphere IBG-3, Forschungszentrum Jülich GmbH, 52428 Jülich, Germany, 0000-0003-1991-7735

³ Faculty of Environmental Sciences and Natural Resource Management, Norwegian University of Life Sciences, Ås, Norway, 0000-0003-2955-5985

⁴ Division of Environment and Natural Resources, Norwegian Institute of Bioeconomy Research, Ås, Norway.

⁵ Department of Earth and Environmental Sciences, KU Leuven, Belgium, 0000-0002-8042-9792

⁶ TERRA, Gembloux Agro-Bio Tech, ULiège, 0000-0001-6912-6136.

⁷ Chair of Soil Physics, University of Bayreuth, Bayreuth, Germany, 0000-0001-7870-0291

⁸ Department of Civil and Environmental Engineering, National University of Singapore, Singapore, 0000-0003-1361-6659

⁹ Division for Agroecology, Faculty of Agriculture, University of Zagreb, Croatia, 0000-0001-9733-6720

¹⁰ Future Regions Research Centre, Geotechnical and Hydrogeological Engineering Research Group, Federation University, Gippsland, VIC 3841, Australia

¹¹ Department of Environmental Sciences, University of Basel, Basel, 4056, Switzerland

¹² Institute of Geocology, Technische Universität Braunschweig, Braunschweig, Germany, 0000-0002-5227-0171

¹³ Department of Plant and Soil Science, Texas Tech University, Lubbock, TX, USA, 0000-0002-1204-0638

¹⁴ Interdisciplinary Environmental Research Centre, Technische Universität Bergakademie Freiberg, Germany, 0000-0001-7389-1201

¹⁵ CENA / University of São Paulo, Piracicaba-SP, Brazil, 0000-0002-7131-5523

¹⁶ Department of Soil and Environment, Swedish University of Agricultural Sciences, Uppsala, Sweden, 0000-0002-3230-5699

¹⁷ Soil Quality and Soil Use, Agroscope, Reckenholzstrasse 191, 8046 Zürich, Switzerland

¹⁸ Physics of Soils and Terrestrial Ecosystems, Department of Environmental Systems Science, ETH Zurich, Zurich, Switzerland, 0000-0001-6315-7441

¹⁹ UK Centre for Ecology & Hydrology (UKCEH), Maclean Building, Wallingford OX10 8BB, U.K., 0000-0003-3727-6468

²⁰ School of Life and Environmental Sciences, the University of Sydney, 0000-0002-1182-2371

²¹ Institute for Soil Science and Land Evaluation, University of Hohenheim, 70599 Stuttgart, Germany, 0000-0003-2424-351X

²² Hydrology and Quantitative Water Management Group, Dep. Environmental Sciences, Wageningen University, 0000-0002-3172-7339

²³ Department of Plant and Environmental Sciences, University of Copenhagen, Frederiksberg C, Denmark, 0000-0002-8333-6524

²⁴ Institute for Soil Sciences, Centre for Agricultural Research, Herman Ottó út 15, 1022 Budapest, Hungary, 0000-0003-1485-8908

²⁵ Department of Geography and Environmental Science, The University of Reading, Reading, United Kingdom, 0000-0002-9498-6696

²⁶ Bureau of Economic Geology, Jackson School of Geosciences, University of Texas at Austin, 0000-0001-6910-1801.

²⁷ University of Twente, P.O. Box 217, 7500 AE Enschede, The Netherlands, 0000-0002-2166-5314

²⁸ Institute of Surface-Earth System Science, School of Earth System Science, Tianjin University, Tianjin, China, 0000-0001-9242-2558

²⁹ School of Architecture, Civil and Environmental Engineering, École Polytechnique Fédérale de Lausanne, Lausanne, Switzerland, 0000-0001-8856-3438.



settings are not captured by existing PTFs, which have been built mostly for agricultural soils in temperate climates. Thus, existing PTFs largely ignore how parent material, vegetation, land use, and climate affect processes that shape soil hydraulic properties. The PTFs used to parameterise the Richards-Richardson equation are mostly limited to predicting parameters of the van Genuchten-Mualem soil hydraulic functions, despite sufficient evidence demonstrating their shortcomings. Another fundamental issue relates to the diverging scales of *derivation* and *application*, whereby PTFs are derived based on laboratory measurements while being often applied at field to regional scales. Scaling, modulation, and constraining strategies exist to alleviate some of these shortcomings in the mismatch between scales. These aspects are addressed here in a joint effort by the members of the International Soil Modelling Consortium (ISMC) Pedotransfer Functions Working Group with the aim to systematise PTF research and provide a roadmap guiding both PTF development and use.

1 Introduction

Spatiotemporal variations in soil moisture contents and water fluxes affect soil biogeochemistry, soil-plant interactions, solute transport, and heat flow, thereby controlling a myriad of processes in the Earth's critical zone (Vereecken et al., 2022; Vereecken et al., 2016). The prediction of these fluxes and states is crucial in multiple disciplines, such as hydrology, ecology, agriculture, climate, and soil science. Different theories have been proposed to model water flow in soils but until today the Richards-Richardson equation (RRE), with its clear physical basis, remains undoubtedly the most popular (Raats and Knight, 2018). The equation finds wide application in numerical models in environmental (Vanclouster et al., 2000), agricultural (Asseng et al., 2015; Jarvis et al., 2022) and geoenvironmental (Chen et al., 2019) simulation studies. It is applied at different spatial, from a few centimetres (e.g., Weller et al., 2011), up to meters (Groh et al., 2020) and grid-cells of kilometres (Ashby and Falgout, 1996; Kuffour et al., 2020), and at temporal scales ranging from days (Schelle et al., 2010) over seasons and years (Brandhorst et al., 2021; Wöhling et al., 2009; Warrach-Sagi et al., 2022) to decades (Basso et al., 2018; Riedel et al., 2023). The RRE is based on continuum theory and requires averaging of pore scale variables to macroscopic state variables such as water content θ and pressure head h (Bear, 1988). The outcome of this averaging yields the soil water retention curve (WRC), $\theta(h)$, and the hydraulic conductivity curve (HCC), $K(h)$. These continuous soil hydraulic properties (SHPs) are described using hydraulic functions or SHP models over the entire pressure head range. An adequate representation of SHPs is crucial for reliable descriptions of soil water dynamics and the related processes. Water flow in soils is also described by simple models based on basic mass balance calculations (capacity models) (Gilding, 1992) These also require knowledge of SHPs, e.g. water content at specific pressure heads such as field capacity (FC), permanent wilting point (PWP) or head ranges such as available water capacity (AWC). In principle, these can all be calculated using SHP functions. Traditionally, SHPs are determined in the laboratory with different methods generally involving small-scale soil columns (typically 100 - 1000 cm³). SHPs are also derived at the lysimeters scale or scale of individual pedons (Wöhling and Vrugt, 2008; Schelle et al., 2012; Over et al., 2015), typically in the range of several m³. Beyond those scales, direct determination of SHPs becomes technically difficult. Instead, SHPs are commonly estimated using hydro-pedotransfer functions (PTF). PTFs



refer to a linear or non-linear regression relationships between explanatory and predictor variables that allow the estimation of
50 SHPs from data available in soil maps or easy-to-measure soil **properties** (Wösten et al., 2001). Thus, provided the **spatio-
temporal states of soils are known** (Gerke et al., 2022). PTFs can be used to relate information contained in soil maps or easy-
to-measure soil properties to the SHP of interest for use in numerical models, such as Land surface models (LSM).

The development of PTFs relies mostly on the derivation of relationships between predictors and response variables (Patil and
Singh, 2016; van Looy et al., 2017), using, in increasing complexity, soil texture based look-up tables (e.g., Schaap et al.,
55 2001; Renger et al., 2008), regression approaches (e.g., Carsel and Parrish, 1988; Weynants et al., 2009; Weber et al., 2020),
or more advanced machine learning methods (e.g., Szabó et al., 2021). **P**redictors generally include sand, silt, clay content,
soil texture classes, bulk density (BD), and soil organic carbon (SOC), although some attempts have been made to include
additional chemical and morphological properties and soil structure information (see Van Looy et al., 2017) or water retention
properties such as water content at field capacity and at wilting point (Schaap et al., 2001).

60 **The majority of PTFs predict parameters of the Brooks-Corey or van Genuchten (Brooks and Corey, 1964; van Genuchten,
1980) and capillary conductivity functions (Mualem, 1976).** These PTFs have been developed mainly on the small scale, or
scale of derivation, with the development mainly led by soil physicists working on experimental data from the laboratory.
However, the *scale of application* typically ranges from field or pedon scale of several meters (Vogel, 2019) to regional or
global scales where application is done on **grids >> 1 km** resolution by PTF users, typically modelers interested in the
65 representation of different Earth System processes (e.g., Pinnington et al., 2021). This results in a striking dichotomy both
between the scale of derivation and the scale of application and between the disciplines involved in the development and use
of PTFs. Moreover, the evaluation of the performance of a given PTF across the different spatial (and temporal) scales is not
necessarily based on the same criteria. In fact, from a modelling perspective, the characterization of PTF performance depends
on the scale of application and the specific process being modelled. In these regards, PTF evaluation restricted solely to
70 laboratory-derived data sets entails several shortcomings with respect to the overall effectiveness of PTFs and confidence in
their application at larger spatial scales. Obtaining effective soil parameters from small scale measurements remains fraught
with difficulty.

While this study does not provide technical details on how to build a PTF (for more detailed overviews of the topic we refer
to Pachepsky and Rawls (2004) and Van Looy et al. (2017)), we briefly point out that, quite generally, the relationship between
75 predictor and predicted variables can be non-linear (Jarvis et al., 2013) and linear models may lead to under-fitting even after
the transformation of variables and parameters. Machine learning approaches (e.g., random forests, gradient boosting, or neural
networks) can deal with non-linearities at the price of being susceptible to overfitting, so that rigorous model validation
schemes need to be used when employing them, such as block or stratified cross-validation (Jorda et al., 2015; Roberts et al.,
2017). Nevertheless, machine learning techniques are the methods of choice for building modern PTFs provided that either the
80 amount of available data is large enough to build the PTF model and, ideally, adequate ways of regularizations are available.
The aims of this article are to i) summarize the state of research on SHP description for derivation of PTFs, ii) discuss issues
arising from the dichotomy between PTF developers and users, iii) identify problems relating to measurements and currently



available databases of soil (hydraulic) properties, iv) provide a blueprint for the inference of soil hydraulic function parameters including evaluation at the appropriate scale and options for plausibility constraining, and v) propose a roadmap for future research directions for the definition of a more robust and versatile next generation of PTFs.

2 Soil hydraulic property models and egregious shortcomings

In this section we discuss the most commonly adopted soil hydraulic property models and discuss potential improvements, always having in mind PTF performance in modelling studies.

2.1 Issues related to the dominance of the van Genuchten-Mualem model

A large number of SHP models have been proposed in the literature (as reviewed by Assouline and Or (2013), and developments since). If we combine just the 22 water retention models listed in Du (2020) with the nine models of relative conductivity collated by Assouline and Or (2013), we easily obtain around 200 SHP model combinations. This number includes purely empirical models (van Genuchten, 1980; Gardner, 1958), physically based models (Mualem, 1976), models with low number of parameters (Brooks and Corey, 1966), and very flexible models with many parameters (Gwo et al., 1996). Among all the different SHP models, the most popular is arguably the van Genuchten-Mualem model (VGM) based on the capillary bundle concept. Here, the soil is represented by a ‘bundle’ of vertical parallel pores of different sizes (capillaries are interconnected to pairs in the HCC model). For the WRC, the VGM assumes that the effective saturation S_e [L^3L^{-3}] is a simple sigmoidal function of the pressure head h [L]:

$$S_e(h) = [1 + (\alpha|h|)^n]^{-m} \quad (1)$$

where α [L^{-1}] is inversely correlated to the air entry value of the soil, and n [-] and m [-] are shape parameters related to the pore-size distribution. In terms of pore size distribution, this function reflects a smooth unimodal equivalent pore-size distribution, which is typical for well sorted materials. The WRC is then given by:

$$\theta(h) = \theta_r + (\theta_s - \theta_r)S_e(h) \quad (2)$$

where θ_s [L^3L^{-3}] is the water content at saturation and θ_r [L^3L^{-3}] is the “residual” or “irreducible” water content. Theoretically, for a fully saturated soil, θ_s is nearly equal to the porosity of the soil φ [L^3L^{-3}]. By constraining $m = 1 - 1/n$ in equation (1), the conductivity model of (Mualem, 1976) yields (van Genuchten, 1980)

$$K(h) = K_s K_r(h) = K_s S_e^\tau (1 - [1 - S_e^{1/m}]^m)^2 \quad (3)$$

where $K(h)$ [LT^{-1}] is the saturated (for $h = 0$) and unsaturated (for $h < 0$) conductivity function, $K_r(h)$ [-] is the relative conductivity function, ranging between 0 and 1, and K_s [LT^{-1}] is the saturated conductivity which, in principle, is the hydraulic conductivity for a fully saturated system where $K_r(h = 0) = 1$ and $\theta(h = 0) = \theta_s \cong \varphi$. According to Mualem (1976) τ (-) may be positive or negative, and accounts for the correlation between pores and for the flow path tortuosity. Based on regression with data from 45 soils, Mualem found $\tau=0.5$ as the best value. This value is most frequently used up to date.



110 **This model** has become so widely used because i) it is relatively flexible in describing water retention curve data, especially
in the wet and mid pressure head range, ii) it is continuously differentiable over the full pressure head range, something very
useful for the numerical solution of the pressure head-based RRE, iii) coupled with the Mualem (1976) theory, it does not
require any measurement of unsaturated HCC, and finally iv) it has been implemented in many soil process modelling tools
such as HYDRUS (Šimůnek et al., 2016), SWAP (Kroes et al., 2017) or Expert-N (Priesack, 2006), hydrological models such
115 as SWAT (Arnold et al., 2013) and many LSM such as JULES (Best et al., 2011), to name a few examples. However, these
highly attractive attributes as well as the early and widespread adoption of the VGM model, followed by a large number of
VGM PTFs is a bane to progress and has hampered adoption of more comprehensive SHP modelling approaches. Some of the
most important shortcomings of the VGM model are mentioned in the following subsections.

2.2 Non-uniform pore size density distributions

120 **In** spite of its wide adoption, the use of the VGM model to represent SHPs is challenged as the underlying assumption of
unimodal pore-size distribution may be invalid since natural soils often exhibit bi- or multi-modal pore size distributions (e.g.,
(Hadas, 1987; Dexter et al., 2008; Oades and Waters, 1991). Particularly in the presence of distinct soil structural elements
such as aggregates, two distinct pore spaces can be identified: intra-aggregate and inter-aggregate pore space in mineral soils
(Nimmo, 2005). Also peat soils have been shown to exhibit multi-modal pore size distributions as a consequence of plant
125 structure and decomposition effects (Weber et al., 2017a). The effect of neglecting multimodality can be small in estimating
the WRC but it may be significant in the HCC, which drops by orders of magnitude as the large water conducting pores empty
(Durner, 1994).

Evidence suggests that HCC data is often better described by scaling $K_r(h)$ using an estimated K_s in the equation rather than
using its measured counterpart (denoted here as K_{sat} [LT^{-1}]); this is an indication of bimodality occurring in the pressure head
130 range near saturation. Also, authors have **excluded the conductivity data > -6 cm** pressure head, and estimated the VGM
parameters, but then used the matching point conductivity (K_0 [LT^{-1}]); (Weynants et al., 2009; Zhang and Schaap, 2017a; Zhang
and Schaap, 2017b) to describe datasets of WRC and HCC. This also indicates the presence of bimodality, something which
has been corroborated by **a** systematic analyses of some data bases by Zhang et al. (2022). Although these models are often
needed to adequately describe tabulated data of WRC and HCC (Zhang et al., 2022; Volk et al., 2016), there are currently no
135 PTFs for multimodal VGM.

However, there remains a more fundamental problem, since it is still not clear if the effective SHP description should be
achieved directly with uni-modal RRE or by coupling RRE variations of the RRE that represent dual or multi-modal porosity.
The reason for this is that for systems with large pore diameters, RRE is not valid, due to the violation of laminar flow
assumption in the Darcy equation for which an alternative theory is needed (Gerke and van Genuchten, 1993; Jarvis, 2007;
140 Jarvis et al., 2016).



2.3 Deficiency in the capillary bundle model

Several studies have illustrated the inability of capillary bundle models, such as the VGM, to describe water content and hydraulic conductivity data over the full pressure head range. More specifically, there is strong evidence that a residual water content as defined in equation (2) has little physical justification as the water content of drying soils approaches zero (Schofield
145 1935). However, other researchers justified the concept of residual water content as the point that water loses its ability to respond to hydraulic gradients (Nimmo, 1991; Luckner, 2017; Cornelis et al., 2005). Nonetheless, many different modelling approaches have been proposed to incorporate different forms of non-capillary water storage and conductivity (Peters, 2013; Weber et al., 2019; Scarfone et al., 2020; Chen and Chen, 2020; Aubertin et al., 2003; Wang et al., 2013; Tuller and Or, 2001), with very few available PTFs for these physically more comprehensive models. An example is Weber et al. (2020) who
150 proposed a meta PTF for the Brunswick (BW) SHP model system (Weber et al., 2019). This PTF translates any set of VGM parameters to the BW parameters and it was shown that it was possible to outperform the VGM model, even if the model was not directly fitted to training data.

2.4 Capillary hysteresis

It is well known that the WRC, as defined above in equations (1) and (2), is not a single monotonic curve, mainly due to
155 capillary hysteresis (Figure 1; Poulouvasilis and Childs, 1971; Pham et al., 2005), which refers to the non-uniqueness of the WRC and its dependence upon the history of soil wetting and drying. Capillary hysteresis results from pore scale processes, mainly due to the irregular shapes of pores (ink bottle effect, (Haines, 1930)), the hysteresis of contact angles (Bachmann et al., 2003; Diamantopoulos et al., 2013), and shrinking/swelling effects (Hillel, 1998). Modelling capillary hysteresis in soils has been a research topic for more than half a century and we refer to Pham et al. (2005) for a review. It is recognized that
160 neglecting hysteresis from simulation of field scale data under realistic transient boundary conditions may lead to significant errors especially during water redistribution (Dane and Wierenga, 1975), as hysteresis has been shown to impact the simulation of water fluxes and storage in the soil. For example, van Dam et al. (1996) tested alternative simulation runs with the SWAP93 model using data from two experimental sites and reported noticeably changed patterns in simulated soil water regime on both daily and annual simulation time scales when accounting for hysteresis. Basile et al. (2003) also stressed the significance to
165 hysteretic soil behaviour when interpreting laboratory- and field-measured soil hydraulic properties.

Capillary hysteresis in soils is generally modelled using either physically based (e.g., Poulouvasilis, 1962; (Philip, JR, 1964; Poulouvasilis, 1962; Poulouvasilis and Childs, 1971; Poulouvasilis and Kargas, 2000; Mualem, 1984)) or empirical models (e.g., (Scott, 1983; Kool and Parker, 1987; Huang et al., 2005). Although hysteresis is still a topic of research and in general recognized as a key process to consider (Hannes et al., 2016), it is rarely accounted for in modelling applications. The reason
170 is that it requires extensive laboratory measurements to determine the boundary curves (drying and wetting curves; the solid red and blue lines in Fig. 1) and that, at larger scales (pedon and above), model parameterization is mainly based on the use of “effective properties”, whereby effective WRC and HCC models are calibrated to match observed average state variables (e.g.,

water content) and water fluxes. For the incorporation of hysteresis in numerical models, PTFs should be able to predict both the primary drying and wetting curves for the same soil.

175 The existence of hysteresis affects the development of PTFs. It directly affects laboratory experiments, since for a drainage experiment, the starting saturation point influences the resulting drying curve. All currently available PTFs target the primary or main drying curve and the underlying data do not contain information on how sample saturation was achieved (i.e., these PTFs ignore the scanning curves in Fig. 1). Also, creating a PTF based on measurements performed on ideally fully saturated soil samples may bias simulations of real field conditions (θ_{field} in Fig. 2) where such fully saturated conditions may occur
180 very rarely (Figure 2).

2.5 Dynamic non-equilibrium and transient SHPs

The study of capillary hysteresis in porous media is also affected by dynamic or non-equilibrium (DNE) effects. DNE refers to the apparent flow-rate dependence of the WRC under transient conditions. In other words, under transient conditions, the water phase is not instantaneously in equilibrium with the pressure head, so that the water content **may lag behind** (e.g.,
185 (Diamantopoulos and Durner, 2012; Hassanizadeh et al., 2002). For example, in the case of drainage, more water is held by the soil matrix when water is moving in contrast to the case where equilibrium has been reached (Hannes et al., 2016; Diamantopoulos et al., 2012). This means the volumetric water content is still tightly coupled with pressure head, but only as a long-term limit that is reached after a (considerable) equilibration time. Many experimental studies have shown the existence of DNE especially in laboratory experiments and for different boundary conditions (Diamantopoulos et al., 2015). Similar to
190 hysteresis, macroscopic observation of DNE is mainly due to pore scale processes, since pore geometry (especially pore connectivity) determines how fast some equilibration is reached. The existence of DNE complicates studying the traditional concept of capillary hysteresis (Funk, 2014, 2015) or quasi-equilibrium hysteresis (Hannes et al., 2016), because DNE is expected to give rise to apparent dynamic hysteresis (Diamantopoulos et al., 2015) when water is flowing. Consequently, it is difficult to separate the effects of capillary hysteresis and dynamic non-equilibrium when examining experimental data.

195 To date, **it** is not clear if DNE should be incorporated into field scale simulations, and consequently in the development of new PTFs. However, identifying those effects in the evaluation of laboratory experiments may lead to less noisy experimental data sets for PTF construction. Furthermore, accounting for hysteresis and DNE may improve the translation from lab data to field scale soil hydraulic parameters and the performance of water flow simulations particularly at short time scales (hours to days). However, when the temporal scale of the simulation increases (years to decades), other processes become equally (or more)
200 important, as SHPs are expected to vary with land use (Meurer et al., 2020a; Meurer et al., 2020b) and tillage practices (Vereecken et al., 2010) (cf section 3.2). The quantification of these processes requires long term experiments where “the drifting” of the SHPs may be monitored so that transient SHPs can be derived. As Vereecken et al. (2010) envisioned, this may require the use of time-dependent PTFs accounting for the soil management history. An example for this time-dependence is considering information about **soil tillage operations and post-tillage** pedogenic processes leading to transient SHPs.



205 3 Guidance for the use of PTFs and critical limitations

This section is intended to assist the reader in the choice of PTFs for modelling applications while presenting the numerous limitations surrounding PTFs. Particular attention is devoted to the spatial validity and transferability of PTFs and highlighting key gaps in the data availability for specific biomes. We discuss the challenges related to the use of PTFs for large scale application and the need to account for the temporal evolution of SHPs in climate and land use change studies. Lastly, we
210 present various software and web-based tools to use PTFs

3.1 Some words of caution in applying PTFs in land surface models

Far from being the only community, Land surface model (LSM) users have been applying PTFs globally for decades. It is also a community that has seen rapid model development in recent years, which has brought continual efforts to improve the representation of soil and soil hydraulics (Gudmundsson and Cuntz, 2016; Fisher and Koven, 2020). Here we briefly list and
215 discuss limitations of currently available soil hydraulic parameterizations with a particular focus on the issue of spatial transferability. We note that, in this manuscript, we use the terminology LSM in a broader sense. These are meant to be numerical or analytical process models which describe the variably saturated water flow in soils. The governing equations may in turn be coupled to other processes such as plant and root growth dynamics or solute and heat flow. The commonality which is of importance, here, is that these models require effective descriptions of SHPs, either in the form of point estimates or
220 parametric functions.

3.1.1 Spatial Appropriateness

Most of the PTFs currently used in LSMs are regression models derived from studies with samples from particular geographical locations. For example, the widely-used Cosby et al. (1984) PTFs are based on data from soil samples from 23 states in the USA. Therefore, it is highly debatable whether it is appropriate to use this PTF in a global model simulation including grid
225 cells with dominant soil types (e.g., highly organic permafrost soils, tropical soils) other than those covered by the US data. Similarly, the Saxton and Rawls (2006) PTF was derived from soil samples excluding organic soils and soils with bulk densities outside the range of 1.0-1.8 g cm⁻³, yet these are widely applied in global LSM simulations, regardlessly. Barros et al. (2013) stated "*In a review on PTFs, Pachepsky and Rawls (1999) and Pachepsky and Rawls (2004) recommended the use of PTFs for regions or soil types similar to those in which they were developed*". Gerke et al. (2022) also point out that "*If we only have training data from a certain geographical region, machine learning (ML) models will probably produce poor results for other regions*". But what is exactly meant by "*similar*" and "*other*"? In a data-poor high-elevation location in the Andes, for example, would it be better to use a European PTF derived from the same soil type and a similar mountain environment (i.e., sharing common soil type and climate, but not geographical location and not necessarily mineralogy), or should we rather use a Brazilian PTF derived from the same soil type but a lowland forest environment (i.e., matching soil type and continent but not
235 climate)? We remind the reader that soil type is a taxonomic soil unit in soil science and often used for soil maps. Defining



soil types is based on one of various existing taxonomic rules which may differ considerably. Soil types (and their sub-types) may therefore group soils into one type, but with largely different hydraulic functioning. Only very few studies have systematically investigated the relevant dimensions which determine the non-stationarity of PTFs in regard to soil forming factors (Jenny, 1941), including soil properties, climate, organisms, topography and landscape attributes, which determine the

240 SHP. A common issue that arises when using PTFs is that data from the locations where the predictions are desired are often not well represented (or even completely absent) in the training dataset used to develop the PTF.

However, there is evidence that it might be possible to use PTFs outside of the geographical location in which the PTF was developed (in this case, different continents) provided the soil type and climate are comparable. Wösten et al. (2013) explicitly studied using PTFs derived from a specific set of soil types from one geographical location (South America; Hodnett and

245 Tomasella, (2002)) and predicted measured data from similar soil types in the Limpopo catchment of South Africa. In a similar study addressing the appropriateness of translocated PTFs, Fuentes-Guevara et al. (2022) examined input-input and input-output correlation structures in databases underlying the development of four PTFs and compared it to the data of their application catchment. They found that **it is** similarities in the correlation of the data, rather than climate, source area, database size, or spatial extent which could explain PTF performance best. More studies are required to substantiate and verify this

250 **transfer learning which is used in soil mapping (Malone et al., 2016) or lean on meta-models (Grunwald et al., 2016)**. This might allow us to understand under which system conditions PTFs are expected to be similar beyond the limit of local specificity.

Of course, better geographic coverage of the data for developing PTFs is highly desirable, but this is labour-intensive and costly. However, due to the large effort, it may take decades until this is realizable. An alternative approach to tackle this lack

255 of site-specific data is to develop PTFs that explicitly **incorporate soil taxonomic classes and/or diagnostic horizons** (i.e., pedological information) as suggested by (Pachepsky and Rawls, 1999; Gatzke et al., 2011). Incorporating information from soil profile characterization and classification has the advantage that it allows for an improved taxonomic coverage by accounting for pedogenetic similarities, even in the absence of broad geographic coverage. As an example, we plot two hydraulic properties—total porosity and water content at -33 kPa—for selected A and B horizons of five US Soil Taxonomy

260 (Soil Survey Staff, 2014) orders and four diagnostic horizons in Figure 3. These probability density ridgeline plots help diagnose differences in the central tendency, spread, skewness, and kurtosis present in several of these taxonomic categories (e.g., Aridisols and Inceptisols). Accounting for these pedogenetic differences by incorporating taxonomic information may improve the applicability of PTFs in regions with poor spatial coverage. Soil taxonomy relates to the classification system of profiles found in the environment. Soil texture relates to the specific textural composition (sand, silt, clay) of a soil.

265 3.1.2 Spatial validity and methods of modulation

Most SHP models applied spatially explicit modelling assume unimodal pore size distribution. This may be an oversimplification in LSM application, especially in forested areas where biopores created by tree roots or bioturbation commonly occur (Fatichi et al., 2020). Although dual- or multi-porosity SHP models are available (see Section 2.2), PTFs for



bimodal or multimodal soils are currently not available (Zhang et al., 2022). Therefore, modulation of current PTFs is achieved
270 to account for this by using vegetation indices to account for biologically-induced soil structure (Fatichi et al., 2020; Bonetti
et al., 2021). Similarly, in arid and semi-arid environments it might be instrumental to include models which also account for
non-capillary storage and hydraulic conductivity (Weber et al., 2019), since in these areas water fluxes may be dominated by
non-capillary processes. While this is never included, a **meta-PTF has been developed** (Weber et al., 2020).
Many LSMs include deep vadose zones and groundwater components including river and lake beds (Condon et al., 2021). For
275 simplicity and due to a lack in knowledge, these LSMs apply the same soil hydraulic parameterization as used for the rest of
the terrestrial surface, even though sediments and **unsaturated rocks** may show substantial differences in SHPs compared to
the soils located close to the surface. Deep sediments are generally not just more compacted, but also have not undergone
pedogenic processes (Marthews et al., 2014), lack the impact of vegetation and bioturbation as a pore space forming process,
which leads to differences in the hydraulic parameters compared to soils developed close to the surface. Thus, at field scale,
280 this requires extrapolation of hydraulic properties to larger depths at which very little observational data has been collected
(Marthews et al., 2014), therefore, making it highly questionable.

3.2 Gaps in PTFs for specific soils, substrate types, and land uses

As stated, parent material, climatology, and land use are important drivers that determine SHPs. However, measuring soil
properties continuously at each location across the globe is currently unfeasible, as it is far too laborious, expensive, and time-
285 consuming (Rustanto et al., 2017). Globally, soil research is advancing rapidly and researchers have begun to publish many
PTFs and databases for regions other than temperate and agriculture-dominated areas. Yet, the use of existing PTFs for global
applications is still limited as PTFs have been predominantly developed on samples from specific regions and transfer learning
studies are very limited (cf section 3.1.). Furthermore, PTFs may be restricted in use due to highly specific input data (Patil
and Singh, 2016) which may not be readily available. In the following, we identify the most prominent list of missing PTFs
290 and call for the development of PTFs for specific soils and substrate type.

As stated, parent material, climatology, and land use are important drivers that determine SHPs. However, measuring soil
properties continuously at each location across the globe is currently unfeasible, as it is far too laborious, expensive, and time-
consuming (Rustanto et al., 2017). Globally, soil research is advancing rapidly and researchers have begun to publish many
PTFs and databases for regions other than temperate and agriculture-dominated areas. Yet, the use of existing PTFs for global
295 applications is still limited as PTFs have been predominantly developed on samples from specific regions and transfer learning
studies are very limited (cf section 3.1.). Furthermore, PTFs may be restricted in use due to highly specific input data (Patil
and Singh, 2016) which may not be readily available. In the following, we identify the most prominent list of missing PTFs
and call for the development of PTFs for specific soils and substrate type.



3.2.1 PTFs for tropical regions

300 The absence of glaciations has resulted in Precambrian surfaces in tropical regions. Together with predominating high rainfall and temperature, this resulted in a distinct soil structure at different scales including different clay mineralogy (Ottoni et al., 2018; Botula et al., 2013; Nguyen et al., 2015). Unlike the predominantly 2:1 clays of temperate regions, tropical regions are dominated by 1:1 (mainly: kaolinite) clay minerals which result in substantially different hydraulic properties to many tropical soils (Sharma and Uehara, 1968). Next to differences in clay mineralogy, bulk density (BD) and cation exchange capacities
305 are other relevant differences between climatic regions (Minasny and Hartemink, 2011), thus serving as viable candidates for predictor variables. Recently, Lehmann et al. (2021) developed a model that used clay mineral maps from Ito and Wagai (2017) to estimate hydrological and mechanical properties for many soil types and concluded that clay mineral-informed PTFs improve regional SHP prediction. An example is provided by (Gupta et al., 2021a) who show that use of clay fraction without consideration of mineralogy as a predictor of SHPs leads to underestimation of K_{sat} and may lead to important effects on the
310 partitioning of water at the land surface (Lehmann et al. 2021). This has been corroborated by Gupta et al. (2021a) whose prediction of K_{sat} improved for tropical regions when explicitly considering data from tropical soils. Ottoni et al. (2018) introduced the Hydrophysical Database for Brazilian Soils (HYBRAS), Gunarathna et al., (2019) developed PTFs for tropical Sri Lankan soils, while Gebauer et al. (2020) developed PTFs for two remote tropical mountain regions dominated by organic soils under volcanic influence, and tropical mineral soils. Thus, data is becoming increasingly available
315 and opportunities have never been greater for collaborative research to develop a bridge between temperate and tropical PTFs. Ways forward are generally a better data coverage, and to ensure to including more auxiliary information such as clay mineralogy and land cover.

3.2.2 PTFs for forest systems

SHPs are controlled considerably by plant root processes shaping soil structure. In this respect, forests soils are markedly
320 different from other land use types with respect to root size and depth distribution, while exhibiting low bulk densities in the topsoil, since trafficking is generally low. Several studies have shown that hydraulic properties of forest soils differ from soils with other vegetation (Jülich et al., 2021; Pirastru et al., 2013). Particularly, the effect of forest root systems on soil structure and the resulting abundance of large pores challenge the application of PTFs that are typically trained using samples from arable land. Some forest PTF examples are those provided by Teepe et al. (2003), (Puhmann and Wilpert, 2012), and (Lim et
325 al., 2020) – these works showed that, in forest soils, established PTFs fail to describe SHPs in the wet range and that new PTFs must include additional local site information to capture the variation of soil formation processes. In response to the current lack of land use specific PTFs, Robinson et al. (2022) performed a global meta-analysis of hydraulic conductivity data measured under different land uses on the same soil type, and developed response ratios that relate the K_{sat} in woodland and grassland to that of arable land. Until land use specific PTFs become more widely available, such approaches may assist soil
330 parameterization in LSMs.



3.2.3 PTFs for litter layers and mulches

Most Earth System models also do not explicitly represent the litter layer (the so-called ‘O horizon’) of natural vegetated areas (e.g., forests or grasslands) nor litter layers of agricultural land (e.g., in pastures after mowing, or mulches covering cropped soils, e.g. to reduce soil evaporation), even though some approaches have been proposed (Gonzalez-Sosa et al., 1999); (Oge
335 and Y. Brunet, 2002). This means that the part of the soil profile that is in direct contact with the atmosphere is not properly represented, although it can have a substantial effect on controlling the soil water balance by impacting below-canopy interception, runoff-infiltration partitioning, and soil evaporation. A common solution to account for litter layers is to parameterize them as a 'pseudo-litter' layer by reducing the **BD** and estimating the SHP from given PTFs (e.g., (Montaldo and Albertson, 2001). This pseudo-litter layer SHP approach is utilitarian and does not truly represent the SHPs, which are
340 markedly different because they contain only little to no mineral particles and the structure of litter layers greatly differs from that of the soil matrix, causing this layer to have very low water retention and unsaturated hydraulic conductivity (Zagyvai-Kiss et al., 2019). Generally, when forest soils are sampled, the litter and humus layer are removed, because litter poses several difficulties for soil physical laboratory methods. The reason lies in problems in the lack of coherence of the matrix, and contact problems regarding the measurement devices, making the laboratory work very cumbersome. Thus, a concerted effort is
345 required to establish methods which can be applied to litter and humus layers and test if the theory underlying RRE is applicable in such contexts.

3.2.4 PTFs for peat soils

Peat soils are characterised by an organic-rich surface layer that contains, depending on definition, about 30 % (or more) soil organic matter (SOM) and is at least 30 cm thick. This SOM range is typically not included in commonly used PTFs that were
350 developed with a focus on mineral soils (e.g., (Wösten et al., 2001; Saxton and Rawls, 2006). To date, there is no PTF for peat soils that would allow deriving hydraulic properties from readily available regional or global spatial input data. As a consequence, peat soils are currently represented in LSMs with a single set of peat parameters and some specified vertical change of properties to account for the increasing peat decomposition with depth (Letts et al., 2000; Bechtold et al., 2019); (Qiu et al., 2018).

355 Several studies have shown that **BD** can serve as a good predictor of K_{sat} , total porosity, and the van Genuchten retention parameters α and n in peat soils (Liu et al., 2020; Liu and Lennartz, 2019; Morris et al., 2022). The degradation state (Wallor et al., 2018; Weber et al., 2017b) as well as drainage history and type of land use (Liu et al., 2020) have emerged as useful predictors for peat SHPs. Apart from the strong impact of land use on peat properties, they naturally depend on the specific mixture of parent materials and, in particular, on the different peat forming plant substrates. In this context, there are large
360 structural differences between the most common peatland types in high latitudes with mostly low vegetation such as mosses, and in tropical regions with mostly swamp forest. As such, vegetation type, or even latitude, could be used as predictors for PTF development for peat soil (McCarter and Price, 2014; Apers et al., 2022).



The modelling of peatlands could benefit from PTFs mainly tailored for two different scales of application. At the level of individual peatlands, a PTF based on easily measurable parameters such as BD and/or porosity could be used to parameterize SHPs in spatially-distributed peatland hydrological models (Jaenicke et al., 2010). At the scale of LSMs, peatland maps are being developed focused on spatial distribution (Xu et al., 2018) but not on their local properties, so that spatially distributed information on potentially useful input parameters (e.g., BD, SOM content) are not yet available. In this context, the accuracy of ML-based maps of soil properties such as those provided by SoilGrids (Poggio et al., 2021) for peatlands is currently debatable. As data become increasingly available for PTF development for peat soils, additional research should investigate the most adequate level of PTF complexity for the proper parameterization of peat SHPs, too.

3.3 Transient PTFs: accounting for time-dependency of SHPs

There is evidence that SHPs vary considerably during the course of a year, especially for soil layers close to the surface. Technical operations such as repeated tillage, re-compaction, and harvest lead to soil compaction or loosening, changes in aggregate stability, soil faunal activity, the development and dying of roots, and silting processes occur may even influence the soil hydraulic properties multiple times within a year or seasons (Messing and Jarvis, 1993; Horn et al., 1994; Bodner et al., 2013; Sandin et al., 2017). Also animal hooves lead to stress induced soil compaction (Keller and Or, 2022). Other abiotic pressures affect the pore size distribution such as freeze-thaw cycles (e.g., (Ren and Vanapalli, 2019) or hardened pans due to water droplets or chemical dissolution. These effects cannot be modelled with the current approaches that assume a rigid porous medium.

On larger time-scales, changing climatic, land use or management conditions impact the soil chemical, biological, and physical conditions (Hirmas et al., 2018). Soil organic carbon influences soil structure by aggregation as a binding agent between minerals (Beare et al., 1994; Lal and Shukla, 2013) and plays an important role in shaping SHPs (Rawls et al., 2004). For example, Bellamy et al. (2005) analysed the SOC loss in England and Wales in the years between 1978 and 2003 and calculated carbon loss ratios of 0.6 \% yr^{-1} , which were independent of land use, suggesting a link to climate change. Nevertheless, the effect of temporal changes of SOC content on WRC and HCC remains almost always unconsidered in hydrological and land surface models. Soil management is also expected to change under future climates. While new cultivations (Sloat et al., 2020) and modified tillage practices, such as no-till or minimum-till (Hodde et al., 2019) alter SHPs (Fu et al., 2021); (Bouma, 2000; Strudley et al., 2008), contrary to the typical assumption that they remain unchanged over simulation times spanning many decades to hundred years as done in climate change and land use change projections (Eyring et al., 2016; Murphy et al., 2004). Currently, there is a lack of data to properly account for the possible impacts of climate change and land use on SHPs. To fill this gap, long-term field trials (e.g., Schmidt et al., 2019) and observatories (Späth et al., 2022) need to be maintained and/or established to allow for a systematic evaluation of the impact of climatic and anthropogenic changes on SHPs.



3.4 Regionalization and upscaling

SHPs are highly variable in space. This is true over all relevant spatial scales, from the centimetre to the global scale. At the centimetre-scale, this high variability casts doubts on the existence of representative elementary volumes in soil (Koestel et al., 2020) - this alone makes the use of laboratory data from small soil samples to infer to SHPs at larger scales debatable (cf section 6.3). At larger scales, several soil types (differing in soil textural properties, BD, SOC content as well as number and type of soil horizons) can be found within a single model grid cell, with clear implications for SHP characterization and layer discretisation.

For distributed LSMs or hydrological models, the fine scale information available from high resolution soil maps has to be upscaled to the grid scale at which the model will be employed. The general problem of upscaling has been a topic of considerable discussion over the past four decades (e.g., (Cale et al., 1983; Rastetter et al., 1992; Pierce and Running, 1995; Constantin et al., 2019; Vereecken et al., 2019)). The most straightforward method to aggregate fine scale input data to a larger scale extent would be spatial averaging, which can be done for certain kinds of soil information such as SOC content, BD, or soil depth. For soil **textural information this kind of approach is generally unsuitable**. For example, if a grid cell is composed of 50 % clay soil and 50 % sandy soil, direct averaging by texture would yield a sandy clay, which neither reflects the properties of the sand nor the clay. Besides, averaging sand, silt, and clay fractions (%) can cause problems in closing the textural mass balance (Montzka et al., 2017). Such averaging procedures generally result in a “**loamification**” in the parameter space. Alternatively, the PTF output (e.g., van Genuchten parameters), rather than the input, may be averaged. However, some SHPs do not behave linearly over different scales, especially the (unsaturated) hydraulic conductivity or the van Genuchten shape parameters α and n , resulting in considerable uncertainties in water flow predictions (Zhu and Mohanty, 2002; Montzka et al., 2017).

Another commonly used approach for upscaling is aggregation by dominant soil type within a grid cell. The removal of non-dominant soils, which may have contrasting properties to the dominant soil type, may lead to a loss of sensitive information, particularly concerning sub-grid variability. Additionally, when soil information is aggregated by dominant soil class, in most cases the 12 USDA soil classes are used (van Looy et al., 2017) resulting in a limited number of soil types being actually represented.

The impact of different soil maps on LSM predicted terrestrial water budget components was studied by (Tafasca et al., 2020) at a grid resolution of 0.5° , who found that the use of three different realistic soil texture maps resulted in rather similar spatial patterns of the simulated water fluxes. The reason behind this could be again the way soil texture was aggregated using the dominant soil class. This approach is taken globally irrespectively of the resolution of the soil map. Therefore, one can argue that not only the choice of PTF impacts the simulated targets, but also the way the soil inputs are aggregated prior to applying any PTF.

Montzka et al. (2017) proposed a more consistent approach of upscaling SHPs based on Miller-Miller scaling (Miller and Miller, 1956). First, **they generated synthetic** water retention curves based on PTF predicted SHP parameters for each sub-grid



point within a single grid. Then, they fitted a soil hydraulic property model to all synthetic data points; this can be considered a suitable averaging procedure and has also been used by Weber et al. (2017a). Thus, Montzka et al. (2017) were able to derive a scaling parameter to preserve the information of the sub-grid variability of the water retention curve which becomes a measure for the spatial variability to describe SHP uncertainty.

430 3.5 Soil hydraulic property maps

Spatially distributed global maps of SHPs with high spatial resolution are highly desirable for LSM applications (Montzka et al., 2017). Such SHP maps are predominantly developed using PTFs - for example, (Zhang and Schaap, 2017b), (Dai et al., 2019), and Simons et al. (2020) used the Rosetta 3 PTFs (Zhang und Schaap 2017) to produce global maps of SHPs at 1 km resolution. Similarly, the euptf (v1) by (Tóth et al., 2015) was used to produce SHP maps at 250 m resolution for Europe (Tóth et al., 2017). However, these maps are inherently limited as their representativeness is subjected both to the quality of the soil property maps used for their derivation, the appropriateness of the applied PTFs and the models used to describe the SHP (e.g. most PTFs are suitable for either the (uni-modal) VGM or BC types of hydraulic functions). A continuous effort should be made to provide and revise such global maps. As PTFs become increasingly more available for specific regions, SHP maps may be created based on different PTFs, each representative for a local conditions.

435
440 Gupta et al. (2021a) and Gupta et al. (2022) recently provided global maps of K_{sat} and VGM parameters using a machine learning framework in which local information on topography, climate, and vegetation was included in addition to traditional easy-to-measure soil properties. In this approach, soil samples from both temperate and tropical climate regions were considered to improve the model's predictions across different biomes. However, the spatial distribution and coverage of available soil samples for model training is still a major limitation – global spatial predictions will benefit from continuous
445 efforts in data collection from underrepresented areas.

3.6 Call for harmonizing PTFs in model inter-comparison studies

The choice of PTF has been shown to considerably affect simulated water fluxes, regardless of model configuration, for example considering bare soil or vegetation or free drainage versus soil profiles influenced by groundwater (Weihermüller et al., 2021). Similarly, Paschalis (Paschalis et al., 2022) et al. (2022) PTF related uncertainties for a given soil type are higher
450 than uncertainties across soil types in both hydrological and ecosystem dynamics. Thus, Weihermüller et al., (2021) strongly recommend to harmonize the PTFs used in model inter-comparison studies to avoid artefacts originating from the choice of PTF rather than from the actual studied model structures. This is important to note since prominent model intercomparison efforts, such as the AgMIP (Agricultural Model Intercomparison and Improvement Project) in which the performance of soil-crop models is compared, mostly ignore the effect of PTFs. In the AgMIP model inter-comparison studies, that look at crop
455 yield (e.g., (Asseng et al., 2013; Bassu et al., 2014), climate change impact on crop growth and water use (Durand et al. 2018), or actual evapotranspiration (Kimball et al., 2019), SHP parameters are generally estimated using different PTFs in the various



models. To rectify this, Groh et al. (2022), in a model intercomparison study on crop growth and water fluxes in different lysimeters, directly provided SHPs to the group of modelers involved in the study.

Based on informal communications, a number of land surface modelers have indicated that they deem the harmonization of PTFs inappropriate as they argue that harmonization will lead to the loss of model diversity, which will subsequently collapse the ensemble spread of LSM outputs and thus bias the ensemble means as the best average representation of ‘reality’. This argument only holds true as long as it does not hamper adoption of more physically comprehensive SHP models, which is the core element of model improvement. Moreover, this perceived lack of adoption undoubtedly hampers our understanding of whether the model output diversities originate from model structure/physics or from the choice of different PTFs. This is especially relevant in model intercomparison studies dedicated to analyse soil model structural differences. This picture is exacerbated by the non-harmonized use of soil maps (i.e., the PTF model input).

If the aim is to understand how different model physics (in terms of various soil processes: infiltration, (un)coupled soil heat and water transfer, soil-root hydraulics, etc.) cause model diversities and impact the process-level understanding of land-atmosphere interactions (e.g., via land surface fluxes), one consistent set of SHP functions, PTFs and soil property map is a prerequisite (Zeng et al., 2021). Therefore, within SoilWat, a joint GEWEX-ISMC initiative, the “Soil Parameter Model Intercomparison Project” (SP-MIP) has been proposed to approach the question to which degree LSM spread is related to choices pertaining to SHPs, via designing controlled multi-model experiments with coordinated inputs of basic soil properties and PTFs (Gudmundsson and Cuntz, 2016).

It is noteworthy, that harmonizing PTFs may come at a price: As presented, PTF choice may be very sensitive to the modelled output. For example, implementing novel and versatile PTFs very likely will improve weather and climate model predictions, through more realistic partitioning of precipitation inputs over the various hydrological flows and stores. However, it needs to be kept in mind that those models have often been tuned, to decrease near-surface atmospheric temperature biases, for example. This means that initial tests with these improved PTFs may not deliver the expected improvements in model skill until the parameters for other soil- and land surface processes have been updated, too.

3.7 Guidance and tools to facilitate the use of PTFs

From the 2000s onwards, the statistical methods used to describe the relationship between SHPs and other readily available soil information have become increasingly more complex, with additional constraints in software specificity often addressed by publishing the software for the PTF calculation. Table 1 provides an overview of software and web interfaces that facilitate the use of existing PTFs. PTFs derived with multiple linear regression or providing mean SHP or WRC and HCC parameters of specific soil groups (i.e., *class PTFs*) do not need specific software or web application to facilitate their use. Collections of selected equations available from the literature can be found in Guber et al. (2006) who list 22 published PTFs for the prediction of WRC, Dai et al. (2019) who present 20 published PTFs for both the WRC and HCC, and Zhang and Schaap (2019) who provided four ways to predict K_s based on effective porosity and six PTFs to estimate K_{sat} based on basic soil properties.



490 Nasta et al. (2021) collected 11 PTFs to predict WRC and 10 PTFs for K_{sat} , which are expected to perform well for European applications.

However, many global regions remain inaccessible for intensive soil sampling, and therefore, the worldwide coverage of soil information remains incomplete (Omuto et al., 2013; Batjes et al., 2020). A workflow for modelers to obtain soil hydraulic parameter values is presented in Figure 4 and Figure 5.

4 Requirements of measurements and auxiliary information

495 4.1 Databases and impact of different measurement methods

Currently available PTFs have been developed based on datasets from different sources and obtained by varying methodologies. This approach has been successful to the extent that these databases provided a first source of input data for large-scale model applications. Yet, uncertainty and variation in collated data for large-scale applications may introduce errors. Harmonisation and standardisation to provide reliable SHPs has not received much attention so far, leading to added 500 uncertainties in model outcomes that do not necessarily correspond to real system variability. Data inconsistencies due to a lack of protocol and uniform standards necessarily lead to differences in PTF prediction, particularly when considering the laboratory and field dichotomy (Gupta et al., 2021b). To exemplify the variability that may be produced by different measurement methods, we explored the European Hydro-pedological Data Inventory (EU-HYDI; (Weynants et al., 2013). We first note that access to EU-HYDI is restricted to the data contributors, complicating efforts to exploit the data richness, and, 505 to certain data locations. From EU-HYDI, we selected those records that included information on soil texture, BD, and organic matter. Multiple-linear regression PTFs were fitted separately for saturated hydraulic conductivity and water contents at particular pressure heads. We then subtracted the observed retention and hydraulic conductivity values from their estimated counterparts and grouped the residuals by measurement methodologies. Figure 6 and Figure 7 show the results for water retention at a suction of -100 cm, and K_{sat} , respectively. The distribution of residuals demonstrates that there is a dependency 510 on methodology as well as on sample sizes used to obtain the water retention and hydraulic conductivity curves in the laboratory. Noise introduced by the different measurement methods or protocols apparently imposes a ceiling to the prediction quality by PTFs. Efforts, such as the *Soil Program on Hydro-Physics via International Engagement* (SOPHIE) initiative (Bakker et al. 2019) that aim to harmonize, standardize, and innovate soil hydro-physical measurements should be further expanded in the future.

515 4.2 Harmonization and standardization of methods

An issue that has hampered every past effort to develop PTFs in the international context is that of different measurement methods, data reporting, and classification standards and/or systems. In some cases, this has caused misunderstanding or misrepresentation of data (Nemes et al., 2009). In other cases, conversion or interpolation solutions had to be sought (e.g., (Wösten et al., 1999; Nemes et al., 1999) to make the available data compatible, inevitably introducing additional uncertainty.



520 Still, Nemes and Rawls (2004) concluded that such conversion is preferable for the purposes of PTF cross-testing and use, rather than using unconverted data, because the conversion or interpolation helps reduce or remove bias in the data even if it introduces additional noise.

The USDA-NRCS National Cooperative Soil Survey Soil Characterization Database (<http://ncsslabdatamart.sc.egov.usda.gov/>) stores data on BD determined using different methods or standards for the same soil sample. In Figure 8, we present a comparison of BD on a dry mass basis determined on soil clods that were equilibrated at -33 kPa water content and oven dried with the volumes determined separately. Because most data plots above the 1:1 line, the deviation indicates a loss in sample volume during oven drying in comparison to a wet clod equilibrated at -33 kPa. Due to the shape of the point cloud in Figure 8, there appears to be no option to calculate one from the other. The same is expected when attempting to compare soil core and soil clod-based BD, in which case the latter does not account for the between-clod pore system. European data collections typically report BD determined on soil cores (e.g., the HYPRES and EU-HYDI databases). This is one example hindering international data comparability.

Another limitation to data comparison stems from different soil particle-size standards. Some countries, like Russia and some Central and Eastern European countries, apply an upper bound for sand content at 1 mm (whereas most standards worldwide use 2 mm). This divergence leaves data from a vast and relatively intensely surveyed land area incompatible with that of the rest of the world. The main issue is that the 1-2 mm coarse sand fraction is absent from the analysis and follow-up calculations; therefore, a conversion would not entail interpolation but extrapolation.

It is highly desirable to harmonize new measurements with historic measurements. For ongoing or future measurements, there seems to be little willingness to change long-established protocols, especially if that implies additional costs. As a positive precedence, Hungary transitioned from the International Society of Soil Science particle-size classification system to that of USDA-ARS, already in the 1990s. This was simply achieved by adding an additional measurement of the texture fraction at a particle diameter of 50 μm to the measurement sequence. allowed both backward and forward compatibility at little extra cost. At present, the Food and Agricultural Organization (FAO) is also engaged in developing recommended measurement protocols for future measurement of various soil properties with the expectation that it will help reduce some sources of variability due to differences in, for example, sample preparation.

545 New methodologies to measure soil properties keep emerging, and this is to be encouraged, even if this leads to both challenges and opportunities. For example, the measurement of soil particle-size distribution by laser diffraction has large up-front investment costs, while the measurement itself is significantly cheaper and quicker than by the pipette or hydrometer methods. At the same time, it has been recognized that the obtained data are not directly compatible, and the conversion between them is not trivial (Bieganski et al., 2018). Yet, methods that provide quasi-continuous data are attractive because their data-efficiency is higher: the same measurement effort provides data that are compatible with multiple standards. To that end, while it comes with new investment costs and potentially new structural errors dependent on the measurement technique, the Integral Suspension Method (Durner and Iden, 2021) has desirable features in it reports quasi-continuous data, while it is based on the same theory as the pipette and hydrometer methods, promising good data compatibility and convertibility. At the time of

writing, the latter is yet to be widely confirmed, however, as is the added benefit of the quasi-continuous data for building
555 PTFs.

Following theoretical understanding and improved technical capabilities, novel measurement and input types have emerged
and will keep emerging. Examples are the characterization (and quantification) of soil structure, pore network characteristics
from X-ray tomography imaging, or spectral properties collected by proximal or remote sensing techniques. However, the use
of such properties as inputs to PTFs is typically demonstrated by small-scale single studies, and the data libraries remain
560 isolated. Data collection is rarely standardized and is often dependent on technical capabilities, practical cost-benefit choices,
and undoubtedly on personal preferences of the involved scientists. One example is data derived from X-ray tomography
imaging. When hardware differs, the image resolution and other hardware/software settings often balanced between costs and
benefits for an individual project. Also, the choice of image processing and segmentation has a large impact on the results.
Non-standardized moisture states of the samples at the time of scanning may induce inter-laboratory uncertainties, even if
565 reported.

Furthermore, the X-ray tomography is also sometimes used to infer water retention curves, it is unlikely that these data are
directly comparable with, for example, data from pressure plate experiments. The reasoning is that the water volume removed
from the sample emptied using pressure plates depends on the pore architecture, while X-ray image-derived data depend
strongly on the image processing pipeline and the selected segmentation approach (Gackiewicz et al. (2019)), who illustrated
570 the huge sensitivity to image thresholding.

It is desirable that respective research groups summon and establish measurement standards and minimum requirements early
and before phasing-in larger volumes of measurements internationally, to help prevent fragmentation and incompatibility of
data. This would enhance the communal effort to develop PTFs with broader validity. As image processing capabilities have
improved steadily, and as we understand their effects on the result, publishing 3-D image data in data repositories prior to
575 processing may be desirable, so they can be analysed uniformly by potential future users when new analytical approaches
emerge. Still, describing and linking structural information as further proxy for PTFs is still ongoing.

No systematic standardization exists in determining SHP. However, in one inter-laboratory comparison of physical properties
and saturated hydraulic conductivity (Buchter et al., 2015) performed by laboratories all in Switzerland, the results showed
significant differences between laboratories used. These results call into question the concept of comparability between
580 laboratories. For example, the degree of soil saturation (see section Fehler! Verweisquelle konnte nicht gefunden werden.)
and saturation method prior to the experiment is not always quantified. Furthermore, other hydrophysical characteristics of a
given soil may change over time (e.g., (Young et al., 2004; Bens et al., 2007; Eppes et al., 2008), as a result of a many factors.
Ideally, these should be captured as metadata as soil samples are analysed.

According to Ghanbarian et al. (2015), supported by the analysis of the EU HYDI database, sample size effects the determined
585 WRC. Surprisingly, Wang et al. (2015) and Czachor et al. (2020) did not make this observation, and concluded as long as
samples have the same height, a sample's diameter and shape do not have an effect. This is surprising, as the REV of a given
soil is not know a priori, so that at sampling time, a sample might not actually be representative. Height may play an important



role due to a non-linear change in water content with sample height, as a consequence of e.g. vertical layering, but also due to the shape of the water retention curve. This may lead to a bias in the calculated sample averaged water content. Concluding on the stated, sample heights are recommended to be “as low as possible” but the sample volume should be large enough to be representative of the soil properties (do Nascimento Silva et al., 2018; Mosquera et al., 2021). However, this minimum representative volume can vary between soil types, making standardisation rather difficult.

Sample preparation conditions such as saturation method (with or without vacuum), saturation solution (distilled water or saline solution to limit colloid dispersion; antimicrobial solution to avoid biofilm development) can also influence the measurement result (Klute and Dirksen, 1986; Dane and Topp, 2002; Cresswell et al., 2008). Air entrapment is known to have a large impact on soil saturated hydraulic conductivity (Faybishenko, 1995). Methods that aim to reduce air entrapment (saturation from below with or without vacuum) will lead to overestimate of field-saturated hydraulic conductivity. The use of contact materials between the sample and the pressure plate and/or weights on top of the sample may also affect the retention measurement (Klute and Dirksen (1986)). These contact materials can be filter paper, or woven materials such as polyester fabric, synthetic knitwear, or cheesecloth; or kaolinite (Reynolds and Topp, 2008) or silt (Klute and Dirksen, 1986). Gee et al. (2002) demonstrated that neither kaolinite nor adding weights improved the contact between samples and plates. However, Gubiani et al., 2013) recommend the use of filter paper under high pressure and McCarter et al. (2017) developed a measurement method particularly suited for peat soils. Laboratory practices differ between labs, and often changed over time in a single lab, as a result of a change in equipment or technician. Furthermore, the temperature and relative humidity in the laboratory impact the measurements by altering the surface tension of the water and the vapor fluxes in the sample during equilibration (Hopmans and Dane, 1986). In a recent study on the reproducibility of the wet part of the soil water retention curve Guillaume et al. (2023) conducted an inter- and intra-laboratory method comparison and found that both inter- and intra-laboratory variability can be a substantial source of scatter and error in the data, even when methods have been harmonised.

With regard to the hydraulic conductivity of soils, the considerations regarding sample saturation remain valid. Javaux and Vanclooster (2006) demonstrated the effect of sample size on hydraulic conductivity estimates. Deb and Shukla (2012) reviewed the multiple factors that can impact the measurement and highlight differences in the device used, the sample support, and the number of replications among others. They conclude that comparing data produced in different studies is almost impossible. The effect on PTFs, however, remains largely unknown. While inter-laboratory comparisons exist for textural analysis, the same is very rare for hydro-physical properties such as retention curve or hydraulic conductivity (Guillaume et al., 2023). This type of exercise requires reference samples, which drain over predefined pressure head ranges, sufficiently enough so that inter- and intra-laboratory measurement uncertainty may be disentangled.

4.3 Required and auxiliary data

What do we need to reach higher quality PTF prediction, especially for larger scale modelling? Clearly, we need to aim at establishing best practices for measuring and reporting data to be used for PTF development. **Harmonization and**



620 standardization significantly increase the possibilities for data (re-) use. Open-source data policies are instrumental in that
respect. To be able to produce meaningful and high-quality syntheses from models that need soil parametrizations, the quality
of the underlying data needs to be assured. PTF quality is also hampered by lack of “best practices”. In other research fields
the need of harmonization and standardization has been recognized, and dealt with either through formalized networks (e.g.,
WEPAL, <https://www.wepal.nl/en/wepal.htm>) or management plans for collaborative research (Finkel et al., 2020), or
625 standardized handbooks (e.g., (Halbritter et al., 2020). Finally, it has to be mentioned that developments for standardization of
measurement methodologies for PTFs development have been initiated by, for example, FAO-GLOSOLAN (
<https://www.fao.org/global-soil-partnership/glosolan/en/>) and the earlier cited SOPHIE initiative
(<https://www.wur.nl/en/article/Soil-Program-on-Hydro-Physics-via-International-Engagement-SOPHIE.htm>; Bakker et al.,
2019).

630 Moreover, we should make sure that repositories containing data for properties traditionally used for PTF development would
benefit from a checklist containing minimal data requirements and reported auxiliary information in soil surveys. In the
following, we present a number of suggestions for what a checklist with metadata should include:

- Soil age and pedogenic development. Assessing the soil age or, more directly, the pedogenic development would
likely enhance predictions of SHPs. For example, age along a chronosequence has been strongly linked to significant
635 changes in soil hydraulic conductivity (Young et al., 2004). Although quantitative pedogenic development indices
have been difficult to generalize given their dependence on knowledge of the parent material, recent work has shown
that these indices can be reconstructed to examine relative differences between illuvial and eluvial horizons removing
the need for lithologic information (Koop et al., 2020).
- Soil geomorphic description. Information on local topography (e.g., slope, aspect, curvature) and land-surface age
would likely assist in comparisons between predictions of soil hydraulic properties for different geomorphic
640 environments as well as serve as a grouping basis for the development of class-based PTFs.
- Information on current land use (e.g., tillage practices), known history of land use changes, soil age since land use
change, and evidence of land degradation characteristics (e.g., erosion).
- Details on vegetation (e.g., above and below ground biomass, leaf area index) and soil fauna, soil type together with
645 horizon, soil depth, root zone depth, groundwater depth.

As such it would be desirable, if funding agencies were aware of standards regarding collection, curation, and storage and
actively include this.

Two notable data/knowledge gaps are field measured SHPs – especially hydraulic conductivity – and the wetting branch of
the hysteretic water retention curve that is relevant under field conditions (cf sections 2 and 6). Careful consideration of the
650 use of hydraulic conductivity in models is warranted though, as it is impacted by the scale of observation (Roth 2008), and
possibly by the atmospheric conditions (Oosterwoud et al., 2017), or by **easonal** effects (Suwardji and Eberbach, 1998; Farkas
et al., 2006; Bormann and Klaassen, 2008) may also be apparent in the data. Additionally, data to fill these gaps can be difficult
to acquire the HCC for soils with very low conductivities. Moreover, its non-standardized quantification methods can introduce
variation as well (Fodor et al., 2011). Field hydraulic conductivity under relatively wet conditions can be obtained through
655 measurements of infiltration, for which a global database, as presented by Rahmati et al. (2018). An alternative is to lean on
methods employed in groundwater hydrology, in which an effective conductivity is used. Although the scale of measurement

is still not comparable to grid cells within Land-Surface or Global Circulation Models, aquifer conductivity can provide an interesting additional data source when the occurring soils resemble the aquifer materials, such as in uniform sedimentary systems. Pelletier et al. (2016) provide a database containing 1-km gridded thickness of soil, regolith, and sedimentary deposit layers that can inform the application of aquifer conductivity as a proxy for larger scale PTF estimation.

Furthermore, with the expansion of proximal and remote sensing, larger scale approaches may become available to estimate hydraulic conductivity. For example, Francos et al. (2021) used UAV hyperspectral data to map water infiltration, and Rezaei et al. (2016) measured apparent electrical conductivity and found a good correlation with the saturated hydraulic conductivity and soil properties, and subsequently hydrologic fluxes.

Since data on the wetting branch of the WRC is rarely available in sizeable (international) soil hydraulic data collections. Of the databases known and frequently used, UNSODA (Leij, 1996; Nemes et al., 2001) is the only one that has separately collected and stored water retention data measured on the wetting branch. However, data are scarce: while there are 730 laboratory measured WRCs in the database that were determined during drying, only 33 were determined during wetting. Field-measured WRCs are even more scarce: only 137 and 2, respectively. There is clearly a gap in our quantitative knowledge of soil water retention behaviour under field conditions, while we are aware of the dichotomy between laboratory-measured data and field-observed effective soil hydraulic behaviour. We understand that this dichotomy is driven by multiple factors, among them the non-representativeness of field conditions by laboratory experiments, the scale of the measurement and typically the scale of PTF derivation (see section 6), and the omission of the effect of neighbouring soil layers when working with a cm-scale soil sample. Therefore, it would be desirable to routinely complement laboratory data with auxiliary information and field measurements.

4.4 Characterizing and considering soil structure

Soil structure has long been recognized as a missing key determinant of SHPs in PTFs (Lin, 2003; Terribile et al., 2011; Pachepsky and Rawls, 2003). Lack of predictors quantifying relevant soil structures explains the poor performance of PTFs for saturated and near-saturated hydraulic conductivity (Vereecken et al., 2010; Jorda et al., 2015; Gupta et al., 2021b). To rectify this gap, using the information on aggregates from field soil surveys is particularly attractive (Pachepsky and Rawls, 2003). Here, the morphology and stability of the soil pore network is fundamental. Due to the opaque nature of soil, quantifying relevant soil structures has proven difficult. During the last 20 years, non-invasive imaging methods have become available and have led to fundamental progress in this field of research, first and foremost three-dimensional X-ray imaging. From this evidence has been derived that the critical pore diameter correlates well with the saturated hydraulic conductivity in undisturbed soil (Koestel et al., 2018). Conceptually speaking, the critical pore diameter is the size of the bottleneck in the pore-to-pore connections from top to the bottom of a soil sample. In freshly tilled soil, it is macro-porosity, which determines this (Schlüter et al., 2020). While acquiring X-ray image data is restricted to sample diameters of less than 20 cm and requires similar efforts as direct measurements of SHPs, it may be useful to identify auxiliary variables and then to relate them to SHP. For example, it will allow to investigate how soil aggregates relate to soil pore network morphologies (Koestel et al., 2021).



690 **Deriving a PTF** for bimodal models requires robust measurements of near saturation unsaturated hydraulic conductivity. In principle, such data may be obtained using tension-disk infiltrometer measurements. A meta-database to the one used in Jarvis et al. (2013) has been recently published (Blanchy et al., 2022). However, the majority of published tension-disk infiltrometer data does not sample sufficient numbers of support tensions for parameterizing bi-modality in HCCs.

Another factor that has been neglected so far is the temporal evolution of SHPs. Swelling and shrinking processes may change soil saturated and near saturated hydraulic conductivity radically within a few hours (Stewart et al., 2016). Burrowing of soil macrofauna like earthworms can increase hydraulic conductivity by orders of magnitudes in a matter of weeks (Bottinelli et al., 2017). Several studies have meanwhile provided evidence of seasonal dynamics, which may be strongly modified on a temporal scale of days to months to years (Messing and Jarvis, 1993; Horn et al., 1994; Bodner et al., 2013; Sandin et al., 2017). Droughts have also been found to alter SHPs significantly (Robinson et al., 2016; Gimbel et al., 2016).

700 Progress in quantifying soil structure has been especially slow at pedon and field scales (Letey, 1991; Eck et al., 2013). Data on soils structure often reflects properties of aggregates (e.g., aggregate-size distributions, aggregate stability). In turn, it is still difficult to relate these directly to soil pores due to lack of information on how aggregates are arranged and packed within a representative soil volume (Sullivan et al., 2022). Where these data exist, they often describe aggregate properties from relatively shallow depths and small samples (e.g., ~25 g; Nimmo and Perkins, 2002) that do not capture the morphological structure of the soil horizon and, thus, missing the connectivity of pore-networks and spatial heterogeneity of SHPs at larger scales (Rabot et al., 2018). Additionally, transferability to other soil samples, even when collected nearby, is still problematic. Additionally, quantitative aggregate data are often only collected for particular research studies as opposed to soil survey efforts, limiting their distribution and availability for inclusion into PTFs. Also, information on the larger soil aggregate structure is often obtained from field descriptions, which are represented by categorical, subjective, and discrete data (Terribile et al., 2011; Eck et al., 2013). Moreover, soil aggregate structure can occur in a nested, hierarchical arrangement within a horizon and the qualitative data for each representative structural unit need to be combined appropriately to provide information on the overall structural character of the material (Hirmas and Gimenez, 2017).

Despite these issues, several recent promising developments allow us to project a roadmap for the including of soil structure in the generation of PTFs. Probably the lowest hanging fruit is the use of historic field description data as inputs into PTFs (Lin et al., 1999). Although we collect these data as categorical, recent work has shown that they can be quantified on a ratio scale (Mohammed et al., 2020). For example, Mohammed et al. (2016) combined image analysis on hundreds of structural silhouettes taken from high-resolution photographs with a survey of 78 soil scientists with experience in the field to classify each structural unit into its ped type (i.e., shape, blocky, prism-shape etc.). This allowed each ped type to be assigned a shape metric derived from the image analysis. Hirmas and Gimenez (2017) showed how this information could be combined in soil horizons where multiple and compound structures were described. Because these data are recorded in standard soil survey efforts (e.g., Soil Science Division Staff, 2017), the ability to convert them to quantitative metrics opens the door to include them as input variables into PTFs and widens the range of possible machine learning algorithms used in PTF development.



Other techniques based on images have been developed that address the quantification and the pore-aggregate problem described above (e.g., computed tomography; Abrosimov et al., 2021; Koestel et al., 2021) as well as the scale issue (e.g.,
725 multi-stripe laser triangulation scanning; (Hirmas et al., 2016; Bagnall et al., 2020). However, these techniques are currently not routinely applied in soil survey efforts and, thus, remain isolated to relatively small numbers of samples without wide geographic and soil-geomorphic representation. Because including these data will doubtlessly improve predictions of PTFs, we agree with the recommendation by Rabot et al. (2018) that a coordinated effort should be established to obtain this information at a wider scale (i.e., development of a soil structure library). More urgently, data from these techniques should
730 be used to create better predictions of quantitative structural metrics from readily available soil property information. These predicted structural parameters can then be used to improve predictions of hydraulic properties from PTFs.

A blueprint for rectifying soil structure omission in current PTFs was recently proposed by Bonetti et al. (2021), who suggested the use of vegetation metrics (in combination with soil textural information) to directly modulate PTF-derived SHPs and account for the effect of biologically-induced soil structure on the soil saturated hydraulic conductivity (see also Fatichi et al.,
735 2020; Fan et al., 2022). While this study still relies on empirical relations to link vegetation and soil structure, it offers a systematic and physically-based approach to model parameterization that goes beyond ad hoc parameter tuning. To overcome biases introduced by the limited number and type of predictors commonly employed, additional information should be included in the derivation of PTFs (Vereecken et al., 2010). In these regards, capitalizing on the ever-increasing availability of spatially resolved remote sensing information could offer new opportunities to concomitantly include additional local information in
740 PTFs and provide estimates of SHPs at scales relevant to land surface and Earth system models (Bonetti et al., 2021). The recent availability of the global-scale digital maps of soil physical and chemical properties – despite their uncertainties - provides high-spatial-resolution information to support the implementation of PTFs for modelling applications, starting from products such as SoilGrids 250 m (Hengl et al., 2017), its recently updated version, SoilGrids 2.0 (Poggio et al., 2021) or OpenLandMap (<https://openlandmap.org>). For example, Gupta et al. (2021) and (Gupta et al., 2022) harnessed the availability
745 of spatially distributed surface and climate attributes to derive maps of soil saturated hydraulic conductivity and WRC parameters at 1 km resolution within a machine learning framework. This novel approach to predictive SHP mapping was named “Covariate-based GeoTransfer Function” (CoGTF) to highlight differences with previous maps solely based on soil information (i.e., traditional PTFs) and generally neglecting additional environmental covariates.

4.5 New opportunities for in situ sensing

750 While advancement to the quantification of soil structure is expected to enhance our ability to better characterize the wet end of the water retention curve and especially saturated and near-saturated conductivity, other opportunities have emerged that may help infer the dry range of soil water retention – whether in one step or two steps.

Sensors exist that can indirectly measure basic soil properties rapidly as an alternative to direct measurement of soil physical and hydraulic properties. These sensors usually involve the application of some wavelengths of the electromagnetic spectrum
755 onto the soil and measuring the response. In particular, soil responds uniquely to the infrared spectrum. Infrared spectrometers



can measure soil responses to infrared radiation rapidly and non-destructively. One of the first applications of near infrared spectrometry in soil science was to measure soil water content (Bowers and Hanks, 1965), but research into field and lab based infrared soil spectrometry has become increasingly popular over the past 2 decades due to the availability of the sensors and mathematical techniques to process the spectra. Studies have found that soil spectra in the visible and near infrared range (NIR, 760 400-2500 nm) and mid infrared range (MIR, 2500-25000 nm) can characterise a range of physical, chemical, and biological properties via multivariate prediction functions (Reeves, 2010; Soriano-Disla et al., 2014). The sensors can be operated in the laboratory or the field. For example, the near infrared sensor can be mounted in a penetrometer to measure soil spectra with depth. Some infrared hyperspectral sensors can be attached to satellite, aircraft or unmanned aerial vehicle, offering detailed soil surface spectra reflectance (e.g., (Lagacherie et al., 2020).

765 Infrared spectrometry may be used to estimate soil (hydraulic) properties, by relating the spectra to the measured soil properties by (multivariate) regression functions. Soil infrared spectra can predict several fundamental soil properties very well including soil particle size distribution, organic and inorganic carbon content, CEC, exchangeable cations, pH, mineralogy and total elemental concentrations of major elements (Ng et al., 2022). Many of these soil properties are key inputs to PTFs and may be used as predictors for published PTFs (Tranter et al., 2008). There are also several studies that suggest that soil NIR and MIR 770 spectra can predict directly points on the WRC and HCC (e.g., Pittaki-Chrysodonta et al., 2018), too. These are termed spectrapedotransfer functions (Santra et al., (2009).

However, as infrared spectrometry only measures the reflectance of the soil matrix (usually in the lab on sieved soil samples) and cannot sense any pores or pore size distribution, it has proven performant to predict water retention in the dry range where water adsorption to mineral surfaces dominates, but has low predictive capability related to water stored in aggregates or 775 capillary pores. The infrared spectra can predict water retention measured using sieved soil samples at all moisture ranges, but the prediction of volumetric water content of soil clods at -60, -100, and -330 hPa were not as accurate as in the sieved samples due to missing information on soil structure. Pittaki-Chrysodonta et al. (2018) stressed that soil-structure-dependent water content will typically be poorly related to basic texture properties and, thus, poorly predicted from NIR spectra.

This factor seems to be disregarded in many publications that promote NIR and MIR as an effective proxy to the whole 780 retention curve, or hydraulic conductivity. Nevertheless, the use of MIR and NIR for predicting soil hydraulic properties can be more accurate than traditional pedotransfer functions since the spectra contains better information on mineral and organic components of the soil (Pittaki-Chrysodonta et al., 2018). Incorporating information on soil structure to the infrared spectra may overcome these limitations. They can open new directions in inferring soil (hydraulic) properties at the volume of soil surveys.

785 5 Constraint based SHP parameterisation for plausible modelling

Before building a parametric PTF, the parameters of the SHP model have to be estimated using measured WRC and HCC data by inverse modelling (SHP model calibration). In this section, we present a method and examples for how SHP models may



790 be parameterised to ensure physical plausibility. As discussed earlier, the sample volumes and measuring devices used to
obtain the WRC and HCC data may differ and induce uncertainties in the data (section 4). It is expected this may propagate to
the calibrated SHP model parameters and ultimately to the built PTF. Additionally, a given SHP model might not actually be
the correct description for the *data generating process* - in other words, the model structure may not be able to describe the
data or be simply incomplete (section 2) for a given model use (section 3). The aforementioned reasons may lead to the
estimation of physically implausible SHP model parameters and PTFs. One method to ensure physically plausible SHP models
during the inverse modelling step is to use additional knowledge and physical constraints in the inference process (Wöhling
795 and Vrugt, 2011; Zhang et al., 2016; Lehmann et al., 2020). We do not discuss outlier detection or the propagation of
uncertainties to the PTFs.

5.1 Parameter Estimation in a Bayesian Framework to integrate constraints.

Most commonly, SHP model parameters are estimated using a cost function which is formulated and used to minimize the
difference between observations and predictions (typically the measured and modelled WRC and HCC data). Frequently, some
800 form of maximum likelihood estimation (Hopmans et al., 2002), is used or the relate minimisation of least squares.
Equivalently to this common approach, Bayesian inference can identify the maximum *a posteriori estimate* of the model
parameters. Beyond such a point estimate, Bayesian inference provides robust information on parameter uncertainty and
auxiliary (physical) constraints during the inference process may be incorporated. We explicitly introduce it here, to highlight
its suitability in the context of building physically consistent (section 5.2.) and functionally evaluated (section 6) PTFs.

805 According to Bayes' theorem, the *posterior* probability $p(\mathbf{x}|\mathbf{y})$ of a parameter set \mathbf{x} given data \mathbf{y} is formulated by the
proportionality $p(\mathbf{x}|\mathbf{y}) \propto p(\mathbf{y}|\mathbf{x})p(\mathbf{x})$. The first factor on the right-hand side, the proportionality $p(\mathbf{y}|\mathbf{x})$, is the joint
probability of a model with its corresponding parameter vector \mathbf{x} to have produced the observed data \mathbf{y} . This is often termed
as the likelihood model. The second factor, $p(\mathbf{x})$, is the *prior* parameter probability. For this frequently weakly informative
bounded uniform priors are used. We note that the adequacy of the statistical assumptions in the likelihood model $p(\mathbf{y}|\mathbf{x})$
810 (e.g., independently and identically distributed errors which are described by a known distribution) is important for both the
accuracy and particularly for the precision of the estimated parameter posterior. For methodologies and methods to quantify
the posterior, we refer to standard text books (e.g., (GELMAN et al., 2013).

Bayes' theorem will yield identical results to the earlier mentioned maximum likelihood estimation when non-informative
priors are used. This is mostly done, and the maximum likelihood estimator or best fit parameter set $\hat{\mathbf{x}}$ is used in the subsequent
815 building process of the PTF. However, it is by use of **informative** priors that constraints can be directly considered a priori,
meaning before the fitting process. This constrains the admissible parameter space to a plausible space. Methodologically, this
can be achieved by constraint-based parameter sampling approaches (Chavez Rodriguez et al., 2022; Gharari et al., 2014).
Note, this step is done before fitting WRC and HCC functions to data. The aim is to obtain a prior that fulfils a list of "minimum
necessary requirements" or "constraints" (cf section 5.2) either evidence-based or expert-elicited for both model parameters
820 and the corresponding model outputs. This may be achieved by drawing parameter vectors from an originally non-informative



prior $p^0(\theta)$. Then, before simulating the prior predictive of the SHP model, the parameter samples are subject to fulfil all constraints directly (i.e., parameter relationships and plausibility constraints). Subsequently, two more categories of constraints related to the model outputs may be included. First, the simulated prior predictive may be analysed directly (e.g., monotonicity in modelled HCC). Secondly, the sampled SHP model parameters may be used to parameterise the RRE and simulate water fluxes (e.g., using HYDRUS) or, for example, infiltration experiments (Lassabatère et al., 2006). The simulated state variables may then be compared to measurements or a list of physical plausibilities. **This model-based evaluation of the prior predictive may provide a method to bridge the gap between the laboratory-based measurements commonly used in PTF building and field scale functional evaluation (section 6).** If this approach is done recursively and the sampling process is coupled to a Markov-Chain Monte Carlo sampler, then the non-informative prior may be turned into a highly informative prior $p^0(\theta|M) \rightarrow p(\theta|M)$ (Chavez Rodriguez et al., 2022) and can be used when fitting the WRC and HCC and ensure physical consistency. We note that due to the multiplicative nature $p(\mathbf{y}|\mathbf{x})p(\mathbf{x})$ this scheme may be done immediately inside the likelihood model, which is straightforward to implement.

To avoid bias in constructing informative priors, constraints should be based on clear empirical evidence and careful consideration of uncertainties in observations. Bayesian constraint based prior modelling approaches also increase the computational efficiency of the subsequent parameter identification and enable a consistent quantification of uncertainties and data worth analyses, provided that the statistical assumptions in the likelihood model are met.

5.2 PTFs have to honour physical constraints

The parameters of the SHP that are determined based on fitting experimental data or predicted by PTFs must obey various physical constraints. Straightforward constraints describing the WRC include: i) soil water retention values between 0 and the value of total porosity, ii) WRC attaining a water content of zero at oven dryness, and iii) water retention values monotonically decreasing with decreasing matric potential. While the monotonicity is ensured for parametric models of SHP (see below), it is not straightforward for PTFs that predict the water content for a few specific matric potential values. In McNeill et al. (2018), the monotonicity was ensured by predicting non-negative water content differences for increasing water potential (starting with a PTF for wilting point at -150 m). A specific example are point PTFs for the wilting point and field capacity (and thus the plant available water). In this case, a possible option is to predict the wilting point and the available water content ≥ 0 with a PTF and then compute the field capacity from those to ensure that the difference between field capacity and wilting point will not result in a negative available water capacity value.

The monotonicity is secured when a parametric PTF is applied, providing it was built to that end. In this case, the parameters of the water retention curve model are predicted, and θ at different h can be computed. However, a more complex approach is required for the derivation of physically constrained WRC or HCC by continuous PTFs. The majority of methods available from the literature predict the parameters of the WRC models, but do not consider parameter correlation, thereby being another reason for why prediction may lead to physically unrealistic parameter combinations. **Class PTFs** are typically not impacted



by **unphysical parameters** estimated as the selected WRC and HCC models are directly fitted to all measured θ - h and (if available) K - h data for each combination of texture class (Wösten et al., 1999; Schaap et al., 2001; Tóth et al., 2015).

855 Apart from constraining the PTF outputs and hydraulic properties derived from estimated parameters, the user should be clearly advised about the input data range the PTF has been trained on. To this end, the commonly communicated minimum-maximum range of, for example, sand, silt, and clay content, is insufficient, given that the min-max data range can be nearly identical for a temperate and a tropical data set, while their density-distribution and related characteristics can differ substantially. More descriptive information is needed that may include, for example, density distribution plots and correlation matrices.

860 The vast majority of methods used for PTFs development are empirical data-driven techniques relying on the derivation of relationships between predictors and response variables (Patil and Singh 2016; Van Looy et al. 2017). The use of limited and only partially representative sets of predictive soil variables combined with the sole reliance on basic goodness-of-fit estimators to evaluate model performance (Vereecken et al. 2010; Van Looy et al. 2017) may, however, lead to **unphysical** parameter combinations and biases in the estimation of soil hydraulic properties (SHPs).

865 In line with section 5.1 and the requirement of constraining, Lehmann et al. (2020) showed that a commonly used metric, the measurable quantity ‘characteristic length of evaporation’, L_C , is overestimated for about 30% of the global terrestrial surfaces if it is predicted based on SHPs derived from Rosetta3 (Zhang and Schaap, 2017b) PTFs. Based on the PTF-predicted SHP-parameter values, the calculated characteristic length was in many cases several meters, which is unrealistic. The authors thus proposed the use of multiple physical constraints during the PTF construction and fitting of measured SHP to avoid unphysical

870 parameter combinations (Or, 2020). Specifically, the parameter values of the SHP were fitted to minimize not only the deviation from the measured soil water retention (or hydraulic conductivity) data but also the expected value of the characteristic length. The example of the characteristic length of evaporation is one possibility to determine SHP parameter values honouring physical constraints, but such a methodology could be further extended to include additional physical constraints. As examples, the “ponding time T_p ” (onset of surface runoff), the “length of evaporation L_C ” (maximum length of capillary flow paths to sustain evaporation from the surface) and the “attainment of field capacity θ_{FC} ” (soil water content after gravity drainage) are good candidates and are given in Box 1. On the example for van Genuchten Mualem, all these secondary properties (in the following denoted as secondary soil hydraulic properties, SHP2) can be expressed analytically as a function of the parameters of the SHP (θ_r , θ_s , n , α), and K_{sat} (see Rahmati et al., 2018; Lehmann et al., 2008; Shokri and Salvucci, 2011; (Twarakavi et al., 2009; Assouline and Or, 2014). Both the basic SHP ($\theta(h)$ and $K(\theta(h))$) and the secondary SHP2 (T_p , L_C , and θ_{FC}) are thus functions of the same parameters to be fitted (θ_r , θ_s , n , and α) or predicted by PTF, meaning that the determination of the parameter values must fulfil constraints related to both SHP and SHP2. In the following, we distinguish between two situations with respect to available information on SHP2.

880 Measurements of SHP2 are relatively easy to perform (measuring time and infiltration rate for T_p , evaporation rate and water table depth for L_C , and water content as function of time for θ_{FC}). However, values of SHP2 are not routinely measured and

885



890 must thus be constrained based on literature values and expectations for certain soil textural classes. For example, ponding time T_p is expected to be larger for coarse textures compared to fine materials, and loamy soils must have higher length of evaporation L_C due to large capillary pressure differences driving flow to the surface. Constraints can thus be defined as a function of soil texture (or other available properties such as BD). Because the shape parameter n changes systematically with texture with small values for fine and large values for coarse textures, constraints can be defined as a function of n . This was done in Lehmann et al. (2020) for L_C and by Twarakavi et al. (2009) for field capacity θ_{FC} .

Furthermore, as discussed in previous sections, currently used PTFs generally lack a proper representation of soil structure (Vereecken et al., 2019), strongly affecting the representation of a realistic and reliable hydrologic response, especially in wet and vegetated regions (Or, 2020; Fatichi et al., 2020; Bonetti et al., 2021). An important consequence of this lack of representation of soil structure and macropore flow in PTF-derived SHPs may result in an overestimation of surface runoff (Sobieraj et al., 2001; Du et al., 2016), thus often requiring ad-hoc tuning of SHPs to properly model water and energy fluxes (Mascaro et al., 2015; Baroni et al., 2017; Fatichi et al., 2020). Similarly, the use of clay fraction as a predictor of SHPs irrespective of the dominant type of clay minerals (Gupta et al., 2021) may lead to an underestimation of the soil saturated hydraulic conductivity thus affecting rainfall partitioning and overestimating surface runoff (Lehmann et al. 2021).

900 Rectifying such biases in current PTF estimates of SHPs requires a paradigm shift to build PTFs which are not purely the result of minimizing a cost-function but should be further anchored to a **physically based** framework (cf. **section 5.1.** for the methodological framework). This is needed to improve their usefulness and reliability in land surface modelling applications (Or, 2020). In these regards, the injection of additional physical constraints in PTFs estimation has been recently shown to reduce the occurrence of unphysical parameter combinations (Lehmann et al., 2020).

905



Box 1. Constraints for the determination of soil hydraulic properties

The parameter values of SHPs are typically defined by fitting measurements at the sample scale but are then applied to simulate processes at larger scales as well. To provide reasonable results at larger scales, the determination of the parameter values must honour various constraints as discussed in this box. Methods how to include the constraints were discussed in subsection 5.1.

At the sample scale (~ 0.1 m), the saturated water content θ_s is constrained by the porosity. In the dry range (relevant for determination of θ_r), water is bound by adsorption that is controlled by the specific surface area SA [$L^2 M^{-1}$] (Tuller and Or, 2005) with a volumetric water content θ at pressure head h determined by the thickness of the adsorbed water layer (expression in parentheses):

$$\theta = SA \cdot \rho_b \cdot \left(\frac{A_{svl}}{6\pi \cdot \rho_w \cdot g \cdot |h|} \right)^3 \quad (B.1)$$

with bulk density ρ_b , density of water ρ_w , gravity acceleration g , and the Hamaker constant A_{svl} with a value of $6 \cdot 10^{-20}$ Joule. At permanent wilting point, the film thickness is about five mono layers of water (5 times $2.5 \cdot 10^{-10}$ m). The change of water content for very negative matric potential values is related to the matric potential head required to obtain water layer thickness down to one monolayer (head value of -21000 m). The water content given by equation (B.1) can be used as constraint for the determination of SHP-parameters.

The usual constraint of the shape parameter n for the soil water characteristic curve is given by $n > 1$. However, for the unsaturated hydraulic conductivity function, the standard VGM formulation can only be applied for $n > 2$ to avoid that unrealistic large pores dominate the conductivity function (Ippisch et al., 2006). For $n > 2$ and $\alpha \cdot h_a > 1$ (with capillary force of largest pores h_a), an air-entry value must be introduced in the formulation of soil hydraulic properties.

At the column or profile scale (\sim m), the following flow properties are determined by the parameters of the SHPs and are relatively easy to measure.

Characteristic length of evaporation L_c . The maximum soil depth that can be depleted by evaporative drying at rate e_0 (imposed by atmospheric conditions) is denoted as characteristic length L_c (Lehmann et al., 2008) and equals:

$$L_c = \frac{\frac{1}{\alpha(n-1)} \left(\frac{2n-1}{n} \right)^{\frac{2n-1}{n}} \left(\frac{n-1}{n} \right)^{\frac{1-n}{n}}}{1 + \frac{e_0}{4K(\theta_{crit})}} \quad (B.2)$$

with the hydraulic conductivity $K(\theta_{crit})$ at critical water saturation θ_{crit} that is defined by the expression $1 + m^{(m+1)/(m-1)}$ to the power of $-m$.

Ponding time T_p . For a constant irrigation rate r , the time of ponding T_p can be estimated based on the equality of amount $r \cdot T_p$ with the integration of infiltration rate (Assouline, 2013) and using a simple estimate of sorptivity S from (Smith and Parlange, 1978):

$$T_p = \frac{\left(2r - \frac{K_s}{2} \right)}{4r \left(r - \frac{K_s}{2} \right)^2} \cdot \frac{4K_s(1-m)}{\alpha(3m-2)} (\theta_{sat} - \theta_0) \cdot F$$

$$F = -2 + \frac{\Gamma(1-m) \cdot \Gamma(3m/2)}{\Gamma(m/2)} + \frac{\Gamma(1+m) \cdot \Gamma(3m/2)}{\Gamma(5m/2)}$$

$$-\theta_0^{3/2-1/m} \left[-2 + H\left(-m, -1 + 3m/2, 3m/2, \theta_0^{1/m}\right) + H\left(m, -1 + 3m/2, 3m/2, \theta_0^{1/m}\right) \right] \quad (B.3)$$

with saturated hydraulic conductivity K_s , van Genuchten parameters α and m , initial θ_0 and saturated water content θ_{sat} , gamma function Γ , and Hypergeometric function H . Note that for $r \leq K_s/2$, no ponding is expected.

Field capacity. Another important soil hydraulic property defined by the parameters fitted at the sample scale is the state of field capacity with water content θ_{FC} . As alternative to the definition of θ_{FC} as (static) water content at pressure head of -1.0 or -3.3 m (such θ_{FC} could be deduced directly from parameterized WCC), field capacity can be defined as state with marginal drainage fluxes as defined by Twarakavi et al. (2009) and implemented in HYDRUS:

$$\theta_{FC} = \theta_{res} + (\theta_{sat} - \theta_{res}) n^{-0.60(2 + \log_{10}(K_s))} \quad (B.4)$$

with van Genuchten shape parameter n and saturated hydraulic conductivity K_s in (cm per day). The time to attain field capacity t_{FC} from an initially saturated layer of thickness L is (Assouline and Or, 2014):

$$t_{FC} = 0.092 \cdot \frac{L(\theta_{sat} - \theta_{res})}{K(\theta_{crit})} \quad (B.5)$$

with hydraulic conductivity K at critical water saturation (see above for L_c).



6 Evaluation of PTFs

Complementary to the constrained PTF derivation, in this section we discuss PTF evaluation. We propose a PTF evaluation scheme that addresses the discrepancy of scales and concepts between PTF derivation and application as a central problem.

910 The overall effectiveness and confidence of PTFs in their application at larger scales are limited, since PTFs are usually only derived with lab measured data. We propose to evaluate PTFs by considering the context and scale of their applications. This includes i) disentangling different levels of system information, ii) functional PTF evaluation, and iii) explicit evaluation of their scaling capability.

6.1 Basic PTF evaluation

915 Typically, validation of PTFs is done with data of the same structure and scale as the training data set. In the vast majority of related research papers, the PTF output for specific SHP models (e.g., VGM) is directly evaluated using sampled subsets of the originally available data (e.g., cross validation) at the lab scale. Ideally, independent and external data sets should be used to evaluate PTFs. Most commonly, their performance is expressed in terms of a limited number of general goodness-of-fit metrics (e.g., R^2 , RMSE) of individual soil parameters relating to SHPs. However, when evaluating a result of regression or
920 machine learning with general mean statistics, the performance of the resulting PTF remains opaque since the distribution and auto-correlation of residuals, non-unique variable combinations, or non-linear characteristics are not assessed. However, we have to include analysing residuals against explanatory and predictor variables (cf. section 5). If we miss this analysis, we risk overinterpreting the information content in the data and ultimately the quality of the PTF.

In principle, the correlation structure in the PTF training data informs about the expected direction in which a predictor will
925 influence a response variable (also cf section 5). It can help diagnose reasons for discrepancies between observed and PTFs based predictions (cf. Fuentes-Guevara et al., 2022). However, the degree of determination and interpretability of the effects of single predictors is reduced by inherent heterogeneity and collinearity of predictors (Dormann et al., 2013). While advances in basic PTF evaluation to data of the same structure and scale as the training data set can and should be established directly, the pertinent task is in fact to address and report the PTF uncertainty with respect to its scale of application.

930 6.2 Gap between scales and levels of information

The choice of the predictor variables is mostly pragmatically defined by established measurement routines and data accessibility in soil maps rather than by considerations of information content. In contrast to the scale and context of development (laboratory), most commonly, PTFs are applied to larger spatial scales (pedon scale and beyond), under natural boundary conditions, and for large aggregation of soil properties (assuming homogeneity). This creates a mixture of weakly
935 informative predictors, implicit scale transfer and physically comprehensive predictions outside the training data space and under substantial uncertainty.



Building on the scale **triplet** (Blöschl and Sivapalan, 1995), potential reference data and PTF applications can be positioned along a scale axis (Fig. 9, x-axis). The scale dependency of inherently nonlinear properties and processes in soils has been discussed in numerous studies and concepts (e.g., Vereecken et al., 2007; Vogel, 2019; Vogel and Roth, 2003). Scaling coincides with a change in the type of boundary conditions, which is largely ignored during PTF development. Current soil physical theory clearly acknowledges that a change of boundary conditions and hydraulic gradients can fundamentally alter the inferred properties in similar soils at different locations, for example, in-situ field retention curve (Figure 2) and non-equilibrium water flow observations (Diamantopoulos et al., 2015). Both issues of scale transfer and shift in boundary conditions can alter the effective SHPs (Iiyama, 2016; Campbell et al., 2018; Hannes et al., 2016), which relates to the fact that the hydraulic properties need to be described with scale and state dependent hydraulic functions (cf. section 4). Inherently, this points at the fact that there is no unifying scale invariant theory.

Moreover, the hydrological system information related to PTF development and application can be classified into different levels with regard to the type of data. We suggest using three consecutive levels of system information to span a second axis (Fig. 9, y-axis):

- The **first level** comprises single parameters of SHP models (e.g., θ_r or n). As discussed, PTF predictions are usually made at this level.
- The **second level** encompasses SHPs that result from the interaction of the single parameters or from direct point predictor PTFs. Usually, they are expressed by physically interpretable functions (e.g., WRC and HCC). Information directly derived from hydraulic properties like the plant-available water or the air-entry value is also assigned to this level. It is the most basic level at which different SHP models can be compared and where an evaluation of the physical consistency of PTFs is meaningful (cf. section 4).
- The **third level** encompasses the effects of the parameters and properties assessed in level 1 and 2 on the hydrological functioning. It comprises any description of system dynamics. Information at this level is usually expressed and communicated as spatial patterns or time series of state variables like soil moisture or matric head. These predictions may involve quantities like runoff, groundwater recharge and evapotranspiration in hydrological models, or crop growth and yield in crop models, or soil loss in erosion models.

The resulting framework clearly depicts the gap between common PTF derivation and PTF application with respect to scale and level of information (Fig. 9).

6.3 Scale- and information aware PTF evaluation concept

How 1st level information is derived under lab conditions has been described earlier (cf. section 5). While remaining at the laboratory scale, the 2nd level of system information unveils a means of analysis for SHPs incorporating the state space spanned by matric potential, soil water content, and hydraulic conductivity, at the least. The 3rd level of system information refers to actual system dynamics as a means for functional evaluation (Romano and Nasta, 2016; Pringle et al., 2007; Nemes et al., 2003; Vereecken et al., 1992) which is, however, rarely chosen when deriving PTFs. To evaluate the quality of estimated SHP from PTF, Vereecken et al., (1992) used a functional evaluation approach based on a soil water balance model to describe system dynamics. In this approach the uncertainty introduced by PTFs in estimating soil hydrological properties such as the



moisture supply capacity (MSC) and the downward flux below the root zone (DFR) were assessed using a Monte Carlo approach. These analyses were solely based on simulations without using experimental data of terms of the soil water balance. 975 Later, also experimental data obtained from transient column experiments (e.g., multistep outflow, inflow or flux experiments; (Diamantopoulos et al., 2015) or lysimeter data (Groh et al., 2022) were used as reference data for functional evaluation. As suggested since Vereecken et al. (1992) simulated time series based on PTF predicted SHP model parameters can be compared to the experimentally observed ones, so that the PTF is evaluated with respect to hydrological functioning. However, the informative value of this evaluation is only based on a confined water flux scenario under very specific boundary conditions. 980 Thus 3rd level evaluation is complementary to the other levels, because functional evaluation alone involves pitfalls of high equifinality, physical inconsistencies, and incorrect interpretation of effects from boundary conditions.

PTF application usually takes place at larger scales, where scaled hydrologic soil properties cannot be measured directly. At pedon-scale examples for 1st level information are parameters inversely estimated based on in-situ observed data (e.g., soil water retention data). However, the field-lab dichotomy, the vague physical meaning of such parameters (Or, 2020), and to 985 some extent the issue of scale in terms of the sample size (Ghanbarian et al., 2017) make such references difficult to serve as basis for PTF evaluation. At the 2nd level of information, the variability of hydraulic curves within one soil unit can be used as a property-based evaluation information.

Inverse modelling of observed state dynamics is an example for 3rd level evaluation. This is an established method and yields effective descriptions of the desired properties and processes (Durner et al., 2007). However, reference data at this level and 990 scale is rare and derived descriptions are subject to non-unique solutions, considerable uncertainty and equifinality (Beven, 2006; Pianosi et al., 2016). At larger scales, this is deemed to become even more problematic.

6.4 Proposal for a standardized pedon-scale experiment to overcome the gap

Successful scale invariant descriptions of SHPs, enabling direct use of PTF predictions, are a rare exception. In addition, required assumptions about homogeneity and a REV become ill-posed. Hence a robust theory for PTF scale transfer appears 995 out of reach as of now. We thus propose to i) explicitly acknowledge scales and boundary conditions, ii) use different levels of system information, and iii) reduce the distance for implicit scaling and information transfer when developing and evaluating PTFs.

Following our proposed evaluation scheme, we call for standardized field experiments which appear to be the most promising way to acquire new data for PTF development. Focusing on the pedon scale could be a first step towards a more physically 1000 consistent reference of macroscale soil functioning. In contrast to the scale of soil core samples, the pedon scale hosts many hydrological processes like infiltration and runoff generation, soil water storage and root water uptake. Furthermore, natural boundary conditions are also effective at the pedon scale.

Building on the experiences with instantaneous profile experiments (field), highly standardized ring sample evaporation experiments (lab) and well-equipped lysimeters (field), we suggest designing a smart and repeatable field experiment. With a 1005 series of wetting and drying cycles and controlled boundary fluxes, it has to provide sufficient information to derive unique,



effective SHPs and reasonable predictors representative for a pedon. Repeating such a standardized in-situ experiment at many sites will generate a new homogeneous data basis to build and validate a new generation of PTFs valid at the relevant scales of application.

7 Manifesto for future PTF development and use

1010 In this study, we reviewed and discussed the current status quo of PTFs from the viewpoints of both developers and users, physical consistency and comprehensiveness in the description of SHPs, fitting choices and constraint-based estimation of SHPs, and identified the common discrepancy in the scale of derivation against the scale of application. Central to this are aspects of functional evaluation of PTF performance in ecohydrological and terrestrial biosphere models (e.g., Paschalis et al., (2022) and the explicit ability of scaling the PTF.

1015 In the light of the presented limitations of current PTFs and available databases (Zhang et al., 2022), and given the importance of modelling soil hydrological process (Vereecken et al., 2022) and soil functions (Vogel et al., 2018) in a variety of hydrological, climatological, and geomorphological applications, we urgently call for a community effort to establish a new harmonized extensive open access database. We envision that this data base contains measurements based on undisturbed soil samples including all necessary attributes (physical, chemical, structural, mineralogical, and auxiliary information (see section 1020 4.3)). For this it is important to i) establish measurement protocols and routines to obtain standardised WRC, HCC, and K_{sat} values (Gupta et al., 2021b), infiltration (Rahmati et al., 2018), and soil structure information (Weller et al., 2022); ii) ensure a worldwide coverage across all soil types; and iii) close the gap between the *scale of derivation* and the *scale of application*. Current databases are still highly fragmented and not harmonized. Setting this up will require extensive collaborative data management structures (Finkel et al., 2020) for which centrally employed data stewards need to be funded who ensure long- 1025 term data curation and points of contact for data collection methods. A promising development by Bakker et al. (2019) is underway who have established a portal and started the SOPHIE initiative to help harmonize, standardize, and innovate the measurement and collection of SHPs through international engagement. Until then, the data and data curation methods, as well as the tools and approaches to construct a new PTF should always be truly reproducible by using data and code repositories.

As a manifesto, we advocate ten points:

- 1030 1. standardize the determination methods of SHPs including the harmonisation of existing data bases,
2. adopt physical comprehensive SHP in spatially explicit modelling of soil water fluxes,
3. develop PTFs for unique soil types, climates and ecosystems (e.g., peat soils, forest soils, and litter layers including mulch, soils with high carbonate content, mulches, salt affected soils, and volcanic ash soils),
4. foster the deployment of PTFs through the use of websites and community repositories,
- 1035 5. harmonized application of selected PTFs in model intercomparison studies,
6. ensure physically consistency by employing constraint-based inverse modelling during the estimation of soil hydraulic model parameters and constraints during the construction of the PTF,
7. tackle the discrepancy between the scale of derivation and the scale of application, ,
8. evaluate PTF on uncorrelated leave-out data or on data whose correlation structure is known,



- 1040 9. evaluate functionally by using other levels of system information, such as simulated vs observed water fluxes, plausibility constraints, and
10. rethink field experiments with aim to yield data with a high information content and re easy to set up and standardisable and ideally low-cost.

8 Author contributions

1045 TW – Tobias Weber, Sara Bonetti – SB, Lutz Weihermüller – LW, Attila Nemes – AN , BS – Brigitta Szabo, HV – Harry Vereecken, MP - Martine van der Ploeg, Efstathios Diamantopoulos, TM - Toby Marthews, YZ – Yonggen Zhang, DH – Daniel Hirmas, CJ - Conrad Jackisch, PL – Peter Lehmann, TH – Tobias L. Hohenbrink, VF – Vilim Filipović

TW (1, 2, 5, 6, 13, 14), SB (1, 2, 5, 6, 13, 14), LW (1, 6, 12, 13, 14), HV (1, 13, 14), MP, AN, (1, 2, 3, 12, 13, 14) ED (2, 3, 12, 13, 14), TM (1, 12, 13, 14), YZ (12, 13), TH (1, 6, 12, 13, 14), CJ (1, 6, 12, 13, 14), DH (2, 12,13,14), PL (2, 6, 13, 14) all

1050 others 13 and 14

code	Topic	Details
1	Conceptualization	Ideas; formulation or evolution of overarching research goals and aims.
2	Data curation	Management activities to annotate (produce metadata), scrub data and maintain research data (including software code, where it is necessary for interpreting the data itself) for initial use and later re-use.
3	Formal analysis	Application of statistical, mathematical, computational, or other formal techniques to analyse or synthesize study data.
4	Funding acquisition	Acquisition of the financial support for the project leading to this publication.
5	Investigation	Conducting a research and investigation process, specifically performing the experiments, or data/evidence collection.
6	Methodology	Development or design of methodology; creation of models.
7	Project administration	Management and coordination responsibility for the research activity planning and execution.
8	Resources	Provision of study materials, reagents, materials, patients, laboratory samples, animals, instrumentation, computing resources, or other analysis tools.
9	Software	Programming, software development; designing computer programs; implementation of the computer code and supporting algorithms; testing of existing code components.
10	Supervision	Oversight and leadership responsibility for the research activity planning and execution, including mentorship external to the core team.
11	Validation	Verification, whether as a part of the activity or separate, of the overall replication/reproducibility of results/experiments and other research outputs.
12	Visualization	Preparation, creation and/or presentation of the published work, specifically visualization/data presentation.
13	Writing – original draft	Preparation, creation and/or presentation of the published work, specifically writing the initial draft (including substantive translation).
14	Writing – review & editing	Preparation, creation and/or presentation of the published work by those from the original research group, specifically critical review, commentary or revision – including pre- or post-publication stages.



9 Competing interests

No competing interests.

1055 10 Acknowledgements

This work was initiated as part of the International Soil Modelling Consortiums (ISMC) Working Group “*Pedotransfer functions and Land Surface Parameterization*”.

1060 TW was funded by the Collaborative Research Center 1253 CAMPOS (Project 7: Stochastic Modelling Framework) under the DFG Grant Agreement SFB 1253/1 2017. Contribution of BS was supported by the European Union’s Horizon 2020 research and innovation programme under grant agreement No 862756, project OPTAIN. YZ was supported by the National Natural Science Foundation of China (grant number: 42077168). VF contribution was supported by the Croatian Science Foundation (grant number UIP-2019-04-5409)

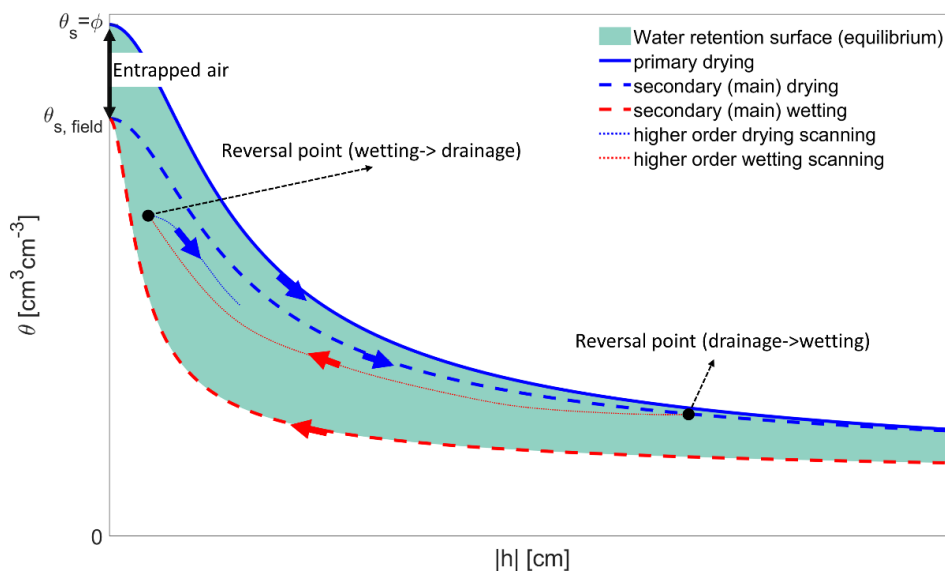


Figure 1: The traditional concept of equilibrium capillary hysteresis. The equilibrium water retention surface (WRS) is bounded by the equilibrium (or static) primary drying curve, starting from 100% saturation and the equilibrium (or static) main wetting curve.

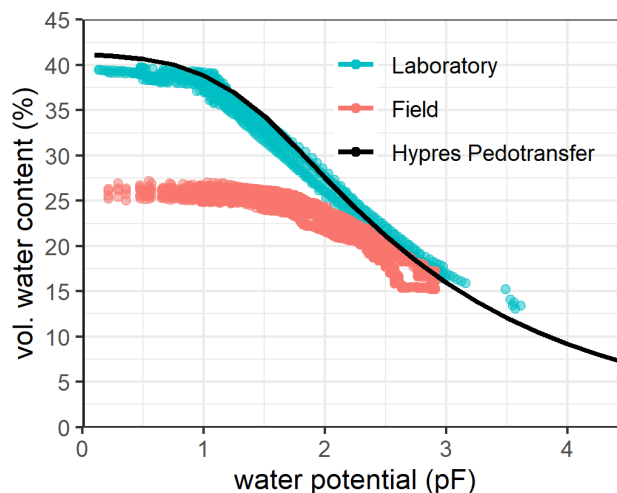


Figure 2: In situ (Field) and laboratory measurements of water retention made at the same soil layer in a loamy sand. Field measurement of volumetric water content was made using four TDR-310S sensors (Acclima, Meridian, USA) installed with a 50 cm horizontal distance and a single T8 tensiometer for water potential measurements (METER Group, Munich, Germany). Field data was collected during a dry period in May and June 2019 below a spring barley crop and during a wet winter period with bare soil conditions from January to April 2020. Lab measurements were made on five undisturbed soil samples collected using ring cores (250 cm³ in volume) in the same soil layer before sensor installation. The water retention curve was measured using evaporation experiments (METER Group, Munich, Germany). The solid line shows the estimated water retention curve based on soil bulk density and texture (USDA) using a PTF (Wösten et al, 1999).

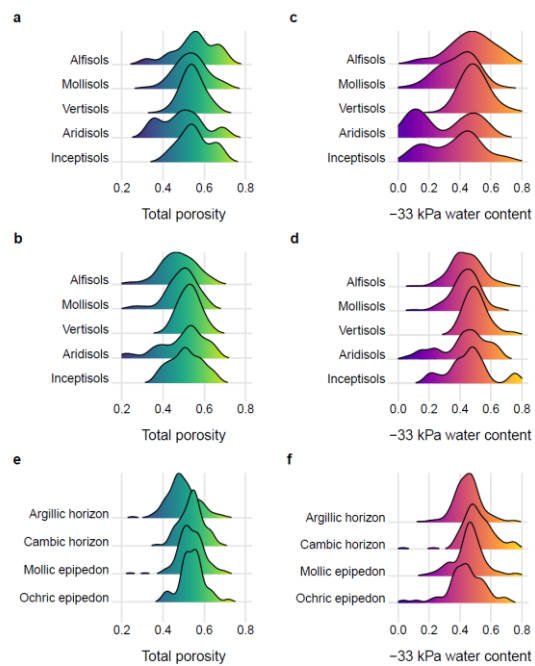


Figure 3: Total porosity and water content at -33 kPa for A-horizons (a, b), B-horizons (b, d) of selected soil orders, and diagnostic horizons (e, f) as defined by US Soil Taxonomy. Data are from the Pedogenic and Environmental Data Set (PEDS).

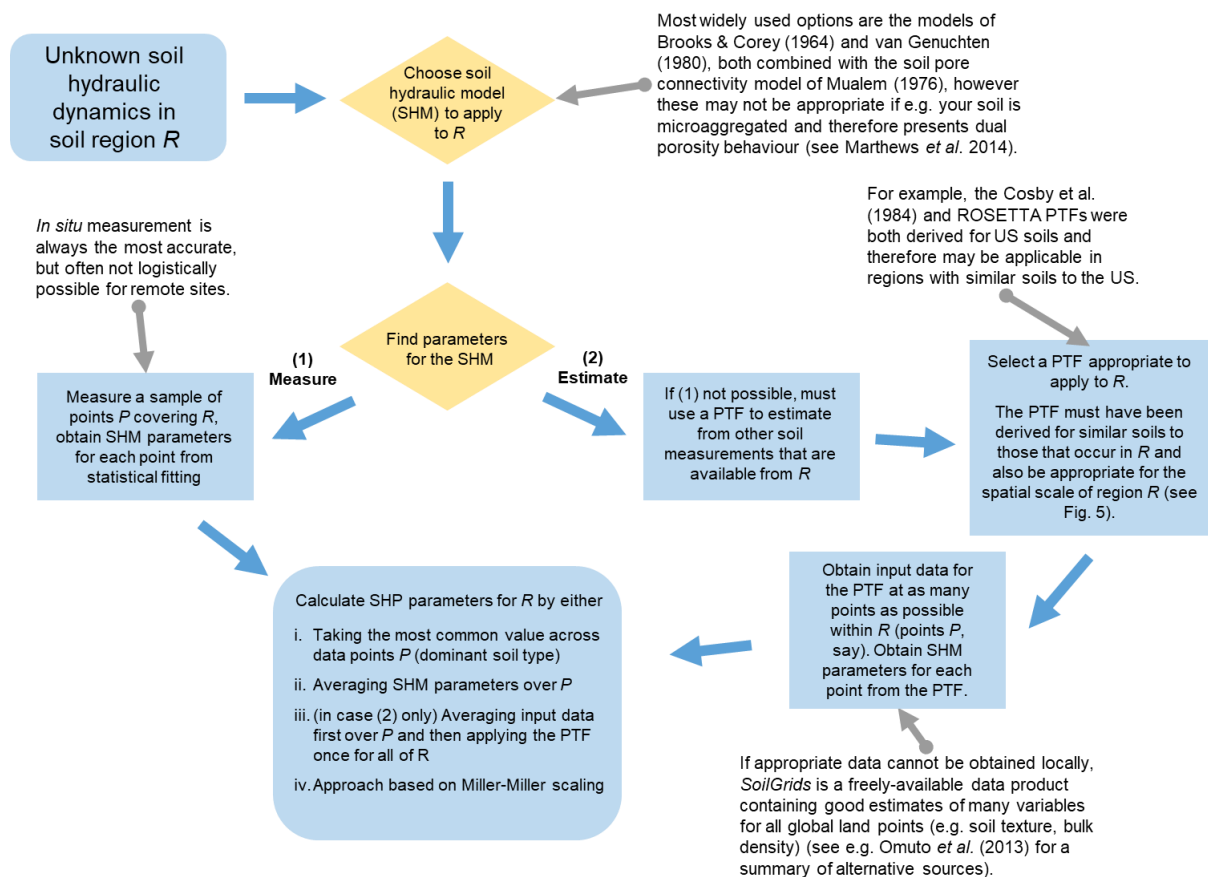


Figure 4: A protocol for the selection of an appropriate set of pedotransfer functions for use in any global soil region R .

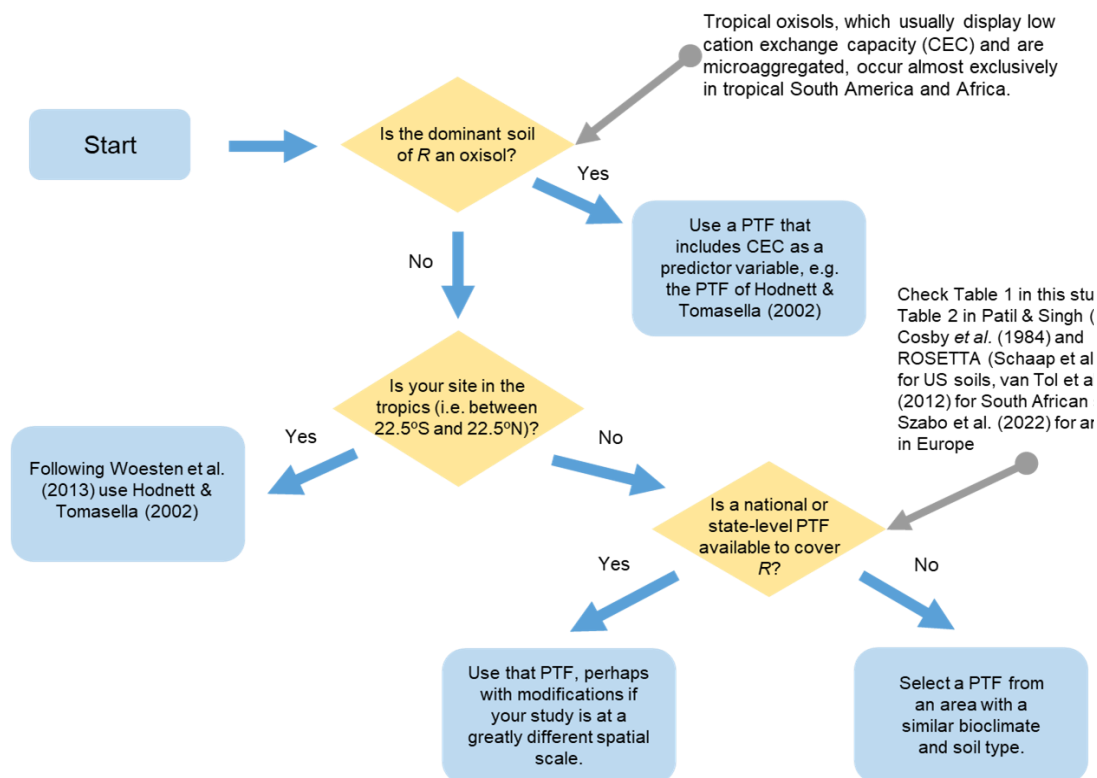


Figure 5: Workflow for acquiring a model representation of soil hydraulic dynamics within an unsampled soil region R. Both "soil hydraulic model" (SHM) and "soil hydraulic dynamics" refer to a set of equations that describe the relationships between volumetric soil water content, soil matric suction and soil hydraulic conductivity, e.g. for van Genuchten (1980) these are two closely-related curves called the Soil Water Characteristic (SWC) and the Hydraulic Conductivity Curve (HCC).



1075

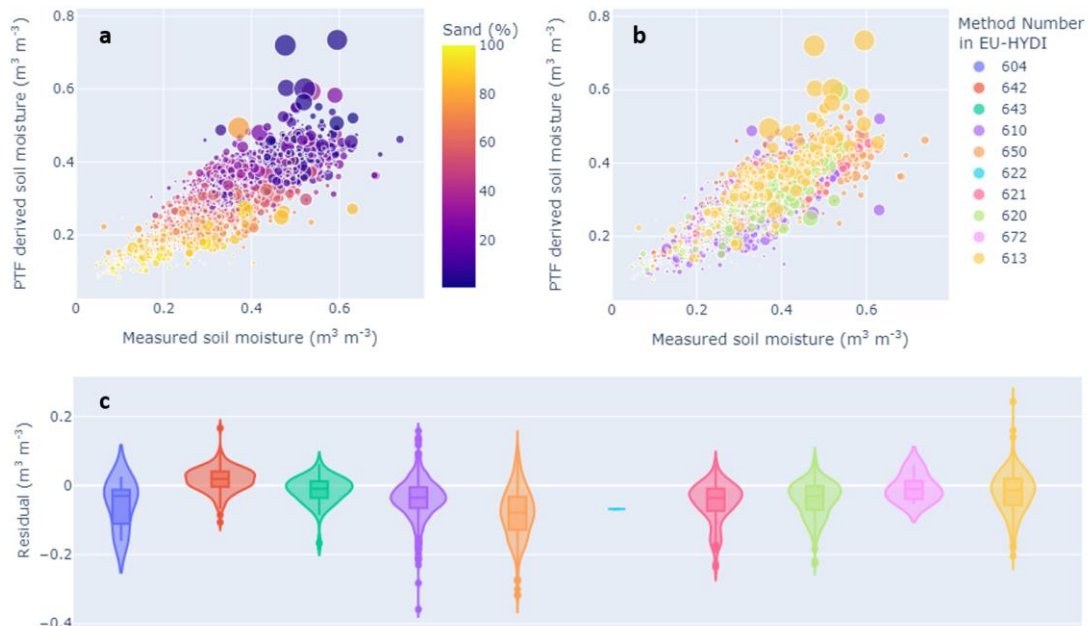


Figure 6: PTF fitting of the water retention data obtained from the EU-HYDI database at soil suction of -100 cm. (a) Comparison between measured soil moisture and PTF derived soil moisture by multiple linear regression (adjusted R^2 : 0.64), colour is related to percentage of sand in sample, data point size is related to organic matter content, (b) same as (a) colour related to method number, data point size is related to organic matter content, (c) residuals plotted per method. Method 604: unknown; Sand/kaolin box method with undisturbed soil core, method 610: 100 cm^3 , 613: 222 cm^3 ; Pressure plate method with undisturbed soil core, method 620: 100 cm^3 , 621: 200 cm^3 , 622: 250 cm^3 ; 642: Pressure membrane method on undisturbed soil clods method 642 3-5 cm^3 with estimation of soil volume on undisturbed soil core (500 cm^3), 643: 3-5 cm^3 ; Hanging water column method with undisturbed soil core, method 650: 250 cm^3 ; Evaporation method on undisturbed soil core, method 672:630 cm^3 , with tensiometers at four depths (1, 3, 5 and 7 cm).

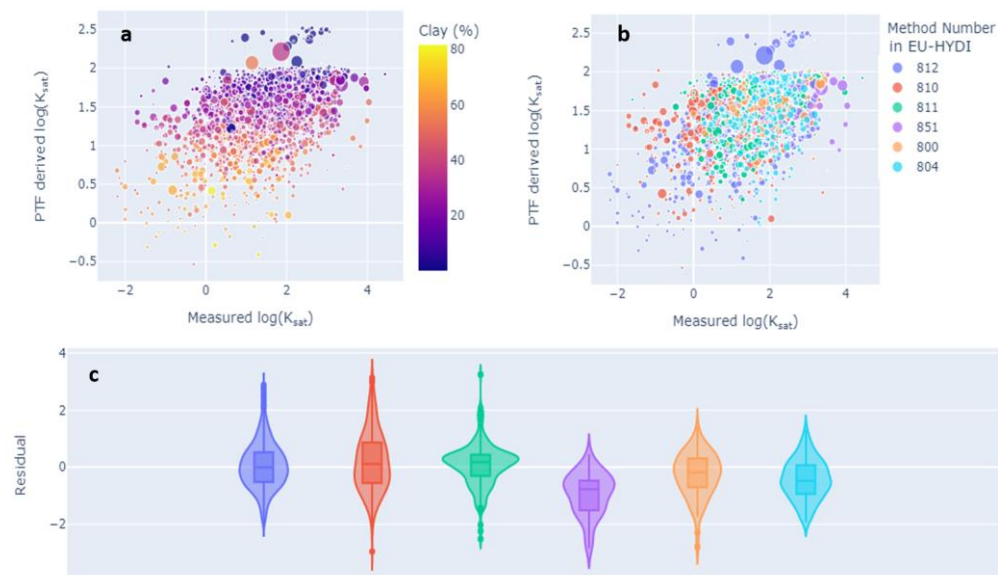


Figure 7: PTF fitting of the saturated hydraulic conductivity (K_{sat}) data obtained from the EU-HYDI database. (a) Comparison between measured $\log(K_{sat})$ and PTF derived $\log(K_{sat})$ by multiple linear regression (adjusted R^2 : 0.21), colour is related to percentage of clay in sample, data point size is related to organic matter content, (b) same as (a) colour related to method number, data point size is related to organic matter content, (c) residuals plotted per method. Saturated hydraulic conductivity methods: Constant head method with undisturbed samples; method 800: 100 cm^3 , 804: 630-4700 cm^3 sample volume. Falling head method with undisturbed samples; method 810: 100 cm^3 , 811: 221-530 cm^3 , 812: unspecified sample volume. In situ falling head method, single ring infiltrometer, method 851: ring 30 cm diameter, inserted 12 cm into the soil.



1080

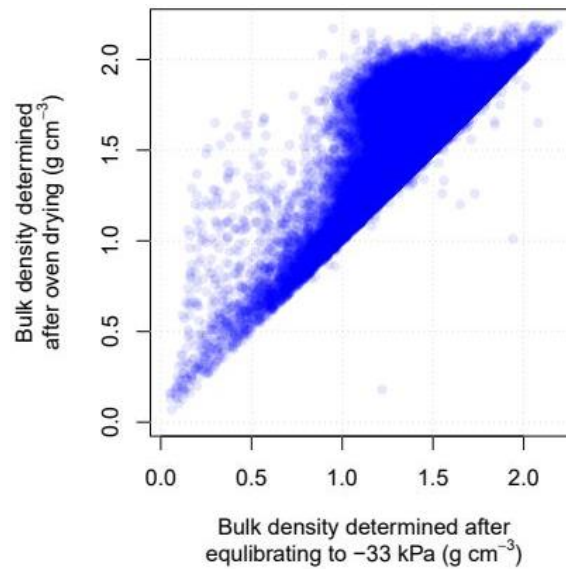


Figure 8: Soil bulk density determined at -33 kPa water content and after oven drying, using data of the USDA-NRCS National Cooperative Soil Survey Soil Characterization Database ($N = 57,512$). Each dot represents one soil sample.

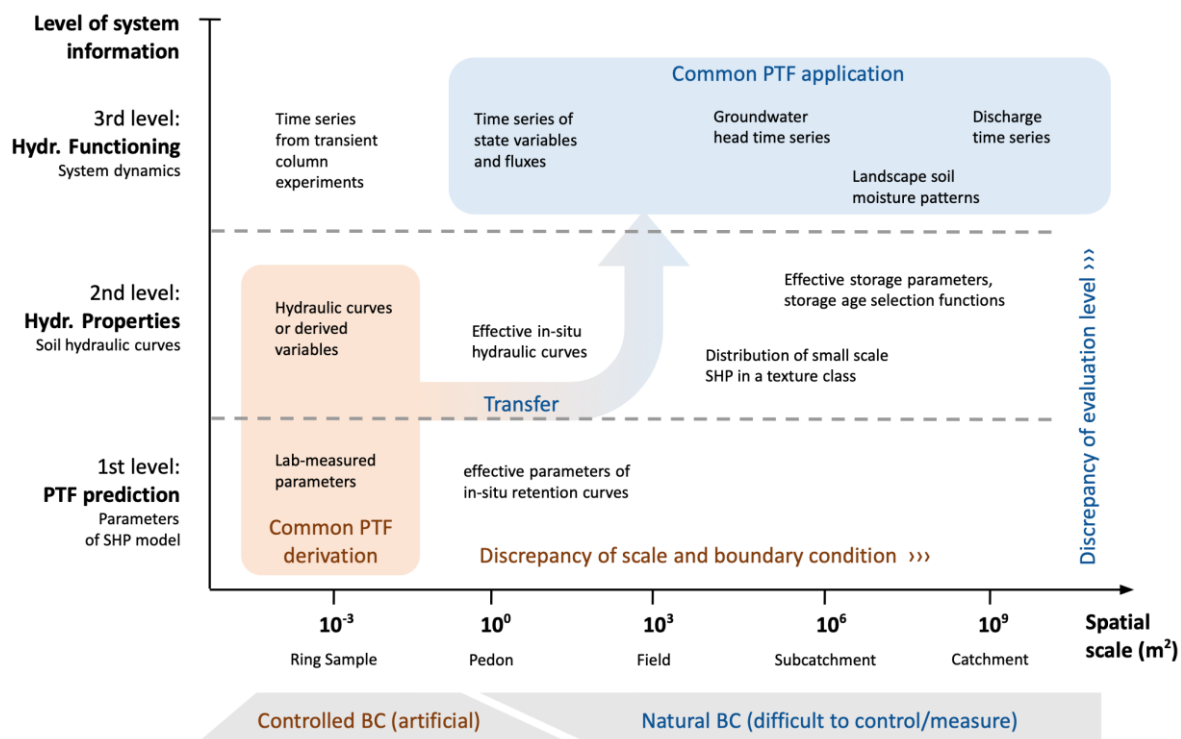


Figure 9: Framework for PTF evaluation. Different evaluation approaches are classified by the scale (x-axis) and level of system information (y-axis) of the observed data used for evaluation.



Table 1: Tools that facilitate the use of available PTFs.

Name of the tool	Predicted soil hydraulic property ¹	Required soil input properties ²	Optional soil input properties ²	Statistical method ³	Incorporated PTFs	Requirement to apply the tool	Available	Link
ROSETTA (Schaap et al., 2001)	VG, K_{Sat}	TEX_USDA, or PSD	BD, q_{-330cm} , $q_{-15000cm}$	class average, neural network	Schaap and Leij (2000)	download software	yes	https://www.ars.usda.gov/pacific-west-area/riverside-ca/agricultural-water-efficiency-and-salinity-research/
Nearest Neighbor Soil Water Retention Estimator (Nemes et al., 2008)	θ_{-330cm} , $\theta_{-15000cm}$	PSD	BD, OM	k-nearest neighbor	(Nemes et al., 2006a; Nemes et al., 2006b)	download software	yes	https://data.nal.usda.gov/dataset/nearest-neighbor-soil-water-retention-estimator
SOILPAR 2.00 (Acutis and Donatelli, 2003)	BC, VG, VGM, θ_{-330cm} , $\theta_{-15000cm}$, K_{Sat}	PSD, BD	OC, PH_H2O, CEC	multiple linear regression	15 PTFs available from literature	download software	no	http://soilpar2.software.informer.com/
CalcPTF (Guber and Pachepsky, 2010)	BC, VG, HC, θ_{-330cm} , $\theta_{-15000cm}$, K_{Sat}	TEX_FAO_MOD or PSD	OC, BD, DEPTH	class average, multiple linear regression	20 PTFs available from literature	download software	yes	https://www.ars.usda.gov/north-east-area/beltsville-md-barc/beltsville-agricultural-research-center/emfs/docs/environmental-transport/calcpft/
eupfR package (Weynants, M. & Tóth, B., 2014)	VG, VGM, θ_{0cm} , θ_{-330cm} , $\theta_{-15000cm}$, K_{Sat}	T/S, TEX_FAO_MOD or TEXT_USDA or PSD	OC, BD, CSCO3, PH_H2O, CEC	class average, multiple linear regression, tree	(Tóth et al., 2015)	R statistical software	yes	https://esdac.jrc.ec.europa.eu/themes/soil-hydraulic-properties
soil_ksat (Araya and Chezehei, 2019)	K_{Sat}	PSD	BD, OC, SV-PSD	boosted regression tree, random forest		R statistical software	yes	https://github.com/saraya209/soil_ksat



Table 1: continued

Name of the tool	Predicted soil hydraulic property ¹	Required soil input properties ²	Optional soil input properties ²	Statistical method ³	Incorporated PTFs	Requirement to apply the tool	Available	Link
eupfv2, (Szabó et al., 2019, Weber et al., 2020)	VG, VGM, θ_{cm} , θ_{-100cm} , θ_{-330cm} , $\theta_{-15000cm}^A$, WC, AWC_2, K_{Sat}	PSD, DEP, TH	OC, BD, CACO3, PH_H2O, CEC	random forest	Szabó et al. (2021)	use of web interface or R statistical software	yes	web interface: https://ptfinterface.rissac.hu , R: https://doi.org/10.5281/zenodo.4281045
ROSETTA3, Zhang and Schaap (2017b)	VG, K_{Sat}	TEX, T_US, DA or PSD	BD, θ_{-330cm} , $\theta_{-15000cm}$	class average, neural network	(Schaap et al., 2001)Zhang and Schaap (2017b)	use of web interface or R statistical software or python	yes	web interface: https://www.handbook60.org/rosetta/ , https://dsiweb.cse.msu.edu/rosetta/ , R: http://ncss-tech.github.io/AQP/soilDB/ROSETT A-API.html, Python package: https://github.com/usda-ar8-ussl/rosetta-soil , Python source code: https://github.com/YonggenZhang/Rosetta
Soil physics and hydrology (sps R package)	VGM parameters, BW-VGM parameters	Sand, Clay, BD, OC	VGM parameters, BW-VGM model parameters	Multiple linear regression	Weynants et al. (2009), Weber et al. (2020),	Use of R functions	yes	https://CRAN.R-project.org/package=sps

¹ θ : water content; K_{Sat} : saturated hydraulic conductivity; VG: parameters of (van Genuchten, 1980) function to describe water retention curve, BC: parameters of the Brooks and Corey function (Brooks and Corey, 1964) to describe water retention; C: parameters of the Campbell function (Campbell, 1974) to describe water retention; HC: parameters of the Hutson and Cass modified Campbell function (Hutson and Cass, 1987); VGM: parameters of the Mualem-van Genuchten function to describe water retention and hydraulic conductivity curve, AWC_2: plant available water content based on q at -100 cm matric potential head; AWC: plant available water content based on θ at -330 cm pressure head., BW-VGM model refers to the physically comprehensive Brunswick (BW) model framework in the van Genuchten Mualem model variant (Streck and Weber, 2020; Weber et al., 2019), 2 TEX_FAO_MOD: modified FAO texture class; TEX_USDA: USDA texture class; T/S: topsoil and subsoil; PSD: particle size distribution (sand, 50–2000 μ m; silt, 2–50 μ m; clay, <2 μ m (mass %)); SV-PSD: secondary variables computed from particle size distribution; DEPTH: mean soil depth; OC: organic carbon content (mass %); BD: bulk density; CACO3: calcium carbonate content; PH_H2O: pH in water; CEC: cation exchange capacity, 3 Class average: the mean value of a given soil hydraulic property by soil textural class.



11 References

- 1090 Abrosimov, K. N., Gerke, K. M., Fomin, D. S., Romanenko, K., and Korost, D. V.: Tomography in Soil Science: From the First Experiments to Modern Methods (A Review), *Eurasian Soil Science*, 54, 1385–1399, <https://doi.org/10.1134/S1064229321090027>, 2021.
- Acutis, M. and Donatelli, M.: SOILPAR 2.00: software to estimate soil hydrological parameters and functions, *European Journal of Agronomy*, 18, 373–377, [https://doi.org/10.1016/S1161-0301\(02\)00128-4](https://doi.org/10.1016/S1161-0301(02)00128-4), 2003.
- 1095 Apers, S., Lannoy, G. de, Baird, A. J., Cobb, A. R., Dargie, G. C., Del Aguila Pasquel, J., Gruber, A., Hastie, A., Hidayat, H., Hirano, T., Hoyt, A. M., Jovani-Sancho, A. J., Katimon, A., Kurnain, A., Koster, R. D., Lampela, M., Mahanama, S., Melling, L., Page, S. E., Reichle, R. H., Taufik, M., Vanderborght, J., and Bechtold, M.: Tropical Peatland Hydrology Simulated With a Global Land Surface Model, *Journal of Advances in Modeling Earth Systems*, 14, e2021MS002784, <https://doi.org/10.1029/2021MS002784>, 2022.
- 1100 Araya, S. N. and Ghezzehei, T. A.: Using Machine Learning for Prediction of Saturated Hydraulic Conductivity and Its Sensitivity to Soil Structural Perturbations, *Water Resour. Res.*, 55, 5715–5737, <https://doi.org/10.1029/2018WR024357>, 2019.
- Arnold, J. G., Kiniry, J. R., Srinivasan, R., Williams, J. R., Haney, E. B., and Neitsch, S. L.: SWAT 2012: Input/Output Documentation, Texas Water Resources Institute, 2013.
- 1105 Ashby, S. F. and Falgout, R. D.: A parallel multigrid preconditioned conjugate gradient algorithm for groundwater flow simulations, *Nuclear science and engineering*, 124, 145–159, 1996.
- Asseng, S., Ewert, F., Martre, P., Rötter, R. P., Lobell, D. B., Cammarano, D., Kimball, B. A., Ottman, M. J., Wall, G. W., White, J. W., Reynolds, M. P., Alderman, P. D., Prasad, P., Aggarwal, P. K., Anothai, J., Basso, B., Biernath, C., Challinor, A. J., Sanctis, G. de, Doltra, J., Fereres, E., Garcia-Vila, M., Gayler, S., Hoogenboom, G., Hunt, L. A., 1110 Izaurralde, R. C., Jabloun, M., Jones, C. D., Kersebaum, K. C., Koehler, A.-K., Müller, C., Naresh Kumar, S., Nendel, C., OLeary, G., Olesen, J. E., Palosuo, T., Priesack, E., Eyshi Rezaei, E., Ruane, A. C., Semenov, M. A., Shcherbak, I., Stockle, C., Stratonovitch, P., Streck, T., Supit, I., Tao, F., Thorburn, P. J., Waha, K., Wang, E., Wallach, D., Wolf, J., Zhao, Z., and Zhu, Y.: Rising temperatures reduce global wheat production, *Nature Clim. Change*, 5, 143–147, <https://doi.org/10.1038/nclimate2470>, 2015.
- 1115 Asseng, S., Ewert, F., Rosenzweig, C., Jones, J. W., Hatfield, J. L., Ruane, A. C., Boote, K. J., Thorburn, P. J., Rötter, R. P., Cammarano, D., Brisson, N., Basso, B., Martre, P., Aggarwal, P. K., Angulo, C., Bertuzzi, P., Biernath, C., Challinor, A. J., Doltra, J., Gayler, S., Goldberg, R., Grant, R., Heng, L., Hooker, J., Hunt, L. A., Ingwersen, J., Izaurralde, R. C., Kersebaum, K. C., Müller, C., Naresh Kumar, S., Nendel, C., OLeary, G., Olesen, J. E., Osborne, T. M., Palosuo, T., Priesack, E., Ripoche, D., Semenov, M. A., Shcherbak, I., Steduto, P., Stöckle, C., Stratonovitch, P., Streck, T., Supit, I., 1120 Tao, F., Travasso, M., Waha, K., Wallach, D., White, J. W., Williams, J. R., and Wolf, J.: Uncertainty in simulating wheat yields under climate change, *Nature Climate Change*, 3, 827–832, <https://doi.org/10.1038/nclimate1916>, 2013.



- Assouline, S. and Or, D.: The concept of field capacity revisited: Defining intrinsic static and dynamic criteria for soil internal drainage dynamics, *Water Resources Research*, 50, 4787–4802, 2014.
- Assouline, S.: Infiltration into soils: Conceptual approaches and solutions, *Water Resour. Res.*, 49, 1755–1772, 1125 <https://doi.org/10.1002/wrcr.20155>, 2013.
- Assouline, S. and Or, D.: Conceptual and parametric representation of soil hydraulic properties: A review, *Vadose Zone Journal*, 12, 2013.
- Aubertin, M., Mbonimpa, M., Bussière, B., and Chapuis, R. P.: A model to predict the water retention curve from basic geotechnical properties, *Can. Geotech. J.*, 40, 1104–1122, <https://doi.org/10.1139/T03-054>, 2003.
- 1130 Bachmann, J., Woche, S. K., Goebel, M.-O., Kirkham, M. B., and Horton, R.: Extended methodology for determining wetting properties of porous media, *Water Resour. Res.*, 39, 2003.
- Bagnall, D. K., Jones, E. J., Balke, S., Morgan, C., and McBratney, A. B.: An in situ method for quantifying tillage effects on soil structure using multistriple laser triangulation, *Geoderma*, 380, 114642, <https://doi.org/10.1016/j.geoderma.2020.114642>, 2020.
- 1135 Bakker, G., van der Ploeg, M., Visser, S., Degre, A., and Nemes, A.: Harmonization, innovation, and standardization of soil hydro-physics properties through international engagement (SOPHIE), in: *Geophysical Research Abstracts*, 2019.
- Baroni, G., Zink, M., Kumar, R., Samaniego, L., and Attinger, S.: Effects of uncertainty in soil properties on simulated hydrological states and fluxes at different spatio-temporal scales, *Hydrology and Earth System Sciences*, 21, 2301–2320, <https://doi.org/10.5194/hess-21-2301-2017>, 2017.
- 1140 Barros, A., van Jong Lier, Q. de, Holanda Nunes Maia, A. de, and Vale Scarpere, F.: Pedotransfer functions to estimate water retention parameters of soils in Northeastern Brazil, *Revista Brasileira de Ciéncia do Solo*, 37, 379–391, <https://doi.org/10.1590/S0100-06832013000200009>, 2013.
- Basile, A., Ciollaro, G., and Coppola, A.: Hysteresis in soil water characteristics as a key to interpreting comparisons of laboratory and field measured hydraulic properties, *Water Resources Research*, 39, 1145 <https://doi.org/10.1029/2003WR002432>, 2003.
- Basso, B., Dumont, B., Maestrini, B., Shcherbak, I., Robertson, G. P., Porter, J. R., Smith, P., Paustian, K., Grace, P. R., Asseng, S., Bassu, S., Biernath, C., Boote, K. J., Cammarano, D., Sanctis, G. de, Durand, J.-L., Ewert, F., Gayler, S., Hyndman, D. W., Kent, J., Martre, P., Nendel, C., Priesack, E., Ripoche, D., Ruane, A. C., Sharp, J., Thorburn, P. J., Hatfield, J. L., Jones, J. W., and Rosenzweig, C.: Soil Organic Carbon and Nitrogen Feedbacks on Crop Yields under 1150 Climate Change, *Agric. environ. lett.*, 3, 180026, <https://doi.org/10.2134/ael2018.05.0026>, 2018.
- Bassu, S., Brisson, N., Durand, J.-L., Boote, K., Lizaso, J., Jones, J. W., Rosenzweig, C., Ruane, A. C., Adam, M., Baron, C., Basso, B., Biernath, C., Boogaard, H., Conijn, S., Corbeels, M., Deryng, D., Sanctis, G. de, Gayler, S., Grassini, P., Hatfield, J., Hoek, S., Izaurralde, C., Jongschaap, R., Kemanian, A. R., Kersebaum, K. C., Kim, S.-H., Kumar, N. S., Makowski, D., Müller, C., Nendel, C., Priesack, E., Pravia, M. V., Sau, F., Shcherbak, I., Tao, F., Teixeira, E., Timlin,



- 1155 D., and Waha, K.: How do various maize crop models vary in their responses to climate change factors?, *Global Change Biology*, 20, 2301–2320, <https://doi.org/10.1111/gcb.12520>, 2014.
- Batjes, N. H., Ribeiro, E., and van Oostrum, A.: Standardised soil profile data to support global mapping and modelling (WoSIS snapshot 2019), *Earth Syst. Sci. Data*, 12, 299320, <https://doi.org/10.5194/essd-12-299-2020>, 2020.
- Bear, J.: *Dynamics of fluids in porous media*, Courier Corporation, 1988.
- 1160 Beare, M. H., Cabrera, M. L., Hendrix, P. F., and Coleman, D.: Aggregate protected and unprotected organic matter pools in conventional and no-tillage soils, *Soil Science Society of America Journal*, 58, 787795, <https://doi.org/10.2136/sssaj1994.03615995005800030021x>, 1994.
- Bechtold, M., Lannoy, G. de, Koster, R. D., Reichle, R. H., Mahanama, S. P., Bleuten, W., Bourgault, M. A., Brmmer, C., Burdun, I., Desai, A. R., Devito, K., Grnwald, T., Grygoruk, M., Humphreys, E. R., Klatt, J., Kurbatova, J., Lohila, A., 1165 Munir, T. M., Nilsson, M. B., Price, J. S., Rhl, M., Schneider, A., and Tiemeyer, B.: PEAT-CLSM: A Specific Treatment of Peatland Hydrology in the NASA Catchment Land Surface Model, *Journal of Advances in Modeling Earth Systems*, 11, 2130–2162, <https://doi.org/10.1029/2018MS001574>, 2019.
- Bellamy, P. H., Loveland, P. J., Bradley, R. I., Lark, R. M., and Kirk, G.: Carbon losses from all soils across England and Wales 1978 - 2003, *Nature*, 437, 245–247, <https://doi.org/10.1038/nature04038>, 2005.
- 1170 Bens, O., Wahl, N. A., Fischer, H., and Hüttl, R. F.: Water infiltration and hydraulic conductivity in sandy cambisols: impacts of forest transformation on soil hydrological properties, *European Journal of Forest Research*, 126, 101–109, <https://doi.org/10.1007/s10342-006-0133-7>, 2007.
- Beven, K.: A manifesto for the equifinality thesis, *Journal of Hydrology*, 320, 18–36, <https://doi.org/10.1016/j.jhydrol.2005.07.007>, 2006.
- 1175 Bieganski, A., Ryzak, M., Sochan, A., Barna, G., Hernádi, H., Beczek, M., Polakowski, C., and Makó, A.: Laser diffractometry in the measurements of soil and sediment particle size distribution, in: *Advances in Agronomy*, Elsevier, 215–279, <https://doi.org/10.1016/bs.agron.2018.04.003>, 2018.
- Blanchy, G., Albrecht, L., Bragato, G., Jarvis, N., and Koestel, J.: *Open Tension-disk Infiltrometer Meta-database (OTIM)*, 2022.
- 1180 Blöschl, G. and Sivapalan, M.: Scale issues in hydrological modelling: A review, *Hydrol. Process.*, 9, 251–290, <https://doi.org/10.1002/hyp.3360090305>, 1995.
- Bodner, G., Scholl, P., and Loiskandl, W. and Kaul, H.-P.: Environmental and management influences on temporal variability of near saturated soil hydraulic properties, *Geoderma*, 204, 120–129, <https://doi.org/10.1016/j.geoderma.2013.04.015>, 2013.
- 1185 Bonetti, S., Wei, Z., and Or, D.: A framework for quantifying hydrologic effects of soil structure across scales, *Communications Earth & Environment*, 2, 1–10, <https://doi.org/10.1038/s43247-021-00180-0>, 2021.
- Bormann, H. and Klaassen, K.: Seasonal and land use dependent variability of soil hydraulic and soil hydrological properties of two Northern German soils, *Geoderma*, 145, 295–302, <https://doi.org/10.1016/j.geoderma.2008.03.017>, 2008.



- 1190 Bottinelli, N., Zhou, H., Capowiez, Y., Zhang, Z. B., Qiu, J., Jouquet, P., and Peng, X. H.: Earthworm burrowing activity of two non-Lumbricidae earthworm species incubated in soils with contrasting organic carbon content (Vertisol vs. Ultisol), *Biology and Fertility of Soils*, 53, 951–955, <https://doi.org/10.1007/s00374-017-1235-8>, 2017.
- Botula, Y.-D., Nemes, A., Mafuka, P., van Ranst, E., and Cornelis, W. M.: Prediction of Water Retention of Soils from the Humid Tropics by the Nonparametric k -Nearest Neighbor Approach, *Vadose zone j.*, 12, vzt2012.0123, <https://doi.org/10.2136/vzt2012.0123>, 2013.
- 1195 Bouma, J.: *Effect of Soil Structure, Tillage, and Aggregation upon Soil Hydraulic Properties*, CRC Press, 2000.
- Bowers, S. and Hanks, R.: Reflection of radiant energy from soil, *Soil science*, 100, 130–138, <https://doi.org/10.1097/00010694-196508000-00009>, 1965.
- Brandhorst, N., Erdal, D., and Neuweiler, I.: Coupling saturated and unsaturated flow: comparing the iterative and the non-iterative approach, *Hydrol. Earth Syst. Sci.*, 25, 4041–4059, <https://doi.org/10.5194/hess-25-4041-2021>, 2021.
- 1200 Brooks, R. H. and Corey, A. T.: Hydraulic properties of porous media, *Hydrology Papers*, Colorado State University, 3, 1–27, 1964.
- Brooks, R. H. and Corey, A. T.: Properties of porous media affecting fluid flow, *Journal of the irrigation and drainage division*, 92, 61–88, 1966.
- Buchter, B., Berli, M., and Weisskopf, P.: Interlaboratory comparison of soil physical parameters, *Environment Agriscope Science*, 2015.
- 1205 Cale, W. G., O'Neill, R. V., and Gardner, R. H.: Aggregation Error in Non-Linear Ecological Models, *Journal of Theoretical Biology*, 100, 539–550, [https://doi.org/10.1016/0022-5193\(83\)90446-0](https://doi.org/10.1016/0022-5193(83)90446-0), 1983.
- Campbell, G. S.: A Simple Method For Determining Unsaturated Conductivity From Moisture Retention Data, *Soil science*, 117, 311–314, <https://doi.org/10.1097/00010694-197406000-00001>, 1974.
- 1210 Carsel, R. F. and Parrish, R. S.: Developing joint probability distributions of soil water retention characteristics, *Water Resources Research*, 24, 755–769, <https://doi.org/10.1029/WR024i005p00755>, 1988.
- Chavez Rodriguez, L., González-Nicolás, A., Ingalls, B., Streck, T., Nowak, W., Xiao, S., and Pagel, H.: Optimal design of experiments to improve the characterisation of atrazine degradation pathways in soil, *European J Soil Science*, 73, <https://doi.org/10.1111/ejss.13211>, 2022.
- 1215 Chen, K. and Chen, H.: Generalized hydraulic conductivity model for capillary and adsorbed film flow, *Hydrogeol J*, 28, 2259–2274, <https://doi.org/10.1007/s10040-020-02175-1>, 2020.
- Chen, X., Ren, J., Wang, D., Lyu, Y., and Zhang, H.: A generalized strength reduction concept and its applications to geotechnical stability analysis, *Geotechnical and Geological Engineering*, 37, 2409–2424, 2019.
- 1220 Condon, L. E., Kollet, S., Bierkens, M. F., Fogg, G. E., Maxwell, R. M., Hill, M. C., Hendricks Franssen, H.-J., Verhoef, A., van Loon, A. F., Sulis, M., and Abesser, C.: Global groundwater modeling and monitoring: Opportunities and challenges, *Water Resources Research*, 57, e2020WR029500, <https://doi.org/10.1029/2020WR029500>, 2021.



- Constantin, J., Raynal, H., Casellas, E., Hoffmann, H., Bindi, M., Doro, L., Eckersten, H., Gaiser, T., Grosz, B., Haas, E., Kersebaum, K.-C., Klatt, S., Kuhnert, M., Lewan, E., Maharjan, G. R., Moriondo, M., Nendel, C., Roggero, P. P., Specka, X., Trombi, G., Villa, A., Wang, E., Weihermüller, L., Yeluripati, J., Zhao, Z., Ewert, F., and Bergez, J.-E.: Management and spatial resolution effects on yield and water balance at regional scale in crop models, *Agricultural and Forest Meteorology*, 275, 184–195, <https://doi.org/10.1016/j.agrformet.2019.05.013>, 2019.
- 1225 Cornelis, W. M., Khlosi, M., Hartmann, R., van Meirvenne, M., and Vos, B. de: Comparison of Unimodal Analytical Expressions for the Soil-Water Retention Curve, *Soil Sci. Soc. Am. j.*, 69, 1902–1911, <https://doi.org/10.2136/sssaj2004.0238>, 2005.
- 1230 Cosby, B. J., Hornberger, G. M., Clapp, R. B., and Ginn, T. R.: A statistical exploration of the relationships of soil moisture characteristics to the physical properties of soils, *Water Resources Research*, 20, 683–690, <https://doi.org/10.1029/WR020i006p00682>, 1984.
- Cresswell, H. P., Green, T. W., and McKenzie, N. J.: The adequacy of pressure plate apparatus for determining soil water retention, *Soil Science Society of America Journal*, 72, 41–49, <https://doi.org/10.2136/SSSAJ2006.0182>, 2008.
- 1235 Czachor, H., Rajkai, K., Lichner, L., and Jozefaciuk, G.: Sample geometry affects water retention curve: Simulation and experimental proves, *Journal of Hydrology*, 588, 125131, <https://doi.org/10.1016/J.JHYDROL.2020.125131>, 2020.
- Dai, Y., Shangguan, W., Wei, N., Xin, Q., Yuan, H., Zhang, S., Liu, S., Lu, X., Wang, D., and Yan, F.: A review of the global soil property maps for Earth system models, *Soil*, 5, 137–158, <https://doi.org/10.5194/soil-5-137-2019>, 2019.
- Dane, J. H. and Topp, G. C. (Eds.): *Methods of Soil Analysis, Part 4 - Physical Methods*, Soil Science Society of America, 1240 Madison, WI, 2002.
- Dane, J. H. and Wierenga, P. J.: Effect of hysteresis on the prediction of infiltration, redistribution and drainage of water in a layered soil, *Journal of Hydrology*, 25, 229–242, 1975.
- Deb, S. K. and Shukla, M. K.: Variability of hydraulic conductivity due to multiple factors, *American Journal of Environmental Sciences*, 8, 489, <https://doi.org/10.3844/ajessp.2012.489.502>, 2012.
- 1245 Dexter, A. R., Czyż, E., Richard, G., and Reszkowska, A.: A user-friendly water retention function that takes account of the textural and structural pore spaces in soil, *Geoderma*, 143, 243–253, <https://doi.org/10.1016/j.geoderma.2007.11.010>, 2008.
- Diamantopoulos, E., Durner, W., Iden, S. C., Weller, U., and Vogel, H.-J.: Modeling dynamic non-equilibrium water flow observations under various boundary conditions, *Journal of Hydrology*, 529, 1851–1858, <https://doi.org/10.1016/j.jhydrol.2015.07.032>, 2015.
- 1250 Diamantopoulos, E., Durner, W., Reszkowska, A., and Bachmann, J.: Effect of soil water repellency on soil hydraulic properties estimated under dynamic conditions, *Journal of Hydrology*, 486, 175–186, 2013.
- Diamantopoulos, E., Iden, S. C., and Durner, W.: Inverse modeling of dynamic nonequilibrium in water flow with an effective approach, *Water Resour. Res.*, 48, <https://doi.org/10.1029/2011WR010717>, 2012.



- 1255 Diamantopoulos, E. and Durner, W.: Dynamic Nonequilibrium of Water Flow in Porous Media: A Review, *Vadose zone j.*, 11, v2011.0197, <https://doi.org/10.2136/vzj2011.0197>, 2012.
- do Nascimento Silva, M. L., Libardi, P. L., and Gimenes, F.: Soil water retention curve as affected by sample height, *Revista Brasileira de Ciência do Solo*, 42, <https://doi.org/10.1590/18069657rbc20180058>, 2018.
- Dormann, C. F., Elith, J., Bacher, S., Buchmann, C., Carl, G., Carré, G., Marquéz, J. R. G., Gruber, B., Lafourcade, B.,
1260 Leitão, P. J., Münkemüller, T., McClean, C., Osborne, P. E., Reineking, B., Schröder, B., Skidmore, A. K., Zurell, D.,
and Lautenbach, S.: Collinearity: a review of methods to deal with it and a simulation study evaluating their
performance, *Ecography*, 36, 27–46, <https://doi.org/10.1111/j.1600-0587.2012.07348.x>, 2013.
- Du, C.: Comparison of the performance of 22 models describing soil water retention curves from saturation to oven dryness,
Vadose zone j., 19, e20072, 2020.
- 1265 Du, E., Di Vittorio, A., and Collins, W. D.: Evaluation of hydrologic components of community land model 4 and bias
identification, *International journal of applied earth observation and geoinformation*, 48, 5–16,
<https://doi.org/10.1016/j.jag.2015.03.013>, 2016.
- Durner, W.: Hydraulic conductivity estimation for soils with heterogeneous pore structure, *Water Resources Research*, 30,
211–223, <https://doi.org/10.1029/93WR02676>, 1994.
- 1270 Durner, W. and Iden, S. C.: The improved integral suspension pressure method (ISP+) for precise particle size analysis of
soil and sedimentary materials, *Soil and Tillage Research*, 213, 105086, <https://doi.org/10.1016/j.still.2021.105086>,
2021.
- Durner, W., Jansen, U., and Iden, S. C.: Effective hydraulic properties of layered soils at the lysimeter scale determined by
inverse modelling, *European J Soil Science*, 0, 071026202618002-???, <https://doi.org/10.1111/j.1365->
1275 2389.2007.00972.x, 2007.
- Eck, D. V., Hirmas, D. R., and Gimenez, D.: Quantifying Soil Structure from Field Excavation Walls using Multistripe Laser
Triangulation Scanning, *Soil Science Society of America Journal*, 77, 1319–1328,
<https://doi.org/10.2136/sssaj2012.0421>, 2013.
- Eppes, M. C., Bierma, R., Vinson, D., and Pazzaglia, F.: A soil chronosequence study of the Reno valley, Italy: Insights into
1280 the relative role of climate versus anthropogenic forcing on hillslope processes during the mid-Holocene, *Geoderma*,
147, 97–107, <https://doi.org/10.1016/j.geoderma.2008.07.011>, 2008.
- Eyring, V., Bony, S., Meehl, G. A., Senior, C. A., Stevens, B., Stouffer, R. J., and Taylor, K. E.: Overview of the Coupled
Model Intercomparison Project Phase 6 (CMIP6) experimental design and organization, *Geosci. Model Dev.*, 9,
19371958, <https://doi.org/10.5194/gmd-9-1937-2016>, 2016.
- 1285 Fan, L., Lehmann, P., Zheng, C., and Or, D.: Vegetation-Promoted Soil Structure Inhibits Hydrologic Landslide Triggering
and Alters Carbon Fluxes, *Geophysical Research Letters*, 49, <https://doi.org/10.1029/2022GL100389>, 2022.
- Farkas, C., Gyuricza, C., and Birkás, M.: Seasonal changes of hydraulic properties of a Chromic Luvisol under different soil
management, *Biologia*, 61, S344-S348, <https://doi.org/10.2478/s11756-006-0186-6>, 2006.



- 1290 Faticchi, S., Or, D., Walko, R., Vereecken, H., Young, M. H., Ghezzehei, T. A., Hengl, T., Kollet, S., Agam, N., and Avissar, R.: Soil structure is an important omission in Earth System Models, *Nature Communications*, 11, 522, <https://doi.org/10.1038/s41467-020-14411-z>, 2020.
- Faybishenko, B. A.: Hydraulic behavior of quasi-saturated soils in the presence of entrapped air: Laboratory experiments, *Water Resources Research*, 31, 2421–2435, <https://doi.org/10.1029/95WR01654>, 1995.
- 1295 Finkel, M., Baur, A., Weber, T., Osenbrück, K., Rügner, H., Leven, C., Schwientek, M., Schlögl, J., Hahn, U., Streck, T., Cirkpa, O. A., Walter, T., and Grathwohl, P.: Managing collaborative research data for integrated, interdisciplinary environmental research, *Earth Sci Inform*, 13, 641–654, <https://doi.org/10.1007/s12145-020-00441-0>, 2020.
- Fisher, R. A. and Koven, C. D.: Perspectives on the Future of Land Surface Models and the Challenges of Representing Complex Terrestrial Systems, *Journal of Advances in Modeling Earth Systems*, 12, <https://doi.org/10.1029/2018MS001453>, 2020.
- 1300 Fodor, N., Sándor, R., Orfanus, T., Lichner, L., and Rajkai, K.: Evaluation method dependency of measured saturated hydraulic conductivity, *Geoderma*, 165, 60–68, <https://doi.org/10.1016/j.geoderma.2011.07.004>, 2011.
- Francos, N., Romano, N., Nasta, P., Zeng, Y., Szabó, B., Manfreda, S., Ciraolo, G., Mészáros, J., Zhuang, R., Su, B., and others: Mapping water infiltration rate using ground and UAV hyperspectral data: A case study of Alento, Italy, *Remote Sensing*, 13, 2606, <https://doi.org/10.3390/rs13132606>, 2021.
- 1305 Fu, Z., Hu, W., Beare, M., Thomas, S., Carrick, S., Dando, J., Langer, S., Müller, K., Baird, D., and Lilburne, L.: Land use effects on soil hydraulic properties and the contribution of soil organic carbon, *Journal of Hydrology*, 602, 126741, <https://doi.org/10.1016/j.jhydrol.2021.126741>, 2021.
- Fuentes-Guevara, M. D., Armindo, R. A., Timm, L. C., and Nemes, A.: Data correlation structure controls pedotransfer function performance, *Journal of Hydrology*, 614, 128540, <https://doi.org/10.1016/j.jhydrol.2022.128540>, 2022.
- 1310 Funk, M.: Hysteretic moisture properties of porous materials: Part II. Condensation potentials, *Journal of Building Physics*, 39, 207–241, <https://doi.org/10.1177/1744259114527809>, 2015.
- Funk, M.: Hysteretic moisture properties of porous materials: Part I: Thermodynamics, *Journal of Building Physics*, 38, 6–49, <https://doi.org/10.1177/1744259113496367>, 2014.
- 1315 Gackiewicz, B., Lamorski, K., and Slawinski, C.: Saturated water conductivity estimation based on X-ray CT images - evaluation of the impact of thresholding errors, *International Agrophysics*, 33, <https://doi.org/10.31545/intagr/104376>, 2019.
- Gardner, W. R.: Some steady-state solutions of the unsaturated moisture flow equation with application to evaporation from a water table, *Soil science*, 85, 228–232, 1958.
- 1320 Gatzke, S. E., Beaudette, D. E., Ficklin, D. L., Luo, Y., and OGeen, A.T. Zhang, M.: Aggregation strategies for SSURGO Data: Effects on SWAT soil inputs and hydrologic outputs, *Soil Science Society of America Journal*, 75, 1908–1921, <https://doi.org/10.2136/sssaj2010.0418>, 2011.



- Gebauer, A., Ellinger, M., Brito Gomez, V. M., and Lie, M.: Development of pedotransfer functions for water retention in tropical mountain soil landscapes: Spotlight on parameter tuning in machine learning, *Soil*, 6, 215–229, <https://doi.org/10.5194/soil-2019-72>, 2020.
- 1325 Gee, G. W., Ward, A. L., Zhang, Z. F., Campbell, G. S., and Mathison, J.: The influence of hydraulic nonequilibrium on pressure plate data, *Vadose Zone Journal*, 1, 172–178, <https://doi.org/10.2113/1.1.172>, 2002.
- GELMAN, A., RUBIN, D. B., CARLIN, J. B., and STERN, H. S.: BAYESIAN data analysis, 3rd ed., Texts in statistical science, Chapman & Hall, Boca Raton, London, New York [etc.], 667 pp., 2013.
- Gerke, H. H. and van Genuchten, M. T.: A dual-porosity model for simulating the preferential movement of water and
1330 solutes in structured porous media, *Water Resour. Res.*, 29, 305–319, <https://doi.org/10.1029/92WR02339>, 1993.
- Gerke, H. H., Vogel, H.-J., Weber, T. K., van der Meij, W. M., and Scholten, T.: 3–4D soil model as challenge for future soil research: Quantitative soil modeling based on the solid phase, *J. Plant Nutr. Soil Sci.*, <https://doi.org/10.1002/jpln.202200239>, 2022.
- Ghanbarian, B., Taslimitehrani, V., Dong, G., and Pachepsky, Y. A.: Sample dimensions effect on prediction of soil water
1335 retention curve and saturated hydraulic conductivity, *Journal of Hydrology*, 528, 127–137, <https://doi.org/10.1016/j.jhydrol.2015.06.024>, 2015.
- Ghanbarian, B., Taslimitehrani, V., and Pachepsky, Y. A.: Accuracy of sample dimension-dependent pedotransfer functions in estimation of soil saturated hydraulic conductivity, *Catena*, 149, 374–380, 2017.
- Gharari, S., Shafiei, M., Hrachowitz, M., Kumar, R., Fenicia, F., Gupta, H. V., and Savenije, H. H. G.: A constraint-based
1340 search algorithm for parameter identification of environmental models, *Hydrol. Earth Syst. Sci.*, 18, 4861–4870, <https://doi.org/10.5194/hess-18-4861-2014>, 2014.
- Gilding, B. H.: MATHEMATICAL MODELLING OF SATURATED AND UNSATURATED GROUNDWATER FLOW, in: *Flow and Transport in Porous Media*, Beijing, China, 8 – 26 August 1988, 1–166, 1992.
- Gimbel, K. F., Puhlmann, H., and Weiler, M.: Does drought alter hydrological functions in forest soils?, *Hydrology and
1345 Earth System Sciences*, 20, 1301–1317, <https://doi.org/10.5194/hess-20-1301-2016>, 2016.
- Gonzalez-Sosa, E., Braud, I., Thony, J.-L., Vauclin, M., Bessemoulin, P., and Calvet, J.-C.: Modelling heat and water exchanges of fallow land covered with plant-residue mulch, *Agricultural and Forest Meteorology*, 97, 151–169, [https://doi.org/10.1016/S0168-1923\(99\)00081-7](https://doi.org/10.1016/S0168-1923(99)00081-7), 1999.
- Groh, J., Diamantopoulos, E., Duan, X., Ewert, F., Herbst, M., Holbak, M., Kamali, B., Kersebaum, K.-C., Kuhnert, M.,
1350 Lischeid, G., Nendel, C., Priesack, E., Steidl, J., Sommer, M., Pütz, T., Vereecken, H., Wallor, E., Weber, T., Wegehenkel, M., Weihermüller, L., and Gerke, H. H.: Crop growth and soil water fluxes at erosion-affected arable sites: Using weighing lysimeter data for model intercomparison, *Vadose Zone J*, 19, e20058, <https://doi.org/10.1002/vzj2.20058>, 2020.
- Groh, J., Diamantopoulos, E., Duan, X., Ewert, F., Heinlein, F., Herbst, M., Holbak, M., Kamali, B., Kersebaum, K.-C.,
1355 Kuhnert, M., Nendel, C., Priesack, E., Steidl, J., Sommer, M., Pütz, T., Vanderborght, J., Vereecken, H., Wallor, E.,



- Weber, T. K. D., Wegehenkel, M., Weihermüller, L., and Gerke, H. H.: Same soil, different climate: Crop model intercomparison on translocated lysimeters, *Vadose zone j.*, 21, <https://doi.org/10.1002/vzj2.20202>, 2022.
- 1360 Grunwald, S., Chaikaew, P., Cao, B., Xiong, X., Vasques, G. M., Kim, J., Ross, C. W., Clingensmith, C. M., Xu, Y., and Gavilan, C.: The Meta Soil Model—An Integrative Framework to Model Soil Carbon Across Various Ecosystems and Scales, in: *Digital Soil Mapping Across Paradigms, Scales and Boundaries*, edited by: Zhang, G.-L., Brus, D., Liu, F., Song, X.-D., and Lagacherie, P., Springer Singapore, Singapore, 165–179, https://doi.org/10.1007/978-981-10-0415-5_14, 2016.
- 1365 Guber, A. K. and Pachepsky, Y. A.: Multimodeling with Pedotransfer Functions, Documentation and User Manual for PTF Calculator (CalcPTF), Report, Environmental Microbial and Food Safety Laboratory, Hydrology and Remote Sensing Laboratory, Beltsville Agricultural Research Center, USDA-ARS, 2010.
- Guber, A. K., Pachepsky, Y. A., Genuchten, M. T., Rawls, W. J., Simunek, J., Jacques, D., Nicholson, T. J., and Cady, R. E.: Field-Scale Water Flow Simulations Using Ensembles of Pedotransfer Functions for Soil Water Retention, *Vadose zone j.*, 5, 234–247, <https://doi.org/10.2136/vzj2005.0111>, 2006.
- 1370 Gubiani, P. I., Reichert, J. M., Campbell, C., Reinert, D. J., and Gelain, N. S.: Assessing Errors and Accuracy in Dew-Point Potentiometer and Pressure Plate Extractor Measurements, *Soil Science Society of America Journal*, 77, 19–24, <https://doi.org/10.2136/SSSAJ2012.0024>, 2013.
- Gudmundsson, L. and Cuntz, M.: Soil Parameter Model Intercomparison Project (SP-MIP): Assessing the Influence of Soil Parameters on the Variability of Land Surface Models, edited by: Lal, R., Kimble, J., and Stewart, B. A., GEWEX-ISMIC SoilWat workshop, Leipzig, 2016.
- 1375 Guillaume, B., Aroui Boukbida, H., Bakker, G., Bieganski, A., Brostaux, Y., Cornelis, W., Durner, W., Hartmann, C., Iversen, B. V., Javaux, M., Ingwersen, J., Lamorski, K., Lamparter, A., Makó, A., Mingot Soriano, A. M., Messing, I., Nemes, A., Pomes-Bordedebat, A., van der Ploeg, M., Weber Karl David, T., Weihermüller, L., Wellens, J., and Degré, A.: Reproducibility of the Wet Part of the Soil Water Retention Curve: A European Interlaboratory Comparison, 2023.
- 1380 Gunarathna, M., Sakai, K., Nakandakari, T., Momii, K., Kumari, M., and Amarasekara, M.: Pedotransfer functions to estimate hydraulic properties of tropical Sri Lankan soils, *Soil and Tillage Research*, 190, 109–119, <https://doi.org/10.1016/j.still.2019.02.009>, 2019.
- Gupta, S., Lehmann, P., Bonetti, S., Papritz, A., and Or, D.: Global Prediction of Soil Saturated Hydraulic Conductivity Using Random Forest in a Covariate-Based GeoTransfer Function (CoGTF) Framework, *Journal of Advances in Modeling Earth Systems*, 13, e2020MS002242, <https://doi.org/10.1029/2020MS002242>, 2021a.
- 1385 Gupta, S., Hengl, T., Lehmann, P., Bonetti, S., and Or, D.: SoilKsatDB: global database of soil saturated hydraulic conductivity measurements for geoscience applications, *Earth System Science Data*, 13, 1593–1612, <https://doi.org/10.5194/essd-13-1593-2021>, 2021b.



- Gupta, S., Papritz, A., Lehmann, P., Hengl, T., Bonetti, S., and Or, D.: Global Mapping of Soil Water Characteristics Parameters— Fusing Curated Data with Machine Learning and Environmental Covariates, *Remote Sensing*, 14, 1947, 1390 <https://doi.org/10.3390/rs14081947>, 2022.
- Gwo, J. P., Jardine, P. M., Wilson, G. V., and Yeh, G. T.: Using a Multiregion Model to Study the Effects of Advective and Diffusive Mass Transfer on Local Physical Nonequilibrium and Solute Mobility in a Structured Soil, *Water Resour. Res.*, 32, 561–570, <https://doi.org/10.1029/95WR03397>, 1996.
- Hadas, A.: Long-term Tillage Practice Effects on Soil Aggregation Modes and Strength, *Soil Science Society of America Journal*, 51, 191–197, <https://doi.org/10.2136/sssaj1987.03615995005100010040x>, 1987. 1395
- Haines, W. B.: Studies in the physical properties of soil. V. The hysteresis effect in capillary properties, and the modes of moisture distribution associated therewith, *The Journal of Agricultural Science*, 20, 97–116, 1930.
- Halbritter, A., Boeck, H. J. de, Eycott, A. E., Reinsch, S., Robinson, D. A., Vicca, S., Berauer, B., Christiansen, C. T., Estiarte, M., Grünzweig, J. M., Gya, R., Hansen, K., Jentsch, A., Lee, H., Linder, S., Marshall, J., Peñuelas, J., Kappel 1400 S.I., Stuart-Haëntjens, E., Wilfahrt, P., the ClimMani Working Group, and Vandvik, V.: The handbook for standardized field and laboratory measurements in terrestrial climate change experiments and observational studies (ClimEx), *Methods in Ecology and Evolution*, 11, 22–37, <https://doi.org/10.1111/2041-210X.13331>, 2020.
- Hannes, M., Wollschläger, U., Wöhling, T., and Vogel, H.-J.: Revisiting hydraulic hysteresis based on long-term monitoring of hydraulic states in lysimeters, *Water Resour. Res.*, 52, 3847–3865, <https://doi.org/10.1002/2015WR018319>, 2016.
- Hassanizadeh, S. M., Celia, M. A., and Dahle, H. K.: Dynamic Effect in the Capillary Pressure-Saturation Relationship and its Impacts on Unsaturated Flow, *Vadose zone j.*, 1, 38–57, <https://doi.org/10.2136/vzj2002.3800>, 2002. 1405
- Hengl, T., Mendes de Jesus, J., Heuvelink, G. B. M., Ruiperez Gonzalez, M., Kilibarda, M., Blagotić, A., Shangquan, W., Wright, M. N., Geng, X., Bauer-Marschallinger, B., Guevara, M. A., Vargas, R., MacMillan, R. A., Batjes, N. H., Leenaars, J. G. B., Ribeiro, E., Wheeler, I., Mantel, S., and Kempen, B.: SoilGrids250m: Global gridded soil information 1410 based on machine learning, *PLOS ONE*, 12, e0169748, <https://doi.org/10.1371/journal.pone.0169748>, 2017.
- Hillel, D.: *Environmental Soil Physics: Fundamentals, Applications, and Environmental Considerations*, Elsevier professional, s.l., 771 pp., 1998.
- Hirmas, D. and Gimenez, D.: A Geometric Equation for Representing Morphological Field Information in Horizons with Compound Structure, *Soil Science Society of America Journal*, 81, 863–867, 1415 <https://doi.org/10.2136/sssaj2016.12.0396n>, 2017.
- Hirmas, D. R., Gimenez, D., Nemes, A., Kerry, R., Brunsell, N. A., and Wilson, C. J.: Climate-induced changes in continental-scale soil macroporosity may intensify water cycle, *Nature*, 561, 100–103, <https://doi.org/10.1038/s41586-018-0463-x>, 2018.
- Hirmas, D. R., Gimenez, D., Mome Filho, E. A., Patterson, M., Drager, K., Platt, B. F., and Eck, D. V.: Quantifying soil 1420 structure and porosity using three-dimensional laser scanning, in: *Digital Soil Morphometrics, Progress in Soil Science*,



- edited by: Hartemink, A. E. and Minasny, B., Springer International Publishing, Switzerland, 19–35,
https://doi.org/10.1007/978-3-319-28295-4_2, 2016.
- Hodde, W., Sesmero, J., Gramig, B., Vyn, T., and Doering, O.: The Predicted Effect of Projected Climate Change on the Economics of Conservation Tillage, *Agronomy Journal*, 111, 3130–3139, <https://doi.org/10.2134/agronj2019.01.0045>,
1425 2019.
- Hodnett, M. G. and Tomasella, J.: Marked differences between van Genuchten soil water-retention parameters for temperate and tropical soils: a new water-retention pedo-transfer functions developed for tropical soils, *Geoderma*, 108, 155–180, [https://doi.org/10.1016/S0016-7061\(02\)00105-2](https://doi.org/10.1016/S0016-7061(02)00105-2), 2002.
- Hopmans, J. W. and Dane, J. H.: Temperature dependence of soil water retention curves, *Soil Science Society of America Journal*, 50, 562–567, <https://doi.org/10.2136/SSSAJ1986.03615995005000030004X>, 1986.
1430
- Hopmans, J. W., Simunek, J., Romano, N., and Durner, W.: Inverse methods, in: *Methods of Soil Analysis. Part 4, SSSA Book Series No. 5, SSA, Madison, WI*, 963–1008, 2002.
- Horn, R., Taubner, H., Wuttke, M., and Baumgartl, T.: Soil physical properties related to soil structure, *Soil and Tillage Research*, 30, 187–216, [https://doi.org/10.1016/0167-1987\(94\)90005-1](https://doi.org/10.1016/0167-1987(94)90005-1), 1994.
- Huang, H.-C., Tan, Y.-C., Liu, C.-W., and Chen, C.-H.: A novel hysteresis model in unsaturated soil, *Hydrol. Process.*, 19, 1653–1665, <https://doi.org/10.1002/hyp.5594>, 2005.
1435
- Hutson, J. L. and Cass, A.: A retentivity function for use in soil-water simulation models, *Journal of Soil Science*, 38, 105–113, <https://doi.org/10.1111/j.1365-2389.1987.tb02128.x>, 1987.
- Ippisch, O., Vogel, H.-J., and Bastian, P.: Validity limits for the van Genuchten–Mualem model and implications for parameter estimation and numerical simulation, *Advances in Water Resources*, 29, 1780–1789,
1440 <https://doi.org/10.1016/j.advwatres.2005.12.011>, 2006.
- Jaenicke, J., Wösten, H., Budiman, A., and Siegert, F.: Planning hydrological restoration of peatlands in Indonesia to mitigate carbon dioxide emissions, *Mitigation and Adaptation Strategies for Global Change*, 15, 223–239, <https://doi.org/10.1007/s11027-010-9214-5>, 2010.
- Jarvis, N., Koestel, J., Messing, I., Moeys, J., and Lindahl, A.: Influence of soil, land use and climatic factors on the hydraulic conductivity of soil, *Hydrology and Earth System Sciences*, 17, 5185–5195, <https://doi.org/10.5194/hess-17-5185-2013>, 2013.
1445
- Jarvis, N. J.: A review of non-equilibrium water flow and solute transport in soil macropores: principles, controlling factors and consequences for water quality, *European J Soil Science*, 58, 523–546, <https://doi.org/10.1111/j.1365-2389.2007.00915.x>, 2007.
1450
- Jarvis, N., Larsbo, M., Lewan, E., and Garré, S.: Improved descriptions of soil hydrology in crop models: The elephant in the room?, *Agricultural Systems*, 202, 103477, <https://doi.org/10.1016/j.agsy.2022.103477>, 2022.
- Jarvis, N., Koestel, J., and Larsbo, M.: Understanding Preferential Flow in the Vadose Zone: Recent Advances and Future Prospects, *Vadose zone j.*, 15, vzj2016.09.0075, <https://doi.org/10.2136/vzj2016.09.0075>, 2016.



- 1455 Javaux, M. and Vanclooster, M.: Three-dimensional structure characterisation and transient flow modelling of a variably saturated heterogeneous monolith, *Journal of Hydrology*, 327, 516–524, 2006.
- Jenny, H.: *Factors of soil formation: A system of quantitative pedology*, McGraw Hill, New York, 1941.
- Jorda, H., Bechtold, M., Jarvis, N., and Koestel, J.: Using boosted regression trees to explore key factors controlling saturated and near-saturated hydraulic conductivity, *European Journal of Soil Science*, 66, 744–756, <https://doi.org/10.1111/ejss.12249>, 2015.
- 1460 Jülich, S., Kreiselmeyer, J., Scheibler, S., Petzold, R., Schwärzel, K., and Feger, K. H.: Hydraulic Properties of Forest Soils with Stagnic Conditions, *Forests*, 12, 2021.
- Keller, T. and Or, D.: Farm vehicles approaching weights of sauropods exceed safe mechanical limits for soil functioning, *Proceedings of the National Academy of Sciences of the United States of America*, 119, e2117699119, <https://doi.org/10.1073/pnas.2117699119>, 2022.
- 1465 Klute, A. and Dirksen, C.: *Water retention: laboratory methods. Methods of soil analysis: Part 1—physical and mineralogical methods.(methodsofsoilan1)*, Soil Science Society of America, American Society of Agronomy, 1986.
- Koestel, J., Fukumasu, J., Garland, G., Larsbo, M., and Svensson, D. N.: Approaches to delineate aggregates in intact soil using X-ray imaging, *Geoderma*, 402, 115360, <https://doi.org/10.1016/j.geoderma.2021.115360>, 2021.
- 1470 Koestel, J., Larsbo, M., and Jarvis, N.: Scale and REV analyses for porosity and pore connectivity measures in undisturbed soil, *Geoderma*, 366, 114206, <https://doi.org/10.1016/j.geoderma.2020.114206>, 2020.
- Koestel, J., Dathe, A., Skaggs, T. H., Klakegg, O., Ahmad, M. A., Babko, M., Giménez, D., Farkas, C., Nemes, A., and Jarvis, N.: Estimating the permeability of naturally structured soil from percolation theory and pore space characteristics imaged by X-ray, *Water Resources Research*, 54, 9255–9263, <https://doi.org/10.1029/2018WR023609>, 2018.
- 1475 Kool, J. B. and Parker, J. C.: Development and evaluation of closed-form expressions for hysteretic soil hydraulic properties, *Water Resour. Res.*, 23, 105–114, 1987.
- Koop, A. N., Hirmas, D. R., Sullivan, P. L., and Mohammed, A. K.: A generalizable index of soil development, *Geoderma*, 360, 113898, <https://doi.org/10.1016/j.geoderma.2019.113898>, 2020.
- Kroes, J. G., van Dam, J. C., Bartholomeus, R. P., Groenendijk, P., Heinen, M., Hendriks, R., Mulder, H. M., Supit, I., and 1480 van Walsum, P.: *SWAP version 4, Alterra - Soil, water and land use*, Wageningen, 2017.
- Kuffour, B. N. O., Engdahl, N. B., Woodward, C. S., Condon, L. E., Kollet, S., and Maxwell, R. M.: Simulating coupled surface-subsurface flows with ParFlow v3. 5.0: capabilities applications and ongoing development of an open-source massively parallel integrated hydrologic model, *Geoscientific Model Development*, 13, 1373–1397, 2020.
- Lagacherie, P., Arrouays, D., Bourennane, H., Gomez, C., and Nkuba-Kasanda, L.: Analysing the impact of soil spatial 1485 sampling on the performances of Digital Soil Mapping models and their evaluation: A numerical experiment on Quantile Random Forest using clay contents obtained from Vis-NIR-SWIR hyperspectral imagery, *Geoderma*, 375, 114503, <https://doi.org/10.1016/j.geoderma.2020.114503>, 2020.
- Lal, R. and Shukla, M. K.: *Principles of soil physics*, CRC Press, 2013.



- Lassabatère, L., Angulo-Jaramillo, R., Soria Ugalde, J. M., Cuenca, R., Braud, I., and Haverkamp, R.: Beerkan Estimation of
1490 Soil Transfer Parameters through Infiltration Experiments-BEST, *Soil Sci. Soc. Am. j.*, 70, 521–532,
<https://doi.org/10.2136/sssaj2005.0026>, 2006.
- Lehmann, P., Leshchinsky, B., Gupta, S., Mirus, B. B., Bickel, S., Lu, N., and Or, D.: Clays are not created equal: How clay
mineral type affects soil parameterization, *Geophysical Research Letters*, 48, e2021GL095311,
<https://doi.org/10.1029/2021GL095311>, 2021.
- 1495 Lehmann, P., Bickel, S., Wei, Z., and Or, D.: Physical Constraints for Improved Soil Hydraulic Parameter Estimation by
Pedotransfer Functions, *Water Resources Research*, 56, e2019WR025963, <https://doi.org/10.1029/2019WR025963>,
2020.
- Lehmann, P., Assouline, S., and Or, D.: Characteristic lengths affecting evaporative drying of porous media, *Physical
Review E*, 77, 56309, 2008.
- 1500 Leij, F. J.: The UNSODA unsaturated soil hydraulic database: user's manual, 96, National Risk Management Research
Laboratory, Office of Research and ..., 1996.
- Letey, J.: The study of soil structure - Science or art, *Soil Research*, 29, 699–707, <https://doi.org/10.1071/SR9910699>, 1991.
- Letts, M. G., Roulet, N. T., Comer, N. T., Skarupa, M. R., and Versegny, D. L.: Parametrization of peatland hydraulic
properties for the Canadian land surface scheme, *Atmosphere-Ocean*, 38, 141–160,
1505 <https://doi.org/10.1080/07055900.2000.9649643>, 2000.
- Lim, H., Yang, H., Chun, K. W., and Choi, H. T.: Development of pedo-transfer functions for the saturated hydraulic
conductivity of forest soil in south Korea considering forest stand and site characteristics, *Water*, 12, 2217,
<https://doi.org/10.3390/w12082217>, 2020.
- Lin, H.: Hydropedology: Bridging Disciplines, Scales, and Data, *Vadose Zone Journal*, 2, 1–11,
1510 <https://doi.org/10.2136/vzj2003.1000>, 2003.
- Lin, H. S., McInnes, K. J., Wilding, L. P., and Hallmark, C. T.: Effects of soil morphology on hydraulic properties: II.
Hydraulic pedotransfer functions, *Soil Science Society of America Journal*, 63, 55–961,
<https://doi.org/10.2136/sssaj1999.634955x>, 1999.
- Liu, H., Price, J., Rezanezhad, F., and Lennartz, B.: Centennial-Scale Shifts in Hydrophysical Properties of Peat Induced by
1515 Drainage, *Water Resources Research*, 56, e2020WR027538, <https://doi.org/10.1029/2020WR027538>, 2020.
- Liu, H. and Lennartz, B.: Hydraulic properties of peat soils along a bulk density gradient-A meta study, *Hydrol. Process.*, 33,
101–114, <https://doi.org/10.1002/hyp.13314>, 2019.
- Luckner, L.: Migration processes in the soil and groundwater zone (1991), CRC Press, [Place of publication not identified],
2017.
- 1520 Malone, B. P., Jha, S. K., Minasny, B., and McBratney, A. B.: Comparing regression-based digital soil mapping and
multiple-point geostatistics for the spatial extrapolation of soil data, *Geoderma*, 262, 243–253,
<https://doi.org/10.1016/j.geoderma.2015.08.037>, 2016.



- Marthews, T. R., Quesada, C. A., Galbraith, D. R., Malhi, Y., Mullins, C. E., Hodnett, M. G., and Dharssi, I.: High-resolution hydraulic parameter maps for surface soils in tropical South America, *Geoscientific Model Development*, 7, 711–723, <https://doi.org/10.5194/gmd-7-711-2014>, 2014.
- Mascaro, G., Vivoni, E. R., and Méndez-Barroso, L. A.: Hyperresolution hydrologic modeling in a regional watershed and its interpretation using empirical orthogonal functions, *Advances in Water Resources*, 83, 190–206, <https://doi.org/10.1016/j.advwatres.2015.05.023>, 2015.
- McCarter, C. and Price, J. S.: Ecohydrology of Sphagnum moss hummocks: mechanisms of capitula water supply and simulated effects of evaporation, *Ecohydrology*, 7, 33–44, <https://doi.org/10.1002/eco.1313>, 2014.
- McCarter, C. P., Ketcheson, S., Weber, T. K., Whittington, P., Scarlett, S., and Price, J.: Modified Technique for Measuring Unsaturated Hydraulic Conductivity in Sphagnum Moss and Peat, *Soil Sci. Soc. Am. j.*, 81, 747–757, <https://doi.org/10.2136/sssaj2017.01.0006>, 2017.
- McNeill, S. J., Lilburne, L. R., Carrick, S., Webb, T. H., and Cuthill, T.: Pedotransfer functions for the soil water characteristics of New Zealand soils using S-map information, *Geoderma*, 326, 96–110, <https://doi.org/10.1016/j.geoderma.2018.04.011>, 2018.
- Messing, I. and Jarvis, N. J.: Temporal variation in the hydraulic conductivity of a tilled clay soil as measured by tension infiltrometers, *Journal of Soil Science*, 44, 11–24, <https://doi.org/10.1111/j.1365-2389.1993.tb00430.x>, 1993.
- Meurer, K., Barron, J., Chenu, C., Coucheney, E., Fielding, M., Hallett, P., Herrmann, A. M., Keller, T., Koestel, J., Larsbo, M., and others: A framework for modelling soil structure dynamics induced by biological activity, *Global Change Biology*, 26, 5382–5403, 2020a.
- Meurer, K. H. E., Chenu, C., Coucheney, E., Herrmann, A. M., Keller, T., Kätterer, T., Nimblad Svensson, D., and Jarvis, N.: Modelling dynamic interactions between soil structure and the storage and turnover of soil organic matter, *Biogeosciences*, 17, 5025–5042, 2020b.
- Miller, E. E. and Miller, R. D.: Physical Theory for Capillary Flow Phenomena, *Journal of Applied Physics*, 27, 324–332, <https://doi.org/10.1063/1.1722370>, 1956.
- Minasny, B. and Hartemink, A. E.: Predicting soil properties in the tropics, *Earth-Science Reviews*, 106, 52–62, <https://doi.org/10.1016/j.earscirev.2011.01.005>, 2011.
- Mohammed, A. K., Hirmas, D. R., Gimenez, D., Mandel, R. D., and Miller, J. R.: A Digital Morphometric Approach for Quantifying Ped Shape, *Soil Science Society of America Journal*, 80, 1604–1618, <https://doi.org/10.2136/sssaj2016.06.0203>, 2016.
- Mohammed, A., Hirmas, D. R., Nemes, A., and Giménez, D.: Exogenous and endogenous controls on the development of soil structure, *Geoderma*, 357, 113945, <https://doi.org/10.1016/j.geoderma.2019.113945>, 2020.
- Montaldo, N. and Albertson, J. D.: On the Use of the ForceRestore SVAT Model Formulation for Stratified Soils, *Journal of Hydrometeorology*, 2, 571–578, [https://doi.org/10.1175/1525-7541\(2001\)002<0571:OTUOTF>2.0.CO;2](https://doi.org/10.1175/1525-7541(2001)002<0571:OTUOTF>2.0.CO;2), 2001.



- Montzka, C., Herbst, M., Weihermüller, L., Verhoef, A., and Vereecken, H.: A global data set of soil hydraulic properties and sub-grid variability of soil water retention and hydraulic conductivity curves, *Earth System Science Data*, 9, 529–543, <https://doi.org/10.5194/essd-9-529-2017>, 2017.
- 1560 Morris, P. J., Davies, M. L., Baird, A. J., Balliston, N., Bourgault, M.-A., Clymo, R. S., Fewster, R. E., Furukawa, A. K., Holden, J., Kessel, E., Ketcheson, S. J., Kløve, B., Larocque, M., Marttila, H., Menberu, M. W., Moore, P. A., Price, J. S., Ronkanen, A.-K., Rosa, E., Strack, M., Surridge, B. W. J., Waddington, J. M., Whittington, P., and Wilkinson, S. L.: Saturated Hydraulic Conductivity in Northern Peats Inferred From Other Measurements, *Water Resour. Res.*, 58, <https://doi.org/10.1029/2022WR033181>, 2022.
- 1565 Mosquera, G. M., Marín, F., Feyen, J., Célleri, R., Breuer, L., Windhorst, D., and Crespo, P.: A field, laboratory, and literature review evaluation of the water retention curve of volcanic ash soils: How well do standard laboratory methods reflect field conditions?, *Hydrological Processes*, 35, e14011, <https://doi.org/10.1002/hyp.14011>, 2021.
- Mualem, Y.: A modified dependent-domain theory of hysteresis, *Soil science*, 137, 283–291, 1984.
- Mualem, Y.: A new model for predicting the hydraulic conductivity of unsaturated porous media, *Water Resources Research*, 12, 513–522, <https://doi.org/10.1029/WR012i003p00513>, 1976.
- 1570 Murphy, J. M., Sexton, D., Barnett, D. N., Jones, G. S., Webb, M. J., Collins, M., and and Stainforth, D. A.: Quantification of modelling uncertainties in a large ensemble of climate change simulations, *Nature*, 430, 768–772, <https://doi.org/10.1038/nature02771>, 2004.
- Nasta, P., Szabó, B., and Romano, N.: Evaluation of pedotransfer functions for predicting soil hydraulic properties: A voyage from regional to field scales across Europe, *Journal of Hydrology: Regional Studies*, 37, 100903, <https://doi.org/10.1016/j.ejrh.2021.100903>, 2021.
- 1575 Nemes, A. and Rawls, W. J.: Soil texture and particle-size distribution as input to estimate soil hydraulic properties, *Developments in soil science*, 30, 47–70, [https://doi.org/10.1016/S0166-2481\(04\)30004-8](https://doi.org/10.1016/S0166-2481(04)30004-8), 2004.
- Nemes, A., Timlin, D. J., Pachepsky, Y. A., and Rawls, W. J.: Evaluation of the Rawls et al.(1982) Pedotransfer Functions for their Applicability at the US National Scale, *Soil Science Society of America Journal*, 73, 1638–1645, <https://doi.org/10.2136/sssaj2008.0298>, 2009.
- 1580 Nemes, A., Roberts, R. T., Rawls, W. J., Pachepsky, Y., and van Genuchten, M.: Software to estimate –33 and –1500kPa soil water retention using the non-parametric k-Nearest Neighbor technique, *Environmental Modelling & Software*, 23, 254–255, <https://doi.org/10.1016/j.envsoft.2007.05.018>, 2008.
- Nemes, A., Rawls, W. J., Pachepsky, Y. A., and van Genuchten, M. T.: Sensitivity Analysis of the Nonparametric Nearest Neighbor Technique to Estimate Soil Water Retention, *Vadose zone j.*, 5, 1222–1235, <https://doi.org/10.2136/vzj2006.0017>, 2006a.
- 1585 Nemes, A., Wösten, J., Lilly, A., and Voshaar, J.: Evaluation of different procedures to interpolate particle-size distributions to achieve compatibility within soil databases, *Geoderma*, 90, 187–202, [https://doi.org/10.1016/S0016-7061\(99\)00014-2](https://doi.org/10.1016/S0016-7061(99)00014-2), 1999.



- 1590 Nemes, A. d., Schaap, M. G., Leij, F. J., and Wösten, J. H.: Description of the unsaturated soil hydraulic database UNSODA version 2.0, *Journal of Hydrology*, 251, 151–162, [https://doi.org/10.1016/S0022-1694\(01\)00465-6](https://doi.org/10.1016/S0022-1694(01)00465-6), 2001.
- Nemes, A., Rawls, W. J., and Pachepsky, Y. A.: Use of the Nonparametric Nearest Neighbor Approach to Estimate Soil Hydraulic Properties, *Soil Sci. Soc. Am. j.*, 70, 327–336, <https://doi.org/10.2136/sssaj2005.0128>, 2006b.
- Nemes, A., Schaap, M. G., and Wösten, J. H.: Functional evaluation of pedotransfer functions derived from different scales
1595 of data collection, *Soil Sci. Soc. Am. j.*, 67, 1093–1102, 2003.
- Ng, W., Minasny, B., Jeon, S. H., and McBratney, A.: Mid-infrared spectroscopy for accurate measurement of an extensive set of soil properties for assessing soil functions, *Soil Security*, 100043, <https://doi.org/10.1016/j.soisec.2022.100043>, 2022.
- Nguyen, P. M., van Le, K., Botula, Y.-D., and Cornelis, W. M.: Evaluation of soil water retention pedotransfer functions for
1600 Vietnamese Mekong Delta soils, *Agricultural Water Management*, 158, 126–138, <https://doi.org/10.1016/j.agwat.2015.04.011>, 2015.
- Nimmo, J. R.: POROSITY AND PORE-SIZE DISTRIBUTION, in: *Encyclopedia of Soils in the Environment*, Elsevier, 295–303, <https://doi.org/10.1016/B0-12-348530-4/00404-5>, 2005.
- Nimmo, J. R. and Perkins, K. S.: Aggregate stability and size distribution, in: *Methods of Soil Analysis, Part 4 - Physical
1605 Methods*, edited by: Dane, J. H. and Topp, G. C., Soil Science Society of America, Madison, WI, 317–328, 2002.
- Nimmo, J. R.: Comment on the treatment of residual water content in “A consistent set of parametric models for the two-phase flow of immiscible fluids in the subsurface” by L. Luckner et al, *Water Resour. Res.*, 27, 661–662, <https://doi.org/10.1029/91WR00165>, 1991.
- Oades, J. M. and Waters, A. G.: Aggregate hierarchy in soils, *Australian Journal of Soil Research*, 29, 815828,
1610 <https://doi.org/10.1071/SR9910815>, 1991.
- Oge, J. and Y. Brunet: A forest floor model for heat and moisture including a litter layer, *Journal of Hydrology*, 255, 212–223, [https://doi.org/10.1016/S0022-1694\(01\)00515-7](https://doi.org/10.1016/S0022-1694(01)00515-7), 2002.
- Omuto, C., Nachtergaele, F., and Vargas Rojas, R.: State of the Art Report on Global and Regional Soil Information: Where are we? Where to go?, Report, Global Soil Partnership Technical Report, FAO, Rome, 2013.
- 1615 Oosterwoud, M., van der Ploeg, M., van der Schaaf, S., and van der Zee, S.: Variation in hydrologic connectivity as a result of microtopography explained by discharge to catchment size relationship, *Hydrological Processes*, 31, 2683–2699, <https://doi.org/10.1002/hyp.11164>, 2017.
- Or, D.: The tyranny of small scales—On representing soil processes in global land surface models, *Water Resources Research*, 56, <https://doi.org/10.1029/2019WR024846>, 2020.
- 1620 Ottoni, M. V., Ottoni Filho, T. B., Schaap, M. G., Lopes-Assad, M., and Rotunno Filho, O. C.: Hydrophysical database for Brazilian soils (HYBRAS) and pedotransfer functions for water retention, *Vadose Zone Journal*, 17, 170095, <https://doi.org/10.2136/vzj2017.05.0095>, 2018.



- Over, M. W., Wollschläger, U., Osorio-Murillo, C. A., and Rubin, Y.: Bayesian inversion of Mualem-van Genuchten parameters in a multilayer soil profile: A data-driven, assumption-free likelihood function, *Water Resources Research*, 51, 861–884, <https://doi.org/10.1002/2014WR015252>, 2015.
- 1625 Pachepsky, Y. A. and Rawls, W. J.: Development of pedotransfer functions in soil hydrology, *Developments in Soil Science*, 30, Elsevier, New York, 2004.
- Pachepsky, Y. A. and Rawls, W. J.: Soil structure and pedotransfer functions, *European J Soil Science*, 54, 443–452, <https://doi.org/10.1046/j.1365-2389.2003.00485.x>, 2003.
- 1630 Pachepsky, Y. A. and Rawls, W. J.: Accuracy and reliability of pedotransfer functions as affected by grouping soils, *Soil Science Society of America Journal*, 63, 1748–1756, <https://doi.org/10.2136/sssaj1999.6361748x>, 1999.
- Paschalis, A., Bonetti, S., Guo, Y., and Fatichi, S.: On the Uncertainty Induced by Pedotransfer Functions in Terrestrial Biosphere Modeling, *Water Resour. Res.*, 58, <https://doi.org/10.1029/2021WR031871>, 2022.
- Patil, N. G. and Singh, S. K.: Pedotransfer Functions for Estimating Soil Hydraulic Properties: A Review, *Pedosphere*, 26, 417–430, [https://doi.org/10.1016/S1002-0160\(15\)60054-6](https://doi.org/10.1016/S1002-0160(15)60054-6), 2016.
- 1635 Pelletier, J. D., Broxton, P. D., Hazenberg, P., Zeng, X., Troch, P. A., Niu, G., Williams, Z. C., Brunke, M. A., and Gochis, D.: Global 1-km gridded thickness of soil, regolith, and sedimentary deposit layers, ORNL DAAC, <https://doi.org/10.3334/ORNLDAAC/1304>, 2016.
- Peters, A.: Simple consistent models for water retention and hydraulic conductivity in the complete moisture range, *Water Resources Research*, 49, 6765–6780, <https://doi.org/10.1002/wrcr.20548>, 2013.
- 1640 Pham, H. Q., Fredlund, D. G., and Barbour, S. L.: A study of hysteresis models for soil-water characteristic curves, *Can. Geotech. J.*, 42, 1548–1568, 2005.
- Philip, JR: Similarity hypothesis for capillary hysteresis in porous materials, *Journal of geophysical research*, 69, 1553–1562, 1964.
- 1645 Pianosi, F., Beven, K., Freer, J., Hall, J. W., Rougier, J., Stephenson, D. B., and Wagener, T.: Sensitivity analysis of environmental models: A systematic review with practical workflow, *Environmental Modelling & Software*, 79, 214–232, <https://doi.org/10.1016/j.envsoft.2016.02.008>, 2016.
- Pierce, L. L. and Running, S. W.: The Effects of Aggregating Subgrid Land-Surface Variation on Large-Scale Estimates of Net Primary Production, *Landscape Ecology*, 10, 239–253, <https://doi.org/10.1007/BF00129258>, 1995.
- 1650 Pinnington, E., Amezcuca, J., Cooper, E., Dadson, S., Ellis, R., Peng, J., Robinson, E., Morrison, R., Osborne, S., and Quaife, T.: Improving soil moisture prediction of a high-resolution land surface model by parameterising pedotransfer functions through assimilation of SMAP satellite data, *Hydrol. Earth Syst. Sci.*, 25, 1617–1641, <https://doi.org/10.5194/hess-25-1617-2021>, 2021.
- 1655 Pirastru, M., Castellini, M., Giadrossich, F., and Niedda, M.: Comparing the hydraulic properties of forested and grassed soils on an experimental hillslope in a Mediterranean environment, *Procedia Environmental Sciences*, 19, 341–350, <https://doi.org/10.1016/j.proenv.2013.06.039>, 2013.



- Pittaki-Chrysodonta, Z., Moldrup, P., Knadel, M., Iversen, B. V., Hermansen, C., Greve, M. H., and Jonge, L. W. de: Predicting the Campbell soil water retention function: Comparing visible-near-infrared spectroscopy with classical pedotransfer function, *Vadose Zone Journal*, 17, 1–12, <https://doi.org/10.2136/vzj2017.09.0169>, 2018.
- 1660 Poggio, L., Sousa, L. M. de, Batjes, N. H., Heuvelink, G., Kempen, B., Ribeiro, E., and Rossiter, D.: SoilGrids 2.0: producing soil information for the globe with quantified spatial uncertainty, *Soil*, 7, 217–240, <https://doi.org/10.5194/soil-7-217-2021>, available at: <https://soil.copernicus.org/articles/7/217/2021/>, 2021.
- Poulovassilis, A.: Hysteresis of pore water, and application of the concept of independent domains, *Soil science*, 93, 405–412, <https://doi.org/10.1097/00010694-196206000-00007>, 1962.
- 1665 Poulovassilis, A. and Kargas, G.: A note on calculating hysteretic behavior, *Soil Sci. Soc. Am. j.*, 64, 1947–1950, 2000.
- Poulovassilis, A. and Childs, E. C.: The hysteresis of pore water: the non-independence of domains, *Soil science*, 112, 301–312, 1971.
- Priesack, E.: Expert-N Dokumentation der Modellbibliothek: Zugl.: Göttingen, Univ., Habil.-Schr., 2006, FAM-Bericht, 60, Hieronymus, München, 2006.
- 1670 Pringle, M. J., Romano, N., Minasny, B., Chirico, G. B., and Lark, R. M.: Spatial evaluation of pedotransfer functions using wavelet analysis, *Journal of Hydrology*, 333, 182–198, <https://doi.org/10.1016/j.jhydrol.2006.08.007>, 2007.
- Puhlmann, H. and Wilpert, K. von: Pedotransfer functions for water retention and unsaturated hydraulic conductivity of forest soils, *Journal of Plant Nutrition and Soil Science*, 175, 221–235, <https://doi.org/10.1002/jpln.201100139>, 2012.
- Qiu, C., Zhu, D., Ciais, P., Guenet, B., Krinner, G., Peng, S., Aurela, M., Bernhofer, C., Brümmner, C., Bret-Harte, S., Chu, H., Chen, J., Desai, A. R., Dušek, J., Euskirchen, E. S., Fortuniak, K., Flanagan, L. B., Friborg, T., Grygoruk, M., Gogo, S., Grünwald, T., Hansen, B. U., Holl, D., Humphreys, E., Hurkuck, M., Kiely, G., Klatt, J., Kutzbach, L., Llargeron, C., Laggoun-Défarge, F., Lund, M., Lafleur, P. M., Li, X., Mammarella, I., Merbold, L., Nilsson, M. B., Olejnik, J., Ottosson-Löfvenius, M., Oechel, W., Parmentier, F.-J. W., Peichl, M., Pirk, N., Peltola, O., Pawlak, W., Rasse, D., Rinne, J., Shaver, G., Schmid, H. P., Sottocornola, M., Steinbrecher, R., Sachs, T., Urbaniak, M., Zona, D., and
- 1680 Ziemblinska, K.: ORCHIDEE-PEAT (revision 4596), a model for northern peatland CO₂, water, and energy fluxes on daily to annual scales, *Geosci. Model Dev.*, 11, 497–519, <https://doi.org/10.5194/gmd-11-497-2018>, 2018.
- Raats, P. A. C. and Knight, J. H.: The Contributions of Lewis Fry Richardson to Drainage Theory, Soil Physics, and the Soil-Plant-Atmosphere Continuum, *Front. Environ. Sci.*, 6, 5, <https://doi.org/10.3389/fenvs.2018.00013>, 2018.
- Rabot, E., Wiesmeier, M., Schlüter, S., and Vogel, H.-J.: Soil structure as an indicator of soil functions: A review, *Geoderma*, 314, 122–137, <https://doi.org/10.1016/j.geoderma.2017.11.009>, available at: <https://www.sciencedirect.com/science/article/pii/S0016706117310273>, 2018.
- 1685 Rahmati, M., Weihermüller, L., Vanderborght, J., Pachepsky, Y. A., Mao, L., Sadeghi, S. H., Moosavi, N., Kheirfam, H., Montzka, C., van Looy, K., Toth, B., Hazbavi, Z., Al Yamani, W., Albalasmeh, A. A., Alghzawi, M. Z., Angulo-Jaramillo, R., Antonino, A. C. D., Arampatzis, G., Armindo, R. A., Asadi, H., Bamutaze, Y., Batlle-Aguilar, J., Béchet, B., Becker, F., Blöschl, G., Bohne, K., Braud, I., Castellano, C., Cerdà, A., Chalhoub, M., Cichota, R., Čislerová, M.,
- 1690



- 1695 Clothier, B., Coquet, Y., Cornelis, W., Corradini, C., Coutinho, A. P., Oliveira, M. B. de, Macedo, J. R. de, Durães, M. F., Emami, H., Eskandari, I., Farajnia, A., Flammini, A., Fodor, N., Gharaibeh, M., Ghavimipannah, M. H., Ghezzehei, T. A., Giertz, S., Hatzigiannakis, E. G., Horn, R., Jiménez, J. J., Jacques, D., Keesstra, S. D., Kelishadi, H., Kiani-Harchegani, M., Kouselou, M., Kumar Jha, M., Lassabatere, L., Li, X., Liebig, M. A., Lichner, L., López, M. V., Machiwal, D., Mallants, D., Mallmann, M. S., Oliveira Marques, J. D. de, Marshall, M. R., Mertens, J., Meunier, F., Mohammadi, M. H., Mohanty, B. P., Pulido-Moncada, M., Montenegro, S., Morbidelli, R., Moret-Fernández, D., Moosavi, A. A., Mosaddeghi, M. R., Mousavi, S. B., Mozaffari, H., Nabiollahi, K., Neyshabouri, M. R., Ottoni, M. V., Ottoni Filho, T. B., Pahlavan-Rad, M. R., Panagopoulos, A., Peth, S., Peyneau, P.-E., Picciafuoco, T., Poesen, J., Pulido, M., Reinert, D. J., Reinsch, S., Rezaei, M., Roberts, F. P., Robinson, D., Rodrigo-Comino, J., Rotunno Filho, O. C., Saito, T., Suganuma, H., Saltalippi, C., Sándor, R., Schütt, B., Seeger, M., Sepehrnia, N., Sharifi Moghaddam, E., Shukla, M., Shutaro, S., Sorando, R., Stanley, A. A., Strauss, P., Su, Z., Taghizadeh-Mehrjardi, R., Taguas, E., Teixeira, W. G., Vaezi, A. R., Vafakhah, M., Vogel, T., Vogeler, I., Votrubova, J., Werner, S., Winarski, T., Yilmaz, D., Young, M. H., Zacharias, S., Zeng, Y., Zhao, Y., Zhao, H., and Vereecken, H.: Development and analysis of the Soil Water Infiltration Global database, *Earth System Science Data*, 10, 1237–1263, <https://doi.org/10.5194/essd-10-1237-2018>, 2018.
- 1700 Rastetter, E. B., King, A. W., Cosby, B. J., Hornberger, G. M., Oneill, R. V., and Hobbie, J. E.: Aggregating Fine-Scale Ecological Knowledge to Model Coarser-Scale Attributes of Ecosystems, *Ecological Applications*, 2, 55–70, <https://doi.org/10.2307/1941889>, 1992.
- 1710 Rawls, W. J., Nemes, A., and Pachepsky, Y.: Effect of soil organic carbon on soil hydraulic properties, *Developments in Soil Science*, Elsevier, New York, 95-114, 2004.
- Reeves, J. B.: Near- versus mid-infrared diffuse reflectance spectroscopy for soil analysis emphasizing carbon and laboratory versus on-site analysis: Where are we and what needs to be done?, *Geoderma*, 158, 3–14, <https://doi.org/10.1016/j.geoderma.2009.04.005>, 2010.
- 1715 Ren, J. and Vanapalli, S. K.: Comparison of Soil-Freezing and Soil-Water Characteristic Curves of Two Canadian Soils, *Vadose Zone Journal*, 18, 180185, <https://doi.org/10.2136/vzj2018.10.0185>, 2019.
- Renger, M., Bohne, K., Facklam, M., Harrach, T., Riek, W., Schäfer, W., Wessolek, G., and Zacharias, S.: Ergebnisse und Vorschläge der DBG-Arbeitsgruppe "Kennwerte des Bodengefüges" zur Schätzung bodenphysikalischer Kennwerte, 2008.
- 1720 Reynolds, W. D. and Topp, G. C.: Soil water desorption and imbibition: tension and pressure techniques, CRC Press Boca Raton, FL, 981–1005, <https://doi.org/10.1201/9781420005271.CH72>, 2008.
- Rezaei, M., Saey, T., Seuntjens, P., Joris, I., Boënnne, W., van Meirvenne, M., and Cornelis, W.: Predicting saturated hydraulic conductivity in a sandy grassland using proximally sensed apparent electrical conductivity, *Journal of Applied Geophysics*, 126, 35–41, <https://doi.org/10.1016/j.jappgeo.2016.01.010>, 2016.



- Riedel, T., Weber, T. K. D., and Bergmann, A.: Near constant groundwater recharge efficiency under global change in a
1725 central European catchment, *Hydrol. Process.*, 37, <https://doi.org/10.1002/hyp.14805>, 2023.
- Roberts, D. R., Bahn, V., Ciuti, S., Boyce, M. S., Elith, J., Guillera-Arroita, G., Hauenstein, S., Lahoz-Monfort, J. J.,
Schröder, B., Thuiller, W., Warton, D. I., Wintle, B. A., Hartig, F., and Dormann, C. F.: Cross-validation strategies for
data with temporal, spatial, hierarchical, or phylogenetic structure, *Ecography*, 40, 913–929,
<https://doi.org/10.1111/ecog.02881>, 2017.
- 1730 Robinson, D. A., Jones, S. B., Lebron, I., Reinsch, S., Domnguez, M. T., Smith, A. R., Jones, D. L., Marshall, M. R., and
and Emmett, B. A.: Experimental evidence for drought induced alternative alternative stable states of soil moisture, *Sci.
Rep.-UK*, 6, 20018, 2016.
- Robinson, D. A., Nemes, A., Reinsch, S., Radbourne, A., Bentley, L., and Keith, A. M.: Global meta-analysis of soil
hydraulic properties on the same soils with differing land use, *The Science of the total environment*, 852, 158506,
1735 <https://doi.org/10.1016/j.scitotenv.2022.158506>, 2022.
- Romano, N. and Nasta, P.: How effective is bimodal soil hydraulic characterization? Functional evaluations for predictions
of soil water balance, *European J Soil Science*, 67, 523–535, <https://doi.org/10.1111/ejss.12354>, 2016.
- Rustanto, A., Booij, M. J., Wösten, H., and Hoekstra, A. Y.: Application and recalibration of soil water retention
pedotransfer functions in a tropical upstream catchment: case study in Bengawan Solo, Indonesia, *Journal of Hydrology
and Hydromechanics*, 65, 307–320, <https://doi.org/10.1515/johh-2017-0020>, 2017.
- 1740 Sandin, M., Koestel, J., Jarvis, N., and Larsbo, M.: Post-tillage evolution of structural pore space and saturated and near-
saturated hydraulic conductivity in a clay loam soil, *Soil and Tillage Research*, 165, 161–168, 2017.
- Santra, P., Sahoo, R. N., Das, B. S., Samal, R. N., Pattanaik, A. K., and Gupta, V. K.: Estimation of soil hydraulic properties
using proximal spectral reflectance in visible, near-infrared, and shortwave-infrared (VIS-NIR-SWIR) region,
1745 *Geoderma*, 152, 338–349, <https://doi.org/10.1016/j.geoderma.2009.07.001>, 2009.
- Saxton, K. E. and Rawls, W. J.: Soil Water Characteristic Estimates by Texture and Organic Matter for Hydrologic
Solutions, *Soil Science Society of America Journal*, 70, 1569–1578, <https://doi.org/10.2136/sssaj2005.0117>, 2006.
- Scarfone, R., Wheeler, S. J., and Lloret-Cabot, M.: Conceptual Hydraulic Conductivity Model for Unsaturated Soils at Low
Degree of Saturation and Its Application to the Study of Capillary Barrier Systems, *J. Geotech. Geoenviron. Eng.*, 146,
1750 [https://doi.org/10.1061/\(ASCE\)GT.1943-5606.0002357](https://doi.org/10.1061/(ASCE)GT.1943-5606.0002357), 2020.
- Schaap, M. G. and Leij, F. J.: Improved Prediction of Unsaturated Hydraulic Conductivity with the Mualem-van Genuchten
Model, *Soil Sci. Soc. Am. j.*, 64, 843–851, <https://doi.org/10.2136/sssaj2000.643843x>, 2000.
- Schaap, M. G., Leij, F. J., and van Genuchten, M. T.: ROSETTA: A computer program for estimating soil hydraulic
parameters with hierarchical pedotransfer functions, *Journal of Hydrology*, 251, 163–176,
1755 [https://doi.org/10.1016/S0022-1694\(01\)00466-8](https://doi.org/10.1016/S0022-1694(01)00466-8), 2001.



- Schelle, H., Iden, S. C., Peters, A., and Durner, W.: Analysis of the agreement of soil hydraulic properties obtained from Multistep-Outflow and Evaporation methods, *Vadose Zone Journal*, 9, 1080–1091, <https://doi.org/10.2136/vzj2010.0050>, 2010.
- 1760 Schelle, H., Iden, S. C., Fank, J., and Durner, W.: Inverse Estimation of Soil Hydraulic and Root Distribution Parameters from Lysimeter Data, *Vadose zone j.*, 11, vzj2011.0169, <https://doi.org/10.2136/vzj2011.0169>, 2012.
- Schlüter, S., Albrecht, L., Schwärzel, K., and Kreiselmeier, J.: Long-term effects of conventional tillage and no-tillage on saturated and near-saturated hydraulic conductivity-Can their prediction be improved by pore metrics obtained with X-ray CT?, *Geoderma*, 361, 114082, <https://doi.org/10.1016/j.geoderma.2019.114082>, 2020.
- 1765 Schmidt, J. H., Junge, S., and Finckh, M. R.: Cover crops and compost prevent weed seed bank buildup in herbicide-free wheat-potato rotations under conservation tillage, *Ecology and evolution*, 9, 2715–2724, <https://doi.org/10.1002/ece3.4942>, 2019.
- Scott, P. S.: Hysteretic effects on net infiltration, *Advances in infiltration*, 163–170, 1983.
- Sharma, M. L. and Uehara, G.: Influence of soil structure on water relations in low humic latosols: I. Water retention, *Soil Science Society of America Journal*, 32, 765–770, <https://doi.org/10.2136/sssaj1968.03615995003200060021x>, 1968.
- 1770 Šimůnek, J., van Genuchten, M. T., and Šejna, M.: Recent Developments and Applications of the HYDRUS Computer Software Packages, *Vadose zone j.*, 15, 0, <https://doi.org/10.2136/vzj2016.04.0033>, 2016.
- Sloat, L. L., Davis, S. J., Gerber, J. S., Moore, F. C., Ray, D., West, P. C., and Mueller, N. D.: Climate adaptation by crop migration, *Nature Communication*, 11, 1243, <https://doi.org/10.1038/s41467-020-15076-4>, 2020.
- 1775 Smith, R. E. and Parlange, J.-Y.: A parameter-efficient hydrologic infiltration model, *Water Resour. Res.*, 14, 533–538, <https://doi.org/10.1029/WR014i003p00533>, 1978.
- Sobieraj, J. A., Elsenbeer, H., and Vertessy, R. A.: Pedotransfer functions for estimating saturated hydraulic conductivity: implications for modeling storm flow generation, *Journal of Hydrology*, 251, 202–220, [https://doi.org/10.1016/S0022-1694\(01\)00469-3](https://doi.org/10.1016/S0022-1694(01)00469-3), 2001.
- 1780 Soil Science Division Staff: Soil survey manual, edited by: Ditzler, C., Scheffe, K., and Monger, H. C., Government Printing Office, Washington, D.C., 2017.
- Soil Survey Staff: Keys to Soil Taxonomy 12th edition, USDA-Natural Resources Conservation Service, Washington, DC, 2014.
- 1785 Soriano-Disla, J. M., Janik, L. J., Viscarra Rossel, R. A., Macdonald, L. M., and McLaughlin, M. J.: The Performance of Visible, Near-, and Mid-Infrared Reflectance Spectroscopy for Prediction of Soil Physical, Chemical, and Biological Properties, *Applied Spectroscopy Reviews*, 49, 139–186, <https://doi.org/10.1080/05704928.2013.811081>, 2014.
- Späth, F., Rajtschan, V., Weber, T. K. D., Morandage, S., Lange, D., Abbas, S. S., Behrendt, A., Ingwersen, J., Streck, T., and Wulfmeyer, V.: The Land-Atmosphere Feedback Observatory: A New Observational Approach for Characterizing Land-Atmosphere Feedback, 2022.



- Stewart, R. D., Abou Najm, M. R., Rupp, D. E., and Selker, J. S.: Modeling multidomain hydraulic properties of shrink-
1790 swell soils, *Water Resources Research*, 52, 7911–7930, <https://doi.org/10.1002/2016WR019336>, 2016.
- Streck, T. and Weber, T. K. D.: Analytical expressions for noncapillary soil water retention based on popular capillary
retention models, *Vadose zone j.*, 19, <https://doi.org/10.1002/vzj2.20042>, 2020.
- Strudley, M. W., Green, T. R., and Ascough, J. C.: Tillage effects on soil hydraulic properties in space and time: State of the
science, *Soil and Tillage Research*, 99, 4–48, <https://doi.org/10.1016/j.still.2008.01.007>, 2008.
- 1795 Sullivan, P. L., Billings, S. A., Hirmas, D. and Li, L., Zhang, X., Ziegler, S. and Murenbeeld, K., Ajami, H., Guthrie, A.,
Singha, K., Giménez, D., Duro, A. and Moreno, V., and Flores, A., Cueva, A., Koop, Aronson, E. L., Barnard, H. R.,
Banwart, S. A., Keen, R. M., Nemes, A., Nikolaidis, N. P., Nippert, J. B., Richter, D., Robinson, D. A., Sadayappan, K.,
Souza, L. de, Unruh, M., and Wen, H.: Embracing the dynamic nature of soil structure: A paradigm illuminating the role
of life in critical zones of the Anthropocene, *Earth-Science Reviews*, 225, 103873,
1800 <https://doi.org/10.1016/j.earscirev.2021.103873>, available at:
<https://www.sciencedirect.com/science/article/pii/S0012825221003743>, 2022.
- Suwardji, P. and Eberbach, P. L.: Seasonal changes of physical properties of an Oxic Paleustalf (Red Kandosol) after 16
years of direct drilling or conventional cultivation, *Soil and Tillage Research*, 49, 65–77, [https://doi.org/10.1016/S0167-1987\(98\)00149-4](https://doi.org/10.1016/S0167-1987(98)00149-4), 1998.
- 1805 Szabó, B., Weynants, M., and Weber, T.: Updated European hydraulic pedotransfer functions with communicated
uncertainties in the predicted variables (euptfv2), *Geoscientific Model Development*, 14, 151–175,
<https://doi.org/10.5194/gmd-14-151-2021>, 2021.
- Szabó, B., Gyurkó, D., Weynants, M., and Weber, T. K. D.: Web interface for European hydraulic pedotransfer functions
(euptfv2), 2019.
- 1810 Tafasca, S., Ducharne, A., and Valentin, C.: Weak sensitivity of the terrestrial water budget to global soil texture maps in the
ORCHIDEE land surface model, *Hydrology and Earth System Sciences*, 24, 3753–3774, <https://doi.org/10.5194/hess-24-3753-2020>, 2020.
- Teepe, R., Dilling, H., and Beese, F.: Estimating water retention curves of forest soils from soil texture and bulk density,
Journal of Plant Nutrition and Soil Science, 166, 11–119, <https://doi.org/10.1002/jpln.200390001>, 2003.
- 1815 Terribile, F., Coppola, A., Langella, G., Martina, M., and Basile, A.: Potential and limitations of using soil mapping
information to understand landscape hydrology, *Hydrology and Earth System Sciences*, 15, 3895–3933,
<https://doi.org/10.5194/hess-15-3895-2011>, available at: <https://hess.copernicus.org/articles/15/3895/2011/>, 2011.
- Tóth, B., Weynants, M., Nemes, A., Mak, A., Bilas, G., and Tth, G.: New generation of hydraulic pedotransfer functions for
Europe, *European Journal of Soil Science*, 66, 226–238, <https://doi.org/10.1111/ejss.12192>, 2015.
- 1820 Tóth, B., Weynants, M., Pásztor, L., and Hengl, T.: 3D soil hydraulic database of Europe at 250 m resolution, *Hydrol.
Processes*, 31, 2662–2666, <https://doi.org/10.1002/hyp.11203>, 2017.



- Tranter, G., Minasny, B., McBratney, AB, Rossel, R. V., and Murphy, B. W.: Comparing spectral soil inference systems and mid-infrared spectroscopic predictions of soil moisture retention, *Soil Science Society of America Journal*, 72, 1394–1400, <https://doi.org/10.2136/sssaj2007.0188>, 2008.
- 1825 Tuller, M. and Or, D.: Water films and scaling of soil characteristic curves at low water contents, *Water Resour. Res.*, 41, <https://doi.org/10.1029/2005WR004142>, 2005.
- Tuller, M. and Or, D.: Hydraulic conductivity of variably saturated porous media: Film and corner flow in angular pore space, *Water Resources Research*, 37, 1257–1276, <https://doi.org/10.1029/2000WR900328>, 2001.
- 1830 Twarakavi, N., Sakai, M., and Šimunek, J.: An objective analysis of the dynamic nature of field capacity, *Water Resources Research*, 45, 2009.
- van Dam, J. C., Wösten, J. H., and Nemes, A.: Unsaturated soil water movement in hysteretic and water repellent field soils, *Journal of Hydrology*, 184, 153–173, [https://doi.org/10.1016/0022-1694\(95\)02996-6](https://doi.org/10.1016/0022-1694(95)02996-6), 1996.
- van Genuchten, M. T.: A closed form equation for predicting the hydraulic conductivity of unsaturated soils, *Soil Science Society of America Journal*, 44, 892–898, <https://doi.org/10.2136/sssaj1980.03615995004400050002x>, 1980.
- 1835 van Looy, K., Bouma, J., Herbst, M., Koestel, J., Minasny, B., Mishra, U., Montzka, C., Nemes, A., Pachepsky, Y. A., Padarian, J., Schaap, M. G., Tóth, B., Verhoef, A., Vanderborght, J., van der Ploeg, M. J., Weihermüller, L., Zacharias, S., Zhang, Y., and Vereecken, H.: Pedotransfer Functions in Earth System Science: Challenges and Perspectives, *Reviews of Geophysics*, 55, 1199–1256, <https://doi.org/10.1002/2017RG000581>, 2017.
- Vancloster, M., Boesten, J. J. T. I., Trevisan, M., Brown, C. D., Capri, E., Eklo, O. M., Gottesburen, B., Gouy, V., and van 1840 der Linden, A. M. A.: A European test of pesticide-leaching models: methodology and major recommendations, *Agricultural Water Management*, 44, 1–19, available at: <https://EconPapers.repec.org/RePEc:eee:agiwat:v:44:y:2000:i:1-3:p:1-19>, 2000.
- Vereecken, H., Weihermüller, L., Assouline, S., Šimunek, J., Verhoef, A., Herbst, M., Archer, N., Mohanty, B., Montzka, C., Vanderborght, J., Balsamo, G., Bechtold, M., Boone, A., Chadburn, S., Cuntz, M., Decharme, B., Ducharne, A., Ek, M., 1845 Garrigues, S., Goergen, K., Ingwersen, J., Kollet, S., Lawrence, D. M., Li, Q., Or, D., Swenson, S., Vrese, P. de, Walko, R., Wu, Y., and Xue, Y.: Infiltration from the Pedon to Global Grid Scales: An Overview and Outlook for Land Surface Modeling, *Vadose Zone Journal*, 18, 180191, <https://doi.org/10.2136/vzj2018.10.0191>, 2019.
- Vereecken, H., Schnepf, A., Hopmans, J., Javaux, M., Or, D., Roose, T., Vanderborght, J., Young, M., Amelung, W., Aitkenhead, M., Allison, S., Assouline, S., Baveye, P., Berli, M., Brüggemann, N., Finke, P., Flury, M., Gaiser, T., 1850 Govers, G., Ghezzehei, T., Hallett, P., Hendricks Franssen, H., Heppell, J., Horn, R., Huisman, J., Jacques, D., Jonard, F., Kollet, S., Lafolie, F., Lamorski, K., Leitner, D., McBratney, A., Minasny, B., Montzka, C., Nowak, W., Pachepsky, Y., Padarian, J., Romano, N., Roth, K., Rothfuss, Y., Rowe, E., Schwen, A., Šimunek, J., Tiktak, A., van Dam, J., van der Zee, S., Vogel, H., Vrugt, J., Wöhling, T., and Young, I.: Modeling Soil Processes: Review, Key Challenges, and New Perspectives, *Vadose Zone Journal*, 15, 1–57, <https://doi.org/10.2136/vzj2015.09.0131>, 2016.



- 1855 Vereecken, H., Weynants, M., Javaux, M., Pachepsky, Y., Schaap, M. G., and van Genuchten, M.: Using pedotransfer functions to estimate the van Genuchten-Mualem soil hydraulic properties: A review, *Vadose Zone Journal*, 9, 795–820, <https://doi.org/10.2136/vzj2010.0045>, 2010.
- Vereecken, H., Kasteel, R., Vanderborght, J., and Harter, T.: Upscaling Hydraulic Properties and Soil Water Flow Processes in Heterogeneous Soils: A Review, *Vadose zone j.*, 6, 1–28, <https://doi.org/10.2136/vzj2006.0055>, 2007.
- 1860 Vereecken, H., Diels, J., van Orshoven, J., Feyen, J., and Bouma, J.: Functional Evaluation of Pedotransfer Functions for the Estimation of Soil Hydraulic Properties, *Soil Sci. Soc. Am. j.*, 56, 1371–1378, <https://doi.org/10.2136/sssaj1992.03615995005600050007x>, 1992.
- Vereecken, H., Amelung, W., Bauke, S. L., Bogaen, H., Brüggemann, N., Montzka, C., Vanderborght, J., Bechtold, M., Blöschl, G., Carminati, A., Javaux, M., Konings, A. G., Kusche, J., Neuweiler, I., Or, D., Steele-Dunne, S., Verhoef, A., 1865 Young, M., and Zhang, Y.: Soil hydrology in the Earth system, *Nat Rev Earth Environ*, <https://doi.org/10.1038/s43017-022-00324-6>, 2022.
- Vogel, H.-J. and Roth, K.: Moving through scales of flow and transport in soil, *Journal of Hydrology*, 272, 95–106, [https://doi.org/10.1016/S0022-1694\(02\)00257-3](https://doi.org/10.1016/S0022-1694(02)00257-3), 2003.
- Vogel, H.-J., Bartke, S., Daedlow, K., Helming, K., Kögel-Knabner, I., Lang, B., Rabot, E., Russell, D., Stöbel, B., Weller, 1870 U., Wiesmeier, M., and Wollschläger, U.: A systemic approach for modeling soil functions, *Soil*, 4, 83–92, <https://doi.org/10.5194/soil-4-83-2018>, 2018.
- Vogel, H.-J.: Scale Issues in Soil Hydrology, *Vadose zone j.*, 18, 1–10, <https://doi.org/10.2136/vzj2019.01.0001>, 2019.
- Volk, E., Iden, S. C., Furman, A., Durner, W., and Rosenzweig, R.: Biofilm effect on soil hydraulic properties: Experimental investigation using soil-grown real biofilm, *Water Resour. Res.*, 52, 5813–5828, 1875 <https://doi.org/10.1002/2016WR018866>, 2016.
- Wallor, E., Roskopf, N., and Zeitz, J.: Hydraulic properties of drained and cultivated fen soils part I - Horizon-based evaluation of van Genuchten parameters considering the state of moorsh-forming process, *Geoderma*, 313, 69–81, <https://doi.org/10.1016/j.geoderma.2017.10.026>, 2018.
- Wang, M., Kong, L., and Zang, M.: Effects of sample dimensions and shapes on measuring soil-water characteristic curves using pressure plate, *Journal of Rock Mechanics and Geotechnical Engineering*, 7, 463–468, 1880 <https://doi.org/10.1016/J.JRMGE.2015.01.002>, 2015.
- Wang, Y., Ma, J., Zhang, Y., Zhao, M., and Edmunds, W. M.: A new theoretical model accounting for film flow in unsaturated porous media, *Water Resour. Res.*, 49, 5021–5028, <https://doi.org/10.1002/wrcr.20390>, 2013.
- Warrach-Sagi, K., Ingwersen, J., Schwitalla, T., Troost, C., Aurbacher, J., Jach, L., Berger, T., Streck, T., and Wulfmeyer, 1885 V.: Noah-MP With the Generic Crop Growth Model Gecros in the WRF Model: Effects of Dynamic Crop Growth on Land-Atmosphere Interaction, *JGR Atmospheres*, 127, <https://doi.org/10.1029/2022JD036518>, 2022.



- Weber, T., Finkel, M., Da Conceição Gonçalves, M., Vereecken, H., and Diamantopoulos, E.: Pedotransfer Function for the Brunswick Soil Hydraulic Property Model and Comparison to the van Genuchten-Mualem Model, *Water Resources Research*, 56, e2019WR026820, <https://doi.org/10.1029/2019WR026820>, 2020.
- 1890 Weber, T. K., Durner, W., Streck, T., and Diamantopoulos, E.: A modular framework for modelling unsaturated soil hydraulic properties over the full moisture range, *Water Resour. Res.*, <https://doi.org/10.1029/2018WR024584>, 2019.
- Weber, T. K. D., Iden, S. C., and Durner, W.: A pore-size classification for peat bogs derived from unsaturated hydraulic properties, *Hydrol. Earth Syst. Sci.*, 21, 6185–6200, <https://doi.org/10.5194/hess-21-6185-2017>, 2017a.
- Weber, T. K. D., Iden, S. C., and Durner, W.: Unsaturated hydraulic properties of Sphagnum moss and peat reveal trimodal
1895 pore-size distributions, *Water Resour. Res.*, 53, 415–434, <https://doi.org/10.1002/2016WR019707>, 2017b.
- Weihermüller, L., Lehmann, P., Herbst, M., Rahmati, M., Verhoef, A., Or, D., Jacques, D., and Vereecken, H.: Choice of pedotransfer functions matters when simulating soil water balance fluxes, *Journal of Advances in Modeling Earth Systems*, 13, e2020MS002404, <https://doi.org/10.1029/2020MS002404>, 2021.
- Weller, U., Albrecht, L., Schlüter, S., and Vogel, H.-J.: An open Soil Structure Library based on X-ray CT data, *Soil*, 8, 507–
1900 515, <https://doi.org/10.5194/soil-8-507-2022>, 2022.
- Weller, U., Ippisch, O., Köhne, M., and Vogel, H.-J.: Direct measurement of unsaturated conductivity including hydraulic nonequilibrium and hysteresis, *Vadose zone j.*, 10, 654–661, 2011.
- Weynants, M., Montanarella, L., Toth, G., Strauss, P., Feichtinger, F., Cornelis, W., Javaux, M., Matula, S., Daroussin, J., Hennings, V., and Schindler, U.: European HYdropedological Data Inventory (EU-HYDI), EUR-Scientific and
1905 Technical Research Series. Publications Office of the European Union, Luxembourg, 2013.
- Weynants, M., Vereecken, H., and Javaux, M.: Revisiting Vereecken Pedotransfer Functions: Introducing a Closed-Form Hydraulic Model, *Vadose Zone Journal*, 8, 86–95, <https://doi.org/10.2136/vzj2008.0062>, 2009.
- Weynants, M. & Tóth, B.: The euptf package, *The European Soil Portal*. p5, 2014.
- Wöhling, T. and Vrugt, J. A.: Multiresponse multilayer vadose zone model calibration using Markov chain Monte Carlo
1910 simulation and field water retention data, *Water Resources Research*, 47, <https://doi.org/10.1029/2010WR009265>, 2011.
- Wöhling, T. and Vrugt, J. A.: Combining multiobjective optimization and Bayesian model averaging to calibrate forecast ensembles of soil hydraulic models, *Water Resour. Res.*, 44, <https://doi.org/10.1029/2008WR007154>, 2008.
- Wöhling, T., Schütze, N., Heinrich, B., Šimůnek, J., and Barkle, G. F.: Three-Dimensional Modeling of Multiple Automated Equilibrium Tension Lysimeters to Measure Vadose Zone Fluxes, *Vadose zone j.*, 8, 1051–1063,
1915 <https://doi.org/10.2136/vzj2009.0040>, 2009.
- Wösten, J., Verzandvoort, S., Leenaars, J., Hoogland, T., and Wesseling, J. G.: Soil hydraulic information for river basin studies in semi-arid regions, *Geoderma*, 195-196, 79–86, <https://doi.org/10.1016/j.geoderma.2012.11.021>, 2013.
- Wösten, J., Pachepsky, Y. A., and Rawls, W. J.: Pedotransfer functions: Bridging the gap between available basic soil data and missing soil hydraulic characteristics, *Journal of Hydrology*, 251, 123–150, [https://doi.org/10.1016/S0022-1694\(01\)00464-4](https://doi.org/10.1016/S0022-1694(01)00464-4), 2001.



- Wösten, J., Lilly, A., Nemes, A., and Le Bas, C.: Development and use of a database of hydraulic properties of European soils, *Geoderma*, 90, 169–185, [https://doi.org/10.1016/S0016-7061\(98\)00132-3](https://doi.org/10.1016/S0016-7061(98)00132-3), 1999.
- Xu, J., Morris, P. J., Liu, J., and Holden, J.: PEATMAP: Refining estimates of global peatland distribution based on a meta-analysis, *Catena*, 160, 134–140, <https://doi.org/10.1016/j.catena.2017.09.010>, available at:
1925 <https://www.sciencedirect.com/science/article/pii/S0341816217303004>, 2018.
- Young, M., McDonald, E. V., Caldwell, T. G., Benner, S. G., and Meadows, D. G.: Hydraulic properties of a desert soil chronosequence in the Mojave Desert, USA, *Vadose Zone Journal*, 3, 956–963, <https://doi.org/10.2113/3.3.956>, 2004.
- Zagyvai-Kiss, K. A., Kalicz, P., Szilgyi, J., and Gribovszki, Z.: On the specific water holding capacity of litter for three forest ecosystems in the eastern foothills of the Alps, *Agricultural and Forest Meteorology*, 278, 107656,
1930 <https://doi.org/10.1016/j.agrformet.2019.107656>, 2019.
- Zeng, Y., Verhoef, A., Or, D., Cuntz, M., Gudmundsson, L. and, Weihermueller, L., Kollet, S., Vanderborght, J., and Vereecken, H.: GEWEX-ISMC SoilWat Project: Taking Stock and Looking Ahead, *GEWEX Newsletter* 2, 2021.
- Zhang, Y. and Schaap, M. G.: Weighted recalibration of the Rosetta pedotransfer model with improved estimates of hydraulic parameter distributions and summary statistics (Rosetta3), *Journal of Hydrology*, 547, 39–53,
1935 <https://doi.org/10.1016/j.jhydrol.2017.01.004>, 2017a.
- Zhang, Y. and Schaap, M. G.: Estimation of saturated hydraulic conductivity with pedotransfer functions: A review, *Journal of Hydrology*, 575, 1011–1030, <https://doi.org/10.1016/j.jhydrol.2019.05.058>, 2019.
- Zhang, Y. and Schaap, M. G.: Weighted Recalibration of the Rosetta Pedotransfer Model with Improved Estimates of Hydraulic Parameter Distributions and Summary Statistics (Rosetta3), *Journal of Hydrology*, 547, 39–53,
1940 <https://doi.org/10.1016/j.jhydrol.2017.01.004>, 2017b.
- Zhang, Y., Weihermüller, L., Toth, B., Noman, M., and Vereecken, H.: Analyzing dual porosity in soil hydraulic properties using soil databases for pedotransfer function development, *Vadose zone j.*, <https://doi.org/10.1002/vzj2.20227>, 2022.
- Zhang, Y., Schaap, M. G., Guadagnini, A., and Neuman, S. P.: Inverse Modeling of Unsaturated Flow Using Clusters of Soil Texture and Pedotransfer Functions, *Water Resources Research*, 52, 7631–7644,
1945 <https://doi.org/10.1002/2016WR019016>, available at: <http://doi.wiley.com/10.1002/2016WR019016>, 2016.
- Zhu, J. T. and Mohanty, B. P.: Spatial Averaging of van Genuchten Hydraulic Parameters for Steady-State Flow in Heterogeneous Soils: A Numerical Study, 1, 261272, <https://doi.org/10.2113/1.2.261>, 2002.