

# Tipping Point Detection and Early-Warnings in climate, ecological, and human systems

Vasilis Dakos<sup>1\*</sup>, Chris A. Boulton<sup>2\*</sup>, Joshua E. Buxton<sup>2</sup>, Jesse F. Abrams<sup>2</sup>, Beatriz Arellano-Nava<sup>2</sup>,  
5 David I. Armstrong McKay<sup>2,3</sup>, Sebastian Bathiany<sup>4</sup>, Lana Blaschke<sup>4,5</sup>, Niklas Boers<sup>2,4,5</sup>, Daniel  
Dylewsky<sup>6</sup>, Carlos López-Martínez<sup>7,8</sup>, Isobel Parry<sup>2</sup>, Paul Ritchie<sup>2</sup>, Bregje van der Bolt<sup>9</sup>, Larissa  
van der Laan<sup>10</sup>, Els Weinans<sup>11</sup>, Sonia Kéfi<sup>1,12</sup>

<sup>1</sup>ISEM, Univ Montpellier, CNRS, EPHE, IRD, F-34095 Montpellier, France;

<sup>2</sup>Global Systems Institute, University of Exeter, Exeter

<sup>3</sup>Stockholm Resilience Centre, Stockholm University, Stockholm, Sweden

<sup>4</sup>Earth System modeling, School of Engineering and Design, Technical University Munich, Munich, Germany.

<sup>5</sup>Potsdam Institute for Climate Impact Research, Potsdam, Germany.

<sup>6</sup>Department of Applied Mathematics, University of Waterloo, Waterloo, Ontario, Canada

<sup>7</sup>Signal Theory and Communications Dept., Universitat Politècnica de Catalunya UPC, Barcelona, Spain;

<sup>8</sup>Institut d'Estudis Espacials de Catalunya IEEC, Barcelona, Spain

<sup>9</sup>Environmental Sciences Group, Water Systems and Global Change, Wageningen University and Research,  
Wageningen, The Netherlands)

<sup>10</sup>Niels Bohr Institute, University of Copenhagen, Copenhagen, Denmark)

<sup>11</sup>Copernicus Institute of Sustainable development, Environmental Sciences, Faculty of Geoscience, Utrecht  
University, Utrecht, The Netherlands

<sup>12</sup>Santa Fe Institute, 1399 Hyde Park Road, Santa Fe, NM 87501, USA

\*Corresponding author: Vasilis Dakos ([vasilis.dakos@umontpellier.fr](mailto:vasilis.dakos@umontpellier.fr)), Chris A Boulton ([C.A.Boulton@exeter.ac.uk](mailto:C.A.Boulton@exeter.ac.uk))

**Abstract.** Tipping points characterize the situation when a system experiences abrupt, rapid and sometimes  
irreversible changes in response to an only gradual change in environmental conditions. Given that such events are in  
most cases undesirable, numerous approaches have been proposed to identify if a system is approaching a tipping  
point. Such approaches have been termed early-warning signals and represent a set of methods for identifying  
statistical changes in the underlying behavior of a system across time or space that would be indicative of an  
approaching tipping point. Although the idea of early warnings for a class of tipping points is not new, in the last two  
decades, the topic generated an enormous amount of interest, mainly theoretical. At the same time, the unprecedented  
amount of data originating from remote sensing systems, field measurements, surveys and simulated data, coupled  
with innovative models and cutting-edge computing, has made possible the development of a multitude of tools and  
approaches for detecting tipping points in a variety of scientific fields. Yet, we miss a complete picture of where, how,  
and which early-warnings have been used so far in real-world case studies. Here we review the literature of the last  
20 years to show how the use of these indicators has spread from ecology and climate to many other disciplines. We  
document what metrics have been used, their success as well as the field, system and tipping point involved. We find  
that, despite acknowledged limitations and challenges, in the majority of the case-studies we reviewed, the  
performance of most early-warnings was positive in detecting tipping points. Overall, the generality of the approaches  
employed - the fact that most early warnings can in theory be observed in many dynamical systems - explains the  
continuous multitude and diversification in their application across scientific domains.

## 1 Introduction

45 Tipping points characterize situation when a system experiences abrupt, rapid and sometimes irreversible changes. Such shifts occur when a threshold is crossed and the system transitions from its current state to a contrasting one (van Nes et al., 2016). Given that tipping points are associated with abrupt, rapid and sometimes irreversible changes, numerous approaches have been proposed to identify if a system is getting closer to such a point. These approaches are often referred to as  
50 Early-Warning Signals (EWS) and they represent a powerful generic tool for anticipating tipping points in a variety of systems (Scheffer et al., 2009). The general mechanism behind EWS is that, as a dynamical system approaches a tipping point, it becomes slower at recovering from small perturbations (Wissel, 1984), and this critical slowing down of the system (CSD) leaves signatures in the temporal and spatial dynamics of the system (Drake et al., 2020). EWS rely on identifying  
55 exactly such changes in the underlying behavior of a system across time or space prior to a tipping point.

Early, after their introduction in the literature, it became clear that EWS did not allow to anticipate all types of tipping points in advance (Hastings and Wysham, 2010), and that they are not unique to  
60 tipping point responses but also occur when systems are undergoing smoother transitions (Kéfi et al., 2013). These realisations imply that some shifts (typically referred to as abrupt shifts or regime shifts) may require alternative or additional signals (Boettiger et al., 2013; Dakos et al., 2015). Thus, a rich research program has been triggered in the theory behind tipping point anticipation and the development of tools (Table 1) for quantifying changes in dynamical patterns of system behaviors  
65 that could be used as early-warnings preceding tipping points and abrupt shifts in general. Different terms have been used to describe the great variety of metrics proposed in the literature, like ‘early-warning systems’ (Lenton, 2013b), ‘observation-based early-warning signals’ (Boers, 2021), used ‘statistical stability indicators’ (Bathiany et al., 2016), ‘critical slowing down (CSD) indicators’ (Tang et al., 2022), ‘leading indicators’ (Carpenter et al., 2008), ‘resilience indicators’ (Dakos et al.,  
70 2015), ‘generic indicators’ (Scheffer et al., 2015), ‘dynamical indicators of resilience’ (DiOR) (Scheffer et al., 2018), ‘indicators of transitions’ (Clements and Ozgul, 2018), ‘universal early warning signals’ (Dylewsky et al., 2023). In the rest of the paper, we will use the term ‘early-warnings’ to refer to this whole family of indicators.

75 Whatever the term used, while early-warnings are well grounded in theory, the challenge remains  
to apply them to real-world systems. A number of review and synthesis papers have summarized  
the theoretical aspects of early-warnings and provided partial accounts of their empirical  
applications (Scheffer et al., 2012a, 2015; Dakos and Kefi, 2022; Nijp et al., 2019; Litzow and Hunsicker, 2016;  
Alberto et al., 2021; Bestelmeyer et al., 2011; Lenton, 2013b, 2011). Yet, although the utility of early-  
80 warnings has led to early-warnings proliferating beyond ecology and climate and have been  
applied across a variety of scientific domains, we miss a complete picture of where, how, and  
which early-warnings have been used so far in real-world case studies.

Here, after summarizing the basics of the theory underlying early-warnings and giving an overview  
85 of their taxonomy, we review the literature for the use of early-warnings in empirical studies across  
all scientific fields. We document what metrics have been used, their success as well as the field,  
system and tipping point involved. We then classify this information in order to provide an  
overview of the progress, the limitations and opportunities in the empirical application of early-  
warnings after 15 years of research on the topic.

90

**Table 1. Available software tools for the estimation of early-warnings with temporal and spatial datasets.**

Name	Software	Description	Reference
<b>earlywarnings</b>	R package	One of the earliest R packages to calculate model and metric based early-warnings	(Dakos et al., 2012) <a href="https://github.com/earlywarningtoolbox">github.com/earlywarningtoolbox</a>
<b>earlywarning</b>	R package format	Fits a normal form model with and without a saddle-node bifurcation based on a likelihood approach	(Boettiger and Hastings, 2012b) <a href="https://github.com/cboettig/earlywarning">github.com/cboettig/earlywarning</a>
<b>Generic_ews</b>	Matlab	Matlab translation from the early-warning signals toolbox in R	<a href="https://git.wur.nl/sparcs/generic_ews-for-matlab/-/tree/master">git.wur.nl/sparcs/generic_ews-for-matlab/-/tree/master</a>
<b>spatialwarnings</b>	R package	Estimates spatial warning signals based on spatial statistics and spatial pattern formation	(Génin et al., 2018)
<b>ewstools</b>	Python package	Python translation of the earlywarnings toolbox, with the addition of deep learning classifiers	(Bury, 2023)
<b>EWSmethods</b>	R package	toolbox inspired by <i>earlywarnings</i> , that omits model-based EWS, but includes multivariate indicators	(O’Brien et al., n.d.)

## 2 The basics of early-warnings

95 The theory behind tipping point anticipation is mostly based on destabilising stable fixed  
equilibrium points. In such cases, There are three ways that a tipping point may theoretically occur  
(Lenton, 2013a). A system may undergo a bifurcation when a parameter (or multiple parameters)  
in the system changes beyond a critical threshold and the stability of the state the system occupies  
is lost, thus causing the system to shift to an alternative state (bifurcation-tipping or B-tipping).  
100 Noise-induced tipping can occur when a system is shifted outside its stable basin of attraction by  
some form of stochastic forcing (N-tipping). A third class, known as rate-induced tipping (R-  
tipping), occurs when a parameter rapidly changes and the system is no longer able to track its  
stable state (Ashwin et al., 2011). Tipping points also occur through phase transitions a long-studied  
set of emergent phenomena in physics which resemble the characteristics of the B-tipping  
105 described above (Sole et al., 1996; Hagstrom and Levin, 2021).

The majority of the early-warnings discussed below are primarily developed to detect cases where  
there is a gradual approach towards a bifurcation-tipping event causing a loss of system state  
stability. Rate-induced tipping could also show early-warning (Ritchie and Sieber, 2015). Noise-  
110 induced tipping is likely to occur unpredictably, and therefore early-warnings are less expected. In  
a realistic scenario with constant stochasticity and conditions gradually changing, tipping is  
commonly a combination of a movement towards bifurcation and noise pushing the system before  
the bifurcation actually occurs. In such case, noise-induced tipping becomes more likely as it is  
easier for the system to leave its current basin of attraction when it is closer to the bifurcation and  
115 this increase in the probability of tipping can be identified through particular early-warnings  
(Section 2.3).

Although most of the theory behind early-warning signals is related to saddle-node (or fold)  
bifurcations, other types of bifurcations have also been considered like transcritical, pitchfork or  
120 Hopf bifurcations (more general codimension-1 bifurcations, (Kuznetsov, 1995)). Such  
bifurcations are smooth (also called continuous) in contrast to the abrupt (i.e. discontinuous) fold  
bifurcations associated with tipping points, yet it has been shown that similar early-warning signals  
can be applied for them (Boettiger et al., 2013; Kéfi et al., 2013). A full list of bifurcation types  
(discontinuous and continuous) and their relationship to CSD can be found in (Thompson and

125 Sieber, 2011). In this paper, the early-warnings considered are mostly developed in the context of the discontinuous fold bifurcation.

We hereafter present a [representative \(but not complete\) overview](#) of the mostly-used early-warnings both theoretically and empirically. These signals can be classified in different ways depending, for instance, on the type of mechanism or tipping point (e.g. CSD-based, non-CSD-based), the type of data used (e.g. temporal, spatial, trait, abundance data), the approach employed (e.g. analysing patterns, fitting models, network methods). In Table 2, we suggest a taxonomy of early-warnings based on the mechanism and the approach used. We then present their basics without going into the details. A full description as well as methods to estimate them can be found elsewhere (Dakos et al., 2012; Kéfi et al., 2014; Scheffer et al., 2015; Clements and Ozgul, 2018; Lenton, 2011; Génin et al., 2018) and in dedicated software packages (Table 1).

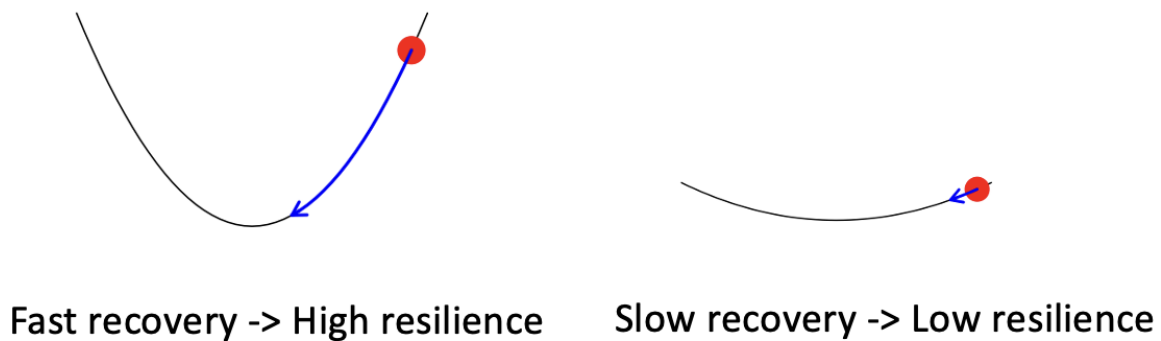
	<b>CSD-based (~ B-tipping)</b>	<b>non-CSD-based (~ B-tipping/ N-tipping)</b>
<b>pattern-based</b>	variance (temporal/spatial) autocorrelation (temporal/spatial) return rate/time (temporal) detrended fluctuation analysis (temporal) spectral reddening (temporal) variance-covariance eigenvalue (temporal) dynamic eigenvalue (temporal) Machine-Learning approach (temporal) recovery length (spatial) speed of traveling waves (spatial) repair time (spatial) Discrete Fourier Transform (spatial)	skewness (temporal/spatial) conditional heteroscedasticity (temporal/spatial) potential analysis (temporal) kurtosis (temporal) quickest detection method (temporal) Fisher information (temporal) mean exit time-Fokker-Planck (temporal) nonlinearity (temporal) trait statistical changes (temporal) Machine-Learning approach (temporal) average flux (temporal) Hurst exponent (spatial/temporal) Turing patterns (spatial) patch size distributions (spatial) Kolmogorov complexity (spatial) network-properties (spatial/temporal)
<b>process-based</b>	generalised models (temporal) time-varying AR(p) models (temporal) probabilistic time-varying AR(p) (temporal)	drift-diffusion-jump models (temporal) threshold AR(p) models (temporal) likelihood ratio (temporal)

140 Table 2. A taxonomy of early-warnings depending on whether the warning is based or not on Critical Slowing Down (CSD). CSD-based early-warnings are mostly associated with bifurcation tipping (B-tipping), while non-CSD-based ones both with B-tipping and noise-induced tipping (N-tipping, see also Sect. 2.1). A second dichotomy is based on the approach: whether the warning is a statistical metric based on the dynamical patterns of the system, or whether it is based on a (as simple as possible) process-model. In parenthesis the type of data (temporal and/or spatial) used to estimate the early-warning.

## 2.1 Early-warnings based on Critical Slowing-Down (CSD-based)

145 Most-used early-warnings are based on searching for evidence of ‘Critical Slowing Down’ (CSD) in the system. Essentially, as the system is forced towards a tipping point, the state it currently occupies starts to lose its stability, and the restoring feedbacks that ‘pull’ the system back to that state after it is perturbed, start to degrade. This causes the system to respond more sluggishly to these perturbations, and thus slow down (Wissel, 1984). Figure 1 shows this concept visually using the ‘ball in the well’ analogy. When the system is more stable, represented by the well with steeper sides, the recovery is faster as the ball (representing the state of the system) returns faster. A system close to tipping, represented by a shallower well, has a slower recovery as the ball takes longer to return. Eventually, the restoring feedbacks of the system may become so weak that the stability of the current state may be lost, and the system may transition to a new stable state. Mathematically, 150 CSD occurs as the leading eigenvalue of the system approaches 0 from below. However, in reality we do not have the equations that govern the system’s dynamics and as such we have to estimate the occurrence of CSD with methods that aim to infer CSD mostly from the patterns of the systems dynamics or by fitting very simple and generic process-based models (Table 2).

160



165 **Figure 1: Using the ‘ball in the well’ analogy to compare a system that is (left) far from tipping, and (right) close to tipping. The system that is further away from tipping recovers faster from perturbations, the steeper sides of the well describing the stronger restoring feedbacks of the system. Closer to tipping, the sides of the well are shallower, such that the system will take longer to return from the same perturbation because the restoring feedbacks are weaker.**

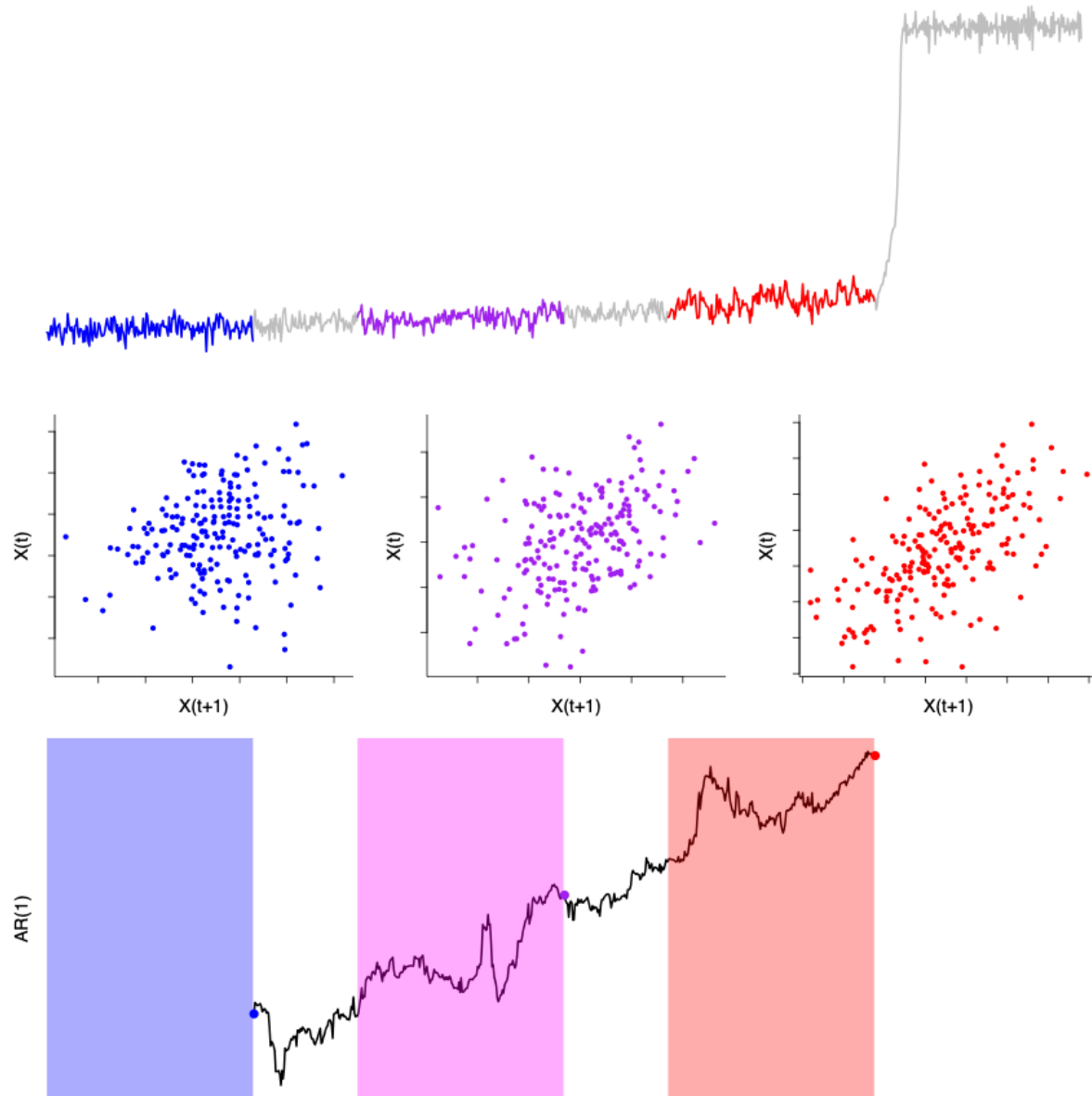
### 2.1.1 Return rate, autocorrelation and variance

Using statistical techniques makes it possible to detect CSD based on the dynamical patterns a system is generating. The most direct way to detect CSD is to consider the rate at which a system returns to its initial state following a perturbation (return rate or return time). A resilient system with strong restoring feedbacks will return to its initial state faster than one which is near to a tipping point (Wissel, 1984). However, this method requires the occurrence of a well-defined perturbation, as well as clear knowledge of when the equilibrium state of the system has been reached, neither of which are always clearly defined in the real world.

175

As the system approaches a tipping point and its recovery slows down, each time step  $X(t)$  is more correlated to the previous timestep  $X(t-1)$  (as shown in Fig. 2). This can be measured with lag-1 autocorrelation, or AR(1), which tends towards 1 as a system experiences CSD prior to tipping to an alternate state. Visually this can be viewed by observing a scatterplot of a timeseries of the system against the timeseries lagged one time point (Fig. 2). When the system is far from tipping (top row Fig. 2), there is no relationship between the current state and the state at the previous point in time (low AR(1)). As the system approaches the tipping point, CSD means that there is a strong correlation between the system state now and at the previous point in time (and thus a higher AR(1)). Larger deviations in the red section of the timeseries can be seen, further showing this slowing down and increase in AR(1).

185



190 **Figure 2: A comparison of the lag-1 autocorrelation (AR(1)) for a system that is far from tipping (blue), getting close to**  
**tipping (purple), and close to tipping (red). As the timeseries approaches tipping (top row), there is no correlation between**  
**the timeseries and itself at the previous time point in the blue part of the timeseries, far from tipping. However, closer to**  
**tipping, in the purple and then red regions of the timeseries, there are correlations and thus higher AR(1) values. In the**  
**timeseries itself there are clear deviations towards the end compared to the beginning, suggesting CSD is occurring as the**  
**tipping point approaches. The early-warning are calculated on a moving window (coloured regions in bottom plot). Here,**  
195 **AR(1) is shown at the end of the window used to calculate it, with examples shown as coloured points to match those windows**  
**on the detrended timeseries.**

Similarly, as the system struggles to return to its initial state as resilience is lost, the variance of the system is also expected to increase, as the system can sample more of the ‘state space’ (all the possible states the system can be in) due to the shallower well. However, this is often recorded



200 alongside an increase in AR(1), because other factors can lead to a change in variance, such as how the system is forced externally.

Spatial analogues of the temporal variance and temporal AR(1) exist too with a similar underlying theory to the one for the temporal ones: as a system approaches a tipping point, and responds more sluggishly to external perturbations and samples more of the state space, it is expected that there will be a higher spatial autocorrelation (Dakos et al., 2010) and spatial variance (Guttal and Jayaprakash, 2009).

Just like AR(1) and variance, all other CSD-based early-warnings aim at detecting characteristic changes in the dynamical patterns of the system either by estimating directly a statistical property (e.g. spectral reddening) or by fitting a statistical model (e.g. detrended fluctuation analysis) (Table 2). A parallel approach involves more complex methods to predict the movement towards tipping points that involve the use of simple process-based models. One such example is that of using a generalised model that integrates knowledge about the system into a model, which may allow us to estimate changes in the leading eigenvalue of the system, once minimal model assumptions have been made (Lade and Gross, 2012).

215

## **2.2 Early-warnings not based on Critical Slowing-Down (non-CSD-based)**

CSD-based early-warnings rely on the assumption that the system state shows only small deviations around the equilibrium state of the system. However, this assumption doesn't hold in the presence of strong stochasticity. In other cases, either CSD is hard to measure or more idiosyncratic metrics have been suggested to act as alternatives to CSD-based warnings. Below, we outline a few of the most representative non-CSD-based early-warnings (Table 2).

### **2.2.1 Skewness**

As the current equilibrium state of the system is losing resilience and the probability to shift to an alternative equilibrium increases, the temporal distribution of states of the system is expected to become increasingly skewed toward the alternative state. This can be quantified by the skewness of the system. The skewness may increase or decrease, depending on whether the alternative

equilibrium is larger or smaller than the current equilibrium (Guttal and Jayaprakash, 2008). Similarly to the change in skewness observed between the two states with temporal data, it is also possible  
230 to observe this change in skewness in the spatial domain (Guttal and Jayaprakash, 2009).

### 2.2.2 Flickering

‘Flickering’ is the situation where strong stochasticity can “push” a system temporarily into the basin of attraction of the alternative state before returning to the current state with increasing  
235 likelihood as the system is approaching tipping (Wang et al., 2012; Dakos et al., 2013). Flickering can be measured either by a simple increase in variance (Dakos et al., 2013), or more complex statistical approaches (e.g. quickest detection method (Carpenter et al., 2014), heteroscedasticity (Seekell et al., 2012; Seekell and Dakos, 2015)).

### 240 2.2.3 Potential analysis

Information about a system at multiple sampling points through time or multiple locations across space can allow reconstructing a ‘stability landscape’ of the system - or potential, which gives an idea of the more frequent states of the systems observed in systems experiencing different environmental conditions and history (Livina et al., 2010). A multimodality in such a landscape for a  
245 given set of environmental conditions suggests that the system could exhibit alternative stable states for that range of conditions (Hirota et al., 2011; Staver et al., 2011; Abis and Brovkin, 2019; Scheffer et al., 2012b).

### 2.2.4 Spatial patterns

250 A number of ecosystems have a clear spatial structure, which is self-organised (e.g. drylands, peatlands, salt marshes, mussel beds; (Rietkerk et al., 2008)). Theoretical models have shown that the size and shape of the spatial patterns change in a consistent way along stress gradients, and as such they are good indicators of ecosystem degradation (von Hardenberg et al., 2001; Rietkerk et al., 2004; Kéfi et al., 2007). Probably one of the most studied examples is the case of dryland ecosystems, where  
255 changes in the shape of regular patterns (Rietkerk et al., 2004) and in the patch size distribution (Kéfi et al., 2007) could inform about the stress experienced by the ecosystem (Dakos et al., 2011).

### 2.2.5 Fitting a threshold model

260 An alternative approach to pattern-based early-warnings is based on fitting process-based models on the timeseries of a system prior to a tipping point. This approach mainly consists of fitting the simplest dynamical model with a tipping point (i.e. a saddle node normal form) (Ditlevsen and Ditlevsen, 2023) and testing its likelihood compared to a model without a tipping point (Boettiger and Hastings, 2012b). Or fitting threshold models assuming simple autoregressive state-space models (Ives and Dakos, 2012; Laitinen et al., 2021).

265

### 2.2.6 Structural changes

A novel way to detect tipping points involves monitoring structural changes properties (e.g. connectivity, node centrality) in network systems (i.e. a network of interacting components) like spatially-connected sites, interacting actors or species in a community (Mayfield et al., 2020; Cavaliere et al., 2016; Yin et al., 2016). Alternatively, temporal correlation between components in multivariate systems has been used to construct an interaction network and analyse its structural properties (Tirabassi et al., 2014).

### 2.2.7 Trait changes

275 Another idiosyncratic approach involves monitoring changes in the statistical moments of fitness-related traits (e.g. body size) (Clements and Ozgul, 2018). Such trait changes have been found in populations under stress where changes in the traits of individuals (i.e. decreasing mean and increasing variance in body size) (Spanbauer et al., 2016; Clements and Ozgul, 2016). These trait-based as well as the above-mentioned structural-based signals are case-specific and idiosyncratic to the details of the system as there is no universal mechanism that would generate an expected pattern related to the approach of tipping points.

## 3 Overview of early-warnings empirical research in the last 20 years

We performed a (not exhaustive) literature review on the empirical (not theoretical) use of warning signals. We first did a topic search (TS) that includes title, abstract and keywords in the Web of Science for the period from 01.01.2004 to 01.04.2023 with the following terms TS=("tipping

285

point\*" OR "tipping" OR "catastrophic bifurcation\*" OR "catastrophic shift\*" OR "regime shift\*" OR "abrupt shift\*" OR "critical transition\*") AND ("early-warning\*" OR "early-warning\*" OR "warning sign\*" OR "resilience indicator\*" OR "leading indicator\*" OR "precursor\*"). We selected as the starting date of our search the year of 2004, despite the fact that CSD was much earlier known in ecology (Wissel, 1984) and signatures of catastrophic bifurcations were theoretically described for dynamical systems (Gilmore, 1981). Our choice was driven by the fact that 2004 is around the year of the first studies in climate (Kleinen et al., 2003; Held and Kleinen, 2004) and ecology (Carpenter and Brock, 2006) where the theoretical idea of using CSD as warning signals emerged, while few years later the first review on early-warnings on critical transitions was published (Scheffer et al., 2009). Within this time period, our topic search returned 887 unique publications. For completeness, we also ran the same topic search before 2004 going back to 1960, and we retrieved 11 publications of which only 1 was related to bifurcations. Clearly, we might have missed relevant records with the TS we selected. For example, had we also included the term "phase transition\*", we would have retrieved 3,916 records. We decided not to include this term as it pertains to a specific and rich field of physics, but with our TS we are confident to have a rather complete overview of the tipping point (and related terms) literature.

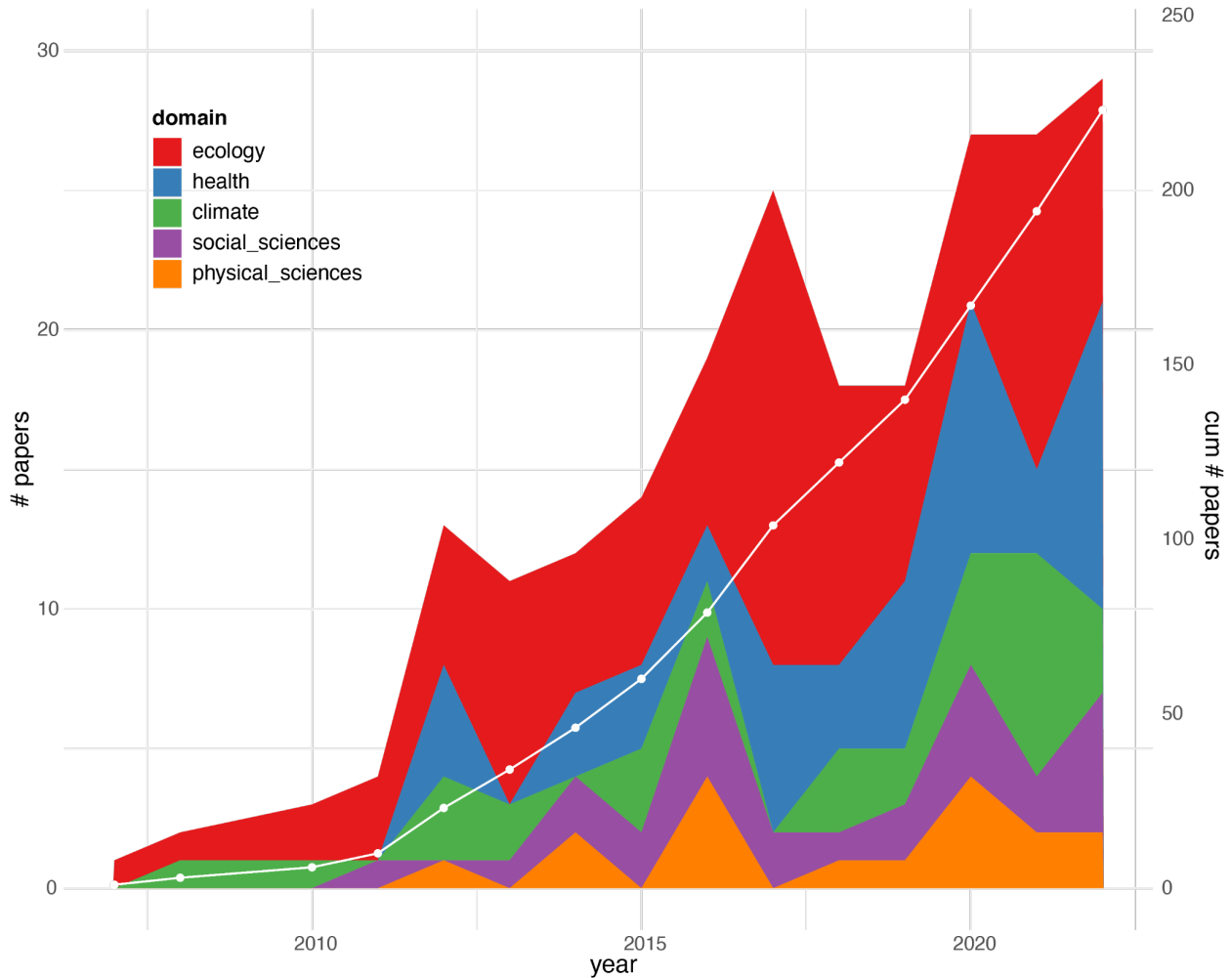
We screened all 887 publications to select only the ones where there was an empirical application of early-warnings (i.e. an indicator was measured on real data to signal the occurrence of a tipping point). This screening led to 229 papers that we classified as ones that have included at least one empirical application of early-warnings. For each paper, we collected the following information: "domain" (e.g. climate, ecology), "system" (e.g. Arctic Sea Ice, fisheries, mental depression), the "tipping point" described, data source (e.g. lab experiment, field survey, remote-sensed datasets, social data), "data type" (i.e. temporal, spatial, spatio-temporal), "indicator" (i.e. the specific warning signal(s) used), "performance" (whether the performance of the early-warning was reported in the paper as positive, negative, mixed (in the case of multiple signals used or multiple datasets analysed), or inconclusive). To facilitate the analysis, we regrouped "data-source" and "indicator" categories in broader groups (see appendix X). We also created two extra categories: we classified systems under a specific "field", and we introduced an "indicator type" based on whether the early-warning was CSD-based or non-CSD based. We then excluded the running year

2023 and summarised results in terms of unique publications using simple statistics and alluvial plots in R (4.3.1).

### 3.1 Overall use of early-warnings across disciplines

320 We were able to classify the total 229 papers published from 2004 to 2023 in 5 main domains: ecology, climate, health, social and physical sciences. We found that empirical papers first appeared in 2007 in the domains of ecology and climate but only after 2010 and 2011 were the first papers in health, social and physical sciences published (Fig. 3). This change may be associated with the highly cited review by Scheffer et al in 2009 (Scheffer et al., 2009) that  
325 introduced (and popularised) the term early-warning signals and critical transitions. Since then the number of empirical studies has quickly increased, but remained dominated by ecology (43.6% of the papers overall), followed by health (22.6%), climate (14.6%), social (12%) and physical sciences (7.6%) - showing the diversification of the uses of early-warning (Fig. 3).

330 The higher number of publications in the health domain compared to the climate domain is unexpected. We found a big number of studies in the medical field (Fig. S1b) that form a distinct group on the emergence of human diseases, such as cancer (Liu et al., 2020), which uses a Non-CSD context-specific early-warning (“dynamic\_network\_biomarkers”, see also Sect. 3.3). Zooming within each domain, we observed that the most ecological studies are on terrestrial and freshwater  
335 fields (Fig. 1Ba) namely on drylands and forests and lake ecosystems (Table S1). The majority of climate studies are on past climate transitions and modern records (Fig. S1c, Table S2), while the social studies are split between societal shifts (like in politics, social behavior, transport) and finance transitions (Fig. S1d, Table S4). Lastly, studies on physical sciences appear more heterogeneous including tipping points in materials, power systems, or even astronomy (Fig. S1e,  
340 Table S5).



345 **Figure 3: Evolution of studies applying early-warnings in empirical datasets. The total 229 papers we identified through our literature review between 2004 and 2022 were classified within five main scientific domains (ecology, health, climate, social sciences, physical sciences). White dotted line shows the cumulative number of papers.**

### 3.2 Multiple sources of data used

Across scientific domains, the vast majority of early-warnings were analysed on temporal data (77.7%), while the spatial data were used in only 8% of all studies (Fig. 4) only pertaining to ecology (Fig. S2). Survey data made the majority of the data sources (43.8%; including field surveys, social survey data, data from weather stations or other monitoring devices, medical data from hospitalisation records to electroencephalograms (EEG)), followed by data from lab experiments (20.7%), remote sensing (12%), paleo-reconstructions (10%), and field experiments (7%). This partitioning can be mostly explained by our classification, meaning that we have grouped together a heterogeneity of data sources (e.g. field surveys, historical climate data, social

350

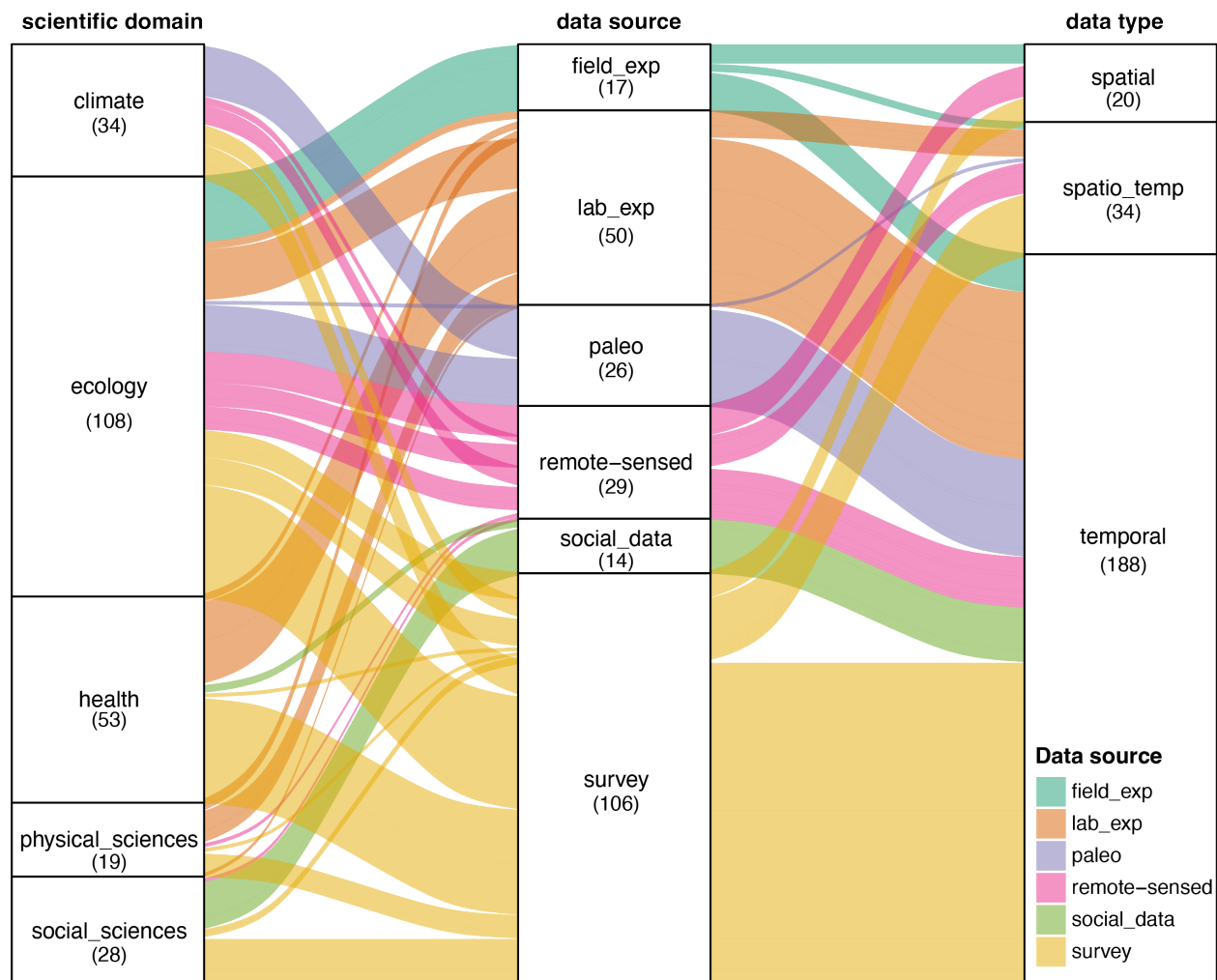
355

study surveys, hospitalisation records, Supplement A). However, it also reflects the availability of each data source (e.g. most survey and paleo data were readily available and reanalysed in the context of tipping points), or the difficulty in their acquisition (e.g. field experiments are harder to execute compared to lab experiments). Looking at how data sources are used across domains, ecology is the only domain where all kinds of data sources have been used. What is also interesting to note is that two sources of data are increasingly used: survey data and remote-sensed (Fig. S3). Specifically, the latter were the latest to be used (2011), but show a consistent rising pattern over the last years mainly due to the fact that satellite products span by now a long enough time period (~20 years) to allow the estimation of early-warnings.

365

A closer look at studies using remote-sensed products reveals a focus on the analysis of temporal early-warning on land environments, mainly forests (e.g Boulton et al., 2022a; Majumder et al., 2019; Saatchi et al., 2021) and drylands (e.g Veldhuis et al., 2022; Uden et al., 2019; Wu et al., 2023), but also extended to the cryosphere, focusing on the analysis of the Arctic and the Antarctic ice sheets (Carstensen and Weydmann, 2012; AlMomani and Bollt, 2021). The spatial resolution of remote-sensed data has been also exploited for the identification of spatial early-warning, especially regarding desertification (Berdugo et al., 2017) and vegetation analyses (Majumder et al., 2019). Overall, we found that the use of remote sensing products offers two distinct yet complementary approaches to detect early-warning; high-level products, which correspond to physical variables, for instance sea surface temperature (SST) (Wu et al., 2015) or different types of indices like the normalized difference vegetation index (NDVI) (Liu et al., 2019) and low-level products, or direct sensor observables.

375



380 **Figure 4: Alluvial plot connecting scientific domains, data sources and data types. Colors indicate the data source used for the estimation of early-warnings. The size of the boxes in each column represents the proportion of each category. The figure is “read” from the middle column (‘data source’) to either the right (‘data type’) or the left (‘scientific domain’). The thickness of the lines are proportional to the studies of a given data source that belong to a certain domain (from the ‘data source’ column to the ‘domain’ column) or are proportional to specific data type used (from the ‘data source’ column to the ‘data type’ column). For example, for the ‘data source’ field experiment (light green), all studies using field experiments belong to the ‘ecology’ domain, while field experiments are split into 3 types of data (spatial, spatio-temporal and temporal). [field\_exp: field experiment, lab\_exp: lab experiment, paleo: paleo-reconstructed data, remote-sensed: data through remote-sensing, social\_data: financial data and from social media, survey: data from surveys (field, lab, social)]**

385

390

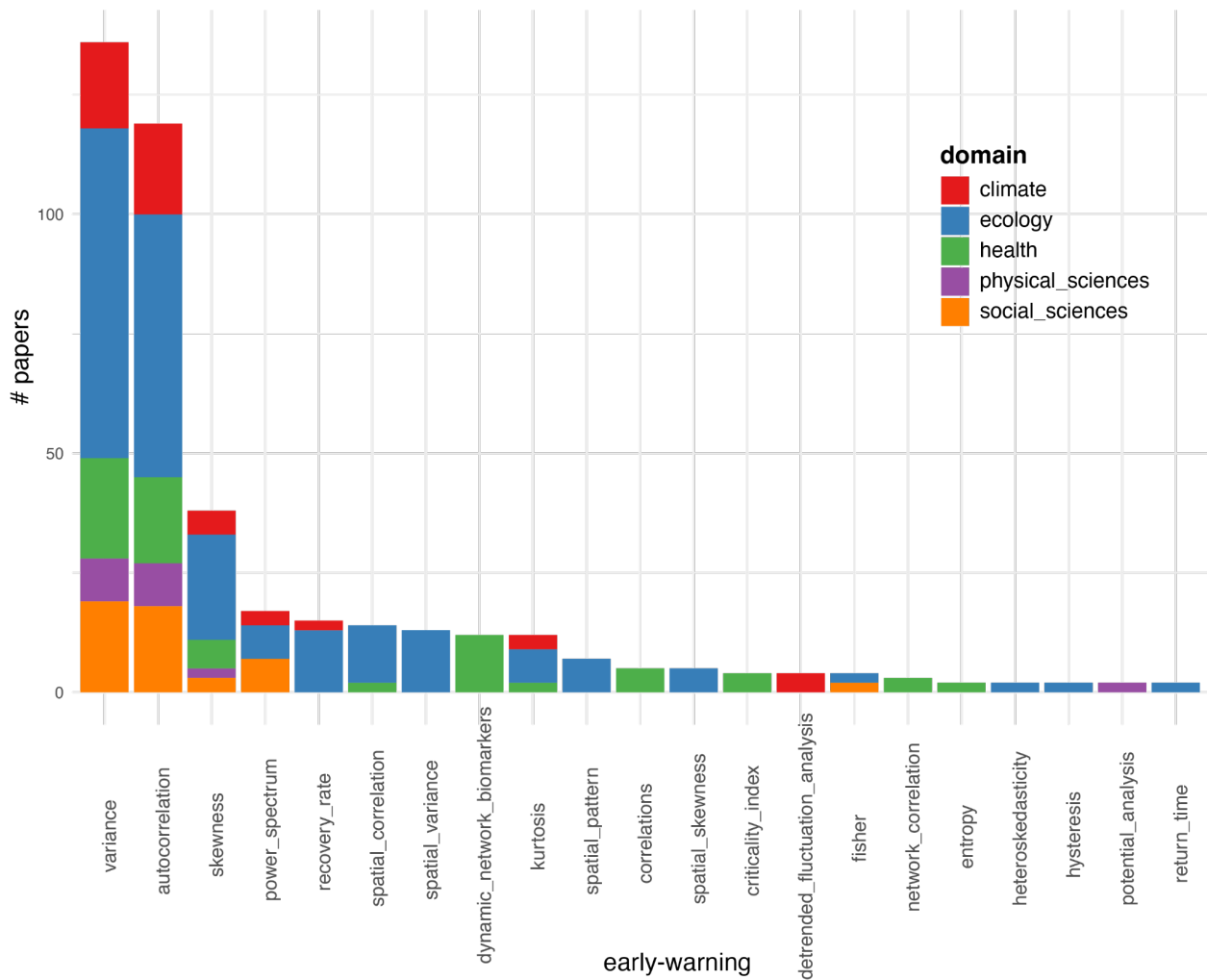
### 3.3 A growing list of of early-warnings

We recorded 65 different early-warnings after reclassifying some into the same group (for example variance, coefficient of variation and standard deviation were reclassified as “variance”, Supplement A). As expected, the majority were CSD-based warnings (74.9%), while 25.1% were

395 non-CSD based ones. Out of the 65 reclassified early-warnings only 21 were used more than once



(the rest 44 early-warnings were used only once, Fig. 5, Supplement A). Variance and autocorrelation were the dominantly used early-warnings across all domains, followed by skewness (Fig. 5). Besides these three early-warnings, the remaining 18 were used selectively within particular domains. The most striking are “spatial variance” (only used in ecological studies) and “dynamic network biomarkers” (only used in health studies, see also Sect. 3.1). Within domains (Fig. S4), ecology is the domain with the highest heterogeneity in the early-warnings (18 out of the 21 used more than once), followed by health (10), and climate (7).

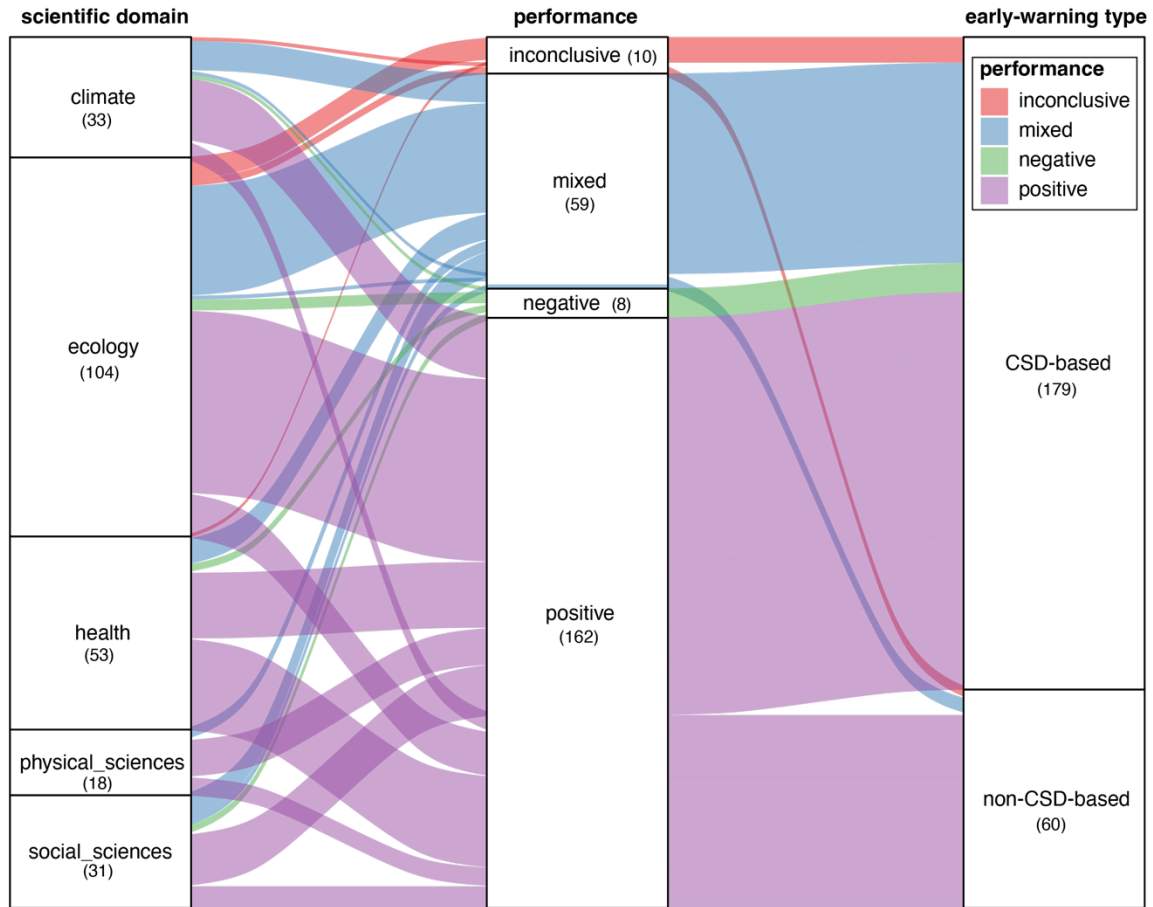


405

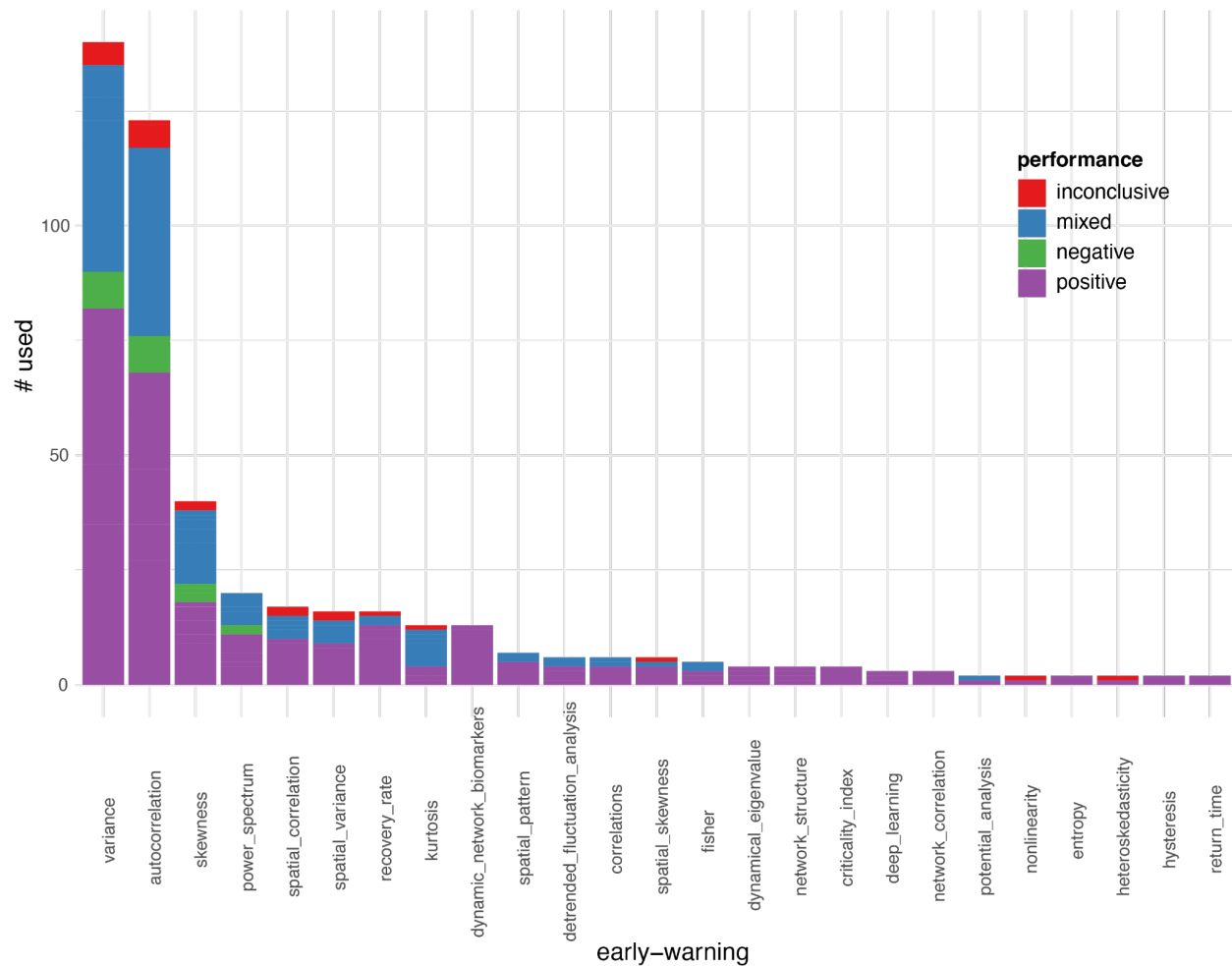
**Figure 5: Number of papers of the 21 early-warnings used more than once in our literature review. Each bar is partitioned into the 5 scientific domains.**

### 410 3.4 A positively skewed performance of early-warnings

67.8% of all studies reported a positive performance of all 65 reclassified early-warnings across all domains (Fig. 6). Only 3.4% of the studies reported negative performances (i.e. no or opposite to expected warning). Studies in ecology reported the most negative results, followed by climate and health, with none reported for physical or social sciences. The performance in the rest of the  
415 studies were either mixed (i.e. positive or negative in studies which analysed multiple early-warnings or datasets, 24.7%) or inconclusive (i.e. a statistically weak result, 4.8%). This is an impressively positively skewed result potentially reflecting the known bias in publishing significant results (Fanelli, 2012) or in post hoc analysis where a tipping point has been already documented and early-warnings have been applied in hindsight (Boettiger and Hastings, 2012a).  
420 Interestingly, all the negative results included CSD-based warnings, while for non-CSD warnings only a small fraction reported inconclusive or mixed results (Fig. 6). This difference could be attributed to the fact that non-CSD warnings are at times idiosyncratic developed for the specific system under study compared to the more generic CSD-based. Indeed, focusing on the 21 early-warnings that were used more than once (Sect. 3.3), such system-specific indicators (such as the  
425 “dynamical\_network\_biomarkers”) always had a positive result (Fig. 7). Overall, the least-used warnings were associated with a positive performance, whereas the most-used ones (like variance, autocorrelation, skewness, power spectrum) showed all types of performance. There was no early-warning that had predominantly negative or mixed results except for kurtosis (Fig. 7). There was no particular difference in the performance of the more-than-once-used early-warnings across  
430 domains (Fig. S5).



435 **Figure 6 Alluvial plot connecting scientific domains, the performance of the early-warnings and the type of early-warning**  
 (CSD-based vs non-CSD-based). Colors indicate the performance. The size of the boxes in each column represents the  
 proportion of each category. The figure is “read” from the middle column (‘performance’) to either the right (‘early-  
 warning type’) or the left (‘scientific domain’). The thickness of the lines are proportional to the performance that belongs  
 440 to a certain domain (from the ‘performance’ column to the ‘domain’ column) or are proportional to the type of early-  
 warning (from the ‘performance’ column to the ‘early-warning type’ column). For example, for the ‘performance’ mixed  
 (blue), studies with mixed performance where done with both CSD-based and non-CSD-based warnings (‘early-warning  
 type’ column), while the CSD-based mixed were found in all domains and the non-CSD-based were split among climate,  
 ecology and social sciences (‘scientific domain’ column). [‘Positive’ performance indicates there was a warning identified;  
 ‘negative’ no warning was identified; ‘mixed’ indicates positive and negative performances when tested in multiple datasets  
 or when testing more than one early-warning in the same dataset; ‘inconclusive’ the results could not indicate neither a  
 445 positive nor a negative warning.]



450 **Figure 7 Early-warnings (used > 1) and their performance. ‘Positive’ performance indicates there was a warning identified; ‘negative’ no warning was identified; ‘mixed’ indicates positive and negative performances when tested in multiple datasets or when testing more than one early-warning in the same dataset; ‘inconclusive’ the results could not indicate neither a positive nor a negative warning.**

#### 455 4. Discussion

The idea of early-warnings based on CSD is relatively old. In a textbook on “Catastrophe Theory for Scientists and Engineers” from 1981, Gilmore already talked about “catastrophe flags” for indicators of CSD (Gilmore, 1981). After an early ecological paper (Wissel, 1984), 20 years later the topic generated an enormous amount of interest, mainly theoretical, with the first empirical tests  
 460 being on past climate tipping points (Livina and Lenton, 2007; Dakos et al., 2008). Our review of the literature of the last two decades shows how the use of these indicators has since spread to many other disciplines. Indeed, the generality of the approach - the fact that CSD can be observed in

many dynamical systems, independent of the details of the underlying dynamical equations-  
created an opportunity for testing their validity on many systems and explains the enthusiasm they  
465 generated and the diversification of applications which followed.

#### **4.1 Early-warning applications: a success story?**

Our literature overview suggests that the 65 early-warning signals identified successfully detected  
a tipping point in almost 70% of the times they were used. This is an impressively positive result,  
470 which should nonetheless be treated with caution. First, in many cases, the empirical studies were  
conducted on systems that are either relatively simple or under controlled lab conditions, making  
them mostly proof-of-principle demonstrations (Dai et al., 2012; Veraart et al., 2012). Second, most  
empirical studies were restricted to hindsight application, meaning that an a priori knowledge of a  
tipping point may introduce bias towards detecting CSD indicators (Boettiger and Hastings, 2012a;  
475 Spears et al., 2017). Third, the documented publication bias against negative or insignificant results  
(Fanelli, 2012; Franco et al., 2014) probably applies in the case of the early-warning research given the  
attention the specific topic has attracted in recent years.

These considerations do not reduce the value and prospect of early-warning research. For instance,  
480 one of their biggest values lies in the possible detection of an approaching tipping point. A number  
of studies has demonstrated the potential proximity of tipping points in modern climate data using  
early-warnings (Boers, 2021; Boulton and Lenton, 2015; Ditlevsen and Ditlevsen, 2023). It has also become  
increasingly clear that early-warnings can be very useful for comparing the resilience of similar  
ecosystems across space (e.g. (Verbesselt et al., 2016; Forzieri et al., 2022; Lenton et al., 2022) to provide an  
485 approximate estimate of resilience that can help prioritise management. In this way, by producing  
'resilience maps' rather than speculating about the proximity to a potential threshold, we can rank  
situations at a given moment and place.

#### **4.2 Challenges**

490 There are a number of conceptual, operational and methodological challenges that can blur the  
detection of early-warnings on real data (Dakos et al., 2015). For these reasons, some studies have  
highlighted their failure at detecting early-warnings on data (Burthe et al., 2016), while others have

raised caution about their uninformed use without knowing more about the system's drivers and underlying mechanisms (Boettiger et al., 2013). Our review can be used as starting point in trying to understand when and why early-warnings can fail or not by looking at how they have been applied within the domains we have identified as their performance seems to be idiosyncratic to the data type and case study used. In what follows, we discuss more generally some of the most important challenges related to the use of early-warnings.

#### 4.2.1 Fast changes, slow responses, stochasticity, multiple drivers, [speeding-up](#), limited data challenge early-warning performance

The detection of early-warnings relies on the assumption that the system is approaching a transition gradually. A system should be externally forced on a slow timescale towards the tipping point, while experiencing perturbations on a shorter timescale such that CSD-based early-warnings signals can be estimated. In theory, it is generally assumed that the short-term noise is independent and identically distributed with a mean of zero. This is unlikely to be the case, with climate systems experiencing extreme weather events, for example, which are likely becoming more prevalent with the changing climate. There have been 3 '1-in-100 year' droughts in the Amazon rainforest since 2005 (Erfanian et al., 2017; Lewis et al., 2011) which clearly alter the signals observed. For cases like these, it is worth measuring early-warnings on the drivers themselves, such as timeseries of rainfall for vegetation systems. If these show early-warnings, then it is likely that signals observed in the system itself are being driven by changes in forcing rather than a movement towards tipping.

Things get even more complicated when more than one driver is acting on the system. In most cases, the assumption is that there is a single driver with a monotonic directional change towards the tipping point. [Or that there are multiple drivers which all have similar effect and directionality on the system response. But it has been shown experimentally that in the presence of multiple drivers contradictory early-warnings may arise even if both drivers would produce similar patterns in early-warnings acting in isolation \(Dai et al., 2015\).](#)

[From a theoretical perspective, it is also possible that approaching a bifurcation tipping event, the system 'speeds up' instead of slowing down. This peculiarity has been explored in models \(Titus and Watson, 2020\), but it is difficult to test empirically. It is a challenge to understand how specific](#)

525 ['speeding-up' is as well as when and in which cases the opposite pattern of classical early-warnings \(i.e. a decrease in autocorrelation and variance\) should be expected.](#)

When monitoring a system, longer timeseries are desirable to detect the upcoming tipping point. For instance, the best-case studies found in this literature review from remote-sensed products, which have been available since ~1972, have approximately 50 years long timeseries. However, 530 due to sensor degradation and upgrades, it can be challenging to get a long timeseries from a single sensor, and products are often created from combined data sources. This can interfere with most of the early-warnings, if this merging changes the signal-to-noise ratio (SNR) across time (Smith et al., 2023). For example, newer sensors will measure with a greater radiometric accuracy, increasing the SNR and in turn 'erroneously' increasing the AR(1) as far as an early-warning is concerned. 535 This increase in SNR will also decrease variance, thus allowing the user to check for anticorrelation between AR(1) and variance to see if the early-warnings are being influenced or not.

As well as questions around data availability and noise behaviour, the inherent timescale of the system being studied can hinder our ability to detect tipping points. While tipping is by definition 540 a 'fast' process, for slow moving systems like the thermohaline circulation (AMOC), this tipping event occurs over decades and could therefore be difficult to detect that the tipping point has been passed using early-warnings. Another example of this is the Amazon rainforest, where at least in modelled vegetation, there is a slow response of the forest based on the climate change that it has been subjected to (Jones et al., 2009). It could take decades for dieback to occur even under a constant 545 climate such that a tipping point could be passed long before it is actually realised (Hughes et al., 2013). This 'committed response' has been explored in a number of GCM experiments (Jones et al., 2009; Boulton et al., 2017), but it is unclear how early-warnings would be affected by this (van Der Bolt et al., 2021).

#### 550 **4.2.2 Non-specificity of early-warnings**

The generic and universal character of most - but in particular CSD-based - early-warnings comes at a price of these warnings not being specific to abrupt and irreversible tipping points. Instead they can be used to also detect smooth and reversible transitions (Kéfi et al., 2013). This limitation suggests that we need other, additional indicators, in particular system-specific indicators (Boettiger

555 et al., 2013). In the case of spatially structured ecosystems such as drylands, for example, studies have shown that temporal early-warnings could fail (Dakos et al., 2011), in which case, the use of the changes in the patterns themselves could provide a good alternative (Rietkerk et al., 2004; Kéfi et al., 2007). In the same way, specific indicators have been developed in health sciences for the monitoring of disease emergence (Table S3).

560

System-specific early-warnings may also be a better prospect, where understanding about processes in the system can help us to monitor its resilience in novel ways (Boulton et al., 2013). Yet, the original idea behind the development of early-warnings was based on the premise that this knowledge is missing or insufficient and thus a pattern-based approach could be more informative (Scheffer et al., 2009). Thus, the challenge is to strike the right level of system-specific warnings and to combine them with the generic ones. For instance, trait-based (Clements and Ozgul, 2016) and function-based (Hu et al., 2022) warnings have been recently suggested as complementary to the existing generic warning signals. A first step towards that direction could be to map the 65 classified early-warnings we reviewed on a gradient of generic to system-specific indicators.

570

#### 4.2.3 Multivariate (high-dimensional) systems

Most early-warnings are well-tailored for uni-dimensional systems, meaning systems described by a single observable (e.g. vegetation cover). However, real dynamical systems are typically high-dimensional and the quantification of early-warnings in those multivariate systems presents 575 challenges. For instance, two different variables may give conflicting information, or obscure a clear signal (Boerlijst et al., 2013; Weinans et al., 2021). [In theory, one expects that the variables directly involved in the interactions to cause a tipping point are the best to monitor](#) (Carpenter et al., 2014), [but modelling work has shown that there can be no early-warnings in connected systems](#) (Dekker et al., 2018). [Thus](#), it is challenging to know [when and](#) which variable(s) [will provide](#) 580 early-warnings in a multivariate system (Dakos, 2018).

Two main approaches in the analysis of multivariate systems have been recently developed. One relies on conceiving the system as a network, where the nodes are the variables, whose dynamics are followed through time, and evaluating changes in the structure of the network. For instance, as the system moves towards a tipping point, changes in degree distributions of such a network are



585 representative for an approaching tipping point (Lu et al., 2021). Recent research explores a complementary approach where causal links are calculated instead of correlation links and the strength of the causal link works as the indicator of resilience (Nowack et al., 2020).

Alternatively, dimension reduction techniques can capture overall network dynamics into a representative statistic. For instance, Principal Component Analysis (often referred to as Empirical  
590 Orthogonal Function (EOF) in climate science) can be used to get directions of change (Held and Kleinen, 2004; Weinans et al., 2019). Data can be projected onto the leading principal component, effectively yielding a univariate timeseries on which the univariate early-warning can be applied (Held and Kleinen, 2004; Boulton and Lenton, 2015; Bathiany et al., 2013). This analysis does not make any a priori assumptions about the interactions between the different network nodes, and is  
595 therefore quite flexible in its use. However, it requires large amounts of high-quality data to yield accurate results. The underlying assumption is that as the system approaches the tipping point, the dynamics become more correlated, leading to a high explained variance of a PCA and clear directionality in the dynamics (Lever et al., 2020).

#### 600 4.2.4 Tipping cascades

A more peculiar challenge in the application of early-warnings is their ability to detect cascading tipping points: where a tipping point in one system has a knock-on effect on another system causing that to also tip (Klose et al., 2020; van de Leemput et al., 2018; Saade et al., 2023). Unless these systems are linked in such a way that early-warnings can be observed in both systems, the cascade  
605 is likely to present as a shock to the second system such that it would be unpredictable whilst monitoring it in isolation (Bathiany et al., 2013). For systems where tipping in one system causes the connected system partially towards a tipping point (known as a ‘two-phase transition’), a stepwise jump in early-warnings in the second system can be detected. For coupled systems where the tipping in the second system happens instantaneously (a ‘joint cascade’) or soon after the  
610 tipping in the first system (a ‘domino cascade’) early-warnings are unlikely to be detectable (Klose et al., 2021).

### 4.3 Opportunities

615 These challenges associated with the use of early-warnings are also accompanied by a number of opportunities to improve their detection in real data. Below we outline a few of the most promising ones.

#### 4.3.1 Composite metrics

620 Although there exists a multitude of early-warnings (CSD-based and non-CSD-based, generic and system-specific, on spatial, structural and temporal data), few studies have compared in a systematic way how these warnings behave one against the other or across different systems (Dakos et al., 2011; Veldhuis et al., 2022). Apart from the CSD-based warnings where their relationships are mathematically known (Kuehn, 2012), we simply do not know how similar information early-warnings provide. Understanding the interrelationships between all types of the most-used early-warnings will be crucial to improve their use for detecting tipping points. Composite metrics - where multiple early-warnings are combined (Drake and Griffen, 2010), abundance-based with trait-based warnings are compared (Clements and Ozgul, 2016), or machine-learning has been used to train models of multiple warnings as predictors (Brett and Rohani, 2020)- have been suggested to improve the significance and detectability of approaching tipping points. Given the increasing capacity to monitor the multivariate aspects of most systems (discussed in Sect. 4.2.3) and the increasing availability of such data (see Sect. 4.3.2), we are not far from estimating multiple early-warnings on multiple dimensions of a system. The next step is to develop meaningful ways to best combine them for detecting tipping points.

#### 635 4.3.2 Increasing data availability: open databases and remote-sensed data

Over the last decade, data from long-term databases and remote-sensing has grown to become the primary sources for capturing temporal and spatial early-warnings for tipping points. Especially for remote-sensing data, this coincides with the expansion of freely available Earth observation datasets combined with access to cloud-based systems which provide the computational power to process this increase in data (Gorelick et al., 2017). A primary focus has been on the temporal analysis of optical imagery from satellites such as the MODIS sensor (Moderate Resolution Imaging Spectroradiometer) (Liu et al., 2019; Majumder et al., 2019) or from the AVHRR sensor (Lenton et al.,

2022). Additionally, the vegetation optical depth (VOD) derived from microwave passive radiometers (Moesinger et al., 2020), has been employed to analyze early-warnings, with temporal records since the late 1970s (Smith et al., 2023; Boulton et al., 2022b). Overall, the continued growth of remotely-sensed datasets is likely to drive further temporal early-warning research, while the emergence of new satellite sensors with enhanced spatial resolutions (in the order of meters) will also enable an improved analysis of spatial early-warning at large scales. Yet, such development requires a profound understanding of the acquisition systems to effectively control and account for parameters that may impact the extraction of early-warnings.

#### 4.3.3 New approaches: Machine-Learning

The success of neural networks for timeseries classification problems has inspired the development of Machine-Learning (ML) techniques for early-warnings detection. There is a natural synergy to this approach in that the same CSD phenomena manifest across a wide range of systems approaching tipping points, so the notoriously data-intensive task of training a neural network can be accomplished using plentiful synthetic data and still produce a result which can plausibly be applied to empirical data.

Deep learning models which combine convolutional layers have been shown to outperform methods using statistical CSD-based warnings (e.g. variance, AR(1)) on a variety of both real and simulated case studies (Bury et al., 2021; Deb et al., 2022). Furthermore, these models have exhibited success in inferring the type of upcoming bifurcation from observed pre-transition dynamics, and have performed well in extensions to phase transitions on spatiotemporal lattices (Dylewsky et al., 2023). Other ML techniques can also tell us something about how far systems are from tipping. For example, random forest models could be used to determine the factors that determine autocorrelation in forest areas on a global scale, and thus how close to tipping these forest areas could be based on driving variables (Forzieri et al., 2022) or can help us determine the factors the influence the occurrence of tipping points (Berdugo et al., 2022). Yet, one should always bear in mind that ML will be as good as their training sets. Testing these approaches on existing datasets will help understand their potential as well as testing them in cases of noise- or rate-tipping. Taken into consideration their limitations (Lapeyrolerie and Boettiger, 2022), combining ML techniques with

‘traditional’ early-warnings could become promising for monitoring systems that may be approaching tipping points.

## 675 **5. Conclusions**

The unprecedented amount of data originating from remote-sensing systems, field measurements, surveys and simulated data, coupled with innovative models and cutting-edge computing, has made possible the development of a multitude of tools and approaches for detecting tipping points in a variety of scientific fields. Early-warnings can tell us that ‘something’ important may be about to happen, but they do not tell us what precisely that ‘something’ may be and when exactly it will happen (Dakos et al., 2015). The next step is to test the real potential of early-warnings as preventive and management tools in anticipating natural and human-induced changes to come.

## 685 **Author contributions**

VD, CB, JEB, SK developed research and drafted the paper. VD led the literature review analysed by VD, CB, JEB, JFA, DIAM, DD, CLM, BvB, LvL, EW, SK. VD, SK ran the analyses. All authors commented on the final text.

## **Competing interests**

690 The authors declare that they have no conflict of interest

## **Financial support**

CAB, JEB, and DIAM were supported by the Bezos Earth Fund via the Global Tipping Points Report project. SB, LB and NB acknowledge funding from the Volkswagen Stiftung, the European Union’s Horizon 2020 research and innovation programme under grant agreement number 820970 (TiPES contribution #269) and under the Marie Skłodowska-Curie grant agreement number 956170, as well as from the Federal Ministry of Education and Research under grant number 01LS2001A.

700

## References

- Abis, B. and Brovkin, V.: Alternative tree-cover states of the boreal ecosystem: A conceptual model, *Glob. Ecol. Biogeogr.*, 28, 612–627, <https://doi.org/10.1111/geb.12880>, 2019.
- Alberto, J., Stelzer, A., Padric, J., Adrian, R., and Willem, B.: Early warning signals of regime shifts for aquatic systems : Can experiments help to bridge the gap between theory and real-world application ?, *Ecol. Complex.*, 47, 100944, <https://doi.org/10.1016/j.ecocom.2021.100944>, 2021.
- 705
- AlMomani, A. A. and Bolt, E.: An early warning sign of critical transition in the Antarctic ice sheet – a data-driven tool for a spatiotemporal tipping point, *Nonlinear Process. Geophys.*, 28, 153–166, <https://doi.org/10.5194/npg-28-153-2021>, 2021.
- 710
- Ashwin, P., Wieczorek, S., Vitolo, R., and Cox, P.: Tipping points in open systems: bifurcation, noise-induced and rate-dependent examples in the climate system, *Philos. Trans. R. Soc. A*, 13, 20, <https://doi.org/10.1098/rsta.2011.0306>, 2011.
- Bathiany, S., Claussen, M., and Fraedrich, K.: Detecting hotspots of atmosphere–vegetation interaction via slowing down &ndash; Part 1: A stochastic approach, *Earth Syst. Dyn.*, 4, 63–78, <https://doi.org/10.5194/esd-4-63-2013>, 2013.
- 715
- Bathiany, S., van der Bolt, B., Williamson, M. S., Lenton, T. M., Scheffer, M., van Nes, E. H., and Notz, D.: Statistical indicators of Arctic sea-ice stability – prospects and limitations, *The Cryosphere*, 10, 1631–1645, <https://doi.org/10.5194/tc-10-1631-2016>, 2016.
- Berdugo, M., Kéfi, S., Soliveres, S., and Maestre, F. T.: Plant spatial patterns identify alternative ecosystem multifunctionality states in global drylands, *Nat. Ecol. Evol.*, 1, 0003, <https://doi.org/10.1038/s41559-016-0003>, 2017.
- 720
- Berdugo, M., Gaitán, J. J., Delgado-Baquerizo, M., Crowther, T. W., and Dakos, V.: Prevalence and drivers of abrupt vegetation shifts in global drylands, *Proc. Natl. Acad. Sci. U. S. A.*, 119, 1–10, <https://doi.org/10.1073/pnas.2123393119>, 2022.
- Bestelmeyer, B. T., A. M. Ellison, Fraser, W. R., Gorman, K. B., Holbrook, S. J., Laney, C. M., Ohman, M. D., Peters, D. P. C., Pillsbury, F. C., Rassweiler, A., Schmitt, R. J., and Sharm, S.: Analysis of abrupt transitions in ecological systems, *Ecosphere*, 2, 129, <https://doi.org/10.1890/ES11-00216.1>, 2011.
- 725
- Boerlijst, M. C., Oudman, T., and de Roos, A. M.: Catastrophic Collapse Can Occur without Early Warning: Examples of Silent Catastrophes in Structured Ecological Models., *PloS One*, 8, e62033, <https://doi.org/10.1371/journal.pone.0062033>, 2013.
- Boers, N.: Observation-based early-warning signals for a collapse of the Atlantic Meridional Overturning Circulation, *Nat. Clim. Change*, 11, <https://doi.org/10.1038/s41558-021-01097-4>, 2021.
- 730
- Boettiger, C. and Hastings, A.: Early warning signals and the prosecutor’s fallacy, *Proc. R. Soc. B Biol. Sci.*, <https://doi.org/10.1098/rspb.2012.2085>, 2012a.
- Boettiger, C. and Hastings, A.: Quantifying limits to detection of early warning for critical transitions., *J. R. Soc. Interface R. Soc.*, 9, 2527–39, <https://doi.org/10.1098/rsif.2012.0125>, 2012b.
- 735
- Boettiger, C., Ross, N., and Hastings, A.: Early warning signals: the charted and uncharted territories, *Theor. Ecol.*, 6, 255–264, <https://doi.org/10.1007/s12080-013-0192-6>, 2013.
- Boulton, C. A. and Lenton, T. M.: Slowing down of North Pacific climate variability and its implications for abrupt ecosystem change., *Proc. Natl. Acad. Sci. U. S. A.*, 112, 11496–501, <https://doi.org/10.1073/pnas.1501781112>, 2015.

- 740 Boulton, C. a., Good, P., and Lenton, T. M.: Early warning signals of simulated Amazon rainforest dieback, *Theor. Ecol.*, <https://doi.org/10.1007/s12080-013-0191-7>, 2013.
- Boulton, C. A., Booth, B. B. B., and Good, P.: Exploring uncertainty of Amazon dieback in a perturbed parameter Earth system ensemble, *Glob. Change Biol.*, 23, 5032–5044, <https://doi.org/10.1111/gcb.13733>, 2017.
- Boulton, C. A., Lenton, T. M., and Boers, N.: Pronounced loss of Amazon rainforest resilience since the early 2000s, *Nat. Clim. Change*, 12, 271–278, <https://doi.org/10.1038/s41558-022-01287-8>, 2022a.
- 745 Boulton, C. A., Lenton, T. M., and Boers, N.: Pronounced loss of Amazon rainforest resilience since the early 2000s, *Nat. Clim Change*, 12, 271–278, <https://doi.org/10.1038/s41558-022-01287-8>, 2022b.
- Brett, T. S. and Rohani, P.: Dynamical footprints enable detection of disease emergence, *PLOS Biol.*, 18, e3000697, <https://doi.org/10.1371/journal.pbio.3000697>, 2020.
- 750 Burthe, S. J., Henrys, P. A., Mackay, E. B., Spears, B. M., Campbell, R., Carvalho, L., Dudley, B., Gunn, I. D. M., Johns, D. G., Maberly, S. C., May, L., Newell, M. A., Wanless, S., Winfield, I. J., Thackeray, S. J., and Daunt, F.: Do early warning indicators consistently predict nonlinear change in long-term ecological data ?, 666–676, <https://doi.org/10.1111/1365-2664.12519>, 2016.
- Bury, T. M.: ewstools : A Python package for early warning signals of bifurcations in time series data, *J. Open Source Softw.*, 8, 8–11, <https://doi.org/10.21105/joss.05038>, 2023.
- 755 Bury, T. M., Sujith, R. I., Pavithran, I., Scheffer, M., Lenton, T. M., Anand, M., and Bauch, C. T.: Deep learning for early warning signals of regime shifts, 450, 0–2, <https://doi.org/10.1073/pnas.2106140118/-/DCSupplemental.y>, 2021.
- Carpenter, S. R. and Brock, W. A.: Rising variance: a leading indicator of ecological transition., *Ecol. Lett.*, 9, 311–318, <https://doi.org/10.1111/j.1461-0248.2005.00877.x>, 2006.
- 760 Carpenter, S. R., Brock, W. A., Cole, J. J., Kitchell, J. F., and Pace, M. L.: Leading indicators of trophic cascades., *Ecol. Lett.*, 11, 128–38, <https://doi.org/10.1111/j.1461-0248.2007.01131.x>, 2008.
- Carpenter, S. R., Brock, W. a., Cole, J. J., and Pace, M. L.: A new approach for rapid detection of nearby thresholds in ecosystem time series, *Oikos*, 123, 290–297, <https://doi.org/10.1111/j.1600-0706.2013.00539.x>, 2014.
- 765 Carstensen, J. and Weydmann, A.: Tipping Points in the Arctic: Eyeballing or Statistical Significance?, *AMBIO*, 41, 34–43, <https://doi.org/10.1007/s13280-011-0223-8>, 2012.
- Cavaliere, M., Yang, G., Danos, V., and Dakos, V.: Detecting the Collapse of Cooperation in Evolving Networks, *Sci. Rep.*, 6, 30845, <https://doi.org/10.1038/srep30845>, 2016.
- Clements, C. F. and Ozgul, A.: Including trait-based early warning signals helps predict population collapse, *Nat. Commun.*, 7, 1–8, <https://doi.org/10.1038/ncomms10984>, 2016.
- 770 Clements, C. F. and Ozgul, A.: Indicators of transitions in biological systems, *Ecol. Lett.*, 21, 905–919, <https://doi.org/10.1111/ele.12948>, 2018.
- Dai, L., Vorselen, D., Korolev, K. S., and Gore, J.: Generic Indicators for Loss of Resilience Before a Tipping Point Leading to Population Collapse, *Science*, 336, 1175–1177, <https://doi.org/10.1126/science.1219805>, 2012.
- 775 Dai, L., Korolev, K. S., and Gore, J.: Relation between stability and resilience determines the performance of early warning signals under different environmental drivers, *Proc. Natl. Acad. Sci.*, 201418415, <https://doi.org/10.1073/pnas.1418415112>, 2015.

- Dakos, V.: Identifying best-indicator species for abrupt transitions in multispecies communities, *Ecol. Indic.*, 94, 494–502, <https://doi.org/10.1016/j.ecolind.2017.10.024>, 2018.
- 780 Dakos, V. and Kéfi, S.: Ecological resilience: what to measure and how, *Environ. Res. Lett.*, 17, 043003, <https://doi.org/10.1088/1748-9326/ac5767>, 2022.
- Dakos, V., Scheffer, M., van Nes, E. H., Brovkin, V., Petoukhov, V., and Held, H.: Slowing down as an early warning signal for abrupt climate change., *Proc. Natl. Acad. Sci.*, 105, 14308–12, <https://doi.org/10.1073/pnas.0802430105>, 2008.
- 785 Dakos, V., van Nes, E. H., Donangelo, R., Fort, H., and Scheffer, M.: Spatial correlation as leading indicator of catastrophic shifts, *Theor. Ecol.*, 3, 163–174, <https://doi.org/10.1007/s12080-009-0060-6>, 2010.
- Dakos, V., Kéfi, S., Rietkerk, M., van Nes, E. H., and Scheffer, M.: Slowing down in spatially patterned ecosystems at the brink of collapse., *Am. Nat.*, 177, E153-166, <https://doi.org/10.1086/659945>, 2011.
- 790 Dakos, V., Carpenter, S. R., Brock, W. A., Ellison, A. M., Guttal, V., Ives, A. R., Kéfi, S., Livina, V., Seekell, D. A., van Nes, E. H., and Scheffer, M.: Methods for Detecting Early Warnings of Critical Transitions in Time Series Illustrated Using Simulated Ecological Data, *PLoS ONE*, 7, e41010, <https://doi.org/10.1371/journal.pone.0041010>, 2012.
- Dakos, V., van Nes, E. H., and Scheffer, M.: Flickering as an early warning signal, *Theor. Ecol.*, 6, 309–317, <https://doi.org/10.1007/s12080-013-0186-4>, 2013.
- 795 Dakos, V., Carpenter, S. R., Nes, E. H. V., and Scheffer, M.: Resilience indicators: prospects and limitations for early warnings of regime shifts, *Philos. Trans. R. Soc. B-Biol. Sci.*, 370, 20130263, <https://doi.org/10.1098/rstb.2013.0263>, 2015.
- Deb, S., Sidheekh, S., Clements, C. F., Krishnan, N. C., and Dutta, P. S.: Machine learning methods trained on simple models can predict critical transitions in complex natural systems, *R. Soc. Open Sci.*, 9, <https://doi.org/10.1098/rsos.211475>, 2022.
- 800 Dekker, M., Heydt, A. S. V. D., and Dijkstra, H. A.: Cascading transitions in the climate system, 1–29, 2018.
- van Der Bolt, B., van Nes, E. H., and Scheffer, M.: No warning for slow transitions, *J. R. Soc. Interface*, 18, 0–2, <https://doi.org/10.1098/rsif.2020.0935>, 2021.
- Ditlevsen, P. and Ditlevsen, S.: Warning of a forthcoming collapse of the Atlantic meridional overturning circulation, *Nat. Commun.*, 14, 4254, <https://doi.org/10.1038/s41467-023-39810-w>, 2023.
- 805 Drake, J. M. and Griffen, B. D.: Early warning signals of extinction in deteriorating environments, *Nature*, 467, 456–459, <https://doi.org/10.1038/nature09389>, 2010.
- Drake, J. M., O’Regan, S. M., Dakos, V., Kéfi, S., Rohani, P., Drake, J. M., O’Regan, S. M., Dakos, V., Kéfi, S., and Rohani, P.: Alternative stable states, tipping points, and early warning signals of ecological transitions, *Theor. Ecol.*, 263–284, <https://doi.org/10.1093/oso/9780198824282.003.0015>, 2020.
- 810 Dylewsky, D., Lenton, T. M., Scheffer, M., Bury, T. M., Fletcher, C. G., Anand, M., and Bauch, C. T.: Universal early warning signals of phase transitions in climate systems, *J. R. Soc. Interface*, 20, 20220562, <https://doi.org/10.1098/rsif.2022.0562>, 2023.
- Erfanian, A., Wang, G., and Fomenko, L.: Unprecedented drought over tropical South America in 2016: significantly under-predicted by tropical SST, *Sci. Rep.*, 7, 5811, <https://doi.org/10.1038/s41598-017-05373-2>, 2017.

- 815 Fanelli, D.: Negative results are disappearing from most disciplines and countries, *Scientometrics*, 90, 891–904, <https://doi.org/10.1007/s11192-011-0494-7>, 2012.
- Forzieri, G., Dakos, V., McDowell, N. G., Ramdane, A., and Cescatti, A.: Emerging signals of declining forest resilience under climate change, *Nature*, 608, 534–539, <https://doi.org/10.1038/s41586-022-04959-9>, 2022.
- 820 Franco, A., Malhotra, N., and Simonovits, G.: Publication bias in the social sciences: Unlocking the file drawer, *Science*, 345, 1502–1505, <https://doi.org/10.1126/science.1255484>, 2014.
- Génin, A., Majumder, S., Sankaran, S., Danet, A., Guttal, V., Schneider, F. D., and Kéfi, S.: Monitoring ecosystem degradation using spatial data and the R package *spatialwarnings*, *Methods Ecol. Evol.*, 9, 2067–2075, <https://doi.org/10.1111/2041-210X.13058>, 2018.
- Gilmore, R.: *Catastrophe theory for scientists and engineers*, John Wiley & Sons, 1981.
- 825 Gorelick, N., Hancher, M., Dixon, M., Ilyushchenko, S., Thau, D., and Moore, R.: Google Earth Engine: Planetary-scale geospatial analysis for everyone, *Remote Sens. Environ.*, 202, 18–27, <https://doi.org/10.1016/j.rse.2017.06.031>, 2017.
- Guttal, V. and Jayaprakash, C.: Changing skewness: an early warning signal of regime shifts in ecosystems, *Ecol. Lett.*, 11, 450–460, <https://doi.org/10.1111/j.1461-0248.2008.01160.x>, 2008.
- 830 Guttal, V. and Jayaprakash, C.: Spatial variance and spatial skewness: leading indicators of regime shifts in spatial ecological systems, *Theor. Ecol.*, 2, 3–12, <https://doi.org/10.1007/s12080-008-0033-1>, 2009.
- Hagstrom, G. and Levin, S.: *Phase Transitions and the Theory of Early Warning Indicators for Critical Transitions*, <https://doi.org/10.48550/arXiv.2110.12287>, 23 October 2021.
- 835 von Hardenberg, J., Meron, E., Shachak, M., Zarmi, Y., and Hardenberg, J. V.: Diversity of vegetation patterns and desertification, *Phys. Rev. Lett.*, 8719, Art. No. 198101, <https://doi.org/10.1103/PhysRevLett.87.198101>, 2001.
- Hastings, A. and Wysham, D. B.: Regime shifts in ecological systems can occur with no warning, *Ecol. Lett.*, 13, 464–472, <https://doi.org/10.1111/j.1461-0248.2010.01439.x>, 2010.
- Held, H. and Kleinen, T.: Detection of climate system bifurcations by degenerate fingerprinting, *Geophys. Res. Lett.*, 31, 1–4, <https://doi.org/10.1029/2004GL020972>, 2004.
- 840 Hirota, M., Holmgren, M., van Nes, E. H., and Scheffer, M.: Global resilience of tropical forest and savanna to critical transitions, *Science*, 334, 232–235, 2011.
- Hu, Z., Dakos, V., and Rietkerk, M.: Using functional indicators to detect state changes in terrestrial ecosystems, *Trends Ecol. Evol.*, 37, 1036–1045, <https://doi.org/10.1016/j.tree.2022.07.011>, 2022.
- 845 Hughes, T. P., Linares, C., Dakos, V., van de Leemput, I. a., and van Nes, E. H.: Living dangerously on borrowed time during slow, unrecognized regime shifts., *Trends Ecol. Evol.*, 28, 149–55, <https://doi.org/10.1016/j.tree.2012.08.022>, 2013.
- Ives, A. R. and Dakos, V.: Detecting dynamical changes in nonlinear time series using locally linear state-space models, *Ecosphere*, 3, 2012.
- 850 Jones, C., Lowe, J., Liddicoat, S., and Betts, R.: Committed terrestrial ecosystem changes due to climate change, *Nat. Geosci.*, 2, 484–487, <https://doi.org/10.1038/ngeo555>, 2009.



- Kéfi, S., Rietkerk, M., Alados, C. L., Pueyo, Y., Papanastasis, V. P., ElAich, A., de Ruiter, P. C., Alados, L., and Ruiter, P. C. D.: Spatial vegetation patterns and imminent desertification in Mediterranean arid ecosystems, *Nature*, 449, 213–217, <https://doi.org/10.1038/nature06111>, 2007.
- 855 Kéfi, S., Dakos, V., Scheffer, M., Van Nes, E. H., and Rietkerk, M.: Early warning signals also precede non-catastrophic transitions, *Oikos*, 122, 641–648, 2013.
- Kéfi, S., Guttal, V., Brock, W. A., Carpenter, S. R., Ellison, A. M., Livina, V. N., Seekell, D. A., Scheffer, M., van Nes, E. H., and Dakos, V.: Early Warning Signals of Ecological Transitions: Methods for Spatial Patterns, *PLoS ONE*, 9, e92097, <https://doi.org/10.1371/journal.pone.0092097>, 2014.
- 860 Kleinen, T., Held, H., Petschel-held, G., and Held, Á. H.: The potential role of spectral properties in detecting thresholds in the Earth system: application to the thermohaline circulation, *Ocean Dyn.*, 53, 53–63, <https://doi.org/10.1007/s10236-002-0023-6>, 2003.
- Klose, A. K., Karle, V., Winkelmann, R., and Donges, J. F.: Emergence of cascading dynamics in interacting tipping elements of ecology and climate: Cascading dynamics in tipping elements, *R. Soc. Open Sci.*, 7, <https://doi.org/10.1098/rsos.200599>, 2020.
- 865 Klose, A. K., Wunderling, N., Winkelmann, R., and Donges, J. F.: What do we mean, “tipping cascade”?, *Environ. Res. Lett.*, 16, 2021.
- Kuehn, C.: A Mathematical Framework for Critical Transitions: Normal Forms, Variance and Applications, *J. Nonlinear Sci.*, 23, 457–510, <https://doi.org/10.1007/s00332-012-9158-x>, 2012.
- Kuznetsov, Y. A.: *Elements of Applied Bifurcation Theory*, Springer-Verlag, New York, 591 pp., 1995.
- 870 Lade, S. J. and Gross, T.: Early warning signals for critical transitions: A generalized modeling approach, *Plos Comput. Biol.*, 8, e1002360, 2012.
- Laitinen, V., Dakos, V., and Lahti, L.: Probabilistic early warning signals, *Ecol. Evol.*, 1–14, <https://doi.org/10.1002/ece3.8123>, 2021.
- 875 Lapeyrolerie, M. and Boettiger, C.: Limits to ecological forecasting : Estimating uncertainty for critical transitions with deep learning, 2022, 1–14, <https://doi.org/10.1111/2041-210X.14013>, 2022.
- van de Leemput, I. A., Dakos, V., Scheffer, M., and van Nes, E. H.: Slow Recovery from Local Disturbances as an Indicator for Loss of Ecosystem Resilience, *Ecosystems*, 21, 141–152, <https://doi.org/10.1007/s10021-017-0154-8>, 2018.
- Lenton, T. M.: Early warning of climate tipping points, *Nat. Clim Change*, 1, 201–209, 2011.
- 880 Lenton, T. M.: Environmental Tipping Points, 1–29 pp., <https://doi.org/10.1146/annurev-environ-102511-084654>, 2013a.
- Lenton, T. M.: What early warning systems are there for environmental shocks?, *Environ. Sci. Policy*, 27, S60–S75, <https://doi.org/10.1016/j.envsci.2012.06.011>, 2013b.
- 885 Lenton, T. M., Buxton, J. E., Armstrong McKay, D. I., Abrams, J. F., Boulton, C. A., Lees, K., Powell, T. W. R., Boers, N., Cunliffe, A. M., and Dakos, V.: A resilience sensing system for the biosphere, *Philos. Trans. R. Soc. B Biol. Sci.*, 377, <https://doi.org/10.1098/rstb.2021.0383>, 2022.
- Lever, J. J., van de Leemput, I. A., Weinans, E., Quax, R., Dakos, V., van Nes, E. H., Bascompte, J., and Scheffer, M.: Foreseeing the future of mutualistic communities beyond collapse, *Ecol. Lett.*, 23, 2–15, <https://doi.org/10.1111/ele.13401>, 2020.

- 890 Lewis, S. L., Brando, P. M., Phillips, O. L., Van Der Heijden, G. M. F., and Nepstad, D.: The 2010 Amazon Drought, *Science*, 331, 554–554, <https://doi.org/10.1126/science.1200807>, 2011.
- Litzow, M. A. and Hunsicker, M. E.: Early warning signals, nonlinearity, and signs of hysteresis in real ecosystems, *Ecosphere*, 7, <https://doi.org/10.1002/ecs2.1614>, 2016.
- 895 Liu, L., Shao, Z., Lv, J., Xu, F., Ren, S., Jin, Q., Yang, J., Ma, W., Xie, H., Zhang, D., and Chen, X.: Identification of Early Warning Signals at the Critical Transition Point of Colorectal Cancer Based on Dynamic Network Analysis, *Front. Bioeng. Biotechnol.*, 8, 530, <https://doi.org/10.3389/fbioe.2020.00530>, 2020.
- Liu, Y., Kumar, M., Katul, G. G., and Porporato, A.: Reduced resilience as an early warning signal of forest mortality, *Nat. Clim. Change*, <https://doi.org/10.1038/s41558-019-0583-9>, 2019.
- 900 Livina, V. N. and Lenton, T. M.: A modified method for detecting incipient bifurcations in a dynamical system, *Geophys. Res. Lett.*, 34, 1–5, <https://doi.org/10.1029/2006GL028672>, 2007.
- Livina, V. N., Kwasniok, F., and Lenton, T. M.: Potential analysis reveals changing number of climate states during the last 60 kyr, *Clim. Past*, 6, 77–82, 2010.
- Lu, Z., Yuan, N., Yang, Q., Ma, Z., and Kurths, J.: Early Warning of the Pacific Decadal Oscillation Phase Transition Using Complex Network Analysis, *Geophys. Res. Lett.*, 48, <https://doi.org/10.1029/2020GL091674>, 2021.
- 905 Majumder, S., Tamma, K., Ramaswamy, S., and Guttal, V.: Inferring critical thresholds of ecosystem transitions from spatial data, *Ecology*, 100, <https://doi.org/10.1002/ecy.2722>, 2019.
- Mayfield, R. J., Langdon, P. G., Doncaster, C. P., Dearing, J. A., Wang, R., Nazarova, L. B., Medeiros, A. S., and Brooks, S. J.: Metrics of structural change as indicators of chironomid community stability in high latitude lakes, *Quat. Sci. Rev.*, 249, 106594, <https://doi.org/10.1016/j.quascirev.2020.106594>, 2020.
- 910 Moesinger, L., Dorigo, W., de Jeu, R., van der Schalie, R., Scanlon, T., Teubner, I., and Forkel, M.: The global long-term microwave Vegetation Optical Depth Climate Archive (VODCA), *Earth Syst. Sci. Data*, 12, 177–196, <https://doi.org/10.5194/essd-12-177-2020>, 2020.
- van Nes, E. H., Arani, B. M. S., Staal, A., van der Bolt, B., Flores, B. M., Bathiany, S., and Scheffer, M.: What Do You Mean, ‘Tipping Point’?, *Trends Ecol. Evol.*, 31, 902–904, <https://doi.org/10.1016/j.tree.2016.09.011>, 2016.
- 915 Nijp, J. J., Temme, A. J. A. M., van Voorn, G. A. K., Kooistra, L., Hengeveld, G. M., Soons, M. B., Teuling, A. J., and Wallinga, J.: Spatial early warning signals for impending regime shifts: A practical framework for application in real-world landscapes, *Glob. Change Biol.*, 25, 1905–1921, <https://doi.org/10.1111/gcb.14591>, 2019.
- Nowack, P., Runge, J., Eyring, V., and Haigh, J. D.: Causal networks for climate model evaluation and constrained projections, *Nat. Commun.*, 11, 1415, <https://doi.org/10.1038/s41467-020-15195-y>, 2020.
- 920 O’Brien, D. A., Deb, S., Sidheekh, S., Krishnan, N. C., Sharathi Dutta, P., and Clements, C. F.: EWSmethods: an R package to forecast tipping points at the community level using early warning signals, resilience measures, and machine learning models, *Ecography*, n/a, e06674, <https://doi.org/10.1111/ecog.06674>, n.d.
- Rietkerk, M., Dekker, S. C., de Ruiter, P. C., and van de Koppel, J.: Self-Organized Patchiness and Catastrophic Shifts in Ecosystems, *Science*, 305, 1926–1929, <https://doi.org/10.1126/science.1101867>, 2004.
- 925 Rietkerk, M., van de Koppel, J., and Koppel, J. V. D.: Regular pattern formation in real ecosystems, *Trends Ecol. Evol.*, 23, 169–175, <https://doi.org/10.1016/j.tree.2007.10.013>, 2008.
- Ritchie, P. and Sieber, J.: Early-warning indicators for rate-induced tipping, 1–14, 2015.

- Saade, C., Fronhofer, E. A., Pichon, B., and Kéfi, S.: Landscape Structure Affects Metapopulation-Scale Tipping Points, *Am. Nat.*, 202, E17–E30, <https://doi.org/10.1086/724550>, 2023.
- 930 Saatchi, S., Longo, M., Xu, L., Yang, Y., Abe, H., André, M., Aukema, J. E., Carvalhais, N., Cadillo-Quiroz, H., Cerbu, G. A., Chernela, J. M., Covey, K., Sánchez-Clavijo, L. M., Cubillos, I. V., Davies, S. J., De Sy, V., De Vleeschouwer, F., Duque, A., Sybille Durieux, A. M., De Avila Fernandes, K., Fernandez, L. E., Gammino, V., Garrity, D. P., Gibbs, D. A., Gibbon, L., Gowae, G. Y., Hansen, M., Lee Harris, N., Healey, S. P., Hilton, R. G., Johnson, C. M., Kankeu, R. S., Laporte-Goetz, N. T., Lee, H., Lovejoy, T., Lowman, M., Lumbuenamo, R., Malhi, Y., Albert Martinez, J.-M. M., Nobre, C., Pellegrini, A., Radachowsky, J., Román, F., Russell, D., Sheil, D., Smith, T. B., Spencer, R. G. M., Stolle, F., Tata, H. L., Torres, D. del C., Tshimanga, R. M., Vargas, R., Venter, M., West, J., Widayati, A., Wilson, S. N., Brumby, S., and Elmore, A. C.: Detecting vulnerability of humid tropical forests to multiple stressors, *One Earth*, 4, 988–1003, <https://doi.org/10.1016/j.oneear.2021.06.002>, 2021.
- 940 Scheffer, M., Bascompte, J., Brock, W. A., Brovkin, V., Carpenter, S. R., Dakos, V., Held, H., van Nes, E. H., Rietkerk, M., and Sugihara, G.: Early-warning signals for critical transitions, *Nature*, 461, 53–59, <https://doi.org/10.1038/nature08227>, 2009.
- Scheffer, M., Carpenter, S. R., Lenton, T. M., Bascompte, J., Brock, W., Dakos, V., van de Koppel, J., van de Leemput, I. A., Levin, S. A., van Nes, E. H., Pascual, M., and Vandermeer, J.: Anticipating Critical Transitions, *Science*, 338, 344–348, <https://doi.org/10.1126/science.1225244>, 2012a.
- 945 Scheffer, M., Hirota, M., Holmgren, M., Van Nes, E. H., and Chapin, F. S.: Thresholds for boreal biome transitions., *Proc. Natl. Acad. Sci. U. S. A.*, 109, 21384–9, <https://doi.org/10.1073/pnas.1219844110>, 2012b.
- Scheffer, M., Carpenter, S. R., Dakos, V., and van Nes, E. H.: Generic Indicators of Ecological Resilience: Inferring the Chance of a Critical Transition, *Annu. Rev. Ecol. Evol. Syst.*, 46, 145–167, <https://doi.org/10.1146/annurev-ecolsys-112414-054242>, 2015.
- 950 Scheffer, M., Bolhuis, J. E., Borsboom, D., Buchman, T. G., Gijzel, S. M. W., Goulson, D., Kammenga, J. E., Kemp, B., van de Leemput, I. A., Levin, S., Martin, C. M., Melis, R. J. F., van Nes, E. H., Romero, L. M., and Olde Rikkert, M. G. M.: Quantifying resilience of humans and other animals, *Proc. Natl. Acad. Sci.*, 0, 201810630, <https://doi.org/10.1073/pnas.1810630115>, 2018.
- 955 Seekell, D. a. and Dakos, V.: Heteroskedasticity as a leading indicator of desertification in spatially explicit data, *Ecol. Evol.*, n/a-n/a, <https://doi.org/10.1002/ece3.1510>, 2015.
- Seekell, D. a., Carpenter, S. R., Cline, T. J., and Pace, M. L.: Conditional Heteroskedasticity Forecasts Regime Shift in a Whole-Ecosystem Experiment, *Ecosystems*, 15, 741–747, <https://doi.org/10.1007/s10021-012-9542-2>, 2012.
- Smith, T., Zotta, R.-M., Boulton, C. A., Lenton, T. M., Dorigo, W., and Boers, N.: Reliability of resilience estimation based on multi-instrument time series, *Earth Syst. Dyn.*, 14, 173–183, <https://doi.org/10.5194/esd-14-173-2023>, 2023.
- 960 Sole, R. V., Manrubia, S. C., Luque, B., Delgado, J., Bascompte, J., Solé, R. V., Manrubia, S. C., Luque, B., Delgado, J., and Bascompte, J.: Phase transitions and complex systems, *Complexity*, 1, 13–26, 1996.
- Spanbauer, T. L., Allen, C. R., Angeler, D. G., Eason, T., Fritz, S. C., Garmestani, A. S., Nash, K. L., Stone, J. R., Stow, C. A., and Sundstrom, S. M.: Body size distributions signal a regime shift in a lake ecosystem, *Proc. R. Soc. Lond. B Biol. Sci.*, 283, <https://doi.org/10.1098/rspb.2016.0249>, 2016.
- 965 Spears, B. M., Futter, M. N., Jeppesen, E., Huser, B. J., Ives, S., Davidson, T. A., Adrian, R., Angeler, D. G., Burthe, S. J., Carvalho, L., Daunt, F., Gsell, A. S., Hessen, D. O., Janssen, A. B. G., Mackay, E. B., May, L., Moorhouse, H., Olsen, S., Søndergaard, M., Woods, H., and Thackeray, S. J.: Ecological resilience in lakes and the conjunction fallacy, *Nat. Ecol. Evol.*, <https://doi.org/10.1038/s41559-017-0333-1>, 2017.

- 970 Staver, A. C., Archibald, S., and Levin, S. A.: The Global Extent and Determinants of Savanna and Forest as Alternative Biome States, *Science*, 334, 230–232, <https://doi.org/10.1126/science.1210465>, 2011.
- Tang, Y., Zhu, X., He, C., Hu, J., and Fan, J.: Critical slowing down theory provides early warning signals for sandstone failure, *Front. Earth Sci.*, 10, 2022.
- Thompson, J. M. T. and Sieber, J.: Predicting climate tipping as a noisy bifurcation: a review, *Int. J. Bifurc. Chaos*, 21, 399–423, <https://doi.org/10.1142/s0218127411028519>, 2011.
- 975 Tirabassi, G., Viebahn, J., Dakos, V., Dijkstra, H. a., Masoller, C., Rietkerk, M., and Dekker, S. C.: Interaction network based early-warning indicators of vegetation transitions, *Ecol. Complex.*, 19, 148–157, <https://doi.org/10.1016/j.ecocom.2014.06.004>, 2014.
- Titus, M. and Watson, J.: Critical speeding up as an early warning signal of stochastic regime shifts, *Theor. Ecol.*, <https://doi.org/10.1007/s12080-020-00451-0>, 2020.
- 980 Uden, D. R., Twidwell, D., Allen, C. R., Jones, M. O., Naugle, D. E., Maestas, J. D., Allred, B. W., and Wallace, K. J.: Spatial Imaging and Screening for Regime Shifts, 7, 1–16, <https://doi.org/10.3389/fevo.2019.00407>, 2019.
- Veldhuis, M. P., Martinez-Garcia, R., Deblauwe, V., and Dakos, V.: Remotely-sensed slowing down in spatially patterned dryland ecosystems, *Ecography*, e06139, <https://doi.org/10.1111/ecog.06139>, 2022.
- 985 Veraart, A. J. A. J., Faassen, E. J. E. J., Dakos, V., Van Nes, E. H. E. H., Lürling, M., Scheffer, M., and Lurling, M.: Recovery rates reflect distance to a tipping point in a living system., *Nature*, 481, 357–9, <https://doi.org/10.1038/nature10723>, 2012.
- Verbesselt, J., Umlauf, N., Hirota, M., Holmgren, M., Van Nes, E. H., Herold, M., Zeileis, A., and Scheffer, M.: Remotely sensed resilience of tropical forests, *Nat. Clim. Change*, 6, 1028–1031, <https://doi.org/10.1038/nclimate3108>, 2016.
- 990 Wang, R., Dearing, J. A., Langdon, P. G., Zhang, E., Yang, X., Dakos, V., and Scheffer, M.: Flickering gives early warning signals of a critical transition to a eutrophic lake state, *Nature*, 492, 419–422, <https://doi.org/10.1038/nature11655>, 2012.
- Weinans, E., Lever, J. J., Bathiany, S., Quax, R., Bascompte, J., Van Nes, E. H., Scheffer, M., and Van De Leemput, I. A.: Finding the direction of lowest resilience in multivariate complex systems, *J. R. Soc. Interface*, 16, <https://doi.org/10.1098/rsif.2019.0629>, 2019.
- 995 Weinans, E., Quax, R., van Nes, E. H., and Leemput, I. A. van de: Evaluating the performance of multivariate indicators of resilience loss, *Sci. Rep.*, 11, 9148, <https://doi.org/10.1038/s41598-021-87839-y>, 2021.
- Wissel, C.: A universal law of the characteristic return time near thresholds, *Oecologia*, 65, 101–107, 1984.
- 1000 Wu, H., Hou, W., Yan, P.-C., Zhang, Z.-S., and Wang, K.: A study of the early warning signals of abrupt change in the Pacific decadal oscillation\*, *Chin. Phys. B*, 24, 089201, <https://doi.org/10.1088/1674-1056/24/8/089201>, 2015.
- Wu, S., Liu, L., Li, D., Zhang, W., Liu, K., Shen, J., and Zhang, L.: Global desert expansion during the 21st century: Patterns, predictors and signals, *Land Degrad. Dev.*, 34, 377–388, <https://doi.org/10.1002/ldr.4466>, 2023.
- 1005 Yin, Z., Dekker, S. C., Rietkerk, M., van den Hurk, B. J. J. M., and Dijkstra, H. A.: Network based early warning indicators of vegetation changes in a land–atmosphere model, *Ecol. Complex.*, 26, 68–78, <https://doi.org/10.1016/j.ecocom.2016.02.004>, 2016.