

Regionalization of GR4J model parameters for river flow prediction in Paraná, Brazil

Louise Akemi Kuana ¹, Arlan Scortegagna Almeida ², Emílio Graciliano Ferreira Mercuri ³, and Steffen Manfred Noe ⁴

¹Programa de Pós-Graduação em Engenharia Ambiental, Universidade Federal do Paraná, Curitiba, Brasil.

²Sistema de Tecnologia e Monitoramento Ambiental do Paraná (Simepar).

³Departamento de Engenharia Ambiental, Universidade Federal do Paraná, Curitiba, Brasil.

⁴Institute of Forestry and Engineering, Estonian University of Life Sciences, Tartu, Estonia.

Correspondence: E.G.F. Mercuri (emilio@ufpr.br)

Abstract. Regionalization methods dependent on hydrological models comprise techniques for transferring calibrated parameters in instrumented watersheds (donor basins) to non-instrumented watersheds (target basins). There is a lack of flow regionalization studies in regions with humid subtropical and hot temperate climate and one of the main novelties of this research is to assess the regionalisation of low flows in Paraná, south of Brazil. In addition to filling this gap, this research presents artificial intelligence innovative techniques for transferring parameters from hydrological models. This study aims to evaluate regionalization methods for transferring GR4J parameters and predict river flow in catchments from the south of Brazil. We created a dataset for Paraná state with daily hydrological time series (precipitation, evapotranspiration, and river flow) and watershed physiographic and climatological indices for 126 catchments. Rigorous quality control techniques were applied to recover data from 1979 to 2020. The regionalization methods compared in this study are based on: simple spatial proximity, physiographic-climatic similarity and regression by Random Forest. Direct regression of Q_{95} was calculated using Random Forest and compared with indirect methods, i.e. using regionalization of GR4J parameters. A set of 100 basins were used to train the regionalization models and another 26 catchments, pseudo non-instrumented, were used to evaluate and compare the performance of regionalizations. The GR4J model showed acceptable performances for the sample of 126 catchments, 65% of watersheds presented log-transformed Nash-Sutcliffe coefficient greater than 0.70 during validation period. According to evaluation carried out for the sample of 26 basins, regionalization based on physiographic-climatic similarity showed to be the most robust method for prediction of daily and Q_{95} reference flow in basins from Paraná state. When increasing the number of donor basins, the method based on spatial proximity has comparable performance to the method based on physiographic-climatic similarity. Based on the physiographic-climatic characteristics of the basins, it was possible to classify 6 distinct groups of watersheds in Paraná. Each group shows similarities in forest cover, urban area, number of days with more than 150 mm of precipitation, and average duration of consecutive dry days. Although the physiographic-climatic similarity method obtained the best performance, the use of machine learning algorithms to regionalize the model parameters had good performance using climatic and physiographic indices as inputs. This research represent a proof-of-concept that basins without flow monitoring can have a good approximation of streamflow if physiographic-climatic information is provided.

1 Introduction

25 According to Razavi and Coulibaly (2013), regionalization methods dependent on rainfall-runoff models comprise techniques for transferring calibrated parameters in instrumented basins (donor basins) to non-instrumented basins (target basins). The study carried out by Arsenault et al. (2019) presents three techniques based on physical similarity, spatial proximity and regression to estimate parameters of three different hydrological models, with the purpose of predicting flows in watersheds that do not have monitoring. Although many advances have been made in this area of hydrology, there are still uncertainties in
30 methods for estimating flows in ungauged basins (Guo et al., 2020). Part of this is due to the uniqueness of each region on the globe, which concerns not only the uniqueness of each location, but also the issue of availability of information (e.g. descriptive characteristics of basins and availability of hydrometeorological data). Additionally, hydrological systems are depend on temporal and spatial scales with interactions between climate, vegetation, topography, and soil (Blöschl et al., 2013; Hrachowitz et al., 2013), that make the task of estimating hydrological information in basins with little or no data challenging.

35 The watersheds analysed in this research belong to the southern region of Brazil with area of approximately 199,315 km². The hydrography of Paraná is composed mainly by Iguaçu River, Paraná River, Paranapanema River, Tibagi River, Ivaí River, and Piquiri River. The study of low flows and droughts is critical in the context of water availability in Brazil, river dams and reservoirs are used for: power generation (70% of Brazilian energy sector), to provide drinking water for population, irrigate crops, and distribute water for industrial use (Carneiro et al., 2020). The Paraná basin, a major hydroelectric producing region
40 with 32% (60 million people) of Brazil's population, in 2000 and 2014 experienced very severe drought, compromising the water supply for 11 million people in São Paulo (Melo et al., 2016). The State of Paraná faced one of its worst droughts in its history between 2020 and 2021 (Cunha et al., 2019; Juliani et al., 2020). There are few studies of flow regionalization in the south of Brazil (Kaviski et al., 2002; Bazzo and Almeida, 2016), at the same time the hydrological measurements and field work are declining (Burt and McDonnell, 2015; Melo et al., 2020). Our work brings novel contributions for watersheds with
45 similar climate and geography, also it provides more information for governmental planning and management.

In order reveal research gaps and how our study goes beyond the existing literature, we highlight the following points: i) the need to better understand regionalization techniques in subtropical climate, which has a very distinct and specific runoff generation mechanisms; ii) a proof-of-concept that basins without flow monitoring can have a good approximation of streamflow if other physiographic-climatic indices are provided; and iii) machine learning algorithms perform better with physiographic-climatic indices as inputs.
50

The aim of this article is to improve the methodology for transferring parameters of the GR4J model calibrated in instrumented watersheds to predict daily flows in basins with little or no hydrological information. The performance of different regionalization methods are verified in Paraná basins that have a history of hydrometeorological data records. Other objectives are the following: i) build a hydrological database for Paraná State, Brazil. The database consists of daily flow, precipitation
55 and evapotranspiration time series and catchments descriptive indices; ii) develop and improve methods for transferring GR4J calibrated parameters through regionalization techniques based on spatial distance, physiographic-climatic similarity and non-linear regression; and iii) compare regionalization methods and Random Forest to estimate the Q_{95} reference flow.

2 Data for Paraná State

60 The study area was delimited based on the hydrographic network of Paraná State, Brazil, which is available at Instituto Água e Terra (IAT) (IAT, 2020), and on a rectangular polygon demarcated between latitudes 22° 15' 36"S and 26° 54' 00"S, and longitudes 48° 00' 00"W and 54° 42' 00"W. Therefore, study area includes the Paraná State, and extends into parts of Santa Catarina and São Paulo States, not completely covering Paranapanema and Paraná river basins (Figure 1).

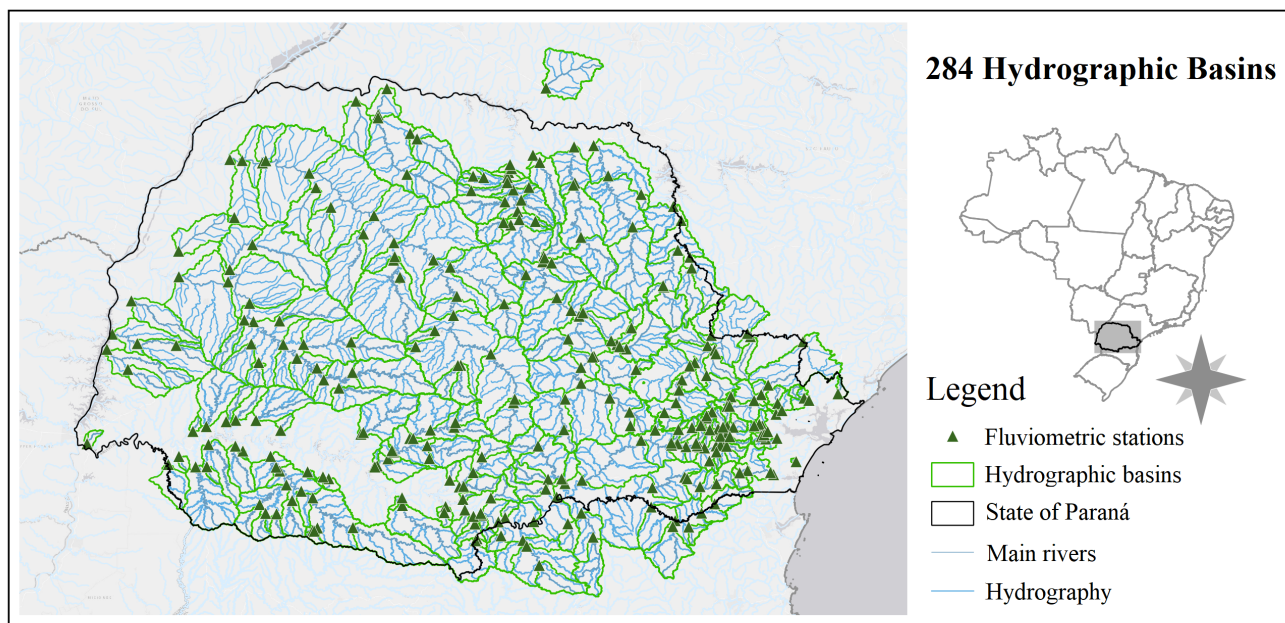


Figure 1. River flow stations and watershed delineation.

65 Time series of hydrometeorological observations were obtained at: Agência Nacional de Águas e Saneamento Básico (ANA) via HidroWEB Portal, Instituto Nacional de Meteorologia (INMET), Sistema de Tecnologia e Monitoramento Ambiental do Paraná (Simepar), Água e Terra Institute (IAT) and Instituto de Desenvolvimento Rural do Paraná (IAPAR-EMATER).

70 Although there are datasets at national level, such as CAMELS-BR (Chagas et al., 2020) and CABra (Almagro et al., 2021), the authors decided to construct a new dataset based on the hydrographic network of Paraná State. This network has a consistent topology and codification, it's hierarchization was proposed by Otto Pfafstetter (Pfafstetter, 1989) and allows extraction of information upstream and downstream of each river section (Sousa et al., 2009).

2.1 Precipitation time series

The Llabrés-Brustenga et al. (2019) quality control method was used to evaluate daily rainfall data series from 1389 stations, which are shown in Figure 2. The method can be divided into four steps. First, stations coordinates, the period of operation and percentage of available data are checked. In second stage, data that are not physically possible are identified and discarded, such as: negative precipitation values and extreme events greater than 300 mm.

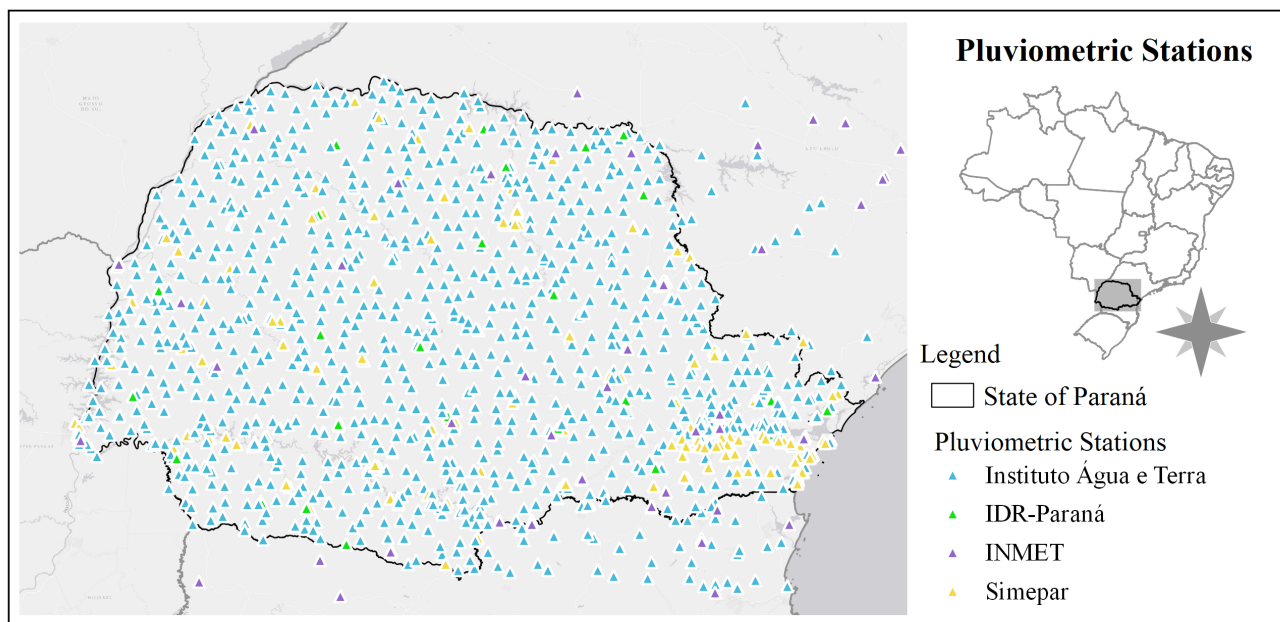


Figure 2. Location of pluviometric stations.

Third stage consists of analyzing the historical series of each station individually. For each year, a quality index is calculated, which depends on 5 (five) factors, namely: i) Percentage of data available in each year of the series; ii) Distribution of failures throughout the year. For this factor, the penalty becomes greater for a series that had long continuous periods of failures; iii) Probability that the series is formed by possible failures that have been padded with zeros. This factor penalizes the series that had monthly cumulative data equal to zero, indicating that “false zeros” are possible; iv) Probability of systematic accumulation of two or more days of the week. This factor penalizes the station if a day of the week with a tendency to rain less than other days of the week is detected at the station; and v) Probability that the series contains outliers. The quality index can range from 0 (zero) to 100 (one hundred) percent. Values equal to 100% indicate absolute quality, above 80% is considered acceptable and below 50% the quality is very low.

The verification process between what was recorded at the station to be analyzed (candidate station) and at neighboring stations (auxiliary stations) is carried out in the fourth stage, also known as relative quality control. At this stage, there are

two indices that are relevant to the classification of daily values for the candidate post, which can be labeled as: valid, “V”, doubtful, “D”, invalid, “N”, or insufficient information, “I”. The records identified as insufficient information denote that there are less than two auxiliary stations in the region and in the same period to be properly evaluated. The first index, called representativeness index, verifies the daily values for each station pair, candidate - auxiliary, this index considers the distance between stations, the altitude difference and the correlation with measured data. A maximum distance of up to 50 km was defined between candidate and auxiliaries stations. The second index is used to analyze the monthly cumulative data. From the Simepar stations, maximum limits of monthly accumulated were established, which were applied to evaluate the historical series of each candidate station.

Validated daily data were spatialized on a $1 \text{ km} \times 1 \text{ km}$ grid using space-time kriging, where precipitation values were estimated on a daily scale using weighted averages between neighborhood data. Then, a second spatialization method was applied to the most recent precipitation history. The method presented by Calvetti et al. (2017) was used to estimate precipitation spatially within the area of interest, where the Poisson equation was used to combine radar and satellite data with the records observed by telemetry precipitation stations. Finally, average rainfall was measured using the arithmetic mean of the grid points located within the drainage area of each watershed.

2.2 River flow data and delineation of watersheds

We constructed the river flow dataset in two ways: i) by directly obtaining river flow time series, where observed water levels were previously transformed into flow by the agency responsible for operating the station, and ii) by time series of water levels which still had not been transformed into flow and, therefore, when available, the station’s rating curves were obtained and then the quota was transformed into flow. We have considered acceptable to use stations with at least 5 years of river flow records for the application of regionalization methods. Time series from stations downstream of flow regularization (dams and reservoirs) were discarded or considered partially in the periods prior to the dams construction.

Conventional stations were obtained from the IAT and HidroWEB Portal databases. Although both banks preserve information from stations of different operators, it was adopted that information coming from the IAT bank would have priority over the ones from HidroWEB Portal. The inventory provided by the technician responsible for the IAT informs that there are 413 river flow stations in the study area with time series bigger than 5 years. From the ANA metadata catalogue, only 15 different stations with at least 5 years of river flow records were identified. The telemetric series of 83 IAT stations and 57 Simepar stations were obtained from the Simepar database.

Locations of the stations were checked through the manual procedure of hydroreferencing using the hydrographic network of the IAT. Finally, a quality control was carried out, in which non-consistent data were disregarded, such as: sudden ruler changes clearly altering the base flow, series with large gaps alternating with short measurement periods, low precision measurements or that presented constant values for long periods. In the end, a total of 284 river flow stations were obtained with observations ranging from 1926 to 2020, as shown on the map in Figure 1.

2.3 Potential evapotranspiration

120 The FAO Penman-Monteith (Allen et al., 1998) equation was used to estimate potential evapotranspiration (ET). This method requires time series of air temperature, air relative humidity, wind speed and solar radiation, which were obtained through Simepar telemetric stations with records ranging from 1997 to 2020. ET was based on long-term average daily values, which means the same potential evapotranspiration series was repeated every year for each station. Subsequently, the punctual information was spatialized using a method of regression followed by interpolation, also known as Regression-Kriging or hybrid
125 method of interpolation (Hengl et al., 2007).

2.4 Catchment Descriptors

Table A1 from the appendix shows catchment descriptors statistics (mean, standard deviation, quartiles, minimum and maximum) for the 126 basins of Paraná dataset. It has 39 descriptive indices divided in 4 categories: physiographic, climatological, land use / land cover, and soil type. Quantitative indices were used to describe landscape, relief, climate, topology of the
130 hydrography, land use and soil type of the watershed. Physiographic indices were obtained for each geographic location and topography of the drainage networks for the selected basins. From the hydrographic network, areas and drainage sections were obtained, which were used as a basis for calculating the indices described in Table A1. Digital elevation model (DEM) with a resolution of 30 meters from NASA's Shuttle Radar Topography Mission (SRTM) was used to estimate slopes and altitudes. Land use and land cover maps for the year 2019, provided by MapBiomias (Souza et al., 2020), were used for calculating
135 the fractions of area that each class occupies in the basins and to determine the dominant class. Soil map was obtained from Embrapa (2020) for Paraná State with a scale of 1:250,000.

The curve number method (CN) developed by Soil Conservation Service (1972) relates soil and land use and land cover information to classify the region based on its storm water retention potential. The ANA metadata catalog was used to estimate the CN in Paraná basins. Average precipitation series and potential evapotranspiration estimates, which were previously
140 determined for each watershed, were used to calculate the indices related to precipitation and potential evapotranspiration. Furthermore, Barbieri et al. (2017) provided atlases of Paraná State with monthly average temperatures and average solar radiation for each season of the year. The atlases were produced based on measurements from INMET, Simepar and Instituto de Desenvolvimento Rural do Paraná (IDR-Paraná) stations between the period 2006 to 2016. This information was used to compute average indices in basins located within the state, and for the catchments on borders or among other states, average
145 values of the nearest watershed were adopted.

2.5 Watershed Selection

The watershed selection consists of 126 river basins that have at least 15 years of flow data between 1979 and 2020, and each year counted has a maximum of 10% of gaps. In addition, it was preferred that the historical series also had more recent data, which extended beyond the year 2010, and limited to homogeneous historical series that passed the Pettitt test (Pettitt, 1979).
150 The non-parametric Pettitt test was calculated using the library *Pyhomogeneity* in *Python*, it is able to indicate the year in which

a sudden change in the temporal trend occurred. The selected 126 watersheds are depicted in Figure 3. Figure A1 (appendix) shows the availability of data over the years, darker green indicates greater amount of data available in that year.

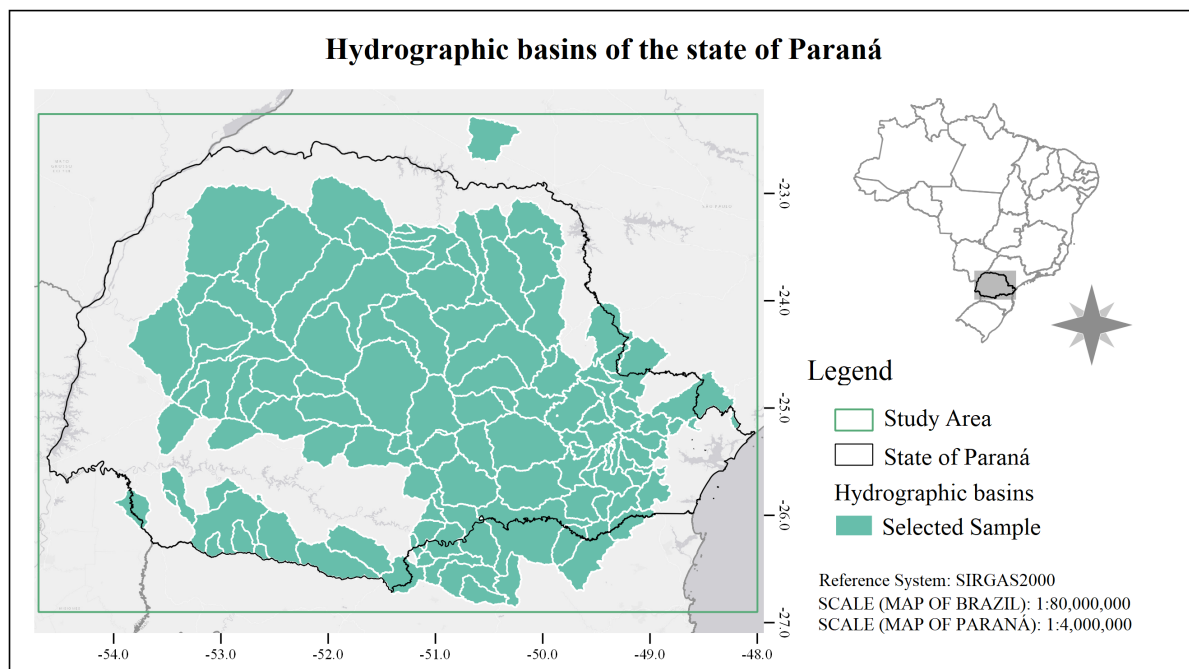


Figure 3. Location of selected watersheds in the state of Paraná.

3 Methods

155 The application of the physiographic-climatic similarity method implicitly considers two assumptions. The first assumption is that if there is similarity between basins, there are similar hydrological responses. The second assumption is that the similarity between sets of calibrated parameters of the hydrological model between two or more river basins may reflect on the similarity of their behavior in relation to the transformation of rainfall into flow (Oudin et al., 2008, 2010; Parajka et al., 2005; Blöschl et al., 2013). Spatial proximity assumes that neighboring basins have similarities in climate, soil type, land use and cover, slope, 160 altitude and other characteristics (Arsenault et al., 2019). Non-linear regression models seek to equate the relationship between dependent variable (e.g. hydrological model parameters) with different independent variables (e.g. descriptive characteristics) (He et al., 2011).

After the dataset construction, calibration and validation of the GR4J model was performed in all basins. The hydrological model, GR4J (*Génie Rural à 4 paramètres Journalier*), proposed by Perrin et al. (2003) has been implemented in different 165 countries, such as France (Oudin et al., 2008, 2010), Australia (Pagano et al., 2010), Brazil (Neto et al., 2021), South Korea

(Shin and Kim, 2016), Mexico (Arsenault et al., 2019), and Russia (Ayzel et al., 2019). This parsimonious model has been showing promising results and stands out for its dependence on few parameters and the use of two meteorological forcing variables on a daily scale, which are: the total precipitation and potential evapotranspiration averaged at the basin scale, requiring historical series of observed flows to adjustment of its four parameters. Three regionalization methods of the GR4J constants were tested, they are based on i) physiographic-climatic similarity, ii) simple spatial proximity and iii) non-linear regression. Estimates of Q_{95} flow using a machine learning algorithm based on the dataset was also compared with data. All these methods are explained in next subsections.

3.1 Calibration and Validation of the hydrological model

GR4J model parameters are obtained through calibration, a process of making simulated flow as close as possible to observed flow. Table 1 summarizes minimum and maximum values used for searching each constant of the model.

Table 1. Descriptions and ranges for GR4J model parameters.

Parameters	Description	Interval
X_1	Production tank capacity (mm)	0 to 6000
X_2	Coefficient of underground exchanges (mm/day)	-20 to 10
X_3	Propagation reservoir capacity (mm)	0 to 4000
X_4	Unit Hydrograph Base Time (days)	0.04 to 20

Simulation period was divided into 3 parts: warm-up, calibration and validation. First 5 years of simulation were used as a warm-up to eliminate the uncertainties of initial conditions (Daggupati et al., 2015). Calibration and validation periods were defined as 70% and 30% of the remaining time series after warm-up, respectively and sequentially.

Differential Evolution (DE) optimization method was used for GR4J calibration. This method was initially proposed by Storn and Price (1997) and is part of *Scipy* library in *Python*. DE is used in optimization problems that use a single objective function, which is our case. According to Krause et al. (2005) and Muleta (2012), the use of Nash-Sutcliffe logarithmic coefficient (logNSE) as an objective function is more influenced by low flows and, therefore, this metric can be used to evaluate the performance of minimum flows predictions. The logNSE can range from $-\infty$ (poor fit) to 1.0 (perfect fit), and is calculated as:

$$\logNSE = 1 - \frac{\sum_{i=1}^N (\ln(Q_i^{\text{sim}} + 0.001) - \ln(Q_i^{\text{obs}} + 0.001))^2}{\sum_{i=1}^N (\ln(Q_i^{\text{obs}} + 0.001) - \bar{Q}_{\ln}^{\text{obs}})^2}, \quad (1)$$

where Q_i^{sim} and Q_i^{obs} correspond to simulated and observed flow on day i , respectively. The average term $\bar{Q}_{\ln}^{\text{obs}}$ is calculated by $\bar{Q}_{\ln}^{\text{obs}} = \frac{1}{N} \sum_{i=1}^N \ln(Q_i^{\text{obs}} + 0.001)$.

Other metrics used to evaluate the performance of regionalization methods are the Pearson Correlation Coefficient (R), the Nash-Sutcliffe Coefficient (NSE) and the Nash-Sutcliffe square root coefficient (sqrtNSE) where flow is transformed by the square root.

3.2 Regionalization Methods

In this work, classical regionalization techniques based on physiographic-climatic similarity, simple spatial proximity and non-linear regression were used. Regionalization based on physiographic-climatic similarity starts by identifying and grouping the watersheds that have the greatest physical, climatic and geographic similarities. The purpose of clustering is to identify homogeneous regions based on descriptive indexes. Regionalization based on simple spatial proximity considers that the study region is homogeneous and, therefore, nearby basins are similar based on climate, relief, vegetation, landscape and soil type. Although both assume that physical similarities can be closely correlated with hydrological responses, if the region is heterogeneous, regionalization based on physiographic-climatic similarity transfers information between basins that are not necessarily geographically neighbours. A second assumption to be considered is: the similarity between a a parameters from two or more river basins may reflect on the similarity of their behaviour in relation to the transformation of rainfall into flow (Oudin et al., 2008, 2010; Parajka et al., 2005; Blöschl et al., 2013). On the other hand, regression methods consider that hydrological model parameters may be related to some physical processes that occur in watersheds and, consequently, are associated with some descriptive characteristics (Arsenault et al., 2019). In this way, it is possible to build a regression model for each parameter of the model.

Diagram in Figure 4 briefly summarizes the application of regionalization methods in this work. After calibrating the GR4J model for each of the 126 river basins, catchments were randomly divided into training and validation sets, with 80% of initial sample basins comprising the training set and 20% forming the validation set.

The training set is formed by river basins considered as possible donors of GR4J parameters, and which were also used to train and build regionalization models. Basins of the validation set are considered to be pseudo non-instrumentalized (indicated by the blue arrow in the diagram of Figure 4), even if it is known that these catchments have hydro meteorological data and were calibrated. Each of regionalization methods consists basically in different methodologies for selecting donor basins for transferring the parameters of GR4J model to target basins.

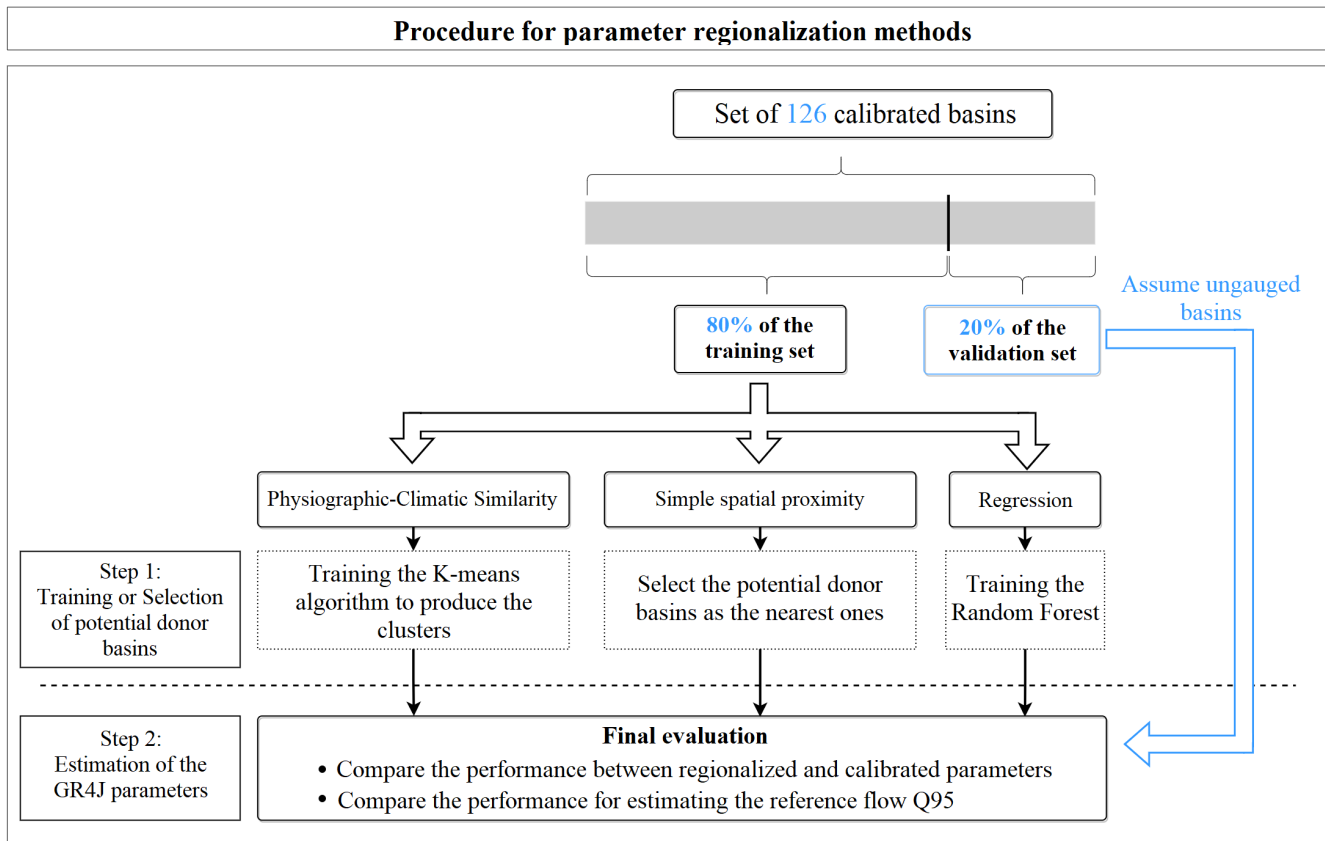


Figure 4. Diagram summarizing the regionalization methods.

3.2.1 Physiographic-Climatic Similarity

215 When applying Predictions in Ungauged Basins (PUBs) methods we must take into account the uniqueness of each region on the globe and all information available in each data set. Bearing in mind the uniqueness of each location, possible basin descriptors were carefully chosen so that they would synthesize different characteristics of river basins and be capable of transmitting the diversity between catchments within the same sample. Thus, the following descriptors were initially selected: basin area, length of main river, altitude and average basin slope, latitude of the basin centroid, daily averages of precipitation and potential evapotranspiration, aridity index, average number of days with extreme precipitation events and fraction of area covered by forest, agriculture and urbanization.

220

Descriptors were normalized so that mean and standard deviation corresponded to zero and one, respectively. This procedure ensures that different variables share the same scale without significant loss of information and, thus, allows categories with different magnitudes to be compared equally. Then, characteristics that showed variability were selected, i.e., that described the set of watersheds as being heterogeneous.

225

Table A1 shows the descriptive statistics adopted, it reveals that Paraná basins have diverse area, length of main river and average altitude. On the other hand, the fraction of urban area showed little variation; despite this, it was preferable to keep this descriptor, since urban infrastructure as well as other anthropogenic activities can seriously disturb the processes of hydrological cycle.

230 High multicollinearity between the descriptors can lead clustering algorithms to take wrong decisions during the formation of groups (Boutsidis et al., 2014). Therefore, two analyses were performed to identify the correlation between descriptors. First, Pearson correlation (R) between each pair of descriptors were calculated. Second, Variance Inflation Factor (VIF) was determined to measure the degree of multicollinearity between descriptors. IVF ranges from 1 (when there is no multicollinearity) to infinity (when there is perfect multicollinearity), the threshold used in this work was below 5. Correlations between descriptors
 235 can be seen in Figure B1 of Appendix B. High correlations, with R values above 0.70, were found between the following pairs of descriptors: aridity index and days of monthly accumulated precipitation above 150mm, average duration of days without rain and latitude of basin centroid, average slope of the basin and fraction of forest, fraction of agricultural area and fraction of forest, annual potential evapotranspiration and average altitude of the basin. To reduce the dimensionality of data the following descriptors were selected: area, forest fraction, urban area fraction, average duration of extreme events with high precipitation
 240 (days of monthly accumulated precipitation above 150mm) and average duration of days without rain.

The Euclidean distance (dist), equation 2, is a metric that can express similarities (small distances) or differences (large distances) between n attributes of two basins (a and b) in an n -dimensional space of attributes (Viviroli et al., 2009).

$$\text{dist}(a, b) = \sqrt{\sum_{k=1}^n [\text{atrib}_k(a) - \text{atrib}_k(b)]^2} \quad (2)$$

Clusters were produced using the K-means method, which was implemented using the *scikit-learn* package. The application
 245 of K-means algorithm involves: first, define the number of K groups, second, for each group initialize a centroid randomly within the range of each category, third, each point is assigned to the centroid that has the smallest distance Euclidean with respect to point, four, a new location of K centroids is computed based on the average of all points assigned to it. The iterative process from third to fourth step is repeated until there are no more changes in the centroids (Wilks, 2011).

The value of K directly affects how groups will be formed. Increasing the number K leads to more groups, but consequently
 250 each group will have fewer members (which brings homogeneity, but does not guarantee representativeness). On the other hand, creating fewer groups generates groups with more members (which does not allow proper identification of the different groups). Two ways to evaluate if the appropriate number of clusters resulting from the agglomeration method is using the Silhouette coefficient (Si) and the *Elbow* method.

According to Rousseeuw (1987), the Silhouette coefficient (Si) consists of calculating the average Euclidean distance (a_p)
 255 of a point p with all points belonging to the same group. Then, the average distance (b_p) of the point p with respect to all the points belonging to the nearest neighbour group is calculated. Thus, the coefficient can be determined using the equation:

$$\text{Si} = \frac{b_p - a_p}{\max(b_p, a_p)}. \quad (3)$$

Si can vary between $[-1, 1]$, and the closer to 1 the more distant the point p is from the neighbour group. Values close to 0 indicates that the point p is close to the limit that divides both groups. And measurements close to -1 indicate that the point p may have been associated with the wrong group.

The elbow method is a graphical tool for evaluating an optimal number of clusters. This technique involves calculating an agglomeration coefficient, in this work the criterion used was the sum of squared distances of each sample (x_i) with the respective centroid (μ_j) of the grouping that the sample is part of, which can be expressed as the sum of squared errors (SSE):

$$SSE = \sum_{i=1}^n (x_i - \mu_j)^2. \quad (4)$$

As number of clusters grows, distances between samples with their respective centroids decrease. However, the number of groups and the clustering coefficient are expected to be small. Thus, from a graph with agglomeration coefficient on y axis and number of groups on x axis, it is possible to identify the point at which there is a sharp flattening or a rapid drop in this coefficient, suggesting an optimal number of clusters (Ketchen Junior and Shook, 1996).

3.2.2 Simple Spatial Proximity

The distance between two points, in this case the centroids of target and donor basins, that have known latitude and longitude can be calculated using the Haversine distance D_H :

$$D_H = 2r \arcsin \left[\sqrt{\sin^2 \left(\frac{x_1 - x_2}{2} \right) + \cos(x_1) \cos(x_2) \sin^2 \left(\frac{y_1 - y_2}{2} \right)} \right], \quad (5)$$

where D_H refers to the distance in km, r is the average radius of the Earth, approximately 6371 km, x and y are respectively the latitudes and longitudes of points 1 and 2.

3.2.3 Regression

Multiple regression models, whether linear or non-linear, seek to find the best relationship between a dependent variable and independent variables, this is done by finding the minimum error given a target. In our case the GR4J model parameters are dependent variables which will be calculated based on descriptive characteristics of the basins (independent variables). The non-linear regression method Random Forest (Breiman, 2001), which was chosen for this work, is able to perform well when dealing with large datasets and is able to distribute weights for the independent variables according to their degree of importance. Thus, two types of regression methods were constructed: Random Forest I and Random Forest II.

Random Forest I used a thousand decision trees and was trained using basin descriptors. For this technique, it is necessary to produce a regression model independently for each parameter (X_1, X_2, X_3 and X_4), however the parameters of a hydrological model generally present dependent relationships among themselves, and for sometimes cannot be observed independently. Thus, a second method defined as Random Forest (RF) II included the calibrated parameters of training basins as descriptors. Second method followed the steps: i) a correlation analysis between GR4J parameters was performed, and thus an ordered list of parameters from highest to lowest correlation index was created; and ii) first regression was done for the parameter with

lowest correlation index, in this case only the descriptive characteristics were used to train the model. Then, regression was performed for parameter with second lowest correlation index, here we used descriptive characteristics and previous parameter that has the lowest correlation index. This process followed until all parameters had their regressions.

3.3 Q_{95} Flow Estimate

Instituto Água e Terra (IAT), the environmental agency responsible for legal permissions of water resources in Paraná State, uses the river flow with 95% permanence (Q_{95}) as a reference flow rate for permission licenses of water use (AGUASPARANÁ, 2010). We have proposed to estimate Q_{95} flow through regression techniques based on basin information and, thus, compare it with Q_{95} flow calculated using regionalized simulated flows. The construction of permanence curves involved: (i) ordering the flows Q in ascending order for N days, (ii) assigning to each ordered flow Q_m the corresponding ranking order m , (iii) compute the frequency or probability of the ordered flows Q_m to be equalled or surpassed $P(Q \geq Q_m)$, which can be calculated using the Weibull plot position shown in the following equation (Pugliese et al., 2014):

$$P(Q \geq Q_m) = 1 - \frac{m}{N + 1}. \quad (6)$$

After obtaining Q_{95} reference flows for the training set, a transformation of units from m^3/s to $L/s/km^2$ was performed, ensuring that the variable is not dependent on basin area. Then, another Random Forest regression method was trained and evaluated for the test set. This RF used 1,000 decision trees and watershed descriptors that presented weights greater than 0.01.

As terminology may sound ambiguous, it is important to distinguish here what are the training and test (or validation) sets used through this work. There are warm-up, calibration and validation periods for river flow simulation, and there are also training and validating sets for machine learning performance evaluation. The 126 basins were divided into training and validation sets for regionalization evaluation. Also, for estimating GR4J parameters and Q_{95} reference flows another training and test (or validation) sets were created for applying Random Forest regressions.

4 Results

4.1 Performance of the GR4J model

GR4J model showed acceptable performances for the sample of 126 watersheds, as shown in Figure 5, with about 65% of Paraná watersheds presenting logNSE equal to or greater than 0.70 during validation period. Basins located close to Paraná coastline reached a lower efficiency when compared to other regions. Some river basins presented superior performances in the validation period when compared to the calibration period, however inverse situations also occur. These phenomena may be associated with changes or improvements in measurement techniques, as well as influenced by changes in land use and land cover.

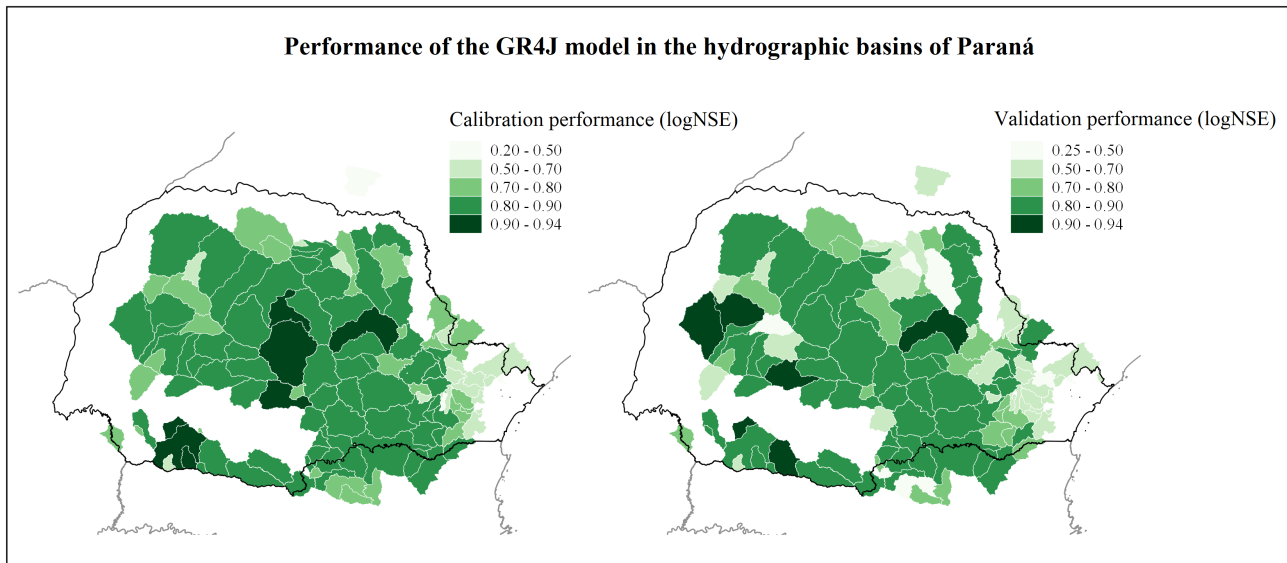


Figure 5. Performance of GR4J model during calibration and validation periods.

4.2 Performance of regionalization methods

Results of each regionalization method are described below.

4.2.1 Physiographic-Climatic Similarity

320 The regionalization method by physiographic-climatic similarity starts with defining the number K of clusters used to group the basins. *Elbow* method indicated that $K = 6$ was appropriate, which is the point of abrupt slope change or curve flattening in Figure 6. Accordingly, Silhouette coefficient (S_i) was higher when the number of clusters K was equal to 6, as shown in Figure 7. After defining K , we used 80% of 126 watersheds for training the K-means algorithm, which was used to group similar watersheds. The remaining 20% were used to test and evaluate the clusters formed.

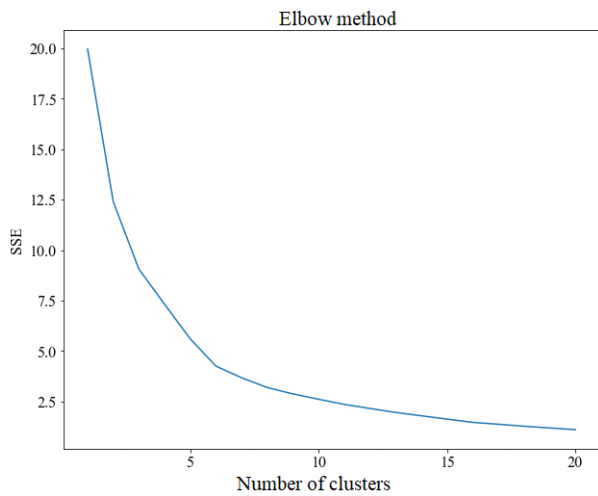


Figure 6. Elbow method for training set basins with K ranging from 1 to 20.

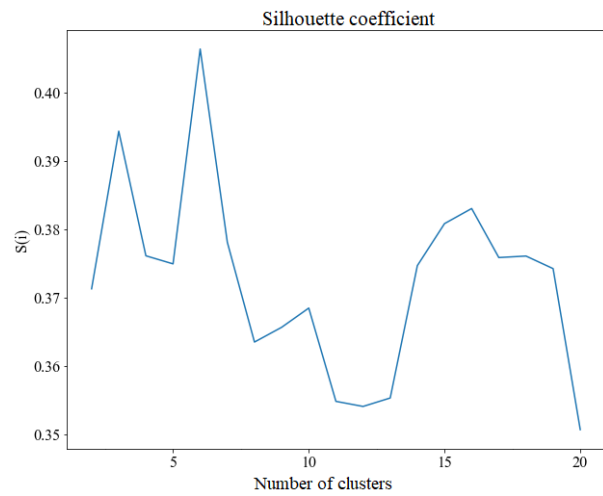


Figure 7. Silhouette coefficients for training set basins with K ranging from 1 to 20.

325 The geospatial distribution of watershed and clusters formed by K-means algorithm can be seen in Figure 8 for basins in training set (left) and validation set (right). Watersheds location *per group* in training set was similar to basins spatial distribution in validation set. Additionally, geographically close basins do not always belong to the same formed group.

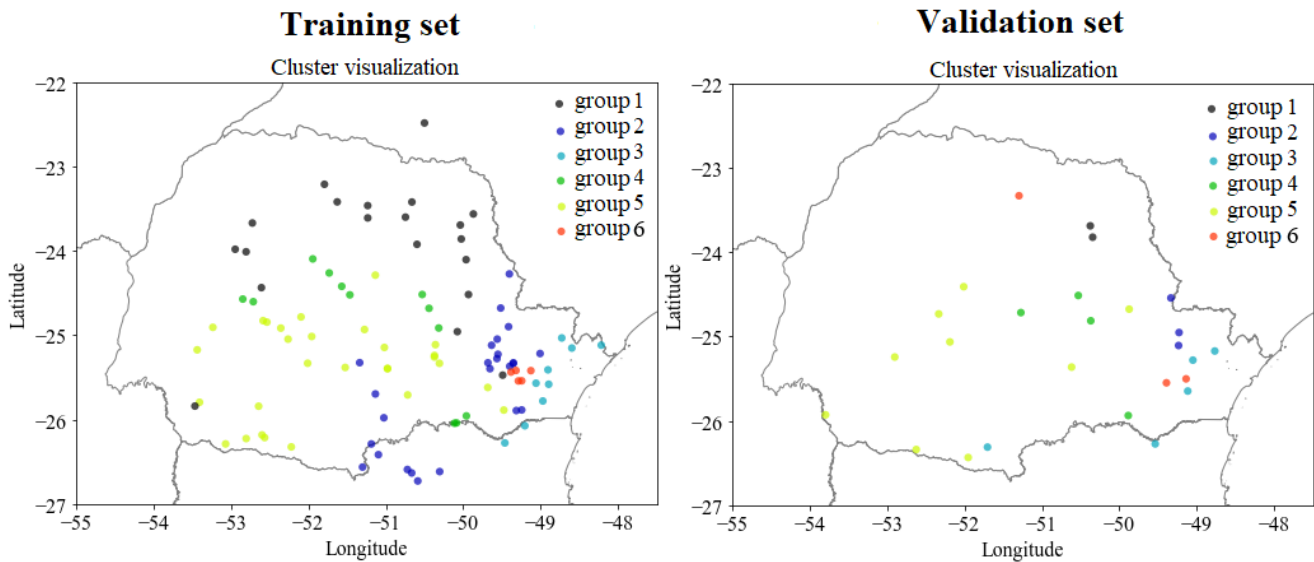


Figure 8. Clusters produced by the K-mean method for the 100 training basins (left side) and 26 validation basins (right side).

Descriptors distribution for each group in training set are shown in box-plots of Figure 9. Group 4 contains basins with the largest drainage areas, located in second and third plateaus of Paraná State centre. Group 5 contains basins that have

330 smaller drainage areas when compared to group 4, but which end up sharing similar characteristics to catchments in group 4. Groups 2 and 3 have a higher percentage of forests, but group 3 has a greater tendency to have more rainfall, smaller areas and shorter periods of consecutive dry days. On the other hand, group 1 stands out for containing the basins that have the longest average duration of consecutive dry days. Finally, group 6 stands out from the others because it contains basins with the highest percentages of urban area and, therefore, may be more influenced by anthropogenic activities. Although the descriptors point to heterogeneities between the formed groups, it is still possible to see overlaps, mainly in relation to the calibrated parameters of GR4J model, as shown in Figure 10.

335

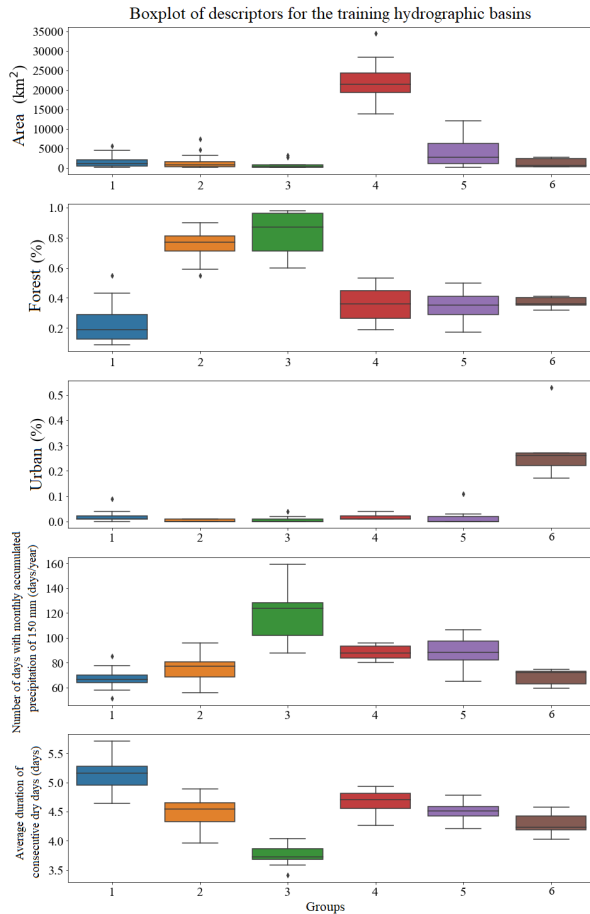


Figure 9. Basins descriptors distributions for training set clusters.

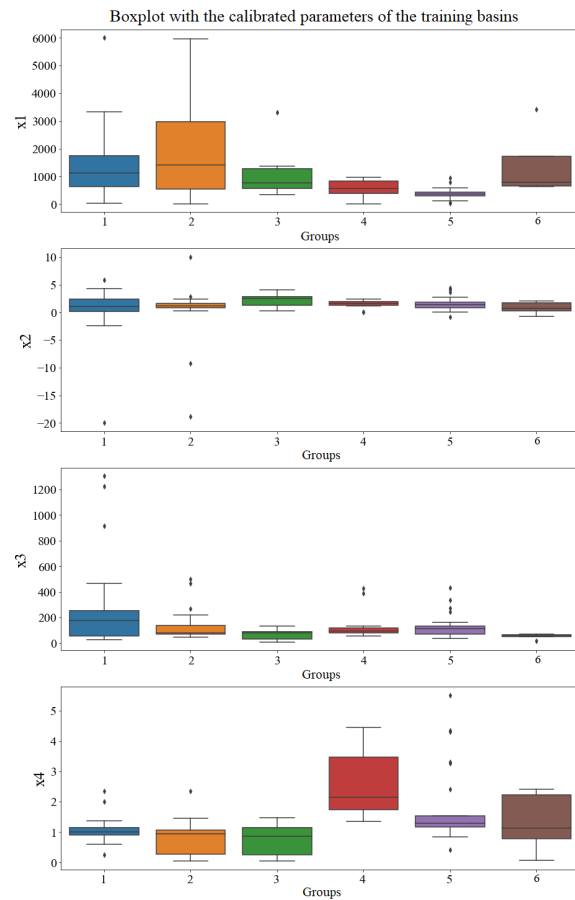


Figure 10. GR4J parameters distributions for basins in training set groups

Basins from group 2, which are located both on first and second plateaus of Paraná State, are similar in size to basins of group 1, but have a higher percentage of forest as a distinct characteristic. Basins of group 3 are found mainly in Paraná coastal region, near *Serra do Mar*, a long system of mountain ranges and escarpments, where orographic rain is more likely to occur.

340 Group 5, which is present in greater quantity, contains hydrographic basins located in all plateaus of the State.

Looking at parameters distributions (Figure 10) from a process perspective, we can find some relations with the catchment descriptors distributions (Figure 9). Parameter X_1 represents the runoff-producing capacity of the watershed reservoir. Our result shows that group 2, which has a higher percentage of forests, also have the highest X_1 median and spread. This can support the hypothesis that more forest may improve the catchment capacity of generating runoff. Parameter X_4 represents the base time of instantaneous unit hydrograph. The boxplots show that larger basins (group 4) have higher X_4 parameters, i.e. bigger watershed areas may increase the base time of a hydrograph. Parameter X_3 represents the propagation reservoir capacity. Our results show that group 6, which has more urban areas, also has the smaller X_3 parameter. This reflects the effect of cities impermeabilization in terms of the flow propagation capacity, i.e. after a precipitation event the watersheds with more urban area have a smaller propagation capacity, or a fast response of the flow peak.

350 4.2.2 Simple Spatial Proximity

The simple spatial proximity regionalization method considers that the region near to the basin of interest is homogeneous and, therefore, it has hydrological similarity. Assuming this hypothesis, we have used the Haversine distance between pairs of receiving basins (pseudo-non-monitored) and donor basins (instrumented basins) to transfer of parameters from the GR4J model. In both methods, physiographic-climatic similarity and simple spatial proximity, the receiving basins are all catchments within the validation set, and the possible parameter donor basins are those from the training set that reached logNSE equal to or greater than 0.70 during the validation period.

We have allowed more than one donor basin to transfer the GR4J parameters to target basins. When there is more than one donor catchment, the four parameters of each donor basin was used to estimate flow in the pseudo non-instrumented target basin. Once the flows were simulated with the donor basins parameters, the average of modelled flows were calculated and used for the target basin.

We compared the ability of both methods (spatial proximity and physiographic-climatic similarity) to generate good results in parameter regionalisation. For this we varied the number of donor catchments from 1 to 10 and evaluated the median logNSE of the receiving catchments river flow simulations in the validation period. The analysis to identify the number of donor basins, shown in Figure 11, indicates that the similarity method presented a maximum median logNSE for a total of 1 basin, and the proximity method presented better results using 7 basins as donors.

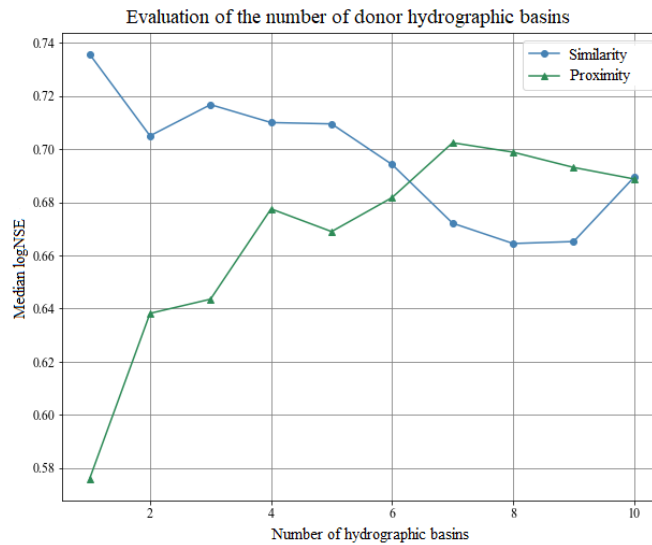


Figure 11. Evaluating the optimal number of donor basins based on logNSE medians during the validation period of receiving basins simulations. The green and blue lines represent spatial proximity and physiographic-climatic similarity regionalization methods, respectively.

4.2.3 Regression of GR4J Parameters

To train the Random Forest regression model, known information about the watersheds in training set was used, namely: the descriptive characteristics (independent variables) and the calibrated parameters of the GR4J model (dependent variable). The descriptive characteristics that Random Forest pointed out as most relevant were: slope of main river and average slope of the basin, for parameter X_1 ; average altitude and average radiation in winter, for parameter X_2 ; average radiation in winter, for parameter X_3 , and fraction of gleissol, for parameter X_4 . Which reinforce that machine learning algorithms perform better with physiographic-climatic indices as inputs.

4.3 Q_{95} Flow Estimation

In order to compare the performance of estimating the Q_{95} reference flow between direct (regression) and indirect (regionalization of parameters) techniques. The regression method of Random Forest, which was named as Random Forest Q_{95} , was applied to directly regionalize Q_{95} flow.

The construction of Random Forest Q_{95} regression model used known information about the watersheds in training set, namely: the watershed descriptors (independent variables) and the Q_{95} , in $L/s/km^2$, estimated from the observed historical series (dependent variable). The most relevant characteristics identified by Random Forest Q_{95} method were: days of precipitation with monthly accumulation of 150 mm, basin centroid longitude, basin average slope, pasture fraction and forest fraction. Q_{95} was calculated, for both observed and simulated flows, using calibration and validation periods. Thus, at least 15 years of fluvimetric records were used to estimate the reference flow.

Correlations between observed Q_{95} flows and those predicted by calibration and regionalization methods were calculated. Regionalizations with highest performances were obtained by physiographic-climatic similarity method, with correlation (R) of 0.973, and then Random Forest Q_{95} method with a correlation of 0.965. Q_{95} flows predicted by calibration of GR4J model had correlation of 0.9956, the regionalization method based on proximity had correlation of 0.9386, while Random Forest reached a correlation equal to 0.9392.

5 Discussion

In dry periods, flow of rivers in Paraná are sustained basically by two mechanisms: baseflow and groundwater recharge. Even in periods with no precipitation, there can happen movement of water from underground aquifers and saturated soil layers into surface water bodies, such as rivers, lakes, or wetlands. All basins studied in this research are draining to the Paraná river, beneath which resides the Guarani aquifer, one of the largest sandstone aquifers in the world (Hirata and Foster, 2021). Karst terrains are also widespread throughout Paraná basin with the Açungui Karst and non-carbonate karsts being the most important ones (Auler and Farrant, 1996; Vestena and Kobiyama, 2007). Açungui carbonate karst is characterised by large areas of horizontally bedded limestones and dolomites, which form extensive regions of little or no relief, and are drained by low gradient rivers (Auler and Farrant, 1996). Interbasin groundwater flow may also play an important role in the water balance during dry periods in karst catchments (Vestena and Kobiyama, 2007).

Bartiko et al. (2019) identified that the rainfall season occurs in DJF months in the south of Brazil. The basins under study in Paraná State are in a region of climatic transition, with reasonably well-distributed rainfall throughout the year. Region's seasonality is generally divided between the six months centered around summer, from October to March, which correspond to the wet period, and the remaining months, from April to September, which correspond to the dry period. However, the occurrence of cold fronts, low-pressure areas, and instability systems during the Brazilian winter can provoke large floods even when this dry period and interrupt the recession process of the hydrographs.

In appendix C we show the hydrographs by physiographic-climatic similarity group. The comparison of hydrographs separated by groups of similar watersheds show the seasonality and strength of smaller flow rates. In these climatic conditions, the predominance of low flows is expected from April to September. The slow release of groundwater volumes after the cessation of surface runoff causes a recession curve that is strongly influenced by river-aquifer interaction. This curve, which conceptual models try to capture through simple mathematical relationships, is influenced by various factors, namely: soil properties, hydraulic characteristics and extent of aquifers, rate and amount of groundwater recharge, evaporation and evapotranspiration of the basin, spatial distribution of vegetation cover, among others (Musy et al., 2014).

Due to the complexity of hydrological processes and the specificities existing in the river basins, representing the recession curve and simulating low flows using conceptual models is an arduous process, sometimes requiring a basin-by-basin hydrological analysis. Attempts to improve this representation in the design of hydrological models have resulted in an increase of parameters, as is the case of traditional Sacramento Soil Moisture Accounting (SAC-SMA) model, which uses two conceptual

reservoirs to simulate low flows with an overlay effect that allows better capture of low flow variability for a wider range of river basins (Burnash et al., 1995). The model applied in our study has an improved version, the GR6J, dedicated to low flows, which uses two additional parameters to better represent exchanges between the river and groundwater (Pushpalatha et al., 2011). In both cases, a better representation of low flows is achieved at the cost of increased model degrees of freedom, which is not ideal for regionalization issues.

In general, the vast majority of basins from validation group presented results with logNSE greater than 0.50 for different regionalization methods, and only two basins within this group presented low performance. Another general behavior was that basins with logNSE equal to or greater than 0.77 using calibrated parameters also achieved comparable performances with regionalized parameters. Additionally, in some cases where regionalization methods used more than one donor basin they provided a diversified set of parameters. When combining this set of parameters they can result in superior performance compared to the use of calibrated parameters in a period prior to validation.

Results were evaluated using the Pearson Correlation Coefficient (R), the Nash-Sutcliffe Coefficient (NSE) and their variations: the flow transform by the square root (sqrtNSE) and by the logarithm (logNSE). NSE gives more emphasis on the performance of higher flows, logNSE is more sensitive to low flows and sqrtNSE provides an intermediate performance (Oudin et al., 2008). Table 2 shows the median values of error statistics for estimated flows in validation period of the 26 watersheds from validation set. Among regionalization methods, values that achieved the best results for each index are highlighted in bold. Thus, the physiographic-climatic similarity stands out positively by reaching logNSE and sqrtNSE equal to 0.736 and 0.726, respectively. Another point to be highlighted is that the spatial proximity method presents, in general, median results for the three coefficients. Table 2 also reveals that regionalization methods performances, in particular proximity and Random Forest, can reach median NSE values equal to or greater than when parameters were calibrated in a period prior to validation.

Table 2. Median values of error statistics calculated for validation period. In bold are shown the best results for each index among regionalization methods.

Efficiency metrics in the validation period				
	Calibrated	Proximity	Similarity	Random Forest
NSE	0.621	0.635	0.602	0.643
logNSE	0.758	0.702	0.736	0.679
sqrtNSE	0.736	0.707	0.726	0.713

The review carried out by Guo et al. (2020) included the analysis of articles from different regions of the globe, which were recently published between 2013 and 2019, in which the researchers also applied similar regionalization techniques (proximity, similarity and regression). The same authors show evidence that regionalization methods based on distances (proximity and similarity) generally present superior performances to methods based on regression. The study carried out by Kuentz et al. (2017) in Europe explored the correlation between 16 different indices of hydrological behaviour responses (e.g. baseline flow

index, Q_5 and Q_{95}) and 35 physical descriptors (e.g. area, slope and aridity index), concludes that there are strong connections between the physical descriptors and the response rates of the hydrological behaviour.

Mohamed et al. (2019) explain that due to non-linear and multidimensional relationship between basins descriptive characteristics and model parameters, the application of regression methods that use machine learning techniques are becoming more common to extrapolate hydrological models parameters. In our study, Random Forest methods performed better when average radiation in winter and days of precipitation with monthly accumulation above 150 mm were informed to the algorithm, which reveals key variables in understand regionalization techniques in humid subtropical and hot temperate climate.

6 Conclusions

In this study, three regionalization methods were developed and deployed with the purpose of estimating daily flows in basins of Paraná State. A set of hydrometeorological data was created and presented together with catchments descriptive indexes. The amount of collected data is greater than national level datasets for the region, since a higher density of fluviometric stations were used. GR4J was employed for 126 watersheds and achieved optimistic performances in validation period ($\log\text{NSE} \geq 0.70$) for 65% of the watersheds.

All regionalization methods showed positive performances. Median values of $\log\text{NSE}$ in regionalization were equal to 0.702, 0.736 and 0.679 for spatial proximity, physiographic-climatic similarity and Random Forest methods, respectively. When comparing the median NSE between the three methods, Random Forest is slightly better. However, the median sqrtNSE was higher for the physiographic-climatic similarity method. The regionalization based on physiographic-climatic similarity proved to be the most robust method for predicting daily flow and Q_{95} reference flow. When increasing the number of donor basins, the method based on spatial proximity has comparable performance to the method based on physiographic-climatic similarity.

Based on the physiographic-climatic characteristics of the basins, it was possible to classify 6 distinct groups of watersheds in Paraná. Basins within each group showed similarities in their size, urban area fraction, average duration of consecutive dry days, number of days with more than 150 mm of precipitation, and forest fraction. Interestingly, the last two descriptors were also relevant for the Random Forest Q_{95} model. The use of machine learning algorithms to regionalize streamflow had good performance using climatic and physiographic indices as inputs. This research represent a proof-of-concept that basins without flow monitoring can have a good approximation of streamflow if physiographic-climatic information is provided.

Our regionalization study showed that parameters are sensible to basin physiographic characteristics and soil use, and this have a direct effect on the streamflow response, i.e. hydrograph peak time, hydrograph base time, production capacity and propagation capacity. Urban impermeable areas produce a fast response of the flow peak. Forests play a significant role in groundwater recharge and low flow generation through various mechanisms: interception and slowing infiltration; enhancing soil structure and porosity and reducing erosion through root system soil stabilization. Overall, forests act as natural sponges, slowing down the movement of water, enhancing infiltration, and promoting groundwater recharge. Protecting and maintaining forest ecosystems is essential for sustaining groundwater resources and ensuring water availability for both human and natural systems.

We recommend for future studies the use of stochastic optimization techniques for model calibration and the use of different hydrological models for parameter regionalizations. In addition, we suggest the estimation of confidence intervals for the regionalized parameters and the use of regionalization methods based on geostatistical techniques. Another recommendation is to include flow seasonality indices (Burn et al., 1997; Parajka et al., 2010) as descriptors to better characterize the physiographic-climatic similarity of the basins.

Appendix A: Data availability and physiographic/climatological indices

480 Figure A1 shows the availability of data over the years, the darker the shade of green the more data.. Watersheds descriptive characteristics are shown in Table A1, the region can be classified as humid subtropical climate (Matallo Junior, 2001).

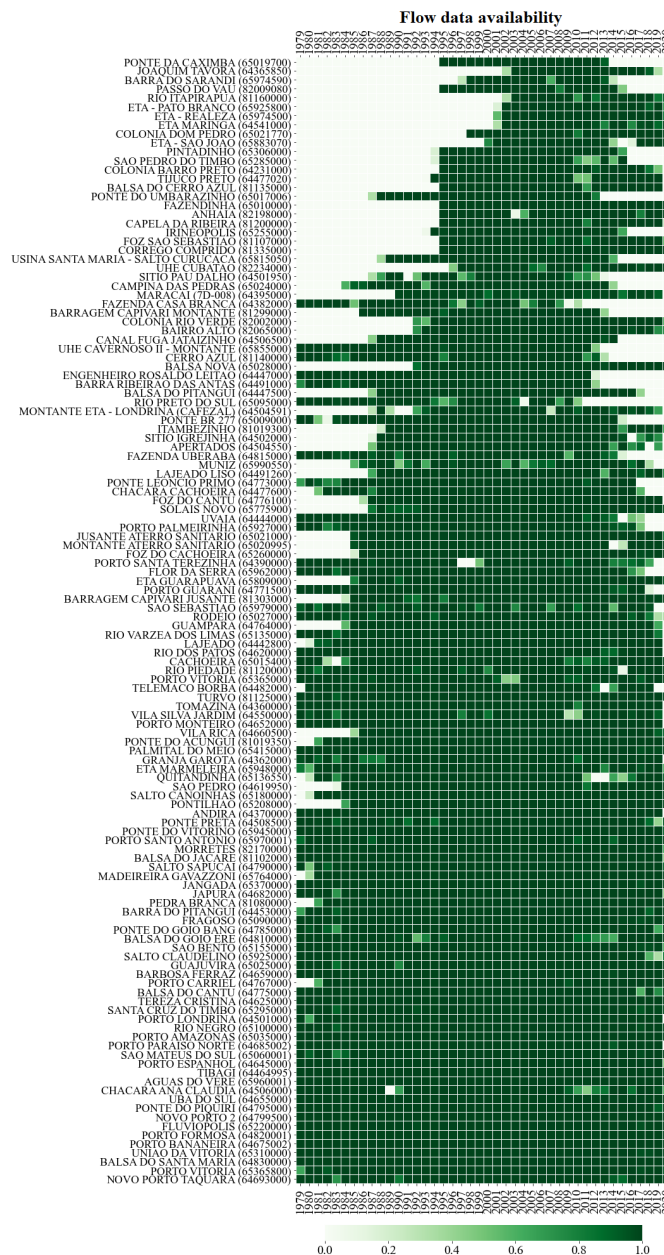


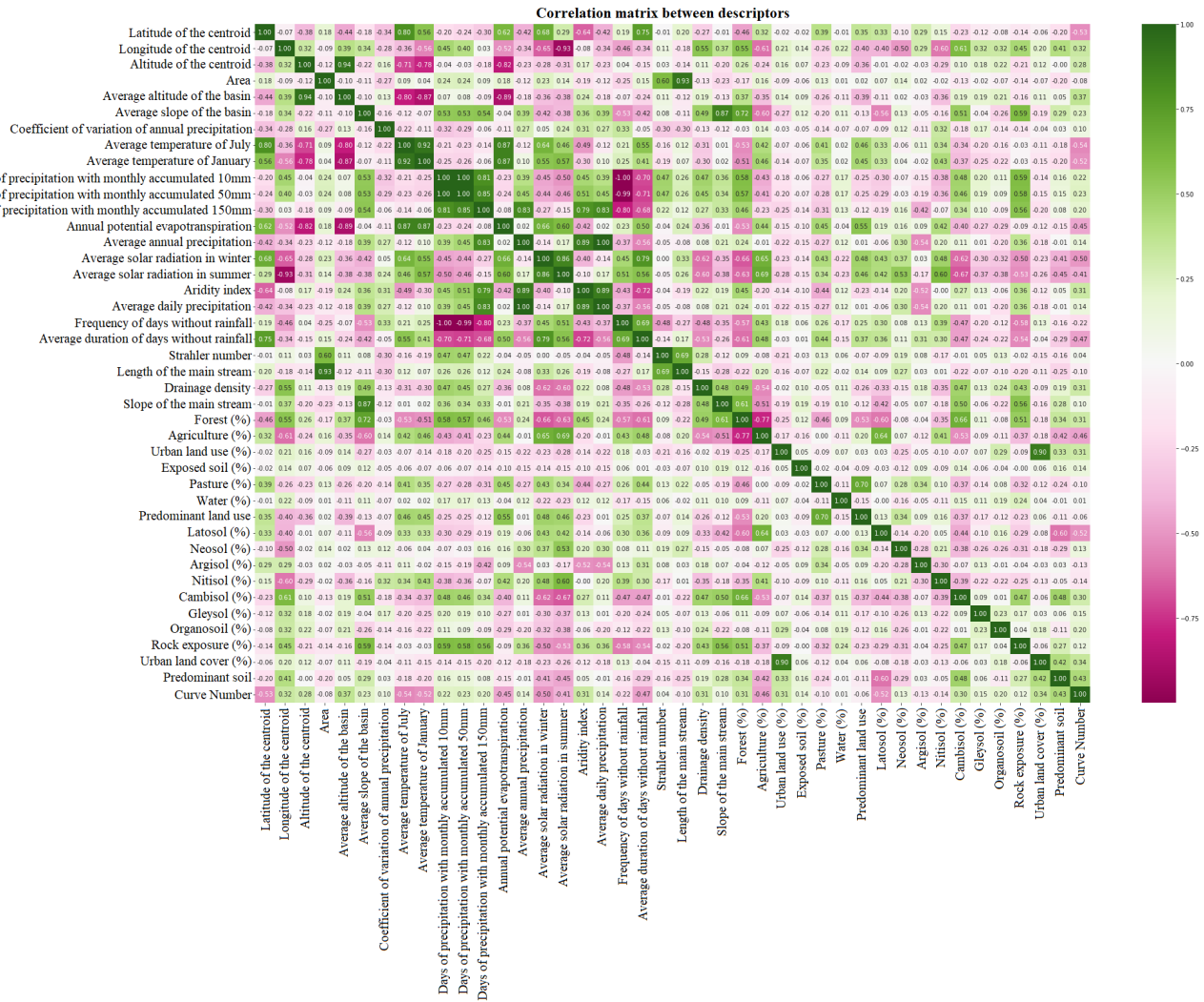
Figure A1. Availability of flow data by station. The darker the green color, the more data available for that year.

Table A1: Descriptive statistics for the Paraná dataset.

Descriptors	mean	standard deviation	min	25 %	50 %	75 %	max
Physiographic indices							
Mean altitude of the centroid (m)	743.16	210.64	62.00	611.25	773.50	892.25	1132.00
Area (km ²)	4474.15	7001.22	13.87	510.70	1523.48	4120.90	34440.18
Average height of the basin (m)	804.33	171.96	262.85	666.36	835.74	920.45	1150.88
Average slope of the basin (m/m)	0.16	0.06	0.06	0.12	0.14	0.18	0.33
Strahler number	6.69	1.29	3.00	6.00	7.00	7.00	9.00
Main river length (m)	185335.43	164551.04	7336.06	66867.87	122924.13	236343.96	748033.70
Drainage density (km/km ²)	2.55	1.04	0.72	1.81	2.33	3.28	5.59
Main river slope (m/m)	0.04	0.02	0.02	0.03	0.03	0.04	0.10
Climatological indices							
Coefficient of variation of annual precipitation	0.17	0.02	0.13	0.16	0.17	0.18	0.21
July average temperature (°C)	15.55	0.58	14.56	15.16	15.42	15.98	17.02
January average temperature (°C)	22.96	0.46	22.26	22.56	22.89	23.31	24.07
Precipitation days with monthly accumulation of 10mm	152.86	17.45	112.79	142.02	151.56	162.55	213.14
Precipitation days with monthly accumulation of 50mm	146.07	17.55	104.38	133.40	145.44	156.40	208.45
Precipitation days with monthly accumulation of 150mm	82.84	17.43	51.38	70.54	81.52	93.96	159.12
Annual potential evapotranspiration (mm)	1255.95	78.02	1139.88	1192.19	1243.22	1326.41	1423.14
Average annual precipitation (mm)	1678.61	216.08	1357.26	1511.72	1614.79	1828.01	2618.98
Average solar radiation in winter months (kwh/m ²)	3.39	0.15	3.13	3.27	3.39	3.50	3.70
Average solar radiation in summer months (kwh/m ²)	5.53	0.19	5.16	5.37	5.54	5.71	5.86
Aridity index	1.34	0.18	0.97	1.24	1.30	1.45	2.02
Average daily precipitation (mm/days)	4.60	0.59	3.72	4.14	4.42	5.00	7.17
Frequency of days without rain (days/year)	208.28	17.94	148.24	197.65	209.87	219.21	249.17
Average length of days without rain (days)	4.54	0.43	3.41	4.29	4.57	4.78	5.71
Land use and land cover							
(1) Forest (%)	0.48	0.25	0.06	0.29	0.41	0.71	0.98
(2) Agriculture (%)	0.27	0.21	0.00	0.07	0.26	0.42	0.79
(3) Urban area (%)	0.03	0.07	0.00	0.00	0.01	0.02	0.53
(4) Exposed soil (%)	0.00	0.00	0.00	0.00	0.00	0.00	0.01
(5) Pasture (%)	0.23	0.13	0.01	0.14	0.19	0.29	0.80
(6) Water (%)	0.00	0.01	0.00	0.00	0.00	0.00	0.08
Curve Number	77.37	4.68	57.93	75.90	77.88	80.39	87.91
Soil type							
(1) Latosol (%)	0.24	0.18	0.00	0.08	0.25	0.35	0.78
(2) Neosol (%)	0.20	0.18	0.00	0.02	0.15	0.33	0.70
(3) Argisol (%)	0.14	0.17	0.00	0.00	0.11	0.21	0.91
(4) Nitosol (%)	0.10	0.13	0.00	0.00	0.04	0.15	0.65
(5) Cambisol (%)	0.20	0.23	0.00	0.02	0.11	0.31	0.95
(6) Gleissolo (%)	0.01	0.03	0.00	0.00	0.00	0.02	0.21
(7) Organosol (%)	0.01	0.03	0.00	0.00	0.00	0.00	0.18
(8) Spodosol (%)	0.00	0.00	0.00	0.00	0.00	0.00	0.00
(9) Rocky outcrop (%)	0.02	0.04	0.00	0.00	0.00	0.01	0.27
(10) Urban Area (%)	0.01	0.05	0.00	0.00	0.00	0.00	0.43

Appendix B: Comparison of descriptors

Figure B1 shows the Pearson correlation coefficients between watershed descriptors.



Appendix C: Hydrographs by physiographic-climatic similarity group

485 Below is shown the hydrographs separated by groups of watersheds with physiographic-climatic similarity. The hydrographs were produced based on flow records observed from 2009 to 2016, the y axis was limited until 400 l/s/km^2 for comparison. Figures C1, C2, C3, C4, C5, C6 show hydrographs from catchments of groups 1, 2, 3, 4, 5 and 6, respectively.

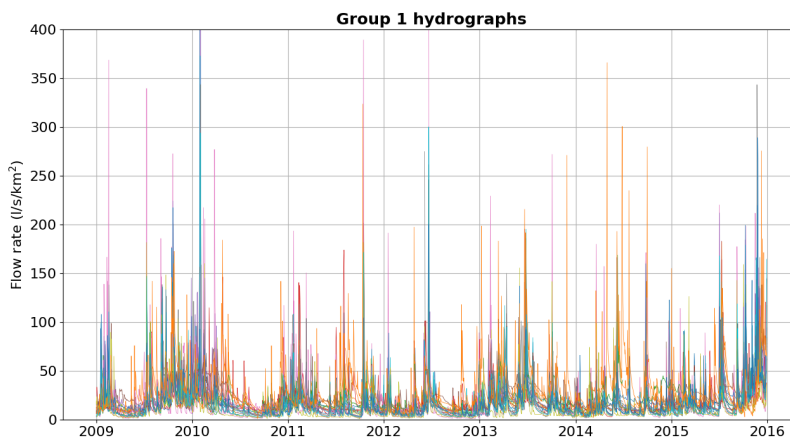


Figure C1. Hydrographs from basins of group 1.

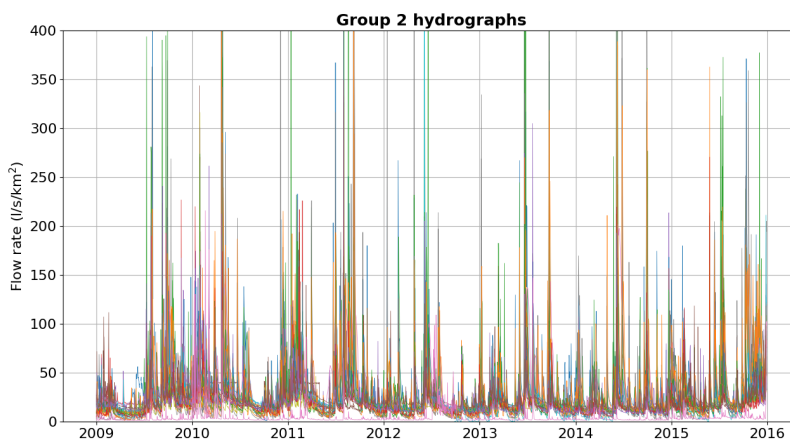


Figure C2. Hydrographs from basins of group 2 .

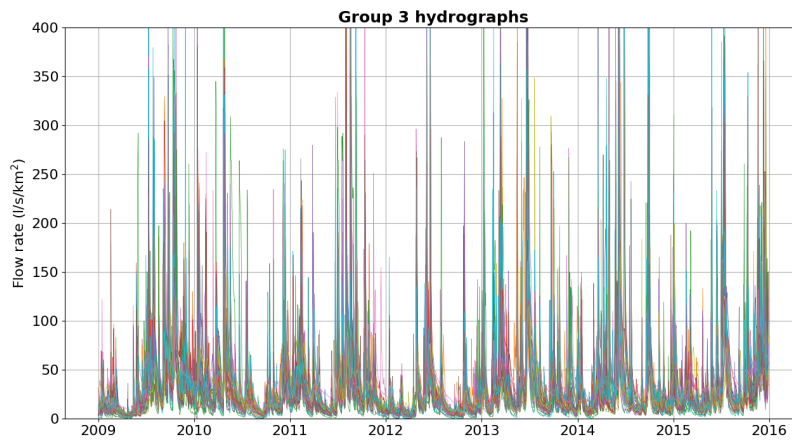


Figure C3. Hydrographs from basins of group 3.

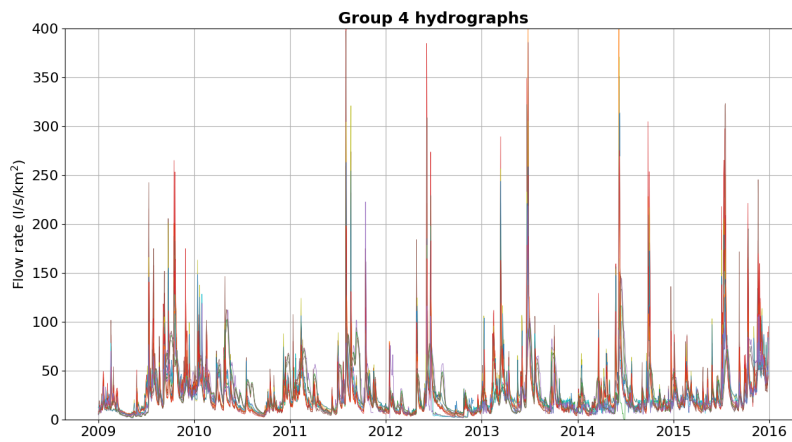


Figure C4. Hydrographs from basins of group 4.

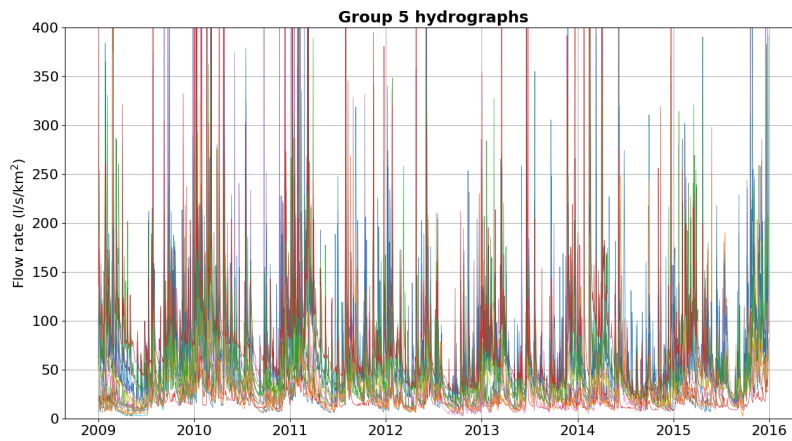


Figure C5. Hydrographs from basins of group 5.

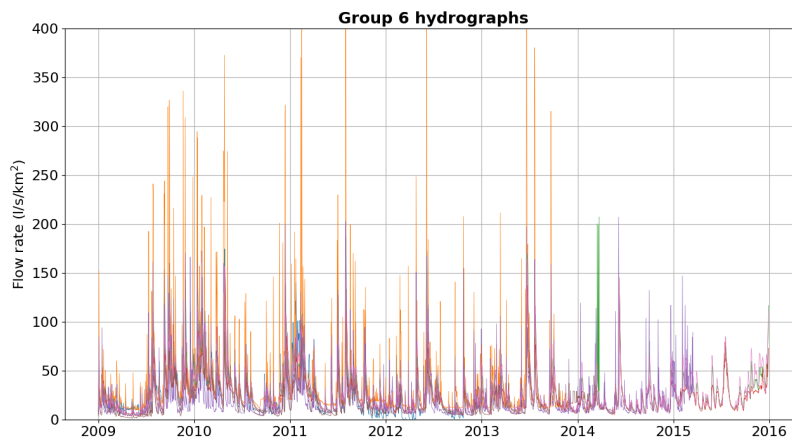


Figure C6. Hydrographs from basins of group 6.

Competing interests. The contact author has declared that none of the authors has any competing interests.

Acknowledgements. This study was partially financed by the Estonian Research Council (grant PRG 1674), and the European Union's Horizon 490 492 2020 Research and Innovation Programme (grant agreement no. 871115) ACTRIS IMP. The authors are grateful to Erasmus+ Eesti Maaülikool (EMÜ) staff mobility program and to the Network on Environmental Monitoring and Modeling (RESMA) project from Federal University of Parana (UFPR) - Coordination for the Improvement of Higher Education Personnel (CAPES) - Institutional Internationalization Program (PRINT) for facilitating the exchange of researchers between Brazil and Estonia. This work was carried out with the support of Technology and Environmental Monitoring System of Paraná (Simepar) and the Sanitation Company of Paraná (Sanepar).

495 **References**

- AGUASPARANÁ: Manual técnico de outorgas, Estado do Paraná, i edn., 2010.
- Allen, R. G., Pereira, L. S., Raes, D., and Smith, M.: Crop evapotranspiration : guidelines for computing crop water requirements, Food and Agriculture Organization of the United Nations, Rome, 1998.
- Almagro, A., Oliveira, P. T. S., Neto, A. A. M., Roy, T., and Troch, P.: CABra: a novel large-sample dataset for Brazilian catchments, 500 *Hydrology and Earth System Sciences*, 25, 3105–3135, <https://doi.org/10.5194/hess-25-3105-2021>, 2021.
- Arsenault, R., Breton-Dufour, M., Poulin, A., Dallaire, G., and Romero-Lopez, R.: Streamflow prediction in ungauged basins: analysis of regionalization methods in a hydrologically heterogeneous region of Mexico, *Hydrological Sciences Journal*, 64, 1297–1311, <https://doi.org/10.1080/02626667.2019.1639716>, 2019.
- Auler, A. and Farrant, A.: A brief introduction to karst and caves in Brazil, *Proceedings of the University of Bristol Speleological Society*, 505 20, 187–200, 1996.
- Ayzel, G., Varentsova, N., Erina, O., Sokolov, D., Kurochkina, L., and Moreydo, V.: OpenForecast: The First Open-Source Operational Runoff Forecasting System in Russia, *Water*, 11, 1546, <https://doi.org/10.3390/w11081546>, 2019.
- Barbieri, G. M. L., Costa, A. B. F., Olivieira, C., Jusevicius, M., and D'Ávila, V. C.: ATLAS SOLARIMÉTRICO DO ESTADO DO PARANÁ, Manuscrito não publicado, 2017.
- 510 Bartiko, D., Oliveira, D., Bonumá, N., and Chaffe, P.: Spatial and seasonal patterns of flood change across Brazil, *Hydrological Sciences Journal*, 64, 1071–1079, 2019.
- Bazzo, J. P. V. and Almeida, R. C. d.: Regionalização de Vazões com o Emprego de Redes Neurais Artificiais RBF, I Simpósio de Métodos Numéricos em Engenharia, 2016.
- Blöschl, G., Sivapalan, M., Wagener, T., Viglione, A., and Savenije, H.: *Runoff Prediction in Ungauged Basins*, Cambridge University Press, 515 <https://doi.org/10.1017/cbo9781139235761>, 2013.
- Boutsidis, C., Zouzias, A., Mahoney, M. W., and Drineas, P.: Randomized Dimensionality Reduction for k-Means Clustering, *IEEE Transactions on Information Theory*, 61, 1045–1062, 2014.
- Breiman, L.: Random Forests, *Machine Learning*, 45, 5–32, 2001.
- Burn, D. H., Zrinji, Z., and Kowalchuk, M.: Regionalization of catchments for regional flood frequency analysis, *Journal of Hydrologic Engineering*, 2, 76–82, 1997.
- 520 Burnash, R. et al.: The NWS River Forecast System-catchment modeling., *Computer models of watershed hydrology.*, pp. 311–366, 1995.
- Burt, T. P. and McDonnell, J. J.: Whither field hydrology? The need for discovery science and outrageous hydrological hypotheses, *Water Resources Research*, 51, 5919–5928, 2015.
- Calvetti, L., Beneti, C., Neundorf, R. L. A., Inouye, R. T., dos Santos, T. N., Gomes, A. M., Herdies, D. L., and de Gonçalves, L. G. G.: 525 Quantitative Precipitation Estimation Integrated by Poisson's Equation Using Radar Mosaic, Satellite, and Rain Gauge Network, *Journal of Hydrologic Engineering*, 22, [https://doi.org/10.1061/\(asce\)he.1943-5584.0001432](https://doi.org/10.1061/(asce)he.1943-5584.0001432), 2017.
- Carneiro, L., Ostroski, A., and Mercuri, E. G. F.: Trophic state index for heavily impacted watersheds: modeling the influence of diffuse pollution in water bodies, *Hydrological Sciences Journal*, 65, 2548–2560, 2020.
- Chagas, V. B. P., Chaffe, P. L. B., Addor, N., Fan, F. M., Fleischmann, A. S., Paiva, R. C. D., and Siqueira, V. A.: CAMELS-BR: 530 hydrometeorological time series and landscape attributes for 897 catchments in Brazil, *Earth System Science Data*, 12, 2075–2096, <https://doi.org/10.5194/essd-12-2075-2020>, 2020.

- Cunha, A. P. M., Zeri, M., Deusdará Leal, K., Costa, L., Cuartas, L. A., Marengo, J. A., Tomasella, J., Vieira, R. M., Barbosa, A. A., Cunningham, C., et al.: Extreme drought events over Brazil from 2011 to 2019, *Atmosphere*, 10, 642, 2019.
- 535 Daggupati, P., Pai, N., Ale, S., Douglas-Mankin, K. R., and J. Jeong, R. W. Z., Parajuli, P. B., Saraswat, D., and Youssef, M. A.: A Recommended Calibration and Validation Strategy for Hydrologic and Water Quality Models, *American Society of Agricultural and Biological Engineers*, 58, 1705–1719, <https://doi.org/10.13031/trans.58.10712>, 2015.
- Embrapa: Mapa de solos do estado do Paraná, Disponível em: http://geoinfo.cnps.embrapa.br/layers/geonode:parana_solos_20201105. Acessado em 05 de julho de 2021., http://geoinfo.cnps.embrapa.br/layers/geonode:parana_solos_20201105, 2020.
- 540 Guo, Y., Zhang, Y., Zhang, L., and Wang, Z.: Regionalization of hydrological modeling for predicting streamflow in ungauged catchments: A comprehensive review, *Wires Water*, e1487, 2020.
- He, Y., Bardossy, A., and Zehe, E.: A review of regionalisation for continuous streamflow simulation, *Hydrol. Earth Syst. Sci.*, 15, 3539–3553, 2011.
- Hengl, T., Heuvelink, G. B. M., and G. Rossiter, D.: About regression-kriging: From equations to case studies, *Computers & Geosciences*, 33, 1301–1315, 2007.
- 545 Hirata, R. and Foster, S.: The Guarani Aquifer System—from regional reserves to local use, *Quarterly Journal of Engineering Geology and Hydrogeology*, 54, qjgh2020–091, 2021.
- Hrachowitz, M., Savenije, H. H. G., Blöschl, G., McDonnell, J. J., Sivapalan, M., Pomeroy, J. W., Arheimer, B., Blume, T., Clark, M. P., Ehret, U., Fenicia, F., Freer, J. E., Gelfan, A., Gupta, H. V., Hughes, D. A., Hut, R. W., Montanari, A., Pande, S., Tetzlaff, D., Troch, P. A., Uhlenbrook, S., Wagener, T., Winsemius, H. C., Woods, R. A., Zehe, E., and Cudennec, C.: A decade of Predictions in Ungauged Basins (PUB)—a review, *Hydrological Sciences Journal*, 58, 1–58, 2013.
- 550 IAT: Mapas e Dados Espaciais, Disponível em: <http://www.iat.pr.gov.br/Pagina/Mapas-e-Dados-Espaciais>. Acessado em 05 de julho de 2021., 2020.
- Juliani, B. H. T., de Campos, A. L., Almeida, A. S., and Leite, E. A.: Estatísticas meteorológicas da seca de 2020 no estado do Paraná, in: *Anais do II END - Encontro Nacional de Desastres da ABRHidro*, ABRHidro, 2020.
- 555 Kaviski, E., Rohn, M. d. C., and Mazer, W.: Projeto HG-171: Consistência e regionalização de dados hidrológicos, Centro de Hidráulica e Hidrologia Prof. Parigot de Souza, 2002.
- Ketchen Junior, D. J. and Shook, C. L.: The application of cluster analysis in strategic management research: an analysis and critique, *Strategic Management Journal*, 17, 441–458, 1996.
- Krause, P., Boyle, D. P., and Bäse, F.: Comparison of different efficiency criteria for hydrological model assessment, *Advances in Geosciences*, 5, 89–97, <https://doi.org/10.5194/adgeo-5-89-2005>, 2005.
- 560 Kuentz, A., Arheimer, B., Hundscha, Y., and Wagener, T.: Understanding hydrologic variability across Europe through catchment classification, *Hydrology and Earth System Sciences*, 21, 2863–2879, <https://doi.org/10.5194/hess-21-2863-2017>, 2017.
- Llabrés-Brustenga, A., Rius, A., Rodríguez-Sol, R., Casas-Castillo, M. C., and Redaño, A.: Quality control process of the daily rainfall series available in Catalonia from 1855 to the present, *Theoretical and Applied Climatology*, 137, 2715–2729, 2019.
- 565 Matallo Junior, H.: Indicadores de desertificação: histórico e perspectivas, Edições UNESCO Brasil, Brasília, DF, Brasil, 2001.
- Melo, D. C., Anache, J. A., Almeida, C. d. N., Coutinho, J. V., Ramos Filho, G. M., Rosalem, L. M., Pelinson, N. S., Ferreira, G. L., Schwamback, D., Calixto, K. G., et al.: The big picture of field hydrology studies in Brazil, *Hydrological Sciences Journal*, 65, 1262–1280, 2020.

- Melo, D. d. C., Scanlon, B. R., Zhang, Z., Wendland, E., and Yin, L.: Reservoir storage and hydrologic responses to droughts in the Paraná River basin, south-eastern Brazil, *Hydrology and Earth System Sciences*, 20, 4673–4688, 2016.
- Mohamed, S., Ludovic, O., and Ribstein, P.: Random Forest Ability in Regionalizing Hourly Hydrological Model Parameters, *Water*, 11, 2019.
- Muleta, M. K.: Model Performance Sensitivity to Objective Function during Automated Calibrations, *Journal of Hydrologic Engineering*, 17, 756–767, [https://doi.org/10.1061/\(asce\)he.1943-5584.0000497](https://doi.org/10.1061/(asce)he.1943-5584.0000497), 2012.
- 575 Musy, A., Hingray, B., and Picouet, C.: *Hydrology: a science for engineers*, CRC press, 2014.
- Neto, W. M. P., Vieira, F. R., and Matosinhos, C. C.: Avaliação da performance dos modelos GR4J, GR5J e GR6J na bacia hidrográfica do ribeirão São João, Minas Gerais, in: *Base de Conhecimentos Gerados na Engenharia Ambiental e Sanitária 3*, Atena, 2021.
- Oudin, L., Andréassian, V., Perrin, C., Michel, C., and Moine, N. L.: Spatial proximity, physical similarity, regression and ungauged catchments: A comparison of regionalization approaches based on 913 French catchments, *Water Resources Research*, 44, <https://doi.org/10.1029/2007wr006240>, 2008.
- 580 Oudin, L., Kay, A., Andréassian, V., and Perrin, C.: Are seemingly physically similar catchments truly hydrologically similar?, *Water Resources Research*, 46, <https://doi.org/10.1029/2009wr008887>, 2010.
- Pagano, T., Hapuarachchi, P., and Wang, Q. J.: Continuous rainfall-runoff model comparison and short-term daily streamflow forecast skill evaluation, *CSIRO Tech. Rep.*, EP103545, <https://doi.org/10.4225/08/58542C672DD2C>, 2010.
- 585 Parajka, J., Merz, R., and Blöschl, G.: A comparison of regionalisation methods for catchment model parameters, *Hydrology and Earth System Sciences*, 9, 157–171, 2005.
- Parajka, J., Kohnová, S., Bálint, G., Barbuc, M., Borga, M., Claps, P., Cheval, S., Dumitrescu, A., Gaume, E., Hlavčová, K., et al.: Seasonal characteristics of flood regimes across the Alpine–Carpathian range, *Journal of hydrology*, 394, 78–89, 2010.
- Perrin, C., Michel, C., and Andréassian, V.: Improvement of a parsimonious model for streamflow simulation, *Journal of Hydrology*, 279, [275–289](https://doi.org/10.1016/S0022-3892(03)00289-9), 2003.
- 590 Pettitt, A. N.: A Non-Parametric Approach to the Change-Point Problem, *Applied Statistics*, 28, 126, <https://doi.org/10.2307/2346729>, 1979.
- Pfafstetter, O.: *Classificação de bacias hidrográficas*, manuscrito não publicado, 1989.
- Pugliese, A., Castellarin, A., and Brath, A.: Geostatistical prediction of flow–duration curves in an index-flow framework, *Hydrol. Earth Syst. Sci.*, 18, 3801–3816, 2014.
- 595 Pushpalatha, R., Perrin, C., Le Moine, N., Mathevet, T., and Andréassian, V.: A downward structural sensitivity analysis of hydrological models to improve low-flow simulation, *Journal of hydrology*, 411, 66–76, 2011.
- Razavi, T. and Coulibaly, P.: Streamflow Prediction in Ungauged Basins: Review of Regionalization Methods, *Journal of Hydrologic Engineering*, 18, 958–975, [https://doi.org/10.1061/\(asce\)he.1943-5584.0000690](https://doi.org/10.1061/(asce)he.1943-5584.0000690), 2013.
- Rousseeuw, P. J.: Silhouettes: A graphical aid to the interpretation and validation of cluster analysis, *Journal of Computational and Applied Mathematics*, 20, 53–65, [https://doi.org/10.1016/0377-0427\(87\)90125-7](https://doi.org/10.1016/0377-0427(87)90125-7), 1987.
- 600 Shin, M.-J. and Kim, C.-S.: Assessment of the suitability of rainfall–runoff models by coupling performance statistics and sensitivity analysis, *Hydrology Research*, 48, 1192–1213, <https://doi.org/10.2166/nh.2016.129>, 2016.
- Soil Conservation Service: *National engineering handbook*, chap. Seção 4, *Hydrology*, p. 762, Department of Agriculture, Washington, 1972.
- Sousa, F. M. L., Neto, V. S. C., Pacheco, W. E., and Barbosa, S. A.: *Sistema Nacional De Informações Sobre Recursos Hídricos: Sistematização Conceitual E Modelagem Funcional*, in: *Anais do XVIII Simpósio Brasileiro de Recursos Hídricos*, Associação Brasileira de Recursos Hídricos, Campo Grande, 2009.
- 605

- Souza, C. M., Shimbo, J. Z., Rosa, M. R., Parente, L. L., Alencar, A. A., Rudorff, B. F. T., Hasenack, H., Matsumoto, M., Ferreira, L. G., Souza-Filho, P. W. M., de Oliveira, S. W., Rocha, W. F., Fonseca, A. V., Marques, C. B., Diniz, C. G., Costa, D., Monteiro, D., Rosa, E. R., Vélez-Martin, E., Weber, E. J., Lenti, F. E. B., Paternost, F. F., Pareyn, F. G. C., Siqueira, J. V., Viera, J. L., Neto, L. C. F., Saraiva, M. M., Sales, M. H., Salgado, M. P. G., Vasconcelos, R., Galano, S., Mesquita, V. V., and Azevedo, T.: Reconstructing Three Decades of Land Use and Land Cover Changes in Brazilian Biomes with Landsat Archive and Earth Engine, *Remote Sensing*, 12, 2735, <https://doi.org/10.3390/rs12172735>, 2020.
- 610 Storn, R. and Price, K.: Differential Evolution – A Simple and Efficient Heuristic for Global Optimization over Continuous Spaces, *Journal of Global Optimization*, 11, 341–359, <https://doi.org/10.1023/a:1008202821328>, 1997.
- 615 Vestena, L. R. and Kobiyama, M.: Water balance in karst: case study of the Ribeirão da Onça catchment in Colombo City, Paraná State-Brazil, *Brazilian Archives of Biology and Technology*, 50, 905–912, 2007.
- Viviroli, D., Mittelbach, H., Gurtz, J., and Weingartner, R.: Continuous simulation for flood estimation in ungauged mesoscale catchments of Switzerland – Part II: Parameter regionalisation and flood estimation results, *Journal of Hydrology*, 377, 208–225, <https://doi.org/10.1016/j.jhydrol.2009.08.022>, 2009.
- 620 Wilks, D. S.: *Statistical Methods in the Atmospheric Sciences*, Academic Press, https://www.ebook.de/de/product/14751307/daniel_s_wilks_statistical_methods_in_the_atmospheric_sciences_100.html, 2011.