

# ~~A robust DayCent model calibration to assess the potential impact of~~ ~~Modelling integrated soil fertility management on for maize yields,~~ ~~soil carbon stocks and greenhouse gas emissions production in~~ ~~Kenya using a Bayesian calibration of the DayCent model.~~

Moritz Laub<sup>1</sup>, Magdalena Necpalova<sup>1,2</sup>, Marijn Van de Broek<sup>1</sup>, Marc Corbeels<sup>3,4</sup>, Samuel Mathu Ndungu<sup>4</sup>, Monicah Wanjiku Mucheru-Muna<sup>5</sup>, Daniel Mugendi<sup>6</sup>, Rebecca Yegon<sup>6</sup>, Wycliffe Waswa<sup>4</sup>, Bernard Vanlauwe<sup>4</sup>, and Johan Six<sup>1</sup>

<sup>1</sup>Department of Environmental Systems Science, ETH Zurich, 8092 Zürich, Switzerland

<sup>2</sup>University College Dublin, School of Agriculture and Food Science, Ireland

<sup>3</sup>AIDA, University of Montpellier, CIRAD, Avenue d'Agropolis, F-34398 Montpellier, France

<sup>4</sup>International Institute of Tropical Agriculture (IITA), c/o ICIPE Compound, P. O. Box 30772-00100, Nairobi, Kenya

<sup>5</sup>Department of Environmental Sciences and Education, Kenyatta University, P.O. Box 43844-00100, Nairobi, Kenya

<sup>6</sup>Department of Water and Agricultural Resource Management, University of Embu, P.O. Box 6-60100, Embu, Kenya

**Correspondence:** Moritz Laub (moritz.laub@usys.ethz.ch)

**Abstract.** Sustainable intensification schemes such as integrated soil fertility management (ISFM) are a proposed strategy to close yield gaps, increase soil fertility, and achieve food security in sub-Saharan Africa. Biogeochemical models such as DayCent can assess their potential at larger scales, but ~~they~~ these models need to be calibrated to new environments and rigorously tested for accuracy. Here, we present a ~~robust~~ Bayesian calibration of DayCent ~~to simulate maize productivity and~~  
5 ~~soil organic carbon stock changes under ISFM~~, using data from four long-term field experiments in Kenya in a leave-one-site-out ~~cross-evaluation~~ cross-validation approach. The experimental treatments consisted of the addition of low- to high-quality organic resources, with and without mineral N fertilizer. We assessed the potential of DayCent to accurately ~~represent the key~~  
~~aspects~~ simulate the key elements of sustainable intensification, including 1) yield, 2) the changes in soil ~~carbon~~ organic carbon  
(SOC), and 3) the greenhouse gas (GHG) balance of CO<sub>2</sub> and N<sub>2</sub>O combined.

10 ~~The calibration with cross-evaluation~~ Compared to the initial parameters, the cross-validation showed improved DayCent simulations of maize ~~yield, evaluated across all sites, (from a grain yield (with the~~ Nash–Sutcliffe ~~modeling model~~ efficiency (EF) ~~of increasing from~~ 0.36 to 0.50) ~~but slightly worsened those of soil organic carbon (SOC) (from EF of and of SOC stock~~  
~~changes (with EF increasing from~~ 0.36 to 0.34). ~~By site, the simulation~~ 0.55). ~~The simulations~~ of maize yield ~~improved (to~~  
15 ~~and those of SOC stock changes also improved by site (with~~ site-specific EF ~~ranging between~~ 0.15 and 0.38 for maize yield ~~and~~  
~~between~~ 0.16 and 0.39) ~~and that of SOC slightly worsened (to site-specific EF between~~ -1.8 and 0.39 ~~0.9 and 0.58 for~~  
~~SOC stock changes~~). ~~The model performance and the match between the cross-evaluation posterior credibility intervals for~~  
~~different sites~~ four cross-validation-derived posterior parameter distributions (leaving out one site each) were similar in all but  
one parameter. Together with the model performance for the different sites in cross-validation, this indicated the robustness  
of the DayCent model parameterization and ~~the reliability of the Daycent model for spatial upscaling of simulations. While~~

20 its reliability for the conditions in Kenya. While DayCent poorly reproduced daily N<sub>2</sub>O emissions ~~were poorly reproduced by~~  
~~DayCent (all EF values were negative~~(with EF ranging between -0.44 and -0.03 by site), cumulative seasonal N<sub>2</sub>O emissions  
were simulated more accurately (EF ranging between ~~0.03 and 0.62~~0.06 and 0.69 by site). The simulated yield-scaled GHG  
balance was highest in control treatments without N addition (between ~~0.5 and 1.5~~0.8 and 1.8 kg CO<sub>2</sub> equivalent per kg grain  
yield across sites) and was ~~lower by about 10 to 60% by combined~~about 30 to 40% lower in the treatment that combined the  
25 application of mineral N and of manure at a moderate rate of 1.2t C ha<sup>-1</sup> yr<sup>-1</sup>. In conclusion, our results indicate that DayCent  
is well-suited ~~to estimate for estimating~~ the impact of ISFM ~~;-on maize yield and SOC changes. They also indicate~~ that the  
trade-off between maize yield and GHG balance is stronger in low-fertility sites, and that ~~the control of SOC losses~~controlling  
SOC losses, while difficult to achieve through the addition of external organic resources, is a priority for the sustainable  
intensification of maize production in Kenya.

## 30 1 Introduction

In Kenya, as in many other Sub-Saharan Africa (SSA) countries, maize yields have remained low, on average 1.7 t ha<sup>-1</sup> com-  
pared to the global average of 5.6 t ha<sup>-1</sup> over the last decade (2011-2021; FAO, 2023). This contributes to the low self-sufficiency  
of food production, with around 20% of the Kenyan population facing severe food insecurity (World-Bank, 2021b). If yields  
are not improved, increased population growth will further deteriorate food self-sufficiency and food security in general in  
35 the coming decades (Zhai et al., 2021), especially considering expected yield declines resulting from more frequent extreme  
weather events (Lobell et al., 2011). One of the key limitations to sustainable maize production in SSA is the insufficient use  
of mineral fertilizer and organic inputs (Vanlauwe et al., 2010). Integrated soil fertility management (ISFM) is a sustainable  
intensification practice that can alleviate these limitations by combining the use of mineral fertilizers with organic inputs (Van-  
lauwe et al., 2010). Several studies have reported that ISFM has the potential to more than double maize yields in Kenya,  
40 especially on infertile soils, due to its positive impact on soil fertility, including soil organic matter (SOM) content (Chivenge  
et al., 2009, 2011). Furthermore, increasing SOM can help mitigate adverse effects of climate change, offering considerable  
potential in carbon-depleted soils across SSA (Corbeels et al., 2019). However, the effectiveness of ISFM in increasing yields  
strongly depends on local site conditions, such as soil and climate (Chivenge et al., 2011).

To close yield gaps in a resource-efficient way and to assess the climate change mitigation potential of ISFM, we need to  
45 understand the long-term effects of ISFM practices at a larger scale. Ideally, this would be facilitated by implementing a large  
number of long-term experiments across a representative range of soil and climatic conditions. However, the significant costs,  
labor, and time required to maintain long-term experiments limit the number of sites for evaluating the variable effects of ISFM  
practices under site-specific conditions. In addition, relying on statistical predictive techniques to upscale results from a limited  
number of sites may lead to low predictive power and large errors, because it is unlikely that the effects of soils and climate on  
50 yield and SOM would be fully captured in the statistical models.

Biogeochemical process-based ecosystem models, such as DayCent (Parton et al., 1998; Del Grosso et al., 2001), simu-  
late the effects of important driving variables on crop yield and SOM formation using semi-mechanistic functions developed

through decades of agronomic and soil research. Because they (partly) embed our current understanding of the complex ecosystem processes, they are more robust for scaling up the yield potential (Saito et al., 2021) and the SOM building capacity (Lee et al., 2020), compared to statistical predictive techniques. However, to avoid bias in model output, it is best practice that models are calibrated and ~~validated to~~ evaluated for local conditions (Necpálová et al., 2015), especially when applied in novel contexts such as different climate zones with different soils.

Although DayCent has been used to estimate SOM stock changes in Kenya on a national scale (Kamoni et al., 2007), and recently to assess the impact of conservation agriculture on SOM in Ethiopia (Lemma et al., 2021), its modules of SOM and maize crop growth have never been rigorously calibrated and ~~validated~~ evaluated for tropical agroecosystems in SSA. A recent evaluation of DayCent in Kenyan maize systems showed that SOM turnover is underpredicted by the model (Nyawira et al., 2021). Because SOM is coupled to nitrogen (N) mineralization in biogeochemical models, there is the potential that this translates into biased crop responses to N addition and biased crop productivity predictions in any upscaling exercise. A potential solution to this issue is the simultaneous calibration of soil and crop parameters in DayCent using data from local long-term experiments. Ideally, this calibration would include the uncertainty in the model parameters and model outputs (Clifford et al., 2014), so ~~a propagation of errors~~ an estimation of uncertainties is possible in upscaling exercises (Stella et al., 2019). This is especially relevant given a recent study showing considerable uncertainty in DayCent's SOM turnover rates, even when calibrated using a range of long-term experiments (Gurung et al., 2020).

In order to use DayCent to assess the potential of ISFM to reduce yield gaps while minimizing environmental impact in Kenya and other SSA countries, this study used a Bayesian calibration to derive robust DayCent parameters of SOM cycling and maize growth in Kenya. With robust, we mean that the model evaluation statistics are representative of applying the model to new sites with the same climate and soils. We used the experimental data of four long-term ISFM experiments conducted in Kenya over nearly two decades (Laub et al., 2023a, b). Of these, two sites were in humid western Kenya and two in subhumid to semi-arid central Kenya.

The first objective of our study was to evaluate to what extent DayCent can reproduce the differences in yields and SOM development in response to the addition of different qualities and rates of organic resources combined with different rates of N fertilizer for a number of contrasting sites. The second objective was to evaluate the greenhouse gas (GHG) balance of different addition rates of organic material in ISFM to find the optimal balance between limiting GHG emissions from the soil and optimizing crop yield (that is, sustainable intensification). ISFM can be a source of N<sub>2</sub>O to the atmosphere (Leitner et al., 2020) but ~~at the same time mitigate CO~~ compared to standard practices, it reduces SOC losses or even increases SOC (Laub et al., 2023a), thereby mitigating CO<sub>2</sub> emissions due to the mineralization of SOC (Laub et al., 2023a) emissions.

The specific steps to reach the objectives of this study were (i) to test the capability of an uncalibrated version of DayCent to simulate yield and SOC development of the different ISFM practices, (ii) to calibrate DayCent to represent ISFM under Kenyan conditions using experimental data from four long-term experiments, displaying the ~~confidence in~~ uncertainty of model parameters by Bayesian calibration, and (iii) to use the calibrated model to gain understanding of the GHG balance of the different ISFM treatments.

## 2 Material and Methods

### 2.1 The experimental sites

The present study used data from four long-term field experiments in Kenya, in which the effect of the addition of different organic resources at different rates was tested, either alone or in combination with the application of mineral N fertilizer, in the context of ISFM. The sites are located in agriculturally important areas in central and western Kenya (Fig. A1). The Embu and Machanga sites are both located in Embu County, in the central part of Kenya. The Aludeka site is situated in Busia County in western Kenya, while Sidada is located in the adjacent Siaya County, south of Busia (Table A1). The experiments ~~in~~at Embu and Machanga began in early 2002, while those ~~in~~at Aludeka and Sidada began in early 2005. Therefore, 19 years of data were available in central Kenya and 16 years in western Kenya (2 sites x 16 years + 2 sites x 19 years = 70 site\*years = 140 site\*seasons). The sites cover a range of altitudes, temperatures, and precipitations. Embu, with a mean annual temperature (MAT) of 20 °C and an annual precipitation of 1200 mm, is the coolest site, while Machanga has a MAT of 24°C and the lowest annual precipitation (800 mm). Sidada (23°C, 1700 mm) and Aludeka (24°C, 1700 mm) have a high MAT and receive significantly more precipitation than the sites in central Kenya. There are two rainy seasons at each site, corresponding to two maize growing seasons per year. The long rainy season occurs from March to August or September, while the short rainy season occurs from October until January or February. In terms of soil texture, Machanga and Aludeka have low clay content (13% clay at both sites), while Sidada and Embu are rich in clay (56 and 60%, respectively).

All experiments were set up as a split plot design with three replicates, with different qualities and quantities of organic resources as main plots and the presence or absence of N fertilizer as subplots. Maize was grown continuously in all experiments, with two crops per year, one in the long rainy season and one in the short rainy season. The experimental design was identical at all four sites and has been described in detail in earlier publications (Chivenge et al., 2009; Gentile et al., 2011; Laub et al., 2023a, b). Organic resource treatments consisted of high quality *Tithonia diversifolia* (TD) green manure~~and~~, high quality *Calliandra calothyrsus* (CC) prunings, low quality stover of *Zea mays* (MS)~~and~~, low quality sawdust from *Grevillea robusta* trees (SD), locally available farmyard manure (FYM), and a control treatment (CT) without organic resource additions. Organic resources differed in quality by the contents of N, lignin and polyphenols (Table A2). Each organic resource was applied once a year at two rates, 1.2 and 4 t C ha<sup>-1</sup> yr<sup>-1</sup>, while mineral N fertilizer was applied at a fixed rate of 120 kg N ha<sup>-1</sup> (CaNH<sub>4</sub>NO<sub>3</sub>) in each of the two growing seasons. Of this, 40 kg N ha<sup>-1</sup> were applied at planting, and the remaining 80 kg N ha<sup>-1</sup> about six weeks later. Organic resources were applied only once a year, prior to planting in the long rainy season, i.e., in January or February. They were incorporated to a depth of 15 cm with hand hoes. Furthermore, a blanket application of 60 kg P ha<sup>-1</sup> as triple superphosphate and of 60 kg K ha<sup>-1</sup> as muriate potash at planting was provided to all plots each season. The plots were kept weed free by hand weeding, two to three times per season, and selective application of pesticides was used when necessary to control armyworm, stemborer, and/or termites.

## 2.2 The DayCent model

DayCent (2017 version of DD\_EVI) is a terrestrial ecosystem model of intermediate complexity (Del Grosso et al., 2001).  
120 It simulates daily C and N fluxes within the soil-plant-atmosphere continuum and has been parameterized for several crops  
and ecosystems (Necpalova et al., 2018). It has submodules to simulate plant growth, organic resource and soil organic matter  
(SOM) decomposition including mineralization of N, soil water and temperature, N gas fluxes, and CH<sub>4</sub> oxidation. The net  
primary productivity of plants is a function of their genetic potential, a simplified phenology, solar radiation, temperature,  
and stresses, such as reduced water or N availability. Here, we used the non-growing degree day version of the DayCent crop  
125 module, that does not simulate phenology but has a seedling stage with reduced growth until a certain biomass (full canopy)  
is reached. SOC and soil N in the topsoil are represented by an active, slow, and passive SOM pool, while litter and organic  
resources are represented by a structural and metabolic litter pool (Parton et al., 1987). All SOM pools are conceptual and have  
no measurable counterparts, whereas the litter pools are semi-quantitative. Their division is based on the measurable ratio of  
lignin to N in the organic resources and plant litter. DayCent can adequately simulate crop yields, SOC and soil N dynamics,  
130 and N<sub>2</sub>O emissions in temperate conditions (Del Grosso et al., 2005; Necpálová et al., 2015; Necpalova et al., 2018; Gurung  
et al., 2020, 2021) but a recent paper showed inadequate performance for tropical conditions (Nyawira et al., 2021).

## 2.3 Data used for the DayCent model calibration and evaluation

To provide an overall assessment of the performance of DayCent for its use in Kenya a leave-one-site-out cross-validation  
approach was applied [to evaluate the model performance](#). Specifically, this involved using a data sub-set from three of the four  
135 sites for model calibration, with [validation-evaluation](#) performed using the data from the fourth site. This process was repeated  
four times, every time with another site serving as the [validation-evaluation](#) site. Different data, were used for this: Maize grain  
yield and the aboveground biomass, both on a dry matter basis, were available for each cropping season between 2002 and  
2020 (further details in Laub et al., 2023b). All this data was used with one exception - the short rainy season of 2019 at Sidada,  
which had unrealistically high maize grain yields of up to 16 t ha<sup>-1</sup>. In addition, plot-scale SOC and total N contents in the  
140 top 15 cm soil layer were available at several time points, and in 2021 for the 0-30 cm soil depth. [In-At](#) Embu and Machanga,  
soil samples were taken every two to three years since the start of the experiment in 2002 until 2021, while [in-at](#) Sidada and  
Aludeka, soil sampling occurred only in 2005, 2018, 2019 and 2021 (further details in Laub et al., 2023a). Because soil bulk  
density data was not available for most time points and there was no significant difference in topsoil bulk density between  
treatments at any site in 2021, the mean soil bulk density per site was used to calculate SOC stocks of the top 15 cm of soil  
145 depth. We used a DayCent parameterization that was developed to simulate SOC stocks of the IPCC-recommended 0-30 cm  
topsoil layer (Gurung et al., 2020) (further details in section 2.3.2). Thus, the 0-15 cm SOC stocks were adjusted to 0-30 cm  
depth. This was done by adding the site-specific SOC stocks from the 15-30 cm layer (specifically, the 15-30 cm equivalent-  
soil-mass-based ones (Wendt and Hauser, 2013; Lee et al., 2009)) to the treatment-specific SOC stocks from 0-15 cm. Due  
to limited data availability for the 15-30 cm soil depth (only 2021), this approach was considered the most conservative and  
150 robust; subsoil carbon usually changes very slowly, and a statistical test revealed no differences in the equivalent soil mass

based SOC stocks of the 15-30 cm layer (2.5-4.7 t soil ha<sup>-1</sup>) between treatments at the same site in 2021 (with only one single exception [in-at](#) Aludeka; Fig. A2).

Data on N<sub>2</sub>O emissions were used in the model evaluation phase, but not for model calibration, due to their scarcity and high uncertainty. The N<sub>2</sub>O measurements were conducted after N fertilization in 2005 (weekly measurements from March to June [in-at](#) Embu and Machanga and daily measurements [in-at](#) Machanga in November), in 2013 and 2018 (weekly measurements from March to beginning of May [in-at](#) Sidada and Aludeka), and in 2021 (weekly measurements from mid-March to mid-May [in-at](#) Sidada). The measurements applied the static chamber method (Hutchinson and Mosier, 1981) with two measuring frames per plot permanently installed for a whole rainy season (one within, one between maize rows). The sampling chambers (0.27 × 0.375 × 0.11 m) had a vent tube and fan for to homogenize the gas sample before extraction with a 60 mL polypropylene syringe through a septum-sealed sampling port. Four gas samples were collected at 0, 15, 30 and 45 min of chamber closure. Gas samples from within and between maize rows were combined per time point in the same syringe (Arias-Navarro et al., 2017). All analyses were conducted using a SRI 8610C gas chromatography (456-GC, Scion Instruments, Livingston, United Kingdom) equipped with an electron capture detector for N<sub>2</sub>O analysis. Fluxes per surface area were determined using the linear slope of gas concentration over time (Pelster et al., 2017; Barthel et al., 2022). Simulated N<sub>2</sub>O emissions were evaluated against measured daily and cumulative N<sub>2</sub>O emissions. To determine the cumulative emissions at plot scale, we used the trapezoid method (Levy et al., 2017), specifically, the trapz function of R (Tuszynski, 2021). Treatment-scale means and variances of the daily and cumulative N<sub>2</sub>O emissions were then computed in a similar way as for the other measurements.

Finally, continuous soil moisture measurements were conducted using sensors placed in each replicate at 10 cm soil depth (EC-5 Soil Moisture Sensor, Meter, Germany) in the control and the 1.2 t C plots of the *Calliandra*, farmyard manure and maize stover treatments at the Sidada and Aludeka sites (March 2018 to December 2020). These soil moisture data were used to initially determine the optimal pedotransfer functions for soil hydraulic conductivity but not used in the model calibration.

### 2.3.1 Model driving variables and model assumptions

The site-specific crop management data was obtained from season- and site-specific records of field management operations. These included dates of organic resource application, manual plowing before planting, maize planting, split application of mineral N, weeding and harvest. Dates of pesticide applications and gap filling or maize thinning were also available, but these operations are not part of standard DayCent management and were therefore not included in modelling. Therefore, our model runs assumed no occurrence of pests or diseases, and an optimal plant density at emergence, which, in practice, was ensured by manual thinning and gap filling.

Recorded weather data existed for all sites, but filling in data gaps was necessary due to unavailability and loss of recorded data. At Embu and Machanga, manual recordings of daily minimum and maximum temperature and precipitation were available from 2002 until the end of 2007, but from 2008 until 2017, only measured precipitation was available. After 2017, newly installed TAHMO stations (<https://tahmo.org/climate-data/>) were available for these two sites, providing daily values for temperature and precipitation. [In-At](#) Aludeka and Sidada, manual recordings of daily minimum and maximum temperature and precipitation were available for all years from 2005 to 2017. Thereafter, weather stations (Meter climate station, Meter Envi-

185 ronment, Munich, Germany) were installed and provided the data. Data gaps were filled by using the NASA POWER product (<https://power.larc.nasa.gov/docs/methodology/>). A bias correction for the minimum and maximum temperature of NASA POWER data was performed, using a linear regression with measured data as dependent variable ( $y$ ) and NASA POWER data as independent variable ( $x$ ). Specifically, the slope and intercept of the regression equation  $y = mx + b$ , were used to produce a corrected estimate of these data. In our specific case, the slopes were not significantly different from 1, but intercepts ( $b$ )  
190 were significantly different from 0. The specific intercepts for maximum temperature were  $-0.3^{\circ}\text{C}$ ,  $-0.4^{\circ}\text{C}$ ,  $+3^{\circ}\text{C}$  and  $+6^{\circ}\text{C}$  for Embu, Machanga, Sidada and Aludeka, respectively. The intercepts for the minimum temperature were  $-0.25^{\circ}\text{C}$ ,  $-0.5^{\circ}\text{C}$ ,  $-3^{\circ}\text{C}$  and  $+1^{\circ}\text{C}$  for Embu, Machanga, Sidada, and Aludeka, respectively. For precipitation, no bias correction was done.

The data on the soil hydraulic properties needed in DayCent (volumetric soil water content at field capacity, wilting point, and saturated hydraulic conductivity  $K_{s,s}$ ) were calculated based on the soil texture measured at each site. The pedotransfer  
195 functions of Hodnett and Tomasella (2002) was used, because it was specifically designed for tropical soils. Its' soil hydraulic properties also showed better agreement between the measured and simulated soil moisture contents than when soil hydraulic properties of Saxton and Rawls (2006) were used. Because the Hodnett and Tomasella (2002) equation does not provide a method to estimate  $K_{s,s}$ ,  $K_{s,s}$  was calculated using the Saxton and Rawls (2006) equation, with values of the water retention curve,  $\alpha$  and  $n$  (van Genuchten, 1982), ~~taken~~ calculated with the equation from Hodnett and Tomasella (2002). The equations  
200 can be found in the supplementary material (A1).

### 2.3.2 Initial model parameterization and selection of potentially sensitive parameters for calibration

~~To parameterize the organic inputs, the mean lignin content~~ It was assumed that the organic resource inputs had the same properties across all sites (i.e., mean values of lignin contents and C/N ratio of the different organic materials across sites (ratios per organic resource were assumed; Table A2) were used. This approach was used because measurements were not  
205 available for all sites and years, and was justified as an analysis of variance of data from the years 2002, 2003, 2004, 2005 and 2006 at Embu and Machanga, and from 2018 at all sites, did not indicate any significant differences in lignin contents and C/N ratios between the sites or years. The C content of maize grain was assumed to be 42.5% throughout the simulation period. This was the mean value of measured grain C content across sites (standard deviation 1.8%) in the short rainy season 2018 and long rainy season 2019 (data not shown). Given the strong correlation between maize grain yield and aboveground biomass in  
210 the measured data ( $r = 0.87$ ), the aboveground biomass data was transformed to harvest index data for the model calibration process, because harvest index had a lower correlation with yield ( $r = 0.59$ ) than aboveground biomass.

The DayCent simulations were conducted at the treatment scale using average values across all three replicate plots for soil parameters (i.e., soil texture, bulk density, pH), SOC and soil N stocks, maize grain yield and aboveground biomass/harvest index. This aggregation was done to reduce the computation time of the simulations and because initial tests showed similar  
215 model performance as compared to applying the model to each experimental replicate individually. The site-specific standard deviation for each type of measurement was used as a measure of uncertainty of the measured data (computed from the three replicates at each time point for each treatment at each site). This choice was based on the statistical models of Laub et al. (2023a, b), showing variance heterogeneity between sites but not between treatments.

The standard parameter values of the DayCent 2020 version were taken as initial model parameters, with three exceptions. 220 First, we used the adjusted decomposition parameter values of the SOM pools from Gurung et al. (2020) to allow the use of DayCent for simulating SOC stocks of the 0-30 cm soil depth layer instead of the standard 0-20 cm layer. Second, we modified the parameter value representing the fraction lost as CO<sub>2</sub> upon structural litter and lignin turnover ( $ps1co(1&2)$ ). The default value for this parameter is 0.5 assigning a carbon use efficiency (CUE) value of 50% to structural litter, based on outdated theories that lignin-rich materials form stable SOC most efficiently (Frimmel and Christman, 1988). Newer studies 225 have, however, clearly shown that minimal structural litter is conserved in the long term, while metabolic litter forms SOC more efficiently (Cotrufo et al., 2013; Deneff et al., 2009; Puttaso et al., 2013; Kallenbach et al., 2016). Thus, we opted for a more realistic prior value of 0.85 for  $ps1co(1&2)$ , corresponding to a more plausible CUE value of 15% for structural litter (Mueller et al., 1997). Third, for the parameters determining the minimum and maximum proportion of nitrified N lost as N<sub>2</sub>O, we used values that fell between the DayCent default values and recent values from Gurung et al. (2021). This choice 230 was motivated by the fact that the DayCent default parameter values led to excessively high emissions, while the Gurung et al. (2021) parameter values resulted in emissions that were too low. Finally, we assumed that the maize growth parameters of the second highest production level (C5 in DayCent) represent best the production levels observed in the experiment.

To identify which model parameters to include in the global sensitivity analysis (see section 2.4) and model calibration, we reviewed literature for recently conducted sensitivity analyzes of the DayCent model (Necpálová et al., 2015; Gurung et al., 235 2020). Additionally, we consulted the DayCent manual to identify and add further parameters of potential importance for the processes considered in our study (i.e., plant productivity and soil C and N cycling). This resulted in a selection of 66 parameters (Table 1 and Table A3). Some of these parameters belong to the same category, but can be individually calibrated in DayCent. For example, the "tillage multiplier" of SOM turnover can have different values for different SOM pools but is usually the same for all SOM pools in the standard DayCent parameterization. Thus, we decided to have the same tillage multiplier value for all 240 SOM and litter pools. Some parameters can have different values between the surface and soil SOM pools (e.g., C/N ratios and turnover rates). For simplicity, we assigned the same C/N ratios and a constant ratio to the turnover rates of surface and soil SOM pools (i.e.,  $decX(2)/decX(1)$ ). This simplified parameter sensitivity analysis and calibration with regard to surface and soil SOM pools. Finally, the parameters governing the minimum and maximum values were reformulated. Instead of calibrating them as a maximum and a minimum value, we considered the maximum value and the difference between the minimum and 245 maximum values (i.e.,  $N2Oadjust_{(max-min)}$  and  $aneref(1)-aneref(2)$ ). This ensured that the minimum value was smaller than the maximum value, thereby avoiding numerical problems (initial  $N2Oadjust_{max}$  was set to 0.015;  $N2Oadjust_{(max-min)}$  to 0.003).

### 2.3.3 Soil organic matter pools initialization based on measured data

Instead of relying on spin-up simulation based on uncertain historical land use and management of the simulated sites, we 250 used measured mineral associated organic carbon (MAOC) fractions as a proxy for the initialization of the passive SOM pool (Zimmermann et al., 2007). Replacing SOM initialization assumptions with measured proxies can enhance model performance (Laub et al., 2020; Wang et al., 2023), and, more importantly, is less sensitive to user assumptions. It also aligns with the



DayCent concepts on SOM; the manual (Hartman et al., 2020) denotes that particulate organic carbon (POC) and MAOC are related to the slow and the passive SOM pool, respectively. MAOC data for samples from the 0-30 cm soil layer was available from the year 2021 (specifically for the control -N, control +N and the farmyard manure -N and *Tithonia diversifolia* -N treatments at 4 t C ha<sup>-1</sup> yr<sup>-1</sup> at all sites). It was derived by density fractionation using sodium polytungstate solution (1.6 g cm<sup>-3</sup> for Aludeka and 1.7 g cm<sup>-3</sup> for the other sites). Aggregates were dispersed with ultrasonication at 400 J ml<sup>-1</sup> (217 s at 200-240W), after which samples were centrifuged for 2h at 4700 rpm to separate the heavy and the light fraction, which were then separated, washed with deionised water, dried at 60°C for 24h and analyzed for weight and C content. A statistical analysis revealed the absence of treatments differences within the same site, so the site-specific MAOC values for the 0-30 cm soil depth across treatments (0.91, 0.88, 0.85, 0.86 g MAOC g<sup>-1</sup> SOC for Aludeka, Embu, Machanga, and Sidada in 0-30 cm, respectively) were used to initialize the SOC in the passive SOM pool in DayCent simulations. Further, 3% of initial SOC was assigned to the active SOM pool (mean value recommended in the DayCent manual) and the remainder of SOC was assigned to the slow SOM pool.

The DayCent manual further states that, although the slow SOM pool is closely related to the POC fraction, it tends to be larger (Hartman et al., 2020). Consequently, the passive SOM pool must be smaller than the MAOC fraction. Additionally, the fractionation data was from 2021, when the experiments were already 19 and 16 years old. To address these issues, two new parameters were introduced in the simulations: 1) an intercept ( $IC_{MAOC}$ ) to account for the passive SOM pool being smaller than the MAOC fraction, and 2) a slope for the time since the start of the experiment ( $SL_t$ ) to account for SOM changes (mostly losses) since the start of the experiments, with the passive SOM pool typically changing at the slowest rate. Given that all sites were converted to agriculture only a few decades ago (Laub et al., 2023a), the percentage of total C in the passive SOM pool at the start of the experiment should be higher than the 30-40 %, that are common at steady state of SOM pools (Hartman et al., 2020). Considering this, it was assumed that the intercepts initial value was -0.1 g MAOC g<sup>-1</sup> SOC and the slopes initial value value was -0.005 g MAOC g<sup>-1</sup> SOC yr<sup>-1</sup> since the start of the experiment, giving both terms approximately the same weight. Thus, the fraction of SOC in the passive SOM pool at the start of the experiment was

$$SOC_p(g\ g^{-1}) = MAOC_{2021} + IC_{MAOC} + SL_t * t_{dif} \quad (1)$$

Here,  $SOC_p$  represents the fraction of SOC in the passive SOM pool at the start of the experiment,  $MAOC_{2021}$  the MAOC fraction in 2021 (g MAOC g<sup>-1</sup> SOC),  $IC_{MAOC}$  the intercept, and  $SL_t$  the slope value that is multiplied by the time difference between the measurement and the start of the experiment in years ( $t_{dif}$ ). With the selected standard values for  $IC_{MAOC}$  and  $SL_t$ , between 66% (Machanga) and 73% (Aludeka) of SOC were assumed to be in the passive SOM pool at the start of the experiment. The uncertainty related to this initialization approach was accounted for in the model calibration by allowing large ranges for these parameters. Finally, to initialize the soil N pools, C/N ratios of the active, slow, and passive SOM pools were set to 10, 17.5, and 8.5, respectively, which are the best estimates provided by the manual (Hartman et al., 2020).

## 2.4 Global sensitivity analysis

285 To reduce the number of optimised parameters during the calibration, we performed a parameter screening (van Oijen, 2020). For this purpose, a global sensitivity analysis was conducted to quantify the relative importance of different model parameters to the relevant model outputs regarding our study's focus on maize yield and the greenhouse gas mitigation potential of ISFM. The aim was to identify and fix less influential model parameters to their initial values, reducing the computational cost for performing the consecutive Bayesian model calibration (see section 2.5). The global sensitivity analysis was performed using  
290 the Sobol method (Saltelli, 2002a, b), which allows for the estimation of the proportion of variance in the model outputs that is explained by each model parameter, while considering the interaction terms of first-order and higher-order (Gurung et al., 2020). The "sensitivity" package (function `sobolSalt`; Iooss et al., 2021) of R version 4.0 (R Core Team, 2020) was applied. This function implements a simultaneous Monte Carlo estimation of first-order and total-effect Sobol indices. The computational cost is  $N(p + 2)$  model runs,  $N$  being the dimension of the two matrices to construct the Sobol sequence,  $p$   
295 being the number of parameters (66 in our case). Our tests indicated similar results for  $N = 500/1000$ , so we chose a dimension of 1000. The preselected model parameters to include are described above and in Tables 1 and A3. ~~Independent uniform prior distributions were~~ The ranges used for the global sensitivity analysis ~~, with the upper and lower parameter boundaries were~~ centered around the initial parameter value obtained as described above (section 2.3.2). ~~We based the global sensitivity analysis~~ parameter ranges ~~The upper and lower parameter boundaries were based~~ on previous sensitivity analyses (e.g. Necpálová  
300 et al., 2015; Gurung et al., 2020), plausible ranges reported in the DayCent manual and variations observed in different maize parameterizations in the literature. The parameters were then grouped according to the magnitude of their ranges. Parameters with very small, small and moderate ranges were varied by  $\pm 10$ , 25 and 50% from the initial parameter value, respectively. For parameters with large and very large ranges, the upper ~~lower~~ boundaries were the initial parameter values multiplied ~~by~~  
3 and 10, respectively, the lower boundaries were the initial parameter values divided by 3 and 10, respectively. The parameter  
305 sensitivity was independently determined for the mean maize grain yield and aboveground biomass, averaged over all seasons at all sites, as well as for the SOC and soil N stocks at the end of the simulation period (equations presented in the supplement A2).

## 2.5 Combined Bayesian calibration of plant and soil model parameters

Bayesian calibration is a probabilistic inverse modeling or data assimilation technique, which is used to estimate the joint posterior distribution of model parameters ( $\theta$ ) given the measured data ( $D$ ) and the model structure ( $M$ ), expressed as  $p(\theta|D, M)$ .  
310 It uses the proportionality form of Bayes' theorem, where  $p(\theta|D, M)$  is proportional to the prior belief about model parameters,  $p(\theta)$  times the likelihood function of the data given the model and the parameters,  $p(D|M, \theta)$ :

$$p(\theta|D, M) \propto p(\theta) * p(D|M, \theta) \quad (2)$$

While the prior,  $p(\theta)$ , is chosen based on previous knowledge of the model parameters, the likelihood function,  $p(D|M, \theta)$ ,  
315 measures how well the model and the data match. In practice it is derived for a given set of parameters sampled from the prior,

**Table 1.** DayCent model parameters and the coefficient of variation used in the calibration. Displayed are parameters considered for calibration due to total sensitivity index > 2.5% (top) and with a total sensitivity index > 1% (bottom). The remainder of parameters (<1%) are not included in this table and can be found in the supplementary (Table A3). The presented calibrated parameter values correspond to the single parameter set with the highest likelihood, which was derived by using the data from all four sites combined. The posterior was also derived by using the data from all four sites combined. Abbreviations: CV, coefficient of variation; SD, standard deviation, 95% CI, 95% credibility interval; Ly, langley.

Parameter	Description	Possible ranges of values	Units	Initial value	Coefficient of variation CV	Calibrated value $\pm$
<b>Included in calibration (total sensitivity &gt;2.5%)</b>						
himax	Maximum harvest index for maize	moderate	g g <sup>-1</sup> (C)	0.40	0.15-0.23	0.350-0.43
ppdf(1)	Optimum temperature for growth of maize	very small	°C	30.00	0.05-0.08	28.74-28.63
ppdf(2)	Maximum temperature for growth of maize	very small	°C	45.00	0.05-0.08	47.00-47.1
prdx(1)	Potential aboveground production of maize	large	g C m <sup>-2</sup> langleyLy <sup>-1</sup>	2.25	0.25-0.38	1.852-6.2
clteff(1,2&4)	Tillage multiplier for SOM turnover	large	unitless	10.00	0.25-0.38	19.10-4.93
aneref(3)	Min. impact of soil anaerobiosis on SOM turnover	large	unitless	0.95	0.25-0.38	0.67-0.79
dec4	Max. turnover rate of passive SOM pool	very large	g g <sup>-1</sup> yr <sup>-1</sup>	0.0035	0.3-0.45	0.0056-0.006
dec5(2)	Max. turnover rate of slow SOM pool	large	g g <sup>-1</sup> yr <sup>-1</sup>	0.10	0.25-0.38	0.060-0.13
fwloss(4)	Scaling factor potential evapotranspiration	moderate	unitless	0.75	0.15-0.23	0.69-0.94
pmco2(1&2)	C lost as CO <sub>2</sub> with metabolic litter turnover*	large	g g <sup>-1</sup> (C)	0.54	0.25-0.38	0.82-0.91
pslco2(1&2)&rsplig	C lost as CO <sub>2</sub> with structural litter turnover*	large	g g <sup>-1</sup> (C)	0.85	0.25-0.38	0.80-0.77
IC <sub>MAOC</sub>	Intercept to derive fraction for fraction of MAOC in slow pool from MAOC-	very large	g g <sup>-1</sup> (C)	-0.1	1	-0.21-0.02
SL <sub>t</sub>	Slope for time difference of MAOC measurement	very-large	g g <sup>-1</sup> yr <sup>-1</sup> (C)	-0.005	0.3-0.38	-0.0024-0.00
<b>Not included in calibration (total sensitivity &lt;2.5% &amp; &gt; 1% )</b>						
frtc(1)	C allocated to roots at planting, without stress	small	fraction of NPP	0.50	0.1-0.15	-
frtc(3)	Time after planting at which maturity is reached	small	number of days	90.00	0.1-0.15	-
pramn(1,2)	Min. aboveground C/N ratio at maturity	small	C/N ratio	62.50	0.1-0.15	-
hiwsf	Max. harvest index reduction with water stress	moderate	g g <sup>-1</sup> (C)	0.60	0.15-0.23	-
teff(1)	Temperature inflection point (effect on SOM turnover)	moderate	unitless	17.05	0.15-0.23	-
varat21&22(2,1)	Min. C/N ratio for material entering slow SOM pool	small	C/N	12.00	0.1-0.15	-
basef	Soil water of bottom layer lost via base flow	moderate	fraction H <sub>2</sub> O	0.30	0.15-0.23	-
N2Oadjust_max	Proportion of nitrified N that is lost as N <sub>2</sub> O	large	g g <sup>-1</sup> (N)	0.015	0.25-0.38	-
MaxNitAmt	Maximum daily nitrification amount	large	g N m <sup>-2</sup>	0.40	0.25-0.38	-

\* (1 - microbial carbon use efficiency) ; ~~highest likelihood parameter set across all four sites~~

by running and evaluating the model using the measured data, the simulated counterpart and the variance-covariance matrix of the model residuals. Following Gurung et al. (2020), we applied the R software (R Core Team, 2020) to create a mixed model with restricted maximum likelihood estimation with the lme4 package (Bates et al., 2015), which automatically constructed the variance covariance matrix based on the nested design of observations to account for autocorrelation of residuals. The likelihood was a function of the following form:

$$p(D|M, \theta_z) = \frac{1}{\sqrt{2\pi}\Sigma} \exp\left(-\frac{1}{2}(M(\theta_z) - D)^T \Sigma^{-1} (M(\theta_z) - D)\right) \quad (3)$$

Here,  $\Sigma$  is the variance covariance matrix,  $M(\theta_z)$  is the vector of simulated values using the z-th parameter set  $\theta_z$  and  $D$  the vector of observed data. In the R software, this can be constructed by setting the residual (modelled value - measured) as

the dependent variable of a zero intercept model with nested random effects (i.e., sampling date within site), and assigning  
325 the inverse of the median standard deviation (of each type of measurement at each site) as weight. By using the inverse of the standard deviation of each type of measurement as weight of the zero-intercept model, it is possible to include different types of measurements into the same likelihood function. This is similar to what is done in weighted analyses commonly performed in meta-analyses (Möhring and Piepho, 2009). The logLik() function is then used to extract the log-likelihood, which is transformed to the likelihood by raising  $e$  to the power of the log-likelihood.

330 The sampling importance resampling method, which was used in this study, is a direct form of Bayesian calibration, which has recently been used by Gurung et al. (2020), to calibrate the parameters of the SOM module of DayCent using a large collection of temperate long-term experiments. It samples the prior by running the model for a large sample of parameter sets of size  $I$  from the prior, computing the likelihood for each sample, and filtering the prior based on importance weights  $w(\theta_z)$

$$w(\theta_z) = \frac{p(D|M, \theta_z)}{\sum_{i=1}^I p(D|M, \theta_z)} \quad (4)$$

335 where  $p(D|M, \theta_z)$  is the likelihood function of the  $z$ th parameter set and  $w(\theta_z)$  is the corresponding importance weight. It is consistent with the proportionality form of Bayes' theorem in that it uses the importance weights  $w(\theta_z)$  as probabilities for sampling from the prior, without replacement, to derive the posterior.

Combined Bayesian calibration of the sensitive DayCent parameters was performed using all available data on maize grain yield, harvest index (calculated from aboveground biomass), and SOC stocks. A notable exception was that SOC stocks from  
340 the Machanga site were not used in the calibration process, because this site was severely affected by soil erosion (Laub et al., 2023a) that is not represented by DayCent. The main reason for only using grain yield, harvest index and SOC data was that the yields, SOC stocks, and their trade-offs were the focus of this study. Technical constraints also influenced the decision; the creation and readout of daily simulation outputs to match simulated and measured soil moisture content, mineral N content and N<sub>2</sub>O fluxes would slow down the whole Bayesian calibration process by a factor of 5. The Bayesian calibration would have  
345 taken more than three months on the virtual machine with 64 cores. Following Gurung et al. (2020), model parameters that had a total sensitivity index of at least 2.5% for either yield, aboveground biomass, or SOC were considered influential and thus were subjected to calibration (11 parameters). Additionally, the new parameters associated with the initialization, IC<sub>MAOC</sub> and SL<sub>t</sub> had to be calibrated, resulting in a total of 13 parameters for calibration (Table 1).

Overall, a total of 200000 simulations were performed, from which 0.1% (200) of the parameter sets were sampled to  
350 derive the posterior distribution through resampling (Gurung et al., 2020). It was assured that this number of simulations was sufficient by splitting the simulations into two halves and visually assessing the similarity of derived posteriors for these subsets. In our experience, the sampling importance resampling algorithm is highly suitable for DayCent, that is prone to crashing with inappropriate parameter combinations. Unlike chain-dependent methods such as Markov Chain Monte Carlo, this method relies on model runs that are independent of each other, ensuring that an erroneous run does not stop the algorithm.  
355 In addition, this method allows for an efficient cross-validation of the posterior parameter set, such as the leave-one-site-out cross-validation employed in this study. Notably, the sampling importance resampling algorithm's advantage lies in its ability

to store model results for each parameter set by site, allowing for straightforward ~~cross-evaluation~~ cross-validation by site, without the need for rerunning the model for each iteration. The posterior parameter distributions of this study are displayed for both the leave-one-site-out cross-validation and the combined dataset from all four sites (Fig. 2). The former shows the importance of individual sites in the calibration process, while the latter provides the most representative posterior distribution for model upscaling, making efficient use of all available data.

To ensure computational efficiency, we used informed Gaussian priors that were centered around the standard parameter values of DayCent, with different coefficients of variation ~~of 0.05, 0.1,~~ based on different observed ranges in previous studies. To make optimal use of existing knowledge about the parameters, the selected coefficients of variation per range were initially based on previous studies that had performed Bayesian calibration of the DayCent model. The coefficients of variation were chosen in a way that the prior from our study covered the whole range of the posterior from previous studies and then multiplied by a factor of 1.5 to account for the additional uncertainty that arose from applying DayCent at tropical sites. The studies of Gurung et al. (2020) and Mathers et al. (2023) were the basis to derive the coefficient of variation for the parameters dec4, dec5(2), clteff(1,2,&4), pslco2(1&2) & rsplig, and pmco2(1&2). The study of Yang et al. (2021) was the basis for the parameters ppdf(1) and ppdf(2), and the study of (Necpálová et al., 2015, though not being Bayesian) was the basis for the parameters aneref(3) and fwloss(4). For himax and prdx(1), we looked into the default parameters of annual crops in DayCent, to assure that the whole range of values (0.30-0.55, and 1.1-3.5: 1.7-2.5, respectively) was covered by the prior. The final coefficients of variation were 0.08, 0.15, ~~0.25 and 0.3~~ 0.23, 0.38 and 0.45 for parameters with very small, small, moderate, large and very large ranges (Table 1). For the newly introduced parameters, we used ~~larger~~ large coefficients of variation, namely 0.38 for SL<sub>t</sub> and 1 for IC<sub>MAOC</sub> ~~and 0.35 for SL~~, the reason for the latter being an initial test, in which IC<sub>t-MAOC</sub> was set to -0.3 instead of -0.1, which proved to be too low, but the uncertainty range with a standard deviation of 0.1 proved to be reasonable. Additionally, all parameters were constrained to remain within their physically sensible limits (i.e., not <0 for all and not >1 for those representing fractions).

## 2.6 Model evaluation

We used the following standard model evaluation statistics (Loague and Green, 1991):

$$MSE_y = \frac{1}{n} \sum_{z=1}^n (O_{yz} - P_{yz})^2 \quad (5)$$

$$RMSE_y = \sqrt{MSE_y} \quad (6)$$

$$EF_y = 1 - \frac{\sum_{z=1}^n (O_{yz} - P_{yz})^2}{\sum_{z=1}^n (O_{yz} - \bar{O}_y)^2} \quad (7)$$

The  $MSE_y$  is the mean-squared-error and  $RMSE$  is its root.  $EF_y$  is the Nash-Sutcliffe [modeling\\_model](#) efficiency. We further divided  $MSE_y$  into squared bias ( $SB$ ), nonunity slope ( $NU$ ) and lack of correlation ( $LC$ ), as suggested by Gauch et al. (2003). We expressed them as a percentage of the  $MSE_y$ :

$$SB_y(\%) = \frac{(\bar{O}_y - \bar{P}_y)^2}{MSE_y} * 100 \quad (8)$$

$$NU_y(\%) = \frac{(1 - b_y)^2 * (\frac{\sum_{z=1}^n (O_{yz}^2)}{n})}{MSE_y} * 100 \quad (9)$$

$$LC_y(\%) = \frac{(1 - r_y)^2 * (\frac{\sum_{z=1}^n (P_{yz}^2)}{n})}{MSE_y} * 100 \quad (10)$$

Here,  $O_{yz}$  is the measured value of the  $z$ -th measurement of the  $y$ -th type of measurement,  $\bar{O}_y$  the mean of the  $y$ -th type of measurement and  $P_{yz}$  the simulated value corresponding to  $O_{yz}$ .  $\bar{P}_y$  is the mean predicted value of the  $y$ -th measurement type,  $b$  the slope of the regression of  $P$  on  $O$  and  $r$  the correlation coefficient between  $O$  and  $P$ . The indicators  $LC$ ,  $SB$  and  $NU$  show the nature of model errors, that is, a high  $LC$  shows that it is mostly random, a high  $SB$  a systematic bias, while a high  $NU$  shows issues of model sensitivity.

## 2.7 Greenhouse gas balance

To compare different ISFM treatments in terms of their greenhouse gas (GHG) emissions, their net GHG balance was computed on a yearly basis ( $\text{kg CO}_2\text{eq ha}^{-1} \text{yr}^{-1}$ ) over the whole simulation period. This calculation was based changes in the SOC content and cumulative emissions of  $\text{N}_2\text{O}$  using a 100-year time horizon of global warming potentials (Necpalova et al., 2018):

$$\text{GHG balance} = \frac{44}{12} * \Delta SOC + 265 * N_2O \quad (11)$$

Here,  $\Delta SOC$  is the change in SOC content ( $\text{kg C ha}^{-1} \text{yr}^{-1}$ ),  $\text{N}_2\text{O}$  the cumulative  $\text{N}_2\text{O}$  flux ( $\text{kg N}_2\text{O ha}^{-1} \text{yr}^{-1}$ ). The  $\text{CH}_4$  oxidation capacity was not considered, because it usually makes a very limited contribution to GHG balance in rainfed cropping systems (Lee et al., 2020) and we did not have data to evaluate the reliability of this simulated flux. In addition to the net annual GHG balance ( $\text{in t CO}_2\text{eq ha}^{-1} \text{yr}^{-1}$ ), we calculated the yield-scaled GHG balance ( $\text{in CO}_2\text{eq kg}^{-1}$  maize grain yield) by dividing the cumulative GHG balance over the entire simulation period by cumulative simulated yields (dry matter base).

### 3.1 Most sensitive DayCent parameters

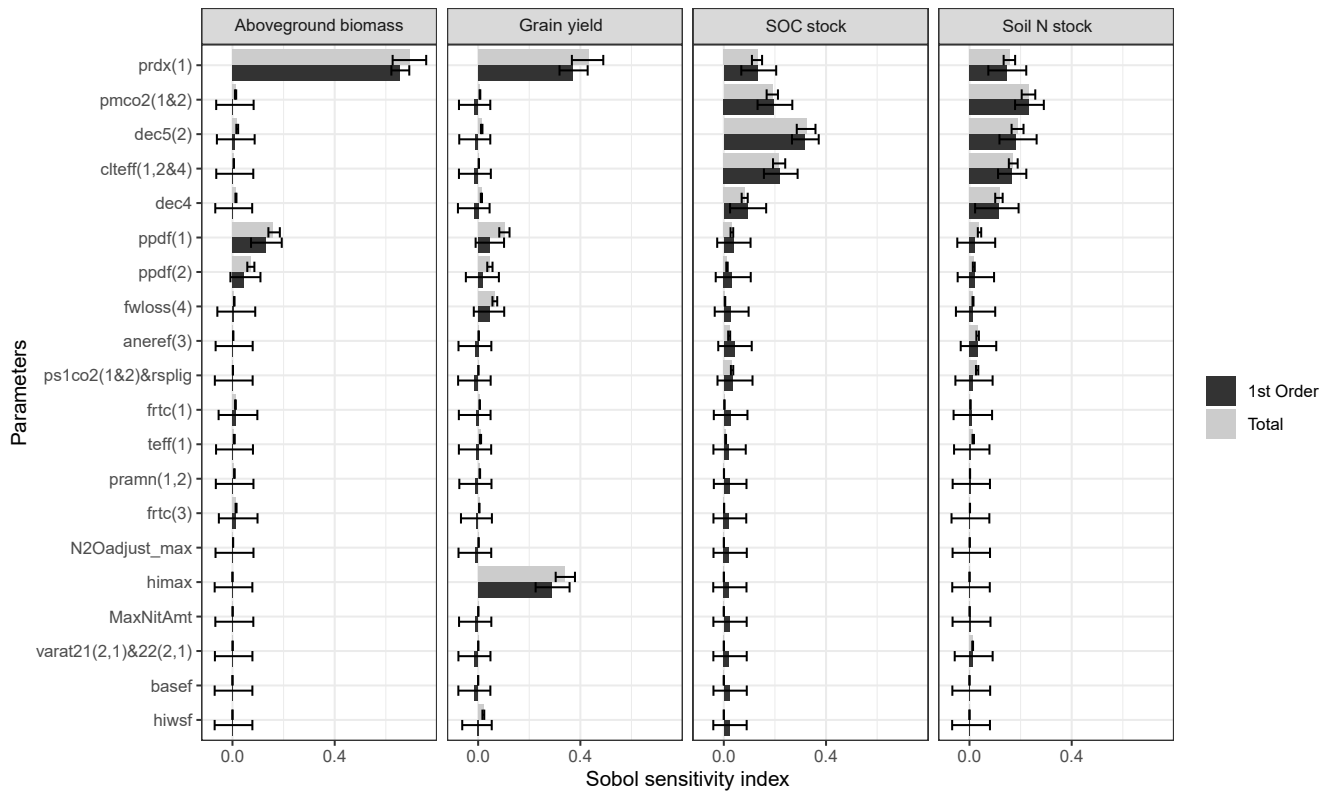
The results of the global sensitivity analysis showed that of the 66 model parameters analyzed, only 20 parameters had a Sobol total sensitivity index >1% for either maize grain yield, aboveground biomass, SOC or soil N stocks (Fig. 1). Of these, only 11 parameters had a Sobol total sensitivity index >2.5%, a threshold that captures the most influential parameters and represents a suitable selection of parameters for model calibration (Gurung et al., 2020). The parameters that turned out to be the most sensitive, with a Sobol total sensitivity index >10% for at least one type of measurement, were radiation use efficiency (prdx(1); for all measurement types); the optimal and maximum temperature for maize growth (ppdf(1) and ppdf(2), respectively; only for grain yield and aboveground biomass), and maximum harvest index (himax; only for grain yield). Further, the turnover rate of the slow and passive SOM pools (dec5(2) and dec4, respectively; only for SOC and soil N), the decomposition multiplier for soil tillage (clteff(1,2&4); only for SOC and soil N) and the fraction lost as CO<sub>2</sub> of the metabolic litter pool (pmco2(1&2), i.e., 1 - CUE); only for SOC and soil N) belonged to the most sensitive model parameters. The parameters of further importance, with a Sobol total sensitivity index >2.5% and <10%, were the minimum value for the impact factor of anaerobic soil conditions (aneref(3); only for SOC and soil N), the scaling factor for potential evapotranspiration (fwloss(4); only for maize grain yield), and the fraction lost as CO<sub>2</sub> of the structural litter and lignin pools (pslco(1&2)&rsplig, i.e., 1-CUE; only for SOC and soil N). The fact that the Sobol 1st order and total sensitivity indexes were similar for most parameters suggested only a limited number of interactions between the parameters identified by the global sensitivity analysis.

### 3.2 Posterior parameter distributions from the Bayesian model calibration

Following the global sensitivity analysis, 13 selected model parameters were calibrated using Gaussian priors which were centered around the initial parameter value, with standard deviations according to the uncertainty ranges (Table 1). ~~The ranges of the prior and the posterior distributions, using~~ It should be noted that the presented calibrated parameter values in Table 1 correspond to the single best parameter set for all four sites combined (i.e., the parameter set that had the highest likelihood in the case of no cross-validation).

Compared to the range of the prior parameter sets, the ranges of the posterior parameter sets calibrated with data from all four sites changed significantly for the parameters fwloss(4) and pmco2(1&2), had a similar mean value but a more narrow distribution for the parameters IC<sub>MAOC</sub>, prdx(1), and pslco2(1&2)&rsplig, and changed slightly for the parameters dec4, were similar. ~~Also the four different posterior distributions from~~ dec5(2), ppdf(1), ppdf(2), and himax (Fig. 2). The posterior parameter sets of the leave-one-site-out cross-validations were largely similar to each other (in agreement with each other and with the posterior parameter sets calibrated with data from all four sites. The exception was the parameter pmco2(1&2), which was centered around 0.55 for the case that the Aludeka site was left out and around 0.70 for all other cases (Fig. 2). ~~However, several parameters slightly shifted from their initial values to the best parameter values across~~

The parameter that changed most strongly in the parameter sets calibrated with data from all four sites. ~~The strongest differences between the initial and calibrated values existed for the potential maximum maize productivity per radiation~~

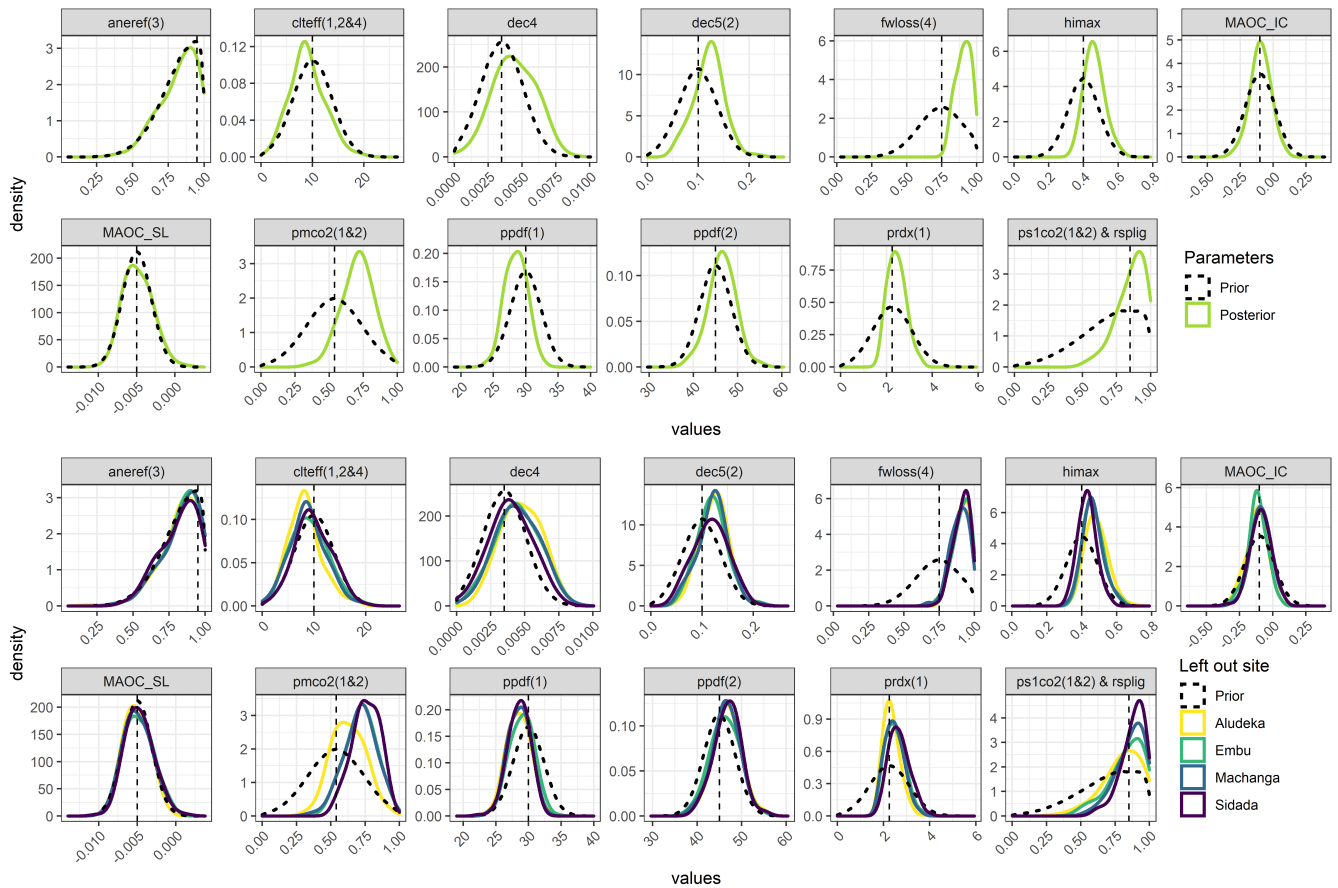


**Figure 1.** Results of the global sensitivity analysis of the most relevant DayCent model parameters. Parameter sensitivity was independently determined for the mean maize aboveground biomass, grain yield, and SOC and soil N stocks at the end of the simulation period. Only parameters with a Sobol sensitivity index >1% are displayed.

440 (prdx(1) was the scaling factor for potential evapotranspiration (fwloss(4); from 2.25 to 1.85 g C m<sup>-2</sup> langley<sup>-1</sup>), the parameter representing the increase of SOM turnover after tillage (clteff(0.75 to 0.94) thereby not including the initial value in the 95% posterior credibility interval (0.81 to 0.99; Table 1). Also the CUE of metabolic litter was reduced (by an increase of pmco2(1;&2) from 0.54 to 0.91 g g<sup>-1</sup>) but the initial value was still within the 95% posterior credibility interval (0.48 to 0.91 g g<sup>-1</sup>). The turnover rates increased for both the slow SOM pool (dec5(2,&4); from 10 to 19.1). An increase of the turnover rate of the ); from 0.10 to 0.13 g g<sup>-1</sup> yr<sup>-1</sup>) and the passive SOM pool (dec4; from 0.0035 to 0.0056-0.0060 g g<sup>-1</sup> yr<sup>-1</sup>) was partly, which was however counterbalanced by a decrease in the turnover rate of the slow SOM pool (dec5(reduction of the effect of tillage on decomposition (clteff(1,2,&4); from 0.10 to 0.06-10 to 5) and all three of these parameters contained their initial values in the 95% posterior credibility intervals. The maximum harvest index slightly increased (himax; from 0.40 to 0.43 g g<sup>-1</sup> yr<sup>-1</sup>) and so did the potential production of maize per unit of light interception (prdx(1); from 2.25 to 2.62 g C m<sup>-2</sup> langley<sup>-1</sup>). Furthermore the loss of carbon from the metabolic litter pool upon decomposition was significantly increased (pmco2(1;&2) (Finally, the optimum temperature for maize growth decreased (ppdf(1;&2); from 30 to 28.6 °C), while the maximum temperature for

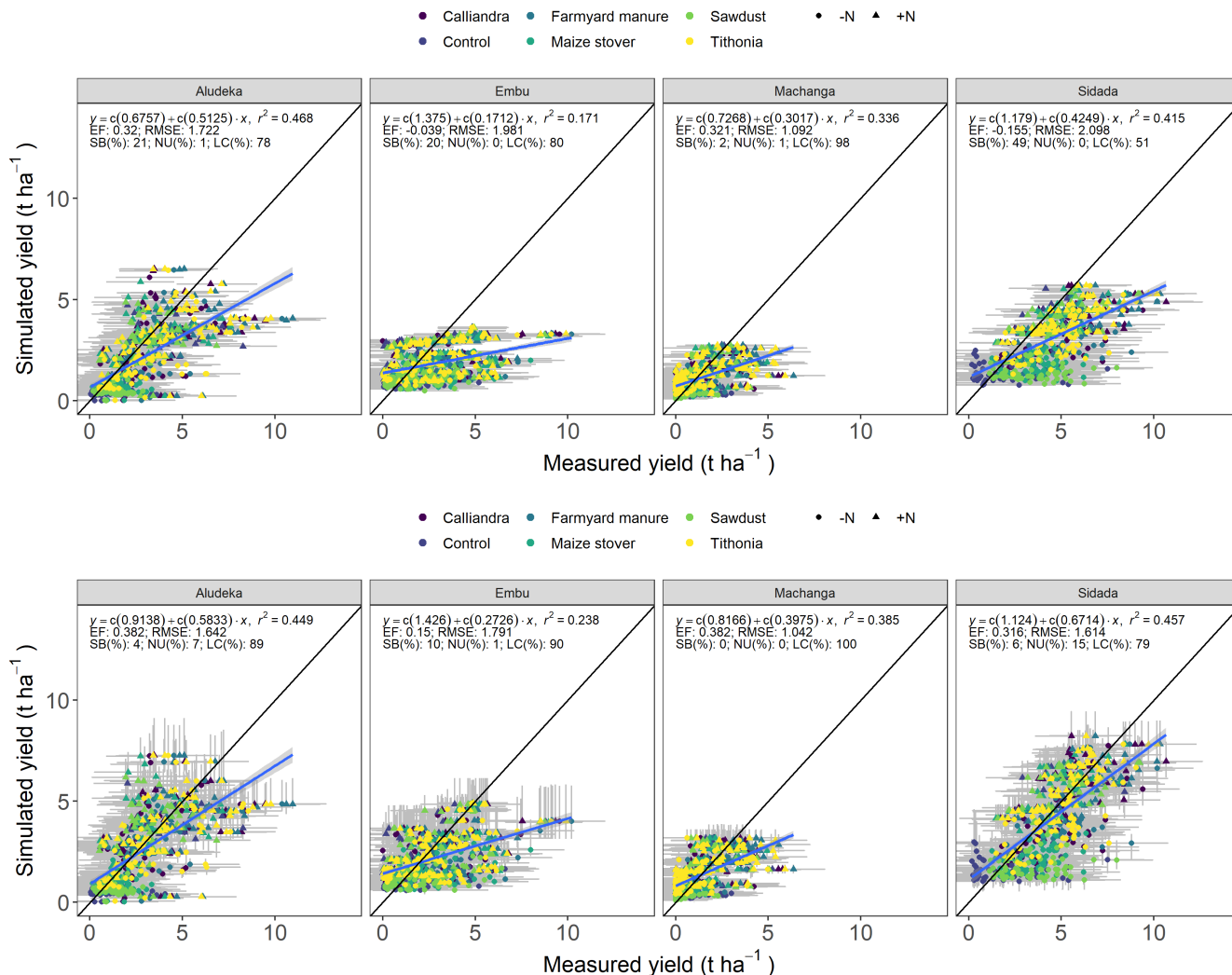
445



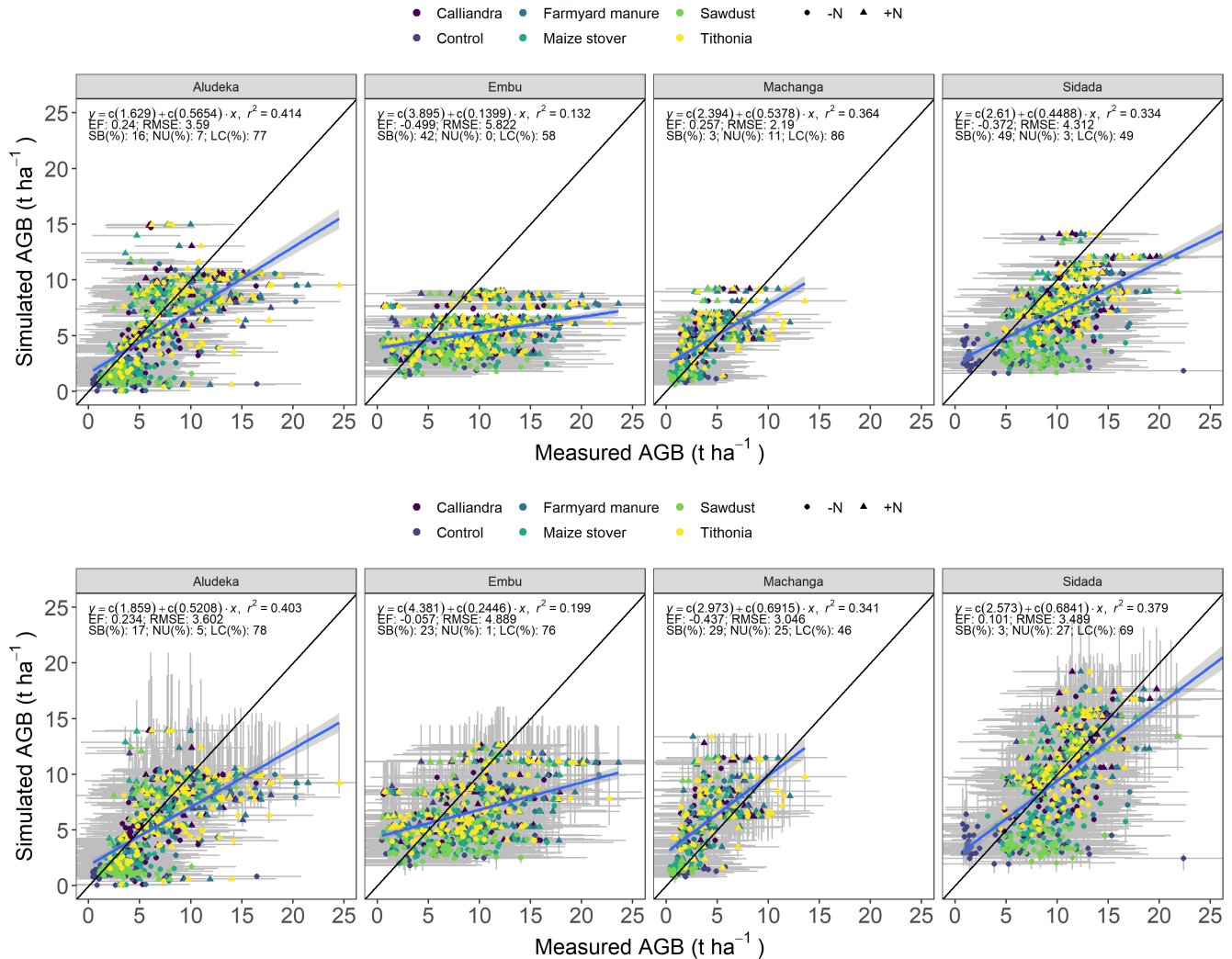


**Figure 2.** Prior compared to the posterior model parameter distribution resulting from the **uncertainty-based** Bayesian model calibration of DayCent using data from all sites combined (top) and the leave-one-site-out cross-validation (bottom). The uncertainty ranges of the priors were based on the range of parameter values found in the literature and increased by a factor of 1.5, because DayCent was applied to tropical site, while historically, it was mostly calibrated based on temperate sites. Dashed vertical lines represent the values of the initially selected parameter set. The posterior distributions are based on all four study sites combined. For the description of the parameters see Table 1.

450 maize growth increased (ppdf(2); from 0.54 to 0.82 g g<sup>-1</sup>). The 45 to 47.1 °C). Of the two parameters that translated measured  
 MAOC into SOC in the passive SOM pool were altered in opposite directions (IC<sub>MAOC</sub><sup>-</sup>, only IC<sub>MAOC</sub> was altered (from -0.1 to  
-0.21 -0.02 g g<sup>-1</sup>; and SL<sub>t</sub>, from -0.005 to -0.0024) but the initial value was still in the 95% posterior credibility intervals (-0.25  
 to 0.06 g g<sup>-1</sup>yr<sup>-1</sup>). Overall, the parameter correlations in the posterior parameter set across the four sites were **minimal, and in**  
**no case stronger than 0.2** (low for soil carbon related parameters (around 0.4 at maximum), but stronger correlations existed  
 455 between plant productivity-related parameters (e.g., -0.7 between himax and prdx(1) and 0.58 between ppdf(1) and ppdf(2);  
 Fig. A3).



**Figure 3.** Simulated compared to measured maize grain yields at the four study sites for the initial DayCent parameter set (top) versus the calibrated parameter set by leave-one-site-out cross-validation (bottom). The 2985 data points correspond to the observations from the experimental treatments over 32 to 38 seasons, depending on the site. Symbols represent the different organic resource and chemical nitrogen fertilizer treatments. Grey bands show the 95% confidence intervals of measured (horizontal) values and the 95% credibility intervals of posterior distribution (vertical). Abbreviations: EF, Nash-Sutcliffe [modeling-model](#) efficiency; RMSE, root mean squared error; SB, squared bias; NU, non-unity slope; LC, lack of correlation. Across all sites model statistics: EF, 0.358; RSME, 1.757 t ha<sup>-1</sup>; SB, 21%; NU, 1%; LC, 77% before and EF, [0.495](#)[0.503](#); RSME, [1.558](#)[1.545](#) t ha<sup>-1</sup>; SB, [24](#)%; NU, [52](#)%; LC, [93](#)[94](#)% after calibration, with [54](#)[27](#)% of measurements being in the 95% credibility interval of the posterior.



**Figure 4.** Simulated compared to measured maize aboveground biomass (AGB) at the four study sites for the initial DayCent parameter set (top) versus the calibrated parameter set by leave-one-site-out cross-validation (bottom). The 2985 data points correspond to the observations from the experimental treatments over 32 to 38 seasons, depending on the site. Symbols represent the different organic resource and chemical nitrogen fertilizer treatments. Grey bands show the 95% confidence intervals of measured (horizontal) values and the 95% credibility intervals of posterior distribution (vertical). Abbreviations: EF, Nash-Sutcliffe ~~modeling-model~~ efficiency; RMSE, root mean squared error; SB, squared bias; NU, non-unity slope; LC, lack of correlation. Across all sites model statistics: EF, 0.033; RSME, 4.392 t ha<sup>-1</sup>; SB, 27%; NU, 1%; LC, 72% before and EF, ~~0.254~~0.231; RSME, ~~3.856~~3.915 t ha<sup>-1</sup>; SB, ~~37~~37%; NU, ~~128~~28%; LC, 85% after calibration, with ~~51~~36% of measurements being in the 95% credibility interval of the posterior.

### 3.3 Simulation of maize grain yields and aboveground biomass at harvest

While the overall variation of maize grain yields across sites and treatments could be captured to some extent with the initial model parameter set, for two sites a negative model efficiency was obtained (Fig. 3). With the leave-one-site-out cross-validation approach, the model efficiency for maize grain yields at the left-out site improved ubiquitously (i.e., from 0.32 to ~~0.39~~ in 0.38 at Aludeka; from -0.04 to ~~0.16~~ in 0.15 at Embu; from 0.32 to ~~0.36~~ in 0.38 at Machanga, from -0.16 to ~~0.27~~ in 0.31 at Sidada, and from 0.36 to 0.50 across all sites) and so did RSME and bias. The same was true for the simulation of aboveground biomass (e.g., from 0.03 to ~~0.25~~ 0.23 across sites; Fig. 4), with the exception of Machanga. Overall, biases in simulated grain yields were mostly eliminated through the model calibration, and biases in simulated aboveground biomass were eliminated ~~in Aludeka and Siadada, reduced in at Sidada, reduced at~~ Embu, but increased ~~in at~~ Machanga.

~~The simulated posterior credibility intervals of simulated yields and aboveground biomass contained 50% and 51% of observed data, respectively, showing a that it could not capture the full uncertainty of measurements.~~ While DayCent could not capture the full season-to-season variability of grain yields and aboveground biomass, the mean yields and aboveground biomass throughout the simulation period were simulated well for most treatments without the addition of mineral N (Fig. A4). The exception to this was the Embu site, where there was a systematic underestimation of yields in the ~~-N treatments.~~ +N treatments. Nonetheless, DayCent was able to acceptably simulate the variability of grain yields across sites by organic resource and mineral N treatment (model efficiencies between 0.30 and 0.54; with values for control -N (0.08) and sawdust -N (0.18) being the exception; Fig A7). Interestingly, DayCent poorly distinguished the mean yields and aboveground biomass of treatments with high compared to very high rates of N inputs (i.e., the differences between the different organic resources and the control within the +N treatment). An additional test of the model sensitivity of mean yields to different levels of mineral N fertilizer in the control provided further insights into this (Fig. A5). In this test, the yields plateaued at mineral N rates that were lower than the maximum N rates provided in the organic resource +N treatments by mineral N and organic resources combined (up to >500 kg N per year or > 250kg N per growing season). ~~In At~~ Machanga and Embu, simulated mean yields stopped increasing at around 100 kg N ha<sup>-1</sup> per growing season, which is less the 120 kg N ha<sup>-1</sup> per growing season in the control +N. ~~In At~~ Aludeka and Sidada, simulated mean yields stopped increasing at 200 to 250 kg N ha<sup>-1</sup> per growing season, but most of the response to N was below 120 kg N ha<sup>-1</sup> per growing season (Fig. A5). Although the mean yields in -N treatments with the high-quality inputs were well simulated, some of the low-quality input treatments ~~in at~~ Aludeka and Sidada, namely maize stover and sawdust at 1.2 and 4 t C ha<sup>-1</sup> yr<sup>-1</sup>, had lower simulated than observed mean yields in their -N treatments (Fig. 5). The same was true for the control -N ~~in Aludeka at Aludeka, Embu,~~ and Machanga.

### 485 3.4 Simulated SOC stocks in response to integrated soil fertility management

~~In contrast.~~ Similar to the simulation of maize grain yields, the simulations of ~~change~~ changes in SOC stocks following the application of organic resources at different rates (1.2 and 4 t ha<sup>-1</sup> yr<sup>-1</sup>) ~~were not~~ generally improved across sites by the leave-one-site-out cross-validation approach compared to using the initial model parameter set (Fig. 6). ~~Both the initial parameter set and the calibrated parameter set resulted, however, in a better model performance.~~ The improvement was even stronger when



**Figure 5.** Barplots of mean simulated and mean measured maize grain yield and aboveground biomass (AGB) from cross-validation. Error bars represent standard deviation.

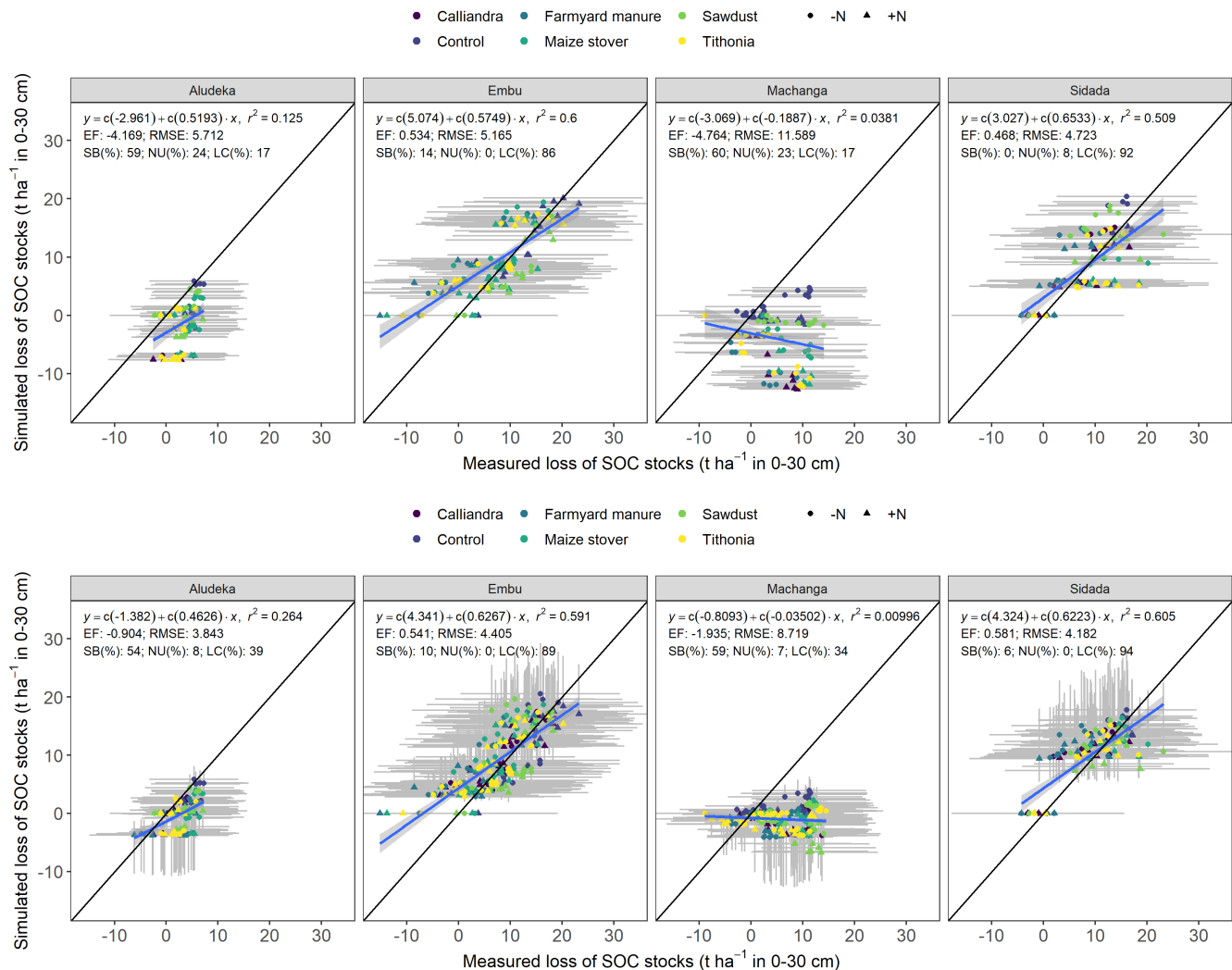
490 compared to DayCent simulations with the default CUE value for the structural pool (these had a negative model efficiency at all four sites; Fig. A6). While Aludeka experienced ~~improved an improved but negative~~ model efficiency for simulated changes in SOC stocks with the leave-one-site-out cross-validation (from -4.17 to ~~-1.84-0.90~~), the model efficiencies ~~for at~~ Embu and Sidada ~~slightly worsened (from 0.54 to 0.33 in were positive in the initial parameter set and improved with calibration (from 0.53 to 0.54 at Embu and from 0.47 to 0.39 in 0.58 at Sidada). Even Also~~ across sites, the model efficiency (computed without  
495 Machanga) ~~slightly decreased improved considerably~~ from 0.36 to ~~0.34 0.55~~ following calibration. As expected, Machanga, for which the SOC stock data had been removed from the calibration dataset due to soil erosion at this site, ~~exhibited still exhibited a~~ poor model efficiency ~~after calibration (-3.6 after calibration)-~~.

~~Despite the reduction in model performance, the Bayesian calibration effectively captured the uncertainty in SOC stock changes in Aludeka, Embu and Sidada. Overall, 84% of measurements fell within the posterior credibility intervals, though the evaluation was done with -1.9 compared to -4.8 before calibration). DayCent performed well in simulating the variability of the changes in SOC stocks across sites, evaluated by organic resource and mineral N treatment (also computed without Machanga). With the exception of the site that was not used in calibration. treatments farmyard manure ±N, maize stover ±N, and sawdust -N model efficiencies were between 0.51 and 0.79 (with RSME between 3.2 and 4.3 t ha<sup>-1</sup>; Fig A8) with the highest performance for the control +N (0.79) and control -N (0.69) treatments. The other treatments still had positive model efficiencies (0.15 to 0.42), but the SOC losses of the farmyard manure treatments were overestimated (EF of 0.15 for -N, 0.29 for +N, RSME of 5.1 and 5.3).~~  
500  
505

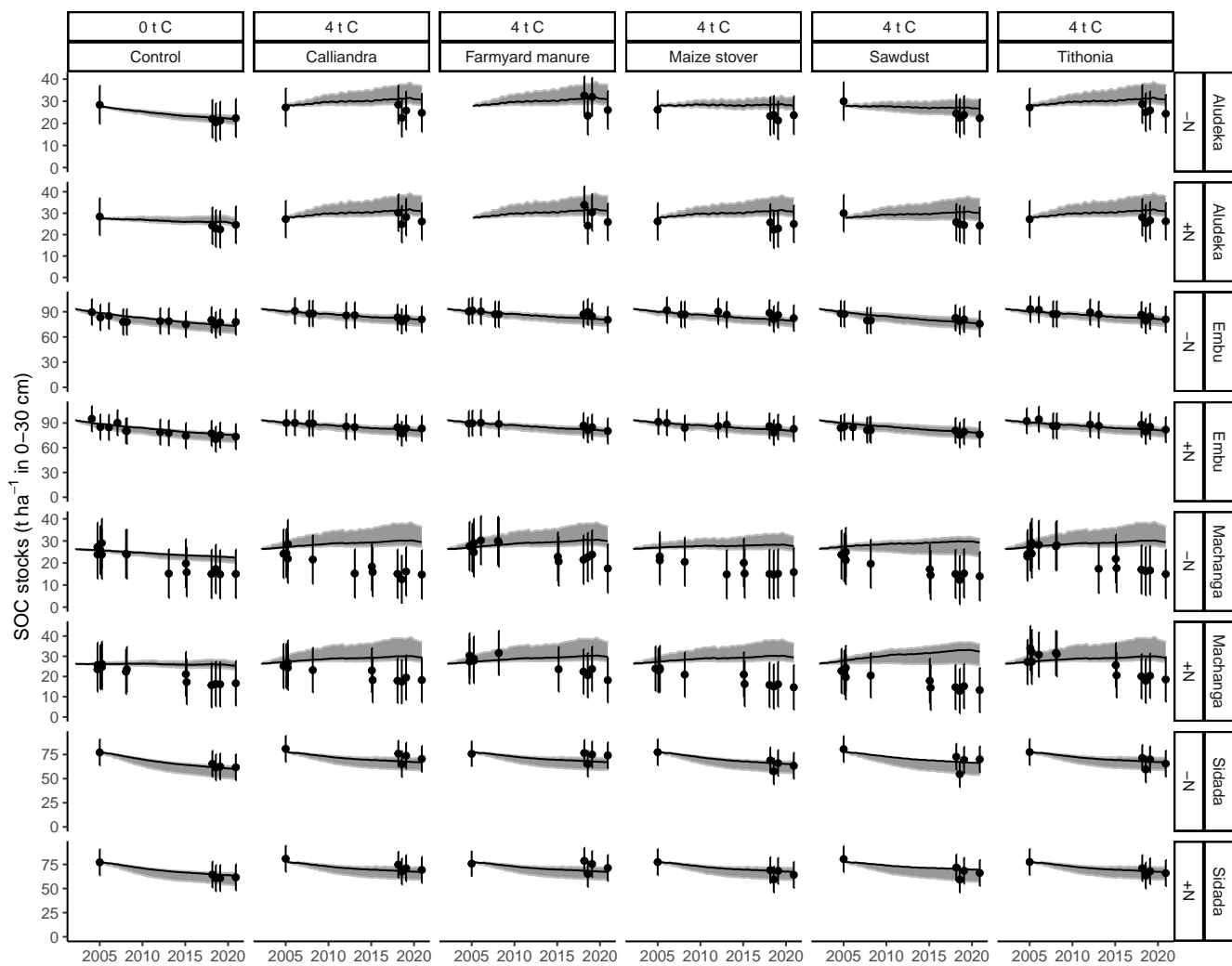
While SOC changes were well captured in the control treatments across all sites, it should be noted that ~~under or overestimation of the change the increases~~ in SOC stocks ~~was most prominent~~ in the treatment receiving 4 t C ha<sup>-1</sup> yr<sup>-1</sup> ~~and this discrepancy varied by site. In Sidada, for example, all treatments that received 4 t C ha<sup>-1</sup> yr<sup>-1</sup> tended to have lower simulated than observed SOC losses, while in Aludeka most treatments that received 4 t C ha<sup>-1</sup> yr<sup>-1</sup> showed a stronger simulated SOC gain than what was observed were overestimated at Aludeka (Fig. A9). The large As a result, the posterior~~ credibility intervals of ~~the Bayesian calibration were also evident when comparing the temporal dynamics of measured with simulated SOC stocks matched well with measured SOC stocks of Embu and Sidada, but not with those of Aludeka (Fig. 7).~~ The difference between the 4 t C ha<sup>-1</sup> yr<sup>-1</sup> input and the control treatments were generally well simulated, but the ~~considerable variability in the measured SOC stocks between different time points fact that Machanga, the other sandy site, could not be used in the calibration due to erosion,~~ likely contributed to the ~~large posterior intervals poorer performance of the sandy site in Aludeka.~~  
510  
515

### 3.5 Simulated N<sub>2</sub>O emissions and GHG balance

The negative model efficiencies and the absence of correlation between observed and simulated daily N<sub>2</sub>O values indicated that model performance for daily N<sub>2</sub>O emissions was poor (Fig. 8). While treatments with higher N loads had both higher simulated and measured N<sub>2</sub>O fluxes compared to those with lower loads, the peaks of N<sub>2</sub>O emissions were often simulated on different  
520 dates than the measurements. This was most noticeable in +N treatments (Fig. A10). Conversely, ~~for the simulated~~ cumulative N<sub>2</sub>O emissions per season ~~, there was were in~~ a better agreement ~~between the simulated and with the~~ measured values. All sites, except Machanga, showed positive model efficiencies (highest ~~in Embu, 0.62; lowest in Sidada, 0.03; at Embu, 0.69;~~

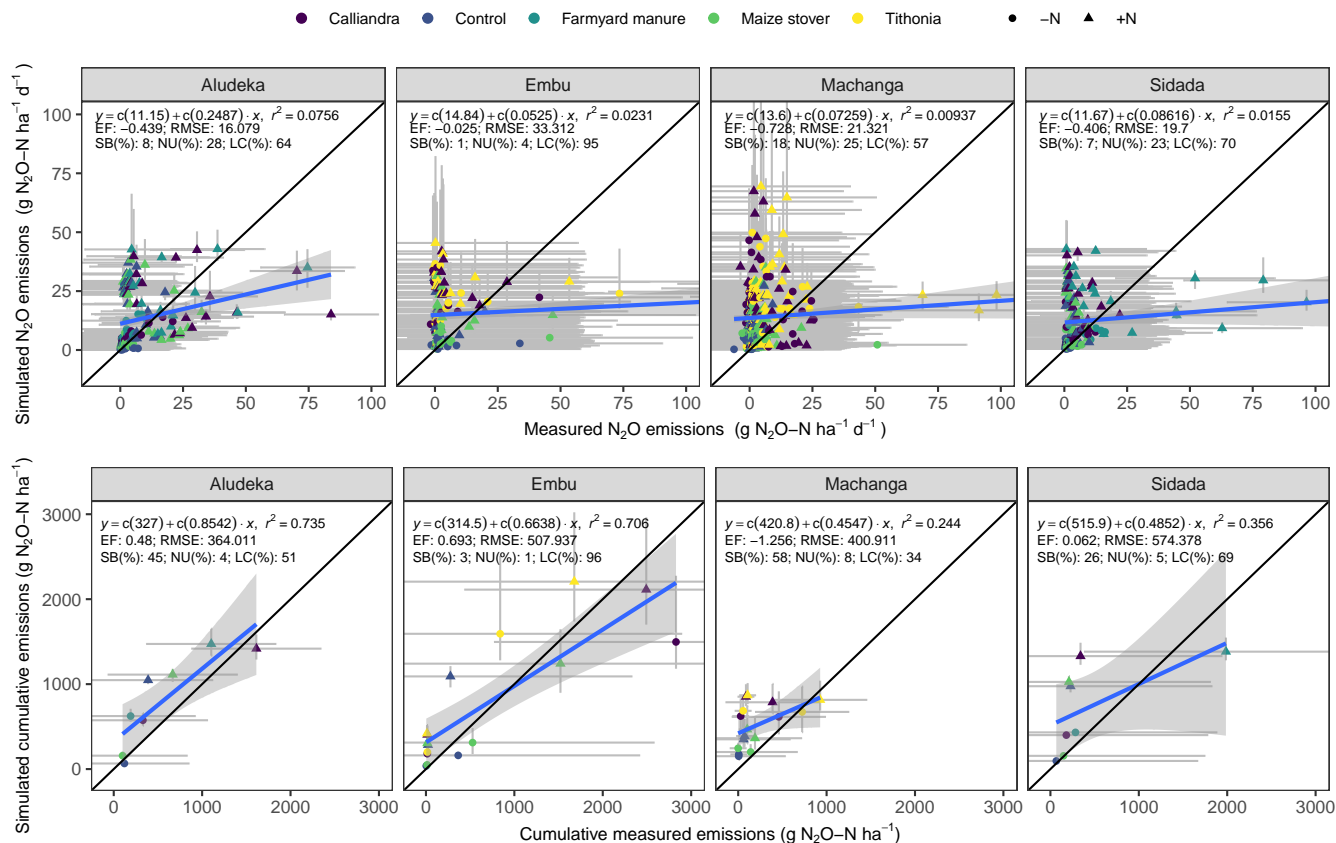


**Figure 6.** Simulated compared to measured changes in SOC stocks since the start of the experiment at the four study sites for the initial Day-Cent parameter set (top) versus the calibrated parameter set by leave-one-site-out cross-validation (bottom). The 724 data points correspond to the observations from the experimental treatments over 32 to 38 seasons, depending on the site. Symbols represent the different organic resource and chemical nitrogen fertilizer treatments. Grey bands show the 95% confidence intervals of measured (horizontal) values and the 95% credibility intervals of posterior distribution (vertical). Abbreviations: EF, Nash-Sutcliffe modeling efficiency; RMSE, root mean squared error; SB, squared bias; NU, non-unity slope; LC, lack of correlation. Across all sites model statistics without Machanga (from which SOC data was excluded in the calibration process due to strong erosion): EF, 0.364; RSME, 5.199 t ha<sup>-1</sup>; SB, 1%; NU, 22%; LC, 77% before and EF, 0.339, 0.548; RSME, 5.11, 4.22 t C ha<sup>-1</sup>; SB, 91%; NU, 29, 11%; LC, 62, 89% after calibration, with 84, 45% of measurements being in the 95% credibility interval of the posterior.



**Figure 7.** Measured (dots) versus simulated SOC stocks over time at the four study sites for the different organic resource and chemical nitrogen fertilizer treatments. Error bars represent 95% confidence intervals for measured data, the black solid line the simulation by the best parameter set **for each site**. Grey bands represent the 95% credibility intervals of the model posterior simulations, calibrated by leave-one-site-out cross-validation. Note that due to intense soil erosion, data from Machanga was not used in the calibration process.





**Figure 8.** Simulated compared to measured  $N_2O$  emissions at the four study sites for the different organic resource and chemical nitrogen fertilizer treatments, based on the calibrated parameter set using leave-one-site-out cross-validation. Displayed are the measured versus modelled per treatment for the days where measurements were conducted (top) and for the mean of cumulative flux measurements per season using the trapezoid method (bottom). The 808 data points (top) correspond to the daily measurements from the experimental treatments over one to two seasons, depending on the site. Symbols represent the different organic resource and chemical nitrogen fertilizer treatments. Error bars represent 95% confidence intervals (measurements) and credibility intervals (simulations). Note that the credibility intervals are only informed by yield, SOC and harvest index data and therefore do not represent the full uncertainty of  $N_2O$  emissions. Abbreviations: EF, Nash-Sutcliffe modeling model efficiency; RMSE, root mean squared error; SB, squared bias; NU, non-unity slope; LC, lack of correlation.

lowest at Sidada, 0.06), but generally underestimated the uncertainty around cumulative N<sub>2</sub>O emissions (Fig. 8). Additionally, the correlation between simulated and measured N<sub>2</sub>O emissions was notably higher for the cumulative emission fluxes than for daily fluxes (R<sup>2</sup> ~~between 0.72 for Aludeka and 0.30~~ of 0.74 for Aludeka, 0.7 for Embu, and 0.36 for Sidada, compared to R<sup>2</sup> close to 0 for daily fluxes). Furthermore, despite some bias ~~in~~ at Aludeka and Sidada, most of the error in seasonal N<sub>2</sub>O emissions was not systematic (i.e., LC of ~~63-51~~ - 95-96%).

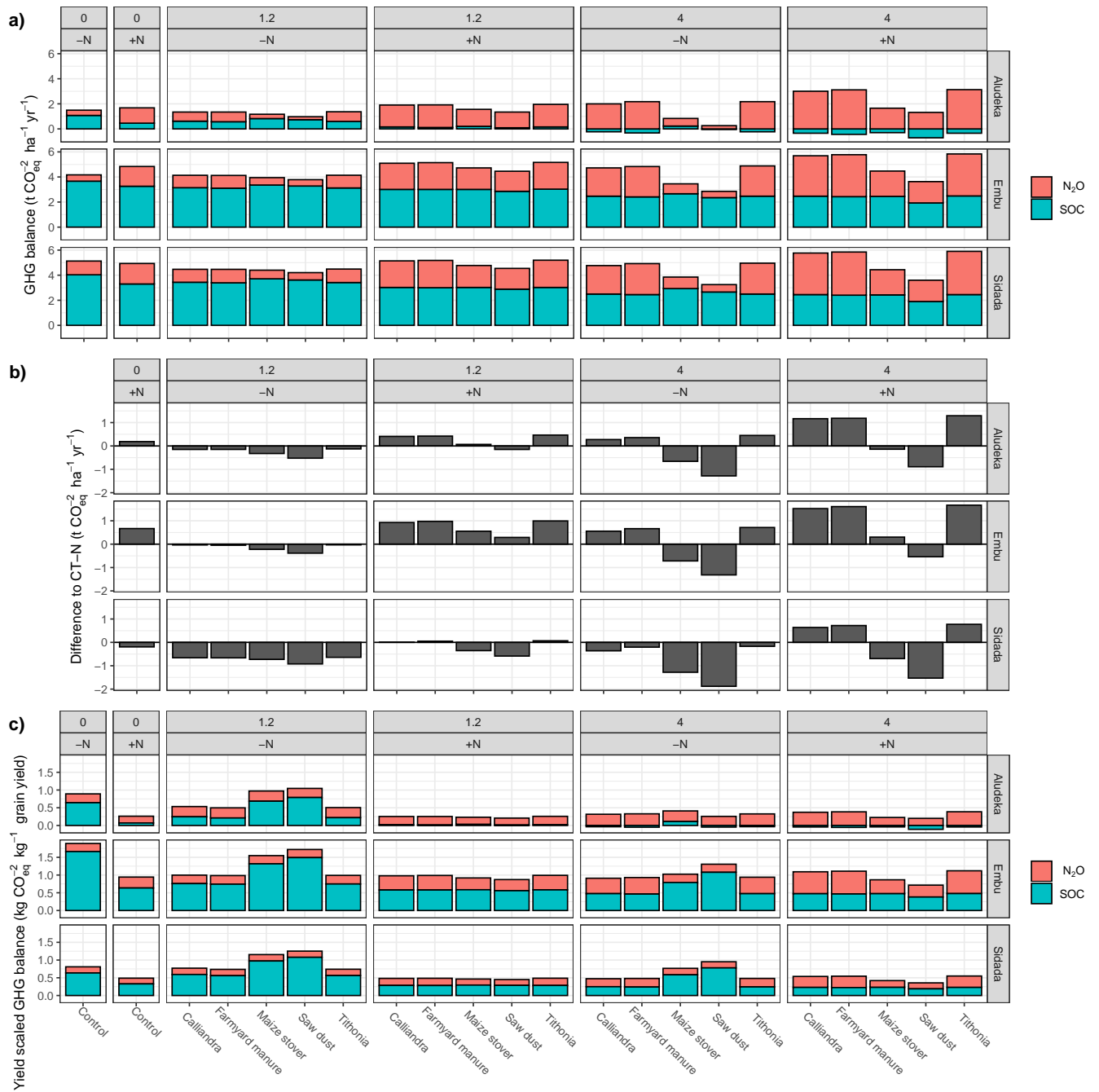
The simulated changes in SOC and seasonal N<sub>2</sub>O emissions revealed a positive GHG balance for all treatments at all sites (Fig. 9 a). Yet, the magnitude of emissions, as well as the relative contributions of N<sub>2</sub>O and CO<sub>2</sub>, differed strongly between sites and treatments. For instance, in the control -N treatment, emissions ranged from 2-1.5 t CO<sub>2</sub> equivalent ha<sup>-1</sup> yr<sup>-1</sup> at Aludeka to 6-5 t CO<sub>2</sub> equivalent ha<sup>-1</sup> yr<sup>-1</sup> at Embu/Sidada. The relative contribution of N<sub>2</sub>O also differed strongly by site. At Aludeka, for example, all positive GHG balance values in the 4 t C ha<sup>-1</sup> yr<sup>-1</sup> treatments receiving farmyard manure, *Tithonia*, and *Calliandra* came from N<sub>2</sub>O, while SOC acted as a sink of GHG. In contrast, at Sidada and Embu, most treatments had ~~around one-third~~ of ~~between a third and half of their~~ GHG balance associated with N<sub>2</sub>O emissions, with the remainder attributed to SOC losses. Compared to the control -N treatment, all organic resource treatments in the -N treatments were simulated to have lower emissions at inputs of 1.2 t C ha<sup>-1</sup> yr<sup>-1</sup> (Fig. 9 b). Yet, ~~including the~~ when including the 4 t C ha<sup>-1</sup> yr<sup>-1</sup> and the +N treatments, the changes ranged from an increase of around 1.5 t CO<sub>2</sub> equivalent ha<sup>-1</sup> yr<sup>-1</sup> to a reduction of 2.5-2 t CO<sub>2</sub> equivalent ha<sup>-1</sup> yr<sup>-1</sup>. Embu was the site where the addition of mineral N (+N treatment) led to the strongest increase in simulated GHG balance compared to the control -N treatment.

Finally, there were site- and treatment-specific differences in the yield-scaled GHG balance. The ~~control~~ ~~treatments~~ control -N, maize stover ~~and sawdust treatments~~ -N and sawdust -N had the highest simulated emissions per kg of maize grain yield across sites (~~1 to 1.5~~ 0.8 to 1.8 kg CO<sub>2</sub> equivalent per kg of yield). In contrast, the farmyard manure, *Calliandra* and *Tithonia* treatments at inputs of 1.2 t C ha<sup>-1</sup> yr<sup>-1</sup> in the +N treatment and at 4 t C ha<sup>-1</sup> yr<sup>-1</sup> in both -N and +N treatments tended to have the lowest simulated emissions at all sites (around 0.5-0.3, 1 and 0.6 kg CO<sub>2</sub> equivalent per kg of yield at Aludeka, Embu, and Sidada, respectively).

## 4 Discussion

### 4.1 Robustness of the Bayesian calibration shown by cross-validation

As shown by the leave-one-site-out cross-validation (Figs. 3 and 4), the Bayesian calibration considerably improved the predictive capability of DayCent for maize grain yield ~~and aboveground biomass~~, aboveground biomass and changes in SOC stocks across sites. The model evaluation statistics from this calibration were comparable to those reported in recent publications that also combined the predictions of crop yield and SOC (Necpalova et al., 2018; Levavasseur et al., 2021; Nyawira et al., 2021). However, while these studies generally showed a better simulation of crop yield than SOC, our study diverged. We found that while better yield simulations compared to SOC simulations were evident at the Aludeka and Machanga sites with soils of low clay content, the results were different at the Embu and Sidada sites with clay-rich soils. Here, SOC stock changes were more accurately simulated than maize grain yield. This, together with the fact that ~~improved simulation of maize grain yield~~



**Figure 9.** Cumulative simulated greenhouse gas (GHG) balance of  $N_2O$  emissions and  $CO_2$  emissions due to loss of SOC at the four study sites for different organic resource and chemical nitrogen fertilizer treatments combined throughout the simulated period (16 years for Aludeka/Sidada; 19 years for Embu/Machanga). Displayed are the GHG balance a) per area of land and year, b) the difference of GHG balance per area of land and year to a no-input treatment, and c) the yield-scaled GHG balance. The GHG balance is expressed in  $CO_2$  equivalent over a 100-year horizon.

~~and aboveground biomass was coincided by a lower model performance in simulating SOC changes (Figs. 6~~ the simulation of aboveground biomass worsened at two sites as a result of the calibration (Fig. ??), suggests that no single best parameter set exists for the current version of DayCent to accurately represent the conditions at all four sites. In that regard, the discrepancy  
560 between the sites with clay-rich and clay-poor soils could indicate that DayCent insufficiently includes soil textures effects on nutrient availability and SOC formation. Yet, drawing definitive conclusions from just four sites is probably not warranted. In the absence of data from more sites, it is preferable to apply the full range of possible parameter sets that are supported by the available data (Mathers et al., 2023), rather than using only the single best parameter set.

Because our calibration shows a good model fit with observed mean yields and changes in SOC stocks across sites, with no  
565 overall major bias (positive EF and errors mostly consisting of LC), the parameter set, especially the full posterior, appears suitable for upscaling of model simulations. Specifically, the yields of the ISFM treatments applying farmyard manure, Calliandra, and Tithonia were simulated well, both with and without the addition of mineral N fertilizer (Fig A7). The changes in SOC stocks for the control, Calliandra, and Tithonia treatments were also simulated well across sites, while DayCent underestimates the SOC buildup from farmyard manure treatments (Fig A8). However, one should keep in mind that the season-to-season yield  
570 variability is captured less accurately than the mean yields (lower RMSE) and that changes in SOC are better represented at sites with clay-rich soils than those with clay-poor soils. Because the model calibration and evaluation were performed at sites with diverse characteristics, it is reasonable to assume that DayCent, when applied to sites with similar climate and soil conditions, will provide satisfactory results with similar model uncertainties and errors. In that respect, while the leave-one-site-out cross-validation made efficient use of data for model evaluation, further model upscaling should apply the full posterior model  
575 parameter set including all sites (Fig. 2) should be used. In that case, a computationally inexpensive exercise would use only the single best parameter set (Table 1), while the full posterior parameter set should be used to get estimates of the posterior credibility intervals for changes in SOC stocks.

#### 4.2 Bayesian calibration shows uncertainty of model parameters

To estimate the potential yield and long-term sustainability of cropping systems without major bias using biogeochemical  
580 models, region-specific model calibrations are needed (Rattalino Edreira et al., 2021; Yang et al., 2021). Therefore, while previous studies have simulated crop productivity under ISFM and similar practices with the default parameter values (e.g. Nezomba et al., 2018; Nyawira et al., 2021), the results of our study underscore the importance of a local calibration, especially when simulations are done with a single parameter set. On the ~~other one~~  
585 parameters (i.e., clteff(1,2&4), dec4, dec5(2)) indicate that the included prior knowledge about DayCent parameters from recent Bayesian calibration studies (Gurung et al., 2020; Yang et al., 2021; Mathers et al., 2023) represent good parameter estimates for a tropical setting. On the other hand, the CUE values of both metabolic litter (centered around 25% with pmco2(1&2) around 0.75) and structural litter (centered around 10% with pslco2(1&2)&rsplig around 0.9) are low compared to the default values. This indicates the difficulty in stabilizing the organic resource additions into SOM at the tropical soils of these four  
590 long-term experiments. Both parameters (pmco2(1&2) and pslco2(1&2)&rsplig) are even higher than in a recent study by

Mathers et al. (2023). However, because these values had reached their predefined upper boundary limit in the study by Mathers et al. (2023), our CUE values might even be representative for temperate and not just for the tropical conditions of Kenya. In general, including prior knowledge about model parameter values from similar studies substantially improves model performance compared to using default parameter values (e.g., see the poor model performance without including prior knowledge on  $\psi_{1co(1&2)}$ ; Fig. A6). In fact, the ~~values of the aligning~~ turnover rates of the slow and passive SOM pools ~~for our study sites were in alignment~~ with those derived ~~in a recent Bayesian calibration of DayCent~~ for temperate conditions (Gurung et al., 2020), ~~indicating~~ indicate that the DayCent temperature function is well suited to handle the faster SOM turnover under tropical conditions. ~~However, it-~~

It is important to note that our sites were under natural vegetation (i.e. forest) or fallow until relatively shortly before the establishment of the experiments (Laub et al., 2023a). Consequently, upon the start of cultivation, erosion and potentially accelerated decomposition (due to soil disturbance) occurred, and SOC has likely not yet reached a new equilibrium with C inputs from maize cultivation. Therefore, C loss is the dominant process occurring at the sites. The good simulations of ~~these~~ the strong SOC changes in the control treatments when using MAOC initialized SOM pools, a method not commonly used with DayCent, further supports suggestions to move away from purely conceptual SOM pools (Abramoff et al., 2018; Laub et al., 2024). Such conceptual pools require many assumptions about the initial vegetation and soil conditions (e.g., in the ~~the~~ spin-up modelling or estimation of SOM pool distribution). In fact, the high uncertainty about initial vegetation, and time and management since site conversion, was a major reason to move away from the model spin-up and site history run usually typically done with DayCent. Thus, our study provides additional support to modify DayCent, incorporating measurable SOM pools (e.g. Dangal et al., 2022).

~~In that sense, the~~ Nevertheless, soil property maps are also subject to uncertainty. For example, differences between different SOC maps used in model initialization propagate into differences in the changes in SOC stocks (Zhou et al., 2023). It was shown that uncertainty of the simulated effect of a soil management practice on the difference of SOC stocks compared to a counterfactual is lower than the uncertainty of the simulated temporal development of SOC stocks (Zhou et al., 2023). Therefore, it may be best practice to work with a baseline and an improved scenario. Both spinup and SOC map initialization have their shortcomings and in the end the model user must make an informed decision on which initialization method they consider subject to less uncertainty, based on which data is locally available.

The similarity of our DayCent model calibration with that of Gurung et al. (2020) and earlier studies, despite using different model initialization approaches, indicates the broad applicability of DayCent. It suggests that the SOM turnover and maize traits in DayCent are representative for temperate to tropical conditions. The adjustments made to the values of optimal and maximum temperature for maize growth ( $ppdf(1)$  and  $ppdf(2)$ ) could be attributed to the local maize varieties that are adapted to the higher temperatures in Kenya. For example, Yang et al. (2021) conducted a region-specific Bayesian model calibration of the DayCent maize growing parameters and found  $ppdf(1)$  to vary between 26 and 32 °C, a range similar to our posterior. However, the differences in model performance by site shows that the broad representativeness of DayCent comes at the cost of model simplification and site-specific model performance. A main reason for this may be that DayCent model formalisms do not include the latest mechanistic understandings of the role of microbes in SOM decomposition (Laub et al., 2024), and

the sorption kinetics of carbon to minerals for SOM protection (Abramoff et al., 2018; Ahrens et al., 2020). Additionally, Daycent does not fully consider that a lot of stabilized SOC is formed by microbes from metabolic and not structural litter (Cotrufo et al., 2013; Kallenbach et al., 2016). For example, it was recently demonstrated that the Millennial model, which includes measurable SOM pools and improved kinetics of carbon sorption better predicts SOC stocks at the global scale than the CENTURY model, which has conceptual SOM pools (Abramoff et al., 2022). While model calibration can compensate for deficiencies in mechanistic accuracy at a single site (Laub et al., 2024), this is likely not possible across sites with different conditions.

An interesting observation is that while the model bias for the mean maize yield was treatment specific (i.e., the mean yields of +N treatments of farmyard manure at 4 t C ha<sup>-1</sup> yr<sup>-1</sup> at all sites and of *Tithonia* at the same rate in all but Sidada, were underpredicted by DayCent), the bias for SOC stocks was mostly site specific (i.e., SOC formation ~~in~~ at Aludeka at 4 t C ha<sup>-1</sup> yr<sup>-1</sup> was overpredicted). A potential explanation for this site-specific bias for SOC is the fact that DayCent was developed under the paradigm of SOM formation occurring mainly from recalcitrant humic compounds in the soil. Alternatively, it might indicate that soil texture alone is insufficient to explain the mineralogy-driven storage potential of SOC (e.g. Reichenbach et al., 2021; Mainka et al., 2022) or that, because Machanga SOC stocks were not used in the calibration due to erosion, SOC changes at clay-rich sites cannot inform SOC changes at sandy sites like Aludeka. Finally, our model sensitivity test to mineral N inputs suggests that the maize yield bias at high N is due to DayCent's inability to capture yield increases above 100-150 kg N per ha and season at the four sites (Fig. A5); the +N treatments of *Tithonia*, *Calliandra* and farmyard manure at 4 t C ha<sup>-1</sup> yr<sup>-1</sup> supplied on average >250 kg N per ha and season. Here, it should be noted that DayCent does not include other potential beneficial effects of organic resource treatments, such as increased pH from farmyard manure application (Xiao et al., 2021; Mtangadura et al., 2017), or improved water infiltration of treatments that maintain SOC stocks compared to those that reduce them.

### 4.3 N<sub>2</sub>O emissions and GHG balance

In general, the poor match between observed and measured daily N<sub>2</sub>O emissions (Fig. A10) illustrates the difficulty of simulating the timing of microbial processes, through which nitrate (NO<sub>3</sub><sup>-</sup>) is converted to N<sub>2</sub> and N<sub>2</sub>O gasses, with models of intermediate complexity such as DayCent. One reason is the poor representation of soil moisture dynamics by the 'tipping bucket' soil water balance approach and that soil gas diffusivity is not explicitly simulated (Zhang and Yu, 2021; Wang et al., 2020). However, the fact that cumulative N<sub>2</sub>O emissions were better simulated than daily emissions, there was no systematic under- or over-prediction of cumulative N<sub>2</sub>O emissions, and simulated N<sub>2</sub>O emissions were within the uncertainty range of measured N<sub>2</sub>O emissions, demonstrates the suitability of DayCent to represent average N<sub>2</sub>O emissions with the current calibration. Nonetheless, the fact that the uncertainty around predicted cumulative N<sub>2</sub>O emissions was lower than the uncertainties of the measurements indicates that the posterior, which was only calibrated with yield, SOC, and harvest index data, underestimates the uncertainty around N<sub>2</sub>O emission predictions. Thus, although DayCent's simulations of N<sub>2</sub>O emissions are superior to using emission factor approaches (dos Reis Martins et al., 2022), simulating N<sub>2</sub>O emissions remains challenging and highly uncertain due to the complexity of the processes involved and their high temporal and spatial variability. Given the limited bias

660 in simulating SOC changes and cumulative N<sub>2</sub>O emissions showed, the DayCent simulations provide a reasonable first estimate of the GHG balance. Nevertheless, the contributions of N<sub>2</sub>O emissions to the GHG balance of up to 100% (at Aludeka) and between 10 to ~~50~~60% (at the other sites; Fig. 9), are subject to high uncertainty, as evident from the measurements. ~~The larger confidence intervals of the measured compared to the simulated cumulative N<sub>2</sub>O emissions suggest that the DayCent model cannot fully represent the variability. Thus, although DayCent's simulations of N<sub>2</sub>O emissions are superior to using emission factor approaches (dos Reis Martins et al., 2022), simulating N<sub>2</sub>O emissions remains challenging and highly uncertain due to the complexity of the processes involved and the high temporal and spatial variability of N<sub>2</sub>O emissions.~~

665 Despite this unresolved uncertainty, our modeling results show that all ISFM options in a maize monocropping system have a net positive GHG balance, aligning with the prevalent trend of SOC losses in recently established (< 50 years) maize systems in SSA (Sommer et al., 2018; Laub et al., 2023a). The findings also support the postulate that closing yield gaps in SSA will increase N<sub>2</sub>O emissions per area of land (Leitner et al., 2020). However, the large differences in the yield-scaled GHG balance between treatments, such as the 30 to 60% lower yield-scaled GHG balance in the FYM 1.2+N treatment compared to the control-N treatment across the sites, indicate that ISFM has the potential to produce crops with relatively lower GHG emissions than no- or low-input input systems, and that the calculation of emissions per unit of food is preferable to the calculation per land area (Clark and Tilman, 2017). Specifically, the ISFM treatments with low-emissions and high yields, such as FYM 1.2+N, that produces between 2 and 4 t of yield per season at emissions of between ~~0.2-0.3~~ and 1 kg CO<sub>2</sub> equivalent per kg of yield, are a suitable mitigation practice compared to the control treatment with little or no inputs of organic and/or chemical fertilizer. Consequently, sustainable intensification and mitigation of greenhouse gases can go hand in hand.

#### 4.4 DayCent is suitable to upscale simulations of "real" ISFM, but has a limited sensitivity to high N inputs

680 Because mean maize yields across sites were reasonably well represented by the calibrated version of DayCent, it can be used for upscaling to predict the potential impact of ISFM in lowering yield gaps at national levels. However, the plateauing of mean yields at high N loads (Fig. A5) indicates that DayCent may not be suitable for estimating maximum achievable yields (e.g., Ittersum et al., 2016), and should thus be restricted to yield predictions for medium N input levels. Given that the historical rates of N fertilizer application in Kenya are less than 50 kg of N ha<sup>-1</sup> (World-Bank, 2021a), the model seems suitable to simulate the effect of implementing 'realistic' ISFM practices, which target maximum N use efficiency (Vanlauwe et al., 2010), with N input rates considerably below the maximum N rates used in the field experiments of this study (e.g., 80 kg N per season; Mutuku et al., 2020). ~~The~~ At all sites, the prediction of mean maize yields was reasonably good-well for *Calliandra*, *Tithonia*, and farmyard manure treatments at 1.2 and 4 t C ha<sup>-1</sup> in the -N treatment, as well as for CT+N, i.e., all treatments that supply N at the desired rate for ISFM. ~~Hence, at these N-levels, simulated~~ Also, the variability of yields and SOC stock changes per treatment across sites was simulated well for *Calliandra*, *Tithonia*, and farmyard manure in both +N and -N treatments (with changes in SOC being simulated a bit worse in farmyard manure treatments; Figs. A7 and A8). While this shows the general capability of DayCent to simulate differences in yields and SOC changes between sites as a function of organic resource composition, it also shows that DayCent cannot capture the better performance of farmyard manure compared to *Calliandra* and *Tithonia* treatments when only considering C, N and lignin contents. Overall, simulated mean maize yields

at medium N-levels are likely representative of the achievable yield through ISFM. In summary, the model calibration seems  
695 suitable for assessing the long-term effects of relevant ISFM practices on soil fertility, maize yield, and GHG emissions as  
well as their trade-offs, given the good representation of mean yield potential and SOC changes by the model. Nevertheless,  
since year-to-year yield variations were not captured well by DayCent, it remains uncertain how effectively the current model  
calibration can simulate scenarios of climate change, where temperature and precipitation patterns will become more erratic. In  
the absence of major pests (which in the experiments were controlled), the variations in seasonal precipitation and temperature  
700 are responsible for these differences, and if these are not well represented, the applicability of DayCent beyond the climatic  
range that it was calibrated for is questionable.

## 5 Conclusions

In this study, we demonstrated the effectiveness of simultaneously calibrating the SOM and plant modules of DayCent to  
simulate maize productivity and changes in SOC stocks under integrated soil fertility management (ISFM) in Kenya, ~~using,~~  
705 Using a Bayesian calibration approach. ~~Our study showed,~~ our study shows the importance of ~~choosing correct~~ using a local  
calibration and of choosing correct prior values for model parameters, ~~and using the full posterior parameter set is the best~~  
~~solution to assess the uncertainty of model outputs.~~ Although the initial DayCent ~~maize plant~~ parameterization represented  
the tropical conditions in Kenya acceptably ~~(i.e., the highest probability posterior parameter values were close to the initial~~  
~~parameterization), the,~~ the overall model performance for maize grain yield ~~and aboveground biomass,~~ aboveground biomass,  
710 and SOC stock changes was improved after calibration using local data. ~~However, better yield simulations partially came at~~  
~~the cost of poorer SOC simulations at some sites. Furthermore, SOM turnover was subject to high uncertainty and biased~~  
~~for clay-poor sites, indicating that the current module structure inadequately captures SOM dynamics in highly weathered~~  
Furthermore, while parameters related to SOM turnover were comparable to previous studies, a lower carbon use efficiency of  
applied organic resources (higher values of CO<sub>2</sub>-loss related parameters) compared to previous studies highlighted the difficulty  
715 in building new SOC stocks in the studied tropical soils. Our leave-one-site out ~~cross-validation~~ cross-validation showed that  
the calibration-derived parameter set is robust for upscaling the model simulations to larger areas in Kenya, particularly when  
applying the full posterior parameter set. At the same time, while mean maize grain yields were well simulated, the year-to-  
year yield variability raised concerns about the model's ability to capture the short-term effects of climate change adequately.  
Finally, while no ISFM treatment was predicted to act as a net sink of greenhouse gases, treatments with high and intermediate  
720 yields exhibited the lowest yield-scaled emissions.

*Code availability.* To get the latest version of DayCent, we suggest to contact the developers directly, who in our case kindly provided the  
latest DayCent version.



*Data availability.* The data sets used for the calibration of this study are available under the IITA data repository. For SOC: <https://doi.org/10.25502/wdh5-6c13/d>. For yields and biomass: <https://doi.org/10.25502/be9y-xh75/d>.

725 *Author contributions.* JS, MN and ML designed the modeling exercise. ML summarized the data, conducted the modeling exercise and prepared the original draft. MWMM, DM, RY, SMN and WW managed and maintained the long-term experiments. ML, SMN, MN, WW, MvdB, MC and JS were involved in the various sampling campaigns. MC, MN, BV and JS acquired funding for the long-term experiments. All co-authors contributed in writing and editing of the final submitted article.

*Competing interests.* All authors declare that they have no conflict of interest.

730 *Acknowledgements.* We want to thank Silas Kiragu, who is responsible for maintaining the experiments [in-at](#) Embu and Machanga site, and John Mukalama, who implemented and maintained the experiments [in-at](#) Aludeka and Sidada. Also, we want to thank John Waruingi for helping with sample processing over the years, and Dr. Moses Thuita for coordinating the experiments for many years, and Britta Jahn-Humphrey for organizing and overseeing the measurement of most SOC and TN in recent years. Further, we thank Matti Barthel and Maryam Cissé, who measured N<sub>2</sub>O emissions, and Fiona Stewart Smith, who conducted the measurements of MAOC fractions. This study was supported by  
735 funds from the European Union's Horizon2020 framework (LANDMARC; Grant agreement ID 869367) the Swiss National Science Foundation (SNSF; grant number 172940) and by the DSCATT project "Agricultural Intensification and Dynamics of Soil Carbon Sequestration in Tropical and Temperate Farming Systems" (N° AF 1802-001, N° FT C002181), supported by the Agropolis Foundation ("Programme d'Investissement d'Avenir" Labex Agro, ANR-10-LABX-0001-01) and by the TOTAL Foundation within a patronage agreement. We further  
740 acknowledge funding and technical support from the Tropical Soil Biology and Fertility Institute of CIAT (TSBF-CIAT), the International Institute of Tropical Agriculture (ITTA), and ETH Zurich in maintaining the experiments throughout many years. The AI language model "Writefull for Overleaf" has been used to improve the grammar of the manuscript.

## Appendix A: Appendix

### A1 Pedotranfer functions to derive the hydraulic parameters

The equations used to calculate the soil hydraulic properties were based on the pedotranfer functions of Hodnett and Tomasella (2002)

745 ∴

$$\theta_r = 0.22733 - 0.00164 \times Sa + 0.00235 \times CEC - 0.00831 \times pH + 1.8 \times 10^{-5} \times Cl^2 + 2.6 \times 10^{-5} \times Sa \times Cl \quad (A1)$$

$$\theta_s = 0.81799 + 9.9 \times 10^{-4} \times Cl - 0.3142 \times BD + 1.8 \times 10^{-4} \times CEC + 0.00451 \times pH - 5 \times 10^{-6} \times Sa \times Cl \quad (A2)$$

$$\ln(\alpha) = -0.02294 - 0.03526 \times Si + 0.024 \times SOC - 7.6 \times 10^{-3} \times CEC - 0.11331 \times pH \quad (A3)$$

$$\ln(n) = 0.62986 - 0.00833 \times Cl - 0.00529 \times SOC + 0.00593 \times pH + 7 \times 10^{-5} \times Cl^2 - 1.4 \times 10^{-4} \times Sa \times Si \quad (A4)$$

750 Here,  $\theta_r$ ,  $\theta_s$ ,  $\alpha$ , and  $n$  are the soil water retention parameters of van Genuchten (1982),  $Sa$ ,  $Si$  and  $Cl$  are Sand, Silt, and Clay content (in %),  $BD$  is the bulk density ( $t\ m^{-3}$ )  $CEC$  is the cation exchange capacity ( $cmol\ kg^{-1}$ ),  $pH$  is the soil pH measured in  $H_2O$ , and  $SOC$  is the SOC content ( $g\ kg^{-1}$ ).

The wilting point (WP) and field capacity (FC) values were then calculated as

$$WP = \theta_r + \frac{(\theta_s - \theta_r)}{(1 + (\alpha \times |-15000|)^n)^{1 - \frac{1}{n}}} \quad (A5)$$

755

$$FC = \theta_r + \frac{(\theta_s - \theta_r)}{(1 + (\alpha \times |-330|)^n)^{1 - \frac{1}{n}}} \quad (A6)$$

$K_S$  was calculated using the Saxton and Rawls (2006) equation, with values of the water retention curve,  $\alpha$  and  $n$  (van Genuchten, 1982), calculated with the equation from Hodnett and Tomasella (2002):

$$\lambda = \frac{\ln(FC) - \ln(WP)}{\ln(1500) - \ln(33)} \quad (A7)$$

$$K_S = \frac{1930 \times (\theta_s - FC)^{(3-\lambda)}}{10 \times 60 \times 60} \quad (A8)$$

760 Here,  $\lambda$  is the slope of logarithmic tension-moisture curve and  $K_S$  is the saturated water conductivity ( $cm\ s^{-1}$ ).

## A2 Equations for the global sensitivity analysis

The means across all sites, which were used in the GSA were calculated as follows:

$$Mean = \frac{1}{n} \sum_{j=1}^n \frac{\sum_{i=1}^N Mod_{ij}}{N} \quad (A9)$$

765

Here  $n$  is the number of sites (4),  $N$  is the number of modelled values per site, and  $Mod_{ij}$  are the individually modelled values. For aboveground biomass and grain yield,  $N$  corresponded to the total number of modelled yields and biomass at all treatments and seasons. For SOC and soil N stock  $N$  corresponded to the total number of treatments per site. The reason is that because changes in SOC and soil N stocks are expected to be stronger the longer a simulation lasts, only the stocks from the end of the simulation were used.

## A3 Site and organic resource characteristics

**Table A1.** Locations, soil properties and climatic conditions of the study sites. Soil properties are given for the 0 - 15 cm depth layer. Coordinates are given in the WGS 84 reference system. The table is adopted from Laub et al. (2022) under the creative common license 4: <http://creativecommons.org/licenses/by/4.0/>.

Soil characteristics	Embu	Machanga	Sidada	Aludeka
Latitude	-0.517	-0.793	0.143	0.574
Longitude	37.459	37.664	34.422	34.191
Initial soil C (%)	3.1	0.8	2.6	0.7
Initial N (%)	0.3	0.05	0.21	0.06
Initial bulk density (g cm <sup>-3</sup> )	1.26	1.51	1.3	1.45
pH (H <sub>2</sub> O)	5.43	5.27	5.4	5.49
Sand (%)	0	31.1	0.1	31
Clay (%)	59.8	13.2	55.7	13.4
Soil type (FAO, 1998)	Humic Nitisol	Ferric Alisol	Humic Ferralsol	Acrisol
Altitude (m)*	1380	1022	1420	1180
Annual rainfall (mm)*	1175	795	1730	1660
Mean annual temperature (°C)	20.1	23.7	22.6	24.4
Months of long rainy season	3 - 8	3 - 8	3 - 9	3 - 9
Months of short rainy season	10 - 01	10 - 01	10 - 01	10 - 01

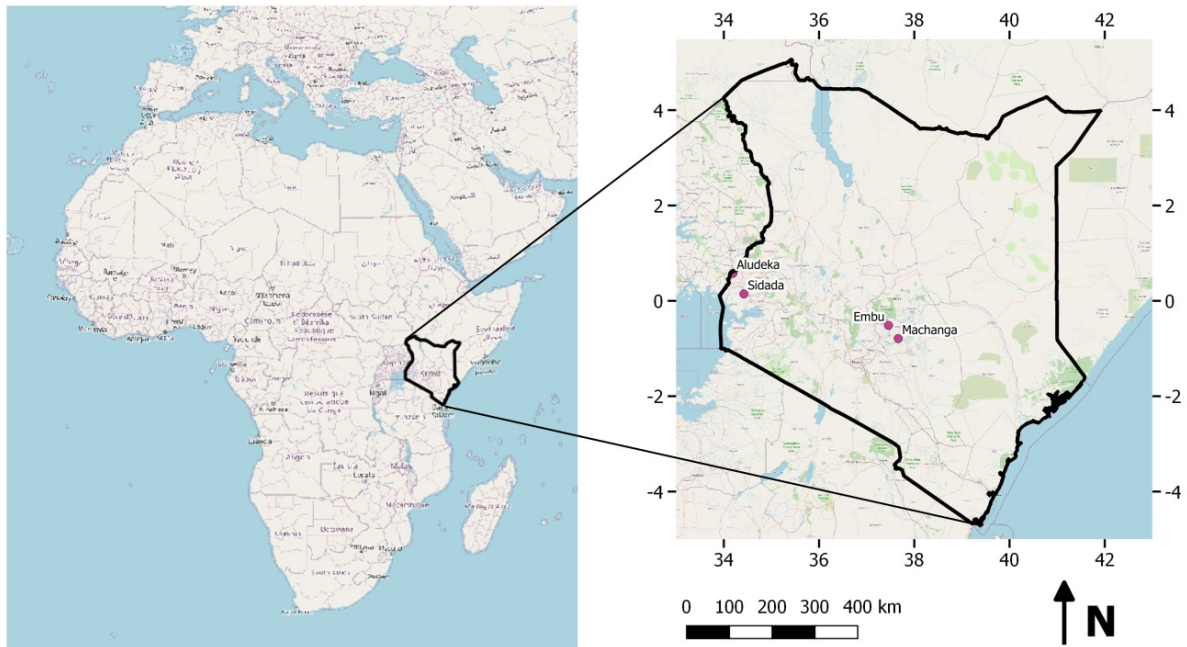
\*Means calculated based on measured data from 2005 to 2020

**Table A2.** Mean measured chemical characteristics (and 95% confidence intervals) of organic resources applied at all sites. Measurements were available from Embu and Machanga from 2002 to 2004, all sites from 2005 to 2007 and in 2018. Significant differences in residue properties were found between the different organic resources, but not between sites and years. Same letters within the same row indicate the absence of significant differences for that property-not sharing any lowercase letter are significantly different from each other (p < 0.05). Abbreviations: n.c. = not classified \* according to Palm et al. (2001). The table is adopted from Laub et al. (2023a) under the creative common license 4: <http://creativecommons.org/licenses/by/4.0/>.

Measured property	<i>Tithonia</i>	<i>Calliandra</i>	Maize stover	Sawdust	Farmyard manure
C (g kg <sup>-1</sup> )	345 <sup>b</sup> (333-357)	396 <sup>c</sup> (383-409)	397 <sup>c</sup> (386-408)	433 <sup>d</sup> (416-449)	234 <sup>a</sup> (213-255)
N (g kg <sup>-1</sup> )	33.2 <sup>d</sup> (28.9-38.2)	32.5 <sup>d</sup> (28.3-37.3)	7.2 <sup>b</sup> (6.5-8)	2.5 <sup>a</sup> (2.1-2.8)	18.1 <sup>c</sup> (15-21.8)
C/N ratio	12.4 <sup>a</sup> (10.8-14.1)	13.6 <sup>a</sup> (11.9-15.5)	58.7 <sup>b</sup> (52.8-65.2)	199.1 <sup>c</sup> (174.1-227.7)	12.3 <sup>a</sup> (9.9-15.4)
P (g kg <sup>-1</sup> )	2.3 <sup>d</sup> (1.8-2.9)	1.1 <sup>c</sup> (0.8-1.5)	0.4 <sup>b</sup> (0.3-0.6)	0.1 <sup>a</sup> (0-0.2)	3.1 <sup>d</sup> (2.3-3.9)
K (g kg <sup>-1</sup> )	37.2 <sup>c</sup> (21.2-65.2)	8.7 <sup>b</sup> (5-15.3)	9 <sup>b</sup> (6-13.5)	2.8 <sup>a</sup> (1.6-4.9)	19.4 <sup>bc</sup> (7.8-48.6)
Lignin (g kg <sup>-1</sup> )	90 <sup>ab</sup> (62-117)	105 <sup>b</sup> (77-133)	48 <sup>a</sup> (37-60)	172 <sup>c</sup> (144-199)	198 <sup>c</sup> (154-242)
Polyphenols (g kg <sup>-1</sup> )	19 <sup>c</sup> (14.9-24.3)	108.7 <sup>d</sup> (85.3-138.6)	11.3 <sup>b</sup> (9.5-13.6)	4.9 <sup>a</sup> (3.8-6.2)	7.8 <sup>ab</sup> (5.2-11.5)
Lignin/N ratio	2.6 <sup>a</sup> (1.8-3.7)	3.1 <sup>ab</sup> (2.2-4.3)	6.2 <sup>c</sup> (4.8-8)	58.3 <sup>d</sup> (41.1-82.8)	6.9 <sup>bc</sup> (3.9-12.3)
Quality / turnover rate*	High / fast	High / slow	Low / fast	Low / slow	n.c.
Class*	1	2	3	4	n.c.
kg N in 4.0 t C ha <sup>-1</sup> yr <sup>-1</sup> , -N [+N]	323 [563]	295 [535]	68 [308]	20 [260]	324 [564]
kg N in 1.2 t C ha <sup>-1</sup> yr <sup>-1</sup> , -N [+N]	97 [337]	88 [328]	20 [260]	6 [246]	97 [337]

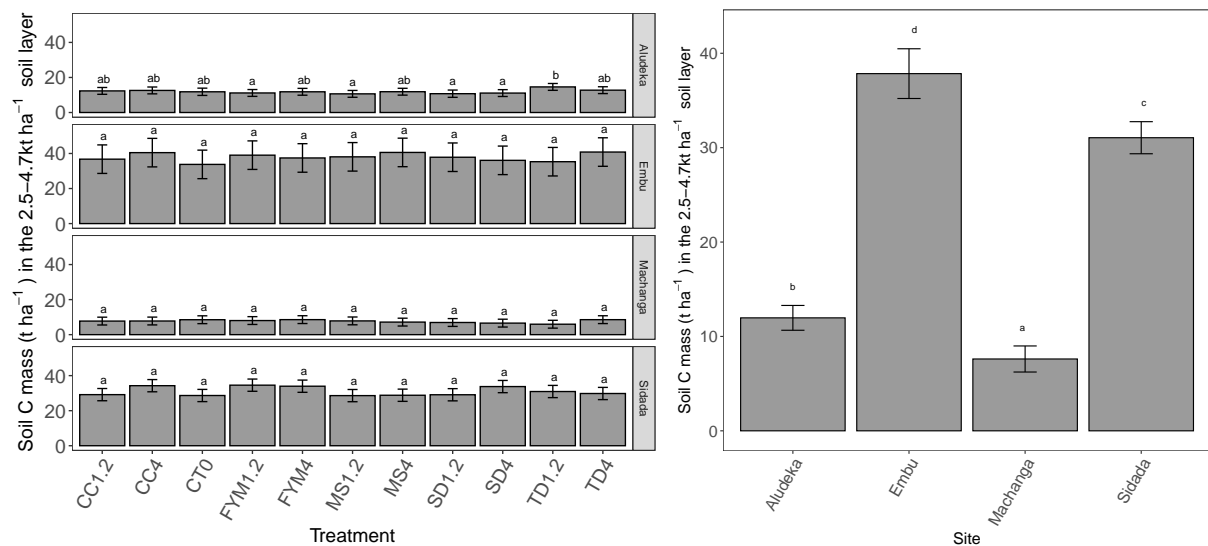
**Table A3.** DayCent model parameters (and feasible ranges) of parameters which were not included in the Bayesian model calibration due to a Sobol total sensitivity index < 1%.

Parameter	Description	Range		Initial value	Coefficient of variation	Model file
		width	Units			
frtc(2)	C allocated to roots at time frtc(3) without stress	small	fraction of NPP	0.20	<del>0.1</del> 0.15	crop.100
frtc(4)	Max. increase in C going to roots under stress	small	fraction of NPP	0.10	<del>0.1</del> 0.15	crop.100
frtc(5)	Max. increase in C going to roots under stress (maturity)	small	fraction of NPP	0.10	<del>0.1</del> 0.15	crop.100
biomax	AGB at which min.and max. C/E ratios of plant increases	small	g biomass m <sup>-2</sup>	700.00	<del>0.1</del> 0.15	crop.100
pramx(1,2)	Max. aboveground C/N ratio with biomass > biomax	small	C/N ratio	125.00	<del>0.1</del> 0.15	crop.100
prbmn(1,1)	For computing min. C/N ratio for belowground matter	small	C/N ratio	45.00	<del>0.1</del> 0.15	crop.100
efgrm(1)	Fraction of above ground N which goes to grain.	small	fraction	0.75	<del>0.1</del> 0.15	crop.100
flig(1,1)	Intercept for annual rainfall effect on lignin content	small	fraction of lignin	0.12	<del>0.1</del> 0.15	crop.100
ppdf(3)	Right curve shape for temperature effect on growth curve	very small	unitless	1.00	<del>0.05</del> 0.08	crop.100
ppdf(4)	Right curve shape for temperature effect on growth curve	very small	unitless	2.50	<del>0.05</del> 0.08	crop.100
favail(1)	Fraction of N available per day to plants	moderate	fraction of N	0.15	<del>0.15</del> 0.23	crop.100
(aneref(1)-aneref(2))	Rain/ET ratio below which, no effect of anaerobiosis	small	unitless	1.00	<del>0.1</del> 0.15	fix.100
aneref(2)	Rain/ET ratio with max. anaerobiosis effect	moderate	unitless	3.00	<del>0.15</del> 0.23	fix.100
damr(1,1)&(2,1)	Fraction of surface N and soil N absorbed by residue	large	fraction of N	0.02	<del>0.25</del> 0.38	fix.100
damrnm(1)	Min. C/N ratio allowed in residue after direct absorption	moderate	C/N	15.00	<del>0.15</del> 0.23	fix.100
dec1(2)	Max. structural litter turnover	small	g g <sup>-1</sup> yr <sup>-1</sup>	4.90	<del>0.1</del> 0.15	fix.100
dec2(2)	Max. metabolic litter turnover	small	g g <sup>-1</sup> yr <sup>-1</sup>	18.50	<del>0.1</del> 0.15	fix.100
dec3(2)	Max. active pool turnover	small	g g <sup>-1</sup> yr <sup>-1</sup>	7.30	<del>0.1</del> 0.15	fix.100
(decX(2)/decX(1))	Ratio soil to surface turnover (newly defined parameter)	small	unitless	1.25	<del>0.1</del> 0.15	fix.100
fwloss(1)	Scaling factor; interception & evaporation by biomass	moderate	unitless	1.00	<del>0.15</del> 0.23	fix.100
fwloss(2)	Scaling factor; bare soil precipitation evaporation	moderate	unitless	1.00	<del>0.15</del> 0.23	fix.100
fwloss(3)	Scaling factor; transpiration water loss	moderate	unitless	1.00	<del>0.15</del> 0.23	fix.100
pabres	Residue amount which results in max. direct N absorption	moderate	g C m <sup>-2</sup>	100.00	<del>0.15</del> 0.23	fix.100
teff(2)	Y location of temperature inflection point (decomposition)	large	unitless	11.75	<del>0.25</del> 0.38	fix.100
teff(3)	Step size of temperature effect on decomposition	moderate	unitless	29.70	<del>0.15</del> 0.23	fix.100
teff(4)	Inflection point slope of temperature effect (decomposition)	very large	unitless	0.25	<del>0.3</del> 0.45	fix.100
varat11&12(1,1)	Max. C/N ratio for material entering active pool	small	C/N	20.00	<del>0.1</del> 0.15	fix.100
varat11&12(2,1)	Min. C/N ratio for material entering active pool	small	C/N	3.00	<del>0.1</del> 0.15	fix.100
varat21&22(1,1)	Max. C/N ratio for material entering slow pool	small	C/N	20.00	<del>0.1</del> 0.15	fix.100
varat3(1,1)	Max. C/N ratio for material entering passive pool	small	C/N	13.00	<del>0.1</del> 0.15	fix.100
varat3(2,1)	Min. C/N ratio for material entering passive pool	small	C/N	6.00	<del>0.1</del> 0.15	fix.100
drain	Fraction of excess water lost by drainage	moderate	fraction of H <sub>2</sub> O	0.80	<del>0.15</del> 0.23	site.100
dmp_st	Damping factor for calculating soil temperature by layer	large	unitless	0.01	<del>0.25</del> 0.38	sitepar.in
N2Oadjust_(max-min)	Proportion of nitrified N that is lost as N <sub>2</sub> O (difference)	large	fraction of N	0.003	<del>0.25</del> 0.38	sitepar.in
Ncoeff	Min water/temperature limitation coefficient (nitrification)	large	unitless	0.03	<del>0.25</del> 0.38	sitepar.in
dmpflux	The damping factor for soil water flux	large	unitless	0.00	<del>0.25</del> 0.38	sitepar.in
astlig_TD	lignin fraction content of organic matter	small	g g <sup>-1</sup> biomass	0.09	<del>0.1</del> 0.15	omad.100
astrec(1)_TD	C/N ratio of added organic matter	very small	C/N ratio	12.40	<del>0.05</del> 0.08	omad.100
astlig_CC	lignin fraction content of organic matter	small	g g <sup>-1</sup> biomass	0.10	<del>0.1</del> 0.15	omad.100
astrec(1)_CC	C/N ratio of added organic matter	very small	C/N ratio	13.60	<del>0.05</del> 0.08	omad.100
astlig_MS	lignin fraction content of organic matter	small	g g <sup>-1</sup> biomass	0.05	<del>0.1</del> 0.15	omad.100
astrec(1)_MS	C/N ratio of added organic matter	very small	C/N ratio	58.70	<del>0.05</del> 0.08	omad.100
astlig_SD	lignin fraction content of organic matter	small	g g <sup>-1</sup> biomass	0.17	<del>0.1</del> 0.15	omad.100
astrec(1)_SD	C/N ratio of added organic matter	very small	C/N ratio	199.10	<del>0.05</del> 0.08	omad.100
astlig_FYM	lignin fraction content of organic matter	small	g g <sup>-1</sup> biomass	0.20	<del>0.1</del> 0.15	omad.100
astrec(1)_FYM	C/N ratio of added organic matter	small	C/N ratio	12.30	<del>0.1</del> 0.15	omad.100



**Figure A1.** Map displaying the location of the four study sites. The background map is based on OpenStreetMap under the Open Database License.

## A2 Subsoil SOC stocks for scaling SOC



**Figure A2.** Subsoil SOC stocks for the 2.5-4.7 kt ha<sup>-1</sup> equivalent soil mass layer, corresponding to an approximate soil depth of 15-30 cm. Displayed are the least square means estimated by the linear mixed model described in (Laub et al., 2023a) for planted plots by treatment (left) and site (right). Error bars display the 95% confidence intervals. **Same lowercase letters indicate the absence of a significant difference in SOC stocks between treatments.** **Mean values at the same each site not sharing any lowercase letter are significantly different from each other** (left figure) **or between sites** (right figure). **In the right figure, mean values per site not sharing any lowercase letter are significantly different from each other** (all p < 0.05). Abbreviations: CC, *Calliandra*; CT, control; FYM, farmyard manure; MS, maize stover; SD, sawdust; TD, *Tithonia Diversifolia*. 0, 1.2 and 4 correspond to C additions of 0, 1.2 and 4 t C ha<sup>-1</sup> yr<sup>-1</sup>.

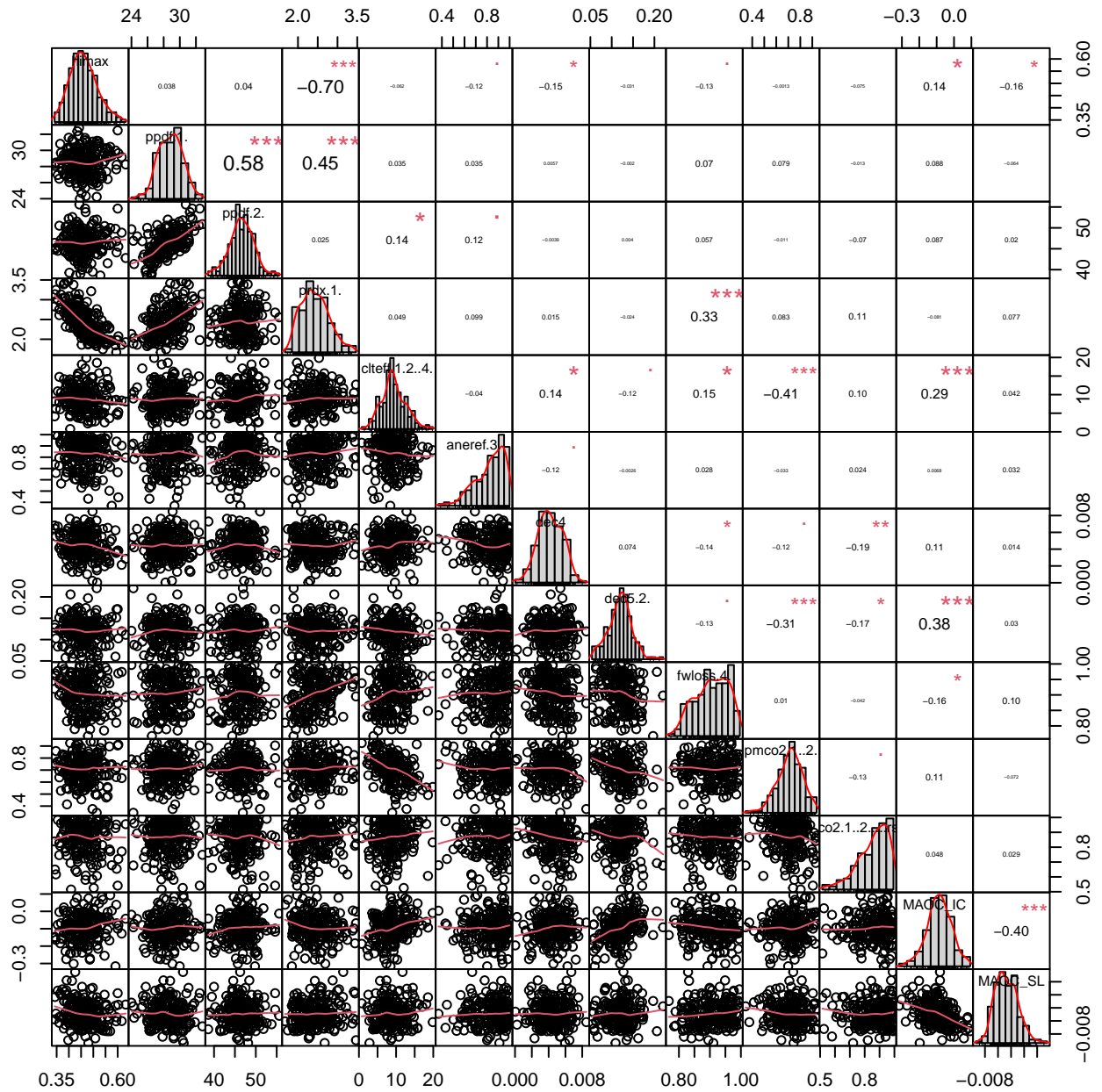
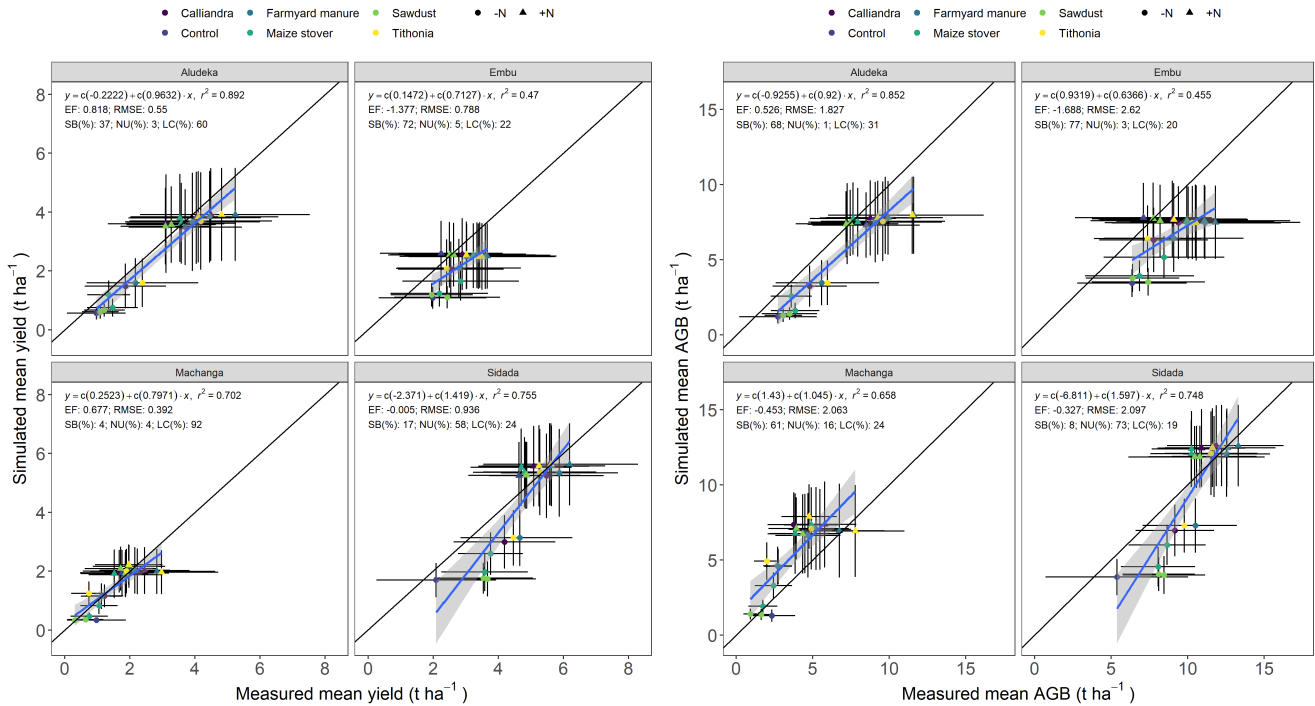


Figure A3. Correlation of parameters from the posterior parameter sets. The posterior distributions are based on all four sites combined.

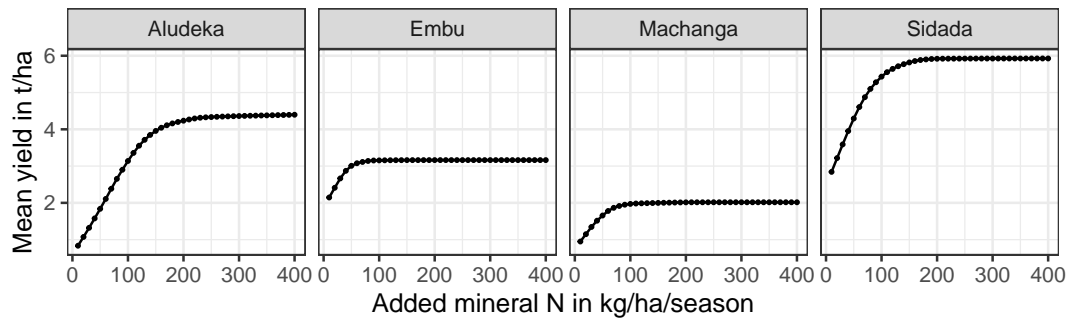




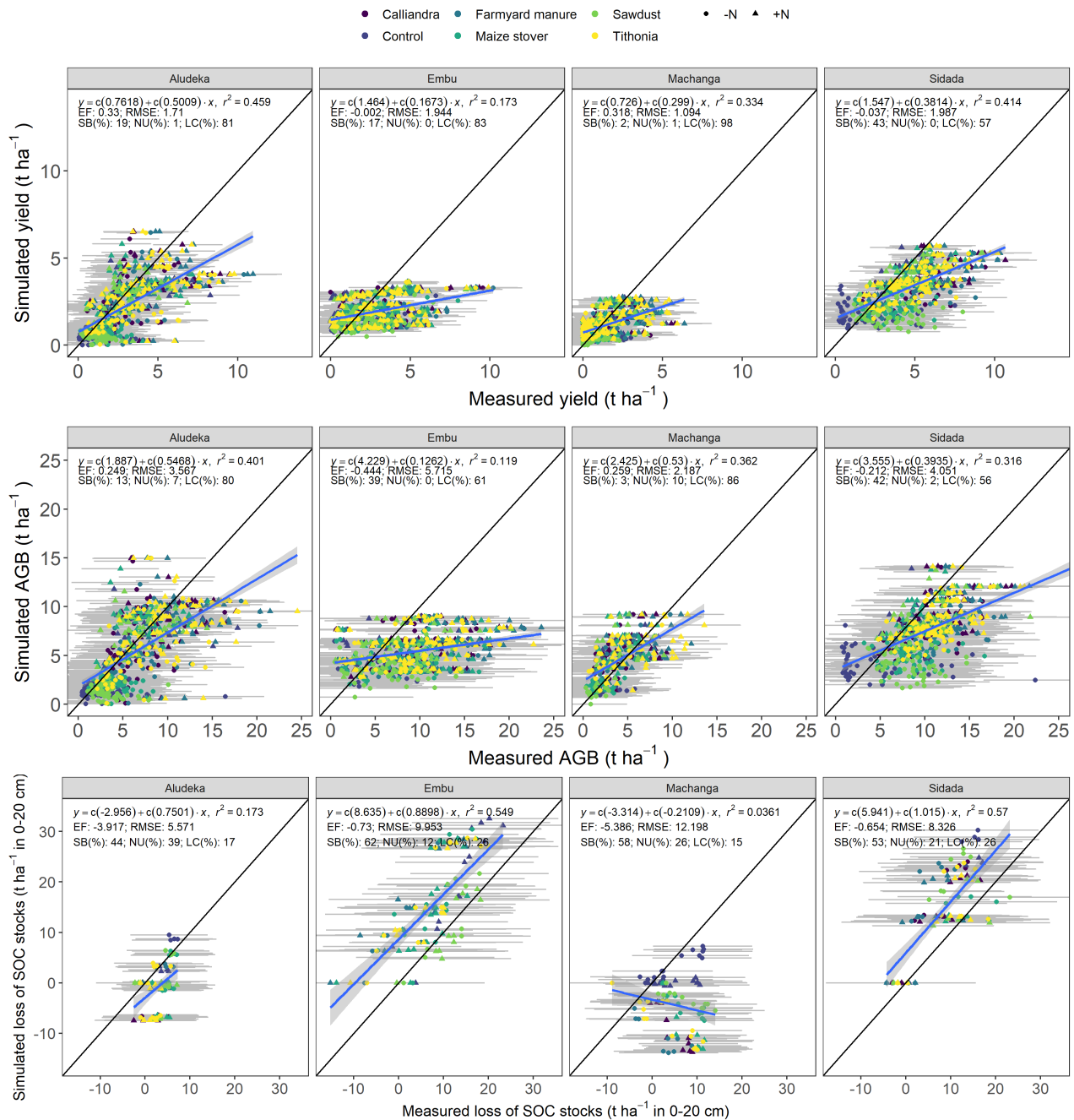
**Figure A4.** Mean simulated versus measured yield and aboveground biomass (AGB) from the leave-one-site-out cross-validation. Error bars represent the standard deviation of measured and simulated values over all years. Abbreviations: EF, Nash-Sutcliffe modeling-model efficiency; RMSE, root mean squared error; SB, squared bias; NU, non-unity slope; LC, lack of correlation. Across all sites model statistics: EF, 0.7550.760; RSME, 0.7070.699 t ha<sup>-1</sup>; SB, 1228%; NU, 258%; LC, 6364% for yield; EF, 0.5830.513; RSME, 2.012.17 t ha<sup>-1</sup>; SB, 510%; NU, 189%; LC, 7781% for AGB.

### A3 Comparing measured and simulated mean yield

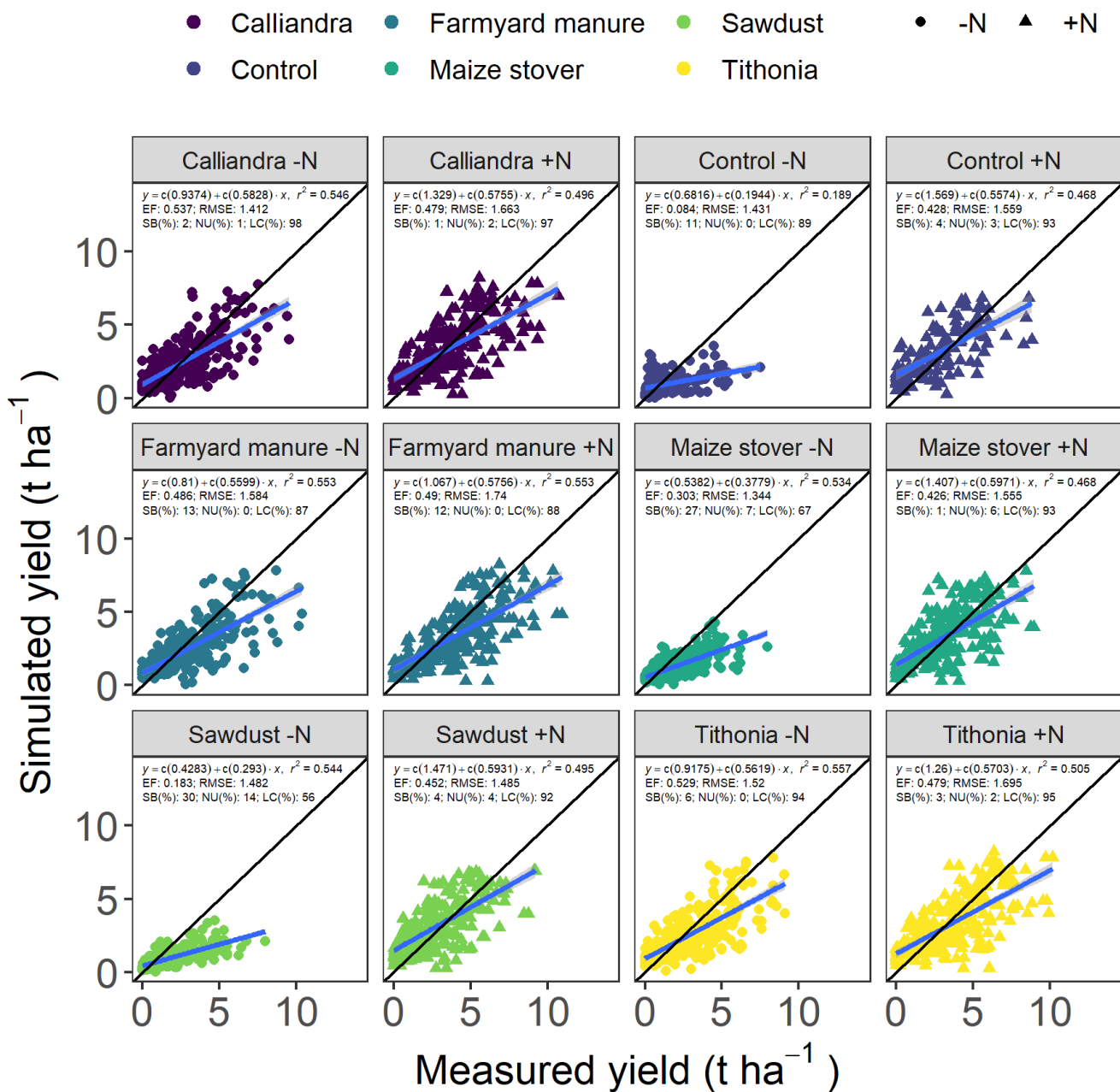
#### A4 Site specific sensitivities of yield to N fertilizer



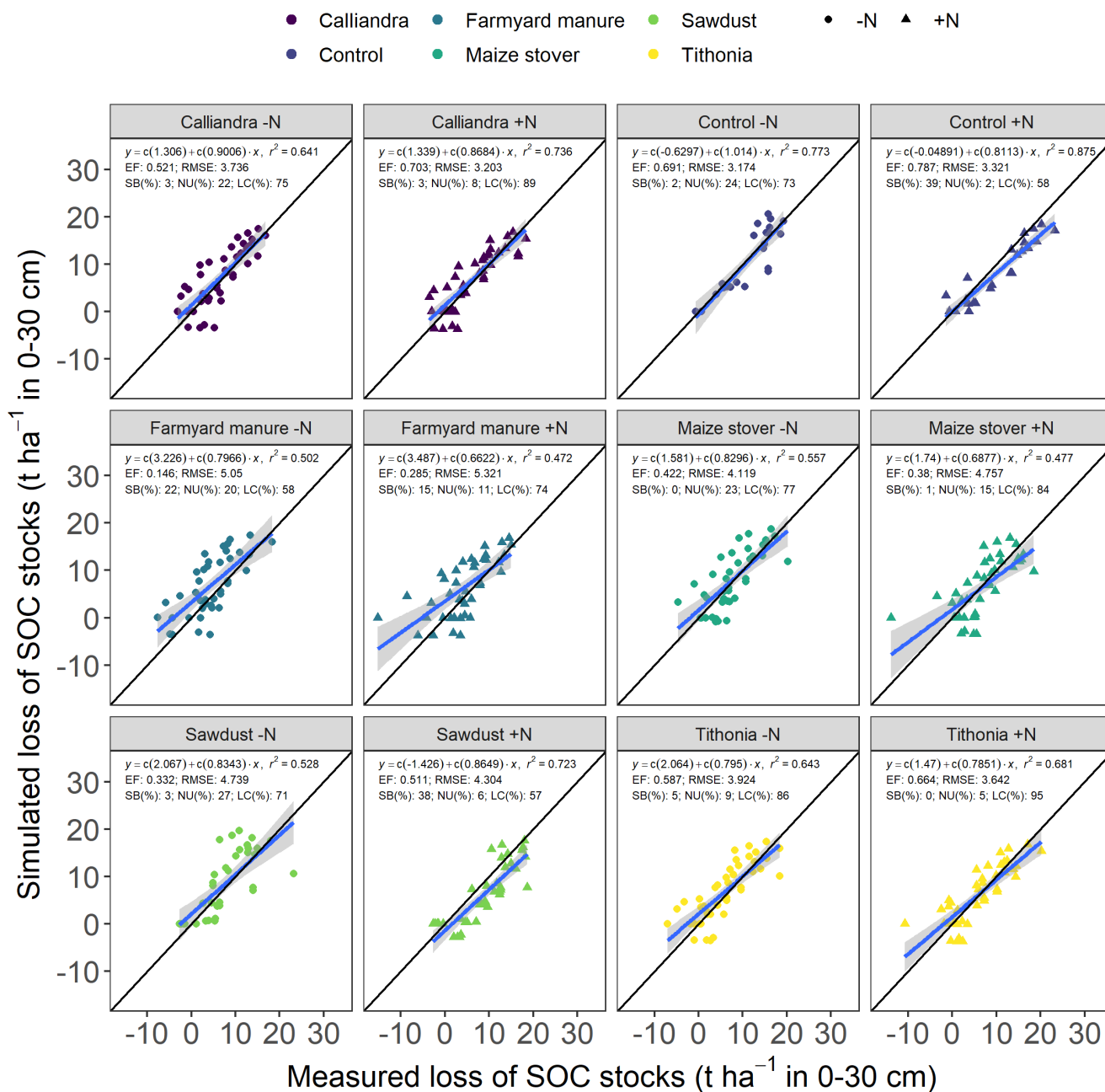
**Figure A5.** Yield response curve of DayCent to varying levels of mineral N application (control + N treatment, without organic resources) using the calibrated DayCent parameters. Displayed are the simulated mean yields across all simulated seasons (32 ~~in~~ at Sidada and Aludeka, 38 seasons ~~in~~ at Embu and Machanga). The amount of mineral N applied per season in the simulations was evenly split between the actual application dates of mineral N in each season at each site.



**Figure A6.** Simulated compared to measured maize grain yields, aboveground biomass and change in SOC stocks at the four study sites for the default DayCent parameter set before adjusting  $ps1co(1&2)$  from 0.5 to 0.85. Grey bands show the 95% confidence intervals of measured (horizontal) values and the 95% credibility intervals of posterior distribution (vertical). Abbreviations: EF, Nash-Sutcliffe modeling model efficiency; RMSE, root mean squared error; SB, squared bias; NU, non-unity slope; LC, lack of correlation.

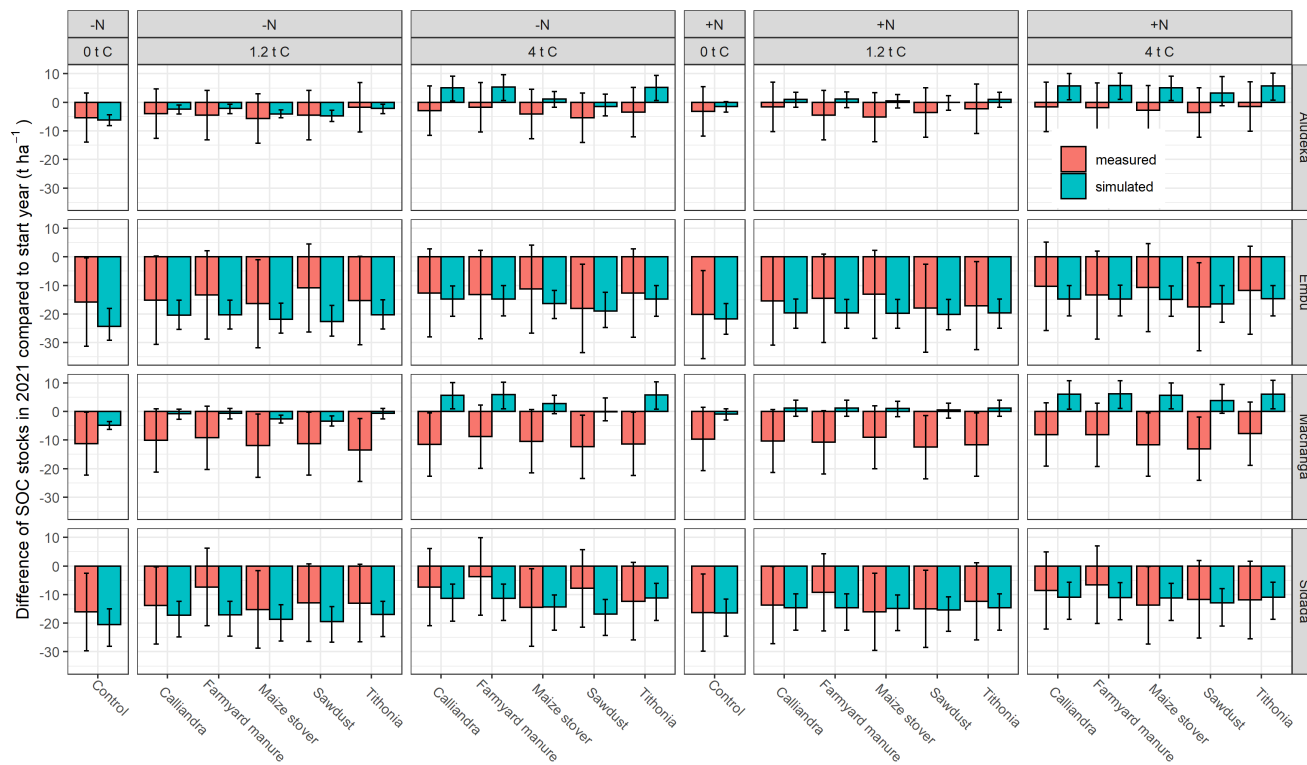


**Figure A7.** [Treatment-specific simulated compared to measured maize grain yields at the four study sites for the calibrated parameter set by leave-one-site-out cross-validation.](#) Abbreviations: EF, Nash-Sutcliffe model efficiency; RMSE, root mean squared error; SB, squared bias; NU, non-unity slope; LC, lack of correlation.

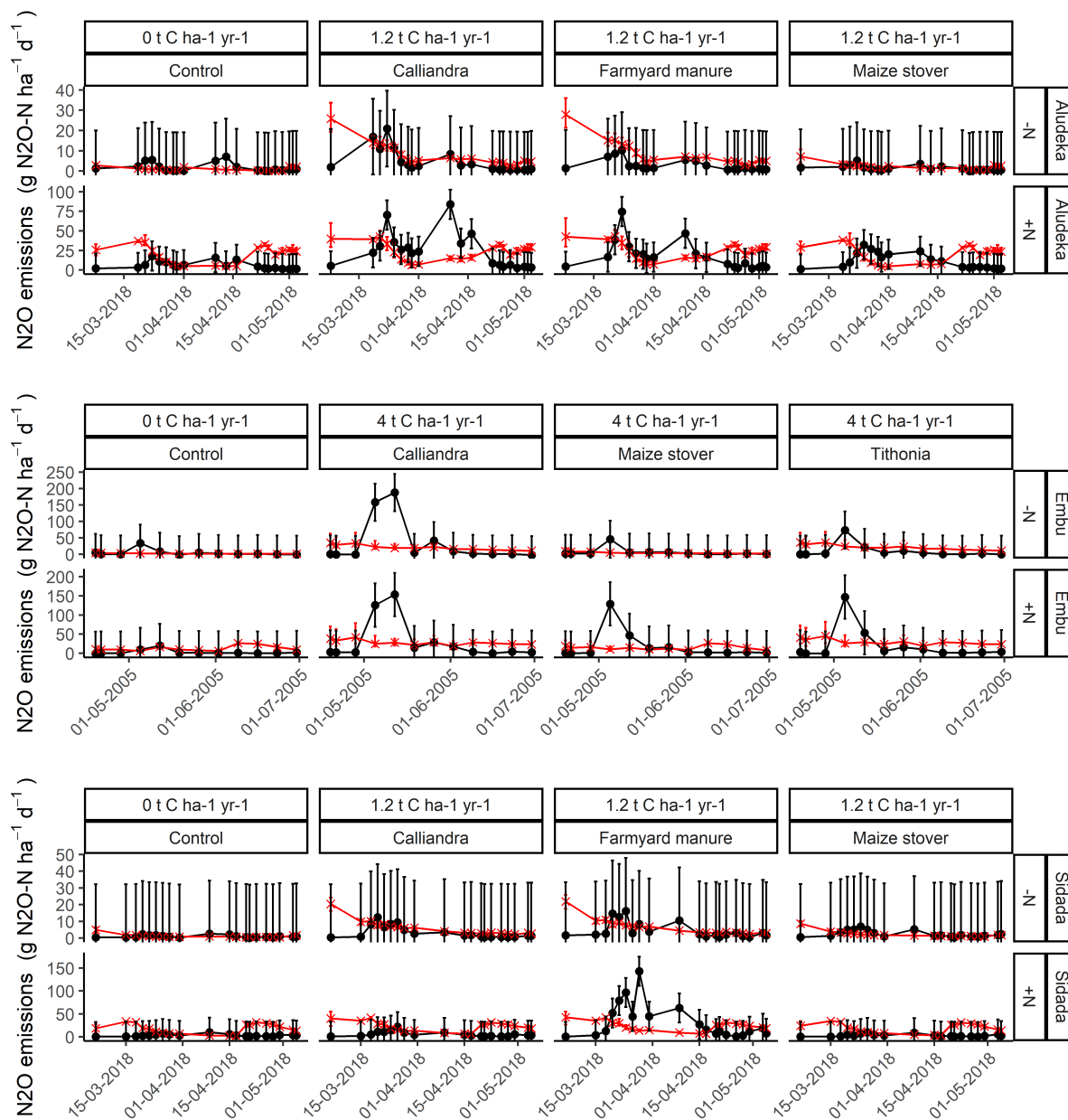


**Figure A8.** Treatment-specific simulated compared to measured changes in SOC stocks (without the Machanga site) since the start of the experiment at the four study sites for the calibrated parameter set by leave-one-site-out cross-validation. Abbreviations: EF, Nash-Sutcliffe model efficiency; RMSE, root mean squared error; SB, squared bias; NU, non-unity slope; LC, lack of correlation.

## A5 Barplots of SOC



**Figure A9.** Barplots of simulated and measured change of SOC stocks (0-30 cm depth) until 2021 from cross-validation, at the four study sites for the different organic resource and chemical nitrogen fertilizer treatments. Error bars represent 95% confidence intervals based on BC (simulations) and variance (measurements).



**Figure A10.** Example of the temporal development of measured (black) vs simulated (red) N<sub>2</sub>O emissions by site. The black error bars represent the 95% confidence intervals due to spatial replication error, the red error bars represent the 95% credibility intervals of simulated N<sub>2</sub>O emissions resulting from parameter distribution of the posterior parameter set.

## References

- Abramoff, R., Xu, X., Hartman, M., O'Brien, S., Feng, W., Davidson, E., Finzi, A., Moorhead, D., Schimel, J., Torn, M., and Mayes, M. A.: The Millennial model: in search of measurable pools and transformations for modeling soil carbon in the new century, *Biogeochemistry*, 137, 51–71, <https://doi.org/10.1007/s10533-017-0409-7>, 2018.
- 780 Abramoff, R. Z., Guenet, B., Zhang, H., Georgiou, K., Xu, X., Viscarra Rossel, R. A., Yuan, W., and Ciais, P.: Improved global-scale predictions of soil carbon stocks with Millennial Version 2, *Soil Biology and Biochemistry*, p. 108466, <https://doi.org/10.1016/j.soilbio.2021.108466>, 2022.
- Ahrens, B., Guggenberger, G., Rethemeyer, J., John, S., Marschner, B., Heinze, S., Angst, G., Mueller, C. W., Kögel-Knabner, I., Leuschner, C., Hertel, D., Bachmann, J., Reichstein, M., and Schrumpf, M.: Combination of energy limitation and sorption capacity explains 14C  
785 depth gradients, *Soil Biology and Biochemistry*, 148, 107912, <https://doi.org/10.1016/j.soilbio.2020.107912>, 2020.
- Arias-Navarro, C., Díaz-Pinés, E., Klatt, S., Brandt, P., Rufino, M. C., Butterbach-Bahl, K., and Verchot, L. V.: Spatial variability of soil N<sub>2</sub>O and CO<sub>2</sub> fluxes in different topographic positions in a tropical montane forest in Kenya, *Journal of Geophysical Research: Biogeosciences*, 122, 514–527, <https://doi.org/10.1002/2016JG003667>, eprint: <https://onlinelibrary.wiley.com/doi/pdf/10.1002/2016JG003667>, 2017.
- Barthel, M., Bauters, M., Baumgartner, S., Drake, T. W., Bey, N. M., Bush, G., Boeckx, P., Botefa, C. I., Dériaz, N., Ekamba, G. L., Gallarotti,  
790 N., Mbayu, F. M., Mugula, J. K., Makelele, I. A., Mbongo, C. E., Mohn, J., Manda, J. Z., Mpambi, D. M., Ntaboba, L. C., Rukeza, M. B., Spencer, R. G. M., Summerauer, L., Vanlauwe, B., Van Oost, K., Wolf, B., and Six, J.: Low N<sub>2</sub>O and variable CH<sub>4</sub> fluxes from tropical forest soils of the Congo Basin, *Nature Communications*, 13, 330, <https://doi.org/10.1038/s41467-022-27978-6>, number: 1 Publisher: Nature Publishing Group, 2022.
- Bates, D., Mächler, M., Bolker, B., and Walker, S.: Fitting Linear Mixed-Effects Models Using lme4, *Journal of Statistical Software*, 67,  
795 1–48, <https://doi.org/10.18637/jss.v067.i01>, 2015.
- Chivenge, P., Vanlauwe, B., Gentile, R., Wangechi, H., Mugendi, D., Kessel, C. v., and Six, J.: Organic and Mineral Input Management to Enhance Crop Productivity in Central Kenya, *Agronomy Journal*, 101, 1266–1275, <https://doi.org/10.2134/agronj2008.0188x>, 2009.
- Chivenge, P., Vanlauwe, B., and Six, J.: Does the combined application of organic and mineral nutrient sources influence maize productivity? A meta-analysis, *Plant and Soil*, 342, 1–30, <https://doi.org/10.1007/s11104-010-0626-5>, 2011.
- 800 Clark, M. and Tilman, D.: Comparative analysis of environmental impacts of agricultural production systems, agricultural input efficiency, and food choice, *Environmental Research Letters*, 12, 064016, <https://doi.org/10.1088/1748-9326/aa6cd5>, 2017.
- Clifford, D., Pagendam, D., Baldock, J., Cressie, N., Farquharson, R., Farrell, M., Macdonald, L., and Murray, L.: Rethinking soil carbon modelling: a stochastic approach to quantify uncertainties, *Environmetrics*, 25, 265–278, <https://doi.org/10.1002/env.2271>, 2014.
- Corbeels, M., Cardinael, R., Naudin, K., Guibert, H., and Torquebiau, E.: The 4 per 1000 goal and soil carbon storage under agroforestry and  
805 conservation agriculture systems in sub-Saharan Africa, *Soil and Tillage Research*, 188, 16–26, <https://doi.org/10.1016/j.still.2018.02.015>, 2019.
- Cotrufo, M. F., Wallenstein, M. D., Boot, C. M., Denef, K., and Paul, E.: The Microbial Efficiency-Matrix Stabilization (MEMS) framework integrates plant litter decomposition with soil organic matter stabilization: do labile plant inputs form stable soil organic matter?, *Global Change Biology*, 19, 988–995, <https://doi.org/10.1111/gcb.12113>, 2013.
- 810 Dangal, S. R. S., Schwalm, C., Cavigelli, M. A., Gollany, H. T., Jin, V. L., and Sanderman, J.: Improving Soil Carbon Estimates by Linking Conceptual Pools Against Measurable Carbon Fractions in the DAYCENT Model Version



- 4.5, *Journal of Advances in Modeling Earth Systems*, 14, e2021MS002622, <https://doi.org/10.1029/2021MS002622>, \_eprint: <https://onlinelibrary.wiley.com/doi/pdf/10.1029/2021MS002622>, 2022.
- 815 Del Grosso, S., Parton, W., Mosier, A., Hartman, M., Brenner, J., Ojima, D., Schimel, D., and others: Simulated interaction of carbon dynamics and nitrogen trace gas fluxes using the DAYCENT model, in: *Modeling carbon and nitrogen dynamics for soil management*, pp. 303–332, CRC Press, Boca Raton, 1st edition edn., <https://www.taylorfrancis.com/books/edit/10.1201/9780367801373/modeling-carbon-nitrogen-dynamics-soil-management-liwang-ma-shaffer-soren-hansen>, 2001.
- Del Grosso, S., Parton, W., Mosier, A., Holland, E., Pendall, E., Schimel, D., and Ojima, D.: Modeling soil CO<sub>2</sub> emissions from ecosystems, *Biogeochemistry*, 73, 71–91, <https://doi.org/10.1007/s10533-004-0898-z>, 2005.
- 820 Deneff, K., Plante, A. F., and Six, J.: Characterization of soil organic matter, in: *Soil Carbon Dynamics: An Integrated Methodology*, edited by Heinemeyer, A., Bahn, M., and Kutsch, W. L., pp. 91–126, Cambridge University Press, Cambridge, <https://doi.org/10.1017/CBO9780511711794.007>, 2009.
- dos Reis Martins, M., Necpalova, M., Ammann, C., Buchmann, N., Calanca, P., Flechard, C. R., Hartman, M. D., Krauss, M., Le Roy, P., Mäder, P., Maier, R., Morvan, T., Nicolardot, B., Skinner, C., Six, J., and Keel, S. G.: Modeling N<sub>2</sub>O emissions of complex cropland 825 management in Western Europe using DayCent: Performance and scope for improvement, *European Journal of Agronomy*, 141, 126613, <https://doi.org/10.1016/j.eja.2022.126613>, 2022.
- FAO: World reference base for soil resources, no. 84 in *World Soil Resources Report*, FAO, Rome, 1998.
- FAO: FAOSTAT Online Database, <https://www.fao.org/faostat/en/#data/QCL>, 2023.
- Frimmel, F. H. and Christman, R. F.: *Humic substances and their role in the environment*, John Wiley and Sons Ltd., 1988.
- 830 Gauch, H. G., Hwang, J. T. G., and Fick, G. W.: Model Evaluation by Comparison of Model-Based Predictions and Measured Values, *Agronomy Journal*, 95, 1442–1442, <https://doi.org/10.2134/agronj2003.1442>, 2003.
- Gentile, R., Vanlauwe, B., and Six, J.: Litter quality impacts short- but not long-term soil carbon dynamics in soil aggregate fractions, *Ecological Society of America*, 21, 695–703, <https://doi.org/10.1890/09-2325.1>, 2011.
- Gurung, R. B., Ogle, S. M., Breidt, F. J., Williams, S. A., and Parton, W. J.: Bayesian calibration of the DayCent ecosystem model to simulate 835 soil organic carbon dynamics and reduce model uncertainty, *Geoderma*, 376, 114529, <https://doi.org/10.1016/j.geoderma.2020.114529>, 2020.
- Gurung, R. B., Ogle, S. M., Breidt, F. J., Parton, W. J., Del Grosso, S. J., Zhang, Y., Hartman, M. D., Williams, S. A., and Venterea, R. T.: Modeling nitrous oxide mitigation potential of enhanced efficiency nitrogen fertilizers from agricultural systems, *Science of The Total Environment*, 801, 149342, <https://doi.org/10.1016/j.scitotenv.2021.149342>, 2021.
- 840 Hartman, M., Parton, W., Del Grosso, S., Easter, M., Hendryx, J., Hilinski, T., Kelly, R., Keough, C., Killian, K., Lutz, S., Marx, E., McKeown, R., Ogle, S., Ojima, D., Paustian, K., Swan, A., and Williams, S.: DayCent Ecosystem Model. The Daily Century Ecosystem, Soil Organic Matter, Nutrient Cycling, Nitrogen Trace Gas, and Methane Model. User Manual, Scientific Basis, and Technical Documentation, 2020.
- Hodnett, M. G. and Tomasella, J.: Marked differences between van Genuchten soil water-retention parameters for temperate and tropical 845 soils: a new water-retention pedo-transfer functions developed for tropical soils, *Geoderma*, 108, 155–180, [https://doi.org/10.1016/S0016-7061\(02\)00105-2](https://doi.org/10.1016/S0016-7061(02)00105-2), 2002.
- Hutchinson, G. L. and Mosier, A. R.: Improved Soil Cover Method for Field Measurement of Nitrous Oxide Fluxes, *Soil Science Society of America Journal*, 45, 311–316, <https://doi.org/10.2136/sssaj1981.03615995004500020017x>, \_eprint: <https://onlinelibrary.wiley.com/doi/pdf/10.2136/sssaj1981.03615995004500020017x>, 1981.

- 850 Iooss, B., Veiga, S. D., Janon, A., Pujol, G., Broto, w. c. f. B., Boumhaout, K., Delage, T., Amri, R. E., Fruth, J., Gilquin, L., Guillaume, J., Idrissi, M. I., Gratiot, L. L., Lemaitre, P., Marrel, A., Meynaoui, A., Nelson, B. L., Monari, F., Oomen, R., Rakovec, O., Ramos, B., Roustant, O., Song, E., Staum, J., Sueur, R., Touati, T., and Weber, F.: sensitivity: Global Sensitivity Analysis of Model Outputs, <https://CRAN.R-project.org/package=sensitivity>, 2021.
- Ittersum, M. K. v., Bussel, L. G. J. v., Wolf, J., Grassini, P., Wart, J. v., Guilpart, N., Claessens, L., Groot, H. d., Wiebe, K., Mason-D’Croz, D., Yang, H., Boogaard, H., Oort, P. A. J. v., Loon, M. P. v., Saito, K., Adimo, O., Adjei-Nsiah, S., Agali, A., Bala, A., Chikowo, R., Kaizzi, K., Kouressy, M., Makoi, J. H. J. R., Ouattara, K., Tesfaye, K., and Cassman, K. G.: Can sub-Saharan Africa feed itself?, *Proceedings of the National Academy of Sciences*, 113, 14 964–14 969, <https://doi.org/10.1073/pnas.1610359113>, publisher: National Academy of Sciences Section: Biological Sciences, 2016.
- 855 Kallenbach, C. M., Frey, S. D., and Grandy, A. S.: Direct evidence for microbial-derived soil organic matter formation and its ecophysiological controls, *Nature Communications*, 7, 1–10, <https://doi.org/10.1038/ncomms13630>, 2016.
- Kamoni, P. T., Gicheru, P. T., Wokabi, S. M., Easter, M., Milne, E., Coleman, K., Falloon, P., and Paustian, K.: Predicted soil organic carbon stocks and changes in Kenya between 1990 and 2030, *Agriculture, Ecosystems & Environment*, 122, 105–113, <https://doi.org/10.1016/j.agee.2007.01.024>, 2007.
- Laub, M., Demyan, M. S., Nkwain, Y. F., Blagodatsky, S., Kätterer, T., Piepho, H.-p., and Cadisch, G.: DRIFTS band areas as measured pool size proxy to reduce parameter uncertainty in soil organic matter models, *Biogeosciences*, 17, 1393–1413, <https://doi.org/10.5194/bg-17-1393-2020>, 2020.
- 865 Laub, M., Schlichenmeier, S., Vityakon, P., and Cadisch, G.: Litter Quality and Microbes Explain Aggregation Differences in a Tropical Sandy Soil, *Journal of Soil Science and Plant Nutrition*, 22, 848–860, <https://doi.org/10.1007/s42729-021-00696-6>, 2022.
- Laub, M., Corbeels, M., Couëdel, A., Ndungu, S. M., Mucheru-Muna, M. W., Mugendi, D., Necpalova, M., Waswa, W., Van de Broek, M., Vanlauwe, B., and Six, J.: Managing soil organic carbon in tropical agroecosystems: evidence from four long-term experiments in Kenya, *SOIL*, 9, 301–323, <https://doi.org/10.5194/soil-9-301-2023>, publisher: Copernicus GmbH, 2023a.
- 870 Laub, M., Corbeels, M., Mathu Ndungu, S., Mucheru-Muna, M. W., Mugendi, D., Necpalova, M., Van de Broek, M., Waswa, W., Vanlauwe, B., and Six, J.: Combining manure with mineral N fertilizer maintains maize yields: Evidence from four long-term experiments in Kenya, *Field Crops Research*, 291, 108 788, <https://doi.org/10.1016/j.fcr.2022.108788>, 2023b.
- 875 Laub, M., Blagodatsky, S., Van de Broek, M., Schlichenmaier, S., Kunlanit, B., Six, J., Vityakon, P., and Cadisch, G.: SAMM version 1.0: a numerical model for microbial-mediated soil aggregate formation, *Geoscientific Model Development*, 17, 931–956, <https://doi.org/10.5194/gmd-17-931-2024>, publisher: Copernicus GmbH, 2024.
- Lee, J., Hopmans, J. W., Rolston, D. E., Baer, S. G., and Six, J.: Determining soil carbon stock changes: Simple bulk density corrections fail, *Agriculture, Ecosystems & Environment*, 134, 251–256, <https://doi.org/10.1016/j.agee.2009.07.006>, 2009.
- 880 Lee, J., Necpálová, M., and Six, J.: Biophysical potential of organic cropping practices as a sustainable alternative in Switzerland, *Agricultural Systems*, 181, 102 822, <https://doi.org/10.1016/j.agsy.2020.102822>, 2020.
- Leitner, S., Pelster, D. E., Werner, C., Merbold, L., Baggs, E. M., Mapanda, F., and Butterbach-Bahl, K.: Closing maize yield gaps in sub-Saharan Africa will boost soil N<sub>2</sub>O emissions, *Current Opinion in Environmental Sustainability*, 47, 95–105, <https://doi.org/10.1016/j.cosust.2020.08.018>, 2020.
- 885 Lemma, B., Williams, S., and Paustian, K.: Long term soil carbon sequestration potential of smallholder croplands in southern Ethiopia with DAYCENT model, *Journal of Environmental Management*, 294, 112 893, <https://doi.org/10.1016/j.jenvman.2021.112893>, 2021.

- Levvasseur, F., Mary, B., and Houot, S.: C and N dynamics with repeated organic amendments can be simulated with the STICS model, *Nutrient Cycling in Agroecosystems*, 119, 103–121, <https://doi.org/10.1007/s10705-020-10106-5>, 2021.
- 890 Levy, P. E., Cowan, N., van Oijen, M., Famulari, D., Drewer, J., and Skiba, U.: Estimation of cumulative fluxes of nitrous oxide: uncertainty in temporal upscaling and emission factors, *European Journal of Soil Science*, 68, 400–411, <https://doi.org/10.1111/ejss.12432>, <https://onlinelibrary.wiley.com/doi/pdf/10.1111/ejss.12432>, 2017.
- Loague, K. and Green, R. E.: Statistical and graphical methods for evaluating solute transport models: Overview and application, *Journal of Contaminant Hydrology*, 7, 51–73, [https://doi.org/10.1016/0169-7722\(91\)90038-3](https://doi.org/10.1016/0169-7722(91)90038-3), 1991.
- Lobell, D. B., Bänziger, M., Magorokosho, C., and Vivek, B.: Nonlinear heat effects on African maize as evidenced by historical yield trials, *Nature Climate Change*, 1, 42–45, <https://doi.org/10.1038/nclimate1043>, 2011.
- 895 Mainka, M., Summerauer, L., Wasner, D., Garland, G., Griepentrog, M., Berhe, A. A., and Doetterl, S.: Soil geochemistry as a driver of soil organic matter composition: insights from a soil chronosequence, *Biogeosciences*, 19, 1675–1689, <https://doi.org/10.5194/bg-19-1675-2022>, publisher: Copernicus GmbH, 2022.
- Mathers, C., Black, C. K., Segal, B. D., Gurung, R. B., Zhang, Y., Easter, M. J., Williams, S., Motew, M., Campbell, E. E., Brummitt, C. D.,  
900 Paustian, K., and Kumar, A. A.: Validating DayCent-CR for cropland soil carbon offset reporting at a national scale, *Geoderma*, 438, 116 647, <https://doi.org/10.1016/j.geoderma.2023.116647>, 2023.
- Mtangadura, T. J., Mtambanengwe, F., Nezomba, H., Rurinda, J., and Mapfumo, P.: Why organic resources and current fertilizer formulations in Southern Africa cannot sustain maize productivity: Evidence from a long-term experiment in Zimbabwe, *PLOS ONE*, 12, e0182 840, <https://doi.org/10.1371/journal.pone.0182840>, publisher: Public Library of Science, 2017.
- 905 Mueller, T., Jensen, L. S., Magid, J., and Nielsen, N. E.: Temporal variation of C and N turnover in soil after oilseed rape straw incorporation in the field: simulations with the soil-plant-atmosphere model DAISY, *Ecological Modelling*, 99, 247–262, [https://doi.org/10.1016/S0304-3800\(97\)01959-5](https://doi.org/10.1016/S0304-3800(97)01959-5), 1997.
- Mutuku, E. A., Roobroeck, D., Vanlauwe, B., Boeckx, P., and Cornelis, W. M.: Maize production under combined Conservation Agriculture and Integrated Soil Fertility Management in the sub-humid and semi-arid regions of Kenya, *Field Crops Research*, 254, 107 833,  
910 <https://doi.org/10.1016/j.fcr.2020.107833>, 2020.
- Möhring, J. and Piepho, H.-P.: Comparison of Weighting in Two-Stage Analysis of Plant Breeding Trials, *Crop Science*, 49, 1977–1988, <https://doi.org/10.2135/cropsci2009.02.0083>, 2009.
- Necpalova, M., Lee, J., Skinner, C., Büchi, L., Wittwer, R., Gattinger, A., van der Heijden, M., Mäder, P., Charles, R., Berner, A., Mayer, J., and Six, J.: Potentials to mitigate greenhouse gas emissions from Swiss agriculture, *Agriculture, Ecosystems & Environment*, 265,  
915 84–102, <https://doi.org/10.1016/j.agee.2018.05.013>, 2018.
- Necpálová, M., Anex, R. P., Fienen, M. N., Del Grosso, S. J., Castellano, M. J., Sawyer, J. E., Iqbal, J., Pantoja, J. L., and Barker, D. W.: Understanding the DayCent model: Calibration, sensitivity, and identifiability through inverse modeling, *Environmental Modelling & Software*, 66, 110–130, <https://doi.org/10.1016/j.envsoft.2014.12.011>, 2015.
- Nezomba, H., Mtambanengwe, F., Rurinda, J., and Mapfumo, P.: Integrated soil fertility management sequences for reducing climate risk in  
920 smallholder crop production systems in southern Africa, *Field Crops Research*, 224, 102–114, <https://doi.org/10.1016/j.fcr.2018.05.003>, 2018.
- Nyawira, S. S., Hartman, M. D., Nguyen, T. H., Margenot, A. J., Kihara, J., Paul, B. K., Williams, S., Bolo, P., and Sommer, R.: Simulating soil organic carbon in maize-based systems under improved agronomic management in Western Kenya, *Soil and Tillage Research*, 211, 105 000, <https://doi.org/10.1016/j.still.2021.105000>, 2021.

- 925 Palm, C., Gachengo, C. N., Delve, R. J., Cadisch, G., and Giller, K. E.: Organic inputs for soil fertility management in tropical agroecosystems: application of an organic resource database, *Agriculture, Ecosystems & Environment*, 83, 27–42, [https://doi.org/10.1016/S0167-8809\(00\)00267-X](https://doi.org/10.1016/S0167-8809(00)00267-X), 2001.
- Parton, W. J., Schimel, D. S., Cole, C. V., and Ojima, D. S.: Analysis of Factors Controlling Soil Organic Matter Levels in Great Plains Grasslands, *Soil Science Society of America Journal*, 51, 1173–1179, <https://doi.org/10.2136/sssaj1987.03615995005100050015x>, 1987.
- 930 Parton, W. J., Hartman, M., Ojima, D., and Schimel, D.: DAYCENT and its land surface submodel: description and testing, *Global and Planetary Change*, 19, 35–48, [https://doi.org/10.1016/S0921-8181\(98\)00040-X](https://doi.org/10.1016/S0921-8181(98)00040-X), 1998.
- Pelster, D., Rufino, M., Rosenstock, T., Mango, J., Saiz, G., Diaz-Pines, E., Baldi, G., and Butterbach-Bahl, K.: Smallholder farms in eastern African tropical highlands have low soil greenhouse gas fluxes, *Biogeosciences*, 14, 187–202, <https://doi.org/10.5194/bg-14-187-2017>, publisher: Copernicus GmbH, 2017.
- 935 Puttaso, A., Vityakon, P., Rasche, F., Saenjan, P., Treloges, V., and Cadisch, G.: Does Organic Residue Quality Influence Carbon Retention in a Tropical Sandy Soil?, *Soil Science Society of America Journal*, 77, 1001–1001, <https://doi.org/10.2136/sssaj2012.0209>, 2013.
- R Core Team: R: A Language and Environment for Statistical Computing, <https://www.r-project.org/>, 2020.
- Rattalino Edreira, J. I., Andrade, J. F., Cassman, K. G., van Ittersum, M. K., van Loon, M. P., and Grassini, P.: Spatial frameworks for robust estimation of yield gaps, *Nature Food*, pp. 1–7, <https://doi.org/10.1038/s43016-021-00365-y>, bandiera\_abtest: a Cc\_license\_type: cc\_by Cg\_type: Nature Research Journals Primary\_atype: Research Publisher: Nature Publishing Group Subject\_term: Biogeography;Plant ecology Subject\_term\_id: biogeography;plant-ecology, 2021.
- 940 Reichenbach, M., Fiener, P., Garland, G., Griepentrog, M., Six, J., and Doetterl, S.: The role of geochemistry in organic carbon stabilization against microbial decomposition in tropical rainforest soils, *SOIL*, 7, 453–475, <https://doi.org/10.5194/soil-7-453-2021>, publisher: Copernicus GmbH, 2021.
- 945 Saito, K., Six, J., Komatsu, S., Snapp, S., Rosenstock, T., Arouna, A., Cole, S., Taulya, G., and Vanlauwe, B.: Agronomic gain: Definition, approach, and application, *Field Crops Research*, 270, 108 193, <https://doi.org/10.1016/j.fcr.2021.108193>, 2021.
- Saltelli, A.: Making best use of model evaluations to compute sensitivity indices, *Computer Physics Communications*, 145, 280–297, [https://doi.org/10.1016/S0010-4655\(02\)00280-1](https://doi.org/10.1016/S0010-4655(02)00280-1), 2002a.
- Saltelli, A.: Sensitivity Analysis for Importance Assessment, *Risk Analysis*, 22, 579–590, <https://doi.org/10.1111/0272-4332.00040>, \_eprint: <https://onlinelibrary.wiley.com/doi/pdf/10.1111/0272-4332.00040>, 2002b.
- 950 Saxton, K. E. and Rawls, W. J.: Soil Water Characteristic Estimates by Texture and Organic Matter for Hydrologic Solutions, *Soil Science Society of America Journal*, 70, 1569–1578, <https://doi.org/https://doi.org/10.2136/sssaj2005.0117>, 2006.
- Sommer, R., Paul, B. K., Mukalama, J., and Kihara, J.: Reducing losses but failing to sequester carbon in soils – the case of Conservation Agriculture and Integrated Soil Fertility Management in the humid tropical agro-ecosystem of Western Kenya, *Agriculture, Ecosystems & Environment*, 254, 82–91, <https://doi.org/10.1016/j.agee.2017.11.004>, 2018.
- 955 Stella, T., Mouratiadou, I., Gaiser, T., Berg-Mohnicke, M., Wallor, E., Ewert, F., and Nendel, C.: Estimating the contribution of crop residues to soil organic carbon conservation, *Environmental Research Letters*, 14, 094 008–094 008, <https://doi.org/10.1088/1748-9326/ab395c>, 2019.
- Tuszynski, J.: caTools: Tools: Moving Window Statistics, GIF, Base64, ROC AUC, etc, <https://CRAN.R-project.org/package=caTools>, 2021.
- 960 van Genuchten, M.: A comparison of numerical solutions of the one-dimensional unsaturated—saturated flow and mass transport equations, *Advances in Water Resources*, 5, 47–55, [https://doi.org/10.1016/0309-1708\(82\)90028-8](https://doi.org/10.1016/0309-1708(82)90028-8), 1982.
- van Oijen, M.: Bayesian Compendium, Springer International Publishing, Cham, <https://doi.org/10.1007/978-3-030-55897-0>, 2020.

- Vanlauwe, B., Bationo, A., Chianu, J., Giller, K., Merckx, R., Mokwunye, U., Ohiokpehai, O., Pypers, P., Tabo, R., Shepherd, K., Smaling, E., Woomer, P., and Sanginga, N.: Integrated Soil Fertility Management: Operational Definition and Consequences for Implementation and Dissemination, *Outlook on Agriculture*, 39, 17–24, <https://doi.org/10.5367/000000010791169998>, 2010.
- 965 Wang, Q., Barré, P., Baudin, F., Clivot, H., Ferchaud, F., Li, Y., Gao, X., and Le Noë, J.: The AMG model coupled with Rock-Eval® analysis accurately predicts cropland soil organic carbon dynamics in the Tuojiang River Basin, Southwest China, *Journal of Environmental Management*, 345, 118–850, <https://doi.org/10.1016/j.jenvman.2023.118850>, 2023.
- Wang, Y., Dou, F., Paustian, K. H., Grosso, S. J. D., Storlien, J. O., Wight, J. P., and Hons, F. M.: Simulating impacts of nitrogen fertilization using DAYCENT to optimize economic returns and environmental services from bioenergy sorghum production, *Agronomy Journal*, 112, 4861–4878, <https://doi.org/10.1002/agj2.20390>, \_eprint: <https://access.onlinelibrary.wiley.com/doi/pdf/10.1002/agj2.20390>, 2020.
- 970 Wendt, J. W. and Hauser, S.: An equivalent soil mass procedure for monitoring soil organic carbon in multiple soil layers, *European Journal of Soil Science*, 64, 58–65, <https://doi.org/10.1111/ejss.12002>, \_eprint: <https://onlinelibrary.wiley.com/doi/pdf/10.1111/ejss.12002>, 2013.
- World-Bank: Arable land (% of land area) - Kenya | Data, <https://data.worldbank.org/indicator/AG.LND.ARBL.ZS?locations=KE>, 2021a.
- 975 World-Bank: Prevalence of severe food insecurity in the population (%) - Kenya, World, Sub-Saharan Africa, Malawi | Data, <https://data.worldbank.org/indicator/SN.ITK.SVFI.ZS?locations=KE-1W-ZG-MW>, 2021b.
- Xiao, Q., Huang, Y., Wu, L., Tian, Y., Wang, Q., Wang, B., Xu, M., and Zhang, W.: Long-term manuring increases microbial carbon use efficiency and mitigates priming effect via alleviated soil acidification and resource limitation, *Biology and Fertility of Soils*, <https://doi.org/10.1007/s00374-021-01583-z>, 2021.
- 980 Yang, Y., Ogle, S., Grosso, S. D., Mueller, N., Spencer, S., and Ray, D.: Regionalizing crop types to enhance global ecosystem modeling of maize production, *Environmental Research Letters*, 17, 014013, <https://doi.org/10.1088/1748-9326/ac3f06>, publisher: IOP Publishing, 2021.
- Zhai, R., Tao, F., Lall, U., and Elliott, J.: Africa Would Need to Import More Maize in the Future Even Under 1.5°C Warming Scenario, *Earth's Future*, 9, e2020EF001574, <https://doi.org/10.1029/2020EF001574>, \_eprint: <https://agupubs.onlinelibrary.wiley.com/doi/pdf/10.1029/2020EF001574>, 2021.
- 985 Zhang, Y. and Yu, Q.: Does agroecosystem model improvement increase simulation accuracy for agricultural N<sub>2</sub>O emissions?, *Agricultural and Forest Meteorology*, 297, 108–281, <https://doi.org/10.1016/j.agrformet.2020.108281>, 2021.
- Zhou, W., Guan, K., Peng, B., Margenot, A., Lee, D., Tang, J., Jin, Z., Grant, R., DeLucia, E., Qin, Z., Wander, M. M., and Wang, S.: How does uncertainty of soil organic carbon stock affect the calculation of carbon budgets and soil carbon credits for croplands in the U.S. Midwest?, *Geoderma*, 429, 116–254, <https://doi.org/10.1016/j.geoderma.2022.116254>, 2023.
- 990 Zimmermann, M., Leifeld, J., Schmidt, M. W. I., Smith, P., and Fuhrer, J.: Measured soil organic matter fractions can be related to pools in the RothC model, *European Journal of Soil Science*, 58, 658–667, <https://doi.org/10.1111/j.1365-2389.2006.00855.x>, 2007.