

An intercomparison of EarthCARE cloud, aerosol and precipitation retrieval products

Shannon L. Mason^{1,2}, Howard W. Barker⁸, Jason N. S. Cole⁷, Nicole Docter¹⁰, David P. Donovan⁴, Robin J. Hogan^{1,3}, Anja Hünerbein⁹, Pavlos Kollias^{5,6}, Bernat Puigdomènech Treserras⁶, Zhipeng Qu⁷, Ulla Wandinger⁹, and Gerd-Jan van Zadelhoff⁴

¹European Centre for Medium-range Weather Forecasts (ECMWF), Reading, UK

²National Centre for Earth Observation, University of Reading, Reading, UK

³Department of Meteorology, University of Reading, Reading, UK

⁴Royal Netherlands Meteorological Institute (KNMI), De Bilt, Netherlands

⁵Stonybrook University, Stonybrook, NY, USA

⁶McGill University, Montreal, QC, Canada

⁷Environment and Climate Change Canada, Toronto, ON, Canada

⁸Environment and Climate Change Canada, Victoria, BC, Canada

⁹Leibniz Institute for Tropospheric Research (TROPOS), Leipzig, Germany

¹⁰Free University of Berlin, Berlin, Germany

Correspondence: Shannon Mason (shannon.mason@ecmwf.int)

Abstract. ~~The mission of the Earth cloud, aerosol and radiation explorer (EarthCARE) mission to observe cloud, aerosol, precipitation and radiation using four complementary instruments requires the development of many single-instrument and synergistic algorithms for the retrieval of geophysical quantities. The retrieval products employ one or more of the cloud profiling radar (CPR), atmospheric lidar (ATLID) and multispectral imager (MSI), while the broadband radiometer (BBR) places the retrieved quantities in the context of the atmospheric radiation budget. To facilitate the development and evaluation of the ESA EarthCARE production model prior to launch, sophisticated instrument simulators have been developed to produce realistic synthetic EarthCARE measurements from the output of cloud-resolving model simulations. While acknowledging that the physical and radiative representation of cloud, aerosol and precipitation in the test scenes are based on numerical models, the opportunity to perform a detailed evaluation wherein the model “truth” is known has provided rare insights into the performance of EarthCARE’s instruments and retrieval algorithms. This level of omniscience will not be available for the evaluation of in-flight EarthCARE retrieval products, even during validation activities coordinated with ground-based and airborne measurements. In this study we intercompare EarthCARE retrieval products from within the ESA production model both statistically across all simulated EarthCARE granules, and using timeseries of data from an individual scene. The comparison between the retrieved quantities helps to illustrate the strengths and limitations of the single-instrument retrievals, and the degrees to which the synergistic retrieval and composite products can represent the entire atmosphere of clouds, aerosols and precipitation.~~

The objective of the Earth Cloud, Aerosol and Radiation Explorer (EarthCARE) mission is to infer attributes of cloud, aerosol, precipitation and radiation from observations made by four complementary instruments. This requires the development of single-instrument and multiple-instrument (i.e., synergistic) retrieval algorithms that employ measurements made by

20 one, or more, of EarthCARE's cloud-profiling radar (CPR), atmospheric lidar (ATLID) and multi-spectral imager (MSI); its
broadband radiometer (BBR) places the retrieved quantities in the context of the surface-atmosphere radiation budget. To facil-
itate development and evaluation of ESA's EarthCARE production model prior to launch, sophisticated instrument simulators
were developed to produce realistic synthetic EarthCARE measurements for simulated conditions provided by cloud-resolving
models. While acknowledging that the physical and radiative representations of cloud, aerosol and precipitation in the test
25 scenes are based on numerical models, the opportunity to perform detailed evaluations wherein the "truth" is known pro-
vides insights into the performance of EarthCARE's instruments and retrieval algorithms. This level of omniscience will not
be available for the evaluation of in-flight EarthCARE retrieval products, even during validation activities coordinated with
ground-based and airborne measurements. In this study we compare EarthCARE retrieval products both statistically across all
simulated scenes, and from a specific time series from a single scene.

30 ~~We show that radar-lidar synergy has the greatest impact in ice clouds; when compared with single-instrument radar and
lidar retrievals, the synergistic ATLID-CPR-MSI cloud, aerosols, and precipitation (ACM-CAP) product accurately retrieves
profiles of both ice water content and effective radius. While liquid cloud is difficult to detect directly from spaceborne
remote sensors, especially in complex and layered scenes, the synergistic retrieval benefits from combined constraints from
lidar backscatter, solar radiances and radar path-integrated attenuation, but still exhibits a high degree of random error. For
35 precipitation retrievals, the CPR cloud and precipitation product (C-CLD) and ACM-CAP have similar performance when
well-constrained by CPR measurements. The greatest differences are in coverage, with ACM-CAP reporting retrievals in the
melting layer, and in heavy precipitation where the radar is dominated by multiple scattering and attenuation). Aerosol retrievals
from ATLID compensate for a high degree of measurement noise in a number of ways, with the ATLID extinction, backscatter
and depolarization (A-EBD) product and ACM-CAP demonstrating similar performance in the test scenes. The multispectral
40 imager (MSI) cloud optical properties (M-COP) product performs very well in unambiguous cloud layers; similarly, the MSI
aerosol optical thickness (M-AOT) product performs well where the possibility of contamination by cloud signal is very low.
A summary of the performance of all retrieval products is provided, and may help to inform the selection of EarthCARE data
products by future users.~~

For ice clouds it is shown that retrieved profiles of ice water content and effective particle size made by the ATLID-CPR-MSI
45 cloud, aerosols, and precipitation (ACM-CAP) synergistic algorithm are consistently more accurate than those from its single-
instrument counterparts. While liquid clouds are often difficult to detect from satellite-borne sensors, especially for multi-
layered clouds, ACM-CAP benefits from combined constraints from lidar backscatter, solar radiances, and radar path-integrated
attenuation, but still exhibits non-trivial random error. For precipitation retrievals, the CPR cloud and precipitation product
(C-CLD) and ACM-CAP have similar performance when well-constrained by CPR measurements. The greatest differences
50 are in coverage, with ACM-CAP reporting retrievals in the melting layer, and in heavy precipitation where CPR signals are
dominated by multiple scattering and attenuation. Aerosol retrievals from ATLID compensate for a high degree of measurement
noise in a number of ways, with the ATLID extinction, backscatter and depolarization (A-EBD) product and ACM-CAP
demonstrating similar performance. The multi-spectral imager (MSI) cloud optical properties (M-COP) product performs
very well for unambiguous cloud layers. Similarly, the MSI aerosol optical thickness (M-AOT) product performs well when

55 [radiances are unaffected by cloud, but both products provide little information about vertical profiles of properties. Finally, a summary of the performance of all retrieval products and their random errors is provided.](#)

1 Introduction

With its mission to measure clouds, aerosols and precipitation and their radiative effects using two active and two passive instruments aboard a single platform, EarthCARE is the most complex of ESA's Earth Explorer satellites to date. EarthCARE's
60 four instruments are the 355nm Atmospheric Lidar (ATLID), 94-GHz Cloud Profiling Radar (CPR), the Multi-Spectral Imager (MSI) and the Broadband Radiometer (BBR), each fully described in Wehr et al. (2023). The ESA EarthCARE production model (Eisinger et al., 2023) includes 14 single-instrument (L2a) and 11 synergistic (L2b) data products, which will present the ~~corrected~~[corrected post-processed](#) measurements from all instruments, interpret those measurements to describe the spatial distributions and classifications of hydrometeors and aerosols through the atmosphere, retrieve the bulk quantities and microphysical
65 properties of clouds, precipitation and aerosols, and finally place each scene in its broadband radiative context. As part of the development of EarthCARE's L2 processors, an unprecedented effort has been directed to the simulation of EarthCARE measurements based on high-resolution numerical weather forecasts (Donovan et al., 2023a; Qu et al., 2022). These simulated test scenes have provided the basis for developing and testing the L2 processors ahead of EarthCARE's launch, and facilitate an evaluation of retrieved geophysical quantities wherein the "true" physical quantities are known.

70 Each L2 processor and its data products have been described and evaluated using the simulated test scenes in dedicated publications. In this study we present an intercomparison of geophysical retrievals describing the bulk amount and microphysical properties of hydrometeors and aerosols:

- ATLID retrievals of profiles of ice clouds (A-ICE) and aerosols (A-AER and A-EBD) are described in Donovan et al. (2023b), and the aerosol layer descriptor (A-ALD) in Wandinger et al. (2023);
- 75 – CPR retrievals of ice and liquid clouds, snow and rain (C-CLD) are described in Mroz et al. (2023);
- MSI cloud mask (M-CM; Hünerbein et al., 2023a) and retrievals of cloud optical properties (M-COP; Hünerbein et al., 2023b), and retrievals of aerosol properties (M-AOT; Docter et al., 2023);
- Retrievals from EarthCARE's active instruments—ice clouds from A-ICE and C-CLD, snow, liquid clouds and rain from C-CLD, and aerosols from A-EBD—are composited into a unified cloud, aerosols and precipitation product (ACM-COM; Cole et al., 2023); and,
- 80 – The corrected measurements from active and passive sensors provide the synergistic inputs for a simultaneous and unified retrieval of all cloud, aerosol and precipitation (ACM-CAP; Mason et al., 2023).

[All relevant L2 products, their expanded acronyms, references and associated processors, are listed in Table 1.](#) The production of both single-instrument (L2a) and synergistic (L2b) retrievals builds some redundancy into the production model, and

85 provides the capacity for an immediate internal verification of EarthCARE products based on intercomparison between geophysical retrieval products within the same processing chain.

Prior to launch the evaluation of EarthCARE retrieval products has been limited to simulated EarthCARE scenes and measurements from previous satellites or field campaigns that can be used as proxies for EarthCARE. After launch, validation efforts will depend on correlative data products from dedicated field campaigns and supersites; however, with multiple single-
90 instrument and synergistic products available, one valuable form of verification that can be carried out using both simulated scenes and in-flight data is by detailed intercomparison of EarthCARE retrievals. Intercomparisons have been a key part of the algorithm development workflow, and inform planning for verification activities during the Commissioning Phase. The description of the EarthCARE production model (Eisinger et al., 2023) and the papers describing the individual processors will provide important complementary information to this study, which is intended as a reference by which users of EarthCARE
95 data can understand the differences between products, their performance as currently understood when applied to the simulated test scenes, and to select data products suited to their purposes. We limit the intercomparison to retrieved geophysical quantities and properties of clouds, precipitation and aerosols: an intercomparison of single-instrument and synergistic detection and target classification products is made in Irbah et al. (2023), while radiative fluxes and heating rates derived from two sets of retrieval products are compared in Barker et al. (2023).

100 In Section 2 we outline the EarthCARE retrieval products that are included in this study, and describe the quantities from the numerical weather model against which they are evaluated. The evaluation (Section 3) is separated into retrievals of ice cloud and snow (Section 3.1), liquid clouds (Section 3.2), rain (Section 3.3) and aerosols (Section 3.4). A summary of the respective performance of single-instrument and synergistic retrievals products, and some discussion and concluding remarks, are made in Section 4.

105 **2 Data products**

Two sets of data products are used to carry out the present evaluation and intercomparison. The “model truth” data products (Section 2.1) have been postprocessed from the numerical model data fields used as inputs for the simulated test scenes. These are non-standard data products that are specific to this activity. The retrieval products (Section 2.2& Table 2) are the output of the official ESA EarthCARE L2 processors at the time of writing, which will closely resemble the data structure and variable
110 naming conventions of the L2 products available after EarthCARE launch.

2.1 Model truth

The [creationgeneration](#) of the three EarthCARE test scenes based on Environment and Climate Change Canada (ECCC)’s high-resolution Global Environmental Multiscale (GEM) model and Copernicus Atmospheric Modelling Service (CAMS) aerosol forecasts is described in Qu et al. (2022), and the simulation of EarthCARE measurements is described in Donovan
115 et al. (2023a). The thermodynamical, cloud and precipitation fields are based on the GEM model, and are merged with the CAMS aerosol fields. The merged and modified quantities describing the properties of the atmosphere, clouds, precipitation

Table 1. Descriptions and references for EarthCARE L2 products relating to retrievals of geophysical quantities, adapted from Tables 1 and 3 from the ESA production model (Eisinger et al., 2023)

L2 product	L2 processor	Product title / contents	Reference
A-ICE	A-PRO	ATLID ice water content and effective radius	Donovan et al. (2023b)
A-AER		ATLID aerosol profiles	Donovan et al. (2023b)
A-EBD		ATLID extinction, backscatter, depolarization	Donovan et al. (2023b)
A-TC		ATLID target classification	Donovan et al. (2023b), Irbah et al. (2023)
A-ALD	A-LAY	ATLID aerosol layer descriptor	Wandinger et al. (2023)
A-CTH		ATLID cloud-top height	Wandinger et al. (2023)
C-FMR	C-PRO	CPR feature mask and corrected reflectivity	Kollias et al. (2023)
C-CD		CPR corrected Doppler	Kollias et al. (2023)
C-TC		CPR target classification	Kollias et al. (2023), Irbah et al. (2023)
C-CLD	C-CLD	CPR cloud profiles	Mroz et al. (2023)
M-COP	M-CLD	MSI cloud optical properties	Hünerbein et al. (2023a)
M-CM		MSI cloud mask	Hünerbein et al. (2023b)
M-AOT	M-AOT	MSI aerosol optical thickness	Docter et al. (2023)
AM-CTH	AM-COL	ATLID-MSI cloud top height	Haarig et al. (2023)
AM-ACD		ATLID-MSI aerosol column descriptor	Haarig et al. (2023)
AC-TC	AC-TC	ATLID-CPR synergistic target classification	Irbah et al. (2023)
ACM-CAP	ACM-CAP	ATLID-CPR-MSI cloud, aerosol and precipitation best estimates	Mason et al. (2023)
ACM-COM	ACM-COM	ATLID-CPR-MSI composite cloud and aerosol profiles	Cole et al. (2023)

and aerosols is referred to in this paper as the “model truth”. The model truth has been collated in two data products, which are archived alongside the L2 products (see Data Availability).

Each of the test scenes is a descending daylit frame (1/8th of an EarthCARE orbit, or around 5000 km). The Halifax scene passes over the western North Atlantic starting near Halifax, Nova Scotia; it features high-latitude mixed-phase boundary layer clouds, a heavily precipitating cold front in the mid-latitudes, and scattered warm marine boundary layer clouds in the sub-tropics. The Baja scene is mid-latitude frame beginning over continental North America, including ice clouds over the Rocky Mountains, and ending over the Baja California peninsula. The Hawaii scene covers the tropical central Pacific Ocean, featuring heavy precipitation from deep tropical convective system. The test scenes’ meteorological and geographical contexts are described in more detail in Qu et al. (2023).

While evaluating the L2 products against the model truth in these simulated scenes provides many insights into the performance of the retrievals, we stress that the numerical models and instrument simulators rely on approximations to the same

quantities and properties as the retrievals (e.g. ice and rain fall speeds, ice density, hydrometeor size distributions and number concentrations, etc.). Apparent errors or biases in the retrievals presented in this paper may therefore be due to differences
130 in assumptions underlying the model truth, and should not be interpreted as unambiguous deficits in the retrieval algorithms. These uncertainties can only ultimately be quantified with in-flight EarthCARE observations and correlative measurements from validation activities.

2.2 Retrievals

The EarthCARE L2 production model is described in detail in Eisinger et al. (2023). In this section we provide brief descrip-
135 tions of selected products which include geophysical retrievals of cloud, aerosol and precipitation.

Table 2 shows the L2 data products from which the retrieved quantities can be intercompared. Not all of these quantities are shown in this paper: single-instrument and synergistic profiling macrophysical products (A-TC, C-TC and AC-TC) inter-
compared in Irbah et al. (2023), while the radiative quantities are evaluated as part of the radiative closure assessment study (Barker et al., 2023). Among the geophysical retrieval products, we have not included the synergistic aerosol column product
140 AM-ACD (Haarig et al., 2023) in this intercomparison.

2.2.1 MSI retrievals

The passive multi-spectral imager (MSI) measures ~~radiances cloud, aerosols and the surface~~ with four solar channels from the visible (670 nm) to the shortwave infrared (2.2 μm), and three thermal-infrared channels (8.5 μm to 12.5 μm), with 500-m spatial resolution across a 150-km swath (Wehr et al., 2023).

145 The L2a MSI Cloud Optical and Physical Properties (M-COP; Hünnerbein et al., 2023b) product reports cloud optical thickness, effective radius and derived cloud water path estimates and their uncertainties based on MSI’s visible, shortwave infrared and thermal-infrared channels. The thermodynamic phase, structure and degree of certainty of cloudy pixels are differentiated using “cloud phase” and “cloud mask” variables which are part of the L2a MSI Cloud mask product (M-CM; Hünnerbein et al., 2023a). Unless otherwise stated, in this paper we interpret cloud water path pixels as liquid water path when the cloud phase is
150 “liquid” or “supercooled/mixed”, and as ice water path when the cloud phase is “ice” or “overlap”.

The L2a MSI Aerosol Optical Thickness (M-AOT; Docter et al., 2023) product includes aerosol optical thickness over ocean and land at 670nm, and over ocean at 865nm, based on MSI’s visible, near infrared and shortwave infrared channels. While both M-COP and M-AOT are provided across the MSI swath, for this study we present MSI retrievals at the nadir pixel only for intercomparison with the active instruments.

155 2.2.2 ATLID retrievals

The 355-nm atmospheric lidar (ATLID) (Wehr et al., 2023) with high-spectral resolution lidar (HSRL) capability, detects clouds and aerosols. All L2 products downstream of the ATLID feature mask (A-FM; van Zadelhoff et al., 2023b) are postprocessed to a grid with 100-m vertical and 1-km along-track resolution. This grid defines the nadir curtain of the joint standard grid (JSG),

160 onto which the data are mapped for all L2a ATLID ~~and MSI~~ products, and L2b synergistic data products such as ACM-CAP and ACM-COM.

The L2a ATLID aerosol product (A-AER; Donovan et al., 2023b) estimates the profile of extinction from targets identified as weak scatterers by A-FM (i.e. aerosols and optically thin ice clouds), using a long averaging window (150 km in the present configuration) to increase the signal-to-noise ratio. Due to its long averaging window, the aerosol retrievals in A-AER have a characteristically smooth distribution. The L2a ATLID extinction, backscatter and depolarization product (A-EBD; Donovan et al., 2023b) is based on an optimal estimation retrieval of extinction profiles, constrained by ATLID’s Rayleigh (i.e. molecular) and Mie (i.e. particulate) backscatter channels. The smoother A-AER provides a “first pass” aerosol retrieval as an input to A-EBD, which retrieves smaller-scale features where justified by stronger particulate backscatter signals.

The A-EBD product provides an input to downstream ATLID products that further interpret the extinction profiles to estimate the physical properties of aerosols and ice. The L2a ATLID aerosol layer descriptor (A-ALD; Wandinger et al., 2023) identifies 170 aerosol layers and their layer-averaged properties. A-ALD provides a total column aerosol optical thickness based on A-EBD, for comparison to the total optical thickness of identified aerosol layers to quantify how much a layer-based approach underestimates the contributions of unresolved aerosols in the profile. The L2a ATLID retrieval of ice cloud [properties](#) (A-ICE; Donovan et al., 2023b) combines an estimate of extinction from A-EBD with the temperature-dependent relation of ice water content and hence effective radius. The extinction coefficient is provided in liquid clouds, the properties of liquid clouds are 175 not retrieved from ATLID alone, due to the rapid extinction of the lidar in liquid layers.

All ATLID aerosol products include at least one aerosol classification variable, in which six tropospheric aerosol mixtures (i.e. dust, sea salt, continental pollution, smoke, dusty smoke, dusty mix) are distinguished; however, we note that these classifications are not identical between products, and the most robustly processed aerosol classification is included in the A-TC product. In general, this involves assigning a higher proportion of volumes to one of the “unknown” classes when the signal is 180 difficult to interpret: these volumes are often at the edges of cloud features or where ATLID is nearly completely attenuated. For consistency, we therefore select for aerosols across the A-AER and A-EBD products using the same A-TC classification variable, and describe where this has a significant impact on the evaluation. We recommend that users use the most advanced target classification variable available: A-TC or even the synergistic product AC-TC.

2.2.3 CPR retrievals

185 The W-band (94 GHz) cloud profiling radar (CPR) has Doppler capability and approximately 5 dBZ more sensitivity than *CloudSat* (Wehr et al., 2023), and [provides measurements of detects](#) clouds and precipitation. CPR measurements are post-processed onto a 100-m vertical grid (oversampled from 500-m vertical pulse length) with 1-km along-track resolution. While the CPR L2a products are provided on their own spatial grid, for the L2b synergistic products (e.g. ACM-CAP and ACM-COM) CPR data are mapped to the Joint Standard Grid using a nearest-neighbour interpolation.

190 The L2a CPR cloud and precipitation product (C-CLD; Mroz et al., 2023) employs an optimal estimation retrieval algorithm to retrieve [the bulk quantities and characteristic sizes of ice cloud](#), snow, rain and liquid clouds from the radar reflectivity, mean Doppler velocity, and path-integrated attenuation measurements of the CPR. Due to its high sensitivity, CPR is expected

to detect some amount of non-precipitating liquid cloud, but the radar measurements are dominated by larger precipitating particles when present, [the microwave scattering properties of which are accounted for within the retrieval algorithms \(Mroz et al., 2023; Mason et al., 2023\)](#). C-CLD includes a representation of liquid cloud both where it is directly diagnosed and where its presence is considered likely (e.g. within rain); however, the retrieval is not applied below a radar reflectivity threshold of -21 dBZ, below which sedimentation velocities are not available from C-CD (Kollias et al., 2023). This further limits the representation of non-precipitating clouds in the C-CLD product.

2.2.4 Synergistic retrievals

The L2b ACM-COM product (Cole et al., 2023) includes a composite atmosphere comprised of L2a ATLID and CPR products. Both A-ICE and C-CLD are used for ice cloud and snow. In volumes where A-ICE and C-CLD both contain ice cloud or snow, the product with the lowest uncertainty in retrieved effective radius and [ice](#) water content is used. C-CLD provides information on rain and liquid cloud. The strong lidar backscatter signal from liquid clouds [beingis](#) invaluable to the detection and classification of liquid cloud layers (including mixed-phase cloud) in A-TC (Donovan et al., 2023b), but no L2a ATLID liquid cloud retrieval is available due to the rapid extinction of the lidar signal. A-EBD is used for aerosols fields.

The ACM-CAP product is a unified retrieval of cloud, aerosol and precipitation from the synergy of ATLID, CPR and MSI measurements (ACM-CAP; Mason et al., 2023). One advantage of a synergistic retrieval is the capacity for a smooth transition between the parts of a cloud that are detected only by ATLID (i.e. optically thin cirrus and the tops of high ice clouds), regions that are detected by both ATLID and CPR (i.e. the tops of most optically thick ice clouds), and those detected by CPR alone after ATLID is extinguished (i.e. within physically deep and optically thick clouds, or below layers of liquid cloud). The assimilation of MSI visible radiance and thermal infrared brightness temperature channels also provides passive constraints on the solar albedo and cloud-top properties that can only be applied consistently in a unified retrieval that represents complex and layered scenes with all combinations of hydrometeors.

3 Results

For the intercomparison results presented here, both the model truth and all retrieval products are mapped onto the Joint Standard Grid using a nearest-neighbour interpolation. The intercomparison is illustrated by time series of retrieved bulk quantities (e.g. ice water content, total aerosol extinction) and/or their vertical integrals (e.g. ice water path, total aerosol optical depth). ~~For this purpose~~ We use case studies to illustrate timeseries of retrieved quantities, wherein the first panel of each figure shows the model truth. ~~w~~We use the Halifax test scene, ~~a descending frame (1/8th of an EarthCARE orbit, or around 5000 km) that passes over the mid-latitudes of the western North Atlantic (including Halifax, Nova Scotia)~~. Of the three simulated EarthCARE test scenes the Halifax scene samples the widest range of regimes including deep and shallow ice clouds with snow and rain, supercooled liquid and mixed-phase clouds, liquid boundary-layer clouds, and aerosols including marine sea salt and continental pollution layers. ~~For this reason we use the Halifax scene to illustrate the intercomparison. Statistieal~~

Table 2. A summary of which EarthCARE L2a & b data products can be intercompared at nadir according to their geometry and physical quantity. *Italics* indicate profiling retrieval products that are provided on higher dimensions, but can be vertically integrated or subset for comparison with other products (e.g. deriving ice water path from ice water content). Products in gray are not included in this intercomparison. Note that some quantities listed here may be derived from variables in the L2 products: for example, both C-CLD and ACM-CAP report “mass flux” in units of $\text{kg s}^{-1} \text{m}^{-2}$ rather than “rain/snow rate” in units of mm h^{-1} ; however, the conversion between these terms is unambiguous, and the terms are used interchangeably.

	PASSIVE, LAYERWISE OR INTEGRATED (SWATH OR NADIR)		PROFILING (NADIR)	
	Physical quantity	L2 product(s)	Physical quantity	L2 product(s)
Ice cloud & snow	Optical thickness	M-COP, <i>A-EBD</i> , <i>ACM-CAP</i>	Extinction	A-EBD, ACM-COM, ACM-CAP
	Effective radius	M-COP, <i>A-ICE</i> , <i>ACM-CAP</i>	Effective radius	A-ICE, ACM-COM, ACM-CAP
	Ice water path	M-COP, <i>A-ICE</i> , <i>C-CLD</i> , <i>ACM-COM</i> , <i>ACM-CAP</i>	Ice W _{water} content	A-ICE, C-CLD, ACM-COM, ACM-CAP
			Median diameter	C-CLD, ACM-CAP
	Surface snowfall rate	<i>C-CLD</i> , <i>ACM-CAP</i>	Number conc.	C-CLD, ACM-CAP
		Snowfall rate	C-CLD, ACM-CAP	
Liquid cloud	Optical thickness	M-COP, <i>A-EBD</i> , <i>ACM-CAP</i>	Extinction	A-EBD, ACM-COM, ACM-CAP
	Effective radius	M-COP, <i>ACM-COM</i> , <i>ACM-CAP</i>	Effective radius	ACM-COM, ACM-CAP
	Liquid water path	M-COP, <i>C-CLD</i> , <i>ACM-COM</i> , <i>ACM-CAP</i>	Liquid W _{water} content	C-CLD, ACM-COM, ACM-CAP
Rain	Rain water path	<i>C-CLD</i> , <i>ACM-COM</i> , <i>ACM-CAP</i>	Rain W _{water} content	C-CLD, ACM-COM, ACM-CAP
			Median diameter	C-CLD, ACM-CAP
			Number conc.	C-CLD, ACM-CAP
	Surface rain rate	<i>C-CLD</i> , <i>ACM-CAP</i>	Rain rate	C-CLD, ACM-CAP
Aerosol	Optical thickness	M-AOT, <i>A-AER</i> , <i>A-EBD</i> , A-ALD, <i>AM-ACD</i> , <i>ACM-CAP</i>	Extinction	A-AER, A-EBD, ACM-COM, ACM-CAP
	Lidar ratio	A-ALD	Lidar ratio	A-AER, A-EBD, ACM-CAP*
	Linear depol. ratio	A-ALD	Linear depol. ratio	A-AER, A-EBD

~~evaluations are carried out using all three simulated test scenes.~~ For statistical evaluations, data from all three simulated test scenes are used.

225

In the evaluation we quantify the random relative error between a retrieval and the model truth using the root mean squared logarithmic error (RMSLE), given by

$$E = \text{sqrt}(\text{mean}((\log(x/y))^2))$$

where x is the retrieval and y is the truth. This formulation is useful when the magnitude of the error may be as large as the value itself, or greater, and has been used for evaluating retrievals of ice cloud water content (Hogan et al., 2006a). When the RMSLE is used in other applications such as machine learning, a scalar value (usually 1) is added to the retrieval and truth to prevent a division by zero. This issue is avoided here by only evaluating retrievals when both the product and the model truth have valid values. For ease of interpretation, the RMSLE is expressed as a pair of percentages, i.e.

$$\text{RMSLE} = +100(\exp(-E) - 1)/100(\exp(E) - 1)\%.$$

In this way, what could be called a “factor of 2 error” can be expressed as the range “+100/−50%”.

3.1 Ice clouds and snow

Ice clouds, snow, graupel and hail are represented as distinct classes within the GEMS model; however, in observations there is no clear threshold between ice cloud and precipitation particles, so it is often necessary in retrievals to treat all glaciated hydrometeors as a continuum. Nevertheless, different instruments are more sensitive to different sizes of ice particles, and this is reflected in the retrieved quantities available in different EarthCARE products. Single-instrument retrievals in the optical spectrum (i.e. ATLID and MSI) are sensitive to smaller ice clouds particles: A-ICE reports profiles of ice water content (IWC), extinction and effective radius *within the part of the cloud for which ATLID is not yet extinguished, around three optical depths*, while M-COP reports ice water path (IWP), optical thickness and cloud-top effective radius *for the entire cloud layer*; these are also the quantities of interest for downstream radiative transfer modelling processor ACM-RT, and are therefore reported in ACM-COM. In the microwave spectrum (i.e. CPR) larger snowflakes and precipitating particles are dominant: therefore C-CLD reports profiles of IWC, mean volume diameter, normalised number concentration and precipitation rate S , which are characteristic of radar retrievals. The synergistic retrieval ACM-CAP assimilates radar, lidar and radiometer measurements and therefore reports all of the above quantities.

Ice clouds and snow are the one part of the atmosphere in which measurements from the radar and lidar overlap usefully for synergistic retrievals; however, the thinnest ice clouds in the test scenes are only partially detected by ATLID. The A-FM (van Zadelhoff et al., 2023b) and A-PRO (Donovan et al., 2023b) processors use multiple techniques to distinguish cloud features from the ATLID signal, including along-track averaging to distinguish thin ice clouds from aerosols. In an intercomparison of target classification products, Irbah et al. (2023) showed that around 10% of the ice clouds in the test scenes are seen by ATLID but not detected by CPR. These cirrus and cloud-top features detected only by lidar contribute almost negligibly to the total mass of ice in the test scenes, which is dominated by snow, but will nevertheless be radiatively important, both for the assimilation of MSI radiances in ACM-CAP and in the broadband radiative closure assessment. ACM-CAP has employed a method of extracting some synergistic information in lidar-only parts of the ice cloud by ensuring that the forward-modelled radar reflectivity in these regions does not exceed the threshold of CPR noise (Mason et al., 2023).

Ice clouds and snow seen by the radar only are dominated by precipitation in deep clouds, where ATLID becomes extinguished near cloud-top, but will also include any ice clouds obscured by the extinction of the lidar in other contexts, such as by layers of supercooled or mixed-phase cloud aloft.

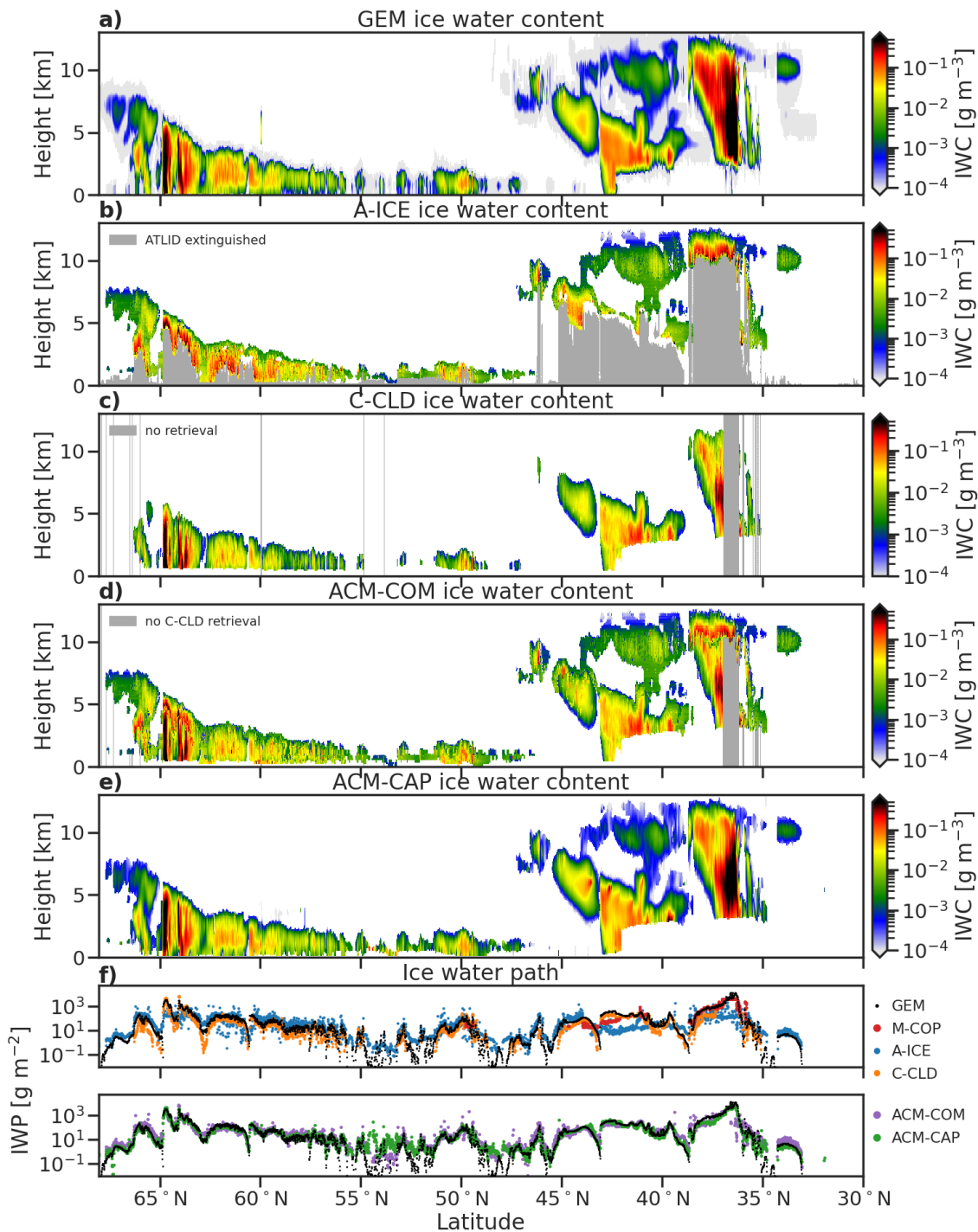


Figure 1. Ice water content from (a) the GEM model, (b) A-ICE, (c) C-CLD, (d) ACM-COM and (e) ACM-CAP, for the Halifax scene, and (f) the corresponding intercomparison of retrieved ice water paths including M-COP, presented over duplicated axes for clarity. Shading in (b) indicates where A-ICE cannot retrieve ice clouds due to the extinction of the ATLID signal; shading in (c) and (d) indicates profiles not retrieved by C-CLD due to multiple scattering or attenuation of CPR signal.

In this section we first intercompare the IWC and IWP, which are common to all retrievals, and then compare selected quantities relating to optical retrievals (i.e. cloud effective radius) and radar retrievals (i.e. snow rate) separately. Figure 1 shows timeseries from the Halifax scene, with GEM-model true and retrieved IWC for the active retrievals (panels a through e), and IWP for all products (panel f).

As discussed above, the lidar and radar retrievals are concerned with different parts of the size spectrum. A-ICE (Fig. 1b) accurately resolves the features at cloud-top, including very high values of IWC up to 1 g m^{-3} in the deepest frontal part of the cloud ($36\text{--}38^\circ\text{N}$), and some of the lowest values less than 1 mg m^{-3} in the optically thin anvils ($38\text{--}44^\circ\text{N}$) and high-latitude clouds ($65\text{--}67^\circ\text{N}$). In these thinnest clouds it is possible to distinguish between the high degree of along-track smoothing used for “weak” backscatter targets, and the more noisy or grainy retrieved values in the regions with moderate backscatter. Throughout the scene, the profile of retrieved IWC retrieved by A-ICE is limited by the extinction of ATLID (shaded in dark grey);, while the very low values of IWC around cloud-edges in the GEM model (Fig. 1a) illustrates that the very weakest features are not resolved by any of the instruments.

Conversely, C-CLD (Fig. 1c) accurately resolves the features of precipitating ice at high latitudes ($48\text{--}66^\circ\text{N}$) and deep within the frontal cloud regime ($35\text{--}45^\circ\text{N}$) with values of IWC up to 1 kg m^{-3} , but misses areas of non-precipitating ice cloud in the optically thin high and mid-level cloud layers, and in ice or mixed-phase clouds between precipitating cells (63°N) and where the shallowest cloud layers may be obscured by surface clutter ($45\text{--}55^\circ\text{N}$). The greatest differences between C-CLD and the GEM model are a deficit of IWC at the top of the deep frontal/anvil cloud ($37\text{--}38^\circ\text{N}$), where the high IWC values are dominated by smaller ice cloud particles rather than the precipitating snow to which CPR is most sensitive.

The L2b products take advantage of the complementary lidar and radar measurements of different parts of the ice cloud and snow continuum to produce a more complete representation of the scene: ACM-COM (Fig. 1d) by merging A-ICE and C-CLD resolving conflicts by selecting the product with the lower retrieval uncertainty in each volume; and ACM-CAP (Fig. 1e) by carrying out a synergistic retrieval in which all ATLID, CPR and MSI measurements are used wherever they are available. ACM-COM inherits IWC from A-ICE at cloud-top and in optically thin clouds, and from C-CLD deep within ice clouds and in snow. In many places the merged IWC fields are consistent (throughout the high-latitude clouds and in the mid-level parts of the frontal cloud) and appear seamless, while discontinuities are evident where the two products differ (in the anvil, and in mid-level clouds around 44°N and 65°N). While cloud-top IWC from A-ICE is available above the convective core around 36°N , the lower parts of the profile are not available in profiles where CPR is strongly affected by radar multiple scattering and attenuation, and C-CLD does not currently attempt a retrieval (Mroz et al., 2023). ACM-CAP most closely resembles the GEM model IWC. Many of the features in optically thin ice clouds are accurately resolved, including values of IWC less than 1 mg m^{-3} : it is likely that ACM-CAP’s Kalman smoother is less aggressive in applying along-track smoothing to compensate for noise in the ATLID particulate backscatter when compared with A-ICE. In heavy snowfall ($64\text{--}65^\circ\text{N}$ and 37°N) ACM-CAP performs as well as C-CLD, with the notable difference that ACM-CAP retrieves profiles of IWC in convective cell where CPR is dominated by multiple scattering. Since radar multiple scattering effects were included in the instrument simulators used to generate the test scenes (Donovan et al., 2023a) and ACM-CAP includes multiple scattering in its radar forward-model (Mason et al., 2023), some information is still available to constrain retrievals in heavy precipitation. Values of IWC in these profiles

reach the values of 1 kg m^{-3} in the GEM model, but are under-constrained by measurements and are lower than the model truth both in the upper levels and close to the melting layer.

290 The timeseries of retrieved IWP (Fig. 1f) generally reflect the strengths and weaknesses of the products described above: A-ICE generally performs well in parts of the scene with low to moderate IWP, and exhibits deficits in deep and mixed-phase clouds where ATLID is rapidly extinguished; C-CLD performs well in the high-IWP profiles (with the exception of the heaviest precipitation cells, which are not retrieved) but misses or underestimates IWP in non-precipitating clouds. IWP from ACM-COM and ACM-CAP are both broadly closer to the GEM model: ACM-COM overestimates IWP in parts of the scene dominated by optically thin ice clouds, which are retrieved by A-ICE with a high degree of along-track averaging, and has a deficit in the deep precipitation where C-CLD does not report a retrieval; ACM-CAP overestimates IWP in the shallowest boundary layer clouds ($52\text{--}55^\circ\text{N}$) where CPR measurements are obscured by surface clutter, and underestimates IWP in the anvil part of the frontal regime (37°N) and the small region of optically thin ice cloud around 34°N . M-COP is available in the sunlit region of the scene equatorward of 50°N : the passive retrieval shows very strong performance in parts of the scene where the active instruments can be limited by extinction and multiple scattering, such as the deep precipitation around $36\text{--}38^\circ\text{N}$. The mid-level and layered cloud regimes $42\text{--}45^\circ\text{N}$ are more challenging for a passive retrieval, and M-COP underestimates IWP in places.

Figure 2 presents a statistical evaluation across all three test scenes, comparing all IWP products against the GEM model. The statistical evaluation plots consist of two panels: In the lower panel of each plot, a joint histogram compares the GEM/CAMS model truth against the retrieved quantity, where a perfect retrieval would follow the diagonal. Annotated at the top-left of each panel is the correlation coefficient r and the ~~root-mean-square (RMS)~~RMSLE. The frequency of occurrence colourmap is log-scaled to exaggerate rare occurrences. The top panel compares the probability density functions of the same quantity: the black lines show all data from the model truth, and the red lines show all of the retrieved data; the grey shading indicates the model truth only in volumes where the retrieval is also defined, while the red shading indicates retrieved values in volumes where none exist in the model truth. For an omniscient observation, the grey shading would match the black line, while in a perfect retrieval the red line would match the grey shading. Annotated at the top-left of each panel is the ratio of the number of retrieved volumes to the number of volumes containing the quantity in the model, a measure of how completely the product apprehends the underlying model truth. As was evident in the Halifax scene, M-COP retrievals are not available in all profiles, but provide a good estimate in deep and optically thick ice cloud: for IWP between ~~0.0110~~ and ~~10-k1e5~~ g m^{-2} the passive retrieval is well-correlated with the GEM model ($r = 0.77$), with an RMSLE of ~~+173/-63%~~. The capacity of ATLID to detect optically thin ice cloud is evident in A-ICE and ACM-CAP; however, in both products the retrieved IWP is often over-estimated below around ~~0.001-k1~~ g m^{-2} ; for this reason, we take ~~0.001-k1~~ g m^{-2} as the lower threshold for the calculation of correlation coefficients and error metrics. At higher IWPs the extinction of ATLID is reflected in A-ICE, which underestimates IWP above around 0.1 kg m^{-2} . In contrast, C-CLD performs well at moderate to high IWPs with a strong correlation ($r = 0.91$) and an RMSLE of ~~+262/-72%~~, with the caveat that profiles with the most extreme values, which tend to be subject to multiple scattering and strong attenuation, are not currently retrieved in this product. ACM-COM combines the advantages of A-ICE and C-CLD, while suppressing some extreme values: at low IWP ACM-COM resembles A-ICE, but C-CLD retrievals compensate for the

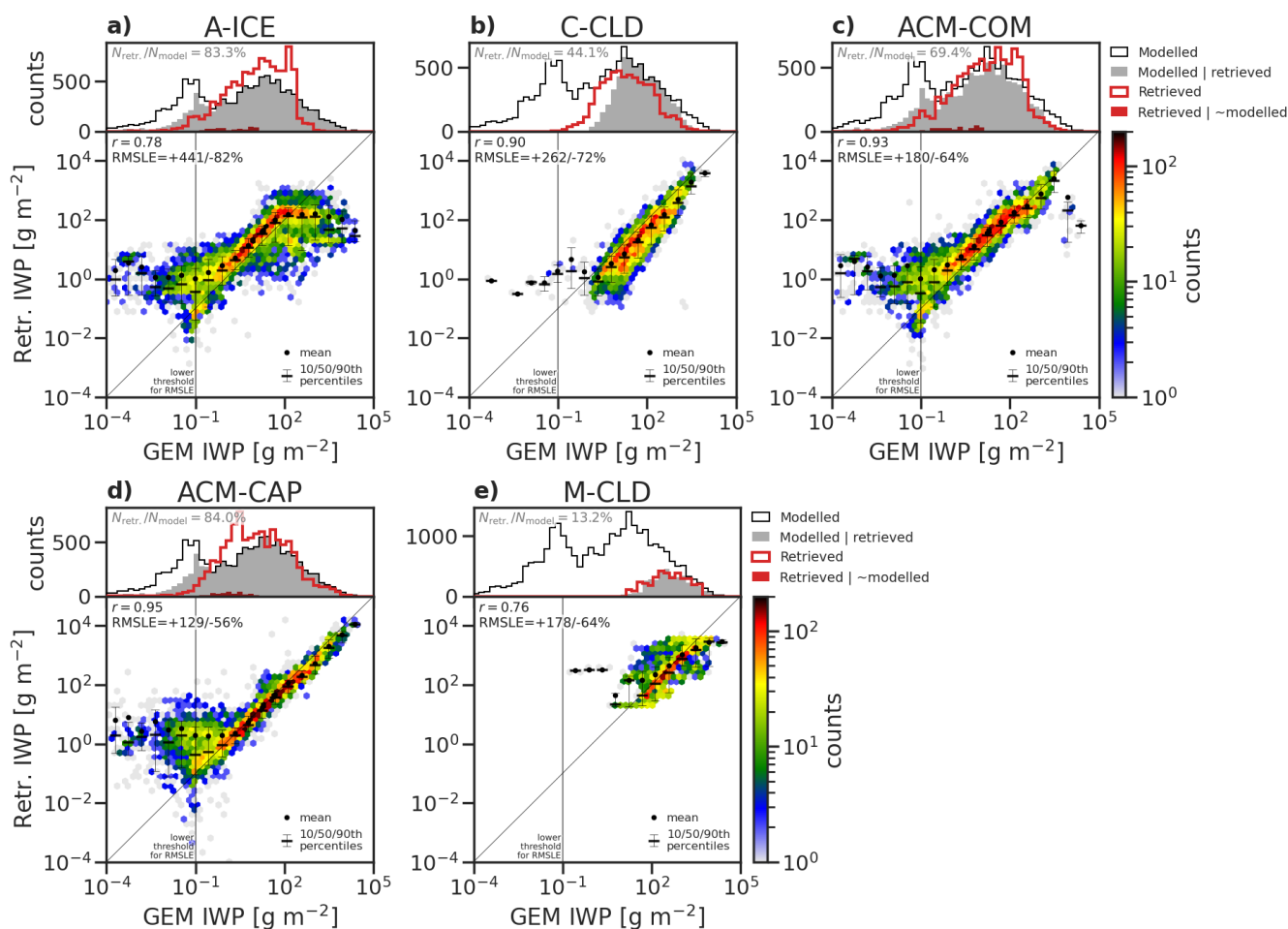


Figure 2. Ice water path (IWP) evaluation for (a) A-ICE, (b) C-CLD, (c) ACM-COM, and (d) ACM-CAP and (e) M-COP. The top part of each panel shows probability density functions (PDFs) for all GEM model data (black line), GEM model data in volumes that are successfully retrieved by the product in question (grey shading), retrieved data (red line) and retrieved values in volumes where the GEM model does not include ice or snow (red shading). The percentage of profiles containing ice and snow in the GEM model that are reported in the product is given in the top-left of each sub-panel, as an indicator of the coverage provided by each product. The bottom part of each panel shows joint histograms of GEM model versus retrieved data, where a perfect retrieval would lie entirely along the diagonal. The colour scale is logarithmic to exaggerate rare features, and the mean and selected deciles of the distribution are overlaid. To summarise the performance of each product, the correlation coefficient r and root-mean-square (RMS)RMSLE are given in the top-left of each sub-panel.

extinction of ATLID at values greater than $0.4 \pm 100 \text{ g m}^{-2}$, resulting in a correlation coefficient closer to that of C-CLD, and reduced random error. With the benefits of radar-lidar synergy in ice clouds, ACM-CAP is strongly correlated to the GEM model ($r = 0.97$) with a very strong representation through moderate to high values of IWP, and an RMSLE of $+71/-41\%$. In columns with IWP below the threshold of $0.001 \pm 1 \text{ g m}^{-2}$, ACM-CAP shares the challenges apparent for A-ICE and ACM-COM, being both biased high and subject to a large random error. Very low-ice water content features that are unresolved by both ATLID and CPR were evident around the edges of the ice clouds in the Halifax scene in Fig. 1; the fraction of profiles that are undetected by EarthCARE was around 16% across the three test scenes.

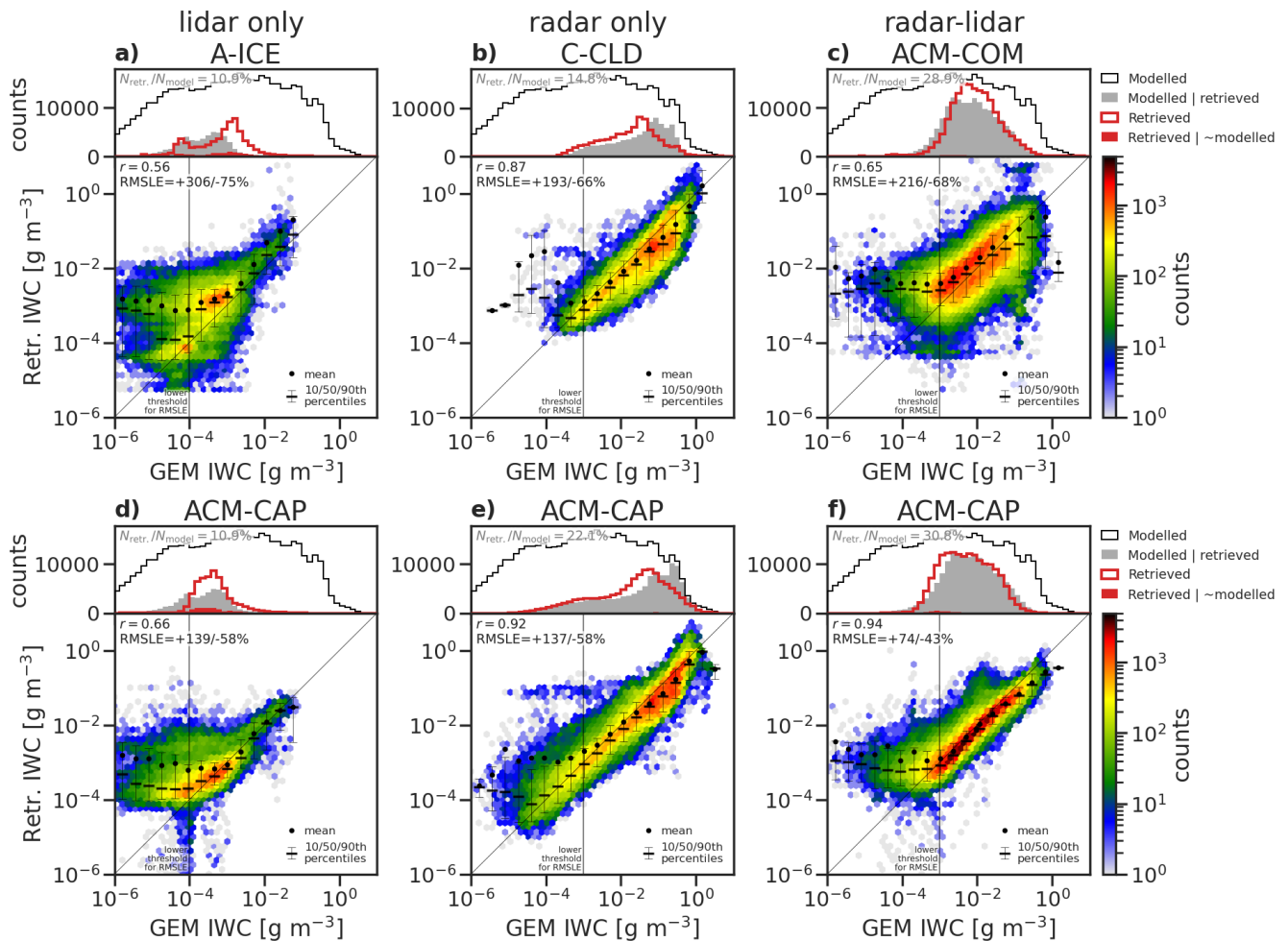


Figure 3. As for Fig. 2, but an intercomparison of IWC retrievals from single-instrument and composite products (a-c) and ACM-CAP (d-f), distinguishing between ice clouds and snow that are detected by lidar-only (a & d), radar only (b & e), and both radar and lidar (c & f).

330 Fig. 3 compares IWC retrievals from the single-instrument and composite retrievals against ACM-CAP in the distinct lidar-only, synergistic, and radar-only parts of the ice clouds and snow in the three test scenes. The IWC here is the combined mass of all ice, snow and graupel species from the GEM model.

In ice clouds detected only by lidar, the distribution of IWC in the GEM model is bimodal with peaks at around $1e-4 \text{ g m}^{-3}$ and $1e-3 \text{ g m}^{-3}$ (grey shading in the top panel of Fig. 3a). These distinct peaks may relate to smaller ice particle and larger
335 snowflake species within the GEM model. This bimodality is also resolved by A-ICE, which distinguishes between strong and weak ice cloud targets, and where the retrieval of ice from weak targets are subject to along-track averaging (Donovan et al., 2023b). ACM-CAP includes no such distinction between ice species, and does not resolve a bimodal distribution of IWC in the lidar-only part of the cloud (red line in top panel of Fig. 3d). ACM-CAP better resolves the upper end of the IWC in this part of the cloud, while A-ICE is biased high. While both A-ICE and ACM-CAP have difficulty retrieving IWC below $1e-3 \text{ g m}^{-3}$
340 m^{-3} as the limits of ATLID signal-to-noise ratio are reached, it is notable that the along-track averaging applied in processing the ATLID measurements enables more accurate retrievals of low IWC down to below $1e-5 \text{ g m}^{-3}$ in A-ICE, while ACM-CAP appears to saturate below around $1e-4 \text{ g m}^{-3}$.

Where radar and lidar measurements are available, ACM-COM selects from A-ICE and C-CLD the product with the lowest estimated uncertainty in each volume. As a result, the random error in ACM-COM is exaggerated in this region, with frequent
345 values varying over an order of magnitude, where the transition between A-ICE (biased high) and C-CLD (biased low) lead to discontinuities. Exaggerating the differences between products, this is the region where ACM-CAP benefits the most from radar-lidar synergy. ACM-CAP has a correlation coefficient of 0.93 and an RMSLE of +71/-41%, compared with $r = 0.67$ and RMSLE=+194/-66% from ACM-COM.

For ice clouds and snow detected only by radar, we compare C-CLD and ACM-CAP. C-CLD covers a narrower range of
350 IWC, as it does not include profiles subject to radar multiple scattering and does not retrieve IWC below $1e-4 \text{ g m}^{-3}$. The lower limit may be due to C-CLD completing retrievals only where there is sufficient SNR for a Doppler velocity measurements, which results in a lower limit of CPR radar reflectivity around -21 dBZ. Both C-CLD and ACM-CAP appear to have a slightly low bias in IWC, of a similar degree, which is greatest through the most frequent values of IWC around $1e-4$ to $1e-3 \text{ kg m}^{-3}$. C-CLD and ACM-CAP have high to very high correlation coefficients (0.85 and 0.91, respectively). We note that when stratifying
355 this evaluation by temperature (not shown) the correlation coefficient and RMSLE of C-CLD degrades toward the colder temperature ranges dominated by ice particles rather than snowflakes. This reflects choices made in the development of C-CLD to prioritise the representation of snow (Mroz et al., 2023). ACM-CAP, with the benefit of lidar measurements in ice clouds, has roughly similar correlation coefficients and RMSLE across all temperature ranges.

Previous evaluations of active retrievals of ice and snow have used airborne in-situ measurements to quantify the uncertainty
360 in retrieved IWC. Hogan et al. (2006b) estimated a range of +55/-35% in IWC for cloud radar retrievals in ice clouds and snow between $-20^\circ\text{C} < T < -10^\circ\text{C}$ that were clear of liquid droplets, rising to +90/-47% for ice clouds with $T < -40^\circ\text{C}$. These uncertainties were based on variations in particle size distribution, although the presence of mixed-phase cloud was observed to lead to substantial biases in retrieved ice water content. Delanoë and Hogan (2008) estimated the error in the retrieved extinction to be around 20 to 40% in ice clouds retrieved with radar-lidar synergy, and around 50% in the radar-only region.

365 The simulated test scenes allow us to quantify uncertainties in retrieval of IWC in a way that includes additional uncertainties, both in the simulated instrument noise and based on the cloud properties represented in the GEM model, such as: variations in the density of ice particles, the presence of supercooled liquid, and the possibility of riming in mixed-phase clouds and convective cores, as well as the simulated instrument noise. The retrieval uncertainties presented here are around twice that presented in other studies, which we attribute to ~~the inclusion of~~ resolving these additional sources of uncertainty. Comparing
370 ACM-CAP retrievals in the parts of the scene detected with radar-lidar synergy and radar only, we note a similar doubling of the uncertainty in the radar-only only part of the cloud to that estimated in Delanoë and Hogan (2008). An updated evaluation and intercomparison of EarthCARE's single-instrument and synergistic ice cloud and snow retrievals using in-flight data will be made as a part of calibration/validation activities.

The effective radius of ice clouds is not easily constrained by single-instrument retrievals, which must rely on assumptions
375 about the relation between extinction, ice water content and effective radius. In A-ICE ice cloud effective radius (Fig. 4b) is a function of atmospheric temperature (Donovan et al., 2023b), which is propagated into the lidar-only portion of ACM-COM (Fig. 4c). Although C-CLD does not itself report ice effective radius, where radar information is available and has a lower retrieval uncertainty, ACM-COM derives ice effective radius based on the C-CLD retrieval (described in Cole et al., 2023); however, the differences between these two products can lead to large and noisy discontinuities in the composite field, where
380 C-CLD retrievals result in significantly lower ice effective radii. In contrast, the synergistic ACM-CAP retrieval assimilates—at least in parts of the profile—both the radar-lidar ratio and two thermal infrared channels from MSI, which constrain the retrieval of ice effective radius more smoothly and accurately (Fig. 4d). Some errors in ACM-CAP with respect to the GEM model are still evident in parts of the Halifax scene, especially in the convective core (37°N) where the density of ice particles is poorly constrained, and at the edge of the cold rain feature (42°N) where the GEM model contains freezing rain but AC-TC diagnoses
385 snow. M-COP retrieves cloud properties over a plane-parallel, vertically homogeneous layer. In order to intercompare cloud-top and profiling effective radius retrievals, Fig. 4e shows cloud-top effective radius calculated from A-ICE, ACM-CAP and the GEM model by taking the average cloud effective radius where optical depth is less than 1 (note that the intercomparison is mostly insensitive to the choice of threshold). M-COP very accurately retrieves cloud-top ice effective radius in ice-only deep frontal clouds in the Halifax scene (36–38°N), but significantly underestimates those in layered parts of the scene (around 50
390 and 41–44°N), where the lower liquid cloud layers may dominate the radiances. This is a well-known challenge for passive retrievals, and layered cloud scenes can be filtered out using the MSI cloud-top phase (M-CP; Hünerbein et al., 2023a).

Estimates of snowfall are limited to retrievals taking advantage of CPR, which is sensitive to the larger snowflakes, penetrates through ~~the profile most profiles~~ of snow, and includes Doppler velocity measurements of snow fallspeed. C-CLD and ACM-CAP report snow mass flux, a quantity which combines information about both IWC and the fallspeed of snowflakes.
395 Accordingly, snow rates are associated with larger retrieval uncertainties related to both the assumed mass-size relation of ice particles and their terminal velocities. The model truth used here combines the mass flux of all ice species, including graupel; however, in practice the snow rate is dominated by the unrimed snow species. Figure 5 compares snow rates for the Halifax scene both as vertical profiles and at selected levels. Both retrievals perform well, with slight differences evident in parts of the scene associated with mixed-phase cloud (e.g. 39–45°N), where ACM-CAP tends to estimate slightly lower snow rates,

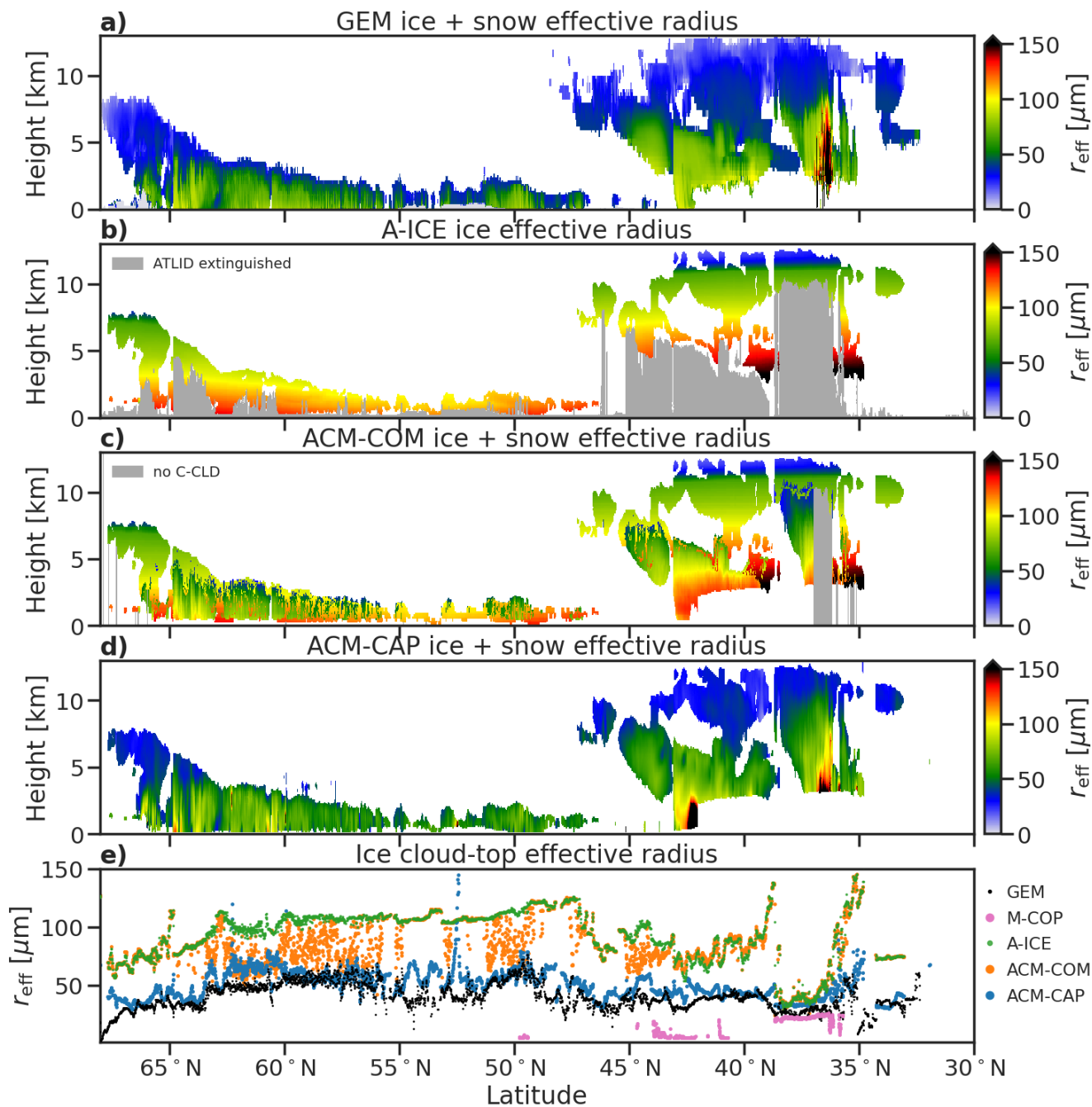


Figure 4. Profiles of ice effective radius from (a) the GEM model, (b) A-ICE, (c) ACM-COM, and (d) ACM-CAP for the Halifax scene. Panel (e) intercompares GEM model and retrieved cloud-top effective radius (averaged where optical thickness is less than 1). Shading in panel b indicates where A-ICE cannot retrieve ice effective radius due to the extinction of ATLID signal, and shading in panel c indicates where ACM-COM has no information due to C-CLD not retrieving in profiles strongly affected by multiple scattering or attenuation of CPR signal. Note that C-CLD does not report ice effective radius, so that product is not included in this comparison.

400 perhaps associated with simultaneously retrieving liquid cloud. The clearest difference between the retrievals are that ACM-CAP retrieves very light snow rate up to the edges and tops of clouds, taking advantage of the more sensitive synergistic target classification. Further, C-CLD does not attempt a retrieval of snow rates in profiles strongly affected by multiple scattering and radar attenuation (i.e. the convective cell around 36–37°N).

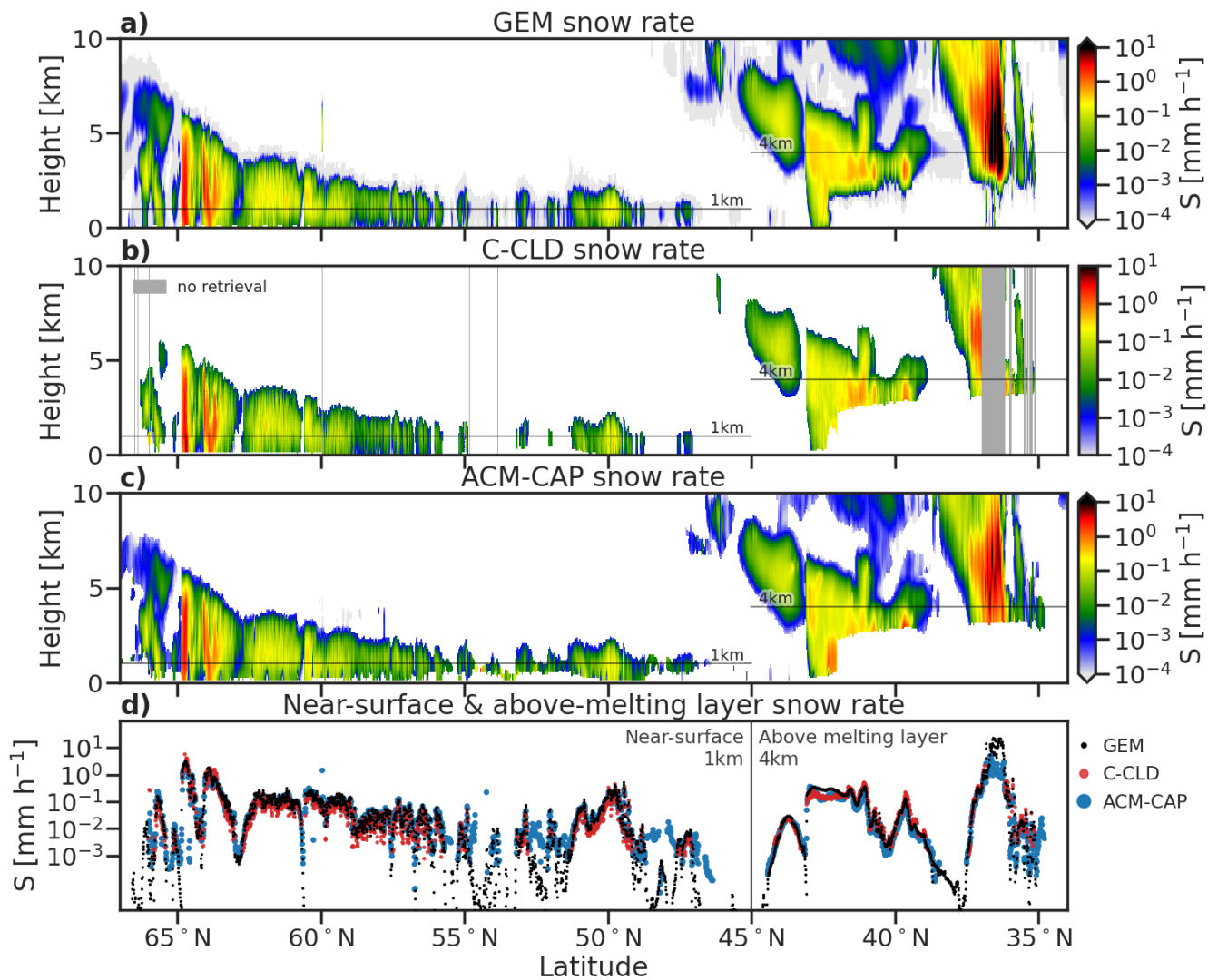


Figure 5. Snow rate from (a) the GEM model, (b) C-CLD, (c) ACM-CAP, and (d) intercompared at selected levels over the Halifax scene. Shading in panel b indicates where C-CLD does not retrieve profiles where CPR is affected by multiple scattering and/or attenuation.

An evaluation of snow rate retrievals across all test scenes is presented in Figure 6, where the combined mass flux of all ice species from the GEM model is used. C-CLD and ACM-CAP have similar correlation coefficients with GEM model data ($r = 0.91$ and 0.97 respectively), and the same RMSLE errors of +133/-57%. C-CLD prioritises snow, and does not report

mass fluxes below around $1e-3 \text{ mm h}^{-1}$, so this is taken as the lower threshold for calculating correlation coefficients and error metrics. ACM-CAP retrieves snowfall rates in ice clouds detected only by ATLID or where CPR's Doppler velocity measurements provide only a weak constraint on vertical motion, with reported snow rates down to $1e-5 \text{ mm h}^{-1}$. ACM-CAP covers 63% of volumes containing ice cloud and snow, and C-CLD around 28%; however, we note that the lightest mass fluxes retrieved by ACM-CAP still overestimate those in the ice clouds of the GEM model, which likely reflects different assumptions about the structure and terminal fallspeeds of the smallest ice particles.

ACM-CAP also reports snow rates in the heaviest precipitation; however, in contrast to the integrated quantity (IWP; Fig. 1), there is a tendency to underestimate the heaviest snow rates around 5 mm h^{-1} and above due to the onset of attenuation, multiple scattering, and associated uncertainties in the presence of supercooled liquid and the degree of riming, especially in convective cells.

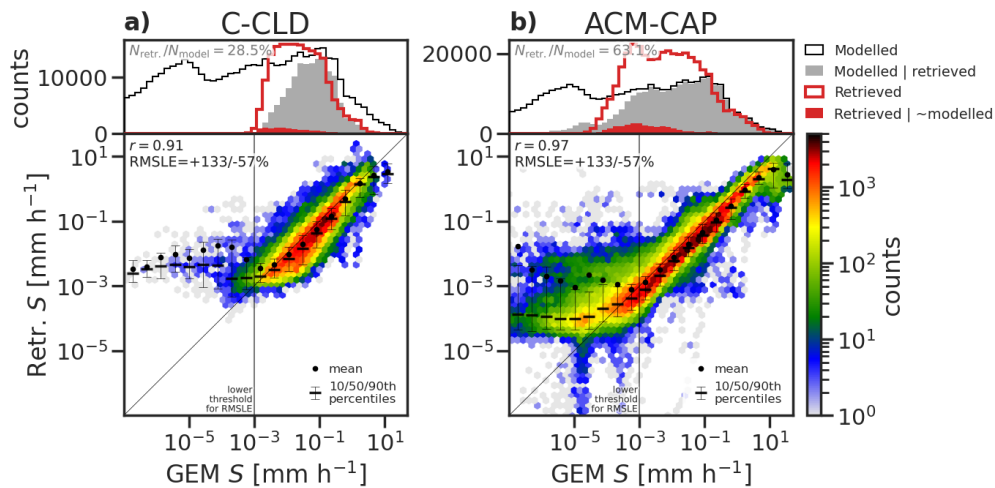


Figure 6. As for Fig. 2, but for snow rate (i.e. ice mass flux) from (a) C-CLD and (b) ACM-CAP for all test scenes against that from the combination of all ice species in the GEM model.

3.1.1 Evaluation of retrieval uncertainties

Ice clouds and snow are the one part of the atmosphere in which measurements from the radar and lidar overlap usefully for synergistic retrievals; however, the thinnest ice clouds in the test scenes are only partially detected by ATLID. The A-FM (van Zadelhoff et al., 2023b) and A-PRO (Donovan et al., 2023b) processors use multiple techniques to distinguish cloud features from the ATLID signal, including along-track averaging to distinguish thin ice clouds from aerosols. In an intercomparison of target classification products, Irbah et al. (2023) showed that around 10% of the ice clouds in the test scenes are seen by ATLID but not detected by CPR. These cirrus and cloud-top features detected only by lidar contribute almost negligibly to the total mass of ice in the test scenes, which is dominated by snow, but will nevertheless be radiatively important, both for the assimilation of MSI radiances in ACM-CAP and in the broadband radiative closure assessment. ACM-CAP

has employed a method of extracting some synergistic information in lidar-only parts of the ice cloud by ensuring that the forward-modelled radar reflectivity in these regions does not exceed the threshold of CPR noise (Mason et al., 2023).

Ice clouds and snow seen by the radar only are dominated by precipitation in deep clouds, where ATLID becomes extinguished near cloud-top, but will also include any ice clouds obscured by the extinction of the lidar in other contexts, such as by layers of supercooled or mixed-phase cloud aloft.

Fig. 3 compares IWC retrievals from the single-instrument and composite retrievals against ACM-CAP in the distinct lidar-only, synergistic, and radar-only parts of the ice clouds and snow in the three test scenes. The IWC here is the combined mass of all ice, snow and graupel species from the GEM model.

In ice clouds detected only by lidar, the distribution of IWC in the GEM model is bimodal with peaks at around $1e-4 \text{ g m}^{-3}$ and $1e-3 \text{ g m}^{-3}$ (grey shading in the top panel of Fig. 3a). These distinct peaks may relate to smaller ice particle and larger snowflake species within the GEM model. This bimodality is also resolved by A-ICE, which distinguishes between strong and weak ice cloud targets, and where the retrieval of ice from weak targets are subject to along-track averaging (Donovan et al., 2023b). ACM-CAP includes no such distinction between ice species, and does not resolve a bimodal distribution of IWC in the lidar-only part of the cloud (red line in top panel of Fig. 3d). ACM-CAP better resolves the upper end of the IWC in this part of the cloud, while A-ICE is biased high. While both A-ICE and ACM-CAP have difficulty retrieving IWC below $1e-3 \text{ g m}^{-3}$ as the limits of ATLID signal-to-noise ratio are reached, it is notable that the along-track averaging applied in processing the ATLID measurements enables more accurate retrievals of low IWC down to below $1e-5 \text{ g m}^{-3}$ in A-ICE, while ACM-CAP appears to saturate below around $1e-4 \text{ g m}^{-3}$.

Where radar and lidar measurements are available, ACM-COM selects from A-ICE and C-CLD the product with the lowest estimated uncertainty in each volume. As a result, the random error in ACM-COM is exaggerated in this region, with frequent values varying over an order of magnitude, where the transition between A-ICE (biased high) and C-CLD (biased low) lead to discontinuities. Exaggerating the differences between products, this is the region where ACM-CAP benefits the most from radar-lidar synergy. ACM-CAP has a correlation coefficient of 0.93 and an RMSLE of +71/-41%, compared with $r = 0.67$ and RMSLE = +194/-66% from ACM-COM.

For ice clouds and snow detected only by radar, we compare C-CLD and ACM-CAP. C-CLD covers a narrower range of IWC, as it does not include profiles subject to radar multiple scattering and does not retrieve IWC below $1e-4 \text{ g m}^{-3}$.

The lower limit may be due to C-CLD completing retrievals only where there is sufficient SNR for a Doppler velocity measurements, which results in a lower limit of CPR radar reflectivity around -21 dBZ. Both C-CLD and ACM-CAP appear to have a slightly low bias in IWC, of a similar degree, which is greatest through the most frequent values of IWC around $1e-4$ to $1e-3 \text{ kg m}^{-3}$. C-CLD and ACM-CAP have high to very high correlation coefficients (0.85 and 0.91, respectively). We note that when stratifying this evaluation by temperature (not shown) the correlation coefficient and RMSLE of C-CLD degrades toward the colder temperature ranges dominated by ice particles rather than snowflakes. This reflects choices made in the development of C-CLD to prioritise the representation of snow (Mroz et al., 2023). ACM-CAP, with the benefit of lidar measurements in ice clouds, has roughly similar correlation coefficients and RMSLE across all temperature ranges.

460 Previous evaluations of active retrievals of ice and snow have used airborne in-situ measurements to quantify the uncertainty
in retrieved IWC. Hogan et al. (2006b) estimated a range of +55/-35% in IWC for cloud radar retrievals in ice clouds and
snow between $-20^{\circ}\text{C} < T < -10^{\circ}\text{C}$ that were clear of liquid droplets, rising to +90/-47% for ice clouds with $T < -40^{\circ}\text{C}$.
These uncertainties were based on variations in particle size distribution, although the presence of mixed-phase cloud was
465 observed to lead to substantial biases in retrieved ice water content. Delanoë and Hogan (2008) estimated the error in the
retrieved extinction to be around 20 to 40% in ice clouds retrieved with radar-lidar synergy, and around 50% in the radar-only
region. The simulated test scenes allow us to quantify uncertainties in retrieval of IWC in a way that includes additional
uncertainties, both in the simulated instrument noise and based on the cloud properties represented in the GEM model, such
as: variations in the density of ice particles, the presence of supercooled liquid, and the possibility of riming in mixed-phase
clouds and convective cores, as well as the simulated instrument noise. The retrieval uncertainties presented here are around
470 twice that presented in other studies, which we attribute to the inclusion of these additional sources of uncertainty. Comparing
ACM-CAP retrievals in the parts of the scene detected with radar-lidar synergy and radar only, we note a similar doubling of
the uncertainty in the radar-only part of the cloud to that estimated in Delanoë and Hogan (2008). An updated evaluation
and intercomparison of EarthCARE's single-instrument and synergistic ice cloud and snow retrievals using in-flight data will
be made as a part of calibration/validation activities.

475 3.2 Liquid cloud

The penetration of the lidar beam into optically thick cloud layers is limited to around 3 optical depths. The ~~attenuation~~extinction
of ATLID ~~is so rapid~~occurs over such a shallow layer in liquid clouds that no single-instrument ATLID retrieval of their proper-
ties is attempted; however, A-EBD does report ATLID extinction coefficients in volumes identified as liquid cloud. The highly
sensitive CPR may be capable of detecting non-precipitating liquid clouds in some cases, and C-CLD includes retrievals of
480 liquid water content (LWC) from non-precipitating liquid clouds (Mroz et al., 2023); however, the simulated test scenes do not
include sufficient sampling of stratocumulus regimes to demonstrate in this intercomparison. The intercomparison of liquid-
cloud retrievals for the Halifax scene (Figure 7) includes the passive retrieval (M-COP), the radar retrieval (C-CLD), and the
synergistic product (ACM-CAP); the representation of liquid cloud in the composite atmosphere of ACM-COM is inherited
entirely from C-CLD, so is not evaluated separately.

485 C-CLD accounts for the likely presence of liquid cloud water in the presence rain, using an adiabatic distribution from the
melting layer to the lifting condensation level (Mroz et al., 2023); this liquid cloud contributes to CPR's path-integrated attenu-
ation (PIA) measurement even when the radar reflectivity is dominated by larger precipitating drops. ACM-CAP makes similar
assumptions in the presence of rain, rimed snow and heavy precipitation, where a simplified profile of liquid water content can
be constrained by both PIA and MSI visible radiances in daylight volumes (Mason et al., 2023). The inferred likelihood of liquid
490 cloud colocated with rain is evaluated for the three test scenes from a target classification perspective in Sect. 6.2 of Irbah et al.
(2023). Comparison with LWC in the GEM model (Fig. 7a-c) suggests that these are justified, if coarse, assumptions when
applied in the stratiform cold rain part of the Halifax scene ($40-43^{\circ}\text{N}$): both C-CLD and ACM-CAP retrieve values of LWC
around 0.001 kg m^{-3} in these areas, close to that in the GEM model.

Elsewhere, only ACM-CAP retrieves liquid cloud, both by synergy with ATLID and by making more aggressive assumptions
495 of liquid cloud through mixed-phase areas. In mixed-phase cloud above this region, ACM-CAP benefits from the detection of
liquid cloud by ATLID as well as the diagnosis of rimed snow by CPR, which are both included in the synergistic target
classification (AC-TC); retrieved values of LWC are close to the GEM model truth in the elevated mixed-phase layer, but
under-estimated near the melting layer. In the deeper precipitation (36–38°N) liquid cloud in ACM-CAP is based on the “heavy
precipitation” classes diagnosed where CPR experiences multiple scattering and strong attenuation. In these latter regions the
500 GEM model truth shows much more complex spatial distributions of liquid cloud, and the coarse assumptions of retrieving
liquid cloud in these contexts are more prone to error; nevertheless, ACM-CAP appears to include liquid cloud in roughly the
right amount.

In the sub-tropical boundary-layer clouds, ATLID measurements in synergy with MSI visible radiances appear to be a
very good constraint on LWC and liquid water path (LWP) (Fig. 7d); in contrast, the discrimination of mixed-phase clouds
505 within the high-latitude boundary layer clouds is much more challenging, and the ACM-CAP liquid water content is frequently
interrupted by gaps in the target classification. Furthermore, the retrieved values of LWP tends to be biased low in this region,
presumably both due to the difficulty in attributing ATLID measurements to ice and liquid cloud, and due to the lack of MSI
solar radiances in this part of the Halifax scene.

The passive MSI retrievals of liquid cloud (M-COP) are limited in their coverage to day-lit pixels, but exhibit very strong
510 performance in unambiguous cloud scenes: both in mid-latitude (45–50°N) and sub-tropical (30–35°N) boundary-layer clouds
and the single-layered or deep frontal clouds (35–41°N), the M-COP LWP is very close to the GEM model truth. The exceptions
are in very challenging layered clouds scenes (42–45°N), where LWP tends to be over-estimated.

An evaluation of M-COP, C-CLD and ACM-CAP retrievals of LWP across [allthe](#) three test scenes is shown in Figure 8.
M-COP retrievals are available in profiles with unambiguous liquid and supercooled liquid cloud layers—and only during
515 daytime—with a coverage of around 43% of cloudy columns at nadir. Where a retrieval is returned, M-COP is highly correlated
with the GEM model truth ($r = 0.91$), with an RMSLE of +166/-62%.

C-CLD liquid cloud retrievals are limited to profiles containing rain, at least in the test scenes in which no significant
stratocumulus clouds are sampled: this amounts to around 16% of columns containing liquid clouds across the three test
scenes. The retrieved LWP is close to the GEM model LWP at the upper end of the distribution, but the moderate correlation
520 ($r = 0.54$) and large RMSLE (+630/-86%) reflect the high degree of spread through moderate values of LWP

The synergistic ACM-CAP retrievals cover the full range of LWP values in the GEM model, and reports retrievals in 96% of
profiles containing liquid cloud. Considering the weak observational constraints on LWP in many parts of the test scenes, the
retrieval is strongly correlated ($r = 0.81$), with an overall RMS-~~error~~LE of values above 1 g m^{-2} is +300/-75%. The closest
correlation and least random error is at at the largest values of LWP above $1e2 \text{ g m}^{-2}$, with a slight positive bias through
525 moderate values 1 to 100 g m^{-2} .

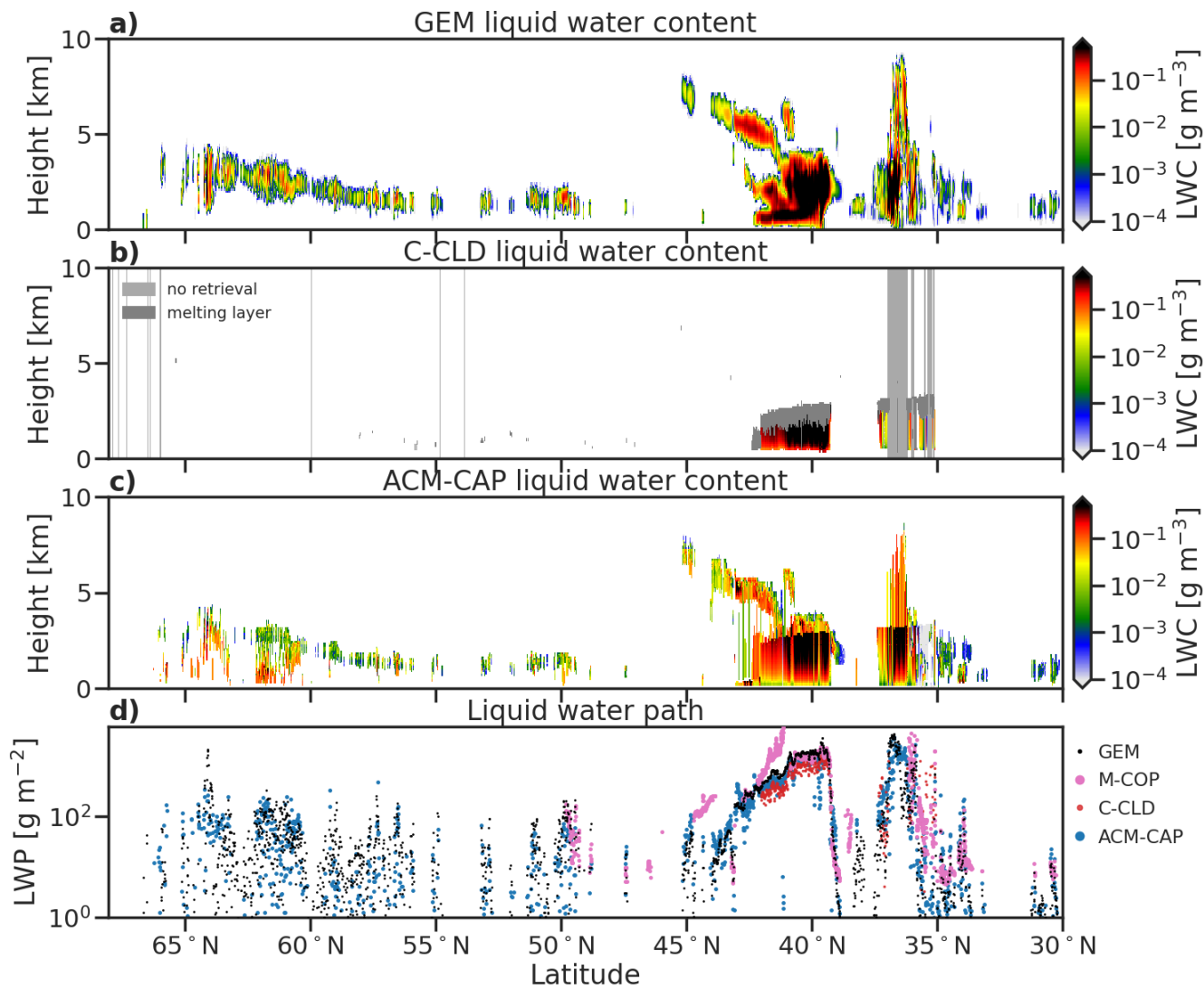


Figure 7. Liquid water content profiles for the Halifax scene from (a) the GEM model, (b) C-CLD, and (c) ACM-CAP. Panel (d) compares the liquid water paths retrieved by C-CLD, ACM-CAP and M-COP at the nadir pixel. Shading in panel (b) indicates that C-CLD does not retrieve profiles that are strongly affected by multiple scattering and/or extinction in the CPR signal: liquid water is only retrieved where colocated with rain, and not the melting layer.

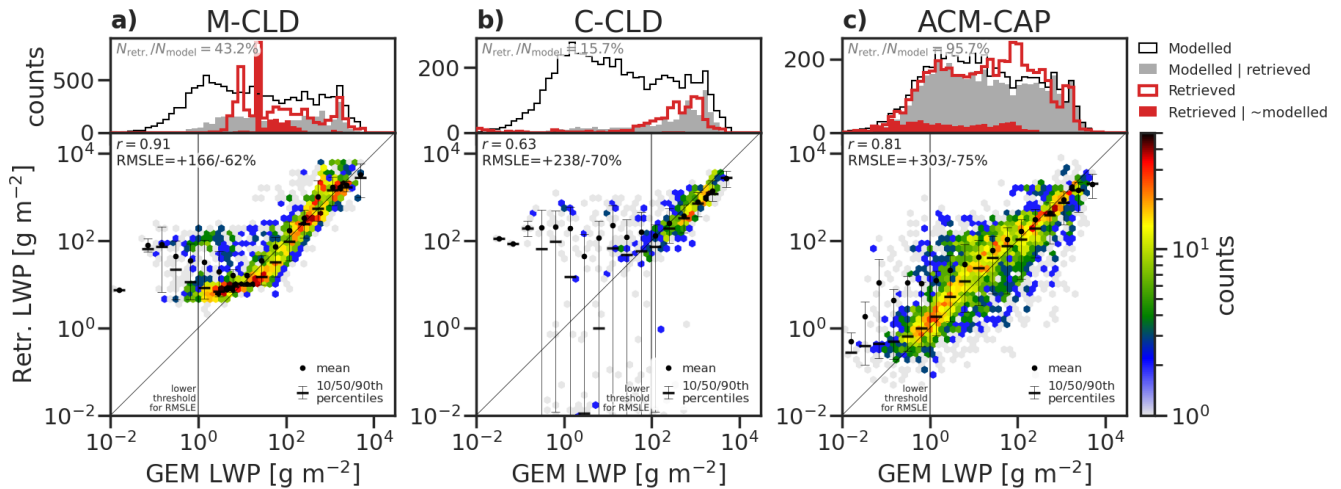


Figure 8. The same as Fig. 2, showing retrieved LWP for (a) M-COP, (b) C-CLD and (c) ACM-CAP across all test scenes.

3.3 Rain

As with snow, the only rain retrievals are those constrained by CPR measurements: C-CLD and ACM-CAP. The greatest differences between the retrievals are their coverage: C-CLD takes the more conservative approach of reporting rain retrievals only where the microphysical properties are well-constrained (i.e. not in the melting layer, which is shaded in dark grey in Fig. 9b), or where the signal-to-noise ratio is sufficient to extract a mean Doppler velocity estimate (i.e. radar reflectivity greater than -21 dBZ; Kollias et al., 2023), and where a complete profile of radar measurements can be used (i.e. where multiple scattering and strong radar attenuation are not detected, shaded in lighter grey in Fig. 9b). Since C-CLD does apply a mass-flux continuity constraint across the melting layer, a simple interpolation of mass flux and snow and rain water content quantities is provided between the lowest volume containing ice and the highest rain in the C-CLD product (Mroz et al., 2023).

In contrast, ACM-CAP prioritises continuity and retrieves rain throughout the melting layer by accounting for discrepancies with an increased radar forward-model errors at near-freezing temperatures. Where no mean Doppler velocity measurements are available to constrain the raindrop size, ACM-CAP will still retrieve rain based on a-priori information—and will report a greater retrieval uncertainty accordingly. To facilitate rain retrievals even in heavy precipitation, radar multiple scattering is included in the ACM-CAP radar forward-model, and rain is retrieved even in conditions of complete extinction of the radar beam.

In terms of rain water content, the values retrieved by C-CLD (and included in ACM-COM) and ACM-CAP are all very close to the GEM model truth, with the exception of ACM-CAP over-estimating rain water content in some of the light stratiform rain (40.5 – 42° N) part of the Halifax scene. The rain water path (RWP; Fig. 9e) shows the importance of resolving the depth of the rain layer: the C-CLD and ACM-COM products tend to under-estimate the total amount of rain water due to not including rain in the melting layer and/or surface clutter.

This is further reflected in the evaluation of RWP over the three test scenes (Fig. 10). ACM-CAP and ACM-COM each exhibit high correlations ($r = 0.89$) and moderate RMS-errorLEs (+145/-59%); however, there are significant differences in the degree of coverage of rainy profiles. While ACM-CAP covers around 97% of rainy volumes, rain in C-CLD does not currently include the melting layer (including virgae) or heavily precipitating profiles, limiting the coverage to 46% across the three scenes. This is further reduced to 36% for ACM-COM, where the surface clutter is also not included in the current configuration.

A quantity of more immediate interest than the rain water path is the rain rate, which includes information about the fallspeed of raindrops and hence their size distribution. The GEM model and retrieved rain rates (R) through a subset of the Halifax scene are shown in Fig. 11. In the stratiform cold rain (39–43°N) rain rates are between 0.1–1.0 mm h⁻¹ with embedded regions of heavier rain up to 10 mm h⁻¹; in the heaviest convective rain (36–37°N) rain rates are between 10 and 30 mm h⁻¹. Where both products report rain rates, they are each very close to the GEM rain rate, with some exceptions: both products are unable to retrieve rain rates under the temperature inversion (42–42.5°N) due to a limitation of the target classification (Irbah et al., 2023), and in the lightest stratiform cold rain (40–42°N) some features are not resolved, especially close to the surface. In the heaviest convective precipitation where no radar reflectivity is available and PIA is saturated, ACM-CAP retrieves heavy rain broadly in the right magnitude, but the strong vertical gradient of rain rate is the result of a poorly-constrained retrieval. This may be addressed by modifying the a-priori assumptions or spatial constraints applied in profiles identified as heavy precipitation (Mason et al., 2023). The rain rate at 1 km (Fig. 11d) shows that both products broadly represent the near-surface rain rate, even resolving narrow precipitation features.

An evaluation of rain rate across the three test scenes is shown in Figure 12. The PDFs of rain rate (top panels) show that the span of the retrieved values (red line) matches very closely the GEM model values that are detected by the instrument (grey shading), and that the coverage of the ACM-CAP retrieval includes almost all moderate to heavy rain rates while missing some of the weakest features (cf. Sect. 6.3 of Irbah et al., 2023), covering around 78% of rainy volumes overall. C-CLD's more cautious approach to the melting layer reduces coverage at all rain rates as well as the heaviest rain rates, and covers around 25% of rainy volumes from the three simulated test scenes. The joint histograms (lower panels) show that C-CLD and ACM-CAP perform very well through moderate to high rain rates ($r = 0.94$ and 0.91 , respectively), with a positive bias in ACM-CAP through moderate to low values. Both products tend toward high biases at the lowest rain rates ($R < 0.01$ mm h⁻¹). The larger RMS-errorLE in ACM-CAP (+184/-65%, compared to +101/-50% for C-CLD) may be the result of its less cautious approach to screening out rainy volumes, such as volumes where mean Doppler velocity measurements are unavailable due to measurement noise.

575 3.4 Aerosols

We compare two ATLID retrievals of aerosol extinction: A-AER and A-EBD, and the aerosol quantities reported by the synergistic retrieval product ACM-CAP, which also includes some information from MSI solar radiances. The layerwise aerosol product A-ALD also provides two estimates of total AOT, comparing the column total and the sum of identified aerosol layers. The passive MSI aerosol optical thickness retrieval from M-AOT can also be compared against the ATLID products the nadir

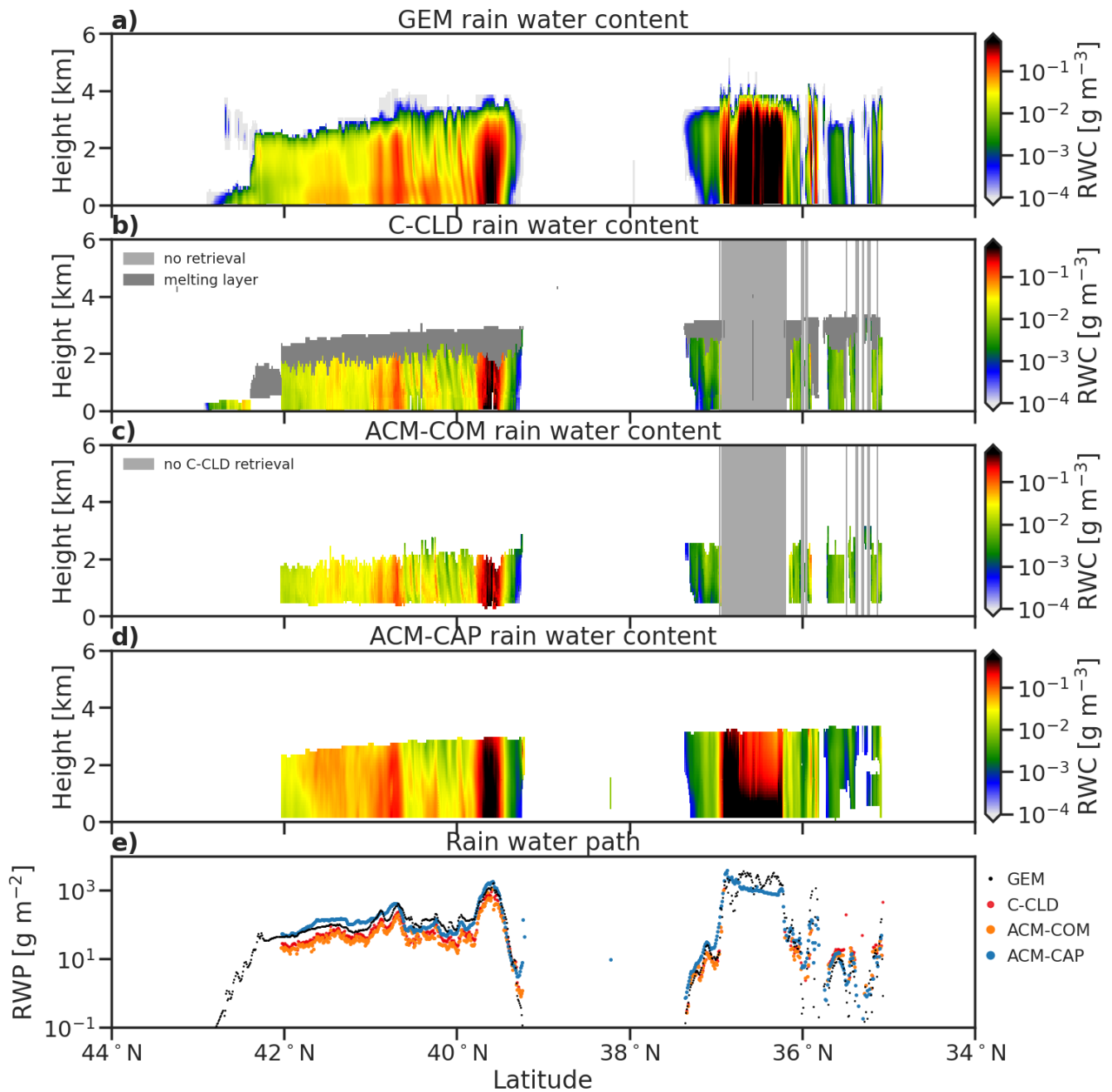


Figure 9. Profiles of rain rate from (a) GEM model, (b) C-CLD, (c) ACM-COM, and (d) and ACM-CAP for the Halifax scene. Rain water paths are compared in panel e. Shading in panel (b) indicates that C-CLD does not retrieve profiles that are strongly affected by multiple scattering and/or extinction of the CPR signal, and all melting snow is treated separately from the rain retrieval.

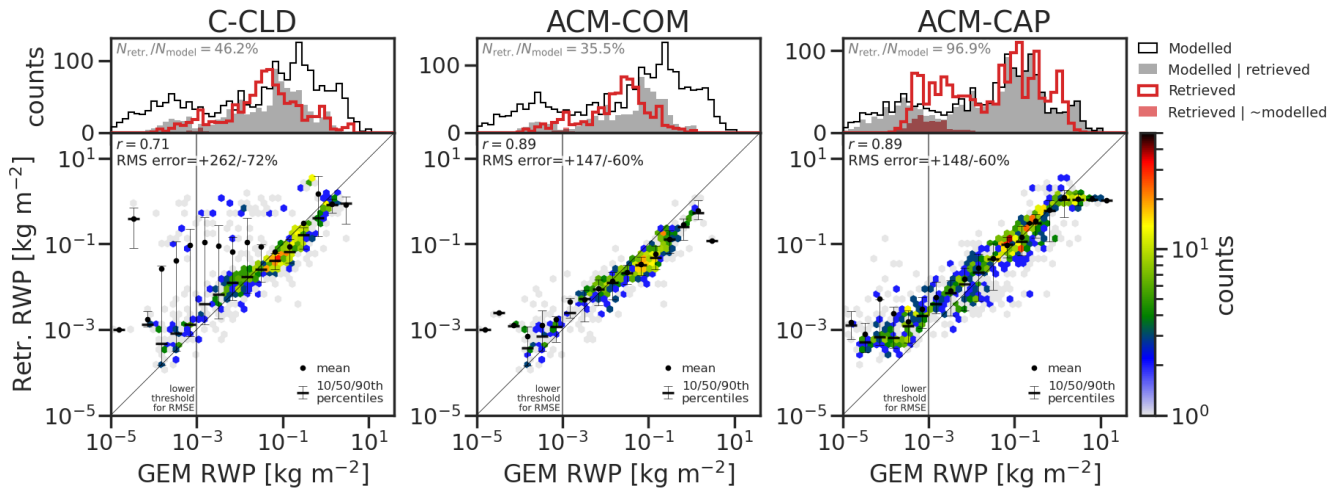


Figure 10. The same as Fig. 2, showing RWP retrievals from (a) C-CLD, (b) ACM-COM, and (c) ACM-CAP across all test scenes.

580 pixel. Figure 13 shows the GEM model and retrieved aerosol extinction and total aerosol optical thicknesses (AOT) for the Halifax scene. Note that aerosols can only be detected and retrieved in the absence of other targets and before the ATLID signal is extinguished (shaded in the figure): clouds obscure much of the aerosols through the mid- and high-latitudes in this scene. In the sub-tropics a layer of marine aerosols near the surface is interrupted by scattered non-precipitating cumulus clouds, and overlaid by a layer of continental pollution Irbah et al. (see target classification in Fig. 9 in 2023). An elevated layer of aerosol over the high-latitude part of the scene is largely unresolved by ATLID.

585 The profiling retrievals of aerosol extinction (Fig. 13b–d) broadly represent the spatial structure of aerosol extinction in the numerical model through the sub-tropical part of the Halifax scene, with some significant differences due to the different methods used to compensate for the high degree of ATLID measurement noise when sampling aerosols. A-AER uses a 150km along-track averaging window to increase the signal-to-noise ratio for aerosols, resulting in smooth retrieval very similar to the CAMS model truth—especially in the top-most layer of continental pollution, which is not interrupted by liquid clouds or breaks in the detection of aerosols. A-EBD retains the most small-scale features in the retrieved aerosol extinction, especially notable in the vertical dimension. Small-scale local maxima in the ACM-CAP aerosol extinction result in a “dappled” texture to the retrieved field, likely due to interruptions to the Kalman smoother around the edges of features. The removal of these artefacts will be the subject of ongoing work.

595 Very high values of aerosol extinction near the surface in A-EBD and A-AER (e.g. 25 to 31°N and around 34°N) are likely related to contamination by liquid clouds embedded in the marine aerosol layer, which will affect both the ATLID Mie and Rayleigh backscatter channels. The number of volumes affected by this is partly reduced by using the A-TC target classification to select for known aerosol classes: the classifications included in the A-AER and A-EBD products include greater frequencies of volumes assigned an aerosol class, but where the particulate signal is strongly affected by attenuation. Other challenging volumes, which are also better screened for by A-TC and the synergistic AC-TC classification used by ACM-CAP, occur within

600

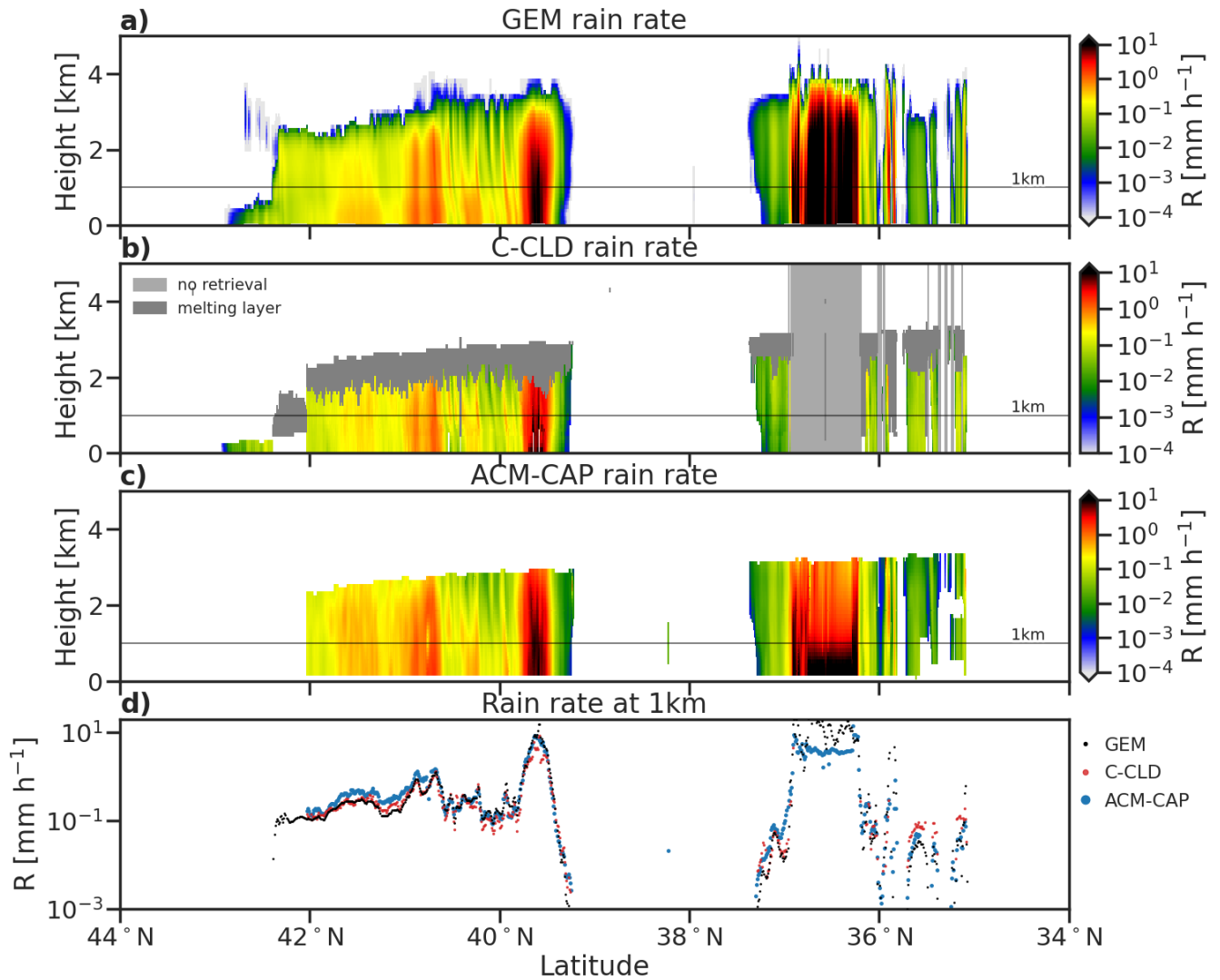


Figure 11. GEM model (a), C-CLD (b) and ACM-CAP (c) profiles of rain rate for the Halifax scene. A comparison of GEM model and retrieved rain rates at 1 km are shown in panel d. Shading in panel (b) indicates that C-CLD does not retrieve profiles that are strongly affected by multiple scattering and/or extinction of the CPR signal, and all melting snow is treated separately from the rain retrieval.

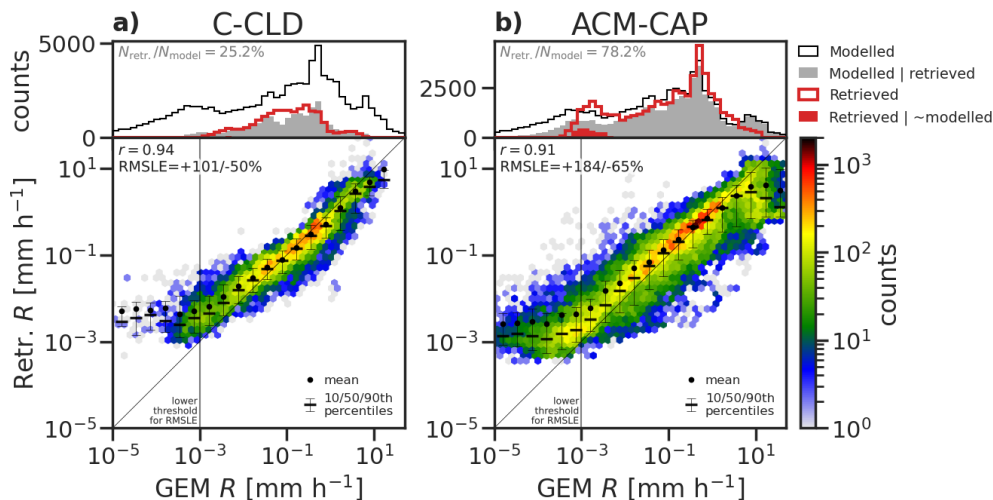


Figure 12. The same as Fig. 2, showing rain rate retrievals from (a) C-CLD and (b) ACM-CAP across all test scenes.

the mixed-phase layers between 39 and 44°N. ACM-CAP is less strongly affected by the issue of extreme aerosol extinctions below the embedded liquid clouds, possible due to simultaneously retrieving liquid cloud and aerosols from the synergy of both ATLID backscatter channels and MSI solar radiances, and as a consequence of making the extinction-to-backscatter ratio a fixed property of each aerosol class, which over-constrains the aerosol extinction. Small areas of erroneous aerosol retrievals in A-EBD and A-AER are also evident within the optically thin ice clouds (39 to 48°N), where the ATLID target classification is based on along-track averaging of weak lidar signals. In this region ACM-CAP benefits from using the synergistic target classification (AC-TC), wherein CPR measurements are used to clarify that no aerosol retrieval should be carried out. In high-latitude parts of the Halifax scene ACM-CAP retrieves erroneously high near-surface aerosol extinctions, perhaps due to this complementary information not being available: these are night-time profiles where MSI solar radiances are not available, and within the CPR surface clutter where the radar cannot clarify ambiguities in the target classification. By visual inspection, A-AER appears to best represent the smoothly-varying features in the large-scale and uninterrupted aerosol fields from the CAMS model; however, in layered and complex scenes the advantages of a synergistic retrieval are evident.

When interpreting the total AOT in the Halifax scene (Fig. 13e), the challenges discussed above are still evident: in the largely cloud-free parts of the sub-tropical aerosol scene (23–25°N and 31–33°N) A-EBD, A-ALD and ACM-CAP are closest to the CAMS model, or biased slightly high (up to around 30% more than the model truth); conversely, A-AER underestimate the total AOT by as much as 30%. The passive retrieval (M-AOT) is available in only the completely cloud-free profiles, and is very close to total AOT (at 670nm) from the model truth especially in largest cloud-free region from 30–33°N. Equatorward of 25°N, M-AOT exhibits a higher degree of noise, possibly due to small amounts of cloud near the surface. The AOT in this region underestimates that from the model truth by around 15 to 20%. Where liquid clouds are embedded in the marine aerosol layer (25–31°N) M-AOT cannot retrieve aerosols, and the active retrievals exhibit a much higher degree of noise. Here

ACM-CAP stays closest to the model truth (within around 50%), while both A-AER and A-EBD are biased high by as much as 100%.

An evaluation of total AOT across all three test scenes is shown in Figure 14. In order to increase the sampling of M-AOT, which can only report aerosol retrievals in daylit and cloud-free pixels, the M-AOT evaluation includes off-nadir data across the entire MSI swath. The AOT at 670nm is used here, which is distinct from the 355nm AOT used for the lidar retrievals. Across the three test scenes, M-AOT reports aerosol retrievals in 27% of pixels that contain aerosols in the model truth: mostly this is due to profiles obscured by clouds. M-AOT exhibits a moderate correlation coefficient ($r = 0.53$) and relatively low RMSLE (+61/-38%), indicating strong performance in unambiguously cloud-free profiles.

Where there is a strong aerosol signal ($AOT > 0.05$), A-AER, A-EBD, A-LAY and ACM-CAP all show joint-histograms close to the diagonal, and correlation coefficients range from moderate (ACM-CAP with $r = 0.62$ to high A-ALD with $r = 0.85$). A-AER has a higher degree of RMSLE and is biased low, both consistent with its high degree of spatial smoothing. A-EBD is more sensitive to small-scale features in ATLID's particulate backscatter measurements, reducing the RMSLE but biasing the AOT high overall. We note that the performance of A-AER and A-EBD are highly sensitive to the aerosol classifications used to select the volumes to be included in the evaluation: when the aerosol classifications provided within each product are used instead of that from A-TC, the random error increases (by around 50 percentage points) and correlation coefficients decrease by 0.1 to 0.2. The total columnar AOT from A-ALD is derived from the extinction profile of A-EBD, but applies a more stringent screening for cloudy volumes: this discards a further 25% of profiles across the three test scenes, and improves the correlation coefficient ($r = 0.85$) and roughly halves the RMSLE. ACM-CAP is notably the least biased of the aerosol products, exhibits a moderate correlation coefficient ($r = 0.62$) that may be affected by the "dappled" artefacts evident in the Halifax scene, and has a similar RMSLE to A-EBD (+101/-50%). The performance of ACM-CAP may be due to the contribution of synergistic observational constraints and fixed values of extinction-to-backscatter ratio. Despite the synergistic target classification helping to screen out ice identified as aerosols, ACM-CAP is the least cautious of the aerosol products, and reports aerosols in 67% of profiles.

4 Discussion and conclusions

The ESA production model for EarthCARE data products includes single-instrument (L2a) and synergistic (L2b) retrievals of cloud, aerosol, and precipitation. This intercomparison provides an illustration of the available L2a and L2b geophysical retrieval products, and demonstrates their capabilities and performance as applied to the simulated test scenes that have been produced ahead of the launch of EarthCARE. An overview of the quantities included in each product is provided in Table 2.

Figure 15 summarises the results of the evaluation of selected bulk quantities of ice cloud and snow, liquid cloud, rain and aerosols from the L2 EarthCARE products presented here including all data from the three test scenes, which covers mid-latitude marine and continental aerosols, shallow and frontal cloud regimes (Halifax), mid-latitude continental aerosols and elevated clouds regimes (Baja), and tropical deep convection and marine aerosols (Hawaii). The products are organised by the

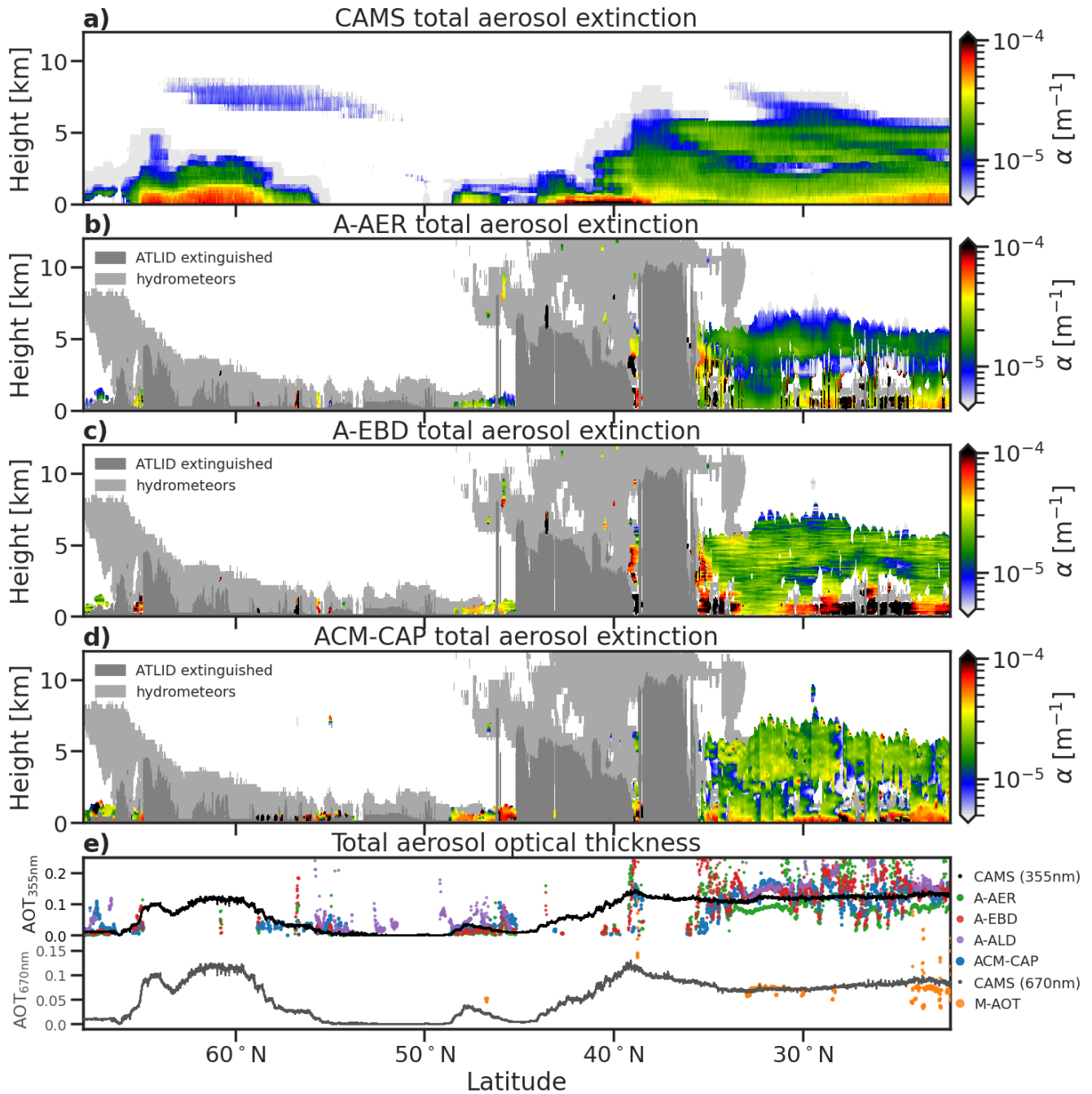


Figure 13. Profiles of total aerosol extinction from (a) the CAMS model (a), (b) A-AER, (c) A-EBD and (d) ACM-CAP, and (e) the total aerosol optical thickness from A-EBD, A-AER, A-ALD and ACM-CAP (at 355nm) and the passive M-AOT (at 670nm), for the Halifax scene. Shading over the A-EBD, A-AER and ACM-CAP profiles indicates where aerosol retrievals are not available due to the complete extinction of ATLID signal, and the presence of other targets.

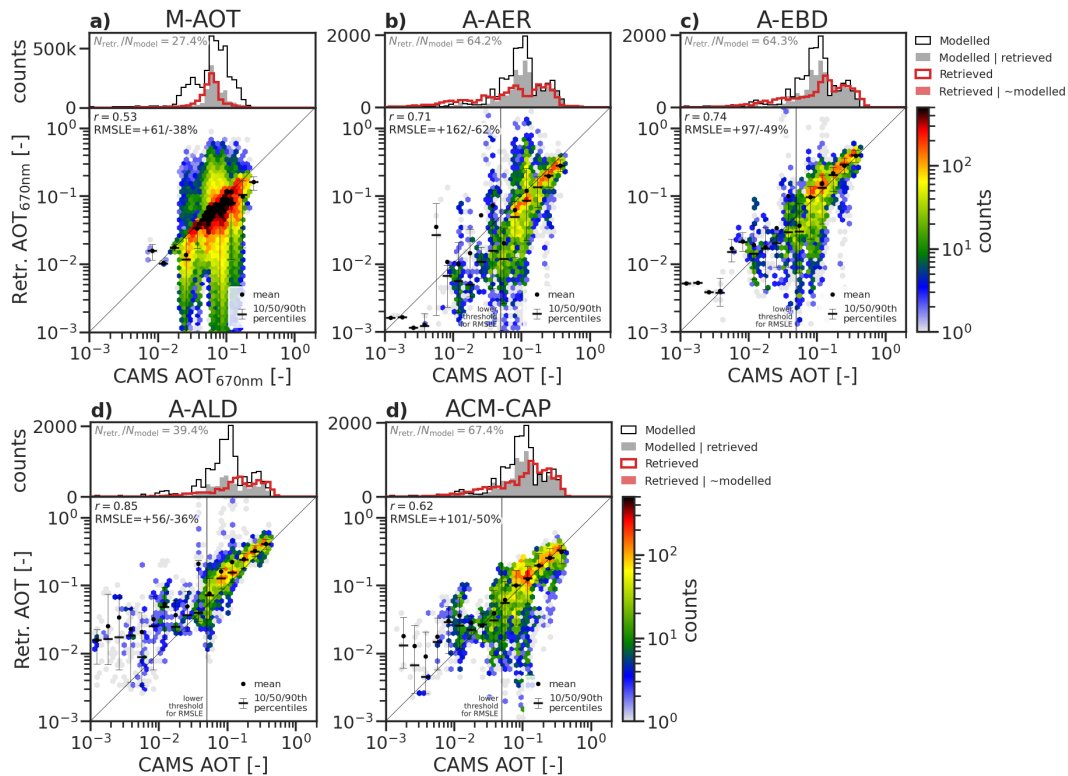


Figure 14. The same as Fig. 2, showing retrieved total aerosol optical thickness (AOT) from (a) M-AOT at 670nm, and (b) A-AER, (c) A-EBD, (d) A-ALD, and (e) ACM-CAP at 355nm, across all simulated test scenes. Due to the need to avoid contamination from cloud in aerosol-only profiles and increase the number of samples, the M-AOT evaluation (a) uses data from across the MSI swath rather than just nadir pixels, drastically increasing the number of samples used in this panel.

EarthCARE instruments that contribute to their retrieval, and each cell is coloured by the RMSLE of the retrieval and filled according to the percentage of profiles that are successfully retrieved.

655 The benefits of instrument synergy are particularly evident in ice clouds and snow, where the ACM-COM and ACM-CAP products cover the wide span from optically thin ice clouds detected only by ATLID, to rimed snow deep within precipitating clouds. The composite of A-ICE and C-CLD performed nearly as well as the synergistic retrieval ACM-CAP in terms of IWP; however, in the regions detected by both lidar and radar, the transition from A-ICE to C-CLD can manifest as discontinuities in the profiles of retrieved ice water content and ice effective radius. A comparison distinguishing the lidar-only, synergistic
 660 and radar-only parts of the ice cloud and snow confirmed that the greatest differences between ACM-COMCAP and the composite of single-instrument retrievals (ACM-COM) are in the ice clouds detected by both radar and lidar; however, in both the lidar-only (ice cloud) and radar-only (snow), ACM-CAP also shows somewhat higher correlations and lower RMSLEs. In the lidar-only region, this may reflect the contributions of MSI radiances, as well as the pseudo-synergistic constraint provided by the absence of radar measurements. In the radar-only snow retrievals there may be some small contribution from MSI solar

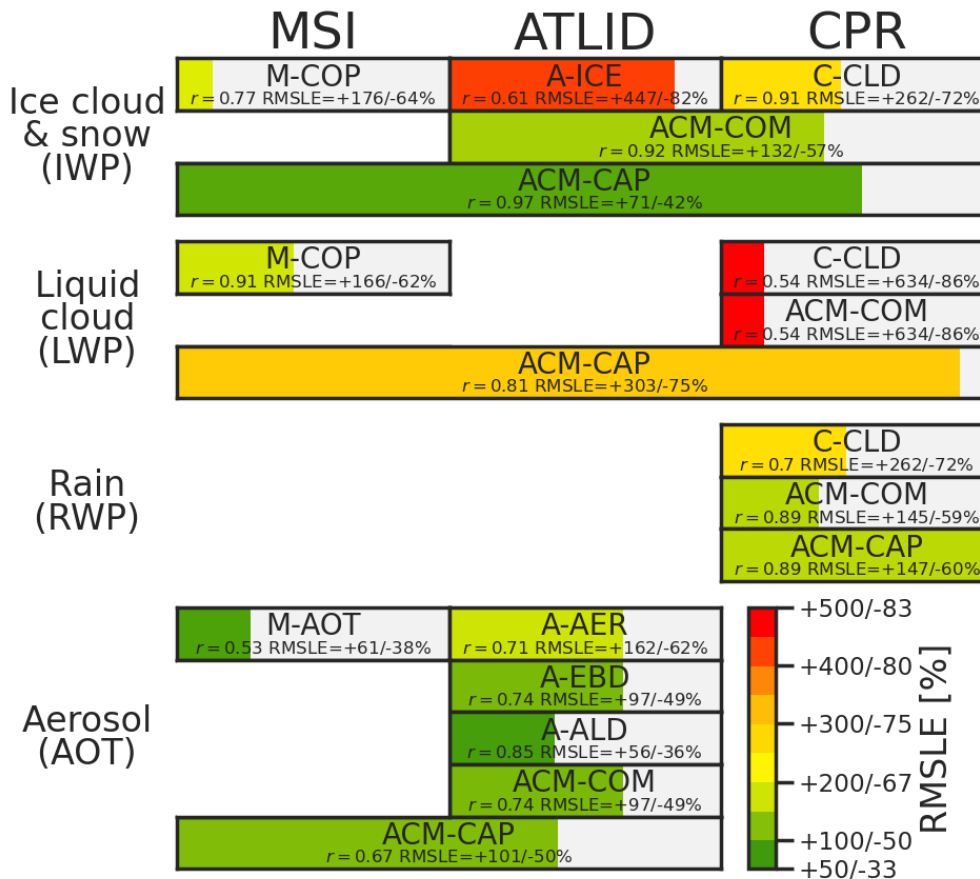


Figure 15. A summary of the evaluation of EarthCARE geophysical retrieval products presented in this study, based on the three simulated EarthCARE test scenes. The columns indicate which of the EarthCARE instruments contribute to the retrieval of ice cloud & snow, liquid cloud, rain and aerosols (with constituents grouped vertically). Each cell is coloured by the RMSLE of the bulk quantities pertaining to each class (i.e. IWP for ice cloud and snow, LWP for liquid cloud, RWP for rain, and AOT for aerosols) relative to the GEM/CAMS model truth, and are filled according to the fraction of profiles in the model truth that are successfully reported in the product.

665 radiances in optically thick cloud, but we expect the majority of the differences here are due to different microphysical and microwave scattering assumptions in ice, which must ultimately be validated with in-flight EarthCARE data.

In some areas the synergistic retrieval relies almost entirely on a single instrument, and L2a products perform equally well. For both snow and rain, the C-CLD and ACM-COM retrievals both perform very strongly, with the greatest differences being in the spatial coverage, where ACM-CAP benefits from synergistic detection of ice clouds and a less cautious approach to screening out volumes at or beyond the limitations of the instruments to detect or constrain retrievals. For retrievals of aerosol optical thickness (AOT) the differences between the ATLID L2a products (A-AER, A-EBD and A-ALD) and ACM-CAP are largely due to different treatments of measurement noise and the selection of volumes classified as aerosols. With its high

670

degree of spatial smoothing, A-AER is biased low, while A-EBD and A-LAY are biased slightly high. The passive retrieval M-AOT performs very well in terms of random error, with a high degree of caution being taken to screening out cloudy profiles.

675 In some areas MSI radiances may help to constrain ACM-CAP's aerosol retrievals, while the synergy with CPR may help to resolve ambiguities in the ATLID target classification, especially around weak backscatter targets and as the lidar becomes fully attenuated.

We have also included passive retrievals of ice and liquid cloud (M-COP) at the nadir pixel; in the test scenes the volume of data for comparison are reduced by the fraction of daylight pixels and, for aerosols, the relative rarity of cloud-free profiles. In

680 terms of IWP and LWP, M-COP performed as well as ACM-CAP in profiles containing single-layered cloud scenes.

The simulated test scenes have proved invaluable as a resource for development of the L1 and L2 processor algorithms, the evaluation of the L2 products, and testing the processor chain. We stress that the present evaluation has been carried out with three simulated EarthCARE [granulesframes](#): that is, 3/8ths of [anone](#) EarthCARE orbit, which cannot be treated as representative of the global distribution or frequency of occurrence of all cloud and aerosol regimes. Furthermore, we are

685 limited to the representation of the numerical models used to generate the scenes, which, [though they have been modified in the generation of the test scenes to produce more realistic microphysical properties \(see Section 7 of Qu et al., 2023\), will](#) may not capture the full range of microphysical properties in the scenes that are sampled. [An important principle of the pre-launch algorithm development and evaluation activities using the simulated test scenes was that the retrieval products should not be unduly “tuned” to fit the microphysical assumptions in the test scenes, and that the ultimate verification and validation must take](#)

690 [place with in-flight EarthCARE data. The respective L2 algorithm description papers \(Table 1\) justify the choices of physical assumptions based on campaign data or previous satellite missions, rather than the test scenes. Algorithm development will continue both prior to EarthCARE's launch and during operations; informed by calibration and validation activities, \[many\]\(#\)some of the challenges presented in this evaluation will be improved \[upon\]\(#\) with the benefit of physical insights \[from ~~and testing with~~\]\(#\) in-flight data.](#)

In addition to the direct evaluation of geophysical quantities presented here, the ACM-RT and ACMB-DF processors (Barker et al., 2023) [will](#) provide a radiative assessment of the retrievals against the on-board top-of-atmosphere radiative fluxes from the broadband radiometer (BBR). The insights gained from [the present](#) direct intercomparison of the composite L2a (ACM-COM) and the synergistic L2b (ACM-CAP) retrievals will help to interpret their performance in terms of broadband radiative closure. Ongoing intercomparison between ESA L2 retrievals products, and with the corresponding Japanese L2 products, will

700 be further leveraged for internal cross-verification of algorithms with in-flight EarthCARE data.

Data availability. The EarthCARE Level-2 demonstration products from simulated scenes, including all products discussed in this paper, are available from <https://doi.org/10.5281/zenodo.7117115> (van Zadelhoff et al., 2023a)

Author contributions. SM led the L2 intercomparison and the writing of the manuscript. RH (ACM-CAP), DD and GJZ (A-ICE, A-EBD & A-AER), UW (A-ALD), PK & BPT (C-CLD), ZQ, JC & HB (ACM-COM), AH (M-COP), and ND (M-AOT) contributed to aspects of the intercomparison and paper pertaining to their respective data products.

Competing interests. At least one of the (co-)authors is a member of the editorial board of Atmospheric Measurement Techniques and a guest member for the editorial board for the special issue “EarthCARE Level 2 algorithms and data products”. The peer-review process was guided by an independent editor, and the authors have no other competing interests to declare.

Acknowledgements

710 We thank Tobias Wehr, Michael Eisinger and Anthony Illingworth for valuable discussions, and are especially grateful to Tobias Wehr for his support for this work over many years as ESA’s EarthCARE Mission Scientist. [We acknowledge all those who contributed to the L2 processors included in this study, and to the development of the simulated test scenes, over many years.](#)

References

- 715 Barker, H. W., Cole, J. N. S., Qu, Z., Villefranque, N., and Shephard, M.: Radiative closure assessment of retrieved cloud and aerosol properties for the EarthCARE mission: the ACMB-DF product, *Atmospheric Measurement Techniques*, to be submitted, 2023.
- Cole, J. N. S., Barker, H. W., Qu, Z., Villefranque, N., and Shephard, M.: Broadband radiative quantities for the EarthCARE mission: the ACM-COM and ACM-RT products, *Atmospheric Measurement Techniques*, 16, 4271–4288, <https://doi.org/10.5194/amt-16-4271-2023>, 2023.
- 720 Delanoë, J. M. E. and Hogan, R. J.: A variational scheme for retrieving ice cloud properties from combined radar, lidar, and infrared radiometer, *Journal of Geophysical Research*, 113, D07 204, <https://doi.org/10.1029/2007JD009000>, 2008.
- Docter, N., Preusker, R., and Fischer, J.: Aerosol optical depth retrieval from the EarthCARE multi-spectral imager: the M-AOT product, *Atmospheric Measurement Techniques*, 16, 3437–3457, <https://doi.org/10.5194/amt-16-3437-2023>, 2023.
- Donovan, D., Kollias, P., van Zadelhoff, G.-J., and Velázquez-Blázquez, A.: The Generation of EarthCARE L1 Test Data sets Using Atmospheric Model Data Sets, *Atmospheric Measurement Techniques*, preprint, <https://doi.org/10.5194/egusphere-2023-384>, 2023a.
- 725 Donovan, D., van Zadelhoff, G.-J., and Wang, P.: The ATLID L2a profile processor (A-AER, A-EBD, A-TC and A-ICE products), *Atmospheric Measurement Techniques*, to be submitted, 2023b.
- Eisinger, M., Wehr, T., Kubota, T., Bernaerts, D., and Wallace, K.: The EarthCARE Mission - Science Data Processing Chain Overview, *Atmospheric Measurement Techniques*, 2023, <https://doi.org/10.5194/egusphere-2023-1998>, 2023.
- 730 Haarig, M., Hünerbein, A., Wandinger, U., Docter, N., Bley, S., Donovan, D., and van Zadelhoff, G.-J.: Retrieval of cloud top heights and aerosol columnar properties from combined EarthCARE lidar and imager observations: the AM-CTH and AM-ACD products, *Atmospheric Measurement Techniques*, preprint, <https://doi.org/10.5194/egusphere-2023-327>, 2023.
- Hogan, R. J., Brooks, M. E., Illingworth, A. J., Donovan, D. P., Tinel, C., Bouniol, D., and Baptista, J. P. V. P.: Independent evaluation of the ability of spaceborne radar and lidar to retrieve the microphysical and radiative properties of ice clouds, *Journal of Atmospheric and Oceanic Technology*, 23, 211–227, <http://journals.ametsoc.org/doi/abs/10.1175/JTECH1837.1>, 2006a.
- 735 Hogan, R. J., Mittermaier, M. P., and Illingworth, A. J.: The retrieval of ice water content from radar reflectivity factor and temperature and its use in evaluating a mesoscale model, *Journal of applied meteorology and climatology*, 45, 301–317, <https://doi.org/10.1175/JAM2340.1>, 2006b.
- Hünerbein, A., Bley, S., Deneke, H., Meirink, J. F., van Zadelhoff, G.-J., and Walther, A.: Cloud optical and physical property retrievals from the EarthCARE multi-spectral imager: the M-COP product, *Atmospheric Measurement Techniques*, preprint, <https://doi.org/10.5194/egusphere-2023-305>, 2023a.
- 740 Hünerbein, A., Bley, S., Horn, S., Deneke, H., and Walther, A.: Cloud mask algorithm from the EarthCARE Multi-Spectral Imager: the M-CM products, *Atmospheric Measurement Techniques*, 16, 2821–2836, <https://doi.org/10.5194/amt-16-2821-2023>, 2023b.
- Irbah, A., Delanoë, J., Zadelhoff, G.-J., Donovan, D., Kollias, P., Tatarevic, A., Treserras, B. P., Mason, S., and Hogan, R.: The classification of atmospheric hydrometeors and aerosols from EarthCARE radar and lidar: the A-TC, C-TC and AC-TC products, *Atmospheric Measurement Techniques*, 16, 2795—2820, <https://doi.org/10.5194/amt-16-2795-2023>, 2023.
- 745 Kollias, P., Puidgomènech Treserras, B., Battaglia, A., Borque, P. C., and Tatarevic, A.: Processing reflectivity and Doppler velocity from EarthCARE's cloud-profiling radar: the C-FMR, C-CD and C-APC products, *Atmospheric Measurement Techniques*, 16, 1901–1914, <https://doi.org/10.5194/amt-16-1901-2023>, 2023.

- 750 Mason, S. L., Hogan, R. J., Bozzo, A., and Pounder, N. L.: A unified synergistic retrieval of clouds, aerosols and precipitation from EarthCARE: the ACM-CAP product, *Atmospheric Measurement Techniques*, 16, 3459–3486, <https://doi.org/https://doi.org/10.5194/amt-16-3459-2023>, 2023.
- Mroz, K., Treserras, B. P., Battaglia, A., Kollias, P., Tatarevic, A., and Tridon, F.: Cloud and Precipitation Microphysics Retrieval for the EarthCARE Cloud Profiling Radar: the C-CLD product, *Atmospheric Measurement Techniques*, 16, 2865–2888, <https://doi.org/10.5194/amt-16-2865-2023>, 2023.
- 755 Qu, Z., Donovan, D. P., Barker, H. W., Cole, J. N. S., Shephard, M., and V., H.: Numerical model generation of test frames for pre-launch studies of EarthCARE’s retrieval algorithms and data management system, *Atmospheric Measurement Techniques Discussions*, 2022, <https://doi.org/https://doi.org/10.5194/amt-2022-300>, 2022.
- Qu, Z., Barker, H. W., Cole, J. N. S., and Shephard, M.: Across-track extension of retrieved cloud and aerosol properties for the EarthCARE mission: the ACM-3D product, *Atmospheric Measurement Techniques*, 16, 2319–2331, <https://doi.org/https://doi.org/10.5194/amt-16-2319-2023>, 2023.
- 760 van Zadelhoff, G.-J., Barker, H. W., Baudrez, E., Bley, S., Clerbaux, N., Cole, J. N. S., de Kloe, J., Docter, N., Domenech, C., Donovan, D. P., Dufresne, J.-L., Eisinger, M., Fischer, J., García-Marañón, R., Haarig, M., Hogan, R. J., Hünerbein, A., Kollias, P., Koopman, R., Madenach, N., Mason, S. L., Preusker, R., Puigdomènech Treserras, B., Qu, Z., Ruiz-Saldaña, M., Shephard, M., Velázquez-Blázquez, A., Villefranque, N., Wandinger, U., Wang, P., and Wehr, T.: EarthCARE level-2 demonstration products from simulated scenes (10.10) [Data set], Zenodo, <https://doi.org/https://doi.org/10.5281/zenodo.7728948>, 2023a.
- 765 van Zadelhoff, G.-J., Donovan, D. P., and Wang, P.: Detection of aerosol and cloud features for the EarthCARE lidar ATLID: the A-FM product, *Atmospheric Measurement Techniques*, 16, 3631–3651, <https://doi.org/10.5194/amt-16-3631-2023>, 2023b.
- Wandinger, U., Haarig, M., Baars, H., Donovan, D., and van Zadelhoff, G.-J.: Retrieval of cloud top heights and aerosol layer properties from EarthCARE lidar observations: the A-CTH and A-ALD products, *Atmospheric Measurement Techniques*, 16, 4031–4052, <https://doi.org/10.5194/amt-16-4031-2023>, 2023.
- 770 Wehr, T., Kubota, T., Tzeremes, G., Wallace, K., Nakatsuka, H., Ohno, Y., Koopman, R., Rusli, S., Kikuchi, M., Eisinger, M., Tanaka, T., Taga, M., Deghaye, P., Tomita, E., and Bernaerts, D.: The EarthCARE Mission - Science and System Overview, *Atmospheric Measurement Techniques*, 16, 3581–3608, <https://doi.org/https://doi.org/10.5194/amt-16-3581-2023>, 2023.