

The Effects of Land Use on Soil Carbon Stocks in the UK

Peter Levy¹, Laura Bentley², Peter Danks³, Bridget Emmett², Angus Garbutt², Stephen Heming³, Peter Henrys⁴, Aidan Keith⁴, Inma Lebron², Niall McNamara⁴, Richard Pywell⁵, John Redhead⁵, David Robinson², and Alexander Wickenden⁵

¹Centre for Ecology and Hydrology, Bush Estate, Penicuik, Midlothian, EH26 0QB, UK

²Centre for Ecology and Hydrology, Environment Centre Wales, Deiniol Road, Bangor, Gwynedd, LL57 2UW, UK

³Reading Agricultural Consultants, Beechwood Court, Long Toll, Woodcote, Reading, RG8 0RR

⁴Centre for Ecology and Hydrology, Lancaster Environment Centre, Library Avenue, Bailrigg, Lancaster, LA1 4AP, UK

⁵Centre for Ecology and Hydrology, Crowmarsh Gifford, Wallingford, OX10 8BB, UK

Correspondence: Peter Levy (plevy@ceh.ac.uk)

Abstract. Greenhouse gas stabilisation in the atmosphere is one of the most pressing challenges of this century. Sequestering carbon in the soil by changing land use and management is increasingly proposed as part of climate mitigation strategies, but our understanding of this is limited in quantitative terms. Here we collate a substantial national and regional data set (15790 soil cores), and analyse it in an advanced statistical modelling framework. This produced new estimates of the effects of land use on soil carbon stocks in the UK, different in magnitude and ranking order from the previous best estimates. Soil carbon stocks were highest in woodlands, followed by rough grazing and semi-natural grasslands, then improved grasslands, and lowest in croplands. Estimates were smaller than the previous estimates, partly because of new data, but mainly because the effect is more reliably characterised using a logarithmic transformation of the data. With the very large data set analysed here, the uncertainty in the differences among land uses was small enough to identify consistent mean effects. However, the variability in these effects was large, and this variability was similar across all surveys. This has important implications for agri-environment schemes, seeking to sequester carbon in the soil by altering land use, because the effect of a given intervention is very hard to verify. We examined the validity of the “space-for-time” substitution, and although the results were not unequivocal, we estimated that the effects are likely to be over-estimated by 5-33%, depending upon land use.

1 Introduction

Conversion of land to agricultural use has had a significant impact on the global carbon cycle (Le Quéré et al., 2009; Wilken-skjeld et al., 2014; Obermeier et al., 2021). This is expected to continue with the rising human population and demand for agricultural land in some regions, and moves towards reforestation and rewilding in other regions ([Gitz and Ciais, 2004](#), [Levy et al. \(2004\)](#), [Lawrence et al., 2016](#)). Different land uses affect the inputs of organic matter to the soil (via plant litter, crop residues, root death, and animal necromass), and affect the losses via heterotrophic respiration and leaching. Depending on how a given land use affects the balance of these gains and losses, the soil carbon stock (S_c) may be increased or decreased, relative to its previous state (Ostle et al., 2009). Under the UNFCCC agreement, each nation is required to estimate its net emission or sequestration of carbon attributable to land-use change, as accounted for under the reporting

rules for Land Use, Land Use Change and Forestry (LULUCF) (Intergovernmental Panel on Climate Change (IPCC), 2003). The default method involves estimating the difference in the long-term equilibrium soil carbon stock among different land uses. This is then used, along with data on the area of land undergoing the transition from each land-use type to every other land-use type (i.e. a matrix of land-use change), to dynamically model the change in soil carbon for each land-use transition each year. The key parameters in this model are the equilibrium soil carbon stock values for the different land uses. In the UK, these are estimated using a space-for-time substitute approach, based on a nationwide survey of soil carbon stock, stratified by land use and soil series (~~Milne and Brown, 1997, Bradley et al. (2005)~~)([Milne and Brown, 1997; Bradley et al., 2005](#)). By examining the differences in soil carbon stock among land uses occurring on the same soil series, and averaging across ~~>400~~ [>400](#) soil series which cover the UK, we can estimate the overall mean effect of each land use on soil carbon stock.

Data from several other soil surveys have become available since 2005, but these differ in their methods, most critically in terms of the soil depth sampled, with many focussing on the more easily-sampled top soil. In the absence of measurements over the whole profile, these [more recent](#) data have not previously been used to update the estimates of UK soil carbon stocks of Bradley et al. (2005), or the effects of land-use change. However, there are some issues with the approach of Bradley et al. (2005) which makes updating these estimates timely. Bulk density was generally estimated using pedotransfer functions, which use organic carbon content as a predictor, and quite how this non-independence may affect the results is unclear. Some of the details of the analysis with respect to land use are not completely clear (the equations used are not available), and different choices and assumptions (about the land-use classification or data transformations, for example) can give quite different results.

A weakness to the general approach is in the assumption that the space-for-time substitution is fully valid: we assume that the spatial differences observed in soil carbon stock within a soil series are completely attributable to differences in land use. This will be inappropriate if there are systematic pre-existing differences in the soil carbon stock on the land chosen for particular uses (such as arable crops, pasture, forestry). For example, the flat, low-lying, free-draining soils typically chosen for arable crops might differ substantially from the higher elevation, marginal land typically chosen for forestry. If there are such differences, this will confound the analysis, such that we are wrongly ascribing cause and effect.

The alternative to the space-for-time substitution approach is to measure the effect of a land-use change at a single site repeatedly over time. However, the number of such studies is very few because of the long time scale required to detect change and the large sample size needed to detect change above the local-scale variability (Schumpf et al., 2011). Paired-plot or chronosequence studies represent a compromise, whereby the space-for-time substitution assumption is still made, but the spatial variability is minimised by choosing closely co-located plots. However, the variability found in such studies is still rather large (Poeplau et al., 2011). Some survey data have suggested that change in soil carbon has occurred over time, irrespective of land-use change (~~Bellamy et al., 2005, Reynolds et al. (2013)~~)([Bellamy et al., 2005; Reynolds et al., 2013](#)), though whether changes are real, general, or what their cause is is subject to debate (~~Smith et al., 2007, Chamberlain et al. (2010)~~)([Smith et al., 2007; Chamberlain et al., 2010](#)). Although most of the survey data cover only a single short period of time, the Countryside Survey data are repeated measurements within the same 1-km squares since 1978. Although bulk density measurements were missing initially, these can still be used to examine possible trends in time (Thomas et al., 2020).

The work described here attempted to improve quantification of the effects of land use on soil carbon stocks in the UK by (i) incorporating more recent survey data, (ii) applying more sophisticated statistical modelling, and (iii) rigorously assessing the validity of the assumption behind the space-for-time substitution. As a check for confounding variation, we look for evidence of change over time not caused by land-use change where the data allow this.

1.1 Hierarchical model

Different soil surveys have been carried out for different purposes, using different protocols, and differ in the depth that is sampled. For example, the CEH Countryside Survey (Emmett, 2010) has a large spatial coverage, with repeated sampling at the same locations, but only samples the top 15 cm of soil. Other surveys have sampled down to a depth of 1 m or more, but have limited coverage of land uses and only occur at one point in time (e.g. Ward et al., 2016)(e.g. Ward et al., 2016). Measurements of bulk density, essential for calculating S_c via Equation 4, are sometimes missing and may have to be imputed from pedotransfer functions. This creates a problem in that the data from different surveys are not directly comparable, and estimating S_c over the whole profile from the available data is not straightforward (Kravchenko and Robertson, 2011).

Our approach to this is to use a Bayesian hierarchical model to estimate S_c as a function of depth. There are strong theoretical grounds for expecting an exponential decline in soil carbon with depth. Firstly, the biomass of plant roots declines exponentially with depth, and this is a major source of carbon input via exudates and root death. Secondly, plant litter is deposited at the soil surface, and moves downwards in a quasi-stochastic manner (via soil macrofauna, disturbance events and leaching), which will produce an exponentially decreasing vertical distribution. The theory is borne out by empirical data: Jobbágy and Jackson (2000) found a logarithmic relationship between soil carbon stock and depth in a meta-analysis of more than 2700 soil profiles. Soil carbon stock is itself the product of two variables with sizeable sampling error (bulk density and carbon fraction, Equation 4) so would be expected to show a lognormal frequency distribution. This is also borne out by the analysis of Jobbágy and Jackson (2000), who found that a logarithmic transformation of carbon stock fitted the key assumptions of linear modelling (normality, homoscedasticity, linearity) much better, according to various diagnostic criteria.

Clearly, one could model this relationship using ordinary linear regression. However, a Bayesian hierarchical approach has several advantages. Firstly, it allows us to “borrow strength”: by correctly representing the structure of the data, we can incorporate data from sub-populations of similar but distinct groups (e.g. data from different sites, locations, or surveys). In this way, it produces more accurate estimates, because it distinguishes between artefacts of the sampling process, rather than assuming all data points are the same and lumping all unexplained variance into a single error term. As such, it can account for the fact that replicate soil cores from the same location at the same site are not independent samples, but will tend to be similar because of their co-location (and therefore have similar systematic differences from the global mean). Similarly, it can account for vagaries of different surveys, acknowledging that the errors and biases are likely to be similar in data from the same survey, because of systematic differences in protocols, laboratory procedures and instrument calibrations. For example the temperature and duration in the combustion furnace used can have a systematic effect on apparent carbon content measured by loss-on-ignition (Hoogsteen et al., 2015), but such vagaries are not explicit in the data typically available.

90 Secondly, the Bayesian approach allows us to propagate the uncertainty correctly, because we quantify the joint posterior distribution of all the parameters that we estimate (Gelman et al., 2013). Thirdly, and it allows us to bring in information from other sources as informative priors. For example, we can use the meta-analysis of Jobbágy and Jackson (2000) to set sensible values and ranges on the prior estimates for the parameters describing the relationship with depth. We can thus develop a statistical model which allows us to incorporate disparate data sets into coherent estimates of whole-profile carbon
95 stock, propagating the associated uncertainty appropriately. Critically, we can make use of the many observations collected at shallow depths, and use these to improve the estimates of whole-profile carbon stock, and the effects thereon of land use, whilst representing the uncertainty associated with the fact that these are *not* measurements of whole-profile carbon stock.

1.2 Validity of space-for-time substitution

We can use a number of approaches to investigate the validity of the assumption behind the space-for-time substitution.

- 100 1. We would expect any increases in S_c which are caused by land-use change to be independent of the initial S_c . By contrast, we expect any pre-existing differences within a soil series to be in relative terms: a given soil series might have a high mean S_c , and the differences between land chosen for arable cropping and forestry will be proportional to this. We can therefore examine whether the ostensible effects of land use are consistent with models of absolute or relative change. The degree of relative change can be equated with pre-existing difference, and the confounding effect removed
105 from the space-for-time substitution.
2. Along similar lines to the above, we can explore correlations between altitude and S_c , removing the effect of land use. Altitude affects climate and soil formation, and this strongly influences choices made over land use, such that different land uses lie on a gradient: as altitude increases, there is a general shift from arable crops to improved pasture, to rough grazing and forestry. If there are pre-existing differences in S_c along this gradient irrespective of land use, then this can
110 be estimated and the confounding effect accounted for.
3. In a Bayesian approach, we can use prior information in combination with observed data to improve our estimates. In the current context, we have information from previous paired-plot studies and modelling studies, which give us an expectation of the likely magnitude of land-use effects. These can be used to counter-balance artefacts which may exist in the space-for-time survey-based estimates of these effects.

115 1.3 Aims

Our aims here were to improve the estimates of the effects of land use on soil carbon stocks in the UK by:

- using more recent survey data to update the estimates of Bradley et al. (2005);
- developing a Bayesian hierarchical model whereby data from different surveys and sampling depths can be incorporated into estimates of whole-profile carbon stock, propagating the associated uncertainty appropriately; and
120
- investigating the validity of the assumption behind the space-for-time substitution.

2 Methods

2.1 The measurement of soil carbon stock and notation

Naming of the relevant quantities involved in measuring soil carbon is rather inconsistent, and it is useful to define some notation. Sampling is usually done by extracting a soil core with an auger, or less commonly, by digging a soil pit (see Nayak et al. (2019) for a recent review of field and laboratory methods). This provides a sample with known area (A, m^2) which is typically divided into one or more depth intervals. These intervals are defined by upper and lower boundaries z_1 and z_2 , with length $d = z_2 - z_1$ in m. The soil from each depth interval is treated as a separate sample for laboratory analysis. The common laboratory process is to sieve the soil through a 2-mm sieve, removing stones, roots and any identifiable litter or living material, to leave the fine earth component (subscript $_{fe}$). The total mass of fine earth (M_{fe}, kg) in each sample is oven-dried, weighed and expressed per unit volume to give the bulk density:

$$\rho_{fe} = \frac{M_{fe}}{dA} \quad [\text{kg m}^{-3}]. \quad (1)$$

The organic carbon content of the fine earth is determined on a very small sub-sample, typically less than 10 g when using the loss-on-ignition (LOI) method, or $\ll 1$ g when using the elemental analyser method, so the soil needs to be ground and well mixed to homogenise, and replicates taken. In the LOI method, a dried sub-sample is weighed, then heated to around 350-500°C for several hours (Ball, 1964; Hoogsteen et al. (2015)) (Ball, 1964; Hoogsteen et al., 2015) so that the organic matter is combusted to CO_2 gas and water vapour. The sample is re-weighed, and the mass loss attributed to organic matter; around 55% of this is carbon, depending on the chemical composition of the organic matter. In an elemental analyser, the combustion gas is trapped, and the exact amounts of CO_2 and H_2O determined, so that the carbon loss is measured directly. Often, elemental analysis is used to verify or calibrate the carbon fraction determined by LOI. Depending on the analytical setup, the total (as opposed to only organic) carbon content may be measured, from which the inorganic fraction has to be estimated, and this may be significant in UK soils. The mass of carbon (M_c) is expressed as a fraction of the mass of fine earth to give the carbon fraction (also referred to as carbon content or concentration):

$$f_c = \frac{M_c}{M_{fe}} \quad [\text{kg kg}^{-1}]. \quad (2)$$

The product of this and bulk density gives the density of carbon:

$$\rho_c = \rho_{fe} f_c \quad [\text{kg m}^{-3}]. \quad (3)$$

The quantity we are ultimately interested in is the mass of carbon per unit ground area i.e. the areal density, more commonly referred to as the carbon stock. This quantity always has some implicit value of depth associated with it. We may refer to the areal density of fine earth or carbon *within* a given depth interval i :

$$s_{fe,i} = d_i \rho_{fe,i} \quad [\text{kg m}^{-2}] \quad (4)$$

$$150 \quad s_{c,i} = d_i \rho_{c,i} \quad [\text{kg m}^{-2}]. \quad (5)$$

and denote this with lower-case s . We can accumulate these with depth through the soil profile to give the cumulative areal density down to a given depth z :

$$S_{fe,z} = \sum_{i=1}^n s_{fe,i} \quad [\text{kg m}^{-2}] \quad (6)$$

$$S_{c,z} = \sum_{i=1}^n s_{c,i} \quad [\text{kg m}^{-2}] \quad (7)$$

155 and denote this with upper-case S ; n is the number of intervals above depth z . As discussed below (section 2.2), there are statistical issues in estimating the cumulative quantity in this way.

The areal density S_c may be calculated for a specified depth z , or for a specified mass of fine earth M_{fe} (i.e. spatial or cumulative mass coordinates, *sensu* Gifford and Roderick (2003), and see Ellert and Bettany (1995)). The latter is important for removing confounding effects of changes in bulk density (or sample compression) when only the upper layers of soil are measured, on the assumption that the areal density of fine earth S_{fe} does not change, even if the bulk density ρ_{fe} does change
 160 (Toriyama et al., 2011). The distinction is less critical if measurements effectively encompass the bulk of the soil profile (down to $-0.6 \sim 0.6$ to 1 m): if a large majority of the soil containing organic material is sampled, then it matters less whether this is expressed in spatial or cumulative mass coordinates. More critically, we want a method which allows us to combine data from surveys which use different sampling depths, both shallow and deep. We describe this below.

165 2.2 Model development

Our approach was to build a parsimonious statistical model which explains the variability in the observations of soil carbon as a function of land use and depth. Often the cumulative soil carbon stock $S_{c,z}$ is used as the response variable, but this violates the assumption of independence among samples. The value of $S_{c,z}$ at each depth is contingent on all values at shallower depths being correct, so this underestimates the uncertainty. By using the variables that are actually measured, we can more correctly
 170 represent the structure of the data, and thereby more accurately quantify the associated uncertainty.

For each soil core i from land use u occurring at location j within site k , we predict the carbon density ρ_c as a linear function of the sampling depth z , according to:

$$\log(\rho_{c,z,u})_i \sim N(\mu, \sigma^2)$$

$$\mu = \beta_{0,u} + \beta_{1,u}z + b_{0j[i],k[i]} + b_{1j[i],k[i]}z$$

$$\begin{pmatrix} b_{0j} \\ b_{1j} \end{pmatrix} \sim N \left(\begin{pmatrix} \mu_{b_{0j}} \\ \mu_{b_{1j}} \end{pmatrix}, \begin{pmatrix} \sigma_{b_{0j}}^2 & \rho_{b_{0j}b_{1j}} \\ \rho_{b_{1j}b_{0j}} & \sigma_{b_{1j}}^2 \end{pmatrix} \right), \text{ for loc_id:site_id } j = 1, \dots, J \quad (8)$$

$$\begin{pmatrix} b_{0k} \\ b_{1k} \end{pmatrix} \sim N \left(\begin{pmatrix} \mu_{b_{0k}} \\ \mu_{b_{1k}} \end{pmatrix}, \begin{pmatrix} \sigma_{b_{0k}}^2 & \rho_{b_{0k}b_{1k}} \\ \rho_{b_{1k}b_{0k}} & \sigma_{b_{1k}}^2 \end{pmatrix} \right), \text{ for site_id } k = 1, \dots, K$$

The β_0 and β_1 parameters represent the global intercept and slope parameters specific to each land use (“fixed effects” in the mixed modelling jargon). The b_0 and b_1 parameters represent group-specific parameters describing the variability among sites, and at locations within sites (“random intercepts and slopes” in the mixed modelling jargon). These local deviations in intercepts and slopes account for the within-location/site correlation of residuals, and are assumed to be independently drawn from normal distributions with the means and covariance matrices shown above. Analogous terms can be added to account for systematic differences between surveys (i.e. data sources) but are not shown here for brevity. The only difference is that these are crossed effects, applying to all sites within a survey, rather than nested effects.

The parameters of hierarchical models are commonly estimated by maximum likelihood estimation (MLE). Here, we used MLE for exploratory analysis, but used a Bayesian method for the final model, for the reasons given earlier. Bayesian methods generally uses Markov chain Monte Carlo (MCMC) sampling, an iterative algorithm for calculating numerical approximations of multi-dimensional integrals. Many MCMC algorithms are available, and the mechanics of performing Bayesian statistical analysis are described in several textbooks (e.g. Gelman et al., 2013) (e.g. Gelman et al., 2013). Here we use the Hamiltonian sampling algorithm, which provides a computationally efficient means of estimating the posterior distribution (Betancourt, 2017; Stan Development Team, 2016) via the R package brms (Bürkner, 2021). The Bayesian approach allows us to incorporate some prior knowledge of the intercept and slope parameters. We know that ρ_c is always positive, and the intercept β_0 on the log scale is typically in the range 3-4 (from the data of Jobbágy and Jackson, 2000), corresponding to ρ_c at $z = 0$ between 20 and 55 kg C m⁻³. We represent this with a normal distribution on the log scale as $\beta_0 \sim N(\mu = 3.5, \sigma = 2)$, which encompasses all the plausible values. The slope with depth is typically between -4 and -2 (also from the data of Jobbágy and Jackson, 2000), meaning that the relative decline in ρ_c over 1 m is between 2% and 13% (i.e. between exp(-4) and exp(-2)). Again, we represent this with a normal distribution as $\beta_1 \sim N(\mu = -3, \sigma = 2)$.

Equation 8 predicts carbon density, whereas the quantity we require is the carbon stock $S_{c,z}$ over a 1-m depth (as used by Bradley et al. (2005)). The prediction from the linear model at the mid-point $z/2$ yields $E[\log(\rho_c)]$, equivalent to the geometric mean or median ρ_c over the depth z . However, the quantity equivalent to $S_{c,z}$ is $E[\rho_c]$ or the arithmetic mean $\bar{\rho}_c$. The inequality between these is well-known, and the “transformation bias” can be approximated in a number of ways (e.g. Miller 1984). Here,

we use a simple but reliable method, whereby we numerically calculate $E[\rho_c]$ from a set of predictions from Equation 8 at 1-mm intervals over a 1-m depth. We then calculate the depth at which the arithmetic mean $\bar{\rho}_c$ occurs as

$$200 \quad z_m = \frac{\log(\bar{\rho}_c) - \beta_{0,u}}{\beta_{1,u}} \quad [\text{m}] \quad (9)$$

where $\beta_{0,u}$ and $\beta_{1,u}$ are the estimated intercept and slope for each land use in Equation 8. Although these parameters vary by land use, so z_m is not completely constant, the variation is only a few cm, and we can use the mean value of $z_m = 0.37$ m for all with little loss in accuracy. Having established the depth at which the arithmetic mean soil carbon occurs, we can then use predictions from Equation 8 at $z = z_m$ where $E[\rho_c]$ is equal to $S_{c,z}$.

205 Some variants on Equation 8 are possible, including log-transforming both axes, neither axis, or only the depth axis (Jobbágy and Jackson, 2000), as well as the nature and form of the hierarchical grouping structure (which terms to include, and whether to allow both intercept (b_0) and slope (b_1) to vary by these groups). We assessed these model variants in terms of variance explained (r^2 and root-mean-square error) ~~as well as examination of quantile plots and trends in residuals with increasing carbon density~~, standard information criteria. The so-called marginal and conditional r^2 values were used, as defined for
210 mixed-effect models by (Nakagawa et al., 2017). Graphically, we examined quantile plots, trends in residuals with increasing carbon density and compared the posterior predictions with the observed data; a good model should be able to reproduce similar patterns to those in the observations.

2.3 Data sources

2.3.1 Bradley et al (2005)

215 Bradley et al. (2005) collated soil core data from separate surveys covering England and Wales, Scotland, and Northern Ireland. Common depth layers were defined across all survey results (0–30 cm and 30–100 cm). Litter horizons were included but unconsolidated subsoil horizons and bedrock were excluded. The soils were classified according to four land-use types: crops and cultivated land (mainly arable); improved, managed grassland; grassland that received no management and semi-natural vegetation; and woodland. For brevity, we refer to these as crops, improved grass, rough grazing and woods, respectively.
220 These classes were chosen so that there would be a reasonable chance of having measured data that could be used for each soil series/land use combination, and the classes are broad enough that they can be applied across all the other surveys described below. Bulk density measurements were infrequent in the data, so were modelled using regression equations on the basis of organic carbon, clay and silt content.

2.3.2 Countryside Survey

225 Countryside Survey is a unique study of the natural resources of the UK's countryside, carried out at approximately decadal intervals since 1978 (Emmett, 2010; Robinson et al. (2020))(Emmett, 2010; Robinson et al., 2020). The survey uses a sampling approach which samples 1-kilometre squares randomly located within different land classes in GB. The original 1978 survey

consisted of 256 1-km squares and collected five soil samples per square, taken from random co-ordinates in five segments of the square. There has been an increase in the number of sample squares over time, and in 2007, 591 1-km squares were sampled with a total of 2614 samples returned for analysis. The survey became a rolling programme in 2018 (Robinson et al., 2020). Within each 1-km square, a set of soil samples were taken from five pre-determined random locations. A sample was taken by inserting a cylindrical plastic tube, 15 cm long, into the soil. ~~Bulk density was measured on the extracted soil material after drying.~~ The carbon fraction was measured using loss-on-ignition on a 10 g air dried sub-sample taken after sieving to 2 mm. The sub-sample was dried at 105°C for 16 hours to remove moisture, weighed, then combusted at 375°C for 16 hours. In 2007 and thereafter, bulk density was measured on the extracted soil material after drying. Prior to this, bulk density was not measured, so was estimated based on a simple model. The pre-2007 estimates of carbon stock have correspondingly higher uncertainty because of this.

2.3.3 Glastir Monitoring and Evaluation Programme (GMEP)

A total of 300 x 1-km squares in Wales were sampled between 2013 and 2016 as described by Robinson et al. (2019). The same protocol was used as in the post-2007 Countryside Survey, described above.

2.3.4 Reading Agricultural Consultants surveys (RAC)

A large soil sampling campaign was conducted along the route of the High-Speed 2 (HS2) rail project (Heming, 2021), as well as at other locations in England, providing almost 2000 soil cores in total. Soil sampling procedures are described in Heming et al. (2021), and report carbon in 0-25 cm and 25-50 cm layers. Soil carbon analysis used the elemental analyser technique. Bulk density was not measured, and was estimated at each location using typical values from the Soil Survey of England and Wales.

2.3.5 Ward et al. (2016)

Ward et al. (2016) conducted a survey of 180 permanent grasslands sites located throughout England. Sampling sites were in 60 different geographical locations, from 12 broad regions of England. At each of the 60 locations, three different fields were selected to give a gradient of management intensity of extensive, intermediate and intensive management. Soil cores in 3.5 cm in diameter were taken from three random areas in each field, to 1-m depth using an Eldeman auger, and divided into five depth increments: 0–7.5 cm, 7.5-20 cm, 20-40 cm, 40-60 cm and 60-100 cm. The carbon fraction was measured using an elemental analyser, along with bulk density.

2.3.6 ELUM

27 sites were sampled for the Ecosystem Land Use Modelling (ELUM) project (Keith et al., 2011), covering bioenergy crops, arable crops, grasslands and woodlands. Soil sampling details were the same as for Ward et al. (2016), but the depth layers were 0-30 cm, 30-50 cm and 50-100 cm.

2.3.7 Easter Bush

260 Repeated intensive soil sampling has taken place at the Easter Bush site in central Scotland in 2004, 2012 and 2015 ([Schrumpf et al., 2011](#), [J. Schrumpf et al., 2011](#); [Jones et al., 2016](#)). Although this covers only a single site, we include the data here for the detailed characterisation of the variation in soil carbon with depth. At each sampling time, 100 cores were taken on a regular grid with 15-m spacing, sampling the whole profile depth (to around 60 cm). A corer with an inner diameter of 8 cm was used for extracting soil samples and bulk density measurements. Both loss-on-ignition and elemental analyser techniques were used.

2.3.8 Meta-analyses

265 Various published studies have collated data from the literature to perform meta-analyses of land-use effects on soil carbon. We compare results with several of these studies ([Post and Kwon, 2000](#), [Guo and Gifford \(2002\)](#), [Berthrong et al. \(2009\)](#), [Poeplau et al. \(2011\)](#)) ([Post and Kwon, 2000](#); [Guo and Gifford, 2002](#); [Berthrong et al., 2009](#); [Poeplau et al., 2011](#)).

2.4 Validity of space-for-time substitution

We used ~~a number of two~~ approaches to investigate the validity of the assumption behind the space-for-time substitution.
270 ~~We would expect any~~ Because we expect increases in S_c which are caused by land-use change to be independent of the initial S_c . ~~By contrast, we expect any pre-existing differences within a soil series to be in relative terms: a given soil series might have a high mean S_c , and the differences between land chosen for arable cropping and forestry will be proportional to this. We therefore,~~ we examined whether the ostensible effects of land use are consistent with models of absolute or relative change. The degree of relative change can be equated with pre-existing difference. To do this, we used the data of Bradley et al.
275 (2005) because the survey includes measurements on multiple land uses on each of several hundred soil series. We expressed the effect of land use as the difference from the value for arable crops on the same soil series; using the land use with the lowest soil carbon stock on average as the reference level means that the overall effects of the three other the land uses are positive.

Along similar lines to the above, we explored correlations between altitude and S_c , removing the effect of land use. If S_c increases with altitude, and land use also systematically changes with altitude, this relationship could confound our estimate
280 of the effect of land use *per se* based on the data. To do this, we fitted a simple linear model of S_c as a function of altitude and land use to all the data where altitude was available.

~~Altitude affects climate and soil formation, and this strongly influences choices made over land use, such that different land uses lie on a gradient: as altitude increases, there is a general shift from arable crops to improved pasture, to rough grazing and forestry.~~

285 1. ~~In a Bayesian approach, we can use prior information in combination with observed data to improve our estimates. In the current context, we have information from previous paired-plot studies and modelling studies, which give us an expectation of the likely magnitude of land-use effects. These can be used to counter-balance artefacts which may exist in the space-for-time survey-based estimates of these effects.~~

we examine whether the ostensible effects of land use are consistent with models of absolute or relative change. This shows
290 the apparent size of the land-use effect with increasing soil carbon stock in the data of Bradley et al. (2005). This is expressed
as the difference from the value for arable crops on the same soil series, so that the overall effects are positive in all three
cases. If differences caused by land-use change were independent of the initial S_c , we would expect the black horizontal line,
indicating no change in the mean effect size. If there were pre-existing differences within a soil series between land chosen for
arable cropping and (say) forestry, these are expected to be proportional to the soil carbon stock (because the variance in S_c is
295 typically proportional to S_c). This would cause the apparent effect of land use to increase with S_c , and this is what we observe
in Figure 5. The slope is greatest in woods and least in grass, so the magnitude of any error will vary among land uses.

3 Results

Figure 1 shows examples of the relationship between carbon density ρ_c and depth in four soil cores, taken from different sites
and surveys. With a logarithmic y axis, a reasonably linear relationship is seen. Variants using logarithmic transformations of
300 x , y and both x and y axes, were explored. The best model in terms of the metrics used (variance explained and analysis of
quantile and residual plots) was the one shown in Figure 1. In organic soils, reasonable relationships were still seen, but ρ_c was
much more constant with depth, so the variance explained by a linear trend was less. We saw some cases where the fit with
depth was poorer, indicating soils with more more complex vertical structures, such as organic horizons within mineral soils,
but these soils were relatively infrequent.

305 The entire data set is plotted on these same axes in Figure 2, split by the main land uses. The appearance of a gap in the
data at 0.25 m depth is an artefact of the depth intervals chosen in the surveys and plotting using the mid-point of the depth
interval. Clearly, there is considerable variation within the main land uses (particularly noting that the y axis is logarithmic).
Much of this accounted for by the group-specific terms in the hierarchical model, such that the full model accounts for **almost
more than** 90% of the variance ~~—Around half (Table 1). Close to 60%~~ of this is attributable to the effects of land use and depth,
310 the remainder attributable to the survey, site and location group-specific terms. The interpretation of the latter is that there is
consistent survey-to-survey, site-to-site and location-to-location variation in the data, which we can identify, and separate from
the estimate of the population-level effect of land use. However, the group-specific terms do not represent “explained variance”,
in the sense that they are not useful for prediction outwith the sample. Ordinary least-squares regression lines are shown for
each survey within these groups to identify the broad differences between surveys. The surveys give broadly similar results, but
315 some systematic differences seem to be apparent. The results from Ward et al. (2016) sit higher than the others for grassland;
the results from the ELUM survey sit lower. The slope with depth was generally greater in the data of Bradley et al. (2005) than
the RAC survey data, but the mean values were very close. No surveys measured at the same sites, so separating these effects
in the model is difficult. With a site-specific effect already accounted for in the model, ~~an the~~ additional survey-specific effect
made only a small difference to the model selection criteria shown in Table 1. Given that this adds a considerable number of
320 extra parameters to be estimated, we considered this was not warranted, ~~based on standard model selection criteria and that the
form of the model shown in Equation 8, corresponding to the third column in Table 1 was parsimonious.~~

To estimate the mean soil carbon stock for each land use, we use predictions from the model over a depth of 1 m (at z_m where $E[\rho_c] = S_{c,z}$), excluding the site- and location-specific terms (which average out to zero at population level). These are shown in Figure 3 with associated 95% confidence intervals and prediction intervals. Soil carbon stocks are highest in woods, followed by rough grazing, and improved grasslands, with arable crops having the lowest values. The differences among land uses are larger than the 95% confidence intervals in all cases, so we can consider that these are real, discernible effects. The prediction intervals, which represent the variability in predictions of the effect at a site outwith the sample, are much larger than the effect size.

The estimated effects of land use are expressed in Figure 4 as the difference from the mean soil carbon stock. The effects are estimated from each survey individually, as well as using all the data. In almost all cases, the effect is of similar magnitude and sign. The sign of the effect appears more variable in improved grasslands, but this lies near the mean, and the degree of variability between surveys is similar to elsewhere, so values may be above or below the mean. The 95% confidence intervals generally do not include zero, so we can be reasonably sure of the overall effects. The prediction intervals, however, span positive and negative values, and are much larger than the effect size.

Also shown are results from three other sources: predictions from the IPCC Tier 1 default method for comparable land-use types; the meta-analysis of Guo and Gifford (2002); and the mean effects from the synthesis of (mostly) paired-plots studies by Poepflau et al. (2011). These all show similar effect sizes to each other, and of consistently the same direction as the UK data. The magnitude of the effect size in arable crops is also very similar to the UK data; that in improved grasslands is close, but consistently positive, whereas the UK data is on average lower than the mean (but as noted above, both lie close to the mean). The effect size for woods is considerably larger in the UK data than in the meta-analyses. The comparison for rough grazing is more restricted, as there is no comparable land use in the meta-analyses, but the IPCC default values are rather lower than the UK data.

Table 1.2 shows the results of this study compared to the results reported by Bradley et al. (2005), in terms of the effect of land use on soil carbon stock. Because mean values differ between studies, we use the value for arable crops as the reference level, the land use with lowest carbon stock. This does not affect the magnitude of the effects, but ensures all effects appear positive. Our values are 1.3, 1.7 & 3.4 times smaller than those of Bradley et al. (2005).

In Figure 5, we examine whether the ostensible effects of land use are consistent with models of absolute or relative change. This shows the apparent size of the land-use effect with increasing soil carbon stock in the data of Bradley et al. (2005). This is expressed as the difference from the value for arable crops on the same soil series, so that the overall effects are positive in all three cases. If differences caused by land-use change were independent of the initial S_c , we would expect the black horizontal line, indicating no change in the mean effect size. If there were pre-existing differences within a soil series between land chosen for arable cropping and (say) forestry, these are expected to be proportional to the soil carbon stock (because the variance in S_c is typically proportional to S_c). This would cause the apparent effect of land use to increase with S_c , and this is what we observe in Figure 5. The slope is greatest in woods and least in grass, so the magnitude of any error will vary among land uses.

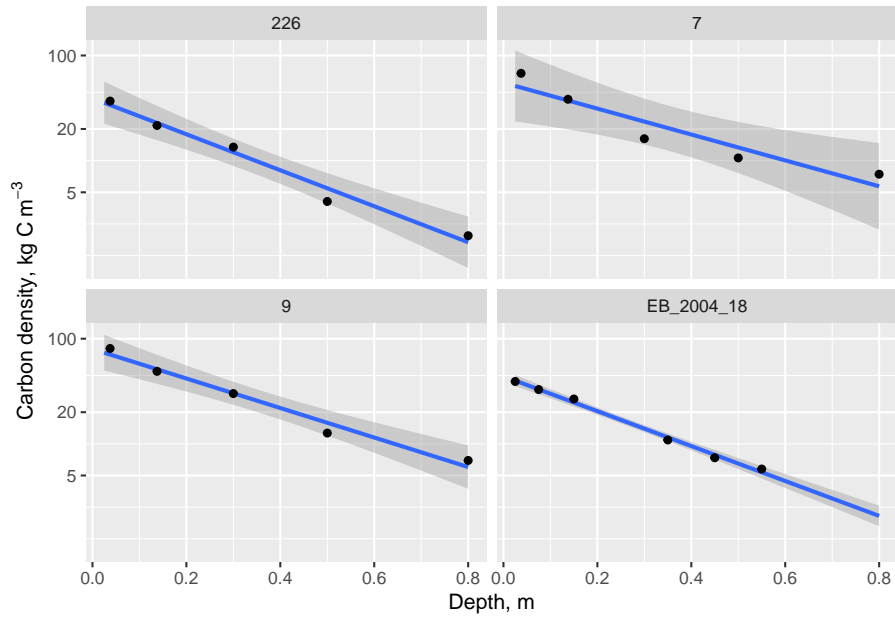


Figure 1. Examples of the relationship between carbon density ρ_c and depth in four soil cores from various sites. Note the logarithmic y axis scaling. Of the various simple models using different transformations, this gave the best linear relationship. The soil cores come from the surveys of Ward et al (2016) (samples 226 and 7), ELUM (sample 9), and Easter Bush (sample EB-2004-18), chosen to illustrate the typical range of this relationship. Points represent soil from a depth interval and are plotted against the mid-point of the depth interval.

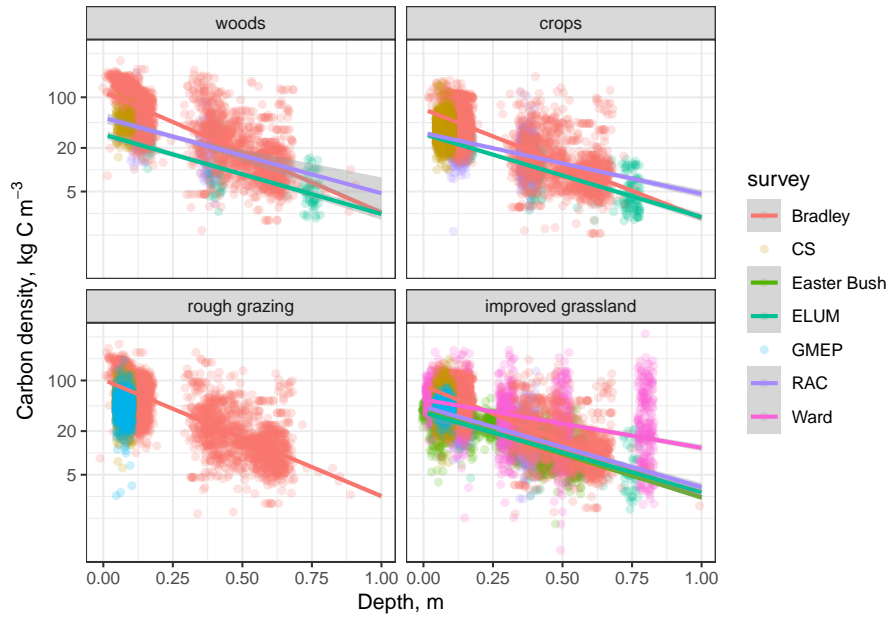


Figure 2. Relationship between carbon density ρ_c and depth by land-use type, showing all data. Note the logarithmic y axis. Points represent soil from a depth interval and are plotted against the mid-point of the depth interval, with some random variation added in the x dimension so that the points are not all over-lying each other at a small number of x values. Ordinary least-squares regression lines are shown for each survey.

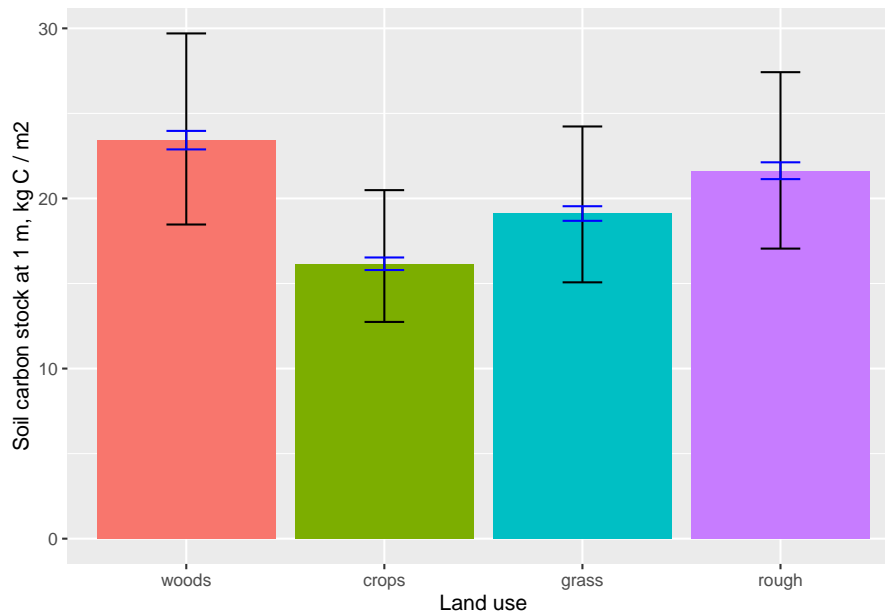


Figure 3. Predicted mean soil carbon stocks to a depth of 1 m for each land use, as estimated by the hierarchical model using all data. Associated 95% confidence intervals are shown as blue error bars, prediction intervals are shown in black. Confidence intervals express the uncertainty in the estimate of the true global mean, whereas prediction intervals express the estimated interval in which a new sample would lie with 95% probability. Both were estimated by Bayesian estimation of the hierarchical model.

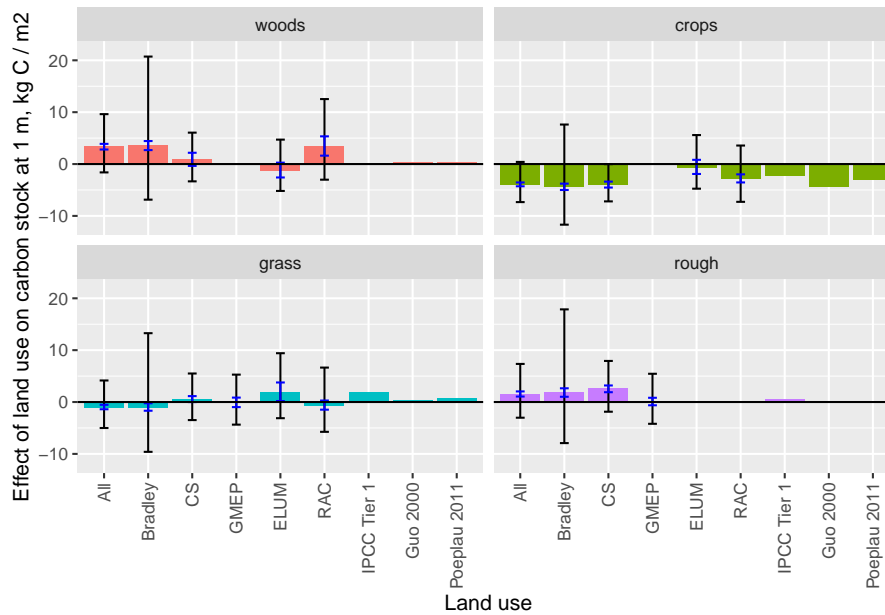


Figure 4. Predicted effect of land use on soil carbon stocks to a depth of 1 m, as estimated by the hierarchical model, expressed relative to the mean soil carbon stock. Associated confidence intervals are shown as blue error bars, prediction intervals are shown in black. Values are shown for each survey individually, as well as the full data set. In addition, we plot comparable predictions from the IPCC Tier 1 model, and the meta-analyses of Guo and Gifford (2002) and Poepplau et al (2011). For the latter in the case of rough grazing, no comparable values were available, so these are missing rather than zero.

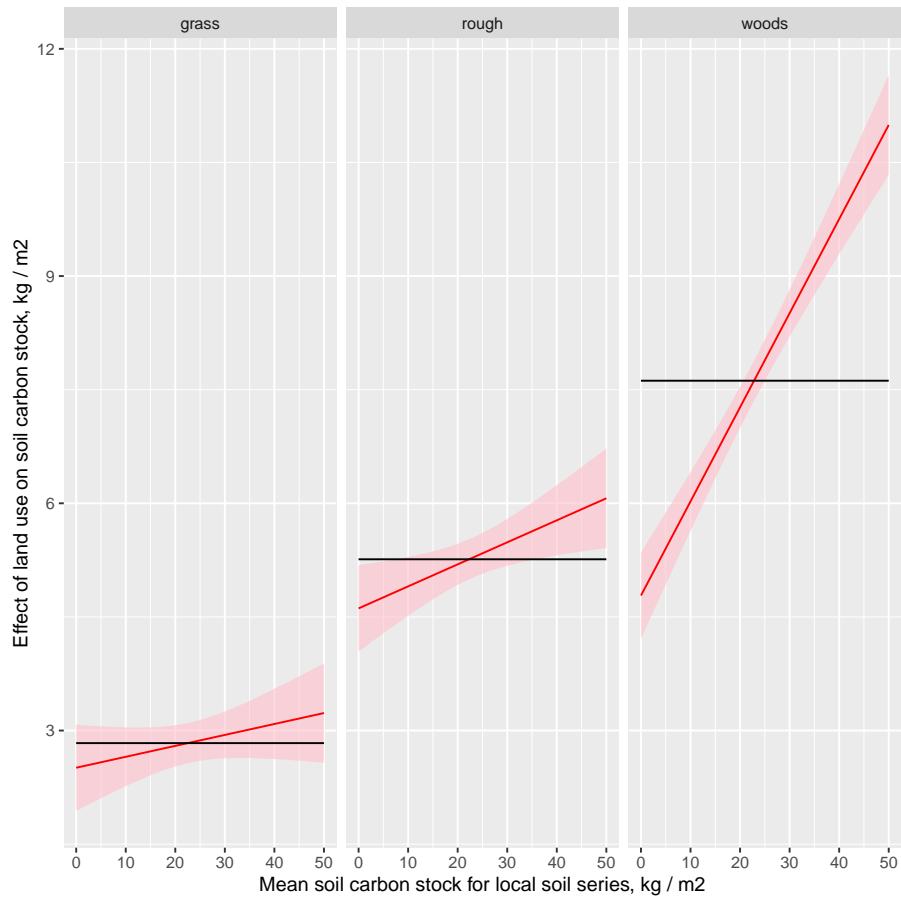


Figure 5. The apparent relationship between the effect of land use and increasing soil carbon stock in the data of Bradley et al (2005). The effect is expressed as the difference from the value for arable crops on the same soil series, so that the overall effects are positive in all three cases. The black horizontal line indicates an expected constant mean effect size in the absence of any effect. Red lines show ordinary least-squares regression lines fitted to the data. The individual data points are not shown because they are highly variable and so require a much larger *y* axis scale for display.

Table 1. Estimates Measures of the effect of land use on soil carbon stock from this study model fit for three model variants, with 95% confidence intervals, compared with differing in their specification of the estimates reported by Bradley et al (2005) grouping structure. Effects are expressed relative to arable crops, a model in which the hierarchical grouping structure (location within site within survey) specifies only an intercept term (so a single global slope with depth is estimated for each land use with lowest carbon stock). The second column corresponds to a model in which the same hierarchical grouping specifies both intercept and slope terms. The third column corresponds to a model in which the hierarchical grouping specifies both intercept and slope terms, so all effects appear positive but only representing variation among locations and sites. Units: The measures are kg C/m²: standard deviation of the residual error (SD); Marginal r^2 excluding the hierarchical grouping terms; Conditional r^2 including the hierarchical grouping terms; Akaike information criterion (AIC); Bayesian information criterion (BIC); intraclass correlation coefficient (ICC); root-mean-square error (RMSE).

| | Hierarchical terms, intercept only | Hierarchical terms incl slope | Hierarchical terms incl slope excl survey |
|-------------|------------------------------------|-------------------------------|---|
| Residual SD | 0.186 | 0.120 | 0.121 |
| Num.Obs. | 26381 | 26381 | 26381 |
| R2 Marg. | 0.571 | 0.483 | 0.592 |
| R2 Cond. | 0.943 | 0.976 | 0.977 |
| AIC | 203742.0 | 189376.9 | 191000.4 |
| BIC | 203840.1 | 189524.2 | 191123.2 |
| ICC | 0.9 | 1.0 | 0.9 |
| RMSE | 0.36 | 0.23 | 0.23 |

Table 2. Estimates of the effect of land use on soil carbon stock from this study, with 95% confidence intervals, compared with the estimates reported by Bradley et al (2005). Effects are expressed relative to arable crops, the land use with lowest carbon stock, so all effects appear positive. Units are kg C/m².

| Land use | Bradley et al (2005) | This study | 95% CI, this study |
|----------|----------------------|------------|--------------------|
| woods | 13 | 7.26 | 6.73 to 7.81 |
| grass | 4 | 2.95 | 2.53 to 3.39 |
| rough | 20 | 5.47 | 4.98 to 5.97 |

The results here have improved the estimates of the effects of land use on soil carbon stocks in the UK by increasing the amount of data they are based upon, and providing a more sophisticated analysis which allows the incorporation of soil samples measured at any depth. The Bayesian hierarchical approach allows us to compensate for biases in the choice of sites and protocols used in different surveys, and to propagate the associated uncertainty appropriately. Accurate estimates of the soil carbon stocks associated with different land uses is critical to the estimates of emissions from LULUCF, as these differences are the basis of the IPCC methodology.

Because of the large sample size, the data of Bradley et al. (2005) still carry a lot of weight in the overall estimates. However, the new estimates are substantially smaller than the reported estimates of Bradley et al. (2005). We identify a number of factors behind this. The main factor is simply because we use a logarithmic transformation of the carbon density data. This is done for several reasons: it gives an approximately linear relationship with depth, it stabilises the variance so that it is relatively constant with increasing ρ_c , and makes the model residuals close to normal. The effect is to give less weight to extreme values. Implicit in using a logarithmic transformation is an assumption that the variance is constant in relative, not absolute terms. Whilst the log transformation is a fundamentally better model in this case (because the assumption of relative variance is borne out by the data), it is not a perfect model, and other options are possible: different transformations, Box-Cox transformation, a generalised linear model with Gamma-distributed residuals. All of these would give somewhat different answers, with different weights given to extreme values, and in reality there remains epistemic uncertainty as to the best way to summarise the data in the form of a model. A more comprehensive analysis could apply several of these approaches and use a model averaging approach to indicate the posterior uncertainty that is introduced by this. Clearly this can be considerable, comparing the results with the previous analysis on the untransformed data.

A second factor is in the analytical method used by Bradley et al. (2005), which implicitly weighted the effect from each soil series by its area. This would give more weight to the soil series with the largest expanse, although these may have little or no land-use change (e.g. in large areas of the uplands). If this effectively gives more weight towards areas with high soil carbon stocks, and the effect of land-use change is over-estimated in these areas for the reasons discussed earlier, then this could introduce a bias. Our approach does not reweight the data based on estimated areal coverage, and attempts to estimate the overall effect of land use, having accounted for the vagaries of different sites and soil series. This is a slightly different approach, but should give the best estimate of the effect at a new location outwith the sample.

The results suggest that the assumption underlying the space-for-time substitution is not completely valid, although they are not unequivocal. The apparent increase in the effect of land use with increasing soil carbon suggests that there are pre-existing differences which confound the comparison, and will lead us to over-estimate the effect. This over-estimation varies across land uses, greatest in woods and rough grazing ($\sim 30\sim 30\%$ and 15%, respectively). This tallies with the comparison with meta-analyses of paired-plot studies, which show smaller effect size. However, the difference is much less in improved grasslands and arable crops, so the effect of pre-existing differences may be much less in these cases. Exploring the trend in soil carbon with altitude, which might lead to an expectation of pre-existing differences in land selected for different uses, showed no

strong relationship (although this did not include the Bradley et al. (2005) or the Countryside Survey data). Long-term single-
390 site experiments where changes in land use have been recorded over several decades are still very valuable as a reference point
for other analyses. (eg. the Rothamstead Park Grass experiment etc.). The Countryside Survey data are important as one of
the few long-term surveys with repeated measurements at a spread of locations wide enough to be used to infer national-scale
trends. Although these did not include bulk density in the early surveys, so we cannot make strong inferences about S_c , the
data show no substantial change in carbon fraction. A more general point is the importance of measuring bulk density when
395 attempting to estimate carbon stock; the fact that this was missing from the data of Bradley et al. (2005), RAC and the earlier
Countryside Surveys make these data sources much more uncertain. Carbon stock is the product of two terms, and one of these
terms is missing in these data. Bradley et al. (2005) report a within-sample accuracy of around 10% in their modelled estimates
of bulk density, which propagates directly into estimates of carbon stock. More problematically, there is a high probability
of introducing systematic errors when using carbon fraction to predict bulk density (as they did), because the change in this
400 relation (over time, or induced by land-use change) is critical but very poorly constrained without simultaneous measurements
of both terms. Ideally, all the data would be re-analysed, propagating all the uncertainties appropriately, but the availability of
the necessary raw data limits the feasibility of this.

The results show some systematic differences between surveys in estimates of carbon stocks, and this is to be expected for
various reasons. Bradley et al. (2005) included all litter horizons in their definition of soil, whereas CS and GMEP included
405 only the F (folic, partially decomposed) and H (humic, decomposed) layers, and excluded the readily recognisable litter.
Differences in the attribution of litter material to the soil have been noted before as a key difference between soil survey
schemes, and an important factor for consistency in experimental comparisons, particularly in woods and forest environments
(Poeplau et al., 2011). This may explain why the data of Bradley et al. (2005) show higher carbon densities in woodlands
compared to CS, with the greatest difference in woodlands. The effect is less pronounced in other land uses where there is less
410 litter. This may explain some of the difference shown in the comparison of the effect of woodland land use among surveys
(4), and in Table 12, although the effect of log transformation is the dominant difference here. There will also be differences
among surveys caused by differences in laboratory analytical procedures. Various authors have shown effects of sample mass,
combustion temperature, and duration on the mass loss observed in the loss-on-ignition method, particularly highlighting the
extent of structural water loss and its dependency on clay content (e.g. Hoogsteen et al., 2015)(e.g. Hoogsteen et al., 2015).
415 Heming (2021) rejects the method on the basis of the uncertainty introduced by the latter. Similarly, the elemental analyser
approach is prone to the uncertainties associated with separating organic and inorganic carbon (Wang et al., 2012), and this
will introduce a different set of biases. Consistency is key in long-running survey schemes, so that true changes over time can
be separated from changes related to different analytical methods. The hierarchical statistical method used attempts to remove
such effects, partitioning them into the group-level effects, and not part of the overall effect of land use which we are trying to
420 discern.

Soils vary widely in depth, and the modelling approach used here makes the comparison across a standardised depth of 1 m,
based on the guidelines for UNFCCC reporting. Many soils in the UK are shallower than this: around half the soils in Wales are
in classifications with a lithoskeletal substrate, and defines the soil to be less than 80 cm thick. We note that the results should

be interpreted as predictions of the effect of land use on a typical but hypothetical soil of 1-m depth, taking into account the way
425 in which carbon density declines with depth. A more complex model would be required to make accurate spatial predictions.

Cropland soils are typically ploughed to a depth of around 30 cm. This means that the top layer will be repeatedly mixed
with soil from below, and could reduce the slope of soil carbon versus depth because of the mixing effect of the plough.
Furthermore, the effect of ploughing might be to create two different layers (above and below the plough depth) with different
slopes (soil carbon vs depth), so something like a “broken stick” model might be more appropriate. In fact, we do not see
430 evidence for either of these effects in the data, but this may be because the samples lack the vertical resolution to discern such
trends. Given the level of aggregation in the available data, the logarithmic decline appears to be reasonable.

With the large data set analysed here, the uncertainty in the differences among land uses was small enough to identify con-
sistent mean effects. However, a striking feature of the results is the extent of the variability in these effects, represented by the
large prediction intervals, and this was similar across all surveys. Mapping soil carbon using geostatistical or machine learn-
435 ing methods has become widespread and increasingly accurate because of the strong spatial relationships in the data (Hengl
et al., 2017). However, this may lead to a false sense of understanding of causal relationships. The data here highlight the
degree of variability, and the effects of land use, whilst discernible in very large samples, are not as clear as is generally pre-
supposed (~~Baker et al., 2007, Kravchenko and Robertson (2011)~~)([Baker et al., 2007; Kravchenko and Robertson, 2011](#)). This
has important consequences for attempts to verify schemes which aim to sequester carbon in the soil by altering land use.

440 With pressure to find measures which will help meet targets for net-zero emissions, there is now considerable interest in op-
tions for sequestering carbon in agricultural soil (~~Soussana et al., 2019, Alliance (2022)~~)([Soussana et al., 2019; Alliance, 2022](#))
. To be credible, these options will need to be verifiable, and governed to ensure permanence and prevent leakage or rever-
sals (~~Smith et al., 2020, Black et al. (2022)~~)([Smith et al., 2020; Black et al., 2022](#)). If soil carbon credits are to be used to pay
farmers for changes in land use or management, the effects need to be demonstrable over relatively short time scales and at a
445 practicable cost. The results we find here have implications for the prospects for this. Although we can demonstrate an overall
mean effect greater than the uncertainty bounds with a large sample size (more than 25,000 individual samples (core depth
sections) at several thousand locations), we find that the variability in these effects is much larger. The prediction intervals
were much larger than the mean effect size, and spanned both positive and negative effect sizes. This result was consistent
across all the surveys we analysed.

450 In any given instance where we wish to verify the change in soil carbon, our expectation is that the observed change in soil
carbon will lie in a very wide range, encompassing both possible gain and loss. Indeed, there will often be instances where the
observed effect is opposite to the expected mean effect. The effect of a given intervention is therefore very hard to verify, and
this raises questions over how this might be handled in such schemes as a formal part of efforts to mitigate climate change.

The effect of the changes to the estimates of equilibrium soil carbon on the carbon fluxes arising from land-use change is
455 not obvious. The changes will reduce the gross fluxes from each land-use change, but how this affects the net effect depends
on the balance of changes and the transition matrix of land-use change each year (Levy et al., 2018), so the net effect is not
linearly predictable, and requires further analysis.

5 Conclusions

We have produced new estimates of the effects of land use on soil carbon stocks in the UK. These are smaller than the previous
460 best estimates of Bradley et al. (2005), partly because of new data, but mainly because the effect is more reliably characterised
using a logarithmic transformation of the data. We characterised the uncertainty and variability in the effect. With the very large
data set analysed here, the uncertainty in the differences among land uses was small enough to identify consistent mean effects.
However, the variability in these effects was large, and this was similar across all surveys. This has important consequences
for attempts to verify schemes which aim to sequester carbon in the soil by altering land use. Whilst we can estimate the
465 expected overall effect at national scale, the effect in any given instance is expected to lie in a very wide range. The effect of a
given intervention is therefore very hard to verify, and may be difficult to include as a formal part of efforts to mitigate climate
change. Examining whether the “space-for-time” substitution is valid, the results were not unequivocal, but we estimated that
the effects are likely to be over-estimated by 5-33%, depending upon land use.

Code and data availability. Countryside Survey and GMEP data sets are available via the UK Environmental Information Data Centre
470 (EIDC) at <https://eidc.ac.uk/>.

Author contributions. PL performed the modelling analysis and wrote the manuscript. All other authors provided data and contributed to the
manuscript.

Competing interests. The authors declare no competing interests.

Acknowledgements. This work was supported by the [UK](#) Natural Environment Research Council through award number NE/R016429/1
475 as part of the UK-SCAPE programme delivering National Capability ~~and the~~, [and by the NERC/Biotechnology and Biological Sciences
Research Council \(BBSRC\) joint research programs NE/N018125/1 LTS-M ASSIST—Achieving Sustainable Agricultural Systems \(www.assist.ceh.ac.uk
http://www.assist.ceh.ac.uk \) and NE/W005050/1 AgZero+project: Towards sustainable, climate-neutral farming \(https://agzeroplus.org.uk/\).](#)

The Glastir Monitoring and Evaluation Program (GMEP) was funded by the Welsh Government as part of the Environment & Rural
480 Affairs Monitoring and Modelling Programme. David Robinson was funded in part by funding from the European Union Horizon Europe
research and innovation programme under grant agreement No.-101086179, funding from the UK Research and Innovation (UKRI) under
the UK government’s Horizon Europe funding guarantee [grant number 10053484], and the Research Council of Norway, Climasol, Project
number: 325253.

References

- 485 Alliance, G.: The Opportunities of Agri-Carbon Markets: Policy and Practice » Green Alliance, 2022.
- Baker, J. M., Ochsner, T. E., Venterea, R. T., and Griffis, T. J.: Tillage and Soil Carbon Sequestration—What Do We Really Know?, *Agriculture, Ecosystems & Environment*, 118, 1–5, <https://doi.org/10.1016/j.agee.2006.05.014>, 2007.
- Ball, D. F.: Loss-on-Ignition as an Estimate of Organic Matter and Organic Carbon in Non-Calcareous Soils, *Journal of Soil Science*, 15, 84–92, <https://doi.org/10.1111/j.1365-2389.1964.tb00247.x>, 1964.
- 490 Bellamy, P. H., Loveland, P. J., Bradley, R. I., Lark, R. M., and Kirk, G. J. D.: Carbon Losses from All Soils across England and Wales 1978–2003, *Nature*, 437, 245–248, <https://doi.org/10.1038/nature04038>, 2005.
- Berthrong, S. T., Jobbágy, E. G., and Jackson, R. B.: A Global Meta-Analysis of Soil Exchangeable Cations, pH, Carbon, and Nitrogen with Afforestation, *Ecological Applications*, 19, 2228–2241, 2009.
- Betancourt, M.: A Conceptual Introduction to Hamiltonian Monte Carlo, arXiv:1701.02434 [stat], 2017.
- 495 Black, H. I. J., Reed, M. S., Kendall, H., Parkhurst, R., Cannon, N., Chapman, P. J., Orman, M., Phelps, J., Rudman, H., Whalley, S., Yeluri-pati, J., and Ziv, G.: What Makes an Operational Farm Soil Carbon Code? Insights from a Global Comparison of Existing Soil Carbon Codes Using a Structured Analytical Framework, *Carbon Management*, 13, 554–580, <https://doi.org/10.1080/17583004.2022.2135459>, 2022.
- Bradley, R., Milne, R., Bell, J., Lilly, A., Jordan, C., and Higgins, A.: A Soil Carbon and Land Use Database for the United Kingdom, *Soil Use and Management*, 21, 363–369, <https://doi.org/10.1079/SUM2005351>, 2005.
- Bürkner, P.-C.: Bayesian Item Response Modeling in R with brms and Stan, *Journal of Statistical Software*, 100, 1–54, <https://doi.org/10.18637/jss.v100.i05>, 2021.
- Chamberlain, P. M., Emmett, B. A., Scott, W. A., Black, H. I. J., Hornung, M., and Frogbrook, Z. L.: No Change in Topsoil Carbon Levels of Great Britain, 1978–2007, *Biogeosciences Discussions*, 7, 2267–2311, 2010.
- 505 Ellert, B. H. and Bettany, J. R.: Calculation of Organic Matter and Nutrients Stored in Soils under Contrasting Management Regimes, *Canadian Journal of Soil Science*, 75, 529–538, 1995.
- Emmett, B.: Countryside Survey: Soils Report from 2007. Technical Report No. 9/07. NERC/Centre for Ecology & Hydrology 192pp. (CEH Project Number: C03259)., Tech. rep., 2010.
- Gelman, A., Carlin, J. B., Stern, H. S., Dunson, D. B., Vehtari, A., and Rubin, D. B.: *Bayesian Data Analysis*, Third Edition, Chapman and Hall/CRC, Boca Raton, 3 edition edn., 2013.
- 510 Gifford, R. M. and Roderick, M. L.: Soil Carbon Stocks and Bulk Density: Spatial or Cumulative Mass Coordinates as a Basis of Expression?, *Global Change Biology*, 9, 1507–1514, 2003.
- Gitz, V. and Ciaia, P.: Future Expansion of Agriculture and Pasture Acts to Amplify Atmospheric CO₂ Levels in Response to Fossil-Fuel and Land-Use Change Emissions, *Climatic change*, 67, 161–184, 2004.
- 515 Guo, L. B. and Gifford, R. M.: Soil Carbon Stocks and Land Use Change: A Meta Analysis, *Global change biology*, 8, 345–360, 2002.
- Heming, S.: Analysis of Top and Subsoil Data from the High Speed 2 (HS2) Rail Project, AHDB Research Review No. 95, p. 31, 2021.
- Hengl, T., de Jesus, J. M., Heuvelink, G. B. M., Gonzalez, M. R., Kilibarda, M., Blagotić, A., Shangguan, W., Wright, M. N., Geng, X., Bauer-Marschallinger, B., Guevara, M. A., Vargas, R., MacMillan, R. A., Batjes, N. H., Leenaars, J. G. B., Ribeiro, E., Wheeler, I., Mantel, S., and Kempen, B.: SoilGrids250m: Global Gridded Soil Information Based on Machine Learning, *PLOS ONE*, 12, e0169748, <https://doi.org/10.1371/journal.pone.0169748>, 2017.
- 520

- Hoogsteen, M. J. J., Lantinga, E. A., Bakker, E. J., Groot, J. C. J., and Tittone, P. A.: Estimating Soil Organic Carbon through Loss on Ignition: Effects of Ignition Conditions and Structural Water Loss, *European Journal of Soil Science*, 66, 320–328, <https://doi.org/10.1111/ejss.12224>, 2015.
- Intergovernmental Panel on Climate Change (IPCC): Good Practice Guidance for Land Use, Land-Use Change and Forestry, IPCC Methodology Reports, Intergovernmental Panel on Climate Change, Kanagawa, Japan, 2003.
- Jobbágy, E. G. and Jackson, R. B.: The Vertical Distribution of Soil Organic Carbon and Its Relation to Climate and Vegetation, *Ecological Applications*, 10, 423–436, [https://doi.org/10.1890/1051-0761\(2000\)010\[0423:TVDOSO\]2.0.CO;2](https://doi.org/10.1890/1051-0761(2000)010[0423:TVDOSO]2.0.CO;2), 2000.
- Jones, S. K., Helfter, C., Anderson, M., Coyle, M., Campbell, C., Famulari, D., Di Marco, C., van Dijk, N., Topp, C. F. E., Kiese, R., Kindler, R., Siemens, J., Schrupf, M., Kaiser, K., Nemitz, E., Levy, P., Rees, R. M., Sutton, M. A., and Skiba, U. M.: The Nitrogen, Carbon and Greenhouse Gas Budget of a Grazed, Cut and Fertilised Temperate Grassland, *Biogeosciences Discuss.*, 2016, 1–55, <https://doi.org/10.5194/bg-2016-221>, 2016.
- Keith, A., Bottoms, E., Henrys, P., Oxley, J., Parmar, K., Perks, M., Rowe, R., Sohi, S., Vanguelova, E., and McNamara, N.: Ecosystem Land Use Modelling & Soil C Flux Trial (ELUM) - Chronosequence Methodology Approaches in Literature, Including Specific Recommendations for Sampling for ELUM, <https://doi.org/10.5286/UKERC.EDC.000045>, 2011.
- Kravchenko, A. N. and Robertson, G. P.: Whole-Profile Soil Carbon Stocks: The Danger of Assuming Too Much from Analyses of Too Little, *Soil Science Society of America Journal*, 75, 235, <https://doi.org/10.2136/sssaj2010.0076>, 2011.
- Lawrence, D. M., Hurtt, G. C., Arneeth, A., Brovkin, V., Calvin, K. V., Jones, A. D., Jones, C. D., Lawrence, P. J., de Noblet-Ducoudré, N., Pongratz, J., Seneviratne, S. I., and Shevliakova, E.: The Land Use Model Intercomparison Project (LUMIP) Contribution to CMIP6: Rationale and Experimental Design, *Geosci. Model Dev.*, 9, 2973–2998, <https://doi.org/10.5194/gmd-9-2973-2016>, 2016.
- Le Quééré, C., Raupach, M. R., Canadell, J. G., Marland et al., G., Le Quééré et al., C., Le Quééré et al., C., Raupach, M. R., Canadell, J. G., Marland, G., Bopp, L., Ciais, P., Conway, T. J., Doney, S. C., Feely, R. A., Foster, P., Friedlingstein, P., Gurney, K., Houghton, R. A., House, J. I., Huntingford, C., Levy, P. E., Lomas, M. R., Majkut, J., Metzl, N., Ometto, J. P., Peters, G. P., Prentice, I. C., Randerson, J. T., Running, S. W., Sarmiento, J. L., Schuster, U., Sitch, S., Takahashi, T., Viovy, N., van der Werf, G. R., and Woodward, F. I.: Trends in the Sources and Sinks of Carbon Dioxide, *Nature Geoscience*, 2, 831–836, <https://doi.org/10.1038/ngeo689>, 2009.
- Levy, P., van Oijen, M., Buys, G., and Tomlinson, S.: Estimation of Gross Land-Use Change and Its Uncertainty Using a Bayesian Data Assimilation Approach, *Biogeosciences*, 15, 1497–1513, <https://doi.org/10.5194/bg-15-1497-2018>, 2018.
- Levy, P. E., Friend, A. D., White, A., and Cannell, M. G. R.: The Influence of Land Use Change on Global-Scale Fluxes of Carbon from Terrestrial Ecosystems, *Climatic Change*, 67, 185–209, 2004.
- Milne, R. and Brown, T. A.: Carbon in the Vegetation and Soils of Great Britain, *Journal of Environmental Management*, 49, 413–433, <https://doi.org/10.1006/jema.1995.0118>, 1997.
- Nakagawa, S., Johnson, P. C. D., and Schielzeth, H.: The Coefficient of Determination R^2 and Intra-Class Correlation Coefficient from Generalized Linear Mixed-Effects Models Revisited and Expanded, *Journal of The Royal Society Interface*, 14, 20170213, <https://doi.org/10.1098/rsif.2017.0213>, 2017.
- Nayak, A. K., Rahman, M. M., Naidu, R., Dhal, B., Swain, C. K., Nayak, A. D., Tripathi, R., Shahid, M., Islam, M. R., and Pathak, H.: Current and Emerging Methodologies for Estimating Carbon Sequestration in Agricultural Soils: A Review, *Science of The Total Environment*, 665, 890–912, <https://doi.org/10.1016/j.scitotenv.2019.02.125>, 2019.
- Obermeier, W. A., Nabel, J. E. M. S., Loughran, T., Hartung, K., Bastos, A., Havermann, F., Anthoni, P., Arneeth, A., Goll, D. S., Lienert, S., Lombardozzi, D., Luyssaert, S., McGuire, P. C., Melton, J. R., Poulter, B., Sitch, S., Sullivan, M. O., Tian, H., Walker, A. P., Wiltshire,

- A. J., Zaehle, S., and Pongratz, J.: Modelled Land Use and Land Cover Change Emissions: A Spatio-Temporal Comparison of Different Approaches, *Earth System Dynamics Discussions*, pp. 1–43, <https://doi.org/10.5194/esd-2020-93>, 2021.
- 560 Ostle, N., Levy, P., Evans, C., and Smith, P.: UK Land Use and Soil Carbon Sequestration, *Land Use Policy*, 26, S274–S283, <https://doi.org/10.1016/j.landusepol.2009.08.006>, 2009.
- Poehlau, C., Don, A., Vesterdal, L., Leifeld, J., Van Wesemael, B., Schumacher, J., and Gensior, A.: Temporal Dynamics of Soil Organic Carbon after Land-Use Change in the Temperate Zone - Carbon Response Functions as a Model Approach, *Global Change Biology*, 17, 2415–2427, <https://doi.org/10.1111/j.1365-2486.2011.02408.x>, 2011.
- 565 Post, W. M. and Kwon, K. C.: Soil Carbon Sequestration and Land-Use Change: Processes and Potential, *Global change biology*, 6, 317–327, 2000.
- Reynolds, B., Chamberlain, P., Poskitt, J., Woods, C., Scott, W., Rowe, E., Robinson, D., Frogbrook, Z., Keith, A., Henrys, P., Black, H., and Emmett, B.: Countryside Survey: National “Soil Change” 1978–2007 for Topsoils in Great Britain—Acidity, Carbon, and Total Nitrogen Status, *Vadose Zone Journal*, 12, vzj2012.0114, <https://doi.org/10.2136/vzj2012.0114>, 2013.
- 570 Robinson, D., Astbury, S., Barrett, G., Burden, A., Carter, H., Emmett, B., Garbutt, A., Giampieri, C., Hall, J., Henrys, P., Hughes, S., Hunt, A., Jarvis, S., Jones, D., Keenan, P., Lebron, I., Nunez, D., Owen, A., Patel, M., Pereira, M., Seaton, F., Sharps, K., Tanna, B., Thompson, N., Williams, B., and Wood, C.: Topsoil Physico-Chemical Properties from the Glastir Monitoring and Evaluation Programme, Wales 2013-2016, 2019.
- 575 Robinson, D., Alison, J., Andrews, C., Brentegani, M., Chetiu, N., Dart, S., Emmett, B., Fitos, E., Garbutt, R., Gray, A., Henrys, P., Hunt, A., Keenan, P., Keith A.M., Koblizek, E., Lebron, I., Millani Lopes Mazzetto, J., Pallett, D., Pereira, M., Pinder, A., Rose, R., Rowe, R., Scarlett, P., Seaton, F., Smart, S., Towill, J., Wagner, M., Williams, B., and Wood, C.: Topsoil Physico-Chemical Properties from the UKCEH Countryside Survey, Great Britain, 2019, 2020.
- Schrumpf, M., Schulze, E. D., Kaiser, K., and Schumacher, J.: How Accurately Can Soil Organic Carbon Stocks and Stock Changes Be Quantified by Soil Inventories?, *Biogeosciences*, 8, 1193–1212, <https://doi.org/10.5194/bg-8-1193-2011>, 2011.
- 580 Smith, P., Chapman, S., Scott, W., Black, H., Wattenbach, M., Milne, R., Campbell, C., Lilly, A., Ostle, N., Levy, P., Lumsdon, D., Millard, P., Towers, W., Zaehle, S., and Smith, J.: Climate Change Cannot Be Entirely Responsible for Soil Carbon Loss Observed in England and Wales, 1978-2003, *Global Change Biology*, 13, 2605–2609, <https://doi.org/10.1111/j.1365-2486.2007.01458.x>, 2007.
- Smith, P., Soussana, J.-F., Angers, D., Schipper, L., Chenu, C., Rasse, D. P., Batjes, N. H., van Egmond, F., McNeill, S., Kuhnert, M., Arias-Navarro, C., Olesen, J. E., Chirinda, N., Fornara, D., Wollenberg, E., Álvaro-Fuentes, J., Sanz-Cobena, A., and Klumpp, K.: How to Measure, Report and Verify Soil Carbon Change to Realize the Potential of Soil Carbon Sequestration for Atmospheric Greenhouse Gas Removal, *Global Change Biology*, 26, 219–241, <https://doi.org/10.1111/gcb.14815>, 2020.
- 585 Soussana, J.-F., Lutfalla, S., Ehrhardt, F., Rosenstock, T., Lamanna, C., Havlík, P., Richards, M., Wollenberg, E. L., Chotte, J.-L., Torquebiau, E., Ciais, P., Smith, P., and Lal, R.: Matching Policy and Science: Rationale for the ‘4 per 1000 - Soils for Food Security and Climate’ Initiative, *Soil and Tillage Research*, 188, 3–15, <https://doi.org/10.1016/j.still.2017.12.002>, 2019.
- 590 Stan Development Team: Rstanarm: Bayesian Applied Regression Modeling via Stan., 2016.
- Thomas, A., Cosby, B. J., Henrys, P., and Emmett, B.: Patterns and Trends of Topsoil Carbon in the UK: Complex Interactions of Land Use Change, Climate and Pollution, *Science of The Total Environment*, 729, 138 330, <https://doi.org/10.1016/j.scitotenv.2020.138330>, 2020.
- Toriyama, J., Kato, T., Siregar, C. A., Siringoringo, H. H., Ohta, S., and Kiyono, Y.: Comparison of Depth- and Mass-Based Approaches for Estimating Changes in Forest Soil Carbon Stocks: A Case Study in Young Plantations and Secondary Forests in West Java, Indonesia, *Forest Ecology and Management*, 262, 1659–1667, <https://doi.org/10.1016/j.foreco.2011.07.027>, 2011.

- Wang, X., Wang, J., and Zhang, J.: Comparisons of Three Methods for Organic and Inorganic Carbon in Calcareous Soils of Northwestern China, *PLoS ONE*, 7, e44334, <https://doi.org/10.1371/journal.pone.0044334>, 2012.
- 600 Ward, S. E., Smart, S. M., Quirk, H., Tallowin, J. R. B., Mortimer, S. R., Shiel, R. S., Wilby, A., and Bardgett, R. D.: Legacy Effects of Grassland Management on Soil Carbon to Depth, *Global Change Biology*, 22, 2929–2938, <https://doi.org/10.1111/gcb.13246>, 2016.
- Wilkenskjeld, S., Kloster, S., Pongratz, J., Raddatz, T., and Reick, C. H.: Comparing the Influence of Net and Gross Anthropogenic Land-Use and Land-Cover Changes on the Carbon Cycle in the MPI-ESM, *Biogeosciences*, 11, 4817–4828, <https://doi.org/10.5194/bg-11-4817-2014>, 2014.