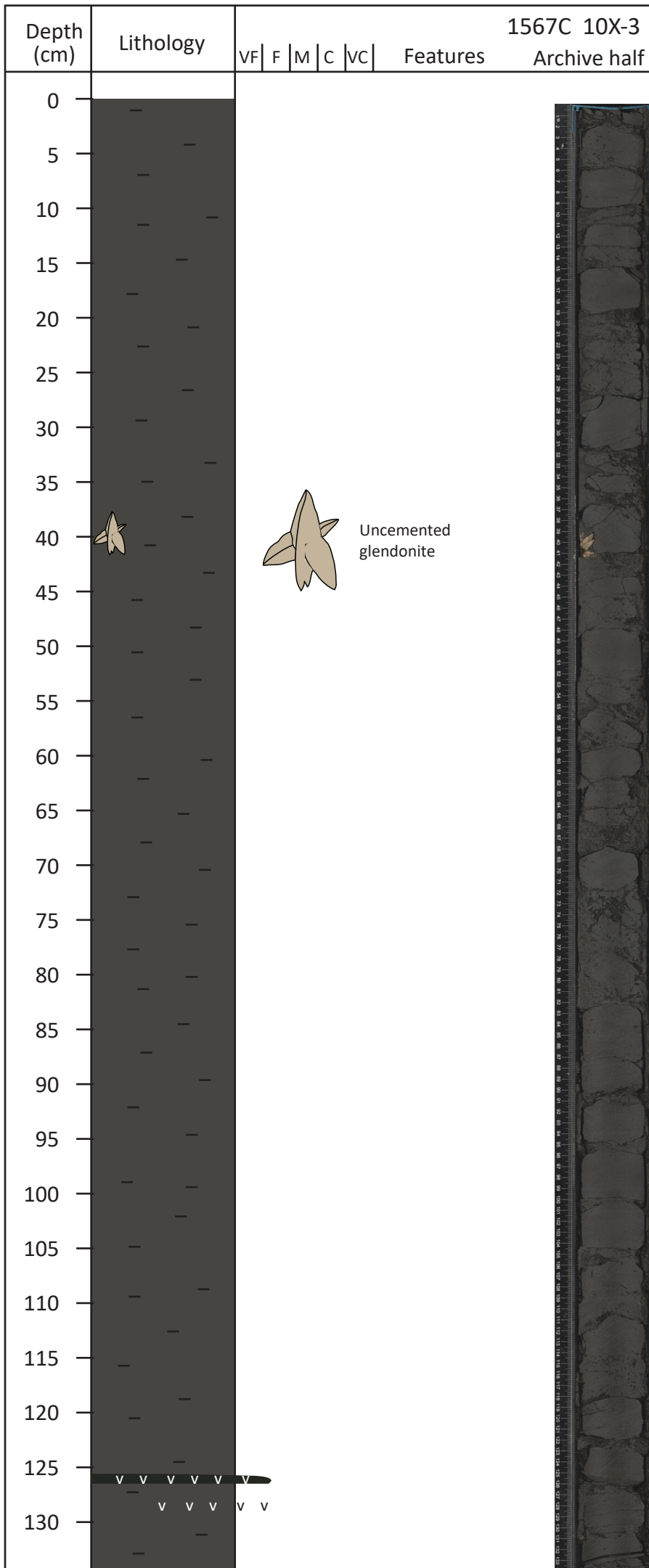



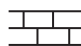




Supplementary Figures

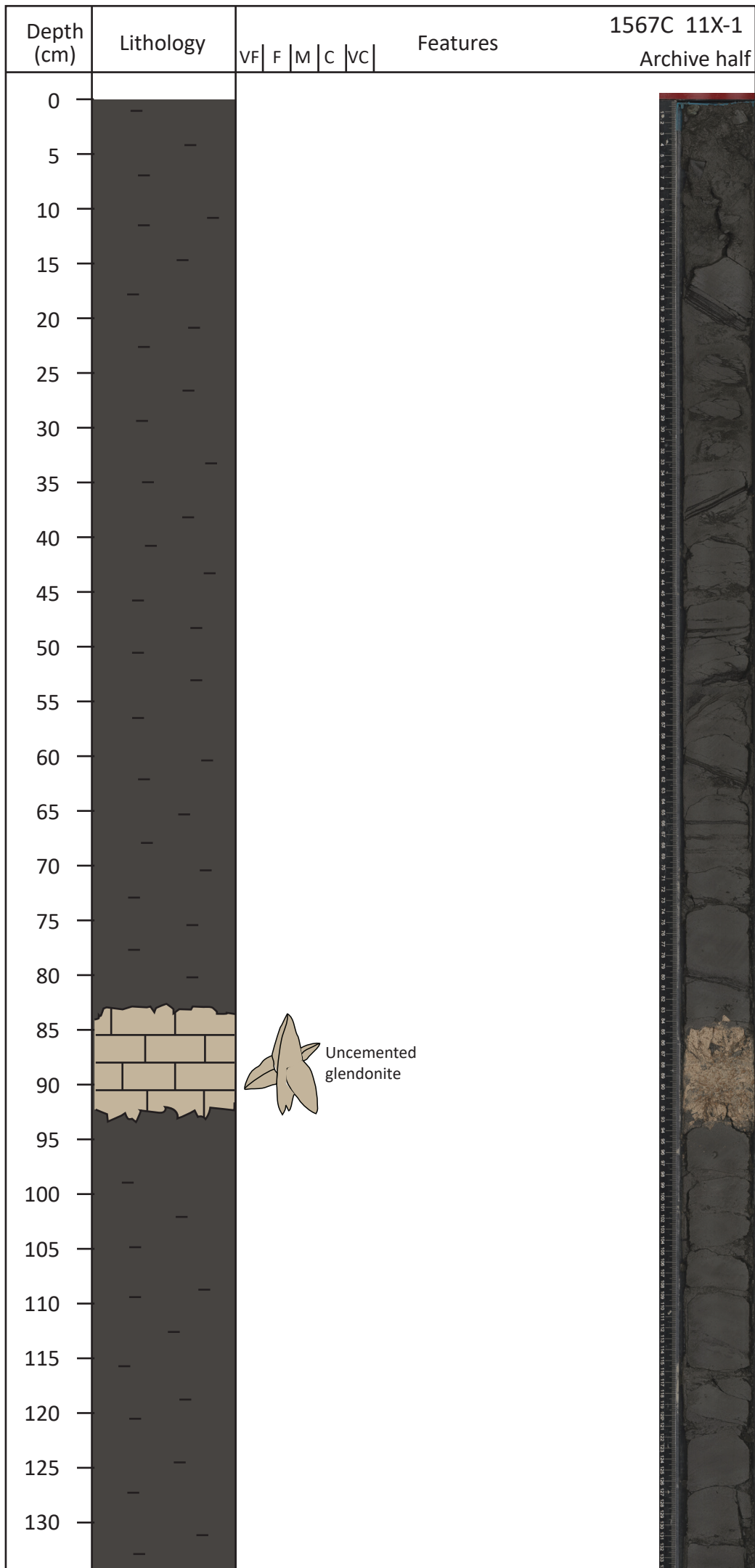


Supplementary Figure S1: High-resolution log of core section U1567C-10X-3.



KEY

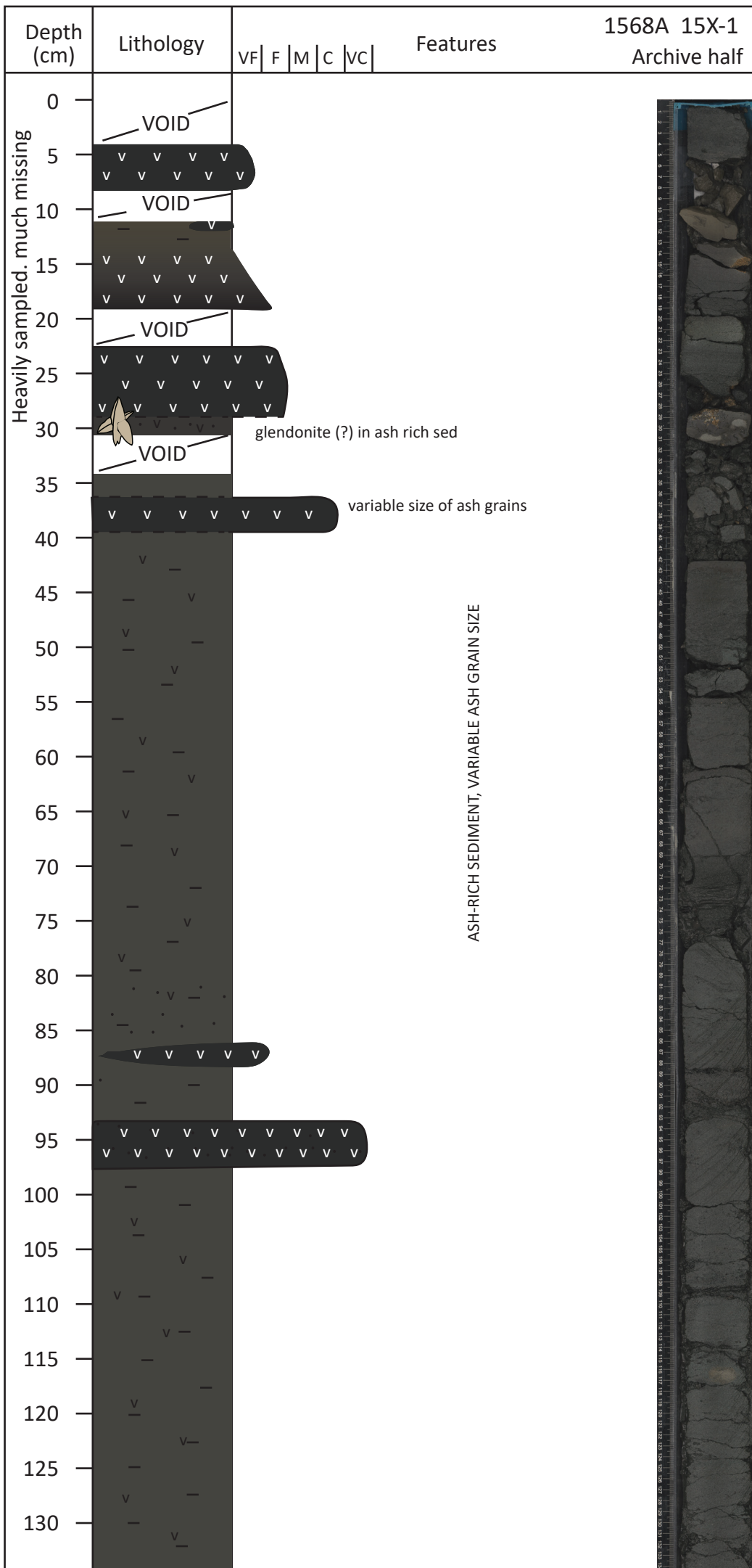
-  Glendonite
- v v v Volcanic ash
- Sand-sized ash grains
- - - Mud/clay
-  Carbonate
-  Laminations
-  Sub-laminations
-  Bioturbation
-  "Water escape structures" /stress cracks



1567C 11X-1
Archive half

Supplementary Figure S2: High-resolution log of core section U1567C-11X-1.





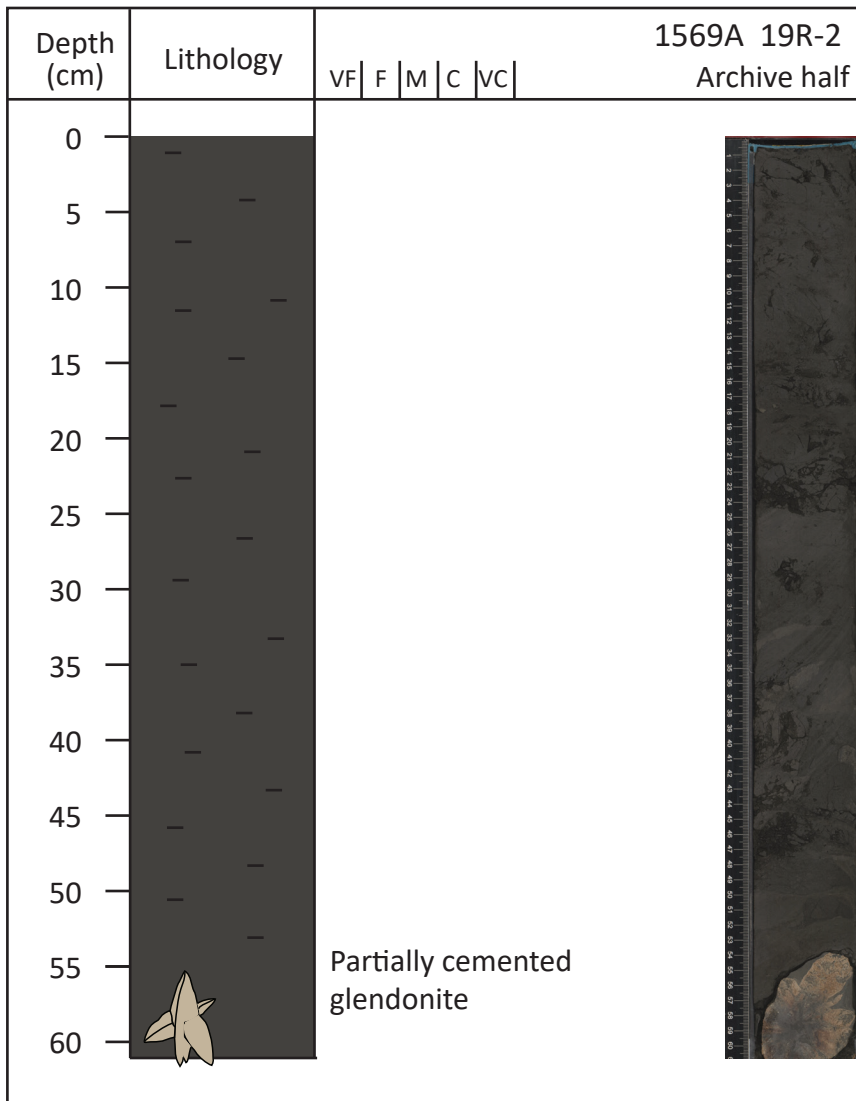
Supplementary Figure S3: High-resolution log of core section U1568A-15X-1.

Depth (cm)	Lithology	1568A 15X-4					Features	1568A 15X-4 Archive half
		VF	F	M	C	VC		
0	VOID							
5								
10	VOID							
15		v	v	v	v	v		
20								
25								
30								
35								
40								
45								
50								
55								
60								
65								
70							Lenses of brown mud, streaks of ash	
75							Ash sand in mud	
80								
85								
90								
95								
100								
105								
110								
115								
120								
125								
130								

Supplementary Figure S4: High-resolution log of core section U1568A-15X-4.

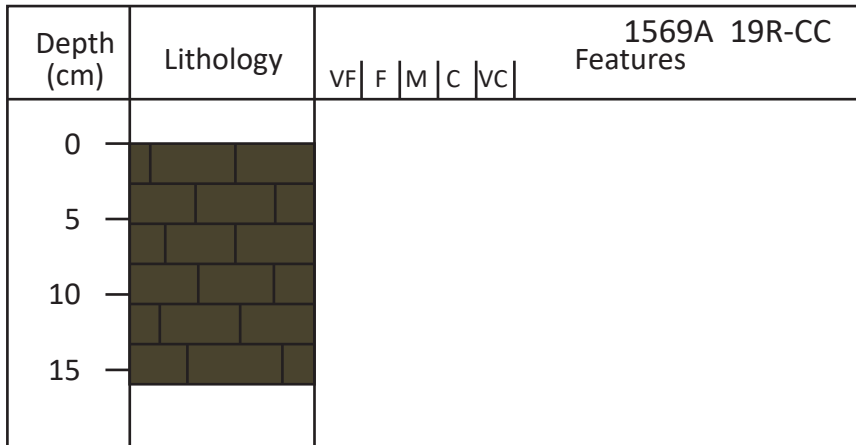


coarser ash-sand in mud
uncemented glendonites
crumbled into the ash-mud mix

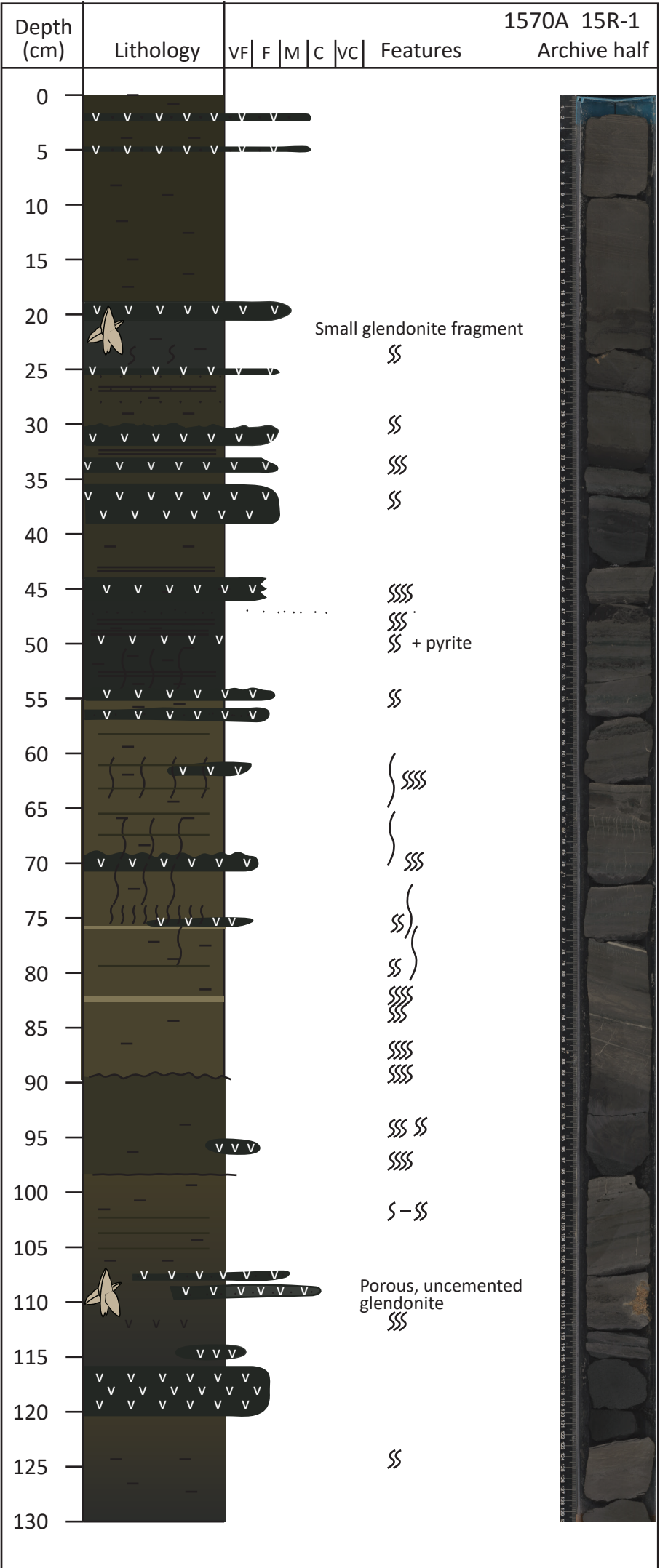


Supplementary Figure

S5: High-resolution log of core section U1569A-19R-2.



(A1) Fig. A6: High-resolution log of core section U1569A-19R-CC.



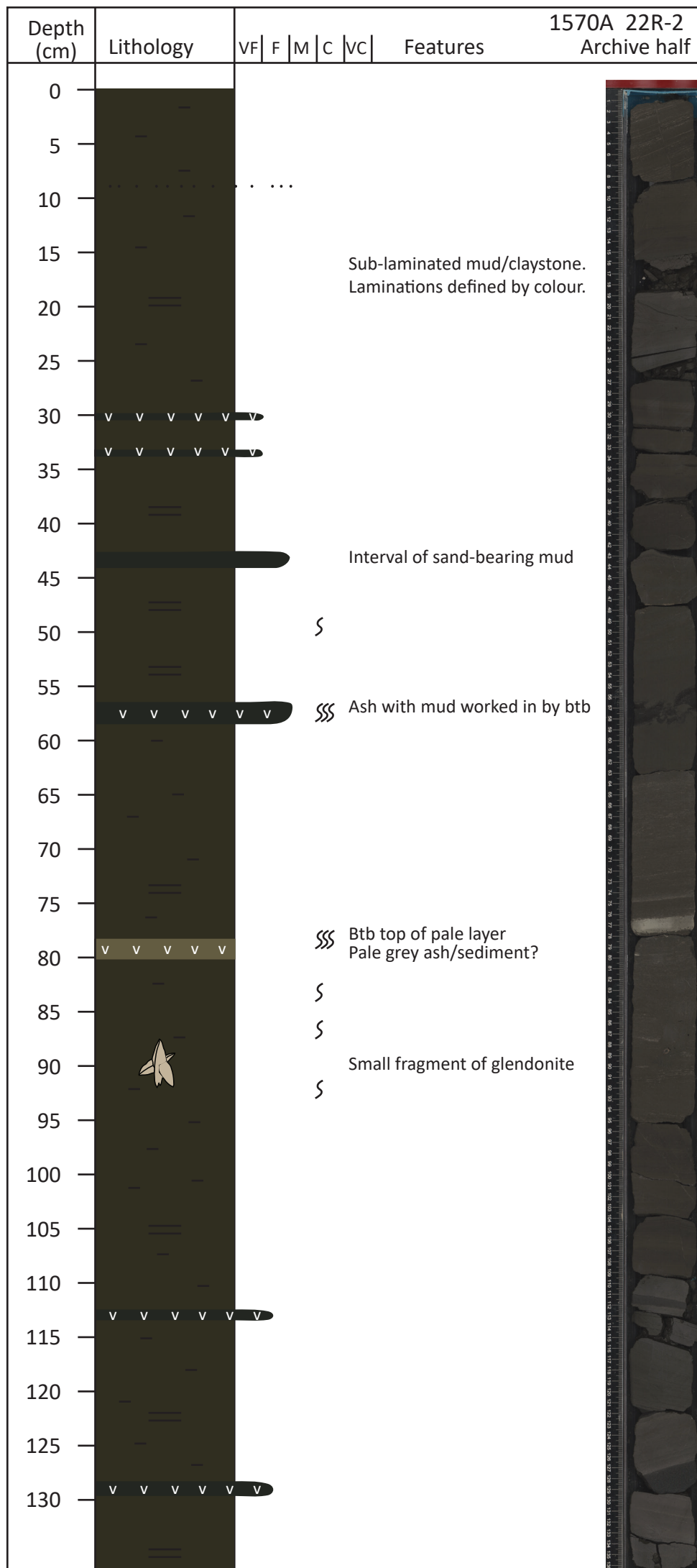
Supplementary Figure S7: High-resolution log of core section U1570A-15R-1.



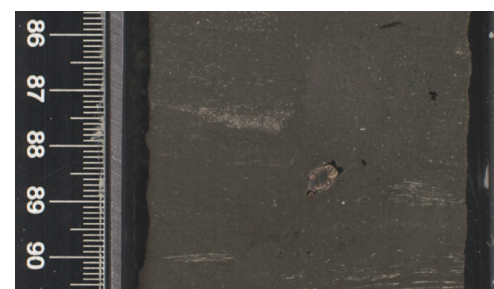
KEY

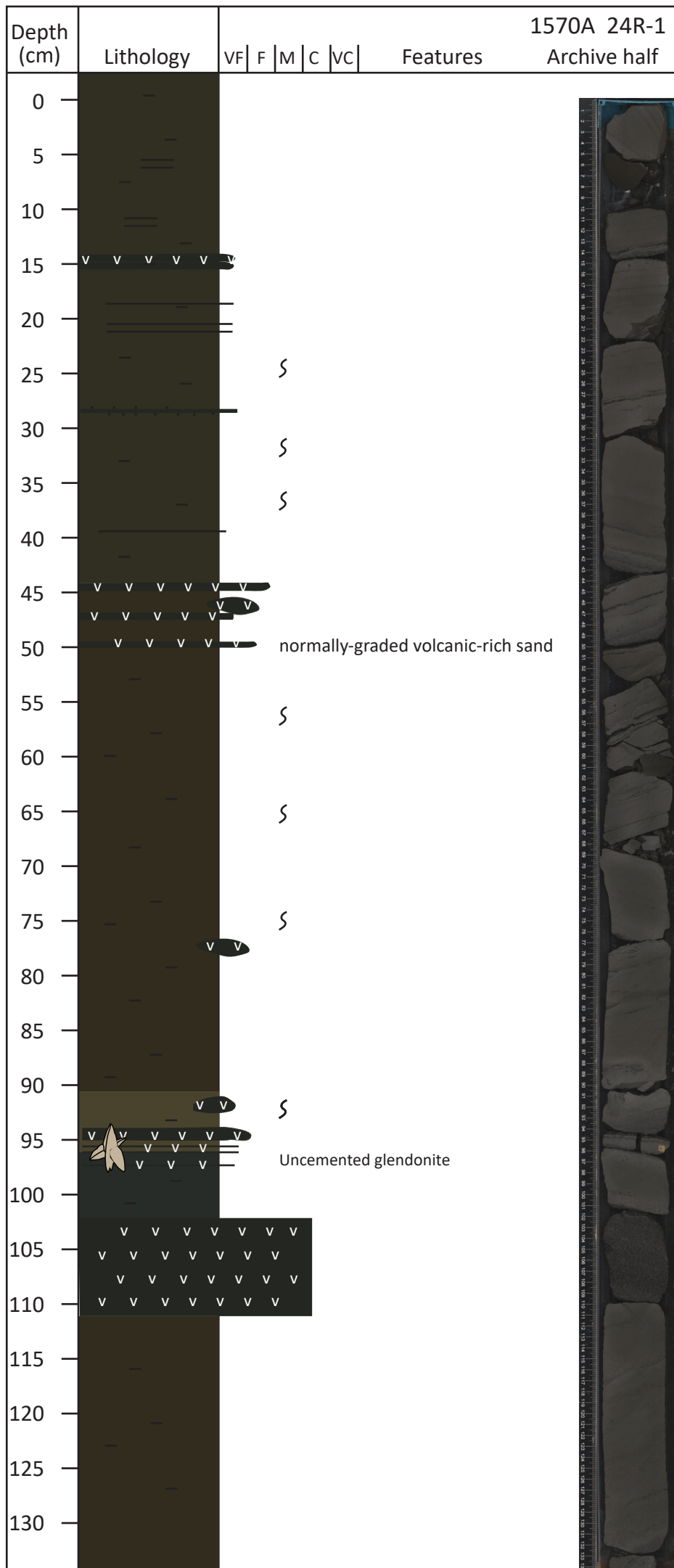
- Glendonite
- v v v Volcanic ash
- Sand-sized ash grains
- - - Mud/clay
- Carbonate
- Laminations
- Sub-laminations
- }} Bioturbation
- { "Water escape structures" / stress cracks





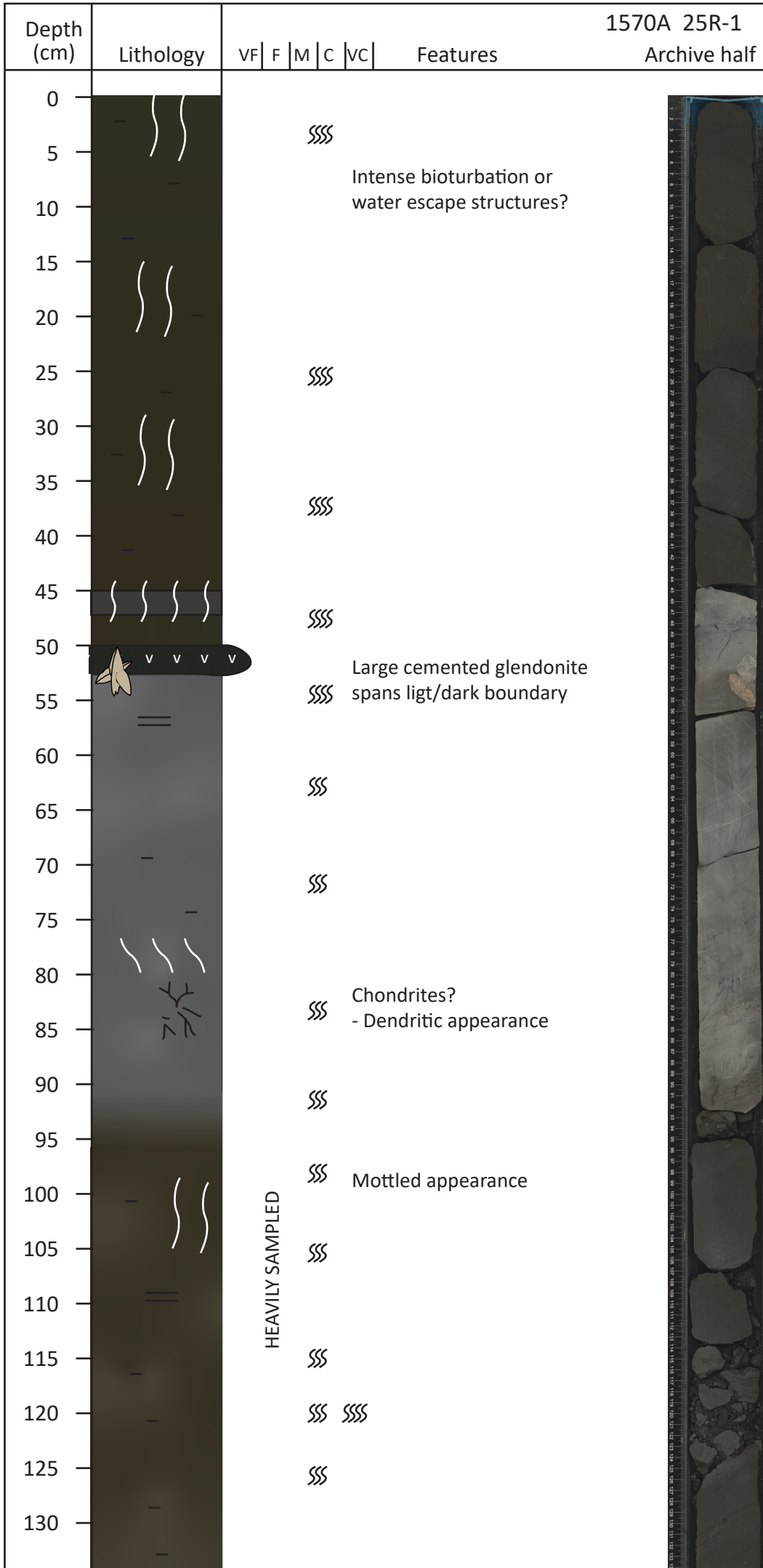
Supplementary Figure S8: High-resolution log of core section U1570A-22R-2.





Supplementary Figure S9: High-resolution log of core section U1570A-24R-1.



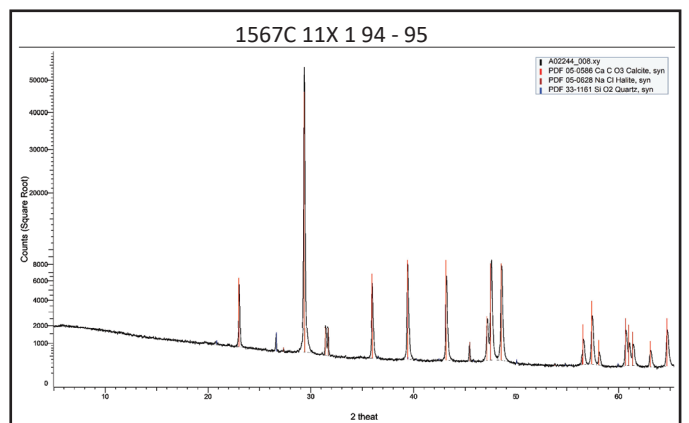
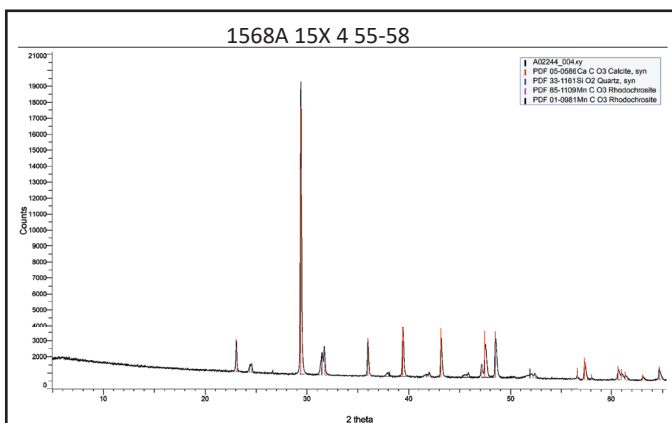
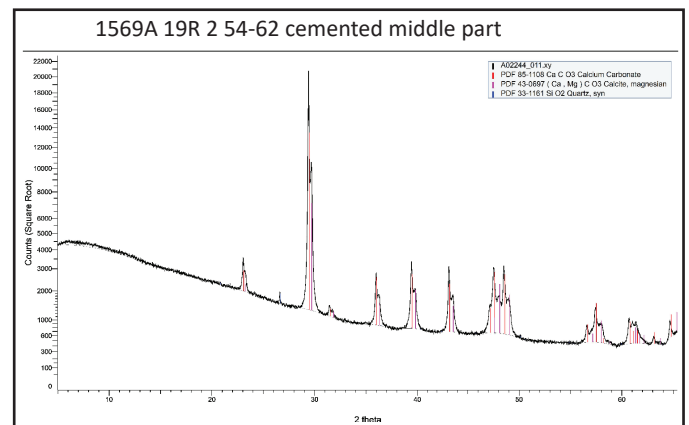
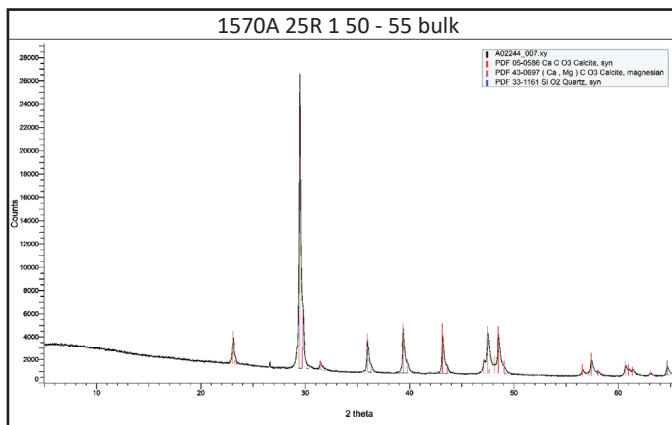
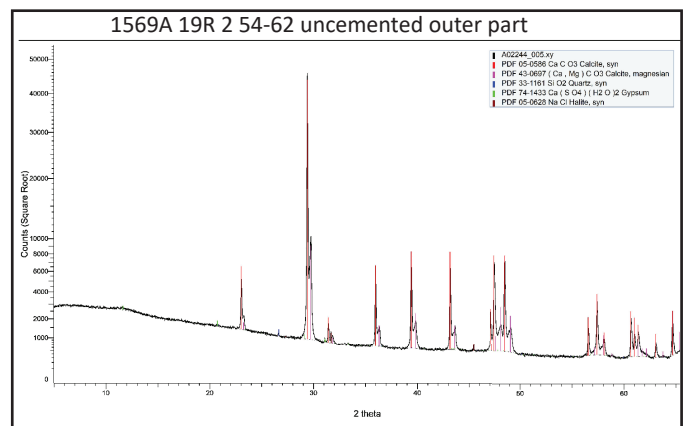
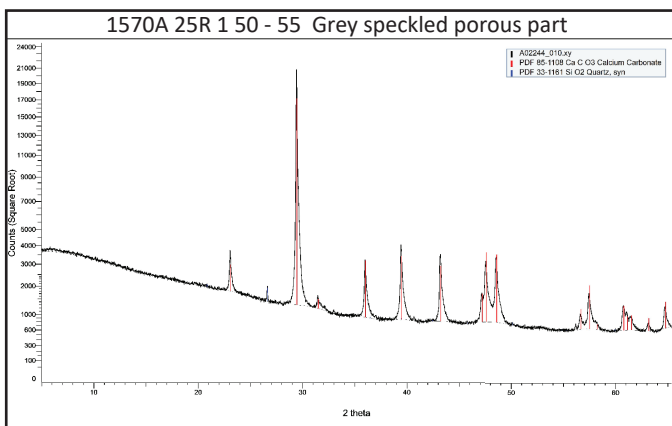
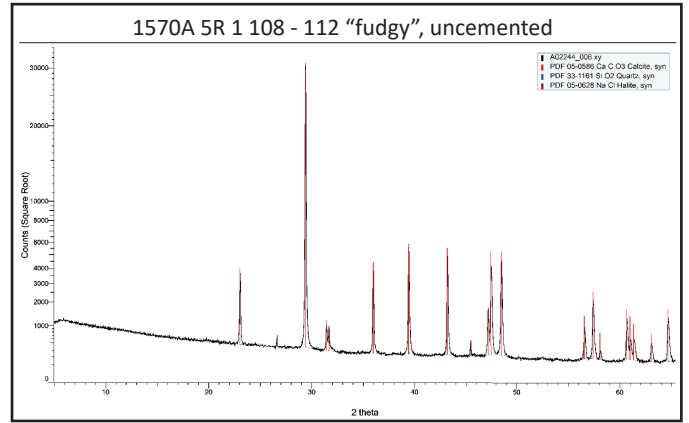
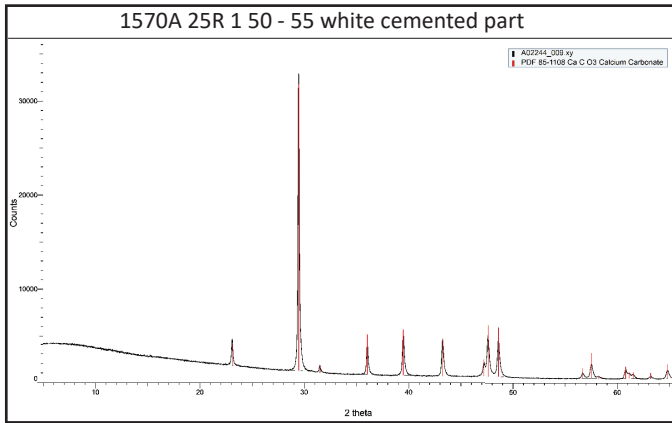


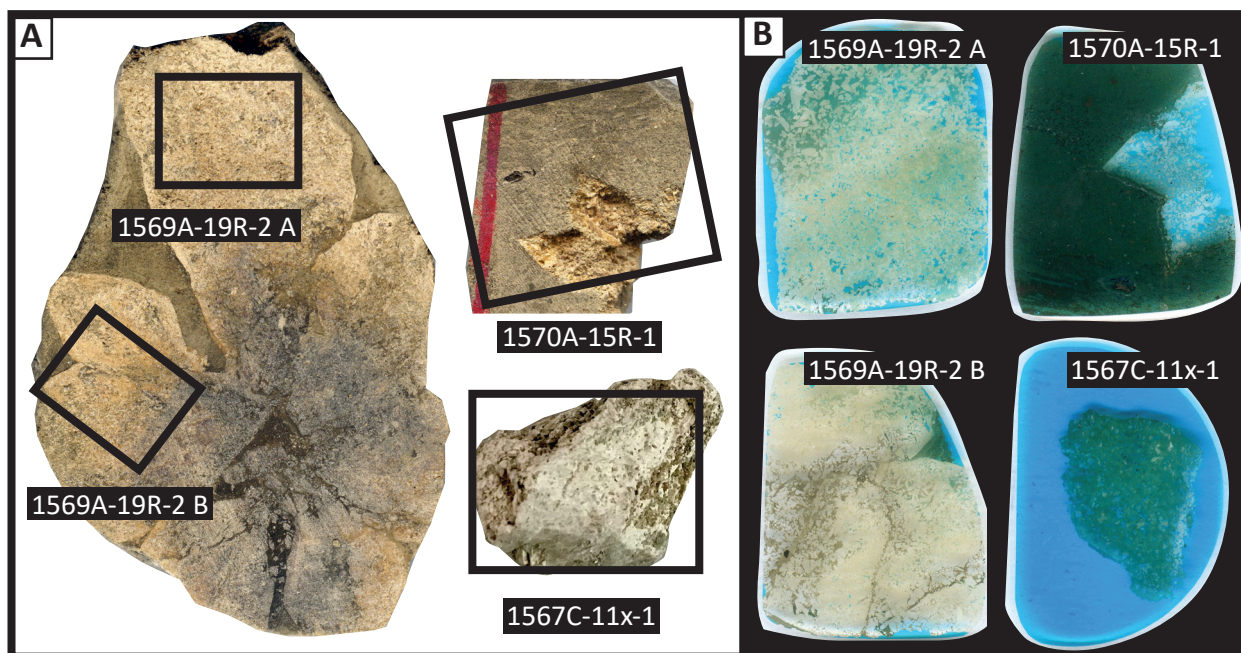
Supplementary Figure S10: High-resolution log of core section U1570A-25R-1.



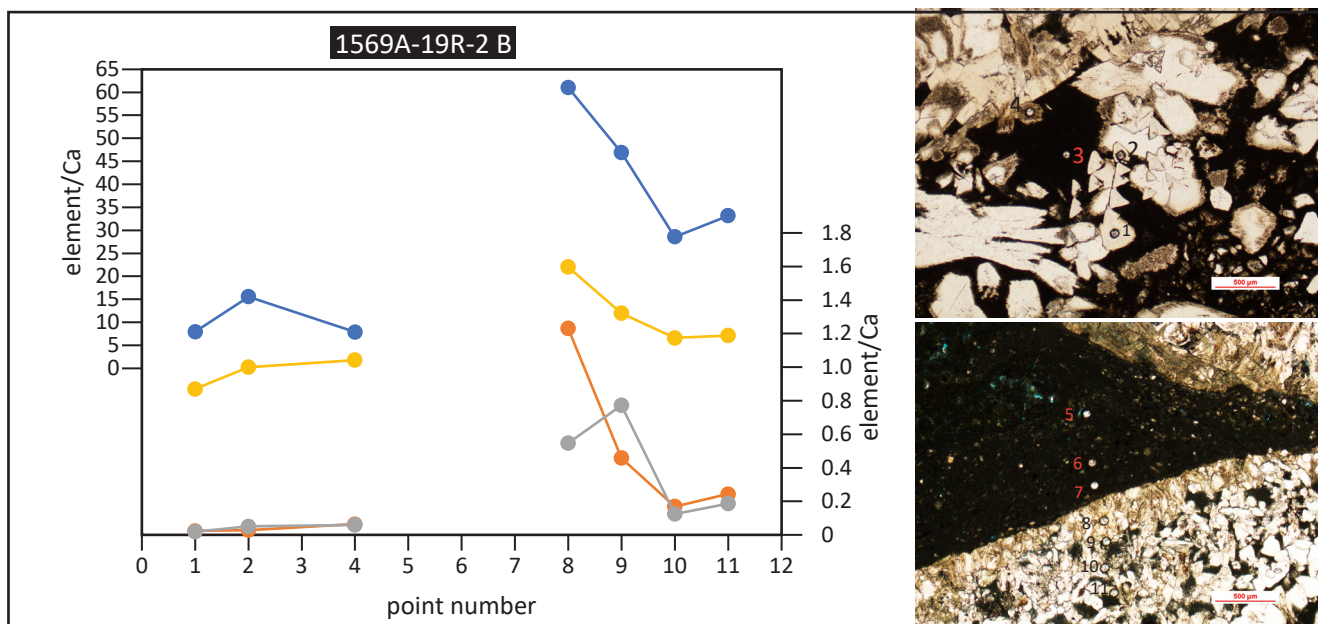
HEAVILY SAMPLED

Supplementary Figure S11: Powder X-Ray diffraction patterns for powdered bulk glendonite samples

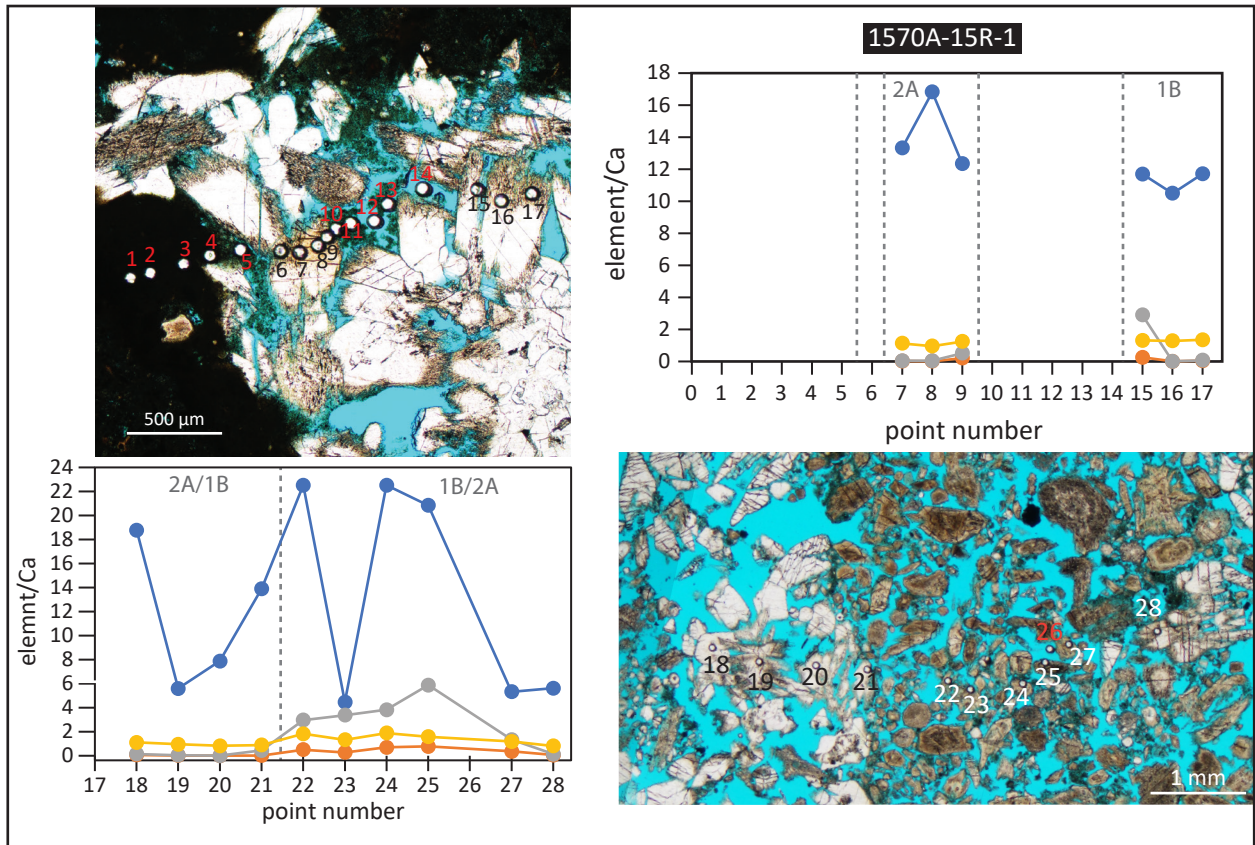




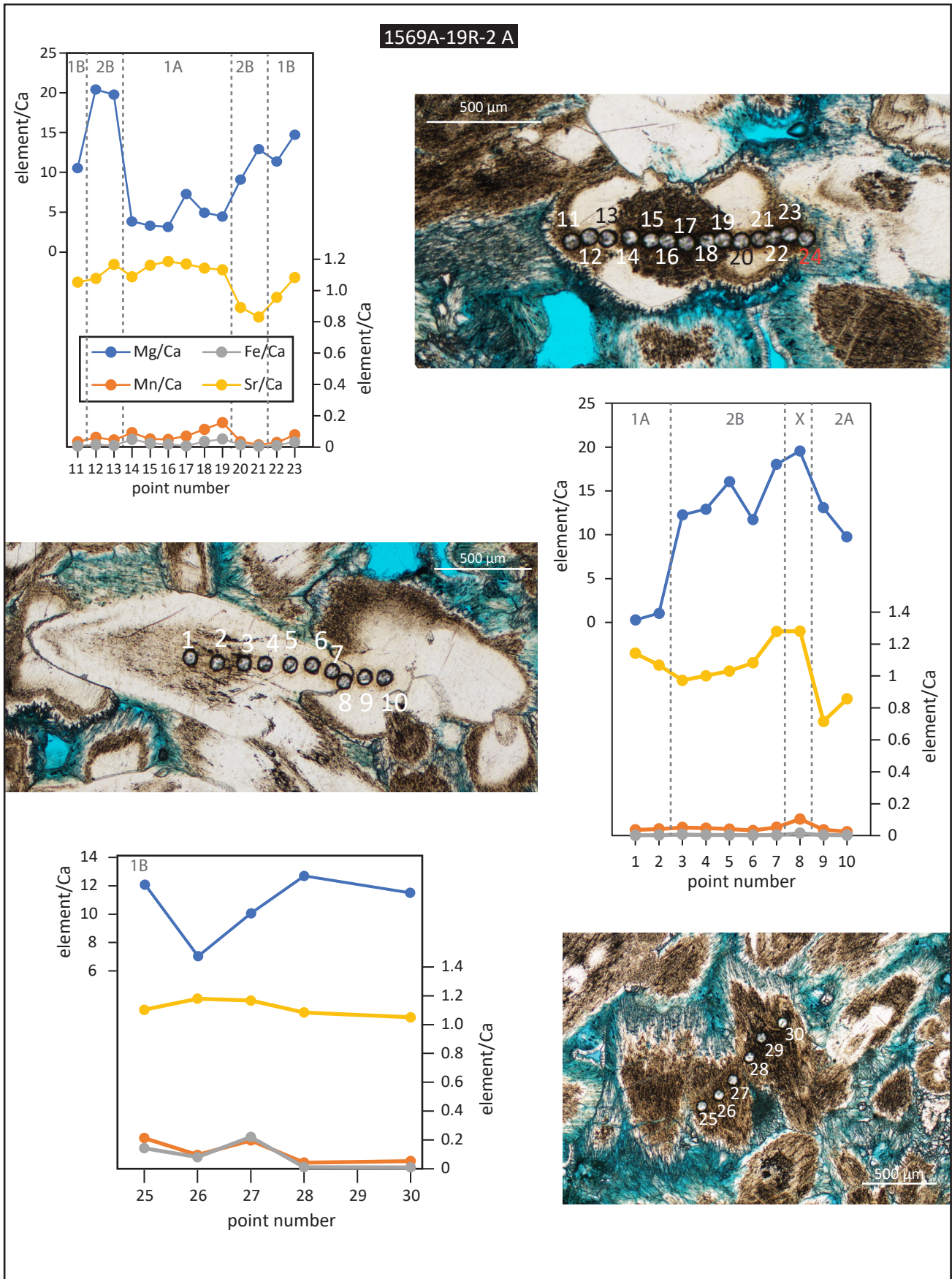
Supplementary Figure S12: (A) Overview of where thin sections were made from 3 selected glendonites. **(B)** Scans of the entire thin sections.



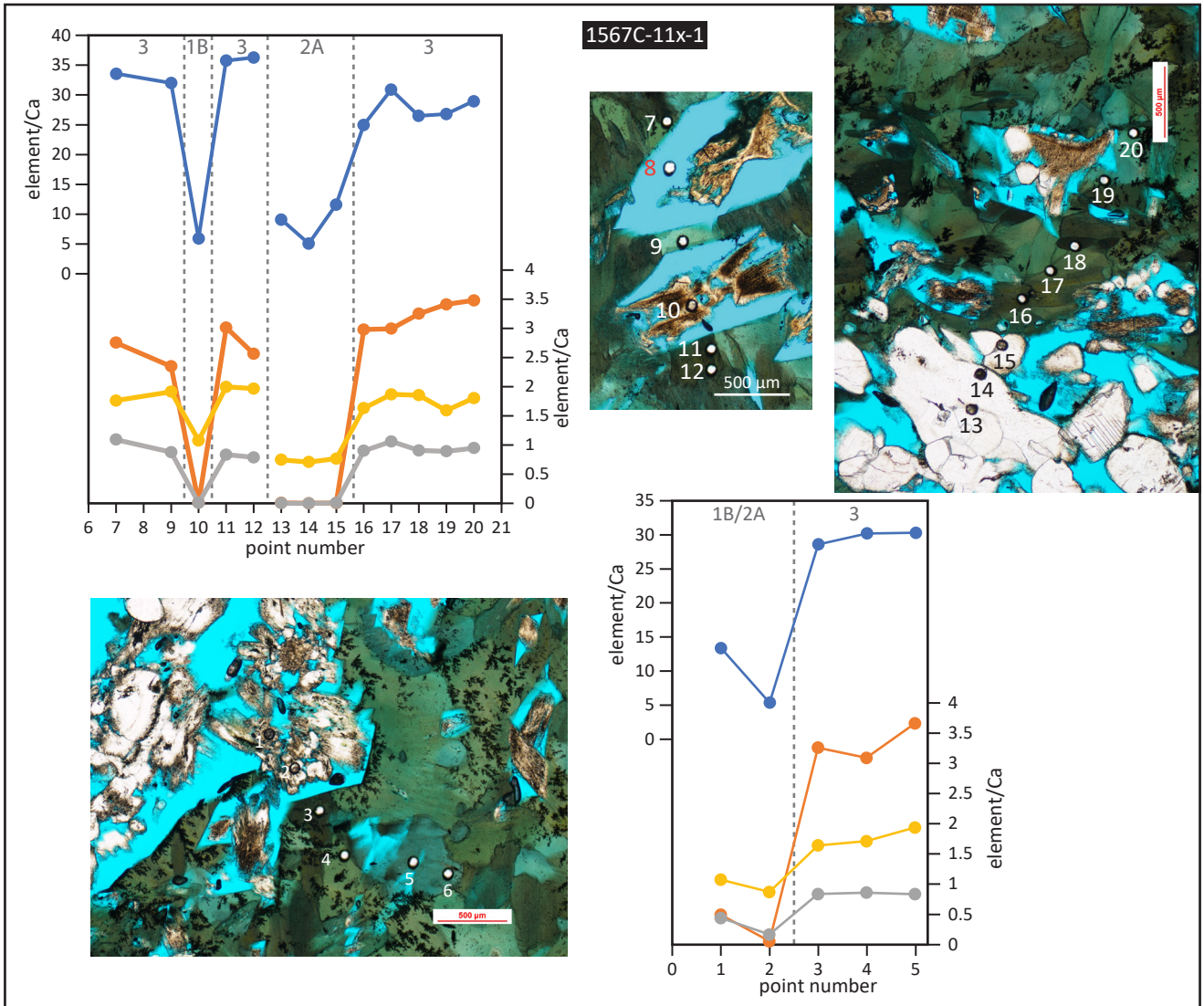
Supplementary Figure S13: (Left) Element/Ca profiles measured by LA-ICPMS across two areas of thin section B of the glendonite from U1569A-19R-2. **(Right)** Photomicrographs of the areas analysed, with labelled sample points, under plane polarised light.



Supplementary Figure S14: Element/Ca profiles measured by LA-ICPMS across two areas of thin section of the glendonite from U1570A-15R-1, shown next to photomicrographs of the sections with labelled sample points, under plane polarised light.



Supplementary Figure S15: Element/Ca profiles measured by LA-ICPMS across areas of thin section A of the glendonite from U1569A-19R-2, shown next to photomicrographs of the sections with labelled sample points, under plane polarised light.



Supplementary Figure S16: Element/Ca profiles measured by LA-ICPMS across two areas of thin section of the glendonite from U1567C-11X-1, shown next to photomicrographs of the sections with labelled sample points, under plane polarised light.