

Atmospheric CO₂ exchanges measured by Eddy Covariance over a temperate salt marsh and influence of environmental controlling factors

Jérémy Mayen^{1,2*}, Pierre Polsenaere¹, Éric Lamaud³, Marie Arnaud^{1,4}, Pierre Kostyrka^{1,5}, Jean-Marc Bonnefond³, Philippe Geairon¹, Julien Gernigon⁶, Romain Chassagne⁷, Thomas Lacoue-Labarthe⁸, Aurore Regaudie de Gioux⁵, Philippe Souchu²

¹IFREMER, Littoral, Laboratoire Environnement Ressources des Pertuis Charentais (LER/PC), BP 133, 17390, La Tremblade, France

10 ²IFREMER, Littoral, Laboratoire Environnement Ressources Morbihan-Pays de Loire (LER/MPL), BP 21105, 44311, Nantes, France

³INRAE, Bordeaux Sciences Agro, ISPA, F-33140 Villenave d'Ornon, France

⁴Institute of Ecology and Environmental Sciences Paris (iEES-Paris), Sorbonne University, Paris 75005, France

⁵IFREMER, Dyneco, Pelagos, ZI de la Pointe du Diable - CS 10070 - 29280 Plouzané, France

15 ⁶LPO, Réserve Naturelle de Lilleau des Niges, 17880, Les Portes en Ré, France

⁷BRGM, 3 avenue Claude-Guillemin, BP 36009, 45060 Orléans, Cedex 02, Orléans, France

⁸Littoral Environnement et Sociétés (LIENSs), UMR 7276, CNRS, La Rochelle Université, 2 Rue Olympe de Gouge, 17000 La Rochelle, France

Correspondence to: Jérémy Mayen (jeremy.mayen@ifremer.fr)

20

Summary. We deployed an atmospheric eddy covariance system to measured continuously the net ecosystem CO₂ exchanges (NEE) over a salt marsh and determine the major biophysical drivers. Our results showed an annual carbon sink mainly due to photosynthesis of the marsh plants. Our study also provides relevant information on NEE fluxes during marsh immersion by decreasing daytime CO₂ uptake and night-time CO₂ emissions at the daily scale whereas the immersion did not affect the annual marsh C balance.

25 **Abstract.** Within the coastal zone, salt marshes are atmospheric CO₂ sinks and represent an essential component of
biological carbon (C) stored on Earth due to a strong primary production. Significant amounts of C are processed within
these tidal systems which requires a better understanding of the temporal CO₂ flux dynamics, the metabolic processes
involved and the controlling factors. Within a temperate salt marsh (French Atlantic coast), continuous CO₂ exchange
measurements were performed by the atmospheric eddy covariance technique to assess the net ecosystem exchange (NEE) at
30 diurnal, tidal and seasonal scales and the associated relevant biophysical drivers. ~~During emersion~~ To study marsh metabolic
processes, measured NEE fluxes were partitioned into ~~net ecosystem production (NEP)~~, gross primary production (GPP) and
ecosystem respiration (R_{eco}) ~~to study marsh metabolic processes during marsh emersion allowing to estimate NEE at the
marsh-atmosphere interface (NEE_{marsh} = GPP - R_{eco})~~. Over the year 2020, the ~~measured~~ net C balance from measured NEE
was -483 g C m⁻² yr⁻¹ while GPP and R_{eco} absorbed and emitted 1019 and 533 g C m⁻² yr⁻¹, respectively. The highest CO₂
35 uptake was recorded in spring during the growing season for halophyte plants in relationships with favourable environmental
conditions for photosynthesis whereas in summer, higher temperatures and lower humidity rates increased ecosystem
respiration. At the diurnal scale, the salt marsh was a CO₂ sink during daytime, mainly driven by light, and a CO₂ source
during night-time, mainly driven by temperature, irrespective of emersion or immersion periods. However, daytime
immersion strongly affected NEE at the daily scale by reducing marsh CO₂ uptake up to 90%. During night-time immersion,
40 CO₂ emissions could be completely suppressed, even causing a change in metabolic status from source to sink under certain
situations, especially in winter when R_{eco} rates were lowest. At the annual scale, tidal ~~immersion rhythm~~ did not significantly
affect the net C balance of the studied salt marsh since similar annual values of measured NEE (with tidal immersion) and
estimated NEE_{marsh} (without tidal immersion) were recorded.

Mis en forme : Indice

Mis en forme : Indice

45 1. Introduction

Salt marshes are intertidal coastal ecosystems dominated by salt-tolerant herbaceous plants located at the terrestrial-
aquatic interface. Despite their low surface area at the global scale (54650 km²; Mcowen et al., 2017), salt marshes provide
important ecosystem services such as erosion protection (natural buffer zones), a water purification, a nursery for fisheries
(Gu et al., 2018) and a high capacity for atmospheric CO₂ uptake and carbon (C) sequestration in their organic matter (OM)
50 enriched sediments and soils (McLeod et al., 2011; Alongi, 2020). Over salt marshes, emersion at low tide and slow
immersion at high tide favour this CO₂ fixation through photosynthesis of terrestrial and aquatic vegetations and also a
strong benthic-pelagic coupling (Cai, 2011; Wang et al., 2016; Najjar et al., 2018). The high net primary production (NPP)
rate of salt marshes on the Atlantic Coast of the United States (1070 g C m⁻² yr⁻¹; Wang et al., 2016) makes marshes one of
the most productive ecosystems on Earth (Duarte et al., 2005; Gedan et al., 2009). According to Artigas et al. (2015),
55 approximately 22% of C fixed through this marsh NPP is then buried in coastal sediments as “blue C” thus allowing salt
marshes to be a large biological C pool (Chmura et al., 2003; McLeod et al., 2011). However, tidal immersion can generate

Mis en forme : Indice

strong lateral exports of organic and inorganic C to the coastal ocean (Wang et al., 2016), partly favouring atmospheric CO₂ emissions from adjacent coastal ecosystems downstream (Wang and Cai, 2004; Jiang et al., 2008). Salt marshes represent a biogeochemically active interface area within the coastal zone but are also threatened by sea level rise, erosion and global warming (Gu et al., 2018) which could significantly alter their capacity to sink and store C (Campbell et al., 2022). Thus, atmospheric CO₂ exchanges need to be accurately measured and better understood, especially the influence of biotic and abiotic controlling factors, in order to be included in regional and global C budgets (Borges et al., 2005; Cai, 2011) and to predict future marsh C sinks within the context of climate change.

In temperate salt marshes, actual and historical land and water management, plant species, tidal influence and environmental conditions have shown to play an important role in their C cycle. Generally, strong seasonal variations in the net ecosystem CO₂ exchange (NEE) were recorded with a marsh CO₂ sink during the hottest and brightest months and a CO₂ source during the rest of the year (Schäfer et al., 2014; Artigas et al., 2015). At a smaller scale, in urban salt marshes (USA), the highest CO₂ uptake occurred at midday in general whereas the system emitted CO₂ throughout the night-time, illustrating the major role of net radiations in the marsh metabolic status (Schäfer et al., 2014, 2019). Tidal immersion over salt marshes can also strongly influence both daytime and night-time NEE fluxes, especially during spring tides (Forbrich and Giblin, 2015). For instance, negative correlations between NEE and tidal effects were computed in a temperate salt marsh (USA) with *Spartina alterniflora* and *Phragmites australis*, especially in summer and winter, with negative (sink) and positive (source) NEE values during incoming and ebbing tides, respectively (Schäfer et al., 2014). Wang et al. (2006) showed a competitive advantage for the growth and productivity of *S. alterniflora* plants under a moderate level of salinity (i.e. 15‰) and immersion conditions. These different EC studies highlight the complexity of the C cycle over salt marshes and the associated biophysical factors driving CO₂ fluxes that require more *in situ* and integrative NEE measurements within and between all compartments at the different temporal scales to better understand the biogeochemical functioning of these ecosystems under changing sea-level conditions.

Within coastal wetlands such as salt marshes and tidal bays, CO₂ fluxes at ~~the sediment-atmosphere#~~ interfaces can be accurately assessed with static chambers by repeating measurements over different intertidal habitats (Xi et al., 2019; Wei et al., 2020a). Yet, a major limitation of this method is that it can hardly include the temporal and spatial CO₂ flux variability across different vegetations and habitats (Migné et al., 2004). ~~In heterogeneous intertidal systems, the eddy covariance (EC) technique can be used to measure ecosystem-scale CO₂ fluxes (NEE). Atmospheric CO₂ fluxes can also be performed in heterogeneous tidal systems using the atmospheric eddy covariance (EC) technique~~ based on the covariance between fluctuations in the vertically velocity and air CO₂ concentration (Baldocchi et al., 1988; Aubinet et al., 1999; Baldocchi, 2003). This direct and non-invasive micrometeorological technique has been of growing interest over the coastal zone to ~~obtain NEE time series assess the NEE~~ through accurate, continuous and high-frequency CO₂ flux measurements (Schäfer et al., 2014; Artigas et al., 2015; Forbrich and Giblin, 2015). This method has been deployed over blue carbon systems such as

mangroves (Rodda et al., 2016; Gnanamoorthy et al., 2020), seagrass meadows (Polsenaere et al., 2012; Van Dam et al., 2021) and salt marshes (Artigas et al., 2015; Forbrich et al., 2018; Schäfer et al., 2019) to assess their CO₂ uptake capacity. In intertidal systems like salt marshes, the major advantage of the EC method is to measure the NEE at the ecosystem scale, coming from all habitats inside the footprint, at various time scales from hours to years and at both the sediment/air and water/air interfaces (i.e. low and high tides, respectively) (Kathilankal et al., 2008; Wei et al., 2020b). Although many studies have used this method to ~~assess~~ study tidal effects on NEE fluxes over salt marshes, only a limited number have looked at the loss of CO₂ uptake due to tidal effects. Moreover, ~~NEE measured by the EC method can be partitioned into marsh metabolic fluxes (gross primary production, GPP and ecosystem respiration, R_{eco}) during emersion periods through modelling approaches~~ ~~marsh metabolic fluxes (NEE) can be partitioned through modelling approaches into net ecosystem production (NEP), gross primary production (GPP) and ecosystem respiration (R_{eco})~~ (Kowalski et al., 2003; Reichstein et al., 2005; Lasslop et al., 2010). However, use of the EC method requires significant qualitative and quantitative processing and data correction applied to each specific site since this method relies on the physical and theoretical backgrounds (Baldocchi et al., 1988; Burba, 2021) and is adapted (technically and scientifically) to the coastal systems.

Our study focused on the atmospheric CO₂ uptake capacity of a tidal salt marsh (old anthropogenic marsh) under the influence of biophysical factors and its potential role in global and regional C budgets. For this purpose, we deployed an atmospheric eddy covariance (EC) station to measure vertical CO₂ fluxes (NEE) over the year 2020 at the ecosystem scale on the Bossys perdus salt marsh on Ré Island connected to the French continental shelf of the Atlantic Ocean. Here, we aim to (a) describe NEE flux temporal series measured at different temporal scales (diurnal, tidal and seasonal scales) using the EC technique, (b) evaluate the relevant environmental factors that control atmospheric CO₂ exchanges (i.e. NEE) and (c) accurately qualify and quantify the effects of tides on the marsh CO₂ metabolism.

2. Materials and methods

2.1. Study site

The study was conducted at the Bossys perdus salt marsh situated along the French Atlantic coast on Ré Island (Fig. 1). It corresponds to a vegetated intertidal area of 52.5 ha that has been protected inside the National Natural Reserve (NNR) ~~since 1981~~ (Fig. 1). ~~Since the 17th century~~ Between the 17th and 20th centuries, the salt marsh has experienced successive periods of intensive land-use (salt harvesting, oyster farming) and returns to natural conditions before becoming a permanent part of the NNR since 1981 for the biodiversity protection without major marsh restoration work (Gernigon, personal communication). It is currently managed to restore its natural hydrodynamics while conserving the site's specific typology due to past human activities (channel networks, humps and dykes; Fig. 2) ~~(Gernigon, personal communication)~~. This salt marsh is linked to the Fier d'Ars tidal estuary that exchanges between 2.4 and 10.2 million m³ of coastal waters with the Breton Sound continental shelf allowing a maximal tidal range of 5 m in the estuary (Bel Hassen, 2001). This

Mis en forme : Expositant

Mis en forme : Expositant

communication allows to (1) drain the intertidal zone of the estuary including mudflats (slikke) and tidal salt marshes (schorre) and (2) supply coastal water to a large complex of artificial salt marshes (i.e. salt ponds) located upstream of the dyke (Fig. 1). The artificial marsh waters preserved and managed by the NNR for biodiversity protection (Mayen et al., 2023 submitted) are eventually flushed back to the estuary downstream through the Bossys perdus channel marsh (Fig. 1).

125

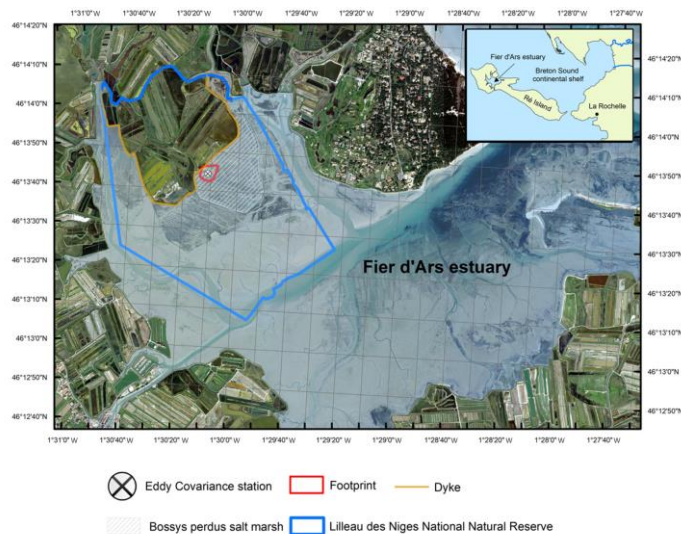


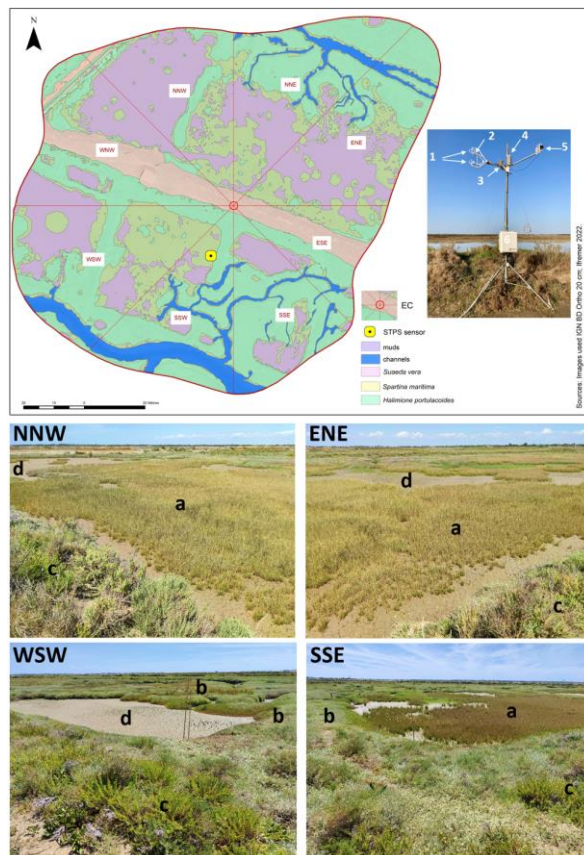
Figure 1: The studied Bossys perdus salt marsh located on the French Atlantic coast within the National Natural Reserve (blue line delimitation) on Ré Island. The salt marsh is connected to the Fier d'Ars tidal estuary (light blue). The dyke separates terrestrial and maritime marsh areas (orange line). The eddy covariance system and associated estimated footprint are indicated (black cross and red line; see Fig. 2). From geo-referenced IGN orthogonal images (IGN 2019).

130

The Bossys perdus salt marsh, located upstream of the estuary (schorre), is subjected to semi-diurnal tides from the Breton Sound continental shelf (Fig. 1) allowing the marsh immersion by two main channels differently in space, time and frequency according to the tidal periods (Fig. 2). At high tides and spring tides, advected coastal waters can completely fill channels (Fig. A.1-B) and immersge the marsh through variable water heights depending on tidal amplitudes and meteorological conditions (Fig. A.1-C). On the contrary, duringat low tides, the marsh vegetation at the benthic interface is emerged into the atmosphere without any coastal waters (Fig. A.1-A). During this time, Bossys perdus channels allow to drain upstream artificial marsh waters to the estuary (Fig. 2). The marsh vegetation assemblage was mainly composed by three halophytic species as perennial plants (*Halimione portulacoides*, *Spartina maritima* and *Suaeda vera*; Fig. 2) that

135

140 associated with different metabolic pathways (the C3-type photosynthesis for *H. portulacoides* and *S. vera* and the C4-type photosynthesis for *S. maritima*; Duarte et al., 2013, 2014). Whereas *H. portulacoides* and *S. vera* are evergreen plants throughout the year, the growing season for *S. maritima* was shorter (from spring) with a flowering period between August and October (plants persist only in the form of rhizomes in winter and fall; Gernigon, personal communication).



145 Figure 2: Location and set-up of the eddy covariance (EC) system within the Bossys perdus salt marsh and its associated footprint estimated from Kljun et al. 2015 and averaged over the year 2020 (70% countour line, i.e. 13042 m²). Wind sectors (45°) and marsh habitats (see Table 1) are represented. The canopy height of the studied marsh is short and constant over the year (0.15 m). The STPS sensor (in yellow), measuring water heights (Hw) and temperatures (Tw), was located in the SSW sector. The EC system

(Campbell Scientific) includes (1) the ultrasonic anemometer (CSAT3), (2) the open-path infrared gas analyser (EC150), (3) the temperature probe (100K6A1A Thermistor), (4) the temperature/relative humidity sensor (HMP155A), (5) the silicon quantum sensor (SKP215), (6) the central acquisition system (CR6) and the electronics module (EC100). A rainfall sensor (TE525MM, Raingauge Texas) simultaneously measured the cumulative precipitation. From geo-referenced IGN orthogonal images (IGN 2019). Pictures of four wind sectors within the studied footprint area (NNW, ENE, WSW and SSE) were taken from the EC system during an emersion period in summer 2021 when all the marsh habitats were emerged into the atmosphere: (a) *Spartina maritima*, (b) *Halimione portulacoides*, (c) *Suaeda vera* and (d) mudflat. © S. Catrin Zech.

2.2. Eddy covariance and micrometeorological measurements ~~Theory of the EC technique~~

The atmospheric eddy covariance (EC) technique allow to quantify the net CO₂ fluxes at the ecosystem-atmosphere interface through micrometeorological measurements of the vertical component of atmospheric turbulent eddies (Aubinet et al., 1999; Baldocchi, 2003; Burba, 2021). The atmosphere is characterized by horizontal air flows that include several rotating eddies of different sizes and frequencies caused by buoyancy and shear of upward and downward moving air allowing for the transport of atmospheric gas such as CO₂ (Aubinet et al., 1999; Baldocchi, 2003; Burba, 2021). Each eddy has three dimensional components including a vertical movement of the wind and each air parcel transported by eddies has its own micrometeorological characteristics (gas concentration, temperature, humidity). Thus, the eddy covariance (EC) technique can be used to measure the vertical component of these turbulent eddies to quantify the net CO₂ fluxes at the ecosystem-atmosphere interface (Burba, 2021). The averaged vertical flux of any gas (F , $\mu\text{mol m}^{-2} \text{s}^{-1}$) can be expressed as the covariance between the vertical wind speed (w , m s^{-1}), air density (ρ , kg m^{-3}) and the dry mole fraction (s) of the gas of interest as:

$$F = \overline{\rho w s} \approx \overline{\rho} \overline{w' s'} \quad (1)$$

where the overbar represents the time average of the parameter (i.e. 10 minutes in this study due to strong fluctuations at the tidal scale; [Polsenaere et al., 2012](#)) and the apostrophe indicates the instantaneous turbulent fluctuations in these parameters relative to their temporal average (Reynolds, 1883). The Reynold's decomposition was used to break the instantaneous term down into its mean and deviation (e.g. $w = \overline{w} + w'$) (Reynolds, 1883; Burba, 2021). ~~Moreover,~~ this equation (Eq. 1) is obtained by assuming, on a flat and homogeneous surface, that (1) the variation in air density is negligible, (2) there is no divergence or convergence of large-scale vertical air motion and (3) atmospheric conditions are stable and stationary (Aubinet et al., 2012). A negative flux of atmospheric CO₂ is directed towards the ecosystem, and is therefore characterized as a sink, and *vice versa* for positive fluxes qualified as sources of CO₂ to the atmosphere.

~~— Eddy covariance and micrometeorological measurements~~

An EC system was continuously deployed at the Bossys perdus salt marsh to measure the net CO₂ ecosystem exchange (NEE, $\mu\text{mol m}^{-2} \text{s}^{-1}$). The set of EC sensors (Fig. 2), at a height of 3.15 m, was composed of an open-path infrared gas analyser (model EC150, *Campbell Scientific Inc.*, Logan, UT) to measure the CO₂ (mg m^{-3}) and H₂O (g m^{-3}) concentrations

in the air as well as the atmospheric pressure (kPa) and an ultrasonic anemometer (model CSAT3, *Campbell Scientific Inc.*, Logan, UT) to measure the three-dimensional components of wind speed (U, V and W; m s^{-1}) at a frequency of 20 Hz and averaged every 10 minutes (Fig. 2). The EC150 gas analyser also measured the air temperature using a thermistor probe (model 100K6A1A Thermistor, *BetaTherm*). The EC100 electronics module (model EC100, *Campbell Scientific Inc.*) allowed to synchronize high-frequency measurements and rapid communications between the CR6 datalogger (model CR6, *Campbell Scientific Inc.*) and EC devices including EC150 and CSAT3A (Fig. 2). The CR6 datalogger is a powerful core component for the data acquisition system. Additional meteorological data such as relative humidity (RH, %), air temperature (T_a , $^{\circ}\text{C}$) and photosynthetically active radiation (PAR, $\mu\text{mol m}^{-2} \text{s}^{-1}$) were recorded every 10 minutes simultaneously and at the same height as the EC sensors, by a temperature/relative humidity sensor (HMP155A, with RAD14 natural ventilation shelter) and a silicon quantum sensor (SKP215, Skye Instruments), respectively (Fig. 2). The vapor pressure deficit (VPD, Pa) was calculated every 10 minutes from saturated vapor pressure (calculated from T_a) and from actual vapor pressure (calculated from RH). A rainfall sensor (TE525MM, Raingauge Texas), located 10 m away and connected to the EC station, simultaneously measured the cumulative precipitation at a height of 1 m (rainfall, mm). All high-frequency EC data were recorded on a SD micro-card (2 Go, *Campbell Scientific Inc.*) that was replaced every two weeks, whereas meteorological data were recorded and stored in the central acquisition system (CR6). The EC system was connected to two rechargeable batteries (AGM, 12 volts and 260 amperes per hour) powered by a monocrystalline solar panel (Victron, 24 volts, 200Wp module with MPPT 100V/30A controller). The EC sensors were checked and cleaned every two weeks and the EC150 was calibrated each season with a zero-air calibration of 0 ppm (*Campbell Scientific Inc.*) and a certificated CO_2 standard of 520 ppm (*Gasdetect*). Water height (H_w ; $\pm 0.3 \text{ m}$) and water temperature (T_w ; $\pm 0.1^{\circ}\text{C}$) and salinity (S_w) values were also measured every 10 minutes, along with EC data using a STPS probe (NKE Instrumentation) located 20 m away from the EC system (Fig. 2). The sensor was checked every two months at the laboratory to verify possible derivations in the measured parameters.

2.3. Footprint estimation and immersion/emersion marsh heterogeneity

Footprints were estimated using the model of Kljun et al. (2015) applied to data from the year 2020 to obtain an annual averaged footprint from the constant measurement height (Z_m , 3.15 m), the constant displacement height ($d = 0.1 \text{ m}$; estimated from 0.67 times the canopy height; *LI-COR Inc.*), mean wind velocities (u_{mean} , m s^{-1}), standard deviations of the lateral velocity fluctuations after rotation [σ_v , m s^{-1}], the Obukhov length (L), friction velocities (u_* , m s^{-1}) and wind directions ($^{\circ}$) obtained from the EC measurements and the EddyPro processing software (EddyPro® v7.0.8, *LI-COR Inc.*) output. For verification, we performed the footprint estimations both with variable Z_m from water height measurements and with constant Z_m from data at emersion and we obtained the same footprint shapes and extends. For all calculations (i.e. habitat coverage, relationships with CO_2 fluxes, etc.), we used the 70% footprint contour line that corresponds to an average

Mis en forme : Police :Gras

Mis en forme : Paragraphe de liste, Hiérarchisation + Niveau : 2 + Style de numérotation : 1, 2, 3, ... + Commencer à : 1 + Alignement : Gauche + Alignement : 0,63 cm + Retrait : 1,4 cm

Mis en forme : Police : (Par défaut) + Corps (Times New Roman), Gras

Mis en forme : Expositant

215 footprint of 13042 m² of our salt marsh area of interest (Fig. 2). A land-use map was also created (Fig. 2) from geo-
referenced IGN BD orthogonal images with a resolution of 20 cm (2019) using ArcGIS 10.2 (ESRI, Redlands, California,
USA). The spatial analysis tool of ArcGIS 10.2 was used to perform an unsupervised classification of the BD orthogonal
images. We checked the resulting map by selecting 20 random locations within the footprint of the studied salt marsh and
compared their land use on the ground and on the map.

220 However, in some situations based on the tide (neap tides), due to meteorology influence (wind direction, atmospheric
pressure) and the local altimetry heterogeneity, our one-location Hw measurements could not accurately account for the
whole spatial emersion and immersion of the marsh in the EC footprint (Fig. 2). At incoming tide, wWhen coastal waters
begin to fill the channel and then overflow over the marsh (from 0.5 h in spring tides to 2.5 h in neap tides; data not shown),
the SSW sector (Fig. 2) was first immersged and a non-zero Hw value was measured. However, although some marsh
sectors were immersged at the same time, others were still emerged. Indeed, lowest marsh levels (56% of the footprint area),
mainly composed of mudflats and *S. maritima* (Table 1 and Fig. 2), Mud areas (lower levels) were quickly immersged from
Hw > 0 m (south) whereas, the whole marsh immersion (muds and plants) only occurred 0.75 h later from Hw > 1.0 m at
high tide during spring tide. Thus, highest marsh levels (44% of the footprint area), mainly composed of *H. portulacoides*
and *S. vera* (Table 1 and Fig. 2), were still emerged for 0 < Hw < 1.0 m. Conversely, at neap tide, this footprint immersion
230 *versus* emersion marsh heterogeneity could still be present even at high tide due to insufficient water levels. Although, a
digital field model for water heights could not be performed in 2020 to have a better spatial representation of the
immersion/emersion footprint, all these important considerations were considered in our computations and analysis in this
study.

235 2.4. EC data processing and quality control

Raw EC data measured at high-frequency were processed following Aubinet et al. (2000) with the EddyPro software.
First, different correcting steps were applied to our raw data according to the procedures given by Vickers and Mahrt (1997)
and Polsonaere et al. (2012) for intertidal systems: (1) unit conversion to check that the units for instantaneous data are
appropriate and consistent to avoid any errors in the calculation and correction of CO₂ fluxes, (2) despiking to remove
240 outliers in the instantaneous data from the anemometer and gas analyser due to electronic and physical noise and replaced
the detected spikes with a linear interpolation of the neighbouring values, (3) amplitude resolution to identify situations in
which the signal variance is too low with respect to the instrumental resolution, (4) double coordinate rotation to align the x-
axis of the anemometer to the current mean streamlines, nullifying the vertical and cross-wind components, (5) time delay
removal by detecting discontinuities and time shifts in the signal acquisition from the anemometer and gas analyser, (6)
245 detrending with removal of short-term linear trends to suppress the impact of low-frequency air movements and (7)
performing the Webb-Pearman-Leuning (WPL) correction to take into account the effects of temperature and water vapour

250 fluctuations on the measured fluctuations in the CO₂ and H₂O densities (Burba, 2021). The turbulent fluctuations of CO₂ fluxes were calculated with EddyPro using the linear detrending method (Gash and Culf, 1996) which involves calculating deviations from around any linear trend evaluated (i.e. over the whole flux averaged period). High-frequency CO₂ fluxes were processed and averaged over intervals of 10 min. (shorter than in terrestrial ecosystems) to detect fast NEE variations with the tide at our site (Polsenaere et al., 2012; Van Dam et al., 2021). During the EC data processing by EddyPro, a correction for flux spectral losses in the low frequency range was performed according to Moncrieff et al. (2004).

255 A strict quality control was applied on EddyPro processed CO₂ flux data to remove bad data related to instrument malfunctions, processing and mathematical artefacts, ambient conditions that do not satisfy the requirements for the EC method, wind that is not from the footprint, and heavy precipitation for the open-path IRGA-conditions (Burba, 2021). Processed data were screened using tests for steady state and turbulent conditions (Foken and Wichura, 1996; Foken et al., 2004; Göckede et al., 2004). If the signal to noise ratio of the EC150 gas analyser was less than 0.7 and/or the percentage of high-frequency missing values over 10 min. exceeds 10% (i.e. data absent in the raw data file or removed through the quality screening procedures), no flux was calculated. This choice was the best compromise between removing poor-quality data and keeping as much of measured CO₂ flux data as possible (data and associated test not shown). Then, we used the method of Papale et al. (2006) to detect and remove outliers in the 10-min. flux data. The median and median absolute deviation (MAD) were calculated over a two-week window separating daytime and night-time periods. Data above 5.2×MAD were removed. After all post-processing and quality controls, 18.3% of the EC data were removed and gap-filled through a machine learning approach to obtain continuous flux data in 2020.

265 2.5. Flux gap filling and statistic tools

270 The Rrandom Fforest (RF) model was used-calculated to gap-fill our EC dataset. Random forest is a supervised machine learning technique proposed by Breiman (2001) that can model a non-linear relationship with no assumption about the underlying distribution of the data population. This method has been shown to be particularly suited to gap-fill EC data (Kim et al., 2020; Cui et al., 2021). Random forest builds multiple decision trees, each of which are based on a bootstrap aggregated data sample (i.e. bagging of the EC data) and a random subset of predictors (i.e. the selected environmental data; Table A.1). The We build RFRandom-forest models-was-built with environmental predictors that have been identified in the literature to control CO₂ fluxes in salt marshes and which were available during the gaps (PAR, air temperature, water level height and relative humidity) and with measurements recorded between 2019 and 2020 (Table A.1). Each random forest model was built from a trained bagging ensemble of 400 randomly generated decision trees (Kim et al., 2020) with the “randomForest” package in the R software (Liaw and Wiener, 2002). In this study, we used the RF2 model with PAR, air temperature, water height and relative humidity as environmental predictors because its performance indicators showed a high Pearson coefficient ($R^2 = 0.88$) and low values of root mean square error (RMSE = 1.27) and model bias (0.0024)

280 ~~allowing to correctly gap-fill a large EC data (Table A.1). The calculated uncertainty of the RF2 model on the resulting~~
~~annual C budget was 0.43%.~~ Each tree was trained from bagged samples including 70% of the initial dataset. The remaining
30% of the data were used to estimate the fit of each random forest model. The model used was then able to explain 88% of
the variability in the test data. Daytime data were better explained than night-time ones (59% vs. 38%), with light being the
main parameter of the model. ~~However, only 20% of the night-time EC data were gap-filled with the Random Forest model.~~
Using a partial dependence analysis and an ondelette analysis, we concluded that the relationships and temporal dynamics
285 modelled ~~allowed to correctly were sufficiently consistent to~~ fill the gaps in our dataset. ~~However, extreme values of some~~
~~predictors (i.e. PAR > 1000 $\mu\text{mol m}^{-2} \text{s}^{-1}$) can reduce the random Forest model performance for estimation of EC data.~~
~~However, the model reduced the influence of certain variables on CO₂ flux during high PAR levels ($> 1000 \mu\text{mol m}^{-2} \text{s}^{-1}$).~~
This observation is common for random forest models, as they show poor results for extreme values. Other models such as
artificial neural networks were also tested but showed poorer results (Table A.1).

290 For all measured variables, the high-frequency data (i.e. 10 min.) did not follow a normal distribution (Shapiro-Wilk
tests, $p < 0.05$). Non-parametric comparison ~~s-tests~~ such as the Mann-Whitney and Kruskal-Wallis ~~tests~~ were carried out with
a 0.05 level of significance. To assess the influence of meteorological and hydrological drivers on NEE fluxes at different
temporal scales, we performed a pairwise Spearman's correlation analysis on the 10-min. values and monthly mean values
(“cor function” in R).

295 2.6. Temporal analysis of NEE fluxes and partitioning

Over the year 2020, temporal variations in NEE fluxes were studied at the seasonal and diurnal/tidal scales. Seasons
were defined based on calendar dates: the winter period from 01/01/2020 to 19/03/2020 and from 21/12/2020 to 31/12/2020,
the spring period from 20/03/2020 to 19/06/2020, the summer period from 20/06/2020 to 21/09/2020 and the fall period
300 from 22/09/2020 to 20/12/2020. Daytime and night-time were separated into $\text{PAR} > 10$ and $\text{PAR} \leq 10 \mu\text{mol m}^{-2} \text{s}^{-1}$,
respectively, ~~and for the metabolic~~ For the NEE flux analysis according to environmental drivers, NEE fluxes were grouped
into five PAR groups ~~were chosen~~ ($0 < \text{PAR} \leq 10$, $10 < \text{PAR} \leq 500$, $500 < \text{PAR} \leq 1000$, $1000 < \text{PAR} \leq 1500$ and $1500 <$
 $\text{PAR} \leq 2000 \mu\text{mol m}^{-2} \text{s}^{-1}$) to reduce NEE fluctuations due to PAR variations. Water heights (Hw) measured at one location
over the marsh (Fig. 2) relative to the mean sea level were used to distinguish emersion (Hw = 0 m at low tide) and
immersion (Hw > 0 m at high tide) ~~periods (see 2.3 section)-situations~~ and thus, the influence of tides on NEE fluxes.
305 ~~However, in some situations based on the tide (neap tides), due to meteorology influence (wind direction, atmospheric~~
~~pressure) and the local altimetry heterogeneity, our one location Hw measurements could not accurately account for the~~
~~whole spatial emersion and immersion of the marsh in the EC footprint. When coastal waters begin to fill the channel and~~
~~then overflow over the marsh (from 0.5 h in spring tides to 2.5 h in neap tides; data not shown), the SSW sector (Fig. 2) was~~

Mis en forme : Anglais (Royaume-Uni)

~~English Title: Marsh metabolism related to photosynthesis and respiration processes, NEE fluxes (i.e. net vertical CO2 exchanges measured by EC) were partitioned into gross primary production (GPP) and ecosystem respiration (R_{eco}), respectively. The net ecosystem production (NEP), calculated as the difference between GPP and R_{eco} (Eq. 2), allows to describe the ability of an ecosystem to consume CO2 and to produce OM (Gattuso et al., 1998). During marsh emersion, NEE fluxes occur at the marsh soil-atmosphere interface involving only benthic metabolism-NEP (or marsh metabolism-NEP) resulting in NEE = GPP - R_{eco}-NEP. During marsh immersion, NEE fluxes are the result of benthic metabolism-NEP, planktonic metabolism-NEP and lateral C exchanges by tides thereby making it more difficult to study the marsh metabolism (Polsenaere et al., 2012). Negatives NEE-and-NEP values indicated a CO2 uptake by the marsh and positives values indicated a CO2 source into the atmosphere. GPP was expressed in negative values and R_{eco} was expressed in positive values. In this study, NEE flux partitioning into marsh metabolic fluxes (NEE_{marsh}) was performed according to the following equation Eq. (2) using the model of Kowalski et al. (2003):~~

To study ~~marsh ecosystem~~ metabolism related to photosynthesis and respiration processes, NEE fluxes (i.e. net vertical CO₂ exchanges measured by EC) were partitioned into gross primary production (GPP) and ecosystem respiration (R_{eco}), respectively. ~~The net ecosystem production (NEP), calculated as the difference between GPP and R_{eco} (Eq. 2), allows to describe the ability of an ecosystem to consume CO₂ and to produce OM (Gattuso et al., 1998).~~ During marsh emersion, NEE fluxes occur at the ~~marsh soil-atmosphere~~ interface involving only benthic ~~metabolism-NEP~~ (or marsh ~~metabolism-NEP~~) resulting in NEE = GPP - R_{eco}-NEP. During marsh immersion, NEE fluxes are the result of benthic ~~NEP-metabolism~~, planktonic ~~metabolism-NEP~~ and lateral C exchanges by tides thereby making it more difficult to study the marsh metabolism (Polsenaere et al., 2012). Negatives NEE-and-NEP values indicated a CO₂ uptake by the marsh and positives values indicated a CO₂ source into the atmosphere. GPP was expressed in negative values and R_{eco} was expressed in positive values. In this

study, ~~NEE flux partitioning into marsh metabolic fluxes (NEE_{marsh}) was performed according to the following equation Eq. (2) using the model of Kowalski et al. (2003):~~

$$NEE_{\text{marsh}} = GPP - R_{\text{eco}} = \frac{a_1 PAR}{a_2 + PAR} - R_{\text{eco}} \quad (2)$$

where a₁ is the maximal photosynthetic CO₂ uptake at light saturation (μmol CO₂ m⁻² s⁻¹) and a₂ is the PAR at half of the maximal photosynthetic CO₂ uptake (μmol photon m⁻² s⁻¹). The a₁/a₂ ratio corresponds to photosynthetic efficiency (Kowalski et al., 2003). R_{eco} was calculated as follows (Eq. 3) according to Wei et al. (2020b):

$$R_{\text{eco}} = R_0 \exp(bTa) \quad (3)$$

where R_{eco} is the night-time ecosystem respiration (μmol CO₂ m⁻² s⁻¹), R₀ is the ecosystem respiration rate at 0°C (μmol CO₂ m⁻² s⁻¹), Ta is the ~~measured~~ air temperature (°C) and b is a response coefficient of the temperature variation (Wei et al., 2020b).

~~For NEE flux partitioning, estimations of the GPP coefficients (a₁ and a₂; Eq. 2) and R_{eco} coefficients (R₀ and b; Eq. 3) were performed by the least square method ("minpack.lm" package in R) at the monthly scale only during emersion periods where measured NEE fluxes correspond to estimated NEE_{marsh} fluxes. All parameters used for NEE flux partitioning (a₁, a₂, R₀ and b; Eqs. 2 and 3) were estimated by the least square method ("minpack.lm" package in R) only during emersion periods at the monthly scale to better take into account the temporal variability of the coefficients. Firstly, for each month, R₀ and b were estimated during night-time emersion periods where NEE = fluxes correspond to R_{eco} following Eq. (3) fluxes (Wei et al., 2020b). Then, a₁ and a₂ were estimated during daytime emersion periods using night-time respiration coefficients (R₀ and b) where NEE = GPP - R_{eco} fluxes correspond to NEP fluxes following Eq. (2) and Eq. (3) (Kowalski et al., 2003). Finally, NEE_{marsh} fluxes (marsh metabolic fluxes without tidal influence) were calculated for each PAR and Ta value measured at a 10-min. frequency over the throughout the year using the monthly coefficients parameters calculated for the partitioning (Eq. 2). As our ecosystem had a low phenological variation (Table A.2+), we concluded that a monthly time step for the coefficient estimation was sufficient to answer our study objectives. During emersion periods, monthly net C balances (i.e. budgets) of measured NEE and estimated~~

Mis en forme : Indice

Mis en forme : Indice

Mis en forme : Anglais (Royaume-Uni)

Mis en forme : Anglais (Royaume-Uni)

Code de champ modifié

Mis en forme : Indice

NEE_{marsh} were very similar as well as the monthly mean fluxes (Table A.32), confirming the correct NEE flux partitioning calculations done in this study.

345 3. Results

3.1. Habitat covering of the footprint

Within the EC footprint, halophile marsh vegetation (66%) composed of *Halimione portulacoides*, *Spartina maritima* and *Suaeda vera* mainly dominated when muds and channels only accounted for 27 and 7%, respectively (Fig. 2). The area occupied by *S. vera*, crossing the EC footprint from WNW to ESE (Table 1), corresponded to the highest marsh area that was partly immersed only during the highest tidal amplitudes (Fig. 2). *H. portulacoides* and *S. maritima* occupied in majority the NNE (70%), SSE (69%), WSW (68%) and SSW (67%) wind sectors. On the contrary, mud habitats mostly covered the NNW sector, where the lowest vegetation cover was found (Table 1 and Fig. 2). The highest channel area was found in the SSW sector (Table 1 and Fig. 2).

355 3.2. Seasonal variations of environmental conditions and NEE fluxes

Over the year 2020, the full seasonal range in solar radiation was measured (Fig. 3-A) with an increase in daytime PAR from winter (lowest light season) to summer (brightest season). A similar seasonal pattern was recorded for air temperatures (Fig. 3-B) with Ta values ranging from 1.5°C in winter (coldest season) to 33.6°C in summer (warmest season). On average, the winter and fall seasons were the wettest (RH > 82%), associated with the lowest vapor pressure deficit (VPD) values whereas spring and summer were the driest ones (RH < 75%), associated with the highest VPD values (Fig. 3-B). Indeed, the highest and lowest cumulative rainfalls were recorded in fall (342 mm) and summer (62 mm), respectively. The highest mean seasonal wind speed was measured in winter ($4.9 \pm 2.3 \text{ m s}^{-1}$) with maximal speeds up to 13 m s^{-1} (Fig. 3-C). Winds came in majority from the SSW-WSW sectors both in winter (55%) and summer (41%) and from the NNE-ENE sectors both in spring (51%) and fall (31%) (Fig. 2). Tidal activities reflected the typical hydrological conditions of the Atlantic coasts with a bi-weekly succession of spring tides and neap tides (Fig. 3-D). Water heights (Hw) strongly varied according to tidal amplitudes with a maximal Hw of 1.4 m during neap tides and 2.0 m during spring tides (overall annual mean of $0.6 \pm 0.4 \text{ m}$; Fig. 3-D). At the annual scale, 25.5% of the EC data were measured when the salt marsh was immersed through variable immersion durations and water heights (Table 2). On average, the daily immersion durations ranged between 5.7 h d^{-1} in winter (23.7% of the EC data) and 6.5 h d^{-1} in fall (28% of the EC data). In winter, the EC data during immersion were split into 19% for $0 < \text{Hw} < 1 \text{ m}$ and 4.7% for $1 < \text{Hw} < 2 \text{ m}$ whereas in fall, these latter were split into 20% for $0 < \text{Hw} < 1 \text{ m}$ and 8% for $1 < \text{Hw} < 2 \text{ m}$. In summer, the lowest marsh immersion was measured with no Hw value higher than 1.5 m (Table 2).

The annual mean NEE value was $-1.27 \pm 3.48 \mu\text{mol m}^{-2} \text{s}^{-1}$ with strong temporal variabilities recorded over both long and short timescales (Fig. 3-E). Significant NEE variations were highlighted between each studied season (Kruskal-Wallis test, $p < 0.001$), where, in average, the highest and lowest atmospheric CO₂ sinks were recorded in spring ($-1.93 \pm 3.84 \mu\text{mol m}^{-2} \text{s}^{-1}$) and fall ($-0.59 \pm 2.83 \mu\text{mol m}^{-2} \text{s}^{-1}$), respectively (Fig. 4). NEE flux partitioning gave an annual mean $\text{NEE}_{\text{marshP}}$ value of $-1.28 \pm 3.16 \mu\text{mol m}^{-2} \text{s}^{-1}$, ranging from $-2.00 \pm 3.49 \mu\text{mol m}^{-2} \text{s}^{-1}$ in spring to $-0.53 \pm 2.51 \mu\text{mol m}^{-2} \text{s}^{-1}$ in fall. On average, in winter and fall, the measured NEE values were lower and more negative than the estimated $\text{NEE}_{\text{marshP}}$ values whereas in spring and summer, the opposite trend was recorded (Fig. 4). Contrary to NEE and $\text{NEE}_{\text{marshP}}$, the highest seasonal values of GPP and R_{eco} were estimated in summer whereas the lowest seasonal values were estimated in winter (Fig. 4). The highest and lowest photosynthetic efficiencies (a_1/a_2 ratio) were found in winter ($-2.08 \cdot 10^{-2}$) and in summer ($-1.36 \cdot 10^{-2}$), respectively.

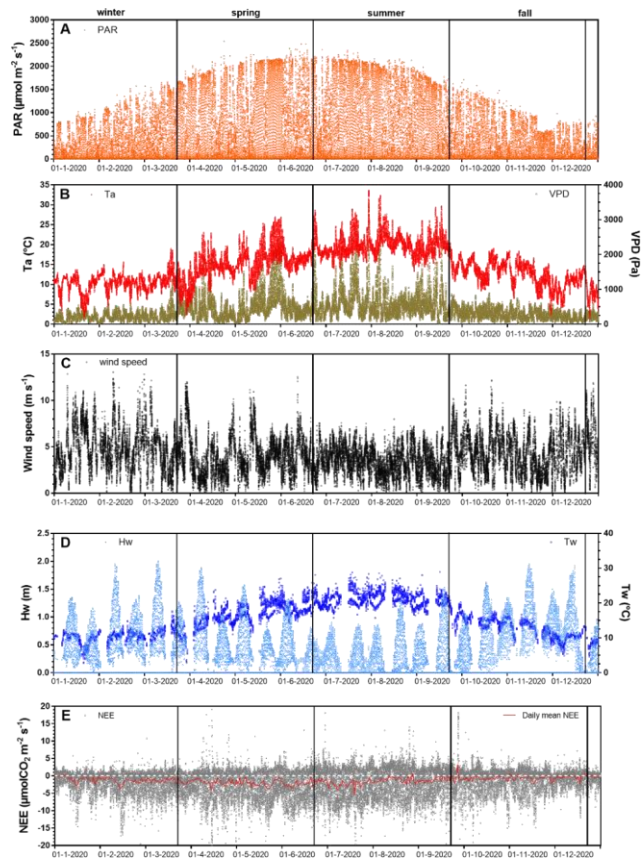
Table 1: Bossys perdus marsh habitat (percentages % in bold and associated surface area m² in brackets) within each 45° wind sector in the corresponding footprint areas (Fig. 2) and the whole averaged footprint for the year 2020 (13042 m², 70% contour line). *Negligible surfaces on the total area of the sector.

Wind sectors		<i>Halimione portulacoides</i>	<i>Spartina maritima</i>	<i>Suaeda vera</i>	Muds	Channels
NNE	0-45	48 (850)	22 (390)	1* (9)	22 (386)	8 (150)
ENE	45-90	31 (590)	26 (492)	1 (22)	37 (704)	4 (80)
ESE	90-135	37 (335)	21 (190)	31 (288)	9 (82)	2 (22)
SSE	135-180	60 (803)	9 (124)	0* (4)	21 (275)	8 (113)
SSW	180-225	48 (734)	19 (283)	0* (2)	8 (122)	25 (388)
WSW	225-270	33 (689)	35 (745)	0* (6)	25 (530)	6 (132)
WNW	270-315	30 (580)	11 (216)	29 (570)	30 (588)	0 (0)
NNW	315-360	16 (249)	26 (401)	2 (31)	56 (867)	0 (0)
Total footprint (70% contour line)		37 (4830)	22 (2841)	7 (932)	27 (3554)	7 (885)

Mis en forme : Indice

Mis en forme : Indice

Mis en forme : Indice



390 Figure 3: Net ecosystem exchanges and associated environmental parameters measured every 10 minutes over the year 2020. The
 measured environmental parameters include (A) the photosynthetically active radiation (PAR, $\mu\text{mol m}^{-2} \text{s}^{-1}$), (B) air temperature
 (Ta, $^{\circ}\text{C}$), vapor pressure deficit (VPD, Pa), (C) wind speed (m s^{-1}), (D) water height (Hw, m), water temperature (Tw, $^{\circ}\text{C}$) and (E)
 the net ecosystem exchanges (NEE, $\mu\text{mol CO}_2 \text{m}^{-2} \text{s}^{-1}$) computed from the 20 Hz atmospheric CO_2 and wind speed measurements
 with the EddyPro software. The red line in Fig. 3-E is the moving average of NEE (daily mean). Seasons are delimited by vertical
 395 lines.

Table 2: Emersion and immersion periods (percentage % in bold) at the studied salt marsh for four water height ranges of 0.5 m over the year 2020 and at the seasonal scale. In brackets, the emersion and immersion durations in hour per day (24-hour, h d⁻¹) were calculated.

	Emersion			Immersion	
	Hw = 0	0 < Hw < 0.5	0.5 < Hw < 1	1 < Hw < 1.5	1.5 < Hw < 2
Year 2020	74.5 (17.9)	12.4 (2.9)	8.7 (2.1)	3.6 (0.9)	0.8 (0.2)
Winter	76.3 (18.0)	10.4 (2.5)	8.6 (2.0)	3.6 (0.9)	1.1 (0.3)
Spring	74.5 (18.0)	13.7 (3.2)	8.2 (2.0)	3.0 (0.7)	0.6 (0.1)
Summer	75.1 (18.5)	17.1 (4.2)	5.9 (1.6)	1.3 (0.3)	0.0 (0.0)
Fall	72.0 (17.0)	8.5 (1.9)	11.5 (2.7)	6.4 (1.5)	1.6 (0.4)

400

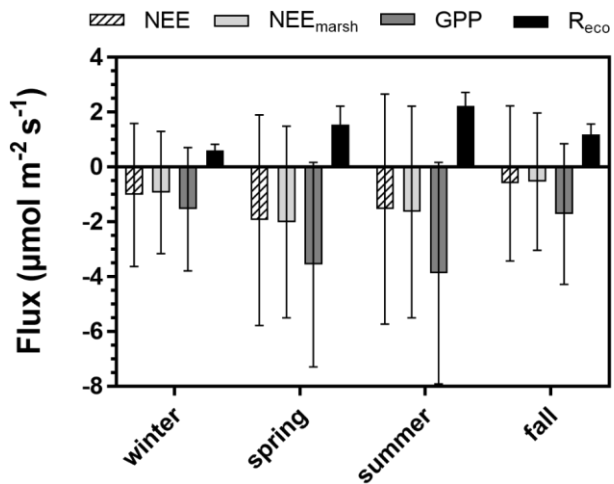


Figure 4: Seasonal variations (means ± SD) of the measured NEE, estimated $\text{NEE}_{\text{marsh}}$, estimated GPP and estimated R_{eco} ($\mu\text{mol CO}_2 \text{m}^{-2} \text{s}^{-1}$) values recorded over the year 2020. NEE: net ecosystem exchange, $\text{NEE}_{\text{marsh}}$: net ecosystem exchanges at the marsh-atmosphere interface without coastal water, R_{eco} : net ecosystem production, GPP: gross primary production, R_{eco} : ecosystem

Mis en forme : Indice

Mis en forme : Indice

405 respiration. The NEE fluxes were partitioned into GPP and R_{eco} according to Kowalski et al. (2003) and Wei et al. (2020b) (see section 2.6).

3.3. Environmental parameter and NEE flux variations at diurnal and tidal scales

410 At each season, significant diurnal differences in NEE fluxes were highlighted (Mann-Whitney tests, $p < 0.05$) with, on average, an atmospheric CO_2 sink during daytime and an atmospheric CO_2 source during night-time, irrespective of emersion or immersion periods (Table 3). For instance, in spring, NEE means were -3.93 ± 3.72 and $1.06 \pm 1.09 \mu mol m^{-2} s^{-1}$ during daytime and night-time, respectively (Fig. 5-B). Over all seasons, similar diurnal variations in measured NEE and estimated NEE_{marsh} were recorded with, on average, a rapid increase in CO_2 uptake during the morning up to the middle of the day (low Ta and VPD values high PAR and low Ta) and then, a decrease in CO_2 uptake during the afternoon (high Ta and VPD values high PAR and high Ta) to become a CO_2 source during night-time (Figs. 5 and A.2). On average, during the afternoon, the GPP decreases and R_{eco} increases explained the measured decrease in CO_2 uptake (Fig. 5). For each season, the highest marsh CO_2 uptakes were measured during daytime emersion periods between 12:00 and 13:00 (maximal PAR levels), with the latter increasing from winter ($-4.84 \pm 2.87 \mu mol m^{-2} s^{-1}$) to spring-summer ($-6.94 \pm 2.80 \mu mol m^{-2} s^{-1}$; Fig. 5).

420

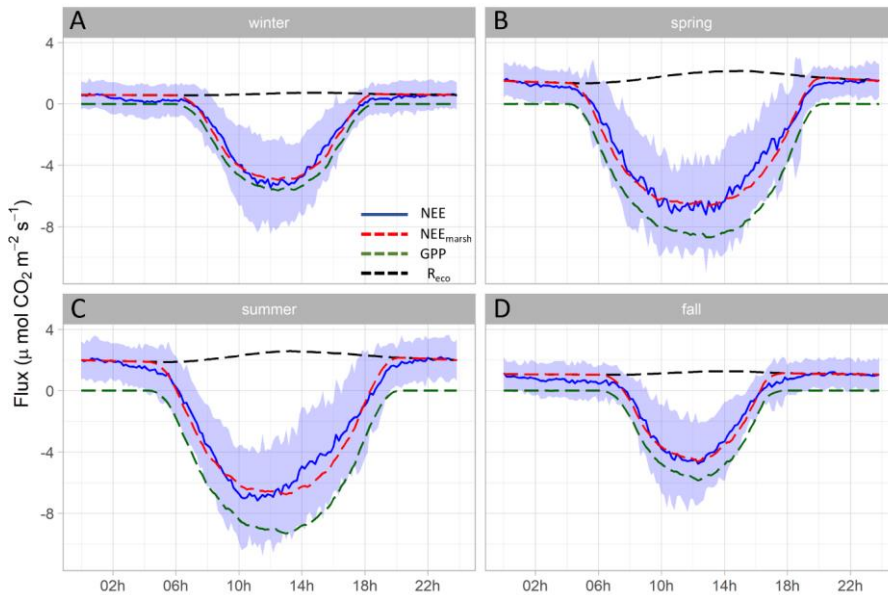
Table 3: Diurnal/tidal variations (means \pm SD in bold) of NEE fluxes ($\mu mol CO_2 m^{-2} s^{-1}$) during each season in 2020. The associated ranges (min/max) are indicated in brackets. Daytime and night-time periods were separated into $PAR > 10$ and $PAR \leq 10 \mu mol m^{-2} s^{-1}$, respectively, whereas emersion and immersion periods were separated into $Hw = 0$ m and $Hw > 0$ m, respectively.

	Daytime Emersion	Night-time Emersion	Daytime Immersion	Night-time Immersion	Seasonal
Winter	-3.15 ± 2.96 (-19.55/10.73)	0.61 ± 0.86 (-4.80/5.40)	-2.03 ± 2.30 (-16.06/6.49)	-0.10 ± 0.99 (-5.31/3.34)	-1.01 ± 2.61 (-19.55/10.73)
Spring	-4.39 ± 3.76 (-25.67/19.09)	1.25 ± 0.98 (-4.54/7.01)	-2.59 ± 3.24 (-29.68/17.62)	0.51 ± 1.22 (-4.60/6.04)	-1.93 ± 3.84 (-29.68/19.09)
Summer	-4.42 ± 3.88 (-23.71/18.07)	2.11 ± 1.34 (-5.93/9.25)	-2.22 ± 3.26 (-25.23/13.01)	1.18 ± 1.44 (-4.86/9.36)	-1.53 ± 4.19 (-25.23/18.07)
Fall	-3.00 ± 3.32 (-21.54/17.74)	1.12 ± 1.03 (-4.19/6.09)	-1.53 ± 2.60 (-18.15/18.21)	0.29 ± 1.07 (-3.97/5.50)	-0.59 ± 2.83 (-21.54/18.21)

425

At each season, the tidal rhythm could strongly disrupt NEE fluxes with, in general, no change in the marsh metabolism status (sink/source). During daytime, significant lower CO_2 uptakes were recorded during immersion than during emersion (Mann-Whitney tests, $p < 0.05$) when marsh plants were mostly immersed in tidal waters and during night-time, a similar

430 tidal pattern was recorded for CO₂ emissions (Mann-Whitney tests, $p < 0.05$; Table 3). For instance, in spring, NEE means were -4.39 ± 3.76 and $-2.59 \pm 3.24 \mu\text{mol m}^{-2} \text{s}^{-1}$ during daytime emersion and daytime immersion, respectively, and were 1.25 ± 0.98 and $0.51 \pm 1.22 \mu\text{mol m}^{-2} \text{s}^{-1}$ during night-time emersion and night-time immersion, respectively. In winter, during some night-time periods, weak CO₂ sinks were recorded both during emersion ($-0.79 \pm 0.84 \mu\text{mol m}^{-2} \text{s}^{-1}$; 137 hours over 71 days) and immersion ($-0.82 \pm 0.91 \mu\text{mol m}^{-2} \text{s}^{-1}$; 143 hours over 55 days associated with a mean Hw of 0.80 m; Fig. A.2) of the salt marsh. The maximal CO₂ uptakes were -4.80 and $-5.31 \mu\text{mol m}^{-2} \text{s}^{-1}$ during night-time emersion and night-time immersion, respectively (Table 3). In winter, during night-time immersion (Fig. A.3) and, at particular moments (i.e. 143 hours over 55 days associated with a mean Hw of 0.80 m), a weak CO₂ sink was recorded ($-0.82 \pm 0.91 \mu\text{mol m}^{-2} \text{s}^{-1}$) with a maximal uptake of $-5.31 \mu\text{mol m}^{-2} \text{s}^{-1}$ (Table 3).



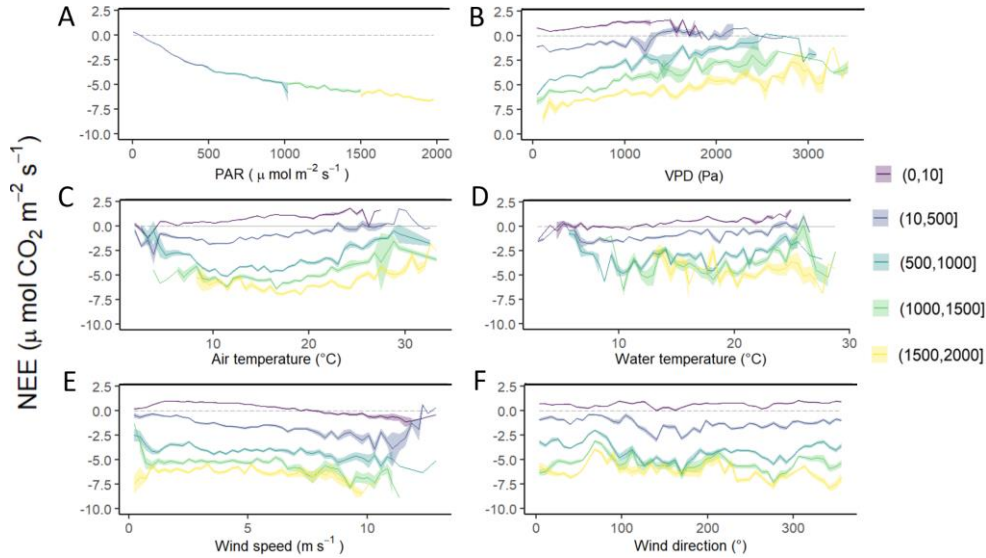
440 **Figure 5:** Hourly plots of the measured NEE, estimated NEE_{marsh}, estimated GPP and estimated R_{eco} diurnal variations obtained every 10 minutes in winter (A), spring (B), summer (C) and fall (D) over the year 2020. NEE averages are represented by blue solid lines whereas standard deviations are represented by blue areas; the NEE_{marsh}, GPP and R_{eco} averages are represented by red, green and black dotted lines, respectively. The NEE fluxes were partitioned into GPP and R_{eco} according to Kowalski et al. (2003) using monthly coefficients (see the M&M section). Night-time periods correspond to GPP = 0 $\mu\text{mol m}^{-2} \text{s}^{-1}$ and NEE_{marsh} = R_{eco}. All values are in $\mu\text{mol CO}_2 \text{ m}^{-2} \text{ s}^{-1}$.

3.4. Influence of environmental drivers on temporal NEE variations

Over the year, NEE fluxes were significantly controlled by solar radiations and air temperatures at the multiple timescales studied, thereby favouring marsh CO₂ uptake. During daytime (PAR > 10 μmol m⁻² s⁻¹), PAR and Ta displayed the strongest negative correlations with NEE at both the monthly scale (-0.87 and -0.65, respectively; n = 12, p < 0.05) and the 10-min. ~~the~~ scale (-0.77 and -0.21, respectively; n = 27160, p < 0.05). The highest and lowest correlations between NEE and PAR were recorded for 10 < PAR ≤ 500 and for 1500 < PAR ≤ 2000 μmol m⁻² s⁻¹, respectively, confirming the rapid increase or decrease in CO₂ uptake for low daytime PAR values (Fig. 6-A). During daytime, Vapor Pressure Deficit (VPD) was negatively correlated with NEE (-0.31; n = 27160, p < 0.05) producing a large reduction of CO₂ uptake for all PAR levels and even led to a switch from sink to source of atmospheric CO₂ from VPD > 1200 Pa for low PAR levels (PAR < 500 μmol m⁻² s⁻¹; Fig. 6-B). For PAR ≤ 500 μmol m⁻² s⁻¹ (night, dawn, dusk or low light days), relative humidity (RH) did not influence NEE whereas from PAR > 500 μmol m⁻² s⁻¹, RH was negatively correlated with NEE and the wettest periods favoured CO₂ uptake (Fig. 6-B). During night-time and daytime, air temperature (Ta) was positively (0.54; n = 27190, p < 0.05) and negatively (-0.21; n = 25544, p < 0.05) correlated with NEE, respectively (-0.54 and -0.21, respectively, p < 0.05). However, from PAR > 500 μmol m⁻² s⁻¹, high Ta values (> 20°C) decreased CO₂ uptake for all PAR levels (Fig. 6-C). Water temperature (Tw) did not influence NEE during immersion (Fig. 6-D). Indeed, for PAR > 500 μmol m⁻² s⁻¹ and Hw > 0.5 m, no significant relationships was found between NEE and Tw (n = 1215; p = 0.26). For low PAR levels (PAR < 500 μmol m⁻² s⁻¹), wind speeds quickly increased CO₂ uptake whereas for higher PAR levels (PAR > 500 μmol m⁻² s⁻¹), CO₂ uptake was increased only for wind speeds higher than 7 m s⁻¹ (Fig. 6-E). For wind directions, a spatial heterogeneity of NEE was recorded according to wind sectors both during daytime and night-time (Fig. 6-F). Within the footprint area composed of an assemblage of plants and muds (Fig. 2), the highest CO₂ uptakes were generally recorded from the Southern sectors (high vegetation:mud ratios) whereas, the lowest CO₂ uptakes were generally recorded from the Northern sectors (low vegetation:mud ratios; Fig. 7). For instance, our sectorial NEE analysis during daytime emersion showed that SSE sector (vegetation:mud ratio of 2.4; Table 1) uptaked 32% (winter), 25% (spring) and 50% (fall) times more atmospheric CO₂ than NNW sector (vegetation:mud ratio of 0.8; Table 1). Moreover, in winter and fall, we highlighted that CO₂ uptake rates of *H. portulacoides* (C3 specie) were significantly higher than *S. maritima* (C4 specie) ones by comparing SSE (60% of *H. portulacoides* and 9% of *S. maritima*) and WSW (33% of *H. portulacoides* and 35% of *S. maritima*) sectors during daytime emersion (Mann-Whitney tests, p < 0.0001). To the contrary, in summer, no significant difference in NEE fluxes was recorded between these two sectors (Mann-Whitney test, p = 0.06; Fig. 7) and more generally, between the different wind

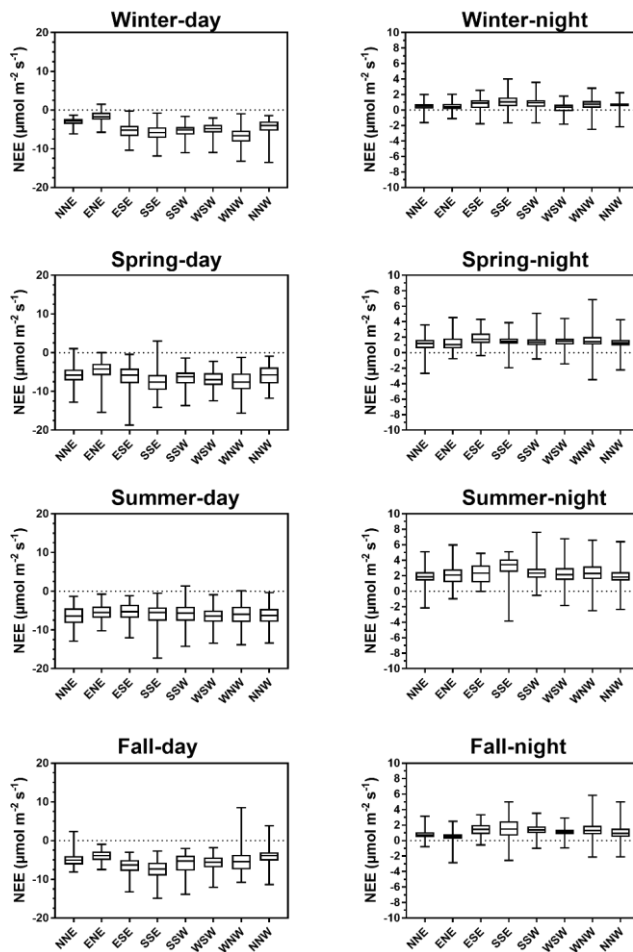
480 sectors (Table 1 and Fig. 7). For all seasons, during night-time emersion, we recorded that Southern sectors (ESE, SSE and
 SSW) emitted higher atmospheric CO₂ than Northern sectors (NNE and ENE), especially in winter and fall (Table 1 and Fig.
 7). For wind directions, the highest CO₂ uptake and CO₂ emission were measured, on average, over the SSE and NNW
 sectors, respectively (Fig. 6 E). High wind speeds (> 7 m s⁻¹) increased CO₂ uptake whereas slow wind speeds did not
 influence NEE (Fig. 6 F).

485



490

Figure 6: Diurnal variations of NEE ($\mu\text{mol CO}_2 \text{ m}^{-2} \text{ s}^{-1}$) obtained every 10 minutes according to different variables within five PAR groups: 0-10 (night-time), 10-500, 500-1000, 1000-1500 and 1500-2000 $\mu\text{mol m}^{-2} \text{ s}^{-1}$. PAR ($\mu\text{mol m}^{-2} \text{ s}^{-1}$; A), air temperature ($^{\circ}\text{C}$, C), water temperature ($^{\circ}\text{C}$, D), wind speed (m s^{-1} , E) and wind direction ($^{\circ}$, F). NEE fluxes are averaged after separating each variable into five classes and the coloured area is the standard error at the mean.



495

Figure 7: Spatial split of NEE fluxes ($\mu\text{mol CO}_2 \text{ m}^{-2} \text{ s}^{-1}$) within each 45° wind sector (Fig. 2) during emersion periods ($H_w = 0 \text{ m}$) at the seasonal and diurnal scales. During daytime, brightest emersion periods ($\text{PAR} \geq 500 \mu\text{mol m}^{-2} \text{ s}^{-1}$) were chosen to reduce NEE fluctuations due to PAR influence (see Fig. 6-a).

500 The tidal rhythm strongly influenced NEE during immersion depending on the measured water heights (Hw) and PAR levels (Figs. 87 and A.32). Over the year, NEE were positively correlated with Hw during daytime but negatively correlated during night-time (Fig. 87). More precisely, night-time immersion strongly reduced CO₂ emissions and even led to a switch from source to sink of atmospheric CO₂ from Hw > 0.4 m in winter (Fig. 87-A), Hw > 0.7 m in spring (Fig. 87-B), Hw > 1.4 m in summer (Fig. 87-C) and Hw > 1 m in fall (Fig. 87-D), on average. For low daytime PAR levels (PAR ≤ 500 μmol m⁻² s⁻¹), immersion only slightly reduced CO₂ uptake (Fig. 87-C). On the contrary, for higher daytime PAR levels (PAR > 500 μmol m⁻² s⁻¹), immersion strongly reduced CO₂ uptake, especially from Hw > 0.5 m, to reach in summer, where the lowest CO₂ sinks was reached from 1 < Hw ≤ 1.05 m, irrespective of the PAR levels (Fig. 87-C). For instance, in summer, daytime NEE means were -2.71 ± 3.48 and -0.16 ± 0.98 μmol m⁻² s⁻¹ for 0 < Hw < 0.5 m and 1 < Hw < 1.5 m, respectively. At each season, from Hw > 1.3 m, the influence of PAR levels on diurnal NEE variations remained low (Fig. 7), reducing the solar radiation contribution on CO₂ uptake. However, during certain daytime immersion periods, incoming tides can temporally favour CO₂ uptake (Fig. 7). For instance, in spring, during daytime immersion (1500 < PAR ≤ 2000 μmol m⁻² s⁻¹), NEE means were -2.89 ± 2.53 and -5.59 ± 2.83 μmol m⁻² s⁻¹ for Hw = 0.9 m and Hw = 1.1 m, respectively (Fig. 7 B).

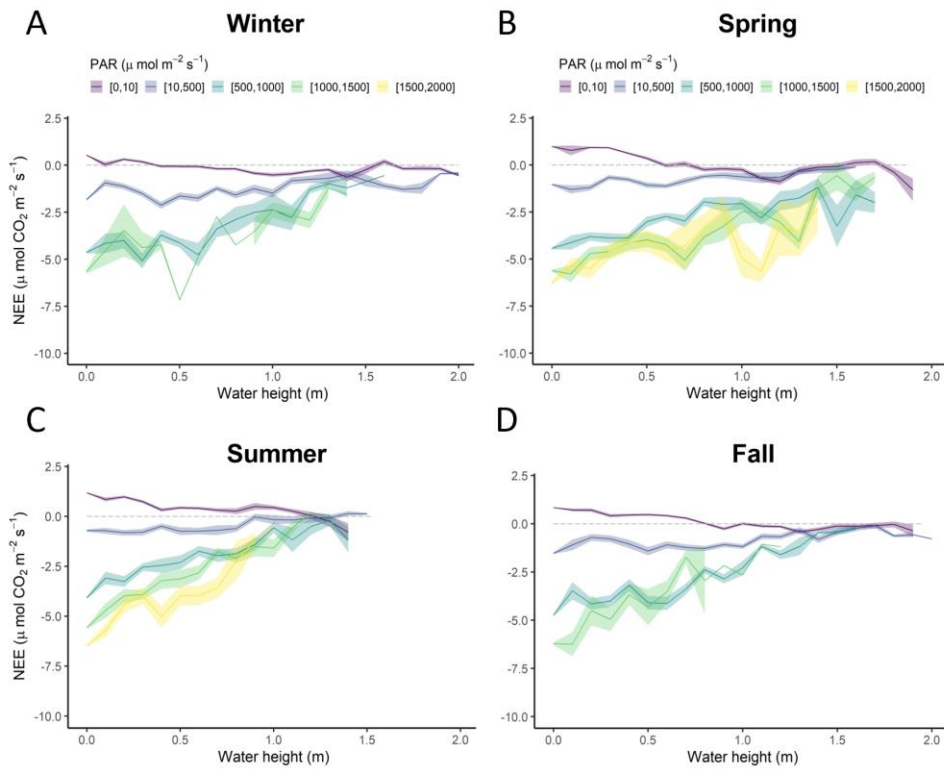
3.5. Annual Carbon budgets

515 Over the year, the annual NEE value was -483.6 g C m⁻² yr⁻¹, associated with an average immersion duration of 6.1 h d⁻¹. Simultaneously, GPP and R_{eco} absorbed and emitted 1019.4 and 533.2 g C m⁻² yr⁻¹, respectively, resulting in an annual NEE_{marsh}^P value similar to the NEE value (Fig. 8). At the seasonal scale, the highest CO₂ uptakes occurred in spring and summer, associated with the lowest marsh immersion levels, and the lowest CO₂ uptakes occurred in winter and fall, associated with the highest marsh immersion levels (Tables 2 and 4). In winter and fall, when the daytime immersion periods were the shortest, net C balances from measured NEE gave higher values than values calculated net C balances from estimated NEE_{marsh}^P (+7.9 and +6.2 g C m⁻², respectively; Table 4). Conversely, in spring and summer when the daytime immersion periods were the longest, the opposite pattern was observed between measured NEE values and estimated NEE_{marsh}^P values (-7.3 and -9.9 g C m⁻², respectively; Table 4).

Mis en forme : Indice

Mis en forme : Indice

Mis en forme : Indice



525 **Figure 87:** Diurnal variations of NEE ($\mu\text{mol CO}_2 \text{ m}^{-2} \text{ s}^{-1}$) obtained every 10 minutes according to water height (Hw, m) within five PAR groups (see captions in Fig. 6) in winter (A), spring (B), summer (C) and fall (D). NEE values were averaged every 0.1 m. The coloured areas represent the standard error of the mean.

530

535

Table 4: Net seasonal carbon balances for the measured NEE and estimated $NEE_{\text{marsh,P}}$ values (g C m^{-2}). Corresponding seasonal percentages (%) of marsh immersion and daytime marsh immersion are indicated. NEE correspond to net vertical CO_2 exchanges measured by EC whereas NEE_{marsh} correspond to net vertical CO_2 exchanges estimated at the benthic interface without any tidal influence. For more information on NEE flux partitioning into NEP, see the M&M section.

	Cumulative NEE (g C m^{-2})	Cumulative NEE_{marsh} (g C m^{-2})	$NEE - NEE_{\text{marsh}}$ (g C m^{-2})	Immersion time (%)	Daytime immersion time (%)
Year 2020	483.6	485.9	-2.3	25.5	52.2
Winter	94.4	86.5	7.9	23.7	41.5
Spring	184.5	191.8	-7.3	25.5	63.4
Summer	149.3	159.2	-9.9	24.9	64.5
Fall	55.5	49.3	6.2	27.9	39.5

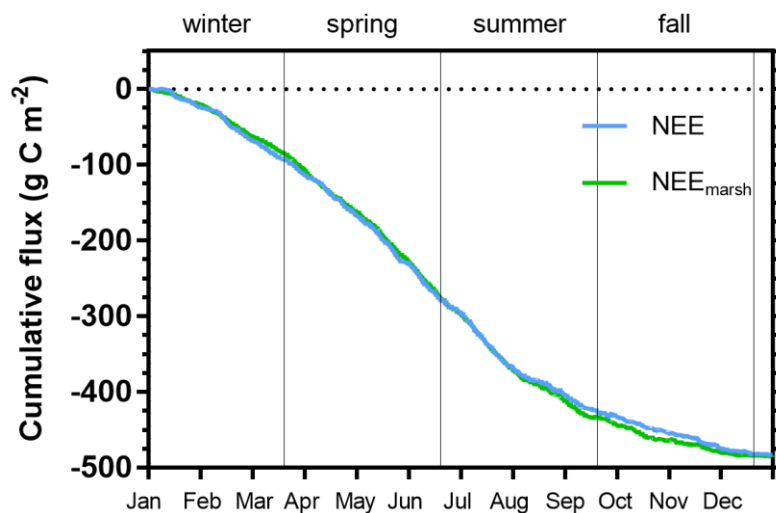


Figure 98: Cumulative fluxes (g C m^{-2}) of the measured NEE (in blue) and estimated $NEE_{\text{marsh,P}}$ (in green) throughout the year 2020. Vertical lines are used to delimit the four seasons. NEE fluxes correspond to net vertical CO_2 exchanges measured by EC whereas $NEE_{\text{marsh,P}}$ fluxes correspond to net vertical CO_2 exchanges estimated from NEE partitioning at the benthic interface only, without any tidal influence.

Mis en forme : Indice

Mis en forme : Indice

Mis en forme : Indice

Table 5: Comparison of the annual NEE budget (g C m⁻² yr⁻¹) using EC measurements across the salt, brackish and freshwater marshes of the coastal zone.

Study sites	Locations	Annual NEE budgets (g C m ⁻² yr ⁻¹)	References
Tidal salt marsh*	Fier d' Ars tidal estuary, France	-483	This study
Tidal salt marsh*	Virginia, USA	-130 ^a	Kathilankal et al., 2008
Urban tidal marsh*	Hudson-Raritan estuary, New-Jersey, USA	From +894 to -310	Schäfer et al., 2014
Restored salt marsh*	Hudson-Raritan estuary, New-Jersey, USA	-213	Artigas et al., 2015
Tidal salt marsh	Plum Island Sound estuary, Massachusetts, USA	From -104 to -233 (-176 ± 32) ^b	Forbrich et al., 2018
Tidal salt marsh	Duplin River salt marsh-estuary, Georgia, USA	From -139 to -309	Nahrawi, 2019
Urban tidal wetlands	Hudson-Raritan estuary, New-Jersey, USA	-307 ^c	Schäfer et al., 2019
Brackish tidal marsh	San Francisco Bay, California, USA	-225	Knox et al., 2018
Brackish marsh	Louisiana, USA	171	Krauss et al., 2016
Para-dominated subtropical marsh	Taiwan	-376	Lee et al., 2015
Reed-dominated marsh	Taiwan	-53	Lee et al., 2015
Freshwater marsh	Louisiana, USA	-337	Krauss et al., 2016
Freshwater wetland	Everglades National Park, Florida, USA	From -91 to +3 (-21 ± 17) ^d	Zhao et al., 2019

550 *Managed and protected marshes, ^aNEE budget during the growing season (from May to October 2007), ^bMean of annual NEE budgets over a five-year period (from 2013 to 2017), ^cAnnual NEE budget of three tidal marshes with different restoration histories, ^dMean of annual NEE budgets over a nine-year period (from 2008 to 2016).

4. Discussion

4.1. Marsh CO₂ uptake and influence of management practice ~~Atmospheric CO₂ exchanges and associated methodological aspects~~

In the present EC study, the studied salt marsh absorbed 483 g C m⁻² yr⁻¹ from the atmosphere. This net C balance (i.e. budget) was lower than the values estimated for global tidal wetlands (1125 g C m⁻² yr⁻¹; Bauer et al., 2013) and for tidal marshes on the U.S. Atlantic coast (775 g C m⁻² yr⁻¹; Wang et al., 2016) but similar to the C balance estimated by Alongi (2020) for global salt marshes (382 g C m⁻² yr⁻¹).

Currently, an increasing number of EC measurements are being taken in salt marshes in order to obtain continuous NEE data series as well as to increase knowledge about the associated metabolic processes and fluxes for these tidal systems (Schäfer et al., 2014; Forbrich et al., 2018; Knox et al., 2018) (Table 5). ~~The advantage of the atmospheric EC method in salt marshes is that it measures ecosystem scale NEE fluxes at both the benthic and aquatic interfaces to obtain high resolution continuous NEE time series. The drawback to EC is a loss of data related to instrument malfunctions, processing and mathematical artefacts, ambient conditions that do not satisfy the requirements for the EC method as well as heavy precipitation for open path IRGA (Burba, 2021) that needs to be gap filled by machine learning methods for instance (Artigas et al., 2015; Forbrich et al., 2018; Knox et al., 2018; Schäfer et al., 2019). Here, a random forest model, based on the PAR, Ta, Hw and RH values, was used to estimate and gap fill the 18.3% missing EC data over the year (Kim et al., 2020; Cui et al., 2021). Moreover, another methodological aspect is the partitioning of NEE fluxes into GPP and R_{eco} to study the terrestrial (benthic) metabolism of the salt marsh related to photosynthesis and respiration processes from plants and soils (Forbrich and Giblin, 2015; Knox et al., 2018; Wei et al., 2020b). Here, parameter calculations performed at the monthly scale for the NEE flux partitioning (Kowalski et al., 2003; Wei et al., 2020b) were found to be the best option based on our present study objectives and due to the low phenological variation of the marsh plants.~~

4.2. ~~Influence of marsh CO₂ uptake and management practice~~

These EC ~~studie~~technique confirmed the estimates of CO₂ sinks in salt marshes (Wang et al., 2016; Alongi, 2020) but also revealed strong NEE flux heterogeneities according to climatic conditions and anthropogenic influences (Herbst et al., 2013; Schäfer et al., 2019). For instance, NEE measured in a natural salt marsh (*S. alterniflora*, *S. maritima* and *D. spicata*) showed a net C uptake from the atmosphere with strong interannual variations in C balances (Table 5) mainly due to rainfall during the growing season for marsh plants (Forbrich et al., 2018). By comparison, in an urban tidal marsh, Schäfer et al. (2014) reported a higher interannual variability from 984 g C m⁻² in 2009 to -310 g C m⁻² in 2012 due to management practices and plant species (*P. australis* and *S. alterniflora* in 2009 and total elimination of *P. australis* in 2012; Table 5). In the same area, in another restored salt marsh in which the *P. australis* monoculture was replaced by a high diversity of

Mis en forme : Indice

Mis en forme : Retrait : Gauche : 0 cm, Première ligne : 0 cm

emergent marsh plants (*S. patens*, *S. cynosuroides*, *S. alterniflora* and *D. spicata*), a net CO₂ uptake was recorded (Table 5) which once again confirms the importance of land management practices in marsh C balances (Artigas et al., 2015). In our studied salt marsh, the natural management for several decades has allowed for a return to the natural site hydrodynamics and the development of productive marsh halophytes, mainly composed of *H. portulacoides* and *S. maritima* (59% of the footprint area). However, past human activities and water management practices for salt farming have shaped the marsh typology (channel network, humps, dykes), producing a time-delayed immersion of plants and muds between high and low marsh areas during spring tides. Thus, due to this emersion/immersion heterogeneity, mud and *S. maritima* areas were quickly immersed by coastal waters whereas, the whole immersion of marsh habitats only occurred during the highest tidal amplitudes favouring a higher atmospheric CO₂ uptake by *H. portulacoides* and *S. vera*. During the year 2020, our rewilded salt marsh did uptake more C from the atmosphere mainly due to strong plant photosynthesis than the other salt, brackish and freshwater marshes reported in the literature (Table 5). However, the net C balances calculated using the EC approach are still too scarce to be able to take all annual and spatial variabilities of salt marshes into account. Based on biomass production measurements in salt marshes, Sousa et al. (2010) estimated that the NPP of *H. portulacoides* was 505 g C m⁻² yr⁻¹ whereas the NPP of *S. maritima* varied between 367 and 959 g C m⁻² yr⁻¹ depending on the chemical-physical characteristics and marsh maturity. these NPP values were similar to our net C balance. Thus, the net metabolism of these halophytic plants could play an important role in our net C balance but, according to “the marsh CO₂ pump” (Wang et al., 2016), a significant proportion of marsh NPP was respired by heterotrophic processes in benthos and then (1) emitted as atmospheric CO₂ (38 ± 11%) and (2) exported by tides as DIC (37 ± 15%; Song et al., 2023). In salt marshes *H. portulacoides* (C3 specie) have high ability to acclimation to temperature variations and elevated CO₂, contrarily to *S. maritima* (C4 specie; Sousa et al., 2010). Indeed, increasing atmospheric CO₂ concentrations (from 380 to 760 ppm) produced an improvement of the light harvesting mechanisms and photosynthetic efficiency for C3 species whereas, negative impacts on photosynthetic ability of C4 species were recorded through photochemical and oxidative stress (Duarte et al., 2014). Thus, under future environmental conditions, the continuous atmospheric CO₂ increases due to human activities will favour the development of C3 species to the detriment of C4 species.

Moreover, despite a lower benthic metabolism (photosynthesis and respiration) of muds than evergreen plants (Fig. 7), the microphytobenthos that-which can developed on mudflats (27% of the footprint area) may also contribute to marsh benthic production during daytime emersion, as highlighted in our studied marsh where static chamber measurements performed in March 2023 at midday showed a net CO₂ uptake to a non-vegetated mudflat (NEE mean of -2.92 μmol m⁻² s⁻¹; unpublished results) and confirmed in an estuarine wetland in China (Xi et al., 2019). On an intertidal flat (France), EC measurements even showed a higher daily benthic metabolism with microphytobenthos (1.72 g C m⁻² d⁻¹; September/October 2007) than with *Zostera noltei* (1.25 g C m⁻² d⁻¹; July and September 2008), confirming the high biological productivity of mudflats (Polsenaere et al., 2012). However, due to the specific assemblage of our studied marsh

(Fig. 2), it remains complex to accurately study these habitat effects (vascular plants vs. microphytobenthos) on NEE fluxes at the marsh scale and draw more general conclusions. Thus, the microphytobenthos could play a significant role in the atmospheric CO₂ uptake of salt marshes but also, more generally, in the carbon cycle of the coastal ocean because the resuspension of the microphytobenthos primary production during tidal immersion induce a large export of organic carbon from muds to coastal waters (up to 60% of the benthic primary production in a nearby tidal flat; Savelli et al., 2019). These fast-growing producers with high labile organic carbon could also be quickly degraded locally by microbial remineralization (Ruttenberg, 1992; Brouwer & Stal, 2001; Morelle et al., 2022) contrary to evergreen plants contributing to long-term “blue carbon” burial in sediments (McLeod et al., 2011).

Mis en forme : Police : (Par défaut) Times New Roman, Couleur de police : Texte 1

4.3.4.2. Metabolism processes and controlling factors at multiple timescales

4.3.4.2.1. Seasonal scale

In a tidal salt marsh, the average monthly budgets from Forbrich et al. (2018) showed, at their site, a net CO₂ sink during the growing season for marsh plants from June to September and a net CO₂ source to the atmosphere during the rest of the year, indicating a strong seasonal variability in NEE. In urban salt marshes, the growing season was longer switching from source to sink in May (Schäfer et al., 2014; Artigas et al., 2015) and even in April in a brackish marsh (Knox et al., 2018). In our studied marsh, the halophyte vegetation, mostly composed of evergreen species, was autotrophic throughout the year allowing a net C uptake from the atmosphere during both the growing and non-growing seasons (between 9 g C m⁻² in December and 73 g C m⁻² in July) whereas, the senescence of smooth cordgrass plants in some salt marshes (*S. alterniflora* and *S. cynosuroides* for instance) from October produced a marsh heterotrophy and a net C source to the atmosphere in winter and fall (Schäfer et al., 2014; Artigas et al., 2015; Forbrich et al., 2018). In our case, *S. maritima* is a perennial specie with a relatively short growing period, thus during winter and fall, the benthic metabolism of this halophytic plant could have a significant lower influence on marsh C uptake than *H. portulacoides* and *S. vera*. The spatial NEE analysis showed that, in summer during daytime emersion, CO₂ uptake rates of the North sectors (high mudflats areas) were close to ones of the South sectors (high plants areas) which suggest a low heterotrophic respiration in the mudflats during this period. In our study, the salt marsh behaved as a net CO₂ sink throughout the year during both the growing and non-growing seasons with the highest and lowest C uptake from the atmosphere reached in July (73 g C m⁻²) and December (9 g C m⁻²), respectively (Fig. 8). The low R_{eco} rates related to plant and soil respiration processes resulted in lower atmospheric CO₂ emissions in the studied salt marsh than in urban salt marshes (Artigas et al., 2015) and brackish marshes (Knox et al., 2018), thus allowing for a net CO₂ sink from winter to summer. Moreover, our low R_{eco} is also likely linked to the low OM decomposition observed at our site, notably due to recalcitrant OM (Arnaud et al., submitted 2022). Furthermore, it is also important to better understand the direct and indirect effects of meteorological conditions and tidal immersion on photosynthesis and respiration processes and the associated marsh C balances (Knox et al., 2018).

Our study showed the predominant role of PAR and Ta on NEE variations in the studied salt marsh as has already been highlighted elsewhere by Wei et al. (2020b). Our results on the NEE flux partitioning into GPP and R_{eco} during emersion indicated that plant photosynthesis was mainly driven by light, while ecosystem respiration was mainly driven by temperature. At the seasonal scale, the strongest CO₂ sinks were measured during warm and bright periods such as spring and summer, which were responsible for 70% of the annual C uptake (Table 4). However, although the highest seasonal rate of GPP was measured in summer during the brightest months, the simultaneously recorded high Ta values instead favoured ecosystem respiration producing a lower CO₂ uptake in summer than in spring (Table 4). For instance, in two urban salt marshes, the Ta values above 30°C reduced CO₂ uptake by increasing respiration and atmospheric CO₂ emissions (Schäfer et al., 2019). These two meteorological parameters controlled short- and long-term NEE variations, as confirmed in urban salt marshes where significant and strong pairwise correlations of NEE with net radiation and temperature were recorded on half hourly, daily and monthly averages (Schäfer et al., 2019).

At the studied salt marsh, we showed a significant influence of ~~RH and~~ VPD ~~and RH~~ on daytime NEE variations favouring plant CO₂ uptake for the lowest VPD values (< 1000 Pa) and the highest RH values (> 80%). The lack of a significant relationship between NEE and RH at night indicated that humidity influenced plant photosynthesis, by decreasing VPD and stomata opening, rather than their respiration. In a similar tidal salt marsh, Forbrich et al. (2018) showed a link between rainfall and C budgets on interannual variations in NEE, i.e. during the early growing season in spring, rainfall events produced a decrease in soil salinity and favoured CO₂ uptake through an increase in plant productivity. In a salt marsh in the Yellow River Delta, significant NEE increases and GPP decreases were recorded with high soil salinities during emersion using static chamber measurements (Wei et al., 2020a). High levels of soil salinity in salt marshes are a stressor for plants such as *Spartina spp.* and can lead to reduce biomass production by inhibiting nutrient and CO₂ uptake throughout stomatal closure (Morris, 1984; Hwang and Morris, 1994). Thus, in our studied marsh, we believe that the increase in dryness periods, especially during the summertime in summer, with a decrease in rainfall events could profoundly modify plant productivity and marsh C uptake. This was confirmed by a significant reduction in the CO₂ sink at the studied salt marsh with low RH and high Ta values.

4.3.2.4.2.2. Diurnal and tidal scale influences

High-frequency EC measurements demonstrated that diurnal variations in NEE fluxes were driven by light rather than air temperature (Xi et al., 2019; Wei et al., 2020b) with no significant time-delay recorded between NEE and PAR variations (Fig. A.23). At our studied site, the highest negative correlations between NEE and PAR were highlighted for low daytime PAR values, indicating that increases in light increases during the morning strongly favoured CO₂ uptake mainly through plant photosynthesis up to the middle of the day. During the afternoon, the high Ta and VPD values (warm and dry periods) produced a reduction of photosynthetic rates through stomatal closure of the C3 plants (Lasslop et al., 2010). This

680 ~~GPP decrease associated with a R_{eco} increase in afternoon reduced the recorded during the afternoon favoured ecosystem~~
~~respiration rather than photosynthesis and, in turn, a reduction in-~~ net CO₂ uptake up to reach CO₂ emissions during night-
time (Knox et al., 2018; Xi et al., 2019). In another tidal salt marsh, Kathilankal et al. (2008) confirmed the PAR importance
on *Spartina* photosynthesis and diurnal NEE fluxes. In a restored salt marsh, EC measurements also showed that the time of
day has a major influence on atmospheric CO₂ exchanges during the growing season, accounting for 49% of NEE variability
685 (Artigas et al., 2015). Moreover, in some cases, soil respiration can also be controlled by PAR or photosynthesis at the
diurnal scale (Vargas et al., 2011; Jia et al., 2018; Mitra et al., 2019), once again highlighting the major role played by light
in diurnal NEE variations (Kathilankal et al., 2008; Wei et al., 2020b). ~~In winter, negative NEE fluxes were measured during~~
~~some night-time emersion periods in the absence of any photosynthetic processes (18.5% in January, 18.1% in February and~~
~~10.7% in March). These negative fluxes could have two mainly sources: (1) an inorganic CO₂ diffusion and dissolution~~
690 ~~processes in saline/alkaline soils over mudflats (Ma et al., 2013) and (2) an inflow of coastal waters undersaturated in CO₂~~
~~with respect to the atmosphere within the footprint area (in channel for instance: Fig. 2) but not seen by the STPS probe due~~
~~to our one-location water height measurement and immersion marsh heterogeneity (see 2.2 section). The negative values~~
~~during night-time emersion could reduce the night-time random Forest model performance for EC data gap-filling and~~
~~produce an underestimation of respiration coefficients for NEE flux partitioning (particularly *b*) even causing negative~~
695 ~~coefficient (February: Table A.2).~~

At the daily scale, the intensity of atmospheric CO₂ exchanges and the metabolic status of the marsh (sink/source) were
also significantly influenced by the tidal rhythm (Fig. 7). Tides produced a significant decrease in daytime CO₂ uptake with
maximal reductions up to 90% for the highest tidal amplitudes. In a *S. alterniflora* salt marsh, a mean reduction of $46 \pm 26\%$
was measured during immersion, although large CO₂ amounts were still assimilated at a reduced rate (Kathilankal et al.,
700 2008). In some cases, daytime NEE fluxes could be completely suppressed during immersion in salt marshes (Moffett et al.,
2010; Forbrich and Giblin, 2015; Wei et al., 2020a) and brackish marshes (Knox et al., 2018). This drop in CO₂ uptake could
be related to a physiological stress for plants under tidal immersion conditions resulting in a reduction of the effective
photosynthetic leaf area and photosynthesis rates (Kathilankal et al., 2008; Moffett et al., 2010). Moreover, the physical
barrier created by tidal waters could limit the CO₂ diffusion from waters to plants, thereby resulting in fewer CO₂ exchanges
705 between the atmosphere and the benthic compartment (sediments, soil). Using chamber measurements at different tidal
stages, Wei et al. (2020a) also highlighted the importance of water heights and marsh immersion levels in NEE variations
and confirmed a significant GPP decrease during immersion. However, tidal effects on daytime NEE fluxes may be more
variable depending on the immersion level of the marsh and the biogeochemistry state of the tidal waters. Indeed, during the
brightest periods in winter and spring, the temporary increases in CO₂ uptake recorded during incoming tides could be
710 related to (1) an increase in the GPP of *H. portulacoides* and *S. vera* (highest marsh levels) plants favoured by VPD and RH
increases and Ta decreases due to tidal conditions and/or (2) tidal waters advected from the shelf that are undersaturated in

CO₂ with respect to the atmosphere due to phytoplankton blooms (Mayen et al., in prep.). Moreover, when the salt marsh was fully immersed at high tide during spring tides, NEE fluxes were mostly controlled by ecosystem respiration or/and inorganic processes (carbonate and physicochemical pumps) rather than by photosynthesis, as light was no longer a major control factor for CO₂ uptake in tidal waters.

During night-time, CO₂ emissions from the salt marsh were inhibited by tidal effects through a significant decrease in ecosystem respiration (Han et al., 2015; Knox et al., 2018; Wei et al., 2020a). The physical barrier formed by tidal waters limits the atmospheric CO₂ releases via respiration from plants and soils (Wei et al., 2020b). Moreover, saturation of surface soils in tidal waters during immersion could reduce oxygen availability in the soil and limit OM microbial decomposition and CO₂ emissions through aerobic respiration (Nyman and DeLaune, 1991; Miller et al., 2001; Jimenez et al., 2012; Han et al., 2015). In our case, night-time CO₂ exchanges were reduced up to 100% (completely suppressed), sometimes even causing a change in metabolic status of atmospheric CO₂ from source to sink, especially in winter when the R_{eco} rates were the lowest (Fig. 7). The presence of tidal waters advected from the shelf during the night and CO₂ undersaturated with respect to the atmosphere due to previous phytoplankton production and/or CaCO₂ dissolution in the water column during the day (Gattuso et al., 1999; Polsenaere et al., 2012), could induce a sink which may lead to a net uptake of CO₂ at night (Fig. 8). The results of our study indicate that tidal NEE variations may be mainly related to the marsh immersion level, the PAR level and the time of the growing cycle of plants as reported in Nahrawi et al. (2020).

4.4.4.3. Salt marsh carbon budgets for future research perspectives

At the annual scale in 2020, the tidal rhythm did not significantly affect the net C balance of the studied salt marsh since similar annual measured NEE and estimated NE_{E_{marsh}P} values were recorded (Fig. 8). The loss of CO₂ uptake measured during daytime immersion due to a GPP decrease could be compensated by night-time immersion where CO₂ emissions and R_{eco} were inhibited. However, strong temporal variabilities were measured, especially between the growing and non-growing seasons. In winter and fall, the salt marsh uptaked more C from the atmosphere with the tidal influence (measured NEE) than without (estimated NE_{E_{marsh}P}), especially in December (+35.7%), November (+19.7%) and January (+15.4%), associated with the highest photosynthetic efficiencies. An opposite trend was observed in spring and summer with a reduction in net C uptake under tidal influence, especially in August (-16.9%) and September (-9.8%). This significant difference in the seasonal C balances could be mainly related to the photoperiod of immersion periods. We demonstrated that daytime immersion decreased CO₂ uptake, whereas night-time immersion decreased CO₂ emissions up to a change in metabolic status for the highest immersion levels. Thus, during seasons where daytime immersion primarily occurs, such as spring and summer, the salt marsh uptaked less atmospheric CO₂ with the tidal influence, whereas seasons that mostly have night-time immersion uptaked more atmospheric CO₂ with the tidal influence (Table 4). However, this unpublished result was possible provided that the salt marsh switched from a source to a sink of CO₂ during night-time immersion due to water

Mis en forme : Indice

Mis en forme : Indice

undersaturation with respect to the atmosphere. In a salt marsh on Sapelo Island (USA), Nahrawi et al. (2020) highlighted
745 tidal CO₂ flux reductions all year round by distinguishing neap tide and spring tide periods. Their results showed that the
highest and lowest reductions in C uptake occurred in spring (-34%) and summer (-13%), respectively, with a similar but
greater tidal influence on the C uptake values compared to our study.

To better constrain the tidal influence on the metabolism of the salt marsh, further investigations have been carried out
in 2021 in parallel with our EC measurements, with the construction of a digital field model for water heights that can be
750 used to spatially determine, over the whole EC footprint, the exact areas of immersion and emersion (especially for the low
water levels) of the marsh in each sector at a 10-min. step. Similarly, during marsh immersion, EC measurements do not
directly capture CO₂ fluxes from benthic metabolism because of the physical barrier of the water and the lower CO₂
diffusion rates in water than in air. Consequently, at the same time as when the NEE measurements were taken, water pCO₂
and inorganic and organic carbon concentrations associated with planktonic metabolism were determined each season
755 through 24-h cycles to provide essential information on the contribution of planktonic communities and plants to CO₂ fluxes
during immersion (Mayen et al., in prep.). The lateral C export from salt marshes through tides plays a significant role in the
coastal ocean C cycle (Guo et al., 2009; Wang et al., 2016). Plant respiration and microbial mineralisation of marsh NPP
could generate DIC in water associated with a strong benthos-pelagos coupling. Thus, our 2021 measurements of the carbon
parameters, planktonic metabolism (production/respiration) and other relevant biogeochemical variables over 24-h diurnal
760 cycles, along with measurements of the soil compartment (root OM production vs. mineralization; Arnaud et al., submitted
2022) carried out simultaneously in the EC footprint would allow for a more integrative calculation of the studied marsh
carbon budget (Mayen et al., in prep.). One advantage of the EC measurements is the aggregation of CO₂ fluxes from all
compartments (waterbodies, soil, plants, atmosphere) in salt marshes. Yet, through this flux aggregation, we cannot
mechanistically understand each marsh compartment, and therefore it can be challenging to predict CO₂ fluxes under
765 multiple global changes. Therefore, future contributions should try to simultaneously quantify all these compartments,
especially soil as it is where most of the carbon is stored in salt marshes (Arnaud et al., submitted 2022). [Ongoing
atmospheric CO₂ exchange measurements are actually carried out since January 2023 up north over the Aiguillon intertidal
Bay \(France\) where we precisely deployed an EC station at the edge between the tidal mud flat on the West side and salt
marsh habitats on the East side of the footprint along with benthic chamber flux and water, sediment, soil carbon
770 measurements and satellite analysis at each season to specially address questions on relative habitat \(mudflat vs. salt
marshes\) influence on atmospheric CO₂ exchanges \(Polsenaere, personal communication\).](#)

5. Conclusion

In this study, we used the micrometeorological eddy covariance technique to investigate the net ecosystem CO₂
775 exchanges (NEE) at different timescales and to determine the major biophysical drivers of a rewilded tidal salt marsh. Over

the year 2020, the net C uptake from the atmosphere ($-483 \text{ g C m}^{-2} \text{ yr}^{-1}$) was mainly related to a low OM decomposition rate coupled with an intense autotrophic metabolism of halophile plants, especially during the growing season, driven by light, temperature and VPD. In summer, the brightest days increased the plant GPP and simultaneously, high temperature and VPD values favoured R_{eco} resulting in a lower net CO_2 uptake in summer than in spring. At the daily scale, the tidal rhythm significantly influenced NEE fluxes according to the level of marsh immersion and PAR. During daytime, tides strongly limited atmospheric CO_2 uptake, up to 90% reductions whereas night-time immersion inhibited atmospheric CO_2 emissions through plant and soil respiration, sometimes even causing a change in metabolic status from source to sink. However, at the annual scale, NEE flux partitioning into $\text{NEE}_{\text{marsh}}$ highlighted that the tidal rhythm did not significantly affect the net marsh C balance. Our continuous NEE measurements have made it possible to better understand the biogeochemical functioning of salt marshes over a wide range of environmental conditions and have provided essential information on NEE fluxes in marshes undergoing potential future changes such as global warming or sea level rise.

Mis en forme : Indice

Data availability

All raw data can be provided by the corresponding authors upon request.

Author contribution

TLL and PP allowed the funding acquisition. PP, EL and JMB conceptualized and designed the study. JM and PP compiled and prepared the datasets. JM and PK performed statistical and time-series analyses. JM, PP, EL and PK investigated and analysed the data. PK and RC performed the Random forest model. JM, PP, EL, PK, ARG and PS confirmed the data. PP, EL, MA, JMB, PG, JG and RC provided resources. JM performed the graphics and wrote the manuscript draft. PP, EL, MA, PK, RC, ARG and PS reviewed and edited the manuscript. PP, ARG and PS supervised the PhD thesis of JM.

Competing interests

The authors declare that they have no conflict of interest.

Acknowledgements

810 I would like to thank Ifremer (the French research institute for exploitation of the sea) for financing my PhD thesis (2020-2023). We are grateful to our colleagues who contributed to the fieldwork carried out during this study. This work is a contribution to the Jérémy Mayen's PhD thesis and the ANR-PAMPAS project (Agence Nationale de la Recherche « Evolution de l'identité patrimoniale des marais des Pertuis Charentais en réponse à l'aléa de submersion marine », ANR-18-CE32-0006). The proofreading of the manuscript and the correcting of the English content were carried out by Sara Mullin (PhD; freelance translator). [We thank Susann Catrin Zech for her contribution in the field \(pictures\) and trainees \(Camille Pery, Maxime Coutantin and Maxime Paschal\) for their contributions on data analysis. Our grateful acknowledgements also go to the two reviewers \(Francisco Artigas and anonymous referee\) for their constructive comments and suggestions.](#)

820 References

- Alongi, D. M.: Carbon Balance in Salt Marsh and Mangrove Ecosystems: A Global Synthesis, *JMSE*, 8, 767, <https://doi.org/10.3390/jmse8100767>, 2020.
- Arnaud, M., Baird, A. J., Morris, P. J., Dang, T. H., and Nguyen, T. T.: Sensitivity of mangrove soil organic matter decay to warming and sea level change, *Global Change Biology*, 26, 1899–1907, <https://doi.org/10.1111/gcb.14931>, 2020.
- Artigas, F., Shin, J. Y., Hobbie, C., Marti-Donati, A., Schäfer, K. V. R., and Pechmann, I.: Long term carbon storage potential and CO₂ sink strength of a restored salt marsh in New Jersey, *Agricultural and Forest Meteorology*, 200, 313–321, <https://doi.org/10.1016/j.agrformet.2014.09.012>, 2015.
- 830 Aubinet, M., Grelle, A., Ibrom, A., Rannik, Ü., Moncrieff, J., Foken, T., Kowalski, A. S., Martin, P. H., Berbigier, P., Bernhofer, Ch., Clement, R., Elbers, J., Granier, A., Grünwald, T., Morgenstern, K., Pilegaard, K., Rebmann, C., Snijders, W., Valentini, R., and Vesala, T.: Estimates of the Annual Net Carbon and Water Exchange of Forests: The EUROFLUX Methodology, in: *Advances in Ecological Research*, vol. 30, Elsevier, 113–175, [https://doi.org/10.1016/S0065-2504\(08\)60018-5](https://doi.org/10.1016/S0065-2504(08)60018-5), 1999.
- 835 Aubinet, M., Vesala, T., and Papale, D. (Eds.): *Eddy Covariance: A Practical Guide to Measurement and Data Analysis*, Springer Netherlands, Dordrecht, <https://doi.org/10.1007/978-94-007-2351-1>, 2012.
- Baldocchi, D. D.: Assessing the eddy covariance technique for evaluating carbon dioxide exchange rates of ecosystems: past, present and future: CARBON BALANCE and EDDY COVARIANCE, *Global Change Biology*, 9, 479–492, <https://doi.org/10.1046/j.1365-2486.2003.00629.x>, 2003.
- 840 Baldocchi, D. D., Hincks, B. B., and Meyers, T. P.: Measuring Biosphere-Atmosphere Exchanges of Biologically Related Gases with Micrometeorological Methods, *Ecology*, 69, 1331–1340, <https://doi.org/10.2307/1941631>, 1988.
- Bauer, J. E., Cai, W.-J., Raymond, P. A., Bianchi, T. S., Hopkinson, C. S., and Regnier, P. A. G.: The changing carbon cycle of the coastal ocean, *Nature*, 504, 61–70, <https://doi.org/10.1038/nature12857>, 2013.

- Bel Hassen, M.: Spatial and Temporal Variability in Nutrients and Suspended Material Processing in the Fier d'Ars Bay (France), *Estuarine, Coastal and Shelf Science*, 52, 457–469, <https://doi.org/10.1006/ecss.2000.0754>, 2001.
- 845 Borges, A. V., Delille, B., and Frankignoulle, M.: Budgeting sinks and sources of CO₂ in the coastal ocean: Diversity of ecosystems counts, *Geophys. Res. Lett.*, 32, L14601, <https://doi.org/10.1029/2005GL023053>, 2005.
- Breiman, L.: Random Forests. *Machine Learning* 45, 5–32. <https://doi.org/10.1023/A:1010933404324>, 2001.
- Burba, G.: 9 – Atmospheric flux measurements, in: *Advances in Spectroscopic Monitoring of the Atmosphere*, edited by: Chen, W., Venables, D. S., and Sigrist, M. W., Elsevier, 443–520, <https://doi.org/10.1016/B978-0-12-815014-6.00004-X>,
850 2021.
- Cai, W.-J.: Estuarine and Coastal Ocean Carbon Paradox: CO₂ Sinks or Sites of Terrestrial Carbon Incineration?, *Annu. Rev. Mar. Sci.*, 3, 123–145, <https://doi.org/10.1146/annurev-marine-120709-142723>, 2011.
- Campbell, A. D., Fatoyinbo, L., Goldberg, L., and Lagomasino, D.: Global hotspots of salt marsh change and carbon emissions, *Nature*, 612, 701–706, <https://doi.org/10.1038/s41586-022-05355-z>, 2022.
- 855 Chmura, G. L., Anisfeld, S. C., Cahoon, D. R., and Lynch, J. C.: Global carbon sequestration in tidal, saline wetland soils, *Global Biogeochem. Cycles*, 17, 1111, <https://doi.org/10.1029/2002GB001917>, 2003.
- Cui, X., Goff, T., Cui, S., Menefee, D., Wu, Q., Rajan, N., Nair, S., Phillips, N., and Walker, F.: Predicting carbon and water vapor fluxes using machine learning and novel feature ranking algorithms, *Science of The Total Environment*, 775, 145130, <https://doi.org/10.1016/j.scitotenv.2021.145130>, 2021.
860
- De Brouwer, J. and Stal, L.: Short-term dynamics in microphytobenthos distribution and associated extracellular carbohydrates in surface sediments of an intertidal mudflat, *Mar. Ecol. Prog. Ser.*, 218, 33–44, <https://doi.org/10.3354/meps218033>, 2001.
- 865 Duarte, C. M., Middelburg, J. J., and Caraco, N.: Major role of marine vegetation on the oceanic carbon cycle, *Biogeosciences*, 2, 1–8, <https://doi.org/10.5194/bg-2-1-2005>, 2005
- Foken, T., Gockede, M., Mauder, M., Mahrt, L., Amiro, B., and Munger, W.: POST-FIELD DATA QUALITY CONTROL, *HANDBOOK OF MICROMETEOROLOGY*, 28, 2004.
- 870 Foken, Th. and Wichura, B.: Tools for quality assessment of surface-based flux measurements, *Agricultural and Forest Meteorology*, 78, 83–105, [https://doi.org/10.1016/0168-1923\(95\)02248-1](https://doi.org/10.1016/0168-1923(95)02248-1), 1996.
- Forbrich, I. and Giblin, A. E.: Marsh-atmosphere CO₂ exchange in a New England salt marsh, *J. Geophys. Res. Biogeosci.*, 120, 1825–1838, <https://doi.org/10.1002/2015JG003044>, 2015.
- 875 Forbrich, I., Giblin, A. E., and Hopkinson, C. S.: Constraining Marsh Carbon Budgets Using Long-Term C Burial and Contemporary Atmospheric CO₂ Fluxes, *J. Geophys. Res. Biogeosci.*, 123, 867–878, <https://doi.org/10.1002/2017JG004336>, 2018.
- Gash, J. H. C. and Culf, A. D.: Applying a linear detrend to eddy correlation data in realtime, *Boundary-Layer Meteorol.*, 79, 301–306, <https://doi.org/10.1007/BF00119443>, 1996.

- 880 Gattuso, J.-P., Frankignoulle, M., and Wollast, R.: CARBON AND CARBONATE METABOLISM IN COASTAL
AQUATIC ECOSYSTEMS, *Annu. Rev. Ecol. Syst.*, 29, 405–434, <https://doi.org/10.1146/annurev.ecolsys.29.1.405>, 1998.
- Gattuso, J.-P., Frankignoulle, M., and Smith, S. V.: Measurement of community metabolism and significance in the coral reef CO₂ source-sink debate, *Proc. Natl. Acad. Sci. U.S.A.*, 96, 13017–13022, <https://doi.org/10.1073/pnas.96.23.13017>, 1999.
- 885 Gedan, K. B., Silliman, B. R., and Bertness, M. D.: Centuries of Human-Driven Change in Salt Marsh Ecosystems, *Annu. Rev. Mar. Sci.*, 1, 117–141, <https://doi.org/10.1146/annurev.marine.010908.163930>, 2009.
- Gnanamoorthy, P., Selvam, V., Deb Burman, P. K., Chakraborty, S., Karipot, A., Nagarajan, R., Ramasubramanian, R., Song, Q., Zhang, Y., and Grace, J.: Seasonal variations of net ecosystem (CO₂) exchange in the Indian tropical mangrove forest of Pichavaram, *Estuarine, Coastal and Shelf Science*, 243, 106828, <https://doi.org/10.1016/j.ecss.2020.106828>, 2020.
- 890 Göckede, M., Rebmann, C., and Foken, T.: A combination of quality assessment tools for eddy covariance measurements with footprint modelling for the characterisation of complex sites, *Agricultural and Forest Meteorology*, 127, 175–188, <https://doi.org/10.1016/j.agrformet.2004.07.012>, 2004.
- Gu, J., Luo, M., Zhang, X., Christakos, G., Agustí, S., Duarte, C. M., and Wu, J.: Losses of salt marsh in China: Trends, threats and management, *Estuarine, Coastal and Shelf Science*, 214, 98–109, <https://doi.org/10.1016/j.ecss.2018.09.015>, 2018.
- 895 Guo, H., Noormets, A., Zhao, B., Chen, J., Sun, G., Gu, Y., Li, B., and Chen, J.: Tidal effects on net ecosystem exchange of carbon in an estuarine wetland, *Agricultural and Forest Meteorology*, 149, 1820–1828, <https://doi.org/10.1016/j.agrformet.2009.06.010>, 2009.
- 900 Han, G., Chu, X., Xing, Q., Li, D., Yu, J., Luo, Y., Wang, G., Mao, P., and Rafique, R.: Effects of episodic flooding on the net ecosystem CO₂ exchange of a supratidal wetland in the Yellow River Delta, *J. Geophys. Res. Biogeosci.*, 120, 1506–1520, <https://doi.org/10.1002/2015JG002923>, 2015.
- Herbst, M., Friborg, T., Schelde, K., Jensen, R., Ringgaard, R., Vasquez, V., Thomsen, A. G., and Soegaard, H.: Climate and site management as driving factors for the atmospheric greenhouse gas exchange of a restored wetland, *Biogeosciences*, 10, 39–52, <https://doi.org/10.5194/bg-10-39-2013>, 2013.
- 905 Hwang, Y.-H. and Morris, J. T.: Whole-plant gas exchange responses of *Spartina alterniflora* (Poaceae) to a range of constant and transient salinities, *American Journal of Botany*, 81, 659–665, <https://doi.org/10.1002/j.1537-2197.1994.tb15500.x>, 1994.
- Jia, X., Zha, T., Wang, S., Bourque, C. P.-A., Wang, B., Qin, S., and Zhang, Y.: Canopy photosynthesis modulates soil respiration in a temperate semi-arid shrubland at multiple timescales, *Plant Soil*, 432, 437–450, <https://doi.org/10.1007/s11104-018-3818-z>, 2018.
- 910 Jiang, L.-Q., Cai, W.-J., and Wang, Y.: A comparative study of carbon dioxide degassing in river- and marine-dominated estuaries, *Limnol. Oceanogr.*, 53, 2603–2615, <https://doi.org/10.4319/lo.2008.53.6.2603>, 2008.

- Jimenez, K. L., Starr, G., Staudhammer, C. L., Schedlbauer, J. L., Loescher, H. W., Malone, S. L., and Oberbauer, S. F.: Carbon dioxide exchange rates from short- and long-hydroperiod Everglades freshwater marsh: EVERGLADES MARSH CARBON DYNAMICS, *J. Geophys. Res.*, 117, G04009, <https://doi.org/10.1029/2012JG002117>, 2012.
- 915 Kathilankal, J. C., Mozdzer, T. J., Fuentes, J. D., D'Odorico, P., McGlathery, K. J., and Zieman, J. C.: Tidal influences on carbon assimilation by a salt marsh, *Environ. Res. Lett.*, 3, 044010, <https://doi.org/10.1088/1748-9326/3/4/044010>, 2008.
- Kim, Y., Johnson, M. S., Knox, S. H., Black, T. A., Dalmagro, H. J., Kang, M., Kim, J., and Baldocchi, D.: Gap-filling approaches for eddy covariance methane fluxes: A comparison of three machine learning algorithms and a traditional method with principal component analysis, *Global Change Biology*, 26, 1499–1518, <https://doi.org/10.1111/gcb.14845>,
920 2020.
- Kljun, N., Calanca, P., Rotach, M. W., and Schmid, H. P.: A simple two-dimensional parameterisation for Flux Footprint Prediction (FFP), *Geosci. Model Dev.*, 8, 3695–3713, <https://doi.org/10.5194/gmd-8-3695-2015>, 2015.
- Knox, S. H., Windham-Myers, L., Anderson, F., Sturtevant, C., and Bergamaschi, B.: Direct and Indirect Effects of Tides on Ecosystem-Scale CO₂ Exchange in a Brackish Tidal Marsh in Northern California, *J. Geophys. Res. Biogeosci.*, 123, 787–806, <https://doi.org/10.1002/2017JG004048>, 2018.
925
- Kowalski, S., Sartore, M., Burlett, R., Berbigier, P., and Loustau, D.: The annual carbon budget of a French pine forest (*Pinus pinaster*) following harvest: ANNUAL CARBON BUDGET OF A PINE FOREST AFTER HARVEST, *Global Change Biology*, 9, 1051–1065, <https://doi.org/10.1046/j.1365-2486.2003.00627.x>, 2003.
- Krauss, K. W., Holm, G. O., Perez, B. C., McWhorter, D. E., Cormier, N., Moss, R. F., Johnson, D. J., Neubauer, S. C., and Raynie, R. C.: Component greenhouse gas fluxes and radiative balance from two deltaic marshes in Louisiana: Pairing chamber techniques and eddy covariance: Gas Fluxes From Louisiana Marshes, *J. Geophys. Res. Biogeosci.*, 121, 1503–1521, <https://doi.org/10.1002/2015JG003224>, 2016.
930
- Lasslop, G., Reichstein, M., Papale, D., Richardson, A. D., Arneeth, A., Barr, A., Stoy, P., and Wohlfahrt, G.: Separation of net ecosystem exchange into assimilation and respiration using a light response curve approach: critical issues and global evaluation: SEPARATION OF NEE INTO GPP AND RECO, *Global Change Biology*, 16, 187–208, <https://doi.org/10.1111/j.1365-2486.2009.02041.x>, 2010.
935
- Lee, S.-C., Fan, C.-J., Wu, Z.-Y., and Juang, J.-Y.: Investigating effect of environmental controls on dynamics of CO₂ budget in a subtropical estuarial marsh wetland ecosystem, *Environ. Res. Lett.*, 10, 025005, <https://doi.org/10.1088/1748-9326/10/2/025005>, 2015.
- 940 Liaw, A., Wiener, M. Classification and Regression by randomForest. *R news* 2, 18–22, 2022.
- Mayen, J., Polsenaere, P., Regaudie De Gioux, A., Dupuy, C., Vagner, M., Lemesle, J.-C., Poitevin, B., and Souchu, P.: Influence of typology and management practices on water pCO₂ and atmospheric CO₂ fluxes over two temperate shelf–estuary–marsh water continuums, *Regional Studies in Marine Science*, 67, 103209, <https://doi.org/10.1016/j.rsma.2023.103209>, 2023.
945
- McLeod, E., Chmura, G. L., Bouillon, S., Salm, R., Björk, M., Duarte, C. M., Lovelock, C. E., Schlesinger, W. H., and Silliman, B. R.: A blueprint for blue carbon: toward an improved understanding of the role of vegetated coastal habitats in sequestering CO₂, *Frontiers in Ecology and the Environment*, 9, 552–560, <https://doi.org/10.1890/110004>, 2011.

- Mcowen, C., Weatherdon, L., Bochove, J.-W., Sullivan, E., Blyth, S., Zockler, C., Stanwell-Smith, D., Kingston, N., Martin, C., Spalding, M., and Fletcher, S.: A global map of saltmarshes, *BDJ*, 5, e11764, <https://doi.org/10.3897/BDJ.5.e11764>, 2017.
- Migné, A., Spilmont, N., and Davoult, D.: In situ measurements of benthic primary production during emersion: seasonal variations and annual production in the Bay of Somme (eastern English Channel, France), *Continental Shelf Research*, 24, 1437–1449, <https://doi.org/10.1016/j.csr.2004.06.002>, 2004.
- 955 Miller, W. D., Neubauer, S. C., and Anderson, I. C.: Effects of Sea Level Induced Disturbances on High Salt Marsh Metabolism, *Estuaries*, 24, 357, <https://doi.org/10.2307/1353238>, 2001.
- Mitra, B., Miao, G., Minick, K., McNulty, S. G., Sun, G., Gavazzi, M., King, J. S., and Noormets, A.: Disentangling the Effects of Temperature, Moisture, and Substrate Availability on Soil CO₂ Efflux, *J. Geophys. Res. Biogeosci.*, 124, 2060–2075, <https://doi.org/10.1029/2019JG005148>, 2019.
- 960 Moffett, K. B., Wolf, A., Berry, J. A., and Gorelick, S. M.: Salt marsh–atmosphere exchange of energy, water vapor, and carbon dioxide: Effects of tidal flooding and biophysical controls, *Water Resour. Res.*, 46, 2009WR009041, <https://doi.org/10.1029/2009WR009041>, 2010.
- Morelle, J., Roose-Amsaleg, C., and Laverman, A. M.: Microphytobenthos as a source of labile organic matter for denitrifying microbes, *Estuarine, Coastal and Shelf Science*, 275, 108006, <https://doi.org/10.1016/j.ecss.2022.108006>, 2022.
- 965 Morris, J. T.: Effects of oxygen and salinity on ammonium uptake by *Spartina alterniflora* Loisel. and *Spartina patens* (Aiton) Muhl., *Journal of Experimental Marine Biology and Ecology*, 78, 87–98, [https://doi.org/10.1016/0022-0981\(84\)90071-6](https://doi.org/10.1016/0022-0981(84)90071-6), 1984.
- 970 Nahrawi, H.: Exchange of Carbon Dioxide between a Southeastern Salt Marsh and the Atmosphere, PhD thesis, The University of Georgia, 131 pp., 2019.
- Nahrawi, H., Leclerc, M. Y., Pennings, S., Zhang, G., Singh, N., and Pahari, R.: Impact of tidal inundation on the net ecosystem exchange in daytime conditions in a salt marsh, *Agricultural and Forest Meteorology*, 294, 108133, <https://doi.org/10.1016/j.agrformet.2020.108133>, 2020.
- 975 Najjar, R. G., Herrmann, M., Alexander, R., Boyer, E. W., Burdige, D. J., Butman, D., Cai, W.-J., Canuel, E. A., Chen, R. F., Friedrichs, M. A. M., Feagin, R. A., Griffith, P. C., Hinson, A. L., Holmquist, J. R., Hu, X., Kemp, W. M., Kroeger, K. D., Mannino, A., McCallister, S. L., McGillis, W. R., Mulholland, M. R., Pilskaln, C. H., Salisbury, J., Signorini, S. R., St-Laurent, P., Tian, H., Tzortziou, M., Vlahos, P., Wang, Z. A., and Zimmerman, R. C.: Carbon Budget of Tidal Wetlands, Estuaries, and Shelf Waters of Eastern North America, *Global Biogeochem. Cycles*, 32, 389–416, <https://doi.org/10.1002/2017GB005790>, 2018.
- 980 Nyman, J. A. and DeLaune, R. D.: CO₂ emission and soil Eh responses to different hydrological conditions in fresh, brackish, and saline marsh soils, *Limnol. Oceanogr.*, 36, 1406–1414, <https://doi.org/10.4319/lo.1991.36.7.1406>, 1991.
- Papale, D., Reichstein, M., Aubinet, M., Canfora, E., Bernhofer, C., Kutsch, W., Longdoz, B., Rambal, S., Valentini, R., Vesala, T., and Yakir, D.: Towards a standardized processing of Net Ecosystem Exchange measured with eddy covariance technique: algorithms and uncertainty estimation, *Biogeosciences*, 3, 571–583, <https://doi.org/10.5194/bg-3-571-2006>, 2006.

- 985 Polsenaere, P., Lamaud, E., Lafon, V., Bonnefond, J.-M., Bretel, P., Delille, B., Deborde, J., Loustau, D., and Abril, G.: Spatial and temporal CO₂ exchanges measured by Eddy Covariance over a temperate intertidal flat and their relationships to net ecosystem production, *Biogeosciences*, 9, 249–268, <https://doi.org/10.5194/bg-9-249-2012>, 2012.
- Reichstein, M., Falge, E., Baldocchi, D., Papale, D., Aubinet, M., Berbigier, P., Bernhofer, C., Buchmann, N., Gilmanov, T., Granier, A., Grunwald, T., Havrankova, K., Ilvesniemi, H., Janous, D., Knohl, A., Laurila, T., Lohila, A., Loustau, D.,
 990 Matteucci, G., Meyers, T., Miglietta, F., Ourcival, J.-M., Pumpanen, J., Rambal, S., Rotenberg, E., Sanz, M., Tenhunen, J., Seufert, G., Vaccari, F., Vesala, T., Yakir, D., and Valentini, R.: On the separation of net ecosystem exchange into assimilation and ecosystem respiration: review and improved algorithm, *Global Change Biol*, 11, 1424–1439, <https://doi.org/10.1111/j.1365-2486.2005.001002.x>, 2005.
- Reynolds, O.: An Experimental Investigation of the Circumstances Which Determine Whether the Motion of Water Shall Be Direct or Sinuous, and of the Law of Resistance in Parallel Channels, *Philosophical Transactions of the Royal Society of London*, 17, 935–982, 1883.
- Rodda, S., Thumaty, K., Jha, C., and Dadhwal, V.: Seasonal Variations of Carbon Dioxide, Water Vapor and Energy Fluxes in Tropical Indian Mangroves, *Forests*, 7, 35, <https://doi.org/10.3390/f7020035>, 2016.
- Ruttenberg, K. C.: Development of a sequential extraction method for different forms of phosphorus in marine sediments,
 1000 *Limnology & Oceanography*, 37, 1460–1482, <https://doi.org/10.4319/lo.1992.37.7.1460>, 1992.
- Schäfer, K. V. R., Tripathee, R., Artigas, F., Morin, T. H., and Bohrer, G.: Carbon dioxide fluxes of an urban tidal marsh in the Hudson-Raritan estuary: Carbon dioxide fluxes of an wetland, *J. Geophys. Res. Biogeosci.*, 119, 2065–2081, <https://doi.org/10.1002/2014JG002703>, 2014.
- 1005 Schäfer, K. V. R., Duman, T., Tomasicchio, K., Tripathee, R., and Sturtevant, C.: Carbon dioxide fluxes of temperate urban wetlands with different restoration history, *Agricultural and Forest Meteorology*, 275, 223–232, <https://doi.org/10.1016/j.agrformet.2019.05.026>, 2019.
- Sousa, A. I., Lillebø, A. I., Pardal, M. A., and Caçador, I.: Productivity and nutrient cycling in salt marshes: Contribution to ecosystem health, *Estuarine, Coastal and Shelf Science*, 87, 640–646, <https://doi.org/10.1016/j.ecss.2010.03.007>, 2010.
- 1010 Van Dam, B., Polsenaere, P., Barreras-Apodaca, A., Lopes, C., Sanchez-Mejia, Z., Tokoro, T., Kuwae, T., Loza, L. G., Rutgersson, A., Fourqurean, J., and Thomas, H.: Global Trends in Air-Water CO₂ Exchange Over Seagrass Meadows Revealed by Atmospheric Eddy Covariance, *Global Biogeochem Cycles*, 35, <https://doi.org/10.1029/2020GB006848>, 2021.
- Vargas, R., Baldocchi, D. D., Bahn, M., Hanson, P. J., Hosman, K. P., Kulmala, L., Pumpanen, J., and Yang, B.: On the multi-temporal correlation between photosynthesis and soil CO₂ efflux: reconciling lags and observations, *New Phytologist*, 191, 1006–1017, <https://doi.org/10.1111/j.1469-8137.2011.03771.x>, 2011.
- 1015 Vickers, D. and Mahrt, L.: Quality Control and Flux Sampling Problems for Tower and Aircraft Data, *J. Atmos. Oceanic Technol.*, 14, 512–526, [https://doi.org/10.1175/1520-0426\(1997\)014<0512:QCAFSP>2.0.CO;2](https://doi.org/10.1175/1520-0426(1997)014<0512:QCAFSP>2.0.CO;2), 1997.
- Wang, Q., Wang, C. H., Zhao, B., Ma, Z. J., Luo, Y. Q., Chen, J. K., and Li, B.: Effects of growing conditions on the growth of and interactions between salt marsh plants: implications for invasibility of habitats, *Biol Invasions*, 8, 1547–1560,
 1020 <https://doi.org/10.1007/s10530-005-5846-x>, 2006.

Wang, Z. A. and Cai, W.-J.: Carbon dioxide degassing and inorganic carbon export from a marsh-dominated estuary (the Duplin River): A marsh CO₂ pump, *Limnol. Oceanogr.*, 49, 341–354, <https://doi.org/10.4319/lo.2004.49.2.0341>, 2004.

Wang, Z. A., Kroeger, K. D., Ganju, N. K., Gonnee, M. E., and Chu, S. N.: Intertidal salt marshes as an important source of inorganic carbon to the coastal ocean, *Limnol. Oceanogr.*, 61, 1916–1931, <https://doi.org/10.1002/lno.10347>, 2016.

1025 Wei, S., Han, G., Chu, X., Song, W., He, W., Xia, J., and Wu, H.: Effect of tidal flooding on ecosystem CO₂ and CH₄ fluxes in a salt marsh in the Yellow River Delta, *Estuarine, Coastal and Shelf Science*, 232, 106512, <https://doi.org/10.1016/j.ecss.2019.106512>, 2020a.

1030 Wei, S., Han, G., Jia, X., Song, W., Chu, X., He, W., Xia, J., and Wu, H.: Tidal effects on ecosystem CO₂ exchange at multiple timescales in a salt marsh in the Yellow River Delta, *Estuarine, Coastal and Shelf Science*, 238, 106727, <https://doi.org/10.1016/j.ecss.2020.106727>, 2020b.

Xi, M., Zhang, X., Kong, F., Li, Y., Sui, X., and Wang, X.: CO₂ exchange under different vegetation covers in a coastal wetland of Jiaozhou Bay, China, *Ecological Engineering*, 137, 26–33, <https://doi.org/10.1016/j.ecoleng.2018.12.025>, 2019.

1035 Zhao, J., Malone, S. L., Oberbauer, S. F., Olivas, P. C., Schedlbauer, J. L., Staudhammer, C. L., and Starr, G.: Intensified inundation shifts a freshwater wetland from a CO₂ sink to a source, *Global Change Biology*, 25, 3319–3333, <https://doi.org/10.1111/gcb.14718>, 2019.