

# Effects of vertical grid spacing on the climate simulated in the ICON-Sapphire global storm-resolving model

Hauke Schmidt<sup>1</sup>, Sebastian Rast<sup>1</sup>, Jiawei<sup>1,2</sup>, Amrit [Cassim](#)<sup>3</sup>, Shih-Wei Fang<sup>1</sup>, Diego<sup>1,4</sup>, Paul<sup>1,5</sup>, Lukas Klufft<sup>1</sup>, Clarissa<sup>1,6</sup>, Theresa Lang<sup>1</sup>, Ulrike Niemeier<sup>1</sup>, Andrea<sup>1,4</sup>, Andrew I. L.<sup>7</sup>, and Bjorn Stevens<sup>1</sup>

<sup>1</sup>Max Planck Institute for Meteorology, Bundesstr. 53, 20146 Hamburg, Germany

<sup>2</sup>now at: Institute of Science and Technology Austria (ISTA), Klosterneuburg, Austria

<sup>3</sup>Department of Physics, University of Cambridge, Cambridge, UK

<sup>4</sup>now at: Deutscher Wetterdienst (DWD), Offenbach, Germany

<sup>5</sup>now at: German Climate Computing Centre (DKRZ), Hamburg, Germany

<sup>6</sup>now at: Institute for Atmospheric and Climate Science, ETH Zürich, Zürich, Switzerland

<sup>7</sup>Atmospheric, Oceanic and Planetary Physics, Department of Physics, University of Oxford, Oxford, UK

**Correspondence:** Hauke Schmidt (hauke.schmidt@mpimet.mpg.de)

**Abstract.** Global storm-resolving models (~~GSRM~~[GSRMs](#)) use strongly refined horizontal grids in comparison to climate models typically used in the Coupled Model Intercomparison Project (CMIP), but comparable vertical grid spacings. Here, we study how changes in vertical grid spacing and adjustments ~~of~~[in](#) the integration time step affect ~~the~~ basic climate quantities simulated by the ICON-Sapphire atmospheric GSRM. Simulations are performed over a 45-day period for five different vertical grids ~~having between with~~ 55 ~~and to~~ 540 vertical layers and maximum tropospheric vertical grid spacings between 800 and 50 m, ~~respectively~~. The effects of changes in vertical grid spacing are compared ~~to differences between simulations with horizontal grid spacings of with the effects of reducing the horizontal grid spacing from~~ 5 ~~and 2.5 km. For most to~~ 2.5 km. For ~~most of the~~ quantities considered, halving ~~the~~ vertical grid spacing has ~~smaller effects than halving a smaller effect than halving the horizontal grid spacing but, but it~~ is not negligible. ~~Every-Each~~ halving of the vertical grid spacing ~~jointly, along~~ with the necessary reductions ~~of the in~~ time step length, increases cloud liquid water by about 7%, compared to about 16% decrease for halving the horizontal grid spacing. The effect is due to both ~~the~~ vertical grid refinement and ~~the~~ time step reduction. There is no tendency ~~of for~~ convergence in the range of grid spacings tested here. The cloud ice amount also increases with a refinement of the vertical grid, but is hardly affected by the time step length and does show a tendency ~~of convergence to converge~~. While the effect on shortwave radiation is globally dominated by the changed reflection due to the changed cloud liquid water content, ~~effects the effect~~ on longwave radiation ~~are is~~ more difficult to interpret because changes in cloud ice concentration and cloud fraction are anticorrelated in some regions. ~~The simulations show that using a maximum tropospheric vertical grid spacing larger than 400 m would increase the truncation error strongly. Computing time investments in a further vertical grid refinement can affect truncation errors of GSRMs similarly to comparable investments in horizontal refinement, because halving the vertical grid spacing is generally cheaper than halving the horizontal grid spacing. However, convergence~~

of boundary layer cloud properties cannot be expected even for the smallest maximum tropospheric grid spacing of 50 m used in this study.

## 1 Introduction

25 A recent development in numerical simulations of the global atmosphere is the increase ~~of in~~ horizontal resolution to grid spacings of a few kilometers ~~grid-spacing~~ to enable an explicit treatment of processes such as precipitating deep convection or gravity waves that need to be parameterized at coarser resolutions (e.g., Satoh et al., 2019). The DYAMOND (DYnamics of the Atmospheric general circulation Modeled On Non-hydrostatic Domains) project (Stevens et al., 2019) was the first intercomparison of simulations of nine ~~of~~ such models which the authors ~~called-call~~ global storm-resolving. Several of these  
30 models were run with two different horizontal grid spacings to estimate the impact of this configuration feature. Hohenegger et al. (2020) ran simulations with the ICOSahedral Non-hydrostatic (ICON) model for identical ~~setups-configurations~~ except for six different horizontal grid spacings ranging from 2.5 to 80 km to analyze the convergence of bulk properties of the simulated climate. They show that for many, but not all, important quantities the effect of a halving of the grid spacing decreases with  
35 ~~the grid spacing. Top~~ increasing grid refinement. For example, the global mean top of the atmosphere (TOA) ~~flux differences between outgoing shortwave flux differs by about  $10 \text{ W m}^{-2}$  between simulations with grid spacings of 40 and 20 km, but only by about  $4 \text{ W m}^{-2}$  between~~ the two finest spacings of 5 and 2.5 km ~~are of about  $4 \text{ W m}^{-2}$  for outgoing shortwave and less than  $1 \text{ W m}^{-2}$  for outgoing longwave radiation.~~ Differences for outgoing longwave radiation are much smaller for all grid spacings. Hohenegger et al. (2020) conclude that a “grid spacing of 5 km appears to be sufficient ~~for capturing-to capture~~ the basic properties of the climate system”.

40 While the DYAMOND models ~~are operated with, in general,~~ generally operate at horizontal grid spacings more than an order of magnitude finer ~~horizontal-grid-spacing~~ than typical climate models ~~as~~ participating in the most recent phase of the Coupled Model Intercomparison Project ~~Eyring et al. (CMIP6; 2016), (CMIP6; Eyring et al., 2016), the~~ vertical grid spacings used in these two classes of models are ~~rather~~ similar (see Fig. 1.19 of Chen et al. (2021) for an overview of CMIP model resolutions). ~~The-Thus, the~~ aspect ratio of horizontal to vertical grid spacing is ~~hence~~ much smaller for DYAMOND than for  
45 CMIP models. The DYAMOND models extend vertically up to between ~~37-~~ and 85 km and ~~deploy-use~~ between 74 and 137 vertical layers. The potential ~~effect of different choices of~~ impact of the chosen vertical grid spacing ~~for-on~~ the performance of global storm-resolving models (GSRMs) has received less attention than ~~effects-the impact~~ of horizontal resolution. The aim of this study is to quantify the role of vertical ~~model~~ grid spacing in global storm-resolving simulations with ICON. ~~More specifically, the primary goal is to~~ Specifically, we will analyze the potential convergence of key climate quantities with the  
50 refinement of vertical grid spacing similar to the analysis of Hohenegger et al. (2020) for horizontal grid spacing.

In traditional global climate modeling, where vertical heat transport and ~~effects-of-gravity-waves-gravity wave effects~~ are parameterized, the importance of an appropriate aspect ratio of horizontal to vertical model grid spacing has been emphasized in several ~~past-previous~~ studies that typically focus on large-scale dynamical processes. ~~Roeckner et al. (2006), e.g., For example, Roeckner et al. (2006)~~ explored the hypothesis of Lindzen and Fox-Rabinovitz (1989) ~~whereby-that~~ appropriate ratios can be

55 estimated based on quasi-geostrophic considerations for large-scale flows and the dissipation conditions for gravity waves. More recently, Skamarock et al. (2019) analyzed simulations with a numerical weather prediction model in configurations with horizontal grid spacings down to 3 km and argued, using dynamical convergence criteria, that a vertical grid spacing of 200 m or less would be required for convergence. Our study will, however, not concentrate on potential effects on simulated dynamics, but on the global atmospheric energy budget, for which the ~~resolution representation~~ of clouds is key. Bogenschutz et al. (2021) tested the sensitivity of boundary layer ~~and in particular stratocumulus, and especially stratocumulus~~ clouds to vertical grid spacing in a general circulation model (GCM) with 1° horizontal resolution but with vertical grids differing mainly in the boundary layer where the maximum layer thickness was between about 15 and 125 m. They showed increasing low cloud amounts with increasing vertical resolution, but demonstrated that also variations of the integration time step have an effect. Lee et al. (2022) and Bogenschutz et al. (2023) demonstrated an improvement of simulated stratocumulus clouds for a refinement of the horizontal grid spacing from 1° to 0.25° accompanied by a strong refinement of the vertical resolution in the boundary layer for selected processes relevant for the cloud formation.

We are not the first to ask how the choice of a vertical grid ~~influences affects~~ the behavior of storm-resolving simulations that explicitly represent vertical heat transport and gravity waves. The focus of such studies is ~~mostly usually~~ on the interaction of cloud microphysical processes and circulations. Seiki et al. (2015) analyzed simulations with the Nonhydrostatic Icosahedral Atmospheric Model (NICAM) with a minimum horizontal grid spacing of 14 km and four different vertical grids with between 40 and 236 layers corresponding to maximum tropospheric layer thicknesses between slightly more than 1000 m and 100 m, respectively. Their focus was on tropical cirrus clouds. They concluded that a grid spacing of 400 m or less is necessary ~~for a proper representation of~~ to properly represent cirrus in their model. Using a more idealized radiative convective equilibrium (RCE) configuration of NICAM, Ohno and Satoh (2018) and Ohno et al. (2019) tested vertical and horizontal grid spacings comparable to those of Seiki et al. (2015) plus an even finer vertical grid with 398 layers and a maximum tropospheric thickness of 50 m. Their simulations indicate that relative humidity near the tropopause is strongly enhanced for the configuration with the coarsest vertical grid in comparison to all other configurations. Furthermore, ice cloud cover ~~is decreasing and precipitation increasing with a refinement of~~ decreases and precipitation increases as the vertical grid is refined.

Besides the above mentioned studies with NICAM, there are a number of studies using limited-area and large-eddy models to estimate effects of vertical grid spacing ~~for on~~ the representation of clouds. Using convection-permitting simulations for the region of ~~Northern North~~ Africa, Mantsis et al. (2020) argue that their simulation of Saharan mid-level cloudiness depends strongly on vertical resolution and ~~suggested suggest~~ that 50 m or less ~~might may~~ be needed for convergence. As another example, Marchand and Ackerman (2011) note, based on large-eddy simulations (LES), that “accurate [...] simulations of [...] boundary layer clouds are difficult to achieve without vertical grid spacing well below 100 m, especially for inversion-topped stratocumulus.” Mellado et al. (2018) also discuss the representation of stratocumulus clouds in LES. They summarize from earlier studies that a vertical grid spacing of 5 m near the inversion provides skill for ~~the simulation of the clouds’~~ simulating the liquid water path (LWP) of the clouds. Their LES simulations with horizontal grid spacing between 10 m and 250 m, and vertical spacing, between 5 m and 20 m show that LWP and low cloud fraction ~~get larger increase~~

finer vertical grids. LES simulations by Cheng et al. (2010) also show this result. Effects of a too coarse horizontal grid on  
90 cloudiness may hence be compensated by a too coarse vertical grid.

In our experiments we use the ~~global ICON~~ ICON global atmospheric model with grids that have maximum tropospheric  
vertical grid spacings between 50 and 800 m, i.e. comparable to those used by Ohno and Satoh (2018), but a finer horizontal  
resolution of, in general, 5 km and a realistic global configuration. Based on the experience from LES (~5 to 500 m horizontal  
grid spacing) and limited area storm-resolving modeling (~500 m to 5 km) we ~~have to~~ must expect that even the finest vertical  
95 grid spacing is too coarse for the realistic simulation of some aspects of global cloudiness. Nevertheless, given the substantial  
dependence of cloudiness (~~and other variables~~) and other quantities on the vertical grid spacing reported for a variety of model  
types, systematically analyzing it seems worthwhile to systematically analyze the effect of much finer vertical grid spacings  
than typically used in GSRM studies ~~; so far, seems of merit~~ to date. To compare the potential benefits of refinements in vertical  
and horizontal grid spacings we have additionally performed a simulation with the same setup but with a halved horizontal  
100 grid spacing. ~~Moreover, as~~ Since increases in both horizontal and vertical resolution usually require a decrease of the model's  
integration time step we ~~have also performed~~ additionally ran simulations with identical vertical grid ~~spacings~~ spacing but  
differing time steps to separate the effects of spatial and temporal resolution, or in other words, the sensitivities of spatial and  
temporal truncation errors.

The effect of the choice of an integration time step length on simulation results of global climate models is arguably dis-  
105 cussed less frequently than the effects of spatial resolution. However, Wan et al. (2021) and Bogenschutz et al. (2021), ~~with~~  
using the same GCM, demonstrated a strong time step sensitivity of low clouds. In their model ~~that,~~ which uses convection  
parameterizations, the low cloud fraction decreases with a shorter time step. Earlier, e.g. Wan et al. (2013) and Gettelman et al.  
(2015) documented effects of the length of the integration time step on aerosol and cloud microphysics, and Beljaars et al.  
(2018) showed an effect on winds in a weather forecast model.

In the following section we present more details on the model and the experimental setup. Section 3 presents effects of  
~~a refinement of~~ refining the vertical grid compared to the reference grid, first in terms of global averages, second spatial  
distributions, and third vertical profiles. ~~Effects~~ The effects of a coarser than standard vertical grid are discussed in Section 4.  
Section 5 compares effects of changes in horizontal and vertical grid spacings. Although not in the focus of our analysis,  
Section 6 presents a comparison of selected simulated quantities with observations. The final section summarizes the results  
115 and provides conclusions.

## 2 Model description and experiment setup

The numerical model employed in this study is the atmosphere component of the Sapphire configuration of the ICON mod-  
eling framework. The Sapphire configuration is described by Hohenegger et al. (2023) and is intended for simulations with  
120 horizontal grid spacings of less than 10 km. The atmosphere component uses a dynamical core to solve the nonhydrostatic  
version of the Navier-Stokes equations and conservation laws for mass and thermal energy and a tracer transport scheme as

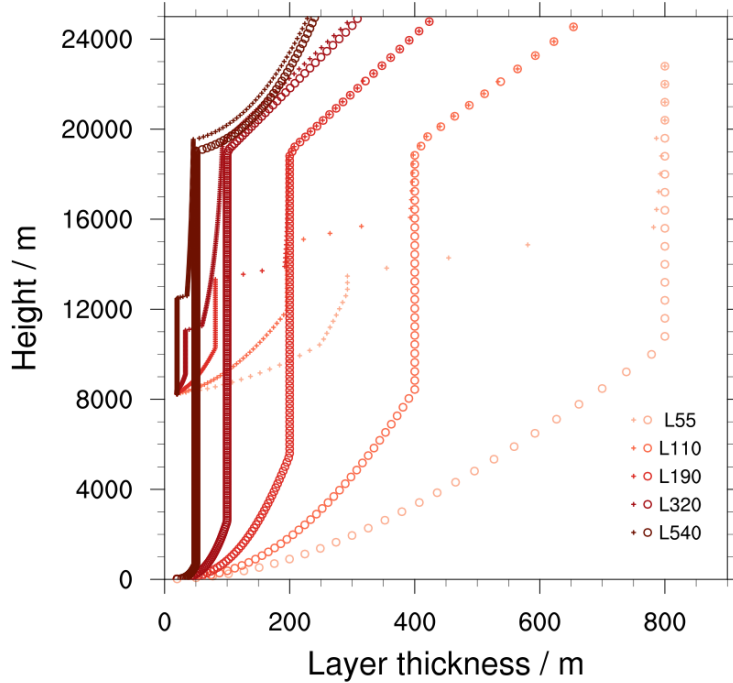
**Table 1.** Key parameters for the simulations.

Name	# of. layers	max. troposph. layer thickness / m	hor. grid spacing / km	lowest layer thickness / m	integration time step / s
<del>L55</del> -L55-40s	55	800	5	20	40
<del>L110</del> -L110-40s	110	400	5	20	40
<del>L190</del> -L190-30s	190	200	5	20	30 (20)*
<del>L320</del> -L320-15s	320	100	5	20	15 (10)*
<del>L540</del> -L540-8s	540	50	5	20	8 (6)*
L110-2.5km	110	400	2.5	20	20
L55-15s	55	800	5	40	15
L110-15s	110	400	5	20	15

\*: Time step lengths given in brackets were used for few individual days of the simulations only, where the originally chosen time step caused instabilities.

developed by Gassmann (2011) and Wan et al. (2013), and implemented by Zängl et al. (2015). The only parameterizations of subgrid-scale atmospheric processes used in this model configurations are the treatment of radiant energy transfer, cloud microphysical processes, and turbulent mixing. Radiant energy transfer is calculated with the RTE-RRTMGP scheme (Radiative Transfer for Energetics - RRTM for General circulation model applications, Pincus et al., 2019). Microphysics are parameterized with a one-moment scheme (Baldauf et al., 2011) that was adapted from the numerical weather prediction configuration of ICON (ICON-NWP Zängl et al., 2015). Turbulence is represented through a Smagorinsky-type parameterization (Smagorinsky, 1963) of which the implementation is described by Lee and Hohenegger (2022). It should be noted that this scheme includes a mixing length calculation that depends on both vertical and horizontal grid spacing. Effects of changing the grid spacings may hence include a contribution from this parameterization. Other parameterizations typically employed for larger-scale atmospheric models to represent the effects of unresolved convection, gravity waves, etc. are not included in ICON-Sapphire, even though we acknowledge that at storm-resolving scales these are not all well resolved. Omitting their parameterization allows us to explore their effects as grid spacing is refined, something parameterizations attempt to hide. Land surface processes are treated by version 4 of the Jena Scheme for Biosphere-Atmosphere Coupling in Hamburg (JSBACH) of which the updates to the earlier version 3.2 (Reick et al., 2021) are described by Hohenegger et al. (2023). The model equations of ICON-Sapphire are discretized using an icosahedral-triangular C-grid that is described and illustrated by Giorgetta et al. (2018).

For the vertical discretization, all ICON atmosphere configurations are employing the Smooth LEvel VERTICAL coordinate (SLEVE Leuenberger et al., 2010), a terrain-following hybrid sigma z-coordinate. The decay of the effect of topography on the vertical coordinate is defined using functions described by Leuenberger et al. (2010). Parameters that define the grid for a specific configuration of ICON are in particular the minimum and maximum tropospheric layer thicknesses ( $\Delta z_{\min}$  and



**Figure 1.** Vertical layer thickness for the examples of grid boxes with surface altitudes of 0 m (circles) and 8205 m (crosses), respectively. The y-axis shows the height of the lower edge of the respective layer. Colors indicate the experiments (see Table 1 for details) as indicated in the legend. Darker colors mark finer vertical grid spacing. Only the lowest 25 km of the grids are shown. The model top is at 75 km for all configurations.

$\Delta z_{\max}$ , respectively) where the minimum is used for the thickness of the lowest layer, the maximum altitude up to which these limits are applied ( $z_{\text{trop}}$ ), and the altitude above which a fixed-height grid is used ( $z_{\text{fh}}$ ).

To estimate the sensitivity of the simulated climate to the vertical grid spacing we have performed five simulations with  
 145  $\Delta z_{\max}$  of 50, 100, 200, 400, and 800 m corresponding to grids with in total between 540 and 55 layers. The first five lines of Table 1 show these simulations which are all run at a horizontal grid spacing of about 5 km (measured as the square root of the triangle surfaces; called R2B9 following the terminology in Giorgetta et al. (2018)) and with a model top at 75 km. Earlier storm-resolving ICON simulations, e.g. for the DYAMOND project, have often been performed with the same top height and  $\Delta z_{\max} = 400$  m, but only 90 vertical layers. Our reference [simulation-grid](#) L110 differs from this earlier vertical grid

150 configuration by  $z_{\text{trop}}$  increased from 14 km to 19 km to have well defined layer thickness changes between the simulations for an altitude region including the tropical tropopause layer. Fig. 1 shows layer thicknesses from the surface to 25 km altitude for the five vertical grids for the examples of surface altitudes of 0 m and 8204 m. The latter corresponds to the grid box with the highest surface elevation of an R2B10 grid (with a horizontal grid spacing of about 2.5 km). Test simulations not further discussed in this paper had revealed the tendency of the grids with 320 and 540 layers to frequently produce numerical  
155 instabilities. This issue could be solved by increasing the altitude where the grid is transitioning from terrain-following to fixed-height, which is why the three coarsest vertical resolutions are run with  $z_{\text{th}} = 22$  km while for ~~L320 and L540~~ L320-15s and L540-8s we are using values of 27 and 35 km, respectively. Attempts to use grids in which the spacing changes more smoothly with altitude than the grids presented in Fig. 1 didn't reduce the instabilities.

Four further sensitivity simulations that have been performed are listed in Table 1. To put the effects of changes in vertical  
160 grid spacing into perspective we have performed simulation L110-2.5km which differs from the reference simulation ~~L110~~ L110-40s by its halved horizontal grid spacing and a halved integration time step. The standard simulations with different vertical (and horizontal) grid spacings use integration time steps of different lengths between 40 s for ~~L55 and L110~~ L55-40s and L110-40s, and 8 s for ~~L540~~ L540-8s. To disentangle potential effects of changes in vertical and temporal discretization we have performed the two additional simulations L55-15s and L110-15s with configurations almost<sup>1</sup> identical to simulations ~~L55~~  
165 ~~and L110~~ L55-40s and L110-40s, respectively, but a time step of 15 s which is also employed in the ~~L320~~ L320-15s experiment. This creates a series of three experiments with identical time step length but still different vertical grid spacing. Simulations L55-15s and L110-15s have the additional benefit that differences to their respective references ~~L55 and L110~~ L55-40s and L110-40s can be attributed unambiguously to the different time steps.

The simulations in this study are initialized from the global meteorological analysis taken from the European Centre for  
170 Medium Range Weather Forecasts (ECMWF) for June, 27, 2021, 0 UTC, and run for 45 days with daily sea surface temperatures and sea ice fraction taken from ECMWF operational daily analyses as lower boundary condition. Most comparisons of the climate state simulated in the different experiments are performed for the last 40 days of the simulation. Additionally, to enable some estimate of the internal variability of the simulations, four subperiods of 10 days each have been compared for parts of the analysis.

175 In the following sections we will not only present resolution dependencies of important climate quantities, but also try to identify their causes. However, besides plausible physical mechanisms, not-easily identifiable numerical aspects in the individual remaining parameterizations or the interplay of parameterized and resolved phenomena may contribute. A thorough unit testing of the individual model components and their dependence on grid spacing and time step choices is arguably advisable to support the identification of the causes, but is beyond the scope of this study. Nevertheless, the results presented  
180 here serve as a practical guide to understanding the large scale effects and should be useful to the model development community.

---

<sup>1</sup>Note that L55-15s is the only simulation with a lowest layer thickness of 40 m instead of 20 m used for all other simulations. However, comparison of an earlier ~~L55~~ L55-40s simulation with  $\Delta z_{\text{min}}=40$  m shows negligible effects of this choice in comparison to the ~~L55~~ L55-15s simulation used here.



### 3 Effects of vertical grid refinement

In most comparisons we use the simulation ~~L110~~L110-40s as reference because its vertical grid is closest to the standard configuration of ICON-Sapphire. In this section we compare simulations with maximum tropospheric grid spacings reduced by up to a factor of 8 (~~L540~~L540-8s) with respect to this reference. The simulation with the coarsest vertical grid spacing (~~L55~~L55-40s) is presented separately in Section 4 because it behaves differently in several respects than one might extrapolate from the experiments with finer vertical grid spacing. Section 5 compares effects of horizontal and vertical grid refinements. The first two subsections of this section report model results in terms of global means and horizontal patterns. The presentation of effects on vertical profiles in Section 3.3 is used to discuss potential reasons for the simulated effects. This discussion is continued in Sections 4 and 5.

#### 3.1 Global averages

##### 3.1.1 Combined effects of vertical grid spacing and time step changes

When refining the spatial discretization of a numerical general circulation model it is, in general, necessary to decrease the integration time step to ensure the stability of the integration by avoiding the violation of the Courant–Friedrichs–Lewy (CFL) convergence condition. Therefore, we are first discussing the effect of combined changes of the vertical grid spacing and the integration time step for the first five experiments listed in Table 1. For simplicity, we refer to these combined changes as “practical vertical resolution changes” because the goal is to change the vertical grid spacing and the time step is only changed out of necessity. Individual effects of grid spacing and time step changes will be presented in Subsection 3.1.2.

Figure 2 a) shows differences in global mean precipitation, precipitable water, and vertically integrated cloud ice and liquid water of experiments ~~L190, L320, and L540, respectively,~~ L190-30s, L320-15s, and L540-8s, each compared to the reference experiment ~~L110.~~ Experiments ~~L55~~ L110-40s, Experiments -40s and L110-2.5km are included in this figure but will be discussed in the following sections.

Precipitation differences among the experiments are small and, as indicated by the vertical bars, can be of different sign for ~~the same experiment but~~ different 10-day subperiods within the same experiment. Possibly, 10-day simulation periods are too short for unambiguously representing a potential effect of vertical grid spacing on precipitation. Over longer time spans precipitation is constrained by the atmospheric energy balance (e.g., Mitchell et al., 1987; Fläschner et al., 2016). Summing up the radiation fluxes of Fig. 2 d) and g) indicates increases of atmospheric radiative cooling of between about  $1 \text{ W m}^{-2}$  for the practical refinement to ~~L190~~L190-30s and  $3 \text{ W m}^{-2}$  for the practical refinement to ~~L540~~L540-8s. These increases are largely balanced by the turbulent energy fluxes at the surface and hence consistent with small increases of precipitation. The energy fluxes will be discussed in more detail below. Precipitable water decreases with practical increases of vertical resolution. The difference between ~~L540 and L110~~ L540-8s and L110-40s is of about 2 %.

A large dependence on a practical vertical grid refinement is simulated for vertically integrated cloud liquid water which increases by similar amounts for each halving of grid spacing. The effect reaches about 22 % for the reduction of the maximum tropospheric grid spacing from 400 m in ~~L110~~L110-40s to 50 m in ~~L540.~~ There is no sign of convergence L540-8s.



215 Convergence is not observable within the range of grid spacings used here. Vertically integrated cloud ice also increases with vertical resolution, but the effect is smaller than for liquid water. The ~~L190, L320 and L540~~ L190-30s, L320-15s and L540-8s experiments show increases in vertically integrated cloud ice of about 5, 7, and 8 % compared to ~~LH0~~ L110-40s, which indicates convergence for this quantity.

Effects on the global mean vertical energy fluxes at the top of the atmosphere (TOA) and the surface are shown in Figs. 2 d) and g), respectively. Net downward TOA shortwave radiation decreases with ~~practieally~~ practically increasing vertical resolution (by about  $2.5 \text{ W m}^{-2}$  for ~~L540 compared to LH0~~ L540-8s compared to L110-40s) as it may be expected from the increase of cloud water. Outgoing longwave radiation (OLR) seems to increase with practically increasing vertical resolution, although the spread between the individual 10-day periods is large.<sup>2</sup> From the increase of cloud ice one would ~~a priori~~ expect the opposite behaviour a priori, but the sign is consistent with the reduction of precipitable water. The apparent inconsistency of the cloud ice and longwave radiation effects will be discussed in Section 3.3.

The effects on the net shortwave downward radiation at the surface are ~~, for all experiments,~~ similar to its TOA component for all experiments. Net surface downward longwave radiation is increasing with practical increases of vertical resolution which would be consistent with more cloud liquid water and ice. The upward sensible heat flux is increasing with practical increases of vertical resolution, as it also seems to be the case for the latent heat flux. The latter signal is very variable and may not be robust but is consistent with increasing atmospheric radiative cooling mentioned above.

In summary, the individual components of the TOA and surface energy fluxes presented in Fig. 2 respond very differently in magnitude to practical changes of vertical resolution, but none of them shows a clear tendency of convergence for the range of vertical grid spacings tested here.

Hohenegger et al. (2020) compared the effects of their horizontal resolution changes in ICON to the multi-model standard deviation of the DYAMOND model intercomparison project. In terms of global means they concluded that simulated differences between horizontal grid spacings of 2.5 and 5 km are small in comparison to the multi-model spread. As we will show in Section 5 effects of halving the vertical grid spacing are in general smaller than of halving horizontal grid spacing. Hence, also the effects of practical vertical resolution doublings are small with respect to this metric.

In the following, we will first analyze to which degree the reported changes in selected global mean climate quantities are due to changes in spatial resolution or time step length. Following this, we will analyze horizontal and vertical patterns of the changes to better understand the origin of global mean effects. The focus will be on the robust signals in both cloud condensate components and their effects on radiative fluxes.

### 3.1.2 Individual effects of vertical grid spacing and time step changes

Panels b), e), and h) of Fig. 2 show differences in the same quantities discussed above of experiment ~~L320~~ L320-15s to L110-15s. These two experiments use the same integration time step of 15 s (except for a single day of ~~L320~~ L320-15s that was run with 10 s to overcome an instability) but differ in their vertical grid spacing. Panels c), f), and i) of Fig. 2 show differences of

---

<sup>2</sup>Note that for consistency all fluxes, including longwave radiation, latent and sensible heat, are presented as positive downward in the figures.

experiments L110-15s and [L110L110-40s](#), and of experiments L55-15s and [L55L55-40s](#), i.e. the effects of a pure reduction of the integration time step from 40 to 15 s.

Comparison of Panels a), b), and c) of Fig. 2 indicates that the increase of cloud liquid water is due to both changing vertical resolution and time step. Both changes appear to contribute about equally to the total effect although the exact contributions are uncertain due to temporal variability. While in [L320L320-15s](#) the maximum tropospheric vertical grid spacing is reduced to 1/4 of the [L110L110-40s](#) value the time step is reduced only to 3/8.

An increase in cloud liquid water would be consistent with an increase in reflected shortwave radiation as mentioned above. However, the previously discussed reduction of TOA downward shortwave radiation with increasing vertical resolution seems to be largely a time step effect while the pure resolution effect has little influence.

In contrast to cloud liquid water, the effect on vertically integrated cloud ice reported above is dominantly indeed a vertical resolution dependence. The reported effect on the sensible heat flux, on the other hand, is largely a time step effect.

The global net radiative effect of a practical vertical resolution increase is a cooling. In experiment [L320L320-15s](#), e.g., in comparison to [L110L110-40s](#), the global total net downward energy fluxes at both TOA and surface are smaller by about 1.9 W m<sup>-2</sup>. Both effects are dominated by the time step dependence. The origin of this will be discussed below.

### 3.2 Spatial distributions

Fig. 3 shows zonal mean differences of selected cloud and radiation flux quantities between selected simulations. To facilitate the identification of signals we don't present results from all practical vertical refinement experiments but leave out experiment [L190L190-30s](#), which causes similar but weaker signals than the even finer resolved grids, and limit ourselves to the differences ([L320L320-15s](#) - L110-15s) for the pure resolution effect and (L110-15s - [L110L110-40s](#)) for the pure time step effect. The zonal mean differences ([L320L320-15s](#) - [L110L110-40s](#)) and ([L540L540-8s](#) - [L110L110-40s](#)) show similar latitude dependence for all presented quantities with in general larger amplitudes for the latter difference. This increases our confidence in the robustness of these signals.

Fig 3 a) indicates that the global increase of vertically integrated cloud liquid water with a practical increase of vertical resolution is due to increases over a large latitude range from southern to northern mid-latitudes. As for the global mean differences there is also no tendency for convergence with higher resolution over all this latitude range. Despite some variability the curves also confirm that the pure time step effect (L110-15s - [L110L110-40s](#)) has a larger contribution than the pure vertical resolution effect ([L320L320-15s](#) - L110-15s) to the practical resolution effect ([L320L320-15s](#) - [L110L110-40s](#)). While there appears to be a distinct pattern also at higher, in particular northern, latitudes, this pattern is much more dependent on the averaging period than the effects at lower latitudes and may depend strongly on the accidental evolution of the meteorological situation in the different simulations. In the analysis of the vertical structure of effects of resolution changes (Section 3.3) we will therefore concentrate on tropical (30°S to 30°N) averages. The difference maps of Fig. 4 confirm that the increase of cloud liquid water is widespread over middle to low-latitude oceans and that both the time step and the vertical grid spacing contribute to this effect. Based on past studies [with LES models \(e.g., Marchand and Ackerman, 2011\)](#) or [GCMs \(e.g., Bogenschutz et al., 2021\)](#), one may expect that in particular the amount of liquid water in stratocumulus areas increases for finer vertical grid spacing. [A](#)

better resolved inversion may reduce the ventilation of the boundary layer or, in other words, the mixing of moist boundary layer air into the free troposphere. Indeed, the patterns of the difference (~~L320-L320-15s~~ - ~~L110-L110-40s~~) shown in Fig. 4 and of (~~L540-L540-8s~~ - ~~L110-L110-40s~~) (not shown) indicate a relatively strong increase off the west coast of northern South America but this signal certainly does not dominate the zonal mean and is not visible in other stratocumulus regions as, e.g.,  
285 off the west coast of North America. Furthermore, it seems again that the time step effect, as indicated by the difference (~~L110-15s~~ - ~~L110-L110-40s~~), contributes strongly to the ~~South-Pacific-stratocumulus-signals~~ signals seen in the difference (~~L320-15s~~ - ~~L110-40s~~). Interestingly, the earlier mentioned studies of Bogenschutz et al. (2021) and Lee et al. (2022) also noted that the South American stratocumulus region is particularly sensitive to vertical resolution changes.

The latitudinal distribution of the increase in vertically integrated cloud ice (Fig. 3 b) is much less uniform than that of  
290 liquid water, the same is true for the spatial pattern shown in Fig. 5. While this can't be easily identified from the map, in Section 3.3.2 it will be shown that the signal differs on average between moist and dry regions of the tropics. In the zonal mean, pure and practical increases of vertical resolution lead to increases of the zonal mean cloud ice amount with peaks near 40°S, 10°S, 20°N and 50°N. It is unclear to which degree these peaks are due to the accidental evolution of weather in the individual experiments or actually a signal of the resolution differences. Zonal average differences calculated for the first 5  
295 days of the simulation period (not shown), for which the simulated meteorology is still fairly similar among the simulations, indicate more uniform increases for finer vertical grid spacings but in particular very similar effects of the practical increase to 320 layers and the pure effect of such a resolution increase. This confirms that the ice signal is, different than the liquid water signal, largely unaffected by the time step differences. In contrast, the local increase of cloud ice over northern South America with a practical resolution increase is mostly a time step effect.

300 The effect of increasing vertical resolution on cloud liquid water is strongly correlated with the effect on zonal mean outgoing, i.e. reflected, shortwave radiation (~~compare Fig solid black line of Fig. 3 a) and d) and f) and~~ and anti-correlated with net surface shortwave radiation (not shown). Regional maxima of an increase in shortwave reflection are for example simulated in the above mentioned stratocumulus region off South America with values up to about  $30 \text{ W m}^{-2}$  for the comparison (~~L540-L540-8s~~ - ~~L110-L110-40s~~). The correlation breaks down near the intertropical convergence zone (ITCZ) which is centered  
305 slightly north of the equator during the simulation period and where no increase of outgoing shortwave reflection is simulated despite increases in cloud liquid water. Here, ~~ice clouds and their changes dominate the changes in reflection. Changes in outgoing shortwave radiation are, in general, well correlated with changes in total cloud fraction diagnosed in the simulations. the reflected shortwave radiation is also not strongly correlated with vertically integrated cloud ice, but with cloud fraction (solid grey, and dotted black lines of Fig. 3 f, respectively).~~ In Section 3.3.2 it will be discussed that vertically integrated cloud  
310 ice and cloud fraction may be anticorrelated in some areas.

### 3.3 Vertical profiles

#### 3.3.1 The boundary layer

We have mentioned above that vertically integrated cloud liquid water increases over a large latitude range dominantly due to a reduction of the time step but additionally due to an increase in vertical resolution. Fig. 6 shows the vertical profile of cloud liquid water averaged over 30°S to 30°N and the differences in this quantity due to individual and combined changes of grid spacing and integration time step. It is clear that the different changes have distinct effects on the profile.

A shorter time step increases the liquid water content in the cloud layer, and dominantly near the lifting condensation level. A higher vertical resolution shifts the profile upwards. While time step and resolution effects are not necessarily independent of each other (see Section 4) the effect of a practical vertical resolution increase is, in general, well approximated by a combination of the two individual effects. It is clear from Fig. 6 that the effect of increased vertical resolution on cloud liquid water is not converging in the range of vertical resolutions used in these experiments.

The origin of the increase in cloud liquid water for practically increasing vertical resolution is not easy to identify. Bogenschutz et al. (2021), and earlier Wan et al. (2021) with the same GCM also recognized a strong time step sensitivity of low clouds. However, in their model that uses convection parameterizations the low cloud fraction decreases with a shorter time step. Wan et al. (2021) show that this sensitivity depends on specifics of the numerical coupling of various processes in the model integration, in particular the parameterizations of convection and cloud micro- and macrophysics.

Concerning the effect of a spatial refinement [on cloud condensate](#) one may assume that when splitting a grid box in two there is simply a larger chance to reach saturation. While we can't exclude such an effect other processes seem to dominate because a refinement of the vertical grid produces an altitude shift, and a refinement of the horizontal grid even a reduction of cloud liquid water (see Section 5).

To better understand the effects we will have a closer look at marine stratocumulus off the coast of South America where signals are strong (Fig. 4). As mentioned earlier, an increase of cloud liquid water in the marine stratocumulus regions may be expected for a finer vertical grid spacing due to a potentially better resolution of the inversion layer, and is also simulated in our experiments. Fig. 7 shows vertical profiles of cloud liquid water, temperature, and specific humidity averaged over the region 15°S to 0°N and 105°W to 90°W. The profiles support the interpretation of a deepening boundary layer and an upward shifting cloud layer for finer vertical grid spacing (Fig. 7b). The upward shift of the inversion can be seen in the temperature profile that shows a reduction of almost 2 K near 1.8 km when comparing ~~L320 and L110~~ [L320-15s and L110-40s](#). The profiles of cloud liquid water, specific humidity, and relative humidity (not shown) all show a strong reduction near the reference cloud base and a strong increase near the reference cloud top. Apparently, the better representation of the inversion leads to a deepening of the boundary layer and also a drying of the free troposphere (see Fig. 7f).

In this stratocumulus region, the individual effects of vertical resolution and time step changes are less shifted against each other in altitude than over the average tropics and both contribute to the liquid water increase near the reference cloud top. The overall increase is mainly due to the time step effect because it is basically positive all over the cloud layer while the pure resolution effect is a vertical shift. However, in contrast to the tropical average, the simulated changes to the reference don't

345 increase much when going to even finer grid spacings than in [L190-L190-30s](#) (not shown). This occurs despite the experience from LES simulations of a large sensitivity to changes in vertical grid spacings even at much smaller scales than considered in our simulations (e.g., Marchand and Ackerman, 2011; Mellado et al., 2018).

An increase of stratocumulus cloud amount was also simulated in a GCM by Bogenschutz et al. (2021) for an up to 8-times increase of the number of vertical levels in the boundary layer. However, only in the first two doublings the boundary layer  
350 depth increased as in our case. The last doubling led to a decrease of the depth. Moreover, in their case a shorter integration time step led to a reduction of the cloud amount.

While the effects of resolution changes in the selected stratocumulus region are much larger than in the tropical average there are a lot of qualitative similarities which suggests that similar mechanisms are in play all over the tropics. This widespread occurrence of similar changes is confirmed by Fig. 8 which shows changes of tropical vertical profiles of cloud liquid water in  
355 precipitation space. The upward shift caused by the finer grid spacing and the increase of cloud liquid water dominantly in the lower part of the cloud layer for a shorter time step is happening in most precipitation regimes.

~~Cloud liquid water effects~~ [Resolution effects on the vertical profiles of cloud liquid water](#) averaged over southern and  
[northern](#) mid-latitudes ~~also look similar, while the largest cloud liquid water amounts in~~ (not shown) ~~are qualitatively similar to the tropics, despite relatively large regional variations in particular in~~ the northern hemisphere ~~occur in the Northern Pacific and Atlantic regions~~ (Fig. 4) ~~in a very shallow boundary layer, and the resolution effects are regionally varying. It is plausible that a change of the~~. [We speculate that a reduced](#) ventilation of the boundary layer and possibly also a reduction of numerical diffusion through the refinement of the grid contribute to the changes of cloud liquid water simulated over ~~such~~ a variety of different conditions.

360

### 3.3.2 The free troposphere

365 We reported above that vertically integrated cloud ice is hardly affected by changes in the integration time step but almost only by the pure changes of vertical grid spacing. Fig. 9 shows that refining the grid spacing basically increases tropical cloud ice at all altitudes where it also exists in the reference simulation. The largest absolute increase is simulated near the cloud ice peak at around 11 km. Only near 14 km cloud ice is slightly reduced for finer vertical grid spacing. The figure also confirms the earlier notion that the effect of refining the grid spacing seems to converge for the highest resolution used in our simulations.

370 To better understand possible causes and consequences of this change in cloud ice Figs. 10 and 11 show tropical mean vertical reference ([L110-L110-40s](#)) profiles of temperature, specific humidity, vertical wind, relative humidity, cloud fraction, and upward longwave radiation, and their respective differences for selected experiments. As an indicator for convective activity the vertical wind velocity is not averaged over the whole tropics but over the 10 % of the tropical area with the strongest precipitation for a given time interval.<sup>3</sup>

375 Cloud ice increases with a refinement of the vertical grid (Fig. 9c) although specific humidity (Fig. 10d) and, despite the lower temperature (Fig. 10b), also relative humidity (Fig. 11b) are reduced at almost all altitudes where cloud ice exists.

---

<sup>3</sup>The magnitude of this average upwelling depends strongly on the selection of the precipitation threshold and on the time average over which this threshold is applied (here daily), but the shape of its vertical profile is fairly independent of these choices.

Fig. 12a shows tropical cloud ice profiles in precipitation space and their differences between experiments ~~L540~~ and ~~L110~~~~L540-8s~~ and ~~L110-40s~~.<sup>4</sup> The average increase of cloud ice is dominated by the regions with high precipitation, i.e. the regions where deep convection occurs. In tropical regions with low precipitation the vertically integrated ice cloud content (not shown) decreases by about 20% which means that in these regions the changes in relative humidity and cloud ice are consistent, but this is not the case in the regions with high precipitation. There, the increase of cloud ice is likely related to the increase of the upwelling (Fig. 10f) transporting more condensate upwards.

The increase of upwelling is consistent with the drying of the troposphere, visible in both specific and relative humidity (Figs. 10d and 11b)), which increases atmospheric radiative cooling (~~not shown~~) that needs to be balanced by stronger subsidence in the dry tropical regions. The effect on atmospheric moisture will be discussed in the following section because it is particularly strong for a coarsening of the vertical grid. The change of upwelling in the moist tropics is also consistent with the temperature changes. A pure time step decrease (L110-15s - ~~L110~~~~L110-40s~~) reduces temperatures in the boundary layer and convective upwelling. A pure vertical resolution increase (L320 - L110-15s) decreases temperature over almost all the tropical profile above the boundary layer, and thereby increases the convective available potential energy and upwelling. This combines to an almost unchanged upwelling up to about 8 km and an increase up to about 14 km for the practical increase of vertical resolution (~~L320~~~~L320-15s~~ - ~~L110~~~~L110-40s~~).

Fig. 12b shows that cloud fraction is reduced everywhere in precipitation space at tropical ice cloud altitudes, despite the increase of the cloud ice content in high precipitation areas. Thus, the opposing signals in cloud ice concentration and cloud fraction (Figs. 9 and 11d) are dominated by the changes in the areas of high precipitation, and not the subsidence regions where the changes have the same sign. ICON-Sapphire uses a cloud scheme that sets cloud fraction in individual grid boxes to 1 if the total condensate concentration is above the threshold of  $10^{-3} \text{ g kg}^{-1}$ , else to 0. A lower average cloud fraction hence means that fewer grid boxes are filled with a sufficient condensate mixing ratio. The apparent contradiction of lower cloud fraction but higher cloud ice concentration at some altitudes can only be explained when there is a larger concentration in fewer condensate-filled grid boxes. This would be consistent with the distribution of lower supersaturation over larger grid boxes suggested by Seiki et al. (2015) for coarser vertical grid spacing. They argued that finer vertical grid spacing would accelerate the interaction between clouds and radiation due to less air mass in a cloudy grid box and hence faster temperature change. Increased cloud top cooling in such boxes would decrease stability and increase variability of supersaturation. However, it is not clear if this the dominant process in our simulations. Consistent with our results, also Ohno et al. (2019) simulate a reduction of high-cloud fraction for finer vertical grids in RCE simulations with NICAM at 28 km horizontal resolution.

#### 405 4 Effects of vertical grid coarsening

Fig. 2 shows that many global mean quantities change more strongly for coarsening the vertical grid with respect to the reference (~~L55~~~~L55-40s~~ - ~~L110~~~~L110-40s~~) than for refining it. ~~In~~ ~~For instance, in~~ the case of precipitation, ~~for instance, the~~ (~~L55~~

---

<sup>4</sup>The pattern of the difference to the reference is consistent for all experiments with a finer vertical grid spacing and also similar if all tropics or only tropical ocean areas are considered.

the (L55-40s - L110-40s) and (L55-15s - L110-15s) differences are the only signals for which the spread between the four individual 10-day periods does not include zero. Both differences result purely from the change in vertical grid spacing because the compared simulations use identical time steps of 40 s and 15 s, respectively. The similarity of the differences (L55-40s - L110-40s) and (L55-15s - L110-15s) provides confidence in the robustness of the signals.

The decrease of precipitation of about 4% decrease in precipitation is consistent with the reduction of the latent heat flux and with the reduction of the atmospheric radiative cooling, which is clearly visible the latter of which is visible clearly in the reduction of OLR. In the case of (L55 - L110) OLR is reduced for the coarser vertical grid spacing by about  $4.3 \text{ W m}^{-2}$ ; in the case of (L55-15s - L110-15s) L110-40s, but only by about  $2.6 \text{ W m}^{-2}$  in the case of (L55-15s - L110-15s). Although the spreads are overlapping we can't exclude that the effect of the change in vertical grid-spacing has a time-step dependence. However, even the  $2.6 \text{ W m}^{-2}$  effect is larger than any of the effects simulated for a refinement of the vertical or horizontal grids and merits further attention.

Fig. 13 shows that the reduction of OLR is dominated by a tropical signal and consistent with an increase in cloud fraction that reaches a maximum of about 12 percentage points near  $10^\circ\text{S}$ . Both signals are larger than signals of even the strongest refinement of the vertical grid (L540 even larger than those of the maximum vertical grid refinement (L540-8s - L110-40s). By contrast, signals from a coarsening of the vertical grid spacing in cloud ice are relatively small, consistent with the global mean quantities. Due to the dominance of the tropical signals it makes sense to, again, discuss vertical profiles of quantities averaged over  $30^\circ\text{S}$  to  $30^\circ\text{N}$ .

Similar to several global mean quantities (Fig. 2), experiment L55-L55-40s also stands out in terms of the tropical profiles of, for instance, temperature and specific humidity because the differences to the reference are larger than simulated in all experiments with refined vertical grid spacing. Temperature increases all over the troposphere with a maximum of about 1.3 K reached near 14 km, compared to a maximum decrease under pure vertical grid refinement (L320-L320-15s - L110-15s) of less than 0.5 K. Specific humidity increases up to 50% in the upper troposphere for a halving of vertical resolution compared to a maximum decrease of about 10% for quadrupling it. Also relative humidity (Fig. 11) also increases much more strongly, by more than 10 percentage points, in the upper troposphere when comparing L55 to L110 for the coarsening from L110-40s to L55-40s than it decreases for increasing resolution. Opposite to the moisture decrease discussed above for the refinement case the grid refinements. The strong moisture increase for the coarsening would reduce atmospheric radiative cooling and hence decelerate the overturning circulation. Lang et al. (2023) analyzed moisture differences in the tropical middle troposphere in our simulations L55, L110, L190-L55-40s, L110-40s, L190-30s, L110-2.5km, and in further simulations with parameter changes. In general, the largest contribution to differences between different model configuration configurations can be traced back to differences in the conditions an air parcel experienced at the point of its last saturation. However, in the case of increased moisture due to the coarsening of the vertical grid spacing, about half of the increase can't be explained by this last saturation paradigm. Lang et al. (2023) speculate that an increase of numerical diffusion for coarser grids contributes to this moistening. Similar to our results, Ohno et al. (2019) also simulate the strongest increase of tropospheric humidity when switching to their coarsest vertical resolution with grid spacings in the upper troposphere of about 1 km.



While the refinement experiments cause increases of cloud ice at almost all altitudes, the signal of experiment [L55-L55-40s](#) is characterized by an upward shift (Fig. 9) of the profile. Also this signal may be caused by the strongly increased moisture which shifts the maximum divergence of longwave radiative cooling and thereby the divergence of vertical velocity in downwelling areas of the tropics and the convective anvils upward (e.g., Hartmann and Larson, 2002). In precipitation space (not shown) the signal of the ~~coarsening of the grid spacing is qualitatively opposite to~~ [grid coarsening is qualitatively consistent with, i.e., opposite to](#), the signal of the refinement shown in Fig. 12. However, with the relatively strong increase of relative humidity cloud ice also increases strongly in the dry regions. At altitudes near 13 km this overcompensates the reduction through reduced upwelling in the moist regions.

The dipole in the upper tropospheric temperature anomaly in this simulation translates itself into an upward shift of the cold point tropopause of about 1 km but hardly any change of the cold point temperature.

As mentioned above, a remarkable feature of the [L55-L55-40s](#) simulation is its strongly reduced OLR (by more than  $4 \text{ W m}^{-2}$  globally and more than  $6 \text{ W m}^{-2}$  in the tropical average; Figs. 2d and 11f, respectively). The analysis of clear-sky fluxes (not shown) indicates that about half of this is a clear-sky effect related to the strongly increased tropospheric humidity (Fig. 10d). The other half can be explained by the increase in ice cloud fraction (Fig. 11d). Analogous to the refinement experiment, where the ice cloud fraction is reduced everywhere in precipitation space, the coarsening leads to an increase everywhere (not shown). In the rainy regions this increase occurs despite a decrease of the cloud ice amount. As discussed above, this apparent inconsistency in the moist regions can only be explained by less cloud ice being distributed to a larger number of grid cells.

Seiki et al. (2015) analyzed tropical cirrus in NICAM simulations at 14 and 28 km horizontal grid spacing for different vertical grid spacings of about 100, 200, 400, and 1000 m in the upper tropical troposphere, i.e. comparable to our ~~experiments~~ [grids](#) L320 to L55. In their simulations, differences in ice cloud quantities between the three finest grids are also much smaller than for the coarsest grid. Their and our results further agree on a comparable decrease of OLR caused by the coarsest vertical grid spacing. However, in other aspects the results differ. While our cloud fraction increases for the coarsest grid basically at all upper tropospheric altitudes they report an increase only near the tropopause.

## 5 Comparing effects of horizontal and vertical grid refinements

Panels a), d), and g) of Fig. 2 show the differences in globally averaged water quantities and radiation fluxes of experiment L110-2.5km with respect to the reference experiment [L110-L110-40s](#), i.e. the effects of halving the horizontal grid spacing, in comparison to the differences of the experiments with refined vertical grids discussed above. The signs and magnitudes of the effects of the practical increase of horizontal resolution presented here are, in general, in agreement with the effects reported and discussed by Hohenegger et al. (2020). Here, the purpose of showing horizontal resolution effects is to compare them with vertical resolution effects. To estimate the relative importance of a practical doubling of horizontal to a practical doubling of vertical resolution one may compare (L110-2.5km - [L110-L110-40s](#)) with ([L190-L190-30s](#) - [L110-L110-40s](#)). However, to judge the effects of comparable computing time investments in horizontal or vertical refinement the comparison of (L110-2.5km -

475 ~~L110L110-40s~~) with (~~L320L320-15s - L110L110-40s~~) would be more appropriate. Independent of which vertical resolution experiment is chosen, absolute effects of horizontal refinement are larger for precipitable water and shortwave radiation fluxes both at the TOA and the surface. Effects on longwave fluxes are of comparable magnitude. The absolute effect on cloud liquid water reaches a similar magnitude when the ~~L320L320-15s~~ experiment is used in the comparison, and the effect on cloud ice is larger in the vertical resolution experiments.

480 Robust (in the sense of the spread of the four individual subperiods not including zero) effects of horizontal and vertical refinements have different signs in particular for cloud liquid water, shortwave fluxes, and the longwave surface flux. The signs of the longwave TOA flux differences are also opposite, but less robust. By contrast, the effect on cloud ice seems to point in the same direction, but is less robust for horizontal refinement.

In the following we will further discuss the relatively large effects on cloud condensate, and in particular cloud liquid water, 485 which is reduced by about 16 % in experiment L110-2.5km compared to ~~L110L110-40s~~. As these experiments differ not only in the horizontal grid spacings of about 2.5 and 5 km, but also in the time steps of 20 and 40 s, the time step effect could partly compensate the horizontal resolution effect. If one assumes that the time step effect acts independently of spatial resolution changes, the pure effect of a doubling of horizontal resolution could be larger by 5 %. This suggests that necessary time step adaptations may reduce the effect of changing the horizontal but enhance the effect of changing the vertical grid.

490 The effects of practical vertical and horizontal resolution changes on net TOA shortwave radiation have opposite signs, which is consistent with the cloud liquid water changes. However, the shortwave radiative effect of horizontal refinement per unit change of cloud water is larger than for vertical resolution.

Fig. 6 shows that the reduction of cloud liquid water with a practical increase of horizontal resolution is occurring fairly homogeneously all over the vertical profile in the tropics. As a shorter time step causes a qualitatively opposite effect one can 495 assume that the effect of a pure refinement of the horizontal grid spacing would cause an even larger but qualitatively similar reduction of cloud liquid water. The reduction of low clouds with higher horizontal resolution has been reported earlier in storm-resolving model simulations with ICON (Hohenegger et al., 2020) and NICAM (Noda et al., 2010). In contrast to the ICON simulations performed for this study and by Hohenegger et al. (2020), Noda et al. (2010) used a subgrid-scale shallow cumulus parameterization. They show that increasing the ventilation of the boundary layer through parameter changes of this 500 parameterization also decreases the low cloud amount. This likely happens in ICON simulations through a better resolution of shallow cumulus for finer horizontal grid spacing. Stevens et al. (2020) argue that a further refinement of horizontal grid spacing to the hectometer scale could further improve such and other cloud features.

Fig. 7 shows that in the South American stratocumulus region the changes in cloud liquid water caused by a halving of horizontal grid spacing are of a similar magnitude as those caused by changed vertical grid spacing despite much weaker 505 effects on the structure of the boundary layer as characterized by the profiles of temperature and humidity. We conjecture that the clouds are more directly affected by a change in horizontal grid spacing, which in this GSRM is still inadequately large for resolving shallow cumulus, but more indirectly by a change in vertical grid spacing via a modified representation of the inversion.

In terms of the vertical distribution of cloud ice (Fig. 9) a refinement of the horizontal grid spacing has a comparable effect to refining the vertical grid but leads to an increase even at very high altitudes up to about 17 km. Fig. 10 shows that, similar to the vertical refinement effect, this is likely related to the increased convective activity as indicated by the increased upwelling in moist regions.

## 6 Comparison to observations

In this section we will present comparisons of selected simulated quantities with observations. The goal is not to provide a comprehensive evaluation of the simulations but rather to provide examples that illustrate the magnitude of grid refinement effects relative to overall model biases.

Fig. 14 shows cloud fraction, and TOA upward shortwave and longwave fluxes from the Clouds and the Earth's Radiant Energy System (CERES) project Energy Balanced and Filled (EBAF) satellite products (Kato et al., 2018; Loeb et al., 2018) edition 4.2 averaged over July 2021 in comparison to simulation results from the experiments for practical vertical resolution changes, i.e., the first five experiments listed in Table 1, averaged over the same time period. Again, the comparisons indicate that the L55-40s experiment is an outlier. All other experiments show relatively coherent biases, indicating that the dominant part of these biases is, in general, not caused by vertical truncation errors.

Over tropical and subtropical regions, the total cloud fraction is overestimated by the models, except for the ITCZ, slightly north of the equator. The overestimation is likely related in part to the dependence of cloud liquid water on model resolution, as discussed in Section 5. Insufficient horizontal model resolution leads to too much low-level cloudiness. This effect is partially compensated by coarser vertical resolution. The underestimation directly at ITCZ latitudes may be related to the fact that the microphysics scheme of the ICON configuration used here represents frozen moisture in three categories, cloud ice, snow, and graupel, but only the first is considered in the radiation code and for the calculation of the cloud fraction. As one may expect, the biases of the outgoing shortwave radiation are, in general, correlated with those of the cloud fraction, while the biases of the outgoing longwave radiation are anticorrelated.

Fig. 15 shows vertical profiles of temperature and specific humidity averaged from 257 radio soundings taken between June, 29, and August, 6, 2021 in the tropical Atlantic (Brandt et al., 2021; Schulz et al., 2022) in comparison to simulation results from the experiments for practical vertical resolution changes sampled at the time and location of the soundings. All simulations are colder at all tropospheric heights and the biases increase with altitude. This increase in the biases is partly due to the cold biases in the lower troposphere and boundary layer, which are amplified in the upper troposphere when the lapse rate follows a moist adiabat. Another contribution to the biases comes from the lapse rate being more skewed to colder temperatures in the simulations. This is particularly evident for the L55-40s experiment, which shows very little bias in the lower troposphere.

It appears that all model configurations represent colder moist adiabats than observed. As discussed in Section 4, the coarsest grid (L55) produces higher tropospheric temperatures than simulated with any of the other grids. Despite this, even the L55-40s simulation has a cold bias with respect to the radio soundings, but smaller than all other simulations. As also mentioned earlier, L55-40s also has a moister troposphere than the other simulations. In comparison to the radiosondes, L55-40s simulates too

high specific humidity at almost all tropospheric altitudes, while the other simulations have a dry bias, in particular in the upper troposphere. Relative humidity (not shown) is simulated better in all simulations except L55-40s.

545 Analogous to the zonal mean horizontal biases, the biases of the vertical profiles are similar for all experiments except L55-40s at most altitudes. An exception is the uppermost troposphere, where the cold bias is clearly reduced in L540-8s and L320-15s compared to coarser vertical grids. This hints at a better representation of the tropopause by finer grid spacing.

## 7 Summary and conclusions

The aim of this study is to quantify the effects ~~that choices of different vertical grid spacings have~~ of the choice of a vertical grid spacing on the global climate simulated with the GSRM ICON-Sapphire at 5 km horizontal grid spacing. We have analyzed 40  
550 days simulated with boundary conditions for a period in the boreal summer of 2021 for five different vertical grids ~~having with~~ between 55 and 540 vertical layers and maximum tropospheric grid spacings between 800 and 50 m. The configuration with 400 m maximum tropospheric spacing (L110) is close to the vertical grid typically used in ICON-Sapphire simulations (e.g., Hohenegger et al., 2023). While, in general, simulations with finer grids were run with shorter integration time steps to ensure numerical stability, additional simulations were ~~performed run~~ with three different vertical grids but identical time ~~step length.~~  
555 ~~This enables us to disentangle steps.~~ This allows us to identify the contributions of pure effects of changes in vertical grid spacing and ~~the choice~~ of the integration time step ~~, and to compare them to to the~~ effects of practical resolution changes ~~which are resulting in general,~~ which generally result from a combination of both. Furthermore, we have run a simulation with halved horizontal grid spacing to compare the effects of vertical and horizontal grid choices.

Practically increasing the vertical resolution leads to changes in the global energy budget. ~~Upward~~ The upward shortwave  
560 radiation at the TOA increases by about  $2.5 \text{ W m}^{-2}$  when ~~increasing~~ the number of vertical layers is increased from 110 to 540. The effect doesn't show any convergence for the vertical grids chosen here and can be attributed mostly to changes in low clouds. Globally averaged cloud liquid water increases by about ~~7% for every %~~ % for each practical doubling of the vertical resolution.

One ~~may can~~ expect that the increase ~~of in~~ cloud liquid water with finer vertical grid spacing should be particularly strong  
565 in stratocumulus regions, where the simulation of the inversion at the cloud top ~~likely benefits is likely to benefit~~ from finer grid spacing. Such an effect is simulated in our experiments for stratocumulus in the Pacific off South America, but the signal is not robust over stratocumulus regions in general. Moreover, in the global average, more than half of the effects on cloud liquid water and shortwave radiation are ~~due related~~ to the reduction of the integration time step ~~necessary for a refinement of needed to refine~~ the grid spacing. Bogenschutz et al. (2021) also simulated an increase in the ~~low cloud amount low level~~  
570 ~~cloudiness~~ for finer vertical grid spacing, but in a GCM with ~~more traditional larger~~ horizontal grid spacing ~~that includes a and~~ convection parameterization. Contrary to our results, Bogenschutz et al. (2021) simulated a ~~reduction of low cloud amount decrease in low level cloudiness~~ for a shorter time step. Wan et al. (2021) show that this sensitivity depends on specifics of the numerical coupling of ~~various different~~ processes in the model integration. To better understand and possibly reduce the time step effect in our model ~~would require,~~ a more detailed analysis of the numerical integration scheme would be required.

575 However, our results confirm that when changes in model grid spacing require changing the integration time step, ~~effects can not the effects cannot~~ necessarily be unambiguously attributed to the spatial discretization change. On a more general note, this serves as a reminder that, while often the shortest integration time step that avoids model crashes is chosen for practical reasons, this choice can strongly affect the simulation results strongly.

Refining the vertical grid spacing increases OLR in our experiments. ~~This effect is, however, in general~~ However, this effect  
580 is generally much smaller than the effect on shortwave radiation. The OLR response can be traced back partly to changes in tropical cirrus clouds, of which, in the tropical average, the cloud fraction decreases with resolution while the total ice mass increases. Effects on the cloud ice concentration are different in moist tropical regions, where they are likely related to changes in convective activity, and in dry tropical regions, where they are consistent with changes in background conditions. ~~Different than~~ Unlike for liquid clouds, effects on tropical upper tropospheric ice clouds and OLR show a tendency to converge for the  
585 vertical resolutions tested here. A further difference is that these effects on cloud ice and OLR are dominated by the effect of the vertical grid spacing ~~and negligible influence from~~ while the influence of time step changes is negligible.

By far the largest change in cloud ice is simulated for increasing the maximum tropospheric vertical grid spacing from 400 m in the reference configuration ~~L110-L110-40s~~ to 800 m in ~~L55~~. ~~This decreases L55-40s~~. ~~This reduces~~ global OLR by more than  $4 \text{ W m}^{-2}$ . The coarsest resolution differs ~~largely strongly~~ from the other simulations in several other quantities ~~like such as~~  
590 tropical tropospheric temperature, specific, and relative humidity. A similarly similar non-linear response to vertical resolution changes ~~was has been~~ simulated in the NICAM GSRM by Seiki et al. (2015) and in a NICAM RCE configuration by Ohno et al. (2019). Seiki et al. (2015) concluded from this that ~~to accurately simulate tropical cirrus clouds~~ a vertical grid spacing of 400 m or less is required to accurately simulate tropical cirrus clouds. Our simulations support the conclusion that vertical grid spacing larger than 400 m would be inadequate for the simulation of tropical cirrus. More in general, the large effects simulated  
595 in ICON-Sapphire for a coarsening of the vertical grid spacing indicate a high price for the computing time gains that could be obtained in such a configuration.

For most of the climate quantities studied here, doubling the vertical resolution beyond the ~~reference grid L110-L110~~ reference grid has smaller effects than ~~the doubling of~~ doubling the horizontal resolution to 2.5 km grid spacing. As an example, cloud liquid water increases by about 7 % per practical doubling of vertical resolution, ~~compared to an approximately~~ while it  
600 decreases by about 16% ~~decrease for practical the % for the practical~~ doubling of horizontal resolution. Interestingly, the effects have are of opposite sign. Effects of increases in horizontal resolution on this quantity are hence counteracted by increases in vertical resolution. Such opposite sensitivities ~~were also obtained by~~ have also been obtained by Cheng et al. (2010) and Mel-  
605 lado et al. (2018) in LES simulations of inversion-topped stratocumulus clouds. Our results confirm the importance of the aspect ratio of vertical and horizontal resolution for the simulation of boundary layer clouds also in GSRMs. More in general, our study emphasizes that the simulation of boundary layer clouds and associated effects in GSRMs is more susceptible to truncation errors than the simulation of many other quantities including, for instance, cirrus clouds.

~~In our analysis we have concentrated on sensitivities of the simulated climate to resolution changes, and not on the question if changes in vertical resolution lead to a better representation of certain climate features in comparison to observations. The latter question is~~ Model biases with respect to observations are, in general, larger than differences between simulations with

610 ~~different vertical resolutions. This is shown by comparisons of simulation results with selected quantities from CERES satellite products and radio soundings. Simulations by Lang et al. (2023) show larger effects of course of interest. However, with our focus on globally or tropically averaged climate quantities such an evaluation can be misleading. As discussed above for the case of boundary layer clouds, parts of the effects of too coarse horizontal resolution on the cloud liquid water amount can be compensated by a too coarse vertical resolution. Similarly, effects of choices in the remaining parameterizations of~~  
615 ~~GSRMs may be larger than effects of vertical resolution changes and obscure potential improvements or degradations of model skills in representing observations. Lang et al. (2023) simulated larger effects from changes in changes in the parameterizations of microphysics and vertical turbulent diffusions diffusion on tropospheric temperature and relative humidity at least in the lower and middle troposphere compared to the effects from our vertical resolution changes in experiments L55, L110, and L190. Nevertheless, future than those caused by the different grids of our L55-40s, L110-40s, and L190-30s simulations.~~  
620 ~~These remaining parameterizations of GSRMs may be a promising target for reducing the simulation biases. This doesn't mean that truncation errors can be ignored. Future studies should evaluate the effects of vertical resolution on specifics of the representation of different specific climate features, as it has been done was done, e.g., by Seiki et al. (2015) for tropical cirrus, where an improvement was shown for finer vertical grid spacing.~~

In the case of tropical vertical temperature profiles, the simulation with the a priori largest truncation error, L55-40s, is closer to the observations than any other of our model configurations. It is very likely that the truncation error compensates for other model deficiencies in this case. Similarly, the tropical cloud fraction outside of the ITCZ, and with it the reflected shortwave radiation, is overestimated most strongly in the simulation with the finest vertical grid, L540-8s. The increase in low-level cloudiness with finer vertical grid spacing, simply enhances the overestimation related to a too coarse horizontal grid spacing.

A central motivation for the investment in higher horizontal resolution in global atmospheric models is that the step to storm-resolving scales ~~enables allows~~ to get rid of parameterizations, in particular for convection. Our analysis shows that ~~even when the storm-resolving scale is reached, for most climate quantities for the grids typically used in ICON and other GSRMs today,~~ the effect of halving ~~horizontal grid spacing the horizontal grid spacing~~ is larger than the effect of halving ~~vertical grid spacing, but the vertical grid spacing for most climate quantities. However, the effects are~~ of the same order of magnitude. ~~As doubling Since doubling the~~ vertical resolution is computationally cheaper than doubling ~~the~~ horizontal resolution, we  
635 conclude that further computing time investments in vertical refinement may affect truncation errors of GSRMs similarly to comparable investments in horizontal refinement. ~~Furthermore, our study points to the inadequacy of Our study clearly shows that~~ coarser vertical grid spacing than ~~that~~ used in our ~~reference grid with 110 layers, and highlights that 110-layer reference grid is inadequate. However,~~ specific climate features ~~like such as~~ boundary layer clouds show no convergence even for a grid with a maximum tropospheric layer thickness of 50 m, which is much finer than what is currently used in most GSRMs.

640 *Code and data availability.* Simulations were run with the ICON branch nextgems\_cycle1\_zstar\_avr of the icon-aes repository as commit 2d18086d538ca6b80785f21b7a14808bf50546c. This source code and run scripts are available here: <https://edmond.mpdl.mpg.de/dataset.xhtml?persistentId=doi:10.17617/3.Z10MPA> (last access:10 July, 2023). The ICON model is available

to individuals under licenses

(<https://code.mpimet.mpg.de/projects/iconpublic/wiki/How%20to%20obtain%20the%20model%20code>, last access: 10 July, 2023). By down-  
645 loading the ICON source code, the user accepts the license agreement. Scripts employed to produce the figures can be found here:  
<https://hdl.handle.net/21.11116/0000-000D-605D-F> (last access: 15 December 2023). Radiosonde data are available from <https://zenodo.org/records/70510>  
(last access: 14 December 2023). CERES data are available from <https://ceres.larc.nasa.gov/data/> (last access: 13 December 2023).

*Author contributions.* HS and BS developed the idea for this study. The vertical grids were developed and the model code adapted for fine  
vertical grid spacing by HS and SR. The simulations were run by SR, HS, and TL. The analysis of the results was conducted by HS, AC, JB,  
650 S-WF, DJC, PK, LK, CK, UN, AS, and AW. The paper was written by HS with input, comments, and reviews from all authors.

*Competing interests.* The authors declare that they have no competing interests.

*Acknowledgements.* We thank Ann Kristin Naumann [and three anonymous reviewers](#) for very helpful comments on an earlier version of  
this manuscript. We thank René Redler and Karl-Hermann Wieners for useful recommendations for running the simulations. [We thank Luis  
Kornblueh for providing an external vertical grid generator and resolving the memory requirements for the very fine vertical grids. We thank  
655 Hauke Schulz for providing the radiosonde data.](#) The simulations were run at the German Climate Computing Center (DKRZ) and we thank  
the DKRZ staff for their support. [HS and DJC acknowledge funding of the SOCTOC project within the ROMIC programme by the German  
Ministry of Education and Research \(BMBF\).](#)

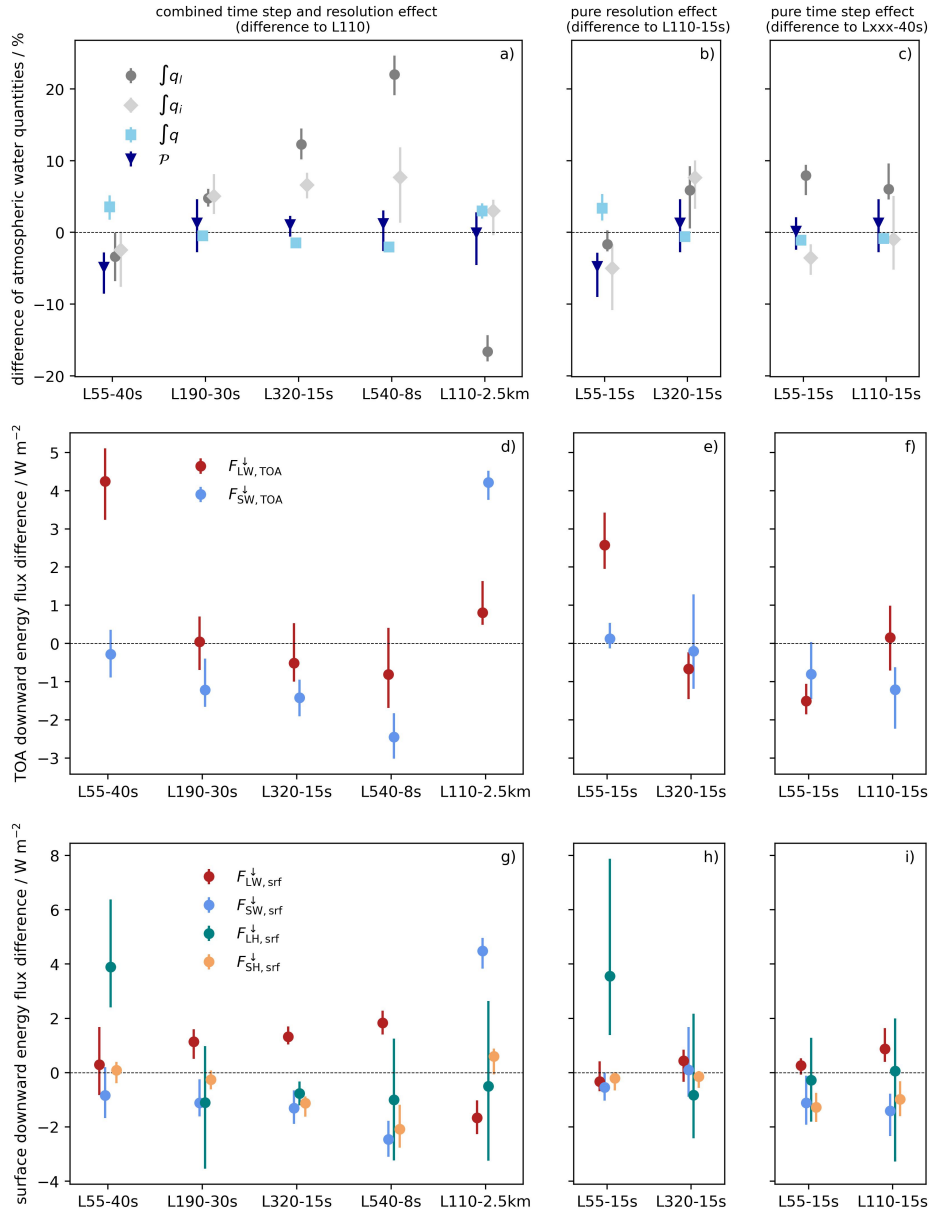


## References

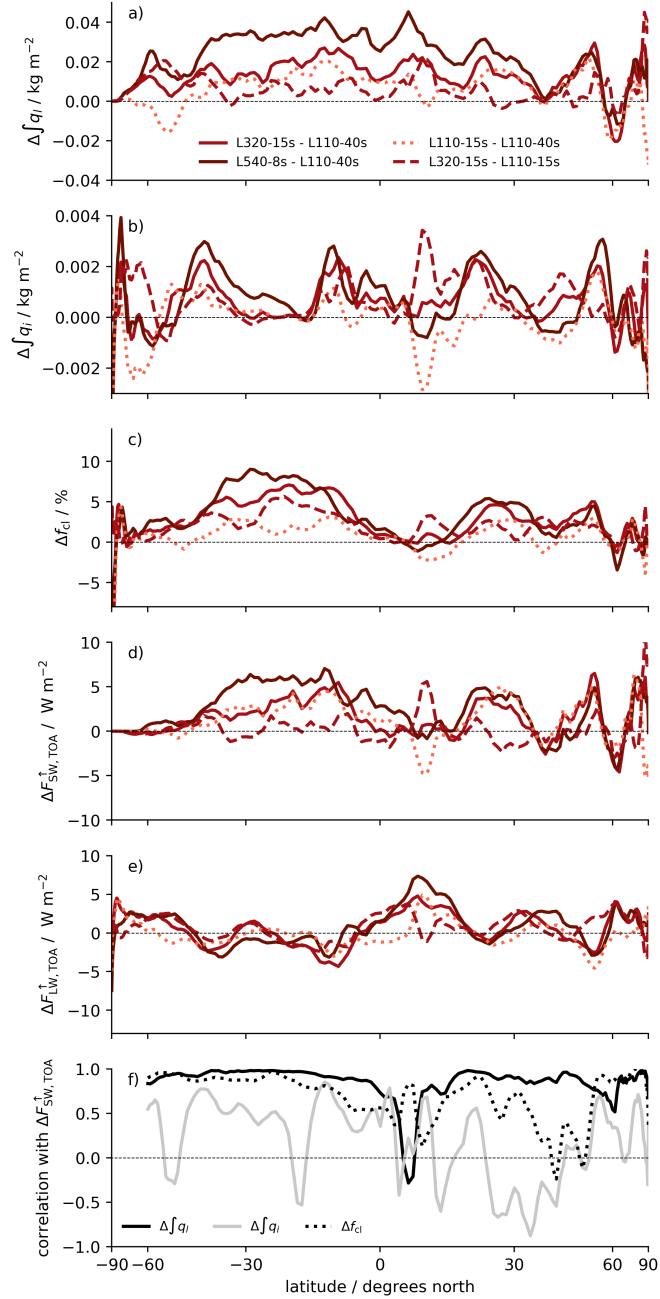
- Baldauf, M., Seifert, A., Förstner, J., Majewski, D., Raschendorfer, M., and Reinhardt, T.: Operational convective-scale numerical weather  
660 prediction with the COSMO model: Description and sensitivities, *Monthly Weather Review*, 139, 3887–3905, 2011.
- Beljaars, A., Balsamo, G., Bechtold, P., Bozzo, A., Forbes, R., Hogan, R. J., Köhler, M., Morcrette, J.-J., Tompkins, A. M., Viterbo, P., et al.:  
The numerics of physical parametrization in the ECMWF model, *Frontiers in Earth Science*, 6, 137, 2018.
- Bogenschutz, P. A., Yamaguchi, T., and Lee, H.-H.: The Energy Exascale Earth System Model simulations With high vertical resolution in  
the lower troposphere, *Journal of Advances in Modeling Earth Systems*, 13, e2020MS002 239, 2021.
- 665 Bogenschutz, P. A., Lee, H.-H., Tang, Q., and Yamaguchi, T.: Combining regional mesh refinement with vertically enhanced physics to target  
marine stratocumulus biases as demonstrated in the Energy Exascale Earth System Model version 1, *Geoscientific Model Development*,  
16, 335–352, 2023.
- Brandt, P., Windmiller, J., Begler, C., Brockmann, I., dos Anjos, F. A. A., Engelmann, R., Franke, H., Hans, A.-C., Imbol Koungue, R. A.,  
Kamm, D., K", M., Lehmke, J., Maia Pacheco, M., Martens, W., Menzel, D., Olbricht, H. D., Quaglia, I., Roch, M., Rubio, H., Ruhtz, T.,  
670 Sch", F., Skupin, A., Stolla, M. K., Tuchen, F. P., and Wittlinger, X. A.: Tropical Atlantic Circulation and Climate: Mooring Rescue, Tech.  
rep., Emden, Germany, 2021.
- Chen, D., Rojas, M., Samset, B., Cobb, K., Diongue Niang, A., Edwards, P., Emori, S., Faria, S., Hawkins, E., Hope, P., Huybrechts, P.,  
Meinshausen, M., Mustafa, S., Plattner, G.-K., and Tréguier, A.-M.: Framing, Context, and Methods, p. 147–286, Cambridge University  
Press, Cambridge, United Kingdom and New York, NY, USA, <https://doi.org/10.1017/9781009157896.003>, 2021.
- 675 Cheng, A., Xu, K.-M., and Stevens, B.: Effects of resolution on the simulation of boundary-layer clouds and the partition of kinetic energy  
to subgrid scales, *Journal of Advances in Modeling Earth Systems*, 2, 2010.
- Eyring, V., Bony, S., Meehl, G. A., Senior, C. A., Stevens, B., Stouffer, R. J., and Taylor, K. E.: Overview of the Coupled Model Intercom-  
parison Project Phase 6 (CMIP6) experimental design and organization, *Geoscientific Model Development*, 9, 1937–1958, 2016.
- Fläschner, D., Mauritsen, T., and Stevens, B.: Understanding the intermodel spread in global-mean hydrological sensitivity, *Journal of*  
680 *Climate*, 29, 801–817, 2016.
- Gassmann, A.: Inspection of hexagonal and triangular C-grid discretizations of the shallow water equations, *Journal of Computational*  
*Physics*, 230, 2706–2721, 2011.
- Gottelman, A., Morrison, H., Santos, S., Bogenschutz, P., and Caldwell, P.: Advanced two-moment bulk microphysics for global models.  
Part II: Global model solutions and aerosol–cloud interactions, *Journal of Climate*, 28, 1288–1307, 2015.
- 685 Giorgetta, M. A., Brokopf, R., Crueger, T., Esch, M., Fiedler, S., Helmert, J., Hohenegger, C., Kornbluh, L., Köhler, M., Manzini, E., et al.:  
ICON-A, the atmosphere component of the ICON earth system model: I. Model description, *Journal of Advances in Modeling Earth*  
*Systems*, 10, 1613–1637, 2018.
- Hartmann, D. L. and Larson, K.: An important constraint on tropical cloud-climate feedback, *Geophysical research letters*, 29, 12–1, 2002.
- Hohenegger, C., Kornbluh, L., Klocke, D., Becker, T., Cioni, G., Engels, J. F., Schulzweida, U., and Stevens, B.: Climate statistics in global  
690 simulations of the atmosphere, from 80 to 2.5 km grid spacing, *Journal of the Meteorological Society of Japan. Ser. II*, 2020.
- Hohenegger, C., Korn, P., Linardakis, L., Redler, R., Schnur, R., Adamidis, P., Bao, J., Bastin, S., Behraves, M., Bergemann, M., et al.:  
ICON-sapphire: Simulating the components of the Earth system and their interactions at kilometer and subkilometer scales, *Geoscientific*  
*Model Development*, 16, 779–811, 2023.

- 695 Kato, S., Rose, F. G., Rutan, D. A., Thorsen, T. J., Loeb, N. G., Doelling, D. R., Huang, X., Smith, W. L., Su, W., and Ham, S.-H.: Surface irradiances of edition 4.0 clouds and the earth's radiant energy system (CERES) energy balanced and filled (EBAF) data product, *Journal of Climate*, 31, 4501–4527, 2018.
- Lang, T., Naumann, A. K., Buehler, S. A., Stevens, B., Schmidt, H., and Aemisegger, F.: How model uncertainties influence tropical humidity in global storm-resolving simulations, *Journal of Advances in Modeling Earth Systems*, submitted, 2023.
- Lee, H.-H., Bogenschutz, P., and Yamaguchi, T.: Resolving away stratocumulus biases in modern global climate models, *Geophysical Research Letters*, 49, e2022GL099422, 2022.
- 700 Lee, J. and Hohenegger, C.: Multiple equilibria of vegetation-atmosphere system in radiative-convective equilibrium storm-resolving simulations with interactive leaf phenology, *Tellus*, accepted, 2022.
- Leuenberger, D., Koller, M., Fuhrer, O., and Schär, C.: A generalization of the SLEVE vertical coordinate, *Monthly Weather Review*, 138, 3683–3689, 2010.
- 705 Lindzen, R. S. and Fox-Rabinovitz, M.: Consistent vertical and horizontal resolution, *Monthly Weather Review*, 117, 2575–2583, 1989.
- Loeb, N. G., Doelling, D. R., Wang, H., Su, W., Nguyen, C., Corbett, J. G., Liang, L., Mitrescu, C., Rose, F. G., and Kato, S.: Clouds and the earth's radiant energy system (CERES) energy balanced and filled (EBAF) top-of-atmosphere (TOA) edition-4.0 data product, *Journal of Climate*, 31, 895–918, 2018.
- Mantsis, D. F., Sherwood, S., Dixit, V., Morrison, H., and Thompson, G.: Mid-level clouds over the Sahara in a convection-permitting regional model, *Climate Dynamics*, 54, 3425–3439, 2020.
- 710 Marchand, R. and Ackerman, T.: A cloud-resolving model with an adaptive vertical grid for boundary layer clouds, *Journal of the atmospheric sciences*, 68, 1058–1074, 2011.
- Mellado, J.-P., Bretherton, C., Stevens, B., and Wyant, M.: DNS and LES for simulating stratocumulus: Better together, *Journal of Advances in Modeling Earth Systems*, 10, 1421–1438, 2018.
- 715 Mitchell, J., Wilson, C., and Cunningham, W.: On CO<sub>2</sub> climate sensitivity and model dependence of results, *Quarterly Journal of the Royal Meteorological Society*, 113, 293–322, 1987.
- Noda, A. T., Oouchi, K., Satoh, M., Tomita, H., Iga, S.-i., and Tsushima, Y.: Importance of the subgrid-scale turbulent moist process: Cloud distribution in global cloud-resolving simulations, *Atmospheric Research*, 96, 208–217, 2010.
- Ohno, T. and Satoh, M.: Roles of cloud microphysics on cloud responses to sea surface temperatures in radiative-convective equilibrium experiments using a high-resolution global nonhydrostatic model, *Journal of Advances in Modeling Earth Systems*, 10, 1970–1989, 2018.
- 720 Ohno, T., Satoh, M., and Noda, A.: Fine vertical resolution radiative-convective equilibrium experiments: Roles of turbulent mixing on the high-cloud response to sea surface temperatures, *Journal of Advances in Modeling Earth Systems*, 11, 1637–1654, 2019.
- Pincus, R., Mlawer, E. J., and Delamere, J. S.: Balancing accuracy, efficiency, and flexibility in radiation calculations for dynamical models, *Journal of Advances in Modeling Earth Systems*, 11, 3074–3089, 2019.
- 725 Reick, C. H., Gayler, V., Goll, D., Hagemann, S., Heidkamp, M., Nabel, J. E., Raddatz, T., Roeckner, E., Schnur, R., and Wilkenskjeld, S.: JSBACH 3-The land component of the MPI Earth System Model: documentation of version 3.2, 2021.
- Roeckner, E., Brokopf, R., Esch, M., Giorgetta, M., Hagemann, S., Kornblueh, L., Manzini, E., Schlese, U., and Schulzweida, U.: Sensitivity of simulated climate to horizontal and vertical resolution in the ECHAM5 atmosphere model, *Journal of Climate*, 19, 3771–3791, 2006.
- Satoh, M., Stevens, B., Judt, F., Khairoutdinov, M., Lin, S.-J., Putman, W. M., and Düben, P.: Global cloud-resolving models, *Current Climate Change Reports*, 5, 172–184, 2019.
- 730

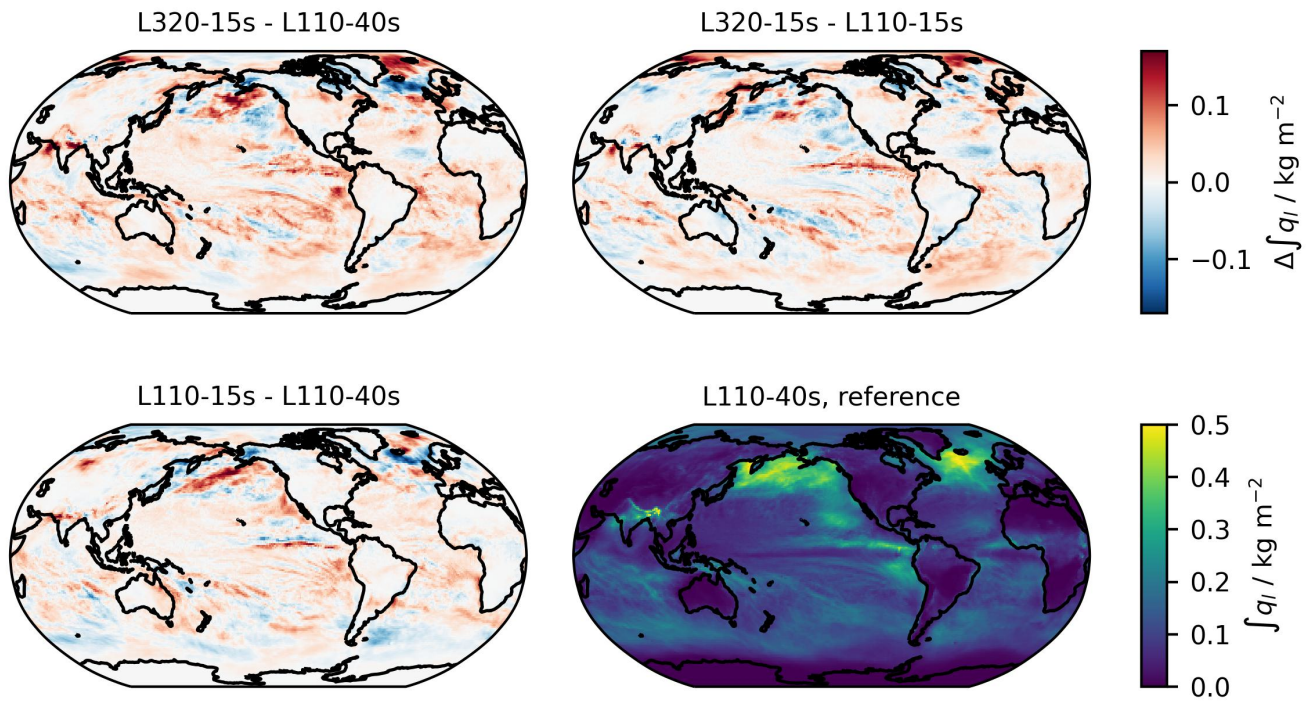
- Schulz, H., Franke, H., Quaglia, I., Stolla, K., Engelmann, R., Lehmke, J., Ruhtz, T., Skupin, A., and Windmiller, J.: Sounding data of SO284, Tech. rep., <https://doi.org/doi:10.5281/zenodo.7051674>, 2022.
- Seiki, T., Kodama, C., Satoh, M., Hashino, T., Hagihara, Y., and Okamoto, H.: Vertical grid spacing necessary for simulating tropical cirrus clouds with a high-resolution atmospheric general circulation model, *Geophysical Research Letters*, 42, 4150–4157, 2015.
- 735 Skamarock, W. C., Snyder, C., Klemp, J. B., and Park, S.-H.: Vertical resolution requirements in atmospheric simulation, *Monthly Weather Review*, 147, 2641–2656, 2019.
- Smagorinsky, J.: General circulation experiments with the primitive equations: I. The basic experiment, *Monthly weather review*, 91, 99–164, 1963.
- Stevens, B., Satoh, M., Auger, L., Biercamp, J., Bretherton, C. S., Chen, X., Düben, P., Judt, F., Khairoutdinov, M., Klocke, D., et al.: DY-  
740 MOND: the DYNamics of the Atmospheric general circulation Modeled On Non-hydrostatic Domains, *Progress in Earth and Planetary Science*, 6, 1–17, 2019.
- Stevens, B., Acquistapace, C., Hansen, A., Heinze, R., Klinger, C., Klocke, D., Rybka, H., Schubotz, W., Windmiller, J., Adamidis, P., et al.: The added value of large-eddy and storm-resolving models for simulating clouds and precipitation, *Journal of the Meteorological Society of Japan. Ser. II*, 98, 395–435, 2020.
- 745 Wan, H., Giorgetta, M. A., Zängl, G., Restelli, M., Majewski, D., Bonaventura, L., Fröhlich, K., Reinert, D., Ripodas, P., Kornbluh, L., et al.: The ICON-1.2 hydrostatic atmospheric dynamical core on triangular grids–Part 1: Formulation and performance of the baseline version, *Geoscientific Model Development*, 6, 735–763, 2013.
- Wan, H., Zhang, S., Rasch, P. J., Larson, V. E., Zeng, X., and Yan, H.: Quantifying and attributing time step sensitivities in present-day climate simulations conducted with EAMv1, *Geoscientific Model Development*, 14, 1921–1948, 2021.
- 750 Zängl, G., Reinert, D., Rípodas, P., and Baldauf, M.: The ICON (ICOsahedral Non-hydrostatic) modelling framework of DWD and MPI-M: Description of the non-hydrostatic dynamical core, *Quarterly Journal of the Royal Meteorological Society*, 141, 563–579, 2015.



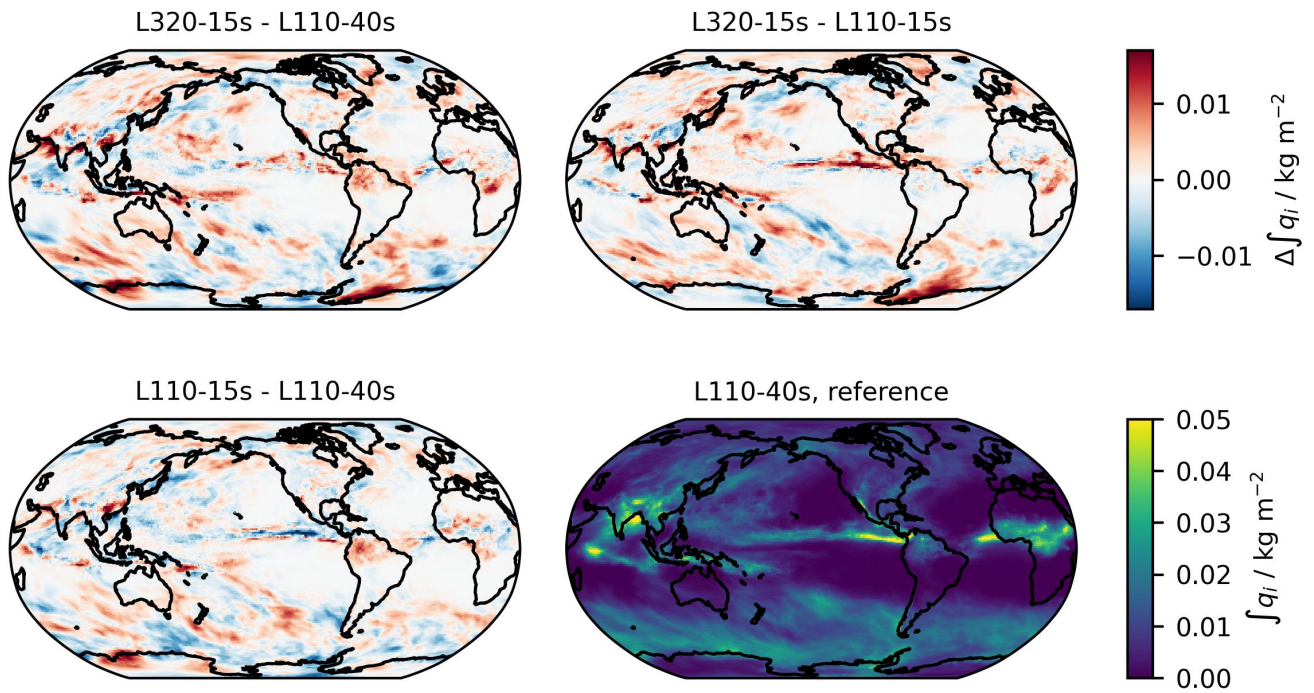
**Figure 2.** Panels a), d), and g) show differences of globally averaged atmospheric quantities from simulations that differ except for (L55-~~L110~~), in both vertical grid spacing and length of the integration time step, with the exception of (L55-40s - L110-40s). Panels b), e), and h) show effects from of differences in vertical grid spacing only, and Panels c), f), and i) effects from of differences in the time step, only. Differences are calculated between the model configuration indicated at the x-axis, and L110-L110-40s (a, d, g), L110-15s (b, e, h), and the configuration with the same vertical grid spacing as the configuration on the x-axis but longer time step (c, f, i), respectively. Quantities depicted are vertically integrated cloud liquid water and cloud ice, precipitable water, and precipitation ( $\int q_l$ ,  $\int q_i$ ,  $\int q$ ,  $\mathcal{P}$ ; a to c), net long-wave, and short-wave radiation at the TOA ( $F_{LW,TOA}^{\downarrow}$ ,  $F_{SW,TOA}^{\downarrow}$ ; d to f), and long-wave and short-wave radiation, sensible, and latent heat fluxes at the surface ( $F_{LW,srf}^{\downarrow}$ ,  $F_{SW,srf}^{\downarrow}$ ,  $F_{SH,srf}^{\downarrow}$ ,  $F_{LH,srf}^{\downarrow}$ ; g to i) at the surface. All fluxes are defined positive downward. Markers depict averages over 40 days, the vertical bars mark the minimum and maximum differences of the four 10-day subperiods.



**Figure 3.** Differences—Panels a) to e) show differences of zonally averaged atmospheric quantities between simulations as indicated in the legend of Panel a). The quantities are a) vertically integrated cloud liquid water  $\int q_l$ , b) vertically integrated cloud ice  $\int q_i$ , c) total cloud fraction  $f_{cl}$ , d) outgoing shortwave radiation at TOA  $F_{SW, TOA}^\uparrow$ , and e) outgoing longwave radiation at TOA  $F_{LW, TOA}^\uparrow$ . Solid lines mark differences of practical vertical resolution changes (i.e. in general also including a time step change), the dashed line a difference caused by a pure vertical resolution change, and the dotted line a difference caused by a pure time step change. All quantities are averaged over the last 40 days of the simulations. Panel f) shows coefficients of correlations between  $F_{SW, TOA}^\uparrow$  on the one, and  $\int q_l$ ,  $\int q_i$ , and  $f_{cl}$  on the other hand, calculated for each latitude and all experiments of Table 1.

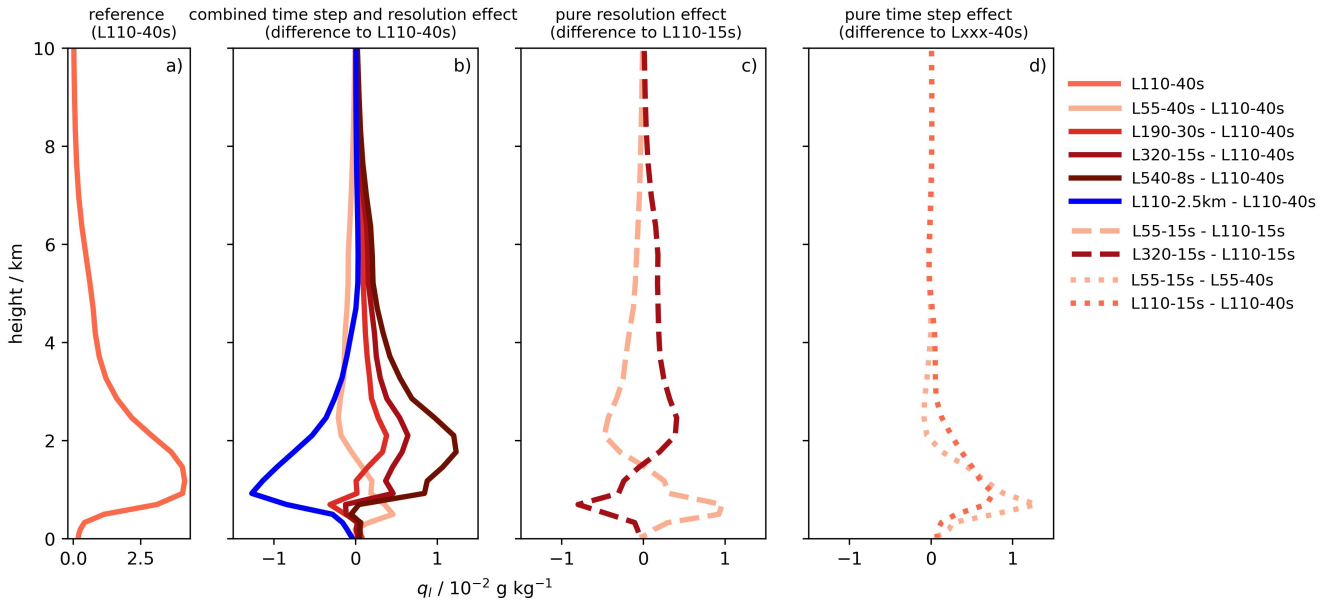


**Figure 4.** Vertically integrated cloud liquid water ( $\text{kg m}^{-2}$ ) from simulation ~~L110~~L110-40s (lower right panel) and differences in this quantity between the simulations indicated in the panel titles. All quantities are averaged over the last 40 days of the simulations.

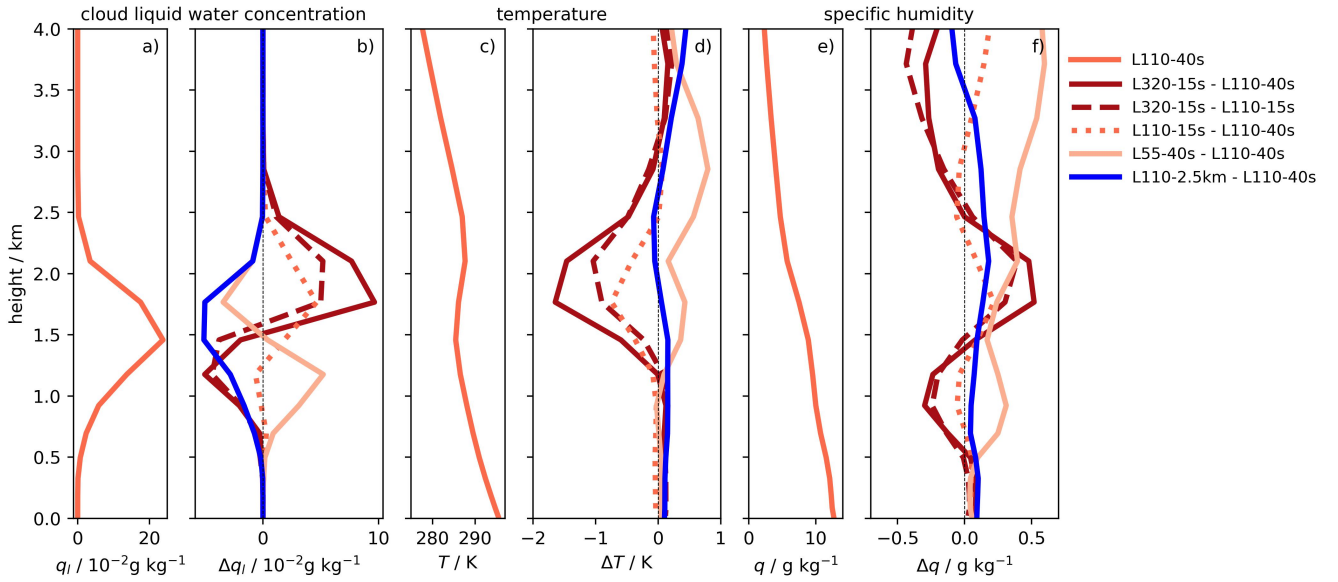


**Figure 5.** Vertically integrated cloud ice ( $\text{kg m}^{-2}$ ) from simulation ~~L110-L110-40s~~ (lower right panel) and differences in this quantity between the simulations indicated in the panel titles. All quantities are averaged over the last 40 days of the simulations.

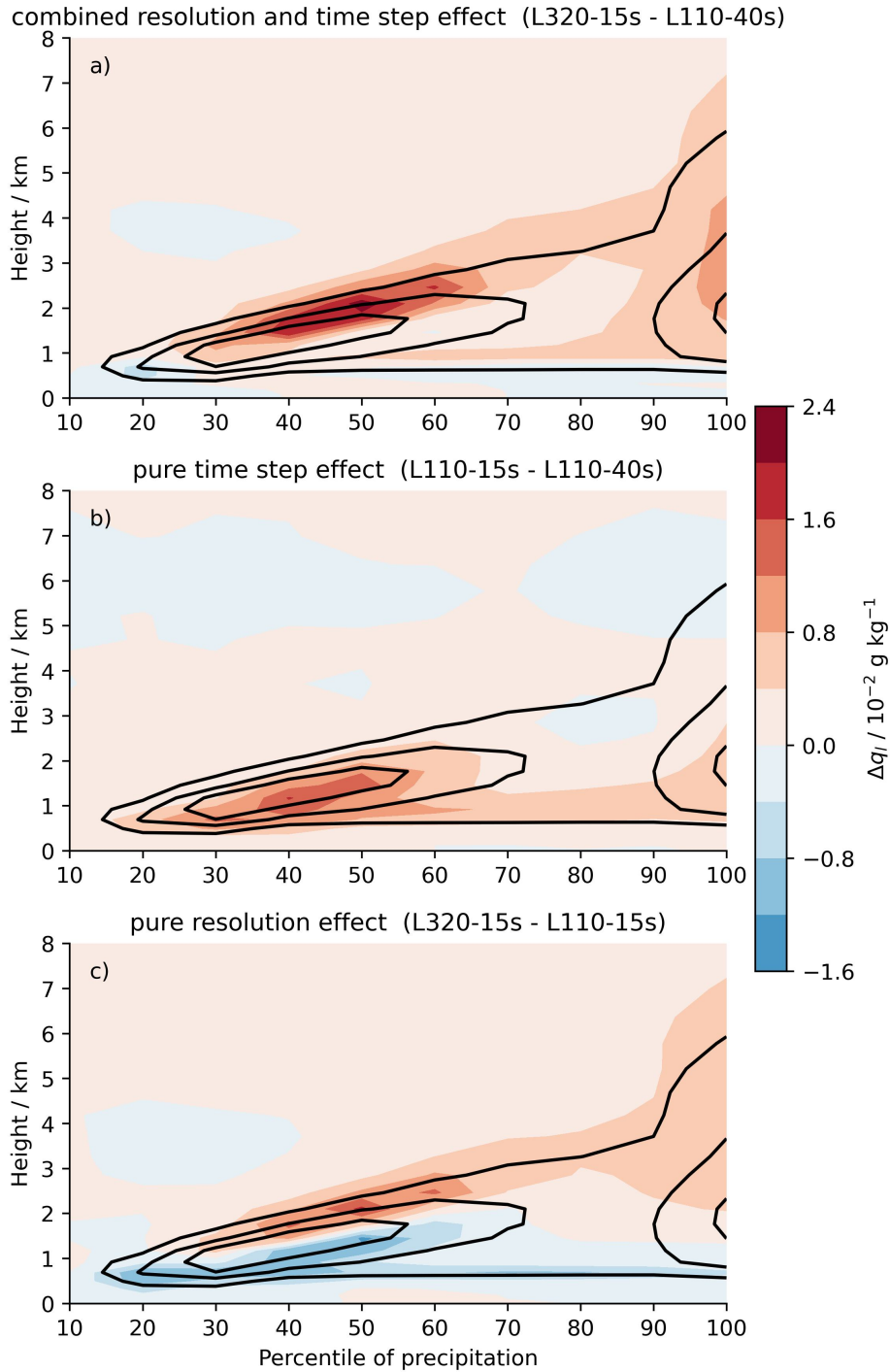




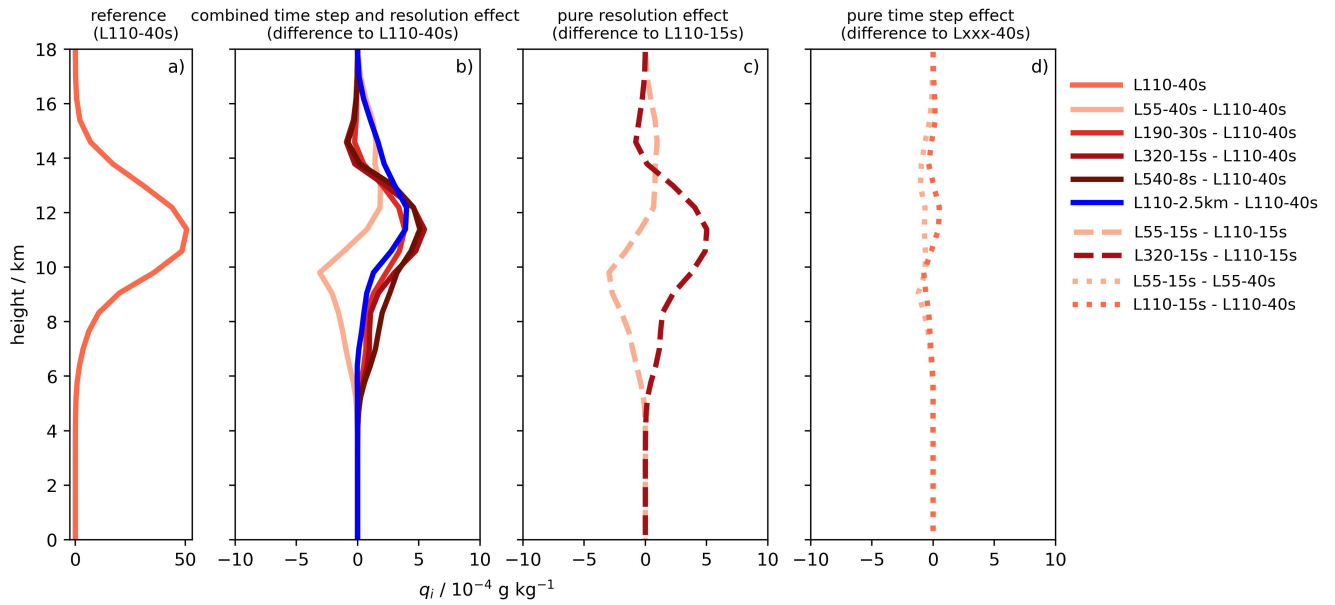
**Figure 6.** Vertical profiles of the cloud liquid water concentration ( $10^{-2} \text{ g kg}^{-1}$ ) averaged over the tropics ( $30^\circ\text{S}$  to  $30^\circ\text{N}$ ) from simulation L110-L110-40s (panel a) and effects on this quantity resulting (panel a) from combined vertical resolution and time step changes, from pure vertical resolution changes (panel c), and from pure time step changes (panel d). Profiles in panel b) are calculated as differences between the simulation indicated in the legend and simulation L110-L110-40s, panel c) shows differences between the simulation indicated in the legend and simulation L110-15s, and panel d) shows the differences (L55-15s - L55-L55-40s) and (L110-15s - L110-L110-40s). To compare the different grids, all values have been interpolated to the L55 grid.



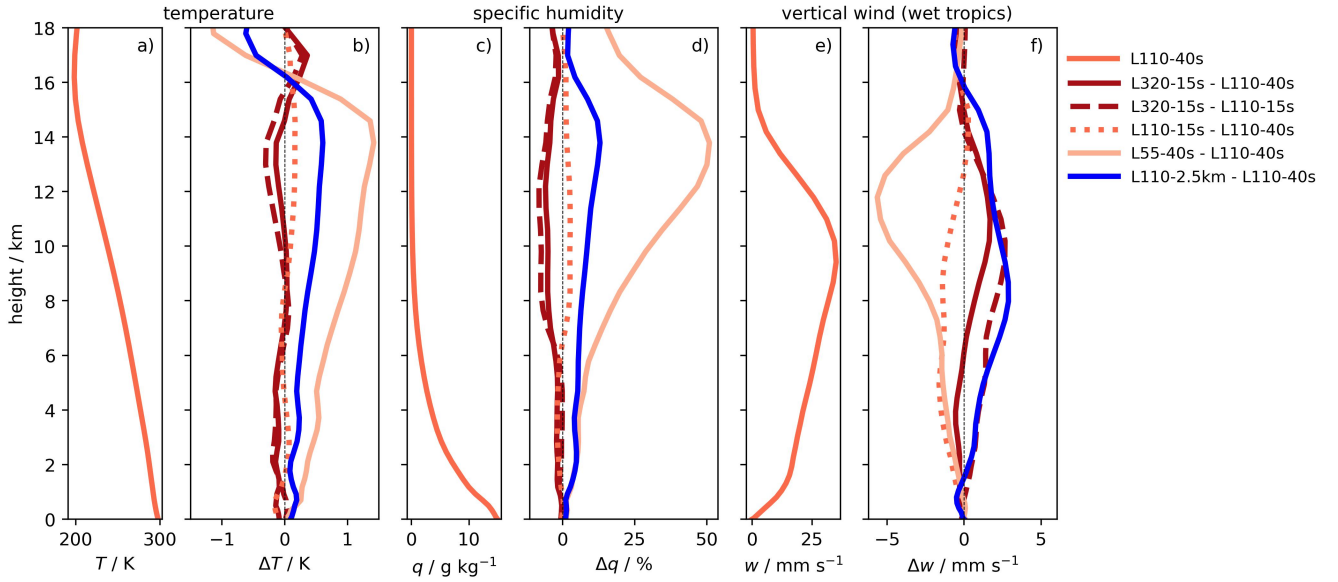
**Figure 7.** Vertical profiles of (a) cloud liquid water concentration ( $q_l$ ;  $10^{-2} \text{ g kg}^{-1}$ ), (c) temperature ( $T$ ; K), and (e) specific humidity ( $q$ ;  $\text{g kg}^{-1}$ ) from [L110-L110-40s](#) averaged over the region  $15^\circ\text{S}$  to  $0^\circ\text{N}$  and  $105^\circ\text{W}$  to  $90^\circ\text{W}$ , i.e. a stratocumulus region off the South American coast. Panels b), d), and f) show the differences in the respective quantities for a practical increase of the vertical resolution ([L320-L320-15s](#) - [L110-L110-40s](#); solid dark red), a pure increase of vertical resolution ([L320-L320-15s](#) - L110-15s; dashed dark red), a pure time step decrease (L110-15s - [L110-L110-40s](#); dotted red), a decrease of the vertical resolution ([L55-L55-40s](#) - [L110-L110-40s](#); solid light red), and a practical increase of the horizontal resolution (L110-2.5km - [L110-L110-40s](#); solid blue).



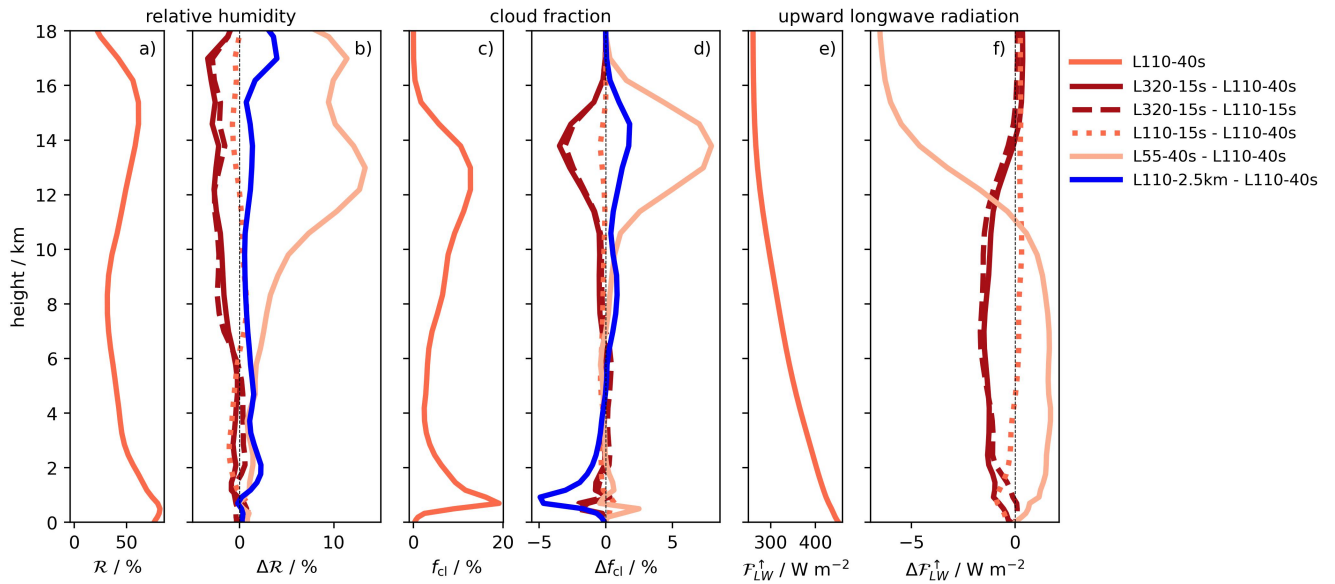
**Figure 8.** Color shading indicates the difference of vertical profiles of the cloud liquid water concentration  $q_i$  between experiments a) [E320-L320-15s](#) - [L110-L110-40s](#), b) [L110-15s](#) - [L110-L110-15s](#), and c) [E320-L320-15s](#) - [L110-15s](#) averaged over percentile bins of tropical precipitation. Numbers on the x-axis mark the percentiles: 10, e.g., marks the mean profile for the tropical  $1^\circ \times 1^\circ$  areas and simulated days with the 10% lowest precipitation rates, 100 marks the 10% highest precipitation rates. Black solid lines mark average  $q_i$  values of 2, 4, and  $6 \times 10^{-2} \text{ g kg}^{-1}$  in [L110-L110-40s](#).



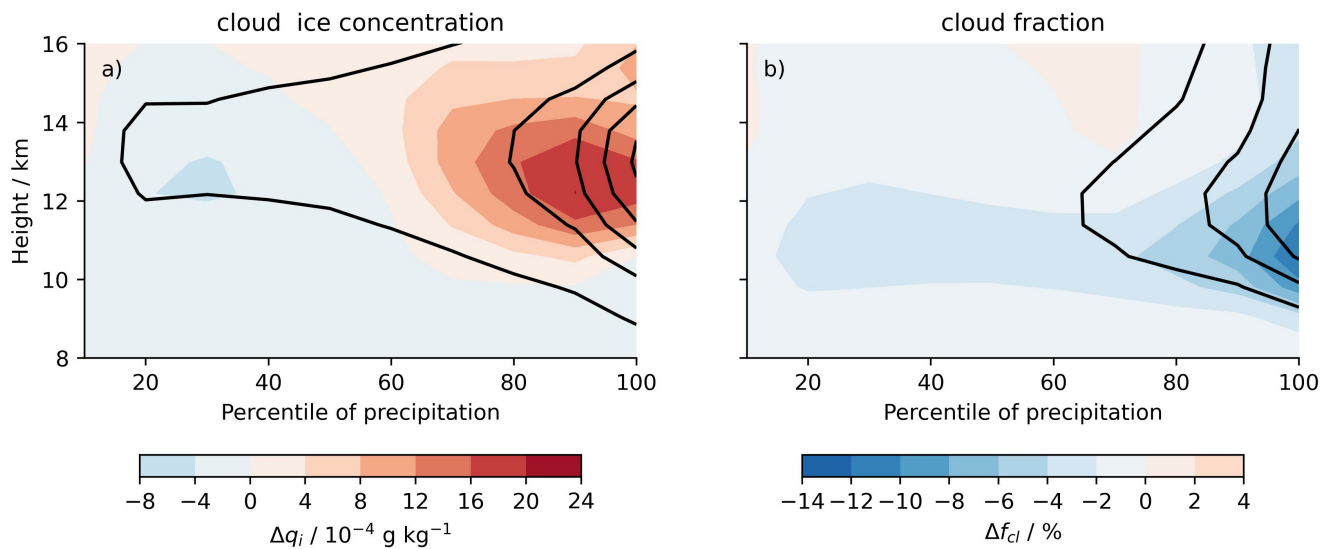
**Figure 9.** As Fig. 6 but for the cloud ice concentration ( $10^{-4} \text{ g kg}^{-1}$ ).



**Figure 10.** Vertical profiles of (a) temperature ( $T$ ; K), (c) specific humidity ( $q$ ;  $\text{g kg}^{-1}$ ), and (e) vertical wind ( $w$ ;  $\text{m s}^{-1}$ ) from [L110-L110-40s](#) averaged over the tropics ( $30^{\circ}\text{S}$  to  $30^{\circ}\text{N}$ ), for the vertical wind data is averaged over the 10 % of the tropical area with the highest precipitation. Panels b), d), and f) show the differences in the respective quantities for a practical increase of the vertical resolution ([L320-L320-15s](#) - [L110-L110-40s](#); solid dark red), a pure increase of vertical resolution ([L320-L320-15s](#) - [L110-15s](#); dashed dark red), a pure time step decrease ([L110-15s](#) - [L110-L110-40s](#); dotted red), a decrease of the vertical resolution ([L55-L55-40s](#) - [L110-L110-40s](#); solid light red), and a practical increase of the horizontal resolution ([L110-2.5km](#) - [L110-L110-40s](#); solid blue).

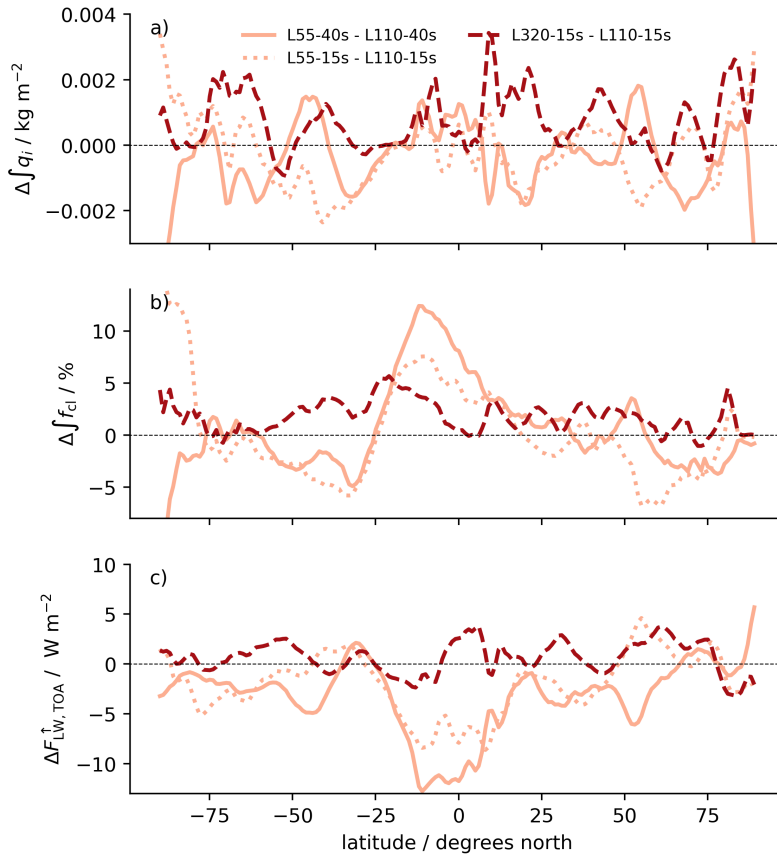


**Figure 11.** As Fig. 10 but for the tropical averages of (a) relative humidity ( $\mathcal{R}$ ; %), (c) cloud fraction ( $f_{cl}$ ; %), and (e) upward longwave radiation flux ( $\mathcal{F}_{LW}^{\uparrow}$ ;  $\text{W m}^{-2}$ ). Differences for relative humidity and cloud fraction are given in percentage points. Due to limited model output radiation fluxes are averaged over 30 days only (instead of 40 days used for all other time averages) and not given for L110-2.5km.

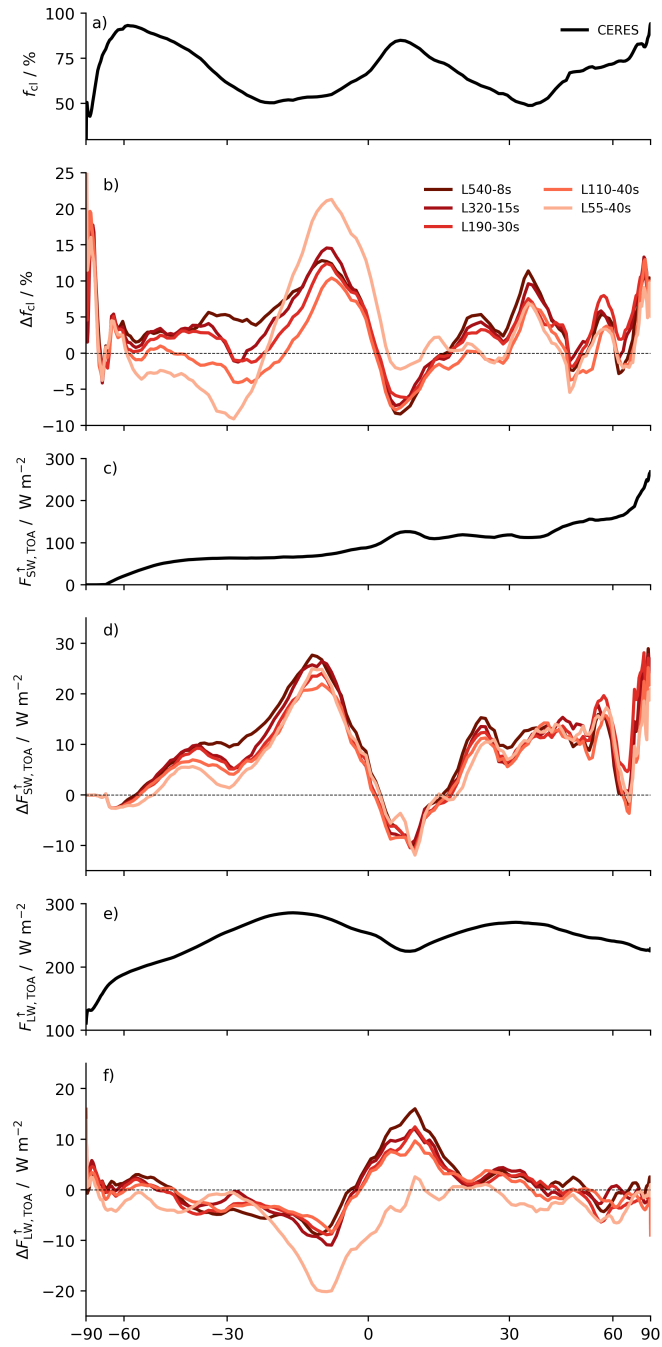


**Figure 12.** Left: Color shading indicates the difference of vertical profiles of the cloud ice concentration  $q_i$  between experiments [L540](#) and [L110-L110-40s](#) averaged over percentile bins of tropical precipitation. Numbers on the x-axis mark the percentiles: 10, e.g., marks the mean profile for the tropical  $1^\circ \times 1^\circ$  areas and simulated days with the 10% lowest precipitation rates, 100 marks the 10% highest precipitation rates. Black solid lines mark average  $q_i$  values of 10, 60, 110, 160, and 210  $\times 10^{-6} \text{ g kg}^{-1}$  in [L110-L110-40s](#). Right: As left, but for the cloud fraction  $f_{cl}$  in %. Black isolines mark average  $f_{cl}$  values of 10, 20, and 30 %.

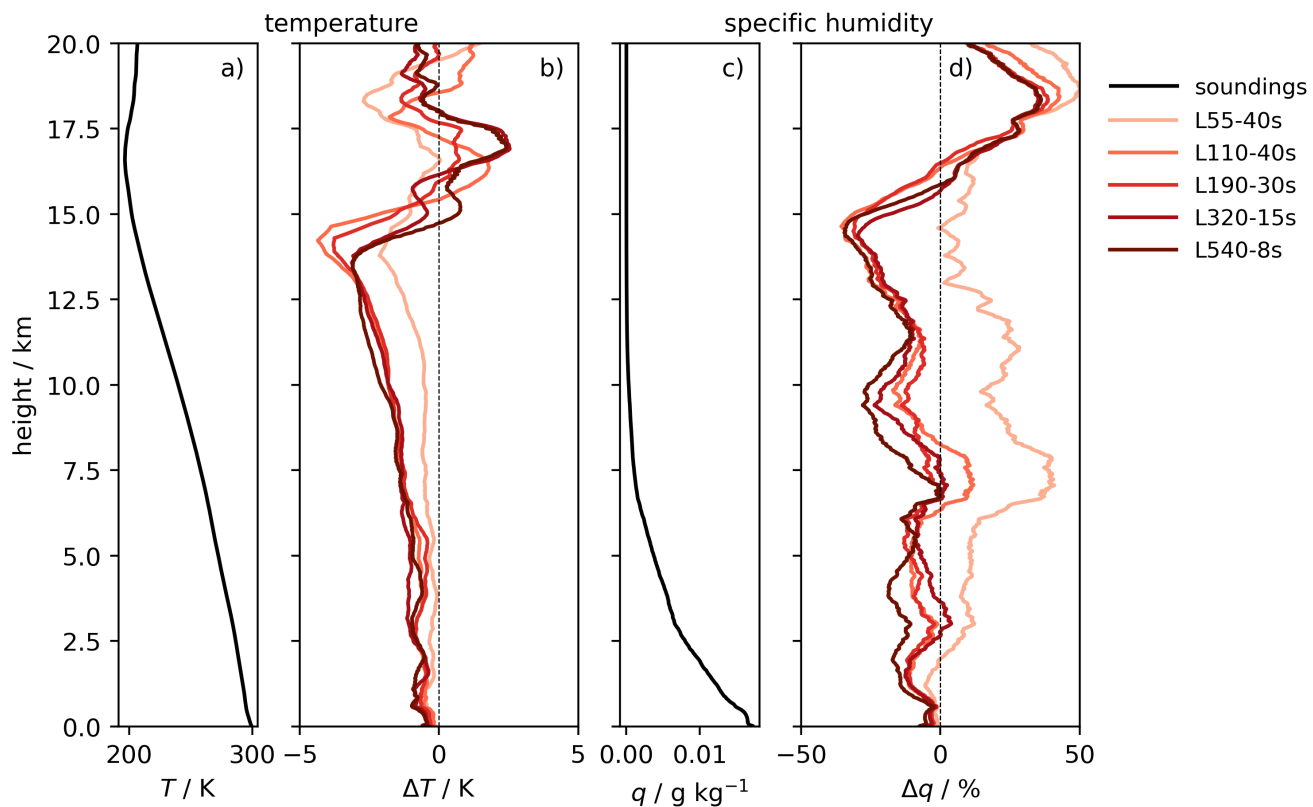




**Figure 13.** Differences of zonally averaged atmospheric quantities between simulations as indicated in the legend of Panel a). The quantities are a) vertically integrated cloud ice  $\int q_i$ , b) total cloud fraction  $f_{cl}$ , and c) outgoing longwave radiation at the TOA  $F_{LW, TOA}^{\downarrow}$ . Solid lines mark differences of practical vertical resolution changes (i.e. in general also including a time step change), the dashed line a difference caused by a pure vertical resolution change, and the dotted line a difference caused by a pure time step change. All quantities are averaged over the last 40 days of the simulations.



**Figure 14.** Zonally averaged total cloud fraction  $f_{cl}$ (a), upward shortwave radiation at the TOA  $F_{SW, TOA}^\uparrow$ (c), and upward longwave radiation at the TOA  $F_{LW, TOA}^\uparrow$ (e) from the CERES satellite observations averaged over July, 2021. Panels b), d), and f) show differences of the respective quantities between the simulations indicated in the legend and the satellite products.



**Figure 15.** Mean vertical profiles of temperature (a) and specific humidity (c) from 257 radio soundings taken between June, 29, and August, 6, 2021 in the tropical Atlantic. Panels b) and d) show differences to these observations from mean simulated profiles for the simulations indicated in the legend and sampled at the time and location of the observations.