

ACEIC: a comprehensive anthropogenic chlorine emission inventory for China

Siting Li^{1,2}, Yiming Liu^{1,2,*}, Yuqi Zhu^{1,2}, Yinbao Jin^{1,2}, Yingying Hong³, Ao Shen^{1,2}, Yifei Xu^{1,2},
Haofan Wang^{1,2}, Haichao Wang^{1,2}, Xiao Lu^{1,2}, Shaojia Fan^{1,2}, Qi Fan^{1,2,*}

¹School of Atmospheric Sciences, Sun Yat-sen University, and Key Laboratory of Tropical Atmosphere-Ocean System, Ministry of Education, Zhuhai, China

²Guangdong Provincial Observation and Research Station for Climate Environment and Air Quality Change in the Pearl River Estuary, Southern Marine Science and Engineering Guangdong Laboratory (Zhuhai), Zhuhai, China

³Guangdong Ecological Meteorology Center, Guangzhou, China

Correspondence to: Yiming Liu (liuym88@mail.sysu.edu.cn), Qi Fan (eesfq@mail.sysu.edu.cn)

Abstract. Chlorine species play a crucial role as precursors to Cl radicals, which can significantly impact the atmospheric oxidation capacity and influence the levels of trace gases related to climate and air quality. Several studies have established the chlorine emission inventory in China in recent years, but the emission remains uncertain and requires further investigation.

Anthropogenic Chlorine Emission Inventory for China (ACEIC) was the first chlorine emission inventory for China based on local data developed in our previous study, which only includes the emissions from coal combustion and waste incineration.

In this study, we updated this inventory to include data from a more recent year (2019) and expanded the range of species

considered (HCl, fine particulate Cl⁻, Cl₂, and hypochlorous acid (HOCl)) as well as the number of anthropogenic sources (41 specific sources). Compared with previous studies, this updated inventory considered more anthropogenic sources, used more

localized emission factors, and adopted more refined estimation methods. The total emissions of HCl, fine particulate Cl⁻, Cl₂, and HOCl in mainland China for the year 2019 were estimated to be 361 (-18%~27%), 174 (-27%~59%), 18 (-10%~15%),

and 79 (-12%~18%) Gg, respectively. To facilitate analysis, we aggregated the chlorine emissions from various sources into five economic sectors: power, industry, residential, agriculture, and biomass burning. HCl emissions were primarily derived

from industry (43%), biomass burning (38%), and residential (13%) sectors. The biomass burning and industry sectors accounted for 74% and 19% of the fine particulate Cl⁻ emissions, respectively. Residential and industry sectors contributed

61% and 29% of the total Cl₂ emissions. HOCl emissions were predominantly from the residential sector, constituting 90% of the total emissions. Notably, the usage of chlorine-containing disinfectants was identified as the most significant source of Cl₂

and HOCl emissions in the residential sector. Geographically, regions with high HCl and fine particulate Cl⁻ emissions were found in North China Plain, Northeast China, Central China, and Yangtze River Delta, whereas the Pearl River Delta, Yangtze

River Delta, and Beijing-Tianjin-Hebei regions exhibited elevated levels of Cl₂ and HOCl emissions. Regarding monthly variation, emissions of HCl and fine particulate Cl⁻ were relatively higher during early spring (February to April) and winter

删除了: s...for China based on local data developed in our previous study, which only includes the emissions from coal combustion and waste incineration. In the present ... [1]

删除了: 2018

删除了: 2018 ...019 were estimated to be 454 ... [2]

删除了: 374

设置了格式: 字体颜色: 自动设置

删除了: 48

删除了: 29

设置了格式: 字体颜色: 自动设置

删除了: 45

删除了: 2

设置了格式: 字体颜色: 自动设置

删除了: 238

删除了: 184

设置了格式: 字体颜色: 自动设置

删除了: 59

删除了: 0

设置了格式: 字体颜色: 自动设置

删除了: 89

删除了: 70

删除了: 17 ...8 (-44...0%~58...5%), and 73 ...9 (-44...2%~79...)

设置了格式: 字体颜色: 自动设置

删除了: 1

删除了: 45

删除了: 40

删除了: industry (35%), ...nd residential (15...3%) sectors. The biomass burning and industry sectors accounted for 78

设置了格式: 字体颜色: 自动设置

设置了格式: 字体颜色: 自动设置

删除了: 5

删除了: 14

删除了: 8

设置了格式: 字体颜色: 自动设置

设置了格式: 字体颜色: 自动设置

删除了: 59...1% and 31 ... [5]

删除了: northeast China, the North China Plain, and the

设置了格式: 字体颜色: 自动设置

110 ~~(December to January)~~ due to intensified agricultural activities, while Cl₂ and HOCl emissions were higher in the summer
months due to increased demand for water disinfection. [We also incorporated this emission inventory to the chemical transport
model and found the simulated concentrations of chlorine species agreed reasonably with the observations, which suggested
the relatively faithful estimations of their emissions.](#) This updated inventory contributes to a better understanding of
115 anthropogenic sources of chlorine species and can aid in the formulation of emission control strategies to mitigate secondary
pollution in China.

删除了: August

删除了: October

设置了格式: 字体颜色: 自动设置

设置了格式: 字体颜色: 自动设置

1 Introduction

Recent field and laboratory studies have revealed the crucial role of chlorine radical (Cl) in tropospheric chemistry (Faxon and Allen, 2013; Qiu et al., 2019a; Young et al., 2014; Peng et al., 2022). As highly reactive radicals, Cl can significantly impact the abundance of trace gases related to climate and air quality. Specifically, in the lower troposphere, Cl can initiate the oxidation of volatile organic compounds (VOCs), elevate the levels of conventional radicals (OH, HO₂, and RO₂), and produce ozone (O₃) and secondary aerosols that contribute to air pollution and alter the earth's radiation budget and climate (Qiu et al., 2019a; Wang et al., 2019; Li et al., 2021; Wang et al., 2020b). Furthermore, Cl reacts rapidly with methane, which is the most abundant hydrocarbon and the second-most important greenhouse gas emitted into the atmosphere (Li et al., 2022; Strode et al., 2020). Consequently, the study of chlorine chemistry in the troposphere has garnered increasing attention within the atmospheric chemistry community.

Chlorine species from anthropogenic activities, including HCl, fine particulate Cl⁻ (pCl), Cl₂, and HOCl, are important precursors of Cl radicals. HCl can react with OH radicals to release Cl radicals (Riedel et al., 2012). Particulate Cl⁻ provides aerosol surfaces for heterogeneous reactions with N₂O₅, producing ClNO₂ that is rapidly photolyzed into Cl radicals after sunrise (Thornton et al., 2010; Bertram and Thornton, 2009; Roberts et al., 2009; Osthoff et al., 2008). During the daytime, Cl₂ can be swiftly photolyzed, releasing two Cl radicals, while HOCl can also be photolyzed to release Cl radicals (Finlayson-Pitts, 1993; Faxon and Allen, 2013). These chlorine species are emitted from various anthropogenic sources (Chang and Allen, 2006; Yin et al., 2022), posing challenges in estimating their emissions. The development of chlorine emission inventories would enhance our understanding of the emission characteristics and primary sources of these emissions. Furthermore, it would provide crucial input data for numerical simulations of air quality, ultimately improving the accuracy of atmospheric pollutant predictions.

The study of estimating the anthropogenic chlorine emission in China began by McCulloch et al. (1999), who established a global anthropogenic chlorine emission inventory called Reactive Chlorine Emissions Inventory (RCEI) based on a relatively rough statistical dataset in 1990. However, due to the rapid industrial and economic growth, this inventory cannot accurately represent the current situation of atmospheric chlorine emissions in China. The first anthropogenic chlorine emission inventory using local data in China (Anthropogenic Chlorine Emission Inventory for China (ACEIC)) was developed by our team (Liu et al., 2018), which considered the HCl and Cl₂ emissions from coal combustion and waste incineration for the year 2012. We then updated this inventory to the year 2014 (Hong et al., 2020). A more detailed chlorine emission inventory for the same year was established by Fu et al. (2018), including the HCl and pCl emissions from coal combustion, industrial production

processes, biomass combustion, and waste incineration. Zhang et al. (2022) also developed a comprehensive global emission inventory of HCl and pCl from 1960 to 2014, including China. Qiu et al. (2019b) compiled an updated emission inventory for Beijing in 2014 with pCl emissions from cooking considered. Lately, a team from Shanghai University has successively established anthropogenic chlorine emission inventories for Shanghai (Yi et al., 2020; Li et al., 2020b), Yangtze River Delta region (Yi et al., 2021), and China (Yin et al., 2022), with the consideration of more chlorine species (HCl, pCl, Cl₂, and HOCl) from various sources.

Despite these studies, the anthropogenic chlorine emission in China remains uncertain and further investigation is still warranted. Firstly, the estimated chlorine emissions in China varied in different studies due to the different applications of emission factors and estimation methods. Some studies have utilized emission factors derived from foreign sources or standards and guidelines that may not accurately reflect the specific local conditions in China. Some calculation methods are rudimentary and lack the granularity needed to effectively capture variations among provinces or different sources. Secondly, some modeling studies (Choi et al., 2020; Li et al., 2021) have used the anthropogenic chlorine emission as inputs and found that the simulated concentrations of chlorine species (HCl and pCl) were underestimated against the observation, which suggests that there are large uncertainties or missing sources for the current emission estimation. Lastly, chlorine emissions from anthropogenic activities were reported in the recent literature, but they have not been considered in the developed emission inventory for China. Such overlooked emissions include those from [medical waste incineration](#), environmental disinfection, tap water utilization, pesticide application, and etc. The neglect of these sources can lead to an underestimation of the total chlorine emission. As a result, the development of a comprehensive anthropogenic chlorine emission inventory that addresses the above issues is of great significance in reducing the uncertainty of the emission estimation.

In this study, we update and improve the ACEIC inventory we developed previously to a more comprehensive one, which includes 4 chlorine species from 41 specific anthropogenic sources, with 2019 as the base year. Compared with the previous studies, this updated inventory considered more anthropogenic sources, used more localized emission factors, and adopted more refined estimation methods, which aims to reduce the uncertainty of chlorine emission estimations. [We also incorporated the emission inventory to a chemical transport model to evaluate the accuracy of emission estimations.](#) The structure of this paper is organized as follows. Section 2 demonstrates the data and method utilized to develop the updated chlorine emission inventory ACEIC. Section 3 presents the characteristic of anthropogenic chlorine emissions, and Section 4 [provided the validation, uncertainty and limitation of this inventory.](#) The conclusion is summarized in Section 5.

删除了: 2018

删除了: discusses

删除了: the

2 Data and Method

2.1 Emission estimation

In our study, we have compiled the emissions of chlorine species (HCl, pCl, Cl₂, HOCl) from 41 anthropogenic activities (Table S1 and S2) across the 31 provinces in mainland China. These emissions are categorized into seven major source categories (Table S1): (1) coal combustion, (2) industrial production processes, (3) waste incineration, (4) biomass burning, (5) cooking, (6) usage of chlorine-containing disinfectants, and (7) usage of pesticides. To estimate anthropogenic chlorine emissions in China for the year 2019, we have employed the "emission factor" method, which is represented by the following equation.

$$E_{HCl} = \sum_{i,j} A_{i,j} \times EF_{(HCl)_{i,j}} \quad (1)$$

$$E_{pCl} = \sum_{i,j} A_{i,j} \times EF_{(PM_{2.5})_{i,j}} \times M_{i,j} \quad (2)$$

$$E_{Cl_2/HOCl} = \sum_{i,j,k} A_{i,j} \times (CD_{i,j} - CR_{i,j}) \times f_j \times R_k \quad (3)$$

Generally, the estimation of HCl and pCl emissions was carried out using formulas 1 and 2, respectively, while the calculation of Cl₂ and HOCl emissions utilized formula 3. In these formulas, the variables i, j, and k represent provinces, emission sources, and chlorine precursors, respectively. The symbol E represents emissions, A represents activity data, and EF represents emission factors. The variable M in equation 2 represents the proportion of Cl⁻ in PM_{2.5}. For equation 3, the variable CD represents the amount of chlorine added, CR represents the residual chlorine, f represents the volatilization rate of chlorine, and R represents the release ratios of chlorine gases.

2.2 Activity data and emission factor

The activity data and emission factor used to calculate the chlorine emissions of each source category are demonstrated in this section. This emission inventory uses a large amount of activity data and advanced emission factors. Most of the activity data, emission factors, and related references can be found in Tables S3-S15. Generally, the activity data were obtained from the yearbook (e.g., China Energy Statistical Yearbook, China Industry Statistical Yearbook, and China Urban-Rural Construction Statistical Yearbook), government statistics (e.g., National Bureau of Statistics, and General Administration of Sport of China), and Gaode's POI data. The emission factors were mainly based on the measured and survey data from the literature. The selection process of emission factors was guided by the principles of prioritizing domestic local areas, prioritizing the most

删除了: 2018

删除了: S12

recent year, and giving precedence to field observations. By adhering to these principles, the study seeks to minimize the inherent uncertainty associated with emission factors to the greatest extent possible.

2.2.1 Coal combustion

Chlorine in the coal can be released into the atmosphere through coal combustion. We estimated the emissions from coal combustion based on the coal consumption data, which were derived from the provincial energy balance spreadsheets of the “China Energy Statistical Yearbook” (National Bureau of Statistics, 2020c). We classified coal consumption into 4 economic sectors: (1) power plants. (2) industry, including industrial processes, construction processes, and heating plants. (3) residential, including residential and commercial activities, transportation, and others. (4) agriculture. The emissions from coal combustion were calculated using the formula proposed in our previous study (Liu et al., 2018):

$$E_{i,j,k} = A_{i,j} \times c_i \times \sum_k [X_{j,k} \times R_{j,k} \times (1 - \eta_{d,j,k}) \times (1 - \eta_{s,j,k})] \times \rho \times \frac{1}{MM_k} \quad (4)$$

where i, j, k, l are the province, source sector, chlorine species, and the energy allocation type (type of boiler and control device combination). A is the coal consumption by province in each source category, and c is the chlorine content in coal by province. Instead of using chlorine content in raw coal produced in each province (Liu et al., 2018), we adopted the data from the study of Fu et al. (2018), which is the value of consumed coal considering the coal transportation. X is the fraction of energy for a sector (energy allocation ratio), and R is the chlorine release rate. η_d is the removal efficiency of dust-removal facilities, and η_s is the removal efficiency of sulfate-removal facilities. The values of $X, R, \eta_d,$ and η_s can be found in Table 2 of our previous study (Liu et al., 2018). ρ is the chlorine proportion of HCl (86.33%), fine particulate Cl⁻ (10.09%), and Cl₂ (3.58%) in emitted flue gases based on the local measurement (Deng et al., 2014). MM refers to mass ratio of chlorine in chlorine species (35.5/36.5, 1, 1 for HCl, pCl, and Cl₂).

2.2.2 Industrial production process

Chlorine species can be released during some industrial production processes. For example, the production of cement, iron, and steel will emit HCl and fine particulate Cl⁻, and HCl will be volatilized during the production of hydrochloric acid, while the production of flat glass will produce HCl, fine particulate Cl⁻, and Cl₂. The emissions from these industrial production processes were estimated based on their production. The data of cement, iron, steel, and flat glass by province were collected from China Industry Statistical Yearbook (National Bureau of Statistics, 2020e), and those of industrial HCl were obtained from the National Bureau of Statistics (https://m.sohu.com/a/335035620_775892/?pvid=000115_3w_a, last access: 1 January 2024).

删除了: (Statistics,

删除了: and previous studies (Zheng et al., 2018)

删除了: t

删除了: he chlorine content in chlorine species

删除了: :

删除了: (Statistics,

删除了: January 2023

设置了格式: 字体: (默认) Times New Roman, 10 磅

For HCl and Cl₂, the emissions were calculated using formula 1. The HCl emission factors of industrial productions of cement, iron, steel, hydrochloric acid, and flat glass were obtained from the literature (see Table S4). The Cl₂ emission factor of flat glass is 0.58 g t⁻¹ (Sepa, 2011; Wang et al., 2014; Zheng et al., 2018). For fine particulate Cl⁻, the emission factors (EF_{pCl}) were calculated from the emission factor of PM_{2.5} (EF_{PM2.5}) and the Cl⁻ proportion in PM_{2.5} (M):

$$EF_{pCl,i} = EF_{PM2.5,i} \times M_i \quad (5)$$

where i denotes different industrial production processes. These parameters for the industrial production of cement, iron, steel, and flat glass are shown in Table S5.

2.2.3 Waste incineration

The primary waste disposal method in China is the waste incineration, which releases HCl and pCl during the incineration process. While China prohibits the open burning of MSW (municipal solid waste), there are still instances of open incineration in certain areas. Apart from MSW waste, the incineration of medical waste can emit chlorine-containing species due to its high plastic content. Therefore, waste incineration can be categorized into three types: MSW incineration stations, MSW open incineration, and medical waste incineration.

For the emission from incineration stations, the waste for incinerations in each province/city were collected from the China Urban-Rural Construction Statistical Yearbook (National Bureau of Statistics, 2020d). The emissions of HCl and pCl are calculated using formulas 1 and 2. We estimated the HCl and PM_{2.5} emission factors to be 0.0259 and 0.0136 g kg⁻¹, respectively, for 2019 based on the proportion of incinerator types used, the application of air pollution control devices, and their emission factors in the study of Fu et al. (2022), as shown in Tables S4 and S5.

For the MSW open incineration, there is no relevant statistical data at present, so its emission was estimated as follows.

$$A_i = (P_{i,u} \times W_u \times F_{i,u} + P_{i,r} \times W_r \times F_{i,r}) \times B \times 365 \quad (6)$$

where i_u and i_r represent the province, urban, and rural data, respectively. P is the population. W is the per capita waste production rate, which is 1.2 kg person⁻¹ d⁻¹ in urban areas and 0.79 kg person⁻¹ d⁻¹ in rural areas (Wang et al., 2017b; He et al., 2010). F represents the proportion of open burning of solid waste, which means the untreated portion (1-f). f represents the

- 删除了: and ... Tt ... [7]
- 删除了: and S5
- 删除了: ,
- 设置了格式: 字体颜色: 自动设置
- 删除了:
- 删除了: .
- 设置了格式: 字体颜色: 自动设置
- 删除了:
- 删除了: t
- 设置了格式: 下标
- 删除了: /
- 设置了格式 ... [8]
- 删除了: (SEPA, 2011; Wang et al., 2014; Zheng et al. ... [9]
- 删除了: S6
- 设置了格式: 字体: 10 磅
- 删除了: garbage ...aste disposal method in China ... [10]
- 设置了格式: 字体: 10 磅
- 删除了: garbage... there are still instances of opep ... [11]
- 设置了格式 ... [12]
- 删除了: s more...chlorine-containing substances ... [13]
- 设置了格式: 字体颜色: 自动设置
- 删除了: when burnt ...ue to its high plastic contep ... 除了生 ... [14]
- 删除了: two
- 删除了: methods
- 删除了: garbage ...ncineration stations and... MSW open ... [15]
- 删除了: garbage
- 删除了: Currently, only the emissions from domestic waste ... [16]
- 设置了格式: 字体颜色: 自动设置
- 删除了: garbage disposal
- 删除了: ors...on stations, the waste for incinerations in each ... [17]
- 删除了:
- 设置了格式 ... [18]
- 删除了: by
- 删除了: Fu et al. (2022), which were 0.0259 and ... [19]
- 删除了: The emissions of HCl were calculated using the ... [20]
- 设置了格式: 字体颜色: 自动设置
- 删除了: ↵
- 删除了: The estimation of fine particulate Cl⁻ emissions ... [21]
- 删除了: waste ...ncineration, there is no relevant statistical ... [22]
- 删除了: MS...@u×F_{i,u}+P_{i,r}×MS ... [23]
- 删除了: 8
- 删除了: , ...u, and r represent the province, urban, and rural ... [24]
- 删除了: /
- 删除了: /
- 删除了: /
- 设置了格式: 上标
- 设置了格式: 上标
- 设置了格式: 上标
- 设置了格式: 上标

treated proportion of solid waste, which is derived from the China Urban and Rural Construction Statistical Yearbook 2019 (National Bureau of Statistics, 2020d). The F value varied in different provinces due to the imbalance of economy, urbanization, and waste disposal technology popularization. B is the waste combustibility rate, which is assumed to be 0.6 based on the study conducted by Fu et al. (2018). The emission factors of HCl and fine particulate Cl⁻ are shown in Table S4 and S5.

For the medical waste incineration, the national production of medical waste can be obtained from Ruiguang.com (https://www.reportrc.com/article/20200506/6615.html, last access: 1 January 2024). It is reported that the inpatient and outpatient departments produced 1.92 and 340000 tons of medical waste, respectively. The production of medical waste in inpatient and outpatient departments in various provinces can be estimated based on formulas 7 and 8, respectively:

$$IW_i = \frac{B_i \times U_i}{B_{sum} \times U_{sum}} \times IW_{sum} \quad (7)$$

$$OW_i = \frac{P_i}{P_{sum}} \times OW_{sum} \quad (8)$$

where i and sum represent the province and national total, respectively, while IW and OW represent the production of medical waste in the inpatient and outpatient departments, respectively. B represents the number of beds, U represents the utilization rate of beds, and P represents the number of visits, all of which can be obtained from the China Health Statistics Yearbook 2020 (National Health Commission of the People's Republic of China, 2020).

We estimate the HCl emission factor of medical waste based on its component proportion and HCl release rate, using the following formula:

$$EF_i = \sum(N_j \times R_j) \times (1 - \eta_d) \times (1 - \eta_s) \quad (9)$$

where j represents different components, N represents the proportion of components, and R represents the HCl release rate, as shown in Table S6. η_d is the chlorine removal efficiency of dust-removal facilities (25.1%), and η_s is the chlorine removal efficiency of sulfate-removal facilities (95.5%) (Liu et al., 2018). Due to the lack of relevant data on pCl emission factors for medical waste incineration, we set it to $EF_{HCl}(\text{medical})/12.8$ based on the EF_{HCl}/EF_{pCl} for the MSW incineration stations being 12.8.

- 删除了: (Statistics,...National Bureau of Statistics, 2020d) ... [25]
- 删除了: S6
- 带格式的: 行距: 1.5 倍行距
- 删除了: disposal of
- 设置了格式: 字体: 10 磅
- 设置了格式 ... [26]
- 删除了: (
- 删除了:
- 删除了:)
- 删除了: Obtained, t...e inpatient and outpatient departments ... [27]
- 设置了格式: 字体颜色: 自动设置
- 设置了格式: 字体颜色: 自动设置
- 设置了格式: 字体颜色: 自动设置
- 设置了格式: 字体颜色: 自动设置
- 设置了格式 ... [28]
- 删除了: 8
- 删除了: 9
- 设置了格式 ... [29]
- 设置了格式 ... [30]
- 删除了: 对于医疗垃圾处置, 全国医疗废物生产量可 ... [31]
- 设置了格式 ... [32]
- 设置了格式 ... [33]
- 删除了: In the formula,
- 设置了格式 ... [34]
- 删除了: China
- 设置了格式: 字体颜色: 自动设置
- 设置了格式 ... [35]
- 域代码已更改
- 删除了: e ... [36]
- 删除了: 我们根据医疗废物的成分占比及其 HCl 释放率 ... [37]
- 设置了格式 ... [38]
- 设置了格式: 字体: 10 磅, 字体颜色: 自动设置
- 删除了: In the formula,
- 删除了: i
- 设置了格式 ... [39]
- 设置了格式 ... [40]
- 删除了: combustion
- 删除了: the pCl emission factor for medical waste disposal
- 删除了: e
- 删除了: of
- 删除了: waste
- 设置了格式 ... [41]
- 设置了格式 ... [42]
- 设置了格式 ... [43]
- 设置了格式 ... [44]
- 设置了格式 ... [45]

2.2.4 Biomass burning

Biomass burning includes household burning and open burning. Both of them include straw burning and firewood burning.

The emissions from straw burning were calculated as follows:

$$A_{i,j,k} = P_{i,j} \times R_j \times D_j \times C_j \times F_{i,j,k} \quad (10)$$

where i , j , and k represent respectively the province, crop type, and combustion type. P represents the crop yield, R signifies the ratio of straw to crop products, and D represents the dry matter ratio. C denotes the combustion efficiency, and F represents the rates of household and open combustion. This study recalibrated the open burning ratio based on the variation in fire radiative power over croplands from MODIS satellite fire point data (<https://modis.gsfc.nasa.gov>, last access: 1 January 2024), re-adjusting the ratios initially proposed in the study of Zhou et al. (2017). Additionally, utilizing the research by Liu et al. (2022), we estimated the household burning ratio for the year 2019 through statistical linear trend analysis. Specific values for these parameters can be found in Tables S7 and S8.

For the firewood burning, the emissions were estimated using the Eq. 11:

$$A_i = \frac{P_i}{S_i} \times B \times T \quad (11)$$

where i represents the province. P represents the rural population, while S represents the average size of rural households. The division P/S represents the number of rural households. B represents the consumption rate of firewood, and T represents the number of days on which firewood is burned. According to the research of Yi et al. (2021), it is assumed that each rural household burns 2 kg of firewood per day, and the total number of burning days in a year is 260. The emission factors of HCl and fine particulate Cl^- from straw and firewood combustion are shown in Tables S4 and S9, respectively.

2.2.5 Cooking

Chlorine emissions from cooking are mainly due to the usage of edible salt, which is released in the form of aerosols during the cooking process (Zhang et al., 2017). The emissions from cooking activities were categorized into three types: household catering, social catering, and canteen catering. In social catering, small and medium-sized catering enterprises contribute to more than 80% of the total emissions (Wu et al., 2018). Canteen catering includes school canteens and unit canteens. The formula for estimating pCl emissions from cooking was as follows:

删除了: 式中, i 代表不同的成分, N 为成分占比, R 为 HCl 释放率, 见表 S6。由于缺少医疗废物燃烧的 pCl 排放因子相关数据, 因此我们根据垃圾焚烧站的 EF_{HCl}/EF_{pCl} 为 12.8, 设置医疗废物处置的 pCl 排放因子为 $EF_{HCl}(\text{medical})/12.8$ 。

删除了: 9

设置了格式: 字体颜色: 自动设置

设置了格式: 字体颜色: 自动设置

设置了格式: 字体颜色: 自动设置

设置了格式: 字体颜色: 自动设置

设置了格式: 字体颜色: 自动设置

删除了: by

删除了: Zhou et al. (2017)

设置了格式: 字体: 10 磅

设置了格式: 字体颜色: 自动设置

删除了: Liu et al. (2022)

删除了: .

删除了: 本研究基于 MODIS 卫星火点数据中耕地的火辐射功率的变化, 重新调整了 Zhou et al.(2017)研究的露天燃烧比例。并且基于 Liu et al.(2022)的研究, 用统计线性趋势估算出 2019 年的家庭燃烧比例。

删除了: 10

删除了: 10

605 $E_{i,j} = N_{i,j} \times n_j \times Q_j \times H_j \times D_j \times (1 - \eta) \times EF_{PM2.5,j} \times M$ (12)

删除了: 11

610 where *i* and *j* represent provinces and catering types, respectively. *N* represents the number of households (i.e. population/family size), the number of social restaurants, the number of students and faculty members in middle schools and colleges, and the number of public institutions and government agencies. *n* is The number of furnaces, and *Q* is the smoke emission. *H* represents the cooking time per day, *D* is the cooking days, and η is the removal efficiency of the flue gas scrubber. $EF_{PM2.5}$ is the emission factor of $PM_{2.5}$, the above parameters are based on the study of Wu et al. (2018). *M* is the proportion of Cl^- in $PM_{2.5}$. According to the local measurement of Li et al. (2018), the average proportion of Cl^- in $PM_{2.5}$ is 1.545%. The parameters related to the emission factors of cooking are shown in Table S10.

615 2.2.6 Usage of chlorine-containing disinfectant

Cl_2 and $HOCl$ released from the usages of chlorine-containing disinfectant are known for their pungent odors, which can pose risks to human health. Consequently, indoor disinfection generally requires meticulous attention to ventilation, such as in hospitals and indoor swimming pools (Huang, 2012; Tang, 2003; the standard GB 15982-2012). The rapid air exchange between indoor and outdoor during the ventilation process can help the emissions of chlorine gases into the atmosphere.

620 The emissions from the disinfection process were estimated as follows:

$E_{i,j} = W_i \times (CD - CR) \times f \times R_j$ (13)

删除了: 12

625 where *i* and *j* are the province and chlorine species, respectively. *W* is the amount of water for disinfection treatment. *CD* and *CR* are the chlorine dose added to the water and the residual chlorine after disinfection, respectively. *f* is the volatilization ratio of chlorine, and *R* is the release ratio of chlorine gases. In this study, the release ratios of $HOCl$ and Cl_2 during the disinfection process are 84% and 11%, respectively (Wong et al., 2017). Except for the activity data (*W*), other parameters in this equation for different usages of disinfectant are presented in Table S11.

删除了: 0.

删除了: 0.

删除了: S5

630 a Cooling tower

To prevent the breeding of bacteria and algae in the circulating water of the cooling tower and reduce the cooling efficiency, it is necessary to add disinfectant regularly and maintain a certain concentration. The volatilization of cooling water will cause

the release of chlorine gases into the atmosphere. The chlorine emission was estimated based on the amount of supplementary water that was regularly added to the cooling tower. It was estimated according to the following equation:

$$W_i = A_i \times L \times S$$

where i is the province, and A is the industrial water consumption. These provincial activity data were obtained from the China Environmental Statistics Yearbook [2020](#) (National Bureau of Statistics, 2020a). L is the proportion of cooling water, which accounts for about 60% of industrial water (Hou and Zhang, 2015). S is the proportion of supplementary water. Here we used the value of 2.4% (Wang et al., 2020a; Zhao, 2015).

b Water treatment

During the water treatment process, which typically involves coagulation, sedimentation, filtration, and disinfection, the use of chlorine-containing disinfectants is a common practice for effective disinfection (Ge et al., 2006). As a result of this disinfection process, emissions of HOCl and Cl₂ are released into the atmosphere. The emission of water treatment is estimated using formula [13](#). The water amount that needs disinfection (W_i) is the quantity of tap water supplied in each province, which can be obtained from the China Urban and Rural Construction Statistical Yearbook [2020](#) (National Bureau of Statistics, 2020d).

The emission factors can be found in Table [S11](#). [The residual chlorine at the end of the pipeline network amount can be obtained from the website of water bureau for each province, as shown in Table S12.](#)

c Waste water treatment

Waste water treatment encompasses the treatment of both medical waste water and domestic sewage. Before discharge, medical waste water undergoes disinfection to prevent the dissemination of pathogens. Similarly, domestic sewage is disinfected before being released into natural water bodies to safeguard the ecological balance against the proliferation of algae and microorganisms. The treatment capacity for medical waste water can be estimated based on the number of hospital beds and the rate of waste water production.

$$W_i = N_i \times Q \times D$$

(14)

删除了: 13

删除了: 2019

删除了: (Statistics,

删除了: 12

删除了: 2019

删除了: (Statistics,

设置了格式: 字体: (默认) Times New Roman

删除了: S5

设置了格式: 字体: (默认) Times New Roman

删除了: queried

删除了: by

删除了: of

删除了: 管网末梢余氯量可通过各个省份的水务局查询, 见表 S12。...

设置了格式: 字体颜色: 自动设置

设置了格式: 字体颜色: 自动设置

设置了格式: 字体颜色: 自动设置

设置了格式: 字体颜色: 自动设置

(15)

删除了: 14

680 where i is the province, and N is the number of hospital beds, which was derived from the China Health Statistics Yearbook
 2020 (National Health Commission of the People's Republic of China, 2020). Q is the waste water production rate, each bed
 produces 0.62 m^3 of medical waste water per day (Zhou, 1987). D is the number of days of disinfection, which is 365.

删除了: 2019

删除了: China

685 The emissions from domestic waste water were estimated based on the provincial sewage treatment capacity. These data were
 obtained from the China Urban and Rural Construction Statistical Yearbook 2020 (National Bureau of Statistics, 2020d).

删除了: 2019

删除了: (Statistics,

d Swimming pool

To inhibit bacterial growth and ensure a sanitary environment in swimming pools, regular disinfection of the pool water is
 necessary (Wang et al., 2002). Due to the lack of data on private swimming pools, this study only considers emissions from
 690 public swimming pools. The volume of public swimming pools was calculated as follows:

删除了: counted

设置了格式: 字体颜色: 自动设置

删除了: 由于缺乏私人游泳池的数据, 本研究只统计公共游泳池的排放。Swimming pools include public

$$V_i = n_i \times \sum_j (a_j \times b_j \times h_j \times r_j)$$

(16)

删除了: Swimming pools include public swimming pools and private swimming pools, and they have different volumes. ...

设置了格式: 字体颜色: 自动设置

删除了: 15

695 where i and j represent different provinces and size types. Swimming pool size types include standard, semi-standard/non-
 standard swimming pools. We assume that the sizes of semi-standard and non-standard swimming pools are the same. n is the
 number of swimming pools, and the provincial data comes from the State Sports General Administration
 (https://www.sport.gov.cn/, last access: 1 January 2024). a , b , and h are the length, width, and depth of the swimming pool
 with different size types, as shown in Table S13. r represents the proportion of different size types of swimming pools, with
 standard swimming pools accounting for 28%, and semi-standard/non-standard swimming pools accounting for 72% (Zhang,
 700 2015).

删除了: January 2023

设置了格式: 字体: (默认) Times New Roman

删除了: S11

The HOCl and Cl₂ emissions of the swimming pool are calculated:

$$705 E_{i,k,l} = V_i \times \sum_k (y \times z \times D) \times c \times f \times R_l \quad (17)$$

删除了: The volume of private swimming pools was calculated as follows:

↵

$$V_i = n_i \times a \times b \times$$

$$h \rightarrow (16) \leftarrow$$

↵

where i , k , and l are provinces, indoor and outdoor types (outdoor and indoor swimming pools), and chlorine species,
 respectively. y is the proportion of indoor and outdoor types, with outdoor swimming pools accounting for 59.43% and indoor
 swimming pools accounting for 38.93% according to the survey of State Sports General Administration

where i represent different provinces. n is the number of swimming pools, and the provincial data are estimated based on the ratio of residents' income to the number of swimming pools following the method proposed by Li et al. (2020). a , b , and h are the length, width, and depth of the private swimming pool, as shown in Table S11.

(<https://www.sport.gov.cn/>, last access: 1 January 2024), ~~z~~ for the dosage, according to the research of Wang et al. (2002) and Qianzhan Industrial Research Institute (<https://bg.qianzhan.com/report/detail/300/210803-5009dc2a.html>, last access: 1 January 2024), the outdoor swimming pool uses $2.10\text{g}\cdot\text{m}^{-3}$ of strong chlorine per day, and the indoor swimming pool uses $1.31\text{g}\cdot\text{m}^{-3}$ every day. D is the number of opening days for the swimming pool. The indoor swimming pool in this study is open all year round, and the outdoor swimming pool is only open in summer. c is the mass fraction of available chlorine in strong chlorine, which is 90% (Wang et al., 2002). f is the chlorine volatilization ratio, which is 0.2 (Li et al., 2020b). R is the release ratio of HOCl (84%) and Cl₂ (11%) (Wong et al., 2017).

e Environmental disinfection

Environmental disinfection includes hospital disinfection, breeding disinfection, and toilet disinfection. For hospital disinfection, chlorine emissions are related to the number of hospitals and the amount of disinfectant used, and the emissions are as follows:

$$E_{i,k} = n_i \times U \times c \times f \times R_k \quad (18)$$

where i and k represent provinces and chlorine-containing species, and n is the number of hospitals. U denotes the quantity of disinfectant utilized. In 2007, the average volume of chlorine-containing disinfectant used in Taizhou hospitals was reported to be 2329.2L (Sun et al., 2007). Due to the absence of data in 2019, we assumed that its change is proportional to the total health cost in recent years. The amount of disinfectant usage is estimated using the formula $U_{2019} = U_{2007} \times C_{2019}/C_{2007}$, where U represents the amount of disinfectant usage, and C represents the total health cost. The total health cost can be obtained from the China Health Statistical Yearbook (National Health Commission of the People's Republic of China, 2020, 2008). As a result, the usage of disinfectants in 2019 is estimated to be 13250.2 L. c is the chlorine content of the disinfectant, which is 1000 mg/L. f is the chlorine volatilization ratio, which is 0.3 (Li et al., 2020b). R is the release ratio of HOCl (84%) and Cl₂ (11%) (Wong et al., 2017).

Breeding disinfection is found in pig farming, poultry farming, and aquaculture. The chlorine emissions from these sources are calculated using the following formula:

$$E_{i,j,k} = S_{i,j} \times U_j \times N_j \times r \times f \times R_k \quad (19)$$

删除了: January 2023

删除了: Due to the lack of relevant literature research or statistical data, this study assumes that the proportion of indoor and outdoor swimming pools is evenly distributed between public and private swimming pools.

设置了格式: 字体: (默认) Times New Roman, 10 磅

设置了格式: 字体颜色: 自动设置

设置了格式: 字体颜色: 自动设置

删除了: 2g

删除了: /

设置了格式: 字体颜色: 自动设置

设置了格式: 字体颜色: 自动设置, 上标

删除了: 25g

删除了: /

设置了格式: 字体颜色: 自动设置

设置了格式: 字体颜色: 自动设置, 上标

删除了: 0.

删除了: 0.

删除了: 2018

设置了格式: 字体: (默认) Times New Roman

删除了: U₂₀₁₈

删除了: C₂₀₁₈

设置了格式

删除了: China

删除了: 2018

删除了: 11898.0

删除了: 0.

删除了: 0.

where $i, j,$ and k represent provinces, different breeding types, and chlorine-containing species. S is the breeding area. The breeding areas of pigs and poultry are calculated by the number of pigs and poultry and the breeding density. The number of pigs and poultry and the aquaculture area can be obtained from statistical data (National Bureau of Statistics, 2020b). U is the amount of disinfectant used per unit area, and N is the disinfection frequency. f is the chlorine volatilization ratio, and these parameters can be found in Table S14. r is the proportion of chlorine-containing disinfectants used for breeding, which is 0.065 (Jing et al., 2019). R is the release ratio of HOCl (84%) and Cl₂ (11%) (Wong et al., 2017).

Toilet disinfection includes disinfection of public toilets and household toilets. Estimates of emissions during the disinfection of public toilets are as follows:

$$E_{i,k} = n_i \times U \times c \times N \times f \times R_k \quad (20)$$

where i and k represent provinces and chlorine-containing species, and n is the number of public toilets. U is the daily disinfectant dose of each toilet, which is 523.8 mL (Wong et al., 2017) (<https://bg.qianzhan.com/report/detail/300/210803-5009dc2a.html>, last access: 1 January 2024). c is the disinfectant concentration, which is 5%. N is the disinfection frequency, which is 365 times/year. f is the chlorine emission rate, which is 0.3. The parameters are all based on the study by Li et al. (2020b). R is the release ratio of HOCl (84%) and Cl₂ (11%) (Wong et al., 2017). There is too little relevant data on household toilet disinfection, and its emission is estimated to be twice that of public toilets (Li et al., 2020b).

f Tap water use

After water treatment, there is still residual chlorine in the tap water at the end of the pipe network, the residual chlorine will be released into the atmosphere during the use of tap water. In this study, we considered the emissions from car washing, lawn watering, road sprinkling, and pipe leaks.

For the car washing, the chlorine emissions were estimated using the following formula:

$$E_{i,j} = \sum_k (S_{i,k} \times U_k \times N_k) \times CR \times R_j \quad (21)$$

where $i, j,$ and k represent the province, chlorine species, and car types, respectively. S is the number of cars, which can be obtained from the National Bureau of Statistics (<https://www.stats.gov.cn/>, last access: 1 January 2024). U is the water

删除了: (Statistics,

删除了: S12

删除了: 0.

删除了: 0.

删除了: 500

设置了格式: 字体颜色: 自动设置

设置了格式: 字体颜色: 自动设置

设置了格式: 字体颜色: 自动设置

设置了格式: 字体颜色: 自动设置

域代码已更改

设置了格式: 字体颜色: 自动设置

设置了格式: 字体颜色: 自动设置

删除了: HOCl (0.84) and Cl₂ (0.11)

设置了格式: 字体颜色: 自动设置

设置了格式: 字体颜色: 自动设置

设置了格式: 字体颜色: 自动设置

删除了: January 2023

设置了格式: 字体: (默认) Times New Roman

设置了格式: 字体颜色: 自动设置

设置了格式: 字体颜色: 自动设置

consumption per vehicle, N is the frequency of water use, and these parameters can be found in Table S15. Except for medium and large passenger cars, we assume that other cars are washed once a week, CR is the amount of residual chlorine, which can be found in Table S12, and R is the release ratio of HOCl (84%) and Cl₂ (11%) (Wong et al., 2017).

For the lawn watering, road sprinkling, the chlorine emissions were estimated using the following formula:

$$E_{i,j,k} = S_{i,j} \times U_j \times N_j \times CR \times R_k \quad (21)$$

where i, j, and k represent the province, source category, and chlorine species, respectively. S is the number of green area, and road area. U is the unit water consumption, the unit water consumption of lawn watering is 1.5L/m², and road sprinkling is 1L/m² (Li et al., 2020b). N is the frequency of water use, lawn watering is 45 times, and road sprinkling is 50 times (Li et al., 2020b). CR is the amount of residual chlorine, which can be found in Table S12, and R is the release ratio of HOCl (84%) and Cl₂ (11%) (Wong et al., 2017).

For the pipeline leaks, the chlorine emissions are estimated as follows:

$$E_{i,k} = W_i \times CR \times f \times R_k \quad (22)$$

where i and k represent provinces and chlorine-containing species. W is the amount of water loss. CR is the amount of residual chlorine, which is 0.86 mg/L (Li et al., 2020b). f is the chlorine volatilization ratio, which is 0.1 (Li et al., 2020b). R is the release ratio of HOCl (84%) and Cl₂ (11%) (Wong et al., 2017).

2.2.7 Usage of pesticide

Active chlorine is also released during pesticide application, thereby enhancing the activity of the atmosphere. The pesticides in this study include insecticides and herbicides. The chlorine emissions from them are calculated using the following formula:

$$E_{i,j} = P_i \times O \times M \div \rho \times A \times c \times f \times R_j \quad (23)$$

where i and j represent provinces and chlorine-containing species, respectively. P is the amount of pesticide usage, O is the proportion of organochlorine pesticides, and the use of organochlorine pesticides accounts for 30% of pesticides (Zhang, 2016). M is the proportion of insecticides and herbicides, 68% and 23% respectively (Zhang, 2016). ρ is the density, the density of

设置了格式: 字体颜色: 自动设置

设置了格式: 字体颜色: 自动设置

设置了格式: 字体颜色: 自动设置

删除了: 除了中、大型载客汽车, 我们假设其他汽车每周洗一次。...

设置了格式: 字体颜色: 自动设置

设置了格式: 字体颜色: 自动设置

设置了格式: 字体颜色: 自动设置

删除了: former three sources

删除了: car washes,

删除了: each car wash uses about 6.6m³ of car wash water per day (Jing et al., 2014), and

删除了: Car wash shops use water 365 times a year, 1

删除了: is 0.86 mg/L (Li et al., 2020)

设置了格式: 字体颜色: 自动设置

设置了格式: 字体颜色: 自动设置

删除了: HOCl (0.84) and Cl₂ (0.11)

设置了格式: 字体颜色: 自动设置

删除了: HOCl (0.84) and Cl₂ (0.11)

设置了格式: 字体颜色: 自动设置

设置了格式: 字体颜色: 自动设置

the insecticide is 1.359g/ml, the herbicide is mainly liquid, and the density value is 1. A is the active ingredient content, the insecticide is 94.8g/L, and the herbicide c is the chlorine content, the chlorine content of pesticides is 13.08%, and the chlorine content of herbicides is 11.48%. f is the chlorine volatilization ratio, which is 0.3. The above parameters are all based on the research of Yi et al. (2021). R is the release ratio of HOCl (84%) and Cl₂ (11%) during the pesticide application (Wong et al., 2017; Yi et al., 2021).

删除了: HOCl (0.84) and Cl₂ (0.11)
设置了格式: 字体颜色: 自动设置
设置了格式: 字体颜色: 自动设置

2.3 Spatial allocation

The estimated provincial chlorine emissions were further gridded into a 0.1° × 0.1° grid to derive a gridded, model-ready emission inventory. The spatial allocation of emissions was handled separately according to point sources and area sources. For point sources with clear location identification, including coal-fired emissions from power plants, coal-fired emissions from heating, emissions from waste incineration stations, and biomass open combustion emissions, the point source emissions will be directly located in the grid according to the longitude and latitude coordinates of the point source. For the emissions from power plants and MSW incineration stations, the emissions in each province were distributed to each location according to its installed capacity. For the emission of biomass open burning, we allocated the provincial emissions spatially to the fire location according to its fire radiation power over the cropland. The fire location and its fire radiation power data were derived from the MODIS satellite data (<https://modis.gsfc.nasa.gov>, last access: 1 January 2024). For emissions from other point sources with unavailable installed capacity data, such as industrial production, we assumed a uniform emission for them and spatially allocated the provincial emissions evenly to each point. For the area sources, the provincial emissions were spatially disaggregated onto grid cells using empirically selected spatial proxies such as population density (total, urban, and rural). The detailed spatial allocation factors of each source category and their sources are listed in Table S16.

删除了: garbage
删除了: disposal
删除了: ors
删除了: Himawari-8 satellite data (<https://www.eorc.jaxa.jp/tree/userguide.html>, last access: 1 January 2023)
设置了格式: 字体颜色: 自动设置
设置了格式: 字体颜色: 自动设置
设置了格式: 字体颜色: 自动设置
设置了格式: 字体颜色: 自动设置

2.4 Temporal allocation

The annual chlorine emissions estimated above were further allocated to each month using the corresponding activity data or the selected monthly proxies. For the emissions of coal-fired power plants and cooling towers, the monthly emissions are allocated according to the thermal power generation. For the emission of heating coal, the time distribution coefficient is set from mid-November to mid-March according to the heating conditions in different regions of China. For the emissions from the industrial production process, pesticide use, and restaurants, the temporal allocation is based on the output of industrial products, pesticides, and revenue of the catering industry, respectively. The monthly output of thermal power generation,

删除了: S13
删除了: and
删除了: the emissions from
删除了: the emissions from the
删除了: time
删除了: distribution
设置了格式: 字体颜色: 自动设置
设置了格式: 字体颜色: 自动设置
设置了格式: 字体颜色: 自动设置
删除了: and
删除了: respectively
设置了格式: 字体颜色: 自动设置
设置了格式: 字体颜色: 自动设置

905 industrial products, pesticides and revenue of the catering industry can be found in the National Bureau of Statistics
(<https://www.stats.gov.cn/>, last access: 1 January 2024). Based on the fire location and its fire radiation power over the cropland
from the MODIS satellite data, we performed temporal allocation of chlorine emissions from biomass burning for each
province. According to the proportion of the number of outdoor and indoor swimming pools, it is assumed that 60% of the
swimming pools are open from mid-May to mid-September, 40% of the swimming pools are open all year round, and the time
910 distribution coefficient of the disinfection discharge of the swimming pool is set accordingly. For other coal burning and
environmental disinfection emissions that are not sensitive to time change, the monthly emissions can be distributed by days.
Other emissions will be allocated according to the existing research. The monthly allocation factors for each source category
are presented in Table S17.

915 3 Results

3.1 Anthropogenic chlorine emission for China (ACEIC)

The ACEIC (Anthropogenic Chlorine Emission Inventory for China) inventory for the year 2019 was developed in this study.
The general information of this inventory is shown in Table 1. It includes emissions from 31 provinces in mainland China. We
estimated the total emissions of HCl, fine particulate Cl⁻, Cl₂, and HOCl in mainland China to be 361, 174, 18, and 79 Gg,
920 respectively. The estimated emissions by source category are presented in Table 2. Figure 1 shows the contribution of different
source categories to the total emission. For HCl emission, coal combustion and biomass burning are the primary sources,
accounting for 47% (170 Gg) and 38% (137 Gg) of the total, respectively. The emissions from industrial production processes
and waste incineration make up 11% (39 Gg) and 4% (17 Gg), respectively. For fine particulate Cl⁻, biomass burning is the
major contributor to the total emission (74%, 128 Gg), followed by industrial production process (12%, 20 Gg), coal
925 combustion (11%, 19 Gg), and waste incineration (3%, 5 Gg). For Cl₂, it is mainly from the usage of chlorine-containing
disinfectants (59%, 10 Gg) and coal combustion (41%, 7 Gg). For HOCl emissions, the usage of chlorine-containing
disinfectant is the major contributor (99%, 79 Gg). We note that the usage of chlorine-containing disinfectants is the major
source of Cl₂ and HOCl. Figure 2 presents the proportion of different usages of chlorine-containing disinfectants. The waste
water treatment account for 43% of the total, followed by water treatment (31%), environmental disinfection (13%), swimming
930 pool (9%), tap water use (2%), and cooling tower (2%).

删除了: and

删除了: January 2023

设置了格式: 字体: (默认) Times New Roman

删除了: Himawari-8...ODIS satellite data, we performed temporal allocation of chlorine emissions from biomass burning for each province. According to the proportion of the number of outdoor and indoor swimming pools, it is assumed that 60% of the swimming pools are open from mid-May to mid-September, 40% of the swimming pools are open all year round, and the time distribution coefficient of the disinfection discharge of the swimming pool is set accordingly. For other coal burning and environmental disinfection emissions that are not sensitive to time change, the monthly emissions can be distributed by days. Other emissions will be allocated according to the existing research. The monthly allocation factors for each source category are presented in Table S17. ... [46]

下移了 [1]: 2.5 CMAQ model simulation^{e1}

In this study, the Weather Research and Prediction (WRF 3.9.1) model (Skamarock et al., 2008) provided meteorological data to drive the CMAQ model (5.2.1). The final NCEP/NCAR reanalysis data (1° x 1°) provides the

删除了: e1

设置了格式

删除了: 2018 ...019 was developed in this study. The ... [48]

删除了: 238

删除了: 17...8, and 73 ...9 Gg, respectively. The estimated ... [49]

设置了格式: 字体颜色: 自动设置

设置了格式: 字体颜色: 自动设置

删除了: 45

删除了: 204

删除了: and 40% (180 Gg)...of the total, respectively. The ... [50]

设置了格式: 字体颜色: 自动设置

设置了格式: 字体颜色: 自动设置

设置了格式: 字体颜色: 自动设置

删除了: 31 ...7 Gg), respectively. For fine particulate Cl⁻ ... [51]

设置了格式: 字体颜色: 自动设置

删除了: 186

设置了格式: 字体颜色: 自动设置

设置了格式

删除了: 9

删除了: 21 ...9 Gg), industrial production process (8% ... [53]

设置了格式: 字体颜色: 自动设置

3.2 Anthropogenic chlorine emission from different economic sectors

We aggregated the anthropogenic chlorine emissions from 41 specific sources into 5 economic sectors, including power, industry, residential, agricultural, and biomass burning (Table S2). Table 3 provides the estimated emissions for HCl, fine particulate Cl⁻, Cl₂, and HOCl, while Figure 3 illustrates the contribution of each economic sector to the total emissions. HCl emissions were predominantly attributed to industry (43%, 155 Gg), biomass burning (38%, 137 Gg), and the residential sector (13%, 47 Gg). For fine particulate Cl⁻ emissions, biomass burning accounted for the majority with 74% (128 Gg), followed by the industry sector with 19% (33 Gg). Cl₂ emissions were primarily sourced from the residential sector (61%, 10 Gg) and the industry sector (29%, 5 Gg). As for HOCl emissions, the residential sector dominated, contributing 90% (22 Gg) of the total.

3.3 Anthropogenic chlorine emission in different provinces

Fig. 4 and Table 4 display the regional variations in anthropogenic chlorine emissions across different provinces. Regarding HCl emissions, Heilongjiang (36.76 Gg), Hebei (23.76 Gg), Shandong (22.12 Gg), Jilin (19.30 Gg), and Hunan (18.65 Gg) emerge as the top five contributing provinces. They account for 10.2%, 6.6%, 6.1%, 5.3%, and 5.2% of the total emissions, respectively. The elevated emissions in Heilongjiang and Jilin are attributed to the major contributions of biomass burning with higher agricultural production, which accounts for 83% and 84%, respectively. For Hebei, Shandong, and Hunan, the higher emissions from industrial production are the major contributors, accounting for 50%, 57% and 39%, respectively. The top five contributors to fine particulate Cl⁻ emissions are Heilongjiang (27.18 Gg), Jilin (14.29 Gg), Hebei (10.97 Gg), Jiangxi (10.53 Gg), and Henan (8.35 Gg). In these provinces, higher biomass burning emissions induced by active agricultural activities dominate the total emission. Cl₂ emissions are predominantly attributed to Guangdong (1.59 Gg), Shandong (1.31 Gg), Jiangsu (1.09 Gg), Hebei (1.02 Gg), and Hunan (0.96 Gg). The top five provinces contributing to HOCl emissions are Guangdong (0.92 Gg), Jiangsu (0.632 Gg), Shandong (0.534 Gg), Zhejiang (0.449 Gg), and Sichuan (0.387 Gg). Due to the large population and developed economy that stimulates the need for disinfection processes, provinces such as Guangdong, Shandong, and Jiangsu have relatively high emissions of Cl₂ and HOCl.

The spatial distribution of anthropogenic chlorine emissions reveals distinct patterns when considering per-unit-area (Fig. S1) and per-capita (Fig. S2) intensity by province. For the per-unit-area emission intensity, Shanghai has the highest emission intensity of HCl (171.68 kg km⁻²), Cl₂ (57.15 kg km⁻²), and HOCl (396.33 kg km⁻²), which is due to its small area. Jiangsu is the province with the highest emission intensity of fine particulate Cl⁻ (78.27 kg km⁻²), which is attributed to its relatively higher emission but smaller area. For the per-capita emission intensity, Heilongjiang has the highest emission intensity of HCl

设置了格式: 字体颜色: 自动设置
删除了: 45
设置了格式: 字体颜色: 自动设置
删除了: 204
设置了格式: 字体颜色: 自动设置
删除了: industry (35%, 160 Gg), ...nd the residential sector ... [54]
设置了格式: 字体颜色: 自动设置
删除了: 186
设置了格式: 字体颜色: 自动设置
删除了: 14
设置了格式: 字体颜色: 自动设置
删除了: 34 ...3 Gg). Cl₂ emissions were primarily sourced ... [55]
删除了: 38.27
设置了格式: 字体颜色: 自动设置
删除了: Shandong ... ebei (38.10...3.76 Gg), Henan ... [56]
设置了格式: 字体颜色: 自动设置
删除了: 24.45...8.65 Gg) emerge as the top five ... [57]
设置了格式: 字体颜色: 自动设置
删除了: 8.4
设置了格式: 字体颜色: 自动设置
删除了: 7.9
设置了格式: 字体颜色: 自动设置
删除了: 7.2
删除了: 4
设置了格式: 字体颜色: 自动设置
设置了格式: 字体颜色: 自动设置
删除了: , Shandong, ... and Henan ...ilin are attributed to ... [58]
删除了: , 54%, ...and 58 ... [59]
设置了格式: 字体颜色: 自动设置
设置了格式: 字体颜色: 自动设置
删除了: 40
删除了: 31...9%, respectively. The top five contributors to ... [60]
设置了格式: 字体颜色: 自动设置
删除了: Henan ...ilin (21.60 ... [61]
删除了: Shandong ...iangxi (21.13 ... [63]
设置了格式: 字体颜色: 自动设置
设置了格式
删除了: , Hebei (15.46 Gg)... and Anhui ...enan ... [65]
设置了格式
删除了: 40 ...9 Gg), Shandong (1.22 ...1 Gg), ... [66]
删除了: Shandong
设置了格式: 字体颜色: 自动设置
删除了: HCl (238.13 kg km⁻²) and ...ine particulate Cl⁻ ... [67]
设置了格式: 字体颜色: 自动设置
删除了: Shanghai has the highest emission intensity of Cl₂ ... [68]

(1129.46 g per person) and fine particulate Cl⁻ (834.90 g per person) due to its highest emission across the country. Ningxia is the province with the highest emission intensity of Cl₂ (37.68 g per person) due to its low population. Shanghai is the province with the highest emission intensity HOCl (101.28 g per person) due to its relatively higher emission but lower population.

3.4 Spatial distribution of the emission

Figure 5 shows the spatial distribution of anthropogenic chlorine emissions with a high-resolution granularity of 0.1° × 0.1°. Generally, eastern China exhibits significantly higher emissions compared to Western China. The distribution pattern of HCl and fine particulate Cl⁻ closely resemble one another, attributable to their primary sources: biomass burning and coal combustion. Similarly, Cl₂ and HOCl display comparable distribution patterns due to their predominant contribution from the usage of chlorine-containing disinfectants. Regarding HCl emissions, elevated levels are primarily concentrated in key regions such as the North China Plain (NCP), Northeast China, Central China, and Yangtze River Delta (YRD). The spatial distribution pattern of fine particulate Cl⁻ closely mirrors that of HCl emissions, except for slightly lower emissions observed in the PRD region. For Cl₂ and HOCl, regions with high emissions encompass the PRD, YRD, Beijing-Tianjin-Hebei region (BTH), SCB, and the central area of Hubei province. These regions exhibit higher population densities and economic development levels, which stimulate the demand for cleaning products and consequently contribute to elevated chlorine emissions.

We also present the spatial distribution of anthropogenic chlorine in various energy sources (Fig. S3) and sectors (Fig. S4). In terms of energy consumption sources, coal emissions are mainly concentrated in North China, Central China, Southwest China, and Northwest China. The emissions from industrial production and waste treatment are mainly concentrated in the BTH, YRD, PRD, and SCB. The spatial distribution of emissions from biomass combustion is similar to that of pCl emissions, while the emissions from disinfectant use are similar to the spatial distribution of Cl₂ and HOCl emissions. Concerning the sector-based distribution, the distribution of power plants is similar to the distribution of coal emissions. The emissions from industrial and civil sectors are mainly concentrated in BTH, YRD, PRD, and SCB. The agricultural sector is mainly concentrated in the southern region. Biomass combustion, as mentioned above, is similar to the distribution of pCl.

3.5 Temporal variation of the emission

Figure 6 shows the temporal variation of anthropogenic emissions for different chlorine species. For HCl and pCl, emissions are mainly concentrated in early spring (February to April) and winter (December to January). The high emission in these months is attributed to the biomass burning emission with active agricultural activities. In contrast, emissions from other

删除了: 014.21

删除了: 720.31

设置了格式: 字体颜色: 自动设置

设置了格式: 字体颜色: 自动设置

删除了: 9.01

删除了: 9.72

删除了: case

删除了: intricate

删除了: Sichuan Basin (SCB),

删除了: , and Pearl River Delta (PRD)

删除了: the emission in mainland China presents a bimodal variation. A remarkable peak is in early spring (February to April), and a small peak is in early autumn (August to October)...

设置了格式: 字体颜色: 自动设置

设置了格式: 字体颜色: 自动设置

sectors remain relatively stable throughout the year. It's worth noting that the monthly variations vary across different regions because of the varied period of biomass burning, as shown in Fig. S5 and S6. For example, in Northeast China (Liaoning, Jilin, and Heilongjiang), where extensive straw burning occurs before crop planting, emissions are elevated in spring only.

The emissions of Cl₂ and HOCl show a different temporal variation pattern from those of HCl and pCl. Their monthly variations are primarily driven by the residential sector, particularly the usage of chlorine-containing disinfectants. Emission peaks occur during summer, corresponding to the high demand for water disinfection. Lower emissions of Cl₂ and HOCl are observed in February.

4 Evaluation and Discussion

4.1 Evaluation based on model simulations

To verify the accuracy of the chlorine emission inventory, we incorporated the emission data to the chemical transport model CMAQ (Community Multiscale Air Quality Model, version 5.2.1), and compared the simulated concentrations of chlorine species with the observation. The simulation was run for the whole year of 2019, with a prior 10-day as the spin-up time. The meteorological inputs for the CMAQ model were driven by the Weather Research and Forecasting model (WRF version 3.9.1). The meteorological initial and boundary conditions were provided by NCEP/NCAR FNL reanalysis data with a horizontal resolution of 1°×1°. The modelling domain of the WRF and CMAQ model covers mainland China with a horizontal resolution of 36 km. The model has 23 vertical layers and reaches up to the top of 50 hPa. We used SAPRC07TIC as the gas-phase chemical mechanism and AERO6i as the aerosol mechanism in the CMAQ model (Carter, 2010; Hutzell et al., 2012; Xie et al., 2013; Murphy et al., 2017; Pye et al., 2017), which includes comprehensive gaseous reactions of chlorine species and the heterogeneous reaction of N₂O₅ and particulate chlorine producing ClNO₂ (Sarwar et al., 2012; Sarwar et al., 2014). The chemical initial and boundary conditions of the CMAQ model were provided by the modelling results from the GEOS-Chem model simulation (Zhu et al., 2024; Wang et al., 2022b). For the emission, the anthropogenic emission of conventional pollutants for China were derived from MEIC (Multi-resolution Emission Inventory for China) 2019 (Zheng et al., 2018; Zheng et al., 2021), and those for east Asia (except China) were obtained from the MIX emission inventory (Li et al., 2017). International shipping emissions were obtained from EDGAR (Emissions Database for Global Atmospheric Research v6.1) (Johansson et al., 2017). We also incorporated the anthropogenic chlorine emissions developed in this study to the model. The biogenic emissions were calculated from the Model of Emissions of Gas and Aerosols from Nature (MEGAN version 2.1) (Guenther et al., 2012) driven by the meteorological inputs from the WRF model.

删除了: 3.6 CMAQ simulation results

Table 6 compares the simulation results and observed concentrations for each station. Due to the limited measurement of chlorine containing substances at present, this study aims to verify the results by collecting literature on chlorine containing species, monitoring results, and model simulations. From the table, it can be seen that the simulation effect of this study is good. The simulation results of HCl and pCl differ from the observation results, which may be due to the rough grid resolution and the distance between the simulated location and the actual observation site. The simulation results of Cl₂, HOCl, and ClNO₂ are very consistent with the observation results, indicating that the inventory results of this study are reliable and suitable for model application.

移动了(插入) [1]

删除了: 2

删除了: 5

删除了: CMAQ model simulation

设置了格式: 字体颜色: 自动设置

设置了格式: 字体颜色: 自动设置

设置了格式: 字体颜色: 自动设置

设置了格式: 字体颜色: 自动设置, 下标

设置了格式: 字体颜色: 自动设置

设置了格式: 字体颜色: 自动设置, 下标

设置了格式: 字体颜色: 自动设置

设置了格式: 字体颜色: 自动设置, 下标

设置了格式: 字体颜色: 自动设置

设置了格式: 字体颜色: 自动设置

设置了格式: 字体颜色: 自动设置

设置了格式: 字体颜色: 自动设置

设置了格式: 字体颜色: 自动设置

设置了格式: 字体颜色: 自动设置

设置了格式: 字体颜色: 自动设置

设置了格式: 字体颜色: 自动设置

设置了格式: 字体颜色: 自动设置

设置了格式: 字体颜色: 自动设置

设置了格式: 字体颜色: 自动设置

设置了格式: 字体颜色: 自动设置

设置了格式: 字体颜色: 自动设置, 英语(美国)

The field observations of chlorine species are sparse in China. Table 6 presents the comparison of simulated concentrations of HCl, pCl, Cl₂, HOCl, and ClNO₂ to the observed values in China collected from available literature. It should be noted that the observations are varied in different years (from 2012 to 2022) and regions, and we used the simulated value during the same months at the same location but in the year 2019 to make a rough comparison. Overall, the simulated mean concentrations of HCl and pCl reasonably matched the observations in a similar magnitude, which suggested the faithful estimation of their emission in this study. For the measurements in some cities (e.g., Wuhan, Guangzhou, Shenzhen, Suzhou, and Beihai) before 2019, the HCl and pCl concentrations were underestimated in the 2019 simulation, which can be attributed to the emission reduction due to the implementation of stringent air quality control in China since 2013. The simulated values of Cl₂, HOCl and ClNO₂ also fell in the range of the observations, which indicated the reasonable estimations of their emissions and its suitable applications to the chemical transport model.

4.2 Comparison with previous studies

We compared our results with the chlorine emissions in China in recent years from other previous studies (Table 5). We regrouped their emission into our source category for a comprehensive comparison. The HCl emission in this study is higher than the emissions in our previous study due to the inclusion of emissions from industrial processes and biomass burning. The HCl emission from coal combustion in this study (2019) is lower than those in 2012 and 2014 due to the reduction of coal consumption in recent years after the implementation of the Clean Air Action in China in 2013. The HCl emission from waste incineration in this study is higher because our previous study only included emissions from MSW incineration stations. The total HCl emission estimated by Fu et al. (2018), Zhang et al. (2022), and Yin et al. (2022) are 458 Gg (2014), 705 Gg (2014), 270 Gg (2019), respectively. Our estimations (361 Gg) are within the range of their results. In this study, HCl emissions from coal combustion are about twice as high as those reported by Fu et al. (2018) and Yin et al. (2022), but significantly lower than the estimation by Zhang et al. (2022). This discrepancy primarily arises from the varied application of emission factors and control technologies. For coal combustion, our study relies on source data derived from on-site observations, differing from Fu et al. (2018) who used control technology application ratios based on national policies, Yin et al. (2022) who employed foreign application ratios, and Zhang et al. (2022) who used an S-curve formula leading to overestimations. Our control technology application ratios are based on domestic research literature, which is deemed more reasonable. Furthermore, our study reports substantially lower HCl emissions from waste incineration compared to Fu et al. (2018) and Zhang et al. (2022). This reduction is attributed to advancements in China's MSW management, with greater emphasis on centralized waste

- 设置了格式: 字体颜色: 自动设置
- 设置了格式: 字体颜色: 自动设置, 下标
- 设置了格式: 字体颜色: 自动设置
- 设置了格式: 字体颜色: 自动设置, 下标
- 设置了格式: 字体颜色: 自动设置
- 设置了格式: 字体颜色: 自动设置, 下标
- 设置了格式: 字体颜色: 自动设置
- 设置了格式: 字体颜色: 自动设置

删除了: In this study, the Weather Research and Prediction (WRF 3.9.1) model (Skamarock et al., 2008) provided meteorological data to drive the CMAQ model (5.2.1). The final NCEP/NCAR reanalysis data (1° x 1°) provides the initial meteorological field and WRF boundary conditions. In this study, we used a nested grid setting for the WRF and CMAQ models, with a horizontal grid spacing of 36km and a grid number of 220 × 150. The chemical boundary condition of the CMAQ model is the boundary of GEOS Chem. The aerosol mechanism in the CMAQ model is saprc07ic ae6i aqkmti. The biological emission data is derived from the calculation results of the MEGAN model based on the model settings. The sea salt module in the CMAQ model is used to simulate the marine spray emissions generated from the ocean. The anthropogenic emission inventory includes the multi-scale emission inventory MEIC_2019 provided by Tsinghua University and the anthropogenic chlorine emission

- 删除了: 1
- 删除了: 2018
- 删除了: garbage incinerators
- 删除了: We note that the emissions from garbage
- 域代码已更改
- 域代码已更改
- 域代码已更改
- 删除了: 454
- 删除了: 74
- 设置了格式: 字体颜色: 自动设置
- 域代码已更改
- 域代码已更改
- 域代码已更改
- 域代码已更改
- 域代码已更改
- 域代码已更改
- 域代码已更改
- 域代码已更改
- 删除了: municipal solid waste

1380 collection and reduced open burning compared to the situation in 2014. Additionally, considering the economic disparities,
urbanization, and uneven waste treatment technology adoption among provinces, we have adopted a differentiated approach,
utilizing waste treatment rates from the Statistical Yearbook to estimate open burning ratios for each province. This approach
offers a more nuanced representation of provincial differences compared to the uniform national open burning ratios employed
by Yin et al. (2022) and Zhang et al. (2022). In our study, biomass combustion is a notable contributor to HCl emissions,
1385 primarily due to disparities in estimations of household combustion rates and outdoor burning methods compared to previous
research. For household combustion rate, compared with Yin et al. (2022), who directly adopted half of Zhou et al. (2017)'s
research, we estimated the household combustion rate for each province according to different linear trends based on the study
of Liu et al. (2022), resulting in a more detailed estimation. Our approach to open burning employs a bottom-up emission
factor method, mitigating potential underestimations resulting from satellite-based detection, which may overlook small-scale
1390 or short-term fire events. Moreover, our estimate of HCl emissions in the Yangtze River Delta (YRD) region is approximately
1.5 times that reported by Yi et al. (2021), who underestimated HCl emissions due to their exclusive focus on centralized coal
combustion, neglecting dispersed coal combustion. In contrast, our study not only encompasses urban waste incineration
facilities but also considers emissions from county towns and open burning.

1395 The total emission of fine particulate Cl⁻ in this study is within the range of the emissions reported by Fu et al. (2018), Zhang
et al. (2022), and Yin et al. (2022). All of these studies highlight biomass burning as the major contributor (74%, 75%, 57%,
and 78% in respective studies). The emissions from coal combustion, industrial processes, and biomass burning are generally
consistent across these studies. Regarding waste incineration, emissions reported by Fu et al. (2018) and Zhang et al. (2022)
are notably higher than those in our study and Yin et al. (2022). This difference can be attributed to significant improvements
1400 in China's municipal solid waste management since 2014, with a greater emphasis on centralized waste collection and reduced
open burning, leading to decreased emissions. Yin et al. (2022), Qiu et al. (2019b) and this study all considered emissions from
cooking. In this study, we employed lower flue gas flow rates and shorter cooking durations following national standards and
actual conditions, and lower proportions of Cl⁻ in PM_{2.5} based on the local measured data from the literature, which reduced
the cooking emission compared with the other two studies. The estimated emissions from the YRD in this study are higher
1405 than those from Yin et al. (2022) because our activity data is considered more comprehensively.

The total emission of Cl₂ in this study is higher than our previous studies because we included additional emissions from
usages of disinfectants and pesticides. Yin et al. (2022) and our studies both demonstrated the emission from usages of chlorine-
containing disinfectants is as important as those from coal combustion. However, the total Cl₂ emission in this study is ~2

域代码已更改

域代码已更改

删除了: to

删除了: Yin et al. (2022)

删除了: ing

删除了: Zhou et al. (2017)

设置了格式: 字体颜色: 自动设置

设置了格式: 字体颜色: 自动设置

设置了格式: 字体颜色: 自动设置

设置了格式: 字体颜色: 自动设置

域代码已更改

删除了: based on Liu et al. (2022) Liu et al. (2022)'s
research, ...

设置了格式: 字体颜色: 自动设置

删除了: making the results of the inventory more detailed

设置了格式: 字体颜色: 自动设置

设置了格式: 字体颜色: 自动设置

删除了: Our household combustion rates are substantiated
by documented sources, while o

删除了: twice as high as

删除了:

域代码已更改

域代码已更改

删除了: 78

删除了: 5

设置了格式: 字体颜色: 自动设置

域代码已更改

域代码已更改

域代码已更改

域代码已更改

域代码已更改

域代码已更改

域代码已更改

域代码已更改

times higher than those estimated in the study of Yin et al. (2022). In this study, emissions from coal combustion are roughly twice as high as those in Yin et al. (2022) due to the use of locally measured emission factors and the application ratio of domestic control technologies. The emissions from disinfectant use in this study are about three times higher than those in Yin et al. (2022). This increase is attributed to the expanded sources of emissions considered in this study, as well as improvements in the calculation methods for chlorine addition in swimming pools. Firstly, this study includes emissions from county-level water treatment, county-level wastewater treatment, tap water usage, and environmental disinfection processes, accounting for 5%, 6%, 2%, and 13% of the total emissions from disinfectant use, respectively. These sources are not negligible. Secondly, localized improvements were made to some emission factors. Regarding the chlorine addition in swimming pools, while Yin et al. (2022) used a concentration of $1 \text{ mg} \cdot \text{L}^{-1}$ from national standards, this study cited experimental research literature and used outdoor and indoor chlorine addition rates of $1.89 \text{ mg} \cdot \text{L}^{-1}$ and $1.19 \text{ mg} \cdot \text{L}^{-1}$ (Wong et al., 2017; Wang et al., 2002) (<https://bg.qianzhan.com/report/detail/300/210803-5009dc2a.html>, last access: 1 January 2024), respectively. Lastly, we improved the estimation method for swimming pool emissions by distinguishing between the open times of indoor and outdoor pools. Unlike the assumption in Yin et al. (2022) that all pools are open in the summer, this study assumes year-round operation for indoor pools and only summer operation for outdoor pools, which is a more realistic scenario. This led to increased disinfectant use in swimming pools, resulting in higher emissions compared to Yin et al. (2022). The estimated emissions from the YRD in this study are higher than those from Yi et al. (2022) because we consider dispersed coal combustion during coal combustion, and activity data such as water treatment, waste water treatment, and environmental disinfection also consider rural areas. The estimated emissions in Shanghai are half that of Li et al. (2020) because their main source of emissions is overestimated from cooling towers, which was also mentioned in the study of Yin et al. (2022).

The research on the development of HOCl emission inventory is limited. This study and Yin et al. (2022) both showed that the emission from the usage of chlorine-containing disinfectants is the major contributor to HOCl emission. However, we estimated the HOCl emission to be ~3 times higher than those estimated by Yin et al. (2022). As mentioned above, this higher estimation can be attributed to the addition of emissions from swimming pools, environmental disinfection, tap water use, and pesticides.

4.3 Uncertainty and limitation

We applied the Monte Carlo method to quantify the uncertainties of the ACEIC inventory. Normal distributions with coefficients of variation (CV) ranging from 5% to 50% were assumed for activity data according to previous studies (Yi et al.,

域代码已更改

域代码已更改

域代码已更改

删除了: 4

删除了: 5

域代码已更改

删除了: /

设置了格式: 上标

删除了: /

删除了: 125

删除了: /

删除了: (Wong et al., 2017; Wang et al., 2002)

设置了格式: 字体颜色: 自动设置

设置了格式: 字体颜色: 自动设置, 上标

设置了格式: 字体颜色: 自动设置

设置了格式: 字体颜色: 自动设置, 上标

设置了格式: 字体颜色: 自动设置

设置了格式: 字体颜色: 自动设置

设置了格式: 字体颜色: 自动设置

设置了格式: 字体颜色: 自动设置

域代码已更改

域代码已更改

域代码已更改

域代码已更改

设置了格式: 字体: (默认) Times New Roman

删除了: 2

域代码已更改

2021; Li et al., 2020b; Zheng et al., 2022; Fu et al., 2018). For the emission factors, probability distributions were fitted for parameters with adequate measurement data. For parameters with limited measurement data, probability distributions were assumed as uniform or log-normal distributions. The detailed uncertainty assumptions for the activity data and emission factors are summarized in Tables S18 and S19. The uncertainties for HCl, pCl, Cl₂, and HOCl emissions were estimated at a 95% confidence interval, resulting in percentage ranges of -18% to 27%, -27% to 59%, -10% to 15%, and -12% to 18%, respectively (Figure 7). It can be seen that the estimated emissions of HCl and pCl are within the uncertainty ranges of other studies. Due to the additional sources of Cl₂ and HOCl in this study, the emissions are relatively higher compared with Yin et al. (2022). However, the percentage of uncertainty for all chlorine species generally reduces in this study compared with the other studies.

Indeed, the ACEIC inventory has its limitations, and further studies are necessary to develop a more comprehensive chlorine emission inventory in China. Some of the areas that require attention and improvement include: (1) More localized measurements and studies on emission factors: There is a need for additional local measurements and studies to obtain more accurate and representative emission factors for chlorine emission. This is particularly important for sectors such as waste treatment, where more localized observation data is needed to improve the accuracy of emission estimates. (2) Inclusion of emissions from additional anthropogenic activities: The inventory can be enhanced by including emissions from other anthropogenic activities that release chlorine species. For example, public places such as hotels, schools, and shopping malls undergo daily disinfection, which can lead to the release of a large amount of Cl₂ and HOCl. (3) Application of specific spatial and temporal allocation factors: Temporal allocation factors, which account for the varying contributions of different sectors over time, need further refinement. The proportion of departmental contributions in each province can differ, resulting in distinct temporal characteristics of emissions. By addressing these limitations and conducting further research in these areas, it will be possible to develop a more robust and comprehensive chlorine emission inventory for China.

5 Conclusion and implication

In this study, we developed the anthropogenic chlorine emission inventory for China (ACEIC 2019) using emission factors mainly based on local measured and survey data from the literature. This inventory includes 4 chlorine species (HCl, fine particle Cl, Cl₂, and HOCl) and 41 specific anthropogenic sources. We estimate that the total emissions of HCl, fine particle Cl, Cl₂, and HOCl in mainland China in 2019 were 361 (-18%~27%), 174 (-27%~59%), 18 (-10%~15%) and 79 (-12%~18%) Gg, respectively. This emission inventory was incorporated into a chemical transport model and the simulated concentrations of chlorine species agreed reasonably with the observation, suggesting the relatively faithful estimation of their emissions.

删除了: S15

删除了: S16

设置了格式: ... [71]

设置了格式: ... [72]

删除了: 48

删除了: 26

删除了: 45

删除了: 2..., -20 ... [73]

删除了: 59... to 89 ... [74]

删除了: 70

删除了: 44

删除了: 5

删除了: 58

删除了: 0

删除了: 44...2% to 79 ... [75]

设置了格式: 字体颜色: 自动设置

设置了格式: 字体颜色: 自动设置

设置了格式: 字体颜色: 自动设置

设置了格式: 字体颜色: 自动设置

设置了格式: 字体颜色: 自动设置

设置了格式: 字体颜色: 自动设置

域代码已更改

设置了格式: ... [76]

删除了: chlorine substances

删除了: the disposal and combustion of medical waste ... [78]

设置了格式: ... [77]

删除了: a Chinese ...he anthropogenic chlorine emissions ... [79]

删除了: 2018

删除了: nese

删除了: 2018 ...019 were 454 ... [80]

删除了: 374

删除了: 48

删除了: 29

删除了: 45

删除了: 2

删除了: 238

删除了: 184

删除了: 59

删除了: 0

删除了: 89

删除了: 70

删除了: 17 ...8 (-44...0%~58...5%) and 73 ...9 ... [83]

设置了格式: ... [81]

设置了格式: 字体颜色: 自动设置

设置了格式: 字体颜色: 自动设置

设置了格式: ... [82]

设置了格式: 字体颜色: 自动设置

设置了格式: 字体颜色: 自动设置

设置了格式: 字体颜色: 自动设置

In terms of energy consumption sources, for HCl emissions, coal combustion and biomass combustion are the main sources, accounting for 4.7% and 3.8% of the total, respectively. For fine particle Cl⁻, biomass combustion is the main contributor (7.4%) to the total emissions. For Cl₂, it mainly comes from the usage of chlorine-containing disinfectants (5.9%) and coal burning (4.1%). For HOCl emissions, the use of chlorine-containing disinfectants is the main reason (99%). Among them, waste water treatment (4.3%) and water treatment (3.1%) are the human activities with the highest emissions during the usage of chlorine-containing disinfectants.

From the perspective of the economic sector, HCl emissions mainly come from the industrial (4.3%) and biomass combustion (3.8%) sectors. Biomass combustion and the industrial sector are the main sources of fine particulate chlorine, accounting for 7.4% and 1.9% of total emissions, respectively. Cl₂ emissions mainly come from the residential and industrial sectors, accounting for 6.1% and 2.9% of the total emissions, respectively. HOCl emissions mainly come from the residential (90%) sector. The use of chlorine-containing disinfectants is the most important source of Cl₂ and HOCl in the residential sector.

From the perspective of provincial emissions, Heilongjiang has the highest emissions of HCl (36.76 Gg) and fine particle Cl⁻ (27.18 Gg). Guangdong has the highest emissions of Cl₂ (1.59 Gg) and HOCl (9.92 Gg). High HCl and fine particle Cl⁻ emission areas are located in the North China Plain, Northeast China, Central China, and Yangtze River Delta, while Cl₂ and HOCl emission areas are located in the Pearl River Delta, Yangtze River Delta, and Beijing-Tianjin-Hebei region. In terms of monthly changes, due to active agricultural activities, the emissions of HCl and fine particle Cl⁻ are relatively high during early spring (February to April) and winter (December to January), while the emissions of Cl₂ and HOCl are higher in summer due to the high demand for corresponding disinfection water.

The results of this study demonstrate that chlorine-containing disinfectants are significant sources of Cl₂ and HOCl. The demand for these disinfectants has risen substantially in recent years due to the spread of COVID-19 worldwide. It is anticipated that the increase in chlorine emissions following the outbreak of COVID-19 will play a more important role in tropospheric chemistry. Furthermore, the long-term trends of chlorine emissions are largely unknown due to most studies focusing on emissions from a specific year. Therefore, an inter-annual emission inventory of chlorine species is essential for controlling emissions. It is worth noting that Cl₂ and HOCl emissions typically peak during the summer when severe O₃ pollution frequently occurs in many parts of China. Therefore, future investigations should assess the impact of chlorine emissions on summertime O₃ formation. This inventory provides valuable insights into the anthropogenic sources of chlorine

删除了: and coal combustion

删除了: 45

删除了: 40

删除了: 78

删除了: 5

设置了格式: 字体颜色: 自动设置

设置了格式

设置了格式

删除了: use

删除了: 56...9%) and coal burning (43...1%). For HOCl emissions, the use of chlorine-containing disinfectants is the main reason (99%). Among them, waste water treatment (42...3%) and water treatment (23

删除了: use

删除了: 1

设置了格式

删除了: 45

删除了: 40

设置了格式

删除了: and industrial (35%) ...ectors. Biomass combustion and the industrial sector are the main sources of fine particulate chlorine, accounting for 78

删除了: 5

删除了: 14

删除了: 8

设置了格式: 字体颜色: 自动设置

设置了格式

删除了: 59...1% and 31

删除了: 38.27

删除了: 45.02

设置了格式

删除了: 27.18

删除了: 34.16

删除了: 40Gg...9 Gg) and HOCl (8.61

设置了格式

删除了: northeast, North China Plain, and Sichuan Basin... while Cl₂ and HOCl emission areas are located in the Pearl River Delta, Yangtze River Delta, and Beijing-Tianjin-Hebei

设置了格式: 字体颜色: 自动设置

species and is conducive to the development of emission control strategies to mitigate secondary pollution in China. We suggest that air quality modeling studies include the chlorine emission inventory to accurately simulate tropospheric chlorine chemistry.

Author contributions

Y.M.L. and Q.F. initiated the research. Y.M.L. designed the research framework. S.T.L. and Y.M.L. collected the materials. S.T.L. calculated the emissions and drew the figures. Y.M.L. and S.T.L. analyzed the results and wrote the paper with inputs from all authors. All authors contributed to the discussion and improvement of the paper.

Financial support

This research has been supported by the Key-Area Research and Development Program of Guangdong Province (2020B1111360003), Guangdong Major Project of Basic and Applied Basic Research (2020B0301030004), Science and Technology Program of Guangdong Province (Science and Technology Innovation Platform Category) (2019B121201002), and the National Natural Science Foundation of China (42105097), and Guangdong Basic and Applied Basic Research Foundation (2023A1515010162).

Competing interests

The authors declare that they have no conflict of interest.

Code/Data availability

The code or data used in this study are available upon request from Yiming Liu (liuym88@mail.sysu.edu.cn) and Siting Li (list23@mail2.sysu.edu.cn).

Reference

Bertram, T. H. and Thornton, J. A.: Toward a general parameterization of N_2O_5 reactivity on aqueous particles: the competing effects of particle liquid water, nitrate and chloride, *Atmos Chem Phys*, 9, 8351-8363, DOI 10.5194/acp-9-8351-2009,

设置了格式: 字体: (默认) Times New Roman

设置了格式: 字体: (默认) Times New Roman, 下标

设置了格式: 字体: (默认) Times New Roman

设置了格式: 字体: (默认) Times New Roman, 下标

设置了格式: 字体: (默认) Times New Roman

带格式的: 缩进: 左侧: 0 厘米, 悬挂缩进: 2 字符, 首行缩进: -2 字符, 行距: 1.5 倍行距

域代码已更改

2009.

Carter, W. P. L.: Development of the SAPRC-07 chemical mechanism, *Atmos. Environ.*, 44, 5324-5335, 10.1016/j.atmosenv.2010.01.026, 2010.

Chang, S. Y. and Allen, D. T.: Atmospheric chlorine chemistry in southeast Texas: Impacts on ozone formation and control, *Environ Sci Technol*, 40, 251-262, 10.1021/es050787z, 2006.

Choi, M. S., Qiu, X., Zhang, J., Wang, S., Li, X., Sun, Y., Chen, J., and Ying, Q.: Study of Secondary Organic Aerosol Formation from Chlorine Radical-Initiated Oxidation of Volatile Organic Compounds in a Polluted Atmosphere Using a 3D Chemical Transport Model, *Environ Sci Technol*, 54, 13409-13418, 10.1021/acs.est.0c02958, 2020.

Deng, S., Zhang, C., Liu, Y., Cao, Q., Xu, Y. Y., Wang, H. L., and Zhang, F.: A full-scale field study on chlorine emission of pulverized coal-fired power plants in China, *Research of Environmental Sciences (in Chinese)*, 27, 127-133, 10.13198/j.issn.1001-6929.2014.02.03, 2014.

Faxon, C. B. and Allen, D. T.: Chlorine chemistry in urban atmospheres: a review, *Environ Chem*, 10, 221-233, 10.1071/En13026, 2013.

Finlayson-Pitts, B. J.: Chlorine atoms as a potential tropospheric oxidant in the marine boundary layer, *Research on Chemical Intermediates*, 19, 235-249, 10.1163/156856793X00091, 1993.

Fu, X., Wang, T., Wang, S. X., Zhang, L., Cai, S. Y., Xing, J., and Hao, J. M.: Anthropogenic Emissions of Hydrogen Chloride and Fine Particulate Chloride in China, *Environ Sci Technol*, 52, 1644-1654, 10.1021/acs.est.7b05030, 2018.

Fu, Z., Lin, S., Tian, H., Hao, Y., Wu, B., Liu, S., Luo, L., Bai, X., Guo, Z., and Lv, Y.: A comprehensive emission inventory of hazardous air pollutants from municipal solid waste incineration in China, *Sci. Total Environ.*, 826, 154212, <https://doi.org/10.1016/j.scitotenv.2022.154212>, 2022.

Gao, Z., Wang, X., Shen, L., Xiang, H., and Wang, H.: Characteristics of Aerosol Chemical Compositions and Size Distributions during a Long-Range Dust Transport Episode in an Urban City in the Yangtze River Delta, *Atmosphere*, 10, 68, 10.3390/atmos10020068, 2019a.

Gao, Z., Wang, X., Shen, L., Xiang, H., and Wang, H.: Observation and Source Apportionment of Trace Gases, Water-Soluble Ions and Carbonaceous Aerosol During a Haze Episode in Wuhan, *Atmosphere*, 10, 397, 2019b.

Ge, Y., Zhu, Z., Lu, Y., and Zhao, J.: Analysis and assessment of health risk on disinfection of drinking water, *Water Purification Technology (in Chinese)*, 1-5, 10.15890/j.cnki.jsjs.2006.03.001, 2006.

Guenther, A. B., Jiang, X., Heald, C. L., Sakulyanontvittaya, T., Duhl, T., Emmons, L. K., and Wang, X.: The Model of Emissions of Gases and Aerosols from Nature version 2.1 (MEGAN2.1): an extended and updated framework for modeling biogenic emissions, *Geosci Model Dev*, 5, 1471-1492, 10.5194/gmd-5-1471-2012, 2012.

删除了: China, N. H. C. o. t. P. s. R. o.: China Health Statistical Yearbook (2008), Peking Union Medical College Press, Beijing, China2008.
China, N. H. C. o. t. P. s. R. o.: China Health Statistical Yearbook (2020), Peking Union Medical College Press, Beijing, China2020.

设置了格式: 字体: (默认) Times New Roman

设置了格式: 字体: (默认) Times New Roman

删除了: ↵

删除了: ↵

1730 He, P., Zhang, C., Yang, N., Zhang, H., Lv, F., and Shao, L.: Present Situation and Technical Treatment Route of Rural Domestic Waste Treatment in China, *Journal of Agro-Environment Science (in Chinese)*, 29, 2049–2054, 2010.

Hong, Y., Liu, Y., Chen, X., Fan, Q., Chen, C., Chen, X., and Wang, M.: The role of anthropogenic chlorine emission in surface ozone formation during different seasons over eastern China, *Sci. Total Environ.*, 723, 137697, <https://doi.org/10.1016/j.scitotenv.2020.137697>, 2020.

Hou, X. and Zhang, C.: *Water Resources Utilization and Water Environment Protection Engineering*, China Building Materials Press, Beijing, China 2015.

Hutzell, W. T., Luecken, D. J., Appel, K. W., and Carter, W. P. L.: Interpreting predictions from the SAPRC07 mechanism based on regional and continental simulations, *Atmos. Environ.*, 46, 417-429, 2012.

1735 Jia, S., Sarkar, S., Zhang, Q., Wang, X., Wu, L., Chen, W., Huang, M., Zhou, S., Zhang, J., Yuan, L., and Yang, L.: Characterization of diurnal variations of PM_{2.5} acidity using an open thermodynamic system: A case study of Guangzhou, China, *Chemosphere*, 202, 677-685, [10.1016/j.chemosphere.2018.03.127](https://doi.org/10.1016/j.chemosphere.2018.03.127), 2018.

1740 Jing, J., Wu, S., Li, F., and Wang, G.: Investigation and Suggestions on the Current Situation of Disease Prevention and Control in Meat Duck Farms in Some Areas of Shandong Province, *Heilongjiang Animal Science and Veterinary Medicine (in Chinese)*, 110-111, [10.13881/j.cnki.hljxmsy.2018.03.0627](https://doi.org/10.13881/j.cnki.hljxmsy.2018.03.0627), 2019.

Johansson, L., Jalkanen, J.-P., and Kukkonen, J.: Global assessment of shipping emissions in 2015 on a high spatial and temporal resolution, *Atmos. Environ.*, 167, 403-415, <https://doi.org/10.1016/j.atmosenv.2017.08.042>, 2017.

1745 Le Breton, M., Hallquist, Å. M., Pathak, R. K., Simpson, D., Wang, Y., Johansson, J., Zheng, J., Yang, Y., Shang, D., Wang, H., Liu, Q., Chan, C., Wang, T., Bannan, T. J., Priestley, M., Percival, C. J., Shallcross, D. E., Lu, K., Guo, S., Hu, M., and Hallquist, M.: Chlorine oxidation of VOCs at a semi-rural site in Beijing: significant chlorine liberation from CINO₂ and subsequent gas- and particle-phase Cl-VOC production, *Atmos Chem Phys*, 18, 13013-13030, [10.5194/acp-18-13013-2018](https://doi.org/10.5194/acp-18-13013-2018), 2018.

1750 Li, F., Huang, D. D., Nie, W., Tham, Y. J., Lou, S., Li, Y., Tian, L., Liu, Y., Zhou, M., Wang, H., Qiao, L., Wang, H., Wang, Z., Huang, C., and Li, Y. J.: Observation of nitrogen oxide-influenced chlorine chemistry and source analysis of Cl₂ in the Yangtze River Delta, China, *Atmos. Environ.*, 306, 119829, [10.1016/j.atmosenv.2023.119829](https://doi.org/10.1016/j.atmosenv.2023.119829), 2023.

Li, J., Zhang, N., Wang, P., Choi, M., Ying, Q., Guo, S., Lu, K., Qiu, X., Wang, S., Hu, M., Zhang, Y., and Hu, J.: Impacts of chlorine chemistry and anthropogenic emissions on secondary pollutants in the Yangtze river delta region, *Environ. Pollut.*, 287, 117624, <https://doi.org/10.1016/j.envpol.2021.117624>, 2021.

1755 Li, J., Liu, Z., Cao, L., Gao, W., Yan, Y., Mao, J., Zhang, X., He, L., Xin, J., Tang, G., Ji, D., Hu, B., Wang, L., Wang, Y., Dai, L., Zhao, D., Du, W., and Wang, Y.: Highly time-resolved chemical characterization and implications of regional transport

设置了格式: 字体: (默认) Times New Roman

设置了格式: 字体: (默认) Times New Roman

设置了格式: 字体: (默认) Times New Roman

设置了格式: 字体: (默认) Times New Roman

设置了格式: 字体: (默认) Times New Roman, 下标

设置了格式: 字体: (默认) Times New Roman

设置了格式: 字体: (默认) Times New Roman

设置了格式: 字体: (默认) Times New Roman

for submicron aerosols in the North China Plain, *Sci. Total Environ.*, 705, 135803, 10.1016/j.scitotenv.2019.135803, 2020a.

Li, L., Yin, S., Huang, L., Yi, X., Wang, Y., Zhang, K., Ooi, C. G., and Allen, D. T.: An emission inventory for Cl₂ and HOCl in Shanghai, 2017, *Atmos. Environ.*, 223, 117220, <https://doi.org/10.1016/j.atmosenv.2019.117220>, 2020b.

Li, M., Zhang, Q., Kurokawa, J., Woo, J. H., He, K. B., Lu, Z. F., Ohara, T., Song, Y., Streets, D. G., Carmichael, G. R., Cheng, Y. F., Hong, C. P., Huo, H., Jiang, X. J., Kang, S. C., Liu, F., Su, H., and Zheng, B.: MIX: a mosaic Asian anthropogenic emission inventory under the international collaboration framework of the MICS-Asia and HTAP, *Atmos Chem Phys*, 17, 935-963, 10.5194/acp-17-935-2017, 2017.

Li, Q., Wu, A., Gong, D., Wang, B., and Luan, S.: Characteristics of PM_{2.5} emitted from cooking emissions: a review, *Environmental Science & Technology (in Chinese)*, 41, 41-50, 10.19672/j.cnki.1003-6504.2018.08.008, 2018.

Li, Q., Fernandez, R. P., Hossaini, R., Iglesias-Suarez, F., Cuevas, C. A., Apel, E. C., Kinnison, D. E., Lamarque, J.-F., and Saiz-Lopez, A.: Reactive halogens increase the global methane lifetime and radiative forcing in the 21st century, *Nature Communications*, 13, 2768, 10.1038/s41467-022-30456-8, 2022.

Liu, Y., Zhao, H., Zhao, G., Zhang, X., and Xiu, A.: Carbonaceous gas and aerosol emissions from biomass burning in China from 2012 to 2021, *J. Clean Prod.*, 362, 132199, <https://doi.org/10.1016/j.jclepro.2022.132199>, 2022.

Liu, Y. M., Fan, Q., Chen, X. Y., Zhao, J., Ling, Z. H., Hong, Y. Y., Li, W. B., Chen, X. L., Wang, M. J., and Wei, X. L.: Modeling the impact of chlorine emissions from coal combustion and prescribed waste incineration on tropospheric ozone formation in China, *Atmos Chem Phys*, 18, 2709-2724, 10.5194/acp-18-2709-2018, 2018.

Lou, S., Tan, Z., Gan, G., Chen, J., Wang, H., Gao, Y., Huang, D., Huang, C., Li, X., Song, R., Wang, H., Wang, M., Wang, Q., Wu, Y., and Huang, C.: Observation based study on atmospheric oxidation capacity in Shanghai during late-autumn: Contribution from nitryl chloride, *Atmos. Environ.*, 271, 118902, 10.1016/j.atmosenv.2021.118902, 2022.

Ma, W., Chen, X., Xia, M., Liu, Y., Wang, Y., Zhang, Y., Zheng, F., Zhan, J., Hua, C., Wang, Z., Wang, W., Fu, P., Kulmala, M., and Liu, Y.: Reactive Chlorine Species Advancing the Atmospheric Oxidation Capacities of Inland Urban Environments, *Environ Sci Technol*, 57, 14638-14647, 10.1021/acs.est.3c05169, 2023.

McCulloch, A., Aucott, M. L., Benkovitz, C. M., Graedel, T. E., Kleiman, G., Midgley, P. M., and Li, Y. F.: Global emissions of hydrogen chloride and chloromethane from coal combustion, incineration and industrial activities: Reactive Chlorine Emissions Inventory, *J Geophys Res-Atmos*, 104, 8391-8403, Doi 10.1029/1999jd900025, 1999.

Murphy, B. N., Woody, M. C., Jimenez, J. L., Carlton, A. M. G., Hayes, P. L., Liu, S., Ng, N. L., Russell, L. M., Setyan, A., Xu, L., Young, J., Zaveri, R. A., Zhang, Q., and Pye, H. O. T.: Semivolatile POA and parameterized total combustion SOA in CMAQv5.2: impacts on source strength and partitioning, *Atmos. Chem. Phys.*, 17, 11107-11133, 10.5194/acp-

设置了格式: 字体: (默认) Times New Roman, 下标

设置了格式: 字体: (默认) Times New Roman

设置了格式: 字体: (默认) Times New Roman

设置了格式: 字体: (默认) Times New Roman

设置了格式: 字体: (默认) Times New Roman, 下标

设置了格式: 字体: (默认) Times New Roman

设置了格式: 字体: (默认) Times New Roman

设置了格式: 字体: (默认) Times New Roman

17-11107-2017, 2017.

[National Bureau of Statistics: China Urban-Rural Construction Statistical Yearbook \(2020\), China Statistics Press, Beijing,](#)

[China2020a.](#)

[National Bureau of Statistics: China Rural Statistical Yearbook \(2020\), China Statistics Press, Beijing, China2020b.](#)

[National Bureau of Statistics: China Industry Statistical Yearbook \(2020\), China Statistics Press, Beijing, China2020c.](#)

[National Bureau of Statistics: China Statistical Yearbook of Environment \(2020\), China Statistics Press, Beijing, China2020d.](#)

[National Bureau of Statistics: China Energy Statistical Yearbook \(2020\), China Statistics Press, Beijing, China2020e.](#)

[National Health Commission of the People's Republic of China: China Health Statistical Yearbook \(2008\), Peking Union](#)

[Medical College Press, Beijing, China2008.](#)

[National Health Commission of the People's Republic of China: China Health Statistical Yearbook \(2020\), Peking Union](#)

[Medical College Press, Beijing, China2020.](#)

[Osthoff, H. D., Roberts, J. M., Ravishankara, A. R., Williams, E. J., Lerner, B. M., Sommariva, R., Bates, T. S., Coffman, D.,](#)

Quinn, P. K., Dibb, J. E., Stark, H., Burkholder, J. B., Talukdar, R. K., Meagher, J., Fehsenfeld, F. C., and Brown, S. S.:
High levels of nitryl chloride in the polluted subtropical marine boundary layer, *Nat Geosci*, 1, 324-328, 10.1038/ngeo177,
2008.

[Peng, X., Wang, W., Xia, M., Chen, H., Ravishankara, A. R., Li, Q., Saiz-Lopez, A., Liu, P., Zhang, F., Zhang, C., Xue, L.,](#)

Wang, X., George, C., Wang, J., Mu, Y., Chen, J., and Wang, T.: An unexpected large continental source of reactive
bromine and chlorine with significant impact on wintertime air quality, *National Science Review*, 8, nwaa304,
10.1093/nsr/nwaa304, 2021.

[Peng, X., Wang, T., Wang, W., Ravishankara, A. R., George, C., Xia, M., Cai, M., Li, Q., Salvador, C. M., Lau, C., Lyu, X.,](#)

Poon, C. N., Mellouki, A., Mu, Y., Hallquist, M., Saiz-Lopez, A., Guo, H., Herrmann, H., Yu, C., Dai, J., Wang, Y., Wang,
X., Yu, A., Leung, K., Lee, S., and Chen, J.: Photodissociation of particulate nitrate as a source of daytime tropospheric
 Cl_2 , *Nature Communications*, 13, 939, 10.1038/s41467-022-28383-9, 2022.

[Pye, H. O. T., Murphy, B. N., Xu, L., Ng, N. L., Carlton, A. G., Guo, H., Weber, R., Vasilakos, P., Appel, K. W., Budisulistiorini,](#)

S. H., Surratt, J. D., Nenes, A., Hu, W., Jimenez, J. L., Isaacman-VanWertz, G., Misztal, P. K., and Goldstein, A. H.: On
the implications of aerosol liquid water and phase separation for organic aerosol mass, *Atmos. Chem. Phys.*, 17, 343-369,
10.5194/acp-17-343-2017, 2017.

[Qiu, X., Ying, Q., Wang, S., Duan, L., Wang, Y., Lu, K., Wang, P., Xing, J., Zheng, M., Zhao, M., Zheng, H., Zhang, Y., and](#)

Hao, J.: Significant impact of heterogeneous reactions of reactive chlorine species on summertime atmospheric ozone
and free-radical formation in north China, *Sci. Total Environ.*, 693, 133580,

设置了格式: 字体颜色: 自动设置

设置了格式: 字体颜色: 自动设置

设置了格式: 字体颜色: 自动设置

设置了格式: 字体颜色: 自动设置

设置了格式: 字体颜色: 自动设置

设置了格式: 字体颜色: 自动设置

设置了格式: 字体颜色: 自动设置

设置了格式: 字体颜色: 自动设置

设置了格式: 字体颜色: 自动设置

设置了格式: 字体颜色: 自动设置

设置了格式: 字体颜色: 自动设置

设置了格式: 字体颜色: 自动设置

设置了格式: 字体颜色: 自动设置

删除了: ↵

设置了格式: 字体: (默认) Times New Roman, 下标

设置了格式: 字体: (默认) Times New Roman

<https://doi.org/10.1016/j.scitotenv.2019.133580>, 2019a.

1820 Qiu, X., Ying, Q., Wang, S., Duan, L., Zhao, J., Xing, J., Ding, D., Sun, Y., Liu, B., Shi, A., Yan, X., Xu, Q., and Hao, J.: Modeling the impact of heterogeneous reactions of chlorine on summertime nitrate formation in Beijing, China, *Atmos. Chem. Phys.*, 19, 6737-6747, 10.5194/acp-19-6737-2019, 2019b.

Riedel, T. P., Bertram, T. H., Crisp, T. A., Williams, E. J., Lerner, B. M., Vlasenko, A., Li, S.-M., Gilman, J., de Gouw, J., Bon, D. M., Wagner, N. L., Brown, S. S., and Thornton, J. A.: Nitryl Chloride and Molecular Chlorine in the Coastal Marine Boundary Layer, *Environ Sci Technol*, 46, 10463-10470, 10.1021/es204632r, 2012.

1825 Roberts, J. M., Osthoff, H. D., Brown, S. S., Ravishankara, A. R., Coffman, D., Quinn, P., and Bates, T.: Laboratory studies of products of N₂O₅ uptake on Cl₂ containing substrates, *Geophys Res Lett*, 36, Artn L20808 10.1029/2009gl040448, 2009.

Sarwar, G., Simon, H., Bhawe, P., and Yarwood, G.: Examining the impact of heterogeneous nitryl chloride production on air quality across the United States, *Atmos Chem Phys*, 12, 6455-6473, 10.5194/acp-12-6455-2012, 2012.

1830 Sarwar, G., Simon, H., Xing, J., and Mathur, R.: Importance of tropospheric ClNO₂ chemistry across the Northern Hemisphere, 41, 4050-4058, 10.1002/2014gl059962, 2014.

SEPA: Emission standard of air pollutants for flat glass industry, 2011.

Shi, Y., Chen, J., Hu, D., Wang, L., Yang, X., and Wang, X.: Airborne submicron particulate (PM₁₀) pollution in Shanghai, China: Chemical variability, formation/dissociation of associated semi-volatile components and the impacts on visibility, *Sci. Total Environ.*, 473-474, 199-206, <https://doi.org/10.1016/j.scitotenv.2013.12.024>, 2014.

1835 Strobe, S. A., Wang, J. S., Manyin, M., Duncan, B., Hossaini, R., Keller, C. A., Michel, S. E., and White, J. W. C.: Strong sensitivity of the isotopic composition of methane to the plausible range of tropospheric chlorine, *Atmos. Chem. Phys.*, 20, 8405-8419, 10.5194/acp-20-8405-2020, 2020.

Sun, Y., Tian, F., Sun, Z., Jiang, W., Wu, B., Xu, Z., and Gu, J.: Investigation and Analysis of the Current Condition of Applying Disinfectants in City Hospitals of Taizhou, *Modern Preventive Medicine (in Chinese)*, 4738-4741, 2007.

1840 Tham, Y. J., Wang, Z., Li, Q., Yun, H., Wang, W., Wang, X., Xue, L., Lu, K., Ma, N., Bohn, B., Li, X., Kecorius, S., Größ, J., Shao, M., Wiedensohler, A., Zhang, Y., and Wang, T.: Significant concentrations of nitryl chloride sustained in the morning: investigations of the causes and impacts on ozone production in a polluted region of northern China, *Atmos. Chem. Phys.*, 16, 14959-14977, 10.5194/acp-16-14959-2016, 2016.

1845 Thornton, J. A., Kercher, J. P., Riedel, T. P., Wagner, N. L., Cozic, J., Holloway, J. S., Dubé, W. P., Wolfe, G. M., Quinn, P. K., Middlebrook, A. M., Alexander, B., and Brown, S. S.: A large atomic chlorine source inferred from mid-continental reactive nitrogen chemistry, *Nature*, 464, 271-274, 10.1038/nature08905, 2010.

设置了格式: 字体: (默认) Times New Roman

设置了格式: 字体: (默认) Times New Roman

设置了格式: 字体: (默认) Times New Roman, 下标

设置了格式: 字体: (默认) Times New Roman

设置了格式: 字体: (默认) Times New Roman, 下标

设置了格式: 字体: (默认) Times New Roman

设置了格式: 字体: (默认) Times New Roman, 上标

设置了格式: 字体: (默认) Times New Roman

设置了格式: 字体: (默认) Times New Roman, 下标

设置了格式: 字体: (默认) Times New Roman

设置了格式: 字体: (默认) Times New Roman, 下标

设置了格式: 字体: (默认) Times New Roman

设置了格式: 字体: (默认) Times New Roman

设置了格式: 字体: (默认) Times New Roman

删除了: Statistics, N. B. o.: China Statistical Yearbook of Environment (2020), China Statistics Press, Beijing, China2020a.↵

Statistics, N. B. o.: China Rural Statistical Yearbook (2020), China Statistics Press, Beijing, China2020b.↵

Statistics, N. B. o.: China Energy Statistical Yearbook (2020), China Statistics Press, Beijing, China2020c.↵

Statistics, N. B. o.: China Urban-Rural Construction Statistical Yearbook (2020), China Statistics Press, Beijing, China2020d.↵

Statistics, N. B. o.: China Industry Statistical Yearbook (2020), China Statistics Press, Beijing, China2020e.↵

- 1860 Wang, G., Chen, J., Xu, J., Yun, L., Zhang, M., Li, H., Qin, X., Deng, C., Zheng, H., Gui, H., Liu, J., and Huang, K.: Atmospheric Processing at the Sea-Land Interface Over the South China Sea: Secondary Aerosol Formation, Aerosol Acidity, and Role of Sea Salts, *Journal of Geophysical Research: Atmospheres*, 127, e2021JD036255, 10.1029/2021JD036255, 2022a.
- 1865 Wang, H., Lu, X., Jacob, D. J., Cooper, O. R., Chang, K. L., Li, K., Gao, M., Liu, Y., Sheng, B., Wu, K., Wu, T., Zhang, J., Sauvage, B., Nédélec, P., Blot, R., and Fan, S.: Global tropospheric ozone trends, attributions, and radiative impacts in 1995–2017: an integrated analysis using aircraft (IAGOS) observations, ozonesonde, and multi-decadal chemical model simulations, *Atmos. Chem. Phys.*, 22, 13753-13782, 10.5194/acp-22-13753-2022, 2022b.
- 1870 Wang, N., Chen, Y., He, Q., Wang, H., Yang, F., Zhao, Q., Bo, Y., He, K., and Yao, Y.: Seasonal Variation and Source Analysis of the Water-soluble Inorganic Ions in Fine Particulate Matter in Suzhou, *Environmental Science*, 37, 4482-4489, 10.13227/j.hjcx.201605094, 2016.
- 1875 Wang, Q., Qiu, Q., Yue, P., and Che, C.: Recycling Cooling Water System and Water Saving Quota, *Green Building (in Chinese)*, 12, 24-27, 2020a.
- Wang, S., Qin, W., Liu, Y., and Wei, S.: An Experimental Study on the Disinfection of Swimming Pool Water with Strong Chlorogen, *China Chlor-Alkali (in Chinese)*, 31-33, 2002.
- Wang, X., Zhang, F., Wang, H., Zhu, J., Zhang, C., Cui, Y., and Shu, Y.: Analysis and Research on Emission Concentration of Heavy Metals, Fluorine and Chlorine from Glass Furnaces, The 18th National Symposium on Sulfur Dioxide, Nitrogen Oxide, Mercury Pollution Prevention and Fine Particulate Matter (PM_{2.5}) Treatment Technology, Luoyang, China 2014.
- Wang, X., Jacob, D. J., Fu, X., Wang, T., Breton, M. L., Hallquist, M., Liu, Z., McDuffie, E. E., and Liao, H.: Effects of Anthropogenic Chlorine on PM_{2.5} and Ozone Air Quality in China, *Environ Sci Technol*, 54, 9908-9916, 10.1021/acs.est.0c02296, 2020b.
- 1880 Wang, X., Wang, H., Xue, L., Wang, T., Wang, L., Gu, R., Wang, W., Tham, Y. J., Wang, Z., Yang, L., Chen, J., and Wang, W.: Observations of N₂O₅ and ClNO₂ at a polluted urban surface site in North China: High N₂O₅ uptake coefficients and low ClNO₂ product yields, *Atmos. Environ.*, 156, 125-134, <https://doi.org/10.1016/j.atmosenv.2017.02.035>, 2017a.
- 1885 Wang, X., Jacob, D. J., Eastham, S. D., Sulprizio, M. P., Zhu, L., Chen, Q. J., Alexander, B., Sherwen, T., Evans, M. J., Lee, B. H., Haskins, J. D., Lopez-Hilfiker, F. D., Thornton, J. A., Huey, G. L., and Liao, H.: The role of chlorine in global tropospheric chemistry, *Atmos Chem Phys*, 19, 3981-4003, 10.5194/acp-19-3981-2019, 2019.
- Wang, Y., Cheng, K., Wu, W., Tian, H., Yi, P., Zhi, G., Fan, J., and Liu, S.: Atmospheric emissions of typical toxic heavy metals from open burning of municipal solid waste in China, *Atmos. Environ.*, 152, 6-15, <https://doi.org/10.1016/j.atmosenv.2016.12.017>, 2017b.

设置了格式: 字体: (默认) Times New Roman, 下标

设置了格式: 字体: (默认) Times New Roman

设置了格式: 字体: (默认) Times New Roman, 下标

设置了格式: 字体: (默认) Times New Roman

设置了格式: 字体: (默认) Times New Roman, 下标

设置了格式: 字体: (默认) Times New Roman

设置了格式: 字体: (默认) Times New Roman

设置了格式: 字体: (默认) Times New Roman

设置了格式: 字体: (默认) Times New Roman

设置了格式: 字体: (默认) Times New Roman

1890 Wang, Z., Wang, W., Tham, Y. J., Li, Q., Wang, H., Wen, L., Wang, X., and Wang, T.: Fast heterogeneous N_2O_5 uptake and ClNO_2 production in power plant and industrial plumes observed in the nocturnal residual layer over the North China Plain, *Atmos. Chem. Phys.*, 17, 12361-12378, 10.5194/acp-17-12361-2017, 2017c.

设置了格式: 字体: (默认) Times New Roman, 下标

设置了格式: 字体: (默认) Times New Roman

设置了格式: 字体: (默认) Times New Roman, 下标

设置了格式: 字体: (默认) Times New Roman

Wong, J. P. S., Carslaw, N., Zhao, R., Zhou, S., and Abbatt, J. P. D.: Observations and impacts of bleach washing on indoor chlorine chemistry, *Indoor Air*, 27, 1082-1090, <https://doi.org/10.1111/ina.12402>, 2017.

设置了格式: 字体: (默认) Times New Roman

设置了格式: 字体: (默认) Times New Roman

1895 Wu, L., Wang, Y., Li, L., and Zhang, G.: Acidity and inorganic ion formation in $\text{PM}_{2.5}$ based on continuous online observations in a South China megacity, *Atmospheric Pollution Research*, 11, 1339-1350, 10.1016/j.apr.2020.05.003, 2020.

设置了格式: 字体: (默认) Times New Roman

设置了格式: 字体: (默认) Times New Roman, 下标

设置了格式: 字体: (默认) Times New Roman

Wu, X., Chen, W., Wang, K., Xiu, A., Zhang, S., Zhao, H., and Zhang, X.: $\text{PM}_{2.5}$ and VOCS emission inventories from cooking in Changchun City, *China Environmental Science (in Chinese)*, 38, 2882-2889, 10.19674/j.cnki.issn1000-6923.2018.0303, 2018.

设置了格式: 字体: (默认) Times New Roman, 下标

设置了格式: 字体: (默认) Times New Roman

1900 Xia, M., Peng, X., Wang, W., Yu, C., Sun, P., Li, Y., Liu, Y., Xu, Z., Wang, Z., Xu, Z., Nie, W., Ding, A., and Wang, T.: Significant production of ClNO_2 and possible source of Cl_2 from N_2O_5 uptake at a suburban site in eastern China, *Atmos. Chem. Phys. Discuss.*, 2020, 1-25, 10.5194/acp-2019-1130, 2020.

设置了格式: 字体: (默认) Times New Roman, 下标

设置了格式: 字体: (默认) Times New Roman

设置了格式: 字体: (默认) Times New Roman, 下标

设置了格式: 字体: (默认) Times New Roman

Xie, Y., Paulot, F., Carter, W. P. L., Nolte, C. G., Luecken, D. J., Hutzell, W. T., Wennberg, P. O., Cohen, R. C., and Pinder, R. W.: Understanding the impact of recent advances in isoprene photooxidation on simulations of regional air quality, *Atmos. Chem. Phys.*, 13, 8439-8455, 2013.

设置了格式: 字体: (默认) Times New Roman

设置了格式: 字体: (默认) Times New Roman, 下标

设置了格式: 字体: (默认) Times New Roman

设置了格式: 字体: (默认) Times New Roman, 下标

设置了格式: 字体: (默认) Times New Roman

1905 Yi, X., Yin, S., Tan, X., Huang, L., Wang, Y., Chen, Y., and Li, L.: Preliminary study on the inventory of sources of hydrogen chloride and particulate chlorine in the atmosphere in Shanghai, *Acta Scientiae Circumstantiae (in Chinese)*, 40, 469-478, 10.13671/j.hjkxxb.2019.0376, 2020.

Yi, X., Yin, S., Huang, L., Li, H., Wang, Y., Wang, Q., Chan, A., Traoré, D., Ooi, M. C. G., Chen, Y., Allen, D. T., and Li, L.: Anthropogenic emissions of atomic chlorine precursors in the Yangtze River Delta region, China, *Sci. Total Environ.*, 771, 144644, <https://doi.org/10.1016/j.scitotenv.2020.144644>, 2021.

设置了格式: 字体: (默认) Times New Roman

设置了格式: 字体: (默认) Times New Roman

Yin, S., Yi, X., Li, L., Huang, L., Ooi, M. C. G., Wang, Y., Allen, D. T., and Streets, D. G.: An Updated Anthropogenic Emission Inventory of Reactive Chlorine Precursors in China, *ACS Earth and Space Chemistry*, 6, 1846-1857, 10.1021/acsearthspacechem.2c00096, 2022.

1915 Young, C. J., Washenfelder, R. A., Edwards, P. M., Parrish, D. D., Gilman, J. B., Kuster, W. C., Mielke, L. H., Osthoff, H. D., Tsai, C., Pikelnaya, O., Stutz, J., Veres, P. R., Roberts, J. M., Griffith, S., Dusanter, S., Stevens, P. S., Flynn, J., Grossberg, N., Lefer, B., Holloway, J. S., Peischl, J., Ryerson, T. B., Atlas, E. L., Blake, D. R., and Brown, S. S.: Chlorine as a primary radical: evaluation of methods to understand its role in initiation of oxidative cycles, *Atmos. Chem. Phys.*, 14, 3427-3440, 10.5194/acp-14-3427-2014, 2014.

1920 Zhang, B., Shen, H., Yun, X., Zhong, Q., Henderson, B. H., Wang, X., Shi, L., Gunthe, S. S., Huey, L. G., Tao, S., Russell, A. G., and Liu, P.: Global Emissions of Hydrogen Chloride and Particulate Chloride from Continental Sources, *Environ Sci Technol*, 56, 3894-3904, 10.1021/acs.est.1c05634, 2022.

Zhang, C.: Study on Pesticide Use Behavior and its Health Effect and Intervention Effect among Farmers in China, Beijing Institute of Technology, Beijing, China, 2016.

1925 Zhang, L.: Analysis on the Operation Status and Influencing Factors of Jinan City natatorium, Shandong Normal University, Shandong, China, 2015.

Zhang, N., Han, B., He, F., Xu, J., Zhao, R., Zhang, Y., and Bai, Z.: Chemical characteristic of PM_{2.5} emission and inhalational carcinogenic risk of domestic Chinese cooking, *Environ. Pollut.*, 227, 24-30, <https://doi.org/10.1016/j.envpol.2017.04.033>, 2017.

Zhang, R., Sun, X., Shi, A., Huang, Y., Yan, J., Nie, T., Yan, X., and Li, X.: Secondary inorganic aerosols formation during haze episodes at an urban site in Beijing, China, *Atmos. Environ.*, 177, 275-282, 10.1016/j.atmosenv.2017.12.031, 2018.

Zhao, H.: Analysis of water-saving measures for industrial recycling cooling water system, *Shandong Chemical Industry*, 44, 101-102+105, 10.19319/j.cnki.issn.1008-021x.2015.06.038, 2015.

1935 Zheng, B., Zhang, Q., Geng, G., Chen, C., Shi, Q., Cui, M., Lei, Y., and He, K.: Changes in China's anthropogenic emissions and air quality during the COVID-19 pandemic in 2020, *Earth Syst. Sci. Data*, 13, 2895-2907, 10.5194/essd-13-2895-2021, 2021.

Zheng, B., Tong, D., Li, M., Liu, F., Hong, C., Geng, G., Li, H., Li, X., Peng, L., Qi, J., Yan, L., Zhang, Y., Zhao, H., Zheng, Y., He, K., and Zhang, Q.: Trends in China's anthropogenic emissions since 2010 as the consequence of clean air actions, *Atmos. Chem. Phys.*, 18, 14095-14111, 10.5194/acp-18-14095-2018, 2018.

1940 Zheng, J., Huang, Z., Sha, Q., Zhong, Z., and Xu, Y.: Uncertainty Analysis of Emission Inventory and Chemical Transport Model, Science Press, Beijing, China 2022.

Zhou, W., Zhao, J., Ouyang, B., Mehra, A., Xu, W., Wang, Y., Bannan, T. J., Worrall, S. D., Priestley, M., Bacak, A., Chen, Q., Xie, C., Wang, Q., Wang, J., Du, W., Zhang, Y., Ge, X., Ye, P., Lee, J. D., Fu, P., Wang, Z., Worsnop, D., Jones, R., Percival, C. J., Coe, H., and Sun, Y.: Production of N₂O₃ and ClNO₂ in summer in urban Beijing, China, *Atmos. Chem. Phys.*, 18, 11581-11597, 10.5194/acp-18-11581-2018, 2018a.

1945 Zhou, X., Zhang, L., Tan, J., Zhang, K., Mao, J., Duan, J., and Hu, J.: Characterization of humic-like substances in PM_{2.5} during biomass burning episodes on Weizhou Island, China, *Atmos. Environ.*, 191, 258-266, <https://doi.org/10.1016/j.atmosenv.2018.08.023>, 2018b.

Zhou, Y.: Hospital sewage disinfection process and its selection, *Disinfection and Sterilization (in Chinese)*, 167-169, 1987.

设置了格式: 字体: (默认) Times New Roman, 下标

设置了格式: 字体: (默认) Times New Roman

设置了格式: 字体: (默认) Times New Roman

设置了格式: 字体: (默认) Times New Roman

设置了格式: 字体: (默认) Times New Roman, 下标

设置了格式: 字体: (默认) Times New Roman

设置了格式: 字体: (默认) Times New Roman, 下标

设置了格式: 字体: (默认) Times New Roman

设置了格式: 字体: (默认) Times New Roman, 下标

设置了格式: 字体: (默认) Times New Roman

设置了格式: 字体: (默认) Times New Roman, 下标

设置了格式: 字体: (默认) Times New Roman

设置了格式: 字体: (默认) Times New Roman

设置了格式: 字体: (默认) Times New Roman

1950 Zhou, Y., Xing, X., Lang, J., Chen, D., Cheng, S., Wei, L., Wei, X., and Liu, C.: A comprehensive biomass burning emission inventory with high spatial and temporal resolution in China, Atmos. Chem. Phys., 17, 2839-2864, 10.5194/acp-17-2839-2017, 2017.

1955 Zhu, Y., Liu, Y., Li, S., Wang, H., Lu, X., Wang, H., Shen, C., Chen, X., Chan, P., Shen, A., Wang, H., Jin, Y., Xu, Y., Fan, S., and Fan, Q.: Assessment of tropospheric ozone simulations in a regional chemical transport model using GEOS-Chem outputs as chemical boundary conditions, Sci. Total Environ., 906, 167485, <https://doi.org/10.1016/j.scitotenv.2023.167485>, 2024.

设置了格式: 字体: (默认) Times New Roman

设置了格式: 字体: (默认) Times New Roman

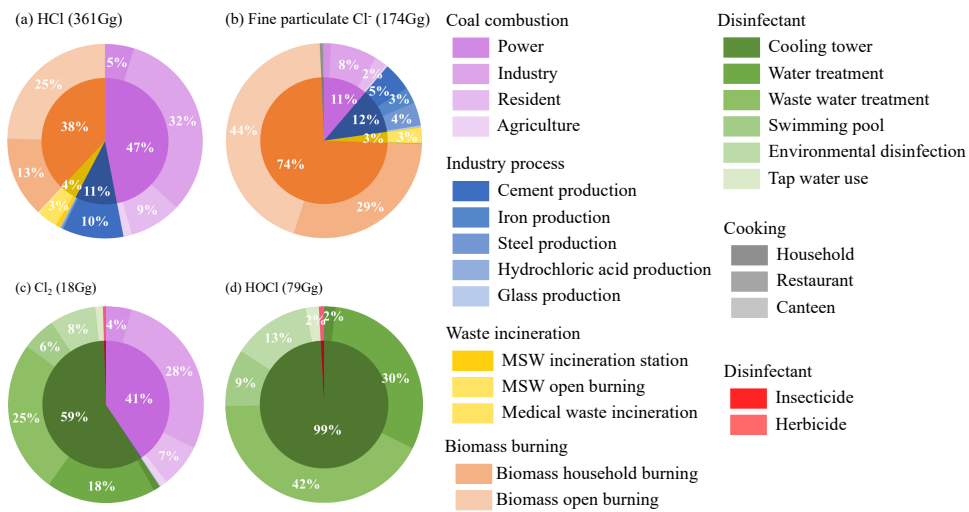
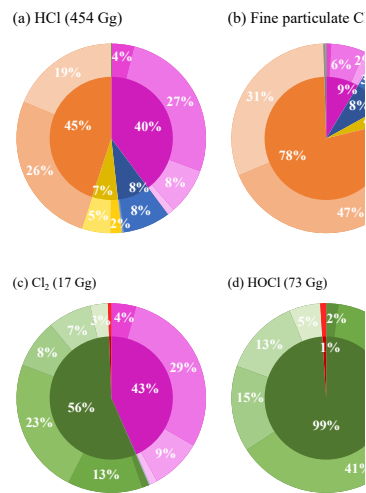


Figure 1 Contributions of different source categories to the anthropogenic emissions of HCl (a), fine particulate Cl⁻ (b), Cl₂ (c), and HOCl (d) in 2019. The aggregation of 7 primary source categories from 41 specific sources can be found in Table S1.



删除了:

设置了格式: 字体: 10 磅

删除了: 2018

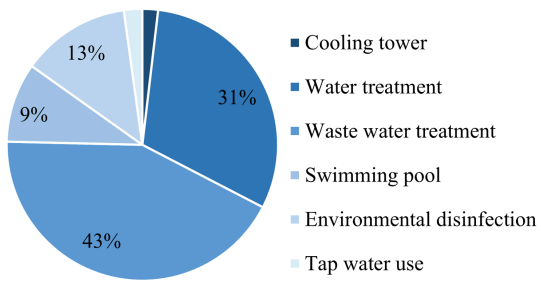
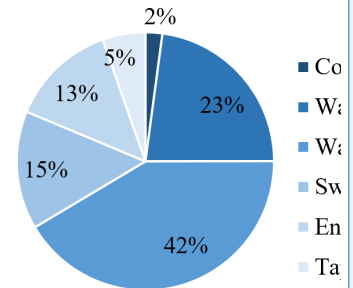


Figure 2 Proportion of chlorine emissions from different usages of chlorine-containing disinfectant in China.



删除了:

设置了格式: 字体: (默认) Times New Roman

设置了格式: 字体: 10 磅

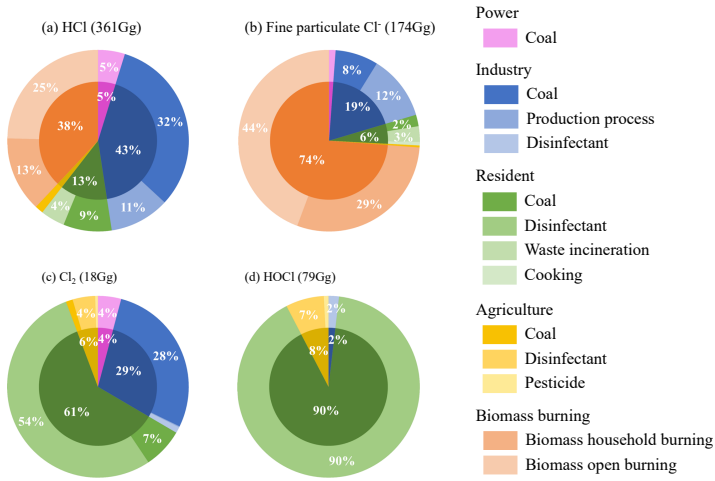
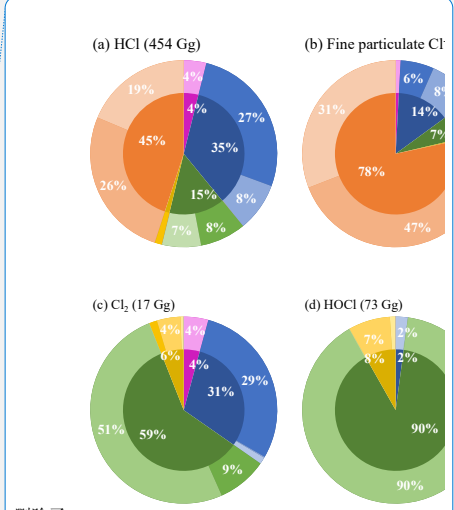


Figure 3 Contributions of different economic sectors to the anthropogenic emissions of HCl (a), fine particulate Cl⁻ (b), Cl₂ (c), and HOCl (d) in 2019. The aggregation of 5 economic sectors from 41 specific sources can be found in Table S2.



删除了:

设置了格式: 字体: 10 磅

删除了: 2018

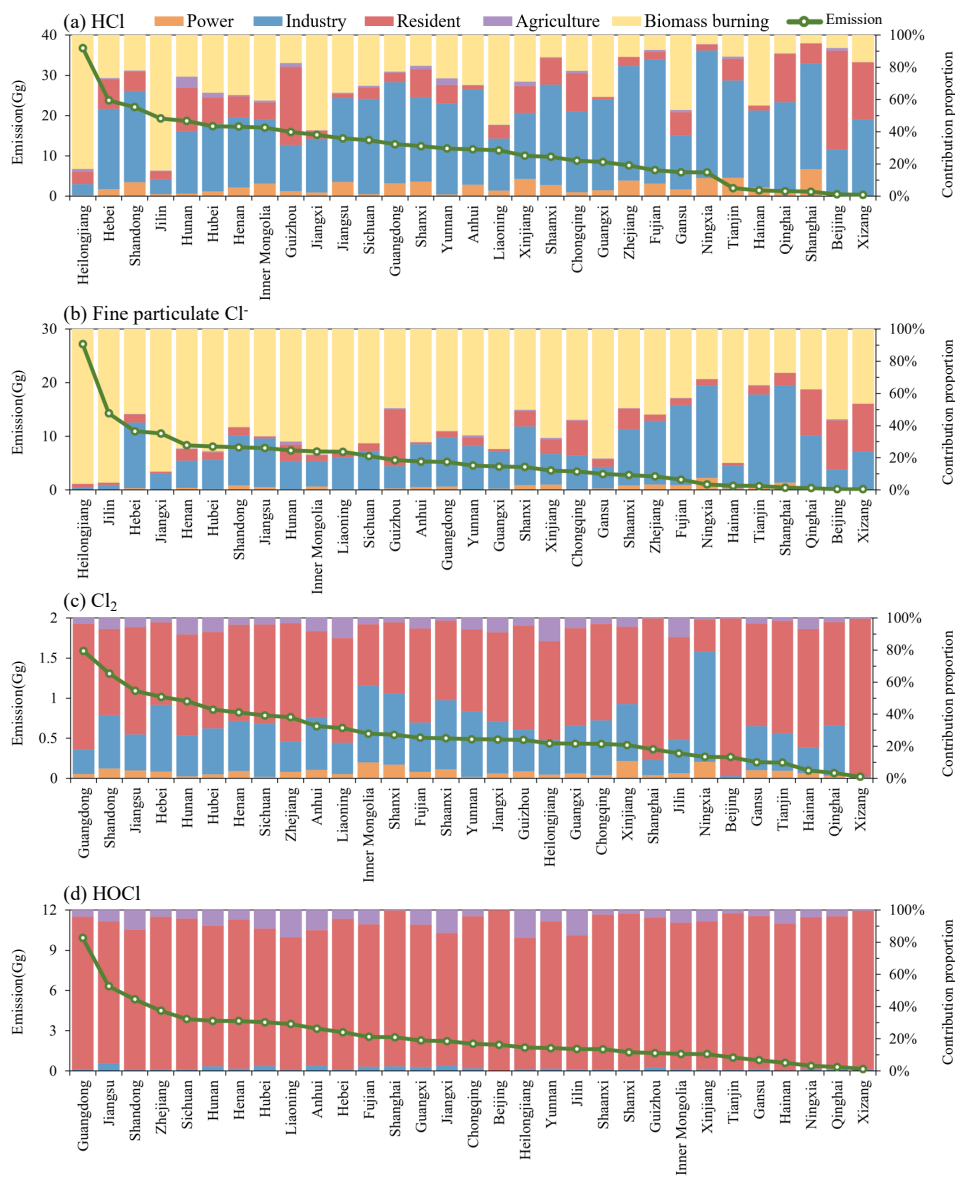
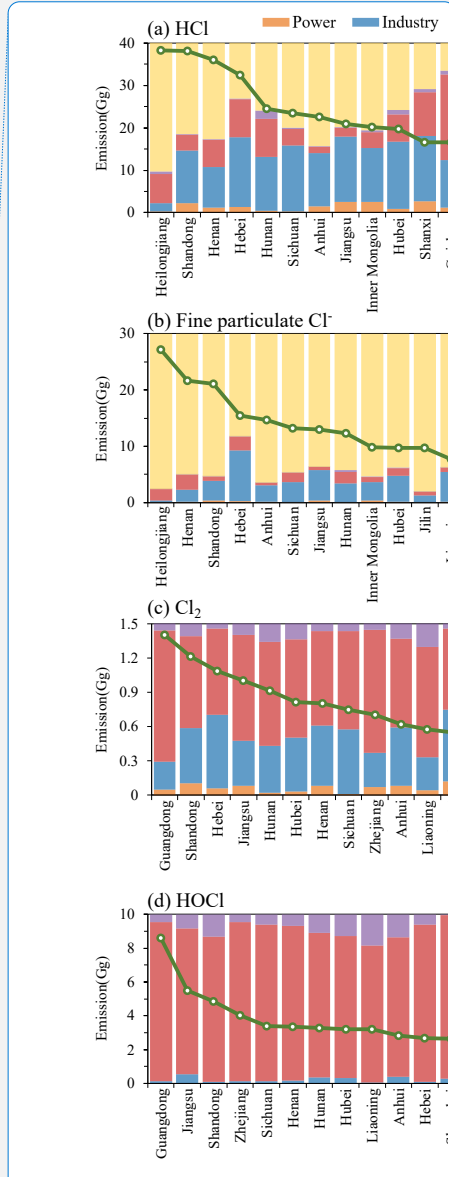


Figure 4 Emissions (green line) and contribution proportions of HCl (a), fine particulate Cl⁻ (b), Cl₂ (c), and HOCl (d) by province in 2019.



删除了:

设置了格式: 字体: 10 磅

删除了: 2018

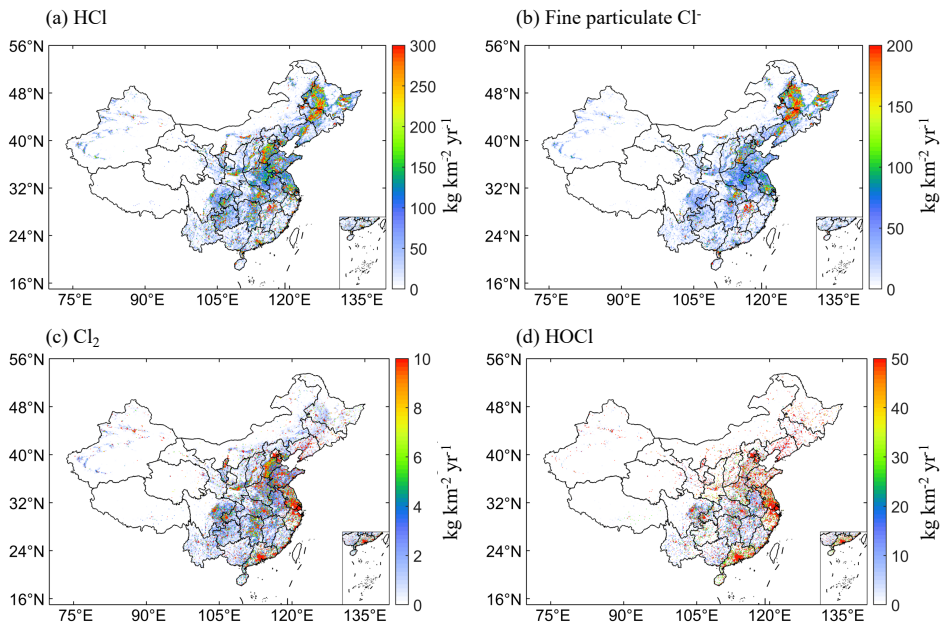
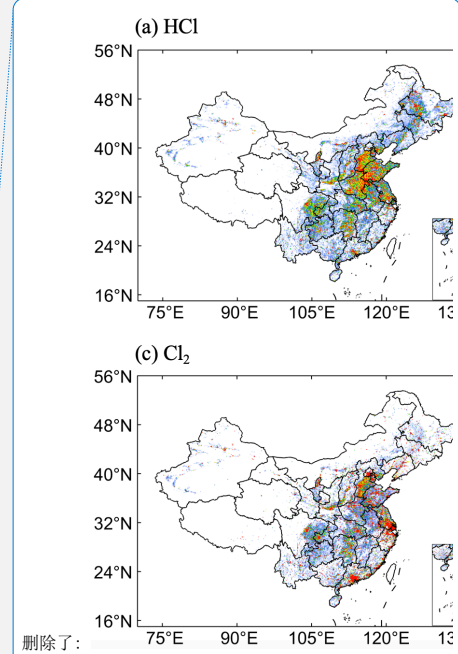


Figure 5 Spatial distribution of anthropogenic HCl, fine particulate Cl⁻, Cl₂, and HOCl emissions in 2019 at 0.1° × 0.1° resolution.



删除了:

删除了: 2018

设置了格式: 字体: 10 磅

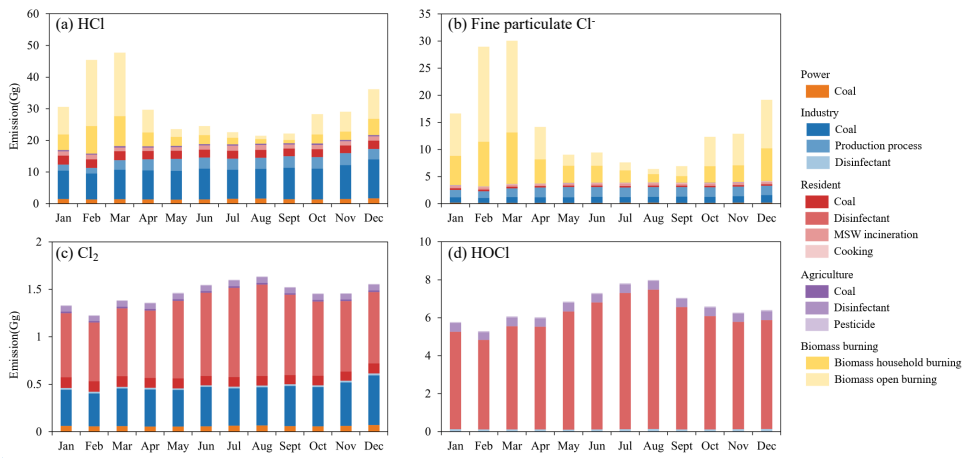
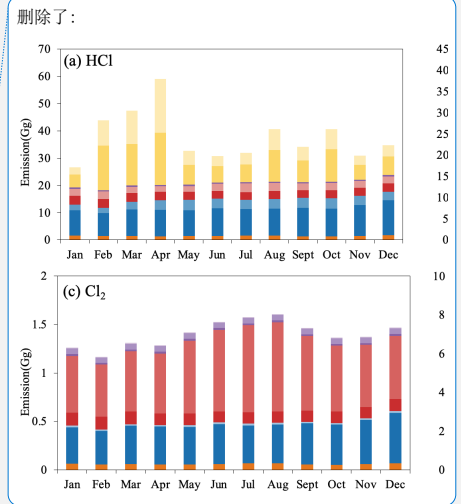


Figure 6 Monthly variation of anthropogenic HCl (a), fine particulate Cl⁻ (b), Cl₂ (c), and HOCl (d) emissions by economic sector in 2019.



设置了格式: 字体: (默认) Times New Roman

设置了格式: 字体: 10 磅

删除了: 2018

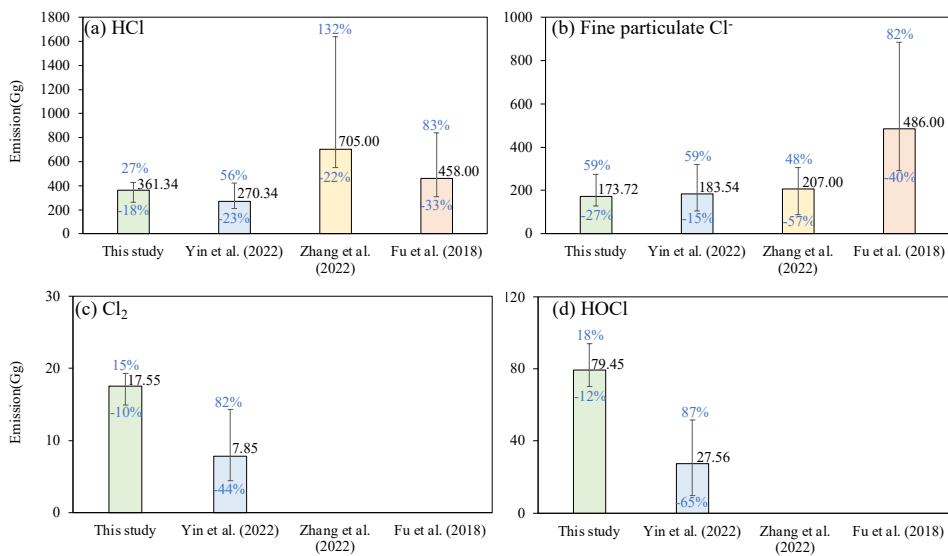
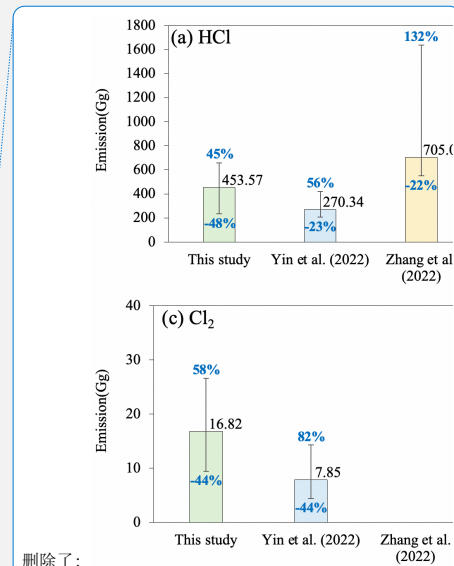


Figure 7 Comparison of anthropogenic chlorine emissions and uncertainty ranges (blue text) with other studies.



删除了:

设置了格式: 字体: 10 磅

Table 1 General information about the ACEIC inventory

Item	Information
Name	Anthropogenic chlorine emissions for China (ACEIC)
Domain	31 provinces in mainland China
Species	HCl, fine particulate Cl ⁻ , Cl ₂ , and HOCl
Source categories	7 major categories: (1) coal combustion, (2) industrial production process, (3) waste incineration, (4) biomass burning, (5) cooking, (6) usages of chlorine-containing disinfection, and (7) usages of pesticide
Base year	2019
Spatial resolution	0.1°×0.1°
Temporal resolution	Monthly

设置了格式: 字体: 10 磅

设置了格式: 字体: 10 磅

设置了格式: 字体: 10 磅

设置了格式: 字体: 10 磅

设置了格式: 字体: 10 磅

删除了: 8

设置了格式: 字体: 10 磅

设置了格式: 字体: 10 磅

设置了格式: 字体: 10 磅

Table 2 Anthropogenic chlorine emission in China by source category in 2019.

Source category	Sub-category	Emission (Gg)			
		HCl	pCl	Cl ₂	HOCl
Coal combustion	Power	17.31	2.03	0.72	
	Industrial	115.98	13.29	4.92	
	Residential	31.11	3.54	1.26	
	Agriculture	5.30	0.60	0.21	
	Sum of coal combustion	169.69	19.46	7.12	0.00
Industrial production process	Cement production	36.31	8.20		
	Iron production	0.46	4.66		
	Steel production	0.76	6.75		
	HCl production	0.56			
	Flat glass production	0.56	0.49	0.03	
Sum of industrial production process	38.65	20.10	0.03	0.00	
Waste incineration	MSW incineration station	2.59	0.20		
	MSW open burning	11.74	4.44		
	Medical waste incineration	1.33	0.10		
	Sum of waste incineration	15.66	4.74	0.00	0.00
Biomass burning	Household burning	48.43	51.23		
	Open burning	88.90	76.99		
	Sum of biomass burning	137.34	128.22	0.00	0.00
Cooking	Household		0.74		
	Restaurant		0.40		
	Canteen		0.05		
	Sum of cooking	0.00	1.19	0.00	0.00
Disinfectant	Cooling tower			0.19	1.47
	Water treatment			3.17	24.21
	Waste water treatment			4.41	33.70
	Swimming pool			0.98	7.45
	Environment disinfectant			1.34	10.23
	Tap water use			0.23	1.73
Sum of disinfectant	0.00	0.00	10.32	78.78	
Pesticide	Insecticide			0.09	0.65
	Herbicide			0.00	0.02
	Sum of pesticide	0.00	0.00	0.09	0.67
Sum of all categories					
		361.34	173.72	17.55	79.45

设置了格式: 字体: 10 磅

删除了: 2018

设置了格式: 字体: 10 磅

删除了: 69

删除了: 01

删除了: 71

删除了: 21.1

删除了: 77

删除了: 89

删除了: 6.00

删除了: 4.09

删除了: 45

删除了: 66

删除了: 64

删除了: 23

删除了: 80.53

删除了: 20.51

删除了: 29

删除了: 5.99

删除了: 06

设置了格式: 字体: 10 磅

删除了: 64

删除了: 74

删除了: 57

删除了: 62

删除了: 54

删除了: 47

删除了: 35

删除了: 19.74

设置了格式: 字体: 10 磅

删除了: Incineration

删除了: WSM

删除了: 8.32

删除了: 1.52

删除了: WSM

删除了: Open burning

删除了: 22.43

删除了: 8.47

删除了: 30.76

删除了: 9.99

设置了格式: 字体: 10 磅

删除了: 119.23

删除了: 112.72

删除了: 84.70

设置了格式

删除了: 73.42

设置了格式

删除了: 203.93

设置了格式

Table 3 Anthropogenic chlorine emission in China by economic sector in 2019.

Sector	Subsector	Emission (Gg)			
		HCl	pCl	Cl ₂	HOCl
Power	Coal combustion	17.31	2.03	0.73	
Industry	Industrial coal combustion	115.98	13.29	4.92	
	Industrial production process	38.65	20.10	0.03	
	Industrial usage of disinfectant	0.00	0.00	0.19	1.47
	Sum of industry	154.62	33.39	5.14	1.47
Residential	Residential coal combustion	31.11	3.54	1.26	
	Residential usage of disinfectant			9.42	71.93
	Waste incineration	15.66	4.74		
	Cooking		1.19		
Sum of residential sector	46.77	9.47	10.68	71.93	
Agriculture	Agricultural coal combustion	5.30	0.60	0.21	
	Agricultural usage of disinfectant			0.70	5.38
	Agricultural usage of pesticide			0.09	0.67
	Sum of agriculture	5.30	0.60	1.01	6.05
Biomass burning	Biomass household burning	48.43	51.23		
	Biomass open burning	88.90	76.99		
	Sum of biomass burning	137.34	128.22		
Sum of all sectors	361.34	173.72	17.55	79.45	

- 删除了: 2018
- 设置了格式: 字体: 10 磅
- 删除了: 69
- 删除了: 01
- 删除了: 71
- 删除了: 21.18
- 删除了: 77
- 删除了: 8
- 删除了: 3
- 删除了: 19.74
- 删除了: 20
- 删除了: 53
- 删除了: 9.53
- 删除了: 51
- 删除了: 12
- 删除了: 53
- 删除了: 6.00
- 删除了: 4.09
- 删除了: 45
- 删除了: 8.52
- 删除了: 65.09
- 删除了: 30.76
- 删除了: 9.99
- 删除了: 13
- 删除了: 66...6.75
- 删除了: 15.21
- 删除了: 9.98
- 删除了: 65.09
- 删除了: 66
- 删除了: 64
- 删除了: 3
- 删除了: 69
- 删除了: 23
- 删除了: 10
- 删除了: 73
- 删除了: 66
- 删除了: 64
- 删除了: 5.96
- 删除了: 119.23
- 删除了: 112.72
- 删除了: 84.70
- 删除了: 73.42
- 设置了格式: 字体: 10 磅, 字体颜色: 自动设置
- 设置了格式: 字体: 10 磅, 字体颜色: 自动设置
- 删除了: 203.93
- 删除了: 186.13
- 设置了格式: 字体: 10 磅, 字体颜色: 自动设置
- 设置了格式: 字体: 10 磅, 字体颜色: 自动设置

Table 4 Anthropogenic chlorine emissions by province in 2019.

Province	Emission (Gg)			
	HCl	pCl	Cl ₂	HOCl
Beijing	0.46	0.16	0.27	1.95
Tianjin	2.00	0.77	0.20	1.01
Hebei	23.76	10.97	1.02	2.89
Shanxi	12.42	4.29	0.54	1.40
Inner Mongolia	17.00	7.17	0.56	1.28
Liaoning	11.38	7.13	0.63	3.50
Jilin	19.30	14.29	0.31	1.63
Heilongjiang	36.76	27.18	0.44	1.75
Shanghai	1.09	0.46	0.36	2.51
Jiangsu	14.37	7.83	1.09	6.32
Zhejiang	7.61	2.54	0.76	4.49
Anhui	11.61	5.32	0.65	3.16
Fujian	6.45	1.96	0.51	2.55
Jiangxi	15.22	10.53	0.49	2.23
Shandong	22.12	7.94	1.31	5.34
Henan	17.28	8.35	0.82	3.73
Hubei	17.37	8.11	0.86	3.63
Hunan	18.65	7.38	0.96	3.74
Guangdong	12.89	5.25	1.59	9.92
Guangxi	8.50	4.38	0.43	2.28
Hainan	1.43	0.81	0.10	0.62
Chongqing	8.81	3.45	0.43	2.03
Sichuan	13.92	6.35	0.79	3.87
Guizhou	15.93	5.56	0.48	1.34
Yunnan	11.82	4.57	0.49	1.71
Xizang	0.35	0.16	0.02	0.16
Shaanxi	9.76	2.80	0.50	1.63
Gansu	5.93	2.97	0.20	0.81
Qinghai	1.25	0.38	0.07	0.30
Ningxia	5.89	1.04	0.27	0.38
Xinjiang	10.03	3.62	0.42	1.26
Sum	361.34	173.72	17.55	79.45

- 设置了格式: 字体: 10 磅
- 删除了: 2018
- 设置了格式: 字体: (默认) Times New Roman, 10 磅
- 删除了: 0.77
- 设置了格式: 字体: (默认) Times New Roman, 10 磅
- 删除了: 0.24
- 设置了格式
- 删除了: 0.28
- 设置了格式
- 删除了: 2.05
- 设置了格式: 字体: (默认) Times New Roman, 10 磅
- 删除了: 2.75
- 设置了格式: 字体: (默认) Times New Roman, 10 磅
- 删除了: 1.22
- 删除了: 0.20
- 删除了: 1.06
- 设置了格式
- 设置了格式
- 删除了: 32.46
- 删除了: 15.46
- 删除了: 1.09
- 删除了: 2.67
- 设置了格式: 字体: (默认) Times New Roman, 10 磅
- 设置了格式: 字体: (默认) Times New Roman, 10 磅
- 设置了格式
- 设置了格式
- 删除了: 16.65
- 删除了: 6.62
- 删除了: 0.55
- 删除了: 1.33
- 设置了格式: 字体: (默认) Times New Roman, 10 磅
- 设置了格式: 字体: (默认) Times New Roman, 10 磅
- 设置了格式
- 设置了格式
- 删除了: 20.21
- 删除了: 9.89
- 删除了: 0.53
- 删除了: 1.27
- 设置了格式: 字体: (默认) Times New Roman, 10 磅
- 设置了格式: 字体: (默认) Times New Roman, 10 磅
- 设置了格式
- 设置了格式
- 删除了: 11.86
- 删除了: 7.66
- 删除了: 0.58
- 设置了格式: 字体: (默认) Times New Roman, 10 磅
- 设置了格式: 字体: (默认) Times New Roman, 10 磅
- 设置了格式
- 设置了格式
- 删除了: 3.19
- 删除了: 13.66
- 删除了: 9.67
- 删除了: 0.29
- 删除了: 1.50
- 设置了格式: 字体: (默认) Times New Roman, 10 磅

Table 5 Comparison of anthropogenic chlorine emissions with other studies. The values in brackets are the proportion of different source categories.

Species	Study	Year	Total	Coal combustion	Industrial process	Waste incineration	Biomass burning	Cooking	Usage of disinfectant	Usage of pesticide
HCl (Gg)	This study	2019	361.34	169.69 (47%)	38.65 (11%)	15.66 (4%)	137.34 (38%)			
	Lin et al. (2018)	2012	235.80	232.90 (99%)		2.90 (1%)				
	Hong et al. (2020)	2014	223.40	219.20 (98%)		4.20 (2%)				
	Fu et al. (2018) ^a	2014	458.00	87.00 (19%)	36.60 (8%)	187.80 (41%)	146.60 (32%)			
	Zhang et al. (2022) ^a	2014	705.00	310.2 (44%)	21.15 (3%)	338.40 (48%)	35.25 (5%)			
pCl (Gg)	Yin et al. (2022)	2019	270.34	80.61 (30%)	57.09 (21%)	35.01 (13%)	97.63 (36%)			
	This study	2019	173.72	19.46 (11%)	20.10 (12%)	4.74 (3%)	128.22 (74%)	1.19 (1%)		
	Fu et al. (2018) ^a	2014	486.00	24.30 (5%)	29.20 (6%)	68.00 (14%)	364.50 (75%)			
Cl ₂ (Gg)	Zhang et al. (2022) ^a	2014	207.00	20.70 (10%)	16.56 (8%)	51.75 (25%)	117.99 (57%)			
	Yin et al. (2022)	2019	183.54	11.86 (6%)	11.88 (6%)	9.78 (5%)	143.19 (78%)	6.85 (4%)		
	This study	2019	17.55	7.12 (41%)	0.03 (0%)			10.32 (59%)	0.09 (0%)	
HOCl (Gg)	Lin et al. (2018)	2012	9.40	9.40 (100%)						
	Hong et al. (2020)	2014	8.90	8.90 (100%)						
HOCl (Gg)	Yin et al. (2022)	2019	7.85	3.46 (44%)		0.78 (10%)		3.61 (46%)		
	This study	2019	79.45					78.78 (99%)	0.67 (1%)	
	Yin et al. (2022)	2019	27.56					27.56 (100%)		

^a The emissions from different source categories are estimated by multiplying the total emission with the corresponding proportions reported in the literature.

删除了: 2018

删除了: 453.57

删除了: 80.53...9.69 (40)

删除了: 35...5 (8)

删除了: 30.76...5.66 (7)

删除了: 203.93...45

删除了: 237.51

删除了: 20.51...9.46 (9)

删除了: 19.74...0.10 (8)

删除了: 9.99...7.4 (4)

删除了: 186.13...78

删除了: 13

删除了: 29...2 (43)

删除了: 9.41...0.32 (56)

删除了: 10...9 (1)

Table 6 Comparison between simulated and observed concentrations of chlorine species. The simulated concentrations are the values during the same measurement period but in the year 2019.

Species	Location	Period	Average observed concentration (1 min max)	Average simulated concentration (1 min max)	Reference
HCl ($\mu\text{g m}^{-3}$)	Beijing	Feb.-Mar., 2015	0.45	0.47	Zhang et al. (2018)
	Beijing	May-Jun., 2016	0.83	0.34	Le Breton et al. (2018)
	Nanjing	May, 2017	0.4	0.77	Gao et al. (2019a)
	Shanghai	Oct.-Nov., 2012	0.55	1.78	Shi et al. (2014)
pCl ($\mu\text{g m}^{-3}$)	Shanghai	Oct.-Dec., 2019	0.4	0.27	Li et al. (2023)
	Beijing	Nov., 2018-Jan., 2019	0.4	0.74	Li et al. (2020a)
	Yanshan	Nov., 2018-Jan., 2019	0.4	0.18	Li et al. (2020a)
	Wuhan	Jan., 2018	1.5	1.35	Gao et al. (2019b)
	Guangzhou	Jun.-Sept., 2013	0.35	0.09	Jia et al. (2018)
	Shenzhen	Sept.-Oct., 2019	0.552	0.218	Wang et al. (2022a)
	Shenzhen	2015	0.3	0.16	Wu et al. (2020)
	Suzhou	Apr., Aug., Oct., Dec., 2015	1.54	0.39	Wang et al. (2016)
	Beihai	Mar.-Apr., 2015	0.28	0.16	Zhou et al. (2018b)
	Cl ₂ (ppt)	Beijing	Oct., 2021-Mar., 2022	35 (242)	27.52 (189.94)
Beijing		Dec., 2017	40	11.63	Peng et al. (2021)
Changzhou		May-Jun., 2019	26 (520)	8.87 (51.16)	Li et al. (2023)
Shanghai		Oct.-Dec., 2019	24 (1100)	25.73 (158.27)	Li et al. (2023)
HOCl (ppt)	Nanjing	Apr., 2018	0-600	76.96 (358.70)	Xia et al. (2020)
ClNO ₂ (ppt)	Beijing	Dec., 2017	70	69.93	Peng et al. (2021)
	Taishan	Jul.-Aug., 2014	54 (2065)	68.26 (420.76)	Wang et al. (2017c)
	Wangdu	Jun.-Jul., 2014	550 (2070)	145.76 (1092.38)	Tham et al. (2016)
	Jinan	Aug.-Sept., 2014	94 (776)	103.02 (686.46)	Wang et al. (2017a)
	Beijing	Jun., 2017	174.3 (1440)	89.73 (662.24)	Zhou et al. (2018a)
	Changzhou	May-Jun., 2019	150 (1300)	129.28 (1006.57)	Li et al. (2023)
	Shanghai	Oct.-Dec., 2019	94 (5700)	148.08 (1039.94)	Li et al. (2023)
	Shanghai	Oct.-Nov., 2020	50 (400)	166.73 (1039.94)	Lou et al. (2022)

设置了格式: 字体: 10 磅
 删除了: CMAQ simulation
 设置了格式: 字体: 10 磅, 字体颜色: 自动设置
 删除了: results and observation results
 设置了格式: 字体: 10 磅, 字体颜色: 自动设置
 设置了格式: 字体: 10 磅
 设置了格式: 字体: 小五
 设置了格式: 字体颜色: 自动设置
 设置了格式: 字体颜色: 自动设置
 删除了:
 设置了格式: 字体: 小五
 删除了:
 设置了格式: 字体: 小五
 设置了格式
 设置了格式: 字体: (默认) Times New Roman, 小五
 删除了: Zhang et al.(2018)
 设置了格式: 字体: (默认) Times New Roman, 小五
 删除了: Le et al.(2018)
 设置了格式: 字体: (默认) Times New Roman, 小五
 删除了: Gao et al.(2019b)
 设置了格式: 字体: (默认) Times New Roman, 小五
 删除了: Shi et al.(2014)
 设置了格式
 删除了:
 删除了: Li et al.(2023)
 设置了格式
 设置了格式: 字体: (默认) Times New Roman, 小五
 删除了: Li et al.(2020)
 设置了格式: 字体: (默认) Times New Roman, 小五
 删除了: Li et al.(2020)
 设置了格式: 字体: (默认) Times New Roman, 小五
 删除了: Gao et al.(2019)
 设置了格式
 删除了: Jia et al.(2018)
 设置了格式: 字体: (默认) Times New Roman, 小五
 删除了: Wang et al.(2021)
 设置了格式: 字体: (默认) Times New Roman, 小五
 删除了: Wu et al.(2020)
 设置了格式: 字体: (默认) Times New Roman, 小五
 删除了: 王念飞等 (2016)
 设置了格式: 字体: 小五, 字体颜色: 自动设置
 设置了格式: 字体: 小五
 删除了: , Guangxi
 设置了格式: 字体: 小五, 字体颜色: 自动设置
 删除了: Zhou et al.(2018b)
 设置了格式
 删除了:
 设置了格式: 字体: (默认) Times New Roman, 小五
 删除了: Ma et al.(2023)
 设置了格式: 字体: (默认) Times New Roman, 小五
 删除了: Peng et al.(2020)
 设置了格式: 字体: (默认) Times New Roman, 小五
 删除了: Li et al.(2023)
 设置了格式: 字体: (默认) Times New Roman, 小五
 删除了: Li et al.(2023)
 设置了格式: 字体: 小五
 设置了格式: 字体: (默认) Times New Roman, 小五
 删除了: Xia et al.(2020)
 设置了格式