

Surface snow bromide and nitrate at Eureka, Canada in early spring and implications for polar boundary layer chemistry

Xin Yang¹, Kimberly Strong², Alison S. Criscitiello³, Marta Santos-Garcia^{1*}, Kristof Bognar^{2**}, Xiaoyi Zhao⁴, Pierre Fogal², Kaley A. Walker², Sara M., Morris⁵, and Peter Effertz^{6,7}

¹British Antarctic Survey, Natural Environment Research Council, Cambridge, UK
²Department of Physics, University of Toronto, Toronto, ON, Canada
³Department of Earth and Atmospheric Sciences, University of Alberta, Edmonton, Alberta, Canada
⁴Air Quality Research Division, Environment and Climate Change Canada, Toronto, ON, Canada
⁵NOAA Earth System Research Laboratories, Physical Sciences Laboratory, Boulder, CO, USA
⁶Cooperative Institute for Research in Environmental Science - CU Boulder, Boulder, CO, USA
⁷NOAA Earth System Research Laboratories, Global Monitoring Laboratory, Boulder, CO, USA
^{*}Now at School of Geosciences, University of Edinburgh, Edinburgh, UK
^{**}Now at 3v Geomatics Inc., Vancouver, BC, Canada



Correspondence to: Xin Yang (xinyang55@bas.ac.uk)

Abstract. This study explores the role of snowpack in polar boundary layer chemistry, especially as a direct source of reactive bromine ($\text{BrOx}=\text{BrO}+\text{Br}$) and nitrogen ($\text{NOx}=\text{NO}+\text{NO}_2$) in the Arctic springtime. Surface snow samples were collected daily from a Canadian high Arctic location at Eureka, Nunavut (80°N , 86°W) from the end of February to the end of March in 2018 and 2019. The snow was sampled at several sites representing distinct environments: sea ice, inland close to sea level, and a hilltop ~ 600 m above sea level (asl). At the inland sites, surface snow salinity has a double-peak distribution with the first and lowest peak at 0.001–0.002 practical salinity unit (psu), which corresponds to the precipitation effect, and the second peak at 0.01–0.04 psu, which is likely related to the salt accumulation effect (due to loss of water vapour by sublimation). Snow salinity on sea ice has a triple-peak distribution; its first and second peaks overlap with the inland peaks, and the third peak at 0.2–0.4 psu is likely due to the sea water effect (a result of upward migration of brine). At all sites, snow sodium and chloride concentrations increase by almost tenfold from the top 0.2 cm to ~ 1.5 cm in depth. Surface snow bromide at sea level is significantly enriched, indicating a net sink of atmospheric bromine. Moreover, surface snow bromide at sea level has an increasing trend over the measurement period, with mean slopes of $0.024\ \mu\text{M d}^{-1}$ in the 0–0.2 cm layer and $0.016\ \mu\text{M d}^{-1}$ in the 0.2–0.5 cm layer. Surface snow nitrate at sea level also shows a significant increasing trend, with mean slopes of 0.27 , 0.20 , and $0.07\ \mu\text{M d}^{-1}$ in the top 0.2 cm, 0.2–0.5 cm, and 0.5–1.5 cm layers, respectively. Using these trends, an integrated net deposition flux of bromide of $(1.01\pm 0.48)\times 10^7$ molecules $\text{cm}^{-2}\ \text{s}^{-1}$ and an integrated net deposition flux of nitrate of $(2.6\pm 0.37)\times 10^8$ molecules $\text{cm}^{-2}\ \text{s}^{-1}$ were derived. In addition, the surface snow nitrate and bromide at inland sites were found to be significantly correlated ($R=0.48\text{--}0.76$) with $[\text{NO}_3^-]/[\text{Br}^-]$ ratio of 4–7, indicating a possible

Style Definition: Normal: Indent: First line: 1.27 cm

Formatted: Indent: First line: 0 cm

Formatted: Indent: First line: 0 cm

Deleted:  ... [1]
Deleted: in surface snow ...increase by almost tenfold from the top 0.2 cm to ~ 1.5 cm in depth. Surface snow bromide in surface snow...at sea level is significantly enriched, indicating that surface snow at Eureka is ... net sink of atmospheric bromine. Moreover, data show that top ...surface snow bromide at all sampling sites...at sea level has an increasing trend over the measurement time...period (late February to late March)... with mean slopes of $0.02419\ \mu\text{M}$ and $1.3\ \text{ppb d}^{-1}$... in the 0–0.2 cm layer and $0.016\ \mu\text{M d}^{-1}$ in the 0.2–0.5 cm layer. ...surface s, respectively. At the sea level sites, ...snow nitrate at sea level also shows a significant increasing trend, with mean slopes of $0.27121\ \mu\text{M d}^{-1}$, $0.20124\ \mu\text{M d}^{-1}$, and $0.04\ \mu\text{M d}^{-1}$ in the top 0.2 cm, 0.2–0.5 cm, and 0.5–1.5 cm layers, respectively. Using these trends, we derive a novel method to calculate deposition flux of bromide and nitrate to the snowpack. For bromide, the ... integrated net deposition flux of bromide of $(1.01\pm 0.48)\times 10^7$ molecules $\text{cm}^{-2}\ \text{s}^{-1}$ at sea level and 1.01×10^7 molecules $\text{cm}^{-2}\ \text{s}^{-1}$ at ~ 600 m...and for nitrate, the ...integrated net deposition flux of nitrate of $(2.6\pm 0.37)\times 10^8$ molecules $\text{cm}^{-2}\ \text{s}^{-1}$ at sea level and 1.0×10^8 molecules $\text{cm}^{-2}\ \text{s}^{-1}$ at ~ 600 m; the negative flux indicates that snow at the hilltop sites is losing nitrate...were derived. The smaller vertical gradient of bromide deposition flux strongly indicates that local snowpack emission on sea ice and inland is not likely to be a large source of reactive bromine. In contrast, nitrate deposition flux has a large vertical gradient, e.g., with a positive flux at sea level and a negative flux at ~ 600 m, indicating that snowpack at sea level is a large source of reactive nitrate. ...In addition, the ...  In addition, we found a significant correlation (with coefficient R values of $0.48\text{--}0.76$) between ...surface snow nitrate and bromide at the ...land sites were found to be significantly correlated ($R=0.48\text{--}0.76$) with. The ... $[\text{NO}_3^-]/[\text{Br}^-]$ ratio ranges...f from...4- to ... indicating a , highlighting the ... [2]

135 ~~acceleration effect of reactive bromine in atmospheric NO_x-to-nitrate conversion. This is the first time such an effect has been seen in snow chemistry data obtained with a sampling frequency as short as one day.~~
~~BrO partial column (0-4 km) data measured by MAX-DOAS show a clear decreasing trend in March 2019, which agrees with the derived surface snow bromide deposition flux indicating that bromine in Eureka atmosphere and surface snow did not reach a photochemical equilibrium state and the photochemical release flux of reactive bromine from snow must be a weak process and smaller than the derived bromide deposition flux of $\sim 1 \times 10^7$ molecules cm⁻² s⁻¹.~~

140 1 Introduction

Reactive bromine (BrO_x=BrO+Br) and reactive nitrogen (NO_x=NO+NO₂) are two important families in atmospheric chemistry, both of which play a critical role in determining the oxidising capacity of the polar boundary layer (Morin et al., 2008). However, the processes involved in the sources, sinks, and recycling of reactive bromine and nitrogen in the air-snow-sea ice system are not fully understood (Abbatt et al., 2012) or parameterised, which prevents quantification of their effects and the ability to make robust predictions for the changing climate using numerical chemical models.

150 Reactive nitrogen-rich air observed in the Arctic troposphere is mainly anthropogenic and subject to long-range transport (Dickerson, 1985). During winter, gaseous nitric acid (HNO₃) or particulate bond nitrate (p-NO₃) is removed from the air via dry and wet deposition. HNO₃ and p-NO₃ mainly dissolve to form nitrate (NO₃⁻) upon contact with the snow cover (Diehl et al., 1995; Abbatt, 1997). Nitrate that accumulates in snowpack can release gaseous NO_x and HONO in spring via photolysis (Dubowski et al., 2001; Honrath et al., 2002), with the processes controlled by many factors including meteorological parameters and chemical, optical, and physical snow properties. These include photolabile NO₃⁻ concentrations, the amount of light-absorbing impurities, the temperature-dependent quantum yields of NO₃⁻ photolysis, and the timing of precipitation (Beine et al., 2003; Frey et al., 2013; Chan et al., 2015; Zatko et al., 2016; Winton et al., 2020). The measured snow-NO_x emission fluxes in polar regions vary from site to site, ranging from near zero to
155 $>1.0 \times 10^9$ molecules cm⁻² s⁻¹ (Jones et al., 2001; Zhou et al., 2001; Honrath et al., 2002; Beine et al., 2002; 2003; Oncley et al., 2004; Frey et al., 2013; Chan et al., 2018). A direct measurement of nitrate dry deposition flux was made by Björkman et al. (2013) in Svalbard using a tray sampling approach. They reported a total flux of 10.27 ± 3.84 mg m⁻² (September 2009 to May 2010) which is roughly equivalent to a mean flux of 4×10^8 molecules cm⁻² s⁻¹. In addition, precipitation at Svalbard dominates nitrate supply to snow, with dry deposited HNO₃ only accounting for 10-14% of total nitrate (Beine et al., 2003; Björkman et al., 2013).

160 Observations show that sea-ice regions have the highest tropospheric bromine oxide (BrO) loading on Earth (Wagner and Platt, 1998). BrO enhancements are normally observed in the polar boundary layer during springtime and are referred to as “bromine explosion” events (BEEs). It is well known that saline substrates are the eventual source of reactive bromine (Wagner and Platt, 1998; Oum et al., 1998; Simpson et al., 2007a). ~~Salts may be supplied to the snow surface by upward migration from sea ice, by frost flowers being wind-blown to the snow surface, or by wind-transported aerosols generated by~~

Deleted: accelerating the

Deleted: we see

Formatted: Font: (Default) +Body (Times New Roman)

Deleted: over the course of one day

Formatted: Font: (Default) +Body (Times New Roman), 10 pt

Formatted: Font: (Default) +Body (Times New Roman), Font colour: Text 1

Formatted: Indent: First line: 0 cm

Formatted: Font: (Default) +Body (Times New Roman)

Formatted: Strikethrough

Deleted:

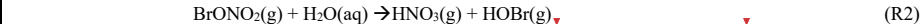
Formatted: Font: (Default) +Body (Times New Roman), Font colour: Text 1

Formatted: Font: (Default) +Body (Times New Roman), Font colour: Text 1, Not Strikethrough

170 [sea spray \(Domine et al., 2004\)](#). However, the dominant source [bromine](#) and the underlying processes involved remain unclear, with more than half a dozen different candidates proposed. These include frost flowers (Kaleschke et al., 2004; Piot and von Glasow, 2008), first-year sea ice surface (Simpson et al., 2005; 2007b), open leads/polynyas (e.g., Peterson et al., 2016; Kirpes et al., 2019; Criscitiello et al., 2021), snowpack on tundra (Pratt et al., 2013), snowpack on sea ice (Custard et al., 2017; Peterson et al., 2019), snowpack on ice sheets (Thomas et al., 2011), and sea salt aerosols from blowing snow (Yang et al., 2008; 2010; 2019, 2020; Frey et al., 2020; Huang et al., 2020). Significant progress has been made in recent decades, with data showing that frost flowers and open leads are only of minor or local importance (Domine et al., 2005; Obbard et al., 2009; Huang et al., 2020). In addition, the proposed stratospheric BrO intrusion (Salawitch et al., 2010) has also been found to be less important than previously thought (Theys et al., 2011). Currently, the major debate surrounds the relative importance of the two remaining candidates – snowpack and blowing snow (e.g., Bogner et al., 2020; Marelle et al., 2021; Swanson et al., 2022).

Reactive bromine can directly cause polar boundary layer ozone depletion events (ODEs), whereby near-surface ozone concentrations in spring drop below 10 ppbv (part per billion by volume), reaching close to 0 ppbv in some cases (Bottenheim et al., 1986; Barrie et al., 1988; Tarasick and Bottenheim, 2002; [Jacobi et al., 2012](#)). In addition, BrO_x can affect reactive nitrogen (Morin et al., 2008) and hydroxyl radicals (HO_x=OH+ HO₂) (Bloss et al., 2007, 2010; Brough et al., 2019) as well as elemental mercury oxidation (e.g., Holmes et al., 2006; Parella et al., 2012; Angot et al., 2016; [Xu et al., 2016](#); Wang et al., 2019) and dimethyl sulphide oxidation (Hoffmann et al., 2016).

It is well-known that BrO_x can directly react with NO_x via the following reactions [R1 and R2](#):



[The product HOBr in R2 can photolyze to reform Br atoms \(R3\) which then react with ozone to form BrO \(R4\) to further oxidise NO_x in R1.](#)



Therefore, the net reaction of R1-R4 is:



[This means that under sunlight and in the presence of bromine, ozone and NO_x molecules will be consumed effectively via chain reactions.](#) Thus, the presence of BrO_x may accelerate the conversion from NO_x to nitrate and influence the atmospheric nitrogen budget. Previous modelling work has estimated that bromine chemistry can cause NO_x reductions of 60-80% at high latitudes in spring (Yang et al., 2005).

200 The emission fluxes of reactive bromine from blowing snow are all based on parameterisation in models (Yang et al., 2008; 2010, 2020; Huang et al., 2020; Swanson et al., 2020; Marelle et al., 2021). There are currently no direct measurements of bromine emission flux from blowing snow. Regarding snowpack bromine emission, a direct gradient measurement of Br₂

Deleted: s

Deleted: →

Deleted: →

Deleted: →

Deleted: →

and BrCl above a patch of snowpack was made near Utqiagvik, Alaska (Custard et al., 2017), who reported emission fluxes of $0.7\text{--}12 \times 10^8$ molecules $\text{cm}^{-2} \text{ s}^{-1}$. However, their emission fluxes were based on a field dataset obtained over only a few days.

Model emission schemes estimated reactive bromine emission fluxes of 9.0×10^7 to 2.7×10^9 molecules $\text{cm}^{-2} \text{ s}^{-1}$, and the emission flux is highly dependent on the parameters applied (Lehrer et al., 2004; Poit et al., 2009; Toyota et al., 2014; Falk and Sinnhuber, 2018; Marelle et al., 2021). The removal of inorganic bromine species (such as HBr, HOBr, Br₂, BrCl, BrONO₂ and BrO) from the atmosphere via wet and dry depositions is mainly calculated by models (e.g., Yang et al., 2005; 2010; Parella et al., 2012; Legrand et al., 2016); thus far, deposition flux has not been reported.

Both nitrate and bromide undergo post-depositional processing within the snowpack (i.e. photochemistry), and the observationally derived flux represents the net direction of emission and deposition. A net source of Br₂ and BrCl was measured over snowpack which was enriched in bromide (Custard et al., 2017); this is likely due to the fact that deposition and emission are two different processes, and they may occur at different times and at different depths and with different rates. For example, the deposited bromide and nitrate may be largely confined to the top few cm layer, while photochemistry may occur only in daytime and across a deep depth (depending on the e-folding depth (Domine et al., 2008)).

Different methods have been used to derive the flux of deposited ions to snow (Cadle et al., 1991; Beine et al., 2003; Macdonald et al., 2017). For instance, Björkman et al. (2013) applied three different methods to derive nitrate dry deposition flux at Svalbard: tray sampling, glacial sampling, and modelling. Macdonald et al. (2017) derived major ion (including nitrate) deposition fluxes at Alert, Nunavut, from freshly fallen snow samples collected on average every four days. However, they could not derive bromide deposition flux, likely due to the efficient post-depositional loss of bromide given the sampling interval of 1 to 19 days. In this study we apply a methodology similar to, but slightly different from, that used by Macdonald et al. (2017). We deliberately increase temporal sampling resolution to ~24 hours and collect snow samples directly from the snowpack surface using a vertical resolution of 2-3 mm. This vertical resolution enables us to collect fresh falling snow from trace precipitation (an amount of precipitation greater than zero, but too small to be measured by standard methods). Because of mixing of surface snow particles due to wind, samples collected in the skin layer are not solely from snow recently fallen in the past 24 hours (with exceptions in very calm conditions); rather, they represent a mixture of various snow particles. Thus, ions measured in the surface layer are not only due to deposition in the past 24 hours, but also to deposition in previous days. Therefore, by looking into the average change of ions within a time scale of 24 hours, we are able to derive a mean net deposition flux of ions such as nitrate and bromide. To that end, we collected the top 1.5 cm of snow in three sub-layers: 0-0.2, 0.2-0.5, and 0.5-1.5 cm at several sampling sites (including onshore and offshore sites as well as on the top of a hill) in the high Arctic at Eureka (80°N, 86°W), Nunavut, Canada (Figure 1) daily during early spring in 2018 and 2019. The aim of this study is to derive a net deposition flux of bromide and nitrate to surface snow and then to infer the role that snowpack plays as a direct source of reactive bromine and nitrogen. Methods and datasets are described in Section 2. The results are reported in Section 3. Discussions and atmospheric implications of this study are in Section 4, with conclusions given in Section 5.

Deleted: Snowpack parameterisation

Deleted:

Deleted: however,

Deleted: So far, there have not been any direct in-situ measurement of bromine deposition flux to snowpack.

Deleted: are

Formatted: Font: (Default) +Body (Times New Roman), Font colour: Text 1

Formatted: Font: (Default) +Body (Times New Roman), Font colour: Text 1

Formatted: Font: Not Italic, Font colour: Text 1

Formatted: Font: Not Italic, Font colour: Text 1

Formatted: Font: Not Italic, Font colour: Text 1

Formatted: Font: Not Italic, Font colour: Text 1

Formatted: Font: Not Italic, Font colour: Text 1

Formatted: Font: Not Italic, Font colour: Text 1

Formatted: Font: Not Italic, Font colour: Text 1

Formatted: Font: Not Italic, Font colour: Text 1

Formatted: Font: Not Italic, Font colour: Text 1

Deleted: ¶

Formatted: Font: Not Italic, Font colour: Text 1

Formatted: Font: Not Italic, Font colour: Text 1

Formatted: Font: (Default) +Body (Times New Roman), Font colour: Text 1

Deleted: In this study, we report measurements of ions in surface snow samples collected from several sampling sites (including onshore and offshore sites as well as on the top of a hill) in the high Arctic at Eureka (80°N, 86°W), Nunavut, Canada (Figure 1) during early spring in 2018 and 2019. Surface snow sampling was performed on a daily basis from three layers at depths of 0–0.2 cm, 0.2–0.5 cm, and 0.5–1.5 cm. The low precipitation at Eureka enables us to investigate vertical gradients of salts and ions in the surface layer of snow, and their temporal trend in spring. The data obtained from this study allow us to derive deposition fluxes of bromide and nitrate to surface snow and then investigate the role that snowpack plays as a direct source or sink of reactive bromine and nitrogen

Deleted: ionic measurements and snow salinity results

Deleted: Conclusions and a

Deleted: given

Formatted: Font: (Default) +Body (Times New Roman), Font colour: Text 1

2 Methods and datasets

2.1 Sampling site and local meteorology

265 Eureka is one of the coldest **and driest** places in the Canadian Arctic, with **an** average air temperature of -37°C **and**
precipitation of ~2 mm in March. Surface inversions are frequently observed in winter-spring (~84% of the time), and boundary
layer height is in the range of 400-800 m (Bradley et al., 1992). Due to the local geography and cold weather, sea ice near the
Eureka Weather Station (EWS) is thick (e.g., >1.5 m in **early spring**) **and stable**. Satellite-based sea ice data show that there
are no clearly identifiable leads or open waters within 600-800 km to the north and west of Eureka in early spring (Bognar et
270 al., 2020). Therefore, the impact of local open leads is negligible. In addition, modelling work shows that this area is only
weakly influenced by open ocean sea spray (Rhodes et al., 2017), thus open-ocean sourced bromine influence is **of secondary**
importance (Yang et al., 2020). Under calm weather conditions, the atmospheric boundary layer at Eureka is generally shallow
and stratified. **Thus**, the measurements made at the Polar Environment Atmospheric Research Laboratory (PEARL) Ridge
Laboratory, located on the top of a hill (610 m asl) (Figure 1) are mainly representative of the free tropospheric influence;
275 however, under unstable condition such as cyclones, **the PEARL Ridge Lab** is within the extended boundary layer. In early
spring, the UV index changes dramatically from very low levels at the end of February to higher levels at the end of March
(Figure S1), mainly due to the rapid increase in daily solar elevation angles after polar sunrise on February 21.

Sea water starts to freeze in late September at Eureka, with snow accumulating in the following months (before
December). **Therefore**, snowpack depth does not change much after December, **which** is consistent with the results of an
280 Arctic snow depth survey by Warren et al. (1999). On sea ice, snowpack depth near **EWS** is 10-30 cm, while snow depth inland
varies from only a few cm at convex locations to more than half a meter at concave locations. The type of sea ice in the Slide
Fiord is mainly **first**-year ice. However, a large iceberg was grounded in the fiord since Summer 2018, which **has** significantly
affected 2019 snow salinity and ionic concentrations on sea ice (see **section 3**).

2.2 Snow sampling

285 As can be seen from Figure 1, **several sampling sites were located** between EWS and the PEARL Ridge Lab. The two
major sampling sites at sea level are ~5 km to the west of EWS: one on sea ice (named “Sea ice,” ~100 m offshore) and one
onshore (named “Onshore,” ~50 m inland). There are two additional inland sites (also close to sea level) just behind EWS: the
PEARL “OPAL” (Zero Altitude PEARL Auxiliary Laboratory) site and the “Creek” site which are close together and ~1000
m from the sea ice. **The PEARL Ridge Lab (hereafter, referred to as PEARL)** is another major sampling site, which is ~15 km
290 to the west of EWS on top of a hill. In addition, a few snow samples were **collected from the Eureka airport** (~70 m asl, ~3 km
to the east of EWS) and on the sea ice in front of EWS; however, these samples were **not for ionic analysis** due to local
contamination concerns.

There are two types of surface snow observed at Eureka. One consists of fluffy mobile snow particles, loosely
connected and white in colour. They mainly cover the top 0.5 cm of snow, and are a mixture of recent falling snow, drifting

Formatted: Indent: First line: 0 cm

Deleted: March

Deleted:

Deleted: Precipitation in winter-early spring is very low

Deleted: ; most snowfall at Eureka happens in the autumn, and

Deleted: . This

Deleted: s

Deleted: shore

Deleted: one

Deleted: ed

Deleted: below

Formatted: Indent: First line: 0 cm

Deleted: we have

Deleted: (hereafter, referred to as PEARL)

Deleted: randomly

Deleted: only analysed

Deleted: salinity (not

Deleted: concentrations)

snow, and deposited ice crystals. On slightly raised surfaces that face the predominant winds, there is a wind-crust layer that is light brown in colour and hard to break, representing aged snow. In 2018, these two types of surface snow were deliberately collected for salinity analysis. All samples were collected using their sampling tubes to scratch them from the surface, roughly at a depth of 0.3–0.5 cm.

A small patch of snow (about 1 m by 2 m) was identified at each major sampling site (Sea ice, Onshore and PEARL) for daily snow sampling. In 2019, surface snow was collected using a small shovel with a funnel. Since March 4 daily snow samples were collected from three sub-layers (0-0.2, 0.2-0.5 and 0.5-1.5 cm). To investigate local geographic variation, a few snow samples were randomly collected across a distance of 1-2 m at each sampling site (from two snow layers: 0-0.5 and 0.5-1.5 cm between February 26 and March 3). On March 4 and 5, validation samples were collected during a precipitation event from three snow layers (0-0.2, 0.2-0.5 and 0.5-1.5 cm) at the OPAL, Onshore and Sea ice sites.

In addition to surface snow, airborne snow samples were collected on a daily basis using a mounted tray outside. For example, one tray was mounted outside the OPAL building (~1 m above the ground), and another one was mounted on the roof of PEARL (~1.5 m above the roof and ~11 m above the ground). In windy conditions, most of the samples collected by trays consist of blowing snow particles. In calm conditions, trace samples from deposited ice crystals and growing hoar frost at the edge of the tray can be collected. During precipitation events, freshly falling snow can be sampled. The trays were swept clean daily after snow sampling using a clean brush.

For logistical reasons, the time of day for surface snow sampling could not be fixed. Samples were normally collected either in the morning (local 9:30-11:00 AM local time) or in the afternoon (local 2:30-5:00 PM local time). This enables the samples to be used to investigate the photochemistry effect. Since March 15, 2019, the majority of samples from Sea ice and Onshore was collected in the afternoon.

Column snow samples were collected (at a vertical resolution of 1-3 cm) from a few sampling sites at irregular intervals, but mainly during March 4–12 in both 2018 and 2019. Ionic column results are reported based on seven 2019 columns (three at Sea ice and four at Onshore) and two 2018 columns (one at Sea ice and one at Onshore). Snow density was measured in 2018 at a vertical resolution of 3 cm using a snow cutter and a hanging scale. The snow density result is shown in Figure S2.

2.3 Salinity measurements and ionic analysis

All snow samples collected were transferred to 50 mL polypropylene tubes with screw caps (Corning CentriStar), which prior to field deployment had been rinsed with ultra-high-purity (UHP) water and dried in a class 100 clean laboratory in Cambridge, UK. All tubes with samples were put in a dark bag for temporary storage before moving into ice core boxes for storage and transportation. One set of snow samples were melted in the OPAL laboratory to measure aqueous conductivity using a conductivity meter (SensIon 5, Hach) with a measurement range of 0–200 mScm⁻¹ and a maximum resolution of 0.1 μScm⁻¹ at low conductivities (0–199.9 μScm⁻¹). Conductivity values were converted into psu, approximately equivalent to the

Deleted: or remove from the surface

Deleted: and condensed

Deleted: we deliberately collected

Deleted: snow

Deleted: simply

Deleted: we collected the top 1.5 cm snow layer in three sub-layers: 0–0.2 cm, 0.2–0.5 cm, and 0.5–1.5 cm with the aim of investigating the vertical gradient of salts and key ions such as sodium, bromide, and nitrate. A small patch of snowpack at each sampling site was identified

Deleted: where it was covered by soft fluffy snow in the surface layer. We used a small shovel and a funnel

Deleted: for sampling. Daily surface snow samples were collected from Sea ice, Onshore, and PEARL.

Deleted: . The tray is approximately 1 m above the ground at OPAL, ...

Deleted: , and

Deleted: at PEARL

Deleted: F

Deleted: clearly

Deleted: in specific conditions

Formatted: Normal

Deleted: r

Deleted: in 2018

Deleted: s are

Deleted: Ionic analysis was performed for some column snow samples: three columns from Sea ice and four from Onshore in 2019, and one column from Sea ice and Onshore sites in 2018.

Formatted: Indent: First line: 0 cm

weight of dissolved inorganic matter in grams per kilogram of seawater. Accuracy as stated by the manufacturer is ± 0.001 psu at low salinities (<1 psu). Results are shown in Figure 2.

The 2018 snow samples were shipped frozen back to Cambridge, UK shortly after the campaign, and the 2019 samples were shipped frozen directly to the Canadian Ice Core Lab (CICL) at the University of Alberta. All samples were only melted prior to the ion chromatography (IC) analysis, apart from a small portion of the samples that had been melted for salinity measurements. The 2018 samples were analysed in October 2018 and the 2019 samples were analysed in December 2019. Elevated salinity samples were diluted with UHP water, typically by a factor of 10 or 100 based on the estimated salinity. Due to the presence of fine particulates in the snow samples, all 2019 samples were filtered using Millex-GP Express PES Membrane, Sterile, 33 mm, 0.22 μm filters (Merck Millipore Ltd., Cork, Ireland). The 2018 snow samples were analysed using Thermo Scientific Dionex ICS-4000 ion chromatography systems, with ions of Na^+ , Ca^{2+} , Mg^{2+} , K^+ , NH_4^+ , Cl^- , Br^- , SO_4^{2-} , NO_3^- , F^- , acetate, formate, oxalate and MSA measured. The 2019 samples for IC analysis were run on a Dionex ICS-5000+ with ions of Na^+ , Ca^{2+} , Mg^{2+} , K^+ , Cl^- , Br^- , SO_4^{2-} , NO_3^- , and MSA measured. Anion analysis was performed using an ionPac AS18-Fast-4 μm column, and cation analysis was performed using an IonPac CS12A column. The eluents for ion chromatography were generated with a Dionex hydroxide eluent generation cartridge (EGC) for anion analyses and a Dionex methanesulfonic acid EGC for cation analyses.

Multiple samples (in 2019) were analysed to assess precision. The relative standard deviations of duplicate analyses, limits of detection (LOD, = 3 times standard deviation of filter blank average peak area), and limits of quantification (LOQ, = 10 times standard deviation of filter blank average peak area) for all sequences (~40 samples analysed per sequence) are reported in Table S1. The LOD of Br^- is 0.200 μM with a relative standard deviation of 0.023 μM and the LOD of NO_3^- is 0.484 μM with a relative standard deviation of 0.037 μM . The mean statistical results for the ionic analysis of the 2018 and 2019 samples are given in Tables S2 and S3, respectively. Mean values excluded outliers, defined as values more than 1.5 interquartile ranges above the upper quartile or below the lower quartile. Column means were calculated using values exclusively within the depth range ≥ 1.5 and ≤ 20 cm. Interpolation for vertical profile data consisted of 2-cm bin averages from 1.5-cm depth to the bottom of the snowpack.

2.4 MAX-DOAS measurements and BrO retrieval

Multi-axis Differential Optical Absorption Spectroscopy (MAX-DOAS) measurements of BrO partial columns were performed at the PEARL Ridge Lab. Spectra were recorded in the ultra-violet (UV) using a grating spectrometer (spectral resolution 0.45 nm) with a cooled (200 K) charge-coupled device (CCD) detector at 0.4–0.5 nm resolution. Elevation angles of 30°, 15°, 10°, 5°, 2°, 1°, and -1° were used in the elevation scans, and measurements were only taken with solar elevation above 4°. Differential slant column densities (dSCDs) of BrO and the oxygen dimer (O_4) were retrieved using the DOAS technique with the settings described in Zhao et al. (2016) and Bogner et al. (2020). Reference spectra for the DOAS analysis were temporally interpolated from zenith measurements taken before and after each elevation scan. dSCDs were converted to profiles using a two-step optimal estimation method (Frieß et al. 2011). First, aerosol extinction profiles were retrieved from

Deleted: 16

Deleted: ppb

Deleted: 1.8

Deleted: ppb

Deleted: 30

Deleted: ppb

Deleted: 2.3

Deleted: ppb

Formatted: Indent: First line: 0 cm

Deleted: PEARL

415 O₄ dSCDs, and then the extinction profiles were used as a forward model parameter in the BrO vertical profile retrieval. The retrievals were performed for 0–4 km altitude on a grid with 0.2-km resolution. Due to the elevation of the measurement site, the instrument often measures BrO in the free troposphere, except during strong wind episodes and storms that generate a deep boundary layer (Bognar et al., 2020).

2.5 Complementary datasets

420 There are two sets of local meteorology data used in this work: one from EWS (the archived data are available at Historical Data - Climate - Environment and Climate Change Canada (ECCC) (weather.gc.ca)) and one from the PEARL Ridge Lab. In addition to the continuous datasets such as pressure, temperature and wind speeds, archived hourly data were used to derive daily weather conditions, such as blowing snow event, fog, ice crystal and trace precipitation. In addition, ECMWF 6-hourly interim (ERA-interim) meteorological data were used to explore large-scale weather conditions. Surface ozone measurements were made by a TEI 49i ozone analyzer deployed at OPAL (Bognar et al., 2020). Hourly mean surface ozone data are available since the instrument was installed in late 2016. The UV index measured during the campaign period in 2018 and 2019 is shown in Figure S1 (and data from the ECCC Brewer spectrophotometer available within Fioletov et al. (2005)). In addition, NOAA back-trajectory output from the Hybrid Single-Particle Lagrangian Integrated Trajectory (HYSPLIT) model (Stein et al., 2015; Rolph et al. 2017) is used for diagnosing the air-mass history of selected events.

3 Results

430 3.1 Snow salinities

Figure 2 shows snow salinity distributions over sea ice (purple) and inland (orange) from all measurements, except for the tray samples. Inland snow has a dual peak distribution with the first and second peaks appearing at 0.001–0.002 psu and 0.01–0.04 psu, respectively. On sea ice, snow has a triple peak distribution, with the first and second peaks overlapping with the inland peaks, indicating similar origins. The third peak at 0.2–0.4 psu clearly reflects sea water influence.

435 Table 1 shows mean and median snow salinities (psu) in tray samples, at inland and sea ice sites, as well as in two snow types: soft fluffy snow and aged hard snow. Tray samples have the lowest mean value of 0.0070±0.0088 psu (N=14) which is lower than the inland mean (0.0290±0.113 psu, N=211) and the Sea ice mean (0.296±1.640 psu, N=146) by ~4 times and ~40 times, respectively. The lowest tray sample salinity of 0.00178 psu corresponded to a falling snow event on March 6, 2019 in calm weather conditions, and is close to the first peak salinity obtained in the surface layer snow, indicating that this first peak of surface snow salinity (0.001–0.002 psu) is likely due to the precipitation dilution effect (due to less salt in falling snow). The tray samples median of 0.0035 psu is roughly one-third and one-tenth of the inland and sea ice samples median values (0.0115 and 0.0375 psu, respectively), but close to their second salinity peak, which is in line with the fact that the majority of tray samples are wind-blown particles.

Formatted: Indent: First line: 0 cm

Deleted:

Deleted: (ERA-interim data)

Deleted: , with

Formatted: Indent: First line: 0 cm

Deleted: apart from

Deleted: results

Deleted: t can be seen that i

Deleted: contamination

Deleted: surface snow (<0.5 cm) salinities at the PEARL, Onshore, and Sea ice sites for

Deleted:

Deleted: daily mean

Deleted: ,

Deleted: obtained on March 6, 2019,

Deleted: s

Deleted: which

Deleted: es that

Deleted: e

Deleted: at

Deleted: attributed

Deleted: corresponding

Deleted: in Figure 1)

465 The salinity difference between the two types of surface snow is significant. For example, at PEARL, the mean salinity of the soft fluffy snow is 0.0039 ± 0.0029 psu ($N=7$), which is ~4 times less than that of the hard aged snow (0.0175 ± 0.0046 psu ($N=2$)). At the Onshore site, the difference is ~11-fold (0.00327 ± 0.00273 psu ($N=73$) vs. 0.0364 ± 0.0112 psu ($N=20$)). At the Sea ice site, the difference increases to ~23-fold (0.0105 ± 0.0104 psu ($N=44$) vs. 0.2372 ± 0.3836 psu ($N=17$)). Comparing these values with the snow salinity distributions in Figure 2, the soft fluffy snow salinity is seen to overlap well with the first peak, and the aged snow salinity overlaps well with the second peak. This indicates that fresh falling snow and the subsequent salt accumulation effect (due to water vapour loss by sublimation) are responsible for the first and the second salinity peak, respectively. The third salinity peak ($0.2\text{--}0.4$ psu) on sea ice is likely due to the sea water effect (due to upward migration of brine), which is also observed in Weddell Sea surface snow (Figure 16 in Frey et al., 2020). In addition, the second snow salinity peak on sea ice ($0.02\text{--}0.04$ psu) is consistent with Weddell Sea snow salinity on multi-year sea ice, which indicates that the salts on multi-year ice surface layers could be a result of the accumulation effect for deposited salts following the sublimation of water vapour rather than a direct sea water impact from the bottom (via the so-called wicking migration effect). However, the Weddell Sea snow salinity does not resolve the first salinity peak at $0.001\text{--}0.002$ psu observed in Eureka, which could be due to the coarse vertical sampling resolution (2-3 cm) applied in their sampling.

480 Figure 3 shows surface snow salinity vertical profiles from the first layer (0-0.2 cm) to the third layer (0.5-1.5 cm), and Figure S3 shows column salinity profiles. Note that tray samples salinity is shown in the upper panel of Figure 3. Salinity in the third layer is ~8 and ~15 times that of the first layer at the Onshore site and the Sea ice site, respectively. The larger vertical gradient seen on sea ice is likely due to sea water influence from below. At PEARL, the vertical trend is not clear, perhaps due to the very thin soft fluffy layer (only a few mm) and the thick crust layer observed at the top of the hill where winds are stronger. Generally, tray samples salinity at the OPAL site is on average larger than that at the PEARL site; a similar result is also reflected in major ions, such as $[\text{Cl}^-]$ and $[\text{NO}_3^-]$ (Figure 4 and S4). The relatively low salinity at the PEARL site is likely attributed to the higher geographic altitude (~600 m) and the higher height of the mounted tray above the ground (e.g., ~11 m at PEARL versus ~1 m at OPAL).

The column salinity profiles in Figure S3 are predominantly 2018 data. Snow salinities at all inland sites do not vary much with distance from the surface. PEARL has the lowest column mean salinity (0.0023 ± 0.0019 psu). Onshore has >10 times the salinity (0.036 ± 0.034 psu). The highest column mean snow salinity was observed on sea ice in 2018, with a mean value (top 20 cm) of 1.673 ± 2.09 psu, the maximum salinity of 18.73 psu was measured at the sea ice interface sample. It is interesting to note that the 2019 column mean on sea ice (top 20 cm) is very low (0.085 ± 0.026 psu), about 20 times lower than the 2018 value, which is likely due to the dilution effect from the large iceberg grounded near Eureka.

495 The snow depth at the 2018 Sea ice sampling site is in a range of 24-28 cm, a similar snow depth range (25-29 cm) at the 2019 Sea ice site was measured, this is partly because we deliberately chose a similar snow depth for sampling. In addition, the measured precipitation amount between October 2017 and March 2018 is 20 mm, and the amount between October 2018 and March 2019 is 19.4 mm, implying a similar snow depth on sea ice. Therefore, the significant difference in column snow salinity between these two years cannot be due to snowpack depth difference, rather the difference could be due

Deleted: in snow salinity ...between the two types of surface snow is significant. For example, at PEARL, the mean salinity of the soft fluffy snow is 0.0039 ± 0.0029 psu ($N=7$), which is ~4 times less than that of the hard aged snow (0.0175 ± 0.0046 psu ($N=2$)). At the Onshore site, the difference is ~11-fold (0.00327 ± 0.00273 psu ($N=73$) vs. 0.0364 ± 0.0112 psu ($N=20$)). At the Sea ice site, the difference increases to ~23-fold (0.0105 ± 0.0104 psu ($N=44$) vs. 0.2372 ± 0.3836 psu ($N=17$)). C If we compare these values with the snow salinity distributions in Figure 2, we find that the soft fluffy snow salinity is seen to overlap well with the first peak, and the aged snow salinity overlaps well with the second peak. These results indicate that fresh falling snow and the subsequent salt accumulation/condensation effect (due to water vapour loss by sublimation) are responsible for the first and the second two salinity peaks, respectively, in surface snow. The third salinity peak ($0.2\text{--}0.4$ psu) on sea ice is likely due to the sea water effect (due to upward migration of brine) contamination, which is also observed in the Weddell Sea surface snow (Figure 16 in Frey et al., 2020). In addition, the second snow salinity peak on Eureka sea ice (at $0.02\text{--}0.04$ psu) is consistent with the Weddell Sea snow salinity on multi-year sea ice, which indicates that the salts on multi-year ice surface layers could be a result of the condensation accumulation effect for deposited precipitated salts following the sublimation of water vapour rather than a direct sea water impact water contamination from the bottom (via the so-called wicking migration effect). However, the Weddell Sea snow salinity does not resolve the first salinity peak (at $0.001\text{--}0.002$ psu) (... [3])

Deleted: It can be seen that salinity in the third layer (~1 cm) is ~8 and ~15 times that of the first layer at the Onshore site and the Sea ice site, respectively. The larger vertical gradient seen on sea ice is likely due to sea water influence/contamination from below. At PEARL, the vertical trend is not clear, perhaps due to the very thin soft fluffy layer (only a few mm) and the thick crust layer observed at the top of the hill where winds are stronger. Generally, tray samples salinity at the OPAL site is on average larger than that at the PEARL site; we see very similar results. This is also reflected in all major cations and major anions, such as $[\text{Cl}^-]$ and $[\text{NO}_3^-]$ (Figure 4 and S4). The relatively low salinity at the PEARL site is likely attributed to two factors: the higher geographic altitude (~600 m) and the higher of the mounted tray above the ground (e.g., ~11 m at PEARL versus ~1 m at OPAL). Therefore, there are less impacts from the sea-ice sourced salts as well as from blowing/drifting snow. (... [4])

Deleted: and a maximum salinity of 18.73 psu was measured at the sea ice interface sample/bottom of the snowpack. It is interesting to note that the 2019 column mean salinity on sea ice (top 20 cm) is very low (0.085 ± 0.026 psu), about 20 times lower than the 2018 value, which is likely due to clearly attributed to (... [5])

Formatted (... [6])

to the saline supply at the sea ice interface. For example, the 2019 bottom snow (1–3 cm above the sea ice interface) salinity is smaller than the 2018 bottom snow salinity by more than an order of magnitude (Figure S3), indicating a possible dilution effect in 2019 from the iceberg grounded near EWS.

3.2 Ion concentrations

Figure 4 shows vertical profiles of 2019 snow ions $[\text{Na}^+]$, $[\text{Cl}^-]$, $[\text{NO}_3^-]$, $[\text{Br}^-]$, non-sea-salt bromide (noted as $\text{nss}[\text{Br}^-] = [\text{Br}^-]_{\text{obs}} - 0.0018 \times [\text{Na}^+]_{\text{obs}}$), non-sea-salt $[\text{SO}_4^{2-}]$ ($\text{nss}[\text{SO}_4^{2-}] = [\text{SO}_4^{2-}]_{\text{obs}} - 0.601 \times [\text{Na}^+]_{\text{obs}}$) and enrichment factors of Br^- , Cl^- and SO_4^{2-} . Non-sea-salt values are calculated with the aim of removing salt effects on the concentration of bromine and sulphate, which assists data interpretation particularly in comparisons between offshore and onshore sites as well as from different snow depths. The enrichment factor is calculated following the equation of $\text{EF}_X = ([X]/[\text{Na}]_{\text{obs}})/([X]/[\text{Na}]_{\text{seawater}})$, where $[X]/[\text{Na}]_{\text{obs}}$ represents the ratio of ion X to sodium in a sample, and $[X]/[\text{Na}]_{\text{seawater}}$ is the ratio in standard sea water (Wilson, 1975). If $\text{EF}_Y > 1.0$, ion X is enriched and if < 1.0 it is depleted. To highlight the surface snow results, a lognormal Y-axis is applied. Tray sample results are plotted in the top panel of each plot. Figure S4 shows the remaining profiles, including $[\text{Ca}^{2+}]$, $[\text{Mg}^{2+}]$, $[\text{K}^+]$, $[\text{SO}_4^{2-}]$ and enrichment of $[\text{Ca}^{2+}]$, $[\text{Mg}^{2+}]$ and $[\text{K}^+]$.

As can be seen from Figure 4(a) and data in Table S3, the tray sample mean $[\text{Na}^+]$ ($19.86 \pm 9.78 \mu\text{M}$) at PEARL is 1.7 times that of the first layer mean ($11.80 \pm 5.20 \mu\text{M}$), and at OPAL, and the tray sample mean $[\text{Na}^+]$ ($36.99 \pm 23.25 \mu\text{M}$) is 1.2 times that of the first layer mean ($31.33 \pm 34.37 \mu\text{M}$). For $[\text{Cl}^-]$ (Figure 4(b)), the factor is 1.5 and 1.3 times at PEARL and OPAL, respectively. The enhancement of tray sample salts is likely due to the accumulation effect following the water loss via sublimation processes. However, this accumulation effect cannot explain the even larger enhancement in $[\text{NO}_3^-]$ and $\text{nss}[\text{Br}^-]$ seen in Figure 4(c) and (e), respectively. For instance, at OPAL, the tray sample mean $[\text{NO}_3^-]$ ($3.41 \pm 2.05 \mu\text{M}$) is 3.6 times the first layer mean ($0.96 \pm 0.21 \mu\text{M}$), and at PEARL, the tray sample $[\text{NO}_3^-]$ ($2.23 \pm 1.37 \mu\text{M}$) is 1.8 times the first layer mean ($1.24 \pm 0.50 \mu\text{M}$). Eureka snow $[\text{NO}_3^-]$ is close to fresh snow nitrate of $2.5 \mu\text{M}$ at Alert in winter (McDonald et al., 2012), but smaller than snow nitrate of $\sim 7 \mu\text{M}$ at Barrow, Alaska (Krnavek et al., 2012).

For $\text{nss}[\text{Br}^-]$, at OPAL, the tray sample mean ($0.24 \pm 0.19 \mu\text{M}$) is 2.4 times the first layer mean ($0.10 \pm 0.07 \mu\text{M}$). This indicates that airborne snow particles may uptake more gaseous nitric acid and soluble bromine species from the air than snow on the ground. The deposition rate of chemical compounds to the ground is controlled by a series of transport steps - aerodynamic, sub-layer of the boundary and surface resistance (Wu et al., 1992).

Similar to snow salinity profiles (Figure 3), 2019 surface snow $[\text{Na}^+]$ (and $[\text{Cl}^-]$) increases significantly from the first layer to the third layer, e.g., by about 20-fold at Onshore, 30-fold at Sea ice, and 8-fold at PEARL (Figure 4(a) and (b)). The lowest sodium concentrations in the first layer are likely due to the precipitation dilution effect (due to less salt in falling snow particles). $[\text{Br}^-]$ (Figure 4(d)) and $[\text{SO}_4^{2-}]$ (Figure S4(d)) show a similar vertical gradient, however $\text{nss}[\text{Br}^-]$ (Figure 4(e)) and $\text{nss}[\text{SO}_4^{2-}]$ (Figure 4(f)) do not show such an increasing trend, indicating the surface layer enhancement of the salts is largely due to the accumulation effect. Moreover, the first layer $\text{nss}[\text{Br}^-]$ is generally higher than the second layer (OPAL is an

Formatted

[7]

Deleted: and vertical profiles

Formatted: Indent: First line: 0 cm

Deleted: 625... $[\text{Na}^+]_{\text{obs}}$), non-sea-salt $[\text{SO}_4^{2-}]$ ($\text{nss}[\text{SO}_4^{2-}] = [\text{SO}_4^{2-}]_{\text{obs}} - 0.601 \times 251...[\text{Na}^+]_{\text{obs}}$) and enrichment factors of Br^- , Cl^- and SO_4^{2-} . Non-sea-salt values are calculated with the aim of removing salt effects on the concentration of bromine and sulphate, which assists data interpretation particularly in comparisons between offshore and onshore sites as well as from different snow depths. The enrichment factor is calculated following the equation of $\text{EF}_X = ([X]/[\text{Na}]_{\text{obs}})/([X]/[\text{Na}]_{\text{seawater}})$, where $[X]/[\text{Na}]_{\text{obs}}$ represents the mass

[8]

Deleted: on average...1.7 and 1.2 times of...times that that ...f the first layer mean result...($11.80 \pm 5.20 \mu\text{M}$), and at PEARL and OPAL, and the tray sample mean $[\text{Na}^+]$ ($36.99 \pm 23.25 \mu\text{M}$) is 1.2 times that of the first layer mean ($31.33 \pm 34.37 \mu\text{M}$) respectively... For $[\text{Cl}^-]$ (Figure 4(b)), the...factor is 1.5 and 1.3 times at PEARL and OPAL, respectively. The enhancement of tray sample salts is likely due to the accumulation effect following the water loss via sublimation processes. However, this condensation ...accumulation effect cannot explain the even larger enhancement in $[\text{NO}_3^-]$ and $\text{nss}[\text{Br}^-]$ seen in Figure 4(c) and (e), respectively. For instance, at OPAL, the tray sample mean mean ... $[\text{NO}_3^-]$ ($3.41 \pm 2.05 \mu\text{M}$) at OPAL is 3.6 times the first layer mean ($0.96 \pm 0.21 \mu\text{M}$),...and and 2.1 times times

[9]

Deleted: Tray sample ... $\text{nss}[\text{Br}^-]$, at OPAL, the tray sample mean ($0.24 \pm 0.19 \mu\text{M}$) is 2.4 times the first layer mean ($0.10 \pm 0.07 \mu\text{M}$) is 2.6 times the first layer mean... This indicates that airborne snow particles may uptake more gaseous nitric acid and soluble bromine species from the air than snow on the ground. The deposition rate of chemical compounds to the ground is controlled by a series of transport steps - aerodynamic, sub-layer of the boundary and surface resistance (Wu et al., 1992).

[10]

Deleted: in ...figure 3), 2019 surface snow $[\text{Na}^+]$ (and $[\text{Cl}^-]$) increases significantly from the first layer to the third layer, e.g., by about 20-fold at Onshore, 30-fold at Sea ice, and 8-fold at PEARL (in Figure 4(a) and (b)). The lowest sodium concentrations in the first layer are likely due to the precipitation dilution effect (due to less salt in falling snow particles). $[\text{Br}^-]$ (Figure 4(d)) and $[\text{SO}_4^{2-}]$ (in ...figure S4(d...)) and (i) ...both ...how a similar large ...ertical gradient, however $\text{nss}[\text{Br}^-]$ (Figure 4(e)) and $\text{nss}[\text{SO}_4^{2-}]$ (Figure 4(f)) do not show such an increasing trend (Figure 4(d) and (f))...indicating the the...surface ...ayerions' ...enhancement of the salts is largely due to the accumulation effect associated with the water condensation effect... Moreover

[11]

exception), indicating the deposited bromide is from the air. A similar result is also seen in the bromine enhancement factor (Figure 4(g)). Regarding the OPAL exception, this is mainly due to the two days when samples were collected during and shortly after the precipitation event (on March 4 and 5, 2019).

The first layer [Br⁻] (Figure 4(d)) at Sea ice ($0.40 \pm 0.20 \mu\text{M}$ (N=40)) and Onshore ($0.40 \pm 0.17 \mu\text{M}$ (N=38)) are almost the same, however, in the second and third layers, [Br⁻] at Sea ice ($3.03 \pm 4.14 \mu\text{M}$ (N=51)) are significantly higher than that at Onshore ($0.38 \pm 0.22 \mu\text{M}$ (N=58)) by more than an order of magnitude. When the sea water contribution is removed, the nss[Br⁻] concentration (Figure 4(e)) are not significantly different from each other ($0.24 \pm 0.19 \mu\text{M}$ (N=32) vs $0.21 \pm 0.17 \mu\text{M}$ (N=50)), strongly indicating similar atmospheric influence at the two sites.

The column mean nss[Br⁻] values at Sea ice is $0.22 \pm 0.18 \mu\text{M}$ (N=17) and at Onshore is $0.30 \pm 0.31 \mu\text{M}$ (N=89). Both values are positive, indicating a net sink of atmospheric bromine prior to the measurements. However, at PEARL, the positive nss[Br⁻] was only observed in the tray samples ($0.28 \pm 0.20 \mu\text{M}$ (N=21)) and the first snow layer ($0.28 \pm 0.12 \mu\text{M}$ (N=31)). The column mean nss[Br⁻] at PEARL is $-0.05 \pm 0.08 \mu\text{M}$ (N=34) (Table S3), indicating snowpack at the top of the hill is bromide depleted. Due to the lack of temporal variation information, the timing of the bromine depletion cannot be determined (e.g., before or after the precipitation), nor whether it occurred soon after sunrise on February 21. The 2018 snow samples at PEARL do not show clear bromine depletion (Figure S5(d)), as the column mean nss[Br⁻] is slightly positive ($0.01 \pm 0.01 \mu\text{M}$ (N=8)) (Table S2). Snow bromide enrichments were reported at other Arctic sea level locations, e.g. in the vicinity of Barrow, Alaska (Simpson et al., 2005), at other Canadian Arctic Archipelago sites (Xu et al., 2016) and on first-year sea ice (Peterson et al., 2019). However, at elevated sites in Svalbard (i.e. a few hundred meters above sea level), both bromide enrichment (Spolaor et al., 2013) and depletion (Jacobi et al., 2019) were measured.

Figure 4(g-i) shows enrichment factors for Br⁻, Cl⁻ and SO₄²⁻ in 2019 snow samples. All these anions are significantly enriched in surface layers and in tray samples, indicating important airborne sources. In particular, the calculated EF_{Br⁻} values in the tray samples and the first and second layers are larger than 10. Due to lack of simultaneous measurements of soluble inorganic bromine and filter aerosols, the dominant form of deposited bromide is unknown. Figure S4 shows that cations [Ca²⁺], [Mg²⁺] and [K⁺] are also enriched, especially in the bottom part at inland sites. In particular, [Ca²⁺] enrichment factors at Onshore and PEARL sites are larger than 10, indicating strong terrestrial dust influence during the late autumn when the land is not completely covered by snow.

Like snow salinity results, major snow ions on sea ice also have a large perturbation from 2018 to 2019. For example, the 2018 column mean snow sodium on sea ice (Tables S2 and S3) is 3-4 times that of the 2019 column mean, which is consistent with the relatively low snow salinity observed in 2019 due to the presence of a large iceberg grounded in the valley.

In 2018, the column mean (1.5–20 cm) bromide on sea ice is $10.74 \pm 8.52 \mu\text{M}$ (N=80) (Table S2), while in 2019, it is only $6.47 \pm 5.36 \mu\text{M}$ (N=66) (Table S3). The lower 2019 snow bromide on sea ice is likely attributed to the freshwater dilution by the iceberg. However, they are both much smaller than mean $30.6 \mu\text{M}$ on thick first year ice (FYI) and $92.5 \mu\text{M}$ on thin FYI at Barrow, Alaska (Krnaev et al., 2012). Yet, surface snow bromide does not follow the column mean pattern; instead, the 2018

Deleted: A similar level of nss[Br⁻] concentration (Figure 4(e)) (of 20–30 ppb) is found at Sea ice and Onshore...re not significantly different from each other ($0.24 \pm 0.19 \mu\text{M}$ (N=32) vs $0.21 \pm 0.17 \mu\text{M}$ (N=50)), strongly indicating they are...imilarly affected by...atmospheric bromine...influence at the two sitespecies (... [12])

Deleted: positive...column mean nss[Br⁻] values at Sea ice is $0.22 \pm 0.18 \mu\text{M}$ (N=17) and at Onshore is $0.30 \pm 0.31 \mu\text{M}$ (N=89). Both values are positive,also...indicating...a that surface snow is a...net sink of atmospheric bromine prior to the measurements. However, aA... PEARL, the positive nss[Br⁻] was is...nly observed in the tray samples ($0.28 \pm 0.20 \mu\text{M}$ (N=21)) and in...he first snow layer tray and top 0.5 cm snow (with values of ...22.7, ...28±0.12 μM (N=31)). 21.5 and 0.3 ppb in the tray samples, first and second layers, layers, respectively...he).... column meanNegative...nss[Br⁻] at PEARL is $-0.05 \pm 0.08 \mu\text{M}$ (N=34)obtained in a deep layer, e.g., with a column mean of -3.5 ppb...(Table S3), indicating snowpack at the top of the hill is bromide depleted. DHowever, d...e to the lack of temporal variation information, the timing ofw...the bromine depletion cannot be determined when this bromine depletion occurs...(e.g., before or after the precipitation), nor more precisely whether itthe depletion...occurred ed...oonrecently...after sunrise on February 21. The However, ...018 snow samples at 2018 snow at PEARL does...not show clear such...romine depletion (Figure S5(d)), as ; instead ...he it shows a small positive...olumn mean nss[Br⁻] is slightly positive (of ...01±0.01 μM (N=8)) (9 ppb (...able S2), which is consistent with the 2018 nss[Br⁻] profile shown in Figure S5(d)... Snow (... [13])

Deleted: the...richment factors for Br⁻, Cl⁻ and SO₄²⁻ in 2019 snow samples. Alt can be seen that...l these anionthey...are significantly enriched in the...urface layers and in tray samples, indicating important airborne sources. In particular, the calculated we find...F_{Br⁻} > 10...values in...he tray samples and and (... [14])

Deleted: at the Onshore and Sea ice sites...re larger than 10. Similar results were reported at an inland Arctic site (Simpson et al., 2005) and on first-year sea ice (Peterson et al., 2019). Due to lack ofSince we do not have...simultaneous measurements of soluble inorganic bromine andor...filter aerosols, we...cannot derive robust conclusions regarding...heir...dominant form of deposit...deposited bromide is unknownnion to the surface (... [16])

Formatted (... [15])

Deleted: 2018 vertical profiles (e.g., [Na⁺], [NO₃⁻], [Br⁻] and nss[Br⁻]) are shown in Figure S5. ...like snow salinity results, major snow ions on sea ice also have a large perturbation from 2018 to 2019. For example, the 2018 column mean snow sodium on sea ice (Tables S2 and S3) is 3-4 times that of the 2019 column mean, which is consistent with the relatively low snow salinity observed in 2019 due to the presence of a large iceberg grounded in the valley. Comparing to 2019 snow profiles, 2018 column sodium and bromide and bromide are much higher. For instance,...n 2018, the column mean (1.5–20 cm) bromide concentration ...n sea ice is $10.74 \pm 8.52 \mu\text{M}$ (N=80)858.4 ppb...in 2018 ...Table S2), while and ...n 2019, it is only $6.47 \pm 5.36 \mu\text{M}$ (N=66)576.7 ppb in 2019...(Table S3). The lower 2019 snow bromide in snowpack ...n sea ice is likely attributed due ...o the fresh...ater dilution effect ...y the grounded...iceberg. However, they are both much smaller than mean $30.6 \mu\text{M}$ on thick first year ice (FYI) and $92.5 \mu\text{M}$ on thin FYI at Barrow, Alaska (Krnaev et al., 2012). However...et, surface snow bromide does not follow the column means (... [17])

1010 surface snow bromide is even lower than that of the 2019 values. For example, bromide in the top 0.5 cm snow layer in 2018
is 0.23±0.10 μM (N=36), which is significantly lower than the 2019 value of 0.40±0.20 μM (N=40) in the 0–0.2 cm layer, and
the value of 3.03±4.14 μM (N=51) in the 0.2–0.5 cm layer. The lower 2018 surface snow bromide loading is likely related to
the extremely low BrO partial columns measured in March at Eureka by MAX-DOAS (Bognar et al., 2020), during which
unusually calm weather, low aerosol optical depth (AOD) and coarse-mode aerosol (likely SSA) concentrations were observed
1015 (see Section 3.3 and Figure 5 below for more details). These results indicate that top layer snow bromide is largely controlled
by atmospheric processes rather than by the underlying snowpack. This conclusion is also consistent with previous findings
that bromide concentrations at low salinities are dominated by atmospheric exchange (Krnavek et al., 2012). Interestingly,
surface layer nitrate concentrations between 2018 and 2019 are not significantly different, e.g. the 2018 top 0.5 cm snow nitrate
on sea ice is 3.13±1.00 μM (N=33), comparable to the 2019 first layer nitrate on sea ice of 3.46±1.55 μM (N=37).

1020 **3.3 Geographic heterogeneity of snow bromide and nitrate**

Using the samples collected between February 26 and March 3, 2019, local geographic differences (across distances
of 1–2 m) of snow sodium, nitrate, and bromide were assessed at each sampling site (Table S4). For bromide, the smallest
heterogeneity is found at inland sites, particularly at PEARL, with the largest heterogeneity at Sea ice. For instance, top 0.5
cm snow [Br⁻] is 0.28±0.14 μM (nss[Br⁻]=0.05±0.07 μM) at PEARL, compared to [Br⁻] of 0.30±0.13 μM (nss[Br⁻]=0.25±0.13
1025 μM) at Onshore and 0.67±0.74 μM (nss[Br⁻]=0.43±0.48 μM) at Sea ice. Deeper layer snow bromide heterogeneity is generally
larger than the upper layer (with an exception at PEARL), which is likely due to the large uncertainty of accumulated bromide.
The smallest standard deviation of nss[Br⁻] is at PEARL (0.075 μM), with the medium 0.21 μM at Onshore, and the largest
0.73 μM at Sea ice. Nitrate in the top 0.5 cm and the 0.5–1.5 cm layer are not significantly different, indicating they are
independent of snow salts. The top 1.5 cm mean [NO₃⁻] at Sea ice is 3.62±1.34 μM, at Onshore is 2.95±0.86 μM, and at
1030 PEARL is 2.03±0.43 μM. As with bromide, PEARL has the smallest mean value and uncertainty. Note that the source of
uncertainty is not solely from geographic variation; other factors such as temporal variations (see section 3.4) as well as the
bias in depth estimation all contribute to the uncertainty.

On March 4 and 5, 2019, snow samples were collected during a precipitation event (Figure 6(a)), from three sub-
layers (0–0.2, 0.2–0.5, and 0.5–1.5 cm) at the 0PAL, Onshore and Sea ice sites (also in Table S4). The 0.2 mm precipitation
1035 meant a ~1 cm snowfall on the surface, which explains the low concentrations and low variability of [Br⁻] at Onshore.
Moreover, the top 0.2 cm snow [Br⁻] (0.12±0.00 μM) at Onshore is very close to that for 0PAL (~5 km away) (0.14±0.02 μM),
indicating they are under the same atmospheric influence. However, at Sea ice the first layer [Br⁻] (0.38±0.04 μM) is ~3 times
of that of the onshore value, highlighting the underlying sea ice effect. The sea ice effect is more significant in the second (0.2–
0.5 cm) layer, where high [Br⁻] (5.73±5.57 μM) was measured. However, the corresponding nss[Br⁻] (0.01±0.04 μM) in the
1040 second layer at Sea ice is very low, and close to the nss[Br⁻] (0.01±0.00 μM) at 0PAL also indicating the same atmospheric
influence. For nitrate, the precipitation effect is less significant, the sea level mean [NO₃⁻] (3.28±1.10 μM) is very close to the

Deleted: mean

Deleted: only

Deleted: 18.2 ppb (Table S2)

Deleted: surface bromide with mean

Deleted: s

Deleted: 32.0

Deleted: 242.3 ppb

Deleted: 0–0.2 cm and

Deleted: s, respectively (Table S3)

Deleted: 2018

Deleted: .

Deleted: ¶

Deleted: Time series of surface

Deleted: [NO₃⁻] and [Br⁻]

Formatted: Subscript

Sea ice mean obtained during February 26–March 3. The sea level nitrate is also higher than the hilltop mean of 2.03 ± 0.43 μM , indicating a vertical gradient of atmospheric nitrogen oxide between the boundary layer and the free troposphere.

3.4 Time series of surface snow $[\text{Br}^-]$ and $[\text{NO}_3^-]$

Figure 5 shows the 2018 time series of local meteorology (a–b), surface ozone at OPAL and 0–4 km MAX-DOAS BrO partial column (c), and top 0.5 cm snow $[\text{Na}^+]$ (d), $[\text{NO}_3^-]$ (e), $[\text{Br}^-]$ (f), and nss $[\text{Br}^-]$ (g) at the Sea ice, Onshore, and PEARL sites. Figure 6 shows the 2019 time series of meteorology (a–b), surface ozone at OPAL and 0–4 km BrO partial column (c), and tray samples $[\text{Na}^+]$ (d), $[\text{NO}_3^-]$ (e), $[\text{Br}^-]$ (f), and nss $[\text{Br}^-]$ (g) at the OPAL and PEARL sites. Figure 7 shows the 2019 time series of surface snow nitrate (a–c) and non-sea-salt bromide (d–f) in three sub-layers: 0–0.2 cm, 0.2–0.5 cm, and 0.5–1.5 cm.

Extremely calm conditions were observed in March 2018, with wind speeds $< 5 \text{ m s}^{-1}$ most days. Figure 5(a) shows strong inversions between EWS and PEARL in March, e.g., the temperature difference between these two heights can be $> 10^\circ\text{C}$. Blowing snow events were only recorded on March 3 and 5, 2018 which is unusually infrequent. On the contrary, March 2019 was very windy, with blowing snow events recorded on March 1, 2, 4, 12–14, 18, 19, 23–25, and 28, 2019, approximately 40% of the days.

March 2018 had a very low background BrO partial column of $\sim 1 \times 10^{13}$ molecules cm^{-2} or less (Figure 5(c)), while March 2019 had a background BrO partial column almost two times the 2018 level (Figure 6(c)). Accordingly, surface ozone concentrations in March 2018 were generally higher than that in March 2019. For example, the background surface ozone in March 2018 was mainly around 30 ppbv, and in March 2019, the background surface ozone is mainly below 20 ppbv indicating accelerated ozone losses due to enhanced BrO loading in the air. In addition, March BrO partial columns show significant decreasing trends with a linear slope of $(-7.21 \pm 0.38) \times 10^{11}$ molecules $\text{cm}^{-2} \text{ d}^{-1}$ ($R=0.60$) in 2018 and of $(-3.03 \pm 0.05) \times 10^{11}$ molecules $\text{cm}^{-2} \text{ d}^{-1}$ ($R=0.64$) in 2019, indicating that a lower tropospheric air mass over Eureka is losing bromine.

Here we focus on the 2019 datasets (Figures 6 and 7) for further discussion. The meteorology record indicates that fog events were recorded on March 7, 15, 17–20, 22, 23 and 28, 2019. Some of these events were accompanied by precipitation (daily amount $\geq 0.2 \text{ mm}$, as shown in Figure 6(b)). Precipitation events were recorded on March 5, 6, 7, 10, 15, 19, 27, 28, 30, and 31 with a total monthly precipitation of 2 mm. On average, precipitation occurs at a frequency of every ~ 3 days, which is consistent with the average Arctic snow age used in Huang and Jeaglé (2012). In addition, if trace precipitation events are included, occurring on March 1, 2, 4, 5, 6, 10–13, 15, 18–21, 24, and 28 ($\sim 50\%$ of the time), then the average precipitation frequency is reduced to every 1.5 days.

Tray sample sodium has a large day-to-day variability (Figure 6(d)). The low sodium concentrations measured on March 6 and 11, 2019 are likely due to the precipitation dilution effects, and the high sodium concentrations measured on March 4–5, 13–14, and 24 are likely related to the windy conditions. In general, OPAL tray sample sodium does not show a clear increasing trend with time, though this is evident at PEARL.

Formatted: Indent: First line: 0 cm

Deleted: temperature and daily precipitation in (a), air pressure and wind speeds in (b)... 1-hourly ... surface ozone at OPAL and 0–4 km MAX-DOAS BrO partial column (c), and top 0.5 cm snow $[\text{Na}^+]$ (d), $[\text{NO}_3^-]$ (e), $[\text{Br}^-]$ (f), and nss $[\text{Br}^-]$ (g) at the Sea ice, Onshore, and PEARL sites. Figure 6 shows the 2019 time series of meteorology at the EWS ... [18]

Deleted: We observe e... extremely calm conditions were observed with wind speeds $< 5 \text{ m s}^{-1}$ most days ... n March 2018, with wind speeds $< 5 \text{ m s}^{-1}$ most days. Figure 5(a) shows strong inversions between EWS and PEARL in March, (...g., the temperature difference between these two heights can be $> 10^\circ\text{C}$, Figure 5... [19]

Deleted: s... a very low background BrO partial columns... of $\sim 1 \times 10^{13}$ molecules cm^{-2} or less (Figure 5(c)), while March 2019 had... a background BrO partial column almost two times the 2018 level (Figure 6(c)). Accordingly, surface ozone concentrations in March 2018 were... generally higher than that in March 2019. For example, ... background surface ozone in March 2018 was... mainly around 30 ppbv, and while ... n in ... arch 2019, the background surface ozone is mainly below 20 ppbv indicating accelerated ozone losses due to enhanced BrO loading in the air. In addition, March BrO partial columns show significant decreasing trends with a linear slope of $(-7.21 \pm 0.38) \times 10^{11}$ molecules $\text{cm}^{-2} \text{ d}^{-1}$ ($R=0.60$) in 2018 and of $(-3.03 \pm 0.05) \times 10^{11}$ molecules $\text{cm}^{-2} \text{ d}^{-1}$ ($R=0.64$) in 2019, indicating that a lower tropospheric air mass over Eureka is losing bromine. ... [20]

Deleted: By examining t... meteorology record we find... indicates that fog events were... recorded on March 7, 15, 17–20, 22, 23 and 28, 2019. Some of these events were... accompanied by precipitation (daily amount $\geq 0.2 \text{ mm}$, as shown in Figure 6(b)). Precipitation events were recorded... on March 5, 6, 7, 10, 15, 19, 27, 28, 30, and 31, ... with a total monthly precipitation of 2 mm) ... [21]

Formatted

Deleted: In addition, trace precipitation days (daily amount of zero) were recorded on March 1, 2, 4, 11, 12, 18, 20, and 21. If all precipitation days are taken into account, a mean snowfall frequency of 1.7 days is obtained. Ice crystals are another very common phenomenon in Eureka during calm weather

Deleted: observed... on March 6 and 11, 2019 are likely due attributed... to the precipitation dilution effects, and with... the high sodium concentrations measured on March 4–5, 13–14, and 24 are likely related to related to very... the windy conditions. In general, OPAL tray sample sodium does not show a clear increasing... trend with time at OPAL... though this is evident at PEARL ... [23]

Tray sample nitrate at OPAL shows a clear increasing trend (Figure 6(e)) with a mean slope of $0.177 \pm 0.073 \mu\text{M d}^{-1}$ ($R=0.46$, $p=0.020$, $N=24$) (Table S5). At Sea ice, snow nitrate in the first layer (0–0.2 cm), has a slope of $0.253 \pm 0.101 \mu\text{M d}^{-1}$ ($R=0.50$, $p=0.022$, $N=21$), and at Onshore it is $0.285 \pm 0.124 \mu\text{M d}^{-1}$ ($R=0.48$, $p=0.033$, $N=20$). In the second layer (0.2–0.5 cm), snow nitrate slope at Sea ice is $0.235 \pm 0.054 \mu\text{M d}^{-1}$ ($R=0.70$, $p=0.0003$, $N=22$), and at Onshore it is $0.165 \pm 0.063 \mu\text{M d}^{-1}$ ($R=0.52$, $p=0.017$, $N=21$). In the third layer (0.5–1.5 cm), snow nitrate slopes at Sea ice and Onshore are smaller, $0.057 \pm 0.025 \mu\text{M d}^{-1}$ ($R=0.41$, $p=0.027$, $N=29$) and $0.08 \pm 0.027 \mu\text{M d}^{-1}$ ($R=0.51$, $p=0.007$, $N=27$), respectively. These slope values are only 1/5 to 1/3 of the top two-layer values, indicating a reduced nitrate deposition flux to deeper snow layers. The standard deviations of nitrate slope at sea level are $\frac{1}{2}$ to $\frac{1}{4}$ of the mean slope values, indicating the linear regression fits are statistically significant.

Nitrate at PEARL behaves differently. For instance, the increasing trend is not statistically different from zero, in PEARL tray samples and in the first layer. Moreover, a negative slope was obtained in the second and third layers, respectively. These results indicate that deposition flux at the top of the hill is reduced and cannot compensate for the nitrate loss via photolysis. The positive slope at sea level indicates the deposited nitrate during the ~1 day period was larger than the photochemical loss during daytime.

Surface snow $[\text{Br}^-]$ and $\text{nss}[\text{Br}^-]$ show a very similar increasing trend (Figure 6(f) versus 6(g)); this is due to the large bromine enrichment factor or weak sea water impact. The 2019 tray sample $\text{nss}[\text{Br}^-]$ slope at OPAL is $0.023 \pm 0.006 \mu\text{M d}^{-1}$ ($R=0.64$, $p<0.001$, $N=24$), which is very close to the first layer slope values (Figure 7(d)) at Onshore and at Sea ice where the trends are statistically significant ($p<0.02$, Table S5). In the second snow layer, the slope values (Figure 7(e)) are still positive but with large p values (0.13–0.18). Tray sample $\text{nss}[\text{Br}^-]$ slope at PEARL is $0.013 \pm 0.006 \mu\text{M d}^{-1}$ ($R=0.56$, $p=0.04$, $N=14$) which is smaller than that at OPAL. In the first and second snow layer at PEARL, slope values are positive and statistically significant (Table S5). Due to the few measurements in the third layer, a robust trend could not be derived, while the Onshore dataset indicates a near zero slope ($0.003 \pm 0.007 \mu\text{M d}^{-1}$) ($R=0.11$, $p=0.63$, $N=23$, Figure 7(f)). In the first and second layers, standard deviation values are about $\frac{1}{2}$ to $\frac{1}{4}$ of the slope values, indicating the bromide trends derived are statistically significant. Due to the large uncertainty, no clear trend (i.e. a zero slope) was obtained.

In addition to the long-term trend, both nitrate and bromide show a large day-to-day perturbation. For instance, the maximum nitrate concentration of $>15 \mu\text{M}$ was observed on March 18, 2019 in both tray samples and the first layer snow, which is likely associated with a heavy fog event, lasting more than 16 hours with visibility decreasing from >10 km before the fog event to only 1–2 km. Meanwhile, snow bromide also showed an enhancement, e.g. with concentrations $>1 \mu\text{M}$ measured at the Sea ice and Onshore sites (Figure 7(d)). Another large bromide enhancement event was observed in tray samples on March 22, 2019, also associated with a >6 hours fog event. March 15, 2019 experienced the longest fog event (>17 hours), however, bromide and nitrate did not show any enhancements, which could be related to the precipitation effect as a 0.2 mm precipitation was recorded.

Deleted: $10.95 \text{ ppb} \dots \text{d}^{-1}$ ((correlation coefficient ... [24])

Deleted: ... (Table S5) Figure 6(e).... A similar increasing trend in nitrate can be seen in all three sub-layers except at PEARL (Figure 7). ... t Sea ice, snow nFor instance, n...trate in the first layer (0–0.2 cm) snow...has a slope of 0.253 ± 0.101 15.7 ppb ... [25]

Formatted: Font: Italic

Deleted: at the Sea ice site ... and at Onshore it is $0.285 \pm 0.124 \mu\text{M}$ 16.7 ppb ... [26]

Deleted: at the Onshore site... In the second layer (0.2–0.5 cm), snow the ...trate slope at Sea ice is $0.235 \pm 0.054 \mu\text{M}$ 14.6 ppb ... [27]

Formatted: Font: Italic

Formatted: Font: Italic

Deleted: at the Sea ice site... and at Onshore it is $0.165 \pm 0.063 \mu\text{M}$ 10.2 ppb ... [28]

Formatted: Font: Italic

Deleted: at the Onshore site... In the third layer (0.5–1.5 cm), snow nitrate the ...lopes at Sea ice and Onshore are is...smaller, : $0.057 \pm 0.025 \mu\text{M}$ 3.6 ppb ... [29]

Formatted: Font: Italic

Deleted: at the Sea ice site ... and ... $0.08 \pm 0.027 \mu\text{M}$ 5.0 ppb ... [30]

Deleted: at the Onshore site... These slope values are only 1/5 to 1/3 of the top two-layer values, indicating a reduced nitrate deposition flux to deeper snow layers. ... [31]

Formatted: Font: Italic

Formatted: Font: Italic

Formatted: ... [32]

Deleted: a near zero ...ncreasing trend is is...not statistically different from zero...observed...in PEARL tray samples and in the first layer (Figure 6(e) and 7(a))... Moreover, a negative slope was can be seen...obtained in the second and third layers, with values of -1.0 ppb d^{-1} ($R=0.29$) and -3.33 ppb d^{-1} ($R=0.80$)... respectively. These results indicate that deposition flux at the top of the hill is reduced and cannot compensate for the nitrate loss via photolysis. The It is reasonable to assume snow at sea level has a similar nitrate loss via photolysis, however the ...ositive slope at sea level trends...indicates...the deposited nitrate during the ~1 day period was larger than the photochemical loss during daytime ... [33]

Deleted: Due to the large enrichment factor of bromide in ... [34]

Deleted: 4..., which is very close to the first layer slope va... [35]

Formatted: Font: Italic

Formatted: Font: Italic

Deleted: ppb d^{-1} ($R=0.56$) at the PEARL site... Figure 7(d) ... [36]

Formatted: ... [37]

Deleted: B...th nitrate and bromide show a large day-to-da... [38]

Formatted: ... [39]

Deleted: that day is also coincident with an enhanced ...ro... [40]

In general, there is not a clear correlation between surface snow sodium and bromide at Eureka. However, on March 4, 14 and 24, 2019 when it was very windy, high bromide and sodium concentrations were observed, indicating blowing snow sourced sea salt contributions.

As noted above, March 18, 2019 was a heavy fog day. The signals of enhanced snow nitrate can be detected in tray samples and the first layer, and is still slightly detectable in the second layer at the Onshore site (Figure 7(a-b)). However, the enhancement signal disappears in the third layer, indicating the fog-related nitrate deposition is mainly confined to the top 0.5 cm snow layer.

The 2018 time series dataset shows a similar story. For example, top 0.5 cm snow nitrate at the Sea ice site has a slope of $0.240 \pm 0.032 \mu\text{M d}^{-1}$ ($R=0.93$, $p<0.001$, $N=11$, Table S5), and at the Onshore site it is $0.166 \pm 0.073 \mu\text{M d}^{-1}$ ($R=0.61$, $p=0.047$, $N=11$). However, 2018 snow [Br] and nss[Br] do not show a clear increasing trend (Figure 5(f, g) and Table S5). The slope at Onshore is very small and not significant ($0.005 \pm 0.005 \mu\text{M d}^{-1}$, $R=0.27$, $N=11$), indicating a weak bromide deposition flux. Although the 2018 snowpack column bromide on sea ice is several times the 2019 column mean (Tables S2&S3), the small bromide deposition flux in 2018 is likely due to the calm weather and the extremely low BrO loading as measured by MAX-DOAS (Bognar et al., 2020).

3.5 Morning versus afternoon nitrate and nss[Br]

Compared to morning samples, afternoon samples at Eureka undergo 3-7 more hours of sunlight, which means photochemical loss of nitrate and bromide from snowpack may be enhanced as a result. The 2019 morning and afternoon concentrations of nitrate and nss[Br] are shown in Figure 8. The mean $[\text{NO}_3^-]$ for morning samples (at Sea ice and Onshore) is $3.02 \pm 1.56 \mu\text{M}$, which is larger than the afternoon mean of $2.79 \pm 1.45 \mu\text{M}$ by $0.23 \mu\text{M}$; at the PEARL site, the morning-afternoon difference is $0.48 \mu\text{M}$ ($1.66 \pm 0.48 \mu\text{M}$ in the morning vs. $1.18 \pm 0.47 \mu\text{M}$ in the afternoon). However, from Figure 8 and Table S6 we find the morning-afternoon differences are well within the error bars of the morning and afternoon samples, and therefore cannot conclude that the small mean difference is a photochemical loss.

Snow bromide also shows a similar weak morning-afternoon difference, however the signals are not significant across all sampling sites. For example, at the Onshore site, the morning, nss[Br] in the first layer is $0.25 \pm 0.12 \mu\text{M}$ ($N=12$, $p<0.001$), which is larger than the afternoon $0.23 \pm 0.21 \mu\text{M}$ ($N=8$, $p=0.019$) by $0.02 \mu\text{M}$; in the third layer the morning-afternoon difference is negative ($-0.04 \mu\text{M}$), calculated from the morning mean of $0.18 \pm 0.22 \mu\text{M}$ ($N=16$, $p=0.005$) and the afternoon mean of $0.22 \pm 0.26 \mu\text{M}$ ($N=12$, $p=0.013$) (Table S6). At the Sea ice site, the morning nss[Br] in the first layer is smaller than the afternoon (by $0.01 \mu\text{M}$); in the second layer, the morning nss[Br] ($0.18 \pm 0.03 \mu\text{M}$, $N=10$, $p<0.001$) is larger than the afternoon ($0.13 \pm 0.09 \mu\text{M}$, $N=6$, $p=0.022$) by $0.02 \mu\text{M}$. Based on the available data shown in Figure 8, a mean morning-afternoon difference of $0.018 \mu\text{M}$ at sea level is derived. At PEARL, the morning-afternoon change is $0.07 \mu\text{M}$ ($0.22 \pm 0.13 \mu\text{M}$ vs $0.15 \pm 0.03 \mu\text{M}$). Although the small positive morning-afternoon change is well in line with the possible daytime

Deleted: We do not see

Deleted: , indicating that enhanced sodium does not necessarily accompany enhanced bromide

Deleted: on a

Deleted: day or shortly after a storm, such as on March 4, 14 and 24, 2019, both

Deleted: ,

Deleted: locally sourced

Deleted: .

Deleted: extremely high

Deleted: on that day

Deleted: clearly seen

Deleted: ,

Deleted: but

Deleted: ed

Deleted:

Deleted: the skin layer and

Deleted: limited to

Deleted: mobile fluffy snow layer

Moved up [3]: means gasses and fine aerosols could penetrate into deep layers (Harder et al., 1996; Björkman, et al., 2013)

Deleted: Snowpack is a highly permeable material, means gasses and fine aerosols could penetrate into deep layers (Harder et ... [41])

Moved (insertion) [3]

Deleted: to the 2019 dataset

Deleted: shows

Deleted: similar

Deleted: 14.88 ppb d^{-1} ($R=0.93$) at the Sea ice site

Formatted: Font: Italic

Formatted: Font: Italic

Deleted: 10.31 ppb d^{-1} ($R=0.61$) at the Onshore site

Deleted: es

Deleted: , with a slope of 0.37 ppb d^{-1} ($R=0.27$) at Sea ice ... [42]

Deleted: is small

Deleted: is only 1/4 to 1/3 of the 2019 slope

Deleted: reduced

Deleted: mean

Deleted: low b

Deleted: to surface snow

Deleted: attributed

Formatted: Heading 2

photochemical loss, due to the large error bars we cannot conclude that this signal is statistically meaningful. Therefore, we cannot claim that daytime photochemistry for snow bromide and nitrate is detected in this study.

Note that the tray sample $[\text{NO}_3^-]$ and $\text{nss}[\text{Br}^-]$ responded differently, with morning concentrations generally lower than their afternoon values. For example, at OPAL the morning mean $[\text{NO}_3^-]$ for the tray samples ($1.54 \pm 0.69 \mu\text{M}$, $N=5$, $p=0.007$) is only half of the afternoon mean ($3.27 \pm 1.80 \mu\text{M}$, $N=8$, $p=0.001$). For bromide, at PEARL the morning mean $\text{nss}[\text{Br}^-]$ for the tray samples ($0.28 \pm 0.18 \mu\text{M}$, $N=8$, $p=0.003$) is also smaller than the afternoon mean ($0.30 \pm 0.24 \mu\text{M}$, $N=9$, $p=0.005$) by $0.02 \mu\text{M}$. This finding is consistent with the vertical profiles of nitrate and bromide shown in Figure 4(c) and (e), where the tray sample $[\text{NO}_3^-]$ at OPAL is 3.6 times the first layer nitrate, and at PEARL it is 2.1 times the first layer nitrate. Additionally, the tray sample $\text{nss}[\text{Br}^-]$ at OPAL is 2.6 times the first layer value. The enhancement of tray sample concentrations is likely due to the small amount of snow water collected by trays; the small addition of bromide deposited could increase its concentration much more than it would affect the large reservoir of surface snow.

3.6 Deposition flux of bromide and nitrate

The daily slopes of nitrate and bromide concentrations derived above can be used to calculate their deposition flux to snowpack following this new equation:

$$\text{Flux} = \frac{A}{T} \sum_{k=1}^n S_k H_k D_k \quad (\text{R3})$$

where Flux is mean net deposition flux (deposition minus emission, in units of molecules $\text{cm}^{-2} \text{s}^{-1}$) over the observational period from snow layer 1 to n , A is Avogadro's number of gas (6.02×10^{23} molecules mole^{-1}), T is seconds in a day (86400 s d^{-1}), S_k is the derived daily slope in snow layer k (in $\mu\text{M d}^{-1}$), H_k is the corresponding snow layer depth (in cm), and D_k is snow density of the layer (in g cm^{-3}).

In this study, $n=3$. A low snow density of 0.15 g cm^{-3} is used for the top two layers, and 0.3 g cm^{-3} is used for the third layer. For nitrate, a mean slope value at sea level (from the Sea ice and Onshore sites) of 0.27 , 0.2 , and $0.07 \mu\text{M d}^{-1}$ were used in the first, second, and third layers, respectively. Therefore, an integrated nitrate deposition flux of 2.6×10^8 molecules $\text{cm}^{-2} \text{s}^{-1}$ from the top 1.5 cm snow is obtained. At PEARL, the integrated deposition flux is negative (-1.0×10^8 molecules $\text{cm}^{-2} \text{s}^{-1}$) according to the mean slope of 0.0 , -0.013 , and $-0.04 \mu\text{M d}^{-1}$ in the three sub-layers. According to the statistical analysis results shown in Table S5, we can work out a mean slope error of $0.066 \mu\text{M d}^{-1}$ at sea level and $0.019 \mu\text{M d}^{-1}$ at PEARL. If we compare that to the average slopes derived of $0.28 \mu\text{M d}^{-1}$ at sea level and $-0.018 \mu\text{M d}^{-1}$, we can work out relative errors of 37% at sea level and 95% at PEARL. Therefore, we have an integrated nitrate deposition flux of $(2.6 \pm 0.37) \times 10^8$ molecules $\text{cm}^{-2} \text{s}^{-1}$ at sea level and $(-1.0 \pm 1.06) \times 10^8$ molecules $\text{cm}^{-2} \text{s}^{-1}$ at PEARL. These results indicate that surface snow at sea level is a net sink of atmospheric nitrate, and at the top of the hilltop it is a source of reactive nitrogen; however, the negative flux derived at PEARL has a large error bar, indicating the flux has a large uncertainty. Our derived nitrate deposition flux at sea level Eureka is close to the winter average flux of 2.7×10^8 molecules $\text{cm}^{-2} \text{s}^{-1}$ derived at Alert, Nunavut (Macdonald et al., 2017) and $\sim 4 \times 10^8$ molecules $\text{cm}^{-2} \text{s}^{-1}$ at Svalbard (Björkman et al., 2013), justifying the method used in this work.

Deleted: 4

Deleted:

Formatted: Indent: First line: 0 cm

Formatted: Indent: Left: 0 cm

Deleted: integrated

Deleted: M is mole weight of species (nitrate or bromide) in grams,

Deleted: 1

Deleted: ppb

Deleted: we use

Deleted: 12.1

Deleted: 12.4

Deleted: 4.3

Deleted: ppb

Deleted: we calculate

Deleted: 4

Deleted:

Deleted: (

Deleted: a

Deleted: 1.0

Deleted: 3.3

Deleted: ppb

Deleted:)

Deleted: atmospher

Deleted: ate

Deleted:

For bromide, the integrated deposition flux from R6 is 1.01×10^7 molecule $\text{cm}^{-2} \text{s}^{-1}$ at sea level, using a mean slope of 0.024, 0.016, and 0.0 $\mu\text{M d}^{-1}$ in the three sub-layers, respectively. At PEARL, the integrated flux is 7.9×10^6 molecules $\text{cm}^{-2} \text{s}^{-1}$. Similarly, from Table S5 we can derive a mean slope error of 0.0096 $\mu\text{M d}^{-1}$ at sea level and 0.0059 $\mu\text{M d}^{-1}$ at PEARL (for the top two layers). If we compare that to the average slope of 0.02 $\mu\text{M d}^{-1}$ at sea level and 0.015 $\mu\text{M d}^{-1}$ at PEARL, we have relative errors of 48% at sea level and 39% at PEARL. Therefore the integrated bromide flux is $(1.01 \pm 0.48) \times 10^7$ molecules $\text{cm}^{-2} \text{s}^{-1}$ at sea level and $(0.79 \pm 0.31) \times 10^7$ molecules $\text{cm}^{-2} \text{s}^{-1}$ at PEARL. This small vertical gradient strongly indicates that BrO concentrations (and total inorganic bromine species) at sea level and in the free troposphere are not significantly different at Eureka, which agrees with the conclusion in Bognar et al. (2020). This implies that either bromine at Eureka is mixed well in the lower troposphere (mainly during strong wind events with enhanced BrO) or local snowpack at sea level is not a large source of reactive bromine. As mentioned previously, from winter to early spring the Eureka boundary layer is very shallow and stratified in calm conditions, thus most of the time PEARL is in the free troposphere. Therefore, if local snowpack on sea ice in the fiord is a large source of reactive bromine, an enhanced deposition flux at sea level should be detected. In addition, previous work focusing on atmospheric chemistry has demonstrated that large BrO enhancement events observed in Eureka in early springtime are mostly transported via cyclones (Zhao et al., 2016; 2017; Yang et al., 2020). The transported bromine in association with storms means well-mixed bromine species from the surface up to the free troposphere (>1 km), which explains the small vertical gradient of deposited bromine flux in this current work.

3.7 Bromine mass balance analysis

For gas-phase bromine (as a family), its concentration C_{air} in the air can be expressed as:

$$\frac{dC_{\text{air}}}{dt} = P_{\text{air}} - \frac{C_{\text{air}}}{\tau_{\text{air}}} \quad (\text{R7})$$

where P_{air} is the emission flux of reactive bromine from snowpack and τ_{air} is the lifetime of bromine species in the air. The second term $\frac{C_{\text{air}}}{\tau_{\text{air}}}$ on the right side represents removal of bromine from the air via deposition. At an equilibrium state, concentration C_{air} will reach a stable level ($=P_{\text{air}} \times \tau_{\text{air}}$). However, from Figures 5(c) and 6(c), we see a significant decreasing trend of BrO partial column, indicating the input term P_{air} is much smaller than the loss term $\frac{C_{\text{air}}}{\tau_{\text{air}}}$. If we take the linear decreasing slope of $(-7.21 \pm 0.38) \times 10^{11}$ molecules $\text{cm}^{-2} \text{d}^{-1}$ in 2018, and $(-3.03 \pm 0.05) \times 10^{11}$ molecules $\text{cm}^{-2} \text{d}^{-1}$ in 2019, and apply a 30% partitioning of BrO in total gas bromine species as calculated by models (Legrand et al., 2016), then the loss rate of total bromine species is $(-2.52 \pm 0.13) \times 10^7$ molecules $\text{cm}^{-2} \text{s}^{-1}$ in 2018 and $(-1.05 \pm 0.02) \times 10^7$ molecules $\text{cm}^{-2} \text{s}^{-1}$ in 2019. The 2019 removal flux is in good agreement with the derived snow bromide deposition flux of $(1.01 \pm 0.48) \times 10^7$ molecules $\text{cm}^{-2} \text{s}^{-1}$, implying the snow bromide is a deposit of atmospheric gas-phase bromine.

In addition, this linear decreasing trend can be re-expressed by an exponential function, as a mathematical solution of R7. For example, 2018 BrO follows an exponential function of $\exp(-0.059 \times t)$ and the 2019 BrO follows a function of $\exp(-0.024 \times t)$ with very similar R values to the linear regressions (see Figures 5(c) and 6(c)). From this we can derive a lifetime

- Deleted: n
- Deleted: to the top 1.5 cm layer snow
- Deleted: 29
- Deleted: (
- Deleted: 1.9
- Deleted: 1.3
- Deleted: ppb
- Deleted:)
- Deleted: 1.01
- Deleted: 7
- Deleted: which is ~20% lower than at sea level
- Deleted: within the boundary layer
- Deleted: is in
- Deleted: ment
- Deleted: either
- Deleted: species
- Deleted: are well
- Deleted: the
- Deleted: in Eureka
- Deleted: located
- Deleted: will
- Deleted: at
- Deleted: in
- Deleted: high altitudes
- Deleted:
- Deleted: measured
- Deleted: The observed ODE and BEE measured during March 6–10, 2018, for example, is associated with a transported cyclone event (to be addressed in a separate study).

of ~17 days in 2018 and ~42 days in 2019, which are about 2-10 times the model-derived global mean lifetimes of ~10 days (von Glasow et al., 2004) and 4-5 days (Yang et al., 2005).

Similarly, for snow bromide concentration C_{snow} , its time-dependent evolution can be expressed as:

$$\frac{dC_{snow}}{dt} = P_{snow} - \frac{C_{snow}}{\tau_{snow}} \quad (R8)$$

where P_{snow} is the snow bromide input from the air, which equals the gas-phase bromine loss term $\frac{C_{air}}{\tau_{air}}$ in R7, and τ_{snow} is the lifetime of snow bromide. The second term $\frac{C_{snow}}{\tau_{snow}}$ on the right side represents release of snow bromide (via photochemistry), which equals the input term P_{air} in R7. At a photochemical steady state and under the assumption that snow bromide lifetime τ_{snow} does not change much during the measurement period, a constant $C_{snow} = P_{snow} \times \tau_{snow}$ is expected. However, Figure 6 indicates that C_{snow} increases linearly, suggesting the input term P_{snow} must be much larger than the loss term $\frac{C_{snow}}{\tau_{snow}}$ (namely the daytime photochemical release of bromide from the surface snow must be much smaller than the deposited bromide).

If we assume the net increase of bromide in the surface snow layer is roughly balanced by the release of reactive bromine from the whole snow column, then a rough bromine mass balance could be reached. This means the emission flux of reactive bromine from snowpack photochemistry is about the same as the deposited bromide flux of $(1.01 \pm 0.48) \times 10^7$ molecules $\text{cm}^{-2} \text{s}^{-1}$ at sea level. But this emission flux will balance the gas-phase bromine removal flux of $(-1.05 \pm 0.002) \times 10^7$ molecules $\text{cm}^{-2} \text{s}^{-1}$ and should result in a stable atmospheric bromine level rather than a decreased BrO trend as observed, unless the BrO partitioning in total bromine species decreases with time in early spring (March here). Otherwise, we must conclude that deposition of bromide to surface snow is more likely “one-way”, namely the photochemical release of reactive bromine from snowpack must be very weak, and much smaller than the derived deposition flux on the order of 1×10^7 molecules $\text{cm}^{-2} \text{s}^{-1}$.

3.8 Relationship between surface snow $[\text{NO}_3^-]$ and $[\text{Br}^-]$

There are multiple sources of snowpack bromide and nitrate. For example, bromide may come from reactive bromine gases (such as HOBr, BrO and BrONO₂) and the terminal product HBr in both gas phase and particle phase. Due to the lack of in-situ data, we cannot accurately quantify the contribution of HBr to snow bromide at Eureka. However, modelling work (focusing on Antarctic coastal Dumont d’Urville chemistry) indicates that reactive bromine species dominate total gaseous inorganic bromine. For example, gas phase HOBr and BrO together account for ~2/3 of total inorganic bromine on average, and gas phase HBr only accounts for 12%. In austral spring (September-October), HBr partitioning is higher but does not exceed 25% (from Figure 14 of Legrand et al., 2016). Bromine may accumulate as gas phase HBr when ozone depletion has terminated (Lehrer et al., 2004), but during the campaign period surface ozone rarely dropped below 2-3 ppbv (Figures 5(a) & 6(a)); therefore, gas phase HBr accounts for a small fraction of total inorganic bromine. In addition, airborne particles can take up gas phase HBr from the air. Size-dependent aerosol data from both hemispheres indicate that the smallest particles (sub-micron size mode) are normally enhanced in Br⁻ (as compared to sea salt reference), while large-sized particles are slightly Br-depleted (Alvarez-Aviles et al., 2007; Legrand et al., 2016). Figure S7 shows that at the Onshore site surface snow sodium and

Deleted: 5

Formatted: Indent: First line: 0 cm

bromide are not significantly correlated apart from in the third layer. At Sea ice, surface snow sodium and bromide are largely correlated but with $[\text{Br}^-]/[\text{Na}^+]$ ratios larger than the sea water ratio (~ 0.0065) indicating that surface snow gains bromide from the air at Eureka. This is in line with the finding at coastal Alaska (Simpson et al., 2005). Moreover, the observed large bromide enhancement factor (>10 , Figure 4g and Section 3.2) strongly indicates that bromide in surface snow is not related to sea salt. Thus, it is reasonable to make the assumption that nssBr^- mainly comes from reactive bromine species.

Relatively low nitrate concentrations of $0.1\text{--}8.2\text{ }\mu\text{M}$ were detected in Arctic sea ice (Clark et al., 2020); their isotope-based investigation of the origin of nitrate indicates that the atmospheric contribution accounts for 40% or less of the sea ice nitrate, demonstrating the importance of atmospheric reactive nitrogen to sea ice nitrate. Our data indicate that there is no significant relationship between sodium and nitrate in surface snow, which is consistent with the finding for Alaska (Krnavek et al., 2012).

However, a significant relationship between surface snow $[\text{NO}_3^-]$ and $[\text{Br}^-]$ (Figure 9) in tray samples at OPAL, 0–0.2 cm, and 0.2–0.5 cm layer snow at the Onshore site (2019), and the top 0.5 cm snow at the Onshore site (2018), with coefficient R in the range of 0.4–0.7. This relationship remains when $\text{nss}[\text{Br}^-]$ is used in the analysis with a similar R of 0.23–0.66 (Figure S6). In early spring, due to the small solar zenith angle, atmospheric OH is very low and the dominant pathway of oxidising NOx to form nitrate is likely via the chain reactions R1–R4. From the net reaction in R5 we can see that without net consumption of bromine, NOx and ozone can be effectively consumed, which means more than one NOx molecule can be converted to nitrate per bromine atom. Figure 9 shows that the ratio of $[\text{NO}_3^-]/[\text{Br}^-]$ ranges from 3.5–6.8, indicating that one molecule bromide deposited to the surface is likely accompanied by 4–7 nitrate molecules, attributed to the fast recycling of gas-phase bromine species before they deposit to the surface snow. For the first time we see field evidence on a time scale of one day showing this effect such as via reactions R1–R4. This finding further confirms previous conclusions regarding the role that reactive bromine plays in determining high latitude atmospheric reactive nitrogen (e.g., Yang et al., 2005; Morin et al., 2008). Such a relationship can be detected in surface snow on sea ice due to the sea water effect on bromide as shown in Figure S7. However, we do see a weak correlation between them at PEARL (not shown).

4 Discussions and implications to polar chemistry

It is reasonable to assume that a rough balance of bromine can be reached in both the atmosphere and the snowpack over the sea ice zone. However, once bromine rich air masses transport from sea ice into inland tundra areas, the bromine budget balance breaks down. In particular, air starts to lose gas-phase bromine and snow begins to gain extra bromide from the air, as we observed at Eureka. However, if quick photochemical equilibrium is reached in surface snow, then we should see a stable bromide concentration in snow. The same goes for gas-phase bromine in the air. However, the significant decrease in BrO partial column in the lower troposphere and the increase in surface snow bromide strongly indicate that they do not reach a photochemical equilibrium state in early spring. Moreover, the significant trends show that it is very likely that snow

Deleted: No significant relationship is found between sodium and bromide or between sodium and nitrate in surface snow. However, we do find

Deleted: 8

Deleted: Moreover,

Deleted: snow

Deleted: We do not see

Deleted: s

Deleted: , likely

Deleted: contamination of

Formatted: Font colour: Text 1

Formatted: Indent: First line: 0 cm

photochemical release of reactive bromine is a very weak process, and the emission flux must be much smaller than the derived removal flux for gas-phase bromine and the snow bromide deposition flux, which is around 1×10^7 molecules $\text{cm}^{-2} \text{s}^{-1}$.

Snow nitrate can be directly photo-dissociated under sunlight, while snow bromide activation needs heterogeneous photochemistry. Therefore, photons are a necessary but not a sufficient condition for bromine recycling. For example, the heterogeneous reactions for snowpack bromide reactivation involve three transport steps: aerodynamics brings gas HOBr or ozone to the near surface sub-layer, and the subsequent transport requires gas molecules to pass through the quasi-laminar boundary layer before they can eventually be absorbed by snow particles. It has been shown that the above three processes vary greatly, depending on the depositing species and surface characteristics (Wu et al., 1992). The bromide loss rate from surface snow is somehow rate-limited by the deposition flux of hypohalous acid such as HOBr or ozone. This could be one reason for the possible weak emission flux of snow reactive bromine.

Snowpack is thought to be a highly permeable material, meaning gasses and fine aerosols could penetrate into deep layers (Harder et al., 1996; Björkman, et al., 2013) due to the exchange of air with the atmosphere (Sturm and Johnson, 1991; Albert and Hardy, 1995; Colbeck, 1997; Albert et al., 2002). However, our data show that most deposited species were in the top 0.5 cm layer. For example, at sea level nitrate slopes reduce significantly from the first layer mean of $0.26 \mu\text{M d}^{-1}$ to the second layer mean of $0.20 \mu\text{M d}^{-1}$ and third layer mean of $0.07 \mu\text{M d}^{-1}$. A similar trend is also obtained for $\text{nss}[\text{Br}^-]$ slopes, with the first layer slope of 0.023, the second layer slope of 0.014, and the third layer slope of $0.0 \mu\text{M d}^{-1}$. These results indicate deposited nitrate and bromide are largely confined to the skin layer. The fog-related bromide and nitrate enhancements are only found in the top two layers (<0.5 cm), which agrees with conclusions of Domine et al. (2004) who state that the aerosol effect on snow ion concentrations is limited to the top few cm. In extreme conditions, applying the above derived absolute nitrate deposition flux ($0.632 \mu\text{M d}^{-1}$) and absolute $\text{nss}[\text{Br}^-]$ deposition flux ($0.064 \mu\text{M d}^{-1}$) to all three layers allows for a nitrate deposition flux of 1.65×10^9 molecules $\text{cm}^{-2} \text{s}^{-1}$ and a bromide deposition flux of 1.72×10^8 molecules $\text{cm}^{-2} \text{s}^{-1}$ to be calculated. These may represent the upper limits of the deposition fluxes of nitrate and bromine.

As shown above, the uncertainty of the bromide measurements is larger in the third layer and on sea ice, where the accumulated salts and sea water make the non-sea-salt bromine signals harder to detect. We also do not have samples from deeper snow layers (>1.5 cm); therefore, our measurements may underestimate the deposition flux of nitrate and bromide. Although the snow e-folding depth (light attenuation) at Eureka was not measured, previous measurements at other polar sites indicate that it varies from a shallow 2-5 cm (Erbland et al., 2013) to a deep 10-20 cm (France et al., 2011) in Antarctica. At Cambridge Bay, Canada, an e-depth of 16 cm was reported in March snowpack (Xu et al., 2016). Therefore, the loss of nitrate and bromide via photochemistry or the release of reactive nitrogen and bromine may come from a deeper snow layer, which we have no data to confirm.

In addition, the method used to derive the deposition flux of nitrate and bromide is different from the instrument-based measurements of gas reactive nitrogen and bromine. For bromine, the method is largely dependent on the choice of sampling location, ideally where the snowpack on sea ice and at inland are less disturbed by other bromine sources such as

open leads, polynyas, and sea spray. Therefore, this method may not work well in areas where sea ice has a significant amount of mobility, with sea ice opening and closing frequently. The conclusions derived in this study may only be representative of local characteristics, as sea ice conditions at Eureka are quite different from those in the central Arctic (Shupe et al., 2022). However, the physical and chemical processes involved in bromide deposition and reactive bromine release may remain the same across locations. To confirm this, a more comprehensive field campaign under typical Arctic sea ice conditions is needed.

Note that the lifetime of an individual reactive bromine species such as BrO and HOBr is short (only a few minutes) under sunlight. However, the quick recycling via photochemically heterogeneous reactions to convert inactive HBr back to the active form (such as Br₂ or BrCl) means that as a family, the lifetime of total inorganic bromine species is in fact much longer e.g., from the model estimated global mean of 4-10 days (Yang et al., 2005; von Glasow et al., 2004) to this study estimation of 17-41 days in early spring at Eureka. For nitrogen oxides (NO_x), the lifetime in Arctic springtime is 2-6 days (Stroud et al., 2007). It is important to note that within a stable boundary layer, the typical time needed for a surface signal to reach the upper layer is 7-30 hrs (Stull, 1988). Therefore, within the one-day timescale selected for snow sampling, emitted reactive bromine and nitrogen should have sufficient time to mix well in the boundary layer and reach a quasi-equilibrium state with other processes, including deposition and photochemistry.

5 Summaries and conclusions

Skin layer snow salinity at the inland site has a double-peak distribution, with the first peak at 0.001-0.002 psu corresponding to the precipitation effect, and the second peak at 0.01–0.04 psu likely due to the salt accumulation effect. Snow salinity on sea ice has a triple-peak distribution and the third peak at 0.2–0.4 psu is clearly related to the sea water effect due to the upward migration of brine on sea ice. The presence of an iceberg in the valley could significantly dilute ice and column snow salinity as observed in 2019 samples.

Based on daily surface snow sampling in the Canadian high Arctic, an integrated spring nitrate deposition flux of $(2.6 \pm 0.37) \times 10^8$ molecules cm⁻² s⁻¹ has been derived from the top 1.5 cm snow in the fiord of Eureka. At the top of the hill (PEARL Ridge Lab, ~600 m), nitrate deposition flux is negative $(-1.0 \pm 1.06) \times 10^8$ molecules cm⁻² s⁻¹ indicating snow is losing nitrate in early spring. Integrated bromide deposition flux at sea level is $(1.01 \pm 0.48) \times 10^7$ molecules cm⁻² s⁻¹; at the hilltop, the deposition flux is $(0.79 \pm 0.31) \times 10^7$ molecules cm⁻² s⁻¹. The small vertical gradient between the boundary layer and the free troposphere indicates local snowpack is a weak reactive bromine emission source. On the contrary, the large vertical gradient in nitrate deposition flux strongly indicates that snowpack at sea level is a large emission source of reactive nitrogen. In addition, the bromide deposition flux at sea level is more than an order of magnitude smaller than the nitrate deposition flux.

Due to the large error bars, we could not derive robust conclusions regarding whether snow nitrate and bromide in the morning samples were generally higher than in the afternoon samples. We therefore could not derive any conclusion regarding snowpack photochemistry. In addition, BrO partial column (0-4 km) data measured by MAX-DOAS show a clear decreasing trend in March 2019, which agrees with the derived surface snow bromide deposition flux indicating that bromine

Moved up [2]: In addition, samples were only collected from the top 1.5 cm snow layer, so the deposition flux may be underestimated. For example, if the nitrate slope obtained in the 0.5-1.5 cm is applied to the 1.5-5 cm snow layer, then the total nitrate deposition flux derived will be roughly tripled.

Moved down [1]: Another finding of this study is that surface snow (<0.5 cm) nitrate and bromide are significantly correlated with a [NO₃]/[Br] ratio of 4–7. This means reactive bromine could effectively accelerate NO_x-to-nitrate conversion. This is the first time such an effect has been seen on a timescale of one day. This also reinforces the importance of reactive bromine in polar and high latitude reactive nitrogen budgets, and its atmospheric oxidising capacity.¶

Moved (insertion) [2]

Deleted: In addition, samples were only collected from the top 1.5 cm snow layer, so the deposition flux may be underestimated. For example, if the nitrate slope obtained in the 0.5-1.5 cm is applied to the 1.5-5 cm snow layer, then the total nitrate deposition flux derived will be roughly tripled. ¶ 4 Conclusions¶

Based on two years of daily surface snow sampling in the Canadian high Arctic, we derive an integrated spring nitrate deposition flux of 2.4×10^8 molecules cm⁻² s⁻¹ from the top 1.5 cm of the snowpack at sea level. At the top of the hill (PEARL, ~600 m), surface snow has a negative deposition flux of -1.0×10^8 molecules cm⁻² s⁻¹, indicating surface snow is losing nitrate in early spring. The integrated bromide deposition flux at sea level is 1.29×10^7 molecules cm⁻² s⁻¹, which is ~10 times smaller than that of the nitrate flux. At PEARL, the integrated deposition flux is very similar to the flux at sea level (only 22% smaller). This small vertical gradient between the boundary layer and the free troposphere implies that snowpack at Eureka is not a large source of reactive bromine, although the nitrate flux gradient data strongly indicate that local snowpack could serve as a source of reactive nitrogen. ¶

If we assume that nitrate and bromide deposited to the snow surface are roughly balanced by the emission flux of reactive nitrogen and bromine from the local snowpack, we can then derive a local snowpack emission flux of $\sim 1 \times 10^7$ molecules cm⁻² s⁻¹ for reactive bromine and 2.4×10^8 molecules cm⁻² s⁻¹ for reactive nitrogen. Compared to previous snowpack emission fluxes of reactive bromine, we find that our derived flux is smaller by more than an order of magnitude. This means that local snowpack is only a weak source of reactive bromine and should not be able to cause BEEs or ODEs in polar spring, but rather influence background BrO. On the contrary, our derived reactive nitrate flux is well within the range of previously estimated fluxes, which suggests that the approach applied in this study is effective. ¶

It has been previously shown that the typical time needed for a surface signal to reach the upper area in a stable boundary layer is 7–30 hrs (Stull, 1988). Therefore, the one-day timescale selected for sampling may allow sufficient time for emitted chemical species to mix well in the boundary layer and reach a rough equilibrium state with other processes, including depositions and photochemistry. The derived deposition flux only represents a lower end of possible fluxes. This is because when samples are collected at a one-day interval, some chemically active species may reach a photochemical state after deposition and re-emission. In addition, samples were only collected from the top 1.5 cm snow layer, so the deposition flux may be underestimated. For example, if the nitrate slope obtained in the 0.5-1.5 cm is applied to the 1.5-5 cm snow layer, then the total nitrate deposition flux derived will be roughly tripled. ¶

1820 in Eureka atmosphere and surface snow did not reach a photochemical equilibrium state and the release flux of reactive bromine from snow must be a weak process and smaller than the derived bromide deposition flux of $\sim 1 \times 10^7$ molecules $\text{cm}^{-2} \text{s}^{-1}$, which flux is smaller than previously estimated flux by a factor of more than an order of magnitude.

Due to the lack of field data on typical Arctic sea ice, we cannot conclusively say whether the result obtained in this study is a local characteristic or can be extended to a broad Arctic area. However, our finding is in line with the conclusion made by Legrand et al. (2016) that snowpack bromine emission is not important over the Antarctic Plateau.

1825 Additionally, we find skin layer snow nitrate and bromide are significantly correlated with a $[\text{NO}_3^-]/[\text{Br}^-]$ ratio of 4–7, indicating reactive bromine could effectively accelerate NO_x -to-nitrate conversion. This is the first time such an effect has been seen on a timescale of one day. This also reinforces the importance of reactive bromine in polar and high latitude reactive nitrogen budgets, and its atmospheric oxidising capacity.

1830 Another finding of this study is that surface snow (< 0.5 cm) nitrate and bromide are significantly correlated with a $[\text{NO}_3^-]/[\text{Br}^-]$ ratio of 4–7. This means reactive bromine could effectively accelerate NO_x -to-nitrate conversion. This is the first time such an effect has been seen on a timescale of one day. This also reinforces the importance of reactive bromine in polar and high latitude reactive nitrogen budgets, and its atmospheric oxidising capacity.

Author Contributions

1835 XY designed the field experiment and performed snow sampling, salinity measurements, and data interpretation. KS and KAW co-organised the campaign. PF and the Canadian Network for the Detection of Atmospheric Change (CANDAC) team provided logistics support and performed snow sampling. AC led ion chromatography analysis for the 2019 samples. KB provided MAX-DOAS BrO data, SMM and PE provided surface ozone data, and XZ supplied local meteorology and radiation data. MGS performed major ionic analysis and plotting. XY led the writing with contributions from all co-authors.

Competing Interest

The authors declare that they have no conflict of interest.

1840 **Data Availability**

All the data will be archived in BAS Polar Data Centre.

Acknowledgements

We thank the UK NERC Arctic office for their support to this study via two UK-Canada bursary programs: “The role of tundra snowpack chemistry in the boundary layer bromine budget at Eureka, Canada” (2018), and “A second investigation

Moved (insertion) [1]

Formatted: Normal

Deleted: ¶

Formatted: Indent: First line: 0 cm

Formatted: Indent: First line: 0 cm

Formatted: Indent: First line: 0 cm

Formatted: Indent: First line: 0 cm

of the role of tundra snowpack chemistry in the boundary layer ‘bromine explosion’ (2019). The Eureka MAX-DOAS BrO measurements were made at the PEARL Ridge Laboratory by CANDAC, primarily supported by NSERC, CSA, and ECCC. The UV index data are from Brewer spectrophotometer by Environment and Climate Change Canada (ECCC). We thank CANDAC and ECCC for enabling and supporting the snow sampling campaigns and BAS Ice Core Laboratory for analysing the 2018 samples (by Sara L. Jackson). [We thank CICL and Anne Myers for assistance with 2019 sample analyses.](#) The NOAA Arctic Research Program, Physical Sciences Laboratory, and Global Monitoring Laboratory have contributed to establishing surface ozone measurement programs in Eureka.

References

Abbatt, J. P. D.: Interaction of HNO₃ with water-ice surfaces at temperatures of the free troposphere, *Geophys. Res. Lett.* 24, 1479-1482, 1997.

Abbatt, J. P. D., Thomas, J. L., Abrahamsson, K., Boxe, C., Granfors, A., Jones, A. E., King, M. D., Saiz-Lopez, A., Shepson, P. B., Sodeau, J., Toohey, D. W., Toubin, C., von Glasow, R., Wren, S. N., and Yang, X.: Halogen activation via interactions with environmental ice and snow in the polar lower troposphere and other regions, *Atmos. Chem. Phys.*, 12, 6237-6271, <https://doi.org/10.5194/acp-12-6237-2012>, 2012.

Albert, M. R. and Hardy, J. P.: Ventilation experiments in a seasonal snow cover. Biogeochemistry of Seasonally Snow Covered Catchments, IAHS pub. No. 228, 44-49, 1995.

Albert, M. R., Grannas, A. M., Bottenheim, J., Shepson, P. B. and Perron, F. E.: Processes and properties of snow-air transfer in the high Arctic with application to interstitial ozone at Alert, Canada, *Atmos. Environ.*, 36, 2779-2787, 2002.

Angot, Helene, Dastoor, Ashu, De Simone, Francesco, Gardfeldt, Katarina, Gencarelli, Christian N., Hedgecock, Ian M., Langer, Sarka, Magand, Olivier, Mastromonaco, Michelle N., Nordstrom, Claus, Pfaffhuber, Katrine A., Pirrone, Nicola, Ryjkov, Andrei, Selin, Noelle E., Skov, Henrik, Song, Shaojie, Sprovieri, Francesca, Steffen, Alexandra, Toyota, Kenjiro, Travnikov, Oleg, Yang, Xin, Dommergue, Aurelien.: Chemical cycling and deposition of atmospheric mercury in Polar Regions: review of recent measurements and comparison with models, *Atmospheric Chemistry and Physics*, 16, 10735-10763. [10.5194/acp-16-10735-2016](https://doi.org/10.5194/acp-16-10735-2016), 2016.

Barrie, L. A., Bottenheim, J. W., Schnell, R. C., Crutzen, P. J., and Rasmussen, R. A.: Ozone destruction and photochemical reactions at polar sunrise in the lower Arctic atmosphere, *Nature*, 334, 138-141, <https://doi.org/10.1038/334138a0>, 1988.

Beine, H. J., Honrath, R. E., Dominé, F., Simpson, W. R., & Fuentes, J. D.: NO_x during background and ozone depletion periods at Alert: Fluxes above the snow surface, *Journal of Geophysical Research*, 107(D21), 12. <https://doi.org/10.1029/2002JD002082>, 2002.

Formatted: Indent: First line: 0 cm

- Beine, H. J., Dominé, F., Ianniello, A., Nardino, M., Allegrini, I., Teinilä, K., and Hillamo, R.: Fluxes of nitrates between snow surfaces and the atmosphere in the European high Arctic, *Atmos. Chem. Phys.*, 3, 335–346, <https://doi.org/10.5194/acp-3-335-2003>, 2003.
- Björkman, RAFAEL Kühnel, DANIELG. Partridge, TJARDAJ. Roberts, WENCHE Aas, MAURO Mazzola, ANGELO Viola, ANDY Hodson, JOHAN Ström & ELISABETH Isaksson: Nitrate dry deposition in Svalbard, *Tellus B: Chemical and Physical Meteorology*, 65:1, 19071, DOI: 10.3402/tellusb.v65i0.19071, 2013.
- Bloss, W.J., Lee, J.D., Heard, D.E., Salmon, Bauguitte, S.J.-B., Roscoe, H.K., Jones, A.E.: Observations of OH and HO₂ radicals in coastal Antarctica, *Atmos. Chem. Phys.*, 7, 4171–4185, 2007.
- Bloss, W., Camredon, M., Lee, J.D., Heard, D.E., Plane, J.M.C., Saiz-Lopez, A., Bauguitte, S.J.B., Salmon, R.A., & Jones, A.E.: Coupling of Hox, NO_x and halogen chemistry in the 24odelling boundary layer, *Atmospheric Chemistry and Physics*, 10(21), 10187–10209. <https://doi.org/10.5194/acp-10-10187-2010>, 2010.
- Bognar, K., Zhao, X., Strong, K., et al.: Measurements of tropospheric bromine monoxide over four halogen activation seasons in the Canadian high Arctic, *J. Geophys. Res. Atmos.* 125, doi:10.1029/2020JD033015, 2020.
- Bottenheim, J. W., Gallant, A. G. & Brice, K. A.: Measurements of NO_y species and O₃ at 82°N latitude, *Geophys. Res. Lett.* 13, 113–116, 1986.
- Bradley, Raymond S.; Keimig, Frank T.; Diaz, Henry F.: Climatology of Surface-Based Inversions in the North American Arctic, *Journal of Geophysical Research*, 97, D14, 15,699–15,712, DOI: 10.1029/92JD01451, 1992.
- Brough, Neil; Jones, Anna E.; Griffiths, Paul T.: Influence of sea-ice-derived halogens on atmospheric Hox as observed in springtime coastal Antarctica, *Geophysical Research Letters*, 46 (16). 10168–10176. <https://doi.org/10.1029/2019GL083825>, 2019.
- Chan, H. G., King, M. D., & Frey, M. M.: The impact of parameterising light penetration into snow on the photochemical production of NO_x and OH radicals in snow, *Atmospheric Chemistry and Physics*, 15(14), 7913–7927. <https://doi.org/10.5194/acp-15-7913-2015>, 2015.
- Chan, H. G., Frey, M. M., and King, M. D.: Modelling the physical multiphase interactions of HNO₃ between snow and air on the Antarctic Plateau (Dome C) and coast (Halley), *Atmos. Chem. Phys.*, 18, doi:10.5194/acp-18-1507-2018, 2018.
- Colbeck, S. C.: Model of wind pumping for layered snow, *J. Glaciol.*, 43, 60–65, 1997.
- Custard K. D., A. R. W. Raso, P. B. Shepson, R. M., Staebler, and K. A. Pratt, Production and release of molecular bromine and chlorine from the Arctic coastal snowpack, *ACS Earth and Space Chemistry*, 1(3), 142–152, <https://doi.org/10.1021/acsearthspacechem.7b00014>, 2017.
- Criscitello, A. S., Geldsetzer, T., Rhodes, R. H., Arienzo, M., McConnell, J., Chellman, N., et al. (2021). Marine aerosol records of Arctic sea-ice and polynya variability from new Ellesmere and Devon Island firn cores, Nunavut, Canada. *Journal of Geophysical Research: Oceans*, 126, e2021JC017205.<https://doi.org/10.1029/2021JC017205>.
- Dickerson, R. R. 1985. Reactive nitrogen-compounds in the Arctic. *J. Geophys. Res.-Atmos.* 90, 1073910743.

Diehl, K., Mitra, S. K. and Pruppacher, H. R.: A laboratory study of the uptake of HNO₃ and HCL vapor by snow
1910 crystals and ice spheres at temperatures between 0 and -40°C, *Atmos. Environ.* 9, 975-981. DOI: 10.1016/1352-
2310(95)00022-q, 1995.

Domine, F., Sparapani, R., Ianniello, A., and Beine, H. J.: The origin of sea salt in snow on Arctic sea ice and in
coastal regions, *Atmos. Chem. Phys.*, 4, 2259–2271, <https://doi.org/10.5194/acp-4-2259-2004>, 2004.

Dubowski, Y., Colussi, A. J., and Hoffmann, M. R.: Nitrogen dioxide release in the 302 nm band photolysis of spray-
1915 frozen aqueous nitrate solutions: Atmospheric Implications, *J. Phys. Chem., A*, 105, 4928–4932, 2001.

Domine, F., A. S. Taillandier, W. R. Simpson, and K. Severin: Specific surface area, density and microstructure of
frost flowers, *Geophys. Res. Lett.*, 32, L13502, doi:10.1029/2005GL023245, 2005.

Erbland, J., Vicars, W. C., Savarino, J., Morin, S., Frey, M. M., Frosini, D., Vince, E., and Martins, J. M. F.: Air-
snow transfer of nitrate on the East Antarctic Plateau – Part 1: Isotopic evidence for a photolytically driven dynamic
1920 equilibrium in summer, *Atmos. Chem. Phys.*, 13, 6403–6419, <https://doi.org/10.5194/acp-13-6403-2013>, 2013.

Falk, S. and Sinnhuber, B.-M.: Polar boundary layer bromine explosion and ozone depletion events in the chemistry-
climate model EMAC v2.52: implementation and evaluation of AirSnow algorithm, *Geosci. Model Dev.*, 11, 1115–1131,
<https://doi.org/10.5194/gmd-11-1115-2018>, 2018.

Fioletov, V. E., Kerr, J. B., McElroy, C. T., Wardle, D. I., Savastiouk, V., and Grajnar, T. S.: The Brewer reference
1925 triad, *Geophys. Res. Lett.*, 32, L20805, <https://doi.org/10.1029/2005GL024244>, 2005.

France, J. L., King, M. D., Frey, M. M., Erbland, J., Picard, G., Preunkert, S., MacArthur, A., and Savarino, J.: Snow
optical properties at Dome C (Concordia), Antarctica: implications for snow emissions and snow chemistry of reactive
nitrogen, *Atmos. Chem. Phys.*, 11, 9787–9801, <https://doi.org/10.5194/acp-11-9787-2011>, 2011.

Frieß, U., Sihler, H., Sander, R., Pöhler, D., Yilmaz, S., and Platt, U.: The vertical distribution of BrO and aerosols
1930 in the Arctic: Measurements by active and passive differential optical absorption spectroscopy, *J. Geophys. Res.-Atmos.*, 116,
D00R04, <https://doi.org/10.1029/2011JD015938>, 2011.

Frey, M. M., et al.: The diurnal variability of atmospheric nitrogen oxides (NO and NO₂) above the Antarctic Plateau
driven by atmospheric stability and snow emissions, *Atmos. Chem. Phys.* 13, doi:10.5194/acp-13-3045-2013, 2013.

Frey, Markus M., Norris, Sarah J., Brooks, Ian M., Anderson, Philip S., Nishimura, Kouichi, Yang, Xin, Jones, Anna
1935 E., Nerentorp Mastromonaco, Michelle G., Jones, David H., Wolff, Eric W.: First direct observation of sea salt aerosol
production from blowing snow above sea ice. *Atmospheric Chemistry and Physics*, 20, 2549-2578. 10.5194/acp-20-2549-
2020, 2020.

Harder, S. L., Warren, S. G., Charlson, R. J. and Covert, D. S.: Filtering of air through snow as a mechanism for
aerosol deposition to the Antarctic ice sheet, *J. Geophys. Res.-Atmos.*, 101, 18729-18743, 1996.

Hoffmann, E. H., Tilgner, A., Schrödner, R., Bräuer, P., Wolke, R., and Herrmann, H.: An advanced 25odelling study
1940 on the impacts and atmospheric implications of multiphase dimethyl sulfide chemistry, *P. Natl. Acad. Sci., USA*, 113, 11776–
11781, <https://doi.org/10.1073/pnas.1606320113>, 2016.

Formatted: Font: (Default) +Body (Times New Roman), 10
pt

Deleted: ¶

Formatted: Font: (Default) +Headings (Times New Roman)

Deleted: ¶

Formatted: Font: (Default) +Headings (Times New Roman)

- 1945 Holmes, C. D., Jacob, D. J., and Yang, X.: Global lifetime of elemental mercury against oxidation by atomic bromine in the free troposphere, *Geophys. Res. Lett.*, 33, L20808, doi:10.1029/2006GL027176, 2006.
- Honrath, R. E., Lu, Y., Peterson, M. C., Dibb, J. E., Arsenault, M. A. and co-authors: Vertical fluxes of NO_x, HONO, and HNO₃ above the snowpack at Summit, Greenland, *Atmos. Environ.* 36, 2629-2640, 2002.
- Huang, J., Jaeglé, L., Chen, Q., Alexander, B., Sherwen, T., Evans, M. J., et al.: Evaluating the impact of blowing-snow sea salt aerosol on springtime BrO and O₃ in the Arctic, *Atmospheric Chemistry and Physics*, 20(12), 7335–7358. https://doi.org/10.5194/acp-20-7335-2020, 2020.
- Jacobi, H. W., D. Voisin, J. L. Jaffrezo, J. Cozic, and T. A. Douglas (2012), Chemical composition of the snowpack during the OASIS spring campaign 2009 at Barrow, Alaska, *J. Geophys. Res. Atmos.*, 117, D00R13, doi:10.1029/2011JD016654.
- 1955 Jones, A. E., Weller, R., Anderson, P. S., Jacobi, H.-W., Wolff, E. W., Schrems, O., & Miller, H.: Measurements of NO_x emissions from the Antarctic snowpack. *Geophysical Research Letters*, 28(8), 1499– 1502. https://doi.org/10.1029/2000GL011956, 2001.
- Jacobi, H.-W., Obleitner, F., Da Costa, S., Ginot, P., Eleftheriadis, K., Aas, W., and Zanatata, M.: Deposition of ionic species and black carbon to the Arctic snowpack: combining snow pit observations with modeling, *Atmos. Chem. Phys.*, 19, 10361–10377, https://doi.org/10.5194/acp-19-10361-2019, 2019.
- 1960 Kaleschke, L., et al.: Frost flowers on sea ice as a source of sea salt and their influence on tropospheric halogen chemistry, *Geophys. Res. Lett.*, 31, L16114, doi:10.1029/2004GL020655, 2004.
- Kirpes, R. M., Bonanno, D., May, N. W., Fraund, M., Barget, A. J., Moffet, R. C., & Pratt, K. A.: Wintertime Arctic sea spray aerosol composition controlled by sea ice lead microbiology, *ACS Central Science*, 5(11), 1760– 1767. https://doi.org/10.1021/acscentsci.9b00541, 2019.
- 1965 Krnavek, L., Simpson, W. R., Carlson, D., Domine, F., Douglas, T. A., and Sturm, M.: The chemical composition of surface snow in the Arctic: Examining marine, terrestrial, and atmospheric influences. *Atmospheric Environment*, 50(0):349– 359. ISSN 13522310. http://www.sciencedirect.com/science/article/pii/S1352231011012192. DOI: https://doi.org/10.1016/j.atmosenv.2011.11.033, 2012.
- 1970 Lehrer, E.; Hönninger, G.; Platt, U.: A One Dimensional Model Study of the Mechanism of Halogen Liberation and Vertical Transport in the Polar Troposphere, *Atmos. Chem. Phys.*, 4, 2427–2440, 2004.
- Legrand, M., Yang, X., Preunkert, S., and Theys, N.: Year-round records of sea salt, gaseous, and particulate inorganic bromine in the atmospheric boundary layer at coastal (Dumont d'Urville) and central (Concordia) East Antarctic sites, *J. Geophys. Res.-Atmos.*, 121,997–1023, doi:10.1002/2015JD024066, 2016.
- 1975 Macdonald, K. M., Sharma, S., Toom, D., Chivulescu, A., Hanna, S., Bertram, A. K., Platt, A., Elsasser, M., Huang, L., Tarasick, D., Chellman, N., McConnell, J. R., Bozem, H., Kunkel, D., Lei, Y. D., Evans, G. J., and Abbatt, J. P. D.: Observations of atmospheric chemical deposition to high Arctic snow, *Atmos. Chem. Phys.*, 17, 5775–5788, https://doi.org/10.5194/acp-17-5775-2017, 2017.

Deleted: .¶

Formatted: Font: Times New Roman, 10 pt, Font colour: Auto

Formatted: Font: (Default) Times New Roman, (Asian) Chinese (China), Pattern: Clear

Formatted: Font: (Default) +Body (Times New Roman), 10 pt

Formatted: Font: (Default) +Body (Times New Roman), 10 pt

- 1980 Marelle, L., Thomas, J. L., Ahmed, S., Tuite, K., Stutz, J., Dommergue, A., Simpson, W. R., Frey, M. M. and Baladima, F.: Implementation and Impacts of Surface and Blowing Snow Sources of Arctic Bromine Activation Within WRF-Chem 4.1.1, *J. Adv. Model. Earth Syst.*, 13, 8, e2020MS002391, doi:10.1029/2020ms002391, 2021.
- Morin, S., Savarino, J., Frey, M. M., Yan, N., Bekki, S., Bottenheim, J. W., and Martins, J. M. F.: Tracing the origin and fate of NO_x in the Arctic atmosphere using stable isotopes in nitrate, *Science*, 322, 730–732, doi:10.1126/science.1161910, 1985 2008.
- Obbard, R., Roscoe, H. K., Wolff, E. W., and Atkinson, H. M.: Frost flower surface area and chemistry as a function of salinity and temperature, *J. Geophys. Res.*, 114, D20305, doi:10.1029/2009JD012481, 2009.
- Oncley, S., Buhr, M., Lenschow, D., Davis, D., & Semmer, S.: Observations of summertime NO fluxes and boundary-layer height at the South Pole during ISCAT 2000 using scalar similarity. *Atmospheric Environment*, 38(32), 5389-5398, <https://doi.org/10.1016/j.atmosenv.2004.05.053>, 2004.
- Oum, K. W., Lakin, M. J. and Finlayson-Pitts, B. J.: Bromine activation in the troposphere by the dark reaction of O₃ with seawater ice, *Geophys. Res. Lett.*, 25(21), 3923–3926, doi:10.1029/1998GL900078, 953 1998.
- Parrella, J. P., D. J. Jacob, Q. Liang, Y. Zhang, L. J. Mickley, B. Miller, M. J. Evans, X. Yang, J. A. Pyle, N. Theys, and M. Van Roozendaal: Tropospheric bromine chemistry: implications for present and pre-industrial ozone and mercury, 1995 *Atmos. Chem. Phys.*, 12, 6723–6740, doi:10.5194/acp-12-6723-2012, 2012. Peterson P. K., Simpson, W. R., Nghiem S. V.: Variability of Bromine Monoxide at Barrow, Alaska Over Four Halogen Activation (March-May) Seasons and at Two On-Ice Locations, *J Geophys Res – Atmos.*, ISSN 2169897X. doi:<https://doi.org/10.1002/2015JD024094>, 2004.
- Peterson, P. K., Hartwig, M., May, N. W., Schwartz, E., Rigor, I., Ermold, W., et al.: Snowpack measurements suggest role for multi-year sea ice regions in Arctic atmospheric bromine and chlorine chemistry, *Elementa: Science of the Anthropocene*, 7, <https://doi.org/10.1525/elementa.352>, 2019.
- Piot, M.; von Glasow, R. The Potential Importance of Frost Flowers, Recycling on Snow, and Open Leads for Ozone Depletion Events. *Atmos. Chem. Phys.*, 8, 2437–2467, 2008.
- Piot, M.; von Glasow, R.: Modelling the Multiphase near-Surface Chemistry Related to Ozone Depletions in Polar Spring, *J. Atmos. Chem.* 64 (2–3), 77–105, 2009.
- 2005 Pratt KA, Custard KD, Shepson PB, Douglas TA, Pöhler D, General S, Zielcke J, Simpson WR, Platt U, Tanner DJ, Gregory, Huey L, Carlsen M and Stirm BH.: Photochemical production of molecular bromine in Arctic surface snowpacks, *Nature Geoscience* 6(5): 351–356. ISSN 1752–0894, <http://www.nature.com/doi/10.1038/ngeo1779>. DOI: 10.1038/ngeo1779, 2013.
- Rhodes, R. H., Yang, X., Wolff, E. W., McConnell, J. R., Frey, M. M.: Sea ice as a source of sea salt aerosol to 2010 Greenland ice cores: a model-based study. *Atmospheric Chemistry and Physics*, 17, 9417–9433. 10.5194/acp-17-9417-2017, 2017.

[Rolph, G., Stein, A., and Stunder, B., Real-time Environmental Applications and Display sYstem: READY, *Environmental Modelling & Software*, 95, 210–228, <https://doi.org/10.1016/j.envsoft.2017.06.025>, 2017.](#)

Moved (insertion) [4]

Deleted: Rolph, G., Stein, A., and Stunder, B.: Real-time Environmental Applications and Display sYstem: READY, *Environ. Modell. Softw.*, 95, 210–228, <https://doi.org/10.1016/j.envsoft.2017.06.025>, 2017.

Deleted: ¶

Field Code Changed

Salawitch, R., Canty, T., Kurosu, T., Chance, K., Liang, Q., 28odelli, A., Pawson, S., Nielsen, J. E., Rodriguez, J. M.,
2020 Bhar-tia, P. K., Liu, X., Huey, L. G., Liao, J., Stickel, R. E., Tanner, D.J., Dibb, J. E., Simpson, W. R., Donohoue, D.,
Weinheimer, A.,Flocke, F., Knapp, D., Montzka, D., Neuman, J. A., Nowak, J.B., Ryerson, T. B., Oltmans, S., Blake, D. R.,
Atlas, E. L., Kinni-son, D. E., Tilmes, S., Pan, L. L., Hendrick, F., Van Roozendael.,M., Kreher, K., Johnston, P. V., Gao, R.
S., Johnson, B., Bui, T.P., Chen, G., Pierce, R. B., Crawford, J. H., and Jacob, D. J.: A new interpretation of total column BrO
during Arctic spring, *Geophys. Res. Lett.*, 37, L21805, doi:10.1029/2010GL043798, 2010.

1025 [Shupe, MD, Rex, M, Blomquist, B et al. \(111 more authors\) \(2022\) Overview of the MOSAiC expedition—
Atmosphere. Elementa: Science of the Anthropocene, 10 \(1\). 00060. ISSN 2325-1026.](#)

Simpson, W. R., Alvarez-Aviles, L., Douglas, T. A., Sturm, M., and Domine, F.: Halogens in the coastal snow pack
near Barrow, Alaska: Evidence for active bromine air-snow chemistry during springtime, *Geophys. Res. Lett.*, 32, L04811,
doi:10.1029/2004GL021748, 2005.

2030 Simpson, W. R., et al.: Halogens and their role in polar boundary-layer ozone depletion, *Atmos. Chem.
Phys.*, 7, 4375– 4418, 2007a.

Simpson, W. R., Carlson, D., Hönninger, G., Douglas, T. A., Sturm, M., Perovich, D., and Platt, U.: First-year sea-
ice contact predicts bromine monoxide (BrO) levels at Barrow, Alaska better than potential frost flower contact, *Atmos. Chem.
Phys.*, 7, 621–627, <https://doi.org/10.5194/acp-7-621-2007>, 2007b.

2035 [Spolaor, A., Gabrieli, J., Martma, T., Kohler, J., Björkman, M. B., Isaksson, E., Varin, C., Vallelonga, P., Plane, J. M.
C., and Bar- bante, C.: Sea ice dynamics influence halogen deposition to Sval- bard, *The Cryosphere*, 7, 1645–1658,
<https://doi.org/10.5194/tc- 7-1645-2013>, 2013.](#)

Stein, A.F., Draxler, R.R, Rolph, G.D., Stunder, B.J.B., Cohen, M.D., and Ngan, F., NOAA’s HYSPLIT atmospheric
transport and dispersion 28odelling system, *Bull. Amer. Meteor. Soc.*, 96, 2059-2077, <http://dx.doi.org/10.1175/BAMS-D-14->
1040 00110.1, 2015.

[Stroud, Craig, Sasha Madronich, Elliot Atlas, Brian Ridley, Frank Flocke, Andy Weinheimer, Bob Talbot, Alan Fried,
Brian Wert, Richard Shetter, Barry Lefer, Mike Coffey, Brian Heikes, Don Blake, Photochemistry in the arctic free troposphere:
NO_x budget and the role of odd nitrogen reservoir recycling, *Atmos. Environ.*, 37 \(24\) \(2003\), 3351-3364,
\[doi.org/10.1016/S1352-2310\\(03\\)00353-4\]\(https://doi.org/10.1016/S1352-2310\(03\)00353-4\).](#)

2045 Sturm, M. and Johnson, J. B.: Natural-convection in the sub-Arctic snow cover, *J. Geophys. Res.* -Solid Earth Planets,
96, 11657-11671, 1991.

Swanson, W. F., Holmes, C. D., Simpson, W. R., Confer, K., Marelle, L., Thomas, J. L., Jaeglé, L., Alexander, B.,
Zhai, S., Chen, Q., Wang, X., and Sherwen, T.: Comparison of model and ground observations finds snowpack and blowing
snow both contribute to Arctic tropospheric reactive bromine, *Atmos. Chem. Phys. Discuss.* <https://doi.org/10.5194/acp-2022->
2050 44, in review, 2022.

Stull, R. B., 1988: *An Introduction to Boundary Layer Meteorology*. Kluwer Academic, 666 pp.

Formatted: Font: (Default) +Body (Times New Roman), 10 pt, Pattern: Clear

Deleted: ¶

Formatted: Font: (Default) Times New Roman, 12 pt, (Asian) Chinese (China)

Formatted: Font: Times New Roman, 10 pt, Font colour: Text 1

Formatted: Font: Times New Roman, 10 pt, Not Bold, Font colour: Text 1

Formatted: Font: Times New Roman, 10 pt, Font colour: Text 1

Formatted: Font: Times New Roman, 10 pt, Font colour: Text 1

Yang, X., Cox, R. A., Warwick, N. J., Pyle, J. A., Carver, G. D., O'Connor, F. M., and Savage, N.H.: Tropospheric bromine chemistry and its impacts on ozone: A model study, *J. Geophys. Res.*, *110*, D23311, doi:10.1029/2005JD006244, 2100 2005.

Yang, X., Pyle, J. A., and Cox, R. A.: Sea salt aerosol production and bromine release: Role of snow on sea ice, *Geophys. Res. Lett.*, *35* (L16815), doi:10.1029/2008gl034536, 2008.

Yang, X., Pyle, J. A., Cox, R. A., Theys, N., and Van Roozendael, M.: Snow-sourced bromine and its implications for polar tropospheric ozone, *Atm. Chem. Phys.*, *10*, 7763-7773, doi:10.5194/acp-10-7763-2010, 2010.

2105 Yang, X., Frey, M. M., Rhodes, R. H., Norris, S. J., Brooks, I. M., Anderson, P. S., Nishimura, K., Jones, A. E., and Wolff, E. W.: Sea salt aerosol production via sublimating wind-blown saline snow particles over sea ice: parameterizations and relevant microphysical mechanisms, *Atmos. Chem. Phys.*, *19*, 8407–8424, <https://doi.org/10.5194/acp-19-8407-2019>, 2019.

Yang, Xin, Blechschmidt, Anne-M., Bognar, Kristof, McClure-Begley, Audra, Morris, Sara, Petropavlovskikh, Irina, 2110 Richter, Andreas, Skov, Henrik, Strong, Kimberly, Tarasick, David W., Uttal, Taneil, Vestenius, Mika, Zhao, Xiaoyi.: Pan-Arctic surface ozone: modelling vs. measurements. *Atmospheric Chemistry and Physics*, *20*. 31 pp. 10.5194/acp-20-15937-2020, 2020.

Zatko, M., Geng, L., Alexander, B., Sofen, E., and Klein, K.: The impact of snow nitrate photolysis on boundary layer chemistry and the recycling and redistribution of reactive nitrogen across Antarctica and Greenland in a global chemical transport model, *Atmos. Chem. Phys.*, *16*, 2819–2842, <https://doi.org/10.5194/acp-16-2819-2016>, 2016.

2115 Zhou, X., Beine, H. J., Honrath, R. E., Fuentes, J. D., Simpson, W., Shepson, P. B., and Bottenheim, J.: Snowpack Photochemical Production as a Source for HONO in the Arctic Boundary Layer in Spring Time, *Geophys. Res. Lett.*, *28* (21), 4087–4090, 2001.

Zhao, X., Strong, K., Adams, C., Schofield, R., Yang, X., Richter, A., Friess, U., Blechschmidt, A.-M., and Koo, J.- 2120 H.: A case study of a transported bromine explosion event in the Canadian high arctic, *J. Geophys. Res. -Atmos.*, *121*, 457–477, doi:10.1002/2015JD023711, 2016.

Zhao, X., Weaver, D., Bognar, K., Manney, G., Millán, L., Yang, X., Eloranta, E., Schneider, M., and Strong, K.: Cyclone-induced surface ozone and HDO depletion in the Arctic, *Atmos. Chem. Phys.*, *17*, 14955-14974, <https://doi.org/10.5194/acp-17-14955-2017>, 2017.

2125

2130

|

Table 1. Mean and median snow salinities (psu) in various snow samples: in tray, at inland and sea ice sites. Surface snow (<0.5 cm) salinities are in two snow types: fluffy soft snow and aged hard snow.

	Snow types	Sample number	Year	Mean ± 1 standard deviation	Median
Tray samples	all	14	2019	0.0070±0.0088	0.0035
Inland samples ^a	all	211	2018, 2019	0.0290±0.1130	0.0115
Sea ice samples ^b	all	146	2018, 2019	0.2960±1.6400	0.0374
PEARL surface	fluffy soft	7	2018	0.0039±0.0029	0.0038
	aged hard	2	2018	0.0175±0.0046	0.0175
Onshore surface	fluffy soft	73	2018	0.0033±0.0027	0.0021
	aged hard	20	2018	0.0364±0.0112	0.0375
Sea ice surface	fluffy soft	44	2018	0.0105±0.0104	0.0057
	aged hard	17	2018	0.2372±0.3836	0.0896

^a Inland data contain all salinity measurements for snow samples in the surface layers and columns collected at the Onshore, OPAL/Creek, PEARL and airport sites. ^b Sea ice data contain all salinity measurements for samples in the surface layers and columns collected over sea ice (see Section 2.2).

2140

Deleted: ¶

Deleted: samples

Deleted: at

Deleted:

Deleted: at PEARL, Onshore and Sea ice sites

Formatted Table

Deleted:

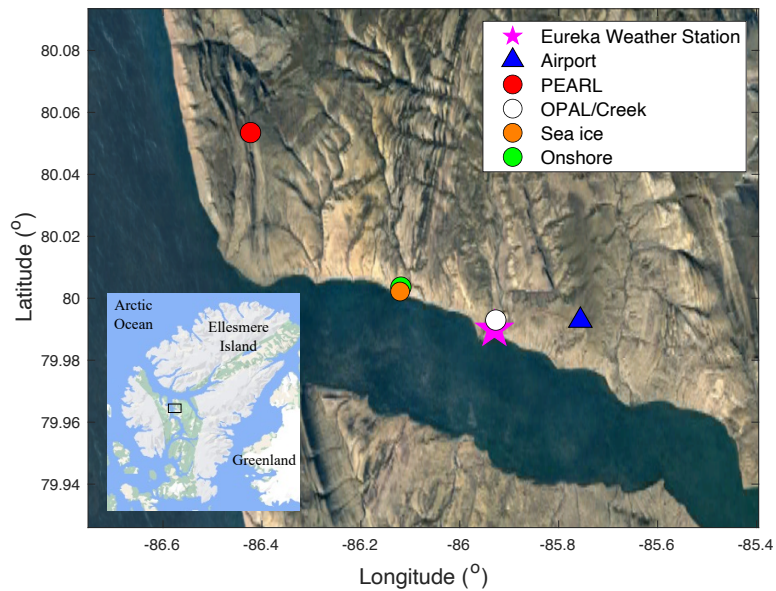
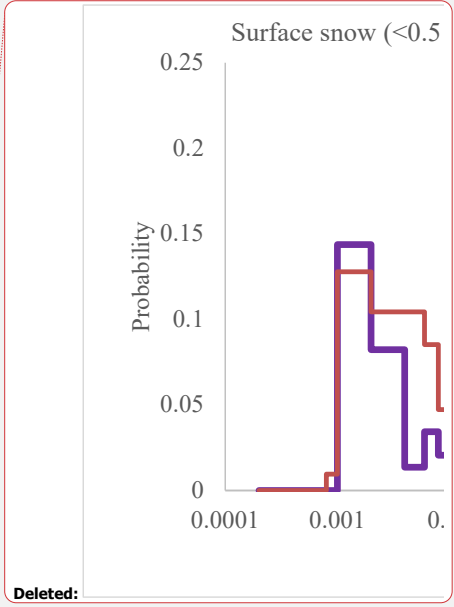
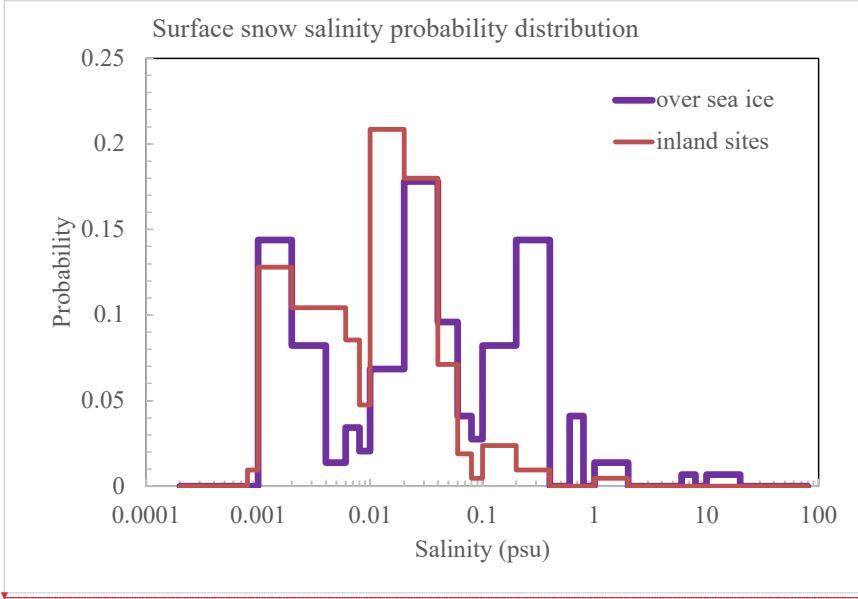


Figure 1. Local map with location of snow sampling sites marked by circles. The Eureka Weather Station (EWS) is marked by a star and the Eureka airport is marked by a triangle. The small inset box shows the location of the main map of Ellesmere Island, Canada. Image ~~copyright~~ @Google Earth/Google Maps.

Deleted: s



2160 Figure 2. Eureka snow salinity probability distribution. The data include 2018 and 2019 snow sample measurements. The distribution over sea ice includes 146 snow samples, and the distribution at inland sites includes 211 snow samples (see Table 1).

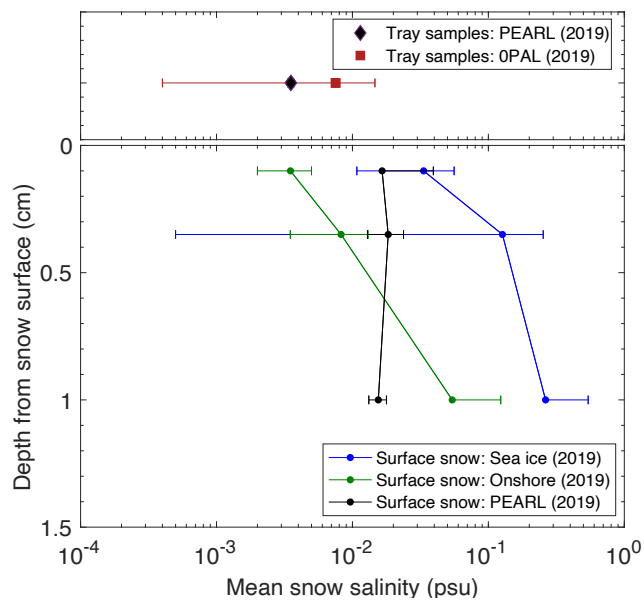


Figure 3. Mean snow salinity from the top 1.5 cm in three sub-layers: 0–0.2 cm, 0.2–0.5 cm, and 0.5–1.5 cm at the Sea ice, Onshore and PEARL sites (lower panel), and tray sample salinity at the OPAL and PEARL sites (upper panel). The horizontal error bar represents one standard deviation. Note that tray samples at OPAL were from a mounted tray outside the OPAL building, approximately 1 m above the ground. Tray samples at PEARL were from a mounted tray (~1.5 m) on the roof of the PEARL Ridge Laboratory (~11 m above the ground).

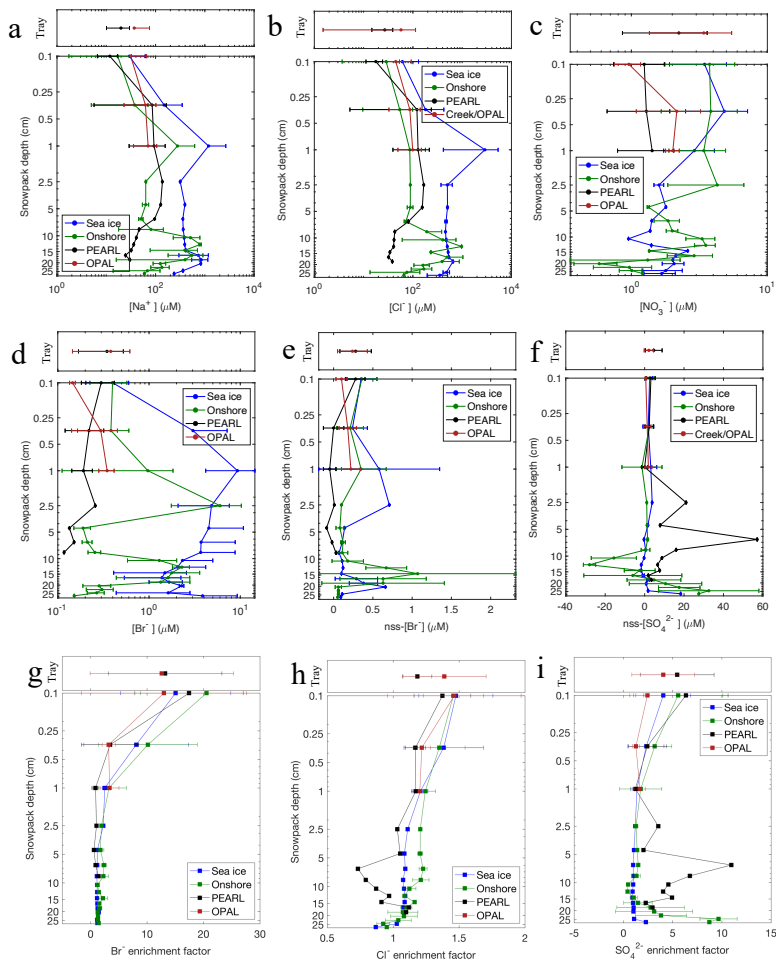
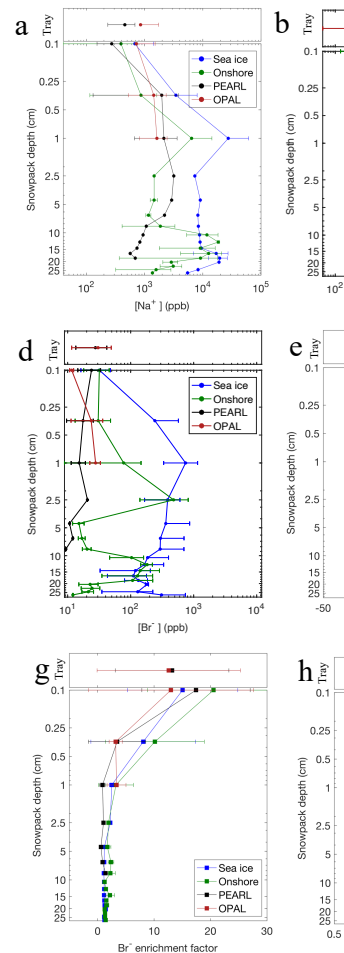


Figure 4. Vertical profiles of 2019 snow ions $[\text{Na}^+]$ (a), $[\text{Cl}^-]$ (b), $[\text{NO}_3^-]$ (c), $[\text{Br}^-]$ (d), non-sea-salt (nss) $[\text{Br}^-]$ (e), nss $[\text{SO}_4^{2-}]$ (f) and enrichment factor of $[\text{Br}^-]$ (g), $[\text{Cl}^-]$ (h) and $[\text{SO}_4^{2-}]$ (i) (see Section 3.2 for details).



Deleted:

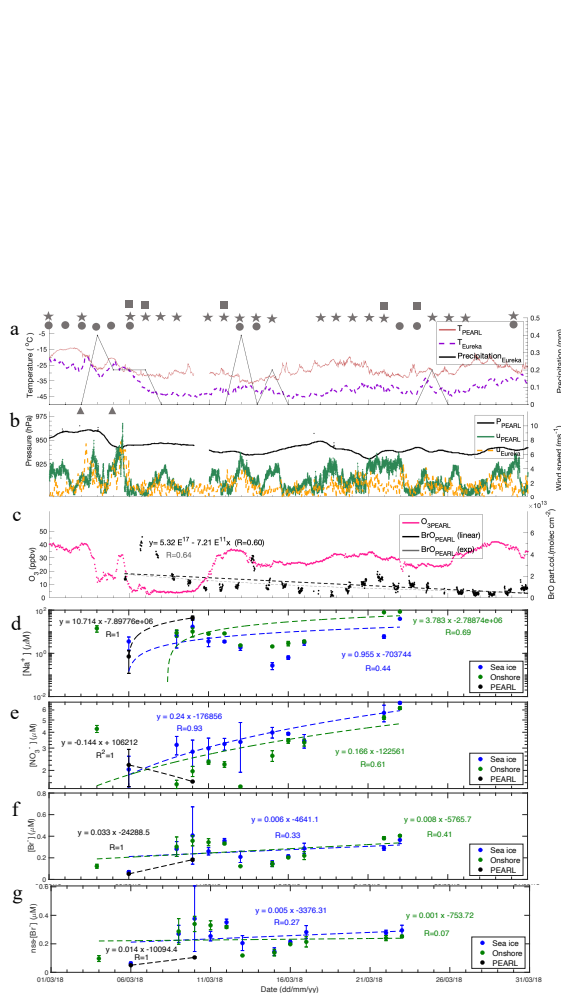
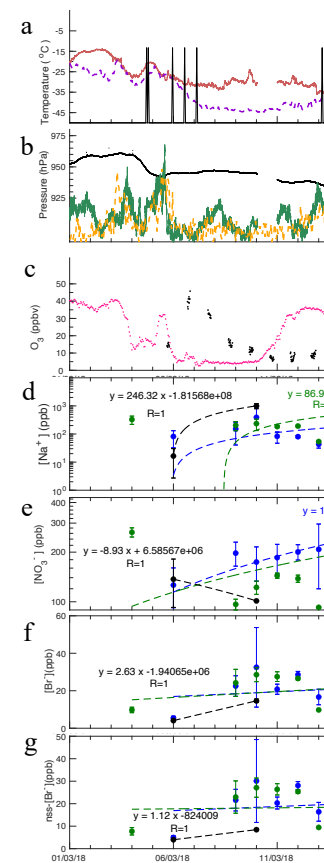


Figure 5. Time series of 2018 data. Air temperature at Eureka Weather Station (EWS) and PEARL and daily total precipitation (≥ 0.2 mm) are shown in panel a. Local weather conditions are marked by symbols in panels a and b: squares represent fog (> 2 hours), star representing ice crystals (> 2 hours), circles represent trace precipitation (> 2 hours), and triangles represent blowing snow (> 2 hours). Atmospheric pressure at EWS and wind speeds at EWS and at PEARL Ridge Laboratory are plotted in panel b. One-hourly surface ozone at 0PAL and MAX-DOAS BrO (0-4 km) partial columns from the PEARL Ridge Laboratory are in panel c. The exponential regression for BrO data is shown by grey dashed line with regression function and correlation coefficient R value given in brackets; the linear regression curve is also added with R value shown only. Note that the BrO data time is in fraction of day and counted from 1970 January 1st. Top 0.5 cm snow [Na⁺] (d), [NO₃⁻] (e), [Br⁻] (f) and nss[Br⁻] (g) and corresponding linear regression function against time, and correlation coefficient R at each site are given. More statistical details of the linear regressions in each panel are given in Table S5.



Deleted:

Deleted: Meteorology data ...ir (...emperature at Eureka Weather Station (EWS) and PEARL and daily total precipitation (≥ 0.2 mm) are shown in panel a. Local weather conditions are marked by symbols in panels a and b: squares represent fog (> 2 hours), star representing ice crystals (> 2 hours), circles represent trace precipitation (> 2 hours), and triangles represent blowing snow (> 2 hours). Atmospheric p, precipitation, p...essure at EWS and surface wind speed) from the Eureka Weather Station...and wind speeds at EWS and at PEARL Ridge Laboratory are plotted in panel (a and ...; One-hourly); ...rface ozone at 0PAL and MAX-DOAS BrO (0-4 km) partial columns from the PEARL Ridge Laboratory are in panel (...)... The exponential regression for BrO data is shown by grey dashed line with regression function and correlation coefficient R value given in brackets; the linear regression curve is also added with R value shown only. Note that the BrO data time is in fraction of day and counted from 1970 January 1st. Top 0.5 cm snow [Na⁺] (d), [NO₃⁻] (e), [Br⁻] (f) and nss[Br⁻] (g) and corresponding l. L...near regression function (...ainst time)

[... 43]

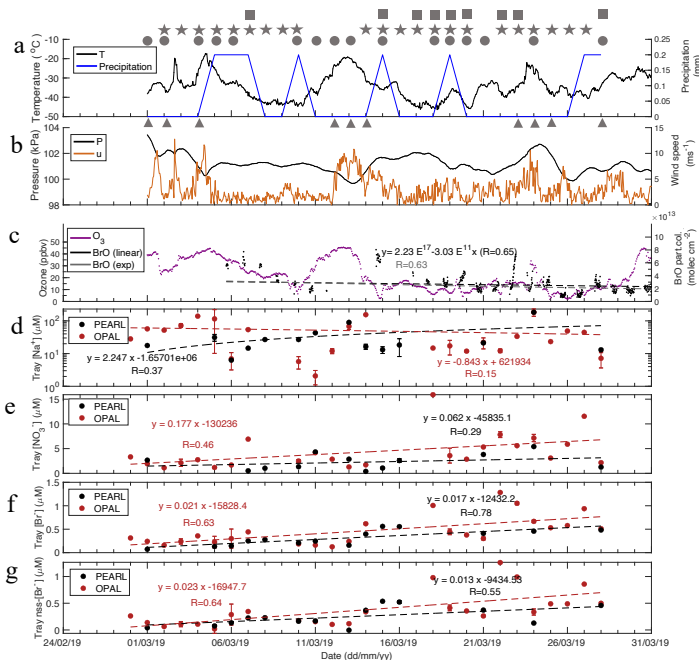
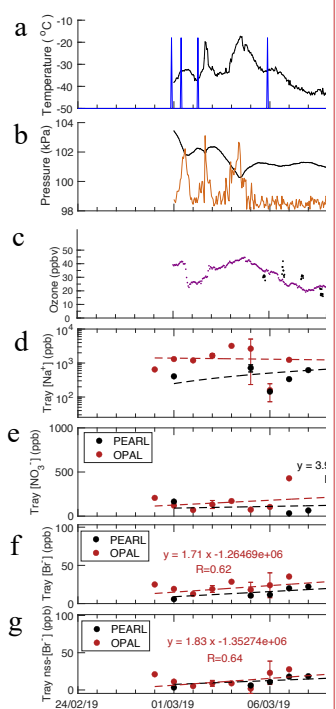


Figure 6. Same as Figure 5 but for 2019 snow time series. Note that the meteorology data are only from the Eureka Weather Station and the ionic data are tray samples $[Na^+]$ (d), $[NO_3^-]$ (e), $[Br^-]$ (f), and non-sea-salt (nss) $[Br^-]$ (g). Table S5 gives more statistical details of the linear regressions in each panel. Local weather conditions are marked by symbols in panels a and b. Squares represent fog, stars represent ice crystals, circles represent trace precipitation, and triangles represent blowing snow.



Deleted:
Deleted: T
Deleted: of 2019 data
Deleted: M
Deleted: (temperature, precipitation, pressure and surface wind speed) ...
Deleted: (a and b); Surface ozone at OPAL and MAX-DOAS BrO partial columns from the PEARL Ridge Laboratory (c);
Deleted: T
Deleted:
Formatted: Font colour: Text 1
Deleted: Linear regression function (against time) and correlation coefficient R at each site are given.

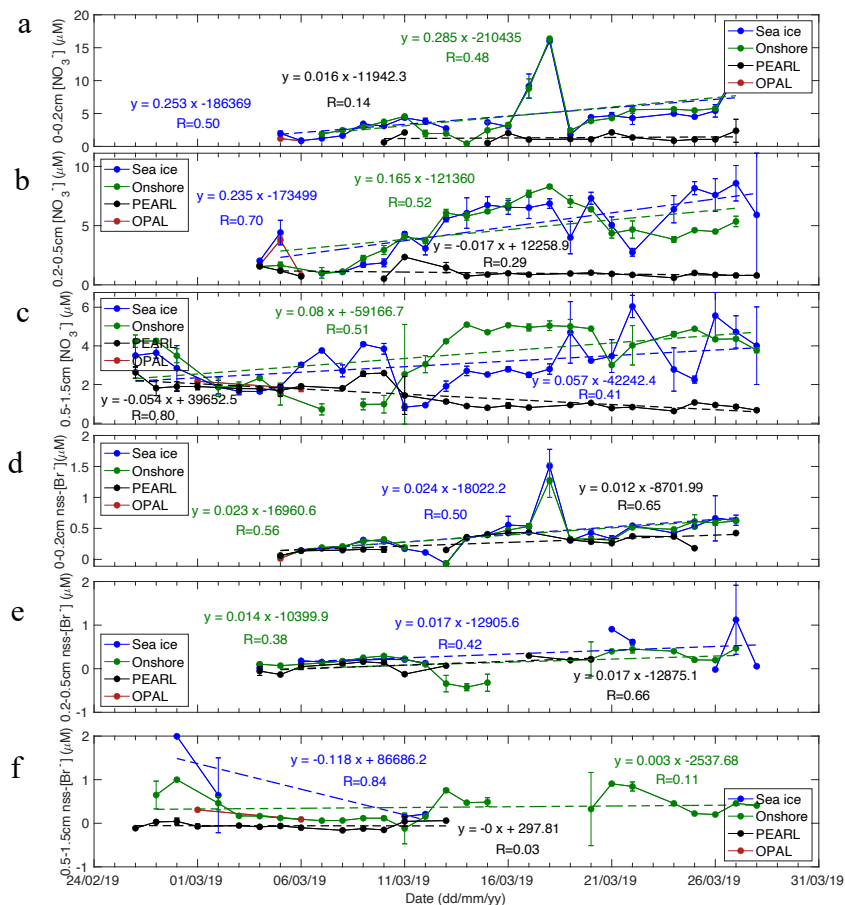
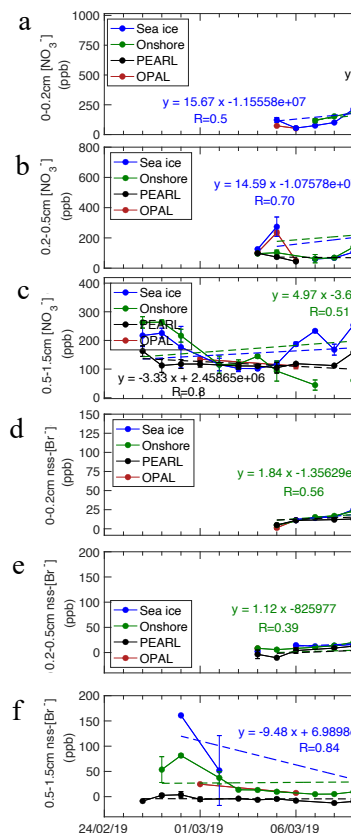


Figure 7. Time series of 2019 snow nitrate (a-c) and non-sea-salt bromide (d-f) in three sub-layers: 0–0.2 cm, 0.2–0.5 cm, and 0.5–1.5 cm at four sampling sites (Sea ice, Onshore, PEARL and OPAL). Linear regression function against time and correlation coefficient R are given. See Table S5 for statistical details of the linear regressions.



Deleted:

Deleted: :

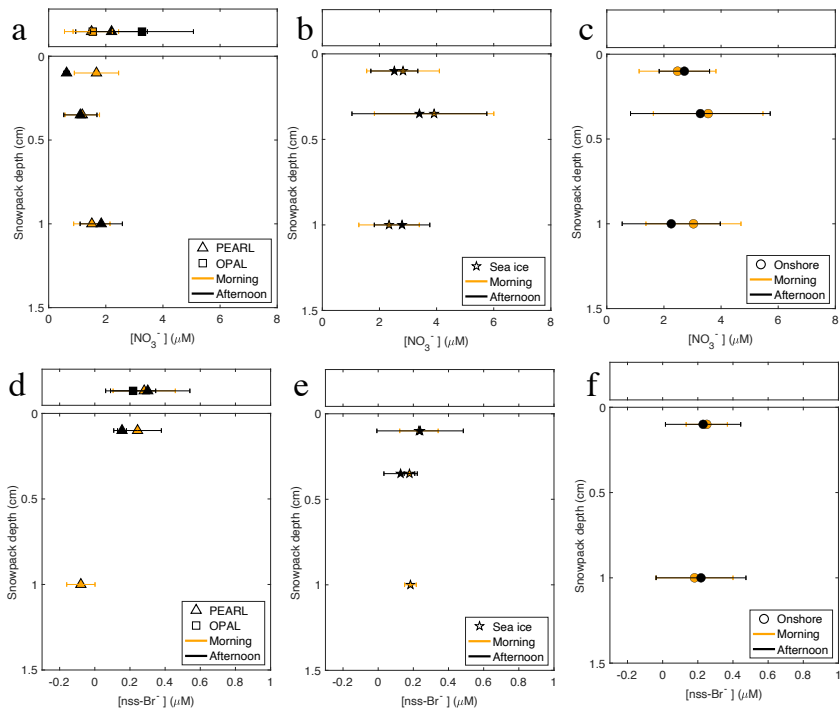


Figure 8. Morning and afternoon nss[Br⁻] and [NO₃⁻] from available snow samples collected between March 3-16, 2019. Note that only the mean values with $p < 0.1$ (in Table S6) are shown and used for the morning-afternoon difference calculation.

Formatted: Font: Not Italic, Font colour: Text 1

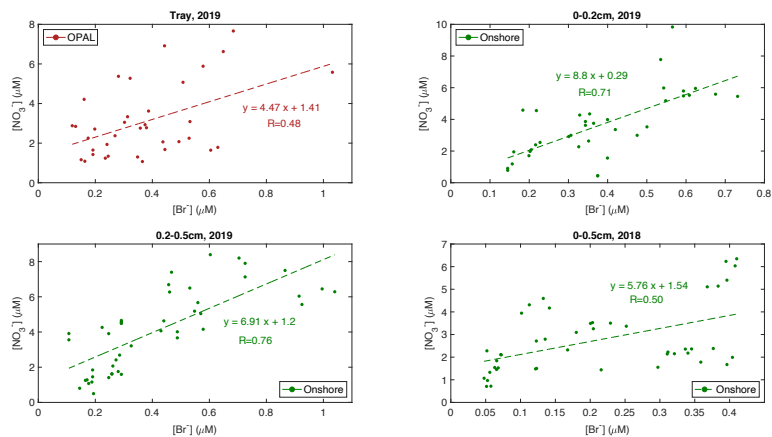
Formatted: Font: Not Italic, Font colour: Text 1

Formatted: Font: Not Italic, Font colour: Text 1

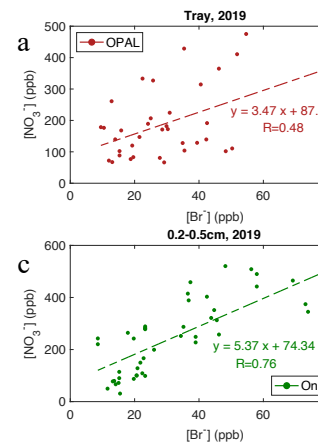
Formatted: Font: Not Italic, Font colour: Text 1

Deleted: ¶

Formatted: Font colour: Text 1



2275 Figure 8. Scatter plot of surface snow nitrate versus bromide in (a) tray samples (2019), (b) 0–0.2 cm layer (2019), (c) 0.2–0.5 cm layer (2019), and (d) 0–0.5 cm layer (2018). Linear regression and corresponding correlation coefficient R are given.



Deleted:

Deleted: ,

Deleted: snow

[illegible]

▲
Page 1: [2] Deleted Xin Yang - BAS 27/12/2022 14:23:00

▼

▲
Page 1: [2] Deleted Xin Yang - BAS 27/12/2022 14:23:00

▼

▲
Page 1: [2] Deleted Xin Yang - BAS 27/12/2022 14:23:00

▼

▲
Page 1: [2] Deleted Xin Yang - BAS 27/12/2022 14:23:00

▼

▲
Page 1: [2] Deleted Xin Yang - BAS 27/12/2022 14:23:00

▼

▲
Page 1: [2] Deleted Xin Yang - BAS 27/12/2022 14:23:00

▼

▲
Page 1: [2] Deleted Xin Yang - BAS 27/12/2022 14:23:00

▼

▲
Page 1: [2] Deleted Xin Yang - BAS 27/12/2022 14:23:00

▼

▲
Page 1: [2] Deleted Xin Yang - BAS 27/12/2022 14:23:00

▼

▲
Page 1: [2] Deleted Xin Yang - BAS 27/12/2022 14:23:00

▼

▲
Page 1: [2] Deleted Xin Yang - BAS 27/12/2022 14:23:00

▼

▲
Page 1: [2] Deleted Xin Yang - BAS 27/12/2022 14:23:00

▼

▲
Page 1: [2] Deleted Xin Yang - BAS 27/12/2022 14:23:00

▼

▲
Page 1: [2] Deleted Xin Yang - BAS 27/12/2022 14:23:00

▼

▲
Page 1: [2] Deleted Xin Yang - BAS 27/12/2022 14:23:00

▼

▲
Page 1: [2] Deleted Xin Yang - BAS 27/12/2022 14:23:00

▼

▲
Page 1: [2] Deleted Xin Yang - BAS 27/12/2022 14:23:00

▼

▲
Page 1: [2] Deleted Xin Yang - BAS 27/12/2022 14:23:00

▼

▲
Page 1: [2] Deleted Xin Yang - BAS 27/12/2022 14:23:00

▼

▲
Page 1: [2] Deleted Xin Yang - BAS 27/12/2022 14:23:00

▼

▲
Page 1: [2] Deleted Xin Yang - BAS 27/12/2022 14:23:00

▼

▲
Page 1: [2] Deleted Xin Yang - BAS 27/12/2022 14:23:00

▼

▲
Page 1: [2] Deleted Xin Yang - BAS 27/12/2022 14:23:00

▼

▲
Page 1: [2] Deleted Xin Yang - BAS 27/12/2022 14:23:00

▼

▲
Page 9: [3] Deleted Xin Yang - BAS 14/12/2022 16:42:00

▼

▲
Page 9: [3] Deleted Xin Yang - BAS 14/12/2022 16:42:00

▼

▲
Page 9: [3] Deleted Xin Yang - BAS 14/12/2022 16:42:00

▼

▲
Page 9: [3] Deleted Xin Yang - BAS 14/12/2022 16:42:00

▼

▲
Page 9: [3] Deleted Xin Yang - BAS 14/12/2022 16:42:00

▼

▲
Page 9: [3] Deleted Xin Yang - BAS 14/12/2022 16:42:00

▼

▲
Page 9: [3] Deleted Xin Yang - BAS 14/12/2022 16:42:00

▼

▲
Page 9: [3] Deleted Xin Yang - BAS 14/12/2022 16:42:00

▼

▲
Page 9: [3] Deleted Xin Yang - BAS 14/12/2022 16:42:00

▼

▲
Page 9: [3] Deleted Xin Yang - BAS 14/12/2022 16:42:00

▼

▲
Page 9: [3] Deleted Xin Yang - BAS 14/12/2022 16:42:00

▼

▲
Page 9: [3] Deleted Xin Yang - BAS 14/12/2022 16:42:00

▼

▲
Page 9: [3] Deleted Xin Yang - BAS 14/12/2022 16:42:00

▼

▲
Page 9: [3] Deleted Xin Yang - BAS 14/12/2022 16:42:00

▼

▲
Page 9: [3] Deleted Xin Yang - BAS 14/12/2022 16:42:00

▼

▲
Page 9: [3] Deleted Xin Yang - BAS 14/12/2022 16:42:00

▼

▲
Page 9: [3] Deleted Xin Yang - BAS 14/12/2022 16:42:00

▼

▲
Page 9: [3] Deleted Xin Yang - BAS 14/12/2022 16:42:00

▼

▲
Page 9: [3] Deleted Xin Yang - BAS 14/12/2022 16:42:00

▼

▲
Page 9: [3] Deleted Xin Yang - BAS 14/12/2022 16:42:00

▼

▲
Page 9: [3] Deleted Xin Yang - BAS 14/12/2022 16:42:00

▼

▲
Page 9: [3] Deleted Xin Yang - BAS 14/12/2022 16:42:00

▼

▲
Page 9: [3] Deleted Xin Yang - BAS 14/12/2022 16:42:00

▼

▲
Page 9: [3] Deleted Xin Yang - BAS 14/12/2022 16:42:00

▼

▲
Page 9: [3] Deleted Xin Yang - BAS 14/12/2022 16:42:00

▼

▲
Page 9: [3] Deleted Xin Yang - BAS 14/12/2022 16:42:00

▼

▲
Page 9: [4] Deleted Xin Yang - BAS 01/01/2024 21:10:00

▼

▲
Page 9: [4] Deleted Xin Yang - BAS 01/01/2024 21:10:00

▼

▲
Page 9: [4] Deleted Xin Yang - BAS 01/01/2024 21:10:00

▼

▲
Page 9: [4] Deleted Xin Yang - BAS 01/01/2024 21:10:00

▼

▲
Page 9: [4] Deleted Xin Yang - BAS 01/01/2024 21:10:00

▼

▲
Page 9: [4] Deleted Xin Yang - BAS 01/01/2024 21:10:00

▼

▲
Page 9: [4] Deleted Xin Yang - BAS 01/01/2024 21:10:00

▼

▲
Page 9: [4] Deleted Xin Yang - BAS 01/01/2024 21:10:00

▼

▲
Page 9: [4] Deleted Xin Yang - BAS 01/01/2024 21:10:00

▼

▲
Page 9: [4] Deleted Xin Yang - BAS 01/01/2024 21:10:00

▼

▲
Page 9: [4] Deleted Xin Yang - BAS 01/01/2024 21:10:00

▼

▲
Page 9: [4] Deleted Xin Yang - BAS 01/01/2024 21:10:00

▼

▲
Page 9: [5] Deleted Xin Yang - BAS 30/12/2022 02:47:00

▼

▲
Page 9: [5] Deleted Xin Yang - BAS 30/12/2022 02:47:00

▼

▲
Page 9: [5] Deleted **Xin Yang - BAS** **30/12/2022 02:47:00**

▼
▲
Page 9: [5] Deleted **Xin Yang - BAS** **30/12/2022 02:47:00**

▼
▲
Page 9: [6] Formatted **Xin Yang - BAS** **29/12/2022 14:35:00**

Font: Not Italic, Font colour: Text 1

▲
Page 9: [6] Formatted **Xin Yang - BAS** **29/12/2022 14:35:00**

Font: Not Italic, Font colour: Text 1

▲
Page 9: [6] Formatted **Xin Yang - BAS** **29/12/2022 14:35:00**

Font: Not Italic, Font colour: Text 1

▲
Page 9: [6] Formatted **Xin Yang - BAS** **29/12/2022 14:35:00**

Font: Not Italic, Font colour: Text 1

▲
Page 9: [6] Formatted **Xin Yang - BAS** **29/12/2022 14:35:00**

Font: Not Italic, Font colour: Text 1

▲
Page 9: [6] Formatted **Xin Yang - BAS** **29/12/2022 14:35:00**

Font: Not Italic, Font colour: Text 1

▲
Page 9: [6] Formatted **Xin Yang - BAS** **29/12/2022 14:35:00**

Font: Not Italic, Font colour: Text 1

▲
Page 9: [6] Formatted **Xin Yang - BAS** **29/12/2022 14:35:00**

Font: Not Italic, Font colour: Text 1

▲
Page 9: [6] Formatted **Xin Yang - BAS** **29/12/2022 14:35:00**

Font: Not Italic, Font colour: Text 1

▲
Page 9: [6] Formatted **Xin Yang - BAS** **29/12/2022 14:35:00**

Font: Not Italic, Font colour: Text 1

▲
Page 9: [6] Formatted **Xin Yang - BAS** **29/12/2022 14:35:00**

Font: Not Italic, Font colour: Text 1

▲
Page 9: [6] Formatted **Xin Yang - BAS** **29/12/2022 14:35:00**

Font: Not Italic, Font colour: Text 1

▲
Page 10: [7] Formatted **Xin Yang - BAS** **29/12/2022 14:35:00**

Font: Not Italic, Font colour: Text 1

▲
Page 10: [7] Formatted **Xin Yang - BAS** **29/12/2022 14:35:00**

Font: Not Italic, Font colour: Text 1

▲
Page 10: [7] Formatted Xin Yang - BAS 29/12/2022 14:35:00

Font: Not Italic, Font colour: Text 1

▲
Page 10: [7] Formatted Xin Yang - BAS 29/12/2022 14:35:00

Font: Not Italic, Font colour: Text 1

▲
Page 10: [7] Formatted Xin Yang - BAS 29/12/2022 14:35:00

Font: Not Italic, Font colour: Text 1

▲
Page 10: [7] Formatted Xin Yang - BAS 29/12/2022 14:35:00

Font: Not Italic, Font colour: Text 1

▲
Page 10: [7] Formatted Xin Yang - BAS 29/12/2022 14:35:00

Font: Not Italic, Font colour: Text 1

▲
Page 10: [7] Formatted Xin Yang - BAS 29/12/2022 14:35:00

Font: Not Italic, Font colour: Text 1

▲
Page 10: [8] Deleted Xin Yang - BAS 11/12/2022 19:19:00

▼

▲
Page 10: [8] Deleted Xin Yang - BAS 11/12/2022 19:19:00

▼

▲
Page 10: [8] Deleted Xin Yang - BAS 11/12/2022 19:19:00

▼

▲
Page 10: [9] Deleted Xin Yang - BAS 27/12/2022 12:24:00

▼

▲
Page 10: [9] Deleted Xin Yang - BAS 27/12/2022 12:24:00

▼

▲
Page 10: [9] Deleted Xin Yang - BAS 27/12/2022 12:24:00

▼

▲
Page 10: [9] Deleted Xin Yang - BAS 27/12/2022 12:24:00

▼

▲
Page 10: [9] Deleted Xin Yang - BAS 27/12/2022 12:24:00

▼

▲
Page 10: [9] Deleted Xin Yang - BAS 27/12/2022 12:24:00

▼

▲
Page 10: [9] Deleted Xin Yang - BAS 27/12/2022 12:24:00

▼

▲
Page 10: [9] Deleted Xin Yang - BAS 27/12/2022 12:24:00

▼

▲
Page 10: [9] Deleted Xin Yang - BAS 27/12/2022 12:24:00

▼

▲
Page 10: [9] Deleted Xin Yang - BAS 27/12/2022 12:24:00

▼

▲
Page 10: [9] Deleted Xin Yang - BAS 27/12/2022 12:24:00

▼

▲
Page 10: [9] Deleted Xin Yang - BAS 27/12/2022 12:24:00

▼

▲
Page 10: [9] Deleted Xin Yang - BAS 27/12/2022 12:24:00

▼

▲
Page 10: [10] Deleted Xin Yang - BAS 27/12/2022 12:36:00

▼

▲
Page 10: [10] Deleted Xin Yang - BAS 27/12/2022 12:36:00

▼

▲
Page 10: [10] Deleted Xin Yang - BAS 27/12/2022 12:36:00

▼

▲
Page 10: [10] Deleted Xin Yang - BAS 27/12/2022 12:36:00

▼

▲
Page 10: [11] Deleted Xin Yang - BAS 12/12/2022 19:55:00

▼

▲
Page 10: [11] Deleted Xin Yang - BAS 12/12/2022 19:55:00

▼

▲
Page 10: [11] Deleted Xin Yang - BAS 12/12/2022 19:55:00

▼

▲
Page 10: [11] Deleted Xin Yang - BAS 12/12/2022 19:55:00

▼

▲
Page 10: [11] Deleted Xin Yang - BAS 12/12/2022 19:55:00

▼

▲
Page 10: [11] Deleted Xin Yang - BAS 12/12/2022 19:55:00

▼

▲
Page 10: [11] Deleted Xin Yang - BAS 12/12/2022 19:55:00

▼
▲
Page 10: [11] Deleted Xin Yang - BAS 12/12/2022 19:55:00

▼
▲
Page 10: [11] Deleted Xin Yang - BAS 12/12/2022 19:55:00

▼
▲
Page 10: [11] Deleted Xin Yang - BAS 12/12/2022 19:55:00

▼
▲
Page 10: [11] Deleted Xin Yang - BAS 12/12/2022 19:55:00

▼
▲
Page 10: [11] Deleted Xin Yang - BAS 12/12/2022 19:55:00

▼
▲
Page 10: [11] Deleted Xin Yang - BAS 12/12/2022 19:55:00

▼
▲
Page 11: [12] Deleted Xin Yang - BAS 01/12/2022 15:58:00

▼
▲
Page 11: [12] Deleted Xin Yang - BAS 01/12/2022 15:58:00

▼
▲
Page 11: [12] Deleted Xin Yang - BAS 01/12/2022 15:58:00

▼
▲
Page 11: [12] Deleted Xin Yang - BAS 01/12/2022 15:58:00

▼
▲
Page 11: [12] Deleted Xin Yang - BAS 01/12/2022 15:58:00

▼
▲
Page 11: [12] Deleted Xin Yang - BAS 01/12/2022 15:58:00

▼
▲
Page 11: [13] Deleted Xin Yang - BAS 08/12/2022 21:32:00

▼
▲
Page 11: [13] Deleted Xin Yang - BAS 08/12/2022 21:32:00

▼
▲
Page 11: [13] Deleted Xin Yang - BAS 08/12/2022 21:32:00

▲
Page 11: [13] Deleted Xin Yang - BAS 08/12/2022 21:32:00

▼

▲
Page 11: [13] Deleted Xin Yang - BAS 08/12/2022 21:32:00

▼

▲
Page 11: [13] Deleted Xin Yang - BAS 08/12/2022 21:32:00

▼

▲
Page 11: [13] Deleted Xin Yang - BAS 08/12/2022 21:32:00

▼

▲
Page 11: [13] Deleted Xin Yang - BAS 08/12/2022 21:32:00

▼

▲
Page 11: [13] Deleted Xin Yang - BAS 08/12/2022 21:32:00

▼

▲
Page 11: [13] Deleted Xin Yang - BAS 08/12/2022 21:32:00

▼

▲
Page 11: [13] Deleted Xin Yang - BAS 08/12/2022 21:32:00

▼

▲
Page 11: [13] Deleted Xin Yang - BAS 08/12/2022 21:32:00

▼

▲
Page 11: [13] Deleted Xin Yang - BAS 08/12/2022 21:32:00

▼

▲
Page 11: [13] Deleted Xin Yang - BAS 08/12/2022 21:32:00

▼

▲
Page 11: [13] Deleted Xin Yang - BAS 08/12/2022 21:32:00

▼

▲
Page 11: [13] Deleted Xin Yang - BAS 08/12/2022 21:32:00

▼

▲
Page 11: [13] Deleted Xin Yang - BAS 08/12/2022 21:32:00

▼

▲
Page 11: [13] Deleted Xin Yang - BAS 08/12/2022 21:32:00

▼

▲
Page 11: [13] Deleted Xin Yang - BAS 08/12/2022 21:32:00

▼

▲
Page 11: [13] Deleted Xin Yang - BAS 08/12/2022 21:32:00

▼

▲
Page 11: [13] Deleted Xin Yang - BAS 08/12/2022 21:32:00

▼

▲
Page 11: [13] Deleted Xin Yang - BAS 08/12/2022 21:32:00

▼

▲
Page 11: [13] Deleted Xin Yang - BAS 08/12/2022 21:32:00

▼

▲
Page 11: [13] Deleted Xin Yang - BAS 08/12/2022 21:32:00

▼

▲
Page 11: [13] Deleted Xin Yang - BAS 08/12/2022 21:32:00

▼

▲
Page 11: [13] Deleted Xin Yang - BAS 08/12/2022 21:32:00

▼

▲
Page 11: [13] Deleted Xin Yang - BAS 08/12/2022 21:32:00

▼

▲
Page 11: [13] Deleted Xin Yang - BAS 08/12/2022 21:32:00

▼

▲
Page 11: [13] Deleted Xin Yang - BAS 08/12/2022 21:32:00

▼

▲
Page 11: [13] Deleted Xin Yang - BAS 08/12/2022 21:32:00

▼

▲
Page 11: [13] Deleted Xin Yang - BAS 08/12/2022 21:32:00

▼

▲
Page 11: [14] Deleted Xin Yang - BAS 01/12/2022 16:09:00

▼

▲
Page 11: [14] Deleted Xin Yang - BAS 01/12/2022 16:09:00

▼

▲
Page 11: [14] Deleted Xin Yang - BAS 01/12/2022 16:09:00

▼

▲
Page 11: [14] Deleted Xin Yang - BAS 01/12/2022 16:09:00

▼

▲
Page 11: [14] Deleted Xin Yang - BAS 01/12/2022 16:09:00

▼

▲
Page 11: [14] Deleted Xin Yang - BAS 01/12/2022 16:09:00

▼

▲
Page 11: [14] Deleted Xin Yang - BAS 01/12/2022 16:09:00

▼

▲
Page 11: [14] Deleted Xin Yang - BAS 01/12/2022 16:09:00

▼

▲
Page 11: [15] Formatted Xin Yang - BAS 20/12/2022 17:56:00

Font: (Default) +Body (Times New Roman)

▲
Page 11: [15] Formatted Xin Yang - BAS 20/12/2022 17:56:00

Font: (Default) +Body (Times New Roman)

▲
Page 11: [16] Deleted Xin Yang - BAS 01/01/2024 21:32:00

✕

▲
Page 11: [16] Deleted Xin Yang - BAS 01/01/2024 21:32:00

✕

▲
Page 11: [16] Deleted Xin Yang - BAS 01/01/2024 21:32:00

✕

▲
Page 11: [16] Deleted Xin Yang - BAS 01/01/2024 21:32:00

✕

▲
Page 11: [16] Deleted Xin Yang - BAS 01/01/2024 21:32:00

✕

▲
Page 11: [16] Deleted Xin Yang - BAS 01/01/2024 21:32:00

✕

▲
Page 11: [16] Deleted Xin Yang - BAS 01/01/2024 21:32:00

✕

▲
Page 11: [16] Deleted Xin Yang - BAS 01/01/2024 21:32:00

✕

▲
Page 11: [16] Deleted Xin Yang - BAS 01/01/2024 21:32:00

✕

▲
Page 11: [17] Deleted Xin Yang - BAS 01/12/2022 16:27:00

▼

▲
Page 11: [17] Deleted Xin Yang - BAS 01/12/2022 16:27:00

▼
▲
Page 11: [17] Deleted Xin Yang - BAS 01/12/2022 16:27:00

▼
▲
Page 11: [17] Deleted Xin Yang - BAS 01/12/2022 16:27:00

▼
▲
Page 11: [17] Deleted Xin Yang - BAS 01/12/2022 16:27:00

▼
▲
Page 11: [17] Deleted Xin Yang - BAS 01/12/2022 16:27:00

▼
▲
Page 11: [17] Deleted Xin Yang - BAS 01/12/2022 16:27:00

▼
▲
Page 11: [17] Deleted Xin Yang - BAS 01/12/2022 16:27:00

▼
▲
Page 11: [17] Deleted Xin Yang - BAS 01/12/2022 16:27:00

▼
▲
Page 11: [17] Deleted Xin Yang - BAS 01/12/2022 16:27:00

▼
▲
Page 11: [17] Deleted Xin Yang - BAS 01/12/2022 16:27:00

▼
▲
Page 11: [17] Deleted Xin Yang - BAS 01/12/2022 16:27:00

▼
▲
Page 11: [17] Deleted Xin Yang - BAS 01/12/2022 16:27:00

▼
▲
Page 11: [17] Deleted Xin Yang - BAS 01/12/2022 16:27:00

▼
▲
Page 13: [18] Deleted Xin Yang - BAS 28/12/2022 01:07:00

▼
▲
Page 13: [18] Deleted Xin Yang - BAS 28/12/2022 01:07:00

▼
▲
Page 13: [18] Deleted Xin Yang - BAS 28/12/2022 01:07:00

▲
Page 13: [19] Deleted Xin Yang - BAS 28/12/2022 01:08:00

▼

▲
Page 13: [19] Deleted Xin Yang - BAS 28/12/2022 01:08:00

▼

▲
Page 13: [19] Deleted Xin Yang - BAS 28/12/2022 01:08:00

▼

▲
Page 13: [19] Deleted Xin Yang - BAS 28/12/2022 01:08:00

▼

▲
Page 13: [20] Deleted Xin Yang - BAS 28/12/2022 01:17:00

▼

▲
Page 13: [20] Deleted Xin Yang - BAS 28/12/2022 01:17:00

▼

▲
Page 13: [20] Deleted Xin Yang - BAS 28/12/2022 01:17:00

▼

▲
Page 13: [20] Deleted Xin Yang - BAS 28/12/2022 01:17:00

▼

▲
Page 13: [20] Deleted Xin Yang - BAS 28/12/2022 01:17:00

▼

▲
Page 13: [20] Deleted Xin Yang - BAS 28/12/2022 01:17:00

▼

▲
Page 13: [20] Deleted Xin Yang - BAS 28/12/2022 01:17:00

▼

▲
Page 13: [20] Deleted Xin Yang - BAS 28/12/2022 01:17:00

▼

▲
Page 13: [20] Deleted Xin Yang - BAS 28/12/2022 01:17:00

▼

▲
Page 13: [21] Deleted Xin Yang - BAS 02/01/2024 11:05:00

▼

▲
Page 13: [21] Deleted Xin Yang - BAS 02/01/2024 11:05:00

▼

▲
Page 13: [21] Deleted Xin Yang - BAS 02/01/2024 11:05:00

▼

▲
Page 13: [21] Deleted Xin Yang - BAS 02/01/2024 11:05:00

▼

▲
Page 13: [21] Deleted Xin Yang - BAS 02/01/2024 11:05:00

▼

▲
Page 13: [21] Deleted Xin Yang - BAS 02/01/2024 11:05:00

▼

▲
Page 13: [21] Deleted Xin Yang - BAS 02/01/2024 11:05:00

▼

▲
Page 13: [22] Formatted Xin Yang - BAS 27/12/2022 12:02:00

Font: Not Italic, Font colour: Text 1

▲
Page 13: [22] Formatted Xin Yang - BAS 27/12/2022 12:02:00

Font: Not Italic, Font colour: Text 1

▲
Page 13: [22] Formatted Xin Yang - BAS 27/12/2022 12:02:00

Font: Not Italic, Font colour: Text 1

▲
Page 13: [22] Formatted Xin Yang - BAS 27/12/2022 12:02:00

Font: Not Italic, Font colour: Text 1

▲
Page 13: [22] Formatted Xin Yang - BAS 27/12/2022 12:02:00

Font: Not Italic, Font colour: Text 1

▲
Page 13: [22] Formatted Xin Yang - BAS 27/12/2022 12:02:00

Font: Not Italic, Font colour: Text 1

▲
Page 13: [22] Formatted Xin Yang - BAS 27/12/2022 12:02:00

Font: Not Italic, Font colour: Text 1

▲
Page 13: [22] Formatted Xin Yang - BAS 27/12/2022 12:02:00

Font: Not Italic, Font colour: Text 1

▲
Page 13: [22] Formatted Xin Yang - BAS 27/12/2022 12:02:00

Font: Not Italic, Font colour: Text 1

▲
Page 13: [22] Formatted Xin Yang - BAS 27/12/2022 12:02:00

Font: Not Italic, Font colour: Text 1

▲
Page 13: [22] Formatted Xin Yang - BAS 27/12/2022 12:02:00

Font: Not Italic, Font colour: Text 1

▲
Page 13: [22] Formatted Xin Yang - BAS 27/12/2022 12:02:00

Font: Not Italic, Font colour: Text 1

▲
Page 13: [22] Formatted Xin Yang - BAS 27/12/2022 12:02:00

Font: Not Italic, Font colour: Text 1

▲
Page 13: [22] Formatted Xin Yang - BAS 27/12/2022 12:02:00

Font: Not Italic, Font colour: Text 1

▲
Page 13: [23] Deleted Xin Yang - BAS 12/12/2022 21:35:00

▼

▲
Page 13: [23] Deleted Xin Yang - BAS 12/12/2022 21:35:00

▼

▲
Page 13: [23] Deleted Xin Yang - BAS 12/12/2022 21:35:00

▼

▲
Page 13: [23] Deleted Xin Yang - BAS 12/12/2022 21:35:00

▼

▲
Page 13: [23] Deleted Xin Yang - BAS 12/12/2022 21:35:00

▼

▲
Page 13: [23] Deleted Xin Yang - BAS 12/12/2022 21:35:00

▼

▲
Page 13: [23] Deleted Xin Yang - BAS 12/12/2022 21:35:00

▼

▲
Page 14: [24] Deleted Xin Yang - BAS 11/12/2022 22:01:00

▼

▲
Page 14: [24] Deleted Xin Yang - BAS 11/12/2022 22:01:00

▼

▲
Page 14: [25] Deleted Xin Yang - BAS 11/12/2022 22:15:00

▼

▲
Page 14: [25] Deleted Xin Yang - BAS 11/12/2022 22:15:00

▼

▲
Page 14: [25] Deleted Xin Yang - BAS 11/12/2022 22:15:00

▼

▲
Page 14: [25] Deleted Xin Yang - BAS 11/12/2022 22:15:00

▼

▲
Page 14: [25] Deleted Xin Yang - BAS 11/12/2022 22:15:00

▼

▲
Page 14: [25] Deleted Xin Yang - BAS 11/12/2022 22:15:00

▼
▲
Page 14: [26] Deleted Xin Yang - BAS 11/12/2022 22:23:00

▼
▲
Page 14: [26] Deleted Xin Yang - BAS 11/12/2022 22:23:00

▼
▲
Page 14: [27] Deleted Xin Yang - BAS 11/12/2022 22:32:00

▼
▲
Page 14: [27] Deleted Xin Yang - BAS 11/12/2022 22:32:00

▼
▲
Page 14: [27] Deleted Xin Yang - BAS 11/12/2022 22:32:00

▼
▲
Page 14: [28] Deleted Xin Yang - BAS 11/12/2022 22:32:00

▼
▲
Page 14: [28] Deleted Xin Yang - BAS 11/12/2022 22:32:00

▼
▲
Page 14: [29] Deleted Xin Yang - BAS 11/12/2022 22:34:00

▼
▲
Page 14: [29] Deleted Xin Yang - BAS 11/12/2022 22:34:00

▼
▲
Page 14: [29] Deleted Xin Yang - BAS 11/12/2022 22:34:00

▼
▲
Page 14: [29] Deleted Xin Yang - BAS 11/12/2022 22:34:00

▼
▲
Page 14: [29] Deleted Xin Yang - BAS 11/12/2022 22:34:00

▼
▲
Page 14: [30] Deleted Xin Yang - BAS 11/12/2022 22:34:00

▼
▲
Page 14: [30] Deleted Xin Yang - BAS 11/12/2022 22:34:00

▼
▲
Page 14: [30] Deleted Xin Yang - BAS 11/12/2022 22:34:00

▲
Page 14: [31] Deleted Xin Yang - BAS 11/12/2022 22:37:00

▼
▲
Page 14: [31] Deleted Xin Yang - BAS 11/12/2022 22:37:00

▼
▲
Page 14: [32] Formatted Xin Yang - BAS 16/12/2022 09:36:00

Font: (Default) +Body (Times New Roman), 10 pt, Not Italic, Font colour: Text 1

▲
Page 14: [32] Formatted Xin Yang - BAS 16/12/2022 09:36:00

Font: (Default) +Body (Times New Roman), 10 pt, Not Italic, Font colour: Text 1

▲
Page 14: [32] Formatted Xin Yang - BAS 16/12/2022 09:36:00

Font: (Default) +Body (Times New Roman), 10 pt, Not Italic, Font colour: Text 1

▲
Page 14: [32] Formatted Xin Yang - BAS 16/12/2022 09:36:00

Font: (Default) +Body (Times New Roman), 10 pt, Not Italic, Font colour: Text 1

▲
Page 14: [32] Formatted Xin Yang - BAS 16/12/2022 09:36:00

Font: (Default) +Body (Times New Roman), 10 pt, Not Italic, Font colour: Text 1

▲
Page 14: [32] Formatted Xin Yang - BAS 16/12/2022 09:36:00

Font: (Default) +Body (Times New Roman), 10 pt, Not Italic, Font colour: Text 1

▲
Page 14: [33] Deleted Xin Yang - BAS 02/01/2024 11:11:00

▼
▲
Page 14: [33] Deleted Xin Yang - BAS 02/01/2024 11:11:00

▼
▲
Page 14: [33] Deleted Xin Yang - BAS 02/01/2024 11:11:00

▼
▲
Page 14: [33] Deleted Xin Yang - BAS 02/01/2024 11:11:00

▼
▲
Page 14: [33] Deleted Xin Yang - BAS 02/01/2024 11:11:00

▼
▲
Page 14: [33] Deleted Xin Yang - BAS 02/01/2024 11:11:00

▼
▲
Page 14: [33] Deleted Xin Yang - BAS 02/01/2024 11:11:00

▼
▲
Page 14: [33] Deleted Xin Yang - BAS 02/01/2024 11:11:00

▲
Page 14: [33] Deleted Xin Yang - BAS 02/01/2024 11:11:00

▼

▲
Page 14: [33] Deleted Xin Yang - BAS 02/01/2024 11:11:00

▼

▲
Page 14: [34] Deleted Xin Yang - BAS 12/12/2022 22:05:00

▼

▲
Page 14: [34] Deleted Xin Yang - BAS 12/12/2022 22:05:00

▼

▲
Page 14: [34] Deleted Xin Yang - BAS 12/12/2022 22:05:00

▼

▲
Page 14: [34] Deleted Xin Yang - BAS 12/12/2022 22:05:00

▼

▲
Page 14: [34] Deleted Xin Yang - BAS 12/12/2022 22:05:00

▼

▲
Page 14: [34] Deleted Xin Yang - BAS 12/12/2022 22:05:00

▼

▲
Page 14: [34] Deleted Xin Yang - BAS 12/12/2022 22:05:00

▼

▲
Page 14: [34] Deleted Xin Yang - BAS 12/12/2022 22:05:00

▼

▲
Page 14: [35] Deleted Xin Yang - BAS 11/12/2022 22:08:00

▼

▲
Page 14: [35] Deleted Xin Yang - BAS 11/12/2022 22:08:00

▼

▲
Page 14: [35] Deleted Xin Yang - BAS 11/12/2022 22:08:00

▼

▲
Page 14: [36] Deleted Xin Yang - BAS 11/12/2022 22:09:00

▼

▲
Page 14: [36] Deleted Xin Yang - BAS 11/12/2022 22:09:00

▼

▲
Page 14: [36] Deleted Xin Yang - BAS 11/12/2022 22:09:00

▼

▲
Page 14: [36] Deleted Xin Yang - BAS 11/12/2022 22:09:00

▼
▲
Page 14: [36] Deleted Xin Yang - BAS 11/12/2022 22:09:00

▼
▲
Page 14: [36] Deleted Xin Yang - BAS 11/12/2022 22:09:00

▼
▲
Page 14: [36] Deleted Xin Yang - BAS 11/12/2022 22:09:00

▼
▲
Page 14: [36] Deleted Xin Yang - BAS 11/12/2022 22:09:00

▼
▲
Page 14: [36] Deleted Xin Yang - BAS 11/12/2022 22:09:00

▼
▲
Page 14: [37] Formatted Xin Yang - BAS 16/12/2022 09:37:00

Font: (Default) +Body (Times New Roman), 10 pt, Not Italic, Font colour: Text 1

▲
Page 14: [37] Formatted Xin Yang - BAS 16/12/2022 09:37:00

Font: (Default) +Body (Times New Roman), 10 pt, Not Italic, Font colour: Text 1

▲
Page 14: [37] Formatted Xin Yang - BAS 16/12/2022 09:37:00

Font: (Default) +Body (Times New Roman), 10 pt, Not Italic, Font colour: Text 1

▲
Page 14: [37] Formatted Xin Yang - BAS 16/12/2022 09:37:00

Font: (Default) +Body (Times New Roman), 10 pt, Not Italic, Font colour: Text 1

▲
Page 14: [37] Formatted Xin Yang - BAS 16/12/2022 09:37:00

Font: (Default) +Body (Times New Roman), 10 pt, Not Italic, Font colour: Text 1

▲
Page 14: [38] Deleted Xin Yang - BAS 28/12/2022 02:05:00

▼
▲
Page 14: [38] Deleted Xin Yang - BAS 28/12/2022 02:05:00

▼
▲
Page 14: [38] Deleted Xin Yang - BAS 28/12/2022 02:05:00

▼
▲
Page 14: [38] Deleted Xin Yang - BAS 28/12/2022 02:05:00

▼
▲
Page 14: [38] Deleted Xin Yang - BAS 28/12/2022 02:05:00

▲
Page 14: [38] Deleted Xin Yang - BAS 28/12/2022 02:05:00

▼
▲
Page 14: [39] Formatted Xin Yang - BAS 16/12/2022 14:57:00

Font: (Default) +Body (Times New Roman), 10 pt, Not Italic, Font colour: Text 1

▲
Page 14: [39] Formatted Xin Yang - BAS 16/12/2022 14:57:00

Font: (Default) +Body (Times New Roman), 10 pt, Not Italic, Font colour: Text 1

▲
Page 14: [39] Formatted Xin Yang - BAS 16/12/2022 14:57:00

Font: (Default) +Body (Times New Roman), 10 pt, Not Italic, Font colour: Text 1

▲
Page 14: [40] Deleted Xin Yang - BAS 11/12/2022 23:18:00

▼
▲
Page 14: [40] Deleted Xin Yang - BAS 11/12/2022 23:18:00

▼
▲
Page 14: [40] Deleted Xin Yang - BAS 11/12/2022 23:18:00

▼
▲
Page 14: [40] Deleted Xin Yang - BAS 11/12/2022 23:18:00

▼
▲
Page 14: [40] Deleted Xin Yang - BAS 11/12/2022 23:18:00

▼
▲
Page 14: [40] Deleted Xin Yang - BAS 11/12/2022 23:18:00

▼
▲
Page 14: [40] Deleted Xin Yang - BAS 11/12/2022 23:18:00

▼
▲
Page 14: [40] Deleted Xin Yang - BAS 11/12/2022 23:18:00

▼
▲
Page 14: [40] Deleted Xin Yang - BAS 11/12/2022 23:18:00

▼
▲
Page 15: [41] Deleted Xin Yang - BAS 15/12/2022 13:56:00

▼
▲
Page 15: [42] Deleted Xin Yang - BAS 12/12/2022 00:10:00

▼
▲
Page 36: [43] Deleted Xin Yang - BAS 11/12/2022 18:07:00

▲
Page 36: [43] Deleted Xin Yang - BAS 11/12/2022 18:07:00

▼

▲
Page 36: [43] Deleted Xin Yang - BAS 11/12/2022 18:07:00

▼

▲
Page 36: [43] Deleted Xin Yang - BAS 11/12/2022 18:07:00

▼

▲
Page 36: [43] Deleted Xin Yang - BAS 11/12/2022 18:07:00

▼

▲
Page 36: [43] Deleted Xin Yang - BAS 11/12/2022 18:07:00

▼

▲
Page 36: [43] Deleted Xin Yang - BAS 11/12/2022 18:07:00

▼

▲
Page 36: [43] Deleted Xin Yang - BAS 11/12/2022 18:07:00

▼

▲
Page 36: [43] Deleted Xin Yang - BAS 11/12/2022 18:07:00

▼

▲
Page 36: [43] Deleted Xin Yang - BAS 11/12/2022 18:07:00

▼

▲
Page 36: [43] Deleted Xin Yang - BAS 11/12/2022 18:07:00

▼

▲
Page 36: [43] Deleted Xin Yang - BAS 11/12/2022 18:07:00

▼

▲