

# Meteoric water and glacial melt in the Southeast Amundsen Sea: A timeseries from 1994-2020

Andrew N. Hennig<sup>1</sup>, David A. Mucciarone<sup>2</sup>, Stanley S. Jacobs<sup>3</sup>, Richard A. Mortlock<sup>4</sup>, Robert B. Dunbar<sup>2</sup>

5 <sup>1</sup>Earth System Science, Stanford University, Stanford, California, 94305, USA

<sup>2</sup>Oceans, Stanford University, Stanford, California, 94305, USA

<sup>3</sup>Lamont-Doherty Earth Observatory, Columbia University, Palisades, New York, 10964, USA

<sup>4</sup>Earth and Planetary Sciences, Rutgers University, Piscataway, New Jersey, 08854, USA

*Correspondence to:* Andrew N. Hennig ([ahennig@stanford.edu](mailto:ahennig@stanford.edu))

10 **Abstract.** Ice sheet mass loss from Antarctica is greatest in the Amundsen Sea sector, where ‘warm’ modified Circumpolar Deep Water moves onto the continental shelf and melts and thins the bases of ice shelves hundreds of meters below the sea surface. We use nearly 1000 paired salinity and oxygen isotope analyses of seawater samples collected on seven expeditions from 1994 to 2020 to produce a time series of glacial meltwater inventory for the Southeast Amundsen Sea continental shelf. Deep  
15 water column salinity- $\delta^{18}\text{O}$  relationships yield freshwater endmember  $\delta^{18}\text{O}$  values from  $-31.3 \pm 1.00-5\text{‰}$  to  $-28.4 \pm 1.00-8\text{‰}$ , consistent with the isotopic composition of local glacial ice. We use a 2-component meteoric water endmember approach that accounts, ~~accounting~~ for precipitation in the upper water column, and ~~using~~ a pure glacial meteoric water endmember for the deep water column. Meteoric water inventories are comprised of nearly pure glacial meltwater in deep shelf waters, and >74% glacial  
20 meltwater in the upper water column. Total meteoric water inventories range from  $8.1 \pm 0.7$  m to  $9.6 \pm 0.8$  m and exhibit greater interannual variability than trend over the study period, based on the available data. The relatively long residence time in the SE Amundsen Sea allows changes in mean meteoric water inventories to diagnose large changes in local melt rates, and improved understanding of regional circulation could produce well-constrained glacial meltwater fluxes. The 2-component meteoric  
25 endmember technique improves the accuracy of the sea ice melt and meteoric fractions estimated from seawater  $\delta^{18}\text{O}$  measurements throughout the entire water column and increases the utility for the broader application of these estimates.

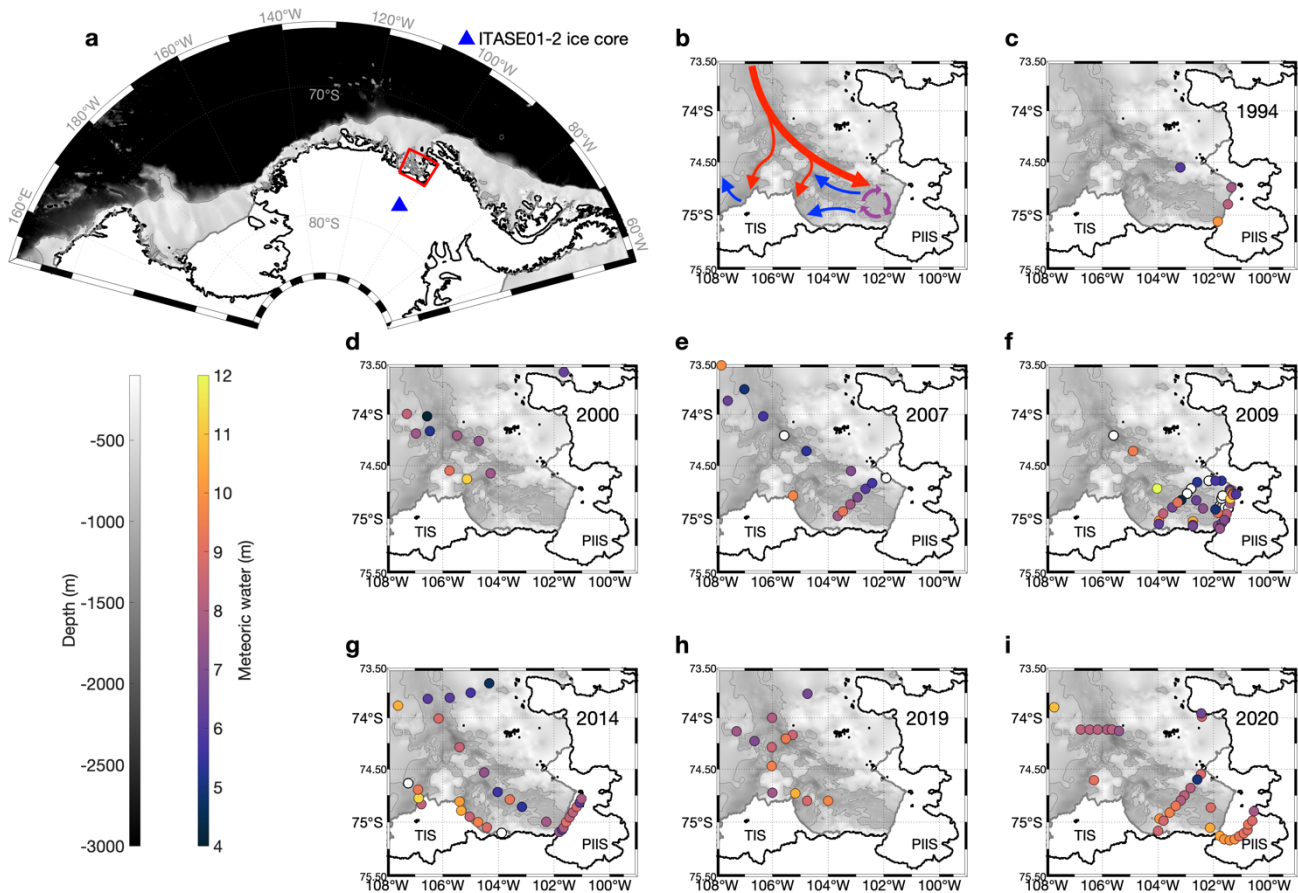
## 1 Introduction

30 Four decades of observations show significant and increasing glacial mass loss from Antarctica (Rignot et al., 2011; Velicogna et al., 2014; Rignot et al., 2019). A Special Report on the Ocean and Cryosphere in a Changing Climate (SROCC) projected 0.61 m to 1.10 m of sea level rise (SLR) by 2100 under RCP8.5 forcing, with uncertainty largely hinging on the future of the Antarctic ice sheet (IPCC, 2022). Over the past two decades, losses from the West Antarctic Ice Sheet (WAIS) comprised  $84 \pm 12\%$  of the total Antarctic contribution to SLR ( $5.5 \pm 2.2$  mm from 1993-2018; WCRP Global Sea Level Budget

35 Group, 2018), with glaciers flowing into the Amundsen Sea Sector (particularly the Pine Island and Thwaites glaciers) dominating the overall negative mass balance of the ice sheet (Rignot et al., 2019; Shepherd et al., 2019).

40 High ice shelf basal melt rates in the Southeast (SE) Amundsen Sea have been linked to the flow of 'warm' and salty modified Circumpolar Deep Water (mCDW) onto the continental shelf, separated by cooler but fresher waters above by a thermocline between 300 m and 700 m (Dutrieux et al., 2014; Jacobs et al., 2011). mCDW flows from the continental shelf break towards SE Amundsen Sea ice shelves via "central" and "eastern" glacially-carved bathymetric troughs (Nakayama et al., 2013). This 'warm' mCDW penetrates into sub-ice shelf cavities (Jacobs et al., 1996; Paolo et al., 2015; Pritchard et al., 2012) where it can access ice shelf grounding lines (Rignot and Jacobs, 2002). To access the Pine Island Ice Shelf (PIIS) grounding line, mCDW passes between the bottom of the ice shelf at ~350 m and a seafloor ridge at ~700 m (Jenkins et al., 2010). Basal melt is driven by total heat transport, dependent more on the thickness of the mCDW layer transported on-shore than its temperature (Dutrieux et al., 2014; Jenkins et al., 2018), with the thickness controlled by local wind forcing of a shelf break  
45 undercurrent, in turn influenced by the Amundsen Sea Low. Despite the strong sensitivity of these ice shelves to ocean forcing, and evidence of increasing mass loss in this region, estimates of Antarctic SLR contributions from basal melt remain poorly constrained (van der Linden et al., 2021, 2023).

55 Southern Ocean water masses have typically have been differentiated and defined by measurements of temperature and salinity, and less often by including oxygen isotopes ( $\delta^{18}\text{O}$ ; Jacobs et al., 1985, 2002; Meredith et al., 2008, 2010, 2013; Brown et al., 2014; Randall-Goodwin et al., 2015; Silvano et al., 2018; Biddle et al., 2019). Salinity-  $\delta^{18}\text{O}$  relationships can be used to infer the source and concentration of highly  $\delta^{18}\text{O}$ -depleted glacial meltwater from seawater properties (Jacobs et al., 1985; Hellmer et al., 1998; Jacobs et al., 2002; Meredith et al., 2008; Randall-Goodwin et al., 2015). A spatial and temporal  
60 array of T, S and  $\delta^{18}\text{O}$  can be utilized to track glacial meltwater (GMW) content and distribution, especially in nearshore waters adjacent to melting ice shelves. Prior studies have used  $\delta^{18}\text{O}$  measurements to estimate meteoric water (precipitation and GMW) abundance in the Amundsen Sea (Biddle et al., 2019; Jeon et al., 2021; Randall-Goodwin et al., 2015) and elsewhere around Antarctica (Meredith et al., 2008, 2010, 2013; Brown and Edmunds, 2016; Silvano et al., 2018) but so far have  
65 revealed little about temporal variability or possible trends in meteoric water content. Here, we use nearly 1000 seawater isotope samples collected during seven austral summers from 1994 to 2020 (Figure 1Figure 1) to investigate meteoric water sources, water column inventories, and their interannual variability in the SE Amundsen Sea.



70 **Figure 1: Study area bathymetry, circulation, and  $\delta^{18}\text{O}$  sampling locations each of 7 years between 1994 and 2020.**  
 800 m isobaths are shown as thin gray lines. (a) SE Amundsen study area, and location of the ITASE01-2 ice core. (b)  
 Location of the Pine Island Bay gyre (purple), pathways of warm deep mCDW (red) toward the ice shelves and pathways of  
 shallower meltwater rich waters (blue) from beneath Pine Island Ice Shelf (PIIS) (Nakayama et al., 2019; Wählin et al.,  
 2021; Dotto et al., 2022). (c-i) Colored dots show sample locations, with colors representing depth-integrated glacial  
 75 meltwater inventories between 0 m and 800 m from 1994 to 2020. Thick gray lines indicate seaward boundaries of Thwaites  
 Ice Shelf (TIS) and the PIIS. Calving fronts are referenced to 2000 (Schaffer et al., 2014; Fretwell et al., 2013), a relatively  
 stable location before a  $\sim 20$  km retreat following calving events between 2017 and 2020 (Joughin et al., 2021a). Stations  
 where sampling did not extend to the seafloor show only partial water column inventories, and stations shown as white dots  
 (2007, 2009, 2014) had two or fewer depths sampled. In 2000, 2007, and 2019, access to sampling along the front of PIIS  
 80 calving front was precluded by fast ice.

## 2 Data and Methods

### 2.1 Sample collection and analysis

We compile data from samples collected during 7 field seasons in the SE Amundsen Sea from 1994 to 2020 (**Figure 1****Figure 1**, **Table 1****Table 1**). Salinity profiles were obtained using calibrated conductivity

85 cells on SBE911 conductivity-temperature-depth (CTD) instruments, monitored with shipboard bottle  
 sample analyses using Guildline AutoSal and PortaSal salinometers calibrated with IAPSO seawater  
 salinity standards.  $\delta^{18}\text{O}$  samples from 2019 and 2020 were collected in glass serum vials capped with  
 rubber stoppers and aluminum seals (**Appendix A8**), which internal lab data demonstrate the  
 maintenance of seawater  $\delta^{18}\text{O}$  sample integrity for 5+ years. In all other years, samples were collected  
 90 in bottles with taped (2009) or parafilm-wrapped (2014), threaded caps. 2009 and 2014 samples were  
 stored for several years before  $\delta^{18}\text{O}$  analysis.

In 1994, 2007, 2009 and 2014,  $\delta^{18}\text{O}$  was measured using an Isotope Ratio Mass Spectrometer (IRMS;  
 Micromass Optima Multiprep or a Finnigan MAT252 HDO). All samples collected in 2019 and 2020,  
 95 and some in 2007 and 2009, were measured with a Picarro L2140-i Cavity Ring Down System (CRDS).  
 Equivalence has been demonstrated between CRDS and IRMS measurements (Walker et al., 2016;  
**Appendix A7**). In all cases, values are reported as per mil(‰) deviations( $\delta$ ), relative to Vienna  
 Standard Mean Ocean Water (VSMOW2; Coplen, 1994).

100 **Table 1: Summary of  $\delta^{18}\text{O}$  data sources, sampling intervals, methods & applications**

Year	Cruise	Sample collection dates	# Samples	$\delta^{18}\text{O}$ Technique(s)
1994	NBP94-02 (Hellmer et al., 1998)	14 Mar. 1994 –	26	IRMS $\text{CO}_2$ equilibration
		15 Mar. 1994		
2000	NBP00-01 (Jacobs et al., 2002)	16 Mar. 2000 –	62	IRMS $\text{CO}_2$ equilibration
		20 Mar. 2000		
2007	NBP07-02	24 Feb. 2007 – 27 Feb. 2007	74	IRMS $\text{CO}_2$ equilibration, CRDS
2009	NBP09-01	16 Jan. 2009 – 29 Jan. 2009	175	IRMS $\text{CO}_2$ equilibration, CRDS
2014	iSTAR2014 (Biddle et al., 2019)	5 Feb. 2014 – 20 Feb. 2014	213	IRMS $\text{CO}_2$ equilibration
2019	NBP19-01	12 Jan 2019 – 14 Jan 2019	107	CRDS
2020	NBP20-02	5 Feb. 2020 – 8 Mar. 2020	280	CRDS

Some of the 2009 samples were processed at Rutgers University in 2010 using a Micromass IRMS; the  
 remainder in 2020 using a Picarro CRDS system at Stanford University. The latter samples were subject  
 to extensive quality control before being included in this study. (**Appendix A6**). A subset of 100  
 105 samples from 2019 and 2020 were processed concurrently using  $\text{CO}_2$  equilibration on a Finnigan  
 MAT252 IRMS and CRDS via vaporizer to ensure data comparability between instrumentation  
 (**Appendix A7**). Measurements for all years achieved a precision of 0.04‰ for IRMS and 0.02‰ for  
 CRDS, based on replicate analyses.

110 After a review of the literature, we considered a possible salt effect in measured seawater  $\delta^{18}\text{O}$ , as  
 suggested by a small number of studies (Lécuyer et al., 2009; Skrzypek and Ford, 2014; Benetti et al.,  
 2017). As no salt effect offset was applied to the previously published data in this study (1994, 2000,

2014) we have not applied any offset to data from other years. The mCDW  $\delta^{18}\text{O}$  value (**Table 2**) for 2014 is significantly higher than other years (**Appendix A2**) – likely due to a calibration offset but may also point to sample storage issues. The mCDW and meteoric water endmembers are defined from observations each year, minimizing the impact of interlaboratory offsets on the results (**Appendix A2, Data and Methods 2.2**).

## 2.2 Three-endmember mixing model

We adapt an approach from Östlund & Hut (1984) as applied in the Peninsula-Bellingshausen-Amundsen region of West Antarctica (Biddle et al., 2019; Jeon et al., 2021; Randall-Goodwin et al., 2015; Meredith et al., 2010) and near the Totten Ice Shelf (Silvano et al., 2018). We use a 3-endmember mixing model (**Equations 1-3**) to determine water source fractions in the field area. The model assumes the observed  $\delta^{18}\text{O}$  and salinity values result from mixtures of mCDW, sea ice melting/freezing, and meteoric waters contributing a range of  $\delta^{18}\text{O}$  and salinity signatures. Model outputs (mCDW, meteoric water, and sea ice melt fractions) critically depend on appropriate endmember inputs, which will affect resulting water source fractions and interpretation of any changes through time. To minimize issues that could arise from inter-laboratory calibration offsets (**Data and Methods 2.1, Appendix A2**), we define mCDW and meteoric water endmembers separately for each year (**Table 2**).

**Equations 1-3: Three-endmember mixing model.** The 3-endmember mixing model uses the absolute salinity and  $\delta^{18}\text{O}$  of mCDW, sea ice melt, and meteoric water endpoints to solve for the relative fractions of the three water sources in each sample analyzed.

$$f_{sim} + f_{met} + f_{mcdw} = 1 \quad (1)$$

$$f_{sim} * S_{sim} + f_{met} * S_{met} + f_{mcdw} * S_{mcdw} = S_{obs} \quad (2)$$

$$f_{sim} * \delta_{sim} + f_{met} * \delta_{met} + f_{mcdw} * \delta_{mcdw} = \delta_{obs} \quad (3)$$

$f$  = fraction of water source

$S$  = salinity

$\delta$  =  $\delta^{18}\text{O}$

$sim$  = sea ice melt

$met$  = meteoric water

$mcdw$  = modified circumpolar deep water

$obs$  = observed sample

The mCDW is the warmest, saltiest, and least  $\delta^{18}\text{O}$ -depleted water mass in the region and comprises the vast majority of the overall water column. Interannual changes in mCDW inflow will result from variable wind forcing (Dotto et al., 2019; Holland et al., 2019; Kim et al., 2021), combined with on-shelf lateral and vertical mixing. In the 3-endmember mixing model, mCDW is defined by the mixing line of data  $>200$  m; with mCDW the  $\delta^{18}\text{O}$  value at the salinity maximum (Biddle et al., 2017) (**Results 3.1; Figure 2, Appendix A1**). Sea ice endmember isotopic values adopted from previous studies in the Amundsen and Bellingshausen region (Meredith et al., 2008, 2010, 2013; Randall-

Goodwin et al., 2015; Biddle et al., 2019) are based on the  $\delta^{18}\text{O}$  of surface water with an offset to account for isotopic fractionation due to freezing (Rohling, 2013).

155 The greatest endmember uncertainty is associated with the meteoric water endmember, which can include basal melt, local and imported iceberg melt, and local and non-local precipitation. Meteoric waters >200 m will consist almost entirely of GMW (Jenkins, 1999; Randall-Goodwin et al., 2015; Biddle et al., 2019) and can be fingerprinted using the 0-salinity intercept of linear regressions through salinity- $\delta^{18}\text{O}$  data, as shown in **Figure 2** (Fairbanks, 1982; Paren and Potter, 1984; Potter et al., 160 1984; Jacobs et al., 1985; Hellmer et al., 1998; Jenkins, 1999; Meredith et al., 2008) (**Results 3.1**). Even meteoric water in the upper 200 m will consist primarily of GMW (Meredith et al., 2008; Bett et al., 2020), however it is also likely to contain some fraction of precipitation with a less negative  $\delta^{18}\text{O}$  value.

The Pine Island/Thwaites area receives  $\sim 0.5$  m/y (water equivalent) of precipitation (Boisvert et al., 165 2020; Donat-Magnin et al., 2021). Local precipitation collected in 2019 at 72.5°S had a  $\delta^{18}\text{O}$  value of -15‰, consistent with studies of precipitation at this latitude and elevation (Masson-Delmotte et al., 2008). To calculate the most accurate meteoric water and sea ice melt/~~formation~~ fractions, we account for the presence of precipitation in the upper water column. With 2 full years' worth of precipitation (residence time of local deep shelf waters  $\sim 2$  years; Tamsitt et al., 2021) in the upper water column, 170 those meteoric waters must be comprised of >74% GMW (**Appendix A4**). We use a 2-component meteoric water endmember approach, with a 'pure' GMW endmember as calculated from the linear regression through those  $\delta^{18}\text{O}$  and salinity data (**Table 2**, **Figure 2**, **Results 3.1**) used in the deep water column, and an endmember comprised of precipitation and GMW (**Table 2**) used in the upper water column.

175

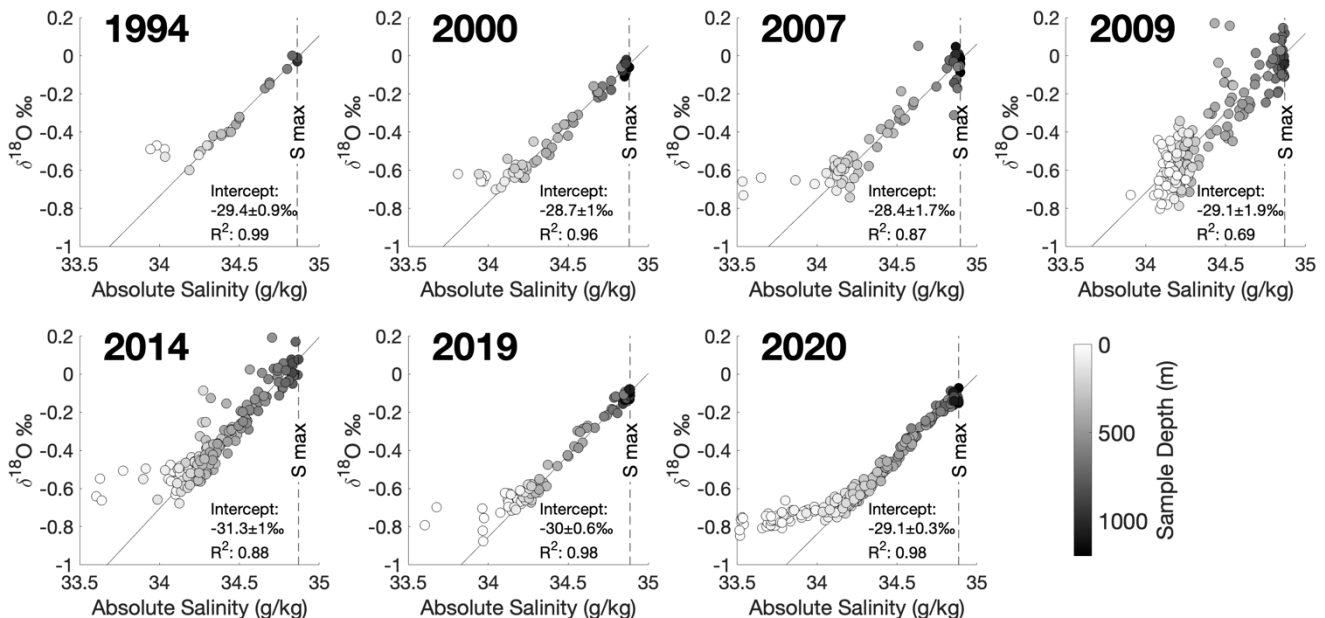
**Table 2: Base salinity and  $\delta^{18}\text{O}$  values used in the 3-endmember mixing model.** mCDW and meteoric GMW components are defined independently using the mCDW-GMW mixing line produced from (>200 m depth) salinity and  $\delta^{18}\text{O}$  observations for each year, as the salinity maximum and zero-salinity intercept, respectively (**Results 3.1**; **Figure 2**; **Appendix A1**). In the upper 200 m, a meteoric endmember comprised of a weighted average between precipitation and GMW fraction is used (**Appendix A4**). Sea ice melt uses the same values for each year. Salinities are reported as absolute salinity (g/kg). 180

Year	mCDW salinity (g/kg)	mCDW $\delta^{18}\text{O}$ (‰)	Meteoric water GMW $\delta^{18}\text{O}$ (‰)	GMW fraction of meteoric water <200 m	Meteoric water precipitation $\delta^{18}\text{O}$ (‰)	Effective <200 m meteoric water $\delta^{18}\text{O}$ (‰)	Sea ice melt salinity (g/kg)	Sea ice melt $\delta^{18}\text{O}$ (‰)
1994	34.86	-0.01	-29.37	0.735		-25.56		
2000	34.88	-0.05	-28.71	0.773		-25.60		
2007	34.90	-0.02	-28.42	0.785		-25.53		
2009	34.87	0.01	-29.09	0.775	-15	-25.92	7	2.1
2014	34.87	0.08	-31.26	0.756		-27.29		
2019	34.89	-0.09	-30.02	0.759		-26.40		
2020	34.89	-0.10	-29.14	0.781		-26.05		

### 3 Results

#### 3.1 Meteoric waters defined by the $\delta^{18}\text{O}$ – salinity relationship

185 Freshwater endmembers (zero-salinity  $\delta^{18}\text{O}$  intercepts) over the seven sampled summers differ by <3‰, ranging from  $-28.4 \pm 1.0$ ‰ to  $-31.3 \pm 1.0$ ‰ with a standard deviation of 1.0‰ across years (Figure 2, Table 2, Table 2). These measurements are consistent with the nearest ice-core (ITASE01-2, from 77.84°S, 102.91°W, Figure 1, Figure 1a; Schneider et al., 2006; Steig et al., 2005) with a mass-averaged  $\delta^{18}\text{O}$  value of  $-29.8 \pm 1.9$ ‰. Ice cores further east have less negative  $\delta^{18}\text{O}$  values (~-20‰; Thomas et al., 2009), while those further west are more negative (~-40‰; Blunier & Brook, 2001). Intercept standard error ranges from  $\pm 0.3$ ‰ in 2020 to  $\pm 1.9$ ‰ in 2009. Endmember extrapolations from the regional salinity and  $\delta^{18}\text{O}$  measurements indicate that freshwater introduced to the water column is dominated by locally derived GMW, as intimated earlier from 1994 data (Hellmer et al., 1998). While winter water, produced during sea-ice formation, also has a depleted  $\delta^{18}\text{O}$  signature, these waters are less depleted than those influenced by GMW (Jenkins, 1999). Aggressively removing winter water samples ( $\Theta < -1.5^\circ\text{C}$ ) from the regression had no impact on the 0-salinity intercepts. The calculated intercepts were also unaffected by. As a secondary check the regressions were re-calculated using only those data falling directly on the mCDW-GMW mixing line in T-S space (distinct from the mCDW-winter water mixing line). —once again, the calculated intercepts were unaffected.



200 **Figure 2: Salinity vs  $\delta^{18}\text{O}$  plots for each year, shaded by depth.** Linear regressions (solid) gray lines (with  $R^2$  from 0.69 in 2009 to 0.99 in 1994) project to zero-salinity glacial meltwater endmember intercepts using data >200 m. Dashed vertical lines indicate the mCDW salinity maxima (Table 2, Table 2). Data diverge from the mCDW-meteoric water mixing line in the upper water column, where sea ice melt freshens the resultant mixture but has an enriching effect on  $\delta^{18}\text{O}$  (Table 2, Table 2). Years with greater divergence at the surface have

205

more sea ice melt (**Appendix A5**). The most negative upper water column seawater  $\delta^{18}\text{O}$  measurements tend to reach minima between -0.9‰ and -0.6‰. Intercept uncertainty is the standard error of the linear regression intercept through data >200 m.

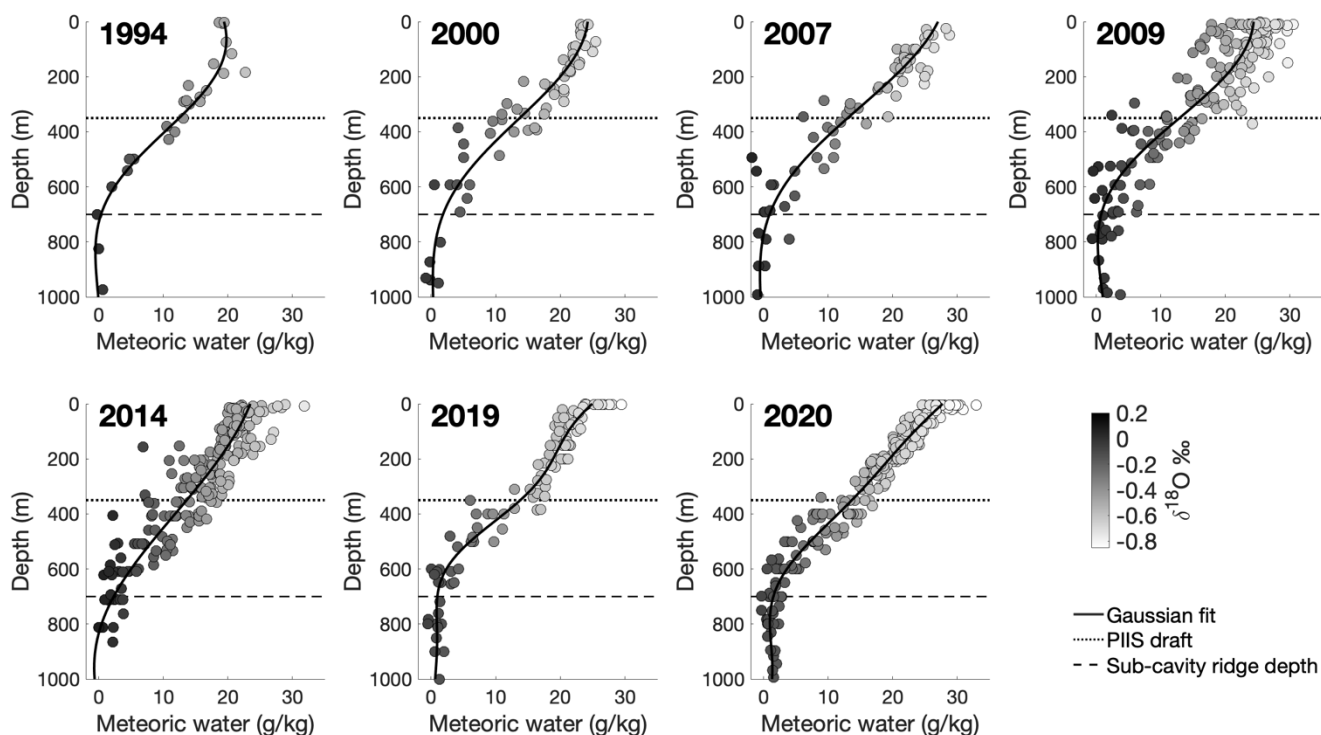
210

Samples below 200 m show a strong  $\delta^{18}\text{O}$ -salinity relationship, forming a mixing line between mCDW and a (glacial) meteoric freshwater endmember introduced at depth. Closer to the surface (from 10 m in 2009 to 160 m in 2000) data diverge from the mixing line due to the net influence of sea ice melt and local precipitation, moving the  $\delta^{18}\text{O}$  of the mixture in a more positive direction. Below 200 m the  $\delta^{18}\text{O}$ -salinity relationship is strongly linear in all years, with 1994, 2000, 2019, 2020 showing the strongest fit.

### 3.2 Vertical distribution of meteoric water illustrates basal melt

215

A 3-endmember mixing model of mCDW, sea ice melt, and meteoric water is used to determine the constituent freshwater components of seawater (**Equations 1****Equations 1-3**) at all depths sampled in the water column (**Figure 3****Figure 3**). By using mCDW and meteoric water endmember values based on data from each year individually, minimizing the potential impact of analytical calibration offsets between laboratories on the calculated meteoric water fractions. (**Data and Methods 2.1**; **Appendix A2**).



220

**Figure 3: Meteoric water fractions (g of meteoric water per kg of seawater/kg) vs depth.** Shading shows  $\delta^{18}\text{O}$  value, and solid lines represent Gaussian Process regression fits. Dotted and dashed lines show the depth of the PIIS draft and sub-cavity ridge (Jenkins et al., 2010). Small Slightly-false negative meteoric water values-fractions at depth-in deep waters occur- are the result when the of sample salinity



and/or  $\delta^{18}\text{O}$  values that exceeds are higher than the mCDW endmember value(s) (Table 2 Table 2; Data and Methods 2.2), the result of spatial variability in mCDW signatures-properties (discussed in further detail in Results 3.5).

Evidence of highly  $\delta^{18}\text{O}$ -depleted freshwater is found at depths above  $\sim 700$  m (the depth of PIIS sub-ice shelf ridge; Jenkins et al., 2010), with highest concentrations found at depths shallower than 350 m – above which glacial meltwater has been observed to flow out from beneath the ice shelf (Biddle et al., 2017; Naveira Garabato et al., 2017). Made less dense by the addition of GMW, such outflows rise through denser waters above, along ice shelf calving fronts and strongly influencing surface waters in this region (Dierssen et al., 2002; Mankoff et al., 2012; Thurnherr et al., 2014; Fogwill et al., 2015). Mean integrated total meteoric water column inventories (Table 3 Table 3) range from a low of  $8.1 \pm 0.7$  m in 1994 to a high of  $9.6 \pm 0.8$  m in 2000 and 2020, with meteoric water fraction uncertainty (described in Results 3.5.1) ranging from 1.4 g/kg in 2019 to 2.8 g/kg in 2009. Uncertainty analysis is described in Results 3.5.1.

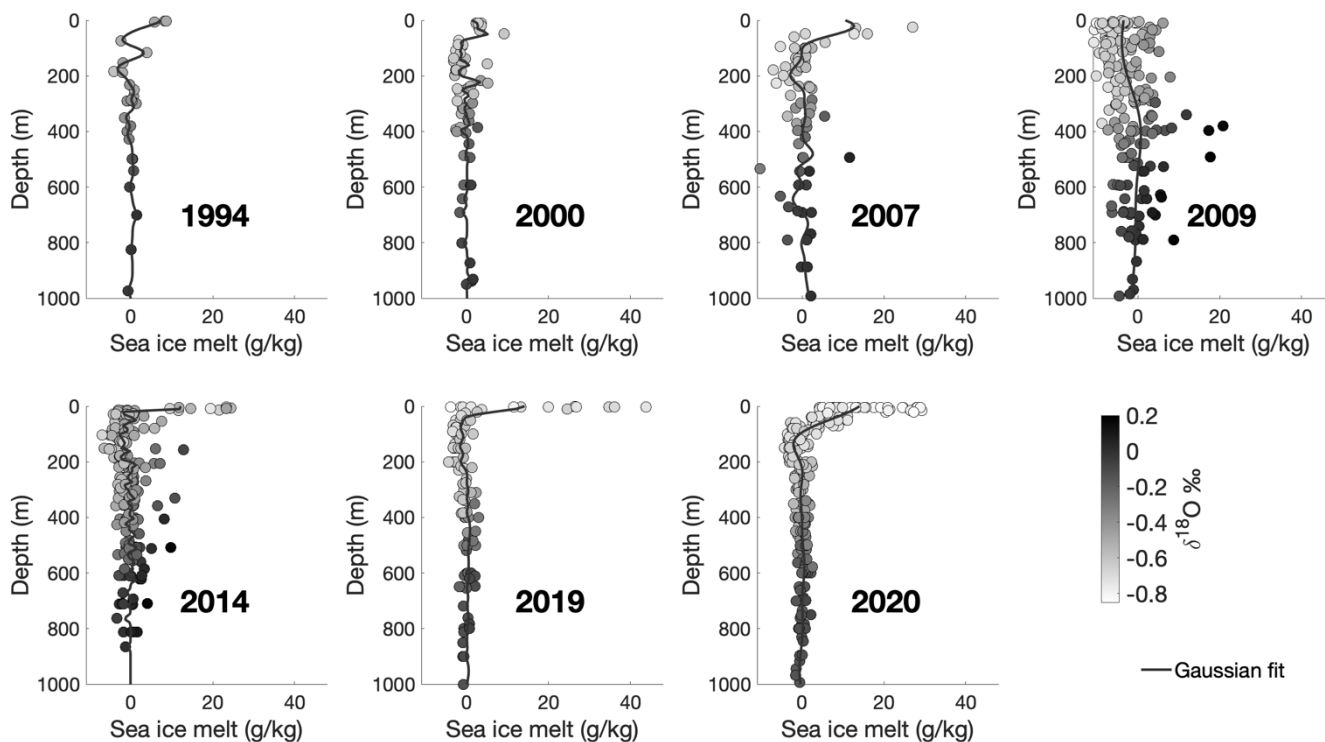
**Table 3: Meteoric water column inventory and uncertainty.** Depth-integrated meteoric water content using the Gaussian Process fit (Figure 3 Figure 3) between the sea surface and 800 m depth. Uncertainties are associated with instrumental precision, spatial variability of data, and endmember uncertainty (Data and Methods 2.2).

Year	Meteoric water column inventory (m)	% meteoric water column inventory uncertainty	Meteoric water fraction uncertainty (g/kg)	Estimated GMW fraction of total meteoric water
1994*	$8.1 \pm 0.7$	8.1%	1.6	0.876
2000	$9.6 \pm 0.8$	8.6%	1.9	0.896
2007	$9.4 \pm 1.1$	11.7%	2.3	0.893
2009	$9.0 \pm 1.1$	12.4%	2.8	0.889
2014	$9.4 \pm 1.0$	11.0%	2.0	0.894
2019	$8.9 \pm 0.7$	8.0%	1.4	0.887
2020	$9.6 \pm 0.8$	8.4%	1.5	0.896

\* As 1994 has only 4 sampling locations, and the strongest fit of any year (Figure 2 Figure 2) its uncertainty may be artificially decreased

### 3.3 Sea ice melt

Sea ice melt fractions reach as high as 40 g/kg in the upper surface waters (2019, Figure 4 Figure 4), while sea ice melt fractions are mostly negative below 100 m, with the minima (i.e., largest negative fraction) occurring just above 200 m in most years. Negative sea ice melt fractions in subsurface waters are produced during sea ice formation (with the opposite signal produced in the near-surface when the sea ice melts), and reach as low as -13 g/kg, indicating regions of net sea ice formation, with the minima (i.e., largest negative fraction) occurring just above 200m in most years – the product of sea ice formation. Larger positive sea ice melt fractions below 200 m correspond with samples with higher  $\delta^{18}\text{O}$  than others at a similar depth/salinity. Total integrated mean sea ice melt (Table 4 Table 4) is near 0 across all years, with uncertainty (described in Results 3.5.1) in sea ice melt fractions ranging from 1.8 g/kg in 2019 to 3.6 g/kg in 2009. Uncertainty analysis is described in Results 3.5.1. Mean sea ice melt inventories are influenced largely by very high fractions near the surface, potentially the result of sea ice melt “flooding” and import of sea ice melt from areas upstream (Ackley et al., 2020), impacting the overall inventories.



**Figure 4: Sea ice melt fractions (g of sea ice melt per kg of seawater) vs depth.** Shading shows  $\delta^{18}\text{O}$  value, and solid lines represent Gaussian Process regression fits. Sea ice melt fractions are highest at the surface. Negative sea ice melt fractions, occurring mostly below 100 m, indicate regions of net sea ice formation are the product of earlier sea ice formation.

**Table 4: Sea ice meltwater column inventory and uncertainty.** Depth-integrated sea ice meltwater content using the Gaussian Process fit (Figure 4, Figure 3) between the sea surface and 800 m depth. Uncertainties are associated with instrumental precision, spatial variability of data, and endmember uncertainty (Data and Methods 2.2).

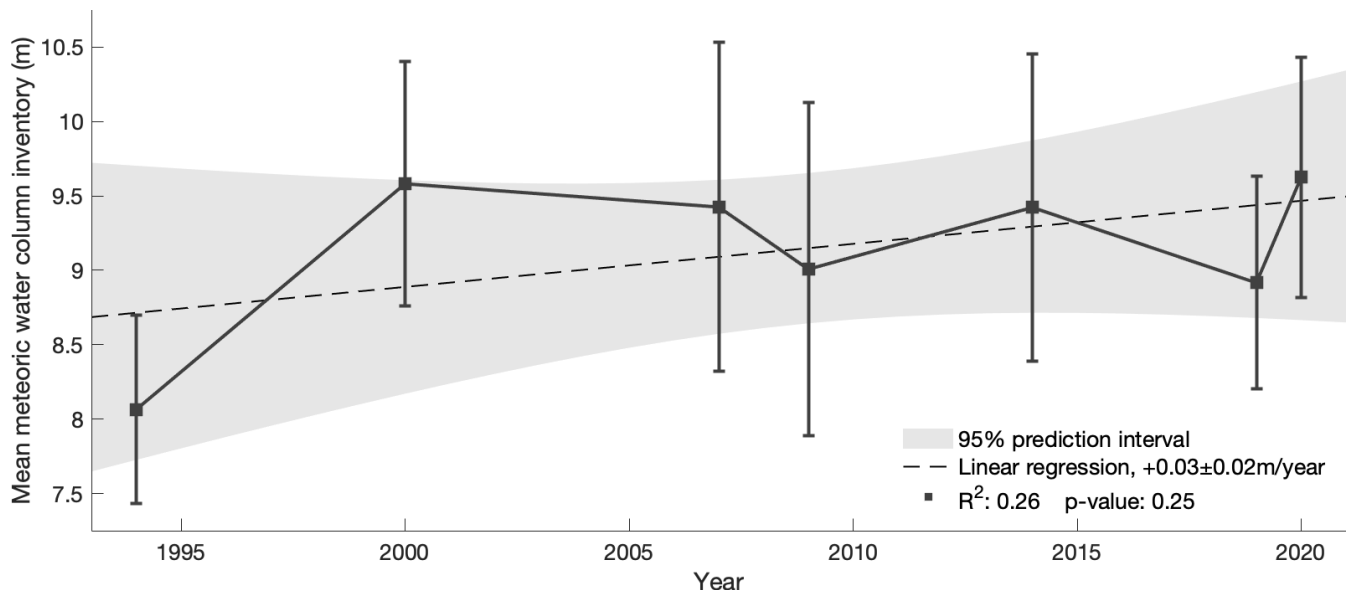
Year	Mean sea ice melt column inventory (m)	Sea ice melt fraction uncertainty (g/kg)
1994	0.1±0.9	2.1
2000	0.1±1.0	2.4
2007	0.6±1.5	2.9
2009	-0.9±1.4	3.6
2014	-0.2±1.1	2.5
2019	0.3±1.0	1.8
2020	0.5±0.9	1.9

Sea ice melt is discussed further in **Appendix A6**.

### 3.4 Average meteoric water inventory over the last two decades

270 Average meteoric water column inventories ([Table 3](#)[Table 3](#)) in the study area were estimated by depth  
integrating the Gaussian Process fit of the calculated meteoric water fractions (solid lines in [Figure](#)  
[3](#)[Figure 3](#)). [Figure 5](#)[Figure 5](#) plots the mean meteoric water inventory in each year, with uncertainty  
described in [Uncertainty and Sensitivity Analyses 3.5](#). The average meteoric water column inventory  
was relatively low in 1994 and higher from 2000-2020. Strongly influenced by the low meteoric water  
inventory in 1994, a linear regression of the mean meteoric water inventories suggests an increase of  
275  $0.03 \pm 0.02$  m/y (p-value 0.25). The increase is small— and given the magnitude of the uncertainty  
associated with these inventories, may be an artefact stemming from spatial sampling bias, or some  
fraction of a meteoric water signal imported from upstream.

280 These results [show greater interannual variability than increasing trend in meteoric water content,](#)  
[however](#) are consistent with recent [studies-modeling](#) showing an increase in basal melt through the  
1990s, followed by relative stability and interannual variability from 2000 through 2020 (Flexas et al.,  
2022), [with interannual variability that is larger than the increasing trend in meteoric water content.](#)  
Meteoric water column inventories have uncertainties of  $<1.1$  m ( $\leq 12.4\%$ ), [when](#)-accounting for  
analytical precision, endmember uncertainty, and spatial variability of the model inputs ([Results 3.5](#)).  
285 Based on very liberal evaluation of precipitation influence, these total meteoric water column  
inventories are likely to consist of  $>87\%$  GMW ([Methods 2.2, Appendix A4](#)). While the glacial  
fraction of these results will include local and non-local iceberg melt, it will not include ice shelf losses  
via iceberg calving where icebergs [are-exported-melt outside](#) of the study area.



290 **Figure 5: Average meteoric water column inventory.** Depth-integrated meteoric water content from the Gaussian Process fit ([Figure](#)  
[3](#)[Figure 3](#)) between the sea surface and 800 m. Error bars show the uncertainty ([Results 3.5](#)) associated with data volume, analytical

precision, and uncertainty in endmember values (**Data and Methods 2.2**). A linear regression of the mean values shows an increase of  $0.03 \pm 0.02$  m/year (p-value 0.25). Grey shading shows the 95% prediction interval for the linear regression.

295

### 3.5 Uncertainty and sensitivity analyses

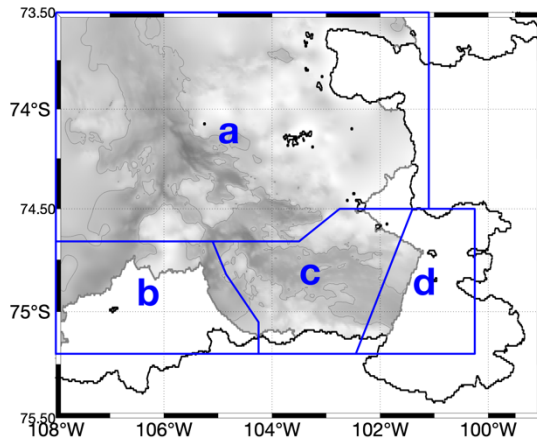
#### 3.5.1 Analytical precision, geographic sampling variability, and endmember uncertainty

The results of the 3-endmember mixing model depend on the inputs and endmembers used – all of which are subject to some level of uncertainty. We ran 15,000 Monte Carlo simulations for each year's data to assess the uncertainty of the results. In each simulation we select 3 stations at random. Each observation is perturbed randomly by the precision associated with analytical precision for that instrument. We determine mCDW and meteoric water endmembers from those perturbed data from the random selection of 3 stations; these two endmembers will differ with each simulation, both due to the observational data perturbations and due to the randomized station selection. We apply an additional perturbation to all three endmembers based on the uncertainty and variability associated with that endmember. In the upper 200 m of the water column, the precipitation fraction, and  $\delta^{18}\text{O}$  value are perturbed independently, in addition to the perturbations made to the meteoric GMW endmember calculated from the mixing lines (**Table 2**, **Figure 2**). The greatest single source of water fraction uncertainty is endmember uncertainty, followed by geographic sampling variability. More in-depth details of the uncertainty analysis, perturbations used, and breakdowns of different uncertainty impacts can be found in **Appendix A3**.

Uncertainty in mean meteoric water fractions ranges from 1.4 g/kg in 2019 to 2.8 g/kg in 2009, and uncertainty in mean meteoric column inventories ranges from 7.9-12.4%. Calculated water fractions are most strongly influenced by changes made to the mCDW endmember (comprising ~99% of an 800 m water column on average; ~95% in surface waters rich in meteoric water and sea ice melt). Sea ice melt and meteoric water fractions vary inversely. Meteoric water fractions also vary inversely with the magnitude of the meteoric water endmember  $\delta^{18}\text{O}$  (i.e. a **larger negative more negative meteoric water** endmember will produce smaller meteoric water fractions). 1994 has the fewest samples, but the strongest fit (**Figure 2**), so uncertainty for this year may be artificially low (**Figure 5**).

#### 3.5.2 Geographic variability by grouping

This study relied on the compilation of data collected for 6 independent studies over 7 different cruises. To determine the impact of inconsistency in sampling locations each year, we conducted a spatial sensitivity analysis by separately analyzing different spatial groups of stations across each year (**Figure 6**, **Table 5**, **Table 6**), running 5,000 Monte Carlo analyses for each group as described in **Results 3.5.1**. Uncertainty is represented as the standard deviation of those results (**Table 5**, **Table 6**).



330 **Figure 6: Boundaries of geographic groupings used for spatial sensitivity analysis.** Blue lines show boundaries of geographic areas analyzed separately. Gray shading shows bathymetry, with isobaths drawn at 800 m. More detailed maps for each year are in Appendix A4.1.

**Table 5: Summarized results of meteoric water column inventory (m) from spatial sensitivity analysis (Figure 6).** Results by year in rows, and by area group in columns. See Appendix A3.3 for further detail.

	a	b	c	d
1994	6.8±0.5*	-	-	8.5±0.6
2000	9.6±0.7	-	-	-
2007	8.8±0.8	10.6±0.8*	9.5±0.7	-
2009	7.5±0.6*	-	9.1±0.8	8.9±0.7
2014	8.7±0.6	10.7±0.6	8.3±0.5	7.9±0.5
2019	8.7±0.6	10.4±0.7	8.6±0.5	-
2020	9.3±0.6	-	9.1±0.5	8.9±0.5

335 \* Data from only one station. For 1994, 2007, and 2009, result is based on only 8, 4, and 4 samples, respectively.

**Table 6: Summarized results of sea ice melt water column inventory (m) from spatial sensitivity analysis (Figure 6).** Results by year in rows, and by area group in columns. See Appendix A3.3 for further detail.

	a	b	c	d
1994	-0.3±0.7*	-	-	0.7±0.9
2000	0.1±0.9	-	-	-
2007	0.6±1.0	1.3±1.1*	0.7±1.0	-
2009	0.0±0.7*	-	-1.4±1.1	-0.7±1.0
2014	-0.1±1.0	0.0±0.9	-0.5±0.9	-0.2±0.8
2019	0.1±0.7	-0.3±0.8	-	-
2020	0.6±0.8	-	0.6±0.8	0.5±0.8

\* Data from only one station. For 1994, 2007, and 2009, result is based on only 8, 4, and 4 samples, respectively.

340 Grouped geographic sensitivity analyses show little spatial variability in mean water column inventories, accounting for uncertainty (Table 5, Table 6). Mean sea ice melt inventories are consistently ~0 m, with near-complete overlap of means and uncertainty envelopes across groupings for each year. Mean meteoric water column inventories are remarkably consistent

345 spatially, except those calculated from stations in Group **a** in 1994 and 2009, where very few data were  
available, and Group **b** alongside the TIS, which showed significantly higher meteoric water inventories  
than the rest of the study area. Only 1 and 2 stations alongside the TIS were sampled in 2007 and 2019,  
the average column inventories are consistent with the 2014 data, where there were 8 stations in Group  
**b**. The higher inventories in Group **b** are suggestive of an accumulation of basal melt, and consistent  
350 with findings from another study showing that basal melt from beneath PIIS ends up along the eastern  
edge of TIS (Wählin et al., 2021).

In some cases (e.g. 2020), the calculated mean meteoric water inventories from the individual groupings  
(**Table 5**) are higher than the overall mean. The apparently lower meteoric water column  
355 inventories result from small differences in calculated endmembers (i.e. less-salty mCDW, more  
negative mCDW  $\delta^{18}\text{O}$ , and/or more negative meteoric water  $\delta^{18}\text{O}$ ), as mCDW and meteoric  
endmembers are defined separately for each geographic grouping in each year. The relative insensitivity  
of sampling location (with the exception of those alongside TIS) in calculated mean meteoric water  
column inventories suggests that precise reoccupation may be unnecessary, and potentially that a  
360 relatively small number of strategic stations/sampling locations could be used to reliably assess mean  
meteoric water column inventory in this region. (See **Appendix A3.3** for detailed results, including  
individual endmembers for each grouping).

## 4 Discussion

### 4.1 The utility of zero-salinity $\delta^{18}\text{O}$ intercepts

365 The meteoric water endmember has been described as the least well-constrained component (Meredith  
et al., 2008, 2010, 2013; Randall-Goodwin et al., 2015; Biddle et al., 2019) of the three-endmember  
mixing model employed here, leading previous studies to use plausible mean meteoric  $\delta^{18}\text{O}$  values,  
falling between the  $\delta^{18}\text{O}$  value of glacial melt and local precipitation. We use linear regressions through  
salinity- $\delta^{18}\text{O}$  mixing lines to (e.g. **Figure 2**) to determine glacial freshwater endmembers  
370 (Fairbanks, 1982; Paren and Potter, 1984; Potter et al., 1984; Jacobs et al., 1985; Hellmer et al., 1998;  
Jenkins, 1999). The salinity- $\delta^{18}\text{O}$  data presented here (**Figure 2**) show ~~mixing~~ clear mixing  
lines between mCDW and a meteoric freshwater at depths below 200\_m, with a  $\delta^{18}\text{O}$  value indicative of  
local glacial freshwater (Steig et al., 2005; Schneider et al., 2006). The uncertainty associated with these  
intercepts is lower than the mass-weighted standard deviation of the average  $\delta^{18}\text{O}$  of the ITASE01-2 ice  
375 core (**Figure 2**). Winter water, a salty, relatively  $\delta^{18}\text{O}$ -depleted product of sea ice formation,  
has a less  $\delta^{18}\text{O}$ -depleted signature than those influenced by GMW (Jenkins, 1999), and a liberal removal  
of samples that may be considered winter water ( $\Theta < 1.5^\circ\text{C}$ ) has insignificant ( $< 0.5\%$ ) effect on the  
calculated intercepts.

380 The 2014 data presented here was previously used in another study (Biddle et al., 2019), where they  
selected  $-25\%$  as a meteoric water  $\delta^{18}\text{O}$  endmember, adopting the midpoint between the GMW and  
precipitation  $\delta^{18}\text{O}$  values from another study further to the west (Randall-Goodwin et al., 2015). For the

2014 data, the current study uses base meteoric  $\delta^{18}\text{O}$  endmembers of -31.3‰ for deep waters, and -27.3‰ for the upper 200 m (**Table 2Table 2**). Using a less-negative endmember (as in Biddle et al., 2019) results in higher meteoric water fractions, and lower sea ice melt (~~or~~ increased sea ice formation) fractions, very almost certainly likely overestimating the deep water column meteoric water content, which will consist of nearly pure GMW. We estimate that >73% of the meteoric water in the upper 200 m is comprised of GMW (**Discussion 4.2, Appendix A4**). Determining the deep meteoric water (GMW) endmember using the better-constrained zero-salinity  $\delta^{18}\text{O}$  intercept of the sample data mixing line (**Data and Methods 2.2**), and a separate shallow meteoric endmember (incorporating a realistic precipitation fraction) provides more accurate estimates of both meteoric water and sea ice melt fractions throughout the water column. The length of the intercept extrapolation emphasizes the importance of careful sample collection, storage, and high-precision analyses.

## 4.2 Glacial meltwater and precipitation

395 The  $\delta^{18}\text{O}$  of local precipitation and glacial melt are significantly different from one another, and can be clearly distinguished on the basis of  $\delta^{18}\text{O}$ . Potter and Paren (1985) observed on George VI glacier that the ice flux into the ice shelf had a  $\delta^{18}\text{O}$  value of  $\sim$ -20‰, while accumulation of precipitation onto the northern form of the ice shelf was much less depleted, with a  $\delta^{18}\text{O}$  of  $\sim$ -13‰. Precipitation grows increasingly depleted in  $^{18}\text{O}$  with latitude (Dansgaard, 1964; Gat and Gouffier, 1981; Ingraham, 400 1998; Masson-Delmotte et al., 2008) and altitude (Dansgaard, 1964; Friedman and Smith, 1970; Siegenthaler and Oeschger, 1980; Ingraham, 1998; Araguás-Araguás et al., 2000; Sato and Nakamura, 2005; Masson-Delmotte et al., 2008). ~~Most (88%)~~ of spatial variation in the  $\delta^{18}\text{O}$  of Antarctic precipitation can be explained by linear relationships between latitude, elevation, and distance from the coast, with elevation being the primary driver (Masson-Delmotte et al., 2008). Precipitation collected 405 during the NBP19-01 cruise in the study had a  $\delta^{18}\text{O}$  value of -15‰, consistent with other data from that latitude and elevation. Precipitation is discussed further in **Appendix A4**.

The nearest Ice cores to our site (ITASE01-2, Steig et al., 2005; Schneider et al., 2006; Siple, Mosley-Thompson et al., 1990) have average  $\delta^{18}\text{O}$  compositions of  $-29.86 \pm 1.96$ ‰ (ITASE01-2) and  $-29.6 \pm 1.0$ ‰ (Siple). Using locally collected salinity and  $\delta^{18}\text{O}$  data from deeper than 200 m to calculate a zero-salinity intercept, we identify average freshwater endmembers ranging from  $-31.3 \pm 0.10$ ‰ to  $-28.4 \pm 1.00$ ‰ (mean  $29.4 \pm 1.0$ ‰). The similar zero-salinity intercept, and strong linear salinity-  $\delta^{18}\text{O}$  relationship below 200 m demonstrates that glacial freshwater is responsible for the observed freshening signal. We find roughly half of the total meteoric water inventory in the upper 200 m, below which 415 inventories yield the same relative trend in interannual variability (**Appendix A5**), indicating that the observed variability results from changes in glacial meltwater content, and not from interannual variability in local precipitation. A substantial fraction of precipitation (both local and non-local) will be deposited on sea-ice, much of which is subsequently advected out of the study area (Assmann et al., 2005), and as a result have no impact on locally measured meteoric water content; suggesting that 420 GMW could comprise an even greater fraction than the base level used here (**Table 2Table 2**).

Nearly half of the water column meteoric water content resides in the upper 200 m, and >73% that meteoric water is comprised of glacial meltwater (**Appendix A5**). The use of a midpoint GMW-precipitation intercept will overestimate GMW fractions through the water column, directly impacting the accuracy of other techniques using  $\delta^{18}\text{O}$  GMW measurements for calibration (Pan et al., 2023).  
425 While previous studies (Randall-Goodwin et al., 2015; Biddle et al., 2019) have not quantified upper water column GMW due to uncertainty surrounding the impact of local precipitation. Our analysis indicates that precipitation comprises a relatively small fraction of even upper water column meteoric water, even in the most extreme case. The 2-component meteoric endmember approach presented here  
430 accounts for a fraction of precipitation in the upper water column, providing more accurate meteoric water and sea ice melt fractions for both deep and shallow waters and more accurate estimates of full column meteoric water (and GMW) inventories.

### 4.3 Temporal changes in mean meteoric water column inventories

435 We ~~have~~ estimated average meteoric water column inventories in the SE Amundsen Sea seawater oxygen isotopes and salinity using a 2-component meteoric water endmember approach in the three-endmember mixing model (**Methods 2.2**). In 1994, 2007, 2014, and 2020, there is a tendency for the maximum integrated meteoric water volume to extend westward from the SW corner of the PIIS, and along the eastern TIS (**Figure 1**~~Figure 1~~), consistent with the gyre-like circulation there (Thurnherr et al., 2014). This pattern of meteoric water distribution is consistent with local GMW patterns previously  
440 observed using traditional hydrographic tracers (Thurnherr et al., 2014; Naveira Garabato et al., 2017; Wåhlin et al., 2021).

445 Local meteoric water content varies from a low of  $8.1 \pm 0.7$  m in 1994 to highs of  $9.6 \pm 0.8$  m in 2000 and 2020. Inventories fluctuated over the latter period, without apparent trend, dependent on the spatial and temporal coverage of available datasets. The inventories presented here are likely to include some fraction of meteoric water (in the form of precipitation and GMW) imported from upstream, however the consistency of our 0-salinity  $\delta^{18}\text{O}$  intercepts with local ice core values suggests that the meteoric  
450 water estimated in this study is predominantly local in source. While salinity and  $\delta^{18}\text{O}$  alone cannot be used to determine basal melt rates, the average meteoric water inventories are sufficient to identify relatively small changes in melt rates, assuming a constant residence time.

455 The mCDW entering the SE Amundsen Sea and accessing the underside of the ice shelves has been shown to exhibit little seasonal variability, with a maximum variance in T of  $<0.1^\circ\text{C}$ , salinity of  $<0.05$  g/kg, and thickness of  $<50$  m (Mallett et al., 2018). All samples used in this study were collected from 12 January to 15 March, while melt rates for the PIIS and TIS exhibit very little seasonal variability (Kimura et al., 2017). With a residence time of  $\sim 2$  years (Tamsitt et al., 2021), it is unlikely that the variability in yearly meteoric water column inventories is a product of a seasonal signal.

460



465 While the meteoric water inventories presented here are not equivalent to melt rates, they should be  
indicative of relative year-to-year changes in melt rates. Our mean meteoric water inventories suggest  
an increase in melt rates after 1994 followed by relative stability, with greater year-to-year variability  
than the trend in melt rates across the years covered by the study data. We find the lowest mean  
meteoric water inventory in 1994, while other studies using hydrographic data estimate 1994 as an  
average melt year for PIG – lower than 2007 and 2009, but higher than 2014 (Joughin et al., 2021b).  
Another study identified a slowdown in melt rates between 1992-2017 (Paolo et al., 2023). One  
modeling study found a low basal melt flux in 1994 followed by a higher, but variable flux through  
2013 (where their simulation ends) under ERA5 forcing, while PACE forcing resulted in interannual  
variability over our study period, but a high melt year occurring in 1994 (Naughten et al., 2022).  
(Adusumilli et al., 2020) found an increase in basal melting between 1994 and 2000 followed by a  
peak in basal melt in 2009, however their results show relative stability with significant interannual  
variability between 1994 and 2018. (Flexas et al., 2022; Naughten et al., 2022) (Flexas et al., 2022,  
p.202; Naughten et al., 2022) The pattern in mean meteoric water inventories presented in this study is  
most consistent with recent modeling efforts finding an increase in melting from 1993-2000, followed  
by relative stability in melt rates through 2019 (Flexas et al., 2022).  
(Adusumilli et al., 2020; Naughten et al., 2022) (Paolo et al., 2023) (Naughten et al., 2022) year for melt,  
however are (Flexas et al., 2022) The inventories are consistent with other studies suggesting relative  
stability in recent decade-scale glacial melt rates with significant interannual variability (Paolo et al.,  
2018; Adusumilli et al., 2020; Flexas et al., 2022). A recent modelling study shows an increase in basal  
melt through the 1990s, followed by relative stability from 2000-2020 (Flexas et al., 2022).

485 ~~The mCDW entering the SE Amundsen Sea and accessing the underside of the ice shelves has been~~  
~~shown to exhibit little seasonal variability, with a maximum variance in T of  $<0.1^{\circ}\text{C}$ , salinity of  $<0.05$~~   
~~g/kg, and thickness of  $<50$  m (Mallett et al., 2018). All samples used in this study were collected from~~  
~~12 January to 15 March, while melt rates for the PHS and TIS exhibit very little seasonal variability~~  
~~(Kimura et al., 2017). With a residence time of 2 years (Tamsitt et al., 2021), it is unlikely that the~~  
~~variability in yearly meteoric water column inventories is a product of a seasonal signal.~~

490  
495  
500  
Glacial meltwater measured in the SE Amundsen Sea includes mCDW-driven basal melt, iceberg melt  
(some of which may consist of icebergs imported from upstream), and meltwater entering the ocean at  
the grounding zone that is driven by the geothermal heat flux to the base of the ice sheet ( $\sim 5.3$  Gt/y;  
Joughin et al., 2009). Other studies have noted an increase in ice sheet losses to iceberg calving in  
recent years (Joughin et al., 2021a), comprising a non-trivial component of ice sheet mass loss (Rignot  
et al., 2013; Greene et al., 2022)– any icebergs that are exported and melt outside of the study area  
(Mazur et al., 2019, 2021) will not contribute to the mean meteoric water inventories presented here.  
The greatest limitation for using average meteoric water inventories as a means for GMW accounting  
arises from the poorly constrained residence time of regional shelf waters, as there has been little study  
of this component. This uncertainty is further confounded due the intensification of coastal circulation  
in the Amundsen Sea resulting from increased melt rates (Jourdain et al., 2017). With local circulation  
generally moving waters westward (Nakayama et al., 2013; Thurnherr et al., 2014; Naveira Garabato et  
al., 2017; Nakayama et al., 2019; Wåhlin et al., 2021; Dotto et al., 2022), it is likely that the calculated

505 meteoric water fractions in the study area (with the exception of those on the western side of TIS) are primarily comprised of basal melt from PIIS.

While circulation and residence time are unknown, and increasing melt rates may make them a moving target; the broad assumption that a mean residence time of 2 years (Tamsitt et al., 2021) and GMW comprising >87% of total meteoric water column content (**Appendix A4**) is representative of the whole study area (~30,000 km<sup>2</sup> ocean), produces GMW input estimates of between 106±17 Gt/y in 1994 to 129±17 Gt/y in 2000/2020. Though empirical, these figures are consistent with satellite-based estimates of mass loss from PIIS via basal melt (Rignot et al., 2013, 2019), demonstrating the potential utility of geochemical ocean measurements for estimating ice shelf melt rates, and helping to calibrate and constrain larger scale remote sensing estimates.

## 515 **5 Conclusion**

We use seawater  $\delta^{18}\text{O}$  and salinity data collected in the SE Amundsen Sea from 1994 to 2020, to calculate inventories of meteoric (fresh) water through the water column. Freshwater intercepts from salinity- $\delta^{18}\text{O}$  plots produce a well-constrained meteoric water endmember consistent with measurements from regional ice cores, and indicative of glacial meltwater. Using a meteoric water endmember determined by a regression through salinity- $\delta^{18}\text{O}$  eliminates much of the uncertainty around meteoric endmembers at depth. In the upper water column, using a meteoric water endmember comprised of glacial meltwater and a volume of local precipitation determined from local climatology, at an appropriate  $\delta^{18}\text{O}$ , produces more accurate meteoric (and sea ice melt) water fractions both at depth, and in the near surface than approaches taken by earlier studies. With cutting edge advanced optical techniques using  $\delta^{18}\text{O}$ -based meteoric water measurements to calibrate their surface-GMW estimates from satellite data (Pan et al., 2023), it is more important than ever that meteoric water fractions (entirely dependent upon selected endmembers) estimated with  $\delta^{18}\text{O}$  are as accurate as possible. The application of local precipitation quantities and  $\delta^{18}\text{O}$  values to the meteoric water column inventories presented here has also allowed us to demonstrate that meteoric waters from the ocean surface to the floor are comprised primarily of glacial meltwater; >73% in the upper water column, and nearly 100% in deep waters. While we have been very liberal with the inclusion of a high precipitation fraction in our analysis, a large portion of local precipitation is likely exported by sea ice without ever entering the surface ocean.

535 The WAIS is an important region for understanding sea level rise, as changes in winds and ocean circulation can increase basal melting of ice shelves, and the flow of their ice streams into the sea. We present an advancement in endmember determination and application for use in the three-endmember mixing model over previous studies, producing more robust, well-constrained results, and suggest broader applications for these types of data. Changes in meteoric water inventories in the SE Amundsen Sea study region are consistent with satellite-based estimates of annual mass loss from the PIIS. These results demonstrate the potential utility of seawater  $\delta^{18}\text{O}$  and salinity data as an independent method for estimating ice shelf basal melt rates. While subject to an increased level of uncertainty due to the

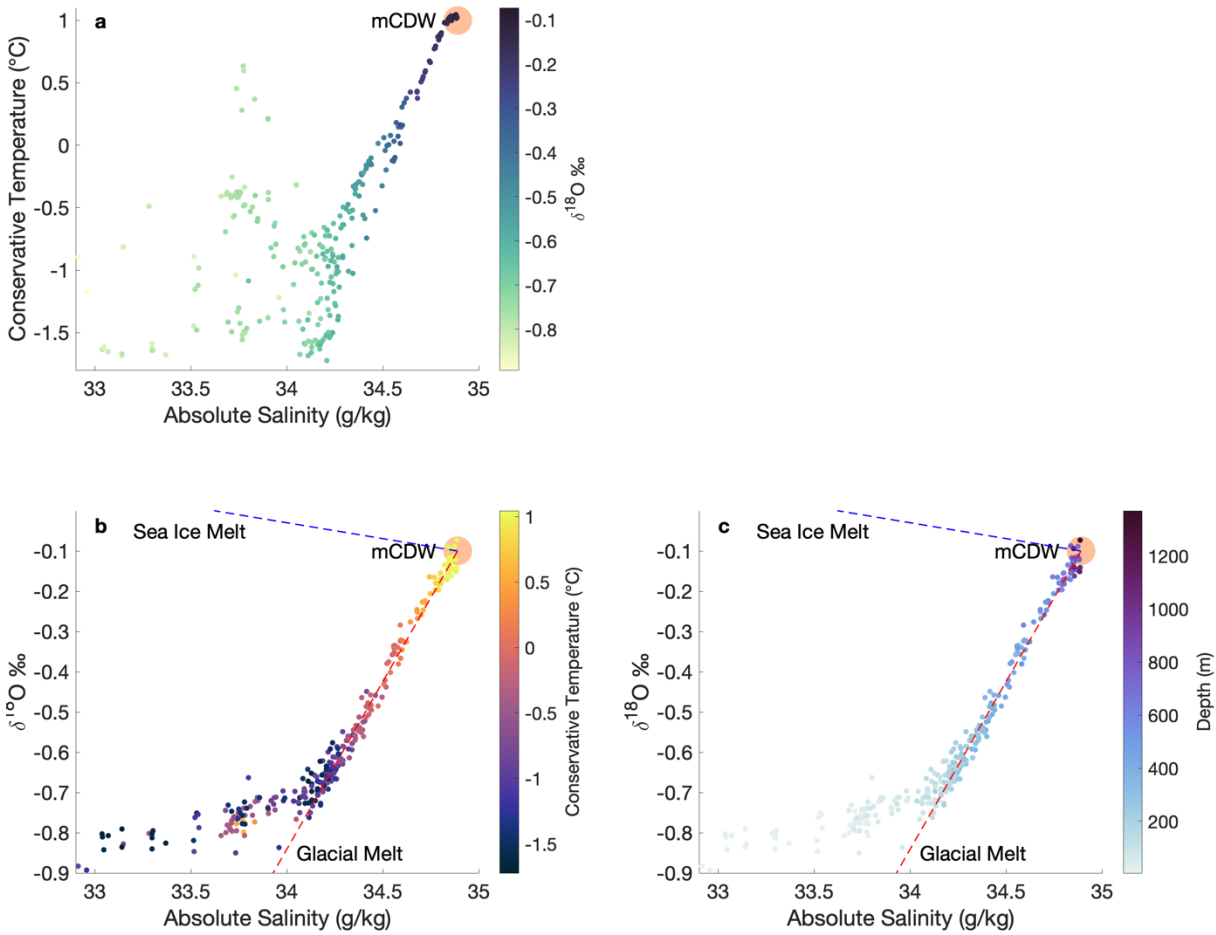
enhanced circulation resulting from increased ice shelf melt and potential influx of meltwater from upstream, monitoring meteoric water fractions, and average inventories can provide insight into the fast-  
545 changing conditions in the SE Amundsen Sea. Regular sampling for  $\delta^{18}\text{O}$  and salinity in this region could reveal if the existing record and its variability will extend into an era when ice shelves are likely to be thinner, with their grounding lines deeper and farther south. Integration of  $\delta^{18}\text{O}$  data into numerical models – with  $\delta^{18}\text{O}$  and associated meteoric water inventories used to constrain and calibrate ocean-ice models, and model outputs informing ongoing  $\delta^{18}\text{O}$  sampling strategy could further our  
550 understanding of ocean circulation and ice loss along this climatically sensitive sector of the WAIS.

## APPENDIX

### A1 Defining mCDW

555 Modified Circumpolar Deep Water (mCDW) is one of three endmember waters we use in a mixing  
model to determine glacial meltwater fractions. As the salinity and  $\delta^{18}\text{O}$  of mCDW are well  
observationally well constrained, with interannual variability and properties that are defined separately  
for each year, as in ~~Figure A1~~ **Figure A1** with 2020 data. Being the warmest, saltiest water on the  
continental shelf, mCDW appears at the top-right on a T-S diagram (Panel **a**), where it also identifies  
560 waters that are the least-depleted in  $\delta^{18}\text{O}$ .

In Panels **b** and **c**, the same 2020 data show the keystone positions of mCDW in  
temperature/salinity/ $\delta^{18}\text{O}$ /depth space. The red and blue dashed lines show property mixing lines  
between mCDW, glacial meltwater (GMW) and sea ice melt, with the colder waters being fresher and  
565 more depleted in  $\delta^{18}\text{O}$ . Most data are above  $\sim 800$  m, with the least  $\delta^{18}\text{O}$  depletion in a few deep  
depressions. Waters that fall off the mCDW-GMW mixing line in the upper 200 m have been  
influenced by sea ice melting/formation and atmospheric processes. Sea ice melt has a slightly positive  
(+2.1‰)  $\delta^{18}\text{O}$ , while GMW has a very negative ( $\sim -30$ ‰)  $\delta^{18}\text{O}$ . Both freshen seawater, with the sea ice  
melt slightly counterbalancing the strong negative  $\delta^{18}\text{O}$  of GMW.  
570



**Figure A1: Temperature, salinity, and  $\delta^{18}\text{O}$  and depth from 2020 data.** A) T-S diagram with colorbar showing  $\delta^{18}\text{O}$ . b)  $\delta^{18}\text{O}$  vs salinity with colorbar showing temperature. C)  $\delta^{18}\text{O}$  vs salinity with colorbar showing sample depth. Data diverge from the mCDW-glacial melt mixing line at depths shallower than 200 m due to the presence of sea ice melt in the admixture. In Panels b and c, dashed lines show the associated property mixing lines for mCDW mixing with sea ice melt, or GMW.

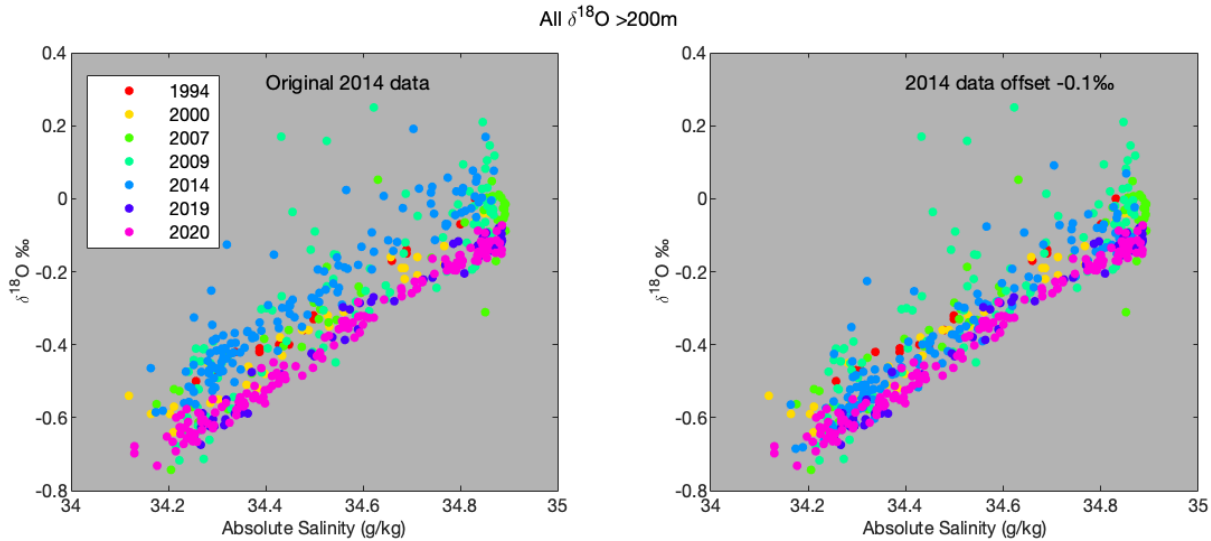
575

In **Figure 2** of the main text,  $\delta^{18}\text{O}$ -salinity plots for each year reveal several data points near the salinity maximum, with some variability in the corresponding  $\delta^{18}\text{O}$ . Below 200 m, trendlines extrapolated to zero-salinity intercepts define the mCDW and meteoric water (GMW) endmembers used in the mixing model. mCDW and meteoric water  $\delta^{18}\text{O}$  are defined at the salinity maximum and zero-salinity intercepts of the trendlines (**Table 2**). The mCDW location corresponds to conventional measures of the deepest and warmest waters on the continental shelf. The calculated zero-salinity intercept values are consistent with the properties of locally available GMW.

580

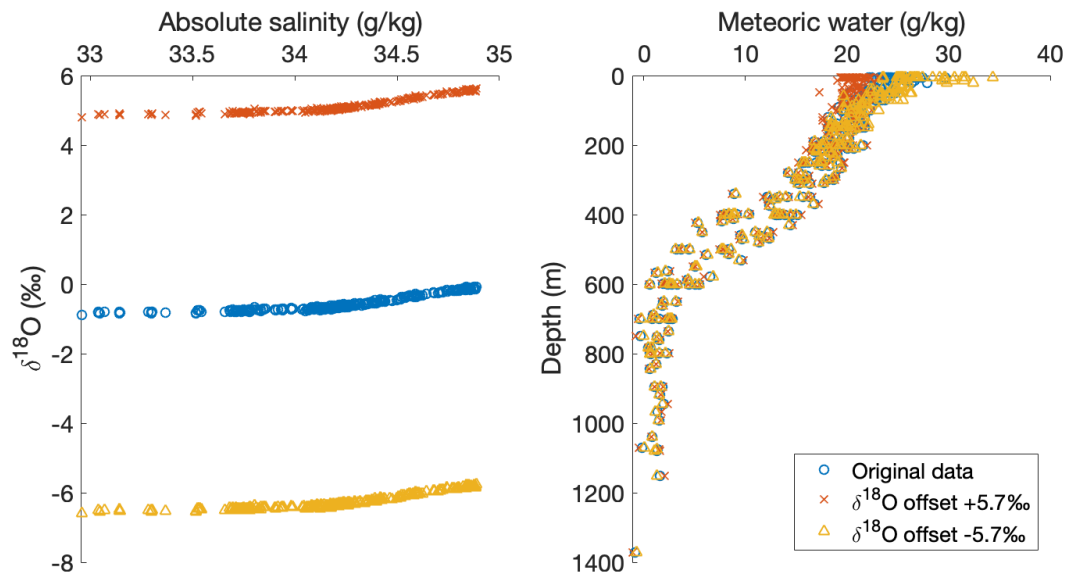
## A2 Inter-laboratory offsets

585  $\delta^{18}\text{O}$  data from different laboratories are subject to possible systematic offsets. For example, a  $\sim 0.1\%$   
|  $\delta^{18}\text{O}$  offset between the 2014 data and other years (**Figure A2**) is likely the result of an inter-  
laboratory calibration offset. On the other hand, greater scatter in the 2009 data suggests that  
evaporation during sample storage left some samples less depleted in  $\delta^{18}\text{O}$ . Here, we primarily compare  
calculated meteoric water fractions rather than  $\delta^{18}\text{O}$  values, with mCDW and meteoric water signatures  
590 defined separately for each year so that any offset will not affect the values of samples from that year  
relative to their mCDW/meteoric water signatures.



595 **Figure A2:  $\delta^{18}\text{O}$  vs Absolute salinity for all years, from data  $>200$  m.** Left panel: All  $\delta^{18}\text{O}$  vs salinity data, with the 2014 data as published in (Biddle et al., 2019). Right panel: same, with a  $-0.1\%$  offset correction applied to the 2014 data.

A sensitivity analysis, all sample data from a given year were offset, and mCDW/meteoric water signatures re-calculated using the offset data. The result and endmembers were used to calculate meteoric water fractions in the 3-endmember mixing model, with sea ice melt values remaining static.  
600 We found that an offset of  $5.7\%$   $\delta^{18}\text{O}$  (**Figure A3**) would be necessary to change the calculated meteoric water fraction by an amount greater than the analytical precision ( $\pm 0.04\%$   $\delta^{18}\text{O}$ ,  $\pm 0.003$  g/kg for salinity) and environmental uncertainty based on ice core measurements ( $\pm 1.9\%$  for  $\delta^{18}\text{O}$ ) and year-to-year variability in mCDW values ( $\pm 0.06\%$   $\delta^{18}\text{O}$ ). Inter-lab offsets should be less than  $0.1\%$  (Walker et al., 2016), so any offsets will not be significant when comparing calculated meteoric  
605 water fractions.



610 **Figure A3: Impact on inter-lab offsets on calculated meteoric (glacial melt) water fraction for NBP20-02 data.** The left panel shows the  $\delta^{18}\text{O}$  offset ( $\pm 5.7\text{‰}$ ) necessary to significantly affect calculated meteoric water fractions, when using mCDW and meteoric water endmembers calculated from that data. The right panel shows the calculated meteoric water fractions produced using the original, and offset data. The calculated meteoric water fractions are impacted very little because two of the three endmembers (mCDW and meteoric water) are defined *by* the offset data.

### A3 Uncertainty and sensitivity analyses

615 Since meltwater fractions are calculated using analytical measures of salinity and  $\delta^{18}\text{O}$ , the accuracy and precision of these measurements are important. CTD salinity sensors have a reported precision of  $\pm 0.002$ . The Isotope Ratio Mass Spectrometer (IRMS; 1994 to 2014) measurements have a measured precision of  $\pm 0.04\text{‰}$  based on replicates, while the Cavity Ring-Down Mass Spectrometer (CRDS) achieved a precision of  $\pm 0.02\text{‰}$ . The meteoric (GMW) endmember is arguably the least-well  
 620 constrained, with glacial ice in West Antarctica ranging from  $-20\text{‰}$  to  $-40\text{‰}$ , but much of that uncertainty has been eliminated by using the zero-salinity intercept determination on a  $\delta^{18}\text{O}$ -salinity mixing line, corroborated by nearby ice core values as discussed in the main manuscript. mCDW is well-constrained, based on many accurate in-situ measurements. Our sea ice melt endmember is adopted from previously published studies in the region (Meredith et al., 2008, 2010, 2013; Randall-  
 625 Goodwin et al., 2015; Biddle et al., 2019).

#### A3.1 Precision and geographic sampling variability impact on endmembers

mCDW and meteoric water endmembers are determined from sample data. We tested the sensitivity of these endmember values to instrumental precision and geographic sampling variability. We ran a Monte Carlo analysis calculating results from random sets of 3 stations 15,000 times. For each group of 3  
 630 stations, mCDW and meteoric water endmembers, and average meteoric water column inventories were calculated using only those data. Stations with fewer than 2 samples  $>200$  m were excluded. As the 3-endmember mixing model is most sensitive to the mCDW endmember, a set of stations lacking samples  $>800$  m (deeper than the sub-cavity ridge; ‘pure’ mCDW) had a random mCDW sample from  $>800$  m that year added to the data set for analysis.

635 **Table A1: Sensitivity of mCDW and meteoric water endmembers to instrumental precision and geographic sampling variability.** mCDW is defined as the  $\delta^{18}\text{O}$  value at the salinity maximum on the linear regression of all salinity- $\delta^{18}\text{O}$  measurements deeper than 200 m in each group of stations; meteoric water  $\delta^{18}\text{O}$  is defined as the zero-salinity intercept on that same line. Average meteoric water inventory is the depth integration of the Gaussian fit of all calculated meteoric water fractions within each group. In all cases, uncertainty is  
 640 represented by the standard deviation in the results obtained across 15,000 Monte Carlo simulations for each year. 1994 had only 4 stations, variability represented by this analysis for that year may be artificially low

Year	Precision			Geographic sampling variability			Combined		
	mCDW salinity (g/kg)	mCDW $\delta^{18}\text{O}$ (‰)	Meteoric water $\delta^{18}\text{O}$ (‰)	mCDW salinity (g/kg)	mCDW $\delta^{18}\text{O}$ (‰)	Meteoric water $\delta^{18}\text{O}$ (‰)	mCDW salinity (g/kg)	mCDW $\delta^{18}\text{O}$ (‰)	Meteoric water $\delta^{18}\text{O}$ (‰)
1994*	0.002	0.018	1.62	0	0.004	0.59	0.002	0.020	1.92
2000	0.002	0.011	0.91	0.010	0.017	1.61	0.010	0.027	2.35
2007	0.001	0.009	0.80	0.007	0.034	3.17	0.007	0.039	3.80
2009	0.002	0.006	0.59	0.001	0.045	3.77	0.002	0.050	4.30
2014	0.002	0.008	0.59	0.015	0.030	2.96	0.015	0.036	3.43
2019	0.001	0.004	0.39	0.005	0.013	1.61	0.006	0.015	1.85
2020	0.001	0.003	0.25	0.016	0.014	1.37	0.016	0.017	1.60

\* As 1994 has only 4 sampling locations, and the strongest fit of any year (Figure 2) its uncertainty may be artificially decreased

~~In all cases, instrumental precision had insignificant impact on endmember determination.~~



645 mCDW properties display low geographic sensitivity, though 2009 and 2014 exhibit higher variability  
than other years, potentially due to sample collection and/or storage issues (**Appendix A2, A6**).  
Meteoric water endmember properties showed greater spatial uncertainty in 2007, 2009, 2014. In these  
3 years, the data show the greatest scatter, and mCDW samples were not always collected from the deep  
650 water column. The lengthy meteoric water endmember extrapolation benefits from many samples  
collected below 200 m, all the way to the seafloor. 2014, spatial uncertainty is somewhat inflated due to  
the very high (>10\_m) meteoric water inventories at stations immediately alongside TIS, while the 2009  
data are impacted by sample storage issues, and poor depth resolution at some locations. In all cases,  
instrumental precision had insignificant impact on endmember determination.

### 655 **A3.2 Uncertainty in calculated meteoric water fractions**

We use Monte Carlo simulations to estimate uncertainty in water mass fraction calculations. We ran  
15,000 simulations, selecting 3 stations at random with input values varied randomly within these  
bounds, and represent uncertainty by the standard deviation of the difference between the simulated,  
and initial runs. Observations were varied randomly by analytical precision for each run. mCDW and  
660 meteoric water endmembers vary through each run, depending on the subset of stations selected (**Table  
A1Table A1**), and the perturbations made to the observational data. Additional perturbations are made  
to the endmember values, including sea ice melt (**Table A2Table A2**).

665 mCDW salinity varied by the results of a spatial sensitivity analysis (**Appendix A3**) and  $\delta^{18}\text{O}$  was  
varied by the 68% prediction interval (1  $\sigma$ ) of the > 200\_m  $\delta^{18}\text{O}$ -salinity relationship at the salinity  
maximum.

670 The GMW meteoric water endmember, used for samples >200 m is additionally perturbed by the  
standard deviation of the ITASE01-2 ice core – also consistent with the largest 0-salinity  $\delta^{18}\text{O}$  intercept  
standard error any year (2009). For those samples shallower than 200\_m, the precipitation  $\delta^{18}\text{O}$  was  
perturbed by values with a standard deviation of 4.5‰ (the mean standard deviation of precipitation  
collected at sites in West Antarctica (Global Network of Isotopes in Precipitation (GNIP), 2023), and  
the GMW fraction was perturbed by 0.05.

675 The sea ice melt endmember is perturbed based on theoretical and experimental values (Rohling, 2013).

Perturbations used in the uncertainty analysis are summarized in **Table A2Table A2**, and the impacts  
on meteoric water fractions and column inventories are summarized in **Table A3Table A3**.

**Table A2: Endmember perturbations for uncertainty analysis.** Perturbations are based on analytical precision for observations, the ITASE01-2 ice core for meteoric water, and theoretical values for sea ice melt (Rohling, 2013). mCDW perturbations are based on the 68% prediction interval ( $\sim 1 \sigma$ ) of the >200\_m  $\delta^{18}\text{O}$ -salinity relationship at the salinity maximum, and salinity perturbations are based on the results of the spatial randomization analysis (Appendix A3).

Parameter	Absolute Salinity perturbation (g/kg)	$\delta^{18}\text{O}$ perturbation (‰)
Observations	0.002	0.04 (0.02 for CRDS)
Meteoric water (GMW)	N/A	1.9
Meteoric water (precipitation)	N/A	4.5
Effective <200_m meteoric water	N/A	2.9**
Sea ice melt (Rohling, 2013)	2	0.1
mCDW, 1994	0.009*	0.011
mCDW, 2000	0.010	0.020
mCDW, 2007	0.007	0.042
mCDW, 2009	0.001	0.050
mCDW, 2014	0.015	0.024
mCDW, 2019	0.005	0.011
mCDW, 2020	0.016	0.011

685 \* For 1994, we perturbed salinity by the average salinity standard deviation for the other years, to compensate for the smaller number of samples

\*\* Mean effective perturbation across all years

690 **Table A3: Uncertainty in meteoric water fractions and column inventories resulting from different types of perturbations Impact of perturbations on meteoric water fraction and column inventory uncertainty.** Mean uncertainty in meteoric water fractions and column inventory associated with perturbations to each of the evaluated sources of uncertainty.

Year	Precision		Endmember		Geographic		All	
	Fraction (g/kg)	Inventory (m)	Fraction (g/kg)	Inventory (m)	Fraction (g/kg)	Inventory (m)	Fraction (g/kg)	Inventory (m)
1994	~0	0.15	0.79	0.50	0.12	0.23	1.61	0.63
2000	~0	0.12	0.97	0.63	0.74	0.46	1.91	0.82
2007	~0	0.13	1.08	0.72	1.00	0.65	2.25	1.10
2009	~0	0.06	1.14	0.72	1.86	0.69	2.84	1.12
2014	~0	0.05	0.91	0.58	1.02	0.82	1.98	1.03
2019	~0	0.05	0.81	0.52	0.60	0.42	1.41	0.71
2020	~0	0.03	0.96	0.55	0.69	0.56	1.53	0.81

695 The mean uncertainty in meteoric water fractions ranges from  $\pm 1.4$  g/kg in 2019 to 2.8 g/kg in 2009, corresponding to average meteoric water column inventories uncertainty between  $\pm 0.5$  m in 2019 and  $\pm 0.7$  m in 2009 (Table A3). Meteoric water and sea ice melt fractions vary inversely, while mCDW fractions remain relatively stable. Calculations are most impacted by changes to the mCDW endpoint, as mCDW makes up  $\sim 99\%$  of the (800\_m) water column on average;  $>95\%$  in the meteoric water and sea ice melt rich surface waters, and  $>98\%$  at all depths below 200 m.

700 14 samples from 2007 (3), 2009 (9), and 2014 (2) suggest negative meteoric water fractions, nine beyond the uncertainty described above. The negative meteoric water fractions result from high-salinity

deep waters with  $\delta^{18}\text{O}$  values less negative than the mCDW endpoint in the 3-endmember mixing model, reflective of uncertainty in the data and/or model limitations. Those years also display a wider spread in mCDW  $\delta^{18}\text{O}$  than other years, likely due to evaporation during storage.

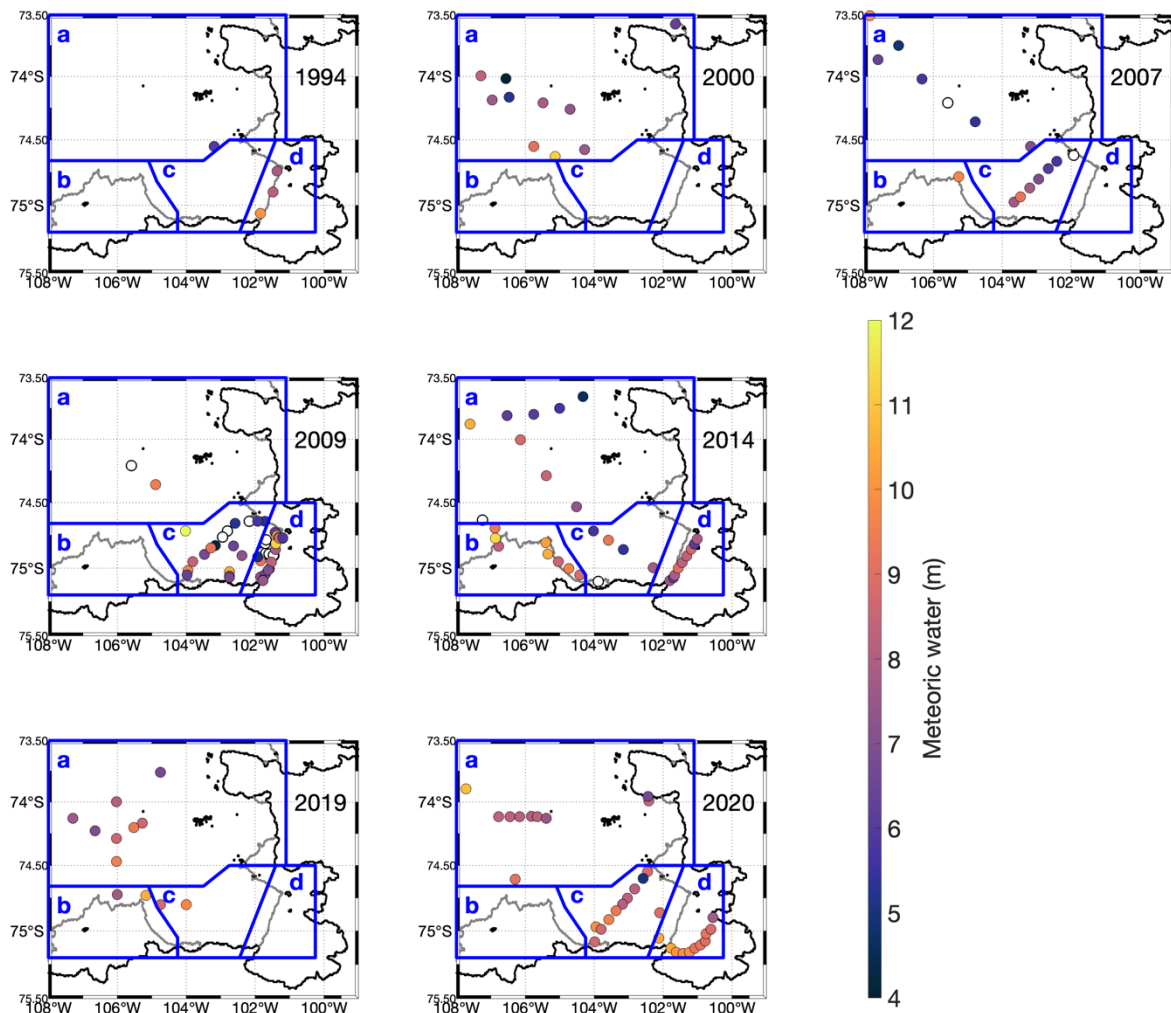
705

Sea ice melt and mCDW fractions are discussed in **Appendix A5**.

### **A3.3 Geographic grouping analysis**

We analyzed the spatial sensitivity of results by splitting the study area into four groups and analyzing data from those groups for each year (**Results 3.5.2**, ~~Figure 6~~**Figure 6**, ~~Figure A4~~**Figure A4**). For each area, mCDW and meteoric water endmembers were defined based on only those data. In 15,000 Monte Carlo simulations, the observations and endpoints were perturbed by uncertainty associated with analytical precision and environmental variability (~~Table A2~~**Table A2**).

710



715 **Figure A4: Sampling locations and geographic group boundaries for all years.** Dot colors show meteoric water column inventory at individual stations, and outlines showing geographic groupings of stations for geographic sensitivity analysis. Some locations provided only partial column inventories. White dots show stations where only one or two depths were collected.

720 **Table A4: Results of geographic grouping sensitivity analysis.** mCDW is defined as the  $\delta^{18}\text{O}$  value at the salinity maximum falling on the linear regression of all salinity- $\delta^{18}\text{O}$  measurements deeper than 200 m in each group of stations; meteoric water  $\delta^{18}\text{O}$  is defined as the zero-salinity intercept on that same line. Uncertainty in mCDW  $\delta^{18}\text{O}$  is represented by the 68% prediction interval (1  $\sigma$ ) at the salinity maximum ( $\sim 1 \sigma$ ), and uncertainty in salinity is the result of the randomization spatial sensitivity analysis, plus variation from perturbation of observations by analytical precision. Average meteoric water inventory is the depth integration of the Gaussian fit of all calculated meteoric water fractions within each group, with uncertainty represented as the standard deviation in meteoric water fractions achieved using 10,000 Monte Carlo simulations perturbing the observations and endpoints by associated analytical and environmental uncertainty (Table A2-Table A2). For each group of stations, mCDW and meteoric water endmembers used in meteoric water calculations are defined using only those data.

725

Year	Group	# of Stations	# of samples	mCDW absolute salinity (g/kg)	mCDW $\delta^{18}\text{O}$ (‰ vs VSMOW)	Meteoric water $\delta^{18}\text{O}$ (‰ vs VSMOW)	Mean meteoric water column inventory (m)	Meteoric water fraction uncertainty (g/kg)	Mean sea ice melt water column inventory (m)	Sea ice melt fraction uncertainty (g/kg)
1994	a	1	8	34.83±0.002	-0.02±0.03	-31.9±3	6.8±0.5	1.3	-0.3±0.7	1.7
	d	3	18	34.86±0.002	-0.02±0.02	-28.3±2	8.5±0.6	1.6	0.7±0.9	2.1
2000	a	10	62	34.88±0.002	-0.05±0.01	-28.7±0.9	9.6±0.7	1.6	0.1±0.9	2.1
2007	a	8	34	34.90±0.001	-0.04±0.01	-26.1±1.4	8.8±0.8	1.8	0.6±1.0	2.3
	b	1	4	34.85±0.002	-0.05±0.04	-29.7±2.8	10.6±0.8	1.4	1.3±1.1	1.9
	c	6	36	34.87±0.002	0.01±0.02	-32.1±1.4	9.5±0.7	1.6	0.7±1.0	2
2009	a	2	4	34.87±0.002	0.01±0.03	-43.7±5.2	7.5±0.6	1.1	0±0.7	1.4
	c	18	61	34.87±0.002	-0.01±0.01	-28.8±1.1	9.1±0.8	1.8	-1.4±1.1	2.3
	d	26	110	34.87±0.001	0.02±0.01	-29±0.8	8.9±0.7	1.7	-0.7±1.0	2.2
2014	a	9	57	34.86±0.002	0.04±0.01	-27.2±1.2	8.7±0.6	1.8	-0.1±1.0	2.4
	b	8	61	34.87±0.002	0.07±0.01	-32.1±1.0	10.7±0.6	1.5	0±0.9	2
	c	5	19	34.83±0.002	0.06±0.03	-33.6±2.0	8.3±0.5	1.4	-0.5±0.9	1.8
	d	9	76	34.83±0.002	0.06±0.01	-31.7±1.1	7.9±0.5	1.4	-0.2±0.8	1.9
2019	a	8	68	34.89±0.001	-0.1±0.01	-27.6±0.6	8.7±0.6	1.2	0.1±0.7	1.6
	b	2	21	34.87±0.002	-0.12±0.01	-30.6±0.9	10.4±0.7	1.1	-0.3±0.8	1.4
	c	2	18	34.85±0.002	-0.11±0.01	-31.5±1.0	8.6±0.5	0.9	0.3±0.6	1.2
2020	a	10	90	34.89±0.002	-0.11±0.01	-28.2±0.4	9.3±0.6	1.3	0.6±0.8	1.9
	c	11	70	34.86±0.002	-0.12±0.01	-29.6±0.5	9.1±0.5	1.1	0.6±0.8	1.6
	d	11	120	34.85±0.001	-0.13±0.01	-29.7±0.4	8.9±0.5	1.1	0.5±0.8	1.5

730 mCDW (as defined in **Appendix A1**) ~~was broadly showexhibits~~ little geographic sensitivity. In all years, mCDW salinity varied by less than observed seasonal salinity-variation ~~in mCDW~~ (0.01 g/kg; Mallett et al., 2018) and, ~~mCDW~~  $\delta^{18}\text{O}$  exhibited less variation than that associated with instrumental precision.

735 The meteoric water  $\delta^{18}\text{O}$  fingerprint calculated for different geographic groupings each year is not geographically sensitive – as would be expected with deep meteoric water (basal meltwater) having a single source. 2009 Group a rendered a significantly different meteoric water endmember, however this number is based on data from just 4 samples (3 from >200 m); given the data limitations and the sample quality issues for 2009, it is unlikely that the -43.7±4.8‰ endmember is representative.

740 In general, the meteoric water column inventories appear insensitive to geographic groupings. The exceptions are Group a in 1994 and 2009, and Group b in 2007, 2014, 2019. In 1994, Group a contains only a single station in 1994 (8 samples), and only 4 samples (2 stations) in 2009. Group b consists of those samples collected alongside TIS; locations likely to be dominated by meltwater originating from beneath PIIS (Wåhlin et al., 2021). Surprisingly, given the small number of samples collected near TIS  
745 in 2007 and 2019, the meteoric water inventories from Group b stations are consistent.

## A4 The impact of precipitation on meteoric water inventories

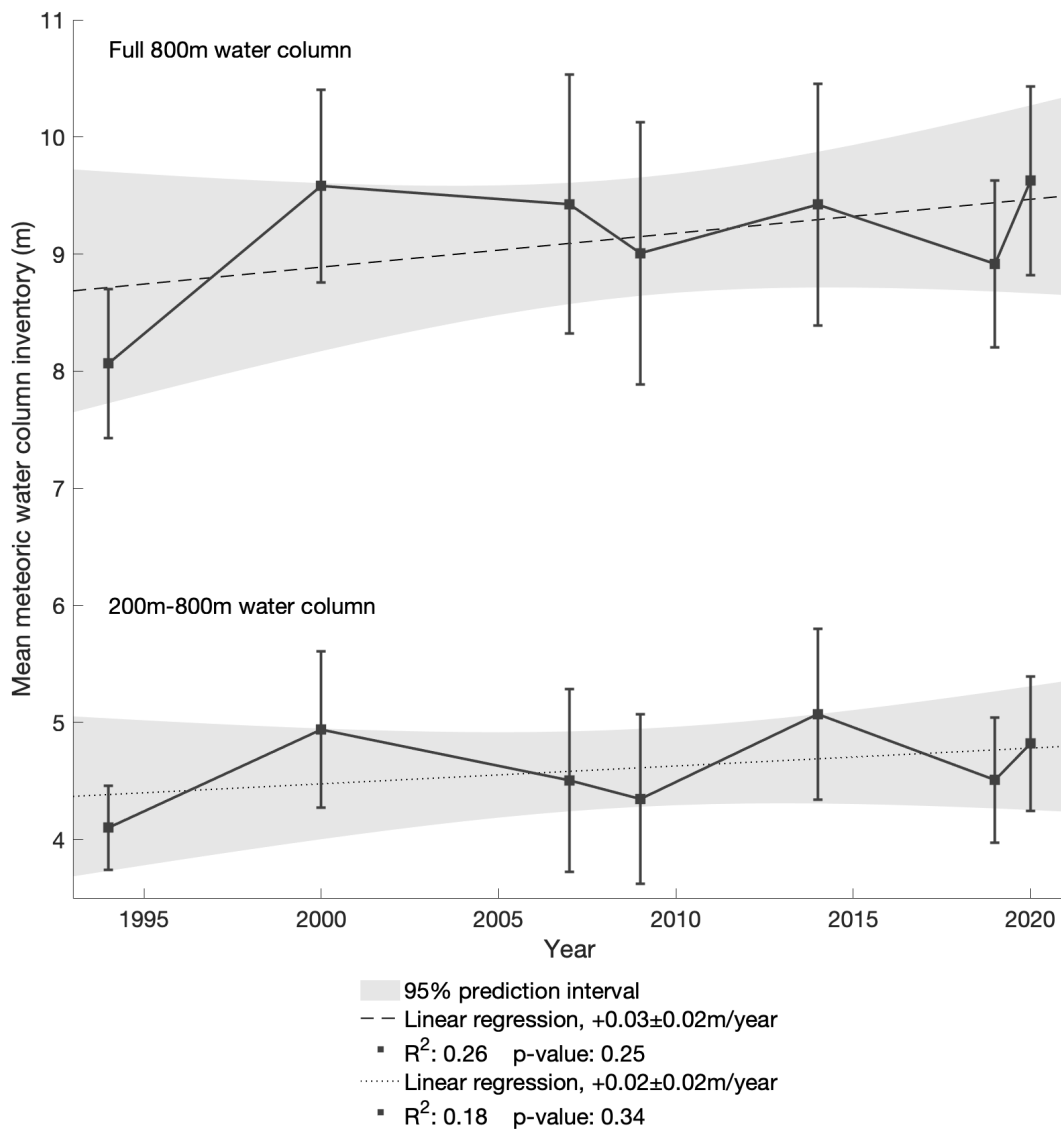
750 Precipitation collected at Halley Bay (75.58°S, 20.56°W, 30\_m elevation) has an average composition of -22.0±5.6‰, while that collected at Rothera Point (67.57°S, 68.13°W, 5\_m elevation) has an average composition of -13.5±3.4‰, and precipitation collected at Vernadsky (65.08°S, 63.98W, 20\_m elevation) has an average composition of -10.2±3.0‰ (Global Network of Isotopes in Precipitation (GNIP), 2023).

755 Sea-level precipitation collected from the field site during NBP19-01 ~~at~~ had <sup>18</sup>O values of ~-15‰, consistent with expected local values from other studies (Gat and Gonfiantini, 1981; Ingraham, 1998; Noone and Simmonds, 2002; Masson-Delmotte et al., 2008). This region of the Amundsen Sea receives ~0.5 m water equivalent of precipitation per year (Donat-Magnin et al., 2021), and mCDW on the shelf has a residence time of ~2 years (Tamsitt et al., 2021).  
760 inventories assuming 1 m (2 full years) of local precipitation (-15‰ δ<sup>18</sup>O) in the upper 200 m of the water column at the time of sampling.

We find that adding 1 m of precipitation to the water column decreases the amount of meteoric water (as defined using the zero-salinity intercepts, **Figure 2**~~Figure 2~~) by an average of 0.55±0.01 m, and decreases sea ice melt by an average of 0.57 ±0.03 m (**Table A5**~~Table A5~~). These results suggest that even with two years' worth of precipitation present in the water column at the time of sampling, the calculated meteoric water inventory could consist of >87% glacial meltwater.

770 **Table A5: Impact of precipitation on total meteoric water column inventory.** Mean meteoric water inventory is the integrated mean meteoric water content between the surface and 800\_m. The upper water column will include meteoric water from both precipitation, and GMW introduced at depth and mixed upward. The three rightmost columns in the table show the impact on meteoric and sea ice melt water column inventories of recalculating column inventories (meteoric water ~-30‰ δ<sup>18</sup>O, **Table 2**~~Table 2~~) assuming 2 years of precipitation (~-15‰ δ<sup>18</sup>O) in the water column at the time of sampling.

Year	Mean meteoric water inventory (m) using GMW endmember only	Impact of adding 1 m (~2 years) precipitation (-15‰ δ <sup>18</sup> O)			
		Change in (glacial) meteoric water (m)	Change in sea ice melt water (m)	Estimated water column GMW fraction	Estimated GMW fraction in upper 200_m water column
1994	7.62	-0.56	-0.61	0.876	0.781
2000	9.16	-0.57	-0.62	0.896	0.759
2007	8.95	-0.56	-0.55	0.893	0.756
2009	8.57	-0.55	-0.55	0.889	0.775
2014	8.93	-0.54	-0.55	0.894	0.785
2019	8.42	-0.54	-0.57	0.887	0.773
2020	9.18	-0.56	-0.54	0.896	0.735



775

**Figure A5:** Mean meteoric column inventory for each sampled year. Points represent the depth-integrated meltwater volume from the Gaussian Process fit (grey lines in [Figure 3](#)) between 200 and 800 m depth. Error bars show the uncertainty in mean meteoric water column inventory associated with analytical precision and environmental variability ([Data and Methods 2.2](#)). The relative year-to-year inventories here show the same general empirical trend (within uncertainty) as [Figure 5](#). 2014 shows the highest sub-200 m meteoric water content, owed to the sampling immediately alongside TIS - directly in the pathway of glacial meltwater from PIIS (Wählin et al., 2021).

780

[Figure A5](#) and [Table A6](#) show a comparison of the yearly inventories in the total water column vs the water column deeper than 200 m. Both the full and partial water columns show the same relative trend in meteoric water content, indicating that the observed variability is not an effect of interannual variability in precipitation.

785

**Table A6: Relative Fractions of yearly meteoric water inventory in the 800 m and 200-800 m water columns.** Reported column inventories are the depth integration of the Gaussian fit of all measurements in the field area between the specified depths. The Relative fraction is the normalized relative volume of the average inventory from year to year.

Year	0 m – 800 m		200 m – 800 m		Fraction of total meteoric water in upper 200 m
	Column Inventory, meteoric water (m)	Normalized relative fraction	Column Inventory, meteoric water (m)	Normalized relative fraction	
1994	8.1±0.6	0.84±0.07	4.1±0.4	0.81±0.07	0.492
2000	9.6±0.8	1.00±0.09	4.9±0.7	0.97±0.13	0.485
2007	9.4±1.1	0.98±0.11	4.5±0.8	0.89±0.15	0.522
2009	9.0±1.1	0.94±0.12	4.3±0.7	0.86±0.14	0.518
2014	9.4±1.0	0.98±0.11	5.1±0.7	1.00±0.14	0.462
2019	8.9±0.7	0.93±0.07	4.5±0.5	0.89±0.11	0.494
2020	9.6±0.8	1.00±0.08	4.8±0.6	0.95±0.11	0.499

790

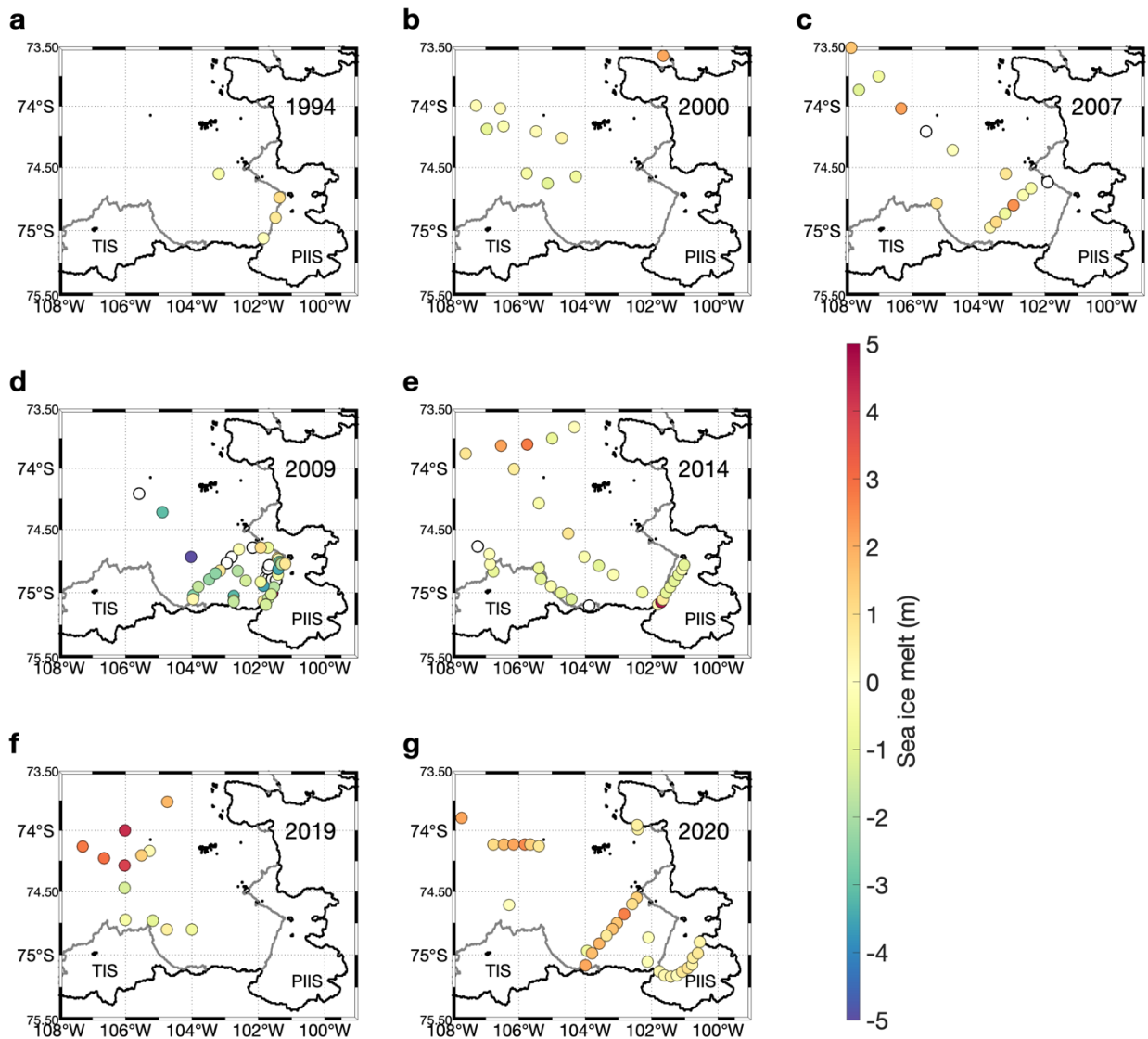


## A5 Sea ice melt and mCDW fractions

### A5.1 Sea ice melt

795 ~~Figure A6~~Figure A6 shows the net sea ice melt water column inventories in all sample locations. In locations where integrated sea ice melt fractions are negative, net sea ice formation at the time of sampling is indicated.

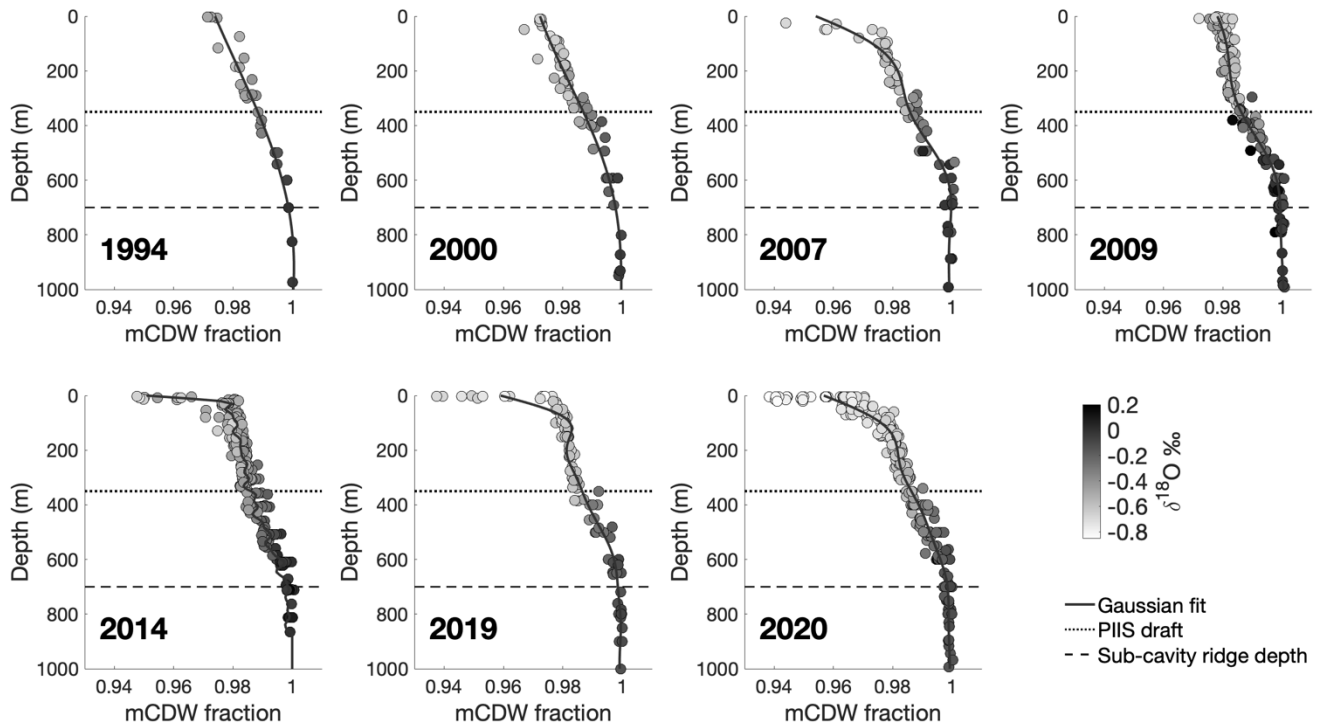
800 In 2007, 2009, and 2014 positive ice melt fractions  $>200$  m, likely ~~the~~ resulted from samples ~~compromised~~subject to evaporation before analysis. Evaporation leads to positive fractionation of seawater  $\delta^{18}\text{O}$ , leading to a less-depleted  $\delta^{18}\text{O}$  observation at time of analysis; less depleted  $\delta^{18}\text{O}$  relative to salinities fresher than mCDW will be interpreted by the 3-endmember mixing model as sea ice melt. The stratification in this region makes it unlikely that there are significant sea ice melt fractions below 200 m. As with the  $\delta^{18}\text{O}$ -salinity (~~Figure 2~~Figure 2) and meteoric water-depth (~~Figure 3~~Figure 3) plots, 1994, 2000, 2019 and 2020 exhibit the tightest distribution, suggesting higher quality data. Grey lines show the Gaussian process fit, and points are shaded to show sample  $\delta^{18}\text{O}$ .



**Figure A6: Integrated sea ice melt fractions at sampling locations each year.** Negative sea ice melt fractions indicate areas of net sea ice formation. Stations with partial water column sampling show only partial inventories. White dots with black outlines are stations where only one or two depths were sampled (2007, 2009, 2014). Years with greater sea ice melt (2007, 2020) than formation show greater divergence from the mCDW-GMW mixing line in surface waters ([Figure 2](#)Figure 2).

## A5.2 mCDW fractions

Waters deeper than ~800\_m are comprised of pure mCDW; moving toward the surface, meteoric freshwater from basal melt is introduced starting at ~700\_m. The near surface waters are rich in meteoric water and/or sea ice melt are comprised of >92% mCDW ([Figure A7](#)Figure A7).



**Figure A7: mCDW fractions vs depth.** Calculated mCDW fractions using salinity and  $\delta^{18}\text{O}$  measurements in 3-endmember mixing model. Shading of dots indicates the measured  $\delta^{18}\text{O}$  of that sample. Deep waters (>800 m) characterize relatively unadulterated mCDW, while near surface waters contain the highest concentrations of sea ice melt and meteoric water. Dotted horizontal lines show the depth of the PIIS draft, and dashed lines show the depth of the PIIS sub-cavity ridge.

**Table A7: mCDW column inventories and uncertainty.** Mean sea ice melt column inventories are produced by depth integrating the Gaussian process fit (grey lines [Figure A7](#)) between the surface and 800 m. Uncertainty as described in [Appendix A3](#).

Year	Mean mCDW column inventory (m)	mCDW fraction uncertainty (g/kg)
1994	781.3±0.5	0.6
2000	780.2±0.7	0.7
2007	779.9±1.2	0.8
2009	781.7±0.6	0.9
2014	780.5±0.9	0.9
2019	780.7±0.6	0.6
2020	779.7±0.8	0.9

## 825 A6 2009 Sample quality control

A subset of the samples for 2009 were analyzed on an IRMS in 2010, while the remainder were stored until a 2020 CRDS analysis. At the latter time, 56% of the samples analyzed contained an unknown, clear, needle-shaped precipitate. Several bottles also had a lower-than-expected sample volume, suggesting evaporation, which would likely have altered the  $\delta^{18}\text{O}$  content via isotopic fractionation.

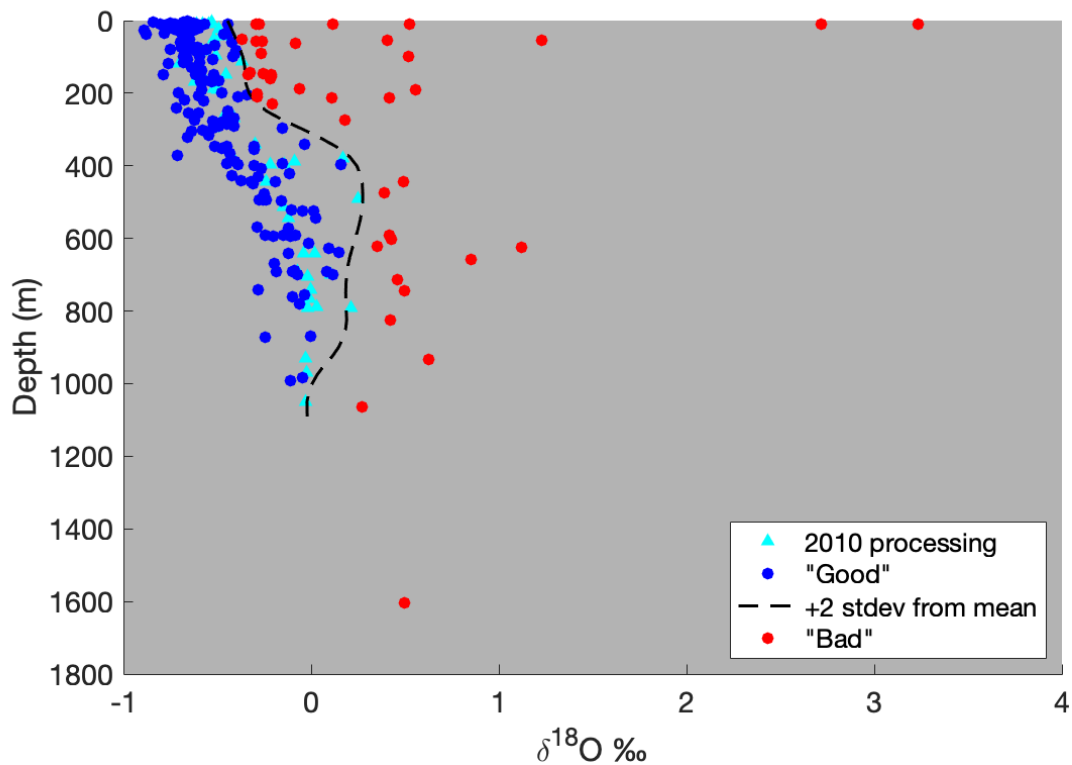
830 Several steps were taken to ensure the quality of samples analyzed after a decade in storage.

### A6.1 SEM EDS Analysis of Precipitate

Samples of the precipitate were extracted from multiple sample bottles and analyzed using a Scanning Electron Microscope, equipped with a FEI Magellan 400 XHR SEM with Bruker Quantax XFlash 6 | 60 SDD EDS detector, at the Stanford Nano Shared Facilities (SNSF). Peaks were observed at the spectra associated with Mg, Si, and O, indicating the precipitate is likely some form of Magnesium Silicate Hydroxide ( $\text{Mg}_3\text{Si}_2\text{O}_5(\text{OH})_4$ ), or Magnesium Silicate Hydrate ( $\text{Mg}_2\text{Si}_3\text{O}_8 \cdot \text{H}_2\text{O}$ ).  $\text{Si}(\text{OH})_4$  is the simplest soluble form of silica and is found universally in seawater at low concentrations (Belton et al., 2012). The maximum amount of silicate that could be expected in this area of the ocean is  $\sim 100 \mu\text{mol/kg}$  (Rubin et al., 1998). In this case, even if the entire  $100 \mu\text{mol/kg}$  of Si were drawn down to 0, solely into a Magnesium Silicate, with a very high fractionation factor, e.g. the  $-40\text{‰}$  reported for diatoms (Leclerc and Labeyrie, 1987) the greatest effect on a sample would be  $0.0003\text{‰}$  – well below the analytical precision of the CRDS ( $0.025\text{‰}$ ) or IRMS ( $0.04\text{‰}$ ). Therefore, it is highly unlikely that the precipitate contributed a detectable fractionation or alteration of seawater  $\delta^{18}\text{O}$  in our samples.

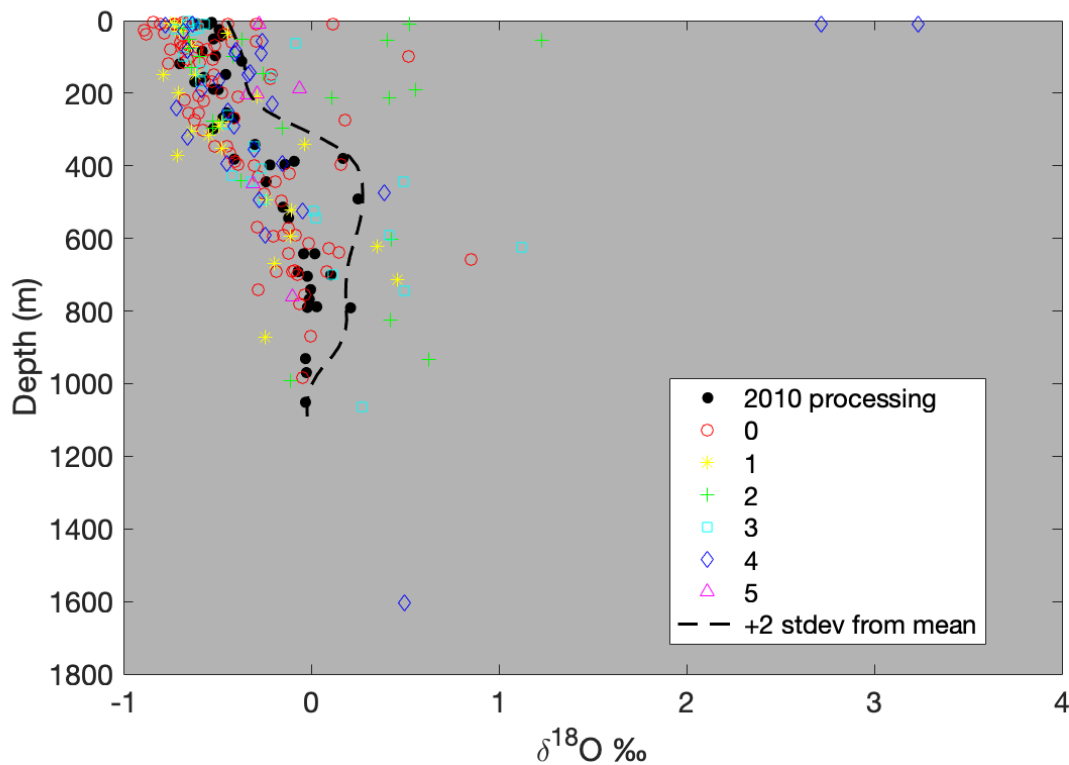
### A6.2 Quality control for evaporation

845 In all years, the bulk of the  $\delta^{18}\text{O}$  data fall in a broadly predictable pattern, less depleted at depths below  $\sim 600 \text{ m}$ , and more depleted near the surface. Values  $>2$  standard deviations from this pattern denote samples that were likely subject to significant evaporation ([Figure A8](#)~~Figure A8~~)



850 **Figure A8:  $\delta^{18}\text{O}$  vs depth for all 2009 samples, coded for likelihood of evaporation.** The dashed line represents +2 standard deviations from a moving depth-averaged  $\delta^{18}\text{O}$  based on the 2010 processing, beyond which the results are unacceptable. Archivable data will be made available upon publication.

855 As a secondary check, the  $\delta^{18}\text{O}$  of all samples was plotted vs depth with a qualitative indicator of the amount of precipitate found in the sample vial ([Figure A9](#)) to see if any patterns emerged compared to that of depth-comparable samples processed in 2010. No clear trend was evident.

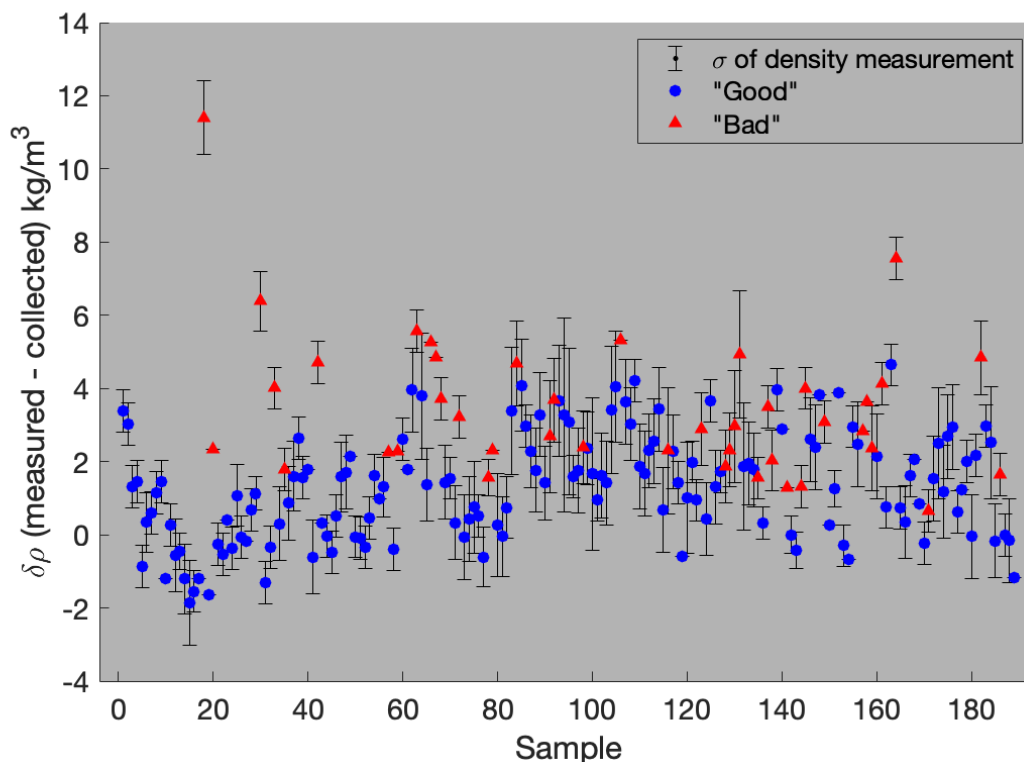


**Figure A9:  $\delta^{18}\text{O}$  vs depth of all 2009 samples, coded by amount of precipitate present.** Each bottle was graded by eye based on the volume of precipitate present with 0 being no precipitate present, and 5 being the most precipitate present. As with [Figure A8](#), the dashed line represents +2 standard deviations from the mean  $\delta^{18}\text{O}$  at each depth.

860

Evaporation is accompanied by isotopic fractionation, with  $\text{H}_2^{16}\text{O}$  evaporating preferentially, leaving the remaining liquid relatively enriched in the  $\text{H}_2^{18}\text{O}$ . Evaporation also increases the salinity and thus density of the remaining sample. We measured the density of each seawater sample 5 times using a calibrated 1 ml pipet and mg balance. The theoretical density of each sample was calculated from its associated CTD salinity and temperature. Differences between measured and theoretical densities for each sample are plotted in [Figure A10](#).

865



**Figure A10: Difference in measured density vs theoretical density for each 2009 sample analyzed in 2020.** Theoretical density is based on CTD salinity at each sample location, and measured density calculated from 1ml sample aliquots weighed on a mg scale, with sample coding as in [Figure A8](#). Error bars represent the standard deviation of replicates for each measurement.

870

While a few samples show clear evidence of evaporation, and correspondingly high  $\delta^{18}\text{O}$  values, most show less obvious density anomalies, exposing the limitations of our scale accuracy at that level. 75% of the samples measured showed a higher than expected density and 25% measured a lower than expected. [Figure A10](#) displays a significant overlap in measured density space between samples previously identified as “good” or “bad” ([Figure A8](#)). [Figure A10](#) shows that there are no samples flagged as compromised (“bad”) from our earlier depth-based analysis with a  $\delta\rho$  greater than 1.3 kg/m<sup>3</sup>. At an aggressive first pass, we removed all sample data with a  $\delta\rho$  greater than 1.3 kg/m<sup>3</sup> and looked at each hydrocast profile individually, using the remaining data. Excluded samples flagged as “good” were returned to the dataset, and individual profiles re-scrutinized individual profiles to check for any qualitative anomalies.

875

880

### A6.3 Conclusion and final 2009 sample inclusion

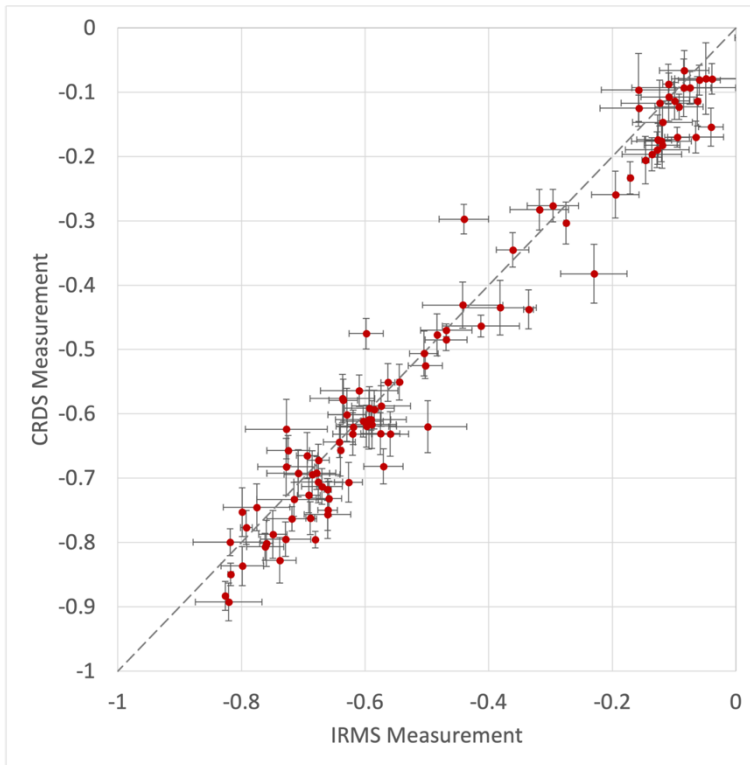
While it is very unlikely that the precipitate changed sample values, some samples do appear to have been subject to evaporation. The inclusion of all samples flagged as “Good” does not qualitatively

change our analyses when compared with the data processed in 2010. We exclude the 41 samples  
§85 initially flagged as “Bad,” (~~Figure A8~~Figure A8) and retain the remaining 148 flagged as “Good”.



## A7 CRDS and IRMS cross-calibration

We processed 100 samples from 2019 and 2020 concurrently using the Picarro L2140-i CRDS, and on a Finnigan MAT252 IRMS (~~Figure A11~~Figure A11) using CO<sub>2</sub> equilibration (Epstein and Mayeda, 1953). Both instruments were independently calibrated using international standards VSMOW, SLAP, and GISP, and all samples were run in duplicate. The data from both machines was comparable, with the Picarro achieving a precision of 0.02‰, and the IRMS achieving a precision of 0.03‰ on replicates. The offset between CRDS and IRMS data averaged -0.02‰, with the CRDS data being more negative. Since the offset between the two machines was less than either instrument's precision, data from the CRDS was used as-is. Values reported for the CRDS are the average of 6 individual injections/measurements from each vial; reported precision is based on the standard deviation between multiple 6-injection averages from replicate analyses, separated by days, weeks, or months.



900 **Figure A11: 101 seawater  $\delta^{18}\text{O}$  samples collected in 2019 and 2020 analyzed with both CRDS and IRMS.** Each point represents the value obtained by measuring the same sample on the IRMS (x-axis) and the CRDS (y-axis). Error bars represent the corresponding standard deviation of the IRMS and CRDS measurements. The dashed grey line is a 1:1 slope.

## A8 CRDS Methods

905 570 of the isotope samples for this study (all samples from 2019 and 2020, portions from 2007 and 2009) were run on a Picarro L2140-i CRDS system, rather than a traditional IRMS. Using this system, we were able to achieve an average precision of  $<0.02\%$  on multiple replicate analyses.

910 Samples were collected in 10 ml or 30 ml glass serum vials (Fisher Scientific part number: 06-406D/06-406F), sealed with rubber stoppers (Fisher Scientific part number: 06-406-11B) and aluminum seals (Fisher Scientific part number: 06-406-15).

915 Sample vials should be filled to just below the “neck” (narrowest part). Minimizing the headspace of the vial is important for minimizing evaporation, however it is important to leave *some* headspace to allow for expansion/contraction of the sample (if collecting samples larger than 30 ml, slightly more headspace should be left, with 250 ml vials being filled to  $\sim 1/2$  way up the “shoulder” before the neck). When sealing serum vials with rubber stoppers and aluminum seals, it is important that the tops of the aluminum seals are crimped tightly but remain flat after crimping/capping. An upward “buckling” of the aluminum seal indicates over-crimping and will produce an inferior seal.

920 Internal lab (Stanford SIL) data shows that samples can be preserved in this manner for ~~up to 5 multiple~~ years without significant degradation, while bottles with threaded caps and parafilm reliably ~~maintain sample integrity below~~ prevent sample evaporation up to the level of -instrument ~~analytical al~~-precision for no more than 1 year.

925

The instrument setup used was as follows:

- 10 $\mu$ l syringe (Trajan Part number: 002982)
- A single standard or unknown run consists of 7 injections (measurements) per sample
- Sample injection volume 2.2  $\mu$ l
- 930 • 3x 5 $\mu$ l rinses with fresh water from inkwell (IW) between each sample
- 3x 2.2 $\mu$ l rinses with sample before first measurement of new sample or standard vial
- Rinse only between sample vials, or 1 rinse for every 7 standard or unknown injections.

Several protocols were also followed with regards to sample and instrument handling.

- 935 • Fresh vial of internal lab standard (ILS) used each day. The ILS was prepared to have a  $\delta^{18}\text{O}$  in the middle of the range expected from the unknowns (i.e.  $\sim -0.3\%$ ) to minimize memory issues between samples. The IW was also filled with water of approximately this composition.
- A fresh 2ml vial of ILS was used each day and discarded at the end of the sequence.

- 940 • Samples were pipetted from sealed 10 ml or 30 ml serum into 2 ml vials (Fisher Scientific part number: 03-391-15) for analysis on the day they were to be analyzed. The 2ml vials used for analysis were found to only reliably preserve sample  $\delta^{18}\text{O}$  for <1 week.
- After each sequence, the syringe was cleaned with DI water, and then rinsed thoroughly with water from the Inkwel, to minimize memory/contamination issues of residual water left in the syringe.
  - Treated in this way, syringes can be expected to last for 1500 to 2500 injections
- 945 • Fresh vaporizer septa (Trajan Part number: 0418240) was used every day
- ILS were analyzed no less than every 5th unknown, and no fewer than 3 ILS were measured per run
- ~~An ILS~~
- 950 • All data were corrected based on the slope of the ILS measurements over the course of the sequence.
- Each run began with no fewer than 10 injections from the IW, to allow the instrument to reach baseline.
- Syringe cleaned thoroughly with DI water each day, and manually rinsed with IW water prior to sequence.
- 955 • No more than 5 unknowns (7 injections each) measured between run of ILS (7 injections)
- ILS measured at least 3 times during each sequence – at the beginning, end, and midpoint. least 3 standards measured during each sequence.

A typical 24h sequence ran 16 unknowns. The sequence was set up, as follows:

- 960 • 15 injections from IW
- ILS (7 injections)
- 4 unknowns (4x7 injections)
- ILS (7 injections)
- 4 unknowns (4x7 injections)
- ILS (7 injections)
- 965 • 4 unknowns (4x7 injections)
- ILS (7 injections)
- 4 unknowns (4x7 injections)
- ILS (7 injections)

Overall, this sequence consists of 162 injections, 112 of which contained salt, for a vaporizer load of  
970 ~8.6 mg of salt/day. The instrument vaporizer was cleaned at least every 200 mg worth of salt injected.

- @ 35PSU & 2.2µl injections, this is 2597 salty injections, or 371 samples @ 7 injections each.  
(~ every 23 analytical days)

Finally, analytical data quality control was conducted in the following way

- The first injection of each sample was discarded, to minimize instrument memory issues
- 975 • If the standard deviation of the remaining 6 injections was >0.04‰, up to one outlier could be removed. Any samples where the standard deviation of measured values was still >0.04‰ were rerun the following day from the same vial, using the same septa.
- If a rerun would not be possible the following day, the vial septa was replaced with a new one.
- 980 • Data from each hydrocast were inspected as a group. Any samples that appeared inconsistent with the rest of the hydrocast (e.g. with regards to salinity, or neighboring  $\delta^{18}\text{O}$  values) were rerun. If the rerun occurred within 1 week of the initial run, the same vial was used. Otherwise, a fresh aliquot of sample was drawn from the resealed serum vial.

### Data availability

All data, excluding that flagged as “bad,” (Appendix A6) used in this study can be accessed at:  
985 <https://doi.org/10.25740/zf704jg7109>

### Author contributions:

Conceptualization: RBD  
Methodology: RBD, ANH, DAM  
Investigation: ANH, DAM, RBD  
990 Visualization: ANH  
Funding acquisition: RBD  
Project administration: RBD  
Supervision: RBD  
Writing – original draft: ANH  
995 Writing – review & editing: ANH, SSJ, RBD, DAM, RAM  
Contribution of data: ANH, DAM, RBD, SSJ, RAM

### Competing interests

The authors declare that they have no conflict of interest.

## 000 Acknowledgments

We acknowledge the staff and crew of Nathaniel B. Palmer cruises 94-02, 00-01, 07-02, 09-01, 19-01, 20-02, and iSTAR2014 for assistance with data acquisition. We extend special thanks to Isa Rosso, Michael Burnett, and Emilia Fercovic for their help with sample collection. MAC3 Impact Philanthropies assisted with CRDS instrumentation and development. Peter Schlosser & Ronny Friedrich provided the 2007 CRDS data, and Shigeru Aoki was consulted regarding the 2014 data offset. Thanks also to Cindy Ross and Stanford Nano Shared Facilities, supported by NSF ECCS-2026822 for SEM analyses.

**Funding:** This project was funded by NSF:  
010 NSF-OPP-1644118  
NSF-OPP-1644159

## References

- Ackley, S. F., Perovich, D. K., Maksym, T., Weissling, B., and Xie, H.: Surface flooding of Antarctic summer sea ice, *Ann. Glaciol.*, 61, 117–126, <https://doi.org/10.1017/aog.2020.22>, 2020.
- 015 Adusumilli, S., Fricker, H. A., Medley, B., Padman, L., and Siegfried, M. R.: Interannual variations in meltwater input to the Southern Ocean from Antarctic ice shelves, *Nat. Geosci.*, 13, 616–620, <https://doi.org/10.1038/s41561-020-0616-z>, 2020.
- Araguás-Araguás, L., Froehlich, K., and Rozanski, K.: Deuterium and oxygen-18 isotope composition of precipitation and atmospheric moisture, *Hydrol. Process.*, 14, 1341–1355,  
020 [https://doi.org/10.1002/1099-1085\(20000615\)14:8<1341::AID-HYP983>3.0.CO;2-Z](https://doi.org/10.1002/1099-1085(20000615)14:8<1341::AID-HYP983>3.0.CO;2-Z), 2000.
- Assmann, K. M., Hellmer, H. H., and Jacobs, S. S.: Amundsen Sea ice production and transport, *J. Geophys. Res. Oceans*, 110, <https://doi.org/10.1029/2004JC002797>, 2005.
- Belton, D. J., Deschaume, O., and Perry, C. C.: An overview of the fundamentals of the chemistry of silica with relevance to biosilicification and technological advances, *Febs J.*, 279, 1710–1720,  
025 <https://doi.org/10.1111/j.1742-4658.2012.08531.x>, 2012.
- Benetti, M., Sveinbjörnsdóttir, A. E., Ólafsdóttir, R., Leng, M. J., Arrowsmith, C., Debondt, K., Fripiat, F., and Aloisi, G.: Inter-comparison of salt effect correction for  $\delta^{18}\text{O}$  and  $\delta^2\text{H}$  measurements in seawater by CRDS and IRMS using the gas-H<sub>2</sub>O equilibration method, *Mar. Chem.*, 194, 114–123, <https://doi.org/10.1016/j.marchem.2017.05.010>, 2017.
- 030 Bett, D. T., Holland, P. R., Naveira Garabato, A. C. N., Jenkins, A., Dutrieux, P., Kimura, S., and Fleming, A.: The Impact of the Amundsen Sea Freshwater Balance on Ocean Melting of the West

- Antarctic Ice Sheet, *J. Geophys. Res. Oceans*, 125, e2020JC016305, <https://doi.org/10.1029/2020JC016305>, 2020.
- 035 Biddle, L. C., Heywood, K. J., Kaiser, J., and Jenkins, A.: Glacial Meltwater Identification in the Amundsen Sea, *J. Phys. Oceanogr.*, 47, 933–954, <https://doi.org/10.1175/JPO-D-16-0221.1>, 2017.
- Biddle, L. C., Loose, B., and Heywood, K. J.: Upper Ocean Distribution of Glacial Meltwater in the Amundsen Sea, Antarctica, *J. Geophys. Res. Oceans*, 124, <https://doi.org/10.1029/2019JC015133>, 2019.
- 040 Blunier, T. and Brook, E. J.: Timing of Millennial-Scale Climate Change in Antarctica and Greenland During the Last Glacial Period, *Science*, 291, 109–112, <https://doi.org/10.1126/science.291.5501.109>, 2001.
- Boisvert, L. N., Webster, M. A., Petty, A. A., Markus, T., Cullather, R. I., and Bromwich, D. H.: Intercomparison of Precipitation Estimates over the Southern Ocean from Atmospheric Reanalyses, *J. Clim.*, 33, 10627–10651, <https://doi.org/10.1175/JCLI-D-20-0044.1>, 2020.
- 045 Brown, D. and Edmunds, P. J.: Differences in the responses of three scleractinians and the hydrocoral *Millepora platyphylla* to ocean acidification, *Mar. Biol.*, 163, 1–10, <https://doi.org/10.1007/s00227-016-2837-7>, 2016.
- Brown, P. J., Meredith, M. P., Jullion, L., Naveira Garabato, A., Torres-Valdés, S., Holland, P., Leng, M. J., and Venables, H.: Freshwater fluxes in the Weddell Gyre: results from  $\delta^{18}\text{O}$ , *Philos. Transact. A Math. Phys. Eng. Sci.*, 372, 20130298, <https://doi.org/10.1098/rsta.2013.0298>, 2014.
- 050 Coplen, T. B.: Reporting of stable hydrogen, carbon, and oxygen isotopic abundances (Technical Report), *Pure Appl. Chem.*, 66, 273–276, <https://doi.org/10.1351/pac199466020273>, 1994.
- Dansgaard, W.: Stable isotopes in precipitation, *Tellus*, 16, 436–468, <https://doi.org/10.3402/tellusa.v16i4.8993>, 1964.
- 055 Dierssen, H. M., Smith, R. C., and Vernet, M.: Glacial meltwater dynamics in coastal waters west of the Antarctic peninsula, *Proc. Natl. Acad. Sci.*, 99, 1790–1795, <https://doi.org/10.1073/pnas.032206999>, 2002.
- 060 Donat-Magnin, M., Jourdain, N. C., Kittel, C., Agosta, C., Amory, C., Gallée, H., Krinner, G., and Chekki, M.: Future surface mass balance and surface melt in the Amundsen sector of the West Antarctic Ice Sheet, *The Cryosphere*, 15, 571–593, <https://doi.org/10.5194/tc-15-571-2021>, 2021.
- Dotto, T. S., Naveira Garabato, A. C., Bacon, S., Holland, P. R., Kimura, S., Firing, Y. L., Tsamados, M., Wählin, A. K., and Jenkins, A.: Wind-Driven Processes Controlling Oceanic Heat Delivery to the

- Amundsen Sea, Antarctica, *J. Phys. Oceanogr.*, 49, 2829–2849, <https://doi.org/10.1175/JPO-D-19-0064.1>, 2019.
- 065 Dotto, T. S., Heywood, K. J., Hall, R. A., Scambos, T. A., Zheng, Y., Nakayama, Y., Hyogo, S., Snow, T., Wählin, A. K., Wild, C., Truffer, M., Muto, A., Alley, K. E., Boehme, L., Bortolotto, G. A., Tyler, S. W., and Pettit, E.: Ocean variability beneath Thwaites Eastern Ice Shelf driven by the Pine Island Bay Gyre strength, *Nat. Commun.*, 13, 7840, <https://doi.org/10.1038/s41467-022-35499-5>, 2022.
- 070 Dutrieux, P., De Rydt, J., Jenkins, A., Holland, P. R., Ha, H. K., Lee, S. H., Steig, E. J., Ding, Q., Abrahamsen, E. P., and Schroder, M.: Strong Sensitivity of Pine Island Ice-Shelf Melting to Climatic Variability, *Science*, 343, 174–178, <https://doi.org/10.1126/science.1244341>, 2014.
- Epstein, S. and Mayeda, T.: Variation of  $^{18}\text{O}$  content of waters from natural sources, *Geochem. Cosmochem. Acta*, 4, 213–224, 1953.
- 075 Fairbanks, R. G.: The origin of continental shelf and slope water in the New York Bight and Gulf of Maine: Evidence from  $\text{H}_2$   $^{18}\text{O}/\text{H}_2$   $^{16}\text{O}$  ratio measurements, *J. Geophys. Res. Oceans*, 87, 5796–5808, <https://doi.org/10.1029/JC087iC08p05796>, 1982.
- Flexas, M. M., Thompson, A., Schodlok, M., Zhang, H., and Speer, K.: Antarctic Peninsula warming triggers enhanced basal melt rates throughout West Antarctica, *Sci. Adv.*, 12, 2022.
- 080 Fogwill, C. J., Phipps, S. J., Turney, C. S. M., and Golledge, N. R.: Sensitivity of the Southern Ocean to enhanced regional Antarctic ice sheet meltwater input, *Earths Future*, 3, 317–329, <https://doi.org/10.1002/2015EF000306>, 2015.
- 085 Fretwell, P., Pritchard, H. D., Vaughan, D. G., Bamber, J. L., Barrand, N. E., Bell, R., Bianchi, C., Bingham, R. G., Blankenship, D. D., Casassa, G., Catania, G., Callens, D., Conway, H., Cook, A. J., Corr, H. F. J., Damaske, D., Damm, V., Ferraccioli, F., Forsberg, R., Fujita, S., Gim, Y., Gogineni, P., Griggs, J. A., Hindmarsh, R. C. A., Holmlund, P., Holt, J. W., Jacobel, R. W., Jenkins, A., Jokat, W., Jordan, T., King, E. C., Kohler, J., Krabill, W., Riger-Kusk, M., Langley, K. A., Leitchenkov, G., Leuschen, C., Luyendyk, B. P., Matsuoka, K., Mouginit, J., Nitsche, F. O., Nogi, Y., Nost, O. A., Popov, S. V., Rignot, E., Rippin, D. M., Rivera, A., Roberts, J., Ross, N., Siegert, M. J., Smith, A. M., Steinhage, D., Studinger, M., Sun, B., Tinto, B. K., Welch, B. C., Wilson, D., Young, D. A., Xiangbin, C., and Zirizzotti, A.: Bedmap2: improved ice bed, surface and thickness datasets for Antarctica, *The Cryosphere*, 7, 375–393, <https://doi.org/10.5194/tc-7-375-2013>, 2013.
- 090 Friedman, I. and Smith, G. I.: Deuterium Content of Snow Cores from Sierra Nevada Area, *Science*, 169, 467–470, <https://doi.org/10.1126/science.169.3944.467>, 1970.
- Gat, J. R. and Gonfiantini, R.: Stable isotope hydrology: deuterium and oxygen-18 in the water cycle. Technical reports series No. 210, 1981.

- Global Network of Isotopes in Precipitation (GNIP): Water Isotope System for data analysis, visualization and Electronic Retrieval (WISER), IAEA, 2023.
- Greene, C. A., Gardner, A. S., Schlegel, N.-J., and Fraser, A. D.: Antarctic calving loss rivals ice-shelf thinning, *Nature*, 1–6, <https://doi.org/10.1038/s41586-022-05037-w>, 2022.
- 100 Hellmer, H. H., Jacobs, S. S., and Jenkins, A.: Oceanic Erosion of a Floating Antarctic Glacier in the Amundsen Sea, in: *Ocean, Ice, and Atmosphere: Interactions at the Antarctic Continental Margin*, vol. 75, edited by: Jacobs, S. S. and Weiss, R. F., American Geophysical Union, Washington, D. C., 83–99, <https://doi.org/10.1029/AR075p0083>, 1998.
- Holland, P. R., Bracegirdle, T. J., Dutrieux, P., Jenkins, A., and Steig, E. J.: West Antarctic ice loss influenced by internal climate variability and anthropogenic forcing, *Nat. Geosci.*, 12, 718–724, <https://doi.org/10.1038/s41561-019-0420-9>, 2019.
- 105 Ingraham, N. L.: Chapter 3 - Isotopic Variations in Precipitation, in: *Isotope Tracers in Catchment Hydrology*, edited by: Kendall, C. and McDONNELL, J. J., Elsevier, Amsterdam, 87–118, <https://doi.org/10.1016/B978-0-444-81546-0.50010-0>, 1998.
- 110 IPCC: *The Ocean and Cryosphere in a Changing Climate: Special Report of the Intergovernmental Panel on Climate Change*, 1st ed., Cambridge University Press, <https://doi.org/10.1017/9781009157964>, 2022.
- Jacobs, S. S., Fairbanks, R. G., and Horibe, Y.: Origin and evolution of water masses near the Antarctic continental margin: Evidence from H<sub>2</sub> 18O / H<sub>2</sub> 16O ratios in seawater, *Oceanol. Antarct. Cont. Shelf*, 115 43, 59–85, <https://doi.org/10.1029/AR043>, 1985.
- Jacobs, S. S., Hellmer, H. H., and Jenkins, A.: Antarctic Ice Sheet melting in the southeast Pacific, *Geophys. Res. Lett.*, 23, 957–960, <https://doi.org/10.1029/96GL00723>, 1996.
- Jacobs, S. S., Giulivi, C. F., and Mele, P. A.: Freshening of the Ross Sea during the late 20th century., *Science*, 297, 386–389, <https://doi.org/10.1126/science.1069574>, 2002.
- 120 Jacobs, S. S., Jenkins, A., Giulivi, C. F., and Dutrieux, P.: Stronger ocean circulation and increased melting under Pine Island Glacier ice shelf, *Nat. Geosci.*, 4, 519–523, <https://doi.org/10.1038/ngeo1188>, 2011.
- Jenkins, A.: The Impact of Melting Ice on Ocean Waters, *J. Phys. Oceanogr.*, 29, 12, 1999.
- Jenkins, A., Dutrieux, P., Jacobs, S. S., McPhail, S. D., Perrett, J. R., Webb, A. T., and White, D.: 125 Observations beneath Pine Island Glacier in West Antarctica and implications for its retreat, *Nat. Geosci.*, 3, 468–472, <https://doi.org/10.1038/ngeo890>, 2010.



- Jenkins, A., Shoosmith, D., Dutrieux, P., Jacobs, S. S., Kim, T. W., Lee, S. H., Ha, H. K., and Stammerjohn, S.: West Antarctic Ice Sheet retreat in the Amundsen Sea driven by decadal oceanic variability, *Nat. Geosci.*, 11, 733–738, <https://doi.org/10.1038/s41561-018-0207-4>, 2018.
- 130 Jeon, M. H., Jung, J., Park, M. O., Aoki, S., Kim, T.-W., and Kim, S.-K.: Tracing Circumpolar Deep Water and glacial meltwater using humic-like fluorescent dissolved organic matter in the Amundsen Sea, Antarctica, *Mar. Chem.*, 235, 104008, <https://doi.org/10.1016/j.marchem.2021.104008>, 2021.
- Joughin, I., Tulaczyk, S., Bamber, J. L., Blankenship, D., Holt, J. W., Scambos, T., and Vaughan, D. G.: Basal conditions for Pine Island and Thwaites Glaciers, West Antarctica, determined using satellite and  
135 airborne data, *J. Glaciol.*, 55, 245–257, <https://doi.org/10.3189/002214309788608705>, 2009.
- Joughin, I., Shapero, D., Smith, B., Dutrieux, P., and Barham, M.: Ice-shelf retreat drives recent Pine Island Glacier speedup, *Sci. Adv.*, 7, eabg3080, <https://doi.org/10.1126/sciadv.abg3080>, 2021a.
- Joughin, I., Shapero, D., Dutrieux, P., and Smith, B.: Ocean-induced melt volume directly paces ice loss from Pine Island Glacier, *Sci. Adv.*, 7, eabi5738, <https://doi.org/10.1126/sciadv.abi5738>, 2021b.
- 140 Jourdain, N. C., Mathiot, P., Merino, N., Durand, G., Le Sommer, J., Spence, P., Dutrieux, P., and Madec, G.: Ocean circulation and sea-ice thinning induced by melting ice shelves in the Amundsen Sea, *J. Geophys. Res. Oceans*, 122, 2550–2573, <https://doi.org/10.1002/2016JC012509>, 2017.
- Kim, T.-W., Yang, H. W., Dutrieux, P., Wåhlin, A. K., Jenkins, A., Kim, Y. G., Ha, H. K., Kim, C.-S., Cho, K.-H., Park, T., Park, J., Lee, S., and Cho, Y. K.: Interannual Variation of Modified Circumpolar  
145 Deep Water in the Dotson-Getz Trough, West Antarctica, *J. Geophys. Res. Oceans*, n/a, e2021JC017491, <https://doi.org/10.1029/2021JC017491>, 2021.
- Kimura, S., Jenkins, A., Regan, H., Holland, P. R., Assmann, K. M., Whitt, D. B., Van Wessem, M., van de Berg, W. J., Reijmer, C. H., and Dutrieux, P.: Oceanographic Controls on the Variability of Ice-Shelf Basal Melting and Circulation of Glacial Meltwater in the Amundsen Sea Embayment, Antarctica,  
150 *J. Geophys. Res. Oceans*, 122, 10131–10155, <https://doi.org/10.1002/2017JC012926>, 2017.
- Leclerc, A. J. and Labeyrie, L.: Temperature dependence of the oxygen isotopic fractionation between diatom silica and water, *Earth Planet. Sci. Lett.*, 84, 69–74, [https://doi.org/10.1016/0012-821X\(87\)90177-4](https://doi.org/10.1016/0012-821X(87)90177-4), 1987.
- Lécuyer, C., Gardien, V., Rigaudier, T., Fourel, F., Martineau, F., and Cros, A.: Oxygen isotope  
155 fractionation and equilibration kinetics between CO<sub>2</sub> and H<sub>2</sub>O as a function of salinity of aqueous solutions, *Chem. Geol.*, 264, 122–126, <https://doi.org/10.1016/j.chemgeo.2009.02.017>, 2009.
- van der Linden, E. C., Le Bars, D., Lambert, E., and Drijfhout, S.: Calibration of basal melt on past ice discharge lowers projections of Antarctica’s sea level contribution, *Ice sheets/Antarctic*, <https://doi.org/10.5194/tc-2021-348>, 2021.

- 160 van der Linden, E. C., Le Bars, D., Lambert, E., and Drijfhout, S.: Antarctic contribution to future sea level from ice shelf basal melt as constrained by ice discharge observations, *The Cryosphere*, 17, 79–103, <https://doi.org/10.5194/tc-17-79-2023>, 2023.
- Mallett, H. K. W., Boehme, L., Fedak, M., Heywood, K. J., Stevens, D. P., and Roquet, F.: Variation in the Distribution and Properties of Circumpolar Deep Water in the Eastern Amundsen Sea, on Seasonal  
165 Timescales, Using Seal-Borne Tags, *Geophys. Res. Lett.*, 45, 4982–4990, <https://doi.org/10.1029/2018GL077430>, 2018.
- Mankoff, K. D., Jacobs, S. S., Tulaczyk, S. M., and Stammerjohn, S. E.: The role of Pine Island Glacier ice shelf basal channels in deep-water upwelling, polynyas and ocean circulation in Pine Island Bay, Antarctica, *Ann. Glaciol.*, 53, 123–128, <https://doi.org/10.3189/2012AoG60A062>, 2012.
- 170 Masson-Delmotte, V., Hou, S., Ekaykin, A., Jouzel, J., Aristarain, A., Bernardo, R. T., Bromwich, D., Cattani, O., Delmotte, M., Falourd, S., Frezzotti, M., Gallée, H., Genoni, L., Isaksson, E., Landais, A., Helsen, M. M., Hoffmann, G., Lopez, J., Morgan, V., Motoyama, H., Noone, D., Oerter, H., Petit, J. R., Royer, A., Uemura, R., Schmidt, G. A., Schlosser, E., Simões, J. C., Steig, E. J., Stenni, B., Stievenard, M., van den Broeke, M. R., van de Wal, R. S. W., van de Berg, W. J., Vimeux, F., and White, J. W. C.:  
175 A Review of Antarctic Surface Snow Isotopic Composition: Observations, Atmospheric Circulation, and Isotopic Modeling\*, *J. Clim.*, 21, 3359–3387, <https://doi.org/10.1175/2007JCLI2139.1>, 2008.
- Mazur, A., Wählin, A. K., and Swart, S.: Seasonal changes of iceberg distribution and surface area in the Amundsen Sea Embayment, *Earth Sciences*, <https://doi.org/10.31223/X5VS4M>, 2021.
- Mazur, A. K., Wählin, A. K., and Kalén, O.: The life cycle of small- to medium-sized icebergs in the  
180 Amundsen Sea Embayment, *Polar Res.*, 38, <https://doi.org/10.33265/polar.v38.3313>, 2019.
- Meredith, M. P., Brandon, M. A., Wallace, M. I., Clarke, A., Leng, M. J., Renfrew, I. A., van Lipzig, N. P. M., and King, J. C.: Variability in the freshwater balance of northern Marguerite Bay, Antarctic Peninsula: Results from  $\delta^{18}\text{O}$ , *Deep-Sea Res. II*, 55, 309–322, <https://doi.org/10.1016/j.dsr2.2007.11.005>, 2008.
- 185 Meredith, M. P., Wallace, M. I., Stammerjohn, S. E., Renfrew, I. A., Clarke, A., Venables, H. J., Shoosmith, D. R., Souster, T., and Leng, M. J.: Changes in the freshwater composition of the upper ocean west of the Antarctic Peninsula during the first decade of the 21st century, *Prog. Oceanogr.*, 87, 127–143, <https://doi.org/10.1016/j.pcean.2010.09.019>, 2010.
- Meredith, M. P., Venables, H. J., Clarke, A., Ducklow, H. W., Erickson, M., Leng, M. J., Lenaerts, J. T.  
190 M., and van den Broeke, M. R.: The Freshwater System West of the Antarctic Peninsula: Spatial and Temporal Changes, *J. Clim.*, 26, 1669–1684, <https://doi.org/10.1175/JCLI-D-12-00246.1>, 2013.

- Mosley-Thompson, E., Thompson, L. G., Grootes, P. M., and Gundestrup, N.: Little Ice Age (Neoglacial) Paleoenvironmental Conditions At Siple Station, Antarctica, *Ann. Glaciol.*, 14, 199–204, <https://doi.org/10.3189/S0260305500008570>, 1990.
- 195 Nakayama, Y., Schröder, M., and Hellmer, H. H.: From circumpolar deep water to the glacial meltwater plume on the eastern Amundsen Shelf, *Deep Sea Res. Part Oceanogr. Res. Pap.*, 77, 50–62, <https://doi.org/10.1016/j.dsr.2013.04.001>, 2013.
- Nakayama, Y., Manucharyan, G., Zhang, H., Dutrieux, P., Torres, H. S., Klein, P., Seroussi, H., Schodlok, M., Rignot, E., and Menemenlis, D.: Pathways of ocean heat towards Pine Island and  
 200 Thwaites grounding lines, *Sci. Rep.*, 9, 16649, <https://doi.org/10.1038/s41598-019-53190-6>, 2019.
- Naughten, K. A., Holland, P. R., Dutrieux, P., Kimura, S., Bett, D. T., and Jenkins, A.: Simulated Twentieth-Century Ocean Warming in the Amundsen Sea, West Antarctica, *Geophys. Res. Lett.*, 49, e2021GL094566, <https://doi.org/10.1029/2021GL094566>, 2022.
- Naveira Garabato, A. C. N., Forryan, A., Dutrieux, P., Brannigan, L., Biddle, L. C., Heywood, K. J.,  
 205 Jenkins, A., Firing, Y. L., and Kimura, S.: Vigorous lateral export of the meltwater outflow from beneath an Antarctic ice shelf, *Nature*, 542, 219–222, <https://doi.org/10.1038/nature20825>, 2017.
- Noone, D. and Simmonds, I.: Annular variations in moisture transport mechanisms and the abundance of  $\delta^{18}\text{O}$  in Antarctic snow, *J. Geophys. Res. Atmospheres*, 107, ACL 3-1-ACL 3-11, <https://doi.org/10.1029/2002JD002262>, 2002.
- 210 Östlund, H. G. and Hut, G.: Arctic Ocean water mass balance from isotope data, *J. Geophys. Res. Oceans*, 89, 6373–6381, <https://doi.org/10.1029/JC089iC04p06373>, 1984.
- Pan, B. J., Gierach, M. M., Meredith, M. P., Reynolds, R. A., Schofield, O., and Orona, A. J.: Remote sensing of sea surface glacial meltwater on the Antarctic Peninsula shelf, *Front. Mar. Sci.*, 10, 1209159, <https://doi.org/10.3389/fmars.2023.1209159>, 2023.
- 215 Paolo, F. S., Fricker, H. A., and Padman, L.: Volume loss from Antarctic ice shelves is accelerating, *Science*, 348, 327–331, <https://doi.org/10.1126/science.aaa0940>, 2015.
- Paolo, F. S., Gardner, A. S., Greene, C. A., Nilsson, J., Schodlok, M. P., Schlegel, N.-J., and Fricker, H. A.: Widespread slowdown in thinning rates of West Antarctic ice shelves, *The Cryosphere*, 17, 3409–3433, <https://doi.org/10.5194/tc-17-3409-2023>, 2023.
- 220 Paren, J. G. and Potter, J. R.: Isotopic tracers in polar seas and glacier ice, *J. Geophys. Res. Oceans*, 89, 749–750, <https://doi.org/10.1029/JC089iC01p00749>, 1984.

- Potter, J. R. and Paren, J. G.: Interaction Between Ice Shelf and Ocean in George VI Sound, Antarctica, in: *Oceanology of the Antarctic Continental Shelf*, American Geophysical Union (AGU), 35–58, <https://doi.org/10.1029/AR043p0035>, 1985.
- 225 Potter, J. R., Paren, J. G., and Loynes, J.: Glaciological and Oceanographic Calculations of the Mass Balance and Oxygen Isotope Ratio of a Melting Ice Shelf, *J. Glaciol.*, 30, 1984.
- Pritchard, H. D., Ligtenberg, S. R. M., Fricker, H. A., Vaughan, D. G., van den Broeke, M. R., and Padman, L.: Antarctic ice-sheet loss driven by basal melting of ice shelves, *Nature*, 484, 502–505, <https://doi.org/10.1038/nature10968>, 2012.
- 230 Randall-Goodwin, E., Meredith, M. P., Jenkins, A., Yager, P. L., Sherrell, R. M., Abrahamsen, E. P., Guerrero, R., Yuan, X., Mortlock, R. A., Gavahan, K., Alderkamp, A.-C., Ducklow, H., Robertson, R., and Stammerjohn, S. E.: Freshwater distributions and water mass structure in the Amundsen Sea Polynya region, Antarctica, *Elem. Sci. Anthr.*, 3, 000065, <https://doi.org/10.12952/journal.elementa.000065>, 2015.
- 235 Rignot, E. and Jacobs, S. S.: Rapid Bottom Melting Widespread near Antarctic Ice Sheet Grounding Lines, *Science*, 296, 2020–2023, <https://doi.org/10.1126/science.1070942>, 2002.
- Rignot, E., Velicogna, I., Van Den Broeke, M. R., Monaghan, A., and Lenaerts, J.: Acceleration of the contribution of the Greenland and Antarctic ice sheets to sea level rise, *Geophys. Res. Lett.*, 38, 1–5, <https://doi.org/10.1029/2011GL046583>, 2011.
- 240 Rignot, E., Jacobs, S. S., Mouginot, J., and Scheuchl, B.: Ice-Shelf Melting Around Antarctica, *Science*, 341, 266–270, <https://doi.org/10.1126/science.1235798>, 2013.
- Rignot, E., Mouginot, J., Scheuchl, B., van den Broeke, M., van Wessem, M. J., and Morlighem, M.: Four decades of Antarctic Ice Sheet mass balance from 1979–2017, *Proc. Natl. Acad. Sci.*, 116, 1095–1103, <https://doi.org/10.1073/pnas.1812883116>, 2019.
- 245 Rohling, E. J.: PALEOCEANOGRAPHY, PHYSICAL AND CHEMICAL PROXIES | Oxygen Isotope Composition of Seawater, in: *Encyclopedia of Quaternary Science*, Elsevier, 915–922, <https://doi.org/10.1016/B978-0-444-53643-3.00293-4>, 2013.
- Rubin, S. I., Takahashi, T., Chipman, D. W., and Goddard, J. G.: Primary productivity and nutrient utilization ratios in the Pacific sector of the Southern Ocean based on seasonal changes in seawater chemistry, *Deep Sea Res. Part Oceanogr. Res. Pap.*, 45, 1211–1234, [https://doi.org/10.1016/S0967-0637\(98\)00021-1](https://doi.org/10.1016/S0967-0637(98)00021-1), 1998.
- 250 Sato, T. and Nakamura, T.: Altitude effects of hydrogen and oxygen isotopic ratios of precipitation in the northern part of Awaji Island, Japan, *J. Jpn. Assoc. Hydrol. Sci.*, 35, 15–22, <https://doi.org/10.4145/jahs.35.15>, 2005.

- 255 Schaffer, J., Timmermann, R., Arndt, J. E., Steinhage, D., and Kanzow, T.: RTopo-2: A global dataset of ice sheet topography, cavity geometry and ocean bathymetry to study ice-ocean interaction in Northeast Greenland, in: EPIC3REKLIM conference “Our Climate - Our Future”, Berlin, Germany, 2014-10-06-2014-10-09, REKLIM conference “Our Climate - Our Future,” Berlin, Germany, 2014.
- Schneider, D. P., Steig, E. J., van Ommen, T. D., Dixon, D. A., Mayewski, P. A., Jones, J. M., and Bitz, C. M.: Antarctic temperatures over the past two centuries from ice cores, *Geophys. Res. Lett.*, 33, <https://doi.org/10.1029/2006GL027057>, 2006.
- 260 Shepherd, A., Gilbert, L., Muir, A. S., Konrad, H., McMillan, M., Slater, T., Briggs, K. H., Sundal, A. V., Hogg, A. E., and Engdahl, M. E.: Trends in Antarctic Ice Sheet Elevation and Mass, *Geophys. Res. Lett.*, 46, 8174–8183, <https://doi.org/10.1029/2019GL082182>, 2019.
- 265 Siegenthaler, U. and Oeschger, H.: Correlation of  $\delta^{18}O$  in precipitation with temperature and altitude, *Nature*, 285, 314–317, <https://doi.org/10.1038/285314a0>, 1980.
- Silvano, A., Rintoul, S. R., Peña-Molino, B., Hobbs, W. R., Wijk, E. van, Aoki, S., Tamura, T., and Williams, G. D.: Freshening by glacial meltwater enhances melting of ice shelves and reduces formation of Antarctic Bottom Water, *Sci. Adv.*, 4, eaap9467, <https://doi.org/10.1126/sciadv.aap9467>, 2018.
- 270 Skrzypek, G. and Ford, D.: Stable Isotope Analysis of Saline Water Samples on a Cavity Ring-down Spectroscopy Instrument, *Environ. Sci. Technol.*, 48, 2827–2834, <https://doi.org/10.1021/es4049412>, 2014.
- Steig, E. J., Mayewski, P. A., Dixon, D. A., Kaspari, S. D., Frey, M. M., Schneider, D. P., Arcone, S. A., Hamilton, G. S., Blue Spikes, V., Mary Albert, Meese, D., Gow, A. J., Shuman, C. A., White, J. W. C., Sneed, S., Flaherty, J., and Wumkes, M.: High-resolution ice cores from US ITASE (West Antarctica): development and validation of chronologies and determination of precision and accuracy, *Ann. Glaciol.*, 41, 77–84, <https://doi.org/10.3189/172756405781813311>, 2005.
- 275 Tamsitt, V., England, M. H., Rintoul, S. R., and Morrison, A. K.: Residence Time and Transformation of Warm Circumpolar Deep Water on the Antarctic Continental Shelf, *Geophys. Res. Lett.*, 48, <https://doi.org/10.1029/2021GL096092>, 2021.
- 280 Thomas, E. R., Dennis, P. F., Bracegirdle, T. J., and Franzke, C.: Ice core evidence for significant 100-year regional warming on the Antarctic Peninsula, *Geophys. Res. Lett.*, 36, <https://doi.org/10.1029/2009GL040104>, 2009.
- 285 Thurnherr, A. M., Jacobs, S. S., Dutrieux, P., and Giulivi, C. F.: Export and circulation of ice cavity water in Pine Island Bay, West Antarctica, *J. Geophys. Res. Oceans*, 119, 1754–1764, <https://doi.org/10.1002/2013JC009307>, 2014.

- 290 Velicogna, I., Sutterley, T. C., and Broeke, M. R. van den: Regional acceleration in ice mass loss from Greenland and Antarctica using GRACE time-variable gravity data, *Geophys. Res. Lett.*, 41, 8130–8137, <https://doi.org/10.1002/2014GL061052>, 2014.
- Wåhlin, A. K., Graham, A. G. C., Hogan, K. A., Queste, B. Y., Boehme, L., Larter, R. D., Pettit, E. C., Wellner, J., and Heywood, K. J.: Pathways and modification of warm water flowing beneath Thwaites Ice Shelf, West Antarctica, *Sci. Adv.*, 7, eabd7254, <https://doi.org/10.1126/sciadv.abd7254>, 2021.
- 295 Walker, S. A., Azetsu-Scott, K., Normandeau, C., Kelley, D. E., Friedrich, R., Newton, R., Schlosser, P., McKay, J. L., Abdi, W., Kerrigan, E., Craig, S. E., and Wallace, D. W. R.: Oxygen isotope measurements of seawater ( $H_2^{18}O/H_2^{16}O$ ): A comparison of cavity ring-down spectroscopy (CRDS) and isotope ratio mass spectrometry (IRMS), *Limnol. Oceanogr. Methods*, 14, 31–38, <https://doi.org/10.1002/lom3.10067>, 2016.
- 300 WCRP Global Sea Level Budget Group: Global sea-level budget 1993–present, *Earth Syst. Sci. Data*, 10, 1551–1590, <https://doi.org/10.5194/essd-10-1551-2018>, 2018.