

# Potential Artifacts ~~In~~ Conservation Laws and Invariants Inferred from Sequential State Estimation

Carl Wunsch<sup>1</sup>, Sarah Williamson<sup>2</sup>, and Patrick Heimbach<sup>2,3,4</sup>

<sup>1</sup>Department of Earth and Planetary Science, Harvard University, Cambridge, MA, USA

<sup>2</sup>Oden Institute for Computational Engineering and Sciences, University of Texas at Austin, Austin, TX, USA

<sup>3</sup>Jackson School of Geosciences, University of Texas at Austin, Austin, TX, USA

<sup>4</sup>Institute for Geophysics, University of Texas at Austin, Austin, TX, USA

**Correspondence:** Sarah Williamson, swilliamson@utexas.edu

**Abstract.** In sequential estimation methods often used in oceanic and general climate calculations of the state and of forecasts, observations act mathematically and statistically as ~~foreigns. For source or sink terms in conservation equations for heat, salt, mass, and momentum. These artificial terms obscure the inference of the system's variability or secular changes. Furthermore,~~ for purposes of calculating changes in important functions of state variables such as total mass and energy, or volumetric current transports, results of both filter and smoother-based estimates are sensitive to mis-representation of a large variety of parameters, including initial conditions, prior uncertainty covariances, and systematic and random errors in observations. Here, toy models of a coupled mass-spring oscillator system and of a barotropic Rossby-wave equation-system are used to demonstrate many of the issues that arise from such mis-representations. Results from Kalman-filter estimates, and those from finite interval smoothing are analyzed. In the filter (and prediction) problem, entry of data leads to violation of conservation and other invariant rules. A finite interval smoothing method restores the conservation rules, but uncertainties in all such estimation results remain. Convincing trend and other time-dependent determinations in “reanalysis”-like estimates require a full understanding of ~~both models and observations. models, observations, and underlying error structures. Application of smoother-type methods that are designed for optimal reconstruction purposes alleviate some of the issues.~~

## 1 Introduction

Intense scientific and practical interest exists in understanding the time-dependent behavior in the past and future of elements of the climate ~~systems of a full reanalysis computation, some simple examples of the known difficulties with sequential analysis methods could be useful.~~ system, especially those represented in a reanalysis. Expert practitioners of the methodology of reanalysis, particularly on the atmospheric side (e.g. Dee (2005), Cohn (2010), Janjić et al. (2014), and Gelaro et al. (2017)) clearly understand the pitfalls of the methodologies, but many of these discussions are couched in the mathematical language of continuous space-time (requiring the full apparatus of functional analysis) and/or the specialized language of atmospheric sciences. Somewhat controversial, contradictory, results in the public domain (e.g. Hu et al. (2020) or Boers (2021)) suggest that, given the technical complexities of a full reanalysis computation, some simple examples of the known difficulties with sequential analysis methods could be helpful. For scientists interested in the results, but not fully familiar with the machinery

being used, it is ~~helpful~~useful to have a more schematic, simplified set of examples so that the numerous assumptions underlying reanalyses and related calculations can be fully understood. ~~dee2005bias~~Dee (2005) is close in spirit to what is attempted here. As in geophysical fluid dynamics methods, two ~~“toy models”~~“toy models” are used to gain insight into issues applying to far more realistic systems.

Discussion of even the simplified systems considered below requires much notation. Although the Appendix writes out the fuller notation and its applications, the basic terminology used is defined more compactly here. Best estimates of past, present, and future invoke knowledge of both observations and models, and both involve physical-dynamical, chemical, and biological elements.

~~Fundamental to understanding many physical systems is analysis of~~To understand and interpret the behavior of physical systems one must examine long-term changes in quantities that are subject to ~~various conservation rules (e.g. system invariants or conservation rules, e.g., energy, enstrophy, total mass, and mean concentrations.)~~or tracer budgets. Conservation rules in physical systems imply that any changes in the quantity are ~~specifically~~ attributable to identifiable sources/sinks/dissipation in the interior and in the ~~boundary conditions~~boundary conditions, and represented as such in the governing equations. Absent that ~~identifiability~~connection in e.g., mass or energy conservation, claims to physical understanding must be viewed with suspicion. In climate science particularly, ~~violation undermines~~violations undermine the ability to determine system trends in physical quantities such as temperature or mass, as well as domain-integrated diagnostics (integrated heat and mass content) over months, decades, and longer.

Two major reservoirs of understanding of systems such as those governing the ocean or climate overall lie with observations of the system, and with the equations of motion (e.g., Navier-Stokes) believed applicable. Appropriate combination of the information from both reservoirs generally leads to improvement over estimates made from either alone, but should never degrade them. Conventional methods for combining data with models fall into the general category of control theory, in both mathematical and engineering forms, although full understanding is made difficult in practice by the need to combine major sub-elements of different disciplines, including statistics of several types, computer science, numerical approximations, oceanography, meteorology, climate, dynamical systems theory, and the observational characteristics of very diverse instrument types and distributions. Within the control theory context, distinct goals include “filtering” (what is the present system state?), “prediction” (what is the best estimate of the future state?), and “interval smoothing” (what was the time history over some finite past interval?) and their corresponding uncertainties.

In oceanography, and climate physics and chemistry more generally, a central tool has become what meteorologists call a “reanalysis,”—a time-sequential estimation method based ultimately on long experience with numerical weather prediction. Particular attention is called, however, to Bengtsson et al. (2004) who showed the impacts of observational system shifts on apparent climate change outcomes arising in some sequential methods. A number of subsequent papers (see, for example, Bromwich and Fogt (2004), Bengtsson et al. (2007), Carton and Giese (2008), and Thorne and Vose (2010)) have noticed difficulties in using reanalyses for long-term climate properties sometimes ending with advice—such as “minimize the errors” (see Wunsch (2020) for one global discussion).

For some purposes, e.g., short-term weather or other prediction, ~~system-failure~~ the failure of the forecasting procedure (consisting of cycles producing analysis increments from data followed by model forecast) to conserve mass or, energy or entropy may be of no concern—as the time-scale of emergence for detectable consequences of that failure can greatly exceed the forecast time. In contrast, for reconstruction of past states, those consequences can destroy any hope of physical interpretation. In long-duration forecasts with rigorous models, which by definition contain no observational data at all, conservation laws and other invariants of the model are ~~likely-to-be-preserved~~ preserved, provided their numerical implementation is accurate. Tests however, of model elements and in particular of accumulating errors, are not then possible until adequate data do appear.

We introduce notation essential for the methods used throughout the manuscript in ~~section~~ Sect. 2. Experiments that examine the impact of data on reconstruction of invariants in a mass-spring oscillator system are discussed in section 3. This section includes the impact of data density and sparsity on reconstructions of energy, position, and velocity, and ends with a discussion of the structure of the covariance matrix. Section 4 covers the Rossby wave equation and examines a simplified dynamical system resembling a forced Rossby wave solution. Here a combination of the Kalman Filter and the Rauch-Tung-Striebel smoother (both defined fully in Bryson and Ho (1975) and Wunsch (2006)) is used to reconstruct a ~~pseudo-energy~~ generalized energy as well as the time-independent transport of a western boundary current. Results are discussed in ~~section~~ Sect. 5. Discussion of even the simplified systems considered below requires much notation. Although the Appendix writes out the fuller notation and its applications, the basic terminology used is defined in the following.

## 2 Notation and Some Generic Inferences

All variables, independent and dependent, are assumed to be discrete. Notation is similar to that in Wunsch (2006). Throughout the manuscript lower case bold variables are vectors and upper case bold variables are matrices.

Let  $\mathbf{x}(t)$  be a state vector for time  $0 \leq t \leq t_f = N_t \Delta t$  where  $\Delta t$  is a discrete time step. A state vector is one that completely describes a physical system evolving according to a model rule (in this case, linear),

$$\mathbf{x}(t + \Delta t) = \mathbf{A}(t) \mathbf{x}(t) + \mathbf{B}(t) \mathbf{q}(t), \quad (1)$$

where  $\Delta t$  is the constant time-step.  $\mathbf{A}(t)$  is a square “state-transition matrix”, and  $\mathbf{B}(t) \mathbf{q}(t)$  is any imposed external forcing, including boundary conditions, with  $\mathbf{B}(t)$  a matrix distributing disturbances  $\mathbf{q}(t)$  appropriately over the state vector. Generally speaking, knowledge of  $\mathbf{x}(t)$  is sought by combining Eq. (1) with a set of linear observations,

$$\mathbf{y}(t) = \mathbf{E}(t) \mathbf{x}(t) + \mathbf{n}(t) \quad (2)$$

Here  $\mathbf{E}(t)$  is another known matrix, which typically vanishes for most values  $t$ , and represents how the observations measure elements of  $\mathbf{x}(t)$ . The variable  $\mathbf{n}(t)$  is the inevitable noise in any real observation and for which some basic statistics will be assumed. Depending upon the nature of  $\mathbf{E}(t)$ , Eq. (2) can be solved by itself for an estimate of  $\mathbf{x}(t)$ . (As part of the linearization assumption, neither  $\mathbf{E}(t)$  nor  $\mathbf{n}(t)$  depends upon the state vector.)

Estimates of the (unknown) true variables  $\mathbf{x}(t)$  and  $\mathbf{q}(t)$  are written with tildes,  $\tilde{\mathbf{x}}(t)$ ,  $\tilde{\mathbf{q}}(t)$ ,  $\tilde{\mathbf{x}}(t, -)$ ,  $\tilde{\mathbf{x}}(t, +)$ , etc. As borrowed from control theory convention, the minus sign in  $\tilde{\mathbf{x}}(t, -)$  denotes a prediction of  $\mathbf{x}(t)$  *not* using any data at time  $t$ , but

90 possibly using data from the past. If no data at  $t$  are ~~then-used,~~ used then  $\tilde{\mathbf{x}}(t) = \tilde{\mathbf{x}}(t, -)$ . ~~The plus sign~~ Similarly, the plus sign  
in  $\tilde{\mathbf{x}}(t, +)$  indicates an estimate at time  $t$  where data *future* to time  $t$  have also been employed. In what follows, the ~~“prediction”~~  
~~“prediction”~~ model is always of the form Eq. (1), but ~~normally-usually~~ with deviations in  $\mathbf{x}(0)$ , and in  $\mathbf{q}(t)$ , which must be  
accounted for.

In any estimation procedure, knowledge of the initial and resulting uncertainties is required. For these linear problems, a  
95 bracket is used to denote expected value, e.g. the variance matrix of any variable  $\xi(t)$  is denoted,

$$\mathbf{P}_\xi(t) = \left\langle \left( \tilde{\xi}(t) - \mathbf{a} \right) \left( \tilde{\xi}(t) - \mathbf{a} \right)^T \right\rangle \quad (3)$$

and where  $\mathbf{a}$  is usually the true value of  $\xi(t)$ , or some averaged value. (When  $\xi$  is omitted in the subscript,  $\mathbf{P}$  refers to  $\tilde{\mathbf{x}}$ .)

Together, Eqs. (1), (2) are a set of linear simultaneous equations for  $\mathbf{x}(t)$  and possibly  $\mathbf{q}(t)$  and which, irrespective of  
whether over- or under-determined, can be solved by the standard inverse methods from linear algebra. For systems too large  
100 for such a calculation and/or ones in which data continue to arrive (e.g., for weather) following a previous calculation, one  
moves to using sequential methods in time.

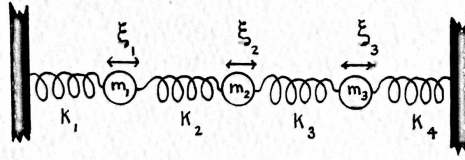
Suppose that, starting from  $t = 0$ , a forecast is made using only the model Eq. (1) until time  $t$ , resulting in  $\tilde{\mathbf{x}}(t, -)$  and a  
model-alone forecast  $\mathbf{A}(t)\tilde{\mathbf{x}}(t, -) + \mathbf{B}(t)\tilde{\mathbf{q}}(t)$ . Should a measurement  $\mathbf{y}(t + \Delta t)$  exist, a weighted average of the difference  
between  $\tilde{\mathbf{x}}(t + \Delta t, -)$  and  $\mathbf{y}(t + \Delta t)$  provides the “best” estimate, where the relative weighting is by the inverse of their separate  
105 uncertainties. In the present case, this best estimate at one time-step in the future is given by,

$$\tilde{\mathbf{x}}(t + \Delta t) = \mathbf{A}(t)\tilde{\mathbf{x}}(t, -) + \mathbf{B}(t)\tilde{\mathbf{q}}(t) + \mathbf{K}(t + \Delta t) [\mathbf{y}(t + \Delta t) - \mathbf{E}(t + \Delta t)\tilde{\mathbf{x}}(t + \Delta t, -)], \quad (4)$$

$$\mathbf{K}(t + \Delta t) = \mathbf{P}(t + \Delta t, -)\mathbf{E}(t + \Delta t)^T [\mathbf{E}(t + \Delta t)\mathbf{P}(t + \Delta t, -)\mathbf{E}(t + \Delta t)^T + \mathbf{R}(t + \Delta t)]^{-1}. \quad (5)$$

As written, this operation is known as the innovation form of the “Kalman filter” (KF), and  $\mathbf{K}(t + \Delta t)$  is the “Kalman gain.”  
Embedded in this form are the matrices  $\mathbf{P}(t + \Delta t, -)$  and  $\mathbf{R}(t + \Delta t)$  which denote the uncertainty of the pure model predic-  
110 tion at time  $t$  and the covariance of the observation noise (usually assumed to have zero mean error) respectively. The ~~operators~~  
uncertainties  $\mathbf{P}(t, -)$  and  $\mathbf{P}(t)$  evolve with time according to a matrix Riccati equation; see Appendix ~~(A1)A~~, Wunsch (2006)  
or numerous textbooks (e.g. Stengel (1986), Goodwin and Sin (1984)) for a fuller discussion. Although possibly looking un-  
familiar, Eq. (4) is simply a convenient rewriting of the matrix-weighted average of the model forecast at  $t + \Delta t$  with that  
determined from the data. If no data exist,  ~~$\mathbf{y}(t + \Delta t) = \mathbf{E}(t + \Delta t) = 0$ , and both  $\mathbf{y}(t + \Delta t)$  and  $\mathbf{E}(t + \Delta t)$  vanish, and~~ the  
115 system reduces to the ordinary model prediction.

Without doing any calculations, some surmises can be made about system behavior from Eq. (4). Among them are: (a) If the  
initial condition (with uncertainty  $\mathbf{P}(0)$ ) has errors, the time evolution will propagate initial condition errors forward. Similarly,  
however obtained, any error in  $\tilde{\mathbf{x}}(t, -)$  with uncertainty covariance  $\mathbf{P}(t + \Delta t, -)$  will be propagated into  $\tilde{\mathbf{x}}(t + \Delta t)$ . (b) Impor-  
tance of the data versus the model evolution depends directly on the ratio of the norms of  ~~$\mathbf{E}(\tau)\mathbf{P}(\tau, -)\mathbf{E}(\tau)^T$ ,  $\mathbf{R}(\tau)\mathbf{E}(\tau)\mathbf{P}(\tau, -)\mathbf{E}(\tau)^T$~~   
120 ~~and  $\mathbf{R}(\tau)$~~ . Lastly (c), most important for this paper, the data disturbances appear in the time-evolution equation (4) fully anal-  
ogous to the external source-sink/boundary condition term. Conservation laws implicit in the model-alone will be violated in  
the time-evolution, and ultimately methods to obviate that problem must be found.



**Figure 1.** Mass-spring oscillator system used as a detailed example. Although the sketch is slightly more general, here all masses have the same value,  $m$ , and all spring constants and Rayleigh dissipation coefficients  $k, r$  are the same.

Although here the true Kalman filter is used for toy models to predict time series, in large-scale ocean or climate models such is almost never the case in practice. Calculation of the  $\mathbf{P}$  matrices from Eq. (A1) is computationally so burdensome that  $\mathbf{K}(t)$  is replaced by some very approximate or intuitive version, usually constant in time, potentially leading to further major errors beyond what is being discussed here.

### 3 Example 1: Mass-Spring Oscillator Oscillators

Consider the intuitively accessible system of a mass-spring oscillator, following any of McCuskey (1959), Goldstein (1980), Wunsch (2006), Strang (2007), initially in the conventional continuous time formulation of simultaneous differential equations. Three identical masses,  $m = 1$ , are connected to each other and to a wall at either end by springs of identical constant,  $k$  (Fig. 1). Movement is damped by a Rayleigh friction coefficient  $r$ . Generalization to differing masses, spring constants, and dissipation coefficients is straightforward. Displacements of each mass are  $\xi_i(t)$ ,  $i = 1, 2, 3$ . The linear Newtonian equations of coupled motion are,

$$m \frac{d^2 \xi_1}{dt^2} + k \xi_1 + k (\xi_1 - \xi_2) + r \frac{d\xi_1}{dt} = q_{c1}(t) \quad (6a)$$

$$m \frac{d^2 \xi_2}{dt^2} + k \xi_2 + k (\xi_2 - \xi_1) + k (\xi_2 - \xi_3) + r \frac{d\xi_2}{dt} = q_{c2}(t) \quad (6b)$$

$$m \frac{d^2 \xi_3}{dt^2} + k \xi_3 + k (\xi_3 - \xi_2) + r \frac{d\xi_3}{dt} = q_{c3}(t). \quad (6c)$$

This second-order system is reduced to a canonical form of coupled first-order equations by introduction of a continuous time state vector, the column vector,

$$\mathbf{x}_c(t) = [\xi_1(t), \xi_2(t), \xi_3(t), d\xi_1/dt, d\xi_2/dt, d\xi_3/dt]^T, \quad (7)$$

140 where superscript  $T$  denotes the transpose. Note the mixture of dimensional units in the elements of  $\mathbf{x}_c(t)$ , identifiable with the Hamiltonian variables of position and momentum. Then Eqs. (6) become (setting  $m = 1$ , or dividing through by it),

$$\frac{d\mathbf{x}_c(t)}{dt} = \mathbf{A}_c \mathbf{x}_c(t) + \mathbf{B}_c \mathbf{q}_c(t), \quad (8)$$

where

$$\mathbf{A}_c = \begin{pmatrix} 0 & 0 & 0 & 1 & 0 & 0 \\ 0 & 0 & 0 & 0 & 1 & 0 \\ 0 & 0 & 0 & 0 & 0 & 1 \\ -2k & k & 0 & -r & 0 & 0 \\ k & -3k & k & 0 & -r & 0 \\ 0 & k & -2k & 0 & 0 & -r \end{pmatrix} = \begin{pmatrix} \mathbf{0}_3 & \mathbf{I}_3 \\ \mathbf{K}_c & \mathbf{R}_c \end{pmatrix}, \quad (9)$$

145 defining the time-invariant  $3 \times 3$  block matrices  $\mathbf{K}_c$  and  $\mathbf{R}_c$ , symmetric and diagonal respectively. The structure of  $\mathbf{B}_c$  depends on which masses are forced. For example, if only  $\xi_2(t)$  is forced, then  $\mathbf{B}_c$  would be the unit vector in the second element.

Assuming  $r, k \neq 0$ ,  $\mathbf{A}$  is full-rank with three pairs of complex conjugate eigenvalues, but non-orthonormal right eigenvectors.  $\mathbf{A}$  and  $\mathbf{B}$  are both assumed time-independent. Discussion of the physics and mathematics of small oscillations can be found in most classical mechanics textbooks and is omitted here. What follows is left in dimensional form to make the results

150 most intuitively accessible.

### Energy

Consider now an energy principle. Let  $\boldsymbol{\xi} = (\xi_1(t), \xi_2(t), \xi_3(t))^T$  be the position sub-vector. Define, without dissipation ( $\mathbf{R}_c = \mathbf{0}$ ) or forcing,

$$\mathcal{E}_c(t) = \frac{1}{2} \left[ \left( \frac{d\boldsymbol{\xi}}{dt} \right)^T \left( \frac{d\boldsymbol{\xi}}{dt} \right) - \boldsymbol{\xi}^T \mathbf{K}_c \boldsymbol{\xi} \right] \quad (10)$$

$$155 \frac{d\mathcal{E}_c(t)}{dt} = \frac{1}{2} \frac{d}{dt} \left[ \left( \frac{d\boldsymbol{\xi}}{dt} \right)^T \left( \frac{d\boldsymbol{\xi}}{dt} \right) - \boldsymbol{\xi}^T \mathbf{K}_c \boldsymbol{\xi} \right] = 0. \quad (11)$$

Here  $\mathcal{E}_c$  is the sum of the kinetic and potential energies (the minus sign compensates for the negative definitions in  $\mathbf{K}_c$ ). The non-diagonal elements of  $\mathbf{K}_c$  redistribute the potential energy amongst the masses through time.

With finite dissipation and forcing,

$$\frac{d\mathcal{E}_c(t)}{dt} = \left( \frac{d\boldsymbol{\xi}}{dt} \right)^T \mathbf{R}_c \left( \frac{d\boldsymbol{\xi}}{dt} \right) + \frac{d\boldsymbol{\xi}^T}{dt} \mathbf{B}_c \mathbf{q}(t). \quad (12)$$

160 If the forcing and dissipation vanish then  $d\mathcal{E}_c(t)/dt = 0$  (see Cohn (2010) for a formal discussion of such continuous time systems.)

### Discretization

~~Eq. (1) is discretized~~ Equation (1) is considered at time intervals  $\Delta t$  using an Eulerian time-step in the same form,

$$\mathbf{x}(t + \Delta t) = \mathbf{A}\mathbf{x}(t) + \mathbf{B}\mathbf{q}(t), \quad t = n\Delta t, \quad (13)$$

165 for  $n \geq 0$ . The prediction model is unchanged except now,

$$\mathbf{A} = \begin{pmatrix} 1 & 0 & 0 & \Delta t & 0 & 0 \\ 0 & 1 & 0 & 0 & \Delta t & 0 \\ 0 & 0 & 1 & 0 & 0 & \Delta t \\ -2k\Delta t & k\Delta t & 0 & 1-r\Delta t & 0 & 0 \\ k\Delta t & -3k\Delta t & k\Delta t & 0 & 1-r\Delta t & 0 \\ 0 & k\Delta t & -2k\Delta t & 0 & 0 & 1-r\Delta t \end{pmatrix} \quad (14)$$

$$= \begin{pmatrix} \mathbf{I}_3 & \Delta t \mathbf{I}_3 \\ \Delta t \mathbf{K}_c & \mathbf{I}_3 + \Delta t \mathbf{R}_c \end{pmatrix} \quad (15)$$

and without the  $c$  subscript.

For this choice of the discrete state vector, the energy rate of change is formally analogous to that in the continuous case,

$$170 \quad \frac{\mathcal{E}(t) - \mathcal{E}(t - \Delta t)}{\Delta t} = \left( \frac{d\xi}{dt} \right)^T \mathbf{R} \left( \frac{d\xi}{dt} \right) + \frac{d\xi^T}{dt} \mathbf{B} \mathbf{q}(t) \quad (16)$$

where  $\mathcal{E}(t)$  is computed as before in Eq. (10) except now using the discretized  $\mathbf{x}(t)$ . An example solution for the nearly dissipationless, unforced oscillator is provided in Fig. 2, produced by the discrete formulation  $\mathcal{E}(t)$ . The potential and kinetic energies through time are shown in Fig. 2c, along with elements and derived quantities of the state vector in Fig. 2a, 2b. Non-zero values here arise only from the initial condition  ~~$\mathbf{x}(0) = [1, 0, 0, 0, 0, 0]^T$ , and necessarily involve specifying both~~  
175  $\mathbf{x}(0) = [1, 0, 0, 0, 0, 0]^T$  necessarily specifying both initial positions and their rates of change. A small amount of dissipation ( $r = 0.5$ ) was included to stabilize the particularly simple numerical scheme. The basic oscillatory nature of the state vector elements is plain, and the decay time is also visible.

The total energy declines over the entire integration time, but with small ~~numerical~~ oscillations persisting after 5000 time steps. Kinetic energy is oscillatory as energy is exchanged with the potential component.

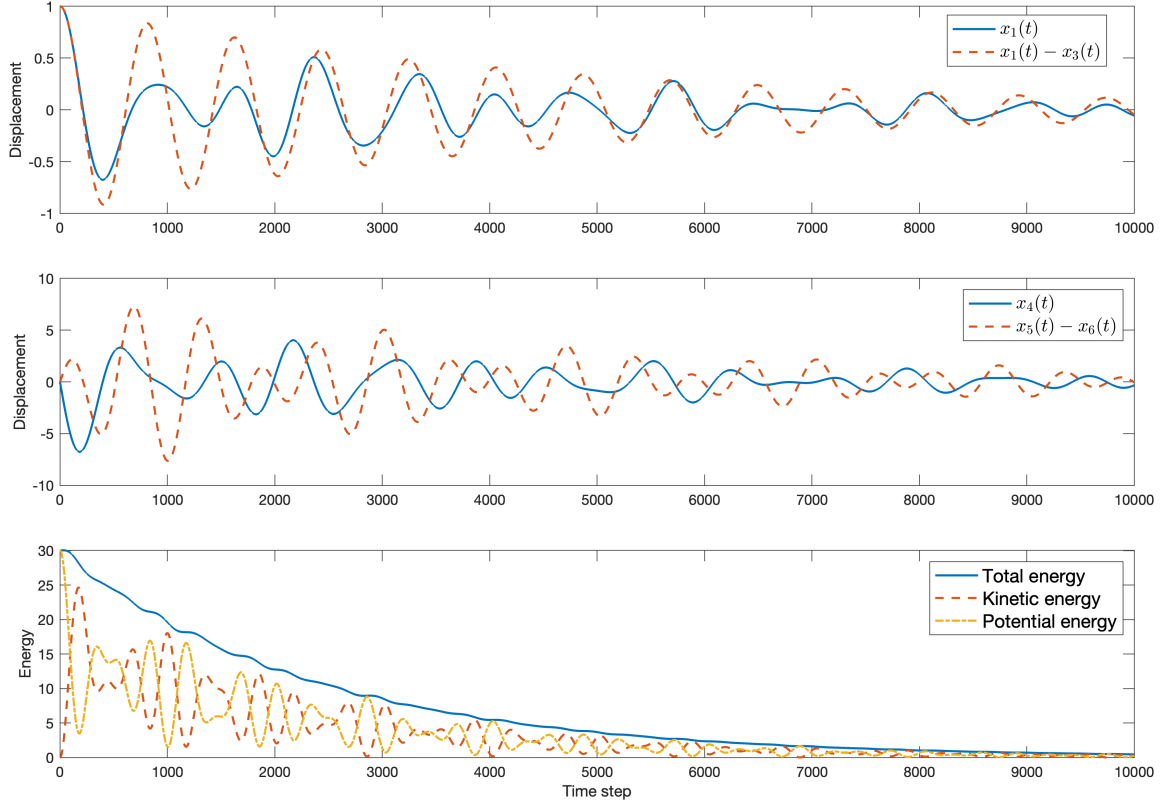
### 180 3.1 Mass-Spring Oscillator with Observations

Note that if the innovation form of the evolution, Eq. (4), is used, the energy change becomes,

$$\frac{\mathcal{E}(t) - \mathcal{E}(t - \Delta t)}{\Delta t} \approx \left( \frac{d\xi}{dt} \right)^T \mathbf{R} \left( \frac{d\xi}{dt} \right) + \frac{d\xi^T}{dt} \mathbf{B} \mathbf{q}(t) + \frac{d\mathbf{x}(t)^T}{dt} \mathbf{K}(t) [\mathbf{y}(t) - \mathbf{E}(t) \mathbf{x}(t)],$$

showing explicitly the influence of the observations. With intermittent observations and/or with changing structures in  $\mathbf{E}(t)$ , then  $\mathcal{E}(t)$  will undergo forced abrupt changes that are a consequence of the sequential innovation.

185 Given the very large number of potentially erroneous elements in any choice of model, data and data distributions, and the ways in which they interact when integrated through time, a comprehensive discussion even of the 6-element state vector mass-spring oscillator system is difficult. Instead, some simple examples exploring primarily the influence of data density on the state estimate and of its mechanical energy are described. Numerical experiments are readily done with the model and its



**Figure 2.** The unforced case, initial condition vanishing except for  $\xi_1(1) = 1$ . Natural frequency and decay scale are apparent. (a)  $x_1(t)$  (solid) and  $x_1(t) - x_3(t)$  (dashed). (b)  $x_4(t)$  (solid) and  $x_5(t) - x_6(t)$  (dashed). (c)  $\mathcal{E}(t)$  showing decay scale from the initial displacement, alongside kinetic energy (dashed) and potential energy (dot-dashed.)

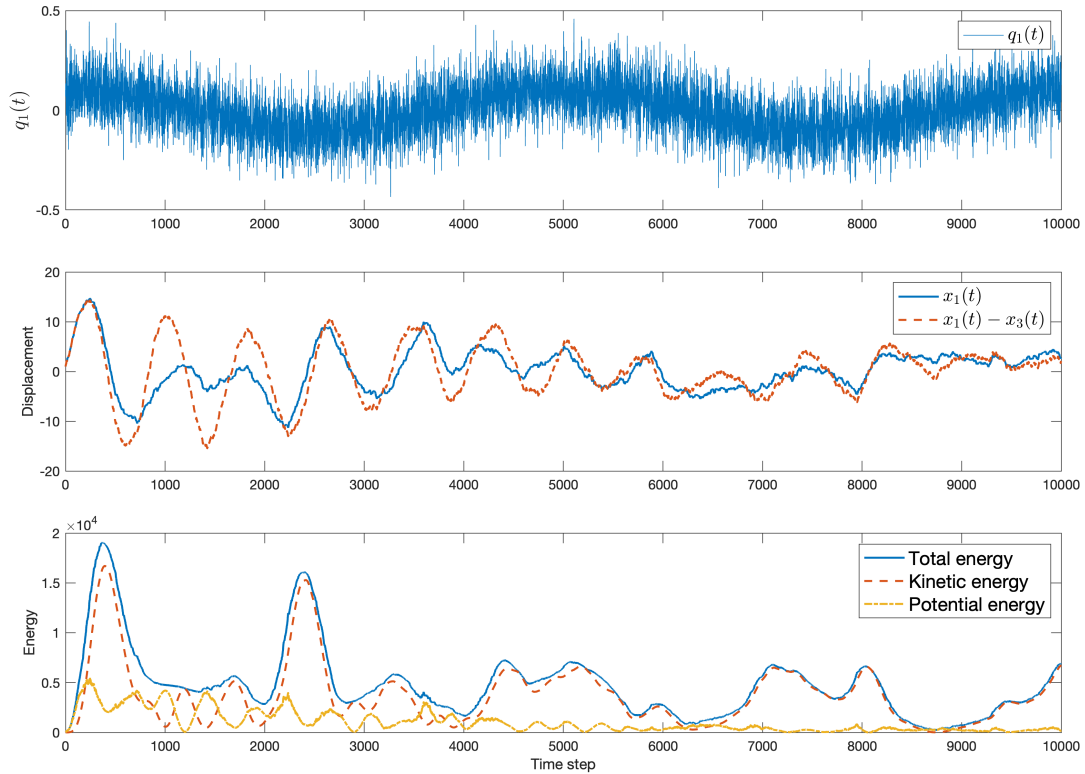
time-constants, model time-step, accuracies and corresponding covariances of initial conditions, boundary conditions, data, etc. The basic problems of any linear or linearized system already emerge in this simple example.

The “true” model assumes the parameters  $k = 30$ ,  $r = 0.5$ , and  $\Delta t = .001$ , and is forced by

$$\mathbf{q}(t) = q_1(t) = 0.1 \cos[2\pi t / (2.5 T_{diss})] + \varepsilon(t). \quad (17)$$

That is, only mass one is forced in position, and with a low frequency not equal to one of the natural frequencies. In this case,  $\mathbf{B} = [1, 0, 0, 0, 0, 0]^T$  and  $\mathbf{q}(t) = q_1(t)$ , a scalar. The dissipation time is  $T_{diss} = 1/r$ , and  $\varepsilon(t)$  is a white noise element with standard deviation 0.1. Initial condition is  $\xi_1(0) = 1$ , all other elements vanishing; see Fig. 3(b) and (c) for an example of a forced solution of positions, velocities, and derived quantities, respectively. Accumulation of the influence of the stochastic element in the forcing depends directly upon details of the model time-scales, and, if  $\varepsilon(t)$  were not white noise, on its spectrum





**Figure 3.** Forced version of the same oscillator system as in Fig. 2. Forcing is at every time-step in the mass one position alone. (a) The forcing,  $\mathbf{q}(t)$ , is given by white noise plus the visible low frequency cosine curve. (b)  $x_1(t)$  (solid) and  $x_1(t) - x_3(t)$  (dashed). (c) Total energy through time,  $\mathcal{E}(t)$  alongside kinetic energy (dashed) and potential energy (dot-dashed). Energy varies with the purely random walk arising from process  $\varepsilon(t)$  as well as from the deterministic forcing.

as well. In all cases the cumulative effect of a random forcing will be a random walk—with details dependent upon the forcing structure, as well as on the various model time scales.

200 The prediction model here has fully known initial conditions and  $\mathbf{A}, \mathbf{B}$  matrices, but the stochastic component of the forcing is being treated as fully unknown, i.e.,  $\varepsilon(t) = 0$ . Added white noise in the data values has a standard deviation of 0.01 in all calculations. The numerical experiments and their parameters are defined in Table 1.

The experiments and their parameters are outlined in Table 1, where “–” is used to indicate that the same conditions as the nominal truth are used:

205

	3.1.1: Accurate observations at two timesteps and multiple timesteps	3.1.2: Fixed position	3.1.3: Observations of averages
Nominal truth	Forcing given by $\mathbf{q}(t)$ (Eq. (17)), observational noise is $\sigma(\varepsilon(t)) = 0.1$ ,	$\mathbf{x}_0 = (1, 0, 2, 0, 0, 0)$ All else the same as 3.1.1	Same as 3.1.1
Prediction	Forcing given by $0.5\mathbf{q}(t) - \varepsilon(t)$	–	–
Kalman filter	Forcing given by $0.5\mathbf{q}(t) - \varepsilon(t)$ , observational noise is $\sigma = 0.01$	–	–

**Table 1.** Numerical experiments and corresponding parameters. Common to all configurations are the following settings:  $k = 30$ ,  $r = 0.5$ ,  $\Delta t = 0.001$ ,  $\mathbf{x}_0 = \mathbf{e}_1$ . The symbol “–” indicates the same conditions as the nominal truth.

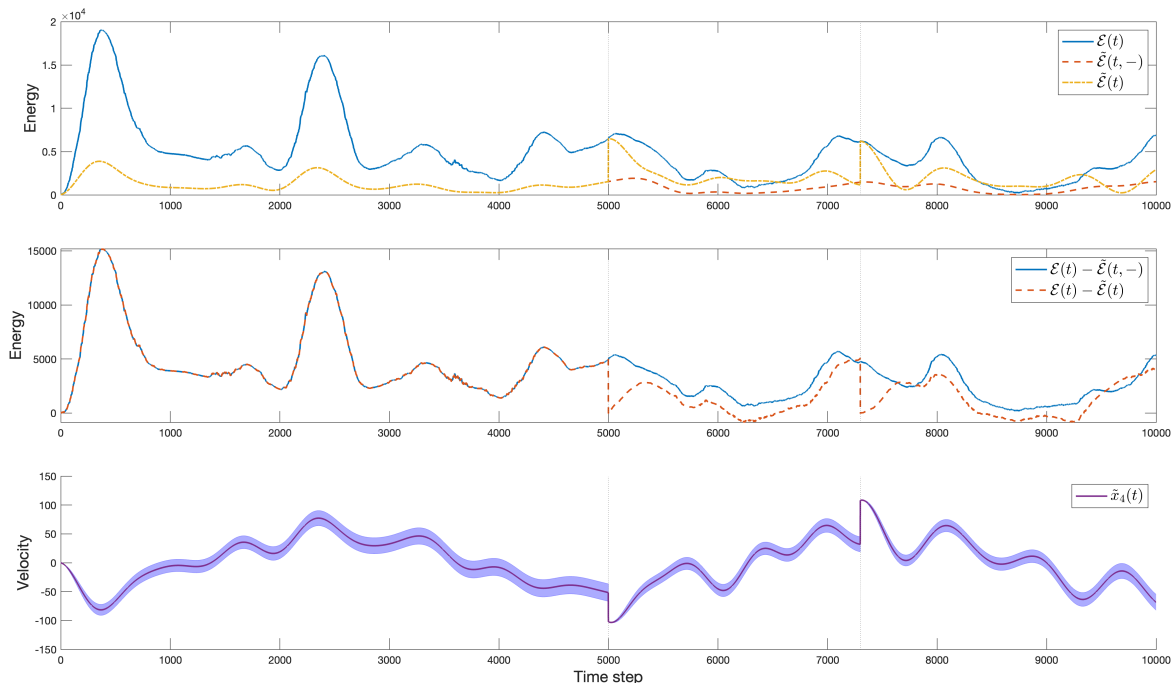
### 3.1.1 Accurate Observations: Two Times and Multiple Times

To demonstrate the most basic problem of estimating energy, consider highly accurate observations of all six generalized coordinates (i.e., positions and velocity) at two times  $\tau_1, \tau_2$  as displayed in Fig. 4 with  $\mathbf{E} = \mathbf{I}_6$ , i.e. having no observational null-space. The forecast model has the correct initial conditions of the true state but incorrect forcing: the deterministic component  
210 has half the amplitude of the true forcing and  $\varepsilon(t)$  is completely unknown. Noise with standard deviation 0.01 is added to the observations. Although the new estimate of the KF reconstructed state vector is an improvement over that from the pure forecast, any effort to calculate a true trend in the energy of the system,  $\tilde{\mathcal{E}}(t)$ , will fail unless careful attention is paid to correcting for the conservation violations at the times of the observation.

Until the first data point (denoted with a vertical line in Fig. 4 in all three panels) is introduced, the KF and prediction energies  
215 are identical, as expected. Energy discontinuities occur at each introduction of a data point ( ~~$t = 5000\Delta t$  and  $t = 7300\Delta t$~~ ).  $t = 5000\Delta t$  and  $t = 7300\Delta t$ , seen as the vertical jumps in Fig. 4a. After the first data point the KF energy ~~remains~~ tends to remain lower than the true energy, but the KF prediction is nonetheless an improvement over that from the prediction model alone. This change is shown in Fig. 4b, where the difference of true and predicted is plotted alongside the difference of true and KF estimate. Even if the observations are made perfect ones (not shown), this bias error in the energy persists (see e.g.,  
220 Dee (2005)). Figure 4c offers insight into the KF prediction via the covariance matrix  $\mathbf{P}(t)$ . The uncertainty in the predicted displacement is small once new data are inserted via the analysis increment, but it quickly grows as the model is integrated beyond the time of analysis.

Figure 5 shows the results when observations occur in clusters having different intervals between the measurements; the first being sparser observations (300 timesteps between data points) and the second being denser observations (125 timesteps  
225 between data points). Visually, the displacement and energy have a periodicity imposed by the observation time-intervals and readily confirmed by Fourier analysis. Again, the KF solution is the pure model prediction until data are available, at which point multiple discontinuities occur, one for every  $t$  where data are introduced.

A great many further specific calculations can provide insight as is apparent in the above examples, and as inferred from the innovation equation, Eq. (4). For example, the periodic appearance of observations introduces periodicities in  $\tilde{\mathbf{x}}(t)$ , and

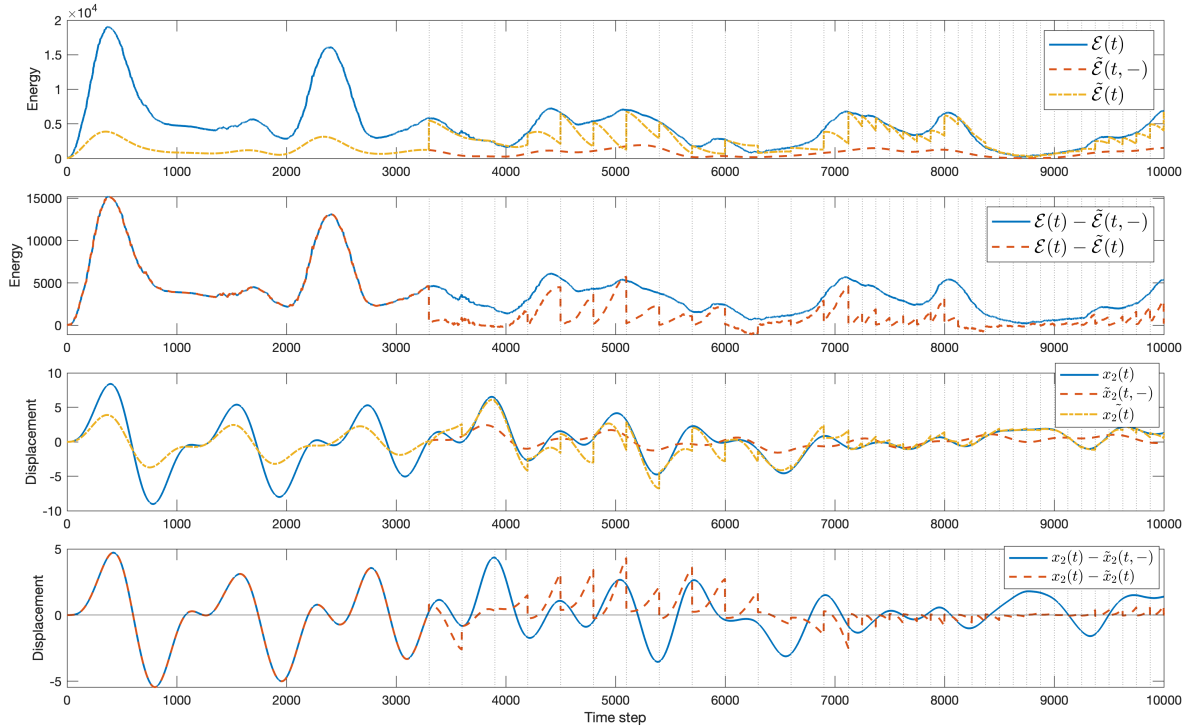


**Figure 4.** (a) Total energy for the 3-mass-spring oscillator system (solid),  $\mathcal{E}(t)$ , the prediction model (dashed),  $\tilde{\mathcal{E}}(t, -)$ , and for the KF reconstruction (dot-dashed),  $\tilde{\mathcal{E}}(t)$ . (b) The difference between truth and prediction total energies (solid) and the difference between truth and KF total energies (dashed). The data points Data are introduced at times indicated by the vertical lines and create discontinuities, forcing  $\mathcal{E}(t) - \tilde{\mathcal{E}}(t)$  to be near zero. Note that the differences do not perfectly match at time  $t = 0$ , but they are relatively small. (c) Estimated position for velocity in of the first mass ( $d\xi_1/dt = x_4(t)$ ) from the Kalman filter, showing the jump at the two times where there are complete near-perfect data. Standard error bar is shown from the corresponding diagonal element of  $\mathbf{P}(t)$ , in this case given by  $\sqrt{P_{44}}$ .

230 hence in properties such as the energy derived from it. Persistence of the information in these observations at future times will  
depend upon model time-constants including dissipation rates.

### 3.1.2 A Fixed Position

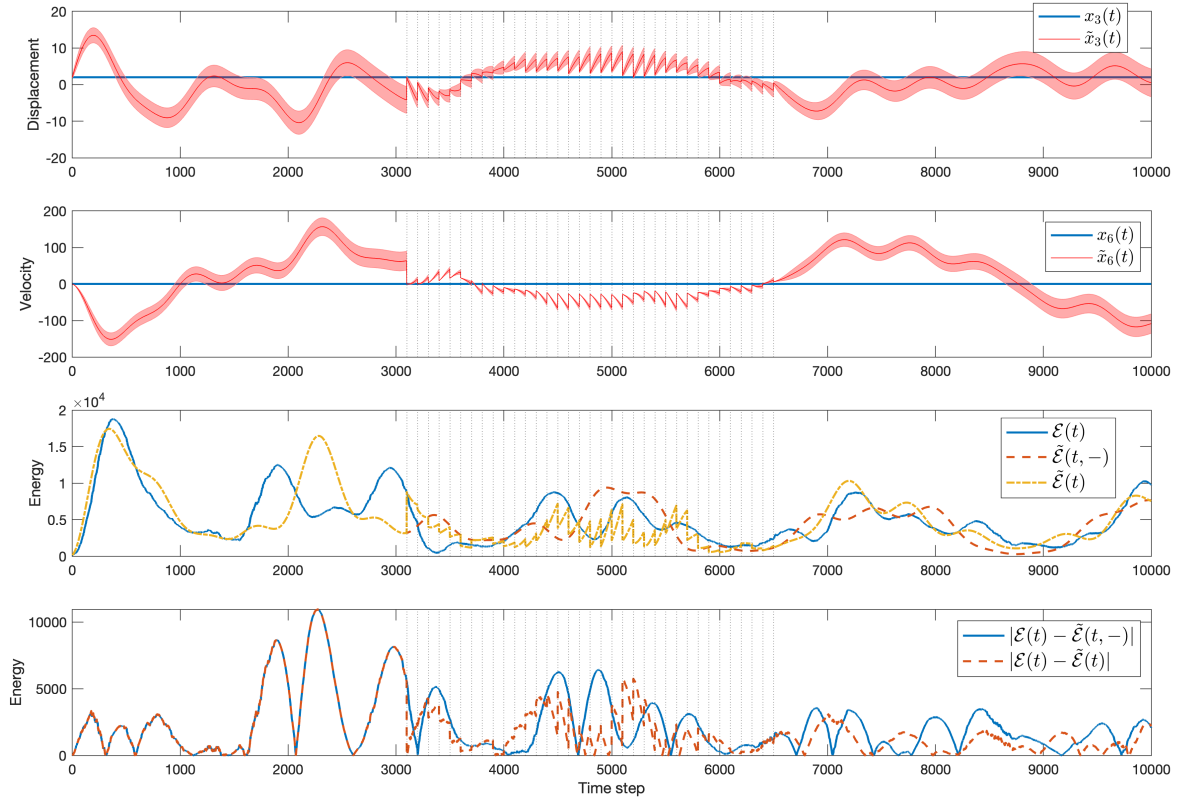
235 Exploration of the dependencies of energies of the mass-spring system is interesting and a great deal more can be said. Turn  
however, to a somewhat different invariant: suppose that one of the mass positions is fixed, but with the true displacement  
unknown to the analyst. A significant literature exists devoted to finding changes in scalar quantities such as global mean  
atmospheric temperatures, or oceanic currents, with the Atlantic Meridional Overturning Circulation (AMOC) being a favorite  
focus. These quantities are typically sub-elements of complicated models involving very large state vectors.



**Figure 5.** (a) Similar to Fig. 4. Shown are true total energy (solid),  $\mathcal{E}(t)$ , plotted alongside the prediction ~~mode-model~~ energy (dashed),  $\tilde{\mathcal{E}}(t, -)$ , and calculated from KF ~~algorithm1-algorithm~~ (dot-dashed),  $\tilde{\mathcal{E}}(t)$ . (b) The difference between the “truth” and prediction (solid) alongside the difference between “truth” and KF (dashed). (c) The position of mass two,  $x_2(t)$ , given by the “true” model (solid), the prediction (dashed), and the KF estimate (dot-dashed). The introduction of data points forces the KF to match the state vector from the data, creating the discontinuities expected. (d)  $x_2(t) - \tilde{x}_2(t, -)$  (solid) alongside  $x_2(t) - \tilde{x}_2(t)$  (dashed).

The true model is now adjusted to include the constraint that  $x_3(t) = \xi_3(t) = 2$  and thus  $x_6(t) = d\xi_3(t)/dt = 0$ . That is, a fixed displacement in mass 3 (and consequently a zero velocity in mass 3) is used in computing the true state vector. The  
240 forecast model has the correct initial condition and incorrect forcing: with a deterministic component again having half the  
true amplitude and fully unknown noise  $\varepsilon(t)$ . Observations are assumed to be those of all displacements and velocities, with  
the added noise having standard deviation 0.01. Results are shown in Fig. 6. The question is whether one can infer accurately  
that  $\xi_3(t) - \xi_3(t)$  is a constant through time. A KF estimate for the fixed position,  $\tilde{x}_3(t) = \tilde{\xi}_3(t)$ , is shown in Fig. 6(a) and  
includes a substantial error in its value (and its variations or trends) at all times. Exceptions occur when data are introduced at  
245 the vertical lines in Fig. 6(a), (b). Owing to the noise in the observations, the KF cannot reproduce a perfect result.

~~Estimated mass 3 position variations~~ Looking at Fig. 6(a), one sees that variations in the position of mass 3 occur even during  
the data dense period and. The variations arise both from the entry of the data and the noise in the observations. An average



**Figure 6.** (a) Correct value of the constant displacement  $x_3(t)$  (solid line) and the estimated value from the KF calculation (dot-dashed line) with error bar computed from  $\mathbf{P}$ . Vertical lines are again the observation times. (b) Correct value of the constant velocity  $x_6(t)$  (solid line) and the estimated value from the KF calculation (dot-dashed line) with error bar computed from  $\mathbf{P}$ . (c) The total energy given by the true model (solid line), the prediction value (dashed line), and the KF estimate (dot-dashed line.) (d) The absolute value of the difference between truth and prediction (solid line), and the absolute value of the difference between truth and the KF value (dashed line.)

taken over the two-halves of the observation interval might lead to the erroneous conclusion that a decrease had taken place. Such an incorrect inference can be precluded by appropriate use of computed uncertainties. Note also the impact of the KF on the energy (Fig. 6c,d), producing artificial changes as in the previous experiment.

### 3.1.3 Observations of Averages

Consider now a set of observations of the average of the position of masses 2 and 3, and of the average velocity of masses 1 and 2, mimicking the type of observations that might be available in a realistic setting. Again for optimistic simplicity, the observations are relatively accurate (including noise with standard deviation 0.01) and occur in the two different sets of periodic time intervals. Prediction begins with the correct initial conditions, and again the forcing has half the correct amplitude with fully unknown random forcing. Figure 7 displays the results. Position estimates shown in Fig. 7(c) are good, but not perfect, as is also true for the total energy -seen in Fig. 7(a). The energy estimate carries oscillatory power with the periodicity of the oncoming observation intervals and appears in the spectral estimate (not shown) with excess energy in the oscillatory band, and somewhat too low energy at the longest periods. Irregular observation spacing would generate a more complicated spectrum in the result.

A general discussion of nullspaces involves that of the column weighted  $\mathbf{P}(\tau, -)\mathbf{E}^T$  appearing in the Kalman gain. If  $\mathbf{E}$  is the identity (i.e. observations of all positions and velocities), and  $\mathbf{R}(\tau)$  has sufficiently small norm, all elements of  $\mathbf{x}(\tau)$  are resolved. In the present case, with  $\mathbf{E}$  having two rows, corresponding to observations of the averages of two mass positions and of two velocity positions, the resolution analysis is more structured than the identity with,

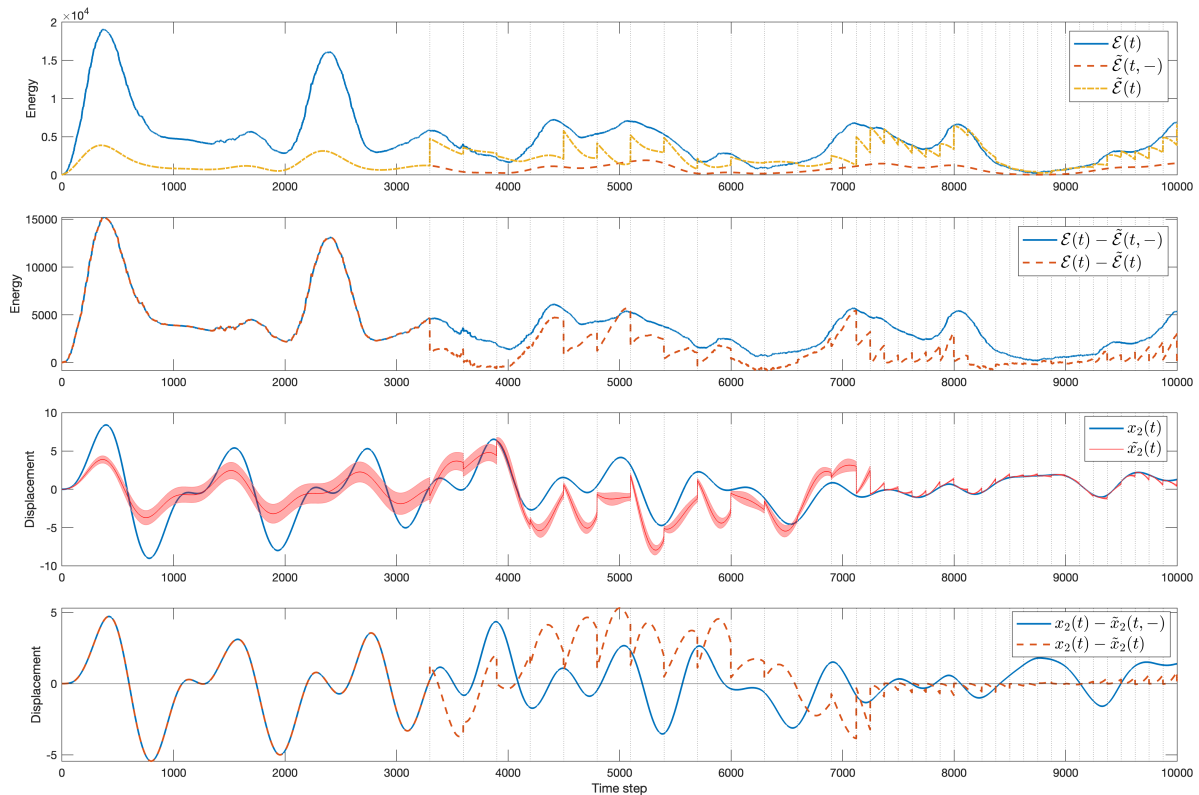
$$\mathbf{E} = \begin{Bmatrix} 0 & 1/2 & 1/2 & 0 & 0 & 0 \\ 0 & 0 & 0 & 1/2 & 1/2 & 0 \end{Bmatrix}. \quad (18)$$

A singular value decomposition  $\mathbf{E} = \mathbf{U}\mathbf{S}\mathbf{V}^T = \mathbf{U}_2\mathbf{S}_2\mathbf{V}_2^T$ , produces two non-zero singular values, where  $\mathbf{U}_2$ , etc. denotes the first two columns of the matrix. At rank 2, the resolution matrices,  $\mathbf{T}_U$ ,  $\mathbf{T}_V$ , based on the  $\mathbf{U}$ ,  $\mathbf{V}$  vectors respectively and the standard solution covariances are easily computed (Wunsch (2006)).  $\mathbf{A}$  distributes information about the partially determined  $x_i$  throughout all masses via the dynamical connections as contained in  $\mathbf{P}(\tau)$ . Bias errors require specific, separate analysis.

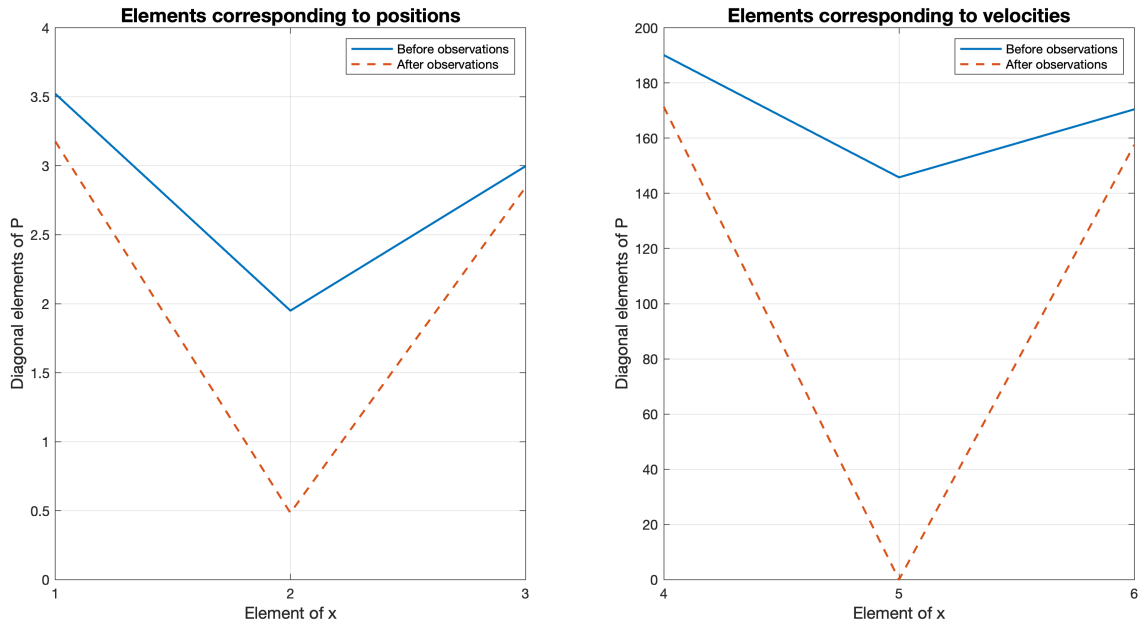
The impact of an observation on future estimated values tends to decay in time, dependent upon the model time-scales. Insight into the future influence of an observation can be obtained from the Green function discussion in the Appendix.

### 3.2 Uncertainties

In a linear system, a Gaussian assumption for the dependent variables is commonly appropriate. Here the quadratic dependent energy variables become  $\chi^2$  distributed. Thus the  $\xi_i^2, \dot{\xi}_i^2$  have such distributions, but with differing means and variances, and with potentially very strong correlations, so that they cannot be regarded as independent variables. Determining the uncertainties of the six covarying elements making up  $\tilde{\mathcal{E}}(t)$  involves some intricacy. A formal analysis can be made of the resulting probability distribution for the sum in  $\tilde{\mathcal{E}}(t)$ , involving non-central  $\chi^2$  distributions (Imhof (1961), Sheil and O'Muircheartaigh (1977), Davies (1980)). As an example, an estimate of the uncertainty could be made via a Monte Carlo approach by generating



**Figure 7.** (a) Results for total energy when observations were of the average of the two positions  $x_2(t), x_3(t)$  and the two velocities,  $x_4(t), x_5(t)$  at the times marked by vertical lines. (b) Total energy differences corresponding to the situation in (a). (c) Results for the displacement  $x_2(t)$  estimate when observations were of averages along with error bar from  $\mathbf{P}$ . (d) Differences between true and predicted (solid blue) and true and KF (dashed red).



**Figure 8.** From left to right: (a) The first three diagonal elements of  $\mathbf{P}$  before any observations of  $x_5$  (solid) and after ten observations of  $x_5$  (dashed). (b) The last three diagonal elements of  $\mathbf{P}$  before any observations (solid) and after ten observations (dashed.)

280  $N$  different versions of the observations, differing in the particular choice of noise value in each and tabulating the resulting range. These uncertainties can be used to calculate, e.g., the formal significance of any apparent trend in  $\tilde{\mathcal{E}}(t) - \tilde{\mathcal{E}}(t)$ . Implicit in such calculations is having adequate knowledge of the probability distribution from which the random variables are obtained. An important caveat is that once again bias errors such as those seen in the energy estimates in Fig. 7(a) must be separately determined.

285 The structure of the uncertainty operator  $\mathbf{P}$  depends upon both the model and the detailed nature of the observations via (see [Appendix A](#); Eq. (A3)). Suppose observations only provide knowledge of the velocity of mass 2,  $x_5(t)$ . Consider  $\mathbf{P}(t = 7124)$ , just before observations become available (i.e., the model has mimicked a true prediction until this point), and  $\mathbf{P}(t = 8250)$ , after ten observations of  $x_5$  have been incorporated with the Kalman filter. The resulting  $\mathbf{P}(t)$  following the observations produces highly inhomogeneous variances (the diagonals of  $\mathbf{P}$ ). In this particular case, one of the eigenvalues of  $\mathbf{P}(\tau)$  for  $\tau$  just beyond the time of any observation, is almost zero, meaning that  $\mathbf{P}(\tau)$  is nearly singular (Fig. 8). The corresponding  
290 eigenvector has a value near 1 in position 5 and is near zero elsewhere. Because numerous accurate observations were made of  $x_5(t)$ , its uncertainty almost vanishes for that element, and a weighting of values by  $\mathbf{P}(t)^{-1}$ , gives it a near infinite weight at that time.



### 3.3 A Fixed-Interval Smoother

The Kalman filter and various approximations to it produce an estimate at any time,  $\tau$ , taking account only of data at  $\tau$  or  
 295 in the past—with an influence falling as the data recedes into the past, at a rate dependent on the model time scales. But  
 in many problems, such as those addressed (for one example) by the Estimating the Circulation and Climate of the Ocean  
 (ECCO) project ([Stammer et al., 2002](#); [Wunsch and Heimbach, 2007](#)), the goal is to find a best-estimate over a finite interval,  
 nominally,  $0 \leq t \leq t_f$ , and accounting for all of the observations, whether past or future to any  $\tau$ . Furthermore, as already noted  
 above, physical sense requires satisfaction of the generalized (to account for sources/sinks) energy, mass, and other important  
 300 conservation rules. How to do that?

In distinction to the “filtering” goal underlying a KF best-prediction, the fixed interval problem is generally known as that of  
 “smoothing.” Several approaches exist. One of the most interesting, and one leading to the ability to parse data versus model  
 structure impact over the whole interval, is called the Rauch-Tung-Striebel (RTS) smoothing algorithm. In that algorithm, it  
 is assumed that a true KF has already been run over the full time-interval, and that the resulting  $\tilde{\mathbf{x}}(t)$ ,  $\mathbf{P}(t)$ ,  $\tilde{\mathbf{x}}(t, -)$ ,  $\mathbf{P}(t, -)$   
 305 remain available. The basic idea is subsumed in the algorithm,

$$\tilde{\mathbf{x}}(t, +) = \tilde{\mathbf{x}}(t) + \mathbf{L}(t + \Delta t) [\tilde{\mathbf{x}}(t + \Delta t, +) - \tilde{\mathbf{x}}(t + \Delta t, -)] \quad (19)$$

with

$$\mathbf{L}(t + \Delta t) = \mathbf{P}(t) \mathbf{A}(t)^T \mathbf{P}(t + \Delta t, -)^{-1} \quad (20)$$

This new estimate, using data *future* to  $t$ , depends upon a weighted average of the previous best estimate  $\tilde{\mathbf{x}}(t)$  with its difference  
 310 between the original pure prediction,  $\tilde{\mathbf{x}}(t + \Delta t, -)$  and the improvement (if any) made of the later estimate at  $t + \Delta t$ . The  
 latter uses any data that occurred *after* that time. Thus a backwards-in-time recursion of Eq. (19) is done—starting from the  
 best estimate at the final KF time,  $t = t_f$ , beyond which no future data occur. The RTS coefficient matrix,  $\mathbf{L}(t + \Delta t)$ , has a  
 particular structure accounting for the correlation between  $\tilde{\mathbf{x}}(t + \Delta t, +)$  and  $\tilde{\mathbf{x}}(t + \Delta t, -)$  generated by the KF. Equation (A5)  
 calculates the new uncertainty,  $\mathbf{P}(t, +)$ .

315 In this algorithm a correction is also necessarily made to the initial assumptions concerning  $\mathbf{q}(t)$ , producing a new set  
 of vector forcings,  $\tilde{\mathbf{q}}(t, +) = \mathbf{q}(t) + \tilde{\mathbf{u}}(t)$  such that the new estimate,  $\tilde{\mathbf{x}}(t, +)$  exactly satisfies Eq. 1 with  $\tilde{\mathbf{q}}$ , at *all* times,  
 over the interval. If the true model satisfies energy [conservation](#), so will the new estimate. [That the smoothed estimate  
 satisfies the free-running but adjusted model parameters and thus all of its implied conservation laws is demonstrated by  
 Bryson and Ho \(1975\) in Chapter 13.](#) Estimated  $\tilde{\mathbf{u}}(t, +)$ , often called the “control vector,” has its own computable uncertainty  
 320 found from Eq. (A5b). In many problems, an improved knowledge of the forcing field/boundary conditions may be equally or  
 more important than is improvement of the state vector. Application of the RTS algorithm is made in the following section to  
 a slightly more geophysical example.

## 4 Example 2: Barotropic Rossby Waves

325 Consider the smoothing problem in a geophysical fluid dynamics toy model. Realism is still not the goal, which remains as the demonstration of various elements making up estimates in simplified settings.

### 4.1 Rossby Wave Normal Modes

A flat-bottom, linearized  $\beta$ -plane Rossby wave system, has a two-dimensional governing equation for the streamfunction,  $\psi$ ,

$$\frac{\partial \nabla^2 \psi}{\partial t} + \beta \frac{\partial \psi}{\partial x} = 0, \quad (21)$$

330 in a square beta-plane basin of horizontal dimension  $L$ . The parameter  $\beta = df/dy$  is the variation of the Coriolis parameter,  $f$ , which varies with the latitude coordinate,  $y$ . This problem is representative of those involving both space and time structures, including boundary conditions. (Spatial variables  $x, y$  should not be confused with the state vector or data variables). Eq. (21) and other geophysically important ones are not self-adjoint, and the general discussion of quadratic invariants leads inevitably to adjoint operators (see Morse and Feshbach (1953) or for bounding problems—Sewell et al. (1987), Chs. 3, 4).

335 The closed-basin problem was considered by Longuet-Higgins (1964). ~~Additionally,~~ Pedlosky (1965) and LaCasce (2002) provide helpful discussions of normal modes. Relevant real observational data are discussed by Luther (1982), Woodworth et al. (1995), Ponte (1997), Thomson and Fine (2021) and others. The domain here is  $0 \leq x \leq L$ ,  $0 \leq y \leq L$  with boundary condition  $\psi = 0$  on all four boundaries.

Introduce non-dimensional primed variables  $t' = ft$ ,  $x = Lx'$ ,  $y = Ly'$ ,  ~~$q = q_0 q'$ ,~~ and  $\psi' = (a^2/f)\psi$ . Letting  $a$  be the radius of the Earth, and  $\beta = \beta' f/a = 1.7$ , Eq. (21) is non-dimensionalized as

$$340 \frac{\partial \nabla'^2 \psi'}{\partial t'} = \beta' \frac{L}{a} \frac{\partial \psi'}{\partial x'} = 0. \quad (22)$$

Choosing further  $L = a$  (since  $a$  is of the same order as the width of the Pacific), and then omitting the primes from here on except for  $\beta'$ ,

$$\frac{\partial \nabla^2 \psi}{\partial t} + \beta' \frac{\partial \psi}{\partial x} = 0 \quad (23)$$

345 Haier et al. (2006) describe numerical solution methods that specifically conserve invariants, but these methods are not used here. Gaspar and Wunsch (1989) employed this system for a demonstration of sequential estimation with altimetric data. Here a different state vector is used.

An analytical solution to (23) is,

$$\psi(t, x, y) = \sum_{n=0}^N \sum_{m=0}^M \exp(-i\sigma_{nm}t) c_{nm} e^{-i\beta'x/\sigma_{nm}} \sin(n\pi x) \sin(m\pi y), \quad (24)$$

along with the dispersion relation,

$$350 \sigma_{nm} = -\frac{\beta'/2}{\sqrt{(n\pi/L)^2 + (m\pi/L)^2}} \quad (25)$$

where  $c_{nm}$  is a coefficient dependent only upon initial conditions in the unforced case.

A state vector is then

$$\mathbf{x}(t) = \{c_p(t)\},$$

where  $p$  is a linear ordering of  $n, m$ . Total dimension is then  $N \cdot M$ , with  $N, M$  the upper limits in Eq. (24). State transition  
355 can be written in the now familiar form,

$$x_j(t + \Delta t) = \exp(-i\sigma_j \Delta t) x_j(t), \quad j = 1, \dots, NM. \quad (26)$$

For numerical examples with the KF and RTS smoother, a random forcing  $q_j(t)$  is introduced at every step so that,

$$x_j(t + \Delta t) = \exp(-i\sigma_j \Delta t) x_j(t) + q_j(t), \quad j = 1, \dots, NM. \quad (27)$$

Note that with the introduction of a forcing ~~these coefficients do~~ the solution described by coefficients  $c_p$  does not strictly  
360 satisfy Eq. (23) but ~~are~~ is rather an over-simplified version of a forced solution. Discussion of this dynamical system is still  
useful for understanding the difficulties that arise in numerical data assimilation. An example of a true forced solution to (21)  
is examined in Pedlosky (1965).

The problem is now made a bit more interesting by addition to  ~~$\psi$~~   $\psi$  of a *steady* component. Namely, the solution  ~~$\psi_s$~~   $\psi_s$  ( $x, y$ )  
from Stommel (1948), whose governing equation is,

$$365 \quad R_a \nabla^2 \psi_s + \beta \frac{\partial \psi_s}{\partial x} = \sin \pi y, \quad (28)$$

where  $R_a$  is a Rayleigh friction coefficient.

An approximate solution, written in the simple boundary-layer/interior form is (e.g., Pedlosky (1965)),

$$\psi_s = e^{-x\beta'/R'_a} \sin \pi y + (x - 1) \sin \pi y, \quad (29)$$

which leads to a small error in the eastern boundary condition (numerical calculations that follow used the full Stommel (1948)  
370 solution). The  $\sin \pi y$  arises from Stommel's assumed time-independent ~~wind-curl~~ wind-stress curl.

The new state vector becomes,

$$\mathbf{x}(t) = \begin{Bmatrix} c_p(t) \\ 1 \end{Bmatrix} \quad (30)$$

now of total dimension  $N \cdot M + 1$ .

The state transition matrix  $\mathbf{A}$  is diagonal with the first  $N \cdot M$  diagonal elements given by  $\text{diag}(\exp(-i\sigma_j \Delta t))$  ~~and~~, and  
375 the final diagonal element  $A_{N \cdot M + 1, N \cdot M + 1} = 1$ , overall square of dimension  $N \cdot M + 1$ . A small, numerical dissipation is  
introduced, multiplying  $\mathbf{A}$  by  $\exp(-b)$  for  $b > 0$ , to accommodate loss of memory, e.g., as a conventional Rayleigh dissipation.  
The matrix operator  $\mathbf{B}$  is diagonal with the first  $N \cdot M$  diagonal elements ~~diag(1)~~ all equal to one, and  $B_{N \cdot M + 1, N \cdot M + 1} = 0$  (no

forcing is added to the steady solution.) Some special care in computing covariances must be taken when using complex state vectors and transition matrices (Schreier and Scharf (2010)).

380 Consistent with the analysis in Pedlosky (1965), no westward intensification exists in the normal modes, which decay as a whole. Rayleigh friction of the time-dependent modes is permitted to be different from that in the time-independent mean flow—a physically acceptable situation.

If  $\mathbf{q}(t) = 0$  and with no dissipation, then Eq. (23) has several useful conservation invariants including the quadratic invariants of the kinetic energy and of the variance in  $\psi$ ,

$$385 \quad \Phi(t) = \mathbf{x}(t)^T \mathbf{x}(t) = \sum_{k=1}^{N \cdot M} |x_k(t)|^2 \quad (31)$$

(conjugate transpose); and the linear invariant of the vorticity or circulation—when integrated over the entire basin domain. As above, estimates of the quadratic and linear conservation rules will depend explicitly on initial conditions, forces, distribution and accuracy of the data, and the covariances and bias errors assigned to all of them.

#### 4.1.1 System with Observations

390 Using the KF plus RTS smoother for sequential estimation, estimates of  $\Phi(t)$  as well as the transport of the western boundary current (WBC),  $T_{WBC}(t)$ , are calculated; the latter is constant in time, although that is unknown to the analyst. Random noise in  $T_{WBC}(t)$  exists from both physical noise—the normal modes—and that of the observations  $\mathbf{y}(t_j)$ , as would be the situation in nature.

Eq. (1) with the above  $\mathbf{A}, \mathbf{B}$  is used to generate the ~~correct~~true fields. Initial conditions,  $\mathbf{x}(0)$ , in the modal components are,

395

$$x_p(0) = 1/(n^2 + m^2), \quad p = (n, m), \quad n = 3, 4, 5, \quad m = 4, 5, \dots, 9 \quad (32)$$

Modal periods are shown in Fig. 9. Parameters are fixed as  $\Delta t = 29$ ,  $b = 1.8 \cdot 10^{-3}$ , and the random forcing  $q_i$  has standard deviation 0.002.

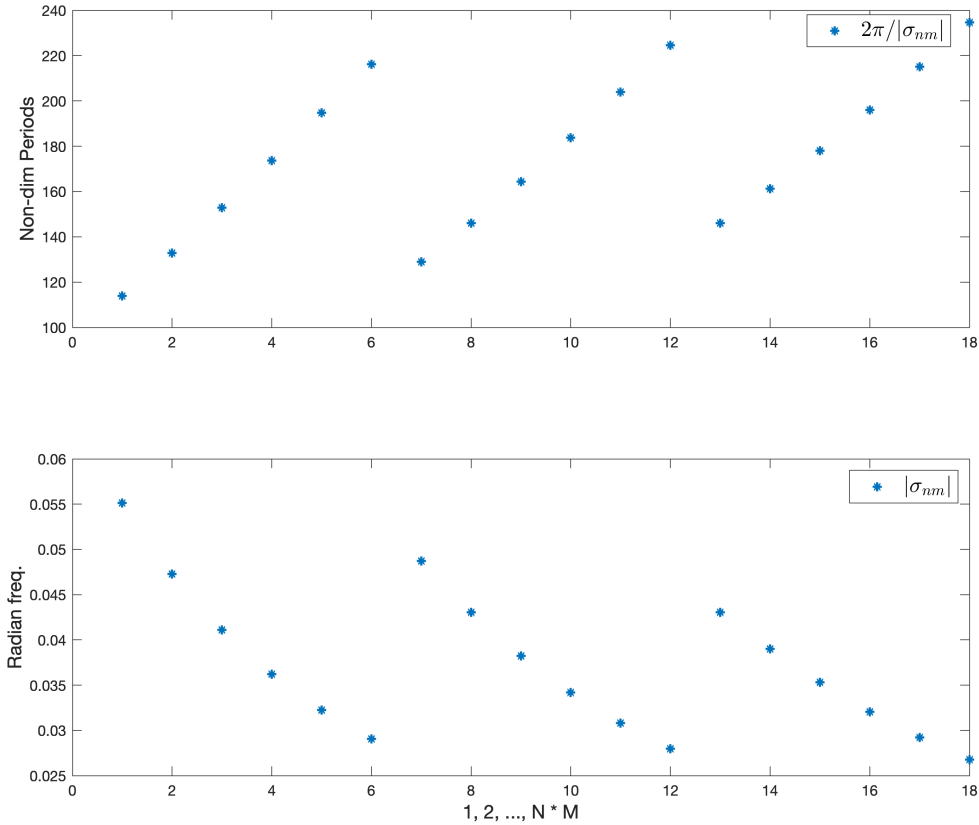
The prediction model uses 0.5 $q_p(t)$  as a first guess for  ~~$q(t)$  as~~ 0.5 $q_p(t)$  -  $q_p(t)$  where  $q_p(t)$  are the true random forcing values, and the initial conditions are too-large as ~~1.5 $x(0)$~~ 1.5 $x(0)$ . Noisy observations  $\mathbf{y}(t)$  are ~~supposed~~assumed to exist at the positions ~~given~~denoted with red dots in Fig. 10, and the measurement noise has a standard deviation of 0.001.

400

The field  $\psi(t = 167\Delta t)$  as given by the true model is shown in Fig. 10, keeping in mind that apart from the time-mean  $\psi$ , the structure seen is the result of a particular set of random forcings.

#### Aliasing

405 In isolation, the observations will time-alias the field, if not taken at minimum intervals of 1/2 the shortest period present (here  $4\Delta t$ ). A ~~spatial-alias~~spatial alias occurs if the separation between observations is ~~less than 1/2~~larger than one-half of the shortest wavelength present (here  $\Delta y = 1/9$ ). Both these phenomena are present in what follows, but their impact is minimized by the presence of the time-evolution model.



**Figure 9.** (a) Non-dimensional periods: ~~Grouped~~, grouped by fixed  $n$  and increasing  $m$ . (b) Inverse of the periods in (a), giving us the frequencies.

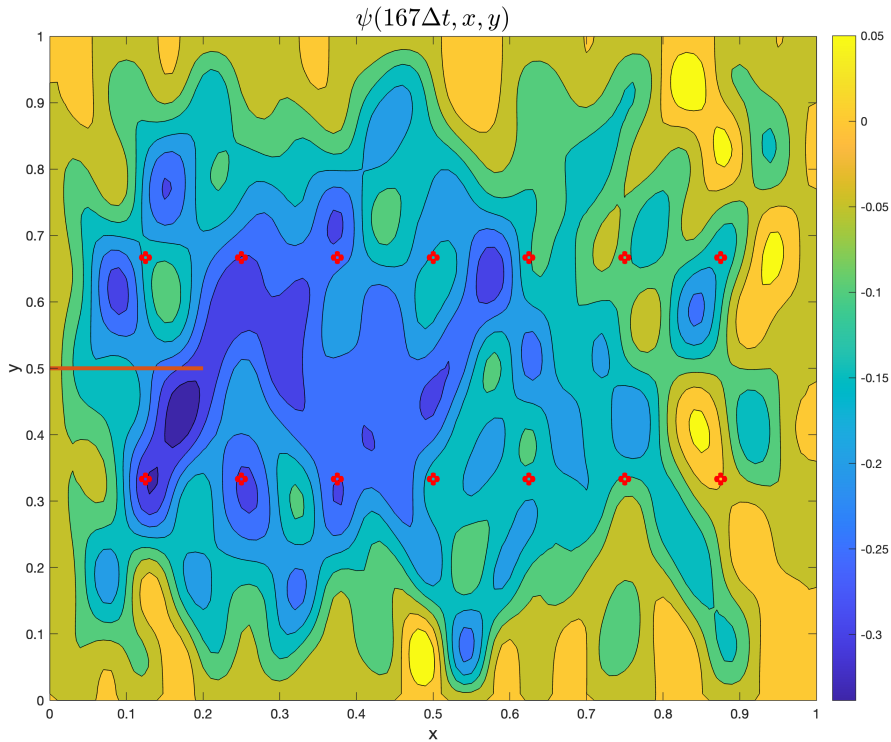
## 4.2 Results: Kalman filter and RTS smoother

410 For the KF and RTS algorithms the model is run for  $t_f = 2000$  timesteps with the above parameters.

### 4.2.1 Energy Estimates

A KF estimate is computed and the results stored. As in section 3.1.1, observations are introduced in two intervals, each with a different density of observations: initially data are introduced with  $50\Delta t$  between them, and subsequently reduced to  $25\Delta t$  between observations. Observations cease prior to  $T_F$ , mimicking a pure prediction interval following the observations.

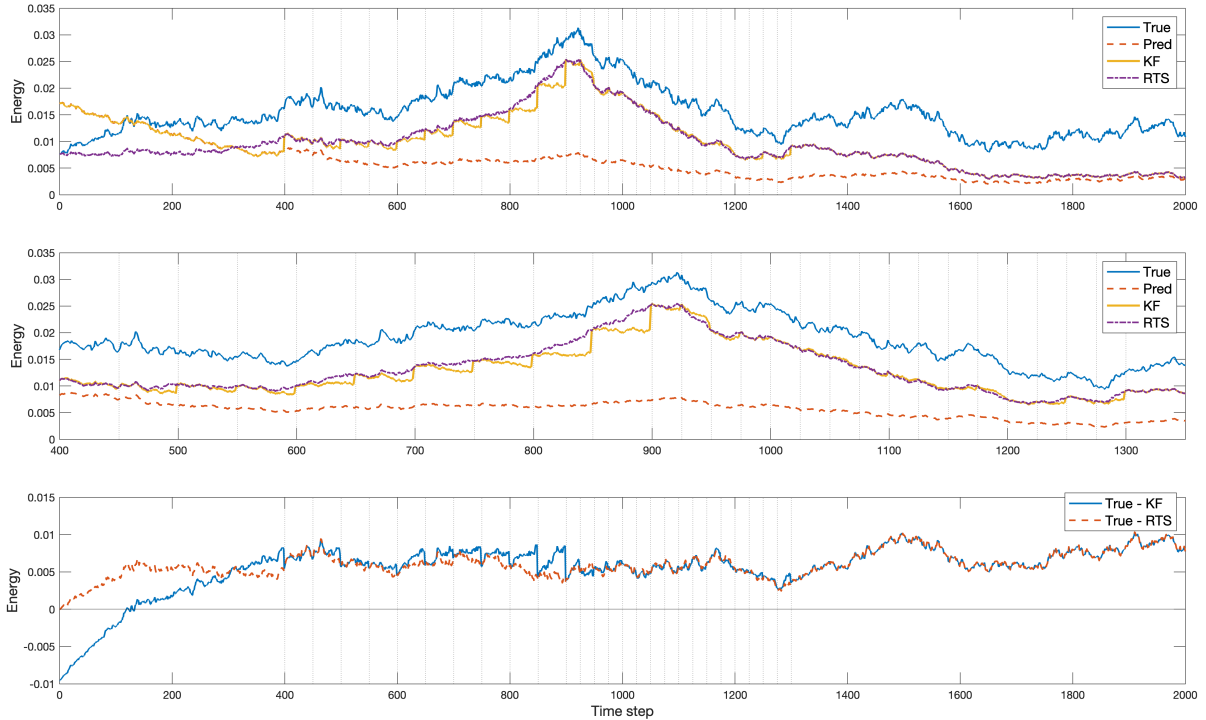
415 The estimated values of the quadratic  $\Phi(t)$  are shown in Fig. 11 for the true values, ~~the prediction, KF estimates and KF estimates~~, RTS smoother estimates, and the pure model prediction. The KF and prediction estimates agree until the first ob-



**Figure 10.** Stream function at  $t = 167\Delta t$ , with the normal modes superimposed on the time-independent Stommel solution. At later times, the mean flow becomes difficult to visually detect in the presence of the growing normal modes under the forcing. The markers indicate the locations of the observational data, and the horizontal line at  $y = 0.5$  is the distance over which the boundary current transport is defined.

420 observation time, at which point a clear discontinuity is seen. As additional observations accumulate,  $\bar{\Phi}_{KF}(t)$  jumps by varying amounts depending upon the particulars of the observations and their noise. Over the entire observation interval the energy reconstructed by the KF remains low—a systematic error owing to the sparse observations and null space of  $\mathbf{E}$ . Here the forcing amplitude overall dominates the effects of the incorrect initial conditions. Uncertainty estimates for energy would once-again come from summations of correlated  $\chi^2$  variables of differing means. In the present case, important systematic errors are visible as the offsets between the curves in Fig. 11.

425 This system can theoretically be over-determined by letting the number of observations at time  $t$  exceed the number of unknowns—should the null space of  $\mathbf{E}(t)$  then vanish. As expected, with 14 covarying observations, and 18 time-varying unknown  $x_i(t)$ , rank 12 time-independent  $\mathbf{E}(t) = \mathbf{E}$  has a nullspace, and thus energy in the true field is missed even if the observations were perfect. As is well-known in inverse methods, the smaller eigenvalues of  $\mathbf{E}$  and their corresponding eigenvectors are most susceptible to noise biases. The solution nullspace of this particular  $\mathbf{E}(t)$  is found from the solution eigenvectors of the singular value decomposition,  $\mathbf{U}\mathbf{\Lambda}\mathbf{V}^T = \mathbf{E}$ . Solution resolution matrix at rank  $K = 12$ ,  $\mathbf{V}_K\mathbf{V}_K^T$ , is shown in Fig. 12.

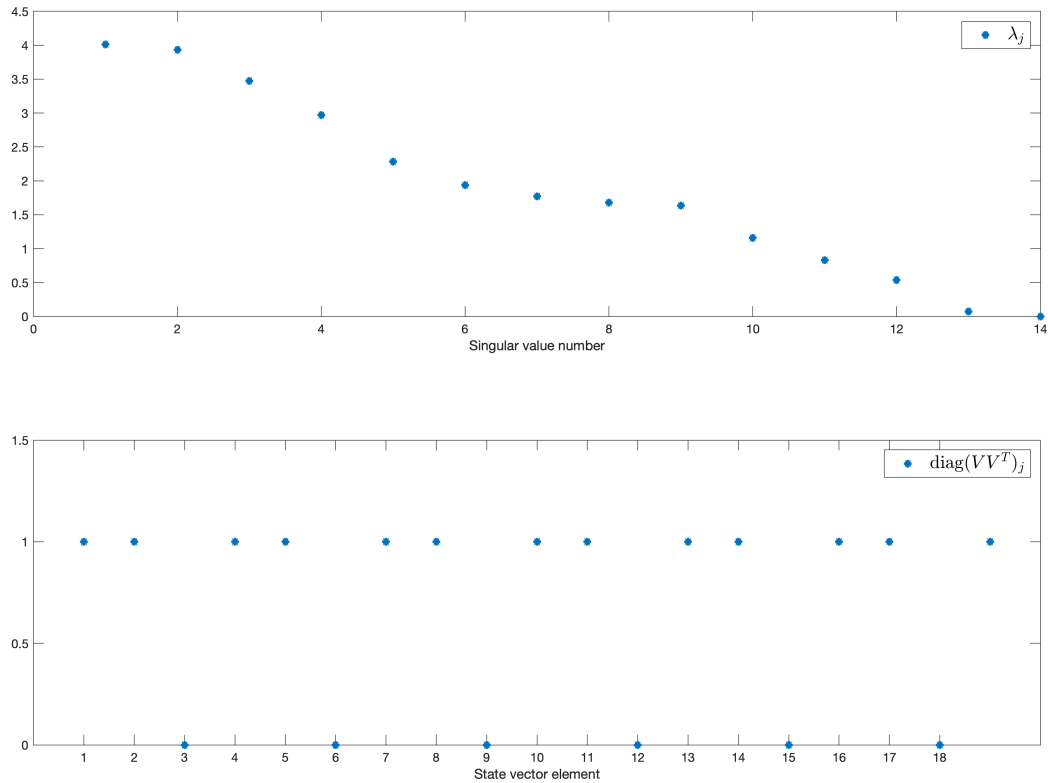


**Figure 11.** (a) The energy, i.e.  $\Phi(t)$  defined by Eq. (31), computed from the non-dimensional state vector of the true model, prediction, KF, and the RTS reconstructions. In the KF the initial conditions are 20% too large, and the forcing is 50% too small. Full knowledge of  $\mathbf{A}$  is assumed. (b) An expanded plot for timesteps  $380 \leq t \leq 1325$  where observations were incorporated into the result. The RTS smoother produces an improved energy, namely one without discontinuities and marginally more accurate than does the KF. (c) Difference between the true values and from the KF (solid line), and [difference](#) between the [true values](#) and RTS smoother values (dashed line).

Thus the observations carry no information about modes (as ordered) 3, 6, 9, 12, 15, and 18. In a real situation, if control  
430 over positioning of the observations was possible, this result could sensibly be modified and/or a strengthening of the weaker singular values could be achieved. Knowledge of the nullspace structure is important in the interpretation of results.

A more general discussion of nullspaces involves that of the weighted  $\mathbf{P}(\tau, -)\mathbf{E}^T$  appearing in the Kalman gain (Eq. 5). If  $\mathbf{P}(\tau, -)^{1/2}$  is the Cholesky factor of  $\mathbf{P}(\tau, -)$  (Wunsch (2006), page 56), then  $\mathbf{E}\mathbf{P}(\tau, -)^{1/2}$  is the conventional column-weighting of  $\mathbf{E}$  at time  $\tau$ , and the resolution analysis would be applied to that combination. A diagonal  $\mathbf{A}$  does not distribute  
435 information from any covariance amongst the elements  $x_j(\tau)$  and which would be carried in  $\mathbf{P}(\tau, -)$ .

Turning now to the RTS smoother, Fig. 11 shows that the energy in the smoothed solution,  $\Phi_{RTS}(t)$ , is continuous (up to the model time-stepping changes); ~~but briefly exceeds the true energy prior to the appearance of the first observation~~. The only information available to the prediction prior to the observational interval lies in the initial conditions, which were given

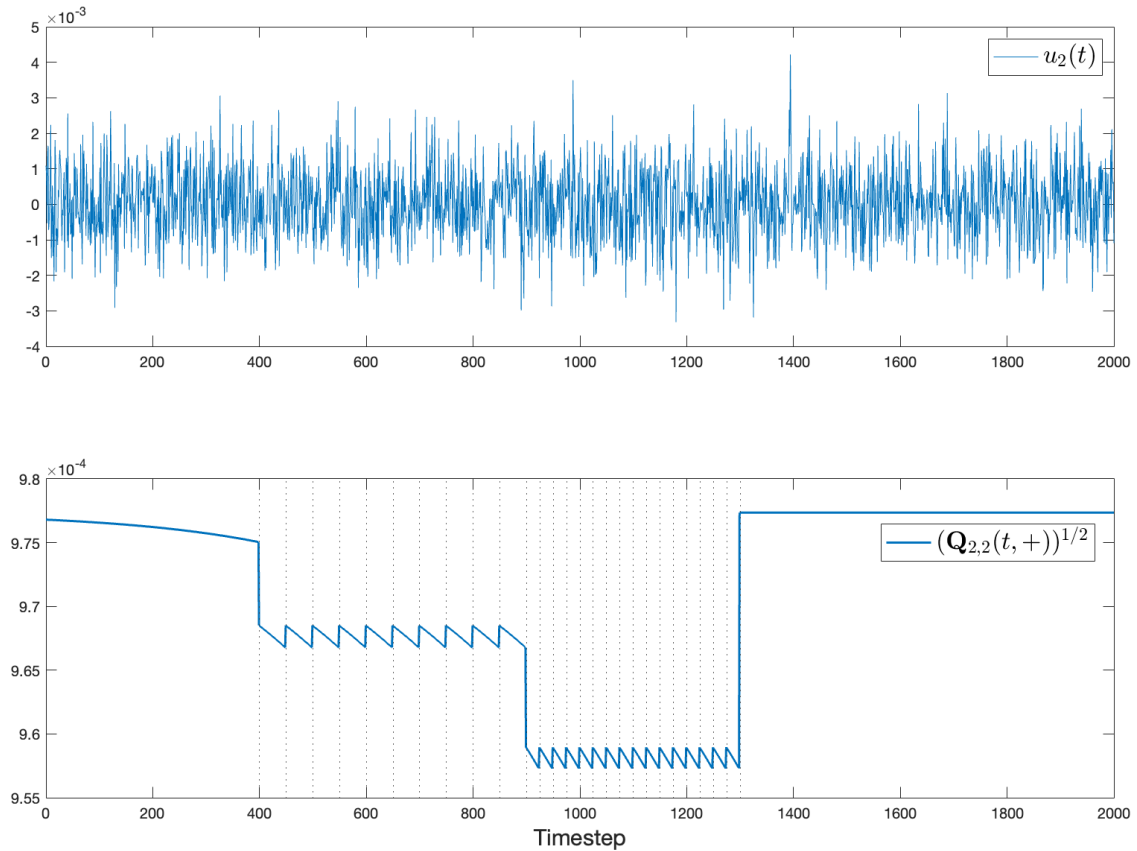


**Figure 12.** (a) Eigenvalues of the first 14 singular vectors of  $\mathbf{E}$ . Rank is 12 with 14 observational positions. (b) Diagonal elements of the rank 12 solution resolution matrix, showing lack of information for several of the modes. A value of 1 means that the mode is fully resolved by the observations. All variables are non-dimensional.

incorrect values leading to an initial uncertainty. Estimated unknown elements  $\mathbf{u}(t)$ , of  $\mathbf{q}(t)$   $\mathbf{u}(t)$ , the control vector, of  $\mathbf{q}(t)$  in this interval also have a large variance.

One element through time of the estimated control vector,  $\tilde{\mathbf{u}}(t)$ ,  $\tilde{\mathbf{u}}(t)$  and its standard error are shown in Fig. 13. The complex result of the insertion of data is apparent. As with the KF, discussion of any systematic errors has to take place outside of the formalities leading to the smoothed solution. This RTS solution does conserve  $\Phi\mathbf{u}(t)$ ,  $\Phi(t)$ , as well as other properties (circulation).





**Figure 13.** (a) One element,  $u_2(t)$ , of the control vector correction estimate and (b) its standard error through time, showing the drop towards zero at the data time, and the slow increase towards a higher value when no data ~~is~~ are available (we note here that  $Q(t, +)$  is computed from  $t = T_f$  backwards to  $t = 0$ ).

## 445 4.2.2 Western Boundary Current Estimates

Consider now determination of  $\tilde{T}_{WBC}(t)$ , the north-south transport across latitude  $y_0$  at each time-step, whose true value is constant.  $T_{WBC}(t)$  is computed from the velocity or stream function as,

$$T_{WBC}(t) = \psi(t, 0, y_0) - \psi(t, x_0, y_0), \quad (33)$$

the stream-function difference between a longitude pair,  $x = 0, x_0$ . From the boundary condition,  $\psi(t, 0, y_0) = 0$ , identically. The horizontal line segment in Fig. 10 indicates the location of the zonal section for the experiment at  $y_0 = 0.5$ , extending from  $x = 0$  to  $x_0 = 0.2$ . In the present context, five different values of  $T_{WBC}(t)$  are relevant: (Aa) the true, steady, time-invariant value, computed from the Stommel solution; (Bb) the true apparent time-dependent value including mode contributions from Eq. (27); (Cc) the estimated value from the prediction model; (Dd) the estimate from the KF; and (Ee) the estimate from the RTS smoother. Fig-Figure 14a displays the transport computed from the full-version-of-Eq-33, Stommel solution  $\psi_s$  alongside the transport computed from the KF estimate. Panel (b) in Fig. 14 displays the same variables-for-steady transport alongside the RTS estimate. Values here are dominated by the variability induced by the normal modes, leading to a random walk. Note that the result can depend sensitively on positions  $x_0, y_0$ , and the particular spatial structure of any given normal mode.

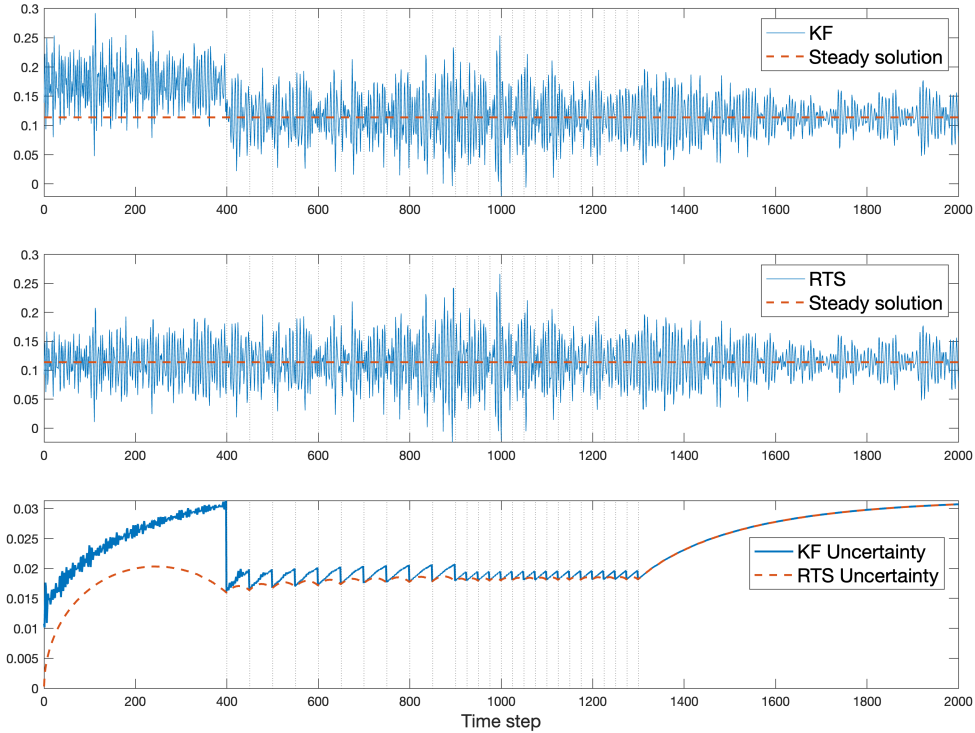
In the KF reconstruction (Fig. 14a), observations move the WBC transport values closer to the steady solution, seen via the jump at  $t = 400$ , but remain noisy. Transport value uncertainties are derived from the  $\mathbf{P}$  of the state vector using Eq. (A1) and shown in Fig. 14c. Within the observation interval the estimates are indistinguishable from the true value, but still have a wide uncertainty with time scales present both from the natural variability and the regular injection times of the data. The magnitude of the uncertainty, during the observation intervals, is still roughly 10% of the magnitude of the KF estimate.

Fig. 14b shows the behavior of the estimate of  $T_{WBC}(t)$  after the RTS smoother has been applied. Most noticeably, the discontinuity that occurred at the onset of the observations has been removed.

465 ~~(a) Estimated non-dimensional western boundary current transport from the Kalman filter (solid line) and the steady western boundary current from the Stommel solution (dashed line). (b) Same as (a) except now the smoothed  $T_{WBC}$  from the RTS smoother next to the steady solution. Vertical dashed lines indicate timesteps where data was available (c) Uncertainty in the  $T_{WBC}$  predictions over time, computed from the operators  $\mathbf{P}(t)$  and  $\mathbf{P}(t, +)$ .~~

A test of the negative-null hypothesis that the transport computed from the RTS smoother was indistinguishable from a steady value is based upon an analysis using the uncertainty (not shown).

The very large uncertainty prior to the onset of data, even with use of a smoothing algorithm, is a central reason that the state estimate produced by the Estimating the Circulation and Climate of the Ocean (ECCO) project (e.g. Fukumori et al. (2018), Stammer et al. (2002); Fukumori et al. (2018)) is confined to the interval following 1992 when the data become far denser than before through the advent of ocean-dedicated satellite altimetry and nascent Argo arrays. Estimates prior to a dense data interval depend greatly upon the time durations built into the system, which in the present case are limited by the longest normal mode period. The real ocean does include some very long memory (Wunsch and Heimbach (2008)), but the estimation skill will depend directly on the specific physical variables of concern. (ECCO estimates are based upon a different algorithm



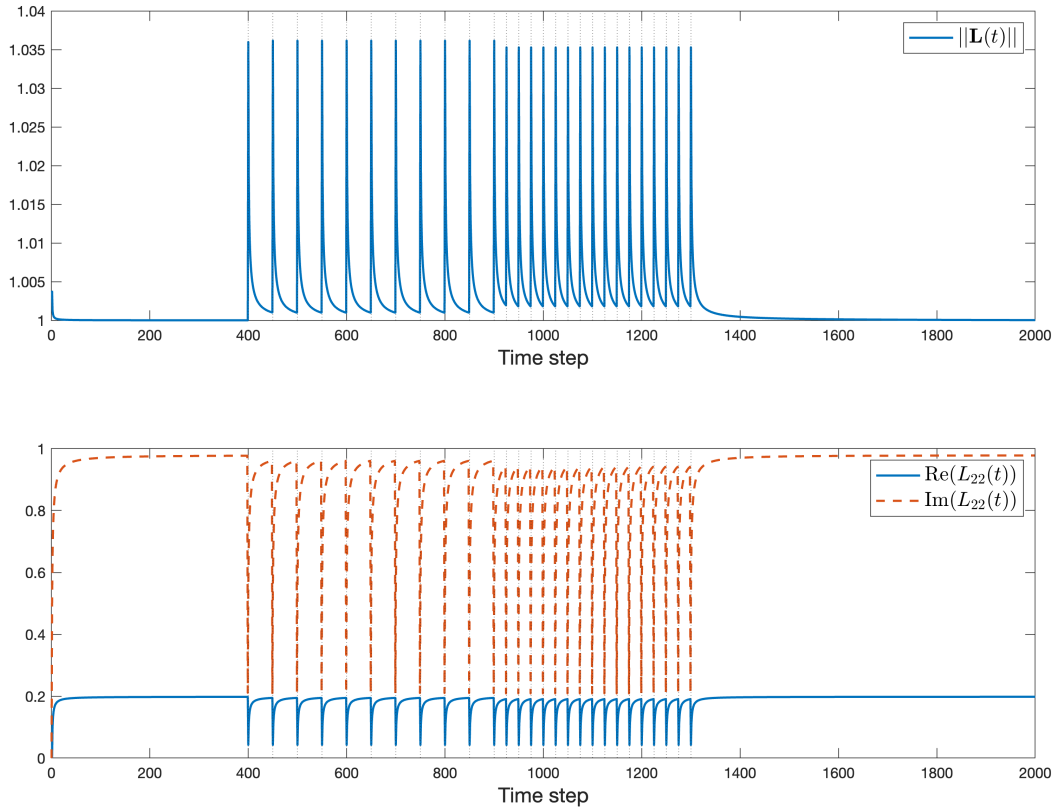
**Figure 14.** (a) Estimated non-dimensional western boundary current transport from the Kalman filter (solid line) and the steady western boundary current from the Stommel solution (dashed line). (b) Same as (a) except now the smoothed  $T_{WBC}$  from the RTS smoother next to the steady solution. Vertical dashed lines indicate timesteps where data was available (c) Uncertainty in the  $T_{WBC}$  predictions over time, computed from the operators  $\mathbf{P}(t)$  and  $\mathbf{P}(t,+)$ .

using iterative least-squares and Lagrange multipliers (Stammer et al. (2002).) For a linear system, those results are identical to those using a sequential smoother (see Fukumori et al. (2018).)

480 Some understanding of the impact via the smoother of later observations on KF time estimates can be found from the operator  $\mathbf{L}(t)$ . Fig. 15 shows the norm of the operator  $\mathbf{L}$  (Eq. 20) controlling the correction to earlier state estimates, along with the time dependence of one of its diagonal elements. As always, the temporal structure of  $\mathbf{L}(t)$  depends directly upon the time constants embedded in  $\mathbf{A}$ , and the compositions of  $\mathbf{P}(t)$ ,  $\mathbf{P}(t + \Delta t, -)$ . In turn these latter are determined by any earlier information, including initial conditions, as well as the magnitudes and distributions of later forcing and data accuracies.

485 Generalizations are not easy.

Relative importance of the The norm of the gain matrix  $\mathbf{M}(t) - \mathbf{M}(t)$ , used for computation of the control vector Eq. (A4) is, provides a measure of its importance relative to the prior estimate, and is displayed in Fig. 16. Here the dependence is directly

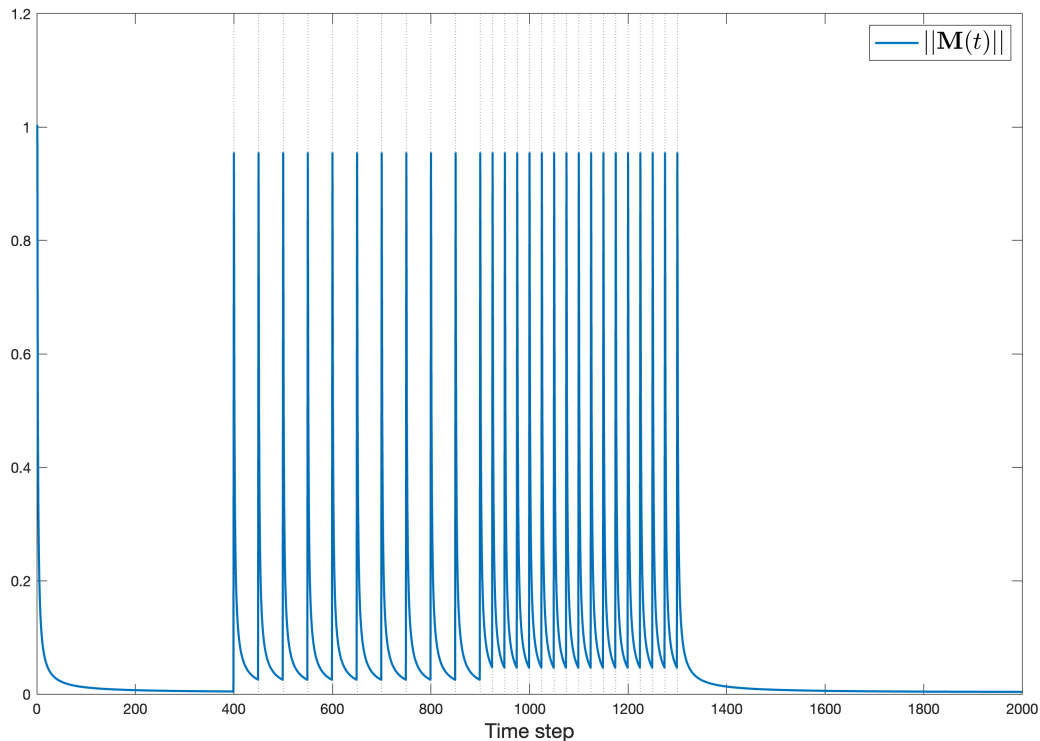


**Figure 15.** (a) Norm of the operator  $\mathbf{L}$  controlling the backwards in time state estimate (see [Eq. \(20\)](#), RTS smoother for the full equation). (b) The real (solid line) and imaginary (dashed line) components of  $L_{22}(t)$ .

upon the a priori known control variance  $\mathbf{Q}(t)$ , the data distributions, and  $\mathbf{P}(t + \Delta t, -)$ . The limiting cases discussed above for the state vector also provide insights here.

### 490 4.2.3 Spectra

Computation of the spectral estimates of the various estimates of any state vector element or combination is straightforward and the  $z$ -transforms in the Appendix provide an analytic approach. What is not so straightforward is the interpretation of the result in this non-statistically stationary system. Care must be taken to account for the non-stationarity.



**Figure 16.** Norm of the gain matrix  $\mathbf{M}$  through time and which determines the magnitude and persistence of inferred changes in the control variables  $\mathbf{u}(t)$ .

## 5 Discussion and Conclusions

495 In sequential estimation methods, the behavior of dynamical system invariants and conservation laws, including energy or circulation or scalar inventories, or derived ones such as a thermocline depth, depend, as shown using toy models, upon a number of parameters. These parameters include the time scales embedded in the dynamical system, the temporal distribution of the data [used in the sequential estimation](#) relative to the embedded time-scales, the accuracies of initial conditions, boundary conditions, sources and sinks, and data, as well as the accuracy of the governing time evolution model. Errors in any of these  
500 parameters can lead to physically significant errors in estimates of the state and control vectors and any quantity derived from them.

Estimates depend directly upon the accuracies of the assumed and calculated uncertainties in all of the elements making up the estimation system. Impacts of data insertions can range from very short time intervals to those extending far into the future. Because of model/data interplay, the only easy generalization is that the user must check the accuracies of all of these  
505 elements, including the appearance of systematic errors in any of them (e.g., Dee (2005)), or of periodicities arising solely

from data distributions. When feasible, a strong clue to the presence of systematic errors in energies, as one example, lies in determining the nullspace of the observation matrices coupled with the structure of the state evolution matrices,  $\mathbf{A}$ . Analogous examples have been computed for advection-diffusion systems (not shown, but see Marchal and Zhao (2021)) with results concerning, in one example, estimates of fixed total tracer inventories.

510 Use of Kalman filters, and the simple analogues most often used in weather prediction or “reanalyses” produces results that are always sub-optimal when the goal is reconstruction because data future to the estimate have not been used. A second consequence is the failure of the result to satisfy any particular dynamical time-evolution model implying loss of energy, mass, etc. conservation laws. In the Rossby wave example, reconstructions of the constant western boundary current transport improved as expected from that of the KF, by using *future* data and the Rauch-Tung-Striebel (RTS) smoother. Estimates nonetheless can still contain large uncertainties—quantifiable from the accompanying algorithmic equations. ~~The RTS algorithm is only one choice from several approaches to the finite interval estimation problem. Alternatives include the least-squares/Lagrange multiplier approach of the ECCO project, which in the linear case can be demonstrated to produce identical results.~~

All possible error sources have not been explored. In particular, only linear systems were analyzed, assuming exact knowledge of the state transition matrix,  $\mathbf{A}$ , and the data distribution matrix,  $\mathbf{B}$ . Notation was simplified by using only time-  
520 independent versions of them. Nonlinear problems arising from errors in  $\mathbf{A}$ ,  $\mathbf{B}$  will be described elsewhere. Other interesting nonlinear ~~problem problems~~ include those where the observations are ~~not independent~~ derived quantities of the state vector, or the observations—such as a speed—are nonlinear in the state vector.

Unless, as in weather prediction, short-term predictions are almost immediately testable by comparison with the observed outcome, physical insights into the system behavior are essential, along with an understanding of the structure of the imputed  
525 statistical relationships. As a considerable literature cited above has made clear, the inference of trends in properties and understanding of the physics (or biology or chemistry) in the presence of time-evolving observation systems requires particular attention. At a minimum, one should test any such system against the behavior of a known result—for example, treating a GCM as “truth” and then running the smoothing algorithms to test whether that truth is forthcoming.

The RTS algorithm is only one choice from several approaches to the finite interval estimation problem. Alternatives include the least-squares/Lagrange multiplier approach of the ECCO project, which in the linear case can be demonstrated to produce identical results. This approach guarantees exact dynamical and kinematic consistency of the state estimate (Stammer et al. (2002),  
530 Stammer et al. (2016), Wunsch and Heimbach (2007)), a key requirement when seeking physical understanding of the results.

Such consistency is ensured by restricting observation-induced updates to those that are formally independent inputs to the conservation laws, i.e., initial, surface, or – where relevant – lateral boundary conditions. This consistency ensures no  
535 artificial source or sink terms in the conservation equations. The ECCO project has conducted this approach with considerable success over the past two decades, and demonstrated the merits of accurate determination of heat, freshwater and momentum budgets and their constituents Heimbach et al. (2019). The Lagrange multiplier framework provides a general inverse modeling framework, which addresses several estimation problems, either separately, or jointly: (i) inference of optimal initial conditions, such as produced by incremental so-called 4-dimensional variational data assimilation practiced in NWP; (ii) inference of  
540 updated (or corrected) boundary conditions, such as practiced in flux inversion methods; (iii) inference of optimal model

parameters, such as done in formal parameter calibration problems; or (iv) any combination thereof. A detailed exposure of this more general framework in the context similar toy models will be presented in a sequel paper.

## Appendix A: Notation and Equations

### *Kalman Filter*

545 The model state transition equation is that in Eq. (1) and the weighted averaging equation is Eq. (4) with the gain matrix  $\mathbf{K}(t)$  defined in Eq. (5). Time evolution of the covariance matrix of  $\tilde{\mathbf{x}}(t)$  is governed by

$$\begin{aligned} \mathbf{P}(t, -) &= \left\langle (\tilde{\mathbf{x}}(t, -) - \mathbf{x}(t)) (\tilde{\mathbf{x}}(t, -) - \mathbf{x}(t))^T \right\rangle \\ &= \mathbf{A} \left( \underline{t-1} \right) \mathbf{P}(t - \Delta t) \mathbf{A} \left( \underline{t-1} \right)^T + \mathbf{\Gamma}(t - \Delta t) \mathbf{Q}(t - \Delta t) \mathbf{\Gamma}(t - \Delta t)^T, \end{aligned} \quad (\text{A1})$$

and

$$\begin{aligned} 550 \quad \mathbf{P}(\underline{t}) &= \mathbf{P}(\underline{t}, -) - \mathbf{K}(\underline{t}) \mathbf{E}(\underline{t}) \mathbf{P}(\underline{t}, -) \\ &= \mathbf{P}(\underline{t}, -) - \mathbf{P}(\underline{t}, -) \mathbf{E} \mathbf{E}(\underline{t})^T \left[ \mathbf{E}(\underline{t}) \mathbf{P}(\underline{t}, -) \mathbf{E}(\underline{t})^T + \mathbf{R}(\underline{t}) \right]^{-1} \mathbf{E}(\underline{t}) \mathbf{P}(\underline{t}, -), \end{aligned} \quad (\text{A2})$$

$\mathbf{E}$ ,  $\mathbf{R}$  are defined in the text. The matrix symbol  $\mathbf{\Gamma}$  is introduced for a situation in which the control distribution over the state differs from that in  $\mathbf{B}$ . Otherwise they are identical. Because  $\mathbf{P}$  is square of the state vector length, calculating it is normally the major computational burden in the use of a Kalman filter.

555 Under some circumstances where a system including observation injection reaches a steady state, the time-index may be omitted in both the KF and the RTS smoother. Time independence is commonly assumed when the rigorous formulation for the KF is replaced by a-an ad hoc constant gain matrix  $\mathbf{K}$ .

### *RTS Smoother*

In addition to Eqs. (19), (20), the Rauch-Tung-Striebel smoother estimates

$$560 \quad \tilde{\mathbf{u}}(t, +) = \mathbf{M}(t + \Delta t) [\tilde{\mathbf{x}}(t + \Delta t, +) - \tilde{\mathbf{x}}(t + \Delta t, -)]_{-}, \quad (\text{A3})$$

$$\mathbf{M}(t + \Delta t) = \mathbf{Q}(t) \mathbf{\Gamma}(t)^T \mathbf{P}(t + \Delta t, -)^{-1}, \quad (\text{A4})$$

for the updated control  $\mathbf{u}(t)$ .  $\mathbf{Q}(t)$  is the assumed covariance of  $\mathbf{u}(t)$  (the uncertainty in  $\mathbf{q}(t)$ ) and  $\mathbf{\Gamma}$  is again often equal to  $\mathbf{B}$ . Then the corresponding uncertainties of the smoothed estimates are,

$$\mathbf{P}(t, +) = \mathbf{P}(t) + \mathbf{L}(t + \Delta t) [\mathbf{P}(t + \Delta t, +) - \mathbf{P}(t + \Delta t, -)] \mathbf{L}(t + \Delta t)^T, \quad (\text{A5a})$$

$$565 \quad \mathbf{P}_u(t, +) = \mathbf{Q}(t, +) = \mathbf{Q}(t) + \mathbf{M}(t + \Delta t) [\mathbf{P}(t + \Delta t, +) - \mathbf{P}(t + \Delta t, -)] \mathbf{M}(t + \Delta t)^T_{-}. \quad (\text{A5b})$$

One can gain insight into this filter/smoother machinery by considering its operation on a scalar state vector with scalar observations (not shown here).

## Appendix: Green-Function-Analysis-of-Estimates

### Appendix B: Green Function Analysis of Estimates

570 *KF response*

The impact at other times of having data at time  $t$  can lend important physical insight into the sequential analyses. Define an innovation matrix-vector,

$$\mathbf{D}_\delta(t, j) = \mathbf{y}(t) - \mathbf{E}(t) \mathbf{x}(t) = \delta_{t, \tau} \boldsymbol{\delta}_{ij} \quad (\text{B6})$$

that is,  $\mathbf{D}_\delta$  is a matrix-vector of Kronecker deltas representing the difference  $D_{ij}(\tau) = \delta_{t, \tau} \boldsymbol{\delta}_{ij} = y_j(\tau) - \sum_r E_{ir}(\tau) x_r(\tau)$ .

575 Solutions to the innovation-equation-innovation equation (4) are the columns of the Green function matrix,

$$\mathbf{G}(t) = \mathbf{A}\mathbf{G}(t - \Delta t) + \mathbf{K}\mathbf{D}_\delta(t), \quad t = m\Delta t. \quad (\text{B7})$$

$\mathbf{K}$ , now fixed in time, is sought as an indication of a delta impulse effects of observations on the prediction model at time  $\tau$ .

Define the scalar complex variable,

$$z = \exp(-i2\pi s\Delta t), \quad -1/2\Delta t \leq s \leq 1/2\Delta t. \quad (\text{B8})$$

580 where  $s$  is the frequency. Then the discrete Fourier transform of Eq. (B7) (the  $z$ -transform—a matrix polynomial in  $z$ ) is,

$$\hat{\mathbf{G}}(z) = (\mathbf{I} - z\mathbf{A})^{-1} \mathbf{K}\hat{\mathbf{D}}_\delta(z). \quad (\text{B9})$$

The norm of the variable  $(\mathbf{I} - z\mathbf{A})^{-1}$  defines the “resolvent” of  $\mathbf{A}$  in the full complex plane (see Trefethen and Embree, 2005), but here, only  $|z| = 1$ , is of direct interest, that is, only on the unit circle. The full complex plane carries information about the behavior of  $\mathbf{A}$ , including stability.

585 Here  $\hat{\mathbf{D}}(z) = \mathbf{I}z^\tau$  and,

$$\hat{\mathbf{G}}(z) = (\mathbf{I} - z\mathbf{A})^{-1} \mathbf{K}z^\tau \quad (\text{B10})$$

If a suitably defined norm of  $\mathbf{A}$  is less than 1,

$$\hat{\mathbf{G}}(z) = (\mathbf{I} - z\mathbf{A})^{-1} \mathbf{K}z^\tau \approx (z^\tau \mathbf{I} + z^{\tau+1} \mathbf{A} + z^{\tau+2} \mathbf{A}^2 + z^{\tau+3} \mathbf{A} + \dots) \mathbf{K} \quad (\text{B11})$$

and the solution matrix in time is the causal vector sequence (no disturbance before  $t = \tau$ ) of columns of

$$\begin{aligned} 590 \quad \mathbf{G}(t) &= 0, \quad t < \tau \\ &= \mathbf{A}^m \mathbf{K}(\tau), \quad t = \tau + m\Delta t \\ & \quad m = 0, 1, 2, \dots \end{aligned} \quad (\text{B12})$$

$\mathbf{G}$  can be obtained without the  $z$ -transform, but the frequency content of these results is of interest.



*Green Function of Smoother Innovation*

595 As with the innovation equation for filtering, Eq. (19) introduces a disturbance into the previous estimate,  $\tilde{\mathbf{x}}(t)$ , in which the structure of  $\mathbf{L}(t)$  determines the magnitude and time scales of observational disturbances propagated *backwards* in time. It provides direct insight in the extent to which later measurements influence earlier ones. As an example, suppose that the KF has been run to time  $t = T_F$  so that  $\tilde{\mathbf{x}}(T_F, +) = \tilde{\mathbf{x}}(T_F)$ , which is the only measurement. Let the innovation,  $\tilde{\mathbf{x}}(T_F, +) - \tilde{\mathbf{x}}(T_F, -)$ , be a matrix of  $\delta$  functions in separate columns,

600 
$$\mathbf{D} = \delta(t - T_f) \mathbf{I}_N \tag{B13}$$

then a backwards-in-time matrix Green function is,

$$\mathbf{G}(t) = \mathbf{L}(t) \dots \mathbf{L}(T_f - \Delta t) \mathbf{L}(T_f) \tag{B14}$$

The various time-scales embedded in  $\mathbf{L}$  depend upon those in  $\mathbf{A}, \mathbf{P}(t, -), \mathbf{P}(t)$  and with many observations including those of the observation intervals, and any structure in the observational noise. Similarly, the control modification will be determined by  $\mathbf{P}(t + \Delta t, -)^{-1}$  if  $\mathbf{Q}(t)\mathbf{\Gamma}(t)^T$  are constant in time.

605

*Author contributions.* CW designed the study, performed initial calculations and the initial writing. Calculations were fully redone and updated by SW. PH advised on, provided updates to, and checked accuracies of the manuscript.

*Competing interests.* None

*Acknowledgements.* Supported from the NASA/UT Austin/JPL ECCO Projects. Work by CW done at home originally during the Trump-Covid Apocalypse period. We would like to thank the two anonymous reviewers for providing detailed, helpful comments on the first copy of this manuscript. Detlef Stammer provided many useful suggestions for an earlier version of the manuscript.

610

*Code availability.* Matlab codes used here are available directly from SW Github page: [https://github.com/swilliamson7/data\\_assimilation\\_project](https://github.com/swilliamson7/data_assimilation_project).

## References

- 615 Bengtsson, L., Hagemann, S., and Hodges, K. I.: Can climate trends be calculated from reanalysis data?, *Journal of Geophysical Research: Atmospheres*, 109, 2004.
- Bengtsson, L., Arkin, P., Berrisford, P., Bougeault, P., Folland, C. K., Gordon, C., Haines, K., Hodges, K. I., Jones, P., Kallberg, P., et al.: The need for a dynamical climate reanalysis, *Bulletin of the American Meteorological Society*, 88, 495–501, 2007.
- Boers, N.: Observation-based early-warning signals for a collapse of the Atlantic Meridional Overturning Circulation, *Nature Climate Change*, 11, 680–688, 2021.
- 620 Bromwich, D. H. and Fogt, R. L.: Strong trends in the skill of the ERA-40 and NCEP–NCAR reanalyses in the high and midlatitudes of the Southern Hemisphere, 1958–2001, *Journal of Climate*, 17, 4603–4619, 2004.
- Bryson, A. E. and Ho, Y.-C.: *Applied optimal control*, revised printing, Hemisphere, New York, 1975.
- Carton, J. A. and Giese, B. S.: A reanalysis of ocean climate using Simple Ocean Data Assimilation (SODA), *Monthly weather review*, 136, 625 2999–3017, 2008.
- Cohn, S. E.: The principle of energetic consistency in data assimilation, in: *Data Assimilation*, pp. 137–216, Springer, 2010.
- Davies, R. B.: Algorithm AS 155: The distribution of a linear combination of  $\chi^2$  random variables, *Applied Statistics*, pp. 323–333, 1980.
- Dee, D. P.: Bias and data assimilation, *Quarterly Journal of the Royal Meteorological Society: A journal of the atmospheric sciences, applied meteorology and physical oceanography*, 131, 3323–3343, 2005.
- 630 Fukumori, I., Heimbach, P., Ponte, R. M., and Wunsch, C.: A dynamically consistent, multivariable ocean climatology, *Bulletin of the American Meteorological Society*, 99, 2107–2128, 2018.
- Gaspar, P. and Wunsch, C.: Estimates from altimeter data of barotropic Rossby waves in the northwestern Atlantic Ocean, *Journal of Physical Oceanography*, 19, 1821–1844, 1989.
- Gelaro, R., McCarty, W., Suárez, M. J., Todling, R., Molod, A., Takacs, L., Randles, C. A., Darmenov, A., Bosilovich, M. G., Reichle, R., 635 et al.: The modern-era retrospective analysis for research and applications, version 2 (MERRA-2), *Journal of climate*, 30, 5419–5454, 2017.
- Goldstein, H.: *Classical Mechanics*, Addison-Wesley, Reading, Mass., 1980.
- Goodwin, G. and Sin, K.: *Adaptive Filtering Prediction and Control*, Prentice-Hall, Englewood Cliffs, N.J., 1984.
- Haier, E., Lubich, C., and Wanner, G.: *Geometric Numerical integration: structure-preserving algorithms for ordinary differential equations*, 640 Springer, 2006.
- Heimbach, P., Fukumori, I., Hill, C. N., Ponte, R. M., Stammer, D., Wunsch, C., Campin, J.-M., Cornuelle, B., Fenty, I., Forget, G., et al.: Putting it all together: Adding value to the global ocean and climate observing systems with complete self-consistent ocean state and parameter estimates, *Frontiers in Marine Science*, 6, 55, 2019.
- Hu, S., Sprintall, J., Guan, C., McPhaden, M. J., Wang, F., Hu, D., and Cai, W.: Deep-reaching acceleration of global mean ocean circulation 645 over the past two decades, *Science advances*, 6, eaax7727, 2020.
- Imhof, J.-P.: Computing the distribution of quadratic forms in normal variables, *Biometrika*, 48, 419–426, 1961.
- Janjić, T., McLaughlin, D., Cohn, S. E., and Verlaan, M.: Conservation of mass and preservation of positivity with ensemble-type Kalman filter algorithms, *Monthly Weather Review*, 142, 755–773, 2014.
- LaCasce, J.: On turbulence and normal modes in a basin, *Journal of marine research*, 60, 431–460, 2002.

- 650 Longuet-Higgins, H. C.: Planetary waves on a rotating sphere, *Proceedings of the Royal Society of London. Series A. Mathematical and Physical Sciences*, 279, 446–473, 1964.
- Luther, D. S.: Evidence of a 4–6 day barotropic, planetary oscillation of the Pacific Ocean, *Journal of Physical Oceanography*, 12, 644–657, 1982.
- Marchal, O. and Zhao, N.: On the Estimation of Deep Atlantic Ventilation from Fossil Radiocarbon Records. Part II:(In) consistency with  
655 Modern Estimates, *Journal of Physical Oceanography*, 51, 2681–2704, 2021.
- McCuskey, S.: *An Introduction to Advanced Dynamics*, Addison-Wesley, Reading, Mass., 1959.
- Morse, P. and Feshbach, H.: *Methods of Theoretical Physics*, McGraw-Hill, New York, 1953.
- Pedlosky, J.: A study of the time dependent ocean circulation, *Journal of Atmospheric Sciences*, 22, 267–272, 1965.
- Ponte, R. M.: Nonequilibrium response of the global ocean to the 5-day Rossby–Haurwitz wave in atmospheric surface pressure, *Journal of*  
660 *physical oceanography*, 27, 2158–2168, 1997.
- Schreier, P. J. and Scharf, L. L.: *Statistical signal processing of complex-valued data: the theory of improper and noncircular signals*, Cambridge university press, 2010.
- Sewell, M. J., Crighton, C., et al.: *Maximum and minimum principles: a unified approach with applications*, vol. 1, CUP Archive, 1987.
- Sheil, J. and O’Muircheartaigh, I.: Algorithm AS 106: The distribution of non-negative quadratic forms in normal variables, *Journal of the*  
665 *Royal Statistical Society. Series C (Applied Statistics)*, 26, 92–98, 1977.
- Stammer, D., Wunsch, C., Giering, R., Eckert, C., Heimbach, P., Marotzke, J., Adcroft, A., Hill, C., and Marshall, J.: Global ocean circulation during 1992–1997, estimated from ocean observations and a general circulation model, *Journal of Geophysical Research: Oceans*, 107, 1–1, 2002.
- Stammer, D., Balmaseda, M., Heimbach, P., Köhl, A., and Weaver, A.: Ocean data assimilation in support of climate applications: status and  
670 perspectives, *Annual review of marine science*, 8, 491–518, 2016.
- Stengel, R. F.: *Stochastic optimal control: theory and application*, John Wiley & Sons, Inc., 1986.
- Stommel, H.: The westward intensification of wind-driven ocean currents, *Eos, Transactions American Geophysical Union*, 29, 202–206, 1948.
- Strang, G.: *Computational science and engineering*, vol. 791, Wellesley-Cambridge Press Wellesley, 2007.
- 675 Thomson, R. E. and Fine, I. V.: Revisiting the ocean’s nonisostatic response to 5-day atmospheric loading: New results based on global bottom pressure records and numerical modeling, *Journal of Physical Oceanography*, 51, 2845–2859, 2021.
- Thorne, P. and Vose, R.: Reanalyses suitable for characterizing long-term trends, *Bulletin of the American Meteorological Society*, 91, 353–362, 2010.
- Woodworth, P., Windle, S., and Vassie, J.: Departures from the local inverse barometer model at periods of 5 days in the central South  
680 Atlantic, *Journal of Geophysical Research: Oceans*, 100, 18 281–18 290, 1995.
- Wunsch, C.: *Discrete inverse and state estimation problems: with geophysical fluid applications*, Cambridge University Press, 2006.
- Wunsch, C.: Is the ocean speeding up? Ocean surface energy trends, *Journal of Physical Oceanography*, 50, 3205–3217, 2020.
- Wunsch, C. and Heimbach, P.: Practical global oceanic state estimation, *Physica D: Nonlinear Phenomena*, 230, 197–208, 2007.
- Wunsch, C. and Heimbach, P.: How long to oceanic tracer and proxy equilibrium?, *Quaternary Science Reviews*, 27, 637–651, 2008.