

1 Fire risk modeling: an integrated and data-driven approach applied to Sicily.

2 Alba Marquez Torres^{1,2}, Giovanni Signorello^{3,4}, Sudeshna Kumar¹, Greta Adamo¹, Ferdinando Villa^{1,5}, Stefano
3 Balbi^{1,5}

4 ¹Basque Centre for Climate Change (BC3), 48940, Leioa, Spain.

5 ²Department of Agriculture and Forest Engineering, University of Lleida, 25003, Lleida, Spain.

6 ³University of Catania, Department of Agriculture, Food and Environment, Catania, 95131, Italy.

7 ⁴Centre for the Conservation and Management of Nature and Agroecosystems (CUTGANA), Catania, 95123, Italy.

8 ⁵Ikerbasque - Basque Foundation for Science, Bilbao, 48009, Spain.

9 *Correspondence to:* Alba Marquez Torres (alba.marquez@bc3research.org)

10 **Abstract.** Wildfires are key to landscape transformation and vegetation succession, but also to socio-ecological values loss.
11 Fire risk mapping can help to manage the most vulnerable and relevant ecosystems impacted by wildfires. However, few
12 studies provide accessible daily dynamic results at different spatio-temporal scales. We develop a fire risk model for Sicily
13 (Italy), an iconic case of the Mediterranean basin, integrating a fire hazard model with an exposure and vulnerability analysis
14 under present and future conditions. The integrated model is data-driven but can run dynamically at a daily time-step, providing
15 spatially and temporally explicit results through the k.LAB software. K.LAB provides an environment for input data
16 integration, combining methods and data such as Geographic Information System, Remote Sensing and Bayesian Network
17 algorithms. All data and models are semantically annotated, open and downloadable in agreement with the FAIR principles
18 (Findable, Accessible, Interoperable and Reusable). The fire risk analysis reveals that 45% of vulnerable areas of Sicily are at
19 high probability of fire occurrence in 2050. The risk model outputs also include qualitative risk indexes, which can make the
20 results more understandable for non-technical stakeholders. We argue that this approach is well suited to aid in landscape and
21 fire risk management, both under current and climate change conditions.

22 1 Introduction

23 Fire, as a natural disturbance, has played an important role in shaping forest structure, increasing biodiversity and leading the
24 species' evolution (Bond and Keeley, 2005; Pausas et al., 2004; Kelly and Brotons, 2017). However, the balance between the
25 natural fire regime and the ecosystem is often disrupted when humans modify the environment to their needs. In recent years,
26 the rural depopulation and simultaneous spread of urban areas as residential buildings into the countryside have increased the
27 fire frequency and burned areas (Faivre et al., 2014; Robinne et al., 2016). Although this is a worldwide problem, the
28 Mediterranean climatic area has experienced a great impact (Kocher and Butsic, 2017; Leone et al., 2009; Pausas and
29 Fernández-Muñoz, 2012).

30 Sicily (Italy), the largest island of the Mediterranean Sea with 25,711 km², has been the cradle of several civilizations and their
31 traditions, with continuous and intense human exploitation of natural resources (forestry, grazing, agriculture) (Antrop, 2005;
32 Sereni, 1961), encompassing multiple agricultural and agroforestry landscapes (Baiamonte et al., 2015; Di Maida, 2020). Due

33 to its great variability of topography, lithology, pedology (Catalano et al., 1996) and climate (Bazan et al., 2015), Sicily is rich
34 in biodiversity and ecosystems (Cullotta and Marchetti, 2007; Peruzzi et al., 2014). Therefore, the island can be viewed as
35 representative of the Mediterranean basin as a whole.

36 Moreover, Sicily is the most populated island in the Mediterranean Sea with nearly 5 million inhabitants, similar to Denmark
37 or Finland (Planistat Europe and Bradley Dunbar Association, 2003). As a consequence, year after year the environment has
38 undergone degradation due to the increase of intensive farming practices, the urbanization growth in the most populated and
39 tourist areas and the loss of traditional agricultural and forest management because of the rural population abandonment (Bazan
40 et al., 2019; Falcucci et al., 2007; Prestia and Scavone, 2018). In the last 50 years, the increase of forest and scrub mass due to
41 the abandonment of traditional land management (Bonanno, 2013; Ragusa and Rapicavoli, 2017) and the increase in the
42 frequency of long droughts created optimal conditions for the occurrence of wildfires (Mouillot et al., 2005; Ruffault et al.,
43 2020). The population living in the wildland-urban interface zone is particularly at risk due to exposure to fire and difficulty
44 in evacuation.

45 Uncontrolled wildfires in Sicily have increased in recent years, making Sicily the Italian region with the highest number of
46 fire events and the largest burned area between 2009 and May 2016 (Fig. 1). The probability of fire occurrence is mainly linked
47 to ignition source, forest fuels and environmental conditions (Ganteaume et al., 2013; Hantson et al., 2015; Ricotta and Di
48 Vito, 2014). The ignition sources are usually divided into natural causes (mainly lightning but geological causes too) and
49 human (accidentally or intentionally) (Aldersley et al., 2011; Ganteaume et al., 2013; Rodrigues and de la Riva, 2014). The
50 main causes of wildfires in Sicily are human-driven (Corrao, 1992; Ferrara et al., 2019). Arson and accidental wildfires, set up
51 to create new pasture resources or to burn stubble, are the first causes of wildfires, especially in areas where vegetation
52 interfaces with urban structures.

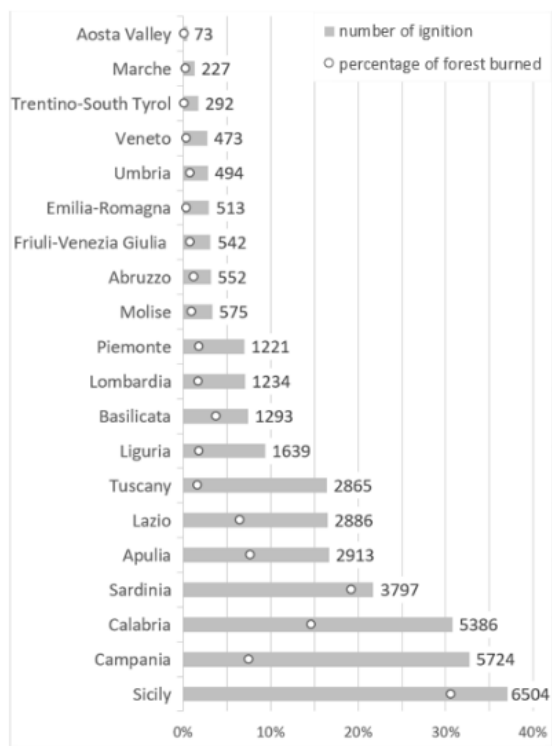


Figure 1: Total number of fire ignitions and percentage of area burned (over 30 ha) in Italy by region between 2009 and May 2016.
Source: Fire activity statistics, *Servizi AntiIncendio Boschivo* (Italian Fire Services).

The consequences of wildfires exceed the loss of forest cover, vary over time and can be long-lasting. Some ecosystem properties and functions that deliver benefits to humans (Daily et al., 1997; Roces-Díaz et al., 2022), including biodiversity, may be lost. This diminish might happen when natural fire regimes and forest ecosystems are strongly altered by human intervention (Tedim et al., 2020; Arno and Brown, 1991), leading to an increase of fire extent, intensity and severity (Pausas et al., 2008; Regos et al., 2014; Castellnou et al., 2019). For example, after the wildfires in summer, with the arrival of the first heavy rains, there can be extensive erosion in burned areas, loss of organic matter or pollution of adjacent water bodies (Bisson et al., 2005; Certini, 2005). In general, burned areas lose their carbon sequestration capacity and desirability for outdoor recreation (Moreira and Russo, 2007).

The literature on fire modeling at different spatio-temporal scales is vast (Ganteaume et al., 2013; Jain et al., 2020; Tymstra et al., 2020). Due to its drought sensitivity, most studies focus on the Mediterranean climatic region (Oliveira et al., 2012; Satir et al., 2016; Wittenberg and Malkinson, 2009). Among the different methods applied, machine learning models are gaining traction due to increased computing power and data access. Many algorithms have been tested, including artificial neural networks, support vector machines, maximum entropy and random forest (Jain et al., 2020).

69 Risk fire mapping has been one of the most widely studied approaches in the forest fire literature. Even so, many models have
70 become obsolete and have not been renewed (Ager and Finney, 2010; Mohajane et al., 2021). The spatial-temporal resolution
71 is too coarse (Lozano et al., 2017) or does not take into account the distribution of forest fuel types (Bacciu et al., 2021; Michael
72 et al., 2021), which is essential for risk reduction (Castellnou et al., 2019). Moreover, risk conditions for society are induced
73 by progressive changes in environmental conditions. For this reason, it is indispensable to create open models that can
74 incorporate new transdisciplinary data and knowledge (Nikolakis and Roberts, 2022; Wunder et al., 2021) that have arisen
75 since 2016 (Artés et al., 2019; Duane et al., 2021).

76 On the society side, knowledge plays a key role in risk reduction, decision-making, coordinated policy action, and re-learning
77 on fire. Vulnerability is associated with a lack of risk communication, especially a lack of sufficient information that can lead
78 to a misunderstanding of risk (Birkmann et al., 2010). This has important implications for motivation and perceptual capacity
79 to act and adapt to climate change (Grothmann and Patt, 2005). Moreover, understanding the fire risk processes can help
80 society to comprehend the landscape transformation needed for a lower-risk environment (Otero et al., 2018). Although efforts
81 are being made, few resources are allocated to the accessibility, sharing, and integration of knowledge at multiple scales across
82 different stakeholders (Weichselgartner and Pigeon, 2015). Therefore, it is crucial to develop accessible tools and methods for
83 fire risk assessment, where managers and stakeholders can consider social and environmental consequences.

84 Similarly, on the scientific side, lack of transparency has been one of the traditional characteristics of modeling (i.e. black box
85 model), even within the decision support system leading to several scientific, organizational and ethical issues (Guidotti et al.,
86 2018). Moreover, most of the models and resources developed by scientific research are not transferable or shared between
87 different programming languages or modeling infrastructures. To connect the scientific knowledge, we applied the Integrated
88 Modeling approach of ARtificial Intelligence for Environment & Sustainability (ARIES,
89 <https://aries.integratedmodelling.org/>), which integrates a network of web accessible data, models, and other resources,
90 implementing the FAIR principles (Wilkinson et al., 2016) through the k.LAB software, a semantic web-based modeling
91 platform. The FAIR principles apply to the generated data and models, which must be:

- 92 • Findable: simple to identify by humans and computers;
- 93 • Accessible: easy access to metadata and resources stored;
- 94 • Interoperable: should be ready to be exchanged, interpreted and combined in a (semi)automated way with other
95 datasets;
- 96 • Reusable: sufficiently well-described to be reused in future research and integrated with other data sources.

97
98 This study analyses wildfire activity for the years 2007-2020, to model fire risk in Sicily. We have adopted the definition of
99 fire risk provided by the AR6 report of IPCC, i.e. the dynamic interaction between the components of ‘climate related hazards
100 with the exposure and vulnerability of the affected human or ecological system to the hazards’ (IPCC, 2012). Thus, in this

101 article, we focus on answering three questions: where it is likely to occur?, what ecosystem services might be affected? and,
102 what is the impact on the environment and the society?.

103 To this end, we have developed a set of models in the k.LAB software and we integrated them into the ARIES network. These
104 models are modular, interconnected, and semantically explicit under k.LAB, where we simulated the current wildfires and
105 their interaction with key human and biophysical drivers, using a machine learning algorithm. Furthermore, as proof of the
106 advantages of using FAIR data and resources, it has been possible to analyze future fire risk under climate change and consider
107 the consequences for different ecosystem services using models included in ARIES and developed by other experts.

108 **2 Material and Methods**

109 **2.1 Study area**

110 The case study was carried out on the island of Sicily, the largest and most populated island in the Mediterranean. Within its
111 2,571 ha, the altitudinal range reaches 3,357 m at the peak of one of the most active volcanoes in the world (Thomaidis et al.,
112 2021). The island has a Mediterranean climate with mild and wet winters and dry and hot summers, highlighting the southwest
113 coast, where the climate is affected by the African currents and summers. Rainfall is scarce leading to water deficits in some
114 provinces. Moreover, the change in land use has gradually modified the climate, with less rainfall and drier rivers (Drago,
115 2005; Ragusa and Rapicavoli, 2017).

116 The land use change caused mainly by the intense deforestation throughout Sicily's history had favored intense agricultural
117 practices, especially in the center and southwest. Thus, agricultural areas cover 57% of the island, whose 35% are arable lands
118 and 22% permanent crops. Roughly a third of Sicily is forest, shrublands and open areas. Woodlands and semi-natural areas
119 are sparse in the agricultural area and denser in areas with special protection, the most important being the Mount Etna
120 surroundings, in the Nebrodi Mountains Regional Park and the *Natural Reserve of Bosco della Ficuzza* (Sicilia Assessorato
121 beni culturali ed ambientali e pubblica istruzione, 1996). Due to its long-lasting socio-ecological history, location in the
122 Mediterranean Sea, its fragility to climate change, and increasing fire regime, Sicily represents an ideal study area
123 representative of the Mediterranean socio-ecological context.

124 **2.2 Fire risk analysis**

125 The interaction of environmental and social processes drives the risk (Table 1), determined by the combination of a physical
126 hazard and the vulnerability of the socio-ecological elements exposed (IPCC, 2012).

127 **Table 1. Fire risk is defined by vulnerability and hazard components (IPCC, 2012).**

RISK	
<i>The potential likelihood of negative consequences for the elements of value in a context considering the probability of occurrence of fire hazards. Fire risk results from the interaction of vulnerability, exposure, and</i>	

<i>hazard.</i>		
1. Hazard	2.Exposure	3.Vulnerability
<i>Probability of occurrence of a physical event (natural or human-induced) that may damage the elements in the same time-space context. For instance, the probability of fire occurrence.</i>	<i>Elements (and their values) that are in a context where a hazardous event, such as fire, may happen.</i>	<i>The tendency of exposed elements to be adversely affected by a hazardous event. For example, predisposition, susceptibility, fragility, weakness, of the exposed elements.</i>
<u>Fire hazard components:</u> <ul style="list-style-type: none"> Weather: <ul style="list-style-type: none"> Temperature Weekly Maximum temperature Days without precipitation Weekly precipitation Solar radiation Biophysical drivers: <ul style="list-style-type: none"> Forest fuel Elevation Slope Human drivers: <ul style="list-style-type: none"> Distance to protected area Distance to road Distance to human settlement 	<u>Ecosystem services exposed:</u> <ul style="list-style-type: none"> Vegetation carbon mass Pollination Outdoor recreation Soil retention Biodiversity* <p>*Technically not an ecosystem service but added here as an associated element of exposure.</p>	<u>Vulnerability</u> <ul style="list-style-type: none"> Wildland-Urban Interface (WUI) Wildland-Agricultural Interface (WAI) Nationally designated areas (CDDA)

128 Fire hazard captures the probability of fire occurrence, based on historical wildfires and drivers such as biophysical factors
129 and human-modified areas. The fire hazard interacts with the elements exposed; we highlight exposed ecological values and
130 ecosystem services such as biodiversity, pollination, carbon mass, soil retention and outdoor recreation that may be affected
131 by fire occurrence.

132 Vulnerability identifies exposed elements that are more susceptible to being highly or irreparably damaged due to their intrinsic
133 or contextual characteristics. Wildland-Urban Interface (WUI) is particularly fire-prone because it is a forested area less than
134 200 meters from an urban area (Ganteaume et al., 2021; Intini et al., 2020), due to the relationship between the ignition points
135 and populated areas (Chappaz and Ganteaume, 2022). It also represents a high weakness for human settlement, as they are
136 extremely close to the forest, becoming a problem in fire management (Cohen, 2008). Wildland-Agricultural Interface (WAI)
137 is a forest area in close proximity (less than 200 meters) to an agricultural area and highly predisposed to burning due to the
138 fire used for clearing forest and pasture or crop establishment (Leone et al., 2009; Ortega et al., 2012). Moreover, fire impacts

139 agricultural land, making food safety susceptible to hazards (Baas et al., 2018). Natural areas with special protection (UNEP-
140 WCMC and IUCN, 2022) are particularly fragile with species with different endemism ranges and sensitive to social, climate
141 and environmental changes (Baiaamonte et al., 2015).

142 Fire risk is considered to be the cumulative consequence given by the interplay context-specific elements. Those elements
143 capture vulnerability, exposure, and hazard components emerging from the probability of fire occurrence. In this study we
144 quantify fire risk by measuring the potential area affected, the hot spots of biodiversity and ecosystem services potentially
145 exposed and their vulnerability. We also assess fire risk both in current and future conditions (S1, Fig. S1) to consider the
146 impact of climate change.

147 **2.2.1 Fire hazard model**

148 The model presented in this study is developed using the k.LAB software to achieve interoperability from the data sources to
149 the generated modeling results (Villa et al., 2017). Within k.LAB, an ontology-driven language called Knowledge-Integrated
150 Modeling (k.IM), provides the basis for the semantic annotations (i.e., explicit definitions) of resources, such as external
151 datasets, and individual modeling tasks (S1, Fig. S2). Once the resources are assembled in the resulting computational
152 workflow, k.LAB returns in output contextualized models’ results visualized on a map. To ensure transparency, textual
153 documentation of the process followed to achieve the results with annexed references and the details about the workflow are
154 also provided to the users.

155 Accurate spatio-temporal detection of fire hazard is essential for the modeling and analysis of fire risk; thus, a system that
156 transparently keeps track of the origin and reliability of input data is crucial. The input data used in this study were collected
157 from different sources and can be classified into two categories: (i) historical wildfires and (ii) explanatory variables, which
158 include weather, human and biophysical drivers. The data collection and processing are discussed in the following paragraphs.
159 All the data and resources are semantically annotated, openly accessible and interoperable within k.LAB.

160 Historical fire data from 2007 to 2020 were collected from two different sources: The Regional Agency of Fire Control in
161 Sicily was used to identify the fire perimeter and the Fire Information for Resources Management System (FIRMS) satellite
162 data to locate the ignition point (Table 2).

163 **Table 2. Information about historical fire data**

	Historical fire perimeter	Historical fire ignition
Source	Regional Agency of Fire Control in Sicily	FIRMS
Spatial resolution	GPS error, less than 10m	MODIS: 1km VIIRS: 375m .

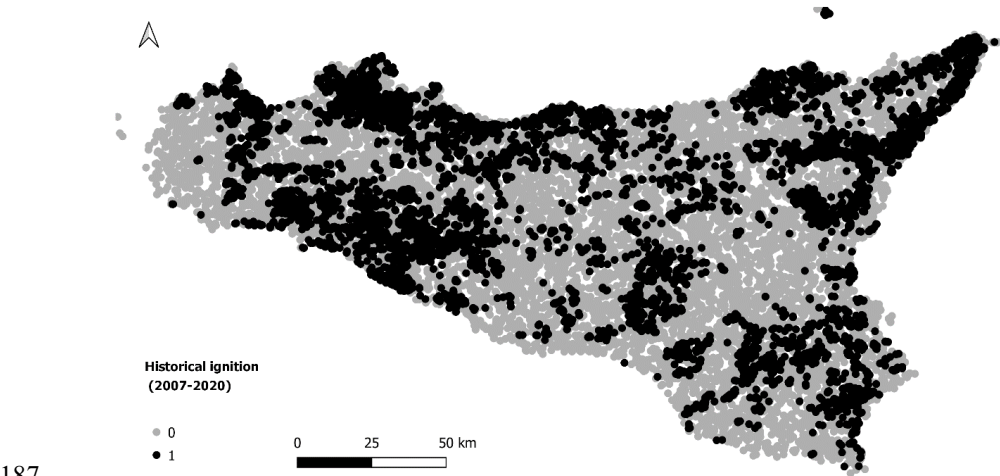
Temporal coverage and time consistency	1 January 2007 - 31 December 2020 (Daily)	MODIS Collection 6: 11 November 2000 – present (Daily) VIIRS: 20 January 2012 – present (Daily)
Coordinate Reference System (CRS)	EPSG:102092 - Monte Mario Italy 2 - Projected for the years 2009 and 2017: EPSG:3004 - Monte Mario / Italy zone 2 - Projected	EPSG:4326 - WGS 84 - Geographic
Feature Type	Polygon	Point

The regional agency collects the perimeter data of historical fires and provides the fire start and end dates collected by the Forestry Information System (SIF – *Sistema Informativo Forestale*) and the forestry command corps of the Sicilian region (*Comando Del Corpo Forestale Della Regione Siciliana*). FIRMS was developed by the University of Maryland, to locate active fires in near real-time by data from MODIS (Moderate Resolution Imaging Spectroradiometer) and VIIRS (Visible Infrared Imaging Radiometer Suite) (Giglio et al., 2016; Schroeder et al., 2014). MODIS is an instrument aboard Terra and Aqua satellites that provides global coverage every 1-2 days and VIIRS sensor is on board the Suomi JPSS-1 satellites and provides full global coverage every 12 hours. When there was information from both satellites for the same fire perimeter, VIIRS was prioritized. Due to its spectral and spatial resolution, VIIRS sensor is more accurate in fire detection (omission and commission of errors) thanks to the detection of the radiative power of the fire, especially in low biomass areas (Fu et al., 2020).

Satellite data was used to locate the fire ignition point inside the perimeter provided by the regional agency. The centroid was considered the ignition point for the perimeters when it wasn't identifiable using satellite data. To prevent double-counting from the data sources, each fire perimeter was double-checked to verify that there was only one ignition point fire perimeter. We obtained a total of 7,492 points linked with their ignition date (day, month and year).

In addition to the ignition data, we prepared an equal number of locations without fire events. This is needed to preserve a balanced dataset of observations that considers the explanatory variables values both in case of ignition and the absence of ignition. The result of an imbalanced training dataset is a "skewed data bias" and a model not capable of discriminating relevant patterns in data (Rennie et al., 2003). The weights for the class with less training data, will be lower when the training data is skewed. Consequently, classification will be unfairly biased in favor of one class over another. The learning algorithm becomes too specific, leading to overfitting (Li et al., 2021).

184 The points without ignition were randomly generated with seeds within the study area between the 01-01-2007 and 31-12-
185 2020 periods. It was verified that none of these points overlap with historically burned perimeters in date and location. The
186 “ign” attribute differentiates ignition points (1) from non-ignition points (0) (Fig. 2).



187
188 **Figure 2: Distribution of historical wildfires (category 1, black color) and no wildfires (category 0, grey color) in the Sicily region**
189 **from 2007 to 2020.**

190 The data feeding the machine learning model comes from open resources on the cloud provided by well-known and reliable
191 institutions. Those input data are incorporated automatically, depending on the spatio-temporal needs of the model. In the
192 Sicily model, the data comes from the Regional Government of Sicily, the University of Catania or E-OBS (Ensembled
193 OBservation) project, among others (Table 3).

194 **Table 3. Variables in the BN model**

Variable (semantic language)	Description	Type	Unit	Source
occurrence of Fire within Site	Present and absent	Discrete	1 (fire) - 0 (no fire)	ARIES ^a , SIF ^b and FIRMS ^c
Atmospheric Temperature	Mean temperature	Continuous	Celsius degrees	E-OBS ^d
Weekly Maximum Atmospheric Temperature	Mean of maximum temperature in the last week	Continuous	Celsius degrees	ARIES ^a (based on E-OBS ^d data)
count of Day	Counting days	Continuous	#	ARIES ^a (based on

without Precipitation	since last precipitation			E-OBS ^d data)
Weekly Precipitation Volume	Accumulated precipitation during a week	Continuous	mm	ARIES ^a (based on E-OBS ^d data)
Solar Radiation	Total solar radiation	Continuous	J/m ²	E-OBS ^d
value of Forest during Fires	Forest fuel type	Discrete	see in S2, Table S1	University of Catania
Elevation	Geographical elevation above sea level, as described by a digital elevation model	Continuous	m	SITR ^e
Slope	Inclination of the above-water terrain in a geographical region	Continuous	grade	ARIES ^a (based on elevation from SITR ^e)
distance to ProtectedArea	Distance to protected area	Continuous	m	k.LAB ^f (based on OSM ^g)
distance to Road	Distance to road	Continuous	m	k.LAB ^f (based on OSM ^g)
distance to Human Settlement	Distance to human settlement	Continuous	m	k.LAB ^f (based on OSM ^g)

^a ARIES: ARTificial Intelligence for Environment & Sustainability

^b SIF: *Sistema Informativo Forestale* (Forestry Information System)

^c FIRMS: Fire Information for Resources Management System

^d E-OBS: Ensembled OBservation

^e SITR: *Sistema Informativo Territoriale Regionale* (Regional Spatial Information System)

^f k.LAB: Knowledge Laboratory

^g OSM: Open Street Map (OpenStreetMap contributors, 2020)

In the case of Sicilian wildfires, the human factor is one of the main triggers that lead to the depopulation of country areas by land managers and the increasing number of tourists and visitors. The human drivers used as explanatory variables in the model are distance to protected areas, distance to road and distance to human settlement. Those variables are calculated using semantics in the k.LAB software. K.LAB is able to compute geographical distances (Euclidean distance) between spatial

206 objects. Additionally to human drivers, the fire hazard also depends on (i) weather (especially due to long dry seasons), (ii)
207 topography and (iii) environment, characterized by the high flammability of the Mediterranean forests (Corrao, 1992). Some
208 of the weather variables, based on E-OBS data, were integrated into the ARIES network. Those drivers influence fuel type,
209 moisture levels and fire behavior.

210 Meteorological data were obtained from the E-OBS Copernicus project (Cornes et al., 2018). We used the last version released
211 in March 2021 to obtain data from 2007-01-01 to 2020-12-31. The data were processed with R software to obtain the
212 meteorological data needed on each specific day as daily temperature and daily solar radiation (Table 3).

213 In addition, heatwaves and long periods of drought are great drivers for the majority of extreme wildfires (Narcizo et al., 2022;
214 Nojarov and Nikolova, 2022; Parente et al., 2018). Moreover, with climate change, these episodes will increase in number,
215 frequency and intensity, especially for the projections for RCP 8.5 (Molina et al., 2020). We have taken into account variables
216 such as the mean of maximum temperatures, the number of days without rain and the precipitation accumulated during the
217 previous week.

218 The topographic factors used (slope and elevation) are constant components of the fire risk model. They have a strong influence
219 on other parameters such as fuel conditions and weather. Slope and elevation were generated from a Digital Elevation Model
220 (DEM) at a 10 meters' resolution.

221 Fuel type and land cover composition have a significant effect on fire ignition. Deep knowledge of the fuel bed is key to fire
222 management, as it is one of the main components of fire risk. Fuel bed has been reformulated into fuel models for easier use
223 in models and systems. The characteristics and properties of fuel types used categorical ranges between 1 to 7 (S2, Table S1)
224 according to the Prometheus project (Lasaponara et al., 2006). The latter defines fuel type as a recognizable combination of
225 fuel components with distinct species, shapes, dimensions, structures, and continuity that will display a particular fire behavior
226 under specific burning conditions (Merrill and Alexander, 1987). The land cover map source is based on the Italian Nature
227 Map (Angelini et al., 2009). Landcover is mainly composed of extensive crops and complex farming systems (46%) so, the
228 main fuel type is ground fuels such as grass (50% of land in Sicily). 29% of the land cover on the island is non-combustible.

229 Among the models that were tested, one of them had the fire frequency as input, calculated with the historical wildfires from
230 2007-2020. This model had an accuracy above 95%. After several literature searches and discussions with experts, it was
231 decided not to incorporate fire frequency into the model. Although the accuracy was much better than the model finally chosen
232 (83.6%), the main disadvantage was the possibility of overfitting. In addition, it may lower the likelihood of detecting wildfires
233 in unusual areas due to changes in land use or phenomena such as climate change. Finally, the difficulty of accessing new
234 wildfires to incorporate into the frequency variable was another important reason.

2.2.2 A Bayesian Network model of fire hazard

Bayesian Networks (BN) (Pearl, 1988) have been widely used in recent years and have been highlighted as a powerful tool for modeling complex problems, representing uncertainty and assisting stakeholders when the data is highly interlinked (Henriksen et al., 2007; Kangas and Kangas, 2004; Penman et al., 2011). Thus, the BN model is especially useful in environmental modeling as wildfire risk because (i) involves a high level of uncertainty, (ii) has limited or incomplete data on key system variables, (iii) contains both qualitative and quantitative information or data in different forms, and (vi) integrates multidisciplinary systems (Chen and Pollino, 2012). In addition, the system is transparent in its process, as its nodes table shows the dependency's strength between nodes and their parents in terms of conditional probability distribution and the relationships between variables are made explicit.

A BN is a model that graphically represents causal assertions between variables as patterns of probabilistic dependencies. The Directed Acyclic Graph (DAG) of a BN is built with nodes (variables) and edges between the nodes (dependencies and mutual relationships between variables). Each successor node (children) is only determined by the values of its immediate predecessors (parents) known as parental Markov property (Pearl, 2009). Roots are the nodes without any parent and with marginal distribution (Borsuk, 2008).

The BN has been learned using the WEKA (Waikato Environment for Knowledge Analysis) library integrated into the k.LAB software (Bouckaert, 2004; Frank et al., 2016; Willcock et al., 2018). WEKA is an open source JAVA library providing a collection of machine learning algorithms. The WEKA interface provides graphical and text components to inspect some BN's properties as basic algorithm information, the BN structure, the probability distribution table or the accuracy by class.

The model has been written in a semantically explicit way using the aforementioned k.IM language (S1, Fig. S2), which compiles in Web Ontology Language (OWL) (Bao et al., 2012) and allows to ontologically define and model natural language-like logical expressions. In addition, a model written in k.IM is able to interoperate with other models available in the k.LAB environment. When modeling in k.IM concepts that have been previously defined in a knowledge-base are invoked, examples are *earth:Site* and *chemistry:Fire* as depicted in (S1, Fig. S2). Those concepts carry out meanings facilitating a semantic integration within the system (Villa et al., 2017).

Since the BN is built with categorical values, continuous data need to be discretized. Discretization allows the establishment of non-linear values between variables and more complex distributions (Friedman and Goldszmidt, 1996). Discretizing the data helps to interpret the results more easily when it comes to decision-making processes by facilitating communication between modelers and end users. However, the interval selection interferes with the final results. We have been taking into account that the higher the number of intervals, the more data is needed to find significant dependencies (Aguilera et al., 2011); the nodes become weak when there are many intervals because there is less data for each distribution.

265 Among the methods to discretize (Beuzen et al., 2018), in this study we use both the equal-width and equal-frequency binning
266 unsupervised methods, according to the input data distribution (see the data histograms in S3). In the first case, the algorithm
267 divides the data into k intervals of equal size and in the case of equal frequency, the user specifies the sub-ranges that result in
268 k intervals (bins) with approximately the same number of values. After modeling with different discretization ranges and
269 obtaining similar accuracy results, we have chosen for each of the variables the minimum number of intervals in order to keep
270 ecological sense, statistical significance and minimize information loss (S4, Table S2). The discretization applied is shown in
271 **Table 4. Discretization applied to the variables used in the fire occurrence modeling.**

Semantic	Method	Bins
AtmosphericTemperature in Celsius	equal-width	10
Weekly Maximum AtmosphericTemperature in Celsius		10
SolarRadiation in J/m^2		5
Weekly PrecipitationVolume in mm		10
Count of Day without Precipitation	equal-frequency	5
Slope in grade		5
Elevation in m		5
distance to ProtectedArea in m		5
distance to Road in m		5
distance to Human Settlement in m		5

272

273 To learn the BN, 80% of the dataset was used to actually learn the model and 20% to test the relationship between historical
274 wildfires (observations) and explanatory variables. On the learning side, we selected the K2 algorithm (Cooper and Herskovits,
275 1992). This type of score-based algorithm searches for the most probable belief-network structure through a heuristic search.
276 The K2 algorithm processes each node in turn and greedily considers adding edges from previously processed nodes to the
277 current one, adding the edges that maximizes the network's score. It turns to the next node when any of the following

278 requirements are met: (i) it has reached the maximum number of parents, (ii) there are no more parents to add, (iii) the score
279 has not improved (Chen et al., 2008). The number of parents for each node can be restricted to a predefined maximum (e.g.
280 maxparents = 1) to mitigate overfitting.

281 The BN predictors have been distributed in a Directed Acyclic Graph (DAG) as shown in Figure 3. DAG is assigning
282 probabilities to each variable's predictor; anthropogenic and biophysical factors such as meteorology, topography and
283 environment. The most influential variable of a BN results from the following characteristics: (i) the strength of influence of
284 each edge connecting the nodes (Balbi et al., 2019) and (ii) how "far", in terms of number of edges, is an input node from the
285 final output (Marcot et al., 2006). The strength of influence is calculated from the conditional probability tables and expresses
286 the difference between the probability distributions of two nodes by looking at the posterior probability distribution of a node,
287 for each possible state of the parent or child node. To summarize this difference, we report normalized Euclidean distance,
288 although other types of distances (e.g. Hellinger) are also used (Balbi et al., 2019). Table 5 quantifies numerically the strength
289 of influence as the thickness of the edges between Fire Hazard node and its children. The predictors with the highest strength
290 of influence are (i) atmospheric temperature, (ii) days without precipitation, (iii) fuel type and (iv) solar radiation (Table 5),
291 all of which are directly linked to the final output (fire occurrence). While atmospheric temperature, number of days without
292 precipitation, and solar radiation are expected to increase in variability and increase fire hazard with limited options for human
293 mitigation, fuel type can be managed with punctual landscape interventions reducing its combustibility level where it is more
294 necessary.

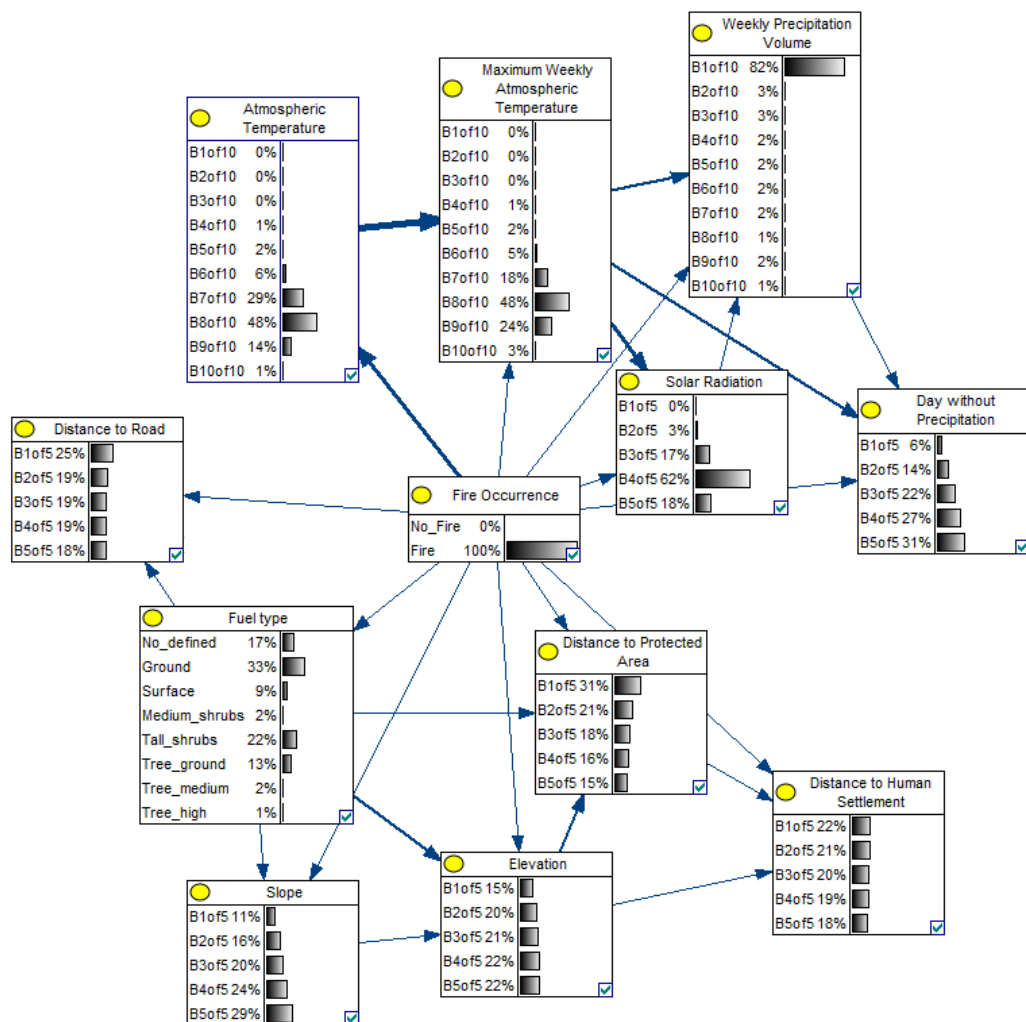


Figure 3. Directed Acyclic Graph (DAG) of the fire hazard Bayesian Network model where arcs width shows the strength of influence between nodes. Nodes show the relative probability of each interval of the variable, described in Supplementary Materials (S4, Table S2).

Table 5. Strength of influence between fire occurrence and its child nodes.

Variable	Strength of influence
Atmospheric Temperature	0.338
Day without Precipitation	0.193
Fuel type	0.192

Solar Radiation	0.191
Elevation	0.158
Maximum Weekly Atmospheric Temperature	0.154
Distance to Protected Area	0.145
Slope	0.138
Distance to Road	0.117
Weekly Precipitation Volume	0.113
Distance to Human Settlement	0.112

Finally, to be more understandable for end-users and stakeholders, the results of the model were divided into 3 equal intervals, related to the level of fire occurrence (high: more than 66% chance, medium: between 33 and 66%, low: probability of fire less than 33%).

2.2.3. Drivers of vulnerability and exposed elements

Social and environmental vulnerability have been assessed as the tendency of exposed elements to be potentially damaged by a fire hazard due to its intrinsic or contextual conditions (IPCC, 2012). First, we used models developed in previous projects in k.LAB to determine the socio-ecological exposed elements. The ecosystem services models and biodiversity considered are those included in the ARIES global model set (Martínez-López et al., 2019). Once the fire hazard model is in k.LAB, all the data and models can interoperate between them through the explicit semantics (Villa et al., 2017). Thus, we can reuse previous ecosystem services models developed (Martínez-López et al., 2019; Willcock et al., 2018) applying them to a different context and creating new knowledge. In this case, due to the specificities of Sicily and the relevance of ecosystem services affected by wildfires, we choose to consider the following models: (i) vegetation carbon mass, (ii) pollination, (iii) outdoor recreation, (iv) biodiversity and (v) soil retention. These models, published in (Martínez-López et al., 2019; Willcock et al., 2018), are briefly described below:

- Vegetation carbon mass: calculates the above- and below-ground carbon storage in vegetation (T/ha), in accordance with Tier 1 Intergovernmental Panel on Climate Change (IPCC) methodology (Gibbs and Ruesch, 2008; IPCC, 2006).
- Pollination: based on land use, cropland, and weather patterns, the pollination model generates spatially explicit data of the supply and demand for insect pollination services.
- Outdoor recreation: calculates the accessibility of recreational features of the natural landscape, and the demand for them, based on the methods by (Paracchini et al., 2014).

- Soil retention: the model provides biophysical estimates of soil loss and retention by plants (in tons of sediment per hectare per year) using the widely used Revised Universal Soil Loss Equation (RUSLE; (Renard et al., 1997).
- Biodiversity: a Bayesian Network approach used to learn from site-based expert estimations of "biodiversity value" to create a map of the entire Sicilian region (Willcock et al. 2018).

To create a comprehensive indicator of ecosystem services and biodiversity, we converted the above-mentioned modeling output to a common scale, using quantitative and qualitative criteria. In order to calculate the potentially reduced social and ecological services, we used the normalization method, instead of others such as qualitative categorization and probabilistic approaches (normal, Poisson, binary) (Chuvieco et al., 2003). We transformed each modeling output rescaling it from 0 to 1, using the minimum and maximum value within the Sicily context. The quantitative scale was classified into 3 categories (1-low, 2-medium, 3-high) using equidistant intervals; thus integrating all modeling outputs into a single value. In this quantitative cross-assessment, the most valuable component was prioritized. The final map was overlaid with wildland areas.

Once exposure was identified, we located the most vulnerable elements that were exposed to fire. Spatial data were generated for WUI, WAI and protected areas. In order to create the WUI area, we generated a 200 m buffer map from the human settlements, then overlaid it with the forest areas. The WAI map followed the same procedure, but with the buffer map from the agricultural areas. Finally, we use the FAO map (UNEP-WCMC and IUCN, 2022) for the protected areas. Vulnerable areas were overlapped with the exposure map.

Finally, the fire hazard model was used to predict how the most vulnerable exposed elements could be affected in the current and future climatic conditions. The future climate data was drawn from the Coupled Model Intercomparison Project 5 (CMIP5) for RCP 8.5 from COordinated Regional climate Downscaling EXperiment (CORDEX) (Giorgi et al., 2009). The data are bias-corrected and simulated by state-of-the-art global and regional climate model pairs. To generate the climatic variables, we used the same process as the current variables. We kept the other variables (solar radiation, fuel, slope, elevation, distance to road, protected area and human settlement) with the current conditions.

3. Results

3.1. Historical data analysis

During the analysis period (2007-2020) 28,814.698 ha were burnt in 12,749 fire perimeters and the data shows significant variability between years (Fig. 4). The average area burnt is equivalent to 20,630 ha with 910 ignitions per year, 2012 being the worst year, with 1,274 ignitions and 55,699 ha burnt. However, the monthly distribution over this period is skewed toward

348 July and August (Fig. 5), due to the weather's favorable fire conditions. August is clearly the month with more wildfires in all
349 the years analyzed, with 4,166 ignitions and 118,481 ha burnt in total (26% more area than July, the second worst month).

350
351

352
353
354

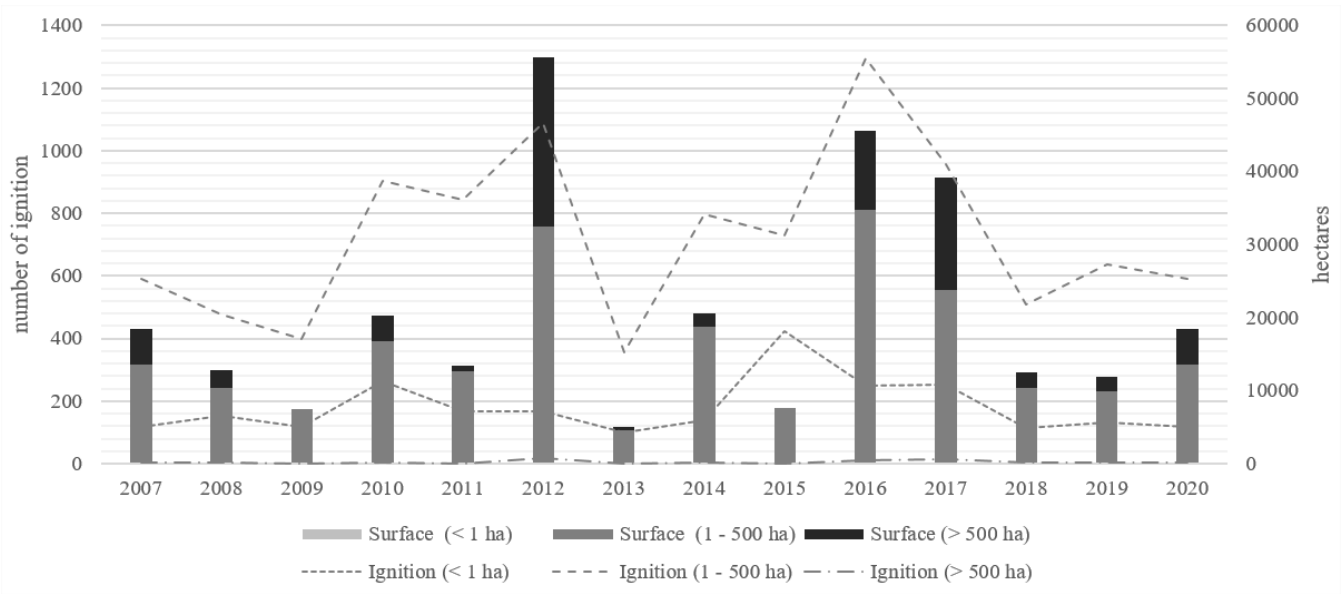


Figure 4: Number of ignitions vs. burned area by year from 2007 to 2020. Source: Regional Agency of Fire Control in Sicily and FIRMS.

355
356
357

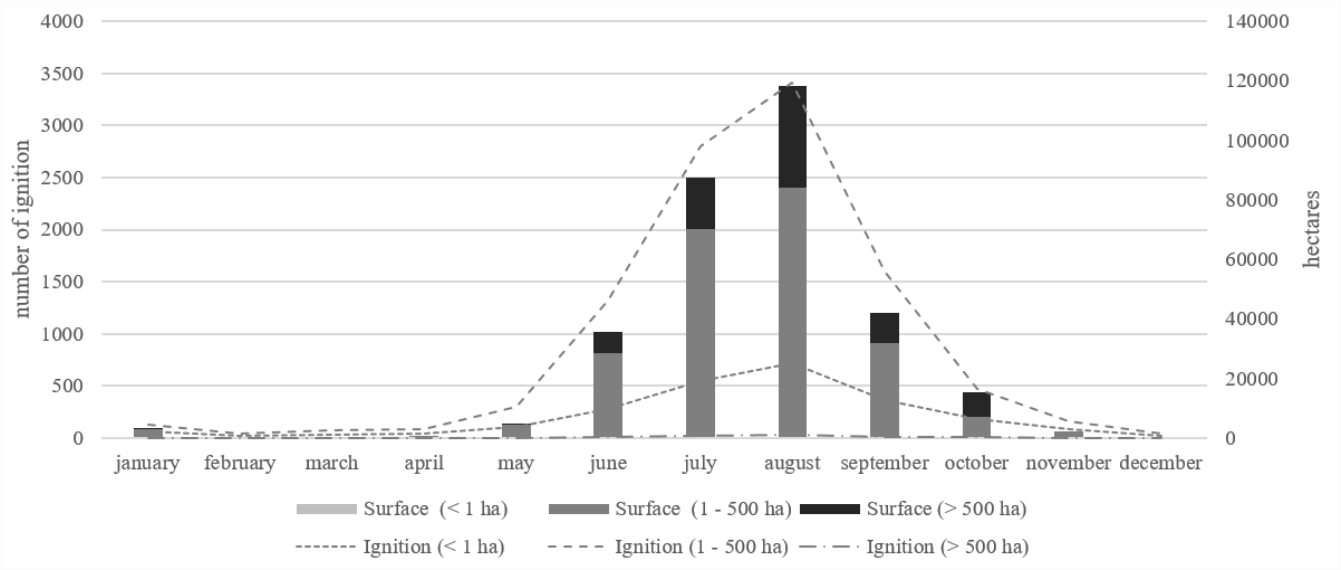
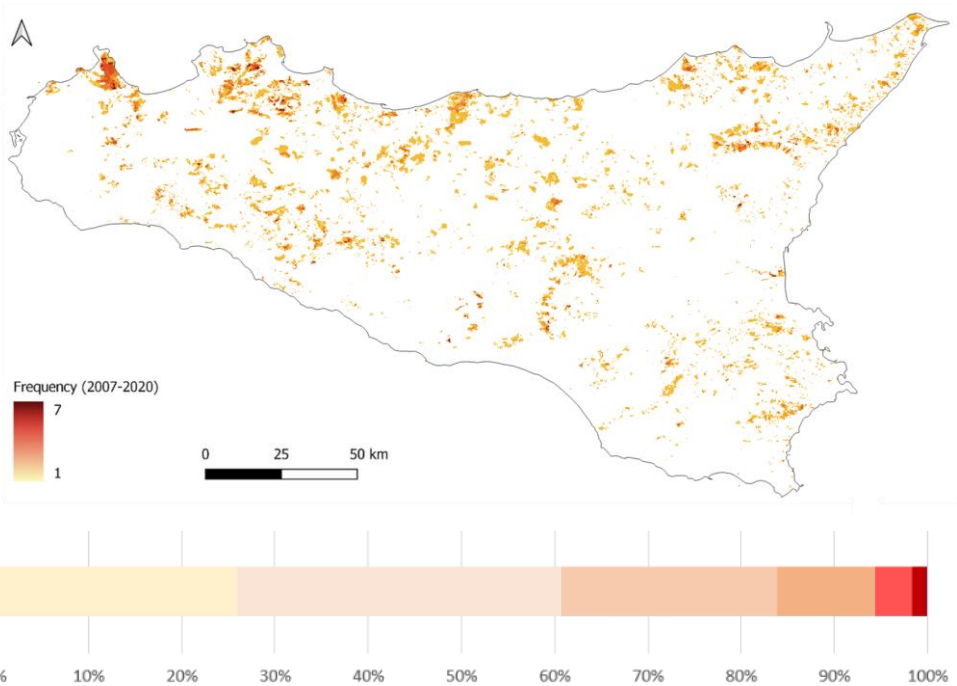


Figure 5: Historical ignitions vs. burned area by month from 2007 to 2020. Source: Regional Agency of Fire Control in Sicily and FIRMS.

358 Fire frequency analysis (Fig. 6) showed that a quarter of the area affected during 13 years (from 2007 to 2020) has burnt once,
359 34.8% twice. 23.1% have burned three times or more, and nearly 6% have been burnt more than 5 times in 13 years. Burned
360 area is spread throughout Sicily, however, areas close to cities, such as Palermo, have been burnt more than others.



361

362

363 **Figure 6: Fire frequency aggregated by year. The legend shows how many times the same area has been burnt during the period of**
364 **2007-2020.**

365 Fire ignition causes have been recorded since 2010. Figure 7 shows that, every year, more than 70% of wildfires are caused
366 by arson, with 2010, 2011 and 2012 being particularly relevant. The percentage of wildfires caused by negligence or natural
367 effects is of little relevance. In general, it seems that the trend of arson is decreasing significantly over the years, from 91.54%
368 to 67.06%. A large part of the percentage that decreases due to arson is replaced by wildfires of unknown origin, so we cannot
369 be confident that this trend is real.

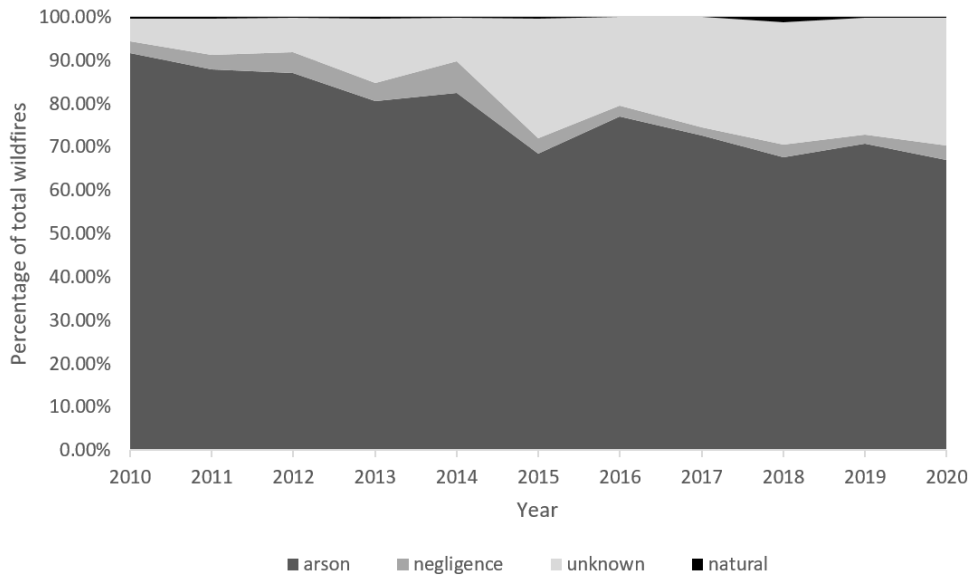


Figure 7: Relative frequency of fires by main fire causes in Sicily in 2010–2020.10 the total wildfires

3.2. The Bayesian data-driven approach

The Bayesian network model shows the probability of each child node under the probability of fire occurrence (where fire hazard is the parent node). For this purpose, in Figure 3, the state of the parent node based on historical fire is set to 100%, indicating that wildfire is certain. The posterior probability of each state of the explanatory variables is then obtained given the Conditional Probability Table (CPT) of each node (Fig. 3).

Accordingly, the fire occurrence probability at “Atmospheric temperature” is highest between 24.71°C and 28.65°C (S4, Table S2) and the weekly maximum temperature is between 27.93°C and 31.69°C. In over 80% of the cases, the weekly precipitation accumulated is below 0.05 mm for fire occurrence. Moreover, the more days without precipitation and higher solar radiation, the higher the probability of fire occurrence. As for the topographic variables, the most important is the slope, since the probability of fire is directly proportional to the slope. The same is observed in the case of elevation but in a less obvious pattern. The probability of fire is higher in locations that are closer to human activities such as roads or buildings and protected areas. Finally, in the case of the environmental variables, the highest fire probability in fuel forest type (S2, Table S1) is when ground fuel is grass (type 1), followed by high shrubs (between 2.0 and 4.0 m) and young trees resulting from natural regeneration or forestation (type 4). The third riskier fuel type is type 5, which occurs when the ground fuel is removed either by prescribed burning or by mechanical means. This situation may also occur in closed canopies in which the lack of sunlight inhibits the growth of surface vegetation.

The most influential variables (in terms of connection strength) according to our BN algorithm are atmospheric temperature, days without precipitation and fuel type (Table 5). While atmospheric temperature and the number of days without precipitation

are expected to increase in variability and increase fire hazard with limited options for human mitigation, fuel type can be managed with punctual landscape interventions reducing its combustibility level where it is more necessary.

The k-fold cross-validation algorithm has been used to estimate the model's accuracy. This algorithm uses the training/testing process “k” times and averages the results. The results for k=10 showed that 83.997% of the instances were correctly classified in two values: occurrence and non-occurrence of wildfires.

We use the confusion matrix to measure the performance of the classification (Table 6). The results show 12,172 correctly classified instances, but also 1,426 false positives and 893 false negatives. The type I error (false positive), i.e. detecting a fire where it, in reality, is not, could lead to allocating efforts to unnecessary areas. Type II error (false negative), could not identify the probability of fire in risk situations and, therefore, would not be managed properly. A false negative rate (0.11) is calculated as the number of incorrect positive predictions divided by the total number of negatives; the best false positive rate is 0.0.

Table 6: Confusion matrix of fire hazard BN modeling.

		Real		Sum
		No fire	Fire	
Predicted	No fire	5,573	893 (type II error)	6,466
	Fire	1,426 (type I error)	6,599	8,025
Sum		6,999	7,492	14,491

The Bayes theorem is key to interpreting the output of binary classification problems using the calculated confusion matrix. Precision is the confusion matrix probability $P(\text{Fire}/\text{TotalPredictedFire}) = 6,599/8,025 = 0.822$. It is the probability that the fire predicted as fire is true. Recall $P(\text{Fire}/\text{TotalActualFire}) = 6,599/7,492 = 0.881$ is the percentage of the actual fires that were correctly predicted by our classification algorithm. Table 7 also shows that the precision for the negative class (no fire) is 0.822. Moreover, the overall accuracy (weighted average between fire and no fire) is 0.841 and 0.840 for precision and recall respectively and gives an overall picture of our model. These weighted results are close to our precision and recall values for fire variables because our model is balanced (7,492 wildfires (51.70%) vs. 6,999 no wildfires (48.29%)). Hence, the overall accuracy (0.84) is a good metric in this situation.

Table 7: Sensitivity analysis of fire hazard model.

	TP	FP	Precision	Recall	F-	MCC	ROC	PRC

	Rate	Rate			Measure			
No fire	0.796	0.119	0.862	0.796	0.828	0.681	0.915	0.922
Fire	0.881	0.204	0.822	0.881	0.851	0.681	0.915	0.903
Weighted Avg.	0.84	0.163	0.841	0.84	0.84	0.681	0.915	0.912

The confusion matrix is also useful for measuring other significant metrics such as the ROC (Receiver Operating Characteristic) curve that summarizes the performance of the Bayesian classifier over all possible thresholds (Bradley, 1997; Fawcett, 2006). It measures accuracy in a weighted sort and is appropriate when the observations are balanced between each class, as in this case. For example, we used a sorting-based method called Area Under the ROC Curve (AUC) that measures the two-dimensional region below the ROC curve from (0,0) to (1,1). Not only the model presents a strong AUC result of 0.915 for fire hazard, because the result is close to 1, but it also shows a significant F-Measure (a harmonic mean of the precision and recall) with 0.847. The model performs well also in terms of uncertainty of the results. In Supplementary Materials (S4, Figure S6) we display the uncertainty map associated with the standard deviation of the probability distribution of fire hazard.

As an example, we present the fire hazard model results (i.e. the mean values of the simulated probability distributions) for August 2050 because this is the month with the most critical historical wildfires in Sicily (Fig. 5), assuming no changes in ecosystem management. Given the ease of access and reuse of models and data in k.LAB, any user of the modeling platform can run the fire hazard model at any time in the future until 2055, as the input data are on the platform and are openly available. As anticipated, the results of the model were divided into 3 equal intervals, related to the level of fire hazard (low: probability of fire less than 33%, medium: between 33 and 66%, high: more than 66% of chance). Figure 8 shows the comparison between the average results for August in 2020 and 2050 at 50 m of resolution.

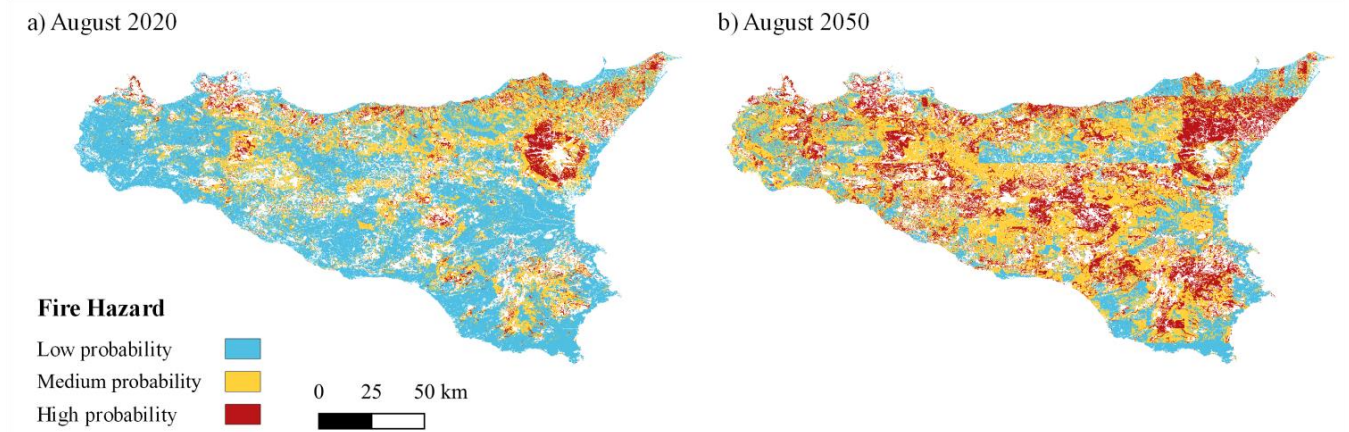


Figure 8. Example of fire hazard in (a) August 2020 (b) and 2050 classified by low, medium, or high probability of fire occurrence.

When comparing simulated outcomes for 2020 and 2050, the increase of areas with high fire probability and decrease of those with low fire probability becomes evident. The area with low fire probability changed from 12,300 km² to 4,887 km², representing a reduction of almost 40%. The extension of area with medium probability of fire occurrence increased from 29% of the total wildland area to 48%. Finally, the wildland area with high fire probability occurrence changed from 8% (1,675.26 km²) to 27% (5,357.62 km²), an increase of 319.8% between the two scenarios. We here highlight the most significant change: from low to medium probability of fire occurrence, which has increased by 7,112.58 km². Conversely 4,504.34 km² of wildland areas with low probability of fire occurrence remain unchanged between 2020 and 2050.

3.3. Wildfire risk levels

The wildfire risk map at 50 m of resolution integrates a set of variables related to exposure and vulnerability (Table 1). In this study, we analyze the areas with important ecological values and ecosystem services for both humans and nature, which would be potentially affected in case of fire due to its exposition.

Figure 9 compares the average spatial variability of the ecosystem services and ecological values exposed in August 2020 and August 2050. In the horizontal axes, the figures are distributed by levels of fire occurrence probability. (low, medium, and high), according to the fire hazard model. The 2020 column shows that the most exposed area corresponds to the low fire hazard level. As the level of fire hazard increases, the exposed area decreases. In contrast, the 2050 column shows that the most exposed area corresponds to the medium fire hazard level, followed by high and low probabilities of fire occurrence.

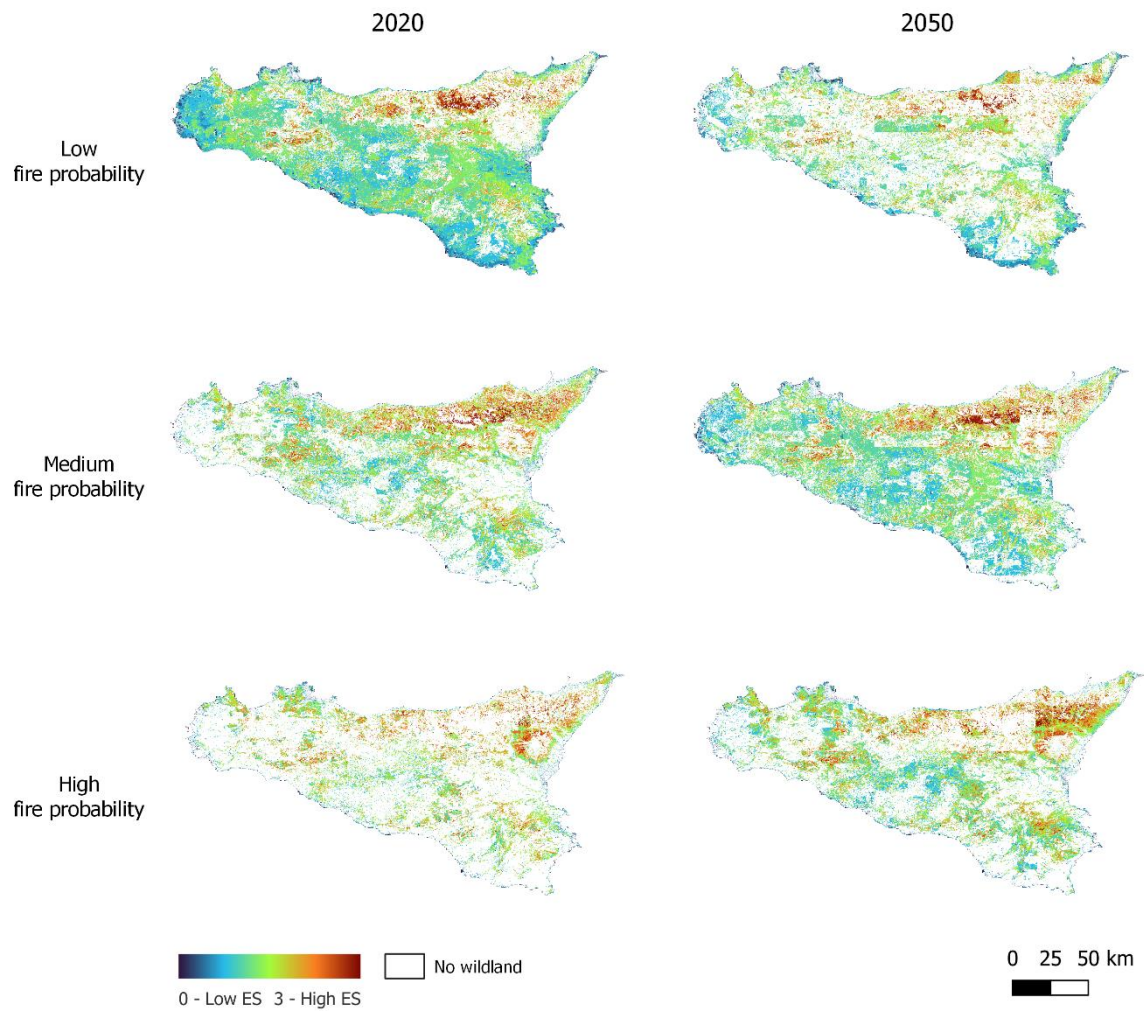


Figure 9: Exposure map of ecological values and ES (Ecosystem Services) that may interact with levels of forest fire probability. (low, medium, and high), in 2020 and 2050.

Linked to Figure 9, Figure 10 shows the changes (in km²) broken-down by ES (Ecosystem Services). As we observed in the exposure maps (Fig. 9), the fire hazard increases in all ES. For example, the exposure to the Carbon Mass ecosystem service and Biodiversity will increase by more than 150% in the exposed areas with high fire probability (S5, Table S3). Outdoor recreation, Soil retention, and Pollination ecosystem services will increase by 117%, 100%, and 56%, respectively. In contrast, the exposure with low fire probability will decrease between 50% and 65% each.

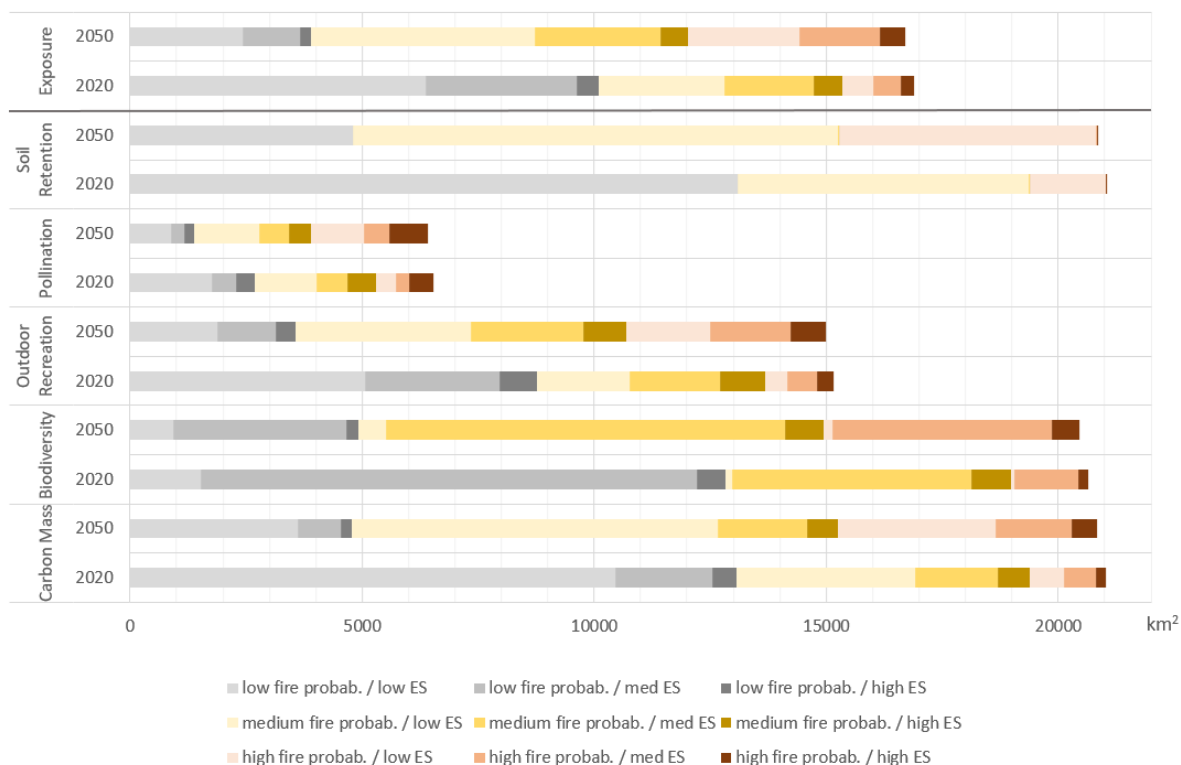
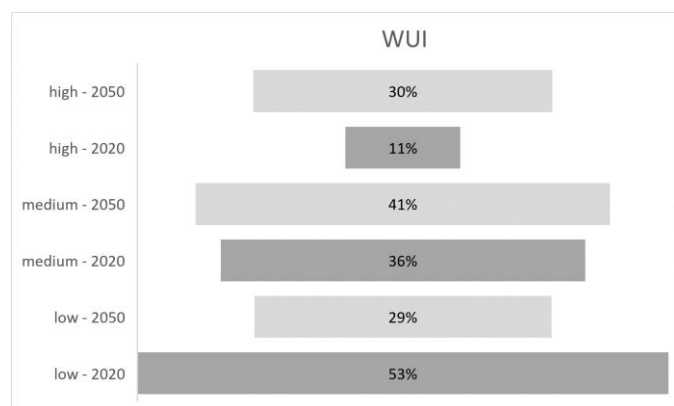


Figure 10: Comparison of the fire hazard level -low (grey), medium (yellow), high (red)- by the importance of the socio-ecological elements exposed in different color tones (low, medium or high). Values show the surface average (km²) in August 2020 and 2050.

Figure 11 shows how the percentage of vulnerable areas is distributed in each of the variables analyzed as a function of the fire probability. Therefore, following the same trend as exposed areas, ecosystem services and ecological values increase fire risk with the influence of climate change. The WUI (Wildland-Urban Interface) case, increases by 19% for high fire probabilities in 2050 and almost half of the wildfires will be at medium risk. In both WAI (Wildland-Agriculture Interface) and protected areas, half of their area could face a high fire risk in the future, doubling the 2020 data.



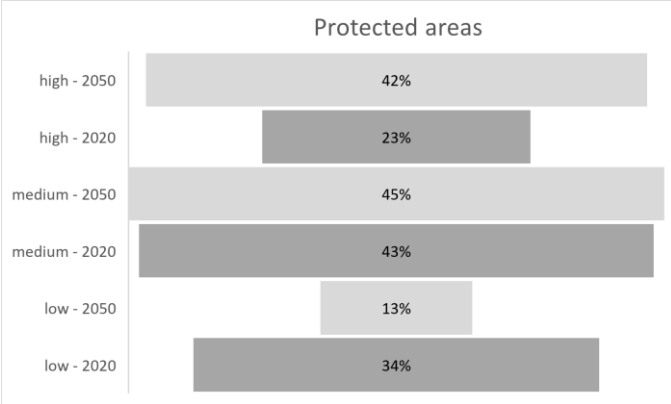
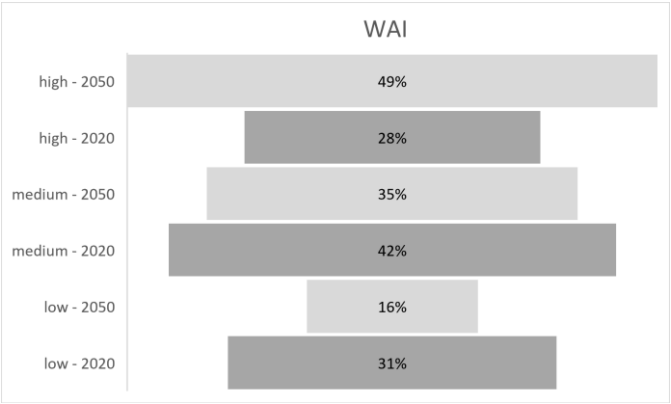


Figure 11: Percentage of the vulnerable areas distributed in each of the variables analyzed (WUI, WAI, Protected Areas) as a function of the fire probability.

Most of the vulnerable locations close to agricultural areas have a high probability of fire. However, one of the areas with high vulnerability in the protected area overlaps with sites that are difficult to access for the population, such as the Nebrodi Regional Park or the Madonie Regional Natural Park (Fig. 12).

Overall, the area with the highest socio-ecological value is in the northeastern quadrant of the island, coinciding with the areas of highest fire risk. In contrast, low-protected regions are primarily agricultural areas, urban surroundings, or areas that have been affected by fire in the recent past. These non-vulnerability areas dominate most of the Sicilian territory.

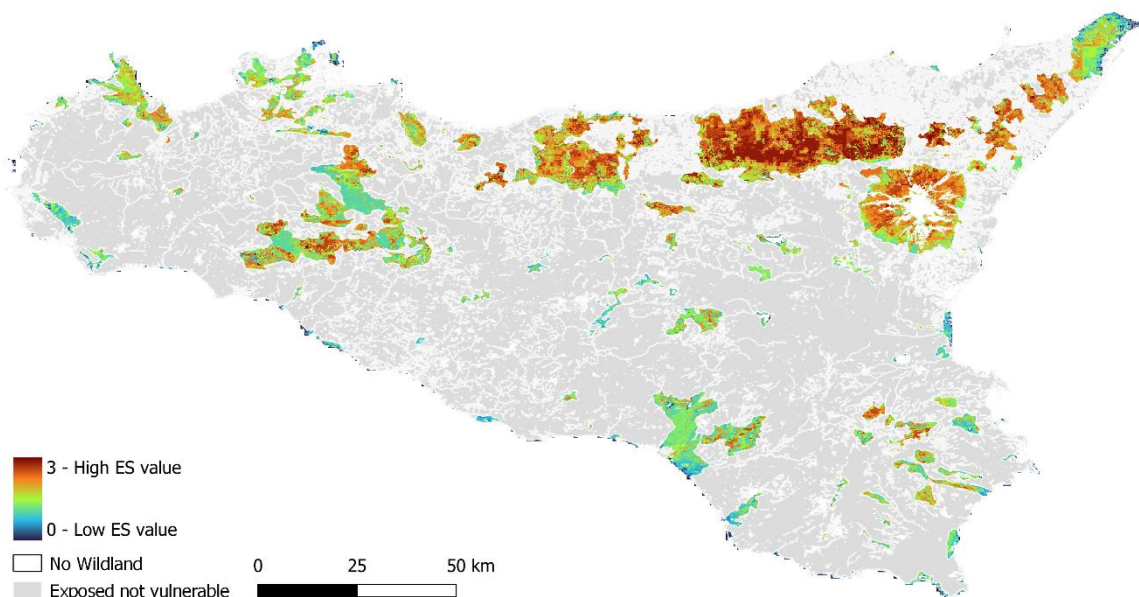


Figure 12: Risk map of hot spots of biodiversity and ecosystem services exposed in protected areas, Wildland-Urban Interface and Wildland-Agricultural Interface in August 2020. Colored from blue with a value of 0 (low socio-environmental value) to red with a value of 3 (high socio-environmental value). Exposed but not vulnerable areas are shaded in grey. No wildland areas and no exposed are in white.

4. Discussion and Summary

Although historical fire data are becoming more accessible and findable, there is still much to be done for enhancing their full use (e.g. their interoperability and reusability). The most reliable data are those collected in the field by authorized public or private institution, but in many cases, it is extremely difficult to access and download field data for the general public. In contrast, satellite data are becoming increasingly accessible. However, fires can not always be properly detected by satellites due to the following reasons: (i) they need a minimum fire size or intensity (linked to the resolution), (ii) there can be false alarms (commission errors), (iii) the information can be obscured by clouds or overstory vegetation, or the time of satellite overpass may not coincide with the fire (Hantson et al., 2013; Schroeder et al., 2008).

In this study, we use both satellite data and field data to verify and complement the fire-related information. Overall, satellite and field common problems are the scarce harmonization among data formats and the lack or bad quality of metadata. In this study, the main difficulties were the differences in parameters such as coordinate reference system, lack of metadata information and fire attributes between the yearly perimeters of fire. By integrating the data in k.LAB, all the data resources were harmonized, properly classified, and made available online with complete metadata.

Concerning the model quality, model errors are related to data location, spatio-temporal resolution or logical consistency (Guptill and Morrison, 2013; Kraak and Ormeling, 2020). Utilizing multiple data sources adds strength to the model and has been especially useful for detecting small wildfires related to land management: the vast majority of wildfires in Sicily. These kinds of wildfires may be too short-lived for the administration technicians or not intense enough to be captured by satellites. Moreover, we consider that this strategy avoided a bias in the estimation of predictors' probabilities (Roy et al., 2005).

The historical fire set was analyzed, filtered, cleaned and processed prior to fire hazard modeling. The frequency of wildfires from 2007 to 2020 was analyzed; some areas have burned more than once in the same year or more than 5 years during the 13-year period. We suggest that future studies would have to study why this phenomenon can happen and how it could be avoided, as such a high frequency of wildfires disrupts the cycle of natural processes of plants and animals, the loss of vegetation structure and composition and the associated ecosystem services.

Once the perimeters of each of the wildfires were identified, the associated information from the administration's wildfires was combined with the active fire points from the satellites to find the fire ignition area. Some differences were observed in the satellite and the government data. This may be due to reasons mentioned above: wildfires not detectable by satellites, or agricultural burnings detected as wildfires when the administration does not consider them as such. A great deal of effort was spent on data collection, cleaning, validation, pre-processing, and storage that complies with FAIR principles obtaining a reliable and open dataset: the basis of the occurrence of the fire model.

The model strength has been improved by extracting information from the predictors' data with dynamic and static variables such as meteorological or topographic data, respectively. Thus, the predictors have informed the model with values specific to each fire event. In addition, the predictors come from reliable and tested sources such as Copernicus or the Italian government as well as expert researchers and technicians. Some of the resources already existed within k.LAB such as protected areas or human settlement distribution and others were added, as fuel types or high resolution digital elevation model. The new information has been annotated in the semantic language k.IM and, like the historical fire data, now is open to any user and can interact with other k.LAB models in line with the FAIR principles.

It should be noted that this model has taken into account some of the explanatory variables at the time of ignition, but also some variables describing the ex-ante situation. Variables such as the average maximum temperature of the previous week, the accumulated precipitation or the number of days without rain were prior to the fire. The influence of climatic factors can help to predict the occurrence of wildfires related to climate change and the stress to which the forest was exposed (Halofsky et al., 2020; Trumbore et al., 2015).

The machine learning algorithm used, BN (Bayesian Network), provides a flexible and adaptable approach to structure the peculiarities of fire hazard modeling: different data sources, changes in spatio-temporal resolution and dynamic versus static

input data. BNs are useful in conducting probabilistic risk assessments since they are capable of directly modeling the whole probability distributions for stable conditions and trade-offs which is crucial for risk assessments such as fire risk of complex ecological systems. They also provide insights or quantification of the influence of a particular node on others (Kumar and Banerji, 2022). In addition, the evaluation of BNs presents much lower costs and efforts than other options, even when the dataset is partly incomplete, which is quite common for environment-related data (Bielza and Larrañaga, 2014). Most of the remaining issues are related to meteorological conditions and environmental data, either due to the punctual failure of nearby stations or problems in post-processing. However, these problems can be solved by integrating data with higher spatial resolution, which, once semantically annotated, will automatically substitute lower-quality resources.

Another advantage of BNs is that they are not a black box models: the direct interpretation of the results, based on the probabilities of the predicting variables, is given in each node probability distribution. Traditional modeling it is often difficult to access the details of the model accuracy for the end user, leading to a lack of reliability. Thanks to k.LAB and its web browser k.Explorer, the accuracy of the model is accessible and interpretable for non-expert end-users as stakeholders or land managers as we showed in the results. In line with FAIR principles, the final output and all the variables needed to compute the fire occurrence are supported by a narrative report produced at runtime to facilitate its interpretation. All these outputs are open and downloadable.

The algorithm used has provided significant values to detect areas with a high probability of fire occurrence. Thus, BNs provide a fast, reliable and accessible tool for land managers through k.LAB and semantics. The metrics related to type I and II errors can have great implications in practice, their acceptable values give credibility to the application and use of the model in real situations.

The integrated model has been able to simplify a problem as complex as the occurrence of wildfires by combining very disparate datasets. Given the results, we successfully identified the different degrees of fire hazard. The model results change according to the most influential variables that can change over time and space, such as meteorological, biophysical data and human pressure on the landscape.

By using k.LAB, a modeler can reutilize the model at any point in time, including calculating the fire hazard in real-time or in future scenarios. For example, we have run the model with future data for 2050 assuming forest management does not change. It has been analyzed how, due to extreme temperatures and the stress that they will place on vegetation, the probability of wildfires will be higher in a large part of Sicily and, therefore, new areas will be affected. The easy adaptation of the BN models together with k.Explorer visualization facilities by the stakeholders simplifies the incorporation of new data in the future to test different land management alternatives.

As the fire hazard model was incorporated into the k.LAB modeling environment,, this new model was able to interact and connect with existing models (Villa et al., 2017). Thus, we overlapped the future fire hazard with ecosystem services that were already developed and published by scientific researchers. We choose the ecosystems that are directly affected by fire such as pollination, soil retention, outdoor recreation, biodiversity and carbon mass.

5. Conclusions

Models informing environmental decisions are usually developed in isolation, self-contained and with results mostly accessible to code owners and their collaborators. However, in a globalized world with increasingly complex and intertwined problems, it is key to connect knowledge and develop methods that can identify integrated solutions (Balbi et al., 2022). The application of appropriate and reliable risk assessment techniques is key to understanding and potentially preventing future damage, but so is making this knowledge accessible to stakeholders. This study combines the power of Artificial Intelligence and, in particular, machine learning, knowledge representation and machine reasoning to model the risk of fire to ecosystem services in Sicily, the largest island in the Mediterranean Sea. We used the k.LAB technology, which provides a common platform to make data and models interoperable and accessible to non-technical users (Balbi et al., 2022).

In this study, we integrated historical fire data from 2007 to 2020 and other explanatory variables to identify the areas at the highest risk in present and future scenarios. We developed a data-driven model using a Bayesian Network (BN) classifier. Model analysis demonstrates that the BN algorithm applied to the historical wildfires data and their real-time variables achieves a high range of predictive accuracy. Despite the identified limitations as the resolution of meteorological data or detect small wildfires, the findings reveal the usefulness of the method, including the possibility to rerun the model at different time steps, and spatial scales statically or dynamically.

The fire risk spatial results are easily accessible through a web browser that can be used freely by land managers and stakeholders. This can help to create new prevention guidelines or focus on the risky areas. Moreover, the model gives scientists and land managers indications about the variables that mostly affect fire probability and how they can mitigate this environmental risk.

Code availability. Code used in this research is open and available at (Marquez Torres, 2023)

Data availability. Data used in this research is open and available at (Marquez Torres, 2023)

Supplement. The supplement related to this article is available on- line at: <https://doi.org/10.5281/zenodo.7618466>

Author contributions. AMT, FV, SB conceptualized the project. AMT, GS provided the data. AMT developed and calibrated the model and ran the simulations. AMT analyzed the data and carried out the investigation. AMT visualized the data. AMT drafted the paper. GS, SB, SK, GA reviewed and edited the paper.

Competing interests. The contact author has declared that none of the authors has any competing interests.

578 *Disclaimer.* Publisher’s note: Copernicus Publications remains neutral with regard to jurisdictional claims in published maps
 579 and institutional affiliations.

580 *Special issue statement.* This article is part of the special issue “The role of fire in the Earth system: understanding interactions
 581 with the land, atmosphere, and society (ESD/ACP/BG/GMD/NHESS inter-journal SI)”. It is not associated with a conference.

582 *Acknowledgements:* We had like to thank the University of Catania for data access, expertise and support. We acknowledge
 583 the use of E-OBS dataset from the EU-FP6 project UERRA (<https://www.uerra.eu>) and the Copernicus Climate Change
 584 Service, and the data providers in the ECA&D project (<https://www.ecad.eu>). We acknowledge the use of data and/or imagery
 585 from NASA's Fire Information for Resource Management System (FIRMS) (<https://earthdata.nasa.gov/firms>), part of NASA's
 586 Earth Observing System Data and Information System (EOSDIS). Map data copyrighted OpenStreetMap contributors and
 587 available from <https://www.openstreetmap.org>.

588 Financial support: This research is part of the FPI MDM-2017-0714-18-2 funded by
 589 MCIN/AEI/10.13039/501100011033 and partially supported by University of Catania; and by the Basque
 590 Government through the BERC 2022-2025 program

591 **References**

- 592 Ager, A. and Finney, M. A.: Climate change impact on fire probability and severity in Mediterranean areas, In: Viegas, D. X.,
 593 ed. Proceedings of the VI International Conference on Forest Fire Research; 15-18 November 2010; Coimbra, Portugal.
 594 Coimbra, Portugal: University of Coimbra. 9 p., 2010.
- 595 Aguilera, P. A., Fernández, A., Fernández, R., Rumí, R., and Salmerón, A.: Bayesian networks in environmental modelling,
 596 Environmental Modelling & Software, 26, 1376–1388, <https://doi.org/10.1016/j.envsoft.2011.06.004>, 2011.
- 597 Aldersley, A., Murray, S. J., and Cornell, S. E.: Global and regional analysis of climate and human drivers of wildfire, Science
 598 of The Total Environment, 409, 3472–3481, <https://doi.org/10.1016/j.scitotenv.2011.05.032>, 2011.
- 599 Angelini, P., Bianco, P., Cardillo, A., Francescato, C., and Oriolo, G.: Gli habitat in Carta della Natura - schede descrittive
 600 degli habitat per la cartografia alla scala 1:50.000, Istituto Superiore per la Protezione e la Ricerca Ambientale (ISPRA), 2009.
- 601 Antrop, M.: Why landscapes of the past are important for the future, Landscape and Urban Planning, 70, 21–34,
 602 <https://doi.org/10.1016/j.landurbplan.2003.10.002>, 2005.
- 603 Arno, S. F. and Brown, J. K.: Overcoming the paradox in managing wildland fire, Western Wildlands, 17, 40–46, 1991.
- 604 Artés, T., Oom, D., de Rigo, D., Durrant, T. H., Maianti, P., Libertà, G., and San-Miguel-Ayanz, J.: A global wildfire dataset
 605 for the analysis of fire regimes and fire behaviour, Sci Data, 6, 296, <https://doi.org/10.1038/s41597-019-0312-2>, 2019.
- 606 Baas, S., Conforti, P., Ahmed, S., and Markova, G.: The impact of disasters and crises on agriculture and food security, FAO,
 607 2018.

608 Bacciu, V., Hatzaki, M., Karali, A., Cauchy, A., Giannakopoulos, C., Spano, D., and Briche, E.: Investigating the Climate-
609 Related Risk of Forest Fires for Mediterranean Islands' Blue Economy, *Sustainability*, 13, 10004,
610 <https://doi.org/10.3390/su131810004>, 2021.

611 Baiamonte, G., Domina, G., Raimondo, F. M., and Bazan, G.: Agricultural landscapes and biodiversity conservation: a case
612 study in Sicily (Italy), *Biodivers Conserv*, 24, 3201–3216, <https://doi.org/10.1007/s10531-015-0950-4>, 2015.

613 Balbi, S., Selomane, O., Sitas, N., Blanchard, R., Kotzee, I., O'Farrell, P., and Villa, F.: Human dependence on natural
614 resources in rapidly urbanising South African regions, *Environ. Res. Lett.*, 14, 044008, <https://doi.org/10.1088/1748-9326/aafe43>, 2019.

616 Balbi, S., Bagstad, K. J., Magrach, A., Sanz, M. J., Aguilar-Amuchastegui, N., Giupponi, C., and Villa, F.: The global
617 environmental agenda urgently needs a semantic web of knowledge, *Environmental Evidence*, 11, 5,
618 <https://doi.org/10.1186/s13750-022-00258-y>, 2022.

619 Bao, J., Kendall, E. F., McGuinness, D. L., and Patel-Schneider, P. F.: *OWL 2 Web Ontology Language Quick Reference*
620 *Guide (Second Edition)*, 2012.

621 Bazan, G., Marino, P., Guarino, R., Domina, G., and Schicchi, R.: Bioclimatology and Vegetation Series in Sicily: A
622 Geostatistical Approach, *anbf*, 52, 1–18, <https://doi.org/10.5735/085.052.0202>, 2015.

623 Bazan, G., Castorao Barba, A., Rotolo, A., and Marino, P.: Geobotanical approach to detect land-use change of a
624 Mediterranean landscape: a case study in Central-Western Sicily, *GeoJournal*, 84, 795–811, <https://doi.org/10.1007/s10708-018-9892-1>, 2019.

626 Beuzen, T., Marshall, L., and Splinter, K. D.: A comparison of methods for discretizing continuous variables in Bayesian
627 Networks, *Environmental Modelling & Software*, 108, 61–66, <https://doi.org/10.1016/j.envsoft.2018.07.007>, 2018.

628 Bielza, C. and Larrañaga, P.: Discrete Bayesian Network Classifiers: A Survey, *ACM Comput. Surv.*, 47, 5:1-5:43,
629 <https://doi.org/10.1145/2576868>, 2014.

630 Birkmann, J., Buckle, P., Jaeger, J., Pelling, M., Setiadi, N., Garschagen, M., Fernando, N., and Kropp, J.: Extreme events and
631 disasters: a window of opportunity for change? Analysis of organizational, institutional and political changes, formal and
632 informal responses after mega-disasters, *Nat Hazards*, 55, 637–655, <https://doi.org/10.1007/s11069-008-9319-2>, 2010.

633 Bisson, M., Favalli, M., Fornaciai, A., Mazzarini, F., Isola, I., Zanchetta, G., and Pareschi, M. T.: A rapid method to assess
634 fire-related debris flow hazard in the Mediterranean region: An example from Sicily (southern Italy), *International Journal of*
635 *Applied Earth Observation and Geoinformation*, 7, 217–231, <https://doi.org/10.1016/j.jag.2005.04.003>, 2005.

636 Bonanno, G.: Adaptive management as a tool to improve the conservation of endemic floras: the case of Sicily, Malta and
637 their satellite islands, *Biodivers. Conserv.*, 22, 1317–1354, <https://doi.org/10.1007/s10531-013-0473-9>, 2013.

638 Bond, W. J. and Keeley, J. E.: Fire as a global 'herbivore': the ecology and evolution of flammable ecosystems, *Trends in*
639 *Ecology & Evolution*, 20, 387–394, <https://doi.org/10.1016/j.tree.2005.04.025>, 2005.

640 Borsuk, M. E.: Bayesian Networks, in: *Encyclopedia of Ecology*, edited by: Jørgensen, S. E. and Fath, B. D., Academic Press,
641 Oxford, 307–317, <https://doi.org/10.1016/B978-008045405-4.00144-0>, 2008.

642 Bouckaert, R. R.: Bayesian network classifiers in Weka, Department of Computer Science, Waikato University, Hamilton,
643 2004.

644 Bradley, A. P.: The use of the area under the ROC curve in the evaluation of machine learning algorithms, *Pattern Recognition*,
645 30, 1145–1159, [https://doi.org/10.1016/S0031-3203\(96\)00142-2](https://doi.org/10.1016/S0031-3203(96)00142-2), 1997.

646 Castellnou, M., Prat-Guitart, N., Arilla, E., Larrañaga, A., Nebot, E., Castellarnau, X., Vendrell, J., Pallàs, J., Herrera, J.,
647 Monturiol, M., Céspedes, J., Pagès, J., Gallardo, C., and Miralles, M.: Empowering strategic decision-making for wildfire
648 management: avoiding the fear trap and creating a resilient landscape, *fire ecol*, 15, 31, [https://doi.org/10.1186/s42408-019-](https://doi.org/10.1186/s42408-019-0048-6)
649 0048-6, 2019.

650 Catalano, R., Di Stefano, P., Sulli, A., and Vitale, F. P.: Paleogeography and structure of the central Mediterranean: Sicily and
651 its offshore area, *Tectonophysics*, 260, 291–323, [https://doi.org/10.1016/0040-1951\(95\)00196-4](https://doi.org/10.1016/0040-1951(95)00196-4), 1996.

652 Certini, G.: Effects of fire on properties of forest soils: a review, *Oecologia*, 143, 1–10, [https://doi.org/10.1007/s00442-004-](https://doi.org/10.1007/s00442-004-1788-8)
653 1788-8, 2005.

654 Chappaz, F. and Ganteaume, A.: Role of land-cover and WUI types on spatio-temporal dynamics of fires in the French
655 Mediterranean area, *Risk Analysis*, <https://doi.org/10.1111/risa.13979>, 2022.

656 Chen, S. H. and Pollino, C. A.: Good practice in Bayesian network modelling, *Environmental Modelling & Software*, 37, 134–
657 145, <https://doi.org/10.1016/j.envsoft.2012.03.012>, 2012.

658 Chen, X.-W., Anantha, G., and Lin, X.: Improving Bayesian Network Structure Learning with Mutual Information-Based
659 Node Ordering in the K2 Algorithm, *IEEE Transactions on Knowledge and Data Engineering*, 20, 628–640,
660 <https://doi.org/10.1109/TKDE.2007.190732>, 2008.

661 Chuvieco, E., Allgöwer, B., and Salas, J.: Integration of Physical and Human Factors in Fire Danger Assessment, in: *Wildland*
662 *Fire Danger Estimation and Mapping*, vol. Volume 4, WORLD SCIENTIFIC, 197–218,
663 https://doi.org/10.1142/9789812791177_0007, 2003.

664 Cohen, J.: The wildland-urban interface fire problem: A consequence of the fire exclusion paradigm, *Forest History Today*.
665 Fall: 20-26., 20–26, 2008.

666 Cooper, G. F. and Herskovits, E.: A Bayesian method for the induction of probabilistic networks from data, *Machine learning*,
667 9, 309–347, 1992.

668 Cornes, R. C., Schrier, G. van der, Besselaar, E. J. M. van den, and Jones, P. D.: An Ensemble Version of the E-OBS
669 Temperature and Precipitation Data Sets, *Journal of Geophysical Research: Atmospheres*, 123, 9391–9409,
670 <https://doi.org/10.1029/2017JD028200>, 2018.

671 Corrao, C.: Forest fires in Sicily, in: *The Management of Mass Burn Casualties and Fire Disasters: Proceedings of the First*
672 *International Conference on Burns and Fire Disasters*, edited by: Masellis, M. and Gunn, S. W. A., Springer Netherlands,
673 Dordrecht, 60–63, https://doi.org/10.1007/978-0-585-33973-3_9, 1992.

674 Cullotta, S. and Marchetti, M.: Forest types for biodiversity assessment at regional level: the case study of Sicily (Italy), *Eur J*
675 *Forest Res*, 126, 431–447, <https://doi.org/10.1007/s10342-006-0166-y>, 2007.

676 Daily, G., Postel, S., Bawa, K., and Kaufman, L.: *Nature’s Services: Societal Dependence On Natural Ecosystems*, Bibliovault
677 OAI Repository, the University of Chicago Press, 1997.

678 Di Maida, G.: The earliest human occupation of Sicily: A review, *The Journal of Island and Coastal Archaeology*, 0, 1–18,
679 <https://doi.org/10.1080/15564894.2020.1803460>, 2020.

680 Drago, A.: Desertification processes and possible mitigation actions [Sicily], Tecnica Agricola (Italy), 2005.

681 Duane, A., Castellnou, M., and Brotons, L.: Towards a comprehensive look at global drivers of novel extreme wildfire events,
682 Climatic Change, 165, 43, <https://doi.org/10.1007/s10584-021-03066-4>, 2021.

683 Faivre, N., Jin, Y., Goulden, M. L., Randerson, J. T., Faivre, N., Jin, Y., Goulden, M. L., and Randerson, J. T.: Controls on the
684 spatial pattern of wildfire ignitions in Southern California, Int. J. Wildland Fire, 23, 799–811,
685 <https://doi.org/10.1071/WF13136>, 2014.

686 Falcucci, A., Maiorano, L., and Boitani, L.: Changes in land-use/land-cover patterns in Italy and their implications for
687 biodiversity conservation, Landscape Ecol, 22, 617–631, <https://doi.org/10.1007/s10980-006-9056-4>, 2007.

688 Fawcett, T.: An introduction to ROC analysis, Pattern Recognition Letters, 27, 861–874,
689 <https://doi.org/10.1016/j.patrec.2005.10.010>, 2006.

690 Ferrara, C., Salvati, L., Corona, P., Romano, R., and Marchi, M.: The background context matters: Local-scale socioeconomic
691 conditions and the spatial distribution of wildfires in Italy, Science of The Total Environment, 654, 43–52,
692 <https://doi.org/10.1016/j.scitotenv.2018.11.049>, 2019.

693 Frank, E., Hall, M. A., and Witten, I. H.: The WEKA Workbench. Online Appendix for “Data Mining: Practical Machine
694 Learning Tools and Techniques,” 4th ed., Morgan Kaufmann, 2016.

695 Friedman, N. and Goldszmidt, M.: Discretizing Continuous Attributes While Learning Bayesian Networks, Proceedings of the
696 13th International Conference on Machine Learning, 157–165, 1996.

697 Fu, Y., Li, R., Wang, X., Bergeron, Y., Valeria, O., Chavardès, R. D., Wang, Y., and Hu, J.: Fire Detection and Fire Radiative
698 Power in Forests and Low-Biomass Lands in Northeast Asia: MODIS versus VIIRS Fire Products, Remote Sensing, 12, 2870,
699 <https://doi.org/10.3390/rs12182870>, 2020.

700 Ganteaume, A., Camia, A., Jappiot, M., San-Miguel-Ayanz, J., Long-Fournel, M., and Lampin, C.: A review of the main
701 driving factors of forest fire ignition over Europe, Environ Manage, 51, 651–662, <https://doi.org/10.1007/s00267-012-9961-z>,
702 2013.

703 Ganteaume, A., Barbero, R., Jappiot, M., and Maillé, E.: Understanding future changes to fires in southern Europe and their
704 impacts on the wildland-urban interface, Journal of Safety Science and Resilience, 2, 20–29,
705 <https://doi.org/10.1016/j.jnlssr.2021.01.001>, 2021.

706 Gibbs, H. K. and Ruesch, A.: New IPCC Tier-1 Global Biomass Carbon Map for the Year 2000, Environmental System
707 Science Data Infrastructure for a Virtual Ecosystem (ESS-DIVE) (United States), <https://doi.org/10.15485/1463800>, 2008.

708 Giglio, L., Schroeder, W., and Justice, C. O.: The collection 6 MODIS active fire detection algorithm and fire products, Remote
709 Sensing of Environment, 178, 31–41, <https://doi.org/10.1016/j.rse.2016.02.054>, 2016.

710 Giorgi, F., Jones, C., and Asrar, G.: Addressing Climate Information Needs at the Regional Level: the CORDEX Framework,
711 175–183 pp., 2009.

712 Grothmann, T. and Patt, A.: Adaptive capacity and human cognition: The process of individual adaptation to climate change,
713 Global Environmental Change, 15, 199–213, <https://doi.org/10.1016/j.gloenvcha.2005.01.002>, 2005.

714 Guidotti, R., Monreale, A., Ruggieri, S., Turini, F., Giannotti, F., and Pedreschi, D.: A Survey of Methods for Explaining
715 Black Box Models, *ACM Comput. Surv.*, 51, 93:1-93:42, <https://doi.org/10.1145/3236009>, 2018.

716 Guptill, S. C. and Morrison, J. L.: *Elements of Spatial Data Quality*, Elsevier, 219 pp., 2013.

717 Halofsky, J. E., Peterson, D. L., and Harvey, B. J.: Changing wildfire, changing forests: the effects of climate change on fire
718 regimes and vegetation in the Pacific Northwest, USA, *fire ecol*, 16, 4, <https://doi.org/10.1186/s42408-019-0062-8>, 2020.

719 Hantson, S., Padilla, M., Corti, D., and Chuvieco, E.: Strengths and weaknesses of MODIS hotspots to characterize global fire
720 occurrence, *Remote Sensing of Environment*, 131, 152–159, <https://doi.org/10.1016/j.rse.2012.12.004>, 2013.

721 Hantson, S., Pueyo, S., and Chuvieco, E.: Global fire size distribution is driven by human impact and climate, *Global Ecology*
722 *and Biogeography*, 24, 77–86, <https://doi.org/10.1111/geb.12246>, 2015.

723 Henriksen, H. J., Rasmussen, P., Brandt, G., von Bülow, D., and Jensen, F. V.: Public participation modelling using Bayesian
724 networks in management of groundwater contamination, *Environmental Modelling & Software*, 22, 1101–1113,
725 <https://doi.org/10.1016/j.envsoft.2006.01.008>, 2007.

726 Intini, P., Ronchi, E., Gwynne, S., and Bénichou, N.: Guidance on Design and Construction of the Built Environment Against
727 Wildland Urban Interface Fire Hazard: A Review, *Fire Technol*, 56, 1853–1883, [https://doi.org/10.1007/s10694-019-00902-](https://doi.org/10.1007/s10694-019-00902-z)
728 *z*, 2020.

729 IPCC: 2006 IPCC Guidelines for National Greenhouse Gas Inventories, Prepared by the National Greenhouse Gas Inventories
730 Programm, IGES, Japan, 2006.

731 IPCC: *Managing the Risks of Extreme Events and Disasters to Advance Climate Change Adaptation — IPCC*, IPCC,
732 Cambridge University Press, Cambridge, United Kingdom and New York, NY, USA, 2012.

733 Jain, P., Coogan, S. C. P., Subramanian, S. G., Crowley, M., Taylor, S., and Flannigan, M. D.: A review of machine learning
734 applications in wildfire science and management, *Environ. Rev.*, 28, 478–505, <https://doi.org/10.1139/er-2020-0019>, 2020.

735 Kangas, A. S. and Kangas, J.: Probability, possibility and evidence: approaches to consider risk and uncertainty in forestry
736 decision analysis, *Forest Policy and Economics*, 6, 169–188, [https://doi.org/10.1016/S1389-9341\(02\)00083-7](https://doi.org/10.1016/S1389-9341(02)00083-7), 2004.

737 Kelly, L. T. and Brotons, L.: Using fire to promote biodiversity, 355, 1264–1265, <https://doi.org/10.1126/science.aam7672>,
738 2017.

739 Kocher, S. D. and Butsic, V.: Governance of Land Use Planning to Reduce Fire Risk to Homes Mediterranean France and
740 California, *Land*, 6, 24, <https://doi.org/10.3390/land6020024>, 2017.

741 Kraak, M.-J. and Ormeling, F.: *Cartography: Visualization of Geospatial Data*, 4th ed., CRC Press, Boca Raton, 261 pp.,
742 <https://doi.org/10.1201/9780429464195>, 2020.

743 Kumar, S. and Banerji, H.: Bayesian network modeling for economic-socio-cultural sustainability of neighborhood-level urban
744 communities: Reflections from Kolkata, an Indian megacity, *Sustainable Cities and Society*, 78, 103632,
745 <https://doi.org/10.1016/j.scs.2021.103632>, 2022.

746 Lasaponara, R., Lanorte, A., and Pignatti, S.: Characterization and Mapping of Fuel Types for the Mediterranean Ecosystems
747 of Pollino National Park in Southern Italy by Using Hyperspectral MIVIS Data, *Earth Interactions*, 10, 1–11,
748 <https://doi.org/10.1175/EI165.1>, 2006.

749 Leone, V., Lovreglio, R., Martín, M. P., Martínez, J., and Vilar, L.: Human Factors of Fire Occurrence in the Mediterranean,
750 Earth Observation of Wildland Fires in Mediterranean Ecosystems, 149–170, https://doi.org/10.1007/978-3-642-01754-4_11,
751 2009.

752 Li, Z., Kamnitsas, K., and Glocker, B.: Analyzing Overfitting Under Class Imbalance in Neural Networks for Image
753 Segmentation, *IEEE Transactions on Medical Imaging*, 40, 1065–1077, <https://doi.org/10.1109/TMI.2020.3046692>, 2021.

754 Lozano, O. M., Salis, M., Ager, A. A., Arca, B., Alcasena, F. J., Monteiro, A. T., Finney, M. A., Del Giudice, L., Scoccimarro,
755 E., and Spano, D.: Assessing Climate Change Impacts on Wildfire Exposure in Mediterranean Areas, *Risk Analysis*, 37, 1898–
756 1916, <https://doi.org/10.1111/risa.12739>, 2017.

757 Marcot, B. G., Steventon, J. D., Sutherland, G. D., and McCann, R. K.: Guidelines for developing and updating Bayesian
758 belief networks applied to ecological modeling and conservation, *Can. J. For. Res.*, 36, 3063–3074,
759 <https://doi.org/10.1139/x06-135>, 2006.

760 Marquez Torres, A.: `amarqueztorres/fire_risk_sicily`: Fire Sicily, , <https://doi.org/10.5281/zenodo.7616451>, 2023.

761 Martínez-López, J., Bagstad, K. J., Balbi, S., Magrach, A., Voigt, B., Athanasiadis, I., Pascual, M., Willcock, S., and Villa, F.:
762 Towards globally customizable ecosystem service models, *Science of The Total Environment*, 650, 2325–2336,
763 <https://doi.org/10.1016/j.scitotenv.2018.09.371>, 2019.

764 Merrill, D. F. and Alexander, M. E.: Glossary of forest fire management terms., National Research Council of Canada,
765 Canadian Committee on Forest Fire Management, 91, 1987.

766 Michael, Y., Helman, D., Glickman, O., Gabay, D., Brenner, S., and Lensky, I. M.: Forecasting fire risk with machine learning
767 and dynamic information derived from satellite vegetation index time-series, *Science of The Total Environment*, 764, 142844,
768 <https://doi.org/10.1016/j.scitotenv.2020.142844>, 2021.

769 Mohajane, M., Costache, R., Karimi, F., Bao Pham, Q., Essahlaoui, A., Nguyen, H., Laneve, G., and Oudija, F.: Application
770 of remote sensing and machine learning algorithms for forest fire mapping in a Mediterranean area, *Ecological Indicators*, 129,
771 107869, <https://doi.org/10.1016/j.ecolind.2021.107869>, 2021.

772 Molina, M. O., Sánchez, E., and Gutiérrez, C.: Future heat waves over the Mediterranean from an Euro-CORDEX regional
773 climate model ensemble, *Sci Rep*, 10, 8801, <https://doi.org/10.1038/s41598-020-65663-0>, 2020.

774 Moreira, F. and Russo, D.: Modelling the impact of agricultural abandonment and wildfires on vertebrate diversity in
775 Mediterranean Europe, *Landscape Ecol*, 22, 1461–1476, <https://doi.org/10.1007/s10980-007-9125-3>, 2007.

776 Mouillot, F., Ratte, J.-P., Joffre, R., Mouillot, D., and Serge Rambal, and: Long-term forest dynamic after land abandonment
777 in a fire prone Mediterranean landscape (central Corsica, France), *Landscape Ecol*, 20, 101–112,
778 <https://doi.org/10.1007/s10980-004-1297-5>, 2005.

779 Narcizo, L., Santos, F. L., Peres, L. F., Trigo, R., and Libonati, R.: The impact of heat waves in forest fires over the Amazon
780 rainforest, *Copernicus Meetings*, <https://doi.org/10.5194/egusphere-egu22-10772>, 2022.

781 Nikolakis, W. and Roberts, E.: Wildfire governance in a changing world: Insights for policy learning and policy transfer, *Risk,*
782 *Hazards & Crisis in Public Policy*, 13, 144–164, <https://doi.org/10.1002/rhc3.12235>, 2022.

783 Nojarov, P. and Nikolova, M.: Heat waves and forest fires in Bulgaria, *Nat Hazards*, [https://doi.org/10.1007/s11069-022-](https://doi.org/10.1007/s11069-022-05451-3)
784 05451-3, 2022.

785 Oliveira, S., Oehler, F., San-Miguel-Ayanz, J., Camia, A., and Pereira, J. M. C.: Modeling spatial patterns of fire occurrence
786 in Mediterranean Europe using Multiple Regression and Random Forest, *Forest Ecology and Management*, 275, 117–129,
787 <https://doi.org/10.1016/j.foreco.2012.03.003>, 2012.

788 OpenStreetMap contributors: Planet dump retrieved from <https://planet.osm.org>, 2020.

789 Ortega, M., Saura, S., González-Avila, S., Gómez-Sanz, V., and Elena-Rosselló, R.: Landscape vulnerability to wildfires at
790 the forest-agriculture interface: half-century patterns in Spain assessed through the SISPARES monitoring framework,
791 *Agroforest Syst*, 85, 331–349, <https://doi.org/10.1007/s10457-011-9423-2>, 2012.

792 Otero, I., Castellnou, M., González, I., Arilla, E., Castell, L., Castellví, J., Sánchez, F., and Nielsen, J. Ø.: Democratizing
793 wildfire strategies. Do you realize what it means? Insights from a participatory process in the Montseny region (Catalonia,
794 Spain), *PLOS ONE*, 13, e0204806, <https://doi.org/10.1371/journal.pone.0204806>, 2018.

795 Paracchini, M. L., Zulian, G., Kopperoinen, L., Maes, J., Schägner, J. P., Termansen, M., Zandersen, M., Perez-Soba, M.,
796 Scholefield, P. A., and Bidoglio, G.: Mapping cultural ecosystem services: A framework to assess the potential for outdoor
797 recreation across the EU, *Ecological Indicators*, 45, 371–385, <https://doi.org/10.1016/j.ecolind.2014.04.018>, 2014.

798 Parente, J., Pereira, M. G., Amraoui, M., and Fischer, E. M.: Heat waves in Portugal: Current regime, changes in future climate
799 and impacts on extreme wildfires, *Science of The Total Environment*, 631–632, 534–549,
800 <https://doi.org/10.1016/j.scitotenv.2018.03.044>, 2018.

801 Pausas, J. G. and Fernández-Muñoz, S.: Fire regime changes in the Western Mediterranean Basin: from fuel-limited to drought-
802 driven fire regime, *Climatic Change*, 110, 215–226, <https://doi.org/10.1007/s10584-011-0060-6>, 2012.

803 Pausas, J. G., Bradstock, R. A., Keith, D. A., and Keeley, J. E.: Plant Functional Traits in Relation to Fire in Crown-Fire
804 Ecosystems, *Ecology*, 85, 1085–1100, <https://doi.org/10.1890/02-4094>, 2004.

805 Pausas, J. G., Llovet, J., Rodrigo, A., Vallejo, R., Pausas, J. G., Llovet, J., Rodrigo, A., and Vallejo, R.: Are wildfires a disaster
806 in the Mediterranean basin? – A review, *Int. J. Wildland Fire*, 17, 713–723, <https://doi.org/10.1071/WF07151>, 2008.

807 Pearl, J.: Probabilistic Reasoning in Intelligent Systems: Networks of Plausible Inference, Morgan Kaufmann, 576 pp., 1988.

808 Pearl, J.: Causality, Cambridge University Press, 486 pp., 2009.

809 Penman, T. D., Price, O., Bradstock, R. A., Penman, T. D., Price, O., and Bradstock, R. A.: Bayes Nets as a method for
810 analysing the influence of management actions in fire planning, *Int. J. Wildland Fire*, 20, 909–920,
811 <https://doi.org/10.1071/WF10076>, 2011.

812 Peruzzi, L., Conti, F., and Bartolucci, F.: An inventory of vascular plants endemic to Italy, *Phytotaxa*, 168, 1–75, 2014.

813 Planistat Europe and Bradley Dunbar Association: Analysis of the island regions and outermost regions of the European Union:
814 Part I The island regions and territories, European Commission, 2003.

815 Prestia, G. and Scavone, V.: Enhancing the Endogenous Potential of Agricultural Landscapes: Strategies and Projects for a
816 Inland Rural Region of Sicily, in: *Smart and Sustainable Planning for Cities and Regions*, Sspcr 2017, New York, 635–648,
817 https://doi.org/10.1007/978-3-319-75774-2_43, 2018.

818 Ragusa, M. A. and Rapicavoli, V.: Levels of desertification risk in the Sicilian forests according to MEDALUS-ESPI protocol,
819 *AIP Conference Proceedings*, 1863, 530004, <https://doi.org/10.1063/1.4992674>, 2017.

820 Regos, A., Aquilué, N., Retana, J., Cáceres, M. D., and Brotons, L.: Using Unplanned Fires to Help Suppressing Future Large
821 Fires in Mediterranean Forests, *PLOS ONE*, 9, e94906, <https://doi.org/10.1371/journal.pone.0094906>, 2014.

822 Renard, K. G., United States, and Agricultural Research Service.: Predicting soil erosion by water:a guide to conservation
823 planning with the revised universal soil loss equation (RUSLE), USDA, 1997.

824 Rennie, J. D. M., Shih, L., Teevan, J., and Karger, D. R.: Tackling the poor assumptions of naive bayes text classifiers, in:
825 Proceedings of the Twentieth International Conference on International Conference on Machine Learning, Washington, DC,
826 USA, 616–623, 2003.

827 Ricotta, C. and Di Vito, S.: Modeling the Landscape Drivers of Fire Recurrence in Sardinia (Italy), *Environmental*
828 *Management*, 53, 1077–1084, <https://doi.org/10.1007/s00267-014-0269-z>, 2014.

829 Robinne, F.-N., Parisien, M.-A., Flannigan, M., Robinne, F.-N., Parisien, M.-A., and Flannigan, M.: Anthropogenic influence
830 on wildfire activity in Alberta, Canada, *Int. J. Wildland Fire*, 25, 1131–1143, <https://doi.org/10.1071/WF16058>, 2016.

831 Roces-Díaz, J. V., Santín, C., Martínez-Vilalta, J., and Doerr, S. H.: A global synthesis of fire effects on ecosystem services
832 of forests and woodlands, *Frontiers in Ecology and the Environment*, 20, 170–178, <https://doi.org/10.1002/fee.2349>, 2022.

833 Rodrigues, M. and de la Riva, J.: An insight into machine-learning algorithms to model human-caused wildfire occurrence,
834 *Environmental Modelling & Software*, 57, 192–201, <https://doi.org/10.1016/j.envsoft.2014.03.003>, 2014.

835 Roy, D. P., Jin, Y., Lewis, P. E., and Justice, C. O.: Prototyping a global algorithm for systematic fire-affected area mapping
836 using MODIS time series data, *Remote Sensing of Environment*, 97, 137–162, <https://doi.org/10.1016/j.rse.2005.04.007>, 2005.

837 Ruffault, J., Curt, T., Moron, V., Trigo, R. M., Mouillot, F., Koutsias, N., Pimont, F., Martin-StPaul, N., Barbero, R., Dupuy,
838 J.-L., Russo, A., and Belhadj-Khedher, C.: Increased likelihood of heat-induced large wildfires in the Mediterranean Basin,
839 *Sci Rep*, 10, 13790, <https://doi.org/10.1038/s41598-020-70069-z>, 2020.

840 Satir, O., Berberoglu, S., and Donmez, C.: Mapping regional forest fire probability using artificial neural network model in a
841 Mediterranean forest ecosystem, *Geomatics, Natural Hazards and Risk*, 7, 1645–1658,
842 <https://doi.org/10.1080/19475705.2015.1084541>, 2016.

843 Schroeder, W., Csiszar, I., and Morisette, J.: Quantifying the impact of cloud obscuration on remote sensing of active fires in
844 the Brazilian Amazon, *Remote Sensing of Environment*, 112, 456–470, <https://doi.org/10.1016/j.rse.2007.05.004>, 2008.

845 Schroeder, W., Oliva, P., Giglio, L., and Csiszar, I. A.: The New VIIRS 375m active fire detection data product: Algorithm
846 description and initial assessment, *Remote Sensing of Environment*, 143, 85–96, <https://doi.org/10.1016/j.rse.2013.12.008>,
847 2014.

848 Sereni, E.: *Storia del paesaggio agrario italiano*, 1961.

849 Sicilia Assessorato beni culturali ed ambientali e pubblica istruzione: Linee guida del piano territoriale paesistico regionale /
850 Regione siciliana, Assessorato dei beni culturali ambientali e della pubblica istruzione, Regione siciliana, Assessorato
851 regionale dei beni culturali ed ambientali e della pubblica istruzione, \Palermo!, vii+472 pp., 1996.

852 Tedim, F., McCaffrey, S., Leone, V., Delogu, G. M., Castelnou, M., McGee, T. K., and Aranha, J.: 13 - What can we do
853 differently about the extreme wildfire problem: An overview, in: *Extreme Wildfire Events and Disasters*, edited by: Tedim,
854 F., Leone, V., and McGee, T. K., Elsevier, 233–263, <https://doi.org/10.1016/B978-0-12-815721-3.00013-8>, 2020.

855 Thomaidis, K., Troll, V. R., Deegan, F. M., Freda, C., Corsaro, R. A., Behncke, B., and Rafailidis, S.: A message from the
856 'underground forge of the gods': history and current eruptions at Mt Etna, *Geology Today*, 37, 141–149,
857 <https://doi.org/10.1111/gto.12362>, 2021.

858 Trumbore, S., Brando, P., and Hartmann, H.: Forest health and global change, *Science*, 349, 814–818,
859 <https://doi.org/10.1126/science.aac6759>, 2015.

860 Tymstra, C., Stocks, B. J., Cai, X., and Flannigan, M. D.: Wildfire management in Canada: Review, challenges and
861 opportunities, *Progress in Disaster Science*, 5, 100045, <https://doi.org/10.1016/j.pdisas.2019.100045>, 2020.

862 UNEP-WCMC and IUCN: Protected Planet: The World Database on Protected Areas (WDPA) [Online], Cambridge, UK:
863 UNEP-WCMC and IUCN., 2022.

864 Villa, F., Balbi, S., Athanasiadis, I. N., and Caracciolo, C.: Semantics for interoperability of distributed data and models:
865 Foundations for better-connected information, *F1000Res*, 6, 686, <https://doi.org/10.12688/f1000research.11638.1>, 2017.

866 Weichselgartner, J. and Pigeon, P.: The Role of Knowledge in Disaster Risk Reduction, *Int J Disaster Risk Sci*, 6, 107–116,
867 <https://doi.org/10.1007/s13753-015-0052-7>, 2015.

868 Wilkinson, M. D., Dumontier, M., Aalbersberg, Ij. J., Appleton, G., Axton, M., Baak, A., Blomberg, N., Boiten, J.-W., Santos,
869 L. B. da S., Bourne, P. E., Bouwman, J., Brookes, A. J., Clark, T., Crosas, M., Dillo, I., Dumon, O., Edmunds, S., Evelo, C.
870 T., Finkers, R., Gonzalez-Beltran, A., Gray, A. J. G., Groth, P., Goble, C., Grethe, J. S., Heringa, J., Hoen, P. A. C. 't, Hooft,
871 R., Kuhn, T., Kok, R., Kok, J., Lusher, S. J., Martone, M. E., Mons, A., Packer, A. L., Persson, B., Rocca-Serra, P., Roos, M.,
872 Schaik, R. van, Sansone, S.-A., Schultes, E., Sengstag, T., Slater, T., Strawn, G., Swertz, M. A., Thompson, M., Lei, J. van
873 der, Mulligen, E. van, Velterop, J., Waagmeester, A., Wittenburg, P., Wolstencroft, K., Zhao, J., and Mons, B.: The FAIR
874 Guiding Principles for scientific data management and stewardship, *Sci Data*, 3, 1–9, <https://doi.org/10.1038/sdata.2016.18>,
875 2016.

876 Willcock, S., Martínez-López, J., Hooftman, D. A. P., Bagstad, K. J., Balbi, S., Marzo, A., Prato, C., Sciandrello, S., Signorello,
877 G., Voigt, B., Villa, F., Bullock, J. M., and Athanasiadis, I. N.: Machine learning for ecosystem services, *Ecosystem Services*,
878 33, 165–174, <https://doi.org/10.1016/j.ecoser.2018.04.004>, 2018.

879 Wittenberg, L. and Malkinson, D.: Spatio-temporal perspectives of forest fires regimes in a maturing Mediterranean mixed
880 pine landscape, *Eur J Forest Res*, 128, 297, <https://doi.org/10.1007/s10342-009-0265-7>, 2009.

881 Wunder, S., Calkin, D. E., Charlton, V., Feder, S., Martínez de Arano, I., Moore, P., Rodríguez y Silva, F., Tacconi, L., and
882 Vega-García, C.: Resilient landscapes to prevent catastrophic forest fires: Socioeconomic insights towards a new paradigm,
883 *Forest Policy and Economics*, 128, 102458, <https://doi.org/10.1016/j.forpol.2021.102458>, 2021.

884