

Fire risk modeling: an integrated and data-driven approach applied to Sicily.

Alba Marquez Torres^{1,2}, Giovanni Signorello^{3,4}, Sudeshna Kumar¹, Greta Adamo¹, Ferdinando Villa^{1,5}, Stefano Balbi^{1,5}

¹BC3 Basque Centre for Climate Change-Klima Aldaketa Ikergai, 48940, Leioa, Spain.

²Department of Agriculture and Forest Engineering, University of Lleida, 25003, Lleida, Spain.

³University of Catania, Department of Agriculture, Food and Environment, Catania, 95131, Italy.

⁴Centre for the Conservation and Management of Nature and Agroecosystems (CUTGAN), Catania, 95123, Italy.

⁵IKERBASQUE, Basque Foundation for Science, Bilbao, 48009, Spain.

Correspondence to: Alba Marquez Torres (alba.marquez@bc3research.org)

Abstract. Wildfires are key to landscape transformation and vegetation succession, but also to socio-ecological values loss. Fire risk mapping can help to manage the most vulnerable and relevant ecosystems impacted by wildfires. However, few studies provide accessible daily dynamic results at different spatio-temporal scales. We develop a fire risk model for Sicily (Italy), an iconic case of the Mediterranean basin, integrating a fire hazard model with an exposure and vulnerability analysis under present and future conditions. The integrated model is data-driven but can run dynamically at a daily time-step, providing spatially and temporally explicit results through the k.LAB software. K.LAB provides an environment for input data integration, combining methods and data such as Geographic Information System, Remote Sensing and Bayesian Network algorithms. All data and models are semantically annotated, open and downloadable in agreement with the FAIR principles (Findable, Accessible, Interoperable and Reusable). The fire risk analysis reveals that 45% of vulnerable areas of Sicily are at high probability of fire occurrence in 2050. The risk model outputs also include qualitative risk indexes, which can make the results more understandable for non-technical stakeholders. We argue that this approach is well suited to aid in landscape and fire risk management, both under current and climate change conditions.

1 Introduction

Fire, as a natural disturbance, has played an important role in shaping forest structure, increasing biodiversity and leading the species' evolution (Bond and Keeley, 2005; Pausas et al., 2004). However, the balance between the natural fire regime and the ecosystem is often disrupted when humans modify the environment to their needs. In recent years, the rural depopulation and simultaneous spread of urban areas as residential buildings into the countryside have increased the fire frequency and burned areas (Faivre et al., 2014; Robinne et al., 2016). Although this is a worldwide problem, the Mediterranean climatic area has experienced a great impact (Kocher and Butsic, 2017; Leone et al., 2009; Pausas and Fernández-Muñoz, 2012).

Sicily (Italy), the largest island of the Mediterranean Sea with 25,711 km², has been the cradle of several civilizations and their traditions, with continuous and intense human exploitation of natural resources (forestry, grazing, agriculture) (Antrop, 2005; Sereni, 1961), encompassing multiple agricultural and agroforestry landscapes (Baïamonte et al., 2015; Di Maida, 2020). Due to its great variability of topography, lithology, pedology (Catalano et al., 1996) and climate (Bazan et al., 2015), Sicily is rich

Formatted: Font: (Default) Times, 14 pt, English (United States)

Deleted: modelling

Formatted: Numbering: Continuous

Deleted: moddaeling

Deleted:

Formatted: Font: (Default) Times, 14 pt, Bold

Formatted

Formatted: Font: (Default) Times, 14 pt, English (United States)

Formatted: Font: (Default) Times, 14 pt, Bold

Formatted

Deleted: ^{2...A,3}

Formatted: Font: 11 pt, English (United States)

Deleted:

Formatted

Deleted: ⁴

Formatted: Font: 11 pt, English (United States)

Deleted: ⁴

Formatted

Formatted: English (United States)

Formatted

Deleted: Universitat de Lleida, 25003, Lleida, Spain

Deleted: ²

Formatted: English (United States)

Deleted: ³

Formatted: English (United States)

Deleted: ⁴

Formatted: English (United States)

Deleted: fires...ildfires. However, few studies provide accessible daily dynamic results at different spatio-temporal scales. We develop a fire risk model for Sicily (Italy), an iconic case of the

Formatted: English (United States)

Deleted: danger

Formatted: English (United States)

Deleted: and...oth under current and climate change

Formatted

Deleted: had

Formatted

Deleted: its

Formatted

85 in biodiversity and ecosystems (Cullotta and Marchetti, 2007; Peruzzi et al., 2014). Therefore, the island can be viewed as
86 representative of the Mediterranean basin as a whole.

Formatted: English (United States)

Formatted: English (United States)

87 Moreover, Sicily is the most populated island in the Mediterranean Sea with nearly 5 million inhabitants, similar to Denmark
88 or Finland (Planistat Europe and Bradley Dunbar Association, 2003). As a consequence, year after year the environment has
89 undergone degradation due to the increase of intensive farming practices, the urbanization growth in the most populated and
90 tourist areas and the loss of traditional agricultural and forest management because of the rural population abandonment (Bazan
91 et al., 2019; Falcucci et al., 2007; Prestia and Scavone, 2018). In the last 50 years, the increase of forest and scrub mass due to
92 the abandonment of traditional land management (Bonanno, 2013; Ragusa and Rapicavoli, 2017) and the increase in the
93 frequency of long droughts created optimal conditions for the occurrence of wildfires (Mouillot et al., 2005; Ruffault et al.,
94 2020). The population living in the wildland-urban interface zone is particularly at risk due to exposure to fire and difficulty
95 in evacuation.

Formatted: English (United States)

Formatted: English (United States)

Formatted: English (United States)

Formatted: English (United States)

Formatted: English (United States)

Formatted: English (United States)

Formatted: English (United States)

Formatted: English (United States)

96 Uncontrolled wildfires in Sicily have increased in recent years, making Sicily the Italian region with the highest number of
97 fire events and the largest burned area between 2009 and May 2016 (Fig. 1). The probability of fire occurrence is mainly linked
98 to ignition source, forest fuels and environmental conditions (Ganteaume et al., 2013; Hantson et al., 2015; Ricotta and Di
99 Vito, 2014). The ignition sources are usually divided into natural causes (mainly lightning but geological causes too) and
100 human (accidentally or intentionally) (Aldersley et al., 2011; Ganteaume et al., 2013; Rodrigues and de la Riva, 2014). The
101 main causes of wildfires in Sicily are human-driven (Corrao, 1992; Ferrara et al., 2019). Arson and accidental wildfires, set up
102 to create new pasture resources or to burn stubble, are the first causes of wildfires, especially in areas where vegetation
103 interfaces with urban structures.

Formatted: Line spacing: 1.5 lines

Deleted: fires

Deleted: (Figure 1a)

Deleted: affected

Formatted: English (United States)

Formatted: English (United States), Not Highlight

Formatted: English (United States)

Deleted: Figure

Formatted: English (United States)

Deleted: b

Formatted: English (United States)

Deleted: hazard

Formatted: English (United States), Not Highlight

Formatted: English (United States)

Formatted: English (United States)

Formatted: English (United States)

Formatted: English (United States)

Formatted: English (United States)

Formatted: English (United States)

Deleted: fires

Deleted: ¶

Formatted: English (United States)

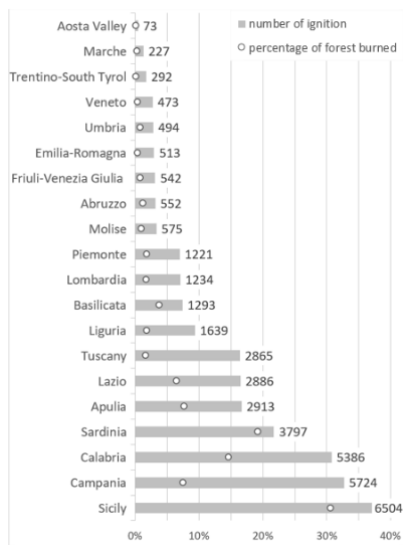


Figure 1: Total number of fire ignitions and percentage of area burned (over 30 ha) in Italy by region between 2009 and May 2016. Source: Fire activity statistics, Servizi Antincendio Boschivo (Italian Forest Fire Services).

The consequences of wildfires exceed the loss of forest cover, vary over time and can be long-lasting. Some ecosystem properties and functions that deliver benefits to humans (Daily et al., 1997; Roces-Díaz et al., 2022), including biodiversity, may be lost depending on fire extension, intensity and frequency. For example, after the wildfires in summer, with the arrival of the first heavy rains, there can be extensive erosion in burned areas, loss of organic matter or pollution of adjacent water bodies (Bisson et al., 2005; Certini, 2005). In general, burned areas lose their carbon sequestration capacity and desirability for outdoor recreation (Moreira and Russo, 2007).

The literature on fire modeling at different spatio-temporal scales is vast (Ganteaume et al., 2013; Jain et al., 2020; Tymstra et al., 2020). Due to its drought sensitivity, most studies focus on the Mediterranean climatic region (Oliveira et al., 2012; Satir et al., 2016; Wittenberg and Malkinson, 2009). Among the different methods applied, machine learning models are gaining traction due to increased computing power and data access. Many algorithms have been tested, including artificial neural networks, support vector machines, maximum entropy and random forest (Jain et al., 2020).

Risk fire mapping has been one of the most widely studied approaches in the forest fire literature. Even so, many models have become obsolete and have not been renewed (Ager and Finney, 2010; Mohajane et al., 2021). The spatial-temporal resolution

Deleted: ¶

Formatted

Deleted: Forest fa) Cumulative frequency ...otal number of f

Deleted: m...ay 2016. b) Total area affected by fire in Italy

Formatted

Formatted

Deleted: Statistiche sull'attività antincendio, Servizi

Formatted

Deleted: www.corporeforestale.it

Formatted

Deleted: fires...ildfires exceed the loss of forest cover, vary over

Formatted

Field Code Changed

Formatted

Deleted: known as ecosystem services

Formatted

Moved up [1]: (Daily et al., 1997; Roces-Díaz et al., 2022)

Deleted: represent a

Formatted

Moved (insertion) [1]

Formatted

Deleted: are ...ay be lost when fireswildfires are big, intense or

Formatted

Deleted: Some of those are such as biodiversity, carbon

Formatted

Deleted: A

Formatted

Deleted: majority of wildfires

Formatted

Field Code Changed

Deleted: ¶

Formatted

Formatted

Deleted:at different spatio-temporal scales,

Formatted

Deleted: or

Formatted

Formatted

Deleted: t

Formatted

To this end, we have developed a set of models in the k.LAB software and we integrated them into the ARIES network. These models are modular, interconnected, and semantically explicit under k.LAB, where we simulated the current wildfires and their interaction with key human and biophysical drivers, using a machine learning algorithm. Furthermore, as proof of the advantages of using FAIR data and resources, it has been possible to analyze future fire risk under climate change and consider the consequences for different ecosystem services using models included in ARIES and developed by other experts.

Deleted: platform
Formatted: English (United States)
Formatted: English (United States)
Deleted: and
Deleted: wildfires
Deleted: see
Formatted: English (United States)

2 Material and Methods

2.1 Study area

The case study was carried out on the island of Sicily, the largest and most populated island in the Mediterranean. Within its 2,571 ha, the altitudinal range reaches 3,357 m at the peak of one of the most active volcanoes in the world (Thomaidis et al., 2021). The island has a Mediterranean climate with mild and wet winters and dry and hot summers, highlighting the southwest coast, where the climate is affected by the African currents and summers. Rainfall is scarce leading to water deficits in some provinces. Moreover, the change in land use has gradually modified the climate, with less rainfall and drier rivers (Drago, 2005; Ragusa and Rapicavoli, 2017).

Formatted: English (United States)
Formatted: English (United States)
Formatted: English (United States)
Formatted: English (United States)

The land use change caused mainly by the intense deforestation throughout Sicily's history had favored intense agricultural practices, especially in the center and southwest. Thus, agricultural areas cover 57% of the island, whose 35% are arable lands and 22% permanent crops. Roughly a third of Sicily is forest, shrublands and open areas. Woodlands and semi-natural areas are sparse in the agricultural area and denser in areas with special protection, the most important being the Mount Etna surroundings, in the Nebrodi Mountains Regional Park and the Natural Reserve of Bosco della Ficuzza (Sicilia Assessorato beni culturali ed ambientali e pubblica istruzione, 1996). Due to its long-lasting socio-ecological history, location in the Mediterranean Sea, its fragility to climate change, and increasing fire regime, Sicily represents an ideal study area representative of the Mediterranean socio-ecological context.

Deleted: nowadays
Deleted: and r
Deleted: being
Deleted: in
Formatted: English (United States), Not Highlight
Formatted: English (United States)
Formatted: English (United States)
Formatted: English (United States)

2.2 Fire risk analysis

The interaction of environmental and social processes drives the risk (Table 1), determined by the combination of a physical hazard and the vulnerability of the socio-ecological elements exposed (IPCC, 2012).

Table 1. Fire risk is defined by vulnerability and hazard components (IPCC, 2012).

Formatted: English (United States)
Formatted: English (United States)
Formatted: English (United States)
Formatted: English (United States)
Formatted: Font: Not Bold, Italic, English (United States)
Deleted: for
Formatted: Font: Not Bold, Italic, English (United States)
Formatted: Font: Not Bold, Italic, English (United States)

RISK

The potential likelihood of negative consequences for the elements of value in a context considering the probability of occurrence of fire hazards. Fire risk results from the interaction of vulnerability, exposure, and hazard.

1. Hazard	2.Exposure	3.Vulnerability
<i>Probability of occurrence of a physical event (natural or human-induced) that may damage the elements in the same time-space context. For instance, the probability of fire occurrence.</i>	<i>Elements (and their values) that are in a context where a hazardous event, such as fire, may happen.</i>	<i>The tendency of exposed elements to be adversely affected by a hazardous event. For example, predisposition, susceptibility, fragility, weakness, of the exposed elements.</i>
Fire hazard components: <ul style="list-style-type: none"> • Weather: <ul style="list-style-type: none"> ○ Temperature ○ Weekly Maximum temperature ○ Days without precipitation ○ Weekly precipitation ○ Solar radiation • Biophysical drivers: <ul style="list-style-type: none"> ○ Forest fuel ○ Elevation ○ Slope • Human drivers: <ul style="list-style-type: none"> ○ Distance to protected area ○ Distance to road ○ Distance to human settlement 	Ecosystem services exposed: <ul style="list-style-type: none"> • Vegetation carbon mass • Pollination • Outdoor recreation • Soil retention • Biodiversity* <p><i>*Technically not an ecosystem service but added here as an associated element of exposure.</i></p>	Vulnerability <ul style="list-style-type: none"> • Wildland-Urban Interface (WUI) • Wildland-Agricultural Interface (WAI) • Nationally designated areas (CDDA)

335 Fire hazard captures the probability of fire occurrence, based on historical wildfires and drivers such as biophysical factors
336 and human-modified areas. The fire hazard interacts with the elements exposed; we highlight exposed ecological values and
337 ecosystem services such as biodiversity, pollination, carbon mass, soil retention and outdoor recreation that may be affected
338 by fire occurrence.

339 Vulnerability identifies exposed elements that are more susceptible to being highly or irreparably damaged due to their intrinsic
340 or contextual characteristics. Wildland-Urban Interface (WUI) is particularly fire-prone because it is a forested area less than
341 200 meters from an urban area (Ganteaume et al., 2021; Intini et al., 2020), due to the relationship between the ignition points
342 and populated areas (Chappaz and Ganteaume, 2022). It also represents a high weakness for human settlement, as they are
343 extremely close to the forest, becoming a problem in fire management (Cohen, 2008). Wildland-Agricultural Interface (WAI)
344 is a forest area in close proximity (less than 200 meters) to an agricultural area and highly predisposed to burning due to the
345 fire used for clearing forest and pasture or crop establishment (Leone et al., 2009; Ortega et al., 2012). Moreover, fire impacts
346 agricultural land, making food safety susceptible to hazards (Baas et al., 2018). Natural areas with special protection (UNEP-

Formatted: English (United States)

Deleted: socio-ecological ...xposed elements to be adversely affected by a hazardous event. For example, pP

Formatted: English (United States)

Deleted: Elements

Formatted: English (United States)

Deleted: occur and

Formatted: English (United States)

Deleted: defect, or lack of ability drive adverse effects on

Formatted: English (United States)

Formatted: English (United States)

Deleted: H

Formatted: English (United States)

Deleted: C

Formatted: English (United States)

Formatted: English (United States)

Formatted: Bulleted + Level: 1 + Aligned at: 0 cm + Indent at: 0.63 cm

Formatted: Outline numbered + Level: 1 + Numbering Style: Bullet + Aligned at: 0 cm + Indent at: 0.63 cm

Formatted: Bulleted + Level: 1 + Aligned at: 0 cm + Indent at: 0.63 cm

Formatted: Bulleted + Level: 2 + Aligned at: 1.27 cm + Indent at: 1.9 cm

Formatted: English (United States)

Formatted: English (United States)

Deleted: Soil retention

Formatted: No bullets or numbering

Formatted: Bulleted + Level: 1 + Aligned at: 0 cm + Indent at: 0.63 cm

Formatted: Bulleted + Level: 2 + Aligned at: 1.27 cm + Indent at: 1.9 cm

Formatted: English (United States)

Formatted: Bulleted + Level: 1 + Aligned at: 0 cm + Indent at: 0.63 cm

Formatted: Bulleted + Level: 2 + Aligned at: 1.27 cm + Indent at: 1.9 cm

Formatted: English (United States)

Formatted: Space Before: 12 pt, After: 12 pt

Deleted: fires

Formatted

WCMC and IUCN, 2022) are particularly fragile with species with different endemism ranges and sensitive to social, climate and environmental changes (Baiamonte et al., 2015).

Fire risk is considered to be the cumulative consequence given by the interplay context-specific elements. Those elements capture vulnerability, exposure, and hazard components emerging from the probability of fire occurrence. In this study we quantify fire risk by measuring the potential area affected, the hot spots of biodiversity and ecosystem services potentially exposed and their vulnerability. We also assess fire risk both in current and future conditions (S1, Fig. S1) to consider the impact of climate change.

2.2.1 Fire hazard model

The model presented in this study is developed using the k.LAB software to achieve interoperability from the data sources to the generated modeling results (Villa et al., 2017). Within k.LAB, an ontology-driven language called Knowledge-Integrated Modeling (k.IM), provides the basis for the semantic annotations (i.e., explicit definitions) of resources, such as external datasets, and individual modeling tasks (S1, Fig. S2). Once the resources are assembled in the resulting computational workflow, k.LAB returns in output contextualized models' results visualized on a map. To ensure transparency, textual documentation of the process followed to achieve the results with annexed references and the details about the workflow are also provided to the users.

Accurate spatio-temporal detection of fire hazard is essential for the modeling and analysis of fire risk; thus, a system that transparently keeps track of the origin and reliability of input data is crucial. The input data used in this study were collected from different sources and can be classified into two categories: (i) historical wildfires and (ii) explanatory variables, which include weather, human and biophysical drivers. The data collection and processing are discussed in the following paragraphs. All the data and resources are semantically annotated, openly accessible and interoperable within k.LAB.

Historical fire data from 2007 to 2020 were collected from two different sources: The Regional Agency of Fire Control in Sicily was used to identify the fire perimeter and the Fire Information for Resources Management System (FIRMS) satellite data to locate the ignition point (Table 2).

Table 2. Information about historical fire data

	Historical fire perimeter	Historical fire ignition
Source	Regional Agency of Fire Control in Sicily	FIRMS
Spatial resolution	GPS error, less than 10m	MODIS: 1km VIIRS: 375m .

Deleted: ...
Formatted ...
Deleted: ¶
Formatted ...
Formatted ...
Deleted: potential...umulative consequence consequence in an a
Formatted ...
Deleted: socio-ecological values will be vulnerable in those
Formatted ...
Deleted: model for
Formatted ...
Deleted: ,
Formatted ...
Deleted: ¶
Formatted ...
Formatted ...
Deleted: for this case
Formatted ...
Deleted: ...a community-based solution which was developed
Formatted ...
Field Code Changed ...
Formatted ...
Deleted: k
Formatted ...
Deleted: which is grounded on an internal knowledge-based,
Formatted ...
Deleted: the
Formatted ...
Deleted: engendering traceability and knowledge integration
Formatted ...
Deleted: models
Formatted ...
Deleted: resolved
Formatted ...
Deleted: a t
Formatted ...
Deleted: a computation
Formatted ...
Deleted: ¶
Formatted ...
Deleted: phasesanalyzing the probability of fire risk.
Formatted ...
Deleted: as k.LAB ...hat allows tracking
Formatted ...
Deleted: , and Through k.LAB, it is possible to allows to track
Formatted ...
Formatted ...
Formatted ...
Formatted ...
Formatted ...

Temporal coverage and time consistency	1 January 2007 - 31 December 2020 (Daily)	MODIS Collection 6: 11 November 2000 - present (Daily) VIIRS: 20 January 2012 - present (Daily)
Coordinate Reference System (CRS)	EPSG:102092 - Monte Mario Italy 2 - Projected for the years 2009 and 2017; EPSG:3004 - Monte Mario / Italy zone 2 - Projected	EPSG:4326 - WGS 84 - Geographic
Feature Type	Polygon	Point

Formatted: English (United States)

Deleted: resolution

Deleted: 2019

Deleted: -

Deleted: -

Formatted: English (United States)

Deleted: r...ference Ss...stemCRS

Formatted: English (United States)

Formatted: English (United States)

Formatted: Space Before: 12 pt, After: 12 pt

Deleted: forest- ...ires and provides the fire start and finish ...nd dates collected by the Forestry Information System (SIFFI

Formatted

Deleted: ...o locate active fires at

Formatted

Deleted: by

Formatted: Space Before: 12 pt, After: 12 pt

Deleted: in order ...o preserve a balanced dataset of observations that represent

Formatted

Deleted: The disparity across classes will be roughly the same when training data is not skewed....The weights for the class with training data, however, ...ill be lower when the training data is skewed. As a consequence

Formatted

Deleted: Each of our predictions will be more accurate because we use more evenly distributed and balanced training data for each class, reducing the bias in our weight estimations. In consequence, our weight predictions are more reliable and our classification accuracy may increase.

Formatted

482 The regional agency collects the perimeter data of historical fires and provides the fire start and end dates collected by the
483 Forestry Information System (SIF - Sistema Informativo Forestale) and the forestry command corps of the Sicilian region
484 (Comando Del Corpo Forestale Della Regione Siciliana). FIRMS was developed by the University of Maryland, to locate
485 active fires in near real-time by data from MODIS (Moderate Resolution Imaging Spectroradiometer) and VIIRS (Visible
486 Infrared Imaging Radiometer Suite) (Giglio et al., 2016; Schroeder et al., 2014). MODIS is an instrument aboard Terra and
487 Aqua satellites that provides global coverage every 1-2 days and VIIRS sensor is on board the Suomi JPSS-1 satellites and
488 provides full global coverage every 12 hours. When there was information from both satellites for the same fire perimeter,
489 VIIRS was prioritized. Due to its spectral and spatial resolution, VIIRS sensor is more accurate in fire detection (omission and
490 commission of errors) thanks to the detection of the radiative power of the fire, especially in low biomass areas (Fu et al.,
491 2020).

492 Satellite data was used to locate the fire ignition point inside the perimeter provided by the regional agency. The centroid was
493 considered the ignition point for the perimeters when it wasn't identifiable using satellite data. To prevent double-counting
494 from the data sources, each fire perimeter was double-checked to verify that there was only one ignition point fire perimeter.
495 We obtained a total of 7,492 points linked with their ignition date (day, month and year).

496 In addition to the ignition data, we prepared an equal number of locations without fire events. This is needed to preserve a
497 balanced dataset of observations that considers the explanatory variables values both in case of ignition and the absence of
498 ignition. The result of an imbalanced training dataset is a "skewed data bias", and a model not capable of discriminating relevant
499 patterns in data (Rennie et al., 2003). The weights for the class with less training data, will be lower when the training data is
500 skewed. Consequently, classification will be unfairly biased in favor of one class over another. The learning algorithm becomes
501 too specific, leading to overfitting (Li et al., 2021).

without Precipitation	since last precipitation			E-OBS ^d data
Weekly Precipitation Volume	Accumulated precipitation during a week	Continuous	mm	ARIES ^a (based on E-OBS ^d data)
Solar Radiation	Total solar radiation	Continuous	J/m ²	E-OBS ^d
value of Forest during Fires	Forest fuel type	Discrete	see in S2. Table S1	University of Catania
Elevation	Geographical elevation above sea level, as described by a digital elevation model	Continuous	m	SITR ^e
Slope	Inclination of the above-water terrain in a geographical region	Continuous	grade	ARIES ^a (based on elevation from SITR ^e)
distance to ProtectedArea	Distance to protected area	Continuous	m	k.LAB ^f (based on OSM ^g)
distance to Road	Distance to road	Continuous	m	k.LAB ^f (based on OSM ^g)
distance to Human Settlement	Distance to human settlement	Continuous	m	k.LAB ^f (based on OSM ^g)

^a [ARIES: Artificial Intelligence for Environment & Sustainability](#)

^b [SIF: Sistema Informativo Forestale \(Forestry Information System\)](#)

^c [FIRMS: Fire Information for Resources Management System](#)

^d [E-OBS: Ensembled Observation](#)

^e [SITR: Sistema Informativo Territoriale Regionale \(Regional Spatial Information System\)](#)

^f [k.LAB: Knowledge Laboratory](#)

^g [OSM: Open Street Map](#) (OpenStreetMap contributors, 2020)

[In the case of Sicilian wildfires, the human factor is one of the main triggers that lead to the depopulation of country areas by land managers and the increasing number of tourists and visitors. The human drivers used as explanatory variables in the model are distance to protected areas, distance to road and distance to human settlement. Those variables are calculated using semantics in the k.LAB software. K.LAB is able to compute geographical distances \(Euclidean distance\) between spatial](#)

- Formatted: English (United States)
- Formatted: English (United States)
- Formatted
- Formatted: English (United States)
- Formatted: English (United States), Superscript
- Deleted: Combustible biomass found in forests
- Formatted
- Deleted: (...2, TableS1) Fig.
- Deleted: 2S1
- Formatted: English (United States)
- Formatted: English (United States)
- Formatted: English (United States)
- Deleted: Biomass of Forest during Fire
- Formatted: Font: Not Italic, Superscript
- Deleted: Geoportale Regione Siciliana, ¶
- Formatted
- Formatted
- Formatted
- Formatted
- Formatted
- Deleted: Geoportale Regione Siciliana, ¶
- Formatted
- Deleted:
- Formatted
- Deleted: University of Catania
- Formatted
- Formatted
- Deleted: ARIES
- Formatted
- Deleted: ARIES
- Formatted
- Formatted
- Formatted
- Formatted
- Formatted
- Formatted
- Deleted: ARIES
- Formatted
- Formatted
- Formatted

632 objects. Additionally to human drivers, the fire hazard also depends on (i) weather (especially due to long dry seasons), (j)
633 topography and (k) environment, characterized by the high flammability of the Mediterranean forests (Corrao, 1992). Some
634 of the weather variables, based on E-OBS data, were integrated into the ARIES network. Those drivers influence fuel type,
635 moisture levels and fire behavior.

636 Meteorological data were obtained from the E-OBS Copernicus project (Cornes et al., 2018). We used the last version released
637 in March 2021 to obtain data from 2007-01-01 to 2020-12-31. The data were processed with R software to obtain the
638 meteorological data needed on each specific day as daily temperature and daily solar radiation (Table 3).

639 In addition, heatwaves and long periods of drought are great drivers for the majority of extreme wildfires (Narcizo et al., 2022;
640 Nojarov and Nikolova, 2022; Parente et al., 2018). Moreover, with climate change, these episodes will increase in number,
641 frequency and intensity, especially for the projections for RCP 8.5 (Molina et al., 2020). We have taken into account variables
642 such as the mean of maximum temperatures, the number of days without rain and the precipitation accumulated during the
643 previous week.

644 The topographic factors used (slope and elevation) are constant components of the fire risk model. They have a strong influence
645 on other parameters such as fuel conditions and weather. Slope and elevation were generated from a Digital Elevation Model
646 (DEM) at a 10 meters' resolution.

647 Fuel type and land cover composition have a significant effect on fire ignition. Deep knowledge of the fuel bed is key to fire
648 management, as it is one of the main components of fire risk. Fuel bed has been reformulated into fuel models for easier use
649 in models and systems. The characteristics and properties of fuel types used categorical ranges between 1 to 7 (S2, Table S1)
650 according to the Prometheus project (Lasaponara et al., 2006). The latter defines fuel type as a recognizable combination of
651 fuel components with distinct species, shapes, dimensions, structures, and continuity that will display a particular fire behavior
652 under specific burning conditions (Merrill and Alexander, 1987). The land cover map source is based on the Italian Nature
653 Map (Angelini et al., 2009). Landcover is mainly composed of extensive crops and complex farming systems (46%) so, the
654 main fuel type is ground fuels such as grass (50% of land in Sicily). 29% of the land cover on the island is non-combustible.

655 Among the models that were tested, one of them had the fire frequency as input, calculated with the historical wildfires from
656 2007-2020. This model had an accuracy above 95%. After several literature searches and discussions with experts, it was
657 decided not to incorporate fire frequency into the model. Although the accuracy was much better than the model finally chosen
658 (83.6%), the main disadvantage was the possibility of overfitting. In addition, it may lower the likelihood of detecting wildfires
659 in unusual areas due to changes in land use or phenomena such as climate change. Finally, the difficulty of accessing new
660 wildfires to incorporate into the frequency variable was another important reason.

Deleted: I
Deleted: II
Deleted: III
Field Code Changed

Formatted: English (United States)
Formatted: English (United States)
Formatted: English (United States)
Formatted: English (United States)
Deleted: 4
Formatted: English (United States)
Deleted: forest fires
Formatted: English (United States)
Formatted: English (United States)
Formatted: English (United States)
Formatted: English (United States)
Formatted: Space Before: 12 pt, After: 12 pt

Deleted: the
Formatted: English (United States)
Deleted: S1,
Formatted: English (United States)
Deleted: 2S1
Formatted: English (United States)
Formatted: English (United States)
Formatted: English (United States)
Formatted: English (United States)
Deleted: is project
Formatted: English (United States)
Formatted: English (United States)
Formatted: English (United States)
Formatted: English (United States)
Formatted: English (United States)
Deleted: fires
Deleted: 2012
Formatted: English (United States)
Deleted: fires
Deleted: fires

2.2.2 A Bayesian Network model of fire hazard

Bayesian Networks (BN) (Pearl, 1988) have been widely used in recent years and have been highlighted as a powerful tool for modeling complex problems, representing uncertainty and assisting stakeholders when the data is highly interlinked (Henriksen et al., 2007; Kangas and Kangas, 2004; Penman et al., 2011). Thus, the BN model is especially useful in environmental modeling as wildfire risk because (i) involves a high level of uncertainty, (ii) has limited or incomplete data on key system variables, (iii) contains both qualitative and quantitative information or data in different forms, and (vi) integrates multidisciplinary systems (Chen and Pollino, 2012). In addition, the system is transparent in its process, as its nodes table shows the dependency's strength between nodes and their parents in terms of conditional probability distribution and the relationships between variables are made explicit.

A BN is a model that graphically represents causal assertions between variables as patterns of probabilistic dependencies. The Directed Acyclic Graph (DAG) of a BN is built with nodes (variables) and edges between the nodes (dependencies and mutual relationships between variables). Each successor node (children) is only determined by the values of its immediate predecessors (parents) known as parental Markov property (Pearl, 2009). Roots are the nodes without any parent and with marginal distribution (Borsuk, 2008).

The BN has been learned using the WEKA (Waikato Environment for Knowledge Analysis) library integrated into the k.LAB software (Bouckaert, 2004; Frank et al., 2016; Willcock et al., 2018). WEKA is an open source JAVA library providing a collection of machine learning algorithms. The WEKA interface provides graphical and text components to inspect some BN's properties as basic algorithm information, the BN structure, the probability distribution table or the accuracy by class.

The model has been written in a semantically explicit way using the aforementioned k.IM language (S1, Fig. S2), which compiles in Web Ontology Language (OWL) (Bao et al., 2012) and allows to ontologically define and model natural language-like logical expressions. In addition, a model written in k.IM is able to interoperate with other models available in the k.LAB environment. When modeling in k.IM concepts that have been previously defined in a knowledge-base are invoked, examples are *earth:Site* and *chemistry:Fire* as depicted in (S1, Fig. S2). Those concepts carry out meanings facilitating a semantic integration within the system (Villa et al., 2017).

Since the BN is built with categorical values, continuous data need to be discretized. Discretization allows the establishment of non-linear values between variables and more complex distributions (Friedman and Goldszmidt, 1996). Discretizing the data helps to interpret the results more easily when it comes to decision-making processes by facilitating communication between modelers and end users. However, the interval selection interferes with the final results. We have been taking into account that the higher the number of intervals, the more data is needed to find significant dependencies (Aguilera et al., 2011); the nodes become weak when there are many intervals because there is less data for each distribution.

Deleted: occurrence

Formatted: English (United States)

Formatted: English (United States)

Formatted

Formatted: Space Before: 12 pt, After: 12 pt

Formatted

Formatted

Deleted: bayesian...N network

Formatted: English (United States)

Formatted: English (United States)

Deleted: Figure 3)

Formatted: Space After: 0 pt, Line spacing: 1.5 lines

Formatted: English (United States)

Deleted: the knowledge-Integrated Modeling language (

Deleted: I

Formatted: English (United States)

Deleted:)... (

Formatted: English (United States)

Formatted

Deleted: A

Formatted: English (United States)

Deleted: I

Formatted: English (United States)

Deleted: Figure 3...

Formatted

Deleted: ¶

Formatted: English (United States)

Formatted: Space Before: 12 pt, After: 12 pt

Deleted: T

Formatted

Deleted: values, so ...continuous data need to be discretizedso in

Formatted

Deleted: in

Formatted

Among the methods to discretize (Beuzen et al., 2018), in this study we use both the equal-width and equal-frequency binning unsupervised methods, according to the input data distribution (see the data histograms in S3). In the first case, the algorithm divides the data into k intervals of equal size and in the case of equal frequency, the user specifies the sub-ranges that result in k intervals (bins) with approximately the same number of values. After modeling with different discretization ranges and obtaining similar accuracy results, we have chosen for each of the variables the minimum number of intervals in order to keep ecological sense, statistical significance and minimize information loss (S4, Table S2). The discretization applied is shown in Table 4. Discretization applied to the variables used in the fire occurrence modeling.

Semantic	Method	Bins
AtmosphericTemperature in Celsius	equal-width	10
Weekly Maximum AtmosphericTemperature in Celsius		10
SolarRadiation in J/m ²		5
Weekly PrecipitationVolume in mm		10
Count of Day without Precipitation	equal-frequency	5
Slope in grade		5
Elevation in m		5
distance to ProtectedArea in m		5
distance to Road in m		5
distance to Human Settlement in m		5

To learn the BN, 80% of the dataset was used to actually learn the model and 20% to test the relationship between historical wildfires (observations) and explanatory variables. On the learning side, we selected the K2 algorithm (Cooper and Herskovits, 1992). This type of score-based algorithm searches for the most probable belief-network structure through a heuristic search. The K2 algorithm processes each node in turn and greedily considers adding edges from previously processed nodes to the current one, adding the edges that maximizes the network's score. It turns to the next node when any of the following

Formatted: Space After: 0 pt, Line spacing: 1.5 lines

Formatted

Deleted: to divide values, so continuous data need to be discretized continuous data by the sorted values

Formatted: English (United States)

Deleted: to...k intervals (bins) with approximately the same number of values. (Liu et al., 2002). The bins number is determined by arity k, in our case, we observe the data histogram (S32S1 Fig. S2S1) and try different intervals.

Formatted

Deleted: (S3S2 Table S3S2),

Formatted: English (United States)

Deleted: lose less information

Formatted: English (United States)

Deleted: Table 45.

Formatted: English (United States)

Deleted: .

Table 45

Formatted: English (United States)

Deleted: on

Formatted: English (United States)

Formatted: English (United States)

Formatted: English (United States)

Formatted: English (United States)

Formatted: English (United States)

Formatted: English (United States)

Formatted: English (United States)

Formatted: English (United States)

Formatted: English (United States)

Formatted: English (United States)

Formatted: English (United States)

Formatted: English (United States)

Formatted: English (United States)

Formatted: English (United States)

Deleted: In order t

Formatted: Space Before: 12 pt, After: 12 pt

Formatted

Deleted: ally...search. The K2 algorithm processes each node in turn and greedily considers adding edges from previously processed nodes to the current one, adding the edges that maximises...aximizesmaximizes

Formatted: English (United States)

790 requirements are met: (i) it has reached the maximum number of parents, (ii) there are no more parents to add, (iii) the score
791 has not improved (Chen et al., 2008). The number of parents for each node can be restricted to a predefined maximum (e.g.
792 maxparents = 1) to mitigate overfitting.

793 The BN predictors have been distributed in a Directed Acyclic Graph (DAG) as shown in Figure 3. DAG is assigning
794 probabilities to each variable's predictor; anthropogenic and biophysical factors such as meteorology, topography and
795 environment. The most influential variable of a BN results from the following characteristics: (i) the strength of influence of
796 each edge connecting the nodes (Balbi et al., 2019) and (ii) how "far", in terms of number of edges, is an input node from the
797 final output (Marcot et al., 2006). The strength of influence is calculated from the conditional probability tables and expresses
798 the difference between the probability distributions of two nodes by looking at the posterior probability distribution of a node,
799 for each possible state of the parent or child node. To summarize this difference, we report normalized Euclidean distance,
800 although other types of distances (e.g. Hellinger) are also used (Balbi et al., 2019). Table 5 quantifies numerically the strength
801 of influence as the thickness of the edges between Fire Hazard node and its children. The predictors with the highest strength
802 of influence are (i) atmospheric temperature, (ii) days without precipitation, (iii) fuel type and (iv) solar radiation (Table 5),
803 all of which are directly linked to the final output (fire occurrence). While atmospheric temperature, number of days without
804 precipitation, and solar radiation are expected to increase in variability and increase fire hazard with limited options for human
805 mitigation, fuel type can be managed with punctual landscape interventions reducing its combustibility level where it is more
806 necessary.

Deleted:

Formatted: English (United States)

Formatted: English (United States)

Deleted: graph form

Deleted: 4

Formatted: English (United States)

Deleted: ,

Deleted: To answer which are the

Deleted: most influential variables of a Bayesian Network we can look at

Formatted: English (United States)

Deleted: 1

Formatted: English (United States)

Deleted: 2

Formatted: English (United States)

Formatted: English (United States)

Formatted: Font: (Default) Times, 10 pt

Formatted: Font: (Default) Times, 10 pt

Formatted: English (United States)

Formatted: English (United States)

Formatted: English (United States)

Formatted: Font: (Default) Times, 10 pt

Formatted: English (United States)

Formatted: English (United States)

Formatted: Font: (Default) Times, 10 pt

Formatted: Font: (Default) Times, 10 pt

Formatted: Font: (Default) Times, 10 pt

Formatted: English (United States)

Formatted: Font: (Default) Times, 10 pt

Formatted: English (United States)

Formatted: Font: (Default) Times, 10 pt

Formatted: English (United States)

Formatted: Font: (Default) Times, 10 pt

Formatted: English (United States)

Formatted: Font: (Default) Times, 10 pt

Formatted: English (United States)

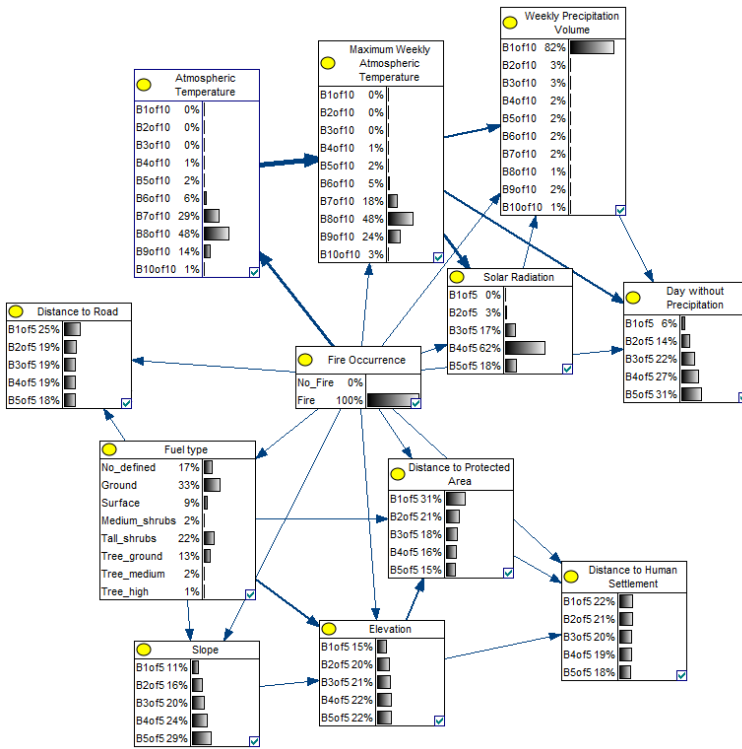


Figure 3. Directed Acyclic Graph (DAG) of the fire hazard Bayesian Network model where arcs width shows the strength of influence between nodes. Nodes show the relative probability of each interval of the variable, described in Supplementary Materials (S4, Table S2).

Table 5. Strength of influence between fire occurrence and its child nodes.

Variable	Strength of influence
Atmospheric Temperature	0.338
Day without Precipitation	0.193
Fuel type	0.192

Deleted: (observations) and explanatory variables. wildfires80% of the dataset was used to learn and 20% to test the relationship between historical fires

Finally, in order to be more understandable for end-users and stakeholders, the results of the model were divided into 3 equal intervals, related to the level of fire occurrence (high: more than 66% of chance, medium: between 33 and 66%, low: probability of fire less than 33%).

Formatted: English (United States)

Deleted: bayesian

Formatted: Font: 9 pt, Bold, Font color: Black

Formatted: Space After: 10 pt, Line spacing: single

Deleted: 4

Formatted: Font: 9 pt, Bold, Font color: Black, English (United States)

Deleted: n

Formatted: Font: 9 pt, Bold, Font color: Black, English (United States)

Formatted: Font: 9 pt, Bold, Font color: Black

Formatted: Font: 9 pt, Bold, Font color: Black, English (United States)

Formatted: Font: 9 pt, Bold, Font color: Black

Formatted: Font: 9 pt, Bold, Font color: Black, English (United States)

Deleted: at

Formatted: Font: 9 pt, Bold, Font color: Black, English (United States)

Formatted: Font: 9 pt, Bold, Font color: Black, English (United States)

Deleted:

Formatted: Font: 9 pt, Bold, Font color: Black

Formatted: Font: 9 pt, Bold, Font color: Black, English (United States)

Deleted: 2

Deleted: 4

Formatted: Font: 9 pt, Bold, Font color: Black

Formatted: Font: 9 pt, Bold, Font color: Black, English (United States)

Formatted: Font: (Default) Times

Formatted: Font: (Default) Times

Formatted: Font: (Default) Times

Formatted: Font: (Default) Times

Solar Radiation	0.191
Elevation	0.158
Maximum Weekly Atmospheric Temperature	0.154
Distance to Protected Area	0.145
Slope	0.138
Distance to Road	0.117
Weekly Precipitation Volume	0.113
Distance to Human Settlement	0.112

838 Finally, to be more understandable for end-users and stakeholders, the results of the model were divided into 3 equal intervals, 839 related to the level of fire occurrence (high: more than 66% chance, medium: between 33 and 66%, low: probability of fire 840 less than 33%).

841 2.2.3. Drivers of vulnerability and exposed elements

842 Social and environmental vulnerability have been assessed as the tendency of exposed elements to be potentially damaged by 843 a fire hazard due to its intrinsic or contextual conditions (IPCC, 2012). First, we used models developed in previous projects 844 in k.LAB to determine the socio-ecological exposed elements. The ecosystem services models and biodiversity considered are 845 those included in the ARIES global model set (Martínez-López et al., 2019). Once the fire hazard model is in k.LAB, all the 846 data and models can interoperate between them through the explicit semantics (Villa et al., 2017). Thus, we can reuse previous 847 ecosystem services models developed (Martínez-López et al., 2019; Willcock et al., 2018) applying them to a different context 848 and creating new knowledge. In this case, due to the specificities of Sicily and the relevance of ecosystem services affected by 849 wildfires, we choose to consider the following models: (i) vegetation carbon mass, (ii) pollination, (iii) outdoor recreation, (iv) 850 biodiversity and (v) soil retention. These models, published in (Martínez-López et al., 2019; Willcock et al., 2018), are briefly 851 described below:

- 852 • [Vegetation carbon mass](#): calculates the above- and below-ground carbon storage in vegetation (T/ha), in accordance 853 with Tier 1 Intergovernmental Panel on Climate Change (IPCC) methodology (Gibbs and Ruesch, 2008; IPCC, 2006).
- 854 • [Pollination](#): based on land use, cropland, and weather patterns, the pollination model generates spatially explicit data 855 of the supply and demand for insect pollination services.
- 856 • [Outdoor recreation](#): calculates the accessibility of recreational features of the natural landscape, and the demand for 857 them, based on the methods by (Paracchini et al., 2014).

Formatted: Font: (Default) Times

Formatted: Font: (Default) Times

Formatted: Font: (Default) Times

Formatted: Font: (Default) Times

Formatted: Font: (Default) Times

Formatted: Font: (Default) Times

Formatted: Font: (Default) Times

Formatted: Font: (Default) Times

Formatted: Space After: 0 pt, Line spacing: 1.5 lines

Deleted: in order

Formatted: Not Highlight

Deleted: ¶

¶

Formatted

Deleted: 2

Formatted

Deleted: in order

Formatted

Deleted: its linked connection with

Formatted: English (United States)

Deleted: fires...ildfires, we choose the ecosystem services

Formatted: English (United States)

Deleted: of

Formatted

Deleted: are

Formatted

Deleted: . We

Formatted

Deleted: Martinez et al. 2016

Formatted: Font:

Deleted: B...sed on land use, cropland, and weather patterns,

Moved down [2]: based on Paracchini et al. (2014) for Europe.

Deleted: The recreation model uses ranked values to determin

Deleted: availability ...ccessibility of recreational activities a

Moved (insertion) [2]

Formatted: Font:

Deleted: for Europe. The model and the accessibility-driven l

- [Soil retention: the model provides biophysical estimates of soil loss and retention by plants \(in tons of sediment per hectare per year\) using the widely used Revised Universal Soil Loss Equation \(RUSLE; \(Renard et al., 1997\).](#)
- [Biodiversity: a Bayesian Network approach used to learn from site-based expert estimations of "biodiversity value" to create a map of the entire Sicilian region \(Willcock et al. 2018\).](#)

To create a comprehensive indicator of ecosystem services [and biodiversity](#), we converted the [above-mentioned](#) modeling output to a common scale, using quantitative and qualitative criteria. In order to calculate the potentially reduced social and ecological services, we used the normalization method, instead of others such as qualitative categorization and probabilistic approaches (normal, Poisson, [binary](#)) (Chuvieco et al., 2003). We transformed each [modeling](#) output rescaling [it](#) from 0 to 1, using the minimum and maximum value within the Sicily context. The quantitative scale was classified into 3 categories (1-low, 2-medium, 3-high) using equidistant intervals; thus integrating all [modelling outputs](#) into a single value. In this quantitative cross-assessment, the most valuable component was prioritized. The final map was [overlaid](#) with wildland areas.

Once [exposure was identified](#), we located the most vulnerable elements that were exposed to fire. Spatial data were generated for WUI, WAI and protected areas. In order to create the WUI area, we generated a 200 [m](#) buffer map from the human settlements, then overlaid it with the forest areas. The WAI map followed the same procedure, but with the buffer map from the agricultural areas. Finally, we use the FAO map ([UNEP-WCMC and IUCN, 2022](#)) for the protected areas. Vulnerable areas were overlapped with the [exposure map](#).

[Finally, the fire hazard model was used to predict how the most vulnerable exposed elements could be affected in the current and future climatic conditions.](#) The future climate data [was drawn from the](#) Coupled Model Intercomparison Project 5 (CMIP5) for RCP 8.5 from COordinated Regional climate Downscaling EXperiment (CORDEX) ([Giorgi et al., 2009](#)). The data are bias-corrected and simulated by state-of-the-art global and regional climate model pairs. To generate the climatic variables, we used [the same process as the current variables.](#) [We kept the other variables \(solar radiation, fuel, slope, elevation, distance to road, protected area and human settlement\) with the current conditions.](#)

3. Results

3.1. Historical data analysis

During the analysis period (2007-2020) 28,814.698 ha were burnt in 12,749 fire perimeters and the data shows significant [variability between years](#) (Fig. 4). The average area burnt is equivalent to 20,630 ha with 910 ignitions per year, being 2012 the worst year, with 1,274 ignitions and 55,699 ha burnt. However, the monthly distribution over this period is skewed toward July and August (Fig. 5), due to the weather's favorable fire conditions. August is clearly the month with more [wildfires](#) in all the years analyzed, with 4,166 ignitions and 118,481 ha burnt in total (26% more area than July, the second worst month).

Deleted: <#>Biodiversity: A Bayesian Network approach is used to spread site-based expert estimations of "biodiversity va...

Formatted: Font:

Deleted: in order ...o create a map of the entire Sicilian regio...

Deleted: The quantitative scale was classified into 3 categories (...)

Formatted: English (United States)

Formatted: Space Before: 12 pt, After: 12 pt

Formatted:

Deleted: ecosystem services related...bove-

Deleted: binaria

Formatted:

Deleted: modelling...odeling output rescaling them

Formatted: English (United States)

Deleted: ecosystem services

Formatted: English (United States)

Deleted: overlap

Deleted: we had the

Formatted:

Deleted: ecosystem services

Deleted: Finally, we use the fire occurrence model . developed t...

Formatted: English (United States)

Deleted: the context specific ecosystem services

Formatted:

Deleted: might

Formatted:

Deleted: due to a probable occurrence of a wildfire event under

Formatted:

Formatted: Space Before: 12 pt, After: 12 pt

Deleted: 8...14.698 ha were burnt in 12,749 fire perimeters and (...)

Formatted: English (United States)

Deleted: ure

Deleted: 5

Formatted: English (United States)

Formatted: English (United States)

Deleted: ure

Formatted: English (United States)

Deleted: 6

Formatted: English (United States)

Deleted: fires

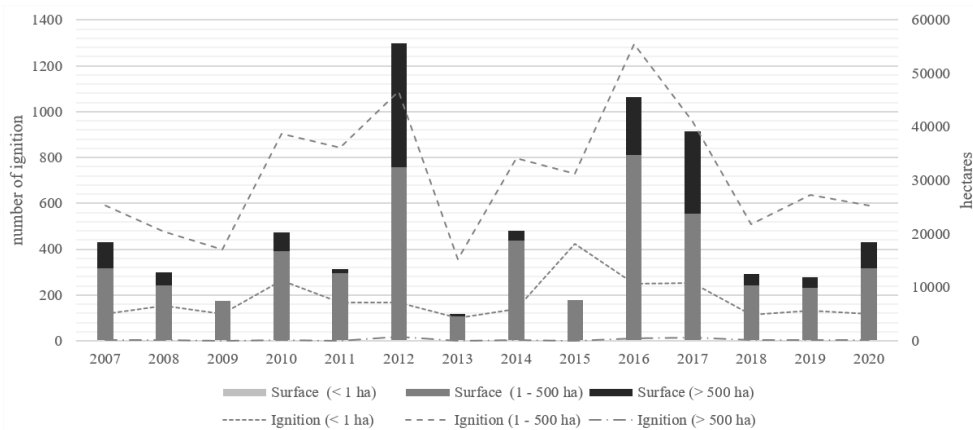


Figure 4: Number of ignitions vs. burned area by year from 2007 to 2020. Source: Regional Agency of Fire Control in Sicily and FIRMS.

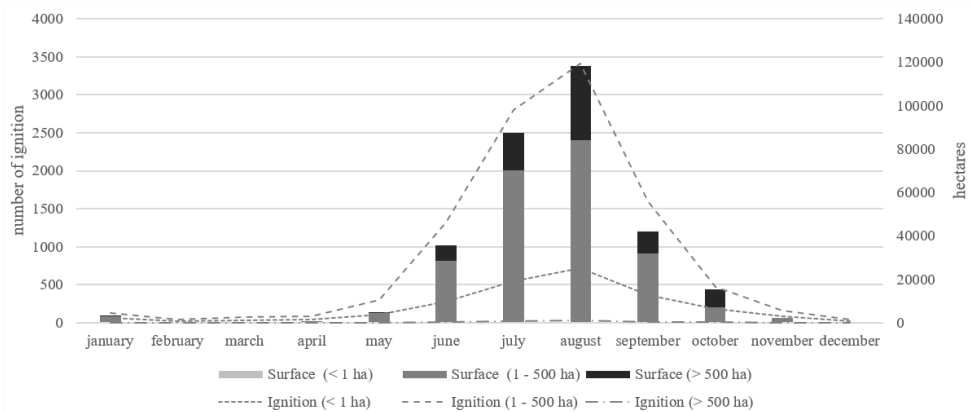
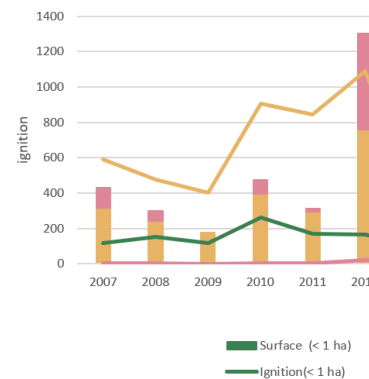


Figure 5: Historical ignitions vs. burned area by month from 2007 to 2020. Source: Regional Agency of Fire Control in Sicily and FIRMS.



Deleted:

Formatted: English (United States)

Formatted: English (United States)

Deleted: 5

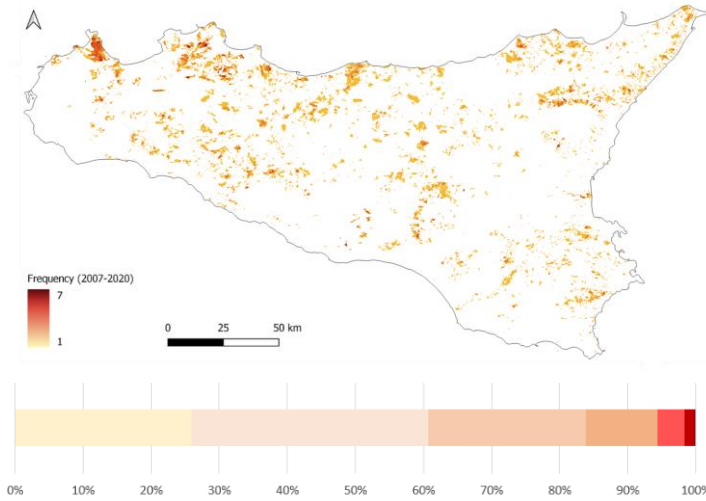
Formatted: English (United States)

Formatted: English (United States)

Deleted: 11

Formatted: English (United States)

1037 Fire frequency analysis (Fig. 6) showed that a quarter of the area affected during 13 years (from 2007 to 2020) has burnt once,
 1038 34.8% twice, 23.1% have burned three times or more, and nearly 6% have been burnt more than 5 times in 13 years. Burned
 1039 area is spread throughout Sicily, however, areas close to cities, such as Palermo, have been burnt more than others.



1041 **Figure 6: Fire frequency aggregated by year. The legend shows how many times the same area has been burnt during the period of**
 1042 **2007-2020.**

1044 Fire ignition causes have been recorded since 2010. Figure 7 shows that, every year, more than 70% of wildfires are caused
 1045 by arson, with 2010, 2011 and 2012 being particularly relevant. The percentage of wildfires caused by negligence or natural
 1046 effects is of little relevance. In general, it seems that the trend of arson is decreasing significantly over the years, from 91.54%
 1047 to 67.06%. A large part of the percentage that decreases due to arson is replaced by wildfires of unknown origin, so we cannot
 1048 be confident that this trend is real.

- Deleted: Figure
- Formatted: Space Before: 12 pt, After: 12 pt
- Deleted: and
- Formatted: English (United States)
- Deleted: have
- Deleted: s
- Deleted: t
- Deleted: have
- Deleted: s
- Formatted: English (United States)
- Formatted: English (United States)
- Deleted: ¶

-
- Deleted:
 - Formatted: English (United States)
 - Formatted: English (United States)
 - Formatted: Centered
 - Formatted: Space Before: 12 pt, After: 12 pt
 - Deleted: fires
 - Deleted: fires
 - Deleted: fires

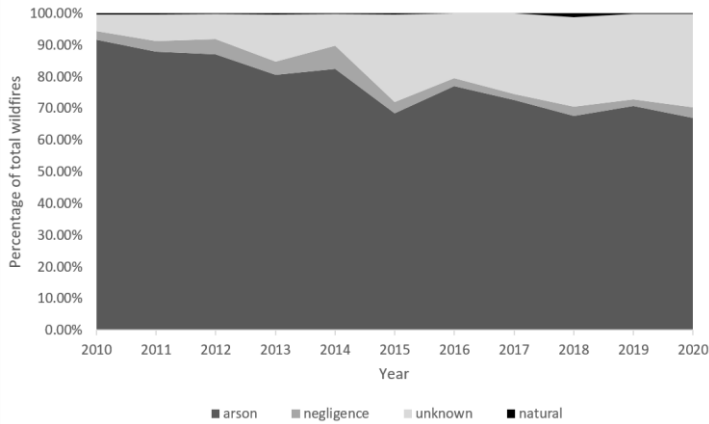


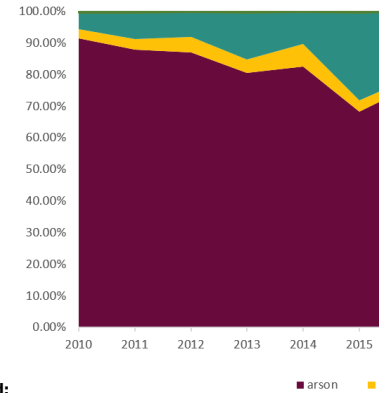
Figure 7: Relative frequency of fires by main fire causes in Sicily in 2010–2020.10, the total wildfires

3.2. The Bayesian data-driven approach

The Bayesian network model shows the probability of each child node under the probability of fire occurrence (where fire hazard is the parent node). For this purpose, in Figure 3, the state of the parent node based on historical fire is set to 100%, indicating that wildfire is certain. The posterior probability of each state of the explanatory variables is then obtained given the Conditional Probability Table (CPT) of each node (Fig. 3).

Accordingly, the fire occurrence probability at “Atmospheric temperature” is highest between 24.71°C and 28.65°C (S4; Table S2) and the weekly maximum temperature is between 27.93°C and 31.69°C. In over 80% of the cases, the weekly precipitation accumulated is below 0.05 mm for fire occurrence. Moreover, the more days without precipitation and higher solar radiation, the higher the probability of fire occurrence. As for the topographic variables, the most important is the slope, since the probability of fire is directly proportional to the slope. The same is observed in the case of elevation but in a less obvious pattern. The probability of fire is higher in locations that are closer to human activities such as roads or buildings and protected areas. Finally, in the case of the environmental variables, the highest fire probability in fuel forest type (S2; Table S1) is when ground fuel is grass (type 1), followed by high shrubs (between 2.0 and 4.0 m) and young trees resulting from natural regeneration or forestation (type 4). The third riskier fuel type is type 5, which occurs when the ground fuel is removed either by prescribed burning or by mechanical means. This situation may also occur in closed canopies in which the lack of sunlight inhibits the growth of surface vegetation.

The most influential variables (in terms of connection strength) according to our BN algorithm are atmospheric temperature, days without precipitation and fuel type (Table 5). While atmospheric temperature and the number of days without precipitation



Deleted:

Formatted

Deleted: Percentage of ignition caused...the total wildfires b

Formatted

Deleted: implying

Formatted

Deleted: a

Formatted

Deleted: the state of fire occurrence, which means that the state

Deleted: as per each

Formatted

Formatted

Deleted: Figure

Formatted

Deleted: 84

Formatted

Deleted: ¶

Formatted

Formatted

Deleted: 18.75...C and 28.6525.55

Formatted

Deleted: 24

Formatted

Deleted: around ...7.92...°C and 31.69°C. In over 80% of the

Formatted

Deleted: 251

Formatted

Deleted: in the

Formatted

Deleted: s as

Deleted: shrubland vegetation ...type 14..., followed by broadle

Formatted

Formatted

Formatted

Formatted

Formatted

Formatted

Formatted

Formatted

Formatted

Formatted

Formatted

Formatted

are expected to increase in variability and increase fire hazard with limited options for human mitigation, fuel type can be managed with punctual landscape interventions reducing its combustibility level where it is more necessary. The k-fold cross-validation algorithm has been used to estimate the model's accuracy. This algorithm uses the training/testing process "k" times and averages the results. The results for k=10 showed that 83.997% of the instances were correctly classified in two values: occurrence and non-occurrence of wildfires.

We use the confusion matrix to measure the performance of the classification (Table 6). The results show 12,172 correctly classified instances, but also 1,426 false positives and 893 false negatives. The type I error (false positive), i.e. detecting a fire where it, in reality, is not, could lead to allocating efforts to unnecessary areas. Type II error (false negative), could not identify the probability of fire in risk situations and, therefore, would not be managed properly. A false negative rate (0.11) is calculated as the number of incorrect positive predictions divided by the total number of negatives; the best false positive rate is 0.0.

Table 6: Confusion matrix of fire hazard, BN modeling.

		Real		
		No fire	Fire	Sum
Predicted	No fire	5,573	893 (type II error)	6,466
	Fire	1,426 (type I error)	6,599	8,025
Sum		6,999	7,492	14,491

The Bayes theorem is key to interpreting the output of binary classification problems using the calculated confusion matrix. Precision is the confusion matrix probability $P(\text{Fire}/\text{TotalPredictedFire}) = 6,599/8,025 = 0.822$. It is the probability that the fire predicted as fire is true. Recall $P(\text{Fire}/\text{TotalActualFire}) = 6,599/7,492 = 0.881$ is the percentage of the actual fires that were correctly predicted by our classification algorithm. Table 7 also shows that the precision for the negative class (no fire) is 0.822. Moreover, the overall accuracy (weighted average between fire and no fire) is 0.841 and 0.840 for precision and recall respectively and gives an overall picture of our model. These weighted results are close to our precision and recall values for fire variables because our model is balanced (7,492 wildfires (51.70%) vs. 6,999 no wildfires (48.29%)). Hence, the overall accuracy (0.84) is a good metric in this situation.

Table 7: Sensitivity analysis of fire hazard model.

	TP	FP	Precision	Recall	F-	MCC	ROC	PRC
--	----	----	-----------	--------	----	-----	-----	-----

Deleted: is
Formatted: English (United States)
Deleted: danger

Deleted: wildfiresforest fires

Formatted: Space Before: 12 pt, After: 12 pt
Deleted: in order

Deleted: in reality
Formatted: English (United States)

Deleted: fire occurrence

Formatted: English (United States)

Formatted: English (United States)

Formatted: English (United States)

Formatted: English (United States)

Formatted: English (United States)

Formatted: English (United States)

Formatted: English (United States)

Formatted: English (United States)

Formatted: English (United States)

Formatted: English (United States)

Formatted: English (United States)

Formatted: English (United States)

Formatted: English (United States)

Formatted: English (United States)

Formatted: English (United States)

Formatted: English (United States)

Formatted: English (United States)

Deleted: fires

Formatted: English (United States)

Deleted: fires

Deleted: ,

Deleted:)

Formatted: English (United States)

Formatted: English (United States), Not Highlight

Deleted: danger

Formatted: English (United States)

	Rate	Rate			Measure			
No fire	0.796	0.119	0.862	0.796	0.828	0.681	0.915	0.922
Fire	0.881	0.204	0.822	0.881	0.851	0.681	0.915	0.903
Weighted	0.84	0.163	0.841	0.84	0.84	0.681	0.915	0.912
Avg.								

The confusion matrix is also useful for measuring other significant metrics such as the ROC (Receiver Operating Characteristic) curve that summarizes the performance of the Bayesian classifier over all possible thresholds (Bradley, 1997; Fawcett, 2006). It measures accuracy in a weighted sort and is appropriate when the observations are balanced between each class, as in this case. For example, we used a sorting-based method called Area Under the ROC Curve (AUC) that measures the two-dimensional region below the ROC curve from (0,0) to (1,1). Not only the model presents a strong AUC result of 0.915 for fire hazard, because the result is close to 1, but it also shows a significant F-Measure (a harmonic mean of the precision and recall) with 0.847. The model performs well also in terms of uncertainty of the results. In Supplementary Materials (S4, Figure S6) we display the uncertainty map associated with the standard deviation of the probability distribution of fire hazard.

As an example, we present the fire hazard model results (i.e. the mean values of the simulated probability distributions) for August 2050 because this is the month with the most critical historical wildfires in Sicily (Fig. 5), assuming no changes in ecosystem management. Given the ease of access and reuse of models and data in k.LAB, any user of the modelling platform can run the fire hazard model at any time in the future until 2055, as the input data are on the platform and are openly available. As anticipated, the results of the model were divided into 3 equal intervals, related to the level of fire hazard (low: probability of fire less than 33%, medium: between 33 and 66%, high: more than 66% of chance). Figure 9 shows the comparison between the average results for August in 2020 and 2050 at 50 m of resolution.

Formatted: English (United States)

Formatted: English (United States)

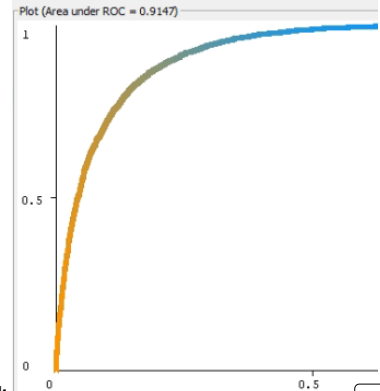
Formatted: English (United States)

Formatted: English (United States)

Formatted: Space After: 0 pt, Line spacing: 1.5 lines

Formatted

Deleted: : i...n Supplementary Materials (S4, Figure S6)5...we



Deleted:

Formatted: English (United States)

Deleted: show

Formatted

Deleted: fire ...odel results (i.e. the mean values of the simulate

Formatted: English (United States)

Deleted: important crucial...ritical

Deleted: fires...ildfires in Sicily (Figure

Formatted: English (United States)

Deleted: 11

Formatted: English (United States)

Formatted: English (United States)

Deleted: the users

Formatted

Deleted: ¶

Formatted

Deleted: In order to be more easily understandable for end-users

Formatted: English (United States)

Deleted: fire...occurrence ...low: probability of fire less than 33

Formatted: English (United States)

Deleted: august...in 2020 and 2050 at 50 metres...eters

Formatted: English (United States)

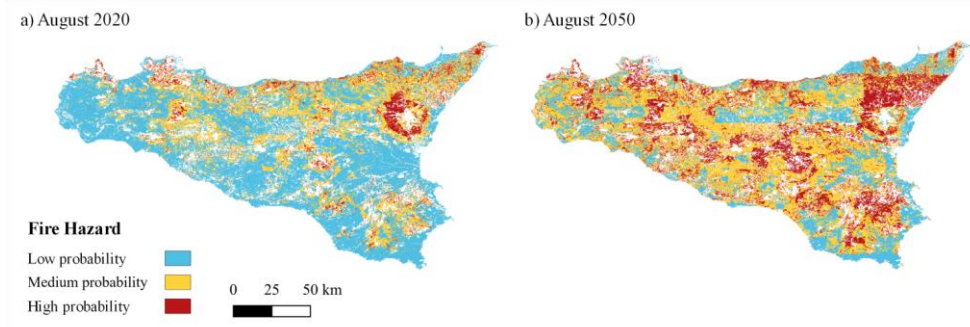


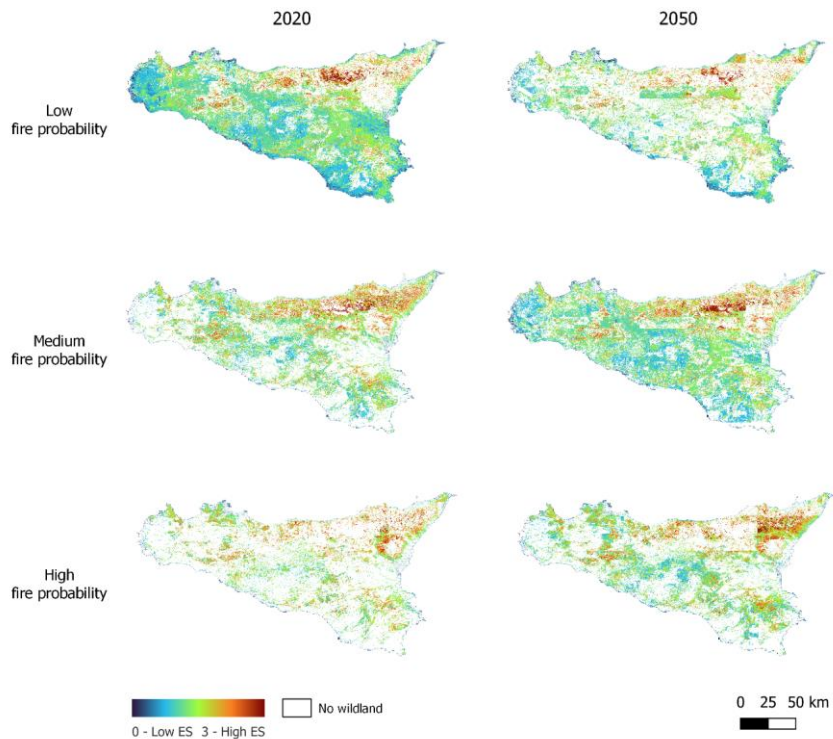
Figure 9. Example of fire hazard in (a) August 2020 (b) and 2050, classified by low, medium, or high probability of fire occurrence.

When comparing simulated outcomes for 2020 and 2050, the increase of areas with high fire probability and decrease of those with low fire probability becomes evident. The area with low fire probability changed from 12,300 km² to 4,887 km², representing a reduction of almost 40%. The extension of area with medium probability of fire occurrence increased from 29% of the total wildland area to 48%. Finally, the wildland area with high fire probability occurrence changed from 8% (1,675.26 km²) to 27% (5,357.62 km²), an increase of 319.8% between the two scenarios. We here highlight the most significant change; from low to medium probability of fire occurrence, which has increased by 7,112.58 km². Conversely 4,504.34 km² of wildland areas with low probability of fire occurrence remain unchanged between 2020 and 2050.

3.3. Wildfire risk levels.

The wildfire risk map at 50 m of resolution integrates a set of variables related to exposure and vulnerability (Table 1). In this study, we analyze the areas with important ecological values and ecosystem services for both humans and nature, which would be potentially affected in case of fire due to its exposition.

Figure 10 compares the average spatial variability of the ecosystem services and ecological values exposed in August 2020 and August 2050. In the horizontal axes, the figures are distributed by levels of fire occurrence probability (low, medium, and high), according to the fire hazard model. The 2020 column shows that the most exposed area corresponds to the low fire hazard level. As the level of fire hazard increases, the exposed area decreases. In contrast, the 2050 column shows that the most exposed area corresponds to the medium fire hazard level, followed by high and low probabilities of fire occurrence.



1363
1364 **Figure 10: Exposure map of ecological values and ES (Ecosystem Services) that may interact with levels of forest fire probability,**
1365 **(low, medium, and high), in 2020 and 2050.**

1366 Linked to Figure 10, Figure 11 shows the changes (in km²) broken-down by ES (Ecosystem Services). As we observed in the
1367 exposure maps (Fig. 10), the fire hazard increases in all ES. For example, the exposure to the Carbon Mass ecosystem service
1368 and Biodiversity will increase by more than 150% in the exposed areas with high fire probability (S5, Table S3). Outdoor
1369 recreation, Soil retention, and Pollination ecosystem services will increase by 117%, 100%, and 56%, respectively. In contrast,
1370 the exposure with low fire probability will decrease between 50% and 65% each.

Formatted: English (United States)

Deleted: 13

Deleted: e

Deleted: s

Deleted: by levelswith

Formatted: English (United States)

Deleted: fire

Deleted: 13

Formatted: English (United States)

Deleted: 4

Formatted: English (United States)

Deleted: Figure

Formatted: English (United States)

Deleted: 13

Deleted: probability of danger

Formatted: English (United States)

Deleted: 4S3

Formatted: English (United States)

Deleted: 54S3

Formatted: English (United States)

Deleted: danger

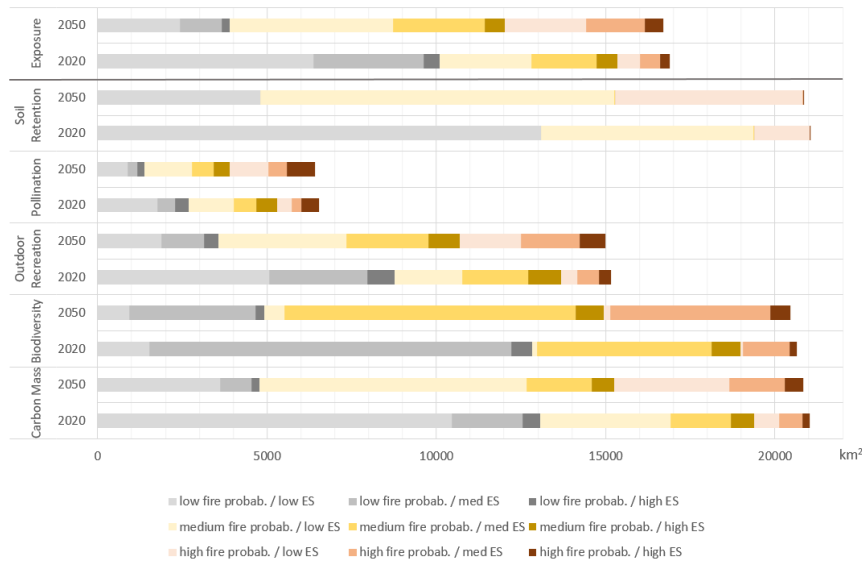
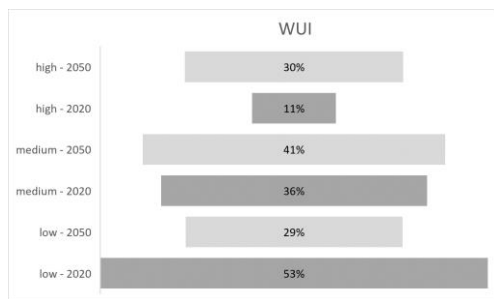


Figure 11: Comparison of the fire hazard level -low (grey), medium (yellow), high (red)- by the importance of the socio-ecological elements exposed in different color tones (low, medium or high). Values show the surface average (km²) in August 2020 and 2050.

Figure 12 shows how the percentage of vulnerable areas is distributed in each of the variables analyzed as a function of the fire probability. Therefore, following the same trend as exposed areas, ecosystem services and ecological values increase fire risk with the influence of climate change. The WUI (Wildland-Urban Interface) case, increases by 19% for high fire probabilities in 2050 and almost half of the wildfires will be at medium risk. In both WAI (Wildland-Agriculture Interface) and protected areas, half of their area could face a high fire risk in the future, doubling the 2020 data.



Formatted: English (United States)

Deleted: 4

Deleted: green

Formatted: English (United States)

Deleted: 2018

Deleted: 5

Formatted: English (United States)

Deleted: L

Formatted: English (United States)

Deleted: fires

Formatted: English (United States)

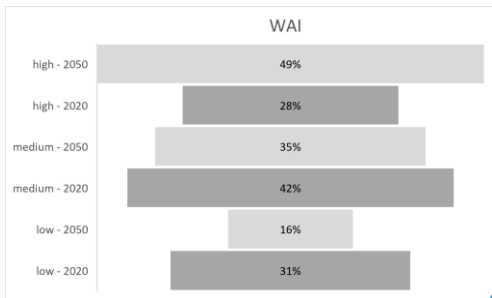
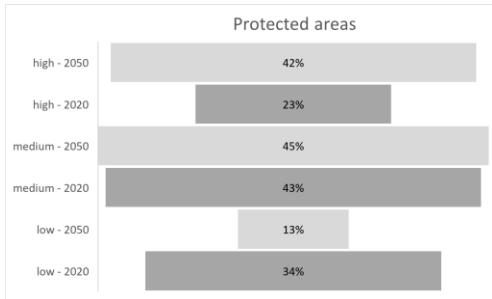


Figure 12: Percentage of the vulnerable areas distributed in each of the variables analyzed (WUI, WAI, Protected Areas) as a function of the fire probability.

Most of the vulnerable locations close to agricultural areas have a high probability of fire. However, one of the areas with high vulnerability in the protected area overlaps with sites that are difficult to access for the population, such as the Nebrodi Regional Park or the Madonie Regional Natural Park (Fig. 13).

Overall, the area with the highest socio-ecological value is in the northeastern quadrant of the island, coinciding with the areas of highest fire risk. In contrast, low-protected regions are primarily agricultural areas, urban surroundings, or areas that have been affected by fire in the recent past. These non-vulnerability areas dominate most of the Sicilian territory.

Formatted: English (United States)

Deleted: 5

Formatted: English (United States)

Formatted: Space After: 12 pt

Deleted: Figure

Formatted: English (United States)

Deleted: 6

Formatted: English (United States)

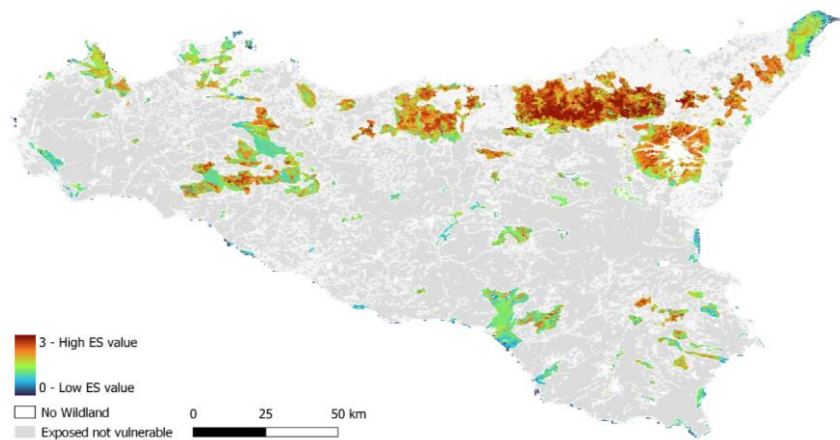


Figure 13: Risk map of hot spots of biodiversity and ecosystem services exposed in protected areas, Wildland-Urban Interface and Wildland-Agricultural Interface in August 2020. Colored from blue with a value of 0 (low socio-environmental value) to red with a value of 3 (high socio-environmental value). Exposed but not vulnerable areas are shaded in grey. No wildland areas and no exposed are in white.

4. Discussion and Summary

Although historical fire data are becoming more accessible and findable, there is still much to be done for enhancing their full use (e.g. their interoperability and reusability). The most reliable data are those collected in the field by authorized public or private institution, but in many cases, it is extremely difficult to access and download field data for the general public. In contrast, satellite data are becoming increasingly accessible. However, not always fire can be properly detected by satellites due to the following reasons: (i) they need a minimum fire size or intensity (linked to the resolution), (ii) there can be false alarms (commission errors), (iii) the information can be obscured by clouds or overstorey vegetation, or the time of satellite overpass may not coincide with the fire (Hantson et al., 2013; Schroeder et al., 2008).

In this study, we use both satellite data and field data to verify and complement the fire-related information. Overall, satellite and field common problems are the scarce harmonization among data formats and the lack or bad quality of metadata. In this study, the main difficulties were the differences in parameters such as coordinate reference system, lack of metadata information and fire attributes between the yearly perimeters of fire. By integrating the data in k.LAB, all the data resources were harmonized, properly classified, and made available online with complete metadata.

- Formatted
- Deleted: socio-ecological values
- Formatted
- Deleted: 6
- Formatted
- Formatted
- Deleted:
- Formatted
- Deleted: Wildland
- Formatted
- Deleted: red
- Formatted
- Deleted: blue
- Formatted
- Formatted
- Deleted: Concerning data sources, a
- Formatted
- Deleted: is ...re becoming more accessible and findable, there is
- Formatted
- Deleted: it has to be taken into account that
- Formatted
- Deleted: sometimes ...annot...be properly detected by satellites
- Formatted
- Deleted: ¶
- Formatted
- Deleted: .
- Formatted
- Deleted: it ...eeds...a minimum fire size or intensity (linked to t
- Formatted
- Deleted: .
- Formatted
- Deleted: ¶
- Formatted
- Deleted: .
- Formatted
- Field Code Changed
- Formatted
- Deleted: .
- Formatted
- Deleted: ¶

1517 Concerning the model quality, model errors are related to data location, spatio-temporal resolution or logical consistency
1518 (Guptill and Morrison, 2013; Kraak and Ormeling, 2020). Utilizing multiple data sources adds strength to the model and has
1519 been especially useful for detecting small wildfires related to land management: the vast majority of wildfires in Sicily. These
1520 kinds of wildfires may be too short-lived for the administration technicians or not intense enough to be captured by satellites.
1521 Moreover, we consider that this strategy avoided a bias in the estimation of predictors' probabilities (Roy et al., 2005).

1522 The historical fire set was analyzed, filtered, cleaned and processed prior to fire hazard modeling. The frequency of wildfires
1523 from 2007 to 2020 was analyzed; some areas have burned more than once in the same year or more than 5 years during the
1524 13-year period. We suggest that future studies would have to study why this phenomenon can happen and how it could be
1525 avoided, as such a high frequency of wildfires disrupts the cycle of natural processes of plants and animals, the loss of
1526 vegetation structure and composition and the associated ecosystem services.

1527 Once the perimeters of each of the wildfires were identified, the associated information from the administration's wildfires was
1528 combined with the active fire points from the satellites to find the fire ignition area. Some differences were observed in the
1529 satellite and the government data. This may be due to reasons mentioned above: wildfires not detectable by satellites, or
1530 agricultural burnings detected as wildfires when the administration does not consider them as such. A great deal of effort was
1531 spent on data collection, cleaning, validation, pre-processing, and storage that complies with FAIR principles obtaining a
1532 reliable and open dataset: the basis of the occurrence of the fire model.

1533 The model strength has been improved by extracting information from the predictors' data with dynamic and static variables
1534 such as meteorological or topographic data, respectively. Thus, the predictors have informed the model with values specific to
1535 each fire event. In addition, the predictors come from reliable and tested sources such as Copernicus or the Italian government
1536 as well as expert researchers and technicians. Some of the resources already existed within k.LAB such as protected areas or
1537 human settlement distribution and others were added, as fuel types or high resolution digital elevation model. The new
1538 information has been annotated in the semantic language k.IM and, like the historical fire data, now is open to any user and
1539 can interact with other k.LAB models in line with the FAIR principles.

1540 It should be noted that this model has taken into account some of the explanatory variables at the time of ignition, but also
1541 some variables describing the ex-ante situation. Variables such as the average maximum temperature of the previous week,
1542 the accumulated precipitation or the number of days without rain were prior to the fire. The influence of climatic factors can
1543 help to predict the occurrence of wildfires related to climate change and the stress to which the forest was exposed (Halofsky
1544 et al., 2020; Trumbore et al., 2015).

1545 The machine learning algorithm used, BN (Bayesian Network), provides a flexible and adaptable approach to structure the
1546 peculiarities of fire hazard modeling: different data sources, changes in spatio-temporal resolution and dynamic versus static

Field Code Changed

Formatted: English (United States)

Formatted: English (United States)

Deleted: fires

Deleted: fires

Deleted: fires

Formatted: English (United States)

Field Code Changed

Formatted: English (United States)

Formatted: English (United States)

Deleted: danger

Deleted: fires

Deleted: fires

Deleted: fires

Deleted: fires

Deleted: fires

Deleted: fires

Deleted: fires

Field Code Changed

Formatted: English (United States)

Formatted: English (United States)

Deleted: fire occurrence

1559 input data. BNs are useful in conducting probabilistic risk assessments since they are capable of directly modelling the whole
1560 probability distributions for stable conditions and trade-offs which is crucial for risk assessments such as fire risk of complex
1561 ecological systems. They also provide insights or quantification of the influence of a particular [node](#) on others (Kumar and
1562 Banerji, 2022). In addition, the evaluation of BNs presents much lower costs and efforts than other options, even when the
1563 dataset is partly incomplete, which is quite common for environment-related data (Bielza and Larrañaga, 2014). Most of the
1564 remaining issues are related to meteorological conditions and environmental data, either due to the punctual failure of nearby
1565 stations or problems in post-processing. However, these problems can be solved by integrating data [with higher spatial](#)
1566 [resolution](#), which, once semantically annotated, will automatically substitute lower-quality resources.

1567 Another advantage of BNs is that they are not a black box models: the direct interpretation of the results, based on the
1568 probabilities of the predicting variables, is given in each node probability distribution. Traditional modeling it is often difficult
1569 to access the details of the model accuracy for the end user, leading to a lack of reliability. Thanks to k.LAB and its web
1570 browser k.Explorer, the accuracy of the model is accessible and interpretable for non-expert end-users as stakeholders or land
1571 managers as we showed in the results. In line with FAIR principles, the final output and all the variables needed to compute
1572 the fire occurrence are supported by a narrative report produced at runtime to facilitate its interpretation. All these outputs are
1573 open and downloadable.

1574 The algorithm used has provided significant values to detect areas with a high probability of fire occurrence. Thus, BNs provide
1575 a fast, reliable and accessible tool for land managers through k.LAB and semantics. The metrics related to type I and II errors
1576 can have great implications in practice, their acceptable values give credibility to the application and use of the model in real
1577 situations.

1578 The integrated model has been able to simplify a problem as complex as the occurrence of [wildfires](#) by combining very
1579 disparate datasets. Given the results, we successfully identified the different degrees of [fire hazard](#). The model results change
1580 according to the most influential variables that can change over time and space, such as meteorological, biophysical data and
1581 human pressure on the landscape.

1582 By using k.LAB, a [modeller](#) can reutilize the model at any point in time, including calculating the [fire hazard](#) in real-time or in
1583 future scenarios. For example, we have run the model with future data for 2050 assuming forest management does not change.
1584 It has been analyzed how, due to extreme temperatures and the stress that they will place on vegetation, the probability of
1585 [wildfires](#) will be higher in a large part of Sicily and, therefore, new areas will be affected. The easy adaptation of the BN
1586 models together with k.Explorer visualization facilities by the stakeholders simplifies the incorporation of new data in the
1587 future to test different land management alternatives.

Deleted: indicator

Formatted: Not Highlight

Formatted: Not Highlight

Deleted:

Formatted: Not Highlight

Formatted: English (United States)

Deleted: (Kumar & Banerji, 2022).

Field Code Changed

Formatted: English (United States)

Formatted: English (United States)

Deleted: more complete

Deleted: s

Deleted: t

Deleted: forest fires

Deleted: fire occurrence probability

Deleted:

Deleted: modeller

Formatted: English (United States)

Deleted: probability of

Deleted: fire occurrence

Deleted: fires

As the fire hazard model was incorporated into the k.LAB modeling environment,, this new model was able to interact and connect with existing models (Villa et al., 2017). Thus, we overlapped the future fire hazard with ecosystem services that were already developed and published by scientific researchers. We choose the ecosystems that are directly affected by fire such as pollination, soil retention, outdoor recreation, biodiversity and carbon mass.

5. Conclusions

Models informing environmental decisions are usually developed in isolation, self-contained and with results mostly accessible to code owners and their collaborators. However, in a globalized world with increasingly complex and intertwined problems, it is key to connect knowledge and develop methods that can identify integrated solutions (Balbi et al., 2022). The application of appropriate and reliable risk assessment techniques is key to understanding and potentially preventing future damage, but so is making this knowledge accessible to stakeholders. This study combines the power of Artificial Intelligence and, in particular, machine learning, knowledge representation and machine reasoning to model the risk of fire to ecosystem services in Sicily, the largest island in the Mediterranean Sea. We used the k.LAB technology, which provides a common platform to make data and models interoperable and accessible to non-technical users (Balbi et al., 2022).

In this study, we integrated historical fire data from 2007 to 2020 and other explanatory variables to identify the areas at the highest risk in present and future scenarios. We developed a data-driven model using a Bayesian Network (BN) classifier. Model analysis demonstrates that the BN algorithm applied to the historical wildfires data and their real-time variables achieves a high range of predictive accuracy. Despite the identified limitations as the resolution of meteorological data or detect small wildfires, the findings reveal the usefulness of the method, including the possibility to rerun the model at different time steps, and spatial scales statically or dynamically.

The fire risk spatial results are easily accessible through a web browser that can be used freely by land managers and stakeholders. This can help to create new prevention guidelines or focus on the risky areas. Moreover, the model gives scientists and land managers indications about the variables that mostly affect fire probability and how they can mitigate this environmental risk.

Code availability. Code used in this research is open and available at (Marquez Torres, 2023).

Data availability. Data used in this research is open and available at (Marquez Torres, 2023).

Supplement. The supplement related to this article is available on-line at: <https://doi.org/10.5281/zenodo.7618466>

Author contributions. AMT, FV, SB conceptualized the project. AMT, GS provided the data. AMT developed and calibrated the model and ran the simulations. AMT analyzed the data and carried out the investigation. AMT visualized the data. AMT drafted the paper. GS, SB, SK, GA reviewed and edited the paper.

Competing interests. The contact author has declared that none of the authors has any competing interests.

- Deleted: model of ...ire hazard model occurrence
- Formatted: English (United States)
- Deleted: modelling
- Field Code Changed
- Deleted: probability of ...ire hazard occurrence
- Formatted: English (United States)
- Formatted: English (United States)
- Deleted: (Villa et al., 2017).
- Formatted
- Formatted: Space After: 12 pt
- Field Code Changed
- Formatted: English (United States)
- Deleted: (Balbi et al., 2022).
- Formatted
- Deleted: and
- Formatted: English (United States)
- Deleted: Sicily
- Formatted: English (United States)
- Deleted: K
- Formatted: English (United States)
- Deleted:
- Field Code Changed
- Formatted: English (United States)
- Deleted: (Balbi et al., 2022).
- Formatted
- Deleted: 12
- Formatted: English (United States)
- Deleted: 19...and other explanatory variables to identify the areas at the highest risk in present and future scenarios. We developed a data-driven model using a Bayesian Network (BN) classifier. Model analysis demonstrates that the BN algorithm applied to the historical fires...ildfires data and their real-time variables achieves a high range of predictive accuracy. Despite the identified limitations as the
- Formatted: English (United States)
- Deleted: ¶
- Formatted
- Field Code Changed
- Field Code Changed
- Formatted
- Deleted: analysed
- Formatted: English (United States)

1679 *Disclaimer.* Publisher’s note: Copernicus Publications remains neutral with regard to jurisdictional claims in published maps
1680 and institutional affiliations.

1681 *Special issue statement.* This article is part of the special issue “The role of fire in the Earth system: understanding interactions
1682 with the land, atmosphere, and society (ESD/ACP/BG/GMD/NHESS inter-journal SI)”. It is not associated with a conference.

1683 *Acknowledgements:* We had like to thank the University of Catania for data access, expertise and support. We acknowledge
1684 the use of E-OBS dataset from the EU-FP6 project UERRA (<https://www.uerra.eu>) and the Copernicus Climate Change
1685 Service, and the data providers in the ECA&D project (<https://www.ecad.eu>). We acknowledge the use of data and/or imagery
1686 from NASA’s Fire Information for Resource Management System (FIRMS) (<https://earthdata.nasa.gov/firms>), part of NASA’s
1687 Earth Observing System Data and Information System (EOSDIS), [Map data copyrighted OpenStreetMap contributors and
1688 available from https://www.openstreetmap.org](https://www.openstreetmap.org).

1689 Financial support: This research is part of the FPI MDM-2017-0714-18-2 funded by
1690 MCIN/AEI/10.13039/501100011033 and partially supported by University of Catania; and by the Basque
1691 Government through the BERC 2022-2025 program.

1692 References

1693 Ager, A. and Finney, M. A.: Climate change impact on fire probability and severity in Mediterranean areas, In: Viegas, D. X.,
1694 ed. Proceedings of the VI International Conference on Forest Fire Research; 15-18 November 2010; Coimbra, Portugal.
1695 Coimbra, Portugal: University of Coimbra. 9 p., 2010.

1696 Aguilera, P. A., Fernández, A., Fernández, R., Rumí, R., and Salmerón, A.: Bayesian networks in environmental modelling,
1697 Environmental Modelling & Software, 26, 1376–1388, <https://doi.org/10.1016/j.envsoft.2011.06.004>, 2011.

1698 Aldersley, A., Murray, S. J., and Cornell, S. E.: Global and regional analysis of climate and human drivers of wildfire, Science
1699 of The Total Environment, 409, 3472–3481, <https://doi.org/10.1016/j.scitotenv.2011.05.032>, 2011.

1700 Angelini, P., Bianco, P., Cardillo, A., Francescato, C., and Oriolo, G.: Gli habitat in Carta della Natura - schede descrittive
1701 degli habitat per la cartografia alla scala 1:50.000, Istituto Superiore per la Protezione e la Ricerca Ambientale (ISPRA), 2009.

1702 Antrop, M.: Why landscapes of the past are important for the future, Landscape and Urban Planning, 70, 21–34,
1703 <https://doi.org/10.1016/j.landurbplan.2003.10.002>, 2005.

1704 Artés, T., Oom, D., de Rigo, D., Durrant, T. H., Maianti, P., Libertà, G., and San-Miguel-Ayanz, J.: A global wildfire dataset
1705 for the analysis of fire regimes and fire behaviour, Sci Data, 6, 296, <https://doi.org/10.1038/s41597-019-0312-2>, 2019.

1706 Baas, S., Conforti, P., Ahmed, S., and Markova, G.: The impact of disasters and crises on agriculture and food security, FAO,
1707 2018.

1708 Bacciu, V., Hatzaki, M., Karali, A., Cauchy, A., Giannakopoulos, C., Spano, D., and Briche, E.: Investigating the Climate-
1709 Related Risk of Forest Fires for Mediterranean Islands’ Blue Economy, Sustainability, 13, 10004,
1710 <https://doi.org/10.3390/su131810004>, 2021.

Formatted: Default Paragraph Font, English (United States)

Formatted: English (United States)

Formatted: Default Paragraph Font, English (United States)

Formatted: English (United States)

Formatted: Font: Not Italic, English (United States)

Formatted: English (United States)

Formatted: English (United States)

Formatted: English (United States)

Deleted: ¶

Formatted: Font: (Asian) Chinese (PRC), (Other) English (United States)

- 1712 Baiaomonte, G., Domina, G., Raimondo, F. M., and Bazan, G.: Agricultural landscapes and biodiversity conservation: a case
1713 study in Sicily (Italy), *Biodivers Conserv.*, 24, 3201–3216, <https://doi.org/10.1007/s10531-015-0950-4>, 2015.
- 1714 Balbi, S., Selomane, O., Sitas, N., Blanchard, R., Kotzee, I., O’Farrell, P., and Villa, F.: Human dependence on natural
1715 resources in rapidly urbanising South African regions, *Environ. Res. Lett.*, 14, 044008, <https://doi.org/10.1088/1748-9326/aafe43>, 2019.
- 1717 Balbi, S., Bagstad, K. J., Magrath, A., Sanz, M. J., Aguilar-Amuchastegui, N., Giupponi, C., and Villa, F.: The global
1718 environmental agenda urgently needs a semantic web of knowledge, *Environmental Evidence*, 11, 5,
1719 <https://doi.org/10.1186/s13750-022-00258-y>, 2022.
- 1720 Bao, J., Kendall, E. F., McGuinness, D. L., and Patel-Schneider, P. F.: OWL 2 Web Ontology Language Quick Reference
1721 Guide (Second Edition), 2012.
- 1722 Bazan, G., Marino, P., Guarino, R., Domina, G., and Schicchi, R.: Bioclimatology and Vegetation Series in Sicily: A
1723 Geostatistical Approach, *anbf*, 52, 1–18, <https://doi.org/10.5735/085.052.0202>, 2015.
- 1724 Bazan, G., Castrorao Barba, A., Rotolo, A., and Marino, P.: Geobotanical approach to detect land-use change of a
1725 Mediterranean landscape: a case study in Central-Western Sicily, *GeoJournal*, 84, 795–811, <https://doi.org/10.1007/s10708-018-9892-1>, 2019.
- 1727 Beuzen, T., Marshall, L., and Splinter, K. D.: A comparison of methods for discretizing continuous variables in Bayesian
1728 Networks, *Environmental Modelling & Software*, 108, 61–66, <https://doi.org/10.1016/j.envsoft.2018.07.007>, 2018.
- 1729 Bielza, C. and Larrañaga, P.: Discrete Bayesian Network Classifiers: A Survey, *ACM Comput. Surv.*, 47, 5:1-5:43,
1730 <https://doi.org/10.1145/2576868>, 2014.
- 1731 Birkmann, J., Buckle, P., Jaeger, J., Pelling, M., Setiadi, N., Garschagen, M., Fernando, N., and Kropp, J.: Extreme events and
1732 disasters: a window of opportunity for change? Analysis of organizational, institutional and political changes, formal and
1733 informal responses after mega-disasters, *Nat Hazards*, 55, 637–655, <https://doi.org/10.1007/s11069-008-9319-2>, 2010.
- 1734 Bisson, M., Favalli, M., Fornaciai, A., Mazzarini, F., Isola, I., Zanchetta, G., and Pareschi, M. T.: A rapid method to assess
1735 fire-related debris flow hazard in the Mediterranean region: An example from Sicily (southern Italy), *International Journal of
1736 Applied Earth Observation and Geoinformation*, 7, 217–231, <https://doi.org/10.1016/j.jag.2005.04.003>, 2005.
- 1737 Bonanno, G.: Adaptive management as a tool to improve the conservation of endemic floras: the case of Sicily, Malta and
1738 their satellite islands, *Biodivers. Conserv.*, 22, 1317–1354, <https://doi.org/10.1007/s10531-013-0473-9>, 2013.
- 1739 Bond, W. J. and Keeley, J. E.: Fire as a global ‘herbivore’: the ecology and evolution of flammable ecosystems, *Trends in
1740 Ecology & Evolution*, 20, 387–394, <https://doi.org/10.1016/j.tree.2005.04.025>, 2005.
- 1741 Borsuk, M. E.: Bayesian Networks, in: *Encyclopedia of Ecology*, edited by: Jørgensen, S. E. and Fath, B. D., Academic Press,
1742 Oxford, 307–317, <https://doi.org/10.1016/B978-008045405-4.00144-0>, 2008.
- 1743 Bouckaert, R. R.: Bayesian network classifiers in Weka, Department of Computer Science, Waikato University, Hamilton,
1744 2004.
- 1745 Bradley, A. P.: The use of the area under the ROC curve in the evaluation of machine learning algorithms, *Pattern Recognition*,
1746 30, 1145–1159, [https://doi.org/10.1016/S0031-3203\(96\)00142-2](https://doi.org/10.1016/S0031-3203(96)00142-2), 1997.

- 1747 Castellnou, M., Prat-Guitart, N., Arilla, E., Larrañaga, A., Nebot, E., Castellarnau, X., Vendrell, J., Pallàs, J., Herrera, J.,
 1748 Monturiol, M., Cespedes, J., Pagès, J., Gallardo, C., and Miralles, M.: Empowering strategic decision-making for wildfire
 1749 management: avoiding the fear trap and creating a resilient landscape, *fire ecol*, 15, 31, [https://doi.org/10.1186/s42408-019-](https://doi.org/10.1186/s42408-019-0048-6)
 1750 0048-6, 2019.
- 1751 Catalano, R., Di Stefano, P., Sulli, A., and Vitale, F. P.: Paleogeography and structure of the central Mediterranean: Sicily and
 1752 its offshore area, *Tectonophysics*, 260, 291–323, [https://doi.org/10.1016/0040-1951\(95\)00196-4](https://doi.org/10.1016/0040-1951(95)00196-4), 1996.
- 1753 Certini, G.: Effects of fire on properties of forest soils: a review, *Oecologia*, 143, 1–10, [https://doi.org/10.1007/s00442-004-](https://doi.org/10.1007/s00442-004-1788-8)
 1754 1788-8, 2005.
- 1755 Chappaz, F. and Ganteaume, A.: Role of land-cover and WUI types on spatio-temporal dynamics of fires in the French
 1756 Mediterranean area, *Risk Analysis*, <https://doi.org/10.1111/risa.13979>, 2022.
- 1757 Chen, S. H. and Pollino, C. A.: Good practice in Bayesian network modelling, *Environmental Modelling & Software*, 37, 134–
 1758 145, <https://doi.org/10.1016/j.envsoft.2012.03.012>, 2012.
- 1759 Chen, X.-W., Anantha, G., and Lin, X.: Improving Bayesian Network Structure Learning with Mutual Information-Based
 1760 Node Ordering in the K2 Algorithm, *IEEE Transactions on Knowledge and Data Engineering*, 20, 628–640,
 1761 <https://doi.org/10.1109/TKDE.2007.190732>, 2008.
- 1762 Chuvieco, E., Allgöwer, B., and Salas, J.: Integration of Physical and Human Factors in Fire Danger Assessment, in: *Wildland
 1763 Fire Danger Estimation and Mapping*, vol. Volume 4, WORLD SCIENTIFIC, 197–218,
 1764 https://doi.org/10.1142/9789812791177_0007, 2003.
- 1765 Cohen, J.: The wildland-urban interface fire problem: A consequence of the fire exclusion paradigm, *Forest History Today*.
 1766 Fall: 20-26., 20–26, 2008.
- 1767 Cooper, G. F. and Herskovits, E.: A Bayesian method for the induction of probabilistic networks from data, *Machine learning*,
 1768 9, 309–347, 1992.
- 1769 Cornes, R. C., Schrier, G. van der, Besselaar, E. J. M. van den, and Jones, P. D.: An Ensemble Version of the E-OBS
 1770 Temperature and Precipitation Data Sets, *Journal of Geophysical Research: Atmospheres*, 123, 9391–9409,
 1771 <https://doi.org/10.1029/2017JD028200>, 2018.
- 1772 Corrao, C.: Forest fires in Sicily, in: *The Management of Mass Burn Casualties and Fire Disasters: Proceedings of the First
 1773 International Conference on Burns and Fire Disasters*, edited by: Masellis, M. and Gunn, S. W. A., Springer Netherlands,
 1774 Dordrecht, 60–63, https://doi.org/10.1007/978-0-585-33973-3_9, 1992.
- 1775 Cullotta, S. and Marchetti, M.: Forest types for biodiversity assessment at regional level: the case study of Sicily (Italy), *Eur J
 1776 Forest Res*, 126, 431–447, <https://doi.org/10.1007/s10342-006-0166-y>, 2007.
- 1777 Daily, G., Postel, S., Bawa, K., and Kaufman, L.: *Nature's Services: Societal Dependence On Natural Ecosystems*, Bibliovault
 1778 OAI Repository, the University of Chicago Press, 1997.
- 1779 Di Maida, G.: The earliest human occupation of Sicily: A review, *The Journal of Island and Coastal Archaeology*, 0, 1–18,
 1780 <https://doi.org/10.1080/15564894.2020.1803460>, 2020.
- 1781 Drago, A.: *Desertification processes and possible mitigation actions [Sicily]*, Tecnica Agricola (Italy), 2005.

1782 Duane, A., Castellnou, M., and Brotons, L.: Towards a comprehensive look at global drivers of novel extreme wildfire events,
1783 Climatic Change, 165, 43, <https://doi.org/10.1007/s10584-021-03066-4>, 2021.

1784 Faivre, N., Jin, Y., Goulden, M. L., Randerson, J. T., Faivre, N., Jin, Y., Goulden, M. L., and Randerson, J. T.: Controls on the
1785 spatial pattern of wildfire ignitions in Southern California, Int. J. Wildland Fire, 23, 799–811,
1786 <https://doi.org/10.1071/WF13136>, 2014.

1787 Falcucci, A., Maiorano, L., and Boitani, L.: Changes in land-use/land-cover patterns in Italy and their implications for
1788 biodiversity conservation, Landscape Ecol, 22, 617–631, <https://doi.org/10.1007/s10980-006-9056-4>, 2007.

1789 Fawcett, T.: An introduction to ROC analysis, Pattern Recognition Letters, 27, 861–874,
1790 <https://doi.org/10.1016/j.patrec.2005.10.010>, 2006.

1791 Ferrara, C., Salvati, L., Corona, P., Romano, R., and Marchi, M.: The background context matters: Local-scale socioeconomic
1792 conditions and the spatial distribution of wildfires in Italy, Science of The Total Environment, 654, 43–52,
1793 <https://doi.org/10.1016/j.scitotenv.2018.11.049>, 2019.

1794 Frank, E., Hall, M. A., and Witten, I. H.: The WEKA Workbench. Online Appendix for “Data Mining: Practical Machine
1795 Learning Tools and Techniques,” 4th ed., Morgan Kaufmann, 2016.

1796 Friedman, N. and Goldszmidt, M.: Discretizing Continuous Attributes While Learning Bayesian Networks, Proceedings of the
1797 13th International Conference on Machine Learning, 157–165, 1996.

1798 Fu, Y., Li, R., Wang, X., Bergeron, Y., Valeria, O., Chavardès, R. D., Wang, Y., and Hu, J.: Fire Detection and Fire Radiative
1799 Power in Forests and Low-Biomass Lands in Northeast Asia: MODIS versus VIIRS Fire Products, Remote Sensing, 12, 2870,
1800 <https://doi.org/10.3390/rs12182870>, 2020.

1801 Ganteaume, A., Camia, A., Jappiot, M., San-Miguel-Ayanz, J., Long-Fournel, M., and Lampin, C.: A review of the main
1802 driving factors of forest fire ignition over Europe, Environ Manage, 51, 651–662, <https://doi.org/10.1007/s00267-012-9961-z>,
1803 2013.

1804 Ganteaume, A., Barbero, R., Jappiot, M., and Maillé, E.: Understanding future changes to fires in southern Europe and their
1805 impacts on the wildland-urban interface, Journal of Safety Science and Resilience, 2, 20–29,
1806 <https://doi.org/10.1016/j.jnlssr.2021.01.001>, 2021.

1807 Gibbs, H. K. and Ruesch, A.: New IPCC Tier-1 Global Biomass Carbon Map for the Year 2000, Environmental System
1808 Science Data Infrastructure for a Virtual Ecosystem (ESS-DIVE) (United States), <https://doi.org/10.15485/1463800>, 2008.

1809 Giglio, L., Schroeder, W., and Justice, C. O.: The collection 6 MODIS active fire detection algorithm and fire products, Remote
1810 Sensing of Environment, 178, 31–41, <https://doi.org/10.1016/j.rse.2016.02.054>, 2016.

1811 Giorgi, F., Jones, C., and Asrar, G.: Addressing Climate Information Needs at the Regional Level: the CORDEX Framework,
1812 175–183 pp., 2009.

1813 Grothmann, T. and Patt, A.: Adaptive capacity and human cognition: The process of individual adaptation to climate change,
1814 Global Environmental Change, 15, 199–213, <https://doi.org/10.1016/j.gloenvcha.2005.01.002>, 2005.

1815 Guidotti, R., Monreale, A., Ruggieri, S., Turini, F., Giannotti, F., and Pedreschi, D.: A Survey of Methods for Explaining
1816 Black Box Models, ACM Comput. Surv., 51, 93:1-93:42, <https://doi.org/10.1145/3236009>, 2018.

- 1817 Guptill, S. C. and Morrison, J. L.: *Elements of Spatial Data Quality*, Elsevier, 219 pp., 2013.
- 1818 Halofsky, J. E., Peterson, D. L., and Harvey, B. J.: Changing wildfire, changing forests: the effects of climate change on fire regimes and vegetation in the Pacific Northwest, USA, *fire ecol*, 16, 4, <https://doi.org/10.1186/s42408-019-0062-8>, 2020.
- 1820 Hantson, S., Padilla, M., Corti, D., and Chuvieco, E.: Strengths and weaknesses of MODIS hotspots to characterize global fire occurrence, *Remote Sensing of Environment*, 131, 152–159, <https://doi.org/10.1016/j.rse.2012.12.004>, 2013.
- 1822 Hantson, S., Pueyo, S., and Chuvieco, E.: Global fire size distribution is driven by human impact and climate, *Global Ecology and Biogeography*, 24, 77–86, <https://doi.org/10.1111/geb.12246>, 2015.
- 1824 Henriksen, H. J., Rasmussen, P., Brandt, G., von Bülow, D., and Jensen, F. V.: Public participation modelling using Bayesian networks in management of groundwater contamination, *Environmental Modelling & Software*, 22, 1101–1113, <https://doi.org/10.1016/j.envsoft.2006.01.008>, 2007.
- 1827 Intini, P., Ronchi, E., Gwynne, S., and Bénichou, N.: Guidance on Design and Construction of the Built Environment Against Wildland Urban Interface Fire Hazard: A Review, *Fire Technol*, 56, 1853–1883, <https://doi.org/10.1007/s10694-019-00902-z>, 2020.
- 1830 IPCC: 2006 IPCC Guidelines for National Greenhouse Gas Inventories, Prepared by the National Greenhouse Gas Inventories Programm, IGES, Japan, 2006.
- 1832 IPCC: *Managing the Risks of Extreme Events and Disasters to Advance Climate Change Adaptation — IPCC*, IPCC, Cambridge University Press, Cambridge, United Kingdom and New York, NY, USA, 2012.
- 1834 Jain, P., Coogan, S. C. P., Subramanian, S. G., Crowley, M., Taylor, S., and Flannigan, M. D.: A review of machine learning applications in wildfire science and management, *Environ. Rev.*, 28, 478–505, <https://doi.org/10.1139/er-2020-0019>, 2020.
- 1836 Kangas, A. S. and Kangas, J.: Probability, possibility and evidence: approaches to consider risk and uncertainty in forestry decision analysis, *Forest Policy and Economics*, 6, 169–188, [https://doi.org/10.1016/S1389-9341\(02\)00083-7](https://doi.org/10.1016/S1389-9341(02)00083-7), 2004.
- 1838 Kocher, S. D. and Butsic, V.: Governance of Land Use Planning to Reduce Fire Risk to Homes Mediterranean France and California, *Land*, 6, 24, <https://doi.org/10.3390/land6020024>, 2017.
- 1840 Kraak, M.-J. and Ormeling, F.: *Cartography: Visualization of Geospatial Data*, 4th ed., CRC Press, Boca Raton, 261 pp., <https://doi.org/10.1201/9780429464195>, 2020.
- 1842 Kumar, S. and Banerji, H.: Bayesian network modeling for economic-socio-cultural sustainability of neighborhood-level urban communities: Reflections from Kolkata, an Indian megacity, *Sustainable Cities and Society*, 78, 103632, <https://doi.org/10.1016/j.scs.2021.103632>, 2022.
- 1845 Lasaponara, R., Lanorte, A., and Pignatti, S.: Characterization and Mapping of Fuel Types for the Mediterranean Ecosystems of Pollino National Park in Southern Italy by Using Hyperspectral MIVIS Data, *Earth Interactions*, 10, 1–11, <https://doi.org/10.1175/EI165.1>, 2006.
- 1848 Leone, V., Lovreglio, R., Martín, M. P., Martínez, J., and Vilar, L.: Human Factors of Fire Occurrence in the Mediterranean, *Earth Observation of Wildland Fires in Mediterranean Ecosystems*, 149–170, https://doi.org/10.1007/978-3-642-01754-4_11, 2009.

- 1851 Li, Z., Kamnitsas, K., and Glocker, B.: Analyzing Overfitting Under Class Imbalance in Neural Networks for Image
1852 Segmentation, *IEEE Transactions on Medical Imaging*, 40, 1065–1077, <https://doi.org/10.1109/TMI.2020.3046692>, 2021.
- 1853 Lozano, O. M., Salis, M., Ager, A. A., Arca, B., Alcasena, F. J., Monteiro, A. T., Finney, M. A., Del Giudice, L., Scoccimarro,
1854 E., and Spano, D.: Assessing Climate Change Impacts on Wildfire Exposure in Mediterranean Areas, *Risk Analysis*, 37, 1898–
1855 1916, <https://doi.org/10.1111/risa.12739>, 2017.
- 1856 Marcot, B. G., Steventon, J. D., Sutherland, G. D., and McCann, R. K.: Guidelines for developing and updating Bayesian
1857 belief networks applied to ecological modeling and conservation, *Can. J. For. Res.*, 36, 3063–3074,
1858 <https://doi.org/10.1139/x06-135>, 2006.
- 1859 Marquez Torres, A.: [amarqueztorres/fire_risk_sicily: Fire Sicily](https://doi.org/10.5281/zenodo.7616451), <https://doi.org/10.5281/zenodo.7616451>, 2023.
- 1860 Martínez-López, J., Bagstad, K. J., Balbi, S., Magrach, A., Voigt, B., Athanasiadis, I., Pascual, M., Willcock, S., and Villa, F.:
1861 Towards globally customizable ecosystem service models, *Science of The Total Environment*, 650, 2325–2336,
1862 <https://doi.org/10.1016/j.scitotenv.2018.09.371>, 2019.
- 1863 Merrill, D. F. and Alexander, M. E.: Glossary of forest fire management terms., National Research Council of Canada,
1864 Canadian Committee on Forest Fire Management, 91, 1987.
- 1865 Michael, Y., Helman, D., Glickman, O., Gabay, D., Brenner, S., and Lensky, I. M.: Forecasting fire risk with machine learning
1866 and dynamic information derived from satellite vegetation index time-series, *Science of The Total Environment*, 764, 142844,
1867 <https://doi.org/10.1016/j.scitotenv.2020.142844>, 2021.
- 1868 Mohajane, M., Costache, R., Karimi, F., Bao Pham, Q., Essahlaoui, A., Nguyen, H., Laneve, G., and Oudija, F.: Application
1869 of remote sensing and machine learning algorithms for forest fire mapping in a Mediterranean area, *Ecological Indicators*, 129,
1870 107869, <https://doi.org/10.1016/j.ecolind.2021.107869>, 2021.
- 1871 Molina, M. O., Sánchez, E., and Gutiérrez, C.: Future heat waves over the Mediterranean from an Euro-CORDEX regional
1872 climate model ensemble, *Sci Rep*, 10, 8801, <https://doi.org/10.1038/s41598-020-65663-0>, 2020.
- 1873 Moreira, F. and Russo, D.: Modelling the impact of agricultural abandonment and wildfires on vertebrate diversity in
1874 Mediterranean Europe, *Landscape Ecol*, 22, 1461–1476, <https://doi.org/10.1007/s10980-007-9125-3>, 2007.
- 1875 Mouillot, F., Ratte, J.-P., Joffre, R., Mouillot, D., and Serge Rambal, and: Long-term forest dynamic after land abandonment
1876 in a fire prone Mediterranean landscape (central Corsica, France), *Landscape Ecol*, 20, 101–112,
1877 <https://doi.org/10.1007/s10980-004-1297-5>, 2005.
- 1878 Narcizo, L., Santos, F. L., Peres, L. F., Trigo, R., and Libonati, R.: The impact of heat waves in forest fires over the Amazon
1879 rainforest, *Copernicus Meetings*, <https://doi.org/10.5194/egusphere-egu22-10772>, 2022.
- 1880 Nikolakis, W. and Roberts, E.: Wildfire governance in a changing world: Insights for policy learning and policy transfer, *Risk,*
1881 *Hazards & Crisis in Public Policy*, 13, 144–164, <https://doi.org/10.1002/rhc3.12235>, 2022.
- 1882 Nojarov, P. and Nikolova, M.: Heat waves and forest fires in Bulgaria, *Nat Hazards*, <https://doi.org/10.1007/s11069-022-05451-3>, 2022.
- 1883
- 1884 Oliveira, S., Oehler, F., San-Miguel-Ayanz, J., Camia, A., and Pereira, J. M. C.: Modeling spatial patterns of fire occurrence
1885 in Mediterranean Europe using Multiple Regression and Random Forest, *Forest Ecology and Management*, 275, 117–129,
1886 <https://doi.org/10.1016/j.foreco.2012.03.003>, 2012.

- 1887 OpenStreetMap contributors: Planet dump retrieved from <https://planet.osm.org>, 2020.
- 1888 Ortega, M., Saura, S., González-Avila, S., Gómez-Sanz, V., and Elena-Rosselló, R.: Landscape vulnerability to wildfires at
1889 the forest-agriculture interface: half-century patterns in Spain assessed through the SISPARES monitoring framework,
1890 *Agroforest Syst*, 85, 331–349, <https://doi.org/10.1007/s10457-011-9423-2>, 2012.
- 1891 Otero, I., Castellnou, M., González, I., Arilla, E., Castell, L., Castellví, J., Sánchez, F., and Nielsen, J. Ø.: Democratizing
1892 wildfire strategies. Do you realize what it means? Insights from a participatory process in the Montseny region (Catalonia,
1893 Spain), *PLOS ONE*, 13, e0204806, <https://doi.org/10.1371/journal.pone.0204806>, 2018.
- 1894 Paracchini, M. L., Zulian, G., Kopperoinen, L., Maes, J., Schägner, J. P., Termansen, M., Zandersen, M., Perez-Soba, M.,
1895 Scholefield, P. A., and Bidoglio, G.: Mapping cultural ecosystem services: A framework to assess the potential for outdoor
1896 recreation across the EU, *Ecological Indicators*, 45, 371–385, <https://doi.org/10.1016/j.ecolind.2014.04.018>, 2014.
- 1897 Parente, J., Pereira, M. G., Amraoui, M., and Fischer, E. M.: Heat waves in Portugal: Current regime, changes in future climate
1898 and impacts on extreme wildfires, *Science of The Total Environment*, 631–632, 534–549,
1899 <https://doi.org/10.1016/j.scitotenv.2018.03.044>, 2018.
- 1900 Pausas, J. G. and Fernández-Muñoz, S.: Fire regime changes in the Western Mediterranean Basin: from fuel-limited to drought-
1901 driven fire regime, *Climatic Change*, 110, 215–226, <https://doi.org/10.1007/s10584-011-0060-6>, 2012.
- 1902 Pausas, J. G., Bradstock, R. A., Keith, D. A., and Keeley, J. E.: Plant Functional Traits in Relation to Fire in Crown-Fire
1903 Ecosystems, *Ecology*, 85, 1085–1100, <https://doi.org/10.1890/02-4094>, 2004.
- 1904 Pearl, J.: *Probabilistic Reasoning in Intelligent Systems: Networks of Plausible Inference*, Morgan Kaufmann, 576 pp., 1988.
- 1905 Pearl, J.: *Causality*, Cambridge University Press, 486 pp., 2009.
- 1906 Penman, T. D., Price, O., Bradstock, R. A., Penman, T. D., Price, O., and Bradstock, R. A.: Bayes Nets as a method for
1907 analysing the influence of management actions in fire planning, *Int. J. Wildland Fire*, 20, 909–920,
1908 <https://doi.org/10.1071/WF10076>, 2011.
- 1909 Peruzzi, L., Conti, F., and Bartolucci, F.: An inventory of vascular plants endemic to Italy, *Phytotaxa*, 168, 1–75, 2014.
- 1910 Planistat Europe and Bradley Dunbar Association: Analysis of the island regions and outermost regions of the European Union:
1911 Part I The island regions and territories, European Commission, 2003.
- 1912 Prestia, G. and Scavone, V.: Enhancing the Endogenous Potential of Agricultural Landscapes: Strategies and Projects for a
1913 Inland Rural Region of Sicily, in: *Smart and Sustainable Planning for Cities and Regions*, Ssper 2017, New York, 635–648,
1914 https://doi.org/10.1007/978-3-319-75774-2_43, 2018.
- 1915 Ragusa, M. A. and Rapicavoli, V.: Levels of desertification risk in the Sicilian forests according to MEDALUS-ESPI protocol,
1916 *AIP Conference Proceedings*, 1863, 530004, <https://doi.org/10.1063/1.4992674>, 2017.
- 1917 Renard, K. G., United States, and Agricultural Research Service.: *Predicting soil erosion by water: a guide to conservation
1918 planning with the revised universal soil loss equation (RUSLE)*, USDA, 1997.
- 1919 Rennie, J. D. M., Shih, L., Teevan, J., and Karger, D. R.: Tackling the poor assumptions of naive bayes text classifiers, in:
1920 *Proceedings of the Twentieth International Conference on International Conference on Machine Learning*, Washington, DC,
1921 USA, 616–623, 2003.

- 1922 Ricotta, C. and Di Vito, S.: Modeling the Landscape Drivers of Fire Recurrence in Sardinia (Italy), *Environmental*
1923 *Management*, 53, 1077–1084, <https://doi.org/10.1007/s00267-014-0269-z>, 2014.
- 1924 Robinne, F.-N., Parisien, M.-A., Flannigan, M., Robinne, F.-N., Parisien, M.-A., and Flannigan, M.: Anthropogenic influence
1925 on wildfire activity in Alberta, Canada, *Int. J. Wildland Fire*, 25, 1131–1143, <https://doi.org/10.1071/WF16058>, 2016.
- 1926 Roces-Díaz, J. V., Santín, C., Martínez-Vilalta, J., and Doerr, S. H.: A global synthesis of fire effects on ecosystem services
1927 of forests and woodlands, *Frontiers in Ecology and the Environment*, 20, 170–178, <https://doi.org/10.1002/fee.2349>, 2022.
- 1928 Rodrigues, M. and de la Riva, J.: An insight into machine-learning algorithms to model human-caused wildfire occurrence,
1929 *Environmental Modelling & Software*, 57, 192–201, <https://doi.org/10.1016/j.envsoft.2014.03.003>, 2014.
- 1930 Roy, D. P., Jin, Y., Lewis, P. E., and Justice, C. O.: Prototyping a global algorithm for systematic fire-affected area mapping
1931 using MODIS time series data, *Remote Sensing of Environment*, 97, 137–162, <https://doi.org/10.1016/j.rse.2005.04.007>, 2005.
- 1932 Ruffault, J., Curt, T., Moron, V., Trigo, R. M., Mouillot, F., Koutsias, N., Pimont, F., Martin-StPaul, N., Barbero, R., Dupuy,
1933 J.-L., Russo, A., and Belhadj-Khedher, C.: Increased likelihood of heat-induced large wildfires in the Mediterranean Basin,
1934 *Sci Rep*, 10, 13790, <https://doi.org/10.1038/s41598-020-70069-z>, 2020.
- 1935 Satir, O., Berberoglu, S., and Donmez, C.: Mapping regional forest fire probability using artificial neural network model in a
1936 Mediterranean forest ecosystem, *Geomatics, Natural Hazards and Risk*, 7, 1645–1658,
1937 <https://doi.org/10.1080/19475705.2015.1084541>, 2016.
- 1938 Schroeder, W., Csiszar, I., and Morisette, J.: Quantifying the impact of cloud obscuration on remote sensing of active fires in
1939 the Brazilian Amazon, *Remote Sensing of Environment*, 112, 456–470, <https://doi.org/10.1016/j.rse.2007.05.004>, 2008.
- 1940 Schroeder, W., Oliva, P., Giglio, L., and Csiszar, I. A.: The New VIIRS 375m active fire detection data product: Algorithm
1941 description and initial assessment, *Remote Sensing of Environment*, 143, 85–96, <https://doi.org/10.1016/j.rse.2013.12.008>,
1942 2014.
- 1943 Sereni, E.: *Storia del paesaggio agrario italiano*, 1961.
- 1944 Sicilia Assessorato beni culturali ed ambientali e pubblica istruzione: Linee guida del piano territoriale paesistico regionale /
1945 Regione siciliana, Assessorato dei beni culturali ambientali e della pubblica istruzione, Regione siciliana, Assessorato
1946 regionale dei beni culturali ed ambientali e della pubblica istruzione, \Palermo!, vii+472 pp., 1996.
- 1947 Thomaidis, K., Troll, V. R., Deegan, F. M., Freda, C., Corsaro, R. A., Behncke, B., and Rafailidis, S.: A message from the
1948 ‘underground forge of the gods’: history and current eruptions at Mt Etna, *Geology Today*, 37, 141–149,
1949 <https://doi.org/10.1111/gto.12362>, 2021.
- 1950 Trumbore, S., Brando, P., and Hartmann, H.: Forest health and global change, *Science*, 349, 814–818,
1951 <https://doi.org/10.1126/science.aac6759>, 2015.
- 1952 Tymstra, C., Stocks, B. J., Cai, X., and Flannigan, M. D.: Wildfire management in Canada: Review, challenges and
1953 opportunities, *Progress in Disaster Science*, 5, 100045, <https://doi.org/10.1016/j.pdisas.2019.100045>, 2020.
- 1954 UNEP-WCMC and IUCN: *Protected Planet: The World Database on Protected Areas (WDPA)* [Online], Cambridge, UK:
1955 UNEP-WCMC and IUCN., 2022.

- 1956 Villa, F., Balbi, S., Athanasiadis, I. N., and Caracciolo, C.: Semantics for interoperability of distributed data and models:
1957 Foundations for better-connected information, *F1000Res*, 6, 686, <https://doi.org/10.12688/f1000research.11638.1>, 2017.
- 1958 Weichselgartner, J. and Pigeon, P.: The Role of Knowledge in Disaster Risk Reduction, *Int J Disaster Risk Sci*, 6, 107–116,
1959 <https://doi.org/10.1007/s13753-015-0052-7>, 2015.
- 1960 Wilkinson, M. D., Dumontier, M., Aalbersberg, Ij. J., Appleton, G., Axton, M., Baak, A., Blomberg, N., Boiten, J.-W., Santos,
1961 L. B. da S., Bourne, P. E., Bouwman, J., Brookes, A. J., Clark, T., Crosas, M., Dillo, I., Dumon, O., Edmunds, S., Evelo, C.
1962 T., Finkers, R., Gonzalez-Beltran, A., Gray, A. J. G., Groth, P., Goble, C., Grethe, J. S., Heringa, J., Hoen, P. A. C. 't, Hooft,
1963 R., Kuhn, T., Kok, R., Kok, J., Lusher, S. J., Martone, M. E., Mons, A., Packer, A. L., Persson, B., Rocca-Serra, P., Roos, M.,
1964 Schaik, R. van, Sansone, S.-A., Schultes, E., Sengstag, T., Slater, T., Strawn, G., Swertz, M. A., Thompson, M., Lei, J. van
1965 der, Mulligen, E. van, Velterop, J., Waagmeester, A., Wittenburg, P., Wolstencroft, K., Zhao, J., and Mons, B.: The FAIR
1966 Guiding Principles for scientific data management and stewardship, *Sci Data*, 3, 1–9, <https://doi.org/10.1038/sdata.2016.18>,
1967 2016.
- 1968 Willcock, S., Martínez-López, J., Hooftman, D. A. P., Bagstad, K. J., Balbi, S., Marzo, A., Prato, C., Sciandrello, S., Signorello,
1969 G., Voigt, B., Villa, F., Bullock, J. M., and Athanasiadis, I. N.: Machine learning for ecosystem services, *Ecosystem Services*,
1970 33, 165–174, <https://doi.org/10.1016/j.ecoser.2018.04.004>, 2018.
- 1971 Wittenberg, L. and Malkinson, D.: Spatio-temporal perspectives of forest fires regimes in a maturing Mediterranean mixed
1972 pine landscape, *Eur J Forest Res*, 128, 297, <https://doi.org/10.1007/s10342-009-0265-7>, 2009.
- 1973 Wunder, S., Calkin, D. E., Charlton, V., Feder, S., Martínez de Arano, I., Moore, P., Rodríguez y Silva, F., Tacconi, L., and
1974 Vega-García, C.: Resilient landscapes to prevent catastrophic forest fires: Socioeconomic insights towards a new paradigm,
1975 *Forest Policy and Economics*, 128, 102458, <https://doi.org/10.1016/j.forpol.2021.102458>, 2021.

1976

Formatted: Bibliography, Space After: 0 pt