

Uncertainties originating from GCM downscaling and bias correction with application to the MIS-11c Greenland Ice Sheet

Brian R. Crow¹, Lev Tarasov², Michael Schulz¹, Matthias Prange¹

¹MARUM (Center for Marine Environmental Sciences) and Faculty of Geosciences, University of Bremen, Bremen, 28359, Germany

5

²Department of Physics and Physical Oceanography, Memorial University of Newfoundland and Labrador, St. John's, A1B 3X7, Canada

Correspondence to: Brian R. Crow (bcrow@marum.de)

10 **Abstract.** The Marine Isotope Stage 11c (MIS-11c) interglacial is an enigmatic period characterized by a long duration of
relatively weak insolation forcing, but is thought to have been coincident with a large global sea level rise of 6-13 m. The
configuration of the Greenland Ice Sheet during the MIS-11c interglacial highstand is therefore of great interest. Given the
limited data constraints, model-based analysis may be of use, but only if model uncertainties are adequately accounted for. A
particularly under-addressed issue in coupled climate and ice sheet modeling is the coupling of surface air temperatures to the
15 ice model. Many studies apply a uniform “lapse rate” accounting for the temperature differences at different altitudes over the
ice surface, but this uniformity neglects both regional and seasonal differences in near-surface temperature
[changes/dependencies on altitude](#). Herein we provide the first such analysis for MIS-11c Greenland that addresses these
uncertainties by comparing 1-way coupled CESM and ice sheet model results from several different downscaling
methodologies.

20 In our study, a spatially- and temporally-varying temperature downscaling method produced the greatest success rate in
matching limited paleodata constraints, and suggests a peak ice volume loss from Greenland during MIS-11c of near 50%
compared to present day (~3.9 m contribution to sea level rise). This result is on the lower bound of existing data- and model-
based studies, partly as a consequence of the applied one-way coupling methodology which neglects some feedbacks.
25 Additional uncertainties are examined by comparing two different present-day regional climate analyses for bias correction of
temperatures and precipitation, a spread of initialization states and times, and different spatial configurations of precipitation
bias corrections. No other factor exhibited greater influence over the simulated Greenland ice sheet than the choice of
temperature downscaling scheme.

1 Introduction

30 Examining past interglacial climates offers the opportunity to conduct data-based tests of our understanding of ice-climate
dynamics and the modeling thereof. With present and near-future warming expected to further accelerate ice loss from the
Greenland and Antarctic ice sheets, maximizing our understanding of their behavior under past warm conditions is a necessity.
The Marine Isotope Stage 11c (MIS-11c) interglacial, spanning approximately 430,000 to 395,000 years ago (ka), presents a
particularly interesting test case for modelers given evidence of a robust sea-level highstand (i.e., large loss of land-ice mass)
35 despite relatively weak insolation forcing (Dutton et al., 2015; Tzedakis et al., 2022).

The relative contributions of the Greenland and Antarctic ice sheets to sea level rise during MIS-11c remain poorly constrained,
but recent modeling work has proposed plausible [peak Greenland-only](#) contributions in the range of 3.9-7.0 m (Robinson et
al., 2017). However, the relative importance of various forms of uncertainty are largely unaccounted for in many coupled ice-
40 climate studies, particularly with regards to bias corrections and temperature downscaling. In this study, we therefore illustrate

the dependence of a simulated MIS-11c Greenland ice sheet (GrIS) upon the key choices made with regards to the simulated climate forcing and its coupling to an ice model.

45 One approach for examining the ice-climate interactions through glacial-interglacial cycles is the two-way interactive coupling of Earth-system models of intermediate complexity (EMICs) and ice-sheet models, enabling direct feedback of e.g., albedo, vegetation, land surface, and elevation changes on the climate forcing (e.g., Ganopolski and Calov, 2011; Goelzer et al., 2016; Robinson et al., 2017; Bahadory and Tarasov, 2018). Such coupled setups benefit from being computationally efficient, enabling long runs and often large ensembles of numerous simulations. However, many model components are highly simplified, and they can therefore only reproduce large-scale features of glacial-interglacial cycles. In recent years, more
50 sophisticated but computationally expensive atmosphere-ocean general circulation models (AOGCMs) have also been increasingly used in two-way coupled setups (e.g., Ridley et al., 2005; Helsen et al., 2013; Sommers et al., 2021). Asynchronous acceleration techniques, in which the ice component is run for multiple years to multiple millennia before updated ice and climate states are exchanged via the coupler, are able to reduce the overall simulation time for such setups (e.g., Herrington and Poulsen, 2011; Helsen et al., 2013; Sommers et al., 2021). While future studies should ideally strive
55 towards more fully-coupled simulations, AOGCM-based coupled simulations remain very computationally demanding at present, and this effectively precludes the possibility of conducting large ensemble simulations.

One common, computationally simpler alternative involves the one-way (offline) coupling of an AOGCM to an ice sheet model. Climate forcing is typically calculated using a steady-state present day or other prescribed ice sheet, limiting the direct
60 feedbacks that the melt or growth of the ice sheet would actually have on the climate system (see e.g. Fyke et al., 2018 for a comprehensive overview). For any given lengthier period of interest, a series of several shorter-duration simulations at conditions representative of selected critical timesteps can be run, with the forcing then interpolated to be continuous between these slices (Stone et al., 2013). Such an approach can be useful for simulating conditions spanning full interglacials (e.g., Stone et al., 2013; Milker et al., 2013) or for comparing various interglacials to each other (Herold et al., 2012; Rachmayani et al., 2016; Rachmayani et al., 2017). This time-slice approach is what we have opted for in our study on the basis that it
65 enables us to test a variety of coupling methodologies in a computationally efficient manner.

Regardless of chosen modeling approach, the relatively low-resolution surface temperatures simulated by a climate model must then be downscaled to the higher-resolution ice surface. [Dynamical downscaling, which involves running a regional climate model \(RCM\) over a more limited domain at higher resolution and/or shorter timescales, can help in achieving the spatial resolution necessary to better resolve surface processes critical to ice sheet mass balance \(e.g., Goelzer et al., 2017\). Such simulations could even be paired with a time-slice or glacial index approach, enabling the development of continuous, higher-resolution climate forcing over an extended period of time \(Jouvet et al., 2023\).](#) However, this approach introduces

[.much additional computational expense and could invite the specter of compounding biases across the AOGCM and RCM simulations.](#)

[The most common approach therefore remains scaling of temperatures to the ice model grid](#) via a lapse rate, or rate of change in temperature with height. Typically this is a prescribed scalar value (e.g., Huybrechts, 1997, Viscaino et al., 2008) or a tunable parametric value (Stone et al., 2010), but neither of these options have a justifiable physical basis. Both methods fail to capture the considerable seasonality and regional variation of lapse rates that has been demonstrated by both in-situ measurements and model simulations of temperatures over glaciers and ice sheets (e.g., Gardner et al., 2009; Fausto et al., 2009; Erokhina et al., 2017). The high sensitivity of ice sheet marginal ablation zones to temperature changes (e.g., Stone et al., 2010), and the control the lapse rate exhibits on the strength of the temperature-elevation feedback, implies a strong need to correctly implement this in model simulations.

The MIS-11c interglacial specifically constitutes a particularly challenging target for a modeling study due to the relative lack of geological constraints on the extent of the ice sheets. Among the limited geological constraints on Greenland's extent dating back to MIS-11c are ice core samples near Summit and DYE-3. Chemical analysis of silty basal ice and bedrock beneath it from the GISP2 core near Summit have suggested the possibility of some limited ice-free time over the past 2.7 million years (Schaefer et al., 2016), but it is likely that most or all of this time preceded the mid-Pleistocene transition (Bierman et al., 2014; Bierman et al., 2016; Yau et al., 2016). [Most recently, analysis of basal sediment from the Camp Century ice core suggests a complete deglaciation of NW Greenland in MIS-11, placing a lower bound on GrIS sea level contribution of 1.4 meters \(Christ et al., 2023\).](#)

Previous model simulations have suggested that the GISP2/Summit region would be among the last places in Greenland to deglaciate even during exceptionally warm stretches (Fyke et al., 2014), suggesting that disappearance of ice at this location would be tantamount to the virtually complete loss of the GrIS. The basal ice at DYE-3, however, has been dated only to the end of the MIS-11 interglacial, albeit with considerable uncertainties arising from dating techniques and poorly constrained ice advection (Yau et al., 2016). Thus, directly derived constraints for the minimum extent of the GrIS during MIS-11c include (1) the preservation of ice at Summit and (2) the disappearance of ice at DYE-3.

Additional indirect evidence of GrIS deglaciation in MIS-11c originates from marine sediment cores from a handful of locations off southern Greenland. Spruce pollen found in these samples, considered to be of local origin, indicates the emergence of boreal coniferous forest across at least the lower elevations of southern Greenland sometime around 400 ka. This is roughly during the later stages of MIS-11c and suggestive of considerable retreat of the GrIS ice margin compared to present (Willerslev et al., 2007; de Vernal and Hilliare-Marcel, 2008). Cessation of ice-rafted debris (IRD) deposition along the southern margin for several thousand years during MIS-11c is unprecedented compared to other late Pleistocene interglacials,

and indicative of the disappearance of most or all marine-terminating ice in southern Greenland (Reyes et al., 2014). Collectively, this evidence suggests a drastic reduction in the extent of the GrIS, but with rather poor constraints on the magnitude, spatial extent, or duration of retreat.

In this study, we present a number of one-way coupled ensemble simulations of the Greenland ice sheet's evolution throughout its substantial melt event during the MIS-11c interglacial. Using constraints provided by reconstructions, we determine a likely range for the GrIS contribution to sea-level change during MIS-11c. We examine the sensitivity of the simulated GrIS to a range of options, including those that are more observationally and physically justifiable than what has generally been used to date. In particular, we demonstrate that commonly-used scalar lapse rates for temperature downscaling perform poorly against our data-based constraints and produce the least GrIS melt in MIS-11c of any tested scheme. Our downscaling techniques, bias-correction schemes, initialization states, and chosen models are all detailed in the following section.

2 Methodology

The present study is centered on the one-way coupling of the climate forcing developed in the Community Earth System Model (CESM) v.1.2.2 with the ice dynamics of the Glacial Systems Model (GSM). A one-way coupling methodology (i.e., CESM forcing provided to GSM with no coupling back to CESM) was selected for computational efficiency reasons; namely, iterative CESM topographic corrections between time slices was judged too impractical to implement, some feedbacks would still be lacking compared to full 2-way coupling, and running a large ensemble of simulations would not be feasible. Relevant descriptions of the two models and the selection and processing of key input variables follow. The purpose here is to overview the various techniques we utilized as they pertain to the treatment of climate forcing and their coupling to the ice model.

2.1 Climate simulations and selected forcing

Our configuration of CESM is a fully coupled general circulation model with atmosphere, ocean, sea ice, land, and runoff components (Hurrell et al., 2013). For the sake of computational feasibility, our climate forcing consists of time-slice simulations every 5 kyr from 423 ka to 398 ka (similar to the Stone et al., 2013 methodology), spanning at distinct points during the MIS-11 interglacial period, and utilizes fixed modern-day ice sheets. Each time slice simulation utilizes temporally appropriate CO₂, CH₄, and N₂O levels characteristic of the selected time derived from ice core records (Siegenthaler et al. 2005; Lüthi et al. 2008; Otto-Bliesner et al. 2017) along with characteristic orbital parameters calculated based on the orbital solution by Laskar (2004). We assume static modern-day topography and land ice for all simulations, which are conducted at a spatial resolution of 2.5° longitude by 1.9° latitude for the atmosphere. Further details regarding the CESM time-slice simulations can be found in the methodology section of Crow et al. (2022). Bias corrections are calculated relative to climatologies from the final 100 years of a 400-year simulation under constant present-day (year 2000 CE) conditions.

140 Among the selected [climate forcing](#) variables are monthly mean and standard deviation of 2-meter air temperatures converted
to sea level, the atmospheric temperature downscaling lapse rate (described in greater detail in the following sub-section), the
mean and standard deviations of zonal (U) and meridional (V) components of wind at a height relevant to orographic
precipitation (details follow), the total precipitation, the total surface evaporation and sublimation, and ocean temperatures
through approximately the top 600 m. GSM has a much higher spatial resolution than CESM and therefore captures more
terrain variation, and its elevation profile is constantly recalculated in accordance with the dynamic ice sheet and lithospheric
145 deformation.

Arrays of U and V winds were constructed utilizing data from various heights in the atmosphere, depending on the terrain
profile. The goal was to capture wind direction and velocity at heights that are relevant for the generation of orographic
precipitation. Since the majority of moisture transport occurs in the atmospheric boundary layer, our formula considers the
150 wind interpolated to the CESM modeled surface height plus 500 m. Where this altitude lies below the height of the simulated
850 hPa pressure surface (i.e., low-altitude/coastal regions), 850 hPa winds are simply used. The input precipitation field is
then adjusted by assuming a proportionality with the vertical velocity that such a wind field would induce, given the slope of
the terrain (Bahadory and Tarasov, 2018). This approximates the strong orographic forcing that steep slopes induce on
precipitation and partly compensates for the mismatch in ice sheet model topography and the orographic boundary condition
155 used in the climate model.

Ocean temperatures are extracted at discrete levels through the top 600 m of the ocean column, roughly reflecting the present-
day depth of waters along the continental shelf of Greenland. This depth also approximately corresponds to the depth of water
that may have contact with marine-terminating outlet glaciers, thus exhibiting a strong influence on sub-shelf melt and calving.
160 The spatial resolution of CESM severely limits its ability to resolve fjord-scale ocean processes, so these temperatures represent
only an approximation of the near-ice ocean environment.

All input fields are then linearly interpolated between the MIS-11 time slices. We acknowledge that this is an imperfect method
that could fail to capture true peaks and nadirs of e.g. surface temperatures as they evolved through the MIS-11 interglacial,
165 as well as the possibility of abrupt and/or nonlinear climate transitions between the time slices. However, these time slices
were chosen specifically to correspond to key points in the evolution of orbital forcing (precession minima and maxima, with
strategically selected intermediate points), and the interpolation therefore should approximately capture the general evolution
of climate through this period.

2.2 Temperature downscaling (lapse rate) methodologies

170 Since our climate simulations assume constant present-day ice and topography, there will be inherent contrasts between the
land/ice surface heights in the climate and ice models. In order to address this discrepancy, a realistic vertical lapse rate must

be utilized for correcting surface air temperatures to the appropriate elevation. We refer throughout this study to the surface slope-lapse rate (henceforth simply “lapse rate”), which is a lapse rate representing the rate at which surface temperatures vary at different surface altitudes. This is distinct from the free-air lapse rate, which represents the change in air temperature with height through the atmosphere. [The free-air lapse rate](#) is thus more dependent on atmospheric dynamics and is often disconnected from [surface characteristics and the near-surface energy balance](#).

As addressed previously, many modeling studies employ a fixed scalar lapse rate, such as the EISMINT3 standard of 7 K km^{-1} (Huybrechts, 1997) or 6.5 K km^{-1} (e.g., Viscaino et al., 2008). Piecewise lapse rates (Huybrechts and de Wolde, 1999) or lapse rates as a tunable parameter (e.g., Stone et al., 2010) have also been used, but have no direct physical basis in modeled or observed temperatures. Therefore a prescribed lapse rate introduces a considerable source of error when coupling climate forcing to an ice model. Below, we describe the several different methods we tested in our study (in addition to a standard fixed lapse rate of 6.5 K km^{-1}).

2.2.1 Seasonally varying

The next logical step in complexity beyond a spatially and temporally uniform fixed lapse rate is a spatially-invariant, seasonally-varying lapse rate. Erokхина et al. (2017) utilized AOGCM simulations under preindustrial, early Holocene, and Last Glacial Maximum (LGM) conditions to demonstrate the dependence of the mean surface lapse rate over Greenland on not only the seasonal cycle, but also the large-scale climate forcing components (i.e., GHGs and orbital parameters). We adopt a similar methodology to Erokхина et al. (2017), utilizing least-squares regression of 2-meter climatological monthly air temperatures from CESM against the CESM surface elevation, excluding points at elevations of less than 100 meters to eliminate contamination from oceanic grid cells. The slope of the regression line produced by each month’s analysis then serves as the lapse rate that applies everywhere in our spatial domain for the given month.

2.2.2 Spatially and temporally varying (STV)

Our most sophisticated method is the fully spatially and temporally varying (STV) slope-lapse rate scheme, which is defined on a point-by-point basis by examining the surface temperatures at all adjacent grid points. For each of the eight neighboring grid points (N, S, E, W, NW, SW, NE, and SE), the temperature delta is calculated and divided by the elevation delta. For elevation differences of less than 100 m, the lapse rate is set to 7 K km^{-1} , a representative mean slope-lapse rate value. This approach ensures that incidental temperature differences across a region with small elevation differences are not inordinately weighted compared to sites of more contrasting altitude. Points with effectively zero elevation difference (e.g., two adjacent sea-level grid cells) are not considered in the calculation. For each grid point, the STV slope-lapse rate is the mean of all eligible surrounding slope-lapse rates.

In addition, we utilize a version of this method that is spatially smoothed with a radius of 3 CESM gridpoints (approx. ~300 km at 70°N latitude). The purpose of the smoothing is to reduce the effects of the poor representation of terrain along the Greenland margin in CESM, minimizing any influence of abrupt gradients resulting from the exclusion of oceanic grid points and reducing the lapse rate gradient between different portions of the ice sheet.

2.2.3 Daytime-only STV

Finally, in an effort to account for diurnal cycle impacts, we calculated STV lapse rates based only on daytime 2 m air temperatures. Only a limited 5-year dataset of hourly values was available from each of the MIS-11c CESM simulations, and no hourly data was available from the present-day simulation. The temperature bias corrections utilized for these simulations are therefore based upon the all-hours STV lapse rates. Hourly values corresponding to 6 am to 6 pm Greenland time were selected, approximately reflecting the window of maximum daily insolation. Differences in lapse rates, and therefore corrected sea-level air temperatures, are minimal during the darker and colder winter and spring months, but are substantial during summer and early fall, when most ablation is occurring (Stone et al., 2010 similarly utilized a lapse rate based only on summer temperatures).

2.3 GSM description

The Glacial Systems Model is a sophisticated thermomechanically coupled continental-scale ice sheet model that is designed for large ensemble simulations of large ice sheets over glacial cycles (Tarasov et al., in prep.). It utilizes an evolved version of the shallow-shelf/shallow-ice dynamical core (SSA/SIA) from Pollard and DeConto (2012) and Pollard et al. (2015). Simulations herein were run at 0.5° longitude and 0.25° latitude grid resolution. Unique and/or noteworthy components of the GSM include:

- a 4 km deep permafrost-resolving bed thermodynamics model that also corrects for seasonal snow cover of ice-free land areas (Tarasov and Peltier 2007);
- a global visco-elastic glacial isostatic adjustment (GIA) solver, updated from Tarasov and Peltier (1997);
- the orographic downscaling of precipitation using climatological wind fields (Bahadory and Tarasov 2018);
- and a novel inclusion of shortwave radiation fluxes into a traditional positive degree day (PDD) scheme.

The GSM has been utilized extensively in coupled ice-climate simulations, most commonly in a coupled system involving the Earth-system model of intermediate complexity LOVECLIM (Goosse et al., 2010; Bahadory and Tarasov, 2018; Bahadory et al., 2021). It has even been utilized previously to demonstrate the considerable spatial and temporal variability of near-surface lapse rates over large ice sheets and the related dependence of ice volume evolution this causes (Bahadory and Tarasov, 2018). It is therefore well-suited to the needs of this study.

Of further relevance is the recent completion of an approximate history matching (see Tarasov and Goldstein preprint in
235 EGU sphere 2023 for an explanation of history matching) of the last glacial cycle Greenland ice sheet with the GSM (Tarasov
et al., in prep.). This thereby provides a sample of GSM history-matched ensemble parameter vectors for which the non-climate
forcing components thereof can be used herein.

2.4 GSM parameters and boundary conditions

The parameters utilized by GSM to represent the various physical processes within and at the interfaces of the ice, till, and
240 bedrock of the domain are derived from an approximate history-matching routine. This glacial cycle history matching was
against deglacial and present-day observed data constraints of the GRIS. This set included relative sea level records, cosmogenic
age constraints, present-day ice thickness and horizontal surface velocities, deep ice core basal temperatures and the GRIP ice
core borehole temperature profile.

245 To partly address initialization uncertainties, the history matching simulations were run for two full glacial cycles (beginning
around 240 ka). The history matching involved Markov Chain Monte Carlo sampling with Bayesian artificial neural network
emulators along with over ten thousand full GSM simulations. A high-variance subset of history matched simulations provided
not only the GSM parameter vectors but also the initialization state for the current simulations as described in the next section.
Since our analysis uses a high-variance set of parameter vectors that were approximately history matched against deglacial
250 and present-day observational constraints for the GRIS, a further examination of ice-model parameter sensitivity is not
conducted here.

With the simulation domain being limited to Greenland and its immediate surroundings, a prescribed eustatic sea level was a
required boundary condition. The LR04 sea level reconstruction (Lisiecki and Raymo, 2005) was employed for this purpose.
255 Finally, GSM utilizes a handful of coupling parameters that modulate the degree to which temperature and precipitation inputs
are bias-corrected. The values of these parameters were qualitatively tested to examine the effects of greater or lesser
“blending” of input values, and ultimately were all set to utilize heavy bias correction.

2.5 Greenland ice sheet initialization

It has already been demonstrated that the ice volume derived from a given ice-climate simulation can be highly dependent on
260 the initial ice topography and thermodynamic state (e.g. Rogozhina et al., 2011). We therefore opted to initialize our
simulations from the previously described history-matched simulations of the past two full glacial cycles, which have e.g. bed
thermal characteristics and bed deformation that are more representative than a steady-state integration from zero or from a
present-day state. Our choice of selecting the 11.5 ka timeslice from the history matched simulations as the initial state for our
MIS 11 simulations was inspired by Raymo and Mitrovica (2012; their figure 1), who presented an overlay of the evolution of
265 the LR04 benthic stack $\delta^{18}\text{O}$ (Lisiecki and Raymo, 2005) from 440-410 ka and 30 ka-present. There is apparent similarity in

the timing and magnitude of the transition from glacial to interglacial conditions at the start of MIS-11c and the present interglacial, and on this basis, 11.5 ka was chosen as an analogous point in the most recent glacial-interglacial transition to 423 ka, the start of our available forcing data.

270 The selected 10-member high-variance history-matched subset already contains a spread in ice volume, distribution, and thermal states at the 11.5 ka point. The initial sea-level equivalent (SLE) ice volumes at 11.5 ka in these simulations have a mean value of 11.1 meters, with a range of 9.2-12.2 meters. For reference, these 10 parameter vectors produce a mean GrIS SLE of 7.7 m at present day, compared to the estimated actual present-day water content of 7.4 m (Morlighem et al., 2017).
275 The slight overestimation of GrIS volume at present-day is a common issue in ice sheet models, ~~and stems partly from the assumptions present in the shallow ice approximation physics (SIA; e.g., Stone et al., 2013, Stone et al., 2010), and partly from discretization, and could be somewhat resolution-dependent. It stems in part from discretization (thus introducing some resolution dependency) and likely in part from uncertainties in subglacial bed topography and regional variations in bed roughness impacting basal drag.~~

280 Our initial states are integrated with constant 423 ka forcing for either 500 or 1500 years prior to the 423 ka begin date in order to avoid discontinuities from abrupt forcing changes in the period of interest. This “spinup time” is broadly similar to the approach taken by Mas e Braga and coauthors (2021) for their MIS-11c simulation of Antarctica. Each parameter vector is therefore represented twice in each ensemble, once with each spinup time. We therefore account for not only the inherent ice-state uncertainty in utilizing a variety of ice states associated with different ice model parameter sets, but additionally the
285 uncertainty associated with selecting an analogue state from the present interglacial.

2.6 Bias correction

The version of CESM utilized in this study is understood to have a cold bias at high latitudes relative to observations and reanalyses, at least in present-day and preindustrial climates (e.g., Wang et al., 2019). This is also evident in our analysis of present-day boreal summer (JJA) mean temperatures adjusted to sea level from the present-day CESM simulation versus two
290 present-day reanalysis datasets (Figure 1). Given that unrealistically cold temperatures would be detrimental to accurately capturing the extent of GrIS surface melt in MIS-11c, an anomaly forcing approach was selected. For each time slice, the relative change of simulated temperatures and precipitation between the CESM present-day simulation and each MIS-11 time slice were calculated. Temperature anomalies are calculated as differences in sea-level-adjusted surface air temperatures, using the lapse rates calculated for each simulation in order to make the adjustment.

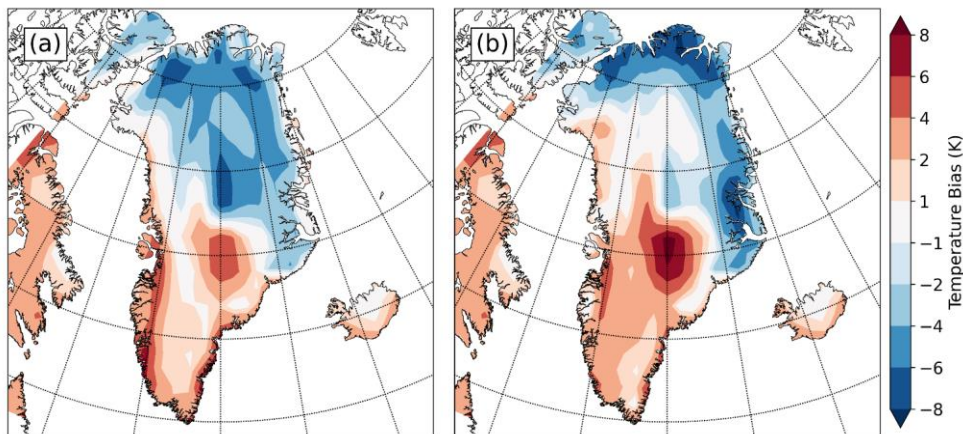
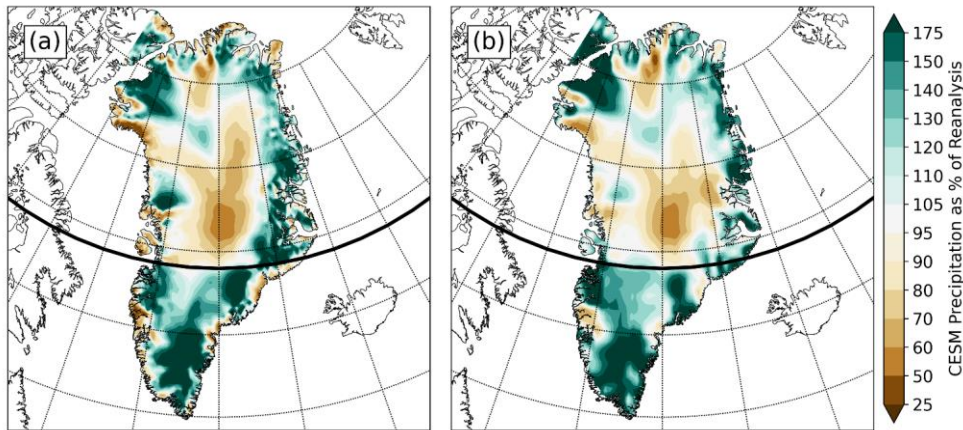


Figure 1. Mean June-July-August sea-level converted temperature difference (bias) between present-day CESM climatology and present-day RACMO (a) and between CESM and MAR (b). Red colors indicate where CESM is warmer than reanalyses, blues indicate that CESM is colder than reanalyses.

Precipitation bias correction is applied as a monthly-varying scale factor over Greenland and the surrounding continental shelf, representing the ratio between the modeled precipitation for a given time slice versus the present-day value. Monthly precipitation climatologies from each time slice are area-weighted across the designated sector and divided by the same quantity from the present-day CESM simulation. By default, only one scaling factor is applied over the entire ice sheet. However, the GSM provides the possibility to define sectors and calculate individual climatological scaling factors for each sector. We therefore tested the effects of using only one precipitation scaling factor against a two-sector north/south division that was established in an effort to address a consistent wet-bias pattern in southern Greenland. In general, the present-day CESM run is much wetter than both the reanalysis datasets around the perimeter of Greenland, and too dry in the center (Figure 24). However, south of 69°N, CESM has a large (25-75%) wet bias almost everywhere. This therefore serves as the dividing line in our two-sector precipitation tests. Given the high dependency of precipitation on atmospheric dynamics and the latter's potential sensitivity to changes in boundary conditions, we judged the imposition of complete spatial (horizontal \times -y) dependence of the bias correction field hard to justify. Instead, we rely on the orographic downscaling of the GSM to account for the majority of dependency on orography.



315 **Figure 24.** Mean annual total precipitation bias ratio of the present-day CESM climatology to RACMO (a) and CESM to MAR (b). Green areas show where CESM is wetter compared to the regional reanalyses, brown where CESM is drier. The bold line of latitude is at 69°N, where the dividing line for 2-sector precipitation bias correction simulations was placed.

320 Two different present-day regional climate model datasets were utilized as climatological baselines to which CESM anomaly forcing was applied: the Modèle Atmosphérique Régional v3.52 (MAR; Fettweis et al., 2017; Gallée and Schayes, 1994) and the Regional Atmospheric Climate Model v2.3p2 (RACMO; Noël et al., 2018). Both models have been developed specifically for use in polar regions and have been used extensively in ice sheet modeling studies previously (e.g., Carter et al., 2022, and references therein). Over Greenland, RACMO is slightly warmer (Figure 12) and drier (Figure 24) than MAR, leading to
 325 notable differences in overall simulated ice volume.

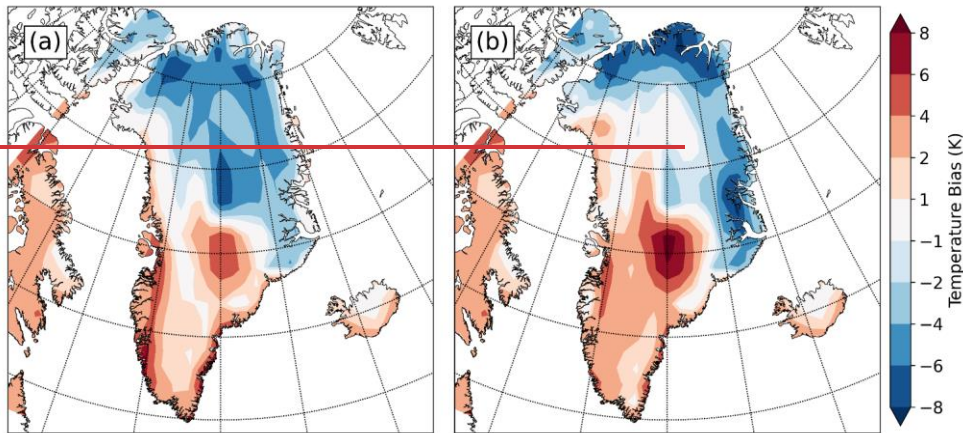


Figure 2. Mean June-July-August sea-level-converted temperature difference (bias) between RACMO present-day climatology and present-day CESM (a) and between MAR and CESM (b). Red colors indicate where reanalyses are warmer than CESM, blues indicate that the reanalyses are colder than CESM.

330 3 Results

Numerous ensembles of simulations were conducted utilizing various combinations of the forcing methodologies described above. A summary table (Table 1) lists the present-day regional climate analyses to which the CESM anomalies were applied, the number of precipitation bias-correction sectors used, and the lapse rate method employed, as well as three key summary statistics. These are the fraction of ensemble members that preserve ice at the GSM grid cell corresponding to the Summit ice-core site throughout the entire simulation, the fraction of ensemble members that have zero ice depth at some point during the simulated period at the grid cell corresponding to the DYE-3 site, and the mean maximum SLE contribution from the melt of the simulated GrIS, averaged among all ensemble members.

335

#	Temperature and Precipitation	PPT Sectors	Lapse rate method	Summit preservation	DYE-3 disappearance	Mean maximum SLE contribution
1	MAR	2	Seasonal	20 / 20	4 / 20	3.27 m
2	RACMO	2	Seasonal	6 / 20	0 / 20	5.07 m
3	MAR	1	STV	14 / 20	18 / 20	3.56 m

Formatted: Heading 1

4	MAR	2	STV	15 / 20	20 / 20	3.86 m
5	RACMO	1	STV	12 / 20	0 / 20	4.50 m
6	RACMO	2	STV	10 / 20	0 / 20	4.67 m
7	MAR	2	Smoothed	6 / 20	4 / 20	5.60 m
8	RACMO	2	Smoothed	0 / 20	0 / 20	6.42 m
9	MAR	2	Daytime	17 / 20	0 / 20	4.29 m
10	RACMO	2	Daytime	5 / 20	0 / 20	5.00 m
11	MAR	2	Constant	20 / 20	0 / 20	2.20 m

Table 1. Summary of the selected forcing datasets and methodologies along with summary statistics for each ensemble. The “Summit preservation” and “DYE-3 disappearance” columns express the fraction of ensemble members (out of 20) that maintain >0 ice depth at Summit throughout the entire simulation and members that achieve ice depth = 0 m at DYE-3 at some point during the simulation, respectively.

The listed ensembles represent just a select subset of all the simulations that were conducted, which also included a number of sensitivity tests and cross-combinations of bias corrections (e.g., MAR temperatures with RACMO precipitation). The focus is primarily on simulations featuring two precipitation sectors (north and south Greenland, divided at 69°N) because these were more successful at meeting our selection criteria, but for ensembles 3 and 5, included to illustrate the contrast with ensembles 4 and 6, respectively. Ensemble 11 utilizes a spatially and temporally uniform 6.5 K km^{-1} lapse rate as a reference for the technique most commonly applied in other studies. The constant lapse rate simulations produce the least melt of the GrIS during MIS-11c and none of the 20 ensemble members meet both Summit and DYE-3 criteria.

Two trends are immediately apparent from the table: first, that for identical lapse rate methodologies, runs forced with anomalies from RACMO data generally produce a greater peak sea level contribution than those run with MAR (greater melting in MIS-11c associated with RACMO). This can be ascribed to the aforementioned slightly warmer and drier climatology in the RACMO dataset in comparison with MAR. Second, the dual “anchor point” criteria of Summit preservation and DYE-3 disappearance prove difficult to simultaneously replicate, with only a minority of all simulations achieving both. This is not unlike the difficulties Yau et al. (2016) encountered in trying to simultaneously replicate temperatures at the NEEM and GISP2 core sites. Particularly problematic was achieving the complete melt of DYE-3, which retained ice in the overwhelming majority of all simulations outside of MAR-forced ensembles that utilized the STV lapse rates. This appears to be in part because of high accumulation rates across the South Dome region, causing it to maintain positive mass balance throughout our simulated MIS-11c despite warmer-than-present temperatures.

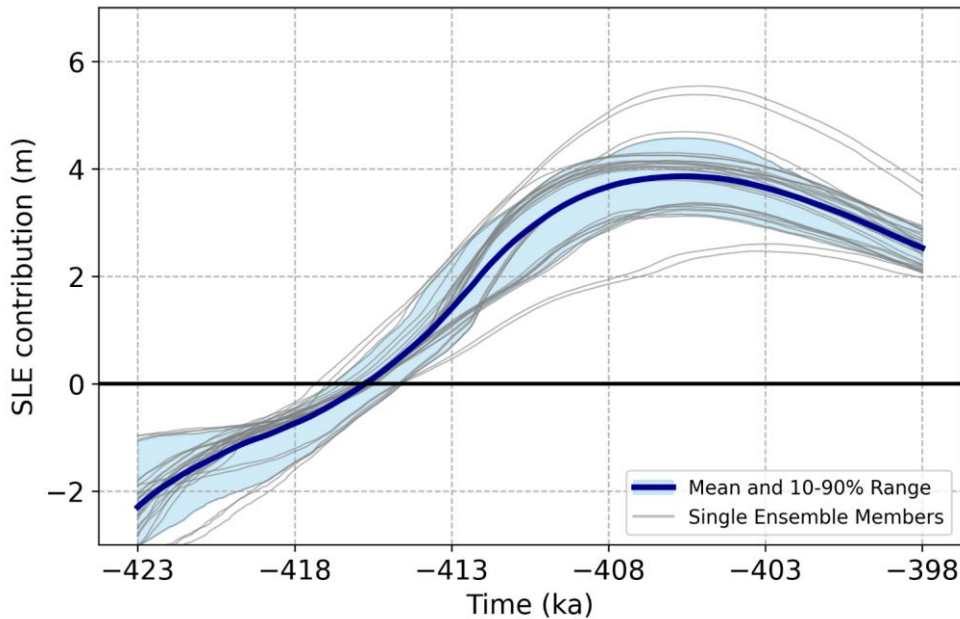


Figure 3. Evolution of GrIS contribution to sea level relative to present (0 m line) for all 31 simulations that matched both Summit and DYE-3 conditions through the course of MIS-11c. The thick blue line represents the mean time-evolution of volume, while shading gives the 10th to 90th interquartile range. Light gray lines show each of the 31 individual member simulations comprising the average.

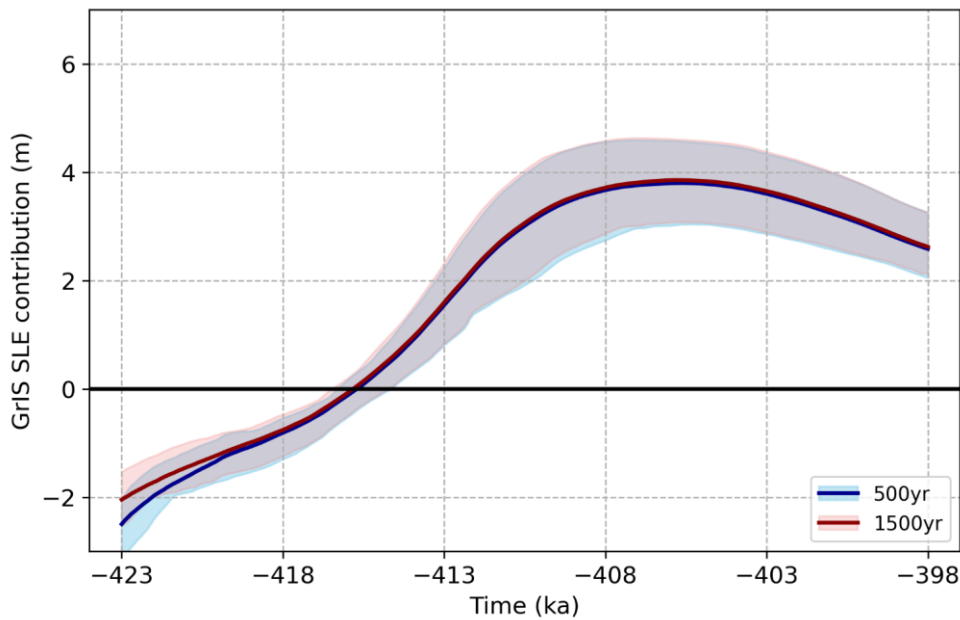
Across all the listed ensembles, a total of 31 simulations (14.1%) simultaneously met the Summit and DYE-3 criteria, all of which utilized MAR-based temperature and precipitation bias corrections and the large majority of which, 27 out of 31 (87%), used STV lapse rates. The remaining four matched simulations used the seasonally varying lapse rates. These fitting simulations produce a mean peak GrIS SLE contribution of 3.9 m (10-90% range of 3.2-4.6 m) at a mean time of 405.8 ka, the time-evolution of which is illustrated in Figure 3. This is equivalent to melting approximately 51% (range 41-60%) of the present-day Greenland ice sheet, based on the volume of the ice sheet from the present-day calibration simulations conducted with identical parameter vectors.

375 In order to better understand the differences incurred by each altered forcing factor, select ensembles are compared directly
below. The qualitative and statistical differences between them are discussed here in the context of each differentiating
characteristic.

3.1 Initialization and spinup time differences

380 Assessed here are two forms of initialization uncertainty: different ice states stemming from the 11.5 ka realizations of the 10
selected GSM parameter vectors and the different relaxation times to account for the subjectivity of the 11.5 ka selection.
Differences in initialization state clearly have an effect, as simulations with a larger beginning ice volume tend to maintain
larger ice volumes at their MIS-11c minima (not explicitly shown here, but partially recognizable among the individual
members in Figure 3). The GSM parameters then appear to be the primary driver of the time-evolution of volume through the
remainder of the simulations, as identical parameter vectors with different spinup times tend to follow nearly identical trends
385 in time.

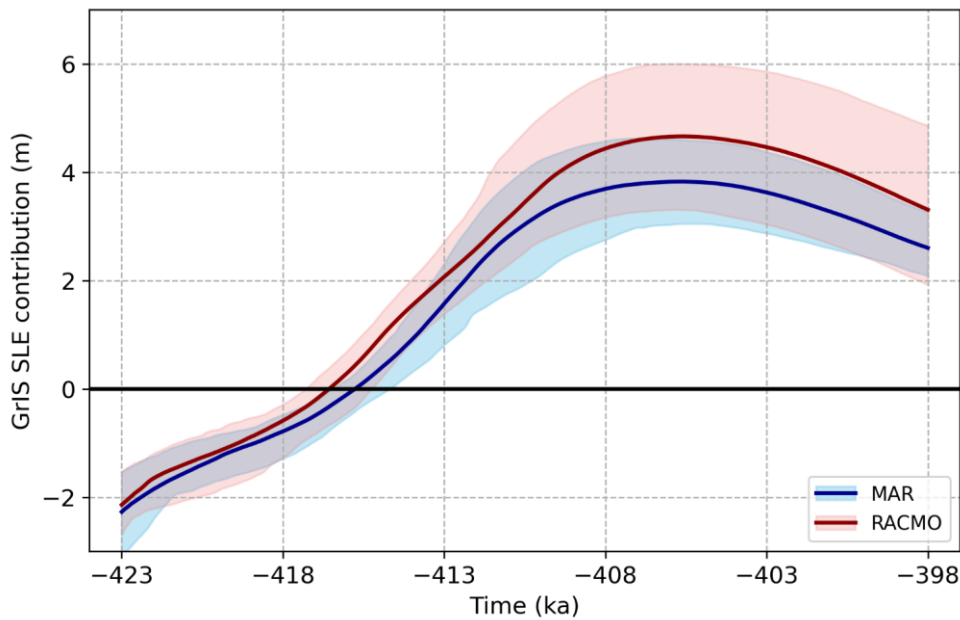
On the whole, our ensembles exhibit minimal sensitivity to the imposed differences in spinup time. Figure 4 illustrates the
evolution of two 10-member ensembles utilizing the same 10 GSM parameter vectors and MAR bias corrections. After an
initial difference in mean and spread at 423 ka arising purely from the use of a 500-year (blue) or 1500-year (red) spinup time
390 (i.e., constant 423 ka forcing from the beginning of the simulation through 423 ka and starting from either 422.5 or 421.5 ka),
the two ensembles quickly converge. Only tiny differences between the ensembles can be observed after 419 ka. This pattern
is robust to the choice of bias correction dataset (MAR or RACMO) and to various lapse rate methodologies, and even holds
when examining only our criteria-matched simulations.



395 Figure 4. Time evolution of sea-level equivalent contribution from Greenland in two ensembles run with identical parameter vectors and forcing, but comparing the 500-year spinup time (blue) with the 1500-year (red). Ensemble means and spreads are practically indistinguishable after 418 ka.

3.2 Climate forcing bias corrections

400 Unlike what we observe with comparing ensembles of different relaxation times, the differences between ensembles using either MAR or RACMO bias corrections are rather stark. Figures 5 and 6 demonstrate the time-evolution of the mean and range of ensembles utilizing the same lapse rate techniques and precipitation bias correction sectors, but differentiating in their use of MAR (blue) or RACMO (red) bias corrections. As expected, the differences can be ascribed to the combined effects of the precipitation and surface temperatures on the surface mass balance.



405 **Figure 5. Comparison of GrIS sea-level contributions from MAR (blue) and RACMO (red) ensembles utilizing fully varying lapse rates and 2 precipitation bias correction sectors. The shading represents the 10-90% range of each ensemble.**

A key result is that the melt extent associated with each forcing type also exhibits different sensitivities to different lapse rate techniques. The effects of the different lapse rates will be elaborated on in Section 3.4, but here we note the apparent amplification of contrasts between the MAR and RACMO ensembles using seasonally-varying lapse rates (Figure 6) as opposed to those using SVT (Figure 5). This sensitivity is a product of multiple factors, including the following:

- the MAR dataset over Greenland is slightly cooler and wetter than RACMO and the spatial patterns of each are slightly different;
- the seasonal cycles of the MAR and RACMO datasets are slightly different;
- the original MAR and RACMO datasets were of slightly different spatial resolution, thus raising the possibility of interpolation differences when both datasets are interpolated to the GSM grid. This could be particularly true along the steep marginal regions, which in turn exhibit the greatest influence on the size of the ablation zone.

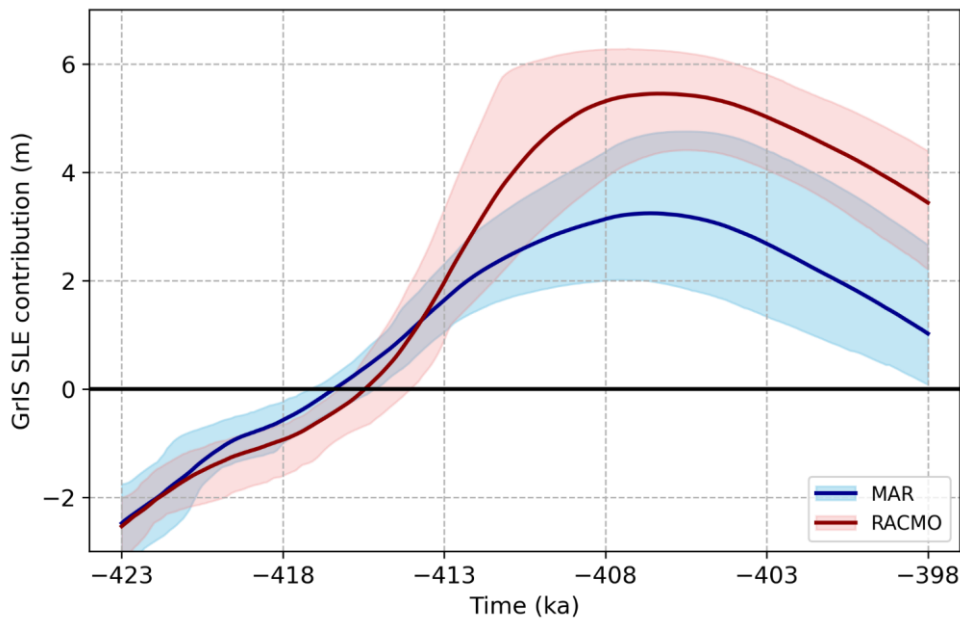


Figure 6. As in Figure 5, but for seasonally-varying lapse rates.

420

As an example, consider the two simulations depicted in Figure 7, which are selected from the ensembles depicted in Figure 6. These runs utilize identical parameter vectors, initialization states, relaxation times, and the seasonally-varying lapse rate method. Stark contrasts exist in the ice states due to the bias correction differences, with the peak SLE contribution from the GrIS at around 5.5 m for the RACMO-corrected run and only 3.2 m for the MAR run. As expected, a substantial difference in the ablation zones is apparent; the ablation zone covers virtually the entire northern, western, and central portions of Greenland by 405 ka in the RACMO run, whereas only northern marginal regions and the ice streams in the greater Jakobshavn Isbrae basin are net ablation zones in the MAR run. Looking at 415 ka surface ice velocities in the simulations offers insight into how this manifests in earlier stages of the ice evolution, with the RACMO run containing greater ice velocities and longer extensions of the ice streams into the interior regions of Greenland. The warmer surface temperatures in the RACMO analysis therefore contribute to a more thermodynamically imbalanced and deformable ice sheet in these simulations in comparison to those bias-corrected with MAR data.

425

430

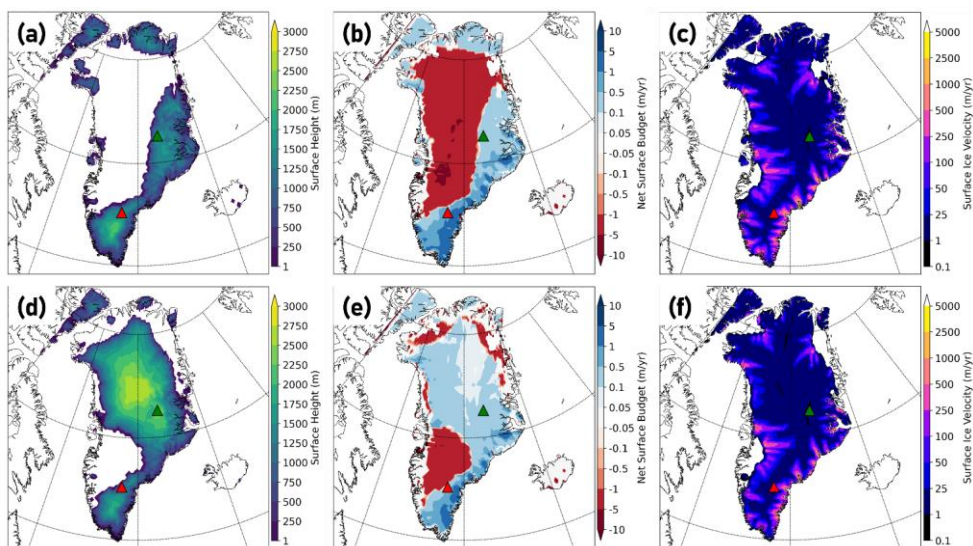


Figure 7. Comparison of one model run from each of the ensembles depicted in Figure 6 with identical parameter vectors. Top row (a-c): temperatures and precipitation bias-corrected with RACMO data. Bottom row (d-f): bias corrections utilize MAR data. Left column (a and d): ice surface height in meters at year 405 ka of the simulation (near ice minimum). Center column (b and e): net surface budget at year 405 ka of the simulation, given in net meters per year of surface accumulation (positive, blue shading) or melt (negative, red shading). Right column (c and f): ice surface velocities expressed in meters per year. The locations of the Summit (green triangle) and DYE-3 (red triangle) core sites are depicted in each panel for reference.

3.3 Precipitation scaling

435 The effects of using multiple precipitation bias-correction factors were also examined. As described in Section 2.6, the present-day CESM simulation is persistently wetter than both MAR and RACMO south of 69°N, so this division was utilized to enable the calculation of two separate monthly precipitation scaling factors. With all other variables kept constant (forcing type and lapse rate methodology), our simulations produce only minimal differences between the 1-sector and 2-sector forcing. Shown in Figure 8 is the difference between ensembles utilizing MAR forcing and STV lapse rates, with only a slight increase in mean melt contribution seen in the 2-sector simulations. Comparisons made between ensembles utilizing RACMO forcing are nearly identical, and thus not shown here.

445

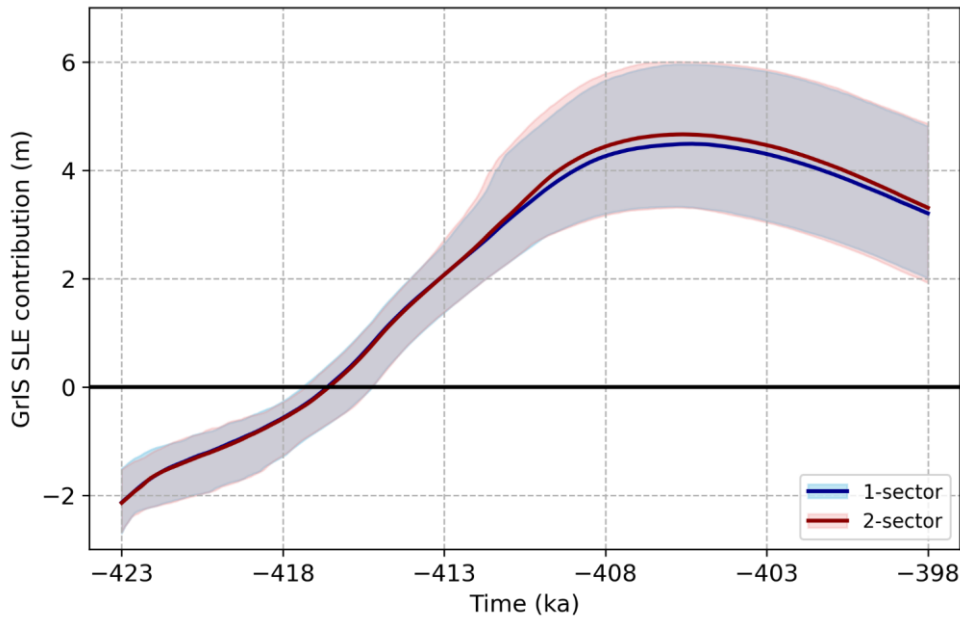


Figure 8. Time evolution of sea level contribution from Greenland from two ensembles with MAR forcing and fully varying lapse rates, but using 1 precipitation scaling factor for the whole GrIS (blue) versus two sectors (red), divided at 69°N.

450

This increase in sea level contribution is a result of slightly less positive mass balance from reduced precipitation over the South Dome region. The change also slightly improves our Summit and DYE-3 match rates, improving from 14/20 to 15/20 members preserving Summit and from 18/20 to 20/20 melting DYE-3 when utilizing MAR forcing and STV lapse rates (Table 1). While the differences between corresponding simulations in the two ensembles are difficult to see spatially, the small localized changes in surface mass balance ultimately result in improved representations of our key ice core locations.

455

3.4 Lapse rate methodology comparison

By far the most impactful forcing difference between simulations was the choice of lapse rate method. As illustrated in Figures 9 and 10, the resulting peak GrIS sea level contribution for each lapse rate method is distinctly different, ranging from approximately 2.2 m SLE with a constant 6.5 K km^{-1} lapse rate to approximately 5.6 m SLE with the smoothed spatially and temporally varying method. The uncertainty ranges, characterized by the 10th to 90th percentile of individual members of each

460

ensemble, also vary in magnitude. The STV method provides the narrowest uncertainty range, while the smoothed and daytime methods each span a range of over 3 m SLE around the time of minimum volume.

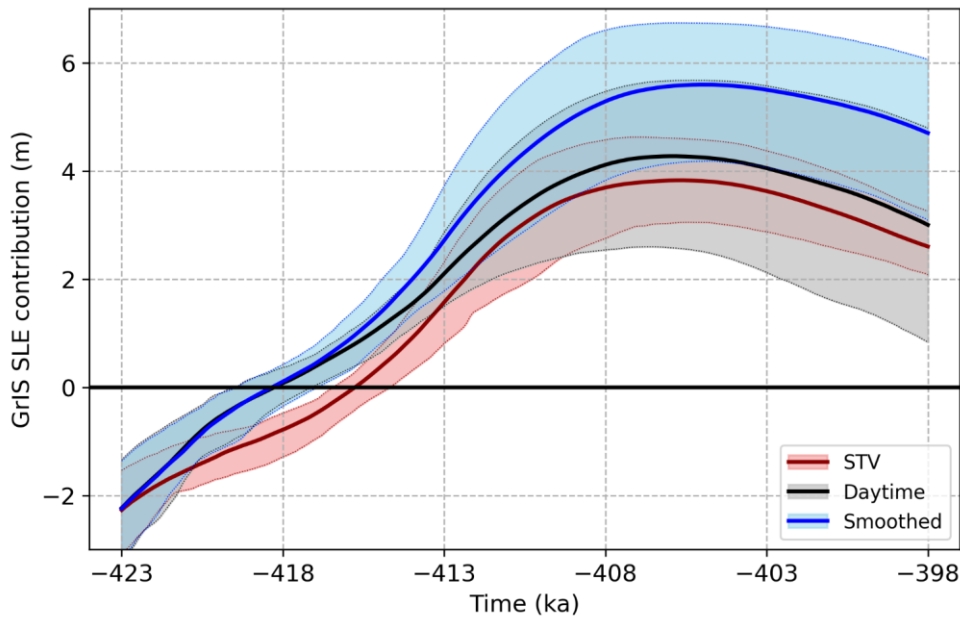


Figure 9. Time-evolution of ensembles forced with MAR bias corrections, 2 precipitation sectors, and the STV (red), daytime-only (black/gray), and smoothed (blue) lapse rate methodologies. Shading represents the 10-90% range for each 20-member ensemble, and bold lines give the time-mean evolution of all members in each ensemble.

These differences can be primarily explained by the effect of the lapse rate on the surface mass balance. The fixed lapse rate method appears to result in an underestimation of the ablation zone and is not responsive to changes in orbital forcing, thus limiting the melt extent sharply. The seasonal lapse rate is spatially invariant and therefore has nearly the same limitation as using a fully fixed lapse rate: the higher vertical temperature gradients in coastal/marginal zones are not resolved, reducing the extent of the ablation area. Higher gradients occur in these marginal zones during the warm season primarily due to the albedo differences between low elevation, snow- and ice-free regions and the snow- and ice-covered higher elevations. Temperature inversions and persistent marine cloud cover also contribute to very low coastal lapse rates. Orographic flows also result in persistent windward cloudiness along steep terrain gradients, contributing to suppressed lower-atmospheric temperature gradients in these areas.

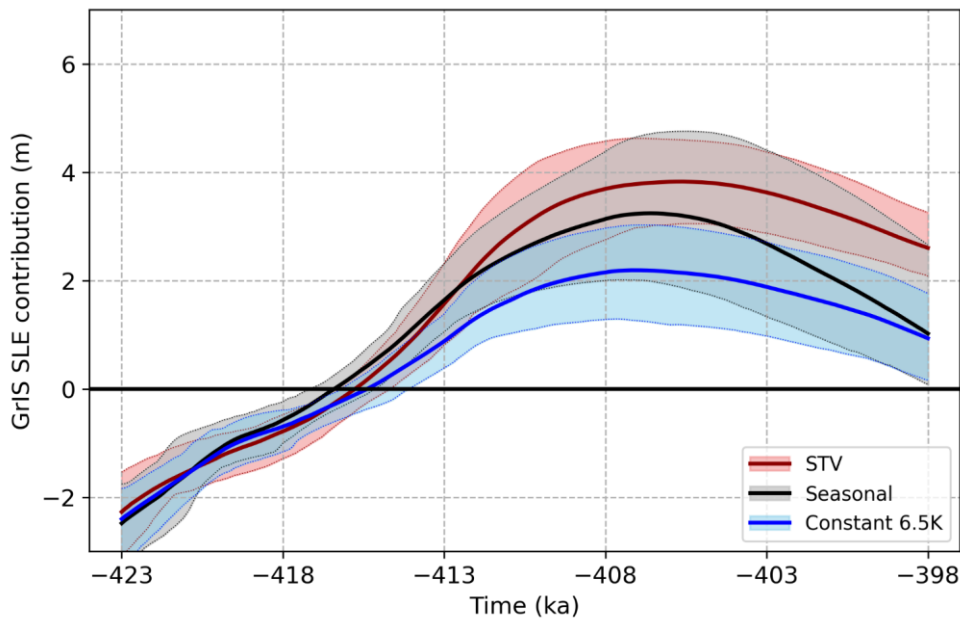


Figure 10. As in Figure 9, but for comparison of the STV, seasonally-varying, and constant 6.5 K km⁻¹ lapse rate methods.

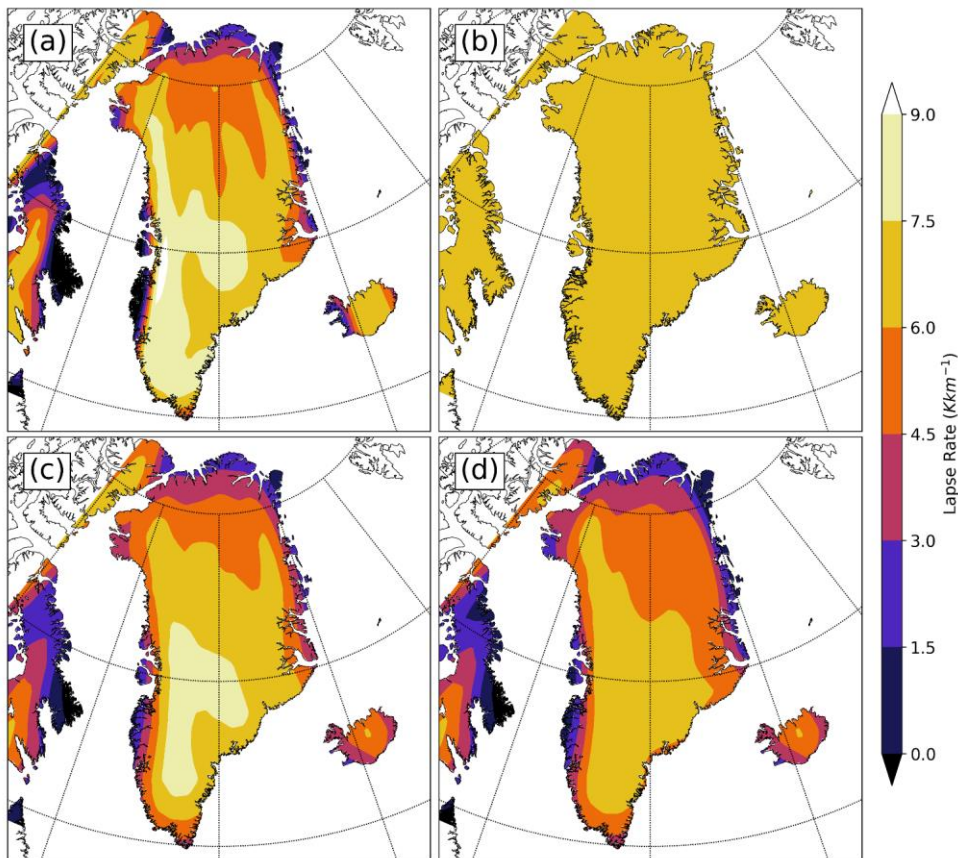
480 On the other end of the spectrum, the smoothed lapse rates result in a likely overestimated ablation zone, as the large lapse rates that generally occur around the steep margins in inland portions of Greenland are artificially broadened into more central marginal portions of the ice sheet. It is also unsurprising that the daytime lapse rates are also smoothed in our case to eliminate overly large terrain artefacts and tend to result in greater melt than the standard STV method, given that daytime-only lapse rates will tend to be higher than all-hours averages. Daytime lapse rates are higher than equivalent all-hours lapse rates due again to albedo differences between higher and lower altitudes, plus the removal of the overnight hours in which the surface energy budget is dominated by longwave cooling. Summer-mean daytime lapse rates are actually somewhat lower than all-hours lapse rates due to the exclusion of much more spatially contrasting nighttime temperatures (i.e., comparatively rapid cooling in the brief subarctic summer night over ice-covered regions steepening the vertical temperature contrast compared to neighboring ice-free areas). This has the effect, however, of enabling above-freezing temperatures at higher altitudes when the CESM forcing is downscaled, thus leading to a more expansive ablation zone.

485

490

495

However, Thus, higher lapse rates do not automatically translate into greater ablation, as increased lapse rates result in cooler simulated conditions over higher terrain that is higher on the GSM grid than on the CESM grid, helping to preserve high-altitude and central portions of the ice sheet. The interplay between the high, cold interior region and the low, warm marginal region explains much of the very large spread in volumes across individual members of the daytime and smoothed lapse rate ensembles. Small differences in initial ice extent and elevation are amplified throughout the simulations, resulting in the large spread seen in both the daytime and smoothed ensembles. Two sample comparisons of simulations that differ only in their lapse rate methodologies can be found in the supplementary materials (Figure S1 and S2).



500 Figure 11. Mean June-July-August slope-lapse rates calculated with the following techniques: (a) fully spatially and temporally
505 varying, (b) seasonally varying, (c) smoothed STV, and (d) daytime-only STV. All plots are from the 413 ka time slice of CESM and
interpolated to the GSM grid.

The STV lapse rate methodology produces the narrowest spread amongst ensemble members. The spatial pattern of the
510 calculated lapse rate is broadly similar for each MIS-11c time slice, reflecting the constancy of the ice margins throughout the
fixed-land-ice CESM simulations, but with small variations dependent on the orbital forcing changes. This method is the most
physically justifiable, as it accounts for regional patterns of temperature and lapse rate driven not only by terrain differences,
but also differences in regional climate regimes. Consider, for example, the very stormy and subarctic southern reaches of
Greenland and the very dry Arctic northern slope of Greenland, which is often characterized by shallow polar high pressure
and even temperature inversions (evident in the summer lapse rate plots as an inland extension of lower lapse rates, particularly
in the N and NE). Accounting for the presence of such features enables a more physically consistent coupling of temperatures
between CESM and the dynamic ice of GSM.

4 Discussion

In this study, we have presented an examination of the relative impacts of various sources of uncertainty in coupled ice-climate
515 modeling with specific application to MIS-11c. Though uncertainties associated with numerically approximated ice processes
remain and are not directly addressed here (e.g., Goelzer et al., 2017), we have demonstrated that climate forcing and its
downscaling is overwhelmingly the dominant influence on our simulated GrIS. Ideally future studies should strive to use fully
two-way coupled climate-ice sheet simulations, thus reducing or eliminating many of these uncertainties. For the time being,
however, large ensembles remain a useful tool for uncertainty assessment, and for computational practicality reasons this
520 remains the domain of EMICs and one-way coupled simulations.

Our use of a full AOGCM for climate forcing offers the benefit of sophisticated, relatively high-resolution climate forcing, but
at the expense of non-interactive, prescribed ice. This in turn means that surface albedo and vegetation feedbacks are missing
from our climate forcing, thus impacting the temperature forcing (and to a lesser extent precipitation). The effect of the missing
525 feedbacks on temperature, for example, could be to underestimate the lapse-rate feedback effect (Pritchard et al., 2008). As
ice retreats, particularly in marginal and low-elevation zones, the surface albedo will tend to increase, and the emergence of
silty layers and eventually bedrock will result in an altogether radiatively different surface. Additionally, the time-slice
methodology allows for the possibility of missing peak climate forcing conditions, which, while unlikely to be very different
from the conditions captured in our simulations, could have potentially occurred between chosen time slices. While our time
530 slices were strategically selected to reflect precession minima, maxima, and intermediate points in the precession cycle, the
fact that our forcing is not continuous allows for possible underestimation of peak interglacial warmth. The MIS-11c

simulations presented here are therefore likely conservative, and skew towards the lower bound of possible GrIS melt for this period.

535 Achieving both filtering criteria simultaneously with our simulations proved difficult, as generally high accumulation rates around DYE-3 often prevented complete melt and high ablation rates at Summit often resulted in elimination of ice there. That our simulations that produced the greatest overall melt of the GrIS in MIS-11 (those utilizing RACMO bias corrections and smoothed lapse rates) had zero success at meeting either criteria illustrates the highly uncertain retreat pattern of the GrIS. By utilizing two separate precipitation bias corrections, one applied to Summit and the other applied to DYE-3, we were able to
540 achieve a modest improvement in meeting these criteria. ~~The two-sector bias correction factor in combination with orographic downscaling remains a simplistic approximation. However, it is unclear what would be an appropriate alternative and as such this is an important target for future work entailing comparisons against RCM results, and offers many potential improvement pathways for future work. One example would be to utilize numerous sectors defined by elevation or terrain features.~~ To the authors' knowledge, no other studies have used such a variable bias correction in their investigations, but it clearly has utility
545 when there are significant regional or sub-regional model biases, which is generally the case for all past and current climate models.

Furthermore, differences in initialization states had only minor impacts on the exact spatial ice distribution of the simulated GrIS, but ultimately little impact on its estimated sea level contribution during MIS-11c. A spinup time lead-in of 500 or 1500
550 years prior to the beginning of our climate forcing period was also of very minor significance, with runs utilizing identical parameter vectors quickly converging after a few thousand years. This may be contrary to reader expectations, given that several previous studies (e.g., Rogozhina et al., 2011; Aschwanden et al., 2013) have identified initialization states as a key factor in modeled ice sheet outcomes. However, the short (500 year) versus long (1500 year) spinup times represent primarily the uncertainty due to the uncertain choice of simulation start time from the present-day spinup simulations. The other aspects
555 of initialization uncertainty, e.g., differences in initial ice distribution and temperature, are inherently accounted for in the use of multiple parameter vectors and their corresponding initial states. The initial spread between different parameter vectors dominates any minor effects from the short versus long spinup times.

We have also demonstrated that proper coupling and bias-correction of near-surface temperatures is of paramount importance
560 to simulating the paleo-GrIS, as it exerts a critical control on surface mass balance. Bias corrections (against higher-quality or higher-resolution datasets) are an optional but very useful means of helping to constrain the uncertainties introduced by utilizing climate forcing from models with known temperature biases or other deficiencies (e.g., Fyke et al., 2011; Ridley et al., 2010). If opting for a bias-corrected or anomaly-forcing method, then selecting baseline datasets that are optimized for polar climates is also advisable (Carter et al., 2022).

565

Ultimately, nothing exhibited such a great influence over our GrIS simulations as the chosen slope-lapse rate technique, and for two primary reasons: (1) the dual manifestation of the lapse rate in both the actual temperature forcing applied and the bias corrections and (2) the overwhelming influence of temperatures upon the surface mass budget. The calculated lapse rates influence temperatures twice: first, in the correction of the surface temperatures from CESM to the appropriate ice-surface height as calculated by GSM; and second, in the magnitude of the applied temperature bias correction, as the MAR and RACMO temperatures were themselves converted to sea-level temperature for direct comparison with CESM. Furthermore, temperature downscaling methodology need not be a subjective and arbitrary choice of scalar lapse rate value; rather, we have demonstrated here that data-based and observationally-supported alternatives are readily available. We have found a data-based spatially and temporally varying lapse rate to be the optimal solution.

575 **5 Conclusions and outlook**

This study was conducted with the dual goals of (1) offering additional constraints on the Greenland ice sheet's contribution to sea level rise during the MIS-11c interglacial and (2) addressing the previously under-examined influence of bias correction and coupling of climate forcing on simulated ice sheets. In particular, we have emphasized the impact of the choice of methodology by which surface temperatures are downscaled from the climate model to the dynamic ice surface in the ice model, demonstrating that it has a dominant effect on the simulated ice sheet.

To the first point, we have found that the minimum volume of the GrIS during MIS-11c was likely slightly less than half of its present-day value. Our simulations matching the criteria of (1) Summit preservation and (2) DYE-3 melt resulted in a mean maximum contribution to the MIS-11c sea level highstand of 3.9 m from the Greenland ice sheet, peaking around 405.8 kya. The uncertainty range defined by the middle 80% of matched simulations is a SLE contribution of 3.2-4.6 m. This estimate, which is likely somewhat conservative, is on the low side of existing estimates. Qualitative estimates based on paleodata have suggested a GrIS contribution of 4.5 to 6.0 m of sea level rise in MIS-11c (Reyes et al., 2014).

Somewhat more comparable is the modeling study of Robinson et al. (2017), which utilized the same two constraining criteria for filtering simulations (preservation of ice at Summit and complete melt at DYE-3). However, their REMBO climate model is a vertically-integrated energy balance model (Robinson et al., 2010) and therefore lacks any atmospheric dynamics. Furthermore, they use a scalar 6.5 K km^{-1} lapse rate for temperature-elevation corrections (Robinson et al., 2010). Their ensemble simulations produced a contribution estimate of 3.9 to 7.0 m of sea-level rise, but without accounting for the potential uncertainties introduced by the scalar lapse rate nor those from the highly simplified climate model. Some of the discrepancy can likely be explained by the fact that their simulations produce a greater duration of melt conditions, with the peak mean SLE contribution occurring approximately 3 kyr later than ours (402.8 ka). While the overall temperature anomalies around Greenland are similar between the studies (Figure 1d in Crow et al., 2022), the temperatures interpolated between CESM runs

appear to be somewhat lower than those from REMBO in the Robinson study in the 408-398 ka period, thus enabling more late-interglacial melt in the latter.

600

The strong dependence of the Greenland ice sheet produced by each simulation on the chosen lapse rate methodology for vertical downscaling of 2 m air temperature highlights the importance of this often-neglected source of uncertainty in coupled ice-climate modeling. Our simulations utilizing the common but observationally and physically unjustifiable choice of a scalar lapse rate (in our case 6.5 K km^{-1}) produce the least melt of any of the temperature downscaling methodologies presented here.

605

Constant lapse rates, and even seasonally-varying but spatially uniform lapse rates, fail to capture critical differences in regional climate conditions and therefore underestimate the extent of marginal ablation regions. In contrast, a spatially- and temporally-varying lapse rate, calculated from the climate model temperature and elevation data, can capture the seasonal cycle and regional climate differences in a physically realistic (albeit subject to model biases) way. Further improvements to the scheme presented here could be made by utilizing climate simulations with fully interactive ice sheets (whether via online or offline asynchronous coupling). Future modeling studies should strongly consider implementation of similar coupling methodologies in order to avoid further compounding errors inherent to climate models.

610

Data availability. Data and analysis code can be obtained by contacting the corresponding author, and an upload of related data is planned for ~~later in 2023~~[early 2024](#).

615

Author contributions. This research was performed as part of the PhD studies of lead author Brian Crow, who is advised by authors ~~Dr.~~ Matthias Prange, ~~Prof. Dr.~~ Michael Schulz, and ~~Prof. Dr.~~ Lev Tarasov. BC carried out climate model simulations with advice and code contributions from MP and experimental design input from MP and MS. The experimental design for ice sheet model simulations was developed by LT and BC. Ice sheet model simulations were carried out by LT. All analysis and figure creation were conducted by BC.

620

Competing interests. Authors L. Tarasov and M. Prange are members of the editorial board of the Icy Landscapes of the Past special joint issue of *Climate of the Past*, *The Cryosphere*, *Earth System Science Data*, and *Earth Surface Dynamics*. The peer-review process was guided by an independent editor, and the authors have no other competing interests to disclose.

625

Acknowledgements. The authors would like to thank the Deutsche Forschungsgemeinschaft (DFG) and the Natural Sciences and Engineering Research Council of Canada (NSERC) for furnishing funding for this research via the ArcTrain International Research Training Group. For providing climatological outputs from the present-day CESM run referenced in this study, we wish to express our gratitude to Ute Merkel of the University of Bremen. We are grateful to both the Northern German Supercomputing Alliance (HLRN) and Digital Research Alliance of Canada ~~and~~ ACENET for access to their computing resources for the climate and ice simulations in this study, respectively. This study also contributes to the DFG Cluster of

630

Excellence EXC-2077 – 390741603 and the PalMod German Climate Modeling Initiative. [Thanks are also due to our two anonymous reviewers, whose suggestions improved the manuscript materially.](#)

References

- 635 Aschwanden, A., Aðalgeirsdóttir, G., and Khroulev, C.: Hindcasting to measure ice sheet model sensitivity to initial states, *The Cryosphere*, 7, 1083–1093, <https://doi.org/10.5194/tc-7-1083-2013>, 2013.
- Bahadory, T. and Tarasov, L.: LCice 1.0 – a generalized Ice Sheet System Model coupler for LOVECLIM version 1.3: description, sensitivities, and validation with the Glacial Systems Model (GSM version D2017.aug17), *Geoscientific Model Development*, 11, 3883–3902, <https://doi.org/10.5194/gmd-11-3883-2018>, 2018.
- 640 Bahadory, T., Tarasov, L., and Andres, H.: Last glacial inception trajectories for the Northern Hemisphere from coupled ice and climate modelling, *Climate of the Past*, 17, 397–418, <https://doi.org/10.5194/cp-17-397-2021>, 2021.
- 645 Bierman, P. R., Corbett, L. B., Graly, J. A., Neumann, T. A., Lini, A., Crosby, B. T., and Rood, D. H.: Preservation of a Preglacial Landscape Under the Center of the Greenland Ice Sheet, *Science*, 344, 402–405, <https://doi.org/10.1126/science.1249047>, 2014.
- Bierman, P. R., Shakun, J. D., Corbett, L. B., Zimmerman, S. R., and Rood, D. H.: A persistent and dynamic East Greenland Ice Sheet over the past 7.5 million years, *Nature*, 540, 256–260, <https://doi.org/10.1038/nature20147>, 2016.
- 655 Briner, J. P., Walcott, C. K., Schaefer, J. M., Young, N. E., MacGregor, J. A., Poinar, K., Keisling, B. A., Anandakrishnan, S., Albert, M. R., Kuhl, T., and Boeckmann, G.: Drill-site selection for cosmogenic-nuclide exposure dating of the bed of the Greenland Ice Sheet, *The Cryosphere*, 16, 3933–3948, <https://doi.org/10.5194/tc-16-3933-2022>, 2022.
- 655 Carter, J., Leeson, A., Orr, A., Kittel, C., and van Wessem, J. M.: Variability in Antarctic surface climatology across regional climate models and reanalysis datasets, *The Cryosphere*, 16, 3815–3841, <https://doi.org/10.5194/tc-16-3815-2022>, 2022.
- 660 [Christ, A., Rittenour, T., Bierman, P., Keisling, B., Knutz, P., Thomsen, T., Keulen, N., Fosdick, J., Hemming, S., Tison, J.-L., Blard, P.-H., Steffensen, J., Caffee, M., Corbett, L., Dahl-Jensen, D., Dethier, D., Hidy, A., Perdrial, N., Peteet, D., and Thomas, E.: Deglaciation of northwestern Greenland during Marine Isotope Stage 11, *Science \(New York, N.Y.\)*, 381, 330–335, <https://doi.org/10.1126/science.ade4248>, 2023.](#)
- 665 Crow, B. R., Prange, M., and Schulz, M.: Dynamic boreal summer atmospheric circulation response as negative feedback to Greenland melt during the MIS-11 interglacial, *Climate of the Past*, 18, 775–792, <https://doi.org/10.5194/cp-18-775-2022>, 2022.
- de Vernal, A. and Hillaire-Marcel, C.: Natural variability of Greenland climate, vegetation, and ice volume during the past million years, *Science*, 320, 1622–1625, <https://doi.org/10.1126/science.1153929>, 2008.
- 670 Dutton, A., Carlson, A. E., Long, A. J., Milne, G. A., Clark, P. U., DeConto, R., Horton, B. P., Rahmstorf, S., and Raymo, M. E.: Sea-level rise due to polar ice-sheet mass loss during past warm periods, *Science*, 349, <https://doi.org/10.1126/science.aaa4019>, 2015.
- 675 Erokhina, O., Rogozhina, I., Prange, M., Bakker, P., Bernales, J., Paul, A., and Schulz, M.: Dependence of slope lapse rate over the Greenland ice sheet on background climate, *J. Glaciol.*, 63, 568–572, <https://doi.org/10.1017/jog.2017.10>, 2017.

- 680 Fausto, R. S., Ahlstrøm, A. P., Van As, D., Bøggild, C. E., and Johnsen, S. J.: A new present-day temperature parameterization for Greenland, *J. Glaciol.*, 55, 95–105, <https://doi.org/10.3189/002214309788608985>, 2009.
- Fettweis, X., Box, J. E., Agosta, C., Amory, C., Kittel, C., Lang, C., van As, D., Machguth, H., and Gallée, H.: Reconstructions of the 1900–2015 Greenland ice sheet surface mass balance using the regional climate MAR model, *The Cryosphere*, 11, 1015–1033, <https://doi.org/10.5194/tc-11-1015-2017>, 2017.
- 685 Fyke, J. G., Weaver, A. J., Pollard, D., Eby, M., Carter, L., and Mackintosh, A.: A new coupled ice sheet/climate model: description and sensitivity to model physics under Eemian, Last Glacial Maximum, late Holocene and modern climate conditions, *Geoscientific Model Development*, 4, 117–136, <https://doi.org/10.5194/gmd-4-117-2011>, 2011.
- 690 Fyke, J., Eby, M., Mackintosh, A., and Weaver, A.: Impact of climate sensitivity and polar amplification on projections of Greenland Ice Sheet loss, *Clim Dyn*, 43, 2249–2260, <https://doi.org/10.1007/s00382-014-2050-7>, 2014.
- Fyke, J., Sergienko, O., Löffverström, M., Price, S., and Lenaerts, J. T. M.: An overview of interactions and feedbacks between ice sheets and the Earth system, *Rev. Geophys.*, 56, 361–408, <https://doi.org/10.1029/2018RG000600>, 2018.
- 695 Gallée, H. and Schayes, G.: Development of a Three-Dimensional Meso- γ Primitive Equation Model: Katabatic Winds Simulation in the Area of Terra Nova Bay, Antarctica, *Monthly Weather Review*, 122, 671–685, [https://doi.org/10.1175/1520-0493\(1994\)122<0671:DOATDM>2.0.CO;2](https://doi.org/10.1175/1520-0493(1994)122<0671:DOATDM>2.0.CO;2), 1994.
- 700 Ganopolski, A. and Calov, R.: The role of orbital forcing, carbon dioxide and regolith in 100 kyr glacial cycles, *Clim. Past*, 7, 1415–1425, <https://doi.org/10.5194/cp-7-1415-2011>, 2011.
- Gardner, A. S., Sharp, M. J., Koerner, R. M., Labine, C., Boon, S., Marshall, S. J., Burgess, D. O., and Lewis, D.: Near-Surface Temperature Lapse Rates over Arctic Glaciers and Their Implications for Temperature Downscaling, *Journal of Climate*, 22, 4281–4298, <https://doi.org/10.1175/2009JCLI2845.1>, 2009.
- 705 Goelzer, H., Huybrechts, P., Loutre, M.-F., and Fichet, T.: Last Interglacial climate and sea-level evolution from a coupled ice sheet–climate model, *Clim. Past*, 12, 2195–2213, <https://doi.org/10.5194/cp-12-2195-2016>, 2016.
- 710 [Goelzer, H., Robinson, A., Seroussi, H., and van de Wal, R. S. W.: Recent Progress in Greenland Ice Sheet Modelling, *Curr Clim Change Rep.* 3, 291–302, <https://doi.org/10.1007/s40641-017-0073-y>, 2017.](https://doi.org/10.1007/s40641-017-0073-y)
- Goosse, H., Brovkin, V., Fichet, T., Haarsma, R., Huybrechts, P., Jongma, J., Mouchet, A., Selten, F., Barriat, P.-Y., Campin, J.-M., Deleersnijder, E., Driesschaert, E., Goelzer, H., Janssens, I., Loutre, M.-F., Morales Maqueda, M. A., Opsteegh, T., Mathieu, P.-P., Munhoven, G., Pettersson, E. J., Renssen, H., Roche, D. M., Schaeffer, M., Tartinville, B., Timmermann, A., and Weber, S. L.: Description of the Earth system model of intermediate complexity LOVECLIM version 1.2, *Geoscientific Model Development*, 3, 603–633, <https://doi.org/10.5194/gmd-3-603-2010>, 2010.
- 715 Helsen, M. M., van de Berg, W. J., van de Wal, R. S. W., van den Broeke, M. R., and Oerlemans, J.: Coupled regional climate-ice-sheet simulation shows limited Greenland ice loss during the Eemian, *Clim. Past*, 9, 1773–1788, <https://doi.org/10.5194/cp-9-1773-2013>, 2013.
- 720 Herold, N., Yin, Q. Z., Karami, M. P., and Berger, A.: Modelling the climatic diversity of the warm interglacials, *Quaternary Sci. Rev.*, 56, 126–141, <https://doi.org/10.1016/j.quascirev.2012.08.020>, 2012.
- 725 Herrington, A. R., and Poulsen, C. J.: Terminating the Last Interglacial: the role of ice sheet–climate feedbacks in a GCM asynchronously coupled to an ice sheet model, *J. Clim.*, 25, 1871–1882, <https://doi.org/10.1175/JCLI-D-11-00218.1>, 2011.

- Hurrell, J. W., Holland, M. M., Gent, P. R., Ghan, S., Kay, J. E., Kushner, P. J., Lamarque, J.-F., Large, W. G., Lawrence, D., Lindsay, K., Lipscomb, W. H., Long, M. C., Mahowald, N., Marsh, D. R., Neale, R. B., Rasch, P., Vavrus, S., Vertenstein, M., Bader, D., Collins, W. D., Hack, J. J., Kiehl, J., and Marshall, S.: The Community Earth System Model: a framework for collaborative research, *B. Am. Meteorol. Soc.*, 94, 1339–1360, <https://doi.org/10.1175/BAMS-D-12-00121.1>, 2013.
- Huybrechts, P. and Wolde, J. de: The Dynamic Response of the Greenland and Antarctic Ice Sheets to Multiple-Century Climatic Warming, *Journal of Climate*, 12, 2169–2188, [https://doi.org/10.1175/1520-0442\(1999\)012<2169:TDR0TG>2.0.CO;2](https://doi.org/10.1175/1520-0442(1999)012<2169:TDR0TG>2.0.CO;2), 1999.
- [Jouvet, G., Cohen, D., Russo, E., Buzan, J., Raible, C. C., Haeberli, W., Kamleitner, S., Ivy-Ochs, S., Imhof, M. A., Becker, J. K., Landgraf, A., and Fischer, U. H.: Coupled climate-glacier modelling of the last glaciation in the Alps, *Journal of Glaciology*, 1–15, <https://doi.org/10.1017/jog.2023.74>, 2023.](#)
- Laskar, J., Robutel, P., Joutel, F., Gastineau, M., Correia, A. C. M., and Levrard, B.: A long-term numerical solution for the insolation quantities of the Earth, *Astron. Astrophys.*, 428, 261–285, <https://doi.org/10.1051/0004-6361:20041335>, 2004.
- Lisiecki, L. E. and Raymo, M. E.: A Pliocene-Pleistocene stack of 57 globally distributed benthic $\delta^{18}\text{O}$ records, *Paleoceanography*, 20, PA1003, <https://doi.org/10.1029/2004PA001071>, 2005.
- [Lüthi, D., Le Floch, M., Bereiter, B., Blunier, T., Barnola, J.-M., Siegenthaler, U., Raynaud, D., Jouzel, J., Fischer, H., Kawamura, K., and Stocker, T. F.: High-resolution carbon dioxide concentration record 650 000–800 000 years before present, *Nature*, 453, 379–382, <https://doi.org/10.1038/nature06949>, 2008.](#)
- Mas e Braga, M., Bernales, J., Prange, M., Stroeven, A. P., and Rogozhina, I.: Sensitivity of the Antarctic ice sheets to the warming of marine isotope substage 11c, *The Cryosphere*, 15, 459–478, <https://doi.org/10.5194/tc-15-459-2021>, 2021.
- Milker, Y., Rachmayani, R., Weinkauf, M. F. G., Prange, M., Raitzsch, M., Schulz, M., and Kučera, M.: Global and regional sea surface temperature trends during Marine Isotope Stage 11, *Clim. Past*, 9, 2231–2252, <https://doi.org/10.5194/cp-9-2231-2013>, 2013.
- Morlighem, M., Williams, C. N., Rignot, E., An, L., Arndt, J. E., Bamber, J. L., Catania, G., Chauché, N., Dowdeswell, J. A., Dorschel, B., Fenty, I., Hogan, K., Howat, I., Hubbard, A., Jakobsson, M., Jordan, T. M., Kjeldsen, K. K., Millan, R., Mayer, L., Mouginit, J., Noël, B. P. Y., O’Cofaigh, C., Palmer, S., Rysgaard, S., Seroussi, H., Siegert, M. J., Slabon, P., Straneo, F., van den Broeke, M. R., Weinrebe, W., Wood, M., and Zinglensen, K. B.: BedMachine v3: complete bed topography and ocean bathymetry mapping of Greenland from multibeam echo sounding combined with mass conservation, *Geophys. Res. Lett.*, 44, 11,051-11,061, <https://doi.org/10.1002/2017GL074954>, 2017.
- Noël, B., van de Berg, W. J., van Wesse, J. M., van Meijgaard, E., van As, D., Lenaerts, J. T. M., Lhermitte, S., Kuipers Munneke, P., Smeets, C. J. P. P., van Ulft, L. H., van de Wal, R. S. W., and van den Broeke, M. R.: Modelling the climate and surface mass balance of polar ice sheets using RACMO2 – Part 1: Greenland (1958–2016), *The Cryosphere*, 12, 811–831, <https://doi.org/10.5194/tc-12-811-2018>, 2018.
- [Otto-Bliesner, B. L., Braconnot, P., Harrison, S. P., Lunt, D. J., Abe-Ouchi, A., Albani, S., Bartlein, P. J., Capron, E., Carlson, A. E., Dutton, A., Fischer, H., Goelzer, H., Govin, A., Haywood, A., Joos, F., LeGrande, A. N., Lipscomb, W. H., Lohmann, G., Mahowald, N., Nehrbass-Ahles, C., Pausata, F. S. R., Peterschmitt, J.-Y., Phipps, S. J., Renssen, H., and Zhang, Q.: The PMIP4 contribution to CMIP6 – Part 2: Two interglacials, scientific objective and experimental design for Holocene and Last Interglacial simulations, *Geosci. Model Dev.*, 10, 3979–4003, <https://doi.org/10.5194/gmd-10-3979-2017>, 2017.](#)

- Pollard, D. and DeConto, R.: Description of a hybrid ice sheet-shelf model, and application to Antarctica, *Geoscientific Model Development*, 5, 1273–1295, 2012.
- 780 Pollard, D., DeConto, R. M., and Alley, R. B.: Potential Antarctic Ice Sheet retreat driven by hydrofracturing and ice cliff failure, *Earth and Plan. Sci. Lett.*, 412, 112–121, <https://doi.org/10.1016/j.epsl.2014.12.035>, 2015.
- 785 Pritchard, M. S., Bush, A. B. G., and Marshall, S. J.: Neglecting ice-atmosphere interactions underestimates ice sheet melt in millennial-scale deglaciation simulations, *Geophys. Res. Lett.*, 35, <https://doi.org/10.1029/2007GL031738>, 2008.
- Rachmayani, R., Prange, M., and Schulz, M.: Intra-interglacial climate variability: model simulations of Marine Isotope Stages 1, 5, 11, 13, and 15, *Clim. Past*, 12, 677–695, <https://doi.org/10.5194/cp-12-677-2016>, 2016.
- 790 Rachmayani, R., Prange, M., Lunt, D. J., Stone, E. J., and Schulz, M.: Sensitivity of the Greenland Ice Sheet to interglacial climate forcing: MIS 5e versus MIS 11, *Paleoceanography*, 32, 1089–1101, <https://doi.org/10.1002/2017PA003149>, 2017.
- Raymo, M. E. and Mitrovica, J. X.: Collapse of polar ice sheets during the stage 11 interglacial, *Nature*, 483, 453–456, <https://doi.org/10.1038/nature10891>, 2012.
- 795 Reyes, A. V., Carlson, A. E., Beard, B. L., Hatfield, R. G., Stoner, J. S., Winsor, K., Welke, B., and Ullman, D. J.: South Greenland ice-sheet collapse during Marine Isotope Stage 11, *Nature*, 510, 525–528, <https://doi.org/10.1038/nature13456>, 2014.
- 800 Ridley, J. K., Huybrechts, P., Gregory, J. M., and Lowe, J. A.: Elimination of the Greenland Ice Sheet in a high CO₂ climate, *J. Clim.*, 18, 3409–3427, <https://doi.org/10.1175/JCLI3482.1>, 2005.
- Ridley, J., Gregory, J. M., Huybrechts, P., and Lowe, J.: Thresholds for irreversible decline of the Greenland ice sheet, *Clim Dyn*, 35, 1049–1057, <https://doi.org/10.1007/s00382-009-0646-0>, 2010.
- 805 Robinson, A., Calov, R., and Ganopolski, A.: An efficient regional energy-moisture balance model for simulation of the Greenland Ice Sheet response to climate change, *The Cryosphere*, 4, 129–144, <https://doi.org/10.5194/tc-4-129-2010>, 2010.
- 810 Robinson, A., Alvarez-Solas, J., Calov, R., Ganopolski, A., and Montoya, M.: MIS-11 duration key to disappearance of the Greenland ice sheet, *Nat. Commun.*, 8, 16008, <https://doi.org/10.1038/ncomms16008>, 2017.
- Rogozhina, I., Martinec, Z., Hagedoorn, J. M., Thomas, M., and Fleming, K.: On the long-term memory of the Greenland Ice Sheet, *Journal of Geophysical Research: Earth Surface*, 116, <https://doi.org/10.1029/2010JF001787>, 2011.
- 815 Schaefer, J. M., Finkel, R. C., Balco, G., Alley, R. B., Caffee, M. W., Briner, J. P., Young, N. E., Gow, A. J., and Schwartz, R.: Greenland was nearly ice-free for extended periods during the Pleistocene, *Nature*, 540, 252–255, <https://doi.org/10.1038/nature20146>, 2016.
- 820 [Siegenthaler, U., Stocker, T. F., Monnin, E., Lüthi, D., Schwander, J., Stauffer, B., Raynaud, D., Barnola, J.-M., Fischer, H., Masson-Delmotte, V., and Jouzel, J.: Stable Carbon Cycle-Climate Relationship During the Late Pleistocene, *Science*, 310, 1313–1317, <https://doi.org/10.1126/science.1120130>, 2005.](https://doi.org/10.1126/science.1120130)
- 825 Sommers, A. N., Otto-Bliesner, B. L., Lipscomb, W. H., Lofverstrom, M., Shafter, S. L., Bartlein, P. J., Brady, E. C., Kluzek, E., Leguy, G., Thayer-Calder, K., and Tomas, R. A.: Retreat and regrowth of the Greenland Ice Sheet during the Last Interglacial as simulated by the CESM2-CISM2 coupled climate-ice sheet model, *Paleoceanography and Paleoclimatology*, 36, <https://doi.org/10.1029/2021PA004272>, 2021.

- Stone, E. J., Lunt, D. J., Rutt, I. C., and Hanna, E.: Investigating the sensitivity of numerical model simulations of the modern state of the Greenland ice-sheet and its future response to climate change, *The Cryosphere*, 4, 397–417, <https://doi.org/10.5194/tc-4-397-2010>, 2010.
- 830
- Stone, E. J., Lunt, D. J., Annan, J. D., and Hargreaves, J. C.: Quantification of the Greenland ice sheet contribution to Last Interglacial sea level rise, *Clim. Past*, 9, 621–639, <https://doi.org/10.5194/cp-9-621-2013>, 2013.
- 835
- Tarasov, L. and Peltier, W. R.: A high-resolution model of the 100 kyr Ice Age cycle, *Ann. Glaciol.*, 25, 58–65, 1997.
- Tarasov, L. and Peltier, W. R.: Coevolution of continental ice cover and permafrost extent over the last glacial-interglacial cycle in North America, *Journal of Geophysical Research: Earth Surface*, 112, <https://doi.org/10.1029/2006JF000661>, 2007.
- 840
- Tarasov, L. and Goldstein, M.: Assessing uncertainty in past ice and climate evolution: overview, stepping-stones, and challenges, *EGUphere* [preprint], <https://doi.org/10.5194/egusphere-2022-1410>, 2023.
- Tarasov, L., Hank, K., and Lecavalier, B.: The glacial systems model (GSM) V22c, in prep., 2023.
- 845
- Tzedakis, P. C., Hodell, D. A., Nehrbass-Ahles, C., Mitsui, T., and Wolff, E. W.: Marine Isotope Stage 11c: An unusual interglacial, *Quaternary Science Reviews*, 284, 107493, <https://doi.org/10.1016/j.quascirev.2022.107493>, 2022.
- Vizcaíno, M., Mikolajewicz, U., Gröger, M., Maier-Reimer, E., Schurgers, G., and Winguth, A. M. E.: Long-term ice sheet–climate interactions under anthropogenic greenhouse forcing simulated with a complex Earth System Model, *Clim Dyn*, 31, 665–690, <https://doi.org/10.1007/s00382-008-0369-7>, 2008.
- 850
- Wang, L., Deng, A., and Huang, R.: Wintertime internal climate variability over Eurasia in the CESM large ensemble, *Clim. Dynamics*, 52, 6735–6748, <https://doi.org/10.1007/s00382-018-4542-3>, 2019.
- 855
- Willerslev, E., Cappellini, E., Boomsma, W., Nielsen, R., Hebsgaard, M. B., Brand, T. B., Hofreiter, M., Bunce, M., Poinar, H. N., Dahl-Jensen, D., Johnsen, S., Steffensen, J. P., Bennike, O., Schwenninger, J.-L., Nathan, R., Armitage, S., de Hoog, C.-J., Alfimov, V., Christl, M., Beer, J., Muscheler, R., Barker, J., Sharp, M., Penkman, K. E. H., Haile, J., Taberlet, P., Gilbert, M. T. P., Casoli, A., Campani, E., and Collins, M. J.: Ancient biomolecules from deep ice cores reveal a forested southern Greenland, *Science*, 317, 111–114, <https://doi.org/10.1126/science.1141758>, 2007.
- 860
- Yau, A. M., Bender, M. L., Robinson, A., and Brook, E. J.: Reconstructing the last interglacial at Summit, Greenland: Insights from GISP2, *Proceedings of the National Academy of Sciences*, 113, 9710–9715, <https://doi.org/10.1073/pnas.1524766113>, 2016.