

# Simulation of marine stratocumulus using the super-droplet method: Numerical convergence and comparison to a double-moment bulk scheme using SCALE-SDM 5.2.6-2.3.1

Chongzhi Yin<sup>1</sup>, Shin-ichiro Shima<sup>2,3</sup>, Lulin Xue<sup>4</sup>, Chunsong Lu<sup>1</sup>

5 <sup>1</sup>China Meteorological Administration Aerosol-Cloud and Precipitation Key Laboratory/Collaborative Innovation Centre on Forecast and Evaluation of Meteorological Disasters (CIC-FEMD), Nanjing University of Information Science and Technology, Nanjing 210044, China

<sup>2</sup>Graduate School of Information Science, University of Hyogo, Kobe, Japan

<sup>3</sup>RIKEN Center for Computational Science, Kobe, Japan

10 <sup>4</sup>National Center for Atmospheric Research, P.O. Box 3000, Boulder, CO 80307, USA

*Correspondence to:* Shin-ichiro Shima (s\_shima@gsis.u-hyogo.ac.jp)

**Abstract.** The super-droplet method (SDM) is a Lagrangian particle-based numerical scheme for cloud microphysics. In this work, a series of simulations based on the DYCOMS-II (RF02) setup with different horizontal and vertical resolutions are conducted to explore the grid convergence of the SDM simulations of marine stratocumulus. The results are compared with 15 the double-moment bulk scheme (SN14) and model intercomparison project (MIP) results. In general, all SDM and SN14 variables show a good agreement with the MIP results and have similar grid size dependencies. The stratocumulus simulation is more sensitive to the vertical resolution than to the horizontal resolution. The vertical grid length  $DZ \ll 2.5$  m is necessary for both SDM and SN14. The horizontal grid length  $DX < 12.5$  m is necessary for the SDM simulations.  $DX \leq 25$  m is sufficient for SN14. We also assess the numerical convergence with respect to the super-droplet (SD) numbers. The simulations are well 20 converged when the SD number concentration (SDNC) is larger than 16 SDs/cell. Our results indicate that the SD number per grid cell is more critical than that per unit volume at least for the stratocumulus case investigated here. Our comprehensive analysis not only offers guidance on numerical settings essential for accurate stratocumulus cloud simulation but also underscores significant differences in liquid water content and cloud macrostructure between SDM and SN14. These differences are attributed to the inherent modeling strategies of the two schemes. SDM's dynamic representation of aerosol 25 size distribution through wet deposition markedly contrasts with SN14's static approach, influencing cloud structure and behavior over a 6-hour simulation. Findings reveal sedimentation's crucial role in altering aerosol distributions near cloud tops, affecting the vertical profile of cloud fraction (CF). Additionally, the study briefly addresses numerical diffusion's potential effects, suggesting further investigation is needed. The results underscore the importance of accurate aerosol modeling and its interactions with cloud processes in marine stratocumulus simulations, pointing to future research directions for enhancing 30 stratocumulus modeling accuracy and predictive capabilities.

## 1 Introduction

Marine stratocumulus clouds cover approximately one quarter of the Earth's surface and play an important role in the planet's radiation budget (Wood, 2012; Matheou and Teixeira, 2019; Nowak et al., 2021). These clouds reflect the incident shortwave radiation and almost have no effect on the outgoing longwave radiation resulting in a negative radiation flux (Wood, 2012). The temperature projection uncertainty in global warming simulation is mainly caused by the representation of marine low clouds in global climate models (Stephens, 2005; Bony and Dufresne, 2005; Bony et al., 2006; Boucher et al., 2013; Zelinka et al., 2020; Kawai and Shige, 2020); thus, the stratocumulus must be accurately represented in numerical models. The IPCC (AR6) states that aerosol–cloud-related processes introduce the greatest uncertainty among the radiative forcing assessment methods of major factors in the earth-atmosphere system. Therefore, we must understand the aerosol–cloud interaction of the stratocumulus.

In the cloud modeling community, two types of methods are commonly used to represent clouds in numerical models. The first type is to treat the cloud as a continuum in the Eulerian framework, namely Eulerian cloud models (ECMs). The second type is to treat the cloud as an ensemble of individual particles in the Lagrangian framework, that is, the Lagrangian particle-based cloud models (LCMs).

Bulk scheme (Kessler, 1969; Lin et al., 1983; Schoenberg Ferrier, 1994; Milbrandt and Yau, 2005) is one of the most widely used Eulerian microphysical schemes. It assumes a specific distribution (e.g., gamma distribution) to characterize the size distributions of aerosol and cloud particles; thus, only several predictors must be considered. This method is numerically efficient and saves computing resources. However, the cloud droplet size distribution of the bulk scheme is a fixed and continuous function; thus, the calculation of microphysical processes depends on the set function properties, and the uncertainty of the cloud simulation results is high (Khain et al., 2015).

Another ECM category represents the cloud hydrometeors in discrete bins and is called the spectral bin microphysics scheme (Khain et al., 2000; Lynn et al., 2005; Morrison and Grabowski, 2010; Xue et al., 2010; Xue et al., 2012; Geresdi et al., 2017), which can explicitly predict the particle size or mass distribution, but is computationally more costly. As a result, bin schemes suffer from the limitation of dimensionality (Shima, 2008; Shima et al., 2009; Grabowski et al., 2019). Most bin schemes are “one-dimensional,” which means they only predict the droplet size or mass distributions. The solute composition, mass, and soluble fraction within the cloud droplet all affect the droplet growth rate and determine the characteristics of particles remaining after the droplet has completely evaporated. In some cases, these factors are essential, but are difficult to consider in the bin schemes (Shima, 2008; Shima et al., 2009; Grabowski et al., 2019; Dziekan et al., 2021). Another problem in bin microphysics comes from the limitation of the Smoluchowski equation used to represent the collision–condensation process (Smoluchowski, 1916). The Smoluchowski equation is deterministic, while the collision–coalescence of droplets is a stochastic process. Therefore, droplet collision, other than expected, can appear. The Smoluchowski equation also does not accurately predict even the mean behavior when the well-mixed volume is small, and the droplet discreteness is evident [see Alfonso and Raga (2017), Dziekan and Pawlowska (2017), Grabowski et al. (2019), and references therein]. In addition, all ECMs are

65 affected by numerical diffusion, which can lead to a simulated system that behaves differently from the expected physical system (Schoeffler, 1982). In bin microphysics, numerical diffusion results in the broadening of the unphysical droplet size distribution (Morrison et al., 2018; Grabowski et al., 2019). Due to the three abovementioned issues, ECMs still face difficulties in accurately simulating cloud microphysical processes. However, the recently developed Lagrangian particle-based method may be a viable solution for representing cloud and precipitation particle populations (Morrison et al., 2020).

70 Shima et al. (2009) proposed an LCM, called the super-droplet method (SDM), in which each super-droplet (SD) represents multiple numbers of aerosol/cloud/precipitation particles with the same attributes and position. The SDM has no numerical diffusion of liquid water and can provide more detailed microphysics information. Note that sub-grid scale (SGS) diffusions are not represented in the original SDM, which may lead to under-diffused supersaturation and accelerate the mixing process (Grabowski and Abade, 2017; Abade et al., 2018; Hoffmann et al., 2019). The Monte Carlo collision-coalescence algorithm  
75 of the SDM is based on the stochastic process of collision-coalescence; hence, the SDM can be applied, even when the Smoluchowski equation is invalid (Dziekan and Pawlowska, 2017). Shima et al. (2009) theoretically estimated that when the number of attributes, which range from 2 to 4, becomes larger than a certain critical value, the SDM becomes computationally more efficient than the bin microphysics approach. With the increase of the supercomputer computing capacity, the number of studies using the SDM or other LCMs has increased in the recent decade (e.g., Arabas and Shima (2013); Naumann and  
80 Seifert (2015); Dziekan and Pawlowska (2017); Sato et al. (2017, 2018); Grabowski et al. (2018); Jaruga and Pawlowska (2018); Schwenkel et al. (2018); Dziekan et al. (2019); Noh et al. (2018); Hoffmann and Feingold (2019); Hoffmann et al. (2019); Seifert and Rasp (2020); Unterstrasser et al. (2020); Shima et al. (2020); Dziekan et al. (2021); Richter et al. (2021); Chandrakar et al. (2022)).

Various studies used ECMs to simulate marine stratocumulus. Some of them investigated the grid convergence characteristics during the simulation. In their work, Matheou et al. (2016) indicated that all flow statistics of stratocumulus simulated by the  
85 LES, except for those related to liquid water, converge for  $DX = DY = DZ < 2.5$  m (i.e.,  $DX$  and  $DY$  are the horizontal grid lengths, while  $DZ$  is the vertical grid length). A series of sensitivity experiments with seven numerical and physical parameters was conducted by Matheou and Teixeira (2019) to understand the source of difficulty in simulating stratocumulus by the LES. They not only used different grid spacings, but also changed the geostrophic wind, divergence, radiation parameterization,  
90 buoyancy formulation, surface fluxes, and the scalar advection numerical method. The grid convergence could merely be found at a very fine resolution. Moreover, the mean results of simulation of the finest resolution agrees with the observations (Stevens et al., 2005). The entrainment rate and the mean profiles, except for the cloud liquid, were not sensitive to the grid resolution. The buoyancy perturbation run in the study of Matheou and Teixeira (2019) also suggested that the buoyancy reversal instability of the cloud top significantly enhances the entrainment rate. Some studies showed that a larger horizontal grid  
95 spacing leads to higher liquid water path (LWP) and cloud cover, whereas a larger vertical grid spacing has the opposite effect (J. Kurowski et al., 2009; Cheng et al., 2010; Yamaguchi and Randall, 2012; Pedersen et al., 2016).

A few studies employed LCMs for stratocumulus, but none of them investigated the grid convergence characteristics when using these LCMs for marine stratocumulus. Dziekan et al. (2019) studied the SDM sensitivity to the time steps of condensation

and coalescence in two-dimensional simulations and compared the SGS turbulence models of different approaches in three-  
100 dimensional (3D) simulations using the setup of the second research flight of the second Dynamics and Chemistry of Marine  
Stratocumulus (DYCOMS-II (RF02)). They found that droplet condensational and collisional growth must be modeled with a  
0.1 s time step. In addition, the simulation results using the Smagorinsky scheme and an algorithm for the SGS turbulent  
motion of computational particles were in the best agreement with the ECM results. They also tested various initial SDNCs  
ranging from 40 to 1000 SDs per grid cell and confirmed that 40 SDs per cell was sufficient in achieving the correct domain-  
105 averaged results for DYCOMS-II (RF02). However, they did not investigate the grid convergence. Hoffmann and Feingold  
(2019) applied a new modeling method L3 combining an LES, a linear eddy model, and an LCM to study stratocumulus. They  
found that the number of cloud holes (i.e., dry air parcels transported from the free atmosphere to the cloud layer) in the L3  
simulation is higher and persists longer. Their simulations showed that reducing the number of cloud droplets during mixing  
results in larger remaining droplets. Their results also illustrated that inhomogeneous mixing does not increase the cloud droplet  
110 age because inhomogeneous mixing hinders the droplet evaporation at the cloud edge and makes the older droplets disappear  
from the cloud faster due to the faster sedimentation caused by diffusional growth. They did not assess the numerical  
convergence either, but admitted that the vertical grid length of 35 m used in their study did not explicitly resolve all cloud  
holes. Another important factor they did not explicitly consider, which could affect the cloud hole persistence, is the impact of  
aerosols. They ignored the curvature and the solute effects in the condensational droplet growth and did not explicitly consider  
115 the activation/deactivation of aerosol particles. Chandrakar et al. (2022) studied the DSD evolution during the transition of  
closed cells to open cells through LES coupling with the SDM. They tracked the trajectories of some sample SDs and found  
that some droplets could rapidly grow to drizzle from the collision-coalescence process, mainly within downdraft. Their results  
showed that once the coalescence timescale becomes similar to the eddy turnover timescale, the coalescence growth could be  
enhanced, and then increases a key driver of the closed-to-open cell transition. However, to save computational resources, they  
120 used a relatively coarse horizontal grid resolution of 100 m, which was too coarse for the precise cloud water simulation in a  
stratocumulus cloud (Matheou and Teixeira, 2019).

One of the aims of the present study is to determine how fine the spatial resolution must be for an accurate simulation of marine  
stratocumulus using the SDM. Several series of simulations based on the DYCOMS-II (RF02) setup with different horizontal  
and vertical resolutions are conducted in this work. The results are compared with those of the double-moment bulk scheme  
125 of Seiki and Nakajima (2014) (hereafter, SN14) and of the model intercomparison project (MIP) of Ackerman et al. (2009).  
The horizontal and vertical grid lengths ranged from 12.5 to 50 m and 2.5 to 10 m, respectively.

Considering the SDM accuracy, a large number of super-droplets could improve the simulation performance. The  
computational efficiency should be considered. Accordingly, the numerical convergence regarding the SDNC at different  
resolutions is discussed to find an optimized initial SD number. Dziekan et al. (2019) suggested that 40 SDs per cell is sufficient  
130 in achieving the correct domain-averaged results for DYCOMS-II (RF02). However, they did not test smaller SDNCs, and it  
could be further reduced. Therefore, we choose eight different initial SDNCs ranging from 1 to 128 to investigate the SD  
numerical convergence in the SDM.

We also compare the difference between a double-moment bulk scheme SN14 and the SDM using the same dynamical core. Some problems in cloud physics (e.g., entrainment-mixing mechanisms) have not been fully understood (Xu et al., 2022; Lu et al., 2023). Microphysics, thermodynamics, and turbulence simulations using high-resolution numerical models can help us understand these mechanisms in the absence of high-resolution observational instruments. Considering the abovementioned advantages of the SDM, our SDM results can provide a reference for the model setting of further studies on stratocumulus and improve our understanding of its macro and microscopic properties. The time evolution of the aerosol number concentration and the size distributions through the aerosol–cloud interaction cannot be calculated by bulk models. This is difficult even when using bin models, but can be accurately represented in particle-based models. Hence, this study on the aerosol–cloud interaction of stratocumulus clouds using particle-based models is important.

Section 2 introduces the basic information of the DYCOMS-II (RF02) simulation setup. Sections 3.1 and 3.2 present the results of the SDM grid and the SD number convergence, respectively. Section 3.3 shows the SN14 grid convergence results. Section 3.4 summarizes the SDM and SN14 numerical convergence characteristics. The SN14 and SDM results are compared with each other and with the DYCOMS MIP. Section 4 presents several sensitivity experiments conducted to investigate the mechanisms responsible for the differences. Section 5 summarizes the study findings and points out the shortcomings of our study and the future perspectives related to the numerical simulation of stratocumulus clouds and the aerosol–cloud interaction mechanisms.

## 2 Method

### 2.1 Model description

The numerical model used here was the Scalable Computing for Advanced Library and Environment (SCALE; <https://scale.riken.jp>), which is a basic library for weather and climate model of the Earth and other planets (Nishizawa et al., 2015; Sato et al., 2015). For the cloud microphysics, the SDM (Shima et al., 2009) and the double-moment bulk scheme SN14 (Seiki and Nakajima, 2014) were used. We implemented SDM into SCALE version 5.2.6, so the model used in this study is referred to as SCALE-SDM 5.2.6-2.3.1.

Moist air fluid dynamics were solved by SCALE’s dynamical core. We utilized a forward temporal integration scheme to solve the compressible Navier–Stokes equations for moist air using a finite volume method. The spatial discretization of Eulerian variables was performed on the Arakawa-C staggered grid (Arakawa and Lamb, 1977). The fourth-order central difference scheme was used for the dynamical variable advection. The third-order upwind scheme with Koren (1993) was utilized for the tracer advection. The second-order central difference scheme was employed for other spatial derivatives. We used the four-step Runge–Kutta scheme for the time integration of the dynamical variables and Wicker and Skamarock (2002) three-step Runge–Kutta scheme for the time integration of tracers. For the SGS turbulence of moist air, unless otherwise stated, a Smagorinsky–Lilly-type scheme, including stratification effects (Lilly, 1962; Smagorinsky, 1963) was used. We added a

165 fourth-order hyper-diffusion to stabilize the calculation. The nondimensional coefficient of the hyper-diffusion term defined in Eq. (A132) of Nishizawa et al. (2015) was set to  $10^{-4}$ .

In the SDM, the time evolution of the aerosol/cloud/precipitation particles is explicitly calculated by solving the elementary process equations of cloud microphysics. In this study, the considered cloud microphysics processes were advection and sedimentation, evaporation and condensation, including cloud condensation nuclei activation and deactivation, and  
170 collision–coalescence. To solve the condensation/evaporation process, the implicit Euler scheme was used to avoid stiffness. The Monte Carlo algorithm of Shima et al. (2009) was used for the collision–coalescence process. We employed the uniform sampling method to initialize the SDs (Section 5.3 of Shima et al. (2020)). The SGS turbulence was not considered for the SDs. Please see the works of Shima et al. (2009) and Shima et al. (2020) for more details on the governing equations and numerical schemes.

175 SN14 is a double-moment bulk scheme, in which the mixing ratio and the number concentration of the cloud and rain droplets are predicted in each grid, but not the aerosol number concentration. In this work, the microphysical processes of activation/deactivation, condensation/evaporation, and collision–coalescence, were calculated at each time step. An aerosol nucleation scheme that estimates cloud condensation nuclei (CCN) activation based on traditional empirical formulas was adopted. This approach, following Twomey (1959), Rogers and Yau (1989), and Seifert and Beheng (2006), accounts for the  
180 supersaturation ratio and its influence on aerosol activity, with the maximum activated aerosol number concentration set at 1.5 times the CCN at a supersaturation ratio of 1%. The scheme incorporates the effects of turbulence on nucleation as per (Lohmann, 2002), taking into account the effective vertical velocity and sub-grid turbulent kinetic energy. For the condensation process, an explicit condensation scheme rather than the saturation adjustment method was used. The collection processes were similar to those used by Seifert and Beheng (2001), Seifert and Beheng (2006) and Seifert (2008). The SGS turbulence  
185 affected the tracers in this bulk scheme. The specific calculation methods of the abovementioned processes were described in detail in the paper of Seiki and Nakajima (2014).

## 2.2 Numerical setup

We performed simulations of a drizzling marine stratocumulus case observed by the second research flight of DYCOMS-II  
190 (RF02) on July 11, 2001 off the coast of Southern California. This field campaign aimed to improve understanding on the stratocumulus characteristics (Stevens et al., 2003).

The initial vertical profiles of the wind, moisture air, and temperature followed that of Ackerman et al. (2009). The setup was for the model intercomparison project (hereafter, DYCOMS MIP) based on DYCOMS-II (RF02). DYCOMS MIP contained 14 different LES models with bulk or bin microphysics, but no LCM. The domain area was  $6 \text{ km} \times 6 \text{ km} \times 1.5 \text{ km}$ . The  
195 simulation time was 6 h. However, due to constraints in computational resources, the simulation with a finer grid resolution of  $12.5 \text{ m} \times 12.5 \text{ m} \times 2.5 \text{ m}$  conducted using the SDM was limited to 5 hours. The periodic boundary condition was imposed for the lateral boundaries. The simplified radiation model described in Ackerman et al. (2009) was used. Unlike in the work of

Ackerman et al. (2009), the maximum supersaturation limited to 1% in the first hour was used herein not only for droplet activation, but also for condensational growth. The initial aerosol number and the size distributions used for the SDM were the bimodal lognormal distribution specified in Ackerman et al. (2009). We reduced the initial aerosol number concentration from 100 to 70  $\text{cm}^{-3}$  for the SN14 simulations to make the mean cloud droplet number concentration consistent with that of the DYCOMS MIP ( $\sim 55 \text{ cm}^{-3}$ ). Constant latent and sensible heat from the surface was imposed. We also slightly decreased the constant surface latent heat flux from 93 to 86.7132  $\text{W/m}^2$  to slightly reduce the predicted liquid water in the SN14 and SDM simulations, thereby avoiding overestimation. The momentum exchange between the SDs and the fluid was also considered in the SDM. The SN14 and SDM results were saved every minute.

Table 1 summarizes the specific horizontal and vertical grid lengths, time steps, and SDNC.

#### 1) Grid resolution test (experiment groups A and B)

Nine different grid resolution settings were used:  $\text{DX} (= \text{DY}) \times \text{DZ} = 50 \text{ m} \times 2.5 \text{ m}/50 \text{ m} \times 5 \text{ m}/50 \text{ m} \times 10 \text{ m}/25 \text{ m} \times 2.5 \text{ m}/25 \text{ m} \times 5 \text{ m}/25 \text{ m} \times 10 \text{ m}/12.5 \text{ m} \times 2.5 \text{ m}/12.5 \text{ m} \times 5 \text{ m}/12.5 \text{ m} \times 10 \text{ m}$ . The aspect ratio ( $\text{DX}/\text{DZ}$ ) was also considered. All grid cells in the SDM and SN14 runs were uniform and not stretched in space. The SDM and SN14 runs with all different grid spacings were categorized into groups A and B, respectively. In both groups, the runs with  $\text{DX} (= \text{DY}) \times \text{DZ} = 50 \text{ m} \times 5 \text{ m}$  were the benchmark runs also used in the DYCOMS MIP. The initial super-droplet number concentrations of the runs in Group A were all 64 per cell. To stabilize the numerical simulations, the time steps were reduced as the resolution became finer. The goal of groups A and B was to explore the grid convergence of SDM and SN14. By comparing these two groups, we expect to find the differences between SDM and SN14.

#### 2) Initial super-droplet number test (experiment groups C and D)

Eight initial super-droplet number concentrations were set in Group C from smallest to largest: 1, 2, 4, 8, 16, 32, and 128 per cell. The same grid resolutions of the SDM runs in Group C (i.e.,  $50 \text{ m} \times 5 \text{ m}$ ) were compared with base run A8. We also investigated the impact of the grid resolution on the SD number characteristics using Group D, which comprised a series of SDM simulations with SD numbers 1, 4, 16, and 64 per cell at a  $25 \text{ m} \times 2.5 \text{ m}$  resolution. We expected groups C and D to help us understand the super-droplet convergence characteristic of the CDNC.

### 3 Numerical convergence characteristics

In this section, we will compare the SCALE results with the DYCOMS MIP results. As specified in the work of Ackerman et al. (2009), the first 2 h was considered as the spin-up period. Moreover, the vertical profiles were averaged over the last 4 h. In all profiles, the y-axis is defined as the height normalized by the inversion height  $z_i$ , which is the mean height of the  $q_t = 8 \text{ g kg}^{-2}$  isosurface. The entrainment rate in the simulations was calculated as  $E = \frac{dz_i}{dt} + Dz_i$ , where  $D = 3.75 \times 10^{-6} \text{ s}^{-1}$  is the uniform divergence of the large-scale horizontal winds. In the time series and vertical profiles, the ensemble range, interquartile range, and mean of the DYCOMS MIP results are denoted by the light and dark shading and solid lines, respectively. The

230 ensemble mean from the simulations that included drizzle without sedimentation is denoted by the dashed lines (Ackerman et al., 2009).

### 3.1 SDM grid convergence

235 In this section, we will analyze the SDM results conducted in various grid resolutions (Group A) to assess the grid convergence characteristics.

#### 3.1.1 Time series of the domain average

240 Fig. 1 shows the time series of several domain-averaged quantities for the SDM results. The results were compared with the DYCOMS MIP results. Fig. 2 depicts the statistics of the boundary layer and the cloud-related fields during the last 4 h (the last 3 h for run A1) versus the grid resolutions. The left and right columns represent the change of variables with DZ and DX, respectively. Each point in these plots represents a 4 h average of the variables for the corresponding SDM runs (a 3 h average for run A1). The error bars show the standard deviation of the time series.

245 The domain-averaged LWP decreased as DZ decreased when  $DZ \leq 5$  m (Figs. 1a and 2a) and was not very sensitive to DX (Figs. 1a and 2b). The LWP showed the trend of getting closer to the true solution as the grid resolution was being refined; however, the LWP changed rate in terms of DZ remained large, even when  $DZ = 2.5$  m. This indicated that a DZ smaller than 2.5 m ( $DZ < 2.5$  m) was needed to obtain a well converged solution. We conclude from the LWP time series that DX less than or equal to 50 m ( $DX \leq 50$  m) was sufficient; however, in the subsequent paragraphs, this conclusion will be proven untrue for all fields. Unlike the DYCOMS MIP, our LWP increased with time in most of our simulations. The LWP during the last 3 h in our simulations were all larger than the MIP average.

250 The cloud cover (CC) is the fraction of cloudy columns defined as columns with an LWP larger than  $20 \text{ g/m}^2$ . Conversely, cloud holes are columns with  $LWP \leq 20 \text{ g/m}^2$ . Figs. 1b and 2c showed that CC increased as DZ decreased. Its dependency on DX was relatively weak. CC exhibited the trend of getting closer to the true solution as the grid resolution was being refined, but was still sensitive to DZ and weakly sensitive to DX, even when  $(DZ, DX) = (2.5 \text{ m}, 12.5 \text{ m})$ . This may indicate that DZ smaller than 2.5 m ( $DZ < 2.5$  m) and DX smaller than 12.5 m ( $DX < 12.5$  m) are necessary in achieving a converged solution. Our CC results were almost always higher than the MIP ensemble mean, except when  $DZ = 10$  m. CC rapidly declined and deviated from the MIP results when  $DZ = 10$  m.

255 The inversion height  $z_i$  decreased as DZ decreased (Figs. 1c and 2e) and increased as DX decreased except run A1 (Figs. 1c and 2f).  $z_i$  displayed the trend of also getting closer to the true solution as the grid resolution was being refined, but remaining strongly sensitive to DZ and weakly sensitive to DX, even when  $(DZ, DX) = (2.5 \text{ m}, 12.5 \text{ m})$ . In other words,  $(DZ < 2.5 \text{ m}$  and  $DX < 12.5 \text{ m})$  are necessary in realizing a converged solution. The differences of  $z_i$  among the Group A runs relative to  $z_i$  were not big and were less than a few percent.  $z_i$  of the SDM rapidly increased during the first 2 h, and then flattened, whereas



that of the MIP more rapidly and continuously increased. This suggests that the DYCOMS MIP has more instability near the cloud tops, leading to stronger upward wind that promote cloud top growth, while the SDM has more stable cloud tops.

265 The entrainment rate (Fig. 1d) slowly decreased in time after the first hour then leveled off. By the definition (Eq. 1) adopted from the DYCOMS MIP, the entrainment rate was determined by the inversion height  $z_i$  and its time derivative  $dz_i/dt$ . Consequently, its dependency to the grid resolution was similar to that of the inversion height  $z_i$ . The entrainment rate decreased as DZ decreased (Fig. 2g) and increased as DX decreased (Fig. 2h). It remained strongly sensitive to DZ and weakly sensitive to DX, indicating that ( $DZ < 2.5$  m and  $DX < 12.5$  m) are necessary for an accurate simulation. The entrainment rates of the SDM were positioned around the lower end of the DYCOMS MIP range.

270 The vertically integrated total turbulent kinetic energy (TKE), including the resolved TKE and the SGS TKE, rose rapidly during the first 40 min, then fell sharply and rose slowly after the first hour (Figs. 1e). It was insensitive to DX (Figs. 1e and 2j) and DZ (Figs. 1e and 2i). Therefore, ( $DZ < 2.5$  m and  $DX \leq 50$  m) are necessary for an accurate simulation. For all the SDM runs, the vertically integrated TKE was almost always around the MIP ensemble average.

275 The CDNC (Fig. 1f) rapidly decreased in the first hour, with an average value of approximately  $60 \text{ cm}^{-3}$ , which was slightly higher than the MIP ensemble average ( $\sim 55 \text{ cm}^{-3}$ ). It was sensitive to DZ (Figs. 1f and 2k), but its dependence on it is unknown and less sensitive to DX (Figs. 1f and 2l). Therefore, ( $DZ < 2.5$  m and  $DX \leq 50$  m) are necessary for an accurate simulation.

280 The surface precipitation (Fig. 1g) in all our simulations was much lower than that in the DYCOMS MIP. Although our SDM results greatly differed from bulk and bin microphysics of the DYCOMS MIP, they were consistent with those in the previous SDM study on this case by Dziekan et al. (2019). Fig. 2m illustrates the surface precipitation increase with the decreasing DZ. However, its dependency on DX was not clear, whereas run A7 have the heaviest surface precipitation of all simulations (Fig. 2n).

### 3.1.2 Horizontally averaged vertical profile

285 In addition to the time series in Figs. 1 and 2, we further investigated the vertical profiles to examine the grid convergence and the vertical structure of clouds. Fig. 3 depicts the vertical profiles obtained by the horizontal average during the last 4 h (a 3 h average for run A1). The vertical axis in these plots represents the real height  $z$  scaled by the inversion height  $z_i$ .

The liquid water potential temperature  $\theta_l$  (Fig. 3d) and the total water mixing ratio  $q_t$  (Fig. 3c) were not sensitive to the grid resolution. Consistent to the surface precipitation time series (Fig. 3g), the rain water mixing ratio  $q_r$  profile (Fig. 3b) was almost 0.

290 The liquid water mixing ratio  $q_l$  (Fig. 3a) increased as DZ decreased and was not sensitive to DX. It remained strongly sensitive to DZ; hence, ( $DZ \ll 2.5 \text{ m} \wedge DX \leq 50 \text{ m}$ ) is necessary for an accurate simulation.

Fig. 3e showed the cloud fraction (CF; fraction of the cloudy grid cells defined as the grid cells with  $CDNC > 20 \text{ cm}^{-3}$ ). CF in the lower-part of the cloud deck depicted the same grid resolution dependency as  $q_l$ . The lower-part CF increased as DZ decreased. When  $DZ = 2.5$  m, the lower-part CF increased with decreasing DX, but was strongly sensitive to DZ. In other

words, ( $DZ \ll 2.5 \text{ m} \wedge DX < 12.5 \text{ m}$ ) is needed for the lower-part CF. Conversely, when examining the CF profile around its  
295 peak within the cloud deck's midsection, the characteristics of grid convergence were ambiguous. The peak CF values were  
very similar across simulations with  $DZ \leq 5 \text{ m}$ . In short, ( $DZ \ll 2.5 \text{ m} \wedge DX < 12.5 \text{ m}$ ) is necessary for the accurate  
simulation of the CF. CF in all SDM runs was smaller in the upper part of the cloud deck, but larger in the lower part of the  
cloud deck than that in the DYCOMS MIP. Fig. 4 showed the horizontal LWP distribution at the end of the simulation ( $t =$   
200 min). Some cloud holes (areas with very low LWP) could be found in Group A. These cloud holes shrank as the grid  
300 resolution increased. Figure 3i presented the averaged CDNC profiles exclusively within cloudy cells, revealing an inverse  
correlation where the CDNC escalates with a decrease in DZ.

The TKE profiles (Fig. 3g) and the variance of the vertical velocity profiles (Fig. 3h) were almost within the ensemble range  
of the DYCOMS MIP in the cloud deck. Their grid dependency was similar to that of the vertically integrated TKE time series.  
The TKE profile increased as DZ decreased. It was less sensitive to DX, but stayed strongly sensitive to DZ. Hence, ( $DZ \ll$   
305  $2.5 \text{ m} \wedge DX \leq 50 \text{ m}$ ) is necessary for an accurate simulation.

The TKE buoyancy production profile (Fig. 3f) was relatively insensitive to the grid resolution in the upper part of the cloud  
layer. We could find a similar dependency to the TKE profiles (Fig. 3g) in the region around the cloud base (i.e., lower-part  
of the cloud and sub-cloud layers). It increased as DZ decreased and was insensitive to DX. Considering the grid dependencies  
of the two regions, ( $DZ \ll 2.5 \text{ m} \wedge DX \leq 50 \text{ m}$ ) is necessary for an accurate simulation. Note also that in the SDM, the  
310 buoyancy production below the cloud base is much bigger than that in the DYCOMS MIP.

### 3.1.3 Summary of the SDM grid convergence and interpretation

Based on the Group A results presented in Figs. 1–4, the results were qualitatively comparable with each other and got closer  
to the true solution as the grid resolution was being refined. However, the  $(DZ, DX) = (2.5 \text{ m}, 12.5 \text{ m})$  resolution was not high  
315 enough yet. In particular, the result was still strongly sensitive to DZ.

Putting everything together, a much finer vertical resolution ( $DZ \ll 2.5 \text{ m}$ ) is necessary for almost all quantities. A finer  
horizontal resolution ( $DX < 12.5 \text{ m}$ ) is necessary for CC, CF,  $z_i$ , and entrainment rate.

We interpret the DZ dependency here. A more detailed cloud structure can be resolved when DZ is refined. This results in a  
higher CC (Figs. 1b and 4) and an enhanced cloud top cooling. The cooler boundary layer confirmed from the enlarged  $\theta$   
320 profile (not shown) led to a higher CF (Fig. 3e). Focusing on the lower-part of the cloud layer (just above the cloud base) in  
Fig. 3e, we can observe a relatively large discrepancy of the CF between runs with  $DZ = 2.5 \text{ m}$  and those with  $DZ = 10 \text{ m}$ ,  
explaining the difference of the  $q_l$  profiles (Fig. 3a). The larger cloudy area near the cloud base resulted in a stronger TKE  
buoyancy production in the higher-resolution runs (Fig. 3f). In the marine stratocumulus case, the contribution of the buoyancy  
production dominated the TKE, consequently increasing the TKE (Fig. 3g) and developing the cloud structure that can be  
325 confirmed by the higher LWP in the time series (Fig. 1a) and thicker cloud layer (Fig. 3e).

### 3.2 SD number convergence

The SD number convergence is discussed in this section. The SDM results at  $50 \text{ m} \times 5 \text{ m}$  with different initial SD numbers ranging from 1 to 128 SDs/cell were compared (Group C). A similar comparison with a finer grid resolution of  $25 \text{ m} \times 2.5 \text{ m}$  (Group D) was also performed to determine the impact of the grid size on the SD number convergence characteristics.

Fig. 5 depicts the last 4 h average of the variables versus the initial SD number concentration. In Group C, CDNC and precipitation decreased, and the entrainment rate and the inversion height increased with the increasing SD number. CDNC converged to approximately  $60/\text{cm}^3$ . All the SDM results converged well in addition to the LWP and  $z_i$  when the initial SDNC was greater than or equal to 16/cell. The absolute relative errors between C5 (16/cell) and C7 (128/cell) in CC,  $z_i$ , TKE, and CDNC were smaller than 5%. We proposed herein an explanation for the CDNC decrease with the increasing SDNC (Figs. 5f and 6a). In a case with a quite small initial SDNC (e.g., 1 or 2 SDs per cell on average), the multiplicity of SDs may therefore be very high, the phase relaxation time may be very long in some grids with almost no SDs, and become extremely short in grids with relatively many SDs. Consequently, there is a greater potential for greater supersaturation and thus more aerosols are activated to the cloud droplets. The time evolution of the supersaturation supports our point: the maximum supersaturation (Fig. 6c) significantly decreases as the SDNC increases during the beginning of the simulations. When the SDNC is small (e.g., 1 or 2), the average supersaturation in the cloudy grids (Fig. 6b) is also essentially at a relatively high value.

The variables in Group D (higher grid resolution) showed the same trend with the SDNC as those in Group C (lower grid resolution). The results in the high-resolution runs also converged well when  $\text{CDNC} \geq 16/\text{cell}$ . The absolute relative errors between D5 (16/cell) and A4 (64/cell) in the LWP, CC,  $z_i$ , entrainment rate, CDNC and surface precipitation were smaller than 5%.

It is worth noting that for cases with large amounts of precipitation formation, a low SD number per grid may not be sufficient. This may affect precipitation formation rate and the spatial distribution of rain and cloud water. Similarly, for polluted cases with GCCN (Giant CCN), a sufficient number of super droplets may be needed to properly sample the aerosol size spectrum and capture the effect of GCCN on precipitation initiation. Dziekan et al. (2021) found that the addition of GCCN to the SDM simulation can significantly increase the precipitation of stratocumulus.

In general, the SDM results all converged well at the initial SDNC greater or equal to 16/cell. All, except precipitation, were within the ensemble range of the DYCOMS MIP. The comparison study on different grid resolution indicated that the SD number per grid cell, not per unit volume, is essential for the SD number convergence characteristic. Considering the balance of the computational cost and the simulation accuracy, the SDNC of 16/cell is the optimal choice of the SDM for the stratocumulus simulations.

### 3.3 SN14 grid convergence

Similar to Section 3.1 for the SDM, this section discusses the conducted SN14 simulations in various grid resolutions (Group B) and the investigated grid convergence characteristics. The time series (Figs. 7 and 8) and the vertical profiles (Fig. 9) of Group B are shown.

The LWP (Figs. 7a and 8a),  $q_l$  (Fig. 9a), and lower-part CF (Fig. 9e) depicted a similar dependency on the grid spacings, that is, they increased as DZ decreased. The dependency on DX was unclear (Fig. 8b). B1 (12.5 m  $\times$  2.5 m) and B4 (25 m  $\times$  2.5 m) were indistinguishable. In other words, (DZ  $\ll$  2.5 m  $\wedge$  DX  $\leq$  25 m) is necessary for these variables. The cloud deck of SN14 was thicker than that of the SDM. Consequently, it contained more liquid water. SN14 agreed with the MIP better than the SDM.

Accordingly, CC (Figs. 7b and 8c) and maximum CF (Fig. 9e) showed similar dependencies to the grid spacings, that is, they increased as DZ decreased (Fig. 8d), but were not sensitive to the grid spacings if (DZ  $\leq$  5 m  $\wedge$  DX  $\leq$  50 m). CC and maximum CF of SN14 were nearly one, a reflection of minimal cloud holes as evidenced by the horizontal distribution of LWP observed in Figs 4 and 10. This near-unity in CC and peak CF, indicative of a highly continuous cloud field.

Similar to the result in the SDM, the inversion height  $z_i$  (Figs. 7c and 8e) decreased as DZ decreased (Fig. 8f). The DX dependency was unclear, but for all DZ, DX = 25 m and DX = 12.5 m agreed well, indicating that (DZ  $\ll$  2.5 m  $\wedge$  DX  $\leq$  25 m) is necessary for an accurate simulation. The entrainment rate (Figs. 7d, 8g, and 8h) was determined by  $z_i$  and  $dz_i/dt$ .  $z_i$  and the entrainment rate of SN14 were larger than those of the SDM due to the fast increase of  $z_i$  during the spin-up time period.  $z_i$  of SN14 was located around the upper end of the MIP, but the entrainment rate of SN14 during the last 4 h agreed well with the MIP result.

The TKE (Figs. 7e, 8i, and 9g),  $w$  variance (Fig. 9h), buoyancy production around the cloud base (Fig. 9f), and CDNC (Figs. 7f, 8k, and 9i) showed similar dependencies, that is, they increased as DZ decreased and decreased as DX decreased. In other words, (DZ  $\ll$  2.5 m  $\wedge$  DX  $\leq$  25 m) is necessary for an accurate simulation. No clear trend was observed in the grid dependency of the buoyancy production near the cloud top, but B1 (12.5 m  $\times$  2.5 m) and B4 (25 m  $\times$  2.5 m) were almost indistinguishable.

All variables characterizing turbulence (i.e., TKE,  $w$  variance, and buoyancy production) were larger in SN14 than in the SDM. In particular, the buoyancy production in the cloud layer was noticeably higher in SN14 than in the SDM. SN14 agreed better with the MIP.

The surface precipitation and  $q_r$  were so small in all the Group B results that they did not affect the overall grid convergence characteristics. This was in agreement with the SDM results, but much lower than the ensemble mean of the MIP.

SN14 showed a higher CDNC than the SDM in the first hour and a lower CDNC during the last 5 h (Figs. 1f and 7f). The higher peak of the CDNC in SN14 might be caused by the higher maximum supersaturation during the first hour. In that of Ackerman et al. (2009) and our SDM simulation, the maximum supersaturation was limited to 1% during the convection spin-up to avoid precipitation suppression, which was not adapted in our SN14 simulation. We conducted an SN14 sensitivity test

with the supersaturation limiter. The result (not shown) showed a lower CDNC during the first hour (maximum reduced from  
390  $120$  to  $90 \text{ cm}^{-3}$ ), but it had little effect on the CDNC after the spin-up stage.

From Figs. 7–9, we conclude that the LWP,  $q_l$ , CC, CF, TKE,  $w$  variance, and buoyancy production around the cloud base and  
CDNC increased, and the inversion height and the entrainment rate decreased with the decreasing DZ. However, the grid  
dependency on DX was relatively weak. The sensitivity of the variables to the grid resolution in SN14 was very similar to that  
in the SDM, but the SDM variables showed a stronger grid dependency on DZ and DX. In conclusion, the variation trend of  
395 the variables with the grid resolution in SN14 was more ambiguous than that in the SDM.

In summary, a much finer vertical resolution ( $DZ \ll 2.5 \text{ m}$ ) was necessary for almost all quantities, except for CC and  
maximum CF. The horizontal resolution of  $DX = 25 \text{ m}$  was sufficient for all quantities. The SN14 results agreed with the MIP  
better than the SDM results.

### 400 3.4 Summary of the numerical convergence characteristics

Sections 3.1 and 3.3 revealed the grid convergence characteristics of SDM and SN14, respectively. The finest grid resolution  
tested was  $(DZ, DX) = (2.5 \text{ m}, 12.5 \text{ m})$ . Our analysis revealed that the grid convergence of both schemes has not yet been  
achieved. However, we observed a trend where the results approached toward the true solution. Overall, under the tested  
parameter range, both SDM and SN14 were strongly sensitive to the vertical resolution and relatively weakly sensitive to the  
405 horizontal resolution.

In conclusion,  $DZ \ll 2.5 \text{ m}$  was necessary for both schemes. Note, however, that the TKE and CDNC in the SDM and the CC  
and the maximum CF in SN14 were not any more sensitive to DZ.

In the SDM, a finer horizontal resolution ( $DX < 12.5 \text{ m}$ ) was necessary for CC, maximum CF,  $z_i$ , and entrainment rate. In  
contrast, the horizontal resolution of  $DX \leq 25 \text{ m}$  was sufficient for SN14.

410 This grid convergence characteristic study showed that when the aspect ratio is unchanged, the LWP increases with the  
decreasing grid spacing, consistent with the previous studies (Pedersen et al., 2016; Mellado et al., 2018; Matheou and Teixeira,  
2019) with isotopic grids ( $DX/DZ = 1$ ). Some studies on the role of the grid resolution in the numerical simulations of the  
turbulent entrainment have also shown that the accurate entrainment rate simulation requires a vertical grid spacing no greater  
than the turbulent undulation scale, which can be 5–10 m for the inversion and turbulence levels typical of the subtropical  
415 marine stratocumulus (Stevens and Bretherton, 1999).

However, the stratocumulus simulation is notorious for such a slow grid convergence with respect to the vertical grid spacing  
DZ. The LES study of Matheou and Teixeira (2019) showed that the numerical convergence for the LWP is hard to achieve,  
even if the isotopic grid size of 1.25 m is used. However, the LES utilizing a 1.25 m grid resolution can reproduce a detailed  
cloud structure (e.g., elongated regions of low LWP, cloud holes, and pockets) (Matheou, 2018). Mellado et al. (2018)  
420 suggested that 2.5 m or less was necessary for their LES to approach the observation. Furthermore, the LWP was numerically  
converged when the Kolmogorov scale used in their DNS was smaller than 0.7 m.

In Section 3.2, we also conducted a numerical convergence analysis on the SD numbers at different grid resolutions. In conclusion, the initial SD number concentration  $\geq 16/\text{cell}$  is sufficient for the tested stratocumulus case. The SD number convergence characteristic was essentially determined by the SD number per grid cell, and not per unit volume. The LWP, CC, inversion height, entrainment rate, and TKE results also supported the finding that  $\text{SDNC} \geq 16/\text{cell}$  was good enough for an accurate stratocumulus simulation.

Note also that the SN14 results agreed with the MIP better than the SDM results. In the subsequent sections, we will focus on understanding the difference in the SDM, SN14, and MIP and conduct an in-depth analysis to elucidate the underlying mechanism.

430

#### 4. Comparison of the SDM and SN14

In Section 3, we explored grid convergence characteristics of the SDM and SN14, noting their similar dependencies on grid size yet distinct outcomes in the cloud top height, entrainment rate, liquid water content, CF, CDNC and turbulence characteristics.

435 The SDM simulations consistently yielded higher LWP values that exhibited an upward trend, unlike the SN14 simulations where LWP appeared lower and remained relatively constant past the initial hour (Fig. 11a). Furthermore, the SDM predicted enhanced  $q_1$  (Fig 12a) and a denser cloud base, evidenced by an increased cloud fraction near the cloud base, in contrast to the SN14 scheme which indicated a propensity towards more pronounced vertical cloud development, as demonstrated by a larger maximum cloud fraction near the cloud top (Fig 12e).

440 The differences between the SDM and SN14 may stem from their distinct aerosol treatment caused the difference between SDM and SN14. Temporal changes of aerosol size distribution through wet deposition were explicitly considered in the SDM, while background aerosol particles were assumed to be uniform and unchanged in SN14. Considering the 6h simulation time, this could modulate the characteristics of the stratocumulus deck.

To examine our hypothesis concerning aerosol wet deposition through cloud droplet sedimentation, an SDM simulation without sedimentation (SDM\_no\_sed) was conducted. In this simulation, all SDs are treated as passive tracers when updating their positions, i.e., their terminal velocities are always zero. Note also that their collision-coalescence by differential sedimentation is still considered in SDM\_no\_sed. The vertical profiles of the total particle number concentration  $N_p$ , total particle number mixing ratio  $q_n$  (ratio of  $N_p$  and air density), and SD number concentration  $N_{SD}$  in the SDM simulations reveal local minima near the cloud top, consistent across scenarios with and without sedimentation (illustrated in Figs. 13h, 13i, and 13j, respectively). Notably, these minima were more pronounced in the simulations incorporating the sedimentation process, aligning with our conjecture and underscoring the sedimentation's significant impact on particle distribution near the cloud top. This aerosol particle depletion near the cloud top propagated to the hole volume (Figs. 13h, 13i, and 13j). Moreover, the aerosol particle depletion in the hole volume in the SDM would make the cloud hole persistent (Fig. 13k). Note also that Figure 9(b)

445

of Arabas et al. (2015) also showed the depletion of aerosol particles near the stratocumulus top and the associated hole volume.

455 On the other hand, a relatively high concentrations of particles near the cloud top with almost no cloud holes could be found in SDM\_no\_sed (Figs. 13h, 13i, 13j and 13k). The above results demonstrated that the wet deposition of aerosols was responsible for the low CF near the cloud top and it also lowered the cloud tops of marine stratocumulus clouds and increased the cloud fraction near the cloud base. In our simulations, we assumed that the aerosol number concentration was initially uniform in space, including the free atmosphere. This should partially compensate for the aerosol particle reduction at the

460 cloud top. In other words, the effect of the cloud top aerosol reduction on the cloud-top volume reduction should be greater in the real world. Another Lagrangian cloud model, called UWLCM (Dziekan et al., 2019), presented a similar CF profile to ours in this stratocumulus case. Since all the SDs in SDM\_no\_sed do not sediment, larger droplets within the cloud are more prone to collide and coalesce. Consequently, cloud droplets are more likely to be collected in SDM\_no\_sed. This leads to an increase in  $q_r$  (Fig. 13b) and a decrease in CDNC (Fig. 13i).

465 The underlying reasons for these discrepancies could also be attributed to the inherent modeling capabilities and approaches of the SDM and SN14. The SDM's design to circumvent numerical diffusion issues enables it to avoid the unphysical dispersion of moisture and cloud droplets across space. Consequently, cloud droplets were not artificially diffused into dry air to evaporate; instead, localized areas of higher supersaturation promote more water vapor to condense onto cloud droplets, leading to an increased liquid water content. This enhanced liquid water content further intensified radiative warming at the cloud base and

470 radiative cooling at the cloud top. Radiative warming at the cloud base potentially made the airflows near the cloud base more active, thereby increasing TKE and facilitating more moisture transport into the cloud. As a result, in the SDM simulations, the cloud fraction, liquid water mixing ratio, buoyancy production, and CDNC were relatively higher near the cloud base (Fig 12). Stronger radiative cooling at the cloud top reduced the temperature in this region (Fig. 12d), enhancing the stability of the cloud top, which in turn diminished cloud top entrainment-mixing (Fig 11d) and TKE (Fig 11e). The localized subsidence that

475 ensued acts to suppress the vertical development of the cloud layer, evidenced by a reduced cloud top height (Fig 11c) and buoyancy production at the cloud top (Fig 12f), leading to a decrease in CF near the cloud top (Fig 12e). Although the avoidance of numerical diffusion is hypothesized to contribute to the enhanced liquid water content observed in SDM simulations, the precise impact of numerical diffusion on cloud dynamics necessitates further exploration. Subsequent sensitivity experiments are imperative to rigorously evaluate the extent of numerical diffusion's influence and to corroborate

480 the mechanisms suggested by this study. In addition to aerosol wet deposition and numerical diffusion effects, the treatment differences in CCN activation/deactivation between the SDM and SN14 may also have influenced the simulation outcomes. The nucleation scheme in SN14 potentially induces more frequent activation/deactivation events compared to the explicit calculations in SDM, possibly affecting latent heat exchange and cloud droplet formation (Hoffmann, 2016; Yang et al., 2023). This aspect of model divergence also requires

485 additional investigation to substantiate its effects on buoyancy flux and cloud structure. From the simulations presented herein, we could not conclude which mechanism is dominating the phenomenon. A detailed assessment of the proposed scenarios will be conducted in the future studies.

## 5 Conclusions

490 In this study, we assessed the performance of the Lagrangian particle-based cloud microphysics scheme, called SDM, for the marine stratocumulus simulation. To do this, we conducted a series of numerical simulations based on DYCOMS-II (RF02). For comparison, we also tested a double-moment bulk scheme, called SN14, using the same dynamical core.

Our simulation results were compared with the results of the model intercomparison project DYCOMS-II (RF02) MIP (Ackerman et al., 2009). In general, all the SDM and SN14 variables mostly showed a reasonable agreement with the MIP  
495 results.

We also investigated the numerical convergence characteristics of both schemes. We first assessed their grid convergence and confirmed their similar grid size dependencies. The stratocumulus cloud simulation was more sensitive to the vertical resolution than the horizontal resolution. Both SDM and SN14 simulations showed that as DZ decreases, there was an increase in CC,  $q_l$ , TKE,  $w$  variance, CDNC, CF and buoyancy production near the cloud base. Conversely, the inversion height ( $z_i$ )  
500 and the entrainment rate decreased with decreasing DZ. It is noteworthy that the LWP exhibited distinct sensitivities to DZ in the two schemes: in the SDM, the LWP decreased as DZ diminishes, particularly when  $DZ \leq 5$  m; conversely, in the SN14, the LWP increased with a decrease in DZ. Despite refining the grid resolution, these variables had not converged within the assessed grid spacing range, indicating that a DZ smaller than 2.5 m may be necessary for a well-converged solution. However, CC, CF, LWP, and  $q_l$  appeared to be relatively insensitive to changes in DX. The previous studies suggested that an isotopic  
505 grid size of 2.5 m or less is needed for the LES (Mellado et al., 2018). Conclusively,  $DZ \ll 2.5$  m was necessary for both SDM and SN14;  $DX < 12.5$  m was necessary for the SDM simulations; and  $DX \leq 25$  m was sufficient for SN14. Considering the huge computational resources required, we could not conduct in-depth and finer-resolution simulations to explore the grid size convergence properties of the SDM and SN14.

According to the SD convergence results, the CDNC increased with the decreasing SDNC due to the longer phase relaxation  
510 time. The simulations numerically converged when the SDNC was larger than 16 SDs/cell, which is smaller than the 40 SDs/cell that Dziekan et al. (2019) confirmed. The entrainment rate and the inversion height also increased with the increasing SDNC. The SD convergence study on different grid resolutions indicated that the SD number per grid cell was more essential for the SDM simulation than that per unit volume. Considering the balance of the computational cost and the simulation accuracy, the SDNC of 16/cell is the optimal choice of the SDM for this marine stratocumulus case.

515 In conclusion, our results suggest that due to the difficulty of the grid convergence of the cloud liquid, finer resolutions, especially vertical ones, are necessary for stratocumulus simulations using the SDM and the bulk scheme. Accordingly, to improve the computational efficiency, 16 SDs per grid cell should be enough for the SDM simulation of non-precipitating marine stratocumulus cases. When computational resources are limited, utilizing stretched grids can be beneficial. As mentioned previously, for simulating stratocumulus clouds, the liquid-water-related variables (e.g., LWP, CC, CF) exhibit a



520 stronger dependence on vertical resolution than horizontal resolution. Therefore, it is possible to allocate a finer vertical  
resolution in the boundary layer while maintaining a coarser resolution in the free atmosphere to conserve computational  
resources. Additionally, some studies have highlighted the presence of a very thin inversion structure due to strong radiative  
cooling at the top of stratocumulus clouds, and turbulent entrainment through this thin layer can exert significant feedback  
effects on boundary layer and cloud properties (Mellado et al., 2018). Consequently, it is advisable to maintain a fine vertical  
525 resolution near the cloud top.

The main discrepancies between the SDM and SN14 simulations of marine stratocumulus are reflected in the content and  
distribution of liquid water as well as in the macrostructure of the cloud. The SDM simulations consistently yielded higher  
LWP values that increased over time, contrasting with SN14 simulations, where LWP remained lower and relatively stable  
past the initial hour. SDM predicted enhanced  $q_l$  and a denser cloud base, evidenced by an increased CF near the cloud base.  
530 Conversely, SN14 tended towards more vertical cloud development, as shown by a larger maximum CF near the cloud top.

The differences observed between the SDM and SN14 simulations can be attributed to their distinct aerosol treatment. In the  
SDM approach, the dynamic process of aerosol size distribution through wet deposition is actively modeled, allowing for a  
realistic representation of aerosol behavior over time. Conversely, the SN14 scheme employs a static approach, treating  
background aerosol particles as constant and uniform throughout the simulation. This fundamental difference in aerosol  
535 treatment between the two models has the potential to significantly influence the behavior and structure of stratocumulus  
clouds over the course of a 6-hour simulation period. The total particle number concentration  $N_p$ , total particle number mixing  
ratio  $q_n$  (ratio of  $N_p$  and air density), and SD number concentration  $N_{SD}$  exhibit local minima near the cloud tops in simulations  
with and without the inclusion of sedimentation processes (SDM and SDM\_no\_sed, respectively). These minima are  
accentuated in simulations incorporating sedimentation, highlighting its significant role in altering particle distributions near  
540 the cloud top. Furthermore, aerosol depletion within hole volume in SDM simulations promotes the persistence of these holes,  
contrasting with the SDM\_no\_sed scenario, where a higher particle concentration near cloud tops and a virtual absence of hole  
volume are observed. This indicates wet deposition's pivotal role in reducing CF near the cloud top, lowering the cloud top,  
and enhancing CF near the cloud base in marine stratocumulus clouds.

The discrepancies noted could be attributed to the inherent modeling capabilities and methodologies of the SDM and SN14.  
545 Specifically, the SDM's strategy to evade numerical diffusion issues allows it to prevent the unphysical spread of moisture and  
cloud droplets. This characteristic facilitates the formation of localized regions of enhanced supersaturation, promoting the  
condensation of water vapor into cloud droplets. It concurrently minimizes the dispersion of cloud droplets into unsaturated  
areas, thereby mitigating evaporation. Consequently, this process contributes to an increase in the liquid water content within  
the cloud. Such an augmentation of liquid water content significantly amplifies radiative warming at the cloud base and  
550 enhances radiative cooling at the cloud top. This differential radiative effect further influences cloud dynamics by activating  
more vigorous airflows near the cloud base, which enhances TKE and facilitates the upward transport of moisture into the  
cloud. Additionally, it stabilizes the cloud top by reducing temperature, which in turn, moderates cloud top entrainment-mixing  
processes and TKE, ultimately affecting the vertical development and structural integrity of the cloud. It is important to note

555 that these proposed mechanisms represent initial hypotheses based on observed simulation differences and require further empirical validation through dedicated experimental studies.

While we also explored the potential impact of differences in CCN activation/deactivation treatments between the models, further evidence is required to support this hypothesis.

560 This study on numerical convergence can help researchers set up precise stratocumulus cloud simulations using the SDM and bulk schemes. Our comparison of the SDM and SN14 also indicates that accurate aerosol representation and its dynamic interaction with cloud processes play crucial roles in shaping marine stratocumulus characteristics as simulated by numerical models. Future studies are warranted for a more detailed examination of these mechanisms and their implications for cloud modeling and prediction.

Code and data availability.

565 The source code of SCALE-SDM is available from <https://doi.org/10.5281/zenodo.10688645> (Yin, 2024). All the model results used for this study can be reproduced by following the instructions included in the above repository. Due to the size of the model results, the data are deposited in local storage at the University of Hyogo in Kobe, Japan, and are available from the corresponding author upon request. For DYCOMS MIP data, please obtain from the website of the DYCOMS-II Field Campaign ([https://gcss-dime.giss.nasa.gov/wg1/dycoms-ii/modsim\\_dycoms-ii\\_gcss7-rf02.html](https://gcss-dime.giss.nasa.gov/wg1/dycoms-ii/modsim_dycoms-ii_gcss7-rf02.html)).

570

Video supplement.

The video supplement related to this article is available online at: <https://doi.org/10.5281/zenodo.10688359>.

Author contribution.

575 All the authors designed the experiments and CY carried them out. SS developed the model code and CY performed the simulations. CY prepared the manuscript with contributions from all co-authors.

Competing interests.

The authors declare that they have no conflict of interest.

580

Acknowledgements.

585 CY and SS would like to thank Yousuke Sato and Seiya Nishizawa for their generous support and informative discussions. We acknowledge the High Performance Computing Center of Nanjing Information Science & Technology for their support of this work. This study was supported by the National Key Scientific and Technological Infrastructure project “Earth System Science Numerical Simulator Facility” (EarthLab). This research partly used the computational resources of Kyushu University and Hokkaido University through the HPCI System Research Project (project IDs: hp160132, hp200078, hp210059, hp220062, hp230166), and the computer facilities of the Center for Cooperative Work on Data science and Computational

science, University of Hyogo. The SCALE library was developed by Team-SCALE of RIKEN Center for Computational Sciences (<https://scale.riken.jp/>, last access: 2 Dec 2022). The authors would like to thank Enago ([www.enago.jp](http://www.enago.jp)) for the English language review.

#### Financial support

This research has been supported by the National Natural Science Foundation of China (42325503), JSPS KAKENHI (grant nos. 26286089, 20H00225, 23H00149), MEXT KAKENHI (grant no. 18H04448), and JST [Moonshot R&D][Grant Number JPMJMS2286].

#### Reference

- Abade, G. C., Grabowski, W. W., and Pawlowska, H.: Broadening of cloud droplet spectra through eddy hopping: Turbulent entraining parcel simulations, *Journal of the Atmospheric Sciences*, 75, 3365-3379, <https://doi.org/10.1175/JAS-D-18-0078.1>, 2018.
- Ackerman, A. S., VanZanten, M. C., Stevens, B., Savic-Jovicic, V., Bretherton, C. S., Chlond, A., Golaz, J.-C., Jiang, H., Khairoutdinov, M., and Krueger, S. K.: Large-eddy simulations of a drizzling, stratocumulus-topped marine boundary layer, *Monthly Weather Review*, 137, 1083-1110, <https://doi.org/10.1175/2008MWR2582.1>, 2009.
- Alfonso, L. and Raga, G. B.: The impact of fluctuations and correlations in droplet growth by collision-coalescence revisited- Part 1: Numerical calculation of post-gel droplet size distribution, *Atmospheric Chemistry and Physics*, 17, 6895-6905, <https://doi.org/10.5194/acp-17-6895-2017>, 2017.
- Arabas, S. and Shima, S.-i.: Large-eddy simulations of trade wind cumuli using particle-based microphysics with Monte Carlo coalescence, *Journal of the Atmospheric Sciences*, 70, 2768-2777, <https://doi.org/10.1175/JAS-D-12-0295.1>, 2013.
- Arabas, S., Jaruga, A., Pawlowska, H., and Grabowski, W. W.: libcloudph++ 1.0: a single-moment bulk, double-moment bulk, and particle-based warm-rain microphysics library in C++, *Geosci. Model Dev.*, 8, 1677-1707, <https://doi.org/10.5194/gmd-8-1677-2015>, 2015.
- Arakawa, A. and Lamb, V. R.: Computational design of the basic dynamical processes of the UCLA general circulation model, *General circulation models of the atmosphere*, Supplement C, 173-265 pp.1977.
- Bony, S. and Dufresne, J. L.: Marine boundary layer clouds at the heart of tropical cloud feedback uncertainties in climate models, *Geophysical Research Letters*, 32, <https://doi.org/10.1029/2005GL023851>, 2005.
- Bony, S., Colman, R., Kattsov, V. M., Allan, R. P., Bretherton, C. S., Dufresne, J.-L., Hall, A., Hallegatte, S., Holland, M. M., and Ingram, W.: How well do we understand and evaluate climate change feedback processes?, *Journal of Climate*, 19, 3445-3482, <https://doi.org/10.1175/JCLI3819.1>, 2006.
- Boucher, O., Randall, D., Artaxo, P., Bretherton, C., Feingold, G., Forster, P., Kerminen, V.-M., Kondo, Y., Liao, H., and Lohmann, U.: Clouds and aerosols, in: *Climate change 2013: the physical science basis. Contribution of Working Group I to the Fifth Assessment Report of the Intergovernmental Panel on Climate Change*, Cambridge University Press, 571-657, 2013.
- Chandrakar, K. K., Morrison, H., and Witte, M.: Evolution of Droplet Size Distributions During the Transition of an Ultraclean Stratocumulus Cloud System to Open Cell Structure: An LES Investigation Using Lagrangian Microphysics, *Geophysical Research Letters*, 49, e2022GL100511, <https://doi.org/10.1029/2022GL100511>, 2022.
- Cheng, A., Xu, K. M., and Stevens, B.: Effects of resolution on the simulation of boundary-layer clouds and the partition of kinetic energy to subgrid scales, *Journal of Advances in Modeling Earth Systems*, 2, <https://doi.org/10.3894/JAMES.2010.2.3>, 2010.
- Dziekan, P. and Pawlowska, H.: Stochastic coalescence in Lagrangian cloud microphysics, *Atmospheric Chemistry and Physics*, 17, 13509-13520, <https://doi.org/10.5194/acp-17-13509-2017>, 2017.
- Dziekan, P., Waruszewski, M., and Pawlowska, H.: University of Warsaw Lagrangian Cloud Model (UWLCM) 1.0: a modern

- large-eddy simulation tool for warm cloud modeling with Lagrangian microphysics, *Geoscientific Model Development*, 12, 2587-2606, 2019.
- 635 Dziekan, P., Jensen, J. B., Grabowski, W. W., and Pawlowska, H.: Impact of Giant Sea Salt Aerosol Particles on Precipitation in Marine Cumuli and Stratocumuli: Lagrangian Cloud Model Simulations, *Journal of the Atmospheric Sciences*, <https://doi.org/10.1175/JAS-D-21-0041.1>, 2021.
- Geresdi, I., Xue, L., and Rasmussen, R.: Evaluation of orographic cloud seeding using a bin microphysics scheme: Two-dimensional approach, *Journal of Applied Meteorology and Climatology*, 56, 1443-1462, <https://doi.org/10.1175/JAMC-D-16-0045.1>, 2017.
- 640 Grabowski, W. W. and Abade, G. C.: Broadening of cloud droplet spectra through eddy hopping: Turbulent adiabatic parcel simulations, *Journal of the Atmospheric Sciences*, 74, 1485-1493, <https://doi.org/10.1175/JAS-D-17-0043.1>, 2017.
- Grabowski, W. W., Dziekan, P., and Pawlowska, H.: Lagrangian condensation microphysics with Twomey CCN activation, *Geoscientific Model Development (Online)*, 11, <https://doi.org/10.5194/gmd-11-103-2018>, 2018.
- Grabowski, W. W., Morrison, H., Shima, S.-I., Abade, G. C., Dziekan, P., and Pawlowska, H.: Modeling of cloud microphysics: Can we do better?, *Bulletin of the American Meteorological Society*, 100, 655-672, <https://doi.org/10.1175/BAMS-D-18-0005.1>, 2019.
- 645 Hoffmann, F.: The Effect of Spurious Cloud Edge Supersaturations in Lagrangian Cloud Models: An Analytical and Numerical Study, *Monthly Weather Review*, 144, 107-118, <https://doi.org/10.1175/MWR-D-15-0234.1>, 2016.
- Hoffmann, F. and Feingold, G.: Entrainment and Mixing in Stratocumulus: Effects of a New Explicit Subgrid-Scale Scheme for Large-Eddy Simulations with Particle-Based Microphysics, *Journal of the Atmospheric Sciences*, 76, 1955-1973, <https://doi.org/10.1175/JAS-D-18-0318.1>, 2019.
- 650 Hoffmann, F., Yamaguchi, T., and Feingold, G.: Inhomogeneous mixing in Lagrangian cloud models: Effects on the production of precipitation embryos, *Journal of the Atmospheric Sciences*, 76, 113-133, <https://doi.org/10.1175/JAS-D-18-0087.1>, 2019.
- J. Kurowski, M., P. Malinowski, S., and W. Grabowski, W.: A numerical investigation of entrainment and transport within a stratocumulus-topped boundary layer, *Quarterly Journal of the Royal Meteorological Society: A journal of the atmospheric sciences, applied meteorology and physical oceanography*, 135, 77-92, <https://doi.org/10.1002/qj.354>, 2009.
- 655 Jaruga, A. and Pawlowska, H.: libcloudph++ 1.1: aqueous phase chemistry extension of the Lagrangian cloud microphysics scheme, *Geoscientific Model Development Discussions*, 1-32, <https://doi.org/10.5194/gmd-11-3623-2018>, 2018.
- Kawai, H. and Shige, S.: Marine Low Clouds and Their Parameterization in Climate Models, *Journal of the Meteorological Society of Japan. Ser. II*, <https://doi.org/10.2151/jmsj.2020-059>, 2020.
- 660 Kessler, E.: On the distribution and continuity of water substance in atmospheric circulations, in: *On the distribution and continuity of water substance in atmospheric circulations*, Springer, 1-84, 1969.
- Khain, A., Ovtchinnikov, M., Pinsky, M., Pokrovsky, A., and Krugliak, H.: Notes on the state-of-the-art numerical modeling of cloud microphysics, *Atmospheric Research*, 55, 159-224, [https://doi.org/10.1016/S0169-8095\(00\)00064-8](https://doi.org/10.1016/S0169-8095(00)00064-8), 2000.
- 665 Khain, A., Beheng, K., Heymsfield, A., Korolev, A., Krichak, S., Levin, Z., Pinsky, M., Phillips, V., Prabhakaran, T., and Teller, A.: Representation of microphysical processes in cloud-resolving models: Spectral (bin) microphysics versus bulk parameterization, *Reviews of Geophysics*, 53, 247-322, <https://doi.org/10.1002/2014RG000468>, 2015.
- Koren, B.: A robust upwind discretization method for advection, diffusion and source terms, *Centrum voor Wiskunde en Informatica Amsterdam* 1993.
- 670 Lilly, D. K.: On the numerical simulation of buoyant convection, *Tellus*, 14, 148-172, <https://doi.org/10.1111/j.2153-3490.1962.tb00128.x>, 1962.
- Lin, Y.-L., Farley, R. D., and Orville, H. D.: Bulk parameterization of the snow field in a cloud model, *Journal of Applied Meteorology and climatology*, 22, 1065-1092, [https://doi.org/10.1175/1520-0450\(1983\)022<1065:BPOTSF>2.0.CO;2](https://doi.org/10.1175/1520-0450(1983)022<1065:BPOTSF>2.0.CO;2), 1983.
- Lohmann, U.: Possible aerosol effects on ice clouds via contact nuclei, *J. Atmos. Sci.*, 59, 647-656, 2002.
- 675 Lu, C., Zhu, L., Liu, Y., Mei, F., Fast, J. D., Pekour, M. S., Luo, S., Xu, X., He, X., Li, J., and Gao, S.: Observational study of relationships between entrainment rate, homogeneity of mixing, and cloud droplet relative dispersion, *Atmospheric Research*, 293, 106900, <https://doi.org/10.1016/j.atmosres.2023.106900>, 2023.
- Lynn, B. H., Khain, A. P., Dudhia, J., Rosenfeld, D., Pokrovsky, A., and Seifert, A.: Spectral (bin) microphysics coupled with a mesoscale model (MM5). Part I: Model description and first results, *Monthly Weather Review*, 133, 44-58, <https://doi.org/10.1175/MWR-2840.1>, 2005.
- 680

- Matheou, G.: Turbulence structure in a stratocumulus cloud, *Atmosphere*, 9, 392, <https://doi.org/10.3390/atmos9100392>, 2018.
- Matheou, G. and Teixeira, J.: Sensitivity to physical and numerical aspects of large-eddy simulation of stratocumulus, *Monthly Weather Review*, 147, 2621-2639, <https://doi.org/10.1175/MWR-D-18-0294.1>, 2019.
- 685 Matheou, G., Chung, D., and Teixeira, J.: On the synergy between numerics and subgrid scale modeling in LES of stratified flows: Grid convergence of a stratocumulus-topped boundary layer, *International Symposium on Stratified Flows*, San Diego, CA, 2016.
- Mellado, J.-P., Bretherton, C., Stevens, B., and Wyant, M.: DNS and LES for simulating stratocumulus: Better together, *Journal of Advances in Modeling Earth Systems*, 10, 1421-1438, <https://doi.org/10.1029/2018MS001312>, 2018.
- 690 Milbrandt, J. and Yau, M.: A multimoment bulk microphysics parameterization. Part I: Analysis of the role of the spectral shape parameter, *Journal of the atmospheric sciences*, 62, 3051-3064, <https://doi.org/10.1175/JAS3534.1>, 2005.
- Morrison, H. and Grabowski, W. W.: An improved representation of rimed snow and conversion to graupel in a multicomponent bin microphysics scheme, *Journal of the Atmospheric Sciences*, 67, 1337-1360, <https://doi.org/10.1175/2010JAS3250.1>, 2010.
- 695 Morrison, H., Witte, M., Bryan, G. H., Harrington, J. Y., and Lebo, Z. J.: Broadening of modeled cloud droplet spectra using bin microphysics in an Eulerian spatial domain, *Journal of the Atmospheric Sciences*, 75, 4005-4030, <https://doi.org/10.1175/JAS-D-18-0055.1>, 2018.
- Morrison, H., van Lier-Walqui, M., Fridlind, A. M., Grabowski, W. W., Harrington, J. Y., Hoose, C., Korolev, A., Kumjian, M. R., Milbrandt, J. A., Pawlowska, H., Posselt, D. J., Prat, O. P., Reimel, K. J., Shima, S.-I., van Diedenhoven, B., and Xue, L.: Confronting the Challenge of Modeling Cloud and Precipitation Microphysics, *Journal of Advances in Modeling Earth Systems*, 12, e2019MS001689, <https://doi.org/10.1029/2019MS001689>, 2020.
- 700 Naumann, A. K. and Seifert, A.: A Lagrangian drop model to study warm rain microphysical processes in shallow cumulus, *Journal of Advances in Modeling Earth Systems*, 7, 1136-1154, <https://doi.org/10.1002/2015MS000456>, 2015.
- Nishizawa, S., Yashiro, H., Sato, Y., Miyamoto, Y., and Tomita, H.: Influence of grid aspect ratio on planetary boundary layer turbulence in large-eddy simulations, *Geoscientific Model Development*, 8, 3393-3419, <https://doi.org/10.5194/gmd-8-3393-2015>, 2015.
- 705 Noh, Y., Oh, D., Hoffmann, F., and Raasch, S.: A Cloud Microphysics Parameterization for Shallow Cumulus Clouds Based on Lagrangian Cloud Model Simulations, *Journal of the Atmospheric Sciences*, 75, 4031-4047, <https://doi.org/10.1175/JAS-D-18-0080.1>, 2018.
- Nowak, J. L., Siebert, H., Szodry, K.-E., and Malinowski, S. P.: Coupled and decoupled stratocumulus-topped boundary layers: turbulence properties, *Atmospheric Chemistry and Physics*, 21, 10965-10991, <https://doi.org/10.5194/acp-21-10965-2021>, 2021.
- 710 Pedersen, J. G., Malinowski, S. P., and Grabowski, W. W.: Resolution and domain-size sensitivity in implicit large-eddy simulation of the stratocumulus-topped boundary layer, *Journal of Advances in Modeling Earth Systems*, 8, 885-903, 2016.
- Richter, D. H., MacMillan, T., and Wainwright, C.: A Lagrangian Cloud Model for the Study of Marine Fog, *Boundary-Layer Meteorology*, 181, 523-542, <https://doi.org/10.1007/s10546-020-00595-w>, 2021.
- 715 Rogers, R. R. and Yau, M. K.: *A Short Course in Cloud Physics*, 1989.
- Sato, Y., Shima, S. i., and Tomita, H.: A grid refinement study of trade wind cumuli simulated by a Lagrangian cloud microphysical model: the super-droplet method, *Atmospheric Science Letters*, 18, 359-365, <https://doi.org/10.1002/asl.764>, 2017.
- 720 Sato, Y., Shima, S. i., and Tomita, H.: Numerical Convergence of Shallow Convection Cloud Field Simulations: Comparison Between Double-Moment Eulerian and Particle-Based Lagrangian Microphysics Coupled to the Same Dynamical Core, *Journal of Advances in Modeling Earth Systems*, 10, 1495-1512, <https://doi.org/10.1029/2018MS001285>, 2018.
- Sato, Y., Nishizawa, S., Yashiro, H., Miyamoto, Y., Kajikawa, Y., and Tomita, H.: Impacts of cloud microphysics on trade wind cumulus: which cloud microphysics processes contribute to the diversity in a large eddy simulation?, *Progress in Earth and Planetary Science*, 2, 1-16, <https://doi.org/10.1186/s40645-015-0053-6>, 2015.
- 725 Schoeffler, P.: Dissipation, dispersion and stability of numerical schemes for advection and diffusion, SMHI1982.
- Schoenberg Ferrier, B.: A double-moment multiple-phase four-class bulk ice scheme. Part I: Description, *Journal of Atmospheric Sciences*, 51, 249-280, [https://doi.org/10.1175/1520-0469\(1994\)051%3C0249:ADMMPF%3E2.0.CO;2](https://doi.org/10.1175/1520-0469(1994)051%3C0249:ADMMPF%3E2.0.CO;2), 1994.
- 730 Schwenkel, J., Hoffmann, F., and Raasch, S.: Improving collisional growth in Lagrangian cloud models: development and verification of a new splitting algorithm, *Geoscientific Model Development* 11 (2018), Nr. 9, 11, 3929-3944,

- <https://doi.org/10.5194/gmd-11-3929-2018>, 2018.
- Seifert, A.: On the parameterization of evaporation of raindrops as simulated by a one-dimensional rainshaft model, *Journal of the Atmospheric Sciences*, 65, 3608-3619, <https://doi.org/10.1175/2008JAS2586.1>, 2008.
- 735 Seifert, A. and Beheng, K. D.: A double-moment parameterization for simulating autoconversion, accretion and selfcollection, *Atmospheric research*, 59, 265-281, 2001.
- Seifert, A. and Beheng, K. D.: A two-moment cloud microphysics parameterization for mixed-phase clouds. Part 1: Model description, *Meteorology and atmospheric physics*, 92, 45-66, <https://doi.org/10.1007/s00703-005-0112-4>, 2006.
- Seifert, A. and Rasp, S.: Potential and Limitations of Machine Learning for Modeling Warm-Rain Cloud Microphysical Processes, *Journal of Advances in Modeling Earth Systems*, 12, e2020MS002301, 2020.
- 740 Seiki, T. and Nakajima, T.: Aerosol effects of the condensation process on a convective cloud simulation, *Journal of Atmospheric Sciences*, 71, 833-853, <https://doi.org/10.1175/JAS-D-12-0195.1>, 2014.
- Shima, S.-i.: Estimation of the Computational Cost of Super-Droplet Method (Fast Algorithms in Computational Fluids: theory and applications), *RIMS Kokyuroku*, 1606, 110-118, 2008.
- 745 Shima, S.-i., Sato, Y., Hashimoto, A., and Misumi, R.: Predicting the morphology of ice particles in deep convection using the super-droplet method: development and evaluation of SCALE-SDM 0.2.5-2.2.0, -2.2.1, and -2.2.2, *Geoscientific Model Development*, 13, 4107-4157, <https://doi.org/10.5194/gmd-13-4107-2020>, 2020.
- Shima, S.-i., Kusano, K., Kawano, A., Sugiyama, T., and Kawahara, S.: The super-droplet method for the numerical simulation of clouds and precipitation: A particle-based and probabilistic microphysics model coupled with a non-hydrostatic model, *Quarterly Journal of the Royal Meteorological Society*, 135, 1307-1320, <https://doi.org/10.1002/qj.441>, 2009.
- 750 Smagorinsky, J.: General circulation experiments with the primitive equations: I. The basic experiment, *Monthly weather review*, 91, 99-164, [https://doi.org/10.1175/1520-0493\(1963\)091%3C0099:GCEWTP%3E2.3.CO;2](https://doi.org/10.1175/1520-0493(1963)091%3C0099:GCEWTP%3E2.3.CO;2), 1963.
- Smoluchowski, M.: Drei Vorträge über Diffusion, Brownsche Molekularbewegung und Koagulation von Kolloidteilchen, *Zeitschrift für Physik*, 17, 557-585, 1916.
- 755 Stephens, G. L.: Cloud feedbacks in the climate system: A critical review, *Journal of climate*, 18, 237-273, <https://doi.org/10.1175/JCLI-3243.1>, 2005.
- Stevens, B., Lenschow, D. H., Vali, G., Gerber, H., Bandy, A., Blomquist, B., Brenguier, J.-L., Bretherton, C., Burnet, F., and Campos, T.: Dynamics and chemistry of marine stratocumulus—DYCOMS-II, *Bulletin of the American Meteorological Society*, 84, 579-594, <https://doi.org/10.1175/BAMS-84-5-579>, 2003.
- 760 Stevens, B., Moeng, C.-H., Ackerman, A. S., Bretherton, C. S., Chlond, A., de Roode, S., Edwards, J., Golaz, J.-C., Jiang, H., and Khairoutdinov, M.: Evaluation of large-eddy simulations via observations of nocturnal marine stratocumulus, *Monthly weather review*, 133, 1443-1462, <https://doi.org/10.1175/MWR2930.1>, 2005.
- Stevens, D. and Bretherton, C.: Effects of resolution on the simulation of stratocumulus entrainment, *Quarterly Journal of the Royal Meteorological Society*, 125, 425-439, <https://doi.org/10.1002/qj.49712555403>, 1999.
- 765 Twomey, S.: The nuclei of natural cloud formation part II: The supersaturation in natural clouds and the variation of cloud droplet concentration, *Geofisica pura e applicata*, 43, 243-249, 10.1007/BF01993560, 1959.
- Unterstrasser, S., Hoffmann, F., and Lerch, M.: Collisional growth in a particle-based cloud microphysical model: insights from column model simulations using LCM1D (v1. 0), *Geoscientific Model Development*, 13, 5119-5145, <https://doi.org/10.5194/gmd-13-5119-2020>, 2020.
- 770 Wicker, L. J. and Skamarock, W. C.: Time-splitting methods for elastic models using forward time schemes, *Monthly weather review*, 130, 2088-2097, [https://doi.org/10.1175/1520-0493\(2002\)130%3C2088:TSMFEM%3E2.0.CO;2](https://doi.org/10.1175/1520-0493(2002)130%3C2088:TSMFEM%3E2.0.CO;2), 2002.
- Wood, R.: Stratocumulus clouds, *Monthly Weather Review*, 140, 2373-2423, <https://doi.org/10.1175/MWR-D-11-00121.1>, 2012.
- 775 Xu, X., Lu, C., Liu, Y., Luo, S., Zhou, X., Endo, S., Zhu, L., and Wang, Y.: Influences of an entrainment–mixing parameterization on numerical simulations of cumulus and stratocumulus clouds, *Atmos. Chem. Phys.*, 22, 5459-5475, [10.5194/acp-22-5459-2022](https://doi.org/10.5194/acp-22-5459-2022), 2022.
- Xue, L., Teller, A., Rasmussen, R., Geresdi, I., and Pan, Z.: Effects of aerosol solubility and regeneration on warm-phase orographic clouds and precipitation simulated by a detailed bin microphysical scheme, *Journal of the atmospheric sciences*, 67, 3336-3354, <https://doi.org/10.1175/2010JAS3511.1>, 2010.
- 780 Xue, L., Teller, A., Rasmussen, R., Geresdi, I., Pan, Z., and Liu, X.: Effects of aerosol solubility and regeneration on mixed-phase orographic clouds and precipitation, *Journal of the atmospheric sciences*, 69, 1994-2010, <https://doi.org/10.1175/JAS->



[D-11-098.1](#), 2012.

Yamaguchi, T. and Randall, D. A.: Cooling of entrained parcels in a large-eddy simulation, *Journal of the Atmospheric Sciences*, 69, 1118-1136, <https://doi.org/10.1175/JAS-D-11-080.1>, 2012.

785 Yang, F., Hoffmann, F., Shaw, R. A., Ovchinnikov, M., and Vogelmann, A. M.: An Intercomparison of Large-Eddy Simulations of a Convection Cloud Chamber Using Haze-Capable Bin and Lagrangian Cloud Microphysics Schemes, *Journal of Advances in Modeling Earth Systems*, 15, e2022MS003270, <https://doi.org/10.1029/2022MS003270>, 2023.

Yin, C.: wanyouyue/GMD\_2024\_code\_Yin: SCALE-SDM\_Yin2024\_v1.0.4. Zenodo, <https://doi.org/10.5281/zenodo.10688645>, 2024.

790 Zelinka, M. D., Myers, T. A., McCoy, D. T., Po-Chedley, S., Caldwell, P. M., Ceppi, P., Klein, S. A., and Taylor, K. E.: Causes of higher climate sensitivity in CMIP6 models, *Geophysical Research Letters*, 47, e2019GL085782, <https://doi.org/10.1029/2019GL085782>, 2020.

795

800

805

810

815

820

825

830

**Table 1 Setup of the sensitivity experiments**

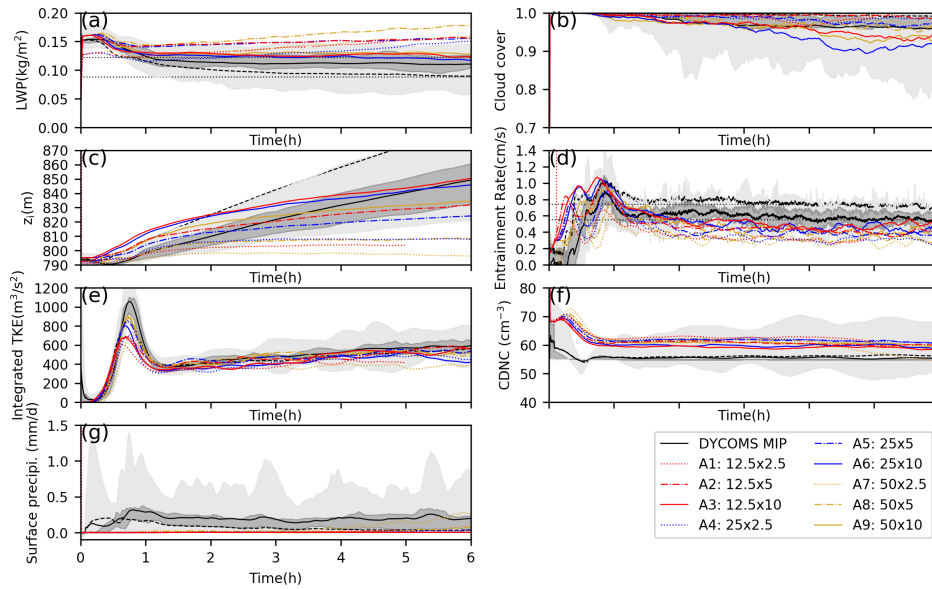
Run	Scheme	DY (m)	DZ (m)	SDNC (SD(s)/ cell)	(DT=DT_PHY_SF=DT_PHY _TB=DT_PHY_MP=DT_PH Y_RD)/DT_DYN (s)*	DT_cnd=DT_coa =DT_adv (s)**
A1	SDM	12.5	2.5	64	0.04/0.004	0.04
A2	SDM	12.5	5	64	0.05/0.005	0.05
A3	SDM	12.5	10	64	0.05/0.005	0.05
A4	SDM	25	2.5	64	0.1/0.005	0.1
A5	SDM	25	5	64	0.1/0.01	0.1
A6	SDM	25	10	64	0.1/0.01	0.1
A7	SDM	50	2.5	64	0.1/0.005	0.1
A8	SDM	50	5	64	0.2/0.01	0.2
A9	SDM	50	10	64	0.2/0.02	0.2
B1	SN14	12.5	2.5	-	0.05/0.005	-
B2	SN14	12.5	5	-	0.05/0.005	-
B3	SN14	12.5	10	-	0.05/0.005	-
B4	SN14	25	2.5	-	0.05/0.005	-
B5	SN14	25	5	-	0.1/0.01	-
B6	SN14	25	10	-	0.1/0.01	-
B7	SN14	50	2.5	-	0.05/0.005	-
B8	SN14	50	5	-	0.2/0.02	-
B9	SN14	50	10	-	0.2/0.02	-
C1	SDM	50	5	1	0.2/0.02	0.2
C2	SDM	50	5	2	0.2/0.02	0.2
C3	SDM	50	5	4	0.2/0.02	0.2
C4	SDM	50	5	8	0.2/0.02	0.2
C5	SDM	50	5	16	0.2/0.02	0.2
C6	SDM	50	5	32	0.2/0.02	0.2
C7	SDM	50	5	128	0.1/0.01	0.1
D1	SDM	25	2.5	1	0.1/0.005	0.1
D3	SDM	25	2.5	4	0.1/0.005	0.1
D5	SDM	25	2.5	16	0.1/0.005	0.1

\*DT, DT\_DYN, DT\_PHY\_SF, DT\_PHY\_TB, DT\_PHY\_MP, and DT\_PHY\_RD are the time steps of time integration and dynamical, surface, turbulence, microphysics, and radiation processes, respectively.



\*\*DT\_cnd, DT\_coa, and DT\_adv are the time steps of the condensation, coalescence, and advection processes, respectively.

835



**Figure 1.** Time series of the (a) liquid water path (LWP), (b) cloud cover, (c) inversion height, (d) entrainment rate, (e) vertically integrated turbulent kinetic energy (TKE), (f) cloud droplet number concentration (CDNC), and (g) surface precipitation for the Group A runs (SDM). The ensemble range, interquartile range, and mean of the DYCOMS MIP results are denoted by the light and dark shading and solid lines, respectively. The ensemble mean from the simulations that included drizzle without sedimentation is denoted by the dashed lines (Ackerman et al., 2009).

840

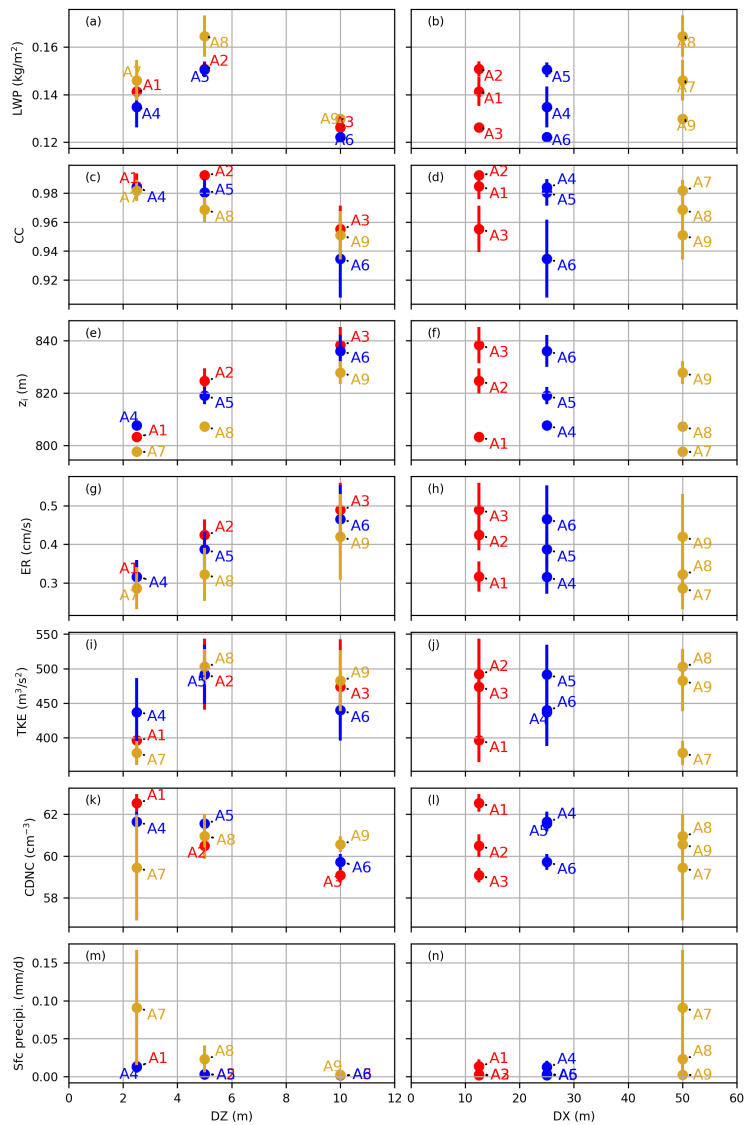
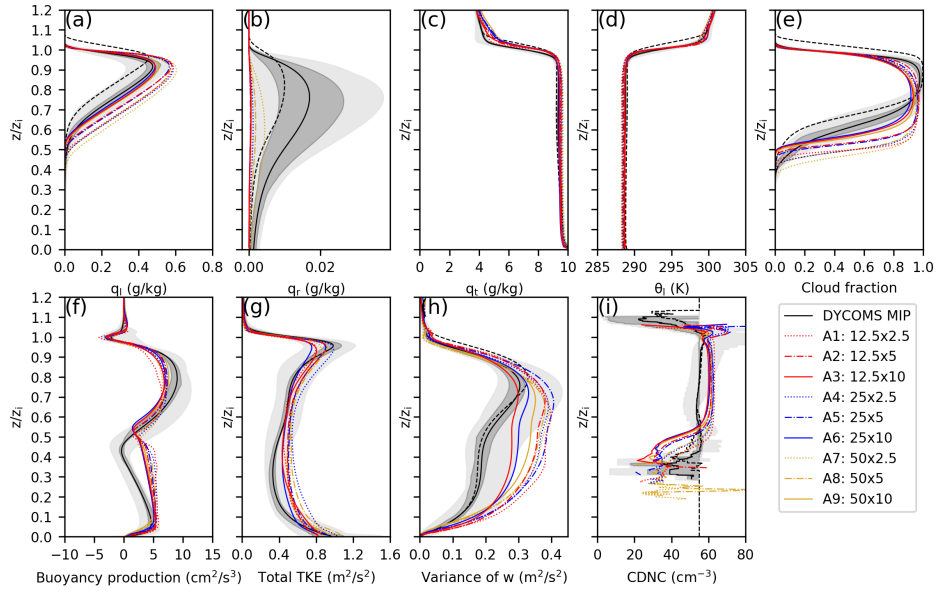
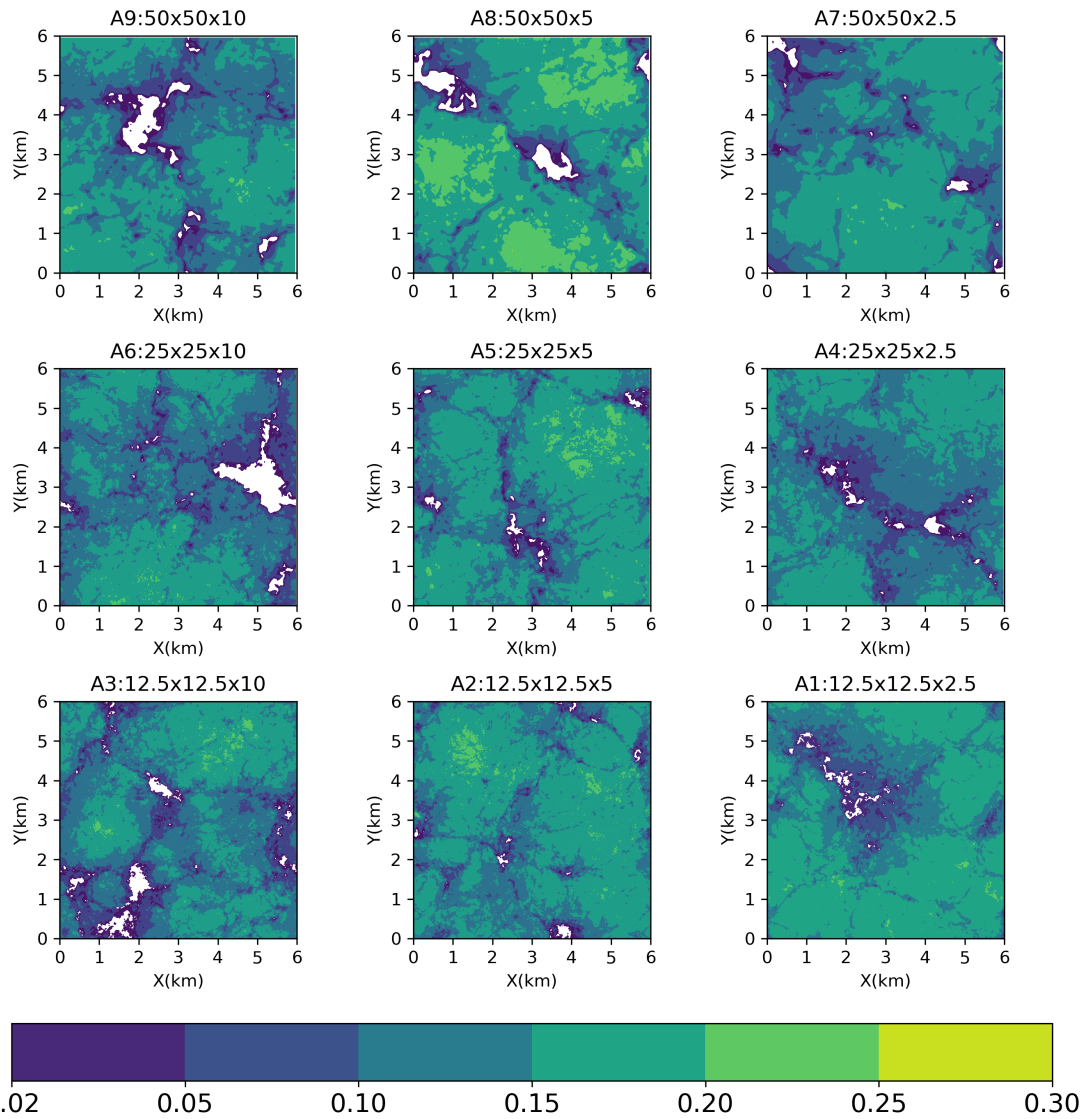


Figure 2. Evolution of the time average of the (a, b) LWP, (c, d) cloud cover, (e, f) inversion height, (g, h) entrainment rate, (i, j) vertically integrated TKE, (k, l) CDNC, and (m, n) surface precipitation for the Group A runs (SDM) with the grid resolution. The left and right columns represent the evolution of the variables with DZ and DX, respectively. Each point in these scatter plots represents the average of one variable from one SDM run. The error bars show the standard deviation of the detrended data.

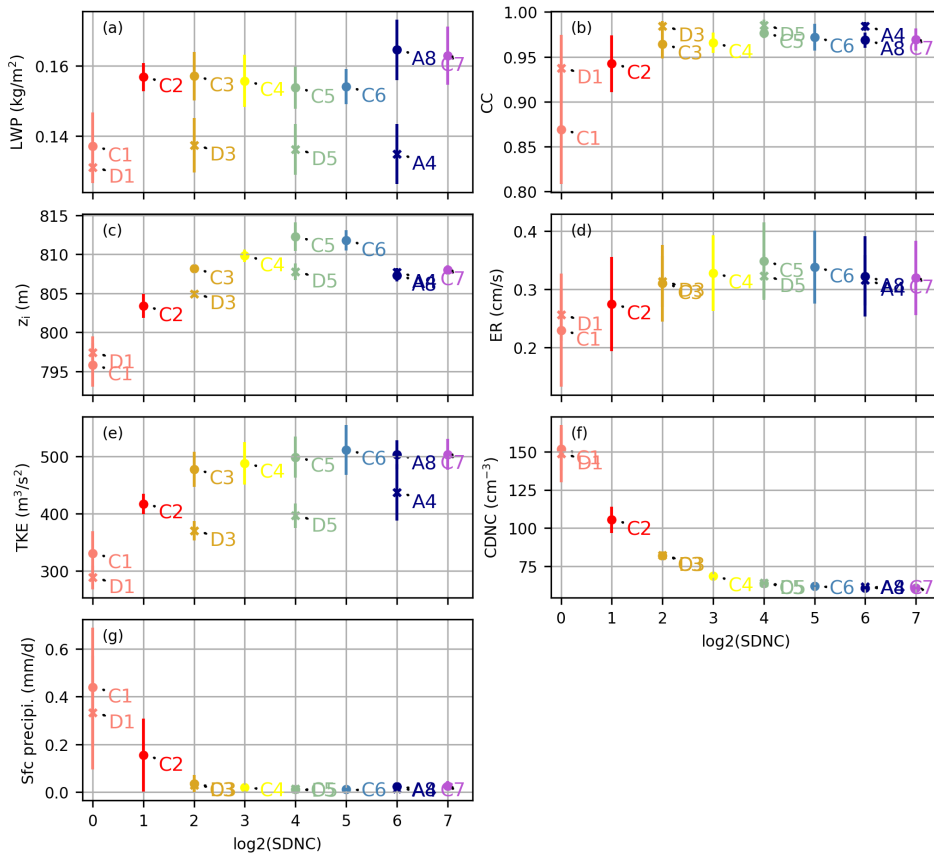


850 **Figure 3.** Vertical profiles of the (a) liquid water mixing ratio, (b) rain water mixing ratio, (c) total water mixing ratio, (d) liquid water potential temperature, (e) cloud fraction, (f) buoyancy production, (g) total TKE, (h)  $w$  variance, and (i) CDNC for the Group A runs (SDM). The meanings of light and dark shading, solid lines, and dashed lines are the same as in Figure 1.

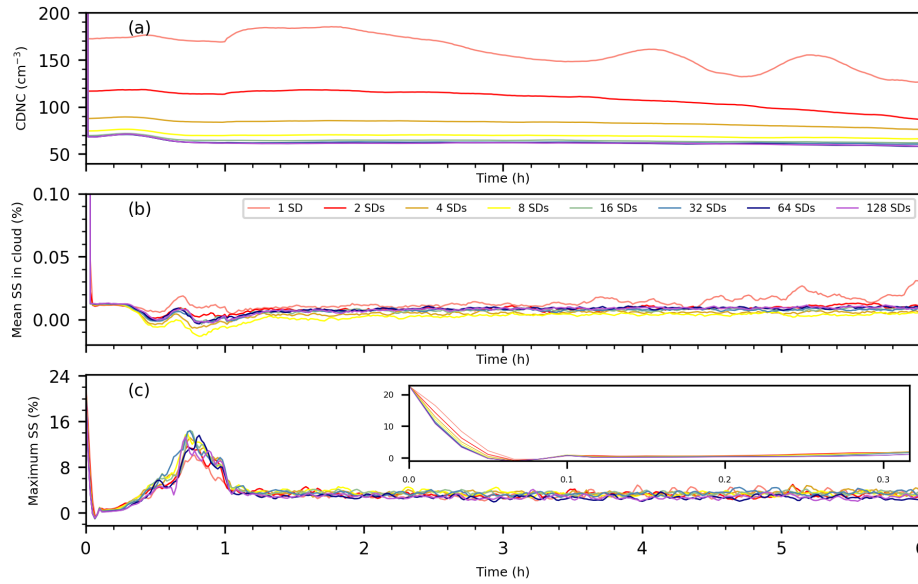
time = 12000s



**Figure 4.** Horizontal LWP distribution at 200 min in Series A (SDM). The size of the cloud holes decreased when the resolution became finer.



860 **Figure 5. Evolution of the time average of the (a) LWP, (b) cloud cover, (c) inversion height, (d) entrainment rate, (e) vertically integrated TKE, (f) CDNC, and (g) surface precipitation for the Group C and D runs and runs A8 and A4 with the SDNC. Each point in these scatter plots represents the average of one of those variables from one SDM run. Group C and D are marked in "circle" and "x," respectively. The error bars show the standard deviation of the detrended data.**



**Figure 6. The time series of (a) CDNC, (b) mean supersaturation within cloudy cells, and (c) maximum supersaturation for the SDM simulations with diverse initial super droplet (SD) concentrations (Group C), conducted at a grid resolution of  $50 \text{ m} \times 50 \text{ m} \times 5 \text{ m}$ . Notably, the inset in panel (c) accentuates the first 20 minutes, underlining the inversely proportional relationship observed between initial SD number concentrations and the magnitude of maximum supersaturation.**

865

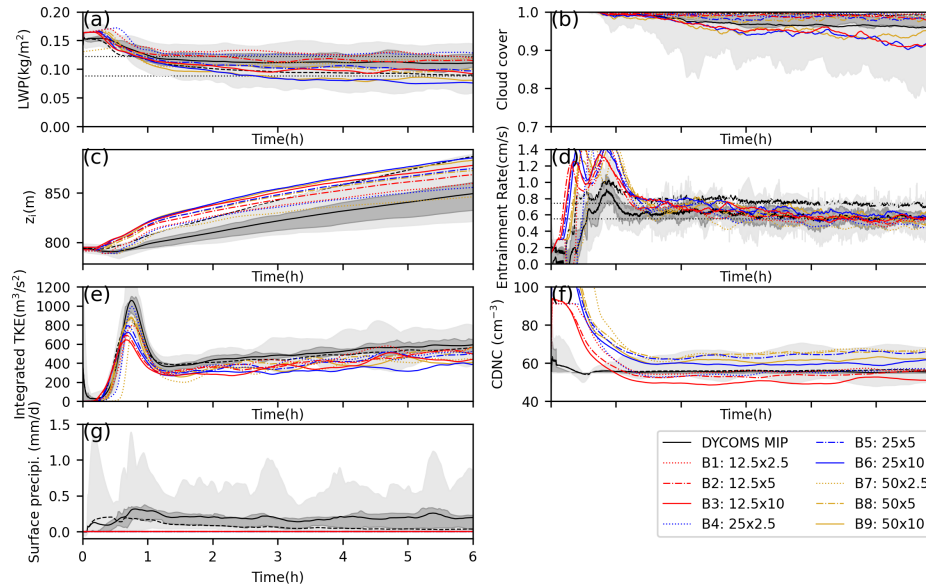


Figure 7. Time series of the a) LWP, (b) cloud cover, (c) inversion height, (d) entrainment rate, (e) vertically integrated TKE, (f) CDNC, and (g) surface precipitation for the Group B runs (SN14). The meanings of light and dark shading, solid lines, and dashed lines are the same as in Figure 1.

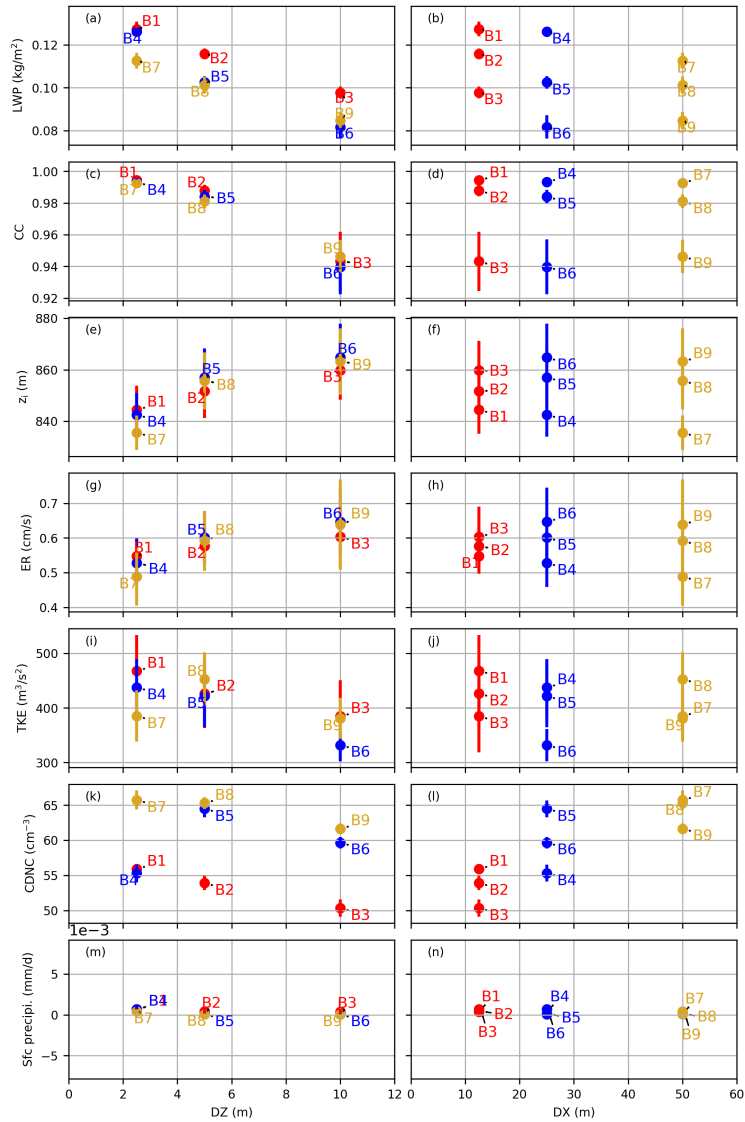


Figure 8. Evolution of the time average of the (a, b) LWP, (c, d) cloud cover, (e, f) inversion height, (g, h) entrainment rate, (i, j) vertically integrated TKE, and (k, l) CDNC and (m, n) surface precipitation for Group B runs (SN14) with the grid resolution. The

left and right columns represent the evolution of the variables with DZ and DX, respectively. Each point in these scatter plots represents the average of one of the variables from one SN14 run. The error bars show the standard deviation of the detrended data.

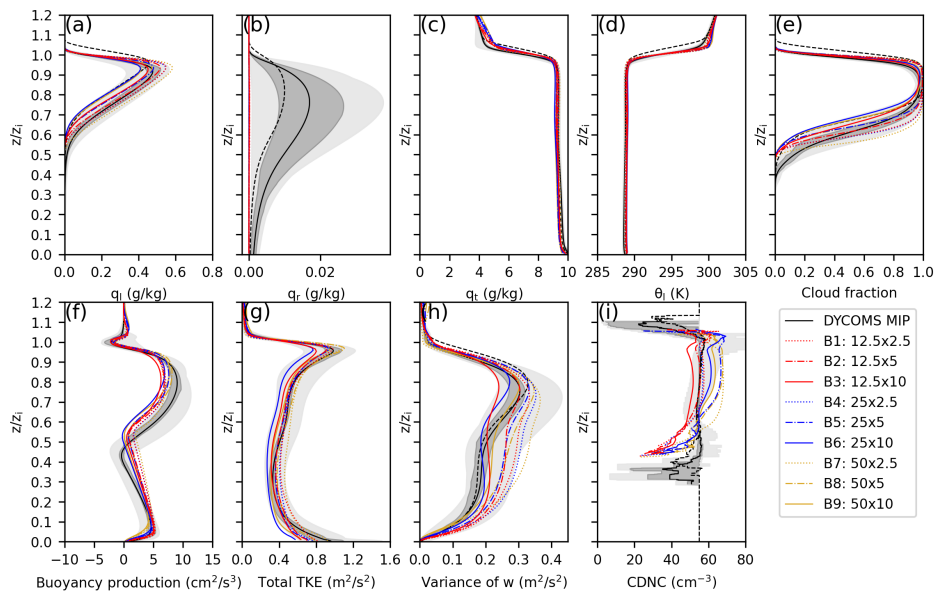


Figure 9. Vertical profiles of the (a) liquid water mixing ratio, (b) rain water mixing ratio, (c) total water mixing ratio, (d) liquid water potential temperature, (e) cloud fraction, (f) buoyancy production, (g) total TKE, (h)  $w$  variance, and (i) CDNC for the Group B runs (SN14). The meanings of light and dark shading, solid lines, and dashed lines are the same as in Figure 1.



time = 12000s

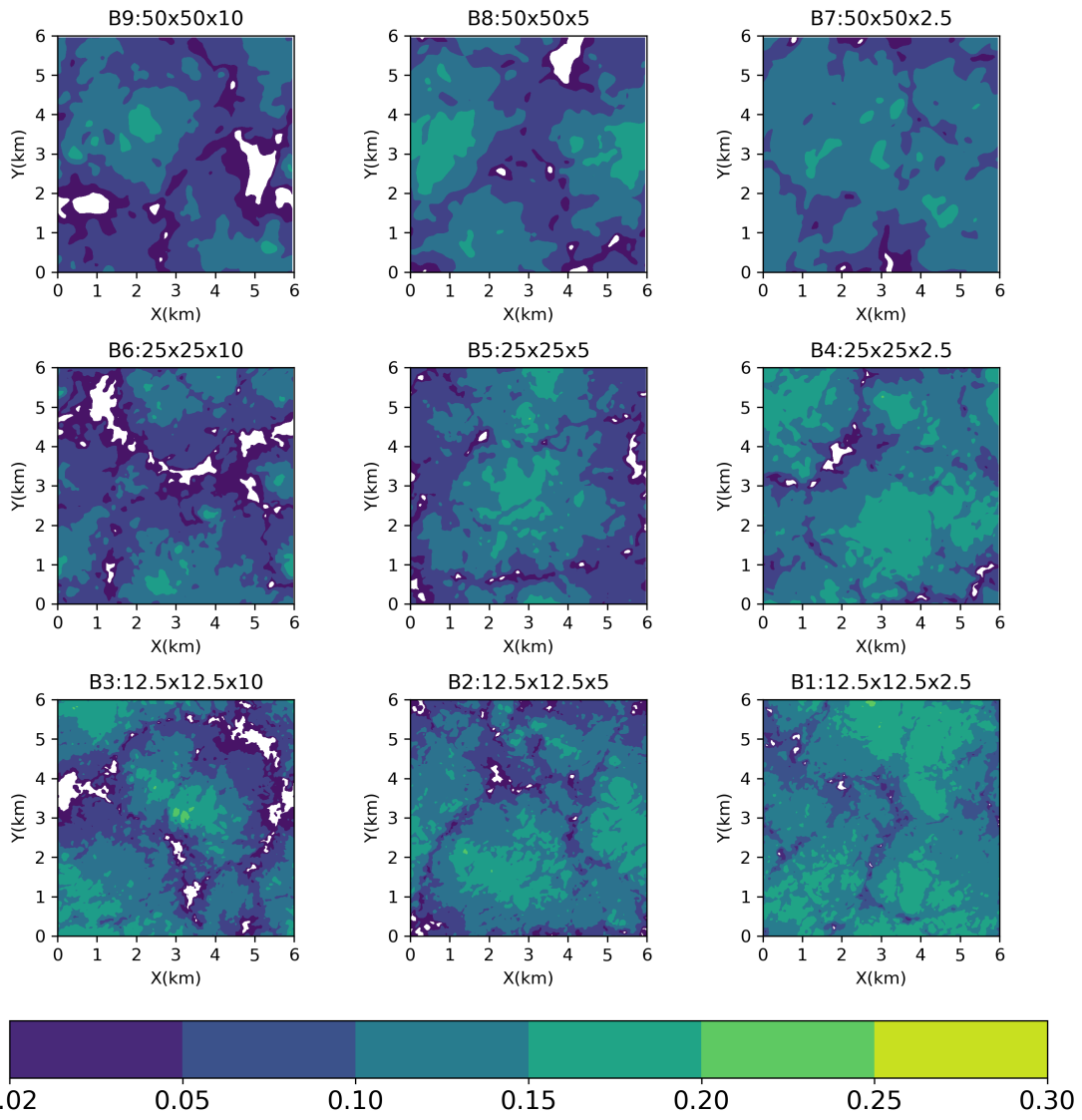
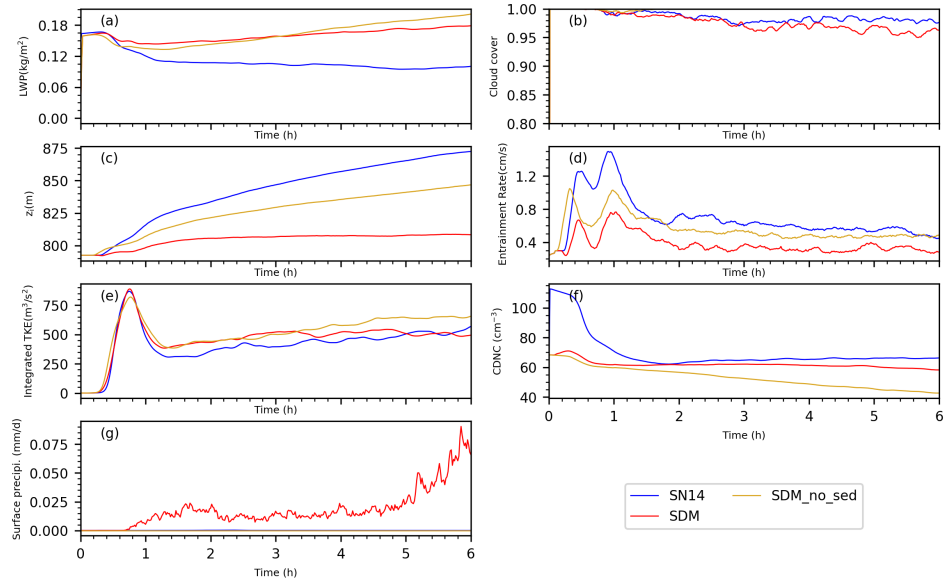


Figure 10. Horizontal LWP distribution at 200 min in Series B (SN14).



885 **Figure 11.** Time series of the LWP, cloud cover, inversion height, entrainment rate, vertically integrated TKE, CDNC, and surface precipitation for runs A8, B8, SDM without sedimentation and SDM with horizontal SGS turbulent mixing.

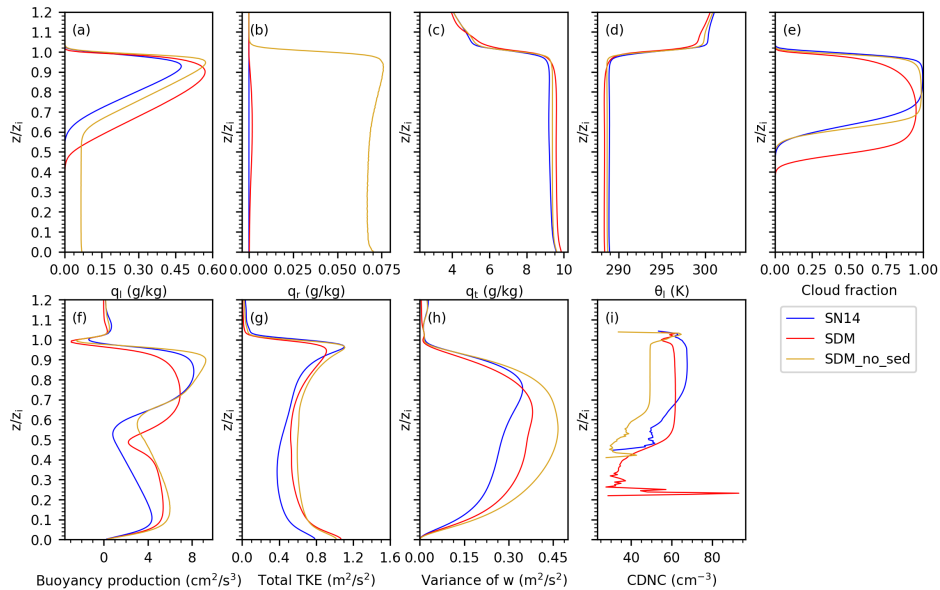


Figure 12. Vertical profiles of the (a) liquid water mixing ratio, (b) rain water mixing ratio, (c) total water mixing ratio, (d) liquid water potential temperature, (e) cloud fraction, (f) buoyancy production, (g) total TKE, (h) w variance, and (i) CDNC for the A8, B8 and SDM without sedimentation and SDM with horizontal SGS turbulent mixing.

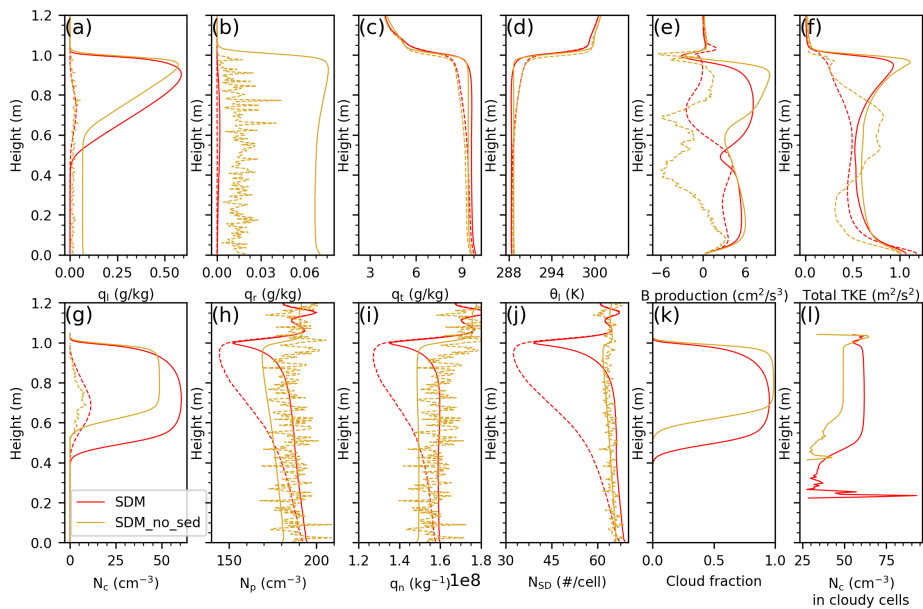


Figure 13. Vertical profiles of  $q_l$ ,  $q_r$ ,  $q_t$ ,  $\theta_l$ , buoyancy production, total TKE,  $N_c$ ,  $N_p$ ,  $q_n$ ,  $N_{SD}$ , CF, and  $N_c$  for runs A8, SDM without sedimentation. The solid and dashed lines in (a)–(j) represent the profiles in the cloudy and hole columns, respectively.